

**GROUNDWATER LEVELS
in the
UPPER BLACK SQUIRREL CREEK
DESIGNATED GROUND WATER BASIN
2014**



by
Ralf Topper



COLORADO
Division of Water Resources
Department of Natural Resources

John W Hickenlooper
Governor

Mike King
Executive Director

Dick Wolfe
State Engineer

Matt Sares
Project Manager

UPPER BLACK SQUIRREL CREEK DESIGNATED GROUND WATER BASIN 2014

This report contains groundwater level data collected from wells in the Upper Black Squirrel Creek Designated Basin during the period from 2004 through 2014. A separate report was not published for 2013. Acquisition and publication of this information is a cooperative effort between the Upper Black Squirrel Creek Ground Water Management District and the Colorado Division of Water Resources. The project is part of a statewide groundwater level monitoring program funded by Senate Bill 200 (1987 legislative session). This legislation directed that a portion of the fees collected for water well permit applications be used for the establishment of a program to monitor water level trends throughout the state.

The report contains water level measurements from thirty-three wells. The locations of those wells and the extent of the alluvial aquifer are shown on the following map. Twenty-five water level measurements were recorded in 2014 on April 9th and 10th. Due to the timing of this monitoring event, eight wells were already pumping from which measurements were not made. Depth to groundwater, below land surface, ranged from 9 to 147 feet. Water levels in excess of 100 feet were only measured at three locations: BS-15A, BS-SLB4, and BS-SLB5.

The wells in this report are listed by township, range and section, beginning at the north end of the basin and proceeding south. Tabular data are presented for each well for the previous ten years. Graphical data are presented for the entire period of record. Analyses of changes in the water level in the aquifer are complicated by unknown pumping schedules. New to the report this year is a modification to the time axis of the hydrographs. All available water level data, for each well, is now plotted as a true time series versus sequential data points. Wells lacking measurements in the past 10 years have been removed from the monitoring program and are no longer included in this publication.

Overall, ground water levels in wells measured by the Division of Water Resources declined approximately two tenths of a foot (0.2) from 2013. The largest decline of 5.5 feet was reported at well BS-18, while the greatest increase of 15 feet was reported at well BS-22A. Medium term, 5-year trends could not be calculated as no 2004 water levels were recorded. Long term, 10-year trends, indicate an overall average decline of 2 feet.

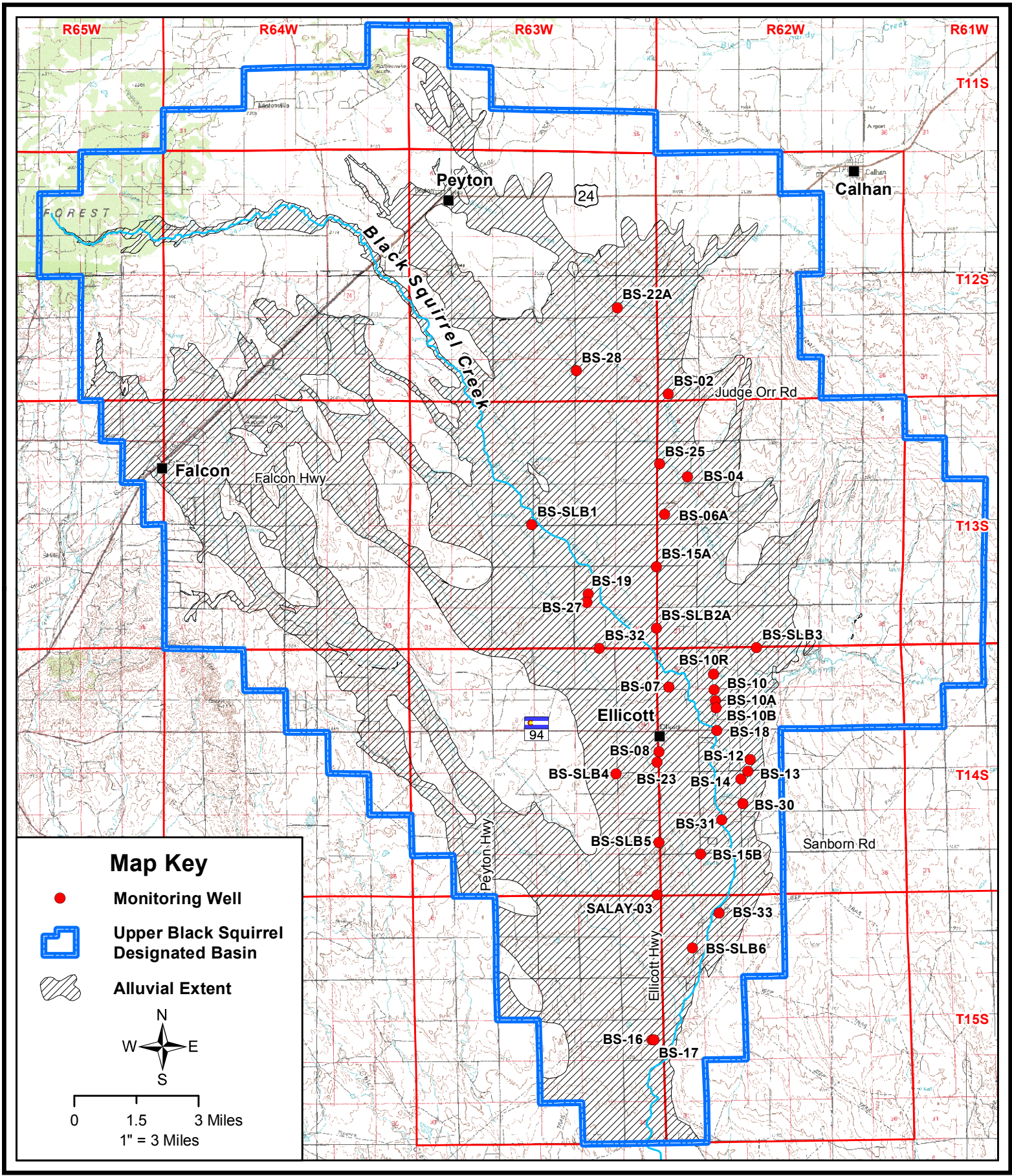
An electronic copy of this report, in Adobe PDF format, is available on the Division of Water Resources website <http://water.state.co.us/groundwater/Pages/HydroGeo.aspx>.

Hardcopy reports may be obtained from the Colorado Division of Water Resources, Public Records Section at 1313 Sherman Street, Room 818, Denver, CO 80203. Additionally, all groundwater level data may be accessed and exported using the tools available on the Colorado Decision Support System website:

<http://cdss.state.co.us/onlineTools/Pages/GroundWaterWaterLevels.aspx>

If you have any question regarding alluvial groundwater and the information in this report, please contact the Groundwater Information Desk at (303) 866-3587.

THIS PAGE INTENTIONALLY BLANK



THIS PAGE INTENTIONALLY BLANK

UPPER BLACK SQUIRREL

Well Name: **BS-02**

Owner: DAVE SNELLSTROM

Permit #: 13171 - RFP - R

Location #: SC01206231CD

USGS Site ID:

Division:	2	Water District:	10	County:	EL PASO
Location:	Q160 Q40 Q10 Section	Twnshp	Range	PM	Distance from section lines:
	SW SE 31	12 S	62 W S		From N/S line: From E/W line:

UTM Coordinates (NAD83): Northing (UTM y) 4312108.7 Easting (UTM x): 553588.5 *GPS*

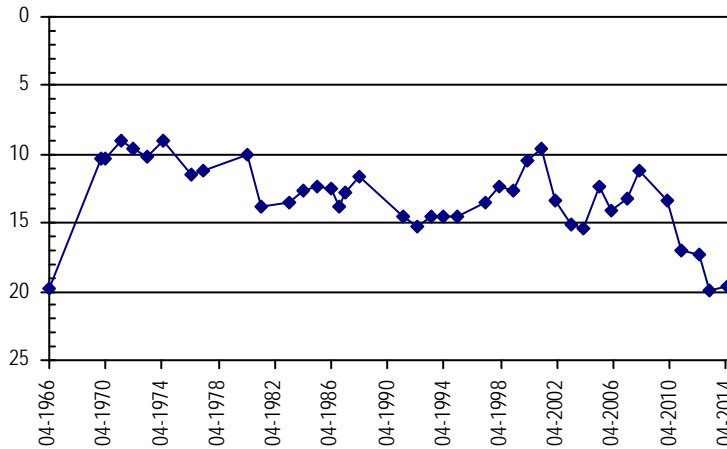
Latitude/Longitude (decimal degrees): 38.956297 -104.381519

Surface Elevation (ft):	6358	Top Perforated Interval (ft):		Base of grout (ft):		Water Level Change	
Well depth (ft):	51	Bottom Perforated Interval (ft):					1 year: 0.35
Aquifer(s):	QUATERNARY ALLUVIUM						5 year:
						10 year:	-4.28

Measurements from last 10 years

Date	Depth to WL (ft)	Elev of WL (ft)	Change (ft)
2/19/2004	15.35	6342.65	-0.23
3/1/2005	12.38	6345.62	2.97
2/27/2006	14.13	6343.87	-1.75
3/7/2007	13.25	6344.75	0.88
2/21/2008	11.14	6346.86	2.11
1/1/2009			
2/17/2010	13.30	6344.70	
2/28/2011	17.02	6340.98	-3.72
4/12/2012	17.34	6340.66	-0.32
2/13/2013	19.98	6338.02	-2.64
4/9/2014	19.63	6338.37	0.35

All Historic Measurements



Well Name: **BS-22A**

Owner: E N CASTANIEN

Permit #: 40767 - -

Location #: SC01206324CC

USGS Site ID:

Division:	2	Water District:	10	County:	EL PASO
Location:	Q160 Q40 Q10 Section	Twnshp	Range	PM	Distance from section lines:
	SW SW 24	12 S	63 W S		From N/S line: From E/W line:

UTM Coordinates (NAD83): Northing (UTM y) 4315474.8 Easting (UTM x): 551619.5 *GPS*

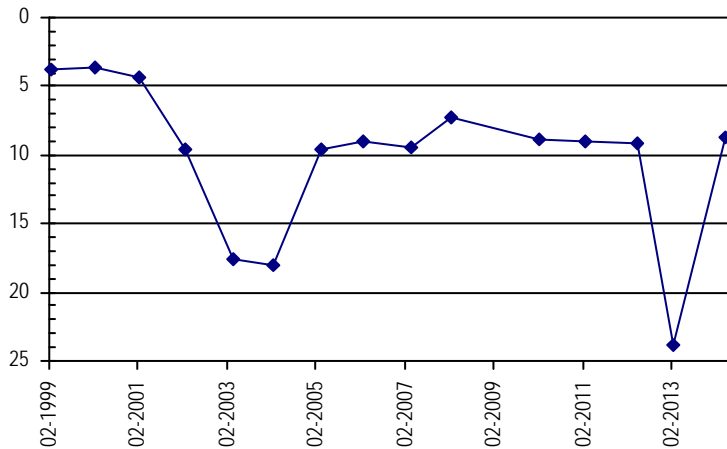
Latitude/Longitude (decimal degrees): 38.986747 -104.403989

Surface Elevation (ft):	6491	Top Perforated Interval (ft):		Base of grout (ft):		Water Level Change	
Well depth (ft):	110	Bottom Perforated Interval (ft):					1 year: 15.03
Aquifer(s):	QUATERNARY ALLUVIUM						5 year:
						10 year:	9.21

Measurements from last 10 years

Date	Depth to WL (ft)	Elev of WL (ft)	Change (ft)
2/19/2004	17.96	6473.04	-0.37
3/1/2005	9.65	6481.35	8.31
2/27/2006	8.95	6482.05	0.70
3/7/2007	9.46	6481.54	-0.51
2/21/2008	7.33	6483.67	2.13
1/1/2009			
2/17/2010	8.89	6482.11	
2/28/2011	8.98	6482.02	-0.09
4/12/2012	9.10	6481.90	-0.12
2/13/2013	23.78	6467.22	-14.68
4/9/2014	8.75	6482.25	15.03

All Historic Measurements



UPPER BLACK SQUIRREL

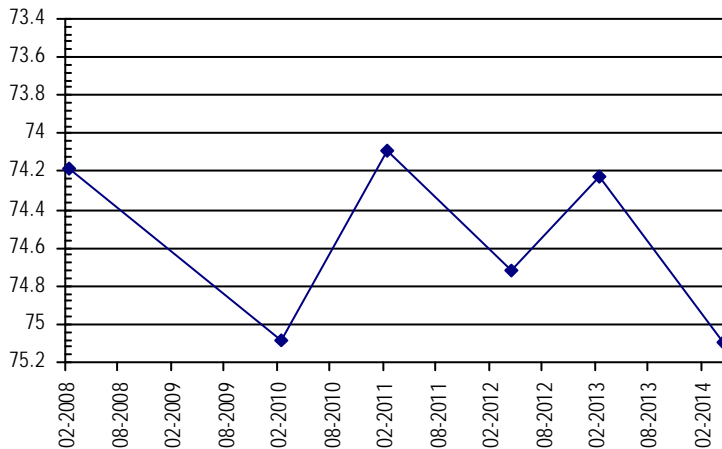
Well Name:	BS-28	<i>Owner:</i>	ELDON BONTREGER
<i>Permit #:</i>	13962 - F -	<i>Location #:</i>	SC01206335BB
<i>USGS Site ID:</i>			
<i>Division:</i>	2	<i>Water District:</i>	10
		<i>County:</i>	EL PASO
<i>Location:</i>	Q160 Q40 Q10 Section	Twnshp Range PM	Distance from section lines:
	NW NW 35 12 S 63 W S		<i>From N/S line:</i> <i>From E/W line:</i>
<i>UTM Coordinates (NAD83):</i>	<i>Northing (UTM y)</i>	4313012.0	<i>Easting (UTM x):</i> 550007.0 <i>GPS</i>
<i>Latitude/Longitude (decimal degrees):</i>		38.964648	-104.422786
<i>Surface Elevation (ft):</i>	6492	<i>Top Perforated Interval (ft):</i>	90
		<i>Base of grout (ft):</i>	
<i>Well depth (ft):</i>	170	<i>Bottom Perforated Interval (ft):</i>	170
<i>Aquifer(s):</i>	QUATERNARY ALLUVIUM		

Water Level Change
1 year: -0.87
5 year:
10 year:

Measurements from last 10 years

Date	Depth to WL (ft)	Elev of WL (ft)	Change (ft)
2/21/2008	74.19	6417.81	
1/1/2009			
2/17/2010	75.09	6416.91	
2/28/2011	74.09	6417.91	1.00
4/12/2012	74.72	6417.28	-0.63
2/13/2013	74.23	6417.77	0.49
4/9/2014	75.10	6416.90	-0.87

All Historic Measurements



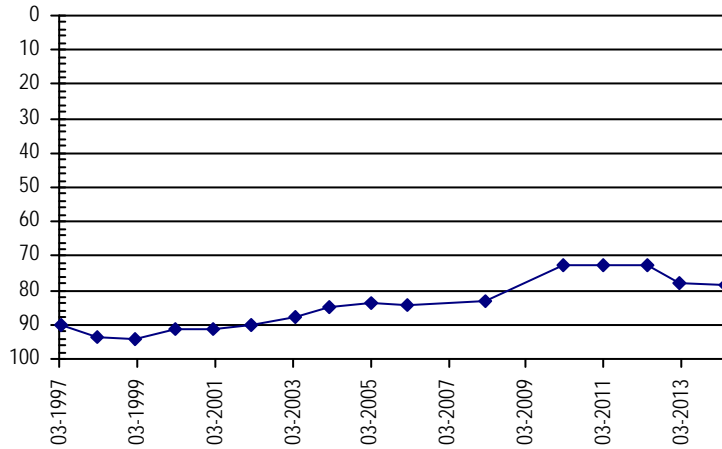
Well Name:	BS-25	<i>Owner:</i>	DEAN GOSS
<i>Permit #:</i>	15389 - FP -	<i>Location #:</i>	SC01306207CB
<i>USGS Site ID:</i>			
<i>Division:</i>	2	<i>Water District:</i>	10
		<i>County:</i>	EL PASO
<i>Location:</i>	Q160 Q40 Q10 Section	Twnshp Range PM	Distance from section lines:
	SW NW 7 13 S 62 W S		<i>From N/S line:</i> <i>From E/W line:</i>
<i>UTM Coordinates (NAD83):</i>	<i>Northing (UTM y)</i>	4309380.7	<i>Easting (UTM x):</i> 553250.5 <i>GPS</i>
<i>Latitude/Longitude (decimal degrees):</i>		38.931736	-104.385632
<i>Surface Elevation (ft):</i>	6283	<i>Top Perforated Interval (ft):</i>	
		<i>Base of grout (ft):</i>	
<i>Well depth (ft):</i>	160	<i>Bottom Perforated Interval (ft):</i>	
<i>Aquifer(s):</i>	QUATERNARY ALLUVIUM		

Water Level Change
1 year: -0.70
5 year:
10 year: 6.21

Measurements from last 10 years

Date	Depth to WL (ft)	Elev of WL (ft)	Change (ft)
2/19/2004	84.89	6198.11	2.91
3/1/2005	83.59	6199.41	1.30
2/27/2006	84.08	6198.92	-0.49
3/19/2007			
2/21/2008	82.87	6200.13	
1/1/2009			
2/17/2010	72.44	6210.56	
2/28/2011	72.87	6210.13	-0.43
4/12/2012	72.92	6210.08	-0.05
2/13/2013	77.98	6205.02	-5.06
4/9/2014	78.68	6204.32	-0.70

All Historic Measurements



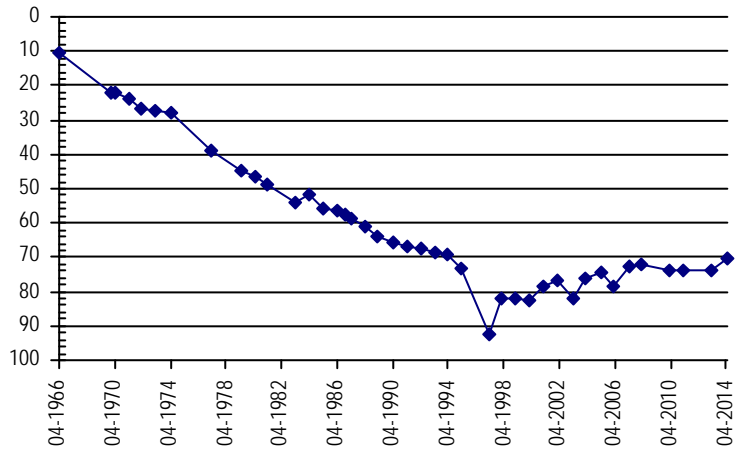
UPPER BLACK SQUIRREL

Well Name:	BS-04	<i>Owner:</i> DEAN GOSS	
<i>Permit #:</i>	6100 - F -	<i>Location #:</i> SC01306207DC	<i>USGS Site ID:</i>
<i>Division:</i>	2	<i>Water District:</i> 10	<i>County:</i> EL PASO
<i>Location:</i>	Q160 Q40 Q10 Section SE SW 7	Twnshp Range PM 13 S 62 W S	Distance from section lines: <i>From N/S line:</i> <i>From E/W line:</i>
<i>UTM Coordinates (NAD83):</i>	<i>Northing (UTM y)</i> 4308902.7	<i>Easting (UTM x):</i> 554338.5	<i>GPS</i>
<i>Latitude/Longitude (decimal degrees):</i>	38.927362	-104.373118	
<i>Surface Elevation (ft):</i>	6257	<i>Top Perforated Interval (ft):</i>	<i>Base of grout (ft):</i>
<i>Well depth (ft):</i>	127	<i>Bottom Perforated Interval (ft):</i>	Water Level Change
<i>Aquifer(s):</i>	QUATERNARY ALLUVIUM		1 year: 3.28
			5 year:
			10 year: 5.54

Measurements from last 10 years

Date	Depth to WL (ft)	Elev of WL (ft)	Change (ft)
2/19/2004	76.09	6180.91	6.01
3/1/2005	74.43	6182.57	1.66
2/27/2006	78.76	6178.24	-4.33
3/19/2007	72.91	6184.09	5.85
2/21/2008	72.05	6184.95	0.86
1/1/2009			
2/17/2010	73.64	6183.36	
2/28/2011	73.75	6183.25	-0.11
4/12/2012			
2/13/2013	73.83	6183.17	
4/9/2014	70.55	6186.45	3.28

All Historic Measurements

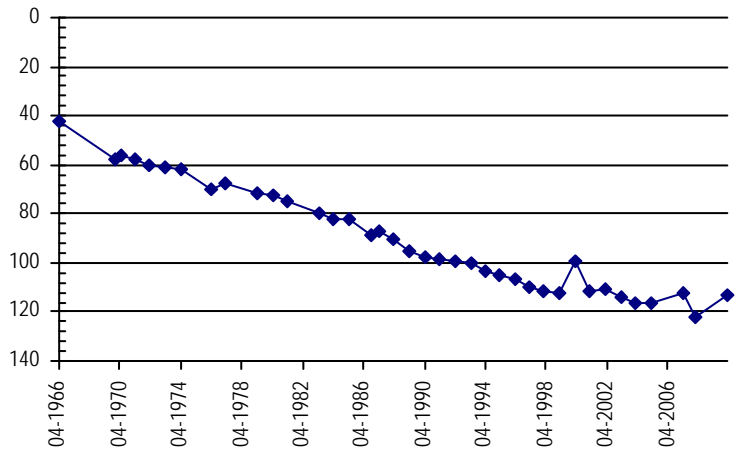


Well Name:	BS-06A	<i>Owner:</i> DEAN GOSS	
<i>Permit #:</i>	11091 - FP -	<i>Location #:</i> SC01306218CB	<i>USGS Site ID:</i>
<i>Division:</i>	2	<i>Water District:</i> 10	<i>County:</i> EL PASO
<i>Location:</i>	Q160 Q40 Q10 Section SW NW 18	Twnshp Range PM 13 S 62 W S	Distance from section lines: <i>From N/S line:</i> <i>From E/W line:</i>
<i>UTM Coordinates (NAD83):</i>	<i>Northing (UTM y)</i> 4307440.7	<i>Easting (UTM x):</i> 553454.5	<i>GPS</i>
<i>Latitude/Longitude (decimal degrees):</i>	38.914242	-104.383430	
<i>Surface Elevation (ft):</i>	6250	<i>Top Perforated Interval (ft):</i>	<i>Base of grout (ft):</i>
<i>Well depth (ft):</i>	187	<i>Bottom Perforated Interval (ft):</i>	Water Level Change
<i>Aquifer(s):</i>	QUATERNARY ALLUVIUM		1 year:
			5 year:
			10 year:

Measurements from last 10 years

Date	Depth to WL (ft)	Elev of WL (ft)	Change (ft)
2/19/2004	116.62	6133.38	-2.42
3/1/2005	116.26	6133.74	0.36
2/27/2006			
3/19/2007	112.60	6137.40	
2/21/2008	122.02	6127.98	-9.42
1/1/2009			
2/17/2010	113.10	6136.90	
2/28/2011			
4/12/2012			
2/13/2013			

All Historic Measurements



UPPER BLACK SQUIRREL

Well Name: **BS-SLB1** **Owner:** COLORADO STATE LAND BOARD
Permit #: 277308 - **USGS Site ID:**
Location #: SC01306316DDD

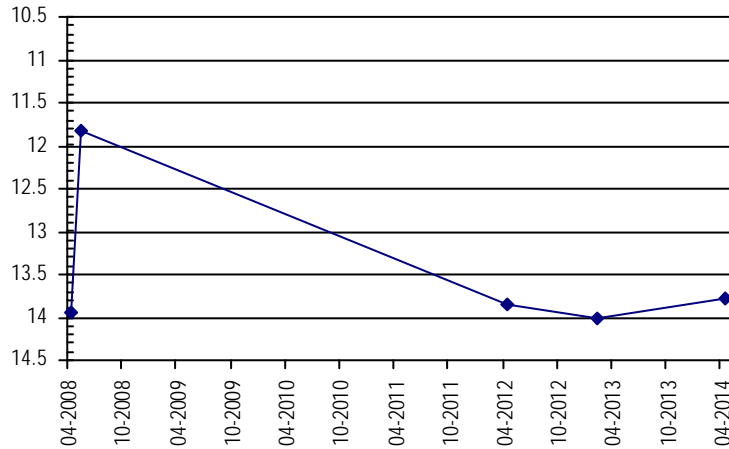
Division: 0 **Water District:** **County:** EL PASO
Location: Q160 Q40 Q10 Section Twnshp Range PM Distance from section lines:
 SE SE SE 16 13 S 63 W S **From N/S line:** **From E/W line:**
UTM Coordinates (NAD83): Northing (UTM y) 4037040.0 Easting (UTM x): 548288.0 *GPS*
Latitude/Longitude (decimal degrees): 36.477434 -104.460961

Surface Elevation (ft): 6343 **Top Perforated Interval (ft):** 20 **Base of grout (ft):** **Water Level Change**
Well depth (ft): 43 **Bottom Perforated Interval (ft):** 40 **1 year:** 0.22
Aquifer(s): QUATERNARY ALLUVIUM **5 year:**
10 year:

Measurements from last 10 years

Date	Depth to WL (ft)	Elev of WL (ft)	Change (ft)
4/30/2008	13.94	6329.06	
5/30/2008	11.83	6331.17	2.11
4/12/2012	13.84	6329.16	-2.01
2/13/2013	14.00	6329.00	-0.16
4/9/2014	13.78	6329.22	0.22

All Historic Measurements



Well Name: **BS-15A** **Owner:**
Permit #: 11799 - FP - **USGS Site ID:**
Location #: SC01306325AA

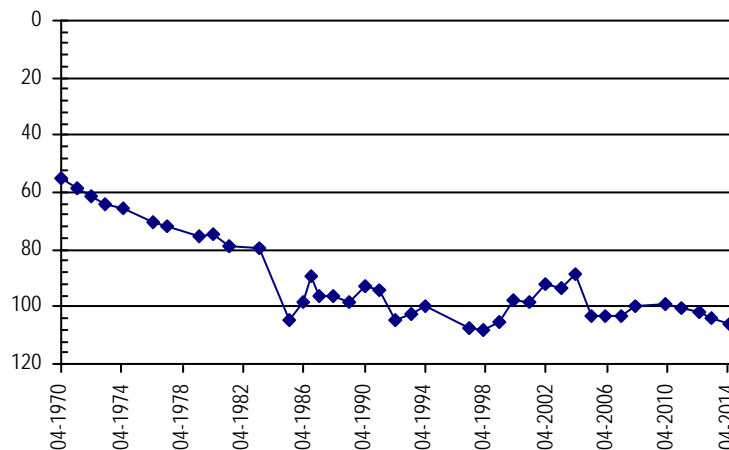
Division: 2 **Water District:** 10 **County:** EL PASO
Location: Q160 Q40 Q10 Section Twnshp Range PM Distance from section lines:
 NE NE 25 13 S 63 W S **From N/S line:** **From E/W line:**
UTM Coordinates (NAD83): Northing (UTM y) 4305393.7 Easting (UTM x): 553138.5 *GPS*
Latitude/Longitude (decimal degrees): 38.895816 -104.387233

Surface Elevation (ft): 6200 **Top Perforated Interval (ft):** **Base of grout (ft):** **Water Level Change**
Well depth (ft): 120 **Bottom Perforated Interval (ft):** **1 year:** -1.80
Aquifer(s): QUATERNARY ALLUVIUM **5 year:**
10 year: -17.40

Measurements from last 10 years

Date	Depth to WL (ft)	Elev of WL (ft)	Change (ft)
2/19/2004	88.60	6111.40	5.18
3/1/2005	103.28	6096.72	-14.68
2/27/2006	103.11	6096.89	0.17
3/7/2007	103.10	6096.90	0.01
2/21/2008	99.52	6100.48	3.58
1/1/2009			
2/17/2010	99.03	6100.97	
2/28/2011	100.54	6099.46	-1.51
4/12/2012	101.70	6098.30	-1.16
2/13/2013	104.20	6095.80	-2.50
4/9/2014	106.00	6094.00	-1.80

All Historic Measurements



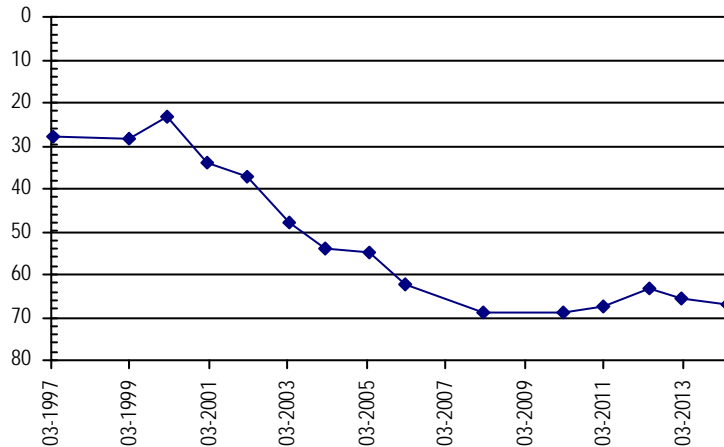
UPPER BLACK SQUIRREL

Well Name:	BS-19	<i>Owner:</i> DEAN GOSS	
<i>Permit #:</i>	27567 - F -	<i>Location #:</i> SC01306326CA	<i>USGS Site ID:</i>
<i>Division:</i>	2	<i>Water District:</i> 10	<i>County:</i> EL PASO
<i>Location:</i>	Q160 Q40 Q10 Section	Twnshp Range PM	Distance from section lines:
	SW NE 26	13 S 63 W S	<i>From N/S line:</i> <i>From E/W line:</i>
<i>UTM Coordinates (NAD83):</i>	<i>Northing (UTM y)</i> 4304334.8	<i>Easting (UTM x):</i> 550486.5	<i>GPS</i>
<i>Latitude/Longitude (decimal degrees):</i>	38.886430	-104.417891	
<i>Surface Elevation (ft):</i>	6220	<i>Top Perforated Interval (ft):</i>	<i>Base of grout (ft):</i>
<i>Well depth (ft):</i>	136	<i>Bottom Perforated Interval (ft):</i>	Water Level Change
<i>Aquifer(s):</i>	QUATERNARY ALLUVIUM		1 year: -1.40
			5 year:
			10 year: -13.05

Measurements from last 10 years

Date	Depth to WL (ft)	Elev of WL (ft)	Change (ft)
2/19/2004	54.01	6165.99	-6.11
3/1/2005	54.97	6165.03	-0.96
2/27/2006	62.40	6157.60	-7.43
3/19/2007			
2/21/2008	68.71	6151.29	
1/1/2009			
2/17/2010	68.98	6151.02	
2/28/2011	67.31	6152.69	1.67
4/12/2012	63.15	6156.85	4.16
2/13/2013	65.66	6154.34	-2.51
4/9/2014	67.06	6152.94	-1.40

All Historic Measurements

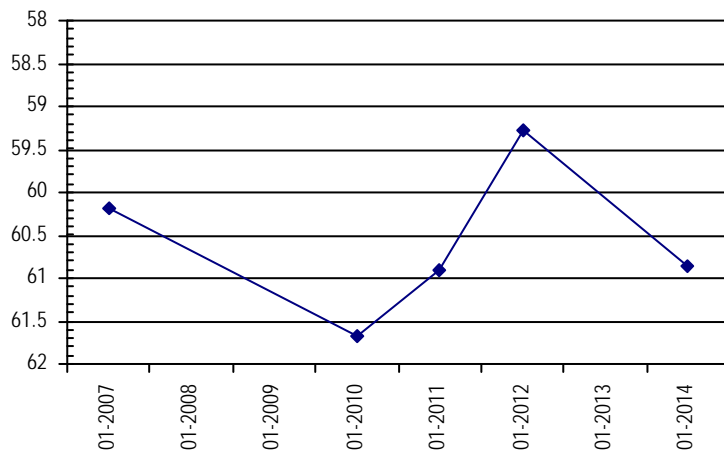


Well Name:	BS-27	<i>Owner:</i> DEAN GOSS	
<i>Permit #:</i>	27564 - FP - R	<i>Location #:</i> SC01306326CD	<i>USGS Site ID:</i>
<i>Division:</i>	2	<i>Water District:</i> 10	<i>County:</i> EL PASO
<i>Location:</i>	Q160 Q40 Q10 Section	Twnshp Range PM	Distance from section lines:
	SW SE 26	13 S 63 W S	<i>From N/S line:</i> <i>From E/W line:</i>
<i>UTM Coordinates (NAD83):</i>	<i>Northing (UTM y)</i> 4304024.0	<i>Easting (UTM x):</i> 550427.0	<i>GPS</i>
<i>Latitude/Longitude (decimal degrees):</i>	38.883633	-104.418600	
<i>Surface Elevation (ft):</i>	6218	<i>Top Perforated Interval (ft):</i>	<i>Base of grout (ft):</i>
<i>Well depth (ft):</i>		<i>Bottom Perforated Interval (ft):</i>	Water Level Change
<i>Aquifer(s):</i>	QUATERNARY ALLUVIUM		1 year:
			5 year:
			10 year:

Measurements from last 10 years

Date	Depth to WL (ft)	Elev of WL (ft)	Change (ft)
3/19/2007	60.18	6157.82	
1/1/2009			
2/17/2010	61.67	6156.33	
2/28/2011	60.90	6157.10	0.77
4/12/2012	59.29	6158.71	1.61
2/13/2013			
4/9/2014	60.85	6157.15	

All Historic Measurements



UPPER BLACK SQUIRREL

Well Name: **BS-32** **Owner:** SPRINGS EAST AIRPORT, INC
Permit #: 6055 - FP - **Location #:** SC01306335DC **USGS Site ID:**

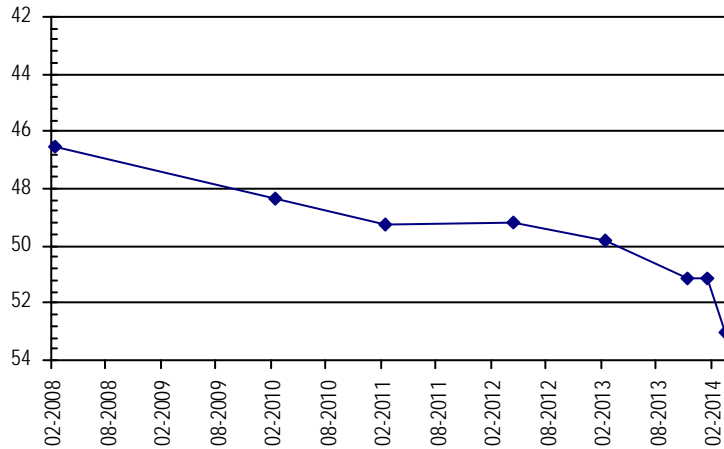
Division: 2 **Water District:** 10 **County:** EL PASO
Location: Q160 Q40 Q10 Section Twnshp Range PM Distance from section lines:
SE SW 35 13 S 63 W S **From N/S line:** **From E/W line:**
UTM Coordinates (NAD83): **Northing (UTM y)** 4302231.0 **Easting (UTM x):** 550905.0 *GPS*
Latitude/Longitude (decimal degrees): 38.867449 -104.413222

Surface Elevation (ft): 6142 **Top Perforated Interval (ft):** 99 **Base of grout (ft):** **Water Level Change**
Well depth (ft): 159 **Bottom Perforated Interval (ft):** 159 **1 year:**
Aquifer(s): QUATERNARY ALLUVIUM **5 year:**
10 year:

Measurements from last 10 years

Date	Depth to WL (ft)	Elev of WL (ft)	Change (ft)
2/21/2008	46.52	6095.48	
1/1/2010			
2/17/2010	48.38	6093.62	
2/28/2011	49.28	6092.72	-0.90
4/12/2012	49.17	6092.83	0.11
2/13/2013	49.80	6092.20	-0.63
11/7/2013	51.13	6090.87	-1.33
1/7/2014	51.13	6090.87	0.00
3/5/2014	53.00	6089.00	-1.87

All Historic Measurements



Well Name: **BS-SLB2A** **Owner:** COLORADO STATE BOARD OF LAND
Permit #: 277307 - - **Location #:** SC01306336CA **USGS Site ID:**

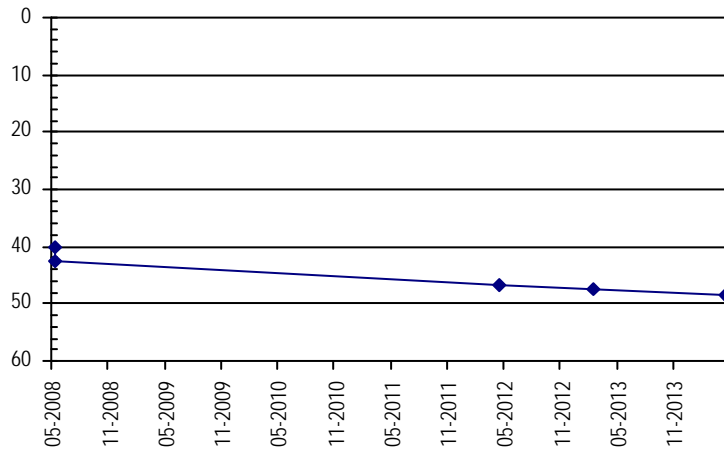
Division: 2 **Water District:** 10 **County:** EL PASO
Location: Q160 Q40 Q10 Section Twnshp Range PM Distance from section lines:
NE SE 36 13 S 63 W S **From N/S line:** **From E/W line:**
UTM Coordinates (NAD83): **Northing (UTM y)** 4303066.0 **Easting (UTM x):** 553120.0 *GPS*
Latitude/Longitude (decimal degrees): 38.874842 -104.387627

Surface Elevation (ft): 6130 **Top Perforated Interval (ft):** 39 **Base of grout (ft):** **Water Level Change**
Well depth (ft): 69 **Bottom Perforated Interval (ft):** 59 **1 year:** -0.86
Aquifer(s): QUATERNARY ALLUVIUM **5 year:**
10 year:

Measurements from last 10 years

Date	Depth to WL (ft)	Elev of WL (ft)	Change (ft)
5/1/2008	40.20	6089.80	
5/30/2008	42.64	6087.36	-2.44
4/12/2012	46.70	6083.30	-4.06
2/13/2013	47.50	6082.50	-0.80
4/9/2014	48.36	6081.64	-0.86

All Historic Measurements



UPPER BLACK SQUIRREL

Well Name: **BS-SLB3** **Owner:** COLORADO STATE LAND BOARD
Permit #: 277314 - **USGS Site ID:**
Location #: SC01406204BAA

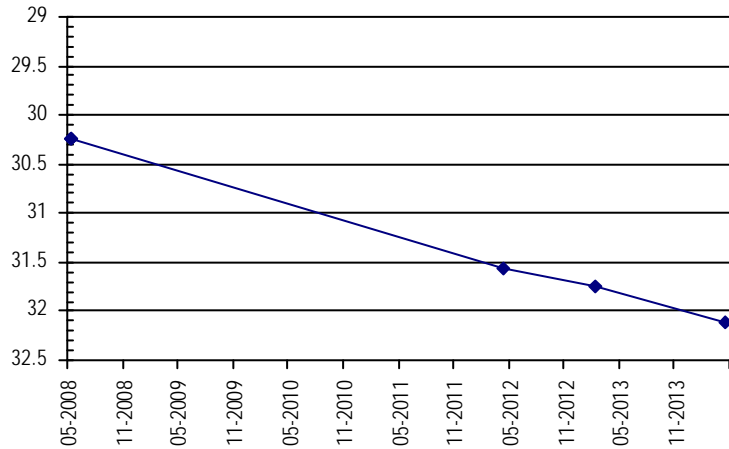
Division: 2 **Water District:** 10 **County:** EL PASO
Location: Q160 Q40 Q10 Section Twnshp Range PM Distance from section lines:
 NW NE NE 4 14 S 62 W S **From N/S line:** **From E/W line:**
UTM Coordinates (NAD83): Northing (UTM y) 4302249.0 Easting (UTM x): 557023.0 *GPS*
Latitude/Longitude (decimal degrees): 38.867236 -104.342703

Surface Elevation (ft): 6052 **Top Perforated Interval (ft):** 22 **Base of grout (ft):** **Water Level Change**
Well depth (ft): 42 **Bottom Perforated Interval (ft):** 42 **1 year:** -0.37
Aquifer(s): QUATERNARY ALLUVIUM **5 year:**
10 year:

Measurements from last 10 years

Date	Depth to WL (ft)	Elev of WL (ft)	Change (ft)
5/2/2008	30.25	6021.75	
5/30/2008	30.25	6021.75	0.00
4/12/2012	31.56	6020.44	-1.31
2/13/2013	31.74	6020.26	-0.18
4/9/2014	32.11	6019.89	-0.37

All Historic Measurements



Well Name: **BS-07** **Owner:** VERNON M JONES
Permit #: 17425 - F - **USGS Site ID:**
Location #: SC01406206CD

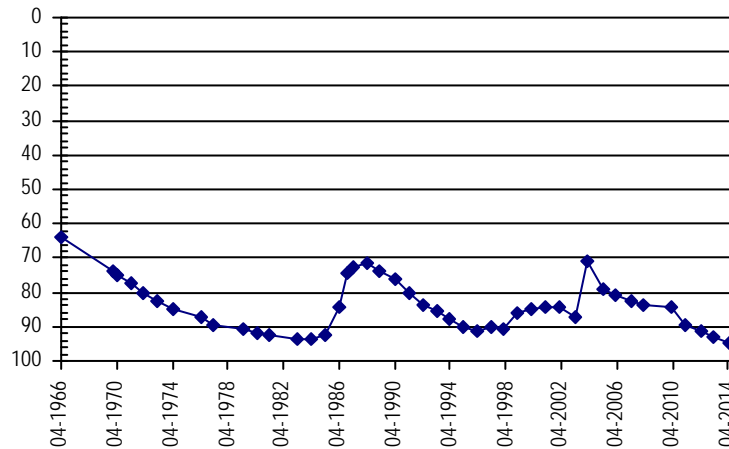
Division: 2 **Water District:** 10 **County:** EL PASO
Location: Q160 Q40 Q10 Section Twnshp Range PM Distance from section lines:
 SE SW 6 14 S 62 W S **From N/S line:** **From E/W line:**
UTM Coordinates (NAD83): Northing (UTM y) 4300725.7 Easting (UTM x): 553621.5 *GPS*
Latitude/Longitude (decimal degrees): 38.853723 -104.382028

Surface Elevation (ft): 6060 **Top Perforated Interval (ft):** **Base of grout (ft):** **Water Level Change**
Well depth (ft): 110 **Bottom Perforated Interval (ft):** **1 year:** -1.72
Aquifer(s): QUATERNARY ALLUVIUM **5 year:**
10 year: -23.63

Measurements from last 10 years

Date	Depth to WL (ft)	Elev of WL (ft)	Change (ft)
2/19/2004	71.01	5988.99	15.94
3/1/2005	79.24	5980.76	-8.23
2/27/2006	80.81	5979.19	-1.57
3/19/2007	82.74	5977.26	-1.93
2/21/2008	83.98	5976.02	-1.24
1/1/2009			
2/17/2010	84.26	5975.74	
2/28/2011	89.59	5970.41	-5.33
4/12/2012	91.11	5968.89	-1.52
2/13/2013	92.92	5967.08	-1.81
4/9/2014	94.64	5965.36	-1.72

All Historic Measurements



UPPER BLACK SQUIRREL

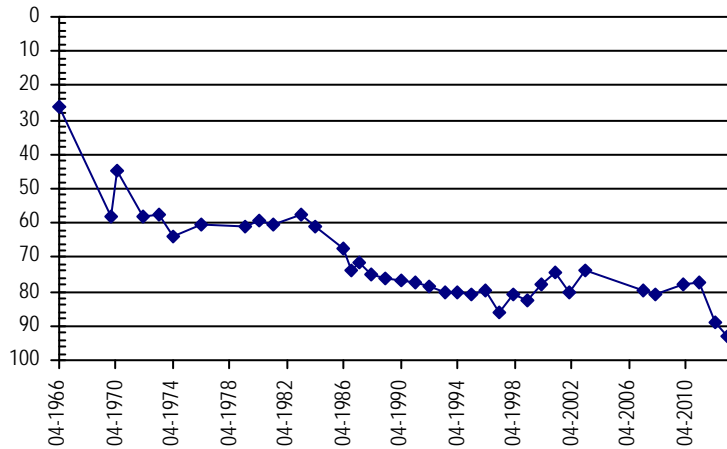
Well Name:	BS-10	<i>Owner:</i> RON GIESBRECHT	
<i>Permit #:</i>	20701 - FP -	<i>Location #:</i> SC01406208BA	<i>USGS Site ID:</i>
<i>Division:</i>	2	<i>Water District:</i> 10	<i>County:</i> EL PASO
<i>Location:</i>	Q160 Q40 Q10 Section NE NW 8	Twnshp Range PM 14 S 62 W S	Distance from section lines: <i>From N/S line:</i> <i>From E/W line:</i>
<i>UTM Coordinates (NAD83):</i>	<i>Northing (UTM y)</i> 4300622.7	<i>Easting (UTM x):</i> 555391.5	<i>GPS</i>
<i>Latitude/Longitude (decimal degrees):</i>	38.852685	-104.361639	
<i>Surface Elevation (ft):</i>	6030	<i>Top Perforated Interval (ft):</i>	<i>Base of grout (ft):</i>
<i>Well depth (ft):</i>	136	<i>Bottom Perforated Interval (ft):</i>	
<i>Aquifer(s):</i>	QUATERNARY ALLUVIUM		

Water Level Change
1 year:
5 year:
10 year:

Measurements from last 10 years

Date	Depth to WL (ft)	Elev of WL (ft)	Change (ft)
2/20/2004			
3/1/2005			
2/27/2006			
3/7/2007	79.46	5950.54	
2/21/2008	80.71	5949.29	-1.25
1/1/2009			
2/17/2010	78.10	5951.90	
3/2/2011	77.48	5952.52	0.62
4/12/2012	88.87	5941.13	-11.39
2/13/2013	93.02	5936.98	-4.15
4/9/2014			

All Historic Measurements



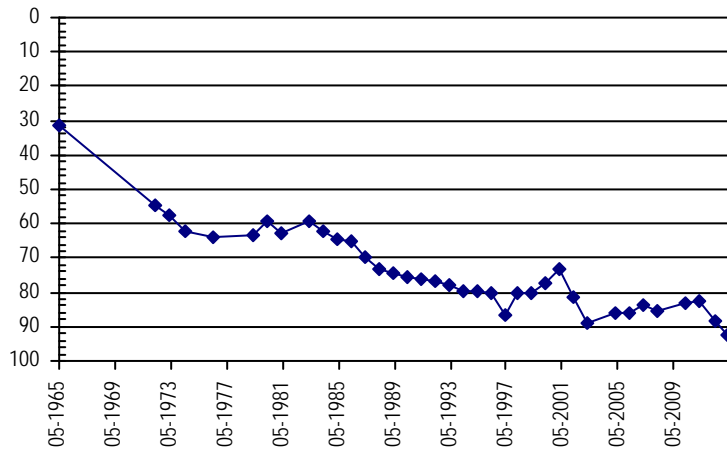
Well Name:	BS-10A	<i>Owner:</i> RON GIESBRECHT	
<i>Permit #:</i>	27608 - FP -	<i>Location #:</i> SC01406208BD1	<i>USGS Site ID:</i>
<i>Division:</i>	2	<i>Water District:</i> 10	<i>County:</i> EL PASO
<i>Location:</i>	Q160 Q40 Q10 Section NW SE 8	Twnshp Range PM 14 S 62 W S	Distance from section lines: <i>From N/S line:</i> <i>From E/W line:</i>
<i>UTM Coordinates (NAD83):</i>	<i>Northing (UTM y)</i> 4300171.7	<i>Easting (UTM x):</i> 555435.5	<i>GPS</i>
<i>Latitude/Longitude (decimal degrees):</i>	38.848618	-104.361168	
<i>Surface Elevation (ft):</i>	6000	<i>Top Perforated Interval (ft):</i>	<i>Base of grout (ft):</i>
<i>Well depth (ft):</i>	155	<i>Bottom Perforated Interval (ft):</i>	
<i>Aquifer(s):</i>	QUATERNARY ALLUVIUM		

Water Level Change
1 year:
5 year:
10 year:

Measurements from last 10 years

Date	Depth to WL (ft)	Elev of WL (ft)	Change (ft)
2/20/2004			
3/1/2005	86.26	5913.74	
2/27/2006	85.82	5914.18	0.44
3/7/2007	83.66	5916.34	2.16
2/21/2008	85.73	5914.27	-2.07
1/1/2009			
2/17/2010	82.99	5917.01	
3/2/2011	82.30	5917.70	0.69
4/12/2012	88.33	5911.67	-6.03
2/13/2013	92.60	5907.40	-4.27
4/9/2014			

All Historic Measurements



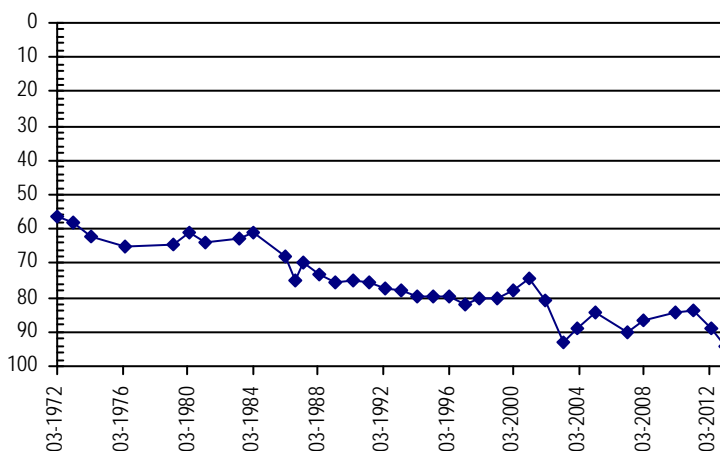
UPPER BLACK SQUIRREL

Well Name: **BS-10B** **Owner:** RON GIESBRECHT
Permit #: 16010 - FP - **Location #:** SC01406208BD2 **USGS Site ID:**
Division: 2 **Water District:** 10 **County:** EL PASO
Location: Q160 Q40 Q10 Section **Twnshp** Range **PM** Distance from section lines:
NW SW 8 14 S 62 W S **From N/S line:** **From E/W line:**
UTM Coordinates (NAD83): **Northing (UTM y)** 4299925.7 **Easting (UTM x):** 555458.5 *GPS*
Latitude/Longitude (decimal degrees): 38.846400 -104.360923
Surface Elevation (ft): 6000 **Top Perforated Interval (ft):** **Base of grout (ft):** **Water Level Change**
Well depth (ft): 148 **Bottom Perforated Interval (ft):** **1 year:**
Aquifer(s): QUATERNARY ALLUVIUM **5 year:**
10 year:

Measurements from last 10 years

Date	Depth to WL (ft)	Elev of WL (ft)	Change (ft)
2/20/2004	88.67	5911.33	4.38
3/1/2005	84.59	5915.41	4.08
2/27/2006			
3/7/2007	90.32	5909.68	
2/21/2008	86.90	5913.10	3.42
1/1/2009			
2/17/2010	84.29	5915.71	
3/2/2011	83.92	5916.08	0.37
4/12/2012	88.68	5911.32	-4.76
2/13/2013	94.01	5905.99	-5.33
4/9/2014			

All Historic Measurements

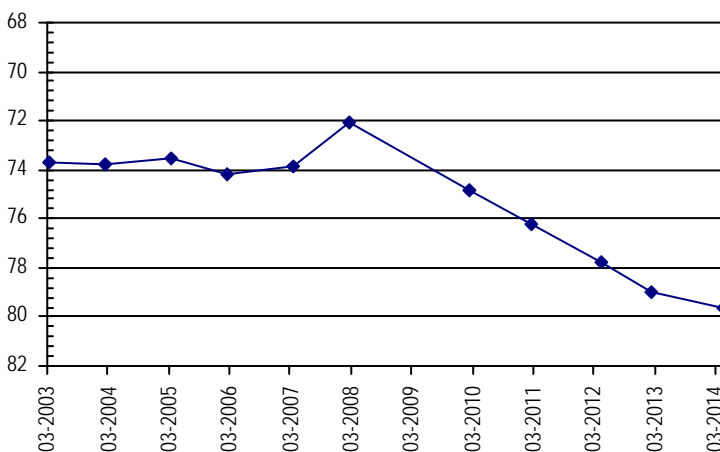


Well Name: **BS-10R** **Owner:**
Permit #: - - **Location #:** SC01406208CAD **USGS Site ID:**
Division: 2 **Water District:** 10 **County:** EL PASO
Location: Q160 Q40 Q10 Section **Twnshp** Range **PM** Distance from section lines:
SW NE 8 14 S 62 W S **From N/S line:** **From E/W line:**
UTM Coordinates (NAD83): **Northing (UTM y)** 4301224.7 **Easting (UTM x):** 555360.5 *GPS*
Latitude/Longitude (decimal degrees): 38.858112 -104.361948
Surface Elevation (ft): 6035 **Top Perforated Interval (ft):** **Base of grout (ft):** **Water Level Change**
Well depth (ft): **Bottom Perforated Interval (ft):** **1 year:** -0.65
Aquifer(s): QUATERNARY ALLUVIUM **5 year:**
10 year: -5.86

Measurements from last 10 years

Date	Depth to WL (ft)	Elev of WL (ft)	Change (ft)
2/20/2004	73.78	5961.22	-0.05
3/1/2005	73.56	5961.44	0.22
2/27/2006	74.18	5960.82	-0.62
3/7/2007	73.87	5961.13	0.31
2/21/2008	72.05	5962.95	1.82
1/1/2009			
2/17/2010	74.85	5960.15	
2/28/2011	76.26	5958.74	-1.41
4/12/2012	77.79	5957.21	-1.53
2/13/2013	78.99	5956.01	-1.20
4/9/2014	79.64	5955.36	-0.65

All Historic Measurements



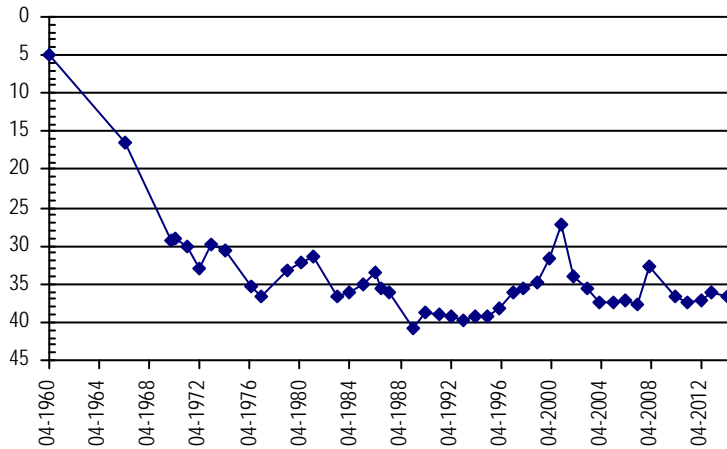
UPPER BLACK SQUIRREL

Well Name:	BS-12	<i>Owner:</i> LINDA & JOHN GLADDEN
<i>Permit #:</i>	2449 - FP -	<i>Location #:</i> SC01406216CA <i>USGS Site ID:</i>
<i>Division:</i>	2	<i>Water District:</i> 10 <i>County:</i> EL PASO
<i>Location:</i>	Q160 Q40 Q10 Section SW NE 16	Twnshp Range PM Distance from section lines: 14 S 62 W S <i>From N/S line:</i> <i>From E/W line:</i>
<i>UTM Coordinates (NAD83):</i>	<i>Northing (UTM y)</i> 4297895.6	<i>Easting (UTM x):</i> 556766.5 <i>GPS</i>
<i>Latitude/Longitude (decimal degrees):</i>	38.828024	-104.346019
<i>Surface Elevation (ft):</i>	5940	<i>Top Perforated Interval (ft):</i> Water Level Change
<i>Well depth (ft):</i>	50	<i>Bottom Perforated Interval (ft):</i> 1 year: -0.69
<i>Aquifer(s):</i>	QUATERNARY ALLUVIUM	5 year:
		10 year: 0.63

Measurements from last 10 years

Date	Depth to WL (ft)	Elev of WL (ft)	Change (ft)
2/20/2004	37.34	5902.66	-1.67
3/1/2005	37.29	5902.71	0.05
2/27/2006	37.27	5902.73	0.02
3/7/2007	37.78	5902.22	-0.51
2/21/2008	32.81	5907.19	4.97
1/1/2009			
2/17/2010	36.62	5903.38	
3/2/2011	37.49	5902.51	-0.87
4/12/2012	37.23	5902.77	0.26
2/19/2013	36.02	5903.98	1.21
4/9/2014	36.71	5903.29	-0.69

All Historic Measurements

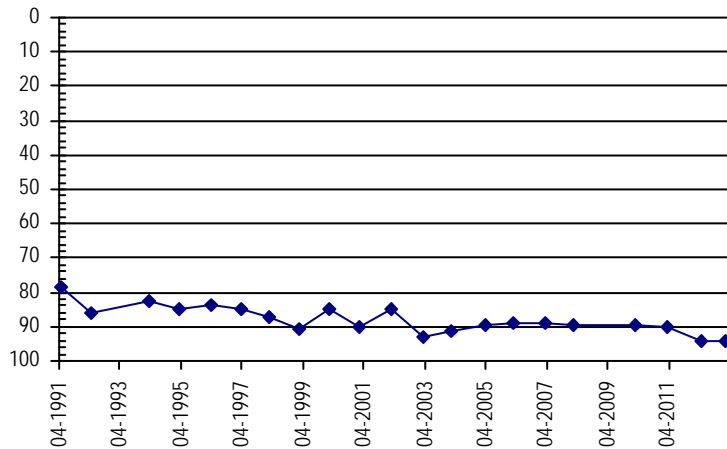


Well Name:	BS-18	<i>Owner:</i> BILL KING
<i>Permit #:</i>	- -	<i>Location #:</i> SC01406217AB <i>USGS Site ID:</i>
<i>Division:</i>	2	<i>Water District:</i> 10 <i>County:</i> EL PASO
<i>Location:</i>	Q160 Q40 Q10 Section NE NW 17	Twnshp Range PM Distance from section lines: 14 S 62 W S <i>From N/S line:</i> <i>From E/W line:</i>
<i>UTM Coordinates (NAD83):</i>	<i>Northing (UTM y)</i> 4299033.7	<i>Easting (UTM x):</i> 555477.5 <i>GPS</i>
<i>Latitude/Longitude (decimal degrees):</i>	38.838361	-104.360776
<i>Surface Elevation (ft):</i>	5950	<i>Top Perforated Interval (ft):</i> Water Level Change
<i>Well depth (ft):</i>	70	<i>Bottom Perforated Interval (ft):</i> 1 year:
<i>Aquifer(s):</i>	QUATERNARY ALLUVIUM	5 year:
		10 year:

Measurements from last 10 years

Date	Depth to WL (ft)	Elev of WL (ft)	Change (ft)
2/20/2004	91.18	5858.82	1.73
3/1/2005	89.46	5860.54	1.72
2/27/2006	88.82	5861.18	0.64
3/7/2007	88.96	5861.04	-0.14
2/21/2008	89.28	5860.72	-0.32
1/1/2009			
2/17/2010	89.40	5860.60	
3/2/2011	90.06	5859.94	-0.66
4/12/2012	94.25	5855.75	-4.19
2/13/2013	94.45	5855.55	-0.20
4/9/2014			

All Historic Measurements



UPPER BLACK SQUIRREL

Well Name: **BS-08** **Owner:** ELLICOTT FIRE PROTECTION DISTRICT
Permit #: 13673 - FP - **Location #:** SC01406218BC **USGS Site ID:**

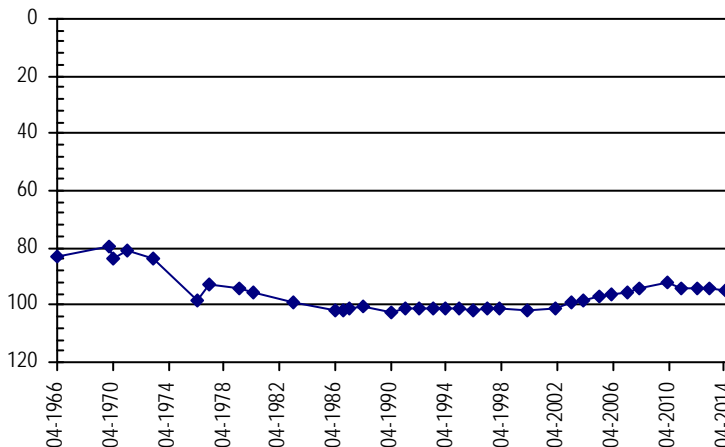
Division: 2 **Water District:** 10 **County:** EL PASO
Location: Q160 Q40 Q10 Section Twnshp Range PM Distance from section lines:
 NW SW 18 14 S 62 W S **From N/S line:** **From E/W line:**
UTM Coordinates (NAD83): **Northing (UTM y)** 4298189.7 **Easting (UTM x):** 553238.5 *GPS*
Latitude/Longitude (decimal degrees): 38.830894 -104.386638

Surface Elevation (ft): 5985 **Top Perforated Interval (ft):** **Base of grout (ft):** **Water Level Change**
Well depth (ft): 134 **Bottom Perforated Interval (ft):** **1 year:** -0.78
Aquifer(s): QUATERNARY ALLUVIUM **5 year:**
10 year: 3.27

Measurements from last 10 years

Date	Depth to WL (ft)	Elev of WL (ft)	Change (ft)
2/20/2004	98.37	5886.63	0.98
3/1/2005	97.16	5887.84	1.21
2/27/2006	96.39	5888.61	0.77
3/7/2007	95.72	5889.28	0.67
2/21/2008	94.48	5890.52	1.24
1/1/2009			
2/17/2010	92.13	5892.87	
3/2/2011	94.04	5890.96	-1.91
4/13/2012	93.84	5891.16	0.20
2/13/2013	94.32	5890.68	-0.48
4/9/2014	95.10	5889.90	-0.78

All Historic Measurements



Well Name: **BS-13** **Owner:** RAYMOND LEWIS
Permit #: 3485 - FP - **Location #:** SC01406221BA **USGS Site ID:**

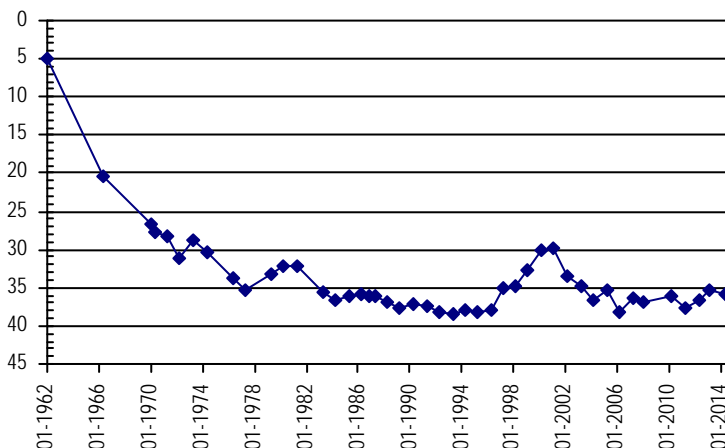
Division: 2 **Water District:** 10 **County:** EL PASO
Location: Q160 Q40 Q10 Section Twnshp Range PM Distance from section lines:
 NW NE 21 14 S 62 W S **From N/S line:** **From E/W line:**
UTM Coordinates (NAD83): **Northing (UTM y)** 4297459.6 **Easting (UTM x):** 556693.5 *GPS*
Latitude/Longitude (decimal degrees): 38.824100 -104.346896

Surface Elevation (ft): 5920 **Top Perforated Interval (ft):** **Base of grout (ft):** **Water Level Change**
Well depth (ft): 52 **Bottom Perforated Interval (ft):** **1 year:** -0.61
Aquifer(s): QUATERNARY ALLUVIUM **5 year:**
10 year: 0.67

Measurements from last 10 years

Date	Depth to WL (ft)	Elev of WL (ft)	Change (ft)
2/20/2004	36.55	5883.45	-1.65
3/1/2005	35.30	5884.70	1.25
2/27/2006	38.31	5881.69	-3.01
3/7/2007	36.31	5883.69	2.00
12/11/2007	36.80	5883.20	-0.49
1/1/2009			
2/17/2010	36.08	5883.92	
3/2/2011	37.56	5882.44	-1.48
4/12/2012	36.67	5883.33	0.89
2/19/2013	35.27	5884.73	1.40
4/9/2014	35.88	5884.12	-0.61

All Historic Measurements



UPPER BLACK SQUIRREL

Well Name: **BS-14**

Owner:

Permit #: - -

Location #: SC01406221BB

USGS Site ID:

Division: 2 *Water District:* 10 *County:* EL PASO

Location: Q160 Q40 Q10 Section Twnshp Range PM Distance from section lines:
NW NW 21 14 S 62 W S *From N/S line:* *From E/W line:*

UTM Coordinates (NAD83): *Northing (UTM y)* 4297140.6 *Easting (UTM x):* 556406.5 *GPS*

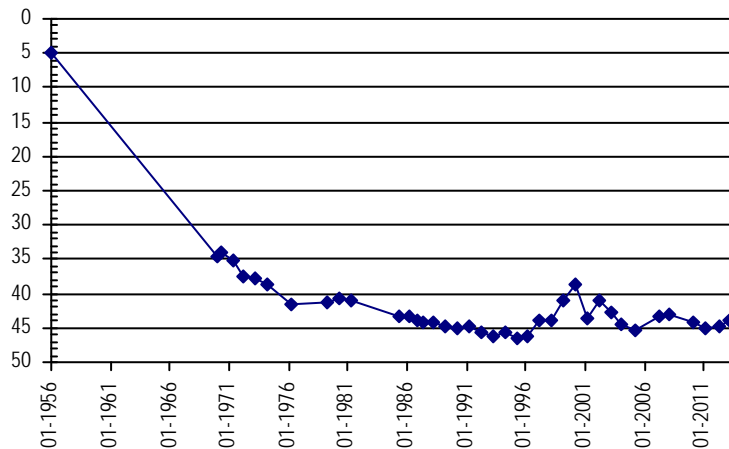
Latitude/Longitude (decimal degrees): 38.821244 -104.350228

Surface Elevation (ft): 5925 *Top Perforated Interval (ft):* *Base of grout (ft):* **Water Level Change**
Well depth (ft): 61 *Bottom Perforated Interval (ft):* **1 year:**
Aquifer(s): QUATERNARY ALLUVIUM **5 year:**
10 year:

Measurements from last 10 years

Date	Depth to WL (ft)	Elev of WL (ft)	Change (ft)
2/20/2004	44.61	5880.39	-1.81
3/1/2005	45.34	5879.66	-0.73
2/27/2006			
3/7/2007	43.30	5881.70	
2/21/2008	43.00	5882.00	0.30
1/1/2009			
2/17/2010	44.33	5880.67	
3/2/2011	45.02	5879.98	-0.69
4/13/2012	44.80	5880.20	0.22
2/19/2013	43.87	5881.13	0.93
4/10/2014			

All Historic Measurements



Well Name: **BS-30**

Owner: GEORGE & TED SCHUBERT

Permit #: 27553 - F -

Location #: SC01406221CC

USGS Site ID:

Division: 2 *Water District:* 10 *County:* EL PASO

Location: Q160 Q40 Q10 Section Twnshp Range PM Distance from section lines:
SW SW 21 14 S 62 W S *From N/S line:* *From E/W line:*

UTM Coordinates (NAD83): *Northing (UTM y)* 4296203.0 *Easting (UTM x):* 556479.0 *GPS*

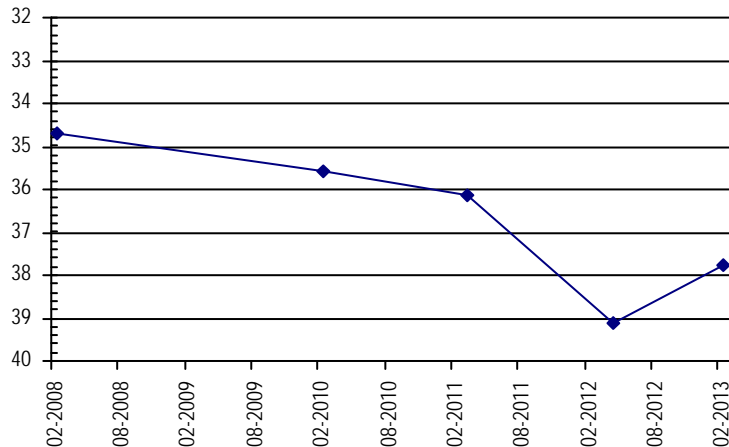
Latitude/Longitude (decimal degrees): 38.812790 -104.349469

Surface Elevation (ft): 5898 *Top Perforated Interval (ft):* 15 *Base of grout (ft):* **Water Level Change**
Well depth (ft): 54 *Bottom Perforated Interval (ft):* 54 **1 year:**
Aquifer(s): QUATERNARY ALLUVIUM **5 year:**
10 year:

Measurements from last 10 years

Date	Depth to WL (ft)	Elev of WL (ft)	Change (ft)
2/21/2008	34.68	5863.32	
1/1/2009			
2/23/2010	35.56	5862.44	
3/2/2011	36.14	5861.86	-0.58
4/13/2012	39.10	5858.90	-2.96
2/19/2013	37.76	5860.24	1.34
4/10/2014			

All Historic Measurements



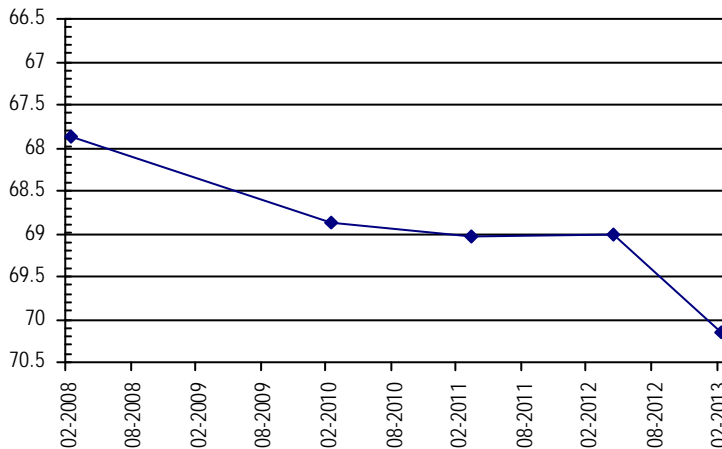
UPPER BLACK SQUIRREL

Well Name: BS-31		<i>Owner:</i> GEORGE & TED SCHUBERT		
<i>Permit #:</i> 6970 - FP -		<i>USGS Site ID:</i>		
<i>Location #:</i> SC01406229AB				
<i>Division:</i>	2	<i>Water District:</i>	10	<i>County:</i> EL PASO
<i>Location:</i>	Q160 Q40 Q10 Section NE NW 29	Twnshp Range PM 14 S 62 W S	<i>Distance from section lines:</i>	
			<i>From N/S line:</i>	<i>From E/W line:</i>
<i>UTM Coordinates (NAD83):</i>	<i>Northing (UTM y)</i> 4295579.0	<i>Easting (UTM x):</i> 555675.0	<i>GPS</i>	
<i>Latitude/Longitude (decimal degrees):</i>	38.807218	-104.358780		
<i>Surface Elevation (ft):</i>	5878	<i>Top Perforated Interval (ft):</i>	56	Water Level Change
<i>Well depth (ft):</i>	96	<i>Bottom Perforated Interval (ft):</i>	96	1 year:
<i>Aquifer(s):</i>	QUATERNARY ALLUVIUM			5 year:
				10 year:

Measurements from last 10 years

Date	Depth to WL (ft)	Elev of WL (ft)	Change (ft)
2/21/2008	67.87	5810.13	
1/1/2009			
2/23/2010	68.87	5809.13	
3/2/2011	69.04	5808.96	-0.17
4/13/2012	69.02	5808.98	0.02
2/19/2013	70.15	5807.85	-1.13
4/10/2014			

All Historic Measurements

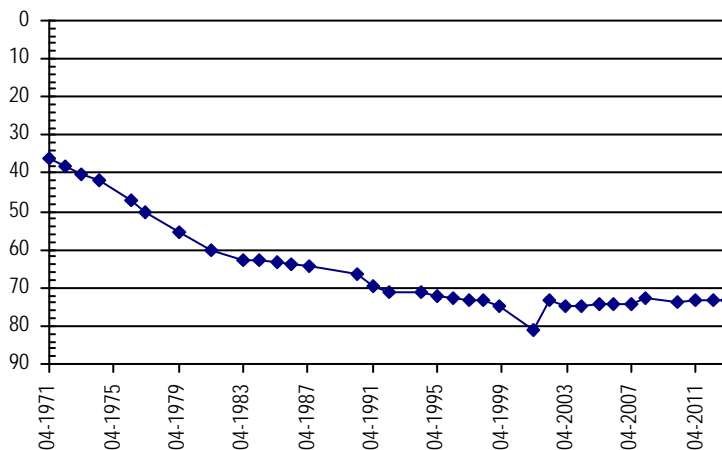


Well Name: BS-15B		<i>Owner:</i>		
<i>Permit #:</i> 20528 - FP -		<i>USGS Site ID:</i>		
<i>Location #:</i> SC01406232BB				
<i>Division:</i>	2	<i>Water District:</i>	10	<i>County:</i> EL PASO
<i>Location:</i>	Q160 Q40 Q10 Section NW NW 32	Twnshp Range PM 14 S 62 W S	<i>Distance from section lines:</i>	
			<i>From N/S line:</i>	<i>From E/W line:</i>
<i>UTM Coordinates (NAD83):</i>	<i>Northing (UTM y)</i> 4294218.7	<i>Easting (UTM x):</i> 554849.5	<i>GPS</i>	
<i>Latitude/Longitude (decimal degrees):</i>	38.795012	-104.368395		
<i>Surface Elevation (ft):</i>	5860	<i>Top Perforated Interval (ft):</i>		Water Level Change
<i>Well depth (ft):</i>	120	<i>Bottom Perforated Interval (ft):</i>		1 year:
<i>Aquifer(s):</i>	QUATERNARY ALLUVIUM			5 year:
				10 year:

Measurements from last 10 years

Date	Depth to WL (ft)	Elev of WL (ft)	Change (ft)
2/20/2004	74.59	5785.41	-0.01
3/1/2005	74.32	5785.68	0.27
2/27/2006	74.05	5785.95	0.27
3/7/2007	74.34	5785.66	-0.29
2/21/2008	72.49	5787.51	1.85
1/1/2009			
2/17/2010	73.57	5786.43	
3/2/2011	73.20	5786.80	0.37
4/13/2012	73.03	5786.97	0.17
2/19/2013	73.39	5786.61	-0.36
4/10/2014			

All Historic Measurements



UPPER BLACK SQUIRREL

Well Name: **BS-SLB4** **Owner:** COLORADO STATE LAND BOARD
Permit #: 277315 - **USGS Site ID:**
Location #: SC01406323AAA

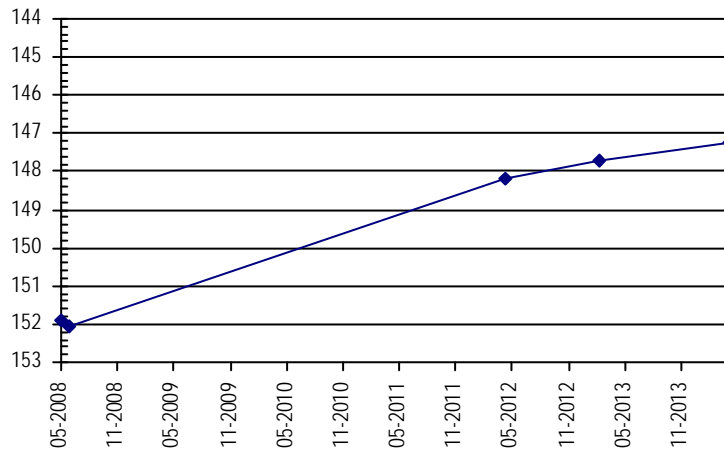
Division: 2 **Water District:** 10 **County:** EL PASO
Location: Q160 Q40 Q10 Section Twnshp Range PM Distance from section lines:
 NE NE NE 23 14 S 63 W S **From N/S line:** **From E/W line:**
UTM Coordinates (NAD83): Northing (UTM y) 4297349.0 Easting (UTM x): 551578.0 *GPS*
Latitude/Longitude (decimal degrees): 38.823418 -104.405831

Surface Elevation (ft): 6000 **Top Perforated Interval (ft):** 112 **Base of grout (ft):** **Water Level Change**
Well depth (ft): 180 **Bottom Perforated Interval (ft):** 172 **1 year:** 0.44
Aquifer(s): QUATERNARY ALLUVIUM **5 year:**
10 year:

Measurements from last 10 years

Date	Depth to WL (ft)	Elev of WL (ft)	Change (ft)
5/5/2008	151.92	5848.08	
5/30/2008	152.07	5847.93	-0.15
4/13/2012	148.17	5851.83	3.90
2/13/2013	147.70	5852.30	0.47
4/9/2014	147.26	5852.74	0.44

All Historic Measurements



Well Name: **BS-23** **Owner:**
Permit #: 16516 - **USGS Site ID:**
Location #: SC01406324AA

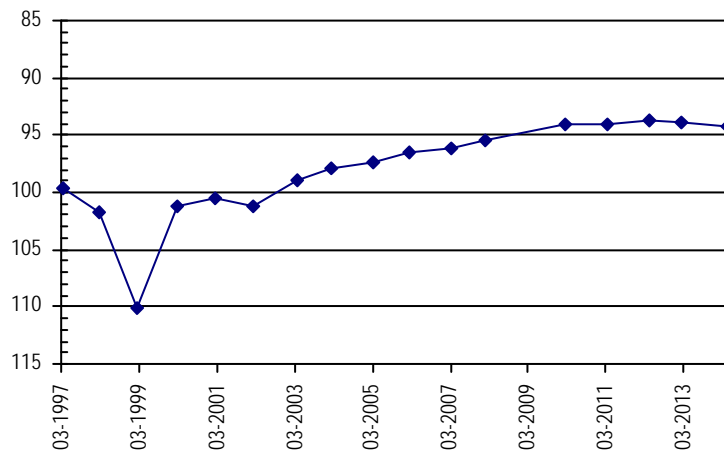
Division: 2 **Water District:** 10 **County:** EL PASO
Location: Q160 Q40 Q10 Section Twnshp Range PM Distance from section lines:
 NE NE 32 14 S 63 W S **From N/S line:** **From E/W line:**
UTM Coordinates (NAD83): Northing (UTM y) 4297546.7 Easting (UTM x): 553173.5 *GPS*
Latitude/Longitude (decimal degrees): 38.825104 -104.387437

Surface Elevation (ft): 5981 **Top Perforated Interval (ft):** **Base of grout (ft):** **Water Level Change**
Well depth (ft): 110 **Bottom Perforated Interval (ft):** **1 year:** -0.44
Aquifer(s): QUATERNARY ALLUVIUM **5 year:**
10 year: 3.70

Measurements from last 10 years

Date	Depth to WL (ft)	Elev of WL (ft)	Change (ft)
2/20/2004	97.97	5883.03	0.93
3/1/2005	97.32	5883.68	0.65
2/27/2006	96.47	5884.53	0.85
3/7/2007	96.13	5884.87	0.34
1/22/2008	95.40	5885.60	0.73
1/1/2009			
2/17/2010	94.09	5886.91	
3/2/2011	94.03	5886.97	0.06
4/13/2012	93.78	5887.22	0.25
2/13/2013	93.83	5887.17	-0.05
4/9/2014	94.27	5886.73	-0.44

All Historic Measurements



UPPER BLACK SQUIRREL

Well Name: **BS-SLB5** **Owner:** COLORADO STATE LAND BOARD
Permit #: 277316 - **Location #:** SC01406325DA **USGS Site ID:**

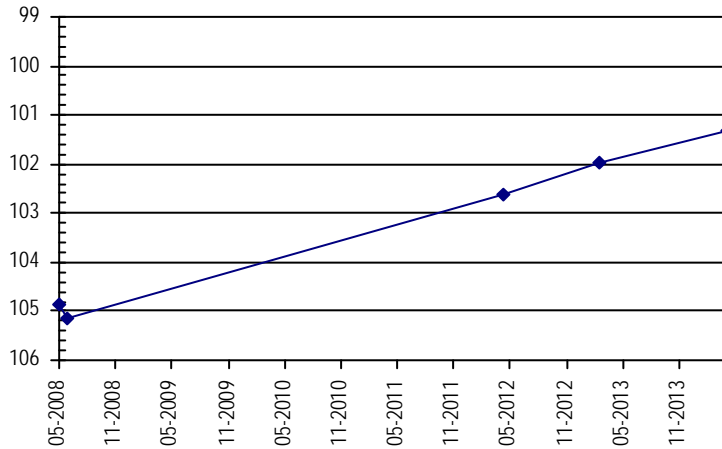
Division: 2 **Water District:** 10 **County:** EL PASO
Location: Q160 Q40 Q10 Section Twnshp Range PM Distance from section lines:
 SE NE 25 14 S 63 W S **From N/S line:** **From E/W line:**
UTM Coordinates (NAD83): Northing (UTM y) 4294671.0 Easting (UTM x): 553232.0 *GPS*
Latitude/Longitude (decimal degrees): 38.799187 -104.386985

Surface Elevation (ft): 5900 **Top Perforated Interval (ft):** 115 **Base of grout (ft):** **Water Level Change**
Well depth (ft): 165 **Bottom Perforated Interval (ft):** 165 **1 year:** 0.63
Aquifer(s): QUATERNARY ALLUVIUM **5 year:**
10 year:

Measurements from last 10 years

Date	Depth to WL (ft)	Elev of WL (ft)	Change (ft)
5/7/2008	104.85	5795.15	
5/30/2008	105.14	5794.86	-0.29
4/12/2012	102.62	5797.38	2.52
2/19/2013	101.97	5798.03	0.65
4/10/2014	101.34	5798.66	0.63

All Historic Measurements



Well Name: **SALAY-03** **Owner:** USGS
Permit #: 98502 - **Location #:** SC01406336DDD **USGS Site ID:**

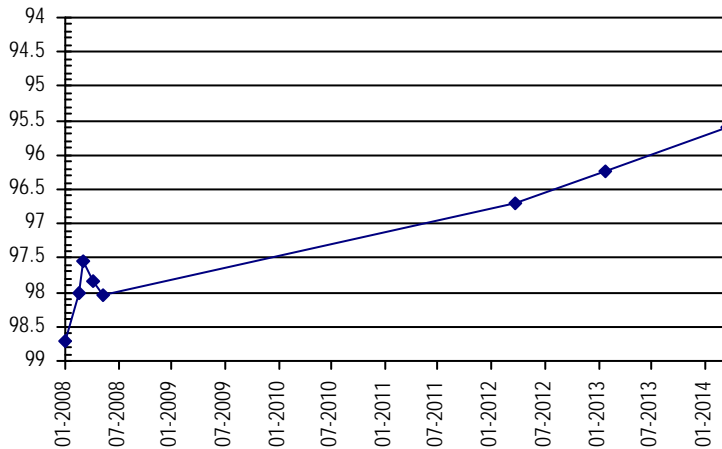
Division: 2 **Water District:** 10 **County:** EL PASO
Location: Q160 Q40 Q10 Section Twnshp Range PM Distance from section lines:
 SE SE SE 36 14 S 63 W S **From N/S line:** **From E/W line:**
UTM Coordinates (NAD83): Northing (UTM y) 4292655.0 Easting (UTM x): 553165.0 *GPS*
Latitude/Longitude (decimal degrees): 38.781025 -104.387912

Surface Elevation (ft): 5858 **Top Perforated Interval (ft):** **Base of grout (ft):** **Water Level Change**
Well depth (ft): 150 **Bottom Perforated Interval (ft):** **1 year:** 0.64
Aquifer(s): QUATERNARY ALLUVIUM **5 year:**
10 year:

Measurements from last 10 years

Date	Depth to WL (ft)	Elev of WL (ft)	Change (ft)
1/24/2008	98.70	5759.30	
3/14/2008	98.00	5760.00	0.70
3/28/2008	97.56	5760.44	0.44
5/1/2008	97.83	5760.17	-0.27
5/30/2008	98.03	5759.97	-0.20
4/13/2012	96.71	5761.29	1.32
2/19/2013	96.23	5761.77	0.48
4/10/2014	95.59	5762.41	0.64

All Historic Measurements



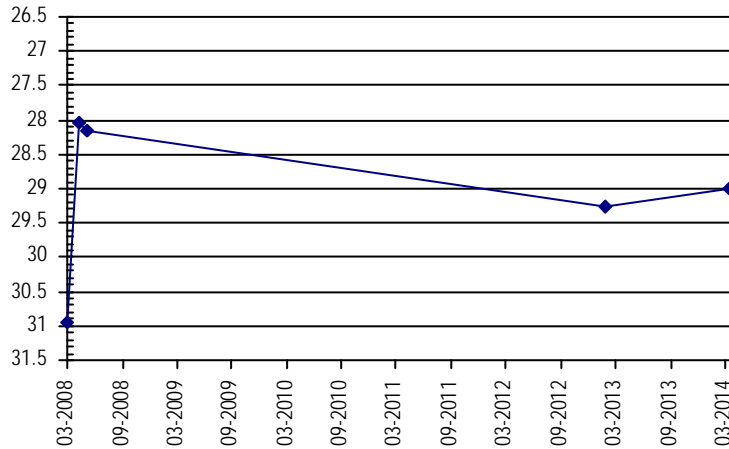
UPPER BLACK SQUIRREL

Well Name: BS-33	<i>Owner:</i> BOHART RANCH
<i>Permit #:</i> 58166 - -	<i>USGS Site ID:</i>
<i>Location #:</i> SC01506205BDD	
<i>Division:</i> 2	<i>Water District:</i> 10
<i>County:</i> EL PASO	
<i>Location:</i> Q160 Q40 Q10 Section	<i>Twonshp Range PM Distance from section lines:</i>
NW SE SE 5 15 S 62 W S	<i>From N/S line: From E/W line:</i>
<i>UTM Coordinates (NAD83): Northing (UTM y)</i> 4291926.6	<i>Easting (UTM x):</i> 555605.2 <i>GPS</i>
<i>Latitude/Longitude (decimal degrees):</i> 38.774311	-104.359878
<i>Surface Elevation (ft):</i> 5790	<i>Top Perforated Interval (ft):</i>
<i>Well depth (ft):</i> 92	<i>Base of grout (ft):</i>
<i>Aquifer(s):</i> QUATERNARY ALLUVIUM	Water Level Change
LARAMIE FOX HILLS	1 year: 0.26
	5 year:
	10 year:

Measurements from last 10 years

Date	Depth to WL (ft)	Elev of WL (ft)	Change (ft)
3/27/2008	30.95	5759.05	
5/8/2008	28.05	5761.95	2.90
5/30/2008	28.15	5761.85	-0.10
2/19/2013	29.27	5760.73	-1.12
4/10/2014	29.01	5760.99	0.26

All Historic Measurements

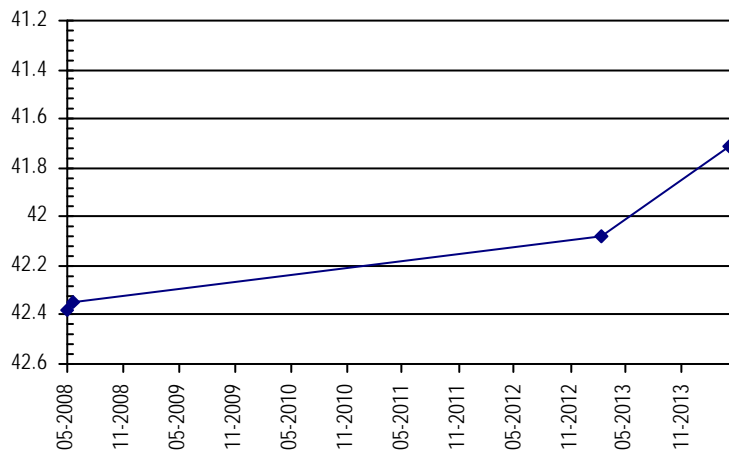


Well Name: BS-SLB6	<i>Owner:</i> COLORADO STATE LAND BOARD
<i>Permit #:</i> 277318 - -	<i>USGS Site ID:</i>
<i>Location #:</i> SC01506207AD	
<i>Division:</i> 2	<i>Water District:</i> 10
<i>County:</i> EL PASO	
<i>Location:</i> Q160 Q40 Q10 Section	<i>Twonshp Range PM Distance from section lines:</i>
NE SE 7 15 S 62 W S	<i>From N/S line: From E/W line:</i>
<i>UTM Coordinates (NAD83): Northing (UTM y)</i> 4290564.0	<i>Easting (UTM x):</i> 554530.0 <i>GPS</i>
<i>Latitude/Longitude (decimal degrees):</i> 38.762099	-104.372362
<i>Surface Elevation (ft):</i> 5755	<i>Top Perforated Interval (ft):</i> 30
<i>Well depth (ft):</i> 87	<i>Base of grout (ft):</i>
<i>Aquifer(s):</i> QUATERNARY ALLUVIUM	Water Level Change
	1 year: 0.37
	5 year:
	10 year:

Measurements from last 10 years

Date	Depth to WL (ft)	Elev of WL (ft)	Change (ft)
5/8/2008	42.38	5712.62	
5/30/2008	42.35	5712.65	0.03
2/19/2013	42.08	5712.92	0.27
4/10/2014	41.71	5713.29	0.37

All Historic Measurements



UPPER BLACK SQUIRREL

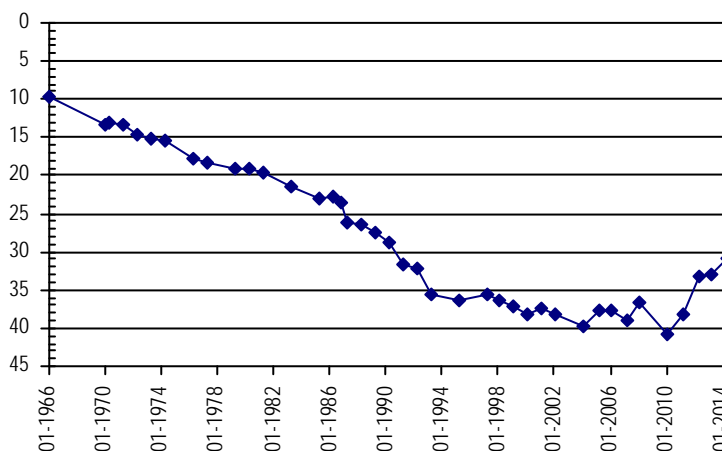
Well Name: **BS-16** **Owner:** JERRY FARMER
Permit #: 2451 - FP - **Location #:** SC01506324DA1 **USGS Site ID:**
Division: 2 **Water District:** 10 **County:** EL PASO
Location: Q160 Q40 Q10 Section Twnshp Range PM Distance from section lines:
 NE SE 24 15 S 63 W S **From N/S line:** **From E/W line:**
UTM Coordinates (NAD83): Northing (UTM y) 4287005.7 Easting (UTM x): 553039.4 *GPS*
Latitude/Longitude (decimal degrees): 38.730125 -104.389791

Surface Elevation (ft): 5690 **Top Perforated Interval (ft):** **Base of grout (ft):** **Water Level Change**
Well depth (ft): 67 **Bottom Perforated Interval (ft):** **1 year:** 1.87
Aquifer(s): QUATERNARY ALLUVIUM **5 year:**
10 year: 8.78

Measurements from last 10 years

Date	Depth to WL (ft)	Elev of WL (ft)	Change (ft)
2/20/2004	39.78	5650.22	
3/1/2005	37.60	5652.40	2.18
2/27/2006	37.80	5652.20	-0.20
3/7/2007	38.87	5651.13	-1.07
2/21/2008	36.53	5653.47	2.34
1/1/2009			
2/17/2010	40.84	5649.16	
3/2/2011	38.26	5651.74	2.58
4/13/2012	33.26	5656.74	5.00
2/19/2013	32.87	5657.13	0.39
4/10/2014	31.00	5659.00	1.87

All Historic Measurements



Well Name: **BS-17** **Owner:** DANIEL FARMER
Permit #: 6494 - FP - **Location #:** SC01506324DA2 **USGS Site ID:**
Division: 2 **Water District:** 10 **County:** EL PASO
Location: Q160 Q40 Q10 Section Twnshp Range PM Distance from section lines:
 SE NE 24 15 S 63 W S **From N/S line:** **From E/W line:**
UTM Coordinates (NAD83): Northing (UTM y) 4286995.0 Easting (UTM x): 552948.0 *GPS*
Latitude/Longitude (decimal degrees):

Surface Elevation (ft): 5680 **Top Perforated Interval (ft):** **Base of grout (ft):** **Water Level Change**
Well depth (ft): 31 **Bottom Perforated Interval (ft):** **1 year:** 3.29
Aquifer(s): QUATERNARY ALLUVIUM **5 year:**
10 year: 11.14

Measurements from last 10 years

Date	Depth to WL (ft)	Elev of WL (ft)	Change (ft)
2/20/2004	43.15	5636.85	-0.25
3/1/2005	39.11	5640.89	4.04
2/27/2006	39.37	5640.63	-0.26
3/7/2007	40.04	5639.96	-0.67
12/11/2007	39.10	5640.90	0.94
1/1/2009			
2/17/2010	39.95	5640.05	
3/2/2011	38.23	5641.77	1.72
4/13/2012	34.86	5645.14	3.37
2/19/2013	35.30	5644.70	-0.44
4/10/2014	32.01	5647.99	3.29

All Historic Measurements

