

WATER LEVELS
IN THE
UPPER BLACK SQUIRREL CREEK
DESIGNATED GROUNDWATER BASIN

MARCH, 2003



OFFICE OF THE STATE ENGINEER

Bill Owens
Governor

Hal Simpson
State Engineer

Greg Walcher
Director

Chuck Roberts
Project Manager

Upper Black Squirrel Water Level Measurements 2003

This report represents the results of water level measurements of wells in the Upper Black Squirrel Creek Designated Ground Water Basin made March 6, 2003. This project was done in cooperation with the Upper Black Squirrel Creek Ground Water Management District and some of the local well owners. This year, as in past years, the funding for this project was supplied in part from well permit fees collected and managed by the Office of the State Engineer as a result of the passage of Senate Bill 200 during the 1987 legislative session.

A total of 22 well sites were visited with 21 wells being measured, recorded and hydrographs constructed. Changes in water level from last year's readings for the alluvial aquifer range from a decline of -12.10 feet in T12S, R62W, Sec. 30, to a rise of 2.25 feet at three different locations. The lowest decline in 2003 was 4.30 feet less than the lowest decline in 2002. The highest rise in 2003 was 4.27 feet less than the highest rise of 2002. The average decline for the entire basin was - 4.33 feet for 2002-2003 measurements as compared to an average decline of -3.66 feet during the period 2001-2002. A total change for the 5-year period of 1999 to 2003 ranges from a decline of -19.30 feet in T13S, R63W, Sec. 26 to a rise of 11.37 feet in T13S, R63W, Sec. 25. The average decline for the last 5-year period is -1.04 feet per year (1999-2003), as compared to an average decline of -0.82 feet/year for the 5-year period (1997-2002).

Results of the measurements of Denver Basin bedrock wells will be published in the annual report for the bedrock aquifers, which will be available in June of this year.

The table of water level measurements included in this report is organized by location. Information presented includes location, water levels measured prior to the 1988 measurements made by this office, the 1988 through 2003 measurements and changes between 2002/2003. Also included are 22 well hydrographs of wells measured in the basin (with all years of record). The final six pages of this report are maps of water level decline from the initial water level measurements to each of the years 1998 through 2003. The first 2 pages immediately following this report depicts water level changes from 2002 to 2003 and 2001 to 2002 with the outlined boundary of the Upper Black Squirrel Alluvium. The maps depict a history of water decline within the Upper Black Squirrel alluvial aquifer.

This ground water basin has a long and unvaried history of continuing ground water level declines. It's apparent that ground water is being mined at a greater rate than recharge is occurring. The maps contained in this report identify areas of intense ground water use throughout the years reported. The recurring and persistent areas of intense ground water use indicate that a metering program is warranted to adequately manage the ground water resources of the Upper Black Squirrel Ground Water Management District.

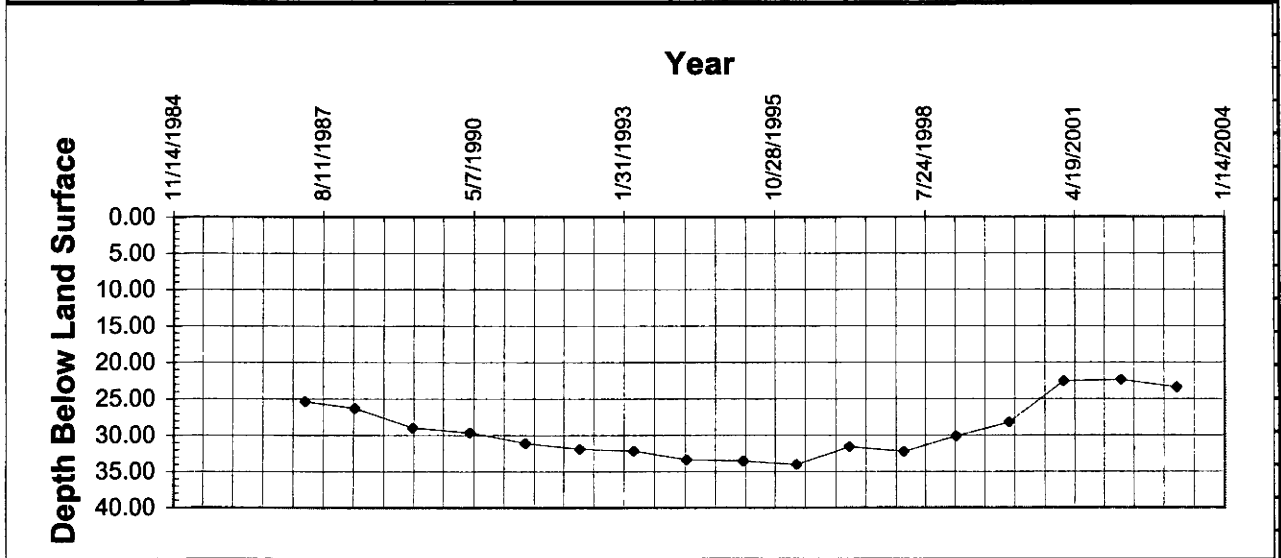
Copies of this report are being made available to well owners for their assistance in this project. Additional reports are available from the Office of the State Engineer, 1313 Sherman Street, Room 818, Denver, Colorado 80203, for a cost of \$3.00.

W102R.cgr
3/2/01

MONITORING WELL DATA SHEET

Well I.D.: BS-01	SC01206230BB		
Permit #:	612-FP	UTM Coordinates:	553,222
County:	EL PASO	Zone 13	4,314,491
Location:	NW,NW, SEC. 30, T. 12 S., R. 62 W., 6 P.M.		
Site I.D.(lat/long)			
Aquifer:	ALLUVIUM		
Well Depth (ft):	123		
Surface Elev. (ft):	6,420		

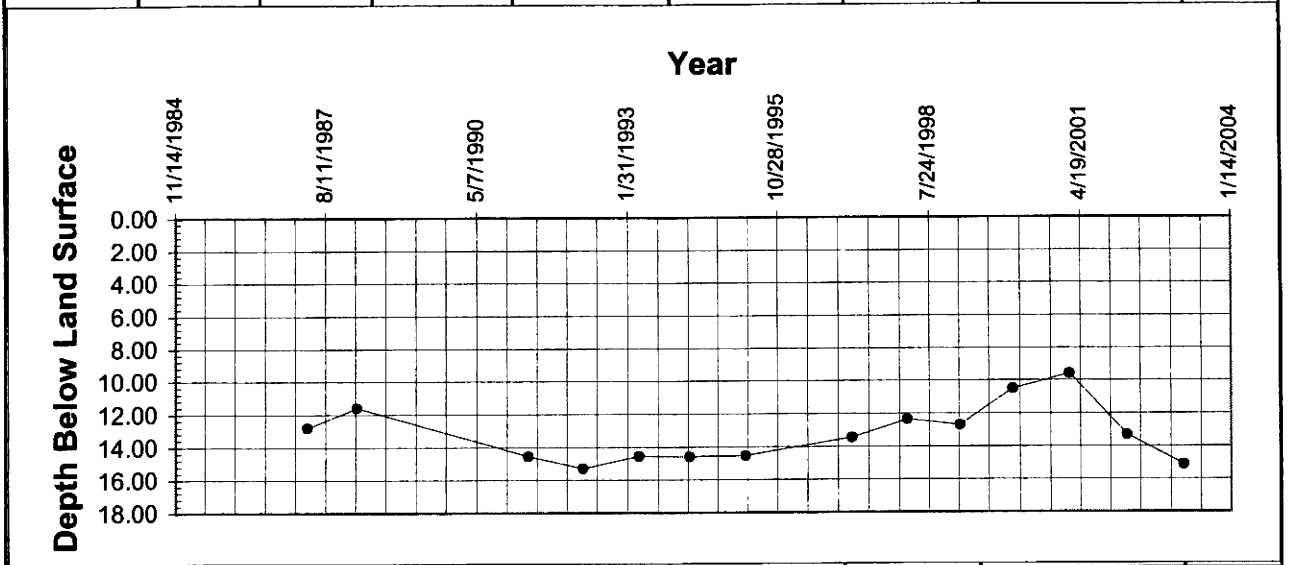
Date	Hold (ft)	Cut (ft)	Depth to Water (ft)	Meas. Pt. - Ft. Above Land Surf.	Depth to Water - Ft. Below Land Surf.	Elev. of Water Level (ft)	Change From Previous Measurement (ft)	Field Data Rcrd By
4/15/1987				0.00	25.40			
3/7/1988					26.33			
3/28/1989					28.95			
4/12/1990					29.65			
4/15/1991					31.09			
4/15/1992					31.90			
4/6/1993					32.16			
3/18/1994					33.35			
3/29/1995					33.55			
3/21/1996					34.00			
3/4/1997					31.60			
2/27/1998					32.25			
2/17/1999					30.10			
2/8/2000					28.20			
2/5/2001	30.00	7.40	22.60	0.00	22.60	6397.4	5.60	CGR
2/26/2002	25.00	2.60	22.40		22.40	6397.6	0.20	CGR
3/6/2003	26.00	2.56	23.44		23.44	6397	-1.04	CGR



MONITORING WELL DATA SHEET

Well I.D.: BS-02	SC01206231CD		
Permit #:	R-13171-RFP	UTM Coordinates:	553,635
County:	EL PASO	Zone 13	4,311,902
Location:	SE,SW,SEC. 31, T. 12S., R. 62 W., 6 P.M.		
Site I.D.(lat/long)			
Aquifer:	ALLUVIUM		
Well Depth (ft):	51		
Surface Elev. (ft):	6,100		

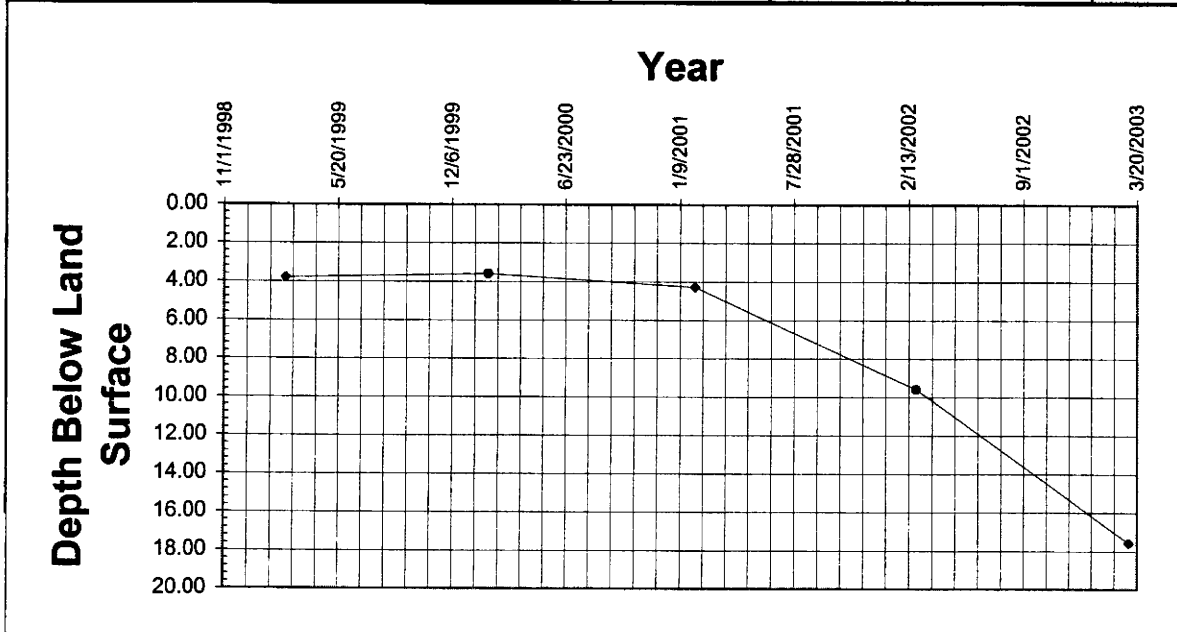
Date	Hold (ft)	Cut (ft)	Depth to Water (ft)	Meas. Pt. - Ft. Above Land Surf.	Depth to Water - Ft. Below Land Surf.	Elev. of Water Level (ft)	Change From Previous Measurement (ft)	Field Data Rcrd By
4/15/1987				1.20	12.80			
3/7/1988					11.58			
4/15/1991					14.56			
4/15/1992					15.30			
4/17/1993					14.55			
3/18/1994					14.60			
3/29/1995					14.53			
3/4/1997					13.45			
2/27/1998					12.35			
2/17/1999					12.70			
2/1/2000					10.50			
2/5/2001	12.00	1.20	10.80	1.20	9.60	6090.40	0.90	CGR
2/26/2002	16.00	1.49	14.51	1.20	13.31	6086.69	-3.71	CGR
3/6/2003	20.00	3.68	16.32	1.20	15.12	6084.88	-1.81	CGR



MONITORING WELL DATA SHEET

Well I.D.: BS-22A	SC 01206324CC		
Permit #:	40767	UTM Coordinates:	551,666
County:	ELPASO		4,315,268
Location:	SW, SW, SEC. 24, T. 12 S., R. 63 W., 6 P.M.		
Site I.D.(lat/long)			
Aquifer:	ALLUVIUM		
Well Depth (ft):	110		
Surface Elev. (ft):	6,229		

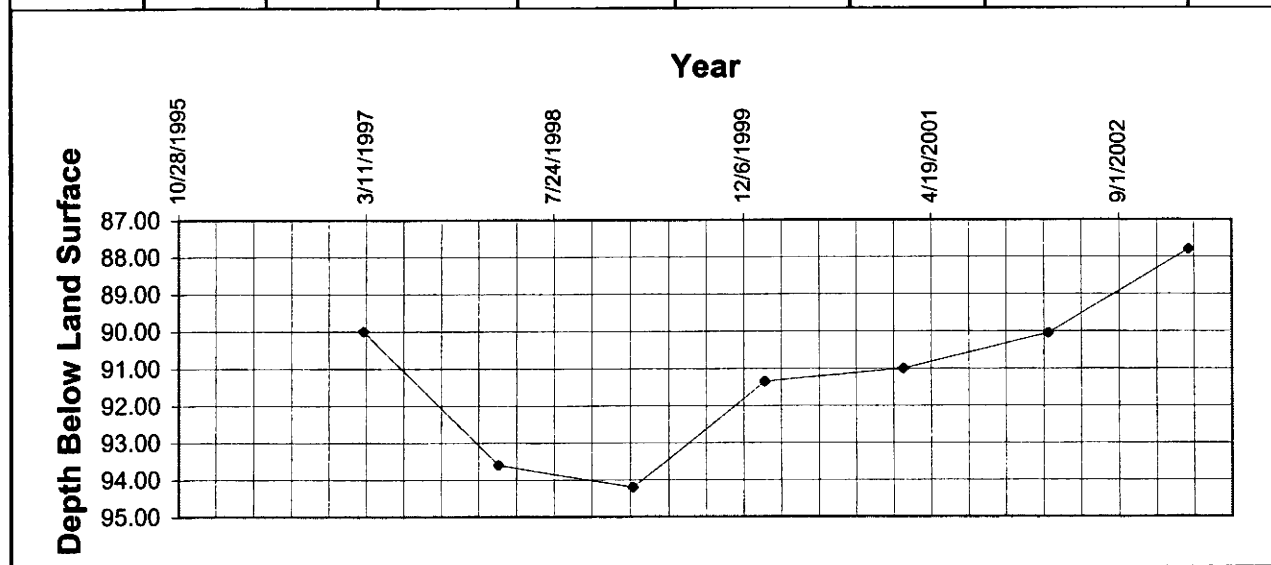
Date	Hold (ft)	Cut (ft)	Depth to Water (ft)	Meas. Pt. - Ft. Above Land Surf.	Depth to Water - Ft. Below Land Surf.	Elev. of Water Level (ft)	Change From Previous Measurement (ft)	Field Data Rcrd By
2/17/1999				0.00	3.80			
2/8/2000					3.60		0.20	CGR
2/5/2001	7.00	1.20	5.80	1.50	4.30	6224.70	-0.70	CGR
2/26/2002	11.00	0.10	11.10	1.50	9.60	6219.4	-5.30	CGR
3/6/2003	20.00	0.91	19.09	1.50	17.59	6211.41	-7.99	DAM



MONITORING WELL DATA SHEET

Well I.D.: BS-25	SC01306207CB		
Permit #:	15389-FP	UTM Coordinates:	553,297
County:	EL PASO	Zone 13	4,309,174
Location:	NW, SW SEC. 7, T. 13 S., R. 62 W., 6 P.M.		
Site I.D. (lat/long)			
Aquifer:	ALLUVIUM		
Well Depth (ft):	160		
Surface Elev. (ft):	6,283		

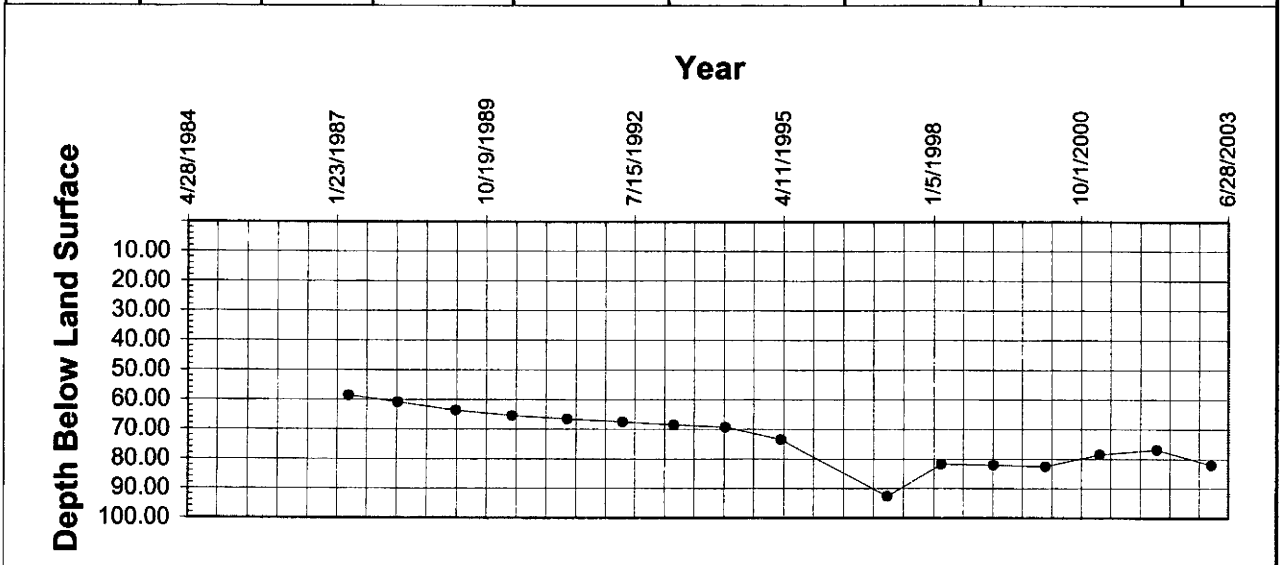
Date	Hold (ft)	Cut (ft)	Depth to Water (ft)	Meas. Pt. - Ft. Above Land Surf.	Depth to Water - Ft. Below Land Surf.	Elev. of Water Level (ft)	Change From Previous Measurement (ft)	Field Data Rcrd By
3/4/1997				1.80	90.00			
2/27/1998					93.60			
2/17/1999					94.20			
2/1/2000					91.35			
2/5/2001	100.00	7.20	92.80	1.80	91.00	6192.00	0.35	CGR
2/26/2002	100.00	8.15	91.85	1.80	90.05	6192.95	0.95	CGR
3/6/2003	100.00	10.40	89.60	1.80	87.80	6195.2	2.25	



MONITORING WELL DATA SHEET

Well I.D.: BS-04	SC01306207DC		
Permit #:	6100-F	UTM Coordinates:	554,385
County:	EL PASO	Zone 13	4,308,696
Location:	SW, SE, SEC. 7, T. 13 S., R. 62 W., 6 P.M.		
Site I.D.(lat/long)			
Aquifer:	ALLUVIUM		
Well Depth (ft):	127		
Surface Elev. (ft):	6,257		

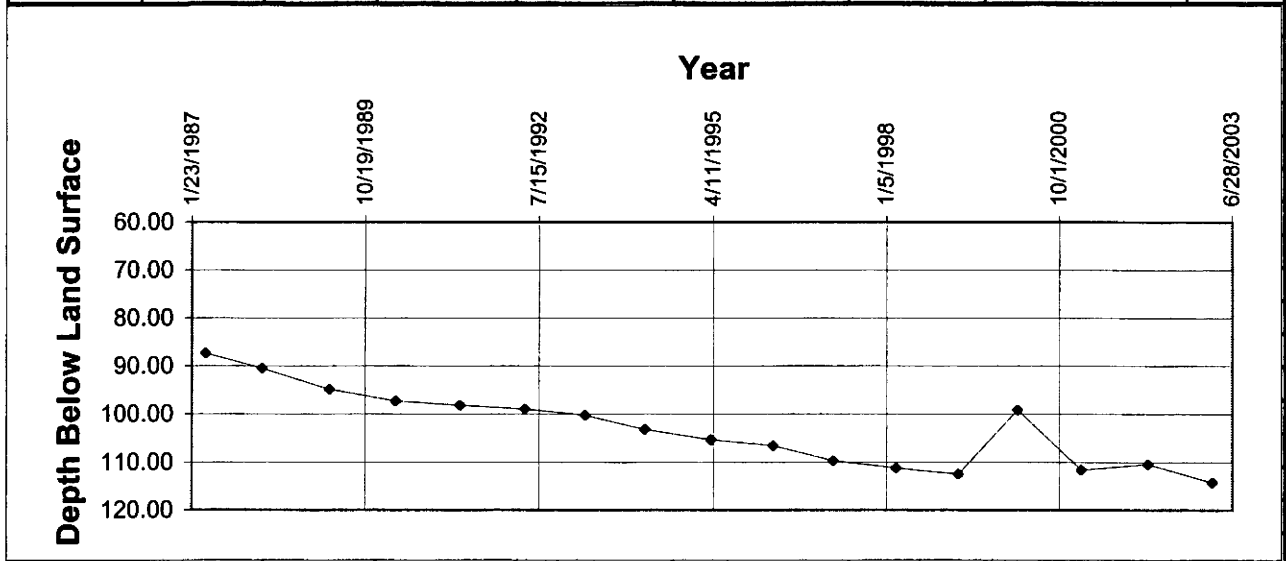
Date	Hold (ft)	Cut (ft)	Depth to Water (ft)	Meas. Pt. - Ft. Above Land Surf.	Depth to Water - Ft. Below Land Surf.	Elev. of Water Level (ft)	Change From Previous Measurement (ft)	Field Data Rcrd By
4/15/1987				0.80	58.50			
3/7/1988					60.87			
3/29/1989					63.70			
4/12/1990					65.50			
4/16/1991					66.62			
4/24/1992					67.55			
4/6/1993					68.52			
3/18/1994					69.30			
3/25/1995					73.46			
3/4/1997					92.70			
2/27/1998					81.75			
2/17/1999					82.10			
2/1/2000					82.50			
2/5/2001	85.00	5.75	79.25	0.80	78.45	6176.55	4.05	CGR
2/26/2002	90.00	12.35	77.65	0.80	76.85	6180.15	1.60	CGR
3/6/2003	90.00	7.90	82.10	0.00	82.10	6174.9	-5.25	DAM



MONITORING WELL DATA SHEET

Well I.D.: BS-06A	SC01306218CB		
Permit #:	11031-FP	UTM Coordinates:	553,501
County:	EL PASO	Zone 13	4,307,234
Location:	NW, SW, SEC. 18, T. 13 S., R. 62 W., 6 P.M.		
Site I.D.(lat/long)			
Aquifer:	ALLUVIUM		
Well Depth (ft):	187		
Surface Elev. (ft):	6,250		

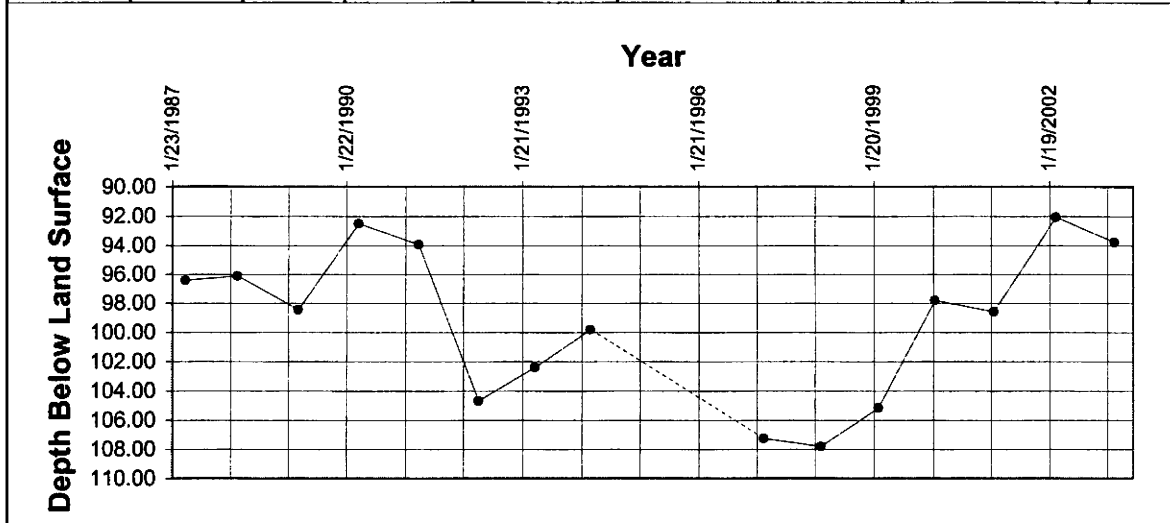
Date	Hold (ft)	Cut (ft)	Depth to Water (ft)	Meas. Pt. - Ft. Above Land Surf.	Depth to Water - Ft. Below Land Surf.	Elev. of Water Level (ft)	Change From Previous Measurement (ft)	Field Data Rcrd By
4/15/1987				0.30	87.40			
3/7/1988					90.56			
3/29/1989					94.90			
4/12/1990					97.30			
4/16/1991					98.20			
4/27/1992					99.00			
4/6/1993					100.30			
3/18/1994					103.25			
3/29/1995					105.37			
3/21/1996					106.60			
3/4/1997					109.70			
2/27/1998					111.20			
2/17/1999					112.45			
2/1/2000				0.50	99.20			
2/5/2001	120.00	7.90	112.10	0.50	111.60	6138.40	-12.40	CGR
2/26/2002	120.00	9.08	110.92	0.50	110.42	6139.58	1.18	CGR
3/6/2003	125.00	10.30	114.70	0.50	114.20	6135.8	-3.78	CGR



MONITORING WELL DATA SHEET

Well I.D.: BS-15A	SC01306325AA	UTM Coordinates:	553,185
Permit #:	11799-FP	Zone 13	4,305,187
County:	EL PASO	NE,NE,SEC. 25, T. 13S., R. 63 W., 6 P.M.	
Location:			
Site I.D.(lat/long)			
Aquifer:	ALLUVIUM		
Well Depth (ft):	120		
Surface Elev. (ft):	6,200		

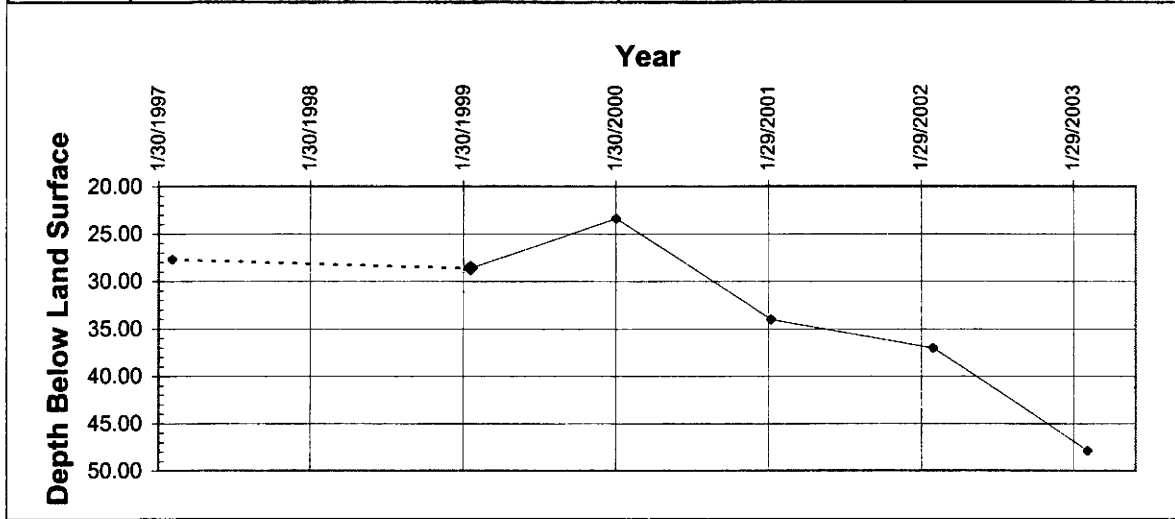
Date	Hold (ft)	Cut (ft)	Depth to Water (ft)	Meas. Pt. - Ft. Above Land Surf.	Depth to Water - Ft. Below Land Surf.	Elev. of Water Level (ft)	Change From Previous Measurement (ft)	Field Data Rcrd By
4/15/1987					96.40			
3/7/1988					96.11			
3/28/1989					98.45			
4/6/1990					92.50			
4/16/1991					93.95			
4/24/1992					104.70			
4/6/1993					102.40			
3/18/1994					99.80			
3/4/1997					107.25			
2/27/1998					107.80			
2/17/1999					105.15			
2/1/2000					97.80			
2/5/2001	100.00	1.00	99.00	0.40	98.60	6101.40	-0.80	CGR
2/26/2002	100.00	7.52	92.48	0.40	92.08	6107.92	6.52	CGR
3/6/2003	100.00	5.82	94.18	0.40	93.78	6106.22	-1.70	CGR



MONITORING WELL DATA SHEET

Well I.D.: BS-19	SC01306326CA	UTM Coordinates:	553,186
Permit #:	27567-F	Zone 13	4,305,188
County:	EL PASO	Location: NE,SW,SEC. 26, T. 13S., R. 63 W., 6 P.M.	
Site I.D.(lat/long)			
Aquifer:	ALLUVIUM		
Well Depth (ft):	136		
Surface Elev. (ft):	6,220		

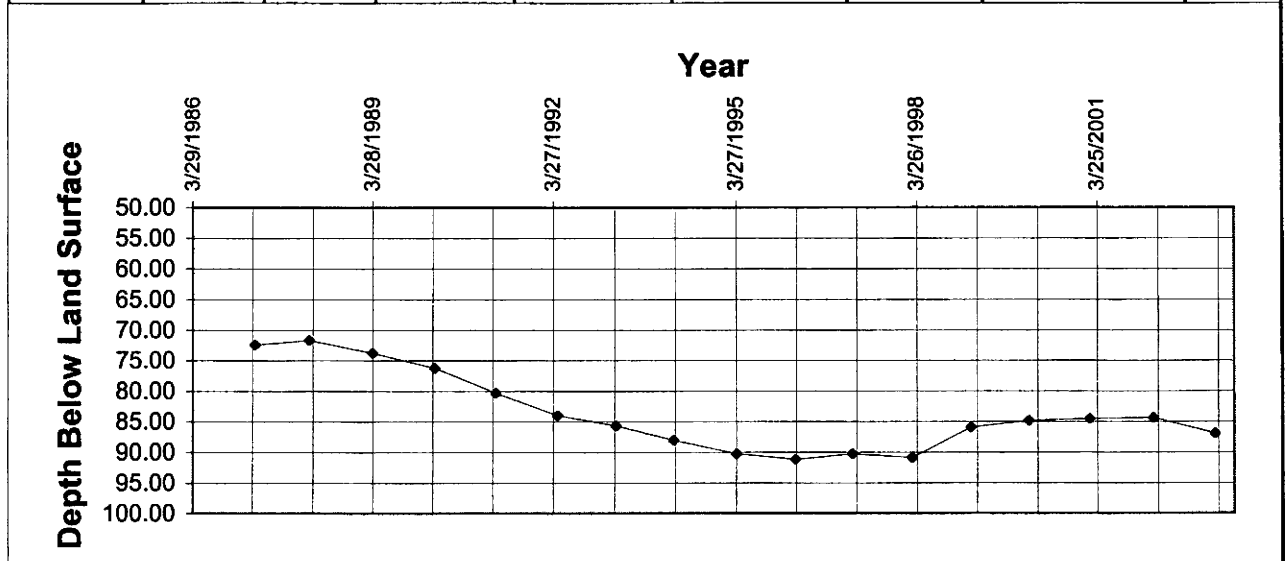
Date	Hold (ft)	Cut (ft)	Depth to Water (ft)	Meas. Pt. - Ft. Above Land Surf.	Depth to Water - Ft. Below Land Surf.	Elev. of Water Level (ft)	Change From Previous Measurement (ft)	Field Data Rcrd By
3/4/1997					27.70			
2/17/1999					28.60			
2/1/2000				0.40	23.40			
2/5/2001	35.00	0.58	34.42	0.40	34.02	6185.98	-10.62	CGR
2/26/2002	40.00	2.55	37.45	0.40	37.05	6182.95	-3.03	CGR
3/6/2003	50.00	1.70	48.30	0.40	47.90	6172.1	-10.85	CGR



MONITORING WELL DATA SHEET

Well I.D.: BS-07	SC01406206CD		UTM Coordinates: 553,668
Permit #:	17425-F		Zone 13 4,300,519
County:	EL PASO		
Location:	SW,SE,SEC. 6, T. 14S., R. 62 W., 6 P.M.		
Site I.D.(lat/long)			
Aquifer:	ALLUVIUM		
Well Depth (ft):	110		
Surface Elev. (ft):	6,060		

Date	Hold (ft)	Cut (ft)	Depth to Water (ft)	Meas. Pt. - Ft. Above Land Surf.	Depth to Water - Ft. Below Land Surf.	Elev. of Water Level (ft)	Change From Previous Measurement (ft)	Field Data Rcrd By
4/15/1987					72.40			
3/7/1988					71.68			
3/28/1989					73.80			
4/12/1990					76.25			
4/16/1991					80.30			
4/24/1992					84.00			
4/6/1993					85.70			
3/18/1994					88.05			
3/29/1995					90.25			
3/21/1996					91.18			
3/4/1997					90.25			
2/27/1998					90.88			
2/17/1999					85.95			
2/1/2000				0.50	84.83			
2/5/2001	90.00	4.95	85.05	0.50	84.55	5975.45	0.28	CGR
2/26/2002	90.00	5.15	84.85	0.50	84.35	5975.65	0.20	CGR
3/6/2003	90.00	2.55	87.45	0.50	86.95	5973.05	-2.60	CGR

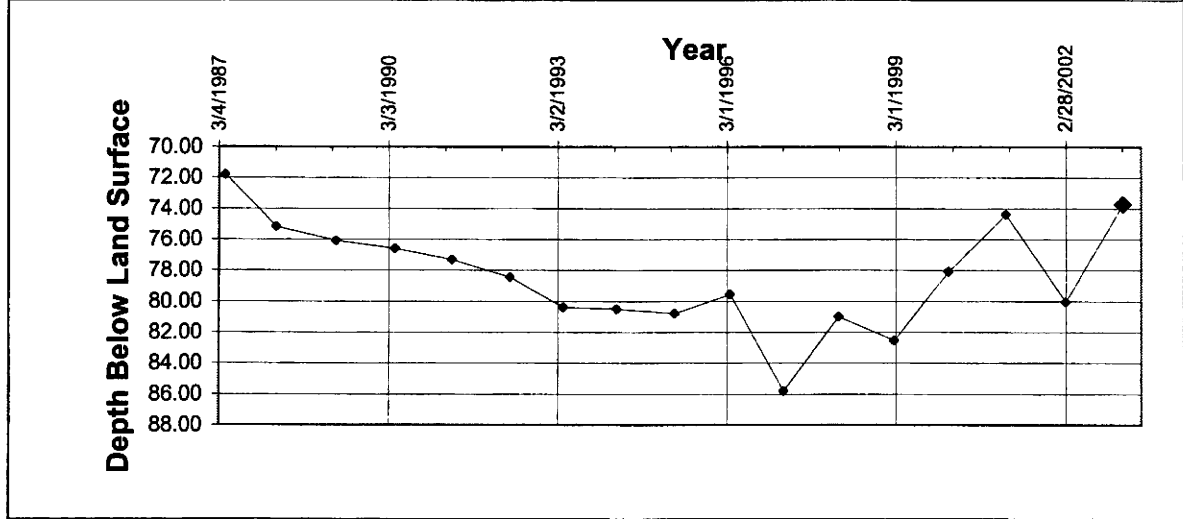


MONITORING WELL DATA SHEET

Well I.D.: BS-10	SC01406208BA		
Permit #:	20701-FP	UTM Coordinates:	555,438
County:	EL PASO	Zone 13	4,300,416
Location:	NW,NE,SEC. 8, T. 14S., R. 62 W., 6 P.M.		
Site I.D.(lat/long)			
Aquifer:	ALLUVIUM		
Well Depth (ft):	136		
Surface Elev. (ft):	6,030		

NOTE: The Large Diamond Point in 2003 signifies a relocation of the Observation well 1/2 mile North

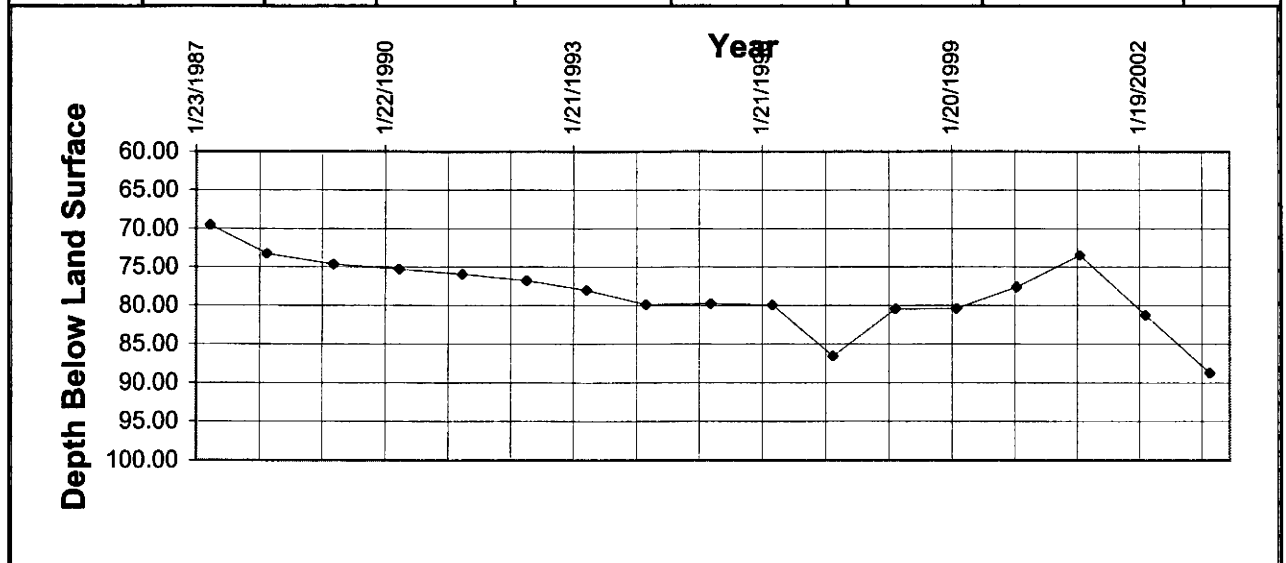
Date	Hold (ft)	Cut (ft)	Depth to Water (ft)	Meas. Pt. - Ft. Above Land Surf.	Depth to Water - Ft. Below Land Surf.	Elev. of Water Level (ft)	Change From Previous Measurement (ft)	Field Data Rcrd By
4/15/1987					71.80			
3/7/1988					75.18			
3/29/1989					76.09			
4/12/1990					76.60			
4/16/1991					77.33			
4/27/1992					78.45			
4/6/1993					80.40			
3/18/1994					80.50			
3/29/1995					80.80			
3/21/1996					79.55			
3/4/1997					85.80			
2/27/1998					81.00			
2/17/1999					82.55			
2/1/2000				0.00	78.10			
2/5/2001	80.00	5.60	74.40	0.00	74.40	5955.60	3.70	CGR
2/26/2002	91.00	10.65	80.35	0.30	80.05	5949.95	-5.65	CGR
3/6/2003	80.00	4.47	75.53	1.80	73.73	5959.27	6.32	CGR



MONITORING WELL DATA SHEET

Well I.D.: BS-10A	SC01406208BD		UTM Coordinates:
Permit #:	27608-FP		555,482
County:	EL PASO		Zone 13 4,299,965
Location:	SE,NW,SEC. 8, T. 14S., R. 62 W., 6 P.M.		
Site I.D.(lat/long)			
Aquifer:	ALLUVIUM		
Well Depth (ft):	155		
Surface Elev. (ft):	6,000		

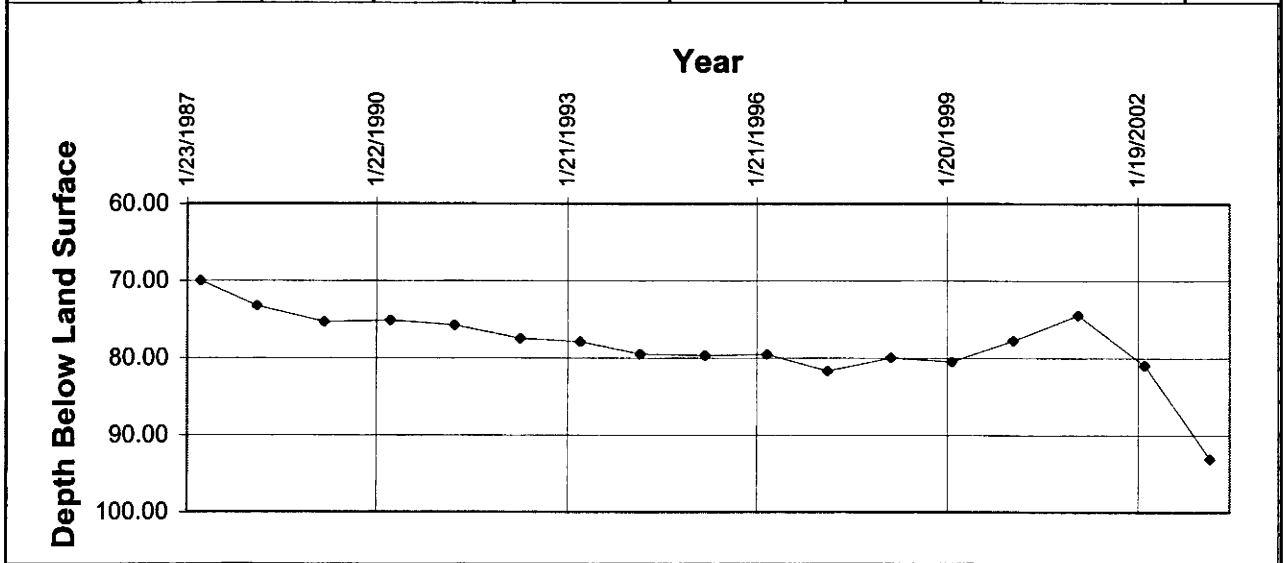
Date	Hold (ft)	Cut (ft)	Depth to Water (ft)	Meas. Pt. - Ft. Above Land Surf.	Depth to Water - Ft. Below Land Surf.	Elev. of Water Level (ft)	Change From Previous Measurement (ft)	Field Data Rcrd By
4/15/1987					69.55			
3/7/1988					73.28			
3/29/1989					74.65			
4/12/1990					75.30			
4/16/1991					75.95			
4/27/1992					76.80			
4/6/1993					78.05			
3/18/1994					79.93			
3/29/1995					79.79			
3/21/1996					79.95			
3/4/1997					86.60			
2/27/1998					80.45			
2/17/1999					80.40			
2/1/2000				0.60	77.60			
2/5/2001	81.00	6.90	74.10	0.60	73.50	5926.50	4.10	CGR
2/26/2002	90.00	8.30	81.70	0.40	81.30	5918.7	-7.80	CGR
3/6/2003	100.00	10.84	89.16	0.40	88.76	5911.24	-7.46	CGR



MONITORING WELL DATA SHEET

Well I.D.: BS-10B	SC01406208BD		
Permit #:	16010 FP	UTM Coordinates:	555,505
County:	EL PASO	Zone 13	4,299,719
Location:	SW,NW,SEC. 8, T. 14S., R. 62 W., 6 P.M.		
Site I.D.(lat/long):			
Aquifer:	ALLUVIUM		
Well Depth (ft):	148		
Surface Elev. (ft):	6,000		

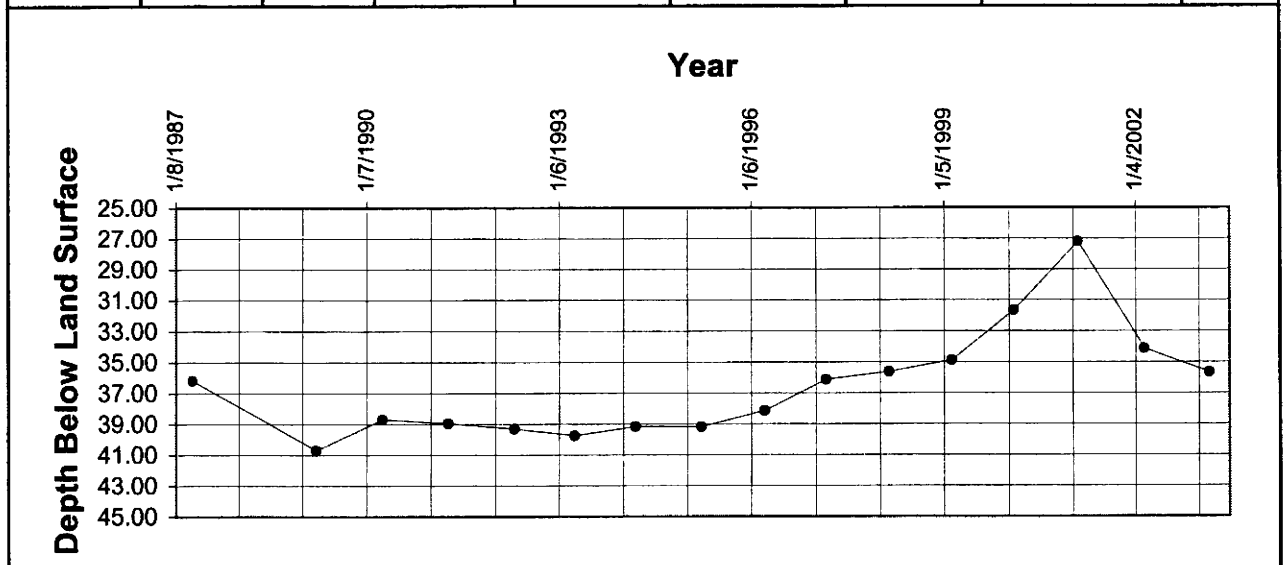
Date	Hold (ft)	Cut (ft)	Depth to Water (ft)	Meas. Pt. - Ft. Above Land Surf.	Depth to Water - Ft. Below Land Surf.	Elev. of Water Level (ft)	Change From Previous Measurement (ft)	Field Data Rcrd By
4/15/1987					70.00			
3/7/1988					73.27			
3/29/1989					75.35			
4/12/1990					75.15			
4/16/1991					75.77			
4/27/1992					77.50			
4/6/1993					77.91			
3/18/1994					79.50			
3/29/1995					79.67			
3/21/1996					79.55			
3/4/1997					81.70			
2/27/1998					79.95			
2/17/1999					80.50			
2/1/2000				0.40	77.80			
2/5/2001	80.00	5.10	74.90	0.40	74.50	5925.50	3.30	CGR
2/26/2002	85.00	3.05	81.95	1.00	80.95	5919.05	-6.45	CGR
3/6/2003	100.00	5.95	94.05	1.00	93.05	5906.95	-12.10	CGR



MONITORING WELL DATA SHEET

Well I.D.: BS-12	SC01406216CA	UTM Coordinates:	556,813
Permit #:	2449-FP	Zone 13	4,297,689
County:	EL PASO	NE,SW,SEC. 16, T. 14S., R. 62 W., 6 P.M.	
Location:			
Site I.D.(lat/long)			
Aquifer:	ALLUVIUM		
Well Depth (ft):	50		
Surface Elev. (ft):	5,940		

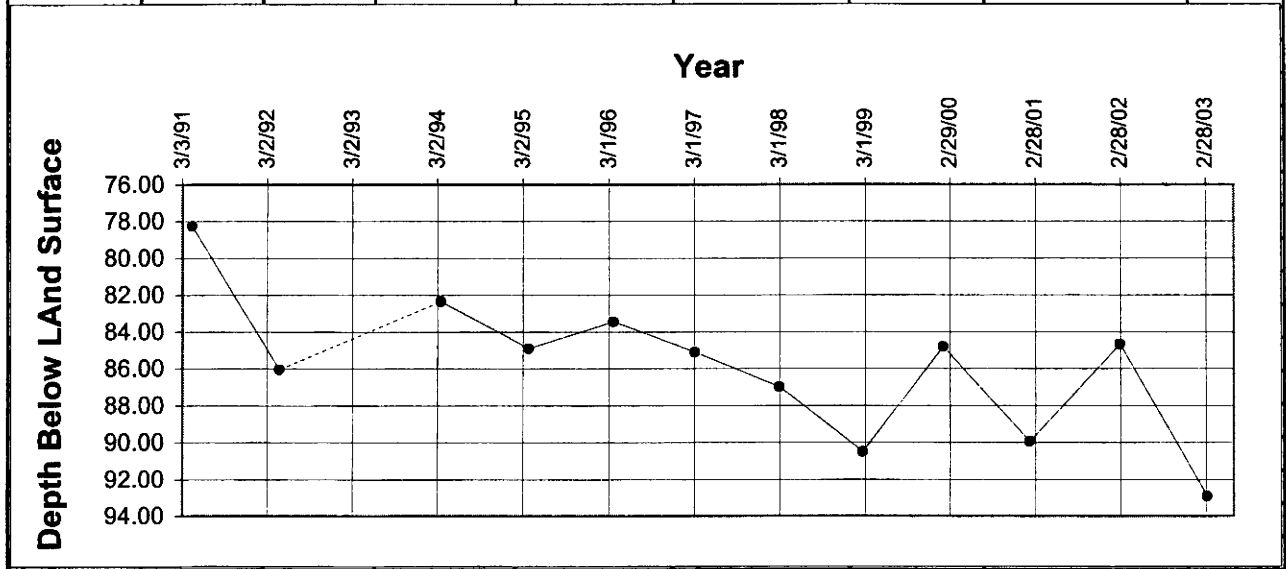
Date	Hold (ft)	Cut (ft)	Depth to Water (ft)	Meas. Pt. - Ft. Above Land Surf.	Depth to Water - Ft. Below Land Surf.	Elev. of Water Level (ft)	Change From Previous Measurement (ft)	Field Data Rcrd By
4/15/1987					36.20			
3/28/1989					40.70			
4/6/1990					38.71			
4/16/1991					38.97			
4/24/1992					39.32			
4/6/1993					39.77			
3/18/1994					39.17			
3/29/1995					39.20			
3/21/1996					38.16			
3/4/1997					36.12			
2/27/1998					35.62			
2/17/1999					34.87			
2/1/2000				1.88	31.67			
2/5/2001	24.00	-5.10	29.10	1.88	27.22	5912.78	-4.45	MPS
2/26/2002	35.00	1.00	36.00	1.88	34.12	5905.88	-6.90	CGR
3/6/2003	40.00	2.45	37.55	1.88	35.67	5904.33	-1.55	CGR



MONITORING WELL DATA SHEET

Well I.D.: BS-18	SC01406217AB		
Permit #:	NA	UTM Coordinates:	555,524
County:	EL PASO	Zone 13	4,298,827
Location:	NW,NE,SEC. 17, T. 14S., R. 62 W., 6 P.M.		
Site I.D.(lat/long)			
Aquifer:	ALLUVIUM		
Well Depth (ft):	70		
Surface Elev. (ft):	5,950		
Badger Meter	369.8AF #369817		

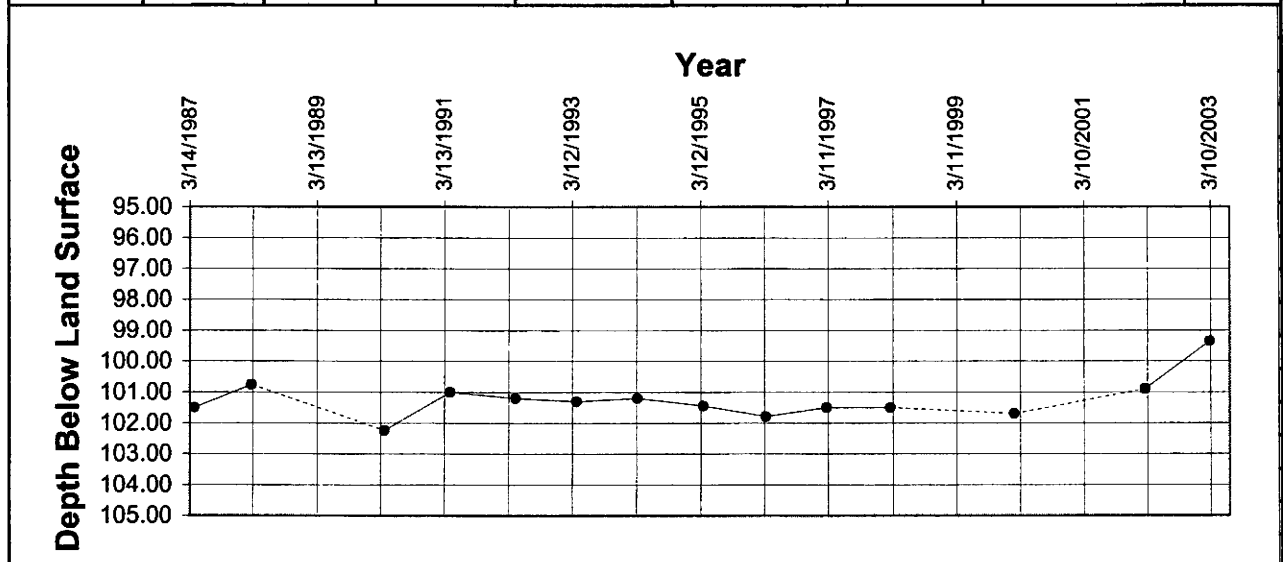
Date	Hold (ft)	Cut (ft)	Depth to Water (ft)	Meas. Pt. - Ft. Above Land Surf.	Depth to Water - Ft. Below Land Surf.	Elev. of Water Level (ft)	Change From Previous Measurement (ft)	Field Data Rcrd By
4/15/1991				0.60	78.25			
4/23/1992					86.05			
3/18/1994					82.35			
3/29/1995					84.92			
3/21/1996					83.45			
3/4/1997					85.10			
2/27/1998					87.00			
2/17/1999					90.50			
2/1/2000					84.80			
2/5/2001	90.00	8.95	91.05	1.10	89.95	5860.05	-5.15	MPS
2/26/2002	100.00	14.18	85.82	1.15	84.67	5865.33	5.28	MPS
3/6/2003	100.00	5.94	94.06	1.15	92.91	5857.09	-8.24	DAM



MONITORING WELL DATA SHEET

Well I.D.: BS-08	SC01406218BC		UTM Coordinates: 553,285
Permit #:	13673 - FP		Zone 13 4,297,983
County:	EL PASO		
Location:	SW,NW,SEC. 18, T. 14S., R. 62 W., 6 P.M.		
Site I.D.(lat/long)			
Aquifer:	ALLUVIUM		
Well Depth (ft):	134		
Surface Elev. (ft):	5,985		

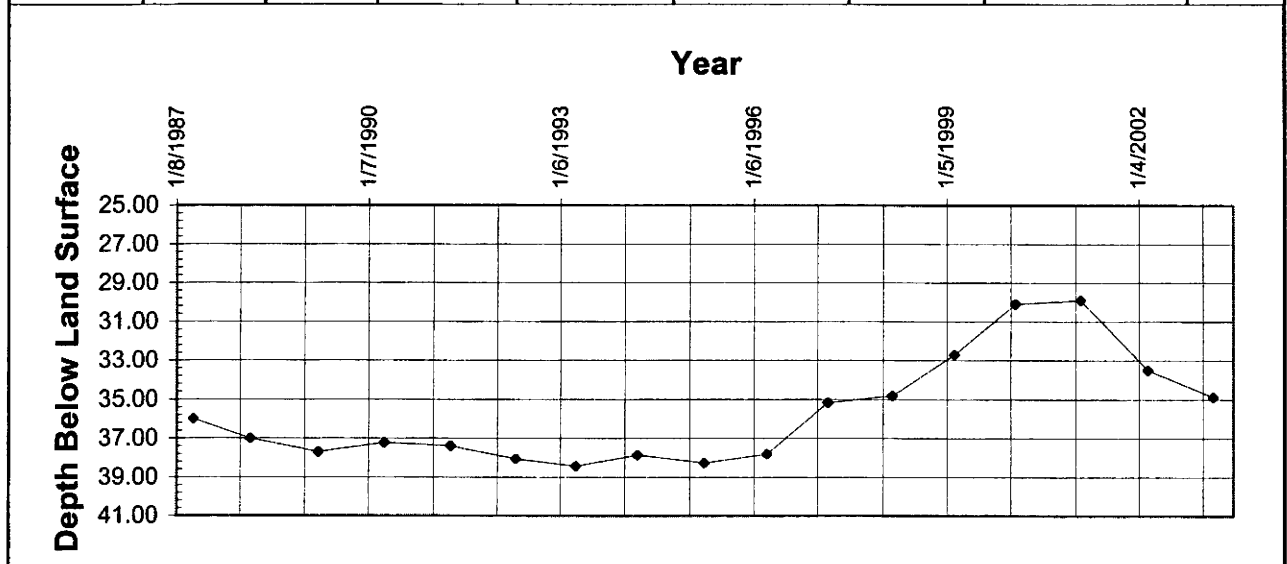
Date	Hold (ft)	Cut (ft)	Depth to Water (ft)	Meas. Pt. - Ft. Above Land Surf.	Depth to Water - Ft. Below Land Surf.	Elev. of Water Level (ft)	Change From Previous Measurement (ft)	Field Data Rcrd By
4/15/1987				0.70	101.50			
3/7/1988					100.76			
4/6/1990					102.24			
4/15/1991					101.00			
4/24/1992					101.20			
4/6/1993					101.30			
3/18/1994					101.20			
3/29/1995					101.45			
3/21/1996					101.80			
3/4/1997					101.50			
2/27/1998					101.50			
2/5/2000	105.00	2.30	102.70	1.00	101.70	5883.30	-0.20	CGR
2/26/2002	110.00	8.10	101.90	1.00	100.90	5884.1	0.80	CGR
3/6/2003	120.00	19.65	100.35	1.00	99.35	5885.65	1.55	CGR



MONITORING WELL DATA SHEET

Well I.D.: BS-13	SC01406221BA		
Permit #:	3485 - FP	UTM Coordinates:	556,740
County:	EL PASO	Zone 13	4,297,253
Location:	NE,NW,SEC. 21, T. 14S., R. 62 W., 6 P.M.		
Site I.D.(lat/long)			
Aquifer:	ALLUVIUM		
Well Depth (ft):	52		
Surface Elev. (ft):	5,920		

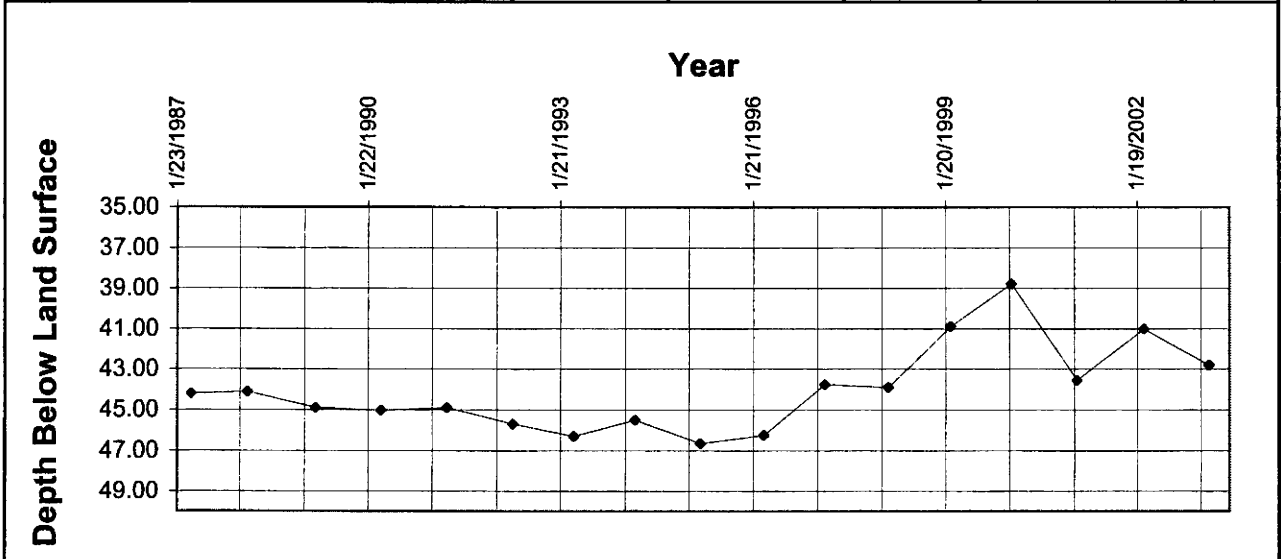
Date	Hold (ft)	Cut (ft)	Depth to Water (ft)	Meas. Pt. - Ft. Above Land Surf.	Depth to Water - Ft. Below Land Surf.	Elev. of Water Level (ft)	Change From Previous Measurement (ft)	Field Data Rcrd By
4/15/1987					36.00			
3/7/1988					37.02			
3/28/1989					37.70			
4/6/1990					37.24			
4/15/1991					37.40			
4/23/1992					38.07			
4/6/1993					38.45			
3/18/1994					37.87			
3/29/1995					38.28			
3/21/1996					37.82			
3/4/1997					35.17			
2/27/1998					34.82			
2/17/1999					32.72			
2/1/2000				2.68	30.12			
2/5/2001	40.00	7.80	32.60	2.68	29.92	5890.08	0.20	CGR
2/26/2002	35.00	0.72	34.28	0.70	33.52	5886.42	-3.66	CGR
3/6/2003	40.00	4.40	35.60	0.70	34.90	5885.1	-1.32	CGR



MONITORING WELL DATA SHEET

Well I.D.:	BS-14	SC01406221BB	
Permit #:	NA	UTM Coordinates: 556,453	
County:	EL PASO	Zone 13 4,296,934	
Location:	NW,NW,SEC. 21, T. 14S., R. 62 W., 6 P.M.		
Site I.D.(lat/long)			
Aquifer:	ALLUVIUM		
Well Depth (ft):	61		
Surface Elev. (ft):	5,925		

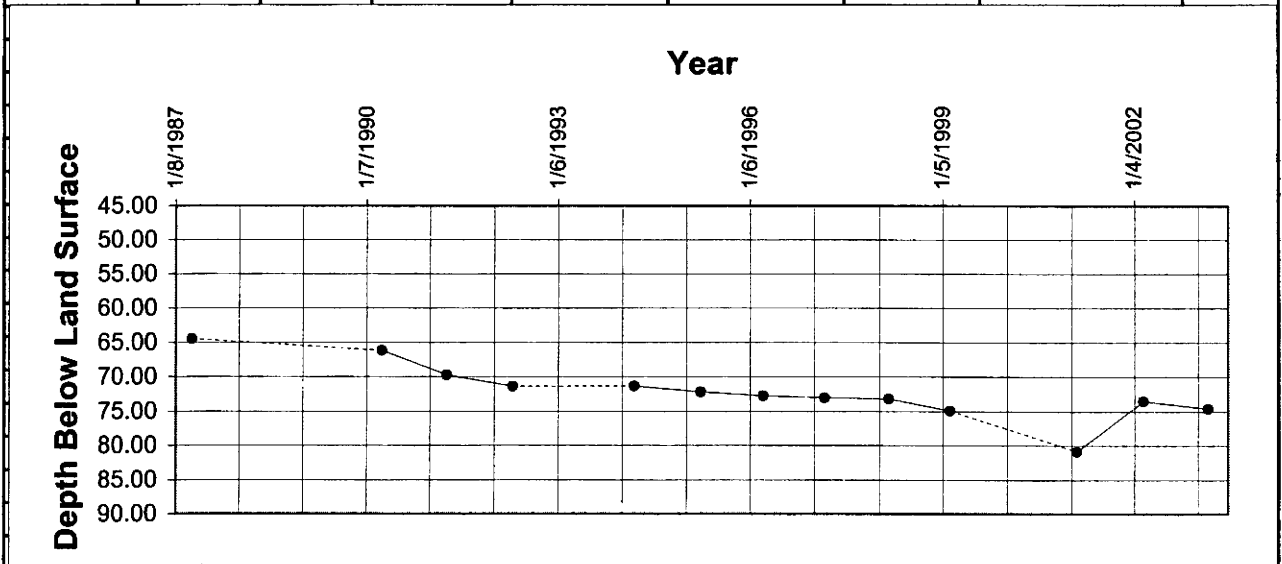
Date	Hold (ft)	Cut (ft)	Depth to Water (ft)	Meas. Pt. - Ft. Above Land Surf.	Depth to Water - Ft. Below Land Surf.	Elev. of Water Level (ft)	Change From Previous Measurement (ft)	Field Data Rcrd By
4/15/1987					44.20			
3/7/1988					44.10			
3/28/1989					44.90			
4/6/1990					45.03			
4/15/1991					44.90			
4/23/1992					45.70			
4/6/1993					46.30			
3/18/1994					45.50			
3/29/1995					46.65			
3/21/1996					46.25			
3/4/1997					43.75			
2/27/1998					43.90			
2/17/1999					40.90			
2/1/2000				1.00	38.80			
2/5/2001	45.00	0.45	44.55	1.00	43.55	5881.45	-4.15	CGR
2/26/2002	50.00	8.72	91.28	0.25	41.03	5883.97	2.52	CGR
3/6/2003	50.00	6.95	43.05	0.25	42.80	5882.2	-1.77	CGR



MONITORING WELL DATA SHEET

Well I.D.: BS-15B	SC01406232BB		UTM Coordinates: 554,896
Permit #:	20528 - FP		Zone 13 4,294,012
County:	EL PASO		
Location:	NW,NW,SEC. 32, T. 14S., R. 62 W., 6 P.M.		
Site I.D.(lat/long)			
Aquifer:	ALLUVIUM		
Well Depth (ft):	120		
Surface Elev. (ft):	5,860		

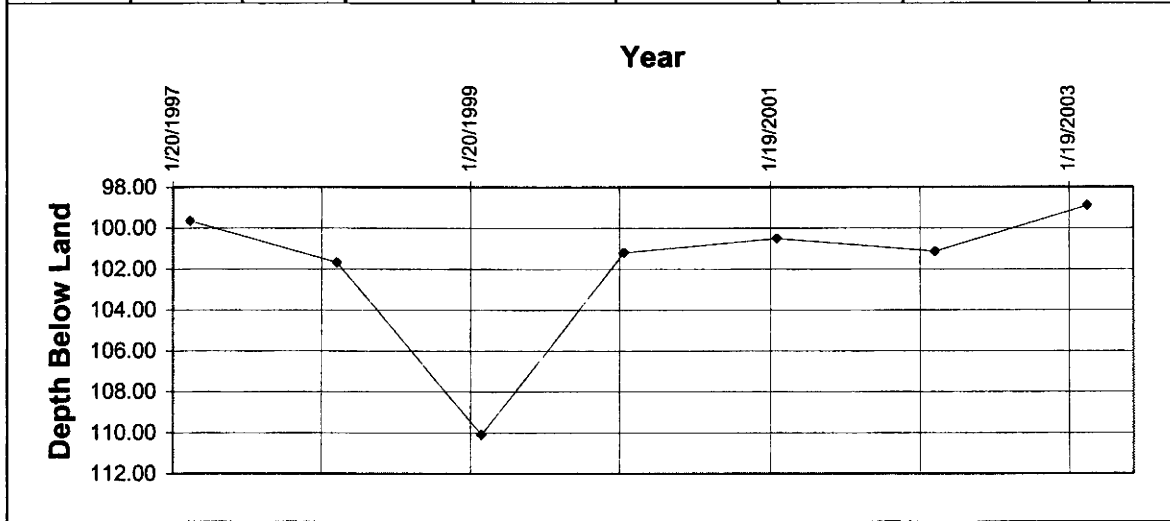
Date	Hold (ft)	Cut (ft)	Depth to Water (ft)	Meas. Pt. - Ft. Above Land Surf.	Depth to Water - Ft. Below Land Surf.	Elev. of Water Level (ft)	Change From Previous Measurement (ft)	Field Data Rcrd By
4/15/1987					64.50			
4/6/1990					66.20			
4/15/1991					69.75			
4/23/1992					71.40			
3/18/1994					71.35			
3/29/1995					72.20			
3/21/1996					72.75			
3/4/1997					73.05			
2/27/1998					73.20			
2/17/1999				0.00	74.90			
2/5/2001	85.00	4.10	80.90	0.00	80.90	5779.10	-6.00	CGR
2/26/2002	90.00	16.50	73.50	0.00	73.50	5776.5	-2.60	CGR
3/6/2003	80.00	5.42	74.58	0.00	74.58	5785.42	-1.10	DAM



MONITORING WELL DATA SHEET

Well I.D.: BS-23	SC01406324AA	UTM Coordinates:	553,220
Permit #:	16516	Zone 13	4,297,340
County:	EL PASO		
Location:	NE,NE,SEC. 32, T. 14S., R. 63 W., 6 P.M.		
Site I.D.(lat/long)			
Aquifer:	ALLUVIUM		
Well Depth (ft):	110		
Surface Elev. (ft):	5,690		

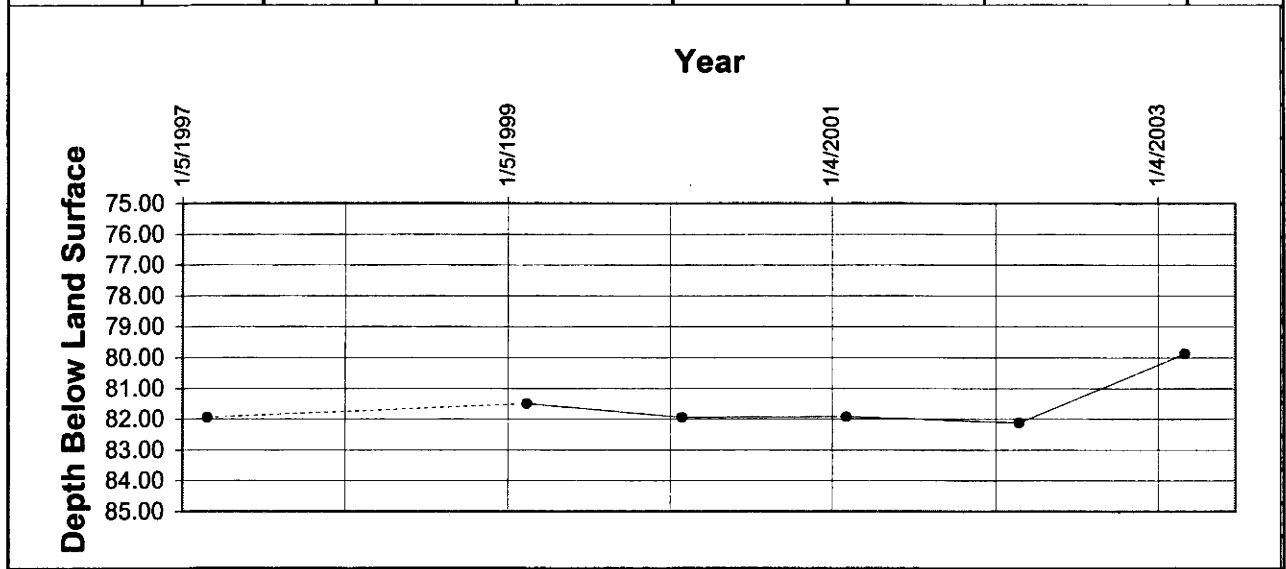
Date	Hold (ft)	Cut (ft)	Depth to Water (ft)	Meas. Pt. - Ft. Above Land Surf.	Depth to Water - Ft. Below Land Surf.	Elev. of Water Level (ft)	Change From Previous Measurement (ft)	Field Data Rcrd By
3/4/1997					99.65			
2/27/1998					101.70			
2/17/1999					110.10			
2/1/2000				1.80	101.20			
2/5/2001	105.00	2.68	102.32	1.80	100.52	5589.48	0.68	CGR
2/26/2002	105.00	3.35	101.65	0.50	101.15	5588.85	-0.63	CGR
3/6/2003	120.00	20.35	99.65	0.75	98.90	5591.1	2.25	DAM



MONITORING WELL DATA SHEET

Well I.D.: BS-24	SC01506301DB		
Permit #:	196677	UTM Coordinates:	552,924
County:	EL PASO	Zone 13	4,291,505
Location:	NW,SW,SEC. 1, T. 15S., R. 63 W., 6 P.M.		
Site I.D.(lat/long)			
Aquifer:	ALLUVIUM		
Well Depth (ft):	160		
Surface Elev. (ft):	5,820		

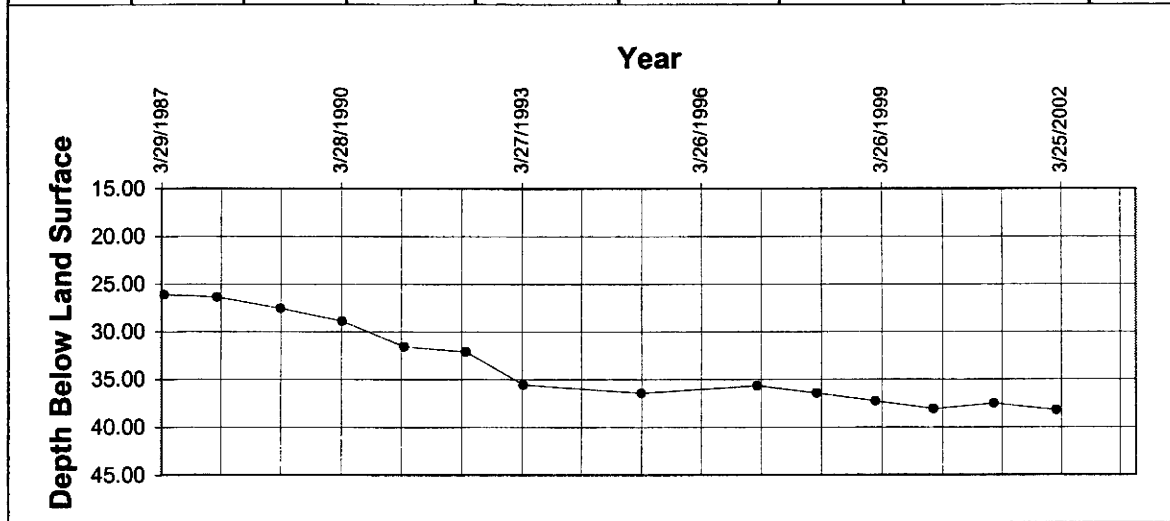
Date	Hold (ft)	Cut (ft)	Depth to Water (ft)	Meas. Pt. - Ft. Above Land Surf.	Depth to Water - Ft. Below Land Surf.	Elev. of Water Level (ft)	Change From Previous Measurement (ft)	Field Data Rcrd By
3/4/1997					81.95			
2/17/1999					81.50			
2/1/2000				0.50	81.95			
2/5/2001	90.00	7.58	82.42	0.50	81.92	5738.08	0.03	CGR
2/26/2002	85.00	2.38	82.62	0.50	82.12	5737.88	-0.20	CGR
3/6/2003	90.00	9.63	80.37	0.50	79.87	5740.13	2.25	CGR



MONITORING WELL DATA SHEET

Well I.D.: BS-16	SC01506324DA	UTM Coordinates:	553,086
Permit #:	2451-FP	Zone 13	4,286,799
County:	EL PASO		
Location:	SE,NE,SEC. 24, T. 15S., R. 63 W., 6 P.M.		
Site I.D.(lat/long)			
Aquifer:	ALLUVIUM		
Well Depth (ft):	67		
Surface Elev. (ft):	5,690		

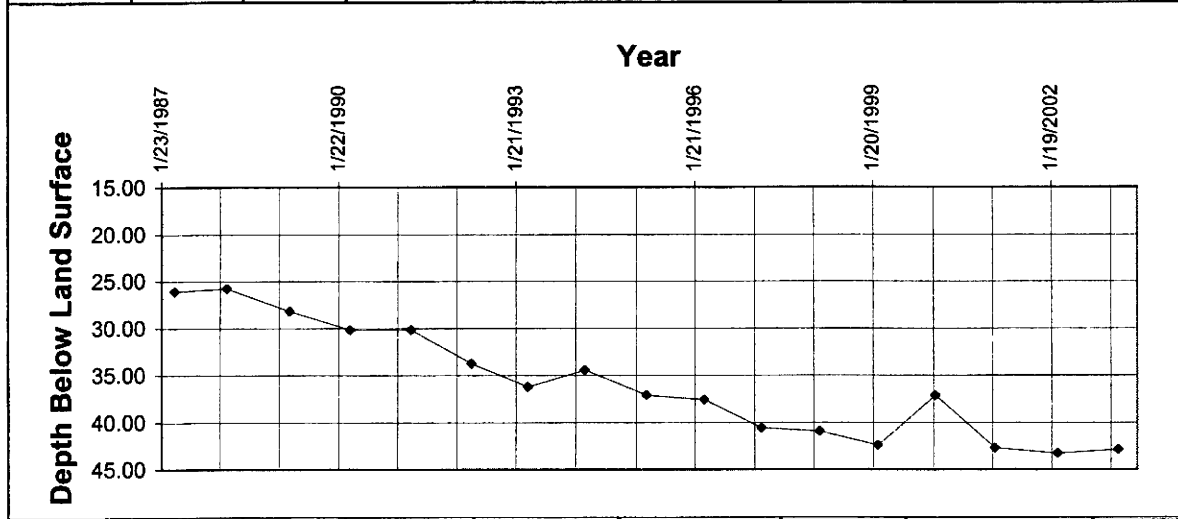
Date	Hold (ft)	Cut (ft)	Depth to Water (ft)	Meas. Pt. - Ft. Above Land Surf.	Depth to Water - Ft. Below Land Surf.	Elev. of Water Level (ft)	Change From Previous Measurement (ft)	Field Data Rcrd By
4/15/1987					26.10			
3/7/1988					26.38			
3/28/1989					27.57			
4/6/1990					28.89			
4/15/1991					31.59			
4/23/1992					32.14			
4/6/1993					35.56			
3/29/1995					36.44			
3/4/1997					35.69			
2/27/1998					36.44			
2/17/1999					37.28			
2/1/2000				1.26	38.09			
2/5/2001	40.00	1.20	38.80	1.26	37.54	5652.46	0.55	CGR
2/26/2002	55.00	15.50	39.50	1.26	38.24	5651.76	-0.70	CGR
3/6/2003	Not measurable							DAM

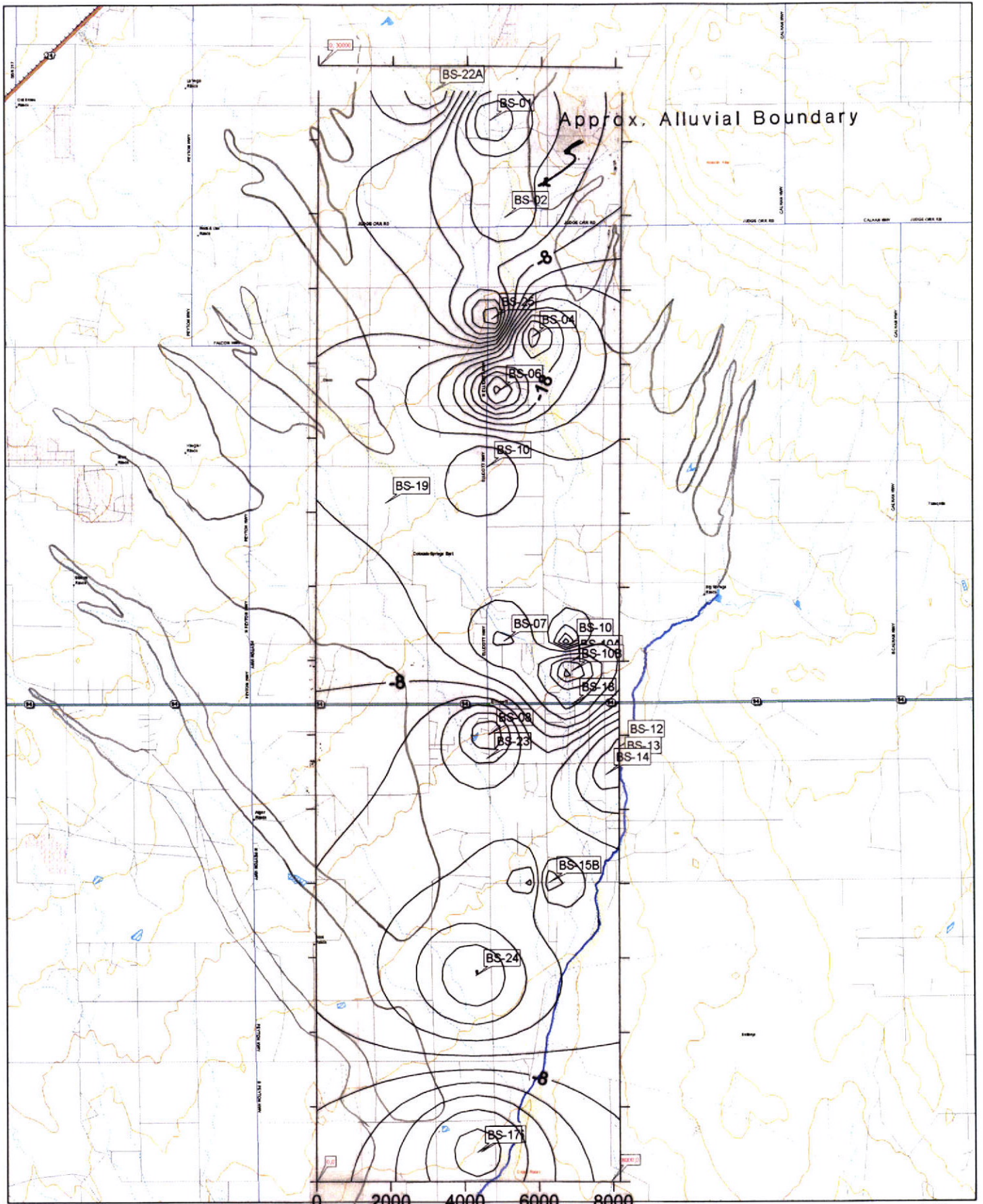


MONITORING WELL DATA SHEET

Well I.D.: BS-17	SC01506324DA	UTM Coordinates:	552,969
Permit #:	6494-FP	Zone 13	4,286,783
County:	EL PASO	NE,SE,SEC. 24, T. 15S., R. 63 W., 6 P.M.	
Location:			
Site I.D.(lat/long)			
Aquifer:	ALLUVIUM		
Well Depth (ft):	31		
Surface Elev. (ft):	5,680		

Date	Hold (ft)	Cut (ft)	Depth to Water (ft)	Meas. Pt. - Ft. Above Land Surf.	Depth to Water - Ft. Below Land Surf.	Elev. of Water Level (ft)	Change From Previous Measurement (ft)	Field Data Rcrd By
4/15/1987					26.10			
3/7/1988					25.77			
3/28/1989					28.20			
4/6/1990					30.19			
4/15/1991					30.19			
4/23/1992					33.77			
4/6/1993					36.23			
3/18/1994					34.45			
3/29/1995					37.12			
3/21/1996					37.60			
3/4/1997					40.60			
2/27/1998					40.95			
2/17/1999					42.45			
2/1/2000				1.50	37.15			
2/5/2001	45.00	0.80	44.20	1.50	42.70	5637.30	-5.55	CGR
2/26/2002	50.00	5.19	44.81	1.50	43.31	5636.69	-0.61	MPS
3/6/2003	46.00	1.60	44.40	1.50	42.90	5637.1	0.41	CGR

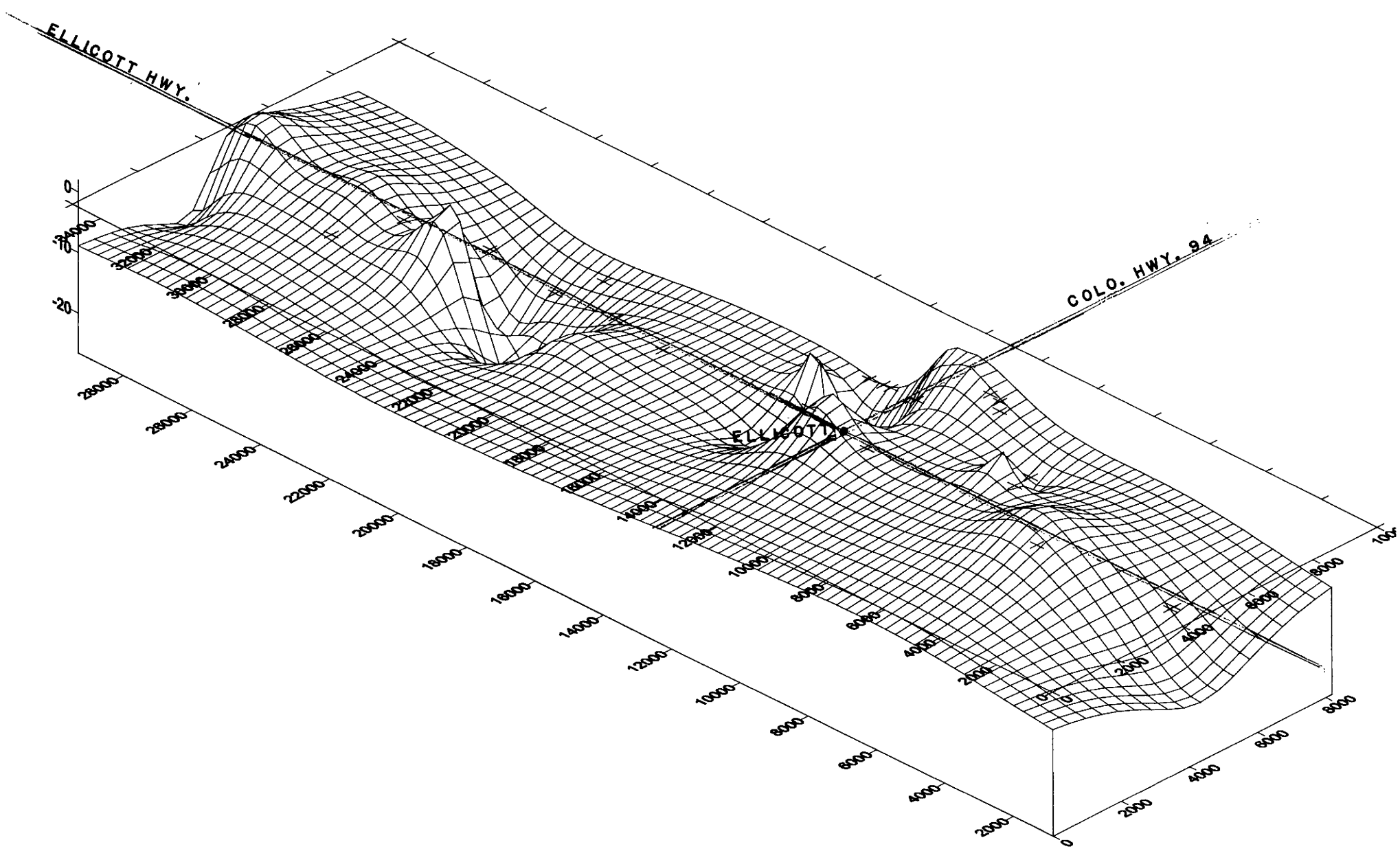




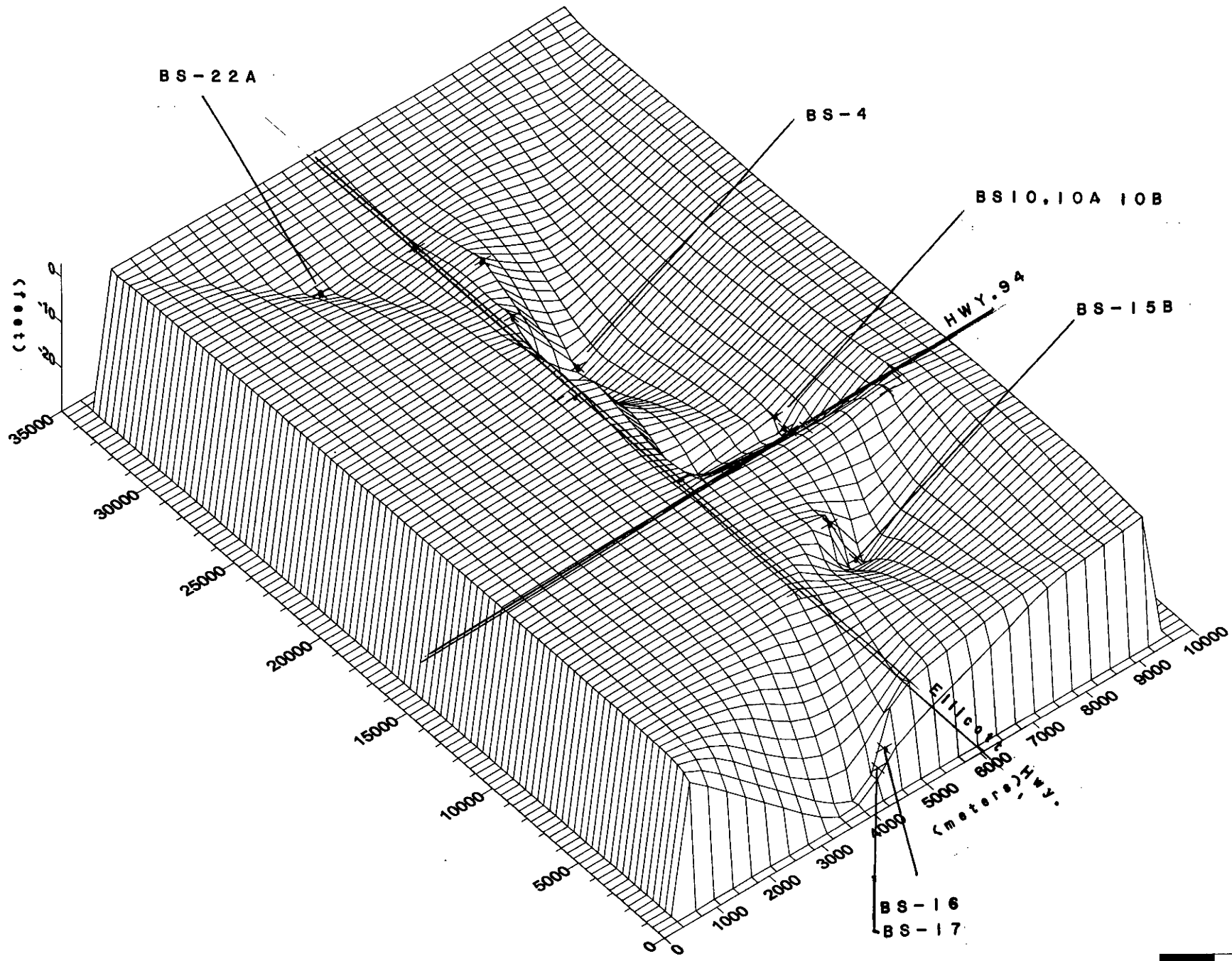
Copyright © 2000 DeLorme, TopoTools. Scale: 1 : 137,500 Zoom Level: 11-5 Datum: NAD27

1 mi

Water Level Decline 2002 to 2003

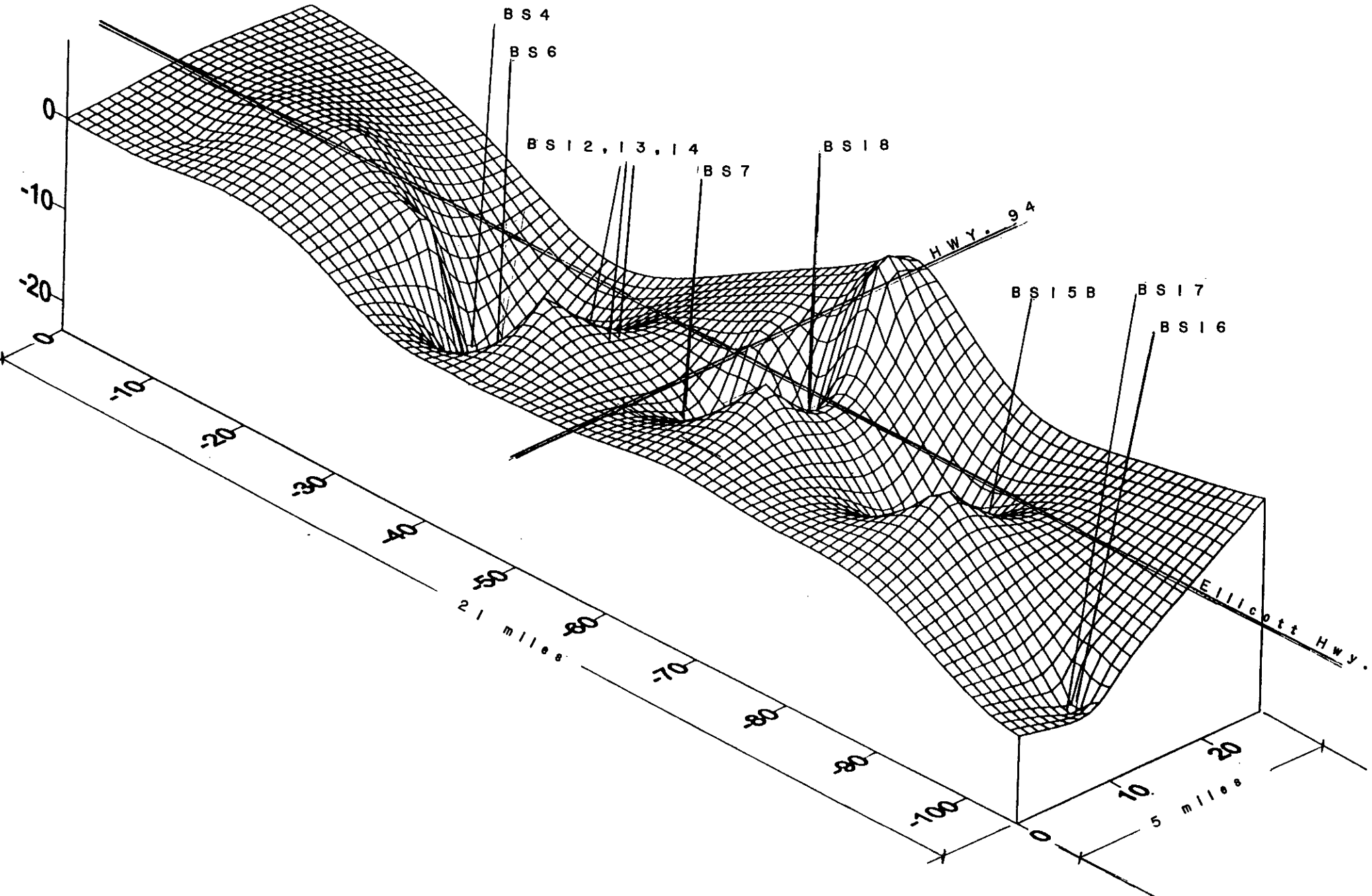


Initial W.L. vis-a-vis 2003 W.L.



Water Level Decline Surface

(Initial water level = 2000 Water Level - see report sheets)

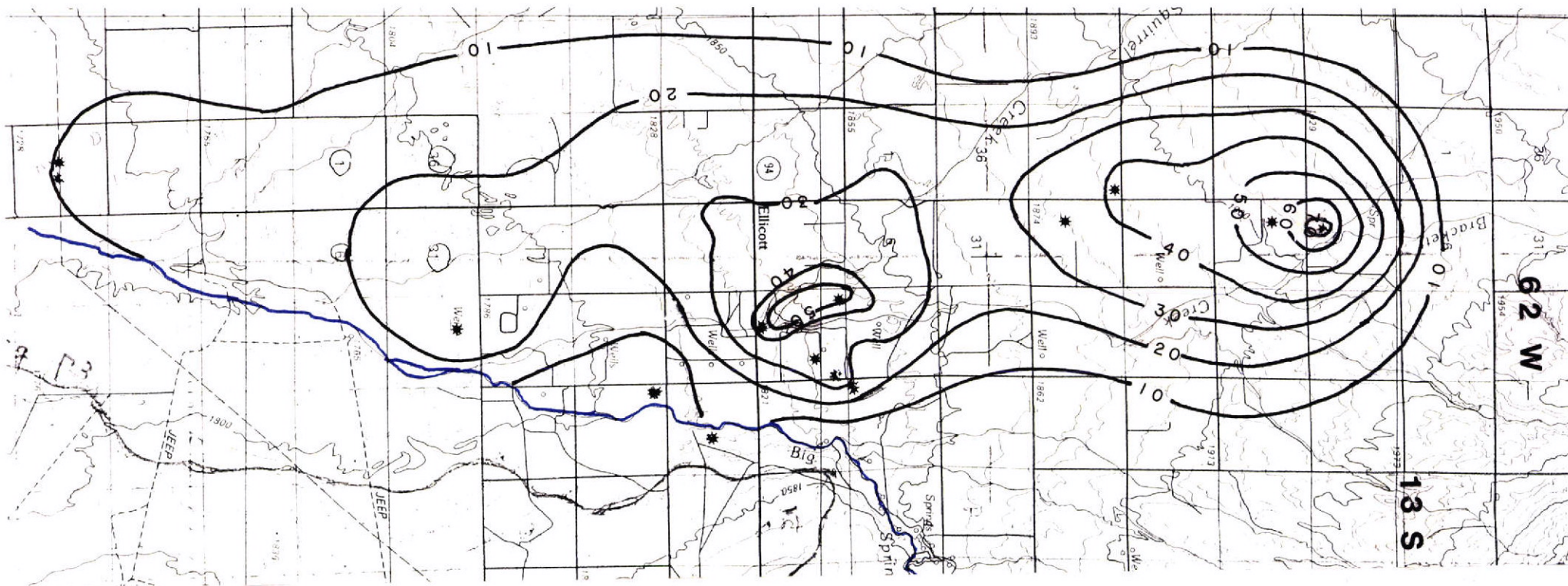


Water Level Decline Surface
(Initial Water Level – 2001 Water Level : see text of report)

UPPER BLACK SQUIRREL CREEK ALLUVIAL AQUIFER WATER LEVEL DECLINE MAP

Decline in feet from initial water levels to current measurements made in February, 2000.

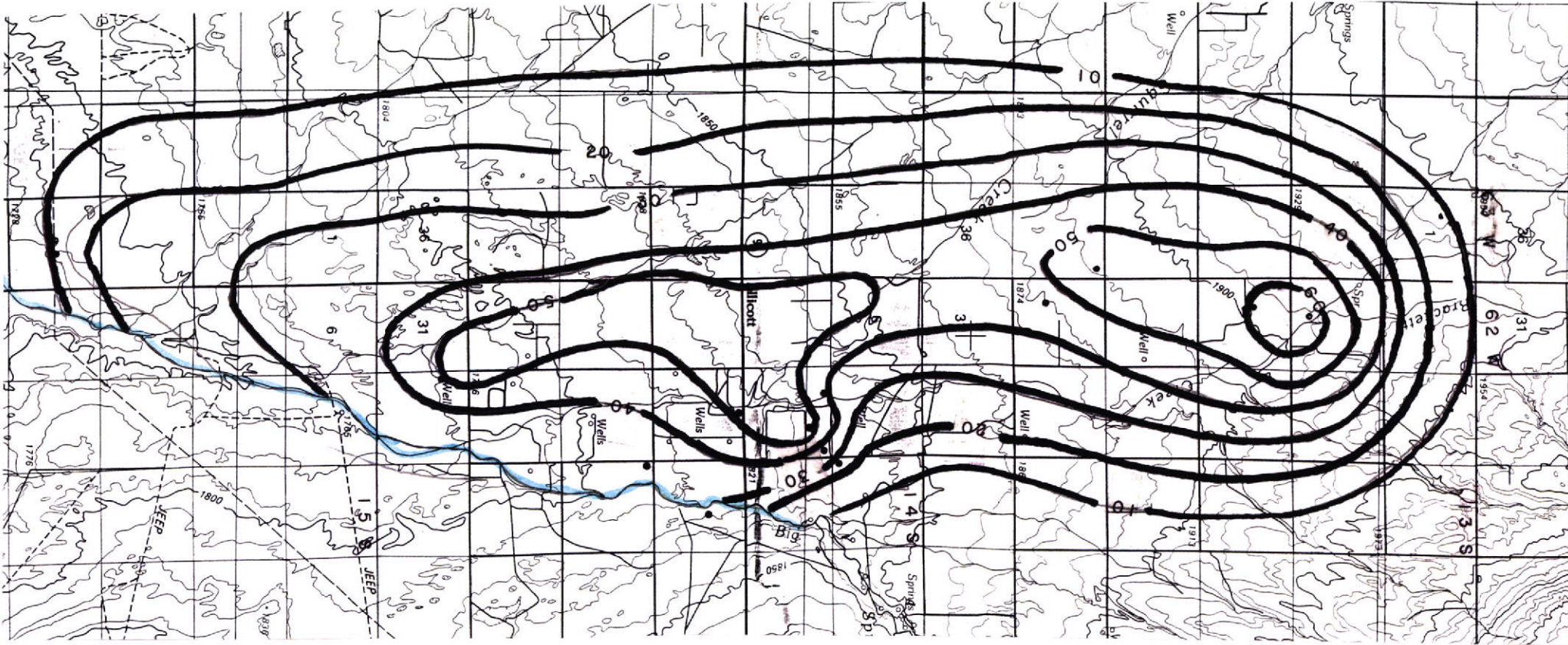
Well Data Point: * (see report data)



UPPER BLACK SQUIRREL CREEK ALLUVIAL AQUIFER WATER LEVEL DECLINE MAP

Decline in feet from initial water levels and water levels measured in February, 1999.

Well Data Point : • (see report data)



UPPER BLACK SQUIRREL CREEK ALLUVIAL AQUIFER WATER LEVEL DECLINE MAP

Decline in feet from initial water level and water levels measured in February , 1998.

Well Data Point : ● (see report data)

