

GROUNDWATER LEVELS
in the
CAMP CREEK
DESIGNATED GROUND WATER BASIN

2015



By Kevin C. Donegan



COLORADO
Division of Water Resources

Department of Natural Resources

John W. Hickenlooper
Governor

Mike King
Executive Director

Dick Wolfe
State Engineer

Matthew A. Sares
Project Manager

**CAMP CREEK DESIGNATED GROUND WATER BASIN
WATER LEVEL MEASUREMENTS
2015**

This report contains the basic groundwater level data collected from wells in the Camp Creek Designated Ground Water Basin during the period from 1993 through 2015. Acquisition and publication of this information is a cooperative effort between the well owners and the Colorado Division of Water Resources. The project is part of a statewide groundwater level monitoring program funded by Senate Bill 200 (1987 legislative session). This legislation directed that a portion of the fees collected for water well permit applications be used for the establishment of a program to monitor water level trends throughout the state.

The report contains water level measurements for ten wells measured February 9, 2015. The locations of those wells in the geographic context of the designated basin are shown on the following map. All of the Camp Creek wells that are monitored are located in Townships 2 and 3 North, Range 54 West of the 6th P.M. Depth to groundwater, below land surface, ranged from 13 to 39 feet. Only two wells, CC-01 and CC-02, in the upper reaches of Camp Creek had water levels less than 20 feet below ground surface.

Tabular and graphical data are presented for each well for the available period of record. Analyses of changes in the water level in the aquifer are complicated by unknown pumping schedules.

On average, groundwater levels in wells in the Camp Creek Designated Basin have remained the same for the past year. Basin wide, water levels have declined approximately 9 feet since 1993, when the Division of Water Resources began the monitoring program.

Copies of this report can be purchased from the Office of the State Engineer, Records Section, 1313 Sherman St., Room 821, Denver, CO 80203, (303) 866-3581.

An electronic copy of this report is available on the Division of Water Resources website <http://water.state.co.us/groundwater/Levels/Pages/HydroGeo.aspx>.

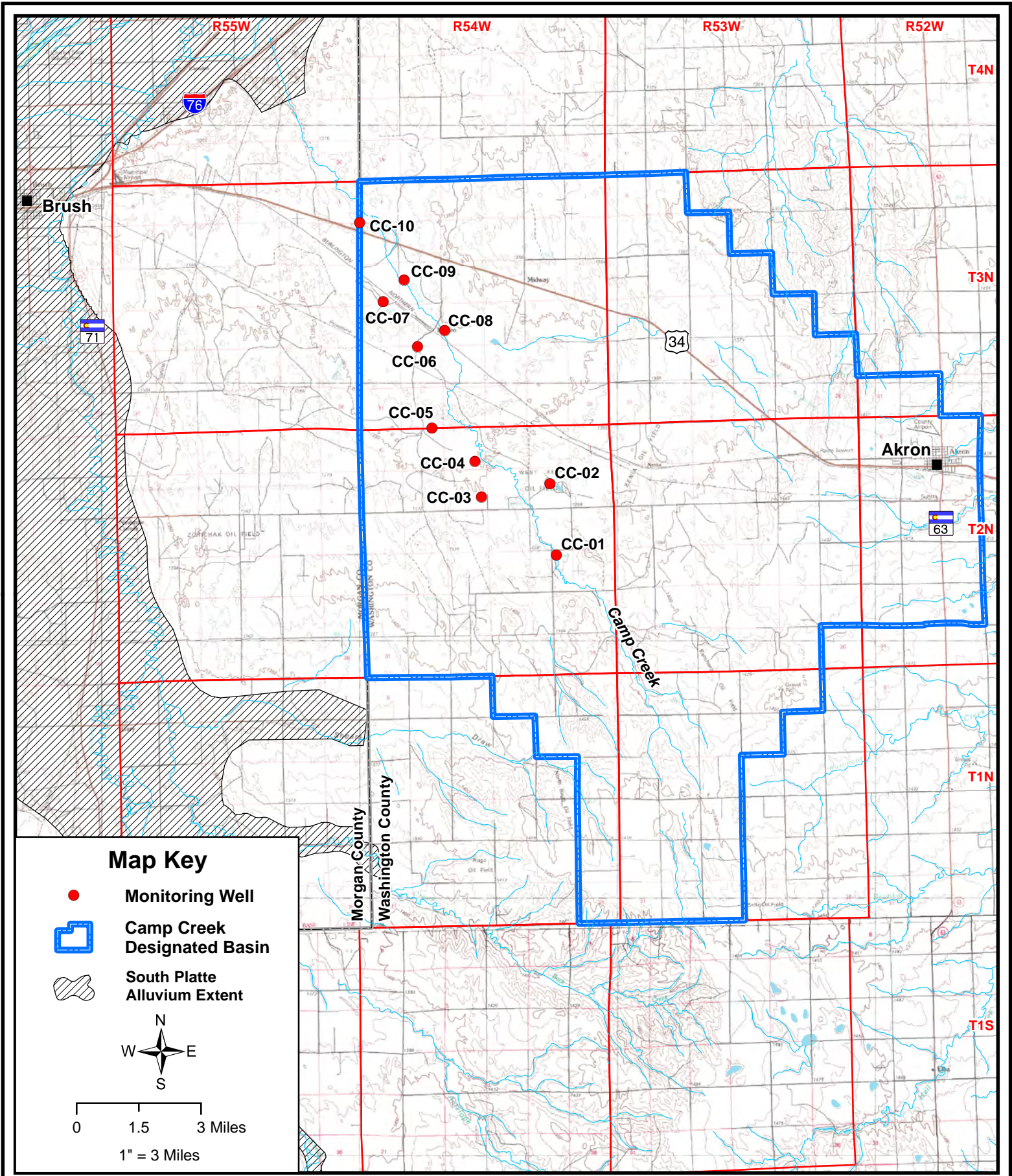
Additionally, all groundwater level data may be accessed and exported using the tools available on the Colorado Decision Support System website:
<http://cdss.state.co.us/onlineTools/Pages/GroundWaterWaterLevels.aspx>

and the Colorado Information Marketplace HydroBase Bulk Data Exporter:
<https://data.colorado.gov/Information-Sharing/DWR-Well-Water-Level/hfwh-wsqi>

or the Colorado Decision Support System MapViewer
<http://water.state.co.us/DataMaps/GISandMaps/MapViewer/Pages/FAQ.aspx>

If you have any questions regarding groundwater and the information in this report, please contact the Groundwater Information Desk at (303) 866-3587.

THIS PAGE INTENTIONALLY BLANK



COLORADO
 Division of Water Resources
 Department of Natural Resources

State of Colorado -- Division of Water Resources
**Camp Creek Designated Basin
 Monitoring Well Network**

THIS PAGE INTENTIONALLY BLANK

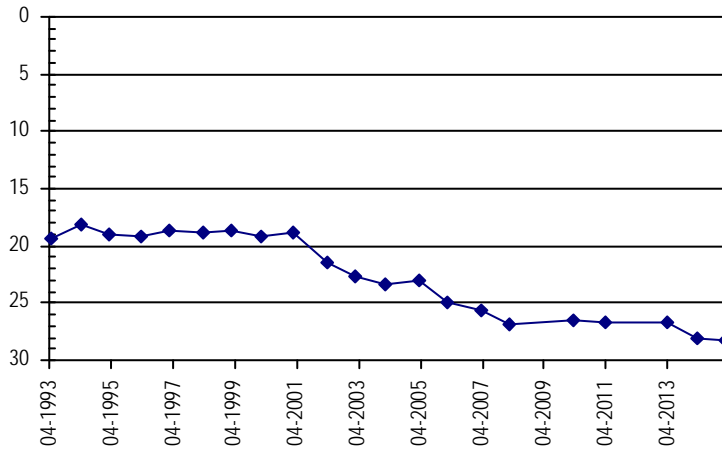
CAMP CREEK

Well Name:	CAMP CREEK - 04	<i>Owner:</i> SPENCE RULE	
<i>Permit #:</i>	19358 - F -	<i>Location #:</i> SB00205404DDB	<i>USGS Site ID:</i>
<i>Division:</i>	1	<i>Water District:</i> 1	<i>County:</i> WASHINGTON
<i>Location:</i>	Q160 Q40 Q10 Section	Twnshp Range PM	Distance from section lines:
	SE SE NW 4	2 N 54 W S	<i>From N/S line:</i> 930 S <i>From E/W line:</i> 1310 E
<i>UTM Coordinates (NAD83):</i>	<i>Northing (UTM y)</i> 4447137.5	<i>Easting (UTM x):</i> 634443.1	
<i>Latitude/Longitude (decimal degrees):</i>	40.163845	-103.421236	
<i>Surface Elevation (ft):</i>	4420	<i>Top Perforated Interval (ft):</i>	Water Level Change
<i>Well depth (ft):</i>	83	<i>Bottom Perforated Interval (ft):</i>	1 year: -0.24
<i>Aquifer(s):</i>	QUATERNARY ALLUVIUM		5 year: -1.78
			10 year: -5.23

Measurements from last 10 years

Date	Depth to WL (ft)	Elev of WL (ft)	Change (ft)
3/2/2005	23.03	4396.97	0.35
2/28/2006	25.01	4394.99	-1.98
3/28/2007	25.57	4394.43	-0.56
2/27/2008	26.90	4393.10	-1.33
1/1/2009			
3/3/2010	26.48	4393.52	
3/1/2011	26.69	4393.31	-0.21
3/28/2012			
3/6/2013	26.71	4393.29	
3/6/2014	28.02	4391.98	-1.31
2/9/2015	28.26	4391.74	-0.24

All Historic Measurements

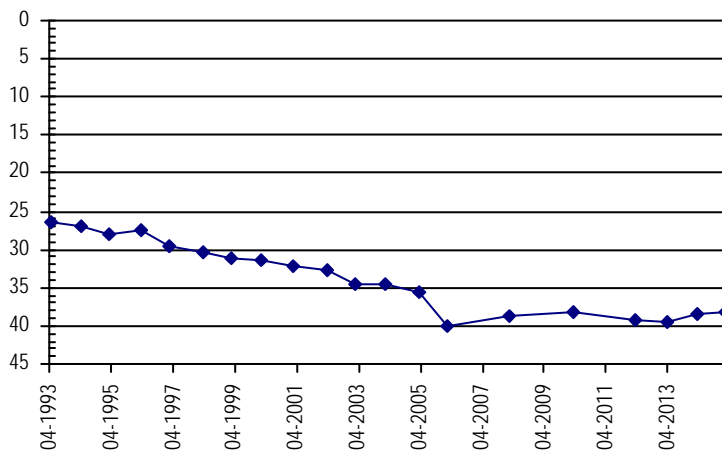


Well Name:	CAMP CREEK - 05	<i>Owner:</i> SPENCE RULE	
<i>Permit #:</i>	25969 - F -	<i>Location #:</i> SB00205405ABB	<i>USGS Site ID:</i>
<i>Division:</i>	1	<i>Water District:</i> 1	<i>County:</i> WASHINGTON
<i>Location:</i>	Q160 Q40 Q10 Section	Twnshp Range PM	Distance from section lines:
	NE NW NW 5	2 N 54 W S	<i>From N/S line:</i> 20 N <i>From E/W line:</i> 1310 E
<i>UTM Coordinates (NAD83):</i>	<i>Northing (UTM y)</i> 4448422.5	<i>Easting (UTM x):</i> 632777.1	
<i>Latitude/Longitude (decimal degrees):</i>	40.175683	-103.440528	
<i>Surface Elevation (ft):</i>	4405	<i>Top Perforated Interval (ft):</i>	Water Level Change
<i>Well depth (ft):</i>	92	<i>Bottom Perforated Interval (ft):</i>	1 year: 0.14
<i>Aquifer(s):</i>	QUATERNARY ALLUVIUM		5 year: -0.07
			10 year: -2.67

Measurements from last 10 years

Date	Depth to WL (ft)	Elev of WL (ft)	Change (ft)
3/2/2005	35.55	4369.45	-0.93
2/28/2006	40.03	4364.97	-4.48
3/28/2007			
2/27/2008	38.65	4366.35	
1/1/2009			
3/3/2010	38.15	4366.85	
3/1/2011			
3/28/2012	39.27	4365.73	
3/6/2013	39.43	4365.57	-0.16
3/6/2014	38.36	4366.64	1.07
2/9/2015	38.22	4366.78	0.14

All Historic Measurements



CAMP CREEK

Well Name: **CAMP CREEK - 03**

Owner: ED BASLER

Permit #: 20791 - F -

Location #: SB00205409DAD

USGS Site ID:

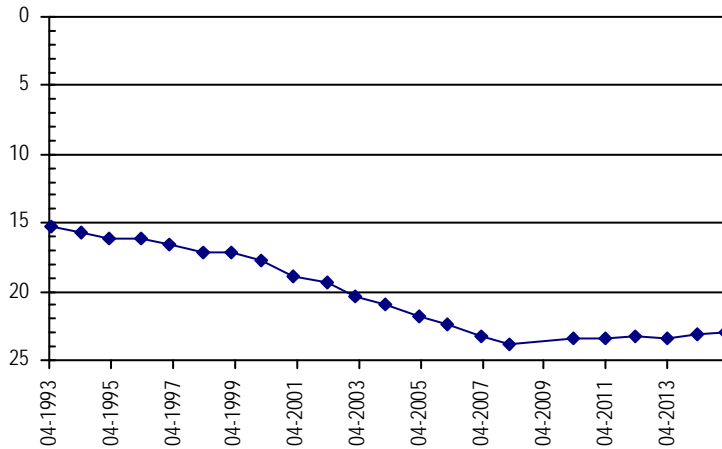
Division:	1	Water District:	1	County:	WASHINGTON
Location:	Q160 Q40 Q10 Section	Twnshp	Range	PM	Distance from section lines:
	SE NE SE 9	2 N	54 W S		From N/S line: 1690 S From E/W line: 680 E
UTM Coordinates (NAD83):	Northing (UTM y)	4445757.5	Easting (UTM x):	634691.0	
Latitude/Longitude (decimal degrees):	40.151377		-103.418613		
Surface Elevation (ft):	4435	Top Perforated Interval (ft):		Base of grout (ft):	
Well depth (ft):	82	Bottom Perforated Interval (ft):			
Aquifer(s):	QUATERNARY ALLUVIUM				

Water Level Change
1 year: 0.17
5 year: 0.38
10 year: -1.09

Measurements from last 10 years

Date	Depth to WL (ft)	Elev of WL (ft)	Change (ft)
3/2/2005	21.87	4413.13	-0.88
2/28/2006	22.43	4412.57	-0.56
3/28/2007	23.25	4411.75	-0.82
2/27/2008	23.79	4411.21	-0.54
1/1/2009			
3/3/2010	23.34	4411.66	
3/1/2011	23.41	4411.59	-0.07
3/28/2012	23.21	4411.79	0.20
3/6/2013	23.39	4411.61	-0.18
3/6/2014	23.13	4411.87	0.26
2/9/2015	22.96	4412.04	0.17

All Historic Measurements



Well Name: **CAMP CREEK - 02**

Owner: MARGARET GROOMS

Permit #: 2297 - F -

Location #: SB00205411ACC

USGS Site ID:

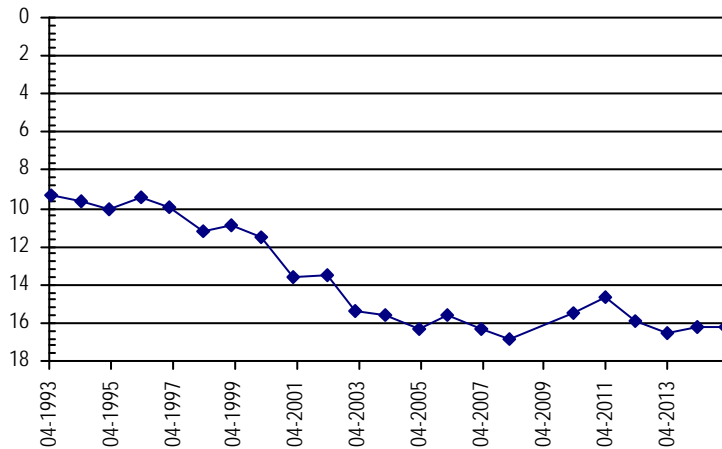
Division:	1	Water District:	1	County:	WASHINGTON
Location:	Q160 Q40 Q10 Section	Twnshp	Range	PM	Distance from section lines:
	NE SW SW 11	2 N	54 W S		From N/S line: 2140 N From E/W line: 2550 E
UTM Coordinates (NAD83):	Northing (UTM y)	4446264.5	Easting (UTM x):	637345.0	
Latitude/Longitude (decimal degrees):	40.155513		-103.387357		
Surface Elevation (ft):	4470	Top Perforated Interval (ft):		Base of grout (ft):	
Well depth (ft):	52	Bottom Perforated Interval (ft):			
Aquifer(s):	QUATERNARY ALLUVIUM				

Water Level Change
1 year: 0.01
5 year: -0.77
10 year: 0.03

Measurements from last 10 years

Date	Depth to WL (ft)	Elev of WL (ft)	Change (ft)
3/2/2005	16.29	4453.71	-0.72
2/28/2006	15.62	4454.38	0.67
3/28/2007	16.32	4453.68	-0.70
2/27/2008	16.84	4453.16	-0.52
1/1/2009			
3/3/2010	15.49	4454.51	
3/1/2011	14.60	4455.40	0.89
3/28/2012	15.87	4454.13	-1.27
3/6/2013	16.57	4453.43	-0.70
3/6/2014	16.27	4453.73	0.30
2/9/2015	16.26	4453.74	0.01

All Historic Measurements



CAMP CREEK

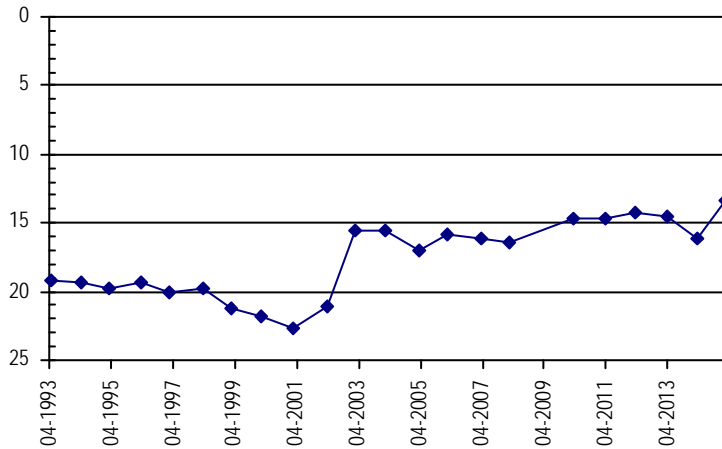
Well Name: **CAMP CREEK - 01** **Owner:** LEO & MARY ANN BASLER
Permit #: 2804 - F - **Location #:** SB00205423ABB **USGS Site ID:**
Division: 1 **Water District:** 1 **County:** WASHINGTON
Location: Q160 Q40 Q10 Section Twnshp Range PM Distance from section lines:
 NE NW NW 23 2 N 54 W S **From N/S line:** 720 N **From E/W line:** 2000 E
UTM Coordinates (NAD83): **Northing (UTM y)** 4443506.5 **Easting (UTM x):** 637601.0
Latitude/Longitude (decimal degrees): 40.130633 -103.384941

Surface Elevation (ft): 4585 **Top Perforated Interval (ft):** **Base of grout (ft):** **Water Level Change**
Well depth (ft): 53 **Bottom Perforated Interval (ft):** **1 year:** 2.65
Aquifer(s): QUATERNARY ALLUVIUM **5 year:** 1.32
10 year: 3.63

Measurements from last 10 years

Date	Depth to WL (ft)	Elev of WL (ft)	Change (ft)
3/1/2005	17.05	4567.95	-1.48
2/28/2006	15.87	4569.13	1.18
3/28/2007	16.10	4568.90	-0.23
2/27/2008	16.48	4568.52	-0.38
1/1/2009			
3/3/2010	14.74	4570.26	
3/1/2011	14.63	4570.37	0.11
3/28/2012	14.21	4570.79	0.42
3/6/2013	14.51	4570.49	-0.30
3/6/2014	16.07	4568.93	-1.56
2/9/2015	13.42	4571.58	2.65

All Historic Measurements



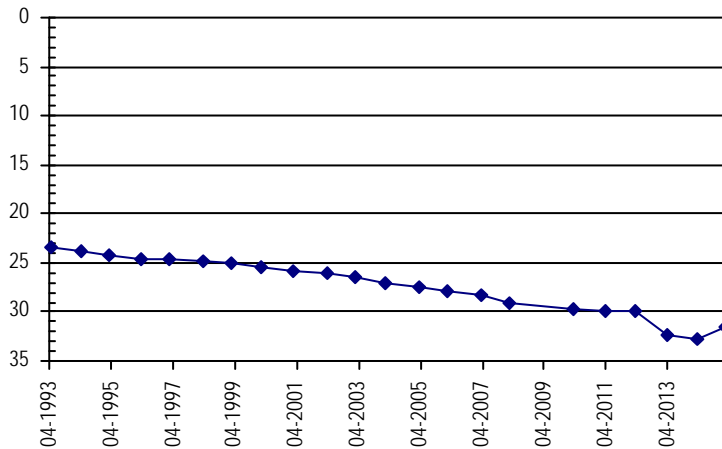
Well Name: **CAMP CREEK - 10** **Owner:** HARRY BOLINGER
Permit #: 21217 - F - **Location #:** SB00305407BBB **USGS Site ID:**
Division: 1 **Water District:** 1 **County:** WASHINGTON
Location: Q160 Q40 Q10 Section Twnshp Range PM Distance from section lines:
 NW NW NW 7 3 N 54 W S **From N/S line:** 30 N **From E/W line:** 90 W
UTM Coordinates (NAD83): **Northing (UTM y)** 4456400.4 **Easting (UTM x):** 629969.1
Latitude/Longitude (decimal degrees): 40.247974 -103.471883

Surface Elevation (ft): 4328 **Top Perforated Interval (ft):** 41 **Base of grout (ft):** **Water Level Change**
Well depth (ft): 126 **Bottom Perforated Interval (ft):** 126 **1 year:** 1.11
Aquifer(s): QUATERNARY ALLUVIUM **5 year:** -1.83
10 year: -4.19

Measurements from last 10 years

Date	Depth to WL (ft)	Elev of WL (ft)	Change (ft)
3/2/2005	27.39	4300.61	-0.26
2/28/2006	27.84	4300.16	-0.45
3/28/2007	28.34	4299.66	-0.50
2/27/2008	29.02	4298.98	-0.68
1/1/2009			
3/3/2010	29.75	4298.25	
3/1/2011	29.96	4298.04	-0.21
3/28/2012	29.97	4298.03	-0.01
3/6/2013	32.32	4295.68	-2.35
3/6/2014	32.69	4295.31	-0.37
2/9/2015	31.58	4296.42	1.11

All Historic Measurements



CAMP CREEK

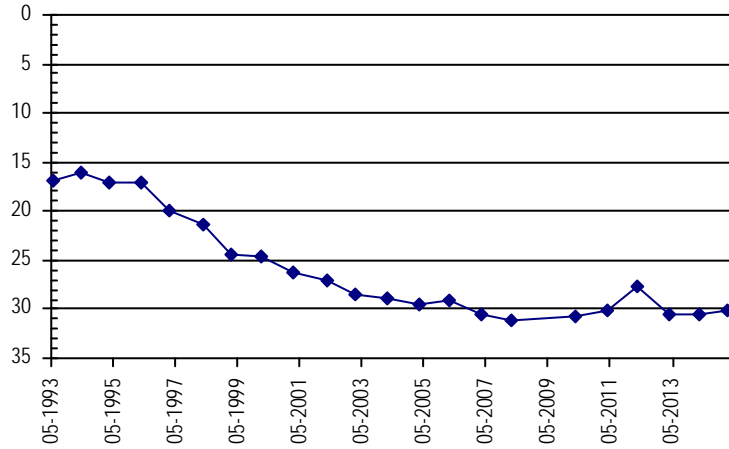
Well Name: **CAMP CREEK - 09** **Owner:** SPENCE RULE
Permit #: 15356 - F - **Location #:** SB00305417BCC **USGS Site ID:**
Division: 1 **Water District:** 1 **County:** WASHINGTON
Location: Q160 Q40 Q10 Section Twnshp Range PM Distance from section lines:
 NW SW SW 17 3 N 54 W S **From N/S line:** 2500 N **From E/W line:** 620 W
UTM Coordinates (NAD83): **Northing (UTM y)** 4454178.4 **Easting (UTM x):** 631687.1
Latitude/Longitude (decimal degrees): 40.227694 -103.452147

Surface Elevation (ft): 4340 **Top Perforated Interval (ft):** **Base of grout (ft):** **Water Level Change**
Well depth (ft): 99 **Bottom Perforated Interval (ft):** **1 year:** 0.41
Aquifer(s): QUATERNARY ALLUVIUM **5 year:** 0.54
10 year: -0.78

Measurements from last 10 years

Date	Depth to WL (ft)	Elev of WL (ft)	Change (ft)
3/2/2005	29.41	4310.59	-0.50
2/28/2006	29.11	4310.89	0.30
3/28/2007	30.43	4309.57	-1.32
2/27/2008	31.18	4308.82	-0.75
1/1/2009			
3/3/2010	30.73	4309.27	
3/1/2011	30.15	4309.85	0.58
3/28/2012	27.69	4312.31	2.46
3/6/2013	30.58	4309.42	-2.89
3/6/2014	30.60	4309.40	-0.02
2/9/2015	30.19	4309.81	0.41

All Historic Measurements



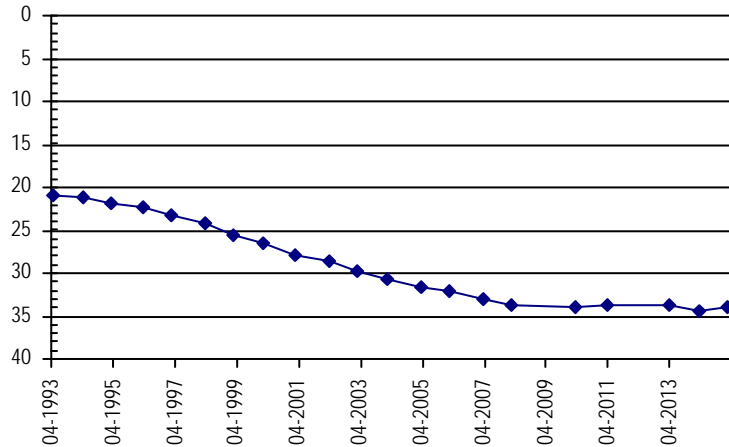
Well Name: **CAMP CREEK - 07** **Owner:** VAUGHEY & VAUGHEY
Permit #: 21077 - S - **Location #:** SB00305418DCC **USGS Site ID:**
Division: 1 **Water District:** 1 **County:** WASHINGTON
Location: Q160 Q40 Q10 Section Twnshp Range PM Distance from section lines:
 SE SW SW 18 3 N 54 W S **From N/S line:** 370 S **From E/W line:** 2040 E
UTM Coordinates (NAD83): **Northing (UTM y)** 4453344.5 **Easting (UTM x):** 630876.1
Latitude/Longitude (decimal degrees): 40.220310 -103.461846

Surface Elevation (ft): 4355 **Top Perforated Interval (ft):** **Base of grout (ft):** **Water Level Change**
Well depth (ft): 115 **Bottom Perforated Interval (ft):** **1 year:** 0.39
Aquifer(s): QUATERNARY ALLUVIUM **5 year:** -0.12
10 year: -2.42

Measurements from last 10 years

Date	Depth to WL (ft)	Elev of WL (ft)	Change (ft)
3/2/2005	31.54	4323.46	-0.82
2/28/2006	32.13	4322.87	-0.59
3/28/2007	33.00	4322.00	-0.87
2/27/2008	33.63	4321.37	-0.63
1/1/2009			
3/3/2010	33.84	4321.16	
3/1/2011	33.67	4321.33	0.17
3/28/2012			
3/6/2013	33.81	4321.19	
3/6/2014	34.35	4320.65	-0.54
2/9/2015	33.96	4321.04	0.39

All Historic Measurements



CAMP CREEK

Well Name: CAMP CREEK - 08

Owner: SPENCE RULE

Permit #: 21958 - F -

Location #: SB00305421CBB

USGS Site ID:

Division: 1 **Water District:** 1 **County:** WASHINGTON

Location: Q160 Q40 Q10 Section Twnshp Range PM Distance from section lines:
SW NW NW 21 3 N 54 W S From N/S line: 1800 S From E/W line: 420 W

UTM Coordinates (NAD83): Northing (UTM y) 4452214.5 Easting (UTM x): 633269.1

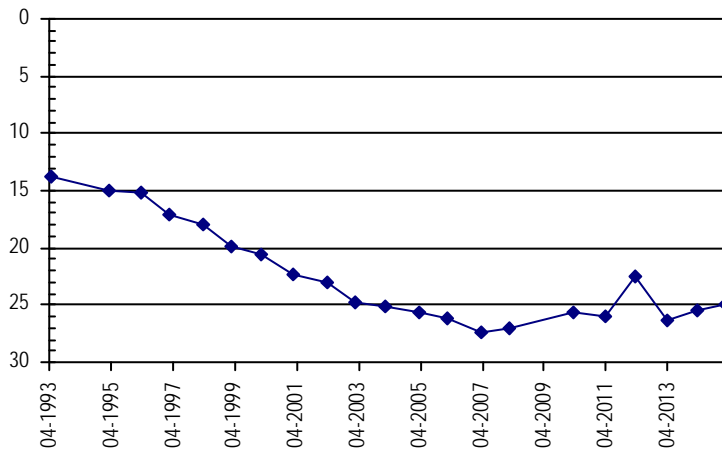
Latitude/Longitude (decimal degrees): 40.209756 -103.433966

Surface Elevation (ft): 4363 **Top Perforated Interval (ft):** **Base of grout (ft):** **Water Level Change**
Well depth (ft): 83 **Bottom Perforated Interval (ft):** **1 year:** 0.43
Aquifer(s): QUATERNARY ALLUVIUM **5 year:** 0.73
10 year: 0.65

Measurements from last 10 years

Date	Depth to WL (ft)	Elev of WL (ft)	Change (ft)
3/2/2005	25.60	4337.40	-0.49
2/28/2006	26.12	4336.88	-0.52
3/28/2007	27.37	4335.63	-1.25
2/27/2008	27.05	4335.95	0.32
1/1/2009			
3/3/2010	25.68	4337.32	
3/1/2011	26.04	4336.96	-0.36
3/28/2012	22.44	4340.56	3.60
3/6/2013	26.25	4336.75	-3.81
3/6/2014	25.38	4337.62	0.87
2/9/2015	24.95	4338.05	0.43

All Historic Measurements



Well Name: CAMP CREEK - 06

Owner: SPENCE RULE

Permit #: 19966 - F -

Location #: SB00305429BAA

USGS Site ID:

Division: 1 **Water District:** 1 **County:** WASHINGTON

Location: Q160 Q40 Q10 Section Twnshp Range PM Distance from section lines:
NW NE NE 29 3 N 54 W S From N/S line: 110 N From E/W line: 2290 W

UTM Coordinates (NAD83): Northing (UTM y) 4451589.5 Easting (UTM x): 632211.1

Latitude/Longitude (decimal degrees): 40.204295 -103.446522

Surface Elevation (ft): 4370 **Top Perforated Interval (ft):** **Base of grout (ft):** **Water Level Change**
Well depth (ft): 99 **Bottom Perforated Interval (ft):** **1 year:** 0.08
Aquifer(s): QUATERNARY ALLUVIUM **5 year:** -0.24
10 year: -2.04

Measurements from last 10 years

Date	Depth to WL (ft)	Elev of WL (ft)	Change (ft)
3/2/2005	37.14	4332.86	-1.22
2/28/2006	37.54	4332.46	-0.40
3/28/2007	38.23	4331.77	-0.69
2/27/2008	39.62	4330.38	-1.39
1/1/2009			
3/3/2010	38.94	4331.06	
3/1/2011	39.20	4330.80	-0.26
3/28/2012	38.61	4331.39	0.59
3/6/2013	39.59	4330.41	-0.98
3/6/2014	39.26	4330.74	0.33
2/9/2015	39.18	4330.82	0.08

All Historic Measurements

