

**GROUND WATER LEVELS
CAMP CREEK
DESIGNATED GROUND WATER BASIN**

2013



COLORADO

Division of Water Resources

Department of Natural Resources

**By
Kevin C. Donegan**

**John W. Hickenlooper
Governor**

**Mike King
Executive Director**

**Dick Wolfe
State Engineer**

**Matthew A. Sares
Project Manager**

**CAMP CREEK DESIGNATED GROUND WATER BASIN
WATER LEVEL MEASUREMENTS
2013**

This report contains the basic ground water level data collected from wells in the Camp Creek Designated Ground Water Basin during the period from 1993 through 2013. Acquisition and publication of this information is a cooperative effort between the well owners the Colorado Division of Water Resources. The project is part of a statewide ground water level monitoring program funded by Senate Bill 200 (1987 legislative session). This legislation directed that a portion of the fees collected for water well permit applications be used for the establishment of a program to monitor water level trends throughout the state.

The report contains water level measurements for ten wells measured March 6, 2013. The locations of those wells in context of the designated basin are shown on the following map. All of the Camp Creek wells that are monitored are located in Townships 2 and 3 North, Range 54 West of the 6th P.M. Depth to ground water, below land surface, ranged from 14 to 40 feet. Only two wells, CC-01 and CC-02, in the upper reaches of Camp Creek had water levels less than 20 feet below ground surface.

Pre-1993 water level information has also been included where available. The pre-1993 data is generally taken from well completion reports or pump installation reports submitted by drilling or pump installation contractors at the time the well was constructed or a permanent pump installed.

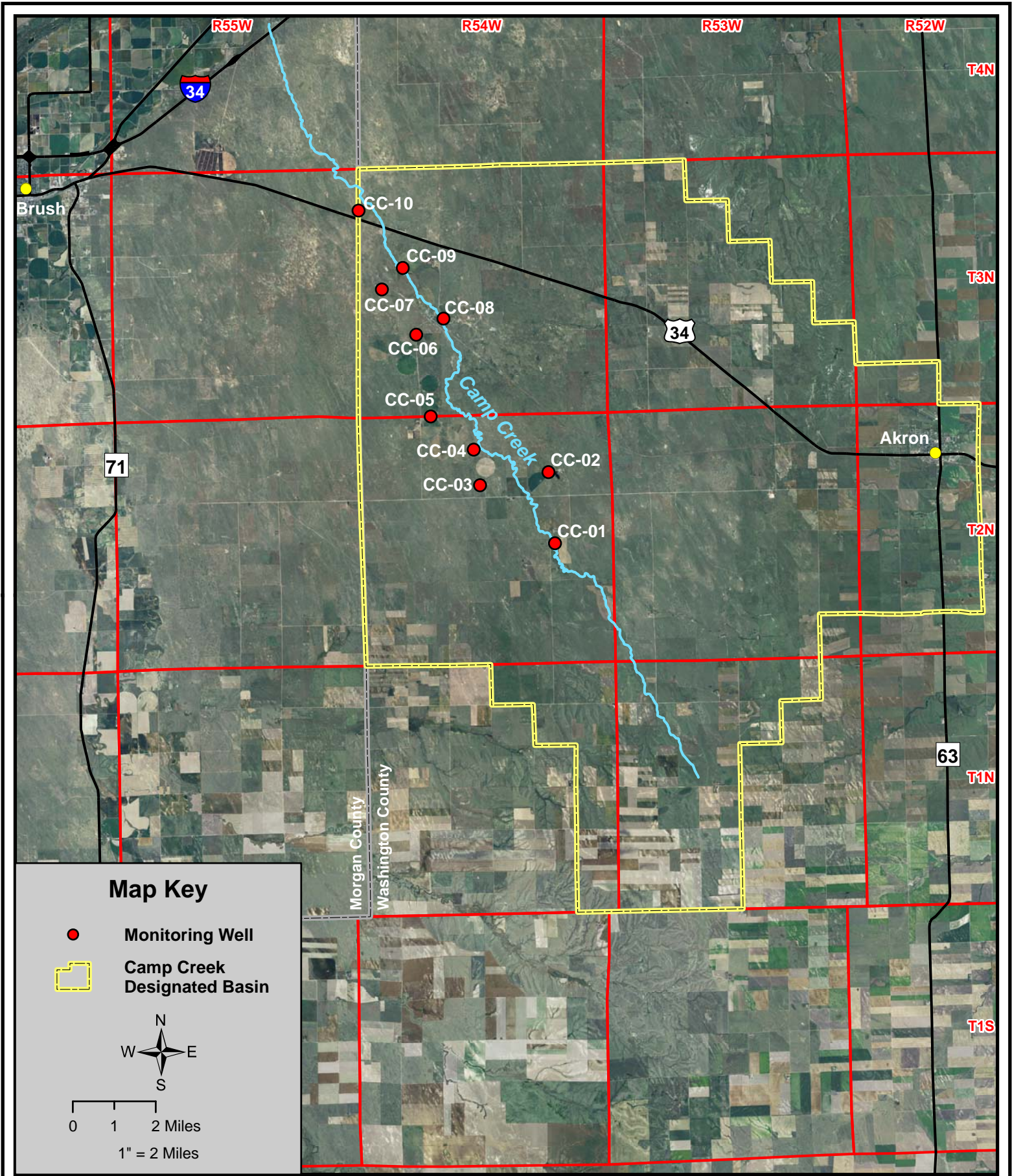
Tabular and graphical data are presented for each well for the available period of record. Analyses of changes in the water level in the aquifer are complicated by unknown pumping schedules.

On average, ground water levels in wells measured by the Division of Water Resources have declined by approximately three feet over the last ten-year period. Average ground water levels are generally the same as they were in 2008 and have declined by approximately a foot and a half between 2012 and 2013. Over the full 20 years of measurement by Division of Water Resources water levels have declined approximately nine feet on average across the Camp Creek Designated Basin.

The 2013 report will be available as a digital version, in Adobe PDF format, and may be viewed or downloaded from the Division's website, <http://water.state.co.us/groundwater/Pages/HydroGeo.aspx>.

The data may be accessed on the internet at the Colorado Decision Support System website <http://cdss.state.co.us> and can be exported to in number of different formats.

THIS PAGE INTENTIONALLY BLANK



State of Colorado -- Division of Water Resources

Camp Creek Designated Basin Monitoring Well Network

THIS PAGE INTENTIONALLY BLANK

