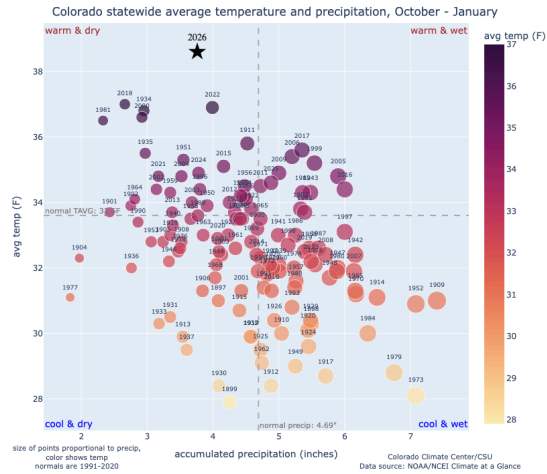




**Observed temperature**

- **Temperatures in Water Year 2026 (Oct 2025 - January 2026) have been the warmest start to the water year on the Colorado Climate Center's 131-year record.**
- **At timescales from 3 to 24 months, the time periods ending in January 2026 were all the warmest on record.**
- **January 2026** was much warmer than average in most of the state, ranking 17th warmest January on record.
- So far, temperatures in **February 2026** have been very warm (up to 12°F above normal), with more warmth projected to close out the month.



**Observed precipitation**

- As of February 23, precipitation accumulation is **82%** of the median statewide. The Water Year has been much drier than average in the central mountains and much of northeastern Colorado.
- **January 2026** was the **31th driest January** on the 131 year record statewide. There was notable dryness in the mountains and in the northeast plains.
- So far, **February 2026** precipitation accumulation has been below normal, ranging from 102% of the median in the Southwest basin to 69% of the median in the South Platte basin.

**Snowpack & Reservoir Storage**

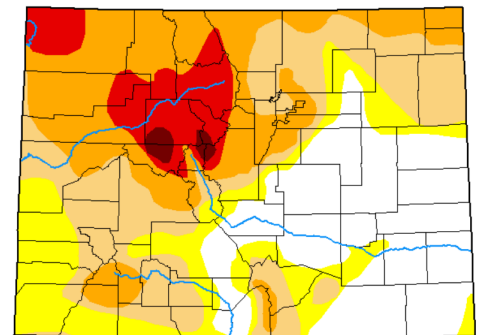
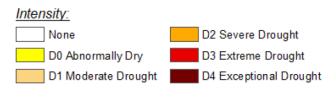
- **Statewide snow water equivalent in WY26 currently ranks 45th out of 46 years in the period of record for SWE, with only WY81 having lower values.**
- In Colorado's major basins, SWE ranges from 51% of the median in the Arkansas basin to 69% of the median in the North Platte basin.
- Statewide reservoir storage is at 86% of median. This is a silver lining heading into spring and summer.

**Streamflows & Soil Moisture**

- Streamflow forecasts are released monthly. The February streamflow forecasts project well below median runoff in most basins (55-65%), with the exception of the South Platte (76%). These estimates will likely drop in the coming months due to the lack of snowpack we've received this winter.
- Soil moisture remains near normal and provides some buffering entering peak accumulation season.

**Drought conditions**

- Extreme drought (D3) continues to persist in the headwater of the Colorado mainstem. Exceptional drought (D4) encompasses portions of Eagle, Pitkin, Park, Lake, and Summit Counties.
- About 32% of the state is currently in severe drought (D2) or worse.



**Seasonal outlook**

- The warm and dry trend is expected to continue into late winter/early spring, especially in southwest Colorado.
- La Niña is on its way out, with ENSO-neutral conditions expected through spring and early summer. There is little known connection between ENSO neutral and Colorado precipitation accumulation, making difficult seasonal snowfall forecasts even more challenging.

**The next Water Conditions Monitoring Committee Meeting will be on March 17, 2026.**

Co-Chairs: Emily Adrid, CWCB and Sarah Brucker, DWR

Additional info at <https://cwcb.colorado.gov/Water-Conditions-Monitoring-Committee>

Special thanks to Russ Schumacher, Colorado Climate Center and Nagam Bell, USDA Natural Resources Conservation Services