



COLORADO

Department of
Natural Resources

April 23, 2024

Water Conditions Summary - WY 2024

Observed temperature

Temperatures during the half of the water year (October - March) rank **7th warmest** in the 129-year record. December and February have been particularly warm, and temperatures in April so far have been slightly warmer than normal, especially in eastern Colorado.

Observed precipitation

This water year has been characterized as warm and wet. The water year so far (October - March) has been the **49th wettest** in the 129-year record, with drier conditions focused in the southwest and wetter conditions in the central mountains. Although the beginning of the water year was dry, this March ranked 16th wettest. Currently, statewide precipitation is currently at 95 percent of the median. Snowpack at peak SWE (April 3) was 107 percent of the median. However, precipitation in April thus far has been below normal, and snowpack levels have reflected that all falling below the median over the past few weeks.

Drought conditions

Drought conditions improved slightly, then worsened slightly this month. At the beginning of the month, about 7.47 percent of the state was in D1 drought. That number fell to about 2 percent in mid-April but jumped back up to 7.74 percent by the end of April. Drought has crept into a large portion of the eastern plains and continues in the southwestern corner of the state.

Snowpack & Reservoir Storage

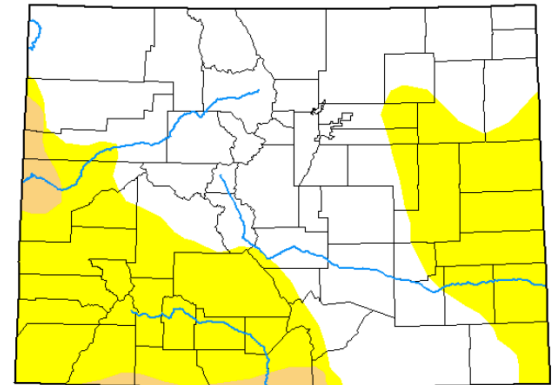
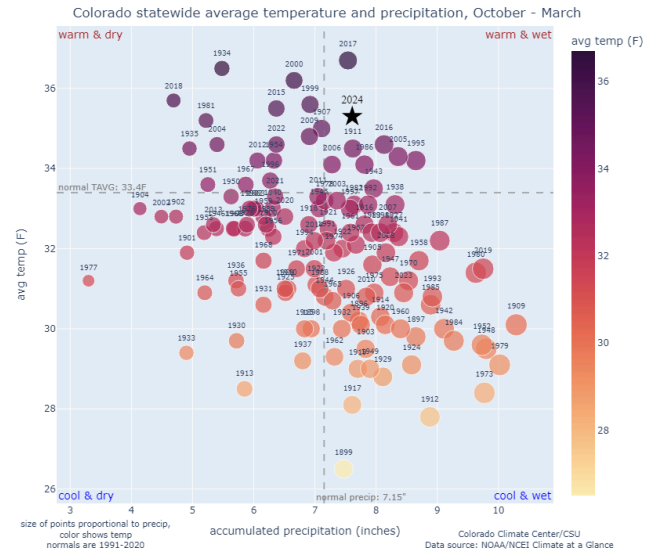
Snow water equivalent (SWE) has fallen below the median once after a sustained period above the median throughout the month of March. Currently, statewide SWE is 95 percent of the median, ranging from 102 in the Yampa-White-Green basin to 81 percent of median in the San Juan-Dolores-Animas-San Miguel basin. Due to April's drier than normal conditions thus far, the southern river basins have seen a rapid decline in snowpack as a percent of median throughout this month, including the Arkansas, Upper Rio Grande, San Juan-Dolores-Animas-San Miguel, and Gunnison basins. Average reservoir storage statewide is 99 percent of median as of April 1, ranging from 134 percent of the median in the Upper Rio Grande basin to 95 percent of the median in the San Miguel-Dolores-Animas-San Juan basin.

Streamflows & Soil Moisture

The streamflow forecast as of April 1 was below normal for the Upper Rio Grande and San Miguel-Dolores-Animas-San Juan basins and above normal for the Yampa-White-Green basin. However, with little precipitation accumulation so far this month, streamflows could be below these projected forecasts statewide. Soil moisture across much of the state is above average due to a combination of a wet spring and early snowmelt in higher elevations.

Seasonal outlook

The rest of spring and early summer look to be warmer than average. May could bring above normal precipitation, however, as we head into the summer months, dry conditions are expected for Colorado and the entire Rocky Mountain region. The El Niño signal has made way for a shift toward neutral conditions as we transition to a La Niña summer and fall.



The next Water Conditions Monitoring Committee Meeting will be on May 21, 2024 at 9am. There will be a hybrid option at the CSU Spur Confluence Theater in Denver.

Co-Chairs: Emily Adrid, CWCB and Sarah Brucker, DWR

Additional info at <https://cwcb.colorado.gov/Water-Conditions-Monitoring-Committee>

Special thanks to Peter Goble, Colorado Climate Center; Brian Domonkos, USDA Natural Resources Conservation Services; and Jeff Deems, Colorado Airborne Snowpack Measurement Program