



# June 2017 Drought Update

## Water Availability Task Force Co- Chairs

Taryn Finnessey, CWCB  
303.866.3441 ext. 3231

[Taryn.Finnessey@state.co.us](mailto:Taryn.Finnessey@state.co.us)

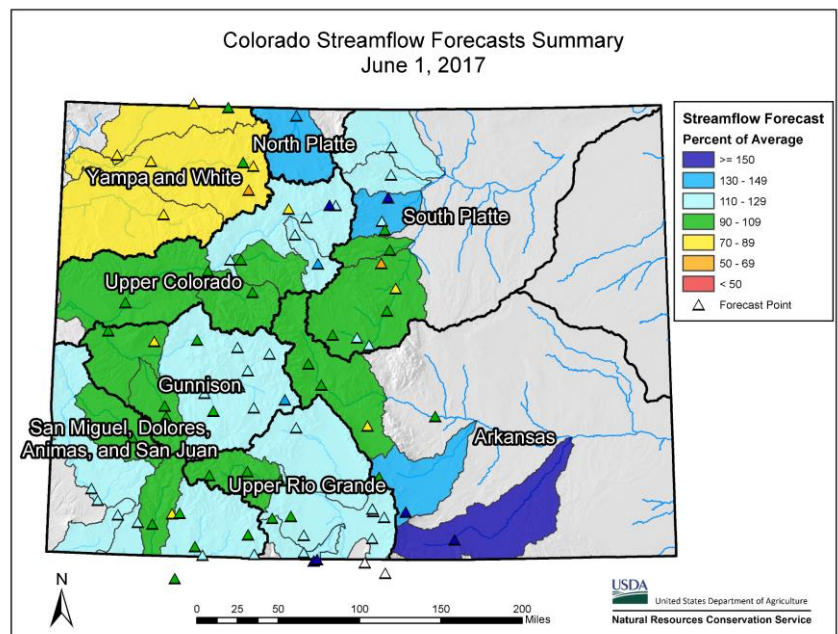
Tracy Kosloff, DWR  
303-866-3581 ext. 8211

[Tracy.Kosloff@state.co.us](mailto:Tracy.Kosloff@state.co.us)

May was characterized by wet and cool conditions, particularly in southeast Colorado. The first 20 days of June were a drastic change characterized by hot temperatures and little rainfall. In most parts of the state, streamflow forecasts throughout the summer season are projected to be near normal to above normal and reservoir storage remains high. These conditions leave municipal suppliers generally feeling comfortable with current levels of supply and demand in their systems.

- After an early peak snow accumulation across the state, snow has melted out in most areas.
- Reservoir storage statewide remains high at 109% of normal.
- After receiving 132% percent of average precipitation in May at Snotel stations, June precipitation to date statewide is only 30% of average as of June 21.
- Long-term forecasts for the summer season are not suggesting any major departure from normal conditions across Colorado.
- Per the June 20 U.S. Drought Monitor, only 6 percent of Colorado is classified as abnormally dry (D0), the same as last month, with no other drought classification area in the state.

Streamflow forecasts are near to above normal statewide, with the exception of the Yampa and White River basins where forecasts are lower, ranging from 59% of normal to 104% of normal.



**NOTE:** The next Water Availability Task Force Meeting will be held on July 25, 2017 at Colorado Parks and Wildlife Broadway Office; Additional information can be found at [www.cwcb.state.co.us](http://www.cwcb.state.co.us) or by contacting Ben Wade at [Ben.Wade@state.co.us](mailto:Ben.Wade@state.co.us)