



# Colorado's Water Supply Future

## Water Supply Reserve Fund Annual Report

October 31, 2016



Colorado Water Conservation Board - Approves 2016 Water Supply Reserve Fund Criteria and Guidelines.

Pictured left to right ( John McClow, Jim Yahn, Russ George, James Eklund, Travis Smith, Ty Wattenberg, John Stulp, Jay Gallagher, April Montgomery, Patty Wells, Laura Chartrand, Alan Hamel)

**To the House of Representatives Committee on  
Agriculture, Livestock, and Natural Resources and the  
Senate Committee on Agriculture, Natural Resources, and Energy**



## Background

The Water Supply Reserve Fund (Fund) was created in 2006 by Senate Bill 06-179. The legislature created the Fund to help citizens identify and meet their critical water supply and management needs. The Fund may be used to:

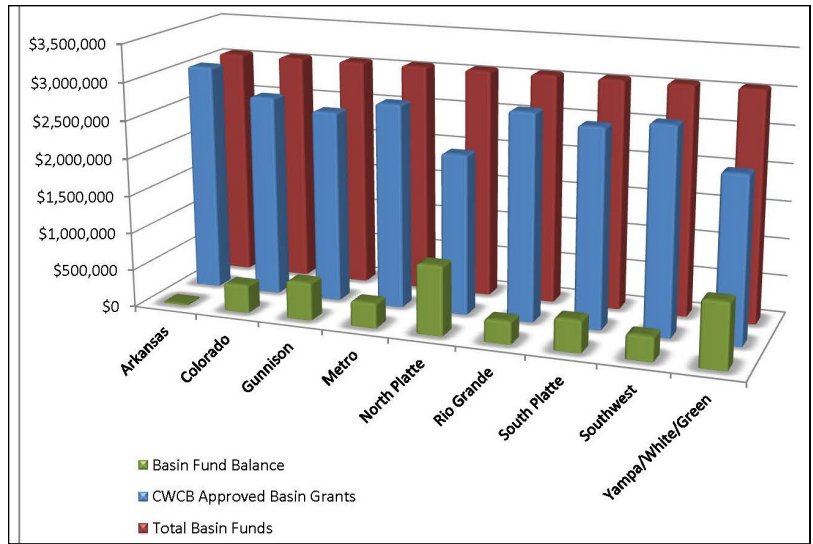
- Identify human, environmental, or recreational water needs (also commonly referred to as "Needs Assessments")
- Evaluate water supplies in each basin
- Build projects or identify methods to meet the water supply needs of the river basin

The authorizing legislation provides funds for a broad range of eligible activities including: construction of infrastructure (storage, pipelines, river improvements, etc.), feasibility studies, studies of human and environmental needs, and technical assistance for permitting or environmental compliance.

## Overview

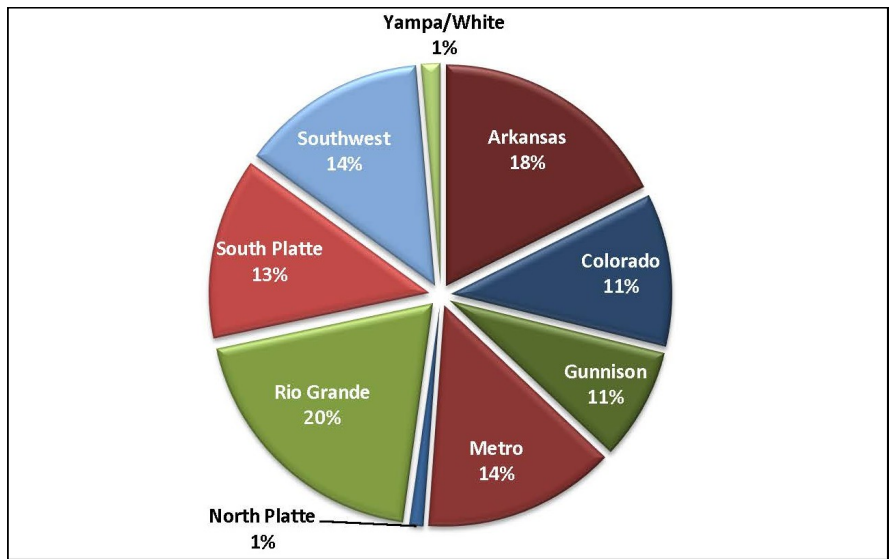
The Fund is administered by the Colorado Water Conservation Board (CWCB) in collaboration with the Interbasin Compact Commission (IBCC) and the 9 Basin Roundtables established under House Bill 05-1177 (Colorado Water for the 21st Century Act). Requests for funding begin at the Basin Roundtables. Applications approved by the local Roundtable are submitted to the CWCB. To date, all funding has been for grants, though most project sponsors provide matching funds and/or leverage other monies.

Monies from the Fund are distributed according to the Criteria and Guidelines, which were jointly developed by the CWCB and IBCC in collaboration with the Basin Roundtables. The Criteria and Guidelines are reviewed annually in October to consider changes to the Fund's operation. The Criteria and Guidelines, application, and other materials are available on the [CWCB website](#).



Total, Approved, and Remaining Funds for the WSRF Basin Accounts			
Basin	Total Basin Funds Allocated	CWCB Approved Basin Grants	Basin Fund Balance
Arkansas	\$3,059,368	\$3,036,932	\$22,436
Colorado	\$3,059,368	\$2,685,291	\$374,077
Gunnison	\$3,059,368	\$2,554,514	\$504,854
Metro	\$3,059,368	\$2,725,031	\$334,337
North Platte	\$3,059,368	\$2,134,668	\$924,700
Rio Grande	\$3,059,368	\$2,755,712	\$303,656
South Platte	\$3,059,368	\$2,635,562	\$423,806
Southwest	\$3,059,368	\$2,734,563	\$324,805
Yampa/White	\$3,059,368	\$2,194,744	\$864,624
Grand Total	\$27,534,312	\$23,457,017	\$4,077,295

Figure 1. Basin Fund Distribution Approved per Basin in FY16



Basin	Arkansas	Colorado	Gunnison	Metro	North Platte	Rio Grande	South Platte	Southwest	Yampa/White
Approved from State-wide	\$9,372,551	\$5,964,274	\$4,369,681	\$7,501,732	\$540,942	\$10,385,323	\$7,061,094	\$7,259,911	\$731,747
Number of	55	21	29	27	8	30	26	23	7

\*Note: Some projects are associated with multiple Basins, in this case the project was counted for each associated basin

Figure 2. Statewide Fund Distribution Approved per Basin (\$48,565,714) FY16



## Accomplishments

Water Supply Reserve Fund projects have been approved across the entire state (see map on page 7). The WSRF Criteria and Guidelines split the funds into Basin Accounts and a Statewide Account. Each Basin Account has received \$3,059,368 to date (Figure 1).

Figure 1 on page 2 show the amounts approved from each Basin Account (totaling \$23,457,017).

To date, the Statewide Account has received \$53,932,481 (including interest), with \$53,187,255 in approved grants.

The distribution of WSRF funds from the Statewide Account per basin is shown in Figure 2 (page 2).

Projects funded from the Fund have addressed both consumptive (agricultural and municipal) and nonconsumptive (environmental and recreational) needs with most of the projects addressing multiple needs. Figure 3 shows the distribution of WSRF funding by primary category.

Funds from the Fund provide the means to conduct studies of water needs and actual project implementation. Figure 4 (page 4) shows how the Fund has supported both aspects of water projects by amount of funding as well as number of projects funded. Though the Fund has funded a large amount of studies it is clear that much more focus and funding has gone towards the implementation of projects to meet critical water supply needs.

## Observations

The Water Supply Reserve Fund Program has been a tremendous success. The Fund has funded a mix of consumptive and nonconsumptive water projects and promoted multi-purpose projects throughout the State. The Fund has funded projects that help Colorado meet its water supply needs with funding that was not available until the passage of the legislation. A sampling of concrete results from the program can be seen in Table 1 (page 4).

The annual review of the Criteria and Guidelines allows for program

## Program Highlights

- ◆ Over \$76,000,000 Granted for 410 Projects Across Colorado
- ◆ Over \$177,000,000 Leveraged with Matching contributions (cash and in-kind) from Numerous Other CWCB, Other State, Federal, and Local Sources

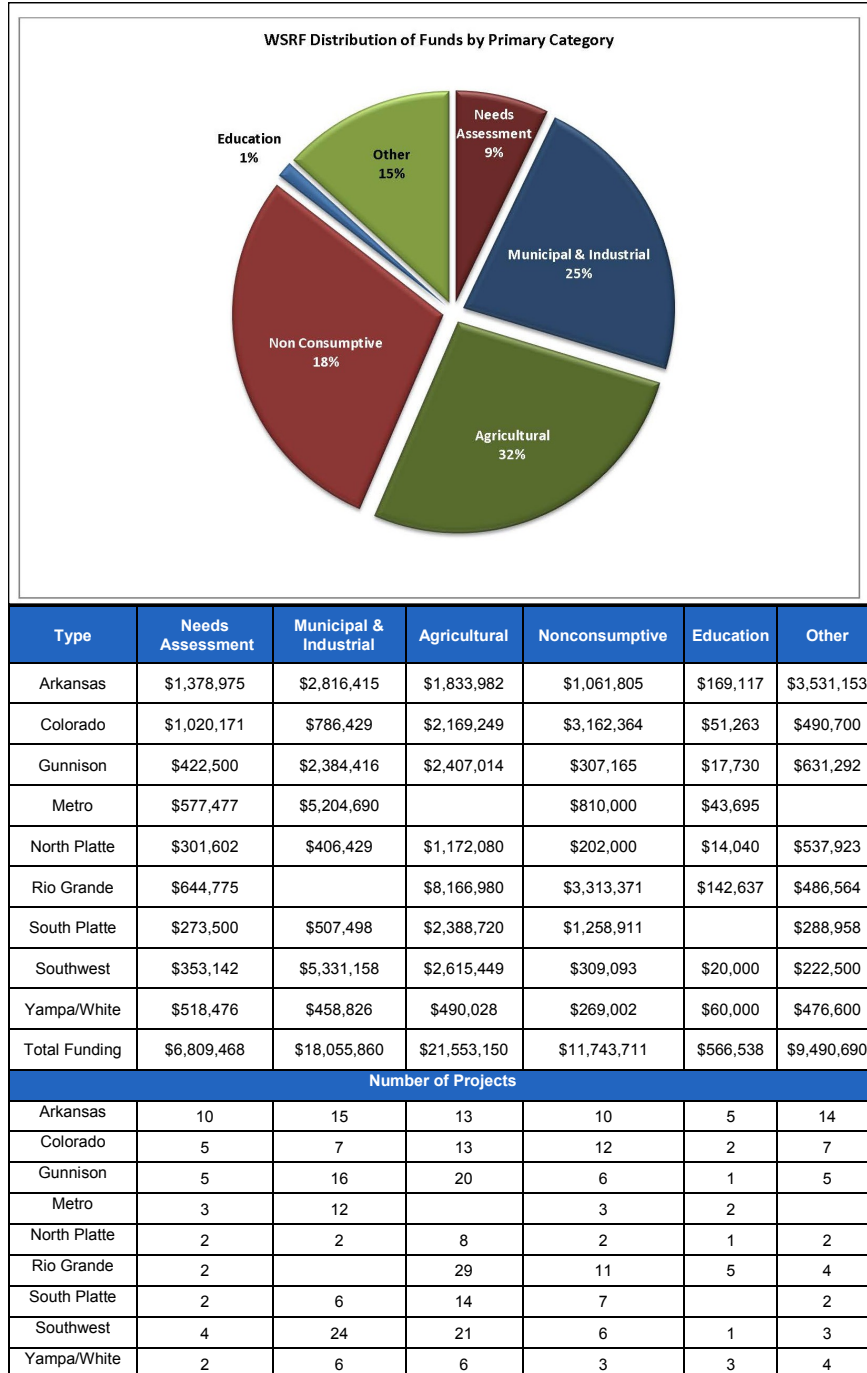


Figure 3: WSRF distribution of funding by primary category 2006-2016



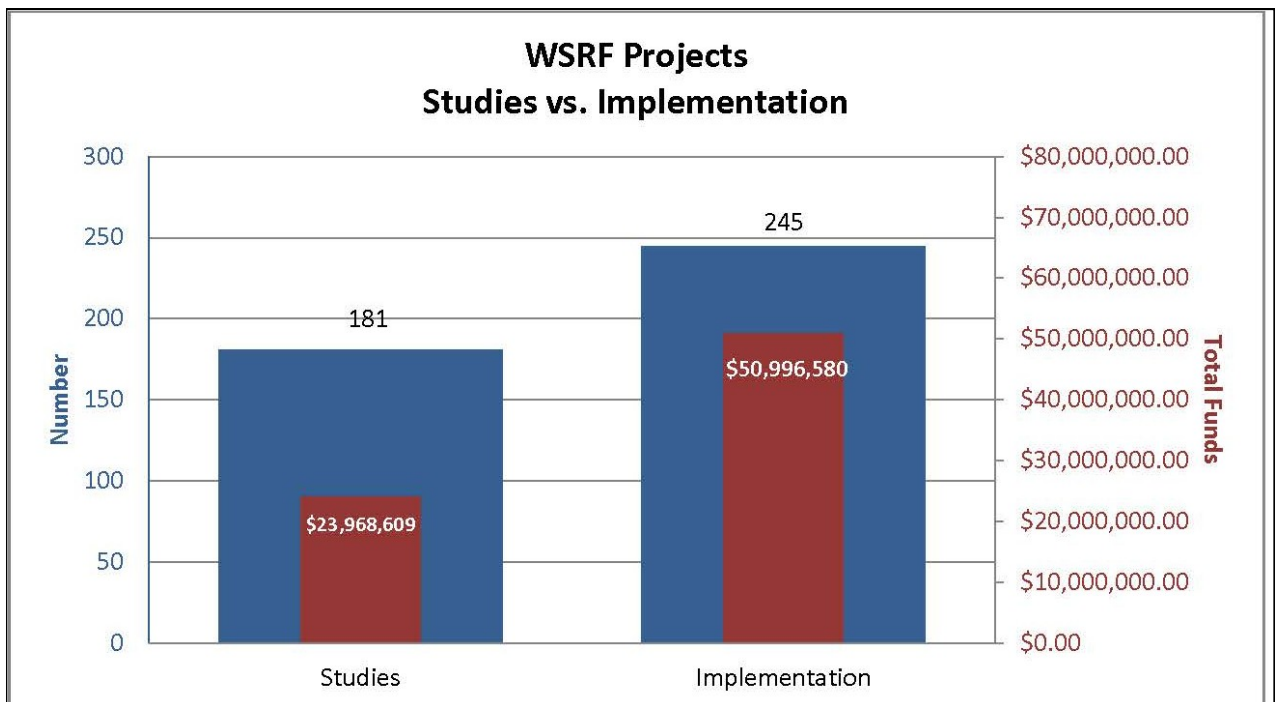
adjustments. Adjustments to the Criteria and Guidelines have enabled the WSRF to adapt to the changing needs of Colorado’s water community and meet the diverse needs of projects throughout the state.

Figure 5 summarizes the status of all approved WSRF projects. Currently there are 181 active grants (In Progress and Contracting), involving approximately \$23.8 million. Per the WSRF Criteria

and Guidelines applications for the Basin Account are considered at each of the CWCB’s bi-monthly board meetings once they have received approval from the appropriate basin roundtable as documented in a letter from the roundtable’s chair. Applications to the Statewide Account are considered twice a year, at the September and March CWCB board meetings.

By the Numbers: A Sampling of data from the WSRF Program	
New Storage Created (acre-feet)	27,526
New Annual Water Supplies (acre-feet)	21,587
Existing Storage Preserved or Enhanced (acre-feet)	242,885.40
Length of Stream Restored or Protected (linear feet)	976,440
Length of Pipe/Canal Built or Improved (linear feet)	1,165,217.50
Area of Restored or Preserved Habitat (acres)	58,453.11
Efficiency Savings (acre-feet/year)	67,611
Efficiency Savings (dollars/year)	27,750
Reports/Studies (engineering, feasibility, watershed, etc.)	164

**Table 1: Data from approved WSRF projects 2006-2016**



**Figure 4. WSRF Funding for Studies and Implementations 2006-2016**

## Funding Summary

Table 2 displays the legislative appropriations and actual funds received by the Water Supply Reserve Fund Program since its inception in 2006. In 2009, the Water Supply Reserve Fund Program was reauthorized in perpetuity by SB 09-106. SB 09-106 appropriates \$10,000,000 per year from the Severance Tax Trust Fund, subject to available funding. Due to budget shortfalls the WSRF has received reduced funding in some years.

As a Severance Tax “Tier II” program appropriated funds are distributed on a 3-part schedule as available with 40% on July 1, 30% on January 1, and the final 30% on April 1 of the fiscal year. All funds are subject to availability of revenues from current severance tax collection.

Table 2 also shows the breakdown of funds between the Basin and Statewide Accounts as directed by the Criteria and Guidelines. The Basin Account funds are then distributed evenly among the 9 basin roundtables.

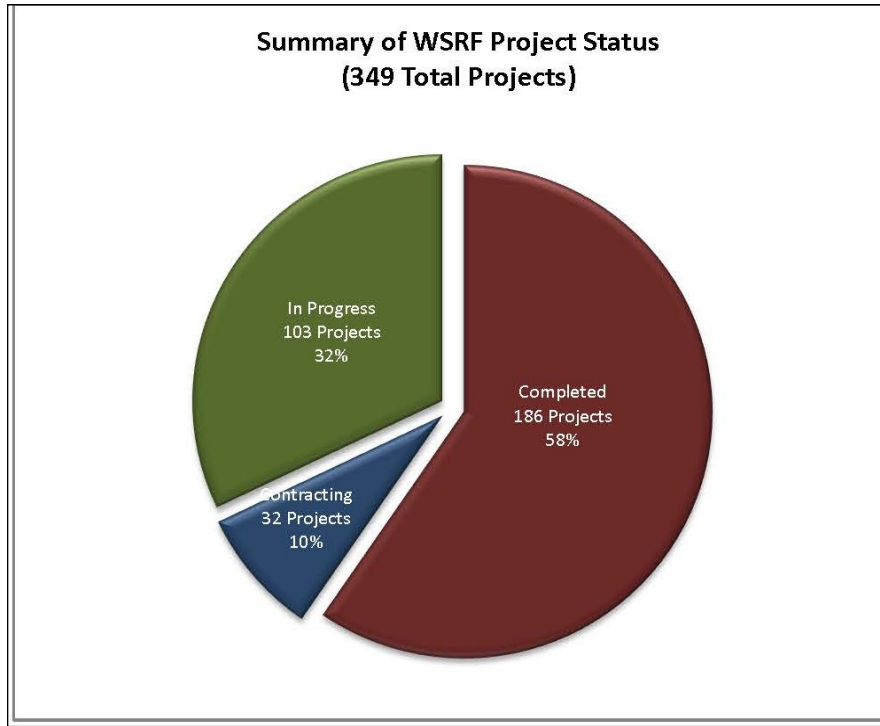


Figure 5. Summary of WSRF Project Status (349 Total Projects) 2006-2016

## WSRF Appropriation and Receipts

October 2016

Fiscal Year	Legislative Appropriation	Funds Received	Statewide Account	Basin Accounts
<b>2006/2007</b>	\$10,000,000	\$10,000,000	\$5,500,000	\$4,500,000
<b>2007/2008</b>	\$6,000,000	\$6,000,000	\$4,200,000	\$1,800,000
<b>2008/2009</b>	\$10,000,000	\$7,000,000	\$4,300,000	\$2,700,000
<b>2009/2010</b>	\$5,775,000	\$5,775,000	\$4,215,750	\$1,559,250
<b>2010/2011</b>	\$6,000,000	\$6,000,000	\$4,380,000	\$1,620,000
<b>2011/2012</b>	\$7,000,000	\$7,000,000	\$4,732,000	\$2,268,000
<b>2012/2013</b>	\$10,000,000	\$7,157,724	\$4,580,943	\$2,576,781
<b>2013/2014</b>	\$10,000,000	\$10,091,639	\$6,458,649	\$3,632,990
<b>2014/2015</b>	\$10,000,000	\$10,000,000	\$6,400,000	\$3,600,000
<b>2015/2016</b>	\$10,000,000	\$9,103,590	\$5,826,298	\$3,277,292
<b>2016/2017</b>	\$0	\$0	\$0	\$0
<b>Interest</b>	N/A	\$3,338,842	\$3,338,841	\$0
<b>TOTAL</b>	\$84,775,000	\$81,466,795	\$53,932,481	\$27,534,313

Table 2. Summary of WSRF Appropriations and Receipts



## In the Spotlight

### WSRF Criteria and Guidelines Updated September 22, 2016

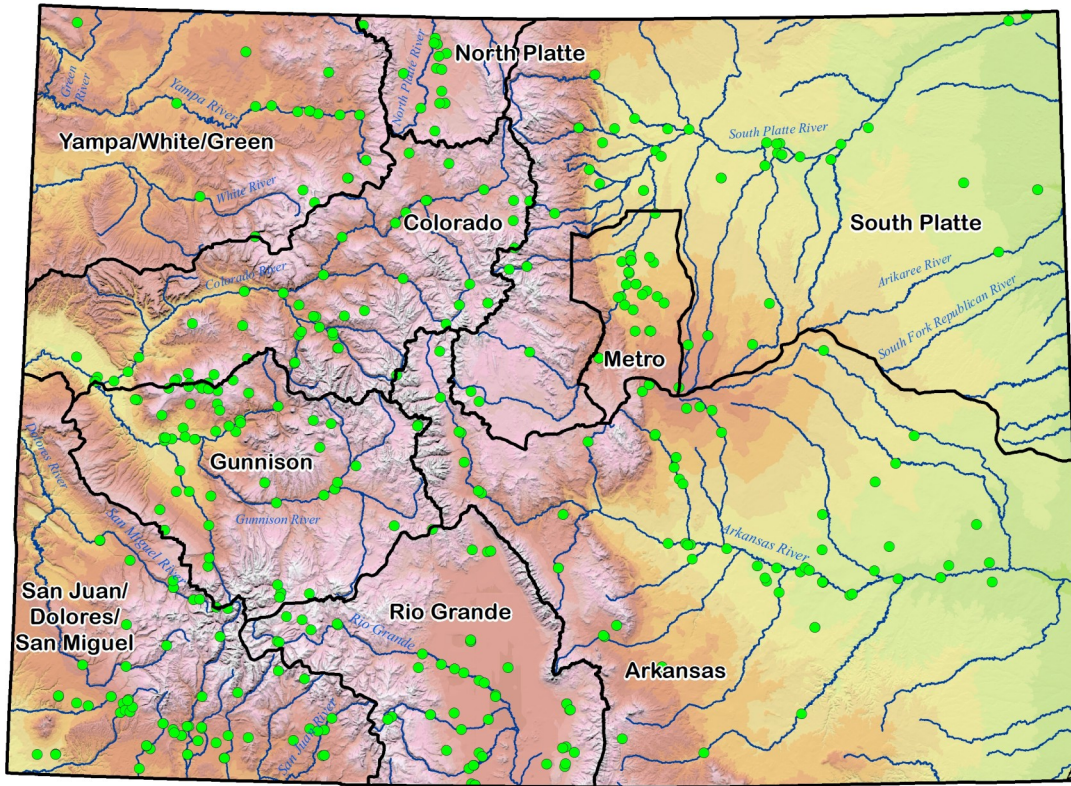
Upon consideration by the IBCC and the CWCB Board, the Water Supply Reserve Fund (WSRF) Criteria and Guidelines have been updated, effective September 22, 2016. In essence, this directive establishes that any WSRF grant applications received by any Roundtable, or Roundtable WSRF Screening Committee/Needs Committee on or after September 22, 2016 are subject to the current WSRF Criteria and Guidelines dated September 22, 2016. In summary, the major revisions are as follows:

- **Basin Account Match:** Basin Account (only) grant requests now require a 25% applicant or 3<sup>rd</sup> party match (a waiver option has been provided)
- **Statewide Account Match:** Statewide Account grant requests now require a 50% match (a waiver option has been provided)
- **Waivers to Basin & Statewide Account Matches:** A waiver option is available to applicants for the required 25% Basin Account Match, and one-half of the 50% Statewide Account Match based upon the applicants demonstrating that meeting the matching requirements imposes a significant financial hardship on the applicant.
- **3<sup>rd</sup> Party Match:** Any matching contribution not provided directly by the applicant, such as a 3<sup>rd</sup> party, must be accompanied by a Letter of Commitment, or a Pending Letter of Commitment
- **Roundtable Conflict of Interest Policy:** A conflict of interest policy must be incorporated into Roundtable By-Laws (A memo with guidance information will be distributed in the near future)
- **Evaluation Criteria Changes:** The Evaluation Criteria; Tier 1-3 and the Supplemental Scoring Matrix for Statewide Account requests have been replaced with the criteria established for state support of a project as documented in Colorado's Water Plan
- **Competitive Selection Process:** Roundtables are directed to establish a competitive selection process for grant contracts of \$100,000 or greater for Roundtable-initiated grant requests
- **Progress Reports:** Staff are provided the authority to withhold reimbursement payments if 6 month Progress Reports are not submitted to the satisfaction of staff
- **Final Deliverables:** Any entity that fails to complete a satisfactory Final Deliverable and submit it to the CWCB within 90 days of the expiration of a purchase order or contract may be denied consideration for future funding of any type from CWCB
- **Administrative Expenses:** Reimbursement of the applicant's or grantee's administrative expenses directly related to the grant shall be limited to a maximum of 15% of the total grant request approved by CWCB
- **Roundtable Criteria & Guidelines:** Roundtables, with staff review and approval, may establish specific Roundtable WSRF Criteria & Guidelines that are more restrictive than CWCB's 2016 WSRF Criteria & Guidelines.

Link to:

[New WSRF Criteria & Guidelines](#)

## Geographic Distribution of WSRF Projects



COLORADO  
Colorado Water  
Conservation Board  
Department of Natural Resources

0 25 50 100 Miles



IBCC Basins  WSRF Projects 

## Water Supply Reserve Fund Applications Approved by the CWCB Board

Water Activity Name	Basin Account	Statewide Account	Total Request
<b>Arkansas Basin Total Requests</b>	<b>\$3,036,932</b>	<b>\$9,372,551</b>	<b>\$12,409,483</b>
Ground Water Conference	\$24,721	\$0	\$24,721
Arkansas Valley Conduit	\$0	\$200,000	\$200,000
Non-native Phreatophyte Trees & Mapping Project	\$0	\$50,000	\$50,000
Upper Black Squirrel Creek Aquifer Recharge Investigation	\$45,200	\$0	\$45,200
Fountain Creek Vision Task Force	\$75,000	\$0	\$75,000
Round Mountain Water & Sanitation District Water System Improvements Project	\$120,000	\$0	\$120,000
Upper Big Sandy Water Balance	\$45,000	\$0	\$45,000
Model Transfers- Agriculture to Urban, Arkansas Basin	\$23,860	\$0	\$23,860
Arkansas Headwaters Diversion Structure Improvement Project Arkansas River Basin	\$0	\$57,955	\$57,955
City of Las Animas Water System Improvements	\$100,000	\$200,000	\$300,000
Colorado State Parks Zebra Mussel Response	\$0	\$1,000,000	\$1,000,000





## Water Supply Reserve Fund Applications Approved by the CWCB Board

Name of Water Activity	Basin Account	Statewide Account	Total Request
<b>Arkansas Basin continued</b>			
Rotational Land Fallowing & Water Leasing Program - Super Ditch	\$150,000	\$0	\$150,000
Telemetry data collection platforms at six reservoirs plus flow control equipment & gauging at six reservoir outlet channels & nine streams w/in the Upper Ark River basin	\$75,000	\$210,332	\$285,332
Demonstration of Membrane Zero Liquid Discharge Process for Drinking Water Systems	\$25,000	\$233,333	\$258,333
Geospatial Decision Support System for Integrated Water Management in the Arkansas River Basin	\$100,000	\$500,000	\$600,000
Demonstration of Membrane Zero Liquid Discharge Process for Drinking Water Systems	\$18,462	\$0	\$18,462
John Martin Wetlands & Neenoshe Reservoir Nonconsumptive Needs Quantification	\$148,975	\$0	\$148,975
UAWCD Hydrologic Water Balance Study	\$0	\$180,000	\$180,000
Bedload/Sediment Collection and Removal Technology - Fountain Creek	\$75,000	\$150,000	\$225,000
Flaming Gorge Project Task Force Assessment	\$40,000	\$0	\$40,000
Stakeholder's Cooperative Management Analysis for the Upper Arkansas River Basin	\$33,600	\$0	\$33,600
Trinidad/Purgatoire River Reach 4 Demonstration Project	\$75,000	\$0	\$75,000
Potential Impacts to Long-Term Farm Financial Planning Resulting from Water Transfers – Arkansas River Basin	\$31,633	\$0	\$31,633
The use of excess storage capacity in Blue Mesa Reservoir to avoid or reduce the impact of a Colorado River Compact curtailment in Colorado	\$24,500	\$98,000	\$122,500
Helena Diversion Structure/BV Boat Chute Improvement Project	\$35,000	\$290,000	\$325,000
Raising Awareness in 2012: A Statewide Celebration of Colorado Water	\$0	\$30,515	\$30,515
Super Ditch Delivery Engineering	\$0	\$225,837	\$225,837
A Multi-Media Program for Reporting Crop and Turf Water Use Estimates from the Colorado Agricultural Meteorological Network (CoAgMet)	\$9,394	\$37,577	\$46,971
Rotating Agricultural Fallowing Public Policy Working Group	\$20,000	\$0	\$20,000
Basin Roundtable Project Exploration Committee: Flaming Gorge	\$5,300	\$7,143	\$12,443
Colorado Water 2012	\$6,255	\$0	\$6,255
North Lake Dam Rehabilitation Project	\$36,962	\$702,273	\$739,235
Groundwater Quality Study - Phase 2 - Upper Black Squirrel Creek Alluvial Aquifer in the Arkansas River Basin	\$35,000	\$0	\$35,000



## Water Supply Reserve Fund Applications Approved by the CWCB Board

Name of Water Activity	Basin Account	Statewide Account	Total Request
<b>Arkansas Basin continued</b>			
Ag-Municipal Conservation Easement Demonstration	\$54,000	\$216,000	\$270,000
Hale Reservoir Renovation – Final Design & Permitting	\$20,000	\$100,000	\$120,000
Mount Pisgah Dam/Wrights Reservoir Outlet Works Rehabilitation	\$25,000	\$136,345	\$161,345
Build, Assess, and Document Accounting and Administration Tools for Lease Following in the Arkansas River Valley	\$20,000	\$39,215	\$59,215
Purgatoire River Reach 3 Habitat Improvement Project	\$25,250	\$0	\$25,250
Agricultural Economics and Water Resources: Methods, Metrics and Models - A Specialty Workshop	\$9,746	\$0	\$9,746
BIP - Arkansas River Basin Implementation Study	\$0	\$205,691	\$205,691
Fountain Creek Bank Restoration at the Frost Ranch	\$30,000	\$75,000	\$105,000
Ordway Cattle Feeders Water Line Extension, Phase II	\$50,000	\$225,000	\$275,000
Water Tank Replacement	\$64,300	\$0	\$64,300
Bear Creek Sediment Mitigation Project (Phase I)	\$15,000	\$85,000	\$100,000
Royal Gorge Wildfire Water Quality Impact and Protection Project – Emergency Mitigation, Stabilization, and Reclamation	\$24,260	\$460,940	\$485,200
Pikes Peak Regional Water Supply Infrastructure Study	\$25,000	\$50,000	\$75,000
Lamar Raw Water Transmission Line Replacement Project	\$50,000	\$150,000	\$200,000
BIP - Arkansas Basin Implementation Plan; Basin Implementation Plan	\$183,471	\$51,709	\$235,180
Helena Diversion Structure/BV Boat Chute Improvement Project - Phase 2	\$43,125	\$0	\$43,125
Red Wing Augmentation Facility	\$50,000	\$200,000	\$250,000
Arkansas Basin Implementation Plan - Phase 2	\$209,200	\$104,600	\$313,800
Arkansas Basin Implementation Plan - Modeling & Shortage Analysis	\$70,000	\$30,000	\$100,000
FIRI Analysis and Tailwater Return Flow Study on Fort Lyon Canal	\$30,000	\$145,137	\$175,137
El Paso County Groundwater Quality Study Phase 2c	\$10,000	\$41,933	\$51,933
Lower Arkansas Valley Water Quality and Water Use Efficiency Working Group	\$29,460	\$0	\$29,460
Preliminary Engineering Report: Area 3 Regional Water Supply Infrastructure	\$26,000	\$100,000	\$126,000
Phase II, Repurposing of Water Supply for Multiple Beneficial Use	\$25,000	\$275,000	\$300,000
Arkansas Basin Watershed Collaborative	\$25,000	\$240,000	\$265,000
Cucharas Basin Collaborative Storage Study	\$25,000	\$195,000	\$220,000
Agricultural Improvements and Sustainable Water Supply using Horizontal Wells	\$50,000	\$150,000	\$200,000



## Water Supply Reserve Fund Applications Approved by the CWCB Board

Name of Water Activity	Basin Account	Statewide Account	Total Request
<b>Arkansas Basin continued</b>			
BIP - Arkansas Roundtable Basin Implementation Plan Coordinator	\$27,880	\$70,000	\$97,880
Replacement of the Horse Creek Flume	\$50,000	\$450,000	\$500,000
Repurposing of Wells 12 and 13	\$25,000	\$136,625	\$161,625
Evans Reservoir Bypass Flume Replacement	\$50,000	\$250,000	\$300,000
Water Infrastructure and Supply Efficiency (WISE) Partnership: Conjunctive Use Infrastructure	\$10,000	\$0	\$10,000
BIP - Arkansas BIP Education & Outreach Goals	\$50,000	\$0	\$50,000
North La Junta Streamlined Flood Mitigation Project	\$25,000	\$0	\$25,000
Water System Improvements - Huerfano River Basin	\$20,000	\$93,400	\$113,400
Upper Arkansas Multi-Use Projects Phase I – Lake Ranch Multi-Use Pilot Project (LRMUPP) Feasibility Study	\$31,196	\$162,944	\$194,140
Evaluation of Flood Control Alternatives for the Fountain Creek Corridor	\$8,800	\$33,000	\$41,800
McClave Water Association Delivery Improvement Project	\$23,010	\$25,000	\$48,010
Ditch Infrastructure Repair Project	\$30,000	\$60,000	\$90,000
Pueblo Channel Debris Removal and Habitat Restoration Project	\$5,000		\$5,000
Fountain Creek Fish Marking and Monitoring Study	\$7,000	\$28,000	\$35,000
Holbrook Reservoir #1's Outlet Flow Measurement Upgrade, Phase 1	\$10,000	\$20,000	\$30,000
Groundwater and Surface Water Interaction and Potential for Underground Water Storage: Phase 2	\$50,000	\$256,618	\$306,618
Phase Two of Tailwater Return Flow Study on Fort Lyon Canal	\$26,000	\$148,796	\$174,796
Arkansas - Adobe Creek Dam Seepage Evaluation	\$5,000	\$45,000	\$50,000
Needs Assessment of Flood Control Alternatives for the Fountain Creek Corridor	\$21,200	\$72,100	\$93,300
Long-term Potable Water Supply to Zinno Subdivision	\$25,000	\$50,000	\$75,000
Arkansas Basin Roundtable BIP Coordinator (year 2)	\$20,267	\$40,533	\$60,800
Name of Water Activity	Basin Account	Statewide Account	Total Request
<b>Colorado Basin Total Request</b>	<b>\$2,685,291</b>	<b>\$5,964,274</b>	<b>\$8,649,565</b>
Advancing Direct Potable Reuse to Optimize Water Supplies & Meet Future Needs	\$15,000	\$32,864	\$47,864
Basin Roundtable Project Exploration Committee: Flaming Gorge	\$2,000	\$7,143	\$9,143
Battlement Reservoir #3 Dam reconstruction to enhance recreational & environmental opportunities	\$80,000	\$0	\$80,000
Bull Creek Reservoir No. 5 Spillway Adequacy Analysis	\$50,000	\$0	\$50,000
Canal #1 Check Structure Pilot Project at Dalton, Kiefer & Springer Properties	\$25,212	\$0	\$25,212
Colorado Basin Implementation Plan	\$100,000		\$100,000
Colorado Basin Implementation Plan	\$166,667	\$83,333	\$250,000

## Water Supply Reserve Fund Applications Approved by the CWCB Board

Name of Water Activity	Basin Account	Statewide Account	Total Request
<b>Colorado Basin continued</b>			
Colorado Basin Nonconsumptive Needs Quantification	\$315,171	\$0	\$315,171
Colorado Basin Roundtable Integrated Water Management Planning Framework	\$43,404	\$0	\$43,404
Colorado Dust-on-Snow Project	\$2,500	\$35,000	\$37,500
Colorado River Development & Curtailment Risk Study	\$8,000	\$0	\$8,000
Colorado River Inventory & Assessment	\$30,000	\$0	\$30,000
Colorado River Restoration and Conservation Projects	\$20,000	\$90,000	\$110,000
Colorado Water 2012	\$29,700	\$0	\$29,700
Crystal River Watershed – Assessment and Design of Restoration Projects	\$15,854	\$288,610	\$304,464
Customer Meter Replacement Program	\$100,000	\$0	\$100,000
East Mesa Water Company Tunnel Bypass Pipeline	\$60,000	\$0	\$60,000
Energy Development Water Needs Assessment (300,000 Joint Application see Colorado)	\$0	\$149,931	\$149,931
Energy Development Water Needs Assessment Study Update	\$25,000	\$0	\$25,000
Enlargement of Eagle Park Reservoir	\$0	\$250,000	\$250,000
Feasibility and design assessment of off-channel reservoir sites in the Crystal River water shed	\$40,000	\$0	\$40,000
Fraser Sedimentation Basin	\$60,000	\$127,900	\$187,900
Gore Canyon Whitewater Park at pump house - Colorado River	\$100,000	\$400,000	\$500,000
Grace and Shehi Diversion Rehabilitation Project (Phase I & II – Alternatives Evaluation & Detailed Design)	\$40,500	\$0	\$40,500
Grand County Stream Flow Management Plan	\$100,000	\$0	\$100,000
Grand River Ditch Pipeline	\$25,000	\$0	\$25,000
Grand Valley Riparian Restoration Collaborative (GVRRC) Project	\$42,726	\$207,274	\$250,000
Grand Valley Roller Dam Rehabilitation Phase 1, Development of the Dam and Canyon Facilities Master Plan	\$42,700	\$0	\$42,700
Grand Valley Water Users Association Water Management Plan Update	\$45,000	\$0	\$45,000
Investigation of Water Savings, Water Quality benefits and Profitability of Sub Surface Drip on Alfalfa in Grand Valley	\$46,894	\$0	\$46,894
Irrigation Asset Inventory Program in the Colorado River Basin	\$54,300	\$0	\$54,300
Irrigators of Lands in the Vicinity of Kremmling (ILVK) - Upper Colorado River Irrigation and Restoration Project - 2016	\$50,000	\$415,400	\$465,400
Kending Reservoir Feasibility Evaluation	\$40,000	\$0	\$40,000
L.E.D.E. Ditch and Reservoir Reconstruction	\$50,000	\$175,000	\$225,000
Missouri Heights	\$25,000	\$0	\$25,000
Missouri Heights - Mountain Meadow Irrigation Company Ditch Lining Project	\$50,000	\$0	\$50,000
Old Dillon Reservoir	\$100,000	\$0	\$100,000
Remote Cloud Seeder for Northern Grand Mesa	\$25,000	\$0	\$25,000
Reservoir 2 Enlargement and Lining Project	\$41,620	\$165,000	\$206,620
Riverside Ranch Irrigation Diversion & River Restoration Project	\$113,000	\$0	\$113,000
Roaring Fork Watershed - Missouri Heights Groundwater Monitoring Phase IIA	\$25,000	\$0	\$25,000
Roaring Fork Watershed Assessment	\$40,000	\$0	\$40,000
Roaring Fork Watershed Assessment -Phase 2	\$40,000	\$0	\$40,000
Robinson Ditch Piping Improvements	\$60,000	\$0	\$60,000
Small Acreage Irrigation Audit Program	\$18,273	\$0	\$18,273





## Water Supply Reserve Fund Applications Approved by the CWCB Board

Name of Water Activity	Basin Account	Statewide Account	Total Request
<b>Colorado Basin continued</b>			
Solicitation of Stakeholders input and advice through a Colorado River Basin edition of Headwaters Magazine Colorado	\$25,000	\$0	\$25,000
Swan River Stream Restoration	\$48,750	\$926,250	\$975,000
Tenmile Creek Restoration Project	\$17,500	\$332,500	\$350,000
Tenmile Creek Restoration Project Phase II	\$13,750	\$261,250	\$275,000
Thomas Creek Crossing and Pipeline and Flume Replacement	\$30,000		\$30,000
Upper Colorado Endangered Fish Recovery Alternatives Analysis (10,825)	\$0	\$200,000	\$200,000
Upper Colorado River Irrigation and Restoration Assessment Phase 1.	\$50,000	\$0	\$50,000
Upper Swan River Restoration Project	\$30,000	\$0	\$30,000
Vail Ditch Project	\$0	\$1,500,000	\$1,500,000
Ware and Hinds Fish Bypass Project	\$31,750	\$31,750	\$63,500
Water Infrastructure and Supply Efficiency (WISE) Partnership: Conjunctive Use Infrastructure	\$10,000	\$0	\$10,000
Windy Gap Reservoir Modification Project (Bypass Project) – Engineering	\$30,000	\$0	\$30,000
Name of Water Activity	Basin Account	Statewide Account	Total Request
<b>Gunnison Basin Requests</b>			
75 Ditch Diversion Improvement and Feature Enhancements	\$46,100	\$0	\$46,100
Agricultural Weather Data Delivery Improvements to Uncompahgre Valley Irrigators	\$77,000	\$35,000	\$112,000
Basin Implementation Plan (Planning and technical Support for 2015)	\$66,700	\$33,300	\$100,000
Basin Roundtable Project Exploration Committee: Flaming Gorge	\$2,000	\$7,143	\$9,143
Blue Mesa Reservoir	\$24,500	\$98,000	\$122,500
Bonita Reservoir Dam Outlet Pipe Rehabilitation	\$54,285	\$0	\$54,285
Colorado Dust-on-Snow Project	\$2,500	\$35,000	\$37,500
Colorado River Development & Curtailment Risk Study	\$8,000	\$0	\$8,000
Curry Easements Woody Invasive Removal Project - West Side of the North Fork of the Gunnison River	\$8,865	\$0	\$8,865
Development of Augmentation Supplies	\$50,000	\$0	\$50,000
Ditch Mapping of Colona Area	\$13,658	\$0	\$13,658
Ditch System Study (continuation Tunnel Reconstruction Project)	\$0	\$82,686	\$82,686
Duke Ditch Piping Project	\$47,237	\$47,237	\$94,474
Eggleston Dam Outlet Repair Project	\$46,911	\$0	\$46,911
Engineering Review of Marcot Dam & Outlet Structure	\$10,000	\$0	\$10,000
Fire Mountain Canal Piping Project in the Gunnison River Basin	\$60,000	\$60,000	\$120,000
Gunnison Basin Implementation Plan	\$133,333	\$66,667	\$200,000
Gunnison Basin Roundtable Education Program	\$19,750	\$0	\$19,750
Gunnison River Riparian and Diversion Restoration Project	\$45,540	\$400,752	\$446,292
Hallenbeck Reservoir No. 1 Dam Rehabilitation (Purdy Mesa Dam)	\$25,000	\$75,000	\$100,000
Hanson Reservoir Outlet Rehabilitation	\$50,000	\$0	\$50,000
Hartland Diversion Dam — Partial Dam Removal and Stabilization	\$53,100	\$0	\$53,100
Hartland Diversion Dam Fish Passage Feasibility Study	\$22,100	\$0	\$22,100
Henson Creek and Lake Fork Confluence Channel Improvements	\$28,975	\$260,111	\$289,086

## Water Supply Reserve Fund Applications Approved by the CWCB Board

Name of Water Activity	Basin Account	Statewide Account	Total Request
<b>Gunnison Basin continued</b>			
Juniata Reservoir Spillway Modification	\$97,000	\$0	\$97,000
Lake Fork of the Gunnison River Enhancement Project	\$23,295	\$209,653	\$232,948
Lake San Cristobal Controlled Outlet Structure	\$35,000	\$0	\$35,000
Lake San Cristobal Inlet Preservation & Fishing Access Project - Easement	\$16,700	\$150,300	\$167,000
Lake San Cristobal Outlet Structure Modification--Phase III	\$0	\$120,960	\$120,960
Lamborn Water Treatment Plant Upgrade	\$75,000	\$310,000	\$385,000
Leon Park Reservoir Dam Outlet Repair	\$31,372	\$0	\$31,372
Lining Outlet for Grand Mesa Reservoir #6	\$19,840	\$0	\$19,840
Lone Cabin Dam Rehabilitation Project	\$121,150	\$46,000	\$167,150
Marcot Dam Outlet Repair	\$49,649	\$0	\$49,649
McCormick Ditch Reconstruction	\$21,346	\$0	\$21,346
McKoon/Blanchard Reservoir Repair Project	\$47,000	\$0	\$47,000
No Chico Brush Agricultural Water Research Project	\$35,000	\$0	\$35,000
North Farmers Ditch Slope Repair & Stabilization	\$35,000	\$0	\$35,000
North Fork Gunnison Enviro/Rec & Irrigation Infrastructure Assess & Planning	\$27,000	\$30,000	\$57,000
North Fork of the Gunnison Invasive Weed Removal	\$20,000	\$0	\$20,000
Off-System Raw Water Storage Project 7 Water Authority/Uncompahgre Valley Water Users Association	\$56,700	\$0	\$56,700
Orchard City Water Reservoir Project (Remaining Tasks)	\$0	\$480,000	\$480,000
Orchard City Water Reservoir Project (Task 1-3)	\$60,000	\$0	\$60,000
Orchard Ranch Ditch Company Pipe Project	\$25,000	\$25,000	\$50,000
Overland Reservoir Dam Expansion/Restoration	\$0	\$68,000	\$68,000
Paonia-Feldman Div Reconstruction; North Fork Gunnison River	\$48,000	\$62,700	\$110,700
Phase II Engineering for Lake San Cristobal Outlet Modification	\$75,265	\$0	\$75,265
Relief Ditch Diversion Dam Design	\$20,650	\$0	\$20,650
Remote Cloud Seeder - Grand Mesa	\$25,000	\$0	\$25,000
Remote Cloud Seeder for Upper Gunnison Basin	\$25,000	\$0	\$25,000
Repair of Gunnison Whitewater Park	\$10,000	\$0	\$10,000
Replacement of Measuring Devices on Grand Mesa	\$40,000	\$0	\$40,000
Ridgway Ditch and Lake Otonawanda Improvement Project	\$109,500	\$0	\$109,500
Safety & Service Needs Inventory for Res Leroux Creek Drainage	\$60,000	\$0	\$60,000
Sediment Mgmt Study For Paonia Reservoir - North Fork Gunnison	\$79,000	\$230,000	\$309,000
Somerset Div Improve Study – North Fork Gunnison River Corridor	\$4,800	\$43,200	\$48,000
Stewart Mesa Water Company Improvement Project	\$12,876	\$0	\$12,876
The Rehabilitation of Blanche Park Reservoir	\$75,000	\$0	\$75,000
Town of Olathe Water Rights	\$15,000	\$0	\$15,000
Town of Ridgway Lake Otonowanda Renovation Project	\$60,000	\$540,000	\$600,000
Tunnel Reconstruction Project	\$40,000	\$677,313	\$717,313
Upper Ohio Creek Flow Restoration	\$6,000	\$0	\$6,000
Upper Uncompahgre Basin WS Protection & Enhancement Project	\$25,000	\$25,000	\$50,000
Valley View Irrigation Improvement	\$11,817	\$0	\$11,817
Water Infrastructure and Supply Efficiency (WISE) Partnership:	\$10,000	\$0	\$10,000
West Reservoir No.1 Outlet Pipe Replacement	\$50,000	\$175,658	\$225,658
Young Creek Reservoir No. 1-2 Repair and Rehabilitation	\$60,000	\$75,000	\$135,000

## Water Supply Reserve Fund Applications Approved by the CWCB Board

Water Activity Name	Basin Account	Statewide Account	Total Request
<b>Metro Requests</b>	<b>\$2,725,031</b>	<b>\$7,501,732</b>	<b>\$10,226,763</b>
8th Avenue to 20th Street In-River , Recreation and Environmental Improvements and Floodplain Mitigation	\$150,000	\$300,000	\$450,000
Advancing Direct Potable Reuse to Optimize Water Supplies & Meet Future Needs	\$25,000	\$32,864	\$57,864
Aquifer Recharge Pilot Study	\$0	\$125,000	\$125,000
Aquifer Recharge Pilot Study	\$0	\$425,000	\$425,000
Basin Roundtable Project Exploration Committee: Flaming Gorge	\$8,700	\$7,143	\$15,843
Biological Treatment to Remove Selenium from Water Treatment Plant Concentrate	\$25,000	\$375,000	\$400,000
Bluff Lake Nature Center Aquatic Habitat Improvement Project	\$10,000	\$190,000	\$200,000
Chatfield Reallocation EIS/FR (South Platte BRT contributing \$27,000)	\$103,000	\$0	\$103,000
Data Loggers & Telemetry	\$50,000	\$78,216	\$128,216
Demonstration of Membrane Zero Liquid Discharge Process for Drinking Water Systems	\$50,000	\$233,333	\$283,333
Demonstration of Membrane Zero Liquid Discharge Process for Drinking Water Systems	\$1,417	\$0	\$1,417
Denver South Platte River Implementation Project - Frontier/Overland Final Design	\$175,000	\$300,000	\$475,000
Educating Denver Metro elected officials and decision makers on solutions-oriented water supply planning	\$14,820	\$0	\$14,820
Elbert County Rural Water Supply Study	\$40,000	\$20,000	\$60,000
Emergency Flood Recovery Assessment, Design, and Recovery including Cycle #2	\$150,000	\$0	\$150,000
Feasibility Study for Bureau of Reclamation Funding from the National Rural Water Supply Act	\$100,000	\$500,000	\$600,000
Grant-Frontier Park West Bank Riparian Floodplain Design and Construction Project	\$100,000	\$250,000	\$350,000
HB16-1256 South Platte Storage Study		\$105,584	\$105,584
Horse Creek Restoration Project	\$50,000	\$275,000	\$325,000
Josh Ames Diversion Removal on Poudre River	\$25,000	\$100,000	\$125,000
Lost Creek Aquifer Recharge and Storage Study	\$80,000	\$0	\$80,000
Meadow and South Ledge Diversion Reconstruction and Fish Passage Demonstration Project	\$4,250	\$80,750	\$85,000
North West Douglas County Rural Water Supply Project	\$50,000	\$950,000	\$1,000,000
Parker Water & San. & CO. State Univ Joint Project on the Rural/Urban Farm Model	\$150,000	\$0	\$150,000
Rotary Sprinkler Nozzle Retrofit	\$0	\$250,000	\$250,000
Rural Douglas County groundwater-level monitoring network	\$50,000		\$50,000
Rural Douglas County groundwater-level monitoring network	\$28,263	\$84,792	\$113,055
Rural Elbert County Groundwater-Level Monitoring Network	\$12,000	\$48,250	\$60,250





## Water Supply Reserve Fund Applications Approved by the CWCB Board

Water Activity Name	Basin Account	Statewide Account	Total Request
<b>Metro Continued</b>			
Rural Well Monitoring in Douglas County	\$13,977	\$0	\$13,977
Solicitation of Stakeholder Input through a South Platte Edition of Headwaters	\$16,019	\$0	\$16,019
South Metro Water Supply Authority - Regional Aquifer Supply Assessment	\$100,540	\$0	\$100,540
South Platte & Metro Integrated Basin Implementation Plan - Consumptive	\$166,000	\$83,000	\$249,000
South Platte & Metro Integrated Basin Implementation Plan - Consumptive	\$137,000	\$69,000	\$206,000
South Platte & Metro Integrated Basin Implementation Plan - Nonconsumptive	\$84,000	\$42,000	\$126,000
South Platte & Metro Integrated Basin Implementation Plan - Nonconsumptive	\$58,000	\$29,500	\$87,500
South Platte River Diurnal Flow Study	\$50,000	\$0	\$50,000
South Platte River Recreation and Habitat Feasibility Study	\$150,000	\$0	\$150,000
South Platte River Recreation and Habitat Improvement Preliminary Design	\$25,000	\$100,000	\$125,000
Theatre Troupe Water Outreach Project	\$8,300	\$0	\$8,300
Upper Mountain Counties Water Needs Assessment	\$43,587	\$0	\$43,587
Water Diplomats: University Students & the State Water Plan	\$4,575	\$24,300	\$28,875
Water Infrastructure & Supply Efficiency (WISE) Partnership: Western Pipeline Connection Engineering/Design	\$88,200	\$793,800	\$882,000
Water Infrastructure & Supply Efficiency (WISE) Partnership: Western Pipeline Connection Engineering/Design	\$68,800	\$619,200	\$688,000
Water Infrastructure and Supply Efficiency (WISE) Partnership: Conjunctive Use Infrastructure	\$40,000	\$800,000	\$840,000
Zero Liquid Discharge Pilot Study	\$200,000	\$200,000	\$400,000
Water Activity Name	Basin Account	Statewide Account	Total Request
<b>North Platte Basin Total Request</b>	<b>\$2,134,668</b>	<b>\$540,942</b>	<b>\$2,675,610</b>
Advancing Direct Potable Reuse to Optimize Water Supplies & Meet Future Needs	\$2,500	\$32,864	\$35,364
Basin Roundtable Project Exploration Committee: Flaming Gorge	\$1,000	\$0	\$1,000
BIP - North Platte Basin Implementation Plan	\$107,500	\$0	\$107,500
Effects of Mtn pine beetle and forest mgmt on water quantity, quality, and forest recovery N.P. and Upper CO River basins	\$212,306	\$164,618	\$376,923
Identification and assessment of important wetlands in N.P. River watershed	\$86,000	\$96,000	\$182,000
Jackson County Basin Wide Augmentation Plan	\$161,000	\$0	\$161,000



## Water Supply Reserve Fund Applications Approved by the CWCB Board

Water Activity Name	Basin Account	Statewide Account	Total Request
<b>North Platte Basin continued</b>			
MacFarlane Dam Rehabilitation Replacement Project	\$500,000	\$100,000	\$600,000
Mallon Extension Ditch Bypass Structure	\$35,900	\$0	\$35,900
Monitoring the effects of weather conditions on the evapotranspiration in N.P. Basin	\$50,409	\$50,409	\$100,818
Mutual Ditch - Structure for Water Control	\$41,940	\$0	\$41,940
New Pioneer Ditch Diversion Reconstruction Project	\$116,000	\$0	\$116,000
North Park Irrigated Meadow Conservation Program - Phase I	\$20,000	\$0	\$20,000
Re-establishment of Lysemeter in North Park to Determine High Altitude, Hay Meadow Crop Coefficients	\$97,051	\$97,051	\$194,102
Seneca Ditch - Structure for Water Control	\$57,539	\$0	\$57,539
Solicitation of stakeholder input through production of a North Platte Basin education package	\$14,040	\$0	\$14,040
Stambaugh Reservoir Outlet Repair	\$29,200	\$0	\$29,200
Structure for Water Control	\$36,000	\$0	\$36,000
Structures for Water Control: Headgates and Diversion	\$55,055		\$55,055
Structures for Water Control: Headgates and Diversion	\$128,828	\$0	\$128,828
Town of Walden Water Supply Improvement Project	\$385,000	\$0	\$385,000
Water Infrastructure and Supply Efficiency (WISE) Partnership: Conjunctive Use Infrastructure	\$10,000	\$0	\$10,000

Water Activity Name	Basin Account	Statewide Account	Total Request
<b>Rio Grande Basin Total Request</b>	<b>\$2,755,712</b>	<b>\$10,385,323</b>	<b>\$13,141,035</b>
2008 Rio Grande Riparian Stabilization Project	\$35,000	\$250,000	\$285,000
2009 Rio Grande Riparian Stabilization Project - Phase 4	\$50,000	\$98,000	\$148,000
Alamosa River In-stream Flow Project	\$64,500	\$0	\$64,500
Alamosa River Watershed Restoration Project	\$0	\$0	\$0
Basin Roundtable Project Exploration Committee: Flaming Gorge	\$1,000	\$7,143	\$8,143
Campbell-Ridden Property & Dugan Ranch Conservation Easement Projects	\$20,000	\$130,000	\$150,000
Colorado Dust-on-Snow Project	\$2,500	\$35,000	\$37,500
Conejos Groundwater Monitoring and Analysis	\$19,000	\$200,000	\$219,000
Conejos North Branch Water Conservation and Management	\$75,000	\$0	\$75,000
Conejos River and North Branch Diversion and Stabilization	\$50,000	\$333,700	\$383,700
Conejos River System Confluence Management Project			\$0
Conejos River System Confluence Management Project	\$15,000	\$280,000	\$295,000

## Water Supply Reserve Fund Applications Approved by the CWCB Board

Water Activity Name	Basin Account	Statewide Account	Total Request
<b>Rio Grande Basin continued</b>			
Conejos River System Gauging Stations Project	\$20,000	\$387,280	\$407,280
Conservation Reserve CREP Phase II	\$31,500	\$0	\$31,500
Culebra Watershed Vallejos Ditch Headgate Replacement	\$10,000	\$90,000	\$100,000
Drip Irrigation Field Trial for Sustainable Potato Cropping in the San Luis Valley	\$40,000	\$0	\$40,000
Educating Today to Balance Tomorrow's Water Supplies & Needs	\$25,000	\$0	\$25,000
Hydrologic Recharge Feasibility Study for the Rio Grande Basin Augmentation- Phase I	\$8,000	\$142,000	\$150,000
Implementing Public Education & Public Outreach in the Rio Grande River Basin: Education to Implementation	\$90,000	\$0	\$90,000
Increasing the Water Holding Capacity of Soil for Agricultural Sustainability in the San Luis Valley	\$98,200	\$0	\$98,200
Kerber Creek Restoration Project	\$34,871	\$0	\$34,871
Kerber Creek Restoration Project - Middle Parcel	\$30,000	\$0	\$30,000
Lower Willow Creek Restoration Project	\$50,000	\$200,000	\$250,000
Lower Willow Creek Restoration Project: Phase 2	\$55,000	\$0	\$55,000
Meeting the Rio Grande Basin Roundtable's Public Education & Public Outreach Goals	\$45,300	\$0	\$45,300
Mountain Home Reservoir Dam Outlet Works Upgrade Feasibility Study	\$25,000	\$0	\$25,000
Nash Ranch Conservation Easement Project	\$10,000	\$90,000	\$100,000
Platoro Reservoir Crest of Dam Repair	\$15,000	\$135,000	\$150,000
Platoro Reservoir Restoration	\$50,000	\$200,000	\$250,000
Plaza Project - Phase 3: Prairie Ditch Implementation Project	\$21,500	\$408,500	\$430,000
Plaza Project 2: McDonald Ditch Implementation Project and Supplemental Funding	\$22,000	\$409,000	\$431,000
Plaza Project 2: McDonald Ditch Implementation Project and Supplemental Funding	\$20,000	\$275,000	\$295,000
Preliminary Design Multi-use Rio Grande Reservoir Rehabilitation and Enlargement	\$0	\$288,000	\$288,000
Quantifying Mogote/Romero Flows & Effects on the Conejos System	\$16,700	\$268,300	\$285,000
Radar Monitoring & Hydrologic Modeling in the Upper Rio Grande Basin	\$37,000	\$200,000	\$237,000
Rehabilitation and Ditch Lining	\$100,000	\$0	\$100,000
Rio Grande Basin Conservation Reserve Enhancement Program	\$36,750	\$0	\$36,750
Rio Grande Basin Implementation Plan and Phase 1 & 2	\$286,975	\$138,800	\$425,775
Rio Grande County Hydro geologic Study	\$99,564	\$0	\$99,564





## Water Supply Reserve Fund Applications Approved by the CWCB Board

Water Activity Name	Basin Account	Statewide Account	Total Request
<b>Rio Grande Basin continued</b>			
Rio Grande Initiative: North Rio Grande Ranch Conservation Easement	\$15,000	\$55,000	\$70,000
Rio Grande Initiative: Haywood Ranch Conservation Easement	\$25,000	\$400,000	\$425,000
Rio Grande Reservoir Multi-Use Rehabilitation: Refinement and Enhancement of Reservoir Reoperation and Optimization Model	\$100,000	\$0	\$100,000
Romero-Guadalupe Channel Rectification Project	\$83,700	\$0	\$83,700
San Antonio River - El Codo Ditch Diversion and Rehabilitation	\$65,000	\$0	\$65,000
San Luis Peoples Ditch Upgrade and Rehabilitation Project - Phase I	\$40,000	\$0	\$40,000
San Luis Valley Wetland Wildlife Conservation Assessment	\$39,000	\$0	\$39,000
Sanchez Reservoir Phase 2 - Outlet Rehabilitation and Gate Tower Replacement	\$55,000	\$859,400	\$914,400
Sanchez Reservoir Rehabilitation - Phase I Assessment & Upgrade	\$10,000	\$85,000	\$95,000
Sangre de Cristo Trinchera Diversion Canal Restoration	\$50,000	\$150,000	\$200,000
Santa Maria and Continental Reservoirs: Rehabilitation and Multiple Use Studies	\$72,000	\$141,700	\$213,700
Santa Maria Reservoir Phase 2 - Continental Dam and Spillway Restoration	\$51,000	\$962,750	\$1,013,750
SANTA MARIA RESERVOIR SIPHON & CANAL SYSTEM REHABILITATION	\$23,000	\$440,750	\$463,750
Shortfall Request - Sangre de Cristo Trinchera Diversion Canal Restoration	\$54,000	\$0	\$54,000
Solicitation of Stakeholders Input & Advice through publication of a Rio Grande Edition of Headwaters Magazine	\$33,237	\$0	\$33,237
Terrace Reservoir Spillway Replacement	\$75,000	\$1,425,000	\$1,500,000
The McDonald Ditch and Plaza Project, Phase I Planning	\$40,000	\$0	\$40,000
The Rio Grande Basin "Narrowing the Gap" for Colorado's Water Future	\$23,500	\$0	\$23,500
Upper Rio Grande Assessment	\$67,000	\$0	\$67,000
Water 2012: The Rio Grande Basin Partnering for Colorado's Water Future	\$15,600	\$0	\$15,600
Water Infrastructure and Supply Efficiency (WISE) Partnership: Conjunctive Use Infrastructure	\$10,000	\$0	\$10,000

## Water Supply Reserve Fund Applications Approved by the CWCB Board

Water Activity Name	Basin Account	Statewide Account	Total Request
<b>South Platte Basin Total Request</b>	<b>\$2,635,562</b>	<b>\$7,061,094</b>	<b>\$9,696,656</b>
Advancing Direct Potable Reuse to Optimize Water Supplies & Meet Future Needs	\$15,000	\$32,864	\$47,864
Agricultural Land/Water Buffer Feasibility Analysis in the South Platte River Basin	\$20,000	\$84,954	\$104,954
Alluvial Aquifer Accretion/Depletion Analysis Tool	\$0	\$200,000	\$200,000
Arickaree River Well retirement program, Republican River basin, CO.	\$19,984	\$79,936	\$99,920
Basin Roundtable Project Exploration Committee: Flaming Gorge	\$2,000	\$7,147	\$9,147
Central South Platte Wetland Partnership	\$150,000	\$0	\$150,000
Chatfield Reallocation EIS/FR (South Platte BRT contributing \$27,000)	\$27,000		\$27,000
Clear Creek Water Banking/High Altitude Storage	\$52,000	\$0	\$52,000
Colorado Agricultural Meteorological Network (CoAgMet)	\$20,000	\$0	\$20,000
Colorado Agricultural Water Alliance Workshop	\$2,550	\$0	\$2,550
Data Logger Installation Project, South Platte River Basin	\$88,958	\$0	\$88,958
Data Loggers & Telemetry	\$103,216	\$78,216	\$181,432
Demonstration of Membrane Zero Liquid Discharge Process for Drinking Water Systems	\$25,000	\$233,333	\$258,333
Demonstration of Membrane Zero Liquid Discharge Process for Drinking Water Systems	\$25,000	\$0	\$25,000
Denver South Platte River Implementation Project - Frontier/Overland Final Design	\$25,000		\$25,000
Development of Decision Support Model for Identifying & Ranking Waterfowl and Wildlife Related Recharge Projects along the South Platte River	\$0	\$85,421	\$85,421
Economic Analysis and Design of Policies to Reduce Colorado's Groundwater Use in the Northern High Plains Ground Water Basin	\$7,994	\$151,888	\$159,882
Elbert County Rural Water Supply Study	\$40,000	\$20,000	\$60,000
Emergency Flood Recovery Assessment, Design, and Recovery including Cycle #2	\$150,000	\$2,255,000	\$2,405,000
FMRICo Recharge & Wetlands Project	\$250,000	\$420,000	\$670,000
Greeley Area Cache la Poudre Greenway Corridor Project	\$15,000	\$25,000	\$40,000
Green Ditch Rehabilitation and Fish Passage Project	\$25,000	\$220,000	\$245,000
Halligan Seaman Water Mgmt project share vision planning model	\$25,435	\$76,305	\$101,740
HB16-1256 South Platte Storage Study	\$0	\$105,584	\$105,584
Horse Creek Restoration Project	\$50,000	\$275,000	\$325,000
Josh Ames Diversion Removal on Poudre River	\$75,000	\$100,000	\$175,000
Little Thompson Watershed Needs Assessment	\$60,000	\$0	\$60,000



## Water Supply Reserve Fund Applications Approved by the CWCB Board

Water Activity Name	Basin Account	Statewide Account	Total Request
<b>South Platte Basin continued</b>			
Lower South Platte Water Cooperative Organizational Analysis	\$60,977	\$200,000	\$260,977
Lower South Platte Wetland Initiative Phase I South Platte River, CO	\$0	\$278,476	\$278,476
Meadow and South Ledge Diversion Reconstruction and Fish Passage Demonstration Project	\$4,250	\$80,750	\$85,000
Ovid Reservoir Comprehensive Feasibility Study	\$176,000	\$0	\$176,000
Poudre River Downtown Project – Reach 3	\$50,000	\$250,000	\$300,000
Prewitt Reservoir Wetland Partnership	\$45,414	\$45,414	\$90,828
Rural Elbert County Groundwater-Level Monitoring Network	\$6,000	\$48,250	\$54,250
S.P. Water protection and restoration	\$0	\$825,552	\$825,552
Solicitation of Stakeholder Input through a South Platte Edition of Headwaters	\$32,038	\$0	\$32,038
South Platte & Metro Integrated Basin Implementation Plan - Consumptive	\$303,000	\$152,000	\$455,000
South Platte & Metro Integrated Basin Implementation Plan - Nonconsumptive	\$142,000	\$71,500	\$213,500
South Platte River Diurnal Flow Study	\$50,000	\$0	\$50,000
South Platte River Phreatophyte Control Pilot	\$35,000	\$30,000	\$65,000
South Platte River Recreation and Habitat Improvement Preliminary Design	\$25,000	\$100,000	\$125,000
Stage Discharge Data Loggers and Telemetry	\$48,800		\$48,800
State Land Board South Platte Recharge Study	\$33,663	\$0	\$33,663
Swede Lake Dam & Reservoir Rehabilitation	\$40,000	\$160,000	\$200,000
Upper Mountain Counties Water Needs Assessment	\$130,763	\$0	\$130,763
Upper Platte and Beaver/Deuel and Snyder Feasibility Study	\$46,875	\$46,875	\$93,750
Water Development of the Bureau of Reclamation properties, known as the Narrows Tract, along the South Platte River	\$15,554	\$121,633	\$137,187
Water Information Dashboards for Improved Efficiency, South Platte Basin and Statewide	\$20,000	\$200,000	\$220,000
Water Infrastructure and Supply Efficiency (WISE) Partnership: Conjunctive Use Infrastructure	\$15,000	\$0	\$15,000
Weld County School Dist RE1 Wetland Partnership	\$42,110	\$0	\$42,110

## Water Supply Reserve Fund Applications Approved by the CWCB Board

Water Activity Name	Basin Account	Statewide Account	Total Request
<b>Southwest Basin Total Request</b>	<b>\$2,734,563</b>	<b>\$7,259,911</b>	<b>\$9,994,474</b>
48 inch Culvert Replacement Project	\$34,354	\$0	\$34,354
A Way Forward: The Dolores River Below McPhee Reservoir	\$25,000	\$0	\$25,000
Animas Airpark Water Distribution System	\$20,000	\$0	\$20,000
Animas River Community Forum - Education & Outreach in the Southwest River Basin	\$37,850	\$0	\$37,850
Animas River Diversion Headgate Monitoring Study	\$14,500	\$0	\$14,500
Animas River Needs Assessment	\$57,000	\$0	\$57,000
Animas Valley Ditch & Water Co. Emergency Ditch Repair	\$30,000	\$0	\$30,000
Aspen Springs Metro Water Filling Station	\$30,000	\$0	\$30,000
Basin Roundtable Project Exploration Committee: Flaming Gorge	\$1,000	\$7,143	\$8,143
Bauer Lakes Water Co. Dam Outlet Structure Upgrade	\$40,000	\$0	\$40,000
Canal Seepage Reduction Program	\$0	\$775,000	\$775,000
Canal Seepage Reduction Project	\$0	\$225,000	\$225,000
Colorado Dust-on-Snow Project	\$2,500	\$35,000	\$37,500
Colorado River Development & Curtailment Risk Study	\$8,000	\$0	\$8,000
Construction of Municipal Water Distribution Pipeline and Related Facilities	\$25,000	\$475,000	\$500,000
Ditch Loss, Hydropower, and Monitoring Improvement Program	\$100,000	\$0	\$100,000
Dry Gulch Reservoir/San Juan Reservoir Land Acquisition	\$0	\$1,000,000	\$1,000,000
Evaluation of Potential Infrastructure Upgrades	\$26,000	\$0	\$26,000
Gauging Station with Telemetry in the Southwest River Basin	\$12,100	\$0	\$12,100
Geothermal Greenhouse Partnership Project	\$25,000	\$50,000	\$75,000
Goodman Point Phase 2	\$20,000	\$240,000	\$260,000
Goodman Point Water Association Pipeline Environmental Assessment	\$7,700	\$0	\$7,700
Groundhog Reservoir Bathymetric Survey	\$35,000	\$0	\$35,000
Hess Lateral Improvement Project	\$38,750	\$736,250	\$775,000
Improved Water User, Conservation, Management and Operations through the Implementation of Water Accounting Software	\$52,500	\$0	\$52,500
Jackson Gulch Reservoir Expansion Project	\$80,000	\$0	\$80,000
Jackson Lake - Bauer Lake #2 Ditch Upgrade Project	\$55,000	\$0	\$55,000
Joseph Freed & Red Mesa Headgate and Ditch Improvement Project	\$55,000	\$0	\$55,000
La Plata Archuleta Water District Permitting	\$0	\$400,000	\$400,000



## Water Supply Reserve Fund Applications Approved by the CWCB Board

Water Activity Name	Basin Account	Statewide Account	Total Request
<b>Southwest Basin continued</b>			
La Plata County Palo Verde PID #3 Water Delivery Project	\$25,000	\$0	\$25,000
La Plata River Water Resources Operations Model and SUPPLEMENTAL FUNDING	\$0	\$155,749	\$155,749
La Plata West Rural Water Supply System	\$100,000	\$1,000,000	\$1,100,000
Lake Durango Water Authority/ Source Water Infrastructure	\$50,000	\$450,000	\$500,000
Long Hollow Reservoir Compact Water Delivery Study	\$38,000	\$0	\$38,000
Lower Blanco River Restoration Project	\$100,000	\$150,000	\$250,000
Mancos Raw Water Improvements	\$81,765	\$0	\$81,765
Mancos River Diversion Project, Phase I	\$24,753	\$0	\$24,753
Mancos River Habitat and Diversion Project - Phase 2	\$20,000	\$99,340	\$119,340
Mancos River Habitat and Diversion Project – Phase III	\$59,000	\$0	\$59,000
McElmo Flume Rehabilitation Project	\$20,000	\$0	\$20,000
Molas Lake Ditch Rehabilitation and Diversion Structures	\$95,000	\$0	\$95,000
MVIC Summit Irrigation Company feasibility study	\$39,300	\$0	\$39,300
North Thompson Ditch	\$20,000	\$0	\$20,000
Pagosa Lakes Area Village Lake Dam Outlet Pipe Repair Project	\$25,000	\$0	\$25,000
Park Ditch Improvements	\$85,000	\$0	\$85,000
Phase 3 of the Southwest Basin Roundtable's Implementation Plan: Implementation and Outreach	\$87,562	\$43,781	\$131,343
Protecting Irrigated Agricultural Lands and Water Rights for Agricultural Production	\$31,500	\$0	\$31,500
Raw Water Pipeline Upgrade & Operations Funding	\$50,000	\$500,000	\$550,000
Raw Water System Update and Future Needs Study	\$58,458	\$0	\$58,458
Recreational Plan for Lake Nighthorse	\$25,000	\$0	\$25,000
Red Mesa Dam & Reservoir – Spillway Alternatives Analysis	\$19,400	\$0	\$19,400
Red Mesa Dam Incremental Damage Analysis (IDA) and Emergency Action Plan (EAP)	\$29,000	\$0	\$29,000
Red Mesa Feasibility Study	\$30,000	\$0	\$30,000
Redburn Ranch Diversion Dam Project	\$50,000	\$98,500	\$148,500
Rehabilitation of the Old Fort at Herperus Water System	\$25,000	\$0	\$25,000
San Miguel River Stream Management Plan Pilot Project	\$32,138	\$0	\$32,138

## Water Supply Reserve Fund Applications Approved by the CWCB Board

Water Activity Name	Basin Account	Statewide Account	Total Request
<b>Southwest Basin continued</b>			
Southwest Basin Implementation Plan- Phase 2	\$24,000	\$12,000	\$36,000
Southwest Basin Implementation Plan	\$51,015	\$25,127	\$76,142
Spring Creek Ditch Siphon Replacement	\$29,000	\$0	\$29,000
Sullivan Ditch Repair Project in the Southwest River Basin	\$27,298	\$0	\$27,298
SW Colorado Weather Modification Strategic Plan for Winter Snow Pack Augmentation	\$55,620	\$0	\$55,620
Telluride Pines Water Augmentation	\$25,000	\$0	\$25,000
Thompson-Epperson Ditch Stabilization	\$30,000	\$0	\$30,000
Totten Reservoir Hydrographic Survey	\$29,500	\$0	\$29,500
Town of Mountain Village 2015 Waterline Extension Project	\$30,000	\$0	\$30,000
Town of Rico Alluvium Pipeline Water Supply Project - Well Drilling and Water Quality Testing	\$20,000	\$68,000	\$88,000
Upper Dolores CAMP ( Coldwater Fisheries Adaptive Mgmt Plan)	\$15,000	\$0	\$15,000
Ute Mountain Ute Tribe Water Conservation and Management Plan	\$30,000	\$40,000	\$70,000
Valley Floor River Restoration Reach One	\$45,000	\$399,021	\$444,021
Water System Master Planning	\$100,000	\$0	\$100,000
Water System Well, Treatment System and Distribution Upgrades	\$50,000	\$0	\$50,000
West Montrose County Reservoir	\$50,000	\$250,000	\$300,000
Wines Ditch Diversion Evaluation	\$40,000	\$25,000	\$65,000
Water Activity Name	Basin Account	Statewide Account	Total Request
<b>Yampa White Green Basin Total Request</b>	<b>\$2,194,744</b>	<b>\$731,747</b>	<b>\$2,926,491</b>
Agricultural Water Needs Assessment	\$201,410	\$0	\$201,410
Armstrong Creek Restoration Project	\$15,000	\$35,000	\$50,000
Colorado River Development & Curtailment Risk Study	\$8,000	\$0	\$8,000
Common Data Repository	\$106,600	\$0	\$106,600
Continuation of lysimeter operations & consumptive use quantification in high-altitude, irrigated meadows in the Yampa/White	\$11,304	\$11,304	\$22,608
Croshe Lake and Reservoir - Simon #1 Dam Outlet Replacement	\$30,000	\$108,380	\$138,380
Development & Implementation of Water Education & Networking 3 year Program of Discussions, Forums, Workshops Tours	\$30,000	\$0	\$30,000
Dev & Implement of Water Education & Outreach: A 3-Year Program of Collateral Dissemination, Media Networking, Forums & Workshops.	\$150,000	\$0	\$150,000
Energy Development Water Needs Assessment (300,000 Joint Application see Colorado)	\$0	\$150,000	\$150,000
Energy Development Water Needs Assessment Study Update	\$25,000	\$0	\$25,000

## Water Supply Reserve Fund Applications Approved by the CWCB Board

Water Activity Name	Basin Account	Statewide Account	Total Request
<b>Yampa White Green Basin continued</b>			
Headwaters Magazine - January 2010	\$20,000	\$0	\$20,000
Improvement of Lysemeter Operations & Consumptive Use Quantification in High-Altitude Irrigated Meadows in the Yampa /White Basin	\$10,000	\$10,978	\$20,978
Morrison Creek Reservoir Feasibility Study	\$49,500	\$0	\$49,500
Rangely Irrigation System Master Plan Study	\$12,500	\$0	\$12,500
Sandwash basin coalbed methane production depletive effects on water resources	\$20,000	\$98,835	\$118,835
Sparks Reservoir	\$16,000	\$0	\$16,000
Steamboat Springs Yampa River Management Plan	\$21,000	\$0	\$21,000
Stillwater Reservoir Seepage Project	\$189,000	\$0	\$189,000
Town of Yampa Water Facilities Plan and storage tank upgrades	\$61,062	\$0	\$61,062
Upper Yampa Water Conservancy District Master Plan Modeling in the Yampa River Basin	\$25,000	\$0	\$25,000
Water Infrastructure and Supply Efficiency (WISE) Partnership: Conjunctive Use Infrastructure	\$10,000	\$0	\$10,000
White River Storage Feasibility Study	\$67,500	\$67,500	\$135,000
White River Storage Study - Phase 2	\$97,750	\$97,750	\$195,500
White River-Highland Ditch Diversion & Headgate Redesign	\$30,000	\$0	\$30,000
Yampa River Structures Project	\$50,000	\$0	\$50,000
Yampa White Basin Nonconsumptive Needs Assessment Watershed Flow Evaluation Tool	\$169,002	\$0	\$169,002
Yampa White Green Basin Roundtable Phase II Agricultural Needs/Return Flow Preliminary Assessment	\$13,250	\$0	\$13,250
Yampa/White Basin Implementation Plan	\$317,066	\$0	\$317,066
Yampa/White/Green Basin Implementation Plan Modeling	\$150,000	\$0	\$150,000
Yampa-White Basin Projects and Methods Analysis	\$58,000	\$152,000	\$210,000
Yellow Jacket Water Storage Feasibility Study	\$220,800	\$0	\$220,800

For more information, please contact:

**Craig Godbout**  
 1313 Sherman St. Room 718  
 Denver, CO 80203  
 303-866-3441, ext. 3210  
[www.cwcb.state.co.us](http://www.cwcb.state.co.us)  
[craig.godbout@state.co.us](mailto:craig.godbout@state.co.us)

John W. Hickenlooper Governor | Robert Randall DNR Executive Director | James Eklund CWCB Director

