



Colorado's Water Supply Future



Water Supply Reserve Account Annual Report

October 31, 2012

Helping Meet Colorado's Consumptive and Non-Consumptive Water Needs



Rio Grande Riparian Stabilization Project — Phase 3

**To the House of Representatives Committee on
Agriculture, Livestock, and Natural Resources and the
Senate Committee on Agriculture, Natural Resources, and Energy**



Background

The Water Supply Reserve Account (Account) was created in 2006 by Senate Bill 06-179. The legislature created the Account to help citizens identify and meet their critical water supply and management needs. The Account may be used to:

- Identify human, environmental, or recreational water needs (also commonly referred to as "Needs Assessments")
- Evaluate water supplies in each basin
- Build projects or identify methods to meet the water supply needs of the river basin

The authorizing legislation provides funds for a broad range of eligible activities including: construction of infrastructure (storage, pipelines, river improvements, etc.), feasibility studies, studies of human and environmental needs, and technical assistance for permitting or environmental compliance.

Overview

The Account is administered by the Colorado Water Conservation Board (CWCB) in collaboration with the Interbasin Compact Commission (IBCC) and the 9 Basin Roundtables established under House Bill 05-1177 (Colorado Water for the 21st Century Act). Requests for funding begin at the Basin Roundtables. Applications approved by the local Roundtable are submitted to the CWCB. To date, all funding has been for grants, though most project sponsors provide matching funds and/or leverage other monies.

Monies from the Account are distributed according to the Criteria and Guidelines, which were jointly developed by the CWCB and IBCC in collaboration with the Basin Roundtables. The Criteria and Guidelines are reviewed annually in October to consider changes to the Account's operation. The Criteria and Guidelines, application, and other materials are available on the CWCB website.

Accomplishments

Water Supply Reserve Account projects have been approved across the entire state (see map on page 4). The WSRA Criteria and Guidelines split the Account into Basin and Statewide Funds. Each Basin Account has received \$1,662,829 to date.

Figure 1 shows the amount approved from each Basin Account (totaling \$11,836,432).

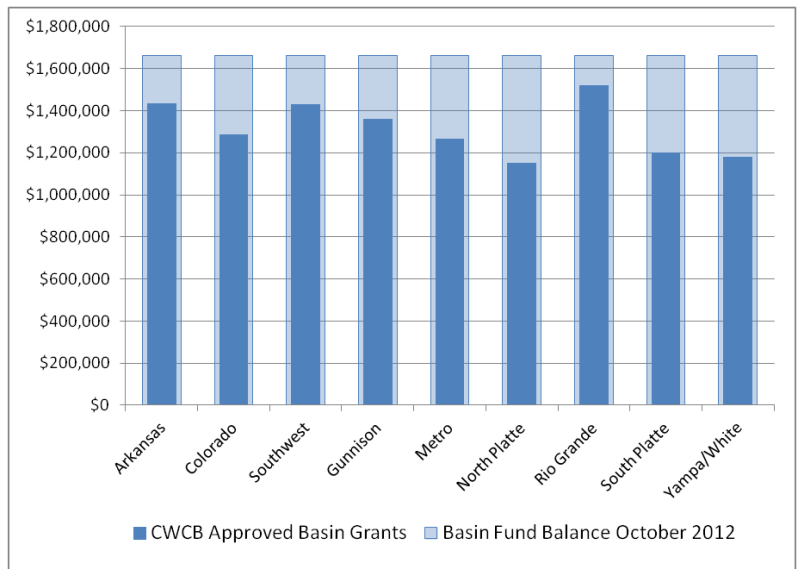


Figure 1. Basin Fund Distribution Approved per Basin

To date, the Statewide Account has received \$30,481,056, with \$27,412,676 in approved grants. The distribution of WSRA funds from the Statewide Account per basin is shown in Figure 2.

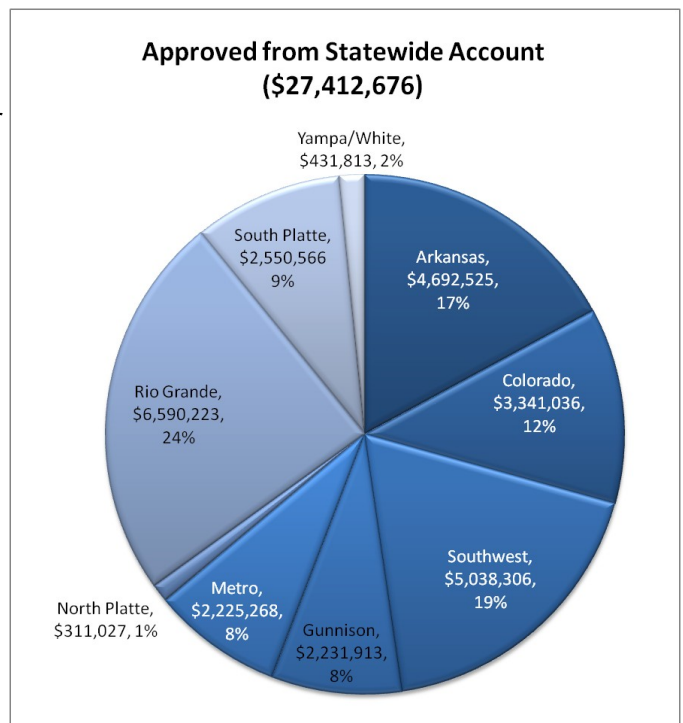


Figure 2. Statewide Fund Distribution Approved per Basin

Program Highlights

- ◆ Almost \$40,000,000 Granted for over 220 Projects Across Colorado
- ◆ Over \$72,000,000 Leveraged with Matching Funds from Numerous Other CWCB, Other State, Federal, and Local Sources
- ◆ Projects Recommended by Basin Roundtables on a Consensus Basis with Final Approval by the CWCB

Leveraging Success: The WSRA and CWCB's Loan Program

Thanks to CWCB's Water Project Loan Program, the CWCB is a self-funded agency that does not receive any money from the General Fund. To ensure that the WSRA program was complimenting the loan program to the maximum extent possible, a joint program was established in FY2011/2012. To increase CWCB loans while helping water users throughout the state meet critical needs, the WSRA now gives preference to applicants that seek a WSRA Grant & CWCB Loan package. To date, the following applicants have benefited from the program:

- Lake Durango Water Authority
- North Delta Irrigation Company
- Terrace Irrigation Company
- Caitlin Canal Company
- Sanchez Ditch and Reservoir Company
- Town of Ridgway

Projects funded from the Account have addressed both consumptive (agricultural and municipal) and nonconsumptive (environmental and recreational) needs with most of the projects addressing multiple needs. Figure 3 shows the distribution of WSRA funding by primary category.

Funds from the Account provide the means to conduct both studies of water needs and actual project implementation. Figure 4 shows how the Account has supported both aspects of water projects by amount of funding as well as number of projects funded. Though the Account has funded a large amount of studies and it is clear that much more focus and funding has gone towards the implementation of projects to meet critical water supply needs.

Observations

The Water Supply Reserve Account Program has been a tremendous success. The Account has funded a mix of consumptive and nonconsumptive water projects and promoted multi-purpose projects throughout the State. The Account has funded projects that help Colorado meet its water supply needs with funding that was not available until the passage of the legislation. A sampling of

WSRA Funding by Primary Category

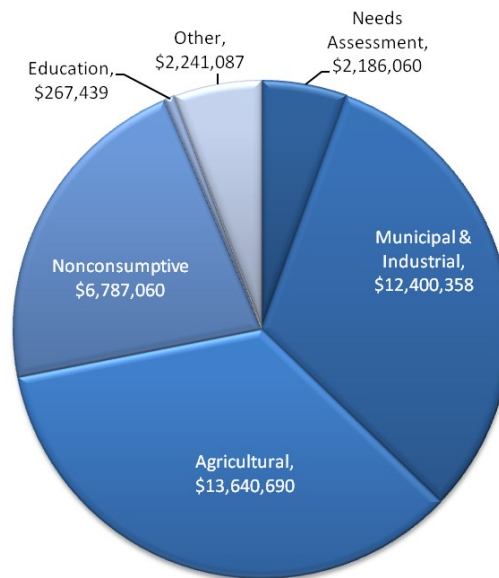


Figure 3. Funding Distribution by Primary Category

Sustaining Mineral Severance Tax Funding - Vital for Ongoing Success

Colorado has billions of dollars in funding needs for water supply and management projects. The mineral severance tax fund was established to help local communities offset the impacts of extracting nonrenewable resources. The distribution formula for severance tax emphasizes water supply in order to provide a renewable resource – *water* – to help offset the impact from extractive natural resource development. The WSRA furthers this objective by helping to provide an adequate water supply for Colorado's citizens and environment.

WSRA Projects Studies vs. Implementation

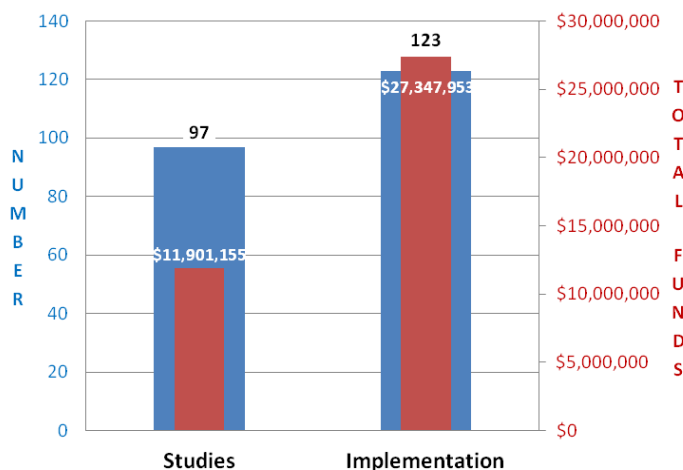


Figure 4. Funding and Project Distribution by Type



concrete results from the program can be seen in the adjacent Table 1.

The annual review of the Criteria and Guidelines allows for program adjustments. Adjustments to the Criteria and Guidelines have enabled the WSRA to adapt to the changing needs of Colorado's water community and meet the diverse needs of projects throughout the state.

By the Numbers: A Sampling of data from the WSRA Program	
New Storage Created (acre-feet)	845
New Annual Water Supplies (acre-feet)	2,180
Existing Storage Preserved or Enhanced (acre-feet)	107,729
Length of Stream Restored or Protected (linear Feet)	155,317
Length of Pipe/Canal Built or Improved (linear feet)	117,258
Area of Restored or Perserved Habitat (acres)	40,648
Efficiency Savings (dollars/year)	25,000
Efficiency Savings (acre-feet/year)	64,163
Reports/Studies (engineering, feasibility, watershed, etc.)	97

Table 1. Summary of Selected WSRA Results

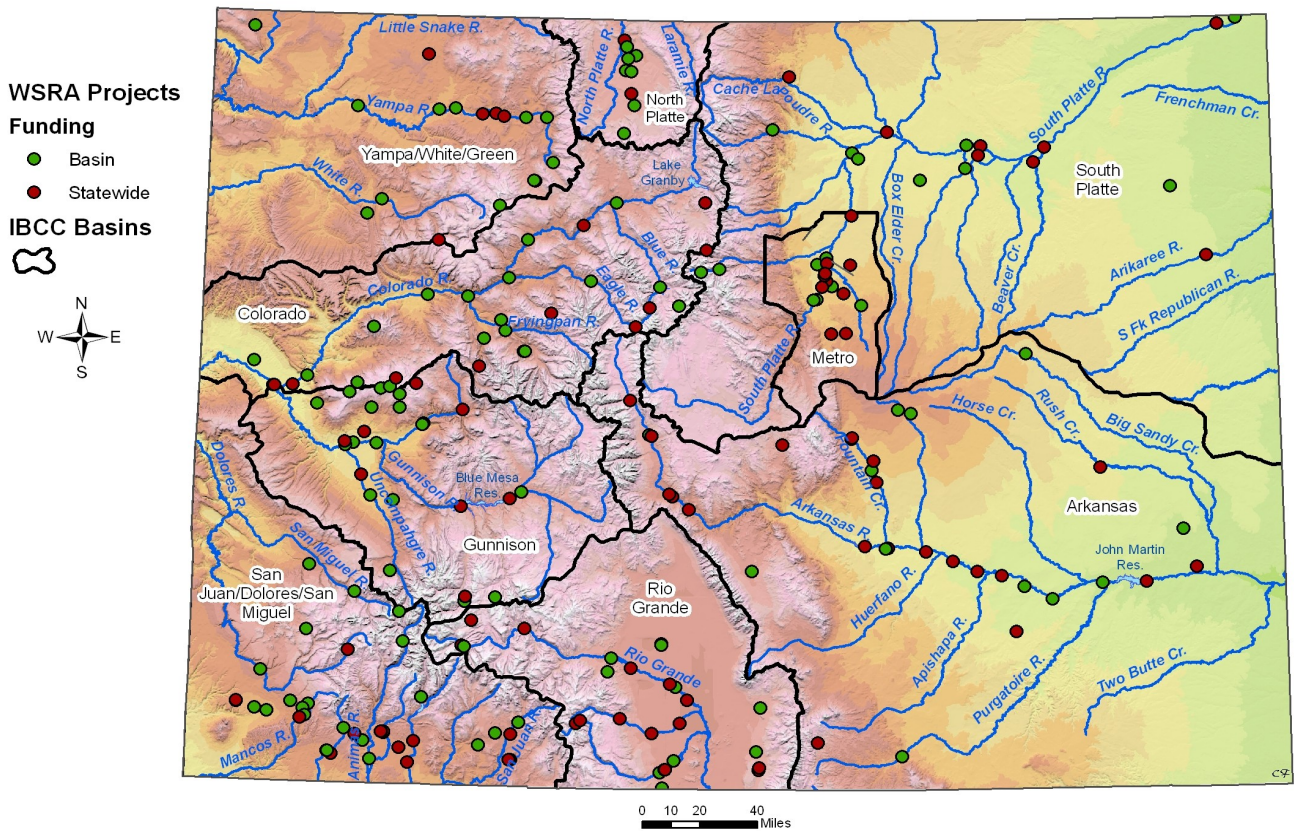
Funding Summary

Table 2 displays the legislative appropriations and actual funds received by the Water Supply Reserve Account Program since its inception in 2006. As a Severance Tax "Tier II" program appropriated funds are distributed on a 3-part schedule as available with 40% on July 1, 30% on January 1, and the final 30% on April 1 of the fiscal year. All funds are subject to availability of revenues from current severance tax collection. In Fiscal Year 2008/2009 the final 30% installment was not received due to the state's budgetary shortfall. Table 2 also shows the breakdown of funds between the Basin and Statewide Accounts as directed by the Criteria and

Guidelines. The Basin Account funds are then distributed evenly among the 9 basin roundtables.

Figure 5 summarizes the status of all approved WSRA projects. Per the WSRA Criteria and Guidelines applications for the Basin Account are considered at each of the CWCB's bi-monthly board meetings once they have received approval from the appropriate basin roundtable as documented in a letter from the roundtable's chair. Applications to the Statewide Account are considered twice a year, at the September and March CWCB board meetings.

Geographic Distribution of WSRA Projects



Recent Legislation and the Future of the WSRA

In 2009, the Water Supply Reserve Account Program was reauthorized in perpetuity by SB 09-106. SB 09-106 appropriates \$10,000,000 per year from the Severance Tax Trust Fund, subject to available funding. Due to budget shortfalls the WSRA has received the following funding the past 4 years: FY2008 \$6,000,000; FY2009 \$7,000,000; FY2010 \$5,775,000; FY2011 \$6,000,000.; FY2012 \$7,000,000. It is authorized to receive \$10,000,000 in FY2013, but will likely receive much less due to a decrease in severance tax revenues.

Summary of WSRA Project Status

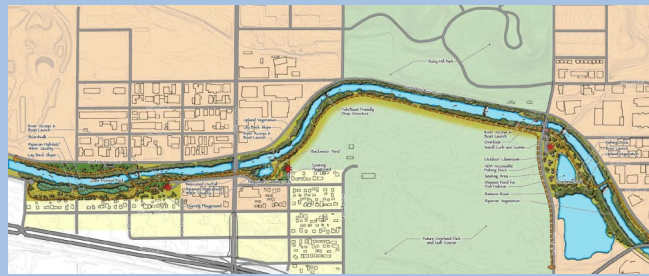


Figure 5. Summary of WSRA Project Status

Project Success Story:

The Greenway Foundation's Denver South Platte River Implementation Project

An excellent example of a nonconsumptive (environmental and recreational) project funded by the WSRA is provided by the Greenway Foundation in collaboration with the City and County of Denver. Through the cooperation of the South Platte and Metro Basin Roundtables the WSRA has helped the Greenway Foundation provide critical river improvements through the most heavily populated river corridor in the state. An initial grant was used for a feasibility study, which was then followed up with a grant for preliminary design work. Finally, a grant for implementation is seeing the project through to completion while leveraging \$5.3 million from Great Outdoors Colorado, Natural Resource Damage Funds, and the Urban Drainage and Flood Control District. The revitalization enabled by these improvements is bringing this heavily used area in the heart of Denver back to life.



WSRA Fund Appropriation and Receipts October 2012

Fiscal Year	Legislative Appropriation	Funds Received	Statewide Account	Basin Account
2006/2007	\$10,000,000	\$10,000,000	\$5,500,000	\$4,500,000
2007/2008	\$6,000,000	\$6,000,000	\$4,200,000	\$1,800,000
2008/2009	\$10,000,000	\$7,000,000	\$4,300,000	\$2,700,000
2009/2010	\$5,775,000	\$5,775,000	\$4,215,750	\$1,559,250
2010/2011	\$6,000,000	\$6,000,000	\$4,380,000	\$1,620,000
2011/2012	\$7,000,000	\$7,000,000	\$4,732,000	\$2,268,000
2012/2013	\$10,000,000	\$1,439,478	\$921,266	\$518,212
Interest	N/A	\$2,232,040	\$2,232,040	\$0
TOTAL	\$44,775,000	\$45,446,518	\$30,481,056	\$14,965,462

Note: The WSRA is a Severance Tax "Tier II" program with 40% of funds distributed on July 1, 30% on January 1, and the final 30% on April 1.

In FY 2008/2009 the final 30% installment of \$3,000,000 was not received due to the State's budgetary shortfall.

In January 2012 interest for the program from its inception to date was credited directly to the Statewide Account.

Interest from January 2012 has been regularly calculated by the Treasury and credited to the Statewide Account.

Table 2. Summary of WSRA Appropriations and Receipts



Water Supply Reserve Account Applications Approved by the CWCB

Name of Water Activity	Basin Account	Statewide Account	Total
Arkansas Basin Total Request	\$1,434,767	\$4,692,525	\$6,127,292
Arkansas Valley Conduit		\$200,000	\$200,000
Southeastern Colorado Water Conservancy District: Tamarisk Project		\$50,000	\$50,000
Upper Black Squirrel Creek Aquifer Recharge Investigation	\$45,200		\$45,200
Ground Water Conference	\$24,721		\$24,721
Fountain Creek Vision Task Force	\$75,000		\$75,000
Round Mountain Water & Sanitation District Water System Improvements Project	\$120,000		\$120,000
Rotational Land Fallowing-Water Leasing Program -Lower Arkansas Super Ditch Company	\$150,000		\$150,000
Upper Big Sandy Water Balance	\$45,000		\$45,000
Model Transfers- Agriculture to Urban, Arkansas Basin	\$23,860		\$23,860
Arkansas Headwaters Diversion Structure Improvement Project		\$57,955	\$57,955
City of Las Animas Water System Improvements	\$100,000	\$200,000	\$300,000
Colorado State Parks Zebra Mussel Response		\$1,000,000	\$1,000,000
Geospatial decision support system for integrated water management	\$100,000	\$500,000	\$600,000
Telemetry data collection platforms at six reservoirs plus flow control equipment and gauging at six reservoir outlet channels & nine streams w/in the upper Ark River basin	\$75,000	\$210,332	\$285,332
Demonstration of Membrane Zero Liquid Discharge Process for Drinking Water Systems (Joint Appl. with SP & Metro)	\$25,000	\$233,333	\$258,333
John Martin Wetlands and Neenoshe Reservoir Nonconsumptive Needs Quantification	\$148,975		\$148,975
Upper Arkansas Water Conservancy District Hydrologic Water Balance Study		\$180,000	\$180,000
City of Pueblo - Bedload/Sediment Collection and Removal Technology - Fountain Creek	\$75,000	\$150,000	\$225,000
Flaming Gorge Project Task Force Assessment	\$20,000		\$20,000
Stakeholders' Cooperative Mgmt Analysis for the Upper Arkansas River Basin	\$33,600		\$33,600
Flathead chub movement associated with the Clear Springs Ranch diversion structure in Fountain Creek	\$7,000	\$28,000	\$35,000
Trinidad/Purgatorie River Reach 4 Demonstration Project	\$75,000		\$75,000
Helena Diversion Structure/BV Boat Chute Improvement Project	\$35,000	\$290,000	\$325,000
Raising Awareness in 2012: A Statewide Celebration of Colorado Water		\$30,515	\$30,515
Super Ditch Delivery Engineering		\$225,837	\$225,837
Blue Mesa Reservoir - Use of Excess Storage Capacity	\$24,500	\$98,000	\$122,500
A Multi-Media Program for Reporting Crop and Turf Water Use Estimates from the Colorado Agricultural Meteorological Network (CoAgMet)	\$9,394	\$37,577	\$46,971
Rotating Agricultural Fallowing Public Policy Working Group	\$20,000		\$20,000
Basin Roundtable Project Exploration Committee: Flaming Gorge	\$5,300	\$7,143	\$12,443
Lower Arkansas Valley Water Conservancy District - Colorado Water 2012	\$6,255		\$6,255
Trinidad North Lake Rehabilitation Project	\$36,962	\$702,273	\$739,235
Groundwater Quality Study - Phase 2 Upper Black Squirrel Creek Alluvial Aquifer	\$35,000		\$35,000
Ag-Municipal Conservation Easement Demonstration	\$54,000	\$216,000	\$270,000
Hale Reservoir Renovation – Final Design & Permitting	\$20,000	\$100,000	\$120,000
Mount Pisgah Dam/Wrights Reservoir Outlet Works Rehabilitation	\$25,000	\$136,345	\$161,345
Build, Assess, and Document Accounting and Administration Tools for Lease Fallowing in the Arkansas River Valley	\$20,000	\$39,215	\$59,215

Water Supply Reserve Account Applications Approved by the CWCB



Name of Water Activity	Basin Account	Statewide Account	Total
Colorado Basin Total Request	\$1,288,330	\$3,341,036	\$4,629,366
Energy Development Water Needs Assessment		\$150,000	\$150,000
Enlargement of Eagle Park Reservoir		\$250,000	\$250,000
Roaring Fork Watershed Assessment	\$40,000		\$40,000
Upper Colorado Endangered Fish Recovery Alternatives (10,825)		\$200,000	\$200,000
Vail Ditch Project		\$1,500,000	\$1,500,000
Bull Creek Reservoir No. 5 Spillway Adequacy Analysis	\$50,000		\$50,000
Basalt WCD - Missouri Heights	\$25,000		\$25,000
Grand County Stream Flow Management Plan	\$100,000		\$100,000
Old Dillon Reservoir	\$100,000		\$100,000
Fraser Sedimentation Basin	\$60,000	\$127,900	\$187,900
Roaring Fork Watershed Assessment - Phase 2	\$40,000		\$40,000
Feasibility and Design Assessment of Off-Channel Reservoir Sites in the Crystal River Watershed	\$40,000		\$40,000
Battlement Reservoir #3 Dam Reconstruction to Enhance Recreational & Environmental Opportunities	\$80,000		\$80,000
Colorado Basin Nonconsumptive Needs Quantification	\$315,171		\$315,171
Solicitation of stakeholders input and advice through a Colorado River Basin edition of Headwater Magazine Colorado	\$25,000		\$25,000
Grand River Ditch Pipeline	\$25,000		\$25,000
Gypsum - L.E.D.E. Ditch and Reservoir Reconstruction Project	\$50,000	\$175,000	\$225,000
Small Acreage Irrigation Audit Program – Grand Valley	\$18,273		\$18,273
Canal #1 Check Structure Pilot Project @ Dalton, Kiefer & Springer Properties	\$25,212		\$25,212
Basin Roundtable Project Exploration Committee: Flaming Gorge	\$2,000	\$7,143	\$9,143
Colorado Mesa University - Colorado Basin Roundtable Education Program	\$29,700		\$29,700
Investigation of Water Savings, Water Quality benefits and Profitability of Sub Surface Drip on Alfalfa in Grand Valley	\$46,894		\$46,894
Upper Swan River Restoration Project	\$30,000		\$30,000
Colorado River Inventory and Assessment	\$30,000		\$30,000
Robinson Ditch Piping Improvements	\$60,000		\$60,000
Tenmile Creek Restoration Project	\$17,500	\$332,500	\$350,000
Colorado River Restoration and Conservation Projects	\$20,000	\$90,000	\$110,000
Crystal River Watershed – Assessment and Design of Restoration Projects	\$15,854	\$301,219	\$317,073
Tamarisk Coalition Grand Valley Riparian Restoration Collaborative Project	\$42,726	\$207,274	\$250,000
Name of Water Activity	Basin Account	Statewide Account	Total
Southwest Basin Total Request	\$1,431,846	\$5,038,306	\$6,470,152
Dry Gulch Reservoir/San Juan Reservoir Land Acquisition		\$1,000,000	\$1,000,000
Goodman Point: Pipeline Environmental Assessment	\$7,700		\$7,700
Goodman Point Phase 2	\$20,000	\$240,000	\$260,000
Jackson Gulch Reservoir Expansion Project	\$61,735		\$61,735
Bauer Lakes Water Co. Dam Outlet Structure Upgrade	\$40,000		\$40,000
La Plata West Rural Water Supply System	\$100,000	\$1,000,000	\$1,100,000
Town of Sawpit – Water System Engineering/Planning	\$25,000		\$25,000
MVIC Summit Irrigation Company feasibility study	\$39,300		\$39,300
Happy Scenes Water System Upgrades	\$50,000		\$50,000
La Plata Archuleta WD: Water System Master Planning	\$100,000		\$100,000
Molas Lake Ditch Rehabilitation and Diversion Structures	\$95,000		\$95,000
Lower Blanco River Restoration Project	\$100,000	\$150,000	\$250,000
Florida Mesa Canal Companies	\$100,000		\$100,000
Red Mesa Dam IDA and EAP	\$29,000		\$29,000



Water Supply Reserve Account Applications Approved by the CWCB

Name of Water Activity	Basin Account	Statewide Account	Total
Southwest Basin Continued			
Park Ditch Company Improvements	\$85,000		\$85,000
Town of Sawpit - Domestic Water System Construction	\$25,000		\$25,000
La Plata Archuleta Water District - Permitting		\$400,000	\$400,000
Animas River Needs Assessment	\$57,000		\$57,000
Mancos River Diversion Project, Phase I	\$24,753		\$24,753
Protecting Irrigated Agricultural Lands and Water Rights for Agricultural Production	\$31,500		\$31,500
Florida Mesa Canal Companies - Canal Seepage Reduction Project		\$225,000	\$225,000
Town of Norwood - Raw Water System Update and Future Needs Study	\$58,458		\$58,458
Florida Mesa Canal Companies - Canal Seepage Reduction Project		\$775,000	\$775,000
A Way Forward: The Dolores River Below McPhee Reservoir	\$25,000		\$25,000
La Plata River and Cherry Creek Ditch Company - Diversion Improvement Project	\$25,000		\$25,000
Recreational Plan for Lake Nighthorse	\$25,000		\$25,000
Totten Reservoir Hydrographic Survey	\$29,500		\$29,500
Aspen Springs Metro Water Filling Station	\$30,000		\$30,000
La Plata River Water Resources Operations Model		\$148,823	\$148,823
Groundhog Reservoir Bathymetric Survey	\$35,000		\$35,000
Lake Durango Water Authority - Source Water Infrastructure Project	\$50,000	\$450,000	\$500,000
Town of Rico Alluvium Pipeline Water Supply Project - Well Drilling and Water Quality Testing	\$20,000	\$68,000	\$88,000
Pagosa Lakes Area Village Dam Outlet Pipe Repair Project	\$25,000		\$25,000
Basin Roundtable Project Exploration Committee: Flaming Gorge	\$1,000	\$7,143	\$8,143
La Plata Archuleta Water District - Construction of Municipal Water Distribution Pipeline and Related Facilities	\$25,000	\$475,000	\$500,000
Mancos River Habitat and Diversion Project - Phase 2	\$20,000	\$99,340	\$119,340
Montezuma Valley Irrigation Company - Improved Water User, Conservation, Management and Operations through the Implementation of Water Accounting Software	\$52,500		\$52,500
Red Mesa Dam & Reservoir – Spillway Alternatives Analysis	\$19,400		\$19,400
Summary of Southwest Basin Applications			
Name of Water Activity	Basin Account	Statewide Account	Total
Gunnison Basin Total Request	\$1,362,322	\$2,231,913	\$3,594,235
Lake San Cristobal Controlled Outlet Structure	\$35,000		\$35,000
Safety and Serviceability Needs Inventory for Reservoirs in the Leroux Creek Drainage Basin	\$60,000		\$60,000
Orchard City Water Reservoir Project	\$60,000	\$380,000	\$440,000
Off-System Raw Water Storage Project 7 Water Authority/Uncompahgre Valley Water Users Association	\$56,700		\$56,700
Paonia-Feldman Diversion Reconstruction	\$48,000	\$62,700	\$110,700
Sedimentation Management Study For Paonia Reservoir	\$79,000	\$230,000	\$309,000
Overland Reservoir Dam Expansion/Restoration		\$68,000	\$68,000
Phase II Engineering for Lake San Cristobal Outlet Modification	\$75,265		\$75,265
Lake San Cristobal Outlet Structure Modification--Phase III		\$120,960	\$120,960
Ridgway Ditch and Lake Otonawanda Improvement Project	\$109,500		\$109,500
Juniata Reservoir Spillway Modification	\$97,000		\$97,000
Hartland Diversion Dam Fish Passage Feasibility Study	\$22,100		\$22,100
City of Ouray: Development of Augmentation Supplies	\$50,000		\$50,000
75 Ditch Diversion Improvements and Feature Enhancements	\$46,100		\$46,100
Lake San Cristobal Outlet Structure	\$150,000		\$150,000
Hanson Reservoir Outlet Rehabilitation	\$50,000		\$50,000
The Rehabilitation of Blanche Park Reservoir	\$75,000		\$75,000
Valley View Irrigation Improvement Project	\$11,817		\$11,817
Blue Mesa Reservoir - Use of Excess Storage Capacity	\$24,500	\$98,000	\$122,500

Water Supply Reserve Account Applications Approved by the CWCB



Name of Water Activity	Basin Account	Statewide Account	Total
Gunnison Basin Continued			
Relief Ditch Diversion Dam Design	\$20,650		\$20,650
Basin Roundtable Project Exploration Committee: Flaming Gorge	\$2,000	\$7,143	\$9,143
Hartland Dam Improvements	\$53,100		\$53,100
Agricultural Weather Data Delivery Improvements to Uncompahgre Valley Irrigators	\$77,000	\$35,000	\$112,000
Grand Mesa Reservoir Company - Lining Outlet Pipe for Grand Mesa Reservoir #6	\$19,840		\$19,840
Colorado Mesa University - Gunnison Basin Roundtable Education Program	\$19,750		\$19,750
North Delta Irrigation Company - Tunnel Reconstruction Project	\$40,000	\$690,110	\$730,110
North Fork of the Gunnison Invasive Weed Removal	\$20,000		\$20,000
Town of Ridgway Lake Otonowanda Renovation Project	\$60,000	\$540,000	\$600,000
Name of Water Activity	Basin Account	Statewide Account	Total
Metro Basin Total Request	\$1,264,929	\$2,225,268	\$3,490,197
Chatfield Reallocation EIS/FR (Joint Appl. with South Platte)	\$103,000		\$103,000
Zero Liquid Discharge Pilot Study	\$200,000	\$200,000	\$400,000
Parker Water and San. And Colo. State University Joint Project on the Rural/Urban Farm Model	\$150,000		\$150,000
Upper Mountain Counties Water Needs Assessment	\$43,587		\$43,587
Solicitation of Stakeholder Input through a South Platte Edition of Headwaters	\$16,019		\$16,019
South Metro Water Supply Authority - Regional Aquifer Supply Assessment	\$100,540		\$100,540
South Platte River Recreation and Habitat Feasibility Study	\$150,000		\$150,000
Demonstration of Membrane Zero Liquid Discharge Process for Drinking Water Systems (Joint Appl with SP & Ark)	\$50,000	\$233,333	\$283,333
Lost Creek Aquifer Recharge and Storage Study	\$80,000		\$80,000
South Metro Aquifer Recharge Pilot Study		\$425,000	\$425,000
DCWRA - Feasibility Study for BOR Funding from the National Rural Water Supply Act	\$100,000	\$500,000	\$600,000
Flaming Gorge Project Task Force Assessment	\$20,000		\$20,000
South Metro Water Supply Authority - Aquifer Recharge Pilot Study		\$125,000	\$125,000
Douglas County Water Resource Authority - Rotary Sprinkler Nozzle Retrofit		\$250,000	\$250,000
Rural Douglas County groundwater-level monitoring network	\$28,263	\$84,792	\$113,055
Educating Denver Metro Elected Officials & Decision Makers on Solution-Oriented Water Supply Planning	\$14,820		\$14,820
Basin Roundtable Project Exploration Committee: Flaming Gorge	\$8,700	\$7,143	\$15,843
South Platte River Recreation and Habitat Improvement Preliminary Design	\$25,000	\$100,000	\$125,000
Denver South Platte River Implementation Project - Frontier/Overland Final Design	\$175,000	\$300,000	\$475,000



Water Supply Reserve Account Applications Approved by the CWCB

Name of Water Activity	Basin Account	Statewide Account	Total
North Platte Basin Total Request	\$1,150,077	\$311,027	\$1,461,104
New Pioneer Ditch Diversion Reconstruction Project	\$116,000		\$116,000
Town of Walden Water Supply Improvement Project	\$385,000		\$385,000
Effects of Mtn pine beetle and forest mgmt on water quantity, quality, and forest recovery N.P. and Upper CO River basins	\$212,306	\$164,618	\$376,923
Identification and assessment of important wetlands	\$86,000	\$96,000	\$182,000
Monitoring the effects of weather conditions on the evapotranspiration	\$50,409	\$50,409	\$100,818
North Park Irrigated Meadow Conservation Program – Phase I	\$20,000		\$20,000
Walden Reservoir Company - Structure for Water Control	\$23,900		\$23,900
Solicitation of Stakeholder Input Through Production of a NP Basin Education Package	\$14,040		\$14,040
Jackson County Water Conservancy District - Structures for Water Control: Headgates and Diversion	\$183,883		\$183,883
Flaming Gorge Project Task Force Assessment	\$1,000		\$1,000
Senecca Ditch - Structure for Water Control	\$57,540		\$57,540
Rio Grande Basin Total Request	\$1,521,929	\$6,590,223	\$8,112,152
Alamosa River In-stream Flow Project	\$64,500		\$64,500
Preliminary Design Multi-use Rio Grande Reservoir Rehabilitation and Enlargement		\$288,000	\$288,000
Rio Grande Basin Conservation Reserve Enhancement Program	\$36,750		\$36,750
Romero-Guadalupe Channel Rectification Project	\$83,700		\$83,700
Rio Grande Initiative	\$200,000	\$1,300,000	\$1,500,000
Santa Maria and Continental Reservoirs: Rehabilitation and Multiple Use Studies	\$50,000	\$141,700	\$191,700
2008 Rio Grande Riparian Stabilization Project	\$35,000	\$250,000	\$285,000
Platoro Reservoir Restoration	\$50,000	\$200,000	\$250,000
Conejos River and North Branch Diversion and Stabilization	\$50,000	\$333,700	\$383,700
Rio Grande Reservoir Multi-Use Rehabilitation: Refinement and Enhancement of Reservoir Reoperation and Optimization Model	\$100,000		\$100,000
El Codo Ditch Diversion and Rehabilitation	\$65,000		\$65,000
Lower Willow Creek Restoration Project	\$50,000	\$200,000	\$250,000
Sangre de Cristo Trinchera Diversion Canal Restoration	\$48,315	\$150,000	\$198,315
Rio Grande Conservation Reserve Enhancement Program (CREP) Phase II - Implementation	\$31,500		\$31,500
Shortfall Request - Sangre de Cristo Trinchera Diversion Canal Restoration	\$54,000		\$54,000
2009 Rio Grande Riparian Stabilization Project - Phase 4	\$50,000	\$98,000	\$148,000
Educating Today to Balance Tomorrow's Water Supplies & Needs	\$25,000		\$25,000
San Luis Peoples Ditch Upgrade and Rehabilitation Project - Phase I	\$40,000		\$40,000
Conejos North Branch Water Conservation and Management	\$75,000		\$75,000
The McDonald Ditch and Plaza project, Phase I Planning	\$40,000		\$40,000
Rio Grande Initiative: North Rio Grande Ranch Conservation Easement	\$15,000	\$55,000	\$70,000
Santa Maria & Continental Reservoirs: Priority Studies to Restore Capacity	\$22,000		\$22,000
Basin Roundtable Project Exploration Committee: Flaming Gorge	\$1,000	\$7,143	\$8,143
Platoro Reservoir Crest of Dam Repair	\$15,000	\$135,000	\$150,000
Sanchez Reservoir Rehabilitation - Phase I Assessment & Upgrade	\$10,000	\$85,000	\$95,000
Plaza Project Phase 2 - McDonald Ditch	\$20,000	\$275,000	\$295,000
Water 2012: The Rio Grande Basin Partnering for Colorado's Water Future	\$15,600		\$15,600
Terrace Reservoir Spillway Improvements	\$75,000	\$1,425,000	\$1,500,000
Conejos River System Gauging Stations Project	\$20,000	\$387,280	\$407,280
Rio Grande County Hydrogeologic Study	\$99,564		\$99,564
Rio Grande Initiative: Haywood Ranch Conservation Easement	\$25,000	\$400,000	\$425,000
Sanchez Reservoir Phase 2 - Outlet Rehabilitation and Gate Tower Replacement	\$55,000	\$859,400	\$914,400

Water Supply Reserve Account Applications Approved by the CWCB



Name of Water Activity	Basin Account	Statewide Account	Total
South Platte Basin Total Request	\$1,200,857	\$2,550,566	\$3,751,423
Chatfield Reallocation EIS/FR (Joint Appl. with Metro)	\$27,000		\$27,000
Clear Creek Water Banking/High Altitude Storage	\$52,000		\$52,000
Ovid Reservoir Comprehensive Feasibility Study	\$176,000		\$176,000
Lower South Platte Wetland Initiative Phase I South Platte River, CO		\$278,476	\$278,476
Stage Discharge Data Loggers and Telemetry	\$48,800		\$48,800
Upper Mountain Counties Water Needs Assessment	\$130,763		\$130,763
Weld County School Dist RE1 Wetland Partnership	\$42,110		\$42,110
Solicitation of Stakeholder Input through a South Platte Edition of Headwaters	\$16,019		\$16,019
S.P. Water Protection and Restoration		\$825,552	\$825,552
Arickaree River Well Retirement Program, Republican River Basin	\$19,984	\$79,936	\$99,920
Halligan Seaman Water Mgmt project share vision planning model	\$25,435	\$76,305	\$101,740
Demonstration of Membrane Zero Liquid Discharge Process for Drinking Water Systems (Joint Appl with Metro & Ark)	\$25,000	\$233,333	\$258,333
Lost Creek Aquifer Recharge and Storage Study	\$80,000		\$80,000
Central South Platte Wetland Partnership	\$93,769		\$93,769
FMRICo Recharge & Wetlands Project	\$250,000	\$420,000	\$670,000
NCWCD - Data Logger and Telemetry Installation Project	\$46,000		\$46,000
Colorado Ag Meteorological Network	\$20,000		\$20,000
Lower South Platte Water Cooperative South Platte Basin	\$60,977	\$200,000	\$260,977
Development of a decision support model for Identifying and Ranking Waterfowl and Wildlife Related Recharge Projects		\$99,821	\$99,821
Alluvial Aquifer Accretion/Depletion Analysis Tool		\$200,000	\$200,000
Basin Roundtable Project Exploration Committee: Flaming Gorge	\$2,000	\$7,143	\$9,143
South Platte River Recreation and Habitat Improvement Preliminary Design	\$25,000	\$100,000	\$125,000
South Platte River Phreatophyte Control Pilot	\$35,000	\$30,000	\$65,000
Denver South Platte River Implementation Project - Frontier/Overland Final Design	\$25,000		\$25,000
Yampa Basin Total Request	\$1,181,374	\$431,813	\$1,613,187
Energy Development Water Needs Assessment (300,000 Joint Application see Colorado)		\$150,000	\$150,000
Morrison Creek Reservoir Feasibility Study	\$49,500		\$49,500
Agricultural Water Needs Assessment	\$201,410		\$201,410
Common Data Repository	\$106,600		\$106,600
Sparks Reservoir	\$16,000		\$16,000
Town of Yampa Water Facilities Plan and storage tank upgrades	\$61,062		\$61,062
Sandwash basin coalbed methane production depletive effects on water resources	\$20,000	\$98,835	\$118,835
CFWE - Headwaters Magazine - January 2010	\$20,000		\$20,000
Community Agricultural Alliance - Development and Implementation of Water Forums, Workshop, and/or Tours	\$10,000		\$10,000
Bear Reservoir Company - Stillwater Reservoir Seepage Project	\$189,000		\$189,000
Yellow Jacket Water Conservancy District - Water Storage Feasibility	\$220,800		\$220,800
Yampa White Basin Nonconsumptive Needs Assessment Watershed Flow Evaluation Tool	\$169,002		\$169,002
Improvement of lysimeter operations and consumptive use quantification in high-altitude, irrigated meadows in the YWG basin	\$10,000	\$10,978	\$20,978
Yampa River/Walker Ditch River Restoration Project	\$20,000	\$20,000	\$40,000
Yampa-White Basin Projects and Methods Analysis	\$38,000	\$152,000	\$190,000
Yampa River Structures Project	\$50,000		\$50,000



For more information, please contact:

Greg Johnson
1580 Logan St., Suite 200
Denver, CO 80203
303-866-3441
www.cwcb.state.co.us
Greg.Johnson@state.co.us