



COLORADO

Colorado Water Conservation Board

Department of Natural Resources
1313 Sherman Street, Room 718
Denver, CO 80203

January 15, 2020

Members of the 2020 Colorado General Assembly

Re: Small Project Loans Approved in Calendar Year 2019
Construction Fund and Severance Tax Perpetual Base Fund

Pursuant to C.R.S. § 37-60-122(b), the Colorado Water Conservation Board (CWCB) is submitting the attached written determination of the basis for all loans under \$10,000,000 authorized during the 2019 calendar year. The report will be presented to the CWCB at the January 27-28, 2020 Board meeting.

The report will be posted on the web at www.leg.colorado.gov and on the CWCB website www.cwcb.state.co.us. A copy of the report has been submitted to the Legislative Library, Room 029 of the State Capitol Building. Paper copies of the Report can be made available upon request.

If you have questions or need additional copies of the report, please contact Ms. Alice Cosgrove, Legislative Liason, at 303-866-3311 x8664.

Sincerely,

Rebecca Mitchell, Director
Colorado Water Conservation Board



Colorado Water Conservation Board

**CONSTRUCTION FUND
AND
SEVERANCE TAX
PERPETUAL BASE FUND**

SMALL PROJECT LOAN REPORT (2019 CALENDAR YEAR)



COLORADO

**Colorado Water
Conservation Board**

Department of Natural Resources

**Colorado Water Conservation Board
Department of Natural Resources**

January 15, 2020

PREFACE

Pursuant to Section 37-60-122(b) of the C.R.S. the Colorado Water Conservation Board (CWCB) is required to submit a report by January 15th of each year to the Colorado General Assembly describing the basis of all Construction Fund and Severance Tax Perpetual Base Fund loans authorized by the CWCB under \$10,000,000. This report fulfills the CWCB reporting obligations for those “Small Project” loans for Calendar Year 2019.

The report includes a summary spreadsheet identifying each loan approval date, the project sponsor or borrower, the project name, the loan amount, and the name of the County and River Basin where the project is located. There were 15 new loan projects under \$10,000,000 approved by the CWCB in Calendar Year 2019. The total loan value is approximately \$49.4 million.

Included in the report is a loan project Data Sheet for each new loan project. The Data Sheet includes a project description, project location map, and other pertinent loan and project information.

January 15, 2020

Colorado Water Conservation Board
Small Project Loans
For Calendar Year 2019

Project	Date Approved	Borrower	Project	Amount Approved	Funding Source*	County	Basin
1	01/28/19	Left Hand Ditch	Allen's Lake Filler Canal Improvements	\$ 671,650	CF	Boulder	South Platte
2	01/28/19	Schneider Ditch Company	Diversion Structure Replacement	\$ 1,245,330	ST	Logan	South Platte
3	03/20/19	Tunnel Water Company	West Half Laramie-Poudre Tunnel Rehab	\$ 9,090,000	CF	Larimer	North Platte/South Platte
4	03/20/19	Groundwater Management Subdistrict of CCWCD	Pioneer Reservoir	\$ 8,697,110	ST	Weld	South Platte
5	03/20/19	Dominion Water & Sanitation District	Chatfield	\$ 4,191,990	ST	Douglas	South Platte
6	05/15/19	Upper Platte and Beaver Canal Company	Diversion Structure Replacement	\$ 4,435,920	CF	Morgan	South Platte
7	05/15/19	Town of Empire	Guanella Reservoir Water Storage Purchase	\$ 124,230	CF	Clear Creek	South Platte
8	05/15/19	Logan Irrigation District	Prewitt Reservoir Dredging	\$ 1,849,310	ST	Washington and Logan	South Platte
9	07/01/19	Hidden Valley Water District	Master Water Meter Connection	\$ 1,737,200	CF	Jefferson	South Platte
10	07/01/19	Taylor & Gill Ditch Company	Ditch Piping	\$ 126,250	CF	Larimer	South Platte
11	07/01/19	Lower Arkansas Water Manage. Assoc.	West Farm Gravel Pit Storage Purchase	\$ 3,630,950	CF	Prowers	Arkansas
12	09/19/19	Cedar Mesa Ditch	Lower Cedar Mesa Ditch Piping	\$ 1,359,460	ST	Delta	Gunnison
13	11/20/19	Republican River WCD	Surface Water Rights Purchase	\$ 5,570,150	ST	Yuma	South Platte
14	11/20/19	Spring Dale Ditch	Diversion Structure Replacement	\$ 1,222,100	ST	Logan	South Platte
15	11/20/19	Groundwater Management Subdistrict of CCWCD	Hokestra Reservoir Purchase	\$ 5,444,405	ST	Weld	South Platte

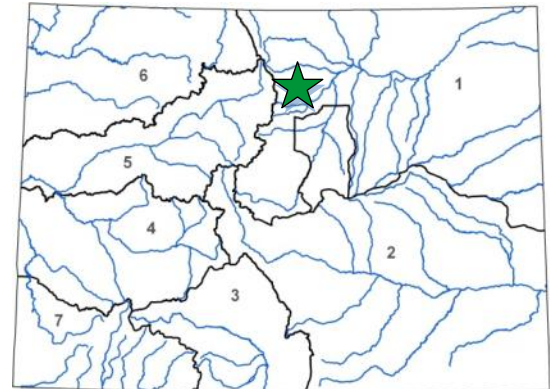
Total Amount Approved in 2019

\$ 49,396,055

*Indicates whether the funding source is from Construction Fund (CF) or Severance Tax Fund (ST)



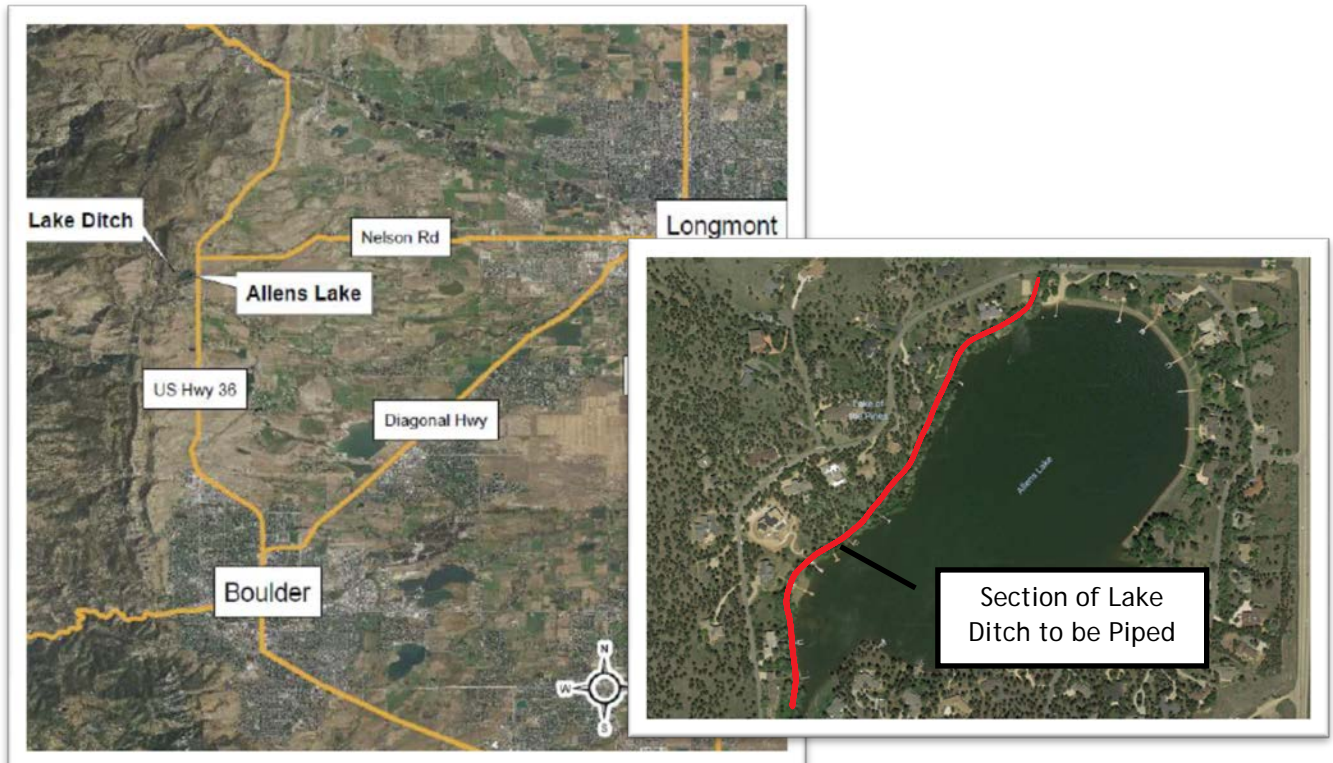
L O A N D E T A I L S	
Project Cost:	\$665,000
CWCB Loan (with Service Fee):	\$671,650
Loan Term and Interest Rate:	30 Years @ 2.50%
Funding Source:	Construction Fund
B O R R O W E R T Y P E	
Agriculture	Municipal
49%	<1% Low - 19% Mid - 32% High
Commercial	0%
P R O J E C T D E T A I L S	
Project Type:	Ditch Rehabilitation
Average Annual Diversions:	50,000 AF



L O C A T I O N	
County:	Boulder
Water Source:	Left Hand Creek
Drainage Basin:	South Platte
Division:	1
District:	5

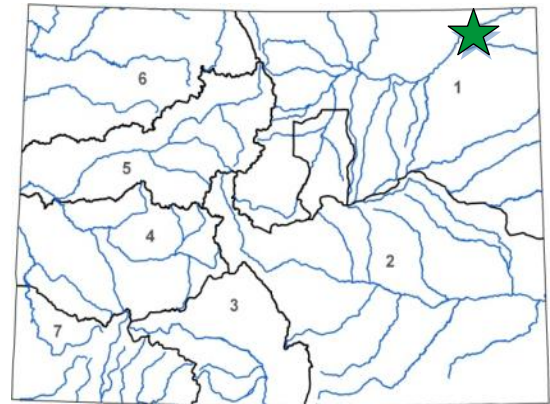
The Left Hand Ditch Company, located in Boulder County, provides irrigation water to a service area of approximately 15,000 acres north of Boulder. Its service area generally lies along Left Hand Creek from the foothills of the Front Range east to Niwot.

The Allen's Lake Filler Canal Improvements Project focuses on a 2,400-foot reach of Lake Ditch which parallels the west shore of Allen's Lake. The existing ditch is experiencing notable losses due to seepage and excessive sedimentation. This is preventing the ditch from delivering the Company's desired 25 cfs design flow. Due to the extremely narrow right-of-way (7.5 feet on both sides of ditch centerline), proper cleaning and maintenance of the ditch is uneconomical. Additionally, residents of the adjacent community surrounding Allen's Lake have built their own crossings and patios on the ditch. This gives rise to concerns of public safety and further restricts ditch cleaning efforts. To address these issues, the Company has opted to pipe the ditch with a 3.5-ft diameter pipe. Construction is anticipated to begin in the spring of 2019.



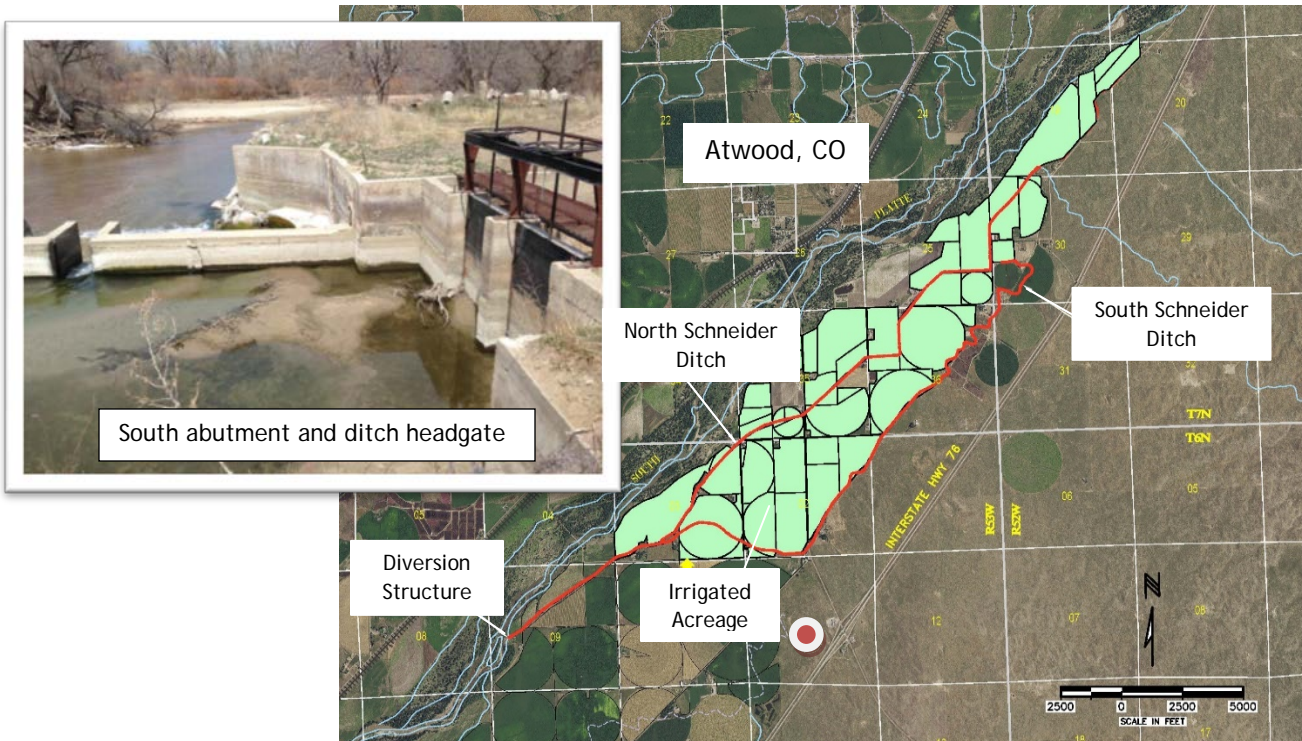


L O A N D E T A I L S		
Project Cost:	\$1,233,000	
CWCB Loan (with 1% Service Fee):	\$1,245,330	
Loan Term and Interest Rate:	30 years @ 1.85%	
Funding Source:	Severance Tax PBF	
B O R R O W E R T Y P E		
Agriculture	Municipal	Commercial
100%	0%	0%
P R O J E C T D E T A I L S		
Project Type:	Diversion Structure	
Average Annual Diversions:	9,400 AF	



L O C A T I O N			
County:	Logan		
Water Source:	South Platte River		
Drainage Basin:	South Platte		
Division:	1	District:	64

The Schneider Ditch Company diverts water from a side channel in the South Platte River for both irrigation and augmentation purposes. Water deliveries are made through the Schneider Ditch to recharge sites and irrigation lands lying south of the South Platte River and near the Town of Atwood. The diversion structure was constructed over 50 years ago and consists of a concrete rollover wall with a flashboard system that diverts water into the ditch. The current structure has a problem with seepage, undermining, and sediment control. A major operational drawback of the current structure is the inability of the Company to remove flashboards on a routine basis, which results in a significant build-up of sand in front of the rollover wall and the ditch intake headgates. The proposed project will include the removal of the existing structure, installation of a new concrete structure with a 60-foot long inflatable bladder gate to act as a service spillway in the river channel, a 10-foot wide radial gate for headgate sand maintenance, a 10-foot wide intake headgate, and construction of a control building with new gate controls. Construction is anticipated to begin in the fall of 2019 with completion before the 2020 irrigation season.

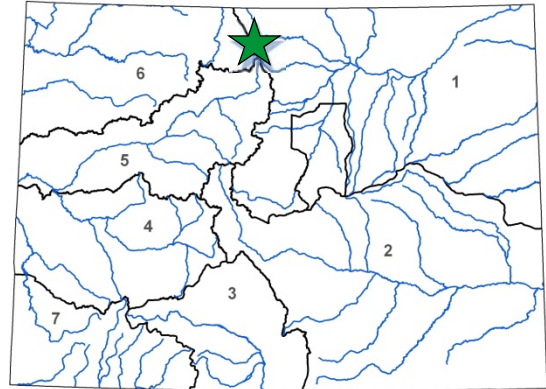




West Half Laramie-Poudre Tunnel Rehabilitation

The Tunnel Water Company
 March 2019 Board Meeting

L O A N D E T A I L S	
Project Cost:	\$ 9,000,000
CWCB Loan (with Service Fee):	\$9,090,000
Loan Term and Interest Rate:	30 Years @ 2.85%
Funding Source:	Construction Fund
B O R R O W E R T Y P E	
Agriculture	Municipal
22%	4% Low - 25% Mid - 49% High
	Commercial
	0%
P R O J E C T D E T A I L S	
Project Type:	Ditch Rehabilitation
Average Annual Diversion:	15,755 AF



L O C A T I O N	
County:	Larimer
Water Source:	Laramie River
Drainage Basin:	North Platte/South Platte
Division:	1
District:	48/3

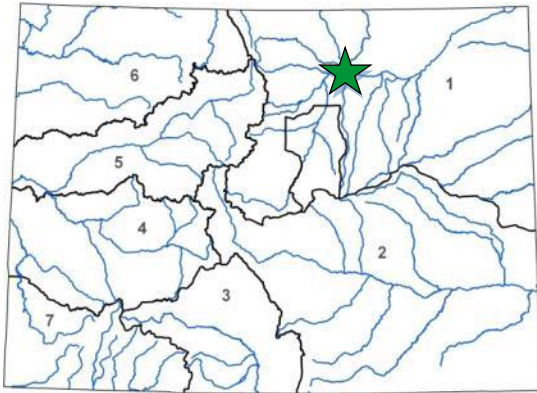
The Tunnel Water Company (Company) operates the Laramie-Poudre Tunnel for the benefit of its two shareholders: Water Supply and Storage Company (WSSC) and Windsor Reservoir and Canal Company (WRCC). The tunnel diverts from the Laramie River, about 60 miles west of Fort Collins, and delivers water through a 2.2-mile tunnel to the Poudre River. WSSC delivers irrigation water to its shareholders, primarily for agricultural irrigation on approximately 40,000 acres lying below the Larimer County Canal. WRCC delivers water to shareholders via the Soldier Canyon and Bellvue Water Treatment Plants for use in their service areas.

The Company purchased the Laramie Poudre Tunnel and its adjoining Laramie River System in 1938. Since 2001, the Company has repaired various sections of the tunnel. To prevent future collapse and tunnel blockage, this project will include replacement of aging support structures and the addition of new supports, rock bolts and shotcrete to ensure future serviceability and maintenance access. The Company is seeking this CWCB loan to cover 100% of construction and engineering costs associated with rehabilitation of the west half of the Laramie-Poudre Tunnel. Completion of final design is scheduled April 2019 and construction is anticipated September 2019.





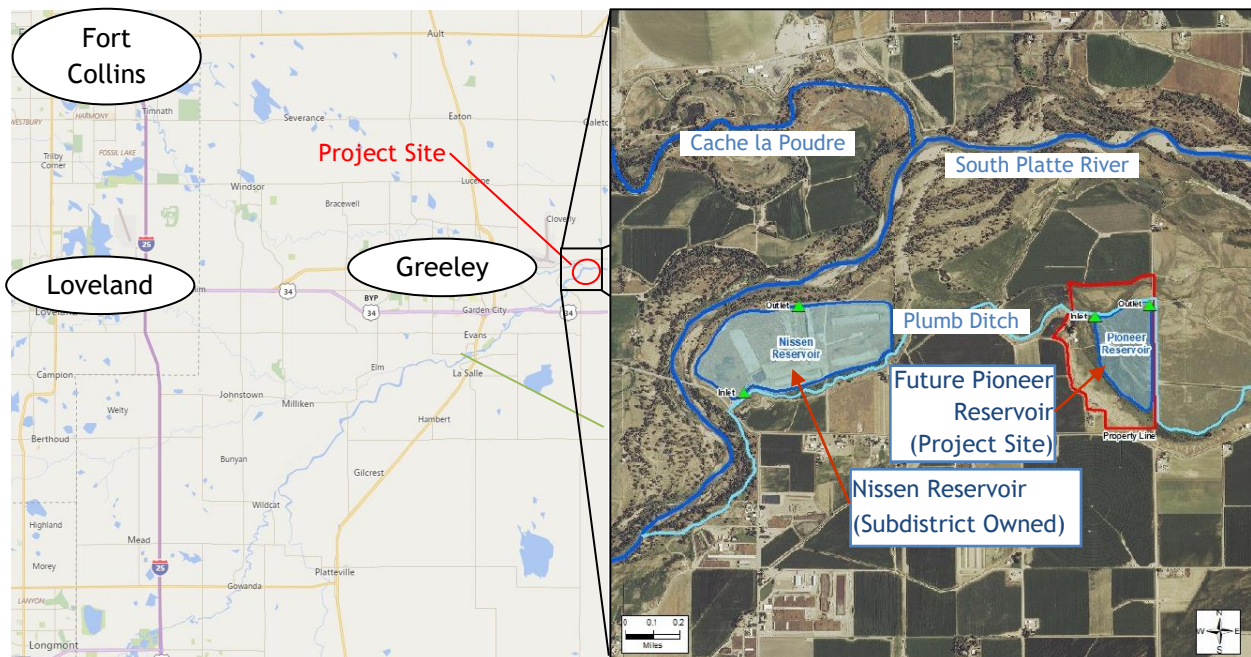
L O A N D E T A I L S	
Project Cost:	\$8,611,000
CWCB Loan (with Service Fee):	\$8,697,110
Loan Term and Interest Rate:	10 years @ 1.20%
Funding Source:	Severance Tax PBF
B O R R O W E R T Y P E	
Agriculture	Municipal
100%	0 % Low - 0% Mid -0% High
	Commercial
	0%
P R O J E C T D E T A I L S	
Project Type:	Reservoir New
Storage Created:	2,000 AF



L O C A T I O N	
County:	Weld
Water Source:	South Platte River
Drainage Basin:	South Platte
Division:	1
District:	2

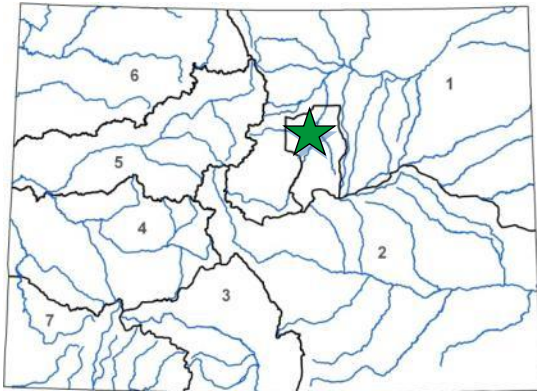
The Central Colorado Water Conservancy District (CCWCD) was formed in 1965 to develop, manage, and protect water resources in northeast Colorado. CCWCD includes approximately 210,000 acres of irrigated agricultural lands. The Groundwater Management Subdistrict, formed in 1973, is a Subdistrict to CCWCD and operates an augmentation plan for alluvial irrigation wells.

The Pioneer Reservoir Project is located east of Greeley in Weld County near the confluence of the South Platte River and the Cache la Poudre. The Project involves the purchase of a slurry wall lined gravel pit which will be reclaimed into a water storage reservoir. Water stored in the reservoir will be used in the Subdistrict’s plan for augmentation as a replacement supply for depletions caused by pumping of member alluvial wells. The purpose of the Project is to increase irrigation opportunities for agricultural production within the Subdistrict’s service area by increasing the Subdistrict’s reliable water supplies. Diversions into and out of the reservoir will occur via the Plumb Ditch off the South Platte River. Mining and reclamation of the pit is expected to be complete by 2021 and infrastructure improvements are expected to be completed by 2022.





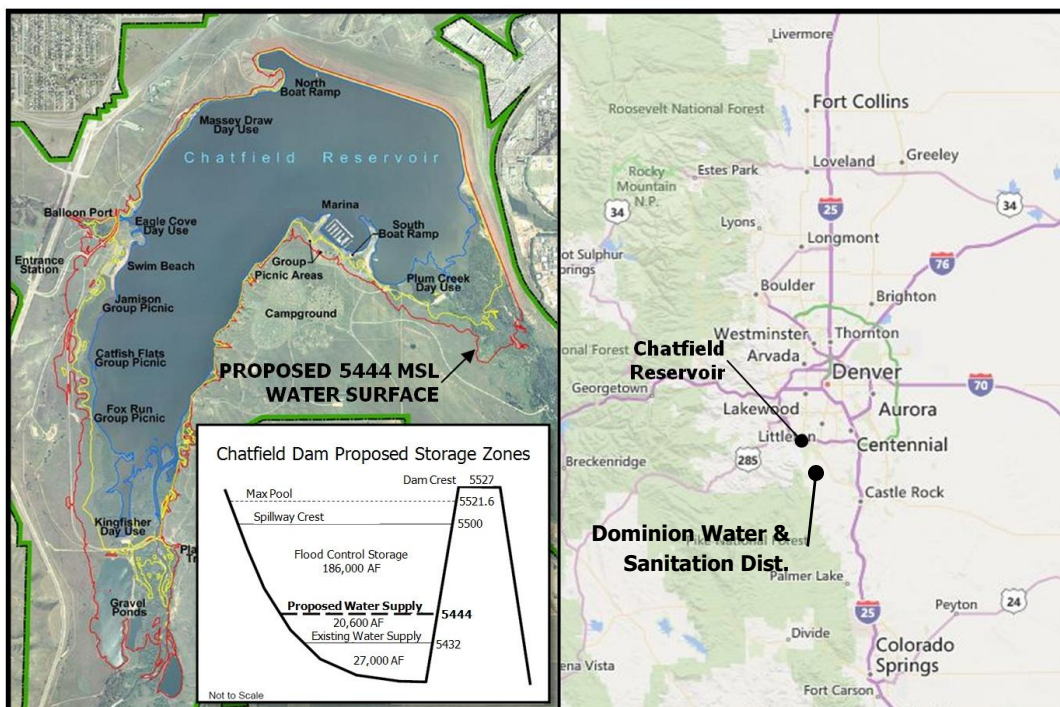
L O A N D E T A I L S		
Project Cost:	\$4,150,485	
CWCB Loan (with Service Fee):	\$4,191,989.85	
Loan Term and Interest Rate:	30 years @ 3.30%	
Funding Source:	Severance Tax PBF	
B O R R O W E R T Y P E		
Agriculture	Municipal	Commercial
0%	0 % Low - 0% Mid -100% High	0%
P R O J E C T D E T A I L S		
Project Type:	Reservoir Enlargement	
New Storage:	500 AF	



L O C A T I O N	
County:	Douglas
Water Source:	S. Platte River & Plum Creek
Drainage Basin:	South Platte
Division:	1 District: 2

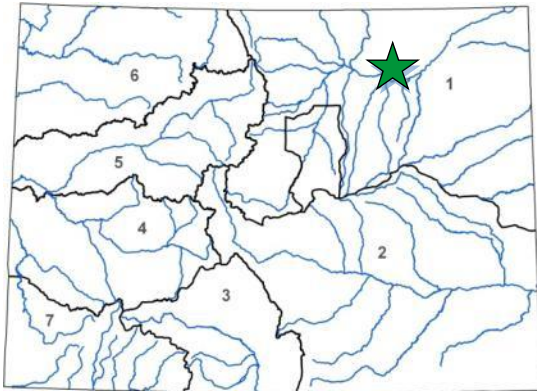
The Dominion Water & Sanitation District is a wholesale water district that was formed in 2004 and provides water, wastewater, and stormwater services to Northwest Douglas County. The District is participating in the Chatfield Reallocation Project in order to increase the permanence and reliability of its water supply. Successful completion of the Project will provide the opportunity to maximize the dependable yield of Dominion’s water rights portfolio. Of the 20,600 AF of storage space being reallocated, the District is purchasing 500 AF from the CWCB. The District will store Chatfield water in accordance with pending water court Case No. 18CW3039.

The US Army Corps of Engineers issued the Project’s final Feasibility Report and Environmental Impact Statement (FR/EIS) and the Record of Decision on May 29, 2014. The Selected Alternative recommended in the FR/EIS will provide 20,600 acre-feet of storage in Chatfield between the elevations 5432 and 5444 msl for M&I water supply and other purposes including agriculture, environmental restoration, and recreation and fishery habitat protection and enhancement. The current overall Reallocation Project cost estimate is \$8,300.97 per AF (\$171 million total). It is anticipated participants in the Reallocation Project will be able to store water by Spring 2020.





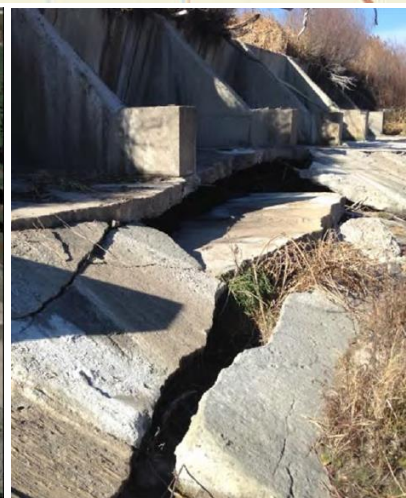
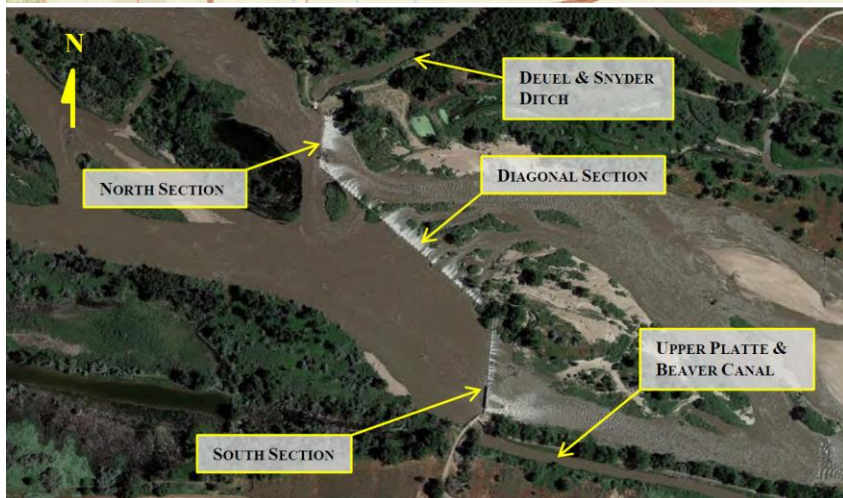
L O A N D E T A I L S	
Project Cost:	\$4,392,000
CWCB Loan (with Service Fee):	\$4,435,920
Loan Term and Interest Rate:	40 years @ 2.25%
Funding Source:	Construction Fund
B O R R O W E R T Y P E	
Agriculture	Municipal
85%	12 % Low - 0% Mid -0% High
	Commercial
	3%
P R O J E C T D E T A I L S	
Project Type:	Diversion Structure Rehabilitation
Average Annual Diversions:	32,300 AF



L O C A T I O N	
County:	Morgan
Water Source:	South Platte River
Drainage Basin:	South Platte
Division:	1
District:	1

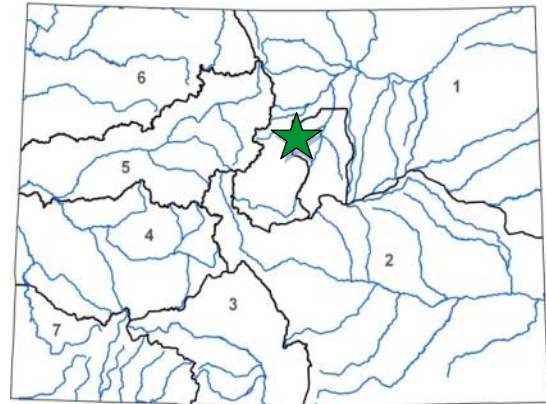
The Upper Platte and Beaver Canal Company was incorporated in 1888 and shares a diversion off the South Platte River with the Duel & Snyder Improvement Company (DSIC). Together the two ditch companies provide irrigation water to 11,500 acres.

The existing diversion structure is a reinforced concrete slab and buttress structure with a height of 9 feet and a length of 1,416 feet. The diversion structure was originally built in 1936 and had improvements done in 1965. This existing structure has several deficiencies including seepage and erosion under the structure and concrete deterioration throughout the structure. This project will consist of the removal and replacement of the existing structure. The new structure will incorporate inflatable crest gate spillways (Obermeyer gate) and restore channel continuity, improve sediment transport, and provide additional flow conveyance during floods. Construction is anticipated to occur from October 2019 through April 2020.





L O A N D E T A I L S	
Project Cost:	\$123,000
CWCB Loan (with 1% Service Fee):	\$124,230
Loan Term and Interest Rate:	30 years @ 2.50%
Funding Source:	Construction Fund
B O R R O W E R T Y P E	
Agriculture	Municipal
0%	100% Low - 0% Mid -0% High
Commercial	0%
P R O J E C T D E T A I L S	
Project Type:	Reservoir Storage
Average Annual Diversions:	50 AF



L O C A T I O N	
County:	Clear Creek
Water Source:	West Fork of Clear Creek
Drainage Basin:	South Platte
Division:	1 District: 7

The City of Golden constructed Guanella Reservoir in 2003 just upstream from the Town of Empire. During construction of the reservoir, negotiations between Empire and Golden yielded an agreement that allowed Empire the delivery of up to 6.3 acre-feet of water per year from Guanella Reservoir. In addition to the yearly delivery, the Town of Empire has the option to purchase or lease 10 acre-feet of perpetual storage in the reservoir. The term of the purchase/lease option of the Golden Agreement expires in 2033. This project will secure the 10 acre-feet of storage space in Guanella Reservoir. The purchase is anticipated to occur in 2019.



Guanella Reservoir looking south



Guanella Reservoir and Dam



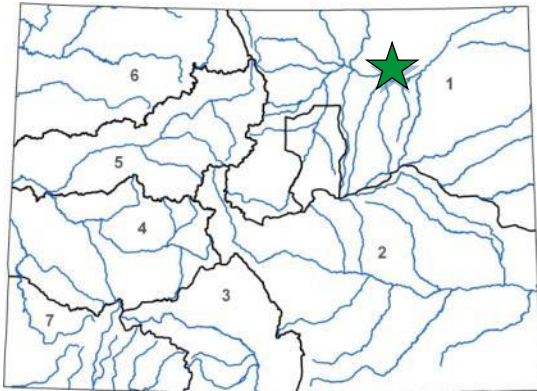
Guanella Reservoir

Town of Empire

Hwy 40



L O A N D E T A I L S	
Project Cost:	\$3,239,000
CWCB Loan (with Service Fee):	\$1,849,310
Loan Term and Interest Rate:	30 years @ 1.90%
Funding Source:	Severance Tax PBF/ Water Plan Grant
B O R R O W E R T Y P E	
Agriculture	Municipal Commercial
91%	2% Low - 0% Mid -7% High 0%
P R O J E C T D E T A I L S	
Project Type:	Reservoir Rehabilitation
Storage Recovered:	1,604 AF

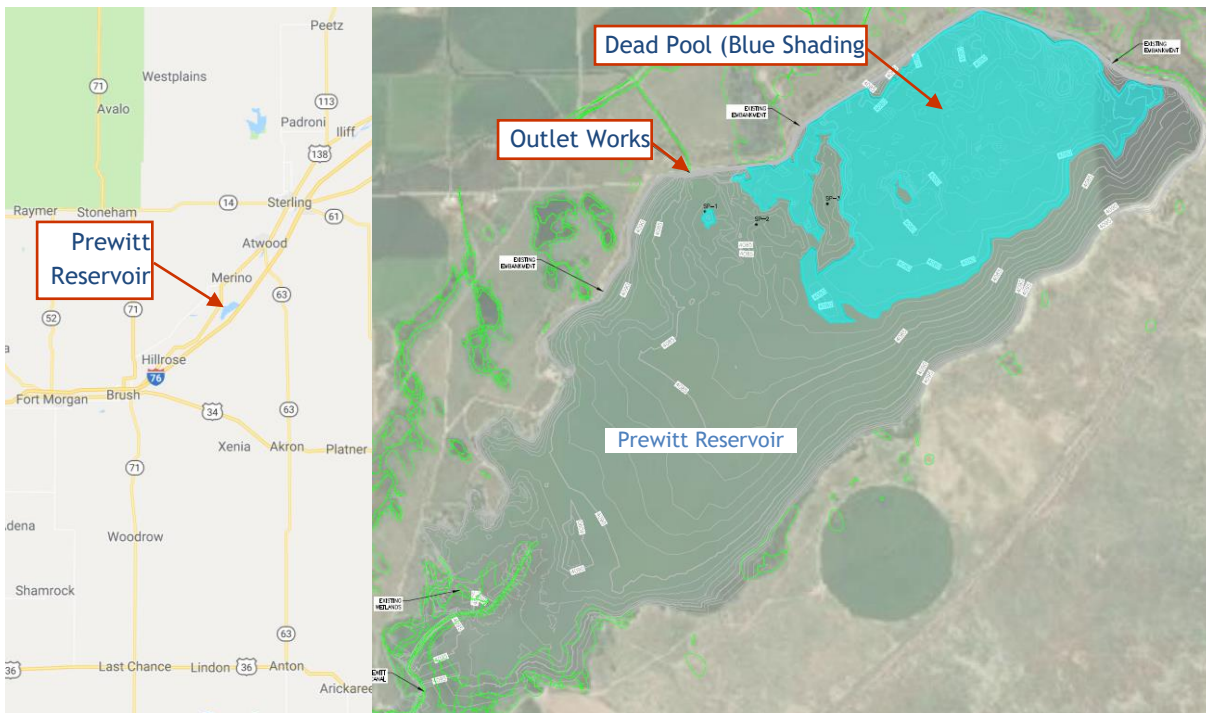


L O C A T I O N	
County:	Washington and Logan
Water Source:	South Platte River
Drainage Basin:	South Platte
Division:	1 District: 64

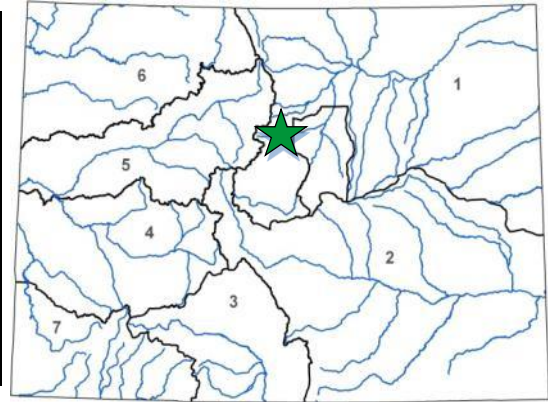
Prewitt Reservoir is owned by Logan Irrigation District, Iliff Irrigation District, and the Morgan Prewitt Reservoir Company. Together they manage the Reservoir through the Prewitt Operating Committee.

Prewitt was built in 1910 and has a current available storage capacity of 29,283 AF. Sedimentation within the Reservoir has caused 1,604 AF to be blocked off from the outlet, creating a dead pool. This project will reconnect the dead pool by dredging a channel from the dead pool to the outlet works. Dredged material will be disposed of by creating an island habitat enhancement site within the Reservoir.

Logan Irrigation District is requesting this loan on behalf of the Operating Committee. Iliff Irrigation District and the Morgan Prewitt Reservoir Company will be Cooperating Entities and all three Reservoir owners will enter into a special agreement setting forth terms for each to pay its pro-rata share of the loan's annual payment. It is anticipated that construction will be able to begin by August 2020 and be completed by August 2021.



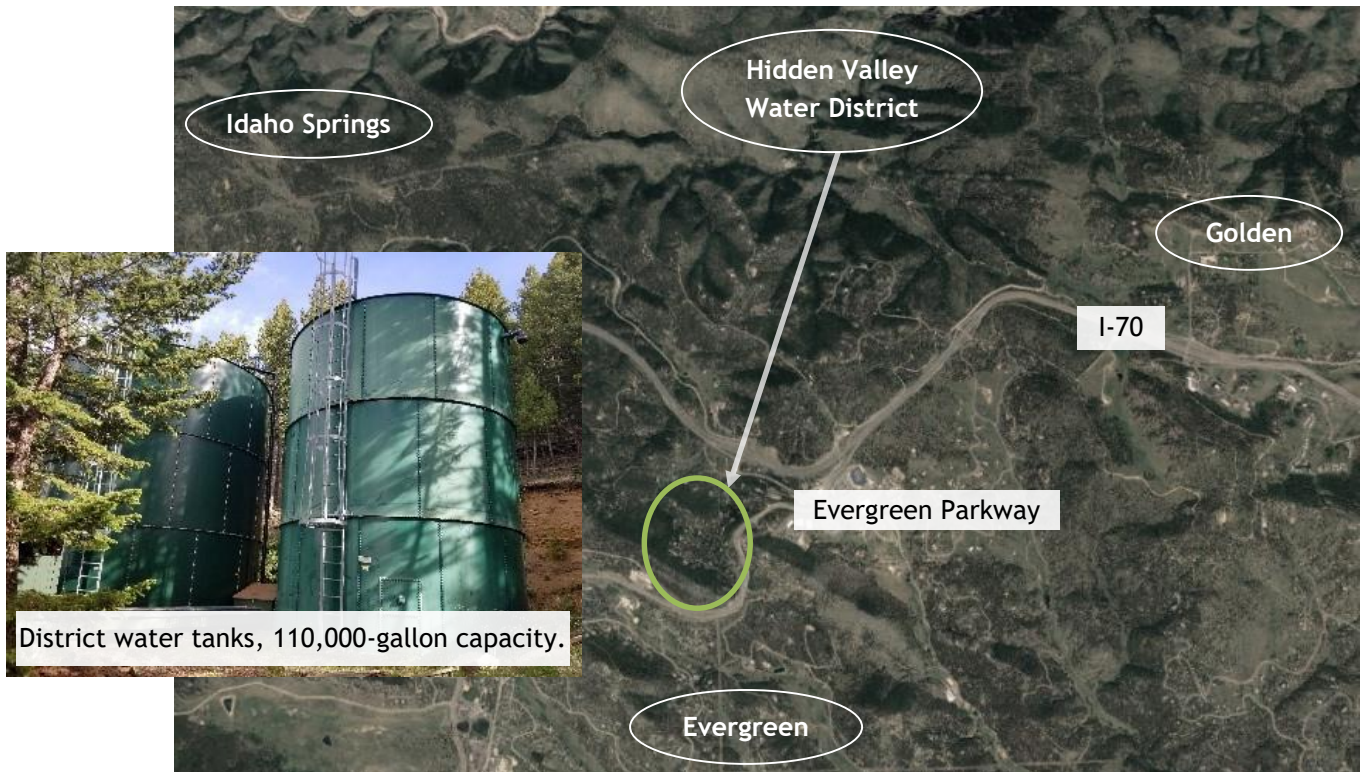
L O A N D E T A I L S	
Project Cost:	\$1,908,000
CWCB Loan (with 1% Service Fee):	\$1,737,200
Loan Term and Interest Rate:	30 years @ 3.0%
Funding Source:	Construction Fund
B O R R O W E R T Y P E	
Agriculture	Municipal
0%	0% Low - 0% Mid - 100% High
Commercial	0%
P R O J E C T D E T A I L S	
Project Type:	Municipal System Rehabilitation
Average Annual Delivery:	11 AF



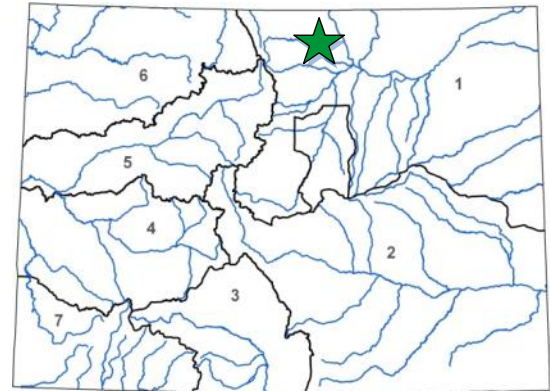
The Hidden Valley Water District (District) is located in Jefferson County, southwest of Interstate 70 and Evergreen Parkway intersection. The District's service area is approximately 92 acres and includes 64 single-family residences. The current drinking water supply does not meet water service demands and water quality is poor with high levels of radionuclides. The purpose of this project is to provide a reliable, safe, and water-quality compliant alternative drinking water source to the current community well system. The District agreed to enter into an intergovernmental agreement with Evergreen Metropolitan District (EMD) for a master meter connection for potable water service.

L O C A T I O N	
County:	Jefferson
Water Source:	Bear Creek
Drainage Basin:	South Platte
Division:	1 District: 9

The District evaluated several connection paths to EMD and determined 2,800 lineal feet of 6-inch transmission main with a master meter, backflow preventer, flow control valves and other equipment could connect EMD's water main to the District's water tanks. Colorado Department of Public Health and Environment issued a service of drinking water enforcement order requiring action to implement a system that will provide long-term compliance. The master water meter connection to EMD meets the enforcement requirements. The District anticipates construction to begin late 2019.



L O A N D E T A I L S	
Project Cost:	\$125,000
CWCB Loan (with Service Fee):	\$126,250
Loan Term and Interest Rate:	30 Years @ 3.10%
Funding Source:	Construction Fund
B O R R O W E R T Y P E	
Agriculture	Municipal
46%	<1% Low - 24% Mid - 2% High
	Commercial
	28%
P R O J E C T D E T A I L S	
Project Type:	Ditch Rehabilitation
Average Annual Diversions:	2,960 AF



L O C A T I O N	
County:	Larimer
Water Source:	Cache la Poudre
Drainage Basin:	South Platte
Division:	1
District:	3

The Taylor & Gill Ditch Company was incorporated in 1891 and provides irrigation water to a service area in Laporte, northwest of Fort Collins. The Company diverts from the Cache la Poudre through a shared diversion structure with the Little Cache Ditch.

The Ditch Piping Project will pipe a 1,000-foot section of the Taylor & Gill ditch that runs through a residential neighborhood. This section is subject to significant seepage and maintenance issues and has limited access. The Company will pipe this section with a 24" diameter water tight HDPE pipe. Construction will occur in between the 2019 and 2020 irrigation season.



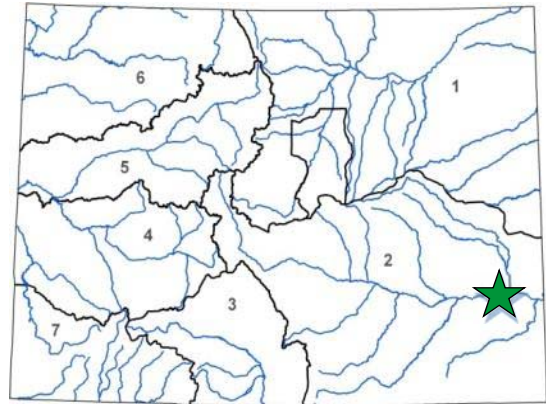


West Farm Gravel Pit Storage Purchase

Lower Arkansas Water Management Association

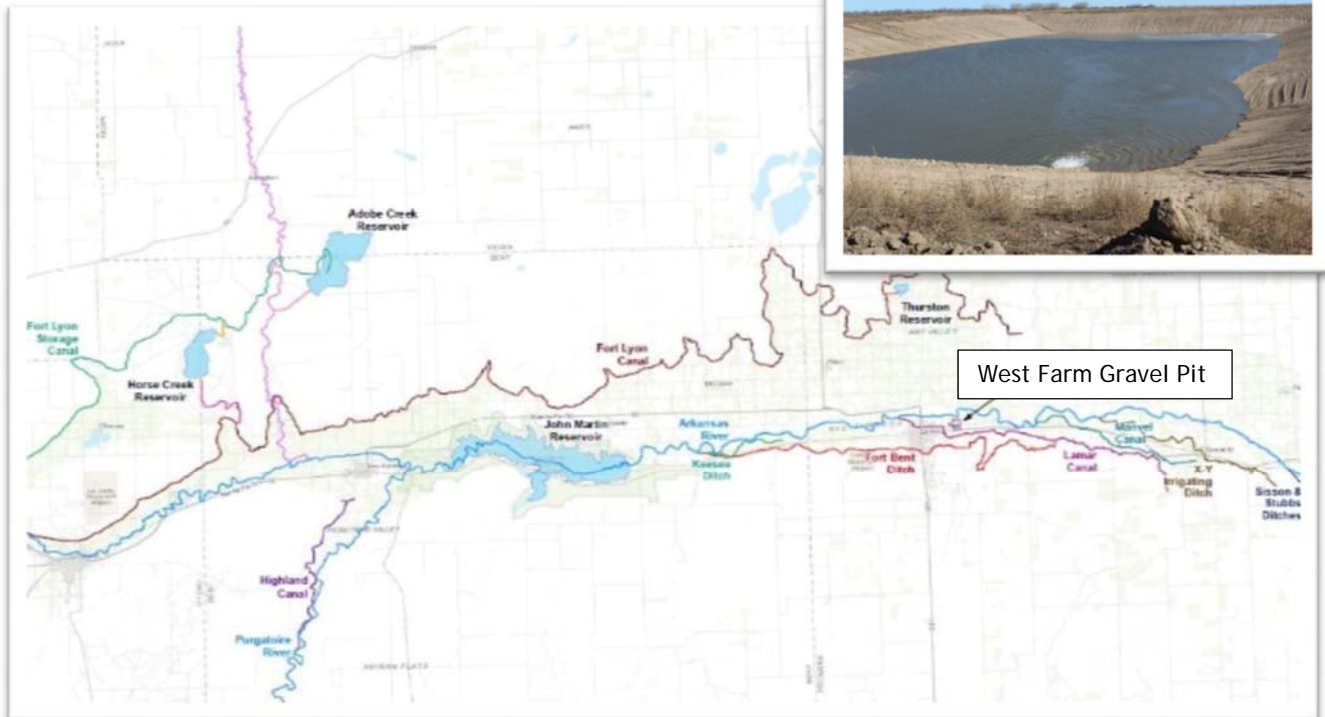
July 2019 Board Meeting

L O A N D E T A I L S		
Project Cost:	\$4,595,000	
CWCB Loan (with 1% Service Fee):	\$3,630,950	
Loan Term and Interest Rate:	30 years @ 2.45%	
Funding Source:	Construction Fund/Water Plan Grant	
B O R R O W E R T Y P E		
Agriculture	Municipal	Commercial
69%	14%	17%
P R O J E C T D E T A I L S		
Project Type:	Reservoir Storage	
Average Annual Diversions:	52,516 AF	

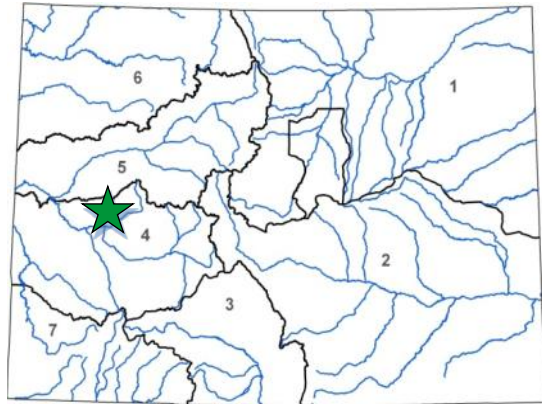


The West Farm Gravel Pit (WFGP) storage reservoir is located downstream of the City of Lamar on the Arkansas River. The Lower Arkansas Water Management Association (LAWMA) plans to purchase approximately 1,638 acre-feet of open water storage capacity in the WFGP to store fully consumable water for use in LAWMA's decreed plan for augmentation, its annual Arkansas River Use Rules replacement plan (Rule 14 Plan), LAWMA-operated Compact Compliance Plans under Rule 10 of the Compact Rules Governing improvements to Surface Water Irrigation Systems in the Arkansas River Basin in Colorado (Rule 10 Plan), and substitute water supply plans that include LAWMA shares as a source of replacement supply. Project benefits include an increased average annual allocation to a common share from 72% to 85% and a reduction in the number of dry year allocations. Along with its loan application, LAWMA applied for a Water Plan Grant to fund a portion of this project with grant money available for water storage projects. A February 2015 final letter report prepared by the State Engineer's Office determined the WFGP slurry wall has been lined to the design standard. LAWMA anticipates completing the purchase in 2019.

L O C A T I O N			
County:	Prowers		
Water Source:	Arkansas River		
Drainage Basin:	Arkansas		
Division:	2	District:	67



L O A N D E T A I L S	
Project Cost:	\$1,346,000
CWCB Loan (with 1% Service Fee):	\$1,359,460
Loan Term and Interest Rate:	30 years @ 1.55%
Funding Source:	Severance Tax PBA , NRCS EQIP
B O R R O W E R T Y P E	
Agriculture	Municipal Commercial
100%	0% Low - 0% Mid - 0% High 0%
P R O J E C T D E T A I L S	
Project Type:	Ditch Rehabilitation
Average Annual Diversions:	6,000 AF



L O C A T I O N	
County:	Delta
Water Source:	Surface Creek
Drainage Basin:	Gunnison
Division:	4 District: 40

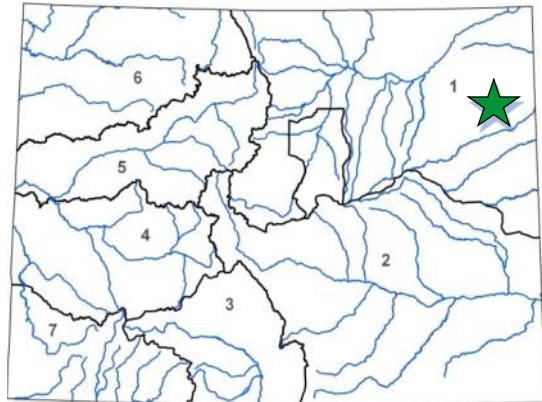
The Cedar Mesa Ditch Company (Company) was organized in Delta County in 1898, and currently diverts irrigation water from Surface Creek to 1,043 acres via a 12-mile ditch. The Company serves shareholders who raise cattle, hay and fruit. The Project will pipe approximately 3.5 miles of the lower ditch section to reduce the average seepage by 720 acre-feet a year, and reduce salt leaching by approximately 800 tons per year.

The project will be funded in conjunction with a Natural Resource Conservation Service (NRCS) Environmental Quality Incentives Program (EQIP) grant. The grant is anticipated to pay approximately 70% of the project cost at completion. The loan will be used to cover all construction costs and after NRCS funding is received, the remaining loan amount is expected to be approximately \$300,000. Construction is expected to begin in October of 2019, and last two to three years.





L O A N D E T A I L S		
Project Cost:	\$6,925,000	
CWCB Loan (with 1% Service Fee):	\$5,570,150	
Loan Term and Interest Rate:	20 years @ 1.20%	
Funding Source:	Severance Tax Perpetual Base Fund	
B O R R O W E R T Y P E		
Agriculture	Municipal	Commercial
100%	0% Low - 0% Mid - 0% High	0%
P R O J E C T D E T A I L S		
Project Type:	Water Rights Purchase	
Average Annual Delivery:	N/A	

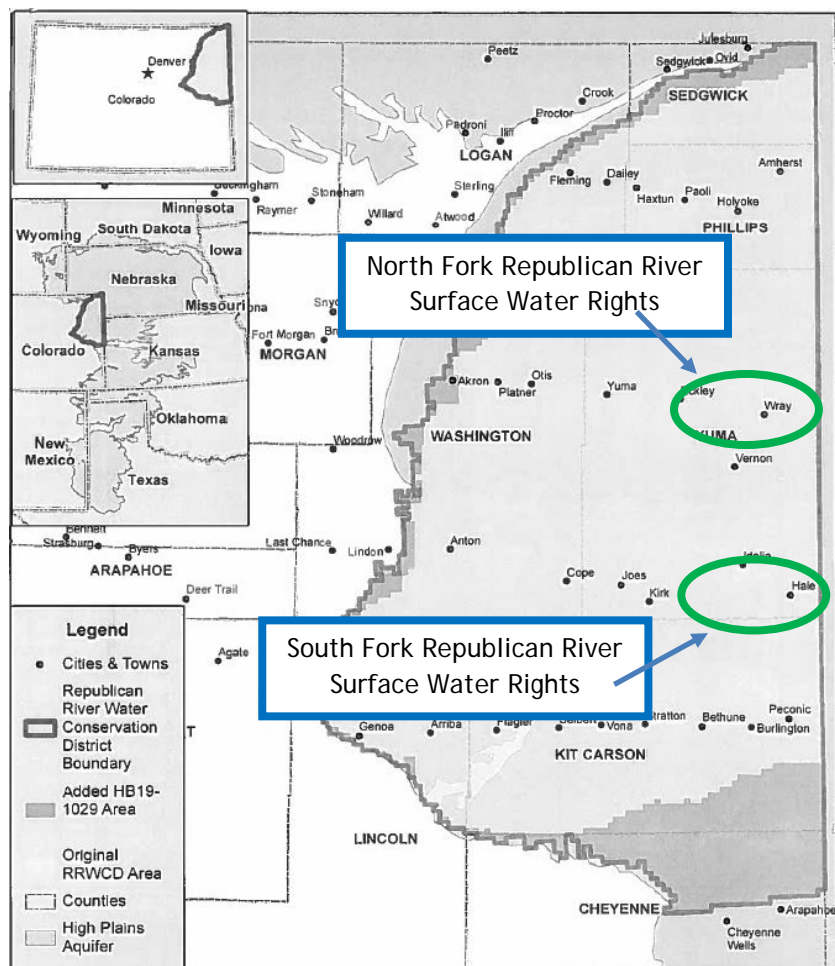


L O C A T I O N			
Counties:	Yuma		
Water Source:	North Fork and South Fork of the Republican River		
Drainage Basin:	South Platte		
Division:	1	District:	49, 65

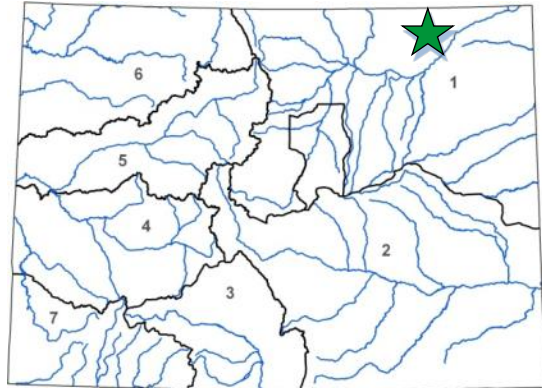
In December 2002, Colorado entered into a Stipulation with Kansas and Nebraska to address the U.S. Supreme Court Case of Kansas v. Nebraska and Colorado. Since then, the State of Colorado had exceeded its annual allocations of beneficial consumptive use under the Republican River Compact (Compact) by an average of 11,000 acre-feet per year. In 2004, the State of Colorado established the Republican River Water Conservation District (District) to assist with Compact compliance. Since, the District has actively sought to acquire senior surface water rights. The water rights result in streamflow increases and help to improve water deliveries required under the Compact.

This Project includes the purchase of senior surface water rights in both the North Fork and South Fork of the Republican River in order to assist the State in complying with the Compact by increasing stream flows. The Project provides multiple benefits that include preventing curtailment of existing water rights and wells due to non-compliance, avoiding a reduction of groundwater-irrigated acreage, furthering a collaborative approach to Endangered Species Act compliance, and minimizing costly litigation with Kansas and Nebraska.

This Project includes the purchase of senior surface water rights in both the North Fork and South Fork of the Republican River in order to assist the State in complying with the Compact by increasing stream flows. The Project provides multiple benefits that include preventing curtailment of existing water rights and wells due to non-compliance, avoiding a reduction of groundwater-irrigated acreage, furthering a collaborative approach to Endangered Species Act compliance, and minimizing costly litigation with Kansas and Nebraska.



L O A N D E T A I L S	
Project Cost:	\$1,210,000
CWCB Loan (with 1% Service Fee):	\$1,222,100
Loan Term and Interest Rate:	30 years at 1.45%
Funding Source:	Severance Tax Perpetual Base Fund
B O R R O W E R T Y P E	
Agriculture	Municipal Commercial
97%	2% Low - 0% Mid - 0% High <1%
P R O J E C T D E T A I L S	
Project Type:	Ditch Rehabilitation
Average Annual Diversions:	12,780 AF



L O C A T I O N	
County:	Logan
Water Source:	South Platte River
Drainage Basin:	South Platte
Division:	1 District: 64

The Springdale Ditch Company (Company) is a mutual ditch company and a non-profit corporation that was incorporated in 1886. The Company, located in Logan County, operates the Springdale Ditch for the benefit of 51 shareholders by providing direct flow of irrigation water from the South Platte River to approximately 3,500 acres by means of a diversion structure on the South Platte and a headgate, located approximately 350 feet downstream of the diversion. Both structures are well maintained, but are showing signs of deterioration. There are also operational concerns, due to system configuration, and operational safety concerns.

The project will include complete removal of the existing structures, and replacement with a single new structure near the existing diversion structure. The new structure will include an inflatable crest gate spillway, intake structure, headgate, and a control building for automated control of the system. The new structure will provide multiple benefits over the current system, including restoration of channel continuity, improved sediment transport along the river, improved fish passage, and a reduction in required dredging activities. Construction is expected to begin in the fall of 2020 and be completed by the spring of 2021.

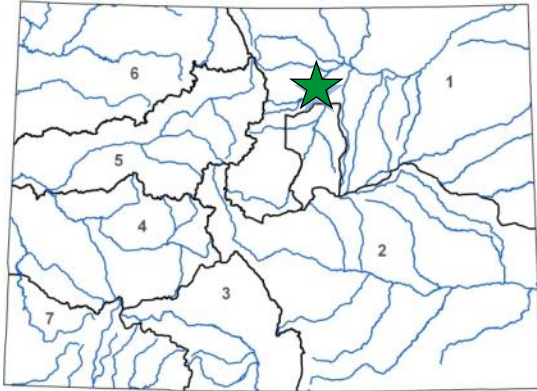




Hokestra Reservoir Purchase and Improvements Project

Groundwater Management Subdistrict of CCWCD
 November 2019 Board Meeting

L O A N D E T A I L S	
Project Cost:	\$5,390,500
CWCB Loan (with Service Fee):	\$5,444,405
Loan Term and Interest Rate:	30-years at 1.45%
Funding Source:	Severance Tax Perpetual Base Fund
B O R R O W E R T Y P E	
Agriculture	Municipal
100%	0 % Low - 0% Mid -0% High
Commercial	0%
P R O J E C T D E T A I L S	
Project Type:	Reservoir New
Storage Created:	1,250 AF



L O C A T I O N	
County:	Weld
Water Source:	St. Vrain / Boulder Creeks
Drainage Basin:	South Platte
Division:	1
District:	5

The Central Colorado Water Conservancy District (CCWCD) was formed in 1965 to develop, manage, and protect water resources in northeast Colorado. CCWCD includes approximately 210,000 acres of irrigated agricultural lands. The Groundwater Management Subdistrict (GMS), formed in 1973, is a Subdistrict to CCWCD and operates an augmentation plan for alluvial irrigation wells.

The Hokestra Reservoir Project is located east of Longmont in Weld County along the St. Vrain Creek. The Project involves the purchase of several excavated gravel pit cells that will be reclaimed into water storage reservoirs, shares of the Rural Ditch Company, and construction of the infrastructure necessary to efficiently store and release water from the reservoir. Water stored in the reservoir will be used in the GMS's plan for augmentation as a replacement supply for depletions caused by pumping of member alluvial wells.

