



COLORADO PARKS & WILDLIFE

Northwest Regional Service Center
711 Independent Avenue, Grand Junction, CO 81505
Phone (970) 255-6100 • FAX (970) 255-6111
wildlife.state.co.us • parks.state.co.us

TO: Colorado Parks and Wildlife Commission
Mike King, Executive Director, Colorado Department of Natural Resources
Members, Agriculture, Livestock, Natural Resources Committee, Colorado House
of Representatives
Members, Agriculture, Natural Resources and Energy Committee, Colorado
State Senate

FROM: State Council, Habitat Partnership Program
Rick D. Cables, Director, Colorado Parks and Wildlife

DATE: August 24, 2012

RE: Habitat Partnership Program Annual Report – FY 2012

As required by statute, attached please find the FY 2012 (July 1, 2011 – June 30, 2012) report for the Habitat Partnership Program (HPP). HPP is authorized by the State Legislature and the Colorado Parks and Wildlife Commission to “reduce wildlife conflicts, particularly those associated with forage and fence issues, and to assist the Division of Wildlife in meeting game management objectives through duties as deemed appropriate by the Director.” HPP is funded by 5% of big game (deer, elk, pronghorn, moose) license revenues from HPP areas, which in FY 2012 was \$2,188,543.

In FY 2012, 19 local HPP committees and the State Council, made up of more than 140 volunteer members representing livestock growers, sportsmen, federal land management agencies and CPW staff met throughout the year across much of Colorado to cooperatively discuss and work towards reducing conflicts between big game wildlife and agricultural operators.

One of the founding principles for HPP was partnerships. Having partners involved in a project allows for leveraging of money and the ability for everyone to do more. In FY 12, more than \$2.4 million dollars of HPP money was leveraged with \$6.89 million dollars, in kind services valued at more than \$3.97 million and more than 31,000 hours of labor from our project partners in the effort to reduce conflicts and meet management objectives.

HPP has strong support at the local level due to the makeup of the local committees and their ability with dedicated funding to implement projects on the ground quickly. Two key benefits of the HPP program are the strong communication and dialogue that takes place among all participants with different perspectives and the subsequent partnerships that are developed to identify and resolve local problems.

STATE OF COLORADO

John W. Hickenlooper, Governor • Mike King, Executive Director, Department of Natural Resources
Rick D. Cables, Director, Colorado Parks and Wildlife
Parks and Wildlife Commission: Robert W. Bray • Chris Castilian • Jeanne Home
Bill Kane, Vice-Chair • Gaspar Perricone • James Pribyl • John Singletary, Chair
Mark Smith, Secretary • James Vigil • Dean Wingfield • Michelle Zimmerman
Ex Officio Members: Mike King and John Salazar

HPP committees are involved in many diverse projects depending on local situations. One of the primary immediate conflicts committees deal with is fence damage, the reduction of which was one of the original purposes for HPP. One way that committees accomplish this is by providing fence repair materials to landowners for minor damages. In situations where continual damage is foreseen, committees also work with landowners to design and erect wildlife friendly fencing, which may be as simple as using a colored top wire to make the fence visible to crossing wildlife. Fencing assistance is, and remains, an integral part of the HPP program.

Habitat improvement projects are a priority for most committees and are seen as the best long term solution to resolving conflicts by improving the quality and quantity of range and habitat resources for both wildlife and livestock. Typical habitat improvement projects include weed control, prescribed burning, fertilization, seeding, water developments and shrub and tree cutting and may occur on both public and private lands.

As one way to accomplish this, the HPP State Council awarded \$500,000 to five entities for large scale habitat improvement projects in FY 2012. Although larger projects require more planning and are more expensive, they are more effective in distributing big game and livestock. The projects submitted and funded exemplified the strong and varied partnerships that HPP has developed as well as emphasizing habitat treatments as the preferred long term solution to many resource issues. These projects were completed in FY 2012 with benefits to wildlife and agricultural operators alike.

While the projects that are used to generate the enclosed reports have been completed in FY 2012, final figures may be adjusted as costs and accomplishments are finalized.

There is much more detailed information available about the HPP program and projects undertaken by the local committees. Interested parties are encouraged to visit the HPP website, www.wildlife.state.co.us/landwater/privatelandprograms or contact the local Colorado Parks and Wildlife office for more program and project information.

If you have any specific questions or would like additional information, please contact Pat Tucker, HPP Coordinator, at (970) 255-6188 or via email at pat.tucker@state.co.us.

HABITAT PARTNERSHIP PROGRAM

Glossary of Terms and Abbreviations

ADM – the GBL used for administrative projects, ie. committee administrative assistants, State Council and local committee meeting costs, supplies, etc.

EQP – the GBL used for equipment purchased by committees for project work. (Prior approval needed and there are limitations on use.)

FEN – the GBL used for fencing projects, ie. new construction, repairs (may be labor and/or materials) to existing fences in problem areas, etc.

GBL – for HPP projects, 9 GBL's are used to categorize the type of project being done, ie. ADM, EQP, FEN, GDM, INF, MAN, MTC, OTH, RES

GDM – the GBL used for game damage projects, ie. new stackyard construction, repairs to existing stackyards (may be labor and/or materials), forage purchases, hunt coordinators

HPP Cost – actual HPP dollars approved and spent by a committee for a project

INF – the GBL used for information and education projects, ie. brochures, web sites, seminars, workshops, etc.

In-Kind \$ - goods or services provided by a cooperator to a project that the cooperator has calculated a dollar value for it.

In-Kind Hours – time contributed by a cooperator to complete a project.

MAN – the GBL used for habitat manipulation projects, ie. prescribed burns, brush/tree treatments, fertilization, reseeding, weed control, water developments, etc.

Match \$ - actual dollars contributed by a cooperator to a project

MTC – the GBL used for maintenance, ie. supplies and ongoing maintenance for HPP owned equipment.

OTH – the GBL used for conservation easement transaction costs and archeological clearances

Private Cost – HPP dollars spent on private land projects

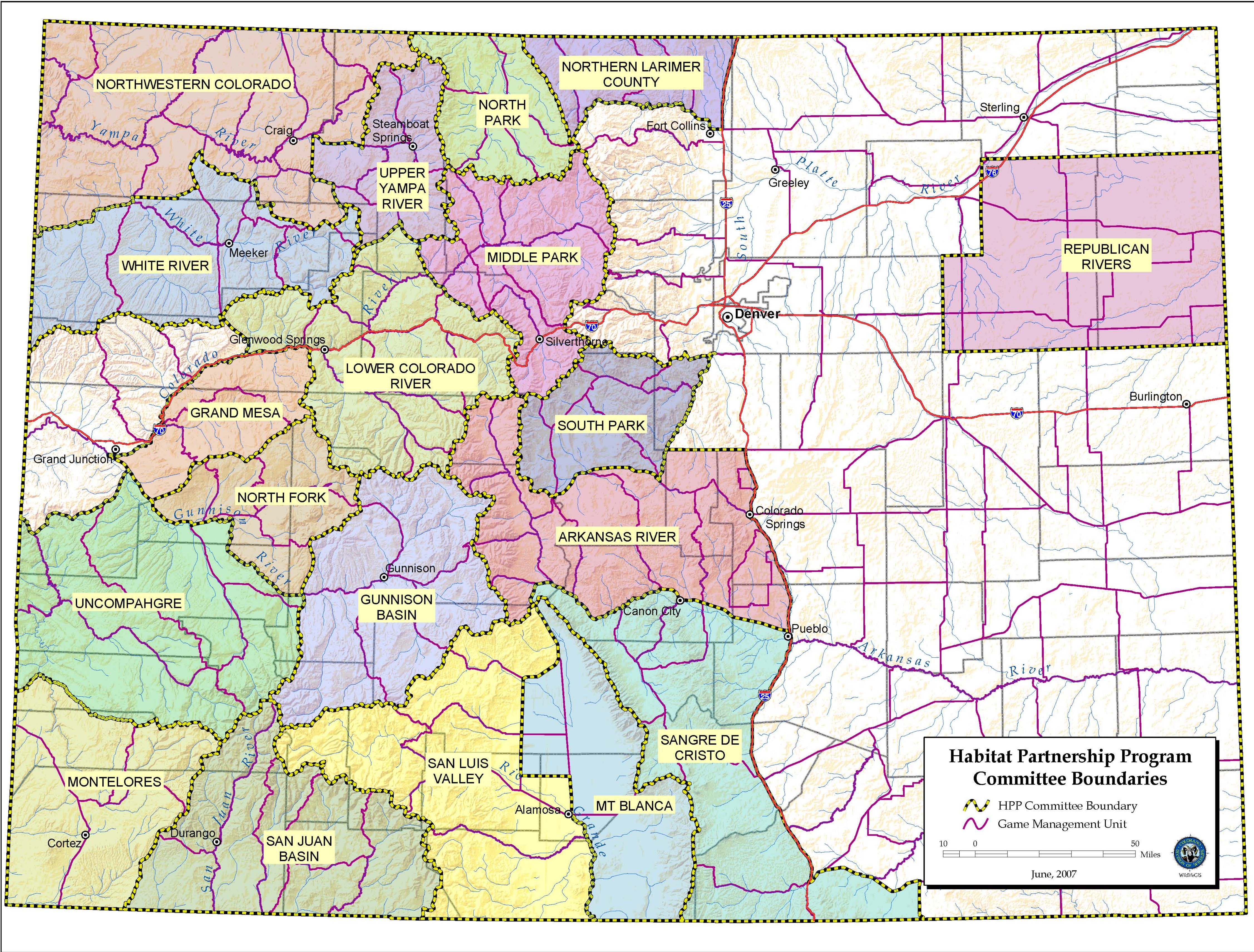
Public Cost – HPP dollars spent on public land projects

RES – the GBL used for project monitoring and research projects, ie. inventory, habitat, movement studies and project evaluation and monitoring

Total Cost – sum of HPP cost, matching funds and in kind funds contributed to a project

COOPERATOR ABBREVIATIONS

BLM – Bureau of Land Management
CSFS – Colorado State Forest Service
DOW – Division of Wildlife
GOCO – Great Outdoors Colorado
MDF – Mule Deer Foundation
NPS – National Park Service
NRCS – Natural Resources Conservation Service
NWTF - National Wild Turkey Foundation
RC+D – Resource Conservation and Development
RMEF – Rocky Mountain Elk Foundation
SLB – State Land Board
UP Project – Uncompahgre Plateau Project
USFS – United States Forest Service
USFWS – United States Fish and Wildlife Service
USGS – United States Geologic Survey



**Habitat Partnership Program
Committee Boundaries**

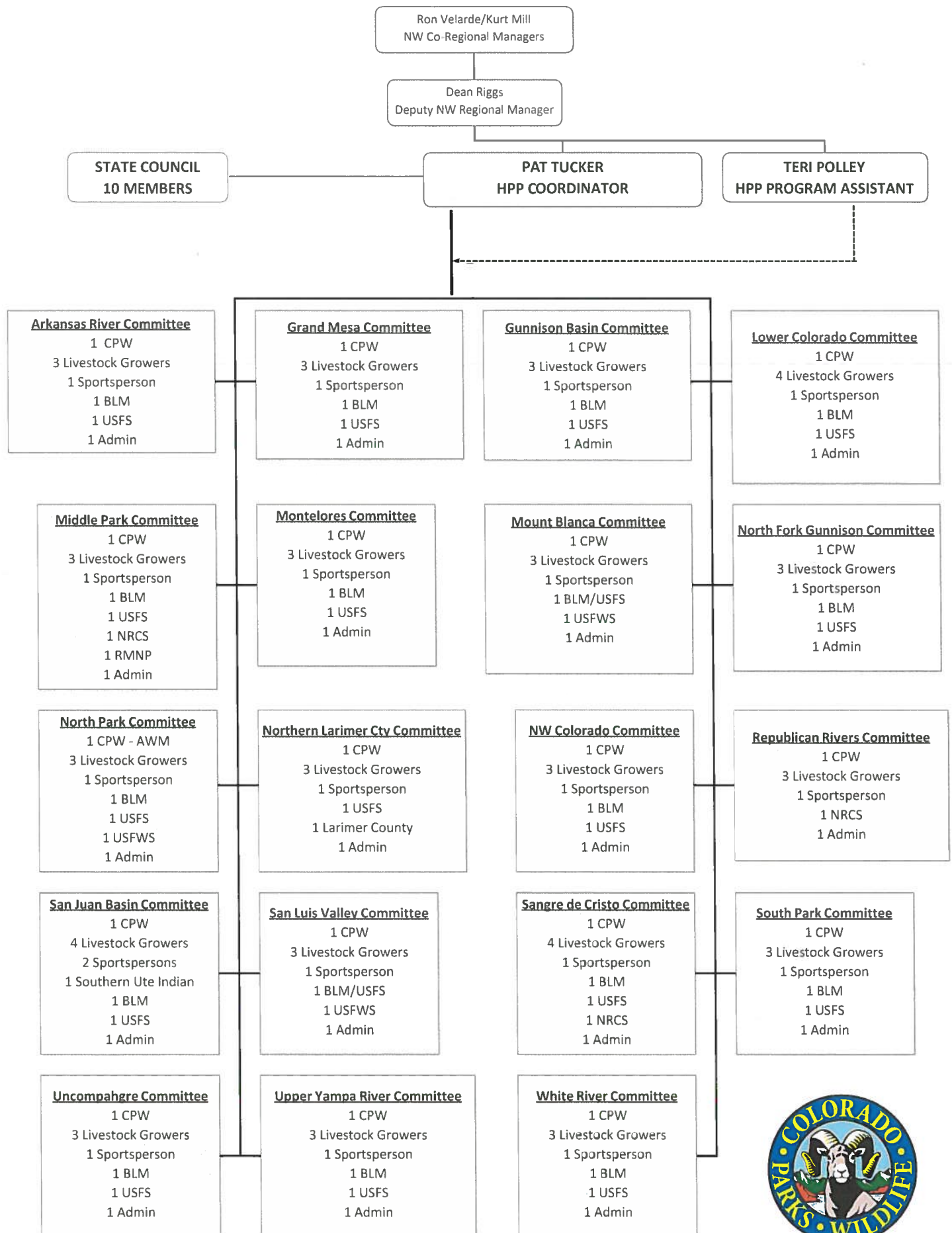
 HPP Committee Boundary
 Game Management Unit

10 0 50
 Miles

June, 2007



Habitat Partnership Program





Colorado Parks and Wildlife

Habitat Partnership Program

Program Accomplishments, HPP and Cooperators - FY 2012

Units	Description	Accomplishments
Acres Burned	Habitat Improved	1976.50
Acres Fertilized	Habitat Improved	6957.02
Acres Irrigated	Habitat Improved	360.00
Acres Mech. or Hand -Treated	Habitat Improved	11754.50
Acres of Weed Control	Habitat Improved	13168.01
Acres Seeded / Planted	Habitat Improved	2956.65
Cattleguards, Gates, etc	Constructed	11.00
Hazing	Projects	1.00
Hunt Coords	Hired	5.00
Miles of New Fence	of New Fence Built	26.30
Plans	Written	7.00
Pounds	of Seed Purchased	360.00
Proj- repair,vouchers,etc	for Minor Fence Repair	440.00
Scare Devices	Provided	1.00
Stackyard Repair	Projects	3.00
Stackyards	Materials Provided	14.00
Tons	of Forage Purchased	124.31
Vinyl Rolls	Provided	45.00
Water Dev	Built and/or Maintained	55.00
Weed control projects	Projects	124.00

'Acres of Weed Control' is used when a treatment has been applied to a specific area and the acreage can be accurately determined.

'Weed control projects' is used when a treatment has been applied over a large area and the acreage cannot be accurately determined and if used, would inflate the actual number of acres treated. Costs vary greatly depending on scope of the project

'Water Dev' denotes many types of water projects, such as the cleanout of an existing pond, well drilling, solar pump installations, new pond creation, spring development and pipeline installation. Costs vary greatly depending on the scope of the project.



Colorado Parks and Wildlife

Habitat Partnership Program

Program Accomplishments, HPP and Cooperators - FY 2012

Type	#Projects	Detail
Equipment	1	
Information/Education	5	
Monitoring/Research	10	
Other	10	Conservation Easements

While the projects that make up these reports have been completed in FY 2012, final figures may be adjusted as costs and accomplishments are finalized.



**Colorado Parks and Wildlife
Habitat Partnership Program**

HPP Program Costs and Hours by GBL - FY 2012

GBL	Total Cost	HPP Cost	Match \$	In-Kind \$	In-Kind Hrs
ADM	\$92,968.85	\$92,968.85	\$0.00	\$0.00	3035
EQP	\$4,450.00	\$4,450.00			
FEN	\$604,557.61	\$307,996.78	\$168,129.83	\$128,431.00	10209
GDM	\$102,514.91	\$67,869.31	\$10,292.60	\$24,353.00	258
INF	\$4,792.89	\$3,692.89	\$1,000.00	\$100.00	20
MAN	\$5,370,149.13	1,816,454.27	\$2,914,807.86	\$638,887.00	17074
OTH	\$6,737,499.00	\$78,373.00	\$3,542,626.00	\$3,116,500.00	445
RES	\$348,062.17	\$68,689.17	\$224,373.00	\$55,000.00	300
Totals:	\$13,314,094.56	\$2,440,494.27	\$6,897,829.29	\$3,975,771.00	31341

While the projects that make up these reports have been completed in FY 12, final figures may be adjusted as costs and accomplishments are finalized.



Colorado Parks and Wildlife

Habitat Partnership Program

Summary of Committee Finances - FY 2012

Committee	HPP Cost	Match Amt	In-Kind Amt	Total Expenses	Private Cost	Public Cost	In-Kind Hrs
Arkansas River	\$63,985.79	\$117,200.00	\$13,400.00	\$194,585.79	\$15,987.61	\$37,468.99	465
Grand Mesa	\$87,224.49	\$355,190.00	\$13,800.00	\$456,214.49	\$82,229.49	\$0.00	1310
Gunnison Basin	\$48,790.67	\$17,800.00	\$29,782.00	\$96,372.67	\$1,634.99	\$44,203.64	635
Lower Colorado River	\$194,094.72	\$953,091.00	\$97,910.00	\$1,245,095.72	\$128,555.27	\$40,544.45	1711
Middle Park	\$84,741.99	\$226,500.00	\$4,900.00	\$316,141.99	\$41,414.94	\$37,989.60	719
Montelores	\$102,829.13	\$338,519.98	\$984,200.00	\$1,425,549.11	\$35,870.18	\$18,112.00	1816
Mount Blanca	\$75,444.18	\$1,221,070.00	\$622,500.00	\$1,919,014.18	\$45,364.86	\$14,580.00	212
North Fork Gunnison	\$102,733.30	\$29,500.00	\$26,187.00	\$158,420.30	\$80,142.05	\$16,248.01	600
North Park	\$31,722.54	\$45,700.00	\$10,500.00	\$87,922.54	\$13,299.33	\$16,280.21	926
Northern Larimer County	\$26,128.53	\$43,609.28	\$8,580.00	\$78,317.81	\$15,644.36	\$4,900.00	360
Northwest Colorado	\$82,907.75	\$206,217.12	\$174,100.00	\$463,224.87	\$70,283.27	\$8,427.48	2000
Republican Rivers	\$4,217.21	\$2,414.00	\$0.00	\$6,631.21	\$0.00	\$3,723.71	124
San Juan Basin	\$143,611.76	\$105,892.92	\$4,635.00	\$254,139.68	\$96,314.67	\$41,939.59	5128
San Luis Valley	\$218,939.04	\$242,004.78	\$1,189,553.00	\$1,650,496.82	\$29,175.42	\$155,334.78	2536
Sangre de Cristo	\$68,640.35	\$1,509,955.71	\$496,856.00	\$2,075,452.06	\$42,831.15	\$12,354.20	2920
South Park	\$39,800.53	\$33,069.12	\$9,100.00	\$81,969.65	\$9,485.91	\$10,018.79	742
State Council	\$728,725.63	\$802,324.00	\$56,900.00	\$1,587,949.63	\$71,860.89	\$635,726.86	262
Uncompahgre	\$96,951.54	\$265,295.00	\$144,115.00	\$506,361.54	\$86,853.05	\$4,996.00	6759
Upper Yampa River	\$41,259.68	\$54,644.60	\$24,353.00	\$120,257.28	\$40,701.88	\$0.00	637
Yampa / White River	\$197,745.44	\$291,231.78	\$51,900.00	\$540,877.22	\$162,025.68	\$14,935.00	1479
HPP Program Totals:	\$2,440,494.27	\$6,897,829.29	\$3,975,771.00	\$13,314,094.56	\$1,069,675.00	\$1,117,783.31	31341

While the projects that make up these reports were completed in FY 12, final figures may be adjusted as costs and accomplishments are finalized.



Colorado Parks and Wildlife
Habitat Partnership Program
Project Cooperators - FY 2012

HPP Program Totals

Cooperator Name	HPP Cost	Match Amt	In-Kind Amt	In-Kind Hrs
	\$210,384.39	\$0.00	\$0.00	0
BLM	\$300,556.33	\$411,744.00	\$46,806.00	660
BLM Grazing Adv Board	\$19,851.23	\$22,500.00	\$0.00	0
County Gov't	\$50,364.61	\$168,750.00	\$218,450.00	3015
CSFS	\$5,000.51	\$52,205.00	\$0.00	0
DOW	\$67,462.69	\$194,219.60	\$80,000.00	374
GOCO	\$5,166.13	\$1,273,200.00	\$0.00	0
HPP Committee Members	\$27,222.46	\$2,873.57	\$4,966.00	3828
HPP State Council	\$0.00	\$0.00	\$0.00	150
Local Govt	\$8,307.67	\$2,000.00	\$0.00	0
Local Land Trust	\$10,999.80	\$12,501.00	\$2,500.00	25
Local Metro Dist	\$6,400.00	\$36,613.00	\$0.00	0
Local Weed Control Dist	\$2,356.89	\$4,000.00	\$0.00	5
MDF	\$60,487.25	\$77,262.15	\$0.00	0
NPS	\$999.77	\$3,000.00	\$0.00	0
NRCS	\$98,449.51	\$1,779,589.06	\$10,830.00	64
NWTF	\$9,834.33	\$155,000.00	\$0.00	0
Other HPP Committee	\$18,634.88	\$16,800.00	\$0.00	0
Other Wildlife Group	\$13,483.02	\$70,500.00	\$30,000.00	0
Owl Mtn Partnership	\$4,333.33	\$17,000.00	\$0.00	0



Colorado Parks and Wildlife
Habitat Partnership Program
Project Cooperators - FY 2012

Cooperator Name	HPP Cost	Match Amt	In-Kind Amt	In-Kind Hrs
Private Business/Org	\$64,974.65	\$392,660.00	\$9,176.00	342
Private Landowner	\$938,292.10	\$1,565,984.91	\$3,473,756.00	19994
Private Local Assoc.	\$14,000.64	\$0.00	\$3,200.00	0
RC+D	\$4,900.00	\$4,900.00	\$1,000.00	120
RMEF	\$126,683.73	\$143,340.00	\$0.00	0
SLB	\$20,508.36	\$48,200.00	\$0.00	0
State Gov't	\$8,427.01	\$32,500.00	\$3,000.00	1945
UP Project	\$9,485.75	\$16,000.00	\$150.00	8
USFS	\$310,425.57	\$314,487.00	\$91,937.00	811
USFWS	\$14,000.64	\$10,000.00	\$0.00	0
USGS	\$8,501.00	\$70,000.00	\$0.00	0
Totals	\$2,440,494.27	\$6,897,829.29	\$3,975,771.00	31341

While the projects that make up these reports were completed in FY 2012, final figures may be adjusted as costs and accomplishments are finalized.