

2020 BIG GAME BROCHURE CORRECTIONS

UPDATED: FEB. 14, 2020



Please see the Colorado Parks and Wildlife website at cpw.state.co.us/bg/regulations for complete regulation information.

NOTE: THE ONLINE VERSION OF THE BROCHURE HAS THE MOST ACCURATE, UP-TO-DATE INFORMATION.

PAGES	CORRECTION	AS PRINTED IN BROCHURE
-------	------------	------------------------

LIST A, B & C TABLES FOR DEER, ELK, PRONGHORN & BEAR

20, 36, 53, 62

Misleading wording was included in the printed version of the brochure about how to get List A & B licenses in the big-game draws.

The wording implies that you can purchase one List A or one List B license through either the primary **or** the secondary draw, but not both.

The correct information is: If you draw a license in the primary draw, you can still apply for licenses in the secondary draw, too, with certain restrictions depending on the List type of the license.

The online version of the brochure has been updated with this correction.

<p>GET ANY NUMBER LIST C</p> <p>IN ADDITION TO ANY LIST A OR B LICENSES</p>	<p>A+B+C+C... / B+B+C+C...</p>	<ul style="list-style-type: none"> ▶ CPW auction or raffle licenses ▶ Game-damage, special-population-management or disease-management licenses ▶ Youth outreach licenses ▶ Ranching for Wildlife licenses held for youth or hunters with mobility impairments ▶ One TIPs reward program license per year ▶ Available through the draw, or at sales agents, CPW locations, online or by phone: <ul style="list-style-type: none"> ▪ Licenses for season choice hunt codes: NEW D-F-089-02-X D-F-093-02-X D-F-096-P6-X D-F-091-P5-X D-F-096-P5-X D-F-101-02-X D-F-092-P5-X ▪ Licenses for hunt codes: D-F-029-P5-R D-F-056-L1-R D-F-104-L3-R D-F-038-P5-R D-F-069-L1-R D-F-391-P5-R D-F-038-L1-R D-F-085-P5-R D-F-481-L1-R
--	---------------------------------------	---

HOW TO GET THEM:

- ▶ **LIST A & B:** You may purchase **ONE** through the primary or secondary draw, or **ONE or BOTH** as leftover licenses, at sales agents, CPW locations or online while supplies last. Additional ways to purchase List A licenses are noted above.
- ▶ **LIST C:** These are issued by CPW locations when available, unless otherwise noted in List C in this table.

page 20, List A, B & C table, "Deer" section

PAGES	CORRECTION	AS PRINTED IN BROCHURE
-------	------------	------------------------

DEER & ELK LIMITED ARCHERY & MUZZLELOADER HUNT CODE TABLES

22-25, 41-43

Clarifying language has been added to the deer and elk limited archery and muzzleloader tables regarding the bear paw symbol.

The correct information is: Whenever you see the bear paw symbol in the deer and elk limited archery and muzzleloader hunt code tables, add-on over-the-counter bear licenses are available: Please see page 66 of the "Bear" section for available hunts and their hunt codes.

The online version of the brochure has been updated with this correction.

DEER					
ARCHERY — LIMITED LICENSES					
UNIT	VALID UNITS	DATES	SEX	HUNT CODE	LIST
1	1	Sept. 2-30	Buck	D-M-001-O1-A	A
2	2	Sept. 2-30	Buck	D-M-002-O1-A	A
3	3, 4, 5, 14, 214, 301, 441	Sept. 2-30	Either	D-E-003-O1-A	A
<p>•Units 4, 5, 14, 214 and 441 are valid for add-on bear licenses. Units 3 and 301 are not. See page 66 and cpw.state.co.us/bearhunts for more.</p>					
4	4, 13, 301	Sept. 2-30	Either	D-E-003-O1-A	A
4	4, 13, 301	Aug. 15-Sept. 30	Buck	D-M-004-P5-A	A
4	4, 13, 301	Aug. 15-Sept. 30	Doe	D-F-004-P5-A	B
<p>•4, 13, 301 Only huntable in the following portions of these townships, ranges and sections that are NOT within Craig City limits: T6N R90W Sect. 5-6; T6N R91W Sect. 1-3; T7N R90W Sect. 29-32; T7N R91W Sect. 25-27, 34, 36.</p> <p>•Units 4, 5, 14, 214 and 441 are valid for add-on bear licenses. Units 3 and 301 are not. See page 66 and cpw.state.co.us/bearhunts for more.</p>					
5	see unit 3				
6	6, 16, 17, 161, 171	Sept. 2-30	Buck	D-M-006-O1-A	A

page 22, limited archery deer hunt code table

ELK					
MUZZLELOADER — LIMITED LICENSES					
SEASON DATES: SEPT. 12-20					
UNIT	VALID UNITS	SEX	HUNT CODE	LIST	
1	1	Bull +	E-M-001-O1-M	A	
		Cow	E-F-001-O1-M	B	
2	2	Bull +	E-M-002-O1-M	A	
		Cow	E-F-002-O1-M	B	
3	3, 301	Either	E-E-003-O1-M	A	
		Cow	E-F-003-O1-M	B	
4	4, 5, 441	Either	E-E-004-O1-M	A	
		Cow	E-F-004-O1-M	B	
4	4, 5, 441	Either	E-E-004-P1-M	A	
		Cow	E-F-004-P1-M	B	
5	see unit 4				
6	6, 16, 17, 161, 171	Either	E-E-006-O1-M	A	
		Cow	E-F-006-O1-M	B	
7	7, 8, 9, 19, 191	Bull	E-M-007-O1-M	A	
		Cow	E-F-007-O1-M	A	
8	see unit 7				
9	see unit 7				
10	10	Bull +	E-M-010-O1-M	A	
		Cow	E-F-010-O1-M	B	
		Either	E-E-011-O1-M	A	
		Cow	E-F-011-O1-M	B	
11	11, 13, 131, 211	Either	E-E-012-O1-M	A	
		Either	E-F-012-O1-M	A	

page 41, limited muzzleloader deer hunt code table

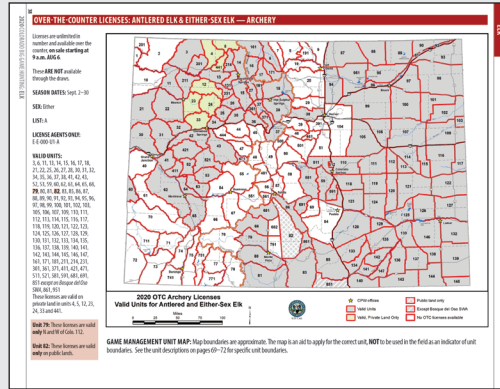
OVER-THE-COUNTER ARCHERY ELK MAPS

37, 38

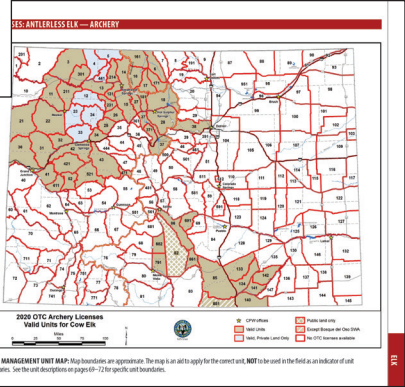
The over-the-counter archery elk maps were missing the bear paw symbol at the time of publication.

The correct information is: Over-the-counter archery elk hunts, seen in the OTC archery antlerless elk and OTC antlered/either-sex elk maps, ARE valid hunts for adding on OTC archery bear licenses. Also see page 66.

The online version of the brochure has been updated with this correction.



page 37



page 38

“MULTIPLE OPTIONS FOR HUNTING BEAR!” ORANGE BOX

62

Information for one of the options for hunting bear was incorrect at the time of publication. The “Hunter C” section incorrectly stated that a customer could purchase an over-the-counter archery deer or elk license.

The correct information is: For “Hunter C,” the only option for an over-the-counter archery license is for elk. Deer do not have OTC archery licenses available.

The online version of the brochure has been updated with this correction.

MULTIPLE OPTIONS FOR HUNTING BEAR!

There are multiple ways to get a license and hunt bear in Colorado for 2020; it just depends on what you'd like to do! For example:

Hunter A: Hunter A only likes to hunt bear, so hunter A would need to:

1. Apply for a **limited** archery, muzzleloader or rifle bear license from the hunt code tables on pages 63–65. And/or:
2. Buy an **over-the-counter** rifle bear license when OTC licenses go on sale Aug. 6 at 9 a.m. (*hunt code tables on page 67*).

Hunter B: Hunter B is planning to draw a deer or elk license, so hunter B has two options:

1. Also apply for a **limited** archery, muzzleloader or rifle bear license.
2. Wait to see if they are awarded an archery or muzzleloader deer or elk license, and then add on an **over-the-counter** bear license of the same method of take that matches at least one of the same units when OTC licenses go on sale.

Hunter C: Hunter C does not participate in the draw, but purchases an over-the-counter deer and/or elk license every year. Hunter C will wait until **over-the-counter** licenses go on sale, purchase an OTC archery deer or elk license, and then add on an OTC bear license of the same method of take that matches at least one of the same units.

page 62

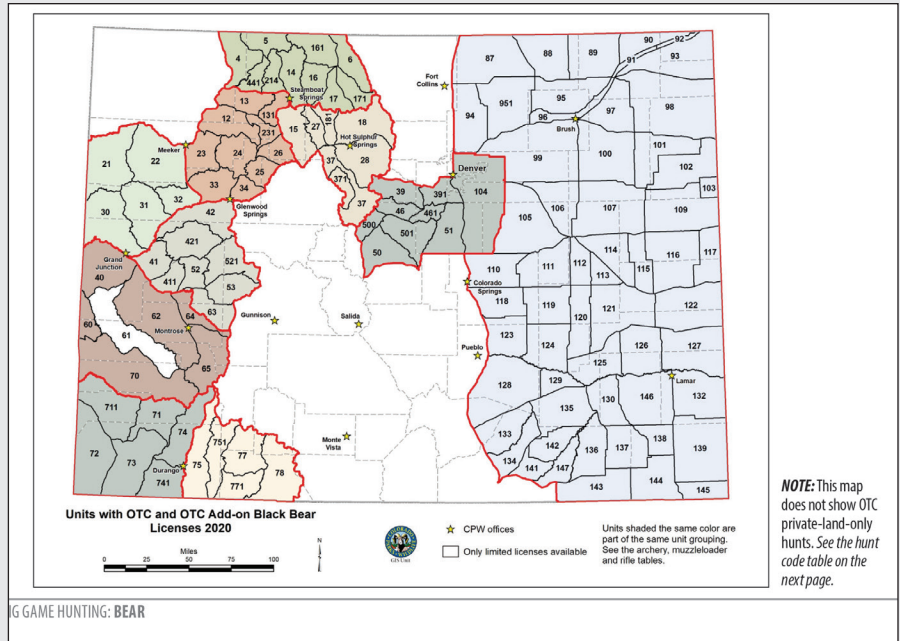
OVER-THE-COUNTER BEAR MAP

66

The over-the-counter bear map was incorrect at the time of publication. Certain unit groupings were shaded the same color, indicating a customer could hunt all of those units, even though the list of units in the over-the-counter hunt code tables did not match the map shading.

The correct information is:
The map has been redone to reflect the hunt code table unit groupings for OTC archery, OTC muzzleloader, OTC rifle and OTC plains rifle. *OTC private-land-only rifle unit groupings do not appear in the map.*

The online version of the brochure has been updated with this correction.



NOTE: This map does not show OTC private-land-only hunts. See the hunt code table on the next page.

page 66

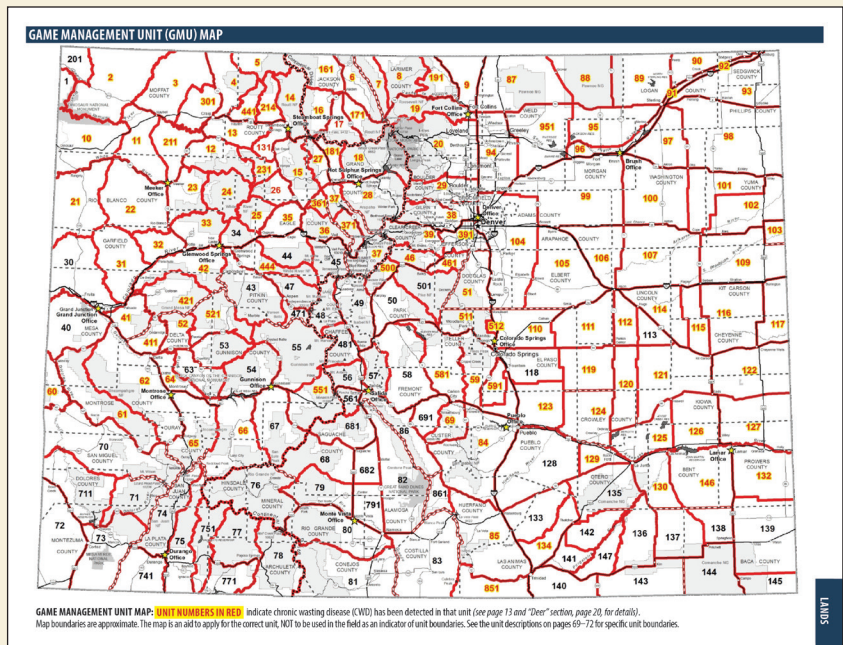
GMU MAP WITH CWD

73
(INSIDE
BACK
COVER)

The GMU map with CWD units highlighted in yellow and red was incorrect at the time of publication.

The correct information is:
Units 66 and 551 should NOT have been highlighted for CWD detection.

The online version of the brochure has been updated with this correction.



page 73, inside back cover