

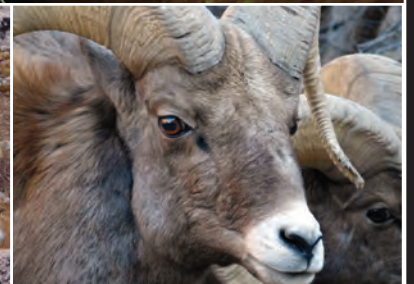
C O L O R A D O P A R K S & W I L D L I F E

# 2013 Colorado Sheep & Goat

APPLICATION DEADLINE: APRIL 2



online brochure



# TABLE OF CONTENTS

## License Fees & Information ..... 1

- What's new in 2013
- Fees and surcharges
- Hunter education requirements

## Identification, Mandatory Checks..... 2

- Bighorn sheep and mountain goat identification tips
- Legal hunting hours, sunrise/sunset tables
- Mandatory checks and reporting for sheep, goat
- Hunter orientation

## In the Field: Handling Your Harvest ..... 3

- **NEW!** Forest Service road closures, using pack goats
- Evidence of sex, attaching carcass tags
- Regulations for transporting and donating meat
- Ranching for Wildlife & special management licenses
- TIPs program details

## License & Hunting Requirements..... 4-5

- License and residency requirements .....4
- Auction and raffle licenses.....4
- Legal hunting methods .....5
- Hunting regulations .....5

## Applications ..... 6

- Using preference points
- How to apply as a group
- Where to submit your application
- How to get refunds

## Bighorn Sheep ..... 7-9

- Hunt code tables ..... 7-8
- **MAP:** Bighorn sheep units.....9

## Mountain Goats ..... 10-11

- Hunt code tables ..... 10
- **MAP:** Mountain goat units..... 11

## GMU Descriptions..... 12-13

## Important Dates ..... back cover

### ON THE COVER:

David Stanley of Breckenridge harvested this bighorn sheep ram in 2011. He wrote, "After a four-hour hike and one and a half hours laying under my poncho waiting for the rain to stop, I crawled over the rocks to take a look. There were 11 rams right below me... I watched them for the next hour and waited for the closest big ram to stand up. I took my shot with my .30-06 Savage rifle that I bought when I was 14 years old – it's 40 years old this year."

Read the rest of David's story and share your own photos and hunt stories on the CPW website at [www.bit.ly/COHuntPhotos](http://www.bit.ly/COHuntPhotos). We may use yours in print.

### RECORDED INFORMATION & SEASON DATES

Deer, Elk, Pronghorn, Bear .....	(303) 291-7529
Fishing.....	(303) 291-7533
Small Game, Upland Game .....	(303) 291-7546
Turkey.....	(303) 291-7547
Hunter Education.....	(303) 291-7530

# CPW OFFICE LOCATIONS

[cpw.state.co.us](http://cpw.state.co.us)

**NEW! All CPW parks and offices now sell hunting and fishing licenses and offer full license services.** See the CPW website for a list of parks locations.

**ONLY** the offices below can assist hunters with animal checks and taking samples that are related to hunting activities referred to in this brochure.

### BRUSH

122 E. Edison  
Brush, 80723  
(970) 842-6300

### COLORADO SPRINGS

4255 Sinton Road  
Colorado Springs, 80907  
(719) 227-5200

### DENVER

6060 Broadway  
Denver, 80216  
(303) 291-7227

### DURANGO

151 E. 16th St.  
Durango, 81301  
(970) 247-0855

### FORT COLLINS

317 W. Prospect Road  
Fort Collins, 80526  
(970) 472-4300

### GLENWOOD SPRINGS

0088 Wildlife Way  
Glenwood Springs, 81601  
(970) 947-2920

### GRAND JUNCTION

711 Independent Ave.  
Grand Junction, 81505  
(970) 255-6100

### GUNNISON

300 W. New York Ave.  
Gunnison, 81230  
(970) 641-7060

### HOT SULPHUR SPRINGS

346 Grand County Rd. 362  
Hot Sulphur Springs, 80451  
(970) 725-6200

### LAMAR

2500 S. Main St.  
Lamar, 81052  
(719) 336-6600

### MEEKER

73485 Hwy. 64  
Meeker, 81641  
(970) 878-6090

### MONTE VISTA

0722 S. Road 1 E.  
Monte Vista, 81144  
(719) 587-6900

### MONTROSE

2300 S. Townsend Ave.  
Montrose, 81401  
(970) 252-6000

### PUEBLO

600 Reservoir Road  
Pueblo, 81005  
(719) 561-5300

### SALIDA

7405 Hwy. 50  
Salida, 81201  
(719) 530-5520

### STEAMBOAT SPRINGS

925 Weiss Dr.  
Steamboat Springs, 80487  
(970) 870-2197

### ADMINISTRATION

6060 Broadway  
Denver, 80216  
(303) 297-1192

Printed for free distribution by

## COLORADO PARKS AND WILDLIFE (CPW)

6060 Broadway, Denver, CO 80216  
(303) 297-1192  
[cpw.state.co.us](http://cpw.state.co.us)

Editor: Amy Nickelson

Cover photo © CPW Hunter Testimonials

Printed Jan. 2013 by American Web, Denver. 80,000 copies.

Printing paid for with hunting and fishing license fees.

Colorado Parks and Wildlife Director: Rick D. Cables

The Colorado Parks and Wildlife Commission sets big-game regulations in January. The Commission (as of Jan. 2013): John Singletary, chairman • Bill Kane, vice chairman • Mark Smith, secretary • Robert Bray, member • Christopher Castilian, member • Jeanne Horne, member • Gaspar Perricone, member • James Pribyl, member • James Vigil, member • Dean Wingfield, member • Michelle Zimmerman, member • Mike King, ex officio member • John Salazar, ex officio member

CPW receives federal financial assistance from the U.S. Fish and Wildlife Service. In accordance with Title VI of the Civil Rights Act of 1964, Section 504 of the Rehabilitation Act of 1973, Title II of the Americans with Disabilities Act of 1990, the Age Discrimination Act of 1975 and Title IX of the Education Amendments of 1972, the U.S. Department of the Interior and its bureaus prohibit discrimination on the basis of race, color, national origin, age, disability or sex.

**NOTE:** Laws and regulations in this brochure are paraphrased for easier understanding and are intended only as a guide. Complete Colorado wildlife statutes and regulations are available at CPW offices listed above and online at [wildlife.state.co.us/RulesRegs/Regulations/Pages/Regulations.aspx](http://wildlife.state.co.us/RulesRegs/Regulations/Pages/Regulations.aspx).



# 2013 WHAT'S NEW

» **NEW HUNTS AVAILABLE FOR BIGHORN SHEEP...** There are a handful of new hunts and changes to bighorn sheep hunting.

Changes include two new archery hunts: One in unit S39 at Mount Silverheels, and one in S69 in Lower Cochetopa Canyon.

The rifle hunts in unit S40 are now grouped with unit S58, for a hunt area that encompasses the Lone Pine and Lower Poudre areas.

There's also a hunt available through the draw this year in unit S48 which has traditionally been a Ranching For Wildlife hunt. Sheep here only reside on private land, get landowner permission before applying, an access fee may be required to hunt with this tag. *See details, pages 7-9.*

» **NEW BOUNDARIES IN HUNT AREAS...** Look at the hunt code tables closely to ensure you apply for the correct hunt, some hunting area boundaries have changed for sheep.

Two notable changes include the hunting boundaries within both units S21 and S33. Both have been split into more hunting areas and new hunts have been added. *See details, pages 7-9.*

» **CHECK FOREST SERVICE CLOSURES...** There's a new website available to quickly and easily check closures of U.S. Forest Service lands and roads. Find out if your hunting area is affected before you apply for a license and before you leave home for your hunt. *See page 3 for details.*



» **NEED A VIDEO FIX?...** Check out the interactive version of the 2013 Sheep & Goat brochure online to view new bighorn ram footage and more: [www.bit.ly/colosheepgoat](http://www.bit.ly/colosheepgoat).

## LICENSE INFORMATION

### HUNTER EDUCATION (SAFETY) REQUIREMENTS

Anyone born on or after Jan. 1, 1949, must have completed an approved hunter education course sanctioned by a state or province before applying for or purchasing a license. Colorado honors hunter education courses from other states and provinces.

You must present an original hunter safety card when buying a license (unless previously verified) or enter the required information when applying by mail or online.

All hunters must carry their hunter education card while hunting unless a "V" is printed on the license, which indicates hunter education has been verified at a CPW location.

The hunter education course schedule is at [wildlife.state.co.us/Hunting/HunterEducation/CourseCalendar/Pages/HECalendar.aspx](http://wildlife.state.co.us/Hunting/HunterEducation/CourseCalendar/Pages/HECalendar.aspx).

### AUCTION AND RAFFLE LICENSES

If you're looking for another way to hunt sheep and goat, auction and raffle licenses may interest you. These special licenses are available

for Rocky Mountain bighorn sheep and mountain goats, allowing you to hunt during extended seasons. These licenses are good statewide in any unit open to hunting that species.

They are offered by participating wildlife organizations that return at least 75 percent of the proceeds to CPW for research, management and education. For information, go to the website [wildlife.state.co.us/Hunting/BigGame/Pages/RaffleAuction.aspx](http://wildlife.state.co.us/Hunting/BigGame/Pages/RaffleAuction.aspx). *See page 4 for more.*

### CHILD SUPPORT DELINQUENCY

State law requires a Social Security number to buy a license. It is not displayed on the license but is provided, if requested, to Child Support Enforcement authorities. Hunting and fishing licenses are not issued to those suspended for noncompliance with child support.

Any current licenses become invalid if held by an individual who is noncompliant with child support.

### WEAPONS RESTRICTIONS

Colorado and federal laws prohibit

## LICENSE FEES

	LICENSE	PROCESS FEE	TOTAL COST
» 2013 Habitat Stamp (required) .....	\$10.....	- .....	<b>\$10</b>

### RESIDENT

» Rocky Mtn. Bighorn.....	\$251 .....	\$3 .....	<b>\$254</b>
» Mountain Goat.....	\$251 .....	\$3 .....	<b>\$254</b>
» Desert Bighorn.....	\$251 .....	\$3 .....	<b>\$254</b>

### NONRESIDENT (must use paper applications to apply)

» Rocky Mtn. Bighorn.....	\$1,951 .....	\$3 .....	<b>\$1,954</b>
» Mountain Goat.....	\$1,951 .....	\$3 .....	<b>\$1,954</b>
» Desert Bighorn.....	\$1,301 .....	\$3 .....	<b>\$1,304</b>

*See license information below for details. Prices include 25-cent search-and-rescue fee and 75-cent surcharge for the Wildlife Management Public Education Fund.*

### SAVE TIME: BUY ONLINE OR BY PHONE

Go to [www.bit.ly/cpwlicensesales](http://www.bit.ly/cpwlicensesales) or call 1-800-244-5613.



### WHAT YOU NEED TO BUY A LICENSE

1. Current and valid photo ID (*Colorado driver's license must be issued at least 6 months prior to applying as a resident*)
2. Proof of hunter education (*see requirements at left*)
3. For residents, proof of residency (*see page 4*)
4. Habitat Stamp (*see requirements below*)

### HABITAT STAMP

- Stamps are \$10 and are nonrefundable. Only one is required per person per year, valid April 1-March 31. A lifetime stamp is \$300.25.
- Anyone 18-64 **MUST** purchase a stamp prior to buying or applying for a preference point, or for a hunting or fishing license.
- Hunters ages 18-64 applying for a limited license must purchase a stamp to apply in the drawing process. Applications submitted for hunters who do not have a Habitat Stamp will be disqualified.
- **EXEMPTIONS:** Anyone with a free lifetime fishing license, a veteran's lifetime combination small-game hunting and fishing license, or those approved for the Big-Game Mobility Impaired Hunting Program. See [wildlife.state.co.us/Hunting/DisabledAccessibility/Pages/DisabilityInformation.aspx](http://wildlife.state.co.us/Hunting/DisabledAccessibility/Pages/DisabilityInformation.aspx) for details.



## Get the lead out



[www.bit.ly/leadammo](http://www.bit.ly/leadammo)

From the field to the table, ensuring your next harvest is safe for your family is important. Switching from lead bullets may be the right option for you. For more, go to the CPW link above. Science tells us ingesting lead can cause potential health problems. Risks are low for most people, however, you can also:

1. Use lead-free shot or bullets.

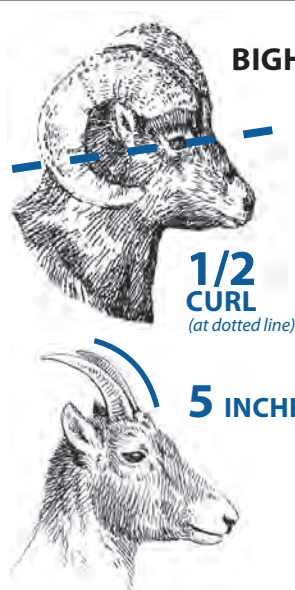
2. Liberally trim and discard meat damaged by the bullet when you process an animal. Fragments can scatter far from the wound.
3. Clean your meat grinder between each animal. Lead is soft and can go through your grinder, contaminating an entire batch of ground meat.
4. Avoid eating game meat from animals harvested with lead bullets if you are pregnant. Children younger than 6 should also avoid it.

Colorado Department of Public Health and Environment and Colorado Parks and Wildlife



people convicted of certain crimes, such as domestic violence, from possessing weapons even for hunting.

If you've been convicted of a crime, check with the appropriate law enforcement authority to find out how these laws apply to you.



### BIGHORN SHEEP IDENTIFICATION

**ONE-HALF CURL RAM:** Male bighorn with a horn or horns having one or both tips grown at least through half (180 degrees) of a circle. This is measured by first establishing a reference line bisecting the eye and base of the ear. A half-curl ram has one or both horns that have grown at least as far as the blue reference line in the illustration.

**1/2 CURL**  
(at dotted line)

**5 INCHES**

**EWE:** A female sheep with a horn or horns at least 5 inches long, measured on the outside curve.

Illustrations by © Wayne Lewis, CPW

### MOUNTAIN GOAT IDENTIFICATION

**MALES:** Horns have bases that are close together and larger than the eye. Horns are heavy and have more curvature.

Males stand and stretch hind legs backwards, with a slight arch in the back, to urinate. The scrotum may be visible from the rear when goats have short summer coats.

**FEMALES:** Horns have bases that are smaller or equal to the eye size. Horns are often thinner and straighter, with a curve at the ends.

Females squat to urinate. The dark vulva patch may be visible when tail is raised.

**FOR MORE** go to the goat ID and quiz online: [wildlife.state.co.us/Hunting/BigGame/GoatIDandQuiz/Pages/HEGoatGuideAndQuiz.aspx](http://wildlife.state.co.us/Hunting/BigGame/GoatIDandQuiz/Pages/HEGoatGuideAndQuiz.aspx)



### LEGAL HUNTING HOURS

Legal hunting hours for sheep and goat are one-half hour before sunrise to one-half hour after sunset.

The sunrise/sunset chart below lists Denver times. Subtract 1 minute from opening and closing time for each 12 1/2 miles east of Denver. Add 1 minute to opening and closing time for each 12 1/2 miles west of Denver. (These changes assume that each degree of longitude equals 50 miles and a change of 1 degree of longitude equals a 4-minute change in sunrise and sunset times.)

#### 2013 SUNRISE/SUNSET TABLE (DENVER)

DAY	AUG. (DST)*		SEPT. (DST)		OCT. (DST)		NOV. (DST)		DEC.		JAN. 2014	
	RISE	SET	RISE	SET	RISE	SET	RISE	SET	RISE	SET	RISE	SET
	A.M.	P.M.	A.M.	P.M.	A.M.	P.M.	A.M.	P.M.	A.M.	P.M.	A.M.	P.M.
1	5:59	8:13	6:28	7:31	6:56	6:42	7:29	5:58	7:02	4:36	7:21	4:46
2	6:00	8:11	6:29	7:29	6:57	6:40	7:30	5:56	7:03	4:36	7:21	4:47
3	6:01	8:10	6:30	7:27	6:58	6:39	6:31 <sup>EST</sup>	4:55	7:04	4:36	7:21	4:48
4	6:02	8:09	6:31	7:26	6:59	6:37	6:32	4:54	7:05	4:35	7:21	4:49
5	6:03	8:08	6:32	7:24	7:00	6:35	6:33	4:53	7:06	4:35	7:21	4:50
6	6:04	8:07	6:33	7:23	7:01	6:34	6:35	4:52	7:07	4:35	7:21	4:51
7	6:05	8:06	6:34	7:21	7:02	6:32	6:36	4:51	7:08	4:35	7:21	4:52
8	6:06	8:05	6:35	7:19	7:03	6:31	6:37	4:50	7:09	4:35	7:21	4:53
9	6:07	8:03	6:36	7:18	7:04	6:29	6:38	4:49	7:09	4:35	7:21	4:54
10	6:08	8:02	6:37	7:16	7:05	6:28	6:39	4:48	7:10	4:36	7:21	4:55
11	6:09	8:01	6:38	7:15	7:06	6:26	6:40	4:47	7:11	4:36	7:20	4:56
12	6:10	8:00	6:39	7:13	7:07	6:25	6:41	4:46	7:12	4:36	7:20	4:57
13	6:10	7:58	6:39	7:11	7:08	6:23	6:43	4:46	7:13	4:36	7:20	4:58
14	6:11	7:57	6:40	7:10	7:09	6:22	6:44	4:45	7:13	4:36	7:19	4:59
15	6:12	7:56	6:41	7:08	7:10	6:20	6:45	4:44	7:14	4:37	7:19	5:00
16	6:13	7:54	6:42	7:06	7:11	6:19	6:46	4:43	7:15	4:37	7:19	5:01
17	6:14	7:53	6:43	7:05	7:13	6:17	6:47	4:43	7:15	4:37	7:18	5:02
18	6:15	7:51	6:44	7:03	7:14	6:16	6:48	4:42	7:16	4:38	7:18	5:03
19	6:16	7:50	6:45	7:01	7:15	6:14	6:49	4:41	7:16	4:38	7:17	5:04
20	6:17	7:49	6:46	7:00	7:16	6:13	6:50	4:41	7:17	4:38	7:17	5:06
21	6:18	7:47	6:47	6:58	7:17	6:12	6:52	4:40	7:17	4:39	7:16	5:07
22	6:19	7:46	6:48	6:56	7:18	6:10	6:53	4:39	7:18	4:39	7:16	5:08
23	6:20	7:44	6:49	6:55	7:19	6:09	6:54	4:39	7:18	4:40	7:15	5:09
24	6:21	7:43	6:50	6:53	7:20	6:08	6:55	4:38	7:19	4:41	7:14	5:10
25	6:22	7:41	6:51	6:52	7:21	6:06	6:56	4:38	7:19	4:41	7:13	5:11
26	6:23	7:40	6:52	6:50	7:22	6:05	6:57	4:38	7:20	4:42	7:13	5:13
27	6:24	7:38	6:53	6:48	7:23	6:04	6:58	4:37	7:20	4:43	7:12	5:14
28	6:25	7:37	6:54	6:47	7:24	6:02	6:59	4:37	7:20	4:43	7:11	5:15
29	6:25	7:35	6:54	6:45	7:26	6:01	7:00	4:36	7:20	4:44	7:10	5:16
30	6:26	7:34	6:55	6:43	7:27	6:00	7:01	4:36	7:21	4:45	7:10	5:17
31	6:27	7:32			7:28	5:59			7:21	4:46	7:09	5:19

\* DST = Daylight Saving Time

#### TIME ADJUSTMENT FOR OTHER COLORADO CITIES

Add or subtract these minutes to the chart above for select towns. For use only as a general reference.

Alamosa	+3	Durango	+11	La Junta	-6
Buena Vista	+5	Fort Morgan	-4	Lamar	-9
Burlington	-10	Gr. Junction	+13	Sterling	-6
Craig	+9	Gunnison	+7	Walden	+5

Source: [www.usno.navy.mil](http://www.usno.navy.mil)

### MANDATORY BIGHORN SHEEP CHECK

- All bighorns, including ewes and desert bighorns, must be inspected by a CPW officer or at a CPW office (listed inside the cover) during regular business hours within five working days of harvest. License holders must personally present sheep with horns and skull intact. A harvest report is completed at that time. A permanent marker will be attached to the horn of bighorn rams.
- All licensees (successful or not) must return a completed questionnaire within 30 days after a season ends. Licensees who do not complete the questionnaire become ineligible for future sheep licenses.
- It is illegal to trade, transfer or sell ram heads, capes, skulls or horns unless CPW inspects and permanently marks horns. The CPW marks only legally killed rams.

### MANDATORY MOUNTAIN GOAT CHECK

- All goats must be inspected by a CPW officer or at a CPW office (listed inside the cover) during regular business hours within five working days of harvest. License holders must personally present goats with horns and skull intact. A harvest report is completed by the hunter at that time.
- All licensees (successful or not) must return a completed questionnaire within 30 days after a season ends. Licensees who do not complete the questionnaire become ineligible for future goat licenses.

### SHEEP AND GOAT HUNTER ORIENTATION

Hunters who draw a sheep or goat license may attend a free course on sheep and goat hunting sponsored by CPW, Rocky Mountain Bighorn Society, Colorado Bowhunters Association and the International Order of Rocky Mountain Goats.

The class is usually held in mid-July. Those who are successful in the draw and obtain a license will receive details about the class through the mail by early June. For more information, call (303) 297-1192.

SMALL THINGS CAN MAKE A BIG DIFFERENCE.

When you purchase a hunting license, 75c goes to educate the public on the role sportsmen play in wildlife management.

HUG A HUNTER<sup>™</sup>.com

## IN THE FIELD

### NEW! CHECK LAND CLOSURES BEFORE YOU HEAD OUT TO HUNT

Projects on the National Forest can temporarily impact access any time of the year. Closures of areas, roads and trails can change quickly due to hazard tree removal, road work, wildfire, wind events, flooding and other activities.

Your hunting destination or access route may be affected. Be informed before you plan your hunt on National Forest System lands. Plan alternative routes and areas to hunt in case closures occur. Keep up-to-date at [www.fs.usda.gov/goto/r2/huntnfs-co](http://www.fs.usda.gov/goto/r2/huntnfs-co).

### NEW! LEAVE YOUR PACK GOATS AT HOME WHEN HUNTING SHEEP

Please leave your pack goats at home during your bighorn hunt. Diseases can be transmitted from goats to bighorns, even if your animals appear healthy. Some diseases can cause large-scale die-offs of wild bighorns.

To prevent disease transmission, keep domestic goats out of areas occupied by bighorn sheep. For more information, go to the CPW website or the Western Association of Fish and Wildlife Agencies: [www.wafwa.org/documents/wswg/RecommendationsForDomesticSheepGoatManagement.pdf](http://www.wafwa.org/documents/wswg/RecommendationsForDomesticSheepGoatManagement.pdf).

### EVIDENCE OF SEX

- 1. MALES:** head with horns attached, testicle, scrotum or penis.  
**FEMALES:** head, udder (mammary) or vulva.
- It is illegal to have or transport big game, or a considerable part of it, without evidence of sex naturally attached. Evidence of sex must be attached to carcass until it is cut into processed meat (commercially or otherwise), wrapped and frozen or stored at licensee's home.
- Head or intact skull of sheep and goats with horns naturally attached to skull plate must accompany the carcass.

### CARCASS TAGS

You must attach a carcass tag to animals you kill per instructions on the tag. Tags must stay on the carcass until the meat is processed and it must remain with the meat until consumed.

It is illegal to sign or tear the tag before a kill. If you lose, accidentally destroy or detach the tag, you must get a duplicate from a CPW location before hunting and prove the loss, detachment or destruction was accidental. Do not remove other

### RANCHING FOR WILDLIFE

Public Ranching For Wildlife (RFW) licenses are available only to Colorado residents by drawing. This year, there is one bighorn sheep RFW license available, for Purgatoire Ranch. *The RFW hunt code and details for this hunt are on page 7.*

RFW landowners must provide free access to hunters who draw a license for the ranch. By applying for a RFW license, hunters allow CPW to provide applicant information to the ranch. RFW hunting rules are different on each ranch. For Purgatoire Ranch rules, maps and ranch contacts, go to [wildlife.state.co.us/Hunting/BigGame/RanchingforWildlife/Pages/RFW.aspx](http://wildlife.state.co.us/Hunting/BigGame/RanchingforWildlife/Pages/RFW.aspx).



"Realizing this was a once-in-a-lifetime draw, my brother Stuart (on left) took a week off of work and helped me get this 10-year-old ram in Unit 32. We lost 40 pounds of weight between us getting ready for this hunt," said Rick Evans. Share tales from your hunts at [www.bit.ly/COHuntPhotos](http://www.bit.ly/COHuntPhotos).

Photo ©  
CPW Hunter Testimonials

parts of a license except the carcass tag after a kill. Doing so voids the license and you must buy a duplicate.

### TRANSPORTING GAME

1. Sheep and goats must have carcass tags properly and securely attached to carcass (not horns), unless it is 20 pounds or less of meat that is accompanied by a donation certificate. If carcass is in pieces, tag must be attached to the piece with evidence of sex naturally attached.
2. Harvested sheep or goats shipped by common carrier must be accompanied by either the license, a photocopy of license or carcass tag and (if less than 20 pounds of meat) a donation certificate.
3. Processed big-game meat must be accompanied by carcass tag or, if donated, a certificate.
4. If you transport someone else's game, animals must be properly tagged, or you can be cited. The upper part of carcass tag must be kept by whoever killed the animal. Carry a list identifying each hunter and animal.
5. Hunters transporting game through other states are encouraged to check with each state for specific carcass transportation regulations.

### DONATING GAME MEAT

Donation certificates are required for all donations. Certificates must contain names, addresses and telephone numbers of donor and recipient; donor's hunting license number; species and amounts do-

noted; date of kill; donor's signature. The certificate can be a simple note; no special form is required. Certificate must stay with the meat until the meat is completely consumed. Donor and recipient are subject to all bag and possession limits.

**NOTE:** A "like license" is a license for exactly the same species, sex, season and method of take as a donor's license.

1. You can donate to someone **WITH OR WITHOUT** a like license:
  - a. Any amount of processed and packaged game meat, anywhere.
2. You can donate to someone **WITHOUT** a like license:
  - a. up to 20 pounds of unprocessed meat, anywhere
  - b. more than 20 pounds of unprocessed meat, only at recipient's home
3. You can donate to someone **WITH** a like license:
  - a. up to 20 pounds of unprocessed meat, anywhere
  - b. more than 20 pounds of unprocessed meat, anywhere, only if:
    - (1) recipient's license is unfilled
    - (2) recipient's carcass tag is on the meat. This establishes recipient's claim to his/her portion of meat and voids his/her license. Donor's tag must remain with his/her portion.
  - c. the entire carcass, if:
    - (1) recipient's license is unfilled, and
    - (2) both the donor's carcass tag and recipient's like-license carcass tag is on the meat, voiding both licenses.

## SPECIAL LICENSE INFORMATION

### TURN IN POACHERS (TIPS) PROGRAM

TIPs rewards people who voluntarily provide information resulting in charging poachers. Awards can be a preference point for species of choice or an unlimited license for the species reported. Some limited licenses also may be available. TIPs licenses do not count toward annual bag and possession limits.

### DISABLED VETERANS

Colorado residents who are disabled veterans or Purple Heart recipients can get free lifetime combination small-game hunting and fishing licenses.

Veterans must have served on active duty and have been honorably discharged. Proof is required

of a service-related disability rated by the Veterans Administration of at least 60 percent through disability retirement benefits or a pension administered by the Department of Veteran Affairs. Contact CPW, (303) 297-1192, for details.

### SPECIAL MANAGEMENT LICENSES

Colorado Parks and Wildlife may issue special licenses to prevent the spread of disease and unplanned expansion of sheep and goats.

Licenses are offered to unsuccessful applicants from nearby units for the same species. Season dates to be determined. These licenses do not use or generate preference points. Hunters do not lose preference points by accepting these licenses.

## LICENSE REQUIREMENTS

1. Bighorn sheep and mountain goat licenses are limited, available only by drawing for specific units. Licenses expire on the date printed on them and are not transferable.
2. You can apply for one bighorn sheep license and one mountain goat license each year. However, you cannot apply for a Rocky Mountain bighorn and desert bighorn in the same year. If you apply for more than one bighorn sheep license at once, your applications become void.
3. **BIGHORN SHEEP:** If you harvest a Rocky Mountain bighorn ram (must have a half-curl or more), you must wait five years (sixth year after harvest) before applying for another Rocky Mountain bighorn ram license. During the five-year waiting period, hunters may apply for ewe licenses but cannot accrue preference points. This rule does not apply if you harvest a ram with an auction, raffle or special sheep management license.
4. **DESERT BIGHORN SHEEP:** If you harvest a desert bighorn sheep, you cannot participate in future desert bighorn sheep drawings.
5. **MOUNTAIN GOAT:** If you harvest a mountain goat, you must wait five years (sixth year after harvest) before applying for another mountain goat license. This rule does not apply if you harvest a goat with an auction, raffle or special goat management license.
6. **RAFFLE OR AUCTION LICENSES:** For information, call (303) 297-1192 or see below for details. Licenses are available for any unit open to hunting sheep or goats in the current season. These licenses can be used in addition to sheep or goat licenses obtained in the limited license drawing.
7. **YOUTHS AGES 12-17** can hunt sheep and goats but must meet hunter education requirements. Youths under 16 must hunt with a mentor. A mentor must be 18 or older and have a hunter education card, if born on or after Jan. 1, 1949. A mentor is not required to hunt. Youths and mentors must be able to see and hear each other without binoculars, radios, other devices or aids while hunting. Youths may apply for a sheep or goat license at age 11 if they will turn 12 before they go hunting.
8. Ten percent of limited licenses are allocated to nonresidents.
9. It is illegal to make false statements to obtain a license or alter a license, and doing so voids the license.
10. Lost or destroyed licenses can be replaced by paying a replacement fee at any CPW location or license agent.

## Auction & Raffle Licenses

### MORE ABOUT THE AUCTION AND RAFFLE PROGRAM:

wildlife.  
state.co.us/  
Hunting/Big  
Game/Pages/  
RaffleAuction.  
aspx

### WIN THE HUNT OF A LIFETIME — TODAY!

Special auction and raffle licenses are available for moose, deer, elk, bighorn sheep, mountain goat and pronghorn. The licenses allow one to hunt during extended seasons in any unit open to hunting the specific species. These licenses are offered by participating wildlife conservation organizations that return at least 75 percent of the proceeds to CPW for research, management and education.

For information on purchasing raffle tickets for licenses or participating in auctions, visit the following websites:

#### BIGHORN SHEEP AND MOUNTAIN GOAT

- Rocky Mountain Bighorn Society: [www.bighornsheep.org](http://www.bighornsheep.org)

#### DEER

- The Mule Deer Foundation: [www.muledeer.org](http://www.muledeer.org)
- Safari Club Intl., Colorado Chapter: [www.scicolorado.org](http://www.scicolorado.org)
- Colorado Mule Deer Association: [www.coloradomuledeer.org](http://www.coloradomuledeer.org)

#### MOOSE

- Safari Club Intl., Colorado Chapter: [www.scicolorado.org](http://www.scicolorado.org)
- Ducks Unlimited, Inc. Colorado: [www.ducks.org/colorado](http://www.ducks.org/colorado)

## RESIDENCY REQUIREMENTS

These are the requirements to qualify as a Colorado resident to buy a hunting license:

1. You must live in Colorado at least 6 consecutive months immediately before applying for or buying a license, and must intend to make Colorado home (except No. 3 and No. 4 below). The residence address you give to buy or apply for a license must be the same as on your Colorado income tax return.
2. A valid Colorado driver's license or Colorado ID is proof of residency if issued at least 6 months prior to buying or applying for a license. If your ID or driver's license was issued or renewed less than 6 months prior, you must provide documentation that proves you have been a resident for the required 6-month period.
3. U.S. military personnel and military personnel of U.S. allies on active duty in Colorado under permanent orders and their dependents. This includes people who were Colorado residents when they entered the military and keep Colorado as their home of record, and their dependents (unless they change their home of record to another state). Also included are personnel of the U.S. Diplomatic Service or diplomatic services of nations recognized by the U.S. assigned here on permanent active duty orders and their dependents. Active duty does not include reserve status or National Guard.
4. Full-time students enrolled and attending a Colorado college, university or trade school at least 6 months immediately before applying for or buying a license. This includes students who are temporarily absent from Colorado but still enrolled. Colorado residents who attend school full time out of state and pay nonresident tuition still qualify for a resident license.
4. Children under 18 have the same residency status as their parent, legal guardian or person with whom they live most of the time per court order.
5. If you have a home in Colorado and another state, call (303) 297-1192 to make sure you comply with Colorado residency requirements before applying for or obtaining a hunting or fishing license.
6. Except as in No. 3 and No. 4 above, you lose your Colorado residency if you apply for, buy or accept hunting or fishing license as a resident of another state or country, register to vote outside Colorado or get a driver's license using an address in another state.



Photo © Dave Bantly  
Dave Bantly poses with his bighorn sheep harvest. Bantly was the winner of the Rocky Mountain Bighorn Society's raffle tag in 2012.

#### PRONGHORN

- Colorado Youth Outdoors: [www.coloradoyo.org](http://www.coloradoyo.org)
- Rocky Mountain Bighorn Society: [www.bighornsheep.org](http://www.bighornsheep.org)
- The Mule Deer Foundation: [www.muledeer.org](http://www.muledeer.org)

#### ELK

- Rocky Mountain Elk Foundation: [www.rmef.org](http://www.rmef.org)
- Colorado Bowhunters Assoc.: [www.coloradobowhunting.org](http://www.coloradobowhunting.org)
- The Mule Deer Foundation: [www.muledeer.org](http://www.muledeer.org)
- Colorado Wildlife Federation: [www.coloradowildlife.org](http://www.coloradowildlife.org)

# HUNTING REQUIREMENTS

## IT'S AGAINST THE LAW TO:

- » If convicted of these felony violations, you can face a lifetime license suspension:
- 1. FELONY OFFENSE:** To kill and abandon big game. It is illegal to remove only the hide, antlers or other trophy parts and leave the carcass in the field.
  - 2. FELONY OFFENSE:** To sell, buy or offer to sell or buy big game.
  - 3. FELONY OFFENSE:** To solicit someone to illegally kill big game for commercial gain or provide outfitting services without required registration.
  - Have a loaded (round in the chamber) rifle or shotgun in or on any motor vehicle. Muzzleloading rifles are considered unloaded if the percussion cap or shotshell primer is removed, or if the powder is removed from flashpan. It is illegal for anyone to have a loaded electronic-ignition muzzleloader in or on a motor vehicle unless the chamber is unloaded or the battery is disconnected and removed from its compartment.
  - Carry firearms (except handguns) on an OHV during deer, elk, pronghorn and bear seasons unless they are unloaded in the chamber and magazine. Firearms (except handguns) and bows carried on an OHV must be fully enclosed in a hard or soft case. Scabbards or cases with open ends or sides are prohibited. This does not apply to landowners or their agents who carry a firearm on an OHV to take depredated wildlife on property they own or lease.
  - Hunt carelessly, discharge a firearm, or release an arrow with disregard for human life or property.
  - Operate or ride a snowmobile with a firearm unless it's completely unloaded and cased, or with a bow unless it's unstrung or cased. Compound bows must be cased, not unstrung.
  - Shoot from or use a motor vehicle, motorcycle, off-highway vehicle, snowmobile or aircraft to hunt, intercept, chase, harass or drive wildlife.
  - Use aircraft to hunt, to direct hunters on the ground or to hunt the same day or day after a flight was made to find wildlife.
  - Hunt under the influence of alcohol or controlled substances.
  - Use artificial light as an aid in hunting wildlife.
  - Use poison, drugs or explosives to hunt or harass wildlife.
  - Fail to extinguish a campfire.
  - Fail to make a reasonable attempt to track and kill animals you wound or may have wounded. It is against the law to pursue wounded wildlife that goes on private property without first obtaining permission from landowner or person in charge.
  - Fail to prepare edible wildlife meat for human consumption. At a minimum, the four quarters, tenderloins and backstraps are edible meat. Internal organs are not.
  - Shoot from, across or on a public road with a firearm, bow or crossbow. People firing a bow, rifle, handgun or shotgun with a single slug must be at least 50 feet from the centerline of the road.
  - Party hunt (kill someone else's game or let someone kill yours).
  - Interfere with hunters. This includes distracting or frightening prey; causing prey to flee by using light or noise; chasing prey on foot or by vehicle; throwing objects; making movements; harassing hunters by using threats or actions; erecting barriers to deny access to hunting areas and intentionally injecting yourself into the line of fire. Violators face prosecution and may have to pay victim's damages and court costs.
  - Use the Internet or other computer-assisted remote technology while hunting or fishing. Hunters and anglers must be physically present in the immediate vicinity while hunting and fishing.
  - For two or more people to use electronic equipment on the ground, in a vehicle or vessel while violating any wildlife law or regulation.

## LEGAL HUNTING METHODS

- 1. HAND-HELD BOW:** a long bow, recurve bow or compound bow on which the string is not drawn mechanically or held mechanically under tension. String or mechanical releases are legal if they are hand-drawn or hand-held with no other attachments or connections to the bow (other than bowstring).
  - Hand-held bows, including compound bows, must use arrows with a broadhead having an outside diameter or minimum width of 7/8-inch with minimum of two steel cutting edges. Each cutting edge must be in same plane for entire length of cutting surface.
  - Only legal hand-held bows allowed during archery seasons.
  - Minimum draw weight: 35 pounds; Let-off max: 80 percent.
  - No part of bow's riser (handle) or track, trough, channel, arrow rest or other device (excluding cables and bowstring) that attaches to the riser can contact, support and/or guide the arrow from a point rearward of bow's brace height behind the undrawn string.
  - Bows can propel only one arrow at a time. No mechanisms that automatically load arrows are allowed.
  - Scopes, electronic or battery-powered devices cannot be incorporated into or attached to a bow or arrow.
  - Hydraulic or pneumatic technology cannot be used to derive or store energy to propel arrows. Explosive arrows prohibited.
- 2. CROSSBOWS:**
  - Minimum draw weight: 125 pounds.
  - Minimum draw length: 14 inches from front of bow to nocking point of drawstring.
  - Positive mechanical safety device required.
  - Bolts must be minimum 16 inches long, have a broadhead minimum 7/8-inch wide and a minimum of two steel cutting edges. Each cutting edge must be in same plane for entire length of cutting surface.
  - Illegal in archery seasons.
- 3. MUZZLELOADING RIFLES & SMOOTHBORE MUSKETS:**
  - In-line muzzleloaders are legal.
  - Must have a single barrel that fires a single round ball or conical projectile.
  - From .40 to .50 caliber, bullets must weigh at least 170 grains.
  - If greater than .50 caliber, bullets must weigh at least 210 grains.
  - Shotshell primers are legal.
- 4. RIFLES:** Must be minimum .24 caliber (6 mm); have minimum 16-inch barrel and be at least 26 inches long, fired from the shoulder. Must use expanding bullets that weigh minimum 70 grains and have an impact energy (at 100 yards) of 1,000 foot-pounds, as rated by the manufacturer. Semi-automatic rifles cannot hold more than six rounds in the magazine and chamber combined. Fully automatic rifles prohibited.
- 5. SHOTGUNS:** Must be minimum 20 gauge and must fire a single slug. Barrel length: minimum 18 inches. Overall length: minimum 26 inches.
- 6. HANDGUNS:** Must use a minimum .24 caliber (6 mm) diameter expanding bullet, with no shoulder stock or attachment. Must use only cartridge or load with minimum energy of 550 foot-pounds at 50 yards. Barrel length: minimum 4 inches.

**OPERATION  
GAME THIEF**  
1-877-265-6648

Operation Game Thief (OGT) is a nonprofit organization working with CPW's law enforcement. Citizens who report poachers or resource violations are paid rewards. Callers don't have to reveal their names, testify in court or sign a deposition. Rewards are paid if information leads to an arrest of a poacher or an issuance of a citation. Rewards do not depend on a conviction but must be requested when a violation is reported. *(This phone number is NOT for information or emergencies.)*



# APPLICATIONS AND PREFERENCE POINTS

## MAIL YOUR APPLICATIONS **MUST POSTMARK ON OR BEFORE MIDNIGHT APRIL 2**

\*Midnight postmark is acceptable.

**MAIL GOAT APPLICATIONS TO:**  
Colorado Parks and Wildlife  
Attn: Mountain Goat  
P.O. Box 173758  
Denver, CO 80217-3758

**MAIL SHEEP APPLICATIONS TO:**  
Colorado Parks and Wildlife  
Attn: Bighorn Sheep  
P.O. Box 173757  
Denver, CO 80217-3757

**APPLY ONLINE** [www.bit.ly/cpwlicensesales](http://www.bit.ly/cpwlicensesales) Online applications are for residents only. Nonresidents must use paper applications.

## FILLING OUT PAPER APPLICATION

- Print in capital, block letters and stay within the boxes. Use black ballpoint pen only. Photocopies not accepted.
- Do not cut or fold applications. Tear along perforations.
- Check or money order payment must accompany each application. The application fee of \$3 is non-refundable. The license cost also includes a 25-cent search-and-rescue fee and 75-cent Wildlife Management Education Fund surcharge.
- Starting from left to right, enter your customer identification (CID) number.
  - If this brochure was mailed to you, your CID number may be on the address label above your name.
  - If you've never had a CID, leave this part blank. Fill out the rest of the form, including the address box. You will get a CID when your application goes through the draw.
- Enter hunt code choices. You can list up to four choices, the first being the one you want most.
- Enter your name in capital letters, as many letters as will fit. Enter your birth date with four digits for the year.
- Fill in "Colorado Resident Since" with month (MM) and year (YYYY) you moved here. If you have always lived here, enter month and year of your birth. Colorado military: enter "88 8888." One number per box.
- You must buy a Habitat Stamp to apply for or buy a limited license. Hunters applying for a limited license must purchase a 2013 stamp to enter the drawing process. You may buy a Habitat Stamp at any license agent, CPW location, online, or by calling 1-800-244-5613. You also can include \$10 for a Habitat Stamp with your license fee when you apply for a license. Put an "X" in this box if you are sending \$10 for the stamp with your application. The \$10 charge is nonrefundable.
- If you have preference points, put an "X" in this box.
- If you were born on or after Jan. 1, 1949, and have completed hunter education, put an "X" in the box.
- State law requires your Social Security number to buy or apply for hunting licenses. If you have already given us your number, leave this blank.
- The "permission to provide" box at the top of the application allows CPW to provide application information to entities offering hunting information or services. If you check this box and change your mind, you can cancel by writing CPW, Attn: Call Center, 6060 Broadway, Denver, CO 80216; or e-mail [wildlife.dowinfo@state.co.us](mailto:wildlife.dowinfo@state.co.us); call (303) 297-1192 or go to any CPW office (listed inside the cover).
- Sign the application and enter a contact phone number.
- You can change your address online or use the change-of-address form in this brochure. Mail the form separately to CPW. Don't mail it with your application.

## SUBMITTING YOUR APPLICATION

- Mail one check and application per envelope in a

## GROUP HUNT INSTRUCTIONS

Group applications are accepted for Rocky Mountain bighorn sheep and mountain goat licenses. Maximum of two people per group. Group applications are prioritized based on the member with **FEWEST** points.

Both members must enter the group leader's CID number in the group application box to be entered as a group. If the leader has no CID, he or she must call CPW to get one. Both people must fill out their applications the same, using the same person as leader. Each hunter's application must be mailed separately.

Colorado residents and nonresidents cannot apply on the same group application. Group applications are not accepted for desert bighorn sheep.

standard, 4 1/8- by 9 1/2-inch envelope. If you have a CID number, write it on the check.

- Personal checks, cashier's checks or money orders are accepted, made to Colorado Parks and Wildlife. U.S. currency only. No cash.
- Payments are NOT accepted at CPW offices, including Denver. A secure drop-box is available in Denver for sealed applications and payments.
- Applications are rejected if your check is returned by the bank. Prosecution may result.

## GETTING REFUNDS OR RESTORING YOUR PREFERENCE POINTS

- Refunds for unsuccessful applicants are issued by May 15. The \$3 application fee and \$10 Habitat Stamp fee are nonrefundable. Points used in applying are not restored to your record if you return your license and obtain a refund. Points may be restored in lieu of a refund at licensee's request if the license is returned before the season opens.
- After a season starts, refunds or point restorations are limited to extreme medical circumstances of licensee, death of the licensee or death of licensee's immediate family member.
- Refunds and preference point restorations are not considered more than 30 days after a season starts. This limit is extended for members of the U.S. military whose service prevented requesting a refund on time.
- You must relinquish your license and carcass tag before opening day of the season. License must be accompanied by a completed request form obtained at a CPW location or on the website. Requests must be postmarked before the season starts. If there isn't enough time to request a form, mail your license and carcass tag with a letter to the CPW. The envelope must be postmarked before the season starts and mailed to CPW, attn: Refund Office, 6060 Broadway, Denver, CO 80216.

## GAINING & USING PREFERENCE POINTS

- One preference point is awarded to hunters who apply properly and are unsuccessful in drawing a license for a first-choice hunt code. Priority goes to whoever has the most points. Hunters who make an application error, including on first-choice hunt codes, do not get a point.
- If you are issued a first-choice license, all accumulated preference points for that species are void and return to zero.
- If you fail to apply for **OR** have not purchased a license for a certain species during a 10-year period, all accumulated points for that species are erased from your record and become void.
- Second-, third- and fourth-choice hunts don't use or generate points.
- The maximum points you can accumulate for Rocky Mountain bighorn sheep or goats are three. If you have three points for bighorn sheep or mountain goat and you fail to draw a first-choice license, you will receive weighted preference for that species.
- WEIGHTED PREFERENCE** increases your probability of drawing. It is calculated by converting your application number into a different, random application number, then dividing that new application number by the amount of weighted points you have, plus one. This generates another new application number. Applications are sorted by this new number from lowest to highest and low numbers for each hunt code are awarded licenses.
- Preference points don't apply to desert bighorn sheep.
- Preference points are not transferable.
- Group application priority is based on member with fewest points.
- If unsuccessful for a first choice, your accumulated points will be listed on your refund or other choice license.
- If you are waiting five years to reapply for a bighorn ram license, you can apply for a bighorn ewe license. If you don't draw a ewe license, you won't get a point.
- Active duty U.S. military stationed in Colorado but deployed outside Colorado are eligible, when they return here, to apply for a preference point for a limited license offered in this year's drawing.

## PREFERENCE POINT CODES

Rocky Mountain bighorn sheep and mountain goat hunters (not desert bighorn) can apply for a preference point instead of a hunt. *Preference-point hunt codes and details are on pages 7 and 10.*

Entering this as a first choice on your application automatically awards you a point. You must still pay the full cost of a license and meet all license requirements.

If you apply for a point only, your money, minus the \$3 application and \$10 Habitat Stamp fees, is refunded.





photo © Wayne Lewis, CPW

# ROCKY MTN. BIGHORN SHEEP

Rams must have a half-curl or longer to be harvested. See page 2 for details.

## PREFERENCE POINT HUNT CODE

To apply for a Rocky Mountain bighorn sheep point, enter hunt code

**S-P-999-99-P** as your **FIRST CHOICE** hunt.

» Entering the preference point hunt code as a first choice on your application automatically awards you a point. You must pay the full license cost, even if just applying for a point. If you only apply for a point the license fee you pay will be refunded to you. The \$3 application fee and \$10 Habitat Stamp fee will not be refunded.

» If you apply for a point as your first choice, you also can use the second-, third- and fourth-choice hunt code spaces on the application to apply for a license.

## BIGHORN RANCHING FOR WILDLIFE

Bighorn sheep hunting is available on Purgatoire Ranch for Colorado residents only. Read ranch rules before applying. Rules, maps and ranch contacts can be found at [wildlife.state.co.us/Hunting/BigGame/RanchingforWildlife/Pages/PurgatoireWildlifeRanch.aspx](http://wildlife.state.co.us/Hunting/BigGame/RanchingforWildlife/Pages/PurgatoireWildlifeRanch.aspx). See page 3 for details.

UNIT	DATES	# LICENSES AND SEX	HUNT CODE
<b>S61</b> Purgatoire Ranch	Dec. 15-Jan. 13	1 Ram	S-M-S61-W1-R

## BIGHORN RIFLE — RESIDENT LICENSES

UNITS	DATES	# LICENSES AND SEX	HUNT CODE
<b>S1, S18</b>	Sept. 3-Oct. 6	2 Ram	S-M-S01-O1-R
		2 Ewe	S-F-S01-O1-R
<b>S3</b>	Aug. 19-Sept. 4	1 Ram	S-M-S03-O1-R
		2 Ram	S-M-S03-O2-R
		1 Ewe	S-F-S03-O2-R
<b>S4</b>	Aug. 19-Sept. 4	2 Ram	S-M-S04-O1-R
		1 Ram	S-M-S04-O2-R
			1 Ewe
<b>S6</b>	Sept. 3-17	2 Ram	S-M-S06-O1-R
	Sept. 20-Oct. 4	1 Ram	S-M-S06-O2-R
<b>S7</b>	Sept. 3-Oct. 6	1 Ram	S-M-S07-O1-R
<b>S8</b>	Sept. 3-Oct. 6	3 Ram	S-M-S08-O1-R

## BIGHORN ARCHERY — RESIDENT LICENSES

UNITS	DATES	# LICENSES AND SEX	HUNT CODE
<b>S6, S46</b>	Nov. 10-30	1 Ram	S-M-S06-O1-A
<b>S9</b>	Aug. 3-29	9 Ram	S-M-S09-O1-A
<b>S12</b>	Aug. 3-29	9 Ram	S-M-S12-O1-A
<b>S20</b>	Aug. 3-29	1 Ram	S-M-S20-O1-A
<b>S32</b> no hunting within a quarter-mile N of I-70 or within a quarter-mile of U.S. 6 and U.S. 40	Aug. 10-25	4 Ram	S-M-S32-O1-A
	Aug. 31-Sept. 15	5 Ram	S-M-S32-O2-A
<b>S34</b>	Oct. 15-31	3 Ewe	S-F-S32-O2-A
		1 Ram	S-M-S34-O1-A
<b>S34</b>	Dec. 1-15	1 Ewe	S-F-S34-O1-A
		1 Ram	S-M-S34-O2-A
<b>S35</b>	Aug. 3-29	4 Ram	S-M-S35-O1-A
<b>S37</b>	Sept. 3-Oct. 6	2 Ram	S-M-S37-O1-A
<b>S38</b>	Dec. 1-31	1 Ram	S-M-S38-O1-A
<b>S39</b>	Aug. 3-29	1 Ram	S-M-S39-O1-A
<b>S44</b>	Aug. 31-Sept. 29	4 Ram	S-M-S44-O1-A
<b>S49</b>	Aug. 3-29	4 Ram	S-M-S49-O1-A
<b>S51</b>	Aug. 3-22	2 Ram	S-M-S51-O1-A
<b>S54</b>	Aug. 10-Sept. 1	1 Ram	S-M-S54-O1-A
		• <b>S54</b> Sheep hunting is valid in this unit ONLY within the area bounded on the N by the northern boundary of T50N; on E by Colo. 135; on S by Gunnison River, Blue Mesa Reservoir and Morrow Point Reservoir; on W by Curecanti Creek.	
<b>S57</b>	Sept. 3-Oct. 6	3 Ram	S-M-S57-O1-A
		2 Ewe	S-F-S57-O1-A
<b>S69</b>	Aug. 10-Sept. 1	1 Ram	S-M-S69-O1-A
<b>S71</b>	Aug. 24-Sept. 22	1 Ram	S-M-S71-O1-A

UNITS	DATES	# LICENSES AND SEX	HUNT CODE
<b>S9</b>	Sept. 3-Oct. 6	9 Ram	S-M-S09-O1-R
		4 Ewe	S-F-S09-O1-R
<b>S10</b>	Sept. 3-Oct. 6	1 Ram	S-M-S10-O1-R
<b>S11</b>	Sept. 3-Oct. 6	4 Ram	S-M-S11-O1-R
		2 Ewe	S-F-S11-O1-R
<b>S12</b>	Sept. 3-Oct. 6	5 Ram	S-M-S12-O1-R
		2 Ewe	S-F-S12-O1-R
<b>S13</b>	Sept. 3-Oct. 6	1 Ram	S-M-S13-O1-R
<b>S15</b>	Sept. 3-Oct. 6	4 Ram	S-M-S15-O1-R
		2 Ewe	S-F-S15-O1-R
<b>S16</b>	Sept. 3-Oct. 6	3 Ram	S-M-S16-O1-R
		2 Ewe	S-F-S16-O1-R

continued on next page

BIGHORN RIFLE — RESIDENT LICENSES

UNITS	DATES	# LICENSES AND SEX	HUNT CODE
<b>S17</b>	Sept. 3-Oct. 6	6 Ram	S-M-S17-01-R
	Sept. 14-Oct. 6	2 Ewe	S-F-S17-01-R
<b>S19</b>	Sept. 3-Oct. 6	1 Ram	S-M-S19-01-R
	• <b>S19</b> borders Rocky Mountain National Park. Sheep may be in park during hunting season.		
<b>S20</b>	Sept. 3-Oct. 6	2 Ram	S-M-S20-01-R
<b>S21</b>	Sept. 3-Oct. 6	5 Ram	S-M-S21-01-R
<b>S21</b> E of Hwy. 550	Sept. 14-Oct. 6	5 Ewe	S-F-S21-01-R
<b>S21</b> W of Hwy. 550		3 Ewe	S-F-S21-S1-R
<b>S22</b>	Sept. 3-Oct. 6	2 Ram	S-M-S22-01-R
<b>S23, S27</b>	Sept. 3-Oct. 6	2 Ram	S-M-S23-01-R
<b>S25</b>	Sept. 3-Oct. 6	1 Ram	S-M-S25-01-R
<b>S28</b>	Sept. 3-Oct. 6	1 Ram	S-M-S28-01-R
<b>S29</b>	Sept. 3-Oct. 6	1 Ram	S-M-S29-01-R
<b>S30</b>	Sept. 3-Oct. 6	1 Ram	S-M-S30-01-R
<b>S31</b>	Sept. 3-Oct. 6	3 Ram	S-M-S31-01-R
<b>S32</b> no hunting within a quarter-mile N of I-70 or within a quarter-mile of U.S. 6 and U.S. 40	Sept. 21-Oct. 6	9 Ram	S-M-S32-01-R
		2 Ewe	S-F-S32-01-R
<b>S33</b>	Sept. 3-19	2 Ram	S-M-S33-01-R
	Sept. 20-Oct. 6	2 Ram	S-M-S33-02-R
<b>S33</b> N of Lake Fork River, Cottonwood Creek, Cuba Gulch, Minnie Gulch; W and N of Colo. 110	Sept. 8-17	2 Ewe	S-F-S33-01-R
	Sept. 25-Oct. 4	2 Ewe	S-F-S33-02-R
<b>S33</b> S of Lake Fork River, Cottonwood Creek, Cuba Gulch, Minnie Gulch; E and S of Colo. 110	Sept. 8-17	1 Ewe	S-F-S33-S1-R
	Sept. 25-Oct. 4	1 Ewe	S-F-S33-S2-R
<b>S35</b>	Sept. 3-Oct. 6	1 Ram	S-M-S35-01-R
	Oct. 7-20	2 Ewe	S-F-S35-01-R
<b>S39</b>	Sept. 3-Oct. 6	1 Ram	S-M-S39-01-R
<b>S40, S58</b>	Sept. 3-Oct. 6	1 Ram	S-M-S40-01-R
		1 Ewe	S-F-S40-01-R
<b>S41</b>	Sept. 3-Oct. 6	1 Ram	S-M-S41-01-R
<b>S44</b>	Oct. 3-16	1 Ram	S-M-S44-01-R
<b>S47</b>	Sept. 3-Oct. 6	2 Ram	S-M-S47-01-R
<b>S48</b>	Dec. 1-31	1 Ram	S-M-S48-01-R
	• <b>S48</b> Sheep are found only on private property in this unit. Before accessing, landowner permission is required and a trespass fee may apply.		
<b>S49</b>	Sept. 3-Oct. 6	2 Ram	S-M-S49-01-R
<b>S50</b>	Sept. 3-Oct. 6	2 Ram	S-M-S50-01-R
<b>S51</b>	Aug. 23-Sept. 11	2 Ram	S-M-S51-01-R
	Sept. 12-Oct. 5	2 Ram	S-M-S51-02-R
<b>S51</b> W of Hwy. 12 only	Oct. 6-18	3 Ewe	S-F-S51-01-R
<b>S53</b>	Sept. 3-Oct. 6	2 Ram	S-M-S53-01-R
	Sept. 14-Oct. 6	2 Ewe	S-F-S53-01-R
<b>S54</b>	Sept. 3-Oct. 6	2 Ram	S-M-S54-01-R
	• <b>S54</b> Sheep hunting is valid in this unit ONLY within the area bounded on the N by Gunnison CR 12 (Kebler Pass Road); on E by Colo. 135; on S by northern boundary of T50N; on W by Curecanti Creek and Coal Creek.		
<b>S59</b>	Sept. 3-Oct. 6	2 Ram	S-M-S59-01-R

UNITS	DATES	# LICENSES AND SEX	HUNT CODE
<b>S60</b>	Sept. 3-Oct. 6	3 Ram	S-M-S60-01-R
	• <b>S60</b> Sheep may be found on private property throughout the unit. Before accessing, landowner permission is required.		
<b>S61</b>	Dec. 1-31	3 Ram	S-M-S61-01-R
<b>S65</b> Trinchera Ranch only	Jan. 4-12	9 Ewe	S-F-S65-01-R
	Sept. 9-Oct. 13	5 Ram	S-M-S66-01-R
<b>S66</b>	Sept. 14-Oct. 13	2 Ewe	S-F-S66-01-R
	Sept. 3-Oct. 6	1 Ram	S-M-S67-01-R
<b>S68</b>	Sept. 3-Oct. 6	2 Ram	S-M-S68-01-R
<b>S69</b>	Sept. 3-Oct. 6	1 Ram	S-M-S69-01-R
<b>S71</b>	Sept. 3-Oct. 6	2 Ram	S-M-S71-01-R
	Sept. 3-Oct. 6	2 Ram	S-M-S73-01-R
<b>S73</b>	Oct. 14-31	1 Ewe	S-F-S73-01-R
	Sept. 10-Oct. 10	1 Ram	S-M-S74-01-R

BIGHORN ARCHERY — NONRESIDENT LICENSES

UNITS	DATES	# LICENSES AND SEX	HUNT CODE
<b>S9</b>	Aug. 3-29	1 Ram	S-M-S09-01-A
<b>S12</b>	Aug. 3-29	1 Ram	S-M-S12-01-A
<b>S32</b> no hunting within a quarter-mile N of I-70 or within a quarter-mile of U.S. 6 and U.S. 40	Aug. 10-25	1 Ram	S-M-S32-01-A
	Aug. 3-29	1 Ram	S-M-S35-01-A
<b>S44</b>	Aug. 31-Sept. 29	1 Ram	S-M-S44-01-A
<b>S49</b>	Aug. 3-29	1 Ram	S-M-S49-01-A

BIGHORN RIFLE — NONRESIDENT LICENSES

UNITS	DATES	# LICENSES AND SEX	HUNT CODE
<b>S3</b>	Aug. 19-Sept. 4	1 Ram	S-M-S03-01-R
<b>S9</b>	Sept. 3-Oct. 6	1 Ram	S-M-S09-01-R
	Sept. 9-Oct. 6	1 Ewe	S-F-S09-01-R
<b>S11</b>	Sept. 3-Oct. 6	1 Ram	S-M-S11-01-R
<b>S12</b>	Sept. 3-Oct. 6	1 Ram	S-M-S12-01-R
<b>S15</b>	Sept. 3-Oct. 6	1 Ram	S-M-S15-01-R
<b>S17</b>	Sept. 3-Oct. 6	1 Ram	S-M-S17-01-R
<b>S21</b>	Sept. 3-Oct. 6	1 Ram	S-M-S21-01-R
<b>S21</b> E of Hwy. 550 only	Sept. 14-Oct. 6	2 Ewe	S-F-S21-01-R
<b>S31</b>	Sept. 3-Oct. 6	1 Ram	S-M-S31-01-R
<b>S32</b> no hunting within a quarter-mile N of I-70 or within a quarter-mile of U.S. 6 and U.S. 40	Sept. 21-Oct. 6	1 Ram	S-M-S32-01-R
		1 Ewe	S-F-S32-01-R
<b>S33</b>	Sept. 3-19	1 Ram	S-M-S33-01-R
<b>S44</b>	Oct. 3-16	1 Ram	S-M-S44-01-R
<b>S51</b> W of Hwy. 12 only	Oct. 6-18	1 Ewe	S-F-S51-01-R
<b>S60</b>	Sept. 3-Oct. 6	1 Ram	S-M-S60-01-R
	• <b>S60</b> Sheep may be found on private property throughout the unit. Before accessing, landowner permission is required.		
<b>S65</b> Trinchera Ranch only	Jan. 4-12	1 Ewe	S-F-S65-01-R
<b>S66</b>	Sept. 9-Oct. 13	1 Ram	S-M-S66-01-R

# DESERT BIGHORN SHEEP

Rams must have a half-curl or longer to be harvested. See page 2.

## DESERT RIFLE — NONRESIDENT LICENSES

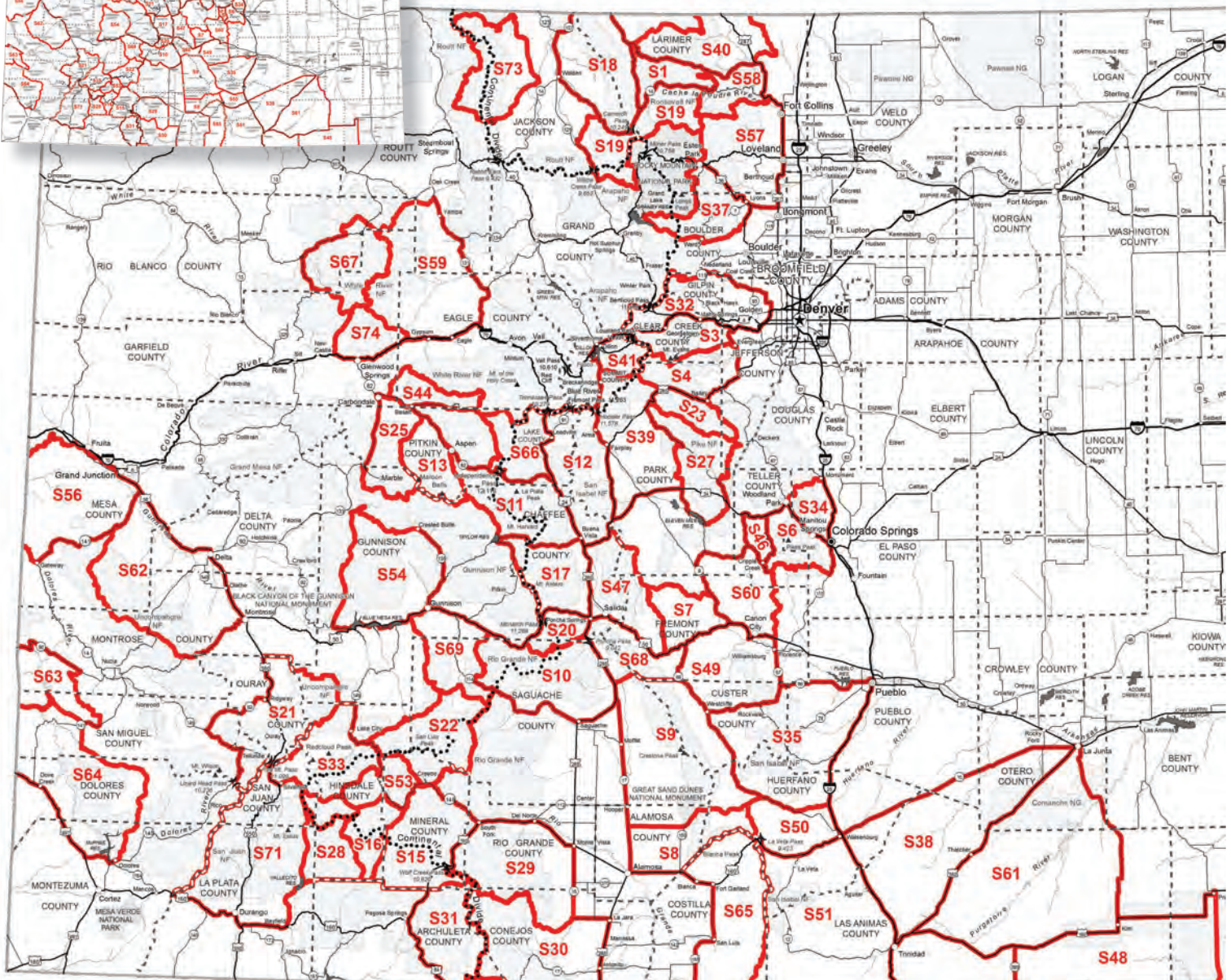
UNITS	DATES	# LICENSES AND SEX	HUNT CODE
S56	Nov. 1-30	1 Ram	C-M-S56-O1-R

## DESERT RIFLE — RESIDENT LICENSES

UNITS	DATES	# LICENSES AND SEX	HUNT CODE
S56	Nov. 1-30	4 Ram	C-M-S56-O1-R
S62	Nov. 1-30	4 Ram	C-M-S62-O1-R
S63, S64	Nov. 1-30	3 Ram	C-M-S63-O1-R

# 2013 BIGHORN SHEEP UNITS

Map boundaries are approximate due to limited space. This map is provided only to give a general idea of unit locations. Refer to unit descriptions for exact unit boundaries.



# MOUNTAIN GOATS

It's difficult to tell the difference between male and female mountain goats. See how to identify goats on page 2.



photo © Wayne Lewis, CPW

## PREFERENCE POINT HUNT CODE

To apply for a mountain goat point, enter hunt code **G-P-999-99-P** as your **FIRST CHOICE** hunt.

- » Entering the preference point hunt code as a first choice on your application automatically awards you a point.
- » You must pay the full license cost, even if just applying for a point. If you only apply for a point the license fee you pay will be refunded to you. The \$3 application fee and \$10 Habitat Stamp fee will not be refunded.
- » If you apply for a point as your first choice, you can use the second-, third- and fourth-choice hunt code spaces on the application to apply for a license.

## ARCHERY — NONRESIDENT LICENSES

UNIT	DATES	# LICENSES AND SEX	HUNT CODE
<b>G5</b>	Sept. 3-Oct. 31	2 Either Sex	G-E-G05-O1-A

## RIFLE — NONRESIDENT LICENSES

UNIT	DATES	# LICENSES AND SEX	HUNT CODE
<b>G2</b>	Sept. 3-Oct. 6	1 Either Sex	G-E-G02-O1-R
<b>G4</b> <i>Weekdays only</i>	Sept. 16-27	1 Either Sex	G-E-G04-O1-R
	Sept. 30-Oct. 11	1 Either Sex	G-E-G04-O2-R
	Oct. 14-25	1 Either Sex	G-E-G04-O3-R
<b>G7</b> <i>Weekdays only</i>	Sept. 16-27	1 Either Sex	G-E-G07-O2-R
	Sept. 30-Oct. 11	1 Either Sex	G-E-G07-O3-R
<b>G12</b>	Sept. 3-Oct. 6	2 Either Sex	G-E-G12-O1-R
<b>G13</b>	Sept. 3-19	2 Either Sex	G-E-G13-O1-R
	Sept. 20-Oct. 6	2 Either Sex	G-E-G13-O2-R
<b>G15</b> <i>Weekdays only • managed for low population size</i>	Sept. 30-Oct. 11	1 Either Sex	G-E-G15-O3-R
<b>G16</b> <i>Weekdays only</i>	Sept. 3-13	1 Either Sex	G-E-G16-O1-R
	Sept. 16-27	1 Female	G-F-G16-O2-R
<b>G17</b> <i>managed for low population size</i>	Sept. 3-Oct. 6	1 Either Sex	G-E-G17-O1-R

## ARCHERY — RESIDENT LICENSES

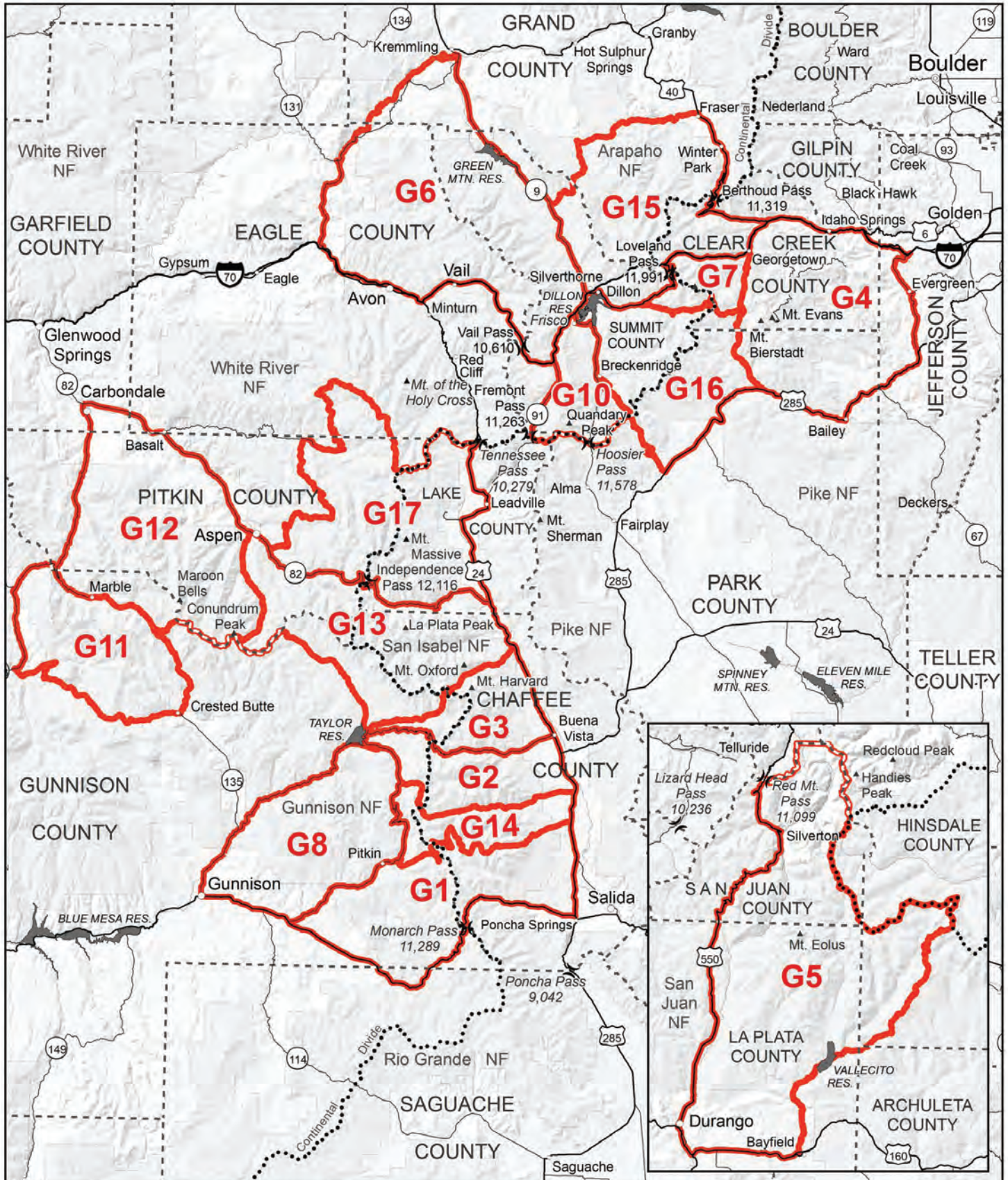
UNIT	DATES	# LICENSES AND SEX	HUNT CODE
<b>G5</b>	Sept. 3-Oct. 31	18 Either Sex	G-E-G05-O1-A
<b>G8</b>	Sept. 3-Oct. 6	2 Either Sex	G-E-G08-O1-A
<b>G14</b>	Sept. 3-Oct. 6	4 Either Sex	G-E-G14-O1-A

## RIFLE — RESIDENT LICENSES

UNIT	DATES	# LICENSES AND SEX	HUNT CODE
<b>G1</b>	Sept. 3-Oct. 6	1 Either Sex	G-E-G01-O1-R
<b>G2</b>	Sept. 3-Oct. 6	14 Either Sex	G-E-G02-O1-R
<b>G3</b>	Sept. 3-Oct. 6	8 Either Sex	G-E-G03-O1-R
<b>G4</b> <i>Weekdays only</i>	Sept. 16-27	9 Either Sex	G-E-G04-O1-R
	Sept. 30-Oct. 11	9 Either Sex	G-E-G04-O2-R
	Oct. 14-25	9 Either Sex	G-E-G04-O3-R
<b>G5</b>	Sept. 14-Oct. 31	2 Either Sex	G-E-G05-O1-R
	<b>• G5</b> <i>Hunting area is only in those portions of unit G5 N of Ten Mile and Trinity creeks and W of Animas River. This is to minimize mountain goat dispersal into those areas.</i>		
<b>G6</b>	Sept. 3-Oct. 6	5 Either Sex	G-E-G06-O1-R
<b>G7</b> <i>Weekdays only</i>	Sept. 3-13	5 Either Sex	G-E-G07-O1-R
	Sept. 16-27	4 Either Sex	G-E-G07-O2-R
	Sept. 30-Oct. 11	3 Either Sex	G-E-G07-O3-R
	Oct. 14-25	4 Either Sex	G-E-G07-O4-R
<b>G10</b> <i>Weekdays only</i>	Sept. 3-13	1 Either Sex	G-E-G10-O1-R
	Sept. 16-27	2 Either Sex	G-E-G10-O2-R
	Sept. 30-Oct. 11	1 Either Sex	G-E-G10-O3-R
	Oct. 14-25	1 Either Sex	G-E-G10-O4-R
<b>G11</b>	Sept. 3-Oct. 6	3 Either Sex	G-E-G11-O1-R
<b>G12</b>	Sept. 3-Oct. 6	14 Either Sex	G-E-G12-O1-R
<b>G13</b>	Sept. 3-19	13 Either Sex	G-E-G13-O1-R
	Sept. 20-Oct. 6	13 Either Sex	G-E-G13-O2-R
<b>G15</b> <i>Weekdays only • managed for low population size</i>	Sept. 3-13	4 Either Sex	G-E-G15-O1-R
		2 Female	G-F-G15-O1-R
	Sept. 16-27	4 Either Sex	G-E-G15-O2-R
		1 Female	G-F-G15-O2-R
	Sept. 30-Oct. 11	2 Either Sex	G-E-G15-O3-R
		1 Female	G-F-G15-O3-R
	Oct. 14-25	3 Either Sex	G-E-G15-O4-R
1 Female		G-F-G15-O4-R	
<b>G16</b> <i>Weekdays only</i>	Sept. 3-13	2 Either Sex	G-E-G16-O1-R
		2 Female	G-F-G16-O1-R
	Sept. 16-27	2 Either Sex	G-E-G16-O2-R
		2 Female	G-F-G16-O2-R
	Sept. 30-Oct. 11	2 Either Sex	G-E-G16-O3-R
		3 Female	G-F-G16-O3-R
	Oct. 14-25	3 Either Sex	G-E-G16-O4-R
		2 Female	G-F-G16-O4-R
<b>G17</b> <i>managed for low population size</i>	Sept. 3-Oct. 6	7 Either Sex	G-E-G17-O1-R

# 2013 MOUNTAIN GOAT UNITS

Map boundaries are approximate due to limited space. This map is provided only to give a general idea of unit locations. Refer to unit descriptions for exact unit boundaries.



# GAME MANAGEMENT UNITS

The following list includes only units open to sheep and goat hunting

## BIGHORN & DESERT SHEEP GMUs

**S1 POUDBRE RIVER (LARIMER CO.)** - bounded on N by CR 80C and Deadman-Red Feather Road; on E by CR 68C (Boy Scout Ranch Road) and Elkhorn Creek; on S by Colo. 14; and on W by the Laramie River Road.

**S3 MOUNT EVANS (CLEAR CREEK, JEFFERSON AND PARK COs.)** - bounded on N by I-70; on E by Colo. 74; on S by Bear Creek, Beartrack Creek, Tumbling Creek, a line from the head of Tumbling Creek to the junction of USFS Trails 603 and 602; USFS Trail 603, and the Pike-Arapaho NF boundary; and on W by the Continental Divide.

**S4 GRANT (CLEAR CREEK, PARK AND JEFFERSON COs.)** - bounded on N by the north boundary of the Pike NF, USFS Trail 603, a line from the junctions of USFS Trails 603 and 602 to the head of Tumbling Creek, Tumbling Creek, Beartrack Creek and Bear Creek; on E by CR 73; on E and S by U.S. 285; on S by the North Fork of the South Platte River; and on W by the Continental Divide.

**S6 PIKES PEAK (TELLER AND EL PASO COs.)** - bounded on N by U.S. 24; on E by I-25 and Colo. 115; on S by Gold Camp Road and Rock Creek; and on W by Colo. 67.

**S7 ARKANSAS RIVER (FREMONT CO.)** - bounded on N by Fremont CR 2; on E by Colo. 9; on S by U.S. 50; and on W by Fremont CR 12.

**S8 HUERFANO (HUERFANO, ALAMOSA COs.)** - bounded on N by Sixmile Lane, USFS Trail 883, USFS 583 (Mosca Pass) and Huerfano CRs 583, 581, 580 and 550; on E by Huerfano CRs 570 and 572 (Pass Creek Road); on S by the Huerfano-Costilla and Costilla-Alamosa Co. lines and U.S. 160; and on W by Colo. 17.

**S9 SANGRE DE CRISTO (ALAMOSA, SAGUACHE, CUSTER AND HUERFANO COs.)** - bounded on N by Saguache CR LL 57, USFS 970 (Hayden Pass Road), and the Fremont-Saguache and Fremont-Custer Co. lines; on E by Colo. 69; on S by Huerfano CRs 550, 580, 581 and 583, USFS 583 (Mosca Pass), USFS Trail 883, and Sixmile Lane; and on W by Colo. 17 and U.S. 285.

**S10 TRICKLE MOUNTAIN (SAGUACHE, CHAFFEE AND GUNNISON COs.)** - bounded on N by U.S. 50 and Marshall Pass Road (USFS 243); on E by U.S. 285; on S by Colo. 114; and on W by USFS 803 (Meyer's G. and Gismo Creek Road), Razor Creek and Saguache CR 14-PP and Gunnison CR 45 (Doyleville Cut-off Road).

**S11 COLLEGIATE NORTH (LAKE, CHAFFEE, PITKIN AND GUNNISON COs.)** - bounded on N by Colo. 82; on E by U.S. 24; on S by Chaffee CR 306 and Cottonwood Pass Road (USFS 209); and on W by Taylor River, the North Fork of the Taylor River, USFS Trail 761 and USFS 123.

**S12 BUFFALO PEAKS (LAKE, CHAFFEE AND PARK COs.)** - bounded on N by the Continental Divide; on E by Colo. 9 and U.S. 285; on S by U.S. 285; and on W by U.S. 24.

**S13 SNOWMASS EAST (PITKIN CO.)** - bounded on N and E by the Roaring Fork River, USFS 123 and 761; on S by the Gunnison-Pitkin Co. line; and on W by the Roaring Fork River-Crystal River divide and Capitol Creek.

**S15 SHEEP MOUNTAIN (HINSDALE, MINERAL AND RIO GRANDE COs.)** - bounded on N by the Rio Grande; on E by Colo. 149, U.S. 160 and the Continental Divide; on S by USFS 667, the Mineral-Archuleta and the Hinsdale-Archuleta Co. lines; and on W by the Piedra River, Middle Fork of the Piedra River, Middle Trout Creek, West Trout Creek and Trout Creek.

**S16 CIMARRONA PEAK (HINSDALE, MINERAL COs.)** - bounded on N by the Rio Grande; on E by Trout Creek, West Trout Creek, Middle Fork of Trout Creek, the Middle Fork of the Piedra River and the Piedra River; on S by the Hinsdale-Archuleta Co. line; and on W by Weminuche Creek, USFS Trail 539, the Los Pinos River, North Fork Pinos River and the Rio Grande Res.-Squaw Creek Divide.

**S17 COLLEGIATE SOUTH (CHAFFEE, GUNNISON COs.)** - bounded on N by Chaffee CR 306 (Cottonwood Creek

Road) and Cottonwood Pass Road (USFS 209); on E by U.S. 24 and 285; on S by U.S. 50; and on W by the Gunnison-Chaffee Co. line, Middle Willow Creek, Willow Creek and the Taylor River.

**S18 RAWAH (LARIMER, JACKSON COs.)** - bounded on N by WY; on E by Larimer CR 103 (Laramie River Road); on S by Colo. 14; on W by Colo. 125 and 127.

**S19 NEVER SUMMER RANGE (LARIMER, JACKSON AND GRAND COs.)** - bounded on N by Colo. 14; on E by Larimer CR 63E (Pingree Park Road), Larimer CR 44H (Buckhorn Road), the Pennock Creek-Elk Creek divide, USFS Trails 928 (Signal Mountain Trail), and 980 (Stormy Peaks Trail); on S by RMNP boundary, USFS 120.4 (North Supply Jeep Road), and 120 (Kawuneechee Road), the North Supply Trail, USFS Trail 118 (Blue Ridge Trail), the Lost Lake Trail, USFS 107 (Lost Lake Road); and on W by Colo. 125 and Jackson CR 27 (Rand-Gould Road).

**S20 MARSHALL PASS (GUNNISON, CHAFFEE AND SAGUACHE COs.)** - bounded on N by U.S. 50; on E by U.S. 285; and on S by Marshall Pass Road; and on W by U.S. 50.

**S21 COW CREEK, WETTERHORN PEAK (OURAY, GUNNISON, SAN MIGUEL AND HINSDALE COs.)** - bounded on N by Colo. 62, U.S. 550, the Ouray-Montrose and Ouray-Gunnison Co. lines, to the Uncompahgre National Forest line, and there to Big Blue Creek; on E and S by Big Blue Creek to Uncompahgre Peak, the Uncompahgre-Animas River divide, the Ouray-Hinsdale Co. line, Engineer Mountain, the Uncompahgre-Lake Fork-Animas River divide, the San Miguel-San Juan and San Miguel-Dolores Co. lines, and Lizard Head Pass; on W by Colo. 145 and U.S. 62.

**S22 SAN LUIS PEAK (HINSDALE, MINERAL AND SAGUACHE COs.)** - bounded on N by USFS 788, Hinsdale CRs 5, 15, and 45, Saguache CR KK-14, and USFS 788 (Los Pinos Pass Road); on E by the Continental Divide, USFS 787, and the La Garita Wilderness boundary; on S by USFS Trails 787 (La Garita Stock Driveway), 790, 789 and 801, and the Rio Grande; and on W by Colo. 149 (Spring Creek Pass), USFS 507, USFS Trails 803, 787 and 473.

**S23 KENOSHA (PARK AND JEFFERSON COs.)** - bounded on N by U.S. 285; on N and E by Park CR 68, USFS 543 and 560; on S by USFS 545, USFS Trail 609, Park CR 56 and USFS 56 (Lost Park Road); and on W by U.S. 285.

**S25 SNOWMASS WEST (PITKIN, GUNNISON AND EAGLE COs.)** - bounded on N by Roaring Fork River; on E by Capitol Creek and the Roaring Fork River-Crystal River divide; on S by the Crystal River-Gunnison River divide; and on W by the Crystal River-Gunnison River divide and Colo 133.

**S27 TARRYALL (PARK, JEFFERSON COs.)** - bounded on N by Park CR 56, USFS 56 (Lost Park Road), USFS Trail 609, and USFS 560; on E by USFS 211 (Matukat Road), Park CR 77, U.S. 24; on S by South Platte River, Park CRs 59, 592 and 23, USFS 234 and Park CR 77; and on W by U.S. 285.

**S28 VALLECITO (HINSDALE, LA PLATA AND SAN JUAN COs.)** - bounded on N by the Continental Divide; on E by North Fork Los Pinos River, Los Pinos River, USFS Trail 539 from Divide Lakes, and Weminuche Creek; on S by the Hinsdale-Archuleta Co. line, East Creek and the Los Pinos River; and on W by Vallecito Reservoir (east shoreline) and Vallecito Creek.

**S29 ALAMOSA CANYON (CONEJOS, MINERAL AND RIO GRANDE COs.)** - bounded on N by U.S. 160; on E by Colo. 15; on S by USFS 255, 240 and 259, USFS Trail 706, USFS 260, 250 and 380; and on W by the Continental Divide.

**S30 CONEJOS RIVER (CONEJOS, ARCHULETA, MINERAL AND RIO GRANDE COs.)** - bounded on N by USFS 380, 250 and 260, USFS Trail 706, USFS 259, 240 and 255, and Colo. 15; on E by U.S. 285; on S by NM and the USFS Rio Grande NF boundary; and on W by the Continental Divide.

**S31 BLANCA RIVER (ARCHULETA, CONEJOS AND RIO GRANDE COs.)** - bounded on N by the Mineral-Archule-

## LAND USE RESTRICTIONS

It is illegal to hunt on private land without permission of owner or person in charge. It is illegal to hunt or fish on State Land Board properties unless they are leased by the CPW or without permission of lessee.

**MT. EVANS HWY. (UNITS G4 AND S3):** Hunting prohibited on Mt. Evans Lake Cirque and within a half-mile of either side of the centerline of Mt. Evans Hwy. (Colo. 5) while the road is open to vehicle traffic from the intersection with Colo. 103 to the summit. When Mt. Evans Road is closed to vehicles, the hunting closure is lifted. There is no ptarmigan hunting at any time.

## ABBREVIATIONS:

<b>U.S.</b> — U.S. highway	<b>E / W</b> — East / west
<b>COLO.</b> — Colorado highway	<b>NF</b> — National Forest
<b>CO.</b> — County	<b>USFS / FS</b> — U.S. Forest Service
<b>CR</b> — County road	<b>BLM</b> — Bureau of Land Management
<b>RES.</b> — Reservoir	<b>RMNP</b> — Rocky Mountain National Park
<b>N/NW/NE</b> — North, northwest, northeast	<b>NM</b> — New Mexico
<b>S/SW/SE</b> — South, southwest, southeast	<b>UT</b> — Utah
	<b>WY</b> — Wyoming

ta Co. line and USFS 667; on E by the Continental Divide; on S by NM; and on W by U.S. 84 and U.S. 160.

**S32 GEORGETOWN (CLEAR CREEK, JEFFERSON, GILPIN AND BOULDER COs.)** - bounded on N and E by USFS 149 (Rollins Pass Road), Gilpin CR 16 (Tolland Road), Colo. 119, and Colo. 72; on S by I-70; and on W by the Continental Divide.

**S33 LAKE FORK/POLE MOUNTAIN (HINSDALE, SAN JUAN COs.)** - bounded on N by the Gunnison-Hinsdale Co. line; on E by Colo. 149; on S by North Clear Creek, USFS Trail 821 from North Clear Creek to Lost Trail Creek, and Lost Trail Creek; on S by the Rio Grande, Stoney Gulch, Cunningham Creek and Colo. 110; and on W by U.S. 550, the Ouray-San Juan Co. line, the Uncompahgre-Upper Gunnison River Divide and Big Blue Creek.

**S34 RAMPART RANGE (EL PASO, TELLER COs.)** - bounded on N by USFS 393, 300 and 320; on E by I-25; and on S and W by U.S. 24 to Woodland Park.

**S35 GREENHORNS (PUEBLO, HUERFANO AND CUSTER COs.)** - bounded on N by Colo. 96; on E by I-25; on S by the Huerfano River; and on S and W by Colo. 69.

**S37 ST. VRAIN (BOULDER, GRAND AND LARIMER COs.)** - bounded on N and E by RMNP boundary and U.S. 36; on S by Boulder CRs 94, 81, 106 and 95 (Lefthand Canyon Drive), Colo. 72 (Peak to Peak Highway), Boulder CR 102 (Brainard Lake Road), USFS Trail 907 (Pawnee Pass Trail) and USFS Trail 1 (Cascade Creek Trail); and on W by USFS 125, USFS Trail 102 (Knight Ridge Trail), and RMNP boundary.

**S38 APISHAPA (HUERFANO, PUEBLO, OTERO AND LAS ANIMAS COs.)** - bounded on N by Colo. 10, and U.S. 50; on E and S by U.S. 350; and on W by I-25.

**S39 MOUNT SILVERHEELS (PARK, SUMMIT COs.)** - bounded on N by Swan River Road (Summit CR 6), USFS 6, the Continental Divide and the North Fork of the South Platte River; on E by U.S. 285, Park CRs 77 and 23 (Turner Gulch Road or USFS 234); on S by U.S. 24; and on W by U.S. 285 and Colo. 9.

**S40 LONE PINE (LARIMER CO.)** - bounded on N by CRs 80C and 59 (Cherokee Park Road) and WY; on E by CR 37, South Branch Boxelder Creek, Boxelder Creek, CR 19; on S by CR 80, and U.S. 287; and on S and W by CRs 74E and 162 (Red Feather Lakes-Deadman Road).

**S41 PERU CREEK (SUMMIT CO.)** - bounded on N by I-70; on E by the Continental Divide; on S by the Swan River Road (CR 6) and USFS 6; and on W by Colo. 9 and U.S. 6.

**S44 BASALT (GARFIELD, EAGLE AND PITKIN COs.)** - bounded on N by USFS Trail 514 (Red Tables Divide Road) and USFS Trail 1870; on E by Crooked Creek Pass Road (USFS 400); on S by Fryngpan River and Roaring Fork River; and on W by Garfield CR 100, and Cottonwood Pass Road.

**S46 DOME ROCK (TELLER CO.)** - bounded on N by U.S. 24; on E and S by Colo. 67; and on W by CR 1.

**S47 BROWNS CANYON (CHAFFEE, FREMONT AND PARK COs.)** - bounded on the N by U.S. 24; on E by Kaufman Ridge, Badger Creek and Fremont CRs 2 and 12; and on S by Arkansas River and South Arkansas River; and on W by U.S. 285 and 24.

**S48 CARRIZO CANYON (BACA AND LAS ANIMAS COs.)** - bounded on N by U.S. 160; on E by Baca CR 13 (Pritchett Grade Road); on S by NM; and on W by Colo. 389.

**S49 GRAPE CREEK/COPPER RIDGE (CUSTER, FREMONT COs.)** - bounded on N by U.S. 50; on E by Colo. 67; on S by Colo. 96; and on W by Colo. 69.

**S50 MOUNT MESTAS (HUERFANO, COSTILLA COs.)** - bounded on N by Huerfano CR 550, Colo. 69 and Huerfano River; on E by I-25; on S by U.S. 160; and on W by Pass Creek Road.

**S51 SPANISH PEAKS (HUERFANO, COSTILLA AND LAS ANIMAS COs.)** - bounded on N by U.S. 160; on E by I-25; on S by NM; and on W by the Huerfano-Costilla Co. line and farther south by the southern Sangre de Cristo divide (Culebra range).

**S53 BRISTOL HEAD (MINERAL, HINSDALE COs.)** - bounded on N by North Clear Creek, Colo. 149, and USFS Trails 473 and 787; on E by USFS Trail 803 and USFS Rd 507; on S by Colo. 149 and the Rio Grande; and on W by Lost Trail Creek.

**S54 DILLON MESA (GUNNISON CO.)** - bounded on N by CR 12; on E by Colo. 135; on S by U.S. 50, the Gunnison River, Blue Mesa Reservoir and Colo. 92; and on W by Curecanti Creek, Curecanti Pass and Coal Creek.

**S56 BLACK RIDGE (MESA CO.)** - bounded on N by Colorado River and U.S. 50; on E by U.S. 50; on E and S by Colo. 141 and the Dolores River; and on W by UT.

**S57 BIG THOMPSON (LARIMER, BOULDER COs.)** -

bounded on N by Larimer CR 44H (Buckhorn Road), Stove Prairie Road (Larimer CR 27), Larimer CRs 52E (Rist Canyon Road) and 54G; on E by U.S. 287; on S by Colo. 66 and U.S. 36; and on W by RMNP boundary, USFS Trails 980 (Stormy Peaks Trail), and 928 (Signal Mountain Trail) and Pennock Creek-Elk Creek divide.

**NEW! S58 LOWER POUDDRE (LARIMER CO.)** - bounded on the north by CR 74E (Red Feather Lakes Road); on the east by U.S. 287 and CR 54G; on the south by Rist Canyon Road (CR 52E), Stove Prairie Road (CR 27), and Buckhorn Road (CR 44H); on the west by Pingree Park Road (CR 63E), Hwy. 14, Elkhorn Creek and the Boy Scout Ranch Road (CR 68).

**S59 DERBY CREEK (RIO BLANCO, ROUTT, EAGLE AND GARFIELD COs.)** - bounded on N by USFS Trails 1103, 1116 and 1117, USFS 959 and 16, Routt CRs 132 and 15; on E by Colo. 131; on S by Eagle River, Colorado River and Deep Creek; and on W by the Colorado River-White River divide, and the White River-Yampa River divide.

**S60 SHELF ROAD (TELLER, FREMONT AND PARK COs.)** - bounded on N by Park CRs 59 and 102 and Teller CRs 112, 11, and 1; on E by Colo. 67, Teller CR 86 and Fremont CR 67; on S by U.S. 50; and on W by Colo. 9.

**S61 PURGATORY CANYON (OTERO, BENT AND LAS ANIMAS COs.)** - bounded on N by U.S. 50; on E by Colo. 109; on S by U.S. 160; and on W by U.S. 350.

**S62 DOMINGUEZ CREEK (DELTA, MESA, MONTROSE AND OURAY COs.)** - bounded on N by Colo. 141; on E by Colo. 50; on S by Colo. 90; and on W by USFS 402 (Divide Road).

**S63 MIDDLE DOLORES RIVER (MONTROSE, SAN MIGUEL COs.)** - bounded on N by Colo. 90; on E by Monogram Mesa Road (Montrose CR DD 19 and San Miguel CRs 18Y, U29 and 25R); on S by Colo. 141, and Big Gypsum Valley Road (San Miguel CR 20R, Dolores River and McIntyre Canyon); and on W by UT.

**S64 UPPER DOLORES RIVER (SAN MIGUEL, DOLORES AND MONTEZUMA COs.)** - bounded on N by McIntyre Canyon, Dolores River, San Miguel CR 20.R (Big Gypsum Valley Road), Colo. 141 and Disappointment Valley Road (San Miguel CR 19.Q and Dolores CR D.00); on E by USFS 526 (Norwood-Dolores Road) and Colo. 145; on S by Colo. 184 and U.S. 491; and on W by UT.

**S65: COSTILLA (COSTILLA CO.)** - bounded on N by the Alamosa-Costilla and Huerfano-Costilla Co. lines; on E by the Huerfano-Costilla Co. line and farther S by the south-

ern Sangre de Cristo divide (Culebra mountain range); on S by NM; and on W by Colo. 159 and U.S. 160.

**S66 MOUNT ELBERT (LAKE, PITKIN COs.)** - bounded on N by North Fork Fryngpan River, Mormon Creek and the Continental Divide; on E by U.S. 24; on S by Colo. 82; and on W by Lost Man Creek, over the ridge from Lost Man Creek to South Fork of Fryngpan River and Fryngpan River.

**S67 FLATTOPS (RIO BLANCO, GARFIELD COs.)** - bounded on N by Williams Fork River-White River divide; on E by White River-Yampa River divide and White River-Colorado River divide; on S by South Fork of the White River-Colorado River divide; and on W by USFS 245, Rio Blanco CRs 17 (Buford-Newcastle Road) and 8, and USFS 250.

**S68 COTOPAXI (CHAFFEE, FREMONT AND SAGUACHE COs.)** - bounded on N by the South Arkansas River, Arkansas River, Fremont CR 12 bridge, and U.S. 50; on E by Colo. 69; on S by the Fremont-Custer and Fremont-Saguache Co. lines, USFS 970 (Hayden Pass Road), and Saguache CR LL 57; and on W by U.S. 285.

**S69 COCHETOPA (GUNNISON, SAGUACHE COs.)** - bounded on N by Gunnison River and U.S. 50, on E by Gunnison CR 45 and Saguache CR 14-PP (Doyleville Cut-off Road), Razor Creek and USFS 803 (Gismo Creek and Meyer's Gulch Road), Colo. 114 and the Continental Divide; on S by Saguache CRs NN-14 and KK-14; and on W by USFS 806 and South Beaver Creek.

**S71 WEST NEEDLES (SAN JUAN, LA PLATA COs.)** - bounded on N by the San Miguel-Ouray Co. line, U.S. 550, Colo. 110, Cunningham Gulch, and Continental Divide; on E by Vallecito Creek and Los Pinos River; on S by U.S. 160; and on W by the Montezuma-La Plata and Montezuma-Dolores Co. lines.

**S73 MOUNT ZIRKEL (JACKSON, ROUTT COs.)** - bounded on N by Mount Zirkel Wilderness boundary, USFS Trail 1125, USFS 660, and Big Creek Road (USFS 600); on E by Jackson CRs 6W, 7, 12W, 18 and 5; on S by Jackson CR 24, and Buffalo Pass Road (USFS 60); and on W by Mount Zirkel Wilderness Area boundary.

**S74 GLENWOOD CANYON (GARFIELD, EAGLE COs.)** - bounded on N by South Fork of White River-Colorado River divide and Deep Creek; on E and S by the Colorado River; and on W by Canyon Creek.

## MOUNTAIN GOAT GMUs

**G1 MT. SHAVANO (CHAFFEE, GUNNISON, SAGUACHE COs.)** - bounded on N by USFS 839, USFS 1451 (Alpine Tunnel), USFS 295, Pomeroy Gulch, Grizzly Mountain and Brown's Creek; on E by U.S. 285; on S by U.S. 50; and on W by Gunnison CR 76 (Quartz Creek Road) and USFS 765 (North Quartz Creek Road).

**G2 MT. PRINCETON (CHAFFEE, GUNNISON COs.)** - bounded on N by Cottonwood Pass Road (USFS 209, USFS 306 and Chaffee CR 306); on E by U.S. 24 and U.S. 285; on S by Colo. 162, USFS 211 and USFS 267; and on W by USFS 765 and USFS 742.

**G3 MT. HARVARD (CHAFFEE, GUNNISON COs.)** - bounded on N by Texas Creek, North Texas Creek, the Continental Divide and Pine Creek; on E by U.S. 24; on S by Cottonwood Pass Road (Chaffee CR 306, USFS 306 and USFS 209); and on W by USFS 742.

**G4 MOUNT EVANS (CLEAR CREEK, JEFFERSON AND PARK COs.)** - bounded on N by I-70; on E by west side of Colo. 74 and Jefferson CR 73; on S and SW by U.S. 285; and on W by Guanella Pass Road (USFS 118 and USFS 381).

**G5 WEST NEEDLES (LA PLATA, SAN JUAN, HINSDALE AND ARCHULETA COs.)** - bounded on N by the San Juan-Ouray Co. line and the Continental Divide; on E by the Los Pinos River-Piedra River divide, East Creek and the Los Pinos River; on S by U.S. 160 and on W by U.S. 550.

**G6 GORE RANGE (GRAND, EAGLE AND SUMMIT COs.)** - bounded on N by the Colorado River; on E by Colo. 9; on S by I-70; and on W by Colo 131.

**G7 GRAY'S PEAK (SUMMIT, CLEAR CREEK COs.)** - bounded on N by U.S. 6/I-70; on E by Guanella Pass Road (USFS 381); on S by the Pike-Arapahoe NF boundary, the Continental Divide, the Argentine Pass trail, USFS 260 and 5; and on W by U.S. 6.

**G8 FOSSIL RIDGE (GUNNISON CO.)** - bounded on N by USFS 742 (Taylor River Road); on E by USFS 765 (Cumberland Pass Road and North Quartz Creek Road); on S by Quartz Creek Road (Gunnison CR 76) and U.S. 50; and on W by Colo. 135.

**G10 TENMILE (SUMMIT AND LAKE COs.)** - bounded on N by I-70; on E by Colo. 9 and Boreas Pass Road (USFS 404 and Summit CR 10); on S by Continental Divide; and on W by Colo. 91 and I-70.

**G11 THE RAGGEDS (GUNNISON, PITKIN COs.)** - bounded on N by USFS 314 (Crystal River Road) and 317 (Schofield Pass Road); on E by USFS 31 (Gothic Road) and Gunnison CR 317 (Crested Butte Road); on S by Gunnison CR 12 (Kebler Pass Road); and on W by Colo. 133.

**G12 MAROON BELLS (GARFIELD, EAGLE, GUNNISON AND PITKIN COs.)** - bounded on N by Colo. 82; on E by Castle Creek; on S by the Gunnison-Pitkin Co. line, the Colorado River headwaters-Gunnison River divide, USFS 317 (Schofield Pass Road), and USFS 314 (Crystal River Rd); and on the west by Colo 133.

**G13 QUAIL MOUNTAIN (LAKE, CHAFFEE, GUNNISON AND PITKIN COs.)** - bounded on N by Colo. 82; on E by U.S. 24; on S by Pine Creek, North Texas Creek, Texas Creek, USFS 742, USFS 761 (Taylor Pass Road), the Gunnison-Pitkin Co. line, and on W by Castle Creek.

**G14 ANTERO (CHAFFEE, GUNNISON COs.)** - bounded on N by USFS 267, USFS 211 and Colo. 162; on E by U.S. 285; on S by Brown's Creek, Grizzly Mountain, Pomeroy Gulch, USFS 295, 1451, and 839; and on W by USFS 765.

**G15 JONES PASS (SUMMIT, GRAND AND CLEAR CREEK COs.)** - bounded on N by USFS 132 (Ute Pass Road), 138, 139 (Crooked Creek Road) and Grand CR 50; on E by U.S. 40 and I-70/U.S. 6; on S by U.S. 6/I-70 and U.S. 6 over Loveland Pass; and on W by U.S. 6 and Colo. 9.

**G16 MT. GUYOT (SUMMIT, CLEAR CREEK AND PARK COs.)** - bounded on N by U.S. 6, USFS 5, USFS 260, the Argentine Pass trail, the Continental Divide and the Pike-Arapahoe NF boundary; on E by Guanella Pass Road; on S by U.S. 285; and on W by Boreas Pass Road (USFS 404 and Summit CR 10), Colo. 9, and U.S. 6.

**G17 INDEPENDENCE PASS (LAKE, PITKIN AND EAGLE COs.)** - bounded on N by the Eagle River-Fryngpan River watershed divide and the Continental Divide; on E by U.S. 24; on S by Colo. 82; and on W by Warren Creek, USFS 131, the Hunter-Fryngpan Wilderness Area boundary, Deadman Creek, and USFS 105, 501, 506, 507 and 400.



Printed for free distribution by  
Colorado Parks and Wildlife  
6060 Broadway, Denver, CO 80216  
(303) 297-1192  
[cpw.state.co.us](http://cpw.state.co.us)

**NOTICE:** This brochure includes information on hunting bighorn sheep and mountain goats. It is not a legal notice nor a complete collection of regulations and laws. It is a condensed guide issued for hunters' convenience. Copies of statutes and regulations can be obtained from a Colorado Parks and Wildlife office or at [wildlife.state.co.us/RulesRegs/Regulations/Pages/Regulations.aspx](http://wildlife.state.co.us/RulesRegs/Regulations/Pages/Regulations.aspx). For questions, call (303) 297-1192.

## 2013 SHEEP & GOAT DATES TO KNOW

**APRIL 2** — Application  
deadline

**MAY 9** — Drawing results  
posted online

**MAY 13-15** — Refunds in  
the mail

**MAY 15** — Licenses in  
the mail

**AUG. 3-JAN. 13\*** — Rocky  
Mountain bighorn  
sheep hunting  
seasons

**SEPT. 3-OCT. 31\*** —  
Mountain goat  
hunting seasons

**NOV. 1-30** — Desert  
bighorn sheep  
hunting seasons

**\*SEASON DATES:** Hunt dates  
vary by license type & hunt loca-  
tion. See hunt tables for details,  
pages 7-11. Some licenses are  
valid only on certain dates. It is  
your responsibility to know the  
correct dates for your hunt.

## MOVING?

**CHANGE YOUR ADDRESS ONLINE** at [www.bit.ly/cpwlicensesales](http://www.bit.ly/cpwlicensesales).  
Click on "BUY AND APPLY FOR LICENSES" and follow the steps to  
change your address.

(Please do NOT use your hunt application as a change-of-address form.)

# Get Outdoors



## Subscribe to Colorado Outdoors

Did you know Colorado has the largest elk herd in the world? Did you know Colorado is the only state where you can buy an over-the-counter bull elk license? *Colorado Outdoors* magazine will keep you up-to-date on all the opportunities available to you and your hunting buddies. Don't flounder around looking for the best spots to fish. *Colorado Outdoors* is a must-read if you're seeking a high-country angling experience or fishing the state's plains reservoirs.

For over 70 years, *Colorado Outdoors* has been the official publication of Colorado Parks and Wildlife (CPW) and the only magazine dedicated to Colorado's wildlife. And now when you subscribe, you get your choice of either a free hunting guide or fishing guide. These special annual editions are packed with a wealth of information you need to know to be a more successful hunter or angler.

We offer insight into our wildlife resources as well as providing up-to-date coverage of hunting, fishing and wildlife management. You get valuable advice from CPW experts, information that you can't get anywhere else. You'll read about recovery efforts of some of our endangered species. Plus you'll learn about environmental news, watchable wildlife events, volunteer opportunities, state fishing records and much more.

## 10 Reasons to subscribe to Colorado Outdoors

- Each one-year subscription entitles you to six issues.
- Subscribers get their choice of either the Fishing Guide or the Hunting Guide. These 40-page special editions sell for \$5 on the newsstand and you get your choice of one absolutely free.
- Learn high-performance hunting tips for a more successful hunt.
- Annual Preference Point issue is a must-have tool in planning your big game hunt.
- Expert advice on cold- and warm-water fishing.
- Award-winning wildlife photography, including annual photography issue.
- A great way to introduce your children to wildlife and the outdoors.
- A valuable reference guide for classrooms and libraries.
- Makes a great gift
- Never any advertising

To order your subscription online visit the Colorado Parks and Wildlife website at <http://wildlifestore.state.co.us> and click on the link to *Colorado Outdoors* magazine