

C O L O R A D O   P A R K S   &   W I L D L I F E

# 2025 Colorado Turkey

APPLICATION DEADLINES: Spring — Feb. 4 (8 p.m. MT) ■ Fall — May 30 (8 p.m. MT)







# TURKEY HUNTING PHOTOS



Brandon Cleveland (left) and his son Jake (right) with their spring turkey harvest  
© Brandon Cleveland



Cooper Skalla and his turkey harvested in western Colorado. © Katie Skalla



10-year-old Wyatt Allen (right), pictured with his dad, Adam Allen (left), harvested his first spring turkey in Rye. © Greg Allen



Hudson Dreher and his fall turkey taken near Kiowa. © Brian Dreher





# ONLINE FEATURES

Check out more Colorado Parks & Wildlife on our  
VIMEO & YOUTUBE CHANNELS



**License Agent List**  
Find an agent near you



**Buy Online**  
Licenses available online



THIS IS A DIGITAL, REAL-TIME DASHBOARD  
REPORT: Please the cursor over any bar in this  
chart to view information specific to that bar.

## Colorado Parks and Wildlife 2018 Turkey Deer Drive

Location: \_\_\_\_\_  
Year of report: \_\_\_\_\_

### DEER/DIA

Year	Age	Sex	Weight	Length	Wing	Height	Score	Notes
2018	1	M	12.5	18.5	15.5	12.5	12.5	
2018	1	F	11.5	17.5	14.5	11.5	11.5	
2018	2	M	13.5	19.5	16.5	13.5	13.5	
2018	2	F	12.5	18.5	15.5	12.5	12.5	
2018	3	M	14.5	20.5	17.5	14.5	14.5	
2018	3	F	13.5	19.5	16.5	13.5	13.5	
2018	4	M	15.5	21.5	18.5	15.5	15.5	
2018	4	F	14.5	20.5	17.5	14.5	14.5	
2018	5	M	16.5	22.5	19.5	16.5	16.5	
2018	5	F	15.5	21.5	18.5	15.5	15.5	
2018	6	M	17.5	23.5	20.5	17.5	17.5	
2018	6	F	16.5	22.5	19.5	16.5	16.5	
2018	7	M	18.5	24.5	21.5	18.5	18.5	
2018	7	F	17.5	23.5	20.5	17.5	17.5	
2018	8	M	19.5	25.5	22.5	19.5	19.5	
2018	8	F	18.5	24.5	21.5	18.5	18.5	
2018	9	M	20.5	26.5	23.5	20.5	20.5	
2018	9	F	19.5	25.5	22.5	19.5	19.5	
2018	10	M	21.5	27.5	24.5	21.5	21.5	
2018	10	F	20.5	26.5	23.5	20.5	20.5	
2018	11	M	22.5	28.5	25.5	22.5	22.5	
2018	11	F	21.5	27.5	24.5	21.5	21.5	
2018	12	M	23.5	29.5	26.5	23.5	23.5	
2018	12	F	22.5	28.5	25.5	22.5	22.5	
2018	13	M	24.5	30.5	27.5	24.5	24.5	
2018	13	F	23.5	29.5	26.5	23.5	23.5	
2018	14	M	25.5	31.5	28.5	25.5	25.5	
2018	14	F	24.5	30.5	27.5	24.5	24.5	
2018	15	M	26.5	32.5	29.5	26.5	26.5	
2018	15	F	25.5	31.5	28.5	25.5	25.5	
2018	16	M	27.5	33.5	30.5	27.5	27.5	
2018	16	F	26.5	32.5	29.5	26.5	26.5	
2018	17	M	28.5	34.5	31.5	28.5	28.5	
2018	17	F	27.5	33.5	30.5	27.5	27.5	
2018	18	M	29.5	35.5	32.5	29.5	29.5	
2018	18	F	28.5	34.5	31.5	28.5	28.5	
2018	19	M	30.5	36.5	33.5	30.5	30.5	
2018	19	F	29.5	35.5	32.5	29.5	29.5	
2018	20	M	31.5	37.5	34.5	31.5	31.5	
2018	20	F	30.5	36.5	33.5	30.5	30.5	
2018	21	M	32.5	38.5	35.5	32.5	32.5	
2018	21	F	31.5	37.5	34.5	31.5	31.5	
2018	22	M	33.5	39.5	36.5	33.5	33.5	
2018	22	F	32.5	38.5	35.5	32.5	32.5	
2018	23	M	34.5	40.5	37.5	34.5	34.5	
2018	23	F	33.5	39.5	36.5	33.5	33.5	
2018	24	M	35.5	41.5	38.5	35.5	35.5	
2018	24	F	34.5	40.5	37.5	34.5	34.5	
2018	25	M	36.5	42.5	39.5	36.5	36.5	
2018	25	F	35.5	41.5	38.5	35.5	35.5	
2018	26	M	37.5	43.5	40.5	37.5	37.5	
2018	26	F	36.5	42.5	39.5	36.5	36.5	
2018	27	M	38.5	44.5	41.5	38.5	38.5	
2018	27	F	37.5	43.5	40.5	37.5	37.5	
2018	28	M	39.5	45.5	42.5	39.5	39.5	
2018	28	F	38.5	44.5	41.5	38.5	38.5	
2018	29	M	40.5	46.5	43.5	40.5	40.5	
2018	29	F	39.5	45.5	42.5	39.5	39.5	
2018	30	M	41.5	47.5	44.5	41.5	41.5	
2018	30	F	40.5	46.5	43.5	40.5	40.5	
2018	31	M	42.5	48.5	45.5	42.5	42.5	
2018	31	F	41.5	47.5	44.5	41.5	41.5	
2018	32	M	43.5	49.5	46.5	43.5	43.5	
2018	32	F	42.5	48.5	45.5	42.5	42.5	
2018	33	M	44.5	50.5	47.5	44.5	44.5	
2018	33	F	43.5	49.5	46.5	43.5	43.5	
2018	34	M	45.5	51.5	48.5	45.5	45.5	
2018	34	F	44.5	50.5	47.5	44.5	44.5	
2018	35	M	46.5	52.5	49.5	46.5	46.5	
2018	35	F	45.5	51.5	48.5	45.5	45.5	
2018	36	M	47.5	53.5	50.5	47.5	47.5	
2018	36	F	46.5	52.5	49.5	46.5	46.5	
2018	37	M	48.5	54.5	51.5	48.5	48.5	
2018	37	F	47.5	53.5	50.5	47.5	47.5	
2018	38	M	49.5	55.5	52.5	49.5	49.5	
2018	38	F	48.5	54.5	51.5	48.5	48.5	
2018	39	M	50.5	56.5	53.5	50.5	50.5	
2018	39	F	49.5	55.5	52.5	49.5	49.5	
2018	40	M	51.5	57.5	54.5	51.5	51.5	
2018	40	F	50.5	56.5	53.5	50.5	50.5	
2018	41	M	52.5	58.5	55.5	52.5	52.5	
2018	41	F	51.5	57.5	54.5	51.5	51.5	
2018	42	M	53.5	59.5	56.5	53.5	53.5	
2018	42	F	52.5	58.5	55.5	52.5	52.5	
2018	43	M	54.5	60.5	57.5	54.5	54.5	
2018	43	F	53.5	59.5	56.5	53.5	53.5	
2018	44	M	55.5	61.5	58.5	55.5	55.5	
2018	44	F	54.5	60.5	57.5	54.5	54.5	
2018	45	M	56.5	62.5	59.5	56.5	56.5	
2018	45	F	55.5	61.5	58.5	55.5	55.5	
2018	46	M	57.5	63.5	60.5	57.5	57.5	
2018	46	F	56.5	62.5	59.5	56.5	56.5	
2018	47	M	58.5	64.5	61.5	58.5	58.5	
2018	47	F	57.5	63.5	60.5	57.5	57.5	
2018	48	M	59.5	65.5	62.5	59.5	59.5	
2018	48	F	58.5	64.5	61.5	58.5	58.5	
2018	49	M	60.5	66.5	63.5	60.5	60.5	
2018	49	F	59.5	65.5	62.5	59.5	59.5	
2018	50	M	61.5	67.5	64.5	61.5	61.5	
2018	50	F	60.5	66.5	63.5	60.5	60.5	
2018	51	M	62.5	68.5	65.5	62.5	62.5	
2018	51	F	61.5	67.5	64.5	61.5	61.5	
2018	52	M	63.5	69.5	66.5	63.5	63.5	
2018	52	F	62.5	68.5	65.5	62.5	62.5	
2018	53	M	64.5	70.5	67.5	64.5	64.5	
2018	53	F	63.5	69.5	66.5	63.5	63.5	
2018	54	M	65.5	71.5	68.5	65.5	65.5	
2018	54	F	64.5	70.5	67.5	64.5	64.5	
2018	55	M	66.5	72.5	69.5	66.5	66.5	
2018	55	F	65.5	71.5	68.5	65.5	65.5	
2018	56	M	67.5	73.5	70.5	67.5	67.5	
2018	56	F	66.5	72.5	69.5	66.5	66.5	
2018	57	M	68.5	74.5	71.5	68.5	68.5	
2018	57	F	67.5	73.5	70.5	67.5	67.5	
2018	58	M	69.5	75.5	72.5	69.5	69.5	
2018	58	F	68.5	74.5	71.5	68.5	68.5	
2018	59	M	70.5	76.5	73.5	70.5	70.5	
2018	59	F	69.5	75.5	72.5	69.5	69.5	
2018	60	M	71.5	77.5	74.5	71.5	71.5	
2018	60	F	70.5	76.5	73.5	70.5	70.5	
2018	61	M	72.5	78.5	75.5	72.5	72.5	
2018	61	F	71.5	77.5	74.5	71.5	71.5	
2018	62	M	73.5	79.5	76.5	73.5	73.5	
2018	62	F	72.5	78.5	75.5	72.5	72.5	
2018	63	M	74.5	80.5	77.5	74.5	74.5	
2018	63	F	73.5	79.5	76.5	73.5	73.5	
2018	64	M	75.5	81.5	78.5	75.5	75.5	
2018	64	F	74.5	80.5	77.5	74.5	74.5	
2018	65	M	76.5	82.5	79.5	76.5	76.5	
2018	65	F	75.5	81.5	78.5	75.5	75.5	
2018	66	M	77.5	83.5	80.5	77.5	77.5	
2018	66	F	76.5	82.5	79.5	76.5	76.5	
2018	67	M	78.5	84.5	81.5	78.5	78.5	
2018	67	F	77.5	83.5	80.5	77.5	77.5	
2018	68	M	79.5	85.5	82.5	79.5	79.5	
2018	68	F	78.5	84.5	81.5	78.5	78.5	
2018	69	M	80.5	86.5	83.5	80.5	80.5	
2018	69	F	79.5	85.5	82.5	79.5	79.5	
2018	70	M	81.5	87.5	84.5	81.5	81.5	
2018	70	F	80.5	86.5	83.5	80.5	80.5	
2018	71	M	82.5	88.5	85.5	82.5	82.5	
2018	71	F	81.5	87.5	84.5	81.5	81.5	
2018	72	M	83.5	89.5	86.5	83.5	83.5	
2018	72	F	82.5	88.5	85.5	82.5	82.5	
2018	73	M	84.5	90.5	87.5	84.5	84.5	
2018	73	F	83.5	89.5	86.5	83.5	83.5	
2018	74	M	85.5	91.5	88.5	85.5	85.5	
2018	74	F	84.5	90.5	87.5	84.5	84.5	
2018	75	M	86.5	92.5	89.5	86.5	86.5	
2018	75	F	85.5	91.5	88.5	85.5	85.5	
2018	76	M	87.5	93.5	90.5	87.5	87.5	
2018	76	F	86.5	92.5	89.5	86.5	86.5	
2018	77	M	88.5	94.5	91.5	88.5	88.5	
2018	77	F	87.5	93.5	90.5	87.5	87.5	
2018	78	M	89.5	95.5	92.5	89.5	89.5	
2018	78	F	88.5	94.5	91.5	88.5	88.5	
2018	79	M	90.5	96.5	93.5	90.5	90.5	
2018	79	F	89.5	95.5	92.5	89.5	89.5	
2018	80	M	91.5	97.5	94.5	91.5	91.5	
2018	80	F	90.5	96.5	93.5	90.5	90.5	
2018	81	M	92.5	98.5	95.5	92.5	92.5	
2018	81	F	91.5	97.5	94.5	91.5	91.5	
2018	82	M	93.5	99.5	96.5	93.5	93.5	
2018	82	F	92.5	98.5	95.5	92.5		



# CONTENTS

## WHAT'S NEW: 2025 ..... 1

## LICENSE INFORMATION ..... 1-2

- License, application processing & Habitat Stamp fees ..... 1
- License requirements ..... 1
- Special opportunity information: youth licenses; outreach licenses for youth & novice adults; mobility impairments ..... 1
- Residency requirements ..... 2
- Hunter education requirements & exemptions ..... 2
- Habitat Stamp information ..... 2

## TURKEY HUNTING LAWS ..... 3

- Legal hunting hours; sunrise/sunset table ..... 3
- Illegal hunting methods; restrictions ..... 3
- Bag limits, tagging & methods of take; evidence of sex ..... 3

## SPRING TURKEY ..... 4-5

- Spring limited license hunt code table ..... 4
- Spring Ranching for Wildlife (RFW) hunt code table ..... 4
- Fishers Peak State Park hunting opportunities ..... 4
- **MAP:** Spring over-the-counter (OTC) licenses ..... 5

## FALL & LATE-SEASON TURKEY ..... 6-7

- Fall limited license hunt code table ..... 6
- Fall Ranching for Wildlife (RFW) hunt code table ..... 6
- Late season private-land-only hunt code table ..... 6
- Youth extended fall season information ..... 6
- **MAPS:** Fall & late season over-the-counter (OTC) licenses ..... 7

## APPLICATIONS & PREFERENCE POINTS ..... 8

- Application & payment deadlines ..... 8
- Preference points ..... 8
- Refunds, reissues & exchanges; clearing failed payments ..... 8

## GMU DESCRIPTIONS ..... 9-13

- Special land use rules & hunting reservation information ..... 9
- **MAP:** Spanish Peaks SWA ..... 11
- **MAP:** James M. John & Lake Dorothy SWAs ..... 13

## IMPORTANT DATES ..... BACK COVER

Printed for free distribution by:

## COLORADO PARKS AND WILDLIFE (CPW)

6060 Broadway, Denver, CO 80216 • 303-297-1192

[cpw.state.co.us](http://cpw.state.co.us)



**OUR MISSION:** The mission of Colorado Parks and Wildlife is to perpetuate the wildlife resources of the state, to provide a quality state parks system and to provide enjoyable and sustainable outdoor recreation opportunities that educate and inspire current and future generations to serve as active stewards of Colorado's natural resources.

### COLORADO PARKS AND WILDLIFE DIRECTOR

Jeff Davis

### COLORADO PARKS AND WILDLIFE COMMISSION MEMBERS, as of November 2024

Dallas May, Chair	Gabriel Otero
Richard Reading, Vice-Chair	Murphy Robinson
Karen Michelle Bailey, Secretary	James Jay Tutchtton
Jessica Beaulieu	Eden Vardy
Marie Haskett	Dan Gibbs, ex-officio member
Tai Jacober	Kate Greenberg, ex-officio member
Jack Murphy	Jeff Davis, CPW Director

### REGULATION BROCHURE EDITOR

Mark Koenig

### COVER PHOTO

© Erik Ruf

### PRINTED

December 2024 by Publication Printers, Denver: 125,000 copies

**Printing paid for with hunting and fishing license fees.**

The Colorado Division of Parks and Wildlife (CPW) receives federal financial assistance from multiple bureaus within the U.S. Department of the Interior. Under Title VI of the 1964 Civil Rights Act (as amended), Section 504 of the Rehabilitation Act of 1973, Title II of the Americans with Disabilities Act of 1990 (as amended), the Age Discrimination Act of 1975 and Title IX of the Education Amendments of 1972, the U.S. Department of the Interior and its bureaus prohibit discrimination on the basis of race, color, religion, national origin, gender, disability or age. In addition, CPW adheres to all antidiscrimination laws of the state of Colorado. For more information on how to request an accommodation or to file a grievance, please visit [dnr.colorado.gov/accessibility](http://dnr.colorado.gov/accessibility).

**NOTICE:** Laws and regulations in this brochure are paraphrased for easier understanding and are intended only as a guide. Complete Colorado wildlife statutes and regulations are available at CPW offices below and online: [cpw.state.co.us/rules-and-regulations](http://cpw.state.co.us/rules-and-regulations)

## CPW ADMINISTRATIVE, REGIONAL & AREA OFFICE LOCATIONS

### ADMINISTRATION

6060 Broadway  
Denver, 80216  
303-297-1192 (M-F, 8 a.m. - 5 p.m. MT)

### REGISTRATION OFFICE

Boat, Snowmobile, Off-Highway Vehicle  
13787 US Hwy. 85 N  
Littleton, 80125

**ONLY** the offices below can assist hunters with animal checks and taking samples that are related to hunting activities. See [cpw.state.co.us](http://cpw.state.co.us) for a complete list of our park locations that can also sell licenses, issue duplicate licenses and accept some licenses for refunds.

### BRUSH

28167 County Rd. T  
Brush, 80723  
970-842-6300

### GRAND JUNCTION

711 Independent Ave.  
Grand Junction, 81505  
970-255-6100

### MONTE VISTA

0722 S. Rd. 1 E.  
Monte Vista, 81144  
719-587-6900

### COLORADO SPRINGS

4255 Sinton Rd.  
Colorado Springs, 80907  
719-227-5200

### GUNNISON

200 S. Spruce St.  
Gunnison, 81230  
970-641-7060

### MONTROSE

2300 S. Townsend Ave.  
Montrose, 81401  
970-252-6000

### DENVER

6060 Broadway  
Denver, 80216  
303-297-7227

### HOT SULPHUR SPRINGS

346 Grand County Rd. 362  
Hot Sulphur Springs, 80451  
970-725-6200

### PUEBLO

600 Pueblo Reservoir Rd.  
Pueblo, 81005  
719-561-5300

### DURANGO

151 E. 16th St.  
Durango, 81301  
970-247-0855

### LAMAR

2500 S. Main St.  
Lamar, 81052  
719-336-6600

### SALIDA

7405 Hwy. 50  
Salida, 81201  
719-530-5520

### FORT COLLINS

317 W. Prospect Rd.  
Fort Collins, 80526  
970-472-4300

### MEEKER

73485 Hwy. 64  
Meeker, 81641  
970-878-6090

### STEAMBOAT SPRINGS

925 Weiss Dr.  
Steamboat Springs, 80487  
970-870-3333

### GLENWOOD SPRINGS

0088 Wildlife Way  
Glenwood Springs, 81601  
970-947-2920

GET THE BROCHURE ONLINE: [cpw.state.co.us/turkey-brochure](http://cpw.state.co.us/turkey-brochure)



Cover Photo: © Erik Ruf

# WE'RE SOCIAL

Join the Conversation



@CoParksWildlife



As of November 2024, printing Colorado Parks and Wildlife hunting regulation brochures has offset **34,244 pounds** of paper consumption by reforesting **412 trees** as part of PrintReleaf Exchange. PrintReleaf helps organizations meet their sustainability goals by automatically reforesting the equivalence of their paper consumption and offsetting the carbon emissions associated with their paper and packaging products.



# WHAT'S NEW: 2025

- ▶ **FALL OVER-THE-COUNTER (OTC) LICENSES:** GMUs 63 and 431 have been added to the list of valid units for fall over-the-counter turkey licenses. See page 7 for more information.
- ▶ **MULTIPLE GMU BOUNDARIES MODIFIED:** GMUs 43, 79, **NEW 431** and 791 are affected. See new boundary descriptions on pages 9–12 for more information.
- ▶ **GMU 431 ADDED TO THE HUNT CODE VALID IN GMU 43:** GMU 43 has been split, creating GMU 431 and new hunting area boundaries for both units. See page 4.
- ▶ **LONE MESA STATE PARK:** Turkey hunting is permitted in the spring **ONLY** at Lone Mesa State Park, and hunters must hold a **T-M-000-U1-R** license. See “Special Land-Use Rules” on page 9 for more information.
- ▶ **LEGAL HUNTING HOURS TIP:** Visit [gml.noaa.gov/grad/solcalc](http://gml.noaa.gov/grad/solcalc) and use the NOAA Solar Calculator to pinpoint the sunrise/sunset time for your hunting location. See page 3 for more information.
- ▶ **REMINDER: A BRIEF PERIOD TO SURRENDER YOUR LICENSE AFTER THE DRAW IS AVAILABLE:** Once the draw is complete, CPW will send emails to customers who are successful in the draw and provide them with a short period when they can surrender their license if they no longer want it, receiving preference-point restoration to the pre-draw level, a refund of the license fee and removal of the license from the customer's account. **The deadline for the spring turkey surrender period is Feb. 12 at 11:59 p.m. MT. The deadline for the fall turkey surrender period is June 7 at 11:59 p.m. MT.** See page 8 for more details.

## LICENSE INFORMATION

### LICENSE, APPLICATION PROCESSING, HABITAT STAMP FEES

#### HABITAT STAMPS

#### FEE

- ▶ 2025 Habitat Stamp (required and nonrefundable) ..... **\$12.47**  
Only one is required per person, ages 18–64, per year buying or applying for a license.
- ▶ Lifetime Habitat Stamp ..... **\$374.47**

#### LICENSES

##### RESIDENTS

- ▶ Application processing fee (per draw and nonrefundable) ..... **\$8.00**
- ▶ Spring ..... **\$36.68**
- ▶ Fall ..... **\$30.44**
- ▶ Youth Spring or Fall (under age 18) ..... **\$19.21**

##### NONRESIDENTS

- ▶ Application processing fee (per draw and nonrefundable) ..... **\$11.00**
- ▶ Spring or Fall ..... **\$188.86**
- ▶ Youth Spring or Fall (under age 18) ..... **\$126.49**

All license prices include a **25-cent** search-and-rescue fee and a **\$1.50** fee for the Wildlife Management Fund, if applicable. **REMINDER: If you draw a license, your credit card or CPW gift certificate on file will be charged after the draw results are posted online.** See page 8 for details and back cover for key dates.

#### BUY ONLINE, BY PHONE OR IN PERSON

- ▶ **Online:** Go to [cpw.state.co.us/buy-apply](http://cpw.state.co.us/buy-apply)
- ▶ **Call:** 1-800-244-5613
- ▶ **In person:** CPW offices, parks and sales agents around the state

#### ACCEPTED FORMS OF PAYMENT

- **Online and by phone:** Visa, Mastercard, Discover credit/debit cards and CPW gift certificates
- **CPW offices/parks:** In addition to the above: check, money order, traveler's checks and cash
- **Sales agents:** Any form of payment the agent accepts (CPW gift certificates are **not** valid).

### WHAT YOU NEED TO BUY A LICENSE

See page 2 for more. ▶

- 1 PROPER IDENTIFICATION** and **PROOF** of residency (for Colorado residents).
- 2 PROOF** of hunter education.
- 3 HABITAT STAMP:** A 2025 (\$12.47) or lifetime (\$374.47) Habitat Stamp is required prior to buying a license for anyone ages 18–64.  
**NOTE: A Social Security number or Individual Taxpayer Identification Number is required for hunters age 12 and older, per federal law.**

### LICENSE REQUIREMENTS

- 1. Small-game licenses are not valid for turkeys.** A turkey license is required to take wild turkey.
- 2. Limited licenses** are available for spring and fall seasons by draw, valid only for specific dates and units (see pages 4–7). Apply online: Go to [cpw.state.co.us/buy-apply](http://cpw.state.co.us/buy-apply).  
▶ Only one application is allowed per season. **Hunters must apply for spring and fall turkey licenses separately.** Fall applications are **NOT** accepted before **MAY 1**. The purchasing system will **NOT** let you submit a fall application during the spring turkey application process.
- 3. Over-the-counter (OTC) licenses** are also available for spring and fall seasons, and can be purchased online, by phone or in person at CPW offices, state parks and sales agents around the state. See the back cover of this brochure for the dates when those licenses go on sale.
- 4. Licenses** are valid for and expire after the season printed on them. Licenses are not transferable.
- 5. It is illegal** to make false statements when buying or altering a license, and doing so voids the license.
- 6. Turkey hunters** do not need to register with the Harvest Info. Program (HIP).

### SPECIAL OPPORTUNITY INFORMATION

#### YOUTH LICENSES

Youth under age 18 can buy or apply for a reduced-cost turkey license. All hunters, including those younger than 18, must meet hunter education requirements. Those under 16 hunting with a youth turkey license must also be accompanied by a mentor while hunting. There is no minimum age to hunt turkey, as long as these requirements are met. A mentor must be 18 or older and must meet hunter education requirements. Mentors aren't required to hunt. While hunting, youth and mentors must be able to see and hear each other without binoculars, radios or other aids.

Youth younger than 18 can buy an adult license as long as they meet hunter education requirements. At age 18, youth must buy an adult license. Youth are considered to be the age they are on the date they submit their draw application. For example, if a 17-year-old submits an application and then turns 18 prior to the start of the turkey season for which they applied, they are still considered a youth and qualify for the youth license.

#### OUTREACH LICENSES: YOUTH & NOVICE ADULTS

Outreach licenses for youth are offered to qualified organizations sponsoring educational youth hunting activities. A maximum of 200 licenses are offered for private land and are limited to youth under 18 years of age. Email [hunteroutreach@state.co.us](mailto:hunteroutreach@state.co.us) to learn more.

Outreach licenses for novice adults are now offered to qualified organizations sponsoring novice adult hunting activities. A maximum of 200 licenses are offered on a first-come, first-served basis to organizations and are limited to novice adult hunters. A novice adult hunter is a Colorado resident age 18 or older, who has either no turkey license purchase history, only held a turkey license(s) in the current or previous year or has no turkey license purchase history in the previous five years. Organizations and novice adult hunters can learn more by emailing [hunteroutreach@state.co.us](mailto:hunteroutreach@state.co.us).

#### HUNTERS WITH MOBILITY IMPAIRMENTS

Ten licenses are offered for qualified hunters with mobility impairments for the spring season, valid only on private land in units 91, 92 and 96 for specific dates. Go to [cpw.state.co.us/hunters-with-disabilities](http://cpw.state.co.us/hunters-with-disabilities) for more information on the program and how to apply.

**NOTE:** In Spanish Peaks SWA, hunters with mobility impairments can hunt after the second weekend of the spring turkey season on Wed., Thurs. and Fri. by permit only. Permits are issued free on a first-come, first-served basis from CPW Licensing. Call 303-291-7235 for more information. *Permits are limited to two people for each of the Wed.–Fri. time periods during the spring season.*



## 1 RESIDENCY REQUIREMENTS

- ▶ The physical residence address you give to buy or apply for a license must be the same as the address given for Colorado state income tax purposes.
- ▶ You terminate your Colorado residency if you apply for, buy or accept a resident hunting, fishing or trapping license issued by another state or foreign country, register to vote outside Colorado or accept a driver's license that shows an address other than in Colorado.
- ▶ Go online for more information: [cpw.state.co.us/colorado-residency](http://cpw.state.co.us/colorado-residency)

### RESIDENCY TYPES

#### 1. STANDARD COLORADO RESIDENT

- Requirements:** You must live in Colorado for at least six consecutive months immediately prior to buying or applying for any resident CPW product, have your primary residence in Colorado and have not applied for or purchased a resident license or pass outside of Colorado in the last 6 months.
- Proof:** Current and valid Colorado driver's license/ID with a Colorado address issued six or more months prior. If the Colorado driver's license/ID is not six months old, you must provide at least two forms of additional residency proof, as outlined in "Additional Residency Proofs" below.

#### 2. STUDENT: ATTENDING SCHOOL FULL TIME IN COLORADO

- Requirements:** You must be attending school full time at an accredited Colorado school starting at least six months prior to buying or applying for any resident CPW product.
- Proof:** Student ID, name of institution, date you became a full-time student and school transcript showing full-time status.

#### 3. STUDENT: ATTENDING SCHOOL FULL TIME OUTSIDE OF COLORADO

- Requirements:** You must meet Colorado residency requirements and be attending an accredited school outside of Colorado, paying nonresident tuition.
- Proof:** Student ID, name of institution, date you became a full-time student and proof of out-of-state tuition payment.

#### 4. MILITARY: STATIONED IN COLORADO

- Requirements:** You must be active-duty military stationed in Colorado. Military member's spouse and/or dependents share the same residency status. Residency begins the date the orders begin.
- Proof:** Military ID and orders.

#### 5. MILITARY: COLORADO HOME OF RECORD

- Requirements:** You must be active-duty military stationed outside of Colorado, but with Colorado as your home of record, paying income tax as a Colorado resident. Military member's spouse and/or dependents share the same residency status.
- Proof:** Military ID and orders.

#### 6. YOUTH

Children under the age of 18 have the same residency status as their parent, legal guardian or person with whom they live the majority of the time per court order.

### OTHER RESIDENCY INFORMATION

#### 1. ADDITIONAL RESIDENCY PROOFS

If you otherwise meet residency requirements but your Colorado driver's license or ID was issued or renewed less than six months ago, or you have a CPW-approved religious exemption to photo identification on your record, you must provide at least two additional proofs of residency showing six consecutive months of Colorado residency immediately prior to buying or applying for a license. Those proofs showing six consecutive months of Colorado residency include: income sources (pay stubs), utility bills, state income tax documents (as a full-time resident), lease agreements/rent receipts, motor vehicle registration, voter registration.

#### 2. MULTIPLE HOMES

If you have a home in Colorado and another location, call 303-297-1192 to make sure you comply with Colorado residency requirements before obtaining a CPW license or state park pass.

## 2 HUNTER EDUCATION

### HUNTER EDUCATION (SAFETY) REQUIREMENTS

1. Anyone born on or after Jan. 1, 1949, must have a hunter education card to hunt in Colorado.
  2. A hunter education card is needed to apply for/buy a license.
  3. Your hunter education card must be carried while hunting, unless it is verified and your license is marked with a "V." To get your hunter education card verified, take your hunter education card to a CPW office (*listed on inside front cover*) or state park.
  4. CPW honors hunter education cards from other states, provinces and countries.
- ▶ More information: [cpw.state.co.us/education-outreach](http://cpw.state.co.us/education-outreach)

### HUNTER EDUCATION EXEMPTIONS

1. Individuals over age 50 or active-duty U.S. military and veterans can obtain a hunter education certificate by testing out of hunter education: [cpw.state.co.us/hunter-education-test-out](http://cpw.state.co.us/hunter-education-test-out)
2. An apprentice certificate can be obtained for hunters who are at least 10 years old and who must be accompanied by a mentor in the field. This hunter education waiver can be obtained twice in a lifetime: [cpw.state.co.us/apprentice-certificate](http://cpw.state.co.us/apprentice-certificate)

## 3 HABITAT STAMPS

Habitat Stamps are **REQUIRED** for hunters and cost \$12.47. Only one is required per person, per year for anyone ages 18–64. Habitat Stamps are valid March 1–March 31 of the following year (13 months).

- ▶ A lifetime stamp is \$374.47.
- ▶ Anyone who is approved in the Columbine, First Responder, Veterans, and/or Big Game Mobility Impaired programs is exempt from the Habitat Stamp requirement. See [cpw.state.co.us/park-specialty-passes](http://cpw.state.co.us/park-specialty-passes).
- ▶ For more information: [cpw.state.co.us/habitat-stamp](http://cpw.state.co.us/habitat-stamp)

**DONATE**

when you purchase your turkey license, or scan the QR code:



[cpw.state.co.us/donate](http://cpw.state.co.us/donate)

## CDPHE WANTS YOUR TICKS!



You can help the Colorado Department of Public Health and Environment **better understand ticks** in our state!

If you find a tick, scan the QR code to learn more, including how to safely remove the tick and send it to CDPHE for identification. **THANKS FOR YOUR HELP!**





# TURKEY HUNTING LAWS

## LEGAL HUNTING HOURS

Legal hunting hours for turkey are one-half hour before sunrise to sunset. Go to [gml.noaa.gov/grad/solcalc](http://gml.noaa.gov/grad/solcalc) to pinpoint the sunrise/sunset time for your hunting location.

### 2025 SUNRISE/SUNSET TABLE (DENVER)

DAY	APRIL		MAY		SEPT.		OCT.	
	RISE A.M. (DST)	SET P.M.	RISE A.M. (DST)	SET P.M.	RISE A.M. (DST)	SET P.M.	RISE A.M. (DST)	SET P.M.
1	6:43	19:24	6:00	19:54	6:28	19:30	6:57	18:42
2	6:42	19:25	5:59	19:55	6:29	19:29	6:58	18:40
3	6:40	19:26	5:58	19:56	6:30	19:27	6:58	18:38
4	6:39	19:27	5:56	19:57	6:31	19:26	6:59	18:37
5	6:37	19:28	5:55	19:58	6:32	19:24	7:00	18:35
6	6:36	19:29	5:54	19:59	6:33	19:22	7:01	18:34
7	6:34	19:30	5:53	20:00	6:34	19:21	7:02	18:32
8	6:32	19:31	5:52	20:01	6:35	19:19	7:03	18:31
9	6:31	19:32	5:51	20:02	6:36	19:18	7:04	18:29
10	6:29	19:33	5:50	20:03	6:37	19:16	7:05	18:28
11	6:28	19:34	5:49	20:04	6:38	19:14	7:06	18:26
12	6:26	19:35	5:48	20:05	6:39	19:13	7:07	18:24
13	6:25	19:36	5:47	20:06	6:40	19:11	7:08	18:23
14	6:23	19:37	5:46	20:07	6:40	19:09	7:09	18:21
15	6:22	19:38	5:45	20:08	6:41	19:08	7:11	18:20
16	6:20	19:39	5:44	20:09	6:42	19:06	7:12	18:19
17	6:19	19:40	5:43	20:10	6:43	19:05	7:13	18:17
18	6:17	19:41	5:42	20:11	6:44	19:03	7:14	18:16
19	6:16	19:42	5:42	20:12	6:45	19:01	7:15	18:14
20	6:15	19:43	5:41	20:13	6:46	19:00	7:16	18:13
21	6:13	19:44	5:40	20:13	6:47	18:58	7:17	18:11
22	6:12	19:45	5:39	20:14	6:48	18:56	7:18	18:10
23	6:10	19:46	5:39	20:15	6:49	18:55	7:19	18:09
24	6:09	19:47	5:38	20:16	6:50	18:53	7:20	18:07
25	6:08	19:48	5:37	20:17	6:51	18:51	7:21	18:06
26	6:06	19:49	5:37	20:18	6:52	18:50	7:22	18:05
27	6:05	19:50	5:36	20:18	6:53	18:48	7:23	18:04
28	6:04	19:51	5:36	20:19	6:54	18:47	7:25	18:02
29	6:03	19:52	5:35	20:20	6:55	18:45	7:26	18:01
30	6:01	19:53	5:35	20:21	6:56	18:43	7:27	18:00
31			5:34	20:21			7:28	17:59

DST = Daylight Savings Time

### TIME ADJUSTMENT FOR OTHER COLORADO CITIES

Add or subtract these minutes to the chart above for select towns. For use only as a general reference.	Alamosa	+3	Gr. Junction	+13
	Buena Vista	+5	Gunnison	+7
	Burlington	-10	La Junta	-6
	Craig	+9	Lamar	-9
	Durango	+11	Sterling	-6
	Fort Morgan	-4	Walden	+5

Source: aa.usno.navy.mil

## RESTRICTIONS

### CHILD SUPPORT DELINQUENCY

State law requires a Social Security number to buy a license. The Social Security number is not displayed on the license but is provided, if requested, to Child Support Enforcement authorities. Hunting and fishing licenses are not issued to those suspended for noncompliance with child support. Any current licenses become invalid if held by an individual who is noncompliant with child support.

### WEAPONS RESTRICTIONS

Colorado and federal laws prohibit people convicted of certain crimes, such as domestic violence, from possessing weapons even for hunting. If you've been convicted of a crime, check with the appropriate law enforcement authority to find out how the laws apply to you.

## ILLEGAL HUNTING METHODS

### IT IS ILLEGAL TO:

- Post, sign or indicate that public lands (except if under an exclusive-control lease) are private.
- Hunt on private land without first obtaining permission from landowner or person in charge.
- Hunt on state trust lands (STLs) without permission of lessee, except those open for wildlife recreation.
- Have a loaded round in the chamber of a rifle or shotgun in or on any motor vehicle.
- Shoot from or use a motor vehicle, motorcycle, off-highway vehicle, snowmobile or aircraft to hunt, intercept, chase, harass or drive wildlife.
- Hunt under the influence of alcohol or controlled substances.
- Use any artificial light as an aid in hunting wildlife.
- Fail to reasonably dress, care for and prepare edible wildlife meat for human consumption. Internal organs are not considered edible portions.
- Party hunt: harvest someone else's game or let someone harvest yours.
- Use recorded or electronically amplified calls.
- Use bait to hunt turkeys. Baiting is placing or scattering salt, mineral, grain or other feed to attract wildlife.
- Erect permanent blinds or tree stands on state wildlife areas (SWAs). Only portable blinds or tree stands may be erected on SWAs. These must be removed at the end of the day that they are used. No nails may be driven into trees. The hunter's Customer Identification number (CID) and dates of use must be visible on the outside of blinds or underside of stands. Placement of blinds or stands does not reserve them for personal use; they may be used by the public on a first-come, first-served basis.
- Use the internet or other computer-assisted remote technology while hunting or fishing. This includes unmanned or remote-control drones used to look for wildlife. Hunters must be physically in the immediate vicinity while hunting or fishing.
- Use live-action game cameras to locate, surveil, or aid or assist in locating or surveilling game wildlife in order to take/try to take game wildlife during the same or following day. "Live-action game camera" is any device capable of recording and transmitting photographic/video data wirelessly to a remote device (such as a computer or smart phone). This doesn't include game cameras that record photographic/video data and store such data for later use, as long as the device cannot transmit data wirelessly.

## BAG LIMITS, TAGGING & METHODS OF TAKE

### BAG & POSSESSION LIMITS

- Bag and possession limit for each season:
  - **2 BEARDED** turkeys in the spring. One must be taken with a limited license, the other must be taken with an over-the-counter license.
  - **1 EITHER SEX** turkey in the fall.
  - **2 BEARDLESS** turkeys in the late season.

### TAGGING

- After harvesting a turkey, hunters must immediately detach, sign and date the carcass tag (bottom section of license) and attach it to the animal. Tags must stay attached while the carcass is transported, in camp, in storage or in your possession.
- If the carcass tag is accidentally detached from the license, lost or destroyed, you must get a duplicate before hunting and prove the loss, detachment or destruction was accidental. Duplicates can be obtained by furnishing proof of accidental detachment, loss or destruction to a CPW area office (listed on inside front cover).

### METHODS OF TAKE

- SHOTGUNS**, including muzzleloading shotguns: maximum 10-gauge allowed and cannot be capable of holding more than three shells in the magazine and chamber combined. Shotguns capable of holding more than three shells must be plugged. Shot must be size #2 (lead or steel) or smaller. Single slugs are illegal.
- HAND-HELD BOWS**

### 3. CROSSBOWS

#### 4. RIFLES AND HANDGUNS:

**a. SPRING SEASON: Rifles and handguns are illegal.**

**b. FALL AND LATE SEASONS ONLY:** Rifles and handguns can be muzzleloading, centerfire or rim fire, and bullets must be a minimum 17 grains with manufacturer's energy rating of at least 110 foot-pounds at 100 yards from muzzle.

**5. AIR GUNS**, precharged pneumatic air guns .25 caliber or larger, during the fall or late season **ONLY**.

**NOTE:** Turkeys can be taken over standing crops or feed scattered solely for agricultural purposes.

**NOTE:** Artificial decoys and manual calls are permitted. Recorded or electronically amplified calls are illegal.

### KEEP EVIDENCE OF SEX ATTACHED

A turkey harvested in the spring must have its beard naturally attached while being transported.



The beard is at the base of the turkey's neck.



# SPRING TURKEY

THE FOLLOWING UNITS ARE CLOSED TO ALL SPRING TURKEY HUNTING: 26, 45, 201, 371, 471

## SPRING LIMITED LICENSES

Limited licenses are limited in number by regulation and are issued through a draw process. Hunters must apply and be successful in the draw (*unless purchased as a leftover or reissued license after the draw*) in order to get one of these licenses, which are valid on public or private land within the unit(s) listed, unless otherwise specified below. **Hunters must always get landowner permission before hunting on private land.**

UNITS	DATES	LICENSES	HUNT CODE
2	April 12–May 31	15	T-M-002-O1-R
15, 27, 37, 361	April 12–May 31	15	T-M-015-O1-R
21	April 12–May 31	15	T-M-021-O1-R
23	April 12–May 31	20	T-M-023-O1-R
23 private land only	April 14–May 31	40	T-M-023-P1-R
25	April 12–May 31	40	T-M-025-O1-R
34	April 12–May 31	40	T-M-034-O1-R
35, 36	April 12–May 31	20	T-M-035-O1-R
43, <b>NEW</b> 431	April 12–May 31	60	T-M-043-O1-R
44	April 12–May 31	80	T-M-044-O1-R
47	April 12–May 31	15	T-M-047-O1-R
59 Beaver Creek SWA and Table Mtn. STL only	April 12–May 2	5	T-M-059-O1-R
	May 3–31	10	T-M-059-O2-R
59 youth only Beaver Creek SWA and Table Mtn. STL only	April 12–May 31	10	T-M-059-K1-R
80	April 12–May 31	10	T-M-080-O1-R
81	April 12–May 31	20	T-M-081-O1-R
91	April 12–May 2	30	T-M-091-O1-R
	May 3–31	30	T-M-091-O2-R
91, 92, 96, 101, 102 youth only	April 12–May 31	150	T-M-091-K1-R
92	April 12–May 2	30	T-M-092-O1-R
	May 3–31	30	T-M-092-O2-R
96	April 12–May 2	50	T-M-096-O1-R
	May 3–31	50	T-M-096-O2-R
96	April 12–May 2	75	T-M-096-P1-R
96 private land only	May 3–31	75	T-M-096-P2-R

## SPRING LIMITED LICENSES

UNITS	DATES	LICENSES	HUNT CODE
101, 102	April 12–May 2	25	T-M-101-O1-R
	May 3–31	25	T-M-101-O2-R
103, 107, 109	April 12–May 2	35	T-M-103-O1-R
	May 3–31	35	T-M-103-O2-R
103, 107, 109 youth only	April 12–May 31	35	T-M-103-K1-R
124, 125, 129	April 12–May 31	25	T-M-124-O1-R
124, 125, 129 youth only	April 12–May 31	15	T-M-124-K1-R
127, 132	April 12–May 31	30	T-M-127-O1-R
139	April 12–May 31	10	T-M-139-O1-R
140 Lake Dorothea SWA only	April 12–May 31	30	T-M-140-O1-R
140 James M. John SWA only	April 12–May 31	20	T-M-140-O2-R
444	April 12–May 31	45	T-M-444-O1-R
444 private land only	April 12–May 31	30	T-M-444-P1-R
851 Bosque del Oso SWA only	April 12–May 31	20	T-M-851-O1-R

## SPRING RANCHING FOR WILDLIFE (RFW)

Public Ranching for Wildlife (RFW) licenses are available **ONLY TO COLORADO RESIDENTS** by draw. Licenses are valid for the dates and ranch on the license. RFW licenses are listed with hunt codes below. Landowners must provide free access to hunters who draw a license for the ranch. By applying for a RFW license, hunters allow CPW to provide applicant information to the ranch. Hunting rules are different for each ranch; read ranch rules on the CPW website before applying: [cpw.state.co.us/rfw](http://cpw.state.co.us/rfw)

UNITS	DATES	LICENSES	HUNT CODE
MOUNTAIN MEADOWS RANCH Unit 84	April 23–May 31	10	T-M-084-W1-R
PURGATOIRE RANCH Units 136, 143, 147	April 12–21	7	T-M-136-W1-R

## ADDITIONAL OPPORTUNITIES

### FISHERS PEAK STATE PARK HUNTING OPPORTUNITIES

Up to five hunters will have the opportunity to hunt turkey on Fishers Peak, near Trinidad, in spring 2025. Access is by permit only, issued by drawing. Information about how to apply for these opportunities will be posted online by Feb. 1, 2025. For more details, go to: [cpw.state.co.us/fishers-peak](http://cpw.state.co.us/fishers-peak)



SPRING OVER-THE-COUNTER (OTC) LICENSES & HUNTABLE GMUS

Over-the-counter (OTC) licenses are usually unlimited in number and available over the counter. These licenses are NOT available through the draw process.

SPRING OTC LICENSE SALES BEGIN: March 1 at 9 a.m. MT

SEASON DATES: April 12 – May 31

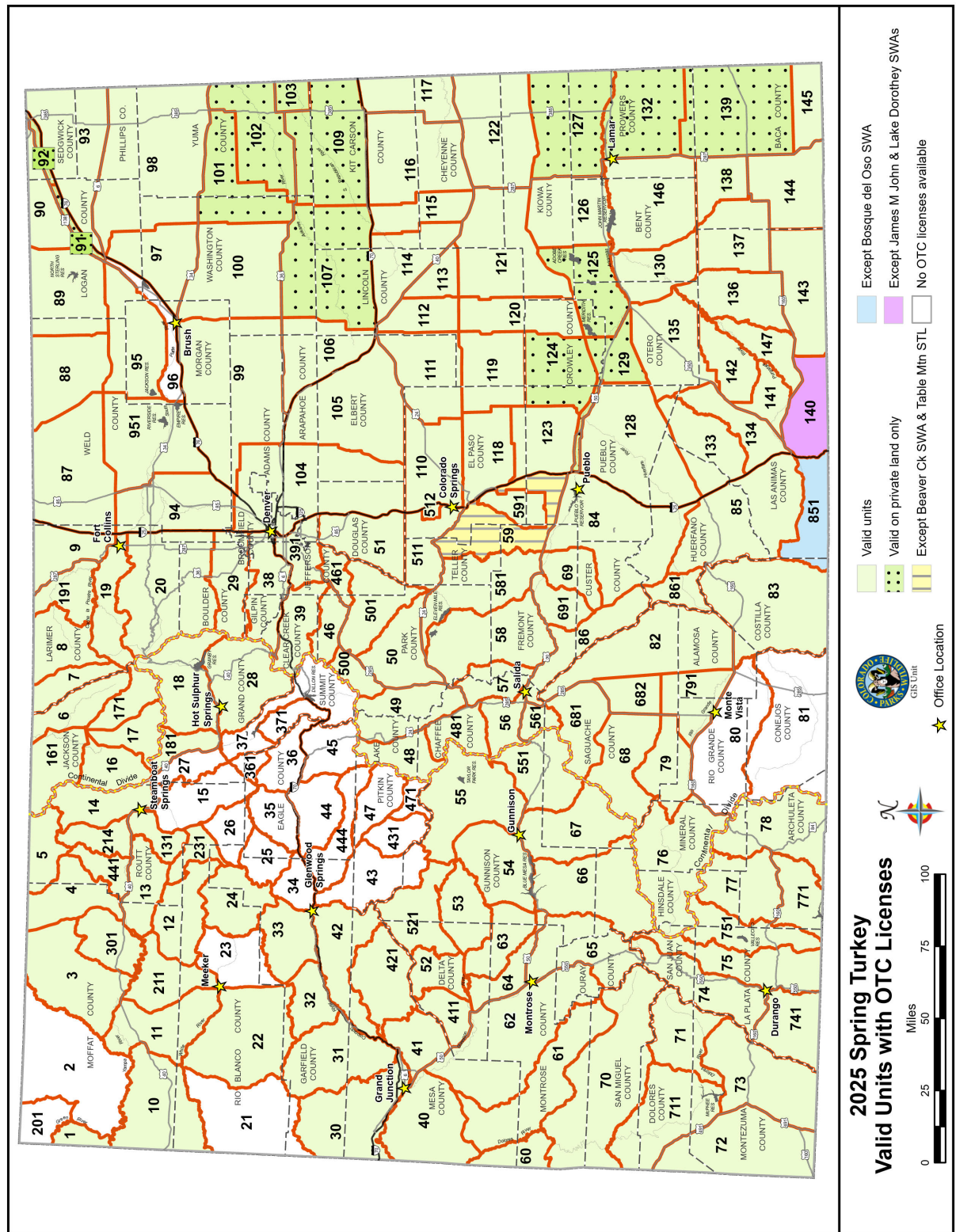
SALES AGENTS ONLY: Use code T-M-000-U1-R

LICENSES ARE VALID — HUNTING IS ALLOWED — IN THE FOLLOWING UNITS (SHADED ON THE MAP):

1, 3, 4, 5, 6, 7, 8, 9, 10, 11, 12, 13, 14, 16, 17, 18, 19, 20, 22, 24, 28, 29, 30, 31, 32, 33, 38, 39, 40, 41, 42, 46, 48, 49, 50, 51, 52, 53, 54, 55, 56, 57, 58, 59 except on Beaver Creek SWA and Table Mountain STL, 60, 61, 62, 63, 64, 65, 66, 67, 68, 69, 70, 71, 72, 73, 74, 75, 76, 77, 78, 79, 82, 83, 84, 85, 86, 87, 88, 89, 90, 93, 94, 95, 97, 98, 99, 100, 104, 105, 106, 110, 111, 112, 113, 114, 115, 116, 117, 118, 119, 120, 121, 122, 123, 126, 128, 130, 131, 133, 134, 135, 136, 137, 138, 140 except on James M. John and Lake Dorothy SWAs, 141, 142, 143, 144, 145, 146, 147, 161, 171, 181, 191, 211, 214, 231, 301, 391, 411, 421, 441, 461, 481, 500, 501, 511, 512, 521, 551, 561, 581, 591, 681, 691, 711, 741, 751, 771, 791, 851 except on Bosque del Oso SWA, 861, 951

AND ONLY ON PRIVATE LAND IN: 91, 92, 101, 102, 103, 107, 109, 124, 125, 127, 129, 132, 139

Visit the Colorado Hunting Atlas for detailed GMU boundaries and maps: [cpw.state.co.us/hunting-atlas](http://cpw.state.co.us/hunting-atlas)



**2025 Spring Turkey**  
**Valid Units with OTC Licenses**

Valid units  
Valid on private land only  
Except Beaver Ck SWA & Table Mtn STL  
Except James M John & Lake Dorothy SWAs  
No OTC licenses available

0 25 50 75 100 Miles

Office Location



# FALL TURKEY

THE FOLLOWING UNITS ARE CLOSED TO ALL FALL TURKEY HUNTING:

2, 21, 26, 30, 35, 36, 44, 45, 80, 81, 89, 90, 93, 95, 97, 98, 99, 100, 106, 111, 115, 120, 201, 371, 471

## FALL LIMITED LICENSES

Limited licenses are limited in number by regulation and are issued through a draw process. Hunters must apply and be successful in the draw (*unless purchased as a leftover or reissued license after the draw*) in order to get one of these licenses, which are valid on public or private land within the listed unit(s), unless otherwise specified below. **Hunters must always get landowner permission before hunting on private land.**

UNITS	DATES	LICENSES	HUNT CODE
15, 27, 37, 361	Sept. 1–Oct. 5	15	T-E-015-L1-R
25	Sept. 1–Oct. 5	15	T-E-025-L1-R
34	Sept. 1–Oct. 5	25	T-E-034-L1-R
47	Sept. 1–Oct. 5	25	T-E-047-L1-R
59 <i>Beaver Creek SWA and Table Mtn. STL only</i>	Sept. 1–Oct. 5	15	T-E-059-L1-R
85 <i>Spanish Peaks SWA, Oberosler Tract only</i>	Sept. 1–Oct. 5	10	T-E-085-L1-R
85 <i>Spanish Peaks SWA, Dochter Tract only</i>	Sept. 1–Oct. 5	10	T-E-085-L2-R
85 <i>Spanish Peaks SWA, Sakarison Tract only</i>	Sept. 1–Oct. 5	10	T-E-085-L3-R
91	Sept. 1–Oct. 31	30	T-E-091-L1-R
91, 92, 96, 101, 102 <i>youth only</i>	Sept. 1–Oct. 31	35	T-E-091-K1-R
92	Sept. 1–Oct. 31	30	T-E-092-L1-R
96	Sept. 1–Oct. 31	75	T-E-096-L1-R
101, 102	Sept. 1–Oct. 31	30	T-E-101-L1-R
103, 107, 109	Sept. 1–Oct. 31	5	T-E-103-L1-R
103, 107, 109 <i>youth only</i>	Sept. 1–Oct. 31	5	T-E-103-K1-R
124, 125, 129	Sept. 1–Oct. 31	15	T-E-124-L1-R
124, 125, 129 <i>youth only</i>	Sept. 1–Oct. 31	15	T-E-124-K1-R
126, 146	Sept. 1–Oct. 31	20	T-E-126-L1-R
127, 132	Sept. 1–Oct. 31	20	T-E-127-L1-R
139	Sept. 1–Oct. 31	5	T-E-139-L1-R
140 <i>Lake Dorothy SWA only</i>	Sept. 1–Oct. 5	10	T-E-140-L1-R
140 <i>James M. John SWA only</i>	Sept. 1–Oct. 5	10	T-E-140-L2-R
444	Sept. 1–Oct. 5	30	T-E-444-L1-R
851 <i>Bosque del Oso SWA only</i>	Sept. 1–Oct. 5	10	T-E-851-L1-R

## FALL RANCHING FOR WILDLIFE (RFW)

Public RFW licenses are available through the draw **ONLY TO COLORADO RESIDENTS**. They are valid for dates and ranch on license. Read ranch rules on the CPW website before applying at [cpw.state.co.us/rfw](http://cpw.state.co.us/rfw). See *Spring RFW*, page 4, for more details.

UNITS	DATES	LICENSES	HUNT CODE
PURGATOIRE RANCH Unit 136, 143, 147	Sept. 13–22	1	T-E-136-W1-R

## LATE SEASON LICENSES: PRIVATE LAND ONLY

Hunters may purchase up to two beardless turkey licenses during the late season. These are available over-the-counter for hunting on **PRIVATE LAND ONLY** within the game management unit where the license holder has permission to hunt.

**Get landowner permission before buying a license.**

See map in shaded box on page 7.

UNITS	DATES	HUNT CODE
112, 113	Dec. 15, 2025–Jan. 15, 2026	Sales agents only: T-F-000-U2-R

## YOUTH EXTENDED FALL SEASON

Youth under 18 with an **UNFILLED FALL** turkey license can hunt turkey from the Sat. before Thanksgiving to the Sun. after Thanksgiving in the units listed on their original fall license. All hunters must follow all applicable regulations and must be accompanied by a mentor, who cannot hunt. Youth turkey hunters should be aware that big-game hunters may also be in the field during this season. See “Youth Licenses” under “Special Opportunity Information” (page 1), or contact a CPW office for information (*listed on inside front cover*).

## HOW TO READ HUNT CODES

### HUNT CODES CONTAIN A LOT OF INFORMATION!

Learning how to read hunt codes can ensure that you apply for the right hunt in the limited license draw each year. **Hunt codes are an 8-character code used to designate species, sex, GMU, season and method of take:**

- THE FIRST LETTER** designates the species: **T** = turkey; **D** = deer; **E** = elk; **A** = pronghorn; **M** = moose; **B** = bear
- THE SECOND LETTER** designates the sex of the animal you want to hunt: **M** = male; **F** = female; **E** = either sex
- THE THIRD PART (THREE NUMBERS)** designates the unit you want to hunt: **001** = unit 1; **201** = unit 201; etc. If more than one unit is valid, only the lowest unit number will appear.
- THE FOURTH PART (A LETTER AND A NUMBER)** indicates hunt dates:
  - **O1** = first season; **O2** = second season; **O3** = third season; etc.
  - **P** is for private-land-only hunts, then the season number: **P1**, **P2**, etc.
  - **E1** = early season. **L1** = late season. **K1**, **K2**, etc. = youth-only hunts.

**W (or J)** = Ranching for Wildlife.  
*NOTE: Be aware that the zero (0) in the hunt units and the letter “O” in the season section look similar!*
- THE LAST LETTER** indicates the method of take the license is valid for: **A** = archery; **M** = muzzleloader; **R** = rifle and associated methods (See page 3.)



## FALL OVER-THE-COUNTER (OTC) LICENSES & HUNTABLE GMUS

Over-the-counter (OTC) licenses are usually unlimited in number and available over the counter. These licenses **ARE NOT** available through the draw process.

**FALL & LATE OTC LICENSE SALES BEGIN:** June 19 at 9 a.m. MT

**SEASON DATES:** Sept. 1–Oct. 5: west of I-25 and GMU 140

Sept. 1–Oct. 31: east of I-25, except GMU 140

**SALES AGENTS ONLY:** Use code T-E-000-U2-R

**LICENSES ARE VALID — HUNTING IS ALLOWED — IN THE FOLLOWING UNITS (SHADED ON THE MAP):**

1, 3, 4, 5, 6, 7, 8, 9, 10, 11, 12, 13, 14, 16, 17, 18, 19, 20, 22, 23, 24, 28, 29, 31, 32, 33, 38, 39, 40, 41, 42, 43, 46, 48, 49, 50, 51, 52, 53, 54, 55, 56, 57, 58, 59 except on Beaver Creek SWA and Table Mountain STL, 60, 61, 62, **NEW 63**, 64, 65, 66, 67, 68, 69, 70, 71, 72, 73, 74, 75, 76, 77, 78, 79, 82, 83, 84, 85 except on Spanish Peaks SWA, 86, 87, 88, 94, 104, 105, 110,

112, 113, 114, 116, 117, 118, 119, 121, 122, 123, 128, 130, 131, 133, 134, 135, 136, 137, 138, 140 except on James M. John and Lake Dorothy SWAs, 141, 142, 143, 144, 145, 147, 161, 171, 181, 191, 211, 214, 231, 301, 391, 411, 421, **NEW 431**, 441, 461, 481, 500, 501, 511, 512, 521, 551, 561, 581, 591, 681, 682, 691, 711, 741, 751, 771, 791, 851 except on Bosque del Oso SWA, 861, 951

**AND ONLY ON PRIVATE LAND IN:** 101, 102

## LATE SEASON OVER-THE-COUNTER LICENSES

Licenses are unlimited in number and available over the counter. These are private-land-only licenses: **Get landowner permission before buying a license.**

**SEASON DATES:**

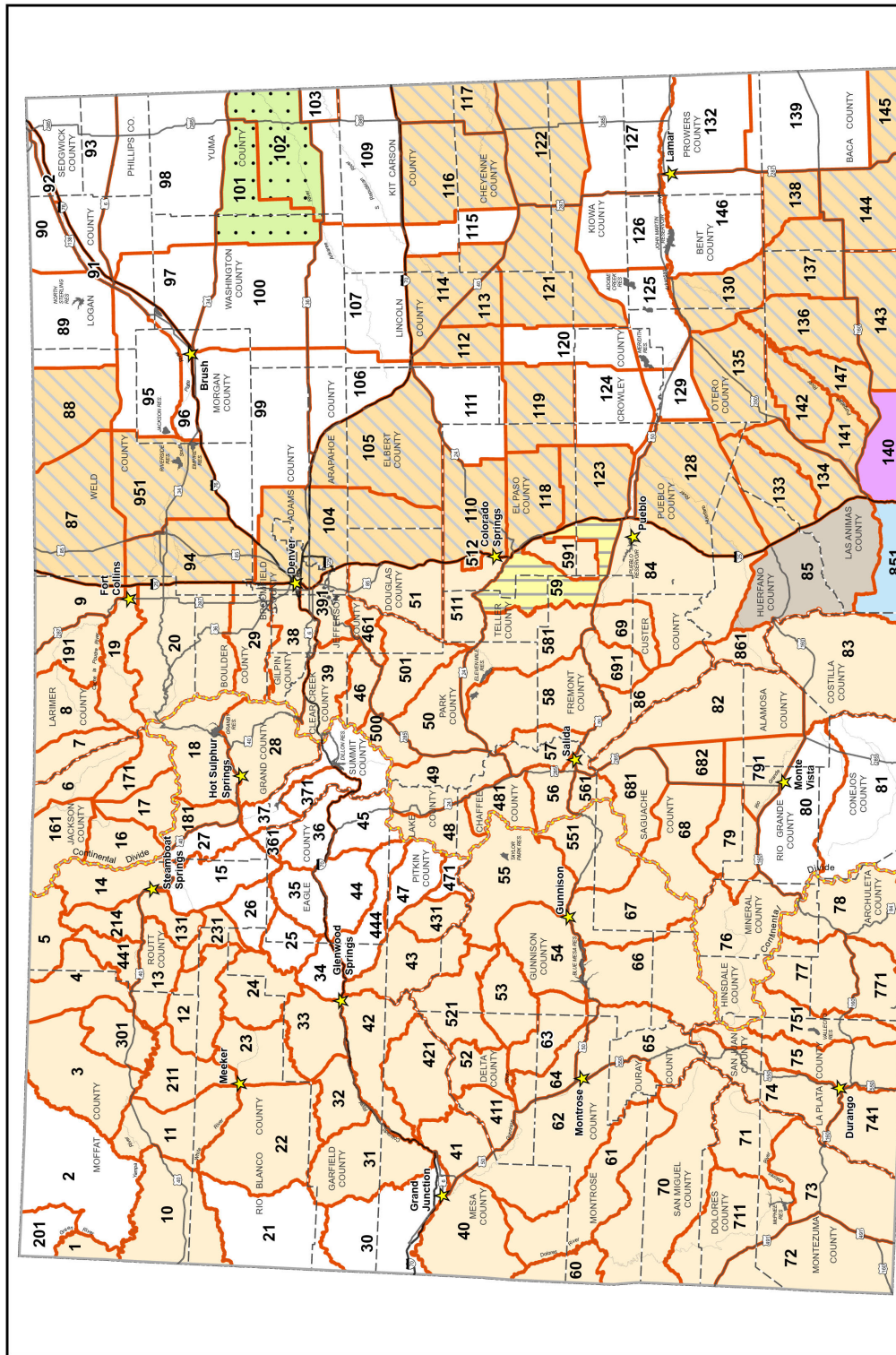
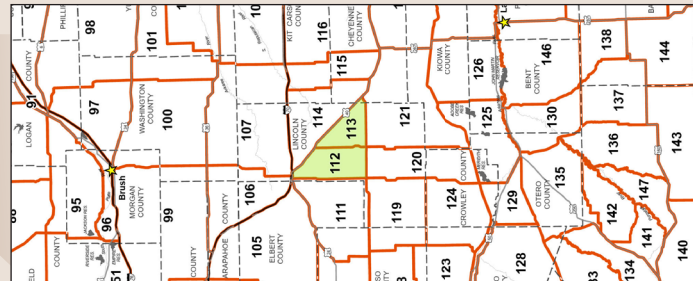
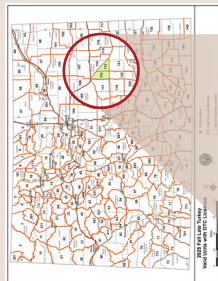
Dec. 15, 2025–Jan. 15, 2026

**SALES AGENTS ONLY:**

Use code T-F-000-U2-R

**LICENSES ARE VALID ON PRIVATE LAND IN THESE UNITS (SHADED ON THE ENLARGED MAP BELOW):**

112, 113



2025 Fall Turkey

Valid Units with OTC Licenses



- Season ends October 5
- Season ends October 24
- Valid on private land only
- Except Beaver Ck SWA & Table Mtn STL
- Except Bosque del Oso SWA
- Except James M. John & Lake Dorothy SWAs
- Except Spanish Peaks SWA
- No OTC licenses available



# APPLICATIONS & PREFERENCE POINTS

For any account issues, please contact us at: 303-297-1192 (M–F, 8 a.m.–5 p.m. MT) or 1-800-244-5613 (24/7)

## APPLICATION & CORRECTION DEADLINES

**SPRING:** Feb. 4 (8 p.m. MT)

**FALL:** May 30 (8 p.m. MT)

**Application corrections must also be made by this date.**

Once the draw is complete, CPW will send emails to customers who are successful in the draw and provide them with a short period when they can surrender their license if they no longer want it, receiving preference point restoration to a pre-draw level, a refund of the license fee and removal of the license from the customer's account. **The deadline for the spring turkey surrender period is Feb. 12 at 11:59 p.m. MT. The deadline for the fall turkey surrender period is June 7 at 11:59 p.m. MT.** To surrender your license, go to your limited license draw results email receipt.

## PAYMENT DEADLINES

**SPRING: FEB. 24** License **must** be paid for by this date.

**FALL: JUNE 19** License **must** be paid for by this date.

**THE PAYMENT DEADLINE IS FINAL.** Plan ahead: Log in to your account before draw results are posted online and make sure your credit card information is accurate.

If we are unable to charge the credit card on file in your account by the payment deadline, your license will be forfeited. *It's the customer's responsibility to know the payment deadlines and verify that their awarded licenses have been paid for prior to the payment deadlines.*

All turkey license applications for the draw(s) are only available **ONLINE** (go to [cpw.state.co.us/buy-apply](http://cpw.state.co.us/buy-apply)) or **BY PHONE** (1-800-244-5613).

Go online to find everything you need for detailed account, application and payment info: [cpwshop.com](http://cpwshop.com) and navigate to "Sign In Or Create Account"

► **How to set up an online account**

► **How to access your existing online account**

[cpw.state.co.us/apply-for-the-draws](http://cpw.state.co.us/apply-for-the-draws)

► **How to apply for the spring and fall draws**

## PREFERENCE POINTS

**1. HOW TO GAIN POINTS:** One preference point is awarded if you are unsuccessful in drawing your *first-choice hunt code* or if you apply for a *preference point hunt code* as your first choice. You can get two preference points each license year for turkey if you submit an application for each season (spring and fall).

**2. PREFERENCE POINT HUNT CODE:** To apply for a preference point *only*, enter either hunt code **T-M-999-99-P (spring season)** or **T-E-999-99-P (fall season)** as the first choice on your application. You must pay for a Habitat Stamp, even if you're just applying for a preference point. The application processing fee and \$12.47 Habitat Stamp fee are nonrefundable.

**3. DRAW PRIORITY:** Priority goes to the hunter with the most points, except for group applications. Group applications are processed based on the member with the fewest points. See [cpw.state.co.us/apply-for-group-hunts](http://cpw.state.co.us/apply-for-group-hunts) online.

**4. POINTS ARE ONLY USED ON FIRST-CHOICE HUNTS:** Second-, third- or fourth-choice hunt codes don't use or generate preference points.

**5. POINT ACCUMULATION:** Preference points accumulate each year until they are used to help you draw a license as a first choice.

**6. USE THEM OR LOSE THEM:** If you don't apply for or purchase a license at least once in 10 consecutive years for turkey, your file is purged and your preference points are lost. Applying for preference points keeps your file active.

**7. CHECK YOUR ONLINE PROFILE:** Your preference point levels and draw results will be listed in your account profile. Go to [cpw.state.co.us/buy-apply](http://cpw.state.co.us/buy-apply).

## REFUNDS

1. Application fees and the \$12.47 Habitat Stamp fee are nonrefundable.

2. **If you drew a license you would like to return AFTER THE SURRENDER PERIOD DEADLINE, payment for the license is still required first.** You can then return it for a refund **OR** preference point restoration. You must relinquish your license **AND** carcass tag at least 14 days before opening day of the season for which the license is valid.

► License must be accompanied by a completed request form obtained at a CPW location or on our website: [cpw.state.co.us/refunds](http://cpw.state.co.us/refunds). Most refunds are subject to a \$15 processing fee. Preference points are reinstated to a pre-draw level. You do **NOT** receive an additional preference point for the draw for which you're returning your license.

► Turkey refund requests must be postmarked at least **14 DAYS** before the season for which the license is valid starts along with a refund or preference point restoration request form to CPW, attn: Refund Office, 6060 Broadway, Denver, CO 80216. A license cannot be recovered once it has been returned.

3. Once there are fewer than 14 days until the season starts, refunds or preference point restorations are limited to extreme medical circumstances of the licensee or of the licensee's immediate family member, death of the licensee or death of the licensee's immediate family member, members of the U.S. military whose service prevented them from requesting a refund or reinstatement on time, or jury duty which overlaps with the season dates on the license.

► These requests must be accompanied by evidence that the license has not been used **AND** the circumstances that prevented the licensee from being able to make their request 14 days or more from season start.

► Customers with an extreme medical circumstance will need to fill out the new Extreme Medical Exception request form. Find instructions online: [cpw.state.co.us/refunds](http://cpw.state.co.us/refunds)

## REISSUES

1. The Reissue Preview List will be posted online every Tues. at 11 a.m., and those hunt codes will be moved to the Leftover List and available for purchase every Wed. as close to 11 a.m. as possible.

2. All hunt codes will be released 11 a.m.–1 p.m. on Wed. of every week, starting the week after leftover licenses go on sale. *Note that no new hunt codes will be added to the list during the week.*

3. Licenses from the preview list for the week will be available for purchase every Wed., starting at 11 a.m. See the website for full details:

[cpw.state.co.us/leftover-licenses](http://cpw.state.co.us/leftover-licenses)

## EXCHANGES

1. All license exchanges will be charged a \$5.00 fee.

2. No refunds or preference point restorations are available on exchanged licenses.

3. Exchanges can be completed at a CPW office or park up until the day before the season starts on the original license. Once a season starts, an exchange is no longer available.

## CLEARING FAILED PAYMENTS

Log in to your account at [cpwshop.com](http://cpwshop.com) and navigate to the "Privileges" tab under "My Orders." Click on "Pay Balance" and pay for your license. You will receive an order number and confirmation email when you have successfully completed the transaction.

**Please note that if you receive a courtesy email that your license payment failed, only updating your credit card on file will NOT pay for your license.** You **MUST** follow the instructions above and receive confirmation that your license is paid for prior to the payment deadline. Payments can also be made over the phone; please call 1-800-244-5612.



# GAME MANAGEMENT UNIT DESCRIPTIONS

**NOTE:** The following list includes **only** GMUs open to turkey hunting.

## SPECIAL LAND-USE RULES

- 1. MAKE HUNTING RESERVATIONS ONLINE OR BY PHONE:** Some properties require reservations to hunt turkey; these can be made online at [cpw.state.co.us/hunting-reservations](http://cpw.state.co.us/hunting-reservations) or through the reservation phone number: **1-800-244-5613**. Reservations are available starting at 9 a.m. Reservations can be made 14 days before the hunt date up until noon the day before the hunt date. *Check the current Colorado State Recreation Lands brochure for details about which properties require reservations.*
- 2. SPANISH PEAKS SWA:** Map to trailhead and parking is on page 11. Hunting is permitted only Sat., Sun., Mon. and Tues. in spring turkey season. Hunters with mobility impairments, see page 1 for exceptions.
- 3. HORSETHIEF CANYON SWA:** All turkey hunting W of Blind #1, S of the Colorado River requires a reservation. Reservations must be made through the Hunting Reservation System. *See number 1 above.* Hunters can hunt only the area reserved. Hunters must check in and out at property.
- 4. HIGEL & RIO GRANDE SWAS:** Spring season access is by permit only, issued by random drawing. Applications are available by emailing [montevista.wildlife@state.co.us](mailto:montevista.wildlife@state.co.us). Group applications accepted; maximum two applicants per group. Application deadline is March 31, annually. Successful applicants will be notified by email. Information about the license drawing is on the application.
- 5. KENOSHA PASS & GUANELLA PASS RD.** (GMUs 39, 46, 500 & 501): Hunting is prohibited year-round along Kenosha Pass within 1/4 mile of Hwy. 285, between mile markers 203 and 206 in Park Co., excluding private lands. Hunting is also prohibited within 1/4 mile of Guanella Pass Rd. (Clear Creek CR 381 and Park CR 62) when the road is open to motor-vehicle traffic, from mile markers 12.5 to 19 (located at the intersection of Guanella Pass Rd. and the Clear Lake picnic area). Hunting is also prohibited within 1/4 mile around and including Deadman's Lake (E of Guanella Pass Rd., N of Mt. Bierstadt Trail [USFS trail 711]), excluding private lands. When Guanella Pass Rd. is closed to motor-vehicle traffic, the hunting closure is lifted.
- 6. CITY OF FORT COLLINS NATURAL AREAS** (GMUs 20 & 191): Hunters crossing City of Fort Collins' Bobcat Ridge Natural Area (in GMU 20, spring turkey season only) or Gateway Natural Area (in GMU 191) to access other lands must have a free city-issued permit at least one week (7 days) in advance to allow processing. Contact City of Fort Collins Natural Areas Department, 970-416-2815 or [fcgov.com/naturalareas/permits](http://fcgov.com/naturalareas/permits) for more information.
- 7. NEW LONE MESA STATE PARK:** Turkey hunting is permitted in the spring only, and hunters must hold a T-M-000-U1-R license. Vehicles are required to have a valid Colorado State Parks Pass (*unless the vehicle has a Disabled Veteran or a Purple Heart license plate*). Only established roads and parking area defined on the Lone Mesa hunting map allowed. Game retrieval roads are excluded from the spring season. Access may be limited due to weather conditions and road closures.

- 1 MOFFAT CO.**  
bounded on N, E and S by Green River; on W by UT.
- 2 MOFFAT CO.**  
bounded on N by WY; on E by Little Snake River; on S by Yampa River; on W by Green River, CRs 34 and 10, Colo. 318 and CR 10N (Irish Canyon Rd.).
- 3 MOFFAT CO.**  
bounded on N by WY; on E by Colo. 13 and CRs 108, 3, 5 and 17; on S by Yampa River, U.S. 40 and Colo. 318; on W by Little Snake River.
- 4 MOFFAT & ROUTT COs.**  
bounded on N by WY; on E by Moffat CR1, Routt CR 82, USFS 150 and Elkhead Creek; on S by U.S. 40; on W by Colo. 13.
- 5 MOFFAT & ROUTT COs.**  
bounded on N by WY; on E by Continental Divide; on S by Little Snake-Elk River divide and USFS 42; on W by USFS 150, Routt CR 82 and Moffat CR 1.
- 6 JACKSON CO.**  
bounded on N by WY; on E by Jackson-Larimer Co. line; on S by Colo. 14; on W by Colo. 125, from Colo. 14 to WY.
- 7 LARIMER CO.**  
bounded on N by WY; on E by CR 103 (Laramie River Rd.); on S by Colo. 14; on W by Larimer-Jackson Co. line.
- 8 LARIMER CO.**  
bounded on N by WY; on E by CRs 59, 80C (Cherokee Park Rd.), 67J (Prairie Divide Rd.), 74E (Red Feather Lakes Rd.) & 69 (Manhattan Rd.); on S by Colo. 14; on W by CR 103 (Laramie River Rd.).
- 9 LARIMER & WELD COs.**  
bounded on N by WY; on E by I-25; on S by Colo. 14; on W by U.S. 287.
- 10 MOFFAT & RIO BLANCO COs.**  
bounded on N by Green and Yampa rivers; on E by Twelvemile Gulch Rd. U.S. 40 to mile marker 38.3 to Elk Springs Ridge to Drill Hole, Winter Valley Gulch, Coal Creek and Wolf Creek; on S by White River; on W by UT.
- 11 MOFFAT & RIO BLANCO COs.**  
bounded on N by Colo. 318 and U.S. 40; on E Moffat CR 57 and Rio Blanco CR 7; on S by White River; on W by Wolf Creek, Coal Creek, Winter Valley Gulch to Drill Hole to Elk Springs Ridge to mile marker 38.3 on U.S. 40, Twelvemile Gulch Rd. U.S. 40, Yampa River and Little Snake River.
- 12 MOFFAT, ROUTT, RIO BLANCO & GARFIELD COs.**  
bounded on N by Colo. 317, Routt CRs 29 and 55, Rio Blanco CRs 10 and 8; on E by Williams Fork-Yampa River divide; on S by Williams Fork-White River divide, USFS 250 and Rio Blanco CRs 48, 15 and 30; on W by Colo. 13.
- 13 MOFFAT & ROUTT COs.**  
bounded on N by U.S. 40; on E by Routt CR 179, Trout Creek, Fish Creek; on S by Routt CR 29 and Colo. 317; on W by Colo. 13.
- 14 ROUTT & GRAND COs.**  
bounded on N by Little Snake-Elk River divide; on E by Continental Divide; on S by U.S. 40; on W by U.S. 40 and Routt CR 129.
- 15 ROUTT, GRAND & EAGLE COs.**  
bounded on N by U.S. 40; on E by Muddy Creek-Yampa River divide (Gore Range divide) and Canyon Creek; on S by Colorado River; on W by Colo. 131.
- 16 JACKSON CO.**  
bounded on N by Lone Pine Creek, CRs 16 and 12W; on E by Colo. 14; on S by U.S. 40; on W by Continental Divide.
- 17 JACKSON CO.**  
bounded on N and E by Colo. 125; on S by Continental Divide (Jackson-Grand Co. line); on W and N by Colo. 14.

## ABBREVIATIONS:

U.S. COLO.	U.S. highway Colorado	S	SW	south southwest	BLM	Bureau of Land Management
CO.	county	SE	SE	southeast	RMNP	Rocky Mtn. National Park
CR RD.	county road	E	E	east	KS	Kansas
RES.	reservoir	NF	NF	National Forest	NEB	Nebraska
N	north	USFS	USFS	U.S. Forest Service	NM	New Mexico
NW	northwest	FS	FS	Forest Service	OK	Oklahoma
NE	northeast				UT	Utah
					WY	Wyoming

- 18 GRAND CO.**  
bounded on N and E by Continental Divide; on S by Arapaho Creek, Lake Granby and Colorado River; on W by main fork of Troublesome and Poison creeks.
- 19 LARIMER CO.**  
bounded on N by Colo. 14 (Poudre Canyon Rd.); on E by I-25; on S by Harmony Rd., CRs 19, 38E, 27 and 44H (Buckhorn Rd.), Elk Creek-Pennock Creek divide and RMNP boundary; on W by Larimer-Jackson Co. line.
- 20 LARIMER, BOULDER & WELD COs.**  
bounded on N by Larimer CRs 44H (Buckhorn Rd.), 27, 38E and 19 and Harmony Rd.; on E by I-25; on S by Colo. 52, U.S. 287, Boulder CR 34 (Niwot/Neva roads), U.S. 36, Boulder CRs 94, 81, 106, 95 (Lefthand Canyon Drive) and 102 (Brainard Lake Rd.) and ridgeline from Brainard Lake W to Pawnee Peak; on W by Continental Divide, RMNP boundary and Pennock Creek-Elk Creek divide.
- 21 RIO BLANCO & GARFIELD COs.**  
bounded on N by White River; on E by Monument Gulch, Colo. 64, Monument Gulch Rd. and Rio Blanco CRs 103 and 26; on S by Douglas Creek-Roan Creek divide, Douglas Creek-Salt Creeks divide, Evacuation Creek-Salt Creeks divide and Bitter Creek-West Salt Creek divide; on W by UT.
- 22 RIO BLANCO & GARFIELD COs.**  
bounded on N by White River; on E by Colo. 13; on S by White River-Colorado River divide; on W by Rio Blanco CRs 26 and 103, Monument Gulch Rd., Colo. 64 and Monument Gulch.
- 23 RIO BLANCO & GARFIELD COs.**  
bounded on N by Rio Blanco CRs 30, 15 and 48 and USFS 250; on E by USFS 250, Rio Blanco CRs 8 and 17 and USFS Primary Forest Rd. 245 (Buford-Newcastle Rd.); on S by White River-Colorado River divide; on W by Colo. 13.
- 24 RIO BLANCO & GARFIELD COs.**  
bounded on N by Williams Fork River-White River divide; on E by White River-Yampa River divide and White River-Colorado River divide; on S by South Fork of White River-Colorado River divide; on W by USFS Primary Forest Rd. 245 and Rio Blanco CRs 17 (Buford-Newcastle Rd.), 8 and USFS 250.
- 25 GARFIELD & EAGLE COs.**  
bounded on N by Middle Fork of Derby Creek and Derby Creek; on E by Colorado River; on S by Deep Creek; on W by Colorado River-White River divide.
- 27 GRAND, ROUTT & JACKSON COs.**  
bounded on N and E by U.S. 40; on S by Colo. 9 and Colorado River; on W by Canyon Creek and Muddy Creek-Yampa River divide (Gore Range divide).
- 28 GRAND CO.**  
bounded on N by Colorado River, Lake Granby and Arapaho Creek; on E by Continental Divide; on S by Continental Divide and Williams Fork River-Straight Creek divide; on W by Williams Fork River-Blue River divide and Barger Gulch.



**29 BOULDER, JEFFERSON & GILPIN COs.**

bounded on N by ridgeline from Pawnee Peak to Brainard Lake, Boulder CRs 102 (Brainard Lake Rd.), 94, 81, 106 and 95 (Lefthand Canyon Drive), U.S. 36, Boulder CR 34 (Neva/Niwot roads) and Colo. 52 (Mineral Rd.); on E by I-25; on S by Colo. 128, 93, 72, and 119 and USFS 149 (Rollins Pass Rd.); on W by Continental Divide.

**30 GARFIELD & MESA COs.**

bounded on N by West Salt Creek-Bitter Creek divide, Evacuation Creek-Salt Creeks divide and Douglas Creek-Salt Creeks divide; on E by East Salt Creek-Roan Creek divide, Big Salt Wash-Roan Creek divide, Little Salt Wash-Roan Creek divide and Bookcliffs; on S by Colorado River; on W by UT.

**31 MESA, GARFIELD & RIO BLANCO COs.**

bounded on N by Colorado River-White River divide; on E by Roan Creek-Parachute Creek divide and Kelly Gulch; on S by Colorado River; on W by Bookcliffs, Little Salt Wash-Roan Creek divide, Big Salt Wash-Roan Creek divide and East Salt Creek-Roan Creek divide.

**32 GARFIELD CO.**

bounded on N by Parachute Creek-Piceance Creek divide; on E by Colo. 13; on S by Colorado River; on W by Kelly Gulch and Roan Creek-Parachute Creek divide.

**33 GARFIELD & RIO BLANCO COs.**

bounded on N by White River-Colorado River divide; on E by Canyon Creek; on S by Colorado River; on W by Colo. 13.

**34 GARFIELD & EAGLE COs.**

bounded on N by Deep Creek; on E and S by Colorado River; on W by Canyon Creek.

**35 EAGLE CO.**

bounded on N by Colorado River; on E by Colo. 131; on S by Eagle River; on W by Colorado River.

**36 EAGLE CO.**

bounded on N by Elk Creek to Piney Ridge, to Eagle's Nest Wilderness boundary and Gore Range divide (Elliott Ridge); on E by Gore Range divide; on S from Gore Range divide to Dowd Junction by I-70, then from Dowd Junction to Wolcott by Eagle River; on W by Colo. 131 and Colorado River from State Bridge to Elk Creek.

**37 SUMMIT & GRAND COs.**

bounded on N by Colorado River; on E by Barger Gulch, Williams Fork River-Blue River divide, Williams Fork River-Straight Creek divide and Continental Divide; on S by Continental Divide; on W by Eagle River-Tenmile Creek divide, I-70, Blue River, Cataract Creek and Gore Range divide.

**38 GILPIN, BOULDER, CLEAR CREEK & JEFFERSON COs.**

bounded on N by USFS 149 (Rollins Pass Rd.) and Colo. 119, 72, 93 and 128; on E by I-25; on S by I-70 and U.S. 40; on W by Continental Divide.

**39 JEFFERSON, CLEAR CREEK & PARK COs.**

bounded on N by U.S. 40 and I-70; on E by Colo. 74 and Jefferson CR 73; on S by U.S. 285, North Turkey Creek-Elk Creek divide and Pike-Arapaho National Forest boundary; on W by Continental Divide. (See unit 391.) *See "Special Land-Use Rules," #5 on page 9, for hunting closure details.*

**40 MESA CO.**

bounded on N by Colorado River; on E by U.S. 50; on S by Colo. 141 and Dolores River; on W by UT.

**41 MESA & DELTA COs.**

bounded on N by Colorado River and Colo. 65; on E by Colo. 65, Lands End Rd., Flowing Park Rd. and Mesa-Delta Co. line; on W by U.S. 50.

**42 MESA & GARFIELD COs.**

bounded on N by Colorado River; on E by South Canyon Creek, divide between Roaring Fork-Crystal River and Baldy Creek-Divide Creek drainages and common point of Mesa-Pitkin-Gunnison Co. lines; on S by Divide Creek-Muddy Creek divide, Divide Creek-Plateau Creek divide and Plateau Creek-Colorado River divide; on W by Colorado River.

**43 GARFIELD, PITKIN, EAGLE & GUNNISON COs.**

**NEW** bounded on N by the Colorado River and the Roaring Fork River; on E by Capitol Creek, the ridgeline of Elk Mountains from Capitol Peak to Snowmass Mountain and the Pitkin-Gunnison Co. line; on S by the divide between Crystal River-East River drainages; on S and W by Crystal River-Anthractite Creek divide; and on W by McClure Pass, Muddy Creek-Crystal River divide, Divide Creek-Crystal River divide, Baldy Creek-Crystal River divide and South Canyon Creek.

**44 EAGLE CO.**

bounded on N by Colorado River and Eagle River; on E by East Lake Creek; on S by Fryingpan River-Eagle River divide; on W by USFS 514 (Red Table Mountain Rd.), CR 10A (Cottonwood Pass Rd.) and Cottonwood Creek.

**46 CLEAR CREEK, PARK & JEFFERSON COs.**

bounded on N by Pike-Arapaho National Forest boundary and North Turkey Creek-Elk Creek divide; on E and S by U.S. 285; on W by North Fork of South Platte River and Continental Divide. *See "Special Land-Use Rules," #5 on page 9, for hunting closure details.*

**47 EAGLE & PITKIN COs.**

bounded on N by Frying Pan River and Ivanhoe Creek; on E by Continental Divide; on S by Colo. 82; on W by Roaring Fork River.

**48 LAKE & CHAFFEE COs.**

bounded on N by Continental Divide; on E by Tennessee Creek and Arkansas River; on S by Clear Creek and South Fork of Clear Creek; on W by Continental Divide.

**49 LAKE, PARK & CHAFFEE COs.**

bounded on N by Continental Divide; on E by Colo. 9 and U.S. 285; on S by U.S. 24; on W by Arkansas River and Tennessee Creek.

**50 PARK CO.**

bounded on N by U.S. 285; on E by CR 77; on S by U.S. 24; on W by U.S. 285.

**51 DOUGLAS CO.**

bounded on N by Colo. 470; on E by I-25; on S by Douglas-Teller Co. line; on W by South Platte River.

**52 DELTA CO.**

bounded on N by Delta-Mesa Co. line; on E by Grand Mesa-Gunnison National Forest boundary, Overland Ditch, West Res. No. 1 and Jay Creek; on S by North Fork of Gunnison River and Colo. 92; on W by Colo. 65.

**53 DELTA & GUNNISON COs.**

bounded on N by North Fork of Gunnison River, Gunnison CR 12 (Kebler Pass Rd.), Kebler Pass and Ohio Pass; on E and S by Gunnison River-North Fork of Gunnison River divide and Curecanti Pass, Smith Fork-Curecanti Creek divide, Smith Fork-Dyer Creek divide and Delta-Montrose Co. line; on W by Colo. 92.

**54 GUNNISON CO.**

bounded on N by Gunnison River-North Fork of Gunnison River divide and CR 12 (Kebler Pass Rd.); on E by Colo. 135; on S by U.S. 50, Blue Mesa Res. and Gunnison River; on W by Curecanti Creek.

**55 GUNNISON CO.**

bounded on N by Gunnison-Pitkin Co. line; on E by Continental Divide; on S by Taylor River-Tomichi Creek divide and Cumberland Pass, USFS 765 (N Quartz Creek Rd.), Quartz Creek Rd. and U.S. 50; on W by Colo. 135, CR 12 (Kebler Pass Rd.), Kebler Pass and Ruby Range Summit.

**56 CHAFFEE CO.**

bounded on N by Chalk Creek and Tincup Pass Rd.; on E by Arkansas River; on S by South Arkansas River to U.S. 50, then U.S. 50; on W by Continental Divide.

**57 CHAFFEE, PARK & FREMONT COs.**

bounded on N by U.S. 24; on E by Kaufman Ridge and Badger Creek; on S and W by Arkansas River.

**58 FREMONT & PARK COs.**

bounded on N by U.S. 24; on E by Park CRs 59 and 102, Colo. 9 and U.S. 50; on S by U.S. 50 and Arkansas River; on W by Kaufman Ridge and Badger Creek.

**59 PUEBLO, FREMONT, EL PASO & TELLER COs.**

bounded on N by U.S. 24; on E by I-25; on S by U.S. 50; on W by Colo. 67 and Phantom Canyon Rd., except portions of Pueblo, Fremont and El Paso counties within Fort Carson Military Reservation. (See unit 591.)

**60 MESA & MONTROSE COs.**

bounded on N and E by Dolores River; on S by Colo. 90; on W by UT.

**61 MESA, MONTROSE, OURAY & SAN MIGUEL COs.**

bounded on N by Colo. 141; on E by USFS 402 (Divide Rd.) and Dave Wood Rd.; on S by Colo. 62; on W by San Miguel River and Dolores River.

**62 DELTA, MESA, MONTROSE & OURAY COs.**

bounded on N by Colo. 141; on E by Colo. 50 and 550; on S by Colo. 62; on W by Dave Wood Rd. and USFS 402 (Divide Rd.).

**63 DELTA, GUNNISON & MONTROSE COs.**

bounded on N by Colo. 92; on E by Colo. 92, Delta-Montrose Co. line, Smith Fork-Dyer Creek divide, Smith Fork-Curecanti Creek divide, Curecanti Pass and Curecanti Creek; on S and W by Gunnison River.

**64 DELTA & MONTROSE COs.**

bounded on N and E by Colo. 92, Gunnison River and Morrow Point Res.; on E by Big Blue Creek; on S and W by U.S. 50.

**65 GUNNISON, HINSDALE, MONTROSE & OURAY COs.**

bounded on N by U.S. 50; on E by Big Blue Creek-Cimarron Creek divide; on S by Ouray-San Juan Co. line; on W by Ouray-San Miguel Co. line and Colo. 62 and 550.

**66 GUNNISON, HINSDALE & SAGUACHE COs.**

bounded on N by Morrow Point Res., Gunnison River and Blue Mesa Res.; on E by Colo. 149, Cebolla Creek, Spring Creek, Cathedral Creek, Groundhog Park and Spring Creek-Cochetopa Creek divide; on S by Continental Divide; on W by Hinsdale-San Juan Co. line, Hinsdale-Ouray Co. line, Cimarron River-Henson Creek divide, Big Blue Creek-Little Cimarron River divide, U.S. 50 and Big Blue Creek.

**67 GUNNISON, HINSDALE & SAGUACHE COs.**

bounded on N by U.S. 50; on E by Colo. 114 and North Pass; on E and S by Continental Divide; on W by Cochetopa Creek-Spring Creek divide and Groundhog Park, Cathedral Creek, Spring Creek, Cebolla Creek and Colo. 149.

**68 SAGUACHE CO.**

bounded on N by Colo. 114; on E by U.S. 285; on S by CRs G and 41G, USFS 675 and 676, USFS trails 796 and 787 and Saguache-Mineral Co. line; on W by Continental Divide.

**69 CUSTER & FREMONT COs.**

bounded on N by U.S. 50; on E by Colo. 67; on S by Colo. 96; on W by Colo. 69, Grape Creek and Arkansas River.

**70 DOLORES, MONTROSE & SAN MIGUEL COs.**

bounded on N by Colo. 90, Dolores River, San Miguel River and Colo. 62; on E by Ouray-San Miguel Co. line and San Miguel-San Juan Co. line; on S by San Miguel-Dolores Co. line, Disappointment Creek, Dolores River and Summit Canyon Creek; on W by UT.

**71 DOLORES & MONTEZUMA COs.**

bounded on N by Disappointment Creek and Dolores-San Miguel Co. line; on E by Dolores-San Juan Co. line, Montezuma-La Plata Co. line and Bear Creek; on S by Colo. 145; on W by USFS 526 (Dolores-Norwood Rd.).

**72 DOLORES & MONTEZUMA COs.**

bounded on N and E by U.S. 491; on S by NM; on W by UT.

**73 MONTEZUMA CO.**

bounded on N by Colo. 184 and 145 and Bear Creek; on E by Montezuma-La Plata Co. line; on S by NM; on W by U.S. 491.

**74 LA PLATA & SAN JUAN COs.**

bounded on N by Ouray-San Juan Co. line; on E by San Juan-Hinsdale Co. line and Animas River; on S by U.S. 160; on W by Montezuma-La Plata Co. line, Dolores-San Juan Co. line, San Miguel-San Juan Co. line and Ouray-San Juan Co. line.

**75 LA PLATA & SAN JUAN COs.**

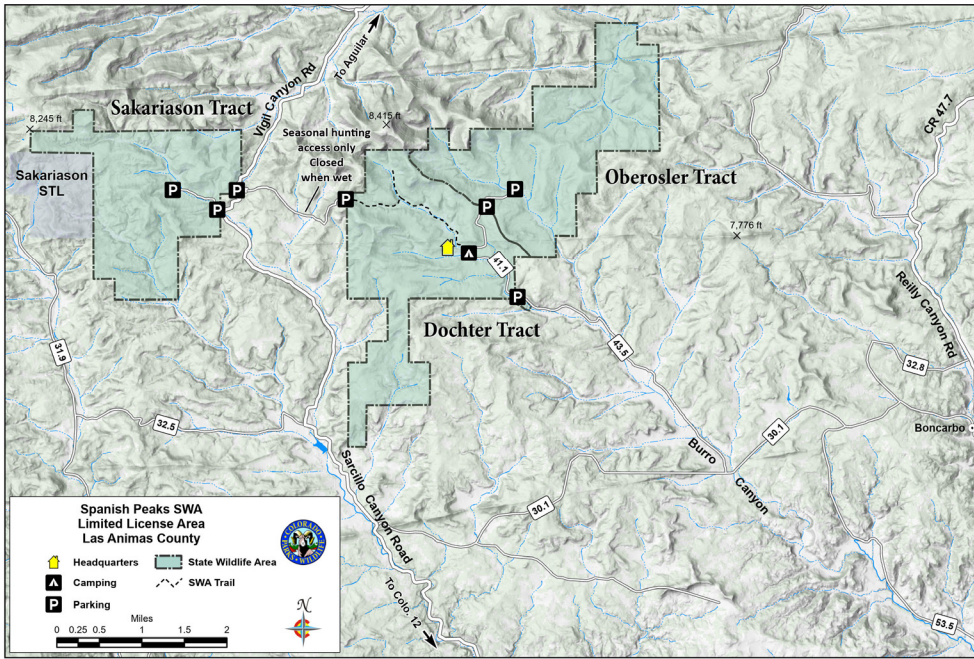
bounded on N and E by Hinsdale-San Juan Co. line, Continental Divide, Los Pinos River-Florida River divide, La Plata CR 240 (Pine River-Florida River Rd.), Bayfield-Vallecito Rd. and Los Pinos River; on S by NM; on W by Animas River.

**76 HINSDALE, MINERAL, RIO GRANDE, SAGUACHE & SAN JUAN COs.**

bounded on N by Continental Divide, Saguache-Mineral Co. line and USFS Trail 787; on E by La Garita Stock Driveway (ATV trail), USFS 600-3A and 600, Colo. 149 and U.S. 160; on S and W by Continental Divide.



## SPANISH PEAKS STATE WILDLIFE AREA



**NOTE:** Spanish Peaks State Wildlife Area boundaries shown in this map are approximate. You can download and print maps for use in the field at: [cpw.state.co.us/wildlife-area-map](http://cpw.state.co.us/wildlife-area-map)

**77 ARCHULETA, HINSDALE, LA PLATA & MINERAL COs.**

bounded on N by Continental Divide and Piedra River-San Juan River divide; on E by Piedra River-San Juan River divide, Four Mile Creek and San Juan River; on S by U.S. 160; on W by Los Pinos River-Piedra River divide.

**78 ARCHULETA, CONEJOS, MINERAL & RIO GRANDE COs.**

bounded on N and E by Continental Divide; on S by NM; on W by San Juan River, Four Mile Creek and Piedra River-San Juan River divide.

**79 MINERAL, RIO GRANDE & SAGUACHE COs.**

bounded on N by USFS trails 787 & 796, USFS 676 & 675 and Saguache CRs 41G & G; on E by U.S. 285; on S by **NEW** Colo. 112 & U.S. 160; on W by Colo. 149, USFS 600 & 600-3A and La Garita Stock Driveway (ATV trail).

**80 ALAMOSA, CONEJOS, MINERAL & RIO GRANDE COs.**

bounded on N by U.S. 160; on E by Rio Grande River; on S by La Jara Creek, Alamosa River, USFS 250 and 380 and Elwood Pass; on W by Continental Divide.

**81 ALAMOSA, ARCHULETA, CONEJOS & RIO GRANDE COs.**

bounded on N by USFS 380 and 250, Alamosa River and La Jara Creek; on E by Rio Grande River; on S by NM; on W by Continental Divide.

**82 ALAMOSA & SAGUACHE COs.**

bounded on N by Poncha Pass; on N and E by Rio Grande River-Arkansas River divide; on S by Alamosa-Costilla Co. line and U.S. 160; on W by Colo. 17 and U.S. 285.

**83 ALAMOSA, COSTILLA & HUERFANO COs.**

bounded on N by U.S. 160 and Alamosa-Costilla Co. line; on E by Costilla-Huerfano Co. line and Sangre de Cristo-Culebra Range; on S by NM; on W by Rio Grande River.

**84 CUSTER, FREMONT, HUERFANO & PUEBLO COs.**

bounded on N by U.S. 50; on E by I-25 and Colo. 1; on S by Colo. 69; on W by Colo. 96 and 67.

**85 HUERFANO & LAS ANIMAS COs.**

bounded on N by Colo. 69; on E by I-25; on S by Colo. 12 and North and West forks of Purgatoire River; on W by Sangre de Cristo divide and Huerfano CRs 570, 572 (Pass Creek Rd.) and 555 (Muddy Creek Rd.).

**86 FREMONT, CUSTER & CHAFFEE COs.**

bounded on N by U.S. 50 to South Arkansas River, then South Arkansas River to Arkansas River; on E by Colo. 69 and Fremont CR 27; on S by Huerfano-Custer Co. line; on W by Sangre De Cristo divide and U.S. 285.

**87 LARIMER & WELD COs.**

bounded on N by WY; on E by Weld CRs 390 (Keota-Grover Rd.) and 105 between Keota and Colo. 14; on S by Colo. 14; on W by I-25.

**88 WELD CO.**

bounded on N by WY and NEB; on E by Colo. 71; on S by Colo. 14; on W by CRs 390 (Keota-Grover Rd.) and 105 (between Keota and Colo. 14).

**89 WELD & LOGAN COs.**

bounded on N by NEB; on E by Colo. 113 and U.S. 138; on S by Colo. 14; on W by Colo. 71.

**90 LOGAN & SEDGWICK COs.**

bounded on N by NEB; on E and S by U.S. 138; on W by Colo. 113.

**91 LOGAN CO.**

bounded on N by U.S. 138; on E by Red Lion Rd. (CR 93); on S by I-76 and U.S. 6; on W by U.S. 138.

**92 LOGAN & SEDGWICK COs.**

bounded on N by U.S. 138 and NEB; on E and S by I-76; on W by Red Lion Rd. (Logan CR).

**93 LOGAN, SEDGWICK & PHILLIPS COs.**

bounded on N by I-76; on N and E by NEB state line; on S by U.S. 6; on W by I-76.

**94 LARIMER, ADAMS & WELD COs.**

bounded on N by Colo. 14; on E by U.S. 85 and 34, Weld CR 49 (Hudson-Keenesburg cutoff) and I-76; on S by Colo. 7; on W by I-25.

**95 WELD, LOGAN, MORGAN & WASHINGTON COs.**

bounded on N by Colo. 14; on E and S by U.S. 6, Logan CRs 6 and 17.7, Washington CR 58, Morgan CR W.7, 2nd Street in Snyder, Colo. 71, Morgan CRs W.5, 28, W, 13.5 and W.5 and Colo. 144; on W by Morgan CR 2, Morgan CR KK/Weld CR 74 (County Line Rd.) and Weld CR 105.

**96 MORGAN, WASHINGTON & LOGAN COs.**

bounded on N by Colo. 144, Morgan CRs W.5, 13.5, W, 28 and W.5, Colo. 71, Morgan CR W.7 (becomes Washington CR 58 at Co. line), Washington CR 58 (becomes Logan CR 17.7 at Co. line), Logan CRs 17.7 and 6 and U.S. 6; on E and S by U.S. 6 and I-76; on W by Colo. 144.

**97 LOGAN, WASHINGTON & MORGAN COs.**

bounded on N and E by Colo. 61; on S by U.S. 34; on W by I-76.

**98 LOGAN, PHILLIPS, YUMA & WASHINGTON COs.**

bounded on N by Colo. 6; on E by NEB; on S by U.S. 34; on W by Colo. 61.

**99 WELD, MORGAN & ADAMS COs.**

bounded on N by I-76; on E by Colo. 71; on S by U.S. 36; on W by Colo. 79 and 144th Ave.; on S and W by Adams CR 25N, 152nd Ave. and I-76; on W by I-76.

**100 WASHINGTON & MORGAN COs.**

bounded on N by U.S. 34; on E by Colo. 61; on S by U.S. 36; on W by Colo. 71.

**101 WASHINGTON & YUMA COs.**

bounded on N by U.S. 34; on E by U.S. 385, Yuma CR 26, Colo. 59, Yuma CRs 16, C and 9 (becomes Washington CR 9 at Co. line) and Washington CRs 9, YY and 7; on S by U.S. 36; on W by Colo. 61.

**102 WASHINGTON & YUMA COs.**

bounded on N by U.S. 34; on E by NEB and KS; on S by U.S. 36; on W by Washington CRs 7, YY, and 9 (becomes Yuma CR 9 at Co. line), Yuma CRs 9, C and 16, Colo. 59, Yuma CR 26 and U.S. 385.

**103 YUMA CO.**

bounded on N by U.S. 36; on E by KS; on S by Kit Carson-Yuma Co. line; on W by U.S. 385.

**104 DENVER, ADAMS, ARAPAHOE, DOUGLAS & ELBERT COs.**

bounded on N by Colo. 7, I-76, 152nd Ave., Adams CR 25N and 144th Ave.; on E by Colo. 79, Colo. 36 (Arapahoe CR 137), Kiowa-Bennett Mile, Elbert CRs 53, 166 and 45-49, Colo. 86 and Elbert CR 25-41; on S by Elbert-Douglas-El Paso Co. lines; on W by I-25.

**105 ADAMS, ARAPAHOE & ELBERT COs.**

bounded on N by U.S. 36; on E by I-70; on S by U.S. 24 and Elbert-El Paso Co. line; on W by Arapahoe CR 137 (Kiowa-Bennett Mile Rd.), Elbert CRs 53, 166, and 45-49, Colo. 86 and Elbert CR 25-41.

**106 ARAPAHOE, ELBERT, WASHINGTON & LINCOLN COs.**

bounded on N by U.S. 36; on E by Colo. 71; on S and W by I-70.

**107 WASHINGTON, LINCOLN & KIT CARSON COs.**

bounded on N by U.S. 36; on E by Colo. 59; on S by I-70; on W by Colo. 71.

**109 WASHINGTON, YUMA & KIT CARSON COs.**

bounded on N by U.S. 36; on E by U.S. 385, Yuma-Kit Carson Co. line and KS; on S by I-70; on W by Colo. 59.

**110 EL PASO CO.**

bounded on N by Douglas-Elbert-El Paso Co. lines; on E by U.S. 24 and CR 523 (Calhan Hwy.); on S by Colo. 94; on W by I-25.

**111 ELBERT, LINCOLN & EL PASO COs.**

bounded on N by U.S. 24; on E by Colo. 71; on S by Colo. 94; on W by U.S. 24 and El Paso CR 523 (Calhan Hwy.).

**112 LINCOLN CO.**

bounded on N by U.S. 40; on E by Co. Primary 109; on S by Colo. 94; on W by Colo. 71.

**113 LINCOLN & CHEYENNE COs.**

bounded on N by U.S. 40; on E by Cheyenne CR 8; on S by Colo. 94; on W by Co. Primary 109.

**114 LINCOLN, KIT CARSON & CHEYENNE COs.**

bounded on N by I-70; on E by Flagler-Wildhorse Rd. (CRs 5, G, 6, A [Kit Carson Co. line], GG [Cheyenne Co. line] and 9); on S and W by U.S. 40.

**115 KIT CARSON & CHEYENNE COs.**

bounded on N by I-70; on E by Colo. 59; on S by U.S. 40; on W by Flagler-Wildhorse Rd. (CRs 5, G, 6, A [Kit Carson Co. line], GG [Cheyenne Co. line] and 9).

**116 KIT CARSON & CHEYENNE COs.**

bounded on N by I-70; on E by U.S. 385; on S by U.S. 40; on W by Colo. 59.

**117 KIT CARSON & CHEYENNE COs.**

bounded on N by I-70; on E by KS; on S by U.S. 40; on W by U.S. 385.

**118 EL PASO CO.**

bounded on N by Colo. 94; on E by Yoder Rd., Shear Rd. and Boone Rd.; on S by Hanover Rd., Finch Rd. and Myers Rd.; on W by I-25.

**119 EL PASO & LINCOLN COs.**

bounded on N by Colo. 94; on E by Colo. 71; on S by Crowley-Lincoln and El Paso-Pueblo Co. line; on W by Yoder Rd., Shear Rd. and Boone Rd.

**120 LINCOLN, CROWLEY & KIOWA COs.**

bounded on N by Colo. 94; on E by Co. Primary roads 109, 1 and 2 and Co. Secondary Rd. 35; on S by Colo. 96; on W by Colo. 71.

**121 CHEYENNE, LINCOLN & KIOWA COs.**

bounded on N by Colo. 94 and U.S. 40; on E by U.S. 287; on S by Colo. 96; on W by Co. Primary roads 109, 1 and 2 and Co. Secondary Rd. 35.

**122 CHEYENNE & KIOWA COs.**

bounded on N by U.S. 40; on E by KS; on S by Colo. 96; on W by U.S. 287.

**123 EL PASO & PUEBLO COs.**

bounded on N by Hanover Rd., Finch Rd. and Myers Rd.; on E by Boone Rd.; on S by Colo. 96 (E of Colo. 96/U.S. 50 intersection) and U.S. 50 (W of the Colo. 96/U.S. 50 intersection); on W by I-25.

**124 CROWLEY & PUEBLO COs.**

bounded on N by Lincoln-Crowley and El Paso-Pueblo Co. lines; on E by Colo. 71; on S by Colo. 96; on W by Boone Rd.

**125 CROWLEY, KIOWA, BENT & OTERO COs.**

bounded on N by Colo. 96; on E by Kiowa CR 19 and Bent CR 14 to Bent CR HH, S on Bent CR 15 to Arkansas River; on S by Arkansas River (E of La Junta), Colo. 109 and U.S. 50 (W of La Junta); on W by Colo. 71.

**126 KIOWA, BENT & PROWERS COs.**

bounded on N by Colo. 96; on E by U.S. 287; on S by Arkansas River; on W by Kiowa CR 19 and Bent CR 14 to Bent CR HH, S on Bent CR 15 to Arkansas River.

**127 KIOWA & PROWERS COs.**

bounded on N by Colo. 96; on E by KS; on S by Arkansas River; on W by U.S. 287.

**128 PUEBLO, HUERFANO, LAS ANIMAS & OTERO COs.**

bounded on N by U.S. 50 business (W of Avondale) and U.S. 50 (E of Avondale); on E by Colo. 167; on S by Colo. 10; on W by I-25.

**129 CROWLEY, OTERO & PUEBLO COs.**

bounded on N by U.S. 50 (W of Colo. 96/U.S. 50 intersection) and Colo. 96 (E of Colo. 96/U.S. 50 intersection); on E by Colo. 71 and U.S. 50; on S by Colo. 10, Colo. 167, U.S. 50 (E of Avondale) and U.S. 50 business (W of Avondale); on W by I-25.

**130 OTERO & BENT COs.**

bounded on N by Arkansas River; on E by Colo. 101, Pritchett-Las Animas improved road and U.S. 50; on S by Bent-Las Animas and Bent-Baca Co. lines; on W by Colo. 109.

**131 ROUTT & RIO BLANCO COs.**

bounded on N by U.S. 40; on E by Colo. 131; on S by Routt CRs 15, 132, 25, 132A and 29; on W by Fish Creek, Trout Creek and Routt CR 179.

**132 PROWERS CO.**

bounded on N by Arkansas River; on E by KS; on S by Prowers CRs D and F; on W by U.S. 287.

**133 HUERFANO, PUEBLO & LAS ANIMAS COs.**

bounded on N by Colo. 10; on E by Colo. Interstate Gas Pipeline Rd.; on S by Apishapa River; on W by I-25.

**134 LAS ANIMAS CO.**

bounded on N by Apishapa River; on E by Colo. Interstate Gas Pipeline Rd.; on S by U.S. 350; on W by I-25.

**135 LAS ANIMAS, PUEBLO & OTERO COs.**

bounded on N by Colo. 10 and U.S. 50; on E by Colo. 109 (N of Purgatoire River) and Purgatoire River (S of Colo. 109); on S by Las Animas-Otero Co. line and N boundary of U.S. Army Pinon Canyon Maneuver Site; on W by U.S. 350 and Colo. Interstate Gas Pipeline Rd.

**136 LAS ANIMAS, BENT & OTERO COs.**

bounded on N by Colo. 109 and Purgatoire River; on E by Colo. 109; on S by U.S. 160; on W by Chacuaco Creek and Purgatoire River.

**137 LAS ANIMAS & BACA COs.**

bounded on N by Bent-Las Animas and Bent-Baca Co. lines; on E by Pritchett-Las Animas improved road and U.S. 160; on S by U.S. 160; on W by Colo. 109.

**138 BACA CO.**

bounded on N by Baca-Bent and Baca-Prowers Co. lines; on E by U.S. 287; on S by U.S. 160; on W by Pritchett-Las Animas improved road.

**139 BACA CO.**

bounded on N by Prowers CRs F and D; on E by KS; on S by CR M; on W by U.S. 287.

**140 LAS ANIMAS CO.**

bounded on N by U.S. 160; on E by Colo. 389; on S by NM; on W by I-25.

**141 LAS ANIMAS CO.**

bounded on N by W and S boundaries of U.S. Army Piñon Canyon Maneuver Site and Colo. Interstate Gas Pipeline Rd.; on E by Purgatoire River and San Francisco Creek; on S by U.S. 160; on W by U.S. 350.

**142 LAS ANIMAS CO.**

in U.S. Army Piñon Canyon Maneuver Site.

**143 LAS ANIMAS CO.**

bounded on N by U.S. 160; on E by Baca-Las Animas Co. line; on S by OK and NM; on W by Colo. 389.

**144 BACA CO.**

bounded on N by U.S. 160; on E by U.S. 287; on S by OK; on W by Baca-Las Animas Co. line.

**145 BACA CO.**

bounded on N by CR M; on E by KS; on S by OK; on W by U.S. 287.

**146 BENT & PROWERS COs.**

bounded on N by Arkansas River; on E by U.S. 287; on S by Prowers-Baca and Bent-Baca Co. lines; on W by Colo. 101 and Pritchett-Las Animas improved road and U.S. 50.

**147 LAS ANIMAS CO.**

bounded on N by Las Animas-Otero Co. line; on E by Purgatoire River and Chacuaco Creek; on S by U.S. 160; on W by San Francisco Creek, Purgatoire River, Colo. Interstate Gas Pipeline Rd., east boundary of U.S. Army Piñon Canyon Maneuver Site.

**161 JACKSON CO.**

bounded on N by WY; on E by Colo. 125; on S by Colo. 14, CRs 12W and 16, Lone Pine Creek and Continental Divide; on W by Continental Divide.

**171 JACKSON CO.**

bounded on N and E by Colo. 14 and Jackson-Larimer Co. line; on S by Jackson-Grand Co. line; on W by Colo. 125.

**181 GRAND CO.**

bounded on N by Continental Divide; on E by Poison Creek and Main Fork of Troublesome Creek; on S by Colorado River; on W by Colo. 9 and U.S. 40.

**191 LARIMER CO.**

bounded on N by WY; on E by U.S. 287; on S by Colo. 14; on W by CRs 69 (Manhattan Rd.), 74E (Red Feather Lakes Rd.), 67J (Prairie Divide Rd.), 80C (Cherokee Park Rd.) and 59.

**211 MOFFAT & RIO BLANCO COs.**

bounded on N by U.S. 40 and Yampa River; on E by Colo. 13; on S by Colo. 13 and Colo. 64; on W by Rio Blanco CR 7 and Moffat CR 57.

**214 ROUTT CO.**

bounded on N by Little Snake-Elk River divide; on E by CR 129; on S by U.S. 40; on W by Wolf Creek, Wolf Mountain, along Elk River-Elkhead Creek divide.

## GET THE LEAD OUT

Go to [CDPHE.COLORADO.GOV/LEAD-HEALTH](http://CDPHE.COLORADO.GOV/LEAD-HEALTH) and click "For the public" to see the factsheets on Lead in Harvested Wild Game and Lead in Indoor Shooting and Firing Ranges.

From the field to the table, ensuring your next harvest is safe for your family and non-target wildlife is important. Health risks due to lead poisoning from consuming game meat are low for most people; however, switching to non-lead ammunition may be an option that's right for you. Science tells us that ingesting lead can cause potential human health problems over time.

Additionally, lead-based ammunition can cause adverse impacts on non-target wildlife from lead ingestion while scavenging. Hunters themselves are conservationists, maintaining species populations and protecting habitats. By switching to non-lead ammunition, hunters can support wildlife by reducing the risk of lead poisoning to non-target wildlife such as eagles and other raptors. For more information on risks to wildlife, visit [sportingleadfree.org/wildlife-human-health](http://sportingleadfree.org/wildlife-human-health) or [huntingwithnonlead.org](http://huntingwithnonlead.org).

### TO HELP REDUCE HUMAN AND WILDLIFE HEALTH IMPACTS, YOU CAN:

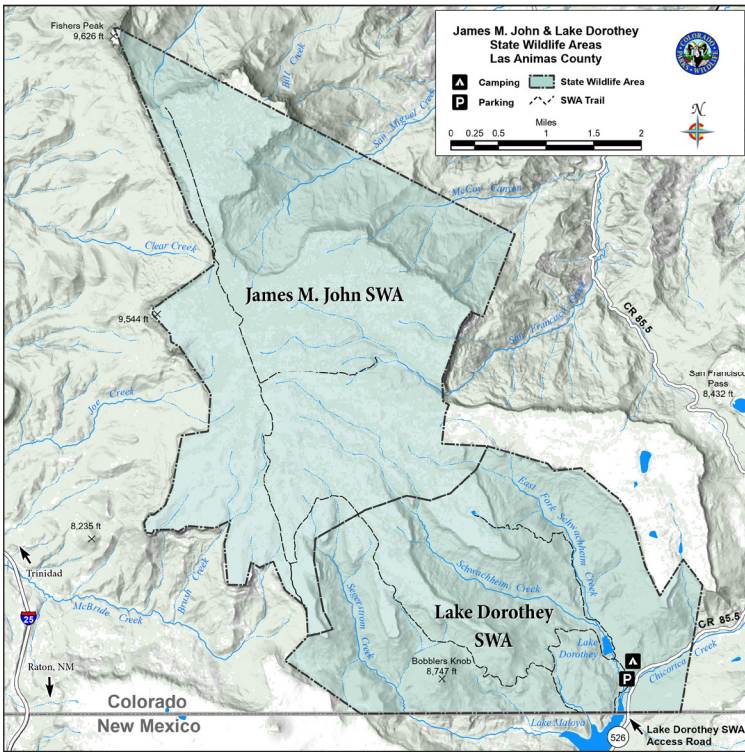
1. Use lead-free shot or bullets. There are many non-lead options now available.
2. Hunters who use lead ammunition should choose quality hunting-grade ammunition with a "bonded" or "partition" construction. Avoid frangible bullet types.
3. Use careful shot selection. Bullets that strike the lethal area (heart/lungs) are less likely to fragment than bullets that strike more heavily boned areas.
4. Bury or pack out your lead-shot gut piles to avoid lead ingestion by non-target wildlife.
5. Avoid eating game meat from animals harvested with lead bullets if you are pregnant. Children younger than 6 should also avoid it.

Colorado Department of Public Health & Environment and Colorado Parks and Wildlife





# JAMES M. JOHN & LAKE DOROTHEY STATE WILDLIFE AREAS



**NOTE:** The James M. John SWA is 4 miles from the Lake Dorothea trailhead. The majority of turkey habitat is in San Miguel Canyon at the northern end of James M. John SWA (about 8 miles from the trailhead). Boundaries depicted are approximate.

You can download and print maps for use in the field at:  
[cpw.state.co.us/wildlife-area-map](http://cpw.state.co.us/wildlife-area-map)

## 231 ROUTT, RIO BLANCO & GARFIELD COs.

bounded on N by Routt CRs 29, 132A, 25, 132 and 15; on E by Colo. 131; on S by Bear River; on W by Williams Fork-Yampa River divide, Dunkley Pass, Rio Blanco CRs 8 and 19 and Routt CR 55.

## 301 MOFFAT CO.

bounded on N by CRs 108, 3, 5 and 17; on E by Colo. 13; on S by Yampa River; on W by CR 17.

## 361 EAGLE & GRAND COs.

bounded on N by Colorado River from Elk Creek to Inspiration Point; on E by Gore Range divide; on S and W by Piney Ridge to Elk Creek, following Piney Ridge to Eagle's Nest Wilderness boundary and Gore Range divide (Elliott Ridge).

## 391 JEFFERSON CO.

bounded on N by I-70; on E by I-25; on S by Colo. 470, CRs 124 (Deer Creek Canyon) and 122 (South Turkey Creek) and U.S. 285; on W by CR 73 and Colo. 74. (See unit 39.)

## 411 MESA & DELTA COs.

bounded on N by Delta-Mesa Co. line, Flowing Park Rd. and Lands End Rd.; on E by Colo. 65 and 92; on S by U.S. 50.

## 421 MESA & GARFIELD COs.

bounded on N by Colorado River-Plateau Creek divide; on E by Divide Creek-Buzzard Creek divide; on S by Mesa-Delta Co. line; on W by Colo. 65.

## 431 **NEW** PITKIN CO.

bounded on N by the Roaring Fork River; on E by Castle Creek; on S by the Pitkin-Gunnison Co. line; on W by the Pitkin-Gunnison Co. line, ridgeline of Elk Mountain from Snowmass Mountain to Capitol Peak and Capitol Creek.

## 441 MOFFAT & ROUTT COs.

bounded on N by USFS 42; on E by Elkhead Creek-Elk River divide and Wolf Creek; on S by U.S. 40; on W by Elkhead Creek.

## 444 EAGLE, GARFIELD & PITKIN COs.

bounded on N by Colorado River, Cottonwood Creek, Eagle CR 10A (Cottonwood Pass Rd.), USFS 514 (Red Table Mountain Rd.) and Fryngpan-Eagle River divide; on E by divide between Lime Creek and North Fork of Fryngpan River and its tributaries and Cross Creek-Homestake Creek drainages; on S by Ivanhoe Creek and Fryngpan River; on W by Roaring Fork River.

## 461 JEFFERSON & PARK COs.

bounded on N by Jefferson CRs 122 (South Turkey Creek Canyon) and 124 (Deer Creek Canyon) and Colo. 7 and 470; on E by South Platte River; on S by North Fork of South Platte River; on W by U.S. 285.

## 481 CHAFFEE CO.

bounded on N by South Fork of Clear Creek and Clear Creek; on E by Arkansas River; on S by Chalk Creek and Tincup Pass Rd. from St. Elmo; on W by Continental Divide.

## 500 PARK CO.

bounded on N by Continental Divide; on E by North Fork of South Platte River; on S by U.S. 285; on W by Colo. 9.

See "Special Land-Use Rules," #5 on page 9, for hunting closure details.

## 501 PARK & JEFFERSON COs.

bounded on N by U.S. 285 and North Fork of South Platte River; on E by South Platte River; on S by U.S. 24; on W by Park CR 77. See "Special Land-Use Rules," #5 on page 9, for hunting closure details.

## 511 TELLER, EL PASO & PARK COs.

bounded on N by Douglas Co. line; on E by I-25; on S by U.S. 24; on W by South Platte River, except on U.S. Air Force Academy.

## 512 EL PASO CO.

bounded on N by N boundary of U.S. Air Force Academy; on E by I-25; on S and W by S and W U.S. Air Force Academy boundaries.

## 521 GUNNISON & DELTA COs.

bounded on N by Delta-Mesa Co. line and Gunnison-Mesa Co. line; on E by Gunnison-Pitkin Co. line, White River-Gunnison National Forest boundary and Ruby Range Summit; on S by Gunnison CR 12 (Kebler Pass Rd.) and North Fork of Gunnison River; on W by Jay Creek, West Res. No. 1, Overland Ditch and Grand Mesa-Gunnison National Forest boundary.

## 551 GUNNISON & SAGUACHE COs.

bounded on N by U.S. 50, Quartz Creek Rd., North Quartz Creek Rd. and Taylor River-Tomichi Creek divide; on E by Continental Divide; on S and W by Colo. 114.

## 561 CHAFFEE & SAGUACHE COs.

bounded on N by U.S. 50; on E by U.S. 285; on S by Arkansas River-Rio Grande River drainage divide; on W by Continental Divide.

## 581 PARK, TELLER & FREMONT COs.

bounded on N by U.S. 24; on E by Colo. 67 and Phantom Canyon Rd.; on S by U.S. 50; on W by Colo. 9 and Park CRs 102 and 59.

## 591 PUEBLO, FREMONT & EL PASO COs.

on Fort Carson Military Reservation land.

## 681 SAGUACHE CO.

bounded on N by Continental Divide and Arkansas River divide between North Pass and Poncha Pass; on E by U.S. 285; on S by U.S. 285 and Colo. 114; on W by Colo. 114.

## 682 SAGUACHE CO.

bounded on N by U.S. 285; on E by Colo. 17; on S by CR G; on W by U.S. 285.

## 691 CUSTER & FREMONT COs.

bounded on N by Arkansas River and U.S. 50; on E and S by Grape Creek; on W by Colo. 69, U.S. 50 and Fremont CR 27.

## 711 DOLORES, MONTEZUMA & SAN MIGUEL COs.

bounded on N by Summit Canyon Creek, Dolores River and Disappointment Creek; on E by USFS 526 (Dolores-Norwood Rd.); on E and S by Colo. 145; on S by Colo. 184; on W by U.S. 491 and UT.

## 741 LA PLATA CO.

bounded on N by U.S. 160; on E by Animas River; on S by NM; on W by Montezuma-La Plata Co. line.

## 751 ARCHULETA, HINSDALE, LA PLATA & SAN JUAN COs.

bounded on N by Continental Divide; on E by Los Pinos River-Piedra River divide; on S by NM; on W by Los Pinos River, CRs 501 (Bayfield-Vallecito Rd.) and 240 (Pine River-Florida River Rd.) and Los Pinos River-Florida River divide.

## 771 ARCHUELTA CO.

bounded on N by U.S. 160; on E by San Juan River; on S by NM; on W by Los Pinos River-Piedra River divide.

## 791 ALAMOSA, RIO GRANDE & SAGUACHE COs.

bounded on N by CR G; on E by Colo. 17; on S by U.S. 160; on W by **NEW** Colo. 112 and U.S. 285.

## 851 COSTILLA & LAS ANIMAS COs.

bounded on N by West and North forks of Purgatoire River and Colo. 12; on E by I-25; on S by NM; on W by Sangre de Cristo divide.

## 861 HUERFANO CO.

bounded on N by Custer-Huerfano Co. line; on E by Colo. 69, CRs 555 (Muddy Creek Rd.), 570 and 572 (Pass Creek Rd.); on S and W by Sangre de Cristo divide.

## 951 WELD & MORGAN COs.

bounded on N by Colo. 14; on E by Weld CR 105, Morgan CR KK/Weld CR 74 (County Line Rd.), Morgan CR 2 and Colo. 144; on S by I-76; on W by Weld CR 49 and U.S. 34 and U.S. 85.



LIVE LIFE  
OUTSIDE

Printed for free distribution by:  
**COLORADO PARKS AND WILDLIFE**  
6060 Broadway, Denver, CO 80216  
303-297-1192  
[cpw.state.co.us](http://cpw.state.co.us)



ONLINE BROCHURE

**NOTICE:** This brochure includes information on turkey hunting. It is not a legal notice nor a complete collection of hunting regulations and laws. It is a condensed guide issued for hunters' convenience. The online brochure is the most up-to-date version and contains any corrections: [cpw.state.co.us/turkey-brochure](http://cpw.state.co.us/turkey-brochure). Copies of statutes and regulations can be obtained from a CPW regional or area office, or at [cpw.state.co.us/rules-and-regulations](http://cpw.state.co.us/rules-and-regulations). For questions, call CPW at 303-297-1192.

## 2025 TURKEY

### SPRING SEASON

#### APRIL 12–MAY 31: SPRING HUNTING SEASON

- JAN. 2** Applications accepted starting this date
- FEB. 4** Application & correction deadline, 8 p.m. MT
- FEB. 10** Draw results posted online by this date  
(check your online account)
- FEB. 12** Surrender period deadline, 11:59 p.m. MT
- FEB. 24** License payment deadline, 11:59 p.m. MT
- MARCH 3** Licenses in the mail
- MARCH 1** Over-the-counter license sales begin

### FALL & LATE SEASON

#### SEPT. 1–OCT. 31: FALL HUNTING SEASON

West of I-25 and GMU 140: Sept. 1–Oct. 5  
East of I-25, except GMU 140: Sept. 1–Oct. 31

#### DEC. 15–JAN. 15: LATE HUNTING SEASON

- MAY 1** Applications accepted starting this date
- MAY 30** Application & correction deadline, 8 p.m. MT
- JUNE 5** Draw results posted online by this date  
(check your online account)
- JUNE 7** Surrender period deadline, 11:59 p.m. MT
- JUNE 19** License payment deadline, 11:59 p.m. MT
- JUNE 21** Licenses in the mail
- JUNE 19** Over-the-counter license sales begin

## CPW GIFT CERTIFICATES make great presents for hunters!



[cpwshop.com](http://cpwshop.com)



### SUPPORTING SCIENCE IN THE WILD

Science is the compass that  
guides wildlife conservation.

Fees from hunting and fishing licenses,  
not tax dollars, help fund this work.



[COWILDLIFECOUNCIL.ORG](http://COWILDLIFECOUNCIL.ORG)



## REPORT POACHERS

### OPERATION GAME THIEF: 1-877-265-6648

Earn a reward payment for reporting wildlife violations by calling  
Operation Game Thief. Callers can remain anonymous.  
(This number is not for information requests or emergencies.)

**TO DONATE:** [co.accessgov.com/ogt/Forms/Page/ogt/payments/](http://co.accessgov.com/ogt/Forms/Page/ogt/payments/)



### YOU CAN HELP STOP POACHING!

**1-877-COLO-OGT**  
**1-877-265-6648**  
[game.thief@state.co.us](http://game.thief@state.co.us)  
Your Wildlife...Your Loss  
Turn In A Poacher!