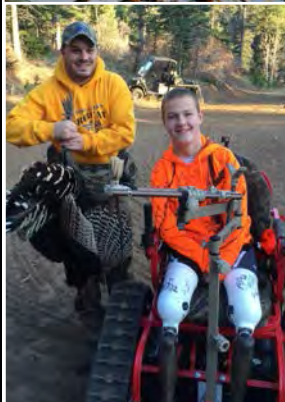
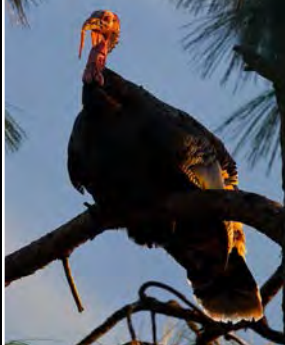


2016 Colorado Turkey



APPLICATION DEADLINES — SPRING: FEB. 11 FALL: JULY 14



online brochure

Online Features

Watch more Colorado Parks and Wildlife videos on our [VIMEO VIDEO CHANNEL HERE](#)

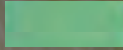
MORE ONLINE

CPW.STATE.CO.US/THINGSTODO/PAGES/TURKEY.ASPX
COLORADO PARKS AND WILDLIFE TURKEY HUNTING INFORMATION

WWW.NWTF.ORG
NATIONAL WILD TURKEY FEDERATION



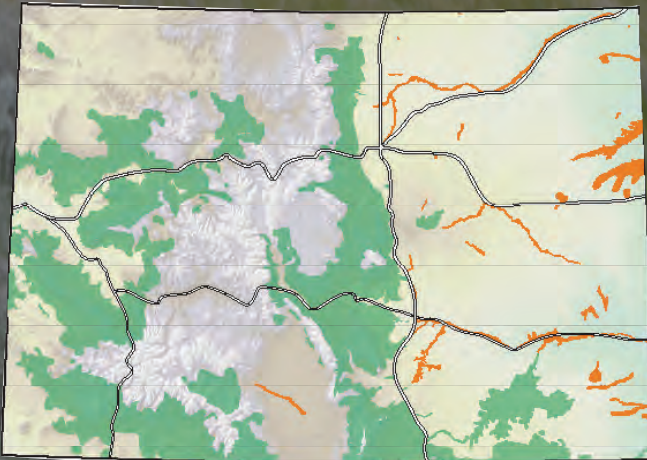
TURKEY RANGES IN COLORADO



Colorado's native Merriam's turkeys can be found on the Front Range and Western Slope in Colorado.



Rio Grande turkeys can be found in the eastern parts of the state.



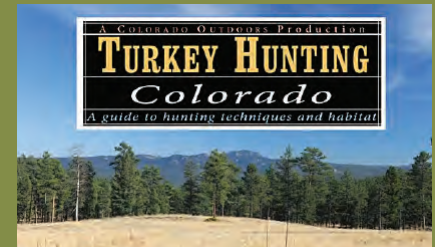
VIDEOS:

HOW TO: SPOT A BEARDLESS TURKEY



DO YOU KNOW THE DIFFERENCE between beardless turkeys and toms?

TECHNIQUES: TURKEY HUNTING



LEARN GOOD STRATEGIES for hunting Merriam's and Rio Grande in Colorado.

TIPS: LATE PRIVATE LAND HUNTS



THE LATE SEASON TURKEY HUNTS offer another chance to bag birds on private land — just get owner permission first.

PUBLIC LAND: HOW TO HUNT IT



GET THE MOST out of hunting on Colorado's public lands. This CPW video highlights small game, big game and waterfowl hunting.

Merriam's Turkey
Photo © Wayne Lewis, CPW

TABLE OF CONTENTS

License Fees 1

- What's new, fees and information for purchasing adult, youth licenses

Spring Season

License Information 2-3

- Limited license tables and hunt codes..... 2
- Spring Ranching for Wildlife hunt codes..... 2
- **MAP:** Spring unlimited licenses 3

Fall and Late Season

License Information 4-5

- Limited license tables and hunt codes..... 4
- Southwest Youth Extended Season units 4
- Fall Ranching for Wildlife hunt code..... 4
- **MAP:** Fall and late unlimited licenses 5

In the Field: Rules & Safety 6

- Bag limits, methods of take
- Tagging your bird, required evidence of sex
- Legal hunting hours, sunrise and sunset table
- Illegal activities
- Contests

License Information & Residency..... 7

- License requirements for adults and youth
- Hunter education requirements
- TIPs program and licenses
- Youth outreach licenses, licenses for hunters with mobility impairments, residency requirements, weapons restrictions, child support information

Applications & Preference Points..... 8

- (Paper applications are in the center of brochure)
- How to fill out the application
 - Deadlines, how to submit, refund policy
 - Gaining and using preference points

Game Management Units & Maps 9-13

- Special land use rules, reservation information
- **MAPS:** James M. John, Lake Dorothey, Spanish Peaks SWAs

Important Deadlines back cover

ABOUT THE COVER:

Husband and wife, Roger and Diana Harris pose with a Merriam's turkey that Diana harvested in Grand County.

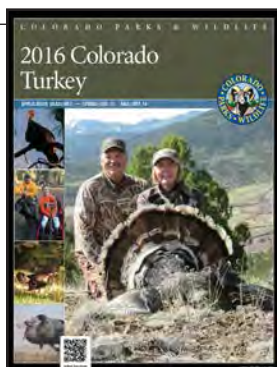
OTHER PHOTOS, TOP TO BOTTOM:

- Merriam's tom roosting in conifer tree
By © Donald M. Jones.

- Stetson Bardfield poses after a successful hunt with Outdoor Buddies. The organization helps those living with disabilities go on hunts and enjoy other outdoor activities.

- Rio Grande turkey
By © Jack Ballard.

- Merriam's turkey
By © Wayne Lewis CPW.



CPW OFFICE LOCATIONS

cpw.state.co.us

ADMINISTRATION

1313 Sherman St., #618
Denver, 80203
(303) 297-1192

ONLY the offices below can assist hunters with animal checks and taking samples that are related to hunting activities. See the CPW website for a complete list of our 42 parks locations that can also sell licenses, issue duplicate licenses and accept licenses for refunds.

BRUSH

122 E. Edison
Brush, 80723
(970) 842-6300

COLORADO SPRINGS

4255 Sinton Road
Colorado Springs, 80907
(719) 227-5200

DENVER

6060 Broadway
Denver, 80216
(303) 291-7227

DURANGO

151 E. 16th St.
Durango, 81301
(970) 247-0855

FORT COLLINS

317 W. Prospect Road
Fort Collins, 80526
(970) 472-4300

GLENWOOD SPRINGS

0088 Wildlife Way
Glenwood Springs, 81601
(970) 947-2920

GRAND JUNCTION

711 Independent Ave.
Grand Junction, 81505
(970) 255-6100

GUNNISON

300 W. New York Ave.
Gunnison, 81230
(970) 641-7060

HOT SULPHUR SPRINGS

346 Grand County Rd. 362
Hot Sulphur Springs, 80451
(970) 725-6200

LAMAR

2500 S. Main St.
Lamar, 81052
(719) 336-6600

MEEKER

73485 Hwy. 64
Meeker, 81641
(970) 878-6090

MONTE VISTA

0722 S. Road 1 E.
Monte Vista, 81144
(719) 587-6900

MONTRÖSE

2300 S. Townsend Ave.
Montrose, 81401
(970) 252-6000

PUEBLO

600 Reservoir Road
Pueblo, 81005
(719) 561-5300

SALIDA

7405 Hwy. 50
Salida, 81201
(719) 530-5520

STEAMBOAT SPRINGS

925 Weiss Dr.
Steamboat Springs, 80487
(970) 870-2197

BOOKMARK THIS BROCHURE ON YOUR TABLET OR SMARTPHONE

cpw.state.co.us/Documents/RulesRegs/Brochure/turkey.pdf

Printed for free distribution by

Colorado Parks and Wildlife (CPW)

6060 Broadway, Denver, CO 80216
(303) 297-1192
cpw.state.co.us

Editor: John Marin

Cover photo by © Roger & Diana Harris

Printed Dec. 2015 by Publication Printers, Denver. 140,000 copies.

Printing paid for with hunting and fishing license fees.

Colorado Parks and Wildlife Director: Robert Broscheid

The Colorado Parks and Wildlife Commission members are (as of July 2015): Robert W. Bray, chairman • Chris Castilian, Vice Chair • Jeanne Horne, Secretary • John Howard, Jr. • Bill Kane • Dale Pizel • James Pribyl • James Vigil • Dean Wingfield • Michelle Zimmerman • Alex Zipp • Mike King, ex-officio member • Don Brown, ex-officio member

CPW receives federal financial assistance from the U.S. Fish and Wildlife Service. In accordance with Title VI of the Civil Rights Act of 1964, Section 504 of the Rehabilitation Act of 1973, Title II of the Americans with Disabilities Act of 1990, the Age Discrimination Act of 1975 and Title IX of the Education Amendments of 1972, the U.S. Department of the Interior and its bureaus prohibit discrimination on the basis of race, color, national origin, age, disability or sex.

NOTE: Laws and regulations in this brochure are paraphrased for easier understanding and are intended only as a guide. Colorado statutes and regulations are available for viewing at CPW offices and online at cpw.state.co.us/aboutus/Pages/Regulations.aspx.



2016 WHAT'S NEW

» CHANGES TO CPW LICENSE REFUNDING TO OCCUR IN 2016...

New changes to the way CPW refunds licenses will take effect in April of 2016. Hunters who need to refund a license will have to do so at least 30 days prior to the start of the season for which the license is valid. A \$15 processing fee will be deducted from most refunds in order to cover administrative costs to CPW. Please see the CPW website for the most up-to-date information on refunds and license reissuing policies, cpw.state.co.us/buyapply/Pages/Licenses.aspx.

» CHANGES TO HUNTER EDUCATION REQUIREMENTS TO TAKE EFFECT IN APRIL 2016...

New changes to hunter education requirements in Colorado will take effect in April of 2016. Veterans and active-duty personnel will be able to obtain a hunter education certificate by testing out of the hunter education course. Additionally, CPW may issue a one-year apprentice certificate to hunters who are at least 10 years old and will be accompanied in the field by a mentor who is at least 18 years old and holds their valid hunter education certificate or was born before January 1, 1949. Please see the CPW website for the most up-to-date information on hunter education, cpw.state.co.us/learn/Pages/HunterEducation.aspx.

» SPRING TURKEY HUNTING NOW OPEN IN GMUS 80 AND 81...

Due to CPW's efforts to bolster the turkey population in GMUs 80 and 81, these units now have limited licenses available through the draw for the spring season. *Please see the hunt code charts on page 2.*

» GMUS 101 & 102 CLOSED TO LATE FALL BEARDLESS TURKEY SEASON...

CPW has found that agricultural conflicts caused by the wintering flock in GMUs 101 and 102 have been greatly reduced. Due to these findings, the Late Fall Beardless Turkey Season in GMUs 101 and 102 are now closed.

» YOUTH-ONLY FALL TURKEY HUNTING LICENSES NOW ESTABLISHED IN GMUS 91, 92, 96, 101 AND 102...

A 4-year study completed in 2012 found that the turkey population in GMUs 91, 92 and 96 along the South Platte River in northeast Colorado has increased significantly, offering high turkey numbers. In addition to these new seasons, CPW has found that GMUs 101 and 102 in the North Fork and Arikaree drainages are also supporting a healthy turkey population. Aligning with CPW's commitment to recruitment and retention, a limited number of youth-only fall turkey licenses will be issued in GMUs 91, 92, 96, 101 and 102. *See page 4.*



Colorado Waterfowl Stamp

PURCHASE STAMPS
& PRINTS ONLINE
WWW.COWILDLIFEFOUNDATION.ORG



Available now!
CALL TO ORDER
303.291.7212

LICENSE FEES

SAVE TIME: BUY ONLINE OR BY PHONE

Purchase hunting and fishing licenses on our secure website: cpw.state.co.us/buyapply/Pages/Licenses.aspx or call 1-800-244-5613.



HABITAT STAMPS	FEE
» 2016 Habitat Stamp.....	\$10 <i>Only one is required per person ages 18-64 per year buying or applying for a license.</i>
» Lifetime Habitat Stamp	\$300.25

LICENSES	FEE
RESIDENTS*	
» Spring	\$24
» Fall	\$19
» Youth Spring or Fall.....	\$14

NONRESIDENTS*	
» Spring or Fall	\$104
» Youth Spring or Fall	\$79

* Prices listed above include the non-refundable \$3 application processing fee for the limited license draws. The \$3 processing fee is **NOT** charged when purchasing a license over-the-counter. All prices include a 25-cent search-and-rescue fee and a 75-cent fee for the Wildlife Management Public Education Fund.

WHAT YOU NEED TO BUY A LICENSE AND HUNT

(Find the full license requirements on page 7)

- ID.** Secure and verifiable ID. A Social Security Number is required for hunters age 12 and older.
- PROOF** of hunter education.
- PROOF** of residency for Colorado residents.
- LICENSE.** All hunters must buy a turkey license to hunt turkeys.
- HABITAT STAMP.** A 2016 Habitat Stamp is required prior to applying for the spring or fall turkey draw or purchasing an over-the-counter turkey license. (See below.)

HABITAT STAMP

- Anyone 18-64 **MUST** buy a 2016 stamp prior to buying or applying for a preference point or hunting or fishing license.
- Stamps are \$10. Only one is required per person per year, valid April 1-March 31. A lifetime stamp is \$300.25.

SPRING OR FALL TURKEY HUNTERS applying for a limited license may purchase a stamp through the draw by submitting an extra \$10 with your application. Habitat Stamp fees are nonrefundable, even if you are unsuccessful in the draw.

Safe handling of game meat

Most of the time, properly handled and prepared game meat poses no greater risk than domestic meat of causing or carrying disease that could make humans sick. Public health officials recommend the following precautions when handling and preparing game meat:

1. Do not handle animals that are obviously sick or found dead. Report sick or dead animals to a nearby CPW office.
2. Keep game cool, clean and dry.
3. Do not eat, drink or smoke while dressing game.
4. Use disposable gloves when cleaning game.
5. Wash your hands with soap and water or use alcohol wipes after dressing game.
6. Clean all tools and surfaces immediately afterward. Use hot soapy water, then disinfect with a 10 percent chlorine bleach solution.
7. Cook game meat to an internal temperature of at least 165° F to kill disease organisms and parasites. Juices from cooked game meat should be clear.
8. Do not eat any raw portions of wild game.
9. Do not feed raw wild game to domestic pets.



SPRING LICENSES

The following units are closed to all spring turkey hunting:
1, 26, 45, 201, 371, 471

SPRING LIMITED LICENSES

Hunters must apply through the draw process to hunt these units. Licenses are valid on public or private land within the unit, unless otherwise specified below:

UNITS	DATES	LICENSES	HUNT CODE
2	April 9 - May 22	5	T-M-002-O1-R
15, 27, 37	April 9 - May 22	10	T-M-015-O1-R
21	April 9 - May 22	10	T-M-021-O1-R
23	April 9 - May 22	10	T-M-023-O1-R
25	April 9 - May 22	15	T-M-025-O1-R
30	April 9 - May 22	15	T-M-030-O1-R
30 youth only	April 9 - May 22	15	T-M-030-K1-R
34	April 9 - May 22	10	T-M-034-O1-R
35, 36, 361	April 9 - May 22	10	T-M-035-O1-R
43	April 9 - May 22	40	T-M-043-O1-R
44	April 9 - May 22	30	T-M-044-O1-R
47	April 9 - May 22	15	T-M-047-O1-R
59 Beaver Creek SWA & Table Mtn STL only	April 9 - May 22	25	T-M-059-O1-R
80	April 9 - May 22	10	T-M-080-O1-R
81	April 9 - May 22	10	T-M-081-O1-R
91	April 9 - April 29	35	T-M-091-O1-R
	April 30 - May 22	35	T-M-091-O2-R
91, 92, 96, 101, 102 youth only	April 9 - May 22	125	T-M-091-K1-R
92	April 9 - April 29	35	T-M-092-O1-R
	April 30 - May 22	35	T-M-092-O2-R
96	April 9 - April 29	50	T-M-096-O1-R
	April 30 - May 22	50	T-M-096-O2-R

UNITS	DATES	LICENSES	HUNT CODE
96 private land only	April 9 - April 29	125	T-M-096-P1-R
	April 30 - May 22	125	T-M-096-P2-R
101, 102	April 9 - April 29	50	T-M-101-O1-R
	April 30 - May 22	50	T-M-101-O2-R
103, 107, 109	April 9 - April 29	50	T-M-103-O1-R
	April 30 - May 22	50	T-M-103-O2-R
103, 107, 109 youth only	April 9 - May 22	40	T-M-103-K1-R
124, 125, 129	April 9 - May 22	15	T-M-124-O1-R
124, 125, 129 youth only	April 9 - May 22	15	T-M-124-K1-R
127, 132	April 9 - May 22	20	T-M-127-O1-R
130 North of U.S. 50	April 9 - May 22	5	T-M-130-O1-R
138, 139	April 9 - May 22	15	T-M-138-O1-R
140 Lake Dorothea SWA only	April 9 - May 22	55	T-M-140-O1-R
140 James M. John SWA only	April 9 - May 22	20	T-M-140-O2-R
444	April 9 - May 22	35	T-M-444-O1-R
444 private land only	April 9 - May 22	20	T-M-444-P1-R
851 Bosque del Oso SWA only	April 9 - May 22	35	T-M-851-O1-R

SPRING RANCHING FOR WILDLIFE

Public Ranching For Wildlife (RFW) licenses are available only to Colorado residents by drawing. Licenses are valid for the dates and ranch on the license. RFW licenses are listed with hunt codes below. Landowners must provide free access to hunters who draw a public license for the ranch. By applying for a RFW license, hunters allow CPW to provide applicant information to the ranch. Hunting rules are different for each ranch. Read ranch rules on the CPW website before applying.

UNITS	DATES	LICENSES	HUNT CODE
MOUNTAIN MEADOWS RANCH Unit 84	April 9 - May 29	10	T-M-084-W1-R
PURGATOIRE RANCH Units 136, 143, 147	April 23 - May 2	7	T-M-136-W1-R
TWIN PEAKS RANCH Unit 85	April 23 - May 22	17	T-M-085-W1-R
TWIN PEAKS RANCH Unit 85, youth only	April 23 - May 22	2	T-M-085-W2-R

SMALL THINGS CAN MAKE A BIG DIFFERENCE.

When you purchase a hunting license, 75¢ goes to educate the public on the role sportsmen play in wildlife management.

SPRING OVER-THE-COUNTER (UNLIMITED) LICENSES & HUNTABLE GMUS

Licenses are unlimited in number and available over the counter. These licenses ARE NOT available through the draw process.

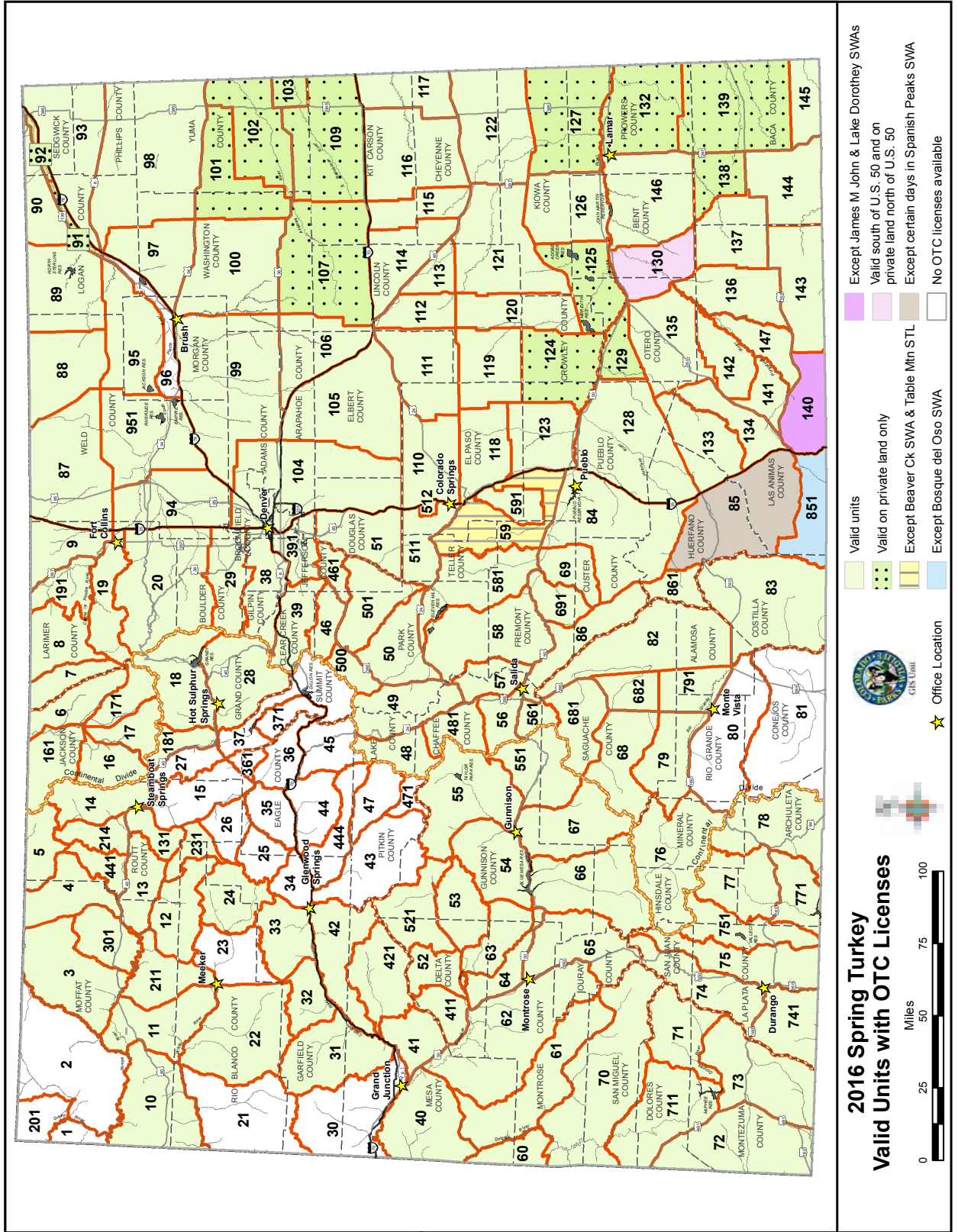
SPRING UNLIMITED LICENSE SALES BEGIN: March 16
SEASON DATES: April 9-May 22

LICENSE AGENTS ONLY: Use code T-M-000-U1-R

LICENSES ARE VALID (HUNTING IS ALLOWED) IN THE FOLLOWING UNITS (SHADED ON THE MAP):

3, 4, 5, 6, 7, 8, 9, 10, 11, 12, 13, 14, 16, 17, 18, 19, 20, 22, 24, 28, 29, 31, 32, 33, 38, 39, 40, 41, 42, 46, 48, 49, 50, 51, 52, 53, 54, 55, 56, 57, 58, 59 except on Beaver Creek SWA and Table Mountain STL lease, 60, 61, 62, 63, 64, 65, 66, 67, 68, 69, 70, 71, 72, 73, 74, 75, 76, 77, 78, 79, 82, 83, 84, 85, 86, 87, 88, 89, 90, 93, 94, 95, 97, 98, 99, 100, 104, 105, 106, 110, 111, 112, 113, 114, 115, 116,

117, 118, 119, 120, 121, 122, 123, 126, 128, 130 south of U.S. 50, 131, 133, 134, 135, 136, 137, 140 except on James M. John and Lake Dorothy SWAs, 141, 142, 143, 144, 145, 146, 147, 161, 171, 181, 191, 211, 214, 231, 301, 391, 411, 421, 441, 461, 481, 500, 501, 511, 512, 521, 551, 561, 581, 591, 681, 682, 691, 711, 741, 751, 771, 791, 851 except on Bosque del Oso SWA, 861, 951
AND ONLY ON PRIVATE LAND IN: 91, 92, 101, 102, 103, 107, 109, 124, 125, 127, 129, 130 north of U.S. 50, 132, 138, 139





LATE SEASON LICENSES — PRIVATE LAND ONLY

Hunters may purchase up to two beardless turkey licenses during the late season. These are available over-the-counter for hunting on **PRIVATE LAND ONLY** within the game management unit where the license holder has permission to hunt. Get landowner permission before buying a license.

UNITS	DATES	HUNT CODE
112, 113	Dec. 15, 2016 - Jan. 15, 2017	License agents only: T-F-000-U2-R

FALL LICENSES

FALL LIMITED LICENSES

Hunters must apply through the draw process to hunt the following units and areas specified. Unlimited (over-the-counter) turkey licenses are not valid in these areas and not available in the draw:

UNITS	DATES	LICENSES	HUNT CODE
25	Sept. 1 - Oct. 2	10	T-E-025-L1-R
34	Sept. 1 - Oct. 2	10	T-E-034-L1-R
59 <i>Beaver Creek SWA & Table Mtn STL only</i>	Sept. 1 - Oct. 2	15	T-E-059-L1-R
85 <i>Spanish Peaks SWA Oberosler Tract only</i>	Sept. 1 - Oct. 2	30	T-E-085-L1-R
85 <i>Spanish Peaks SWA Tochter Tract only</i>	Sept. 1 - Oct. 2	30	T-E-085-L2-R
85 <i>Spanish Peaks SWA Sakariason Tract only</i>	Sept. 1 - Oct. 2	30	T-E-085-L3-R
91	Sept. 1 - Oct. 28	50	T-E-091-L1-R
91, 92, 96, 101, 102 <i>youth only</i>	Sept. 1 - Oct. 28	50	T-E-091-K1-R
92	Sept. 1 - Oct. 28	50	T-E-092-L1-R
96	Sept. 1 - Oct. 28	125	T-E-096-L1-R
101, 102	Sept. 1 - Oct. 28	50	T-E-101-L1-R
103, 107, 109	Sept. 1 - Oct. 28	80	T-E-103-L1-R
103, 107, 109 <i>youth only</i>	Sept. 1 - Oct. 28	40	T-E-103-K1-R
124, 125, 129	Sept. 1 - Oct. 28	15	T-E-124-L1-R
124, 125, 129 <i>youth only</i>	Sept. 1 - Oct. 28	15	T-E-124-K1-R
126, 146	Sept. 1 - Oct. 28	20	T-E-126-L1-R
127, 132	Sept. 1 - Oct. 28	10	T-E-127-L1-R
130 North of U.S. 50	Sept. 1 - Oct. 28	5	T-E-130-L1-R
138, 139	Sept. 1 - Oct. 28	10	T-E-138-L1-R
140 Lake Dorothea SWA only	Sept. 1 - Oct. 2	35	T-E-140-L1-R
140 James M. John SWA only	Sept. 1 - Oct. 2	10	T-E-140-L2-R
444	Sept. 1 - Oct. 2	20	T-E-444-L1-R
851 Bosque del Oso SWA only	Sept. 1 - Oct. 2	25	T-E-851-L1-R

The following units are closed to fall turkey hunting: 1, 2, 15, 21, 23, 26, 27, 30, 35, 36, 37, 44, 45, 47, 63, 80, 81, 89, 90, 93, 95, 97, 98, 99, 100, 106, 111, 115, 120, 201, 361, 371, 471

FALL RANCHING FOR WILDLIFE

Public RFW licenses are available through the draw only to Colorado residents. They are valid for dates and ranch on license. Read ranch rules on the CPW website before applying. See page 2 for details.

UNITS	DATES	LICENSES	HUNT CODE
PURGATOIRE RANCH <i>Units 136, 143, 147</i>	Sept. 24-Oct. 3	2	T-E-136-W1-R

SOUTHWEST YOUTH EXTENDED SEASON

Youths under 18 can hunt turkey in units 52, 54, 55, 60, 61, 62, 64, 65, 66, 67, 68, 70, 71, 72, 73, 74, 75, 76, 77, 78, 79, 82, 83, 411, 521, 551, 681, 682, 711, 741, 751, 771 from the Saturday before Thanksgiving (Nov. 19) through the Sunday after Thanksgiving (Nov. 27) if they have an unfilled youth fall turkey license. Youths must follow all applicable regulations and must be accompanied by a mentor, who cannot hunt. Contact a CPW office for information.

5 TIPS TO STAY SAFE IN THE FIELD

Successful turkey hunting requires hunters to be stealthy and well-camouflaged. However, this also means you are well-camouflaged from other hunters, which can increase the chances of hunting-related accidents. Keep these points in mind in the field:

- 1. KNOW YOUR TARGET.** As with all hunting opportunities, be absolutely sure of your target and what lies beyond it before you pull the trigger. Never shoot at sound or movement.
- 2. STAY ALERT.** When using a turkey call, hunters may mistake your call for a real turkey.
- 3. CHOOSE GOOD COVER.** Choose hunting locations that provide cover for your back and also give you visibility. Your calling position should have a solid background as wide as your shoulders and higher than your head while providing you

with 180-degree visibility. Don't hide so well that you can't see what's happening. Sit still; both turkeys and hunters may see even slight movements.

- 4. KNOW WHAT NOT TO WEAR.** Don't wear red, white or blue clothing, because you could look like a mature male turkey, which also sports these colors. Alert other hunters to your presence. You can hang fluorescent material (like a hunter-orange cap or vest) above your calling spot and wear hunter orange while going to and from your hunting spot.

- 5. DON'T ATTEMPT TO STALK** a turkey in the spring. Hunters use calling to attract birds and you may be stalking a hunter, increasing the chances of an accident. Find a good location to sit and call birds to you. If you see another hunter approaching, don't use turkey calls to alert the hunter. In a clear, loud voice, say "Hunter."

FALL OVER-THE-COUNTER (UNLIMITED) LICENSES & HUNTABLE GMUS

Licenses are unlimited in number and available over the counter. These ARE NOT available through the draw.

FALL & LATE UNLIMITED SALES BEGIN: Aug. 2

SEASON DATES:

Sept. 1-Oct. 2 — west of I-25 and GMU 140;

Sept. 1-Oct. 28 — east of I-25 (except GMU 140)

LICENSE AGENTS ONLY: Use code T-E-000-U2-R

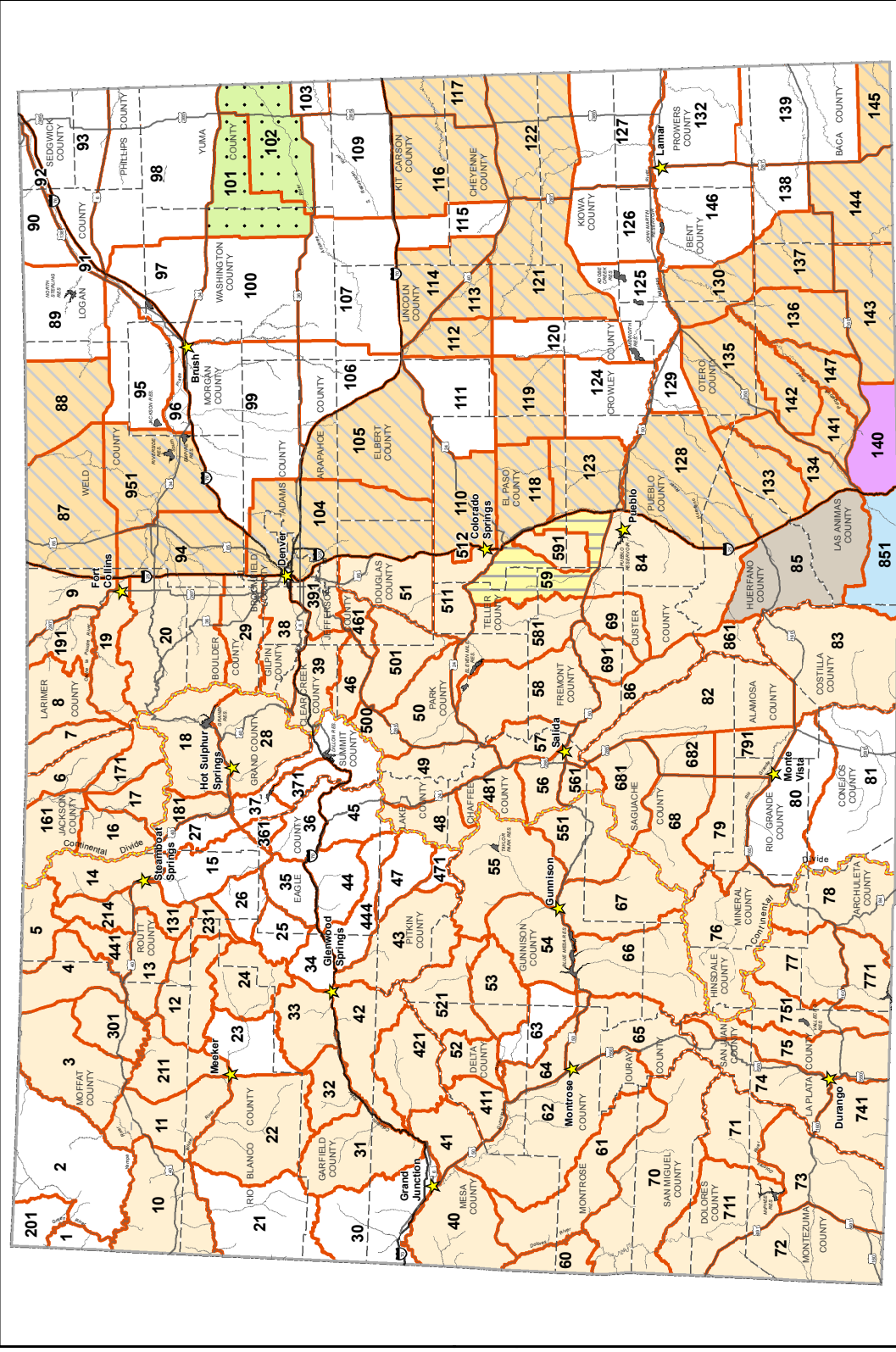
LICENSES ARE VALID (HUNTING IS ALLOWED) IN THE FOLLOWING UNITS (SHADED ON THE MAP):

3, 4, 5, 6, 7, 8, 9, 10, 11, 12, 13, 14, 16, 17, 18, 19, 20, 22, 24, 28, 29, 31, 32, 33, 38, 39, 40, 41, 42, 43, 46, 48, 49, 50, 51, 52, 53, 54, 55, 56, 57, 58, 59 except on Beaver Creek SWA and Table Mountain STL lease, 60, 61, 62, 64, 65, 66, 67, 68, 69, 70, 71, 72, 73, 74, 75, 76, 77, 78, 79, 82, 83, 84,

85 except on Spanish Peaks SWA, 86, 87, 88, 94, 104, 105, 110, 112, 113, 114, 116, 117, 118, 119, 121, 122, 123, 128, 130, 131, 133, 134, 135, 136, 137, 140 except on James M. John and Lake Dorothy SWAs, 141, 142, 143, 144, 145, 147, 161, 171, 181, 191, 211, 214, 231, 301, 391, 411, 421, 441, 461, 481, 500, 501, 511, 512, 521, 551, 561, 581, 591, 681, 682, 691, 711, 741, 751, 771, 791, 851 except on Bosque del Oso SWA, 861, 951, **AND ONLY ON PRIVATE LAND IN: 101 and 102.**

LATE SEASON UNLIMITED LICENSES

Licenses are unlimited in number and available over the counter. These are private-land-only licenses, get landowner permission before buying a tag.

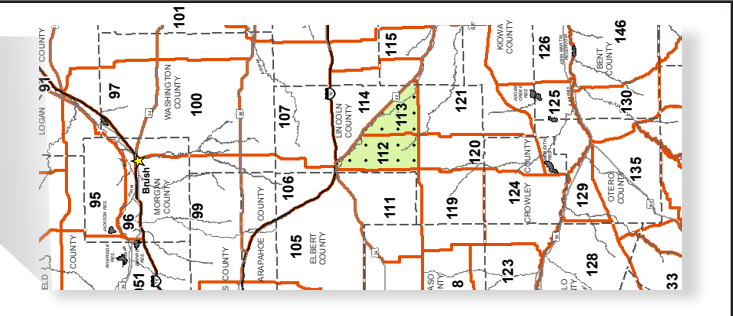
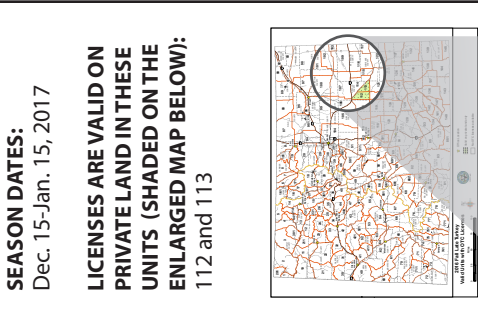


2016 Fall Turkey Valid Units with OTC Licenses

0 25 50 75 100 Miles

Office Location ★

- Season ends Oct. 2
- Season ends Oct. 28
- Valid on private land only
- Except Bosque del Oso SWA
- Except James M. John & Lake Dorothy SWAs
- Except Spanish Peaks SWA
- Except Beaver Ck SWA & Table Mtn STL
- No OTC licenses available



LICENSES ARE VALID ON PRIVATE LAND IN THESE UNITS (SHADED ON THE ENLARGED MAP BELOW):
112 and 113

SEASON DATES:
Dec. 15-Jan. 15, 2017

IN THE FIELD: RULES & SAFETY

LEGAL HUNTING HOURS

Legal hunting hours for turkey are one-half hour before sunrise to sunset. The sunrise/sunset chart below lists Denver times. Subtract 1 minute from opening and closing time for each 12 1/2 miles east of Denver. Add 1 minute to opening and closing time for each 12 1/2 miles west of Denver. (These changes assume that each degree of longitude equals 50 miles and a change of 1 degree of longitude equals a 4-minute change in sunrise and sunset times.)

2016 SUNRISE/SUNSET TABLE (DENVER)								
DAY	APRIL		MAY		SEPT.		OCT.	
	RISE A.M.	SET P.M.	RISE A.M.	SET P.M.	RISE A.M.	SET P.M.	RISE A.M.	SET P.M.
1	6:43	19:25	6:00	19:55	6:29	19:30	6:57	18:41
2	6:42	19:26	5:59	19:56	6:29	19:29	6:58	18:40
3	6:40	19:27	5:57	19:57	6:30	19:27	6:59	18:38
4	6:38	19:28	5:56	19:58	6:31	19:25	7:00	18:37
5	6:37	19:29	5:55	19:59	6:32	19:24	7:01	18:35
6	6:35	19:30	5:54	20:00	6:33	19:22	7:02	18:33
7	6:34	19:31	5:53	20:01	6:34	19:21	7:03	18:32
8	6:32	19:32	5:52	20:02	6:35	19:19	7:04	18:30
9	6:31	19:33	5:51	20:03	6:36	19:17	7:05	18:29
10	6:29	19:34	5:50	20:03	6:37	19:16	7:06	18:27
11	6:28	19:35	5:49	20:04	6:38	19:14	7:07	18:26
12	6:26	19:36	5:48	20:05	6:39	19:12	7:08	18:24
13	6:25	19:37	5:47	20:06	6:40	19:11	7:09	18:23
14	6:23	19:38	5:46	20:07	6:41	19:09	7:10	18:21
15	6:22	19:39	5:45	20:08	6:42	19:08	7:11	18:20
16	6:20	19:40	5:44	20:09	6:42	19:06	7:12	18:18
17	6:19	19:41	5:43	20:10	6:43	19:04	7:13	18:17
18	6:17	19:42	5:42	20:11	6:44	19:03	7:14	18:15
19	6:16	19:43	5:42	20:12	6:45	19:01	7:15	18:14
20	6:14	19:44	5:41	20:13	6:46	19:59	7:16	18:13
21	6:13	19:45	5:40	20:14	6:47	18:58	7:17	18:11
22	6:12	19:46	5:39	20:14	6:48	18:56	7:18	18:10
23	6:10	19:47	5:39	20:15	6:49	18:54	7:19	18:09
24	6:09	19:48	5:38	20:16	6:50	18:53	7:20	18:07
25	6:08	19:49	5:37	20:17	6:51	18:51	7:21	18:06
26	6:06	19:50	5:37	20:18	6:52	18:49	7:22	18:05
27	6:05	19:51	5:36	20:19	6:53	18:48	7:24	18:03
28	6:04	19:52	5:36	20:19	6:54	18:46	7:25	18:02
29	6:02	19:53	5:35	20:20	6:55	18:45	7:26	18:01
30	6:01	19:54	5:35	20:21	6:56	18:43	7:27	18:00
31			5:34	20:22			7:28	17:58

DST = Daylight Savings Time

TIME ADJUSTMENT FOR OTHER COLORADO CITIES

Add or subtract these minutes to the chart above for select towns. For use only as a general reference.	Alamosa	+3	Gr. Junction	+13
	Buena Vista	+5	Gunnison	+7
	Burlington	-10	La Junta	-6
	Craig	+9	Lamar	-9
	Durango	+11	Sterling	-6
	Fort Morgan	-4	Walden	+5

Source: www.usno.navy.mil

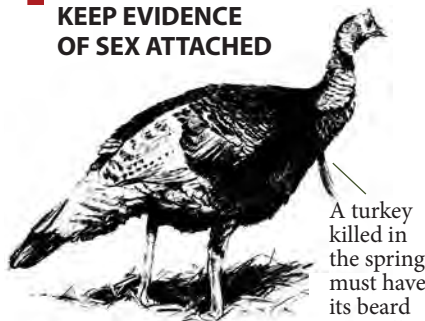
CONTESTS

It is illegal to promote, conduct, offer to conduct or participate in contests using marked or tagged small game and upland game birds for money or valuable prizes. Valuable prizes don't include certificates of recognition or other tokens without significant monetary value. This does not apply to wildlife parks and field trials licensed by CPW.

IT'S AGAINST THE LAW TO:

1. Post, sign or indicate that public lands (except if under an exclusive-control lease) are private.
2. Hunt on private land without first obtaining permission from landowner or person in charge.
3. Hunt on State Trust Lands without permission of lessee, except those open for wildlife recreation.
4. Have a loaded (in the chamber) rifle or shotgun in or on any motor vehicle.
5. Shoot from or use a motor vehicle, motorcycle, off-highway vehicle, snowmobile or aircraft to hunt, intercept, chase, harass or drive wildlife.
6. Hunt under the influence of alcohol or controlled substances.
7. Use any artificial light as an aid in hunting wildlife.
8. Fail to reasonably dress, care for and prepare edible wildlife meat for human consumption. Internal organs are not considered edible portions.
9. Party hunt (kill someone else's game or let someone kill yours).
10. Use recorded or electronically amplified calls.
11. Use bait to hunt turkeys. Baiting is placing, or scattering salt, mineral, grain or other feed to attract wildlife.
12. Only portable blinds or tree stands may be erected on state wildlife areas. These must be removed at the end of the day they are used. No nails may be driven into trees. The hunter's Customer Identification number (CID) and dates of use must be visible on the outside of blinds or underside of stands. Placement of blinds or stands does not reserve them for personal use, they may be used by the public on first-come, first-served basis.
13. Use the Internet or other computer-assisted remote technology while hunting or fishing. This includes unmanned or remote-control drones used to look for wildlife. Hunters must be physically in the immediate vicinity while hunting or fishing.

KEEP EVIDENCE OF SEX ATTACHED



A turkey killed in the spring must have its beard naturally attached while being transported. The beard is at the base of the turkey's neck.

BAG & POSSESSION LIMITS

1. Bag and possession limit for each season:
 - » 2 BEARDED turkeys in the spring. One must be taken with a limited license, the other must be taken with an over-the-counter license.
 - » 1 EITHER SEX turkey in the fall.
 - » 2 BEARDLESS turkeys in the late season.

TAGGING

1. After killing a turkey, hunters must immediately detach, sign and date the carcass tag and attach it to the animal. Tags must stay attached while the carcass is transported, in camp, in storage or in your possession.
2. If the carcass tag is accidentally detached from the license, lost or destroyed, you

must get a duplicate before hunting and prove the loss, detachment or destruction was accidental. Duplicates can be obtained by furnishing proof of accidental detachment, loss or destruction to a CPW office.

METHODS OF TAKE

1. **SHOTGUNS**, including muzzleloading shotguns: maximum 10-gauge allowed and cannot be capable of holding more than three shells in the magazine and chamber combined. Shotguns capable of holding more than three shells must be plugged. Shot must be size #2 (lead or steel) or smaller. Single slugs are illegal.
2. **HAND-HELD BOWS**
3. **CROSSBOWS**
4. **RIFLES AND HANDGUNS:**

- a. **SPRING SEASON:** Rifles and handguns are illegal.
- b. **FALL AND LATE SEASONS ONLY:** Except in units 91, 92, 96 & 951, rifles and handguns can be muzzleloading, centerfire or rimfire, and bullets must be a minimum 38 grains with manufacturer's energy rating of at least 110 foot-pounds at 100 yards from muzzle.

NOTE » Turkeys can be taken over standing crops or feed scattered solely for agricultural purposes.

NOTE » Artificial decoys and manual calls are permitted. Recorded or electronically amplified calls are illegal.

LICENSE INFORMATION & RESIDENCY REQUIREMENTS

LICENSE REQUIREMENTS

1. Completion and proof of a hunter education course is required for anyone born on or after Jan. 1, 1949, to purchase a hunting license or preference point. *Changes to hunter education requirements will take effect April 2016.
2. Small-game licenses are not valid for turkeys. A turkey license is required to take wild turkey.
3. Limited licenses are available for spring and fall seasons by drawing, valid only for specific dates and units. Apply online or use the mail-in application in the center of this brochure.
4. Only one application is allowed per season. Hunters must apply for spring and fall turkey licenses separately. Fall applications are NOT accepted before May 19. DO NOT submit a fall application during the spring turkey application process or your application will be disqualified.
5. Licenses are valid for and expire after the season printed on them. Licenses are not transferable.
6. False statements made in buying licenses or altering licenses are illegal, and doing so voids licenses.
7. Turkey hunters do not need to register with the Harvest Information Program (HIP).

YOUTH LICENSES

Youths under age 18 can buy or apply for a reduced-cost turkey license. All hunters, including those younger than 18, must meet hunter education requirements. Those under 16 must be accompanied by a mentor while hunting. There is no minimum age to hunt turkey, as long as these requirements are met.

A mentor must be 18 or older and must meet hunter education requirements. Mentors aren't required to hunt. While hunting, youths and mentors must be able to see and hear each other without binoculars, radios or other aids.

Youths younger than 18 can buy an adult license as long as they meet hunter education requirements. At age 18, youths must buy an adult license.

YOUTH OUTREACH LICENSES

Youth Outreach licenses are offered to qualified organizations sponsoring educational youth hunting activities.

A maximum of 200 licenses are offered for private land only and are limited to youths under 18 years of age. Application procedures are on the CPW website at cpw.state.co.us/learn/Pages/OutreachYouthLicensing.aspx.

HUNTERS WITH MOBILITY IMPAIRMENTS

Ten licenses are offered for qualified hunters with mobility impairments for spring season, valid on private land in units 91, 92, 96 for specific dates.

1. Hunters must have a mobility impairment from a permanent medical condition that makes hunting physically impossible without an attendant's assistance. Evidence may include prescribed equipment such as a wheelchair, shoulder or arm crutches, a walker or two canes.
2. License applications and access permit applications are available at CPW offices. Submit applications with payment to CPW Limited Licenses, 6060 Broadway, Denver, CO 80216.

Hunters can apply from the Monday after the November Parks and Wildlife Commission meeting until spring turkey season ends.

3. Applications must include a statement from a licensed medical doctor or certified physical, occupational or recreational therapist, describing the impairment and permanent medical condition. More documentation may be required.
4. In Spanish Peaks State Wildlife Area, hunters with mobility impairments can hunt after the second weekend of the spring turkey season on Wed., Thurs. and Fri. by permit only. Permits are issued free on a first-come, first-served basis. Permits are limited to two people each for the Wed.-Fri. time period.

HUNTER EDUCATION REQUIREMENTS

1. Anyone born on or after Jan. 1, 1949, must have a hunter education card to hunt in Colorado.
 2. A hunter education card is needed to apply for or buy a license. It must be carried while hunting (unless previously verified - marked with a "V" on your license).
 - To get verified, take your hunter education card to a CPW office.
 3. CPW honors hunter education cards from other states and provinces.
 4. For information and to find hunter education courses, please visit: cpw.state.co.us/learn/Pages/HunterEducation.aspx.
- NEW!** Changes to hunter education requirements will take effect in April 2016. Please see the CPW website for the most up-to-date information on hunter education, cpw.state.co.us/learn/Pages/HunterEducation.aspx.

RESIDENCY REQUIREMENTS

These are the requirements to qualify as a Colorado resident to buy a hunting license:

1. You must live in Colorado at least 6 consecutive months immediately before applying for or buying a license **AND** must intend to make Colorado home (except No. 3 and No. 4 below.) The residence address you give to buy or apply for a license must be the same as on your Colorado income tax return.
2. A valid Colorado driver's license or Colorado ID is proof of residency if issued at least 6 months prior to buying or applying for a license. If your ID or driver's license was issued or renewed less than 6 months prior, you must provide documentation that proves you have been a resident for the required 6-month period.
3. U.S. military personnel and military personnel of U.S. allies on active duty in Colorado under permanent orders and their dependents. This includes people who were Colorado residents when they entered the military and maintain Colorado as their home of record, and their dependents (who keep Colorado as their home of record). Also included are personnel of the U.S. Diplomatic Service or diplomatic services of nations recognized by the U.S. assigned to duty here on permanent active duty orders and their dependents. Active duty military does not include reserve status, National Guard, or government contractors.
4. Full-time students enrolled and attending an

REPORT POACHERS

OPERATION GAME THIEF: 1-877-265-6648
EMAIL: GAME.THIEF@STATE.CO.US

Earn a reward payment for reporting wildlife violations by calling Operation Game Thief. Callers can remain anonymous. (This number is not for information requests or emergencies.)



TIPs PROGRAM

The Turn In Poachers (TIPs) program rewards people who voluntarily provide information resulting in charging poachers. Awards can be a preference point for a species of choice or an unlimited license for the species reported. Some limited licenses may be available as a third option. Reward licenses do not count toward annual bag and possession limits. Contact CPW for details, (303) 297-1192.

accredited Colorado college, university or trade school at least 6 months immediately before applying for or buying a license. This includes students who are temporarily absent from Colorado but still enrolled. Colorado residents who attend school full-time out of state and pay nonresident tuition still qualify for a resident license.

5. Children under 18 have the same residency status as their parent, legal guardian or person with whom they live the majority of the time per court order.
6. If you have a home in Colorado and another state, call (303) 297-1192 to make sure you comply with Colorado residency requirements before obtaining a hunting or fishing license.
7. Except as in No. 3 and No. 4 above, you lose your Colorado residency if you apply for, buy or accept a hunting, fishing or trapping license as a resident of another state or country; register to vote outside Colorado or get a driver's license with an address in another state.

SECURE & VERIFIABLE IDENTIFICATION

As required by the state's "Secure and Verifiable Identity Document Act," residents and nonresidents buying or applying for hunting or fishing licenses must show secure and verifiable ID. For a list of acceptable and unacceptable documentation, go to the CPW website at cpw.state.co.us/Documents/RulesRegs/Brochure/SecureAndVerifiableIdentity.pdf.

CHILD SUPPORT DELINQUENCY

State law requires a Social Security number to buy a license. It is not displayed on the license but is provided, if requested, to Child Support Enforcement authorities. Hunting and fishing licenses are not issued to those suspended for noncompliance with child support. In addition, any current licenses become invalid if held by an individual who is noncompliant with child support.

WEAPONS RESTRICTIONS

Colorado and federal laws prohibit people convicted of certain crimes, such as domestic violence, from possessing weapons even for hunting.

If you've been convicted of a crime, check with the appropriate law enforcement authority to find out how these laws apply to you.

APPLICATIONS & PREFERENCE POINTS

BUY ONLINE: cpw.state.co.us/buyapply/Pages/Licenses.aspx

SUBMITTING YOUR APPLICATION

1. Mail one check and one application per standard 4 1/8- by 9 1/2-inch envelope. If you have a CID number, write it on the check.
2. Applications must be postmarked or received at Colorado Parks and Wildlife, Attn: Turkey, P.O. Box 173781, Denver, CO 80217-3781, by deadlines. Midnight postmark is acceptable.

REFUNDS

License fees are refunded to unsuccessful applicants. Refunds are sent to the applicant, regardless of who made the original payment. The \$3 service fee and \$10 Habitat Stamp fee are nonrefundable. Applications are rejected if your check is returned by the bank. Prosecution may result.

MOVING? CHANGE YOUR ADDRESS

Existing customers may log on to bit.ly/cpw_license_sales, click "Purchase Online" and follow the steps. New customers may use the paper change-of-address form in this brochure. Mail the form separately — do not include it with your application — to: CPW Address Change, 6060 Broadway, Denver, CO 80216. Address changes listed on hunt applications will not be processed.

GAINING & USING PREFERENCE POINTS

1. **HOW TO GAIN POINTS:** One preference point is awarded if you apply properly and are unsuccessful in drawing your first-choice hunt code or if you apply for a preference point hunt code as your first choice. You can get two turkey preference points per calendar year. One preference point is awarded to unsuccessful applicants in the spring drawing and one in the fall drawing.
2. **HUNTING PRIORITY:** Priority goes to the hunter with the most points, except for group applications. Group applications are processed based on the member with the fewest points.
3. **POINTS ARE ONLY USED ON FIRST-CHOICE HUNTS:** Second-, third- or fourth-choice hunt codes don't use or generate preference points.
4. **POINT ACCUMULATION:** Preference points accumulate until they are used to help you draw a license as a first choice.
5. **USE THEM OR LOSE THEM:** If you don't apply for or purchase a license at least once in 10 consecutive years, your file is purged and your preference points are lost. Applying for preference points keeps your file active.
6. **SAVE YOUR REFUND STUB:** If unsuccessful in the draw, your refund stub will show your accumulated points. Keep this for your records.
7. **PREFERENCE POINT HUNT CODE:** To apply for a preference point only, enter hunt code **T-P-999-99-P** as the first choice on your application. You must pay the full license cost and pay for a Habitat Stamp, even if you're just applying for a preference point. Your license fee will be refunded, the \$3 service fee and \$10 Habitat Stamp fee are nonrefundable.

APPLICATION DEADLINES

FEB. 11, SPRING: Application must be received or postmarked for spring limited license draw

JULY 14, FALL: Application must be received or postmarked for fall limited license draw

APPLY ONLINE

AVOID ERRORS: Submit your application online to check for errors and correct payment. Print your online receipt as record.

Customers with errors on applications will not be contacted to fix them. Those applications will be disqualified from the draw.

Correction requests can be submitted unit Feb. 17 for spring and July 18 for fall at: cpw.state.co.us/buyapply/Pages/ApplicationCorrections.aspx.

FILLING OUT YOUR APPLICATION

SPRING/FALL: Apply for spring and fall season separately. Fall applications are not accepted until May 19. DO NOT submit a fall application during the spring application process or it will be disqualified.

PAYMENT: Check or money order payment must accompany each application. The cost includes a 25-cent search-and-rescue fee and 75-cent Wildlife Education Fund surcharge. The \$3 service fee and \$10 Habitat Stamp fee are nonrefundable.

TIPS: Print in capital, block letters and stay within the boxes. Use black ballpoint pen only. Photocopies are not accepted. Do not cut or fold applications. Tear along perforations.

1. Enter your Customer Identification Number (CID).
 - a. If this brochure was mailed to you, your CID number may be on the address label above your name.
 - b. If you've never had a CID, leave this part blank. Fill out the application, including the "New Customer" part. You will receive a CID when your application is processed.
2. Enter hunt code choices. List up to four choices, the first being the one you want most.
3. Enter your name in capital letters. Enter as

many letters as will fit. Enter your birth date with four digits for the year.

4. Fill in "Colorado Resident Since" boxes with month (MM) and year (YYYY) you moved here. If you have always lived here, enter the month and year of your birth. Colorado military: enter "88 8888." One number per box.
5. You must buy a Habitat Stamp to apply for or buy a limited license. *Applications will be disqualified from the draw if the hunter has not yet purchased a valid 2016 Habitat Stamp.* Hunters applying for a limited license must purchase a stamp to enter the drawing process. They are available at any license agent, CPW office or online. You can include \$10 for a Habitat Stamp with your license fee when you apply for a license through the mail or online. Put an "X" in the box if you are sending \$10 for your 2015 Habitat Stamp with your application.
6. For group hunts, all members — including the group leader — must enter the same CID number in the group application box to be entered as a group. If the leader has no CID, the leader must call CPW at (303) 297-1192 to get one. All group members must fill out their applications the same, using the same person as the group leader, the same hunt codes and same number of choices. If there are discrepancies, the group leader's hunt codes are used for everyone. Members must mail applications separately.
7. If you have preference points, check this box.
8. If you were born on or after Jan. 1, 1949, and have completed hunter education, check this box.
9. State law requires your Social Security number to buy or apply for hunting licenses. If you have already given your number, leave this blank.
10. The "permission to provide" box at the top of the application allows CPW to provide information from applications to entities offering hunting information or services. You may opt out by writing CPW, 6060 Broadway, Denver, CO 80216, Attn: Call Center; or email wildlife.dowinfo@state.co.us; call (303) 297-1192 or go to any CPW office.
11. Sign the application and enter a valid daytime phone number where we can reach you. Make a copy for your records.
12. This section is for new customers only. To change your address, see "How to Change Your Address" section on this page.

GAME MANAGEMENT UNIT DESCRIPTIONS, LOCATIONS

The following list includes only game management units open to turkey hunting

2 - (MOFFAT CO.) bounded on N by WY; on E by Little Snake River; on S by Yampa River; on W by Green River, CRs 34 & 10, Colo. 318 and CR 10N (Irish Canyon Road).

3 - (MOFFAT CO.) bounded on N by WY, on E by Colo. 13/789, CRs 108, 3, 158, 5 and 17; on S by Yampa River, U.S. 40 and Colo. 318; on W by Little Snake River.

4 - (MOFFAT & ROUTT COs.) bounded on N by WY; on E by Moffat CR 1, Routt CR 82, USFS 150 and Elkhead Creek; on S by U.S. 40; on W by Colo. 13/789.

5 - (MOFFAT & ROUTT COs.) bounded on N by WY; on E by Continental Divide; on S by Little Snake-Elk River Divide and USFS 42; on W by USFS 150, Routt CR 82 and Moffat CR 1.

6 - (JACKSON CO.) bounded on N by WY; on E by Jackson-Larimer Co. line; on S by Colo. 14; on W by Colo. 125 from Colo. 14 to WY.

7 - (LARIMER CO.) bounded on N by WY; on E by CR 103 (Laramie River Road); on S by Colo. 14; on W by Larimer-Jackson county line.

8 - (LARIMER CO.) bounded on N by WY; on E by CRs 59, 80C (Cherokee Park Road), 179 (Prairie Divide Road), 74E (Red Feather Lakes Road), 68C (Boy Scout Ranch Road); and 69 (Manhattan Road); on S by Colo. 14; on W by CR 103 (Laramie River Road).

9 - (LARIMER & WELD COs.) bounded on N by WY; on E by I-25; on S by Colo. 14; and on W by U.S. 287.

10 - (MOFFAT & RIO BLANCO COs.) bounded on N by Green and Yampa rivers; on E by Twelvemile Gulch Road, U.S. 40 to mile marker 38.3 to Elk Springs Ridge to Drill Hole, Winter Valley Gulch, Coal Creek and Wolf Creek; on S by White River; on W by UT.

11 - (MOFFAT & RIO BLANCO COs.) bounded on N by Colo. 318 and U.S. 40; on E by Deception Creek-Strawberry Creek Road; on S by White River; on W by Wolf Creek, Coal Creek, Winter Valley Gulch to Drill Hole to Elk Springs Ridge to mile marker 38.3 on U.S. 40, Twelvemile Gulch Road, Yampa River and Little Snake River.

12 - (MOFFAT, ROUTT, RIO BLANCO & GARFIELD COs.) bounded on N by Colo. 317, Routt CRs 29 and 55, Rio Blanco CRs 10 & 8; on E by Williams Fork-Yampa River divide; on S by Williams Fork-

ABBREVIATIONS:

U.S. — U.S. highway

COLO. — Colorado highway

CO. — County

CR — County road

RES. — Reservoir

N/NW/NE — North, northwest, northeast

S/SW/SE — South, southwest, southeast

E — East

W — West

NF — National Forest

USFS / FS — U.S. Forest Service

BLM — Bureau of Land Management

RMNP — Rocky Mountain National Park

KS — Kansas

NEB — Nebraska

NM — New Mexico

OK — Oklahoma

UT — Utah

WY — Wyoming

White River divide, USFS Road 250, Rio Blanco CRs 48, 15 & 30; on W by Colo. 13/789.

13 - (MOFFAT & ROUTT COs.) bounded on N by U.S. 40; on E by Routt CR 179, Trout Creek, Fish Creek; on S by Routt CR 29 and Colo. 317; on W by Colo. 13/789.

14 - (ROUTT & GRAND COs.) bounded on N by Little Snake-Elk River divide; on E by the Continental Divide; on S by U.S. 40; on W by U.S. 40 and Routt CR 129.

15 - (ROUTT, GRAND & EAGLE COs.) bounded on N by U.S. 40; on E by Muddy Creek-Yampa River divide (Gore Range Divide) and Canyon Creek; on S by Colorado River; on W by Colo. 131.

16 - (JACKSON CO.) bounded on N by Lone Pine Creek, CRs 16 & 12W; on E by Colo. 14; on W by Continental Divide.

17 - (JACKSON CO.) bounded on N and E by Colo. 125; on S by Continental Divide (Jackson-Grand county line); on W and N by Colo. 14.

18 - (GRAND CO.) bounded on N and E by Continental Divide; on S by Arapaho Creek, Lake Granby and Colorado River; on W by the main fork of Troublesome Creek and Poison Creek.

SPECIAL LAND USE RULES

1. CALL FOR RESERVATIONS — A few SWAs require reservations to hunt turkey, these can be made by calling 1-800-846-9453. Check the 2015 *Colorado State Recreation Lands* brochure for details about which properties need reservations and for instructions on how to make and keep hunting reservations.

2. SPANISH PEAKS SWA — Map to trailhead and parking is on page 11. Hunting permitted only Sat., Sun., Mon. and Tues. in spring turkey season. Hunters with mobility impairments, see page 7 for exceptions.

3. HORSETHIEF CANYON SWA — Spring turkey hunting access is by youth permit only and is limited to just youth mentor hunting. Mentors cannot hunt. Applications available at the CPW Northwest Region office, 711 Independent Ave., Grand Junction, 81505. Application deadline March 31. Successful applicants will be notified by mail.

4. HIGEL, RIO GRANDE SWAs — Spring season access is by permit only, issued by drawing. Applications available at the CPW office, 0722 S. Road 1E, Monte Vista, 81144. Group applications accepted; maximum two applicants per group. Application deadline is Jan. 31. Successful applicants will be notified by mail. Information about the license drawing is on the application.

19 - (LARIMER CO.) bounded on N by Colo. 14 (Poudre Canyon Road); on E by I-25; on S by Harmony Road, CRs 19, 38E, 27 & 44H (Buckhorn Road), Elk Creek-Pennock Creek divide and RMNP boundary; on W by Larimer-Jackson county line.

20 - (LARIMER & BOULDER COs.) bounded on N by Larimer CRs 44H (Buckhorn Road), 27, 38E, 19, and Harmony Road; on E by I-25; on S by Colo. 52, U.S. 287, Boulder CR 34 (Niwot/Neva roads), U.S. 36, Boulder CRs 94, 81, 106, and 95 (Lefthand Canyon Drive), 102 (Brainard Lake Road), and ridge line from Brainard Lake W to Pawnee Peak; on W by Continental Divide, RMNP boundary, and Pennock Creek-Elk Creek divide.

21 - (RIO BLANCO & GARFIELD COs.) bounded on N by the White River; on E by Monument Gulch, Colo. 64, Monument Gulch Road, Rio Blanco CRs 103 and 26; on S by Douglas Creek-Roan Creek divide, the Douglas Creek-Salt Creeks divide, the Evacuation Creek-Salt Creeks divide and the Bitter Creek-West Salt Creek divide; and on W by UT.

22 - (RIO BLANCO & GARFIELD COs.) bounded on N by White River; on E by Colo. 13/789; on S by White River-Colorado River divide; on W by Rio Blanco CRs 26, 103, Monument Gulch Road, Colo. 64 and Monument Gulch.

23 - (RIO BLANCO & GARFIELD COs.) bounded on N by Rio Blanco CRs 30, 15 & 48, USFS Road 250; on E by USFS Road 250, Rio Blanco CRs 8 and 17 and USFS Primary Forest Road 245 (Buford-Newcastle Road); on S by White River-Colorado River divide; on W by Colo. 13/789.

24 - (RIO BLANCO & GARFIELD COs.) bounded on N by Williams Fork River-White River divide; on E by White River-Yampa River divide and White River-Colorado River divide; on S by South Fork of White River-Colorado River divide; on W by USFS Primary Forest Road 245 and Rio Blanco CRs 17 (Buford-Newcastle Road), 8 and USFS 250.

25 - (GARFIELD & EAGLE COs.) bounded on N by the Middle Fork of Derby Creek and Derby Creek; on E by Colorado River; on S by Deep Creek; and on W by the Colorado River-White River divide.

27 - (GRAND & ROUTT COs.) bounded on N and E by U.S. 40; on S by Colo. 9 and Colorado River; on W by Canyon Creek and Muddy Creek-Yampa River divide (Gore Range Divide).

28 - (GRAND CO.) bounded on N by Colorado River, Lake Granby and Arapaho Creek; on E by Continental Divide; on S by Continental Divide and Williams Fork-Straight Creek divide; on W by Williams Fork-Blue River divide and Barger Gulch.

29 - (BOULDER, JEFFERSON & GILPIN COs.) bounded on N by the ridge line from Pawnee Peak to Brainard Lake, Boulder CRs 102 (Brainard Lake Road), 94, 81, 106, and 95 (Lefthand Canyon Drive), U.S. 36, Boulder CR 34 (Neva/Niwot roads), and Colo. 52 (Mineral Road); on E by I-25; on S by Colo. 128, 93, 72, 119, and USFS Road 149 (Rollins Pass Road); on W by Continental Divide.

30 - (GARFIELD & MESA COs.) bounded on N by West Salt Creek-Bitter Creek divide, Evacuation Creek-Salt Creeks divide and Douglas Creek-Salt Creeks divide; on E by East Salt Creek-Roan Creek divide, Big Salt Wash- and Little Salt Wash-Roan Creek divides, and Bookcliffs; on S by Colorado River; on W by UT.

31 - (MESA, GARFIELD & RIO BLANCO COs.) bounded on N by Colorado-White River divide; on E by Roan Creek-Parachute Creek divide and Kelly Gulch; on S by Colorado River; and on W by Bookcliffs, Little Salt Wash-Roan Creek divide and East Salt Creek-Roan Creek divide.

32 - (GARFIELD CO.) bounded on N by Parachute Creek-Piceance Creek divide; on E by Colo. 13/789; on S by Colorado River; on W by Kelly Gulch and Roan Creek-Parachute Creek divide.

33 - (GARFIELD & RIO BLANCO COs.) bounded on N by White

River-Colorado River divide; on E by Canyon Creek; on S by Colorado River; on W by Colo. 13/789.

34 - (GARFIELD & EAGLE COs.) bounded on N by Deep Creek; on E and S by Colorado River; on W by Canyon Creek.

35 - (EAGLE CO.) bounded on N by Colorado River; on E by Colo. 131; on S by Eagle River; on W by Colorado River.

36 - (EAGLE CO.) bounded on N by Elk Creek to Piney Ridge, to Eagle's Nest Wilderness boundary and Gore Range divide (Elliot Ridge); on E by Gore Range divide; on S from Gore Range divide to Vail Pass summit on I-70, following I-70 to Dowd Junction, then to Wolcott by the Eagle River; on W by Colo. 131 and the Colorado River from State Bridge to Elk Creek.

37 - (SUMMIT & GRAND COs.) bounded on N by Colorado River; on E by Barger Gulch, Williams Fork River-Blue River divide, Williams Fork River-Straight Creek divide and the Continental Divide; on S by Continental Divide; on W by Eagle River-Tenmile Creek divide, I-70, Blue River, Cataract Creek and Gore Range Divide.

38 - (GILPIN, BOULDER, CLEAR CREEK & JEFFERSON COs.) bounded on N by USFS Road 149 (Rollins Pass Road), Colo. 119, 72, 93 and 128; on E by I-25; on S by I-70 and U.S. 40; on W by Continental Divide.

39 - (JEFFERSON, CLEAR CREEK & PARK COs.) bounded on N by U.S. 40 and I-70; on E by Colo. 74 and Jefferson CR 73; on S by U.S. 285, North Turkey Creek-Elk Creek divide and Pike-Arapaho NF boundary; on W by Continental Divide. (See unit 391.)

40 - (MESA CO.) bounded on N by Colorado River; on E by U.S. 50; on S by Colo. 141 and Dolores River; on W by UT.

41 - (MESA & DELTA COs.) bounded on N by Colorado River and Colo. 65; on E by Colo. 65, Lands End Road, Flowing Park Road and Mesa-Delta county line; on W by U.S. 50.

42 - (MESA & GARFIELD COs.) bounded on N by the Colorado River; on E by South Canyon Creek, the divide between Roaring Fork-Crystal River and Baldy Creek-Divide Creek drainages and common point of Mesa-Pitkin-Gunnison county lines; on S by Divide Creek-Muddy Creek divide, Divide Creek-Plateau Creek divide and Plateau Creek-Colorado River divide; and on W by Colorado River.

43 - (GARFIELD, PITKIN, EAGLE & GUNNISON COs.) bounded on N by Colorado River; on E by Roaring Fork River and Castle Creek;

on S by divide between Roaring Fork-Crystal River drainages and East River-Muddy Creek drainages and McClure Pass; on W by Muddy Creek-Crystal River divide, divide between Roaring Fork-Crystal River drainages and Divide Creek-Baldy Creek drainages and South Canyon Creek.

44 - (EAGLE CO.) bounded on N by Colorado River and Eagle River; on E by East Lake Creek; on S by Fryingpan River-Eagle River divide; on W by USFS Road 514 (Red Table Mountain Road), CR 10A (Cottonwood Pass Road) and Cottonwood Creek.

46 - (CLEAR CREEK, PARK & JEFFERSON COs.) bounded on N by Pike-Arapaho NF boundary and North Turkey Creek-Elk Creek divide; on E and S by U.S. 285; on W by North Fork of South Platte River and the Continental Divide.

47 - (EAGLE & PITKIN COs.) bounded on N by Frying Pan River and Ivanhoe Creek; on E by the Continental Divide; on S by Colo. 82; on W by Roaring Fork River.

48 - (LAKE & CHAFFEE COs.) bounded on N by Continental Divide; on E by Tennessee Creek and Arkansas River; on S by Clear Creek and South Fork of Clear Creek; on W by Continental Divide.

49 - (LAKE, PARK & CHAFFEE COs.) bounded on N by Continental Divide; on E by Colo. 9 and U.S. 285; on S by U.S. 24; on W by Arkansas River and Tennessee Creek.

50 - (PARK CO.) bounded on N by U.S. 285; on E by CR 77; on S by U.S. 24; on W by U.S. 285.

51 - (DOUGLAS CO.) bounded on N by Colo. 470; on E by I-25; on S by Douglas-Teller county line; on W by South Platte River.

52 - (DELTA CO.) bounded on N by Delta-Mesa county line; on E by Grand Mesa-Gunnison NF boundary, Overland Ditch, West Res. No. 1, and Jay Creek; on S by North Fork of Gunnison River and Colo. 92; on W by Colo. 65.

53 - (DELTA & GUNNISON COs.) bounded on N by North Fork of Gunnison River, Gunnison CR 12 (Kebler Pass Road), Kebler Pass and Ohio Pass; on E and S by Gunnison River-North Fork of Gunnison River divide and Curecanti Pass, Smith Fork-Curecanti Creek divide, Smith Fork-Dyer Creek divide, and Delta-Montrose county line; on W by Colo. 92.

54 - (GUNNISON CO.) bounded on N by Gunnison River-North Fork of Gunnison River divide and CR 12 (Kebler Pass Road); on E by Colo. 135; on S by U.S. 50, Blue Mesa Res. and Gunnison River; on W by Curecanti Creek.

55 - (GUNNISON CO.) bounded on N by Gunnison-Pitkin county line; on E by Continental Divide; on S by Taylor River-Tomichi Creek divide and Cumberland Pass, USFS Road 765 (N Quartz Creek Road), Quartz Creek Road, and U.S. 50; on W by Colo. 135, CR 12 (Kebler Pass Road), Kebler Pass and Ruby Range Summit.

56 - (CHAFFEE CO.) bounded on N by Chalk Creek and Tincup Pass Road; on E by Arkansas River and Colo. 291; on S by U.S. 50; on W by Continental Divide.

57 - (CHAFFEE, PARK & FREMONT COs.) bounded on N by U.S. 24; on E by Kaufman Ridge and Badger Creek; on S by U.S. 50 and Colo. 291; on W by Arkansas River.

58 - (FREMONT & PARK COs.) bounded on N by U.S. 24; on E by Park CR 59 and Colo. 9; on S by U.S. 50; on W by Kaufman Ridge and Badger Creek.

59 - (PUEBLO, FREMONT, EL PASO & TELLER COs.) bounded on N by U.S. 24; on E by I-25; on S by U.S. 50; on W by Colo. 67 and Phantom Canyon Road, except portions of Pueblo, Fremont and El Paso counties within Fort Carson Military Reservation. (See unit 591.)

60 - (MESA & MONTROSE COs.) bounded on N and E by Dolores River; on S by Colo. 90; on W by UT.

61 - (MESA, MONTROSE, OURAY & SAN MIGUEL COs.) bounded on N by Colo. 141; on E by USFS roads 402 (Divide Road) and Dave Wood Road; on S by Colo. 62; on W by San Miguel River and Dolores River.

62 - (DELTA, MESA, MONTROSE & OURAY COs.) bounded on N by Colo. 141; on E by Colo. 50 and 550; on S by Colo. 62; on W by Dave Wood Road and USFS Road 402 (Divide Road).

63 - (DELTA, GUNNISON & MONTROSE COs.) bounded on N by Colo. 92; on E by Colo. 92, Delta-Montrose county line, Smith Fork-Dyer Creek divide, Smith Fork-Curecanti Creek divide, Curecanti Pass and Curecanti Creek; on S and W by Gunnison River.

64 - (DELTA & MONTROSE COs.) bounded on N and E by Colo. 92 to the Gunnison River, south to Morrow Point Res.; on E by Big Blue Creek; on S and W by U.S. 50.

65 - (GUNNISON, HINSDALE, MONTROSE & OURAY COs.) bounded on N by U.S. 50; on E by Big Blue Creek-Cimarron Creek divide; on S by Ouray-San Juan county line; on W by Ouray-San Miguel county line, Colo. 62 and Colo. 550.

66 - (GUNNISON, HINSDALE & SA-GUACHE COs.) bounded on N by Morrow Point Res., Gunnison River

Get the lead out

www.bit.ly/leadammo

From the field to the table, ensuring your next harvest is safe for your family is important. Switching from lead bullets may be an option that's right for you. For more, go to the CPW website link above.

Science tells us ingesting lead can cause potential health problems. Risks are low for most people, however, you can also:

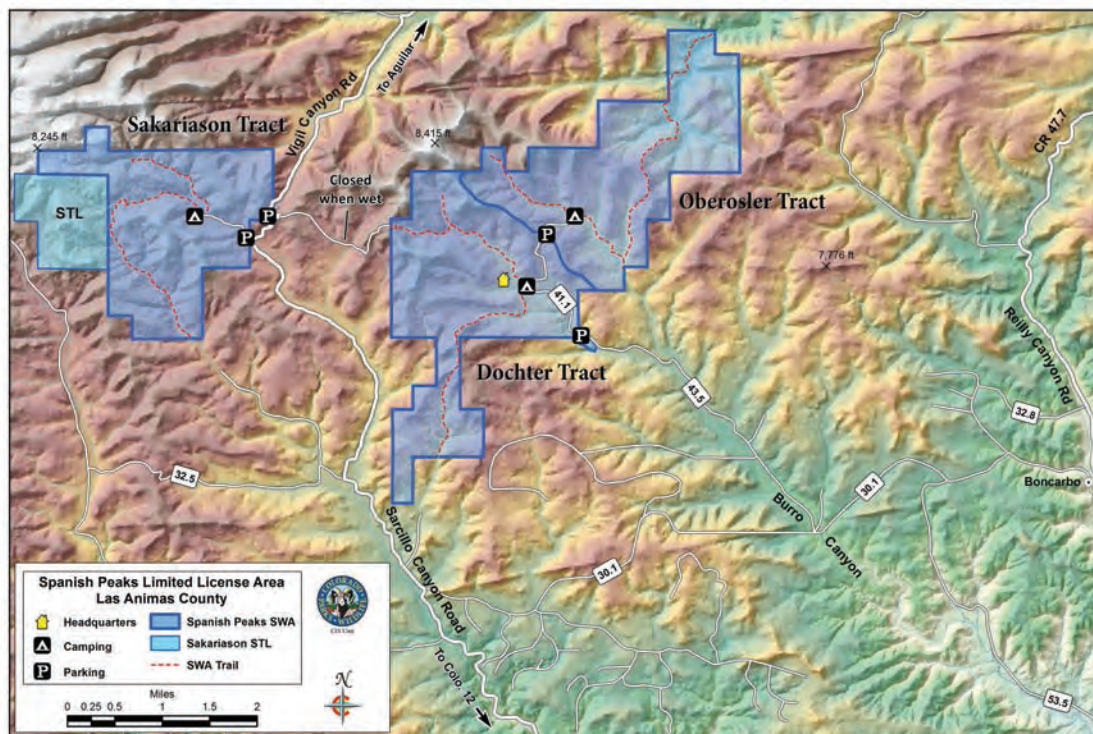
1. Use lead-free shot or bullets.
2. Liberally trim and discard meat damaged by the bullet when you process an animal. Fragments can scatter far from the wound.
3. Clean your meat grinder between each animal. Lead is soft and can go through your grinder, contaminating an entire batch of ground meat.
4. Avoid eating game meat from animals harvested with lead bullets if you are pregnant. Children younger than 6 should also avoid it.



Colorado Department of Public Health and Environment and Colorado Parks and Wildlife



SPANISH PEAKS STATE WILDLIFE AREA



NOTE: State Wildlife Area boundaries shown in this map are approximate. You can download and print maps for use in the field at cpw.state.co.us/placetogo/parks/Pages/WildlifeAreaMap.aspx.

and Blue Mesa Res.; on E by Colo. 149, Cebolla Creek, Spring Creek, Cathedral Creek and Groundhog Park, and Spring Creek-Cochetopa Creek divide; on S by Continental Divide; on W by Hinsdale-San Juan county line, Hinsdale-Ouray county line, Cimarron River-Henson Creek divide, and Big Blue Creek-Little Cimarron River divide, U.S. 50 and Big Blue Creek.

67 - (GUNNISON, HINSDALE & SAGUACHE COS.) bounded on N by U.S. 50; on E by Colo. 114 and North Pass; on E and S by Continental Divide; on W by Cochetopa Creek-Spring Creek divide and Groundhog Park, Cathedral Creek, Spring Creek, Cebolla Creek and Colo. 149.

68 - (SAGUACHE CO.) bounded on N by Colo. 114; on E by U.S. 285; on S by CRs G and 41G, USFS Roads 675 & 676, USFS Trails 796 & 787 and Saguache-Mineral county line; on W by Continental Divide.

69 - (CUSTER & FREMONT COS.) bounded on N by U.S. 50; on E by Colo. 67; on S by Colo. 96; on W by Colo. 69, Grape Creek and Arkansas River.

70 - (DOLORES, MONTROSE & SAN MIGUEL COS.) bounded on N by Colo. 90, Dolores River, San Miguel River, and Colo. 62; on E by Ouray-San Miguel county line and San Miguel-San Juan county line; on S by San Miguel-Dolores county line, Disappointment Creek, Dolores River and Summit Canyon Creek; on W by UT.

71 - (DOLORES & MONTEZUMA COS.) bounded on N by Dis-

pointment Creek and Dolores-San Miguel county line; on E by Dolores-San Juan county line, Montezuma-La Plata county line and Bear Creek; on S by Colo. 145; on W by USFS Road 526 (Dolores-Norwood Road).

72 - (DOLORES & MONTEZUMA COS.) bounded on N and E by U.S. 491; on S by NM; on W by UT.

73 - (MONTEZUMA CO.) bounded on N by Colo. 184 & 145 and Bear Creek; on E by Montezuma-La Plata county line; on S by NM; on W by U.S. 491.

74 - (LA PLATA & SAN JUAN COS.) bounded on N by Ouray-San Juan county line; on E by San Juan-Hinsdale county line and Animas River; on S by U.S. 160; on W by Montezuma-La Plata county line, Dolores-San Juan county line, San Miguel-San Juan county line & Ouray-San Juan county line.

75 - (LA PLATA & SAN JUAN COS.) bounded on N and E by Hinsdale-San Juan county line, Continental Divide, Los Pinos River-Florida River divide, La Plata CR 240 (Pine River-Florida River Road), Bayfield-Vallecito Road and Los Pinos River; on S by NM; on W by Animas River.

76 - (HINSDALE, MINERAL, RIO GRANDE, SAGUACHE & SAN JUAN COS.) bounded on N by Continental Divide, Saguache-Mineral county line, and USFS Trail 787; on E by La Garita Stock Driveway (all-terrain-vehicle trail), USFS roads 600-3A & 600, Colo. 149 and U.S. 160; on S and W by Continental Divide.

77 - (ARCHULETA, HINSDALE, LA PLATA & MINERAL COS.) bounded on N by Continental Divide and Piedra River-San Juan River divide; on E by Piedra River-San Juan River divide, Four Mile Creek and San Juan River; on S by U.S. 160; on W by Los Pinos River-Piedra River divide.

78 - (ARCHULETA, CONEJOS, MINERAL & RIO GRANDE COS.) bounded on N and E by Continental Divide; on S by NM; on W by San Juan River, Four Mile Creek and Piedra River-San Juan River divide.

79 - (MINERAL, RIO GRANDE & SAGUACHE COS.) bounded on N by USFS trails 787 and 796, USFS roads 676 and 675, Saguache CRs 41G and G; on E by U.S. 285; on S by U.S. 160; on W by Colo. 149, USFS roads 600 and 600-3A and La Garita Stock Driveway (ATV trail).

80 - (ALAMOSA, CONEJOS, MINERAL & RIO GRANDE COS.) bounded on N by U.S. 160; on E by the Rio Grande; on S by La Jara Creek, the Alamosa River, USFS Roads 250 and 380 and Elwood Pass; and on W by the Continental Divide.

81 - (ALAMOSA, ARCHULETA, CONEJOS & RIO GRANDE COS.) bounded on N by USFS Roads 380 and 250, the Alamosa River, and La Jara Creek; on E by the Rio Grande; on S by NM; and on W by the Continental Divide.

82 - (ALAMOSA & SAGUACHE COS.) bounded on N by Poncha Pass; on N and E by Rio Grande-Arkansas River divide; on S by Alamosa-Costilla county line and U.S. 160; on W by Colo. 17 and U.S. 285.

83 - (ALAMOSA, COSTILLA & HUERFANO COS.) bounded on N by U.S. 160 and Alamosa-Costilla county line; on E by Costilla-Huerfano county line and Sangre de Cristo-Culebra Range; on S by NM; on W by Rio Grande River.

84 - (CUSTER, FREMONT, HUERFANO & PUEBLO COS.) bounded on N by U.S. 50; on E by I-25 and Colo. 1; on S by Colo. 69; on W by Colo. 96 & 67.

85 - (HUERFANO & LAS ANIMAS COS.) bounded on N by Colo. 69; on E by I-25; on S by Colo. 12 and North and West forks of Purgatoire River; on W by Sangre de Cristo Divide, Huerfano CRs 570, 572 (Pass Creek Road) and 555 (Muddy Creek Road).

86 - (FREEMONT, CUSTER & CHAFFEE COS.) bounded on N by U.S. 50; on E by Colo. 69; on S by Huerfano-Custer county line; on W by Sangre De Cristo Divide and U.S. 285.

87 - (LARIMER & WELD COS.) bounded on N by WY; on E by Weld CRs 390 (Keota-Grover Road) and 105 between Keota and Colo. 14; on S by Colo. 14; on W by I-25.

88 - (WELD CO.) bounded on N by WY and NEB; on E by Colo. 71; on S by Colo. 14; on W by CRs 390 (Keota-Grover Road) and 105 (between Keota and Colo. 14).

89 - (WELD & LOGAN COS.) bounded on N by NEB; on E by Colo. 113 and U.S. 138; on S by Colo. 14; on W by Colo. 71.

90 - (LOGAN & SEDGWICK COS.) bounded on N by NEB; on E and S by U.S. 138; on W by Colo. 113.

91 - (LOGAN CO.) bounded on N by U.S. 138; on E by Red Lion Road (CR 93); on S by I-76 and U.S. 6; on W by U.S. 138.

92 - (LOGAN & SEDGWICK COs.) bounded on N by U.S. 138 and NEB; on E and S by I-76; on W by Red Lion Road (Logan CR 93).

93 - (LOGAN, SEDGWICK & PHIL-LIPS COs.) bounded on N by I-76; on N and E by NEB state line; on S by U.S. 6; on W by I-76.

94 - (LARIMER, ADAMS & WELD COs.) bounded on N by Colo. 14; on E by U.S. 85 and U.S. 34, Weld CR 49 (Hudson-Keenesburg Cutoff), and I-76; on S by Colo. 7; on W by I-25.

95 - (WELD, LOGAN, MORGAN & WASHINGTON COs.) bounded on N by Colo. 14; on E and S by U.S. 6, Logan CRs 6 and 17.7, Washington CR 58, Morgan CR W.7, 2nd Street in Snyder, Colo. 71, Morgan CRs W.5, 28, W, 13.5 and W.5, and Colo. 144; and on W by Morgan CR 2, Morgan CR KK/Weld CR 74, and Weld CR 105.

96 - (LOGAN, WASHINGTON & MORGAN COs.) bounded on N by Colo. 144, Morgan CRs W.5, 13.5, W, 28 and W.5, Colo. 71, Morgan CR W.7 (becomes Washington CR 58 at county line), Washington CR 58 (becomes Logan CR 17.7 at county line), Logan CRs 17.7, 6 and U.S. 6; on E and S by U.S. 6 and I-76; on W by Colo. 144.

97 - (LOGAN, WASHINGTON & MORGAN COs.) bounded on N and E by Colo. 61; on S by U.S. 34; and on W by I-76.

98 - (LOGAN, PHILLIPS, YUMA & WASHINGTON COs.) bounded on N by Colo. 6; on E by NEB; on S by U.S. 34; on W by Colo. 61.

99 - (WELD, MORGAN & ADAMS COs.) bounded on N by I-76; on E by Colo. 71; on S by U.S. 36; on W by Colo. 79 and 144th Ave.; on S and W by Adams CR 25N, 152nd Ave. and I-76; on W by I-76.

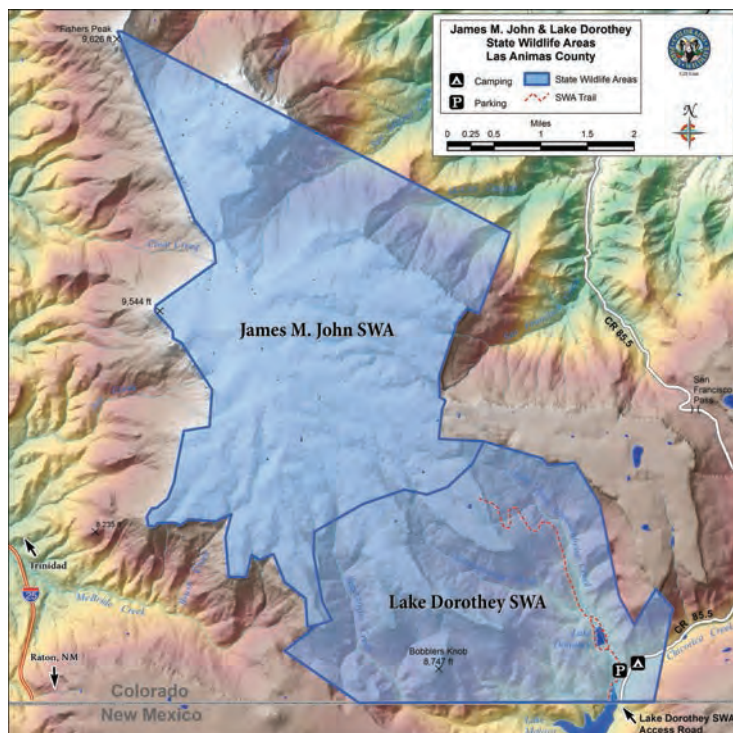
100 - (WASHINGTON & MORGAN COs.) bounded on N by U.S. 34; on E by Colo. 61; on S by U.S. 36; on W by Colo. 71.

101 - (WASHINGTON & YUMA COs.) bounded on N by U.S. 34; on E by U.S. 385, Yuma CR 26, Colo. 59, Yuma CRs 16, C, 9 (becomes Washington CR 9 at county line), Washington CRs 9, YY and 7; on S by U.S. 36; on W by Colo. 61.

102 - (WASHINGTON & YUMA COs.) bounded on N by U.S. 34; on E by NEB and KS; on S by U.S. 36; on W by Washington CRs 7, YY, and 9 (becomes Yuma CR 9 at county line), Yuma CRs 9, C and 16, Colo. 59, Yuma CR 26 and U.S. 385.

103 - (YUMA CO.) bounded on N by U.S.

JAMES M. JOHN AND LAKE DOROTHEY SWAs



NOTE: The James M. John SWA is 4 miles from the Lake Dorothy trailhead. The majority of turkey habitat is in San Miguel Canyon at the northern end of James M. John SWA (about 8 miles from the trailhead). Boundaries depicted are approximate.

36; on E by KS; on S by Kit Carson-Yuma county line; on W by U.S. 385.

104 - (DENVER, ADAMS, ARAPAHOE, DOUGLAS & ELBERT COs.) bounded on N by Colo. 7, I-76, 152nd Ave., Adams CR 25N & 144th Ave.; on E by Colo. 79, Colo. 36 (Arapahoe CR 137), Kiowa-Bennett Mile Road, Elbert CRs 53, 166, 45-49, Colo. 86 and Elbert CR 25-41; on S by Elbert-Douglas-El Paso county lines; on W by I-25.

105 - (ADAMS, ARAPAHOE & ELBERT COs.) bounded on N by U.S. 36; on E by I-70; on S by U.S. 24 and Elbert-El Paso county line; and on W by Arapahoe CR 137 (Kiowa-Bennett Mile Road), Elbert CRs 53, 166, 45-49, Colo. 86 and Elbert CR 25-41.

106 - (ARAPAHOE, ELBERT, WASHINGTON & LINCOLN COs.) bounded on N by U.S. 36; on E by Colo. 71; on S and W by I-70.

107 - (WASHINGTON, LINCOLN & KIT CARSON COs.) bounded on N by U.S. 36; on E by Colo. 59; on S by I-70; on W by Colo. 71.

109 - (WASHINGTON, YUMA & KIT CARSON COs.) bounded on N by U.S. 36; on E by U.S. 385, Yuma-Kit Carson county line and KS; on S by I-70; on W by Colo. 59.

110 - (EL PASO CO.) bounded on N by Douglas-Elbert-El Paso county lines;

on E by U.S. 24 and CR 523 (Calhan Hwy.); on S by Colo. 94; on W by I-25.

111 - (EL PASO, LINCOLN & ELBERT COs.) bounded on N by U.S. 24; on E by Colo. 71; on S by Colo. 94; and on W by U.S. 24 and El Paso CR 523 (Calhan Hwy).

112 - (LINCOLN CO.) bounded on N by U.S. 40; on E by Co. Primary 109; on the S by Colo. 94; on W by Colo. 71.

113 - (LINCOLN & CHEYENNE COs.) bounded on N by U.S. 40; on E by Cheyenne CR 8; on S by Colo. 94; on W by Co. Primary 109.

114 - (LINCOLN, KIT CARSON & CHEYENNE COs.) bounded on N by I-70; on E by Flagler-Wildhorse Road (CRs 5, G, 6, A [Kit Carson county line], GG [Cheyenne county line] and 9); on S and W by U.S. 40.

115 - (KIT CARSON & CHEYENNE COs.) bounded on N by I-70; on E by Colo. 59; on S by U.S. 40; and W by the Flagler-Wildhorse Road.

116 - (KIT CARSON & CHEYENNE COs.) bounded on N by I-70; on E by U.S. 385; on S by U.S. 40; on W by Colo. 59.

117 - (KIT CARSON & CHEYENNE COs.) bounded on N by I-70; on E by KS; on S by U.S. 40; on W by U.S. 385.

118 - (EL PASO CO.) bounded on N

by Colo. 94; on E by Yoder Road, Shear Road and Boone Road; on S by Hanover Road, Finch Road and Myers Road; on W by I-25.

119 - (EL PASO & LINCOLN COs.) bounded on N by Colo. 94; on E by Colo. 71; on S by Crowley-Lincoln and El Paso-Pueblo county lines; on W by Yoder Road, Shear Road and Boone Road.

120 - (LINCOLN, CROWLEY & KIOWA COs.) bounded on N by Colo. 94, on E by Co. Primary Roads 109, 1, 2, and Secondary Road 35; on S by Colo. 96; and on W by Colo. 71.

121 - (CHEYENNE, LINCOLN & KIOWA COs.) bounded on N by Colo. 94 and U.S. 40; on E by U.S. 287; on S by Colo. 96; and on W by Co. Primary Roads 109, 1, 2, and Secondary Road 35.

122 - (CHEYENNE & KIOWA COs.) bounded on N by U.S. 40; on E by KS; on S by Colo. 96; on W by U.S. 287.

123 - (EL PASO & PUEBLO COs.) bounded on N by Hanover Road, Finch Road and Myers Road; on E by Yoder Road, Shear Road and Boone Road; on S by Arkansas River; on W by I-25.

124 - (CROWLEY & PUEBLO COs.) bounded on N by Lincoln-Crowley and El Paso-Pueblo county lines; on E by Colo. 71; on S by Arkansas River; on W by Yoder-Boone Road.

125 - (CROWLEY, KIOWA, BENT & OTERO COs.) bounded on N by Colo. 96; on E by Kiowa CR 19 and Bent CR 14 to Bent CR HH, S on Bent CR 15 to Arkansas River; on S by Arkansas River; on W by Colo. 71.

126 - (KIOWA, BENT & PROWERS COs.) bounded on N by Colo. 96; on E by U.S. 287; on S by Arkansas River; on W by Kiowa CR 19 and Bent CR 14 to Bent CR HH; S on Bent CR 15 to Arkansas River.

127 - (KIOWA & PROWERS COs.) bounded on N by Colo. 96; on E by KS; on S by Arkansas River; on W by U.S. 287.

128 - (PUEBLO, HUERFANO, LAS ANIMAS & OTERO COs.) bounded on N by Arkansas River; on E by Colo. 167; on S by Colo. 10; on the W by I-25.

129 - (OTERO CO.) bounded on N and E by Arkansas River; on S by Colo. 10; on W by Colo. 167.

130 - (OTERO & BENT COs.) bounded on N by Arkansas River; on E by Colo. 101, Pritchett-Las Animas improved road, and U.S. 50; on S by Bent-Las Animas, Bent-Baca county lines; on W by Colo. 109.

131 - (ROUTT & RIO BLANCO COs.) bounded on N by U.S. 40; on E by Colo. 131; on S by Routt CRs 15, 132, 25, 132A and 29; on W by Fish Creek, Trout Creek & Routt CR 179.

132 - (PROWERS CO.) bounded on N by Arkansas River; on E by KS; on S by Prowers CRs D & F; on W by U.S. 287.

133 - (HUERFANO, PUEBLO & LAS ANIMAS COs.) bounded on N by Colo. 10; on E by Colo. Interstate Gas Pipeline Road; on S by Apishapa River; on W by I-25.

134 - (LAS ANIMAS CO.) bounded on N by Apishapa River; on E by Colo. Interstate Gas Pipeline Road; on S by U.S. 350; on W by I-25.

135 - (LAS ANIMAS, PUEBLO & OTERO COs.) bounded on N by Colo. 10 and Arkansas River; on E by Colo. 109 (N of Purgatoire River) and Purgatoire River (S of Colo. 109); on S by Las Animas-Otero county line, N boundary of U.S. Army Pinon Canyon Maneuver Site, and U.S. 350; on W by Colo. Interstate Gas Pipeline Road.

136 - (OTERO, BENT & LAS ANIMAS COs.) bounded on N by Colo. 109 and Purgatoire River; on E by Colo. 109; on S by U.S. 160; on W by Chacuaco Creek and Purgatoire River.

137 - (LAS ANIMAS & BACA COs.) bounded on N by Bent-Las Animas & Baca county lines; on E by Pritchett-Las Animas improved road and U.S. 160; on S by U.S. 160; on W by Colo. 109.

138 - (BACA CO.) bounded on N by Baca-Bent & Baca-Prowers county lines; on E by U.S. 287; on S by U.S. 160; on W by Pritchett-Las Animas improved road.

139 - (BACA CO.) bounded on N by Prowers CRs D & F; on E by KS; on S by Baca CR M; on W by U.S. 287.

140 - (LAS ANIMAS CO.) bounded on N by U.S. 160; on E by Colo. 389; on S by NM; on W by I-25.

141 - (LAS ANIMAS CO.) bounded on N by W and S boundaries of U.S. Army Pinon Canyon Maneuver Site and Colo. Interstate Gas Pipeline Road; on E by Purgatoire River and San Francisco Creek; on S by U.S. 160; on W by U.S. 350.

142 - (LAS ANIMAS CO.) in U.S. Army Pinon Canyon Maneuver Site.

143 - (LAS ANIMAS CO.) bounded on N by U.S. 160; on E by Baca-Las Animas county line; on S by OK & NM; on W by Colo. 389.

144 - (BACA CO.) bounded on N by U.S. 160; on E by U.S. 287; on S by OK; on W by Baca-Las Animas county line.

145 - (BACA CO.) bounded on N by CR M; on E by KS; on S by OK; on W by U.S. 287.

146 - (BENT & PROWERS COs.) bounded on N by Arkansas River; on E by U.S. 287; on S by Prowers-Baca & Bent-Baca county lines; on W by Colo. 101 and Pritchett-Las

Animas improved road and U.S. 50.

147 - (LAS ANIMAS CO.) bounded on N by Las Animas-Otero county line; on E by Purgatoire River and Chacuaco Creek, on S by U.S. 160; on W by San Francisco Creek, Purgatoire River, Colo. Interstate Gas Pipeline Road, east boundary of U.S. Army Pinon Canyon Maneuver Site.

161 - (JACKSON CO.) bounded on N by WY; on E by Colo. 125; on S by Colo. 14, CRs 12W & 16, Lone Pine Creek and Continental Divide; on W by Continental Divide.

171 - (JACKSON CO.) bounded on N and E by Colo. 14 and Jackson-Larimer county line; on S by Jackson-Grand county line; on W by Colo. 125.

181 - (GRAND CO.) bounded on N by Continental Divide; on E by Poison Creek and Main Fork of Troublesome Creek; on S by Colorado River; on W by Colo. 9 and U.S. 40.

191 - (LARIMER CO.) bounded on N by WY; on E by U.S. 287; on S by Colo. 14; on W by CRs 69, 68C, 74E (Red Feather Lakes Road), 67J, 179, 80C (Cherokee Park Road) and 59.

211 - (MOFFAT & RIO BLANCO COs.) bounded on N by U.S. 40 and Yampa River; on E by Colo. 13/789; on S by White River; on W by Strawberry Creek-Deception Creek Road.

214 - (ROUTT CO.) bounded on N by Little Snake-Elk River divide; on E by CR 129; on S by U.S. 40; on W by Wolf Creek, Wolf Mountain, along the Elk River-Elkhead Creek divide.

231 - (ROUTT, RIO BLANCO & GARFIELD COs.) bounded on N by Routt CRs 29, 132A, 25, 132 & 15; on E by Colo. 131; on S by Bear River; on W by Williams Fork-Yampa River divide to Dunkley Pass, Rio Blanco CRs 8 & 19 and Routt CR 55.

301 - (MOFFAT CO.) bounded on N by CRs 5, 158, 3 & 108; on E by Colo. 13/789; on S by Yampa River; on W by CR 17.

361 - (EAGLE & GRAND COs.) bounded on N by the Colorado River from Elk Creek to Inspiration Point; on E by the Gore Range Divide; on S and W by Piney Ridge to Elk Creek, following Piney Ridge to the Eagle's Nest Wilderness boundary and the Gore Range Divide (Elliott Ridge).

391 - (JEFFERSON CO.) bounded on N by I-70; on E by I-25; on S by Colo. 470, CRs 124 (Deer Creek Canyon), 122 (South Turkey Creek) and U.S. 285; on W by CR 73 and Colo. 74. (See unit 39)

411 - (MESA & DELTA COs.) bounded on N by Delta-Mesa county line, Flowing Park Road and Lands End Road; on E by Colo. 65 and 92; on S by U.S. 50.

421 - (MESA & GARFIELD COs.) bounded on N by Colorado River-Plateau Creek divide; on E by Divide Creek-Buzzard Creek divide;

on S by Mesa-Delta county line; on W by Colo. 65.

441 - (MOFFAT & ROUTT COs.) bounded on N by USFS Road 42; on E by Elkhead Creek-Elk River divide and Wolf Creek; on S by U.S. 40; on W by Elkhead Creek.

444 - (EAGLE, GARFIELD & PITKIN COs.) bounded on N by Colorado River, Cottonwood Creek, Eagle CR 10A, (Cottonwood Pass Road), USFS 514 (Red Table Mountain Road) and Fryngpan-Eagle River divide; on E by divide between Lime Creek and North Fork of Fryngpan River and its tributaries and Cross Creek-Homestake Creek drainages; on S by Ivanhoe Creek and Fryngpan River; on W by Roaring Fork River.

461 - (JEFFERSON & PARK COs.) bounded on N by Jefferson CRs 122 (South Turkey Creek Canyon), 124 (Deer Creek Canyon), Colo. 7 and 470; on E by South Platte River; on S by North Fork of South Platte River; on W by U.S. 285.

481 - (CHAFFEE CO.) bounded on N by South Fork of Clear Creek and Clear Creek; on E by Arkansas River; on S by Chalk Creek and Tincup Pass Road from St. Elmo; on W by Continental Divide.

500 - (PARK CO.) bounded on N by Continental Divide; on E by North Fork of South Platte River; on S by U.S. 285; on W by Colo. 9.

501 - (PARK & JEFFERSON COs.) bounded on N by U.S. 285 and North Fork of South Platte River; on E by South Platte River; on S by U.S. 24; on W by Park CR 77.

511 - (TELLER, EL PASO & PARK COs.) bounded on N by Douglas county line; on E by I-25; on S by U.S. 24; on W by South Platte River, except on U.S. Air Force Academy.

512 - (EL PASO CO.) bounded on N by north boundary of U.S. Air Force Academy; on E by I-25; on S and W by the south and west U.S. Air Force Academy boundaries.

521 - (GUNNISON & DELTA COs.) bounded on N by Delta-Mesa county line and Gunnison-Mesa county line; on E by Gunnison-Pitkin county line, White River-Gunnison NF boundary and Ruby Range Summit; on S by Gunnison CR 12 (Kebler Pass Road) and North Fork of Gunnison River; on W by Jay Creek, West Res. No. 1, Overland Ditch and Grand Mesa-Gunnison NF boundary.

551 - (GUNNISON & SAGUACHE COs.) bounded on N by U.S. 50, Quartz Creek Road, North Quartz Creek Road and Taylor River-Tomichi Creek divide; on E by Continental Divide; on S and W by Colo. 114.

561 - (CHAFFEE & SAGUACHE COs.) bounded on N by U.S. 50; on E by U.S. 285; on S by the Arkansas

River-Rio Grande drainage divide; on W by Continental Divide.

581 - (PARK, TELLER & FREMONT COs.) bounded on N by U.S. 24; on E by Colo. 67 and Phantom Canyon Road; on S by U.S. 50; on W by Colo. 9 and Park CR 59.

591 - (PUEBLO, FREMONT & EL PASO COs.) on Fort Carson Military Reservation land.

681 - (SAGUACHE CO.) bounded on N by Continental Divide and Arkansas River Divide between North Pass and Poncha Pass; on E by U.S. 285; on S by U.S. 285 & Colo. 114; on W by Colo. 114.

682 - (SAGUACHE CO.) bounded on N by U.S. 285; on E by Colo. 17; on S by CR G; on W by U.S. 285.

691 - (CUSTER & FREMONT COs.) bounded on N by U.S. 50; on E and S by Grape Creek and Arkansas River; on W by Colo. 69.

711 - (DOLORES, MONTEZUMA & SAN MIGUEL COs.) bounded on N by Summit Canyon Creek, Dolores River and Disappointment Creek; on E by USFS Road 526 (Dolores-Norwood Road); on E and S by Colo. 145; on S by Colo. 184; on W by U.S. 491 and UT.

741 - (LA PLATA CO.) bounded on N by U.S. 160; on E by Animas River; on S by NM; on W by Montezuma-La Plata county line.

751 - (ARCHULETA, HINSDALE, LA PLATA & SAN JUAN COs.) bounded on N by Continental Divide; on E by Los Pinos River-Piedra River divide; on S by NM; on W by Los Pinos River, CRs 501 (Bayfield-Vallecito Road), 240 (Pine River-Florida River Road) and Los Pinos River-Florida River divide.

771 - (ARCHULETA CO.) bounded on N by U.S. 160; on E by San Juan River; on S by NM; on W by Los Pinos River-Piedra River divide.

791 - (ALAMOS, RIO GRANDE & SAGUACHE COs.) bounded on N by CR G; on E by Colo. 17; on S by U.S. 160; on W by U.S. 285.

851 - (COSTILLA & LAS ANIMAS COs.) bounded on N by West and North forks of Purgatoire River, Colo. 12; on E by I-25; on S by NM; on W by Sangre de Cristo Divide.

861 - (HUERFANO CO.) bounded on N by Custer-Huerfano county line; on E by Colo. 69, CRs 555 (Muddy Creek Road), 570 and 572 (Pass Creek Road); on S and W by Sangre de Cristo Divide.

951 - (WELD & MORGAN COs.) bounded on N by Colo. 14; on E by Weld CR 105, Morgan CR KK/Weld CR 74, Morgan CR 2 and Colo. 144; on S by I-76; on W by Weld CR 49, U.S. 34 and U.S. 85.



Printed for free distribution by
Colorado Parks and Wildlife
6060 Broadway, Denver, CO 80216
(303) 297-1192
cpw.state.co.us

NOTICE: This brochure includes information on turkey hunting. It is not a legal notice nor a complete collection of hunting regulations and laws. It is a condensed guide issued for hunters' convenience. Copies of statutes and regulations can be obtained from a Colorado Parks and Wildlife area office or at cpw.state.co.us/aboutus/Pages/Regulations.aspx. For questions, call CPW at (303) 297-1192.

2016 TURKEY DATES TO KNOW

SPRING

FEB. 11 — Application deadline

MARCH 7 — Drawing results posted online

MARCH 16 — Over-the-counter license sales begin

MARCH 7 — Licenses in the mail

APRIL 9-MAY 22* — Spring hunting season

FALL & LATE SEASON

MAY 19 — Applications accepted beginning on this date

JULY 14 — Application deadline

JULY 29 — Drawing results posted online

JULY 29 — Licenses in the mail

AUG. 2 — Over-the-counter license sales begin

SEPT. 1-OCT. 28* — Fall season

DEC. 15-JAN. 15* — Late season

***SEASON DATES:** Hunt dates vary by license type and hunt location. See hunt tables for details, pages 2-5. Some licenses are valid only on certain dates. It is your responsibility to know the correct dates for your hunt.

The Corner Store, Colorado Style

With your mobile device, you can shop whenever and wherever you like. Whether you are looking for books, hats, DVDs and more, or are wishing to purchase your yearly hunting and fishing licenses or state parks pass, Colorado Parks and Wildlife makes it easy for you. If you need to purchase a hunting or fishing license, you'll find just what you're looking for at co.wildlifelicenses.com. Need to buy your annual state park pass? You'll find it at parksstore.state.co.us. And if you are looking for outdoor-related books, hats, DVDs, or the perfect gift for your favorite outdoor enthusiast, you'll find everything you need and more at wildlifestore.state.co.us.

© WAYNE D. LEWIS/CPW