

COLORADO DIVISION OF WILDLIFE

# 2011 Colorado Turkey



VIEW AN INTERACTIVE, SEARCHABLE BROCHURE ONLINE AT:  
[WWW.FLIPSEEKPUBS.COM/PUBLICATION/?I=55755](http://WWW.FLIPSEEKPUBS.COM/PUBLICATION/?I=55755)

- Spring application deadline: **FEB. 10**
- Fall application deadline: **JULY 14**

#### DON'T MISS INSIDE:

- NEW hunting area maps  
pages 5, 7
- Application instructions  
page 2
- Safety in the field  
page 3



#### VIDEO

Learn top turkey hunting techniques from DOW experts. Details inside.



# TABLE OF CONTENTS

## License Fees, What's New in 2011 ..... 1

- Fees and details for purchasing adult, youth licenses
- 2011 Habitat Stamp and hunting area changes

## Applications and preference points ..... 2

- How to fill out the application
- Application deadline, submitting and refund policy
- Gaining and using preference points
- (Paper applications are located in the center of the brochure.)

## In the field: Bag limits, safety, more ..... 3

- Bag limits, methods of take
- Tagging your bird, required evidence of sex
- Legal hunting hours, sunrise and sunset table
- Safety tips for hunters

## Spring license information ..... 4-5

- Limited license tables and hunt codes .....4
- Spring Ranching for Wildlife units and hunt codes.....4
- **MAP:** Hunttable units with spring unlimited license .....5

## Fall license information ..... 6-7

- Limited license tables and hunt codes .....6
- Southwest Youth Extended Season units .....6
- Fall Ranching for Wildlife units and hunt code.....6
- **MAP:** Hunttable units with fall unlimited license .....7

## License requirements, SWA maps ..... 8-9

- **MAPS:** James M. John, Lake Dorothy, Spanish Peaks SWAs
- Hunter education requirements, youth outreach licenses, mobility-impaired licenses, residency requirements, weapons restrictions, child support information, TIPs program, contest participation

## Game Management Units ..... 9-13

- Special land use rules and hunt information .....10

## Important deadlines & season dates ..... back

### RECORDED INFORMATION & SEASON DATES

Deer, Elk, Pronghorn, Bear .....	(303) 291-7529
Fishing .....	(303) 291-7533
Small Game, Upland Game .....	(303) 291-7546
Turkey .....	(303) 291-7547
Waterfowl .....	(303) 291-7548
Hunter Education .....	(303) 291-7530
Mobility Impaired Licenses .....	(303) 291-7528
List of recordings .....	(303) 297-1192

# DOW OFFICES

[www.wildlife.state.co.us](http://www.wildlife.state.co.us)

### DOW HEADQUARTERS

6060 Broadway  
Denver, 80216  
(303) 297-1192

### GUNNISON

300 W. New York Ave.  
Gunnison, 81230  
(970) 641-7060

### SERVICE CENTERS

#### BRUSH

122 E. Edison  
Brush, 80723  
(970) 842-6300

### HOT SULPHUR SPRINGS

346 Grand County Rd. 362  
Hot Sulphur Springs, 80451  
(970) 725-6200

#### LAMAR

2500 S. Main St.  
Lamar, 81052  
(719) 336-6600

#### COLORADO SPRINGS

4255 Sinton Road  
Colorado Springs, 80907  
(719) 227-5200

#### MEEKER

73485 Hwy. 64  
Meeker, 81641  
(970) 878-6090

#### DENVER/ METRO

6060 Broadway  
Denver, 80216  
(303) 291-7227

#### MONTE VISTA

0722 S. Road 1 East  
Monte Vista, 81144  
(719) 587-6900

#### DURANGO

151 E. 16th St.  
Durango, 81301  
(970) 247-0855

#### MONTROSE

2300 S. Townsend Ave.  
Montrose, 81401  
(970) 252-6000

#### FORT COLLINS

317 W. Prospect Road  
Fort Collins, 80526  
(970) 472-4300

#### PUEBLO

600 Reservoir Road  
Pueblo, 81005  
(719) 561-5300

#### GLENWOOD SPRINGS

50633 Hwys. 6 & 24  
Glenwood Springs, 81601  
(970) 947-2920

#### SALIDA

7405 Hwy. 50  
Salida, 81201  
(719) 530-5520

#### GRAND JUNCTION

711 Independent Ave.  
Grand Junction, 81505  
(970) 255-6100

#### STEAMBOAT SPRINGS

925 Weiss Drive  
Steamboat Springs, 80477  
(970) 870-2197

Printed for free distribution

## COLORADO DIVISION OF WILDLIFE

Department of Natural Resources  
6060 Broadway, Denver 80216  
(303) 297-1192

[www.wildlife.state.co.us](http://www.wildlife.state.co.us)

Published December 2010; 140,000 copies

Editor: Amy Nickelson | Cover photo of Merriam's turkey © DonaldMJones.com | Printed by: American Web, Denver



The DOW receives federal financial assistance from the U.S. Fish and Wildlife Service. In accordance with Title VI of the Civil Rights Act of 1964, Section 504 of the Rehabilitation Act of 1973, Title II of the Americans with Disabilities Act of 1990, the Age Discrimination Act of 1975 and Title IX of the Education Amendments of 1972, the U.S. Department of the Interior and its bureaus prohibit discrimination on the basis of race, color, national origin, age, disability or sex. If you believe that you have been discriminated against in any program, activity or facility as described above or for more information, write: U.S. Fish and Wildlife Service, Division of Bird Habitat Conservation, Attn: Civil Rights Coordinator, 4401 N Fairfax Drive, MBSP 4020, Arlington, VA 22203.

The Wildlife Commission sets turkey regulations in November. Wildlife Commissioners (as of Dec. 2010): Tim Glenn, chairman • Robert Streeter, vice chairman • Mark Smith, secretary • David R. Brougham, member • Dennis Buechler, member • Dorothea Farris, member • Allan Jones, member • John Singletary, member • Dean Wingfield, member • Mike King, ex officio member • John Stulp, ex officio member



## 2011 LICENSE FEES

LICENSE	FEE	TOTAL TO APPLY	COST
» Habitat Stamp (required) ..\$10 .....	-	.....\$10	

### RESIDENT

» Limited Spring .....	\$21	.....\$3	.....\$24
» Limited Fall .....	\$16	.....\$3	.....\$19
» Limited Youth .....	\$11	.....\$3	.....\$14
» Unlimited Spring .....	\$21	.....-	.....\$21
» Unlimited Fall .....	\$16	.....-	.....\$16
» Unlimited Youth .....	\$11	.....-	.....\$11

### NONRESIDENT

» Limited Spring or Fall .....	\$101	.....\$3	.....\$104
» Limited Youth .....	\$76	.....\$3	.....\$79
» Unlimited Spring or Fall .....	\$101	.....-	.....\$101
» Unlimited Youth .....	\$76	.....-	.....\$76

Prices include 25-cent search-and-rescue fee and 75-cent surcharge for the Wildlife Education Fund.

### SAVE TIME: BUY ONLINE OR BY PHONE

Buy your license through the DOW's website or by calling 1-800-244-5613. Credit cards are accepted for phone and Internet purchases. DOW license agents and offices also sell licenses.



### LICENSE INFORMATION

1. Completion and proof of a hunter education course is required for anyone born on or after Jan. 1, 1949, to purchase a hunting license in Colorado. *For information, see the "Hunter Education" section on page 8.*
2. Small-game licenses are not valid for turkeys. A turkey license is required to take wild turkey.
3. Limited licenses are available by drawing, valid only for specific dates and units. Apply online or use the mail-in application in the center of this brochure.
4. You can apply for a limited spring turkey and a limited fall turkey license. You cannot hunt in the fall turkey season with a spring turkey license. Fall applications are NOT accepted before June 1. Only one application is allowed per season.
5. Unlimited licenses go on sale starting March 15 for spring turkey and July 12 for fall. They are sold at license agents, online, at DOW offices or by phone.
6. Licenses expire after the season that is printed on them. Licenses are not transferrable.
7. False statements made in buying licenses or altering licenses are illegal, and doing so voids licenses.
8. Turkey hunters do not need to register with the Harvest Information Program (HIP).

### YOUTH LICENSES

Youths under age 18 can buy or apply for a reduced-cost turkey license. All hunters, including those younger than 18, must meet hunter education requirements. Those under 16 must be accompanied by a mentor while hunting.

A mentor must be 18 or older and must meet hunter education requirements. *See page 8 for details.* Mentors aren't required to hunt. While hunting, youths and mentors must be able to see and hear each other without binoculars, radios or other aids.

Youths under 18 can buy an adult license as long as they meet hunter education requirements. At age 18, youths must buy an adult license.

# New in 2011

## SPRING HUNT CHANGES

New spring hunting opportunities have opened up this year on the Eastern Plains. Many private-land areas east of Interstate 25 will be open to hunting with an over-the-counter license. Hunters must still get permission from landowners before hunting on any private land.

**IN GMUs EAST OF I-25:** In most units, spring hunting requires an unlimited license, which is available over the counter. **UNITS 91, 92, 96** are exceptions — in these, public and private-land hunting is by limited permit only. Hunters headed to these units

must apply for a license through the limited license draw. *See the map on page 5 for details.*

**IN GMUs 101, 102, 103, 107, 109, 124, 125, 127, 129, 130 (north of U.S. 50), 132, 138, 139:** Spring hunting on public land is by limited permit only. Hunters going to these areas (such as to hunt State Wildlife Areas) must apply for a license through the draw. Spring private-land hunting in these units is through unlimited licenses, available over the counter at license agents, online or at Colorado Division of Wildlife offices.

**IN GMUs 93, 98, 99, 100:** Licenses are now unlimited and available over the counter.

The DOW made these changes to make it easier to get a spring license to hunt on private property east of I-25. However, hunters should be aware that in many of these units (with some exceptions) turkeys may be absent or occur in very low densities.

**TWO NEW SPRING HUNTS** are set on the Western Slope this year, in GMUs 25 and 47. These are limited licenses, available through the draw process.

**CHANCELLOR RANCH IS CLOSED** to both spring and fall turkey hunting. The DOW no longer manages this land or any hunting permits for it.

## HABITAT STAMP CHANGES

There are new laws in place regarding 2011 Colorado Wildlife Habitat Stamps. Here's what you need to know:

- Anyone 18-64 **MUST** purchase a stamp prior to buying or applying for a hunting or fishing license.

- Stamps now cost \$10 and only one is required per

person per year, valid April 1-March 31. A lifetime stamp is \$300.25.

**SPRING TURKEY HUNTERS** applying for a limited license may purchase a stamp through the draw by submitting an extra \$10 with your paper or online application. Habitat stamp fees are nonrefundable, even if you are unsuccessful in the draw. The 2010 habitat stamp is not valid for the 2011 spring turkey draw.

## UPDATED MAPS

Need help figuring out where you can hunt with an over-the-counter license? Our new game management maps for the spring and fall seasons take the guesswork out of getting the correct over-the-counter license. *See pages 5 and 7.*

## FREE VIDEO ONLINE

The Colorado Division of Wildlife is proud to present another video, "Turkey Hunting Colorado," in our effort to educate and recruit hunters.

After receiving rave reviews for "Pheasant Hunting Colorado," this video was created to help Colorado's hunters have a more enjoyable and successful experience while pursuing Merriam's and Rio Grandes in Colorado.

If you want to become a more successful turkey hunter, or have an interest in hunting turkeys but don't know where to start, take a look at this great instructional video.

Watch "Turkey Hunting Colorado" on the DOW website at [www.wildlife.state.co.us/NewsMedia/Videos/turkeyhunting.htm](http://www.wildlife.state.co.us/NewsMedia/Videos/turkeyhunting.htm).

Hunters may also call (303) 297-1192 or e-mail [wildlife.dowinfo@state.co.us](mailto:wildlife.dowinfo@state.co.us) and request a free DVD. These will only be mailed to customers who request them. We encourage you to help preserve Colorado's hunting heritage by sharing your DVD with others interested in hunting.



# APPLICATIONS AND PREFERENCE POINTS

Apply online at [www.wildlife.state.co.us](http://www.wildlife.state.co.us), or use the mail-in application inside this brochure and follow these instructions:

## FILLING OUT YOUR APPLICATION

1. Print in capital, block letters and stay within the boxes. Use black ballpoint pen only. Photocopies are not accepted.
2. Do not cut or fold applications. Tear along perforations.
3. Check or money order payment must accompany each application. The cost includes a 25-cent search-and-rescue fee and 75-cent Wildlife Education Fund surcharge. The \$3 application fee and \$10 habitat stamp fee are nonrefundable.
4. Starting from left to right, enter your Customer Identification (CID) Number.
  - a. If this brochure was mailed to you, your CID number may be on the address label above your name.
  - b. If you've never had a CID, leave this part blank. Fill out the rest of the form, including the shaded area. You will receive a CID with the first license you buy.
5. Enter hunt code choices. You can list up to four choices, the first being the one you want most.
6. Enter your name. Use capital letters. Enter as many letters as will fit. Enter your birth date with four digits for the year.
7. Fill in "Colorado Resident Since" boxes with month (MM) and year (YYYY) you moved here. If you have always lived here, enter the month and year of your birth. Colorado military: enter "88 8888." One number per box.

## APPLICATION DEADLINE

**FEB. 10:** Application must be received for spring limited license draw  
**JULY 14:** Application must be received for fall limited license draw.

8. You must buy a habitat stamp to apply for or buy a limited license. Hunters applying for a limited license must purchase a stamp to enter the drawing process. You may buy a habitat stamp at any license agent, DOW office or online. You also can include \$10 for a stamp with your license fee when you apply for a license through the mail or online. Put an "X" in the box if you are sending \$10 for your 2011 stamp with your application.
9. For group hunts, all members — including the group leader — must enter the same CID number in the group application box to be entered as a group. If the leader has no CID, the leader must call the DOW at (303) 297-1192 to get one. All group members must fill out their applications the same, using the same person as leader. Members must mail applications separately.
10. If you have preference points, put an "X" in the box.
11. If you were born on or after Jan. 1, 1949, and have completed hunter education, put an "X" in the box.
12. State law requires your Social Security number to buy or apply for hunting licenses. If you have already given us your number, leave this blank.

13. The "permission to provide" box at the top of the application allows the DOW to provide information from applications to entities offering hunting information or services. If you check this box and change your mind, you can cancel by writing DOW, 6060 Broadway, Denver, CO 80216, Attn: Call Center; or e-mail [wildlife.dowinfo@state.co.us](mailto:wildlife.dowinfo@state.co.us); call (303) 297-1192 or go to any DOW office.

14. Sign the application and enter a contact phone number.

15. Change your address online (see "Moving?" section below) or use the change-of-address form in this brochure. Mail the form separately to the DOW. Don't mail it with your application.

## SUBMITTING YOUR APPLICATION

1. Mail your check and application in a standard, 4 1/8- by 9 1/2-inch envelope to the address below. If you have a CID number, write it on the check.
2. Applications must be postmarked or received at the Division of Wildlife, Attn: Turkey, P.O. Box 173781, Denver, CO 80217-3781, by deadlines. Midnight postmark is acceptable.

## REFUNDS

License fees are refunded to unsuccessful applicants. The \$3 application fee and \$10 habitat stamp fee are nonrefundable. Applications are rejected if your check is returned by the bank. Prosecution may result.

## MOVING? CHANGE YOUR ADDRESS ONLINE

To make sure we get your new address, go to [WWW.WILDLIFE.STATE.CO.US/TOTAL\\_LICENSING](http://WWW.WILDLIFE.STATE.CO.US/TOTAL_LICENSING); click on "BUY AND APPLY FOR LICENSES" and follow the steps to change your address. (Please do NOT use your hunt application as a change of address form.)

## GAINING & USING PREFERENCE POINTS

1. **HOW TO GAIN POINTS:** One preference point is awarded if you apply properly and are unsuccessful in drawing your first-choice hunt code or if you apply for a preference point hunt code as your first choice. You can get two turkey preference points per calendar year. One preference point is awarded to unsuccessful applicants in the spring drawing and one in the fall drawing.
2. **HUNTING PRIORITY:** Priority goes to the hunter with the most points, except for group applications. Group applications are processed based on the member who has the fewest points.
3. **POINTS ARE ONLY USED ON FIRST-CHOICE HUNTS:** Second-, third- or fourth-choice hunt codes don't use or generate preference points.
4. **POINT ACCUMULATION:** Preference points accu-

mulate until you draw a license as a first choice.

5. **USE THEM OR LOSE THEM:** If you don't apply for or purchase a license at least once in 10 consecutive years, your file is purged and your preference points are lost. Applying for preference points keeps your file active.
6. **SAVE YOUR REFUND STUB:** If unsuccessful in the draw, your refund stub will show your accumulated points. Keep this for your records.
7. **PREFERENCE POINT HUNT CODE:** To apply for a preference point only, enter hunt code **T-P-999-99-P** as the first choice on your application. You must pay the full license cost and pay for a habitat stamp, even if you're just applying for a preference point. Your license fee will be refunded, the \$3 application fee and \$10 habitat stamp fee are nonrefundable.

## OPERATION GAME THIEF

1-877-265-6648

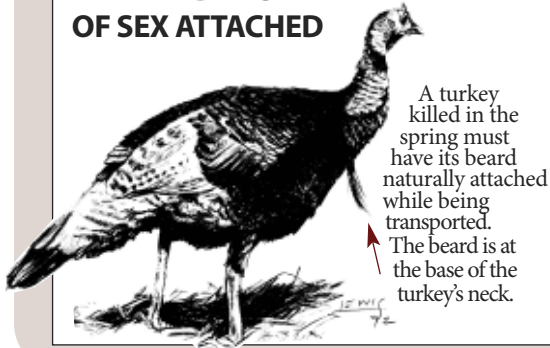
Operation Game Thief (OGT) is a nonprofit organization working with the DOW's law enforcement program. It pays rewards to citizens who report poachers or resource violations. Callers don't have to reveal their names, tes-



tify in court or sign a deposition. Rewards are paid if the information leads to an arrest of a poacher or an issuance of a citation. Rewards do not depend on a conviction but must be requested when a violation is reported. (This phone number cannot be used for information requests or emergencies.)

# IN THE FIELD: BAG LIMITS, METHODS OF TAKE, SAFETY

## KEEP EVIDENCE OF SEX ATTACHED



## TAGGING

1. After killing a turkey, hunters must immediately detach, sign and date the carcass tag and attach it to the animal. Tags must stay attached while the carcass is transported, in camp, in storage or in your possession.
2. If the carcass tag is accidentally detached from the license, lost or destroyed, you must get a duplicate before hunting and prove the loss, detachment or destruction was accidental. Duplicates can be obtained by furnishing proof of accidental detachment, loss or destruction to the DOW.

## BAG AND POSSESSION LIMITS

1. The annual bag and possession limit is one bearded turkey in spring season and one turkey of either sex in the fall season.
2. Hunters with a limited spring license can take two bearded turkeys. One must be taken on the limited license. The second must be taken with an over-the-counter license. If you take two turkeys in the spring, you cannot take a turkey in fall.

## LEGAL HUNTING HOURS

Legal hunting hours for turkey are one-half hour before sunrise to sunset. The sunrise/sunset chart below lists Denver times. Subtract 1 minute from opening and closing time for each 12 1/2 miles east of Denver. Add 1 minute to opening and closing time for each 12 1/2 miles west of Denver. (These changes assume that each degree of longitude equals 50 miles and a change of 1 degree of longitude equals a 4-minute change in sunrise and sunset times.)

### 2011 SUNRISE/SUNSET TABLE (DENVER)

DAY	APRIL		MAY		SEPT.		OCT.	
	RISE A.M. (DST)	SET P.M.	RISE A.M. (DST)	SET P.M.	RISE A.M. (DST)	SET P.M.	RISE A.M. (DST)	SET P.M.
1	6:44	7:24	6:01	7:54	6:28	7:31	6:56	6:43
2	6:43	7:25	6:00	7:55	6:29	7:30	6:57	6:41
3	6:41	7:26	5:58	7:56	6:30	7:28	6:58	6:39
4	6:40	7:27	5:57	7:57	6:31	7:27	6:59	6:38
5	6:38	7:28	5:56	7:58	6:32	7:25	7:00	6:36
6	6:37	7:29	5:55	7:59	6:32	7:23	7:01	6:35
7	6:35	7:30	5:54	8:00	6:33	7:22	7:02	6:33
8	6:33	7:31	5:53	8:01	6:34	7:20	7:03	6:32
9	6:32	7:32	5:52	8:02	6:35	7:19	7:04	6:30
10	6:30	7:33	5:51	8:03	6:36	7:17	7:05	6:28
11	6:29	7:34	5:50	8:04	6:37	7:15	7:06	6:27
12	6:27	7:35	5:49	8:05	6:38	7:14	7:07	6:25
13	6:26	7:36	5:48	8:06	6:39	7:12	7:08	6:24
14	6:24	7:37	5:47	8:07	6:40	7:10	7:09	6:22
15	6:23	7:38	5:46	8:07	6:41	7:09	7:10	6:21
16	6:21	7:39	5:45	8:08	6:42	7:07	7:11	6:19
17	6:20	7:40	5:44	8:09	6:43	7:06	7:12	6:18
18	6:18	7:41	5:43	8:10	6:44	7:04	7:13	6:17
19	6:17	7:42	5:42	8:11	6:45	7:02	7:14	6:15
20	6:15	7:43	5:41	8:12	6:45	7:01	7:15	6:14
21	6:14	7:44	5:41	8:13	6:46	6:59	7:16	6:12
22	6:13	7:45	5:40	8:14	6:47	6:57	7:17	6:11
23	6:11	7:46	5:39	8:15	6:48	6:56	7:18	6:10
24	6:10	7:47	5:38	8:15	6:49	6:54	7:19	6:08
25	6:09	7:48	5:38	8:16	6:50	6:52	7:21	6:07
26	6:07	7:49	5:37	8:17	6:51	6:51	7:22	6:06
27	6:06	7:50	5:37	8:18	6:52	6:49	7:23	6:04
28	6:05	7:51	5:36	8:19	6:53	6:48	7:24	6:03
29	6:03	7:52	5:36	8:20	6:54	6:46	7:25	6:02
30	6:02	7:53	5:35	8:20	6:55	6:44	7:26	6:01
31			5:35	8:21			7:27	5:59

### TIME ADJUSTMENT FOR OTHER CITIES

This table reflects the number of minutes to add to the chart above for select towns. These are approximate, use only as a general reference. Consult a state map for more details.

Alamosa	+3	Gr. Junction	+13
Buena Vista	+5	Gunnison	+7
Burlington	-10	La Junta	-6
Craig	+9	Lamar	-9
Durango	+11	Sterling	-6
Fort Morgan	-4	Walden	+5

Source: www.usno.navy.mil

## METHODS OF TAKE

1. **SHOTGUNS**, including muzzleloading shotguns: maximum 10-gauge allowed and cannot be capable of holding more than three shells in the magazine and chamber combined. Shotguns capable of holding more than three shells must be plugged. Shot must be size #2 (lead or steel) or smaller. Single slugs are illegal.
2. **HAND-HELD BOWS**
3. **CROSSBOWS**
4. **RIFLES AND HANDGUNS:**

- a. Spring Season: Rifles and handguns are illegal.
- b. Fall Season only: Except in units 91, 92, 96 & 951, rifles and handguns can be muzzle-loading, centerfire or rimfire, and bullets must be a minimum 38 grains with manu-

facturer's energy rating of at least 110 foot-pounds at 100 yards from muzzle.

5. Turkeys can be taken over standing crops or feed scattered solely for agricultural purposes.
6. It is illegal to use bait. Baiting is placing, or scattering salt, mineral, grain or other feed to attract wildlife.
7. Artificial decoys and manual calls are permitted. Recorded or electronically amplified calls are illegal.
8. It is illegal to use any artificial light as a hunting aid.
9. Hunters must be physically in the immediate vicinity of where they hunt. It is illegal to use Internet or computer-assisted remote equipment to hunt.

## 5 TIPS TO STAY SAFE IN THE FIELD

Successful turkey hunting requires hunters to be stealthy and well-camouflaged. However, this also means you are well-camouflaged from other hunters, which can increase the chances of hunting-related accidents. Be vigilant and keep these five points in mind when you head into the field:

1. **KNOW YOUR TARGET.** As with all hunting opportunities, be absolutely sure of your target and what lies beyond it before you pull the trigger. Never shoot at sound or movement.
2. **STAY ALERT.** When using a turkey call, hunters may mistake your call for a real turkey. Know what's going on around you.
3. **CHOOSE GOOD COVER.** Choose hunting locations that provide cover for your back and also let you maintain visibility. Your calling position should have a solid background as wide as your shoulders and higher than your head while providing you with 180-

degree visibility. Don't hide so well that you can't see what's happening. Camouflage hides you, but doesn't make you invisible. Sit perfectly still; turkeys and hunters both see even slight movements.

4. **KNOW WHAT NOT TO WEAR.** Don't wear red, white or blue clothing, because you could look like a mature male turkey, which also sports these colors. It's also a good idea to alert other hunters to your presence. You can hang fluorescent material (like a hunter-orange cap or vest) above your calling spot and wear hunter orange while going to and from your hunting spot.

5. **NEVER STALK.** Don't stalk turkey calls in the spring. Birds breed in spring and are more wary and alert, and chances of accidents are higher. Find a concealed location and let the birds come to you. Don't move, wave or use turkey calls to alert another hunter to your presence. A quick move may create a hazard. If necessary, yell or blow a whistle to alert a hunter to your location.





## SPRING TURKEY REGULATIONS:

The following units are totally closed to spring turkey hunting:  
1, 26, 45, 80, 81, 201, 371, 471, 512

**SPRING LIMITED LICENSES** — Hunters must apply through the draw process to hunt these units. Licenses are valid in public or private land within the unit, unless otherwise specified below:

UNITS	DATES	LICENSES	HUNT CODE
2	April 9 - May 22	5	T-M-002-O1-R
15, 27, 37	April 9 - May 22	5	T-M-015-O1-R
21	April 9 - May 22	5	T-M-021-O1-R
23	April 9 - May 22	10	T-M-023-O1-R
25	April 9 - May 22	10	T-M-025-O1-R
30 youth only	April 9 - May 22	5	T-M-030-K1-R
34	April 9 - May 22	5	T-M-034-O1-R
35, 36, 361	April 9 - May 22	5	T-M-035-O1-R
43	April 9 - May 22	30	T-M-043-O1-R
44	April 9 - May 22	20	T-M-044-O1-R
47	April 9 - May 22	10	T-M-047-O1-R
59 Beaver Creek SWA & Table Mtn STL only	April 9 - May 22	25	T-M-059-O1-R
91	April 9 - 29	25	T-M-091-O1-R
	April 30 - May 22	25	T-M-091-O2-R
91 private land only	April 9 - 29	10	T-M-091-P1-R
	April 30 - May 22	10	T-M-091-P2-R
92	April 9 - 29	25	T-M-092-O1-R
	April 30 - May 22	25	T-M-092-O2-R
92 private land only	April 9 - 29	5	T-M-092-P1-R
	April 30 - May 22	5	T-M-092-P2-R

UNITS	DATES	LICENSES	HUNT CODE
96	April 9 - 29	35	T-M-096-O1-R
	April 30 - May 22	35	T-M-096-O2-R
96 private land only	April 9 - 29	20	T-M-096-P1-R
	April 30 - May 22	20	T-M-096-P2-R
101	April 9 - 29	5	T-M-101-O1-R
	April 30 - May 22	5	T-M-101-O2-R
102	April 9 - 29	25	T-M-102-O1-R
	April 30 - May 22	25	T-M-102-O2-R
103, 107, 109	April 9 - May 22	100	T-M-103-O1-R
103, 107, 109 youth only	April 9 - May 22	20	T-M-103-K1-R
124, 125, 129	April 9 - May 22	12	T-M-124-O1-R
124, 125, 129 youth only	April 9 - May 22	14	T-M-124-K1-R
127, 132	April 9 - May 22	10	T-M-127-O1-R
130 North of U.S. 50	April 9 - May 22	5	T-M-130-O1-R
138, 139	April 9 - May 22	15	T-M-138-O1-R
140 Lake Dorothea SWA only	April 9 - May 22	75	T-M-140-O1-R
140 James John SWA only	April 9 - May 22	20	T-M-140-O2-R
444	April 9 - May 22	35	T-M-444-O1-R
851 Bosque del Oso SWA only	April 9 - May 22	25	T-M-851-O1-R

### RANCHING FOR WILDLIFE

Public Ranching For Wildlife licenses are available only to Colorado residents by drawing. Licenses are valid for the season and ranch on the license. RFW licenses are listed with hunt codes below. Landowners must provide free access to hunters who draw a public license for the ranch. By applying for a RFW license, hunters allow the DOW to provide applicant information to the ranch. RFW hunting rules are different for each ranch. Read ranch rules — available on the DOW website — before applying.

SPRING UNITS	DATES	LICENSES	HUNT CODE
Mountain Meadows Ranch - Unit 84	April 9 - May 15	10	T-M-084-W1-R
Twin Peaks Ranch Unit 85	April 25 - May 23	17	T-M-085-W1-R
Purgatoire Ranch Units 136, 143, 147	April 30 - May 10	18	T-M-136-W1-R

See page 6 for fall Ranching For Wildlife units and hunt code.

### SAFE HANDLING OF GAME MEAT

Most of the time, properly handled and prepared game meat poses no greater risk than domestic meat of causing or carrying diseases that could potentially make humans sick. Hunters are encouraged to contact their local public health department or DOW office for information on wildlife diseases where they hunt. Public health officials recommend the following precautions when handling and preparing game meat:

1. Do not handle animals that are obviously sick or found dead. Report your find to a DOW office.
2. Keep game cool, clean and dry.
3. Do not eat, drink or smoke while dressing game.

4. Use disposable gloves when cleaning game.
5. Wash your hands with soap and water or use alcohol wipes after dressing game.
6. Clean all tools and surfaces immediately afterward. Use hot soapy water, then disinfect with a 10 percent chlorine bleach solution, then rinse well.
7. Cook game meat to an internal temperature of at least 165° F to kill disease organisms and parasites. Juices from adequately cooked game meat should be clear.
8. Do not eat raw portions of wild game.
9. Do not feed raw wild game to domestic pets.

# SPRING UNLIMITED LICENSES & GAME MANAGEMENT UNITS

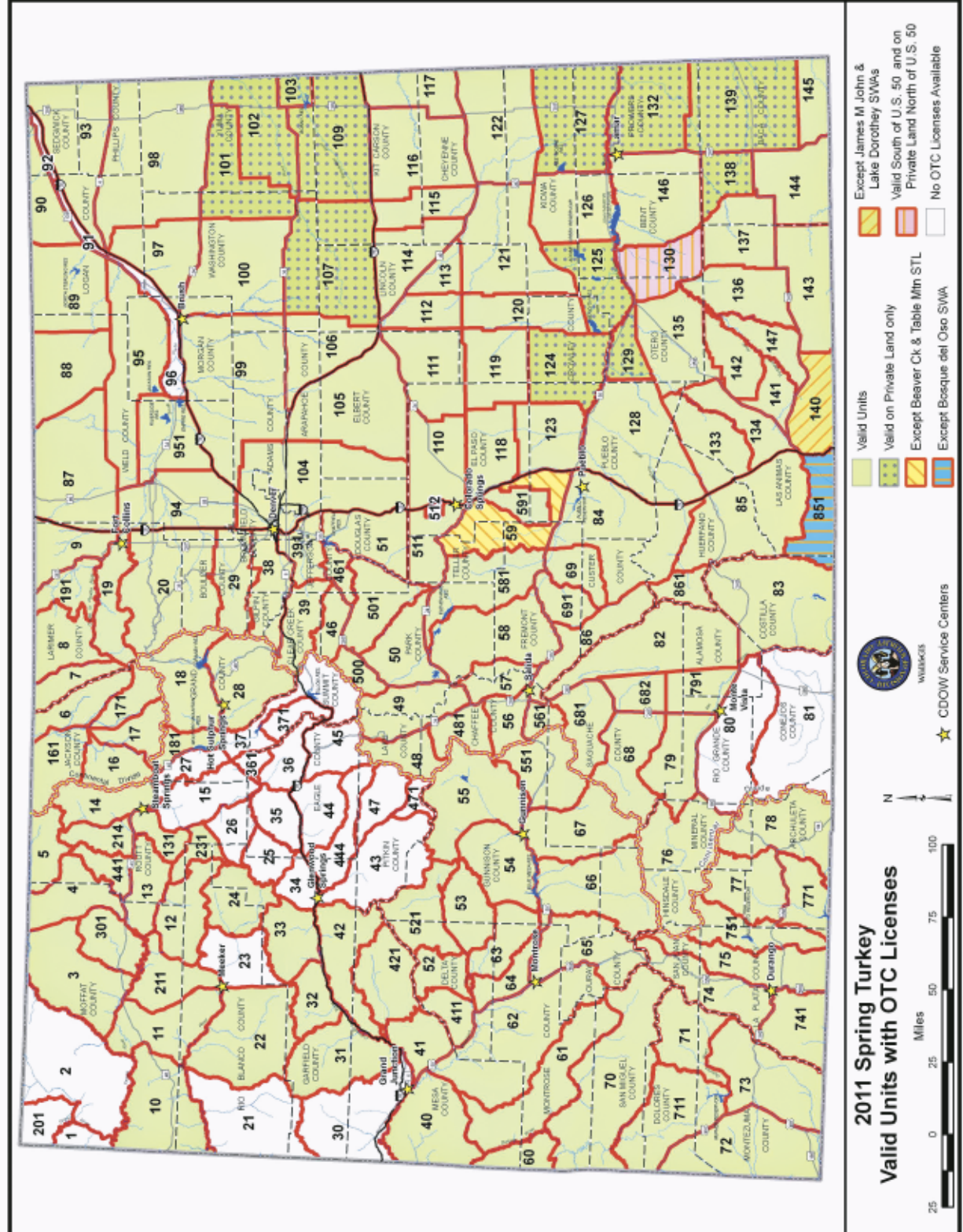
(Licenses are unlimited in number and available over the counter. Hunters do not need to participate in the draw to hunt these areas.)

SEASON DATES: April 9-May 22  
HUNT CODE: T-M-000-U1-R

LICENSES ARE VALID (HUNTING IS ALLOWED) IN THE FOLLOWING UNITS (SHADED ON MAP): 3, 4, 5, 6, 7, 8, 9, 10, 11, 12, 13, 14, 16, 17, 18, 19, 20, 22, 24, 28, 29, 31, 32, 33, 38, 39, 40, 41, 42, 46, 48, 49, 50, 51, 52, 53, 54, 55, 56, 57, 58, 59 except Beaver Creek SWA and Table Mountain STL, 60, 61, 62, 63, 64, 65, 66, 67, 68, 69, 70, 71, 72, 73, 74, 75, 76, 77, 78, 79, 82, 83, 84, 85, 86, 87, 88, 89, 90, 93, 94, 95, 97, 98, 99, 100, 104, 105, 106, 110, 111, 112, 113, 114, 115, 116, 117, 118, 119, 120, 121, 122, 123, 126, 128,

130 south of U.S. 50, 131, 133, 134, 135, 136, 137, 140 except on James M. John and Lake Dorothy SWAs, 141, 142, 143, 144, 145, 146, 147, 161, 171, 181, 191, 211, 214, 231, 301, 391, 411, 421, 441, 461, 481, 500, 501, 511, 521, 551, 561, 581, 591, 681, 682, 691, 711, 741, 751, 771, 791, 851 except Bosque del Oso SWA, 861, 951

ALSO VALID ON PRIVATE LAND ONLY IN UNITS: 101, 102, 103, 107, 109, 124, 125, 127, 129, 130 north of U.S. 50, 132, 138, 139







## FALL TURKEY REGULATIONS:

The following units are totally closed to fall turkey hunting: 1, 2, 15, 21, 23, 25, 26, 27, 30, 34, 35, 36, 37, 44, 45, 47, 53, 63, 80, 81, 89, 90, 93, 95, 97, 98, 99, 100, 106, 111, 115, 120, 201, 361, 371, 471, 512

### FALL LIMITED LICENSES

Hunters must apply through the draw process to hunt the following units and areas specified. Unlimited (over-the-counter) turkey licenses are not valid in these areas:

UNITS	DATES	LICENSES	HUNT CODE
59 Beaver Creek SWA & Table Mtn STL only	Sept. 1 - Oct. 2	15	T-E-059-L1-R
85 Spanish Peaks SWA Oberosler Tract only	Sept. 1 - Oct. 2	30	T-E-085-L1-R
85 Spanish Peaks SWA Dochter Tract only	Sept. 1 - Oct. 2	30	T-E-085-L2-R
85 Spanish Peaks SWA Sakariason Tract only	Sept. 1 - Oct. 2	30	T-E-085-L3-R
91	Sept. 1 - Oct. 21	20	T-E-091-L1-R
92	Sept. 1 - Oct. 21	15	T-E-092-L1-R
96	Sept. 1 - Oct. 21	35	T-E-096-L1-R
101	Sept. 1 - Oct. 21	10	T-E-101-L1-R
102	Sept. 1 - Oct. 21	30	T-E-102-L1-R
103, 107, 109	Sept. 1 - Oct. 21	100	T-E-103-L1-R
103, 107, 109 youth only	Sept. 1 - Oct. 21	20	T-E-103-K1-R
124, 125, 129	Sept. 1 - Oct. 21	10	T-E-124-L1-R
124, 125, 129 youth only	Sept. 1 - Oct. 21	10	T-E-124-K1-R
126, 146	Sept. 1 - Oct. 21	20	T-E-126-L1-R
127, 132	Sept. 1 - Oct. 21	6	T-E-127-L1-R
130 North of U.S. 50	Sept. 1 - Oct. 21	5	T-E-130-L1-R
138, 139	Sept. 1 - Oct. 21	10	T-E-138-L1-R
140 Lake Dorothy SWA only	Sept. 1 - Oct. 2	50	T-E-140-L1-R
140 James John SWA only	Sept. 1 - Oct. 2	10	T-E-140-L2-R
444	Sept. 1 - Oct. 2	20	T-E-444-L1-R
851 Bosque del Oso SWA only	Sept. 1 - Oct. 2	25	T-E-851-L1-R

### RANCHING FOR WILDLIFE

Public RFW licenses are available only to Colorado residents by drawing, valid for the season and ranch on the license. RFW hunting rules are different for each ranch. Read ranch rules on the DOW website before applying. See page 4 for more RFW details.

FALL RFW UNITS	DATES	LICENSES	HUNT CODE
Purgatoire Ranch Units 136, 143, 147	Sept. 24 - Oct. 4	2	T-E-136-W1-R

See page 4 for spring Ranching For Wildlife units and hunt codes.

### SOUTHWEST YOUTH EXTENDED SEASON

Youths under 18 can hunt turkey in units 52, 54, 55, 60, 61, 62, 64, 65, 66, 67, 68, 70, 71, 72, 73, 74, 75, 76, 77, 78, 79, 82, 83, 411, 521, 551, 681, 682, 711, 741, 751, 771 from Sat. before Thanksgiving (Nov. 20) through Sun. after Thanksgiving (Nov. 28) if they have an unfilled youth fall turkey license. Youths must follow all applicable regulations and must be accompanied by a mentor, who cannot hunt. Contact the DOW for information.

### LEAD BULLETS IN GAME MEAT

Concerns have been raised about the potential risk of exposure to lead from eating wild game harvested with lead bullets. Ingesting lead from a variety of sources can cause significant health problems, especially in young children and pregnant women. Not enough research has been done to fully evaluate potential health risks that may be associated with lead in game meat, but data from a recent study suggest these risks are low for most people. The Colorado Department of Public Health and Environment and DOW offer recommendations to minimize exposure to lead:

**LEAD FRAGMENTS CANNOT BE ELIMINATED WITH COMPLETE CERTAINTY**, so pregnant women and children younger than 6 should avoid eating meat from game animals harvested with lead bullets. These people are more sensitive to the health effects of lead, and ingesting even small amounts may be harmful. Lead can affect the development of infants and young children.

**HUNTERS CAN USE LEAD-FREE SHOT OR BULLETS** to eliminate

lead in game meat. If using steel shot, be careful — the harder steel can chip teeth.

**WHEN PROCESSING AN ANIMAL, LIBERALLY TRIM AND DISCARD MEAT DAMAGED BY THE BULLET**

because lead fragments may scatter some distance from the visible wound. Discard meat that is bruised, discolored or contains hair, dirt, grass, bone or lead fragments.

**LEAD IS A SOFT METAL** that can be ground with meat, spreading lead contamination through an entire batch of ground meat. Lead has been found more often in ground meat than whole meat cuts. To minimize the amount of processed game meat potentially contaminated with lead, clean the grinder frequently, preferably between each animal.

**EVEN IF A CARCASS IS PROCESSED USING THESE RECOMMENDATIONS**, at home or at a commercial processor, there is still a chance small amounts of lead may remain in the meat if lead bullets have been used.

**MONEY WELL SPENT.**  
When you purchase a hunting or fishing license, 75¢ goes to the Wildlife Management Education Fund, which helps preserve your hunting and fishing privileges in Colorado.

**Wildlife COUNCIL**  
MANAGED BY THE COLORADO DEPARTMENT OF WILDLIFE

keepingcoloradowild.org



# FALL UNLIMITED LICENSES & GAME MANAGEMENT UNITS

(Licenses are unlimited in number and available over the counter. Hunters do not need to participate in the draw to hunt these units.)

## SEASON DATES:

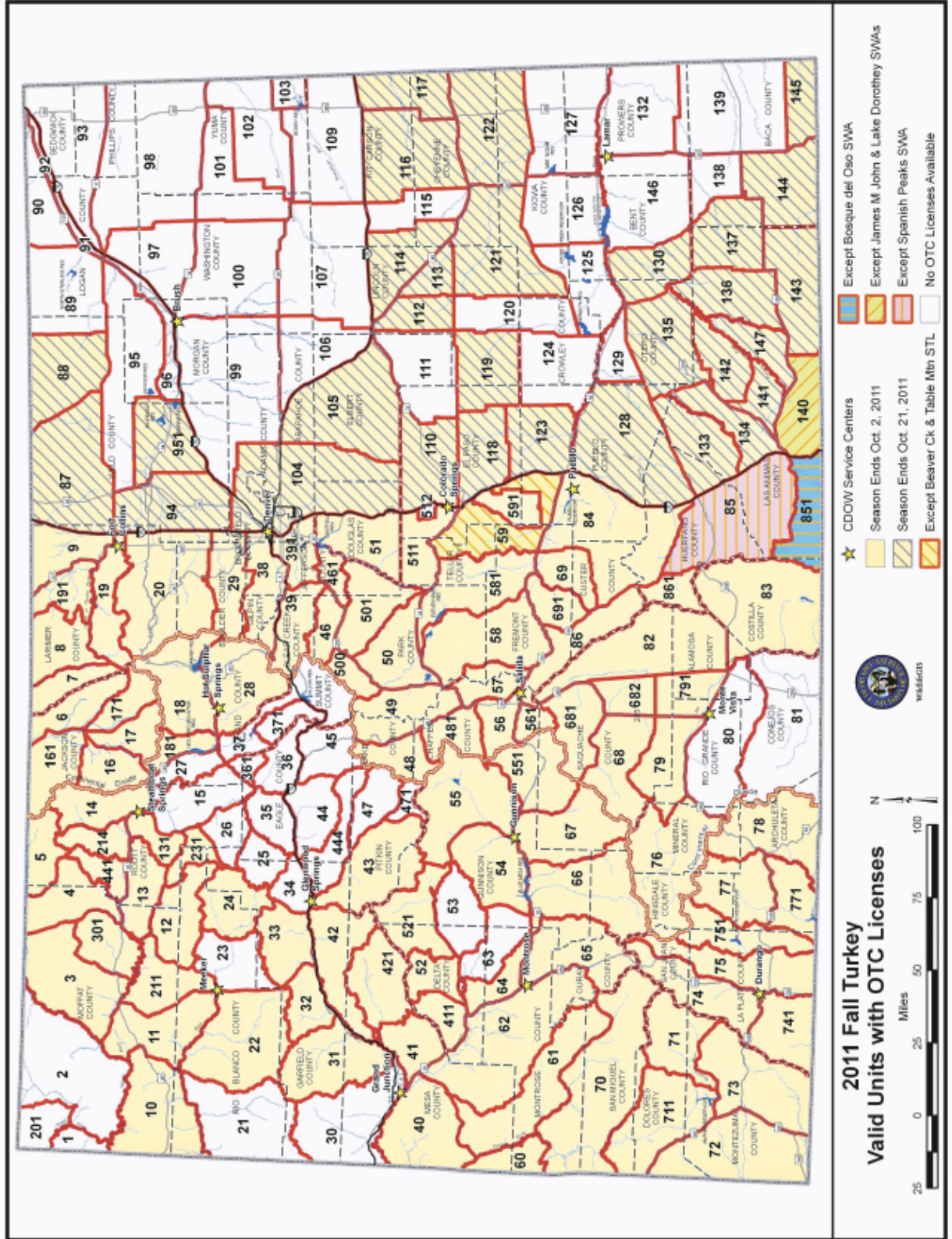
Sept. 1-Oct. 2 — west of I-25 and GMU 140;  
 Sept. 1-Oct. 21 — east of I-25 (except GMU 140)

HUNT CODE: T-E-000-U2-R

## LICENSES ARE VALID (HUNTING IS ALLOWED) IN THE FOLLOWING UNITS (SHADED ON THE MAP):

3, 4, 5, 6, 7, 8, 9, 10, 11, 12, 13, 14, 16, 17, 18, 19, 20, 22, 24, 28, 29, 31, 32, 33, 38, 39, 40, 41, 42, 43, 46, 48, 49, 50, 51, 52, 54, 55, 56, 57, 58, 59 except on Beaver Creek SWA and Table Mountain STL, 60, 61, 62, 64, 65, 66, 67, 68, 69, 70, 71, 72, 73, 74, 75, 76, 77, 78,

79, 82, 83, 84, 85 except on Spanish Peaks SWA, 86, 87, 88, 94, 104, 105, 110, 112, 113, 114, 116, 117, 118, 119, 121, 122, 123, 128, 130, 131, 133, 134, 135, 136, 137, 140 except on James M. John and Lake Dorothy SWAs, 141, 142, 143, 144, 145, 147, 161, 171, 181, 191, 211, 214, 231, 301, 391, 411, 421, 441, 461, 481, 500, 501, 511, 521, 551, 561, 581, 591, 681, 682, 691, 711, 741, 751, 771, 791, 851 except on Bosque del Oso SWA, 861, 951





## LICENSE DETAILS

### HUNTER EDUCATION (SAFETY)

Anyone born on or after Jan. 1, 1949, must have completed an approved hunter education course sanctioned by a state or province before applying for or purchasing a license. Colorado honors hunter education courses from other states and provinces. A hunter safety card must be presented when buying a license over the counter at a license agent. All hunters must carry their hunter education card while hunting unless "Verified" is printed by the DOW on their license.

### YOUTH OUTREACH LICENSES

Youth Outreach licenses are offered to qualified organizations sponsoring educational youth hunting activities. A maximum of 50 licenses are offered for private land only and are limited to youths under 18 years of age. Application procedures are on the DOW website at [wildlife.state.co.us/Hunting/HunterOutreach/YouthLicensingPrograms](http://wildlife.state.co.us/Hunting/HunterOutreach/YouthLicensingPrograms).

### LICENSES FOR HUNTERS WITH MOBILITY IMPAIRMENTS

1. Ten licenses are offered for qualified mobility-impaired hunters for spring season, valid on private land in units 91, 92, 96 on specific dates.
2. Hunters must have a mobility impairment from a permanent medical condition that makes hunting physically impossible without an attendant's assistance. Evidence may include prescribed equipment such as a wheelchair, shoulder or arm crutches, a walker or two canes.
3. License applications and access permit applications are available from the DOW. Submit applications with payment to DOW Limited Licenses, 6060 Broadway, Denver, CO 80216. Hunters can apply from the Monday after the November Wildlife Commission meeting until spring turkey season ends.
4. Applications must include a statement from a licensed medical doctor or certified physical, occupational or recreational therapist, describing the impairment and permanent medical condition. More documentation may be required.
5. In Spanish Peaks State Wildlife Area, mobility-impaired hunters can hunt in the spring turkey season after the second weekend of the season on Wed., Thurs. and Fri. by permit only. Permits are issued free on a first-come, first-served basis. Permits are limited to two people each Wed.-Fri. time period.

### TIPS PROGRAM

TIPs rewards people who voluntarily provide information resulting in charging poachers. Awards can be a preference point for a species of choice or an unlimited license for the species reported. Some limited licenses may be available as a third option. Reward licenses do not count toward annual bag and possession limits.

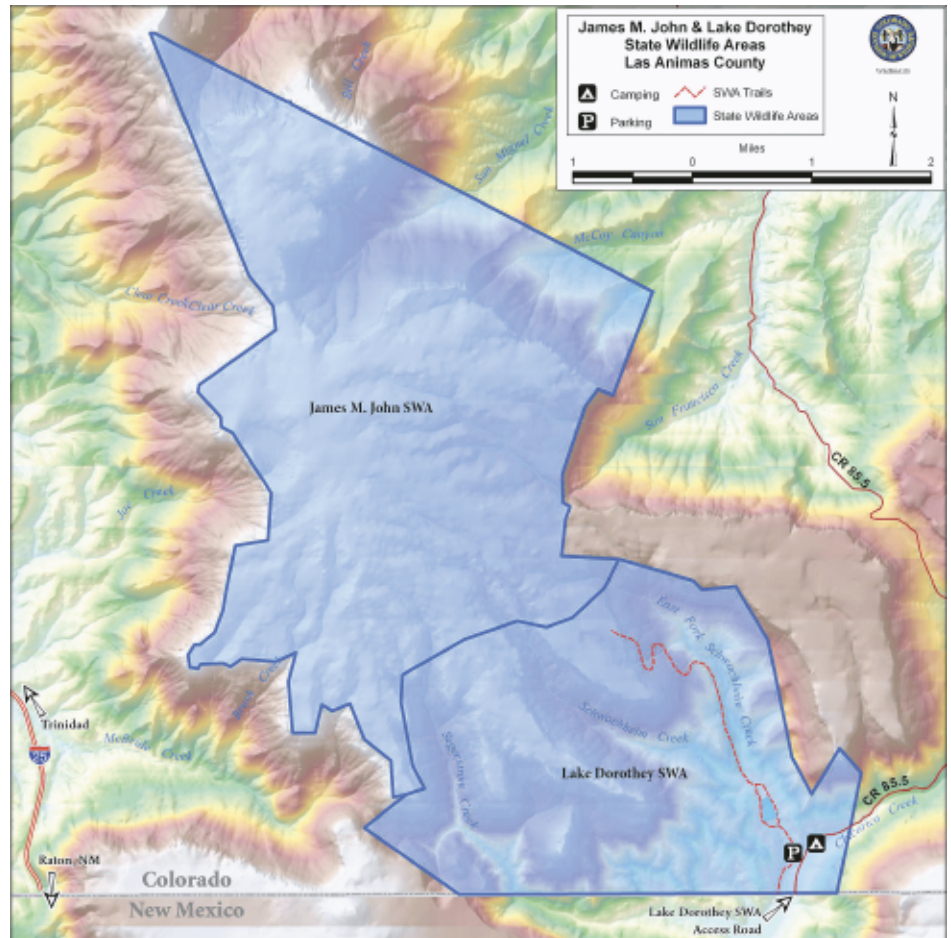
### CONTESTS

It is illegal to promote, conduct, offer to conduct or participate in contests using marked or tagged small game and upland game birds for money or valuable prizes. Valuable prizes don't include certificates of recognition or other tokens without significant monetary value. This does not apply to wildlife parks and field trials licensed by the DOW.

### WEAPONS RESTRICTIONS

Colorado and federal laws prohibit people convicted of certain crimes, such as domestic violence, from possessing weapons even for hunting. If you've been

### JAMES M. JOHN and LAKE DOROTHEE SWAS



**Note:** The James M. John SWA is 4 miles from the Lake Dorothee trailhead. The majority of turkey habitat, in San Miguel Canyon at the northern end of James M. John SWA, is 8 miles from the trailhead. Boundaries depicted are approximate.

convicted of a crime, check with the appropriate law enforcement authority to find out how these laws apply to you.

### RESIDENCY REQUIREMENTS

These are the requirements to qualify as a Colorado resident to buy a hunting license:

1. You must have lived continuously in Colorado at least six months immediately before applying for or buying a license, and must intend to make Colorado home (except #2 and #3 below.) The residence address given to purchase or apply for a license must be the same address used on your Colorado income tax return.
2. U.S. Armed Services personnel and military personnel of U.S. allies on active duty in Colorado under permanent orders and their dependents. This includes people who were Colorado residents when they entered the armed services and maintain Colorado as their home of record, and their dependents (unless they change their home of record to another state.) Also included are personnel of the U.S. Diplomatic Service or diplomatic services of nations recognized by the U.S. assigned to duty here on permanent active duty orders and their dependents. Active duty does not include reserve status or National Guard.
3. Full-time students enrolled and attending a Col-

orado college, university or trade school at least six months immediately before applying for or buying a license. This includes students who are temporarily absent from Colorado but still enrolled. Colorado residents who attend school full-time out of state and pay nonresident tuition still qualify for a resident license.

4. Children under 18 in Colorado have the same residency status as their parent, legal guardian or person with whom they live the majority of the time per court order.
5. If you have a home in Colorado and another state, call (303) 297-1192 to make sure you comply with Colorado residency requirements before obtaining a hunting or fishing license.
6. Except as in #2 and #3 above, you lose your Colorado residency if you apply for, buy or accept a hunting, fishing or trapping license as a resident of another state or country; register to vote outside Colorado or get a driver's license with an address in another state.

### CHILD SUPPORT DELINQUENCY

State law requires Social Security numbers for all licenses purchased. It is not displayed on the license but may be provided, if requested, to Child Support Enforcement authorities. Hunting and fishing licenses are not issued to people delinquent in child support.



# GAME MANAGEMENT UNITS: DESCRIPTIONS, LOCATIONS

The following list includes only units open to spring and fall turkey hunting

## ABBREVIATIONS:

**U.S.** — U.S. Highway  
**COLO.** — Colorado Highway  
**CO.** — County  
**CR** — County Road  
**RES.** — Reservoir  
**N/NW/NE** — North, northwest, northeast  
**S/SW/SE** — South, southwest, southeast  
**E** — East  
**W** — West  
**NF** — National Forest  
**USFS / FS** — U.S. Forest Service  
**BLM** — Bureau of Land Management  
**RMNP** — Rocky Mountain National Park  
**KS** — Kansas  
**NE** — Nebraska  
**NM** — New Mexico  
**OK** — Oklahoma  
**UT** — Utah  
**WY** — Wyoming

**2 - (MOFFAT CO.)** bounded on N by WY; on E by Little Snake River; on S by Yampa River; on W by Green River, CRs 34 & 10, Colo. 318 and CR 10N (Irish Canyon Road).

**3 - (MOFFAT CO.)** bounded on N by WY, on E by Colo. 13/789, CRs 108, 3, 158, 5 & 17; on S by Yampa River, U.S. 40 and Colo. 318; on W by Little Snake River.

**4 - (MOFFAT & ROUTT COs.)** bounded on N by WY; on E by Moffat CR 1, Routt CR 82, USFS 150 and Elkhead Creek; on S by U.S. 40; on W by Colo.13/789.

**5 - (MOFFAT & ROUTT COs.)** bounded on N by WY; on E by Continental Divide; on S by USFS 409 and 414, Little Snake-Elk River Divide and USFS 42; on W by USFS 150, Routt CR 82 and Moffat CR 1.

**6 - (JACKSON CO.)** bounded on N by WY; on E by Jackson-Larimer Co. line; on S by Colo.14; on W by Colo. 125 from Colo.14 to WY.

**7 - (LARIMER CO.)** bounded on N by WY; on E by CR 103 (Laramie River Road); on S by Colo.14; on W by Larimer-Jackson Co. line.

**8 - (LARIMER CO.)** bounded on N by WY; on E by CRs 59, 80C (Cherokee Park Road), 179 (Prairie Divide Road), 74E (Red Feather Lakes Road), 68C (Boy Scout Ranch Road), and 69 (Manhattan Road); on S by Colo. 14; on W by CR 103 (Laramie River Road).

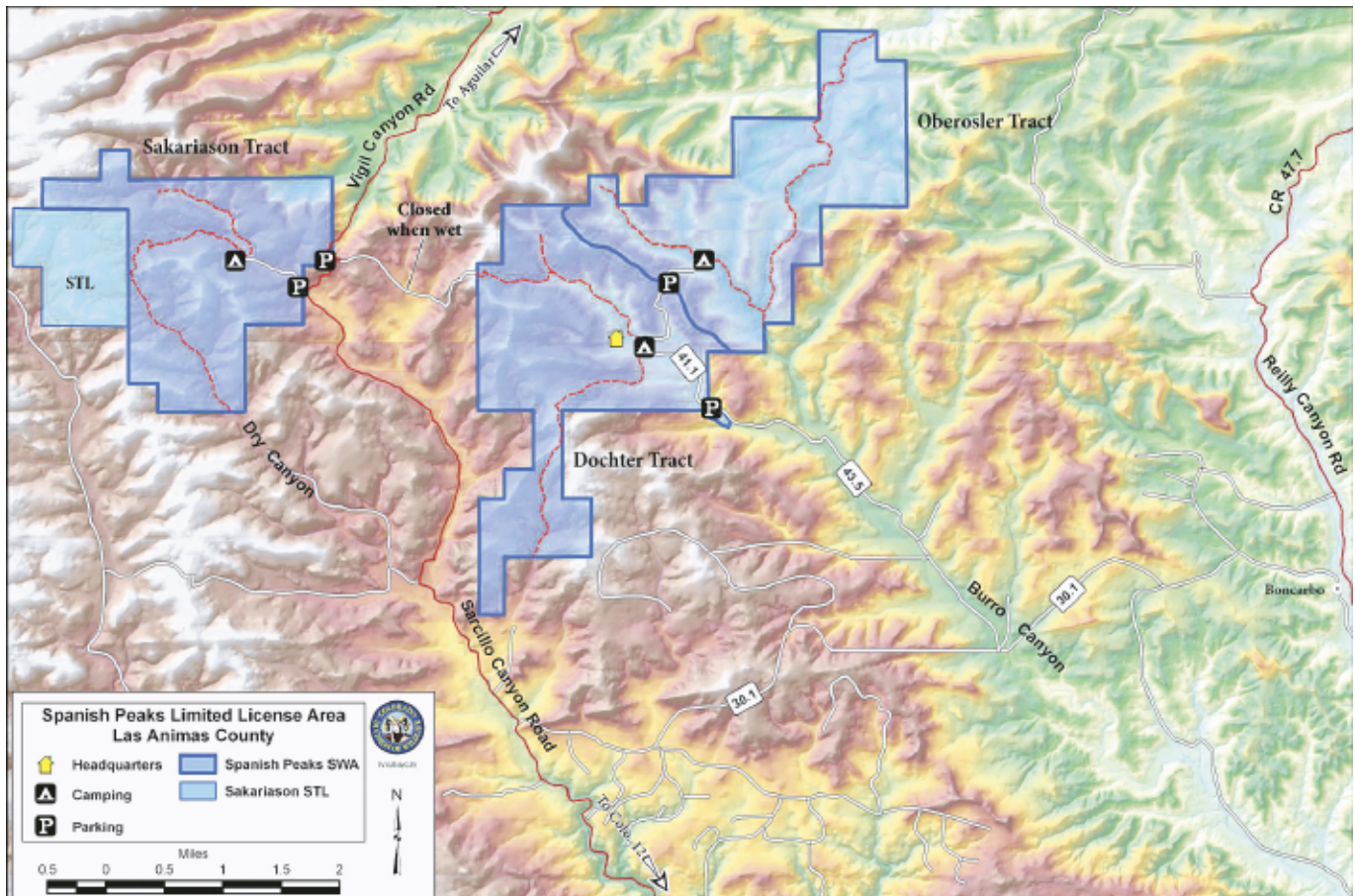
**9 - (LARIMER & WELD COs.)** bounded on N by WY; on E by I-25; on S by Colo. 14; and on W by U.S. 287.

**10 - (MOFFAT & RIO BLANCO COs.)** bounded on N by Green and Yampa rivers; on E by Twelvemile Gulch Road, U.S. 40, Winter Valley Gulch, Coal Creek and Wolf Creek; on S by White River; on W by UT.

**11 - (MOFFAT & RIO BLANCO COs.)** bounded on N by Colo. 318 and U.S. 40; on E by Deception Creek-Strawberry Creek Road; on S by White River; on W by Wolf Creek, Coal Creek, Winter Valley Gulch, U.S. 40, Twelvemile Gulch Road, Yampa River and Little Snake River.

**12 - (MOFFAT, ROUTT, RIO BLANCO & GARFIELD COs.)** bounded on N by Colo. 317, Routt CRs 29 and 55, Rio Blanco CRs 10 & 8; on E by Williams Fork-Yampa River divide; on S by Williams Fork-White River divide, USFS Road 250, Rio Blanco CRs

## SPANISH PEAKS STATE WILDLIFE AREA



**Note:** SWA boundaries shown in this map are approximate. You can download and print maps for use in the field at [www.wildlife.state.co.us/LandWater](http://www.wildlife.state.co.us/LandWater).

## SPECIAL LAND USE RULES

- 1. SPANISH PEAKS SWA:** Map to trailhead and parking is on page 9. Hunting permitted only Sat., Sun., Mon. and Tues. in spring turkey seasons. *Mobility-impaired hunters, see page 8 for exceptions.*
- 2. HORSETHIEF CANYON SWA:** Turkey hunting is by one youth permit only and limited to just youth mentor hunting. Mentors cannot hunt. Applications available at DOW, 711 Independent Ave., Grand Junction, 81505. Application deadline March 31. Successful applicants will be notified by mail.
- 3. HIGEL, RIO GRANDE SWAs:** Spring season access is by permit only, issued by drawing. Applications available at DOW, 0722 S. Road 1E, Monte Vista, 81144. Group applications accepted; maximum two applicants per group. Application deadline: Jan. 31. Successful applicants will be notified by mail.
- 4. UNION TRACT OF ELLIOTT SWA:** Closed to turkey hunting.
- 5. CHANCELLOR RANCH:** The DOW no longer oversees licensing for this land. It is closed to both spring and fall turkey hunting.

## IT IS ILLEGAL TO:

- ▶ Hunt on private land without permission from the landowner or person in charge.
- ▶ Post, sign or indicate that public lands (except if under an exclusive-control lease) are private.
- ▶ Hunt on State Trust Lands without permission of lessee, except those open for wildlife recreation.

48, 15 & 30; on W by Colo. 13/789.

**13 - (MOFFAT & ROUTT COs.)** bounded on N by U.S. 40; on E by Routt CR 179, Trout Creek, Fish Creek; on S by Routt CR 29 and Colo. 317; on W by Colo. 13/789.

**14 - (ROUTT & GRAND COs.)** bounded on N by Little Snake-Elk River divide; on E by Continental Divide; on S by U.S. 40; on W by U.S. 40 and Routt CR 129.

**15 - (ROUTT, GRAND, EAGLE COs.)** bounded on N by U.S. 40; on E by Muddy Creek-Yampa River divide (Gore Range Divide) and Canyon Creek; on S by Colorado River; on W by Colo. 131.

**16 - (JACKSON CO.)** bounded on N by Lone Pine Creek, CRs 16 & 12W; on E by Colo. 14; on W by Continental Divide.

**17 - (JACKSON CO.)** bounded on N and E by Colo. 125; on S by Continental Divide (Jackson-Grand Co. line); on W and N by Colo. 14.

**18 - (GRAND CO.)** bounded on N and E by Continental Divide; on S by Arapaho Creek, Lake Granby and Colorado River; on W by the main fork of Troublesome Creek and Poison Creek.

**19 - (LARIMER CO.)** bounded on N by Colo. 14 (Poudre Canyon Road); on E by I-25; on S by Harmony Road, CRs 19, 38E, 27 & 44H (Buckhorn Road), Elk Creek-Pennock Creek divide and RMNP boundary; on W by Larimer-Jackson Co. line.

**20 - (LARIMER & BOULDER COs.)** bounded on N by Larimer CRs 44H (Buckhorn Road), 27, 38E, 19, and Harmony Road; on E by I-25; on S by Colo. 52, U.S. 287, Boulder CR 34 (Niwot/Neva roads), U.S. 36, Boulder CRs 94, 81, 106, and 95 (Lefthand Canyon Drive), 102 (Brainard Lake Road), and ridge line from Brainard Lake W to Pawnee Peak; on W by Continental Divide, RMNP boundary, and Pennock Creek-Elk Creek divide.

**21 - (RIO BLANCO & GARFIELD COs.)** bounded on N by the White River; on E by Monument Gulch,

Colo. 64, Monument Gulch Road, Rio Blanco CRs 103 and 26; on S by Douglas Creek-Roan Creek divide, the Douglas Creek-Salt Creeks divide, the Evacuation Creek-Salt Creeks divide and the Bitter Creek-West Salt Creek divide; and on W by UT.

**22 - (RIO BLANCO & GARFIELD COs.)** bounded on N by White River; on E by Colo. 13/789; on S by White River-Colorado River divide; on W by Rio Blanco CRs 26, 103, Monument Gulch Road, Colo. 64 and Monument Gulch.

**23 - (RIO BLANCO & GARFIELD COs.)** bounded on N by Rio Blanco CRs 30, 15 & 48, USFS Road 250; on E by USFS Road 250, Rio Blanco CRs 8 & 17 and USFS Primary Forest Road 245 (Buford-Newcastle Road); on S by White River-Colorado River divide; on W by Colo. 13/789.

**24 - (RIO BLANCO & GARFIELD COs.)** bounded on N by Williams Fork River-White River divide; on E by White River-Yampa River divide and White River-Colorado River divide; on S by S Fork of White River-Colorado River divide; on W by USFS Primary Forest Road 245 and Rio Blanco CRs 17 (Buford-Newcastle Road), 8 and USFS 250.

**25 - (GARFIELD & EAGLE COs.)** bounded on N by the Middle Fork of Derby Creek and Derby Creek; on E by Colorado River; on S by Deep Creek; and on W by the Colorado River-White River divide.

**27 - (GRAND & ROUTT COs.)** bounded on N and E by U.S. 40; on S by Colo. 9 and Colorado River; on W by Canyon Creek and Muddy Creek-Yampa River divide (Gore Range Divide).

**28 - (GRAND CO.)** bounded on N by Colorado River, Lake Granby and Arapaho Creek; on E by Continental Divide; on S by Continental Divide and Williams Fork-Straight Creek divide; on W by Williams Fork-Blue River divide and Barger Gulch.

**29 - (BOULDER, JEFFERSON & GILPIN COs.)** bounded on N by the ridge line from Pawnee Peak

to Brainard Lake, Boulder CRs 102 (Brainard Lake Road), 94, 81, 106, and 95 (Lefthand Canyon Drive), U.S. 36, Boulder CR 34 (Neva/Niwot roads), and Colo. 52 (Mineral Road); on E by I-25; on S by Colo. 128, 93, 72, 119, and USFS Road 149 (Rollins Pass Road); on W by Continental Divide.

**30 - (GARFIELD, MESA COs.)** bounded on N by West Salt Creek-Bitter Creek divide, Evacuation Creek-Salt Creek divide and Douglas Creek-Salt Creek divide; on E by East Salt Creek-Roan Creek divide, Big Salt Wash- and Little Salt Wash-Roan Creek divides, and Bookcliffs; on S by Colorado River; on W by UT.

**31 - (MESA, GARFIELD & RIO BLANCO COs.)** bounded on N by Colorado-White River divide; on E by Roan Creek-Parachute Creek divide and Kelly Gulch; on S by Colorado River; and on W by Bookcliffs, Little Salt Wash-Roan Creek divide, Big Salt Wash-Roan Creek divide and East Salt Creek-Roan Creek divide.

**32 - (GARFIELD CO.)** bounded on N by Parachute Creek-Piceance Creek divide; on E by Colo. 13/789; on S by Colorado River; on W by Kelly Gulch and Roan Creek-Parachute Creek divide.

**33 - (GARFIELD & RIO BLANCO COs.)** bounded on N by White-Colorado River divide; on E by Canyon Creek; on S by Colorado River; on W by Colo. 13/789.

**34 - (GARFIELD & EAGLE COs.)** bounded on N by Deep Creek; on E and S by Colorado River; on W by Canyon Creek.

**35 - (EAGLE CO.)** bounded on N by Colorado River; on E by Colo. 131; on S by Eagle River; on W by Colorado River.

**36 - (EAGLE CO.)** bounded on N by Elk Creek to Piney Ridge, to Eagle's Nest Wilderness boundary and Gore Range divide (Elliot Ridge); on E by Gore Range divide; on S from Gore Range divide to Vail Pass summit on I-70, following I-70 to Dowd Junction, then to Wolcott by the Eagle River; on W by Colo. 131 and the Colorado River from State Bridge to Elk Creek.

**37 - (SUMMIT, GRAND COs.)** bounded on N by Colorado River; on E by Barger Gulch, Williams Fork River-Blue River divide, Williams Fork River-Straight Creek divide and Continental Divide; on S by Continental Divide; on W by Eagle River-Tenmile Creek divide, I-70, Blue River, Cataract Creek and Gore Range Divide.

**38 - (GILPIN, BOULDER, CLEAR CREEK & JEFFERSON COs.)** bounded on N by USFS Road 149 (Rollins Pass Road), Colo. 119, 72, 93 and 128; on E by I-25; on S by I-70 and U.S. 40; on W by Continental Divide.

**39 - (JEFFERSON, CLEAR CREEK & PARK COs.)** bounded on N by U.S. 40 and I-70; on E by Colo. 74 and Jefferson CR 73; on S by U.S. 285, N Turkey Creek-Elk Creek divide and Pike-Arapaho NF boundary; on W by Continental Divide. (See unit 391.)

**40 - (MESA CO.)** bounded on N by Colorado River; on E by U.S. 50; on S by Colo. 141 and Dolores River; on W by UT.

**41 - (MESA & DELTA COs.)** bounded on N by Colorado River and Colo. 65; on E by Colo. 65, Lands End Road, Flowing Park Road and Mesa-Delta Co. line; on W by U.S. 50.



- 42 - (MESA & GARFIELD COs.)** bounded on N by Colorado River; on E by S Canyon Creek, the divide between Roaring Fork-Crystal River and Baldy Creek-Divide Creek drainages and common point of Mesa-Pitkin-Gunnison Co. lines; on S by Divide Creek-Muddy Creek divide, Divide Creek-Plateau Creek divide and Plateau Creek-Colorado River divide; and on W by Colorado River.
- 43 - (GARFIELD, PITKIN, EAGLE & GUNNISON COs.)** bounded on N by Colorado River; on E by Roaring Fork and Castle Creek; on S by divide between Roaring Fork-Crystal River drainages and East River-Muddy Creek drainages and McClure Pass; on W by Muddy Creek-Crystal River divide, divide between Roaring Fork-Crystal River drainages and Divide Creek-Baldy Creek drainages and S Canyon Creek.
- 44 - (EAGLE CO.)** bounded on N by Colorado River and Eagle River; on E by East Lake Creek; on S by Frypan River-Eagle River divide; on W by USFS Road 514 (Red Table Mountain Road), CR 10A (Cottonwood Pass Road) and Cottonwood Creek.
- 46 - (CLEAR CREEK, PARK & JEFFERSON COs.)** bounded on N by Pike-Arapaho NF boundary and N Turkey Creek-Elk Creek divide; on E and S by U.S. 285; on W by N Fork of South Platte River and Continental Divide.
- 47 - (EAGLE & PITKIN COs.)** bounded on N by Frypan River and Ivanhoe Creek; on E by the Continental Divide; on S by Colo. 82; on W by Roaring Fork River.
- 48 - (LAKE & CHAFFEE COs.)** bounded on N by Continental Divide; on E by Tennessee Creek and Arkansas River; on S by Clear Creek and S Fork of Clear Creek; on W by Continental Divide.
- 49 - (LAKE, PARK & CHAFFEE COs.)** bounded on N by Continental Divide; on E by Colo. 9 and U.S. 285; on S by U.S. 24; on W by Arkansas River and Tennessee Creek.
- 50 - (PARK CO.)** bounded on N by U.S. 285; on E by CR 77; on S by U.S. 24; on W by U.S. 285.
- 51 - (DOUGLAS CO.)** bounded on N by Colo. 470; on E by I-25; on S by Douglas-Teller Co. line; on W by S Platte River.
- 52 - (DELTA CO.)** bounded on N by Delta-Mesa Co. line; on E by Grand Mesa-Gunnison NF boundary, Overland Ditch, West Res. No. 1, and Jay Creek; on S by N Fork of Gunnison River and Colo. 92; on W by Colo. 65.
- 53 - (DELTA & GUNNISON COs.)** bounded on N by N Fork of Gunnison River, Gunnison CR 12 (Kebler Pass Road) Kebler Pass and Ohio Pass; on E and S by Gunnison River-N Fork of Gunnison River divide and Curecanti Pass, Smith Fork-Curecanti Creek divide, Smith Fork-Dyer Creek divide, and Delta-Montrose Co. line; on W by Colo. 92.
- 54 - (GUNNISON CO.)** bounded on N by Gunnison River-N Fork of Gunnison River divide and CR 12 (Kebler Pass Road); on E by Colo. 135; on S by U.S. 50, Blue Mesa Res. and Gunnison River; on W by Curecanti Creek.
- 55 - (GUNNISON CO.)** bounded on N by Gunnison-Pitkin Co. line; on E by Continental Divide; on S by Taylor River-Tomichi Creek divide and Cumberland Pass, USFS Road 765 (N Quartz Creek Road), Quartz Creek Road, and U.S. 50; on W by Colo. 135, CR 12 (Kebler Pass Road), Kebler Pass and Ruby Range Summit.
- 56 - (CHAFFEE CO.)** bounded on N by Chalk Creek and Tincup Pass Road; on E by Arkansas River and Colo. 291; on S by U.S. 50; on W by Continental Divide.
- 57 - (CHAFFEE, PARK & FREMONT COs.)** bounded on N by U.S. 24; on E by Kaufman Ridge and Badger Creek; on S by U.S. 50 and Colo. 291; on W by Arkansas River.
- 58 - (FREMONT & PARK COs.)** bounded on N by U.S. 24; on E by Park CR 59 and Colo. 9; on S by U.S. 50; on W by Kaufman Ridge and Badger Creek.
- 59 - (PUEBLO, FREMONT, EL PASO & TELLER COs.)** bounded on N by U.S. 24; on E by I-25; on S by U.S. 50; on W by Colo. 67 and Phantom Canyon Road, except portions of Pueblo, Fremont and El Paso counties within Fort Carson Military Reservation. (See unit 591.)
- 60 - (MESA & MONTROSE COs.)** bounded on N and E by Dolores River; on S by Colo. 90; on W by UT.
- 61 - (MESA, MONTROSE, OURAY & SAN MIGUEL COs.)** bounded on N by Colo. 141; on E by USFS roads 402 (Divide Road), 517 (South Divide Road), and Dave Wood Road; on S by Colo. 62; on W by San Miguel River and Dolores River.
- 62 - (DELTA, MESA, MONTROSE & OURAY COs.)** bounded on N by Colo. 141; on E by Colo. 50 and 550; on S by Colo. 62; on W by Dave Wood Road and USFS Road 402 (Divide Road).
- 63 - (DELTA, GUNNISON & MONTROSE COs.)** bounded on N by Colo. 92; on E by Colo. 92, Delta-Montrose CO. line, Smith Fork-Dyer Creek divide, Smith Fork-Curecanti Creek divide, Curecanti Pass and Curecanti Creek; on S and W by Gunnison River.
- 64 - (DELTA & MONTROSE COs.)** bounded on N and E by Colo. 92 to the Gunnison River, south to Morrow Point Res.; on E by Big Blue Creek; on S and W by U.S. 50 to Delta.
- 65 - (GUNNISON, HINSDALE, MONTROSE & OURAY COs.)** bounded on N by U.S. 50; on E by Big Blue Creek-Cimarron Creek divide; on S by Ouray-San Juan Co. line; on W by Ouray-San Miguel Co. line, Colo. 62 and Colo. 550.
- 66 - (GUNNISON, HINSDALE & SAGUACHE COs.)** bounded on N by Morrow Point Res., Gunnison River and Blue Mesa Res.; on E by Colo. 149, Cebolla Creek, Spring Creek, Cathedral Creek and Groundhog Park, and Spring Creek-Cochetopa Creek divide; on S by Continental Divide; on W by Hinsdale-San Juan Co. line, Hinsdale-Ouray Co. line, Cimarron River-Henson Creek divide, and Big Blue Creek-Little Cimarron River divide, U.S. 50 and Big Blue Creek.
- 67 - (GUNNISON, HINSDALE & SAGUACHE COs.)** bounded on N by U.S. 50; on E by Colo. 114 and North Pass; on E and S by Continental Divide; on W by Cochetopa Creek-Spring Creek divide and Groundhog Park, Cathedral Creek, Spring Creek, Cebolla Creek and Colo. 149.
- 68 - (SAGUACHE CO.)** bounded on N by Colo. 114; on E by U.S. 285; on S by CRs G and 41G, USFS Roads 675 & 676, USFS Trails 796 & 787 and Saguache-Mineral Co. line; on W by Continental Divide.
- 69 - (CUSTER & FREMONT COs.)** bounded on N by U.S. 50; on E by Colo. 67; on S by Colo. 96; on W by Colo. 69, Grape Creek and Arkansas River.
- 70 - (DOLORES, MONTROSE & SAN MIGUEL COs.)** bounded on N by Colo. 90, Dolores River, San Miguel River, and Colo. 62; on E by Ouray-San Miguel Co. line and San Miguel-San Juan Co. line; on S by San Miguel-Dolores Co. line, Disappointment Creek, Dolores River and Summit Canyon Creek; on W by UT.
- 71 - (DOLORES & MONTEZUMA COs.)** bounded on N by Disappointment Creek and Dolores-San Miguel Co. line; on E by Dolores-San Juan Co. line, Montezuma-La Plata Co. line and Bear Creek; on S by Colo. 145; on W by USFS Road 526 (Dolores-Norwood Road).
- 72 - (DOLORES & MONTEZUMA COs.)** bounded on N and E by U.S. 491; on S by NM; on W by UT.
- 73 - (MONTEZUMA CO.)** bounded on N by Colo. 184 & 145 and Bear Creek; on E by Montezuma-La Plata Co. line; on S by NM; on W by U.S. 491.
- 74 - (LA PLATA & SAN JUAN COs.)** bounded on N by Ouray-San Juan Co. line; on E by San Juan-Hinsdale Co. line and Animas River; on S by U.S. 160; on W by Montezuma-La Plata Co. line, Dolores-San Juan Co. line, San Miguel-San Juan Co. line & Ouray-San Juan Co. line.
- 75 - (LA PLATA & SAN JUAN COs.)** bounded on N and E by Hinsdale-San Juan Co. line, Continental Divide, Los Pinos River-Florida River divide, La Plata CR 240 (Pine River-Florida River Road), Bayfield-Vallecito Road and Los Pinos River; on S by NM; on W by Animas River.
- 76 - (HINSDALE, MINERAL, RIO GRANDE, SAGUACHE & SAN JUAN COs.)** bounded on N by Continental Divide, Saguache-Mineral Co. line, and USFS Trail 787; on E by La Garita Driveway (all-terrain vehicles trail), USFS roads 600-3A & 600, Colo. 149 and U.S. 160; on S and W by Continental Divide.
- 77 - (ARCHULETA, HINSDALE, LA PLATA & MINERAL COs.)** bounded on N by Continental Divide and Piedra River-San Juan River divide; on E by Piedra River-San Juan River divide, Four Mile Creek and San Juan River; on S by U.S. 160; on W by Los Pinos River-Piedra River divide.
- 78 - (ARCHULETA, CONEJOS, MINERAL & RIO GRANDE COs.)** bounded on N and E by Continental Divide; on S by NM; on W by San Juan River, Four Mile Creek and Piedra River-San Juan River divide.
- 79 - (MINERAL, RIO GRANDE & SAGUACHE COs.)** bounded on N by USFS trails 787 and 796, USFS roads 676 and 675, Saguache CRs 41G and G; on E by U.S. 285; on S by U.S. 160; on W by Colo. 149, USFS roads 600 and 600-3A and La Garita Driveway (ATV trail).
- 82 - (ALAMOSA & SAGUACHE COs.)** bounded on N by Poncha Pass; on N and E by Rio Grande-Arkansas River divide; on S by Alamosa-Costilla Co. line and U.S. 160; on W by Colo. 17 and U.S. 285.
- 83 - (ALAMOSA, COSTILLA & HUERFANO COs.)** bounded on N by U.S. 160 and Alamosa-Costilla Co. line; on E by Costilla-Huerfano Co. line and Sangre de Cristo-Culebra Range; on S by NM; on W

- by Rio Grande River.
- 84 - (CUSTER, FREMONT, HUERFANO & PUEBLO COs.)** bounded on N by U.S. 50; on E by I-25 and Colo. 1; on S by Colo. 69; on W by Colo. 96 & 67.
- 85 - (HUERFANO, LAS ANIMAS & TRINIDAD COs.)** bounded on N by Colo. 69; on E by I-25; on S by Colo. 12 and N and W forks of Purgatoire River; on W by Sangre de Cristo Divide, Huerfano CRs 570, 572 (Pass Creek Road) and 555 (Muddy Creek Road).
- 86 - (FREMONT, CUSTER & CHAFFEE COs.)** bounded on N by U.S. 50; on E by Colo. 69; on S by Huerfano-Custer Co. line; on W by Sangre De Cristo Divide and U.S. 285.
- 87 - (LARIMER & WELD COs.)** bounded on N by WY; on E by Weld CRs 390 (Keota-Grover Road) and 105 between Keota and Colo. 14; on S by Colo. 14; on W by I-25.
- 88 - (WELD CO.)** bounded on N by WY and NE; on E by Colo. 71; on S by Colo. 14; on W by CRs 390 (Keota-Grover Road) and 105 (between Keota and Colo. 14).
- 89 - (WELD & LOGAN COs.)** bounded on N by NE; on E by Colo. 113 and U.S. 138; on S by Colo. 14; on W by Colo. 71.
- 90 - (LOGAN & SEDGWICK COs.)** bounded on N by NE; on E and S by U.S. 138; on W by Colo. 113.
- 91 - (LOGAN CO.)** bounded on N by U.S. 138; on E by Red Lion Road; on S by I-76 and U.S. 6; on W by U.S. 138.
- 92 - (LOGAN, SEDGWICK COs.)** bounded on N by U.S. 138 and NE; on E and S by I-76 and Red Lion Road; on W by U.S. 138.
- 93 - (LOGAN, SEDGWICK & PHILLIPS COs.)** bounded on N by I-76; on N and E by NE state line; on S by U.S. 6; on W by I-76.
- 94 - (LARIMER, ADAMS & WELD COs.)** bounded on N by Colo. 14; on E by U.S. 85 and U.S. 34, Weld CR 49 (Hudson-Keenesburg Cutoff), and I-76; on S by Colo. 7; on W by I-25.
- 95 - (WELD, LOGAN, MORGAN & WASHINGTON COs.)** bounded on N by Colo. 14; on E and S by U.S. 6, Logan CRs 6 and 17.7, Washington CR 58, Morgan CR W.7, 2nd Street in Snyder, Colo. 71, Morgan CRs W.5, 28, W, 13.5 and W.5, Colo. 144, Morgan CR 2, GG, 0, Weld CR 68 and Colo. 392; and on W by U.S. 85.
- 96 - (LOGAN, WASHINGTON & MORGAN COs.)** bounded on N by Colo. 144, Morgan CRs W.5, 13.5, W, 28 and W.5, Colo. 71, Morgan CR W.7 (which becomes Washington CR 58 at Co. line), Washington CR 58 (which becomes Logan CR 17.7 at Co. line), Logan CRs 17.7, 6 and U.S. 6; on E and S by U.S. 6 and I-76; on W by Colo. 144.
- 97 - (LOGAN, WASHINGTON & MORGAN COs.)** bounded on N and E by Colo. 61; on S by U.S. 34; and on W by I-76.
- 98 - (LOGAN, PHILLIPS, YUMA & WASHINGTON COs.)** bounded on N by Colo. 6; on E by NE; on S by U.S. 34; on W by Colo. 61.
- 99 - (WELD, MORGAN & ADAMS COs.)** bounded on N by I-76; on E by Colo. 71; on S by U.S. 36; on W by Colo. 79 and 144th Ave.; on S and W by Adams CR 25N, 152nd Ave. and I-76; on W by I-76.
- 100 - (WASHINGTON, MORGAN COs.)** bounded on N by U.S. 34; on E by Colo. 61; on S by U.S. 36; on W by Colo. 71.
- 101 - (WASHINGTON, YUMA COs.)** bounded on N by U.S. 34; on E by U.S. 385, Yuma CR 26, Colo. 59, Yuma CRs 16, C, 9 (which becomes Washington CR 9 at Co. line), Washington CRs 9, YY and 7; on S by U.S. 36; on W by Colo. 61.
- 102 - (WASHINGTON & YUMA COs.)** bounded on N by U.S. 34; on E by NE and KS; on S by U.S. 36; on W by Washington CRs 7, YY, and 9 (which becomes Yuma CR 9 at Co. line), Yuma CRs 9, C and 16, Colo. 59, Yuma CR 26 and U.S. 385.
- 103 - (YUMA CO.)** bounded on N by U.S. 36; on E by KS; on S by Kit Carson-Yuma Co. line; on W by U.S. 385.
- 104 - (DENVER, ADAMS, ARAPAHOE, DOUGLAS & ELBERT COs.)** bounded on N by Colo. 7, I-76, 152nd Ave., Adams CR 25N & 144th Ave.; on E by Colo. 79, Colo. 36 (Arapahoe CR 137), Kiowa-Bennett Mile Road, Elbert CRs 53, 166, 45-49, Colo. 86 and Elbert CR 25-41; on S by Elbert-Douglas-El Paso Co. lines; on W by I-25.
- 105 - (ADAMS, ARAPAHOE & ELBERT COs.)** bounded on N by U.S. 36; on E by I-70; on S by U.S. 24 and Elbert-El Paso Co. line; and on W by Arapahoe CR 137 (Kiowa-Bennett Mile Road), Elbert CRs 53, 166, 45-49, Colo. 86 and Elbert CR 25-41.
- 106 - (ARAPAHOE, ELBERT, WASHINGTON & LINCOLN COs.)** bounded on N by U.S. 36; on E by Colo. 71; on S and W by I-70.
- 107 - (WASHINGTON, LINCOLN & KIT CARSON COs.)** bounded on N by U.S. 36; on E by Colo. 59; on S by I-70; on W by Colo. 71.
- 109 - (WASHINGTON, YUMA & KIT CARSON COs.)** bounded on N by U.S. 36; on E by U.S. 385, Yuma-Kit Carson Co. line and KS; on S by I-70; on W by Colo. 59.
- 110 - (EL PASO CO.)** bounded on N by Douglas-Elbert-El Paso Co. lines; on E by U.S. 24 and CR 523 (Calhan Hwy.); on S by Colo. 94; on W by I-25.
- 111 - (EL PASO, LINCOLN & ELBERT COs.)** bounded on N by U.S. 24; on E by Colo. 71; on S by Colo. 94; and on W by U.S. 24 and El Paso CR 523 (Calhan Hwy.).
- 112 - (LINCOLN CO.)** bounded on N by U.S. 40; on E by Co. Primary 109; on the S by Colo. 94; on W by Colo. 71.
- 113 - (LINCOLN & CHEYENNE COs.)** bounded on N by U.S. 40; on E by Cheyenne CR 8; on S by Colo. 94; on W by Co. Primary 109.
- 114 - (LINCOLN, KIT CARSON & CHEYENNE COs.)** bounded on N by I-70; on E by Flagler-Wildhorse Road (CRs 5, G, 6, A (Kit Carson Co. line), GG, (Cheyenne Co. line) and 9; on S and W by U.S. 40.
- 115 - (KIT CARSON, CHEYENNE COs.)** bounded on N by I-70; on E by Colo. 59; on S by U.S. 40; and W by the Flagler-Wildhorse Road.
- 116 - (KIT CARSON & CHEYENNE COs.)** bounded on N by I-70; on E by U.S. 385; on S by U.S. 40; on W by Colo. 59.
- 117 - (KIT CARSON & CHEYENNE COs.)** bounded on N by I-70; on E by KS; on S by U.S. 40; on W by U.S. 385.
- 118 - (EL PASO CO.)** bounded on N by Colo. 94; on E by Yoder Road, Shear Road and Boone Road; on S by Hanover Road, Finch Road and Myers Road; on W by I-25.
- 119 - (EL PASO & LINCOLN COs.)** bounded on N by Colo. 94; on E by Colo. 71; on S by Crowley-Lincoln and El Paso-Pueblo Co. lines; on W by Yoder Road, Shear Road and Boone Road.
- 120 - (LINCOLN, CROWLEY & KIOWA COs.)** bounded on N by Colo. 94, on E by Co. Primary Roads 109, 1, 2, and Secondary Road 35; on S by Colo. 96; and on W by Colo. 71.
- 121 - (CHEYENNE, LINCOLN & KIOWA COs.)** bounded on N by Colo. 94 and U.S. 40; on E by U.S. 287; on S by Colo. 96; and on W by Co. Primary Roads 109, 1, 2, and Secondary Road 35.
- 122 - (CHEYENNE & KIOWA COs.)** bounded on N by U.S. 40; on E by KS; on S by Colo. 96; on W by U.S. 287.
- 123 - (EL PASO & PUEBLO COs.)** bounded on N by Hanover Road, Finch Road and Myers Road; on E by Yoder Road, Shear Road and Boone Road; on S by Arkansas River; on W by I-25.
- 124 - (CROWLEY & PUEBLO COs.)** bounded on N by Lincoln-Crowley and El Paso-Pueblo Co. lines; on E by Colo. 71; on S by Arkansas River; on W by Yoder-Boone Road.
- 125 - (CROWLEY, KIOWA, BENT & OTERO COs.)** bounded on N by Colo. 96; on E by Kiowa CR 19 and Bent CR 14 to Bent CR HH, S on Bent CR 15 to Arkansas River; on S by Arkansas River; on W by Colo. 71.
- 126 - (KIOWA, BENT & PROWERS COs.)** bounded on N by Colo. 96; on E by U.S. 287; on S by Arkansas River; on W by Kiowa CR 19 and Bent CR 14 to Bent CR HH; S on Bent CR 15 to Arkansas River.
- 127 - (KIOWA & PROWERS COs.)** bounded on N by Colo. 96; on E by KS; on S by Arkansas River; on W by U.S. 287.
- 128 - (PUEBLO, HUERFANO, LAS ANIMAS & OTERO COs.)** bounded on N by Arkansas River; on E by Colo. 167; on S by Colo. 10; on the W by I-25.
- 129 - (OTERO CO.)** bounded on N and E by Arkansas River; on S by Colo. 10; on W by Colo. 167.
- 130 - (OTERO & BENT COs.)** bounded on N by Arkansas River; on E by Colo. 101, Pritchett-Las Animas improved road, and U.S. 50; on S by Bent-Las Animas, Bent-Baca Co. lines; on W by Colo. 109.
- 131 - (ROUTT & RIO BLANCO COs.)** bounded on N by U.S. 40; on E by Colo. 131; on S by Routt CRs 15, 132, 25, 132A and 29; on W by Fish Creek, Trout Creek & Routt CR 179.
- 132 - (PROWERS CO.)** bounded on N by Arkansas River; on E by KS; on S by Prowers CRs D & F; on W by U.S. 287.
- 133 - (HUERFANO, PUEBLO & LAS ANIMAS COs.)** bounded on N by Colo. 10; on E by Colo. Interstate Gas Pipeline Road; on S by Apishapa River; on W by I-25.
- 134 - (LAS ANIMAS CO.)** bounded on N by Apishapa River; on E by Colo. Interstate Gas Pipeline Road; on S by U.S. 350; on W by I-25.
- 135 - (LAS ANIMAS, PUEBLO & OTERO COs.)** bounded on N by Colo. 10 and Arkansas River; on



- E by Colo. 109 (N of Purgatoire River) and Purgatoire River (S of Colo. 109); on S by Las Animas-Otero Co. line, N boundary of U.S. Army Pinon Canyon Maneuver Site, and U.S. 350; on W by Colo. Interstate Gas Pipeline Road.
- 136 - (OTERO, BENT & LAS ANIMAS CO.)** bounded on N by Colo. 109 and Purgatoire River; on E by Colo. 109; on S by U.S. 160; on W by Chacuaco Creek and Purgatoire River.
- 137 - (LAS ANIMAS & BACA COs.)** bounded on N by Bent-Las Animas & Bent-Baca Co. lines; on E by Pritchett-Las Animas improved road and U.S. 160; on S by U.S. 160; on W by Colo. 109.
- 138 - (BACA CO.)** bounded on N by Baca-Bent & Baca-Prowers Co. lines; on E by U.S. 287; on S by U.S. 160; on W by Pritchett-Las Animas improved road.
- 139 - (BACA CO.)** bounded on N by Prowers CRs D & F; on E by KS; on S by Baca CR M; on W by U.S. 287.
- 140 - (LAS ANIMAS CO.)** bounded on N by U.S. 160; on E by Colo. 389; on S by NM; on W by I-25.
- 141 - (LAS ANIMAS CO.)** bounded on N by W and S boundaries of U.S. Army Pinon Canyon Maneuver Site and Colo. Interstate Gas Pipeline Road; on E by Purgatoire River and San Francisco Creek; on S by U.S. 160; on W by U.S. 350.
- 142 - (LAS ANIMAS CO.)** in U.S. Army Pinon Canyon Maneuver Site.
- 143 - (LAS ANIMAS CO.)** bounded on N by U.S. 160; on E by Baca-Las Animas Co. line; on S by OK & NM; on W by Colo. 389.
- 144 - (BACA CO.)** bounded on N by U.S. 160; on E by U.S. 287; on S by OK; on W by Baca-Las Animas Co. line.
- 145 - (BACA CO.)** bounded on N by CR M; on E by KS; on S by OK; on W by U.S. 287.
- 146 - (BENT & PROWERS COs.)** bounded on N by Arkansas River; on E by U.S. 287; on S by Prowers-Baca & Bent-Baca Co. lines; on W by Colo. 101 and Pritchett-Las Animas improved road and U.S. 50.
- 147 - (LAS ANIMAS CO.)** bounded on N by Las Animas-Otero Co. line; on E by Purgatoire River and Chacuaco Creek, on S by U.S. 160; on W by San Francisco Creek, Purgatoire River, Colo. Interstate Gas Pipeline Road, E boundary of U.S. Army Pinon Canyon Maneuver Site.
- 161 - (JACKSON CO.)** bounded on N by WY; on E by Colo. 125; on S by Colo. 14, Jackson CRs 12W & 16, Lone Pine Creek and Continental Divide; on W by Continental Divide.
- 171 - (JACKSON CO.)** bounded on N and E by Colo. 14 and Jackson-Larimer Co. line; on S by Jackson-Grand Co. line; on W by Colo. 125.
- 181 - (GRAND CO.)** bounded on N by Continental Divide; on E by Poison Creek and Main Fork of Troublesome Creek; on S by Colorado River; on W by Colo. 9 and U.S. 40.
- 191 - (LARIMER CO.)** bounded on N by WY; on E by U.S. 287; on S by Colo. 14; on W by CRs 69, 68C, 74E (Red Feather Lakes Road), 67, 179, 80C (Cherokee Park Road) and 59.
- 211 - (MOFFAT & RIO BLANCO COs.)** bounded on N by U.S. 40 and Yampa River; on E by Colo. 13/789; on S by White River; on W by Strawberry Creek-Deception Creek Road.
- 214 - (ROUTT CO.)** bounded on N by Little Snake-Elk River divide; on E by CR 129; on S by U.S. 40; on W by Wolf Creek, Wolf Mountain, along the Elk River-Elkhead Creek divide.
- 231 - (ROUTT, RIO BLANCO & GARFIELD COs.)** bounded on N by Routt CRs 29, 132A, 25, 132 & 15; on E by Colo. 131; on S by Bear River; on W by Williams Fork-Yampa River divide to Dunkley Pass, Rio Blanco CRs 8 & 19 and Routt CR 55.
- 301 - (MOFFAT CO.)** bounded on N by CRs 5, 158, 3 & 108; on E by Colo. 13/789; on S by Yampa River; on W by CR 17.
- 361 - (EAGLE & GRAND COs.)** bounded on N by the Colorado River from Elk Creek to Inspiration Point; on E by the Gore Range Divide; on S and W by Piney Ridge to Elk Creek, following Piney Ridge to the Eagle's Nest Wilderness boundary and the Gore Range Divide (Elliott Ridge).
- 391 - (JEFFERSON CO.)** bounded on N by I-70; on E by I-25; on S by Colo. 470, CRs 124 (Deer Creek Canyon), 122 (South Turkey Creek) and U.S. 285; on W by CR 73 and Colo. 74. (See unit 39)
- 411 - (MESA & DELTA COs.)** bounded on N by Delta-Mesa Co. line, Flowing Park Road and Lands End Road; on E by Colo. 65 and 92; on S by U.S. 50.
- 421 - (MESA & GARFIELD COs.)** bounded on N by Colorado River-Plateau Creek divide; on E by Divide Creek-Buzzard Creek divide; on S by Mesa-Delta Co. line; on W by Colo. 65.
- 441 - (MOFFAT & ROUTT COs.)** bounded on N by USFS Road 42; on E by Elkhead Creek-Elk River divide and Wolf Creek; on S by U.S. 40; on W by Elkhead Creek.
- 444 - (EAGLE, GARFIELD & PITKIN COs.)** bounded on N by Colorado River, Cottonwood Creek, Eagle CR 10A, (Cottonwood Pass Road), USFS 514 (Red Table Mountain Road) and Fryingpan-Eagle River divide; on E by divide between Lime Creek and N Fork of Fryingpan River and its tributaries and Cross Creek-Homestake Creek drainages; on S by Ivanhoe Creek and Fryingpan River; on W by Roaring Fork River.
- 461 - (JEFFERSON & PARK COs.)** bounded on N by Jefferson CRs 122 (South Turkey Creek Canyon), 124 (Deer Creek Canyon), Colo. 7 and 470; on E by South Platte River; on S by North Fork of South Platte River; on W by U.S. 285.
- 481 - (CHAFFEE CO.)** bounded on N by South Fork of Clear Creek and Clear Creek; on E by Arkansas River; on S by Chalk Creek and Tincup Pass Road from St. Elmo; on W by Continental Divide.
- 500 - (PARK CO.)** bounded on N by Continental Divide; on E by North Fork of South Platte River; on S by U.S. 285; on W by Colo. 9.
- 501 - (PARK & JEFFERSON COs.)** bounded on N by U.S. 285 and North Fork of South Platte River; on E by South Platte River; on S by U.S. 24; on W by Park CR 77.
- 511 - (TELLER, EL PASO & PARK COs.)** bounded on N by Douglas Co. line; on E by I-25; on S by U.S. 24; on W by South Platte River, except on U.S. Air Force Academy.
- 521 - (GUNNISON & SAGUACHE COs.)** bounded on N by Delta-Mesa Co. line and Gunnison-Mesa Co. line; on E by Gunnison-Pitkin Co. line, White River-Gunnison NF boundary and Ruby Range Summit; on S by Gunnison CR 12 (Kebler Pass Road), N Fork of Gunnison River; on W by Jay Creek, West Res. No. 1, Overland Ditch and Grand Mesa-Gunnison NF boundary.
- 551 - (GUNNISON & SAGUACHE COs.)** bounded on N by U.S. 50, Quartz Creek Road, N Quartz Creek Road and Taylor River-Tomichi Creek divide; on E by Continental Divide; on S and W by Colo. 114.
- 561 - (CHAFFEE, SAGUACHE COs.)** bounded on N by U.S. 50; on E by U.S. 285; on S by the Arkansas River-Rio Grande drainage divide; on W by Continental Divide.
- 581 - (PARK, TELLER & FREMONT COs.)** bounded on N by U.S. 24; on E by Colo. 67 and Phantom Canyon Road; on S by U.S. 50; on W by Colo. 9 and Park CR 59.
- 591 - (PUEBLO, FREMONT & EL PASO COs.)** on Fort Carson.
- 681 - (SAGUACHE CO.)** bounded on N by Continental Divide and Arkansas River Divide between North Pass and Poncha Pass; on E by U.S. 285; on S by U.S. 285 & Colo. 114; on W by Colo. 114.
- 682 - (SAGUACHE CO.)** bounded on N by U.S. 285; on E by Colo. 17; on S by CR G; on W by U.S. 285.
- 691 - (CUSTER & FREMONT COs.)** bounded on N by U.S. 50; on E and S by Grape Creek and Arkansas River; on W by Colo. 69.
- 711 - (DOLORES, MONTEZUMA & SAN MIGUEL COs.)** bounded on N by Summit Canyon Creek, Dolores River and Disappointment Creek; on E by USFS Road 526 (Dolores-Norwood Road); on E and S by Colo. 145; on S by Colo. 184; on W by U.S. 491 and UT.
- 741 - (LA PLATA CO.)** bounded on N by U.S. 160; on E by Animas River; on S by NM; on W by Montezuma-La Plata Co. line.
- 751 - (ARCHULETA, HINSDALE, LA PLATA & SAN JUAN COs.)** bounded on N by Continental Divide; on E by Los Pinos River-Piedra River divide; on S by NM; on W by Los Pinos River, CRs 501 (Bayfield-Vallecito Road), 240 (Pine River-Florida River Road) and Los Pinos River-Florida River divide.
- 771 - (ARCHULETA CO.)** bounded on N by U.S. 160; on E by San Juan River; on S by NM; on W by Los Pinos River-Piedra River divide.
- 791 - (ALAMOSA, RIO GRANDE & SAGUACHE COs.)** bounded on N by CR G; on E by Colo. 17; on S by U.S. 160; on W by U.S. 285.
- 851 - (COSTILLA & LAS ANIMAS COs.)** bounded on N by West and North forks of Purgatoire River, Colo. 12; on E by I-25; on S by NM; on W by Sangre de Cristo Divide.
- 861 - (HUERFANO CO.)** bounded on N by Custer-Huerfano CO. line; on E by Colo. 69, CRs 555 (Muddy Creek Road), 570 and 572 (Pass Creek Road); on S and W by Sangre de Cristo Divide.
- 951 - (WELD & MORGAN COs.)** bounded on N by Colo. 392, Weld CR 68; on E by Morgan CRs O, GG & 2, Colo. 144; on S by I-76; on W by Weld CR 49, U.S. 34 and U.S. 85.



Printed for free distribution by  
**Colorado Division of Wildlife**  
6060 Broadway, Denver CO 80216  
(303) 297-1192  
[www.wildlife.state.co.us](http://www.wildlife.state.co.us)

**NOTICE:** This brochure is not a legal notice nor a complete collection of hunting regulations and laws. It is a condensed guide issued for hunters' convenience. Copies of wildlife statutes and regulations can be obtained from a DOW office and are available on the website at [www.wildlife.state.co.us](http://www.wildlife.state.co.us). For questions, call the DOW, (303) 297-1192.

## 2011 TURKEY DATES TO KNOW

### SPRING

- Application deadline  
**FEB. 10**
- Drawing results online by  
**MARCH 4**
- Licenses/refunds in the mail  
**MARCH 14**
- Unlimited license sales start  
**MARCH 15**
- Spring hunting season  
**APRIL 9-MAY 22\***

### FALL

- Applications accepted beginning  
**JUNE 1**
- Unlimited license sales start  
**JULY 12**
- Application deadline  
**JULY 14**
- Drawing results online by  
**AUG. 2**
- Licenses/refunds in the mail  
**AUG. 3**
- Fall hunting season  
**SEPT. 1-OCT. 21\***

**\*SEASON DATES:** Specific hunt dates vary by license type & hunt location. See hunt tables for details, pages 4-7. Some licenses are valid only on certain dates. It is your responsibility to know the correct dates for your hunt.

# Get Outdoors



## Subscribe to Colorado Outdoors

Did you know Colorado has the largest elk herd in the world? Did you know Colorado is the only state where you can buy an over-the-counter bull elk license? *Colorado Outdoors* magazine will keep you up-to-date on all the opportunities available to you and your hunting buddies. Don't flounder around looking for the best spots to fish. *Colorado Outdoors* is a must-read if you're seeking a high-country angling experience or fishing the state's plains reservoirs.

For over 70 years, *Colorado Outdoors* has been the official publication of the Division of Wildlife (DOW) and the only magazine dedicated to Colorado's wildlife. And now when you subscribe, you get your choice of either a free hunting guide or fishing guide. These special annual editions are packed with a wealth of information you need to know to be a more successful hunter or angler.

We offer insight into our wildlife resources as well as providing up-to-date coverage of hunting, fishing and wildlife management. You get valuable advice from DOW experts, information that you can't get anywhere else. You'll read about recovery efforts of some of our endangered species. Plus you'll learn about environmental news, watchable wildlife events, volunteer opportunities, state fishing records and much more.

## 10 Reasons to subscribe to Colorado Outdoors

- Each one-year subscription entitles you to six issues.
- Subscribers get their choice of either the Fishing Guide or the Hunting Guide. These 40-page special editions sell for \$5 on the newsstand and you get your choice of one absolutely free.
- Learn high-performance hunting tips for a more successful hunt.
- Annual Preference Point issue is a must-have tool in planning your big game hunt.
- Expert advice on cold- and warm-water fishing.
- Award-winning wildlife photography, including annual photography issue.
- A great way to introduce your children to wildlife and the outdoors.
- A valuable reference guide for classrooms and libraries.
- Makes a great gift
- Never any advertising

To order your subscription online visit the Division of Wildlife website at <http://wildlife.state.co.us/wildlifestore> and click on the link to *Colorado Outdoors* magazine