

2007 Colorado Turkey



ATTENTION
HUNTERS:



**DON'T FORGET YOUR
2007 HABITAT STAMP**



***Spring application deadline: Feb. 8
Fall application deadline: July 12***

DOW OFFICES

DOW Headquarters
6060 Broadway
Denver, 80216
(303) 297-1192

Fort Collins Svc. Ctr.
317 W. Prospect Road
Fort Collins, 80526
(970) 472-4300

Northwest Region Svc. Ctr.
711 Independent Ave.
Grand Junction, 81505
(970) 255-6100

Glenwood Springs Svc. Ctr.
50633 Hwys. 6 & 24
Glenwood Springs, 81601
(970) 947-2920

Southwest Region Svc. Ctr.
151 E. 16th St.
Durango, 81301
(970) 247-0855

Hot Sulphur Springs Svc. Ctr.
346 Grand County Road 362
Hot Sulphur Springs, 80451
(970) 725-6200

Southeast Region Svc. Ctr.
4255 Sinton Road
Colorado Springs, 80907
(719) 227-5200

Lamar Svc. Ctr.
2500 S. Main St.
Lamar, 81052
(719) 336-6600

Monte Vista Svc. Ctr.
0722 S. Road 1 E.
Monte Vista, 81144
(719) 587-6900

For recordings on season dates and other information:
Deer, Elk, Pronghorn, Bear (303) 291-7529
Fishing (303) 291-7533
Small Game, Upland Game (303) 291-7546
Turkey (303) 291-7547
Waterfowl (303) 291-7548
Hunter Education (303) 291-7530

Telephone License Sales 1-800-244-5613

www.wildlife.state.co.us

Northeast Region Svc. Ctr.
6060 Broadway
Denver, 80216
(303) 291-7227

Brush Svc. Ctr.
122 E. Edison, Box 128
Brush, 80723
(970) 842-6300

Montrose Svc. Ctr.
2300 S. Townsend Ave.
Montrose, 81401
(970) 252-6000

Gunnison Svc. Ctr.
300 W. New York Ave.
Gunnison, 81230
(970) 641-7060

Meeker Svc. Ctr.
73485 Hwy. 64
Meeker, 81641
(970) 878-6090

Steamboat Spgs. Svc. Ctr.
925 Weiss Drive
Steamboat Spgs., 80477
(970) 870-2197

Pueblo Svc. Ctr.
600 Reservoir Road
Pueblo, 81005
(719) 561-5300

Salida Svc. Ctr.
7405 Hwy. 50
Salida, 81201
(719) 530-5520

Table of Contents

What's New for 2007	1
License Fees	1
License Information	1
Residency Requirements	1
Habitat Stamp	2
Hunter Education	2
Ranching For Wildlife	2
Hunting Hours	2
Bag and Possession Limits	2
Methods of Take	2
Contests	2
Tagging	2
Evidence of Sex	2
Preference Points	3
Land Use Rules	3
Mobility-impaired Licenses	3
Unlimited Turkey Seasons	4
Limited Licenses.....	4-5
Filling Out Your Application	5
GMU Map	6-7
Maps of Limited License Areas	8
GMU Descriptions	9-13
Guide to Legal Hunting Hours	13

OPERATION GAME THIEF

Operation Game Thief (OGT) is a non-profit organization working with the DOW's law enforcement program. It pays rewards to citizens who report poachers or resource violations. Callers don't have to reveal their names, testify in court or sign a deposition. Rewards are paid if the information leads to the arrest of a poacher or a citation is issued. Rewards do not depend on a conviction but must be requested when a violation is reported. Call toll-free, **1-877-COLOOGT (265-6648)** toll free. The number should not be used for information requests or emergencies.

NOTICE

This brochure is not a legal notice nor a complete collection of hunting regulations and laws. It is a condensed guide issued for hunters' convenience. Copies of wildlife statutes and regulations can be obtained from a DOW office and are available on our Web site, www.wildlife.state.co.us. For questions, call the DOW, (303) 297-1192.

*For information on hunting in
Colorado, call (303) 297-1192.*

2007 TURKEY HUNTING

What's New For 2007

Youth Hunts: Limited licenses now are available for youths only in several units. See "Limited Licenses."

Spring Limited Licenses: Units 101 and 139 are open for limited hunting this spring.

Fall Limited Licenses: Units 102 and 139 will offer limited hunting in the fall.

Walk-In Access: Spring turkey hunting may be offered this year on specific properties enrolled in the Walk-In Access Program.

Habitat Stamp: Limited licenses will not be mailed until you have met your habitat stamp requirement. See "Filling Out Your Application."

Preference Points: Purging of turkey points will begin for inactive hunters in 2007. See "Preference Points."

2007 TURKEY LICENSE FEES

(Add \$5 for Habitat Stamp***)

License	License Fee	Applic. Fee	Total
Unlimited Spring Resident.....	\$21		\$21
Unlimited Fall Resident.....	\$16		\$16
Unlimited Resident Youth.....	\$11		\$11
Unlimited Spring/Fall Nonresident.....	\$101		\$101
Unlimited Nonresident Youth.....	\$76		\$76
Limited Spring Resident.....	\$21	\$3	\$24
Limited Fall Resident.....	\$16	\$3	\$19
Limited Resident Youth.....	\$11	\$3	\$14
Limited Spring/Fall Nonresident.....	\$101	\$3	\$104
Limited Nonresident Youth.....	\$76	\$3	\$79

Costs include 25-cent search and rescue fee and 75-cent surcharge for the Wildlife Management Education Fund.

***Habitat Stamp required.

LICENSE INFORMATION

1. You must apply for limited licenses, valid only for specific dates and units. See "Limited Licenses."
2. You can apply for a limited spring turkey and limited fall turkey license. You cannot hunt in fall turkey season with a spring turkey license. Fall applications are NOT accepted before June 1. Only 1 application is allowed per season.
3. You can buy unlimited licenses at license agents, DOW offices, via the internet or by phone. Unlimited licenses go on sale starting Dec. 15 for spring turkey and July 9 for fall.
4. Small game licenses are not valid for turkeys.
5. Licenses expire on the date printed on them. Licenses are not transferrable.
6. False statements made in buying licenses or altering licenses are

illegal, and doing so voids licenses.

7. Turkey hunters do not need to register with the Harvest Information Program (HIP).

8. A habitat stamp is required. See "Habitat Stamp."

RESIDENCY REQUIREMENTS

These are the requirements to qualify as a Colorado resident to buy a hunting license:

1. You must have lived continuously in Colorado at least six months immediately before applying for or buying a license, and must intend to make Colorado home (except #2 and 3 below).
2. U.S. armed services personnel and military personnel of U.S. allies on active duty in Colorado under permanent orders and their dependents. This includes people who were Colorado residents when they entered the armed services and keep Colorado as their home of record, and their dependents (with Colorado as their home of record). Also included are personnel of the U.S. Diplomatic Service or diplomatic services of nations recognized by the U.S. assigned here on permanent active duty orders and their dependents. Active duty does not include reserve status or National Guard.
3. Full-time students enrolled and attending a Colorado college, university or trade school at least six months immediately before applying for or buying a license. This includes students who are temporarily absent from Colorado but still enrolled. Colorado residents who attend school full time out of state and pay nonresident tuition still qualify for a resident license.
4. Children under 18 have the same residency status as their parent, legal guardian or person with whom they live the majority of the time per court order.
5. If you have a home in Colorado and another state, call (303) 297-1192 to make sure you comply with Colorado residency requirements before obtaining a hunting or fishing license.
6. Except as in #2 and 3 above, you lose your Colorado residency if you apply for, buy or accept a hunting, fishing or trapping license as a resident of another state or country; register to vote outside Colorado or get a driver's license with an address in another state.

BUY AND APPLY ONLINE

Hunters can apply for limited turkey licenses through the DOW's Web site. Habitat stamps and unlimited licenses also are sold online or by calling, 1-800-244-5613. You can use a credit card for phone or internet purchases. DOW offices and license agents also sell unlimited turkey licenses.

Printed for free distribution by the
COLORADO DIVISION OF WILDLIFE
 Department of Natural Resources
 6060 Broadway, Denver 80216
 (303) 297-1192
www.wildlife.state.co.us

Published December 2006; 130,000 copies
 Editor: Brigid Kelly
 Cover photo by Sherm Spoelstra
 Printer: Publication Printers, Denver.

The Colorado Division of Wildlife of the Department of Natural Resources prohibits discrimination on the basis of race, color, religion, sex, national origin and disabilities in all aspects of employment and public participation in its programs and services. For information or to register a complaint, contact the Colorado Division of Wildlife, 6060 Broadway, Denver 80216, or call (303) 297-1192. The Wildlife Commission sets turkey regulations in November. Commissioners (as of November 2006): Jeffrey A. Crawford, chair; Tom Burke, vice chair; Claire O'Neal, secretary; Robert Bray, member; Brad Coors, member; Rick Enstrom, member; James McAnally, member; Richard Ray, member; Ken Torres, member; Russell George, ex-officio member; Don Ament, ex-officio member.



2007 TURKEY HUNTING

COLORADO HABITAT STAMP

A Colorado Wildlife Habitat Stamp is required of people ages 19-64 who buy a hunting or fishing license. With a license purchase, the stamp is \$5 and required with each of the first 2 licenses bought in a calendar year (\$10 total). Everyone between 19 and 64 - even people who don't hunt or fish - must have an annual habitat stamp to enter a state wildlife area or state trust land leased by the DOW.

Without a hunting or fishing license, the stamp costs \$10.25 (25-cent search and rescue fee). A lifetime stamp is \$200.

NOTE: For turkey hunters who apply for limited licenses, see "Filling Out Your Application."

HUNTER EDUCATION (SAFETY)

Anyone born on or after Jan. 1, 1949, must have completed an approved hunter education course or bowhunter education course (for archery licenses only) sanctioned by a state or province before applying for or purchasing a license. Colorado honors hunter education courses from other states and provinces. A hunter safety card must be presented when buying a license over the counter at a license agency. All hunters must carry their hunter education card when hunting unless "Verified" is printed by the DOW on their license.

RANCHING FOR WILDLIFE

Public RFW licenses are available only to Colorado residents by drawing. Licenses are valid only for the season and ranch on the license. RFW licenses are listed with hunt codes in this brochure. RFW landowners must provide free access to hunters who draw a public license for the ranch. By applying for a RFW license, hunters allow the DOW to provide applicant information to the ranch. RFW hunting rules are different for each ranch. For example on some ranches, guides may be required for public hunters but must be provided by the landowner free of charge. Read ranch rules before applying. Rules are found on our Web site.

YOUTH LICENSES

NEW FOR 2007: The youth license program has expanded to include 16 and 17 year olds. Youths under age 18 can buy or apply for a reduced-cost turkey license. All youths must meet hunter education requirements. Those under 16 must be accompanied by a mentor while hunting. A mentor must be 18 or older and must meet hunter education requirements. Mentors aren't required to hunt. While hunting, youths and mentors must be able to see and hear each other without binoculars, radios or other aids. Youths under 18 also can buy an adult license as long as they meet hunter education requirements. At age 18, youths must buy an adult license.

BAG AND POSSESSION LIMITS

1. The annual bag and possession limit is 1 bearded turkey in spring season and 1 turkey of either sex in fall.
2. Hunters with a **limited** spring license can take 2 bearded turkeys. One must be harvested on the limited license in the limited area. The second must be harvested with an unlimited license in an unlimited area. If you take 2 turkeys in spring, you cannot take a turkey in fall.
3. TIPs reward licenses do not count toward annual bag limits for turkey.

METHODS OF TAKE

1. **SHOTGUNS**, including muzzleloading shotguns: max. 10-gauge allowed and cannot be capable of holding more than three shells in the magazine and chamber combined. Shotguns originally capable of holding more than three shells must be plugged. Shot must be size #2

(lead or steel) or smaller. Single slugs are illegal.

2. HAND-HELD BOWS

3. CROSSBOWS

4. RIFLES AND HANDGUNS:

- a. Spring Season: Rifles and handguns are illegal.
 - b. Fall Season Only: Except in units 91, 92, 94, 96 & 951, rifles and handguns can be muzzleloading, centerfire or rimfire, and bullets must be min. 38 grains with manufacturer's energy rating of at least 110 foot-pounds at 100 yards from muzzle.
6. Turkeys can be taken over standing crops or feed scattered solely for agricultural purposes.
 7. It is illegal to use bait while turkey hunting. Baiting is placing, or scattering salt, mineral, grain or other feed to attract wildlife.
 8. Artificial decoys and manual calls are permitted. Recorded or electronically amplified calls are illegal.
 9. It is illegal to use artificial light as a hunting aid.
 10. It is illegal to use electronic night vision equipment, electronically enhanced light-gathering optics or thermal imaging devices as a hunting aid.
 11. Hunters must be physically present in the immediate vicinity of where they are hunting. It is illegal to use internet or computer-assisted remote equipment to hunt.

CONTESTS

It is illegal to promote, conduct, offer to conduct or participate in contests using marked or tagged small game and upland game birds for money or valuable prizes. Valuable prizes don't include certificates of recognition or other tokens without significant monetary value. This does not apply to wildlife parks and field trials licensed by DOW.

TIPs PROGRAM

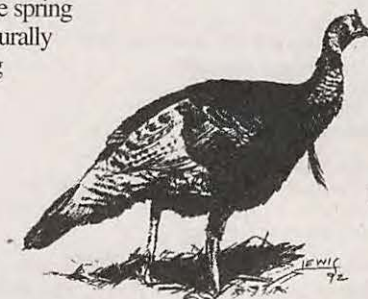
The TIPs program rewards people who voluntarily provide information resulting in charging a poacher with illegal take or possession of big game or turkey. Awards can be a preference point for the species of choice or an unlimited license for the species being reported. Some limited licenses may be available as a third option. Reward licenses do not count toward annual bag and possession limits. Applications and more information about TIPs are available from the DOW.

TAGGING

1. After killing a turkey, hunters must immediately detach, sign and date the carcass tag and attach it to the carcass. Tags must stay attached while the carcass is transported, in camp, in storage or in your possession.
2. If the carcass tag is accidentally detached from the license, or lost or destroyed, you must get a duplicate before hunting. You must give proof to the DOW that the tag was accidentally detached to get a duplicate.

EVIDENCE OF SEX

A turkey killed in the spring must have beard naturally attached while being transported.



Beard

2007 TURKEY HUNTING

PREFERENCE POINTS

1. One preference point is awarded if you apply properly and are unsuccessful in drawing a license for your first-choice hunt code, or if you apply for a preference point hunt code as your first choice. You can get 2 preference points per calendar year. One preference point is awarded to unsuccessful applicants in the spring limited license drawing and 1 in the fall drawing.
2. Second-, third- or fourth-choice hunt codes don't use or generate preference points.
3. Preference points accumulate until you draw a license as a first choice.
4. Priority goes to the hunter with the most points except for group applications. Group applications are processed based on the member who has the fewest points.
5. **NEW FOR 2007:** If you don't apply at least once in 5 consecutive years, your file is purged and your points are lost. Applying for preference points keeps your file active. Purging begins after the fall 2007 drawing.
6. If unsuccessful, your refund stub will show your accumulated points. Keep the stub for your records.
7. **Preference Point Hunt Code:** To apply for a preference point only, enter hunt code **TP-999-99-P** as the first choice on your application. You must pay the full license cost even if you're just applying for a preference point. Your license fee, minus the \$3 application fee, will be refunded.



8. Other state wildlife areas may have restrictions on turkey hunting. Please see the 2007 Fishing Regulations and Property Directory.

WALK-IN ACCESS PROGRAM

NEW FOR 2007: The Division is attempting to expand the Walk-in Access Program to include spring turkey hunting in 2007. Properties enrolled in the program will be marked with signs and published in the Spring Turkey Walk-In Program Atlas, available in March. More information on the program will be published in that atlas.

MOBILITY-IMPAIRED LICENSES

1. Ten licenses are offered for qualified mobility-impaired hunters for spring season, valid only on private land in units 91, 92, 96, 102, for specific dates.
2. **NEW FOR 2007:** On the Spanish Peaks State Wildlife Area, mobility-impaired hunters can hunt in spring turkey season after the second weekend of the season on Wed., Thurs. and Fri. by special access permit only. Permits are free and issued first come, first served. Permits are limited to 2 people each day.
3. Hunters must have a mobility impairment from a permanent medical condition that makes hunting physically impossible without an attendant's assistance. Evidence may include prescribed equipment such as a wheelchair, shoulder or arm crutches, walker or two canes.
4. Applications must include a statement from a licensed medical doctor or certified physical, occupational or recreational therapist, describing the impairment and permanent medical condition. Additional documentation may be required.
5. A license application and/or access permit application are available from DOW. License application with payment and/or access application must be submitted to Limited License, 6060 Broadway, Denver, CO 80216. Hunters can apply from the Monday after the Wildlife Commission meeting in Nov. until spring turkey season ends.

WEAPONS RESTRICTIONS

Colorado and federal laws prohibit people convicted of certain crimes, such as domestic violence, from possessing weapons even for hunting. If you've been convicted of a crime, be sure to check with the appropriate law enforcement authority to find out how these laws apply to you.

CHILD SUPPORT DELINQUENCY

State law requires Social Security numbers to buy all licenses. It is not displayed on the license but is provided, if requested, to Child Support Enforcement authorities. Hunting and fishing licenses are not issued to people delinquent in child support.

HUNTING HOURS

One-half hour before sunrise to sunset. See Sunset/Sunrise chart.

LAND USE RULES

1. Union Tract of Elliott SWA: Closed to turkey hunting.
2. Spanish Peaks SWA: Hunting permitted only Sat., Sun., Mon. and Tues. in spring turkey seasons.
3. It is illegal to hunt on private land without permission from landowner or person in charge. It is illegal to post, sign or indicate that public lands (except if under an exclusive-control lease) are private. It is illegal to hunt on State Trust Lands without permission of lessee, except those open for wildlife recreation.
4. Field trials occur on some state wildlife areas where turkey hunting is allowed, especially in Feb., March, Aug. and Sept. and at Banner Lakes, South Republican (Bonny Res.) and Tamarack.
5. Higel, Rio Grande SWAs: Access only by permit in spring season. Permits issued by drawing. Applications available at DOW, 0722 S. Road 1E, Monte Vista, 81144. Group applications accepted; max. 2 per group. Application deadline: Jan. 31. Successful applicants notified by mail.
6. Chancellor Ranch State Trust Land: Access only by permit to hunters and 1 non-hunting companion. Permits issued by drawing at DOW's Lamar office. Youths get first priority. Applications available from DOW, 2500 S. Main, Lamar, 81052, (719) 336-6600, or on our Web site. Group applications accepted; max. 2 per group. Fall deadline: July 1. Spring deadline: Jan. 31. Successful applicants notified by mail. Hunting access restricted to max. of 15 hunters each in spring and fall season.
7. You must buy a habitat stamp to visit state wildlife areas.

Moving?

ChangeYourAddressOnline

1. Go to www.wildlife.state.co.us/total_licensing/
2. Click on "Buying and Applying for Licenses"
3. Identify yourself; update your information; click on "Update Address Only."

2007 TURKEY HUNTING

SPRING UNLIMITED LICENSES

April 14-May 27 valid statewide EXCEPT in limited units listed in the tables that follow and units totally closed to turkey hunting. Units totally closed to spring turkey hunting are: 1, 21, 25, 26, 30, 35, 45, 47, 80, 81, 89, 90, 93, 95, 97, 98, 99, 100, 106, 111, 115, 120, 121, 138, 201, 371, 471. License agents only: please use T-M-000-U1-R to sell unlimited spring turkey licenses.

SPRING LIMITED LICENSES

Unlimited turkey licenses not valid in these units.

AREA	DATES	LICENSES	HUNT CODE
Unit 2	April 14-May 27	5	T-M-002-O1-R
Units 15, 27, 36, 37	April 14-May 27	5	T-M-015-O1-R
Unit 23	April 14-May 27	10	T-M-023-O1-R
Unit 31	April 14-May 27	75	T-M-031-O1-R
Unit 34	April 14-May 27	5	T-M-034-O1-R
Unit 43	April 14-May 27	30	T-M-043-O1-R
Unit 44	April 14-May 27	5	T-M-044-O1-R
Unit 59 Beaver Creek SWA & Table Mtn. STL Only	April 14-May 27	25	T-M-059-O1-R
Unit 91	April 14-29	25	T-M-091-O1-R
Unit 91, Not valid on SWAs	April 14-29	10	T-M-091-S1-R
Unit 91	April 30-May 20	25	T-M-091-O2-R
Unit 91, Not valid on SWAs	April 30-May 20	10	T-M-091-S2-R
Unit 92	April 14-29	25	T-M-092-O1-R
Unit 92, Not valid on SWAs	April 14-29	5	T-M-092-S1-R
Unit 92	April 30-May 20	25	T-M-092-O2-R
Unit 92, Not valid on SWAs	April 30-May 20	5	T-M-092-S2-R
Unit 96	April 14-29	35	T-M-096-O1-R
Unit 96, Not valid on SWAs	April 14-29	20	T-M-096-S1-R
Unit 96	April 30-May 20	35	T-M-096-O2-R
Unit 96, Not valid on SWAs	April 30-May 20	20	T-M-096-S2-R
Unit 101	April 14-29	5	T-M-101-O1-R
Unit 101	April 30-May 20	5	T-M-101-O2-R
Unit 102	April 14-29	25	T-M-102-O1-R
Unit 102	April 30-May 20	25	T-M-102-O2-R
Units 103, 107, 109	April 14-May 27	75	T-M-103-O1-R
Unit 105	April 14-May 20	20	T-M-105-O1-R
*Units 107, 109	April 14-May 27	5	T-M-107-K1-R
Units 124, 125, 129	April 14-May 27	3	T-M-124-O1-R
Units 124, 125, 129, Not valid on SWAs	April 14-May 27	7	T-M-124-S1-R
*Units 124, 125, 129	April 14-May 27	2	T-M-125-K1-R
Units 126, 146	April 14-May 27	15	T-M-126-O1-R
Units 127, 132	April 14-May 27	5	T-M-127-O1-R
Unit 130, N of US 50 only	April 14-May 27	2	T-M-130-O1-R

*Youth Only

SPRING LIMITED LICENSES

AREA	DATES	LICENSES	HUNT CODE
Unit 130, N of US 50, Not valid on SWAs	April 14-May 27	5	T-M-130-S1-R
Unit 139	April 14-May 27	2	T-M-139-O1-R
Unit 140, Lake Dorothy SWA only	April 14-May 27	75	T-M-140-O1-R
Unit 140, James M. John SWA only	April 14-May 27	20	T-M-140-O2-R
Unit 444	April 14-May 27	10	T-M-444-O1-R
Unit 851, Bosque del Oso SWA only	April 14-May 27	25	T-M-851-O1-R

FALL UNLIMITED LICENSES

Sept. 1-Oct. 7 valid statewide EXCEPT limited units listed in the tables that follow and units totally closed to turkey hunting. Units totally closed to fall turkey hunting are: 1, 2, 15, 21, 23, 25, 26, 27, 30, 34, 35, 36, 37, 44, 45, 47, 53, 63, 80, 81, 89, 90, 93, 95, 97, 98, 99, 100, 101, 106, 111, 115, 120, 121, 138, 201, 371, 471, 481. License agents only: please use T-E-000-U2-R to sell unlimited fall turkey licenses.

FALL LIMITED LICENSES

Unlimited turkey licenses not valid in these units.

Sept. 1-Oct. 7

AREA	LICENSES	HUNT CODE
Unit 31 (except 1/2 mile either side of Colo. River from Una Bridge east of DeBeque to Utah)	75	T-E-031-L1-R
Unit 59, Beaver Ck. SWA & Table Mtn. STL only	25	T-E-059-L1-R
Unit 85, Spanish Peaks SWA only		
Oberosler Tract	30	T-E-085-L1-R
Dochter Tract	30	T-E-085-L2-R
Sakariason Tract	30	T-E-085-L3-R
Unit 91	10	T-E-091-L1-R
Unit 92	15	T-E-092-L1-R
Unit 96	20	T-E-096-L1-R
Unit 102	10	T-E-102-L1-R
Units 103, 107, 109	75	T-E-103-L1-R
Unit 105	20	T-E-105-L1-R
*Units 107, 109	5	T-E-107-K1-R
Units 124, 125, 129	10	T-E-124-L1-R
*Units 124, 125, 129	2	T-E-125-K1-R
Units 126, 146	15	T-E-126-L1-R
Units 127, 132	3	T-E-127-L1-R
Unit 130, N of US 50	5	T-E-130-L1-R
Units 139	2	T-E-139-L1-R
Unit 140, Lake Dorothy SWA only	50	T-E-140-L1-R
Unit 140, James M. John SWA only	10	T-E-140-L2-R
Units 444	10	T-E-444-L1-R
Unit 851, Bosque del Oso SWA only	25	T-E-851-L1-R

*Youth Only

2007 TURKEY HUNTING

WILDLIFE RANCHING LICENSES

SPRING SEASONS

AREA	DATES	LICENSES	HUNT CODE
Colorado Nature Ranch, unit 31	May 5-15	2	T-M-031-W1-R
Mountain Meadows, unit 84	April 23-May 20	10	T-M-084-W1-R
Purgatoire Ranch, units 136, 143, 147	April 28-May 8	18	T-M-136-W1-R
Twin Peaks Ranch, unit 85	April 28-May 20	17	T-M-085-W1-R

FALL SEASONS

AREA	DATES	LICENSES	HUNT CODE
Colorado Nature Ranch, unit 31	Sept. 1-10	4	T-E-031-W1-R
Purgatoire Ranch, units 136, 143, 147	Sept. 1-11	2	T-E-136-W1-R

2007 LIMITED LICENSE CALENDAR

SPRING

Application deadline.....Feb. 8
Licenses/refunds in mail by.....March 12
Drawing results online.....March 12

FALL

Applications accepted beginning.....June 1
Application deadline.....July 12
Licenses/refunds in mail.....Aug. 1
Drawing results online.....Aug. 1

FILLING OUT YOUR APPLICATION

1. Print in capital, block letters and stay within the boxes.
2. Do not cut or fold applications. Tear along perforations.
3. Use black ballpoint pen only. Photocopies not accepted.
4. If you bought a license after 2003, your Customer Identification Number (CID) is on the license. If you were mailed this brochure, your CID number may be on the address label above your name. Starting from left to right, enter your number.
5. If you've never had a CID, leave that part of the form blank. Fill out the rest of the form, including the shaded area. You will receive a new CID with the first license you buy.
6. If your address changed, use the change-of-address form in the application insert (home address only). Mail the form separately to the DOW. Don't mail it with your application.
7. Enter a first choice. You can list up to three more choices.
8. Enter your name as on your CID. Use capital letters. Enter as many letters as will fit. Enter your birth date as on your CID with four digits for the year.
9. Colorado residents: Fill in "Colorado Resident Since" boxes with month (MM) and year (YYYY) you moved here. If you have always lived in Colorado, enter month and year of your birth. If you're in the military in Colorado, enter "88 8888." One number per box.
10. **NEW FOR 2007:** Applicants are encouraged to buy their annual habitat stamp before or when applying for a limited license. Licenses will NOT be mailed to hunters until they have met the annual habitat stamp requirement (see "Habitat Stamp"). To avoid delays in receiving your license, you can buy a habitat stamp online, by calling 1-

800-244-5613 and at any license agent or DOW office. You also can include \$5 for a 2007 habitat stamp with your license fee when you apply for a limited license. Put an "X" in this box if you are sending \$5 for the stamp with your application.

11. Only applications with the same CID number in group application box are entered as a group. If the leader has no CID, leader must call the DOW to get one. All group members must fill out their applications the same, using the same person as leader. Members must mail applications separately.

12. If you have preference points, mark an X in this box. To apply for a turkey preference point, enter hunt code **T-P-999-99-P** as the first choice on your application.

13. If you were born on or after Jan. 1, 1949, and have completed hunter education, put "X" in the box.

14. State law requires your Social Security number to buy or apply for hunting licenses. If you already have given us your number, leave this part blank.

15. The permission to provide box allows us to provide information from applications to entities offering hunting information, services and products, including guides and outfitters. If you check this box and later change your mind, you can cancel by writing DOW, 6060 Broadway, Denver, CO 80216, Attn: Call Center; e-mail wildlife.dowinfo@state.co.us; call (303) 297-1192 or visit any DOW office.

16. Sign the application. Enter a day phone number.

SUBMITTING YOUR APPLICATION

1. Mail your check and application in a standard, 4-1/8 by 9-1/2 inch envelope to the address below. If you have a CID number, enter it on the check.

2. Applications must be postmarked or received at the **Division of Wildlife, Attn: Turkey, P.O. Box 173781, Denver, CO 80217-3781**, by deadlines (midnight postmark acceptable).

REFUNDS

License fees are refunded to unsuccessful applicants. The \$3 application fee is nonrefundable. Applications are rejected if your check is returned by the bank. Prosecution may result.

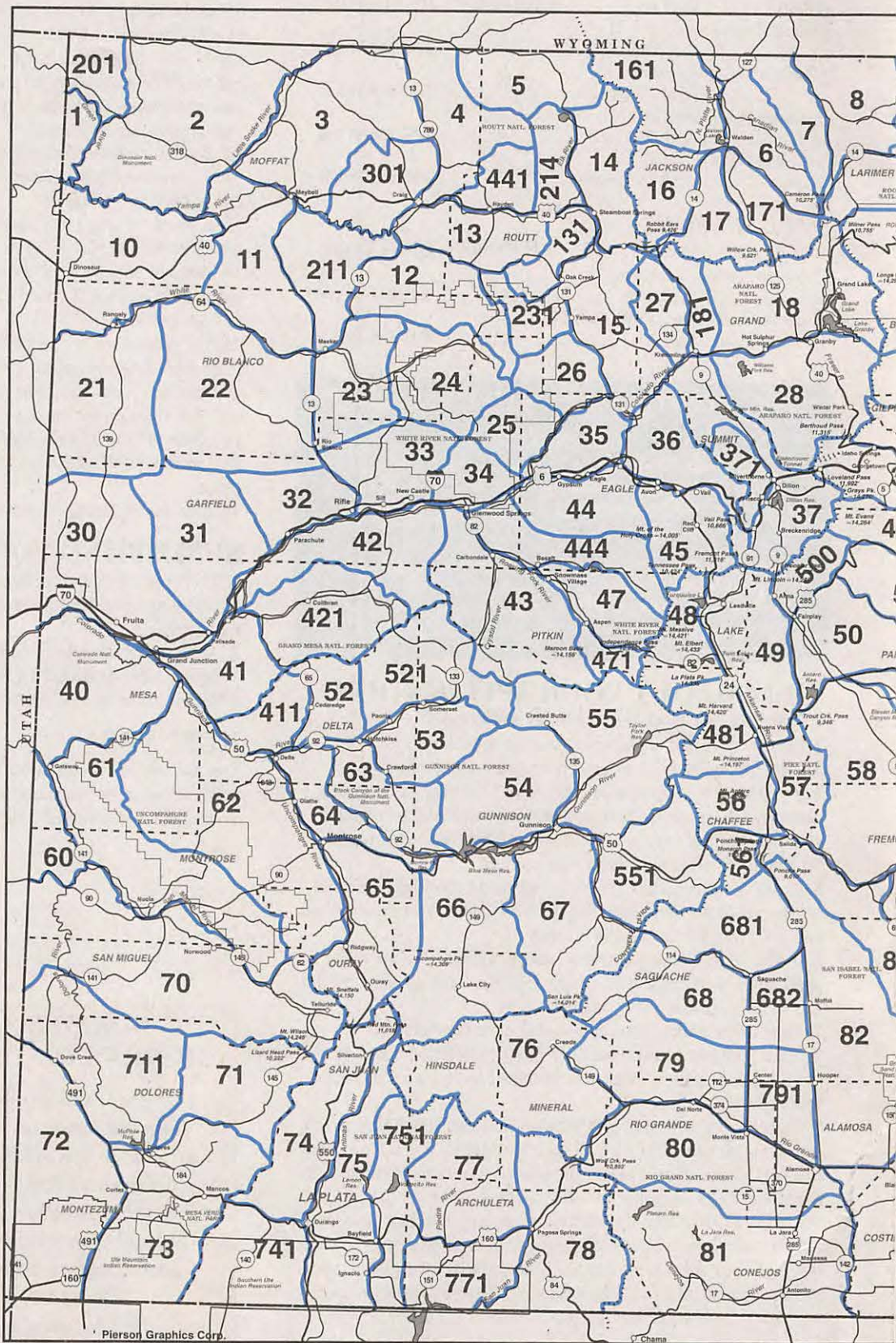
WORRIED ABOUT MAKING A MISTAKE ON YOUR APPLICATION?

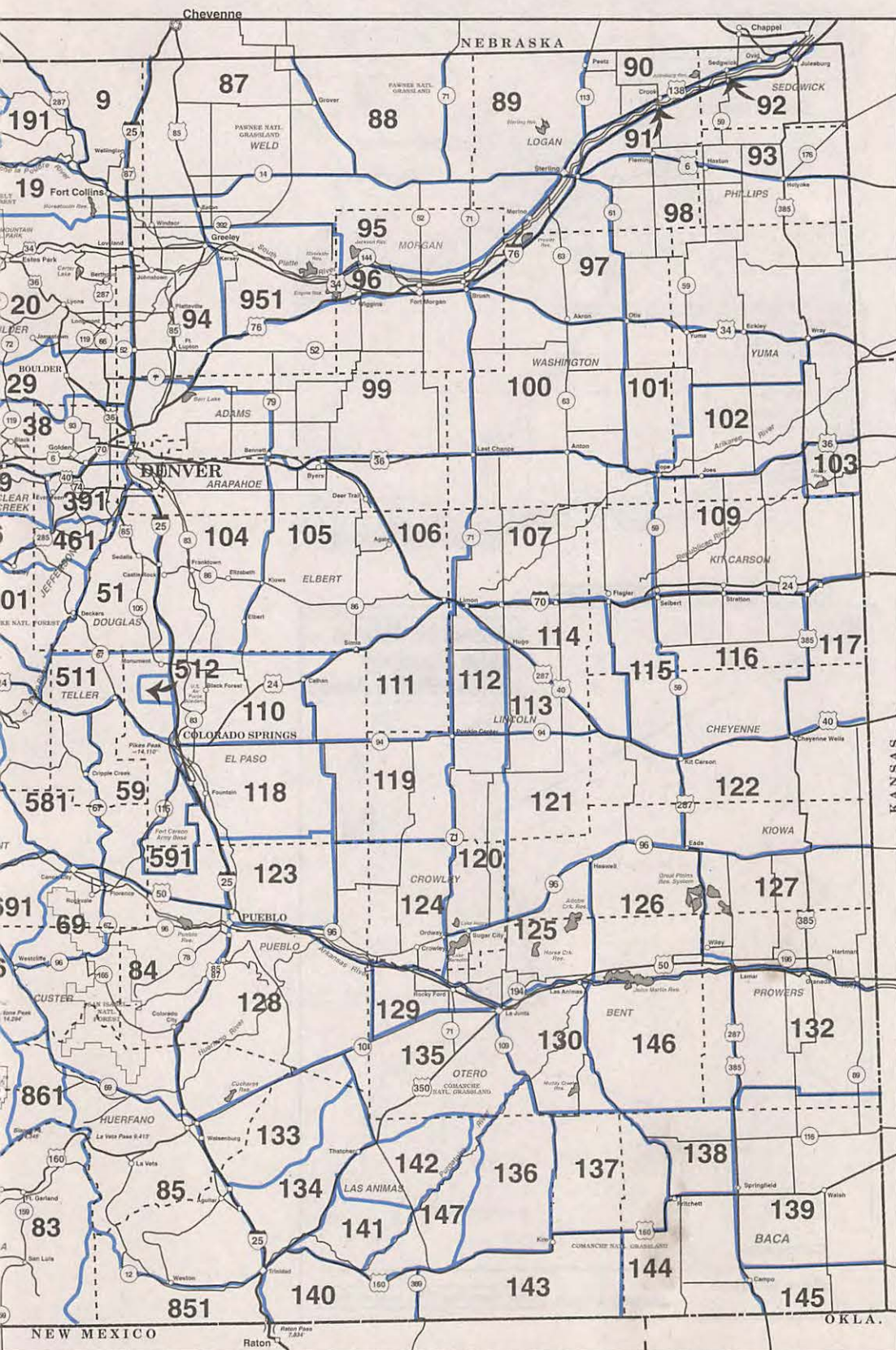
Our automated online application process can help cut down on simple mistakes that may disqualify you from the drawing. You'll find applying for limited licenses much faster and easier by doing it online. Plus, you can pay for your annual habitat stamp online and not risk any delay in getting your limited license in the mail.

Go to: www.wildlife.state.co.us
and follow the simple steps to apply.

GAME MANAGEMENT UNIT MAP

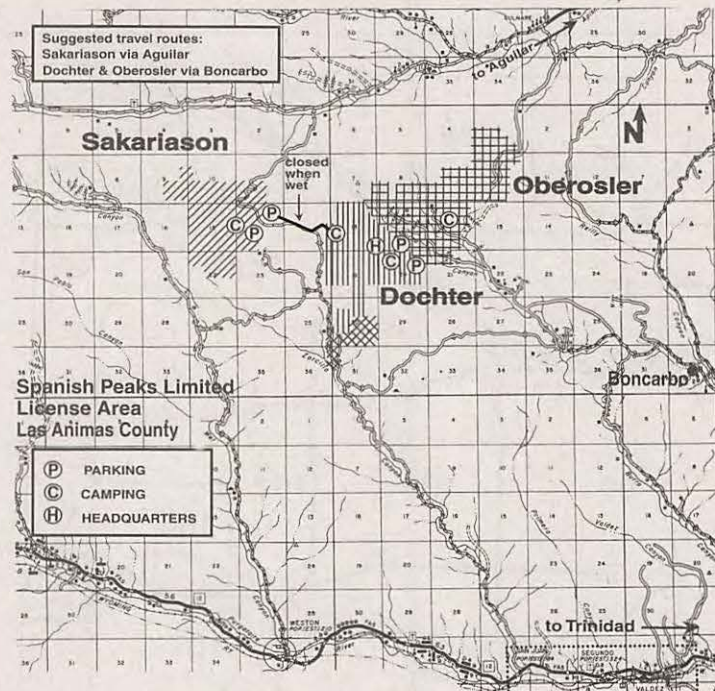
Map boundaries are only approximate. These maps are provided only to help you apply for the correct unit. These maps are NOT to be used in the field as indicators of unit boundaries. See unit descriptions for boundaries.



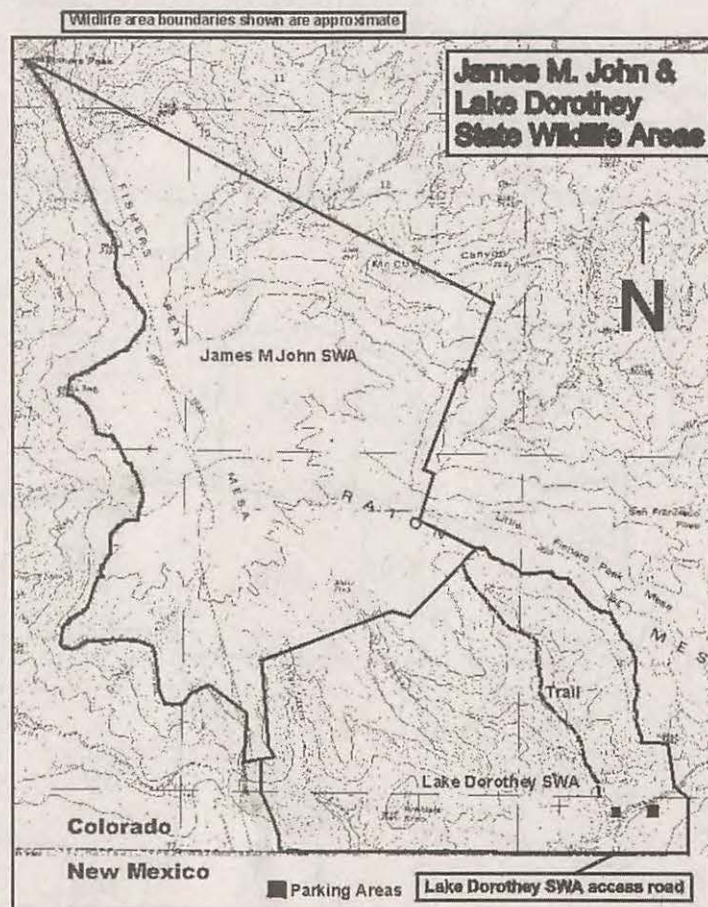


TURKEY HUNTING ON SWAs

Note: Not all limited license areas are depicted here. Please refer to the limited license area lists.



NOTE: James M. John State Wildlife Area is 4 miles from the Lake Dorothy trailhead. The majority of turkey habitat in San Miguel Canyon is 8 miles from the trailhead.



DESCRIPTIONS OF TURKEY HUNTING GAME MANAGEMENT UNITS

ABBREVIATION KEY:

KS: Kansas	Neb: Nebraska	NM: New Mexico	OK: Oklahoma
UT: Utah	WY: Wyoming	Colo: Colorado Highway	
US: U.S. Highway	Co: County	CR: County Road	Ck: Creek
Div: Divide	Dr: Drive	Fk: Fork	Pk: Peak
Pt: Point	Res: Reservoir	Rd: Road	N: North
S: South	E: East	W: West	
RMNP: Rocky Mountain National Park	NF: National Forest		
USFS: U.S. Forest Service			

- 2 - (Moffat) bounded on N by WY; on E by Little Snake River; on S by Yampa River; on W by Green River, Moffat CR 34 & 10, Colo 318 and Moffat CR 10N (Irish Canyon Rd).
- 3 - (Moffat) bounded on N by WY, on E by Colo.13/789, CRs108, 3, 158, 5 & 17, on S by Yampa River, US40 and Colo.318, on W by Little Snake River.
- 4 - (Moffat & Routt) bounded on N by WY; on E by Slater Ck and Elkhead Ck; on S by US40; on W by Colo.13/789.
- 5 - (Moffat & Routt) bounded on N by WY; on E by Continental Div; on S by Little Snake-Elk River Div; on W by Slater Ck.
- 6 - (Jackson) bounded on N by WY; on E by Jackson-Larimer Co line; on S by Colo.14; on W by Colo.125 from Colo.14 to WY.
- 7 - (Larimer) bounded on N by WY; on E by CR103 (Laramie River Rd); on S by Colo.14; on W by Larimer-Jackson Co line.
- 8 - (Larimer) bounded on N by WY; on E by CRs59, 80C (Cherokee Park Rd), 179 (Prairie Dirt Rd), 74E (Red Feather Lakes Rd), 68C (Boy Scout Ranch Rd), and 69 (Manhattan Rd); on S by Colo.14; on W by Larimer CR103 (Larimer River Rd).
- 9 - (Larimer & Weld) bounded on N by WY; on E by I-25; on S by Colo.14; and on W by US287.
- 10 - (Moffat & Rio Blanco) bounded on N by Green and Yampa rivers, on E by Twelvemile Gulch, US40, Winter Valley Gulch, Coal Ck and Wolf Ck; on S by White River; on W by UT.
- 11 - (Moffat & Rio Blanco) bounded on N by Colo.318 and US40; on E by the Deception Ck-Strawberry Ck Rd; on S by White River; on W by Wolf Ck, Coal Ck, Winter Valley Gulch, US40, Twelvemile Gulch, Yampa River and Little Snake River.
- 12 - (Moffat, Routt, Rio Blanco & Garfield) bounded on N by Colo.317, Routt CRs29 & 55, Rio Blanco CRs10 & 8; on E by Williams Fk-Yampa River Div; on S by Williams Fk-White River Div, USFS Rd250, Rio Blanco CRs48, 15 & 30; on W by Colo.13/789.
- 13 - (Moffat & Routt) bounded on N by US40, on E by Routt CR179, Trout Ck & Fish Ck; on S by Routt CR29 and Colo.317; on W by Colo.13/789.
- 14 - (Routt & Grand) bounded on N by Little Snake-Elk River Div; on E by Continental Div; on S by US40; on W by US40 and Routt CR129.
- 15 - (Routt, Grand, Eagle) bounded on N by US40; on E by Muddy Ck-Yampa River Div (Gore Range Div) and Canyon Ck; on S by Colorado River; on W by Colo.131.
- 16 - (Jackson) bounded on N by Lone Pine Ck, CRs16 & 12W; on E by Colo.14; on W by Continental Div.
- 17 - (Jackson) bounded on N and E by Colo.125; on S by Continental Div (Jackson-Grand Co line); on W and N by Colo.14.
- 18 - (Grand) bounded on N and E by Continental Div, on S by Arapaho Ck, Lake Granby and Colorado River; on W by Main Fk of Troublesome Ck and Poison Ck.
- 19 - (Larimer) bounded on N by Colo.14 (Poudre Canyon Rd); on E by I-25; on S by Harmony Rd, CRs19, 38E, 27 & 44H (Buckhorn Rd), Elk Ck & Pennock Ck Div and RMNP boundary; on W by Larimer-Jackson Co line.
- 20 - (Larimer & Boulder) bounded on N by Larimer CRs44H, (Buckhorn Rd) 27, 38E, 19, and Harmony Rd; on E by I-25; on S by Colo.52, US287, Boulder CR34 (Niwo/Neve Rds), US36, Boulder CRs94, 81, 106,

and 95 (Lefthand Canyon Dr), 102 (Brainard Lake Rd), and ridge line from Brainard Lake W to Pawnee Pk; on W by Continental Div, RMNP boundary, and Pennock Ck-Elk Ck Div.

- 22 - (Rio Blanco & Garfield) bounded on N by White River; on E by Colo.13/789; on S by White River-Colorado River Div; on W by Rio Blanco CRs26 & 103, Monument Gulch Rd, Colo.64 and Monument Gulch.
- 23 - (Rio Blanco & Garfield) bounded on N by Rio Blanco CRs30, 15 & 48, USFS Rd 250; on E by USFS Rd 250, Rio Blanco CRs8 & 17 and USFS Primary 245 (Buford-Newcastle Rd); on S by White River-Colorado River Div; on W by Colo.13/789.
- 24 - (Rio Blanco & Garfield) bounded on N by Williams Fk River-White River Div; on E by White River-Yampa River Div and White River-Colorado River Div; on S by S Fk of White River-Colorado River Div; on W by USFS Primary 245 and Rio Blanco CRs17 (Buford-Newcastle Rd), 8 and USFS Rd 250.
- 27 - (Grand & Routt) bounded on N and E by US40; on S by Colo.9 and Colorado River; on W by Canyon Ck and Muddy Ck-Yampa River Div (Gore Range Div).
- 28 - (Grand) bounded on N by Colorado River, Lake Granby and Arapaho Ck; on E by Continental Div; on S by Continental Div and Williams Fk-Straight Ck Div; on W by Williams F.-Blue River Div and Barger Gulch.
- 29 - (Boulder, Jefferson & Gilpin) bounded on N by ridge line from Pawnee Pk to Brainard Lake, Boulder CRs102 (Brainard Lake Rd), Boulder CRs94, 81, 106, and 95 (Lefthand Canyon Dr), US36, Boulder CR34, (Neve/Niwot Rds), and Colo.52 (Mineral Rd); on E by I-25; on S by Colo.128, Colo.93, Colo.72, Colo.119, and USFS Rd 149 (Rollins Pass Rd); on W by Continental Div.
- 31 - (Mesa, Garfield & Rio Blanco) bounded on N by Colorado-White River Div; on E by Roan Ck-Parachute Ck Div and Kelly Gulch; on S by Colorado River; and on W by Bookcliffs, Little Salt Wash-Roan Ck Div, Big Salt Wash-Roan Ck Div and East Salt Ck-Roan Ck Div.
- 32 - (Garfield) bounded on N by Parachute Ck-Piceance Ck Div; on E by Colo.13/789; on S by Colorado River; on W by Kelly Gulch and Roan Ck-Parachute Ck Div.
- 33 - (Garfield & Rio Blanco) bounded on N by White-Colorado River Div; on E by Canyon Ck; on S by Colorado River; on W by Colo.13/789.
- 34 - (Garfield & Eagle) bounded on N by Deep Ck; on E and S by Colorado River; on W by Canyon Ck.
- 36 - (Eagle, Grand) bounded on N by Colorado River from State Bridge to Inspiration Pt; on E by Gore Range Div; on S by Gore Range Div to Dowd Junction by I-70 and from Dowd Junction to Wolcott by the Eagle River; on W by Colo 131.
- 37 - (Summit, Grand) bounded on N by Colorado River; on E by Barger Gulch, Williams Fk River-Blue River Div, Williams Fk River-Straight Ck Div and Continental Div; on S by Continental Div; on W by Eagle River-Tenmile Ck Div, I-70, Blue River, Cataract Ck, and Gore Range Div.
- 38 - (Gilpin, Boulder, Clear Ck & Jefferson) bounded on N by USFS Rd 149 (Rollins Pass Rd), Colo.119, Colo.72, Colo.93, and Colo.128; on E by I-25; on S by I-70 and US40; on W by Continental Div.
- 39 - (Jefferson, Clear Ck & Park) bounded on N by US40 and I-70; on E by Colo.74 & Jefferson CR73; on S by US285, N.Turkey Ck-Elk Ck Div, and Pike-Arapaho NF boundary; on W by Continental Div. (See unit 391.)
- 40 - (Mesa) bounded on N by Colorado River; on E by US50; on S by Colo.141 and Dolores River; on W by UT
- 41 - (Mesa & Delta) bounded on N by Colorado River and Colo.65; on E by Colo.65, Lands End Rd, Flowing Park Rd and Mesa-Delta Co line; on W by US50.
- 42 - (Mesa & Garfield) bounded on N by Colorado River; on E by South Canyon Ck divide between Roaring Fk-Crystal River and Baldy Ck-Div Ck drainages and common point of Mesa-Pitkin-Gunnison Co lines; on S by Div Ck-Muddy Ck Div, Div Ck-Plateau Ck Div and Plateau Ck-Colorado River Div; and on W by Colorado River.

DESCRIPTIONS OF TURKEY HUNTING GAME MANAGEMENT UNITS

- 43** - (Garfield, Pitkin, Eagle & Gunnison) bounded on N by Colorado River; on E by Roaring Fk and Castle Ck; on S by divide between Roaring Fk-Crystal River drainages and East River-Muddy Ck drainages and McClure Pass; on W by Muddy Ck-Crystal River Div, divide between Roaring Fk-Crystal River drainages and Div Ck-Baldy Ck drainages and S Canyon Ck.
- 44** - (Eagle) bounded on N by Colorado River and Eagle River; on E by East Lake Ck; on S by Fryingpan River-Eagle River Div; on W by USFS Rd 514 (Red Table Mtn Rd), Eagle CR 10A (Cottonwood Pass Rd) and Cottonwood Ck.
- 46** - (Clear Ck, Park & Jefferson) bounded on N by Pike-Arapaho NF boundary and N Turkey Ck-Elk Ck Div; on E and S by US285; on W by N Fk of S Platte River and Continental Div.
- 48** - (Lake & Chaffee) bounded on N by Continental Div; on E by Tennessee Ck and Arkansas River; on S by Clear Ck and S Fork of Clear Ck; on W by Continental Div.
- 49** - (Lake, Park & Chaffee) bounded on N by Continental Div; on E by Colo.9 and US285; on S by US24; on W by Arkansas River and Tennessee Ck.
- 50** - (Park) bounded on N by US285; on E by CR77; on S by US24; on W by US285.
- 51** - (Douglas) bounded on N by Colo.470; on E by I-25; on S by Douglas-Teller Co line; on W by S Platte River.
- 52** - (Delta) bounded on N by Delta-Mesa Co line; on E by Grand Mesa-Gunnison NF boundary, Overland Ditch, West Res No 1, and Jay Ck; on S by N Fk of Gunnison River and Colo.92; on W by Colo.65.
- 53** - (Delta & Gunnison) bounded on N by N Fk of Gunnison River, Gunnison CR12 (Kebler Pass Rd) Kebler Pass and Ohio Pass; on E and S by Gunnison River-N Fk of Gunnison River Div and Curecanti Pass, Smith Fork-Curecanti Ck Div, Smith Fork-Dyer Ck Div, and Delta-Montrose Co line; on W by Colo.92.
- 54** - (Gunnison) bounded on N by Gunnison River-N Fork F of Gunnison River Div and CR12 (Kebler Pass Rd); on E by Colo.135; on S by US50, Blue Mesa Res and Gunnison River; on W by Curecanti Ck.
- 55** - (Gunnison) bounded on N by Gunnison-Pitkin Co line; on E by Continental Div; on S by Taylor River-Tomichi Ck Div and Cumberland Pass, USFS Rd 765 (N Quartz Ck Rd), Quartz Ck Rd, and US50; on W by Colo.135, CR12 (Kebler Pass Rd), Kebler Pass and Ruby Range Summit.
- 56** - (Chaffee) bounded on N by Chalk Ck and Tincup Pass Rd; on E by Arkansas River and Colo.291; on S by US50; on W by Continental Div.
- 57** - (Chaffee, Park & Fremont) bounded on N by US24; on E by Kaufman Ridge and Badger Ck; on S by US50 and Colo.291; on W by Arkansas River.
- 58** - (Fremont & Park) bounded on N by US24; on E by Park CR59 and Colo.9; on S by US50; on W by Kaufman Ridge and Badger Ck.
- 59** - (Pueblo, Fremont, El Paso & Teller) bounded on N by US24; on E by I-25; on S by US50; on W by Colo.67 and Phantom Canyon Rd, except portions of Pueblo, Fremont and El Paso counties in Fort Carson Military Reservation. (See unit 591.)
- 60** - (Mesa & Montrose) bounded on N and E by Dolores River; on S by Colo.90; on W by UT.
- 61** - (Mesa, Montrose, Ouray & San Miguel) bounded on N by Colo.141; on E by USFS Rds 402 (Divide Rd), 517 (South Divide Rd), and Dave Wood Rd; on S by Colo.62; on W by San Miguel River and Dolores River.
- 62** - (Delta, Mesa, Montrose & Ouray) bounded on N by Colo.141; on E by Colo.50 and 550; on S by Colo.62; on W by Dave Wood Rd and USFS 402 (Divide Rd).
- 63** - (Delta, Gunnison & Montrose) bounded on N and E by Colo.92, Delta-Montrose Co line, Smith Fork-Dyer Ck Div, Smith Fork-Curecanti Ck Div, Curecanti Pass, and Curecanti Ck; on S and W by Gunnison River.
- 64** - (Delta & Montrose) bounded on N by Colo.92 and Gunnison River; on E by Gunnison River, Morrow Pt Res and Big Blue Ck-Little Cimarron River Div; on S and W by US50.
- 65** - (Gunnison, Hinsdale, Montrose & Ouray) bounded on N by US50; on E by Big Blue Ck-Cimarron Ck Div; on S by Ouray-San Juan Co line; on W by Ouray-San Miguel Co line, Colo.62 and Colo.550.
- 66** - (Gunnison, Hinsdale & Saguache) bounded on N by Morrow Pt Res, Gunnison River and Blue Mesa Res; on E by Colo.149, Cebolla Ck, Spring Ck, Cathedral Ck and Groundhog Park, and Spring Ck-Cochetopa Ck Div; on S by Continental Div; on W by Hinsdale-San Juan Co line, Hinsdale-Ouray Co line, Cimarron River-Henson Ck Div, and Big Blue Ck-Little Cimarron River Div.
- 67** - (Gunnison, Hinsdale & Saguache) bounded on N by US50; on E by Colo.114 and North Pass; on E and S by Continental Div; on W by Cochetopa Ck-Spring Ck Div and Groundhog Park, Cathedral Ck, Spring Ck, Cebolla Ck and Colo.149.
- 68** - (Saguache) bounded on N by Colo.114; on E by Colo.17 and US285; on S by Saguache CRsG & 41G, USFS Rds 675 & 676, USFS Trs 796 & 787 and Saguache-Mineral Co line; on W by Continental Div.
- 69** - (Custer & Fremont) bounded on N by US50; on E by Colo.67; on S by Colo.96; on W by Colo.69, Grape Ck and Arkansas River.
- 70** - (Dolores, Montrose & San Miguel) bounded on N by Colo.90, Dolores River, San Miguel River, and Colo.62; on E by Ouray-San Miguel Co line and San Miguel-San Juan Co line; on S by San Miguel-Dolores Co line, Disappointment Ck, Dolores River, and Summit Canyon Ck; on W by UT.
- 71** - (Dolores & Montezuma) bounded on N by Disappointment Ck and Dolores-San Miguel Co line; on E by Dolores-San Juan Co line, Montezuma-La Plata Co line and Bear Ck; on S by Colo.145; on W by USFS Rd 526 (Dolores-Norwood Rd).
- 72** - (Dolores & Montezuma) bounded on N and E by US491; on S by NM; on W by UT.
- 73** - (Montezuma) bounded on N by Colo.184 & 145 and Bear Ck; on E by Montezuma-La Plata Co line; on S by NM; on W by US491.
- 74** - (La Plata & San Juan) bounded on N by Ouray-San Juan Co line; on E by San Juan-Hinsdale Co line and Animas River; on S by US160; on W by Montezuma-La Plata Co line, Dolores-San Juan Co line, San Miguel-San Juan Co line & Ouray-San Juan Co line.
- 75** - (La Plata & San Juan) bounded on N and E by Hinsdale-San Juan Co line, Continental Div, Los Pinos River-Florida River Div, La Plata CR240 (Pine River-Florida River Rd), Bayfield-Vallecito Rd and Los Pinos River; on S by NM; on W by Animas River.
- 76** - (Hinsdale, Mineral, Rio Grande, Saguache & San Juan) bounded on N by Continental Div, Saguache-Mineral Co line, and USFS Tr 787; on E by La Garita Dr (all-terrain vehicles), USFS Rds 600-3A & 600, Colo.149 and US160; on S and W by Continental Div.

DESCRIPTIONS OF TURKEY HUNTING GAME MANAGEMENT UNITS

77 - (Archuleta, Hinsdale, La Plata & Mineral) bounded on N by Continental Div and Piedra River-San Juan River Div; on E by Piedra River-San Juan River Div, Four Mile Ck, and San Juan River; on S by US160; on W by Los Pinos River-Piedra River Div.

78 - (Archuleta, Conejos, Mineral & Rio Grande) bounded on N and E by Continental Div; on S by NM; on W by San Juan River, Four Mile Ck and Piedra River-San Juan River Div.

79 - (Alamosa, Mineral, Rio Grande & Saguache) bounded on N by USFS Trs 787 & 796, USFS Rds 676 & 675, Saguache CRs41G & G; on E by Colo.17; on S by US160; on W by Colo.149, USFS Rds 600 & 600-3A and La Garita Dr (OHV trail).

82 - (Alamosa & Saguache) bounded on N by Poncha Pass; on N and E by Rio Grande-Arkansas River Div; on S by Alamosa-Costilla Co line and US160; on W by Colo.17 and US285.

83 - (Alamosa, Costilla & Huerfano) bounded on N by US160 and Alamosa-Costilla Co line; on E by Costilla-Huerfano Co line and Sangre de Cristo-Culebra Range; on S by NM; on W by Rio Grande River.

84 - (Custer, Fremont, Huerfano & Pueblo) bounded on N by US50; on E by I-25 and Colo.1; on S by Colo.69; on W by Colo.96 & .67.

85 - (Huerfano & Las Animas) bounded on N by Colo.105 & 69; on E by I-25; on S by Colo.12 and N Fk of Purgatoire River and W Fk of Purgatoire River; on W by Sangre de Cristo Div and Colo.305 (Pass Ck Rd).

86 - (Fremont, Custer & Chaffee) bounded on N by US50; on E by Colo.69; on S by Huerfano-Custer Co line; on W by Sangre De Cristo Div and US285.

87 - (Larimer & Weld) bounded on N by WY; on E by Colo.155 (Keota-Grover Rd); on S by Colo.14; on W by I-25.

88 - (Weld) bounded on N by WY and Neb; on E by Colo.71; on S by Colo.14; on W by Colo.155 (Keota-Grover Rd).

91 - (Logan) bounded on N by US138; on E by Red Lion Rd; on S by I-76 and US6; on W by US138.

92 - (Logan & Sedgwick) bounded on N by US138 and Neb; on E by Neb; on S by I-76; on W by Red Lion Rd.

94 - (Larimer, Adams & Weld) bounded on by Colo.14; on E by US85 and 34, Weld CR49 (Hudson-Keenesburg cutoff), and I-76; on S by Colo.7; on W by I-25.

96 - (Logan, Washington & Morgan) bounded on N by Colo.144, Morgan CRsW.5, 13.5, W, 28 and W.5, Colo.71, Morgan CRW.7 (which becomes Washington CR 58 at co line), Washington CR58 (which becomes Logan CR17.7 at co line), Logan CRs17.7 and 6 and US6; on E and S by US6 and I-76; on W by Colo.144.

101 - (Washington, Yuma) bounded on N by US 34; on E by US 385, Yuma CR 26, Colo 59, Yuma CRs 16, C, 9 (Yuma CR 9 becomes Washington CR 9 at Co line), Washington CRs 9, YY and 7; on S by US 36; on W by Colo 61.

102 - (Washington & Yuma) bounded on N by US34; on E by Neb and KS; on S by US36; on W by Washington CRs7, YY, and 9 (Washington CR9 becomes Yuma CR9 at co line), Yuma CRs9, C and 16, Colo.59, Yuma CR26 and US385.

103 - (Yuma) bounded on N by US36; on E by KS; on S by Kit Carson-Yuma Co line; on W by US385.

104 - (Denver, Adams, Arapahoe, Douglas & Elbert) bounded on N by Colo.7, I-76, 152nd Ave, Adams CR25N & 144th Ave; on E by Colo.79, Colo.36 (Arapahoe CR137), Kiowa-Bennett Mile Rd, Elbert CRs53, 166, 45-49, Colo.86 and Elbert CR25-41; on S by Elbert-Douglas -El Paso Co lines; on W by I-25.

105 - (Adams, Arapahoe & Elbert) bounded on N by US36; on E by I-70; on S by US24 and Elbert-El Paso Co line; and on W by Arapahoe CR137 (Kiowa-Bennett Mile Rd), Elbert CRs53, 166, 45-49, Colo.86 and Elbert CR25-41.

107 - (Washington, Lincoln & Kit Carson) bounded on N by US36; on E by Colo.59; on S by I-70; on W by Colo.71.

109 - (Washington, Yuma & Kit Carson) bounded on N by US36; on E by US385, Yuma-Kit Carson Co line, and KS; on S by I-70; on W by Colo.59.

110 - (El Paso) bounded on N by Douglas-Elbert-El Paso Co line; on E by US24 and CR523 (Calhan Hwy); on S by Colo.94; on W by I-25.

112 - (Lincoln) bounded on N by US40; on E by Co Primary 109; on the S by Colo.94; on W by Colo.71. (See unit 120.)

113 - (Lincoln & Cheyenne) bounded on N by US40; on E by Cheyenne CR8; on S by Colo.94; on W by Co Primary 109. (See unit 121.)

114 - (Lincoln, Kit Carson & Cheyenne) bounded on N by I-70; on E by Flagler-Wildhorse Rd (CRs 5, G, 6, A (Kit Carson Co line), GG, (Cheyenne Co line), & 9 ; on S and W by US 40.

116 - (Kit Carson & Cheyenne) bounded on N by I-70; on E by US385; on S by US40; on W by Colo.59.

117 - (Kit Carson & Cheyenne) bounded on N by I-70; on E by KS; on S by US40; on W by US385.

118 - (El Paso) bounded on N by Colo.94; on E by Yoder Rd, Shear Rd, and Boone Rd; on S by Hanover Rd, Finch Rd, and Myers Rd; on W by I-25.

119 - (El Paso & Lincoln) bounded on N by Colo.94; on E by Colo.71; on S by Crowley-Lincoln and El Paso-Pueblo Co line; on W by Yoder Rd, Shear Rd and Boone Rd.

122 - (Cheyenne & Kiowa) bounded on N by US40; on E by KS; on S by Colo.96; on W by US287.

123 - (El Paso & Pueblo) bounded on N by Hanover Rd, Finch Rd, and Myers Rd; on E by Yoder Rd, Shear Rd and Boone Rd; on S by Arkansas River; on W by I-25.

124 - (Crowley & Pueblo) bounded on N by Lincoln-Crowley and El Paso-Pueblo Co lines; on E by Colo.71; on S by Arkansas River; on W by Yoder-Boone Rd.

125 - (Crowley, Kiowa, Bent & Otero) bounded on N by Colo.96; on E by Kiowa CR19 and Bent CR14 to Bent CRHH, S on Bent CR15 to Arkansas River; on S by Arkansas River; on W by Colo.71.

126 - (Kiowa, Bent & Prowers) bounded on N by Colo.96; on E by US287; on S by Arkansas River; on W by Kiowa CR19 and Bent CR14 to Bent CRHH, S on Bent CR15 to Arkansas River.

127 - (Kiowa & Prowers) bounded on N by Colo.96; on E by KS; on S by Arkansas River; on W by US287.

128 - (Pueblo, Huerfano, Las Animas & Otero) bounded on N by Arkansas River; on E by Colo.167; on S by Colo.10; on the W by I-25.

129 - (Otero) bounded on N and E by Arkansas River; on S by Colo.10; on W by Colo.167.

130 - (Otero & Bent) bounded on N by Arkansas River; on E by Colo.101, Pritchett-Las Animas improved road, and US50; on S by Bent-Las Animas, Bent-Baca & Otero-Las Animas Co lines; on W by Colo.109.

131 - (Routt & Rio Blanco) bounded on N by US40; on E by Colo.131; on S by Routt CRs15, 132, 25, 132A and 29; on W by Fish Ck, Trout Ck & Routt CR179.

132 - (Prowers) bounded on N by Arkansas River; on E by KS; on S by Prowers CRsD & F; on W by US287.

DESCRIPTIONS OF TURKEY HUNTING GAME MANAGEMENT UNITS

- 133** - (Huerfano, Pueblo & Las Animas) bounded on N by Colo.10; on E by CO Interstate Gas Pipeline Rd; on S by Apishapa River; on W by I-25.
- 134** - (Las Animas) bounded on N by Apishapa River; on E by CO Interstate Gas Pipeline Rd; on S by US350; on W by I-25.
- 135** - (Las Animas, Pueblo & Otero) bounded on N by Colo.10 and Arkansas River; on E by Colo.109 (N of Purgatoire River) and Purgatoire River (S of Colo.109); on S by Las Animas-Otero Co line, N boundary of US Army Pinon Canyon Maneuver Site, and US350; on W by CO Interstate Gas Pipeline Rd.
- 136** - (Otero) bounded on N by Colo.109 and Purgatoire River; on E by Colo.109; on S by US160; on W by Chacuaco Ck and Purgatoire River.
- 137** - (Las Animas & Baca) bounded on N by Bent-Las Animas & Bent-Baca Co lines; on E by Pritchett-Las Animas improved road and US160; on S by US160; on W by Colo.109.
- 139** - (Baca) bounded on N by Prowers CRsD & F; on E by KS; on S by Baca CRM; on W by US287.
- 140** - (Las Animas) bounded on N by US160; on E by Colo.389; on S by NM; on W by I-25.
- 141** - (Las Animas) bounded on N by W and S boundaries of US Army Pinon Canyon Maneuver Site and CO Interstate Gas Pipeline Rd; on E by Purgatoire River and San Francisco Ck; on S by US160; on W by US350.
- 142** - (Las Animas) in US Army Pinon Canyon Maneuver Site.
- 143** - (Las Animas) bounded on N by US160; on E by Baca-Las Animas Co line; on S by OK & NM; on W by Colo.389.
- 144** - (Baca) bounded on N by US160; on E by US287; on S by OK; on W by Baca-Las Animas Co line.
- 145** - (Baca) bounded on N by Baca CRM; on E by KS; on S by OK; on W by US287.
- 146** - (Bent & Prowers) bounded on N by Arkansas River; on E by US287; on S by Prowers-Baca & Bent-Baca Co lines; on W by Colo.101 and Pritchett-Las Animas improved road and US50.
- 147** - (Las Animas) bounded on E by Chacuaco Ck; on S by US160; on W by San Francisco Ck, Purgatoire River, CO Interstate Gas Pipeline Rd, E boundary of U.S. Army Pinon Canyon Maneuver Site, Las Animas-Otero Co line and Purgatoire River.
- 161** - (Jackson) bounded on N by WY; on E by Colo.125; on S by Colo.14, Jackson CRs12W & 16, Lone Pine Ck and Continental Div; on W by Continental Div.
- 171** - (Jackson) bounded on N and E by Colo.14 and Jackson-Larimer Co line; on S by Jackson-Grand Co line; on W by Colo.125.
- 181** - (Grand) bounded on N by Continental Div; on E by Poison Ck and Main Fk of Troublesome Ck; on S by Colorado River; on W by Colo.9 and US40.
- 191** - (Larimer) bounded on N by WY; on E by US287; on S by Colo.14; on W by Larimer CRs69, 68C, 74E (Red Feather Lakes Rd), 67, 179, 80C (Cherokee Pk Rd) and 59.
- 211** - (Moffat & Rio Blanco) bounded on N by US40 and Yampa River; on E by Colo.13/789; on S by White River; on W by Strawberry Ck-Deception Ck Rd.
- 214** - (Routt) bounded on N by Little Snake-Elk River Div; on E by Routt CR129; on S by US40; on W by Wolf Ck, Wolf Mtn along the Elk River-Elkhead Ck Div.
- 231** - (Routt, Rio Blanco & Garfield) bounded on N by Routt CRs29, 132A, 25, 132 & 15; on E by Colo.131; on S by Bear River; on W by Williams Fk-Yampa River Div to Dunkley Pass, Rio Blanco CRs8 & 19 and Routt CR55.
- 301** - (Moffat) bounded on N by CRs5, 158, 3 & 108; on E by Colo.13/789; on S by Yampa River; on W by CR17.
- 391** - (Jefferson) bounded on N by I-70; on E by I-25; on S by Colo.470, CRs124 (Deer Ck Canyon), 122 (South Turkey Ck) and US285; on W by CR73 and Colo.74. (See unit 39.)
- 411** - (Mesa & Delta) bounded on N by Delta-Mesa Co line, Flowing Park Rd and Lands End Rd; on E by Colo.65 and Colo.92; on S by US50.
- 421** - (Mesa & Garfield) bounded on N by Colorado River-Plateau Ck Div; on E by Div Ck-Buzzard Ck Div; on S by Mesa-Delta Co line; on W by Colo.65.
- 441** - (Moffat & Routt) bounded on N by USFS Rd 42; on E by Elkhead Ck-Elk River Div and Wolf Ck; on S by US40; on W by Elkhead Ck.
- 444** - (Eagle, Garfield & Pitkin) bounded on N by Colorado River, Cottonwood Ck, Eagle CR10A, (Cottonwood Pass Rd), USFS 514 (Red Table Mountain Rd) and Fryingpan-Eagle River Div; on E by divide between Lime Ck and N Fork of Fryingpan River and its tributaries and Cross Ck-Homestake Ck drainages; on S by Ivanhoe Ck and Fryingpan River; on W by Roaring Fork River.
- 461** - (Jefferson & Park) bounded on N by Jefferson CRs122 (S Turkey Ck Canyon), 124 (Deer Ck Canyon), Colo.7 and 470; on E by S Platte River; on S by N Fk of S Platte River; on W by US285.
- 481** - (Chaffee) bounded on N by S Fk of Clear Ck and Clear Ck; on E by Arkansas River; on S by Chalk Ck and Tincup Pass Rd from St. Elmo; on W by Continental Div.
- 500** - (Park) bounded on N by Continental Div; on E by N Fk of S Platte River; on S by US285; on W by Colo.9.
- 501** - (Park & Jefferson) bounded on N by US285 and N Fk of S Platte River; on E by S Platte River; on S by US24; on W by Park CR77.
- 511** - (Teller, El Paso & Park) bounded on N by Douglas Co lines; on E by I-25; on S by US24; on W by S Platte River, except on US Air Force Academy.
- 512** - (El Paso) bounded on N by N boundary of US Air Force Academy; on E by I-25; on S and W by S and W boundaries of Air Force Academy.
- 521** - (Delta & Gunnison) bounded on N by Delta-Mesa Co line and Gunnison-Mesa Co line; on E by Gunnison-Pitkin Co line, White River-Gunnison NF boundary and Ruby Range Summit; on S by Gunnison CR12 (Kebler Pass Rd), N Fk of Gunnison River; on W by Jay Ck and Overland Ditch.
- 551** - (Gunnison & Saguache) bounded on N by US50, Quartz Ck Rd, N, Quartz Ck Rd and divide between Taylor River and Tomichi Ck; on E by Continental Div; on S and W by Colo.114.
- 561** - (Chaffee & Saguache) bounded on N by US50; on E by US285; on S by divide between Arkansas River drainage and Rio Grande drainage; on W by Continental Div.
- 581** - (Park, Teller & Fremont) bounded on N by US24; on E by Colo.67 and Phantom Canyon Rd; on S by US50; on W by Colo.9 and Park CR59.
- 591** - (Pueblo, Fremont & El Paso) on Fort Carson.
- 681** - (Saguache) bounded on N by Continental Div and Arkansas River Div between North Pass and Poncha Pass; on E by US285; on S by US285 & Colo.114; on W by Colo.114.
- 691** - (Custer & Fremont) bounded on N by US50; on E and S by Grape Ck and Arkansas River; on W by Colo.69.
- 711** - (Dolores, Montezuma & San Miguel) bounded on N by Summit Canyon Ck, Dolores River and Disappointment Ck; on E by USFS Rd 526 (Dolores-Norwood Rd); on E and S by Colo.145; on S by Colo.184; on W by US491 and UT.
- 741** - (La Plata) bounded on N by US160; on E by Animas River; on S by NM; on W by Montezuma-La Plata Co line.
- 751** - (Archuleta, Hinsdale, La Plata & San Juan) bounded on N by Continental Div; on E by divide between Los Pinos and Piedra rivers; on S by NM; on W by Los Pinos River, CR501 (Bayfield-Vallecito Rd), CR240 (Pine River-Florida River Rd), and Los Pinos River-Florida River Div.
- 771** - (Archuleta) bounded on N by US160; on E by San Juan River; on S by NM; on W by Los Pinos River-Piedra River Div.
- 851** - (Costilla & Las Animas) bounded on N by W Fk of Purgatoire River, N Fk of Purgatoire River, Colo.12; on E by I-25; on S by NM; on

DESCRIPTIONS OF TURKEY HUNTING GAME MANAGEMENT UNITS

W by Sangre de Cristo Div.

861 - (Huerfano) bounded on N by Custer-Huerfano Co line; on E by Colo.69 and Colo.305 (Pass Ck Rd); on S and W by Sangre de Cristo Div.
951 - (Weld & Morgan) bounded on N by Colo.392, Weld CR68; on E by Morgan CRsO, GG & 2, Colo.144; on S by I-76; on W by Weld CR49, US34 and US85.

TURKEY HUNTING SAFETY TIPS

- 1. Be Sure of Your Target.** Never shoot at sound or movement. Be certain of your target before you pull the trigger.
- 2. Be Alert** when using a turkey call. Other hunters may mistake it for a real turkey.
- 3. Protect Your Back and Maintain Visibility.** Your calling position should have a solid background as wide as your shoulders and higher than your head while providing you with 180-degree visibility. Don't hide so well that you can't see what's happening. Camouflage hides you but doesn't make you invisible. Sit perfectly still; turkeys and hunters both see even slight movement.
- 4. Colors and Blaze Orange.** To alert other hunters to your presence, hang fluorescent material such as a cap or vest above your calling spot and wear fluorescent orange while going to and from your hunting spot. Eliminate red, white and blue from your clothes since mature male turkeys also sport these colors.
- 5. Don't Stalk.** Never stalk a turkey in the spring. Chances of success are slim; accident chances are high. Birds breed in spring and are more wary and alert. Find a concealed location, and let the bird come to you. Don't move, wave or use turkey calls to alert another hunter. A quick move may create a hazard. If necessary, yell or blow a whistle to alert another hunter of your presence.

GUIDE TO LEGAL HUNTING HOURS

The table below is valid for Denver, CO. SUBTRACT one minute from opening and closing time for each 12 1/2 miles east of Denver. ADD one minute to opening and closing time for each 12 1/2 miles west of Denver. The above changes assume each degree of longitude equals 50 miles and that a change of 1 degree of longitude equals 4 minutes change in sunrise and sunset times.

Sunrise/Sunset Table

	APRIL Rise-Set A.M.-P.M.	MAY Rise-Set A.M.-P.M.	SEPT. Rise-Set A.M.-P.M.	OCT. Rise-Set A.M.-P.M.
DAY				
1	6:43 7:23	6:00 7:53	6:27 7:31	6:55 6:42
2	6:42 7:24	5:58 7:54	6:28 7:30	6:56 6:41
3	6:40 7:25	5:57 7:55	6:29 7:58	6:57 6:39
4	6:39 7:26	5:56 7:56	6:30 7:27	6:58 6:38
5	6:37 7:27	5:55 7:57	6:31 7:25	6:59 6:36
6	6:25 7:28	5:54 7:58	6:32 7:23	7:00 6:34
7	6:34 7:29	5:52 7:59	6:33 7:22	7:01 6:33
8	6:32 7:30	5:51 8:00	6:34 7:20	7:02 6:31
9	6:31 7:31	5:50 8:01	6:34 7:18	7:03 6:30
10	6:29 7:32	5:49 8:02	6:35 7:17	7:04 6:28
11	6:28 7:33	5:48 8:03	6:36 7:15	7:05 6:27
12	6:26 7:34	5:47 8:04	6:37 7:14	7:06 6:25
13	6:25 7:35	5:46 8:05	6:38 7:12	7:07 6:23
14	6:23 7:36	5:45 8:06	6:39 7:10	7:08 6:22
15	6:22 7:37	5:44 8:07	6:40 7:09	7:09 6:20
16	6:20 7:38	5:43 8:07	6:41 7:07	7:10 6:19
17	6:19 7:39	5:43 8:08	6:42 7:05	7:11 6:18
18	6:17 7:40	5:42 8:09	6:43 7:04	7:12 6:16
19	6:16 7:41	5:41 8:10	6:44 7:02	7:14 6:15
20	6:14 7:42	5:40 8:11	6:45 7:00	7:15 6:13
21	6:13 7:43	5:39 8:12	6:46 6:59	7:16 6:12
22	6:11 7:44	5:39 8:13	6:47 6:57	7:17 6:10
23	6:10 7:45	5:38 8:14	6:48 6:55	7:18 6:09
24	6:09 7:46	5:37 8:15	6:49 6:54	7:19 6:08
25	6:07 7:47	5:37 8:15	6:49 6:52	7:20 6:06
26	6:06 7:48	5:36 8:16	6:50 6:50	7:21 6:05
27	6:05 7:49	5:35 8:17	6:51 6:49	7:22 6:04
28	6:03 7:50	5:35 8:18	6:52 6:47	7:23 6:03
29	6:02 7:51	5:34 8:19	6:53 6:46	7:24 6:01
30	6:01 7:52	5:34 8:19	6:54 6:44	7:26 6:00
31		5:33 8:20		7:27 5:59

New Deboning DVD

NEW



Down to the Bone is a quick and easy method for deboning an elk in the field.

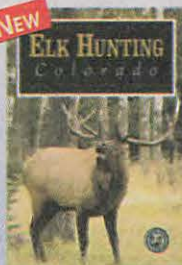
With this instructional DVD, hunters will learn a simple and legal method of removing the inedible portions of meat from an elk where it falls. By removing the bones and other inedible portions of the animal, hunters can reduce the weight by more than 50 percent. No more sawing and quartering. Learn how to identify the best cuts for steaks, roasts and hamburger. \$17.95



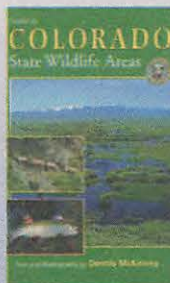
Colorado Outdoors Big Game Deluxe CD by HuntData

Includes draw trends for the past 15 years, harvest trends for every season in every unit, ranking and ratings for each unit and season across the state, concentration maps for deer, elk and pronghorn, land use, 1:100,000 topographical and shaded relief features, annual internet updates, sheep and goat unit maps, UTM coordinate system, way point creation and export, kill site plotting for moose, bighorn sheep and mountain goats. \$97.95

NEW



Elk Hunting - Colorado DVD Whether you are looking for that monster trophy bull or just to fill the freezer, this DVD will help improve your chances for success. This all inclusive elk hunting video educates the viewer on everything from the planning stages of an elk hunt to the techniques to use in the field. Learn about elk habits and where you can find animals during the different seasons. Learn how biologists manage the herds and decide how many licenses to issue to hunters. Get tips from a professional butcher for getting the best out of your elk meat. \$17.95.



Guide to Colorado State Wildlife Areas

This is the first-ever comprehensive guide to the Division of Wildlife's 241 State Wildlife Areas. The 344-page book contains recommended areas for hunting, fishing and watching wildlife and provides information on primary use, location, size, elevation, camping, species information and directions - plus regional maps and more than 166 full-color photographs. \$27.95.

ORDER FORM Prices include shipping and handling

	Price	Qty.	Total
Down To The Bone DVD (NEW)	\$17.95		
Big Game CD, Deluxe Edition	\$97.95		
Guide To State Wildlife Areas Book	\$27.95		
Elk Hunting - Colorado DVD (NEW)	\$17.95		
Colorado Deer Hunting Video	\$17.95		
Big Game Hunting in Colorado Video	\$17.95		
From The Field To The Table DVD (NEW)	\$17.95		
Order any two videos or DVDs for	\$30.00		
Order any three videos or DVDs for	\$43.50		
TOTAL			

SHOP ONLINE AT <http://wildlife.state.co.us/shopDOW>

Name _____
 Address _____
 City _____ State _____ Zip _____
 Daytime phone _____
METHOD OF PAYMENT Charge my ☐ Visa ☐ MasterCard
 Account No. _____ Exp. Date _____
 Signature _____

COLORADO OUTDOORS 6060 Broadway, Denver, CO 80216
 (303) 297-1192

23



Printed for free distribution by
Colorado Division of Wildlife
 6060 Broadway, Denver CO 80216
 (303) 297-1192
www.wildlife.state.co.us