

Colorado Turkey 2006



Coming In 2006:
Habitat Stamp
See "What's New"

Spring application deadline: Feb. 9
Fall application deadline: July 13

DOW OFFICES

DOW Headquarters
6060 Broadway
Denver, 80216
(303) 297-1192

Fort Collins Svc. Ctr.
317 W. Prospect Rd.
Fort Collins, 80526
(970) 472-4300

Northwest Region Svc. Ctr.
711 Independent Ave.
Grand Junction, 81505
(970) 255-6100

Glenwood Springs Svc. Ctr.
50633 Hwys. 6 & 24
Glenwood Springs, 81601
(970) 947-2920

Southwest Region Svc. Ctr.
151 E. 16th St.
Durango, 81301
(970) 247-0855

Hot Sulphur Springs Svc. Ctr.
346 Grand County Rd. 362
Hot Sulphur Springs, 80451
(970) 725-6200

Southeast Region Svc. Ctr.
4255 Sinton Rd.
Colorado Springs, 80907
(719) 227-5200

Lamar Svc. Ctr.
2500 S. Main St.
Lamar, 81052
(719) 336-6600

Monte Vista Svc. Ctr.
0722 S. Road 1 E.
Monte Vista, 81144
(719) 587-6900

For recordings on season dates and other information:
Deer, Elk, Pronghorn, Bear (303) 291-7529
Fishing (303) 291-7533
Small Game, Upland Game (303) 291-7546
Turkey (303) 291-7547
Waterfowl (303) 291-7548
Hunter Education (303) 291-7530
Mobility-impaired Licenses (303) 291-7528

Telephone License Sales 1-800-244-5613

www.wildlife.state.co.us

Northeast Region Svc. Ctr.
6060 Broadway
Denver, 80216
(303) 291-7227

Brush Svc. Ctr.
122 E. Edison, Box 128
Brush, 80723
(970) 842-6300

Montrose Svc. Ctr.
2300 S. Townsend Ave.
Montrose, 81401
(970) 252-6000

Gunnison Svc. Ctr.
300 W. New York Ave.
Gunnison, 81230
(970) 641-7060

Meeker Svc. Ctr.
73485 Hwy. 64
Meeker, 81641
(970) 878-6090

Steamboat Spgs. Svc. Ctr.
925 Weiss Dr.
Steamboat Spgs., 80477
(970) 870-2197

Pueblo Svc. Ctr.
600 Reservoir Road
Pueblo, 81005
(719) 561-5300

Salida Svc. Ctr.
7405 Hwy. 50
Salida, 81201
(719) 530-5520

Table of Contents

What's New for 2006	1
License Fees	1
License Information	1
Residency Qualifications	1
Habitat Stamp	1
Total Licensing System	2
Hunter Education	2
Ranching For Wildlife	2
Hunting Hours	2
Bag and Possession Limits	2
Legal Hunting Methods	2
Contests	2
Tagging	3
Evidence of Sex	3
Preference Points	3
Land Use Rules	3
Mobility-impaired Licenses	3
Unlimited Turkey Seasons	4
Limited Licenses.....	4-5
Filling Out Applications	5
GMU Map	6-7
Maps of Limited License Areas	8
GMU Descriptions	9-13
Guide to Legal Hunting Hours	13

OPERATION GAME THIEF

Operation Game Thief (OGT) is a non-profit organization working with the DOW's law enforcement program. It pays rewards to citizens who report poachers or resource violations. Callers don't have to reveal their names, testify in court or sign a deposition. Rewards are paid if the information leads to the arrest of a poacher or a citation is issued. Rewards do not depend on a conviction but must be requested when a violation is reported. Call toll-free, **1-877-COLOOGT (265-6648)** toll free. The number should not be used for information requests or emergencies.

NOTICE

This brochure is not a legal notice nor a complete collection of hunting regulations and laws. It is a condensed guide issued for hunters' convenience. Copies of wildlife statutes and regulations can be obtained from a DOW office and are available on our Web site, www.wildlife.state.co.us. For questions, call the DOW, (303) 297-1192.

2006 TURKEY HUNTING

What's New For 2006

Preference Points: Turkey hunters now may acquire 2 preference points annually: 1 in the spring drawing and 1 in fall.

Fee Increase: The Colorado Legislature has approved a license fee increase, starting Jan. 1, 2006.

Habitat Stamp: As of Jan. 1, 2006, hunters, anglers and visitors to state wildlife areas must buy a Habitat Stamp. See "Habitat Stamp."

Education Surcharge: The fee bill included a 75-cent surcharge for the Wildlife Management Public Education Fund.

2006 TURKEY LICENSE FEES

License	License Fee	Applic. Fee	Total
Unlimited Spring Resident.....	\$21		\$21
Unlimited Fall Resident.....	\$16		\$16
Unlimited Resident Youth.....	\$11		\$11
Unlimited Spring/Fall Nonresident.....	\$101		\$101
Unlimited Nonresident Youth.....	\$76		\$76
Limited Spring Resident.....	\$21	\$3	\$24
Limited Fall Resident.....	\$16	\$3	\$19
Limited Resident Youth.....	\$11	\$3	\$14
Limited Spring/Fall Nonresident.....	\$101	\$3	\$104
Limited Nonresident Youth.....	\$76	\$3	\$79

Costs include 25-cent search and rescue fee and 75-cent surcharge for the Wildlife Management Education Fund.

LICENSE INFORMATION

1. You must apply in the drawing for limited licenses, valid only for specific dates and units. See "Limited Licenses."
2. You can apply for a limited spring turkey and limited fall turkey license. You cannot hunt in fall turkey season with a spring turkey license. Fall applications are NOT accepted before June 1. Only 1 application is allowed per season.
3. You can buy unlimited licenses at license agents, DOW offices, via the internet or by phone. Unlimited licenses go on sale starting Dec. 15, 2005, for spring turkey and July 10 for fall.
4. Small game licenses are not valid for turkeys.
5. Licenses expire on the date printed on them. Licenses are not transferrable.
6. False statements made in buying licenses or altering licenses

are illegal, and doing so voids licenses.

7. Turkey hunters do not need to register with the Harvest Information Program (HIP).

8. A habitat stamp is required. See "Habitat Stamp."

RESIDENCY QUALIFICATIONS

These are the requirements to qualify as a Colorado resident to buy a hunting license:

1. You must have lived continuously in Colorado at least six months immediately before applying for or buying a license, and must intend to make Colorado home (except #2 and 3 below.)
2. U.S. armed services personnel, service personnel of a U.S. ally, personnel of the U.S. Diplomatic Service or diplomatic services of a nation recognized by the U.S. stationed here on permanent active duty orders (but not reserves or National Guard) and their dependents. This includes people who were Colorado residents when they entered the armed services and maintain Colorado as their home of record, and their dependents.
3. Full-time students enrolled and attending a Colorado college, university or trade school at least six months immediately before applying for or buying a license. This includes students who are temporarily absent from Colorado but still enrolled.
4. Children under 18 have the same residency status as their parent or legal guardian.

HABITAT STAMP

New For 2006: Now everyone can play a part in conserving Colorado's habitat, the key to wildlife's future. To preserve wildlife habitat for future generations, sportsmen and conservationists joined to develop the habitat stamp. Money from the program is designated for acquiring and managing habitat for hunting, fishing and wildlife viewing. Understanding the need to protect habitat and its economic benefit to the state, Colorado lawmakers approved the habitat stamp, which will be offered starting Jan. 1, 2006. For people 19-64, the stamp is \$5 and is required on the first 2 licenses bought in a calendar year. The stamp is \$10 if bought without a license and is required of people 19-64 who use a state wildlife area. Lifetime stamps are \$200. People younger than 19 and older than 64 are not required to buy the stamp. Anyone can buy a habitat stamp and be part of Colorado's future. See our Web site for details.

Printed for free distribution by the
COLORADO DIVISION OF WILDLIFE
Department of Natural Resources
6060 Broadway, Denver 80216
(303) 297-1192
www.wildlife.state.co.us

Published December 2005; 130,000 copies
Editor: Brigid Kelly
Cover photo by Sherm Spoelstra
Printer: Publication Printers, Denver.

The Colorado Division of Wildlife of the Department of Natural Resources prohibits discrimination on the basis of race, color, religion, sex, national origin and disabilities in all aspects of employment and public participation in its programs and services. For information or to register a complaint, contact the Colorado Division of Wildlife, 6060 Broadway, Denver 80216, or call (303) 297-1192. The Wildlife Commission sets turkey regulations in November. Commissioners (as of November 2005): Jeffrey A. Crawford, chair; Tom Burke, vice chair; Ken Torres, secretary; Robert Bray, member; Rick Enstrom, member; Philip James, member; Claire O'Neal, member; Richard Ray, member; Robert Shoemaker, member; Russell George, ex-officio member; Don Ament, ex-officio member.



2006 TURKEY HUNTING

TOTAL LICENSING SYSTEM

The DOW and license agents now use computer terminals to sell licenses. Agents also offer other services, such as replacing licenses and verifying hunter education cards issued by the DOW. You also can buy licenses through our Web site or by calling, 1-800-244-5613. Credit cards are accepted for phone or internet purchases. Learn more on our Web site.

HUNTER EDUCATION (SAFETY)

Anyone born on or after Jan. 1, 1949, must have completed an approved hunter education course or bowhunter education course (for archery licenses only) sanctioned by a state or province before applying for or purchasing a license. Colorado honors hunter education courses from other states and provinces. A hunter safety card must be presented when buying a license over the counter at a license agency. All hunters must carry their hunter education card when hunting unless "Verified" is printed by the DOW on their license.

RANCHING FOR WILDLIFE

Public RFW licenses are available only to Colorado residents by drawing. Licenses are valid only for the season and ranch on the license. RFW licenses are listed with hunt codes in this brochure. RFW landowners must provide free access to hunters who draw a public license for the ranch. By applying for a RFW license, hunters allow the DOW to provide applicant information to the ranch. RFW hunting rules are different for each ranch. For example on some ranches, guides may be required for public hunters but must be provided by the landowner free of charge. Read ranch rules before applying. Rules are found on our Web site under each ranch's specific page, wildlife.state.co.us/ranching/ranching.asp.

HUNTING HOURS

One-half hour before sunrise to sunset. See Sunset/Sunrise chart.

BAG AND POSSESSION LIMITS

1. The annual bag and possession limit is **1** bearded turkey in spring season and **1** turkey of either sex in fall.
2. Hunters with a **limited** spring license can take **2** bearded turkeys. One must be harvested on the limited license in the limited area. The second must be harvested with an unlimited license in an unlimited area. If you take **2** turkeys in spring, you cannot take a turkey in fall.
3. TIPs reward licenses do not count toward annual bag limits for turkey.

METHODS OF TAKE

1. **SHOTGUNS**, including muzzleloading shotguns: max. 10-gauge allowed and cannot be capable of holding more than three shells in the magazine and chamber combined. Shotguns originally capable of holding more than three shells must be plugged. Shot must be size #2 (lead or steel) or smaller. Single slugs are illegal.
2. **HAND-HELD BOWS**
3. **CROSSBOWS**
4. **RIFLES AND HANDGUNS**:
 - a. Spring Season: Rifles and handguns are illegal.
 - b. Fall Season Only: Except in units 91, 92, 94, 96 & 951, rifles and handguns can be muzzleloading, centerfire or rimfire, and bullets must be min. 38 grains with manufacturer's energy rating of at least 110 foot-pounds at 100 yards from muzzle.
6. Turkeys can be taken over standing crops or feed scattered solely for agricultural purposes.
7. It is illegal to use bait while turkey hunting. Baiting is placing, or scattering salt, mineral, grain or other feed to attract wildlife.
8. Artificial decoys and manual calls are permitted. Recorded or electronically amplified calls are illegal.
9. It is illegal to use electronic night vision equipment, electronically enhanced light-gathering optics or thermal-imaging devices as an aid in hunting or taking wildlife. Having a firearm with cartridges in chamber or magazine, or loaded with powder or ball, or strung, uncased bow while attempting to project artificial light into an area with wildlife is prima facie evidence of a violation.

CONTESTS

It is illegal to promote, conduct, offer to conduct or participate in contests using marked or tagged small game and upland game birds for money or valuable prizes. Valuable prizes don't include certificates of recognition or other tokens without significant monetary value. This does not apply to wildlife parks and field trials licensed by DOW.

TIPs PROGRAM

The TIPs program rewards people who voluntarily provide information resulting in charging a poacher with illegal take or possession of big game or turkey. Awards can be a preference point for the species of choice or an unlimited license for the species being reported. Some limited licenses may be available as a third option. Reward licenses do not count toward annual bag and possession limits. Applications and more information about TIPs are available from the DOW.

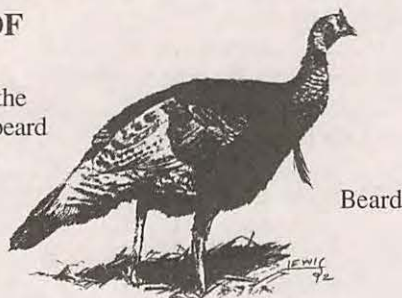
2006 TURKEY HUNTING

TAGGING

1. After killing a turkey, hunters must immediately detach, sign and date the carcass tag and attach it to the carcass. Tags must stay attached while the carcass is transported, in camp, in storage or in your possession.
2. If the carcass tag is accidentally detached from the license, or lost or destroyed, you must get a duplicate before hunting. You must give proof to the DOW that the tag was accidentally detached to get a duplicate.

EVIDENCE OF SEX

A turkey killed in the spring must have beard naturally attached while being transported.



PREFERENCE POINTS

1. One preference point is awarded if you apply properly and are unsuccessful in drawing a license for your first-choice hunt code, or if you apply for a preference point hunt code as your first choice. **New for 2006:** You can get 2 preference points per calendar year. One preference point is awarded in the spring limited license drawing and 1 in the fall drawing.
2. Second-, third- or fourth-choice hunt codes don't use or generate preference points.
3. Preference points accumulate until you draw a license as a first choice. If you don't apply at least once in 5 consecutive years, your file is purged and your points are lost. Applying for preference points keeps your file active.
4. Priority goes to the hunter with the most points except for group applications. Group applications are processed based on the member who has the fewest points.
5. If unsuccessful, your refund stub will show your accumulated points. Keep the stub for your records.
6. **Preference Point Hunt Code:** To apply for a preference point only, enter hunt code **T-P-999-99-P** as the first choice on your application. You must pay the full license cost even if you're just applying for a preference point. Your license fee, minus the \$3 application fee, will be refunded.

LAND USE RULES

1. Union Tract of Elliott SWA: Closed to turkey hunting.
2. Spanish Peaks SWA: Hunting permitted only Sat., Sun., Mon. and Tues. in spring turkey seasons.
3. It is illegal to hunt on private land without permission from landowner or person in charge. It is illegal to post, sign or indicate that public lands (except if under an exclusive-control lease) are private. It is illegal to hunt on State Trust Lands without permission of lessee, except those open for wildlife recreation.
4. Field trials occur on some state wildlife areas where turkey hunting is allowed, especially in Feb., March, Aug. and Sept.

and at Banner Lakes, South Republican (Bonny Res.) and Tamarack.

5. Higel, Rio Grande SWAs: Access only by permit in spring season. Permits issued by drawing. Applications available at DOW, 0722 S. Road 1E, Monte Vista, 81144. Group applications accepted; max. 2 per group. Application deadline: Jan. 31. Successful applicants notified by mail.
6. Chancellor Ranch State Trust Land: Access only by permit to hunters and 1 non-hunting companion. Permits issued by drawing at DOW's Lamar office. Youths get first priority. Applications available from DOW, 2500 S. Main, Lamar, 81052, (719) 336-6600, or on our Web site. Group applications accepted; max. 2 per group. Deadline for fall season: July 1. Spring deadline: Jan. 31. Successful applicants notified by mail. Access permits issued for spring: 5 bearded turkey permits for youths; 5 bearded turkey permits for other hunters. Access permits issued for fall: 5 bearded turkey permits for youths; 5 bearded turkey permits for other hunters.
7. You must buy a habitat stamp to visit state wildlife areas.
8. Other state wildlife areas may have restrictions on turkey hunting. Please see the 2006 Fishing Regulations and Property Directory.

MOBILITY-IMPAIRED LICENSES

1. Ten licenses are offered for qualified mobility-impaired hunters for spring season, valid only on private land in units 91, 92, 96, 102, for specific dates.
2. Hunters must have a mobility impairment from a permanent medical condition that makes hunting physically impossible without an attendant's help. Evidence may include prescribed equipment such as a wheelchair, shoulder or arm crutches, walker or two canes.
3. Applications available from DOW and must be submitted with fee to Limited Licenses, 6060 Broadway, Denver, 80216. Hunters can apply from the Monday after the Wildlife Commission meeting in Nov. until spring turkey season ends.
4. Applications must include a statement from a licensed medical doctor or certified physical, occupational or recreational therapist, describing the impairment and permanent medical condition. Additional documentation may be required.

WEAPONS RESTRICTIONS

Colorado and federal laws prohibit people convicted of certain crimes, such as domestic violence, from possessing weapons, even for hunting. If you were convicted of a crime, check with the appropriate law enforcement authority to learn how these laws apply to you.

CHILD SUPPORT DELINQUENCY

The Colorado Child Support Enforcement Act requires your Social Security number to buy licenses. It is not displayed on the license but is provided, when requested, to Child Support Enforcement authorities. Hunting and fishing licenses are not issued to people delinquent in child support.

2006 TURKEY HUNTING

2006 LIMITED LICENSE CALENDAR

SPRING

Application deadlineFeb. 9
 Licenses/refunds in mail byMarch 13
 Success informationMarch 13

FALL

Applications accepted beginningJune 1
 Application deadlineJuly 13
 Licenses/refunds in mail and
 success information byAug. 2

SPRING UNLIMITED LICENSES

April 8-May 21 valid statewide EXCEPT in limited units listed in the tables that follow and units totally closed to turkey hunting. Units totally closed to spring turkey hunting are: 1, 21, 25, 26, 30, 35, 45, 47, 80, 81, 89, 90, 93, 95, 97, 98, 99, 100, 101, 106, 111, 115, 120, 121, 138, 139, 201, 371, 471. License agents only: please use T-M-000-U1-R to sell unlimited spring turkey licenses.

SPRING LIMITED LICENSES

Unlimited turkey licenses not valid in these units.

AREA	DATES	LICENSES	HUNT CODE
Unit 2	April 8-May 21	5	T-M-002-O1-R
Units 15, 27, 36, 37	April 8-May 21	5	T-M-015-O1-R
Unit 23	April 8-May 21	10	T-M-023-O1-R
Unit 31	April 8-May 21	75	T-M-031-O1-R
Unit 34	April 8-May 21	5	TM-034-O1-R
Unit 43	April 8-May 21	30	T-M-043-O1-R
Unit 44	April 8-May 21	5	T-M-044-O1-R
Unit 59 Beaver Creek SWA & Table Mtn. STL Only	April 8-May 21	25	T-M-059-O1-R
Unit 91	April 8-23	25	T-M-091-O1-R
Unit 91, Not valid on SWAs	April 8-23	10	T-M-091-S1-R
Unit 91	April 24-May 14	25	T-M-091-O2-R
Unit 91, Not valid on SWAs	April 24-May 14	10	T-M-091-S2-R
Unit 92	April 8-23	25	T-M-092-O1-R
Unit 92, Not valid on SWAs	April 8-23	5	T-M-092-S1-R
Unit 92	April 24-May 14	25	T-M-092-O2-R
Unit 92, Not valid on SWAs	April 24-May 14	5	T-M-092-S2-R
Unit 96	April 8-23	35	T-M-096-O1-R
Unit 96, Not valid on SWAs	April 8-23	20	T-M-096-S1-R
Unit 96	April 24-May 14	35	T-M-096-O2-R
Unit 96, Not valid on SWAs	April 24-May 14	20	T-M-096-S2-R
Unit 102	April 8-23	25	T-M-102-O1-R

SPRING LIMITED LICENSES

AREA	DATES	LICENSES	HUNT CODE
Unit 102	April 24-May 14	25	T-M-102-O2-R
Units 103, 107, 109	April 8-May 21	70	T-M-103-O1-R
Unit 105	April 8-May 14	20	T-M-105-O1-R
Units 124, 125, 129	April 8-May 21	3	T-M-124-O1-R
Units 124, 125, 129, Not valid on SWAs	April 8-May 21	7	T-M-124-S1-R
Units 126, 146	April 8-May 21	15	T-M-126-O1-R
Units 127, 132	April 8-May 21	5	T-M-127-O1-R
Unit 130, N of US 50 only	April 8-May 21	2	T-M-130-O1-R
Unit 130, N of US 50, Not valid on SWAs	April 8-May 21	5	T-M-130-S1-R
Unit 140, Lake Dorothy SWA only	April 8-May 21	75	T-M-140-O1-R
Unit 140, James M. John SWA only	April 8-May 21	20	T-M-140-O2-R
Unit 444	April 8-May 21	10	T-M-444-O1-R
Unit 851, Bosque del Oso SWA only	April 8-May 21	25	T-M-851-O1-R

FALL UNLIMITED LICENSES

Sept. 1-Oct. 1 valid statewide EXCEPT limited units listed in the tables that follow and units totally closed to turkey hunting. Units totally closed to fall turkey hunting are: 1, 2, 15, 21, 23, 25, 26, 27, 30, 34, 35, 36, 37, 44, 45, 47, 53, 63, 80, 81, 89, 90, 93, 95, 97, 98, 99, 100, 101, 102, 106, 111, 115, 120, 121, 138, 139, 201, 371, 471, 481. License agents only: please use T-E-000-U2-R to sell unlimited fall turkey licenses.

FALL LIMITED LICENSES

Unlimited turkey licenses not valid in these units.

Sept. 1-Oct. 1

AREA	LICENSES	HUNT CODE
Unit 31 (except 1/2 mile either side of Colo. River from Una Bridge east of DeBeque to Utah)	75	T-E-031-L1-R
Unit 59, Beaver Ck. SWA & Table Mtn. STL only	25	T-E-059-L1-R
Unit 85, Spanish Peaks SWA only		
Oberosler Tract	30	T-E-085-L1-R
Dochter Tract	30	T-E-085-L2-R
Sakariason Tract	30	T-E-085-L3-R
Unit 91	10	T-E-091-L1-R
Unit 92	15	T-E-092-L1-R
Unit 96	20	T-E-096-L1-R
Units 103, 107, 109	70	T-E-103-L1-R
Unit 105	20	T-E-105-L1-R
Units 124, 125, 129	10	T-E-124-L1-R

2006 TURKEY HUNTING

FALL LIMITED LICENSES

DATES: Sept. 1-Oct. 1

AREA	LICENSES	HUNT CODE
Units 126, 146	10	T-E-126-L1-R
Units 127, 132	3	T-E-127-L1-R
Unit 130, N of US 50	5	T-E-130-L1-R
Unit 140, Lake Dorothy SWA only	75	T-E-140-L1-R
Unit 140, James M. John SWA only	20	T-E-140-L2-R
Units 444	10	T-E-444-L1-R
Unit 851, Bosque del Oso SWA only	25	T-E-851-L1-R

WILDLIFE RANCHING LICENSES

Spring Seasons

AREA	DATES	LICENSES	HUNT CODE
Colorado Nature Ranch, unit 31	May 1-21	2	T-M-031-W1-R
Purgatoire Ranch, units 136, 143, 147	May 1-May 11	14	T-M-136-W1-R
Twin Peaks Ranch, unit 85	April 29-May 21	17	T-M-085-W1-R

Fall Seasons

AREA	DATES	LICENSES	HUNT CODE
Colorado Nature Ranch, unit 31	Sept. 1-14	4	T-E-031-W1-R
Purgatoire Ranch, units 136, 143, 147	Sept. 1-11	2	T-E-136-W1-R

FILLING OUT YOUR APPLICATION

1. Print in capital, block letters and stay within the boxes.
2. Do not cut or fold applications. Tear along perforations.
3. Use black ballpoint pen only. Photocopies not accepted.
4. If you bought a license after 2003, your Customer Identification Number (CID) is on the license. If you have a Conservation Certificate, you can use that number to apply. The number is in the upper right corner of the CC. If you were mailed this brochure, your CC or CID number may be on the address label above your name. Starting from left to right, enter your number.
5. If you've never had a CID, leave that part of the form blank. Fill out the rest of the form, including the shaded area. You will receive a new CID with the first license you buy.
6. If your address changed, use the change-of-address form in the application insert (home address only). Mail the form separately to the DOW. Don't mail it with your application.
7. Enter a first choice. You can list up to three more choices.
8. Enter your name as on your CID. Use capital letters. Enter as many letters as will fit. Enter your birth date as on your CID with four digits for the year.
9. Colorado residents: Fill in "Colorado Resident Since" boxes

with month (MM) and year (YYYY) you moved here. If you have always lived in Colorado, enter month and year of your birth. If you're in the military in Colorado, enter "88 8888." One number per box.

10. Only applications with the same CID number in the group application box are entered as a group. Group leaders must complete this section. If the leader has no CID, leader must call the DOW to get a number. All group members must fill out their applications the same, using the same person as leader. Members must mail applications separately.

11. If you have preference points, mark an X in this box. To apply for a turkey preference point, enter hunt code T-P-999-99-P as the first choice on your application.

12. If you were born on or after Jan. 1, 1949, and have completed hunter education, put "X" in the box.

13. State law requires your Social Security number to buy or apply for hunting licenses. If you already have given us your number, leave this part blank.

14. The permission to provide box allows us to provide information from applications to entities offering hunting information, services and products, including guides and outfitters. If you check this box and later change your mind, you can cancel by writing DOW, 6060 Broadway, Denver, CO 80216, Attn: Call Center; e-mail www.wildlife.dowinfo@state.co.us; call (303) 297-1192 or visit any DOW office.

15. Sign the application. Enter a day phone number.

SUBMITTING YOUR APPLICATION

1. Mail your check and application in a standard, 4-1/8 by 9-1/2 inch envelope to the address below. If you have a CC or CID number, enter it on the check.
2. Applications must be postmarked or received at the **Division of Wildlife, Attn: Turkey, P.O. Box 173781, Denver, CO 80217-3781**, by deadlines on previous page (midnight postmark acceptable).

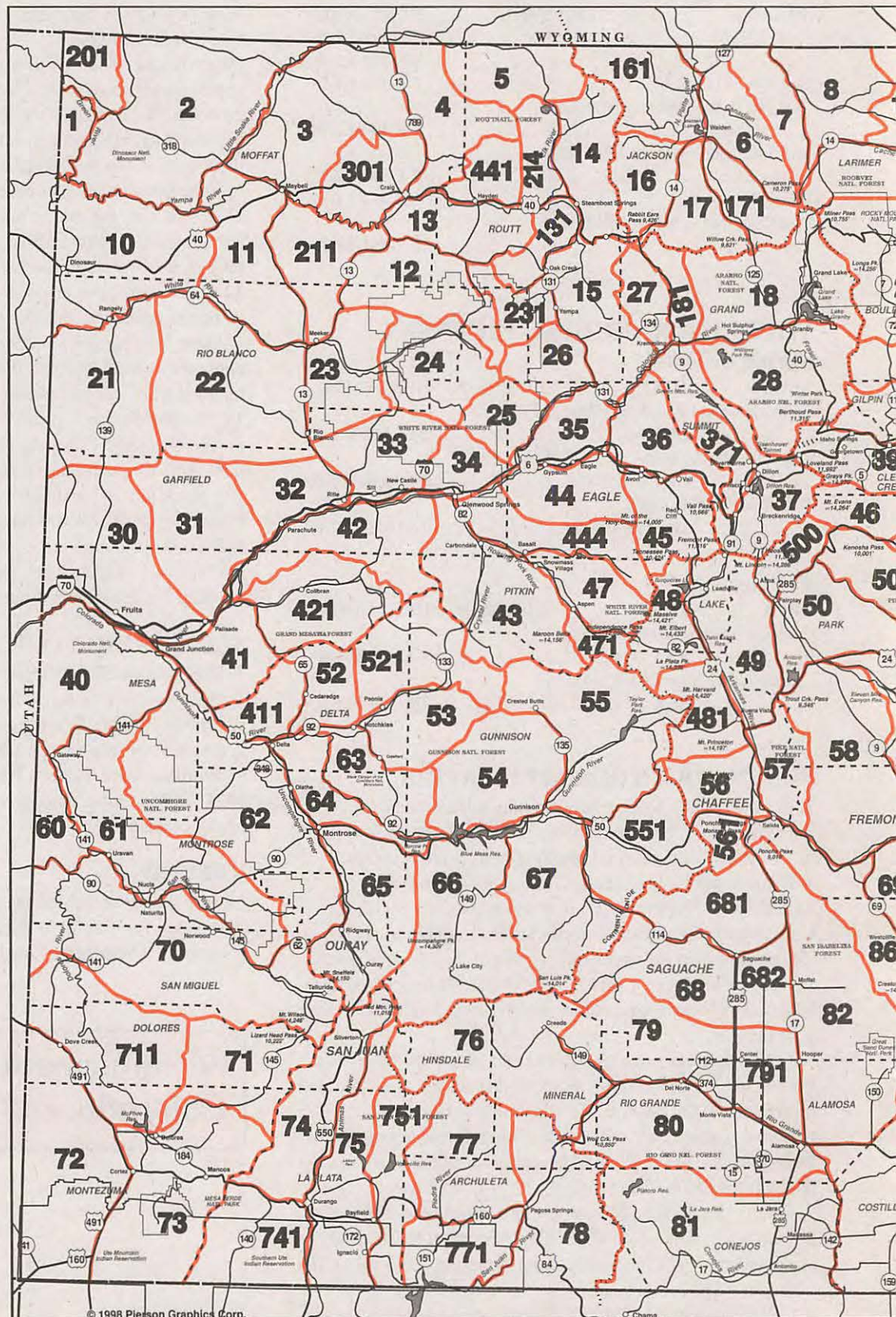
REFUNDS

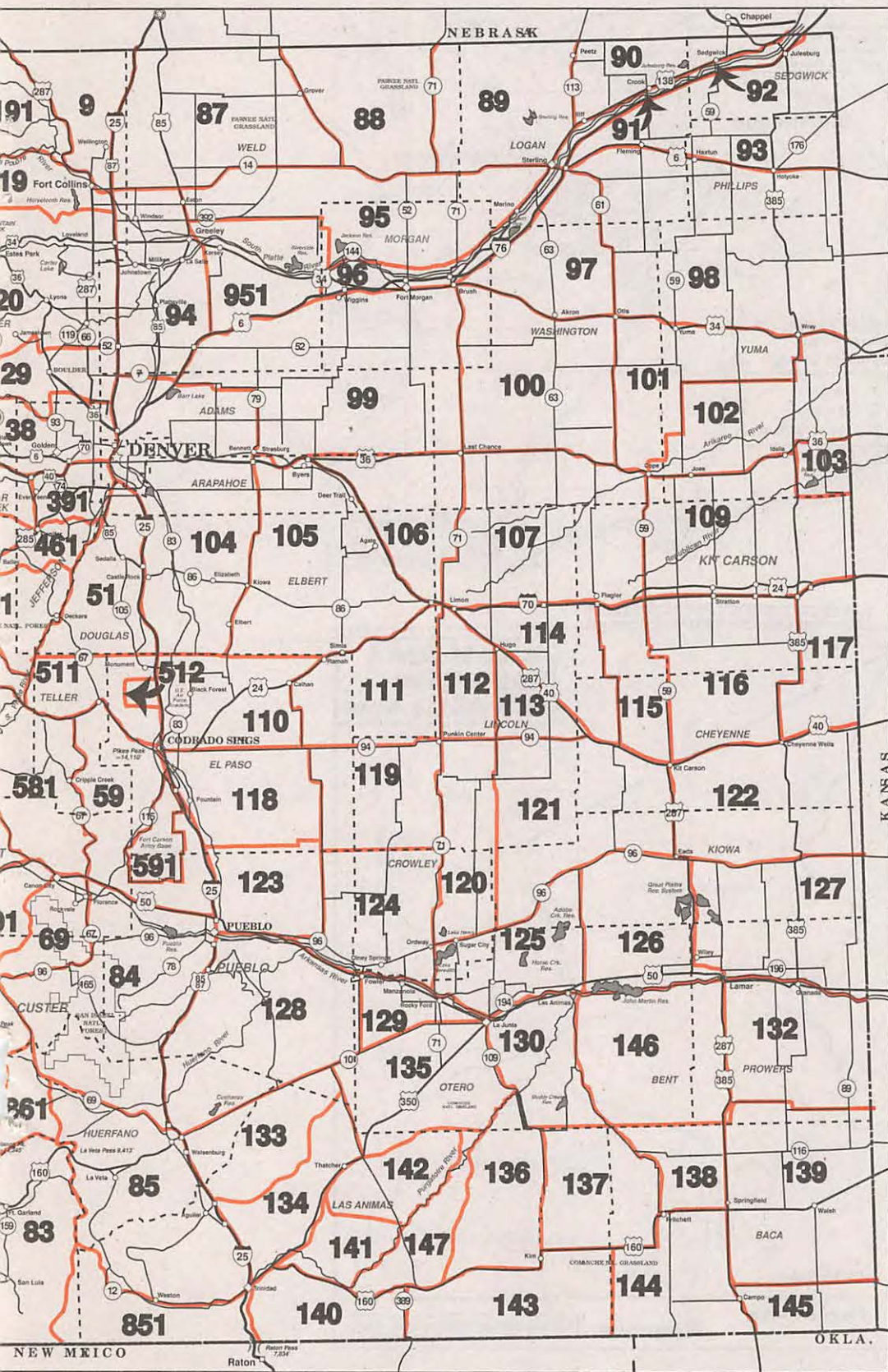
License fees are refunded to unsuccessful applicants. The \$3 application fee is nonrefundable. Applications are rejected if your check is returned by the bank. Prosecution may result.

For information on hunting in Colorado, call (303) 297-1192.

GAME MANAGEMENT UNIT MAP

Map boundaries are only approximate. These maps are provided only to help you apply for the correct unit. These maps are NOT to be used in the field as indicators of unit boundaries. See unit descriptions for boundaries.





HAVE YOU MOVED?

PLEASE FILL OUT

**THE BLACK CHANGE OF ADDRESS FORM
ON THE REVERSE SIDE OF THIS FORM**

HAVE YOU MOVED?

**FILL OUT THE REVERSE SIDE OF THIS FORM AND
MAIL IT IN A SEPARATE ENVELOPE TO:**

**Division of Wildlife
Attention: Address Changes
6060 Broadway
Denver, CO 80216**

DO NOT MAIL LICENSE APPLICATIONS TO THIS ADDRESS

DO NOT INCLUDE YOUR ADDRESS CHANGE FORM WITH YOUR APPLICATION

Change of addresses submitted on application forms are not currently recorded by the system.

REMOVE TABS BEFORE MAILING

Follow perforation lines, remove all excess paper before mailing.

REMOVE TABS BEFORE MAILING

Follow perforation lines, remove all excess paper before mailing.

TURKEY 2006

USE BLACK BALLPOINT PEN AND PRINT IN CAPITAL LETTERS

Applicants please remember that landowner permission is required prior to applying for a PLO hunt.



I give DOW permission to provide my name, address, and license information to certain persons requesting it. See instructions.

CID/CC #

Customer Identification Number or CC #

Customer Identification Number or CC #

The Division of Wildlife cannot be responsible for errors due to applications completed with lower case letters, colored inks or pencil.

1st Choice Hunt Code

2nd Choice Hunt Code

3rd Choice Hunt Code

4th Choice Hunt Code

First Name

MI

Last Name

Date of Birth (MMDDYYYY)

☐ Non-Resident

☐ Resident

Colorado Resident Since (MMYYYY)

Colorado Resident Since (MMYYYY)

Mark "X" if you have preference points for this species.

Mark "X" if you have a Hunter Education Card

(SSN) Your Social Security Number

"I CERTIFY THAT THE INFORMATION GIVEN ON THIS APPLICATION IS TRUE." (Giving false information when applying for a license is a criminal offense.)

I hereby authorize the D.O.W. to make further inquiries to verify this information and specifically agree that venue for such offenses shall be the District and County Court of Adams County Colorado unless otherwise agreed by the D.O.W.

FOR GROUPS ONLY (Same species, unit, season, and method of take)

CID/CC

Enter Group Leader's Customer Identification # or Conservation Certificate Number

Enter Group Leader's Customer Identification # or Conservation Certificate Number

DO NOT USE THIS SPACE FOR ADDRESS CHANGES! USE THE ADDRESS CHANGE FORM INCLUDED IN THIS BROCHURE. Complete this area ONLY if you have NEVER had a Customer ID # or Conservation Certificate.

Address, P.O. Box, Rural Route (Mailing)

City (Include foreign country if needed)

Your Area Code and Phone Number

Drivers License Number (no dashes or spaces)

☐ Male

☐ Female

State

Zip

State

Height (ft-in.)

Weight (lbs)

L08061

80024000

TURKEY 2006

USE BLACK BALLPOINT PEN AND PRINT IN CAPITAL LETTERS

Applicants please remember that landowner permission is required prior to applying for a PLO hunt.



I give DOW permission to provide my name, address, and license information to certain persons requesting it. See instructions.

CID/CC #

Customer Identification Number or CC #

Customer Identification Number or CC #

The Division of Wildlife cannot be responsible for errors due to applications completed with lower case letters, colored inks or pencil.

1st Choice Hunt Code

2nd Choice Hunt Code

3rd Choice Hunt Code

4th Choice Hunt Code

First Name

MI

Last Name

Date of Birth (MMDDYYYY)

☐ Non-Resident

☐ Resident

Colorado Resident Since (MMYYYY)

Colorado Resident Since (MMYYYY)

Mark "X" if you have preference points for this species.

Mark "X" if you have a Hunter Education Card

(SSN) Your Social Security Number

"I CERTIFY THAT THE INFORMATION GIVEN ON THIS APPLICATION IS TRUE." (Giving false information when applying for a license is a criminal offense.)

I hereby authorize the D.O.W. to make further inquiries to verify this information and specifically agree that venue for such offenses shall be the District and County Court of Adams County Colorado unless otherwise agreed by the D.O.W.

FOR GROUPS ONLY (Same species, unit, season, and method of take)

CID/CC

Enter Group Leader's Customer Identification # or Conservation Certificate Number

Enter Group Leader's Customer Identification # or Conservation Certificate Number

DO NOT USE THIS SPACE FOR ADDRESS CHANGES! USE THE ADDRESS CHANGE FORM INCLUDED IN THIS BROCHURE. Complete this area ONLY if you have NEVER had a Customer ID # or Conservation Certificate.

Address, P.O. Box, Rural Route (Mailing)

City (Include foreign country if needed)

Your Area Code and Phone Number

Drivers License Number (no dashes or spaces)

☐ Male

☐ Female

State

Zip

State

Height (ft-in.)

Weight (lbs)

L08061

80024000

TURKEY APPLICATION CHECKLIST

Be sure to...

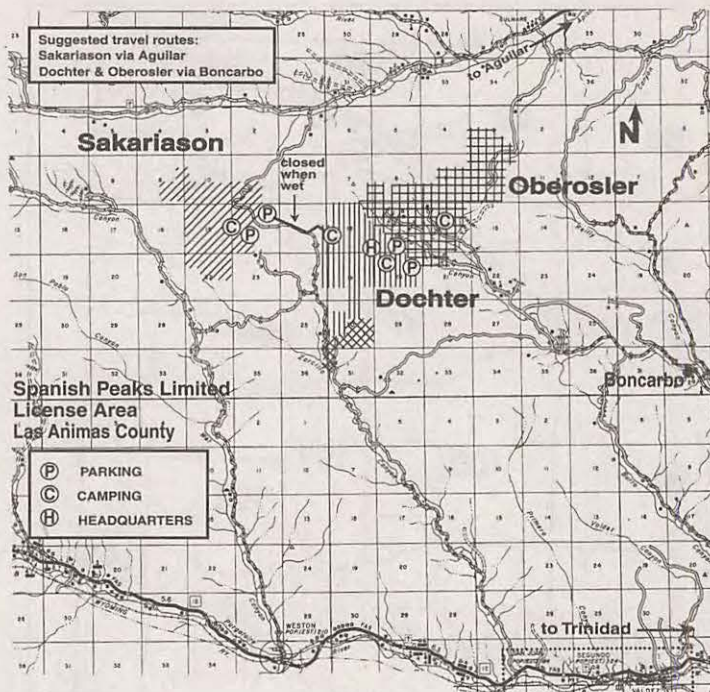
- ☒ Use CAPITAL LETTERS and BLACK INK for your application.
 - ☒ Write your CID Number or Conservation Certificate number, name and date of birth (using all four digits of the year) exactly as shown on your License, Conservation Certificate or mailing label of this brochure. (If you have NEVER had a CID or Conservation Certificate, fill out the bottom part of the application also.)
 - ☒ Read the instructions on the release of name and address information.
 - ☒ Mark the Preference Point and Hunter Education checkboxes if applicable.
 - ☒ Include a daytime phone number in the signature box.
 - ☒ Enclose payment to the Colorado Division of Wildlife.
 - ☒ Complete the "Colorado Resident Since" boxes if applicable.
 - ☒ Using a legal-sized envelope, include only ONE application and ONE check addressed to:

Colorado Division of Wildlife
Attention: Turkey
P.O. Box 173781
Denver, CO 80217-3781
 - ☒ Send us your ADDRESS CHANGE form in a separate envelope (Do NOT include it with your application). Mail by the application deadline to ensure your license or refund is sent to your current address.
- Remember: Photocopies will not be accepted.

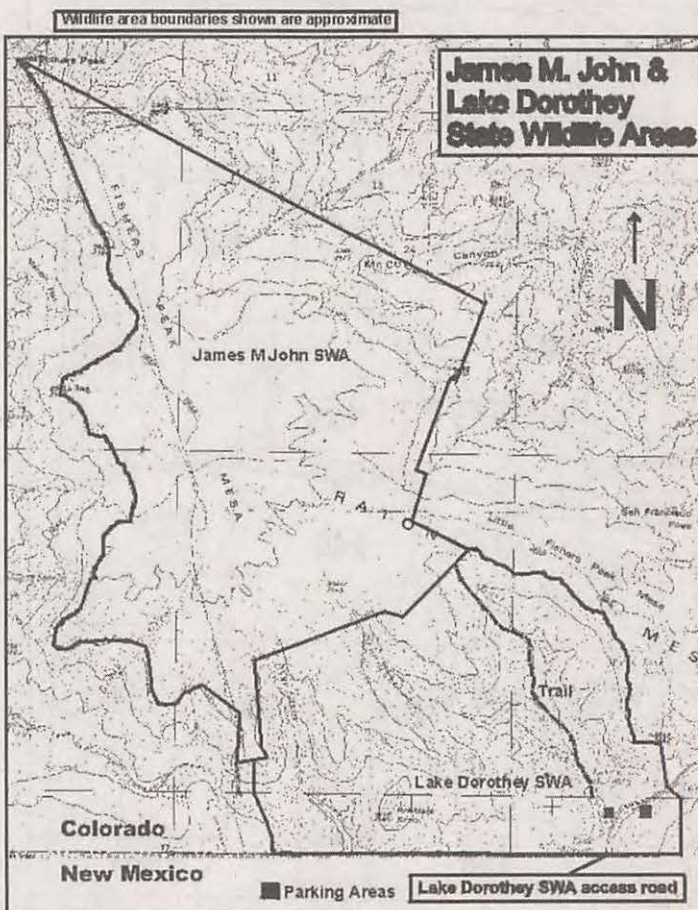
Applicants please remember that landowner permission is required prior to applying for a PLO hunt.

MAPS OF TURKEY HUNTING ON SWAs

Note: Not all limited license areas are depicted here. Please refer to the limited license area lists.



NOTE: James M. John State Wildlife Area is 4 miles from the Lake Dorothy trailhead. The majority of turkey habitat in San Miguel Canyon is 8 miles from the trailhead.



DESCRIPTIONS OF TURKEY HUNTING GAME MANAGEMENT UNITS

Abbreviations used:

KS: Kansas	Neb: Nebraska	NM: New Mexico	OK: Oklahoma
UT: Utah	WY: Wyoming	Colo: Colorado Highway	
US: U.S. Highway	Co: County	CR: County Road	Ck: Creek
Div: Divide	Dr: Drive	Fk: Fork	Pk: Peak
Pt: Point	Res: Reservoir	Rd: Road	N: North
S: South	E: East	W: West	
RMNP: Rocky Mountain National Park	NF: National Forest		
USFS: U.S. Forest Service			

Each unit consists of lands in county or counties in parentheses.

- 3 - (Moffat) bounded on N by WY, on E by Colo.13/789, CRs108, 3, 158, 5 & 17, on S by Yampa River, US40 and Colo.318, on W by Little Snake River.
- 4 - (Moffat & Routt) bounded on N by WY; on E by Slater Ck and Elkhead Ck; on S by US40; on W by Colo.13/789.
- 5 - (Moffat & Routt) bounded on N by WY; on E by Continental Div; on S by Little Snake-Elk River Div; on W by Slater Ck.
- 6 - (Jackson) bounded on N by WY; on E by Jackson-Larimer Co line; on S by Colo.14; on W by Colo.125 from Colo.14 to WY.
- 7 - (Larimer) bounded on N by WY; on E by CR103 (Laramie River Rd); on S by Colo.14; on W by Larimer-Jackson Co line.
- 8 - (Larimer) bounded on N by WY; on E by CRs59, 80C (Cherokee Park Rd), 179 (Prairie Dirt Rd), 74E (Red Feather Lakes Rd), 68C (Boy Scout Ranch Rd), and 69 (Manhattan Rd); on S by Colo.14; on W by Larimer CR103 (Larimer River Rd).
- 9 - (Larimer & Weld) bounded on N by WY; on E by I-25; on S by Colo.14; and on W by US287.
- 10 - (Moffat & Rio Blanco) bounded on N by Green and Yampa rivers, on E by Twelvemile Gulch, US40, Winter Valley Gulch, Coal Ck and Wolf Ck; on S by White River; on W by UT.
- 11 - (Moffat & Rio Blanco) bounded on N by Colo.318 and US40; on E by the Deception Ck-Strawberry Ck Rd; on S by White River; on W by Wolf Ck, Coal Ck, Winter Valley Gulch, US40, Twelvemile Gulch, Yampa River and Little Snake River.
- 12 - (Moffat, Routt, Rio Blanco & Garfield) bounded on N by Colo.317, Routt CRs29 & 55, Rio Blanco CRs10 & 8; on E by Williams Fk-Yampa River Div; on S by Williams Fk-White River Div, USFS Rd250, Rio Blanco CRs48, 15 & 30; on W by Colo.13/789.
- 13 - (Moffat & Routt) bounded on N by US40, on E by Routt CR179, Trout Ck & Fish Ck; on S by Routt CR29 and Colo.317; on W by Colo.13/789.
- 14 - (Routt & Grand) bounded on N by Little Snake-Elk River Div; on E by Continental Div; on S by US40; on W by US40 and Routt CR129.
- 15 - (Routt, Grand, Eagle) bounded on N by US40; on E by Muddy Ck-Yampa River Div (Gore Range Div) and Canyon Ck; on S by Colorado River; on W by Colo.131.
- 16 - (Jackson) bounded on N by Lone Pine Ck, CRs16 & 12W; on E by Colo.14; on W by Continental Div.
- 17 - (Jackson) bounded on N and E by Colo.125; on S by Continental Div (Jackson-Grand Co line); on W and N by Colo.14.
- 18 - (Grand) bounded on N and E by Continental Div, on S by Arapaho Ck, Lake Granby and Colorado River; on W by Main Fk of Troublesome Ck and Poison Ck.
- 19 - (Larimer) bounded on N by Colo.14 (Poudre Canyon Rd); on E by I-25; on S by Harmony Rd, CRs19, 38E, 27 & 44H (Buckhorn Rd), Elk Ck & Pennock Ck Div and RMNP boundary; on W by Larimer-Jackson Co line.
- 20 - (Larimer & Boulder) bounded on N by Larimer CRs44H, (Buckhorn Rd) 27, 38E, 19, and Harmony Rd; on E by I-25; on S by Colo.52, US287, Boulder CR34 (Niwot/Neva Rds), US36, Boulder CRs94, 81, 106, and 95 (Lefthand Canyon Dr), 102 (Brainard Lake Rd), and ridge line from Brainard Lake W to Pawnee Pk; on W by Continental Div, RMNP

boundary, and Pennock Ck-Elk Ck Div.

- 22 - (Rio Blanco & Garfield) bounded on N by White River; on E by Colo.13/789; on S by White River-Colorado River Div; on W by Rio Blanco CRs26 & 103, Monument Gulch Rd, Colo.64 and Monument Gulch.
- 23 - (Rio Blanco & Garfield) bounded on N by Rio Blanco CRs30, 15 & 48, USFS Rd 250; on E by USFS Rd 250, Rio Blanco CRs8 & 17 and USFS Primary 245 (Buford-Newcastle Rd); on S by White River-Colorado River Div; on W by Colo.13/789.
- 24 - (Rio Blanco & Garfield) bounded on N by Williams Fk River-White River Div; on E by White River-Yampa River Div and White River-Colorado River Div; on S by S Fk of White River-Colorado River Div; on W by USFS Primary 245 and Rio Blanco CRs17 (Buford-Newcastle Rd), 8 and USFS Rd 250.
- 27 - (Grand & Routt) bounded on N and E by US40; on S by Colo.9 and Colorado River; on W by Canyon Ck and Muddy Ck-Yampa River Div (Gore Range Div).
- 28 - (Grand) bounded on N by Colorado River, Lake Granby and Arapaho Ck; on E by Continental Div; on S by Continental Div and Williams Fk-Straight Ck Div; on W by Williams F-Blue River Div and Barger Gulch.
- 29 - (Boulder, Jefferson & Gilpin) bounded on N by ridge line from Pawnee Pk to Brainard Lake, Boulder CRs102 (Brainard Lake Rd), Boulder CRs94, 81, 106, and 95 (Lefthand Canyon Dr), US36, Boulder CR34, (Neva/Niwot Rds), and Colo.52 (Mineral Rd); on E by I-25; on S by Colo.128, Colo.93, Colo.72, Colo.119, and USFS Rd 149 (Rollins Pass Rd); on W by Continental Div.
- 31 - (Mesa, Garfield & Rio Blanco) bounded on N by Colorado-White River Div; on E by Roan Ck-Parachute Ck Div and Kelly Gulch; on S by Colorado River; and on W by Bookcliffs, Little Salt Wash-Roan Ck Div, Big Salt Wash-Roan Ck Div and East Salt Ck-Roan Ck Div.
- 32 - (Garfield) bounded on N by Parachute Ck-Piceance Ck Div; on E by Colo.13/789; on S by Colorado River; on W by Kelly Gulch and Roan Ck-Parachute Ck Div.
- 33 - (Garfield & Rio Blanco) bounded on N by White-Colorado River Div; on E by Canyon Ck; on S by Colorado River; on W by Colo.13/789.
- 34 - (Garfield & Eagle) bounded on N by Deep Ck; on E and S by Colorado River; on W by Canyon Ck.
- 38 - (Gilpin, Boulder, Clear Ck & Jefferson) bounded on N by USFS Rd 149 (Rollins Pass Rd), Colo.119, Colo.72, Colo.93, and Colo.128; on E by I-25; on S by I-70 and US40; on W by Continental Div.
- 39 - (Jefferson, Clear Ck & Park) bounded on N by US40 and I-70; on E by Colo.74 & Jefferson CR73; on S by US285, N.Turkey Ck-Elk Ck Div, and Pike-Arapaho NF boundary; on W by Continental Div. (See unit 391.)
- 40 - (Mesa) bounded on N by Colorado River; on E by US50; on S by Colo.141 and Dolores River; on W by UT.
- 41 - (Mesa & Delta) bounded on N by Colorado River and Colo.65; on E by Colo.65, Lands End Rd, Flowing Park Rd and Mesa-Delta Co line; on W by US50.
- 42 - (Mesa & Garfield) bounded on N by Colorado River; on E by South Canyon Ck divide between Roaring Fk-Crystal River and Baldy Ck-Div Ck drainages and common point of Mesa-Pitkin-Gunnison Co lines; on S by Div Ck-Muddy Ck Div, Div Ck-Plateau Ck Div and Plateau Ck-Colorado River Div; and on W by Colorado River.

DESCRIPTIONS OF TURKEY HUNTING GAME MANAGEMENT UNITS

43 - (Garfield, Pitkin, Eagle & Gunnison) bounded on N by Colorado River; on E by Roaring Fk and Castle Ck; on S by divide between Roaring Fk-Crystal River drainages and East River-Muddy Ck drainages and McClure Pass; on W by Muddy Ck-Crystal River Div, divide between Roaring Fk-Crystal River drainages and Div Ck-Baldy Ck drainages and S Canyon Ck.

46 - (Clear Ck, Park & Jefferson) bounded on N by Pike-Arapaho NF boundary and N Turkey Ck-Elk Ck Div; on E and S by US285; on W by N Fk of S Platte River and Continental Div.

48 - (Lake & Chaffee) bounded on N by Continental Div; on E by Tennessee Ck and Arkansas River; on S by Clear Ck and S Fork of Clear Ck; on W by Continental Div.

49 - (Lake, Park & Chaffee) bounded on N by Continental Div; on E by Colo.9 and US285; on S by US24; on W by Arkansas River and Tennessee Ck.

50 - (Park) bounded on N by US285; on E by CR77; on S by US24; on W by US285.

51 - (Douglas) bounded on N by Colo.470; on E by I-25; on S by Douglas-Teller Co line; on W by S Platte River.

52 - (Delta) bounded on N by Delta-Mesa Co line; on E by Grand Mesa-Gunnison NF boundary, Overland Ditch, West Res No 1, and Jay Ck; on S by N Fk of Gunnison River and Colo.92; on W by Colo.65.

53 - (Delta & Gunnison) bounded on N by N Fk of Gunnison River, Gunnison CR12 (Kebler Pass Rd) Kebler Pass and Ohio Pass; on E and S by Gunnison River-N Fk of Gunnison River Div and Curecanti Pass, Smith Fork-Curecanti Ck Div, Smith Fork-Dyer Ck Div, and Delta-Montrose Co line; on W by Colo.92.

54 - (Gunnison) bounded on N by Gunnison River-N Fork F of Gunnison River Div and CR12 (Kebler Pass Rd); on E by Colo.135; on S by US50, Blue Mesa Res and Gunnison River; on W by Curecanti Ck.

55 - (Gunnison) bounded on N by Gunnison-Pitkin Co line; on E by Continental Div; on S by Taylor River-Tomichi Ck Div and Cumberland Pass, USFS Rd 765 (N Quartz Ck Rd), Quartz Ck Rd, and US50; on W by Colo.135, CR12 (Kebler Pass Rd), Kebler Pass and Ruby Range Summit.

56 - (Chaffee) bounded on N by Chalk Ck and Tinçup Pass Rd; on E by Arkansas River and Colo.291; on S by US50; on W by Continental Div.

57 - (Chaffee, Park & Fremont) bounded on N by US24; on E by Kaufman Ridge and Badger Ck; on S by US50 and Colo.291; on W by Arkansas River.

58 - (Fremont & Park) bounded on N by US24; on E by Park CR59 and Colo.9; on S by US50; on W by Kaufman Ridge and Badger Ck.

59 - (Pueblo, Fremont, El Paso & Teller) bounded on N by US24; on E by I-25; on S by US50; on W by Colo.67 and Phantom Canyon Rd, except portions of Pueblo, Fremont and El Paso counties in Fort Carson Military Reservation. (See unit 591.)

60 - (Mesa & Montrose) bounded on N and E by Dolores River; on S by Colo.90; on W by UT.

61 - (Mesa, Montrose, Ouray & San Miguel) bounded on N by Colo.141; on E by USFS Rds 402 (Divide Rd), 517 (South Divide Rd), and Dave Wood Rd; on S by Colo.62; on W by San Miguel River and Dolores River.

62 - (Delta, Mesa, Montrose & Ouray) bounded on N by Colo.141; on E by Colo.50 and 550; on S by Colo.62; on W by Dave Wood Rd and USFS 402 (Divide Rd).

63 - (Delta, Gunnison & Montrose) bounded on N and E by Colo.92, Delta-Montrose Co line, Smith Fork-Dyer Ck Div, Smith Fork-Curecanti Ck Div, Curecanti Pass, and Curecanti Ck; on S and W by Gunnison River.

64 - (Delta & Montrose) bounded on N by Colo.92 and Gunnison River; on E by Gunnison River, Morrow Pt Res and Big Blue Ck-Little Cimarron River Div; on S and W by US50.

65 - (Gunnison, Hinsdale, Montrose & Ouray) bounded on N by US50; on E by Big Blue Ck-Cimarron Ck Div; on S by Ouray-San Juan Co line; on W by Ouray-San Miguel Co line, Colo.62 and Colo.550.

66 - (Gunnison, Hinsdale & Saguache) bounded on N by Morrow Pt Res, Gunnison River and Blue Mesa Res; on E by Colo.149, Cebolla Ck, Spring Ck, Cathedral Ck and Groundhog Park, and Spring Ck-Cochetopa Ck Div; on S by Continental Div; on W by Hinsdale-San Juan Co line, Hinsdale-Ouray Co line, Cimarron River-Henson Ck Div, and Big Blue Ck-Little Cimarron River Div.

67 - (Gunnison, Hinsdale & Saguache) bounded on N by US50; on E by Colo.114 and North Pass; on E and S by Continental Div; on W by Cochetopa Ck-Spring Ck Div and Groundhog Park, Cathedral Ck, Spring Ck, Cebolla Ck and Colo.149.

68 - (Saguache) bounded on N by Colo.114; on E by Colo.17 and US285; on S by Saguache CRsG & 41G, USFS Rds 675 & 676, USFS Trs 796 & 787 and Saguache-Mineral Co line; on W by Continental Div.

69 - (Custer & Fremont) bounded on N by US50; on E by Colo.67; on S by Colo.96; on W by Colo.69, Grape Ck and Arkansas River.

70 - (Dolores, Montrose & San Miguel) bounded on N by Colo.90, Dolores River, San Miguel River, and Colo.62; on E by Ouray-San Miguel Co line and San Miguel-San Juan Co line; on S by San Miguel-Dolores Co line, Disappointment Ck, Dolores River, and Summit Canyon Ck; on W by UT.

71 - (Dolores & Montezuma) bounded on N by Disappointment Ck and Dolores-San Miguel Co line; on E by Dolores-San Juan Co line, Montezuma-La Plata Co line and Bear Ck; on S by Colo.145; on W by USFS Rd 526 (Dolores-Norwood Rd).

72 - (Dolores & Montezuma) bounded on N and E by US491; on S by NM; on W by UT.

73 - (Montezuma) bounded on N by Colo.184 & 145 and Bear Ck; on E by Montezuma-La Plata Co line; on S by NM; on W by US491.

74 - (La Plata & San Juan) bounded on N by Ouray-San Juan Co line; on E by San Juan-Hinsdale Co line and Animas River; on S by US160; on W by Montezuma-La Plata Co line, Dolores-San Juan Co line, San Miguel-San Juan Co line & Ouray-San Juan Co line.

75 - (La Plata & San Juan) bounded on N and E by Hinsdale-San Juan Co line, Continental Div, Los Pinos River-Florida River Div, La Plata CR240 (Pine River-Florida River Rd), Bayfield-Vallecito Rd and Los Pinos River; on S by NM; on W by Animas River.

76 - (Hinsdale, Mineral, Rio Grande, Saguache & San Juan) bounded on N by Continental Div, Saguache-Mineral Co line, and USFS Tr 787; on E by La Garita Dr (all-terrain vehicles), USFS Rds 600-3A & 600, Colo.149 and US160; on S and W by Continental Div.

DESCRIPTIONS OF TURKEY HUNTING GAME MANAGEMENT UNITS

- 77 - (Archuleta, Hinsdale, La Plata & Mineral) bounded on N by Continental Div and Piedra River-San Juan River Div; on E by Piedra River-San Juan River Div, Four Mile Ck, and San Juan River; on S by US160; on W by Los Pinos River-Piedra River Div.
- 78 - (Archuleta, Conejos, Mineral & Rio Grande) bounded on N and E by Continental Div; on S by NM; on W by San Juan River, Four Mile Ck and Piedra River-San Juan River Div.
- 79 - (Alamosa, Mineral, Rio Grande & Saguache) bounded on N by USFS Trs 787 & 796, USFS Rds 676 & 675, Saguache CRs41G & G; on E by Colo.17; on S by US160; on W by Colo.149, USFS Rds 600 & 600-3A and La Garita Dr (OHV trail).
- 82 - (Alamosa & Saguache) bounded on N by Poncha Pass; on N and E by Rio Grande-Arkansas River Div; on S by Alamosa-Costilla Co line and US160; on W by Colo.17 and US285.
- 83 - (Alamosa, Costilla & Huerfano) bounded on N by US160 and Alamosa-Costilla Co line; on E by Costilla-Huerfano Co line and Sangre de Cristo-Culebra Range; on S by NM; on W by Rio Grande River.
- 84 - (Custer, Fremont, Huerfano & Pueblo) bounded on N by US50; on E by I-25 and Colo.1; on S by Colo.69; on W by Colo.96 & .67.
- 85 - (Huerfano & Las Animas) bounded on N by Colo.105 & 69; on E by I-25; on S by Colo.12 and N Fk of Purgatoire River and W Fk of Purgatoire River; on W by Sangre de Cristo Div and Colo.305 (Pass Ck Rd).
- 86 - (Fremont, Custer & Chaffee) bounded on N by US50; on E by Colo.69; on S by Huerfano-Custer Co line; on W by Sangre De Cristo Div and US285.
- 87 - (Larimer & Weld) bounded on N by WY; on E by Colo.155 (Keota-Grover Rd); on S by Colo.14; on W by I-25.
- 88 - (Weld) bounded on N by WY and Neb; on E by Colo.71; on S by Colo.14; on W by Colo.155 (Keota-Grover Rd).
- 91 - (Logan) bounded on N by US138; on E by Red Lion Rd; on S by I-76 and US6; on W by US138.
- 92 - (Logan & Sedgwick) bounded on N by US138 and Neb; on E by Neb; on S by I-76; on W by Red Lion Rd.
- 94 - (Larimer, Adams & Weld) bounded on by Colo.14; on E by US85 and 34, Weld CR49 (Hudson-Keenesburg cutoff), and I-76; on S by Colo.7; on W by I-25.
- 96 - (Logan, Washington & Morgan) bounded on N by Colo.144, Morgan CRsW.5, 13.5, W, 28 and W.5, Colo.71, Morgan CRW.7, Washington CR58/Logan CR17.7, Logan CR6 and US6; on E and S by I-76 and US6; on W by Colo.144.
- 102 - (Washington & Yuma) bounded on N by US34; on E by Neb and KS; on S by US36; on W by Washington CRs7, YY, and 9 (Washington CR9 becomes Yuma CR9 at co line), Yuma CRs9, C and 16, Colo.59, Yuma CR26 and US385.
- 103 - (Yuma) bounded on N by US36; on E by KS; on S by Kit Carson-Yuma Co line; on W by US385.
- 104 - (Denver, Adams, Arapahoe, Douglas & Elbert) bounded on N by Colo.7, I-76, 152nd Ave, Adams CR25N & 144th Ave; on E by Colo.79, Colo.36 (Arapahoe CR137), Kiowa-Bennett Mile Rd, Elbert CRs53, 166, 45-49, Colo.86 and Elbert CR25-41; on S by Elbert-Douglas-El Paso Co lines; on W by I-25.
- 105 - (Adams, Arapahoe & Elbert) bounded on N by US36; on E by I-70; on S by US24 and Elbert-El Paso Co line; and on W by Arapahoe CR137 (Kiowa-Bennett Mile Rd), Elbert CRs53, 166, 45-49, Colo.86 and Elbert CR25-41.
- 107 - (Washington, Lincoln & Kit Carson) bounded on N by US36; on E by Colo.59; on S by I-70; on W by Colo.71.
- 109 - (Washington, Yuma & Kit Carson) bounded on N by US36; on E by US385, Yuma-Kit Carson Co line, and KS; on S by I-70; on W by Colo.59.
- 110 - (El Paso) bounded on N by Douglas-Elbert-El Paso Co line; on E by US24 and CR523 (Calhan Hwy); on S by Colo.94; on W by I-25.
- 112 - (Lincoln) bounded on N by US40; on E by Co Primary 109; on the S by Colo.94; on W by Colo.71. (See unit 120.)
- 113 - (Lincoln & Cheyenne) bounded on N by US40; on E by Cheyenne CR8; on S by Colo.94; on W by Co Primary 109. (See unit 121.)
- 114 - (Lincoln, Kit Carson & Cheyenne) bounded on N by I-70; on E by Flagler-Wildhorse Rd (CRs5, G, 6, A (Kit Carson Co line), GG, (Cheyenne Co line), & 9; on S and W by US 40.
- 116 - (Kit Carson & Cheyenne) bounded on N by I-70; on E by US385; on S by US40; on W by Colo.59.
- 117 - (Kit Carson & Cheyenne) bounded on N by I-70; on E by KS; on S by US40; on W by US385.
- 118 - (El Paso) bounded on N by Colo.94; on E by Yoder Rd, Shear Rd, and Boone Rd; on S by Hanover Rd, Finch Rd, and Myers Rd; on W by I-25.
- 119 - (El Paso & Lincoln) bounded on N by Colo.94; on E by Colo.71; on S by Crowley-Lincoln and El Paso-Pueblo Co line; on W by Yoder Rd, Shear Rd and Boone Rd.
- 122 - (Cheyenne & Kiowa) bounded on N by US40; on E by KS; on S by Colo.96; on W by US287.
- 123 - (El Paso & Pueblo) bounded on N by Hanover Rd, Finch Rd, and Myers Rd; on E by Yoder Rd, Shear Rd and Boone Rd; on S by Arkansas River; on W by I-25.
- 124 - (Crowley & Pueblo) bounded on N by Lincoln-Crowley and El Paso-Pueblo Co lines; on E by Colo.71; on S by Arkansas River; on W by Yoder-Boone Rd.
- 125 - (Crowley, Kiowa, Bent & Otero) bounded on N by Colo.96; on E by Kiowa CR19 and Bent CR14 to Bent CRHH, S on Bent CR15 to Arkansas River; on S by Arkansas River; on W by Colo.71.
- 126 - (Kiowa, Bent & Prowers) bounded on N by Colo.96; on E by US287; on S by Arkansas River; on W by Kiowa CR19 and Bent CR14 to Bent CRHH, S on Bent CR15 to Arkansas River.
- 127 - (Kiowa & Prowers) bounded on N by Colo.96; on E by KS; on S by Arkansas River; on W by US287.
- 128 - (Pueblo, Huerfano, Las Animas & Otero) bounded on N by Arkansas River; on E by Colo.167; on S by Colo.10; on the W by I-25.
- 129 - (Otero) bounded on N and E by Arkansas River; on S by Colo.10; on W by Colo.167.
- 130 - (Otero & Bent) bounded on N by Arkansas River; on E by Colo.101, Pritchett-Las Animas improved road, and US50; on S by Bent-Las Animas, Bent-Baca & Otero-Las Animas Co lines; on W by Colo.109.
- 131 - (Routt & Rio Blanco) bounded on N by US40; on E by Colo.131; on S by Routt CRs15, 132, 25, 132A and 29; on W by Fish Ck, Trout Ck & Routt CR179.
- 132 - (Prowers) bounded on N by Arkansas River; on E by KS; on S by Prowers CRsD & F; on W by US287.

DESCRIPTIONS OF TURKEY HUNTING GAME MANAGEMENT UNITS

133 - (Huerfano, Pueblo & Las Animas) bounded on N by Colo.10; on E by CO Interstate Gas Pipeline Rd; on S by Apishapa River; on W by I-25.

134 - (Las Animas) bounded on N by Apishapa River; on E by CO Interstate Gas Pipeline Rd; on S by US350; on W by I-25.

135 - (Las Animas, Pueblo & Otero) bounded on N by Colo.10 and Arkansas River; on E by Colo.109 (N of Purgatoire River) and Purgatoire River (S of Colo.109); on S by Las Animas-Otero Co line, N boundary of US Army Pinon Canyon Maneuver Site, and US350; on W by CO Interstate Gas Pipeline Rd.

136 - (Otero) bounded on N by Colo.109 and Purgatoire River; on E by Colo.109; on S by US160; on W by Chacuaco Ck and Purgatoire River.

137 - (Las Animas & Baca) bounded on N by Bent-Las Animas & Bent-Baca Co lines; on E by Pritchett-Las Animas improved road and US160; on S by US160; on W by Colo.109.

138 - (Baca) bounded on N by Baca-Bent & Baca-Prowers Co lines; on E by US287; on S by US160; on W by Pritchett-Las Animas improved road.

139 - (Baca) bounded on N by Prowers CRsD & F; on E by KS; on S by Baca CRM; on W by US287.

140 - (Las Animas) bounded on N by US160; on E by Colo.389; on S by NM; on W by I-25.

141 - (Las Animas) bounded on N by W and S boundaries of US Army Pinon Canyon Maneuver Site and CO Interstate Gas Pipeline Rd; on E by Purgatoire River and San Francisco Ck; on S by US160; on W by US350.

142 - (Las Animas) in US Army Pinon Canyon Maneuver Site.

143 - (Las Animas) bounded on N by US160; on E by Baca-Las Animas Co line; on S by OK & NM; on W by Colo.389.

144 - (Baca) bounded on N by US160; on E by US287; on S by OK; on W by Baca-Las Animas Co line.

145 - (Baca) bounded on N by Baca CRM; on E by KS; on S by OK; on W by US287.

146 - (Bent & Prowers) bounded on N by Arkansas River; on E by US287; on S by Prowers-Baca & Bent-Baca Co lines; on W by Colo.101 and Pritchett-Las Animas improved road and US50.

147 - (Las Animas) bounded on E by Chacuaco Ck; on S by US160; on W by San Francisco Ck, Purgatoire River, CO Interstate Gas Pipeline Rd, E boundary of U.S. Army Pinon Canyon Maneuver Site, Las Animas-Otero Co line and Purgatoire River.

161 - (Jackson) bounded on N by WY; on E by Colo.125; on S by Colo.14, Jackson CRs12W & 16, Lone Pine Ck and Continental Div; on W by Continental Div.

171 - (Jackson) bounded on N and E by Colo.14 and Jackson-Larimer Co line; on S by Jackson-Grand Co line; on W by Colo.125.

181 - (Grand) bounded on N by Continental Div; on E by Poison Ck and Main Fk of Troublesome Ck; on S by Colorado River; on W by Colo.9 and US40.

191 - (Larimer) bounded on N by WY; on E by US287; on S by Colo.14; on W by Larimer CRs69, 68C, 74E (Red Feather Lakes Rd), 67, 179, 80C (Cherokee Pk Rd) and 59.

211 - (Moffat & Rio Blanco) bounded on N by US40 and Yampa River; on E by Colo.13/789; on S by White River; on W by Strawberry Ck-Deception Ck Rd.

214 - (Routt) bounded on N by Little Snake-Elk River Div; on E by Routt CR129; on S by US40; on W by Wolf Ck, Wolf Mtn along the Elk River-Elkhead Ck Div.

231 - (Routt, Rio Blanco & Garfield) bounded on N by Routt CRs29, 132A, 25, 132 & 15; on E by Colo.131; on S by Bear River; on W by Williams Fk-Yampa River Div to Dunkley Pass, Rio Blanco CRs8 & 19 and Routt CR55.

301 - (Moffat) bounded on N by CRs5, 158, 3 & 108; on E by Colo.13/789; on S by Yampa River; on W by CR17.

371 - (Summit) bounded on N by Cataract Ck; on E by Green Mtn Res and Blue River; on S by I-70; on W by Gore Range Div.

391 - (Jefferson) bounded on N by I-70; on E by I-25; on S by

Colo.470, CRs124 (Deer Ck Canyon), 122 (South Turkey Ck) and US285; on W by CR73 and Colo.74. (See unit 39.)

411 - (Mesa & Delta) bounded on N by Delta-Mesa Co line, Flowing Park Rd and Lands End Rd; on E by Colo.65 and Colo.92; on S by US50.

421 - (Mesa & Garfield) bounded on N by Colorado River-Plateau Ck Div; on E by Div Ck-Buzzard Ck Div; on S by Mesa-Delta Co line; on W by Colo.65.

441 - (Moffat & Routt) bounded on N by USFS Rd 42; on E by Elkhead Ck-Elk River Div and Wolf Ck; on S by US40; on W by Elkhead Ck.

444 - (Eagle, Garfield & Pitkin) bounded on N by Colorado River, Cottonwood Ck, Eagle CR10A, (Cottonwood Pass Rd), USFS 514 (Red Table Mountain Rd) and Fryingpan-Eagle River Div; on E by divide between Lime Ck and N Fork of Fryingpan River and its tributaries and Cross Ck-Homestake Ck drainages; on S by Ivanhoe Ck and Fryingpan River; on W by Roaring Fork River.

461 - (Jefferson & Park) bounded on N by Jefferson CRs122 (S Turkey Ck Canyon), 124 (Deer Ck Canyon), Colo.7 and 470; on E by S Platte River; on S by N Fk of S Platte River; on W by US285.

481 - (Chaffee) bounded on N by S Fk of Clear Ck and Clear Ck; on E by Arkansas River; on S by Chalk Ck and Tincup Pass Rd from St. Elmo; on W by Continental Div.

500 - (Park) bounded on N by Continental Div; on E by N Fk of S Platte River; on S by US285; on W by Colo.9.

501 - (Park & Jefferson) bounded on N by US285 and N Fk of S Platte River; on E by S Platte River; on S by US24; on W by Park CR77.

511 - (Teller, El Paso & Park) bounded on N by Douglas Co lines; on E by I-25; on S by US24; on W by S Platte River, except on US Air Force Academy.

512 - (El Paso) bounded on N by N boundary of US Air Force Academy; on E by I-25; on S and W by S and W boundaries of Air Force Academy.

521 - (Delta & Gunnison) bounded on N by Delta-Mesa Co line and Gunnison-Mesa Co line; on E by Gunnison-Pitkin Co line, White River-Gunnison NF boundary and Ruby Range Summit; on S by Gunnison CR12 (Kebler Pass Rd), N Fk of Gunnison River; on W by Jay Ck and Overland Ditch.

551 - (Gunnison & Saguache) bounded on N by US50, Quartz Ck Rd, N. Quartz Ck Rd and divide between Taylor River and Tomichi Ck; on E by Continental Div; on S and W by Colo.114.

561 - (Chaffee & Saguache) bounded on N by US50; on E by US285; on S by divide between Arkansas River drainage and Rio Grande drainage; on W by Continental Div.

581 - (Park, Teller & Fremont) bounded on N by US24; on E by Colo.67 and Phantom Canyon Rd; on S by US50; on W by Colo.9 and Park CR59.

591 - (Pueblo, Fremont & El Paso) on Fort Carson.

681 - (Saguache) bounded on N by Continental Div and Arkansas River Div between North Pass and Poncha Pass; on E by US285; on S by US285 & Colo.114; on W by Colo.114.

691 - (Custer & Fremont) bounded on N by US50; on E and S by Grape Ck and Arkansas River; on W by Colo.69.

711 - (Dolores, Montezuma & San Miguel) bounded on N by Summit Canyon Ck, Dolores River and Disappointment Ck; on E by USFS Rd 526 (Dolores-Norwood Rd); on E and S by Colo.145; on S by Colo.184; on W by US491 and UT.

741 - (La Plata) bounded on N by US160; on E by Animas River; on S by NM; on W by Montezuma-La Plata Co line.

751 - (Archuleta, Hinsdale, La Plata & San Juan) bounded on N by Continental Div; on E by divide between Los Pinos and Piedra rivers; on S by NM; on W by Los Pinos River, CR501 (Bayfield-Vallecito Rd), CR240 (Pine River-Florida River Rd), and Los Pinos River-Florida River Div.

771 - (Archuleta) bounded on N by US160; on E by San Juan River; on S by NM; on W by Los Pinos River-Piedra River Div.

DESCRIPTIONS OF TURKEY HUNTING GAME MANAGEMENT UNITS

851 - (Costilla & Las Animas) bounded on N by W Fk of Purgatoire River, N Fk of Purgatoire River, Colo.12; on E by I-25; on S by NM; on W by Sangre de Cristo Div.

861 - (Huerfano) bounded on N by Custer-Huerfano Co line; on E by Colo.69 and Colo.305 (Pass Ck Rd); on S and W by Sangre de Cristo Div.

951 - (Weld & Morgan) bounded on N by Colo.392, Weld CR68; on E by Morgan CRsO, GG & 2, Colo.144; on S by I-76; on W by Weld CR49, US34 and US85.

GUIDE TO LEGAL HUNTING HOURS

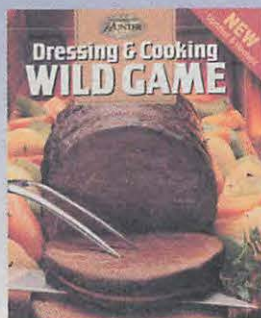
The table below is valid for Denver, CO. SUBTRACT one minute from opening and closing time for each 12 1/2 miles east of Denver. ADD one minute to opening and closing time for each 12 1/2 miles west of Denver. The above changes assume each degree of longitude equals 50 miles and that a change of 1 degree of longitude equals 4 minutes change in sunrise and sunset times.

TURKEY HUNTING SAFETY TIPS

- 1. Be Sure of Your Target.** Never shoot at sound or movement. Be certain of your target before you pull the trigger.
- 2. Be Alert** when using a turkey call. Other hunters may mistake it for a real turkey.
- 3. Protect Your Back and Maintain Visibility.** Your calling position should have a solid background as wide as your shoulders and higher than your head while providing you with 180-degree visibility. Don't hide so well that you can't see what's happening. Camouflage hides you but doesn't make you invisible. Sit perfectly still; turkeys and hunters both see even slight movement.
- 4. Colors and Blaze Orange.** To alert other hunters to your presence, hang fluorescent material such as a cap or vest above your calling spot and wear fluorescent orange while going to and from your hunting spot. Eliminate red, white and blue from your clothes since mature male turkeys also sport these colors.
- 5. Don't Stalk.** Never stalk a turkey in the spring. Chances of success are slim; accident chances are high. Birds are breeding in spring and are more wary and alert. Find a concealed location, and let the bird come to you. Don't move, wave or use turkey calls to alert another hunter. A quick move may create a hazard. If necessary, yell or blow a whistle to alert another hunter of your presence.

Sunrise/Sunset Table

	APRIL Rise-Set A.M.-P.M.	MAY Rise-Set A.M.-P.M.	SEPT. Rise-Set A.M.-P.M.	OCT. Rise-Set A.M.-P.M.
DAY				
1	5:43 6:23	6:00 7:53	6:27 7:31	6:55 6:42
2	5:42 6:24	5:58 7:54	6:28 7:30	6:56 6:41
3	5:40 6:25	5:57 7:55	6:29 7:58	6:57 6:39
4	6:39 7:26	5:56 7:56	6:30 7:27	6:58 6:38
5	6:37 7:27	5:55 7:57	6:31 7:25	6:59 6:36
6	6:25 7:28	5:54 7:58	6:32 7:23	7:00 6:34
7	6:34 7:29	5:52 7:59	6:33 7:22	7:01 6:33
8	6:32 7:30	5:51 8:00	6:34 7:20	7:02 6:31
9	6:31 7:31	5:50 8:01	6:34 7:18	7:03 6:30
10	6:29 7:32	5:49 8:02	6:35 7:17	7:04 6:28
11	6:28 7:33	5:48 8:03	6:36 7:15	7:05 6:27
12	6:26 7:34	5:47 8:04	6:37 7:14	7:06 6:25
13	6:25 7:35	5:46 8:05	6:38 7:12	7:07 6:23
14	6:23 7:36	5:45 8:06	6:39 7:10	7:08 6:22
15	6:22 7:37	5:44 8:07	6:40 7:09	7:09 6:20
16	6:20 7:38	5:43 8:07	6:41 7:07	7:10 6:19
17	6:19 7:39	5:43 8:08	6:42 7:05	7:11 6:18
18	6:17 7:40	5:42 8:09	6:43 7:04	7:12 6:16
19	6:16 7:41	5:41 8:10	6:44 7:02	7:14 6:15
20	6:14 7:42	5:40 8:11	6:45 7:00	7:15 6:13
21	6:13 7:43	5:39 8:12	6:46 6:59	7:16 6:12
22	6:11 7:44	5:39 8:13	6:47 6:57	7:17 6:10
23	6:10 7:45	5:38 8:14	6:48 6:55	7:18 6:09
24	6:09 7:46	5:37 8:15	6:49 6:54	7:19 6:08
25	6:07 7:47	5:37 8:15	6:49 6:52	7:20 6:06
26	6:06 7:48	5:36 8:16	6:50 6:50	7:21 6:05
27	6:05 7:49	5:35 8:17	6:51 6:49	7:22 6:04
28	6:03 7:50	5:35 8:18	6:52 6:47	7:23 6:03
29	6:02 7:51	5:34 8:19	6:53 6:46	7:24 6:01
30	6:01 7:52	5:34 8:19	6:54 6:44	7:26 6:00
31		5:33 8:20		6:27 4:59



A Wild Game Cookbook

Dressing & Cooking Wild Game is a complete guide to field dressing and preparing great-tasting big game, small game, upland birds and waterfowl. With more than 370 color photographs, step-by step directions and valuable nutritional information, this book teaches you how to make your wild game dishes as memorable as the hunts that made them possible.

- Learn how to care for every kind of game after it's down.
- Discover the secrets for keeping wild birds from drying out during the cooking process. Get freezer storage charts, nutritional charts, butchering, hanging, aging and skinning information. Full-color, 160 pages. \$23.95



Colorado Outdoors Big Game Deluxe CD by HuntData

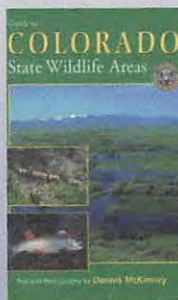
Includes draw trends for the past 12 years, harvest trends for every season in every unit, ranking and ratings for each unit and season across the state, concentration maps for deer, elk and pronghorn, land use, 1:100,000 topographical and shaded relief features, annual internet updates, sheep and goat unit maps, UTM coordinate system, way point creation and export, kill site plotting for moose, bighorn sheep and mountain goats. \$97.95



Colorado Elk Hunting Video will improve your chances of bagging a Rocky Mountain elk. This video examines all the big game seasons and will help you find the one that is right for you. See what tips a professional butcher recommends for processing elk meat. And learn where to find elk in different seasons and habitats. Approx. 60 min. \$17.95.



From The Field To The Table Video A professional guide takes you through field dressing, skinning and quartering a 6 x 7 bull elk. Shows how to cape a trophy, tips on butchering and how to cook the meat. Approx 60 min. \$17.95.



Guide To Colorado State Wildlife Areas

This is the first-ever comprehensive guide to the Division of Wildlife's 241 State Wildlife Areas. The 344-page book contains recommended areas for hunting, fishing and watching wildlife and provides information on primary use, location, size, elevation, camping, species information and directions – plus regional maps and more than 166 full-color photographs. \$27.95.

ORDER FORM Prices include shipping and handling

	Price	Qty.	Total
Dressing & Cooking Wild Game Cookbook	\$23.95		
Big Game CD, Deluxe Edition	\$97.95		
Guide To State Wildlife Areas Book	\$27.95		
Colorado Elk Hunting Video	\$17.95		
Colorado Deer Hunting Video	\$17.95		
Big Game Hunting in Colorado Video	\$17.95		
From The Field To The Table Video	\$17.95		
Order any two videos for	\$30.00		
Order any three videos for	\$43.50		
TOTAL			

SHOP ONLINE AT <http://wildlife.state.co.us/shopDOW>

Name _____
 Address _____
 City _____ State _____ Zip _____
 Daytime phone _____
METHOD OF PAYMENT Charge my ☐ Visa ☐ MasterCard
 Account No. _____ Exp. Date _____
 Signature _____

COLORADO OUTDOORS 6060 Broadway, Denver, CO 80216
 (303) 297-1192

23



Printed for free distribution by
Colorado Division of Wildlife
 6060 Broadway, Denver CO 80216
 (303) 297-1192
www.wildlife.state.co.us