

COLORADO

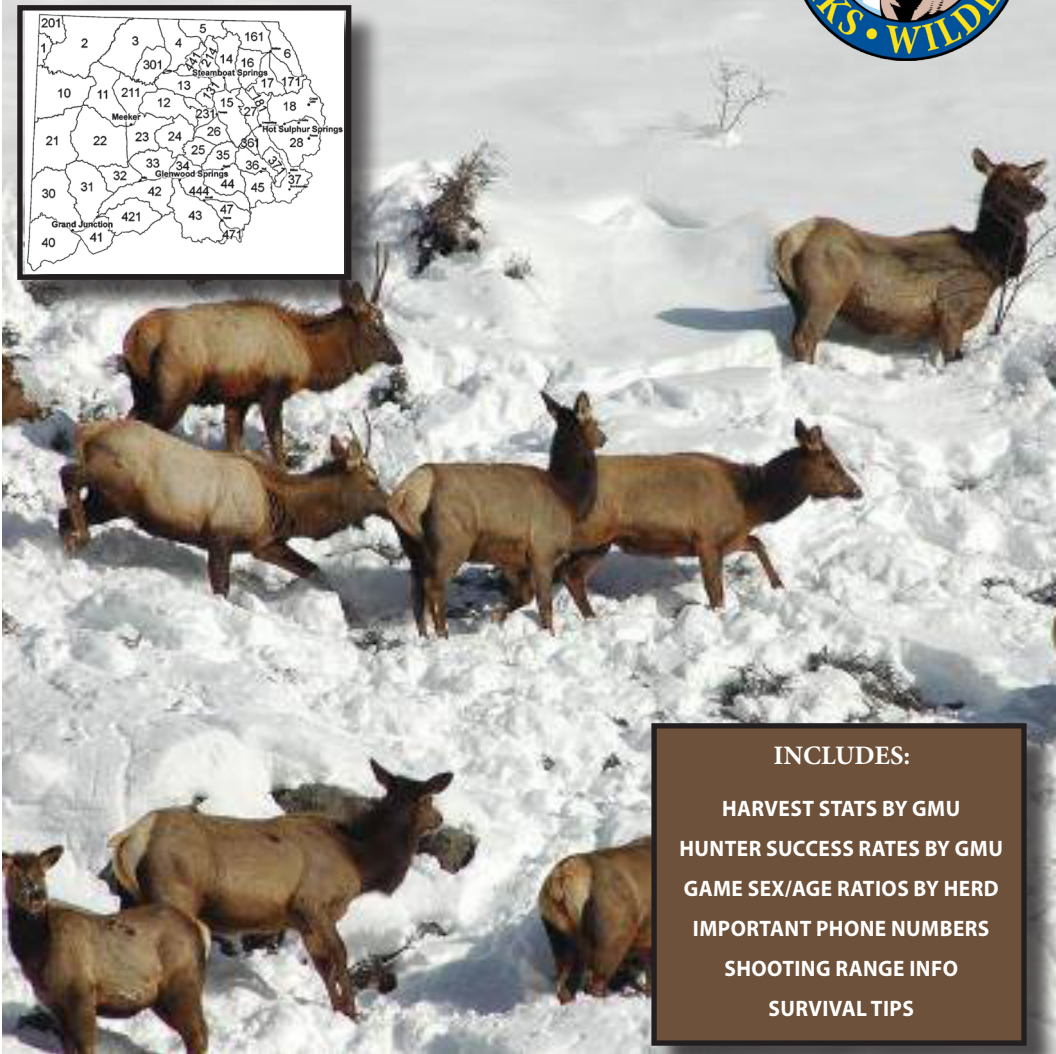
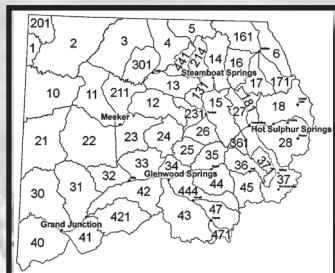
BIG GAME HUNT GUIDE

NORTHWEST REGION



HUNT GUIDE: 2015-2016

DEER ELK MOOSE PRONGHORN BEAR



INCLUDES:

- HARVEST STATS BY GMU
- HUNTER SUCCESS RATES BY GMU
- GAME SEX/AGE RATIOS BY HERD
- IMPORTANT PHONE NUMBERS
- SHOOTING RANGE INFO
- SURVIVAL TIPS

COLORADO PARKS & WILDLIFE

NW REGION OFFICE
711 INDEPENDENT AVE
GRAND JUNCTION, CO 81505

970-255-6100

CONTENTS

ANTLER POINTS & UNLIMITED ELK UNITS	2
DONATION CERTIFICATE	3
ATV & OHV INFORMATION	4
ELK VS. MOOSE INFO	5
USING STATISTICS TO HELP YOUR HUNT	6

ELK AND DEER HARVEST STATS & POPULATION OBJECTIVES

Green River	7
Lower Yampa	11
Upper Yampa	14
North Park	19
Bookcliffs/Piceance	22
White River	27
Eagle River Valley	32
Middle Park	35
Glade Park	39
Grand Mesa, North	42
Roaring Fork	45

PRONGHORN, MOOSE AND BEAR HARVEST STATS AND POPULATION OBJECTIVES

Pronghorn	48
Moose	49
Black Bear	51

LOCAL GUN RANGES	52
------------------	----

MANAGEMENT AGENCIES - PHONE LISTINGS & INFORMATION	57
--	----

GENERAL VISITORS INFORMATION	58
------------------------------	----

SURVIVAL TIPS	59
---------------	----

CHRONIC WASTING DISEASE	60
-------------------------	----

HABITAT PARTNERSHIP PROGRAM	61
-----------------------------	----

MAPS
WWW.HUNTDATA.COM
COLORADOHUNTINGMAPS.COM

NEW IN THE NORTHWEST 2015

Win a Rifle and Scope!

Deer hunters in GMUs 11,12, 13, 22, 23, 24, 131, 211, 231 (DAU D-7 - White River) can win a Ruger 25-06 with a Leupold scope donated by the Colorado Mule Deer Association. If you harvest a deer, take the head in for CWD testing and you will automatically be entered into the drawing.

New Access Information - Bookcliffs/Piceance

See P. 23 of this guide for new information

Youth Hunting Opportunities Expand

1. Youths get at least 15 percent of the limited licenses in every game management unit for doe, pronghorn, antlerless and either-sex deer and antlerless elk. Includes all methods of take, and all seasons.

2. Youths no longer have to wait to hunt during a late season. Youth may purchase their original tag to hunt deer or elk; if the season on their license ends and an animal has not been harvested, they may continue to hunt in expanded areas during any of the rifle seasons. See P. 5-7 of the 2015 Big Game Brochure for details.

Lighted Nocks, Recording Devices Approved For Archery Hunting

Lighted nocks can aid in the recovery of game animals, and new rules allow for the use of recording devices. See "Legal Methods of Take" - See P.16 of the 2015 Big Game Brochure for details.

Archery Season Extended

The bear archery season has been extended to Sept. 30 to increase hunter success. See P. 59 of the 2015 Big Game Brochure for details.

Deer

Boundaries for select private-land archery hunts in unit 41 have been expanded. See P. 21 of the 2015 Big Game Brochure for details. There is a new, fourth-rifle buck hunt in unit 201.

Pronghorn

To be consistent with other species dates, the pronghorn muzzleloader season has been moved to Sept. 21-29. See P. 50 of the 2015 Big Game Brochure for details.

Moose

Bull hunts in units 44 and 45, in the Eagle Valley watershed are among the new moose hunts available this year. See P. 44-45 of the 2015 Big Game Brochure for details.

Bears

There are numerous changes to how and when you can hunt bear during rifle elk and deer seasons. New rules expand your time in the field and the ability to harvest a bear. See P. 59 of the 2015 Big Game Brochure for details.

Check For Forest Service Closures

National Forest projects can impact access any time of the year. The 2015 Big Game Brochure includes a "Lands Closure," section on P. 60, with details, websites and information. The latest updates about closures can be found at www.cpw.state.co.us.

ANTLER POINT RESTRICTIONS

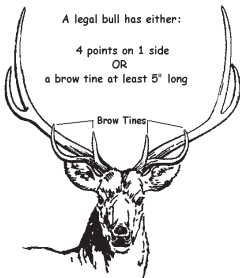
Deer



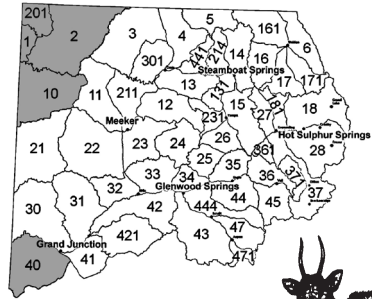
**Spike Buck
(at least 5")**

All buck (antlered) deer harvested in northwest Colorado must have at least one 5" spike.

ELK



Legal bulls in white units must have at least one brow tine that is at least 5 inches



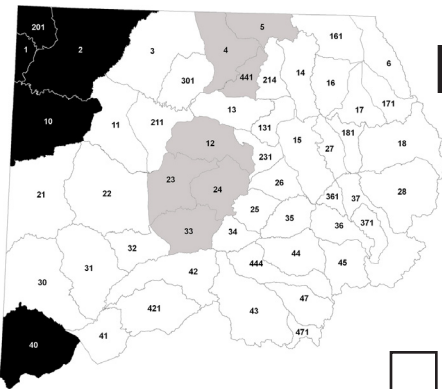
Legal bull in shaded limited units must have at least a 5 inch spike on one side.



UNLIMITED BULL ELK LICENSES

Over the counter bull elk licenses are available to non-resident and resident hunters in northwest Colorado.

The map below shows where these licenses are valid.

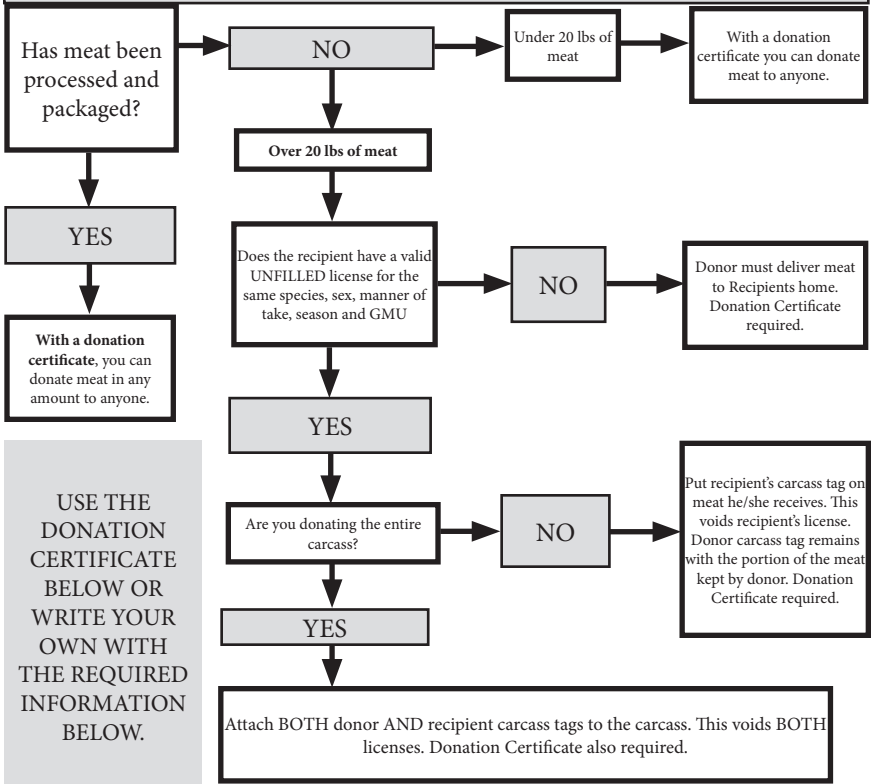


LIMITED UNITS - Draw Only
You may NOT hunt in these areas with an over-the-counter license

ARCHERY RESTRICTION
Rifle hunters may hunt in these areas with an over-the-counter license, however archery over-the-counter license holders may only hunt on private land in these units.

UNLIMITED UNITS
Hunters with an unlimited bull elk license (archery or rifle) may hunt in these units. Remember: You must still have permission to hunt private land.

DONATING GAME MEAT



USE THE DONATION CERTIFICATE BELOW OR WRITE YOUR OWN WITH THE REQUIRED INFORMATION BELOW.

STATE OF COLORADO

GAME DONATION CERTIFICATE

Date: _____

Donor name _____

Donor Address _____

Recipient name _____

Recipient Address _____

Kind of game donated _____

Number/Weight of donation _____

The above mentioned game and/or fish was legally taken on (date): _____

using hunting license # _____

Signature Recipient _____

Signature Donor _____

Make two copies - one for donor, one for recipient

ATV and OHV

Colorado law allows local and state law enforcement officers to write citations for off-highway vehicle (OHV) users who are violating federal travel rules. This means that wildlife officers can write tickets to OHV users who are riding in closed areas or designated wilderness areas. As a rider, it's your responsibility to know the roads, trails and areas where you legally can ride.

Users riding in an OHV in a closed area face fines of \$100 dollars. If the violation takes place while hunting, fishing or trapping, the user will be penalized 10 points against hunting and fishing privileges. Violations in federal wilderness areas are \$200 fines and 15 points.

Users riding an OHV on public lands should consult with the appropriate land management agency to obtain information about travel management. Once you have determined your hunting area, contact the local office of the US Forest Service (USFS) or the Bureau of Land Management (BLM) to obtain a travel map.



The Colorado OHV Registration Program fees fund trail maintenance, construction, trail heads, parking areas, trail signs, maps, and land acquisition. It also enables law enforcement personnel to identify and return stolen vehicles, encourages safe and responsible OHV use, and promotes respect for public lands

Out-of-state residents who bring OHVs into Colorado must purchase a Colorado Non-Resident OHV permit which is valid from the date of purchase through the following March 31. These permits can be purchased anywhere you get your hunting/fishing licenses in Colorado, via mail-in request, or you can order one online at the Colorado Parks and Wildlife E-Store.

Once purchased, this sticker should be placed on the vehicle's outside face of the right front fender or fork. Since this is only a use permit, no renewal notice will be sent to non-resident permit holders; you must purchase a new permit each year you come to Colorado with your OHV.

For more information about OHVs from Colorado Parks and Wildlife go to:

www.cpw.state.co.us/thingstodo/Pages/OHVs.aspx

HUNTERS, PLEASE BE ETHICAL!

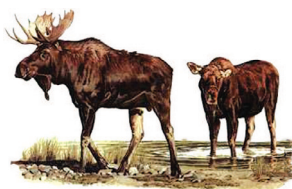
Moose populations are growing here and can often be found in elk habitat throughout northwest Colorado.

**BE PATIENT AND USE GOOD OPTICS!
STUDY THE ENTIRE ANIMAL!
SAFE HUNTING IS NO ACCIDENT!**



ELK CHARACTERISTICS

- Branched antlers
- Light tan coat, brown head
- Often travel in larger herds
- Slender snout
- Spook easily



MOOSE CHARACTERISTICS

- Palmated antlers
- Dark brown or black body
- Bell on throat
- Bulbous snout
- Travel alone, in pairs or in small groups
- Do not spook easily
- Will charge if threatened

***If you mistakenly kill a moose, dress it immediately.
As soon as possible, notify a wildlife officer.***

The fines for illegally killing, then abandoning a moose starts at \$1,370 on up to \$25,000 and can include felony charges, the permanent loss of hunting privileges and prison!



**REPORT POACHING OR SUSPICIOUS ACTIVITY TO
OPERATION GAME THIEF
1-877-COLO OGT (265-6648)**

ATTENTION HUNTERS!

CPW's Wildlife Health Program Is Investigating 'Hoof Overgrowth' in Moose and Elk

If you harvest an animal with overgrown hooves, please report it immediately to a wildlife officer, your local CPW office or by email to

karen.fox@state.co.us

Include your closest estimation of where the animal was harvested.
GPS coordinates are helpful.

UNDERSTANDING HARVEST STATS & HERD RATIOS

Ever see a baseball player with a .125 batting average hit a home run? Ever see a 'can't miss' stock take a plunge? Ever hunt a unit with a 100% success rate and not see any deer? If you're nodding your head to any of these scenarios then you're one of the people who knows that statistics are a good guide, but they aren't a guarantee. So, here's a guide to help make sense of these stats.

AGE & SEX RATIOS				
Herd	GMUs	Adult Male:Female Objective	Population Estimate	Population Objective
A	B	C	D	E

A - Herd Name - A herd is generally defined as the area where a group of animals spends the entire year. A herd area includes winter range, transition range, migratory corridors, fawning and calving areas and summer range.

B - Game Management Units - geographic areas within a herd area. Herds may use many GMUs or a single GMU. Because herd areas and the booklet chapters don't always overlap cleanly on a map, you may see that an area in this booklet may have multiple herds or herds may be split by multiple areas in the booklet.

C - Adult Male:Female Objective - The ratio of male animals to female animals that CPW is trying to obtain. This is the goal that optimizes the herd as a quality herd (producing more 'trophy' type bucks and bulls), an opportunity herd (producing more hunting opportunity) or something in between.

D - Population Estimate - This is the current year estimate of the size of the herd. As it is impossible to physically count every animal, the estimate is derived through computer modeling, on-the-ground observation, harvest data and other factors.

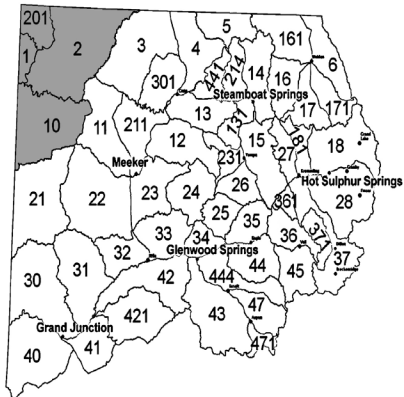
E - Population Objective - Often given as a range, this is the population that CPW is trying to achieve. This number is based on herd plans (called "DAU Plans" internally) that are developed through a public participation process. The herd objective is set to try and balance concerns of interested parties, which may range from agricultural damage to hunter preference.

Because space is limited in the booklet, we generally only include the major seasons (archery, muzzleloader and four rifle seasons). In units where early or late seasons are critical, we've tried to list those numbers. Additional harvest stats can be found on our web site at cpw.state.co.us.

When reading the harvest stats, it's important to keep in mind that the statistics are derived utilizing statistical sampling techniques. With more than 300,000 hunting licenses sold in Colorado each year, it's impossible to contact every hunter. So a statistical sample is matched with license sales data and an estimate of hunter numbers and hunter success is established.

In some smaller units you may not see any data reported for a season in which you participated. There are instances where not enough hunters respond to our survey inquiries and therefore it isn't possible to report any data.

Also keep in mind that past performance doesn't necessarily guide future success. Warm weather during the previous year may have limited harvest. Cold and snowy weather may have sent hunters home early the previous year, limiting the harvest. You may have better conditions. A forest fire or other event may have disrupted an area the last year. Don't automatically assume that poor previous results mean a unit is a bad place to hunt, and vice-versa. To compensate for some of those factors that might skew harvest dramatically higher or lower in a unit, we've added three-year and five-year hunter success average columns.



GREEN RIVER

**GMU
1, 2, 10, 201**

**LOCAL CPW OFFICE
Meeker (970) 878-6090**

AREA MAPS	BLM Canyon of Lodore BLM Rangely
AREA INFO	www.rangely.com

GENERAL AREA INFORMATION

In this area, 9,700' Diamond Mountain is the highest point, dropping to 5100' elevation at the White River. Sage and sage-grassland dominate, with the typical vegetation groups as the elevation increases.

Weather is generally mild through the later seasons, though the higher elevations can have significant snow accumulations.

Public land accounts for more than 85% of GMU 201. GMU 2 is a 'checker-board' of public and private land, and GMU 10 is mostly BLM land with a lot of scattered private land. Consult a map and be aware of where you are.

GMU 1 has poor access into the rough, rocky terrain and into the wilderness area. You must draw a license to hunt the Green River units, and it can take many years of preference points. Hence, the hunting pressure is typically light.

An agreement with a private land owner and the State Land Board opens several thousand acres in GMU 201 for public hunting access.

See the Craig Chamber of Commerce or the CPW office in Meeker for details.

Dinosaur National Park Is Closed To All Hunting.

GREEN RIVER DEER INFORMATION

Deer are scattered throughout GMUs 2,10 & 201. If there is winter range migration, it is usually during 3rd season. Deer in GMU 1 tend to stay at the south & north ends of Brown's Park Refuge. The average good buck in GMUs 2 and 201 measures 24-26". There are trophy bucks in GMU 10, however they tend to have tall versus wide antlers. Hunt the brush-covered areas, high elevations early in the season, lower elevations later.

2014 DEER OBJECTIVES				
Herd	GMUs	Buck:Doe Objectives	Population Estimate	Population Objective
Little Snake	1, 2, 201	15:100	1740	13,500
Rangely	10	20:100	930	7,000

2014 DEER HARVEST STATS									
UNIT	SEASON	BUCK	DOE	FAWN	TOTAL HARVEST	TOTAL HUNTERS	SUCCESS %		
							LAST YR	3 YR	5 YR
1	Muzzle	0	0	0	0	1	0	50	67
	2nd Rifle	5	0	0	5	5	100	100	83
	3rd Rifle	4	0	0	4	4	100	100	100
2	Archery	0	0	0	0	2	0	57	62
	Muzzle	3	0	0	3	3	100	80	89
	2nd Rifle	11	0	0	11	12	92	89	90
	3rd Rifle	6	0	0	6	8	75	89	92
10	Archery	-	-	-	-	-	-	-	-
	2nd Rifle	11	0	0	11	16	69	80	70
	3rd Rifle	3	0	0	3	5	60	54	80
201	Archery	2	0	0	2	6	33	50	50
	Muzzle	7	0	0	7	7	100	82	81
	2nd Rifle	21	0	0	21	21	100	94	89
	3rd Rifle	13	0	0	13	14	93	80	87



GREEN RIVER ELK INFORMATION

Big, 300 + size bulls are common. The elk tend to stay put over the seasons. Movement is weather dependent. Overall, elk are scattered in GMUs 2, 10, 201 and the northern portion of GMU 1. We recommend Blue Mountain and Moosehead Mtn in GMU 10, but be prepared for rough terrain. When hunting GMUs 2 or 201 - hold out for a good bull - the average size is around 305. In GMU 2, try the SW corner. In GMU 1, try Hoy Draw & Chokecherry Draw.

2014 ELK OBJECTIVES

Herd	GMUs	Bull:Cow Objective	Population Estimate	Population Objective
Cold Springs	2, 201	40:100	1,700	1,000
Green River	1	30:100	170	170
Rangely -Blue Mtn.	10	40:100	1,200	1,200

2014 ELK HARVEST STATS

UNIT	SEASON	BULL	COW	CALF	TOTAL HARVEST	TOTAL HUNTERS	SUCCESS %		
							LAST YR	3 YR	5 YR
1	Archery	0	0	0	0	1	0	33	20
	Muzzle	1	2	0	3	5	60	38	26
	Early	6	0	0	6	16	38	50	49
	1st Rifle	2	3	0	5	7	71	50	42
	2nd Rifle	0	4	0	4	20	20	20	12
	3rd Rifle	0	4	0	4	16	25	56	39
	4th Rifle	0	0	0	0	16	0	1	22
2	Archery	8	0	0	8	8	100	96	85
	Muzzle	4	0	0	4	12	33	39	53
	Early	24	2	0	26	37	70	67	66
	1st Rifle	0	10	1	11	28	39	43	41
	2nd Rifle	0	9	0	9	23	39	31	32
	3rd Rifle	0	12	3	15	34	44	35	37
	4th Rifle	0	15	4	19	45	42	29	42



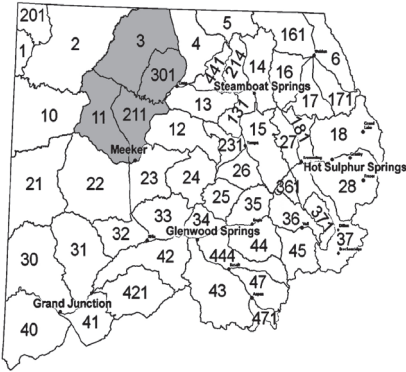
Cont. on next page

GREEN RIVER

2014 ELK HARVEST (Cont.)

UNIT	SEASON	BULL	COW	CALF	TOTAL HARVEST	TOTAL HUNTERS	SUCCESS %		
							LAST YR	3 YR	5 YR
10	Archery	13	0	0	13	15	87	61	61
	Muzzle	1	2	0	3	10	30	43	53
	Early	25	44	4	73	124	59	66	70
	1st Rifle	4	22	2	28	51	55	44	44
	2nd Rifle	0	28	0	28	57	49	53	48
	3rd Rifle	0	33	8	41	78	53	49	41
	4th Rifle	0	108	6	114	205	56	45	46
201	Archery	8	0	0	8	8	100	79	76
	Muzzle	9	4	0	13	14	93	61	60
	Early	27	0	0	27	28	96	91	91
	1st Rifle	0	17	0	17	22	77	67	62
	2nd Rifle	0	20	2	22	38	58	52	55
	3rd Rifle	0	9	3	12	27	44	59	55
	4th Rifle	0	14	2	16	29	55	47	43





LOWER YAMPA

**GMU
3, 11, 211, 301**

**LOCAL CPW OFFICE
Meeker (970) 878-6090**

AREA MAPS	BLM Craig BLM Meeker
AREA INFO	www.craig-chamber.com www.meekerchamber.com

GENERAL AREA INFORMATION

The Lower Yampa units lie south of Wyoming, bordered by White and Little Snake rivers.

The lower elevations of 6,000' consist of sage and sage steeps. Pinyon and juniper cover the upper elevations up to 8,500'.

Expect zero to light snow cover in 1st & 2nd seasons. The later seasons may bring moderate snow and a potential for near zero temperatures. If the weather is mild, deer and elk will not be present in high numbers until the later seasons.

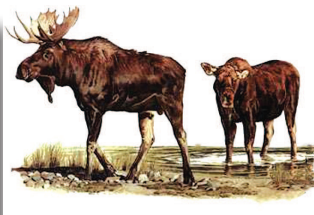
Overall access is easy and 4WD is not necessary in most areas. Hunting pressure is heavy.

Outside of GMU 301, 70 percent of the Lower Yampa is public land.

MOOSE IN AREA

BE PATIENT!

ALWAYS BE 100% SURE OF YOUR TARGET!



LOWER YAMPA DEER INFORMATION

The buck-doe ratio is increasing. The mid-range elevations with mountain shrub and pinyon-juniper breaks generally hold the most deer, especially during the regular rifle seasons. Movement occurs with weather and hunting pressure. In 211 and 11, deer are generally found in the Danforth Hills during 2nd rifle season moving to lower elevations in Axial Basin (GMU 211), Bitterbrush SWA and adjacent BLM (GMU 11), and Crooked Wash (GMU 11) by 3rd and 4th rifle. Several thousand acres are open for public hunting in Axial Basin through a coordinated resource management plan (see Meeker CPW office for more details.)

2014 DEER OBJECTIVES

Herd	GMUs	Buck:Doe Objective	Population Estimate	Population Objective
Bear's Ears	3, 4, 5, 14, 214, 301,441	22:100	41,780	37,800
White River	11, 12, 13, 22, 23, 24, 131, 211,231	22-25:100	37,530	67,500

2014 DEER HARVEST STATS

UNIT	SEASON	BUCK	DOE	FAWN	TOTAL HARVEST	TOTAL HUNTERS	SUCCESS %		
							LAST YR	3 YR	5 YR
3	Archery	21	17	0	38	90	42	37	29
	Muzzle	10	3	0	13	27	48	53	45
	2nd Rifle	267	35	0	302	412	73	67	61
	3rd Rifle	358	75	8	441	527	84	79	76
	4th Rifle	5	0	0	5	5	100	64	59
11	Archery	0	0	0	0	41	0	5	15
	Muzzle	3	6	0	9	42	21	26	25
	2nd Rifle	129	5	0	134	214	63	59	51
	3rd Rifle	167	79	4	250	299	84	80	71
	4th Rifle	3	0	0	3	3	100	75	70
211	Archery	0	0	0	0	10	0	11	7
	Muzzle	10	0	0	10	16	63	40	32
	2nd Rifle	76	2	0	78	121	64	60	52
	3rd Rifle	90	16	0	106	160	66	70	64
	Late	0	5	0	5	5	100	92	85
301	Archery	0	8	0	8	29	28	55	45
	Muzzle	3	0	0	3	9	33	36	38
	2nd Rifle	129	49	10	188	239	79	75	67
	3rd Rifle	204	46	0	250	308	81	78	75
	4th Rifle	-	-	-	-	-	-	-	-

LOWER YAMPA

ELK INFORMATION

The large elk herd occupies all available habitat. The later seasons are usually better, especially on public land, due to snow and hunting pressure pushing the elk out of the adjacent units. The success rate is very good on late cow elk hunts. Axial Basin CRM is a hot spot for hunting, but crowding is significant. The best bull hunting will be on private lands. *Youth hunting participation during the late seasons in these GMUs is now limited. Please see big game brochure for details.*"

2014 ELK OBJECTIVES

Herd	GMUs	Bull:Cow Objective	Population Estimate	Population Objective
Bears Ears	3, 4, 5, 14, 214, 301, 441	20-25:100	18,000	15,000-18,000
White River	11, 12, 13, 23, 24, 25, 26, 33, 34, 131, 211, 231	20-27:100	39,000	32,000 - 39,000

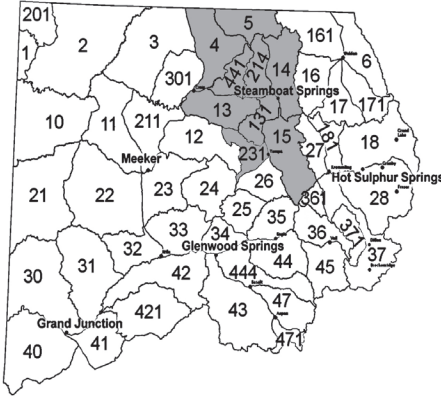
2014 ELK HARVEST STATS

UNIT	SEASON	BULL	COW	CALF	TOTAL HARVEST	TOTAL HUNTERS	SUCCESS %		
							LAST YR	3 YR	5 YR
3	Archery	16	0	0	16	112	14	13	11
	Muzzle	0	0	0	0	2	0	0	0
	Early	0	74	0	74	107	69	57	48
	1st Rifle	72	39	0	111	332	33	32	32
	2nd Rifle	34	13	0	47	422	11	13	12
	3rd Rifle	120	101	4	225	1115	20	13	11
	4th Rifle	27	99	5	131	705	19	25	26
11	Archery	8	3	0	11	204	5	14	15
	Muzzle	0	0	0	0	36	0	7	5
	Early	0	102	26	128	225	57	43	46
	1st Rifle	367	149	30	546	1808	30	32	29
	2nd Rifle	37	22	0	59	504	12	16	20
	3rd Rifle	69	43	0	112	973	12	15	18
	4th Rifle	43	62	24	129	834	15	19	24
211	Archery	16	7	0	23	224	10	17	26
	Muzzle	0	5	3	8	21	38	29	22
	Early	0	48	11	59	78	76	36	41
	1st Rifle	25	7	0	32	197	16	36	39
	2nd Rifle	68	55	12	135	591	23	23	25
	3rd Rifle	66	56	0	122	758	16	18	22
	4th Rifle	18	83	11	112	546	21	18	24
301	Archery	0	0	0	0	89	0	2	5
	Muzzle	0	0	0	0	3	0	0	0
	Early	0	37	0	37	74	50	49	51
	1st Rifle	46	4	0	50	121	41	29	24
	2nd Rifle	80	0	0	80	320	25	15	14
	3rd Rifle	105	23	11	139	647	21	17	16
	4th Rifle	21	26	10	57	327	17	23	27

UPPER YAMPA

GMUs

**4, 5, 13, 14, 15,
131, 214, 231, 441**



LOCAL CPW OFFICE
GMUs 4 & 5-Meeker office
(970) 878-6090
Others - Steamboat Springs
(970) 870-2197

AREA MAPS	USFS Routt National Forest
AREA INFO	www.craig-chamber.com www.ci.steamboat.co.us

GENERAL AREA INFORMATION

From a low of 6,300 to 12,000' along the Continental Divide. The Routt National Forest dominates the eastern 2/3 of the Upper Yampa units with coniferous forests and aspen.

Most of the land outside of the national forest is private land. Mountain shrub and rolling sage cover the low country.

Expect light to moderate snow in the 1st season, gradually increasing through the 4th season. 4WD is usually necessary on the secondary roads.

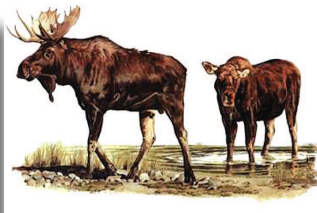
Hunting pressure is heavy. Hunters will have better success and enjoy more solitude by walking into remote areas.

Hunting pressure may create refuge situations on the private lands in GMUs 13, 131, 214 and 441. Mt. Zirkel (GMU 14) and Sarvis Creek (GMU 15) Wilderness Areas access is restricted to non-vehicle methods. Public hunting in GMUs 13 and 131 is limited to a few small parcels of BLM land and some State Trust Land parcels.

Domestic sheep grazing typically occurs on parts of the Routt National Forest through the months of August and September. Elk will typically avoid areas actively used by sheep but often are not far away. Hunters can use this knowledge to their advantage. To learn more about sheep management and actively grazed areas, archery and muzzleloader hunters are encouraged to contact the Hahns Peak-Bears Ranger District in Steamboat Springs at 970-870-2299, or visit the Medicine Bow-Routt National Forests website at <http://www.fs.usda.gov/mbr>.

MOOSE IN AREA

BE PATIENT!
ALWAYS BE 100% SURE OF YOUR TARGET!



UPPER YAMPA DEER INFORMATION

The deer herd has declined in the upper Yampa units due to a variety of factors. Most of the deer will be found in the western section of these units. Movement is also to the west. Hot spots are located north of Hayden. Some good trophy bucks are seen in the southern portion. In GMUs 4 & 5, the buck hunting has shown steady improvement. This area is not managed for trophy bucks, but it does have a good number of adult males in the population. Hunt the aspen and brush areas.

2014 DEER OBJECTIVES

Herd	GMUs	Buck:Doe Objective	Population Estimate	Population Objective
Bears Ears	3, 4, 5, 14, 214, 301, 441	22:100	41,780	37,800
State Bridge	15, 35, 36, 45, 361	26-30:100	17,570	13,500 - 16,500
White River	11, 12, 13, 22, 23, 24, 131, 211, 231	22-25 :100	37,500	67,500

2014 DEER HARVEST STATS

UNIT	SEASON	BUCK	DOE	FAWN	TOTAL HARVEST	TOTAL HUNTER	SUCCESS %		
							LAST YR	3 YR	5 YR
4	Archery	16	0	0	16	73	22	27	23
	Muzzle	11	11	0	22	43	51	52	40
	2nd Rifle	257	61	0	318	552	58	61	53
	3rd Rifle	219	28	0	247	298	83	80	74
	4th Rifle	3	0	0	3	3	100	100	91
5	Archery	8	8	0	16	61	26	15	14
	Muzzle	4	0	0	4	39	10	24	25
	2nd Rifle	58	3	3	64	98	65	62	51
	3rd Rifle	44	4	2	50	54	93	85	74
	4th Rifle	4	0	0	4	4	100	92	95
13	Archery	5	0	0	5	27	19	25	30
	Muzzle	13	0	0	13	20	65	28	49
	2nd Rifle	100	8	0	108	183	59	49	49
	3rd Rifle	73	10	0	83	125	66	65	62
14	Archery	21	12	0	33	102	32	29	25
	Muzzle	6	8	0	14	30	47	35	33
	Early	11	0	0	11	31	35	30	23
	2nd Rifle	49	21	8	78	151	52	28	26
	3rd Rifle	0	3	0	3	24	13	12	15

Cont. on next page

UPPER YAMPA

2014 DEER HARVEST STATS (Cont.)

UNIT	SEASON	BUCK	DOE	FAWN	TOTAL HARVEST	TOTAL HUNTER	SUCCESS %		
							LAST YR	3 YR	5 YR
15	Archery	17	17	10	44	177	25	18	16
	Muzzle	22	10	0	32	155	21	21	20
	2nd Rifle	99	34	4	137	410	33	38	42
	3rd Rifle	167	29	0	196	354	55	59	57
	4th Rifle	14	0	0	14	22	64	68	71
131	Archery	0	0	0	0	19	0	23	24
	Muzzle	3	0	0	3	14	21	18	16
	2nd Rifle	19	0	0	19	39	49	35	29
	3rd Rifle	3	0	0	3	23	13	18	26
214	Archery	0	4	8	12	65	18	14	10
	Muzzle	0	5	0	5	16	31	44	41
	2nd Rifle	45	8	4	57	163	35	38	37
	3rd Rifle	4	0	0	4	8	50	35	30
441	Archery	4	0	0	4	58	7	13	11
	Muzzle	0	3	0	3	8	38	35	35
	2nd Rifle	96	13	0	109	186	59	53	44
	3rd Rifle	50	8	0	58	70	83	67	67

ELK INFORMATION

Elk are plentiful throughout the Upper Yampa area. Licenses are also readily available, but hunters should not rely on leftover license availability as these herds approach population objective. CPW has been working to minimize crop damage and significantly reduce the number of elk in these units. There are good numbers of bull elk, however, do not expect to see many large adult males. Large elk numbers occur on the Routt National Forest. The basic movement is from the higher to lower elevation in response to hunting pressure and weather. Hunt the timber and hunt the Routt National Forest early. Within the Upper Yampa GMU's, private lands access is primarily available on a fee hunting basis.

2014 ELK OBJECTIVES

Herd	GMUs	Bull:Cow Objective	Population Estimate	Population Objective
Bears Ears	3, 4, 5, 14, 214, 301, 441	20-25:100	18,000	15,000-18,000
White River	11, 211, 12, 13, 131, 231, 23, 24, 25, 26, 33, 34	20-27:100	39,000	32,000-39,000
Gore Pass	15, 27	24-28:100	4,500	3,500-4,500

Cont. on next page

UPPER YAMPA

2014 ELK HARVEST STATS

UNIT	SEASON	BULL	COW	CALF	TOTAL HARVEST	TOTAL HUNTERS	SUCCESS %		
							LAST YR	3 YR	5 YR
4	Archery	30	40	0	70	383	18	22	21
	Muzzle	0	16	0	16	90	18	27	24
	Early	6	73	13	92	191	48	45	42
	1st Rifle	197	87	6	290	739	39	40	41
	2nd Rifle	162	72	4	238	1182	20	20	21
	3rd Rifle	250	30	0	280	735	38	32	27
	4th Rifle	49	42	7	98	382	26	26	30
5	Archery	27	5	5	37	131	28	27	23
	Muzzle	0	6	0	6	26	23	35	31
	Early	0	60	0	60	60	100	100	84
	1st Rifle	59	10	0	69	216	32	39	39
	2nd Rifle	136	27	3	166	509	33	29	27
	3rd Rifle	93	3	3	99	250	40	32	31
	4th Rifle	0	7	0	7	27	26	21	44
13	Archery	47	4	0	51	235	22	21	22
	Muzzle	0	7	0	7	21	33	32	27
	Early	0	100	11	111	161	69	65	66
	1st Rifle	69	27	0	96	299	32	45	45
	2nd Rifle	76	58	3	137	477	29	33	35
	3rd Rifle	203	63	0	266	693	38	41	43
	4th Rifle	69	91	29	189	333	57	55	57
	Late	0	6	0	6	6	100	100	100
14	Archery	142	77	4	223	1276	17	14	12
	Muzzle	0	6	0	6	52	12	17	15
	1st Rifle	30	6	0	36	226	16	24	21
	2nd Rifle	79	34	3	116	655	18	14	14
	3rd Rifle	27	24	0	51	394	13	16	16
	4th Rifle	13	5	0	18	82	22	27	33
	Late	0	5	5	10	53	19	45	45
15	Archery	112	53	0	165	988	17	11	12
	Muzzle	0	5	0	5	67	7	9	11
	Early	0	8	0	8	8	100	100	100
	1st Rifle	42	35	9	86	484	18	18	19
	2nd Rifle	34	54	2	90	1179	8	11	13
	3rd Rifle	69	25	3	97	946	10	11	11
	4th Rifle	22	10	0	32	205	16	18	20
	Late	0	66	0	66	153	43	39	43

UPPER YAMPA

2014 ELK HARVEST STATS (Cont.)

UNIT	SEASON	BULL	COW	CALF	TOTAL HARVEST	TOTAL HUNTERS	SUCCESS %		
							LAST YR	3 YR	5 YR
131	Archery	51	7	0	58	471	12	18	16
	Muzzle	0	8	0	8	28	29	23	19
	1st Rifle	39	0	0	39	148	26	23	31
	2nd Rifle	41	37	0	78	390	20	28	28
	3rd Rifle	46	52	6	104	244	43	34	30
	4th Rifle	2	17	5	24	90	27	35	36
	Late	0	32	18	50	145	34	47	50
214	Archery	35	3	0	38	450	8	17	16
	Muzzle	0	3	3	6	13	46	40	34
	Early	0	51	13	64	101	63	63	60
	1st Rifle	23	9	0	32	119	27	40	37
	2nd Rifle	52	61	11	124	524	24	27	26
	3rd Rifle	8	0	3	11	74	15	25	23
	4th Rifle	11	13	0	24	51	47	37	40
Late	0	21	0	21	46	46	54	56	
441	Archery	4	16	16	36	227	16	21	22
	Muzzle	0	8	0	8	35	23	37	26
	Early	0	6	6	12	12	100	92	72
	1st Rifle	53	15	0	68	226	30	28	35
	2nd Rifle	78	9	0	87	454	19	22	23
	3rd Rifle	93	6	0	99	237	42	29	28
	4th Rifle	12	11	0	23	88	26	21	33
Late	0	29	20	49	70	70	76	74	

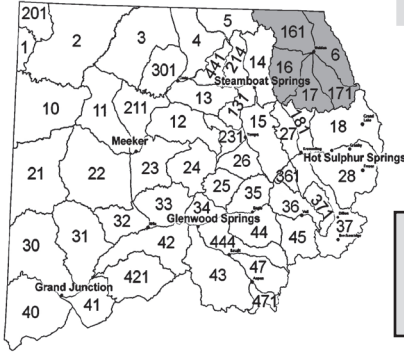


NORTH PARK

GMU

6, 16, 17, 161, 171

LOCAL CPW OFFICE
Steamboat Springs
(970) 870-2197



AREA MAPS

USFS Routt National Forest

AREA INFO

www.ci.steamboat.co.us

GENERAL AREA INFORMATION

North Park borders Wyoming between the Continental Divide and Medicine Bow Mtns. The valley floor at 7,880' supports ag lands and sage.

Extensive willow stands line the streams - a favorite moose habitat, so be sure of your target. The forest surrounding the basin varies from aspen/lodgepole to spruce/fir.

The area is generally windy and colder than places in western Colorado. Prepare for snow during your hunt. 4WD is helpful, as are chains.

Over 2/3 of North Park is public land.

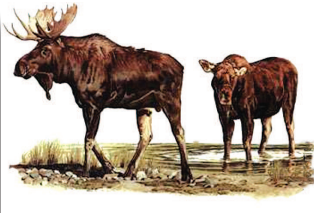
Mt. Zirkel (west) and Never Summer (southeast) are the Wilderness Areas.

Access to State Trust Lands and Wilderness Areas is non-motorized.

Big game can move onto private lands with no public access.

MOOSE IN AREA

BE PATIENT!
ALWAYS BE 100% SURE OF YOUR TARGET!



NORTH PARK DEER INFORMATION

If you are patient, you could have success hunting trophy bucks. North Park has an early rifle, deer-only season that begins as soon as possible after archery closes. This season provides additional hunter opportunities as many of the deer in North Park migrate early. Few deer are found in North Park during January classification flights. Small sample sizes lead to higher observed buck:doe ratios than can be expected during the hunting seasons. Use 3-year average success rates for choosing a hunt.

2014 DEER OBJECTIVES

Herd	GMUs	Buck:Doe Objective	Population Estimate	Population Objective
North Park	6, 16, 17, 161, 171	30-40:100	5,550	5,400 - 6,400

2014 DEER HARVEST STATS

UNIT	SEASON	BUCK	DOE	FAWN	TOTAL HARVEST	TOTAL HUNTER	SUCCESS %		
							LAST YR	3 YR	5 YR
6	Archery	5	0	0	5	20	25	20	19
	Muzzle	2	0	0	2	12	17	31	40
	Early	16	0	0	16	28	57	56	48
	2nd Rifle	13	0	0	13	17	76	58	46
	3rd Rifle	10	0	0	10	14	71	65	60
	4th Rifle	4	0	0	4	4	100	100	62
16	Archery	0	0	0	0	12	0	35	38
	Muzzle	4	0	0	4	6	67	50	25
	Early	11	0	0	11	22	50	51	39
	2nd Rifle	9	0	0	9	15	60	41	33
	3rd Rifle	5	0	0	5	9	56	20	13
17	Archery	0	0	0	0	7	0	24	11
	Muzzle	4	0	0	4	4	100	58	28
	Early	7	0	0	7	12	58	40	39
	2nd Rifle	4	0	0	4	8	50	35	29
	3rd Rifle	2	0	0	2	14	14	19	13
161	Archery	7	0	0	7	17	41	43	41
	Muzzle	4	0	0	4	10	40	29	17
	Early	17	0	0	17	23	74	54	43
	2nd Rifle	18	0	0	18	24	75	64	52
	3rd Rifle	6	0	0	6	10	60	30	24
171	Archery	3	0	0	3	10	30	23	19
	Muzzle	2	0	0	2	2	100	60	28
	Early	9	0	0	9	13	69	49	45
	2nd Rifle	6	0	0	6	12	50	46	39
	3rd Rifle	10	0	0	10	13	77	58	45

NORTH PARK ELK INFORMATION

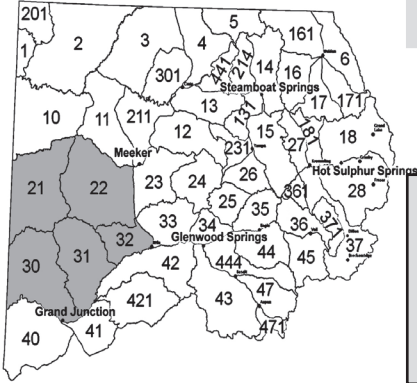
Elk are distributed evenly throughout these units. During the day, the bulls will be in dark timber - glass in the early morning and evening. The herd tends to stay in the coniferous timbered areas until late in the season, moving to lower elevations with snow and hunting pressure.

2014 ELK OBJECTIVES

Herd	GMUs	Bull:Cow Objective	Population Estimate	Population Objective
North Park	6, 16, 17, 161, 171	20-23:100	4,500	4,000 - 4,500

2014 ELK HARVEST STATS

UNIT	SEASON	BULL	COW	CALF	TOTAL HARVEST	TOTAL HUNTERS	SUCCESS %		
							LAST YR	3 YR	5 YR
6	Archery	70	40	0	110	815	13	10	10
	Muzzle	0	29	0	29	150	19	14	12
	Early	0	20	0	20	39	51	47	44
	1st Rifle	8	64	9	81	769	11	18	19
	2nd Rifle	63	49	10	122	1128	11	10	11
	3rd Rifle	11	27	8	46	531	9	11	11
	4th Rifle	7	12	3	22	150	15	16	17
16	Archery	51	60	3	114	533	21	16	14
	Muzzle	0	0	0	0	41	0	7	13
	Early	0	24	5	29	55	53	41	43
	1st Rifle	8	6	0	14	271	5	21	21
	2nd Rifle	7	31	10	48	339	14	18	19
	3rd Rifle	11	8	0	19	285	7	9	10
	4th Rifle	3	16	8	27	117	23	20	25
17	Archery	24	7	0	31	424	7	9	10
	Muzzle	0	0	0	0	41	0	0	4
	Early	0	18	10	28	57	49	45	48
	1st Rifle	17	17	0	34	380	9	17	18
	2nd Rifle	34	31	20	85	358	24	15	14
	3rd Rifle	24	31	7	62	425	15	15	16
	4th Rifle	5	25	0	30	140	21	16	16
161	Archery	40	50	0	90	779	12	12	11
	Muzzle	0	11	5	16	58	28	21	19
	Early	0	3	0	3	13	23	10	26
	1st Rifle	16	23	17	56	378	15	18	15
	2nd Rifle	15	0	0	15	710	2	8	9
	3rd Rifle	11	0	6	17	526	3	10	9
	4th Rifle	6	12	0	18	153	12	16	18
171	Archery	31	3	0	34	401	8	10	9
	Muzzle	0	0	0	0	30	0	6	6
	Early	0	26	5	31	36	86	60	57
	1st Rifle	22	50	0	72	325	22	18	20
	2nd Rifle	59	28	20	107	568	19	15	14
	3rd Rifle	39	19	0	58	279	21	14	13
	4th Rifle	0	8	4	12	116	10	10	12



BOOKCLIFFS/PICEANCE

GMU
21, 22, 30, 31, 32

LOCAL CPW OFFICES
 Meeker (GMU 21, 22)
(970) 878-6090
 Grand Junction (GMU 30, 31, 32)
(970) 255-6100

AREA MAPS	BLM Douglas Pass BLM Meeker BLM Grand Junction	BLM Rangely BLM Glenwood Springs BLM Roan Plateau Travel Map
AREA INFO	www.visitgrandjunction.com or www.rangely.com	

GENERAL AREA INFORMATION

Pinyon-juniper, with pockets of sagebrush, cover most of area at lower elevations. Higher elevations are characterized by sagebrush interspersed with aspen stands and some dark timber. Terrain varies from rolling sagebrush to steep-sided canyons. Some areas are steep & rugged, especially in southern portion..

Rains bring muddy roads. High elevation snows make roads impassible without chains.

75% of area is BLM land.

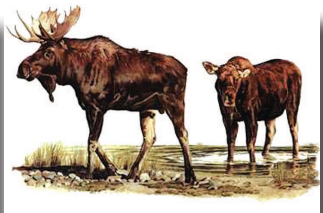
There are remote hunting areas accessible by foot, horseback or ATV. Get maps and study BLM access points.

Weather is generally mild.

Significant energy development occurring in these units.

MOOSE IN AREA

BE PATIENT!
ALWAYS BE 100% SURE OF YOUR TARGET!



BOOKCLIFFS/PICEANCE

Important Note for Bookcliffs / Piceance Hunters

In 1986, the federal government sold thousands of acres of public land in the Piceance/Roan area (GMUs 22 and 32) to energy companies. The agreement required that the companies keep the land open to the public for 20 years. The public access agreement ended in 2006. These parcels, known as the “Girls Claims”, are now private property. Beyond the thousands of acres that are owned by the companies, these parcels also control access to thousands of acres of public land.

Hunters, be aware that Shell Oil Company sold 19,000 acres located off the Cathedral Bluffs area, including areas around Corral Gulch and Spruce Gulch, to a private owner. Legal access to this area is to be determined in the future.

Encana has agreed to keep 17,000 acres the company owns open for the 2015 hunting seasons. CPW appreciates the company’s willingness to support the heritage of hunting in western Colorado.

It’s important to note that these access agreements are NOT new lands. They are heavily hunted former public lands where generations of hunters will be displaced as these lands are closed to hunting. If new hunters begin using the lands where access agreements are in place, there is the potential for overcrowding, which may make future agreements more difficult. Please respect private and Encana land so that it will be available in the future.

If you hunt these units, make sure you have current maps. Colorado Parks and Wildlife has no control over closed lands, even if you’ve hunted there for years. If you have questions or concerns, please contact the BLM or energy companies directly.



BOOKCLIFFS/PICEANCE DEER INFORMATION

The hunting ranges from fair to good in the Bookcliffs and Piceance units. Deer are well-distributed in the northern portion from mid-October. Concentrate on higher elevations in early seasons. If the weather is dry, you'll need to do a lot of walking and looking. Good snows will move the herds to lower elevations to the north and to the south. Hunt high early, low later. Cathedral Rim has some big bucks, but tough terrain. Little Hills and Dry Fork of Piceance is better late. GMUs 21 and 30 are managed as quality deer units and licenses are separate from licenses that are valid in units 22, 31 or 3

2014 DEER OBJECTIVES

Herd	GMUs	Buck:Doe Objective	Population Estimate	Population Objective
Bookcliffs	21, 30	30-35:100	7,840	10,000 - 12,000
Logan Mountain	31, 32	25-30:100	6,590	6,500 - 8,500

2014 DEER HARVEST STATS

UNIT	SEASON	BUCK	DOE	FAWN	TOTAL HARVEST	TOTAL HUNTER	SUCCESS %		
							LAST YR	3 YR	5 YR
21	Archery	23	0	0	23	55	42	47	43
	Muzzle	11	0	0	11	22	50	44	46
	2nd Rifle	194	0	0	194	241	80	87	86
	3rd Rifle	47	0	0	47	47	100	93	93
22	Archery	21	4	0	25	61	41	41	40
	Muzzle	23	11	0	34	62	55	47	45
	2nd Rifle	180	39	8	227	340	67	71	71
	3rd Rifle	187	34	2	223	260	86	84	80
	4th Rifle	1	0	0	1	5	20	69	82
30	Archery	11	0	0	11	54	20	32	30
	Muzzle	2	0	0	2	9	22	32	37
	2nd Rifle	53	14	0	67	106	63	62	62
	3rd Rifle	27	6	0	33	57	58	67	73
31	Archery	38	0	0	38	116	33	40	34
	Muzzle	30	0	0	30	52	58	66	58
	2nd Rifle	125	0	0	125	204	61	65	64
	3rd Rifle	89	0	0	89	142	63	63	69
32	Archery	11	7	0	18	59	31	35	34
	Muzzle	9	0	0	9	25	36	56	47
	2nd Rifle	36	0	0	36	46	78	53	59
	3rd Rifle	28	0	0	28	41	68	61	63

BOOKCLIFFS/PICEANCE ELK INFORMATION

Good cow hunting opportunities. The best hunting is in remote areas, mostly at high elevations, where the elk tend to hold up in pockets of green timber and aspen. Check out the Texas Mountain area and Rat Hole Ridge. Hunting pressure will push some bulls into the large expanses of pinyon-juniper. If snow and hunting pressure are sufficient, some elk will move into the Little Hills and Dry Fork area of Piceance later in the seasons. Most of the GMU 32 elk move into GMU 22 to winter. Elk normally concentrate on the north side of Douglas Pass during the archery, muzzleloader, and early rifle seasons. Movement of large numbers of elk into GMU-30 generally does not occur until early November.

2014 ELK OBJECTIVES

Herd	GMUs	Bull:Cow Objective	Population Estimate	Population Objective
Yellow Creek	21, 22, 30, 31, 32	18-22:100	9,000	7,000 - 9,000

2014 ELK HARVEST STATS

UNIT	SEASON	BULL	COW	CALF	TOTAL HARVEST	TOTAL HUNTERS	SUCCESS %		
							LAST YR	3 YR	5 YR
21	Archery	81	22	0	103	412	25	16	17
	Muzzle	0	8	0	8	57	14	9	7
	1st Rifle	0	0	0	0	2	0	0	0
	2nd Rifle	72	7	3	82	588	14	23	26
	3rd Rifle	30	13	0	43	658	7	13	12
	4th Rifle	27	19	6	52	409	13	15	17
22	Archery	85	7	17	109	435	25	17	19
	Muzzle	0	4	0	4	66	6	11	9
	Early	0	46	0	46	147	31	34	32
	1st Rifle	71	2	3	76	297	26	29	28
	2nd Rifle	22	45	11	78	671	12	15	17
	3rd Rifle	62	37	4	103	663	16	15	17
	4th Rifle	22	69	12	103	250	41	32	32

Cont. on next page

BOOKCLIFFS/PICEANCE

30	Archery	0	0	0	0	139	0	6	8
	Muzzle	0	0	0	0	4	0	0	6
	1st Rifle	8	0	0	8	105	8	26	26
	2nd Rifle	7	13	7	27	196	14	12	12
	3rd Rifle	24	19	17	60	349	17	17	19
	4th Rifle	5	27	5	37	193	19	21	28

2014 ELK HARVEST STATS (Cont.)

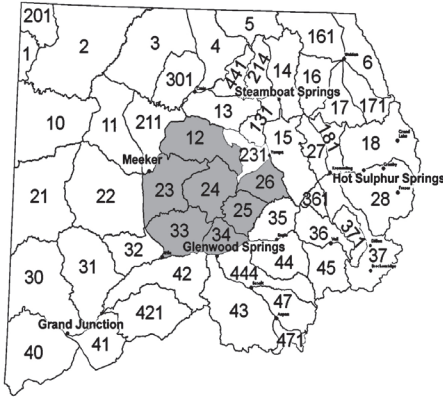
UNIT	SEASON	BULL	COW	CALF	TOTAL HARVEST	TOTAL HUNTERS	SUCCESS %		
							LAST YR	3 YR	5 YR
31	Archery	46	7	0	53	267	20	21	19
	Muzzle	0	0	0	0	9	0	3	13
	Early	0	74	3	77	129	60	45	47
	1st Rifle	22	6	0	28	102	27	34	36
	2nd Rifle	20	14	4	38	263	14	18	19
	3rd Rifle	32	27	0	59	319	18	19	20
	4th Rifle	9	44	17	70	344	20	16	17
32	Archery	8	3	0	11	299	4	12	14
	Muzzle	0	0	0	0	4	0	0	0
	Early	0	10	20	30	80	38	58	41
	1st Rifle	0	3	0	3	13	23	17	24
	2nd Rifle	26	19	0	45	209	22	20	20
	3rd Rifle	20	7	0	27	279	10	13	16
	4th Rifle	0	3	0	3	50	6	20	23



WHITE RIVER

GMU

12, 23, 24, 25, 26, 33, 34,



LOCAL CPW OFFICES

Glenwood Springs (GMU 25, 26, 34) (970) 947-2920

Meeker (GMU 12, 23, 24) (970) 878-6090

Steamboat Springs (GMU 26) (970) 870-2197

Grand Junction (GMU 33) (970) 255-6100

AREA MAPS	USFS White River National Forest
AREA INFO	www.glenwoodchamber.com or www.meekerchamber.com

GENERAL AREA INFORMATION

White River offers variety & extremes. Several peaks in the Flattop Wilderness are 12,200' in elevation. Elevation drops to 5,300' near Rifle. The lower elevation vegetation starts out with sage, progressing to oakbrush/mtn brush, aspen, evergreens and alpine tundra.

Expect mild weather with light snow in the 1st season, with roads becoming impassable in the upper half of the area by the 3rd season.

The high country in GMU 24 is prone to heavy snowstorms in late seasons. Heavy snowstorms can strand hunters on Flattops after 1st season.

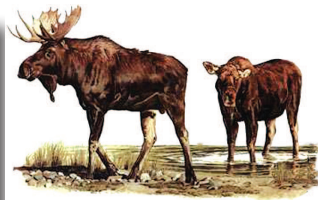
While there is a great deal of public land, hunting pressure is heavy especially in northern half of GMUs 23 & 24. 4WD is necessary on all but the few main paved roads. Half of the area is roadless - which makes for very good hunting if you can walk or pack in.

You may encounter heavy ATV traffic in GMUs 12, 23 and 33.

Hunters in GMU 25 and 26 can gain access using Forest Service Road 610 (Stump Park Rd) or USFS Road 613 (Crescent Lake Rd).

MOOSE IN AREA

BE PATIENT!
ALWAYS BE 100% SURE OF YOUR TARGET!



WHITE RIVER DEER INFORMATION

The deer are scattered and will move in response to hunting pressure and weather. On National Forest lands in GMUs 12, 23, and 24, deer hunting is generally better in early seasons. Good public land deer hunting can typically be found in GMU 12 on the Jensen and Indian Run State Wildlife Areas. Jensen SWA is north of Meeker and Indian Run SWA is east of Hamilton. GMU 23 deer hunters can try Hay Flats and Miller Creek southwest of Meeker and the Jensen and Oak Ridge State Wildlife Areas north and east of Meeker. Deer densities are lower across GMU 24 but hunters can find deer on the south facing slopes above the White River. UNIT 33 ARCHERY & MUZZLE-LOADER LICENSES NO LONGER VALID IN 23 & 24— If you purchase an archery or muzzleloader license for unit 33, you can no longer also hunt in unit 23 and 24, and vice versa. There are now separate tags for these units. See the hunt tables for corresponding hunt codes.

2014 DEER OBJECTIVES

Herd	GMUs	Buck:Doe Objective	Population Estimate	Population Objective
Rifle Creek	33	30-35:100	7,030	7,700 - 9,400
Sweetwater Creek	25,26,34	28-32:100	5,680	5,000-6,000
White River	11, 12, 13, 22, 23, 24, 131, 211, 231	22-25:100	37,530	67,500

2014 DEER HARVEST STATS

UNIT	SEASON	BUCK	DOE	FAWN	TOTAL HARVEST	TOTAL HUNTER	SUCCESS %		
							LAST YR	3 YR	5 YR
12	Archery	10	4	0	14	64	22	16	14
	Muzzle	7	7	0	14	47	30	25	23
	Early	0	0	0	0	4	0	0	0
	2nd Rifle	166	18	9	193	383	50	53	50
	3rd Rifle	122	21	7	150	233	64	57	58
	4th Rifle	0	0	0	0	3	0	0	39
23	Archery	18	10	0	28	108	26	25	24
	Muzzle	11	5	0	16	66	24	36	37
	2nd Rifle	91	31	4	126	244	52	41	36
	3rd Rifle	68	11	0	79	140	56	50	47
	4th Rifle	1	0	0	1	1	100	100	39
24	Archery	10	10	0	20	82	24	14	8
	Muzzle	5	3	0	8	38	21	19	15
	Early	1	0	0	1	2	50	20	13
	2nd Rifle	42	9	0	51	130	39	25	24
	3rd Rifle	7	4	0	11	37	30	29	21
	4th Rifle	14	0	0	14	28	50	57	54
25	Archery	8	9	0	17	98	17	19	14
	Muzzle	2	12	0	14	91	15	21	20
	Early	0	0	0	0	4	0	0	0
	2nd Rifle	76	52	0	128	360	36	32	33
	3rd Rifle	81	28	4	113	256	44	50	51
	4th Rifle	14	0	0	14	28	50	57	54

Cont. on next page

WHITE RIVER

2014 DEER HARVEST STATS (Cont.)

UNIT	SEASON	BUCK	DOE	FAWN	TOTAL HARVEST	TOTAL HUNTER	SUCCESS %		
							LAST YR	3 YR	5 YR
26	Archery	0	0	0	0	31	0	16	14
	Muzzle	2	2	0	4	25	16	15	13
	Early	0	0	0	0	2	0	0	0
	2nd Rifle	25	18	10	53	202	26	28	33
	3rd Rifle	48	25	4	77	142	54	56	56
	4th Rifle	3	0	0	3	17	18	48	55
33	Archery	19	22	0	41	128	32	30	28
	Muzzle	9	26	0	35	83	42	32	27
	2nd Rifle	92	0	0	92	359	26	36	30
	3rd Rifle	108	0	0	108	232	47	44	44
	4th Rifle	4	0	0	4	9	44	58	63
34	Archery	3	7	0	10	73	14	12	9
	Muzzle	6	5	0	11	94	12	18	19
	2nd Rifle	31	15	3	49	231	21	18	16
	3rd Rifle	16	5	0	21	133	16	24	24
	4th Rifle	4	0	0	4	21	19	32	32
231	Archery	0	0	0	0	44	0	9	5
	Muzzle	3	8	2	13	31	42	31	28
	Early	0	0	0	0	1	0	0	0
	2nd Rifle	18	0	0	18	40	45	36	32
	3rd Rifle	3	0	0	3	7	43	24	17



WHITE RIVER ELK INFORMATION

Generally all of GMUs 12, 23 and 24 are considered very good elk hunting. They are generally at higher elevations in the eastern portions of GMUs 12 and 24 during early seasons, and move west to lower elevations (and private lands) as hunting pressure and snow depth increase. Try the abundant public lands in eastern GMU 12 and 24 early on. Because of access roads, hunting pressure is high on Sleepy Cat, Lost Park and Sand Peak. The Flattops Wilderness Area offers good hunting, but travel is limited to walking or horseback and the potential for heavy snowfall means hunters must be prepared. Successful hunters avoid the main roads and hunt the dark timber and deeper canyons. Jensen State Wildlife Area is good during most seasons. Oak Ridge State Wildlife Area is good during 3rd and 4th rifle seasons. Both properties are limited to foot or horseback travel.

2014 ELK OBJECTIVES

Herd	GMUs	Bull:Cow Objective	Population Estimate	Population Objective
White River	11, 12, 13, 131, 231, 23, 24, 25, 26, 33, 34, 131, 211, 231	20-27:100	39,000	32,000-39,000

2014 ELK HARVEST STATS

UNIT	SEASON	BULL	COW	CALF	TOTAL HARVEST	TOTAL HUNTERS	SUCCESS %		
							LAST YR	3 YR	5 YR
12	Archery	113	21	9	143	629	23	24	23
	Muzzle	0	16	7	23	80	29	29	25
	Early	0	65	19	84	126	67	61	63
	1st Rifle	297	89	17	403	1392	29	35	38
	2nd Rifle	182	144	15	341	1601	21	24	23
	3rd Rifle	105	127	0	232	882	26	32	32
	4th Rifle	42	104	0	146	520	28	27	33
23	Archery	67	16	0	83	454	18	17	19
	Muzzle	0	5	0	5	29	17	10	13
	Early	0	53	0	53	64	83	69	68
	1st Rifle	15	21	0	36	743	5	17	23
	2nd Rifle	102	51	9	162	1092	15	16	17
	3rd Rifle	54	36	0	90	786	11	17	19
	4th Rifle	14	122	0	136	485	28	20	23
24	Late	0	28	0	28	38	74	74	73
	Archery	38	12	0	50	333	15	15	15
	Muzzle	0	0	0	0	53	0	7	10
	Early	0	0	0	0	11	0	32	40
	1st Rifle	141	36	0	177	897	20	27	26
	2nd Rifle	94	72	15	181	1098	16	13	15
	3rd Rifle	4	22	0	26	392	7	16	17
4th Rifle	0	11	0	11	134	8	19	24	
Late	0	3	0	3	5	60	43	53	

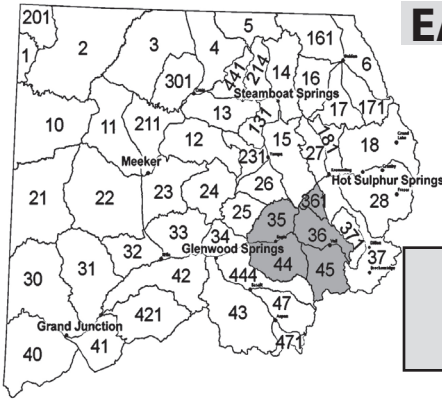
Cont. on next page

WHITE RIVER

2014 ELK HARVEST STATS

UNIT	SEASON	BULL	COW	CALF	TOTAL HARVEST	TOTAL HUNTERS	SUCCESS %		
							LAST YR	3 YR	5 YR
25	Archery	8	27	3	38	248	15	10	10
	Muzzle	0	3	0	3	52	6	9	7
	Early	0	41	8	49	142	35	36	37
	1st Rifle	56	0	0	56	189	30	19	22
	2nd Rifle	34	6	0	40	380	11	10	11
	3rd Rifle	35	3	0	38	302	13	14	17
	4th Rifle	4	2	0	6	46	13	17	21
26	Archery	40	0	0	40	215	19	10	10
	Muzzle	0	3	3	6	15	40	15	10
	Early	0	33	8	41	70	59	42	35
	1st Rifle	0	0	0	0	136	0	12	15
	2nd Rifle	60	6	0	66	316	21	18	17
	3rd Rifle	15	11	3	29	289	10	15	19
	4th Rifle	2	2	0	4	61	7	18	22
33	Archery	107	30	16	153	782	20	15	14
	Muzzle	0	4	0	4	66	6	17	19
	1st Rifle	20	46	0	66	530	12	17	18
	2nd Rifle	60	54	11	125	991	13	14	13
	3rd Rifle	58	18	0	76	449	17	14	16
	4th Rifle	11	8	0	19	200	10	15	22
	Late	0	32	0	32	69	46	36	37
34	Archery	51	4	4	59	298	20	14	13
	Muzzle	0	3	0	3	30	10	9	11
	Early	0	17	0	17	37	46	41	43
	1st Rifle	15	10	0	25	201	12	14	15
	2nd Rifle	15	8	0	23	360	6	8	8
	3rd Rifle	4	3	0	7	234	3	13	15
	4th Rifle	0	3	0	3	36	8	19	16
231	Archery	47	8	3	58	491	12	10	10
	Muzzle	0	3	0	3	49	6	11	8
	Early	0	33	4	37	84	44	49	43
	1st Rifle	81	10	25	116	418	28	28	28
	2nd Rifle	7	15	4	26	315	8	12	13
	3rd Rifle	14	7	0	21	156	13	20	21
	4th Rifle	10	2	0	12	72	17	19	20

EAGLE RIVER VALLEY



GMU

35, 36, 44, 45, 361

LOCAL CPW OFFICE
Glenwood Springs
(970) 947-2920

AREA MAPS	USFS White River National Forest
AREA INFO	www.glenwoodchamber.com

GENERAL AREA INFORMATION

These units are bordered by the Colorado River, the Gore Range, the Red Table Mountains and the Continental Divide.

Elevation climbs from 6,000' with sage and pinyon to over 14,000' with alpine vegetation starting at 10,500'.

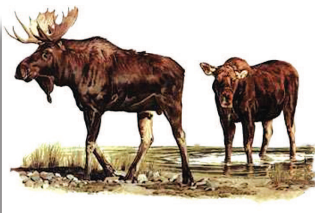
Weather varies widely with heavy high country snow. Motorized travel restricted to designated routes.

GMUs 35 & 44 have some public access, however the northern part of GMU 44 between Edwards and Eagle is primarily private property with no hunting allowed.

Check your map and contact the BLM/USFS office regarding off road travel.

MOOSE IN AREA

BE PATIENT!
ALWAYS BE 100% SURE OF YOUR TARGET!



EAGLE RIVER VALLEY DEER INFORMATION

Deer herds will be scattered from 6,500' to timberline and will move down to the lower elevation pinyon-juniper areas as heavy snow arrives. Over 18" of snow will move the Deer. Try hunting the aspen, open parks and shrublands. GMUs 35 and 36 have the most mule deer. After the first heavy snow, most GMU 45 deer will move into GMU 36. GMU 44 is managed for trophy deer with limited number of licenses, but it is a good place to take a big buck.

2014 DEER OBJECTIVES

Herd	GMUs	Buck:Doe Objective	Population Estimate	Population Objective
Red Table Mountain	44	35:100	2,210	7,000
State Bridge	15, 35, 36, 45, 361	26-30:100	17,570	13,500-16,500

2014 DEER HARVEST STATS

UNIT	SEASON	BUCK	DOE	FAWN	TOTAL HARVEST	TOTAL HUNTERS	SUCCESS %		
							LAST YR	3 YR	5 YR
35	Archery	13	4	0	17	89	19	19	18
	Muzzle	26	14	0	40	129	31	39	33
	2nd Rifle	98	21	5	124	291	43	51	51
	3rd Rifle	146	9	0	155	254	61	54	53
	4th Rifle	10	0	0	10	14	71	72	81
36	Archery	0	9	0	9	81	11	18	17
	Muzzle	26	14	4	44	74	59	33	30
	Early	9	0	0	9	14	64	72	59
	2nd Rifle	82	37	0	119	268	44	41	37
	3rd Rifle	77	8	2	87	161	54	53	53
44	4th Rifle	0	0	0	0	5	0	47	61
	Archery	15	6	0	21	63	33	28	28
	Muzzle	11	2	2	15	60	25	28	28
	Early	3	0	0	3	6	50	27	24
	2nd Rifle	28	16	0	44	75	59	55	51
	3rd Rifle	9	11	0	20	34	59	60	60
45	4th Rifle	8	0	0	8	11	73	87	90
	Archery	11	19	0	30	101	30	34	34
	Muzzle	17	11	0	28	61	46	39	34
	Early	1	0	0	1	6	17	31	23
	2nd Rifle	49	2	0	51	86	59	47	39
	3rd Rifle	15	2	0	17	29	59	39	39
361	4th Rifle	0	0	0	0	2	0	0	0
	Archery	0	0	0	0	16	0	0	3
	Muzzle	0	4	0	4	4	100	81	62
	2nd Rifle	37	2	0	39	79	49	33	33
	3rd Rifle	0	7	0	7	20	35	29	40

EAGLE RIVER VALLEY ELK INFORMATION

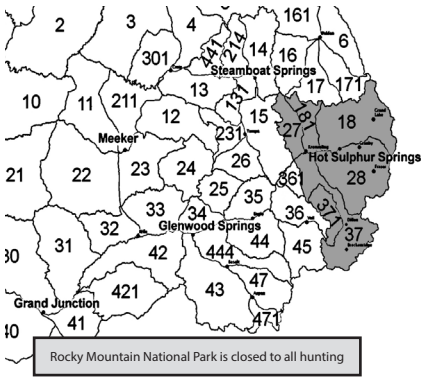
Elk are scattered from about 7,000' to above timberline. As hunting pressure increases, they seek the deeper canyons and dark timber areas way from roads. Concentrating on the large stands of dark timber and the larger wilderness areas will increase your chance of finding a big bull on public lands. Large blocks of private land in GMUs 35 and 36 provide refuge areas and can make hunting difficult.

2014 ELK OBJECTIVES

Herd	GMUs	Bull:Cow Objective	Population Estimate	Population Objective
Frying Pan	44, 45, 47, 444	18-30:100	8,500	5,500-8,500
Piney River	35, 36, 361	22-44:100	4,600	3,000-4,600

2014 ELK HARVEST STATS

UNIT	SEASON	BULL	COW	CALF	TOTAL HARVEST	TOTAL HUNTERS	SUCCESS %		
							LAST YR	3 YR	5 YR
35	Archery	24	11	0	35	341	10	9	8
	Muzzle	20	5	0	25	144	17	13	16
	Early	0	32	3	35	78	45	49	52
	1st Rifle	34	10	0	44	210	21	18	22
	2nd Rifle	26	12	5	43	309	14	14	16
	3rd Rifle	31	46	16	93	393	24	21	22
36	4th Rifle	6	11	0	17	51	33	31	30
	Archery	19	11	0	30	490	6	8	7
	Muzzle	12	9	0	21	168	13	7	8
	Early	0	4	0	4	14	29	27	31
	1st Rifle	26	26	0	52	225	23	21	21
	2nd Rifle	52	30	9	91	608	15	15	14
44	3rd Rifle	8	21	0	29	308	9	11	13
	4th Rifle	2	2	0	4	30	13	25	28
	Archery	43	8	4	55	405	14	8	8
	Muzzle	19	9	0	28	238	12	10	9
	Early	0	40	0	40	82	49	57	55
	1st Rifle	11	36	0	47	266	18	17	17
45	2nd Rifle	22	5	5	32	489	7	9	9
	3rd Rifle	11	4	0	15	364	4	9	13
	4th Rifle	0	23	6	29	177	16	15	19
	Archery	35	3	0	38	591	6	6	7
	Muzzle	19	0	0	19	130	15	14	12
	Early	0	29	6	35	116	30	29	28
361	1st Rifle	0	3	6	9	134	7	20	21
	2nd Rifle	11	12	0	23	369	6	11	13
	3rd Rifle	11	9	2	22	275	8	10	13
	4th Rifle	5	9	0	14	96	15	17	19
	Archery	0	0	0	0	107	0	4	4
	Muzzle	0	0	0	0	25	0	3	5
361	Early	0	4	0	4	23	17	29	27
	1st Rifle	0	4	0	4	34	12	19	21
	2nd Rifle	0	0	0	0	86	0	6	11
	3rd Rifle	0	4	0	4	67	6	8	9
	4th Rifle	0	11	4	15	53	28	22	24



MIDDLE PARK

GMU

18, 27, 28, 37, 181, 371

LOCAL CPW OFFICE
Hot Sulphur Springs
(970) 725-6200

AREA MAPS	USFS Routt National Forest USFS White River National Forest USFS Arapahoe/Roosevelt National Forest
AREA INFO	www.kremmlingchamber.com www.granbychamber.com

GENERAL AREA INFORMATION

The Continental Divide and the Gore Range Divide encircle Middle Park. Most of this terrain is steep to very steep. The weather can change rapidly. Areas can become snowbound. 4WD is recommended, along with chains.

Sagebrush/shrubs are common on southern exposures at lower elevations. The valley bottoms are mostly private lands. The remaining 2/3 of this area is public land.

GMU 27 has less public land than the other GMUs. Check USFS maps for ATV closures/restrictions.

Hunters around Wolford Mountain (GMU 181 and 27) should be aware that a travel management plan is in place - check with the BLM Kremmling office for information. Horses/pack animals are recommended for remote tracts and for Wilderness Areas.

Due to the proximity to Denver, there are many weekend hunters & recreationalists (bikers, hikers, ATVers).

The past decade's mountain pine beetle killed an estimated 80 percent of mature lodgepole pine trees in Grand County, creating numerous hazards along public roadways as these trees begin to fall.

As a result, fire danger is increased, big game distribution is changing in some areas and logging operations are likely in some spots. Hunters might focus on some of the dead lodgepole areas as increased sunlight to the forest floor creates more forage and these areas tend to hold deer and elk for longer periods of time. However be aware of possible falling trees when hiking, or setting up camp in pine beetle kill sections! Set up camps etc, in cleared areas away from dead trees. These dead trees can fall on their own without wind, or warning!

Road closures for tree removal will likely occur this season and next in this area. To avoid disappointment, be sure to call the **Sulphur Ranger District's Visitor's Information Hotline at 970-887-4100**, the **Kremmling BLM office at 970-724-3000** or the **Yampa Forest Service Office at 970-638-4516** BEFORE planning your hunting trip, or setting up camp. Or, sign up for updates by emailing SRDUpdates@fs.fed.us.

You can stop by the visitor's center at 9 Ten Mile Drive in Granby, visit www.fs.usda.gov/arp; or follow us on Twitter: [www.twitter.com/usfsarp](https://twitter.com/usfsarp)."

MIDDLE PARK DEER INFORMATION

All GMUs have good numbers of deer. The buck-to-doe ratios continue to increase as a result of limited buck hunting and mild winters. All units are managed for quality bucks. There are good numbers of mature bucks, but they rarely reach trophy status found in lower elevation mtn shrub & mild winter areas. Concentrate on transition zones that have aspen, shrub and coniferous cover. Deer tend to move west and down in elevation over the seasons, snow will move them faster and farther. They typically migrate out of GMU 371 with average snowfall. A limited number of 4th season deer licenses available.

2014 DEER OBJECTIVES

Herd	GMUs	Buck:Doe Objective	Population Estimate	Population Objective
Middle Park	18, 181, 27, 28, 37, 371	30-35:100	14,980	10,500 - 12,500

2014 DEER HARVEST STATS

UNIT	SEASON	BUCK	DOE	FAWN	TOTAL HARVEST	TOTAL HUNTER	SUCCESS %		
							LAST YR	3 YR	5 YR
18	Archery	58	19	0	77	343	22	16	12
	Muzzle	70	61	0	131	404	32	28	22
	2nd Rifle	166	107	18	291	1279	23	25	25
	3rd Rifle	189	134	14	337	1147	29	33	34
	4th Rifle	79	0	0	79	148	53	52	58
27	Archery	14	9	0	23	90	26	24	21
	Muzzle	0	19	0	19	111	17	29	29
	2nd Rifle	77	87	0	164	700	23	29	26
	3rd Rifle	64	49	7	120	479	25	26	26
	4th Rifle	16	0	0	16	43	37	33	38
28	Archery	5	24	0	29	186	16	16	14
	Muzzle	4	19	0	23	220	10	21	22
	2nd Rifle	79	67	0	146	682	21	22	23
	3rd Rifle	66	86	0	152	647	23	30	33
	4th Rifle	33	0	0	33	69	48	49	58
37	Archery	28	0	0	28	241	12	13	15
	Muzzle	24	0	0	24	175	14	26	26
	2nd Rifle	54	55	9	118	513	23	29	29
	3rd Rifle	60	38	10	108	429	25	33	35
	4th Rifle	10	0	0	10	42	24	38	34

MIDDLE PARK

2014 DEER HARVEST STATS (Cont.)

UNIT	SEASON	BUCK	DOE	FAWN	TOTAL HARVEST	TOTAL HUNTER	SUCCESS %		
							LAST YR	3 YR	5 YR
181	Archery	0	0	0	0	47	0	8	15
	Muzzle	10	0	0	10	44	23	21	18
	2nd Rifle	51	8	8	67	315	21	23	22
	3rd Rifle	10	40	0	50	373	13	28	28
	4th Rifle	25	0	0	25	45	56	52	50
371	Archery	9	0	0	9	77	12	9	5
	Muzzle	14	0	0	14	74	19	16	16
	2nd Rifle	19	9	0	28	173	16	25	20
	3rd Rifle	23	0	0	23	138	17	16	16
	4th Rifle	0	0	0	0	4	0	28	20



ELK INFORMATION

Elk are well distributed in all units. Bull to cow ratios are good because the area is fairly steep and heavily timbered. Generally, trophy bulls are rare (a few are taken every year) because bulls are managed for hunter opportunity. With hunting pressure and snow, elk head for the inaccessible timber and private property. GMU 27 has a lot of private land. Hunt the rough terrain and heavy cover away from roads and trails to increase your success.

2014 ELK OBJECTIVES

Herd	GMUs	Bull:Cow Objective	Population Estimate	Population Objective
Gore Pass	15, 27	24-28:100	4,500	3,500-4,500
Troublesome Creek	18, 181	21-26:100	4,300	3,600-4,300
Williams Fork River	28, 37, 371	21-31:100	5,550	4,700-5,500

MIDDLE PARK

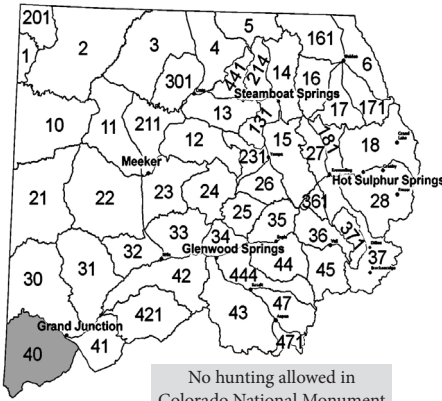
2014 ELK HARVEST STATS

UNIT	SEASON	BULL	COW	CALF	TOTAL HARVEST	TOTAL HUNTER	SUCCESS %		
							LAST YR	3 YR	5 YR
18	Archery	15	11	3	29	1065	3	4	5
	Muzzle	0	3	0	3	126	2	3	4
	1st Rifle	83	36	9	128	904	14	17	14
	2nd Rifle	40	52	3	95	1073	9	11	12
	3rd Rifle	46	57	0	103	1020	10	11	11
	4th Rifle	3	45	0	48	911	5	8	12
27	Archery	58	7	0	65	384	17	10	8
	Muzzle	0	0	0	0	13	0	13	12
	1st Rifle	19	11	0	30	185	16	20	18
	2nd Rifle	15	21	6	42	577	7	12	13
	3rd Rifle	4	22	0	26	352	7	7	6
	4th Rifle	2	7	3	12	115	10	10	10
28	Archery	23	27	8	58	1127	5	6	6
	Muzzle	0	15	0	15	74	20	10	11
	1st Rifle	67	68	0	135	566	24	21	20
	2nd Rifle	62	48	17	127	1064	12	12	13
	3rd Rifle	35	26	0	61	860	7	9	12
	4th Rifle	19	40	0	59	449	13	12	12
37	Archery	38	14	14	66	664	10	7	8
	Muzzle	0	7	4	11	39	28	19	14
	1st Rifle	15	55	20	90	280	32	26	27
	2nd Rifle	66	42	0	108	575	19	14	14
	3rd Rifle	31	10	0	41	405	10	10	12
	4th Rifle	14	10	5	29	149	19	13	17
181	Archery	20	4	0	24	233	10	8	10
	Muzzle	0	0	0	0	27	0	12	7
	1st Rifle	2	14	0	16	97	16	20	18
	2nd Rifle	4	5	0	9	335	3	4	7
	3rd Rifle	4	21	0	25	382	7	8	8
	4th Rifle	9	9	0	18	310	6	8	14
371	Archery	23	16	0	39	509	8	7	8
	Muzzle	0	0	0	0	33	0	3	8
	1st Rifle	34	27	6	67	220	30	30	28
	2nd Rifle	11	0	0	11	214	5	8	10
	3rd Rifle	20	4	0	24	204	12	13	12
	4th Rifle	10	37	4	51	254	20	17	16

GLADE PARK

GMU
40

LOCAL CPW OFFICE
Grand Junction (970) 255-6100



AREA MAPS	USFS Uncompahgre National Forest BLM Delta BLM Grand Junction BLM Moab BLM Westwater
AREA INFO	www.visitgrandjunction.com

GENERAL AREA INFORMATION

This 750 square mile unit consists of a relatively flat summit leading to sloping mesas bisected by deep, rugged canyons. The highest elevation range is approximately 9,800’.

Roads provide access to the mesas, but many of the canyons are remote and accessible only by foot or horseback.

Weather starts out mild but mud/snow accumulation is likely in later seasons.

Early season hunters should favor higher elevations of the USFS land, while later season hunters will do better on the lower BLM lands.

Hunters can find many water holes within the dark timber stands on north facing slopes.

Elk and deer frequent these areas during warm temperatures and heavy hunting pressure.

GMU 40 has a lot of private land, and public access to BLM is often difficult to reach by vehicle.

GLADE PARK DEER INFORMATION

There are some good bucks in GMU 40 but they are hard to locate. The upper end of the Little Dolores drainage is a good place for quality mule deer bucks but there is considerable private land. Late season hunters may have success near Seiber Canyon, but it is foot or horseback only. Areas along the Utah border and north of Gateway can be good during the rifle seasons however be aware of private land and the state line.

2014 DEER OBJECTIVES

Herd	GMUs	Buck:Doe Objective	Population Estimate	Population Objective
Glade Park	40	30-35:100	5,270	6,500-8,500

2014 DEER HARVEST STATS

UNIT	SEASON	BUCK	DOE	FAWN	TOTAL HARVEST	TOTAL HUNTERS	SUCCESS %		
							LAST YR	3 YR	5 YR
40	Archery	31	0	0	31	71	44	44	45
	Muzzle	18	0	0	18	36	50	59	60
	2nd Rifle	103	0	0	103	141	73	68	64
	3rd Rifle	79	0	0	79	107	74	71	74



GLADE PARK ELK INFORMATION

Bulls will be bugling from mid-Sept through 1st rifle opening weekend. Elk are widely distributed. Most stay high until hunting pressure pushes them to lower elevations and less accessible drainages. Do not hunt areas that have previously received heavy hunting pressure - elk will not be there. Successful hunters do a lot of walking and looking.

GMU 40 is a limited unit. You must apply in the draw.

2014 ELK OBJECTIVES

Herd	GMUs	Bull:Cow Objective	Population Estimate	Population Objective
Glade Park	40	30-35:100	3,800	2,800-3,800

2014 ELK HARVEST STATS

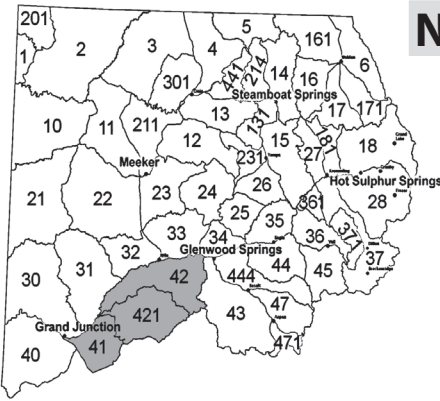
UNIT	SEASON	BULL	COW	CALF	TOTAL HARVEST	TOTAL HUNTER	SUCCESS %		
							LAST YR	3 YR	5 YR
40	Archery	38	0	0	38	74	51	54	48
	Muzzle	0	0	0	0	24	0	7	18
	Early	0	117	2	119	314	38	43	44
	1st Rifle	22	7	0	29	60	48	47	50
	2nd Rifle	18	10	0	28	54	52	57	60
	3rd Rifle	20	21	0	41	59	69	52	56
	4th Rifle	12	6	2	20	46	43	45	45



NORTH GRAND MESA

GMU
41, 42, 421

LOCAL CPW OFFICE
Grand Junction
(970) 255-6100



AREA MAPS	USFS Grand Mesa National Forest USFS White River National Forest
AREA INFO	www.visitgrandjunction.com

GENERAL AREA INFORMATION

Grand Mesa terrain ranges from high elevation (11,000') spruce/fir forests to low elevation (4,800') pinyon-juniper woodlands.

Weather can be rainy or snowy, then warm up and dry out the following day. Roads can become very muddy and 4WD is recommended.

Hunters should be prepared to spend time on foot or horseback.

Much of the area is public land.

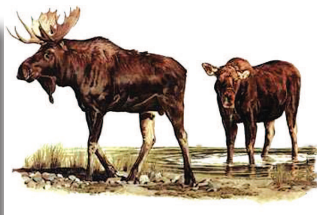
Overall, the hunting pressure is heavy.

Intensive natural gas development activity is occurring in GMUs 42 and 421.

Contact the USFS Grand Valley Ranger District, 970-242-8211 for more details on energy development in this area.

MOOSE IN AREA

BE PATIENT!
ALWAYS BE 100% SURE OF YOUR TARGET!



NORTH GRAND MESA ELK INFORMATION

The deer population has declined in recent years. The fourth, buck-only season was eliminated in 2014. However deer are still abundant and at the lower end of the population objective range. Deer are found on forest lands and higher elevation private lands during Oct. The resident deer stay in lower agricultural areas year round. The migrating deer herd begins to move off the forest to lower elevations in mid-Nov, often to BLM lands. The best deer hunting is at mid elevations (8,500-9,500'), with more buck opportunities in the later seasons. The Battlements can be good in late seasons, but the terrain is rugged. The open country offers good opportunities for those who get out on foot or horseback.

2014 DEER OBJECTIVES

Herd	GMUs	Buck:Doe Objective	Population Estimate	Population Objective
North Grand Mesa	41, 42, 421	25-30:100	15,140	17,000-23,000

2014 DEER HARVEST STATS

UNIT	SEASON	BUCK	DOE	FAWN	TOTAL HARVEST	TOTAL HUNTER	SUCCESS %		
							LAST YR	3 YR	5 YR
41	Archery	30	13	0	43	128	34	32	24
	Muzzle	14	3	0	17	70	24	35	34
	2nd Rifle	99	29	0	128	299	43	42	38
	3rd Rifle	230	42	0	272	532	51	47	45
42	Archery	15	6	0	21	84	25	38	32
	Muzzle	12	12	0	24	67	36	31	29
	2nd Rifle	119	62	0	181	469	39	41	44
	3rd Rifle	185	26	7	218	404	54	52	54
421	Archery	22	34	5	61	197	31	31	29
	Muzzle	28	12	0	40	147	27	39	35
	2nd Rifle	165	46	0	211	434	49	40	43
	3rd Rifle	268	13	0	281	419	67	58	55



NORTH GRAND MESA ELK INFORMATION

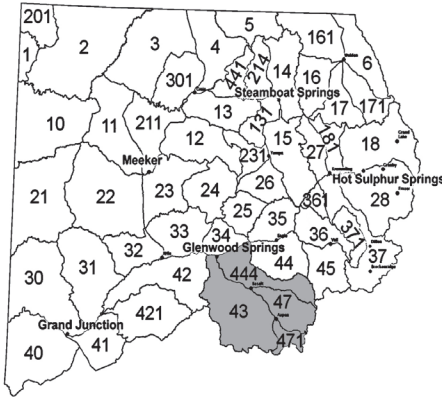
The elk herd is well distributed with good hunting success expected. Elk are scattered throughout the forest and on private lands. Most elk stay at higher elevations (8500- 10,000') in thick timber and oakbrush. There is no migration during the season, movement to the more remote areas is in response to hunting pressure. They will seek classic cover - the heavily wooded, north-facing slopes near water. You will need to get away from the roads. There are lots of legal bulls as the area is managed for quantity of bulls rather than trophy status. Hence, trophy bulls are present but relatively rare.

2014 ELK OBJECTIVES

Herd	GMU	Bull:Cow Objective	Population Estimate	Population Objective
North Grand Mesa	41, 42, 52, 411, 421, 521	20-25:100	19,000	15,000-19,000

2014 ELK HARVEST STATS

UNIT	SEASON	BULL	COW	CALF	TOTAL HARVEST	TOTAL HUNTER	SUCCESS %		
							LAST YR	3 YR	5 YR
41	Archery	24	22	0	46	359	13	16	15
	Muzzle	18	73	0	91	313	29	22	19
	Early	0	57	0	57	216	26	31	34
	1st Rifle	82	52	0	134	585	23	26	24
	2nd Rifle	22	25	4	51	420	12	18	17
	3rd Rifle	27	17	6	50	405	12	14	14
	4th Rifle	43	4	0	47	271	17	14	13
42	Archery	112	53	3	168	889	19	18	17
	Muzzle	55	23	0	78	291	27	21	18
	Early	0	0	0	0	6	0	0	0
	1st Rifle	31	32	0	63	236	27	33	31
	2nd Rifle	191	66	12	269	1347	20	20	20
	3rd Rifle	62	97	0	159	1025	16	18	18
	4th Rifle	21	20	4	45	214	21	23	23
421	Archery	93	38	11	142	980	14	15	15
	Muzzle	37	25	0	62	286	22	15	19
	Early	0	45	4	49	187	26	40	43
	1st Rifle	47	20	8	75	465	16	22	24
	2nd Rifle	139	85	0	224	1490	15	18	17
	3rd Rifle	24	59	16	99	485	20	19	19
	4th Rifle	0	8	0	8	120	7	19	22



ROARING FORK

GMU
43, 47, 444, 471

LOCAL CPW OFFICE
Glenwood Springs
(970) 947-2920

AREA MAPS	USFS White River National Forest
AREA INFO	www.glenwoodchamber.com

GENERAL AREA INFORMATION

This area encompasses the Roaring Fork, Frying Pan and Crystal River drainages.

The lower elevations (6500') are primarily developed or agricultural.

Timberline is around 11,500' and there are 14,000' peaks in the Wilderness Areas. Be prepared for daytime highs of 75F dropping to 20F at night. Snow can exceed several feet in the higher elevations and moisture can make roads dangerous or impassible. 4WD is a necessity.

About 40% of the area is wilderness (Hunter-Fryingpan, Maroon Bells, Raggeds, Collegiate Peaks) and vehicles are not allowed.

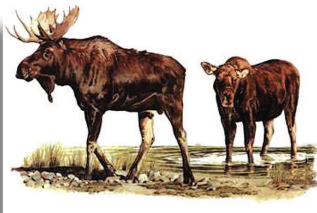
These rugged areas offer increased hunting success, but require horseback/pack-in camps. Hunting pressure is moderate.

There are large blocks of private lands in GMU 43 east of Hwy 133 & in the western part of GMU 444.

MOOSE IN AREA

BE PATIENT!

ALWAYS BE 100% SURE OF YOUR TARGET!



ROARING FORK DEER INFORMATION

This herd is concentrated in aspen and oakbrush habitats before the snow flies. Hunting pressure does not generally cause herd movement, but they will move to lower elevation woodlands as snow accumulates. Archery and muzzleloader hunters should head to timberline.

Early rifle season hunters should focus on high elevation areas around timberline, Capitol Creek, Haystack Mountain and East Snowmass Creek. Later season hunters could try “The Crown”, Holgate Mesa, Williams Hill and Light Hill, but expect to see other hunters in these areas. Some good bucks can be found if hunters focus in areas away from roads.

2014 DEER OBJECTIVES

Herd	GMUs	Buck:Doe Objective	Population Estimate	Population Objective
Basalt	444	30:100	4,080	5,300
Maroon Bells	43, 47, 471	30-35:100	6,050	7,500-8,500

2014 DEER HARVEST STATS

UNIT	SEASON	BUCK	DOE	FAWN	TOTAL HARVEST	TOTAL HUNTER	SUCCESS %		
							LAST YR	3 YR	5 YR
43	Archery	11	11	0	22	149	15	17	15
	Muzzle	64	0	0	64	152	42	30	28
	Early	10	0	0	10	13	77	54	50
	2nd Rifle	71	34	0	105	261	40	39	38
	3rd Rifle	80	14	0	94	211	45	47	51
	4th Rifle	4	0	0	4	4	100	37	39
47	Archery	4	4	0	8	34	24	12	8
	Muzzle	2	0	0	2	14	14	13	13
	Early	9	0	0	9	19	47	40	25
	2nd Rifle	12	5	0	17	34	50	31	34
	3rd Rifle	17	0	0	17	33	52	43	41
	4th Rifle	2	0	0	2	4	50	73	77
444	Archery	25	3	0	28	86	33	31	26
	Muzzle	22	8	0	30	71	42	47	41
	Early	0	0	0	0	1	0	40	33
	2nd Rifle	115	45	8	168	313	54	46	44
	3rd Rifle	75	15	3	93	188	49	49	48
	4th Rifle	21	0	0	21	21	100	74	78
471	Archery	0	4	0	4	23	17	13	8
	Muzzle	2	0	0	2	7	29	21	17
	Early	9	0	0	9	18	50	58	46
	2nd Rifle	7	0	0	7	10	70	24	13
	3rd Rifle	0	0	0	0	5	0	30	24

ROARING FORK

ELK INFORMATION

Early seasons find elk anywhere from 7500' to above timberline. With increased hunting pressure and snow, herds tend to move to remote areas or private lands - away from roads and hunters. The wilderness areas are a good bet for success but hunters must hike or horseback as motorized travel is prohibited. Try Snowmass Creek, Conundrum Creek, Capitol Creek, Avalanche Creek, Difficult Creek, McFarland Creek, Maroon Creek, Thompson Creek, Basalt Mountain, Four-mile, the Marble area, and the upper Frying Pan drainages. Kobey Park and Sloans Peak are good but deep snow and bad roads should be expected, especially later in the seasons.

2014 ELK OBJECTIVES

Herd	GMUs	Bull:Cow Objective	Population Estimate	Population Objective
Avalanche Creek	43, 471	17-27:100	5,400	3,600-5,400
Frying Pan River	44, 45, 47, 444	18-30:100	8,500	5,500-8,500

2014 ELK HARVEST STATS

UNIT	SEASON	BULL	COW	CALF	TOTAL HARVEST	TOTAL HUNTER	SUCCESS %		
							LAST YR	3 YR	5 YR
43	Archery	35	15	0	50	638	8	12	11
	Muzzle	31	0	0	31	217	14	17	18
	Early	0	48	18	66	139	47	46	49
	1st Rifle	20	38	7	65	362	18	21	24
	2nd Rifle	33	12	12	57	758	8	15	17
	3rd Rifle	58	39	0	97	505	19	19	22
47	4th Rifle	12	26	7	45	171	26	26	26
	Archery	20	0	0	20	269	7	9	8
	Muzzle	4	4	0	8	52	15	12	14
	Early	0	37	0	37	58	64	55	55
	1st Rifle	6	8	0	14	81	17	15	15
	2nd Rifle	49	21	3	73	317	23	15	16
444	3rd Rifle	19	11	0	30	234	13	16	19
	4th Rifle	2	17	3	22	67	33	28	27
	Archery	15	3	0	18	299	6	7	8
	Muzzle	7	0	0	7	129	5	13	14
	Early	0	89	0	89	259	34	39	39
	1st Rifle	23	0	0	23	141	16	22	24
471	2nd Rifle	37	16	8	61	621	10	15	15
	3rd Rifle	27	9	0	36	397	9	12	13
	4th Rifle	7	9	3	19	157	12	13	16
	Archery	4	3	0	7	132	5	9	8
	Muzzle	0	0	0	0	15	0	10	7
	Early	0	3	0	3	6	50	55	41
471	1st Rifle	0	0	0	0	40	0	9	13
	2nd Rifle	7	7	0	14	82	17	21	25
	3rd Rifle	0	2	1	3	29	10	18	19
	4th Rifle	0	5	0	5	28	18	16	19

PRONGHORN

PRONGHORN INFORMATION

Northwest Colorado offers good pronghorn hunting opportunities. Hunter success varies by GMU. Hunter success is typically higher on private land, but public land pronghorn can still be found. The pronghorn season in GMUs 41, 62, and 411 is closed (new this year) to manage the population.

2014 PRONGHORN OBJECTIVES

Herd	GMUs	Buck:Doer Objective	Population Estimate	Population Objective
North Park	6,16,17,161,171	30-40:100	1,600	1,500-1,600
Great Divide	3,4,5,13,14,214,301,441	55:100	12,370	15,800
Maybell	11	40:100	1,250	1,400
Sand Wash	1,2,201	68:100	3,200	3,200
Axial Basin	12,23,211	35:100	330	300
Middle Park	18,27,28,37,181,371	40:100	780	630

2014 PRONGHORN STATS

UNIT	SEASON	BUCK	DOE	FAWN	TOTAL HARVEST	TOTAL HUNTERS	SUCCESS %		
							LAST YR	3 YR	5 YR
2	Rifle	14	0	0	14	23	61	72	75
3	Rifle	334	129	8	471	560	84	81	81
4	Rifle	65	74	4	143	165	87	74	76
5	Rifle	2	0	2	4	11	36	32	44
6	Rifle	12	2	0	14	14	100	97	93
11	Rifle	88	37	9	134	175	77	82	86
12	Rifle	2	1	0	3	4	75	74	66
13	Rifle	37	30	8	75	107	70	66	71
16	Rifle	10	0	0	10	14	71	67	67
17	Rifle	13	4	0	17	20	85	75	68
18	Rifle	27	13	0	40	57	70	67	64
23	Rifle	0	11	0	11	24	46	56	57
27	Rifle	3	7	0	10	32	31	38	43
37	Rifle	0	3	0	3	3	100	64	56
131	Rifle	0	3	2	5	5	100	68	70
161	Rifle	13	2	2	17	19	89	92	94
171	Rifle	3	0	0	3	7	43	33	47
181	Rifle	3	13	10	26	40	65	57	59
201	Rifle	16	16	4	36	40	90	86	82
211	Rifle	6	7	0	13	17	76	67	66
214	Rifle	4	9	0	13	28	46	57	59
301	Rifle	121	31	13	165	217	76	73	76
441	Rifle	14	0	0	14	27	52	61	67

MOOSE

MOOSE INFORMATION

Northwest Colorado's moose population is thriving since moose were first re-introduced by the CPW into North Park in 1978. Recent introductions of moose include Grand Mesa (2005) and Flattops Wilderness Area (2009).

The introduction of moose into the Flattops also began in 2009 with the release of 20 moose transplanted from an overpopulated unit in Utah. Future transplants into the Flattops will continue to increase viewing and hunting opportunity.



Big game hunters in all areas in northwest Colorado are reminded to be sure of their target.

The accidental kill of moose by elk hunters is a threat to these new populations.

In cooperation with Colorado chapters of Safari Club International, an extensive education campaign is being conducted to alert hunters to these new populations.

MOOSE

2014 MOOSE OBJECTIVES

Herd	GMUs	Bull:Cow Objective	Population Estimate	Population Objective
North Park	6, 16, 17, 161, 171	60-70:100	590	500-600
Gore	14,18, 28, 36, 37, 181, 371	65:100	390	190
Grand Mesa (N)	41, 42, 43, 52, 411, 421, 521	55-65:100	410	300-400
White River	12, 23, 24	(undeter.)	150	100-200

2014 MOOSE HARVEST STATS

UNIT	SEASON	BULL	COW	BULL HUNTERS	COW HUNTERS	SUCCESS %	
						BULL	COW
6	All	14	20	14	22	100	91
14	All	3	2	3	3	100	67
15	All	0	1	0	2	0	50
16	All	5	1	5	3	100	33
17	All	5	9	5	10	100	90
18	All	15	12	13	15	115	80
23	All	0	0	0	1	0	0
24	All	2	0	2	1	100	0
27	All	3	0	3	1	100	0
28	All	10	6	10	8	100	75
36	All	2	0	2	0	100	0
37	All	1	2	1	2	100	100
41	All	0	0	3	1	0	0
161	All	5	1	5	3	100	33
171	All	8	11	9	16	89	69
181	All	2	0	2	0	100	0
201	All	0	0	1	0	0	0
371	All	1	1	2	1	50	100
421	All	3	6	6	10	50	60

BLACK BEAR

Black bear hunting opportunities are abundant in northwest Colorado. A constitutional amendment passed by voters in Colorado eliminated the spring hunting of bears and prohibits the use of hounds or bait in bear hunting. Bear hunters should be familiar with the regulations regarding the take of bear in Colorado.

September bear season - Hunters can apply for a September bear rifle license in the annual big game draw. These either sex licenses are limited and only available through the draw - rarely as leftovers. These licenses are open to all legal methods of take, meaning the holder can choose to hunt with archery equipment or muzzleloader during this season.

Over-the-counter with caps - Archery, muzzleloader and some rifle bear licenses are sold over-the-counter on a first-come, first-served basis beginning in July. These licenses require that the holder also possesses a valid deer or elk license for the area and season that the hunter will be hunting bear.

2014 BEAR HARVEST STATS

Bear harvest stats are reported differently than other big game species. Because bears are relatively reclusive and fewer in number statewide than deer or elk, estimating populations at the local level is problematic. It is estimated that Colorado has between 16,000 and 18,000 black bears statewide. Success rates for bear hunters tend to be lower than other big game animals, and requires the issuance of a large number of licenses to achieve a relatively small harvest.

Population	GMUs	Licenses Issued	Boar Harvest	Sow Harvest	Total Harvest	Success %
B-1	21, 22, 30, 31, 32	1128	74	71	145	13
B-4	4, 5, 6, 14, 16, 17, 161, 171, 214, 441	1250	28	26	54	4
B-10	12, 13, 23, 24, 25, 26, 33, 34, 131, 231	1731	62	42	104	6
B-11	35, 36, 361, 43, 44, 45, 47, 444, 471	1512	43	49	92	6
B-15	1, 2, 3, 10, 11, 201, 211, 301	207	10	6	16	8
B-16	15, 18, 27, 28, 37, 181, 371	362	20	13	33	9
B-17	41, 421, 52, 411, 521, 53, 63	3069	166	130	296	10

GUN RANGES IN THE NW REGION

Basalt State Wildlife Area Shooting Range

Basalt

Colorado Parks and Wildlife, Glenwood Springs Office

970 - 947-2920

The range is located in the Christine unit of the Basalt SWA. Take Highway 82 to Two Rivers Road, turn on to Homestead Drive and then turn into the Basalt SWA entrance that is on the west end of Homestead Drive. There is a large green/white CPW sign at the bottom of the hill on the road up to the shooting range.

Public pistol range, 100 yard rifle and shotgun ranges. Open weekdays 7 a.m. to 7 p.m. and weekends 9 a.m. to 7 p.m. year 'round. Fully automatic firearms are prohibited. Not including muzzleloader and shotgun, rifles on the range must be .50 caliber or lower. For a fee, the Roaring Fork Valley Sportsman's Association offers trap and skeet shooting on Wednesday evenings and weekends from noon to 5 p.m. The range is otherwise unsupervised.

Note: Beginning December 1, 2010, the range will close at 5 p.m. on Saturdays and Sundays until further notice.

Bears Ears Sportsman Club

P.O. Box 622, Craig

970-824-8376

300-yard rifle and handgun range for members. Open to the public the first Sunday/Monday of each month. Also open during daylight hour, the Thursday and Friday prior to each big game season for hunter sight-in. For more information, pick up brochures at the Craig Sportsman's Center.

Byers Canyon Rifle Range

Hot Sulphur Springs

970-725-6200

Colorado Parks and Wildlife - Hot Sulphur Springs Office. This range is closed during winter months to provide winter forage to big game. This closure is generally in effect beginning the first week in January. The range will remain closed until deer move toward higher ground in the spring, which typically occurs in early April.

Open daily, sunrise to sunset (except as noted, above). Five centerfire rifle 25-, 100-, and 200 yard ranges, one rimfire (.22 cal) rifle range, shotgun (hand traps only – not provided), and one handgun range provided. Range also has straw bales for archery. One rifle range has wheel chair access to 25/100-yard target range. Paper targets only (exception for clay birds for shotgun, and targets for archery). No bowling pins or other breakables allowed on range. Unsupervised range! Eye and ear protection mandatory. Portable toilet and trash dumpster on site.

GUN RANGES

Castle Peak Gun Club **P.O. Box 319, Gypsum**

Open prior to hunting season for hunter sight-in. Range visible from I-70; north-side of the Interstate, west of the interchange.

Glenwood Springs Gun Club **Glenwood Springs** **970-945-7401**

Public welcome to shoot when range is open. Sporting clays, trap, black powder, rifle and pistol ranges up to 200 yards. Hunter education courses are available also.

Grand Junction BLM Public Shooting Ranges

North of Grand Junction **Bureau of Land Management (BLM), Grand Junction Field Office** **970 -244-3000**

From Grand Junction, take Horizon Drive northeast to H Road; west on H Road approximately 1.25 miles to 27¼ Road; north on 27¼ Road 5 miles to the rifle range or 5.8 miles to the pistol range. Open to the public year-round; no supervision provided. The rifle range has a sheltered firing line with 25 stations and 8 benches with range distances from 50 to 500 yards. The pistol range has 4 benches with range distances up to 150 yards. There is no trash service—shooters are responsible for removing their own brass, shell casings, targets and trash. Please be aware of other users of these public lands such as hikers, horseback riders, and OHV operators.

East of Grand Junction **Bureau of Land Management (BLM), Grand Junction Field Office** **970 -244-3000**

(Acquire a map of this shooting area at the Grand Junction BLM office.)

Shooting area is located on East Orchard Mesa. To reach the shooting area, travel east on C Road past 34 Road.

This public land shooting area is open to the public year around. There are several no-shoot zones to protect nearby residences, nearby FAA communication equipment and a power sub-station. It is a federal offense to shoot in or through these areas. Do not shoot across a road or trail. Establish a safe shooting location with a good backstop down range. Users are responsible for removing all targets, shells, brass and trash. No glass targets.

GUN RANGES

Grand Junction Trap and Skeet Club, Inc.

116 32 Rd., Grand Junction

970-245-0780

Public and league trap and skeet shooting.

Grand Mesa Bowmen

PO Box 752, Grand Junction

970-244-2977

Bowhunting club with 42 outdoor targets near Colorado National Monument. Family memberships are \$36 per year.

Hayden Shooting Range

2 miles south of Hayden

Colorado Parks and Wildlife, Steamboat Springs Office

970-870-2197

100-, 200- and 300-yard rifle and pistol range is open to the public 7 days a week from dawn until dusk.

Meeker Sportsman's Club

4.5 miles southwest of Meeker on Colorado Highway 13

Hunter sight-in Thursdays and Fridays prior to each big game season. Look for more information on flyers around town. Public is welcome to shoot in other organized events. Memberships are \$20 per family and include full use of range, including archery, trap, rifle and pistol ranges. Write for more information.

Plateau Creek State Wildlife Area

West of Collbran

Colorado Parks and Wildlife, Grand Junction Office

970-255-6100

From Grand Junction, take I-70 east to Highway 65 (Exit 49), then 8 miles east to Highway 330, then about 7.5 miles east to county road V, then north .25 mile to the range. The range, operated by Colorado Parks and Wildlife, is open year 'round during daylight hours. There are four adjustable shooting benches with 50, 100, 200, and 300 yard ranges. There is no trash service; shooters are asked to remove all trash, targets, and brass after use. The county road leading to this range can be impassable in wet weather.

GUN RANGES

Red Rock Archery
3193 Hill Ave., Grand Junction
970-241-2697

Open to the public. 20 and 30 yard indoor archery range, 3D shoots on Tuesdays and Thursdays and DART Video Target System

West Rifle Creek State Wildlife Area
North of Rifle
970-255-6100

Colorado Parks and Wildlife, Grand Junction Office Range distance: 200 yards. Small bore rifle, large bore rifle, pistol, and shotgun are allowed. Range is open to the public year round; no supervision provided. No trash service; shooters are responsible for removing trash including brass, shell casings, and targets. Directions: From Rifle, take Highway 13 north to Highway 325, then north on 325 to Rifle Gap Reservoir. At the dam turn west on CR 252 and travel approximately 2 miles; shooting range is on a dirt road off to the left just before reaching the intersection with CR 210.

Rifle Sportsmen's Club
West of Rifle
970-876-2133

Range is located north of the US Forest Service office on Fravert Road. Public can access the range during sight-in days two days prior to each of the big game seasons, except 4th season when range is open to the public on Friday only. Cost is \$5 per gun during sight-in days. Targets at 25, 100, 200 and 300 yards; gongs at 100-500 yards. Annual membership can be purchased for \$50/yr. Membership includes access to large and small bore range, long distance range, pistol range, archery targets, action pistol and trap/skeet/five-stand range. Hunter safety and concealed carry classes available.

Routt County Rifle & Pistol Club
P.O. Box 3116, Steamboat Springs
970-870-0298

Call for dates and times that the club is open to the public. Facilities include trap, skeet, sporting clays, indoor .22, outdoor pistol, 25-, 50-, 100- and 200-yard rifle ranges.

GUN RANGES

Summit County Public Shooting Range

**639 County Rd 66
Dillon, CO 80435
www.summitrange.org**

There are limited facilities at range. There is now a porta-potty, but there is no running water or electricity. Take note before planning your day at the range.

The ground beneath the range is compacted recycled asphalt. Driving a target stand into the ground is not advised as it may damage the surface. Self-supporting stands with sandbags are one useful method of creating a target stand. Try making a 2x4 stand and drill holes in the stand for your stake-equipped targets.

Vail Rod & Gun Club, Ltd.

**001 Sporting Clay Way, Wolcott
970-926-3472**

Open to the public for sporting clays during summer months. In fall, archery, pistol and 100 yard rifle range open to the public.

Walden Public Shooting Area

**East of Walden
970-723-4625**

Take Jackson CR 12E east out of Walden. Go four miles. Shooting range is on the north side of the road and is marked with a white sign displaying the range rules and small CPW and BLM emblems.

Open to the public year-round; no supervision provided. The range has benches with range distances from 50 to 300 yards. There is no trash service—shooters are responsible for removing their own brass, shell casings, targets and trash. Please be aware of other users of these public lands such as hikers, horseback riders, and OHV operators.

White River Bowmen

**Post Office Box 32, Rangely
970-675-8559**

Bowhunting club with 14 outdoor targets and clubhouse. Memberships \$30 per year.



LAND MANAGEMENT AGENCIES

Bureau of Land Management BLM www.co.blm.gov/offices.htm	Grand Junction Field Office 2815 H Road		(970) 244-3000
	Glenwood Springs Field Office (Silt) 2300 River Frontage Road		(970) 876-9000
	White River Field Office (Meeker) 220 E. Market Street		(970) 878-3800
	Little Snake Field Office (Craig) 455 Emerson Street		(970) 826-5000
	Kremmling Field Office 2103 East Park Avenue		(970) 724-3000
United States Forest Service USFS www.fs.usda.gov/whiteriver www.fs.usda.gov/gmug www.fs.usda.gov/mbr	White River National Forest	Blanco RD (Meeker) 220 E. Market Street	(970) 878-4039
		Rifle RD (Rifle) 0094 County Rd 244	(970) 625-2371
		Aspen RD (Carbondale) 620 Main St.	(970) 925-3445
		Eagle RD (Eagle) 125 West 5th St.	(970) 328-6388
		Holy Cross RD (Minturn) 24747 Hwy 24	(970) 827-5715
		Dillon RD (Silverthorne) 680 Blue River Pkwy	(970) 468-5400
	Grand Mesa, Uncompahgre & Gunnison National Forest 2250 Hwy 50, Delta (970) 874-6600	Grand Valley RD (Grand Junction) 2777 Crossroads Blvd #1	(970) 242-8211
		Other Grand Mesa, Uncompahgre, & Gunnison National Forest Ranger Districts are located in the CPW's SW Region, see <i>Big Game Hunting in SW Colorado</i> booklet.	
	Routt & Medicine Bow National Forest 2468 Jackson St. Laramie WY (307) 745-2300	Hahns Peak/Bears Ears (Steamboat Springs) 925 Weiss Dr	(970) 870-2299
		Parks RD (Walden) 100 Main Street	(970) 723-2700
		Yampa RD (Yampa) 300 Roselawn Ave	(970) 638-4516
	Arapaho National Forest	Sulphur RD (Granby) 9 Ten Mile Drive	(970) 887-4100

GENERAL VISITORS INFORMATION

State Parks Reservations www.cpw.state.co.us Reservations (800) 678-2267 General Info (970) 255-6100	Colorado Tourism Board www.colorado.com (800) COLORADO 800-265-6723
US National Park Service www.nps.gov	Campground and cabin info www.coloradodirectory.com

ROADS AND WEATHER

Colorado Dept. of Transportation www.cotrip.org Toll free (877) 315-ROAD	www.crh.noaa.gov/gjt/ www.weather.com
--	--

MAPS

TOPO Maps US Geological Survey http://topomaps.usgs.gov (800) 435-7627	BLM Maps www.co.blm.gov (303) 239-3600
	US Forest Service Maps www.nationalforeststore.com (303) 275-5350

GUIDE AND OUTFITTER INFORMATION

For a lisregistered guides and outfitters CO Dept of Regulatory Agencies www.dora.state.co.us/outfitters (303) 894-7778	Colorado Outfitters Association www.coloradooutfitters.org P.O. Box 10 Silt, CO 81652 (970) 824-2468
--	--

IMPORTANT - If you are hunting or fishing on BLM or U.S. Forest Service public lands, make sure your outfitter is permitted for that activity in that area. Check with your local BLM or Forest Service office before you book a trip.

BE SAFE AND RETURN TO YOUR FAMILY

This is a basic, preliminary list of survival tips, suggestions and equipment. There are many survival guides and manuals that provide much more detailed information. ***Be sure to pick one up, and read it.***

REMEMBER THESE TIPS

- Always tell someone where you are going and when you will return.
- Always stick to your plan, stay put if you become lost or stranded.
- Always take someone with you - avoid going out alone.
- You must have shelter each night.
- The ability to build a fire is paramount.
- Signaling, like everything else in survival, is not a spur-of-the-moment thing and you must prepare for it so that it is ready when you need it.
- You must have a way to find, purify and drink water
- Dress for weather but remember it can change *suddenly and drastically!*

BASIC SURVIVAL KIT

SHELTER PACKAGE:

- 1 GOLD AND 1 SILVER EMERGENCY BLANKETS (SPACE BLANKETS)
- 1 SHEET PLASTIC, 3 MIL., 6 FOOT BY 6 FOOT
- 50 FEET PARACHUTE CORD
- ELECTRICIAN'S TAPE, MUST BE COLD RESISTANT

FIRE PACKAGE:

- 2 CONTAINERS OF MATCHES, STRIKE ANYWHERE TYPE, IN WATERPROOF CONTAINERS
- MAGNESIUM FIRESTARTING TOOL[®] OR METAL MATCH[®]
- COTTON BALLS IMPREGNATED WITH PETROLEUM JELLY
- 1 CANDLE

SIGNAL PACKAGE:

- 1 GLASS 'G.I.'-TYPE SIGNAL MIRROR (EVEN AN OLD CD MAY WORK)
- 1 PLASTIC WHISTLE
- 1 DAYLIGHT FLUORESCENT ORANGE CLOTH SIGNAL PANEL, 3 FOOT BY 3 FOOT

ADDITIONAL SUPPLIES:

- FIRST-AID KIT THAT ADDRESSES WILDERNESS EMERGENCIES.
- A GOOD KNIFE—THIS IS YOUR MOST IMPORTANT SURVIVAL TOOL.
- RAIN GEAR—PONCHO PREFERRED.
- BACKPACK HYDRATION SYSTEM OR CANTEEN, AND WATER PURIFICATION TABLETS.
- HIGH ENERGY, LIGHTWEIGHT FOOD BARS AND SNACKS.
- A CELL-PHONE WITH A CHARGED BATTERY - YOU *MIGHT* HAVE CELL COVERAGE

CHRONIC WASTING DISEASE

Chronic wasting disease (CWD) is a neurological disease that can be found in some deer, elk and moose, and is fatal to these animals. The disease has been found throughout northern Colorado, and in a number of other states and provinces. If you have questions about CWD and public health, contact the Colorado Department of Public Health and Environment at (303) 692-2700.

PRECAUTIONS

- Do not shoot, handle or consume any animal that appears sick.
- Wear disposable rubber gloves when field dressing and processing animals.
- Bone out the meat from your animal.
- Minimize the handling of brain, spinal tissues, and viscera.
- Wash hands and instruments thoroughly after field dressing is completed.
- Avoid consuming brain, spinal cord, eyes, spleen, tonsils, pancreas and lymph nodes of harvested animals. Normal field dressing, coupled with boning out a carcass, will remove most, if not all, of these body parts.
- Do not consume meat from animals known to be infected with CWD.
- Knives, saws and cutting table surfaces can be disinfected by soaking in a solution of 50 percent unscented household bleach and 50 percent water for an hour. Afterward, rinse thoroughly and allow them to air dry.
- Submit harvested animals for testing at a CPW-CWD testing station



HABITAT PARTNERSHIP PROGRAM



The Habitat Partnership Program is a unique collaboration between sportsmen, landowners and land management agencies, including the BLM, employees of the U.S. Forest Service, and Colorado Parks and Wildlife.

The Habitat Partnership Program's purpose is to reduce conflicts and losses to ranchers and farmers caused by big game.

One way HPP does this is by developing more and better habitat on both public and private lands. Nearly 3/4 of HPP's funds are spent on habitat improvements each year.

Five percent of revenue generated by the sale of hunting licenses fund HPP projects throughout Colorado. This money (over \$2 million dollars annually) is matched with other people's money and time. This allows HPP to get more done at a lower cost for everyone.

By reducing landowner losses, HPP is helping increase a tolerance for big game animals on private property. Simply put, if HPP didn't exist, hunters could not enjoy the enormous hunting opportunities that they have today. Habitat conditions would be poorer than they are now and landowners and sportsmen wouldn't have the good relationships they do now.

HUNTERS, THANK YOU FOR YOUR SUPPORT!

FOR MORE INFORMATION, GO TO

www.bit.ly/hppprogram



This book is intended to provide a general overview of big game hunting in Northwest Colorado, and should not be considered a legal document. Despite our best efforts, some errors may exist or information can become outdated. Call your local Colorado Parks and Wildlife office with questions or further details.

For specific details on regulations, restrictions, licenses and applications, please refer to the current Colorado Big Game brochure, or for a full legal document, you can view general and big game regulations on our web site at cpw.state.co.us



Colorado Parks and Wildlife is an enterprise agency, relying primarily on license sales, state parks fees and registration fees to support its operations, including: 42 state parks and more than 350 wildlife areas covering approximately 900,000 acres, management of fishing and hunting, wildlife watching, camping, motorized and non-motorized trails, boating and outdoor education. CPW's work contributes approximately \$6 billion in total economic impact annually throughout Colorado.



POACHERS STEAL FROM EVERYONE
REPORT POACHING OR SUSPICIOUS ACTIVITY

CALL 1-877-COLO OGT (265-6648)

Verizon Cellular Users
#OGT

Questions or Suggestions?
Mike Porras - NW Region Public Information Officer
(970) 255-6162
mike.porras@state.co.us