

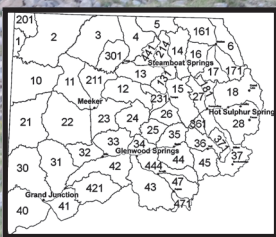
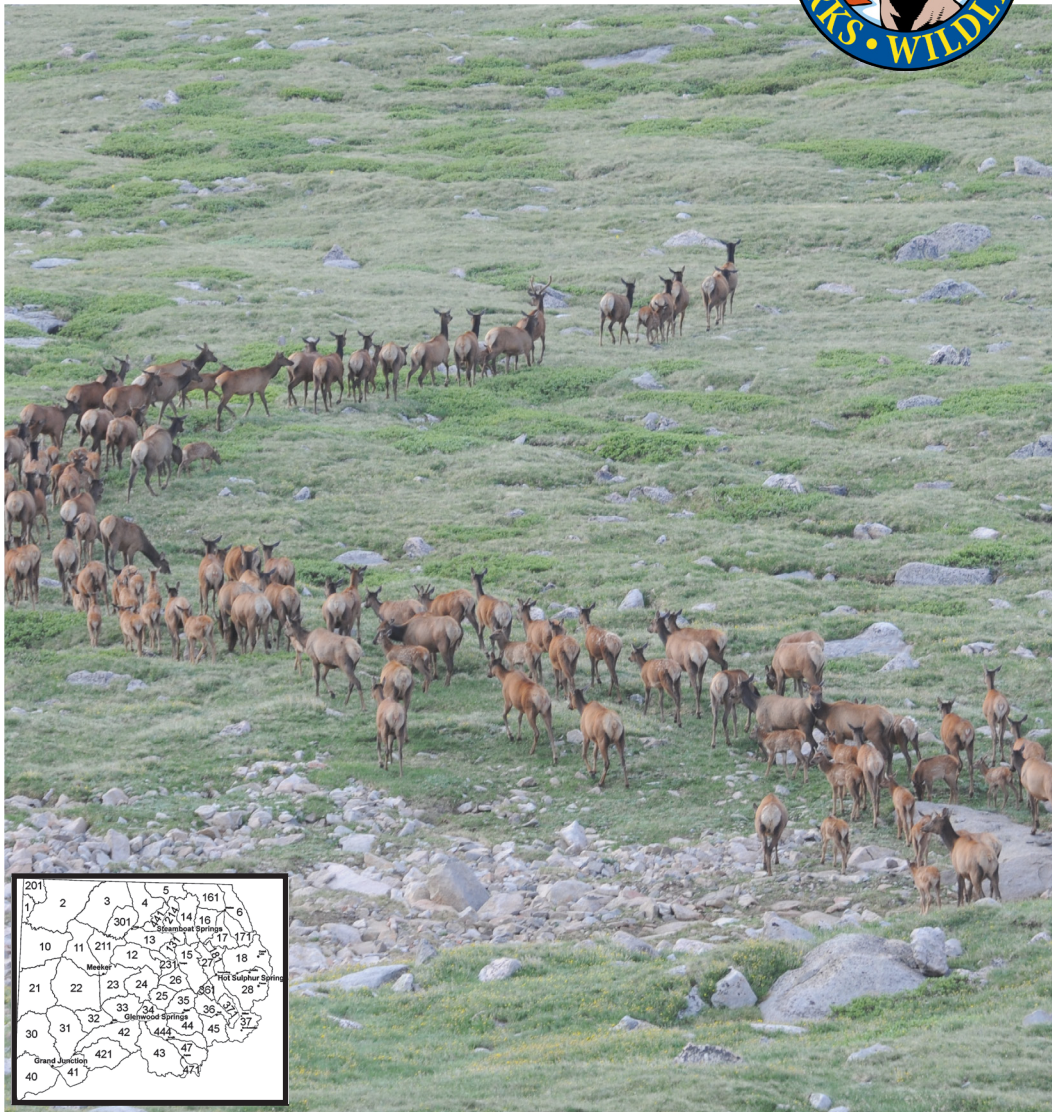
COLORADO

Big Game Hunt Guide

Northwest Region



HUNT GUIDE: 2014-2015 MULE DEER ELK MOOSE PRONGHORN BEAR



INCLUDES:

Harvest Stats by GMU - Hunter Success Rates by GMU - Game Sex/Age Ratios by Herd
Important Phone Numbers - Shooting Range Locations - Survival Tips

CONTENTS

ANTLER POINTS & UNLIMITED ELK UNITS	2
DONATION CERTIFICATE	3
ATV & OHV INFORMATION	4
ELK VS. MOOSE INFO	5
USING STATISTICS TO HELP YOUR HUNT	6
ELK AND MULE DEER HARVEST STATS & POPULATION OBJECTIVES	
Green River	7
Lower Yampa	11
Upper Yampa	14
North Park	19
Bookcliffs/Piceance	22
White River	27
Eagle River Valley	32
Middle Park	35
Glade Park	39
Grand Mesa	42
Roaring Fork	45
PRONGHORN, MOOSE AND BEAR HARVEST STATS AND POPULATION OBJECTIVES	
Pronghorn	48
Moose	49
Black Bear	51
LOCAL GUN RANGES	52
MANAGEMENT AGENCIES PHONE LISTINGS & INFORMATION	57
GENERAL VISITORS INFORMATION	58
SURVIVAL TIPS	59
CAMPING IN BEAR COUNTRY	60
HABITAT PARTNERSHIP PROGRAM	61

Questions or Suggestions?

Mike Porras - NW Region Public Information Officer

(970) 255-6162

mike.porras@state.co.us

IMPORTANT INFO FOR THE NORTHWEST - 2014

See the 2014 Big Game Brochure or cpw.state.co.us for additional information!

IMPORTANT CHANGES

See the 2014 Colorado Big Game Hunting Guide for Details

Non-Residents get a bonus annual fishing license

All nonresidents who purchase a big game license in Colorado will now receive a combination big game license/fishing license, good until March 31, 2015.

Drone Use Illegal

The use of unmanned, remote control aircraft to look for wildlife or aid in hunting is now illegal.

Mule deer

Youth hunts added - Youth-only muzzleloader and rifle hunts for antlerless mule deer have been added to GMUs 43, 47 and 471.

Moose

Successful moose populations mean numerous new hunts are available around the state. In the NW, cow hunts are now available in GMUs 15 and 27 and bull licenses are also available for the first time in 15 and 27. Also for the first time, new hunts in GMUs 1 and 201 are available.

New Auction/Raffle Dates

The new closing date for the mule deer season auction and raffle licenses is the end of November, or the end of the last antlered or either-sex season in a unit, whichever comes later.

Ammunition Restrictions

In state lands and State Wildlife Areas, a regulation prohibits the possession of the following ammunition and/or firearms: tracer rounds, armor piercing rounds, military hardened round with explosive or radioactive substances, .50 caliber BMG rounds or fully automatic firearms.

MAPS

WWW.HUNTDATA.COM

COLORADOHUNTINGMAPS.COM

ANTLER POINT RESTRICTIONS

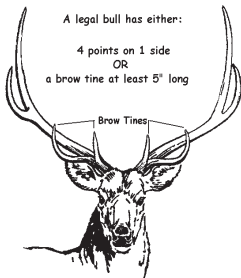
Mule deer



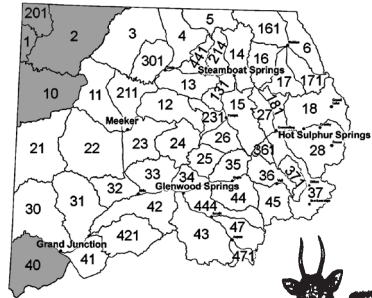
Spike Buck (at least 5")

All buck (antlered) mule deer harvested in northwest Colorado must have at least one 5" spike.

ELK



Legal bulls in white units must have at least one brow tine that is at least 5 inches



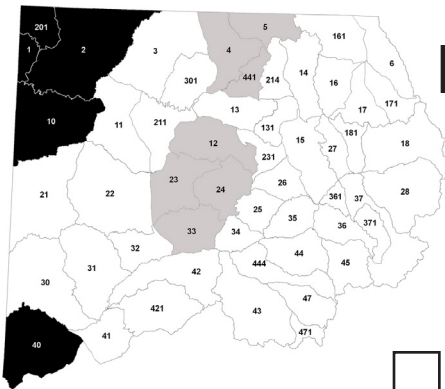
Legal bull in shaded limited units must have at least a 5 inch spike on one side.



UNLIMITED BULL ELK LICENSES

Over the counter bull elk licenses are available to non-resident and resident hunters in northwest Colorado.

The map below shows where these licenses are valid.

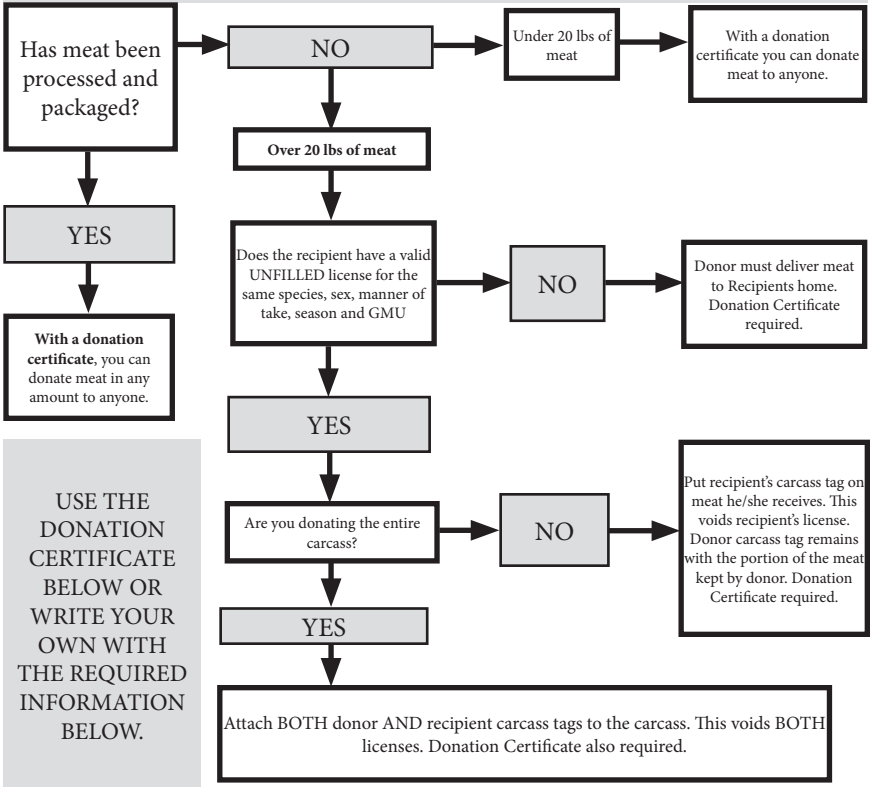


LIMITED UNITS - Draw Only
You may NOT hunt in these areas with an over-the-counter license

ARCHERY RESTRICTION
Rifle hunters may hunt in these areas with an over-the-counter license, however archery over-the-counter license holders may only hunt on private land in these units.

UNLIMITED UNITS
Hunters with an unlimited bull elk license (archery or rifle) may hunt in these units. Remember: You must still have permission to hunt private land.

DONATING GAME MEAT



USE THE DONATION CERTIFICATE BELOW OR WRITE YOUR OWN WITH THE REQUIRED INFORMATION BELOW.

STATE OF COLORADO

GAME DONATION CERTIFICATE

Date: _____

Donor name _____

Donor Address _____

Recipient name _____

Recipient Address _____

Kind of game donated _____

Number/Weight of donation _____

The above mentioned game and/or fish was legally taken on (date): _____

using hunting license # _____

Signature Recipient _____

Signature Donor _____

Make two copies - one for donor, one for recipient

ATV and OHV

Colorado law allows local and state law enforcement officers to write citations for off-highway vehicle (OHV) users who are violating federal travel rules. This means that wildlife officers can write tickets to OHV users who are riding in closed areas or designated wilderness areas. As a rider, it's your responsibility to know the roads, trails and areas where you legally can ride.

Users riding in an OHV in a closed area face fines of \$100 dollars. If the violation takes place while hunting, fishing or trapping, the user will be penalized 10 points against hunting and fishing privileges. Violations in federal wilderness areas are \$200 fines and 15 points.

Users riding an OHV on public lands should consult with the appropriate land management agency to obtain information about travel management. Once you have determined your hunting area, contact the local office of the US Forest Service (USFS) or the Bureau of Land Management (BLM) to obtain a travel map.



In Colorado, We Stay The Trail
STAYTHETRAIL.ORG

The Colorado OHV Registration Program fees fund trail maintenance, construction, trail heads, parking areas, trail signs, maps, and land acquisition. It also enables law enforcement personnel to identify and return stolen vehicles, encourages safe and responsible OHV use, and promotes respect for public lands

Out-of-state residents who bring OHVs into Colorado must purchase a Colorado Non-Resident OHV permit which is valid from the date of purchase through the following March 31. These permits can be purchased anywhere you get your hunting/fishing licenses in Colorado, via mail-in request, or you can order one online at the Colorado Parks and Wildlife E-Store.

Once purchased, this sticker should be placed on the vehicle's outside face of the right front fender or fork. Since this is only a use permit, no renewal notice will be sent to non-resident permit holders; you must purchase a new permit each year you come to Colorado with your OHV.

For more information about OHVs from Colorado Parks and Wildlife go to:

www.cpw.state.co.us/thingstodo/Pages/OHVs.aspx

ATTENTION HUNTERS

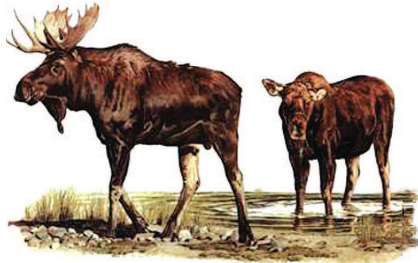
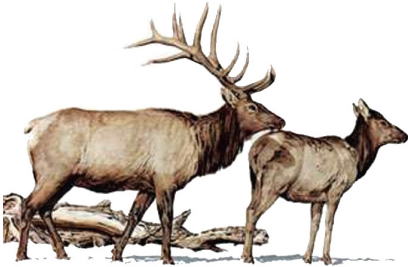
Moose populations are growing in Colorado and can often be found in elk habitat throughout northwest Colorado.

BE PATIENT AND USE GOOD OPTICS!

STUDY THE ENTIRE ANIMAL!

BE 100% SURE OF YOUR TARGET BEFORE YOU SHOOT!

SAFE HUNTING IS NO ACCIDENT!



ELK CHARACTERISTICS

- Branched antlers
- Light tan coat, brown head
- Often travel in larger herds
- Slender snout
- Spook easily

MOOSE CHARACTERISTICS

- Palmated antlers
- Dark brown or black body
- Bell on throat
- Bulbous snout
- Travel alone, in pairs or in small groups
- Do not spook easily
- Will attack if threatened

**If you mistakenly kill a moose, dress it immediately.
As soon as possible, notify a wildlife officer.**

The fines for illegally killing, then abandoning a moose starts at \$1,370 on up to \$25,000 and can include felony charges, the permanent loss of hunting privileges and prison!

**REPORT POACHING OR SUSPICIOUS ACTIVITY TO
OPERATION GAME THIEF
1-877-COLO OGT (265-6648)**



UNDERSTANDING HARVEST STATS & HERD RATIOS

Ever see a baseball player with a .125 batting average hit a home run? Ever see a 'can't miss' stock take a plunge? Ever hunt a unit with a 100% success rate and not see any Mule deer? If you're nodding your head to any of these scenarios then you're one of the people who knows that statistics are a good guide, but they aren't a guarantee. So, here's a guide to help make sense of these stats.

AGE & SEX RATIOS				
Herd	GMUs	Adult Male:Female Objective	Population Estimate	Population Objective
A	B	C	D	E

A - Herd Name - A herd is generally defined as the area where a group of animals spends the entire year. A herd area includes winter range, transition range, migratory corridors, fawning and calving areas and summer range.

B - Game Management Units - geographic areas within a herd area. Herds may use many GMUs or a single GMU. Because herd areas and the booklet chapters don't always overlap cleanly on a map, you may see that an area in this booklet may have multiple herds or herds may be split by multiple areas in the booklet.

C - Adult Male:Female Objective - The ratio of male animals to female animals that CPW is trying to obtain. This is the goal that optimizes the herd as a quality herd (producing more 'trophy' type bucks and bulls), an opportunity herd (producing more hunting opportunity) or something in between.

D - Population Estimate - This is the current year estimate of the size of the herd. As it is impossible to physically count every animal, the estimate is derived through computer modeling, on-the-ground observation, harvest data and other factors.

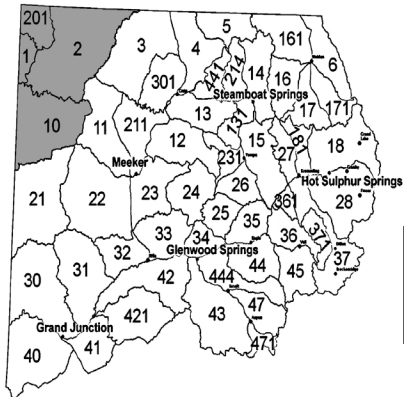
E - Population Objective - Often given as a range, this is the population that CPW is trying to achieve. This number is based on herd plans (called "DAU Plans" internally) that are developed through a public participation process. The herd objective is set to try and balance concerns of interested parties, which may range from agricultural damage to hunter preference.

Because space is limited in the booklet, we generally only include the major seasons (archery, muzzleloader and four rifle seasons). In units where early or late seasons are critical, we've tried to list those numbers. Additional harvest stats can be found on our web site at cpw.state.co.us.

When reading the harvest stats, it's important to keep in mind that the statistics are derived utilizing statistical sampling techniques. With more than 300,000 hunting licenses sold in Colorado each year, it's impossible to contact every hunter. So a statistical sample is matched with license sales data and an estimate of hunter numbers and hunter success is established.

In some smaller units you may not see any data reported for a season in which you participated. There are instances where not enough hunters respond to our survey inquiries and therefore it isn't possible to report any data.

Also keep in mind that past performance doesn't necessarily guide future success. Warm weather during the previous year may have limited harvest. Cold and snowy weather may have sent hunters home early the previous year, limiting the harvest. You may have better conditions. A forest fire or other event may have disrupted an area the last year. Don't automatically assume that poor previous results mean a unit is a bad place to hunt, and vice-versa. To compensate for some of those factors that might skew harvest dramatically higher or lower in a unit, we've added three-year and five-year hunter success average columns.



GREEN RIVER

**GMU
1, 2, 10, 201**

**LOCAL CPW OFFICE
Meeker (970) 878-6090**

AREA MAPS	BLM Canyon of Lodore BLM Rangely
AREA INFO	www.rangely.com

GENERAL AREA INFORMATION

In this area, 9,700' Diamond Mountain is the highest point, dropping to 5100' elevation at the White River. Sage and sage-grassland dominate, with the typical vegetation groups as the elevation increases.

Weather is generally mild through the later seasons, though the higher elevations can have significant snow accumulations.

Public land accounts for more than 85% of GMU 201. GMU 2 is a 'checker-board' of public and private land, and GMU 10 is mostly BLM land with a lot of scattered private land. Consult a map and be aware of where you are.

GMU 1 has poor access into the rough, rocky terrain and into the wilderness area. You must draw a license to hunt the Green River units, and it can take many years of preference points. Hence, the hunting pressure is typically light.

An agreement with a private land owner and the State Land Board opens several thousand acres in GMU 201 for public hunting access.

See the Craig Chamber of Commerce or the CPW office in Meeker for details.

Dinosaur National Park Is Closed To All Hunting.

GREEN RIVER

MULE DEER INFORMATION

Mule deer are scattered throughout GMUs 2, 10 & 201. If there is winter range migration, it is usually during 3rd season. Mule deer in GMU 1 tend to stay at the south & north ends of Brown's Park Refuge. The average good buck in GMUs 2 and 201 measures 24-26". There are trophy bucks in GMU 10, however they tend to have tall versus wide antlers. Hunt the brush-covered areas, high elevations early in the season, lower elevations later.

2013 MULE DEER OBJECTIVES

Herd	GMUs	Buck:Doe Objective	Population Estimate	Population Objective
Little Snake	1, 2, 201	15:100	1,100	13,500
Rangely	10	20:100	580	7,000

2013 MULE DEER HARVEST STATS

UNIT	SEASON	BUCK	DOE	FAWN	TOTAL HARVEST	TOTAL HUNTERS	SUCCESS %		
							LAST YR	3 YR	5 YR
1	Muzzle	1	0	0	1	1	100	100	50
	2nd Rifle	9	0	0	9	9	100	90	82
	3rd Rifle	4	0	0	4	4	100	100	100
2	Archery	1	0	0	1	2	50	78	62
	Muzzle	2	0	0	2	4	50	80	90
	2nd Rifle	14	0	0	14	17	82	88	90
	3rd Rifle	4	0	0	4	4	100	95	92
10	Archery	0	0	0	0	2	0	0	14
	2nd Rifle	18	0	0	18	18	100	84	72
	3rd Rifle	4	0	0	4	5	80	69	88
201	Archery	3	0	0	3	6	50	64	63
	Muzzle	5	0	0	5	8	63	70	66
	2nd Rifle	21	0	0	21	23	91	88	85
	3rd Rifle	9	0	0	9	16	56	81	87

GREEN RIVER

ELK INFORMATION

Big, 300 + size bulls are common. The elk tend to stay put over the seasons. Movement is weather dependent. Overall, elk are scattered in GMUs 2, 10, 201 and the northern portion of GMU 1. We recommend Blue Mountain and Moosehead Mtn in GMU 10, but be prepared for rough terrain. When hunting GMUs 2 or 201 - hold out for a good bull - the average size is around 305. In GMU 2, try the SW corner. In GMU 1, try Hoy Draw & Chokecherry Draw.

2013 ELK OBJECTIVES

Herd	GMUs	Bull:Cow Objective	Population Estimate	Population Objective
Cold Springs	2, 201	40:100	1,260	1,000
Green River	1	30:100	200	170
Rangely -Blue Mtn.	10	40:100	3,390	1,200

2013 ELK HARVEST STATS

UNIT	SEASON	BULL	COW	CALF	TOTAL HARVEST	TOTAL HUNTERS	SUCCESS %		
							LAST YR	3 YR	5 YR
1	Muzzle	1	3	0	4	7	57	26	23
	Early	5	0	0	5	8	63	54	59
	1st Rifle	2	2	0	4	7	57	36	37
	2nd Rifle	0	3	0	3	14	21	13	18
	3rd Rifle	0	11	0	11	14	79	48	34
	4th Rifle	0	1	0	1	24	4	8	31
2	Archery	7	0	0	7	7	100	81	83
	Muzzle	5	0	0	5	11	45	48	53
	Early	26	2	0	28	44	64	67	64
	1st Rifle	0	13	1	14	25	56	36	43
	2nd Rifle	0	7	0	7	21	33	33	34
	3rd Rifle	0	12	0	12	33	36	28	34
	4th Rifle	0	8	0	8	40	20	37	41
10	Archery	10	0	0	10	15	67	51	56
	Muzzle	2	2	0	4	6	67	59	62
	Early	21	59	7	87	135	64	72	72
	1st Rifle	4	11	0	15	53	28	41	46
	2nd Rifle	0	25	0	25	53	47	50	46
	3rd Rifle	0	32	2	34	67	51	43	39
	4th Rifle	0	88	12	100	216	46	44	43

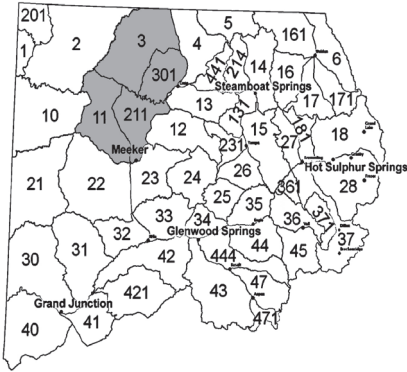
Cont. on next page

GREEN RIVER

2013 ELK HARVEST STATS (Cont.)

UNIT	SEASON	BULL	COW	CALF	TOTAL HARVEST	TOTAL HUNTERS	SUCCESS %		
							LAST YR	3 YR	5YR
201	Archery	6	0	0	6	8	75	67	76
	Muzzle	4	3	0	7	11	64	45	51
	Early	21	1	0	22	26	85	88	91
	1st Rifle	0	13	0	13	19	68	59	53
	2nd Rifle	0	17	0	17	45	38	50	56
	3rd Rifle	0	19	0	19	24	79	60	55
	4th Rifle	0	22	4	26	57	46	38	44





LOWER YAMPA

**GMU
3, 11, 211, 301**

**LOCAL CPW OFFICE
Meeker (970) 878-6090**

AREA MAPS	BLM Craig BLM Meeker
AREA INFO	www.craig-chamber.com www.meekerchamber.com

GENERAL AREA INFORMATION

The Lower Yampa units lie south of Wyoming, bordered by White and Little Snake rivers.

The lower elevations of 6,000' consist of sage and sage steeps. Pinyon and juniper cover the upper elevations up to 8,500'.

Expect zero to light snow cover in 1st & 2nd seasons. The later seasons may bring moderate snow and a potential for near zero temperatures. If the weather is mild, mule deer and elk will not be present in high numbers until the later seasons.

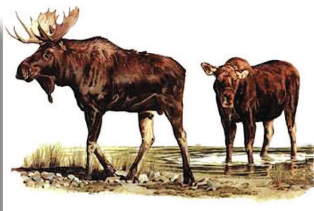
Overall access is easy and 4WD is not necessary in most areas. Hunting pressure is heavy.

Outside of GMU 301, 70 percent of the Lower Yampa is public land.

MOOSE IN AREA

BE PATIENT!

ALWAYS BE 100% SURE OF YOUR TARGET!



LOWER YAMPA

MULE DEER INFORMATION

The buck-doe ratio is increasing. The mid-range elevations with mountain shrub and pinyon-juniper breaks generally hold the most mule deer, especially during the regular rifle seasons. Movement occurs with weather and hunting pressure. In 211 and 11, mule deer are generally found in the Danforth Hills during 2nd rifle season moving to lower elevations in Axial Basin (GMU 211), Bitterbrush SWA and adjacent BLM (GMU 11), and Crooked Wash (GMU 11) by 3rd and 4th rifle. Several thousand acres are open for public hunting in Axial Basin through a coordinated resource management plan (see Meeker CPW office for more details.)

2013 MULE DEER OBJECTIVES

Herd	GMUs	Buck:Doe Objective	Population Estimate	Population Objective
Bear's Ears	3, 4, 5, 14, 214, 301,441	22:100	34,330	37,800
White River	11, 12, 13, 22, 23, 24, 131, 211,231	22-25:100	31,980	67,500

2013 MULE DEER HARVEST STATS

UNIT	SEASON	BUCK	DOE	FAWN	TOTAL HARVEST	TOTAL HUNTERS	SUCCESS %		
							LAST YR	3 YR	5 YR
3	Archery	21	0	0	21	42	50	26	26
	Muzzle	10	2	0	12	20	60	49	48
	2nd Rifle	206	51	8	265	421	63	57	57
	3rd Rifle	271	72	7	350	474	74	73	75
	4th Rifle	1	0	0	1	5	20	40	62
11	Archery	0	0	0	0	21	0	11	31
	Muzzle	8	0	0	8	43	19	27	25
	2nd Rifle	67	8	4	79	155	51	45	49
	3rd Rifle	116	76	4	196	243	81	70	66
	4th Rifle	3	0	0	3	4	75	83	63
211	Archery	0	4	0	4	22	18	9	6
	Muzzle	6	0	0	6	21	29	31	31
	2nd Rifle	98	7	0	105	171	61	52	53
	3rd Rifle	91	21	4	116	171	68	64	62
	Late	0	2	0	2	3	67	90	81
301	Archery	0	0	9	9	17	53	50	50
	Muzzle	0	0	0	0	16	0	32	39
	2nd Rifle	106	26	7	139	210	66	67	61
	3rd Rifle	256	46	0	302	393	77	73	75
	4th Rifle	0	0	0	0	2	0	22	48

LOWER YAMPA

ELK INFORMATION

The large elk herd occupies all available habitat. The later seasons are usually better, especially on public land, due to snow and hunting pressure pushing the elk out of the adjacent units. The success rate is very good on late cow elk hunts. Axial Basin CRM is a hot spot for hunting, but crowding is significant. The best bull hunting will be on private lands. *Youth hunting participation during the late seasons in these GMUs is now limited. Please see big game brochure for details.*

2013 ELK OBJECTIVES

Herd	GMUs	Bull:Cow Objective	Population Estimate	Population Objective
Bears Ears	3, 4, 5, 14, 214, 301, 441	20-25:100	20,500	15,000-18,000
White River	11, 12, 13, 23, 24, 25, 26, 33, 34, 131, 211, 231	20-27:100	35,730	32,000 - 39,000

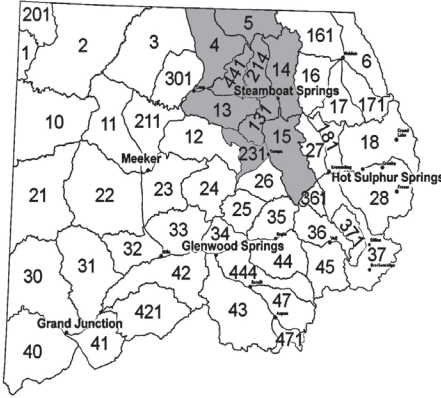
2013 ELK HARVEST STATS

UNIT	SEASON	BULL	COW	CALF	TOTAL HARVEST	TOTAL HUNTERS	SUCCESS %		
							LAST YR	3 YR	5 YR
3	Archery	10	4	0	14	74	19	12	9
	Muzzle	0	0	0	0	3	0	0	14
	Early	0	54	9	63	90	70	46	37
	1st Rifle	21	15	0	36	192	19	31	34
	2nd Rifle	43	47	2	92	498	18	13	10
	3rd Rifle	101	32	3	136	1033	13	8	7
	4th Rifle	51	91	12	154	563	27	27	26
11	Archery	27	7	0	34	200	17	19	17
	Muzzle	0	7	0	7	30	23	7	8
	Early	0	44	9	53	155	34	35	51
	1st Rifle	181	52	0	233	718	32	34	34
	2nd Rifle	71	31	12	114	635	18	18	22
	3rd Rifle	86	142	10	238	1081	22	19	21
	4th Rifle	27	117	6	150	880	17	21	28
211	Archery	50	13	0	63	256	25	26	30
	Muzzle	0	2	0	2	16	13	22	31
	Early	0	9	0	9	97	9	33	48
	1st Rifle	94	36	0	130	421	31	43	47
	2nd Rifle	115	31	0	146	604	24	25	26
	3rd Rifle	103	26	0	129	746	17	22	22
	4th Rifle	32	58	3	93	761	12	18	28
301	Archery	0	0	0	0	13	0	13	13
	Muzzle	0	0	0	0	2	0	0	0
	1st Rifle	0	3	0	3	36	8	12	25
	2nd Rifle	29	5	0	34	301	11	8	10
	3rd Rifle	97	19	0	116	580	20	14	13
	4th Rifle	31	50	3	84	368	23	29	25

UPPER YAMPA

GMUs

**4, 5, 13, 14, 15,
131, 214, 231, 441**



LOCAL CPW OFFICE
GMUs 4 & 5-Meeker office
(970) 878-6090
Others - Steamboat Springs
(970) 870-2197

AREA MAPS	USFS Routt National Forest
AREA INFO	www.craig-chamber.com www.ci.steamboat.co.us

GENERAL AREA INFORMATION

From a low of 6,300 to 12,000' along the Continental Divide. The Routt National Forest dominates the eastern 2/3 of the Upper Yampa units with coniferous forests and aspen.

Most of the land outside of the national forest is private land. Mountain shrub and rolling sage cover the low country.

Expect light to moderate snow in the 1st season, gradually increasing through the 4th season. 4WD is usually necessary on the secondary roads.

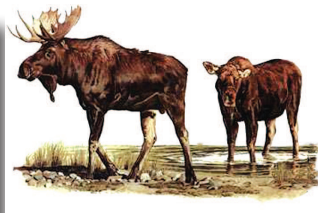
Hunting pressure is heavy. Hunters will have better success and enjoy more solitude by walking into remote areas.

Hunting pressure may create refuge situations on the private lands in GMUs 13, 131, 214 and 441. Mt. Zirkel (GMU 14) and Sarvis Creek (GMU 15) Wilderness Areas access is restricted to non-vehicle methods. Public hunting in GMUs 13 and 131 is limited to a few small parcels of BLM land and some State Trust Land parcels.

Domestic sheep grazing typically occurs on parts of the Routt National Forest through the months of August and September. Elk will typically avoid areas actively used by sheep but often are not far away. Hunters can use this knowledge to their advantage. To learn more about sheep management and actively grazed areas, archery and muzzleloader hunters are encouraged to contact the Hahns Peak-Bears Ranger District in Steamboat Springs at 970-870-2299, or visit the Medicine Bow-Routt National Forests website at <http://www.fs.usda.gov/mbr>.

MOOSE IN AREA

BE PATIENT!
ALWAYS BE 100% SURE OF YOUR TARGET!



UPPER YAMPA

MULE DEER INFORMATION

The mule deer herd has declined in the upper Yampa units due to a variety of factors. Most of the mule deer will be found in the western section of these units. Movement is also to the west. Hot spots are located north of Hayden. Some good trophy bucks are seen in the southern portion. In GMUs 4 & 5, the buck hunting has shown steady improvement. This area is not managed for trophy bucks, but it does have a good number of adult males in the population. Hunt the aspen and brush areas.

2013 MULE DEER OBJECTIVES

Herd	GMUs	Buck:Doe Objective	Population Estimate	Population Objective
Bears Ears	3, 4, 5, 14, 214, 301, 441	22:100	34,330	37,800
White River	11, 12, 13, 22, 23, 24, 131, 211, 231	22-25 :100	31,980	67,500
State Bridge	15, 35, 36, 45, 361	26-30:100	14,760	15,000 - 16,500

2013 MULE DEER HARVEST STATS

UNIT	SEASON	BUCK	DOE	FAWN	Total Harvest	Total Hunter	SUCCESS %		
							LAST YR	3 YR	5 YR
4	Archery	38	4	0	42	116	36	25	19
	Muzzle	6	9	0	15	29	52	44	38
	2nd Rifle	275	50	0	325	476	68	54	50
	3rd Rifle	172	13	0	185	224	83	74	67
	4th Rifle	5	0	0	5	5	100	93	86
5	Archery	4	0	0	4	88	5	8	10
	Muzzle	10	0	0	10	21	48	34	28
	2nd Rifle	66	3	2	71	100	71	52	42
	3rd Rifle	32	7	0	39	50	78	74	67
	4th Rifle	5	0	0	5	5	100	92	90
13	Archery	5	0	0	5	27	19	25	30
	Muzzle	13	0	0	13	20	65	28	49
	2nd Rifle	100	8	0	108	183	59	49	49
	3rd Rifle	73	10	0	83	125	66	65	62
	Archery	4	30	0	34	89	38	24	20
14	Muzzle	0	6	0	6	25	24	31	31
	Early	9	0	0	9	25	36	23	23
	2nd Rifle	29	8	0	37	147	25	17	22
	3rd Rifle	5	0	0	5	23	22	8	10

Cont. on next page

UPPER YAMPA

2013 MULE DEER HARVEST STATS (Cont.)

UNIT	SEASON	BUCK	DOE	FAWN	Total Harvest	Total Hunter	SUCCESS %		
							LAST YR	3 YR	5 YR
15	Archery	13	13	0	26	185	14	12	12
	Muzzle	27	11	0	38	154	25	22	17
	2nd Rifle	133	56	0	189	462	41	41	42
	3rd Rifle	186	15	0	201	323	62	60	56
	4th Rifle	23	0	0	23	28	82	74	74
131	Archery	0	4	0	4	29	14	28	25
	Muzzle	0	1	0	1	19	5	14	13
	2nd Rifle	8	0	0	8	22	36	29	20
	3rd Rifle	3	0	0	3	18	17	27	36
214	Archery	4	8	0	12	54	22	11	13
	Muzzle	5	2	0	7	16	44	46	45
	2nd Rifle	58	18	0	76	149	51	40	36
	3rd Rifle	5	0	0	5	12	42	30	26
441	Archery	4	0	0	4	53	8	15	13
	Muzzle	0	2	0	2	12	17	35	34
	2nd Rifle	111	14	0	125	207	60	47	41
	3rd Rifle	55	10	0	65	86	76	63	58

ELK INFORMATION

Elk are plentiful throughout the Upper Yampa area. Licenses are also readily available, but hunters should not rely on leftover license availability as these herds approach population objective. CPW has been working to minimize crop damage and significantly reduce the number of elk in these units. There are good numbers of bull elk, however, do not expect to see many large adult males. Large elk numbers occur on the Routt National Forest. The basic movement is from the higher to lower elevation in response to hunting pressure and weather. Hunt the timber and hunt the Routt National Forest early. In GMUs 4 & 5, private land access is only available on a fee hunting basis.

2013 ELK OBJECTIVES

Herd	GMUs	Buck:Doe Objective	Population Estimate	Population Objective
Bears Ears	3, 4, 5, 14, 214, 301, 441	20-25:100	20,000	15,000-18,000
White River	11, 211, 12, 13, 131, 231, 23, 24, 25, 26, 33, 34	20-27:100	35,730	32,000-39,000
Gore Pass	15, 27	24-28:100	4,170	4,000-4,500

UPPER YAMPA

2013 ELK HARVEST STATS

UNIT	SEASON	BULL	COW	CALF	Total Harvest	Total Hunter	SUCCESS %		
							LAST YR	3 YR	5 YR
4	Archery	61	44	3	108	352	31	23	21
	Muzzle	0	22	3	25	75	33	25	22
	Early	0	84	17	101	254	40	40	44
	1st Rifle	183	38	3	224	696	32	39	43
	2nd Rifle	169	41	0	210	1101	19	19	20
	3rd Rifle	186	40	2	228	671	34	25	23
	4th Rifle	42	3	12	57	260	22	33	31
5	Archery	38	12	0	50	140	36	22	22
	Muzzle	0	11	0	11	40	28	33	34
	Early	0	60	0	60	60	100	87	76
	1st Rifle	73	30	3	106	247	43	40	40
	2nd Rifle	81	9	2	92	457	20	25	26
	3rd Rifle	47	7	0	54	169	32	29	28
	4th Rifle	0	0	0	0	23	0	25	35
13	Archery	19	21	0	40	271	15	20	21
	Muzzle	0	4	0	4	23	17	23	28
	Early	0	139	0	139	234	59	67	64
	1st Rifle	179	58	7	244	516	47	49	50
	2nd Rifle	137	18	5	160	531	30	33	37
	3rd Rifle	142	73	11	226	526	43	43	42
	4th Rifle	82	121	11	214	435	49	55	55

Cont. on next page



UPPER YAMPA

2013 ELK HARVEST STATS (Cont.)

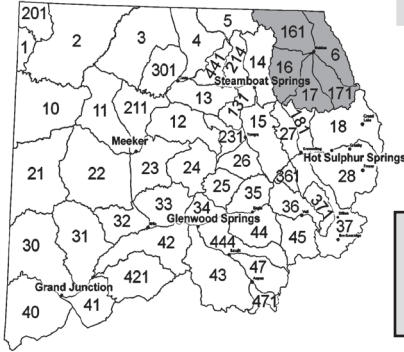
UNIT	SEASON	BULL	COW	CALF	Total Harvest	Total Hunter	SUCCESS %		
							LAST YR	3 YR	5 YR
14	Archery	58	37	10	105	1000	11	10	12
	Muzzle	0	8	2	10	42	24	16	21
	1st Rifle	33	17	2	52	169	31	22	21
	2nd Rifle	27	21	0	48	594	8	12	14
	3rd Rifle	45	21	4	70	245	29	17	18
	4th Rifle	13	8	0	21	84	25	31	33
	Late	0	19	4	23	27	85	74	74
15	Archery	55	30	0	85	1020	8	9	11
	Muzzle	0	12	0	12	75	16	10	15
	1st Rifle	49	33	5	87	471	18	19	19
	2nd Rifle	50	37	10	97	1344	7	12	14
	3rd Rifle	67	47	5	119	791	15	12	12
	4th Rifle	14	17	1	32	213	15	17	21
	Late	0	51	0	51	160	32	36	40
131	Archery	47	23	0	70	331	21	19	17
	Muzzle	0	9	0	9	38	24	18	23
	1st Rifle	0	22	9	31	211	15	28	31
	2nd Rifle	45	61	11	117	389	30	28	31
	3rd Rifle	34	60	0	94	242	39	29	26
	4th Rifle	11	13	6	30	98	31	34	39
	Late	0	74	8	82	152	54	48	53
214	Archery	70	37	3	110	516	21	17	18
	Muzzle	0	14	0	14	27	52	35	31
	Early	0	44	0	44	61	72	63	59
	1st Rifle	52	15	0	67	184	36	42	40
	2nd Rifle	61	43	2	106	428	25	26	27
	3rd Rifle	27	16	0	43	114	38	26	24
	4th Rifle	9	7	0	16	62	26	38	37
	Late	0	23	0	23	43	53	60	59
441	Archery	15	13	0	28	140	20	21	24
	Muzzle	0	8	1	9	24	38	31	23
	Early	0	8	0	8	8	100	89	67
	1st Rifle	27	11	0	38	234	16	32	39
	2nd Rifle	60	15	0	75	434	17	21	22
	3rd Rifle	61	24	2	87	254	34	21	23
	4th Rifle	12	6	0	18	152	12	20	36
	Late	0	13	0	13	21	62	76	77

NORTH PARK

GMU

6, 16, 17, 161, 171

LOCAL CPW OFFICE
Steamboat Springs
(970) 870-2197



AREA MAPS	USFS Routt National Forest
AREA INFO	www.ci.steamboat.co.us

GENERAL AREA INFORMATION

North Park borders Wyoming between the Continental Divide and Medicine Bow Mtns. The valley floor at 7,880' supports ag lands and sage.

Extensive willow stands line the streams - a favorite moose habitat, so be sure of your target. The forest surrounding the basin varies from aspen/lodgepole to spruce/fir.

The area is generally windy and colder than places in western Colorado. Prepare for snow during your hunt. 4WD is helpful, as are chains.

Over 2/3 of North Park is public land.

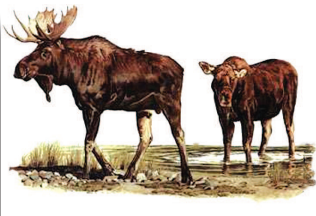
Mt. Zirkel (west) and Never Summer (southeast) are the Wilderness Areas.

Access to State Trust Lands and Wilderness Areas is non-motorized.

Big game can move onto private lands with no public access.

MOOSE IN AREA

BE PATIENT!
ALWAYS BE 100% SURE OF YOUR TARGET!



NORTH PARK

MULE DEER INFORMATION

If you are patient, you could have success hunting trophy bucks. North Park has an early rifle, mule deer-only season that begins as soon as possible after archery closes. This season provides additional hunter opportunities as many of the mule deer in North Park migrate early. Few mule deer are found in North Park during January classification flights. Small sample sizes lead to higher observed buck:doe ratios than can be expected during the hunting seasons. Use 3-year average success rates for choosing a hunt.

2013 MULE DEER OBJECTIVES

Herd	GMUs	Buck:Doe Objective	Population Estimate	Population Objective
North Park	6, 16, 17, 161, 171	30-40:100	5,670	5,400 - 6,400

2013 MULE DEER HARVEST STATS

UNIT	SEASON	BUCK	DOE	FAWN	TOTAL HARVEST	TOTAL HUNTERS	SUCCESS %		
							LAST YR	3 YR	5 YR
6	Archery	2	0	0	2	17	12	15	16
	Muzzle	4	0	0	4	9	44	37	40
	Early	10	0	0	10	20	50	41	45
	2nd Rifle	6	0	0	6	18	33	34	41
	3rd Rifle	11	0	0	11	15	73	54	56
	4th Rifle	3	0	0	3	3	100	48	59
16	Archery	5	0	0	5	17	29	43	51
	Muzzle	1	0	0	1	6	17	17	23
	Early	19	0	0	19	31	61	43	40
	2nd Rifle	4	0	0	4	9	44	25	28
	3rd Rifle	0	0	0	0	10	0	0	6
17	Archery	2	0	0	2	9	22	18	12
	Muzzle	1	0	0	1	3	33	25	32
	Early	4	0	0	4	15	27	33	35
	2nd Rifle	2	0	0	2	13	15	19	26
	3rd Rifle	2	0	0	2	14	14	19	10
161	Archery	5	0	0	5	12	42	34	43
	Muzzle	1	0	0	1	7	14	13	22
	Early	11	0	0	11	26	42	38	37
	2nd Rifle	15	0	0	15	22	68	43	46
	3rd Rifle	3	0	0	3	12	25	21	17
171	Archery	5	0	0	5	14	36	22	13
	Muzzle	4	0	0	4	4	100	25	24
	Early	8	0	0	8	14	57	48	39
	2nd Rifle	8	0	0	8	10	80	40	31
	3rd Rifle	8	0	0	8	12	67	46	33

NORTH PARK

ELK INFORMATION

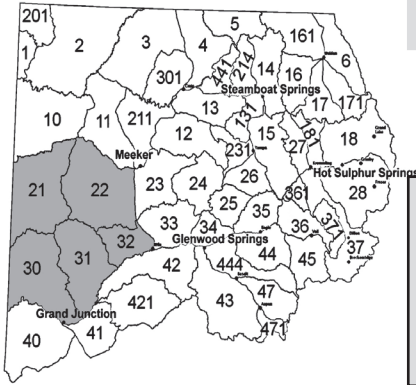
Elk are distributed evenly throughout these units. During the day, the bulls will be in dark timber glass in the early morning and evening. The herd tends to stay in the coniferous timbered areas until late in the season, moving to lower elevations with snow and hunting pressure.

2013 ELK OBJECTIVES

Herd	GMUs	Bull:Cow Objective	Population Estimate	Population Objective
North Park	6, 16, 17, 161, 171	20-23:100	6,580	4,000 - 4,500

2013 ELK HARVEST STATS

UNIT	SEASON	BULL	COW	CALF	TOTAL HARVEST	TOTAL HUNTERS	SUCCESS %		
							LAST YR	3 YR	5 YR
6	Archery	27	10	7	44	538	8	9	9
	Muzzle	0	6	3	9	105	9	8	10
	Early	0	10	0	10	40	25	32	38
	1st Rifle	45	73	10	128	524	24	24	20
	2nd Rifle	76	21	0	97	922	11	11	11
	3rd Rifle	15	28	9	52	467	11	12	11
	4th Rifle	11	29	5	45	161	28	22	18
16	Archery	50	13	0	63	483	13	12	12
	Muzzle	0	6	3	9	42	21	23	24
	Early	0	18	0	18	61	30	40	42
	1st Rifle	40	12	7	59	241	24	22	22
	2nd Rifle	20	38	11	69	440	16	19	17
	3rd Rifle	4	9	0	13	217	6	10	12
	4th Rifle	3	20	0	23	106	22	29	27
17	Archery	26	7	0	33	327	10	12	9
	Muzzle	0	0	0	0	66	0	7	8
	Early	0	36	0	36	57	63	57	64
	1st Rifle	40	17	5	62	348	18	20	21
	2nd Rifle	37	21	0	58	436	13	13	12
	3rd Rifle	24	18	5	47	328	14	16	17
	4th Rifle	2	19	4	25	129	19	19	19
161	Archery	35	17	0	52	570	9	9	8
	Muzzle	0	13	3	16	83	19	18	20
	Early	0	0	0	0	12	0	31	26
	1st Rifle	22	26	0	48	208	23	14	17
	2nd Rifle	9	21	10	40	612	7	10	9
	3rd Rifle	49	21	2	72	466	15	11	10
	4th Rifle	5	35	18	58	207	28	24	18
171	Archery	19	18	0	37	332	11	8	8
	Muzzle	0	3	5	8	50	16	11	10
	Early	0	37	0	37	44	84	65	64
	1st Rifle	35	21	5	61	321	19	22	25
	2nd Rifle	38	38	1	77	547	14	13	12
	3rd Rifle	18	10	7	35	293	12	12	12
	4th Rifle	3	9	5	17	99	17	15	11



BOOKCLIFFS/PICEANCE

GMU
21, 22, 30, 31, 32

LOCAL CPW OFFICES
 Meeker (GMU 21, 22)
(970) 878-6090
 Grand Junction (GMU 30, 31, 32)
(970) 255-6100

AREA MAPS	BLM Douglas Pass BLM Meeker BLM Grand Junction	BLM Rangely BLM Glenwood Springs BLM Roan Plateau Travel Map
AREA INFO	www.visitgrandjunction.com or www.rangely.com	

GENERAL AREA INFORMATION

Pinyon-juniper, with pockets of sagebrush, cover most of area at lower elevations. Higher elevations are characterized by sagebrush interspersed with aspen stands and some dark timber. Terrain varies from rolling sagebrush to steep-sided canyons. Some areas are steep & rugged, especially in southern portion..

Rains bring muddy roads. High elevation snows make roads impassible without chains.

75% of area is BLM land.

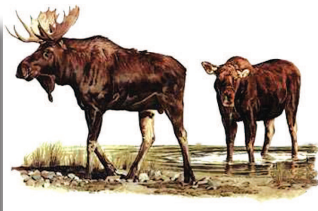
There are remote hunting areas accessible by foot, horseback or ATV. Get maps and study BLM access points.

Weather is generally mild.

Significant energy development occurring in these units.

MOOSE IN AREA

BE PATIENT!
ALWAYS BE 100% SURE OF YOUR TARGET!



BOOKCLIFFS/PICEANCE

Important Note for Bookcliffs / Piceance Hunters

In 1986, the federal government sold thousands of acres of public land in the Piceance/Roan area (GMUs 22 and 32) to energy companies. The agreement required that the companies keep the land open to the public for 20 years. The public access agreement ended in 2006. These parcels, known as the “Girls Claims”, are now private property. Beyond the thousands of acres that are owned by the companies, these parcels also control access to thousands of acres of public land.

Colorado Parks and Wildlife has reached a 10-year \$1/year hunting access agreement with Shell to keep 19,000 private acres open. Encana has agreed to keep 17,000 acres the company owns open for the 2014 hunting seasons. CPW appreciates these companies willingness to support the heritage of hunting in western Colorado. Negotiations with other companies for other “Girls Claims” properties are ongoing.

It’s important to note that these access agreements are NOT new lands. They are heavily hunted former public lands where generations of hunters will be displaced as these lands are closed to hunting. If new hunters begin using the lands where access agreements are in place, there is the potential for overcrowding, which may make future agreements more difficult. Please respect Shell and Encana land so that it will be available in the future.

If you hunt these units, make sure you have current maps. Colorado Parks and Wildlife has no control over closed lands, even if you’ve hunted there for years. If you have questions or concerns, please contact the BLM or energy companies directly.



BOOKCLIFFS/PICEANCE

MULE DEER INFORMATION

The hunting ranges from fair to good in the Bookcliffs and Piceance units. Mule deer are well-distributed in the northern portion from mid-October. Concentrate on higher elevations in early seasons. If the weather is dry, you'll need to do a lot of walking and looking. Good snows will move the herds to lower elevations to the north and to the south. Hunt high early, low later. Cathedral Rim has some big bucks, but tough terrain. Little Hills and Dry Fork of Piceance is better late. GMUs 21 and 30 are managed as quality mule deer units and licenses are separate from licenses that are valid in units 22, 31 or 32

2013 MULE DEER OBJECTIVES

Herd	GMUs	Buck:Doe Objective	Population Estimate	Population Objective
Bookcliffs	21, 30	30-35:100	8,000	10,000 - 12,000
Logan Mountain	31, 32	25-30:100	7,600	6,500 - 8,500

2013 MULE DEER HARVEST STATS

UNIT	SEASON	BUCK	DOE	FAWN	TOTAL HARVEST	TOTAL HUNTERS	SUCCESS %		
							LAST YR	3 YR	5 YR
21	Archery	30	0	0	30	56	54	45	44
	Muzzle	16	0	0	16	28	57	46	50
	2nd Rifle	224	0	0	224	245	91	88	88
	3rd Rifle	51	0	0	51	54	94	93	92
22	Archery	13	10	0	23	56	41	39	39
	Muzzle	13	6	0	19	45	42	48	45
	2nd Rifle	199	47	4	250	325	77	73	70
	3rd Rifle	207	39	0	246	300	82	82	75
	4th Rifle	4	0	0	4	4	100	100	100
30	Archery	20	0	0	20	73	27	31	32
	Muzzle	4	0	0	4	16	25	39	39
	2nd Rifle	42	15	3	60	130	46	58	63
	3rd Rifle	33	16	0	49	69	71	76	80
31	Archery	41	4	2	47	104	45	40	30
	Muzzle	35	0	0	35	50	70	66	63
	2nd Rifle	98	0	0	98	180	54	66	60
	3rd Rifle	101	0	0	101	150	67	67	68
32	Archery	4	6	0	10	40	25	33	30
	Muzzle	23	0	0	23	34	68	59	53
	2nd Rifle	26	0	0	26	68	38	52	56
	3rd Rifle	24	0	0	24	48	50	60	63

BOOKCLIFFS/PICEANCE

ELK INFORMATION

Good cow hunting opportunities. The best hunting is in remote areas, mostly at high elevations, where the elk tend to hold up in pockets of green timber and aspen. Check out the Texas Mountain area and Rat Hole Ridge. Hunting pressure will push some bulls into the large expanses of pinyon-juniper. If snow and hunting pressure are sufficient, some elk will move into the Little Hills and Dry Fork area of Piceance later in the seasons. Most of the GMU 32 elk move into GMU 22 to winter. Elk normally concentrate on the north side of Douglas Pass during the archery, muzzleloader, and early rifle seasons. Movement of large numbers of elk into GMU-30 generally does not occur until early November.

2013 ELK OBJECTIVES				
Herd	GMUs	Bull:Cow Objective	Population Estimate	Population Objective
Yellow Creek	21, 22, 30, 31, 32	18-22:100	11,810	7,000 - 9,000

2013 ELK HARVEST STATS

UNIT	SEASON	BULL	COW	CALF	TOTAL HARVEST	TOTAL HUNTERS	SUCCESS %		
							LAST YR	3 YR	5 YR
21	Archery	47	14	0	61	543	11	15	16
	Muzzle	0	6	2	8	85	9	5	8
	1st Rifle	96	8	3	107	426	25	27	29
	2nd Rifle	49	43	0	92	579	16	15	14
	3rd Rifle	39	39	0	78	451	17	17	18
	4th Rifle	15	24	0	39	201	19	23	21
22	Archery	50	6	0	56	358	16	17	18
	Muzzle	0	6	0	6	38	16	13	12
	Early	0	54	8	62	124	50	28	32
	1st Rifle	86	27	3	116	387	30	29	32
	2nd Rifle	76	11	0	87	722	12	16	18
	3rd Rifle	77	24	8	109	826	13	15	19
30	4th Rifle	9	76	8	93	301	31	26	31
	Archery	19	3	0	22	204	11	9	11
	Muzzle	0	0	0	0	18	0	0	6
	1st Rifle	76	0	0	76	168	45	30	32
	2nd Rifle	34	0	0	34	277	12	11	12
	3rd Rifle	40	25	0	65	458	14	18	21
	4th Rifle	38	11	0	49	165	30	24	31

Cont. on next page

BOOKCLIFFS/PICEANCE

2013 ELK HARVEST STATS (Cont.)

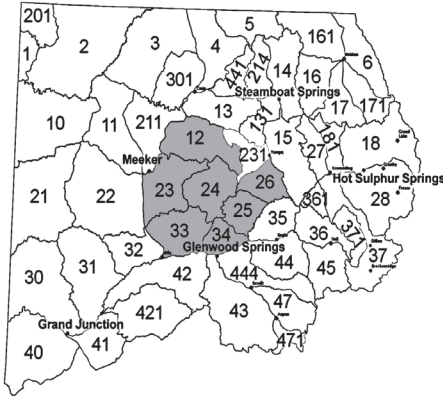
UNIT	SEASON	BULL	COW	CALF	TOTAL HARVEST	TOTAL HUNTERS	SUCCESS %		
							LAST YR	3 YR	5 YR
31	Archery	46	7	0	53	267	20	21	19
	Muzzle	0	0	0	0	9	0	3	13
	Early	0	74	3	77	129	60	45	47
	1st Rifle	22	6	0	28	102	27	34	36
	2nd Rifle	20	14	4	38	263	14	18	19
	3rd Rifle	32	27	0	59	319	18	19	20
	4th Rifle	9	44	17	70	344	20	16	17
32	Archery	19	6	0	25	204	12	18	16
	Muzzle	0	0	0	0	10	0	0	11
	Early	0	62	11	73	96	76	41	39
	1st Rifle	17	3	0	20	119	17	25	26
	2nd Rifle	18	22	3	43	212	20	17	18
	3rd Rifle	19	11	6	36	205	18	17	18
	4th Rifle	0	13	0	13	39	33	37	30



WHITE RIVER

GMU

12, 23, 24, 25, 26, 33, 34



LOCAL CPW OFFICES

Glenwood Springs (GMU 25, 26, 34) (970) 947-2920

Meeker (GMU 12, 23, 24) (970) 878-6090

Steamboat Springs (GMU 26) (970) 870-2197

Grand Junction (GMU 33) (970) 255-6100

AREA MAPS	USFS White River National Forest
AREA INFO	www.glenwoodchamber.com or www.meekerchamber.com

GENERAL AREA INFORMATION

White River offers variety & extremes. Several peaks in the Flattop Wilderness are 12,200' in elevation. Elevation drops to 5,300' near Rifle. The lower elevation vegetation starts out with sage, progressing to oakbrush/mtn brush, aspen, evergreens and alpine tundra.

Expect mild weather with light snow in the 1st season, with roads becoming impassable in the upper half of the area by the 3rd season.

The high country in GMU 24 is prone to heavy snowstorms in late seasons. Heavy snowstorms can strand hunters on Flattops after 1st season.

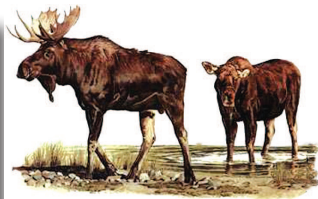
While there is a great deal of public land, hunting pressure is heavy especially in northern half of GMUs 23 & 24. 4WD is necessary on all but the few main paved roads. Half of the area is roadless - which makes for very good hunting if you can walk or pack in.

You may encounter heavy ATV traffic in GMUs 12, 23 and 33.

Hunters in GMU 25 and 26 can gain access using Forest Service Road 610 (Stump Park Rd) or USFS Road 613 (Crescent Lake Rd).

MOOSE IN AREA

BE PATIENT!
ALWAYS BE 100% SURE OF YOUR TARGET!



WHITE RIVER

MULE DEER INFORMATION

The mule deer are scattered and will move in response to hunting pressure and weather. On National Forest lands in GMUs 12, 23, and 24, mule deer hunting is generally better in early seasons. Good public land mule deer hunting can typically be found in GMU 12 on the Jensen and Indian Run State Wildlife Areas. Jensen SWA is north of Meeker and Indian Run SWA is east of Hamilton. GMU 23 mule deer hunters can try Hay Flats and Miller Creek southwest of Meeker and the Jensen and Oak Ridge State Wildlife Areas north and east of Meeker. Mule deer densities are lower across GMU 24 but hunters can find mule deer on the south facing slopes above the White River. UNIT 33 ARCHERY & MUZZLELOADER LICENSES NO LONGER VALID IN 23 & 24— If you purchase an archery or muzzleloader license for unit 33, you can no longer also hunt in unit 23 and 24, and vice versa.

There are now separate tags for these units. See the hunt tables for corresponding hunt codes.

2013 MULE DEER OBJECTIVES				
Herd	GMUs	Buck:Doe Objective	Population Estimate	Population Objective
Rifle Creek	33	30-35:100	5,850	7,700 - 9,400
Sweetwater Creek	25,26,34	28-32:100	5,670	5,000-6,000
White River	11, 211, 12, 22, 23, 24, 13, 131, 231	22-25:100	31,980	67,500

2013 MULE DEER HARVEST STATS

UNIT	SEASON	BUCK	DOE	FAWN	TOTAL HARVEST	TOTAL HUNTERS	SUCCESS %		
							LAST YR	3 YR	5 YR
12	Archery	4	6	0	10	65	15	13	11
	Muzzle	5	0	0	5	40	13	23	21
	Early	0	0	0	0	1	0	0	0
	2nd Rifle	150	21	0	171	294	58	52	47
	3rd Rifle	95	19	0	114	213	54	56	58
23	Archery	23	23	0	46	137	34	22	20
	Muzzle	17	11	0	28	95	29	39	36
	2nd Rifle	55	25	0	80	269	30	35	33
	3rd Rifle	53	5	0	58	167	35	47	46
	4th Rifle	4	0	0	4	4	100	55	35
24	Archery	2	3	0	5	56	9	7	5
	Muzzle	5	2	0	7	26	27	11	14
	Early	0	0	0	0	2	0	10	17
	2nd Rifle	19	2	0	21	104	20	20	20
	3rd Rifle	11	5	0	16	38	42	23	17
25	Archery	22	4	0	26	93	28	16	12
	Muzzle	3	11	0	14	69	20	22	21
	Early	0	0	0	0	7	0	0	7
	2nd Rifle	66	52	0	118	432	27	31	31
	3rd Rifle	80	30	1	111	220	50	52	51
	4th Rifle	11	0	0	11	23	48	56	49

Cont. on next page

WHITE RIVER

2013 MULE DEER HARVEST STATS (Cont.)

UNIT	SEASON	BUCK	DOE	FAWN	TOTAL HARVEST	TOTAL HUNTERS	SUCCESS %		
							LAST YR	3 YR	5 YR
26	Archery	3	10	0	13	48	27	16	13
	Muzzle	7	2	0	9	49	18	14	12
	2nd Rifle	27	21	0	48	221	22	36	37
	3rd Rifle	61	30	7	98	178	55	59	53
	4th Rifle	12	0	0	12	17	71	71	64
33	Archery	9	26	4	39	148	26	23	23
	Muzzle	7	14	3	24	87	28	27	24
	2nd Rifle	154	0	0	154	361	43	35	30
	3rd Rifle	120	0	0	120	245	49	43	42
	4th Rifle	8	0	0	8	8	100	63	69
34	Archery	8	0	0	8	91	9	10	8
	Muzzle	14	11	3	28	113	25	22	20
	2nd Rifle	29	16	0	45	234	19	16	14
	3rd Rifle	28	6	2	36	153	24	27	27
	4th Rifle	7	0	0	7	25	28	40	38
231	Archery	0	3	0	3	29	10	10	12
	Muzzle	0	6	0	6	24	25	23	22
	2nd Rifle	12	3	0	15	43	35	34	27
	3rd Rifle	9	0	0	9	23	39	18	16



WHITE RIVER

ELK INFORMATION

Generally all of GMUs 12, 23 and 24 are considered very good elk hunting. They are generally at higher elevations in the eastern portions of GMUs 12 and 24 during early seasons, and move west to lower elevations (and private lands) as hunting pressure and snow depth increase. Try the abundant public lands in eastern GMU 12 and 24 early on. Because of access roads, hunting pressure is high on Sleepy Cat, Lost Park and Sand Peak. The Flattops Wilderness Area offers good hunting, but travel is limited to walking or horseback and the potential for heavy snowfall means hunters must be prepared. Successful hunters avoid the main roads and hunt the dark timber and deeper canyons. Jensen State Wildlife Area is good during most seasons. Oak Ridge State Wildlife Area is good during 3rd and 4th rifle seasons. Both properties are limited to foot or horseback travel.

2013 ELK OBJECTIVES

Herd	GMUs	Bull:Cow Objective	Population Estimate	Population Objective
White River	11, 211, 12, 13, 131, 231, 23, 24, 25, 26, 33, 34, 131, 211, 231	20-27:100	35,730	32,000-39,000

2013 ELK HARVEST STATS

UNIT	SEASON	BULL	COW	CALF	TOTAL HARVEST	TOTAL HUNTERS	SUCCESS %		
							LAST YR	3 YR	5 YR
12	Archery	108	26	8	142	610	23	23	24
	Muzzle	0	15	2	17	68	25	24	25
	Early	0	97	9	106	194	55	56	63
	1st Rifle	291	127	41	459	1541	30	39	41
	2nd Rifle	152	147	8	307	1364	23	23	23
	3rd Rifle	163	204	49	416	1006	41	33	34
	4th Rifle	45	61	34	140	490	29	28	34
23	Archery	45	38	0	83	471	18	18	21
	Muzzle	0	2	2	4	48	8	14	18
	Early	0	36	27	63	98	64	58	56
	1st Rifle	91	36	0	127	909	14	24	26
	2nd Rifle	61	104	17	182	1385	13	14	18
	3rd Rifle	94	72	30	196	890	22	20	23
	4th Rifle	9	39	0	48	306	16	17	19
	Late	0	25	0	25	33	76	71	58
24	Archery	23	18	0	41	428	10	16	16
	Muzzle	0	2	0	2	45	4	15	17
	Early	0	18	0	18	35	51	33	53
	1st Rifle	212	70	20	302	1198	25	28	27
	2nd Rifle	59	34	16	109	1206	9	12	14
	3rd Rifle	57	74	0	131	487	27	20	18
	4th Rifle	5	10	6	21	156	13	22	26
	Late	0	5	0	5	11	45	42	38

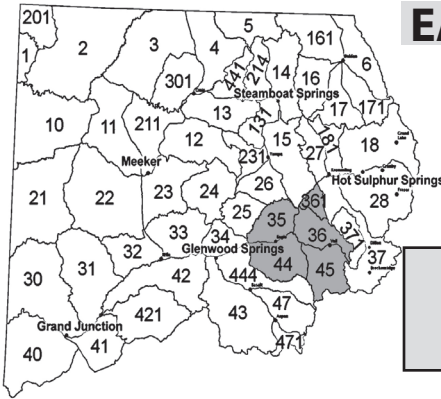
Cont. on next page

UNIT	SEASON	BULL	COW	CALF	TOTAL HARVEST	TOTAL HUNTERS	SUCCESS %		
							LAST YR	3 YR	5YR
25	Archery	36	4	0	40	401	10	10	9
	Muzzle	0	0	0	0	36	0	9	7
	Early	0	69	0	69	195	35	37	37
	1st Rifle	16	0	0	16	240	7	20	21
	2nd Rifle	31	2	0	33	345	10	9	12
	3rd Rifle	45	1	0	46	276	17	16	19
	4th Rifle	7	0	0	7	27	26	24	25
26	Archery	15	4	0	19	328	6	9	9
	Muzzle	0	2	0	2	17	12	3	6
	Early	0	24	0	24	70	34	27	31
	1st Rifle	18	10	0	28	163	17	15	17
	2nd Rifle	41	2	0	43	293	15	14	14
	3rd Rifle	37	12	2	51	259	20	19	20
	4th Rifle	17	0	0	17	44	39	21	22
33	Archery	45	7	0	52	519	10	11	14
	Muzzle	0	9	0	9	59	15	23	23
	1st Rifle	79	22	0	101	520	19	18	21
	2nd Rifle	80	35	9	124	896	14	12	15
	3rd Rifle	51	13	16	80	537	15	13	15
	4th Rifle	4	16	0	20	207	10	24	25
	Late	0	26	0	26	80	33	32	39
34	Archery	24	4	3	31	312	10	12	10
	Muzzle	0	2	0	2	53	4	10	9
	Early	0	13	4	17	35	49	34	42
	1st Rifle	0	9	0	9	188	5	15	15
	2nd Rifle	10	9	0	19	374	5	8	9
	3rd Rifle	32	23	0	55	270	20	19	16
	4th Rifle	4	3	3	10	37	27	17	19
231	Archery	38	18	0	56	546	10	10	11
	Muzzle	0	2	0	2	57	4	9	12
	Early	0	49	4	53	89	60	43	42
	1st Rifle	53	39	0	92	379	24	23	28
	2nd Rifle	21	36	2	59	324	18	14	15
	3rd Rifle	19	35	0	54	227	24	23	22
	4th Rifle	0	3	0	3	56	5	18	23

EAGLE RIVER VALLEY

GMU

35, 36, 44, 45, 361



LOCAL CPW OFFICE
Glenwood Springs
(970) 947-2920

AREA MAPS	USFS White River National Forest
AREA INFO	www.glenwoodchamber.com

GENERAL AREA INFORMATION

These units are bordered by the Colorado River, the Gore Range, the Red Table Mountains and the Continental Divide.

Elevation climbs from 6,000' with sage and pinyon to over 14,000' with alpine vegetation starting at 10,500'.

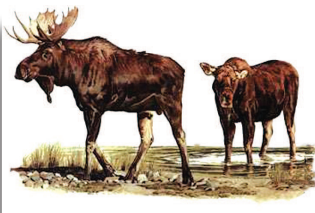
Weather varies widely with heavy high country snow. Motorized travel restricted to designated routes.

GMUs 35 & 44 have some public access, however the northern part of GMU 44 between Edwards and Eagle is primarily private property with no hunting allowed.

Check your map and contact the BLM/USFS office regarding off road travel.

MOOSE IN AREA

BE PATIENT!
ALWAYS BE 100% SURE OF YOUR TARGET!



EAGLE RIVER VALLEY

MULE DEER INFORMATION

Mule deer herd will be scattered from 6,500' to timberline and will move down to the lower elevation pinyon-juniper areas as heavy snow arrives. Over 18" of snow will move the mule deer. Try hunting the aspen, open parks and shrublands. GMUs 35 and 36 have the most mule deer. After the first heavy snow, most GMU 45 mule deer will move into GMU 36. GMU 44 is managed for trophy mule deer with limited number of licenses, but it is a good place to take a big buck.

2013 MULE DEER OBJECTIVES

Herd	GMUs	Buck:Doe Objective	Population Estimate	Population Objective
State Bridge	15, 35, 36, 45, 361	26-30:100	14,760	13,500-16,500
Red Table Mountain	44	35:100	2,090	7,000

2013 MULE DEER HARVEST STATS

UNIT	SEASON	BUCK	DOE	FAWN	TOTAL HARVEST	TOTAL HUNTERS	SUCCESS %		
							LAST YR	3 YR	5 YR
35	Archery	22	0	0	22	108	20	18	17
	Muzzle	33	12	0	45	102	44	41	32
	2nd Rifle	164	20	0	184	298	62	54	50
	3rd Rifle	155	20	7	182	329	55	53	49
	4th Rifle	4	0	0	4	6	67	79	72
36	Archery	8	12	0	20	76	26	22	18
	Muzzle	14	20	0	34	109	31	24	23
	Early	16	0	0	16	16	100	66	48
	2nd Rifle	61	18	0	79	233	34	37	34
	3rd Rifle	105	16	6	127	207	61	56	49
	4th Rifle	8	0	0	8	8	100	70	68
44	Archery	24	2	0	26	59	44	29	25
	Muzzle	13	2	0	15	61	25	28	29
	Early	0	0	0	0	4	0	18	15
	2nd Rifle	29	12	0	41	75	55	50	49
	3rd Rifle	9	8	1	18	33	55	64	61
	4th Rifle	10	0	0	10	10	100	97	96
45	Archery	16	8	0	24	90	27	32	38
	Muzzle	24	9	0	33	79	42	33	30
	Early	4	0	0	4	6	67	38	31
	2nd Rifle	53	9	3	65	162	40	38	37
	3rd Rifle	12	0	3	15	28	54	35	27
361	Archery	0	0	0	0	6	0	5	5
	Muzzle	0	3	3	6	6	100	53	53
	2nd Rifle	3	0	0	3	21	14	20	20
	3rd Rifle	3	0	0	3	14	21	41	41
	4th Rifle	0	0	0	0	2	0	33	33

EAGLE RIVER VALLEY

ELK INFORMATION

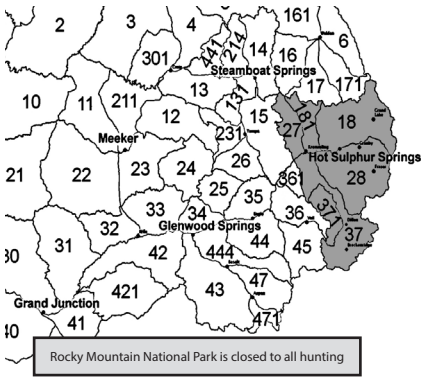
Elk are scattered from about 7,000' to above timberline. As hunting pressure increases, they seek the deeper canyons and dark timber areas way from roads. Concentrating on the large stands of dark timber and the larger wilderness areas will increase your chance of finding a big bull on public lands. Large blocks of private land in GMUs 35 and 36 provide refuge areas and can make hunting difficult.

2013 ELK OBJECTIVES

Herd	GMUs	Bull:Cow Objective	Population Estimate	Population Objective
Piney River	35, 36, 361	22-44:100	3,730	3,000-4,600
Frying Pan	44, 45, 47, 444	18-30:100	7,110	5,500-8,500

2013 ELK HARVEST STATS

UNIT	SEASON	BULL	COW	CALF	TOTAL HARVEST	TOTAL HUNTERS	SUCCESS %		
							LAST YR	3 YR	5 YR
35	Archery	13	16	0	29	313	9	7	8
	Muzzle	12	5	0	17	139	12	13	15
	Early	0	35	0	35	60	58	49	56
	1st Rifle	14	18	2	34	242	14	21	22
	2nd Rifle	40	22	0	62	323	19	15	15
	3rd Rifle	35	46	1	82	427	19	20	22
	4th Rifle	3	13	0	16	52	31	28	26
36	Archery	30	3	0	33	504	7	7	8
	Muzzle	5	2	0	7	195	4	6	7
	Early	0	6	0	6	13	46	26	29
	1st Rifle	10	11	0	21	205	10	18	22
	2nd Rifle	68	31	7	106	617	17	15	16
	3rd Rifle	22	32	0	54	447	12	12	13
	4th Rifle	3	7	0	10	39	26	31	25
44	Archery	21	7	0	28	442	6	6	7
	Muzzle	7	2	0	9	185	5	9	9
	Early	0	54	7	61	104	59	53	57
	1st Rifle	15	44	0	59	307	19	17	19
	2nd Rifle	36	19	6	61	559	11	9	10
	3rd Rifle	48	14	4	66	483	14	14	14
	4th Rifle	13	11	0	24	187	13	17	19
45	Archery	31	20	3	54	585	9	7	7
	Muzzle	18	7	0	25	155	16	11	12
	Early	0	20	2	22	103	21	25	26
	1st Rifle	32	12	0	44	157	28	25	24
	2nd Rifle	22	29	1	52	524	10	12	13
	3rd Rifle	16	14	0	30	271	11	11	14
	4th Rifle	1	14	0	15	127	12	18	20
361	Archery	3	0	0	3	68	4	5	5
	Muzzle	0	0	0	0	55	0	6	6
	Early	0	6	0	6	13	46	33	33
	1st Rifle	11	0	0	11	60	18	23	23
	2nd Rifle	6	0	0	6	85	7	14	14
	3rd Rifle	3	7	5	15	123	12	10	10
	4th Rifle	0	5	3	8	61	13	22	22



MIDDLE PARK

GMU

18, 27, 28, 37, 181, 371

LOCAL CPW OFFICE
Hot Sulphur Springs
(970) 725-6200

AREA MAPS	USFS Routt National Forest USFS White River National Forest USFS Arapahoe/Roosevelt National Forest
AREA INFO	www.kremmlingchamber.com www.granbychamber.com

GENERAL AREA INFORMATION

The Continental Divide and the Gore Range Divide encircle Middle Park. Most of this terrain is steep to very steep. The weather can change rapidly. Areas can become snowbound. 4WD is recommended, along with chains.

Sagebrush/shrubs are common on southern exposures at lower elevations. The valley bottoms are mostly private lands. The remaining 2/3 of this area is public land.

GMU 27 has less public land than the other GMUs. Check USFS maps for ATV closures/restrictions.

Hunters around Wolford Mountain (GMU 181 and 27) should be aware that a travel management plan is in place - check with the BLM Kremmling office for information. Horses/pack animals are recommended for remote tracts and for Wilderness Areas.

Due to the proximity to Denver, there are many weekend hunters & recreationalists (bikers, hikers, ATVers).

The past decade's mountain pine beetle killed an estimated 80 percent of mature lodgepole pine trees in Grand County, creating numerous hazards along public roadways as these trees begin to fall.

As a result, fire danger is increased, big game distribution is changing in some areas and logging operations are likely in some spots. Hunters might focus on some of the dead lodgepole areas as increased sunlight to the forest floor creates more forage and these areas tend to hold mule deer and elk for longer periods of time. However be aware of possible falling trees when hiking, or setting up camp in pine beetle kill sections! Set up camps etc, in cleared areas away from dead trees. These dead trees can fall on their own without wind, or warning!

Road closures for tree removal will likely occur this season and next in this area. To avoid disappointment, be sure to call the **Sulphur Ranger District's Visitor's Information Hotline at 970-887-4100**, the **Kremmling BLM office at 970-724-3000** or the **Yampa Forest Service Office at 970-638-4516** BEFORE planning your hunting trip, or setting up camp. Or, sign up for updates by emailing SRDUpdates@fs.fed.us.

You can stop by the visitor's center at 9 Ten Mile Drive in Granby, visit www.fs.usda.gov/arp; or follow us on Twitter: www.twitter.com/usfsarp."

MIDDLE PARK

MULE DEER INFORMATION

All GMUs have good numbers of mule deer. The buck-to-doe ratios continue to increase as a result of limited buck hunting and mild winters. All units are managed for quality bucks. There are good numbers of mature bucks, but they rarely reach trophy status found in lower elevation mtn shrub & mild winter areas. Concentrate on transition zones that have aspen, shrub and coniferous cover. mule deer tend to move west and down in elevation over the seasons, snow will move them faster and farther. They typically migrate out of GMU 371 with average snowfall. A limited number of 4th season mule deer licenses available.

2013 MULE DEER OBJECTIVES

Herd	GMUs	Buck:Doer Objective	Population Estimate	Population Objective
Middle Park	18, 181, 27, 28, 37, 371	30-35:100	15,280	10,500 - 12,500

2013 MULE DEER HARVEST STATS

UNIT	SEASON	BUCK	DOE	FAWN	TOTAL HARVEST	TOTAL HUNTERS	SUCCESS %		
							LAST YR	3 YR	5 YR
18	Archery	25	8	0	33	318	10	9	9
	Muzzle	50	18	2	70	265	26	20	18
	2nd Rifle	157	132	0	289	1094	26	25	26
	3rd Rifle	189	126	17	332	968	34	37	34
	4th Rifle	55	0	0	55	133	41	57	55
27	Archery	3	8	8	19	149	13	23	20
	Muzzle	17	26	0	43	138	31	33	32
	2nd Rifle	118	115	3	236	645	37	27	28
	3rd Rifle	76	18	12	106	384	28	27	26
	4th Rifle	10	0	0	10	47	21	33	39
28	Archery	37	0	0	37	367	10	13	12
	Muzzle	28	18	0	46	197	23	28	26
	2nd Rifle	125	39	11	175	927	19	22	24
	3rd Rifle	197	85	1	283	845	33	34	35
	4th Rifle	30	0	0	30	94	32	55	56
37	Archery	0	8	0	8	173	5	14	17
	Muzzle	24	30	6	60	190	32	32	29
	2nd Rifle	102	51	0	153	501	31	30	31
	3rd Rifle	153	67	16	236	644	37	36	39
	4th Rifle	25	0	0	25	50	50	40	39

Cont. on next page

MIDDLE PARK

2013 MULE DEER HARVEST STATS (Cont.)

UNIT	SEASON	BUCK	DOE	FAWN	TOTAL HARVEST	TOTAL HUNTERS	SUCCESS %		
							LAST YR	3 YR	5 YR
181	Archery	5	0	0	5	93	5	16	13
	Muzzle	10	6	0	16	58	28	19	15
	2nd Rifle	56	30	8	94	445	21	22	21
	3rd Rifle	93	81	6	180	437	41	35	30
	4th Rifle	21	0	0	21	50	42	47	44
371	Archery	0	0	0	0	79	0	5	3
	Muzzle	5	6	0	11	75	15	16	14
	2nd Rifle	41	20	18	79	157	50	21	22
	3rd Rifle	24	0	0	24	165	15	17	17
	4th Rifle	5	0	0	5	11	45	47	25



ELK INFORMATION

Elk are well distributed in all units. Bull to cow ratios are good because the area is fairly steep and heavily timbered. Generally, trophy bulls are rare (a few are taken every year) because bulls are managed for hunter opportunity. With hunting pressure and snow, elk head for the inaccessible timber and private property. GMU 27 has a lot of private land. Hunt the rough terrain and heavy cover away from roads and trails to increase your success.

2013 ELK OBJECTIVES

Herd	GMUs	Bull:Cow Objective	Population Estimate	Population Objective
Gore Pass	15, 27	24-28:100	4,170	3,500-4,500
Troublesome Creek	18, 181	21-26:100	4,230	3,600-4,300
Williams Fork River	28, 37, 371	21-31:100	5,470	4,700-5,500

MIDDLE PARK

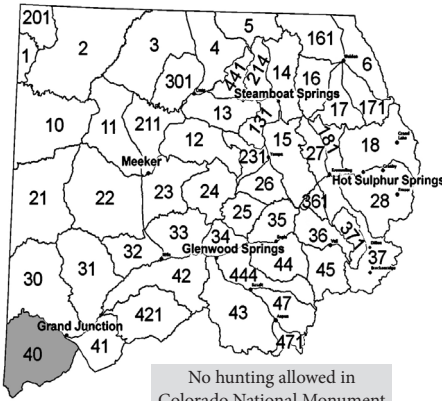
2013 ELK HARVEST STATS

UNIT	SEASON	BULL	COW	CALF	TOTAL HARVEST	TOTAL HUNTERS	SUCCESS %		
							LAST YR	3 YR	5 YR
18	Archery	33	24	4	61	1094	6	5	6
	Muzzle	0	0	0	0	116	0	5	10
	1st Rifle	91	92	9	192	849	23	15	16
	2nd Rifle	85	65	3	153	1171	13	12	12
	3rd Rifle	59	89	2	150	997	15	12	12
	4th Rifle	7	63	0	70	857	8	13	13
27	Archery	22	7	0	29	396	7	7	6
	Muzzle	0	5	0	5	22	23	12	17
	1st Rifle	19	12	7	38	183	21	21	20
	2nd Rifle	30	53	12	95	581	16	14	14
	3rd Rifle	8	11	4	23	328	7	5	5
	4th Rifle	4	5	3	12	107	11	8	12
28	Archery	51	10	3	64	985	6	6	7
	Muzzle	0	3	0	3	72	4	8	8
	1st Rifle	82	38	6	126	511	25	19	19
	2nd Rifle	58	72	3	133	1109	12	12	13
	3rd Rifle	49	66	11	126	865	15	12	13
	4th Rifle	23	18	0	41	421	10	13	10
37	Archery	31	24	3	58	781	7	6	9
	Muzzle	0	3	0	3	23	13	10	11
	1st Rifle	0	34	0	34	285	12	26	23
	2nd Rifle	15	20	7	42	521	8	11	14
	3rd Rifle	24	21	3	48	406	12	11	13
	4th Rifle	3	9	5	17	257	7	14	16
181	Archery	3	3	4	10	217	5	9	8
	Muzzle	0	0	0	0	9	0	11	9
	1st Rifle	14	5	9	28	189	15	20	19
	2nd Rifle	6	3	0	9	336	3	5	8
	3rd Rifle	15	37	0	52	397	13	8	8
	4th Rifle	18	12	11	41	381	11	8	15
371	Archery	6	10	0	16	418	4	7	7
	Muzzle	0	3	0	3	34	9	4	12
	1st Rifle	31	27	7	65	219	30	26	25
	2nd Rifle	24	1	0	25	254	10	12	11
	3rd Rifle	12	10	10	32	190	17	14	12
	4th Rifle	8	40	3	51	240	21	15	14

GLADE PARK

GMU
40

LOCAL CPW OFFICE
Grand Junction (970) 255-6100



AREA MAPS	USFS Uncompahgre National Forest BLM Delta BLM Grand Junction BLM Moab BLM Westwater
AREA INFO	www.visitgrandjunction.com

GENERAL AREA INFORMATION

This 750 square mile unit consists of a relatively flat summit leading to sloping mesas bisected by deep, rugged canyons. The highest elevation range is approximately 9,800’.

Roads provide access to the mesas, but many of the canyons are remote and accessible only by foot or horseback.

Weather starts out mild but mud/snow accumulation is likely in later seasons.

Early season hunters should favor higher elevations of the USFS land, while later season hunters will do better on the lower BLM lands.

Hunters can find many water holes within the dark timber stands on north facing slopes.

Elk and mule deer frequent these areas during warm temperatures and heavy hunting pressure.

GMU 40 has a lot of private land, and public access to BLM is often difficult to reach by vehicle.

GLADE PARK

MULE DEER INFORMATION

There are some good bucks in GMU 40 but they are hard to locate. The upper end of the Little Dolores drainage is a good place for quality mule deer bucks but there is considerable private land. Late season hunters may have success near Seiber Canyon, but it is foot or horseback only. Areas along the Utah border and north of Gateway can be good during the rifle seasons however be aware of private land and the state line.

2013 MULE DEER OBJECTIVES				
Herd	GMUs	Buck:Doe Objective	Population Estimate	Population Objective
Glade Park	40	30-35:100	5,690	6,500-8,500

2013 MULE DEER HARVEST STATS

UNIT	SEASON	BUCK	DOE	FAWN	TOTAL HARVEST	TOTAL HUNTERS	SUCCESS %		
							LAST YR	3 YR	5 YR
40	Archery	33	0	0	33	66	50	42	45
	Muzzle	17	0	0	17	28	61	65	60
	2nd Rifle	94	0	0	94	138	68	65	62
	3rd Rifle	77	0	0	77	106	73	73	72



GLADE PARK

ELK INFORMATION

Bulls will be bugling from mid-Sept through 1st rifle opening weekend. Elk are widely distributed. Most stay high until hunting pressure pushes them to lower elevations and less accessible drainages. Do not hunt areas that have previously received heavy hunting pressure - elk will not be there. Successful hunters do a lot of walking and looking.

GMU 40 is a limited unit. You must apply in the draw.

2013 ELK OBJECTIVES				
Herd	GMUs	Bull:Cow Objective	Population Estimate	Population Objective
Glade Park	40	30-35:100	2,430	2,800-3,800

2013 ELK HARVEST STATS

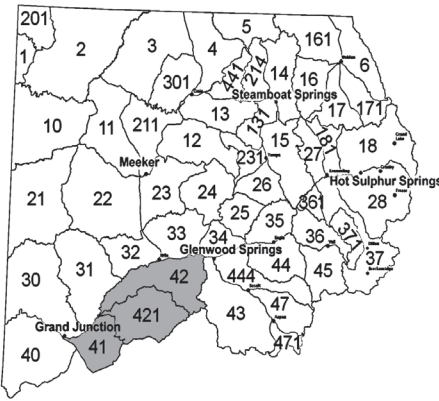
UNIT	SEASON	BULL	COW	CALF	TOTAL HARVEST	TOTAL HUNTERS	SUCCESS %		
							LAST YR	3 YR	5 YR
40	Archery	47	0	0	47	68	69	50	50
	Muzzle	0	0	0	0	20	0	6	27
	Early	0	123	13	136	289	47	49	48
	1st Rifle	22	7	0	29	68	43	53	52
	2nd Rifle	22	5	2	29	58	50	62	61
	3rd Rifle	11	5	4	20	56	36	49	51
	4th Rifle	11	3	0	14	50	28	43	42



GRAND MESA

GMU
41, 42, 421

LOCAL CPW OFFICE
Grand Junction
(970) 255-6100



AREA MAPS	USFS Grand Mesa National Forest USFS White River National Forest
AREA INFO	www.visitgrandjunction.com

GENERAL AREA INFORMATION

Grand Mesa terrain ranges from high elevation (11,000') spruce/fir forests to low elevation (4,800') pinyon-juniper woodlands.

Weather can be rainy or snowy, then warm up and dry out the following day. Roads can become very muddy and 4WD is recommended.

Hunters should be prepared to spend time on foot or horseback.

Much of the area is public land.

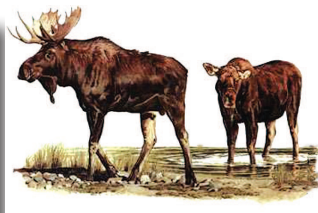
Overall, the hunting pressure is heavy.

Intensive natural gas development activity is occurring in GMUs 42 and 421.

Contact the USFS Grand Valley Ranger District, 970-242-8211 for more details on energy development in this area.

MOOSE IN AREA

BE PATIENT!
ALWAYS BE 100% SURE OF YOUR TARGET!



GRAND MESA

MULE DEER INFORMATION

The mule deer population has declined in recent years. The fourth, buck-only season was eliminated in 2013. However mule deer are still abundant and at the lower end of the population objective range. mule deer are found on forest lands and higher elevation private lands during Oct. The resident mule deer stay in lower agricultural areas year round. The migrating mule deer herd begins to move off the forest to lower elevations in mid-Nov, often to BLM lands. The best mule deer hunting is at mid elevations (8,500-9,500'), with more buck opportunities in the later seasons. The Battlements can be good in late seasons, but the terrain is rugged. The open country offers good opportunities for those who get out on foot or horseback.

2013 MULE DEER OBJECTIVES

Herd	GMUs	Buck:Doe Objective	Population Estimate	Population Objective
North Grand Mesa	41, 42, 421	25-30:100	14,400	17,000-23,000

2013 MULE DEER HARVEST STATS

UNIT	SEASON	BUCK	DOE	FAWN	TOTAL HARVEST	TOTAL HUNTERS	SUCCESS %		
							LAST YR	3 YR	5 YR
41	Archery	15	18	0	33	103	32	24	19
	Muzzle	24	7	0	31	93	33	36	32
	2nd Rifle	72	47	0	119	292	41	40	37
	3rd Rifle	200	48	6	254	471	54	42	44
42	Archery	22	19	0	41	135	30	33	29
	Muzzle	13	15	0	28	95	29	27	29
	2nd Rifle	149	19	0	168	460	37	44	44
	3rd Rifle	235	78	0	313	565	55	52	55
421	Archery	30	19	0	49	160	31	27	27
	Muzzle	40	22	0	62	129	48	44	40
	2nd Rifle	106	35	0	141	472	30	40	42
	3rd Rifle	101	30	6	137	271	51	51	51



GRAND MESA

ELK INFORMATION

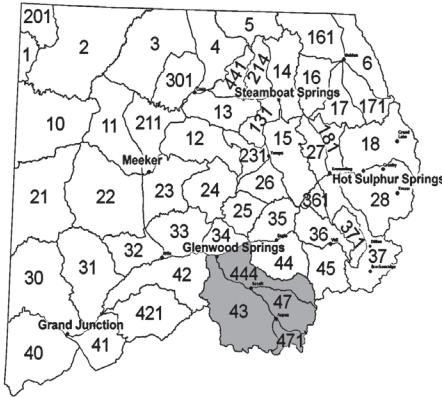
The elk herd is well distributed with good hunting success expected. Elk are scattered throughout the forest and on private lands. Most elk stay at higher elevations (8500- 10,000') in thick timber and oakbrush. There is no migration during the season, movement to the more remote areas is in response to hunting pressure. They will seek classic cover - the heavily wooded, north-facing slopes near water. You will need to get away from the roads. There are lots of legal bulls as the area is managed for quantity of bulls rather than trophy status. Hence, trophy bulls are present but relatively rare.

2013 ELK OBJECTIVES

Herd	GMUs	Bull:Cow Objective	Population Estimate	Population Objective
Grand Mesa	41, 411, 42, 421, 52, 521	20-25:100	15,980	15,000-19,000

2013 ELK HARVEST STATS

UNIT	SEASON	BULL	COW	CALF	TOTAL HARVEST	TOTAL HUNTERS	SUCCESS %		
							LAST YR	3 YR	5 YR
41	Archery	31	23	4	58	354	16	17	15
	Muzzle	23	8	0	31	242	13	15	16
	Early	0	47	0	47	206	23	34	37
	1st Rifle	89	31	0	120	443	27	28	26
	2nd Rifle	32	37	21	90	480	19	19	18
	3rd Rifle	27	34	1	62	387	16	14	16
	4th Rifle	8	8	0	16	201	8	10	11
42	Archery	115	38	4	157	820	19	19	16
	Muzzle	7	28	0	35	166	21	15	16
	1st Rifle	77	32	5	114	299	38	34	32
	2nd Rifle	102	124	10	236	1200	20	20	20
	3rd Rifle	62	119	0	181	1166	16	19	20
	4th Rifle	30	17	0	47	254	19	25	24
421	Archery	61	47	21	129	958	13	16	16
	Muzzle	26	22	0	48	359	13	16	20
	Early	0	87	3	90	185	49	44	46
	1st Rifle	80	48	0	128	507	25	26	26
	2nd Rifle	121	102	16	239	1253	19	19	18
	3rd Rifle	39	74	1	114	656	17	18	19
	4th Rifle	25	13	5	43	188	23	23	25



ROARING FORK

GMU
43, 47, 444, 471

LOCAL CPW OFFICE
 Glenwood Springs
 (970) 947-2920

AREA MAPS	USFS White River National Forest
AREA INFO	www.glenwoodchamber.com

GENERAL AREA INFORMATION

This area encompasses the Roaring Fork, Frying Pan and Crystal River drainages.

The lower elevations (6500') are primarily developed or agricultural.

Timberline is around 11,500' and there are 14,000' peaks in the Wilderness Areas. Be prepared for daytime highs of 75F dropping to 20F at night. Snow can exceed several feet in the higher elevations and moisture can make roads dangerous or impassible. 4WD is a necessity.

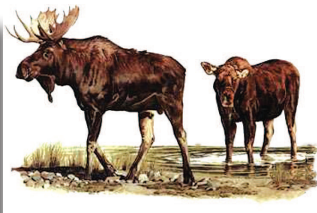
About 40% of the area is wilderness (Hunter-Fryingpan, Maroon Bells, Raggeds, Collegiate Peaks) and vehicles are not allowed.

These rugged areas offer increased hunting success, but require horseback/pack-in camps. Hunting pressure is moderate.

There are large blocks of private lands in GMU 43 east of Hwy 133 & in the western part of GMU 44.

MOOSE IN AREA

BE PATIENT!
ALWAYS BE 100% SURE OF YOUR TARGET!



ROARING FORK

MULE DEER INFORMATION

This herd is concentrated in aspen and oakbrush habitats before the snow flies. Hunting pressure does not generally cause herd movement, but they will move to lower elevation woodlands as snow accumulates. Archery and muzzleloader hunters should head to timberline.

Early rifle season hunters should focus on high elevation areas around timberline, Capitol Creek, Haystack Mountain and East Snowmass Creek. Later season hunters could try “The Crown”, Holgate Mesa, Williams Hill and Light Hill, but expect to see other hunters in these areas. Some good bucks can be found if hunters focus in areas away from roads.

2013 MULE DEER OBJECTIVES				
Herd	GMUs	Buck:Doe Objective	Population Estimate	Population Objective
Maroon Bells	43, 47, 471	30-35:100	5,560	7,500-8,500
Basalt	444	30:100	3,210	5,300

2013 MULE DEER HARVEST STATS

UNIT	SEASON	BUCK	DOE	FAWN	TOTAL HARVEST	TOTAL HUNTERS	SUCCESS %		
							LAST YR	3 YR	5 YR
43	Archery	16	11	2	29	134	22	15	14
	Muzzle	16	3	0	19	136	14	25	23
	Early	7	0	0	7	12	58	41	43
	2nd Rifle	69	25	4	98	234	42	38	38
	3rd Rifle	106	25	0	131	216	61	52	50
	4th Rifle	2	0	0	2	7	29	23	48
47	Archery	4	0	0	4	40	10	8	11
	Muzzle	3	0	0	3	25	12	15	12
	Early	4	0	0	4	14	29	23	18
	2nd Rifle	11	2	0	13	48	27	23	31
	3rd Rifle	21	2	0	23	34	68	37	33
	4th Rifle	4	0	0	4	4	100	86	89
444	Archery	0	2	0	2	47	4	4	10
	Muzzle	2	0	0	2	13	15	12	19
	Early	6	0	0	6	15	40	15	18
	2nd Rifle	11	4	0	15	61	25	32	34
	3rd Rifle	10	2	0	12	55	22	34	26
	4th Rifle	2	0	0	2	3	67	80	71
471	Archery	0	2	0	2	47	4	4	10
	Muzzle	2	0	0	2	13	15	12	19
	Early	6	0	0	6	15	40	15	18
	2nd Rifle	11	4	0	15	61	25	32	34
	3rd Rifle	10	2	0	12	55	22	34	26

ROARING FORK

ELK INFORMATION

Early seasons find elk anywhere from 7500' to above timberline. With increased hunting pressure and snow, herds tend to move to remote areas or private lands - away from roads and hunters. The wilderness areas are a good bet for success but hunters must hike or horseback as motorized travel is prohibited. Try Snowmass Creek, Conundrum Creek, Capitol Creek, Avalanche Creek, Difficult Creek, McFarland Creek, Maroon Creek, Thompson Creek, Basalt Mountain, Four-mile, the Marble area, and the upper Frying Pan drainages. Kobey Park and Sloans Peak are good but deep snow and bad roads should be expected, especially later in the seasons.

2013 ELK OBJECTIVES

Herd	GMUs	Bull:Cow Objective	Population Estimate	Population Objective
Avalanche Creek	43, 471	17-27:100	3,850	3,600-5,400
Frying Pan River	44, 45, 47, 444	18-30:100	7,110	5,500-8,500

2013 ELK HARVEST STATS

UNIT	SEASON	BULL	COW	CALF	TOTAL HARVEST	TOTAL HUNTERS	SUCCESS %		
							LAST YR	3 YR	5 YR
43	Archery	96	21	0	117	857	14	13	12
	Muzzle	39	6	0	45	217	21	19	19
	Early	0	57	0	57	154	37	47	49
	1st Rifle	54	47	0	101	377	27	24	24
	2nd Rifle	85	71	7	163	848	19	18	18
	3rd Rifle	42	66	0	108	570	19	24	23
47	4th Rifle	12	30	0	42	252	17	26	26
	Archery	27	4	0	31	271	11	9	10
	Muzzle	4	0	0	4	79	5	15	12
	Early	0	24	0	24	48	50	47	54
	1st Rifle	5	7	0	12	65	18	12	15
	2nd Rifle	24	11	0	35	383	9	13	16
444	3rd Rifle	36	23	0	59	287	21	20	19
	4th Rifle	5	13	0	18	89	20	27	26
	Archery	19	10	0	29	335	9	9	9
	Muzzle	21	5	0	26	173	15	16	16
	Early	0	42	9	51	178	29	36	43
	1st Rifle	20	22	0	42	227	19	27	24
471	2nd Rifle	54	63	6	123	635	19	16	17
	3rd Rifle	15	34	5	54	426	13	14	13
	4th Rifle	2	12	0	14	214	7	15	16
	Archery	14	4	0	18	145	12	12	8
	Muzzle	0	4	0	4	19	21	11	9
	Early	0	5	0	5	5	100	38	31
	1st Rifle	0	4	0	4	66	6	11	17
	2nd Rifle	7	7	0	14	66	21	25	29
3rd Rifle	5	3	0	8	30	27	18	23	
4th Rifle	0	4	0	4	29	14	21	13	

PRONGHORN

PRONGHORN INFORMATION

Northwest Colorado offers good pronghorn hunting opportunities. Hunter success varies by GMU. Hunter success is typically higher on private land, but public land pronghorn can still be found. The pronghorn season in GMUs 41, 62, and 411 is closed (new this year) to manage the population.

2013 PRONGHORN OBJECTIVES				
Herd	GMUs	Buck:Doe Objective	Population Estimate	Population Objective
North Park	6,16,17,161,171	35-40:100	1,320	1,500-1,600
Great Divide	3,4,5,13,14,214,301,441	55:100	15,800	15,800
Maybell	11	40:100	1,400	1,400
Sand Wash	1,2,201	68:100	3,200	3,200
Axial Basin	12,23,211	35:100	300	300
Middle Park	18,27,28,37,181,371	40:100	630	630

2013 PRONGHORN STATS

UNIT	SEASON	BUCK	DOE	FAWN	TOTAL HARVEST	TOTAL HUNTERS	SUCCESS %		
							LAST YR	3 YR	5 YR
2	Rifle	15	0	0	15	16	94	78	78
3	Rifle	265	104	20	389	485	80	79	80
4	Rifle	64	49	12	125	175	71	68	76
5	Rifle	2	7	0	9	24	38	32	51
6	Rifle	10	2	1	13	14	93	98	92
11	Rifle	87	79	6	172	189	91	85	89
12	Rifle	3	3	0	6	7	86	63	67
13	Rifle	63	48	9	120	185	65	66	75
16	Rifle	7	1	0	8	19	42	68	70
17	Rifle	7	3	0	10	15	67	57	59
18	Rifle	9	16	2	27	46	59	62	62
23	Rifle	5	5	0	10	19	53	56	60
27	Rifle	2	2	0	4	14	29	56	58
28	Rifle	2	5	0	7	9	78	60	43
37	Rifle	2	0	0	2	7	29	55	38
131	Rifle	0	3	2	5	5	100	55	64
161	Rifle	12	3	0	15	15	100	93	88
171	Rifle	3	0	0	3	6	50	39	44
181	Rifle	9	5	2	16	27	59	58	54
201	Rifle	9	17	0	26	31	84	79	79
211	Rifle	8	3	0	11	16	69	62	62
214	Rifle	7	12	0	19	31	61	61	64
301	Rifle	130	24	4	158	219	72	73	75
441	Rifle	14	1	0	15	25	60	65	72

MOOSE

MOOSE INFORMATION

Northwest Colorado's moose population is thriving since moose were first re-introduced by the CPW into North Park in 1978. Recent introductions of moose include Grand Mesa (2005) and Flattops Wilderness Area (2009).

The introduction of moose into the Flattops also began in 2009 with the release of 20 moose transplanted from an overpopulated unit in Utah. Future transplants into the Flattops will continue to increase viewing and hunting opportunity.



Big game hunters in all areas in northwest Colorado are reminded to be sure of their target.

The accidental kill of moose by elk hunters is a threat to these new populations.

In cooperation with Colorado chapters of Safari Club International, an extensive education campaign is being conducted to alert hunters to these new populations.

MOOSE

2013 MOOSE OBJECTIVES

Herd	GMUs	Bull:Cow Objective	Population Estimate	Population Objective
North Park	6, 16, 17, 161, 171	60-70:100	580	500-600
Gore	14,18, 28, 36, 37, 181, 371	65:100	410	190
Grand Mesa	41, 42, 43, 52, 411, 421, 521	55-65:100	430	300-400
White River	12, 23, 24	(undeter.)	150	100-200

2013 MOOSE HARVEST STATS

UNIT	SEASON	BULL	COW	BULL HUNTERS	COW HUNTERS	SUCCESS %	
						BULL	COW
6	All	11	17	11	19	100	89
14	All	2	1	3	2	67	50
16	All	5	1	4	4	125	25
17	All	9	7	7	11	129	64
18	All	11	13	15	16	73	81
24	All	2	2	2	2	100	100
28	All	10	6	10	9	100	67
36	All	1	0	1	0	100	0
37	All	4	0	4	2	100	0
41	All	1	0	1	0	100	0
161	All	5	1	6	4	83	25
171	All	9	10	8	17	113	59
181	All	1	0	1	0	100	0
371	All	0	2	0	2	0	100
421	All	5	5	5	6	100	83



BLACK BEAR

Black bear hunting opportunities are abundant in northwest Colorado. A constitutional amendment passed by voters in Colorado eliminated the spring hunting of bears and prohibits the use of hounds or bait in bear hunting. Bear hunters should be familiar with the regulations regarding the take of bear in Colorado.

September bear season - Hunters can apply for a September bear rifle license in the annual big game draw. These either sex licenses are limited and only available through the draw - rarely as leftovers. These licenses are open to all legal methods of take, meaning the holder can choose to hunt with archery equipment or muzzleloader during this season.

Over-the-counter with caps - Archery, muzzleloader and some rifle bear licenses are sold over-the-counter on a first-come, first-served basis beginning in July. These licenses require that the holder also possesses a valid mule deer or elk license for the area and season that the hunter will be hunting bear.

2013 BEAR HARVEST STATS

Bear harvest stats are reported differently than other big game species. Because bears are relatively reclusive and fewer in number statewide than mule deer or elk, estimating populations at the local level is problematic. It is estimated that Colorado has between 16,000 and 18,000 black bears statewide. Success rates for bear hunters tend to be lower than other big game animals, and requires the issuance of a large number of licenses to achieve a relatively small harvest.

Population	GMUs	Licenses Issued	Boar Harvest	Sow Harvest	Total Harvest	Success %
B-1	21, 22, 30, 31, 32	841	41	18	59	7
B-4	4, 5, 6, 14, 16, 17, 161, 171, 214, 441	1053	25	20	45	4
B-10	12, 13, 23, 24, 25, 26, 33, 34, 131, 231	1358	50	29	79	6
B-11	35, 36, 361, 43, 44, 45, 47, 444, 471	1366	41	19	60	4
B-15	1, 2, 3, 10, 11, 201, 211, 301	246	11	8	19	8
B-16	15, 18, 27, 28, 37, 181, 371	356	21	2	23	6
B-17	41, 421, 52, 411, 521, 53, 63	3890	105	60	165	4

GUN RANGES

Basalt State Wildlife Area Shooting Range

Basalt

Colorado Parks and Wildlife, Glenwood Springs Office

970 - 947-2920

The range is located in the Christine unit of the Basalt SWA. Take Highway 82 to Two Rivers Road, turn on to Homestead Drive and then turn into the Basalt SWA entrance that is on the west end of Homestead Drive. There is a large green/white CPW sign at the bottom of the hill on the road up to the shooting range.

Public pistol range, 100 yard rifle and shotgun ranges. Open weekdays 7 a.m. to 7 p.m. and weekends 9 a.m. to 7 p.m. year 'round. Fully automatic firearms are prohibited. Not including muzzleloader and shotgun, rifles on the range must be .50 caliber or lower. For a fee, the Roaring Fork Valley Sportsman's Association offers trap and skeet shooting on Wednesday evenings and weekends from noon to 5 p.m. The range is otherwise unsupervised.

Note: Beginning December 1, 2010, the range will close at 5 p.m. on Saturdays and Sundays until further notice.

Bears Ears Sportsman Club

P.O. Box 622, Craig

970-824-8376

300-yard rifle and handgun range for members. Open to the public the first Sunday/Monday of each month. Also open during daylight hour, the Thursday and Friday prior to each big game season for hunter sight-in. For more information, pick up brochures at the Craig Sportsman's Center.

Byers Canyon Rifle Range

Hot Sulphur Springs

970-725-6200

Colorado Parks and Wildlife - Hot Sulphur Springs Office. This range is closed during winter months to provide winter forage to big game. This closure is generally in effect beginning the first week in January. The range will remain closed until mule deer move toward higher ground in the spring, which typically occurs in early April.

Open daily, sunrise to sunset (except as noted, above). Five centerfire rifle 25-, 100-, and 200 yard ranges, one rimfire (.22 cal) rifle range, shotgun (hand traps only – not provided), and one handgun range provided. Range also has straw bales for archery. One rifle range has wheel chair access to 25/100-yard target range. Paper targets only (exception for clay birds for shotgun, and targets for archery). No bowling pins or other breakables allowed on range. Unsupervised range! Eye and ear protection mandatory. Portable toilet and trash dumpster on site.

GUN RANGES

Castle Peak Gun Club **P.O. Box 319, Gypsum**

Open prior to hunting season for hunter sight-in. Range visible from I-70; north-side of the Interstate, west of the interchange.

Glenwood Springs Gun Club **Glenwood Springs** **970-945-7401**

Public welcome to shoot when range is open. Sporting clays, trap, black powder, rifle and pistol ranges up to 200 yards. Hunter education courses are available also.

Grand Junction BLM Public Shooting Ranges

North of Grand Junction **Bureau of Land Management (BLM), Grand Junction Field Office** **970 -244-3000**

From Grand Junction, take Horizon Drive northeast to H Road; west on H Road approximately 1.25 miles to 27¼ Road; north on 27¼ Road 5 miles to the rifle range or 5.8 miles to the pistol range. Open to the public year-round; no supervision provided. The rifle range has a sheltered firing line with 25 stations and 8 benches with range distances from 50 to 500 yards. The pistol range has 4 benches with range distances up to 150 yards. There is no trash service—shooters are responsible for removing their own brass, shell casings, targets and trash. Please be aware of other users of these public lands such as hikers, horseback riders, and OHV operators.

East of Grand Junction **Bureau of Land Management (BLM), Grand Junction Field Office** **970 -244-3000**

(Acquire a map of this shooting area at the Grand Junction BLM office.)

Shooting area is located on East Orchard Mesa. To reach the shooting area, travel east on C Road past 34 Road.

This public land shooting area is open to the public year around. There are several no-shoot zones to protect nearby residences, nearby FAA communication equipment and a power sub-station. It is a federal offense to shoot in or through these areas. Do not shoot across a road or trail. Establish a safe shooting location with a good backstop down range. Users are responsible for removing all targets, shells, brass and trash. No glass targets.

GUN RANGES

Grand Junction Trap and Skeet Club, Inc.

116 32 Rd., Grand Junction

970-245-0780

Public and league trap and skeet shooting.

Grand Mesa Bowmen

PO Box 752, Grand Junction

970-244-2977

Bowhunting club with 42 outdoor targets near Colorado National Monument. Family memberships are \$36 per year.

Hayden Shooting Range

2 miles south of Hayden

Colorado Parks and Wildlife, Steamboat Springs Office

970-870-2197

100-, 200- and 300-yard rifle and pistol range is open to the public 7 days a week from dawn until dusk.

Meeker Sportsman's Club

4.5 miles southwest of Meeker on Colorado Highway 13

Hunter sight-in Thursdays and Fridays prior to each big game season. Look for more information on flyers around town. Public is welcome to shoot in other organized events. Memberships are \$20 per family and include full use of range, including archery, trap, rifle and pistol ranges. Write for more information.

Plateau Creek State Wildlife Area

West of Collbran

Colorado Parks and Wildlife, Grand Junction Office

970-255-6100

From Grand Junction, take I-70 east to Highway 65 (Exit 49), then 8 miles east to Highway 330, then about 7.5 miles east to county road V, then north .25 mile to the range. The range, operated by Colorado Parks and Wildlife, is open year round during daylight hours. There are four adjustable shooting benches with 50, 100, 200, and 300 yard ranges. There is no trash service; shooters are asked to remove all trash, targets, and brass after use. The county road leading to this range can be impassable in wet weather.

GUN RANGES

Red Rock Archery
3193 Hill Ave., Grand Junction
970-241-2697

Open to the public. 20 and 30 yard indoor archery range, 3D shoots on Tuesdays and Thursdays and DART Video Target System

West Rifle Creek State Wildlife Area
North of Rifle
970-255-6100

Colorado Parks and Wildlife, Grand Junction Office Range distance: 100 yards. Small bore rifle, large bore rifle, pistol, and shotgun are allowed. Range is open to the public year round; no supervision provided. No trash service; shooters are responsible for removing trash including brass, shell casings, and targets. Directions: From Rifle, take Highway 13 north to Highway 325, then north on 325 to Rifle Gap Reservoir. At the dam turn west on CR 252 and travel approximately 2 miles; shooting range is on a dirt road off to the left just before reaching the intersection with CR 210.

Rifle Sportsmen's Club
West of Rifle
970-876-2133

Range is located north of the US Forest Service office on Fravert Road.

Public can access the range during sight-in days two days prior to each of the big game seasons, except 4th season when range is open to the public on Friday only. Cost is \$5 per gun during sight-in days. Targets at 25, 100, 200 and 300 yards; gongs at 100-500 yards. Annual membership can be purchased for \$50/yr. Membership includes access to large and small bore range, long distance range, pistol range, archery targets, action pistol and trap/skeet/five-stand range. Hunter safety and concealed carry classes available.

Routt County Rifle & Pistol Club
P.O. Box 3116, Steamboat Springs
970-870-0298

Call for dates and times that the club is open to the public. Facilities include trap, skeet, sporting clays, indoor .22, outdoor pistol, 25-, 50-, 100- and 200-yard rifle ranges.

GUN RANGES

Summit County Public Shooting Range

**639 County Rd 66
Dillon, CO 80435
www.summitrange.org**

There are limited facilities at range. There is now a porta-potty, but there is no running water or electricity. Take note before planning your day at the range.

The ground beneath the range is compacted recycled asphalt. Driving a target stand into the ground is not advised as it may damage the surface. Self-supporting stands with sandbags are one useful method of creating a target stand. Try making a 2x4 stand and drill holes in the stand for your stake-equipped targets.

Vail Rod & Gun Club, Ltd.

**001 Sporting Clay Way, Wolcott
970-926-3472**

Open to the public for sporting clays during summer months. In fall, archery, pistol and 100 yard rifle range open to the public.

Walden Public Shooting Area

**East of Walden
970-723-4625**

Take Jackson CR 12E east out of Walden. Go four miles. Shooting range is on the north side of the road and is marked with a white sign displaying the range rules and small CPW and BLM emblems. Open to the public year-round; no supervision provided. The range has benches with range distances from 50 to 300 yards. There is no trash service—shooters are responsible for removing their own brass, shell casings, targets and trash. Please be aware of other users of these public lands such as hikers, horseback riders, and OHV operators.

White River Bowmen

**Post Office Box 32, Rangely
970-675-8559**

Bowhunting club with 14 outdoor targets and clubhouse. Memberships \$30 per year.

LAND MANAGEMENT AGENCIES

<p>Bureau of Land Management BLM</p> <p>www.co.blm.gov/offices.htm</p>	Grand Junction Field Office 2815 H Road		(970) 244-3000
	Glenwood Springs Field Office (Silt) 2300 River Frontage Road		(970) 876-9000
	White River Field Office (Meeker) 220 E. Market Street		(970) 878-3800
	Little Snake Field Office (Craig) 455 Emerson Street		(970) 826-5000
	Kremmling Field Office 2103 East Park Avenue		(970) 724-3000
<p>United States Forest Service USFS</p> <p>www.fs.usda.gov/whiteriver www.fs.usda.gov/gmug www.fs.usda.gov/mbr</p>	<p>White River National Forest</p>	Blanco RD (Meeker) 220 E. Market Street	(970) 878-4039
		Rifle RD (Rifle) 0094 County Rd 244	(970) 625-2371
		Aspen RD (Carbondale) 620 Main St.	(970) 925-3445
		Eagle RD (Eagle) 125 West 5th St.	(970) 328-6388
		Holy Cross RD (Minturn) 24747 Hwy 24	(970) 827-5715
		Dillon RD (Silverthorne) 680 Blue River Pkwy	(970) 468-5400
	<p>Grand Mesa, Uncompahgre & Gunnison National Forest</p> <p>2250 Hwy 50, Delta (970) 874-6600</p>	Grand Valley RD (Grand Junction) 2777 Crossroads Blvd #1	(970) 242-8211
		Other Grand Mesa, Uncompahgre, & Gunnison National Forest Ranger Districts are located in the CPW's SW Region, see <i>Big Game Hunting in SW Colorado</i> booklet.	
	<p>Routt & Medicine Bow National Forest</p> <p>2468 Jackson St. Laramie WY (307) 745-2300</p>	Hahns Peak/Bears Ears (Steamboat Springs) 925 Weiss Dr	(970) 870-2299
		Parks RD (Walden) 100 Main Street	(970) 723-2700
Yampa RD (Yampa) 300 Roselawn Ave		(970) 638-4516	
<p>Arapaho National Forest</p>	Sulphur RD (Granby) 9 Ten Mile Drive	(970) 887-4100	

MAPS

WWW.HUNTDATA.COM

COLORADOHUNTINGMAPS.COM

GENERAL VISITORS INFORMATION

State Parks Reservations www.cpw.state.co.us Reservations (800) 678-2267 General Info (970) 255-6100	Colorado Tourism Board www.colorado.com (800) COLORADO 800-265-6723
US National Park Service www.nps.gov	Campground and cabin info www.coloradodirectory.com

ROADS AND WEATHER

Colorado Dept. of Transportation www.cotrip.org Toll free (877) 315-ROAD	www.crh.noaa.gov/gjt/ www.weather.com
--	--

MAPS

TOPO Maps US Geological Survey http://topomaps.usgs.gov (800) 435-7627	BLM Maps www.co.blm.gov (303) 239-3600
	US Forest Service Maps www.nationalforeststore.com (303) 275-5350

GUIDE AND OUTFITTER INFORMATION

For a list of registered guides and outfitters CO Dept of Regulatory Agencies www.dora.state.co.us/outfitters (303) 894-7778	Colorado Outfitters Association www.coloradooutfitters.org P.O. Box 10 Silt, CO 81652 (970) 824-2468
--	--

ATTENTION HUNTERS!

If you are hunting or fishing on BLM or U.S. Forest Service public lands, make sure your outfitter is permitted for that activity in that area. Check with your local BLM or Forest Service office before you book a trip.

CHRONIC WASTING DISEASE

Chronic wasting disease (CWD) is neurological disease that can be found in some mule deer, elk and moose, and is fatal to these animals. The disease has been found in twelve states, including Colorado, and two Canadian provinces. If you have questions about CWD and public health, contact the Colorado Department of Public Health and Environment at (303) 692-2700.

PRECAUTIONS

- Do not shoot, handle or consume any animal that appears sick.
- Wear rubber gloves when field dressing and processing animals.
- Bone out the meat from your animal.
- Minimize the handling of brain and spinal tissues.
- Wash hands and instruments thoroughly after field dressing is completed.
- Avoid consuming brain, spinal cord, eyes, spleen, tonsils, pancreas and lymph nodes of harvested animals. Normal field dressing, coupled with boning out a carcass, will remove most, if not all, of these body parts.
- Do not consume meat from animals known to be infected with CWD.
- Knives, saws and cutting table surfaces can be disinfected by soaking in a solution of 50 percent unscented household bleach and 50 percent water for an hour. Afterward, allow them to air dry.
- Have harvested animals tested at a CPW-CWD testing station.

BE SAFE AND RETURN TO YOUR FAMILY

This is a basic, preliminary list of survival tips, suggestions and equipment. There are many survival guides and manuals that provide much more detailed information. ***Be sure to pick one up, and read it.***

- Always tell someone where you are going and when you will return.
- Always stick to your plan, stay put if you become lost or stranded.
- Always take someone with you, never go out alone.
- You must have shelter each night.
- The ability to build a fire is paramount.
- Signaling, like everything else in survival, is not a spur-of-the-moment thing and you must prepare for it so that it is ready when you need it.
- You must have a way to find, purify and drink water
- Dress for weather but remember it can change *suddenly and drastically!*

BASIC SURVIVAL KIT

SHELTER PACKAGE:

- 1 GOLD AND 1 SILVER EMERGENCY BLANKETS (SPACE BLANKETS)
- 1 SHEET PLASTIC, 3 MIL., 6 FOOT BY 6 FOOT
- 50 FEET PARACHUTE CORD
- ELECTRICIAN'S TAPE, MUST BE COLD RESISTANT

FIRE PACKAGE:

- 2 CONTAINERS OF MATCHES, STRIKE ANYWHERE TYPE, IN WATERPROOF CONTAINERS
- MAGNESIUM FIRESTARTING TOOL[®] OR METAL MATCH[®]
- COTTON BALLS IMPREGNATED WITH PETROLEUM JELLY
- 1 CANDLE

SIGNAL PACKAGE:

- 1 GLASS 'G.I.'-TYPE SIGNAL MIRROR (EVEN AN OLD CD MAY WORK)
- 1 PLASTIC WHISTLE
- 1 DAYLIGHT FLUORESCENT ORANGE CLOTH SIGNAL PANEL, 3 FOOT BY 3 FOOT

ADDITIONAL SUPPLIES:

- FIRST-AID KIT THAT ADDRESSES WILDERNESS EMERGENCIES.
- A GOOD KNIFE—THIS IS YOUR MOST IMPORTANT SURVIVAL TOOL.
- RAIN GEAR—PONCHO PREFERRED.
- BACKPACK HYDRATION SYSTEM OR CANTEEN, AND WATER PURIFICATION TABLETS.
- HIGH ENERGY, LIGHTWEIGHT FOOD BARS AND SNACKS.
- A CELL-PHONE WITH A CHARGED BATTERY - YOU *MIGHT* HAVE CELL COVERAGE

CAMPING IN BEAR COUNTRY

Bears have a tremendous sense of smell.

Keep a clean camp to avoid unwanted visitors

Stash your trash. Use bear-proof containers or double bag and lock trash in car trunk or camper. Never leave trash outside.

Store food, beverages and toiletries in air-tight containers. Don't store food containers in your tent or anywhere a bear can see, smell or reach.

Keep a clean camp. Secure your trash, and keep it in a locked vehicle.

Keep a clean tent. Don't store anything with an odor in your tent. This includes food, beverages, toiletries, gum toothpaste, sunscreen, candles and insect repellent.

Don't sleep in the clothes you cook in - Change your clothes before you turn-in and store those clothes with your food in an air-tight container.

Don't feed wildlife. Bears that are fed by humans lose their fear of people, putting others at risk.



HABITAT PARTNERSHIP PROGRAM



The Habitat Partnership Program is a unique collaboration between sportsmen, landowners and land management agencies, including the BLM, employees of the U.S. Forest Service, and Colorado Parks and Wildlife.

HPP's purpose is to reduce conflicts and losses to ranchers and farmers caused by big game.

One way HPP does this is by developing more and better habitat on both public and private lands. Nearly 3/4 of HPP's funds are spent on habitat improvements each year.

Five percent of revenue generated by the sale of hunting licenses fund HPP projects throughout Colorado. This money (over \$2 million dollars annually) is matched with other people's money and time. This allows HPP to get more done at a lower cost for everyone.

By reducing landowner losses, HPP is helping increase a tolerance for big game animals on private property. Simply put, if HPP didn't exist, hunters could not enjoy the enormous hunting opportunities that they have today. Habitat conditions would be poorer than they are now and landowners and sportsmen wouldn't have the good relationships they do now.

HUNTERS, THANK YOU FOR YOUR SUPPORT!

FOR MORE INFORMATION, GO TO

www.bit.ly/hppprogram



Colorado Parks and Wildlife manages 42 state parks, all of Colorado's wildlife, more than 300 state wildlife areas and a host of recreational programs.



To learn more, please visit:
www.cpw.state.co.us
Follow us on Facebook

Information and guidance for this booklet was provided by the Colorado Parks and Wildlife personnel of the Northwest Region. Their hard work and dedication to the wildlife resource make northwest Colorado a spectacular hunting destination.

Thanks also to the CPW GIS unit for providing the maps used in this booklet. Information depicted is for reference purposes only and is compiled from the best available sources. Reasonable efforts have been undertaken to assure the accuracy of all maps.

This book is intended to provide a general overview of big game hunting in Northwest Colorado, and should not be considered a legal document. Despite our best efforts, some errors may exist or information can become outdated. Call your local Colorado Parks and Wildlife office with questions or further details.

For specific details on regulations, restrictions, licenses and applications, please refer to the current Colorado Big Game brochure, or for a full legal document, you can view general and big game regulations on our web site at cpw.state.co.us



POACHERS STEAL FROM EVERYONE
REPORT POACHING OR SUSPICIOUS ACTIVITY
CALL 1-877-COLO OGT (265-6648)

Verizon Cellular Users

#OGT