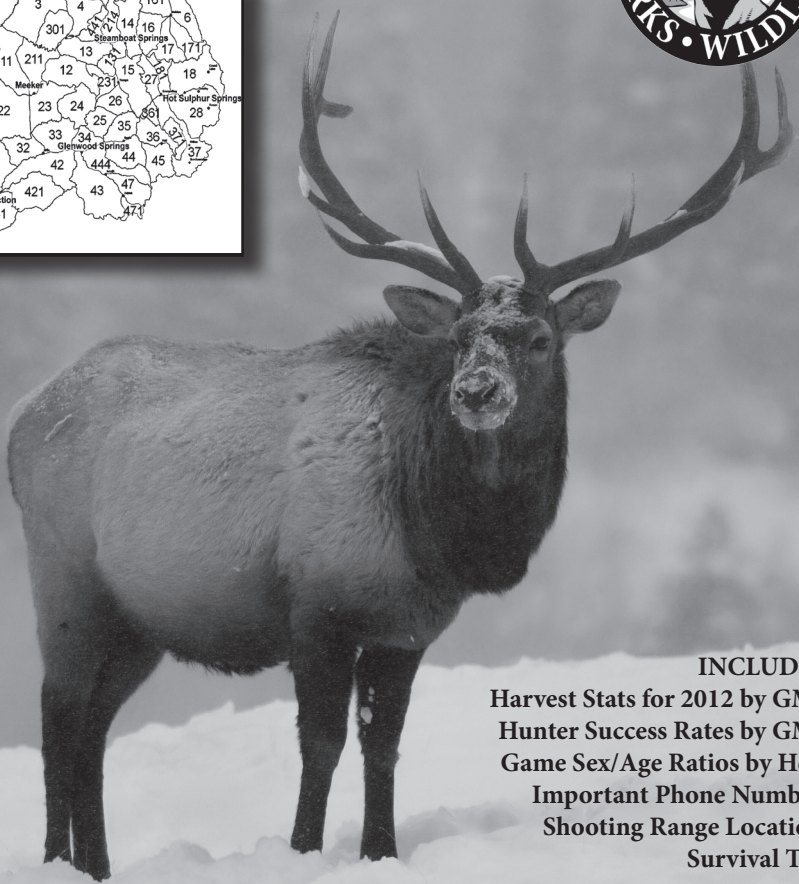
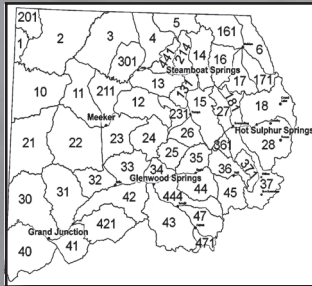


BIG GAME HUNTING GUIDE

Northwest Colorado

2013 - 2014



INCLUDES:
Harvest Stats for 2012 by GMU
Hunter Success Rates by GMU
Game Sex/Age Ratios by Herd
Important Phone Numbers
Shooting Range Locations
Survival Tips

COLORADO PARKS AND WILDLIFE

Northwest Region Office • 711 Independent Avenue, Grand Junction, CO 81505
(970) 255-6100 • www.cpw.state.co.us

ABOUT THIS BOOKLET

This book is intended to provide a general overview of big game hunting in Northwest Colorado, and should *not* be considered a legal document. Despite our best efforts, some errors may exist or information can become outdated. Call your local Colorado Parks and Wildlife office with questions or further details.

For specific details on regulations, restrictions, licenses and applications, please refer to the current *Colorado Big Game* brochure, or for a full legal document, you can view general and big game regulations on our web site at:

www.cpw.state.co.us

The data in this booklet is provided to help hunters with hunting tips and suggestions. While this data is also utilized in management of game populations, it is not the only data Colorado Parks and Wildlife uses. Because aerial survey data varies widely based on factors such as weather conditions, time spent in the air and time of day, biologists also utilize harvest data, game damage claims, landowner reports, advanced computer modeling, on-the-ground knowledge and other information in establishing herd objectives and population estimates.

ACKNOWLEDGEMENTS

Information and guidance for this booklet was provided by the Colorado Parks and Wildlife personnel of the Northwest Region. Their hard work and dedication to the wildlife resource make northwest Colorado a spectacular hunting destination. Thanks to all of them for doing what they do and for telling us about it, so we could tell you.

Thanks also to the CPW GIS unit for providing the maps used in this booklet. Information depicted is for reference purposes only and is compiled from the best available sources. Reasonable efforts have been undertaken to assure the accuracy of all maps.

Questions or Suggestions?

Mike Porras - NW Region Public Information Officer

(970) 255-6162

mike.porras@state.co.us

If you would like to have your NW Region hunting photo included in this guide, please send your photo, photo credit and photo details to the email address above. The photo must be an original, taken by you or submitted with the photographer's express permission. Colorado Parks and Wildlife will not publish any photos without express permission by the photographer and is not responsible for misidentification or misrepresentation by anyone.
Not every photo will be used in the publication.

CONTENTS

ANTLER POINTS & UNLIMITED ELK UNITS	2
DONATION CERTIFICATE	3
ATV & OHV INFORMATION	4
ELK VS. MOOSE INFO	5
USING STATISTICS TO HELP YOUR HUNT	6
ELK AND DEER UNITS & HARVEST STATS	7-46
PRONGHORN, MOOSE AND BEAR INFO & STATS	47-50
LOCAL GUN RANGES	51-55
PHONE LISTINGS & INFO SOURCES	56
GENERAL VISITORS INFORMATION	57
SURVIVAL TIPS	58
CAMPING IN BEAR COUNTRY	59

IMPORTANT INFO FOR THE NORTHWEST - 2013

See the 2013 Big Game Brochure or cpw.state.co.us for additional information!

IMPORTANT - NEW CHANGES TO LATE SEASON YOUTH ELK HUNTS

The rules for late season youth hunts have changed.

See page 4 of the 2013 Colorado Big Game Brochure for details.

CHECK FOREST SERVICE CLOSURES

Projects, wildfires, flooding, road events, etc. on the National Forest can impact access any time of the year. Your hunting destination or access route may be affected. Learn about closures and plan alternative routes and area to hunt. Go to www.bit.ly/hunterinfoufs, or see page 56 for contact info.

ELK

Fourth season licenses for GMU 32 are being reinstated this year.

Late season antlerless hunts in GMU 40 have been closed.

Antlerless licenses in 41, 42, 421 are now list B

Either sex licenses in some units in the NW region are again separate bull or cow licenses -see brochure for details.

Antlerless hunts in GMUs 25 and 26 are no longer over the counter with caps - hunters must now apply in the draw for these units.

DEER

North Park deer herd numbers have remained low for six years. To help restore the herd, doe hunting in North Park is currently not available.

MOOSE

During the mandatory inspection, an incisor tooth for the bottom jaw will be pulled.

Successful moose populations mean numerous new hunts are available around the state. In the NW, cow hunts are now available in 41, 42 and 421, and bull hunts in 12, 23, 24.

AMMUNITION RESTRICTIONS

In state lands and State Wildlife Areas, A regulation prohibits the possession of the following ammunition and/or firearms: tracer rounds, armor piercing rounds, military hardened round with explosive or radioactive substances, .50 caliber BMG rounds or fully automatic firearms.

ANTLER POINT RESTRICTIONS

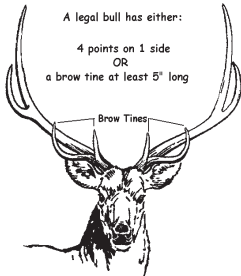
DEER



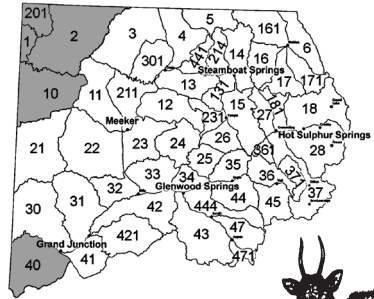
**Spike Buck
(at least 5")**

All buck (antlered) deer harvested in northwest Colorado must have at least one 5" spike.

ELK



Legal bulls in white units must have at least one brow tine that is at least 5 inches



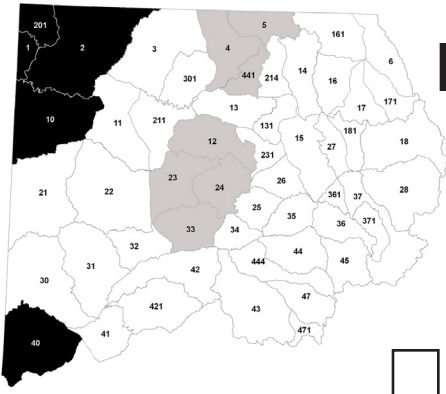
Legal bull in shaded limited units must have at least a 5 inch spike on one side.



UNLIMITED BULL ELK LICENSES

Over the counter bull elk licenses are available to non-resident and resident hunters in northwest Colorado.

The map below shows where these licenses are valid.

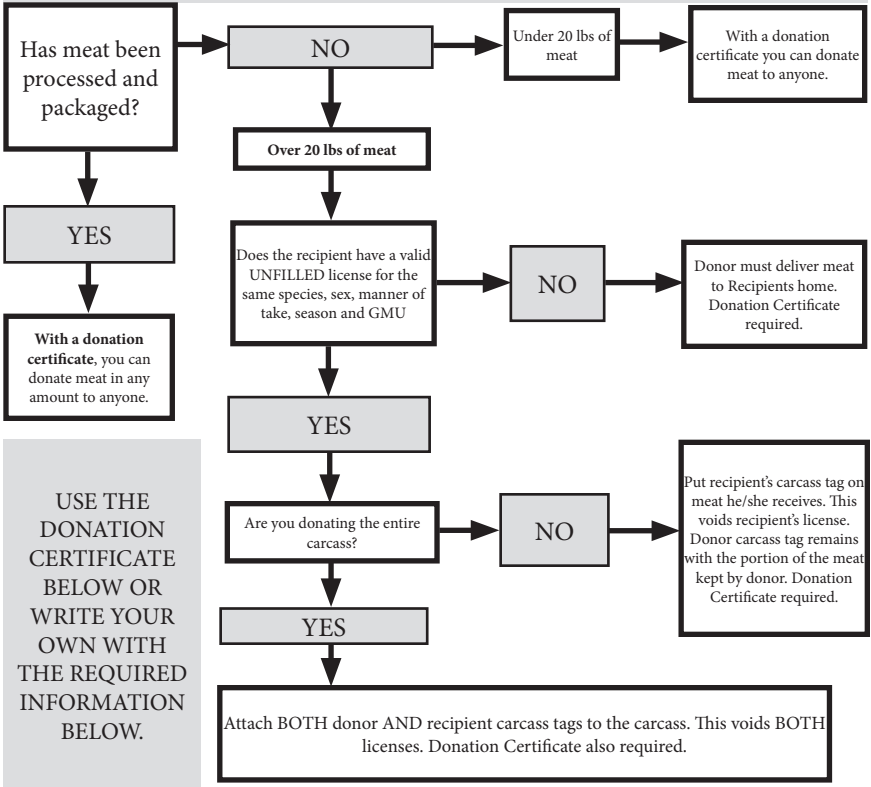


LIMITED UNITS - Draw Only
You may NOT hunt in these areas with an over-the-counter license

ARCHERY RESTRICTION
Rifle hunters may hunt in these areas with an over-the-counter license, however archery over-the-counter license holders may only hunt on private land in these units.

UNLIMITED UNITS
Hunters with an unlimited bull elk license (archery or rifle) may hunt in these units. Remember: You must still have permission to hunt private land.

DONATING GAME MEAT



USE THE DONATION CERTIFICATE BELOW OR WRITE YOUR OWN WITH THE REQUIRED INFORMATION BELOW.

STATE OF COLORADO

GAME DONATION CERTIFICATE

Date: _____

Donor name _____

Donor Address _____

Recipient name _____

Recipient Address _____

Kind of game donated _____

Number/Weight of donation _____

The above mentioned game and/or fish was legally taken on (date): _____

using hunting license # _____

Signature Recipient _____

Signature Donor _____

Make two copies - one for donor, one for recipient

ATV and OHV

Colorado law allows local and state law enforcement officers to write citations for off-highway vehicle (OHV) users who are violating federal travel rules. This means that wildlife officers can write tickets to OHV users who are riding in closed areas or designated wilderness areas. *As a rider, it's your responsibility to know the roads, trails and areas where you legally can ride.*

Users riding in an OHV in a closed area face fines of \$100 dollars. If the violation takes place while hunting, fishing or trapping, the user will be penalized 10 points against hunting and fishing privileges. Violations in federal wilderness areas are \$200 fines and 15 points.

Users riding an OHV on public lands should consult with the appropriate land management agency to obtain information about travel management. Once you have determined your hunting area, contact the local office of the US Forest Service (USFS) or the Bureau of Land Management (BLM) to obtain a travel map.



STAYTHETRAIL.ORG

The Colorado OHV Registration Program fees fund trail maintenance, construction, trail heads, parking areas, trail signs, maps, and land acquisition. It also enables law enforcement personnel to identify and return stolen vehicles, encourages safe and responsible OHV use, and promotes respect for public lands

Out-of-state residents who bring OHVs into Colorado must purchase a Colorado Non-Resident OHV permit which is valid from the date of purchase through the following March 31. These permits can be purchased anywhere you get your hunting/fishing licenses in Colorado, via mail-in request, or you can order one online at the Colorado Parks and Wildlife E-Store.

Once purchased, this sticker should be placed on the vehicle's outside face of the right front fender or fork. Since this is only a use permit, no renewal notice will be sent to non-resident permit holders; you must purchase a new permit each year you come to Colorado with your OHV.

For more information about OHVs from Colorado Parks and Wildlife go to:

www.bit.ly/ohvcolorado

ATTENTION ELK HUNTERS!

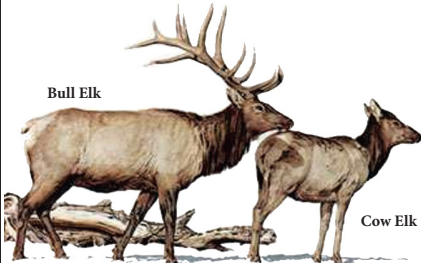
Moose populations are growing in Colorado and can often be found in elk habitat.

ALWAYS be on the lookout for moose!

BE PATIENT AND USE GOOD OPTICS!

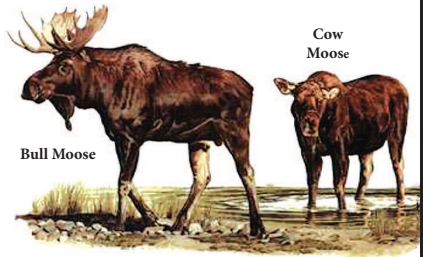
BE 100% SURE OF YOUR TARGET BEFORE YOU SHOOT!

SAFE HUNTING IS, NO ACCIDENT!



Bull Elk

Cow Elk



Bull Moose

Cow Moose

ELK CHARACTERISTICS

- Branched antlers
- Light tan coat, brown head
- Often travel in larger herds
- Slender snout
- Spook easily

MOOSE CHARACTERISTICS

- Palmated antlers
- Dark brown or black body
- Bell on throat
- Bulbous snout
- Travel alone, in pairs or in small groups
- Do not spook easily
- Will attack if threatened

**If you mistakenly kill a moose, dress it immediately.
As soon as possible, notify a wildlife officer.**

The fines for illegally killing, then abandoning a moose starts at \$1,370 on up to \$25,000 and can include felony charges, the permanent loss of hunting privileges and prison!

**REPORT POACHING OR SUSPICIOUS ACTIVITY TO
OPERATION GAME THIEF**

1-877-COLO OGT (265-6648)



UNDERSTANDING HARVEST STATS & HERD RATIOS

Ever see a baseball player with a .125 batting average hit a home run? Ever see a 'can't miss' stock take a plunge? Ever hunt a unit with a 100% success rate and not see any deer? If you're nodding your head to any of these scenarios then you're one of the people who knows that statistics are a good guide, but they aren't a guarantee. So, here's a guide to help make sense of these stats.

AGE & SEX RATIOS*				
Herd	GMUs	Adult Male:Female Objective	Population Estimate	Population Objective
A	B	C	D	E

A - Herd Name - A herd is generally defined as the area where a group of animals spends the entire year. A herd area includes winter range, transition range, migratory corridors, fawning and calving areas and summer range.

B - Game Management Units - geographic areas within a herd area. Herds may use many GMUs or a single GMU. Because herd areas and the booklet chapters don't always overlap cleanly on a map, you may see that an area in this booklet may have multiple herds or herds may be split by multiple areas in the booklet.

C - Adult Male:Female Objective - The ratio of male animals to female animals that CPW is trying to obtain. This is the goal that optimizes the herd as a quality herd (producing more 'trophy' type bucks and bulls), an opportunity herd (producing more hunting opportunity) or something in between.

D - Population Estimate - This is the current year estimate of the size of the herd. As it is impossible to physically count every animal, the estimate is derived through computer modeling, on-the-ground observation, harvest data and other factors.

E - Population Objective - Often given as a range, this is the population that CPW is trying to achieve. This number is based on herd plans (called "DAU Plans" internally) that are developed through a public participation process. The herd objective is set to try and balance concerns of interested parties, which may range from agricultural damage to hunter preference.

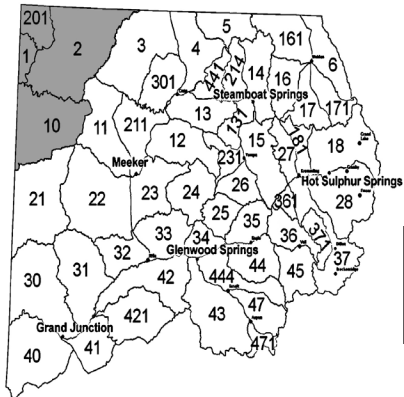
**Buck:Doe and Fawn:Doe observed ratios are no longer reported.*

Because space is limited in the booklet, we generally only include the major seasons (archery, muzzleloader and four rifle seasons). In units where early or late seasons are critical, we've tried to list those numbers. Additional harvest stats can be found on our web site at www.cpw.state.co.us.

Have you ever harvested an animal in a unit, then noticed a zero-percent success rate in the following year's statistics for that unit? While rare, it's actually possible. It's the kind of occurrence that highlights the limitations of statistics. When reading the harvest stats, it's important to keep in mind that the statistics are derived utilizing statistical sampling techniques. With more than 300,000 hunting licenses sold in Colorado each year, it's impossible to contact every hunter. So a statistical sample is matched with license sales data and an estimate of hunter numbers and hunter success is established.

For that same reason, in some smaller units you may not see any data reported for a season in which you participated. There are instances where not enough hunters respond to our survey inquiries and therefore it isn't possible to report any data.

Also keep in mind that *past performance doesn't necessarily guide future success*. Warm weather during the previous year may have limited harvest. Cold and snowy weather may have sent hunters home early the previous year, limiting the harvest. You may have better conditions. A forest fire or other event may have disrupted an area the last year. Don't automatically assume that poor previous results mean a unit is a bad place to hunt, and vice-versa. To compensate for some of those factors that might skew harvest dramatically higher or lower in a unit, we've added three-year and five-year hunter success average columns.



GREEN RIVER

**GMU
1, 2, 10, 201**

**LOCAL CPW OFFICE
Meeker (970) 878-6090**

AREA MAPS	BLM Canyon of Lodore BLM Rangely
AREA INFO	www.rangely.com

GENERAL AREA INFORMATION

In this area, 9,700' Diamond Mountain is the highest point, dropping to 5100' elevation at the White River. Sage and sage-grassland dominate, with the typical vegetation groups as the elevation increases.

Weather is generally mild through the later seasons, though the higher elevations can have significant snow accumulations.

Public land accounts for more than 85% of GMU 201. GMU 2 is a 'checker-board' of public and private land, and GMU 10 is mostly BLM land with a lot of scattered private land. Consult a map and be aware of where you are.

GMU 1 has poor access into the rough, rocky terrain and into the wilderness area. You must draw a license to hunt the Green River units, and it can take many years of preference points. Hence, the hunting pressure is typically light.

An agreement with a private land owner and the State Land Board opens several thousand acres in GMU 201 for public hunting access.

See the Craig Chamber of Commerce or the CPW office in Meeker for details.

Dinosaur National Park Is Closed To All Hunting.

GREEN RIVER

DEER INFORMATION

Deer are scattered throughout GMUs 2,10 & 201. If there is winter range migration, it is usually during 3rd season. Deer in GMU 1 tend to stay at the south & north ends of Brown's Park Refuge. The average good buck in GMUs 2 and 201 measures 24-26". There are trophy bucks in GMU 10, however they tend to have tall versus wide antlers. Hunt the brush-covered areas, high elevations early in the season, lower elevations later.

2012 DEER OBJECTIVES

Herd	GMUs	Buck:Doe Objective	Population Estimate	Population Objective
Little Snake	1, 2, 201	15:100	1,100	13,500
Rangely	10	20:100	580	7,000

2012 DEER HARVEST STATS

UNIT	SEASON	BUCK	DOE	FAWN	TOTAL HARVEST	TOTAL HUNTERS	SUCCESS %		
							LAST YR	3 YR	5 YR
1	Archery	0	0	0	0	1	0	0	0
	2nd Rifle	5	0	0	5	5	100	73	73
	3rd Rifle	3	0	0	3	3	100	100	100
2	Archery	3	0	0	3	3	100	78	69
	Muzzle	3	0	0	3	3	100	100	95
	2nd Rifle	15	0	0	15	16	94	92	89
	3rd Rifle	7	0	0	7	7	100	96	91
10	Archery	n/a	n/a	n/a	n/a	n/a	n/a	n/a	n/a
	Muzzle	n/a	n/a	n/a	n/a	n/a	n/a	n/a	n/a
	2nd Rifle	14	0	0	14	20	70	65	68
	3rd Rifle	0	0	0	0	3	0	84	83
	4th Rifle	n/a	n/a	n/a	n/a	n/a	n/a	n/a	n/a
201	Archery	2	0	0	2	2	100	67	79
	Muzzle	6	0	0	6	7	86	81	71
	2nd Rifle	19	0	0	19	21	90	84	86
	3rd Rifle	11	0	0	11	11	100	100	100

GREEN RIVER

ELK INFORMATION

Big, 300 + size bulls are common. The elk tend to stay put over the seasons. Movement is weather dependent. Overall, elk are scattered in GMUs 2, 10, 201 and the northern portion of GMU 1. We recommend Blue Mountain and Moosehead Mtn in GMU 10, but be prepared for rough terrain. When hunting GMUs 2 or 201 - hold out for a good bull - the average size is around 305. In GMU 2, try the SW corner. In GMU 1, try Hoy Draw & Chokecherry Draw.

2012 ELK OBJECTIVES

Herd	GMUs	Bull:Cow Objective	Population Estimate	Population Objective
Cold Springs	2, 201	40:100	1,190	950
Green River	1	30:100	200	170
Rangely -Blue Mtn.	10	40:100	4,300	1,200

2012 ELK HARVEST STATS

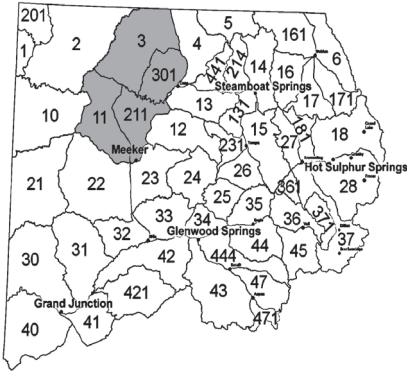
UNIT	SEASON	BULL	COW	CALF	TOTAL HARVEST	TOTAL HUNTERS	SUCCESS %		
							LAST YR	3 YR	5 YR
1	Archery	1	0	0	1	2	50	25	27
	Muzzle	0	1	0	1	9	11	9	25
	Early	8	0	0	8	14	57	51	60
	1st Rifle	1	0	0	1	6	17	34	30
	2nd Rifle	0	4	0	4	22	18	9	26
	3rd Rifle	0	9	3	12	18	67	35	27
	4th Rifle	0	0	0	0	28	0	28	31
2	Archery	7	0	0	7	8	88	77	80
	Muzzle	4	0	0	4	10	40	63	56
	Early	25	2	0	27	40	68	65	67
	1st Rifle	0	15	0	15	41	37	39	41
	2nd Rifle	0	6	0	6	26	23	31	35
	3rd Rifle	0	10	2	12	44	27	36	38
	4th Rifle	0	9	0	9	41	22	44	39
10	Archery	4	0	0	4	14	29	49	56
	Muzzle	3	0	0	3	7	43	59	63
	Early	27	60	0	87	116	75	76	72
	1st Rifle	1	9	3	13	23	57	49	57
	2nd Rifle	0	22	4	26	39	67	49	45
	3rd Rifle	0	26	0	26	60	43	39	39
	4th Rifle	0	91	6	97	266	36	41	42

GREEN RIVER

2012 ELK HARVEST STATS (Cont.)

UNIT	SEASON	BULL	COW	CALF	TOTAL HARVEST	TOTAL HUNTERS	SUCCESS %		
							LAST YR	3 YR	5 YR
201	Archery	5	0	0	5	8	63	68	68
	Muzzle	2	0	0	2	11	18	45	58
	Early	24	0	0	24	26	92	91	91
	1st Rifle	0	9	2	11	20	55	54	54
	2nd Rifle	0	17	2	19	28	68	60	60
	3rd Rifle	0	6	2	8	15	53	52	48
	4th Rifle	0	16	0	16	37	43	40	41





LOWER YAMPA

**GMU
3, 11, 211, 301**

**LOCAL CPW OFFICE
Meeker (970) 878-6090**

AREA MAPS	BLM Craig BLM Meeker
AREA INFO	www.craig-chamber.com www.meekerchamber.com

GENERAL AREA INFORMATION

The Lower Yampa units lie south of Wyoming, bordered by White and Little Snake rivers.

The lower elevations of 6,000' consist of sage and sage steeps. Pinyon and juniper cover the upper elevations up to 8,500'.

Expect zero to light snow cover in 1st & 2nd seasons. The later seasons may bring moderate snow and a potential for near zero temperatures. If the weather is mild, deer and elk will not be present in high numbers until the later seasons.

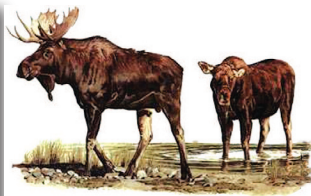
Overall access is easy and 4WD is not necessary in most areas. Hunting pressure is heavy.

Outside of GMU 301, 70 percent of the Lower Yampa is public land.

MOOSE IN AREA

BE PATIENT!

ALWAYS BE 100% SURE OF YOUR TARGET!



LOWER YAMPA

DEER INFORMATION

The buck-doe ratio is increasing. The mid-range elevations with mountain shrub and pinyon-juniper breaks generally hold the most deer, especially during the regular rifle seasons. Movement occurs with weather and hunting pressure. In 211 and 11, deer are generally found in the Danforth Hills during 2nd rifle season moving to lower elevations in Axial Basin (GMU 211), Bitterbrush SWA and adjacent BLM (GMU 11), and Crooked Wash (GMU 11) by 3rd and 4th rifle. Several thousand acres are open for public hunting in Axial Basin through a coordinated resource management plan (see Meeker CPW office for more details.)

2012 DEER OBJECTIVES

Herd	GMUs	Buck:Doe Objective	Population Estimate	Population Objective
Bear's Ears	3, 4, 5, 14, 214, 301,441	22:100	29,510	37,800
White River	11, 12, 13, 22, 23, 24, 131, 211,231	22-25:100	42,750	67,500

2012 DEER HARVEST STATS

UNIT	SEASON	BUCK	DOE	FAWN	TOTAL HARVEST	TOTAL HUNTERS	SUCCESS %		
							LAST YR	3 YR	5 YR
3	Archery	3	9	3	15	70	21	20	21
	Muzzle	11	0	0	11	21	52	41	45
	2nd Rifle	202	34	3	239	376	64	57	56
	3rd Rifle	295	81	12	388	492	79	74	71
	4th Rifle	3	0	0	3	4	75	59	56
11	Archery	4	0	0	4	19	21	30	38
	Muzzle	13	2	0	15	36	42	28	31
	2nd Rifle	88	14	2	104	171	61	47	45
	3rd Rifle	109	53	11	173	229	76	66	59
	4th Rifle	0	0	0	0	1	0	63	63
211	Archery	3	0	0	3	29	10	4	7
	Muzzle	7	2	0	9	25	36	29	26
	2nd Rifle	104	2	0	106	187	57	48	48
	3rd Rifle	92	59	7	158	210	75	63	57
	4th Rifle	2	0	0	2	2	100	71	71
	Late	0	3	1	4	4	100	85	63
301	Archery	12	18	0	30	39	77	49	46
	Muzzle	2	9	0	11	14	79	55	51
	2nd Rifle	202	41	3	246	319	77	65	60
	3rd Rifle	236	34	8	278	368	76	73	72
	4th Rifle	0	0	0	0	2	0	58	43

LOWER YAMPA

ELK INFORMATION

The large elk herd occupies all available habitat. The later seasons are usually better, especially on public land, due to snow and hunting pressure pushing the elk out of the adjacent units. The success rate is very good on late cow elk hunts. Axial Basin CRM is a hot spot for hunting, but crowding is significant. The best bull hunting will be on private lands. *Youth hunting participation during the late seasons in these GMUs is now limited. Please see big game brochure for details.*²

2012 ELK OBJECTIVES

Herd	GMUs	Bull:Cow Objective	Population Estimate	Population Objective
Bears Ears	3, 4, 5, 14, 214, 301, 441	20-25:100	16,690	15,000-18,000
White River	11, 12, 13, 23, 24, 25, 26, 33, 34, 131, 211, 231	20-27:100	34,690	32,000 - 39,000

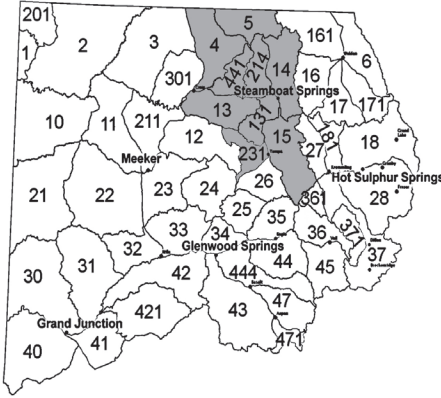
2012 ELK HARVEST STATS

UNIT	SEASON	BULL	COW	CALF	TOTAL HARVEST	TOTAL HUNTERS	SUCCESS %		
							LAST YR	3 YR	5 YR
3	Archery	0	0	0	0	49	0	6	11
	Early	0	0	0	0	3	0	0	18
	Muzzle	0	11	0	11	61	18	26	19
	1st Rifle	26	56	0	82	197	42	36	39
	2nd Rifle	30	2	0	32	444	7	9	6
	3rd Rifle	35	3	0	38	864	4	6	6
	4th Rifle	16	71	14	101	288	35	30	18
11	Archery	24	14	0	38	187	20	18	17
	Muzzle	0	0	0	0	41	0	0	5
	Early	0	40	0	40	140	29	45	45
	1st Rifle	115	73	14	202	501	40	28	36
	2nd Rifle	82	15	0	97	590	16	24	22
	3rd Rifle	61	70	8	139	1120	12	18	19
211	4th Rifle	36	139	21	196	750	26	29	27
	Archery	37	12	3	52	312	17	30	30
	Muzzle	0	5	2	7	21	33	19	39
	Early	0	36	0	36	115	31	42	47
	1st Rifle	101	29	10	140	232	60	49	53
	2nd Rifle	93	25	7	125	553	23	25	25
	3rd Rifle	115	50	8	173	856	20	25	21
301	4th Rifle	19	72	31	122	491	25	31	32
	Archery	3	0	0	3	20	15	11	11
	Muzzle	0	0	0	0	3	0	0	0
	Early	0	10	0	10	22	45	52	26
	1st Rifle	0	15	0	15	76	20	16	30
	2nd Rifle	18	7	0	25	307	8	10	7
	3rd Rifle	46	12	0	58	580	10	11	8
4th Rifle	24	50	10	84	299	28	31	19	

UPPER YAMPA

GMUs

**4, 5, 13, 14, 15,
131, 214, 231, 441**



LOCAL CPW OFFICE
GMUs 4 & 5-Meeker office
(970) 878-6090
Others - Steamboat Springs
(970) 870-2197

AREA MAPS	USFS Routt National Forest
AREA INFO	www.craig-chamber.com www.ci.steamboat.co.us

GENERAL AREA INFORMATION

From a low of 6,300' to 12,000' along the Continental Divide. The Routt National Forest dominates the eastern 2/3 of the Upper Yampa units with coniferous forests and aspen.

Most of the land outside of the national forest is private land. Mountain shrub and rolling sage cover the low country.

Expect light to moderate snow in the 1st season, gradually increasing through the 4th season. 4WD is usually necessary on the secondary roads.

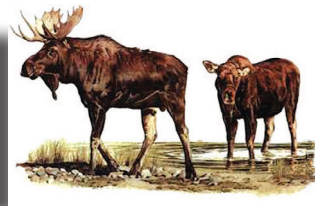
Hunting pressure is heavy. Hunters will have better success and enjoy more solitude by walking into remote areas.

Hunting pressure may create refuge situations on the private lands in GMUs 13, 131, 214 and 441. Mt. Zirkel (GMU 14) and Sarvis Creek (GMU 15) Wilderness Areas access is restricted to non-vehicle methods. Public hunting in GMUs 13 and 131 is limited to a few small parcels of BLM land and some State Trust Land parcels.

Domestic sheep grazing typically occurs on parts of the Routt National Forest through the months of August and September. Elk will typically avoid areas actively used by sheep but often are not far away. Hunters can use this knowledge to their advantage. To learn more about sheep management and actively grazed areas, archery and muzzleloader hunters are encouraged to contact the Hahns Peak-Bears Ranger District in Steamboat Springs at 970-870-2299, or visit the Medicine Bow-Routt National Forests website at <http://www.fs.usda.gov/mbr>.

MOOSE IN AREA

BE PATIENT!
ALWAYS BE 100% SURE OF YOUR TARGET!



UPPER YAMPA

DEER INFORMATION

The deer herd has declined in the upper Yampa units over the past four years due to severe winters. Most of the deer will be found in the western section of these units. Movement is also to the west. Hot spots are located north of Hayden. Some good trophy bucks are seen in the southern portion. In GMUs 4 & 5, the buck hunting has shown steady improvement. This area is not managed for trophy bucks, but it does have a good number of adult males in the population. Hunt the aspen and brush areas. Doe licenses in these units are no longer "list B" licenses except for GMU 15

2012 DEER OBJECTIVES

Herd	GMUs	Buck:Doe Objective	Population Estimate	Population Objective
Bears Ears	3, 4, 5, 14, 214, 301, 441	22:100	29,510	37,800
White River	11, 12, 13, 22, 23, 24, 131, 211, 231	22-25 :100	42,750	67,500
State Bridge	15, 35, 36, 45, 361	26-30:100	15,710	13,500 - 16,500

2012 DEER HARVEST STATS

UNIT	SEASON	BUCK	DOE	FAWN	Total Harvest	Total Hunter	SUCCESS %		
							LAST YR	3 YR	5 YR
4	Archery	9	21	0	30	142	21	18	14
	Muzzle	12	12	0	24	46	52	34	32
	2nd Rifle	266	52	5	323	543	59	47	45
	3rd Rifle	152	11	6	169	233	73	69	54
	4th Rifle	5	0	0	5	5	100	90	78
5	Archery	6	9	0	15	87	17	15	13
	Muzzle	3	3	0	6	22	27	27	21
	2nd Rifle	33	3	0	36	80	45	44	42
	3rd Rifle	27	0	5	32	39	82	69	62
	4th Rifle	2	0	0	2	3	67	92	89
13	Archery	n/a	n/a	n/a	n/a	n/a	n/a	n/a	n/a
	Muzzle	2	0	0	2	13	15	32	48
	2nd Rifle	61	12	0	73	166	44	45	48
	3rd Rifle	61	8	0	69	105	66	59	51
	4th Rifle	4	0	0	4	4	100	59	59
14	Archery	3	15	0	18	100	18	19	17
	Muzzle	2	12	0	14	41	34	32	32
	1st Rifle	4	0	0	4	24	17	12	21
	2nd Rifle	5	9	5	19	187	10	21	21
	3rd Rifle	0	0	0	0	20	0	14	12
	4th Rifle	1	0	0	1	1	100	100	100

UPPER YAMPA

2012 DEER HARVEST STATS (Cont.)

UNIT	SEASON	BUCK	DOE	FAWN	Total Harvest	Total Hunter	SUCCESS %		
							LAST YR	3 YR	5 YR
15	Archery	13	10	1	24	153	16	13	11
	Muzzle	10	5	6	21	118	18	18	16
	2nd Rifle	107	41	0	148	373	40	46	40
	3rd Rifle	143	11	0	154	253	61	56	51
	4th Rifle	16	0	0	16	28	57	69	73
131	Archery	12	4	0	16	38	42	32	28
	Muzzle	3	2	0	5	16	31	18	18
	2nd Rifle	4	0	0	4	27	15	22	26
	3rd Rifle	5	0	0	5	20	25	34	31
214	Archery	3	0	0	3	76	4	3	13
	Muzzle	10	6	0	16	31	52	43	46
	2nd Rifle	29	6	0	35	136	26	34	31
	3rd Rifle	6	0	0	6	23	26	25	18
441	Archery	12	0	0	12	42	29	14	14
	Muzzle	3	0	0	3	3	100	47	36
	2nd Rifle	40	5	0	45	137	33	36	41
	3rd Rifle	35	13	0	48	99	48	60	46
	4th Rifle	n/a	n/a	n/a	n/a	n/a	n/a	n/a	n/a

ELK INFORMATION

Elk are plentiful throughout the Upper Yampa area. Licenses are also readily available, but hunters should not rely on leftover license availability as these herds approach population objective. CPW has been working to minimize crop damage and significantly reduce the number of elk in these units. There are good numbers of bull elk, however, do not expect to see many large adult males. Large elk numbers occur on the Routt National Forest. The basic movement is from the higher to lower elevation in response to hunting pressure and weather. Hunt the timber and hunt the Routt National Forest early. In GMUs 4 & 5, private land access is only available on a fee hunting basis.

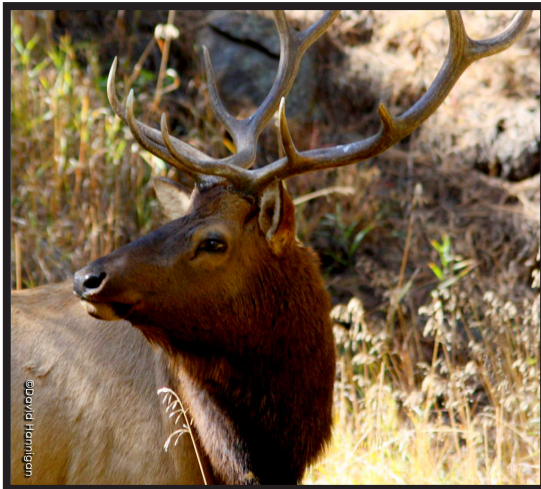
2012 ELK OBJECTIVES

Herd	GMUs	Bull:Cow Objective	Population Estimate	Population Objective
Bear's Ears	3, 4, 5, 14, 214, 301, 441	20-25:100	16,690	15,000 - 18,000
White River	11, 211, 12, 13, 131, 231, 23, 24, 25, 26, 33, 34	20-27:100	34,690	32,000 - 39,000
Gore Pass	15, 27	24-28:100	4,560	3,500 - 4,500

UPPER YAMPA

2012 ELK HARVEST STATS

UNIT	SEASON	BULL	COW	CALF	TOTAL HARVEST	TOTAL HUNTERS	SUCCESS %		
							LAST YR	3 YR	5 YR
4	Archery	32	25	6	63	374	17	19	18
	Muzzle	0	21	0	21	68	31	23	21
	Early	0	58	0	58	109	53	41	34
	1st Rifle	129	124	18	271	541	50	46	44
	2nd Rifle	162	57	0	219	1058	21	21	18
	3rd Rifle	121	25	0	146	638	23	20	17
	4th Rifle	15	39	0	54	162	33	35	25
5	Archery	6	12	0	18	120	15	17	18
	Muzzle	0	14	3	17	32	53	36	33
	Early	0	17	0	17	17	100	45	51
	1st Rifle	35	20	0	55	122	45	41	43
	2nd Rifle	126	15	2	143	401	36	27	24
	3rd Rifle	21	11	0	32	152	21	26	26
	4th Rifle	0	7	0	7	16	44	55	38
13	Archery	38	13	3	54	175	31	25	22
	Muzzle	0	7	2	9	18	50	29	28
	Early	0	122	24	146	210	70	68	63
	1st Rifle	138	41	25	204	382	53	47	50
	2nd Rifle	155	55	4	214	526	41	39	37
	3rd Rifle	155	40	11	206	499	41	44	40
	4th Rifle	44	102	17	163	267	61	61	56



UPPER YAMPA

2012 ELK HARVEST STATS (Cont.)

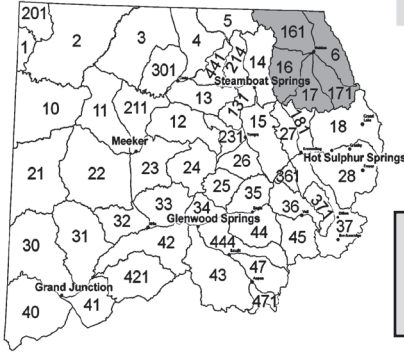
UNIT	SEASON	BULL	COW	CALF	Total Harvest	Total Hunter	SUCCESS %		
							LAST YR	3 YR	5 YR
14	Archery	88	44	0	132	1071	12	11	12
	Muzzle	0	5	2	7	40	18	14	21
	1st Rifle	22	23	6	51	173	29	20	21
	2nd Rifle	52	34	8	94	645	15	15	15
	3rd Rifle	7	18	0	25	256	10	14	15
	4th Rifle	18	8	0	26	74	35	39	38
	Late	0	12	0	12	20	60	60	60
15	Archery	52	14	7	73	908	8	11	12
	Muzzle	0	2	0	2	67	3	11	17
	1st Rifle	43	35	2	80	417	19	20	21
	2nd Rifle	94	108	29	231	1401	16	16	15
	3rd Rifle	40	40	0	80	846	9	10	11
	4th Rifle	5	29	12	46	190	24	23	24
	Late	0	50	19	69	158	44	47	48
131	Archery	71	20	3	94	401	23	16	17
	Muzzle	0	5	0	5	31	16	14	19
	1st Rifle	25	7	9	41	134	31	40	37
	2nd Rifle	64	62	0	126	351	36	30	31
	3rd Rifle	21	26	0	47	241	20	22	24
	4th Rifle	14	27	5	46	100	46	41	37
	Late	0	75	2	77	147	52	53	56
214	Archery	55	27	4	86	437	20	16	17
	Muzzle	0	6	2	8	30	27	28	25
	Early	0	10	0	10	24	42	48	43
	1st Rifle	41	16	0	57	85	67	42	43
	2nd Rifle	81	48	4	133	405	33	27	26
	3rd Rifle	21	6	0	27	134	20	21	20
	4th Rifle	3	21	0	24	59	41	44	37
	Late	0	13	4	17	24	71	65	62
441	Archery	36	16	0	52	184	28	25	25
	Muzzle	0	9	4	13	23	57	24	25
	Early	0	27	0	27	31	87	67	59
	1st Rifle	60	6	3	69	174	40	43	44
	2nd Rifle	97	21	3	121	415	29	26	23
	3rd Rifle	26	5	0	31	252	12	20	21
	4th Rifle	15	7	5	27	82	33	44	37
	Late	0	41	0	41	45	91	81	81

NORTH PARK

GMU

6, 16, 17, 161, 171

LOCAL CPW OFFICE
Steamboat Springs
(970) 870-2197



AREA MAPS	USFS Routt National Forest
AREA INFO	www.ci.steamboat.co.us

GENERAL AREA INFORMATION

North Park borders Wyoming between the Continental Divide and Medicine Bow Mtns.

The valley floor at 7,880' supports ag lands and sage.

Extensive willow stands line the streams - a favorite moose habitat, so be sure of your target. The forest surrounding the basin varies from aspen/lodgepole to spruce/fir.

The area is generally windy and colder than places in western Colorado. Prepare for snow during your hunt. 4WD is helpful, as are chains.

Over 2/3 of North Park is public land.

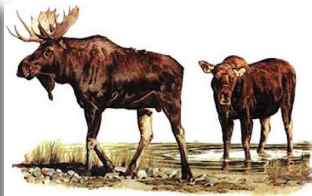
Mt. Zirkel (west) and Never Summer (southeast) are the Wilderness Areas.

Access to State Trust Lands and Wilderness Areas is non-motorized.

Big game can move onto private lands with no public access.

MOOSE IN AREA

BE PATIENT!
ALWAYS BE 100% SURE OF YOUR TARGET!



NORTH PARK

DEER INFORMATION

If you are patient, you could have success hunting trophy bucks. North Park has an early 9-day deer-only season that begins the last week of September. This season provides additional hunter opportunities as many of the deer in North Park migrate early. Few deer are found in North Park during January classification flights. Small sample sizes lead to higher observed buck:doe ratios than can be expected during the hunting seasons. Use 3-year average success rates for choosing a hunt.

2012 DEER OBJECTIVES

Herd	GMUs	Buck:Doe Objective	Population Estimate	Population Objective
North Park	6, 16, 17, 161, 171	30-40:100	5,060	5,400 - 6,400

2012 DEER HARVEST STATS

UNIT	SEASON	BUCK	DOE	FAWN	TOTAL HARVEST	TOTAL HUNTERS	SUCCESS %		
							LAST YR	3 YR	5 YR
6	Archery	0	5	0	5	24	21	19	12
	Muzzle	8	0	0	8	24	33	43	35
	Early	16	1	0	17	29	59	45	40
	2nd Rifle	13	0	0	13	20	65	42	43
	3rd Rifle	7	0	0	7	14	50	53	50
	4th Rifle	2	0	0	2	2	100	55	62
16	Archery	5	3	0	8	8	100	51	49
	Muzzle	2	0	0	2	2	100	18	29
	Early	14	0	0	14	34	41	32	39
	2nd Rifle	3	0	0	3	15	20	25	29
	3rd Rifle	0	0	0	0	6	0	6	6
17	Archery	0	3	0	3	5	60	10	7
	Muzzle	2	0	0	2	5	40	16	29
	Early	5	0	0	5	13	38	38	34
	2nd Rifle	6	0	0	6	13	46	29	31
	3rd Rifle	4	0	0	4	14	29	13	10
161	Archery	0	5	0	5	11	45	41	42
	Muzzle	2	0	0	2	7	29	13	30
	Early	15	1	0	16	33	48	39	41
	2nd Rifle	8	0	0	8	18	44	42	41
	3rd Rifle	2	0	0	2	15	13	17	15
	4th Rifle	n/a	n/a	n/a	n/a	n/a	n/a	n/a	n/a
171	Archery	0	0	0	0	11	0	7	4
	Muzzle	0	0	0	0	4	0	9	12
	Early	5	1	0	6	20	30	39	33
	2nd Rifle	3	0	0	3	15	20	29	24
	3rd Rifle	3	0	0	3	11	27	29	30
	4th Rifle	n/a	n/a	n/a	n/a	n/a	n/a	n/a	n/a

NORTH PARK

ELK INFORMATION

Elk are distributed evenly throughout these units. During the day, the bulls will be in dark timber - glass in the early morning and evening. The herd tends to stay in the coniferous timbered areas until late in the season, moving to lower elevations with snow and hunting pressure. Computer models likely over-estimate the total North Park elk population due to biased January observed bull:cow ratios resulting from multiple bias factors including state line issues, refuge areas, and low public land hunter success rates.

2012 ELK OBJECTIVES				
Herd	GMUs	Bull:Cow Objective	Population Estimate	Population Objective
North Park	6, 16, 17, 161, 171	20-23:100	5,470	4,000 - 4,500

2012 ELK HARVEST STATS

UNIT	SEASON	BULL	COW	CALF	TOTAL HARVEST	TOTAL HUNTERS	SUCCESS %		
							LAST YR	3 YR	5 YR
6	Archery	27	10	7	44	538	8	9	9
	Muzzle	0	6	3	9	105	9	8	10
	Early	0	10	0	10	40	25	32	38
	1st Rifle	45	73	10	128	524	24	24	20
	2nd Rifle	76	21	0	97	922	11	11	11
	3rd Rifle	15	28	9	52	467	11	12	11
	4th Rifle	11	29	5	45	161	28	22	18
16	Archery	50	13	0	63	483	13	12	12
	Muzzle	0	6	3	9	42	21	23	24
	Early	0	18	0	18	61	30	40	42
	1st Rifle	40	12	7	59	241	24	22	22
	2nd Rifle	20	38	11	69	440	16	19	17
	3rd Rifle	4	9	0	13	217	6	10	12
	4th Rifle	3	20	0	23	106	22	29	27
17	Archery	26	7	0	33	327	10	12	9
	Muzzle	0	0	0	0	66	0	7	8
	Early	0	36	0	36	57	63	57	64
	1st Rifle	40	17	5	62	348	18	20	21
	2nd Rifle	37	21	0	58	436	13	13	12
	3rd Rifle	24	18	5	47	328	14	16	17
	4th Rifle	2	19	4	25	129	19	19	19
161	Archery	35	17	0	52	570	9	9	8
	Muzzle	0	13	3	16	83	19	18	20
	Early	0	0	0	0	12	0	31	26
	1st Rifle	22	26	0	48	208	23	14	17
	2nd Rifle	9	21	10	40	612	7	10	9
	3rd Rifle	49	21	2	72	466	15	11	10
	4th Rifle	5	35	18	58	207	28	24	18
171	Archery	19	18	0	37	332	11	8	8
	Muzzle	0	3	5	8	50	16	11	10
	Early	0	37	0	37	44	84	65	64
	1st Rifle	35	21	5	61	321	19	22	25
	2nd Rifle	38	38	1	77	547	14	13	12
	3rd Rifle	18	10	7	35	293	12	12	12
	4th Rifle	3	9	5	17	99	17	15	11

BOOKCLIFFS/PICEANCE

GMU

21, 22, 30, 31, 32

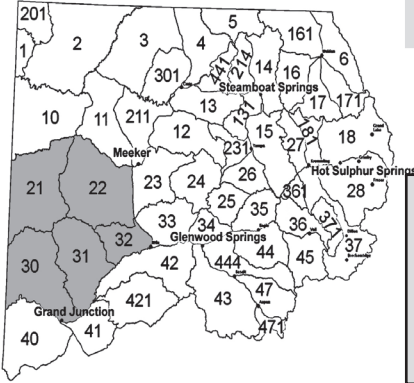
LOCAL CPW OFFICES

Meeker (GMU 21, 22)

(970) 878-6090

Grand Junction (GMU 30, 31, 32)

(970) 255-6100



AREA MAPS	BLM Douglas Pass BLM Meeker BLM Grand Junction	BLM Rangely BLM Glenwood Springs BLM Roan Plateau Travel Map
AREA INFO	www.visitgrandjunction.com or www.rangely.com	

GENERAL AREA INFORMATION

There have been numerous, recent fires in this area. Check with the local land management agency for information about any possible closures. See page 56 for contact information.

Pinyon-juniper with pockets of sagebrush cover most of area. Terrain varies from rolling sagebrush to steep-sided canyons. Some areas are steep & rugged, especially in southern portion.

Rains bring muddy roads. High elevation snows make roads impassible without chains.

75% of area is BLM land.

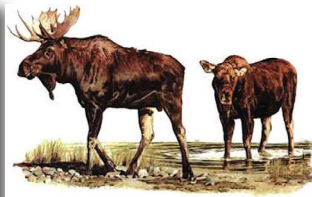
There are remote hunting areas accessible by foot, horseback or ATV. Get maps and study BLM access points.

Weather is generally mild.

Intense energy development occurring in these units.

MOOSE IN AREA

**BE PATIENT!
ALWAYS BE 100% SURE OF YOUR TARGET!**



BOOKCLIFFS/PICEANCE

Important Note for Bookcliffs / Piceance Hunters

In 1986, the federal government sold thousands of acres of public land in the Piceance/Roan area (GMUs 22 and 32) to energy companies. The agreement required that the companies keep the land open to the public for 20 years. The public access agreement ended in 2006. These parcels, known as the “Girls Claims”, are now private property. Beyond the thousands of acres that are owned by the companies, these parcels also control access to thousands of acres of public land.

Colorado Parks and Wildlife has reached a 10-year \$1/year hunting access agreement with Shell to keep 19,000 private acres open. Encana has agreed to keep 17,000 acres the company owns open for the 2013 hunting seasons. CPW appreciates these companies willingness to support the heritage of hunting in western Colorado. Negotiations with other companies for other “Girls Claims” properties have been unsuccessful.

It’s important to note that these access agreements are NOT new lands. They are heavily hunted former public lands where generations of hunters will be displaced as these lands are closed to hunting. If new hunters begin using the lands where access agreements are in place, there is the potential for overcrowding, which may make future agreements more difficult. Please respect Shell and Encana land so that it will be available in the future.

If you hunt these units, make sure you have current maps. Colorado Parks and Wildlife has no control over closed lands, even if you’ve hunted there for years. If you have questions or concerns, please contact the BLM or energy companies directly.



BOOKCLIFFS/PICEANCE

DEER INFORMATION

The hunting ranges from fair to good in the Bookcliffs and Piceance units. Deer are well-distributed in the northern portion from mid-October. Concentrate on higher elevations in early seasons. If the weather is dry, you'll need to do a lot of walking and looking. Good snows will move the herds to the south. Hunt high early, low later. Cathedral Rim has some big bucks, but tough terrain. Little Hills and Dry Fork of Piceance is better late. GMUs 21 and 30 are managed as quality deer units and licenses are separate from licenses that are valid in units 22, 31 or 32.

2012 DEER OBJECTIVES

Herd	GMUs	Buck:Doe Objective	Population Estimate	Population Objective
Bookcliffs	21, 30	30-35:100	9,550	10,000 - 12,000
Logan Mountain	31, 32	25-30:100	8,190	6,500 - 8,500

2012 DEER HARVEST STATS

UNIT	SEASON	BUCK	DOE	FAWN	TOTAL HARVEST	TOTAL HUNTERS	SUCCESS %		
							LAST YR	3 YR	5 YR
21	Archery	28	0	0	28	61	46	40	47
	Muzzle	6	0	0	6	25	24	41	54
	2nd Rifle	212	0	0	212	241	88	87	87
	3rd Rifle	46	0	0	46	54	85	90	91
22	Archery	13	8	0	21	52	40	39	37
	Muzzle	10	11	0	21	52	40	44	45
	2nd Rifle	152	59	3	214	310	69	71	67
	3rd Rifle	179	32	2	213	256	83	78	71
	4th Rifle	4	0	0	4	4	100	100	92
30	Archery	42	0	0	42	98	43	32	35
	Muzzle	7	0	0	7	16	44	44	46
	2nd Rifle	63	26	2	91	118	77	66	70
	3rd Rifle	33	11	2	46	64	72	79	84
31	Archery	40	2	0	42	95	44	30	24
	Muzzle	36	0	0	36	52	69	56	65
	2nd Rifle	161	0	0	161	206	78	67	58
	3rd Rifle	96	0	0	96	162	59	71	66
32	Archery	22	0	0	22	42	52	39	27
	Muzzle	26	0	0	26	44	59	43	51
	2nd Rifle	30	0	0	30	60	50	61	58
	3rd Rifle	34	0	0	34	51	67	66	64

BOOKCLIFFS/PICEANCE

ELK INFORMATION

Good cow hunting opportunities. The best hunting is in remote areas, mostly at high elevations, where the elk tend to hold up in pockets of green timber and aspen. Check out the Texas Mountain area and Rat Hole Ridge. Hunting pressure will push some bulls into the large expanses of pinyon-juniper. If snow and hunting pressure are sufficient, some elk will move into the Little Hills and Dry Fork area of Piceance later in the seasons. Most of the GMU 32 elk move into GMU 22 to winter. Elk normally concentrate on the north side of Douglas Pass during the archery, muzzleloader, and early rifle seasons. Movement of large numbers of elk into GMU-30 generally does not occur until early November.

2012 ELK OBJECTIVES

Herd	GMUs	Bull:Cow Objective	Population Estimate	Population Objective
Yellow Creek	21, 22, 30, 31, 32	18-22:100	11,700	7,000 - 9,000

2012 ELK HARVEST STATS

UNIT	SEASON	BULL	COW	CALF	TOTAL HARVEST	TOTAL HUNTERS	SUCCESS %		
							LAST YR	3 YR	5 YR
21	Archery	44	29	3	76	533	14	18	18
	Muzzle	0	0	0	0	39	0	4	11
	1st Rifle	145	7	0	152	501	30	30	32
	2nd Rifle	55	46	9	110	658	17	13	14
	3rd Rifle	50	33	0	83	572	15	18	18
	4th Rifle	16	17	3	36	217	17	20	21
22	Archery	22	18	0	40	427	9	18	17
	Muzzle	0	7	0	7	56	13	9	16
	Early	0	34	9	43	176	24	29	29
	1st Rifle	55	16	0	71	217	33	28	34
	2nd Rifle	120	42	2	164	741	22	20	20
	3rd Rifle	97	27	0	124	776	16	18	21
	4th Rifle	14	49	3	66	276	24	29	28
30	Archery	4	10	0	14	253	6	9	12
	Muzzle	0	0	0	0	13	0	10	15
	1st Rifle	17	2	0	19	123	15	22	28
	2nd Rifle	29	2	0	31	266	12	12	11
	3rd Rifle	32	34	6	72	366	20	21	22
	4th Rifle	5	18	3	26	178	15	31	29

BOOKCLIFFS/PICEANCE

2012 ELK HARVEST STATS (Cont.)

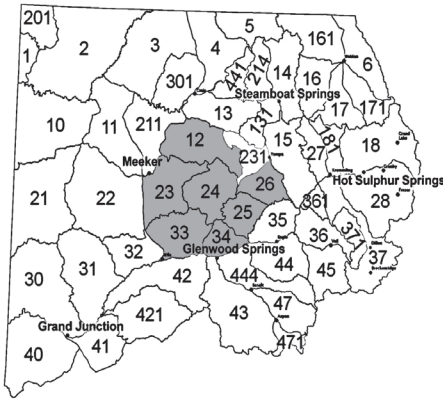
UNIT	SEASON	BULL	COW	CALF	TOTAL HARVEST	TOTAL HUNTERS	SUCCESS %		
							LAST YR	3 YR	5 YR
31	Archery	34	7	4	45	208	22	19	19
	Muzzle	0	0	0	0	17	0	7	17
	Early	0	50	2	52	124	42	43	48
	1st Rifle	37	7	0	44	148	30	35	39
	2nd Rifle	23	32	7	62	258	24	23	19
	3rd Rifle	43	21	7	71	410	17	20	20
	4th Rifle	0	43	8	51	310	16	15	15
32	Archery	28	17	0	45	195	23	20	15
	Muzzle	0	0	0	0	20	0	0	11
	Early	0	58	0	58	101	57	32	36
	1st Rifle	14	0	0	14	80	18	27	30
	2nd Rifle	31	10	0	41	229	18	20	17
	3rd Rifle	13	11	2	26	189	14	20	17
	4th Rifle	5	0	0	5	14	36	35	22



WHITE RIVER

GMU

12, 23, 24, 25, 26, 33, 34



LOCAL CPW OFFICES

Glenwood Springs (GMU 25, 26, 34) (970) 947-2920
 Meeker (GMU 12, 23, 24) (970) 878-6090
 Steamboat Springs (GMU 26) (970) 870-2197
 Grand Junction (GMU 33) (970) 255-6100

AREA MAPS	USFS White River National Forest
AREA INFO	www.glenwoodchamber.com or www.meekerchamber.com

GENERAL AREA INFORMATION

White River offers variety & extremes. Several peaks in the Flattop Wilderness are 12,200' in elevation. Elevation drops to 5,300' near Rifle.

The lower elevation vegetation starts out with sage, progressing to oakbrush/mtn brush, aspen, evergreens and alpine tundra.

Expect mild weather with light snow in the 1st season, with roads becoming impassable in the upper half of the area by the 3rd season.

The high country in GMU 24 is prone to heavy snowstorms in late seasons. Heavy snowstorms can strand hunters on Flattops after 1st season.

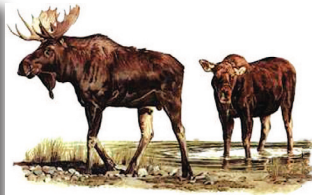
While there is a great deal of public land, hunting pressure is heavy especially in northern half of GMUs 23 & 24. 4WD is necessary on all but the few main paved roads. Half of the area is roadless - which makes for very good hunting if you can walk or pack in.

You may encounter heavy ATV traffic in GMUs 12, 23 and 33.

Hunters in GMU 25 and 26 can gain access using Forest Service Road 610 (Stump Park Rd) or USFS Road 613 (Crescent Lake Rd).

MOOSE IN AREA

BE PATIENT!
ALWAYS BE 100% SURE OF YOUR TARGET!



WHITE RIVER

DEER INFORMATION

The deer are scattered and will move in response to hunting pressure and weather. On National Forest lands in GMUs 12, 23, and 24, deer hunting is generally better in early seasons. Good public land deer hunting can typically be found in GMU 12 on the Jensen and Indian Run State Wildlife Areas. Jensen SWA is north of Meeker and Indian Run SWA is east of Hamilton. GMU 23 deer hunters can try Hay Flats and Miller Creek southwest of Meeker and the Jensen and Oak Ridge State Wildlife Areas north and east of Meeker. Deer densities are lower across GMU 24 but hunters can find deer on the south facing slopes above the White River. UNIT 33 ARCHERY & MUZZLELOADER LICENSES NO LONGER VALID IN 23 & 24— If you purchase an archery or muzzleloader license for unit 33, you can no longer also hunt in unit 23 and 24, and vice versa.

There are now separate tags for these units. See the hunt tables for corresponding hunt codes.

2012 DEER OBJECTIVES				
Herd	GMUs	Buck:Doe Objective	Population Estimate	Population Objective
Rifle Creek	33	30-35:100	5,850	7,700 - 9,400
White River	11, 211, 12, 22, 23, 24, 13, 131, 231	22-25:100	42,750	67,500
Sweetwater Creek	25, 26, 34	28-32:100	5,560	5,000-6,000

2012 DEER HARVEST STATS

UNIT	SEASON	BUCK	DOE	FAWN	TOTAL HARVEST	TOTAL HUNTERS	SUCCESS %		
							LAST YR	3 YR	5 YR
12	Archery	0	9	0	9	78	12	12	10
	Muzzle	11	2	0	13	41	32	25	23
	2nd Rifle	127	25	0	152	291	52	47	42
	3rd Rifle	106	11	0	117	220	53	57	44
	4th Rifle	0	0	0	0	1	0	44	53
23	Archery	14	9	0	23	139	17	20	15
	Muzzle	27	16	0	43	83	52	43	33
	2nd Rifle	87	28	5	120	273	44	35	31
	3rd Rifle	92	15	0	107	178	60	49	37
	4th Rifle	4	2	0	6	78	8	4	5
24	Archery	0	2	0	2	27	7	8	8
	Muzzle	1	0	0	1	6	17	9	13
	Early	23	0	0	23	146	16	21	19
	2nd Rifle	0	8	0	8	46	17	14	9
	3rd Rifle	4	0	0	4	37	11	12	14
25	Archery	0	5	0	5	68	7	5	9
	Muzzle	6	12	0	18	62	29	22	19
	2nd Rifle	57	36	1	94	276	34	35	31
	3rd Rifle	75	32	0	107	187	57	54	43
	4th Rifle	15	0	0	15	19	79	59	45

WHITE RIVER

2012 DEER HARVEST STATS (Cont.)

UNIT	SEASON	BUCK	DOE	FAWN	TOTAL HARVEST	TOTAL HUNTERS	SUCCESS %		
							LAST YR	3 YR	5 YR
26	Archery	3	0	0	3	23	13	11	8
	Muzzle	2	0	0	2	25	8	9	12
	2nd Rifle	37	23	0	60	150	40	42	39
	3rd Rifle	33	37	9	79	130	61	58	48
	4th Rifle	7	0	0	7	12	58	64	55
33	Archery	16	20	2	38	121	31	28	18
	Muzzle	7	14	0	21	78	27	24	24
	2nd Rifle	176	0	0	176	438	40	28	28
	3rd Rifle	111	0	0	111	289	38	43	39
	4th Rifle	3	0	0	3	9	33	59	55
34	Archery	0	10	0	10	65	15	7	9
	Muzzle	3	12	0	15	86	17	19	18
	2nd Rifle	7	13	0	20	177	11	12	14
	3rd Rifle	29	3	2	34	91	37	28	24
	4th Rifle	9	0	0	9	16	56	40	48



ELK INFORMATION

Generally all of GMUs 12, 23 and 24 are considered very good elk hunting. They are generally at higher elevations in the eastern portions of GMUs 12 and 24 during early seasons, and move west to lower elevations (and private lands) as hunting pressure and snow depth increase. Try the abundant public lands in eastern GMU 12 and 24 early on. Because of access roads, hunting pressure is high on Sleepy Cat, Lost Park and Sand Peak. The Flattops Wilderness Area offers good hunting, but travel is limited to walking or horseback and the potential for heavy snowfall means hunters must be prepared. Successful hunters avoid the main roads and hunt the dark timber and deeper canyons. Jensen State Wildlife Area is good during most seasons. Oak Ridge State Wildlife Area is good during 3rd and 4th rifle seasons. Both properties are limited to foot or horseback travel.

2012 ELK OBJECTIVES

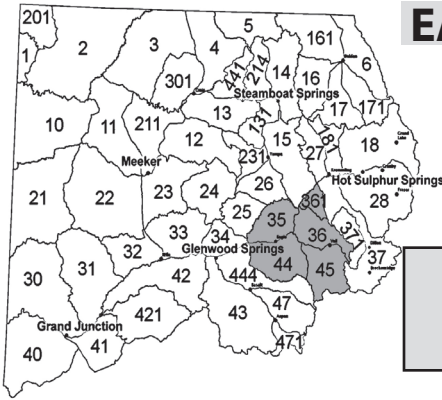
Herd	GMUs	Bull:Cow Objective	Population Estimate	Population Objective
White River	11, 211, 12, 13, 131, 231, 23, 24, 25, 26, 33, 34, 131, 211, 231	20-27:100	35,870	32,000-39,000

WHITE RIVER

2012 ELK HARVEST STATS

UNIT	SEASON	BULL	COW	CALF	TOTAL HARVEST	TOTAL HUNTERS	SUCCESS %		
							LAST YR	3 YR	5 YR
12	Archery	112	24	3	139	545	26	24	25
	Muzzle	0	21	5	26	83	31	24	25
	Early	0	107	13	120	187	64	65	64
	1st Rifle	357	287	62	706	1597	44	43	41
	2nd Rifle	175	180	16	371	1368	27	24	23
	3rd Rifle	78	179	18	275	1018	27	31	29
	4th Rifle	31	67	28	126	534	24	37	34
23	Archery	76	10	0	86	527	16	19	20
	Muzzle	0	3	0	3	43	7	13	19
	Early	0	21	0	21	38	55	65	50
	1st Rifle	149	130	18	297	983	30	30	29
	2nd Rifle	141	72	25	238	1067	22	18	18
	3rd Rifle	117	55	0	172	1059	16	20	22
	4th Rifle	13	47	4	64	419	15	22	21
24	Late	0	22	3	25	35	71	73	60
	Archery	81	7	0	88	406	22	17	16
	Muzzle	0	8	0	8	41	20	17	21
	Early	0	0	0	0	10	0	41	45
	1st Rifle	230	172	33	435	1252	35	28	30
	2nd Rifle	100	63	16	179	1201	15	16	15
	3rd Rifle	44	22	0	66	510	13	16	17
25	4th Rifle	4	52	0	56	167	34	33	28
	Late	0	1	0	1	5	20	54	38
	Archery	16	10	0	26	351	7	9	9
	Muzzle	0	9	0	9	44	20	9	12
	Early	0	39	6	45	113	40	40	32
	1st Rifle	29	18	0	47	190	25	26	25
	2nd Rifle	44	16	0	60	636	9	12	13
26	3rd Rifle	35	8	4	47	381	12	18	17
	4th Rifle	4	5	0	9	56	16	22	23
	Archery	26	3	0	29	346	8	10	10
	Muzzle	0	0	0	0	21	0	4	6
	Early	0	31	8	39	108	36	29	31
	1st Rifle	15	15	0	30	177	17	18	21
	2nd Rifle	40	14	0	54	302	18	16	13
33	3rd Rifle	34	18	6	58	355	16	21	17
	4th Rifle	2	6	0	8	59	14	23	18
	Archery	71	11	0	82	582	14	13	16
	Muzzle	0	15	2	17	51	33	27	23
	1st Rifle	63	22	25	110	576	19	19	23
	2nd Rifle	82	43	5	130	884	15	13	15
	3rd Rifle	50	16	0	66	657	10	16	14
34	4th Rifle	7	35	7	49	181	27	32	27
	Late	0	11	4	15	52	29	35	43
	Archery	27	7	0	34	275	12	11	11
	Muzzle	0	7	0	7	49	14	15	10
	Early	0	10	3	13	42	31	40	39
	1st Rifle	8	38	0	46	186	25	18	20
	2nd Rifle	27	19	0	46	416	11	10	9
34	3rd Rifle	10	11	5	26	165	16	17	12
	4th Rifle	0	8	0	8	39	21	15	14

EAGLE RIVER VALLEY



GMU

35, 36, 44, 45, 361

LOCAL CPW OFFICE
Glenwood Springs
(970) 947-2920

AREA MAPS	USFS White River National Forest
AREA INFO	www.glenwoodchamber.com

GENERAL AREA INFORMATION

These units are bordered by the Colorado River, the Gore Range, the Red Table Mountains and the Continental Divide.

Elevation climbs from 6,000' with sage and pinyon to over 14,000' with alpine vegetation starting at 10,500'.

Weather varies widely with heavy high country snow. Motorized travel restricted to designated routes.

GMUs 35 & 44 have some public access, however the northern part of GMU 44 between Edwards and Eagle is primarily private property with no hunting allowed.

Check your map and contact the BLM/USFS office regarding off road travel.

MOOSE IN AREA

BE PATIENT!
ALWAYS BE 100% SURE OF YOUR TARGET!



EAGLE RIVER VALLEY

DEER INFORMATION

Deer hunting in these units continues to improve. The herd will be scattered from 6,500' to timberline and will move down to the lower elevation pinyon-juniper areas as heavy snow arrives. Over 18" of snow will move the deer. Try hunting the aspen, open parks and shrublands. GMUs 35 and 36 have the most deer. After the first heavy snow, most GMU 45 deer will move into GMU 36. GMU 44 is managed for trophy deer with limited number of licenses, but it is a good place to take a big buck.

2012 DEER OBJECTIVES				
Herd	GMUs	Buck:Doe Objective	Population Estimate	Population Objective
State Bridge	15, 35, 36, 45, 361	26-30:100	15,710	13,500-16,500
Red Table Mountain	44	35:100	2,190	7,000

2012 DEER HARVEST STATS

UNIT	SEASON	BUCK	DOE	FAWN	TOTAL HARVEST	TOTAL HUNTERS	SUCCESS %		
							LAST YR	3 YR	5 YR
35	Archery	6	5	0	11	61	18	15	13
	Muzzle	27	10	0	37	80	46	30	27
	2nd Rifle	119	10	0	129	264	49	49	42
	3rd Rifle	110	9	0	119	254	47	48	44
	4th Rifle	12	0	0	12	16	75	87	62
36	Archery	5	5	0	10	59	17	17	12
	Muzzle	8	6	0	14	97	14	19	23
	Early	6	0	0	6	13	46	39	33
	2nd Rifle	59	21	0	80	176	45	34	34
	3rd Rifle	58	15	0	73	170	43	49	41
	4th Rifle	1	0	0	1	6	17	60	49
44	Archery	2	3	0	5	61	8	20	18
	Muzzle	14	6	0	20	60	33	31	29
	Early	1	0	0	1	5	20	20	12
	2nd Rifle	30	6	0	36	70	51	48	42
	3rd Rifle	14	10	0	24	37	65	62	63
	4th Rifle	8	0	0	8	9	89	93	93
45	Archery	31	14	0	45	101	45	38	37
	Muzzle	4	6	0	10	44	23	24	22
	Early	0	0	0	0	4	0	11	19
	2nd Rifle	40	13	3	56	119	47	35	39
	3rd Rifle	4	1	0	5	38	13	28	23
	4th Rifle	0	0	0	0	1	0	0	0
361	Archery	0	0	0	0	7	0	7	7
	Muzzle	0	3	0	3	6	50	27	27
	2nd Rifle	5	3	0	8	51	16	22	22
	3rd Rifle	11	0	0	11	39	28	45	45

EAGLE RIVER VALLEY

ELK INFORMATION

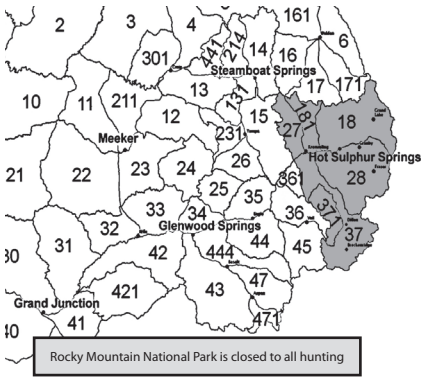
Elk are scattered from about 7,000' to above timberline. As hunting pressure increases, they seek the deeper canyons and dark timber areas way from roads. Concentrating on the large stands of dark timber and the larger wilderness areas will increase your chance of finding a big bull on public lands. Large blocks of private land in GMUs 35 and 36 provide refuge areas and can make hunting difficult.

2012 ELK OBJECTIVES

Herd	GMUs	Bull:Cow Objective	Population Estimate	Population Objective
Piney River	35, 36, 361	16:100	3,760	2,950
Frying Pan	44, 45, 47, 444	20:100	7,100	5,100

2012 ELK HARVEST STATS

UNIT	SEASON	BULL	COW	CALF	TOTAL HARVEST	TOTAL HUNTERS	SUCCESS %		
							LAST YR	3 YR	5 YR
35	Archery	21	0	0	21	316	7	7	9
	Muzzle	13	0	0	13	143	9	16	16
	Early	0	28	0	28	60	47	53	59
	1st Rifle	19	14	2	35	178	20	26	28
	2nd Rifle	22	0	0	22	280	8	15	13
	3rd Rifle	17	49	11	77	387	20	23	21
	4th Rifle	4	8	5	17	58	29	29	21
36	Archery	35	13	0	48	454	11	8	8
	Muzzle	2	4	0	6	134	4	9	10
	Early	0	2	0	2	17	12	28	42
	1st Rifle	24	36	0	60	208	29	24	26
	2nd Rifle	42	31	0	73	549	13	13	15
	3rd Rifle	11	34	2	47	412	11	15	15
44	Archery	17	7	0	24	463	5	6	8
	Muzzle	12	16	3	31	287	11	10	11
	Early	0	68	26	94	154	61	55	58
	1st Rifle	15	34	1	50	328	15	16	19
	2nd Rifle	22	24	2	48	607	8	10	10
	3rd Rifle	27	1	6	34	482	7	15	13
	4th Rifle	14	5	8	27	179	15	22	19
45	Archery	13	0	7	20	573	3	6	7
	Muzzle	5	3	3	11	120	9	9	9
	Early	0	35	3	38	111	34	29	30
	1st Rifle	17	17	8	42	174	24	22	25
	2nd Rifle	32	41	3	76	528	14	15	13
	3rd Rifle	11	16	0	27	233	12	15	14
	4th Rifle	9	22	0	31	128	24	23	24
361	Archery	7	0	0	7	75	9	6	6
	Muzzle	0	4	0	4	35	11	12	12
	Early	0	5	0	5	15	33	25	25
	1st Rifle	11	0	6	17	72	24	25	25
	2nd Rifle	3	6	0	9	74	12	17	17
	3rd Rifle	4	0	0	4	85	5	8	8
	4th Rifle	5	9	0	14	56	25	30	30



MIDDLE PARK

GMU

18, 27, 28, 37, 181, 371

LOCAL CPW OFFICE
Hot Sulphur Springs
 (970) 725-6200

AREA MAPS	USFS Routt National Forest USFS White River National Forest USFS Arapahoe/Roosevelt National Forest
AREA INFO	www.kremmlingchamber.com www.granbychamber.com

GENERAL AREA INFORMATION

The Continental Divide and the Gore Range Divide encircle Middle Park. Most of this terrain is steep to very steep. The weather can change rapidly. Areas can become snowbound. 4WD is recommended, along with chains.

Sagebrush/shrubs are common on southern exposures at lower elevations. The valley bottoms are mostly private lands. The remaining 2/3 of this area is public land.

GMU 27 has less public land than the other GMUs. Check USFS maps for ATV closures/restrictions.

Hunters around Wolford Mountain (GMU 181 and 27) should be aware that a travel management plan is in place - check with the BLM Kremmling office for information. Horses/pack animals are recommended for remote tracts and for Wilderness Areas.

Due to the proximity to Denver, there are many weekend hunters & recreationalists (bikers, hikers, ATVers).

Pine beetles have affected more than 90% of the lodgepole pine stands in Grand and Summit Counties. As a result, fire danger is increased, big game distribution is changing in some areas and logging operations are likely in some spots. Hunters might focus on some of the dead lodgepole areas as increased sunlight to the forest floor creates more forage and these areas tend to hold deer and elk for longer periods of time. However be aware of possible falling trees when hiking, or setting up camp in pine beetle kill sections! Set up camps etc, in cleared areas away from dead trees. These dead trees can fall on their own without wind, or warning!

The past decade's mountain pine beetle killed an estimated 80 percent of mature lodgepole pine trees in Grand County, creating numerous hazards along public roadways as these trees begin to fall.

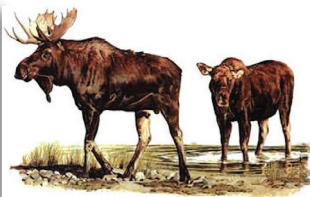
Road closures for tree removal will likely occur this season and next in this area. To avoid disappointment, be sure to call the Sulphur Ranger District's Visitor's Information Hotline at 970-887-4100 BEFORE planning your hunting trip, or setting up camp. Or, sign up for updates by emailing SRDUpdates@fs.fed.us.

You can stop by the visitor's center at 9 Ten Mile Drive in Granby, visit www.fs.usda.gov/arp; or follow us on Twitter: www.twitter.com/usfsarp.

MOOSE IN AREA

BE PATIENT!

ALWAYS BE 100% SURE OF YOUR TARGET!



MIDDLE PARK

DEER INFORMATION

All GMUs have good numbers of deer. The buck-to-doe ratios continue to increase as a result of limited buck hunting and mild winters. All units are managed for quality bucks. There are good numbers of mature bucks, but they rarely reach trophy status found in lower elevation mtn shrub & mild winter areas. Concentrate on transition zones that have aspen, shrub and coniferous cover. Deer tend to move west and down in elevation over the seasons, snow will move them faster and farther. They typically migrate out of GMU 371 with average snowfall. A limited number of 4th season deer licenses available.

2012 DEER OBJECTIVES

Herd	GMUs	Buck:Doe Objective	Population Estimate	Population Objective
Middle Park	18, 181, 27, 271, 28, 37, 371	30-35:100	15,350	10,500 - 12,500

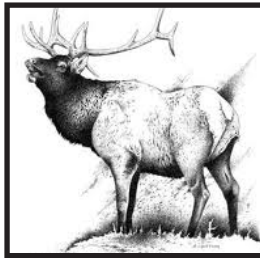
2012 DEER HARVEST STATS

UNIT	SEASON	BUCK	DOE	FAWN	TOTAL HARVEST	TOTAL HUNTERS	SUCCESS %		
							LAST YR	3 YR	5 YR
18	Archery	18	20	0	38	291	13	9	7
	Muzzle	24	20	0	44	202	22	14	16
	2nd Rifle	83	107	17	207	834	25	26	28
	3rd Rifle	154	105	16	275	766	36	37	33
	4th Rifle	76	0	0	76	122	62	67	55
27	Archery	22	22	0	44	119	37	24	27
	Muzzle	15	27	0	42	108	39	34	31
	2nd Rifle	42	53	12	107	420	25	21	28
	3rd Rifle	49	33	4	86	352	24	26	26
	4th Rifle	13	0	0	13	29	45	45	44
28	Archery	20	28	0	48	178	27	16	14
	Muzzle	24	29	0	53	169	31	27	27
	2nd Rifle	83	59	17	159	549	29	26	24
	3rd Rifle	79	74	8	161	506	32	36	33
	4th Rifle	49	0	0	49	66	74	75	58
37	Archery	32	11	0	43	196	22	20	19
	Muzzle	27	20	7	54	174	31	30	26
	2nd Rifle	78	67	0	145	405	36	31	32
	3rd Rifle	111	31	0	142	422	34	39	38
	4th Rifle	9	0	0	9	23	39	29	31

MIDDLE PARK

2012 DEER HARVEST STATS (Cont.)

UNIT	SEASON	BUCK	DOE	FAWN	TOTAL HARVEST	TOTAL HUNTERS	SUCCESS %		
							LAST YR	3 YR	5 YR
181	Archery	0	9	0	9	39	23	28	18
	Muzzle	0	7	0	7	54	13	12	13
	2nd Rifle	57	40	0	97	379	26	22	22
	3rd Rifle	34	52	8	94	349	27	27	25
	4th Rifle	32	0	0	32	55	58	51	39
371	Archery	0	9	0	9	41	22	5	3
	Muzzle	0	7	0	7	47	15	16	17
	2nd Rifle	12	8	0	20	181	11	12	17
	3rd Rifle	26	0	0	26	152	17	17	17
	4th Rifle	0	0	0	0	3	0	12	21



ELK INFORMATION

Elk are well distributed in all units. Bull to cow ratios are good because the area is fairly steep and heavily timbered. Generally, trophy bulls are rare (a few are taken every year) because bulls are managed for hunter opportunity. With hunting pressure and snow, elk head for the inaccessible timber and private property. GMU 27 has a lot of private land. Hunt the rough terrain and heavy cover away from roads and trails to increase your success.

2012 ELK OBJECTIVES

Herd	GMUs	Bull:Cow Objective	Population Estimate	Population Objective
Gore Pass	15, 27	24-28:100	4,560	3,500-4,500
Troublesome Creek	18, 181	21-26:100	4,320	3,600-4,300
Williams Fork River	28, 37, 371	24-31:100	5,830	4,700-5,500

MIDDLE PARK

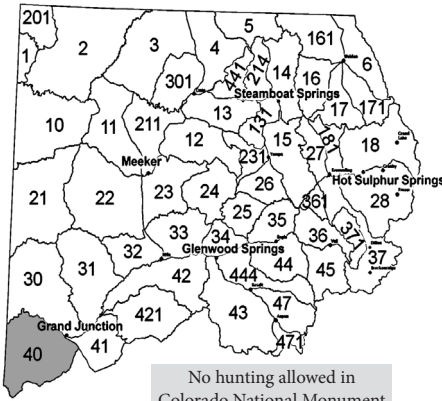
2012 ELK HARVEST STATS

UNIT	SEASON	BULL	COW	CALF	TOTAL HARVEST	TOTAL HUNTERS	SUCCESS %		
							LAST YR	3 YR	5 YR
18	Archery	29	19	0	48	1012	5	6	7
	Muzzle	0	9	0	9	115	8	6	12
	1st Rifle	67	44	9	120	891	13	12	17
	2nd Rifle	68	40	4	112	1068	10	13	12
	3rd Rifle	49	29	0	78	1044	7	11	11
	4th Rifle	1	91	0	92	853	11	16	13
27	Archery	17	3	0	20	318	6	5	6
	Muzzle	0	0	4	4	36	11	11	15
	1st Rifle	5	26	8	39	172	23	17	19
	2nd Rifle	38	42	0	80	595	13	14	14
	3rd Rifle	7	7	5	19	313	6	5	5
	4th Rifle	4	6	0	10	122	8	10	15
28	Archery	34	23	3	60	869	7	7	8
	Muzzle	0	6	0	6	86	7	10	11
	1st Rifle	44	29	5	78	513	15	18	18
	2nd Rifle	67	48	7	122	1053	12	13	12
	3rd Rifle	35	23	0	58	895	6	12	12
	4th Rifle	8	33	8	49	393	12	13	13
37	Archery	10	13	0	23	630	4	7	9
	Muzzle	0	3	0	3	29	10	10	15
	1st Rifle	23	72	8	103	315	33	31	27
	2nd Rifle	49	19	7	75	534	14	14	16
	3rd Rifle	14	18	8	40	480	8	12	15
	4th Rifle	4	41	0	45	291	15	20	19
181	Archery	10	6	0	16	157	10	11	9
	Muzzle	0	6	2	8	32	25	11	12
	1st Rifle	29	14	9	52	201	26	20	19
	2nd Rifle	13	7	0	20	342	6	9	9
	3rd Rifle	9	3	0	12	400	3	6	7
	4th Rifle	5	23	4	32	400	8	17	16
371	Archery	28	0	6	34	384	9	9	8
	Muzzle	0	0	0	0	31	0	11	16
	1st Rifle	21	40	2	63	209	30	27	24
	2nd Rifle	19	2	0	21	239	9	12	12
	3rd Rifle	14	12	0	26	220	12	11	11
	4th Rifle	7	14	7	28	252	11	13	11

GLADE PARK

GMU
40

LOCAL CPW OFFICE
Grand Junction (970) 255-6100



AREA MAPS	USFS Uncompahgre National Forest BLM Delta BLM Grand Junction BLM Moab BLM Westwater
AREA INFO	www.visitgrandjunction.com

GENERAL AREA INFORMATION

This 750 square mile unit consists of a relatively flat summit leading to sloping mesas bisected by deep, rugged canyons. The highest elevation range is approximately 9,800'.

Roads provide access to the mesas, but many of the canyons are remote and accessible only by foot or horseback.

Weather starts out mild but mud/snow accumulation is likely in later seasons.

Early season hunters should favor higher elevations of the USFS land, while later season hunters will do better on the lower BLM lands.

Hunters can find many water holes within the dark timber stands on north facing slopes.

Elk and deer frequent these areas during warm temperatures and heavy hunting pressure.

GMU 40 has a lot of private land, and public access to BLM is often difficult to reach by vehicle.

GLADE PARK

ELK INFORMATION

There are some good bucks in GMU 40 but they are hard to locate. The upper end of the Little Dolores drainage is a good place for quality mule deer bucks but there is considerable private land. Late season hunters may have success near Seiber Canyon, but it is foot or horseback only. Areas along the Utah border and north of Gateway can be good during the rifle seasons however be aware of private land and the state line.

2012 DEER OBJECTIVES				
Herd	GMUs	Buck:Doe Objective	Population Estimate	Population Objective
Glade Park	40	30-35:100	6,630	6,500-8,500

2012 DEER HARVEST STATS									
UNIT	SEASON	BUCK	DOE	FAWN	TOTAL HARVEST	TOTAL HUNTERS	SUCCESS %		
							LAST YR	3 YR	5 YR
40	Archery	30	0	0	30	76	39	43	45
	Muzzle	23	0	0	23	35	66	63	57
	2nd Rifle	104	0	0	104	163	64	60	61
	3rd Rifle	73	0	0	73	110	66	75	70



GLADE PARK

ELK INFORMATION

Bulls will be bugling from mid-Sept through 1st rifle opening weekend. Elk are widely distributed. Most stay high until hunting pressure pushes them to lower elevations and less accessible drainages. Do not hunt areas that have previously received heavy hunting pressure - elk will not be there. Successful hunters do a lot of walking and looking.

You can NOT hunt elk in GMU 40 with an unlimited bull elk license. GMU 40 is a limited unit. You must apply in the draw.

2012 ELK OBJECTIVES				
Herd	GMUs	Bull:Cow Objective	Population Estimate	Population Objective
Glade Park	40	30-35:100	2,480	2,800-3,800

2012 ELK HARVEST STATS

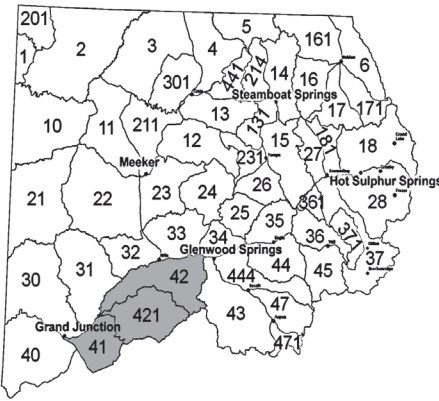
UNIT	SEASON	BULL	COW	CALF	TOTAL HARVEST	TOTAL HUNTERS	SUCCESS %		
							LAST YR	3 YR	5 YR
40	Archery	28	0	0	28	66	42	41	49
	Muzzle	0	5	0	5	28	18	23	37
	Early	0	106	9	115	260	44	45	48
	1st Rifle	18	6	0	24	48	50	54	55
	2nd Rifle	19	18	1	38	56	68	66	59
	3rd Rifle	19	12	0	31	63	49	58	52
	4th Rifle	13	23	1	37	63	59	49	45



GRAND MESA

GMU
41, 42, 421

LOCAL CPW OFFICE
Grand Junction
(970) 255-6100



AREA MAPS	USFS Grand Mesa National Forest USFS White River National Forest
AREA INFO	www.visitgrandjunction.com

GENERAL AREA INFORMATION

Grand Mesa terrain ranges from high elevation (11,000') spruce/fir forests to low elevation (4,800') pinyon-juniper woodlands.

Weather can be rainy or snowy, then warm up and dry out the following day. Roads can become very muddy and 4WD is recommended.

Hunters should be prepared to spend time on foot or horseback.

Much of the area is public land.

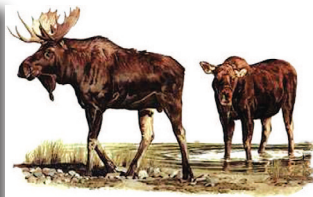
Overall, the hunting pressure is heavy.

Intensive natural gas development activity is occurring in GMUs 42 and 421.

Contact the USFS Grand Valley Ranger District, 970-242-8211 for more details on energy development in this area.

MOOSE IN AREA

BE PATIENT!
ALWAYS BE 100% SURE OF YOUR TARGET!



GRAND MESA

DEER INFORMATION

The deer population has declined in recent years, and buck: doe ratios are below the objective range. For these reasons, buck and doe licenses have been reduced in all seasons. In addition, the fourth, buck-only season was eliminated in 2012. However deer are still abundant and at the lower end of the population objective range. Deer are found on forest lands and higher elevation private lands during Oct. The resident deer stay in lower agricultural areas year round. The migrating deer herd begins to move off the forest to lower elevations in mid-Nov, often to BLM lands. The best deer hunting is at mid elevations (8,500-9,500'), with more buck opportunities in the later seasons. The Battlements can be good in late seasons, but the terrain is rugged. The open country offers good opportunities for those who get out on foot or horseback.

2012 DEER OBJECTIVES

Herd	GMUs	Buck:Doe Objective	Population Estimate	Population Objective
North Grand Mesa	41, 42, 421	25-30:100	15,900	17,000-23,000

2012 DEER HARVEST STATS

UNIT	SEASON	BUCK	DOE	FAWN	TOTAL HARVEST	TOTAL HUNTERS	SUCCESS %		
							LAST YR	3 YR	5 YR
41	Archery	13	6	0	19	70	27	16	20
	Muzzle	28	5	2	35	71	49	36	33
	2nd Rifle	96	52	0	148	353	42	36	39
	3rd Rifle	129	29	0	158	443	36	40	41
	4th Rifle								
42	Archery	41	30	0	71	132	54	34	29
	Muzzle	13	13	0	26	89	29	28	29
	2nd Rifle	157	50	8	215	458	47	47	45
	3rd Rifle	223	47	0	270	570	47	53	53
	4th Rifle								
421	Archery	18	35	0	53	168	32	28	26
	Muzzle	43	17	0	60	140	43	34	38
	2nd Rifle	126	78	8	212	487	44	45	45
	3rd Rifle	209	29	6	244	449	54	53	52
	4th Rifle								



GRAND MESA

ELK INFORMATION

OVER THE COUNTER ARCHERY LICENSES FOR COW ELK ARE NO LONGER VALID IN THESE UNITS. ANTLERLESS ELK LICENSES IN 41, 42, AND 421 ARE NOW LIST B.

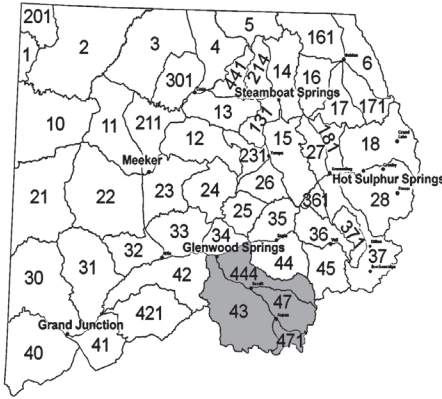
The elk herd is well distributed with good hunting success expected. Elk are scattered throughout the forest and on private lands. Most elk stay at higher elevations (8500-10,000') in thick timber and oakbrush. There is no migration during the season, movement to the more remote areas is in response to hunting pressure. They will seek classic cover - the heavily wooded, north-facing slopes near water. You will need to get away from the roads. There are lots of legal bulls as the area is managed for quantity of bulls rather than trophy status. Hence, trophy bulls are present but relatively rare.

2012 ELK OBJECTIVES

Herd	GMUs	Bull:Cow Objective	Population Estimate	Population Objective
Grand Mesa	41, 411, 42, 421, 52, 521	20-25:100	18,780	15,000-19,000

2012 ELK HARVEST STATS

UNIT	SEASON	BULL	COW	CALF	TOTAL HARVEST	TOTAL HUNTERS	SUCCESS %		
							LAST YR	3 YR	5 YR
41	Archery	32	10	4	46	233	20	16	14
	Muzzle	11	43	7	61	267	23	17	16
	Early	0	54	31	85	185	46	42	45
	1st Rifle	44	53	0	97	346	28	23	29
	2nd Rifle	48	39	6	93	369	25	18	17
	3rd Rifle	20	21	0	41	327	13	13	16
	4th Rifle	9	11	0	20	139	14	12	13
	Late								
42	Archery	46	49	3	98	615	16	15	14
	Muzzle	30	7	7	44	305	14	13	18
	1st Rifle	118	39	0	157	480	33	30	30
	2nd Rifle	120	68	6	194	904	21	19	19
	3rd Rifle	84	84	28	196	840	23	20	21
	4th Rifle	9	56	6	71	247	29	26	27
421	Archery	63	56	4	123	693	18	16	16
	Muzzle	15	14	0	29	277	10	21	23
	Early	0	72	6	78	177	44	47	42
	1st Rifle	76	42	10	128	503	25	26	28
	2nd Rifle	93	96	11	200	925	22	18	18
	3rd Rifle	19	73	12	104	546	19	20	20
	4th Rifle	19	22	0	41	184	22	26	26



ROARING FORK

GMU
43, 47, 444, 471

LOCAL CPW OFFICE
Glenwood Springs
(970) 947-2920

AREA MAPS	USFS White River National Forest
AREA INFO	www.glenwoodchamber.com

GENERAL AREA INFORMATION

This area encompasses the Roaring Fork, Frying Pan and Crystal River drainages.

The lower elevations (6500') are primarily developed or agricultural.

Timberline is around 11,500' and there are 14,000' peaks in the Wilderness Areas. Be prepared for daytime highs of 75F dropping to 20F at night. Snow can exceed several feet in the higher elevations and moisture can make roads dangerous or impassible. 4WD is a necessity.

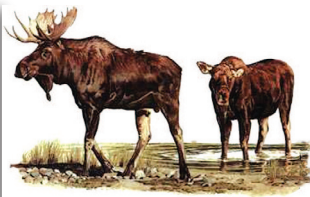
About 40% of the area is wilderness (Hunter-Fryingpan, Maroon Bells, Raggeds, Collegiate Peaks) and vehicles are not allowed.

These rugged areas offer increased hunting success, but require horseback/pack-in camps. Hunting pressure is moderate.

There are large blocks of private lands in GMU 43 east of Hwy 133 & in the western part of GMU 444.

MOOSE IN AREA

BE PATIENT!
ALWAYS BE 100% SURE OF YOUR TARGET!



ROARING FORK

DEER INFORMATION

Deer populations were on the upswing for several years but did decline during the winter of 2007-2008.

This herd is concentrated in aspen and oakbrush habitats before the snow flies. Hunting pressure does not generally cause herd movement, but they will move to lower elevation woodlands as snow accumulates. Archery and muzzleloader hunters should head to timberline.

Early rifle season hunters should focus on high elevation areas around timberline, Capitol Creek, Haystack Mountain and East Snowmass Creek. Later season hunters could try “The Crown”, Holgate Mesa, Williams Hill and Light Hill, but expect to see other hunters in these areas. Some good bucks can be found if hunters focus in areas away from roads.

2012 DEER OBJECTIVES

Herd	GMUs	Buck:Doe Objective	Population Estimate	Population Objective
Maroon Bells	43, 47, 471	30-35:100	5,350	7,500-8,500
Basalt	444	30:100	3,880	5,300

2012 DEER HARVEST STATS

UNIT	SEASON	BUCK	DOE	FAWN	TOTAL HARVEST	TOTAL HUNTERS	SUCCESS %		
							LAST YR	3 YR	5 YR
43	Archery	30	2	0	32	192	17	13	11
	Muzzle	43	2	0	45	133	34	27	24
	Early	4	0	0	4	14	29	38	42
	2nd Rifle	61	25	0	86	240	36	36	38
	3rd Rifle	67	3	3	73	201	36	50	43
	4th Rifle	1	0	0	1	8	13	32	50
47	Archery	0	2	0	2	47	4	4	10
	Muzzle	2	0	0	2	13	15	12	19
	Early	6	0	0	6	15	40	15	18
	2nd Rifle	11	4	0	15	61	25	32	34
	3rd Rifle	10	2	0	12	55	22	34	26
	4th Rifle	2	0	0	2	3	67	80	71
444	Archery	0	2	0	2	47	4	4	10
	Muzzle	2	0	0	2	13	15	12	19
	Early	6	0	0	6	15	40	15	18
	2nd Rifle	11	4	0	15	61	25	32	34
	3rd Rifle	10	2	0	12	55	22	34	26
	4th Rifle	2	0	0	2	3	67	80	71
471	Archery	5	0	0	5	35	14	5	6
	Muzzle	0	2	0	2	16	13	13	18
	Early	12	0	0	12	18	67	40	32
	2nd Rifle	0	0	0	0	8	0	0	21
	3rd Rifle	2	0	0	2	8	25	13	10

ROARING FORK

ELK INFORMATION

Early seasons find elk anywhere from 7500' to above timberline. With increased hunting pressure and snow, herds tend to move to remote areas or private lands - away from roads and hunters. The wilderness areas are a good bet for success but hunters must hike or horseback in as motorized travel is prohibited. Try Snowmass Creek, Conundrum Creek, Capitol Creek, Avalanche Creek, Difficult Creek, McFarland Creek, Maroon Creek, Thompson Creek, Basalt Mountain, Four-mile, the Marble area, and the upper Frying Pan drainages. Kobey Park and Sloans Peak are good but deep snow and bad roads should be expected, especially later in the seasons.

Some great opportunities for private land cow hunting exist in GMU 43, if you can get permission.

2012 ELK OBJECTIVES				
Herd	GMUs	Bull:Cow Objective	Population Estimate	Population Objective
Avalanche Creek	43, 471	19:100	4,280	3,300
Frying Pan River	44, 45, 47, 444	20:100	7,930	5,100

2012 ELK HARVEST STATS

UNIT	SEASON	BULL	COW	CALF	TOTAL HARVEST	TOTAL HUNTERS	SUCCESS %		
							LAST YR	3 YR	5 YR
43	Archery	69	41	3	113	898	13	11	12
	Muzzle	30	7	3	40	241	17	19	19
	Early	0	88	7	95	178	53	53	50
	1st Rifle	36	40	0	76	409	19	25	23
	2nd Rifle	76	87	18	181	1045	17	19	19
	3rd Rifle	42	61	9	112	617	18	24	24
	4th Rifle	30	67	5	102	295	35	28	26
47	Archery	10	7	0	17	218	8	7	11
	Muzzle	9	0	0	9	40	23	17	12
	Early	0	32	0	32	64	50	54	58
	1st Rifle	7	2	0	9	93	10	14	14
	2nd Rifle	16	18	3	37	300	12	17	19
	3rd Rifle	26	16	0	42	280	15	20	17
	4th Rifle	10	17	2	29	93	31	29	31
444	Archery	10	7	0	17	283	6	9	10
	Muzzle	27	0	0	27	164	16	16	16
	Early	0	115	18	133	269	49	43	48
	1st Rifle	25	25	2	52	157	33	28	27
	2nd Rifle	71	32	6	109	675	16	16	17
	3rd Rifle	34	5	7	46	345	13	14	14
	4th Rifle	5	27	3	35	168	21	22	22
471	Archery	10	7	0	17	283	6	9	10
	Muzzle	27	0	0	27	164	16	16	16
	Early	0	115	18	133	269	49	43	48
	1st Rifle	25	25	2	52	157	33	28	27
	2nd Rifle	71	32	6	109	675	16	16	17
	3rd Rifle	34	5	7	46	345	13	14	14
	4th Rifle	5	27	3	35	168	21	22	22

PRONGHORN, BEAR & MOOSE

PRONGHORN INFORMATION

Northwest Colorado offers good pronghorn hunting opportunities. Hunter success varies by GMU. Hunter success is typically higher on private land, but public land pronghorn can still be found. The pronghorn season in GMUs 41, 62, and 411 is closed (new this year) to manage the population.

2012 PRONGHORN OBJECTIVES				
Herd	GMUs	Buck:Doe Objective	Population Estimate	Population Objective
Sand Wash	1, 2, 201	68:100	1,530	3,200
Great Divide	3, 4, 5, 13, 14, 214, 301, 441	55:100	10,660	15,800
North Park	6, 16, 17, 161, 171	30-40:100	1,160	1,500 - 1,600
Maybell	11	40:100	1,500	1,400
Axial Basin	12, 23, 211	35:100	760	300
Middle Park	18, 27, 28, 37, 181, 371	40:100	690	630

2012 PRONGHORN STATS

UNIT	SEASON	BUCK	DOE	FAWN	TOTAL HARVEST	TOTAL HUNTERS	SUCCESS %		
							LAST YR	3 YR	5 YR
2	Rifle	15	0	0	15	22	68	75	78
201	Rifle	18	11	2	31	37	84	79	78
3	Rifle	295	124	12	431	554	78	80	82
301	Rifle	295	124	12	431	554	78	80	82
4	Rifle	76	62	7	145	220	66	75	79
441	Rifle	19	3	0	22	32	69	72	75
5	Rifle	0	0	4	4	18	22	47	56
6	Rifle	7	4	0	11	11	100	90	91
11	Rifle	95	62	15	172	221	78	87	89
211	Rifle	14	8	2	24	39	62	64	64
12	Rifle	6	2	3	11	16	69	64	65
13	Rifle	57	69	3	129	196	66	73	78
214	Rifle	13	16	0	29	48	60	60	66
16	Rifle	14	3	0	17	19	89	75	70
161	Rifle	9	3	2	14	16	88	93	81
17	Rifle	6	0	0	6	9	67	57	60
171	Rifle	1	0	0	1	8	13	48	51
18	Rifle	15	9	0	24	33	73	61	49
181	Rifle	7	9	0	16	34	47	54	49
27	Rifle	4	2	0	6	6	100	74	67
28	Rifle	0	0	0	0	6	0	50	28

PRONGHORN, BEAR and MOOSE

MOOSE INFORMATION

Northwest Colorado's moose population is thriving since moose were first re-introduced by the CPW into North Park in 1978. Recent introductions of moose include Grand Mesa (2005) and Flattops Wilderness Area (2009).

The introduction of moose into the Flattops also began in 2009 with the release of 20 moose transplanted from an overpopulated unit in Utah. Future transplants into the Flattops will continue to increase viewing and hunting opportunity.



Big game hunters in all areas in northwest Colorado are reminded to be sure of their target.

The accidental kill of moose by elk hunters is a threat to these new populations.

In cooperation with Colorado chapters of Safari Club International, an extensive education campaign is being conducted to alert hunters to these new populations.

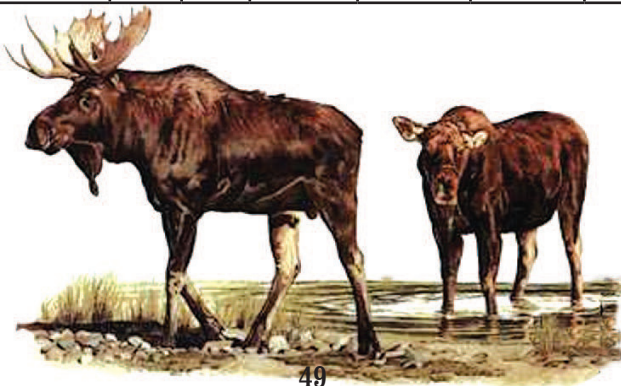
MOOSE

2012 MOOSE OBJECTIVES

Herd	GMUs	Bull:Cow Objective	Population Estimate	Population Objective
North Park	6, 16, 17, 161, 171	60-70:100	570	500-600
Gore	14,18, 28, 36, 37, 181, 371	65:100	420	190
Grand Mesa	41, 42, 43, 52, 411, 421, 521	55-65:100	360	300-400
White River	12, 23, 24	(undeter.)	150	100-200

2012 MOOSE HARVEST STATS

UNIT	SEASON	BULL	COW	BULL HUNTERS	COW HUNTERS	SUCCESS %	
						BULL	COW
6	All	11	18	11	19	100	95
14	All	2	2	2	2	100	100
16	All	3	3	3	4	100	75
17	All	8	8	8	11	100	73
18	All	15	13	15	14	100	93
28	All	9	6	9	7	100	86
36	All	1	0	1	0	100	0
37	All	2	0	2	0	100	0
161	All	4	2	4	3	100	67
171	All	11	17	11	18	100	94
371	All	1	2	1	2	100	100
421	All	6	0	6	0	100	0



BLACK BEAR

Black bear hunting opportunities are abundant in northwest Colorado. A constitutional amendment passed by voters in Colorado eliminated the spring hunting of bears and prohibits the use of hounds or bait in bear hunting. Bear hunters should be familiar with the regulations regarding the take of bear in Colorado.

September bear season - Hunters can apply for a September bear rifle license in the annual big game draw. These either sex licenses are limited and only available through the draw - rarely as leftovers. These licenses are open to all legal methods of take, meaning the holder can choose to hunt with archery equipment or muzzleloader during this season.

Over-the-counter with caps - Archery, muzzleloader and some rifle bear licenses are sold over-the-counter on a first-come, first-served basis beginning in July. These licenses require that the holder also possesses a valid deer or elk license for the area and season that the hunter will be hunting bear.

2012 BEAR HARVEST STATS

Bear harvest stats are reported differently than other big game species. Because bears are relatively reclusive and fewer in number statewide than deer or elk, estimating populations at the local level is problematic. It is estimated that Colorado has between 16,000 and 18,000 black bears statewide. Success rates for bear hunters tend to be lower than other big game animals, and requires the issuance of a large number of licenses to achieve a relatively small harvest.

Population	GMUs	Licenses Issued	Boar Harvest	Sow Harvest	Total Harvest	Success %
B-1	21, 22, 30, 31, 32	843	53	31	84	10
B-4	4, 5, 6, 14, 16, 17, 161, 171, 214, 441	1001	34	27	61	6
B-10	12, 13, 23, 24, 25, 26, 33, 34, 131, 231	1110	47	18	65	6
B-11	35, 36, 43, 44, 45, 47, 444, 471	1212	54	32	86	7
B-15	1, 2, 3, 10, 11, 201, 211, 301	190	7	5	12	6
B-16	15, 18, 27, 28, 37, 181, 371	340	17	10	27	8
B-17	41, 421, 52, 411, 521, 53, 63	1649	81	69	150	9

GUN RANGES

Basalt State Wildlife Area Shooting Range

Basalt

Colorado Parks and Wildlife, Glenwood Springs Office

970 - 947-2920

The range is located in the Christine unit of the Basalt SWA. Take Highway 82 to Two Rivers Road, turn on to Homestead Drive and then turn into the Basalt SWA entrance that is on the west end of Homestead Drive. There is a large green/white CPW sign at the bottom of the hill on the road up to the shooting range.

Public pistol range, 100 yard rifle and shotgun ranges. Open weekdays 7 a.m. to 7 p.m. and weekends 9 a.m. to 7 p.m. year 'round. Fully automatic firearms are prohibited. Not including muzzleloader and shotgun, rifles on the range must be .50 caliber or lower. For a fee, the Roaring Fork Valley Sportsman's Association offers trap and skeet shooting on Wednesday evenings and weekends from noon to 5 p.m. The range is otherwise unsupervised.

Note: Beginning December 1, 2010, the range will close at 5 p.m. on Saturdays and Sundays until further notice.

Bears Ears Sportsman Club

P.O. Box 622, Craig

970-824-8376

300-yard rifle and handgun range for members. Open to the public the first Sunday/Monday of each month. Also open during daylight hour, the Thursday and Friday prior to each big game season for hunter sight-in. For more information, pick up brochures at the Craig Sportsman's Center.

Byers Canyon Rifle Range

Hot Sulphur Springs

970-725-6200

Colorado Parks and Wildlife - Hot Sulphur Springs Office. This range is closed during winter months to provide winter forage to big game. This closure is generally in effect beginning the first week in January. The range will remain closed until deer move toward higher ground in the spring, which typically occurs in early April.

Open daily, sunrise to sunset (except as noted, above). Five centerfire rifle 25-, 100-, and 200 yard ranges, one rimfire (.22 cal) rifle range, shotgun (hand traps only – not provided), and one handgun range provided. Range also has straw bales for archery. One rifle range has wheel chair access to 25/100-yard target range. Paper targets only (exception for clay birds for shotgun, and targets for archery). No bowling pins or other breakables allowed on range. Unsupervised range! Eye and ear protection mandatory. Portable toilet and trash dumpster on site.

GUN RANGES

Castle Peak Gun Club **P.O. Box 319, Gypsum**

Open prior to hunting season for hunter sight-in. Range visible from I-70; north-side of the Interstate, west of the interchange.

Glenwood Springs Gun Club **Glenwood Springs** **970-945-7401**

Public welcome to shoot when range is open. Sporting clays, trap, black powder, rifle and pistol ranges up to 200 yards. Hunter education courses are available also.

Grand Junction BLM Public Shooting Ranges

North of Grand Junction **Bureau of Land Management (BLM), Grand Junction Field Office** **970 -244-3000**

From Grand Junction, take Horizon Drive northeast to H Road; west on H Road approximately 1.25 miles to 27¼ Road; north on 27¼ Road 5 miles to the rifle range or 5.8 miles to the pistol range. Open to the public year-round; no supervision provided. The rifle range has a sheltered firing line with 25 stations and 8 benches with range distances from 50 to 500 yards. The pistol range has 4 benches with range distances up to 150 yards. There is no trash service—shooters are responsible for removing their own brass, shell casings, targets and trash. Please be aware of other users of these public lands such as hikers, horseback riders, and OHV operators.

East of Grand Junction **Bureau of Land Management (BLM), Grand Junction Field Office** **970 -244-3000**

(Acquire a map of this shooting area at the Grand Junction BLM office.)

Shooting area is located on East Orchard Mesa. To reach the shooting area, travel east on C Road past 34 Road.

This public land shooting area is open to the public year around. There are several no-shoot zones to protect nearby residences, nearby FAA communication equipment and a power sub-station. It is a federal offense to shoot in or through these areas. Do not shoot across a road or trail. Establish a safe shooting location with a good backstop down range. Users are responsible for removing all targets, shells, brass and trash. No glass targets.

GUN RANGES

Grand Junction Trap and Skeet Club, Inc.

116 32 Rd., Grand Junction

970-245-0780

Public and league trap and skeet shooting.

Grand Mesa Bowmen

PO Box 752, Grand Junction

970-244-2977

Bowhunting club with 42 outdoor targets near Colorado National Monument. Family memberships are \$36 per year.

Hayden Shooting Range

2 miles south of Hayden

Colorado Parks and Wildlife, Steamboat Springs Office

970-870-2197

100-, 200- and 300-yard rifle and pistol range is open to the public 7 days a week from dawn until dusk.

Meeker Sportsman's Club

4.5 miles southwest of Meeker on Colorado Highway 13

Hunter sight-in Thursdays and Fridays prior to each big game season. Look for more information on flyers around town. Public is welcome to shoot in other organized events. Memberships are \$20 per family and include full use of range, including archery, trap, rifle and pistol ranges. Write for more information.

Plateau Creek State Wildlife Area

West of Collbran

Colorado Parks and Wildlife, Grand Junction Office

970-255-6100

From Grand Junction, take I-70 east to Highway 65 (Exit 49), then 8 miles east to Highway 330, then about 7.5 miles east to county road V, then north .25 mile to the range. The range, operated by Colorado Parks and Wildlife, is open year 'round during daylight hours. There are four adjustable shooting benches with 50, 100, 200, and 300 yard ranges. There is no trash service; shooters are asked to remove all trash, targets, and brass after use. The county road leading to this range can be impassable in wet weather.

GUN RANGES

Red Rock Archery
3193 Hill Ave., Grand Junction
970-241-2697

Open to the public. 20 and 30 yard indoor archery range, 3D shoots on Tuesdays and Thursdays and DART Video Target System

West Rifle Creek State Wildlife Area
North of Rifle
970-255-6100

Colorado Parks and Wildlife, Grand Junction Office Range distance: 100 yards. Small bore rifle, large bore rifle, pistol, and shotgun are allowed. Range is open to the public year round; no supervision provided. No trash service; shooters are responsible for removing trash including brass, shell casings, and targets. Directions: From Rifle, take Highway 13 north to Highway 325, then north on 325 to Rifle Gap Reservoir. At the dam turn west on CR 252 and travel approximately 2 miles; shooting range is on a dirt road off to the left just before reaching the intersection with CR 210.

Rifle Sportsmen's Club
West of Rifle
970-876-2133

Range is located north of the US Forest Service office on Fravert Road. Public can access the range during sight-in days two days prior to each of the big game seasons, except 4th season when range is open to the public on Friday only. Cost is \$5 per gun during sight-in days. Targets at 25, 100, 200 and 300 yards; gongs at 100-500 yards. Annual membership can be purchased for \$50/yr. Membership includes access to large and small bore range, long distance range, pistol range, archery targets, action pistol and trap/skeet/five-stand range. Hunter safety and concealed carry classes available.

Routt County Rifle & Pistol Club
P.O. Box 3116, Steamboat Springs
970-870-0298

Call for dates and times that the club is open to the public. Facilities include trap, skeet, sporting clays, indoor .22, outdoor pistol, 25-, 50-, 100- and 200-yard rifle ranges.

GUN RANGES

Summit County Public Shooting Range

**639 County Rd 66
Dillon, CO 80435
www.summitrange.org**

There are limited facilities at range. There is now a porta-potty, but there is no running water or electricity. Take note before planning your day at the range.

The ground beneath the range is compacted recycled asphalt. Driving a target stand into the ground is not advised as it may damage the surface. Self-supporting stands with sandbags are one useful method of creating a target stand. Try making a 2x4 stand and drill holes in the stand for your stake-equipped targets.

Vail Rod & Gun Club, Ltd.

**001 Sporting Clay Way, Wolcott
970-926-3472**

Open to the public for sporting clays during summer months. In fall, archery, pistol and 100 yard rifle range open to the public.

Walden Public Shooting Area


**East of Walden
970-723-4625**

Take Jackson CR 12E east out of Walden. Go four miles. Shooting range is on the north side of the road and is marked with a white sign displaying the range rules and small CPW and BLM emblems. Open to the public year-round; no supervision provided. The range has benches with range distances from 50 to 300 yards. There is no trash service—shooters are responsible for removing their own brass, shell casings, targets and trash. Please be aware of other users of these public lands such as hikers, horseback riders, and OHV operators.

White River Bowmen

**Post Office Box 32, Rangely
970-675-8559**

Bowhunting club with 14 outdoor targets and clubhouse. Memberships \$30 per year.

COLORADO PARKS AND WILDLIFE - NW REGION			
 www.cpw.state.co.us	Grand Junction Regional and Area Office	711 Independent Ave. Grand Junction CO 81505	(970) 255-6100
	Glenwood Springs	0088 Wildlife Way Glenwood Springs CO 81601	(970) 947-2920
	Meeker	73485 Hwy 64; PO Box 1181 Meeker CO 81641	(970) 878-6090
	Hot Sulphur Springs	346 Grand County Rd 362; PO Box 216 Hot Sulphur Springs CO 80451	(970) 725-6200
	Steamboat Springs	925 Weiss Drive - PO Box 775777 Steamboat Springs CO 80477	(970) 870-2197

LAND MANAGEMENT AGENCIES			
Bureau of Land Management BLM www.co.blm.gov/offices.htm	Grand Junction Field Office 2815 H Road	(970) 244-3000	
	Glenwood Springs Field Office (Silt) 2300 River Frontage Road	(970) 876-9000	
	White River Field Office (Meeker) 220 E. Market Street	(970) 878-3800	
	Little Snake Field Office (Craig) 455 Emerson Street	(970) 826-5000	
	Kremmling Field Office 2103 East Park Avenue	(970) 724-3000	
United States Forest Service USFS www.fs.fed.us/r2/whiteriver www.fs.fed.us/r2/gmug www.fs.fed.us/r2/mbr	White River National Forest	Blanco RD (Meeker) 220 E. Market Street	(970) 878-4039
		Rifle RD (Rifle) 0094 County Rd 244	(970) 625-2371
		Aspen RD (Carbondale) 620 Main St.	(970) 963-2266
		Eagle RD (Eagle) 125 West 5th St.	(970) 328-6388
		Holy Cross RD (Minturn) 24747 Hwy 24	(970) 827-5715
		Dillon RD (Silverthorne) 680 Blue River Pkwy	(970) 468-5400
	Grand Mesa, Uncompahgre & Gunnison National Forest	Grand Valley RD (Grand Junction) 2777 Crossroads Blvd #1	(970) 242-8211
		2250 Hwy 50, Delta (970) 874-6600 Other Grand Mesa, Uncompahgre, & Gunnison National Forest Ranger Districts are located in the CPW's SW Region, see <i>Big Game Hunting in SW Colorado</i> booklet.	
	Routt & Medicine Bow National Forest 2468 Jackson St. Laramie WY (307) 745-2300	Hahns Peak/Bears Ears (Steamboat Springs) 925 Weiss Dr	(970) 879-1870
		Parks RD (Walden) 100 Main Street	(970) 723-8204
		Parks RD (Kremmling) 2103 East Park Ave	(970) 724-3000
		Yampa RD (Yampa) 300 Roselawn Ave	(970) 638-4516
Arapaho National Forest	Sulphur RD (Granby) 9 Ten Mile Drive	(970) 887-4100	

GENERAL VISITORS INFORMATION

State Parks Reservations www.cpw.state.co.us Reservations (800) 678-2267 General Info (970) 255-6100	Colorado Tourism Board www.colorado.com (800) COLORADO
US National Park Service www.nps.gov	Campground and cabin info www.coloradodirectory.com

ROADS AND WEATHER

Colorado Dept. of Transportation www.cotrip.org toll free (877) 315-ROAD	www.crh.noaa.gov/gjt/ www.weather.com
--	--

MAPS

TOPO Maps US Geological Survey http://topomaps.usgs.gov (800) 435-7627	BLM Maps www.co.blm.gov (303) 239-3600
	US Forest Service Maps www.nationalforeststore.com (303) 275-5350

GUIDE AND OUTFITTER INFORMATION

For a list of registered guides and outfitters CO Dept of Regulatory Agencies www.dora.state.co.us/outfitters (303) 894-7778	Colorado Outfitters Association www.coloradooutfitters.org P.O. Box 10 Silt, CO 81652 (970) 824-2468
--	--

ATTENTION HUNTERS!

If you are hunting or fishing on BLM or U.S. Forest Service public lands, make sure your outfitter is permitted for that activity in that area. Check with your local BLM or Forest Service office before you book a trip.

CHRONIC WASTING DISEASE

Chronic wasting disease (CWD) is neurological disease that can be found in some deer, elk and moose, and is fatal to these animals. The disease has been found in twelve states, including Colorado, and two Canadian provinces. If you have questions about CWD and public health, contact the CDPHE at (303) 692-2700.

PRECAUTIONS

- Do not shoot, handle or consume any animal that appears sick.
- Wear rubber gloves when field dressing and processing animals.
- Bone out the meat from your animal.
- Minimize the handling of brain and spinal tissues.
- Wash hands and instruments thoroughly after field dressing is completed.
- Avoid consuming brain, spinal cord, eyes, spleen, tonsils, pancreas and lymph nodes of harvested animals. Normal field dressing, coupled with boning out a carcass, will remove most, if not all, of these body parts.
- Do not consume meat from animals known to be infected with CWD.
- Knives, saws and cutting table surfaces can be disinfected by soaking in a solution of 50 percent unscented household bleach and 50 percent water for an hour. Afterward, allow them to air dry.
- Have harvested animals tested at a CPW-CWD testing station.

BE SAFE AND RETURN TO YOUR FAMILY

This is a basic, preliminary list of survival tips, suggestions and equipment. There are many survival guides and manuals that provide much more detailed information. ***Be sure to pick one up, and read it.***

- Always tell someone where you are going and when you will return.
- Always stick to your plan, stay put if you become lost or stranded.
- Always take someone with you, never go out alone.
- You must have shelter each night.
- The ability to build a fire is paramount.
- Signaling, like everything else in survival, is not a spur-of-the-moment thing and you must prepare for it so that it is ready when you need it.
- You must have a way to find, purify and drink water
- Dress for weather but remember it can change *suddenly and drastically!*

BASIC SURVIVAL KIT

SHELTER PACKAGE:

- 1 GOLD AND 1 SILVER EMERGENCY BLANKETS (SPACE BLANKETS)
- 1 SHEET PLASTIC, 3 MIL., 6 FOOT BY 6 FOOT
- 50 FEET PARACHUTE CORD
- ELECTRICIAN'S TAPE, MUST BE COLD RESISTANT

FIRE PACKAGE:

- 2 CONTAINERS OF MATCHES, STRIKE ANYWHERE TYPE, IN WATERPROOF CONTAINERS
- MAGNESIUM FIRESTARTING TOOL[®] OR METAL MATCH[®]
- COTTON BALLS IMPREGNATED WITH PETROLEUM JELLY
- 1 CANDLE

SIGNAL PACKAGE:

- 1 GLASS 'G.I.'-TYPE SIGNAL MIRROR (EVEN AN OLD CD MAY WORK)
- 1 PLASTIC WHISTLE
- 1 DAYLIGHT FLUORESCENT ORANGE CLOTH SIGNAL PANEL, 3 FOOT BY 3 FOOT

ADDITIONAL SUPPLIES:

- FIRST-AID KIT THAT ADDRESSES WILDERNESS EMERGENCIES.
- A GOOD KNIFE—THIS IS YOUR MOST IMPORTANT SURVIVAL TOOL.
- RAIN GEAR—PONCHO PREFERRED.
- BACKPACK HYDRATION SYSTEM OR CANTEEN, AND WATER PURIFICATION TABLETS.
- HIGH ENERGY, LIGHTWEIGHT FOOD BARS AND SNACKS.
- A FULLY CHARGED CELL-PHONE - YOU *MIGHT* HAVE CELL COVERAGE

CAMPING IN BEAR COUNTRY

**Bears have a tremendous sense of smell.
Keep a clean camp to avoid
unwanted visitors**

Stash your trash. Use bear-proof containers or double bag and lock trash in car trunk or camper. Never leave trash outside.

Store food, beverages and toiletries in air-tight containers. Don't store food containers in your tent or anywhere a bear can see, smell or reach.

Keep a clean camp. Secure your trash, and keep it in a locked vehicle.

Keep a clean tent. Don't store anything with an odor in your tent. This includes food, beverages, toiletries, gum toothpaste, sunscreen, candles and insect repellent.

Don't sleep in the clothes you cook in - Change your clothes before you turn-in and store those clothes with your food in an air-tight container.

Don't feed wildlife. Bears that are fed by humans lose their fear of people, putting others at risk.





Colorado Parks and Wildlife manages 42 state parks, all of Colorado's wildlife, more than 300 state wildlife areas and a host of recreational programs.

To learn more, please visit:

cpw.state.co.us



POACHERS STEAL FROM EVERYONE
REPORT POACHING OR SUSPICIOUS ACTIVITY

OPERATION GAME THIEF

CALL 1-877-COLO OGT (265-6648)

Verizon Cellular Users

#OGT