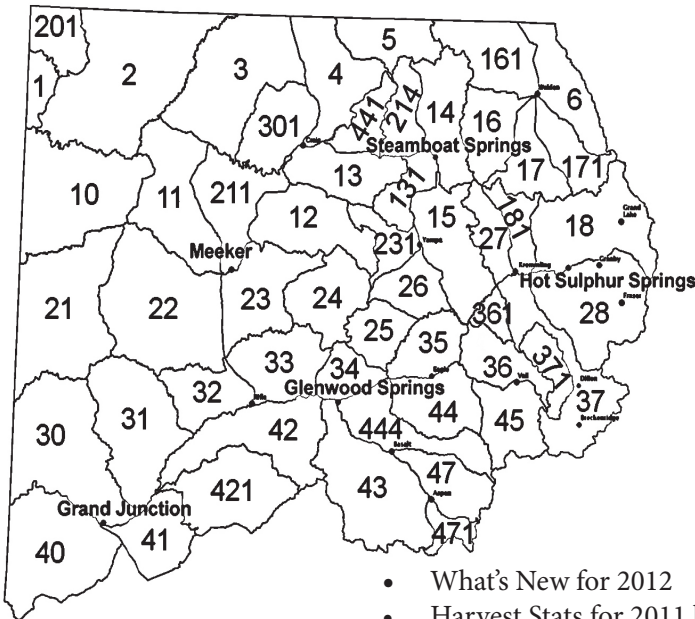


# 2012-2013 Big Game Hunting In Northwest Colorado



- What's New for 2012
- Harvest Stats for 2011 by GMU
- Hunter Success Rates by GMU
- Game Sex/Age Ratios by herd
- Important Phone Numbers
- Black Bear Hunting Info
- Moose Hunting Info
- Shooting Range Locations

COLORADO PARKS AND WILDLIFE

Northwest Region Office • 711 Independent Avenue, Grand Junction, CO 81505  
(970) 255-6100 • [www.wildlife.state.co.us](http://www.wildlife.state.co.us)

# ABOUT THIS BOOKLET

This book is intended to provide a general overview of big game hunting in Northwest Colorado, and should NOT be considered a legal document. Despite our best efforts, some errors may exist or information has become outdated. Call with your local Colorado Parks and Wildlife office with questions, or for further details and information.

For specific details on regulations, restrictions, licenses and applications, please refer to the 2012 *Colorado Big Game* brochure, or for a full legal document, you can view general and big game regulations on our web site at [www.wildlife.state.co.us](http://www.wildlife.state.co.us).

The data in this booklet is provided to help hunters with hunting tips and suggestions. While this data is also utilized in management of game populations, it is not the ONLY data the Colorado Parks and Wildlife uses. Because aerial survey data varies widely based on factors such as weather conditions, time spent in the air, and time of day, biologists also utilize harvest data, game damage claims, landowner reports, advanced computer modeling, on-the-ground knowledge, and other information in establishing herd objectives and population estimates.

Good luck with your hunt and remember:

**BE PATIENT!**

**BEFORE YOU SHOOT, TAKE TIME TO IDENTIFY YOUR TARGET**

***Safe Hunting Is No Accident!***

## ACKNOWLEDGEMENTS

Information and guidance for this booklet was provided by the District Wildlife Managers, Area Wildlife Managers, Area Biologists and Customer Service Representatives of the Northwest Region. Their hard work and dedication to the wildlife resource make northwest Colorado a spectacular hunting destination. Thanks to all of them for doing what they do and for telling us about it, so we could tell you.

Thanks also to the CPW GIS unit for providing the maps used in this booklet.

Information depicted is for reference purposes only and is compiled from the best available sources. Reasonable efforts have been undertaken to assure the accuracy of all maps.

**Questions or Suggestions?**

**Mike Porras - NW Region Public Information Officer**

**(970) 255-6162**

**[mike.porras@state.co.us](mailto:mike.porras@state.co.us)**

# CONTENTS

ANTLER POINTS & UNLIMITED ELK UNITS	2
DONATION CERTIFICATE	3
ATV & OHV INFORMATION	4
USING STATISTICS TO HELP YOUR HUNT	5
ELK AND DEER UNITS & HARVEST STATS	6-45
PRONGHORN, MOOSE AND BEAR INFO & STATS	46-49
PHONE LISTINGS & INFO SOURCES	50
LOCAL GUN RANGES	51- 56
GENERAL INFORMATION/CWD	57

## NEW IN THE NORTHWEST - 2012

See the [2012 Big Game Brochure](#) or [wildlife.state.co.us](http://wildlife.state.co.us) for additional information!

### **\*IMPORTANT - LATE SEASON YOUTH ELK HUNT CHANGES\***

**Late youth hunts in many units are being restricted. See page 4 of the [2012 Colorado Big Game Brochure](#) for details and additional information.**

#### **CLOSED HUNTS**

All pronghorn hunts in GMUs 41,62, and 411 have been closed to manage game populations.

All 4th season buck hunts in units 41, 42, and 421 will not be available this year.

#### **SOME DEER LICENSES CHANGED FROM LIST B TO LIST A TAGS**

Some licenses for areas north of Craig to the White River have been changed from List B to List A. Hunters may only purchase one List A tag to hunt deer.

#### **MORE LIST B PRONGHORN LICENSES AVAILABLE**

Many licenses previously classified as List A are now classified as List B. Hunters may purchase up to two List B licenses.

#### **BEAR HUNT CODE CHANGES**

Bear hunters should pay close attention to hunt codes this year. The hunt code for the unit you like to hunt may have changed since 2011, and your license may be valid in a different unit that you are accustomed. See page 52 of the [Big Game Brochure](#) for details.

#### **MOOSE PREFERENCE POINTS**

A new regulation allows hunters to keep moose preference points on record for 10 years. As with other big game, if you get a first-choice moose licenses, all of your accumulated points will be purged for that species.

#### **NEW AMMUNITION RESTRICTIONS**

In state lands and State Wildlife Areas, A new regulation prohibits the possession of the following ammunition and/or firearms: tracer rounds, armor piercing rounds, military hardened round with explosive or radioactive substances, .50 caliber BMG rounds or fully automatic firearms.

#### **COLORADO FIRES AND BURNING REGULATIONS**

Recent fires in Colorado affected large areas. Prior to setting up camp, check with local land management agencies for the most current fire regulations. Check with the local CPW office for current hunting conditions in areas possibly affected by fires.

# ANTLER POINT RESTRICTIONS

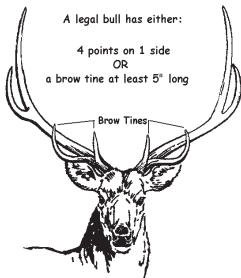
## DEER



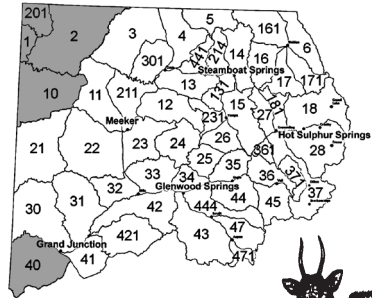
**Spike Buck  
(at least 5")**

All buck (antlered) deer harvested in northwest Colorado must have at least one 5" spike.

## ELK



Legal bulls in white units must have at least one brow tine that is at least 5 inches



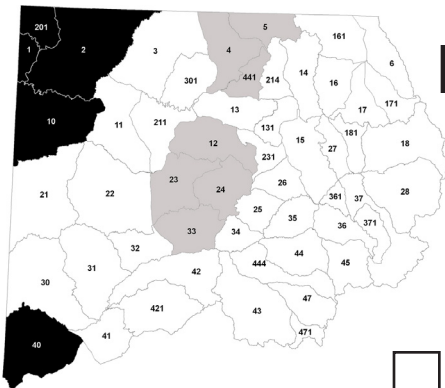
Legal bull in shaded limited units must have at least a 5 inch spike on one side.



# UNLIMITED BULL ELK LICENSES

Over the counter bull elk licenses are available to non-resident and resident hunters in northwest Colorado.

The map below shows where these licenses are valid.

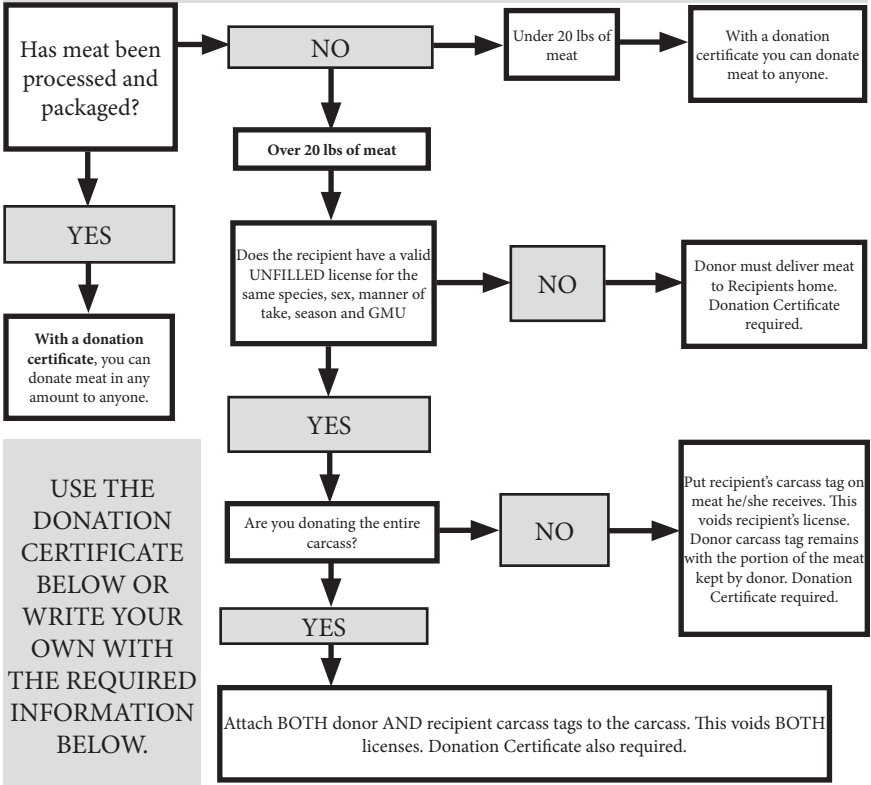


**LIMITED UNITS - Draw Only**  
You may NOT hunt in these areas with an over-the-counter license

**ARCHERY RESTRICTION**  
Rifle hunters may hunt in these areas with an over-the-counter license, however archery over-the-counter license holders may only hunt on private land in these units.

**UNLIMITED UNITS**  
Hunters with an unlimited bull elk license (archery or rifle) may hunt in these units. Remember: You must still have permission to hunt private land.

# DONATING GAME MEAT



USE THE DONATION CERTIFICATE BELOW OR WRITE YOUR OWN WITH THE REQUIRED INFORMATION BELOW.

## STATE OF COLORADO

GAME DONATION CERTIFICATE

Date: \_\_\_\_\_

Donor name \_\_\_\_\_

Donor Address \_\_\_\_\_

Recipient name \_\_\_\_\_

Recipient Address \_\_\_\_\_

Kind of game donated \_\_\_\_\_

Number/Weight of donation \_\_\_\_\_

The above mentioned game and/or fish was legally taken on (date): \_\_\_\_\_

using hunting license # \_\_\_\_\_

Signature Recipient \_\_\_\_\_

Signature Donor \_\_\_\_\_

Make two copies - one for donor, one for recipient

## ATV and OHV

Colorado law allows local and state law enforcement officers to write citations for off-highway vehicle (OHV) users who are violating federal travel rules. This means that wildlife officers can write tickets to OHV users who are riding in closed areas or designated wilderness areas. *As a rider, it's your responsibility to know the roads, trails and areas where you legally can ride.*

OHV users riding in a closed area face fines of \$100 dollars. If the violation takes place while hunting, fishing or trapping, the user will be penalized 10 points against hunting and fishing privileges. Violations in federal wilderness areas are \$200 fines and 15 points.

OHV users on public lands should consult with the appropriate land management agency to obtain information about travel management. Once you have determined your hunting area, contact the local office of the US Forest Service (USFS) or the Bureau of Land Management (BLM) to obtain a travel map.

### Keep Your Wheels Where They Belong™



UTILITY TERRAIN VEHICLE



4 WHEEL DRIVE VEHICLE



MOTORCYCLE



ALL TERRAIN VEHICLE

For info and tips visit  
[www.staythetrail.org](http://www.staythetrail.org)

All OHVs (*ATVs, dune buggies, unlicensed motorcycles*) operated on public lands in Colorado must be registered or permitted for Colorado use. Residents must register OHVs annually.

**Non-residents wishing to use an OHV in Colorado must obtain a \$25 Colorado permit from Colorado Parks and Wildlife. Your home state registration is no longer valid in Colorado.**

Resident registration is available at some Colorado Parks and Wildlife offices. Call for information.

Non-resident permits are available at anywhere hunting and fishing licenses are sold.

**For more information on OHV regulations contact your nearest Colorado Parks and Wildlife Office**

# UNDERSTANDING HARVEST STATS & HERD RATIOS

Ever see a baseball player with a .125 batting average hit a home run? Ever see a ‘can’t miss’ stock take a plunge? Ever hunt a unit with a 100% success rate and not see any deer? If you’re nodding your head to any of these scenarios then you’re one of the people who knows that statistics are a good guide, but they aren’t a guarantee. So, here’s a guide to help make sense of these stats.

AGE & SEX RATIOS*				
Herd	GMUs	Adult Male:Female Objective	Population Estimate	Population Objective
A	B	C	D	E

**A Herd Name** - A herd is generally defined as the area where a group of animals spends the entire year. A herd area includes winter range, transition range, migratory corridors, fawning and calving areas and summer range.

**B Game Management Units** - geographic areas within a herd area. Herds may use many GMUs or a single GMU. Because herd areas and the booklet chapters don’t always overlap cleanly on a map, you may see that an area in this booklet may have multiple herds or herds may be split by multiple areas in the booklet.

**C Adult Male:Female Objective** - The ratio of male animals to female animals that CPW is trying to obtain. This is the goal that optimizes the herd as a quality herd (producing more ‘trophy’ type bucks and bulls), an opportunity herd (producing more hunting opportunity) or something in between.

**D Population Estimate** - This is the current year estimate of the size of the herd. As it is impossible to physically count every animal, the estimate is derived through computer modeling, on-the-ground observation, harvest data and other factors.

**E Population Objective** - Often given as a range, this is the population that CPW is trying to achieve. This number is based on herd plans (called “DAU Plans” internally) that are developed through a public participation process. The herd objective is set to try and balance concerns of interested parties, which may range from agricultural damage to hunter preference.

*\*Buck:Doe and Fawn:Doe observed ratios are no longer reported.*

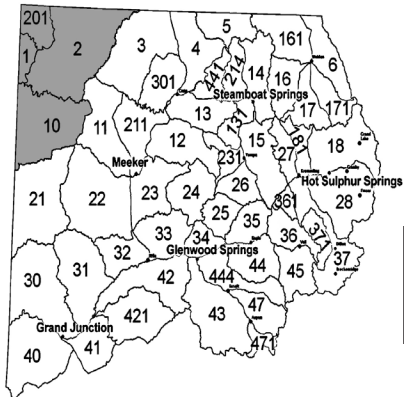
## HARVEST STATS INFORMATION

Because space is limited in the booklet, we generally only include the major seasons (archery, muzzleloader and four rifle seasons). In units where early or late seasons are critical, we’ve tried to list those numbers. Additional harvest stats can be found on our web site at [www.wildlife.state.co.us](http://www.wildlife.state.co.us).

Have you ever harvested an animal in a unit, then noticed a zero-percent success rate in the following year’s statistics for that unit? While rare, it’s actually possible. It’s the kind of occurrence that highlights the limitations of statistics. When reading the harvest stats, it’s important to keep in mind that the statistics are derived utilizing statistical sampling techniques. With more than 300,000 hunting licenses sold in Colorado each year, it’s impossible to contact every hunter. So a statistical sample is matched with license sales data and an estimate of hunter numbers and hunter success is established.

For that same reason, in some smaller units you may not see any data reported for a season in which you participated. There are instances where not enough hunters respond to our survey inquiries and therefore it isn’t possible to report any data.

Also keep in mind that *past performance doesn’t necessarily guide future success*. Warm weather during the previous year may have limited harvest. Cold and snowy weather may have sent hunters home early the previous year, limiting the harvest. You may have better conditions. A forest fire or other event may have disrupted an area the last year. Don’t automatically assume that poor previous results mean a unit is a bad place to hunt, and vice-versa. To compensate for some of those factors that might skew harvest dramatically higher or lower in a unit, we’ve added three-year and five-year hunter success average columns.



# GREEN RIVER

## GMU

**1, 2, 10, 201**

**LOCAL CPW OFFICE**  
**Meeker (970) 878-6090**

AREA MAPS	BLM Canyon of Lodore BLM Rangely
AREA INFO	<a href="http://www.rangely.com">www.rangely.com</a>

### AREA INFORMATION

In this area, 9,700' Diamond Mountain is the highest point, dropping to 5100' elevation at the White River. Sage and sage-grassland dominate, with the typical vegetation groups as the elevation increases.

Weather is generally mild through the later seasons, though the higher elevations can have significant snow accumulations.

Public land accounts for more than 85% of GMU 201. GMU 2 is a 'checker-board' of public and private land, and GMU 10 is mostly BLM land with a lot of scattered private land. Consult a map and be aware of where you are.

GMU 1 has poor access into the rough, rocky terrain and into the wilderness area. You must draw a license to hunt the Green River units, and it can take many years of preference points. Hence, the hunting pressure is typically light.

An agreement with a private landowner and the State Land Board opens several thousand acres in GMU 201 for public hunting access.

See the Craig Chamber of Commerce or the CPW office in Meeker for details.

**Dinosaur National Park Is Closed To All Hunting.**



# GREEN RIVER

## 2011 DEER INFORMATION

Deer are scattered throughout GMUs 2,10 & 201. If there is winter range migration, it is usually during 3rd season. Deer in GMU 1 tend to stay at the south & north ends of Brown's Park Refuge. The average good buck in GMUs 2 and 201 measures 24-26". There are trophy bucks in GMU 10, however they tend to have tall versus wide antlers. Hunt the brush-covered areas, high elevations early in the season, lower elevations later.

2011 DEER OBJECTIVES				
Herd	GMUs	Buck:Doe Objective	Population Estimate	Population Objective
Little Snake	1, 2, 201	15:100	1780	13500
Rangely	10	20:100	650	7000

## 2011 DEER HARVEST STATS

UNIT	SEASON	BUCK	DOE	FAWN	TOTAL HARVEST	TOTAL HUNTERS	SUCCESS %		
							LAST YR	3 YR	5 YR
1	Muzzle	0	0	0	0	1	0	0	0
	2nd Rifle	5	0	0	5	7	71	68	75
2	Archery	3	0	0	3	4	75	50	69
	Muzzle	3	0	0	3	3	100	100	94
	2nd Rifle	16	0	0	16	18	89	92	90
	3rd Rifle	8	0	0	8	9	89	88	92
10	Archery	0	0	0	0	3	0	17	30
	Muzzle	5	0	0	5	5	100	50	40
	2nd Rifle	5	0	0	5	5	100	50	40
	3rd Rifle	5	0	0	5	5	100	50	40
	4th Rifle	2	0	0	2	2	100	67	79
201	Archery	2	0	0	2	3	67	63	77
	Muzzle	3	0	0	3	5	60	57	65
	2nd Rifle	12	0	0	12	15	80	81	86
	3rd Rifle	10	0	0	10	10	100	100	95



# GREEN RIVER

## 2011 ELK INFORMATION

Big, 300 + size bulls are common. The elk tend to stay put over the seasons. Movement is weather dependent. Overall, elk are scattered in GMUs 2, 10, 201 and the northern portion of GMU 1. We recommend Blue Mountain and Moosehead Mtn in GMU 10, but be prepared for rough terrain. When hunting GMUs 2 or 201 - hold out for a good bull - the average size is around 305. In GMU 2, try the SW corner. In GMU 1, try Hoy Draw & Chokeycherry Draw.

2011 ELK OBJECTIVES				
Herd	GMUs	Bull:Cow Objective	Population Estimate	Population Objective
Cold Springs	2, 201	40:100	1170	950
Green River	1	30:100	200	170
Blue Mtn	10	40:100	4000	1,200

## 2011 ELK HARVEST STATS

UNIT	SEASON	BULL	COW	CALF	TOTAL HARVEST	TOTAL HUNTERS	SUCCESS %		
							LAST YR	3 YR	5 YR
1	Muzzle	1	0	0	1	7	14	17	24
	Early	6	3	0	9	19	47	59	62
	1st Rifle	6	3	0	9	19	47	59	62
	2nd Rifle	0	5	0	5	53	9	18	35
	3rd Rifle	0	6	0	6	29	21	21	17
	4th Rifle	0	8	0	8	56	14	39	37
2	Archery	7	0	0	7	11	64	77	76
	Muzzle	6	0	0	6	10	60	58	51
	Early	27	0	0	27	39	69	64	71
	1st Rifle	0	24	0	24	81	30	43	40
	2nd Rifle	0	20	4	24	66	36	35	39
	3rd Rifle	0	15	2	17	68	25	34	38
	4th Rifle	0	63	4	67	146	46	44	39
10	Archery	8	0	0	8	14	57	62	61
	Muzzle	4	2	0	6	9	67	66	74
	Early	26	55	0	81	105	77	73	73
	1st Rifle	1	9	0	10	16	63	57	57
	2nd Rifle	0	9	2	11	33	33	38	39
	3rd Rifle	0	105	4	109	269	41	38	40
	4th Rifle	0	55	3	58	96	60	45	47

# GREEN RIVER

## 2011 ELK HARVEST STATS (Cont.)

UNIT	SEASON	BULL	COW	CALF	TOTAL HARVEST	TOTAL HUNTERS	SUCCESS %		
							LAST YR	3 YR	5 YR
201	Archery	5	0	0	5	8	63	82	76
	Muzzle	5	1	0	6	11	55	56	67
	Early	22	0	0	22	25	88	92	93
	1st Rifle	0	10	0	10	19	53	46	53
	2nd Rifle	0	22	4	26	52	50	60	54
	3rd Rifle	0	18	0	18	36	50	48	44
	4th Rifle	0	17	4	21	72	29	43	42

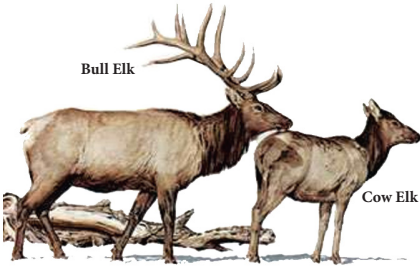
### ATTENTION ELK HUNTERS!

Moose populations are growing in Colorado and can often be found in elk habitat.

**ALWAYS** be on the lookout for moose!

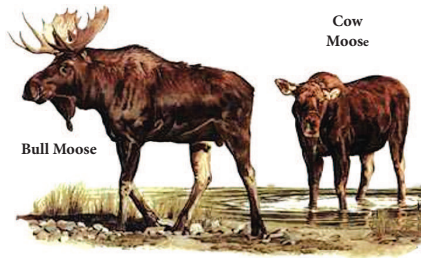
**BE PATIENT AND USE GOOD OPTICS!**

**BE 100% SURE OF YOUR TARGET BEFORE YOU SHOOT!**



ELK CHARACTERISTICS

- Branched antlers
- Light tan coat, brown head
- Often travel in larger herds
- Slender snout
- Spook easily



MOOSE CHARACTERISTICS

- Palmated antlers
- Dark brown or black body
- Bell on throat
- Bulbous snout
- Travel alone, in pairs or in small groups
- Do not spook easily
- Will attack if threatened

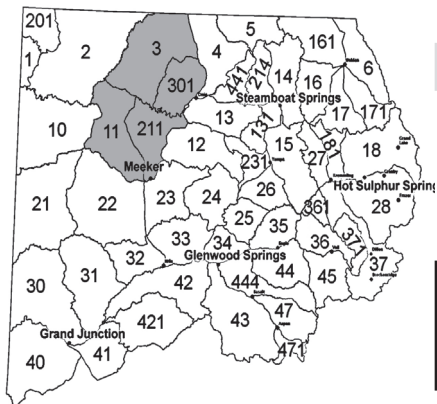
**If you mistakenly kill a moose, dress it immediately.  
As soon as possible, notify a wildlife officer.**

The fines for illegally killing & abandoning a moose starts at \$1,370 on up to \$25,000 and can include felony charges, the permanent loss of hunting privileges and prison!

**REPORT POACHING OR SUSPICIOUS ACTIVITY TO  
OPERATION GAME THIEF**

**1-877-COLO OGT (265-6648)**





# LOWER YAMPA

**GMU  
3, 11, 211, 301**

**LOCAL CPW OFFICE  
Meeker (970) 878-6090**

AREA MAPS	BLM Craig BLM Meeker
AREA INFO	<a href="http://www.craig-chamber.com">www.craig-chamber.com</a> <a href="http://www.meekerchamber.com">www.meekerchamber.com</a>

## AREA INFORMATION

The Lower Yampa units lie south of Wyoming, bordered by White and Little Snake rivers.

The lower elevations of 6,000' consist of sage and sage steeps. Pinyon and juniper cover the upper elevations up to 8,500'.

Expect zero to light snow cover in 1st & 2nd seasons. The later seasons may bring moderate snow and a potential for near zero temperatures. If the weather is mild, deer and elk will not be present in high numbers until the later seasons.

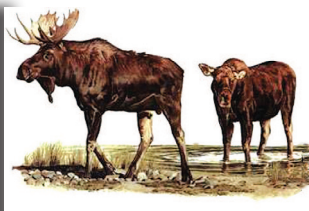
Overall access is easy and 4WD is not necessary in most areas. Hunting pressure is heavy.

Outside of GMU 301, 70 percent of the Lower Yampa is public land.

**MOOSE IN AREA**

**BE PATIENT!**

**ALWAYS BE 100% SURE OF YOUR TARGET!**



# LOWER YAMPA

## 2011 DEER INFORMATION

The buck-doe ratio is increasing. The mid-range elevations with mountain shrub and pinyon-juniper breaks generally hold the most deer, especially during the regular rifle seasons. Movement occurs with weather and hunting pressure. In 211 and 11, deer are generally found in the Danforth Hills during 2nd rifle season moving to lower elevations in Axial Basin (GMU 211), Bitterbrush SWA and adjacent BLM (GMU 11), and Crooked Wash (GMU 11) by 3rd and 4th rifle. Several thousand acres are open for public hunting in Axial Basin through a coordinated resource management plan (see Meeker CPW office for more details.)

2011 DEER OBJECTIVES				
Herd	GMUs	Buck:Doe Objective	Population Estimate	Population Objective
Bears Ears	3,301, 4, 5, 441, 214, 14	22:100	31,110	37,800
White River	11, 211, 12, 22, 23, 24, 13, 131, 231	22-25:100	43,680	67,500

## 2011 DEER HARVEST STATS

UNIT	SEASON	BUCK	DOE	FAWN	TOTAL HARVEST	TOTAL HUNTERS	SUCCESS %		
							LAST YR	3 YR	5 YR
3	Archery	0	15	0	15	84	18	23	23
	Muzzle	7	8	0	15	36	42	44	47
	2nd Rifle	185	64	9	258	538	48	55	61
	3rd Rifle	368	89	1	458	673	68	74	72
	4th Rifle	4	0	0	4	11	36	67	63
11	Archery	3	0	0	3	21	14	46	34
	Muzzle	10	3	0	13	52	25	23	35
	2nd Rifle	75	13	0	88	271	32	46	49
	3rd Rifle	200	50	0	250	416	60	61	65
	4th Rifle	7	0	0	7	7	100	64	70
211	Archery	0	0	0	0	26	0	0	18
	Muzzle	14	0	0	14	48	29	30	23
	2nd Rifle	105	17	0	122	286	43	50	47
	3rd Rifle	140	29	5	174	324	54	58	58
	4th Rifle	3	0	0	3	6	50	74	77
	Late	0	3	0	3	3	100	80	59
301	Archery	6	0	0	6	34	18	27	45
	Muzzle	5	0	0	5	20	25	42	41
	2nd Rifle	194	47	0	241	411	59	56	62
	3rd Rifle	257	24	5	286	423	68	74	71
	4th Rifle	2	0	0	2	5	40	57	49

# LOWER YAMPA

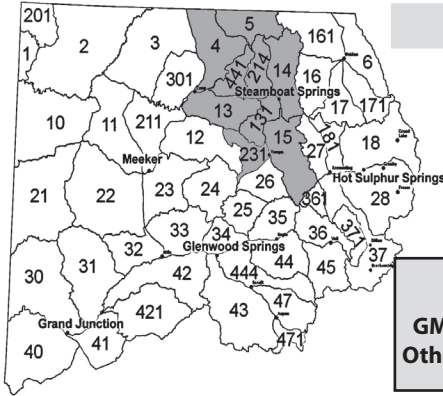
## 2011 ELK INFORMATION

The large elk herd occupies all available habitat. The later seasons are usually better, especially on public land, due to snow and hunting pressure pushing the elk out of the adjacent units. The success rate is very good on late cow elk hunts. Axial Basin CRM is a hot spot for hunting, but crowding is significant. The best bull hunting will be on private lands. *Youth hunting participation during the late seasons in these GMUs is now limited. Please see big game brochure for details."*

2011 ELK OBJECTIVES				
Herd	GMUs	Bull:Cow Objective	Population Estimate	Population Objective
Bears Ears	3, 301, 4, 5, 441, 214, 14	20-25:100	15,810	15,000-18,000
White River	11, 211, 12, 13, 131, 231, 23, 24, 25, 26, 33, 34	20-27:100	35,870	32,000 - 39,000

## 2011 ELK HARVEST STATS

UNIT	SEASON	BULL	COW	CALF	TOTAL HARVEST	TOTAL HUNTERS	SUCCESS %		
							LAST YR	3 YR	5 YR
3	Archery	7	0	0	7	51	14	7	11
	Early	0	27	0	27	67	40	32	18
	1st Rifle	14	18	0	32	95	34	36	35
	2nd Rifle	13	38	0	51	445	11	7	9
	3rd Rifle	43	3	0	46	867	5	6	6
	4th Rifle	23	42	8	73	350	21	24	17
11	Archery	31	6	0	37	197	19	17	16
	Muzzle	0	0	0	0	24	0	5	5
	Early	0	56	6	62	143	43	59	44
	1st Rifle	112	89	0	201	640	31	33	33
	2nd Rifle	49	38	16	103	544	19	26	24
	3rd Rifle	143	84	15	242	992	24	24	19
211	4th Rifle	22	127	52	201	964	21	33	36
	Archery	79	25	0	104	288	36	31	32
	Muzzle	0	1	0	1	22	5	44	41
	Early	76	21	4	101	249	41	38	36
	1st Rifle	0	4	0	4	21	19	34	44
	2nd Rifle	0	45	22	67	123	54	57	41
	3rd Rifle	85	38	0	123	260	47	51	50
4th Rifle	90	49	14	153	560	27	28	27	
301	Archery	6	0	0	6	39	15	14	13
	Early	0	27	0	27	68	40	48	18
	1st Rifle	0	2	0	2	51	4	31	32
	2nd Rifle	11	5	0	16	284	6	10	9
	3rd Rifle	50	8	3	61	529	12	10	8
	4th Rifle	45	51	10	106	276	38	25	20



# UPPER YAMPA

## GMUs

**4, 5, 13, 14, 15,  
131, 214, 231, 441**

**LOCAL CPW OFFICE**  
**GMUs 4 & 5-Meeker office (970) 878-6090**  
**Others - Steamboat Springs (970) 870-2197**

AREA MAPS	USFS Routt National Forest
AREA INFO	<a href="http://www.craig-chamber.com">www.craig-chamber.com</a> <a href="http://www.ci.steamboat.co.us">www.ci.steamboat.co.us</a>

## AREA INFORMATION

From a low of 6,300 to 12,000' along the Continental Divide. The Routt National Forest dominates the eastern 2/3 of the Upper Yampa units with coniferous forests and aspen.

Most of the land outside of the national forest is private land. Mountain shrub and rolling sage cover the low country.

Expect light to moderate snow in the 1st season, gradually increasing through the 4th season. 4WD is usually necessary on the secondary roads.

Hunting pressure is heavy. Hunters will have better success and enjoy more solitude by walking into remote areas.

Hunting pressure may create refuge situations on the private lands in GMUs 13, 131, 214 and 441. Mt. Zirkel (GMU 14) and Sarvis Creek (GMU 15) Wilderness Areas access is restricted to non-vehicle methods. Public hunting in GMUs 13 and 131 is limited to a few small parcels of BLM land and some State Trust Land parcels.

Domestic sheep grazing typically occurs on parts of the Routt National Forest through the months of August and September. Elk will typically avoid areas actively used by sheep but often are not far away. Hunters can use this knowledge to their advantage. To learn more about sheep management and actively grazed areas, archery and muzzleloader hunters are encouraged to contact the Hahns Peak-Bears Ranger District in Steamboat Springs at 970-870-2299, or visit the Medicine Bow-Routt National Forests website at <http://www.fs.usda.gov/mbr>.

**MOOSE IN AREA  
BE PATIENT!  
ALWAYS BE 100% SURE OF YOUR TARGET!**



# UPPER YAMPA

## 2011 DEER INFORMATION

The deer herd has declined in the upper Yampa units over the past four years due to severe winters. Most of the deer will be found in the western section of these units. Movement is also to the west. Hot spots are located north of Hayden. Some good trophy bucks are seen in the southern portion. In GMUs 4 & 5, the buck hunting has shown steady improvement. This area is not managed for trophy bucks, but it does have a good number of adult males in the population. Hunt the aspen and brush areas. Doe licenses in these units are no longer "list B" licenses except for GMU 15

### 2011 DEER OBJECTIVES

Herd	GMUs	Buck:Doe Objective	Population Estimate	Population Objective
Bears Ears	3,301, 4, 5, 441, 214, 14	22:100	31,110	31,110 - 37,800
White River	11, 211, 12, 22, 23, 24, 13, 131, 231	22-25 :100	43,680	67,500
State Bridge	15, 35, 36, 45, 361	26-30:100	14,760	13,500 - 16,500

### 2011 DEER HARVEST STATS

UNIT	SEASON	BUCK	DOE	FAWN	Total Harvest	Total Hunter	SUCCESS %		
							LAST YR	3 YR	5 YR
4	Archery	7	0	0	7	64	11	11	14
	Muzzle	10	3	0	13	43	30	31	32
	2nd Rifle	178	76	10	264	683	39	43	46
	3rd Rifle	197	32	3	232	331	70	63	54
	4th Rifle	16	0	0	16	18	89	84	76
5	Archery	0	0	0	0	57	0	9	14
	Muzzle	2	3	0	5	18	28	23	23
	2nd Rifle	41	5	0	46	117	39	38	45
	3rd Rifle	43	3	0	46	70	66	64	65
	4th Rifle	5	0	0	5	5	100	92	94
13	Archery	8	0	0	8	26	31	34	27
	Muzzle	3	0	0	3	32	9	50	52
	2nd Rifle	68	30	0	98	218	45	48	51
	3rd Rifle	78	16	0	94	151	62	59	41
	4th Rifle	3	0	0	3	5	60	56	58
14	Archery	16	0	0	16	98	16	16	23
	Muzzle	10	6	0	16	49	33	31	35
	1st Rifle	1	0	0	1	12	8	20	23
	2nd Rifle	31	5	0	36	195	18	24	21
	3rd Rifle	0	0	0	0	21	0	9	9
	4th Rifle	1	0	0	1	1	100	100	100



# UPPER YAMPA

## 2011 DEER HARVEST STATS (Cont.)

UNIT	SEASON	BUCK	DOE	FAWN	Total Harvest	Total Hunter	SUCCESS %		
							LAST YR	3 YR	5 YR
15	Archery	2	4	0	6	133	5	10	9
	Muzzle	10	16	0	26	122	21	14	19
	2nd Rifle	112	39	0	151	343	44	44	38
	3rd Rifle	117	13	2	132	236	56	51	47
	4th Rifle	21	0	0	21	25	84	77	68
131	Archery	0	5	0	5	22	23	20	16
	Muzzle	4	0	0	4	39	10	10	15
	2nd Rifle	21	2	0	23	70	33	19	23
	3rd Rifle	5	0	0	5	10	50	46	30
214	Archery	3	0	0	3	39	8	13	24
	Muzzle	2	8	0	10	25	40	42	45
	2nd Rifle	79	5	5	89	213	42	35	34
	3rd Rifle	3	0	0	3	11	27	24	11
441	Archery	9	10	0	19	155	12	24	25
	Muzzle	0	5	0	5	40	13	15	25
	2nd Rifle	70	3	0	73	425	17	22	22
	3rd Rifle	27	5	0	32	220	15	22	25
	4th Rifle	6	5	4	15	67	22	45	32

## 2011 ELK INFORMATION

Elk are plentiful throughout the Upper Yampa area. Licenses are also readily available, but hunters should not rely on leftover license availability as these herds approach population objective. CPW has been working to minimize crop damage and significantly reduce the number of elk in these units. There are good numbers of bull elk, however, do not expect to see many large adult males. Large elk numbers occur on the Routt National Forest. The basic movement is from the higher to lower elevation in response to hunting pressure and weather. Hunt the timber and hunt the Routt National Forest early. In GMUs 4 & 5, private land access is only available on a fee hunting basis.

## 2011 ELK OBJECTIVES

Herd	GMUs	Bull:Cow Objective	Population Estimate	Population Objective
Bears Ears	3, 301, 4, 5, 441, 214, 14	20-25:100	15,810	15,000 - 18,000
White River	11, 211, 12, 13, 131, 231, 23, 24, 25, 26, 33, 34	20-27:100	35,870	32,000 - 39,000
Gore Pass	15, 27	24-28:100	4,540	3,500 - 4,500

# UPPER YAMPA

## 2011 ELK HARVEST STATS

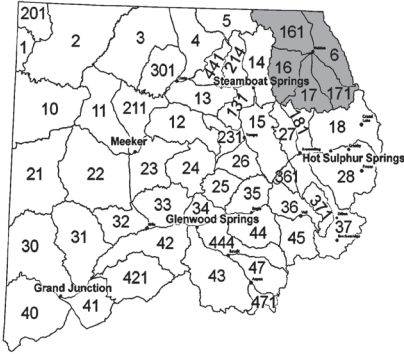
UNIT	SEASON	BULL	COW	CALF	TOTAL HARVEST	TOTAL HUNTERS	SUCCESS %		
							LAST YR	3 YR	5 YR
4	Archery	45	40	0	85	407	21	20	18
	Muzzle	0	7	2	9	78	12	18	24
	1st Rifle	0	20	3	23	92	25	44	27
	Early	74	123	5	202	572	35	44	44
	2nd Rifle	159	46	5	210	1128	19	20	19
	3rd Rifle	99	13	0	112	597	19	18	15
	4th Rifle	53	45	0	98	207	47	33	23
5	Archery	8	11	3	22	142	15	20	21
	Muzzle	0	2	2	4	26	15	31	30
	Early	0	0	0	0	12	0	52	26
	1st Rifle	23	24	0	47	155	30	38	42
	2nd Rifle	75	9	0	84	428	20	24	20
	3rd Rifle	57	5	0	62	188	33	29	29
	4th Rifle	3	1	5	9	24	38	39	31
13	Archery	28	10	0	38	206	18	21	22
	Muzzle	0	0	0	0	15	0	26	28
	Early	0	179	36	215	306	70	64	61
	1st Rifle	95	80	0	175	376	47	50	51
	2nd Rifle	74	44	2	120	460	26	38	37
	3rd Rifle	144	36	6	186	413	45	42	38
	4th Rifle	29	140	2	171	289	59	56	55



# UPPER YAMPA

## 2011 ELK HARVEST STATS (Cont.)

UNIT	SEASON	BULL	COW	CALF	Total Harvest	Total Hunter	SUCCESS %		
							LAST YR	3 YR	5 YR
14	Archery	32	36	0	68	977	7	12	13
	Muzzle	0	2	0	2	37	5	21	24
	1st Rifle	5	10	0	15	188	8	17	21
	2nd Rifle	57	17	4	78	634	12	15	17
	3rd Rifle	27	13	0	40	285	14	17	16
	4th Rifle	7	14	2	23	70	33	35	35
15	Archery	74	29	0	103	825	12	14	13
	Muzzle	0	7	2	9	88	10	17	20
	1st Rifle	40	31	16	87	442	20	20	22
	2nd Rifle	80	70	23	173	1308	13	16	15
	3rd Rifle	53	36	12	101	846	12	12	12
	4th Rifle	9	24	0	33	235	14	22	22
131	Late	0	38	7	45	137	33	42	56
	Archery	29	20	4	53	425	12	13	16
	Muzzle	0	4	0	4	33	12	24	19
	1st Rifle	15	37	10	62	134	46	38	33
	2nd Rifle	13	49	7	69	355	19	29	30
	3rd Rifle	14	40	0	54	187	29	24	24
	4th Rifle	6	20	3	29	110	26	39	35
214	Late	0	42	6	48	128	38	52	56
	Archery	36	8	6	50	478	10	16	17
	Muzzle	0	6	1	7	26	27	29	28
	Early	0	8	0	8	13	62	56	37
	1st Rifle	34	3	0	37	110	34	36	44
	2nd Rifle	47	35	2	84	398	21	26	24
	3rd Rifle	15	5	0	20	95	21	20	20
	4th Rifle	7	17	0	24	49	49	41	36
441	Late	0	17	0	17	28	61	58	55
	Archery	9	10	0	19	155	12	24	25
	Muzzle	0	5	0	5	40	13	15	25
	Early	0	20	0	20	23	87	62	51
	1st Rifle	60	25	2	87	202	43	46	44
	2nd Rifle	70	3	0	73	425	17	22	22
	3rd Rifle	27	5	0	32	220	15	22	25
	4th Rifle	6	5	4	15	67	22	45	32
Late	0	14	0	14	24	58	64	64	



# NORTH PARK

**GMU**

**6, 16, 17, 161, 171**

**LOCAL CPW OFFICE**  
 Steamboat Springs  
 (970) 870-2197

<b>AREA MAPS</b>	USFS Routt National Forest
<b>AREA INFO</b>	<a href="http://www.ci.steamboat.co.us">www.ci.steamboat.co.us</a>

## AREA INFORMATION

North Park borders Wyoming between the Continental Divide and Medicine Bow Mtns.

The valley floor at 7,880' supports ag lands and sage.

Extensive willow stands line the streams - a favorite moose habitat, so be sure of your target. The forest surrounding the basin varies from aspen/lodgepole to spruce/fir.

The area is generally windy and colder than places in western Colorado. Prepare for snow during your hunt. 4WD is helpful, as are chains.

Over 2/3 of North Park is public land.

Mt. Zirkel (west) and Never Summer (southeast) are the Wilderness Areas.

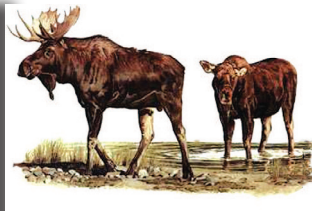
Access to State Trust Lands and Wilderness Areas is non-motorized.

Big game can move onto private lands with no public access.

**MOOSE IN AREA**

**BE PATIENT!**

**ALWAYS BE 100% SURE OF YOUR TARGET!**



# NORTH PARK

## 2011 DEER INFORMATION

If you are patient, you could have success hunting trophy bucks. North Park has an early 9-day deer-only season that begins the last week of September. This season provides additional hunter opportunities as many of the deer in North Park migrate early. Few deer are found in North Park during January classification flights. Small sample sizes lead to higher observed buck:doe ratios than can be expected during the hunting seasons. Use 3-year average success rates for choosing a hunt.

<b>2011 DEER OBJECTIVES</b>				
Herd	GMUs	Buck:Doe Objective	Population Estimate	Population Objective
North Park	6, 16, 17, 161, 171	30-40:100	4,220	5,400 - 6,400

## 2011 DEER HARVEST STATS

UNIT	SEASON	BUCK	DOE	FAWN	TOTAL HARVEST	TOTAL HUNTERS	SUCCESS %		
							LAST YR	3 YR	5 YR
6	Archery	2	0	0	2	18	11	15	14
	Muzzle	5	5	0	10	27	37	42	28
	Early	6	6	0	12	45	27	42	43
	2nd Rifle	5	0	0	5	33	15	37	43
	3rd Rifle	8	0	0	8	19	42	54	54
	4th Rifle	9	0	0	9	24	38	56	65
16	Archery	1	3	0	4	15	27	51	50
	Muzzle	1	0	0	1	15	7	20	30
	Early	11	2	2	15	46	33	35	45
	2nd Rifle	4	0	0	4	20	20	28	25
	3rd Rifle	0	0	0	0	17	0	9	8
17	Archery	0	0	0	0	14	0	0	8
	Muzzle	0	0	0	0	4	0	31	22
	Early	8	4	0	12	36	33	35	43
	2nd Rifle	1	0	0	1	22	5	24	22
	3rd Rifle	2	0	0	2	14	14	4	7
161	Archery	0	4	0	4	18	22	43	44
	Muzzle	1	0	0	1	17	6	22	31
	Early	8	9	0	17	58	29	35	42
	2nd Rifle	10	0	0	10	37	27	41	50
	3rd Rifle	5	0	0	5	20	25	16	15
	4th Rifle	2	0	0	2	12	17	19	18
171	Archery	0	2	0	2	7	29	7	21
	Muzzle	0	0	0	0	8	0	16	13
	Early	9	6	0	15	27	56	38	44
	2nd Rifle	5	0	0	5	15	33	26	24
	3rd Rifle	6	0	0	6	14	43	27	28
	4th Rifle	0	0	0	0	2	0	0	9

# NORTH PARK

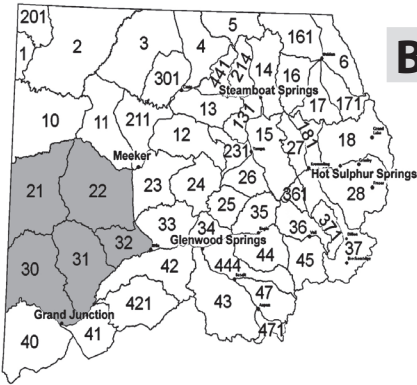
## 2011 ELK INFORMATION

Elk are distributed evenly throughout these units. During the day, the bulls will be in dark timber - glass in the early morning and evening. The herd tends to stay in the coniferous timbered areas until late in the season, moving to lower elevations with snow and hunting pressure. Computer models likely over-estimate the total North Park elk population due to biased January observed bull:cow ratios resulting from multiple bias factors including state line issues, refuge areas, and low public land hunter success rates.

2011 ELK OBJECTIVES				
Herd	GMUs	Bull:Cow Objective	Population Estimate	Population Objective
North Park	6, 16, 17, 161, 171	20-23:100	7,990	4,000 - 4,500

## 2011 ELK HARVEST STATS

UNIT	SEASON	BULL	COW	CALF	TOTAL HARVEST	TOTAL HUNTERS	SUCCESS %		
							LAST YR	3 YR	5 YR
6	Archery	19	27	0	46	487	9	9	10
	Muzzle	0	7	0	7	146	5	11	10
	Early	0	12	0	12	30	40	44	41
	1st Rifle	37	25	0	62	456	14	20	19
	2nd Rifle	58	19	0	77	839	9	11	12
	3rd Rifle	35	16	2	53	559	9	11	10
	4th Rifle	7	7	0	14	160	9	16	13
16	Archery	30	18	0	48	447	11	11	11
	Muzzle	0	0	8	8	45	18	22	23
	Early	0	20	0	20	56	36	49	46
	1st Rifle	25	29	9	63	270	23	22	20
	2nd Rifle	40	49	0	89	376	24	19	17
	3rd Rifle	10	11	0	21	211	10	14	13
17	Archery	33	0	0	33	279	12	10	9
	Muzzle	0	0	0	0	52	0	10	11
	Early	0	27	5	32	52	62	65	59
	1st Rifle	30	32	10	72	365	20	21	23
	2nd Rifle	24	29	0	53	399	13	12	10
	3rd Rifle	27	27	0	54	375	14	18	16
161	Archery	33	10	7	50	488	10	8	8
	Muzzle	0	2	4	6	69	9	18	21
	Early	0	7	0	7	22	32	36	27
	1st Rifle	12	9	0	21	310	7	13	18
	2nd Rifle	21	15	0	36	474	8	10	9
	3rd Rifle	12	11	2	25	478	5	8	7
171	Archery	13	9	5	27	177	15	17	12
	Archery	19	7	3	29	292	10	6	8
	Muzzle	0	4	0	4	15	27	7	11
	Early	0	14	0	14	36	39	55	58
	1st Rifle	18	44	9	71	324	22	25	26
	2nd Rifle	14	25	0	39	350	11	13	11
	3rd Rifle	23	16	2	41	298	14	13	11
4th Rifle	3	7	0	10	95	11	11	9	



# BOOKCLIFFS/PICEANCE

GMU

21, 22, 30, 31, 32

## LOCAL CPW OFFICES

Meeker (GMU 21, 22)

**(970) 878-6090**

Grand Junction (GMU 30, 31, 32)

**(970) 255-6100**

AREA MAPS	BLM Douglas Pass BLM Meeker BLM Grand Junction	BLM Rangely BLM Glenwood Springs BLM Roan Plateau Travel Map
AREA INFO	<a href="http://www.visitgrandjunction.com">www.visitgrandjunction.com</a> or <a href="http://www.rangely.com">www.rangely.com</a>	

## AREA INFORMATION

**Intense energy development occurring in these units.**

Pinyon-juniper with pockets of sagebrush cover most of area.

Terrain varies from rolling sagebrush to steep-sided canyons.

75% of area is BLM land.

There are remote hunting areas accessible by foot, horseback or ATV.

Get maps and study BLM access points.

Some areas are steep & rugged, especially in southern portion.

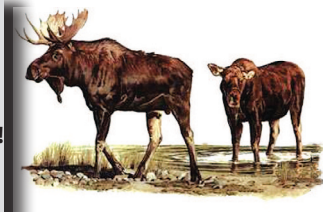
Weather is generally mild.

Rains bring muddy roads. High elevation snows make roads impassible without chains.

## MOOSE IN AREA

**BE PATIENT!**

**ALWAYS BE 100% SURE OF YOUR TARGET!**



# BOOKCLIFFS/PICEANCE

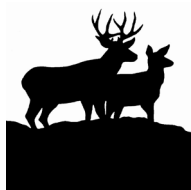
## Important Note for Bookcliffs / Piceance Hunters

In 1986, the federal government sold thousands of acres of public land in the Piceance/Roan area (GMUs 22 and 32) to energy companies. The agreement required that the companies keep the land open to the public for 20 years. The public access agreement ended in 2006. These parcels, known as the “Girls Claims”, are now private property. Beyond the thousands of acres that are owned by the companies, these parcels also control access to thousands of acres of public land.

Colorado Parks and Wildlife has reached a 10-year \$1/year hunting access agreement with Shell to keep 19,000 private acres open. EnCana has agreed to keep 17,000 acres the company owns open for the 2012 hunting seasons. CPW appreciates these companies willingness to support the heritage of hunting in western Colorado. Negotiations with other companies for other “Girls Claims” properties have been unsuccessful.

It’s important to note that these access agreements are NOT new lands. They are heavily hunted former public lands where generations of hunters will be displaced as these lands are closed to hunting. If new hunters begin using the lands where access agreements are in place, there is the potential for overcrowding, which may make future agreements more difficult. Please respect Shell and EnCana land so that it will be available in the future.

If you hunt these units, make sure you have current maps. Colorado Parks and Wildlife has no control over closed lands, even if you’ve hunted there for years. If you have questions or concerns, please contact the BLM or energy companies directly.





# BOOKCLIFFS/PICEANCE

## 2011 DEER INFORMATION

The hunting ranges from fair to good in the Bookcliffs and Piceance units. Deer are well-distributed in the northern portion from mid-October. Concentrate on higher elevations in early seasons. If the weather is dry, you'll need to do a lot of walking and looking. Good snows will move the herds to the south. Hunt high early, low later. Cathedral Rim has some big bucks, but tough terrain. Little Hills and Dry Fork of Piceance is better late. GMUs 21 and 30 are managed as quality deer units and licenses are separate from licenses that are valid in units 22, 31 or 32.

2011 DEER OBJECTIVES				
Herd	GMUs	Buck:Doe Objective	Population Estimate	Population Objective
Bookcliffs	21, 30	30-35:100	9,180	10,000 - 12,000
Logan Mountain	31, 32	25-30:100	8,120	6,500 - 8,500

## 2011 DEER HARVEST STATS

UNIT	SEASON	BUCK	DOE	FAWN	TOTAL HARVEST	TOTAL HUNTERS	SUCCESS %		
							LAST YR	3 YR	5 YR
21	Archery	32	0	0	32	82	39	42	46
	Muzzle	15	0	0	15	28	54	57	58
	2nd Rifle	182	0	0	182	218	83	87	88
	3rd Rifle	52	0	0	52	53	98	93	92
22	Archery	23	0	0	23	65	35	38	38
	Muzzle	48	15	3	66	124	53	46	47
	2nd Rifle	190	58	7	255	353	72	69	64
	3rd Rifle	192	42	0	234	287	82	71	71
	4th Rifle	4	0	0	4	4	100	100	86
30	Archery	25	14	0	39	153	25	31	35
	Muzzle	9	0	0	9	19	47	42	49
	2nd Rifle	44	30	0	74	137	54	64	74
	3rd Rifle	47	4	2	53	63	84	86	88
31	Archery	33	0	0	33	108	31	20	20
	Muzzle	45	0	0	45	74	61	59	65
	2nd Rifle	128	0	0	128	200	64	56	56
	3rd Rifle	116	0	0	116	157	74	71	69
32	Archery	4	0	0	4	26	15	23	18
	Muzzle	16	0	0	16	32	50	45	50
	2nd Rifle	50	0	0	50	74	68	63	57
	3rd Rifle	44	0	0	44	70	63	66	66

# BOOKCLIFFS/PICEANCE

## 2011 ELK INFORMATION

Good cow hunting opportunities. The best hunting is in remote areas, mostly at high elevations, where the elk tend to hold up in pockets of green timber and aspen. Check out the Texas Mountain area and Rat Hole Ridge. Hunting pressure will push some bulls into the large expanses of pinyon-juniper. If snow and hunting pressure are sufficient, some elk will move into the Little Hills and Dry Fork area of Piceance later in the seasons. Most of the GMU 32 elk move into GMU 22 to winter. Elk normally concentrate on the north side of Douglas Pass during the archery, muzzleloader, and early rifle seasons. Movement of large numbers of elk into GMU-030 generally does not occur until early November.

2011 ELK OBJECTIVES				
HERD	GMUs	Bull:Cow Objective	Population Estimate	Population Objective
Yellow Creek	21, 22, 30, 31, 32	18-22:100	11,980	7,000 - 9,000

## 2011 ELK HARVEST STATS

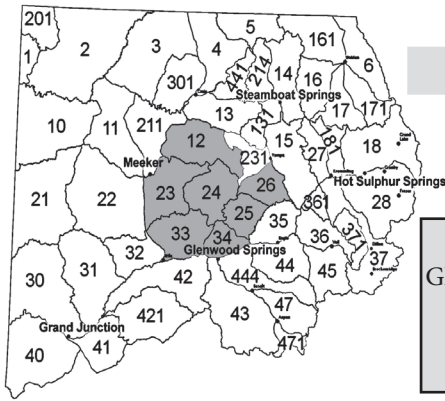
UNIT	SEASON	BULL	COW	CALF	TOTAL HARVEST	TOTAL HUNTERS	SUCCESS %		
							LAST YR	3 YR	5 YR
21	Archery	81	18	0	99	460	22	18	19
	Muzzle	0	0	0	0	42	0	10	12
	1st Rifle	60	34	8	102	429	24	29	31
	2nd Rifle	54	18	2	74	659	11	13	14
	3rd Rifle	31	54	1	86	471	18	20	18
	4th Rifle	18	34	0	52	142	37	23	21
22	Archery	69	23	12	104	395	26	21	18
	Muzzle	0	2	3	5	43	12	11	18
	Early	0	23	5	28	180	16	30	32
	1st Rifle	32	51	16	99	373	27	33	34
	2nd Rifle	71	34	6	111	736	15	19	21
	3rd Rifle	90	47	8	145	904	16	21	21
	4th Rifle	7	49	8	64	285	22	33	29
30	Archery	12	9	0	21	194	11	14	11
	Muzzle	0	0	0	0	15	0	11	17
	1st Rifle	0	25	0	25	111	23	32	33
	2nd Rifle	10	0	9	19	243	8	11	12
	3rd Rifle	43	26	5	74	326	23	24	21
	4th Rifle	11	24	5	40	133	30	38	31

# BOOKCLIFFS/PICEANCE

## 2011 ELK HARVEST STATS (Cont.)

UNIT	SEASON	BULL	COW	CALF	TOTAL HARVEST	TOTAL HUNTERS	SUCCESS %		
							LAST YR	3 YR	5 YR
31	Archery	33	11	10	54	246	22	19	16
	Muzzle	0	2	0	2	43	5	16	26
	Early	0	70	15	85	222	38	45	49
	1st Rifle	30	2	0	32	54	59	41	43
	2nd Rifle	20	18	5	43	252	17	19	18
	3rd Rifle	33	24	0	57	274	21	21	21
	4th Rifle	0	6	0	6	116	5	14	15
32	Archery	38	9	0	47	262	18	15	14
	Muzzle	0	0	0	0	2	0	15	14
	Early	0	5	12	17	165	10	25	32
	1st Rifle	31	6	0	37	86	43	33	36
	2nd Rifle	18	11	0	29	222	13	17	16
	3rd Rifle	20	8	1	29	139	21	19	15
	4th Rifle	9	0	0	9	20	45	26	26





# WHITE RIVER

## GMU

12, 23, 24, 25, 26, 33, 34

LOCAL CPW OFFICES
Glenwood Springs (GMU 25, 26, 34) (970) 947-2920
Meeker (GMU 12, 23, 24) (970) 878-6090
Steamboat Springs (GMU 26) (970) 870-2197
Grand Junction (GMU 33) (970) 255-6100

AREA MAPS	USFS White River National Forest
AREA INFO	<a href="http://www.glenwoodchamber.com">www.glenwoodchamber.com</a> or <a href="http://www.meekerchamber.com">www.meekerchamber.com</a>

## AREA INFORMATION

White River offers variety & extremes. Several peaks in the Flattop Wilderness are 12,200' in elevation. Elevation drops to 5,300' near Rifle.

The lower elevation vegetation starts out with sage, progressing to oakbrush/mtn brush, aspen, evergreens and alpine tundra.

Expect mild weather with light snow in the 1st season, with roads becoming impassable in the upper half of the area by the 3rd season.

The high country in GMU 24 is prone to heavy snowstorms in late seasons. Heavy snowstorms can strand hunters on Flattops after 1st season.

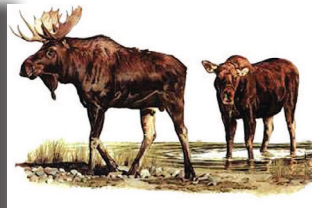
While there is a great deal of public land, hunting pressure is heavy especially in northern half of GMUs 23 & 24. 4WD is necessary on all but the few main paved roads. Half of the area is roadless - which makes for very good hunting if you can walk or pack in.

You may encounter heavy ATV traffic in GMUs 12, 23 and 33.

Hunters in GMU 25 and 26 can gain access using Forest Service Road 610 (Stump Park Rd) or USFS Road 613 (Crescent Lake Rd).

## MOOSE IN AREA

**BE PATIENT!**  
**ALWAYS BE 100% SURE OF YOUR TARGET!**



# WHITE RIVER

## 2011 DEER INFORMATION

The deer are scattered and will move in response to hunting pressure and weather. On National Forest lands in GMUs 12, 23, and 24, deer hunting is generally better in early seasons. Good public land deer hunting can typically be found in GMU 12 on the Jensen and Indian Run State Wildlife Areas. Jensen SWA is north of Meeker and Indian Run SWA is east of Hamilton. GMU 23 deer hunters can try Hay Flats and Miller Creek southwest of Meeker and the Jensen and Oak Ridge State Wildlife Areas north and east of Meeker. Deer densities are lower across GMU 24 but hunters can find deer on the south facing slopes above the White River. UNIT 33 ARCHERY & MUZZLELOADER LICENSES NO LONGER VALID IN 23 & 24— If you purchase an archery or muzzleloader license for unit 33, you can no longer also hunt in unit 23 and 24, and vice versa. There are now separate tags for these units. See the hunt tables for corresponding hunt codes.

2011 DEER OBJECTIVES				
HERD	GMUs	Buck:Doe Objective	Population Estimate	Population Objective
Rifle Creek	33	30-35:100	7,530	7,700 - 9,400
White River	11, 211, 12, 22, 23, 24, 13, 131, 231	22-25:100	43,680	67,500
Sweetwater Creek	25, 26, 34	28-32:100	5,400	5,000-6,000

## 2011 DEER HARVEST STATS

UNIT	SEASON	BUCK	DOE	FAWN	TOTAL HARVEST	TOTAL HUNTERS	SUCCESS %		
							LAST YR	3 YR	5 YR
12	Archery	5	8	0	13	113	12	10	11
	Muzzle	6	0	3	9	35	26	20	27
	2nd Rifle	118	34	0	152	329	46	44	38
	3rd Rifle	108	14	4	126	207	61	61	39
	4th Rifle	8	0	0	8	15	53	45	58
23	Archery	27	5	0	32	182	18	17	15
	Muzzle	21	8	0	29	79	37	32	29
	2nd Rifle	70	47	0	117	371	32	31	30
	3rd Rifle	75	27	0	102	225	45	44	28
	4th Rifle	2	0	0	2	7	29	23	36
24	Archery	3	4	0	7	124	6	4	5
	Muzzle	0	0	0	0	26	0	12	11
	Early	0	0	0	0	2	0	20	10
	2nd Rifle	39	6	0	45	188	24	21	18
	3rd Rifle	4	0	0	4	37	11	12	14
25	Archery	6	0	0	6	74	8	6	8
	Muzzle	6	3	0	9	58	16	18	16
	Early	0	0	0	0	2	0	14	9
	2nd Rifle	65	24	4	93	264	35	32	31
	3rd Rifle	62	22	0	84	174	48	48	36
	4th Rifle	7	0	0	7	17	41	39	39

# WHITE RIVER

## 2011 DEER HARVEST STATS (Cont.)

UNIT	SEASON	BUCK	DOE	FAWN	TOTAL HARVEST	TOTAL HUNTERS	SUCCESS %		
							LAST YR	3 YR	5 YR
26	Archery	0	0	0	0	30	0	7	7
	Muzzle	0	3	0	3	27	11	10	10
	2nd Rifle	41	32	0	73	137	53	43	42
	3rd Rifle	62	14	0	76	120	63	50	42
	4th Rifle	11	0	0	11	13	85	63	53
33	Archery	24	0	0	24	176	14	20	15
	Muzzle	9	22	0	31	120	26	23	23
	2nd Rifle	147	0	0	147	545	27	24	25
	3rd Rifle	153	0	0	153	354	43	42	39
	4th Rifle	6	0	0	6	10	60	71	58
34	Archery	4	0	0	4	60	7	6	11
	Muzzle	8	10	0	18	80	23	19	16
	2nd Rifle	24	6	0	30	171	18	12	15
	3rd Rifle	17	3	2	22	98	22	25	21
	4th Rifle	8	0	0	8	19	42	38	42

## 2011 ELK INFORMATION

Generally all of GMUs 12, 23 and 24 are considered very good elk hunting. They are generally at higher elevations in the eastern portions of GMUs 12 and 24 during early seasons, and move west to lower elevations (and private lands) as hunting pressure and snow depth increase. Try the abundant public lands in eastern GMU 12 and 24 early on. Because of access roads, hunting pressure is high on Sleepy Cat, Lost Park and Sand Peak. The Flattops Wilderness Area offers good hunting, but travel is limited to walking or horseback and the potential for heavy snowfall means hunters must be prepared. Successful hunters avoid the main roads and hunt the dark timber and deeper canyons. Jensen State Wildlife Area is good during most seasons. Oak Ridge State Wildlife Area is good during 3rd and 4th rifle seasons. Both properties are limited to foot or horseback travel.

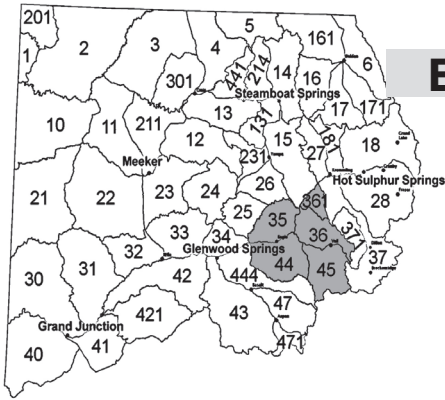
## 2011 ELK OBJECTIVES

HERD	GMUs	Bull:Cow Objective	Population Estimate	Population Objective
White River	11, 211, 12, 13, 131, 231, 23, 24, 25, 26, 33, 34	20-27:100	35,870	32,000-39,000

# WHITE RIVER

## 2011 ELK HARVEST STATS

UNIT	SEASON	BULL	COW	CALF	TOTAL HARVEST	TOTAL HUNTERS	SUCCESS %		
							LAST YR	3 YR	5 YR
12	Archery	74	30	13	117	567	21	24	27
	Muzzle	0	4	8	12	76	16	23	25
	Early	0	125	13	138	273	51	65	62
	1st Rifle	337	256	35	628	1470	43	43	42
	2nd Rifle	174	103	11	288	1489	19	23	22
	3rd Rifle	169	111	39	319	996	32	33	27
23	4th Rifle	35	59	18	112	336	33	41	31
	Archery	78	24	9	111	557	20	23	23
	Muzzle	0	10	2	12	44	27	24	18
	Early	0	35	0	35	68	51	54	47
	1st Rifle	85	172	8	265	996	27	29	28
	2nd Rifle	95	51	7	153	1522	10	18	16
	3rd Rifle	135	83	6	224	999	22	27	22
4th Rifle	12	72	0	84	433	19	22	21	
24	Late	0	23	2	25	37	68	54	61
	Archery	57	18	0	75	461	16	16	15
	Muzzle	0	9	0	9	40	23	20	21
	Early	0	0	0	0	10	0	57	48
	1st Rifle	145	130	19	294	1218	24	25	29
	2nd Rifle	120	50	0	170	1524	11	16	17
	3rd Rifle	48	39	0	87	456	19	18	16
	4th Rifle	0	24	0	24	140	17	27	21
25	Late	0	2	0	2	3	67	39	38
	Archery	23	17	0	40	295	14	10	10
	Muzzle	0	0	2	2	41	5	5	13
	Early	0	36	0	36	95	38	36	27
	1st Rifle	26	34	0	60	184	33	27	25
	2nd Rifle	54	0	0	54	579	9	13	16
	3rd Rifle	71	10	0	81	407	20	21	16
26	4th Rifle	4	8	0	12	36	33	27	20
	Archery	25	3	10	38	261	15	10	12
	Muzzle	0	0	0	0	31	0	7	10
	Early	0	7	0	7	85	8	28	37
	1st Rifle	8	16	0	24	195	12	17	25
	2nd Rifle	40	6	6	52	437	12	13	14
	3rd Rifle	47	14	4	65	284	23	21	17
33	4th Rifle	5	5	0	10	63	16	21	16
	Archery	50	7	0	57	560	10	15	16
	Muzzle	0	10	0	10	44	23	22	24
	1st Rifle	27	34	8	69	465	15	23	25
	2nd Rifle	55	43	10	108	1168	9	15	14
	3rd Rifle	32	33	0	65	481	14	17	14
34	4th Rifle	12	46	7	65	181	36	30	24
	Late	0	12	8	20	57	35	43	45
	Archery	32	3	4	39	278	14	9	11
	Muzzle	0	4	0	4	31	13	9	12
	Early	0	11	0	11	42	26	44	42
	1st Rifle	26	16	0	42	260	16	16	21
	2nd Rifle	16	22	2	40	477	8	9	11
34	3rd Rifle	6	28	5	39	202	19	14	11
	4th Rifle	0	0	1	1	39	3	16	9



# EAGLE RIVER VALLEY

## GMU

35, 36, 44, 45, 361

LOCAL CPW OFFICE  
Glenwood Springs  
(970) 947-2920

AREA MAPS	USFS White River National Forest
AREA INFO	<a href="http://www.glenwoodchamber.com">www.glenwoodchamber.com</a>

## AREA DESCRIPTION

These units are bordered by the Colorado River, the Gore Range, the Red Table Mtns and the Continental Divide.

Elevation climbs from 6,000' with sage and pinyon to over 14,000' with alpine vegetation starting at 10,500'.

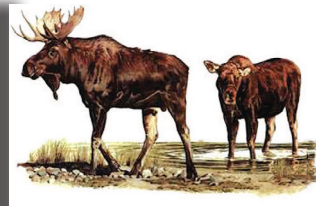
Weather varies widely with heavy high country snow. Motorized travel restricted to designated routes.

GMUs 35 & 44 have some public access, however the northern part of GMU 44 between Edwards and Eagle is primarily private property with no hunting allowed.

Check your map and contact the BLM/USFS office regarding off road travel.

## MOOSE IN AREA

**BE PATIENT!**  
**ALWAYS BE 100% SURE OF YOUR TARGET!**





# EAGLE RIVER VALLEY

## 2011 DEER INFORMATION

Deer hunting in these units continues to improve. The herd will be scattered from 6,500' to timberline and will move down to the lower elevation pinyon-juniper areas as heavy snow arrives. Over 18" of snow will move the deer. Try hunting the aspen, open parks and shrublands. GMUs 35 and 36 have the most deer. After the first heavy snow, most GMU 45 deer will move into GMU 36. GMU 44 is managed for trophy deer with limited number of licenses, but it is a good place to take a big buck.

2011 DEER OBJECTIVES				
Herd	GMUs	Buck:Doe Objective	Population Estimate	Population Objective
State Bridge	15, 35, 36, 45, 361	26-30:100	14,760	13,500-16,500
Red Table Mountain	44	35:100	2,130	7,000

## 2011 DEER HARVEST STATS

UNIT	SEASON	BUCK	DOE	FAWN	TOTAL HARVEST	TOTAL HUNTERS	SUCCESS %		
							LAST YR	3 YR	5 YR
35	Archery	6	5	0	11	79	14	15	15
	Muzzle	19	13	0	32	99	32	22	27
	2nd Rifle	102	7	0	109	223	49	44	43
	3rd Rifle	125	2	0	127	226	56	47	40
	4th Rifle	11	0	0	11	12	92	72	50
36	Archery	11	0	0	11	52	21	14	10
	Muzzle	7	11	0	18	70	26	24	20
	Early	5	0	0	5	12	42	28	32
	2nd Rifle	69	7	0	76	234	32	32	31
	3rd Rifle	98	15	0	113	179	63	46	39
44	4th Rifle	5	0	0	5	6	83	69	48
	Archery	7	9	2	18	48	38	24	19
	Muzzle	15	0	0	15	57	26	29	30
	Early	2	0	0	2	8	25	17	14
	2nd Rifle	29	4	0	33	76	43	47	50
	3rd Rifle	13	13	0	26	36	72	62	53
45	4th Rifle	13	0	0	13	13	100	96	80
	Archery	0	10	0	10	53	19	39	30
	Muzzle	7	5	0	12	45	27	25	22
	Early	2	0	0	2	6	33	27	24
	2nd Rifle	17	13	0	30	115	26	33	36
361	3rd Rifle	0	6	0	6	8	75	25	14
	Archery	0	1	0	1	8	13	13	13
	Muzzle	0	0	0	0	5	0	0	0
	2nd Rifle	8	0	0	8	23	35	35	35
	3rd Rifle	19	2	0	21	32	66	66	66
4th Rifle	1	0	0	1	1	100	100	100	

# EAGLE RIVER VALLEY

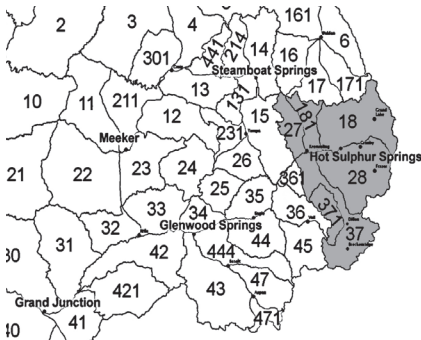
## 2011 ELK INFORMATION

Elk are scattered from about 7,000' to above timberline. As hunting pressure increases, they seek the deeper canyons and dark timber areas way from roads. Concentrating on the large stands of dark timber and the larger wilderness areas will increase your chance of finding a big bull on public lands. Large blocks of private land in GMUs 35 and 36 provide refuge areas and can make hunting difficult.

<b>2011 ELK OBJECTIVES</b>				
HERD	GMUs	Bull:Cow Objective	Population Estimate	Population Objective
Piney River	35, 36, 361	16:100	3,760	2,950
Frying Pan	44, 45, 47, 444	20:100	7,100	5,100

### 2011 ELK HARVEST STATS

UNIT	SEASON	BULL	COW	CALF	TOTAL HARVEST	TOTAL HUNTERS	SUCCESS %		
							LAST YR	3 YR	5 YR
<b>35</b>	Archery	4	9	3	16	263	6	9	9
	Muzzle	7	15	0	22	127	17	20	19
	Early	0	20	0	20	49	41	58	65
	1st Rifle	10	50	8	68	223	30	27	31
	2nd Rifle	54	6	0	60	366	16	16	12
	3rd Rifle	40	31	0	71	358	20	24	23
	4th Rifle	0	17	0	17	68	25	24	13
<b>36</b>	Archery	14	7	3	24	493	5	7	8
	Muzzle	7	6	2	15	176	9	9	11
	Early	0	4	0	4	16	25	29	58
	1st Rifle	14	10	4	28	178	16	25	26
	2nd Rifle	75	38	8	121	816	15	16	15
	3rd Rifle	36	3	5	44	401	11	14	15
	4th Rifle	6	6	0	12	33	36	23	14
<b>44</b>	Archery	24	7	0	31	454	7	7	8
	Muzzle	15	4	0	19	202	9	10	12
	Early	0	58	4	62	151	41	56	58
	1st Rifle	24	27	5	56	313	18	20	22
	2nd Rifle	24	21	0	45	479	9	11	13
	3rd Rifle	70	27	0	97	424	23	17	15
	4th Rifle	15	24	0	39	172	23	22	20
<b>45</b>	Archery	22	10	7	39	516	8	8	7
	Muzzle	9	2	0	11	138	8	11	9
	Early	0	21	0	21	111	19	25	31
	1st Rifle	15	21	0	36	159	23	23	28
	2nd Rifle	30	32	0	62	494	13	13	13
	3rd Rifle	11	10	0	21	192	11	17	13
	4th Rifle	7	16	0	23	119	19	22	23
<b>361</b>	Archery	0	3	0	3	95	3	3	3
	Muzzle	4	0	0	4	34	12	12	12
	Early	0	0	0	0	5	0	0	0
	1st Rifle	8	4	0	12	42	29	29	29
	2nd Rifle	9	11	8	28	144	19	19	19
	3rd Rifle	9	0	0	9	72	13	13	13
	4th Rifle	2	4	0	6	11	55	55	55



# MIDDLE PARK

## GMU

18, 27, 28, 37, 181, 371

**LOCAL CPW OFFICE**  
**Hot Sulphur Springs**  
**(970) 725-6200**

Rocky Mountain National Park is closed to all hunting

AREA MAPS	USFS Routt National Forest USFS White River National Forest USFS Arapahoe/Roosevelt National Forest
AREA INFO	<a href="http://www.kremmlingchamber.com">www.kremmlingchamber.com</a> <a href="http://www.granbychamber.com">www.granbychamber.com</a>

## AREA INFORMATION

The Continental Divide and the Gore Range Divide encircle Middle Park.

Most of this terrain is steep to very steep. The weather can change rapidly. Areas can become snowbound. 4WD is recommended, along with chains.

Sagebrush/shrubs are common on southern exposures at lower elevations. The valley bottoms are mostly private lands. The remaining 2/3 of this area is public land.

GMU 27 has less public land than the other GMUs. Check USFS maps for ATV closures/restrictions.

Hunters around Wolford Mountain (GMU 181 and 27) should be aware that a travel management plan is in place - check with the BLM Kremmling office for information. Horses/pack animals are recommended for remote tracts and for Wilderness Areas.

Due to the proximity to Denver, there are many weekend hunters & recreationalists (bikers, hikers, ATVers).

Pine beetles have affected more than 90% of the lodgepole pine stands in Grand and Summit Counties. As a result, fire danger is increased, big game distribution is changing in some areas and logging operations are likely in some spots. Hunters might focus on some of the dead lodgepole areas as increased sunlight to the forest floor creates more forage and these areas tend to hold deer and elk for longer periods of time. However be aware of possible falling trees when hiking, or setting up camp in pine beetle kill sections! Set up camps etc, in cleared areas away from dead trees. These dead trees can fall on their own without wind, or warning!

The past decade's mountain pine beetle killed an estimated 80 percent of mature lodgepole pine trees in Grand County, creating numerous hazards along public roadways as these trees begin to fall.

Road closures for tree removal will likely occur this season and next in this area. To avoid disappointment, be sure to call the **Sulphur Ranger District's Visitor's Information Hotline at 970-887-4100** BEFORE planning your hunting trip, or setting up camp. Or, sign up for updates by emailing [SRDUpdates@fs.fed.us](mailto:SRDUpdates@fs.fed.us). You can stop by the visitor's center at 9 Ten Mile Drive in Granby, visit [www.fs.usda.gov/arp](http://www.fs.usda.gov/arp); or follow us on Twitter: [www.twitter.com/usfsarp](https://twitter.com/usfsarp).

**MOOSE IN AREA**

**BE PATIENT!**  
**ALWAYS BE 100% SURE OF YOUR TARGET!**



# MIDDLE PARK

## 2011 DEER INFORMATION

All GMUs have good numbers of deer. The buck-to-doe ratios continue to increase as a result of limited buck hunting and mild winters. All units are managed for quality bucks. There are good numbers of mature bucks, but they rarely reach trophy status found in lower elevation mtn shrub & mild winter areas. Concentrate on transition zones that have aspen, shrub and coniferous cover. Deer tend to move west and down in elevation over the seasons, snow will move them faster and farther. They typically migrate out of GMU 371 with average snowfall. A limited number of 4th season deer licenses available.

2011 DEER OBJECTIVES				
Herd	GMUs	Buck:Doe Objective	Population Estimate	Population Objective
Middle Park	18, 181, 27, 271, 28, 37, 371	30-35:100	15,350	10,500 - 12,500

2011 DEER HARVEST STATS									
UNIT	SEASON	BUCK	DOE	FAWN	TOTAL HARVEST	TOTAL HUNTERS	SUCCESS %		
							LAST YR	3 YR	5 YR
18	Archery	10	0	0	10	287	3	7	5
	Muzzle	8	15	0	23	232	10	12	16
	2nd Rifle	83	74	8	165	736	22	27	28
	3rd Rifle	195	62	18	275	655	42	34	32
	4th Rifle	81	0	0	81	114	71	58	48
27	Archery	5	8	0	13	69	19	17	26
	Muzzle	16	5	0	21	72	29	30	31
	2nd Rifle	52	29	0	81	530	15	23	29
	3rd Rifle	65	17	6	88	300	29	26	30
	4th Rifle	18	0	0	18	47	38	46	43
28	Archery	0	8	0	8	182	4	7	11
	Muzzle	39	15	0	54	171	32	24	22
	2nd Rifle	90	28	0	118	624	19	25	24
	3rd Rifle	132	72	0	204	534	38	36	33
	4th Rifle	39	0	0	39	56	70	62	53
37	Archery	8	8	0	16	118	14	20	16
	Muzzle	16	10	5	31	96	32	26	24
	2nd Rifle	50	51	0	101	407	25	30	32
	3rd Rifle	132	0	0	132	333	40	42	38
	4th Rifle	13	0	0	13	45	29	33	31



# MIDDLE PARK

## 2011 DEER HARVEST STATS (Cont.)

UNIT	SEASON	BUCK	DOE	FAWN	TOTAL HARVEST	TOTAL HUNTERS	SUCCESS %		
							LAST YR	3 YR	5 YR
181	Archery	0	16	0	16	51	31	15	15
	Muzzle	8	0	0	8	47	17	9	14
	2nd Rifle	26	24	5	55	315	17	19	21
	3rd Rifle	55	50	0	105	303	35	25	28
	4th Rifle	13	0	0	13	36	36	36	29
371	Archery	0	0	0	0	67	0	0	4
	Muzzle	8	0	0	8	37	22	13	21
	2nd Rifle	6	8	0	14	200	7	17	21
	3rd Rifle	11	9	0	20	104	19	19	29
	4th Rifle	3	0	0	3	3	100	21	25

## 2011 ELK INFORMATION

Elk are well distributed in all units. Bull to cow ratios are good because the area is fairly steep and heavily timbered. Generally, trophy bulls are rare (a few are taken every year) because bulls are managed for hunter opportunity. With hunting pressure and snow, elk head for the inaccessible timber and private property. GMU 27 has a lot of private land. Hunt the rough terrain and heavy cover away from roads and trails to increase your success.

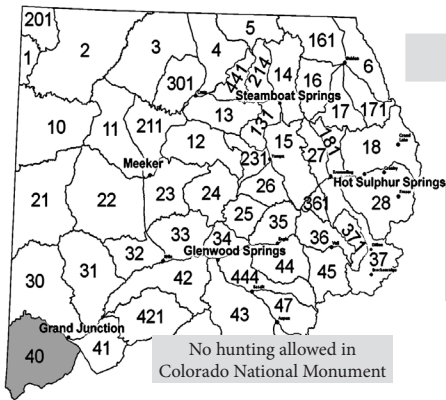
## 2011 ELK OBJECTIVES

Herd	GMUs	Bull:Cow Objective	Population Estimate	Population Objective
Gore Pass	15, 27	24-28:100	4,540	3,500-4,500
Troublesome Creek	18, 181	21-26:100	4,920	3,600-4,300
Williams Fork	28, 37, 371	24-31:100	5,020	4,700-5,500



## 2011 ELK HARVEST STATS

UNIT	SEASON	BULL	COW	CALF	TOTAL HARVEST	TOTAL HUNTERS	SUCCESS %		
							LAST YR	3 YR	5 YR
18	Archery	33	14	3	50	981	5	7	7
	Muzzle	0	9	0	9	109	8	13	15
	1st Rifle	56	30	9	95	892	11	15	18
	2nd Rifle	79	43	0	122	1020	12	12	13
	3rd Rifle	41	62	10	113	870	13	13	11
	4th Rifle	71	109	2	182	866	21	15	13
27	Archery	13	9	8	30	394	8	5	6
	Muzzle	0	0	0	0	18	0	17	15
	1st Rifle	16	12	0	28	142	20	18	22
	2nd Rifle	20	49	4	73	602	12	14	15
	3rd Rifle	0	0	0	0	267	0	4	5
	4th Rifle	2	0	0	2	78	3	14	17
28	Archery	28	14	8	50	888	6	8	9
	Muzzle	0	5	3	8	51	16	9	14
	1st Rifle	56	37	6	99	607	16	19	19
	2nd Rifle	58	57	2	117	931	13	13	13
	3rd Rifle	56	75	2	133	790	17	15	13
	4th Rifle	14	47	10	71	402	18	10	12
37	Archery	41	7	0	48	630	8	11	10
	Muzzle	0	3	0	3	42	7	11	17
	1st Rifle	28	29	5	62	165	38	23	25
	2nd Rifle	31	15	1	47	453	10	17	17
	3rd Rifle	40	14	0	54	375	14	16	15
	4th Rifle	18	36	3	57	290	20	20	20
181	Archery	18	7	0	25	195	13	9	8
	Muzzle	0	0	0	0	32	0	5	10
	1st Rifle	15	12	0	27	133	20	17	15
	2nd Rifle	13	9	0	22	377	6	10	14
	3rd Rifle	14	14	0	28	306	9	8	8
	4th Rifle	0	16	0	16	330	5	20	16
371	Archery	26	7	4	37	405	9	8	8
	Muzzle	0	0	0	0	14	0	17	18
	1st Rifle	22	19	0	41	216	19	22	22
	2nd Rifle	17	26	4	47	270	17	12	13
	3rd Rifle	16	11	4	31	204	15	10	11
	4th Rifle	0	14	4	18	159	11	12	11



No hunting allowed in Colorado National Monument

# GLADE PARK

GMU

40

LOCAL CPW OFFICE  
Grand Junction (970) 255-6100

AREA MAPS	USFS Uncompahgre National Forest BLM Delta                      BLM Grand Junction BLM Moab                      BLM Westwater
AREA INFO	<a href="http://www.visitgrandjunction.com">www.visitgrandjunction.com</a>

## AREA INFORMATION

This 750 square mile unit consists of a relatively flat summit leading to sloping mesas bisected by deep, rugged canyons. The highest elevation range is approximately 9,800’.

Roads provide access to the mesas, but many of the canyons are remote and accessible only by foot or horseback.

Weather starts out mild but mud/snow accumulation is likely in later seasons.

Early season hunters should favor higher elevations of the USFS land, while later season hunters will do better on the lower BLM lands.

Hunters can find many water holes within the dark timber stands on north facing slopes.

Elk and deer frequent these areas during warm temperatures and heavy hunting pressure.

**GMU 40 has a lot of private land, and public access to BLM is often difficult to reach by vehicle.**

# GLADE PARK

## 2011 DEER INFORMATION

There are some good bucks in GMU 40 but they are hard to locate. The upper end of the Little Dolores drainage is a good place for quality mule deer bucks but there is considerable private land. Late season hunters may have success near Seiber Canyon, but it is foot or horseback only. Areas along the Utah border and north of Gateway can be good during the rifle seasons however be aware of private land and the state line.

### 2011 DEER OBJECTIVES

Herd	GMUs	Buck:Doe Objective	Population Estimate	Population Objective
Glade Park	40	30-35:100	6,330	6,500-8,500

### 2011 DEER HARVEST STATS

UNIT	SEASON	BUCK	DOE	FAWN	TOTAL HARVEST	TOTAL HUNTERS	SUCCESS %		
							LAST YR	3 YR	5 YR
40	Archery	33	0	0	33	88	38	46	48
	Muzzle	28	0	0	28	42	67	59	51
	2nd Rifle	116	0	0	116	182	64	60	62
	3rd Rifle	106	0	0	106	137	77	73	72





# GLADE PARK

## 2011 ELK INFORMATION

Bulls will be bugling from mid-Sept through 1st rifle opening weekend. Elk are widely distributed. Most stay high until hunting pressure pushes them to lower elevations and less accessible drainages. Do not hunt areas that have previously received heavy hunting pressure - elk will not be there. Successful hunters do a lot of walking and looking.

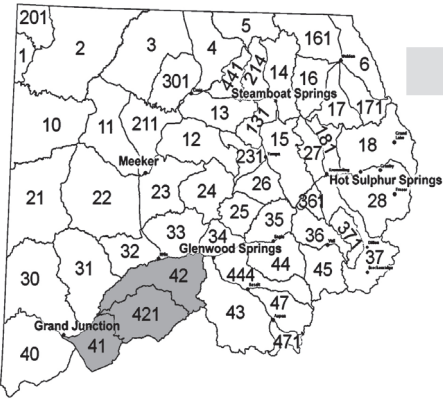
You can NOT hunt elk in GMU 40 with an unlimited bull elk license. GMU 40 is a limited unit. You must apply in the draw.

2011 ELK OBJECTIVES				
Herd	GMUs	Bull:Cow Objective	Population Estimate	Population Objective
Glade Park	40	30-35:100	2,720	2,800-3,800

## 2011 ELK HARVEST STATS

UNIT	SEASON	BULL	COW	CALF	TOTAL HARVEST	TOTAL HUNTERS	SUCCESS %		
							LAST YR	3 YR	5 YR
40	Archery	35	0	0	35	86	41	46	45
	Muzzle	0	0	0	0	35	0	30	39
	Early	0	169	9	178	326	55	49	50
	1st Rifle	24	16	3	43	65	66	56	54
	2nd Rifle	24	22	1	47	69	68	62	55
	3rd Rifle	26	6	5	37	62	60	56	50
	4th Rifle	11	26	4	41	100	41	41	40





# GRAND MESA

GMU

41, 42, 421

LOCAL CPW OFFICE  
Grand Junction  
(970) 255-6100

AREA MAPS	USFS Grand Mesa National Forest USFS White River National Forest
AREA INFO	<a href="http://www.visitgrandjunction.com">www.visitgrandjunction.com</a>

## AREA INFORMATION

Grand Mesa terrain ranges from high elevation (11,000') spruce/fir forests to low elevation (4,800') pinyon-juniper woodlands.

Weather can be rainy or snowy, then warm up and dry out the following day. Roads can become very muddy and 4WD is recommended.

Hunters should be prepared to spend time on foot or horseback.

Much of the area is public land.

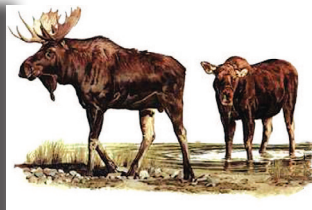
Overall, the hunting pressure is heavy.

Intensive natural gas development activity is occurring in GMUs 42 and 421. This work includes a major drilling project and a pipeline project.

Contact the USFS Grand Valley Ranger District, 970-242-8211 for more details on energy development in this area.

## MOOSE IN AREA

**BE PATIENT!**  
**ALWAYS BE 100% SURE OF YOUR TARGET!**



# GRAND MESA

## 2011 DEER INFORMATION

The deer population has declined in recent years, and buck: doe ratios are below the objective range. For these reasons, buck and does licenses have been reduced in all seasons. In addition, the fourth, buck-only season has been eliminated in 2012. However deer are still abundant and at the lower end of the population objective range. Deer are found on forest lands and higher elevation private lands during Oct. The resident deer stay in lower agricultural areas year round. The migrating deer herd begins to move off the forest in mid-Nov to lower elevations, often to BLM lands. The best deer hunting is at mid elevations (8,500-9,500'), with more buck opportunities in the later seasons. The Battlements can be good in late seasons, but the terrain is rugged. The open country offers good opportunities for those who get out on foot or horseback.

### 2011 DEER OBJECTIVES

Herd	GMUs	Buck:Doe Objective	Population Estimate	Population Objective
North Grand Mesa	41, 42, 421	25-30:100	19,210	17,000-23,000

### 2011 DEER HARVEST STATS

UNIT	SEASON	BUCK	DOE	FAWN	TOTAL HARVEST	TOTAL HUNTERS	SUCCESS %		
							LAST YR	3 YR	5 YR
41	Archery	0	7	0	7	72	10	12	25
	Muzzle	14	6	0	20	74	27	28	33
	2nd Rifle	67	138	0	205	528	39	34	39
	3rd Rifle	147	82	26	255	671	38	43	44
	4th Rifle	4	0	0	4	9	44	59	45
42	Archery	22	3	0	25	154	16	22	26
	Muzzle	17	9	0	26	117	22	28	33
	2nd Rifle	180	110	0	290	621	47	45	46
	3rd Rifle	258	97	26	381	721	53	57	56
	4th Rifle	6	0	0	6	7	86	81	80
421	Archery	38	13	0	51	243	21	25	23
	Muzzle	46	30	3	79	193	41	38	37
	2nd Rifle	123	192	9	324	716	45	44	44
	3rd Rifle	189	95	0	284	587	48	51	52
	4th Rifle	5	0	0	5	6	83	67	60



**POACHERS STEAL FROM EVERYONE**  
**REPORT POACHING OR SUSPICIOUS ACTIVITY**

## OPERATION GAME THIEF

**CALL 1-877-COLO OGT (265-6648)**

Verizon Cellular Users  
 #OGT

# GRAND MESA

## 2011 ELK INFORMATION

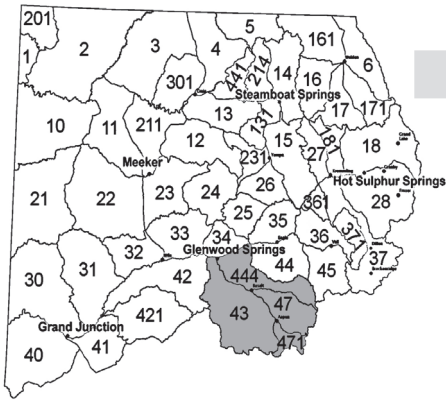
**OVER THE COUNTER ARCHERY LICENSES FOR COW ELK ARE NO LONGER VALID IN THESE UNITS.**

The elk herd is well distributed with good hunting success expected. Elk are scattered throughout the forest and on private lands. Most elk stay at higher elevations (8500-10,000') in thick timber and oakbrush. There is no migration during the season, movement to the more remote areas is in response to hunting pressure. They will seek classic cover - the heavily wooded, north-facing slopes near water. You will need to get away from the roads. There are lots of legal bulls as the area is managed for quantity of bulls rather than trophy status. Hence, trophy bulls are present but relatively rare.

2011 ELK OBJECTIVES				
Herd	GMUs	Bull:Cow Objective	Population Estimate	Population Objective
Grand Mesa	41, 411, 42, 421, 52, 521	20-25:100	17,610	15,000-19,000

## 2011 ELK HARVEST STATS

UNIT	SEASON	BULL	COW	CALF	TOTAL HARVEST	TOTAL HUNTERS	SUCCESS %		
							LAST YR	3 YR	5 YR
41	Archery	25	13	0	38	227	17	12	13
	Muzzle	0	7	0	7	148	5	12	14
	Early	0	59	7	66	192	34	40	44
	1st Rifle	84	23	0	107	382	28	24	30
	2nd Rifle	24	6	6	36	296	12	15	15
	3rd Rifle	28	16	0	44	308	14	17	15
	4th Rifle	0	10	0	10	119	8	11	13
	Late	0	0	0	0	5	0	0	0
42	Archery	97	27	0	124	607	20	15	14
	Muzzle	4	16	0	20	210	10	15	19
	1st Rifle	77	37	0	114	353	32	29	30
	2nd Rifle	105	57	8	170	902	19	19	19
	3rd Rifle	52	90	3	145	715	20	21	20
	4th Rifle	22	40	0	62	209	30	25	25
421	Archery	76	39	3	118	660	18	16	15
	Muzzle	20	51	9	80	343	23	25	25
	Early	0	59	11	70	175	40	46	40
	1st Rifle	85	8	9	102	390	26	26	30
	2nd Rifle	75	88	12	175	1000	18	17	17
	3rd Rifle	42	39	6	87	534	16	20	19
	4th Rifle	16	17	0	33	148	22	28	25



# ROARING FORK

**GMU**

**43, 47, 444, 471**

**LOCAL CPW OFFICE**  
**Glenwood Springs**  
**(970) 947-2920**

<b>AREA MAPS</b>	<b>USFS White River National Forest</b>
<b>AREA INFO</b>	<a href="http://www.glenwoodchamber.com">www.glenwoodchamber.com</a>

## AREA INFORMATION

This area encompasses the Roaring Fork, Frying Pan and Crystal River drainages.

The lower elevations (6500') are primarily developed or agricultural.

Timberline is around 11,500' and there are 14,000' peaks in the Wilderness Areas. Be prepared for daytime highs of 75F dropping to 20F at night. Snow can exceed several feet in the higher elevations and moisture can make roads dangerous or impassible. 4WD is a necessity.

About 40% of the area is wilderness (Hunter-Fryingpan, Maroon Bells, Raggeds, Collegiate Peaks) and vehicles are not allowed.

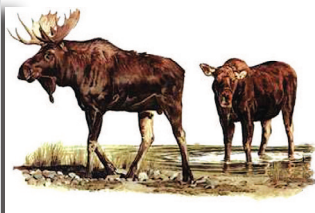
These rugged areas offer increased hunting success, but require horseback/pack-in camps. Hunting pressure is moderate.

There are large blocks of private lands in GMU 43 east of Hwy 133 & in the western part of GMU 444.

**MOOSE IN AREA**

**BE PATIENT!**

**ALWAYS BE 100% SURE OF YOUR TARGET!**



# ROARING FORK

## 2011 DEER INFORMATION

Deer populations were on the upswing for several years but did decline during the winter of 2007-2008.

This herd is concentrated in aspen and oakbrush habitats before the snow flies. Hunting pressure does not generally cause herd movement, but they will move to lower elevation woodlands as snow accumulates. Archery and muzzleloader hunters should head to timberline.

Early rifle season hunters should focus on high elevation areas around timberline, Capitol Creek, Haystack Mountain and East Snowmass Creek. Later season hunters could try “The Crown”, Holgate Mesa, Williams Hill and Light Hill, but expect to see other hunters in these areas. Some good bucks can be found if hunters focus in areas away from roads.

2011 DEER OBJECTIVES				
Herd	GMUs	Buck:Doe Objective	Population Estimate	Population Objective
Maroon Bells	43, 47, 471	30-35:100	6,330	7,500-8,500
Basalt	444	30:100	3,830	5,300

## 2011 DEER HARVEST STATS

UNIT	SEASON	BUCK	DOE	FAWN	TOTAL HARVEST	TOTAL HUNTERS	SUCCESS %		
							LAST YR	3 YR	5 YR
43	Archery	7	8	0	15	166	9	11	13
	Muzzle	31	4	0	35	133	26	23	22
	Early	5	0	0	5	13	38	43	45
	2nd Rifle	62	22	6	90	241	37	38	35
	3rd Rifle	123	9	0	132	226	58	51	43
	4th Rifle	2	0	0	2	7	29	63	56
47	Archery	4	0	0	4	44	9	14	17
	Muzzle	3	1	0	4	24	17	12	16
	Early	1	0	0	1	18	6	8	17
	2nd Rifle	3	2	0	5	33	15	35	22
	3rd Rifle	13	4	0	17	50	34	29	28
444	Archery	6	14	0	20	78	26	20	21
	Muzzle	7	7	3	17	58	29	30	28
	Early	1	0	0	1	1	100	29	50
	2nd Rifle	80	29	3	112	316	35	37	36
	3rd Rifle	53	22	0	75	178	42	46	40
	4th Rifle	19	0	0	19	21	90	82	76
471	Archery	0	0	0	0	29	0	0	3
	Muzzle	2	1	0	3	5	60	13	26
	Early	4	0	0	4	14	29	20	27
	2nd Rifle	0	0	0	0	10	0	17	14
	3rd Rifle	0	0	0	0	5	0	0	0

# ROARING FORK

## 2011 ELK INFORMATION

Early seasons find elk anywhere from 7500' to above timberline. With increased hunting pressure and snow, herds tend to move to remote areas or private lands - away from roads and hunters. The wilderness areas are a good bet for success but hunters must hike or horseback in as motorized travel is prohibited. Try Snowmass Creek, Conundrum Creek, Capitol Creek, Avalanche Creek, Difficult Creek, McFarland Creek, Maroon Creek, Thompson Creek, Basalt Mountain, Four-mile, the Marble area, and the upper Frying Pan drainages. Kobey Park and Sloans Peak are good but deep snow and bad roads should be expected, especially later in the seasons.

Some great opportunities for private land cow hunting exist in GMU 43, if you can get permission.

2011 ELK OBJECTIVES				
Herd	GMUs	Bull:Cow Objective	Population Estimate	Population Objective
Avalanche Creek	43, 471	19:100	4,450	3,300
Frying Pan	44, 45, 47, 444	20:100	7,100	5,100

## 2011 ELK HARVEST STATS

UNIT	SEASON	BULL	COW	CALF	TOTAL HARVEST	TOTAL HUNTERS	SUCCESS %		
							LAST YR	3 YR	5 YR
43	Archery	67	22	4	93	827	11	11	11
	Muzzle	27	9	0	36	188	19	19	20
	Early	0	75	0	75	150	50	51	50
	1st Rifle	50	62	8	120	436	28	24	25
	2nd Rifle	88	74	3	165	971	17	18	19
	3rd Rifle	80	125	6	211	627	34	27	21
47	4th Rifle	14	78	5	97	383	25	25	22
	Archery	16	0	0	16	250	6	10	12
	Muzzle	8	6	0	14	65	22	12	14
	Early	0	36	0	36	85	42	57	61
	1st Rifle	0	9	0	9	101	9	16	15
	2nd Rifle	42	23	0	65	334	19	20	22
444	3rd Rifle	22	31	0	53	217	24	20	19
	4th Rifle	10	14	2	26	86	30	27	29
	Archery	24	10	0	34	311	11	9	11
	Muzzle	24	2	0	26	162	16	16	15
	Early	0	54	2	56	216	26	44	50
	1st Rifle	39	7	16	62	201	31	24	28
471	2nd Rifle	58	27	7	92	724	13	17	19
	3rd Rifle	33	20	0	53	341	16	13	14
	4th Rifle	12	22	0	34	156	22	20	21
	Archery	4	7	4	15	98	15	7	10
	Muzzle	0	0	0	0	12	0	5	13
	Early	0	0	0	0	7	0	0	0
471	1st Rifle	2	0	0	2	28	7	22	23
	2nd Rifle	17	3	0	20	70	29	34	23
	3rd Rifle	0	2	0	2	22	9	25	16
	4th Rifle	0	5	0	5	9	56	12	15

# PRONGHORN, BEAR and MOOSE

## 2011 PRONGHORN INFORMATION

Northwest Colorado offers good pronghorn hunting opportunities. Hunter success varies by GMU. Hunter success is typically higher on private land, but public land pronghorn can still be found. The pronghorn season in GMUs 41, 62, and 411 is closed (new this year) to manage the population.

2011 PRONGHORN OBJECTIVES				
Herd	GMUs	Buck:Doe Objective	Population Estimate	Population Objective
Sand Wash	1, 2, 201	68:100	1,280	3,200
Great Divide	3, 301, 4, 5, 13, 14, 131, 214, 441	55:100	11,040	15,800
North Park	6, 16, 161, 17, 171	30-40:100	1,010	1,500 - 1,600
Maybell	11	40:100	1,890	1,400
Axial Basin	12,23, 211	40:100	690	300
Middle Park	18, 181, 27, 28, 37, 371	40:100	620	630

## 2011 PRONGHORN STATS

UNIT	SEASON	BUCK	DOE	FAWN	TOTAL HARVEST	TOTAL HUNTERS	SUCCESS %		
							LAST YR	3 YR	5 YR
2	Rifle	16	0	0	16	21	76	77	80
201	Rifle	17	8	2	27	38	71	76	78
3	Rifle	271	158	17	446	566	79	81	84
301	Rifle	95	64	10	169	219	77	77	82
4	Rifle	81	107	29	217	320	68	78	80
441	Rifle	20	4	0	24	37	65	75	79
5	Rifle	6	6	0	12	36	33	59	55
6	Rifle	10	5	0	15	15	100	91	88
11	Rifle	87	81	3	171	193	89	93	94
211	Rifle	16	20	2	38	63	60	62	66
12	Rifle	10	4	0	14	26	54	65	66
13	Rifle	59	61	14	134	201	67	81	81
214	Rifle	11	11	1	23	38	61	65	64
16	Rifle	13	3	0	16	22	73	71	64
161	Rifle	6	5	0	11	12	92	86	80
17	Rifle	0	0	0	0	4	0	55	67



# PRONGHORN, BEAR and MOOSE

## 2011 PRONGHORN STATS (Cont.)

UNIT	SEASON	BUCK	DOE	FAWN	TOTAL HARVEST	TOTAL HUNTERS	SUCCESS %		
							LAST YR	3 YR	5 YR
171	Rifle	3	0	0	3	4	75	49	63
18	Rifle	3	3	0	6	13	46	60	40
181	Rifle	6	6	0	12	15	80	55	44
27	Rifle	4	1	0	5	7	71	63	67
28	Rifle	5	0	0	5	5	100	42	27

## MOOSE

### MOOSE INFORMATION

Northwest Colorado's moose population is thriving since moose were first re-introduced by the CPW into North Park in 1978. Recent introductions of moose include Grand Mesa (2005) and Flattops Wilderness Area (2009).

The introduction of moose into the Flattops also began in 2009 with the release of 20 moose transplanted from an overpopulated unit in Utah. Future transplants into the Flattops will continue to increase viewing and hunting opportunity.

**Big game hunters in all areas in northwest Colorado are reminded to be sure of their target.** The accidental kill of moose by elk hunters is a threat to these new populations. In cooperation with Colorado chapters of Safari Club International, an extensive education campaign is being conducted to alert hunters to these new populations.

### 2011 MOOSE OBJECTIVES

Herd	GMUs	Bull:Cow Objective	Population Estimate	Population Objective
North Park	6, 16, 17, 161, 171	60-70:100	560	500-600
Gore	14,18, 28, 36, 37, 181, 371	65:100	350	190
Grand Mesa	41, 42, 43, 52, 411, 421, 521	55-65:100	300	300-400
Flattops	12, 23, 24, 33	(undeter.)	(undeter.)	(undeter.)



## 2011 MOOSE HARVEST STATS

UNIT	SEASON	BULL	COW	BULL HUNTERS	COW HUNTERS	SUCCESS %	
						BULL	COW
6	All	9	17	11	17	82	100
14	All	2	1	2	2	100	50
16	All	3	3	3	5	100	60
17	All	5	8	5	10	100	80
18	All	14	12	14	14	100	86
28	All	7	3	8	5	88	60
36	All	1	0	1	0	100	0
161	All	3	2	4	2	75	100
171	All	11	9	12	13	92	69
371	All	1	2	2	2	50	100
421	All	3	0	3	0	100	0
521	ALL	1	0	1	0	100	0

## BLACK BEAR

Black bear hunting opportunities are abundant in northwest Colorado. A constitutional amendment passed by voters in Colorado eliminated the spring hunting of bears and prohibits the use of hounds or bait in bear hunting. Bear hunters should be familiar with the regulations regarding the take of bear in Colorado.

September bear season - Hunters can apply for a September bear rifle license in the annual big game draw. These either sex licenses are limited and only available through the draw - rarely as leftovers. These licenses are open to all legal methods of take, meaning the holder can choose to hunt with archery equipment or muzzleloader during this season.

Over-the-counter with caps - Archery, muzzleloader and some rifle bear licenses are sold over-the-counter on a first-come, first-served basis beginning in July. These licenses require that the holder also possesses a valid deer or elk license for the area and season that the hunter will be hunting bear.

# BLACK BEAR

Bear harvest stats are reported differently than other big game species. Because bears are relatively reclusive and fewer in number statewide than deer or elk, estimating populations at the local level is problematic. It is estimated that Colorado has between 16,000 and 18,000 black bears statewide. Success rates for bear hunters tend to be lower than other big game animals, and requires the issuance of a large number of licenses to achieve a relatively small harvest.

2011 BEAR HARVEST STATS						
Population	GMUs	Licenses Issued	Boar Harvest	Sow Harvest	Total Harvest	Success %
<b>B-1</b>	21, 22, 30, 31, 32	610	32	22	54	9
<b>B-4</b>	4, 5, 6, 14, 16, 17, 161, 171, 214, 441	599	22	13	35	6
<b>B-10</b>	12, 13, 23, 24, 25, 26, 33, 34, 131, 231	784	31	19	50	6
<b>B-11</b>	35, 36, 43, 44, 45, 47, 444, 471	903	36	16	52	6
<b>B-15</b>	1, 2, 3, 10, 11, 201, 211, 301	148	4	3	7	5
<b>B-16</b>	15, 18, 27, 28, 37, 181, 371	288	18	4	22	8
<b>B-17</b>	41, 421, 52, 411, 521, 53, 63	1636	99	37	136	8


## CAMP TIPS

### ***Bears Are Common Throughout Colorado.***

Follow these tips to keep bears out of camp.

- ***Stash your trash.*** Use bear-proof containers or double bag and lock trash in car trunk or camper. Never leave trash outside.
- ***Store food, beverages and toiletries in air-tight containers.*** Don't store food containers in your tent or anywhere a bear can see, smell or reach.
- ***Keep a clean camp.***
- ***Keep a clean tent.*** Don't store anything with an odor in your tent. That includes food, beverages, toiletries, gum toothpaste, sunscreen, candles and insect repellent. Don't sleep in the clothes you cook in - store those clothes with your food in an air-tight container.



COLORADO PARKS AND WILDLIFE - NW REGION			
 www.wildlife.state.co.us	Grand Junction Regional and Area Office	711 Independent Ave. Grand Junction CO 81505	(970) 255-6100
	Glenwood Springs	0088 Wildlife Way Glenwood Springs CO 81601	(970) 947-2920
	Meeker	73485 Hwy 64; PO Box 1181 Meeker CO 81641	(970) 878-6090
	Hot Sulphur Springs	346 Grand County Rd 362; PO Box 216 Hot Sulphur Springs CO 80451	(970) 725-6200
	Steamboat Springs	925 Weiss Drive - PO Box 775777 Steamboat Springs CO 80477	(970) 870-2197

LAND MANAGEMENT AGENCIES			
<b>Bureau of Land Management BLM</b>  www.co.blm.gov/offices.htm	Grand Junction Field Office 2815 H Road	(970) 244-3000	
	Glenwood Springs Field Office (Silt) 2300 River Frontage Road	(970) 876-9000	
	White River Field Office (Meeker) 220 E. Market Street	(970) 878-3800	
	Little Snake Field Office (Craig) 455 Emerson Street	(970) 826-5000	
	Kremmling Field Office 2103 East Park Avenue	(970) 724-3000	
<b>United States Forest Service USFS</b>  www.fs.fed.us/r2/whiteriver www.fs.fed.us/r2/gmug www.fs.fed.us/r2/mbr	<b>White River National Forest</b>	Blanco RD (Meeker) 220 E. Market Street	(970) 878-4039
		Rifle RD (Rifle) 0094 County Rd 244	(970) 625-2371
		Aspen RD (Carbondale) 620 Main St.	(970) 963-2266
		Eagle RD (Eagle) 125 West 5th St.	(970) 328-6388
		Holy Cross RD (Minturn) 24747 Hwy 24	(970) 827-5715
		Dillon RD (Silverthorne) 680 Blue River Pkwy	(970) 468-5400
	<b>Grand Mesa, Uncompahgre &amp; Gunnison National Forest</b>	Grand Valley RD (Grand Junction) 2777 Crossroads Blvd #1	(970) 242-8211
		2250 Hwy 50, Delta (970) 874-6600	Other Grand Mesa, Uncompahgre, & Gunnison National Forest Ranger Districts are located in the CPW's SW Region, see <i>Big Game Hunting in SW Colorado</i> booklet.
	<b>Routt &amp; Medicine Bow National Forest</b>  2468 Jackson St. Laramie WY (307) 745-2300	Hahns Peak/Bears Ears (Steamboat Springs) 925 Weiss Dr	(970) 879-1870
		Parks RD (Walden) 100 Main Street	(970) 723-8204
		Parks RD (Kremmling) 2103 East Park Ave	(970) 724-3000
		Yampa RD (Yampa) 300 Roselawn Ave	(970) 638-4516
<b>Arapaho National Forest</b>	Sulphur RD (Granby) 9 Ten Mile Drive	(970) 887-4100	

# GUN RANGES

## **Basalt State Wildlife Area Shooting Range**

**Basalt**

**Colorado Parks and Wildlife, Glenwood Springs Office 970 - 947-2920**

The range is located in the Christine unit of the Basalt SWA. Take Highway 82 to Two Rivers Road, turn on to Homestead Drive and then turn into the Basalt SWA entrance that is on the west end of Homestead Drive. There is a large green/white DOW/CPW sign at the bottom of the hill on the road up to the shooting range.

Public pistol range, 100 yard rifle and shotgun ranges. Open weekdays 7 a.m. to 7 p.m. and weekends 9 a.m. to 7 p.m. year 'round. Fully automatic firearms are prohibited. Not including muzzleloader and shotgun, rifles on the range must be .50 caliber or lower. For a fee, the Roaring Fork Valley Sportsman's Association offers trap and skeet shooting on Wednesday evenings and weekends from noon to 5 p.m. The range is otherwise unsupervised.

Note: Beginning December 1, 2010, the range will close at 5 p.m. on Saturdays and Sundays until further notice.

## **Bears Ears Sportsman Club**

**P.O. Box 622, Craig 970-824-8376**

300-yard rifle and handgun range for members. Open to the public the first Sunday/Monday of each month. Also open during daylight hour, the Thursday and Friday prior to each big game season for hunter sight-in. For more information, pick up brochures at the Craig Sportsman's Center.

## **Byers Canyon Rifle Range**

**Hot Sulphur Springs 970-725-6200**

Colorado Parks and Wildlife - Hot Sulphur Springs Office. This range is closed during winter months to provide winter forage to big game. This closure is generally in effect beginning the first week in January. The range will remain closed until deer move toward higher ground in the spring, which typically occurs in early April.

Open daily, sunrise to sunset (except as noted, above). Five centerfire rifle 25-, 100-, and 200 yard ranges, one rimfire (.22 cal) rifle range, shotgun (hand traps only – not provided), and one handgun range provided. Range also has straw bales for archery. One rifle range has wheel chair access to 25/100-yard target range. Paper targets only (exception for clay birds for shotgun, and targets for archery). No bowling pins or other breakables allowed on range. Unsupervised range! Eye and ear protection mandatory. Portable toilet and trash dumpster on site.

# GUN RANGES

## **Castle Peak Gun Club** **P.O. Box 319, Gypsum**

Open prior to hunting season for hunter sight-in. Range visible from I-70; north-side of the Interstate, west of the interchange.

## **Glenwood Springs Gun Club** **Glenwood Springs 970-945-7401**

Public welcome to shoot when range is open. Sporting clays, trap, black powder, rifle and pistol ranges up to 200 yards. Hunter education courses are available also.

## **Grand Junction BLM Public Shooting Ranges**

### **North of Grand Junction** **Bureau of Land Management (BLM), Grand Junction Field Office** **970 -244-3000**

From Grand Junction, take Horizon Drive northeast to H Road; west on H Road approximately 1.25 miles to 27¼ Road; north on 27¼ Road 5 miles to the rifle range or 5.8 miles to the pistol range. Open to the public year-round; no supervision provided. The rifle range has a sheltered firing line with 25 stations and 8 benches with range distances from 50 to 500 yards. The pistol range has 4 benches with range distances up to 150 yards. There is no trash service—shooters are responsible for removing their own brass, shell casings, targets and trash. Please be aware of other users of these public lands such as hikers, horseback riders, and OHV operators.

### **East of Grand Junction** **Bureau of Land Management (BLM), Grand Junction Field Office** **970 -244-3000**

(Acquire a map of this shooting area at the Grand Junction BLM office.)

Shooting area is located on East Orchard Mesa. To reach the shooting area, travel east on C Road past 34 Road.

This public land shooting area is open to the public year around. There are several no-shoot zones to protect nearby residences, nearby FAA communication equipment and a power sub-station. It is a federal offense to shoot in or through these areas. Do not shoot across a road or trail. Establish a safe shooting location with a good backstop down range. Users are responsible for removing all targets, shells, brass and trash. No glass targets.

# GUN RANGES

## **Grand Junction Trap and Skeet Club, Inc.**

**116 32 Rd., Grand Junction 970-245-0780**

Public and league trap and skeet shooting.

## **Grand Mesa Bowmen**

**PO Box 752, Grand Junction 970-244-2977**

Bowhunting club with 42 outdoor targets near Colorado National Monument. Family memberships are \$36 per year.

## **Hayden Shooting Range**

**2 miles south of Hayden**

**Colorado Parks and Wildlife, Steamboat Springs Office**

**970-870-2197**

100-, 200- and 300-yard rifle and pistol range is open to the public 7 days a week from dawn until dusk.

## **Meeker Sportsman's Club**

**4.5 miles southwest of Meeker on Colorado Highway 13**

Hunter sight-in Thursdays and Fridays prior to each big game season. Look for more information on flyers around town. Public is welcome to shoot in other organized events. Memberships are \$20 per family and include full use of range, including archery, trap, rifle and pistol ranges. Write for more information.

## **Plateau Creek State Wildlife Area**

**West of Collbran**

**Colorado Parks and Wildlife, Grand Junction Office**

**970-255-6100**

From Grand Junction, take I-70 east to Highway 65 (Exit 49), then 8 miles east to Highway 330, then about 7.5 miles east to county road V, then north .25 mile to the range. The range, operated by the Division of Wildlife, is open year 'round during daylight hours. There are four adjustable shooting benches with 50, 100, 200, and 300 yard ranges. There is no trash service; shooters are asked to remove all trash, targets, and brass after use. The county road leading to this range can be impassable in wet weather.

# **GUN RANGES**

## **Red Rock Archery**

**3193 Hill Ave., Grand Junction 970-241-2697**

Open to the public. 20 and 30 yard indoor archery range, 3D shoots on Tuesdays and Thursdays and DART Video Target System

## **West Rifle Creek State Wildlife Area**

**North of Rifle 970-255-6100**

Colorado Parks and Wildlife, Grand Junction Office Range distance: 100 yards. Small bore rifle, large bore rifle, pistol, and shotgun are allowed. Range is open to the public year round; no supervision provided. No trash service; shooters are responsible for removing trash including brass, shell casings, and targets. Directions: From Rifle, take Highway 13 north to Highway 325, then north on 325 to Rifle Gap Reservoir. At the dam turn west on CR 252 and travel approximately 2 miles; shooting range is on a dirt road off to the left just before reaching the intersection with CR 210.

## **Rifle Sportsmen's Club**

**West of Rifle**

**970-876-2133**

Range is located north of the US Forest Service office on Fravert Road.

Public can access the range during sight-in days two days prior to each of the big game seasons, except 4th season when range is open to the public on Friday only. Cost is \$5 per gun during sight-in days. Targets at 25, 100, 200 and 300 yards; gongs at 100-500 yards. Annual membership can be purchased for \$50/yr. Membership includes access to large and small bore range, long distance range, pistol range, archery targets, action pistol and trap/skeet/five-stand range. Hunter safety and concealed carry classes available.

## **Routt County Rifle & Pistol Club**

**P.O. Box 3116, Steamboat Springs**

**970-870-0298**

Call for dates and times that the club is open to the public. Facilities include trap, skeet, sporting clays, indoor .22, outdoor pistol, 25-, 50-, 100- and 200-yard rifle ranges.



# GUN RANGES

**Vail Rod & Gun Club, Ltd.**  
**001 Sporting Clay Way, Wolcott**  
**970-926-3472**

Open to the public for sporting clays during summer months. In fall, archery, pistol and 100 yard rifle range open to the public.

**Walden Public Shooting Area**  
**East of Walden**  
**970-723-4625**

Take Jackson CR 12E east out of Walden. Go four miles. Shooting range is on the north side of the road and is marked with a white sign displaying the range rules and small DOW/CPW and BLM emblems. Open to the public year-round; no supervision provided. The range has benches with range distances from 50 to 300 yards. There is no trash service—shooters are responsible for removing their own brass, shell casings, targets and trash. Please be aware of other users of these public lands such as hikers, horseback riders, and OHV operators.

**White River Bowmen**  
**Post Office Box 32, Rangely**  
**970-675-8559**

Bowhunting club with 14 outdoor targets and clubhouse. Memberships \$30 per year.



## GENERAL VISITORS INFORMATION

State Parks <a href="http://www.parks.state.co.us">www.parks.state.co.us</a> Reservations (800) 678-2267 General Info (970) 255-6100	Colorado Tourism Board <a href="http://www.colorado.com">www.colorado.com</a> (800) COLORADO
US National Park Service <a href="http://www.nps.gov">www.nps.gov</a>	Campground and cabin info <a href="http://www.coloradodirectory.com">www.coloradodirectory.com</a>

## ROADS AND WEATHER

Colorado Dept. of Transportation <a href="http://www.cotrip.org">www.cotrip.org</a> toll free (877) 315-ROAD	<a href="http://www.crh.noaa.gov/gjt/">www.crh.noaa.gov/gjt/</a>  <a href="http://www.weather.com">www.weather.com</a>
--	--

## MAPS

TOPO Maps US Geological Survey <a href="http://topomaps.usgs.gov">http://topomaps.usgs.gov</a> (800) 435-7627	BLM Maps <a href="http://www.co.blm.gov">www.co.blm.gov</a> (303) 239-3600
	US Forest Service Maps <a href="http://www.nationalforeststore.com">www.nationalforeststore.com</a> (303) 275-5350

## GUIDE AND OUTFITTER INFORMATION

For a list of registered guides and outfitters CO Dept of Regulatory Agencies <a href="http://www.dora.state.co.us/outfitters">www.dora.state.co.us/outfitters</a> (303) 894-7778	Colorado Outfitters Association <a href="http://www.coloradooutfitters.org">www.coloradooutfitters.org</a> (970) 824-2468
--	---

## ATTENTION HUNTERS!

If you are hunting or fishing on BLM or Forest Service public lands, make sure your outfitter is permitted for that activity in that area. Check with your local BLM or Forest Service office before you book a trip.

## CHRONIC WASTING DISEASE

Chronic wasting disease (CWD) is neurological disease that can be found in some deer, elk and moose, and is fatal to these animals. The disease has been found in twelve states, including Colorado, and two Canadian provinces. If you have questions about CWD and public health, contact the CDPHE at (303) 692-2700.

### PRECAUTIONS

- Do not shoot, handle or consume any animal that appears sick.
- Wear rubber gloves when field dressing and processing animals.
- Bone out the meat from your animal.
- Minimize the handling of brain and spinal tissues.
- Wash hands and instruments thoroughly after field dressing is completed.
- Avoid consuming brain, spinal cord, eyes, spleen, tonsils, pancreas and lymph nodes of harvested animals. Normal field dressing, coupled with boning out a carcass, will remove most, if not all, of these body parts.
- Do not consume meat from animals known to be infected with CWD.
- Knives, saws and cutting table surfaces can be disinfected by soaking in a solution of 50 percent unscented household bleach and 50 percent water for an hour. Afterward, allow them to air dry.
- Have harvested animals tested at a DOW CWD testing station. Northwest CWD testing submission sites:

# BE SAFE AND RETURN TO YOUR FAMILY

This is a basic, preliminary list of survival tips, suggestions and equipment. There are many survival guides and manuals that provide much more detailed information. Be sure to pick one up, and READ IT.

- Always tell someone where you are going and when you will return.
- Always stick to your plan, stay put if you become lost or stranded.
- Always take someone with you, never go out alone.
- You must have shelter each night.
- The ability to build a fire is paramount.
- Signaling, like everything else in survival, is not a spur-of-the-moment thing and you must prepare for it so that it is ready when you need it.
- You must have a way to find, purify and drink water
- Dress for weather but remember it can change suddenly and drastically.

## BASIC SURVIVAL KIT

### **SHELTER PACKAGE:**

- 1 GOLD AND 1 SILVER EMERGENCY BLANKETS (SPACE BLANKETS)
- 1 SHEET PLASTIC, 3 MIL., 6 FOOT BY 6 FOOT
- 50 FEET PARACHUTE CORD
- ELECTRICIAN'S TAPE, MUST BE COLD RESISTANT

### **FIRE PACKAGE:**

- 2 CONTAINERS OF MATCHES, STRIKE ANYWHERE TYPE, IN WATERPROOF CONTAINERS
- MAGNESIUM FIRESTARTING TOOL© OR METAL MATCH©
- COTTON BALLS IMPREGNATED WITH PETROLEUM JELLY
- 1 CANDLE

### **SIGNAL PACKAGE:**

- 1 GLASS 'G.I.'-TYPE SIGNAL MIRROR (AN OLD CD MAY WORK)
- 1 PLASTIC WHISTLE
- 1 DAYLIGHT FLUORESCENT ORANGE CLOTH SIGNAL PANEL, 3 FOOT BY 3 FOOT

### **ADDITIONAL SUPPLIES:**

- FIRST-AID KIT THAT ADDRESSES WILDERNESS EMERGENCIES.
- A GOOD KNIFE—THIS IS YOUR MOST IMPORTANT SURVIVAL TOOL.
- RAIN GEAR—PONCHO PREFERRED.
- BACKPACK HYDRATION SYSTEM OR CANTEEN, AND WATER PURIFICATION TABLETS.
- HIGH ENERGY, LIGHTWEIGHT FOOD BARS AND SNACKS.
- A FULLY CHARGED CELL-PHONE - YOU *MIGHT* HAVE CELL COVERAGE



**Colorado Parks and Wildlife** was created by the merger of Colorado State Parks and the Colorado Division of Wildlife, two nationally recognized leaders in conservation, outdoor recreation and wildlife management.

**Colorado Parks and Wildlife** manages 42 state parks, all of Colorado's wildlife, more than 300 state wildlife areas and a host of recreational programs.

To learn more about Colorado's state parks, see:  
**[www.parks.state.co.us](http://www.parks.state.co.us)**

To learn more about Colorado's wildlife programs, see:  
**[www.wildlife.state.co.us](http://www.wildlife.state.co.us)**