

2012 Light Goose Conservation Action Harvest Report

The 2012 Light Goose report provides information on the estimated harvest of light geese during the Conservation Action (CA) period. The light goose CA season is restricted to lands east of I-25. Due to questionable county harvest estimates, which result from low levels of response and dynamic harvest rates, harvest, hunter numbers and days are reported on a statewide basis, but are also provided for South and North of I-70. Information is also provided on the use of electronic calls, extended hunting hours, use of unplugged shotguns and wounding loss during the conservation action period. The 2012 Conservation Action began on February 13, 2012 and concluded on the last day of April, 2012.

A post-season harvest survey was conducted by phone and internet. A stratified random sample of 4,000 potential light goose hunters was drawn from among HIP participants. Individuals within the sample that provided email addresses to HIP were sent email surveys as well. The sample was stratified as follows:

- 1 = Did not hunt light geese in 10/11; 2 = Hunted light geese in 10/11 but did not bag geese
3 = Bagged 1-30 light geese in 10/11; 4 = Bagged more than 30 light geese in 10/11

Harvest Data Summary

One thousand five hundred twenty-two (1,522, 38% response rate) hunters were contacted. One-hundred sixty-five (165) hunters reported hunting light geese during the conservation action period. Days hunted ranged from 1 (24 hunters) to 37 (1 hunter) and individual harvest ranged from 1 (5 hunters) to 456 (1 hunter). Forty-seven (47) percent reported being satisfied with their light goose hunting experience, compared to 33% in 2011, while 20% and 32% were neutral or not satisfied in 2012, respectively. The leading reason for hunting during the conservation action period was “hunting unlimited geese” (28.8%), followed by “none of these reasons” (25%) and “environmental concerns” (19.4%). Twenty-eight percent of hunters surveyed said they would be very likely to participate in future conservation action periods, while 48.6% were somewhat likely to participate and 22.8% were not at all likely to participate. **Statewide harvest for the conservation action period was estimated at 18,971 ± 2,579 (16,392 – 21,550).**

Comparison with 2011 survey results:

Comparing the figures for the conservation action period for 2011 and 2012, the estimated harvest was significantly lower in 2012 than during the 2011 CA when an estimated **28,193 ± 3,632 (24,561 – 31,825)** birds were harvested. Hunter numbers were lower in 2011 (**1,385 ± 308**) than in 2012 (**1,847 ± 398**). Total days hunted were higher in 2011 (**10,095 ± 3,692**) than 2012 (**8,659 ± 2,381**).

Hunter Statistics and Harvest by Strata, County and Population

Summary tables provide estimates of hunter numbers, days in the field and light goose harvest state and region-wide. Estimates are followed by the standard error of the estimate, and 95% upper (UCL) and lower (LCL) confidence limits.

2012 Light Goose CA Harvest Summary, By Area

Area	Hunters	SE(hunters)	LCL Hunters	UCL Hunters	Days Hunted	SE (Days Hunted)	LCL Days	UCL Days	Harvest	SE(harvest)	LCL Harvest	UCL Harvest
South of I-70	677	121	439	915	2436	408	1636	3236	6897	661	5602	8192
North of I-70	1383	182	1026	1740	5965	1050	3907	8023	12074	1151	9817	14331
Total	1847	203	1449	2245	8659	1215	6278	11040	18971	1316	16392	21550

2012 Light Goose CA Harvest Summary, By Strata

Stratum	Hunters	SE(hunters)	LCL Hunters	UCL Hunters	Days Hunted	SE (Days Hunted)	LCL Days	UCL Days	Harvest	SE(harvest)	LCL Harvest	UCL Harvest
1	1324	197	990	1771	5801	1173	3918	8589	5580	326	4977	6255
2	57	38	17	188	113	78	34	382	0	0	0	0
3	270	29	219	333	1263	254	855	1865	4907	1007	3296	7306
4	196	13	172	224	1482	172	1181	1859	8484	782	7084	10160
Total	1847	203	1449	2245	8659	1215	6278	11040	18971	1316	16392	21550

2012 Light Goose CA Harvest Summary, By Method

Method	Hunters	SE(hunters)	LCL Hunters	UCL Hunters	Harvest	SE(harvest)	LCL Harvest	UCL Harvest
Electronic calls	510	86	341	679	13168	2921	7443	18893
Extended hours	532	91	354	710	1916	337	1255	2577
Unplugged gun	535	101	337	733	2785	580	1648	3922

2012 Light Goose Satisfaction, by Percentage

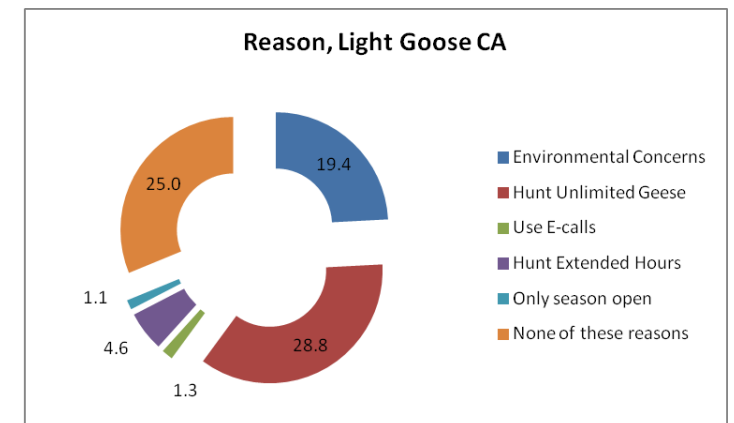
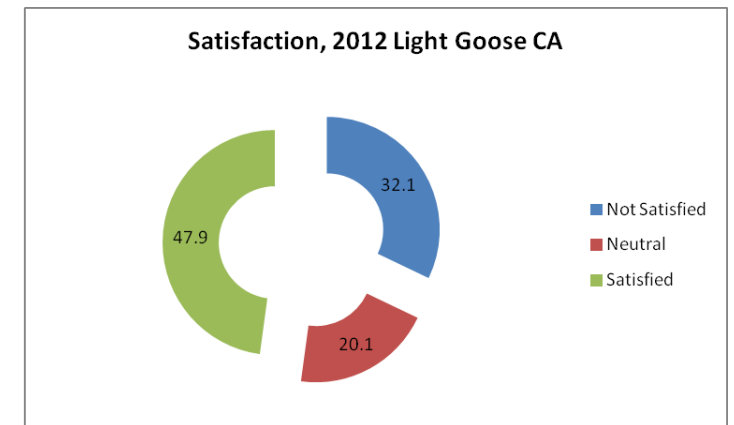
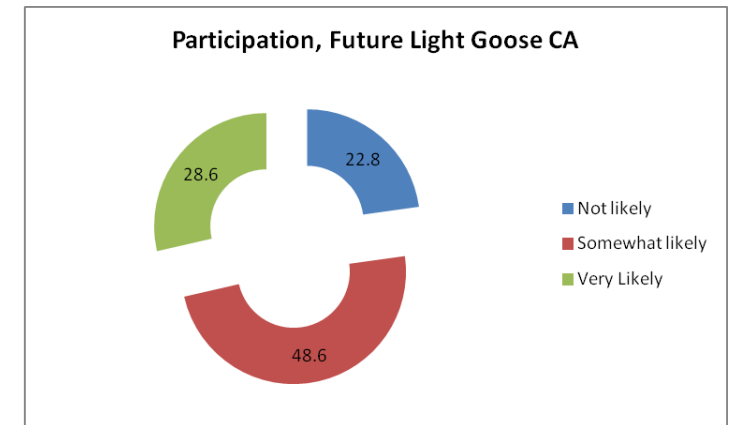
Satisfaction	Stratum				Total
	1	2	3	4	
Strongly Dissatisfied	16.7	50.0	12.8	23.0	17.9
Somewhat Dissatisfied	7.1	0.0	4.3	6.8	6.7
Slightly Dissatisfied	7.1	0.0	12.8	8.1	7.6
Neutral	23.8	0.0	12.8	4.1	20.1
Slightly Satisfied	4.8	0.0	4.3	5.4	4.7
Somewhat Satisfied	21.4	0.0	17.0	16.2	19.9
Strongly Satisfied	19.1	50.0	36.2	36.5	23.3

Future Participation, by Percentage

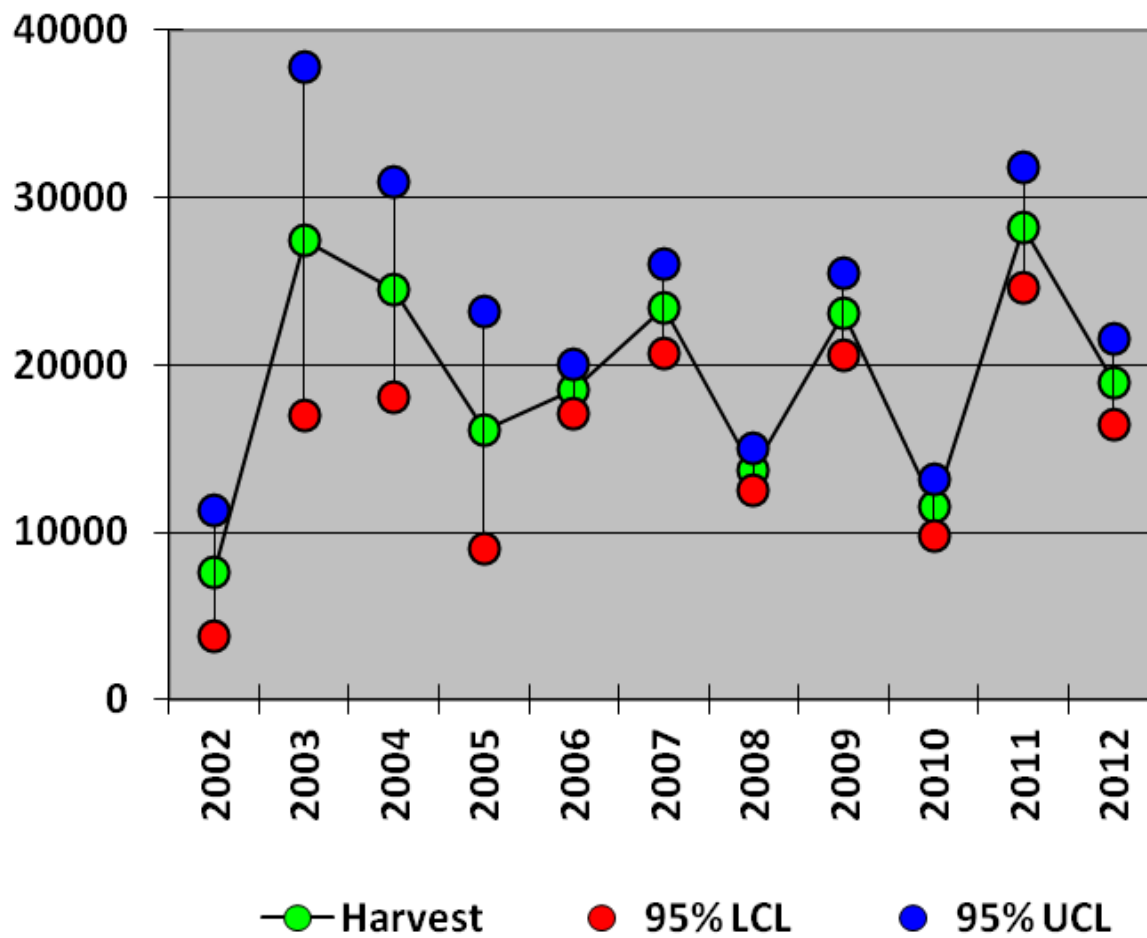
Future CA Hunting	Stratum				Total
	1	2	3	4	
Not likely	26.7	12.5	10.9	7.4	22.8
Somewhat likely	54.6	37.5	34.1	20.3	48.6
Very Likely	18.7	50.0	55.1	72.4	28.6

Reason for Participating, by Percentage

Reason for hunting	Stratum				Total
	1	2	3	4	
Environmental Concerns	19.1	0.0	17.0	28.4	19.4
Hunt Unlimited Geese	28.6	50.0	23.4	29.7	28.8
Use E-calls	0.0	0.0	6.4	6.8	1.3
Hunt Extended Hours	4.8	0.0	6.4	2.7	4.6
Only season open	0.0	0.0	4.3	6.8	1.1
None of these reasons	26.2	0.0	27.7	20.3	25.0



Light Goose CA Harvest, Colorado
2002-2012



Light Goose CA Harvest,
South and North of I-70

