

COLORADO PARKS & WILDLIFE

# 2012 Colorado Waterfowl



HUNTERS: SOME SEASON DATES CONTINUE INTO 2013



© Michael Clifton

## DON'T MISS INSIDE:

### » Scaup limits increase.

The season is longer, the bag limits are bigger.

### » Reservation changes.

Grand Valley lands have a new reservation number.

*See page 1 for details*



online brochure

COLORADO PARKS AND WILDLIFE • 6060 Broadway, Denver, CO 80216  
(303) 297-1192 • [www.wildlife.state.co.us](http://www.wildlife.state.co.us) • [www.parks.state.co.us](http://www.parks.state.co.us)



**ABOUT THE COVER:** Richard Clifton continues his winning streak in the 2012 Colorado Waterfowl Stamp Art contest. His painting of Ross' geese, "Misty Afternoon" was chosen as this year's winning design for the annual stamp. Clifton has won the contest in 2010, 2011 and 2012. He is a hunter and self-taught artist. The Colorado Wildlife Heritage Foundation sells prints and stamps of the 2012 stamp. If interested please contact the foundation at (303) 291-7212 or [www.cwhf.us](http://www.cwhf.us). Proceeds from the sale of waterfowl stamps and prints support wetlands that benefit Colorado's waterfowl species.

## TABLE OF CONTENTS

### License Fees & Information ..... 1

- What's new in 2012
- Fees and surcharges
- Hunter education requirements
- Youth license requirements
- Disabled veterans license requirements

### Purchasing a License ..... 2

- License and residency requirements, weapons restrictions, child-support information
- Habitat Stamp information

### Know Before You Go ..... 3-5

- Harvest Information Program (HIP) ..... 3
- Legal hunting hours ..... 3
- Sunrise/Sunset table ..... 3
- Walk-In Access program ..... 3
- Common hunting definitions ..... 5
- What to do with banded birds ..... 5
- Tagging, shipping and importing ..... 5
- Donating wildlife, wildlife causing damage ..... 5

### Season Dates, Bag Limits ..... 6-10

- Goose season regulations ..... 6
- **MAP:** Statewide goose seasons ..... 7
- Duck, coot, teal season regulations ..... 8
- Duck identification chart ..... 8
- **MAP:** Statewide duck seasons and zones ..... 9
- Hawking and falconry regulations ..... 10
- Youth hunt regulations ..... 10

### Nontoxic Shot Table and Rules ..... 10

### Hunting Laws & Methods of Take ..... 11

- Legal and illegal hunting methods
- Hawking and falconry hunting laws
- Safe handling of game meat

### Land-Use Rules ..... 12-17

## WILDLIFE AREA OFFICES

[WWW.WILDLIFE.STATE.CO.US](http://WWW.WILDLIFE.STATE.CO.US)

### HEADQUARTERS

6060 Broadway  
Denver, 80216  
(303) 297-1192

### FORT COLLINS

317 W. Prospect Road  
Fort Collins, 80526  
(970) 472-4300

### MEEKER

73485 Hwy. 64  
Meeker, 81641  
(970) 878-6090

### AREA OFFICES

### GLENWOOD SPRINGS

0088 Wildlife Way  
Glenwood Springs, 81601  
(970) 947-2920

### MONTE VISTA

0722 S. Road 1 E.  
Monte Vista, 81144  
(719) 587-6900

### BRUSH

122 E. Edison  
Brush, 80723  
(970) 842-6300

### GRAND JUNCTION

711 Independent Ave.  
Grand Junction, 81505  
(970) 255-6100

### MONTROSE

2300 S. Townsend Ave.  
Montrose, 81401  
(970) 252-6000

### COLORADO SPRINGS

4255 Sinton Road  
Colorado Springs, 80907  
(719) 227-5200

### GUNNISON

300 W. New York Ave.  
Gunnison, 81230  
(970) 641-7060

### PUEBLO

600 Reservoir Road  
Pueblo, 81005  
(719) 561-5300

### DENVER

6060 Broadway  
Denver, 80216  
(303) 291-7227

### HOT SULPHUR SPRINGS

346 Grand County Rd. 362  
Hot Sulphur Springs,  
80451  
(970) 725-6200

### SALIDA

7405 Hwy. 50  
Salida, 81201  
(719) 530-5520

### DURANGO

151 E. 16th St.  
Durango, 81301  
(970) 247-0855

### LAMAR

2500 S. Main St.  
Lamar, 81052  
(719) 336-6600

### STEAMBOAT SPRINGS

925 Weiss Dr.  
Steamboat Springs,  
80487  
(970) 870-2197

Printed for free distribution by

## COLORADO PARKS AND WILDLIFE (CPW)

6060 Broadway, Denver, CO 80216  
(303) 297-1192

[www.wildlife.state.co.us](http://www.wildlife.state.co.us)

[www.parks.state.co.us](http://www.parks.state.co.us)

Editor: Amy Nickelson

Cover artwork by © Richard Clifton

Printed 2012 by American Web, Denver. 105,000 copies.

Printing paid for with hunting and fishing license fees.



The Colorado Parks and Wildlife Commission sets waterfowl regulations in July and August. Rick D. Cables is CPW director. Commission members are (as of August 2012): John Singletary, chairman • Bill Kane, vice chairman • Mark Smith, secretary • Robert Bray, member • Christopher Castilian, member • Jeanne Horne, member • Gaspar Perricone, member • James Pribyl, member • James Vigil, member • Dean Wingfield, member • Michelle Zimmerman, member • Mike King, ex officio member • John Salazar, ex officio member

CPW receives federal financial assistance from the U.S. Fish and Wildlife Service. In accordance with Title VI of the Civil Rights Act of 1964, Section 504 of the Rehabilitation Act of 1973, Title II of the Americans with Disabilities Act of 1990, the Age Discrimination Act of 1975 and Title IX of the Education Amendments of 1972, the U.S. Department of the Interior and its bureaus prohibit discrimination on the basis of race, color, national origin, age, disability or sex.

*NOTE: Laws and regulations in this brochure are paraphrased for easier understanding and are intended only as a guide. Colorado wildlife statutes and regulations are available for viewing at CPW offices and online at [www.wildlife.state.co.us/RulesRegs/Pages/Regs.aspx](http://www.wildlife.state.co.us/RulesRegs/Pages/Regs.aspx).*



# 2012 WHAT'S NEW

» **SCAUP LIMITS REMOVED.** The U.S. Fish and Wildlife Service recently passed a regulation that will increase opportunity for scaup statewide. The new regulation lengthens the scaup season in the Pacific Flyway and allows for a full bag limit in both flyways. The new season length and bag limit for scaup is the same as the basic season and limits for duck seasons. *See page 8.*

» **DUCK SEASON SPLIT CHANGED.** The season split for duck and coot hunting has been changed this year in the Northeast Zone. It now aligns with the late plains rifle season for deer, so hunters can use the break during the waterfowl split to hunt deer with the proper big-game license. *See page 8 for details.*

» **NEW RESERVATION PHONE NUMBER.** To improve customer service and reduce hold time on the phone, those hunting the Grand Valley area in the Pacific Flyway now have a local phone number to call to reserve a waterfowl blind. Check before you call to ensure you have the right reservation phone number and will be able to reserve your favorite hunting spot quickly and efficiently.

Lands using the new phone number include: Colorado River Island SWA, Franklin Island SWA, Highline Lake State Park, Horsethief Canyon SWA, James M. Robb Colorado River State Park, Orchard Mesa SWA and Tilman Bishop SWA. *See page 12 for details.*

## REPORT POACHERS



**OPERATION GAME THIEF: 1-877-265-6648**  
**EMAIL: GAME.THIEF@STATE.CO.US**

Earn a reward payment for reporting wildlife violations by calling Operation Game Thief, a wildlife crimestoppers organization. A reward is paid, if requested by the caller, upon a citation issued or arrest made. Callers can remain anonymous. *(This number is not for information requests or emergencies.)*



**YOU CAN HELP  
STOP POACHING!**

**1-877-COLO-OGT**  
**1-877-265-6648**  
[www.thatstate.co.us](http://www.thatstate.co.us)  
 Your Wildlife...Your Loss  
 Turn In A Poacher!

## LICENSE FEES

	RESIDENT	NONRESIDENT
» Habitat Stamp ( <i>required</i> ) .....	<b>\$10</b>	<b>\$10</b>
» Small Game .....	<b>\$21</b>	<b>\$56</b>
» Small Game ( <i>one-day</i> ) .....	<b>\$11</b>	<b>\$11</b>
» Small Game ( <i>additional day</i> ) .....	<b>\$5</b>	<b>\$5</b>
» Youth Small Game ( <i>Under 18</i> ) .....	<b>\$1.75</b>	<b>\$1.75</b>
» Small Game & Fishing Combo.....	<b>\$41</b>	<b>n/a</b>
» Colorado Waterfowl Stamp.....	<b>\$5</b>	<b>\$5</b>
» Federal Migratory Bird Hunting Stamp ( <i>Duck Stamp</i> ) .....	<b>\$15</b>	<b>\$15</b>
» Military ( <i>60 percent or more disability, see details below</i> ).....	<b>free</b>	<b>n/a</b>

*Prices include 25-cent search-and-rescue fee and 75-cent surcharge for the Wildlife Management Public Education Fund.*

### SAVE TIME: BUY ONLINE OR BY PHONE

Go to [www.wildlife.state.co.us/ShopDOW/AppsAndLicenses/Pages/totallicensing.aspx](http://www.wildlife.state.co.us/ShopDOW/AppsAndLicenses/Pages/totallicensing.aspx) or call 1-800-244-5613. CPW offices and license agents also sell licenses.



## LICENSE INFORMATION

### WHAT YOU NEED TO BUY A LICENSE

1. Current and valid photo ID and proof of residency (*See page 2*)
2. Proof of hunter education (*see requirements below*)
3. Habitat Stamp (*See page 2*)
4. To hunt waterfowl, all hunters must purchase a small-game license. Hunters age 16 and older also must have a Colorado Waterfowl Stamp and federal migratory bird stamp prior to hunting.

### HUNTER EDUCATION (SAFETY) REQUIREMENTS

Hunters born on or after Jan. 1, 1949, must have completed an approved hunter education course sanctioned by a state or province before purchasing a license. Colorado honors hunter education courses from other states and provinces. You must present an original hunter safety card when buying a license (unless previously verified) or enter the required information when applying by mail or online. You must carry your hunter education card while hunting unless a "V" is printed on the license, which indicates hunter education has been verified at a Wildlife Area Office.

Hunter education courses can be found at [www.wildlife.state.co.us/Hunting/HunterEducation/CourseCalendar/Pages/HECalendar.aspx](http://www.wildlife.state.co.us/Hunting/HunterEducation/CourseCalendar/Pages/HECalendar.aspx).

### YOUTH LICENSES AND MENTOR HUNTING

People under age 18 must have a license to hunt waterfowl. A youth small-game license is \$1, plus surcharge. All youths must meet hunter education requirements. Those under 16 must be accompanied by a mentor while hunting. A mentor must be 18 or older and must meet hunter education requirements. Mentors aren't required to hunt. While hunting, youths and mentors must be able to see and hear each other without binoculars, radios or other aids. Youths can buy an adult license as long as they meet hunter education requirements. At age 18, hunters must buy an adult license.

### DISABLED VETERANS

Colorado residents who are disabled veterans or Purple Heart recipients can get free lifetime combination small-game hunting and fishing licenses. You must have served on active duty and have been honorably discharged. Proof is required of a service-related disability rated by the Veterans Administration of at least 60 percent through disability retirement benefits or a pension administered by the Department of Veteran Affairs or respective service department.

# PURCHASING A LICENSE

## LICENSE REQUIREMENTS

- Hunters must have a small-game license, youth small-game or combination fishing/small-game license to hunt waterfowl. Hunters must carry their license when hunting and show it when requested by law enforcement officers.
- Hunters age 16 or older must have a \$15 Federal Migratory Bird Hunting and Conservation Stamp (Duck Stamp) and a \$5 Colorado State Waterfowl Stamp to hunt waterfowl.  
**COLORADO WATERFOWL STAMP:** The state stamp is printed on your hunting license and validated by signing your name in ink across the imprint. The gum-backed state stamp is available for an extra \$2.50, if desired, and is mailed after July 1.  
**FEDERAL DUCK STAMP:** The federal stamp is available after July 1 online, by phone and at select post offices ([www.fws.gov/duckstamps/stamps.htm](http://www.fws.gov/duckstamps/stamps.htm)). It is valid when you sign your name in ink across the face of the stamp. It is also available at Wildlife Area Offices and license agents. When purchased at state outlets, an electronic stamp is issued. This instantly gives you a unique code that is valid for 45 days from the date of issue, sufficient time for the gum-backed stamp to arrive in the mail. A federal stamp is not required to take light geese during the conservation order season.
- Annual fishing, small-game and furbearer licenses, as well as Colorado waterfowl stamps and Habitat Stamps are valid April 1 through March 31 of the following year. Lifetime small-game and fishing combination licenses are valid as long as you are a Colorado resident.
- If a license is restricted to a specific area, you can hunt only that area.
- Licenses and stamps are not transferable.
- False statements made in buying a license and altering a license are illegal and void the license.
- Lost or destroyed licenses can be replaced by buying a new one or signing an affidavit and paying a fee. Forms are available at Wildlife Area Offices and license agents.

## HABITAT STAMPS ARE REQUIRED FOR HUNTERS

Habitat Stamps are \$10 and only one is required per person per year for anyone ages 18-64. Stamps are valid April 1-March 31.

- » You must purchase a stamp before buying or applying for a preference point or a hunting or fishing license.
- » A lifetime stamp is \$300.25.
- » Anyone buying a one-day or additional-day license for fishing and/or small game is exempt from purchasing the Habitat Stamp with the first two of these licenses. The habitat fee will be assessed when a third one-day or additional-day license is purchased for fishing or small game.
- » Anyone who holds a free Lifetime Fishing License, a Veteran's Lifetime Combination Small-Game Hunting/Fishing License, or are approved for the Big Game Mobility Impaired Hunting Program is exempt from the Habitat Stamp requirement. See [www.wildlife.state.co.us/Hunting/DisabledAccessibility/Pages/DisabilityInformation.aspx](http://www.wildlife.state.co.us/Hunting/DisabledAccessibility/Pages/DisabilityInformation.aspx).

## RESIDENCY REQUIREMENTS

The requirements to qualify as a Colorado resident to buy a hunting license:

- You must live in Colorado at least 6 consecutive months immediately before applying for or buying a license, and must intend to make Colorado home (except No. 3 and No. 4 below.) The residence address you give to buy or apply for a license must be the same as on your Colorado income tax return.
- A valid Colorado driver's license or Colorado ID is proof of residency if issued as least 6 months prior to buying or applying for a license. If your ID or driver's license was issued or renewed less than 6 months prior, you must provide documentation that proves you have been a resident for the required 6-month period.
- U.S. military personnel and military personnel of U.S. allies on active duty in Colorado under permanent orders and their dependents. This includes people who were Colorado residents when they entered the military and maintain Colorado as their home of record, and their dependents (who keep Colorado as their home of record.) Also included are personnel of the U.S. Diplomatic Service or diplomatic services of nations recognized by the U.S. assigned to duty here on permanent active duty orders and their dependents. Active duty does not include reserve status or National Guard.
- Full-time students enrolled and attending an accredited Colorado college, university or trade school at least 6 months immediately before applying for or buying a license. This includes students who are temporarily absent from Colorado but still enrolled. Colorado residents who attend school full-time out of state and pay nonresident tuition still qualify for a resident license.
- Children under 18 have the same residency status as their parent, legal guardian or person with whom they live the majority of the time per court order.
- If you have a home in Colorado and another state, call (303) 297-1192 to make sure you comply with Colorado residency requirements before obtaining a hunting or fishing license.
- Except as in No. 3 and No. 4 above, you lose your Colorado residency if you apply for, buy or accept a hunting, fishing or trapping license as a resident of another state or country; register to vote outside Colorado or get a driver's license with an address in another state.

## CHILD-SUPPORT DELINQUENCY

State law requires a Social Security number to buy a license. It is not displayed on the license but is provided, if requested, to Child Support Enforcement authorities. Hunting and fishing licenses are not issued to people suspended for noncompliance with child support. In addition, any current licenses become invalid if held by someone noncompliant with child support.

## WEAPONS RESTRICTIONS

Colorado and federal laws prohibit people convicted of certain crimes, such as domestic violence, from possessing weapons even for hunting. If you've been convicted of a crime, check with the appropriate law enforcement authority to find out how these laws apply to you.

"Misty Afternoon"  
by Richard Clifton

PURCHASE STAMPS  
& PRINTS ONLINE  
[WWW.CWHF.US](http://WWW.CWHF.US)  
OR CALL TO ORDER  
303.291.7212

2012  
EXPIRES  
6/30/13

COLORADO  
WATERFOWL STAMP

Colorado Waterfowl Stamp

SMALL THINGS CAN MAKE A BIG DIFFERENCE.

When you purchase a hunting license,  
75¢ goes to educate the public on the role  
sportsmen play in wildlife management.

HUG A HUNTER<sup>™</sup>.com

# KNOW BEFORE YOU GO

Laws and legal hunting methods explained on page 11

## HARVEST INFORMATION PROGRAM (HIP) 1-866-265-6447 (1-866-COLOHIP)

If you hunt small game, furbearers, or migratory birds in Colorado, including by falconry, you must sign up with HIP before your license is valid.

Hunters must write their HIP number in the space provided on the license. Hunters will be asked basic questions about their hunting, including how many birds they harvested the previous

season and what species they plan to hunt this year. A season means Sept. 1-March 15 of the next year.

Both the phone line and website run 24 hours a day, every day, and the process takes about 5 minutes. To sign up for HIP, hunters need to call 1-866-265-6447 (1-866-COLOHIP) or go online to [www.colohip.com](http://www.colohip.com).



## LEGAL HUNTING HOURS

Legal times to hunt waterfowl are one-half hour before sunrise to sunset.

In light goose conservation season, hunting is allowed one-half hour before sunrise to one-half hour after sunset.

The sunrise/sunset chart below lists time in Denver. Subtract 1 minute from opening and

closing time for each 12 1/2 miles east of Denver. Add 1 minute to opening and closing time for each 12 1/2 miles west of Denver.

(These changes assume that each degree of longitude equals 50 miles and a change of 1 degree of longitude equals a 4-minute change in sunrise and sunset times.)

## 2012-2013 SUNRISE/SUNSET TABLE (DENVER)

DAY	SEPT.		OCT.		NOV.		DEC.		JAN. 2013		FEB. 2013		MARCH 2013		
	RISE	SET	RISE	SET	RISE	SET	RISE	SET	RISE	SET	RISE	SET	RISE	SET	
(DST)	A.M.	P.M.	(DST)	A.M.	P.M.	(Daylight saving time)	A.M.	P.M.	A.M.	P.M.	A.M.	P.M.	A.M.	P.M.	
1	6:29	7:30	6:57	6:41	7:29	5:57	7:02	4:36	7:21	4:47	7:07	5:20	6:33	5:52	
2	6:29	7:29	6:58	6:40	7:30	5:56	7:03	4:36	7:21	4:47	7:07	5:21	6:31	5:53	
3	6:30	7:27	6:59	6:38	7:31	5:55	7:04	4:36	7:21	4:48	7:06	5:22	6:30	5:55	
4	6:31	7:25	7:00	6:37	6:33	4:54	DST ends	7:05	4:35	7:21	4:49	7:05	5:24	6:28	5:56
5	6:32	7:24	7:01	6:35	6:34	4:53	7:06	4:35	7:21	4:50	7:04	5:25	6:27	5:57	
6	6:33	7:22	7:02	6:33	6:35	4:52	7:07	4:35	7:21	4:51	7:02	5:26	6:25	5:58	
7	6:34	7:21	7:03	6:32	6:36	4:51	7:08	4:35	7:21	4:52	7:01	5:27	6:23	5:59	
8	6:35	7:19	7:04	6:30	6:37	4:50	7:09	4:35	7:21	4:53	7:00	5:28	6:22	6:00	
9	6:36	7:17	7:05	6:29	6:38	4:49	7:10	4:35	7:21	4:54	6:59	5:30	6:20	6:01	
10	6:37	7:16	7:06	6:27	6:39	4:48	7:10	4:36	7:21	4:55	6:58	5:31	6:19	6:02	
11	6:38	7:14	7:07	6:26	6:41	4:47	7:11	4:36	7:20	4:56	6:57	5:32	7:17	7:03	
12	6:39	7:12	7:08	6:24	6:42	4:46	7:12	4:36	7:20	4:57	6:56	5:33	7:16	7:04	
13	6:40	7:11	7:09	6:23	6:43	4:45	7:13	4:36	7:20	4:58	6:54	5:34	7:14	7:05	
14	6:41	7:09	7:10	6:21	6:44	4:45	7:13	4:36	7:19	4:59	6:53	5:35	7:12	7:06	
15	6:42	7:08	7:11	6:20	6:45	4:44	7:14	4:37	7:19	5:00	6:52	5:37	7:11	7:07	
16	6:42	7:06	7:12	6:18	6:46	4:43	7:15	4:37	7:19	5:01	6:51	5:38	7:09	7:08	
17	6:43	7:04	7:13	6:17	6:47	4:42	7:15	4:37	7:18	5:03	6:49	5:39	7:08	7:09	
18	6:44	7:03	7:14	6:15	6:48	4:42	7:16	4:38	7:18	5:04	6:48	5:40	7:06	7:10	
19	6:45	7:01	7:15	6:14	6:50	4:41	7:17	4:38	7:17	5:05	6:47	5:41	7:04	7:11	
20	6:46	6:59	7:16	6:13	6:51	4:40	7:17	4:39	7:17	5:06	6:45	5:42	7:03	7:12	
21	6:47	6:58	7:17	6:11	6:52	4:40	7:18	4:39	7:16	5:07	6:44	5:44	7:01	7:13	
22	6:48	6:56	7:18	6:10	6:53	4:39	7:18	4:40	7:15	5:08	6:43	5:45	7:00	7:14	
23	6:49	6:54	7:19	6:09	6:54	4:39	7:19	4:40	7:15	5:09	6:41	5:46	6:58	7:15	
24	6:50	6:53	7:20	6:07	6:55	4:38	7:19	4:41	7:14	5:11	6:40	5:47	6:56	7:16	
25	6:51	6:51	7:21	6:06	6:56	4:38	7:19	4:41	7:13	5:12	6:38	5:48	6:55	7:17	
26	6:52	6:50	7:22	6:05	6:57	4:37	7:20	4:42	7:13	5:13	6:37	5:49	6:53	7:18	
27	6:53	6:48	7:24	6:03	6:58	4:37	7:20	4:43	7:12	5:14	6:36	5:50	6:52	7:19	
28	6:54	6:46	7:25	6:02	6:59	4:37	7:20	4:43	7:11	5:15	6:34	5:51	6:50	7:20	
29	6:55	6:45	7:26	6:01	7:00	4:36	7:21	4:44	7:10	5:16			6:48	7:21	
30	6:56	6:43	7:27	6:00	7:01	4:36	7:21	4:45	7:09	5:18			6:47	7:22	
31			7:28	5:59			7:21	4:46	7:08	5:19			6:45	7:23	

### TIME ADJUSTMENT FOR OTHER COLORADO CITIES

This table reflects the minutes to add/subtract to the chart above for select towns. These are approximate, use only as a reference. Consult a state map for more details.

Alamosa	+3	Gr. Junction	+13
Buena Vista	+5	Gunnison	+7
Burlington	-10	La Junta	-6
Craig	+9	Lamar	-9
Durango	+11	Sterling	-6
Fort Morgan	-4	Walden	+5

## WALK-IN ACCESS PROGRAM

The Walk-In Access (WIA) program provides opportunities to hunt small game, migratory game birds and furbearers on enrolled properties.

WIA properties allow hunting small game, furbearers, migratory game birds and Eurasian collared-doves but only during established season dates. Properties are closed to hunting Gambel's quail, Gunnison's sage-grouse and greater sage-grouse.

The brochure includes tips on how to have successful dove, pheasant and quail hunts in Colorado.

The regular season walk-in properties are open Sept. 1 through the end of February.

The late cropland season properties are open from opening day of pheasant season through the end of February.

Extended walk-in properties are open from the start of pheasant season through the end of March.

Properties are open to foot access only, from one hour before sunrise until one hour after sunset. They are open two hours before sunrise until two hours after sunset for waterfowl hunting.

A WIA permit is no longer required to hunt WIA lands, but hunters must have a small-game license. Properties enrolled are posted with Walk-In Access signs and published in the WIA atlas. Access is prohibited as posted when the landowner is actively harvesting crops.

Two atlases for 2012-13 will be published. The early version, the 2012 Small Game Walk-In Atlas is available in mid-August and includes properties open Sept. 1. The 2012 Late Cropland Atlas will be available in late October and includes an updated property list.



# Get Outdoors



## Subscribe to Colorado Outdoors

Did you know Colorado has the largest elk herd in the world? Did you know Colorado is the only state where you can buy an over-the-counter bull elk license? *Colorado Outdoors* magazine will keep you up-to-date on all the opportunities available to you and your hunting buddies. Don't flounder around looking for the best spots to fish. *Colorado Outdoors* is a must-read if you're seeking a high-country angling experience or fishing the state's plains reservoirs.

For over 70 years, *Colorado Outdoors* has been the official publication of Colorado Parks and Wildlife (CPW) and the only magazine dedicated to Colorado's wildlife. And now when you subscribe, you get your choice of either a free hunting guide or fishing guide. These special annual editions are packed with a wealth of information you need to know to be a more successful hunter or angler.

We offer insight into our wildlife resources as well as providing up-to-date coverage of hunting, fishing and wildlife management. You get valuable advice from CPW experts, information that you can't get anywhere else. You'll read about recovery efforts of some of our endangered species. Plus you'll learn about environmental news, watchable wildlife events, volunteer opportunities, state fishing records and much more.

## 10 Reasons to subscribe to Colorado Outdoors

- Each one-year subscription entitles you to six issues.
- Subscribers get their choice of either the Fishing Guide or the Hunting Guide. These 40-page special editions sell for \$5 on the newsstand and you get your choice of one absolutely free.
- Learn high-performance hunting tips for a more successful hunt.
- Annual Preference Point issue is a must-have tool in planning your big game hunt.
- Expert advice on cold- and warm-water fishing.
- Award-winning wildlife photography, including annual photography issue.
- A great way to introduce your children to wildlife and the outdoors.
- A valuable reference guide for classrooms and libraries.
- Makes a great gift
- Never any advertising

**To order your subscription online visit the Colorado Parks and Wildlife website at <http://wildlifestore.state.co.us> and click on the link to *Colorado Outdoors* magazine**



## Attention: Snow goose hunters

If you removed the plug from your shotgun during the 2012 Light Goose Conservation Order season, remember to replace the plug in your gun before hunting in the fall small-game and waterfowl seasons.

### TAGGING, SHIPPING, IMPORTING

1. A carcass tag must be attached to wildlife requiring one.
2. Licensees must accompany wildlife not requiring a carcass tag (*except as in No. 4*).
3. One fully feathered wing or head must be attached to birds in transit until they arrive at hunter's home or commercial processing facility.
4. To ship migratory birds, packages must be marked outside with name and address of sender, name and address of receiver and number of birds, by species. Licenses, a photocopy of the license or carcass tag must accompany wildlife shipped by common carrier.
5. It is illegal to leave migratory birds anywhere other than at your home or with someone else for picking, cleaning, processing, permanent or temporary storage or taxidermy unless the birds or package of birds have a tag attached. You must sign tags, include your address, total number and species of birds, date of kill and your hunting license number.
6. Migratory bird preservation facilities:
  - a. If you have someone else's migratory birds for picking, cleaning, freezing, processing, storing or shipping, you must have records showing the number of each species, date you received them, date birds were disposed of, and name and address of who received the birds.
  - b. You must keep records 1 year after the last entry.
  - c. You must allow people authorized to enforce this regulation to enter the facilities at reasonable hours to inspect records and premises.
7. Per week, beginning on Sunday, it is illegal to import more than 25 doves and 10 pigeons from a foreign country; or more than 10

### WATCH FOR BANDED BIRDS

Wildlife managers need help gathering information about the migratory bird populations. If you kill a banded bird, please report it to the USGS Bird Banding Lab, [www.reportband.gov](http://www.reportband.gov) or call 1-800-327-BAND.

ducks and 5 geese from a foreign country, except Canada and Mexico. Doves and waterfowl imported from Canada and Mexico cannot exceed Canadian and Mexican export limits. One fully feathered wing must stay attached to birds transported and shipped between ports of entry and someone's home or a migratory bird facility. It is illegal to import someone else's birds.

8. It is illegal to take, have, transport, import or export migratory birds, their parts, nests or eggs that were taken, bought, sold, transported, possessed or exported illegally.
9. It is illegal to have or transport live migratory birds, including wounded birds. You must kill migratory game birds immediately after recovering them.
10. No permit is required to have or transport plumage and skins of legally taken migratory birds for your own use.
11. No permit required to have, dispose of and transport feathers of wild ducks and wild geese legally killed, or of birds seized by wildlife authorities. It is legal to use feathers to make fishing flies, bed pillows, mattresses and similar commercial items, except millinery or ornamental use.
12. It is illegal to buy, sell, barter, or offer to buy or sell feathers or mounted specimens of migratory game birds.

the recipient's home. A like-license is for the same species, sex, dates and manner of take as the donor's license. Bag and possession limits apply to donors and recipients and birds must be properly tagged. See "Tagging, Shipping, Importing," above.

### WILDLIFE CAUSING DAMAGE

Colorado law allows landowners to protect private property from most wildlife damage. For information, call the CPW at (303) 297-1192.

### CALL BEFORE DIGGING

1-800-922-1987

Colorado law requires waterfowl hunters to call the Utility Notification Center of Colorado before digging hunting pits. By doing so, hunters can avoid accidentally hitting electric, gas, water and other utility lines.

### DONATING WILDLIFE

You can donate edible parts of wildlife to a like-license holder anywhere or to anyone at

## HUNTING DEFINITIONS

**AGGREGATE:** Total number of animals allowed to be taken in one day, by one person. This is equal to the largest daily bag limit.

**DAILY BAG LIMIT:** Maximum number of birds you can kill daily, including birds eaten or donated the day you killed them.

**CENTRAL FLYWAY:** East of the Continental Divide.

**GEESE:** All species of geese and brant. Light geese means lesser snow geese (including blue), greater snow geese and Ross' geese. Dark geese means Canada geese, white-fronted geese, brant and all other species of geese except light geese.

**MANIPULATION:** Alteration of natural vegetation or agricultural crops by activities that include, but are not limited to, mowing, shredding, discing, rolling, chopping, trampling, flattening, burning or herbicide treatments. Manipulation does not include distributing or scattering grain, seed or other feed after removal from or storage on the field where grown.

**MIGRATORY GAME BIRDS:** Migratory birds included in conventions between U.S. and foreign countries to protect birds for which seasons are established. They are: waterfowl (ducks, including mergansers; and geese, including brant), mourning and white-winged doves, sandhill cranes, American coots, sora, Virginia rail, Wilson's snipe, band-tailed pigeons, crows.

**NATURAL VEGETATION:** Non-agricultural, native or natural plants growing from planting, or existing seeds and other propagules. This does not include planted millet. However, millet growing on its own after planting year is considered natural vegetation.

**NON-TOXIC SHOT:** Any shot type approved to take migratory game birds according to 50 CFR 20.21 (*U.S. Fish and Wildlife Service*). See page 10 for table and details.

**NORMAL AGRICULTURAL OPERATION:** Planting, harvesting, post-harvest manipulation or agricultural practice conducted according to 50 CFR 20.11 (*U.S. Fish and Wildlife Service*).

**NORMAL AGRICULTURAL PLANTING, HARVESTING OR POST-HARVEST MANIPULATION:** planting or harvesting to produce and gather crops or manipulation after harvest and removal of grain, conducted according to 50 CFR 20.11 (*U.S. Fish and Wildlife Service*).

**NORMAL SOIL STABILIZATION PRACTICE:** Planting for agricultural soil erosion control or post-mining reclamation conducted according to 50 CFR 20.11 (*U.S. Fish and Wildlife Service*).

**PACIFIC FLYWAY:** West of the Continental Divide.

**POSSESSION LIMIT:** Maximum number of birds allowed at any time.

**SINKBOX:** Raft or low-floating device with a depression concealing a person below the surface of the water.





# GOOSE SEASON REGULATIONS, BAG LIMITS

## CENTRAL FLYWAY

### REGULAR SEASON

**AREAS:** East of Continental Divide, except areas with the following seasons: Northern Front Range, North Park and South Park/San Luis Valley

**DARK GEESE —**

**DATES:** Nov. 17-Feb. 10, 2013  
**DAILY BAG LIMIT:** 4  
**POSSESSION LIMIT:** 8

**LIGHT GEESE —**

**DATES:** Oct. 27-Feb. 10, 2013  
**DAILY BAG LIMIT:** 20  
**POSSESSION LIMIT:** Unlimited

### NORTHERN FRONT RANGE SEASON

**AREAS:** Boulder, Larimer and Weld counties from the Continental Divide east along the Wyoming border to Hwy. 85, south on Hwy. 85 to Adams Co. line, and all of Adams, Arapahoe, Broomfield, Clear Creek, Denver, Douglas, Gilpin and Jefferson counties.

**DARK GEESE —**

**DATES:** Sept. 29-Oct. 14; Nov. 17-Feb. 10, 2013  
**DAILY BAG LIMIT:** 4  
**POSSESSION LIMIT:** 8

**LIGHT GEESE —**

**DATES:** Oct. 27-Feb. 10, 2013  
**DAILY BAG LIMIT:** 20  
**POSSESSION LIMIT:** Unlimited

### SOUTH PARK/SAN LUIS VALLEY SEASON

**AREAS:** Alamosa, Chaffee, Conejos, Costilla, Custer, Fremont, Lake, Park, Rio Grande and Teller counties. And the parts of Hinsdale, Mineral and Saguache counties east of the Continental Divide.

**DARK GEESE —**

**DATES:** Sept. 29-Oct. 14; Nov. 17-Feb. 10, 2013  
**DAILY BAG LIMIT:** 4  
**POSSESSION LIMIT:** 8

**LIGHT GEESE —**

**DATES:** Oct. 27-Feb. 10, 2013  
**DAILY BAG LIMIT:** 20  
**POSSESSION LIMIT:** Unlimited

### NORTH PARK SEASON

**AREAS:** Jackson County

**DARK GEESE —**

**DATES:** Sept. 29-Oct. 14; Nov. 17-Feb. 10, 2013  
**DAILY BAG LIMIT:** 4  
**POSSESSION LIMIT:** 8

**LIGHT GEESE —**

**DATES:** Oct. 27-Feb. 10, 2013  
**DAILY BAG LIMIT:** 20  
**POSSESSION LIMIT:** Unlimited

### LIGHT GOOSE CONSERVATION ORDER SEASON

**AREAS:** East of I-25  
**DATES:** Feb. 11-April 30, 2013

**DAILY BAG LIMIT:** Unlimited  
**POSSESSION LIMIT:** Unlimited

**NOTE:** See page 11, No. 7 of "Legal Hunting Methods" section for special conditions.

## PACIFIC FLYWAY

### EARLY CANADA GOOSE SEASON

**AREAS:** West of Continental Divide  
**DATES:** Sept. 1-9

**DAILY BAG LIMIT:** 4 Canada geese  
**POSSESSION LIMIT:** 8 Canada geese

### REGULAR SEASON

**AREAS:** West of Continental Divide  
**DATES:** Sept. 22-Oct. 1; Nov. 3-Jan. 27, 2013

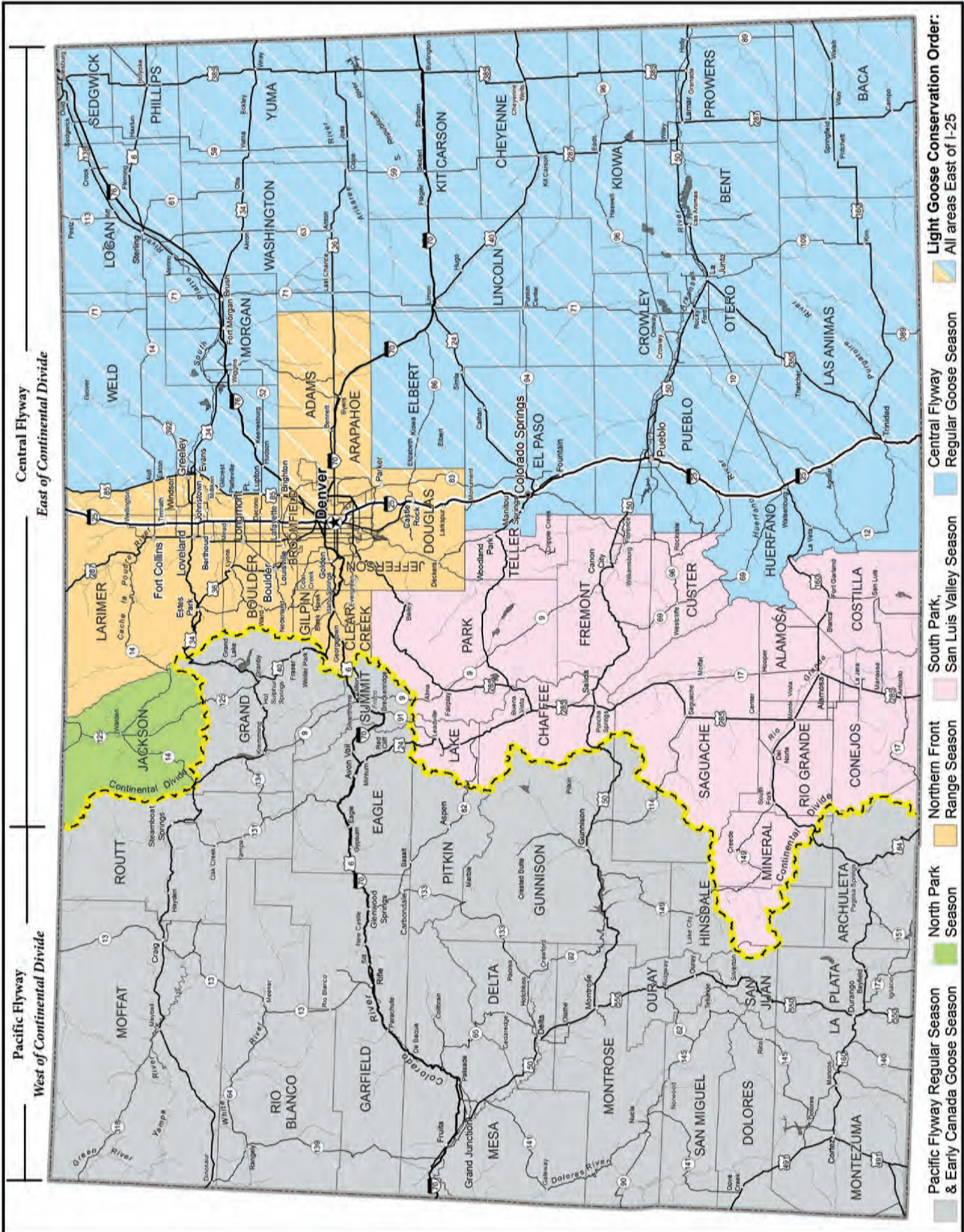
**DAILY BAG LIMIT:** 4 dark geese; 10 light geese  
**POSSESSION LIMIT:** 8 dark geese; 20 light geese



Hunters learn how to set goose decoys and hunt from pit blinds as part of the CPW Hunter Outreach program. Photo by © CPW.



# GOOSE SEASONS IN COLORADO







# DUCK & COOT SEASON REGULATIONS, BAG LIMITS

## SEPTEMBER TEAL SEASON

**AREAS:** Lake and Chaffee counties and all areas east of I-25.

**DATES:** Sept. 8-16

**DAILY BAG LIMIT:** 4

**POSSESSION LIMIT:** 8



**COOTS:** 15

**MERGANSERS:** 5; only 2 can be hooded mergansers.

**POSSESSION LIMIT:** 2 daily bag limits

## CENTRAL FLYWAY

### NORTHEAST ZONE

**AREA:** East of I-25 and north of I-70

**DATES:** Oct. 6-Nov. 26; Dec. 15-Jan. 27, 2013

**DAILY BAG LIMIT —**

**DUCKS:** 6, excluding mergansers. Of these, up to 5 can be mallards, but no more than 2 can be female mallards. Included in the daily bag limit of 6, you can have no more than 2 pintails, 1 canvasback, 2 redheads and 3 wood ducks.

**COOTS:** 15

**MERGANSERS:** 5; only 2 can be hooded mergansers

**POSSESSION LIMIT:** 2 daily bag limits

**DAILY BAG LIMIT —**

**DUCKS:** 6, excluding mergansers. Up to 5 can be mallards, no more than 2 can be female mallards. Included in the daily bag limit of 6, you can have no more than 2 pintails, 1 canvasback, 2 redheads and 3 wood ducks.

**COOTS:** 15

**MERGANSERS:** 5; only 2 can be hooded mergansers

**POSSESSION LIMIT:** 2 daily bag limits

### MOUNTAIN/FOOTHILLS ZONE

**AREA:** West of I-25 and east of Continental Divide, except El Paso, Pueblo, Huerfano and Las Animas counties

**DATES:** Sept. 29-Nov. 25; Dec. 21-Jan. 27, 2013

**DAILY BAG LIMIT —**

**DUCKS:** 6, excluding mergansers. Of these, up to 5 can be mallards, but no more than 2 can be female mallards. Included in the daily bag limit of 6, you can have no more than 2 pintails, 1 canvasback, 2 redheads and 3 wood ducks.

## PACIFIC FLYWAY

**AREA:** West of Continental Divide

**DATES:** Sept. 22-Oct. 10; Nov. 3-Jan. 27, 2013

**DAILY BAG LIMIT —**

**DUCKS & MERGANSERS:** 7 in aggregate. Of these, no more than 2 can be female mallards, 2 pintails, 1 canvasback and 2 redheads.

**POSSESSION LIMIT:** 2 daily bag limits

**COOTS:** Daily bag and possession limit is 25

## DUCKS OF COLORADO

The winter male plumage of some commonly encountered ducks are depicted here.

For more on identifying waterfowl, go to [www.npwrc.usgs.gov/resource/birds/waterfowl/index.htm](http://www.npwrc.usgs.gov/resource/birds/waterfowl/index.htm).



Mallard



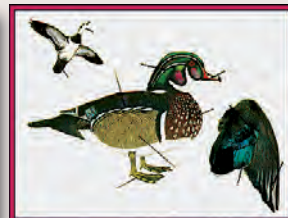
Redhead



American wigeon



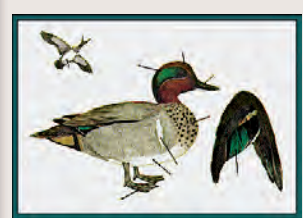
Gadwall



Wood duck



Hooded merganser



Green-winged teal



Canvasback



Pintail



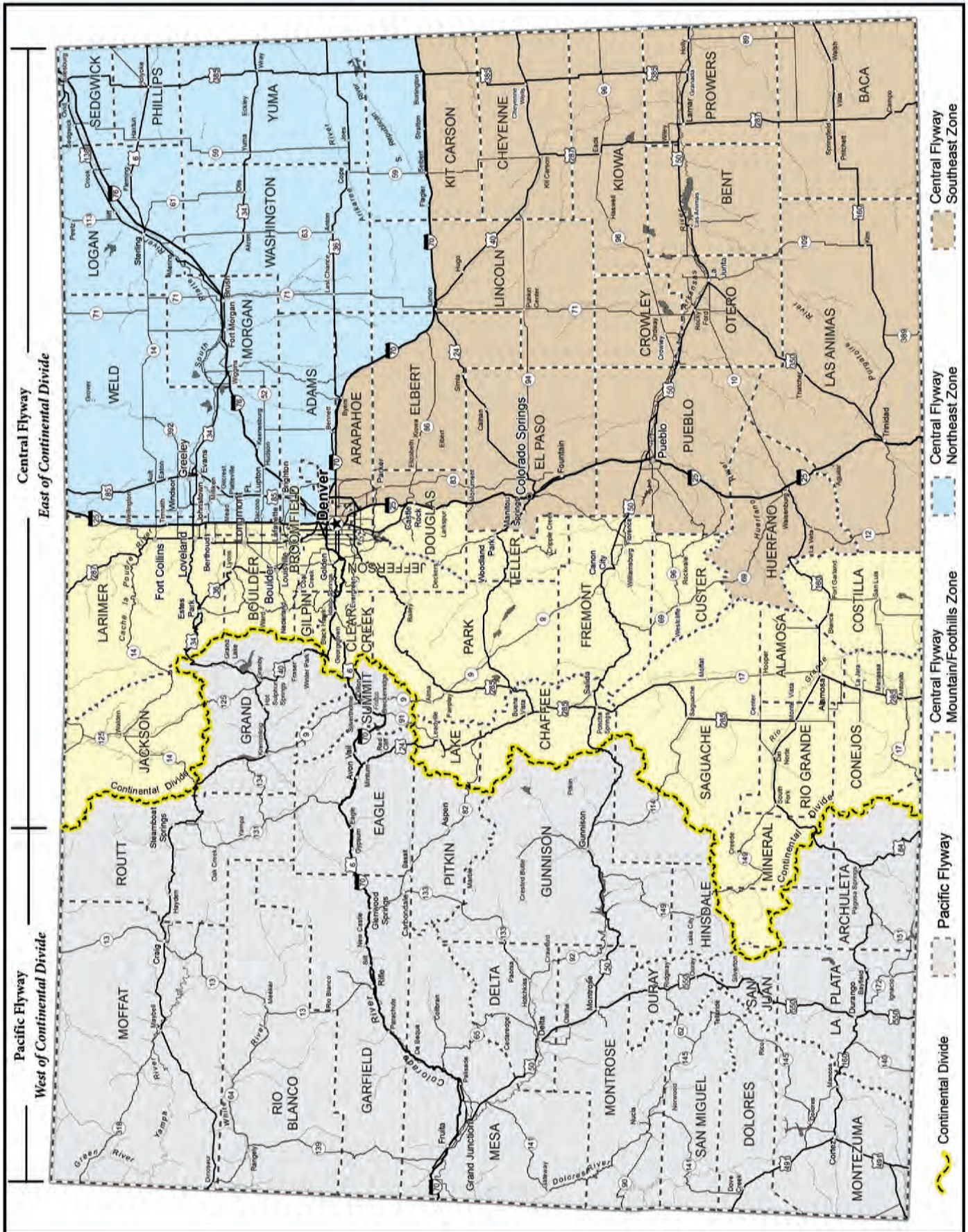
Lesser scaup



Blue-winged teal



# DUCK SEASON FLYWAYS AND ZONES







# YOUTH HUNT REGULATIONS

**NOTE:** Hunting in youth seasons is restricted to youths under age 18 with a mentor. Mentors cannot hunt during youth seasons. Other rules apply. See "Youth Licenses," page 1.

## CENTRAL FLYWAY

### NORTHEAST ZONE

**AREA:** East of I-25 and north of I-70  
**DATES:** Sept. 22-23

### SOUTHEAST ZONE

**AREA:** East of I-25 and south of I-70, and all of El Paso, Pueblo, Huerfano and Las Animas counties  
**DATES:** Oct. 20-21

### MOUNTAIN/FOOTHILLS ZONE

**AREA:** West of I-25 and east of the Continental Divide, except El Paso, Pueblo,

Huerfano and Las Animas counties

**DATES:** Sept. 22-23

### BAG AND POSSESSION LIMITS FOR ALL ZONES IN CENTRAL FLYWAY —

**DUCKS, COOT, MERGANSERS:** Daily bag and possession limits are the same as regular Central Flyway regulations, *see page 8.*

**GEESE — DAILY BAG LIMIT:** 4 dark geese  
**POSSESSION LIMIT:** 2 daily bag limits

## PACIFIC FLYWAY

**AREA:** West of Continental Divide

**DATES:** Oct. 13-14

### BAG AND POSSESSION LIMITS —

**DUCKS, COOTS, MERGANSERS:** Daily bag and possession limit is same as regular Pacific Flyway regulations, *see page 8.*

**GEESE — DAILY BAG LIMIT:** 4 dark geese, 10 light geese

**POSSESSION LIMIT:** 2 daily bag limits



# HAWKING & FALCONRY REGULATIONS:

## CENTRAL AND PACIFIC FLYWAYS

**DATES:** Coincide with regular seasons in this brochure

**DAILY BAG LIMIT:** 3 singly or in aggregate

**POSSESSION LIMIT:** 6 singly or in aggregate

**NOTE:** The falconry bag and possession limit is not in addition to the gun bag and possession limit.

## NONTOXIC SHOT REGULATIONS

1. It is illegal to use or have toxic (lead) shot, either in shotshells or as loose shot for muzzleloading, while taking or attempting to take ducks, geese or coots in Colorado. This includes national wildlife refuges open to hunting. Toxic shot, either in shotshells or as loose shot for muzzleloading, cannot be in a hunter's gun, on his/her person or near a hunter taking or attempting to take waterfowl. Store lead shot in your vehicle. You can store lead shot elsewhere if it's not readily accessible while hunting waterfowl.
2. Nontoxic shot is required in commercial wildlife parks, field trials and dog-training while hunting captive-reared mallards.
3. Nontoxic shot is any type approved by the U.S. Fish and Wildlife Service. Go to: [www.fws.gov/migratorybirds/CurrentBirdIssues/nontoxic.htm](http://www.fws.gov/migratorybirds/CurrentBirdIssues/nontoxic.htm).
4. It is illegal to have or use nontoxic shot larger than size T to hunt ducks, geese or coots.

TOM ROSTER'S 2012 NONTOXIC SHOT LETHALITY TABLE <sup>®</sup>							
Proven Nontoxic Shot Loads For Waterfowl & Upland Game Birds <sup>1</sup> Load Velocity: 1,225 - 1,450 FPS	Typical Shooting Range of Activity (Yards)	Most Effective Nontoxic Shot Size(s) For Birds Listed Under the First Column Entitled ACTIVITY	Minimum Load Weight (Ounces)	Minimum Pellet Hits Needed on Lethal Areas for Clean Kills	Minimum Pattern Count Needed at Any Distance for Clean Kills (# of Pellets in 30" Circle)	Most Effective Choke(s) (Given in Lead Shot Choke Designations)	NOTE: The pellets in the steel shot loads listed in this table were traditional, highly spherical ball-shaped pellets of ~ 7.86 g/cc density and 90-95 DPH hardness. The HEVI-Shot pellets were of 12.0 g/cc density and slightly harder than traditional steel pellets.
<b>ACTIVITY</b>							
Large Geese At Long Range Giant, Western, Atlantic and Interior Canadas	50-65 50-70	Steel BBB to T HEVI-Shot 2 to B	1-1/4 1-1/2	1-2 1-2	50-55 50-55	Improved Modified Improved Modified, Full	
Large Geese Over Decoys	35-50 35-50	Steel BB to BBB HEVI-Shot 2 to B	1-1/4 1-1/2	1-2 1-2	50-55 50-55	Improved Cylinder, Modified Improved Cylinder, Modified	
Medium/Small Geese Long Range Snow, White-fronted, Lesser Canadas	50-65 50-65	Steel BB to BBB HEVI-Shot 2	1-1/4 1-1/2	1-2 1-2	60-65 60-65	Improved Modified Improved Modified, Full	
Medium/Small Geese Over Decoys	35-50 35-50	Steel 2 to BB HEVI-Shot 4 to 2	1-1/8 1-1/4	1-2 1-2	60-65 60-65	Light Modified, Modified Improved Cylinder, Modified	
Large Ducks At Long Range Mallard, Black, Pintail, Goldeneye, Gadwall	45-65 45-65	Steel 2 to 1 HEVI-Shot 4	1-1/8 1-1/4	1-2 1-2	85-90 85-90	Improved Modified, Full Improved Modified, Full	
Large Ducks Over Decoys	20-45 20-45	Steel 6 to 2 HEVI-Shot 6 to 4	3/4 - 1 1-1/8	1-2 1-2	85-90 85-90	I.C. (20-35 Yds), Mod. (35-45 Yds) I.C. (20-35 Yds), Mod. (35-45 Yds)	
Medium Ducks Over Decoys Wigeon, Scaup, Shoveler	20-45 20-45	Steel 6 to 3 HEVI-Shot 6 to 4	1 1-1/8	1-2 1-2	115-120 115-120	I.C. (20-35 Yds), Mod. (35-45 Yds) I.C. (20-35 Yds), Mod. (35-45 Yds)	
Small Ducks Over Decoys Teal, Ruddy, Bufflehead	20-45 20-45	Steel 6 to 4 HEVI-Shot 6	1 1-1/8	1-2 1-2	135-145 135-145	Mod. (20-35 Yds), Full (35-45 Yds) Mod. (20-35 Yds), Full (35-45 Yds)	
Ring-Necked Pheasants	20-50 20-50	Steel 3 to 2 HEVI-Shot 4	1 1-1/8	2-3 2-3	90-95 90-95	I.C. (20-30 Yds), Mod. (30-50 Yds) I.C. (20-30 Yds), Mod. (30-50 Yds)	
Turkeys (Head and Neck Shots)	20-40	Steel 4	1-1/4	3-4	210-230	Full or Extra Full	
Swatter Load For Wounded Birds	20-30	Steel 7 to 6	1	1	175	Improved Modified, Full	

This table summarizes Tom Roster's analyses to date of the waterfowl lethality data bases for certain of the 15 U.S. steel versus lead waterfowl shooting tests run between 1988 & 1982 & one steel-only pheasant shooting test plus lethality data bases owned by ammunition companies for birds taken with nontoxic shotshells loads Roster tested for them & the CONSEP organization. Note: Steel #BBB (.190") and HEVI-Shot #2 (.150") have exhibited the best all-around performance for taking geese; steel #3 (.140") and HEVI-Shot #4 (.130") the best all-around performance for taking ducks; and steel #2 and HEVI-Shot #4 the best all-around performance for taking ring-necked pheasants. <sup>1</sup> These findings are derived from testing 3" 20 gauge; 2 1/2", 3" and 3 1/2" 12 gauge; and 3 1/2" 10 gauge steel loads; plus 3" 20 gauge and 2 1/2" and 3" 12 gauge HEVI-Shot loads.

© Copyright 2012 by Tom Roster. For answers to questions on this table contact: Tom Roster, 1190 Lynnwood, Klamath Falls, OR, USA 97601. tomroster@charter.net



# HUNTING LAWS & LEGAL METHODS OF TAKE

## Safe handling of game meat

Concern has grown about diseases affecting wild animals that could potentially make humans sick. Most of the time, properly handled and prepared game meat poses no greater risk than domestic meat of causing disease in humans. Hunters are encouraged to contact their local public health department or CPW office for information on wildlife diseases that may be present where they plan to hunt. Public health officials recommend the following precautions when handling and preparing game meat:

1. Do not handle animals that are obviously sick or found dead. Report sick or dead animals you find to a Wildlife Area Office near you.
2. Keep game cool, clean and dry.
3. Do not eat, drink or smoke while dressing game.
4. Use disposable gloves when cleaning game.
5. Wash your hands with soap and water or use alcohol wipes after dressing game.
6. Clean all tools and surfaces immediately afterward. Use hot soapy water, then disinfect with a 10 percent chlorine bleach solution.
7. Cook game meat to an internal temperature of at least 165° F to kill disease organisms and parasites. Juices from adequately cooked game meat should be clear.
8. Do not eat any raw portions of wild game.
9. Do not feed raw wild game to domestic pets.

## LEGAL HUNTING METHODS

1. Shotguns cannot be larger than 10 gauge. They cannot hold more than 3 shells in magazine and chamber combined (except during Light Goose Conservation Order Season, *see No. 7 below*). Shotguns must be fired from the shoulder. To reduce capacity of shotguns that hold more than 3 shells in the chamber and magazine combined, the magazine must be cut off, altered or plugged with a 1-piece filler that cannot be removed unless the gun is disassembled. Slugs are illegal to hunt waterfowl.
2. Hand-held bows allowed only if the arrow or bowstring is not held or drawn mechanically. It is illegal to use bows on firing lines designated by the Colorado Parks and Wildlife Commission.
3. It is legal to hunt waterfowl in the open, from a blind or other concealed place except a sinkbox. When camouflaged with vegetation from agricultural crops, camouflaging cannot result in exposing, depositing, distributing or scattering grain or other feed.
4. Hunting allowed from vessels (except sinkboxes) with motors or sails if the motor is off, and/or sails are furled and forward movement has stopped. Hunting is allowed from drifting vessels and those propelled by hand. Use of motorized vessels only allowed to pick up dead or injured birds.
5. Hawking or falconry is permitted.
6. Dogs, artificial decoys, duck calls or goose calls are legal, except recorded or electronically amplified calls or sounds. Recorded or electronically amplified calls are legal to hunt common crows.
7. **IN LIGHT GOOSE CONSERVATION ORDER SEASON:** Recorded or electronically amplified calls are allowed. Shotguns that hold more than 3 rounds in the chamber may be used during this season only. Hunting is allowed one-half hour before sunrise to one-half hour after sunset. A federal migratory bird and state conservation stamp are not required. (*See page 6 for season dates.*)
8. The most restrictive state or federal laws apply. See [www.wildlife.state.co.us/Hunting/Waterfowl/Pages/WaterfowlHome.aspx](http://www.wildlife.state.co.us/Hunting/Waterfowl/Pages/WaterfowlHome.aspx) or [www.fws.gov/hunting/whatres.html](http://www.fws.gov/hunting/whatres.html) for a detailed summary of federal regulations on migratory bird hunting. More regulations also may apply to National Wildlife Refuges opened to hunting, go to [www.fws.gov/refuges](http://www.fws.gov/refuges) for details.

## ILLEGAL HUNTING METHODS

1. Baiting. For information on federal baiting laws, go to [www.fws.gov/le/HuntFish/waterfowl\\_baiting.htm](http://www.fws.gov/le/HuntFish/waterfowl_baiting.htm).
  - a. It is illegal to take migratory game birds and waterfowl by the aid of baiting, or on or over any baited area, if you know or reasonably should know the area is baited. It is illegal to place or direct placement of bait on or next to an area to cause, induce or allow anyone to take or attempt to take migratory birds with the help of bait or over a baited area.
  - b. Baiting means directly or indirectly placing, exposing, distributing or scattering salt, grain or other feed as an attraction for migratory game birds to, on or over where hunters are trying to hunt. An area is considered baited for 10 days after complete removal of baiting material.
  - c. It is legal to take migratory game birds, including waterfowl, coots and cranes, on or over the following lands not otherwise baited: standing or flooded standing crops; standing flooded or manipulated natural

vegetation; flooded harvested crop lands; where seeds or grains were scattered solely from normal agricultural planting, harvesting, post-harvest manipulation or normal soil stabilization practice; flooded, standing agricultural crops where grain is inadvertently scattered solely by a hunter entering or exiting an area, placing decoys or retrieving downed birds.

- d. It is legal to take migratory game birds, except waterfowl, coots and cranes, on or over the following lands not otherwise baited: where grain or other feed is distributed or scattered solely from manipulation of agricultural crops or other feed, or solely from normal agricultural operations.
2. It is illegal to use any artificial light as an aid in hunting or taking wildlife.
  3. Traps, snares, nets, rifles, pistols, swivel guns, punt guns, battery guns, machine guns and fish hooks, poisons, toxicants, explosives or stupefying substances are illegal.
  4. It is illegal to use live, tame or captive ducks and geese as decoys. All tame, captive ducks and geese must be removed 10 days before hunting. They must be in an enclosure that substantially reduces the sound of their calls and conceals them from the sight of waterfowl.
  5. It is illegal to discharge a firearm or release an arrow from, on or across a public road. Hunting with rifles, handguns, shotguns firing a single slug and archery equipment prohibited within 50 feet on each side of the center line of any public road. On a divided road, the prohibition includes the median, and the 50-foot requirement is measured from the center line of both roads. Waterfowl cannot be hunted from, on or across a highway, road, designated trail or other right-of-way (public or private) in national wildlife refuges.
  6. It is illegal to carry or have a firearm (except a pistol or revolver) in or on a motor vehicle unless chamber is unloaded.
  7. Possession of wildlife is evidence you hunted.
  8. It is illegal to kill, capture, wound or harass wildlife from an aircraft or motor vehicle. It is also illegal to operate aircraft, discharge firearms or release arrows from aircraft or motor vehicles with the same intent.
  9. It is illegal to waste or abandon edible portions of wildlife, or to leave wounded wildlife without trying to track and kill it.
  10. It is illegal to leave decoys or things used as decoys in the field or on water overnight on state wildlife areas.

## HAWKING AND FALCONRY

1. Apprentices may hunt with only one raptor at a time.
2. A resident falconry license required.
3. Nonresident falconers must buy a nonresident falconry license from the CPW's special licensing section, a one-day small-game hunting license or a nonresident small-game hunting license. Hunter education laws apply.
4. Falconers must comply with HIP.
5. Firearms prohibited while hawking.
6. Hawking prohibited from a public road.
7. Hawking on private property is illegal without permission from owner or person in charge.
8. Nonresidents also must obtain an import permit at least 30 days in advance from special licensing. It is free, but a current health certificate issued within 30 days of the proposed entry from state of origin required. Import permit applications and import permits are available on the CPW website at [www.wildlife.state.co.us](http://www.wildlife.state.co.us).

# LANDS WITH SPECIAL WATERFOWL REGULATIONS

## LAND RESTRICTIONS AND USE RULES

**NOTE:** Additional restrictions may apply on some properties. Consult the CPW's State Wildlife Area brochure for details.

1. It is illegal to hunt on private land without permission from landowner or person in charge. It is illegal to post or indicate that public lands are private. It is illegal to hunt on State Trust Lands without permission of lessee, except on lands open for wildlife recreation.
2. It is illegal to hunt waterfowl in federal reservations; areas the U.S. government sets aside as bird, game or other wildlife reservations, breeding grounds or refuges; or areas closed by the Migratory Bird Treaty Act, except as permitted. More regulations may apply on national wildlife refuges. Contact: Alamosa and Monte Vista, (719) 589-4021; Browns Park, (970) 365-3613; Arapaho, (970) 723-8202.
3. **IN THE AREAS BOUNDED** on N by Wyoming; E and S by I-76, Hwy. 71, U.S. 36 and I-70; and W by the Continental Divide and Larimer-Jackson county line; and in Bent, Crowley, Kiowa, Mesa, Otero and Prowers counties:
  - a. It is illegal to hunt waterfowl within 50 yards on either side of center line of a public road.
  - b. It is illegal to hunt waterfowl within 150 yards of a dwelling, including directly above it, without first obtaining permission from owner, occupant or person in charge of the dwelling.
4. **PUEBLO COUNTY:** It is illegal to hunt waterfowl within 150 yards of a dwelling, including directly above it, without first obtaining permission from owner, occupant or person in charge of dwelling.
5. **ALONG THE COLORADO RIVER:**
  - a. **IN GRAND COUNTY:** Closed to waterfowl hunting from Shadow Mountain dam to Twin Creek after Nov. 13.
  - b. **IN MESA COUNTY:** Closed to waterfowl hunting on Colorado River and 200 yards on either side of river from Grand Avenue bridge in Grand Junction to west end of Horsethief Canyon SWA from Wed.-Fri., except Thanksgiving, Christmas and New Year's Day. Also, the river and 200 yards on either side of it are closed to waterfowl hunting from Appleton Drain to Hunter Wash (at the west end of Walker SWA).

**NOTE:** This list includes some regulations for waterfowl hunters. It is not a complete list of regulations for these properties. See the State Wildlife Areas and State Trust Lands brochures for complete regulations. Drought conditions exist throughout portions of the state. Please check water levels at eastern plains reservoirs before your hunting trip, as some are currently dry or at extremely low levels.

## RESERVATION PROCEDURES

For properties that specify reservations are available or required, call **1-800-846-9453 (1-800-UGO-WILD)**

- » **RESERVATIONS NOT ACCEPTED MORE THAN 14 DAYS IN ADVANCE** of hunt date nor after noon the day before the hunt date or noon Friday for hunts on Sunday and holidays falling on Monday.
- » **TO CANCEL**, hunters must do so by noon the day before the hunt date. Failing to cancel reservations or follow check-station procedures may result in losing future reservation rights for the rest of the hunting season.
- » **MAXIMUM 1 RESERVATION PER HUNT DATE** and 1 reservation per phone call. Reservations are not transferable. To make the reservation, a person must have a valid license for the species to be hunted and must be at the property the day of the hunt.
- » **HUNTERS MAY ONLY HUNT** the area specified on the reservation, unless stated otherwise in the following listings.

### NEW:

Reservations must be made on these Grand Valley properties below by calling (970) 255-6161. All other reservation rules apply.

- » Colorado River Island SWA
- » Franklin Island SWA
- » Highline Lake State Park
- » Horsethief Canyon SWA
- » James M. Robb Colorado River State Park
- » Orchard Mesa SWA
- » Tilman Bishop SWA

### ANDRICK PONDS SWA, MORGAN CO.

1. Public access is limited to 3 a.m.-9 p.m. Sat., Sun., Wed. and legal holidays only. Access is by foot only, through designated parking areas. Night hunting is prohibited.
2. Hunting by reservation only. See "Reservation Procedures" (above) for details. Maximum 4 hunters allowed in each area at one time. From Sept. 1 through end of regular goose season, only 3 reservations allowed per hunter annually. No hunting on Clark Lake.
3. Mandatory check in and check out as posted.
4. From Sept. 1-Nov. 30, only open for migratory bird hunting within designated hunting areas.
5. From Dec. 1 through end of regular goose season, hunting is permitted for migratory birds and small game. Hunt days will be established as small-game hunting or migratory-bird hunting only to minimize conflicts.
  - a. **SMALL GAME** — Small-game hunting allowed only on Sun. and only in December and January. Dec. 23 and Jan. 20

are youth/mentor small-game hunting only. On these dates, at least one member of the hunting party must be a youth under 18 years old, and hunters age 15 younger must be accompanied by a mentor.

Three hunting areas are designated: northwest area, southwest area and east area.

Reservations available, follow "Reservation Procedures" (above).

**b. MIGRATORY BIRD** — Migratory bird hunting only on Sat., Wed. and legal holidays from Dec. 1 through end of dark goose season. Hunting areas same as from Sept. 1-Nov. 30.

Reservations available, follow "Reservation Procedures" (above).

6. From the Thurs. before Sept. 1 through the end of dark goose season, scouting permitted from 10 a.m.-2 p.m. on Thurs. that are not open to hunting in and prior to waterfowl seasons. Must have reservation or letter from CPW. All people must check in and out at check station. Firearms, dogs not

allowed during scouting.

7. Hunting prohibited with centerfire rifles.

### ARAPAHO NATIONAL WILDLIFE REFUGE, JACKSON CO.

1. Units A and D closed to all hunting. Unit B open to migratory bird, small-game hunting through Dec. 31. Unit C closed to migratory bird hunting. For information, call (970) 723-8202.

### ATWOOD STL, LOGAN CO.

1. Hunting only on Sat., Sun., Wed., Labor Day, Columbus Day (observed), Veterans Day, Thanksgiving Day, Christmas Day, New Year's Day, Martin Luther King Jr. Day and Presidents Day.
2. Reservations are required for small-game and waterfowl hunting. See "Reservation Procedures" (above) for details. Mandatory check in and check out as posted.
3. Two reservations are for the general public, 1 for hunters with mobility impairments and 1 for youth/mentor. General public and mobility-impaired must hunt the up-river





© Ed Gorman, CPW

A mallard extends the landing gear on a weed-filled pond near Sedgwick.

side of Hwy. 63. Youths and mentors must hunt down-river side of the highway.

4. Launching or take out of vessels prohibited from first day of teal season through dark goose season.
5. Hunting prohibited with centerfire rifles.

#### **ATWOOD SWA, LOGAN CO.**

1. Public access by foot, through designated parking areas. Maximum 4 groups or vehicles with maximum 4 people per group.
2. During regular duck season, hunting is by reservation only. See "Reservation Procedures" (page 12) for details. Maximum 4 per reservation. Hunters must check out at mandatory station by 2 p.m. No reservation is required for live trapping.
3. Waterfowl and small-game hunting permitted only on Sat., Sun., Wed., Columbus Day (observed), Veterans Day, Thanksgiving Day, Christmas Day, New Year's Day, Martin Luther King Jr. Day.
4. Launching or take out of vessels prohibited from first day of teal season through dark goose season.

#### **BANNER LAKES SWA, WELD CO.**

1. Access by foot only, through designated parking areas.
2. Open for waterfowl hunting only from the first day of regular waterfowl season to the day before opening of pheasant season. Hunting only on Sat., Sun., Mon. and legal holidays.
3. Reservations available for waterfowl, not required. See "Reservation Procedures" (page 12) for details. Maximum 4 hunters per reservation.
4. Reservations valid during reserved day until hunter with reservation checks out. Hunters may check in on first-come, first-served basis after a hunter with a reservation checks out. If a reserved area is not claimed by legal sunrise, or if no reservation exists for a hunt area, hunters may check in after midnight the morning before the hunt.
5. Waterfowl hunters must follow check-in and check-out procedures as posted.
6. From the Thurs. before Sept. 1 through the end of dark goose season, scouting permitted from 10 a.m.-2 p.m. on Thurs. that are not open to hunting in and prior

to waterfowl seasons. Must have reservation or letter from CPW. All people must check in and out at check station. Firearms, dogs not allowed during scouting.

#### **BARR LAKE STATE PARK, ADAMS CO.**

1. Waterfowl hunting only, and only on Sat. and Wed.
3. Hunting by reservation only. See "Reservation Procedures" (page 12) for details. Mandatory check in and check out as posted.
2. Hunting is from designated blinds only. Maximum 3 hunters per blind. Unreserved blinds will be available on first-come, first-served basis after 5 a.m. each day. Reserved blinds unoccupied by 7 a.m. are first come, first served.

#### **BRAVO STL, LOGAN CO.**

1. Access from designated parking only.
2. Launching or take out of vessels prohibited from first day of teal season through dark goose season.
3. Waterfowl and small-game hunters must check out at check station before leaving property.

#### **BRAVO SWA, LOGAN CO.**

1. Access from designated parking only.
  2. Launching or take out of vessels prohibited from first day of teal season through dark goose season.
  3. During regular duck season, waterfowl and small-game hunters must check out at mandatory check station.
- ON SCALVA PARCEL:** All public access requires a reservation. See "Reservation Procedures" (page 12) for details. From June through August, reservations available by calling (970) 842-6300. Limited to 3 groups of 4 hunters each per day.
- a. Access by foot only 4 a.m.-9 p.m. through designated parking and mandatory check station.
  - b. From Sept. 1-May 31, only hunting is allowed and is limited to archery, muzzleloading and shotgun during established seasons. Hunting is only on Sat., Sun., Wed., Labor Day, Columbus Day (observed), Veterans Day, Thanksgiving Day, Christmas Day, New Year's Day, Martin Luther King Jr. Day and Presidents Day.

## LAND CLOSURES DURING DEER SEASON

(OPENING WEEKENDS)

All recreational activities except deer hunting prohibited on the following lands during opening weekend of regular plains rifle deer season and on opening day and first weekend of late plains rifle deer season:

» **STATE WILDLIFE AREAS:**

Atwood, Bravo (and Scalva parcel), Brush, Centennial Valley, Cottonwood, Dune Ridge, Elliott, Jean K. Tool, Julesburg, Knudson, Messex, Overland Trail, Pony Express, Sedgwick Bar and Tamarack Ranch

» **STATE TRUST LANDS:** Atwood, Ford Bridge and Red Lion Ranch

## LAUNCHING VESSELS

Launching or taking out vessels from the water is prohibited from the first day of Sept. teal season until the last day of dark goose season on these properties:

» **STATE WILDLIFE AREAS:**

Atwood, Boyd Ponds, Bravo, Brower, Brush, Centennial Valley, Cottonwood, Dune Ridge, Elliott, Jean K. Tool, Julesburg, Knudson, Messex, Mitani-Tokuyasu, Overland Trail, Pony Express, Sedgwick Bar and Tamarack Ranch

» **STATE TRUST LANDS:**

Atwood, Bravo, Ford Bridge and Red Lion Ranch

### BROWNS PARK NATIONAL WILDLIFE REFUGE, MOFFAT CO.

1. Butch Cassidy Lake, Hog Lake and the river corridor are open to waterfowl hunting. All other units are closed. For information, call (970) 365-3613.

### BRUSH SWA, MORGAN CO.

1. Public access only from 3 a.m.-9 p.m., except with night-hunting permit. Access from designated parking only.
2. During regular duck season, waterfowl and small-game hunting is by reservation only. See "Reservation Procedures" (page 12) for details. Two waterfowl and two small-game reservations are available in designated areas. Maximum 4 people per reservation. There is one youth/mentor area available. No more than two mentors and at least one youth per youth/mentor reservation. Mentors must be 18 and have hunter education certificate. No reservation is required for live trapping or fishing at Chartier Pond.

Hunters must check out at designated check station by 2 p.m. Hunting permitted only on Sat., Sun., Wed., Columbus Day (observed), Veterans Day, and Thanksgiving Day, Christmas Day, New Year's Day and Martin Luther King Jr. Day.

3. Launching or take out of vessels prohibited from first day of teal season through dark goose season.

### BRUSH PRAIRIE PONDS SWA, MORGAN CO.

1. Public access only from 3 a.m.-9 p.m., except with night-hunting permit.
2. All land users must check in and check out at the designated check station at Brush Memorial Park. Maximum 4 hunters allowed in each area.
3. **NEW:** Two hunting areas are reserved for residents of the city of Brush and are awarded through lottery system. Applications to enter lottery available at the CPW Brush Service Center after the August Commission meeting. Hunters must have valid license for species to be hunted to enter the drawing. For complete application and hunt reservation details, call the Brush Service Center, (970) 842-6300.
4. From opening of teal season through Nov. 30, only migratory-bird hunting allowed and only on Sat., Sun., Wed., Columbus Day (observed), Veterans Day, and Thanksgiving

Day during established waterfowl seasons.

5. From the September teal season through Dec. 1, reservations available, but not required. See "Reservation Procedures" (page 12) for details. Maximum 3 reservations per hunter annually. Reservations valid until 9 a.m. Hunters may check in on first-come, first-served basis after a hunter with a reservation checks out. If no reservation exists for a hunt area, hunters may check in after midnight the morning before the hunt.
6. From Dec. 1 through the last day of regular goose season, only hunting is allowed. Reservations available to hunt on Dec. 1 (first day for small-game and big-game hunting). Reservations not available from Dec. 2-end of regular goose season. Hunters may check in at one of five hunting areas on a first-come, first-served basis, after midnight the morning before the hunt. Hunters properly checked in to any of these areas may hunt anywhere on the property.
7. From the Thurs. before opening of teal season until Nov. 30, scouting permitted from 10 a.m.-2 p.m. on Thurs. that are not open to hunting in and prior to waterfowl seasons. Must have reservation or letter from CPW. All people must check in and out at check station. Firearms, dogs not allowed during scouting.

### CENTENNIAL VALLEY SWA, WELD CO.

1. Park only in designated parking areas.
2. During waterfowl season, small-game and waterfowl hunting is only in designated zones.
3. During regular duck seasons, open only Sat., Sun., Mon. and legal holidays.
4. During regular duck seasons, reservations are required for waterfowl and small-game hunting. See "Reservation Procedures" (page 12) for details. Maximum 4 hunters per reservation. Mandatory check in and check out as posted.
5. Launching or take out of vessels prohibited from first day of teal season through dark goose season.
6. Dogs allowed only as aid to hunting.

### CHUCK LEWIS SWA, ROUTT CO.

1. Open 4 a.m.-10 p.m. only, no overnight parking.
2. Waterfowl hunting permitted, except within 50 yards of CR 14F bridge.

3. Dogs allowed only as aid to waterfowl hunting or aid to a person with disabilities.
4. Launching or take out of vessels prohibited except when used for fishing.

### COLORADO RIVER ISLAND SWA, MESA CO.

1. Only waterfowl hunting, and only from designated blinds.
2. Hunting by reservation only. See "Reservation Procedures" (page 12) for details. Mandatory check-in and check-out procedures as posted.
3. If no reservation exists for a hunt area, hunters may check in on a first-come, first-served basis after 5 a.m. the day of the hunt. Reserved areas not claimed by 7 a.m. will be available on a first-come, first-served basis. But, any area must be yielded upon request of the hunter holding a valid and active reservation for that area.
4. Dogs allowed only as aid to hunting.

### CRAWFORD STATE RECREATION AREA, DELTA CO.

1. Hunting prohibited as posted.

### DILLON RESERVOIR, SUMMIT CO.

1. Waterfowl hunting prohibited on Labor Day and the Sat. and Sun. before Labor Day.
2. Denver Water restricts hunting to designated areas only. For details, go to [www.co.summit.co.us/openspace/drrec.html](http://www.co.summit.co.us/openspace/drrec.html).

### DOMELAKES SWA, SAGUACHE CO.

1. Access by foot or horseback only from designated parking. Parking allowed only in parking areas.
2. Camping allowed during waterfowl seasons only in designated areas.
3. Dogs allowed only as aid to hunting.

### ELLIOTT SWA, MORGAN CO.

1. Open to public 3 a.m.-9 p.m. daily, except with night-hunting permit.
2. Scouting permitted from the Thurs. before opening of teal season through Nov. 30 on N and S Hamlin Tracts, and from the Thurs. before opening of teal season through the first segment of the regular duck season on Union Tract. Scouting permitted from 10 a.m.-2 p.m. on Thurs. that are not open to hunting in and prior to waterfowl seasons. Must have reservation or letter from CPW. All people must check in and out at check station. Firearms and dogs not allowed during scouting.



3. Launching or take out of vessels prohibited from first day of teal season through dark goose season.

**ON UNION TRACT:** Open only for waterfowl hunting from designated blinds or as posted. Access from designated parking areas only.

Reservations available but not required, see "Reservation Procedures" (page 12) for details. Mandatory check station. Maximum 4 hunters per area.

a. From Sept. teal season through the first segment of regular waterfowl season, waterfowl hunting allowed only Sat., Sun., Wed. and Columbus Day (observed).

Max. 2 reservations annually per hunter. Reservations valid until 9 a.m. Hunters may check in on first-come, first-served basis after a hunter with a reservation checks out or if no reservation exists for a hunt area after 3 a.m. immediately before the hunt.

b. During subsequent segments of regular waterfowl season, CPW may establish maximum of 15 days of waterfowl hunting to be consistent with management objectives or restrictions, including weather, water levels, need for waterfowl resting areas, and to maximize public hunting and youth hunting opportunities. To enter a drawing to reserve an area, send a postcard with name, address, phone number, desired dates and hunting area (Area 1 or Area 2) to CPW, Union Tract Drawing, 122 E. Edison St., Brush, CO 80723. Cards must be postmarked by Sept. 30. Successful applicants notified by Oct. 21. Hunters can apply for 1 area daily, but can list multiple requests on 1 postcard. Reservations limited to 1 drawing per hunter annually. Reservations valid until 9 a.m. Hunters check in on first-come, first-served basis after a hunter with a lottery reservation checks out, or if no reservation exists for an area after 3 a.m. the day of the hunt. Dates available for reservations are Dec. 15, 16, 22, 23, 25 and Jan. 1, 5, 6, 12, 13, 19, 20, 26, 27.

**ON HAMLIN TRACTS (N AND S):**

All users must use mandatory check station. Maximum 4 hunters per area.

a. From Sept. 1-Nov. 30, waterfowl and migratory bird hunting only and only on Sat., Sun., Weds., Labor Day, Columbus Day (observed), Veterans Day (observed) and Thanksgiving Day.

Reservations available but not required, see "Reservation Procedures" (page 12) for details. Maximum 3 reservations per hunter annu-

ally. Reservations valid until 9 a.m. Hunters may check in on first-come, first-served basis after a hunter with a reservation checks out or if no reservation exists for a hunt area after 3 a.m. immediately before the hunt.

b. Hunters must comply with youth/mentor restrictions as posted on South Hamlin Tract.

c. From Dec. 1 through March 31, reservations not available. Hunters may check in on first-come, first-served basis but not until 3 a.m. immediately before hunt. Two areas available on both north and south tracts. Hunters properly checked in for one of these areas may hunt anywhere within that area.

**EMPIRE RESERVOIR,  
WELD & MORGAN COs.**

1. Goose hunting prohibited below historical and recorded high-water line. Hunting also prohibited north of reservoir 20 yards above high-water line from the inlet structure, north and east to easternmost end of dike.

**FLAGLER RESERVOIR SWA,  
KIT CARSON CO.**

1. Boating prohibited during waterfowl season, except crafts propelled by hand, wind or electric motor.
2. Youth mentor hunting only. Only one mentor per youth may hunt.

**FOSSIL CREEK RESERVOIR,  
LARIMER CO.**

1. Closed to goose hunting as posted.

**FRANK SWA, WELD  
& LARIMER COs.**

1. During regular duck season, waterfowl and small-game hunting is only on Sat., Sun., Mon. and legal holidays.
2. Reservations are required. See "Reservation Procedures" (page 12) for details. Maximum 4 hunters per reservation. Mandatory check out as posted at check station.
3. Hunting prohibited west of Weld CR 13 and in the posted safety zone in the northeast corner of the property.

**FRANKLIN ISLAND SWA,  
MESA CO.**

1. Only waterfowl hunting, and only from designated blinds.
2. Hunting by reservation only. See "Reservation Procedures" (page 12) for details. Mandatory check-in and check-out procedures as posted.
3. If no reservation exists for a hunt area, hunters may check in on a first-come, first-served basis after 5

a.m. the day of the hunt. Reserved areas not claimed by 7 a.m. will be available on a first-come, first-served basis. But, any area must be yielded upon request of the hunter holding a valid and active reservation for that area.

4. Dogs allowed only as aid to hunting.

**GRAND LAKE, WINDY GAP  
RESERVOIR, GRAND CO.**

1. Closed to goose hunting on lakes and within 100 yards of high-water lines.

**GUNNISON RIVER SWA,  
GUNNISON CO.**

1. Access is by foot only.
2. Only waterfowl hunting with shotguns allowed.

**GYPSON PONDS SWA,  
EAGLE CO.**

1. Dogs are prohibited on the eastern ponds, except when used for waterfowl hunting.
2. Launching or take out of vessels prohibited.

**HIGEL SWA, ALAMOSA CO.**

1. Open only Sat., Sun., Weds. and legal holidays from Sept. 1-Feb. 14, and only with permit.
2. Maximum 25 permits issued free daily on first come, first served basis. From Sept. 1-30 and Nov. 11-Feb. 14, get free permits at the Wildlife Area Office in Monte Vista, or through reservation system by calling (719) 587-6923. From Oct. 1-Nov. 10, permits available by phone reservations only. Contact the Monte Vista service center for details.

**HIGHLINE LAKE STATE REC-  
REATION AREA, MESA CO.**

1. Waterfowl hunting only Mon.-Fri. and only in designated blinds. Maximum 4 hunters per blind.
2. Hunting by reservation only. See "Reservation Procedures" (page 12) for details. Mandatory check-in and check-out procedures as posted.
3. If no reservation exists for a hunt area, hunters may check in on a first-come, first-served basis after 5 a.m. the day of the hunt. Reserved areas not claimed by 7 a.m. will be available on a first-come, first-served basis. But, any area must be yielded upon request of the hunter holding a valid and active reservation for that area.

**HORSETHIEF CANYON SWA,  
MESA CO.**

1. Open to public 5 a.m.-9 p.m. Open

24 hours for fishing only.

2. Waterfowl hunting is prohibited Weds.-Fri., except on Thanksgiving Day, Christmas Day and New Year's Day.
3. Hunting with shotguns, hand-held bows and muzzleloaders only.
4. Quail hunting is prohibited.
5. Reservations not required for waterfowl hunting 100 yards east of Blind No. 1 to the eastern property boundary, including Skipper's Island.
6. From 100 yards east of Blind No. 1 to western boundary of the property, waterfowl hunting on Sat. restricted to youth/mentor hunting only.
7. Waterfowl hunters on west end of property must reserve a blind and must hunt from or within 100 yards of that blind. Maximum 4 hunters per blind. See "Reservation Procedures" (page 12) for details. Mandatory check-in and check-out procedures as posted.
8. If no reservation exists for a hunt area, hunters may check in on a first-come, first-served basis after 5 a.m. the day of the hunt. Reserved areas not claimed by 7 a.m. will be available on a first-come, first-served basis. But any area must be yielded upon request of the hunter holding a valid, active reservation for that area.

**JACKSON LAKE SWA,  
MORGAN CO.**

1. Access only from designated parking areas.
2. During regular duck season, all waterfowl and small-game hunters must check out at mandatory check station.
3. Boat hunting prohibited beginning Nov. 1 except for hunters with boat reservation. See "Reservation Procedures" (page 12) for details. Maximum 4 people per reservation. Hunters with boat reservations must call reservation line 2 days before hunt to confirm ice conditions. Only boat hunters with reservations are exempt from Nov. 1 boat closure. Boats prohibited on frozen surface of lake.
4. Hunters and vessels must stay in designated hunt zone. Hunting prohibited within 150 yards of shore or other vessels. Vessels launched from Jackson Lake State Park must have state parks pass.
5. Waterfowl hunting from vessels permitted only Sat., Sun., Wed., Columbus Day (observed), Veterans Day, Thanksgiving Day, Christmas Day, New Year's Day and Martin Luther King Jr. Day.
6. Vessels need to be pre-inspected and sealed with an inspection receipt in accordance with state boating regulations.

**JAMES M. ROBB COLORADO RIVER STATE PARK, MESA CO.**

1. Park in designated parking areas only.
2. Waterfowl hunting only, and only from designated blinds, maximum 4 hunters per blind.
3. Hunting by reservation only. See "Reservation Procedures" (page 12) for details. Mandatory check-in and check-out procedures as posted.
4. If no reservation exists for a hunt area, hunters may check in on a first-come, first-served basis after 5 a.m. the day of the hunt. Reserved areas not claimed by 7 a.m. will be available on a first-come, first-served basis. But, any area must be yielded upon request of the hunter holding a valid and active reservation for that area.

**JEAN K. TOOL SWA, MORGAN CO.**

1. Access through designated parking areas only, from 3 a.m.-9 p.m. Except with night-hunting permit.
2. During regular duck season, waterfowl and small-game hunters must check out at designated station by 2 p.m.
3. Hunting is by reservation only. See "Reservation Procedures" (page 12) for details. Three waterfowl and three small-game reservations per day, maximum 4 people per reservation. No reservation is required for live trapping.
4. Hunting allowed only on Sat., Sun., Wed., Columbus Day (observed), Veterans Day, Thanksgiving Day, Christmas Day, New Year's Day, Martin Luther King Jr. Day.
5. Launching or take out of vessels prohibited from first day of teal season through dark goose season.

**JOHN MARTIN RESERVOIR SWA, BENT CO.**

1. Open only to retrieve downed waterfowl from Nov. 1 through last day of waterfowl season as posted on U.S. Army Corps of Engineers property leased by CPW to provide for resting waterfowl, depending on water levels, weather and presence of birds.

**JOHNSON POND, SEDGWICK CO.**

1. Goose hunting prohibited in area of Sedgwick Co. including: Hwy. 138 on N, Hwy. 385 on E, I-76 on S and CR 29 on W.
2. Light goose hunting is allowed

within the Johnson Pond Special Goose Closure only during special late light goose season and Light Goose Conservation Order.

**JUMBO RESERVOIR SWA, LOGAN & SEDGWICK COs.**

1. Closed to goose hunting in parts of Logan and Sedgwick counties bounded on N by Logan CR 70 and Sedgwick CR 3; on E by Sedgwick CR 3; on S by Logan CR 970 and Sedgwick CR 24.8, and on W by Logan CR 95, except for Red Lion SWA as posted.
2. Except as allowed below, boating prohibited Oct. 1 through last day of regular goose season. Hand-propelled craft may be used to set and pick up decoys and to retrieve downed waterfowl. Boats prohibited within 50 feet of outlet structure.
3. No hunting on frozen surface of lake.
4. Hunting from floating devices allowed from opening day of regular Eastern Plains duck season until opening day of dark goose season. Reservations required. See "Reservation Procedures" (page 12) for details. Three reservations available for waterfowl hunting from vessels on res. Boat hunting reservations will be cancelled if ice is unsafe. Hunters with boat reservations must call reservation line 2 days before scheduled hunt to confirm ice conditions. Only boat hunters with reservations are exempt from boat closure.
5. Hunting from floating devices permitted only Sat., Sun., Wed., Columbus Day (observed) and Veterans Day. Hunters must leave reservoir by 2 p.m. Hunting prohibited within 150 yards of shore and other vessels.
6. Vessels (other than those launched by hand) must undergo required inspection for invasive species.

**LOWER LATHAM RESERVOIR, WELD CO.**

1. Hunting prohibited as posted.

**MACK MESA STATE RECREATION AREA, MESA CO.**

1. Hunting, trapping prohibited.

**MACFARLANE RESERVOIR STL, JACKSON CO.**

1. Open Aug. 15-end of Feb.
2. Motorized travel to the reservoir to access waterfowl hunting allowed at all times on designated routes only.

**MEREDITH RESERVOIR, CROWLEY CO.**

1. Hunting prohibited as posted.

**MITANI-TOKUYASU SWA, WELD CO.**

1. During waterfowl season, parking area open only 4 a.m. until one hour after sunset. Parking in designated spaces in parking areas only.
2. Waterfowl hunting access limited to occupants of vehicles legally parked in designated parking area.
3. Launching or take out of vessels prohibited from first day of teal season through dark goose season.

**MOGENSEN PONDS SWA, MESA CO.**

1. Waterfowl hunting only and only from designated blinds.

**MONTE VISTA & ALAMOSA NATIONAL WILDLIFE REFUGES, ALAMOSA & RIO GRANDE COs.**

1. Hunting in designated areas only, access through posted parking areas only.
2. Two blinds available on first come, first served basis.
3. Nontoxic shot required for shotgun hunting. For information, call (719) 589-4021.
4. Decoys cannot be left unattended and blinds must be removed daily.
5. Dogs allowed as an aid to hunting.

**NEW WINDSOR RESERVOIR, WELD CO.**

1. Hunting prohibited as posted.
2. Closed to waterfowl hunting within 400 yards of occupied dwelling, without first obtaining permission from owner or person in charge, or within 0.25 of a mile from center line of these roads: from CR 74 and Colo. 257, north to CR 78; east to CR 21; south to CR 74; then west to Colo. 257, including the area within shape formed by these roads.
3. Closed to waterfowl hunting within 150 yards of center line of Colo. 257 between CRs 78 and 74; CR 74 between Colo. 257 and CR 21.

**ORCHARD MESA SWA, MESA CO.**

1. Open for public access July 15-March 14.
2. Only access from parking area on "C" Rd., between roads 30 and 31. Vehicles prohibited beyond parking area.
3. Waterfowl hunters must hunt from designated blinds or in the zone identified for each blind. Maximum 4 hunters per blind.
4. Waterfowl hunting by reservation

only. See "Reservation Procedures" (page 12) for details. Mandatory check-in and check-out procedures as posted.

5. If no reservation exists for a hunt area, hunters may check in on a first-come, first-served basis after 5 a.m. the day of the hunt. Reserved areas not claimed by 7 a.m. will be available on a first-come, first-served basis. But, any area must be yielded upon request of the hunter holding a valid and active reservation for that area.
6. Must hunt with bows and/or shotguns with shotshells only.
7. Dogs allowed only as an aid to hunting.

**OVERLAND TRAIL SWA, LOGAN CO.**

1. Foot access only, from designated parking area.
2. During regular duck season, waterfowl and small-game hunters must check out at designated check station.
3. Launching or take out of vessels prohibited from first day of teal season through dark goose season.

**PONY EXPRESS SWA, SEDGWICK CO.**

1. Closed to goose hunting in part of Sedgwick County south of Hwy. 138, west of Hwy. 385, north of I-76 and east of CR 29.
2. Light goose hunting allowed during special control season and any conservation order for light geese.
3. Launching or take out of vessels prohibited from first day of teal season through dark goose season.

**PREWITT RESERVOIR SWA, LOGAN & WASHINGTON COs.**

1. Waterfowl hunting prohibited as posted to provide for waterfowl resting depending on water levels, weather and presence of birds.
2. Boating prohibited, except hand-propelled crafts used in waterfowl hunting (putting out, picking up decoys, retrieving downed waterfowl), from Oct. 1 through last day of regular goose season. Boating prohibited if it creates whitewater wake.
3. Hunting prohibited from floating device.

**QUEENS SWA, KIOWA CO.**

1. Boating prohibited if it creates a whitewater wake in channel between Lower and Upper Queens reservoirs.

**ON UPPER QUEENS (including channel), NEE NOSHE, NEE GRONDA:**



- a. Mandatory check in and check out when check station is open.
- b. Open only to retrieve downed waterfowl from Nov. 1 through last day of waterfowl season as posted.

**ON LOWER QUEENS:**

- a. Boating prohibited if it creates whitewater wake from opening day of waterfowl season until Dec. 1.
- b. Mandatory check in and check out when check station is open.
- c. Open only to retrieve downed waterfowl from Dec. 1 through last day of waterfowl season as posted.

**ON NEE SO PAH:**

- a. Open only to retrieve downed waterfowl from Nov. 1 through last day of waterfowl season.



© Ed Gorman, CPW

Mark Herwig, of Pheasants Forever, on a duck hunt near the town of Crook.

**RAMAH SWA, EL PASO CO.**

1. Only float tubes or crafts propelled by hand, wind or electric motor are allowed from Nov. 1 through the last day of waterfowl season.
2. Shotguns or bows allowed for hunting.

**RED LION SWA, LOGAN CO.**

1. Access from parking areas only.
2. Hunting from frozen surface of the lake is prohibited.
3. Only float-tubes or carry-on crafts propelled by hand for hunting or fishing purposes are allowed, such as for placing or retrieving decoys or downed waterfowl. Hunting from any vessel or floating device is prohibited.
4. Light goose hunting allowed, during special late light goose season and any conservation order for light geese, in area bounded on north by Logan CR 970; on east by Sedgwick CR 1 (Logan CR 97); on south by Hwy. 138; and on west by Logan CR 95.

**5. During regular duck season:**

- a. Waterfowl and small-game hunting is by reservation only. See "Reservation Procedures" (page 12) for details. Maximum 4 people per reservation. Hunters must follow check-in and check-out procedures. Must check out by 2 p.m. No reservation is required for live trapping.

Nine waterfowl and three small-game reservations are available in designated areas. There is one youth/mentor area available. No more than 2 mentors and at least 1 youth per youth/mentor reservation. Mentors aren't required to hunt, but must be 18 and have valid hunter education certificate.

- b. Waterfowl and small-game hunting only allowed on Sat., Sun., Wed.,

Columbus Day (observed), Veterans Day, Thanksgiving Day, Christmas Day, New Year's Day and Martin Luther King Jr. Day.

**RIVERSIDE RESERVOIR, WELD CO.**

1. Goose hunting prohibited as posted.

**RUSSELL LAKES SWA, SAGUACHE CO.**

1. Parking only in established areas.
2. Closes at 1 p.m. during first split waterfowl season.
3. Closed as posted to protect wintering and nesting waterfowl and to protect administrative areas. Sect. 29 closed during waterfowl seasons.

**SOUTH REPUBLICAN SWA, YUMA CO.**

1. Parking only in designated areas. Waterfowl hunting access prohibited on downstream face of dam.
2. Waterfowl hunting prohibited as posted to provide resting areas.

**SWEITZER LAKE, DELTA CO.**

1. Hunting waterfowl allowed on opening day and thereafter on Sat., Sun., Wed. and legal holidays.

**TAMARACK RANCH SWA, LOGAN CO.**

1. Reservations are available but not required. See "Reservation Procedures" (page 12) for details. Reservations available for weekends and Columbus Day (observed), Veterans Day, Thanksgiving Day, Christmas Day, New Year's Day, Martin Luther King Jr. Day and Presidents Day.

2. Mandatory check in and check out as posted at designated station.
3. The first hunt date available for reservations is the Sat. after Oct. 24 and the last date available is the last Sun. of regular duck season. Weekdays, weekends and holidays outside the reservation period and any unreserved or open units are available for hunting without reservations and are regulated through check station.
4. Hunters must park vehicles at parking area they are checked into and are restricted to that area until 9 a.m., at which time they may walk into and hunt adjacent areas.
5. Launching or take out of vessels prohibited from first day of teal season through dark goose season.

**TILMAN BISHOP SWA, MESA CO.**

1. Open for public access July 15-March 14.
2. Mandatory check-in and check-out procedures for hunters at entrance station.
3. Hunting with bows and/or shotguns with shotshells only.
4. Dogs allowed only as aid to hunting.
5. Waterfowl hunters must hunt from designated blinds or in the zone identified for each blind. Maximum 4 hunters per blind.
6. Waterfowl hunting by reservation only. See "Reservation Procedures" (page 12) for details.
7. If no reservation exists for a hunt area, hunters may check in on a first-come, first-served basis after 5 a.m. the day of the hunt. Reserved areas not claimed by 7 a.m. will be available on a first-come, first-

served basis. But, any area must be yielded upon request of the hunter holding a valid and active reservation for that area.

**TRINIDAD STATE PARK, LAS ANIMAS CO.**

1. Waterfowl hunting prohibited as posted.

**TURK'S POND SWA, BACA CO.**

1. From the first split of waterfowl seasons through last day of waterfowl seasons, the following regulations are in effect in sections 20, 21, 28, 29, 32 & 33 in Township 29 South, Range 44 West, 6th P.M.:
  - a. On SWA land within 0.25 of a mile of ordinary high-water line, hunting prohibited as posted.
  - b. It is illegal to discharge firearms or arrows from, on or across 50 yards on each side of center line of public roads.
2. Boating prohibited except float tubes or crafts propelled by hand, wind or electric motor.
3. Open near pond and administrative building only to retrieve downed waterfowl from opening day of waterfowl season through end of February.

**VANCIL RESERVOIR, MORGAN CO.**

1. Waterfowl hunting prohibited as posted to provide for waterfowl resting as necessary depending on water levels, weather and presence of birds.

**WELLINGTON SWA, LARIMER & WELD COs.**

1. From first day of regular waterfowl season to first day of pheasant season Wellington Unit open only on Sat., Sun., Mon. and Columbus Day (observed), Veterans Day, Thanksgiving Day, Christmas Day, New Year's Day and Martin Luther King Jr. Day.
2. Only hand-propelled vessels may be used, and only when hunting waterfowl.

**WHITEHORSE SWA, ADAMS CO.**

1. Closed except for youth/mentor waterfowl hunting when authorized by area wildlife manager as participants in CPW youth hunter program.
2. Reservations required. See "Reservation Procedures" (page 12) for details. Hunters with reservations can only hunt area specified on reservation, except in areas where reservations are not required or are unreserved and unoccupied.
3. Mandatory check in and check out as posted at check station.

# 2012 Waterfowl Hunting

[www.wildlife.state.co.us](http://www.wildlife.state.co.us)

Colorado Parks and Wildlife  
6060 Broadway, Denver CO 80216  
(303) 297-1192



COLORADO PARKS & WILDLIFE

# Get Outdoors



Colorado Parks and Wildlife promotes:

- Responsible outdoor and wildlife recreation
- Wildlife and habitat conservation
- Public awareness and respect for wildlife and Colorado's public lands

To learn more visit: [www.wildlife.state.co.us](http://www.wildlife.state.co.us) or [www.parks.state.co.us](http://www.parks.state.co.us)

#### NOTICE: ABOUT THIS GUIDE & SPECIES INCLUDED

*This brochure includes information on ducks, coots, mergansers, migratory birds and other waterfowl. This brochure is not a legal notice nor a complete collection of hunting regulations and laws. Copies of statutes and regulations can be obtained from a CPW office or at [www.wildlife.state.co.us/RulesRegs/Regulations/Pages/Regulations.aspx](http://www.wildlife.state.co.us/RulesRegs/Regulations/Pages/Regulations.aspx). For questions, call CPW at (303) 297-1192.*