

COLORADO DIVISION OF WILDLIFE

# 2010 Colorado Waterfowl



**Don't miss inside:**

- New bag limit for pintails
- Habitat Stamp changes
- Walk-In Access is now free

**View an interactive, searchable  
version of this brochure at:**

[www.flipseekpubs.compublication/?i=45702](http://www.flipseekpubs.compublication/?i=45702)

**Attention hunters: Some season  
dates continue into 2011**

# TABLE OF CONTENTS

**License Fees & Information ..... 1**  
 • Fees and surcharges, youth license requirements, disabled veterans, other restrictions

**Purchasing a License ..... 2**  
 • License and residency requirements  
 • Hunter Education and Harvest Information Program  
 • Walk-In Access program

**Know Before You Go ..... 3**  
 • Common hunting definitions  
 • Tagging, Shipping, Importing  
 • Banded birds, Donating Wildlife, Wildlife Causing Damage  
 • Call before digging: Utility Notification Center phone number

**Legal Hunting Hours, Sunrise/Sunset Table ..... 4**

**Season Dates, Bag Limits ..... 4-8**  
 • Goose season regulations ..... 4  
 • Statewide map of goose seasons ..... 5  
 • Teal, duck and coot season regulations ..... 6  
 • Duck identification chart ..... 6  
 • Hawking and Falconry regulations ..... 6  
 • Statewide map of duck season ..... 7  
 • Youth hunt regulations ..... 8

**Nontoxic Shot Table and Rules ..... 8**

**Land-Use Rules ..... 9-12**

**Hunting Laws & Methods of Take ..... 13**  
 • Legal hunting methods  
 • Illegal hunting methods  
 • Hawking and Falconry regulations  
 • Safe handling of game meat

**RECORDED INFORMATION & SEASON DATES**  
 Deer, Elk, Pronghorn, Bear .....(303) 291-7529  
 Fishing .....(303) 291-7533  
 Small Game, Upland Game .....(303) 291-7546  
 Turkey .....(303) 291-7547  
 Waterfowl .....(303) 291-7548  
 Hunter Education .....(303) 291-7530  
 Mobility Impaired Licenses .....(303) 291-7528  
 List of recordings .....(303) 297-1192

# DOW OFFICES

[www.wildlife.state.co.us](http://www.wildlife.state.co.us)

**DOW HEADQUARTERS**  
 6060 Broadway  
 Denver, 80216  
 (303) 297-1192

**LAMAR**  
 2500 S. Main St.  
 Lamar, 81052  
 (719) 336-6600

## OFFICES & SERVICE CENTERS

**MEEKER**  
 73485 Hwy. 64  
 Meeker, 81641  
 (970) 878-6090

**BRUSH**  
 122 E. Edison  
 Brush, 80723  
 (970) 842-6300

**MONTE VISTA**  
 0722 S. Road 1 East  
 Monte Vista, 81144  
 (719) 587-6900

**DENVER/ NORTHEAST**  
 6060 Broadway  
 Denver, 80216  
 (303) 291-7227

**MONTROSE**  
 2300 S. Townsend Ave.  
 Montrose, 81401  
 (970) 252-6000

**DURANGO**  
 151 E. 16th St.  
 Durango, 81301  
 (970) 247-0855

**NORTHWEST REGION**  
 711 Independent Ave.  
 Grand Junction, 81505  
 (970) 255-6100

**FORT COLLINS**  
 317 W. Prospect Road  
 Fort Collins, 80526  
 (970) 472-4300

**PUEBLO**  
 600 Reservoir Road  
 Pueblo, 81005  
 (719) 561-5300

**GLENWOOD SPRINGS**  
 50633 Hwys. 6 & 24  
 Glenwood Springs, 81601  
 (970) 947-2920

**SALIDA**  
 7405 Hwy. 50  
 Salida, 81201  
 (719) 530-5520

**GUNNISON**  
 300 W. New York Ave.  
 Gunnison, 81230  
 (970) 641-7060

**SOUTHEAST REGION**  
 4255 Sinton Road  
 Colorado Springs, 80907  
 (719) 227-5200

**HOT SULPHUR SPRINGS**  
 346 Grand County Rd. 362  
 Hot Sulphur Springs, 80451  
 (970) 725-6200

**STEAMBOAT SPRINGS**  
 925 Weiss Dr.  
 Steamboat Spgs., 80477  
 (970) 870-2197

Printed for free distribution

## COLORADO DIVISION OF WILDLIFE

Department of Natural Resources  
 6060 Broadway, Denver 80216  
 (303) 297-1192  
[www.wildlife.state.co.us](http://www.wildlife.state.co.us)

Published August 2010; 105,000 copies

Editor: Amy Nickelson | Cover photo © Vic Schendel | Printed by: Publication Printers, Denver



The DOW receives federal financial assistance from the U.S. Fish and Wildlife Service. In accordance with Title VI of the Civil Rights Act of 1964, Section 504 of the Rehabilitation Act of 1973, Title II of the Americans with Disabilities Act of 1990, the Age Discrimination Act of 1975 and Title IX of the Education Amendments of 1972, the U.S. Department of the Interior and its bureaus prohibit discrimination on the basis of race, color, national origin, age, disability or sex. If you believe that you have been discriminated against in any program, activity or facility as described above or for more information, write: U.S. Fish and Wildlife Service, Division of Bird Habitat Conservation, Attn: Civil Rights Coordinator, 4401 N Fairfax Drive, MBSP 4020, Arlington, VA 22203.

The Wildlife Commission sets waterfowl seasons in August. Wildlife Commissioners (as of August 2010): Tim Glenn, chair • Robert Streeter, vice chair • Mark Smith, secretary • David R. Brougham, member • Dennis Buechler, member • Dorothea Farris, member • Allan Jones, member • John Singletary, member • Dean Wingfield, member • Mike King, ex officio member • John Stulp, ex officio member

# New in 2010:



Photo © Vic Schendel

## NEW PINTAIL BAG LIMIT

Waterfowl hunters will find a change this season to the daily bag limit for pintails. The new limit

for pintails in the Central Flyway portion of Colorado (Mountain/Foothills and Eastern Plains zones) has been increased from one last year to two for the 2010-2011 season.

See page 6 for duck bag limit details, and page 7 for a map of duck season zones.

## FREE WALK-IN ACCESS

Beginning this year, small game hunters are no longer required to purchase permits to hunt properties enrolled in the DOW's Walk-In Access (WIA) program. The DOW has eliminated the access fee to offer even greater opportunities for Colorado's small game and waterfowl hunters.

The program provides more than 220,000 acres of private-land access to small game and waterfowl hunters. Depending on the area, these properties offer hunting for pheasants, scaled and bobwhite quail, doves, rabbits,

and, in some cases, ducks and geese. See page 2 for details.

Properties enrolled for the 2010-2011 program include Conservation Reserve Program (CRP) grasslands, sandsage and cholla rangelands and cultivated cropland.

A WIA Atlas, showing the location of enrolled properties opening Sept. 1, is available at DOW offices and license agents in mid-August, or on the DOW website: [www.wildlife.state.co.us/Hunting/SmallGame/WalkInAccess](http://www.wildlife.state.co.us/Hunting/SmallGame/WalkInAccess). The Late Cropland Supplemental Atlas is available in late October.

## HABITAT STAMP CHANGES

There are new laws in place regarding habitat stamps. Here's what you need to know:

- Anyone 18-64 must purchase a stamp to buy or apply for a hunting or fishing license.
- Stamps cost \$5 each; no more than 2 are required per person per year, valid April 1-March 31. A lifetime stamp is \$200.25.

Hunters applying for a limited license must purchase a stamp to apply in the drawing process.

Anyone buying a one-day or additional-day license for fishing and/or small game is exempt from purchasing the habitat stamp with the first two of these licenses. The habitat fee will be assessed when a third one-day or additional-day license is purchased for fishing or small game.

### YOUR 75-CENT WILDLIFE EDUCATION FEE WORKS FOR YOU

The Wildlife Management Public Education Advisory Council uses these funds to educate the public about the importance of wildlife management and that this management is funded primarily through the sale of hunting and fishing licenses. Visit the website at [www.keepingcoloradowild.org](http://www.keepingcoloradowild.org).



## LICENSE FEES

	RESIDENT	NONRESIDENT
» Small Game .....	\$21	\$56
» Small Game (one-day) .....	\$11	\$11
» Youth Small Game (Under 18) .....	\$1.75	\$1.75
» Small Game & Fishing Combo .....	\$41	n/a
» Habitat Stamp (required) .....	\$5	\$5
» Colorado Waterfowl Stamp .....	\$5	\$5
» Federal Migratory Bird Hunting Stamp (Duck Stamp) .....	\$15	\$15
» Military (60% or more disability, details below) .....	free	n/a

Prices include 25-cent search-and-rescue fee and 75-cent surcharge for the Wildlife Management Public Education Fund.

### SAVE TIME: BUY ONLINE OR BY PHONE

Buy your license through the DOW's website or by calling 1-800-244-5613. Credit cards are accepted for phone and Internet purchases. DOW offices and license agents also sell licenses.



## INFORMATION

### YOUTH LICENSES AND MENTOR HUNTING

People under age 18 must have a license to hunt small game. A youth small game license is \$1, plus surcharge. All youths must meet hunter education requirements. Those under 16 must be accompanied by a mentor while hunting. A mentor must be 18 or older and must meet hunter education requirements. Mentors aren't required to hunt. While hunting, youths and mentors must be able to see and hear each other without binoculars, radios or other aids. Youths under 18 also can buy an adult license as long as they meet hunter education requirements. At age 18, youths must buy an adult license.

### DISABLED VETERANS

Colorado residents who are disabled veterans can get a free lifetime combination small game hunting and fishing license. Residents must have served on active duty and been honorably discharged. Proof is required of a service-related disability rated by the Veterans Administration of at least 60% through disability retirement benefits or a pension administered by the Department of Veteran Affairs or respective service department. Contact the DOW, (303) 297-1192, for details.

### CHILD SUPPORT DELINQUENCY

State law requires Social Security numbers for all licenses purchased. It is not displayed on the license but may be provided, if requested, to Child Support Enforcement authorities. Hunting and fishing licenses are not issued to people delinquent in child support.

### WEAPONS RESTRICTIONS

Colorado and federal laws prohibit people convicted of certain crimes, such as domestic violence, from possessing weapons even for hunting. If you've been convicted of a crime, check with the appropriate law enforcement authority to find out how these laws apply to you.

# PURCHASING A LICENSE

## LICENSE REQUIREMENTS

1. Hunters must have a small game license, youth small game or combination fishing/small game license to hunt waterfowl. Hunters must carry their license when hunting and show it when requested by law enforcement officers.

2. Hunters 16 or older must have a \$15 Federal Migratory Bird Hunting and Conservation Stamp (Duck Stamp) and a \$5 Colorado State Waterfowl Stamp to hunt waterfowl.

**WATERFOWL STAMP:** The state stamp is printed on your hunting license and validated by signing your name in ink across the imprint. The gum-backed state stamp is available for an extra \$2.50, if desired, and is mailed after July 1.

**FEDERAL DUCK STAMP:** The federal stamp is available after July 1 online, by phone and at select post offices ([www.fws.gov/duckstamps/stamps.htm](http://www.fws.gov/duckstamps/stamps.htm)). It is valid when you sign your name in ink across the face of the stamp. It is also available at DOW offices and license agents. When purchased at state outlets, an electronic stamp is issued. This instantly gives you a unique code that is valid for 45 days from the date of issue, sufficient time for the gum-backed stamp to arrive in the mail. A federal stamp is not required to take light geese during the conservation order season.

3. Annual fishing, small game and furbearer licenses, as well as Colorado waterfowl stamps and habitat stamps are valid April 1 through March 31 of the following year. Licenses expire on the date printed on them. Lifetime small game and fishing combination licenses are valid as long as you are a Colorado resident.

4. If a license is restricted to a specific area, you can hunt only that area.

5. Licenses and stamps are not transferable.

6. False statements made in buying a license and altering a license are illegal and void the license.

7. Lost or destroyed licenses can be replaced by buying a new one or signing an affidavit and paying a fee. Forms are available at DOW offices and license agents.

## HARVEST INFORMATION PROGRAM (HIP)

Small game, furbearer and migratory bird hunters, including falconers, must sign up with HIP each year before their license is valid.

Write the new HIP number in the space provided on your license. If you signed up with HIP for the 2009 season and buy a small game license in 2010, remember to also transfer the old HIP number to your new license.

To sign up with HIP, call 1-866-265-6447 (1-866-COLOHIP) or go to [www.colohip.com](http://www.colohip.com). You will need to provide basic information, including how many birds you harvested the previous season and species you plan to hunt this year.

The HIP phone line and website run 24 hours daily. For help, call 1-800-368-4683, from 6 a.m.-4 p.m. (MST) Monday-Saturday.

## HUNTER EDUCATION (SAFETY) REQUIREMENTS

Hunters born on or after Jan. 1, 1949, must have completed an approved hunter education course sanctioned by a state or province before purchasing a license. Colorado honors hunter education courses from other states and provinces. You must present an original hunter safety card when buying a license (unless previously verified) or enter the required information when applying by mail or online. You must carry your hunter education card while hunting unless a "V" is printed on the license, which indicates hunter education has been verified at a DOW office.

*Hunter education courses can be found online at [www.wildlife.state.co.us/Hunting/HunterEducation/CourseCalendar](http://www.wildlife.state.co.us/Hunting/HunterEducation/CourseCalendar). Details on seminars/clinics: [www.wildlife.state.co.us/Hunting/HunterOutreach/ClinicsAndSeminars](http://www.wildlife.state.co.us/Hunting/HunterOutreach/ClinicsAndSeminars).*

## RESIDENCY REQUIREMENTS

These are the requirements to qualify as a Colorado resident to buy a hunting license:

1. You must have lived continuously in Colorado at least six months immediately before applying for or buying a license, and must intend to make Colorado home (except #2 and #3 below.) The residence address given to purchase or apply for a license must be the same address used on your Colorado income tax return.

2. U.S. armed services personnel and military personnel of U.S. allies on active duty in Colorado under permanent orders and their dependents. This includes people who were Colorado residents when they entered the armed services and maintain Colorado as their home of record, and their dependents (unless they change their home of record to another state.) Also included are personnel of the U.S. Diplomatic Service or diplomatic services of nations recognized by the U.S. assigned to duty here on permanent active duty orders and their dependents. Active duty does not include reserve status or National Guard.

3. Full-time students enrolled and attending a Colorado college, university or trade school at least six months immediately before applying for or buying a license. This includes students who are temporarily absent from Colorado but still enrolled. Colorado residents who attend school full-time out of state and pay nonresident tuition still qualify for a resident license.

4. Children under 18 have the same residency status as their parent, legal guardian or person with whom they live the majority of the time per court order.

5. If you have a home in Colorado and another state, call (303) 297-1192 to make sure you comply with Colorado residency requirements before obtaining a hunting or fishing license.

6. Except as in #2 and #3 above, you lose your Colorado residency if you apply for, buy or accept a hunting, fishing or trapping license as a resident of another state or country; register to vote outside Colorado or get a driver's license with an address in another state.

## WALK-IN ACCESS PROGRAM (WIA)

The Walk-In Access Program provides opportunities to hunt small game, migratory game birds and furbearers on enrolled properties. The (1) regular season properties are open Sept. 1 through the end of February. The (2) late cropland season properties are open from opening day of pheasant season through the end of February. The (3) extended walk-in properties are open from the start of pheasant season through the end of March.

WIA properties allow hunting small game, furbearers, migratory game birds and Eurasian collared-doves but only during established season dates. Properties are closed to hunting Gambel's quail, Gunnison's sage-grouse and Greater sage-grouse.

Properties are open to foot access only. For waterfowl hunting, lands are open two hours before sunrise until two hours after sunset. A WIA permit is no longer required to hunt WIA lands, but hunters must have a small game license. Properties enrolled are posted with Walk-In Access signs and published in a WIA atlas. Access is prohibited as posted when the landowner is actively harvesting crops.

Two atlases for 2010-11 will be published. An early version will be available in mid-August and includes properties open Sept. 1. A second atlas will be available in late October and includes all properties.

**2010 Colorado Waterfowl Stamp**

Your Donation Helps Restore & Preserve Colorado's Wetlands

- 1 PURCHASE STAMPS & PRINTS ONLINE [WWW.CWHF.INFO](http://WWW.CWHF.INFO)
- 2 CALL CWHF TO PLACE ORDER **303.291.7212**

2010 WINNING ARTIST: "Flying Pintails" by Richard Clifton [www.cwhf.info](http://www.cwhf.info)




## OPERATION GAME THIEF

Operation Game Thief is a nonprofit organization working with the DOW's law enforcement program. It pays rewards to citizens who report poachers or resource violations. Callers don't have to reveal their names, testify in court or sign a deposition. Rewards are paid if the information leads to the arrest of a poacher or a citation is issued. Rewards do not depend on a conviction but must be requested when a violation is reported. Call: 1-877-COLOOGT toll-free. (Number not for information or emergencies.)



# KNOW BEFORE YOU GO

more hunting laws and legal methods of take on page 13

## Attention: Snow goose hunters



If you removed the plug from your shotgun during the 2010 Spring Conservation Action, remember to replace the plug in your gun before hunting during the fall small game and waterfowl seasons.

## WATCH FOR BANDED BIRDS

Wildlife managers need help gathering information about the migratory bird populations. If you kill a banded bird, please report it to the USGS Bird Banding Lab, [www.reportband.gov](http://www.reportband.gov) or 1-800-327-BAND.

## TAGGING, SHIPPING, IMPORTING

1. You must attach a carcass tag to wildlife requiring one.
2. Licenses must accompany wildlife not requiring a carcass tag (except as in #4 below).
3. One fully feathered wing or head must be attached to birds in transit until they arrive at hunter's home or commercial processing facility.
4. To ship migratory birds, packages must be marked outside with name and address of sender, name and address of receiver and number of birds, by species. Licenses, a photocopy of the license or carcass tag must accompany wildlife shipped by common carrier.
5. It is illegal to leave migratory birds anywhere other than at your home or with someone else for picking, cleaning, processing, permanent or temporary storage or taxidermy unless the birds or package of birds have a tag attached. You must sign tags, include your address, total number and species of birds, date of kill and your hunting license number.
6. Migratory bird preservation facilities:
  - a. If you have someone else's migratory birds for picking, cleaning, freezing, processing, storing or shipping, you must have records showing the number of each species, date you received them, date birds were disposed of, and name and address of who received the birds.
  - b. You must keep records 1 year after the last entry.

c. You must allow people authorized to enforce this regulation to enter the facilities at reasonable hours to inspect records and premises.

7. Per week, beginning on Sunday, it is illegal to import more than 25 doves and 10 pigeons from a foreign country; or more than 10 ducks and 5 geese from a foreign country, except Canada and Mexico. Doves and waterfowl imported from Canada and Mexico cannot exceed Canadian and Mexican export limits. One fully feathered wing must stay attached to birds transported and shipped between ports of entry and someone's home or a migratory bird facility. It is illegal to import someone else's birds.

8. It is illegal to take, have, transport, import or export migratory birds, their parts, nests or eggs that were taken, bought, sold, transported, possessed or exported illegally.

9. It is illegal to have or transport live migratory birds, including wounded birds. You must kill migratory game birds immediately after you recover them.

10. No permit is required to have or transport plumage and skins of legally taken migratory birds for your own use.

11. No permit is required to have, dispose of and transport feathers from wild ducks and wild geese that were legally killed, or from birds seized by wildlife authorities. It is legal to use feathers to make fishing flies, bed pillows, mattresses and similar commercial items, except millinery or ornamental use.

12. It is illegal to buy, sell, barter, or offer to buy or sell feathers or mounted specimens of migratory game birds.

## CALL BEFORE DIGGING 1-800-922-1987

Colorado law requires waterfowl hunters to call the Utility Notification Center of Colorado before digging hunting pits. By doing so, hunters can avoid accidentally hitting electric, gas, water and other utility lines.

## DONATING WILDLIFE

You can donate edible parts of wildlife to a

like-license holder anywhere or to anyone at the recipient's home. A like-license is for the same species, sex, dates and manner of take as the donor's license. Bag and possession limits apply to donors and recipients and birds must be properly tagged. See "Tagging, Shipping, Importing," above.

## WILDLIFE CAUSING DAMAGE

Colorado law allows landowners to protect private property from most wildlife damage. For information, call (303) 297-1192.

## Hunting definitions

**AGGREGATE:** Total number of animals allowed to be taken in one day, by one person. This is equal to the largest daily bag limit.

**DAILY BAG LIMIT:** Maximum number of birds you can kill daily, including birds eaten or donated the day you killed them.

**CENTRAL FLYWAY:** East of the Continental Divide.

**GEESE:** All species of geese and brant. Dark geese means Canada geese, white-fronted geese, brant and all other species of geese except light geese. Light geese means lesser snow geese (including blue), greater snow geese and Ross' geese.

**MANIPULATION:** Alteration of natural vegetation or agricultural crops by activities that include, but are not limited to, mowing, shredding, discing, rolling, chopping, trampling, flattening, burning or herbicide treatments. Manipulation does not include distributing or scattering grain, seed or other feed after removal from or storage on the field where grown.

**MIGRATORY GAME BIRDS:** Migratory birds included in conventions between U.S. and foreign countries to protect birds for which seasons are established. They are: waterfowl (ducks, including mergansers, and geese, including brant); mourning and white-winged doves; sandhill cranes; American coots; sora; Virginia rail; Wilson's snipe; band-tailed pigeons, crows.

**NATURAL VEGETATION:** Non-agricultural, native or natural plants growing from planting, or existing seeds and other propagules. This does not include planted millet. However, millet growing on its own after planting year is considered natural vegetation.

**NON-TOXIC SHOT:** Any shot type approved to take migratory game birds according to 50 CFR 20.21 (U.S. Fish and Wildlife Service). See page 8 for table and details.

**NORMAL AGRICULTURAL OPERATION:** Planting, harvesting, post-harvest manipulation or agricultural practice conducted according to 50 CFR 20.11 (U.S. Fish and Wildlife Service).

**NORMAL AGRICULTURAL PLANTING, HARVESTING OR POST-HARVEST MANIPULATION:** planting or harvesting to produce and gather crops or manipulation after harvest and removal of grain, conducted according to 50 CFR 20.11 (U.S. Fish and Wildlife Service).

**NORMAL SOIL STABILIZATION PRACTICE:** Planting for agricultural soil erosion control or post-mining reclamation conducted according to 50 CFR 20.11 (U.S. Fish and Wildlife Service).

**PACIFIC FLYWAY:** West of the Continental Divide.

**POSSESSION LIMIT:** Maximum number of birds allowed at any time.

**SINKBOX:** Raft or low-floating device with a depression concealing a person below the surface of the water.



## GOOSE SEASON REGULATIONS:

### CENTRAL FLYWAY

#### REGULAR SEASON

**AREAS:** East of Continental Divide, except Northern Front Range, North Park, South Park/San Luis Valley seasons, and the Light Goose Conservation Order Season.

**DARK GEESE —**

**DATES:** Nov. 13-Feb. 13, 2011

**DAILY BAG LIMIT:** 4

**POSSESSION LIMIT:** 8

**LIGHT GEESE —**

**DATES:** Oct. 30-Feb. 13, 2011

**DAILY BAG LIMIT:** 20

**POSSESSION LIMIT:** Unlimited

### NORTHERN FRONT RANGE SEASON

**AREAS:** Boulder, Larimer and Weld counties from the Continental Divide east along the Wyoming border to Hwy. 85, south on Hwy. 85 to Adams Co. line, and all of Adams, Arapahoe, Broomfield, Clear Creek, Denver, Douglas, Gilpin and Jefferson counties.

**DARK GEESE —**

**DATES:** Oct. 2-11; Nov. 13-Feb. 13, 2011

**DAILY BAG LIMIT:** 4

**POSSESSION LIMIT:** 8

**LIGHT GEESE —**

**DATES:** Oct. 30-Feb. 13, 2011

**DAILY BAG LIMIT:** 20

**POSSESSION LIMIT:** Unlimited

### SOUTH PARK, SAN LUIS VALLEY SEASON

**AREAS:** Alamosa, Chaffee, Conejos, Costilla, Custer, Fremont, Lake, Park, Rio Grande and Teller counties. And, parts of Hinsdale, Mineral and Saguache counties east of Continental Divide.

**DARK GEESE —**

**DATES:** Oct. 2-11; Nov. 13-Feb. 13, 2011

**DAILY BAG LIMIT:** 4

**POSSESSION LIMIT:** 8

**LIGHT GEESE —**

**DATES:** Oct. 30-Feb. 13, 2011

**DAILY BAG LIMIT:** 20

**POSSESSION LIMIT:** Unlimited

### NORTH PARK SEASON

**AREAS:** Jackson County

**DARK GEESE —**

**DATES:** Oct. 2-11; Nov. 13-Feb. 13, 2011

**DAILY BAG LIMIT:** 4

**POSSESSION LIMIT:** 8

**LIGHT GEESE —**

**DATES:** Oct. 30-Feb. 13, 2011

**DAILY BAG LIMIT:** 20

**POSSESSION LIMIT:** Unlimited

### LEGAL HUNTING HOURS

Legal times to hunt small game are one-half hour before sunrise to sunset. In light goose conservation season, hunting is allowed one-half hour before sunrise to one-

half hour after sunset.

The sunrise/sunset chart below lists Denver times. Subtract 1 minute from opening and closing time for each 1 1/2 miles east of Denver. Add 1 minute to opening and

closing time for each 12 1/2 miles west of Denver. *(These changes assume each degree of longitude equals 50 miles and a change of 1 degree of longitude equals a 4-minute change in sunrise and sunset times.)*

### 2010-2011 SUNRISE/SUNSET TABLE (DENVER)

DAY	SEPT. RISE SET A.M. P.M. (DST)		OCT. RISE SET A.M. P.M. (DST)		NOV. RISE SET A.M. P.M.		DEC. RISE SET A.M. P.M.		JAN. 2011 RISE SET A.M. P.M.		FEB. 2011 RISE SET A.M. P.M.		MARCH 2011 RISE SET A.M. P.M.	
	1	6:28	7:31	6:56	6:42	7:29	5:58	7:02	4:36	7:21	4:46	7:08	5:19	6:33
2	6:29	7:29	6:57	6:41	7:30	5:57	7:03	4:36	7:21	4:47	7:07	5:21	6:32	5:53
3	6:30	7:28	6:58	6:39	7:31	5:56	7:04	4:36	7:21	4:48	7:06	5:22	6:30	5:54
4	6:31	7:26	6:59	6:37	7:32	5:55	7:05	4:35	7:21	4:49	7:05	5:23	6:29	5:55
5	6:32	7:25	7:00	6:36	7:33	5:54	7:06	4:35	7:21	4:50	7:04	5:24	6:27	5:56
6	6:33	7:23	7:01	6:34	7:34	5:52	7:07	4:35	7:21	4:51	7:03	5:25	6:26	5:57
7	6:34	7:21	7:02	6:33	6:35	4:51	<sup>DST</sup> 7:07	4:35	7:21	4:52	7:02	5:27	6:24	5:58
8	6:35	7:20	7:03	6:31	6:37	4:50	7:08	4:35	7:21	4:53	7:01	5:28	6:23	5:59
9	6:35	7:18	7:04	6:30	6:38	4:49	7:09	4:35	7:21	4:53	7:00	5:29	6:21	6:00
10	6:36	7:17	7:05	6:28	6:39	4:49	7:10	4:35	7:21	4:54	6:59	5:30	6:20	6:01
11	6:37	7:15	7:06	6:27	6:40	4:48	7:11	4:36	7:20	4:56	6:57	5:31	6:18	6:02
12	6:38	7:13	7:07	6:25	6:41	4:47	7:12	4:36	7:20	4:57	6:56	5:33	6:16	6:04
13	6:39	7:12	7:08	6:24	6:42	4:46	7:12	4:36	7:20	4:58	6:55	5:34	6:15	6:05
14	6:40	7:10	7:09	6:22	6:43	4:45	7:13	4:36	7:20	4:59	6:54	5:35	<sup>DST</sup> 7:13	7:06
15	6:41	7:08	7:10	6:21	6:45	4:44	7:14	4:36	7:19	5:00	6:53	5:36	7:12	7:07
16	6:42	7:07	7:11	6:19	6:46	4:43	7:14	4:37	7:19	5:01	6:51	5:37	7:10	7:08
17	6:43	7:05	7:12	6:18	6:47	4:43	7:15	4:37	7:18	5:02	6:50	5:38	7:09	7:09
18	6:44	7:03	7:13	6:16	6:48	4:42	7:16	4:37	7:18	5:03	6:49	5:39	7:07	7:10
19	6:45	7:02	7:14	6:15	6:49	4:41	7:16	4:38	7:17	5:04	6:47	5:41	7:05	7:11
20	6:46	7:00	7:15	6:13	6:50	4:41	7:17	4:38	7:17	5:05	6:46	5:42	7:04	7:12
21	6:47	6:59	7:16	6:12	6:51	4:40	7:17	4:39	7:16	5:06	6:45	5:43	7:02	7:13
22	6:48	6:57	7:18	6:11	6:52	4:40	7:18	4:39	7:16	5:08	6:43	5:44	7:01	7:14
23	6:49	6:55	7:19	6:09	6:53	4:39	7:18	4:40	7:15	5:09	6:42	5:45	6:59	7:15
24	6:49	6:54	7:20	6:08	6:55	4:39	7:19	4:40	7:14	5:10	6:41	5:46	6:57	7:16
25	6:50	6:52	7:21	6:07	6:56	4:38	7:19	4:41	7:14	5:11	6:39	5:47	6:56	7:17
26	6:51	6:50	7:22	6:05	6:57	4:38	7:20	4:42	7:13	5:12	6:38	5:49	6:54	7:18
27	6:52	6:49	7:23	6:04	6:58	4:37	7:20	4:42	7:12	5:13	6:36	5:50	6:52	7:19
28	6:53	6:47	7:24	6:03	6:59	4:37	7:20	4:43	7:11	5:15	6:35	5:51	6:51	7:20
29	6:54	6:45	7:25	6:02	7:00	4:37	7:20	4:44	7:11	5:16			6:49	7:21
30	6:55	6:44	7:26	6:00	7:01	4:36	7:21	4:45	7:10	5:17			6:48	7:22
31			7:27	5:59			7:21	4:45	7:09	5:18			6:46	7:23

This table reflects the minutes to add to the chart above for select towns. These are approximate, use only as a general reference. Consult a state map for more details.

Alamosa	+3	Durango	+11	La Junta	-6
Buena Vista	+5	Fort Morgan	-4	Lamar	-9
Burlington	-10	Gr. Junction	+13	Sterling	-6
Craig	+9	Gunnison	+7	Walden	+5

Source: www.usno.navy.mil and Rand McNally Atlas

### LIGHT GOOSE CONSERVATION ORDER SEASON

**AREAS:** East of I-25.

**DATES:** Feb. 14-April 30, 2011

**DAILY BAG LIMIT:** Unlimited

**POSSESSION LIMIT:** Unlimited

### PACIFIC FLYWAY

#### EARLY CANADA GOOSE SEASON

**AREAS:** West of Continental Divide

**DATES:** Sept. 1-9

**DAILY BAG LIMIT:** 3 Canada geese

**POSSESSION LIMIT:** 6 Canada geese

#### REGULAR SEASON

**AREAS:** West of Continental Divide

**DATES:** Sept. 25-Oct. 3; Nov. 5-Jan. 30, 2011

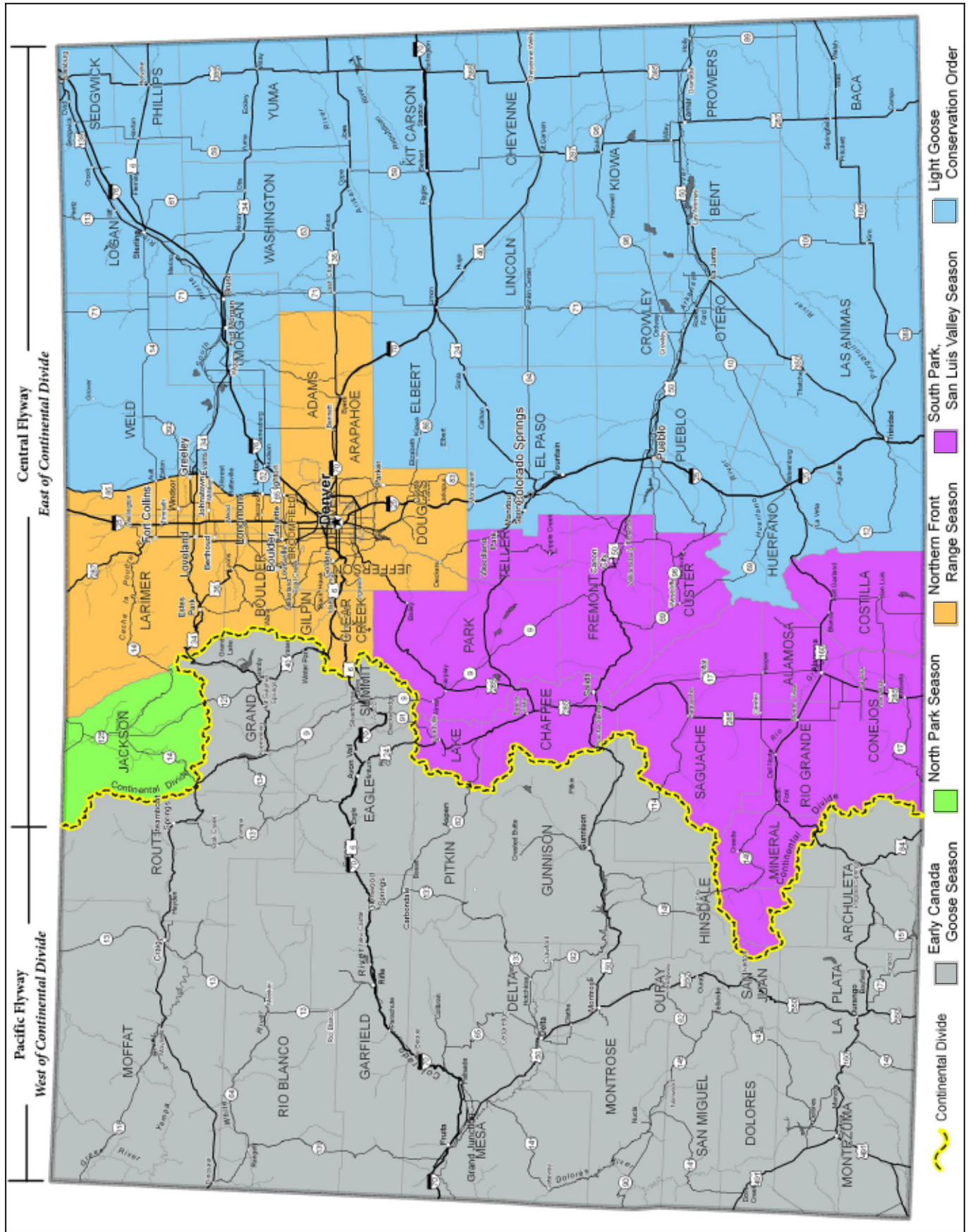
**DAILY BAG LIMIT:** 3 dark geese;

10 light geese

**POSSESSION LIMIT:** 6 dark geese;

20 light geese

# SPECIAL GOOSE SEASON AREAS



## 2010 Colorado Waterfowl

### SEPTEMBER TEAL SEASON

**AREAS:** Lake and Chaffee counties and all areas east of I-25.

**DATES:** Sept. 11-19

**DAILY BAG LIMIT:** 4

**POSSESSION LIMIT:** 8



### HAWKING AND FALCONRY REGULATIONS:

### CENTRAL AND PACIFIC FLYWAYS

**DATES:** Coincide with regular seasons.

**DAILY BAG LIMIT:** 3 singly or in aggregate

**POSSESSION LIMIT:** 6 singly or in aggregate

**NOTE:** Falconry bag and possession limits are not in addition to gun bag limits.



### DUCK & COOT SEASON REGULATIONS:

#### CENTRAL FLYWAY

**AREA — EASTERN PLAINS ZONE:** East of I-25 and all of El Paso, Pueblo, Huerfano and Las Animas counties.

**DATES:** Oct. 2-18; Nov. 6-Jan. 23, 2011

**DAILY BAG LIMIT —**

**DUCKS:** 6, excluding mergansers. Of these, up to 5 can be mallards, but no more than 2 can be female mallards. Included in the daily bag limit of 6, you can have no more than 2 pintails, 1 canvasback, 2 redheads, 3 wood ducks and 2 scaup.

**COOTS:** 15

**MERGANSERS:** 5; only 2 can be hooded mergansers.

**POSSESSION LIMIT:** 2 daily bag limits

**AREA — MOUNTAIN/FOOTHILLS ZONE:**

West of I-25, east of Continental Divide, except El Paso, Pueblo, Huerfano and Las Animas counties.

**DATES:** Oct. 2-Nov. 29; Dec. 18-Jan. 23, 2011

**DAILY BAG LIMIT —**

**DUCKS:** 6, excluding mergansers. Of these, up to 5 can be mallards, but no more than 2 can be female mallards. Included in the daily bag limit of 6, you can have no more than 2 pintails, 1 canvasback, 2 redheads, 3 wood ducks and 2 scaup.

**COOTS:** 15

**MERGANSERS:** 5; only 2 can be hooded mergansers.

**POSSESSION LIMIT:** 2 daily bag limits

#### PACIFIC FLYWAY

**AREA:** West of Continental Divide

**DATES:** Sept. 25-Oct. 12; Nov. 5-Jan. 30, 2011

**DAILY BAG LIMIT —**

**DUCKS, MERGANSERS:** 7 in the aggregate. Of these, no more than 2 can be female mallards, 2 pintails, 1 canvasback, 2 redheads and 3 scaup. No scaup can be taken after Jan. 11, 2011.

**POSSESSION LIMIT:** 2 daily bag limits

**COOTS:** Daily bag and possession limit is 25.

## DUCKS OF COLORADO

The winter male plumage of some commonly encountered ducks, and duck species with bag limit restrictions, are depicted. For more on identifying waterfowl, go to [www.npwr.usgs.gov/resource/birds/waterfwl/index.htm](http://www.npwr.usgs.gov/resource/birds/waterfwl/index.htm).



Mallard



Pintail



Wood duck



Gadwall



Green-winged teal



Blue-winged teal



American wigeon



Canvasback



Redhead



Lesser scaup

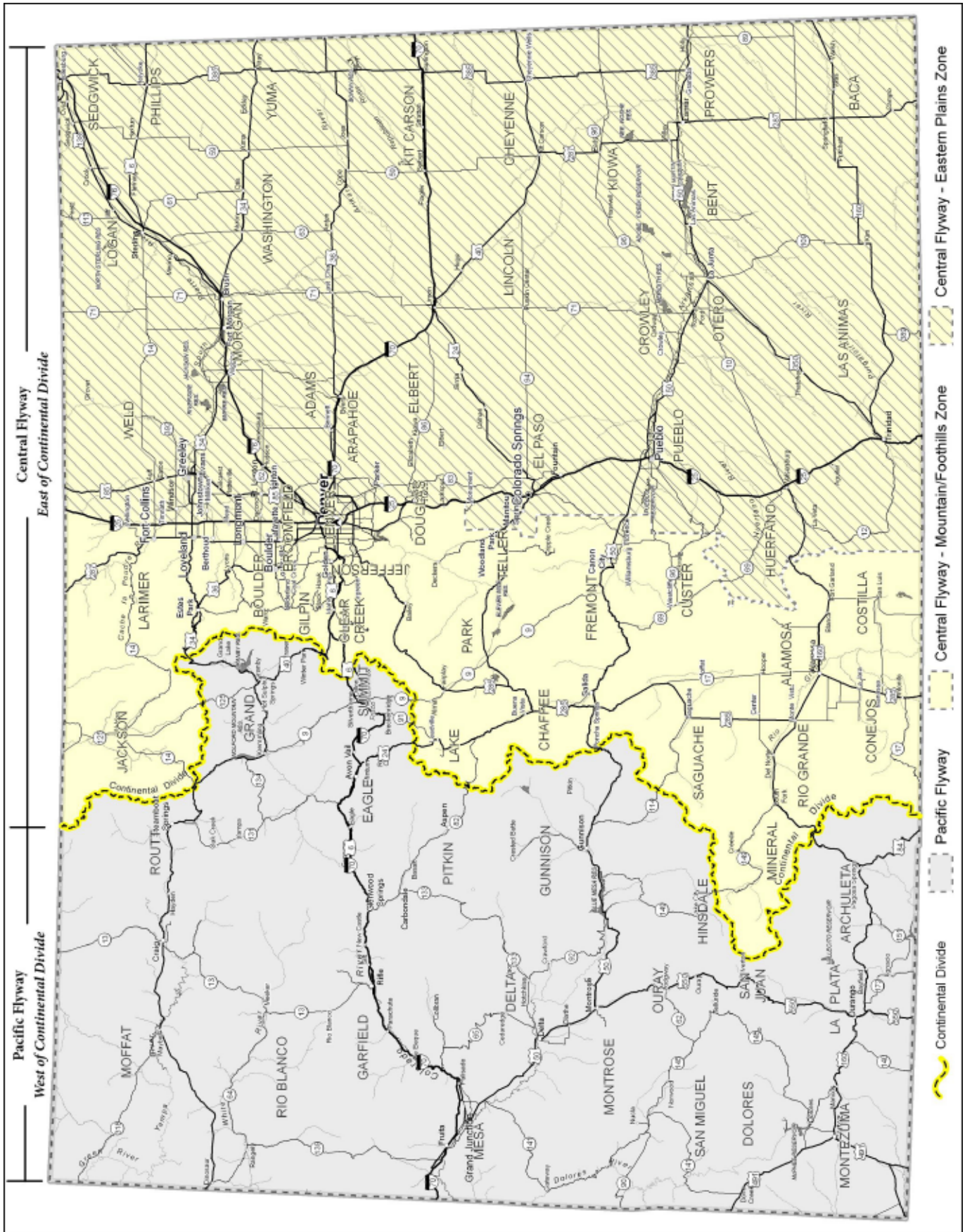


Hooded merganser

Illustrations © Central Flyway Waterfowl Council



# REGULAR DUCK SEASON FLYWAYS AND ZONES





## YOUTH HUNT REGULATIONS:

### CENTRAL FLYWAY

**AREA — EASTERN PLAINS ZONE:** East of I-25 and all of El Paso, Pueblo, Huerfano and Las Animas counties.

**DATES:** Sept. 25-26

**AREA — MOUNTAIN/FOOTHILLS ZONE:** West of I-25 and east of Continental Divide, except El Paso, Pueblo, Huerfano and Las Animas counties.

**DATES:** Sept. 25-26

*NOTE: Hunting restricted to youths age 17 and younger with a mentor. Mentors cannot hunt during youth seasons. Other rules apply. See "Youth Licenses," page 1.*

**BAG AND POSSESSION LIMITS —**

**DUCKS, COOT, MERGANSERS:** Daily bag and possession limit is same as regular Central Flyway regulations.

**GEESE:** Daily bag limit: 4 dark geese; possession limit: 8 dark geese

### PACIFIC FLYWAY

**AREA —** West of Continental Divide

**DATES:** Oct. 16-17

**BAG AND POSSESSION LIMITS — DUCKS, COOTS, MERGANSERS:**

Daily bag and possession limit is same as regular Pacific Flyway regulations.

**GEESE:** Daily bag limit: 3 dark geese, 10 light geese. Possession limit: 2 daily bag limits

### NONTOXIC SHOT REGULATIONS

1. It is illegal to use or have toxic (lead) shot, either in shotshells or as loose shot for muzzleloading, while taking or attempting to take ducks, geese or coots in Colorado. This includes national wildlife refuges open to hunting. Toxic shot, either in shotshells or as loose shot for

muzzleloading, cannot be in a hunter's gun, on his/her person or near a hunter taking or attempting to take waterfowl. Store lead shot in your vehicle. You can store lead shot elsewhere if it's not readily accessible while hunting waterfowl.

2. Nontoxic shot is required in commercial wildlife parks, field trials and dog-training

while hunting captive-reared mallards.

3. Nontoxic shot is any type approved by the U.S. Fish and Wildlife Service. Go to: [www.fws.gov/migratorybirds/CurrentBirdIssues/nontoxic.htm](http://www.fws.gov/migratorybirds/CurrentBirdIssues/nontoxic.htm).

4. It is illegal to have or use nontoxic shot larger than size T to hunt ducks, geese or coots.

## CONSEP<sup>4</sup> 2006 NONTOXIC SHOT LETHALITY TABLE<sup>®</sup>

Proven Nontoxic Shot Loads For Waterfowl & Upland Game Birds <sup>1</sup> <i>Load Velocity: 1,225 - 1,450 FPS</i>	Typical Shooting Range of Activity (Yards)	Most Effective Nontoxic Shot Sizes(s) for Activity	Minimum Load Weight (Ounces)	Minimum Pellet Hits Needed on Lethal Areas for Clean Kills	Minimum Pattern Count Needed at Any Distance for Clean Kills (# of Pellets in 30" Circle)	Choke Starting Points (Given in Lead Shot Choke Designations)	
ACTIVITY							
Large Geese At Long Range <sup>2</sup> Giant, Western, Atlantic and Interior Canadas	50-65 50-70	Steel BBB to T HEVI-Shot 2 to BB	1-1/4 1-1/4	1-2 1-2	50-55 50-55	Improved Modified Full, Improved Modified	
Large Geese Over Decoys <sup>2</sup>	40-50 40-50	Steel BB to BBB HEVI-Shot 4 to 2	1-1/8 1-1/4	1-2 1-2	50-55 50-55	Modified (Mod. or M.) I.C., Modified	
Medium/Small Geese Long Range <sup>2</sup> Snow, White-front, Lesser Canadas	50-65	Steel BB to BBB	1-1/4	1-2	60-65	Improved Modified	
Medium/Small Geese Over Decoys <sup>2</sup>	40-50	Steel 2 to BB	1-1/8	1-2	60-65	Modified (Mod. or M.)	
Large Ducks At Long Range Mallard, Black, Pintail, Goldeneye, Gadwall	45-65	Steel 2 to 1	1-1/8	1-2	85-90	Full	
Large Ducks Over Decoys <sup>3</sup>	20-45	Steel 6 to 2	3/4 - 1	1-2	85-90	I.C. (20-35 Yds), M. (35-45 Yds)	
Medium Ducks Over Decoys <sup>3</sup> Wigeon, Scaup, Shoveler	30-45	Steel 6 to 3	1	1-2	115-120	I.C. (20-35 Yards), Modified (35-45 Yards)	
Small Ducks Over Decoys <sup>3</sup> Teal, Ruddy, Bufflehead	30-45	Steel 6 to 4	1	1-2	135-145	Modified (20-35 Yards), Full (35-45 Yards)	
Ring-Necked Pheasants	20-50	Steel 3 to 2	1	2-3	90-95	I.C. (20-30 Yds), M. (30-50 Yds)	
Turkeys (Head and Neck Shots)	20-40	Steel 4	1-1/4	3-4	210-230	Full or Extra Full	
Swatter Load For Wounded Birds	20-35	Steel 7 to 5	1	1	175	Mod. or Full (7 or 6), Full (5's)	

This table summarizes analysis to date of the waterfowl and upland game bird lethality data base of the Cooperative North American Shotgunning Education Program (CONSEP). Responsible shotgun hunters not only engage in thorough pattern testing and ample target practice, but also restrict shooting to ranges less than 45 yards.

**Note:** To date, steel #BBB (.190") and HEVI-Shot #2 (.150") have exhibited the best all-around performance for taking geese; steel #3 (.140") the best all-around performance for taking ducks.

1 These findings are derived from testing 3" 20-gauge; 2 3/4", 3" and 3 1/2" 12-gauge; and 3 1/2" 10 gauge steel loads and 2 3/4" and 3" 12 gauge HEVI-Shot loads. As additional pellet sizes and types, load configurations, and gauges are tested and data bases completed, findings will be updated and may change.

2 Steel #F (.220") in all 12-gauge load configurations has exhibited the highest crippling rate on geese of all steel pellet sizes tested. Due to inadequate pattern density, steel #F has not proven lethal on geese beyond 55 yards.

3 Steel #4 (.130") has exhibited good all-around performance for taking small and medium-sized ducks, but has not proven lethal on large ducks beyond 45 yards.

This terminal ballistics information is provided courtesy of the members of CONSEP. CONSEP is a research and information service currently funded jointly by 18 U.S. state fish and wildlife agencies, the U.S. Fish and Wildlife Service, the Inter. Hunter Educ. Assoc., the British Assoc. for Shooting and Conservation (BASC), the Danish Hunters' Assoc.-Denmark, Field & Game Australia, Sporting Shooters Assoc. of Australia, the Victoria Dept. of Sustainability and Environ.-Australia, Environ-Metal, Inc., Remington Arms Co., and Winchester Div./Olin Corp. Contributing members include Larry Gore's Katy Prairie Outfitters, Briley Mfg. Co., and Oregon DF&W.

4 This table is NOT a CONSEP product. Table created and © Copyright 2006 by Tom Roster. Reprint rights and/or permission to quote/use portions of this table granted only by written permission of Tom Roster, 1190 Lynnewood Blvd., Klamath Falls, OR, USA 97601, 541/884-2974, [tomroster@charter.net](mailto:tomroster@charter.net)

## LAND USE RULES

### LAND RESTRICTIONS AND USE RULES

**NOTE:** Additional restrictions may apply on some properties. Consult the DOW's State Wildlife Area brochure for details.

1. It is illegal to hunt on private land without permission from landowner or person in charge. It is illegal to post or indicate that public lands are private. It is illegal to hunt on State Trust Lands without permission of lessee, except lands open for wildlife recreation.

2. It is illegal to hunt waterfowl in federal reservations; areas the U.S. government sets aside as bird, game or other wildlife reservations, breeding grounds or refuges; or areas closed by the Migratory Bird Treaty Act, except as permitted. More regulations may apply on national wildlife refuges. Contact: Alamosa and Monte Vista, (719) 589-4021; Browns Park, (970) 365-3613; Arapaho, (970) 723-8202.

**3. IN THE AREAS BOUNDED** on N by Wyoming; E and S by I-76, Hwy. 71, U.S. 36 and I-70; and W by the Continental Divide and Larimer-Jackson county line; and in Bent, Crowley, Kiowa, Mesa, Otero and Prowers counties:

a. It is illegal to hunt waterfowl within 50 yards on either side of center line of a public road.

b. It is illegal to hunt waterfowl within 150 yards of a dwelling, including directly above it, without first obtaining permission from owner, occupant or person in charge of the dwelling.

**4. PUEBLO COUNTY:** It is illegal to hunt waterfowl within 150 yards of a dwelling, including directly above it, without first obtaining permission from owner, occupant or person in charge of dwelling.

**5. ALONG THE COLORADO RIVER:**

a. **IN GRAND COUNTY:** Closed to waterfowl hunting from Shadow Mountain dam to Twin Creek after Nov. 13.

b. **IN MESA COUNTY:** Closed to waterfowl hunting on Colorado River and 200 yards on either side of river from Grand Avenue bridge in Grand Junction to W end of Horsethief Canyon SWA from Wed.-Fri., except Thanksgiving, Christmas and New Year's Day. Closed to waterfowl hunting on river and 200 yards on either side of river from Appleton Drain to Hunter Wash (at the W end of Walker SWA).

## Reservation Procedures

On properties requiring reservations, call 1-800-846-9453 (1-800-UGO-WILD). Reservations are taken 9 a.m.-4 p.m. Monday-Friday. For printable property maps and information about the reservation system, go to the DOW website at: [www.wildlife.state.co.us/Hunting/Waterfowl/Reservations](http://www.wildlife.state.co.us/Hunting/Waterfowl/Reservations).

- Reservations are not accepted more than 14 days in advance of hunt date nor after noon the day before the hunt date or noon Friday for hunts on Sunday and holidays falling on Monday.
- To cancel, hunters must do so by noon the day before the hunt date. Failing to cancel reservations or follow check station procedures may result in losing future reservation rights for the rest of the hunting season.
- Maximum 1 reservation per hunt date and 1 reservation per phone call. Reservations are not transferable. The person making the reservation must be a licensed hunter for the species to be hunted and must be at the property the day of the hunt.

## SPECIAL REGULATION PROPERTIES

**NOTE:** These lands have special waterfowl regulations. Additional rules apply on some properties. Consult the DOW's State Wildlife Area (SWA) brochure for details.

### ANDRICK SWA

1. Public access is limited to Sat., Sun., Wed. and legal holidays. During these days, public access is prohibited from 9 p.m.-3 a.m. Night hunting is prohibited.

2. Hunting by reservation only. See "Reservation Procedures" (top of page) for details. Max. 4 hunters allowed in each area at any time. From Sept. 1 through end of regular goose season, only 3 reservations allowed per hunter annually.

3. From Sept. 1-Nov. 30, all public use prohibited except migratory bird hunting in designated hunting areas.

4. From Dec. 1 through end of regular goose season, hunting is permitted for waterfowl and small game. During this time, the property will be divided into small game and migratory bird hunting areas, and hunt days will be established as small game hunting or migratory bird hunting only to minimize conflicts.

a. **SMALL GAME** — Small game hunting restricted to December and January, Sundays only. Dec. 5, 19 and Jan. 16 are limited to youth/mentor small game hunting. On these dates, at least one member of the hunting party must be a youth under 18 years old, and hunters age 15 younger must be accompanied by a mentor.

Three hunting areas are designated, named: northwest area, southwest area and east area. All small game reservations for each area will be awarded by lottery. To enter, hunters must send a post card to: Attention Andrick Ponds Reservations, Brush Service Center, 122 East Edison Ave., Brush, CO 80723. Cards must be postmarked by Sept. 30 and include the hunter's name, address, CID number and preferred hunting areas and dates. Successful applicants notified by Oct. 21. Hunters can apply for no more than 1 hunt area each day, but can list multiple dates on 1 postcard.

b. **MIGRATORY BIRD** — Migratory bird hunting only on Sat., Wed. and legal holidays from Dec. 1 through end of dark goose season. Hunting areas same as from Sept. 1-Nov. 30. Reservations taken by calling 1-800-846-9453, following normal reservations procedures.

5. From end of dark goose season through the Fri. prior to Memorial Day, only spring turkey hunting allowed.

6. Mandatory check in and check out as posted.

### ARAPAHO NATIONAL WILDLIFE REFUGE

1. Unit A closed to all hunting. Unit B open to migratory

and resident small game. Unit C closed to migratory bird hunting. For information, call (970) 723-8202.

### ATWOOD STATE TRUST LAND

1. Hunting prohibited except Sat., Sun., Wed., Labor Day, Columbus Day (observed), Veterans Day, Thanksgiving Day, Christmas, New Year's Day, Martin Luther King Jr. Day and Presidents Day.

2. Small game and waterfowl hunting regulated by reservation system and mandatory check station. See "Reservation Procedures" (top of page) for details. Hunters may hunt only area specified on reservation. Mandatory check in and check out as posted.

3. There are four reservations available: 2 are for the general public, 1 is for mobility-impaired hunters and 1 for youth and their mentor. General public and mobility-impaired must hunt the up-river side of Hwy. 63. Youths and mentors must hunt down-river side of the highway.

4. Hunting prohibited with centerfire rifles.

### ATWOOD SWA

1. Beginning first day of the regular duck season through last day of regular duck season, waterfowl and small game hunters must check out at designated check station. Access from designated parking areas only.

### BANNER LAKES SWA

1. Closed first day of regular waterfowl season to the day before the first day of pheasant season except for waterfowl hunting on Sat., Sun., Mon. and legal holidays.

2. Waterfowl reservations available but not required. See "Reservation Procedures" (top of page) for details. Hunters can only hunt the area specified on the reservation. Max. 4 hunters per reservation.

3. Reservations valid during reserved day until hunter with reservation checks out. Hunters may check in on first-come, first-served basis after a hunter with a reservation checks out. If a reserved area is not claimed by legal sunrise, or if no reservation exists for a hunt area, hunters may check in after midnight the morning before the hunt.

4. Waterfowl hunters must follow check-in and check-out procedures as posted.

5. Access only through designated parking areas.

### BARR LAKE STATE PARK

1. Waterfowl hunting only, restricted to Sat. and Wed.

2. Hunting from designated blinds only. Max. of 3 hunters per blind. Unreserved blinds will be available on

## 2010 Colorado Waterfowl

first-come, first-served basis after 5 a.m. each day. Reserved blinds unoccupied by 7 a.m. are first come, first served.

**3.** Hunting by reservation only. See "Reservation Procedures" (page 9) for details. Hunters can only hunt the area specified on the reservation. Mandatory check in and check out as posted.

### BRAVO SWA

**1.** Beginning with the first day of the regular duck season through the last day of the regular duck season, reservations are required for all hunting. See "Reservation Procedures" (page 9) for details.

**2.** Waterfowl and small game hunting is permitted only on Sat., Sun., Wed., Columbus Day (observed), Veterans Day, Thanksgiving Day, Christmas Day, New Year's Day and Martin Luther King Jr. Day.

**3.** Reservations are limited as follows: County Road 34 and 36 parking lots: 1 waterfowl and 1 small game reservation per day; County Road 370 parking lot #1: 2 waterfowl and 2 small game reservations per day; Youth/Mentor parking lot: 1 waterfowl reservation per day (no more than two mentors and at least one youth per reservation); County Road 370 parking lot #2: 1 waterfowl and 1 small game reservation per day. Max. 4 people allowed per reservation.

**4.** Waterfowl and small game hunters must check out by 2 p.m. daily and must follow check-in and check-out procedures as posted.

**5.** Access from designated parking areas only.

**6. SCALVA PARCEL:** All public access requires a reservation. See "Reservation Procedures" (page 9) for details.

**a.** From Sept. 1-May 31, only hunting is allowed and is limited to archery, muzzleloading and shotgun during established seasons. Hunting is only on Sat., Sun., Wed., Labor Day, Columbus Day (observed), Veterans Day, Thanksgiving Day, Christmas Day, New Year's Day, Martin Luther King Jr. Day and Presidents Day.

**b.** Access by foot only 4 a.m.-9 p.m. through designated parking and mandatory check station.

**7.** Deer, fall turkey hunting allowed in established seasons. Deer and turkey hunters do not need to check in or out, but reservations are required.

### BROWNS PARK NATIONAL WILDLIFE REFUGE

**1.** Butch Cassidy Lake, Hog Lake and the river corridor are open to waterfowl hunting. All other units are closed. For information, call 970-365-3613.

### BRUSH SWA

**1.** Beginning with the first day of regular duck season through last day of regular duck season, waterfowl and small game hunters must check out at designated check station. Access from designated parking areas only.

### BRUSH PRAIRIE PONDS SWA

**1.** Public access prohibited from 9 p.m.-3 a.m., except when authorized by night hunting permit.

**2.** All land users must check in and check out at the designated check station at Brush Memorial Park. Access is regulated through the check station, max. 4 hunters allowed in each area.

**3.** From the last day of regular goose season until opening of first waterfowl season, only wildlife observation is permitted with access limited to areas as posted. This is to protect nesting waterfowl and

## Land closures in deer season (opening weekend)

All recreational activities except deer hunting prohibited on the following lands during opening weekend of regular plains rifle deer season and on opening day and first weekend of late plains rifle deer season:

**STATE WILDLIFE AREAS:** Atwood, Bravo (and Scalva parcel), Brush, Centennial Valley, Cottonwood, Dune Ridge, Elliott, Jean K. Tool, Julesburg leases, Knudson, Messex, Mitani-Tokuyasu, Overland Trail, Pony Express and Sedgwick Bar, Tamarack Ranch.

**STATE TRUST LANDS:** Atwood, Red Lion Ranch and Ford Bridge

## Launching vessels

Launching or taking out vessels from the water is prohibited from the first day of Sept. teal season until the last day of dark goose season on the following properties:

**STATE WILDLIFE AREAS:** Boyd Ponds, Bravo, Brower, Brush, Centennial Valley, Cottonwood, Dune Ridge, Elliott, Jean K. Tool, Julesburg, Knudson, Messex, Overland Trail, Pony Express, Sedgwick Bar, Tamarack Ranch

**STATE TRUST LANDS:** Atwood, Bravo, Ford Bridge, Red Lion Ranch

depends on water levels. Public access by foot only.

**4.** From opening of teal season through Nov. 30, only migratory bird hunting allowed and only on Sat., Sun., Wed., Columbus Day (observed), Veterans' Day and Thanksgiving Day.

**5.** From the September teal season through Dec. 1, reservations are available, but not required. See "Reservation Procedures" (page 9) for details. Max. 3 reservations per hunter annually. Reservations valid until 9 a.m., hunters may only hunt the area specified on the reservation or which they check into. Hunters may check in on first-come, first-served basis after a hunter with a reservation checks out. If no reservation exists for a hunt area, hunters may check in after midnight the morning before the hunt.

**6.** From Dec. 1 through the last day of regular goose season, only hunting is allowed. Reservations available to hunt on Dec. 1 (first day for small game and big game hunting). Reservations not available from Dec. 2-Jan. 31. Hunters may check in at one of five hunting areas on a first-come, first-served basis, after midnight the morning before the hunt. Hunters properly checked in to any of these areas may hunt anywhere on the property.

### CENTENNIAL VALLEY SWA

**1.** During waterfowl season, small game and waterfowl hunting is only in designated areas.

**2.** Hunting with centerfire rifles prohibited.

**3.** During regular duck seasons, reservations are required for waterfowl and small game hunting. See "Reservation Procedures" (page 9) for details.

Hunters with reservations can only hunt the area specified on the reservation. Max. 4 hunters allowed per reservation.

**4.** Mandatory check in and check out as posted at designated station.

**5.** Closed during regular waterfowl seasons except Sat., Sun., Mon. and legal holidays. Closed March 1-Aug. 31 except on designated trail for wildlife viewing and for hunters with spring turkey licenses.

### CHUCK LEWIS SWA

**1.** Waterfowl hunting prohibited within 50 yards of CR 14F bridge.

**2.** Closed 10 p.m.-4 a.m. Overnight parking prohibited.

**3.** Dogs permitted as an aid to waterfowl hunting or aid to a person with disabilities.

### CRAWFORD STATE RECREATION AREA

**1.** Hunting prohibited as posted.

### DILLON RESERVOIR

**1.** Waterfowl hunting prohibited on Labor Day and the Sat. and Sun. before Labor Day.

**2.** Denver Water Board restricts hunting to designated areas only. For more property information, go to [www.co.summit.co.us/openspace/drrec.html](http://www.co.summit.co.us/openspace/drrec.html).

### DOMELAKES SWA

**1.** Camping during waterfowl seasons allowed only in designated areas.

### ELLIOTT SWA

**1. WEST ELLIOTT CLOSURE:** Closed as posted in 80-acre part N of S. Platte River, S of CR W.7 and E of railroad.

### 2. HAMLIN TRACTS (N AND S):

**a.** Max. 4 hunters per area. Mandatory check in and check out as posted.

**b.** From Sept. teal season through Nov. 30, migratory bird hunting allowed only Sat., Sun., Wed., Labor Day, Columbus Day (observed), Veterans Day and Thanksgiving.

**c.** Reservations are available but not required. See "Reservation Procedures" (page 9) for details. Hunters with reservations can only hunt area specified on reservation. Max. 3 reservations per hunter annually.

**d.** Reservations valid until 9 a.m. Hunters may check in on first-come, first-served basis after a hunter with a reservation checks out or if no reservation exists for a hunt area after 3 a.m. immediately before the hunt.

**e.** Hunters must comply with youth/mentor restrictions as posted on S Hamlin Tract.

**f.** From Dec. 1 through March 31, reservations not available. Hunters may check in on first-come, first-served basis but not until 3 a.m. immediately before hunt. Two areas available on both N and S tracts. Hunters properly checked in for one of these areas may hunt anywhere within that area.

### 3. UNION TRACT:

**a.** Open for waterfowl hunting only. Reservations available but not required. See "Reservation Procedures" (page 9) for details. Hunters with reservations can only hunt area specified on reservation. Max. 2 reservations per hunter each year. Manda-

tory check in and check out as posted.

**b.** Max. 4 hunters per area. Hunting allowed only in designated blinds, as posted, or within area identified for each blind. Reservations valid until 9 a.m. Hunters may check in on first-come, first-served basis after a hunter with a reservation checks out or if no reservation exists for a hunt area after 3 a.m. immediately before the hunt.

**c.** From Sept. teal season through the first segment of regular waterfowl season, hunting allowed only Sat., Sun., Wed. and Columbus Day (observed).

**d.** During subsequent segments of regular waterfowl season, DOW may establish max. 15 days of waterfowl hunting to be consistent with management objectives or restrictions, including weather, water levels, presence of waterfowl, need for waterfowl resting areas, the need to maximize public hunting and youth hunting opportunities. To enter a drawing for an area, send a postcard with name, address, phone number, desired dates and hunting area (Area 1 or Area 2) to DOW Union Tract Drawing, 122 E. Edison St., Brush, CO 80723. Cards must be postmarked by Sept. 30. Successful applicants notified by Oct. 21. Hunters can apply for 1 area daily, but can list multiple requests on 1 postcard. Reservations limited to 1 drawing per hunter annually. Dates available for reservations are Nov. 6, 7, 11, 20, 21, 25; Dec. 11, 12, 25, 26, 31; Jan. 1, 2, 22, 23.

**EMPIRE RESERVOIR**

**1.** Goose hunting prohibited below historical and recorded high-water line. Hunting also prohibited N of res. 20 yards above high-water line from the inlet structure, N and E to easternmost end of dike.

**FLAGLER RESERVOIR SWA**

**1.** Boating prohibited during waterfowl season, except crafts propelled by hand, wind or electric motor. Boating also prohibited if it creates a white-water wake, except water skiing allowed Sun. and Mon. June 1-Aug. 31.

**2.** Hunting limited to youth mentor hunting only. Max. 1 mentor per youth may hunt.

**FOSSIL CREEK RESERVOIR**

**1.** Closed to goose hunting as posted.

**FRANK SWA**

**1.** During regular duck season, all waterfowl and small game hunting is limited to Sat., Sun., Mon. and legal holidays.

**2.** A reservation is required. See "Reservation Procedures" (page 9) for details. Max. 4 hunters allowed per reservation. Hunters must hunt only in areas specified on the reservation. Mandatory check out as posted at designated check station.

**3.** Hunting prohibited west of CR 13 and in the posted safety zone in the NE corner of the property.

**GRAND LAKE, WINDY GAP RESERVOIR**

**1.** Closed to goose hunting on lakes and within 100 yards of high-water lines.

**GUNNISON RIVER SWA**

**1.** Public access is by foot only.

**2.** Discharge of firearms and bows prohibited, except when hunting. Only waterfowl hunting with shotguns allowed.

**GYPSON PONDS SWA**

**1.** Dogs are prohibited on the eastern ponds, except

when used for waterfowl hunting.

**HIGEL SWA**

**1.** Closed Sept. 1-Feb. 14, except by permit Sat., Sun., Wed. and legal holidays. Closed Feb. 15-July 15 to protect nesting water birds.

**2.** Permits required for access Sept. 1-Feb. 14. Max. 25 permits daily. Get free permits through DOW in Monte Vista, or through reservation system by calling (719) 587-6923. Phone reservations only Oct. 1-Nov. 10.

**HIGHLINE LAKE STATE RECREATION AREA**

**1.** Closed to waterfowl hunting Sat. and Sun.

**2.** Waterfowl hunting limited to designated blinds. Max. 4 hunters per blind. Mandatory check in and check out at west entrance station.

**HORSETHIEF CANYON SWA**

**1.** On Sat., waterfowl hunting restricted to youth mentor hunting only from 100 yards E of Blind No. 1 to W property boundary.

**2.** To hunt waterfowl on W end, reservations for specific blind required. Hunting restricted to designated blind or within 100 yards of it. Max. 4 hunters per blind. Reservations on first-come basis, from check-in station. Permits not required 100 yards E of Blind No. 1 to E boundary of property, including Skipper's Island.

**3.** Waterfowl hunting prohibited Wed.-Fri., except Thanksgiving, Christmas, New Year's Day.

**JACKSON LAKE SWA**

**1.** Access only from designated parking areas.

**2.** Beginning with first day of regular duck season through the last day of regular duck season, all hunting is by reservation only. See "Reservation Procedures" (page 9) for details. Hunters with reservations can only hunt area specified on reservation. Max. 4 hunters per reservation. Mandatory check in and check out as posted at designated check station.

**3.** Reservations regulated by areas. One area reserved for youth mentor hunting. Max. 2 mentors and at least 1 youth per reservation. Three reservations available for waterfowl hunting from vessels on lake.

**4.** Boat hunting prohibited beginning on first day of regular dark goose season. Hunters with boat reservations must call reservation line 2 days before scheduled hunt to confirm ice conditions. Only boat hunters with reservations are exempt from Nov. 1 boat closure. Boats prohibited on frozen surface of lake.

**5.** Mandatory check out at station at parking lot a half-mile S of CR CC and CR 4 by 2 p.m. Waterfowl hunters with boat reservation exempt from check-out station.

**6.** Hunters and vessels must stay in designated hunt zone. Hunting prohibited within 150 yards of shore, other vessels. Vessels launched from Jackson Lake State Park must have state parks pass.

**7.** Waterfowl and small game hunting permitted only Sat., Sun., Wed., Columbus Day (observed), Veterans Day, Thanksgiving Day, Christmas, New Year's Day and Martin Luther King Jr. Day.

**8.** Deer hunting allowed in established seasons. Deer hunters do not need to check in or out. Deer hunting reservations required and are unlimited in number.

**JEAN K. TOOL SWA**

**1.** Beginning with the first day of regular duck season through last day of regular duck season, waterfowl and small game hunters must check out at designated check station.

**2.** Access from designated parking areas only.

**JOHN MARTIN RESERVOIR**

**1.** Closed, except to retrieve downed waterfowl, Nov. 1 through last day of waterfowl season as posted on U.S. Army Corps of Engineers property leased by DOW or State Parks to provide for resting waterfowl, depending on water levels, weather and presence of birds.

**JOHNSON POND (SEDGWICK CO.)**

**1.** Goose hunting prohibited in area of Sedgwick Co. including: Hwy. 138 on N, Hwy. 385 on E, I-76 on S and CR 29 on W.

**2.** Light goose hunting is allowed within the Johnson Pond Special Goose Closure only during special late light goose season and Light Goose Conservation Order.

**JUMBO RESERVOIR (JULESBURG) SWA**

**1.** Closed to goose hunting in parts of Logan and Sedgwick counties bounded on N by Logan CR 70 and Sedgwick CR 3; on E by Sedgwick CR 3; on S by Logan CR 970 and on W by Logan CR 95, except for Red Lion SWA as posted.

**2.** Except as allowed below, boating prohibited Oct. 1 through last day of regular goose season. Hand-propelled craft may be used to set and pick up decoys and to retrieve downed waterfowl. Boats prohibited within 50 feet of outlet structure.

**3.** No hunting from frozen surface of lake.

**4.** Vehicles limited to 250.

**5.** Hunting from floating devices allowed from opening day of regular Eastern Plains duck season until opening day of dark goose season. Reservations required. See "Reservation Procedures" (page 9) for details. Three reservations available for waterfowl hunting from vessels on res. Boat hunting reservations will be cancelled if ice is unsafe.

Hunters with boat reservations must call reservation line 2 days before scheduled hunt to confirm ice conditions. Only boat hunters with reservations are exempt from Oct. 1 boat closure.

**6.** Hunting from floating devices permitted only Sat., Sun., Wed., Columbus Day (observed), Veterans Day, Thanksgiving, Christmas Day, New Year's Day and Martin Luther King Jr. Day. Hunters must leave res. by 2 p.m. Hunting prohibited within 150 yards of shore and other vessels.

**LOWER LATHAM RESERVOIR**

**1.** Hunting prohibited as posted.

**MACK MESA STATE RECREATION AREA**

**1.** Hunting, trapping prohibited.

**MACFARLANE RESERVOIR STL**

**1.** Motorized travel for waterfowl hunting access to the reservoir is allowed on designated routes only.

**MEREDITH RESERVOIR**

**1.** Hunting prohibited as posted.

**MITANI-TOKUYASU SWA**

**1.** During waterfowl season, parking area closed one hour after sunset until 4 a.m.

**2.** Waterfowl hunting access limited to occupants of

## 2010 Colorado Waterfowl

vehicles legally parked in designated parking area.

### MOGENSEN PONDS SWA

1. Hunting prohibited, except waterfowl from designated blinds.

### MONTE VISTA & ALAMOSA NATIONAL WILDLIFE REFUGES

1. Nontoxic shot required for shotgun hunting. For information, call (719) 589-4021.

### NEW WINDSOR RESERVOIR

1. Hunting prohibited as posted.

2. Closed to waterfowl hunting within 400 yards of occupied dwelling, without first obtaining permission from owner or person in charge, or within a quarter-mile from center line of these roads: from CR 74 and Colo. 257, N to CR 78; E to CR 21; S to CR 74; then W to Colo. 257, including the area within shape formed by these roads.

3. Closed to waterfowl hunting within 150 yards of Colo. 257 center line between CRs 78 and 74; CR 74 between Colo. 257 and CR 21.

### ORCHARD MESA SWA

1. Access only from parking area on C Road between roads 30 and 31.

2. Camping, fires, horses prohibited. Vehicles prohibited beyond parking area.

3. Closed March 15 to July 14 to protect nesting migratory birds.

4. Waterfowl hunters must hunt from designated blinds or zones identified for each blind. Blinds assigned at entrance station, available daily, first come, first served. Max. 4 hunters per blind.

5. Hunting restricted to bows and shotguns with shotshells.

6. Dogs prohibited except as hunting aid.

### OVERLAND TRAIL SWA

1. Hunting by reservation only. Max. 4 hunters per reservation. See "Reservation Procedures" (page 9) for details. Hunters with reservations can only hunt area specified on reservation. Mandatory check in and check out at designated check station as posted.

2. Foot access only via designated parking area.

3. From Sept. 1-May 31, hunting permitted only on Sat., Sun., Wed., legal holidays and opening day of the late rifle deer season.

4. Beginning with first day of regular duck season through last day of regular duck season, only hunting allowed. Waterfowl and small game hunters must check out at designated check station by 2 p.m. Hunting allowed Sat., Sun., Wed., Columbus Day (observed), Veterans Day, Thanksgiving Day, Christmas Day, New Year's Day and Martin Luther King Jr. Day.

### PONY EXPRESS SWA

1. Closed to goose hunting in part of Sedgwick County S of US 138, W of US 385, N of I-76 and E of CR 29.

2. Light goose hunting allowed during special control season and any conservation order for light geese.

### PREWITT RESERVOIR SWA

1. Waterfowl hunting prohibited as posted to provide for waterfowl resting depending on water levels, weather and presence of birds.

2. Boating prohibited, except hand-propelled crafts used in waterfowl hunting (putting out, picking up decoys, retrieving downed waterfowl), Oct. 1

through last day of regular goose season. Boating prohibited if it creates white-water wake.

3. Hunting prohibited from floating device.

### QUEENS SWA

1. Boating prohibited if it creates a whitewater wake in channel between Lower and Upper Queens reservoirs.

2. **UPPER QUEENS (INCLUDING CHANNEL), NEE NOSHE, NEE GRONDA:**

a. Mandatory check in and check out at check station when open.

b. Closed Nov. 1 through last day of waterfowl season as posted, except to retrieve downed waterfowl.

3. **LOWER QUEENS:**

a. Boating prohibited if it creates whitewater wake from opening day of waterfowl season until Dec. 1.

b. Mandatory check in and check out at check station when open.

c. Closed Dec. 1 through last day of waterfowl season as posted except to retrieve downed waterfowl.

4. **NEE SO PAH:**

a. Closed Nov. 1 through last day of waterfowl season except to retrieve downed waterfowl.

### RAMAH RESERVOIR SWA

1. Boating prohibited Nov. 1 through the last day of waterfowl season except float tubes or crafts propelled by hand, wind or electric motor.

2. Discharging firearms or bows prohibited except shotguns or bows for hunting. Discharging archery equipment allowed on established archery range.

### RED LION SWA

1. Boating prohibited, except float tubes or craft propelled by hand for fishing and hunting. Boating prohibited Oct. 1-March 31, except for hand-propelled craft to place or retrieve decoys or downed waterfowl.

2. During special control season and conservation orders for light geese, light goose hunting allowed in the area bounded by N by CR 970, on E by CR 97 (Sedgwick CR 1), on S by US 138 and on W by CR 95.

3. From first day of regular duck season through last day of regular duck season, waterfowl and small game hunters must check out at designated check station. Access from designated parking areas only.

4. Closed to goose hunting in parts of Logan and Sedgwick counties bounded on N by Logan CR 70 and Sedgwick CR 3, on E by Sedgwick CR 3, on S by Sedgwick CR 24.8 and across Red Lion SWA as posted, and on W by Logan CR 95, except for Red Lion SWA as posted.

### RIVERSIDE RESERVOIR

1. Goose hunting prohibited as posted.

### RUSSELL LAKES SWA

1. Parking only in established areas.

2. Closed as posted to protect wintering and nesting waterfowl and to protect administrative areas. Sect. 29 closed during waterfowl seasons.

3. Closes at 1 p.m. during first waterfowl season.

### SOUTH REPUBLICAN SWA

1. Parking only in designated areas. Access prohibited on downstream face of dam.

2. Waterfowl hunting prohibited as posted.

### SWEITZER LAKE

1. Hunting waterfowl permitted on opening day and thereafter on Sat., Sun., Wed. and legal holidays.

### TAMARACK RANCH SWA

1. Reservations are available but not required. See "Reservation Procedures" (page 9) for details. Hunting open weekends and Columbus Day (observed), Veterans Day, Thanksgiving Day, Christmas, New Year's Day, Martin Luther King Jr. Day and Presidents Day.

2. The first hunt date available for reservations is the Sat. after Oct. 24 and the last date available is the last Sun. of regular duck season. Weekdays, weekends and holidays outside the reservation period and any unreserved or open units are available for hunting without reservations and are regulated through check station. Hunters with reservations can only hunt area specified on reservation. Mandatory check in and check out as posted at designated station.

3. Hunters must park vehicles at parking area they are checked into and are restricted to that area until 9 a.m., at which time they may walk into and hunt adjacent areas.

### TILMAN BISHOP SWA

1. Waterfowl hunters may hunt only from designated blinds or in the zone marked for each blind.

2. Blinds assigned at entrance station, available daily on first-come, first-served basis. Max. 4 hunters per blind.

3. Hunting with shotguns, shot-shells and bows only.

### TRINIDAD STATE RECREATION AREA

1. Waterfowl hunting prohibited as posted.

### TURK'S POND

1. From the first split of waterfowl seasons through the last day of waterfowl seasons, the following regulations are in effect in sections 20, 21, 28, 29, 32 & 33 in Township 29 South, Range 44 West, 6th P.M.:

a. On SWA land within a quarter-mile of ordinary high-water line, hunting prohibited as posted.

b. It is illegal to discharge firearms or arrows from, on or across 50 yards on each side of center line of public roads.

### TURK'S POND SWA

1. Boating prohibited except float tubes or crafts propelled by hand, wind or electric motor.

2. Closed near pond and administrative building, except to retrieve downed waterfowl from opening day of waterfowl season through end of February.

### VANCIL RESERVOIR

1. Waterfowl hunting prohibited as posted to provide for waterfowl resting as necessary depending on water levels, weather and presence of birds.

### WELLINGTON SWA

1. Boating prohibited except hand-propelled crafts used in hunting waterfowl.

2. Closed on Wellington Unit from first day of regular waterfowl season to first day of pheasant season except Sat., Sun., Mon. and legal holidays.

### WHITEHORSE SWA

1. Closed except for youth/mentor waterfowl hunting when authorized by area wildlife manager as participants in DOW youth hunter program.

2. Reservations required for waterfowl hunting. See "Reservation Procedures" (page 9) for details. Hunters with reservations can only hunt area specified on reservation except in areas where reservations are not required or are unreserved and unoccupied.

3. Mandatory check in and check out as posted at designated check station.

# HUNTING LAWS & LEGAL METHODS OF TAKE

## Safe handling of game meat

Concern has grown about diseases affecting wild animals that could potentially make humans sick.

Most of the time, properly handled and prepared game meat poses no greater risk than domestic meat of causing disease in humans.

Hunters are encouraged to contact their local public health department or DOW office for information on wildlife diseases that may be present where they plan to hunt.

Public health officials recommend the following precautions when handling and preparing game meat:

1. Do not handle animals that are obviously sick or found dead. Report sick or dead animals you find to a DOW office.
2. Keep game cool, clean and dry.
3. Do not eat, drink or smoke while dressing game.
4. Use disposable gloves when cleaning game.
5. Wash your hands with soap and water or use alcohol wipes after dressing game.
6. Clean all tools and surfaces immediately afterward. Use hot soapy water, then disinfect with a 10% chlorine bleach solution.
7. Cook game meat to an internal temperature of at least 165° F to kill disease organisms and parasites. Juices from adequately cooked game meat should be clear.
8. Do not eat any raw portions of wild game.
9. Do not feed raw wild game to domestic pets.

## LEGAL HUNTING METHODS

**1.** Shotguns cannot be larger than 10 gauge. They cannot hold more than 3 shells in magazine and chamber combined (except during Light Goose Conservation Order Season, see No. 7 below). Shotguns must be fired from the shoulder. To reduce capacity of shotguns that hold more than 3 shells in the chamber and magazine combined, the magazine must be cut off, altered or plugged with a 1-piece filler that cannot be removed unless the gun is disassembled. Slugs are illegal to hunt waterfowl.

**2.** Hand-held bows allowed only if the arrow or bowstring is not held or drawn mechanically. It is illegal to use bows on firing lines designated by the Wildlife Commission.

**3.** It is legal to hunt waterfowl in the open, from a blind or other concealed place except a sinkbox. When camouflaged with vegetation from agricultural crops, camouflaging cannot result in exposing, depositing, distributing or scattering grain or other feed.

**4.** Hunting allowed from vessels (except sinkboxes) with motors or sails if the motor is off, and/or sails are furled and forward movement has stopped. Hunting is allowed from drifting vessels and those propelled by hand. Use of motorized vessels only allowed to pick up dead or injured birds.

**5.** Hawking or falconry permitted.

**6.** Dogs, artificial decoys, duck calls or goose calls are legal, except recorded or electronically amplified calls or sounds. Recorded or electronically amplified calls are legal to hunt common crows.

**7.** In Light Goose Conservation Order Season: Recorded or electronically amplified calls are allowed. Shotguns that hold more than 3 rounds in the chamber may be used during this season only. (See page 4 for season dates.)

**8.** The most restrictive state or federal laws apply. See [www.wildlife.state.co.us/Hunting/Waterfowl](http://www.wildlife.state.co.us/Hunting/Waterfowl) or [www.fws.gov/hunting/whatres.html](http://www.fws.gov/hunting/whatres.html) for a detailed summary of federal regulations on migratory bird hunting. More regulations also may apply to National Wildlife Refuges opened to hunting, go to [www.fws.gov/refuges](http://www.fws.gov/refuges) for details.

## ILLEGAL HUNTING METHODS

**1.** Baiting. For information on federal baiting laws, go to [www.fws.gov/le/HuntFish/waterfowl\\_baiting.htm](http://www.fws.gov/le/HuntFish/waterfowl_baiting.htm).

**a.** It is illegal to take migratory game birds and waterfowl by the aid of baiting, or on or over any baited area, if you know or reasonably should know the area is baited. It is illegal to place or direct placement of bait on or next to an area to cause, induce or allow anyone to take or attempt to take migratory birds with the help of bait or over a baited area.

**b.** Baiting means directly or indirectly placing, exposing, distributing or scattering salt, grain or other feed as an attraction for migratory game birds to, on or over where hunters are trying to hunt. An area is considered baited for 10 days after complete removal of baiting material.

**c.** It is legal to take migratory game birds, including waterfowl, coots and cranes, on or over the following lands not otherwise baited: standing or flooded standing crops; standing flooded or manipulated natural vegetation; flooded harvested crop lands; where seeds or grains were scattered solely from normal agricultural planting, harvesting, post-har-

vest manipulation or normal soil stabilization practice; flooded, standing agricultural crops where grain is inadvertently scattered solely by a hunter entering or exiting an area, placing decoys or retrieving downed birds.

**d.** It is legal to take migratory birds, except waterfowl, coots and cranes, on or over the following lands not otherwise baited: where grain or other feed is distributed or scattered solely from manipulation of agricultural crops or other feed, or solely from normal agricultural operations.

**2.** It is illegal to use any artificial light as an aid in hunting or taking wildlife.

**3.** Traps, snares, nets, rifles, pistols, swivel guns, punt guns, battery guns, machine guns and fish hooks, poisons, toxicants, explosives or stupefying substances are illegal.

**4.** It is illegal to use live, tame or captive ducks and geese as decoys. All tame, captive ducks and geese must be removed 10 days before hunting. They must be in an enclosure that substantially reduces the sound of their calls and conceals them from the sight of waterfowl.

**5.** It is illegal to discharge a firearm or release an arrow from, on or across a public road. Hunting with rifles, handguns, shotguns firing a single slug and archery equipment prohibited within 50 feet on each side of the center line of any public road. On a divided road, the prohibition includes the median, and the 50-foot requirement is measured from the center line of both roads. Waterfowl cannot be hunted from, on or across a highway, road, designated trail or other right-of-way (public or private) in national wildlife refuges.

**6.** It is illegal to carry or have a firearm (except a pistol or revolver) in or on a motor vehicle unless chamber is unloaded.

**7.** Possession of wildlife is evidence you hunted.

**8.** It is illegal to kill, capture, wound or harass wildlife from an aircraft or motor vehicle. It is also illegal to operate aircraft, discharge firearms or release arrows from aircraft or motor vehicles with the same intent.

**9.** It is illegal to waste or abandon edible portions of wildlife, or to leave wounded wildlife without trying to track and kill it.

**10.** It is illegal to leave decoys or things used as decoys in the field or on water overnight on state wildlife areas.

## HAWKING AND FALCONRY

**1.** Apprentices cannot hunt with more than 1 raptor at a time.

**2.** A resident falconry license required.

**3.** Nonresident falconers must buy a nonresident falconry license from the DOW's special licensing section, a one-day small game hunting license or a nonresident small game hunting license. Hunter education laws apply.

**4.** Falconers must comply with HIP.

**5.** Firearms prohibited while hawking.

**6.** Hawking prohibited from a public road.

**7.** Hawking on private property is illegal without permission from owner or person in charge.

**8.** Nonresidents also must obtain an import permit at least 30 days in advance from special licensing. The permit is free, but a current health certificate issued within 30 days of the proposed entry from state of origin required. Import permit applications and import permits are available on the DOW website.

# 2010 Waterfowl Hunting

[www.wildlife.state.co.us](http://www.wildlife.state.co.us)

Colorado Division of Wildlife

6060 Broadway, Denver CO 80216

(303) 297-1192



## Get Outdoors



### Subscribe to Colorado Outdoors

Did you know Colorado has the largest elk herd in the world? Did you know Colorado is the only state where you can buy an over-the-counter bull elk license? *Colorado Outdoors* magazine will keep you up-to-date on all the opportunities available to you and your hunting buddies. Don't flounder around looking for the best spots to fish. *Colorado Outdoors* is a must-read if you're seeking a high-country angling experience or fishing the state's plains reservoirs.

For over 70 years, *Colorado Outdoors* has been the official publication of the Division of Wildlife and the only magazine dedicated to Colorado's wildlife. And now when you subscribe, you get your choice of either a free hunting guide or fishing guide. These special annual editions are packed with a wealth of information you need to know to be a more successful hunter or angler.

We provide insight into our wildlife resources as well as providing up-to-date coverage of hunting, fishing and wildlife management. You get valuable advice from Division of Wildlife experts, and you can't get that information anywhere else. You'll read about recovery efforts of some of our endangered species. Plus you'll benefit from environmental news, watchable wildlife events, volunteer opportunities, state fishing records and much more.

### 10 Reasons to subscribe to Colorado Outdoors

- Each one-year subscription entitles you to six issues.
- Subscribers get their choice of either the Fishing Guide or the Hunting Guide. These 40-page special editions sell for \$5 on the newsstand and you get your choice of one absolutely free.
- Learn high-performance hunting tips for a more successful hunt.
- Annual Preference Point issue is a must-have tool in planning your big game hunt.
- Expert advice on cold- and warm-water fishing.
- Award-winning wildlife photography, including annual photography issue.
- A great way to introduce your children to wildlife and the outdoors.
- A valuable reference guide for classrooms and libraries.
- Makes a great gift
- Never any advertising

**To order your subscription online visit the Division of Wildlife Web site at <http://wildlife.state.co.us/wildlifestore> and click on the link to Colorado Outdoors magazine**

#### NOTICE: ABOUT THIS GUIDE

This brochure is not a legal notice nor a complete collection of hunting regulations and laws. It is a condensed guide issued for hunters' convenience. Copies of wildlife statutes and regulations can be obtained from a DOW office and are available on the Colorado Division of Wildlife website at [www.wildlife.state.co.us](http://www.wildlife.state.co.us). For information, call the DOW, (303) 297-1192.