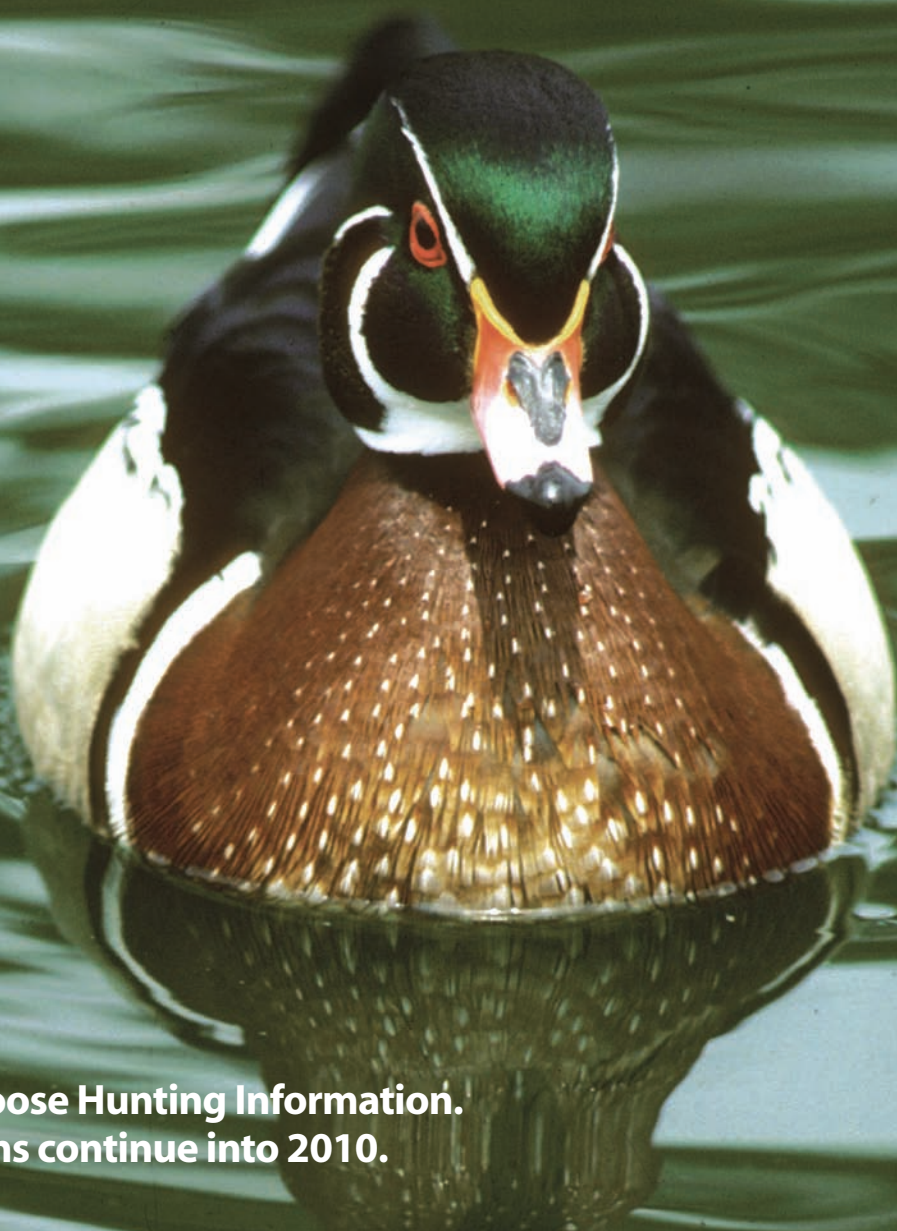


COLORADO DIVISION OF WILDLIFE

# 2009 Colorado Waterfowl



**Duck and Goose Hunting Information.**  
Some seasons continue into 2010.

# DOW OFFICES

DOW Headquarters 6060 Broadway Denver, 80216 (303) 297-1192	Denver Svc. Ctr. 6060 Broadway Denver, 80216 (303) 291-7227
Brush Svc. Ctr. 122 E. Edison, Box 128 Brush, 80723 (970) 842-6300	Fort Collins Svc. Ctr. 317 W. Prospect Road Fort Collins, 80526 (970) 472-4300
Glenwood Springs Svc. Ctr. 50633 Hwys. 6 & 24 Glenwood Springs, 81601 (970) 947-2920	Gunnison Svc. Ctr. 300 W. New York Ave. Gunnison, 81230 (970) 641-7060
Hot Sulphur Springs Svc. Ctr. 346 Grand County Road 362 Hot Sulphur Springs, 80451 (970) 725-6200	Lamar Svc. Ctr. 2500 S. Main St. Lamar, 81052 (719) 336-6600
Meeker Svc. Ctr. 73485 Hwy. 64 Meeker, 81641 (970) 878-6090	Montrose Svc. Ctr. 2300 S. Townsend Ave.. Montrose, 81401 (970) 252-6000
Monte Vista Svc. Ctr. 0722 S. Road 1 E Monte Vista, 81144 (719) 587-6900	Northwest Region Svc. Ctr. 711 Independent Ave. Grand Junction, 81505 (970) 255-6100
Pueblo Svc. Ctr. 600 Reservoir Road Pueblo, 81005 (719) 561-5300	Salida Svc. Ctr. 7405 Hwy. 50 Salida, 81201 (719) 530-5520
Southwest Region Svc. Ctr. 151 E. 16th St. Durango, 81301 (970) 247-0855	Southeast Region Svc. Ctr. 4255 Sinton Road Colorado Springs, 80907 (719) 227-5200
Steamboat Spgs. Svc. Ctr. 925 Weiss Drive Steamboat Spgs., 80477 (970) 870-2197	

For recordings on season dates and other information:	
Deer, Elk, Pronghorn, Bear	(303) 291-7529
Fishing	(303) 291-7533
Small Game, Upland Game	(303) 291-7546
Turkey	(303) 291-7547
Waterfowl	(303) 291-7548
Hunter Education	(303) 291-7530
Mobility Impaired Licenses	(303) 291-7528
For a list of recordings	(303) 297-1192

[www.wildlife.state.co.us](http://www.wildlife.state.co.us)

## BUY LICENSES ONLINE

Buy your license online or by calling 1-800-244-5613.  
Credit cards accepted for phone and internet purchases.  
DOW offices and license agents also sell licenses.

## Table of Contents

Definitions .....	1
Habitat Stamp .....	1
License Fees.....	1
License Requirements.....	2
Residency Requirements .....	2
Harvest Information Program (HIP).....	2
Youth Licenses .....	2
Hunter Education Requirements.....	2
Hunting Hours .....	2
Legal Hunting Methods.....	2-3
Nontoxic Shot .....	3
Illegal Hunting Methods .....	3
Hawking/Falconry .....	3
Tagging, Shipping, Importing .....	3-4
Donating Wildlife .....	5
Banded Birds .....	5
Land-Use Rules .....	5
Walk-In Access Program .....	5
Waterfowl Restrictions .....	6-10
Guide to Legal Hunting Hours .....	9
Season Dates, Bag Limits.....	11-12
Central Flyway Map .....	12
Special Goose Seasons Map.....	13

## OPERATION GAME THIEF

Operation Game Thief (OGT) is a non-profit organization working with the DOW's law enforcement program. It pays rewards to citizens who report poachers or resource violations. Callers don't have to reveal their names, testify in court or sign a deposition. Rewards are paid if the information leads to the arrest of a poacher or a citation is issued. Rewards do not depend on a conviction but must be requested when a violation is reported. Call: **1-877-COLOOGT** toll-free. The number should not be used for information requests or emergencies.



## NOTICE

This brochure is not a legal notice nor a complete collection of hunting regulations and laws. It is a condensed guide issued for hunters' convenience. Copies of wildlife statutes and regulations can be obtained from a DOW office and are available on our website. For information, call the DOW, (303) 297-1192.

# 2009 WATERFOWL HUNTING

## WHAT'S NEW FOR 2009-2010

**Central Flyway Bag Limits:** Hunters now can take pintails and canvasback during the entire open season in the Central Flyway. The bag limit for wood ducks has increased. See "Duck, Coot Seasons."

**Pacific Flyway Bag Limits:** The season on canvasbacks is now open in the Pacific Flyway. Bag limits for pintails and scaup also have increased. See "Duck, Coot Seasons."

**Property Restrictions:** Several state wildlife areas in northeast Colorado have new restrictions for waterfowl hunters. See "Waterfowl Restrictions."

## DEFINITIONS

**Aggregate:** Total number of animals allowed in a bag limit regardless of species.

**Daily bag limit:** Max. number of birds you can kill daily, including birds eaten or donated the day you killed them.

**Central Flyway:** East of the Continental Divide.

**Geese:** All species of geese and brant. Dark geese means Canada geese, white-fronted geese, brant and all other species of geese except light geese. Light geese means lesser snow geese (including blue), greater snow geese and Ross' geese.

**Manipulation:** Alteration of natural vegetation or agricultural crops by activities that include, but are not limited to, mowing, shredding, discing, rolling, chopping, trampling, flattening, burning or herbicide treatments. Manipulation does not include distributing or scattering grain, seed or other feed after removal from or storage on the field where grown.

**Migratory game birds:** Migratory birds included in conventions between U.S. and foreign countries to protect birds for which seasons are established. They are: waterfowl (ducks, including mergansers, and geese, including brant); mourning and white-winged doves; sandhill cranes; American coots; sora; Virginia rail; Wilson's snipe; band-tailed pigeons, crows.

**Natural vegetation:** Non-agricultural, native or natural plants grow-



ing from planting, or existing seeds and other propagules. This does not include planted millet. However, millet growing on its own after planting year is considered natural vegetation.

**Normal agricultural operation:** Planting, harvesting, post-harvest manipulation or agricultural practice conducted according to 50 CFR 20.11 (US Fish and Wildlife Service).

**Normal agricultural planting, harvesting or post-harvest manipulation:** planting or harvesting to produce and gather crops or manipulation after harvest and removal of grain, conducted according to 50 CFR 20.11 (US Fish and Wildlife Service).

**Normal soil stabilization practice:** Planting for agricultural soil erosion control or post-mining reclamation conducted according to 50 CFR 20.11 (US Fish and Wildlife Service).

**Pacific Flyway:** West of the Continental Divide.

**Possession limit:** Max. number of birds allowed at any time.

**Sinkbox:** Raft or low-floating device with a depression concealing people below water.

## HABITAT STAMP

A Colorado Wildlife Habitat Stamp is required of people 19-64 who buy hunting or fishing licenses. With a license purchase, the stamp is \$5 and required with the first 2 licenses (\$10 total) bought per year. Habitat stamps are valid April 1 through March 31 annually. A lifetime stamp is \$200.

## 2009-10 LICENSE FEES

	Resident	Nonresident
Small Game	\$21	\$56
Small Game (one-day)	\$11	\$11
Comb. Small Game & Fishing	\$41	
Military w/60% or more disability	free	
Youth (Under 18) Small Game	\$1	\$1

Costs include 25-cent search and rescue fee, and 75-cent surcharge for the Wildlife Management Public Education Fund.

Printed for free distribution by the  
**COLORADO DIVISION OF WILDLIFE**  
Department of Natural Resources  
6060 Broadway, Denver 80216  
(303) 297-1192  
[www.wildlife.state.co.us](http://www.wildlife.state.co.us)

Published September 2009; 105,000 copies  
Printed by Publication Printers, Denver  
Editor: Brigid Kelly

The DOW receives federal financial assistance from the U.S. Fish and Wildlife Service. In accordance with Title VI of the Civil Rights Act of 1964, Section 504 of the Rehabilitation Act of 1973, Title II of the Americans with Disabilities Act of 1990, the Age Discrimination Act of 1975 and Title IX of the Education Amendments of 1972, the U.S. Department of the Interior and its bureaus prohibit discrimination on the basis of race, color, national origin, age, disability or sex. If you believe that you have been discriminated against in any program, activity or facility as described above or for more information, write: U.S. Fish and Wildlife Service, Division of Bird Habitat Conservation, Attn: Civil Rights Coordinator, 4401 N Fairfax Drive, MBSP 4020, Arlington, VA 22203.

The Wildlife Commission sets waterfowl seasons in August. Wildlife Commissioners (as of August 2009): Brad Coors, chair; Tim Glenn, vice chair; Dennis Buechler, secretary; Jeffrey A. Crawford, member; Dorothea Farris, member; Roy McAnally, member; John Singletary, member; Mark Smith, member; Robert Streeter; member Harris Sherman, ex-officio member; John Stulp, ex-officio member.



# 2009 WATERFOWL HUNTING

## LICENSE REQUIREMENTS

1. Annual fishing licenses, senior fishing licenses, small game licenses, furbearer licenses, combination fishing and small game licenses, Colorado waterfowl stamps, habitat stamps and walk-in access permits are valid April 1-March 31 the following year.
2. Hunters must have a small game license, youth small game or combination license to hunt waterfowl.
3. Hunters 16 or older also need a Federal Migratory Bird Hunting Stamp, or duck stamp, to hunt waterfowl, available at post offices and DOW offices. The stamp is valid when you sign your name in ink across the face of it. An electronic stamp issued at license agents also provides a receipt as proof of purchase. This proof of purchase contains a unique code given instantly and is valid for 45 days from the date of issue, sufficient time for the peel and stick stamp to arrive in the mail. A federal stamp is not required to take light geese during the conservation order season.
4. Hunters 16 or older also need a Colorado waterfowl stamp, available at license agents and DOW offices. The state stamp is printed on your license. The stamp is valid when you sign your name in ink across the face of it.
5. Licenses and stamps are not transferable.
6. Lifetime small game and fishing combination licenses purchased before 1990 are valid for Colorado residents.
7. Lost or destroyed licenses can be replaced by buying a new one or by signing an affidavit and paying a fee. Forms are available at DOW offices and license agents.
8. You must carry your license when hunting and show it when requested by any law enforcement officer.

## RESIDENCY REQUIREMENTS

These are the requirements to qualify as a Colorado resident to buy a hunting license:

1. You must have lived continuously in Colorado at least six months immediately before applying for or buying a license, and must intend to make Colorado home (except #2 and 3 below.) The residence address given to purchase or apply for a license must be the same address used on your Colorado income tax return.
2. U.S. armed services personnel and military personnel of U.S. allies on active duty in Colorado under permanent orders and their dependents. This includes people who were Colorado residents when they entered the armed services and maintain Colorado as their home of record, and their dependents (unless they change their home of record to another state.) Also included are personnel of the U.S. Diplomatic Service or diplomatic services of nations recognized by the U.S. assigned to duty here on permanent active duty orders and their dependents. Active duty does not include reserve status or National Guard.
3. Full-time students enrolled and attending a Colorado college, university or trade school at least six months immediately before applying for or buying a license. This includes students who are temporarily absent from Colorado but still enrolled. Colorado residents who attend school full time out of state and pay nonresident tuition still qualify for a resident license.
4. Children under 18 have the same residency status as their parent, legal guardian or person with whom they live the majority of the time per court order.
5. If you have a home in Colorado and another state, call (303) 297-1192 to make sure you comply with Colorado residency requirements before obtaining a hunting or fishing license.

6. Except as in #2 and 3 above, you lose your Colorado residency if you apply for or obtain a hunting, fishing or trapping license as a resident of another state or country; register to vote outside Colorado or get a driver's license with an address in another state.

## HARVEST INFORMATION PROGRAM

Small game, furbearers, migratory bird hunters, including falconers, must sign up with HIP before their license is valid. Write the HIP number in the space provided on your license. If you signed up with HIP for the 2009-10 season and you buy a small game license in 2010, remember to transfer the HIP number to your new license. To sign up with HIP, call 1-866-265-6447 (1-866-COLOHIP) or go to [www.colohip.com](http://www.colohip.com). You will be asked basic information, including how many birds you harvested the previous season and species you plan to hunt this year. The phone line and website run 24 hours daily. For help, call 1-800-368-4683, Mon.-Sat., 6 a.m. to 4 p.m. MST.

## YOUTH LICENSES

Anyone under age 18 can buy a youth small game license for \$1. All youths must meet hunter education requirements. Those under 16 must be accompanied by a mentor while hunting. A mentor must be 18 or older and must meet hunter education requirements. Mentors aren't required to hunt. While hunting, youths and mentors must be able to see and hear each other without binoculars, radios or other aids. Youths under 18 also can buy an adult license as long as they meet hunter education requirements. At age 18, hunters must buy an adult license.

## HUNTER EDUCATION

Hunters born on or after Jan. 1, 1949, must have completed an approved hunter education course sanctioned by a state or province before applying for or purchasing a license. Colorado honors hunter education courses from other states and provinces. You must present an original hunter safety card when buying a license. You must carry your hunter education card while hunting unless "Verified" is printed by the DOW on your license.

## DISABLED VETERANS

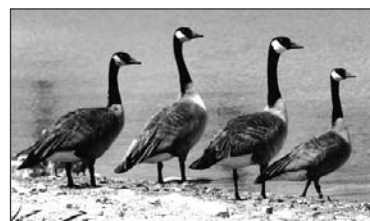
Colorado residents who are disabled veterans can get free lifetime combination small game hunting and fishing licenses. They must have served on active duty and been honorably discharged. They also must prove a service-related disability rated by the Veterans Administration of at least 60% through disability retirement benefits or a pension administered by the Dept. of Veteran Affairs or respective service department. Contact DOW, (303) 297-1192.

## HUNTING HOURS

One-half hour before sunrise to sunset. Light Goose Conservation Order Season: Hunting allowed 1/2 hour before sunrise to 1/2 hour after sunset.

## LEGAL HUNTING METHODS

1. Shotguns cannot be larger than 10 gauge. They cannot hold more than 3 shells in magazine and chamber combined. They must be fired from the shoulder. To reduce capacity of shotguns that hold more than 3 shells in the chamber and maga-



# 2009 WATERFOWL HUNTING

zine combined, the magazine must be cut off, altered or plugged with a 1-piece filler that cannot be removed unless the gun is disassembled. Slugs are illegal to hunt waterfowl.

2. Hand-held bows allowed only if the arrow or bowstring is not held or drawn mechanically. It is illegal to use bows on firing lines designated by the Wildlife Commission.

3. It is legal to hunt waterfowl in the open, from a blind or other concealed place except a sinkbox. When camouflaged with vegetation from agricultural crops, camouflaging cannot result in exposing, depositing, distributing or scattering grain or other feed.

4. Hunting allowed from vessels (except sinkboxes) with motors or sails if the motor is off, and/or sails are furled and forward movement has stopped. Hunting is allowed from drifting vessels and those propelled by hand. Use of motorized vessels only allowed to pick up dead or injured birds.

5. Hawking or falconry permitted.

6. Dogs, artificial decoys, duck calls or goose calls are legal, except recorded or electronically amplified calls or sounds.

Recorded or electronically amplified calls are legal to hunt common crows.

7. Light Goose Conservation Order Season: Recorded or electronically amplified calls are allowed.

## NONTOXIC SHOT

1. It is illegal to use or have toxic (lead) shot, either in shotshells or as loose shot for muzzleloading, while taking or attempting to take ducks, geese or coots in Colorado. This includes national wildlife refuges open to hunting. Toxic shot, either in shotshells or as loose shot for muzzleloading, cannot be in a hunter's gun, on his/her person or near a hunter taking or attempting to take waterfowl. Store lead shot in your vehicle. You can store lead shot elsewhere if it's not readily accessible while hunting waterfowl.

2. Nontoxic shot required in commercial wildlife parks, field trials and dog-training while hunting captive-reared mallards.

3. Nontoxic shot is any type approved by the U.S. Fish and Wildlife Service. Go to:

[www.fws.gov/migratorybirds/issues/nontoxic\\_shot/nontoxic.htm](http://www.fws.gov/migratorybirds/issues/nontoxic_shot/nontoxic.htm).

4. It is illegal to have or use nontoxic shot larger than size T to hunt ducks, geese or coots.

## ILLEGAL HUNTING METHODS

1. Baiting: (For information on federal baiting laws, go to [www.fws.gov/le/HuntFish/waterfowl\\_baiting.htm](http://www.fws.gov/le/HuntFish/waterfowl_baiting.htm))

a. It is illegal to take migratory game birds and waterfowl by the aid of baiting, or on or over any baited area, if you know or reasonably should know the area is baited. It is illegal to place or direct placement of bait on or next to an area to cause, induce or allow anyone to take or attempt to take migratory birds with the help of bait or over a baited area.

b. Baiting means directly or indirectly placing, exposing, distributing or scattering salt, grain or other feed as an attraction for migratory game birds to, on or over where hunters are trying to hunt. An area is considered baited for 10 days after complete removal of baiting material.

c. It is legal to take migratory game birds, including waterfowl, coots and cranes, on or over the following lands not otherwise baited: standing or flooded standing crops; standing flooded or manipulated natural vegetation; flooded harvested crop lands; where seeds or grains were scattered solely from normal agricultural planting, harvesting, post-harvest manipulation or normal soil stabilization practice; flooded, standing agricultural crops where grain is inadvertently scattered solely by a hunter entering

or exiting an area, placing decoys or retrieving downed birds.

d. It is legal to take migratory birds, except waterfowl, coots and cranes, on or over the following lands not otherwise baited: where grain or other feed is distributed or scattered solely from manipulation of agricultural crops or other feed, or solely from normal agricultural operations.

2. Toxicants and explosives are illegal.

3. It is illegal to use any artificial light as an aid in hunting or taking wildlife.

4. Traps, snares, nets, rifles, pistols, swivel guns, punt guns, battery guns, machine guns and fish hooks are illegal.

5. It is illegal to use live, tame or captive ducks and geese as decoys. All tame, captive ducks and geese must be removed 10 days before hunting. They must be in an enclosure that substantially reduces the sound of their calls and conceals them from the sight of waterfowl.

6. It is illegal to discharge a firearm or release an arrow from, on or across a public road. Hunting with rifles, handguns, shotguns firing a single slug and archery equipment prohibited within 50 feet on each side of the center line of any public road. On a divided road, the prohibition includes the median, and the 50-foot requirement is measured from the center line of both roads. Waterfowl cannot be hunted from, on or across a highway, road, designated trail or other right-of-way (public or private) in national wildlife refuges.

7. It is illegal to carry or have a firearm (except a pistol or revolver) in or on a motor vehicle unless chamber is unloaded.

8. Possession of wildlife is evidence you hunted.

9. It is illegal to kill, capture, wound or harass wildlife from an aircraft or motor vehicle. It is also illegal to operate aircraft, discharge firearms or release arrows from aircraft or motor vehicles with the same intent.

10. It is illegal to waste or abandon edible portions of wildlife, or to leave wounded wildlife without trying to track and kill it.

11. It is illegal to leave decoys or things used as decoys in the field or on water overnight on state wildlife areas.

## HAWKING/FALCONRY

1. Apprentices cannot hunt with more than 1 raptor at a time.

2. A resident falconry license required.

3. Nonresident falconers must buy a nonresident falconry license from the DOW's special licensing section, a one-day small game hunting license or a nonresident small game hunting license.

Hunter education laws apply.

4. Falconers must comply with HIP.

5. Firearms prohibited while hawking.

6. Hawking prohibited from a public road.

7. Hawking on private property is illegal without permission from owner or person in charge.

8. Nonresidents also must obtain an import permit at least 30 days in advance from special licensing. The permit is free, but a current health certificate issued within 30 days of the proposed entry from state of origin required. Import permit applications and import permits are available on our website.

## TAGGING, SHIPPING, IMPORTING

1. You must attach a carcass tag to wildlife requiring one.

2. Licensees must accompany wildlife not requiring a carcass tag (except as in #4 below).

3. One fully feathered wing or head must be attached to birds in transit until they arrive at hunter's home or commercial processing facility.

4. To ship migratory birds, packages must be marked outside



# 2009 WATERFOWL HUNTING

with name and address of sender, name and address of receiver and number of birds, by species. Licenses, a photocopy of the license or carcass tag must accompany wildlife shipped by common carrier.

5. It is illegal to leave migratory birds anywhere other than at your home or with someone else for picking, cleaning, processing, permanent or temporary storage or taxidermy unless the birds or package of birds have a tag attached. You must sign tags, include your address, total number and species of birds, date of kill and your hunting license number.

6. Migratory bird preservation facilities:

a. If you have someone else's migratory birds for picking, cleaning, freezing, processing, storing or shipping, you must have records showing number of each species, date you received them, date birds were disposed of, and name and address of who received the birds.

b. You must keep records 1 year after the last entry.

c. You must allow people authorized to enforce this regulation to enter the facilities at reasonable hours to inspect records and premises.

7. Per week, beginning on Sunday, it is illegal to import more than 25 doves and 10 pigeons from a foreign country; or more than 10 ducks and 5 geese from a foreign country, except Canada and Mexico. Doves and waterfowl imported from

Canada and Mexico cannot exceed Canadian and Mexican export limits. One fully feathered wing must stay attached to birds transported and shipped between ports of entry and someone's home or a migratory bird facility. It is illegal to import someone else's birds.

8. It is illegal to take, have, transport, import or export migratory birds, their parts, nests or eggs that were taken, bought, sold, transported, possessed or exported illegally.

9. It is illegal to have or transport live migratory birds, including wounded birds. You must kill migratory game birds immediately after you recover them.

10. No permit is required to have or transport plumage and skins of legally taken migratory birds for your own use.

11. No permit required to have, dispose of and transport feathers from wild ducks and wild geese that were legally killed, or from birds seized by wildlife authorities. It is legal to use feathers to make fishing flies, bed pillows, mattresses and similar commercial items, except millinery or ornamental use.

12. It is illegal to buy, sell, barter, or offer to buy or sell feathers or mounted specimens of migratory game birds.

# 2009 WATERFOWL HUNTING

## LAND-USE RULES

1. It is illegal to hunt on private land without permission from landowner or person in charge. It is illegal to post or indicate that public lands are private. It is illegal to hunt on State Trust Lands without permission of lessee, except lands open for wildlife recreation.
2. It is illegal to hunt waterfowl in federal reservations; areas the U.S. government sets aside as bird, game or other wildlife reservations, breeding grounds or refuges; or areas closed by the Migratory Bird Treaty Act, except as permitted. More regulations may apply on national wildlife refuges. Contact: Alamosa and Monte Vista, (719) 589-4021; Browns Park, (970) 365-3613; Arapaho, (970) 723-8202.
3. In the areas bounded on N by Wyoming; E and S by I-76, Hwy. 71, US 36 and I-70; and W by the Continental Divide and Larimer-Jackson county line; and in Bent, Crowley, Kiowa, Mesa, Otero and Prowers counties:
  - a. It is illegal to hunt waterfowl within 50 yards on either side of center line of a public road.
  - b. It is illegal to hunt waterfowl within 150 yards of a dwelling, including directly above it, without first obtaining permission from owner, occupant or person in charge of the dwelling.
4. Pueblo County: It is illegal to hunt waterfowl within 150 yards of a dwelling, including directly above it, without first obtaining permission from owner, occupant or person in charge of dwelling.
5. Colorado River:
  - a. Grand County: Closed to waterfowl hunting from Shadow Mountain dam to Twin Creek after Nov. 13.
  - b. Mesa County: Closed to waterfowl hunting on Colorado River and 200 yds. on either side of river from Grand Ave. bridge in Grand Junction to W end of Horsethief Canyon SWA, Wed.-Fri., except Thanksgiving, Christmas and New Year's Day. Closed to waterfowl hunting on river and 200 yds. on either side of river from Appleton Drain to Hunter Wash (W end of Walker SWA).

## SAFE HANDLING OF GAME MEAT

Concern has grown recently about diseases affecting wild animals that could potentially make humans sick. Most of the time, properly handled and prepared game meat poses no greater risk than domestic meat of causing disease in humans. Hunters are encouraged to contact their local public health department or DOW office for information on wildlife diseases that may be present where they plan to hunt. Public health officials recommend the following precautions when handling and preparing game meat:

1. Do not handle animals that are obviously sick or found dead. Report sick or dead animals you find to a DOW office.
2. Keep game cool, clean and dry.
3. Do not eat, drink or smoke while dressing game.
4. Use disposable gloves when cleaning game.
5. Wash your hands with soap and water, or use alcohol wipes after dressing game.
6. Clean all tools and surfaces immediately afterward. Use hot soapy water, then disinfect with a 10% chlorine bleach solution.
7. Cook game meat to an internal temperature of at least 165° F to kill disease organisms and parasites. Juices from adequately cooked game meat should be clear.
8. Do not eat any raw portions of wild game.
9. Do not feed raw wild game to domestic pets.



## WALK-IN ACCESS PROGRAM

The Walk-In Access (WIA) Program provides opportunities to hunt small game, migratory game birds and furbearers. Properties fall under 3 classifications: The (1) regular season properties are open Sept. 1 through the end of February. The (2) late cropland season properties are open from opening day of pheasant season through the end of February. The (3) extended walk-in properties are open from the start of pheasant season through the end of March. WIA properties allow hunting small game, furbearers migratory game birds and Eurasian collared-doves but only during established season dates. Properties are closed to hunting Gambel's quail, Gunnison's sage grouse and greater sage grouse. Foot access only. Hunters ages 18 and older must buy a \$20 access permit to hunt WIA lands, in addition to a small game license. Access permits cannot be transferred to anyone. Hunters under age 18 must obtain a free access permit to hunt WIA lands. Other people may accompany hunters without buying an access permit if they do not hunt. Properties enrolled are posted with Walk-In Access signs and published in a WIA atlas. Two atlases for 2009-10 will be published. An early version will be available in late August and includes properties open Sept. 1. A second atlas will be available in late October and includes all properties.

## DONATING WILDLIFE

1. You may donate edible portions of wildlife not requiring a carcass tag to a like license holder. A like license is for the same species, sex, dates and manner of take as donor's license.
2. Bag and possession limits apply to donor and recipient.

## BANDED BIRDS

Wildlife managers need your help gathering information about the status of migratory bird populations. If you kill a banded bird, please report it to Bird Banding Laboratory, 1-800-327-BAND.

## WEAPONS RESTRICTIONS

Colorado and federal laws prohibit people convicted of certain crimes, such as domestic violence, from possessing weapons even for hunting. If you've been convicted of a crime, be sure to check with the appropriate law enforcement authority to find out how these laws apply to you.

## CHILD SUPPORT DELINQUENCY

State law requires Social Security numbers to buy all licenses. It is not displayed on the license but is provided, if requested, to Child Support Enforcement authorities. Hunting and fishing licenses are not issued to people delinquent in child support.

# 2009 WATERFOWL HUNTING

## WATERFOWL RESTRICTIONS

**Atwood (SWA), Bravo, Brush, Centennial, Cottonwood, Dune Ridge, Elliott (except Union Tract), Jean K. Tool, Julesburg leases, Knudson, Messex, Overland Trail, Pony Express and Sedgwick Bar, Tamarack SWAs. Atwood, Red Lion Ranch and Ford Bridge STLs:**

All recreational activities except deer hunting prohibited opening weekend of regular plains rifle deer season, and opening day and first weekend of late plains rifle deer season.

### ARAPAHO NAT'L WILDLIFE REFUGE

1. Unit A closed to all hunting. Unit B open to migratory and resident small game. Unit C closed to migratory bird hunting. For information, call (970) 723-8202.

### ATWOOD STATE TRUST LAND

1. Hunting prohibited except Sat., Sun., Wed., Labor Day, Columbus Day (observed), Veterans Day (observed), Thanksgiving, Christmas, New Year's, Martin Luther King Day, Presidents' Day.
2. Small game and waterfowl hunting regulated by reservation system and mandatory check station. Reservations made by calling 1-800-846-9453. Reservations not accepted more than 14 days in advance of hunt date nor after noon the day before the hunt date or noon Fri. for Sun. and holidays falling on Mon. To cancel, hunters must do so by noon the day before the hunt date. Failing to cancel reservations may result in losing future reservation rights for the rest of the hunting season. Max. 1 reservation per hunt date and 1 reservation per phone call. Reservations not transferable. People making reservations must be licensed hunters for the species to be hunted and must be at property the day of hunt. Hunters may hunt only area specified on reservation. Hunters must follow check in and out procedures as posted. Two reservations are for the general public: 1 for mobility-impaired hunters and 1 for youth and their mentors. General public and mobility-impaired must hunt the up river side of Hwy. 63. Youths and mentors must hunt down river side of highway.
3. Hunting prohibited with centerfire rifles.

### ATWOOD SWA

1. Beginning with first day of the regular duck season through last day of regular duck season, waterfowl and small game hunters must check out at designated check station. Access from designated parking areas only.

### BANNER LAKES SWA

1. Closed first day of regular waterfowl season to day before the first day of pheasant season except for waterfowl hunting on Sat., Sun., Mon. and legal holidays. During this period, waterfowl hunting regulated by reservation and mandatory check station. Reservations available for waterfowl but not required. Reservations valid throughout reserved day until hunter with reservation checks out. Hunters may check in on first-come, first-served basis after a hunter with a reservation checks out, or if no reservation exists for a hunt area after midnight immediately preceding the hunt. Reservations made by calling 1-800-846-9453. Reservations not accepted more than 14 days before hunt date, nor after noon the day before the hunt date, or noon Friday for Sun. and holidays on Mon. To cancel, hunters must do so by noon the day before the hunt date. Failing to cancel reservations may result in losing reservation rights for the rest of the season. Max. 1 reservation per day, and 1 reservation per phone call. Reservations not transferable. People making reservations must be licensed hunters for the species to be hunted and must be at property the day of hunt. Hunters can only hunt the area specified on the reservation. Mandatory check in and check out as posted.
2. Access only through designated parking areas.

### BARR LAKE STATE PARK

1. Waterfowl hunting only, restricted to Sat. and Wed.
2. Hunting from designated blinds only. Max. of 3 hunters per blind. Unreserved blinds will be first come, first served after 5 a.m. each day. Reserved blinds unoccupied by 7 a.m. are first come, first served.
3. Hunting by reservation and mandatory check station. Reservations made by calling 1-800-846-9453. Reservations not accepted more than 14 days before hunt date, nor after noon the day before the hunt date, or noon Friday for Sun. and holidays on Mon. To cancel, hunters must do so by noon

the day before the hunt date. Failing to cancel reservations may result in losing reservation rights for the rest of the season. Max. 1 reservation per day, and 1 reservation per phone call. Reservations not transferable. People making reservations must be licensed hunters for the species to be hunted and must be at property the day of hunt. Hunters can only hunt the area specified on the reservation. Mandatory check in and check out as posted.

### BRAVO SWA

1. Access only from designated parking areas.
2. Beginning with the first day of regular duck season through the last day of regular duck season, waterfowl and small game hunting by reservation by calling 1-800-846-9453 and mandatory check station. Reservations not accepted more than 14 days before hunt date, nor after noon the day before the hunt date, or noon Friday for Sun. and holidays on Mon. To cancel, hunters must do so by noon the day before the hunt date. Failing to cancel reservations may result in losing reservation rights for the rest of the season. Max. 4 people per reservation. Max. 1 reservation per day, and 1 reservation per phone call. Reservations not transferable. People making reservations must be licensed hunters for species to be hunted and must be at property the day of hunt. Mandatory check in and check out as posted. Only hunting allowed during this time.
3. Reservations limited to:
  - a. 1 waterfowl, 1 small game reservation daily each for CR 34 parking lot, CR 36 parking lot and CR 370 parking lot 2.
  - b. 2 waterfowl, 2 small game reservations daily for CR 370 parking lot 1.
  - c. 1 waterfowl reservation daily for Youth/Mentor Parking Lot. No more than 2 mentors, at least 1 youth per reservation. Mentors not required to hunt.
4. Waterfowl and small game hunting allowed only Sat., Sun., Wed., Columbus Day (observed), Veterans Day (observed), Thanksgiving Day, Christmas, New Year's Day and Martin Luther King Day.
5. Hunters must check out by 2 p.m.

### BRAVO SWA, Scalva Parcel

1. Sept. 1-May 31, only hunting allowed. Hunting limited to archery, muzzle-loading and shotgun during established seasons and only Sat., Sun., Wed., Labor Day, Columbus Day (observed), Veterans Day (observed), Thanksgiving Day, Christmas, New Year's Day, Martin Luther King Day, Presidents' Day.
2. Reservations required by calling 1-800-846-9453, Sept. through Feb. From March through August, reservations by calling 970-842-6300. Reservations not accepted more than 14 days before hunt date, nor after noon the day before the hunt date, or noon Friday for Sun. and holidays on Mon.
3. Access through designated parking area and mandatory check station. Access allowed 4 a.m. to 9 p.m. Foot access only.

### BRUSH SWA

1. Beginning with the first day of regular duck season through last day of regular duck season, waterfowl and small game hunters must check out at designated check station. Access from designated parking areas only.

### BRUSH PRAIRIE PONDS SWA

1. From Feb. 1 until opening day of first waterfowl season, open only for wildlife viewing.
2. All access by mandatory check in and check out at designated check station at Brush Memorial Park. Max. 4 hunters per area.
3. During Sept. teal season, migratory bird hunting allowed daily. From first segment of regular waterfowl season through Nov. 30, only migratory bird hunting allowed, and only Sat., Sun., Wed., Columbus Day (observed), Veterans Day (observed), Thanksgiving Day.
4. Reservations available, but not required, from Sept. teal season through Dec. 1. Reservations valid throughout reserved day until hunter with reservation checks out. Hunters may check in on first-come, first-served basis after a hunter with a reservation checks out, or if no reservation exists for a hunt area after midnight immediately preceding the hunt. Reservations made by calling 1-800-846-9453. Reservations not accepted more than 14 days before hunt date, nor after noon the day before the hunt date, or noon Friday for Sun. and holidays on Mon. To cancel, hunters must do so by noon the day before the hunt date. Failing to cancel reservations may result in losing reservation rights for the rest of the season. Max. 1 reservation per day, and 1 reservation per phone call. Max. 3 reservations per hunter annually. Reservations not transferable. People making reservations must be licensed



# 2009 WATERFOWL HUNTING

hunters for the species to be hunted and must be at property the day of hunt. Hunters can only hunt the area specified on the reservation or which they check into.

**5.** From Dec. 1 through Jan. 31, only hunting allowed. Reservations available to hunt on Dec. 1. From Dec. 2 through Jan. 31, reservations not available. Hunters may check in on first-come, first-served basis, but not until midnight before the hunt. Five hunting areas open for check in. Hunters who check in for one of these 5 areas may hunt anywhere on the property.

## **CENTENNIAL VALLEY SWA**

**1.** During waterfowl season, small game and waterfowl hunting only in designated zones.

**2.** Hunting with centerfire rifles prohibited.

**3.** During regular waterfowl seasons, reservations required for waterfowl and small game hunting by calling 1-800-846-9453. Mandatory check station. Reservations not accepted more than 14 days before hunt date, nor after noon the day before the hunt date, or noon Friday for Sun. and holidays on Mon. To cancel, hunters must do so by noon the day before the hunt date. Failing to cancel reservations may result in losing reservation rights for the rest of the season. Max. 1 reservation per day, and 1 reservation per phone call.

Reservations not transferable. People making reservations must be licensed hunters for the species to be hunted and must be at property the day of hunt. Hunters with reservations can only hunt area specified on reservation. Mandatory check in and check out as posted at designated station.

**4.** Closed during regular waterfowl seasons except Sat., Sun., Mon., holidays. Closed March 1-Aug. 31 except on designated trail for wildlife viewing and for hunters with spring turkey licenses.

## **CHUCK LEWIS SWA**

**1.** Waterfowl hunting permitted except within 50 yds. of CR 14F bridge.

**2.** Closed 10 p.m.-4 a.m. Overnight parking prohibited.

**3.** Dogs permitted as an aid to waterfowl hunting.

## **CRAWFORD STATE REC. AREA**

**1.** Hunting prohibited as posted.

## **DILLON RES.**

**1.** Waterfowl hunting prohibited on Labor Day and the Sat. and Sun. before Labor Day.

**2.** Denver Water Board restricts hunting to designated areas only. For map, go to [www.co.summit.co.us/OpenSpace/drrec.htm](http://www.co.summit.co.us/OpenSpace/drrec.htm).

## **ELLIOTT SWA**

**1.** West Elliott Closure: Closed as posted in 80-acre part N of S. Platte River, S of CR W.7 and E of railroad.

**2.** Hamlin Tracts (N and S):

**a.** Hunting by reservation system and mandatory check station. Max. 4 hunters per area.

**b.** During Sept. teal season, migratory bird hunting available daily.

**c.** From first segment of regular waterfowl season through Nov. 30, hunting allowed only Sat., Sun., Wed., Labor Day, Columbus Day (observed), Veterans Day (observed), and Thanksgiving.

**d.** From Sept. teal season through Nov. 30, reservations available but not required. Reservations valid throughout reserved day until hunter with reservation checks out. Hunters may check in on first-come, first-served basis after a hunter with a reservation checks out or if no reservation exists for a hunt area after midnight immediately before the hunt. Reservations by calling 1-800-846-9453. Mandatory check station. Reservations not accepted more than 14 days before hunt date, nor after noon the day before the hunt date, or noon Friday for Sun. and holidays on Mon. To cancel, hunters must do so by noon the day before the hunt date. Failing to cancel reservations may result in losing reservation rights for the rest of the season. Max. 1 reservation per day, and 1 reservation per phone call. Max. 3 reservations per hunter annually. Reservations not transferable. People making reservations must be licensed hunters for the species to be hunted and must be at property the day of hunt. Hunters with reservations can only hunt area specified on reservation. Hunters must comply with youth/mentor restrictions as posted.

**e.** From Dec. 1 through March 31, reservations not available. Hunters may check in on first-come, first-served basis but not until midnight

immediately preceding hunt. Two areas available each on N and S tracts. Hunters properly checked in for one of these areas may hunt anywhere on Hamlin Tract.

**3.** Union Tract:

**a.** Closed, except for waterfowl hunting regulated by reservation system and mandatory check station. Max. 4 hunters per area. Hunting allowed only in designated blinds as posted or within area identified for each blind. During Sept. teal season, migratory bird hunting available daily. During first segment of regular waterfowl season, hunting allowed only Sat., Sun., Wed. and Columbus Day (observed). From Sept. teal season through end of first segment of regular waterfowl season, reservations available but not required. Reservations valid throughout reserved day until hunter with reservation checks out. Hunters may check in on first-come, first-served basis after a hunter with a reservation checks out or if no reservation exists for a hunt area after midnight immediately before the hunt. Reservations by calling 1-800-846-9453. Mandatory check station. Reservations not accepted more than 14 days before hunt date, nor after noon the day before the hunt date, or noon Friday for Sun. and holidays on Mon. To cancel, hunters must do so by noon the day before the hunt date. Failing to cancel reservations may result in losing reservation rights for the rest of the season. Max. 1 reservation per day, and 1 reservation per phone call. Reservations not transferable. People making reservations must be licensed hunters for the species to be hunted and must be at property the day of hunt. Hunters with reservations can only hunt area specified on reservation.

**b.** During subsequent segments of regular waterfowl season, DOW may establish max. 15 days of waterfowl hunting to be consistent with management objectives or restrictions, including weather, water levels, presence of waterfowl, need for waterfowl resting areas, the need to maximize public hunting and youth hunting opportunities. To enter a drawing for an area, send a postcard with name, address, phone number, desired dates and hunting area to DOW, Union Tract Drawing, Box 801, Brush, CO 80723. Cards must be postmarked by Sept. 30. Successful applicants notified by Oct. 21. Hunters can apply for 1 area daily, but can list multiple requests on 1 postcard. Reservations limited to 1 drawing per hunter annually. Dates available for reservations are Nov. 7, 8, 26, 28, 29, Dec. 12, 13, 19, 25, 31, Jan. 1, 9, 10, 23, 24.

## **EMPIRE RES.**

**1.** Goose hunting prohibited below historical and recorded high-water line. Hunting also prohibited N of res. 20 yards above high-water line from the inlet structure, N and E to E end of dike.

## **FLAGLER RES. SWA**

**1.** Boating prohibited during waterfowl season, except crafts propelled by hand, wind or electric motor. Boating also prohibited if it creates a whitewater wake, except water skiing allowed Sun. and Mon.

June 1-Aug. 31.

**2.** Hunting limited to youth mentor hunting only. Max. 1 mentor per youth may hunt.

## **FOSSIL CREEK RES.**

**1.** Closed to goose hunting as posted.

## **FRANK SWA**

**1.** Reservations required during regular waterfowl seasons by calling 1-800-846-9453. Mandatory check station. Reservations not accepted more than 14 days before hunt date, nor after noon the day before the hunt date, or noon Friday for Sun. and holidays on Mon. To cancel, hunters must do so by noon the day before the hunt date. Failing to cancel reservations may result in losing reservation rights for the rest of the season. Max. 1 reservation per day, and 1 reservation per phone call. Reservations not transferable. People making reservations must be licensed hunters for the species to be hunted and must be at property the day of hunt. Mandatory check in and check out as posted at designated check station.

**2.** Waterfowl hunting allowed in established hunt zones only.

## **GRAND LAKE, WINDY GAP RES.**

**1.** Closed to goose hunting on lakes and within 100 yds. of high-water lines.

# 2009 WATERFOWL HUNTING

## **HIGEL SWA**

1. Closed Sept. 1-Feb. 14, except Sat., Sun., Wed. and legal holidays. Closed Feb. 15-July 15 to protect nesting water birds. 2. Permits required. Max. 25 permits daily. Contact DOW in Monte Vista for free permit. Call (719) 587-6923.

## **HIGHLINE LAKE STATE REC. AREA**

1. Closed to waterfowl hunting Sat., Sun.  
2. Waterfowl hunting limited to designated blinds. Max. 4 hunters per blind. Hunters must check in and out at W entrance station.

## **HORSETHIEF CANYON SWA**

1. On Sat., waterfowl hunting restricted to youth mentor hunting only. No more than 1 mentor per youth may hunt.  
2. To hunt waterfowl on west end, reservations for specific blind required. Hunting restricted to designated blind or within 100 yards of it. Max. 4 hunters per blind. Reservations on first-come basis, from check-in station. Permits not required east of diversion structure.

3. Waterfowl hunting prohibited Wed.-Fri., except Thanksgiving, Christmas, New Year's Day.

## **JACKSON LAKE SWA**

1. Access only from designated parking areas.  
2. Beginning with first day of regular duck season through the last day of regular duck season, reservations required for waterfowl and small game hunting by calling 1-800-846-9453. Mandatory check station. Reservations not accepted more than 14 days before hunt date, nor after noon the day before the hunt date, or noon Friday for Sun. and holidays on Mon. To cancel, hunters must do so by noon the day before the hunt date. Failing to cancel reservations may result in losing reservation rights for the rest of the season. Max. 1 reservation per day, and 1 reservation per phone call. Max. hunters per group is 4. Reservations not transferable. People making reservations must be licensed hunters for the species to be hunted and must be at property the day of hunt. Hunters with reservations can only hunt area specified on reservation. Mandatory check in and check out as posted at designated check station. Only hunting allowed during this time.  
3. Reservations regulated by areas. One area reserved for youth mentor hunting. Max. 2 mentors and at least 1 youth per reservation. Three reservations available for waterfowl hunting from vessels on lake.  
4. Boat hunting prohibited beginning on first day of regular dark goose season. Hunters with boat reservations must call reservation line 2 days before scheduled hunt to confirm ice conditions. Only boat hunters with reservations are exempt from Nov. 1 boat closure. Boats prohibited on frozen surface of lake.

5. Check station at parking lot 1/2 mile S of CR CC and CR 4 by 2 p.m. Waterfowl hunters with boat reservation exempt from check out station.  
6. Hunters and vessels must stay in designated hunt zone. Hunting prohibited within 150 yards of shore and other vessels. Vessels launched from Jackson Lake State Park must have state parks pass.  
7. Waterfowl and small game hunting permitted only Sat., Sun., Wed., Columbus Day (observed), Veterans Day (observed), Thanksgiving Day, Christmas, New Year's Day and Martin Luther King Day.

## **JEAN K. TOOL SWA**

1. Beginning with the first day of regular duck season through last day of regular duck season, waterfowl and small game hunters must check out at designated check station. Access from designated parking areas only.

## **JOHN MARTIN RES.**

1. Closed, except to retrieve downed waterfowl, Nov. 1 through last day of waterfowl season as posted on US Army Corps of Engineers property leased by DOW or State Parks to provide for resting waterfowl, depending on water levels, weather and presence of birds.

## **JUMBO RES. SWA**

1. Closed to goose hunting in parts of Logan and Sedgwick counties bounded on N by Logan CR 70 and Sedgwick CR 3; on E by Sedgwick CR 3; on S by Logan CR 970 and on W by Logan CR 95, except for Red Lion SWA as posted.  
2. Except as allowed below, boating prohibited Oct. 1 through last day of regular goose season. Hand-propelled craft may be used to set and

pick up decoys and to retrieve downed waterfowl. Boats prohibited within 50 feet of outlet structure.

3. Hunting prohibited from frozen surface of lake.

4. Vehicles limited to 250.

5. Hunting from floating devices by reservation from opening day of regular duck season until opening day of dark goose season.

Reservations by calling 1-800-846-9453. Reservations not accepted more than 14 days nor less than 48 hours before hunt date. Failing to cancel reservations may result in losing future reservation rights. Max. 1 reservation per day, and 1 reservation per phone call. Reservations not transferable. People making reservations must be licensed hunters and be at property the day of hunt. Three reservations available for waterfowl hunting from vessels on res. Boat hunting reservations will be cancelled if ice is unsafe. Hunters with boat reservations must call reservation line 2 days before scheduled hunt to confirm ice conditions. Only boat hunters with reservations are exempt from Oct. 1 boat closure.

6. Hunting from floating devices permitted only Sat., Sun., Wed., Columbus Day (observed), Veterans Day (observed). Hunters must leave res. by 2 p.m. Hunting prohibited within 150 yards of shore and other vessels.

## **LOWER LATHAM RES.**

1. Hunting prohibited as posted.

## **MACK MESA STATE REC. AREA**

1. Hunting, trapping prohibited.

## **MEREDITH RES.**

1. Hunting prohibited as posted.

## **MONTE VISTA & ALAMOSA NAT'L WILDLIFE REF.**

1. Nontoxic shot required for shotgun hunting. For information, call (719) 589-4021.

## **NEW WINDSOR RES.**

1. Hunting prohibited as posted.

2. Closed to waterfowl hunting within 400 yds. of occupied dwelling, without first obtaining permission from owner or person in charge, or within 1/4 mile from center line of these roads: from CR 74 and Colo. 257, N to CR 78; E to CR 21; S to CR 74; then W to Colo. 257, including area formed by these roads.

3. Closed to waterfowl hunting within 150 yds. of Colo. 257 center line between CRs 78 and 74; CR 74 between Colo. 257 and CR 21.

## **NORTH STERLING RES.**

1. Hunting prohibited from dam.

2. Boating prohibited, except hand-propelled crafts used in waterfowl hunting (putting out, picking up decoys, retrieving downed waterfowl), Nov. 1 through last day of regular goose season.

## **ORCHARD MESA SWA**

1. Access only from parking area on C Rd between Rds 30 and 31.

2. Camping, fires, horses prohibited. Vehicles prohibited beyond parking area.

3. Closed March 15 to July 14 to protect nesting migratory birds.

4. Waterfowl hunters must hunt from designated blinds or zones identified for each blind. Blinds assigned at entrance station, available daily, first come, first served. Max. 4 hunters per blind.

5. Hunting restricted to bows and shotguns with shotshells.

6. Dogs prohibited except as hunting aid.

## **OVERLAND TRAIL SWA**

1. Reservations required by calling 1-800-846-9453. Reservations not accepted more than 14 days before hunt date, nor after noon the day before the hunt date, or noon Friday for Sun. and holidays on Mon. To cancel, hunters must do so by noon the day before the hunt date. Failing to cancel reservations may result in losing reservation rights for the rest of the season. Max. 1 reservation per day, and 1 reservation per phone call. Max. hunters per group is 4. Reservations not transferable. People making reservations must be licensed hunters for the species to be hunted and must be at property the day of hunt. Hunters with reservations can only hunt area specified on reservation. Mandatory check in and check out at designated check station as posted.

2. Foot access only via designated parking area.

# 2009 WATERFOWL HUNTING

3. From Sept. 1 through May 31, hunting permitted only Sat., Sun., Wed., legal holidays and opening days of plains rifle and late rifle deer seasons.
4. Beginning first day of regular duck season through last day of regular duck season, only hunting allowed. Waterfowl and small game hunters must check out at designated check station by 2 p.m. Deer and turkey hunters do not need to check in or out, but reservations required. Max. 4 per reservation. Waterfowl, small game hunting allowed Sat., Sun., Wed., Columbus Day (observed), Veterans Day (observed), Thanksgiving Day, Christmas, New Year's Day, Martin Luther King Day. Hunters must check out at check station by 2 p.m.

## PNY EXPRESS (JOHNSON POND) SWA

1. Closed to goose hunting in part of Sedgwick County S of US 138, W of US 385, N of I-76 and E of CR 29.
2. Light goose hunting allowed during special control season and any conservation order for light geese.

## PREWITT RES. SWA

1. Waterfowl hunting prohibited as posted to provide for waterfowl resting depending on water levels, weather and presence of birds.
2. Boating prohibited, except hand-propelled crafts used in waterfowl hunting (putting out, picking up decoys, retrieving downed waterfowl), Oct. 1 through last day of regular goose season. Boating prohibited if it creates white-water wake.
3. Hunting prohibited from floating device.

## QUEENS SWA

1. Boating prohibited if it creates a whitewater wake in channel between Lower and Upper Queens reservoirs.
2. Upper Queens (including channel), Nee Noshe, Nee Gronda:  
 a. Hunters must check in and out at check station when open.  
 b. Closed Nov. 1 through last day of waterfowl season as posted, except to retrieve downed waterfowl.
3. Lower Queens:  
 a. Boating prohibited if it creates whitewater wake from opening day of waterfowl season through Dec. 1.  
 b. Hunters must check in and out at check station when open.  
 c. Closed Dec. 1 through last day of waterfowl season as posted except to retrieve downed waterfowl.
4. Nee So Pah:  
 a. Closed Nov. 1 through last day of waterfowl season except to retrieve downed waterfowl.

## GUIDE TO LEGAL HUNTING HOURS

This table is valid for Denver, CO. SUBTRACT one minute from opening and closing time for each 12 1/2 miles east of Denver. ADD one minute to opening and closing time for each 12 1/2 miles west of Denver. The above changes are based on the assumption that each degree of longitude equals 50 miles and that a change of 1 degree of longitude equals 4 minutes change in sunrise and sunset times.

## 2009-2010 SUNRISE/SUNSET TABLE

DAY	SEPT. (DST)		OCT. (DST)		NOV.		DEC.		JAN.		FEB.		MAR.	
	Rise	Set	Rise	Set	Rise	Set	Rise	Set	Rise	Set	Rise	Set	Rise	Set
	A.M.	P.M.	A.M.	P.M.	A.M.	P.M.	A.M.	P.M.	A.M.	P.M.	A.M.	P.M.	A.M.	P.M.
1	6:27	7:31	6:55	6:42	6:28	4:58	7:01	4:35	7:20	4:45	7:08	5:20	6:33	5:52
2	6:28	7:30	6:56	6:41	6:29	4:56	7:02	4:35	7:21	4:45	7:07	5:21	6:31	5:53
3	6:29	7:28	6:57	6:39	6:30	4:55	7:03	4:35	7:21	4:46	7:06	5:22	6:30	5:54
4	6:30	7:27	6:58	6:38	6:31	4:54	7:04	4:34	7:21	4:47	7:05	5:24	6:28	5:56
5	6:31	7:25	6:59	6:36	6:32	4:53	7:05	4:34	7:21	4:48	7:04	5:25	6:27	5:57
6	6:32	7:23	7:00	6:34	6:33	4:52	7:06	4:34	7:21	4:49	7:03	5:26	6:25	5:58
7	6:33	7:22	7:01	6:33	6:35	4:51	7:07	4:34	7:21	4:50	7:02	5:27	7:24	6:59
8	6:34	7:20	7:02	6:31	6:36	4:50	7:08	4:34	7:20	4:51	7:00	5:28	7:22	7:00
9	6:34	7:18	7:03	6:30	6:37	4:49	7:09	4:34	7:20	4:52	6:59	5:30	7:20	7:01
10	6:35	7:17	7:04	6:28	6:38	4:48	7:09	4:34	7:20	4:53	6:58	5:31	7:19	7:02
11	6:37	7:15	7:05	6:27	6:39	4:47	7:10	4:34	7:20	4:54	6:57	5:32	7:17	7:03
12	6:38	7:14	7:06	6:25	6:40	4:46	7:11	4:35	7:20	4:55	6:56	5:33	7:16	7:04
13	6:38	7:12	7:07	6:23	6:41	4:45	7:12	4:35	7:19	4:56	6:56	5:33	7:16	7:04
14	6:39	7:10	7:08	6:22	6:43	4:44	7:12	4:35	7:19	4:57	6:53	5:35	7:13	7:06
15	6:40	7:09	7:09	6:20	6:44	4:44	7:13	4:36	7:19	4:58	6:52	5:37	7:11	7:07
16	6:41	7:07	7:10	6:19	6:45	4:43	7:14	4:36	7:18	4:59	6:51	5:38	7:09	7:08
17	6:42	7:05	7:11	6:18	6:46	4:42	7:14	4:36	7:18	5:00	6:50	5:30	7:08	7:09
18	6:43	7:04	7:12	6:16	6:47	4:41	7:15	4:36	7:17	5:01	6:48	5:40	7:06	7:10
19	6:44	7:02	7:14	6:15	6:48	4:41	7:16	4:37	7:17	5:02	6:47	5:41	7:05	7:11
20	6:45	7:00	7:15	6:13	6:49	4:40	7:16	4:37	7:16	5:04	6:46	5:42	7:03	7:12
21	6:46	6:59	7:16	6:11	6:50	4:39	7:17	4:37	7:16	5:05	6:44	5:43	7:01	7:13
22	6:47	6:57	7:17	6:10	6:52	4:39	7:17	4:38	7:15	5:07	6:43	5:45	7:00	7:14
23	6:48	6:55	7:18	6:09	6:53	4:38	7:18	4:38	7:15	5:08	6:41	5:46	6:58	7:15
24	6:49	6:54	7:19	6:08	6:54	4:38	7:18	4:39	7:14	5:08	6:40	5:47	6:57	7:16
25	6:49	6:52	7:20	6:06	6:55	4:38	7:19	4:40	7:13	5:09	6:39	5:48	6:55	7:17
26	6:50	6:50	7:21	6:05	6:56	4:37	7:19	4:40	7:13	5:11	6:37	5:49	6:53	7:18
27	6:51	6:49	7:22	6:04	6:57	4:37	7:20	4:41	7:12	5:12	6:36	5:50	6:52	7:19
28	6:52	6:47	7:23	6:03	6:58	4:36	7:20	4:42	7:11	5:13	6:34	5:51	6:50	7:20
29	6:53	6:46	7:24	6:01	6:59	4:36	7:20	4:42	7:10	5:14			6:49	7:21
30	6:54	6:44	7:26	6:00	7:00	4:35	7:20	4:43	7:09	5:15			6:47	7:22
31			7:27	5:59			7:20	4:44	7:08	5:17			6:45	7:23

# 2009 WATERFOWL HUNTING

## CALL BEFORE DIGGING

Colorado law requires waterfowl hunters to call the Utility Notification Center of Colorado before digging hunting pits. By doing so, hunters can avoid accidentally hitting electric, gas, water and other utility lines. Call 1-800-922-1987.

### RAMAH RES. SWA

1. Boating prohibited Nov. 1 through the last day of waterfowl season except float tubes or crafts propelled by hand, wind or electric motor.
2. Discharging firearms or bows prohibited except shotguns or bows for hunting. Discharging archery equipment allowed on established archery range.

### RED LION SWA

1. Boating prohibited, except float tubes or craft propelled by hand.
2. During special control season and conservation orders for light geese, light goose hunting allowed in the area bounded by N by CR 970, on E by CR 97 (Sedgwick CR 1), on S by US 138 and on W by CR 95.
3. Beginning with first day of regular duck season through last day of regular duck season, waterfowl and small game hunters must check out at designated check station. Access from designated parking areas only.
4. Closed to goose hunting in parts of Logan and Sedgwick counties bounded on N by Logan CR 70 and Sedgwick CR 3, on E by Sedgwick CR 3, on S by Sedgwick CR 24.8 and across Red Lion SWA as posted, and on W by Logan CR 95, except for Red Lion SWA as posted.

### RIVERSIDE RES.

1. Closed to goose hunting as posted.

### RUSSELL LAKES SWA

1. Parking only in established areas.
2. Closed as posted to protect wintering and nesting waterfowl and to protect administrative areas. Sect. 29 closed during waterfowl seasons.
3. Closes at 1 p.m. during first waterfowl season.

### SOUTH REPUBLICAN SWA

1. Parking only in designated areas. Access prohibited on downstream face of dam.
2. Waterfowl hunting prohibited as posted.

### SWITZER LAKE

1. Hunting waterfowl permitted on opening day and Sat., Sun., Wed., legal holidays.

### TAMARACK RANCH SWA

1. Reservations required by calling 1-800-846-9453 for hunting on weekends and Columbus Day (observed), Veterans Day (observed), Thanksgiving Day, Christmas, New Year's Day, Martin Luther King Day and Presidents' Day. Mandatory check station. The first hunt date available for reservations is the Sat. after Oct. 24 and the last date available is the last Sun. of regular duck season. Weekdays, weekends and holidays outside the reservation period and any unreserved or open units are available for hunting without reservations and are regulated through check station. Reservations not accepted more than 14 days before hunt date, nor after noon the day before the hunt date, or noon Friday for Sun. and holidays on Mon. To cancel, hunters must do so by noon the day before the hunt date. Failing to cancel reservations may result in losing reservation rights for the rest of the season. Max. 1 reservation per day, and 1 reservation per phone call. Reservations not transferable. People making reservations must be licensed hunters for the species to be hunted and must be at property the day of hunt. Hunters with reservations can only hunt area specified on reservation. Mandatory check in and check out as posted at designated station.

### TRINIDAD STATE REC. AREA

1. Waterfowl hunting prohibited as posted.

### TURK'S POND

1. From beginning of first split of waterfowl seasons through last day of waterfowl seasons, the following regulations are in effect in sections 20, 21, 28, 29, 32 & 33 in Township 29 South, Range 44 West, 6th P.M.:

- a. On all land in SWA within 1/4 mile of ordinary high-water line,

hunting prohibited as posted.

b. It is illegal to discharge firearms or arrows from, on or across 50 yds. on each side of center line of public roads.

### TURK'S POND SWA

1. Boating prohibited except float tubes or crafts propelled by hand, wind or electric motor.
2. Closed near pond and administrative building, except to retrieve downed waterfowl from opening day of waterfowl season through Feb. 28.

### VANCIL RES.

1. Waterfowl hunting prohibited as posted to provide for waterfowl resting as necessary depending on water levels and presence of birds.

### WELLINGTON SWA

1. Boating prohibited except hand-propelled crafts used in hunting waterfowl.
2. Closed from first day of regular waterfowl season to first day of pheasant season except Sat., Sun., Mon. and legal holidays.

### WHITEHORSE SWA

1. Closed except for youth/mentor waterfowl hunting when authorized by area wildlife manager as participants in DOW youth hunter program.
2. Reservations required for waterfowl hunting by calling 1-800-846-9453. Mandatory check station. Reservations not accepted more than 14 days before hunt date, nor after noon the day before the hunt date, or noon Friday for Sun. and holidays on Mon. To cancel, hunters must do so by noon the day before the hunt date. Failing to cancel reservations may result in losing reservation rights for the rest of the season. Max. 1 reservation per day, and 1 reservation per phone call. Reservations not transferable. People making reservations must be licensed hunters for the species to be hunted and must be at property the day of hunt. Hunters with reservations can only hunt area specified on reservation except in areas where reservations are not required or are unreserved and unoccupied. Mandatory check in and check out as posted at designated check station.

**Note:** Additional restrictions may apply on some state wildlife areas. Consult the DOW's State Wildlife Area brochure for details.

## YOUR 75 CENT WILDLIFE EDUCATION FEE WORKS FOR YOU

The Wildlife Management Public Education Advisory Council uses these funds to educate the public about the importance of wildlife management and that this management is funded primarily through the sale of hunting and fishing licenses. Look for our ads on TV and billboards throughout Colorado, or visit our website, [www.keepingcoloradowild.org](http://www.keepingcoloradowild.org)



# 2009 WATERFOWL HUNTING

## GOOSE SEASONS

### CENTRAL FLYWAY

#### REGULAR SEASON

East of Continental Divide, except Northern Front Range, North Park, South Park/San Luis Valley seasons, and the Light Goose Conservation Order Season.

**Nov. 21-Feb. 14, 2010, dark geese**

**Oct. 31-Feb. 14, 2010, light geese**

**Daily bag limit:** 4 dark geese; 20 light geese

**Possession limit:** 8 dark geese; unlimited for light geese



### PACIFIC FLYWAY REGULAR SEASON

West of Continental Divide.

**Sept. 26-Oct. 4;**

**Nov. 6-Jan. 31, 2010**

**Daily bag limit:** 3 dark geese; 10 light geese

**Possession limit:** 6 dark geese; 20 light geese

### NORTH PARK SEASON

Jackson County (Central Flyway).

**Dark Geese:**

**Oct. 3-12;**

**Nov. 21-Feb. 14, 2010**

**Daily bag limit:** 4 dark geese

**Possession limit:** 8 dark geese

**Light Geese:**

**Oct. 31-Feb. 14, 2010**

**Daily bag limit:** 20

**Possession limit:** Unlimited

### SOUTH PARK, SAN LUIS VALLEY SEASON

Alamosa, Chaffee, Conejos, Costilla, Custer, Fremont, Lake, Park, Rio Grande and Teller counties. And, parts of Hinsdale, Mineral and Saguache counties east of Continental Divide.

**Dark Geese:**

**Oct. 3-12;**

**Nov. 21-Feb. 14, 2010**

**Daily bag limit:** 4 dark geese

**Possession limit:** 8 dark geese

**Light Geese:**

**Oct. 31-Feb. 14, 2010**

**Daily bag limit:** 20

**Possession limit:** Unlimited

### NORTHERN FRONT RANGE SEASON

Boulder, Larimer and Weld counties from the Continental Divide E along the Wyoming border to Hwy. 85, S on Hwy. 85 to Adams Co line. And, all of Adams, Arapahoe, Broomfield, Clear Creek, Denver, Douglas, Gilpin and Jefferson counties.

**Dark Geese:**

**Oct. 3-12;**

**Nov. 21-Feb. 14, 2010**

**Daily bag limit:** 4 dark geese

**Possession limit:** 8 dark geese

**Light Geese:**

**Oct. 31-Feb. 14, 2010**

**Daily bag limit:** 20

**Possession limit:** Unlimited

### EARLY CANADA GOOSE SEASON

All areas in Pacific Flyway.

**Sept. 1-9**

**Daily bag limit:** 3 dark geese

**Possession limit:** 6 dark geese

### LIGHT GOOSE CONSERVATION ORDER SEASON

All areas east of I-25.

**Feb. 15-April 30, 2010**

**Daily bag limit:** Unlimited

**Possession limit:** Unlimited

## DUCK, COOT SEASONS

### SEPTEMBER TEAL

Lake and Chaffee counties and all areas east of I-25.

**Sept. 12-20**

**Daily bag limit:** 4

**Possession limit:** 8

### CENTRAL FLYWAY

**Eastern Plains Zone:** East of I-25 and all of El Paso, Pueblo, Huerfano and Las Animas counties.

**Oct. 3-19;**

**Nov. 7-Jan. 24, 2010**

**Daily bag limit:**

**Ducks:** 6, excluding mergansers. Of these, up to 5 can be mallards, but no more than 2 can be female mallards. Included in the daily bag limit of 6, you can have no more than 1 pintail, 1 canvasback, 2 redheads, 3 wood ducks and 2 scaup.

**Coots:** 15

**Mergansers:** 5; only 2 can be hooded mergansers.

**Possession limit:** 2 daily bag limits



**Mountain/Foothills Zone:** West of I-25, east of Continental Divide, except El Paso, Pueblo, Huerfano and Las Animas counties.

**Oct. 3-Nov. 30;**

**Dec. 19-Jan. 24, 2010**

**Daily bag limit:**

**Ducks:** 6, excluding mergansers. Of these, up to 5 can be mallards, but no more than 2 can be female mallards. Included in the daily bag limit of 6, you can have no more than 1 pintail, 1 canvasback, 2 redheads, 3 wood ducks and 2 scaup.

**Coots:** 15

**Mergansers:** 5; only 2 can be hooded mergansers.

**Possession limit:** 2 daily bag limits



# 2009 WATERFOWL HUNTING

## PACIFIC FLYWAY

West of Continental Divide.

Sept. 26-Oct. 13;

Nov. 6-Jan. 31, 2010

Daily bag limit:

**Ducks, mergansers:** 7 in the aggregate. Of these, no more than 2 can be female mallards, 2 pintails, 1 canvasback, 2 redheads and 3 scaup. No scaup can be taken after Jan. 12.

**Possession limit:** 2 daily bag limits

**Coots:** Daily bag and possession limit is 25.

## PACIFIC FLYWAY

West of Continental Divide.

Oct. 17-18

**Ducks, coots, mergansers:**

**Daily bag and possession limit:**

See regular Pacific Flyway.

**Geese:**

**Daily bag limit: 3 dark geese, 10 light geese**

**Possession limit: 2 daily bag limits**

*Note: Hunting restricted to youths under age 18. Mentors cannot hunt during youth seasons. Other mentor rules apply. See "Youth Licenses."*

## YOUTH WATERFOWL

## CENTRAL FLYWAY

**Eastern Plains Zone:** East of I-25 and all of El Paso, Pueblo, Huerfano and Las Animas counties. **Sept. 26-27**

**Mountain/Foothills Zone:** West of I-25, east of Continental Divide, except El Paso, Pueblo, Huerfano and Las Animas counties. **Sept. 26-27**

**Ducks, coot, mergansers:**

**Daily bag and possession limit:** See regular Central Flyway.

**Geese:**

**Daily bag limit: 4 dark geese**

**Possession limit: 8 dark geese**

## FALCONRY

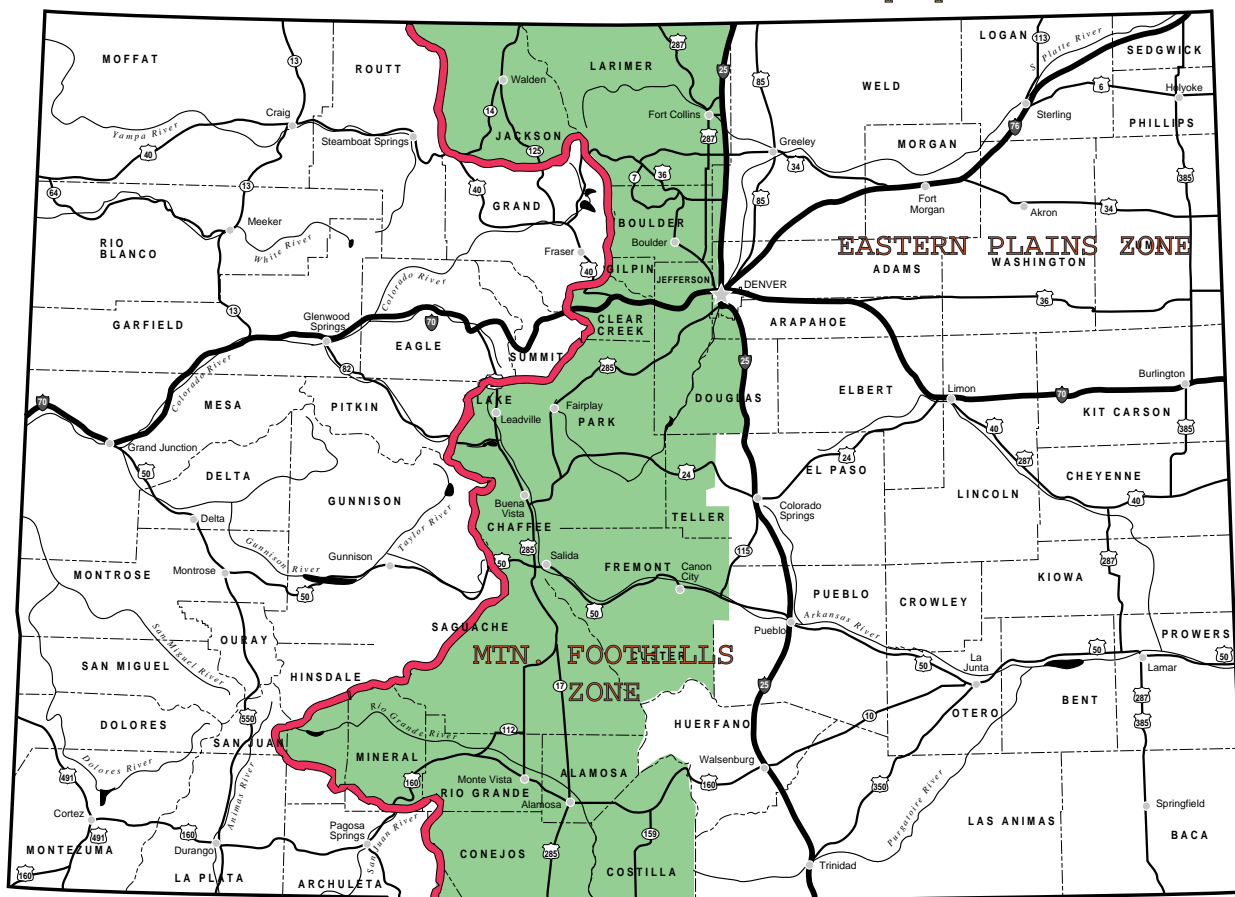
## CENTRAL AND PACIFIC FLYWAYS

Dates coincide with regular seasons. **Note:** Falconry bag and possession limits are not in addition to gun bag limits.

**Daily bag limit: 3 singly or in aggregate**

**Possession limit: 6 singly or in aggregate**

Pacific Flyway: West of Continental Divide Central Flyway: East of Continental D.



Continental Divide





# New Deboning DVD

## From the Colorado Division of Wildlife



**Down to the Bone** is a quick and easy method for deboning an elk in the field. With this highly acclaimed instructional DVD, hunters will learn a simple and legal method of removing the inedible portions of meat from an elk where it falls. By removing the bones and other inedible portions of the animal, hunters can reduce the weight by more than 50 percent. No more sawing and quartering. Learn how to identify the best cuts for steaks, roasts and hamburger.



**Colorado Outdoors Big Game Deluxe CD** by HuntData  
 Includes draw trends for the past 12 years, harvest trends for every season in every unit, ranking and ratings for each unit and season across the state, concentration maps for deer, elk and pronghorn, land use, 1:100,000 topographical and shaded relief features, annual internet updates, sheep and goat unit maps, UTM coordinate system, way point creation and export, kill site plotting for moose, bighorn sheep and mountain goats. \$97.95

**COMING SOON!**



**Elk Hunting – Colorado DVD** will improve your chances of bagging a Rocky Mountain elk. In this DVD you will learn about all the big game seasons and will find the one that is right for you. Learn about elk habitats, DAs, how biologists manage the herds, calling tips, hunting strategies and more. See what tips a professional butcher recommends for processing elk meat. \$17.95.

**Colorado Deer Hunting Video** This videotape offers expert advice on tactics that will make you a more successful hunter. It tells where to concentrate your efforts to get that trophy, how to react to hunting pressure and how to find deer in different seasons. Approx. 30 min. \$17.95.



**Dressing & Cooking Wild Game Cookbook** is a complete guide to field dressing and preparing great-tasting big game, small game, upland birds and waterfowl. With more than 370 color photographs, step-by-step directions and valuable nutritional information, this cookbook teaches you how to make your wild game dishes as memorable as the hunts that made them possible. Full-color, 160 pages. \$23.95

## ORDER FORM Prices include shipping and handling

	Price	Qty.	Total
Down to the Bone DVD	\$17.95		
Big Game CD, Deluxe Edition	\$97.95		
Dressing & Cooking Wild Game Cookbook	\$23.95		
Elk Hunting – Colorado DVD <b>COMING SOON!</b>	\$17.95		
Colorado Deer Hunting Video	\$17.95		
Big Game Hunting in Colorado Video	\$17.95		
All About Colorado's Trout Fishing Video	\$17.95		
Order any two videos or DVDs for	\$30.00		
Order any three videos or DVDs for	\$43.50		
<b>TOTAL</b>			

SHOP ONLINE AT <http://wildlife.state.co.us/shopDOW>

Name \_\_\_\_\_  
 Address \_\_\_\_\_  
 City \_\_\_\_\_ State \_\_\_\_\_ Zip \_\_\_\_\_  
 Daytime phone \_\_\_\_\_  
**METHOD OF PAYMENT** Charge my  Visa  MasterCard  
 Account No. \_\_\_\_\_ Exp. Date \_\_\_\_\_  
 Signature \_\_\_\_\_

**COLORADO OUTDOORS** 6060 Broadway, Denver, CO 80216  
 (303) 297-1192