

# WATERFOWL

2006

**Colorado  
Hunting Season  
Information  
Ducks and Geese  
Some Seasons  
Continue into 2007**

*This is not a legal document.*





## DOW OFFICES

DOW Headquarters  
6060 Broadway  
Denver, 80216  
(303) 297-1192

Fort Collins Svc. Ctr.  
317 W. Prospect Road  
Fort Collins, 80526  
(970) 472-4300

Northwest Region Svc. Ctr.  
711 Independent Ave.  
Grand Junction, 81505  
(970) 255-6100

Glenwood Springs Svc. Ctr.  
50633 Hwys. 6 & 24  
Glenwood Springs, 81601  
(970) 947-2920

Southwest Region Svc. Ctr.  
151 E. 16th St.  
Durango, 81301  
(970) 247-0855

Hot Sulphur Springs Svc. Ctr.  
346 Grand County Road 362  
Hot Sulphur Springs, 80451  
(970) 725-6200

Southeast Region Svc. Ctr.  
4255 Sinton Road  
Colorado Springs, 80907  
(719) 227-5200

Lamar Svc. Ctr.  
2500 S. Main St.  
Lamar, 81052  
(719) 336-6600

Monte Vista Svc. Ctr.  
0722 S. Road 1 E  
Monte Vista, 81144  
(719) 587-6900

For recordings on season dates and other information:  
Deer, Elk, Pronghorn, Bear (303) 291-7529  
Fishing (303) 291-7533  
Small Game, Upland Game (303) 291-7546  
Turkey (303) 291-7547  
Waterfowl (303) 291-7548  
Hunter Education (303) 291-7530  
Mobility Impaired Licenses (303) 291-7528  
For a list of recordings (303) 297-1192

[www.wildlife.state.co.us](http://www.wildlife.state.co.us)

Northeast Region Svc. Ctr.  
6060 Broadway  
Denver, 80216  
(303) 291-7227

Brush Svc. Ctr.  
122 E. Edison, Box 128  
Brush, 80723  
(970) 842-6300

Montrose Svc. Ctr.  
2300 S. Townsend Ave.  
Montrose, 81401  
(970) 252-6000

Gunnison Svc. Ctr.  
300 W. New York Ave.  
Gunnison, 81230  
(970) 641-7060

Meeker Svc. Ctr.  
73485 Hwy. 64  
Meeker, 81641  
(970) 878-6090

Steamboat Spgs. Svc. Ctr.  
925 Weiss Drive  
Steamboat Spgs., 80477  
(970) 870-2197

Pueblo Svc. Ctr.  
600 Reservoir Road  
Pueblo, 81005  
(719) 561-5300

Salida Svc. Ctr.  
7405 Hwy. 50  
Salida, 81201  
(719) 530-5520

## Table of Contents

Division of Wildlife Offices .....	Inside Cover
Definitions .....	1-2
License Costs .....	2
License Requirements .....	2
Residency Requirements .....	2
Habitat Stamp .....	2
Harvest Information Program (HIP) .....	2
Youth Licenses .....	2
Hunter Education Requirements .....	2
Hunting Hours .....	3
Legal Methods of Take .....	3
Non-Toxic Shot .....	3
Illegal Methods of Take .....	3
Hawking/Falconry .....	3-4
Tagging, Shipping, Importing .....	4
Donating Wildlife .....	4
Banded Birds .....	4
Youth Hunting Areas .....	5
Land-Use Rules .....	5
Walk-In Access Program .....	5
Closures/Restricted Hunting Areas .....	6-10
Guide to Legal Hunting Hours .....	9
Season Dates, Bag Limits .....	11-12
Central Flyway Map .....	12
Special Goose Seasons Map .....	13

### OPERATION GAME THIEF

Operation Game Thief (OGT) is a non-profit organization working with the DOW's law enforcement program. It pays rewards to citizens who report poachers or resource violations. Callers don't have to reveal their names, testify in court or sign a deposition. Rewards are paid if the information leads to the arrest of a poacher or a citation is issued. Rewards do not depend on a conviction but must be requested when a violation is reported. Call: 1-877-COLOOGT toll-free. The number should not be used for information requests or emergencies.

### NOTICE

This brochure is not a legal notice nor a complete collection of hunting regulations and laws. It is a condensed guide issued for hunters' convenience. Copies of wildlife statutes and regulations can be obtained from a DOW office and are available on our website. For information, call the DOW, (303) 297-1192.



# 2006 WATERFOWL HUNTING

## WHAT'S NEW FOR 2006-2007

**Central Flyway Seasons:** This flyway now has 2 zones with 2 seasons each for ducks and coots. See "Season Dates, Bag Limits."

**Pueblo County:** The goose season specifically for this county has been eliminated. Pueblo County goose hunting now falls under the regular season dates and bag limits in the Central Flyway.

**Goose Season:** The Northern Front Range season has expanded. See Goose Season Map.

**Note:** This brochure features hunting seasons only for ducks and geese. See the 2006 Small Game brochure for other migratory birds.

## DEFINITIONS

**Aggregate:** Total number of animals allowed in a bag limit regardless of species.

**Daily bag limit:** Max. number of birds you can kill daily, including birds eaten or donated the day you killed them.



**Baiting:** Directly or indirectly placing, exposing, distributing or scattering salt, grain or other feed as an attraction for migratory game birds to, on or over where hunters are trying to hunt.

**Baited area:** See above. Areas are considered baited for 10 days after bait is removed.

**Central Flyway:** East of the Continental Divide.

**Crossbow:** Bow fired from the shoulder, attached perpendicular to stock. Must use mechanical device to hold bow string cocked.

**Falconry/Hawking:** Hunting with a trained raptor.

**Geese:** All species of geese and brant. Dark geese means Canada geese, white-fronted geese, brant and all other species of geese except light geese. Light geese means lesser snow geese (including blue), greater snow geese and Ross' geese.

**Hand-held bow:** Long bow or compound bow with manually held or drawn string. Hand-held or hand-drawn string releases and mechanical releases attached to bow only at bow string are legal.

**Handgun:** Pistol or revolver with no shoulder stock or attachment.

**Like license:** Recipients of donated game meat must have a license for the same species, same sex, same dates and same manner of take as donor's license.

**Manipulation:** Alteration of natural vegetation or agricultural crops

by activities that include, but are not limited to, mowing, shredding, discing, rolling, chopping, trampling, flattening, burning or herbicide treatments. The term manipulation does not include distributing or scattering grain, seed or other feed after removal from or storage on the field where grown.

**Migratory game birds:** Migratory birds included in conventions between U.S. and foreign countries to protect birds for which seasons are established. They are: waterfowl (ducks, including mergansers, and geese, including brant); doves; sandhill cranes; American coots; sora; Virginia rail; Wilson's snipe; band-tailed pigeons, crows.

**Natural vegetation:** Non-agricultural, native or natural plants growing from planting, or existing seeds and other propagules, including millet that grows on its own after planting year.

**Normal agricultural planting, harvest or post-harvest manipulation:** Planting or harvesting to produce and gather a crop, or manipulation after harvesting and removing grain, according to U.S. Dept. of Agriculture's Cooperative Extension Service.

**Normal agricultural operation:** Normal agricultural planting, harvesting, post-harvest manipulation or agricultural practices, according to U.S. Dept. of Agriculture's Cooperative Extension Service.

**Normal soil stabilization practice:** Planting for agricultural soil erosion control or post-mining reclamation for agricultural soil erosion control, according to U.S. Dept. of Agriculture's Cooperative Extension Service.

**Pacific Flyway:** West of the Continental Divide.

**Pellet gun:** Handgun or rifle powered by compressed air or gas that is .177 caliber or larger and fires pellets.

**Possession limit:** Max. number of birds allowed at any time.

**Rifle:** Firearm fired from the shoulder with a rifled bore, 16-inch or longer barrel and min. overall length of 26 inches.

## BUY YOUR LICENSE ONLINE

Hunters can buy small game licenses through the DOW's Web site or by calling, 1-800-244-5613. You can use a credit card for phone or internet purchases. DOW offices and license agents also sell licenses.

Printed for free distribution by the  
**COLORADO DIVISION OF WILDLIFE**  
Department of Natural Resources  
6060 Broadway, Denver 80216  
(303) 297-1192  
[www.wildlife.state.co.us](http://www.wildlife.state.co.us)

Published September 2006; 95,000 copies  
Printed by Publication Printers, Denver  
Cover photo by Tyler Baskfield  
Editor: Brigid Kelly

The Colorado Division of Wildlife of the Department of Natural Resources prohibits discrimination on the basis of race, color, religion, sex, national origin and disabilities in all aspects of employment and public participation in its programs and services. For information or to register a complaint, contact the Colorado Division of Wildlife, 6060 Broadway, Denver 80216, or call (303) 297-1192.

The Wildlife Commission sets waterfowl seasons in August. Wildlife Commissioners (as of August 2006): Jeffrey A. Crawford, chair; Tom Burke, vice chair; Claire O'Neal, secretary; Robert Bray, member; Brad Coors, member; Rick Enstrom, member; James McAnally, member; Richard Ray, member; Ken Torres, member; Russell George, ex-officio member; Don Ament, ex-officio member.





# 2006 WATERFOWL HUNTING

**Shotgun:** Has a smooth bore, an 18-inch or longer barrel and min. overall length of 26 inches.

**Sinkbox:** Raft or low-floating device with a depression concealing people below water.

## 2006 LICENSE COSTS

	Resident	Nonresident
Small Game	\$21	\$56
Small Game (one-day)	\$11	\$11
Comb. Small Game & Fishing	\$41	
Military w/60% or more disability	free	
Youth (Under 16) Small Game	\$1	\$1

Costs include 25-cent search and rescue fee, and a 75-cent surcharge for the Wildlife Management Public Education Fund.

## LICENSE REQUIREMENTS

1. Hunters must have a small game license, youth small game or combination license to hunt waterfowl.
2. Hunters must buy a 2007 license to hunt after Dec. 31 in waterfowl seasons continuing in 2007.
3. Hunters 16 or older also need a Federal Migratory Bird Hunting Stamp, or duck stamp, to hunt waterfowl. The \$15 stamp is valid when you sign your name in ink across the face of it. It is available at post offices and DOW offices. The federal stamp is not required to take light geese during the conservation order season.
4. Hunters 16 or older also need a Colorado waterfowl stamp. The state stamp is printed on your license. The stamp is valid when you sign your name in ink across the face of it. The \$5 stamp is available at license agents and DOW offices. State and federal waterfowl stamps are good for the entire 2006-2007 waterfowl season.
5. Licenses and stamps are not transferable and expire on the date printed on them.
6. Lifetime small game and fishing combination licenses purchased before 1990 are valid for Colorado residents.
7. Lost or destroyed licenses can be replaced by buying a new one or by signing an affidavit and paying a fee. Forms are available at DOW offices and license agents.
8. You must carry your license when hunting and show it when requested by any law enforcement officer.

## RESIDENCY REQUIREMENTS

These are the requirements to qualify as a Colorado resident to buy a hunting license:

1. You must have lived continuously in Colorado at least six months immediately before applying for or buying a license, and must intend to make Colorado home (except #2 and 3 below.)
2. U.S. armed services personnel and military personnel of U.S. allies on active duty in Colorado under permanent orders and their dependents. This includes people who were Colorado residents when they entered the armed services and maintain Colorado as their home of record, and their dependents (unless they change their home of record to another state.) Also included are personnel of the U.S. Diplomatic Service or diplomatic services of nations recognized by the U.S. assigned to duty here on permanent active duty orders and their dependents. Active duty does not include reserve status or National Guard.

3. Full-time students enrolled and attending a Colorado college, university or trade school at least six months immediately before applying for or buying a license. This includes students who are temporarily absent from Colorado but still enrolled. Colorado residents who attend school full time out of state and pay non-resident tuition still qualify for a resident license.

4. Children under 18 have the same residency status as their parent, legal guardian or person with whom they live the majority of the time per court order.

5. If you have a home in Colorado and another state, call (303) 297-1192 to make sure you comply with Colorado residency requirements before obtaining a hunting or fishing license.

6. Except as in #2 and 3 above, your Colorado residency ends if you apply for, buy or accept hunting, fishing or trapping license as a resident of another state or country; register to vote outside Colorado; or get a driver's license with an address in another state.

## HABITAT STAMP

The Colorado Habitat Stamp is required of people ages 19-64 who buy a hunting or fishing license. With a license purchase, the stamp is \$5 and required on the first 2 licenses bought in a calendar year. The stamp costs \$10.25 (25-cent search and rescue fee) if purchased without a hunting or fishing license and is required of people 19-64 who use a state wildlife area. A lifetime stamp is \$200.

## HARVEST INFORMATION PROGRAM

If you hunt small game, furbearers, migratory birds, including by falconry, you must sign up with HIP before your license is valid. You must write the HIP number in space provided on your license. If you registered with HIP for the 2006-2007 seasons and you want to hunt after Jan. 1, 2007, you must buy a 2007 small game hunting license. Make sure you transfer the 2006-2007 HIP number to your 2007 license. To sign up for HIP, call 1-866-265-6447 (1-866-COLOHIP) or go to [www.colohip.com](http://www.colohip.com). You will be asked basic information about hunting, including how many birds you killed the previous season and species you will hunt this year. The phone line and website run 24 hours daily. For help, call 1-800-368-4683, Mon.-Sat., 6 a.m. to 4 p.m. MST.

## YOUTH LICENSES

Hunters under 16 can buy a youth small game license for \$1. Youths must be accompanied by a mentor while hunting and must meet hunter education requirements. A mentor must be 18 or older and meet hunter education requirements. Mentors aren't required to hunt. Youths and mentors must be able to see and hear each other while hunting. However, youths under 16 can buy an adult license as long as they meet hunter education requirements. At age 16, youths must buy an adult license.

## HUNTER EDUCATION REQUIREMENTS

Hunters born on or after Jan. 1, 1949, must have **completed** an approved hunter education course or bowhunter education course (for archery licenses only) sanctioned by a state or province before applying for or purchasing a license. Colorado honors hunter education courses from other states and provinces. You must present an original hunter safety card when buying a license. You must carry their hunter education card when hunting unless "Verified" is printed by the DOW on your license.



# 2006 WATERFOWL HUNTING

## DISABLED VETERANS

If you are a Colorado resident and are a disabled veteran, you can get a free lifetime combination small game hunting and fishing license. You must have served on active duty with an honorable discharge. You also must establish to the DOW a service-related disability rated by the Veterans Administration of at least 60% through disability retirement benefits or a pension issued through a public statute administered by the Dept. of Veteran Affairs or respective service department. Contact DOW, (303) 297-1192 for details.

## HUNTING HOURS

One-half hour before sunrise to sunset. Light Goose Conservation Order Season: Hunting allowed 1/2 hour before sunrise to 1/2 hour after sunset.

## LEGAL METHODS OF TAKE

1. Shotguns cannot be larger than 10 gauge. They cannot hold more than 3 shells in magazine and chamber combined. They must be fired from the shoulder. To reduce capacity of shotguns that hold more than 3 shells in the chamber and magazine combined, the magazine must be cut off, altered or plugged with a 1-piece filler that cannot be removed unless the gun is disassembled. Slugs are illegal to hunt waterfowl.
2. Hand-held bows cannot mechanically hold or draw the arrow or bow string. It is illegal to use bows on firing lines designated by the Wildlife Commission.
3. It is legal to hunt waterfowl in the open, from a blind or other concealed place except a sinkbox. When camouflaged with natural vegetation (including agricultural crops), camouflaging cannot result in exposing, depositing, distributing or scattering grain or other feed.
4. Hunting allowed on or over areas not otherwise baited, including:
  - a. Standing, flooded or manipulated natural vegetation; flooded harvested crop lands. Lands where seeds or grains were scattered solely from normal agricultural planting, harvesting, post-harvest manipulation or normal soil stabilization practice. Flooded, standing agricultural crops where grain is inadvertently scattered solely by a hunter entering or exiting an area, placing decoys or retrieving downed birds.
  - b. Where grain or other feed is distributed or scattered solely from manipulation of agricultural crops or other feed, or solely from normal agricultural operations.
5. Hunting allowed from vessels (except sinkboxes) with motors or sails if the motor is off, and/or sails are furled and forward movement has stopped. Hunting is allowed from drifting vessels and those propelled by hand. Motorized vessels only allowed to pick up dead or injured birds, or to put out and retrieve decoys.
6. Hawking or falconry permitted.
7. Dogs, artificial decoys, duck calls or goose calls are legal, except recorded or electronically amplified calls or sounds. Recorded or electronically amplified calls are legal to hunt common crows.
8. Light Goose Conservation Order Season: Recorded or electronically amplified calls are allowed.



## NON-TOXIC SHOT

1. It is illegal to use or have toxic (lead) shot, either in shotshells or as loose shot for muzzleloading, while taking or attempting to take ducks, geese or coots in Colorado. This includes all national wildlife refuges open to hunting. Toxic shot, either in shotshells or as loose shot for muzzleloading, cannot be in a hunter's gun, on his/her person or near a hunter taking or attempting to take waterfowl. Store lead shot in your vehicle. It can be stored elsewhere if it is not readily accessible while hunting waterfowl.
2. Non-toxic shot required in commercial wildlife parks, in field trials and dog-training when hunting captive-reared mallards.
3. Non-toxic shot is any type approved by the U.S. Fish and Wildlife Service.
4. It is illegal to have or use non-toxic shot larger than size T while taking or attempting to take ducks, geese or coots.

## ILLEGAL METHODS OF TAKE

1. It is illegal to hunt waterfowl on or over baited areas if you know or should know the area is baited. It is illegal to place or direct placing bait on or next to an area to cause or induce anyone to take or attempt to take migratory birds with bait.
2. Toxicants and explosives are illegal.
3. It is illegal to use artificial light as a hunting aid.
4. It is illegal to use electronic night vision equipment, electronically enhanced light-gathering optics or thermal imaging devices as a hunting aid.
5. Traps, snares, nets, rifles, pistols, swivel guns, punt guns, battery guns, machine guns and fish hooks are illegal.
6. It is illegal to use live, tame or captive ducks and geese as decoys. All tame, captive ducks and geese must be removed 10 days before hunting. They must be in an enclosure that substantially reduces the sound of their calls and conceals them from the sight of waterfowl.
7. It is illegal to fire firearms or release arrows from, on or across a public road. Waterfowl cannot be hunted from, on or across a highway, road, designated trail or other right-of-way (public or private) in national wildlife refuges.
8. It is illegal to carry or have a firearm (except a pistol or revolver) in or on a motor vehicle unless chamber is unloaded.
9. Possession of wildlife is evidence you hunted.
10. It is illegal to kill, capture, wound or harass wildlife from an aircraft or motor vehicle. It is also illegal to operate aircraft, discharge firearms or release arrows from aircraft or motor vehicles with the same intent.
11. It is illegal to waste or abandon edible portions of wildlife, or to leave wounded wildlife without trying to track and kill it.
12. It is illegal to leave decoys or things used as decoys in the field or on water overnight on state wildlife areas.

## HAWKING/FALCONRY

1. No more than 2 raptors allowed at a time. Apprentices hunt with only 1 raptor at a time.
2. Resident raptor license required.
3. Nonresident falconers must buy a nonresident falconry license from the DOW's special licensing section, a one-day small game hunting license or a nonresident small game hunting license. Hunter education laws apply.
4. Falconers must comply with HIP.



# 2006 WATERFOWL HUNTING

5. Firearms prohibited while hawking.
6. Hawking prohibited from a public road.
7. Hawking on private property prohibited without permission from owner or person in charge.
8. Nonresidents must obtain an import permit from special licensing at least 30 days before hawking. The permit is free. A current health certificate issued from state of origin is required within 30 days of coming to Colorado. Import applications and permits can be faxed. No other falconry license types can be faxed. Contact Special Licensing via e-mail at [Kathy.Konishi@state.co.us](mailto:Kathy.Konishi@state.co.us).

## TAGGING, SHIPPING, IMPORTING

1. You must attach a carcass tag to wildlife requiring one.
2. Licensees must accompany wildlife not requiring a carcass tag (except as in #4 below).
3. One fully feathered wing or head must be attached to birds in transit until they arrive at hunter's home or commercial processing facility.
4. To ship migratory birds, packages must be marked outside with name and address of sender, name and address of receiver and number of birds, by species. Licenses, a photocopy of the license or carcass tag must accompany wildlife shipped by common carrier.
5. It is illegal to leave migratory birds anywhere other than at your home or with someone else for picking, cleaning, processing, permanent or temporary storage or taxidermy unless the birds or package of birds have a tag attached. You must sign tags, include your address, total number and species of birds, date of kill and your hunting license number.
6. Migratory bird preservation facilities:
  - a. If you have someone else's migratory birds for picking, cleaning, freezing, processing, storing or shipping, you must have records showing number of each species, date you received them, date birds were disposed of, and name and address of who received the birds.
  - b. You must keep records 1 year after the last entry.
  - c. You must allow people authorized to enforce this regulation to enter the facilities at reasonable hours to inspect records and premises.
7. Per week, beginning on Sunday, it is illegal to import more than 25 doves and 10 pigeons from a foreign country; or more than 10 ducks and 5 geese from a foreign country, except Canada and Mexico. Doves and waterfowl imported from Canada and Mexico cannot exceed Canadian and Mexican export limits. One fully feathered wing must stay attached to birds transported and shipped between ports of entry and someone's home or a migratory bird facility. It is illegal to import someone else's birds.
8. It is illegal to take, have, transport, import or export migratory birds, their parts, nests or eggs that were taken, bought, sold, transported, possessed or exported illegally.
9. It is illegal to have or transport live migratory birds, including wounded birds. You must kill migratory game birds immediately after you recover them.
10. No permit is required to have or transport plumage and skins of legally taken migratory birds for your own use.
11. No permit required to have, dispose of and transport feathers from wild ducks and wild geese that were legally

killed, or from birds seized by wildlife authorities. It is legal to use feathers to make fishing flies, bed pillows, mattresses and similar commercial items, except millinery or ornamental use.

12. It is illegal to buy, sell, barter, or offer to buy or sell feathers or mounted specimens of migratory game birds.

13. **Attention crane hunters:** Whooping cranes are federally endangered and illegal to hunt. They may be in Colorado during sandhill crane season.

## DONATING WILDLIFE

1. You may donate edible portions of wildlife not requiring a carcass tag to a like license holder.
2. Bag and possession limits apply to donor and recipient.

## BANDED BIRDS

Wildlife managers need your help gathering information about the status of migratory bird populations. If you kill a banded bird, please report it to Bird Banding Laboratory, 1-800-327-BAND.

*For information on waterfowl  
hunting in Colorado,  
call (303) 297-1192.*



# 2006 WATERFOWL HUNTING

## WEAPONS RESTRICTIONS

Colorado and federal laws prohibit people convicted of certain crimes, such as domestic violence, from possessing weapons even for hunting. If you've been convicted of a crime, be sure to check with the appropriate law enforcement authority to find out how these laws apply to you.

## CHILD SUPPORT DELINQUENCY

State law requires Social Security numbers to buy all licenses. It is not displayed on the license but is provided, if requested, to Child Support Enforcement authorities. Hunting and fishing licenses are not issued to people delinquent in child support.

## YOUTH HUNTING AREAS

Several state wildlife areas and state trust lands have been set aside for youth hunters, ages 15 and under. See listings in this brochure, and the DOW's State Trust Lands brochure and the Fishing Season Information and Wildlife Property Directory.

## LAND-USE RULES

1. It is illegal to hunt on private land without permission from landowner or person in charge. It is illegal to post or indicate that public lands are private. It is illegal to hunt on State Trust Lands without permission of lessee, except lands open for wildlife recreation.
2. It is illegal to hunt waterfowl in federal reservations; areas the U.S. government sets aside as bird, game or other wildlife reservations, breeding grounds or refuges; or areas closed by the Migratory Bird Treaty Act, except as permitted. More regulations may apply on national wildlife refuges. Contact: Alamosa and Monte Vista, (719) 589-4021; Browns Park, (970) 365-3613; Arapaho, (970) 723-8202.
3. In the areas bounded on N by Wyoming-Colorado lines; E and S by I-76, Hwy. 71, US 36 and I-70; and W by the Continental Divide and Larimer-Jackson county line; and in Bent, Crowley, Kiowa, Mesa, Otero and Prowers counties:
  - a. It is illegal to hunt waterfowl within 50 yards on either side of center line of a public road.
  - b. It is illegal to hunt waterfowl within 150 yards of a dwelling, including directly above it, without first obtaining permission from owner, occupant or person in charge of the dwelling.
4. Pueblo County: It is illegal to hunt waterfowl within 150 yards of a dwelling, including directly above it, without first obtaining permission from owner, occupant or person in charge of the dwelling.
5. At Johnson Pond in Sedgwick County:
  - a. Closed to goose hunting in part of Sedgwick County bounded on N by US 138, on E by US 385, on S by I-76, and on W by Sedgwick CR 29.
  - b. Light goose hunting allowed during the special control season and any conservation order for light geese.
6. Check with specific state parks or recreation areas about hunting restrictions or call (303) 866-3437 in Denver.



## WALK-IN ACCESS PROGRAM

The Walk-in Access Program allows hunting small game, migratory birds and furbearers on enrolled lands with good pheasant and/or scaled quail habitat in eastern Colorado. Lands in the program are marked with signs and published in the Walk-In Program Atlas. Access allowed only from the start of pheasant season through Feb. 28. Check season dates in this brochure for details. Properties are closed 1 hour after sunset to 1 hour before sunrise. Foot access only. Hunters 16 and older must buy a \$20 access permit and small game license. Hunters under 16 don't need an access permit on these lands. Other people may accompany hunters without buying a permit or habitat stamp as long as they don't hunt. Access permits cannot be transferred to anyone.

**Note:** The Wildlife Commission is considering regulation changes to add Walk-In Access opportunity for geese and perhaps other waterfowl on the Western Slope. Another change would make access permits valid for a calendar year, which means 2006 permits would expire Dec. 31, 2006. A final Commission decision is expected in September. For details, see the Walk-In Program Atlas, which will be available at license agents and DOW offices in late October.



# 2006 WATERFOWL HUNTING

## CLOSURES

**Atwood (SWA), Bravo, Brush, Centennial, Cottonwood, Dune Ridge, Elliott, Jean K. Tool, Julesburg leases, Knudson, Messex, North Tract of Elliott, Overland Trail, Pony Express, Sedgwick Bar and Tamarack SWAs.**

**Atwood, Red Lion Ranch and Ford Bridge STLs:**

1. All recreational activities except deer hunting are prohibited on opening weekend of regular plains rifle deer season, and opening day and first weekend of late plains rifle deer season. (Oct. 28, 29, Dec. 1, 2, 3.)

## RESTRICTED HUNTING AREAS

**ADOBE CREEK RES. SWA** - Bent and Kiowa counties

1. Closed 1 hour after sunset to 1 hour before sunrise except for fishing.
2. All-terrain vehicles, dirt bikes, snowmobiles prohibited.
3. Access to frozen lake surface prohibited.
4. Access to dams, inlets and outlet structures prohibited except for fishing.

**ARAPAHO NAT'L WILDLIFE REFUGE** - Jackson County

1. Unit A closed to all hunting. Unit B open to migratory and resident small game. Unit C closed to migratory bird hunting. For information, call (970) 723-8202.

**ATWOOD STATE TRUST LAND** - Logan County

1. Hunting prohibited except Sat., Sun., Wed., Labor Day, Columbus Day (observed), Veterans Day (observed), Thanksgiving day, Christmas, New Year's, Martin Luther King Day, Presidents' Day.
2. Reservations required for hunting by calling 1-800-846-9453. Reservations not accepted more than 14 days nor less than 48 hours before hunt date. Failing to cancel reservations may result in losing future reservation rights. Max. 1 reservation per day, and 1 reservation per phone call. Reservations not transferable. People making reservations must be licensed hunters and must be at property the day of the hunt. Check in and check out required. Four reservations issued a day with max. of 4 people each. Two reservations are for the general public: 1 for mobility-impaired hunters and 1 for youth and their mentors. General public and mobility-impaired must hunt the up river side of Hwy. 63. Youths and mentors must hunt down-river side of highway.
3. Hunting prohibited with centerfire rifles.
4. All recreational activities except deer hunting are prohibited on opening weekend of regular plains rifle deer season, and opening day and first weekend of late plains rifle deer season. (Oct. 28, 29, Dec. 1, 2, 3.)

**BANNER LAKES SWA** - Weld County

1. Boating prohibited, except float tubes or crafts propelled by hand.
2. Closed from first day of regular waterfowl season to opening day of pheasant season, except Sat., Sun., Mon. and legal holidays. Hunting only in designated zones. Reservations required.
3. Reservations required for hunting by calling 1-800-846-9453. Reservations not accepted more than 14 days nor less than 48 hours before hunt date. To cancel, call the same number or you may forfeit reservation rights. Failing to cancel reservations may result in losing future reservation rights. Max. 1 reservation per day, and 1 reservation per phone call. Reservations not transferable. Whoever makes a reservation must be a licensed hunter and must be at property the day of the hunt. Check in and check out required. First hunting date available for reservation is Sept. 25; last date available is Nov. 8.
4. Foot access only.

**BARR LAKE STATE PARK** - Adams County

1. Waterfowl hunting only, restricted to Sat. and Wed.
2. Hunting from designated blinds only. Max. of 3 hunters per blind. Unreserved blinds will be first come, first served after 5 a.m. each day. Reserved blinds unoccupied by 7 a.m. are first come, first served.
3. Users must register at check-in point before hunting.
4. For reservations call 1-800-846-9453. Reservations not accepted more than 14 days nor less than 2 days in advance. First date available for reservation is Oct. 2; last date is Feb. 13, 2007. To cancel, call the same number or you may forfeit reservation rights.

**BRAVO SWA** - Logan County

1. All recreational activities except deer hunting are prohibited on opening weekend of regular plains rifle deer season, and opening day and first weekend of late plains rifle deer season. (Oct. 28, 29, Dec. 1, 2, 3.)

\*As of press time, the DOW was working on a lease to add land to this state wildlife area. The Scavia parcel will offer limited hunting by reservation. For more information, see our website.

**BRUSH PRAIRIE PONDS SWA** - Morgan County

1. From Feb. 1 until opening day of first waterfowl season, open only for wildlife viewing.
2. From opening day of first waterfowl season through Nov. 30, only migratory bird hunting allowed and only on Sat., Sun., Wed. and Columbus Day (observed), Veteran's Day (observed), Thanksgiving Day. Hunters must use designated ponds.
3. Reservations required for hunting by calling 1-800-846-9453. Reservations not accepted more than 14 days nor less than 48 hours before hunt date. Failing to cancel reservations may result in losing future reservation rights. Max. 1 reservation per day, and 1 reservation per phone call. Max. hunters per group is 4. Reservations not transferable. People making reservations must be licensed hunters and must be at property day of hunt. Mandatory check in and check out.
4. Reservations required on Dec. 1. From Dec. 2 through Jan. 31, only hunting allowed, user numbers regulated by mandatory check station and no reservations required.
5. Mandatory check in and out at Brush Memorial Park. During waterfowl season, hunters must check out by 3 p.m. if property is open the next day.

**CENTENNIAL VALLEY SWA** - Weld County

1. Camping, dogs (except used for hunting), dog training, fires, target practice, recreational horse use, prohibited.
2. During regular waterfowl seasons, hunting allowed only on Sat., Sun., Mon. and legal holidays.
3. Centerfire rifles prohibited.
4. During waterfowl season, small game and waterfowl hunters must have reservations and use designated hunt zones.
5. Reservations required for hunting by calling 1-800-846-9453. Reservations not accepted more than 14 days nor less than 48 hours before hunt date. Failing to cancel reservations may result in losing future reservation rights. Max. 1 reservation per day, and 1 reservation per phone call. Max. hunters per group is 4. Reservations not transferable. People making reservations must be licensed hunters and must be at property the day of hunt. Mandatory check in and check out as posted.



# 2006 WATERFOWL HUNTING

6. Closed during regular waterfowl seasons except Sat., Sun., Mon., holidays. Closed March 1-Aug. 31 except on designated trail for wildlife viewing and for hunters with spring turkey licenses. All recreational activities except deer hunting are prohibited on opening weekend of regular plains rifle deer season, and opening day and first weekend of late plains rifle deer season. (Oct. 28, 29, Dec. 1, 2, 3.)

## **CHUCK LEWIS SWA - Routt County**

1. Waterfowl hunting permitted except within 50 yds. of CR 14F bridge.

2. Closed 10 p.m.-4 a.m. Overnight parking prohibited.

3. Dogs permitted as an aid to waterfowl hunting.

## **COLORADO RIVER - Grand County**

1. Closed to waterfowl hunting from Shadow Mountain dam to Twin Creek after Nov. 13.

## **COLORADO RIVER - Mesa County**

1. Closed to waterfowl hunting on Colorado River and 200 yds. on either side of river from Grand Ave. bridge in Grand Junction to W end of Horsethief Canyon SWA, Wed.-Fri., except Thanksgiving, Christmas and New Year's Day.

2. Closed to waterfowl hunting on river and 200 yds. on either side of river from Appleton Drain to Hunter Wash (W end of Walker SWA).

## **CRAWFORD SWA - Delta County**

1. Hunting prohibited as posted.

## **DIAMOND J SWA - Jackson County**

1. Hunting prohibited as posted east of Colo. 125.

## **DILLON RES. - Summit County**

1. Waterfowl hunting prohibited on Labor Day and the Sat. and Sun. before Labor Day.

## **ELLIOTT SWA - Morgan County**

1. All recreational activities except deer hunting are prohibited on opening weekend of regular plains rifle deer season, and opening day and first weekend of late plains rifle deer season. (Oct. 28, 29, Dec. 1, 2, 3.)

2. West Elliott Closure: Closed as posted in 80-acre part N of S. Platte River, S of CR W 7 and E of railroad.

## **EMPIRE RES. - Weld and Morgan counties**

1. Closed to goose hunting in part of Weld and Morgan counties bounded on N by Bijou Canal from US 34 W to Weld CR 91 (Chapelton Lane); on W by Weld CR 91 from Bijou Canal to I-76, on S by I-76 from Weld CR 91 to Colo. 144, on E by Colo. 144 from I-76 to US 34, and on NE by US 34 from Colo. 144 to Bijou Canal.

## **ESCALANTE SWA - Delta, Mesa and Montrose counties**

1. Hunting prohibited in Lower Roubideau Tract, except for youths 15 and younger. Youths must be accompanied by mentors while hunting. Mentors must be 18 or older and meet hunter education requirements. No more than 1 mentor per youth.

## **FLAGLER RES. SWA - Kit Carson County**

1. Boating prohibited during waterfowl season, except float tubes or crafts propelled by hand, wind or electric motor. Boating also prohibited if it creates a whitewater wake, except water skiing allowed Sun., and Mon., June 1-Aug. 31.

2. Hunting prohibited except for youths 15 and younger. Youths must be accompanied by mentors while hunting. Mentors must be 18 or older and meet hunter education requirements. No more than 1 mentor per youth.

## **FOSSIL CREEK RES. - Larimer County**

1. Closed to goose hunting as posted.

## **FRANK SWA - Weld, Larimer counties**

1. Reservations required for hunting by calling 1-800-846-9453. Reservations not accepted more than 14 days nor less than 48 hours before hunt date. Failing to cancel reservations may result in losing future reservation rights. Max. 1 reservation per day, and 1 reservation per phone call. Max. hunters per group is 4. Reservations not transferable. People making reservations must be licensed hunters and must be at property the day of the hunt. Mandatory check in and check out as posted.

2. Waterfowl hunting allowed in established hunt zones only.

3. Habitat stamps not required for people who stay on bike path.

## **GRAND LAKE, WINDY GAP RES. - Grand County**

1. Closed to goose hunting on lakes and within 100 yds. of high-water lines.

## **HIGEL SWA - Alamosa County**

1. Closed Sept. 1-Feb. 14, except Sat., Sun., Wed. and legal holidays. Closed Feb. 15-July 15 to protect nesting water birds. DOW can give special permission for educational or scientific uses.

2. Permits required. Max. 25 permits daily. Contact DOW in Monte Vista for free permit. Call (719) 587-6923.

## **HIGHLINE LAKE SWA - Mesa County**

1. Closed to waterfowl hunting Sat., Sun.

2. Waterfowl hunting limited to designated blinds. Max. 4 hunters per blind.

3. Hunters must check in and out at west entrance station.

## **HORSETHIEF CANYON SWA - Mesa County**

1. On Sat., waterfowl hunting restricted to youths 15 and younger accompanied by mentors. Mentors must be 18 or older and meet hunter education requirements. No more than 1 mentor per youth.

2. To hunt waterfowl on west end, reservations for specific blind required. Hunting restricted from blind or within 100 yards of it. Max. 4 hunters per blind. Reservations on first-come basis, from check-in station. Permits not required east of diversion structure.

3. Waterfowl hunting prohibited Wed.-Fri., except Thanksgiving, Christmas, New Year's Day.

4. Habitat stamp not required.

## **JACKSON LAKE SWA - Morgan County**

1. Hunting from ice prohibited and elsewhere as posted.

## **JOHN MARTIN RES. SWA - Bent County**

1. Closed, except to retrieve downed waterfowl, Nov. 1 through last day of waterfowl season as posted on US Army Corps of Engineers property leased by DOW or State Parks to provide for resting waterfowl, depending on water levels, weather and presence of birds.

## **JUMBO RES. SWA - Logan, Sedgwick counties**

1. Closed to goose hunting in parts of Logan and Sedgwick counties bounded on N by Logan CR 70 and Sedgwick CR 3; on E by Sedgwick CR 3; on S by Logan CR 970 and on W by Logan CR 95, except for Red Lion SWA as posted.



# 2006 WATERFOWL HUNTING

2. Boating prohibited, except hand-propelled crafts used in waterfowl hunting (putting out, picking up decoys, retrieving downed waterfowl), Oct. 1 through last day of regular goose season.

3. Hunting prohibited from floating device or frozen surface of lake.  
**KARVAL RES. SWA** - Lincoln County

1. Boating prohibited, except float tubes or crafts propelled by hand, wind or electric motor.

**LOWER LATHAM RES.** - Weld County

1. Hunting prohibited as posted.

**MACK MESA STATE REC. AREA** - Mesa County

1. Hunting prohibited.

**MANVILLE SWA** - Jackson County

1. Hunting prohibited.

**MEREDITH RES.** - Crowley County

1. Closed, except to retrieve downed waterfowl Nov. 1 through last day of waterfowl season, as posted.

2. Hunting prohibited as posted.

**MONTE VISTA & ALAMOSA NAT'L WILDLIFE REF.**

1. Non-toxic shot required for all shotgun hunting. For information, call (719) 589-4021.

**MURPHY SWA** - Jackson County

1. Hunting prohibited.

**NEW WINDSOR RES.** - Weld County

1. Hunting prohibited as posted.

2. Closed to waterfowl hunting within 400 yds. of occupied dwelling, without first obtaining permission from owner or person in charge, or within 1/4 mile from center line of these roads: from CR 74 and Colo. 257, N to CR 78; E to CR 21; S to CR 74; then W to Colo. 257, including area formed by these roads.

3. Closed to waterfowl hunting 150 yds. of Colo. 257 center line between CRs 78 and 74; CR 74 between Colo. 257 and CR 21.

**NORTH STERLING RES.** - Logan County

1. Hunting prohibited from dam.

2. Boating prohibited, except hand-propelled crafts used in waterfowl hunting (putting out, picking up decoys, retrieving downed waterfowl), Nov. 1 through last day of regular goose season.

**NORTH TRACT, ELLIOTT SWA**

1. From Aug. 1-March 31, hunting allowed only Sat., Sun., Wed., Labor Day, Columbus Day (observed), Veteran's Day (observed), Thanksgiving Day, Christmas, New Year's, Martin Luther King Day and Presidents' Day.

2. All recreational activities except deer hunting are prohibited on opening weekend of regular plains rifle deer season, and opening day and first weekend of late plains rifle deer season. (Oct. 28, 29, Dec. 1, 2, 3.)

3. Reservations required for hunting by calling 1-800-846-9453. Reservations not accepted more than 14 days nor less than 48 hours before hunt date. Failing to cancel reservations may result in losing future reservation rights. Max. 1 reservation per day, and 1 reservation per phone call. Max. hunters per group is 4. Reservations not transferable. People making reservations must be licensed hunters and must be at property the day of the hunt. Mandatory check in and check out as posted.

4. Only 2 parties or vehicles with max. of 4 people per party can hunt per day.

**ORCHARD MESA SWA** - Mesa County

1. Access only from parking area on C Rd between 30 and 31 Rds.

2. Camping, fires, horses prohibited.

3. Vehicles prohibited beyond parking area.

4. Closed March 15 to July 14 to protect nesting migratory birds.

5. Waterfowl hunters must hunt from designated blinds or zones identified for each blind. Blinds assigned at entrance station, available daily, first come, first served. Max. 4 hunters per blind.

6. No other small game hunting allowed.

7. Hunting restricted to bows and shotguns with shotshells.

8. Dogs prohibited except as hunting aid.

**OVERLAND TRAIL SWA** - Logan County

1. Reservations required for hunting by calling 1-800-846-9453.

Reservations not accepted more than 14 days nor less than 48 hours before hunt date. Failing to cancel reservations may result in losing future reservation rights. Max. 1 reservation per day, and 1 reservation per phone call. Max. hunters per group is 4. Reservations not transferable. People making reservations must be licensed hunters and must be at property the day of the hunt. Mandatory check in and check out as posted.

2. Access only via designated parking area.

3. From Sept. 1 through May 31, hunting permitted only Sat., Sun., Wed., legal holidays.

4. All recreational activities except deer hunting are prohibited on opening weekend of regular plains rifle deer season, and opening day and first weekend of late plains rifle deer season. (Oct. 28, 29, Dec. 1, 2, 3.)

**PASTORIUS RES. SWA** - La Plata County

1. Hunting allowed only Sat., Sun., Wed.

2. Discharging firearms or bows prohibited except when hunting.

**PLAYA BLANCA SWA** - Alamosa County

1. Open as posted Tues., Thurs., Sat., Nov. 1-Jan. 30.

**PONY EXPRESS SWA** - Sedgwick County

1. All recreational activities except deer hunting are prohibited on opening weekend of regular plains rifle deer season, and opening day and first weekend of late plains rifle deer season. (Oct. 28, 29, Dec. 1, 2, 3.)

2. Discharging firearms or bows prohibited except when hunting.

3. Closed to goose hunting in part of Sedgwick County S of US 138, W of US 385, N of I-76 and E of CR 29.

4. Light goose hunting allowed during special control season and any conservation order for light geese.

**PREWITT RES.** - Washington and Logan counties

1. Waterfowl hunting prohibited as posted to provide for waterfowl resting depending on water levels, weather and presence of birds.

2. Boating prohibited, except hand-propelled crafts used in waterfowl hunting (putting out, picking up decoys, retrieving downed waterfowl), Oct. 1 through last day of regular goose season. Boating prohibited if it creates white-water wake.

3. Hunting prohibited from floating device.



# 2006 WATERFOWL HUNTING

## PUEBLO RES. SWA - Pueblo County

1. Discharging firearms and bows prohibited, except shotguns and bows while hunting.

## QUEENS SWA - Kiowa County

1. Boating prohibited if it creates a whitewater wake in channel between Lower and Upper Queens reservoirs.

2. Upper Queens (including channel), Nee Noshe, Nee Gronda:

a. Hunters must check in and out at check station when open.

b. Closed Nov. 1 through last day of waterfowl season as posted, except to retrieve downed waterfowl.

3. Lower Queens:

a. Boating prohibited if it creates whitewater wake from opening day of waterfowl season through Dec. 1.

b. Hunters must check in and out at check station when open.

c. Closed Dec. 1 through last day of waterfowl season as posted except to retrieve downed waterfowl.

4. Nee So Pah:

a. Closed Nov. 1 through last day of waterfowl season except to retrieve downed waterfowl.

## RAMAH RES. SWA - El Paso County

1. Boating prohibited Nov. 1 through the last day of waterfowl season except float tubes or crafts propelled by hand, wind or electric motor.

2. Discharging firearms or bows prohibited except shotguns or bows for hunting. Discharging archery equipment allowed on established archery range.

## RED LION SWA - Logan County

1. Boating prohibited, except hand-propelled crafts used in waterfowl hunting (putting out, picking up decoys, retrieving downed waterfowl).

2. During special control season and conservation orders for light geese, light goose hunting allowed in the area bounded by N by CR 970, on E by CR 97 (Sedgwick CR 1), on S by US 138 and on W by CR 95.

3. Closed to goose hunting in parts of Logan and Sedgwick counties bounded on N by Logan CR 70 and Sedgwick CR 3, on E by Sedgwick CR 3, on S by Sedgwick CR 24.8 and across Red Lion SWA as posted, and on W by Logan CR 95, except for Red Lion SWA as posted.

## GUIDE TO LEGAL HUNTING HOURS

This table is valid for Denver, CO. SUBTRACT one minute from opening and closing time for each 12 1/2 miles east of Denver. ADD one minute to opening and closing time for each 12 1/2 miles west of Denver. The above changes are based on the assumption that each degree of longitude equals 50 miles and that a change of 1 degree of longitude equals 4 minutes change in sunrise and sunset times.

## 2006-2007 SUNRISE/SUNSET TABLE

	SEPT. (DST)		OCT. (DST)		NOV.		DEC.		JAN.		FEB.		MAR.	
	Rise	Set	Rise	Set	Rise	Set	Rise	Set	Rise	Set	Rise	Set	Rise	Set
DAY	A.M.	P.M.	A.M.	P.M.	A.M.	P.M.	A.M.	P.M.	A.M.	P.M.	A.M.	P.M.	A.M.	P.M.
1	6:27	7:31	6:55	6:42	6:28	4:58	7:01	4:35	7:20	4:45	7:08	5:20	6:33	5:52
2	6:28	7:30	6:56	6:41	6:29	4:56	7:02	4:35	7:21	4:45	7:07	5:21	6:31	5:53
3	6:29	7:28	6:57	6:39	6:30	4:55	7:03	4:35	7:21	4:46	7:06	5:22	6:30	5:54
4	6:30	7:27	6:58	6:38	6:31	4:54	7:04	4:34	7:21	4:47	7:05	5:24	6:28	5:56
5	6:31	7:25	6:59	6:36	6:32	4:53	7:05	4:34	7:21	4:48	7:04	5:25	6:27	5:57
6	6:32	7:23	7:00	6:34	6:33	4:52	7:06	4:34	7:21	4:49	7:03	5:26	6:25	5:58
7	6:33	7:22	7:01	6:33	6:35	4:51	7:07	4:34	7:21	4:50	7:02	5:27	6:24	5:59
8	6:34	7:20	7:02	6:31	6:36	4:50	7:08	4:34	7:20	4:51	7:00	5:28	6:22	6:00
9	6:34	7:18	7:03	6:30	6:37	4:49	7:09	4:34	7:20	4:52	6:59	5:30	6:20	6:01
10	6:35	7:17	7:04	6:28	6:38	4:48	7:09	4:34	7:20	4:53	6:58	5:31	6:19	6:02
11	6:37	7:15	7:05	6:27	6:39	4:47	7:10	4:34	7:20	4:54	6:57	5:32	7:17	7:03
12	6:38	7:14	7:06	6:25	6:40	4:46	7:11	4:35	7:20	4:55	6:56	5:33	7:16	7:04
13	6:38	7:12	7:07	6:23	6:41	4:45	7:12	4:35	7:19	4:56	6:56	5:33	7:16	7:04
14	6:39	7:10	7:08	6:22	6:43	4:44	7:12	4:35	7:19	4:57	6:53	5:35	7:13	7:06
15	6:40	7:09	7:09	6:20	6:44	4:44	7:13	4:36	7:19	4:58	6:52	5:37	7:11	7:07
16	6:41	7:07	7:10	6:19	6:45	4:43	7:14	4:36	7:18	4:59	6:51	5:38	7:09	7:08
17	6:42	7:05	7:11	6:18	6:46	4:42	7:14	4:36	7:18	5:00	6:50	5:30	7:08	7:09
18	6:43	7:04	7:12	6:16	6:47	4:41	7:15	4:36	7:17	5:01	6:48	5:40	7:06	7:10
19	6:44	7:02	7:14	6:15	6:48	4:41	7:16	4:37	7:17	5:02	6:47	5:41	7:05	7:11
20	6:45	7:00	7:15	6:13	6:49	4:40	7:16	4:37	7:16	5:04	6:46	5:42	7:03	7:12
21	6:46	6:59	7:16	6:11	6:50	4:39	7:17	4:37	7:16	5:05	6:44	5:43	7:01	7:13
22	6:47	6:57	7:17	6:10	6:52	4:39	7:17	4:38	7:15	5:07	6:43	5:45	7:00	7:14
23	6:48	6:55	7:18	6:09	6:53	4:38	7:18	4:38	7:15	5:08	6:41	5:46	6:58	7:15
24	6:49	6:54	7:19	6:08	6:54	4:38	7:18	4:39	7:14	5:08	6:40	5:47	6:57	7:16
25	6:49	6:52	7:20	6:06	6:55	4:38	7:19	4:40	7:13	5:09	6:39	5:48	6:55	7:17
26	6:50	6:50	7:21	6:05	6:56	4:37	7:19	4:40	7:13	5:11	6:37	5:49	6:53	7:18
27	6:51	6:49	7:22	6:04	6:57	4:37	7:20	4:41	7:12	5:12	6:36	5:50	6:52	7:19
28	6:52	6:47	7:23	6:03	6:58	4:36	7:20	4:42	7:11	5:13	6:34	5:51	6:50	7:20
29	6:53	6:46	7:24	6:01	6:59	4:36	7:20	4:42	7:10	5:14			6:49	7:21
30	6:54	6:44	6:26	5:00	7:00	4:35	7:20	4:43	7:09	5:15			6:47	7:22
31			6:27	4:59			7:20	4:44	7:08	5:17			6:45	7:23

Note: Daylight Saving Time ends Oct. 29, 2006. In 2007, Daylight Savings begins March 11 and ends Nov. 4.



# 2006 WATERFOWL HUNTING

## **RIVERSIDE RES. - Weld County**

1. Closed to goose hunting as posted.

## **RUSSELL LAKES SWA - Saguache County**

1. Parking only in established areas.

2. Closed as posted to protect wintering and nesting waterfowl and to protect administrative areas.

3. Sect. 29 closed during waterfowl seasons.

4. Closes at 1 p.m. during first waterfowl season.

## **SAN LUIS LAKES SWA - Alamosa County**

1. Boating prohibited north of buoy line.

## **SAND DRAW SWA - Sedgewick County**

1. Hunting prohibited, except youths 15 and younger. Youths must be accompanied by mentors while hunting. Mentors must be 18 or older and meet hunter education requirements. No more than 1 mentor per youth.

2. Discharging firearms or bows prohibited except when hunting.

## **SEELEY RES. SWA - Weld County**

1. Hunting prohibited.

## **SOUTH REPUBLICAN SWA - Yuma County**

1. Parking only in designated areas.

2. Access prohibited on downstream face of dam.

3. Waterfowl hunting prohibited as posted.

## **STALKER LAKE SWA - Logan County**

1. Camping, fires prohibited.

2. Boating prohibited except float tubes or craft propelled by hand, wind or electric motor.

3. Hunting allowed only with shotguns or bows.

4. Target practice prohibited except if authorized by area wildlife manager. Discharging firearms or bows prohibited except while hunting.

5. Hunting on western part prohibited as posted through 2006-07 waterfowl season.

6. Hunting allowed from closed area E to dam as posted until Oct. 31 through the 2006-07 waterfowl season.

## **SWEITZER LAKE - Delta County**

1. Hunting waterfowl permitted on opening day and Sat., Sun., Wed., legal holidays.

## **TAMARACK RANCH SWA - Logan County**

1. All recreational activities except deer hunting are prohibited on opening weekend of regular plains rifle deer season, and opening day and first weekend of late plains rifle deer season. (Oct. 28, 29, Dec. 1, 2, 3.)

2. Horse use prohibited N of I-76 except when training hunting dogs and then only allowed in Feb., March, April (through the Wed. before the opening of spring turkey season) and August.

3. Phone reservations available for hunting small game, waterfowl weekends and holidays Nov. 1 through last day of regular waterfowl season. Reservations required for hunting by calling 1-800-846-9453. Reservations not accepted more than 14 days nor less than 48 hours before hunt date. Failing to cancel reservations may result in losing future reservation rights. Max. 1 reservation per day, and 1 reservation per phone call. Max. hunters per group is 4. Reservations not transferable. People making reservations must be licensed hunters and must be at property the day of the hunt. Mandatory check in and check out as posted.

## **TOTTEN RES. SWA - Montezuma County**

1. Hunting prohibited as posted in inlet Sept. 30-Jan. 20.

## **TRINIDAD STATE REC. AREA - Las Animas County**

1. Waterfowl hunting prohibited as posted.

## **TURK'S POND - Baca County**

1. From beginning of first split of waterfowl seasons through last day of waterfowl seasons, the following regulations are in effect in sections 20, 21, 28, 29, 32 & 33 in Township 29 South, Range 44 West, 6th P.M.:

a. On all land in SWA within 1/4 mile of ordinary high-water line, hunting prohibited as posted.

b. It is illegal to discharge firearms or arrows from, on or across 50 yds. on each side of center line of public roads.

## **TURK'S POND SWA - Baca County**

1. Boating prohibited except float tubes or crafts propelled by hand, wind or electric motor.

2. Closed near pond and administrative building, except to retrieve downed waterfowl from opening day of waterfowl season through Feb. 28.

## **TWO BUTTES RES. SWA - Prowers, Baca counties**

1. Boating prohibited in Two Buttes Ponds below dam except float tubes or craft propelled by hand, wind or electric motor.

## **UNION TRACT, ELLIOTT SWA :**

1. Closed, except for limited waterfowl hunting on specific dates. Waterfowl hunting permitted first come, first served. Limited to 2 blinds from beginning of teal season through the end of first waterfowl season.

2. Blind reservations by lottery. Drawing is Oct. 10. Reservation dates: Nov. 23, 25, 26; Dec. 9, 10, 23, 24, 25, 30, 31; Jan. 13, 14, 27, 28. To reserve blind, send postcard with name, address, phone number, dates and blind number (blind #1-south or blind #2-north) to DOW, Union Tract Drawing, Box 801, Brush, 80723. Max. 4 hunters per blind. Hunters can apply only for 1 blind per day. All dates hunters want to apply for can be put on 1 postcard. Postcards must be postmarked by Oct. 2. Successful applicants notified by Oct. 23. Reservations for licensed hunters only. Person holding reservation must be at property on day of hunt. Reservations not transferable.

3. Mandatory check in before hunting.

## **VANCIL RES. - Morgan County**

1. Waterfowl hunting prohibited.

## **WATSON LAKE SWA - Larimer County**

1. Hunting prohibited.

## **WELLINGTON SWA - Larimer & Weld counties**

1. Boating prohibited except hand-propelled crafts used in hunting waterfowl.

2. Closed from first day of regular waterfowl season to first day of pheasant season except Sat., Sun., Mon. and legal holidays.

## **CALL BEFORE DIGGING**

Colorado law requires waterfowl hunters to call the Utility Notification Center of Colorado before digging hunting pits. By doing so, hunters can avoid accidentally hitting electric, gas, water and other utility lines. Call 1-800-922-1987.



# 2006 WATERFOWL HUNTING

## GOOSE SEASONS

### CENTRAL FLYWAY

#### REGULAR SEASON

East of Continental Divide, except Northern Front Range, North Park, South Park/San Luis Valley seasons, and the Light Goose Conservation Order Season.

Nov. 25-Feb. 18, 2007, dark geese

Nov. 4-Feb. 18, 2007, light geese

**Daily bag limit:** 3 dark geese; 20 light geese

**Possession limit:** 6 dark geese; unlimited for light geese



### PACIFIC FLYWAY REGULAR SEASON

West of Continental Divide.

First season: Sept. 30-Oct. 6

Second season: Nov. 1-Jan. 28, 2007

**Daily bag limit:** 3 dark geese; 4 light geese

**Possession limit:** 6 dark geese; 8 light geese

### NORTH PARK SEASON

Jackson County (Central Flyway).

Dark Geese:

Sept. 30-Oct. 8;

Nov. 25-Feb. 18, 2007

**Daily bag limit:** 3 dark geese

**Possession limit:** 6 dark geese

Light Geese:

Nov. 4-Feb. 18, 2007

**Daily bag limit:** 20

**Possession limit:** Unlimited

### SOUTH PARK, SAN LUIS VALLEY SEASON

Alamosa, Chaffee, Conejos, Costilla, Custer, Fremont, Lake, Park, Rio Grande and Teller counties. And, parts of Hinsdale, Mineral and Saguache counties east of Continental Divide.

Dark Geese:

Sept. 30-Oct. 8;

Nov. 25-Feb. 18, 2007

**Daily bag limit:** 3 dark geese

**Possession limit:** 6 dark geese

Light Geese:

Nov. 4-Feb. 18, 2007

**Daily bag limit:** 20

**Possession limit:** Unlimited

### NORTHERN FRONT RANGE SEASON

**NEW FOR 2006:** Boulder, Larimer and Weld counties from the Continental Divide E along the Wyoming border to Hwy. 85, S on Hwy. 85 to Adams Co line. And, all of Adams, Arapahoe, Broomfield, Clear Creek, Denver, Douglas, Gilpin and Jefferson counties.

Dark Geese:

Sept. 30-Oct. 8;

Nov. 25-Feb. 18, 2007

**Daily bag limit:** 3 dark geese

**Possession limit:** 6 dark geese

Light Geese:

Nov. 4-Feb. 18, 2007

**Daily bag limit:** 20

**Possession limit:** Unlimited

### EARLY CANADA GOOSE SEASON

All areas in Pacific Flyway.

Sept. 2-10

**Daily bag limit:** 3 dark geese

**Possession limit:** 6 dark geese

### LIGHT GOOSE CONSERVATION ORDER SEASON

All areas east of I-25.

Feb. 24-April 30, 2007

**Daily bag limit:** Unlimited

**Possession limit:** Unlimited

## DUCK, COOT SEASONS

### SEPTEMBER TEAL

Lake and Chaffee counties and all areas east of I-25.

Sept. 9-17

**Daily bag limit:** 4

**Possession limit:** 8

### CENTRAL FLYWAY

**Eastern Plains Zone:** East of I-25 and all of El Paso, Pueblo, Huerfano and Las Animas counties.

First Season.....Sept. 30-Oct. 8

Second Season .....Nov. 3-Jan. 28, 2007

**Daily bag limit:**

**Ducks:** 6, excluding mergansers. Of these, up to 5 can be mallards, but no more than 2 can be female. Also included in the daily bag limit of 6, you can have no more than 1 pintail, 1 canvasback, 2 redheads, 1 mottled duck, 2 wood ducks and 2 scaup. No canvasbacks or pintails can be taken after Dec. 2.

**Coots:** 15

**Mergansers:** 5 Only 2 can be hooded mergansers.

**Possession limit:** 2 daily bag limits



**Mountain/Foothills Zone:** West of I-25, east of Continental Divide, except El Paso, Pueblo, Huerfano and Las Animas counties.

First Season.....Sept. 30-Nov. 26

Second Season.....Dec. 22-Jan. 28, 2007

**Daily bag limit:**

**Ducks:** 6, excluding mergansers. Of these, up to 5 can be mallards, but no more than 2 can be female. Also included in the daily bag limit of 6, you can have no more than 1 pintail, 1 canvasback, 2 redheads, 1 mottled duck, 2 wood ducks and 2 scaup. No canvasbacks or pintails can be taken after Nov. 7.

**Coots:** 15

**Mergansers:** 5 Only 2 can be hooded mergansers.

**Possession limit:** 2 daily bag limits



# 2006 WATERFOWL HUNTING

## PACIFIC FLYWAY

West of Continental Divide.

**First Season** .....Sept. 30-Oct. 15

Second Season ..... Nov. 1-Jan. 28, 2007

**Daily bag limit:**

**Ducks, mergansers:** 7 in the aggregate. Of these, no more than 2 can be female mallards, 1 pintail, 1 canvasback, 2 redheads and 3 scaup.

**Possession limit:** 2 daily bag limits

**Coots:** Daily bag and possession limit is 25.

## YOUTH WATERFOWL

## CENTRAL FLYWAY

**Eastern Plains Zone:** East of I-25 and all of El Paso, Pueblo, Huerfano and Las Animas counties. **Oct. 21-22**

**Mountain/Foothills Zone:** West of I-25, east of Continental Divide, except El Paso, Pueblo, Huerfano and Las Animas counties. **Sept. 23-24.**

### Ducks, coot, mergansers:

**Daily bag and possession limit:** See regular Central Flyway.

**Geese:**

**Daily bag limit:** 3 dark geese

**Possession limit:** 6 dark geese

## PACIFIC FLYWAY

Oct. 28-29

### Ducks, coots, mergansers:

**Daily bag and possession limit:**

Same as regular Pacific Flyway.

Geese:

**Daily bag limit:** 3 dark and light geese in the aggregate

**Possession limit:** 2 daily bag limits

*Note: Hunting restricted to youths under age 16. Mentors cannot hunt during these youth seasons. Other mentor rules apply. See "Youth Licenses."*

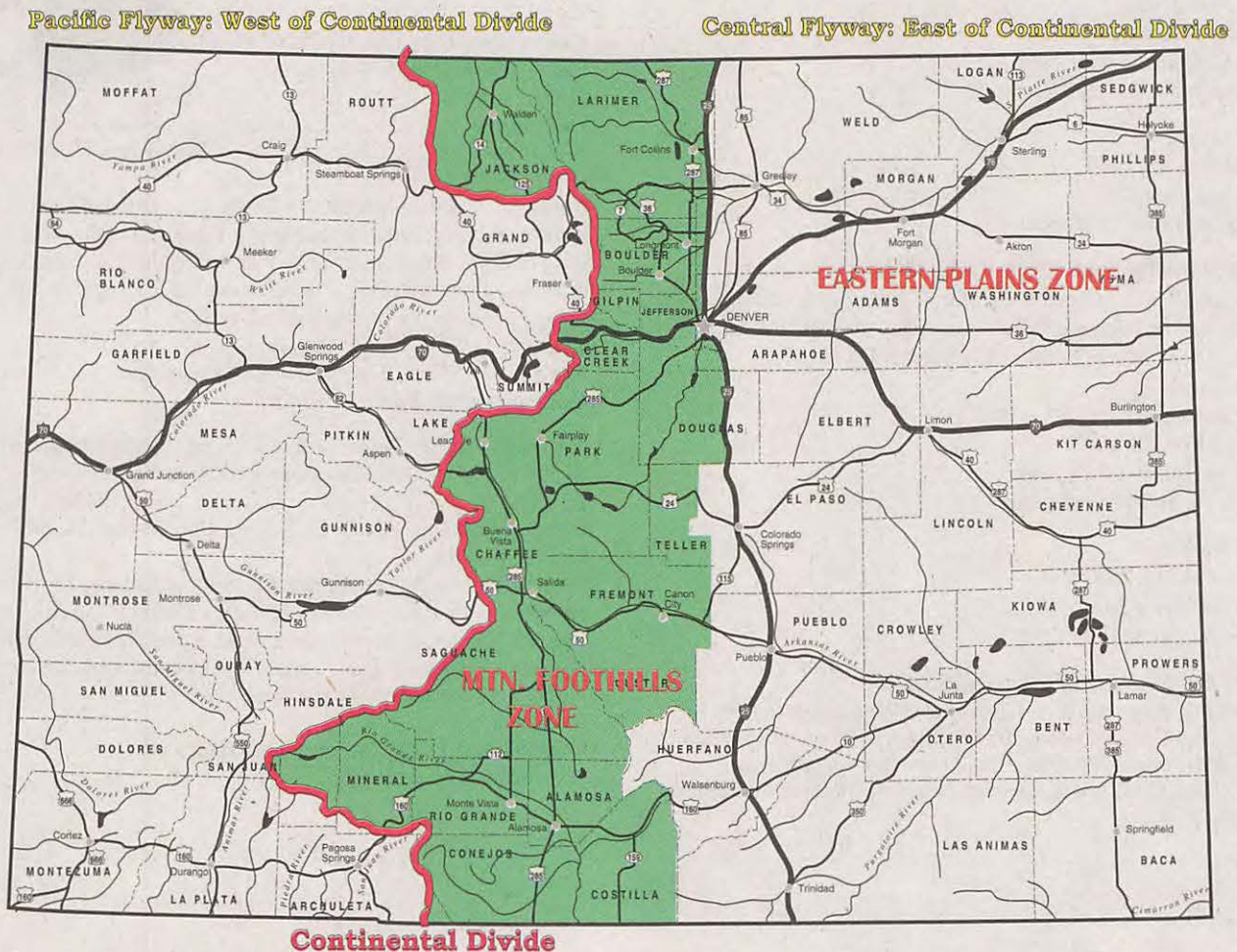
# FALCONRY

## CENTRAL AND PACIFIC FLYWAYS

Dates coincide with regular seasons. **Note:** Falconry bag and possession limits are not in addition to gun bag limits.

**Daily bag limit:** 3 singly or in aggregate

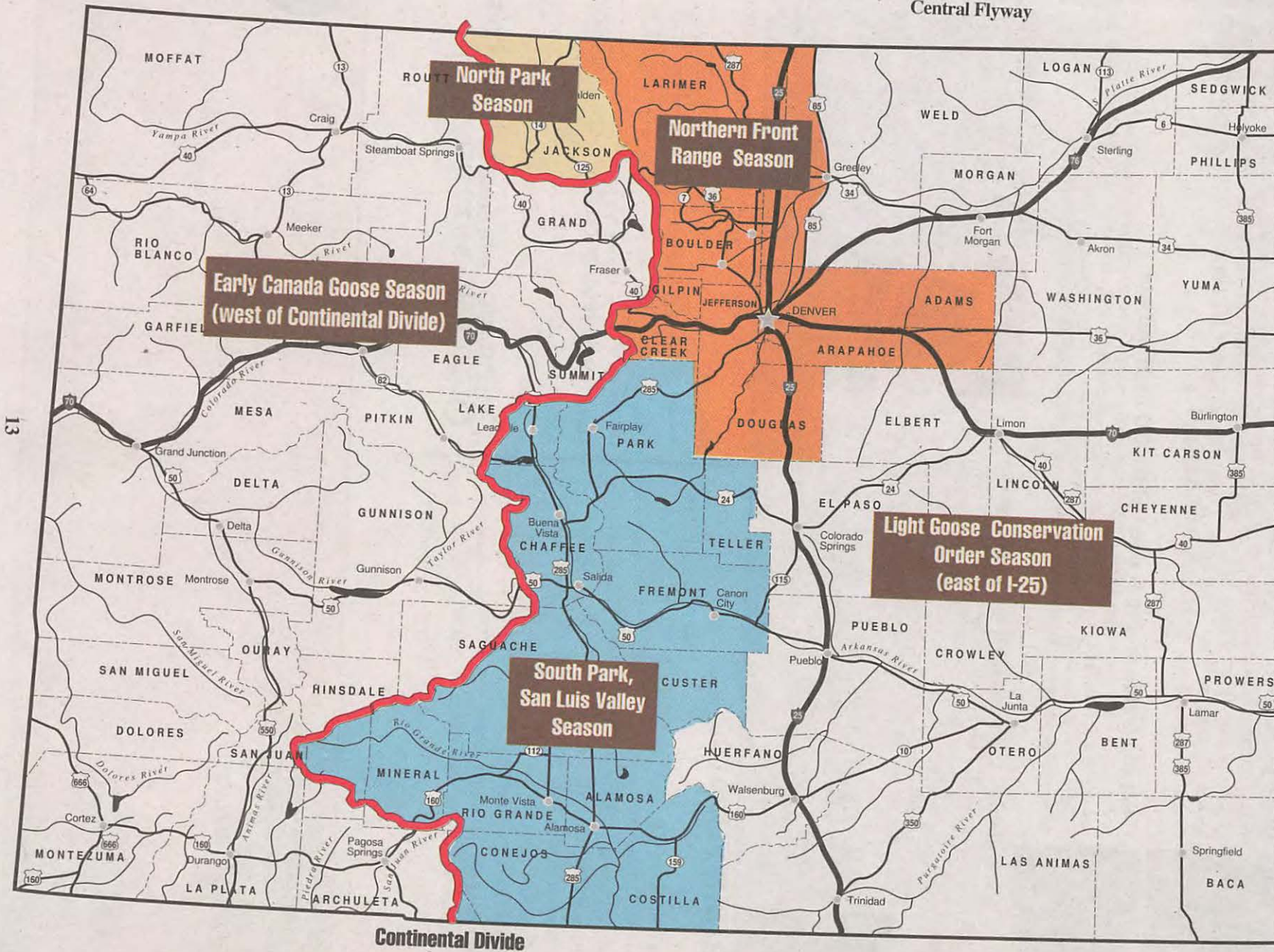
**Possession limit:** 6 singly or in aggregate





Pacific Flyway

Central Flyway

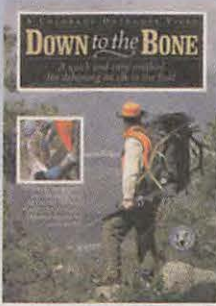


GOOSE SEASONS MAP



# New Deboning DVD

From the Colorado Division of Wildlife



**Down to the Bone** is a quick and easy method for deboning an elk in the field.

With this highly acclaimed instructional DVD, hunters will learn a simple and legal method of removing the inedible portions of meat from an elk where it falls. By removing the bones and other inedible portions of the animal, hunters can reduce the weight by more than 50 percent. No more sawing and quartering. Learn how to identify the best cuts for steaks, roasts and hamburger.



## Colorado Outdoors Big Game Deluxe CD by HuntData

Includes draw trends for the past 12 years, harvest trends for every season in every unit, ranking and ratings for each unit and season across the state, concentration maps for deer, elk and pronghorn, land use, 1:100,000 topographical and shaded relief features, annual internet updates, sheep and goat unit maps, UTM coordinate system, way point creation and export, kill site plotting for moose, bighorn sheep and mountain goats. \$97.95

**COMING SOON!**



**Elk Hunting – Colorado DVD** will improve your chances of bagging a Rocky Mountain elk. In this DVD you will learn about all the big game seasons and will find the one that is right for you. Learn about elk habitats, DAUs, how biologist manage the herds, calling tips, hunting strategies and more. See what tips a professional butcher recommends for processing elk meat. \$17.95.

**Colorado Deer Hunting Video** This videotape offers expert advice on tactics that will make you a more successful hunter. It tells where to concentrate your efforts to get that trophy, how to react to hunting pressure and how to find deer in different seasons. Approx. 30 min. \$17.95.



## Dressing & Cooking Wild Game Cookbook

is a complete guide to field dressing and preparing great-tasting big game, small game, upland birds and waterfowl. With more than 370 color photographs, step-by-step directions and valuable nutritional information, this cookbook teaches you how to make your wild game dishes as memorable as the hunts that made them possible.

Full-color, 160 pages. \$23.95

## ORDER FORM

Prices include shipping and handling

	Price	Qty.	Total
Down to the Bone DVD	\$17.95		
Big Game CD, Deluxe Edition	\$97.95		
Dressing & Cooking Wild Game Cookbook	\$23.95		
Elk Hunting – Colorado DVD <b>COMING SOON!</b>	\$17.95		
Colorado Deer Hunting Video	\$17.95		
Big Game Hunting in Colorado Video	\$17.95		
All About Colorado's Trout Fishing Video	\$17.95		
Order any two videos or DVDs for	\$30.00		
Order any three videos or DVDs for	\$43.50		
<b>TOTAL</b>			

## SHOP ONLINE AT <http://wildlife.state.co.us/shopDOW>

Name \_\_\_\_\_

Address \_\_\_\_\_

City \_\_\_\_\_ State \_\_\_\_\_ Zip \_\_\_\_\_

Daytime phone \_\_\_\_\_

**METHOD OF PAYMENT** Charge my ☐ Visa ☐ MasterCard

Account No. \_\_\_\_\_ Exp. Date \_\_\_\_\_

Signature \_\_\_\_\_

**COLORADO OUTDOORS** 6060 Broadway, Denver, CO 80216  
(303) 297-1192

20

Printed for free distribution by  
Colorado Division of Wildlife  
6060 Broadway, Denver CO 80216  
(303) 297-1192  
[www.wildlife.state.co.us](http://www.wildlife.state.co.us)

