

2013 Colorado Small Game



HUNTERS: SOME SEASON DATES CONTINUE INTO 2014



online brochure

TABLE OF CONTENTS

License Fees & Information 1

- What's new in 2013
- Furbearer Harvest Log
- License fees
- Hunter education requirements
- Youth license requirements
- Disabled veterans license requirements

Purchasing a License 2

- License and residency requirements, weapons restrictions, child-support information
- Harvest Information Program (HIP)
- Walk-In Access Program (WIA)

Season Dates, Bag Limits 3-5

- Small game 3
- Hawking/falconry 3
- Migratory and other birds..... 4-5
- Greater sage-grouse hunting area maps..... 4
- Common small-game bird habitat maps..... 4
- Dove identification chart 5

Know Before You Go 6-7

- Common hunting definitions 6
- Small-game survey information 6
- Bobcat seals..... 6
- Species identification 6
- Nontoxic shot regulations 6
- Donating wildlife 6
- Wildlife causing damage 6
- Legal hunting hours, sunrise/sunset table..... 7

Hunting Laws

& Methods of Take 8-9

- Small-game legal, illegal hunting methods..... 8
- General hunting laws..... 8
- Furbearer legal hunting methods..... 8
- Hawking and falconry hunting laws..... 9
- Migratory bird legal hunting methods and laws 9

Land-Use Rules 10-12

- Reservation procedures & phone numbers 10
- Land closures in deer seasons..... 11

Game Management Unit Map 13

SMALL THINGS CAN MAKE A BIG DIFFERENCE.

When you purchase a hunting license, 75¢ goes to educate the public on the role sportsmen play in wildlife management.



CPW OFFICE LOCATIONS

cpw.state.co.us

ONLY the offices below can assist hunters with animal checks and taking samples that are related to hunting activities. See the CPW website for a complete list of our 42 parks locations.

BRUSH

122 E. Edison
Brush, 80723
(970) 842-6300

COLORADO SPRINGS

4255 Sinton Road
Colorado Springs, 80907
(719) 227-5200

DENVER

6060 Broadway
Denver, 80216
(303) 291-7227

DURANGO

151 E. 16th St.
Durango, 81301
(970) 247-0855

FORT COLLINS

317 W. Prospect Road
Fort Collins, 80526
(970) 472-4300

GLENWOOD SPRINGS

0088 Wildlife Way
Glenwood Springs, 81601
(970) 947-2920

GRAND JUNCTION

711 Independent Ave.
Grand Junction, 81505
(970) 255-6100

GUNNISON

300 W. New York Ave.
Gunnison, 81230
(970) 641-7060

HOT SULPHUR SPRINGS

346 Grand County Rd. 362
Hot Sulphur Springs, 80451
(970) 725-6200

LAMAR

2500 S. Main St.
Lamar, 81052
(719) 336-6600

MEEKER

73485 Hwy. 64
Meeker, 81641
(970) 878-6090

MONTE VISTA

0722 S. Road 1 E.
Monte Vista, 81144
(719) 587-6900

MONTROSE

2300 S. Townsend Ave.
Montrose, 81401
(970) 252-6000

PUEBLO

600 Reservoir Road
Pueblo, 81005
(719) 561-5300

SALIDA

7405 Hwy. 50
Salida, 81201
(719) 530-5520

STEAMBOAT SPRINGS

925 Weiss Dr.
Steamboat Springs, 80487
(970) 870-2197

ADMINISTRATION

6060 Broadway
Denver, 80216
(303) 297-1192

Printed for free distribution by

COLORADO PARKS AND WILDLIFE (CPW)

6060 Broadway, Denver, CO 80216
(303) 297-1192
cpw.state.co.us

Editor: Amy Nickelson

Cover photo © Vic Schendel

Printed July 2013 by American Web, Denver. 155,000 copies.

Printing paid for with hunting and fishing license fees.



The Colorado Parks and Wildlife Commission sets small game regulations in July.

The Commission (as of July 2013): John Singletary, chairman • Bill Kane, vice chairman • Mark Smith, secretary • Robert Bray, member • Christopher Castilian, member • Jeanne Horne, member • Gaspar Perricone, member • James Pribyl, member • James Vigil, member • Dean Wingfield, member • Michelle Zimmerman, member • Mike King, ex officio member • John Salazar, ex officio member

CPW receives federal financial assistance from the U.S. Fish and Wildlife Service. In accordance with Title VI of the Civil Rights Act of 1964, Section 504 of the Rehabilitation Act of 1973, Title II of the Americans with Disabilities Act of 1990, the Age Discrimination Act of 1975 and Title IX of the Education Amendments of 1972, the U.S. Department of the Interior and its bureaus prohibit discrimination on the basis of race, color, national origin, age, disability or sex.

NOTE: Laws and regulations in this brochure are paraphrased for easier understanding and are intended only as a guide. Colorado statutes and regulations are available for viewing at CPW offices and online at www.wildlife.state.co.us/RulesRegs/Regulations/Pages/Regulations.aspx.

WHAT'S NEW 2013

» **TAKE MORE TEAL...** The bag and possession limit on September teal hunting rises this year, allowing hunters more opportunity in the realm of waterfowl. Bag limits increase from 4 to 6 teal, and the possession limit rises from 8 to 18. See page 5 for details.

» **POSSESSION LIMIT INCREASES...** Possession limits for some bird species have gone up from last year. Remember, a possession limit is the total number of an animal you can have at one time. That includes those you harvest in the field, those in the freezer at home, in your car, or anywhere else in your possession.

This year, dove possession limits have increased from 30 to 45 of each species of mourning and white-winged doves. The band-tailed pigeon possession limit is now 15, the Wilson's Snipe limit is 24. And hunters are allowed 9 sandhill cranes in their possession. See pages 4-5 for details.

» **CHUKAR HUNT CHANGES...** Game Management Units 9, 19 and 191 will be closed to chukar hunting for the next two years. See page 4 for details.

» **WHICH LICENSE IS RIGHT FOR YOU?...** A standard small-game license is good for all upland game birds, waterfowl and all of the small-game mammals listed in this brochure. There is also a "furbearer only" license available, which is only good for fur-bearing mammals (coyotes, beavers, raccoons, foxes, bobcats, etc.). Please make sure you choose the best license to fit your hunting needs.

FURBEARER HARVEST LOG INFORMATION



SPECIES: _____

HARVEST DATE: _____

SEX: M / F AGE: MATURE / SUB-ADULT

METHOD: HUNT / TRAP / ROAD KILL

LOCATION: (drainage) _____

COUNTY: _____ GMU: _____

TRAP NIGHTS: (No. of nights trap was set) _____

HUNT DAYS: (No. of days or part days hunted) _____

BOBCAT HARVEST

LOCATION: _____

SECTION: _____ 1/4 SECTION: _____

TOWNSHIP: _____ RANGE: _____

OR UTM EASTING: _____ NORTHING: _____

LICENSE FEES

	RESIDENT	NONRESIDENT
» Habitat Stamp (required)	\$10	\$10
» Small Game (includes furbearers)	\$21	\$56
» Small Game (one-day)	\$11	\$11
» Small Game (additional day)	\$5	\$5
» Youth Small Game (Under 18)	\$1.75	\$1.75
» Small Game & Fishing Combo	\$41	n/a
» Furbearer only	\$21	\$56
» Military (60 percent or more disability, see details below)	free	n/a

Prices include 25-cent search-and-rescue fee and 75-cent surcharge for the Wildlife Management Public Education Fund.

SAVE TIME: BUY ONLINE OR BY PHONE

Go to www.bit.ly/cpwlicensesales or call 1-800-244-5613. CPW offices and license agents also sell licenses.



LICENSE INFORMATION

WHAT YOU NEED TO BUY A LICENSE

1. Current and valid photo ID (Colorado identification must be issued at least 6 months prior to applying as a resident, see page 2)
2. Proof of hunter education (see requirements below)
3. Habitat Stamp (see page 2)
4. For residents, proof of residency (see page 2)

HUNTER EDUCATION (SAFETY) REQUIREMENTS

Hunters born on or after Jan. 1, 1949, must have completed an approved hunter education course sanctioned by a state or province before purchasing a license. Colorado honors hunter education courses from other states and provinces. You must present an original hunter safety card when buying a license (unless previously verified) or enter the required information when applying by mail or online. You must carry your hunter education card while hunting unless a "V" is printed on the license, which indicates hunter education has been verified at a CPW office (listed on opposite page).

Hunter education courses can be found at www.wildlife.state.co.us/Hunting/HunterEducation/CourseCalendar/Pages/HECalendar.aspx.

YOUTH LICENSES AND MENTOR HUNTING

People under age 18 must have a license to hunt small game. A youth small-game license is \$1, plus surcharge. All youths must meet hunter education requirements. Those under 16 must be accompanied by a mentor while hunting. A mentor must be 18 or older and must meet hunter education requirements. Mentors aren't required to hunt. While hunting, youths and mentors must be able to see and hear each other without binoculars, radios or other aids. Youths can buy an adult license as long as they meet hunter education requirements. At age 18, hunters must buy an adult license.

DISABLED VETERANS

Colorado residents who are disabled veterans or Purple Heart recipients can get free lifetime combination small-game hunting and fishing licenses. You must have served on active duty and have been honorably discharged. Proof is required of a service-related disability rated by the Veterans Administration of at least 60 percent through disability retirement benefits or a pension administered by the Department of Veteran Affairs or respective service department.

PURCHASING A LICENSE

LICENSE REQUIREMENTS

1. You must carry your license when hunting and show it when requested by law enforcement officers.
2. Annual fishing, small-game and furbearer licenses, as well as Colorado waterfowl stamps and habitat stamps, are valid April 1 through March 31 of the following year. Lifetime small-game and fishing combination licenses are valid as long as you are a Colorado resident.
3. In order to hunt in any seasons that continue beyond March 31, 2014 (*see dates listed on pages 3-5*), you must purchase a 2014 small-game license.
4. **TO HUNT AND TAKE SMALL GAME**, you need a small-game license, a combination small-game and fishing or a lifetime small-game and fishing license. Small-game hunters must register with HIP before their first hunt. *See details in the "Harvest Information Program" section below.*
5. **TO HUNT COMMON SNAPPING TURTLES**, you need a small-game license or fishing license.
6. **TO HUNT FURBEARERS**, you must have a small-game or furbearer license.
7. **YOU CAN HUNT COYOTES** without a small-game license during big-game seasons if you have an unfilled big-game license for the same season and unit. You must use the same method of take for coyotes as your big-game license allows. Once the big-game license has been filled, hunters must purchase a small-game license to continue hunting coyotes. If you're not hunting big game, a small-game license is required to hunt coyotes.
8. **TO HUNT WATERFOWL**, you need a small-game hunting license. If you are 16 or older, you also need a Federal Migratory Bird Hunting Stamp (Duck Stamp) and a Colorado Waterfowl Stamp.
9. **TO HUNT BAND-TAILED PIGEONS AND SANDHILL CRANES**, a separate federal permit number, available through HIP, is required.
10. If a license is restricted to a specific area, you can hunt only that area.
11. Licenses are not transferable.
12. False statements made in buying a license and altering a license are illegal and void the license.
13. Lost or destroyed licenses can be replaced by buying a new one or signing an affidavit and paying a fee. Forms are available at CPW offices and license agents.

HABITAT STAMPS ARE REQUIRED FOR HUNTERS

Habitat Stamps are \$10 and only one is required per person per year for anyone ages 18-64. Stamps are valid April 1-March 31.

- » You must purchase a stamp before buying or applying for a preference point or a hunting or fishing license.
- » A lifetime stamp is \$300.25.
- » Anyone buying a one-day or additional-day license for fishing and/or small game is exempt from purchasing the Habitat Stamp with the first two of these licenses. The habitat fee will be assessed when a third one-day or additional-day license is purchased for fishing or small game.
- » Anyone who holds a free Lifetime Fishing License, a Veteran's Lifetime Combination Small-Game Hunting/Fishing License, or are approved for the Big Game Mobility Impaired Hunting Program is exempt from the Habitat Stamp requirement. See www.wildlife.state.co.us/Hunting/DisabledAccessibility/Pages/DisabilityInformation.aspx.

HARVEST INFORMATION PROGRAM (HIP)

Small-game, furbearer and migratory bird hunters, including falconers, must sign up with HIP each year before their license is valid.

Write the new HIP number on your license.

To sign up with HIP, call 1-866-265-6447 (1-866-COLOHIP) or go to www.colohip.com. You will be asked for basic information, including how many birds you harvested the previous season and species you plan to hunt this year. The HIP phone line and website run 24 hours daily.

CHILD-SUPPORT DELINQUENCY

State law requires a Social Security number to buy a license. It is not displayed on the license but is provided, if requested, to Child Support Enforcement authorities. Hunting and fishing licenses are not issued to people suspended for noncompliance with child support. In addition, any current licenses become invalid if held by someone noncompliant with child support.

Attention: Snow goose hunters

If you removed the plug from your shotgun to hunt during the 2013 Spring Conservation Action, remember to replace the plug before hunting in the fall small-game and waterfowl seasons.

WEAPONS RESTRICTIONS

Colorado and federal laws prohibit people convicted of certain crimes, such as domestic violence, from possessing weapons, even for hunting. If you've been convicted of a crime, check with the appropriate law enforcement authority to find out how these laws apply to you.

WALK-IN ACCESS PROGRAM (WIA)

The Walk-In Access Program provides opportunities to hunt small game, migratory game birds and furbearers on enrolled properties. The regular season properties are open Sept. 1 through the end of February. The late cropland season properties are open from opening day of pheasant season through the end of February. The extended walk-in properties are open from the start of pheasant season through the end of March.

WIA properties allow hunting small game, furbearers, migratory game birds and Eurasian collared-doves but only during established season dates. Properties are closed to hunting Gambel's quail, Gunnison's sage-grouse and greater sage-grouse.

Properties are open to foot access only. For small-game hunting, lands are open one hour before sunrise until one hour after sunset. A WIA permit is no longer required to hunt WIA lands, but hunters must have a small-game license. Properties enrolled are posted with Walk-In Access signs and published in a WIA atlas. Access is prohibited as posted when the landowner is actively harvesting crops.

Two atlases for 2013-14 will be published. An early version will be available in mid-August and includes properties open Sept. 1. A second atlas will be available in late October and includes all properties.

RESIDENCY REQUIREMENTS

The requirements to qualify as a Colorado resident to buy a hunting license:

1. You must live in Colorado at least 6 consecutive months immediately before applying for or buying a license, and must intend to make Colorado home (except No. 3 and No. 4 below.) The residence address you give to buy or apply for a license must be the same as on your Colorado income tax return.
2. A valid Colorado driver's license or Colorado ID is proof of residency if issued as least 6 months prior to buying or applying for a license. If your ID or driver's license was issued or renewed less than 6 months prior, you must provide documentation that proves you have been a resident for the required 6-month period.
3. U.S. military personnel and military personnel of U.S. allies on active duty in Colorado under permanent orders and their dependents. This includes people who were Colorado residents when they entered the military and maintain Colorado as their home of record, and their dependents (who keep Colorado as their home of record.) Also included are personnel of the U.S. Diplomatic Service or diplomatic services of nations recognized by the U.S. assigned to duty here on permanent active duty orders and their dependents. Active duty does not include reserve status or National Guard.
4. Full-time students enrolled and attending an accredited Colorado college, university or trade school at least 6 months immediately before applying for or buying a license. This includes students who are temporarily absent from Colorado but still enrolled. Colorado residents who attend school full-time out of state and pay nonresident tuition still qualify for a resident license.
5. Children under 18 have the same residency status as their parent, legal guardian or person with whom they live the majority of the time per court order.
6. If you have a home in Colorado and another state, call (303) 297-1192 to make sure you comply with Colorado residency requirements before obtaining a hunting or fishing license.
7. Except as in No. 3 and No. 4 above, you lose your Colorado residency if you apply for, buy or accept a hunting, fishing or trapping license as a resident of another state or country; register to vote outside Colorado or get a driver's license with an address in another state.



SMALL-GAME REGULATIONS, STATEWIDE

ABERT'S SQUIRREL

SEASON: Nov. 15-Jan. 15, 2014
DAILY BAG LIMIT: 2
POSSESSION LIMIT: 4

BEAVER

SEASON: Oct. 1-April 30, 2014
BAG AND POSSESSION LIMITS: Unlimited

BOBCAT

SEASON: Dec. 1-end of Feb. 2014
BAG AND POSSESSION LIMITS: Unlimited
NOTE: See "Bobcat Seals," page 6.

COMMON SNAPPING TURTLE

SEASONS: April 1-Oct. 31, annually
BAG AND POSSESSION LIMITS: Unlimited

COTTONTAIL, SNOWSHOE HARE, WHITE-TAILED & BLACK-TAILED JACKRABBIT

SEASON: Oct. 1-end of Feb. 2014

DAILY BAG LIMIT: 10 of each species

POSSESSION LIMIT: 20 of each species

COYOTE

SEASON: Year-round
BAG AND POSSESSION LIMITS: Unlimited

FOX & PINE SQUIRREL

SEASON: Oct. 1-end of Feb. 2014
DAILY BAG LIMIT: 5 of each species
POSSESSION LIMIT: 10 of each species

MARMOT

SEASON: Aug. 10-Oct. 15
DAILY BAG LIMIT: 2
POSSESSION LIMIT: 4

PRAIRIE DOGS: WHITE-TAILED, BLACK-TAILED, GUNNISON'S

PUBLIC LAND SEASON: June 15-end of Feb. 2014
PRIVATE LAND SEASON: Year-round
BAG AND POSSESSION LIMITS: Unlimited

PRAIRIE RATTLESNAKE

SEASON: June 15-Aug. 15
DAILY BAG LIMIT: 3
POSSESSION LIMIT: 6

WYOMING (RICHARDSON'S)

GROUND SQUIRREL
SEASON: Year-round
BAG AND POSSESSION LIMITS: Unlimited

BADGER, MINK, PINE MARTEN, GRAY FOX, RED FOX, SWIFT FOX, RACCOON, RING-TAILED CAT, STRIPED SKUNK, WESTERN SPOTTED SKUNK, LONG-TAILED WEASEL, SHORT-TAILED WEASEL, OPOSSUM, MUSKRAT

SEASON: Nov. 1-end of Feb. 2014
BAG AND POSSESSION LIMITS: Unlimited

HUNTING WITH HAWKS & FALCONS

» **REGULATIONS FOR USING HAWKS AND FALCONS TO HUNT SMALL GAME**, see also pages 8-9.

COTTONTAIL, SNOWSHOE HARE, WHITE-TAILED & BLACK-TAILED JACKRABBIT

SEASON: Sept. 1-March 31, 2014
AREA: Statewide
DAILY BAG LIMIT: 10 of each species
POSSESSION LIMIT: 20 of each species

CHUKAR

SEASON: Sept. 1-March 31, 2014
AREA: Statewide, except hunting is closed in GMUs 9, 19, 191
DAILY BAG LIMIT: 4
POSSESSION LIMIT: 12

DUCKS, GEESE, MERGANSER, COOTS, SORA, VIRGINIA RAIL, BAND-TAILED PI- GEON, DOVES, WILSON'S SNIPE, CROW

SEASON: Dates coincide with established seasons
DAILY BAG LIMIT: 3 singly or in the aggregate for species with an open hunting season or special falconry season
POSSESSION LIMIT: 9 singly or in aggregate
NOTE: Falconry bag and possession limits are not in addition to gun bag limits.

EUROPEAN STARLING, ENGLISH OR HOUSE SPARROW

SEASON: Year-round
AREA: Statewide
BAG, POSSESSION LIMITS: Unlimited

FOX & PINE SQUIRREL

SEASON: Sept. 1-March 31, 2014
AREA: Statewide
DAILY BAG LIMIT: 5 of each species
POSSESSION LIMIT: 10 of each species

FURBEARERS

SEASON: Dates coincide with established seasons
AREA: Statewide
BAG, POSSESSION LIMITS: Unlimited

GROUSE: DUSKY

SEASON: Sept. 1-March 31, 2014
AREA: West of I-25
DAILY BAG LIMIT: 3
POSSESSION LIMIT: 9

GROUSE: GREATER SAGE-GROUSE

SEASON: Sept. 1-Jan. 31, 2014
AREA: GMUs 2, 3, 4, 5, 6, 10, 11, 13, 16, 17, 18 except east of Colo. 125 in Grand County; 27, 28 except north and east of Grand CR 50 (Church Park Rd.); 37, 161, 171, 181, 211, 301 and 441

DAILY BAG LIMIT: 2
POSSESSION LIMIT: 2 birds only in GMUs 6, 16, 17, 161, 171; 4 birds in all other GMUs

GROUSE: MOUNTAIN SHARP-TAILED

SEASON: Sept. 1-Jan. 31, 2014
AREA: GMUs 4, 5, 12, 13, 14, 131, 211, 214, 441
DAILY BAG LIMIT: 2 birds
POSSESSION LIMIT: 4 birds

PHEASANT

SEASON: Sept. 1-March 31, 2014
AREA: Statewide
DAILY BAG LIMIT: 3 birds
POSSESSION LIMIT: 9 birds

QUAIL: NORTHERN BOBWHITE, SCALED, GAMBEL'S

SEASON 1: Sept. 1-March 31, 2014
AREA: Statewide
DAILY BAG LIMIT: 8 of each species
POSSESSION LIMIT: 24 of each species

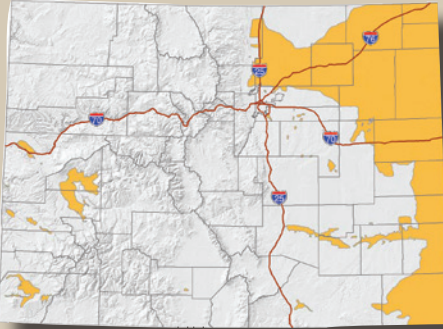
WHITE-TAILED PTARMIGAN

SEASON: Sept. 1-March 31, 2014
AREA: Statewide
DAILY BAG LIMIT: 3
POSSESSION LIMIT: 6

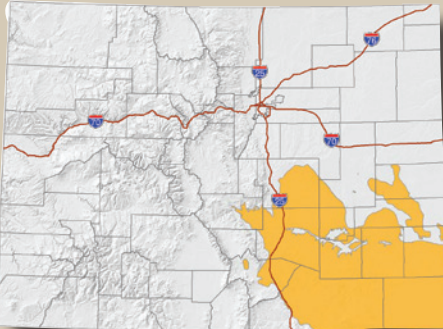
HABITAT RANGES OF COMMON SMALL-GAME BIRDS

The ranges of popular Colorado birds to hunt are shaded in orange below. The red lines through the state indicate I-70 east and west, I-25 north and south and I-76 northeast from Denver.

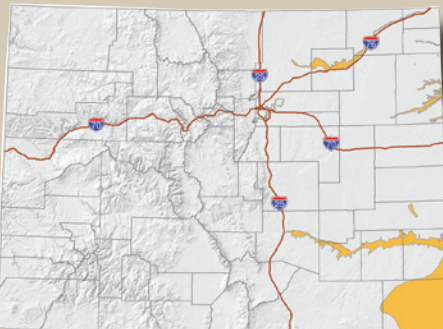
PHEASANT:



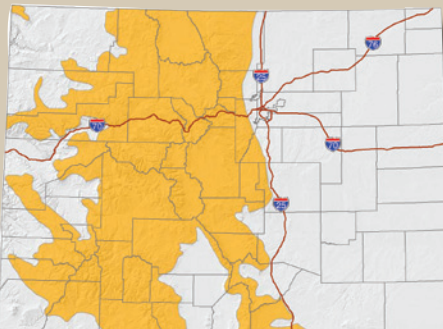
SCALED QUAIL:



BOBWHITE QUAIL:



DUSKY GROUSE:



MIGRATORY & OTHER BIRD REGULATIONS

BAND-TAILED PIGEON

SEASON: Sept. 1-30
AREA: Statewide
DAILY BAG LIMIT: 5
POSSESSION LIMIT: 15
NOTE: Permit required through HIP. See "License Requirements," page 2, for more.

CHUKAR

SEASON: Sept. 1-Nov. 30
AREA: Statewide, except hunting is closed in GMUs 9, 19, 191
DAILY BAG LIMIT: 4
POSSESSION LIMIT: 12

CROW

SEASON: Oct. 1-Jan. 31, 2014
AREA: Statewide
BAG AND POSSESSION LIMITS: Unlimited
NOTE: Recorded or electronically amplified calls may be used during this season.

DOVES: MOURNING, WHITE-WINGED

SEASON: Sept. 1-Nov. 9
AREA: Statewide
DAILY BAG LIMIT: 15 singly or in aggregate for either species
POSSESSION LIMIT: 45 of either species
NOTE: See "Species Identification" on page 6 for transit requirements. See Eurasian note on this page for influence on bag limits.

DOVES: EURASIAN COLLARED

SEASON: Year-round
AREA: Statewide
DAILY BAG, POSSESSION LIMITS: Unlimited
NOTE: If taken Sept. 1-Nov. 9, fully feathered Eurasians will not be counted toward mourning and white-winged bag and possession limits. If Eurasians taken at this time are not fully feathered, they count toward all dove bag and possession limits. Eurasians must be fully feathered if taken at times other than Sept. 1-Nov. 9. See "Species Identification" on page 6 for transit requirements.

EUROPEAN STARLING, ENGLISH OR HOUSE SPARROW

SEASON: Year-round
AREA: Statewide
BAG AND POSSESSION LIMITS: Unlimited

GREATER PRAIRIE-CHICKEN

SEASON: Oct. 1-Jan. 5, 2014
AREA: Only GMUs 93, 97, 98, 100, 101, 102
BAG AND POSSESSION LIMITS: 2 per year

GROUSE: DUSKY

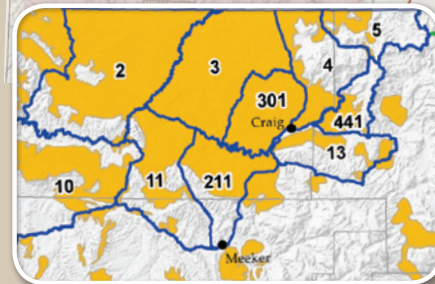
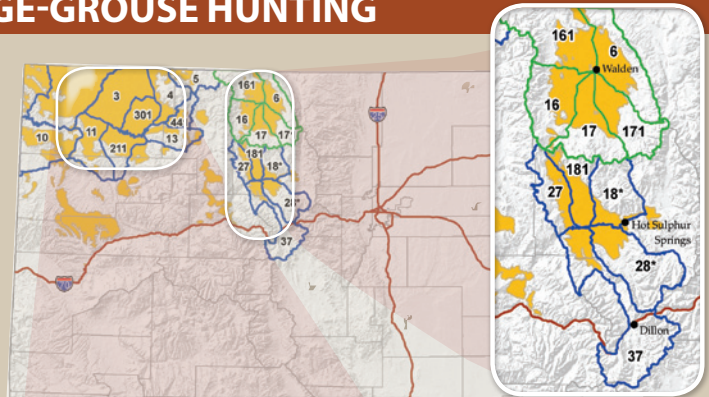
SEASON: Sept. 1-Nov. 17
AREA: West of I-25
DAILY BAG LIMIT: 3
POSSESSION LIMIT: 9

GREATER SAGE-GROUSE HUNTING

The areas of the state open to greater sage-grouse hunting were recently modified based on grouse populations.

Units open to greater sage-grouse hunting include GMUs 2, 3, 4, 5, 10, 11, 13, part of 18, 27, part of 28, 37, 181, 211, 301 and 441.

Also, the North Park season is open in units 6, 16, 17, 161 and 171.



- OPEN FOR HUNTING**
- North Park season units open Sept. 14-15
 - Regular season units open Sept. 14-20
 - Greater sage-grouse habitat range

GROUSE: GREATER SAGE-GROUSE**SEASON 1:** Sept. 14-15**AREA:** Only GMUs 6, 16, 17, 161, 171 (North Park)**DAILY BAG LIMIT:** 2**POSSESSION LIMIT:** 2**SEASON 2:** Sept. 14-20**AREA:** GMUs 2, 3, 4, 5, 10, 11, 13, 18 except east of Colo. 125 in Grand County, 27, 28 except north and east of Grand CR 50 (Church Park Rd.), 37, 181, 211, 301 and 441.**DAILY BAG LIMIT:** 2**POSSESSION LIMIT:** 4**GROUSE: MOUNTAIN SHARP-TAILED****SEASON:** Sept. 1-15**AREA:** Only GMUs 4, 5, 12, 13, 14, 131, 211, 214, 441**DAILY BAG LIMIT:** 2**POSSESSION LIMIT:** 4**PHEASANT****DAILY BAG LIMIT:** 3 cocks**POSSESSION LIMIT:** 9 cocks**SEASON 1:** Nov. 9-Jan. 31, 2014**AREA:** East of I-25**SEASON 2:** Nov. 9-Jan. 5, 2014**AREA:** West of I-25**QUAIL: NORTHERN BOBWHITE, SCALED, GAMBEL'S****DAILY BAG LIMIT:** 8 of each species**POSSESSION LIMIT:** 24 of each species**SEASON 1:** Nov. 9-Jan. 5, 2014**AREA:** East of I-25 and north of I-70 from I-25 east to Byers and Hwy. 36 from Byers to Kansas.**SEASON 2:** Nov. 9-Jan. 5, 2014**AREA:** West of I-25 except those areas west of I-25 in Pueblo, Fremont, Huerfano and Las Animas counties.**SEASON 3:** Nov. 9-Jan. 31, 2014**AREA:** East of I-25 and south of I-70 from I-25 to Byers and Hwy. 36 from Byers to Kansas, and parts of the following counties that are west of I-25: Pueblo, Fremont, Huerfano, Las Animas.**SANDHILL CRANE****SEASON:** Oct. 5-Dec. 1**AREA:** East of the Continental Divide except North Park (Jackson County) and San Luis Valley.**DAILY BAG LIMIT:** 3**POSSESSION LIMIT:** 9**NOTE:** Permit required through HIP. See "License Requirements," page 2, for more information.**SORA AND VIRGINIA RAIL****SEASON:** Sept. 1-Nov. 9**AREA:** Statewide**DAILY BAG LIMIT:** 25 singly or aggregate**POSSESSION LIMIT:** 75 singly or aggregate**TEAL****SEASON:** Sept. 14-22**AREAS:** In Lake and Chaffee counties and all areas east of I-25.**DAILY BAG LIMIT:** 6**POSSESSION LIMIT:** 18**WHITE-TAILED PTARMIGAN****DAILY BAG LIMIT:** 3**POSSESSION LIMIT:** 6**SEASON 1:** Sept. 14-Oct. 6**AREA:** Statewide except GMUs 44, 45, 53, 54, 66, 67, 68, 70, 71, 74-81, 444, 751**SEASON 2:** Sept. 14-Nov. 17**AREA:** Only GMUs 44, 45, 53, 54, 66, 67, 68, 70, 71, 74-81, 444, 751**WILSON'S SNIPE****SEASON:** Sept. 1-Dec. 16**AREA:** Statewide**DAILY BAG LIMIT:** 8**POSSESSION LIMIT:** 24**COLORADO DOVE IDENTIFICATION****There are three types of doves in Colorado.**

Knowing how to identify each is important to avoid violating the law while hunting.

White-winged doves are not common in Colorado and occur primarily along the Front Range. Eurasians occur sporadically throughout the state. The white-winged dove is pioneering new habitats north of its historic range in the southwest U.S. The Eurasian collared-dove is an exotic introduced into the United States.

DOVE BANDING

Mourning doves are banded in Colorado and other states as part of a program to monitor their status. Hunters should report banded mourning doves to the USGS Bird Banding Lab, www.reportband.gov or call 1-800-327-BAND.



© Wayne Lewis, CPW

MOURNING DOVE

- » 12 inches long from tip of beak to end of tail
- » Grayish-brown color
- » Long, pointed tail
- » Rapid wing beat, erratic flight path
- » Soft call, "cooAHoo," followed by several coos



© Wayne Lewis, CPW

EURASIAN COLLARED-DOVE

- » 15 inches from tip of beak to end of tail
- » Larger, heavier than mourning dove
- » Dark grayish-brown
- » Long, squared tail
- » Thin black band on neck with white upper border
- » Gray belly and undertail coverts with black on tail
- » Coarse, rapid, three-part cooing, "coo-coo-coo," middle coo is longest



© George Andrejko, Ariz. Game & Fish

WHITE-WINGED DOVE

- » Slightly larger than mourning dove
- » Gray-brown color
- » Long, moderately rounded tail
- » White bar on upper wing surface
- » Soft call, "hoo-hoo hoo-hoo," with the last note descending



KNOW BEFORE YOU GO

SMALL-GAME SURVEYS

Colorado Parks and Wildlife conducts several small-game harvest surveys annually to estimate harvest, hunter numbers and recreation days, in addition to assessing satisfaction and crowding. In many cases, surveys represent the primary means of monitoring populations of several species, especially those difficult to survey by observation. Harvest surveys also are valuable to hunters wanting to learn more about small game in Colorado.

Past surveys are available on the CPW website at www.wildlife.state.co.us/Hunting/SmallGame/Statistics/Pages/Statistics.aspx and updated reports are available after annual surveys conclude. Hunters are selected randomly to participate. Small-game surveys are by telephone or by e-mail. If contacted, your participation is not required, but responding — even if you did not hunt or harvest an animal — helps CPW manage small game.

SPECIES IDENTIFICATION

A fully feathered wing or head must be attached to all birds, except turkeys, doves and band-tailed pigeons, in transit to hunter's home or commercial processor. For pheasants, a foot with visible spur can be substituted. Note: While in the field or during transport, all dressed (not fully feathered) doves count against the daily bag and possession limit for mourning and white-winged doves during the Sept. 1-Nov. 9 dove season. Eurasian collared-doves must be fully feathered while in the field or during transport at all other times.

BOBCAT SEALS

All bobcats or their pelts must be personally presented by the hunter for inspection and sealing by CPW within 30 days after take or within five days after the season closes, whichever is sooner. Any bobcat hide/pelt without a seal within five days after the season closes is illegal and becomes the property of the state. Seals will be placed only on bobcats taken legally in Colorado. Inspection and sealing is free, and seals must stay attached to hide until processed. Bobcat hides/pelts cannot be transported, shipped or otherwise taken from Colorado until inspected and sealed. It is illegal to buy, sell, trade or barter an untanned bobcat hide/pelt without a seal. One seal per hide/pelt. Contact a nearby CPW office for details.

DONATING WILDLIFE

You can donate edible parts of wildlife to a like-license holder anywhere or to anyone at the recipient's home. Bag and possession limits apply to donors and recipients and birds must be properly tagged. See *"Migratory Bird Transporting, Shipping"* on page 9.

NONTOXIC SHOT

1. It is illegal to use or have toxic (lead) shot, either in shotshells or as loose shot for muzzleloading, while taking or attempting to take ducks, geese or coots in Colorado. This includes national wildlife refuges open to hunting. Toxic shot, either in shotshells or as loose shot for muzzleloading, cannot be in a hunter's gun, on his/her person or near a hunter taking or attempting to take waterfowl. Store lead shot in your vehicle. You can store lead shot elsewhere if it's not readily accessible while hunting waterfowl.
2. Nontoxic shot is required in commercial wildlife parks, field trials and dog-training while hunting captive-reared mallards.
3. Nontoxic shot is any type approved by the U.S. Fish and Wildlife Service. Go to: www.fws.gov/migratorybirds/CurrentBird-Issues/nontoxic.htm.
4. It is illegal to have or use nontoxic shot larger than size T to hunt ducks, geese or coots.

WILDLIFE CAUSING DAMAGE

Colorado law allows landowners to protect private property from most wildlife damage. For information, call (303) 297-1192.

HUNTING TERMS AND DEFINITIONS

AGGREGATE: total number of animals allowed in a bag limit regardless of species.

CANADA LYNX RECOVERY AREA: in San Juan and Rio Grande national forests, and associated land above 9,000 feet, west from a north-south line passing through Del Norte and east from a north-south line passing through Dolores; and from New Mexico north to the Gunnison basin, including Taylor Park east to the Collegiate Range. The recovery area includes Game Management Units 55, 65-68, 70, 71, 74-81, 551, 681, 711 and 751.

CROSSBOW: bow fired from the shoulder, attached perpendicularly to its stock. Has mechanical device to hold string cocked.

DAILY BAG LIMIT: maximum number of wildlife you can take in a day, including any consumed or donated during day taken.

FALCONRY (OR HAWKING): hunting with a trained raptor.

FURBEARERS: mink, pine marten, badger, red fox, gray fox, swift fox, striped skunk, western spotted skunk, beaver, muskrat, long-tailed weasel, short-tailed weasel, coyote, bobcat, opossum, ring-tailed cat, raccoon.

HAND-HELD BOW: long bow or compound bow with a manually held or drawn string.

HANDGUN: pistol, revolver, without shoulder stock or attachment.

LIKE LICENSE: license to take the same wildlife in same manner at same time.

LIVE TRAPS: box traps or cage traps.

MIGRATORY GAME BIRDS: migratory birds included in conventions between U.S. and foreign countries to protect birds for which seasons are offered. They are: waterfowl (ducks, including mergansers, and geese, including brant), mourning and white-winged doves, band-tailed pigeons, sandhill cranes, American coots, sora, Virginia rail, Wilson's snipe, crows.

PELLET GUN: handgun or rifle powered by compressed air or gas that is .177 caliber or larger and fires pellets.

PELT: skin of a furbearer with hair intact.

POSSESSION LIMIT: maximum number of wildlife you can have at any time, including in the field, in transport, at home or in storage.

RELOCATION: moving live wildlife to a site not contiguous to the capture site.

RIFLE: firearm fired from the shoulder with a rifled bore, 16-inch or longer barrel, at least 26 inches in overall length.

SHOTGUN: firearm fired from the shoulder with a smooth bore, at least an 18-inch barrel and at least 26 inches in overall length.

SLINGSHOT: hand-held device manually drawn or held with elastic band attached to arms or attachment points for propelling stones or metal projectiles. Wrist-brace attachments and non-elastic projectile pouches are normal parts of a slingshot.

SMALL-GAME BIRDS: grouse, ptarmigan, pheasant, quail, partridge, greater prairie-chicken, chukar.

SMALL-GAME MAMMALS: cottontail rabbit, snowshoe hare, jackrabbit, marmot, fox squirrel, pine squirrel, Abert's squirrel, prairie dog, Wyoming (Richardson's) ground squirrel.

OTHER SMALL GAME: prairie rattlesnake, European starling, English or house sparrow, common snapping turtle.

TRAPPING: taking or attempting to take wildlife with a trap.

LEGAL HUNTING HOURS

Legal times to hunt small game are one-half hour before sunrise to sunset. An exception is made for furbearers, which can be hunted from one-half hour before sunrise to one-half hour after sunset.

Raccoons, coyotes, bobcats, striped skunks, beavers and red, gray and swift foxes can be hunted at night. See "Furbearers: Legal Hunting Methods" on page 8 for details.

The sunrise/sunset chart below lists time in Denver. Subtract 1 minute from opening and closing time for each 12 1/2 miles east of Denver. Add 1 minute for each 12 1/2 miles west of Denver. (These changes assume that each degree of longitude equals 50 miles and a change of 1 degree of longitude equals a 4-minute change in sunrise and sunset times.)

2013 SUNRISE/SUNSET TABLE (DENVER)

DAY	SEPT.		OCT.		NOV.		DEC.		JAN. 2014	
	RISE	SET	RISE	SET	RISE	SET	RISE	SET	RISE	SET
(DST)	A.M.	P.M.	A.M.	P.M.	A.M.	P.M.	A.M.	P.M.	A.M.	P.M.
1	6:28	7:31	6:56	6:42	7:29	5:58	7:02	4:36	7:21	4:46
2	6:29	7:29	6:57	6:40	7:30	5:56	7:03	4:36	7:21	4:47
3	6:30	7:27	6:58	6:39	6:31	4:55 ^{DST ends}	7:04	4:36	7:21	4:48
4	6:31	7:26	6:59	6:37	6:32	4:54	7:05	4:35	7:21	4:49
5	6:32	7:24	7:00	6:35	6:33	4:53	7:06	4:35	7:21	4:50
6	6:33	7:23	7:01	6:34	6:35	4:52	7:07	4:35	7:21	4:51
7	6:34	7:21	7:02	6:32	6:36	4:51	7:08	4:35	7:21	4:52
8	6:35	7:19	7:03	6:31	6:37	4:50	7:09	4:35	7:21	4:53
9	6:36	7:18	7:04	6:29	6:38	4:49	7:09	4:35	7:21	4:54
10	6:37	7:16	7:05	6:28	6:39	4:48	7:10	4:36	7:21	4:55
11	6:38	7:15	7:06	6:26	6:40	4:47	7:11	4:36	7:20	4:56
12	6:39	7:13	7:07	6:25	6:41	4:46	7:12	4:36	7:20	4:57
13	6:39	7:11	7:08	6:23	6:43	4:46	7:13	4:36	7:20	4:58
14	6:40	7:10	7:09	6:22	6:44	4:45	7:13	4:36	7:19	4:59
15	6:41	7:08	7:10	6:20	6:45	4:44	7:14	4:37	7:19	5:00
16	6:42	7:06	7:11	6:19	6:46	4:43	7:15	4:37	7:19	5:01
17	6:43	7:05	7:13	6:17	6:47	4:43	7:15	4:37	7:18	5:02
18	6:44	7:03	7:14	6:16	6:48	4:42	7:16	4:38	7:18	5:03
19	6:45	7:01	7:15	6:14	6:49	4:41	7:16	4:38	7:17	5:04
20	6:46	7:00	7:16	6:13	6:50	4:41	7:17	4:38	7:17	5:06
21	6:47	6:58	7:17	6:12	6:52	4:40	7:17	4:39	7:16	5:07
22	6:48	6:56	7:18	6:10	6:53	4:39	7:18	4:39	7:16	5:08
23	6:49	6:55	7:19	6:09	6:54	4:39	7:18	4:40	7:15	5:09
24	6:50	6:53	7:20	6:08	6:55	4:38	7:19	4:41	7:14	5:10
25	6:51	6:52	7:21	6:06	6:56	4:38	7:19	4:41	7:13	5:11
26	6:52	6:50	7:22	6:05	6:57	4:38	7:20	4:42	7:13	5:13
27	6:53	6:48	7:23	6:0	6:58	4:37	7:20	4:43	7:12	5:14
28	6:54	6:47	7:25	6:02	6:59	4:37	7:20	4:43	7:11	5:15
29	6:54	6:45	7:26	6:01	7:00	4:36	7:20	4:44	7:10	5:16
30	6:55	6:43	7:27	6:00	7:01	4:36	7:21	4:45	7:10	5:17
31			7:28	5:59			7:21	4:46	7:09	5:19

DST - Daylight Saving Time

Source: www.usno.navy.mil

TIME ADJUSTMENT FOR OTHER COLORADO CITIES

This table reflects the minutes to add/subtract from the chart above for select towns. These are approximate, use only as a general reference. Consult a state map for more details.

Alamosa	+3	Gr. Junction	+13
Buena Vista	+5	Gunnison	+7
Burlington	-10	La Junta	-6
Craig	+9	Lamar	-9
Durango	+11	Sterling	-6
Fort Morgan	-4	Walden	+5



ATTENTION HUNTERS!

CPW has released Canada lynx in southwest Colorado, which may be found elsewhere in the state. If you see one, please report it to a CPW office. Bobcat hunters should make sure they don't shoot a lynx. Lynx differ from bobcats in several ways:

- **THE TIP OF A LYNX TAIL** is black all around. On a bobcat, the underside of the tip of its tail is white.
- **THE EAR TUFTS** of lynx are more than 1 inch long.
- **THE BELLY FUR** on a lynx is tawny colored. On a bobcat, it is white.
- **LYNX TRACKS** are 3 1/2 to 4 1/2 inches wide. Bobcat tracks are smaller than 2 1/2 inches wide.

SAFE HANDLING OF GAME MEAT

Concern has grown about diseases affecting wild animals that could potentially make humans sick. Most of the time, properly handled and prepared game meat poses no greater risk than domestic meat of causing disease in humans. Hunters are encouraged to contact their local public health department or CPW office for information on wildlife diseases that may be present where they plan to hunt. Public health officials recommend the following precautions when handling and preparing game meat:

1. Do not handle animals that are obviously sick or found dead. Report sick or dead animals you find to a CPW office.
2. Keep game cool, clean and dry.
3. Do not eat, drink or smoke while dressing game.
4. Use disposable gloves when cleaning game.
5. Wash your hands with soap and water or use alcohol wipes after dressing game.
6. Clean all tools and surfaces immediately afterward. Use hot soapy water, then disinfect with a 10 percent chlorine bleach solution.
7. Cook game meat to an internal temperature of at least 165° F to kill disease organisms and parasites. Juices from adequately cooked game meat should be clear.
8. Do not eat any raw portions of wild game.
9. Do not feed raw wild game to domestic pets.

**OPERATION
GAME THIEF
1-877-265-6648**

Operation Game Thief (OGT) is a nonprofit organization working with CPW's law enforcement. Citizens who report poachers or resource violations are paid rewards. Callers don't have to reveal their names, testify in court or sign a deposition. Rewards are paid if information leads to an arrest of a poacher or an issuance of a citation. Rewards do not depend on a conviction but must be requested when a violation is reported. (This phone number cannot be used for information requests or emergencies.)

YOU CAN HELP STOP POACHING!
1-877-COLO-OGT
1-877-265-6648
 game.thief@state.co.us
 Your Wildlife...Your Loss
 Turn In A Poacher!

GENERAL HUNTING LAWS

1. Colorado Parks and Wildlife can post firing lines at its properties.
2. It is illegal to kill, capture, injure or harass wildlife from an aircraft or motor vehicle. It is also illegal to operate aircraft with intent to injure, harass, drive or rally wildlife. It is illegal to discharge a firearm or release an arrow from an aircraft or motor vehicle.
3. It is illegal to discharge a firearm or release an arrow from, on, or across a public road. Hunting with rifles, handguns, shotguns firing a single slug and archery equipment prohibited within 50 feet on each side of the center line of any public road. On a divided road, the prohibition includes the median, and the 50-foot requirement is measured from the center line of both roads.
4. It is illegal to carry or have a firearm, except a pistol or revolver, in or on a motor vehicle unless the chamber is unloaded. While using artificial light from a vehicle, it is illegal to have a firearm with cartridges in the chamber or magazine, or possess a strung bow unless the bow is cased.

5. You must take edible parts of game meat home to eat or provide it for human consumption. Do not leave wounded wildlife (or possibly wounded wildlife) without attempting to track and kill it.
6. Possession of wildlife is evidence you hunted.
7. Small-game and migratory bird

CALIBER RESTRICTION

It is illegal to hunt game birds, small-game mammals or furbearers with a centerfire rifle larger than .23 caliber in regular rifle deer and elk seasons west of I-25, unless you have an unfilled deer or elk license for the season you are hunting. A small-game license is required.

hunters are not required to wear solid daylight, fluorescent orange clothes. However, CPW encourages you to wear fluorescent orange clothes for safety.

8. You must stop at CPW check stations when told to do so.
9. Violations of Colorado wildlife laws carry point values. You can face suspension of license privileges for up to five years or more if you accumulate 20 or more points in five years.
10. It is illegal to promote, conduct, offer to conduct or participate in a competitive event that involves killing small game or furbearers for which there is no bag and possession limit (including coyotes and prairie dogs). Contests are allowed if no more than 5 of each species are killed by each participant during the event. Contests of marked or tagged small game and game birds for money or valuable prizes also are illegal. Tokens of recognition without significant monetary value are not considered valuable prizes. This does not apply to wildlife parks and field trials licensed by CPW.
11. During deer, elk, pronghorn and bear seasons, firearms (except handguns) must be unloaded in the chamber and magazine when carried on an off-highway vehicle (OHV). Firearms (except handguns) and bows carried on an OHV must be fully enclosed in a hard or soft case. Scabbards or cases with open ends or sides are prohibited. This regulation does not apply to landowners or their agents carrying a firearm on an OHV for the purpose of taking depredated wildlife on property owned or leased by them.

LEGAL SMALL-GAME HUNTING METHODS:

FOR GAME MAMMALS

1. Rifles or handguns.
2. Shotguns cannot be larger than 10 gauge. Shotguns cannot be capable of holding more than 3 shells in magazine and chamber combined.
3. Hand-held bows and crossbows.
4. Pellet guns and slingshots.
5. Hawking.

FOR GAME BIRDS (EXCEPT MIGRATORY BIRDS)

1. Rifles or handguns allowed for dusky grouse and ptarmigan.
2. Shotguns cannot be larger than 10 gauge not firing a single slug. Shotguns cannot be capable of holding more than 3 shells in magazine and chamber combined.
3. Hand-held bows and crossbows.
4. Pellet guns and slingshots allowed for dusky grouse and ptarmigan.
5. Hawking.

FOR FURBEARERS

1. Any rifle, handgun, shotgun, handheld bow or crossbow or live traps — limited to cage or box traps.
2. Use of bait. It must be made solely of plants or animals. Bait cannot contain metal, glass, porcelain, plastic, cardboard or paper. Wildlife used as bait can be carcasses or parts of legally taken furbearers, carp, shad, white and longnose suckers, and inedible parts of legally obtained game mammals, birds or game fish.
3. Use of electronic calls.
4. You must check traps at least daily. In lynx recovery areas, or where lynx are, you must check traps every 24 hours. More on lynx: www.wildlife.state.co.us/Research/Mammal/Lynx/Pages/Lynx.aspx.
5. Any accidentally captured live animals for which trapping season is open must be killed or released immediately upon checking the trap.
6. If wildlife (except Canada lynx, see No. 7 in this list) is accidentally captured alive when trapping season is closed or is illegal for that species, you must release the animal immediately. You cannot kill it. If you find a dead animal in your trap, you must bring its carcass to a CPW officer or office within 5 days. Failing to do so is evidence of illegal possession of wildlife. Trappers who comply will not be charged with illegal possession.

7. If you accidentally capture a Canada lynx but it's not injured, you must release it immediately and report it CPW within 24 hours. If a lynx is accidentally injured, but not in your possession, you must report it to CPW within 24 hours. If you capture a lynx accidentally and injure it, take the lynx to CPW or licensed veterinarian and report it to CPW within 24 hours. If you accidentally kill a lynx, you must report it to CPW within 24 hours and take the carcass to CPW within 3 days after the report. Failing to follow these rules is considered unlawful take and possession. You will not be charged if you comply with these requirements, are registered in CPW's Lynx Conservation Plan or use the plan's best management practices to avoid accidentally taking a lynx.
8. On private land, artificial light is allowed at night to hunt beavers, raccoons, coyotes, bobcats, striped skunks and red, gray or swift foxes with permission of landowner or agent.
9. On public land, artificial light is allowed at night with permit from local district or area wildlife manager, to hunt raccoons, coyotes, bobcats, striped skunks, beavers and red, gray or swift foxes. Permits are valid for time and place specified.
 - a. Permits are not valid 24 hours before or during deer, elk or pronghorn rifle seasons, nor opening weekend of grouse, pheasant, quail and waterfowl seasons.
 - b. It is illegal to hunt with a light permanently attached to a vehicle or to project light from inside a vehicle.
 - c. It is illegal to take furbearers within 500 yards of a dwelling, building, campground or other structure, or in areas that jeopardize human safety.
 - d. You must carry and show the permit while hunting if requested by a law enforcement officer.
 - e. CPW can deny a permit for management purposes.
 - f. Night-hunting permits are not issued for bobcat on public land in Canada lynx recovery areas or where lynx are. If a bobcat hunter kills a Canada lynx during bobcat hunting season, CPW will not issue any more night-hunting permits for bobcat for the rest of the calendar year in the recovery areas or where the lynx was killed. CPW also will revoke all night-hunting permits previously issued for bobcats.

ILLEGAL SMALL-GAME HUNTING METHODS:

(INCLUDES FURBEARERS)

1. The use of toxicants, drugs, explosives, stupefying substances or leghold traps, instant kill body-gripping design traps or snares to hunt, kill, capture, injure or harass wildlife are illegal, except with permits issued by CPW or the Colorado Department of Agriculture.
2. Use of electronic devices and electronic calls are not allowed to hunt small game. (Electronic calls are legal to hunt furbearers.)
3. Use of any artificial light as an aid in hunting wildlife, except as in "Legal Hunting Methods," (above) is not allowed.
4. Use of bait to hunt small-game mammals, game birds and migratory birds is not allowed.
5. Use of visual lures, fresh meat baits, fish oil and anise oil lures to attract felids in lynx recovery areas or where lynx are is not allowed.
6. Except when legally placed on private property by permit, it is illegal to set traps or snares within 50 feet of either side of the travelled part of state or federal highways or county roads.
7. It is illegal to destroy or damage beaver or muskrat houses, dens or dams, except to maintain water flow or prevent property damage.

AIDS IN HUNTING SMALL GAME

1. Dogs are allowed to hunt small game, waterfowl and furbearers but only to pursue, bring to bay, retrieve, flush or point. It is illegal to use dogs to hunt cottontail rabbits, snowshoe hares and tree squirrels during any big-game season.
2. Artificial decoys are permitted.
3. European ferrets are permitted for hawking. Ferrets must be neutered, tattooed on left inguinal area and dyed along one-fourth of their body for easy field identification.
4. Mechanical devices designed to call wildlife are allowed. Electronic calls can be used to hunt furbearers.
5. You can hunt migratory game birds over standing crops or feed used in the course of agricultural planting, harvesting or other normal agricultural practices.

GENERAL HUNTING LAWS FOR HAWKING & FALCONRY

1. Apprentices cannot hunt with more than one raptor at a time.
2. A falconry license is required for residents.
3. Nonresident falconers must buy either:
 - a. A nonresident annual falconry license from CPW's Special Licensing section or,
 - b. A nonresident small-game license and have proof that they possess a valid falconry license in their home state.
4. Hunter education certificate is not necessary with a resident 3-year falconry license or a nonresident annual raptor license. State and federal Migratory Bird Hunting Stamps are required for hunting migratory waterfowl.
5. Falconers must comply with HIP.
6. Firearms prohibited while hawking.
7. Hawking prohibited from a public road.
8. Hawking on private property is illegal without permission from owner or person in charge.
9. Nonresidents bringing birds into the state must obtain an import permit at least 30 days in advance from Special Licensing. The permit is free, but a current health certificate issued within 30 days of the proposed entry from state of origin is required.
10. Import permit applications and permits are available on the CPW website.

MIGRATORY BIRD HUNTING LAWS

LEGAL HUNTING METHODS

(ALSO FOR EURASIAN COLLARED-DOVES)

1. Shotguns cannot be larger than 10 gauge. They cannot be capable of holding more than three shells in magazine and chamber combined. They must be fired from the shoulder. To reduce capacity of shotguns that hold more than three shells in the chamber and magazine combined, the magazine must be cut off, altered or plugged with a one-piece filler that cannot be removed unless the gun is disassembled. Slugs are illegal to hunt waterfowl.
2. Hand-held bows are allowed only if the arrow or bowstring is not held or drawn mechanically. It is illegal to use bows on firing lines designated by the Parks and Wildlife Commission.
3. It is legal to hunt waterfowl in the open, from a blind or other concealed place except a sink box. When camouflaged with vegetation from agricultural crops, camouflaging cannot result in exposing, depositing, distributing or scattering grain or other feed.
4. a. It is illegal to take migratory birds and waterfowl by the aid of baiting, or on or over any baited area, if you know or reasonably should know the area is baited. It is illegal to place or direct placement of bait on or next to an area to cause, induce or allow anyone to take or attempt to take migratory birds with the help of bait or over a baited area.
 - b. Baiting means directly or indirectly placing, exposing, distributing or scattering salt, grain or other feed as an attraction for migratory game birds to, on or over where hunters are trying to hunt.
- c. It is legal to take migratory birds, including waterfowl, coots and cranes, on or over the following lands not otherwise baited: standing or flooded standing crops; standing flooded or manipulated natural vegetation; flooded harvested crop lands; where seeds or grains were scattered solely from normal agricultural planting, harvesting, post-harvest manipulation or normal soil stabilization practice; flooded, standing agricultural crops where grain is inadvertently scattered solely by a hunter entering or exiting an area, placing decoys or retrieving downed birds.
- d. It is legal to take migratory birds, except waterfowl, coots and cranes, on or over the following lands not otherwise baited: where grain or other feed is distributed or scattered solely from manipulation of agricultural crops or other feed, or solely from normal agricultural operations.

5. Hunting is allowed from vessels (except sink boxes) with motors or sails if motor is off, and/or sails furled and forward movement has stopped. Hunting is allowed from drifting vessels and those propelled by hand. Motorized vessels are only allowed to pick up dead or injured birds, or to put out and retrieve decoys.
6. Hawking or falconry permitted.
7. Dogs, artificial decoys, duck calls or goose calls are legal, except recorded or electronically amplified calls or sounds. Recorded or electronically amplified calls are legal to hunt common crows.

GENERAL HUNTING LAWS

In Colorado, the Pacific Flyway is west of the Continental Divide, and the Central Flyway is east of the Continental Divide. Federal and state laws apply.

1. The Colorado Parks and Wildlife Commission sets waterfowl seasons in August. See the *2013 Waterfowl* brochure, available in September.
2. You cannot hunt migratory birds on a federal reservation, federal land set aside as a wildlife reservation, breeding ground or refuge or federal land closed by the Migratory Bird Treaty Act, except as permitted.
3. It is illegal to hunt migratory birds from, on or across a highway, road, trail, public or private right-of-way in national wildlife refuges. Stricter regulations may apply on wildlife refuges. Contact: Alamosa and Monte Vista National Wildlife Refuges, (719) 589-4021; Browns Park NWR, (970) 365-3613; Arapaho NWR, (970) 723-8202.
4. In the areas bounded on north by Wyoming; east and south by I-76, Hwy. 71, U.S. 36 and I-70; and west by the Continental Divide and Larimer-Jackson county line; and in Bent, Crowley, Kiowa, Mesa, Otero and Prowers counties:
 - a. It's illegal to hunt waterfowl within 50 yards on either side of center line of a public road.
 - b. It is illegal to hunt waterfowl within 150 yards of a dwelling, including directly above it, without first obtaining permission from owner, occupant or person in charge of the dwelling.
5. The most restrictive state or federal laws apply. See www.fws.gov/hunting/whatres.html for more.
6. You cannot kill, have, transport, import or export migratory birds, their parts, nests or eggs that were taken, bought, sold, transported, possessed or exported illegally.
7. It is illegal to have or transport live migratory birds or waterfowl, including wounded birds. You must

kill migratory birds immediately after you injure them, and they become part of your bag limit.

8. You don't need a permit to have and transport plumage or skins of legally taken migratory birds for your use.
9. You don't need a permit to have, dispose and transport feathers from wild ducks and wild geese legally killed, or from birds seized and condemned by wildlife authorities. It is legal to use feathers to make fishing flies, bed pillows, mattresses and similar commercial items, except for millinery or ornamental use.
10. It is illegal to buy, sell, barter or offer to buy or sell feathers or mounted specimens of migratory birds.
11. It is illegal to receive or have someone else's migratory birds unless they are tagged as required.
12. **SANDHILL CRANE HUNTERS:** Whooping cranes are federally endangered and illegal to hunt. They may be in Colorado during sandhill crane season.

TRANSPORTING, SHIPPING

You must tag migratory birds or packages of birds before transporting them, including to a taxidermist or someone else for picking, cleaning, processing and storage. You must sign the tag and include your address, number and species of birds, harvest date and license number. You don't need to tag birds you have at home. You can ship migratory birds only if you mark the package outside with name and address of sender, name and address of recipient, and number of birds by species.

IMPORTING (HARVESTED BIRDS)

In a week (beginning on Sunday), you cannot import more than 25 doves and 10 pigeons from a foreign country. You also cannot import more than 10 ducks and 5 geese from a foreign country, except Canada and Mexico. Doves and waterfowl imported from Canada and Mexico cannot exceed Canadian and Mexican export limits. Export limits vary among provinces and states. One fully feathered wing must stay attached to migratory game birds transported between ports of entry and a person's home or game-bird facility. It is illegal to import someone else's migratory game birds.

PRESERVATION FACILITIES

It is illegal to receive or have someone else's migratory birds to pick, clean, freeze, process, store or ship without records showing number of each species, date birds were received, date birds were disposed, name and address of person receiving the birds. You must keep records for 1 year after the last entry on them. Officers authorized to enforce this regulation can enter facilities at reasonable hours to inspect records and premises.

LAND-USE RULES

ANDRICK PONDS SWA, MORGAN CO.

- Public access is limited to 3 a.m.-9 p.m. Sat., Sun., Wed. and legal holidays only. Access is by foot only, through designated parking areas. Night hunting is prohibited.
- Hunting by reservation only. See "Reservation Procedures" (at right) for details. Maximum 4 hunters allowed in each area at any time. From Sept. 1 through end of regular goose season, only 3 reservations allowed per hunter annually. No hunting on Clark Lake.
- From Sept. 1-Nov. 30, only open for migratory bird hunting within designated hunting areas.
- From Dec. 1 through end of regular goose season, hunting is permitted for migratory birds and small game. Hunt days will be established as small-game hunting or migratory-bird hunting only to minimize conflicts. Hunters need to refer to the 2013 Waterfowl brochure to find which dates are designated small-game hunting only and which dates are designated migratory-bird hunting only.
- Mandatory check in and check out as posted.
- From the Thurs. before Sept. 1 through the end of dark goose season, scouting permitted from 10 a.m.-2 p.m. on Thurs. that are not open to hunting in and prior to waterfowl seasons. Must have reservation or letter from CPW. All people must check in and out at check station. Firearms, dogs not allowed during scouting.

ATWOOD STL, LOGAN CO.

- Hunting only on Sat., Sun., Wed., Labor Day, Columbus Day (observed), Veterans Day, Thanksgiving Day, Christmas Day, New Year's Day, Martin Luther King Jr. Day and Presidents Day.
- Reservations are required for small-game and waterfowl hunting. See "Reservation Procedures" (this page) for details. Hunters may hunt only area specified on reservation. Mandatory check in and check out as posted.
- Two reservations are for the general public, 1 for hunters with mobility impairments and 1 for youth/mentor. General public and mobility-impaired must hunt the up-river side of Hwy. 63. Youths and mentors must hunt down-river side of the highway.
- Launching or take out of vessels prohibited from first day of teal season through dark goose season.

ATWOOD SWA, LOGAN CO.

- Public access by foot only, through designated parking areas. Maximum 4 groups or vehicles with maximum 4 people per group.
- During regular duck season, hunting is by reservation only. See "Reservation Procedures" (this page) for details. Maximum 4 per reservation. Hunters may only hunt area specified on reservation and must check out at mandatory station by 2 p.m. No reservation is required for live trapping.
- Hunting permitted only on Sat., Sun., Wed., Columbus Day (observed), Veterans Day, Thanksgiving Day, Christmas Day, New Year's Day, Martin Luther King Jr. Day.
- Launching or take out of vessels prohibited from first day of teal season through dark goose season.

BANNER LAKES SWA, WELD CO.

- Access by foot only, through designated parking areas.
- Open for waterfowl hunting only from the first day of regular waterfowl season to the day before opening of pheasant season. Hunting only on Sat., Sun., Mon. and

NOTE: This list includes some regulations for small-game hunters. It is not a complete list of land regulations for these properties. See the 2013 State Recreational Lands brochure for complete regulations.

RESERVATION PROCEDURES

For properties that specify reservations are available or required, call 1-800-846-9453 (1-800-UGO-WILD)

» **RESERVATIONS NOT ACCEPTED MORE THAN 14 DAYS IN ADVANCE** of hunt date nor after noon the day before the hunt date or noon Friday for hunts on Sunday and holidays falling on Monday.

» **TO CANCEL**, hunters must do so by noon the day before the hunt date. Failing to cancel reservations or follow check-station procedures may result in losing future reservation rights for the rest of the hunting season.

» **MAXIMUM 1 RESERVATION PER HUNT DATE** and 1 reservation per phone call. Reservations are not transferable. To make the reservation, a person must have a valid license for the species to be hunted and must be at the property the day of the hunt.

legal holidays.

- Reservations available for waterfowl, not required. See "Reservation Procedures" (this page) for details. Hunters can only hunt the area specified on the reservation. Maximum 4 hunters per reservation.
- Reservations valid during reserved day until hunter with reservation checks out. Hunters may check in on first-come, first-served basis after a hunter with a reservation checks out. If a reserved area is not claimed by legal sunrise, or if no reservation exists for a hunt area, hunters may check in after midnight the morning before the hunt.
- Waterfowl hunters must follow check-in and check-out procedures as posted.
- From the Thurs. before Sept. 1 through the end of dark goose season, scouting permitted from 10 a.m.-2 p.m. on Thurs. that are not open to hunting in and prior to waterfowl seasons. Must have reservation or letter from CPW. All people must check in and out at check station. Firearms, dogs not allowed during scouting.

BRAVO STL, LOGAN CO.

- Access from designated parking only.
- Launching or take out of vessels prohibited from first day of teal season through dark goose season.
- During regular duck season, waterfowl and small-game hunters on the trust land must check out at the SWA check station before leaving property.

BRAVO SWA, LOGAN CO.

- Access from designated parking only.
- Launching or take out of vessels prohibited from first day of teal season through dark goose season.
- During regular duck season, waterfowl and small-game hunters must check out at mandatory check station.

SCALVA PARCEL: All public access requires a reservation. See "Reservation Procedures" (this page) for details. Limited to 3 groups of 4 hunters each per day.

- Access by foot only 4 a.m.-9 p.m. through designated parking and mandatory check station.
- From Sept. 1-May 31, only hunting is allowed and is

Reservations must be made on the properties listed below by calling (970) 255-6161. All other reservation rules apply.

- » Colorado River Island SWA
- » Franklin Island SWA
- » Highline Lake State Park
- » Horsethief Canyon SWA
- » James M. Robb Colorado River State Park
- » Orchard Mesa SWA
- » Tilman Bishop SWA

limited to archery, muzzleloading and shotgun during established seasons. Hunting is only on Sat., Sun., Wed., Labor Day, Columbus Day (observed), Veterans Day, Thanksgiving Day, Christmas Day, New Year's Day, Martin Luther King Jr. Day and Presidents Day.

BRUSH SWA, MORGAN CO.

- Public access only from 3 a.m.-9 p.m., except with night-hunting permit. Access from designated parking only.
- During regular duck season, waterfowl and small-game hunting is by reservation only. Call 1-800-846-9553 for reservations. Two waterfowl and two small-game reservations are available in designated areas. Maximum 4 people per reservation. There is one youth/mentor area available. No more than two mentors and at least one youth per youth/mentor reservation. Mentors must be 18 and have hunter education certificate. No reservation is required for live trapping or fishing at Chartier Pond.

Hunters must check out at designated check station by 2 p.m. Hunting permitted only on Sat., Sun., Wed., Columbus Day (observed), Veterans Day, and Thanksgiving Day, Christmas Day, New Year's Day and Martin Luther King Jr. Day.

- Launching or take out of vessels prohibited from first day of teal season through dark goose season.

BRUSH PRAIRIE PONDS SWA, MORGAN CO.

- Public access only from 3 a.m.-9 p.m., except with night-hunting permit.
- All land users must check in and check out at the designated check station at Brush Memorial Park. Maximum 4 hunters allowed in each area.
- Two hunting areas are reserved for residents of the city of Brush and are awarded through lottery system. Applications to enter lottery available at the CPW office in Brush after the August Commission meeting. Hunters must have valid license for species to be hunted to enter the drawing. For complete application and hunt reservation details, call the CPW office in Brush, (970) 842-6300.
- From opening of teal season through Nov. 30, only

migratory-bird hunting allowed and only on Sat., Sun., Wed., Columbus Day (observed), Veterans Day, and Thanksgiving Day during established waterfowl seasons.

5. From the September teal season through Dec. 1, reservations available, but not required. See "Reservation Procedures" (at left) for details. Maximum 3 reservations per hunter annually. Reservations valid until 9 a.m., hunters may only hunt area specified on reservation or where they check into. Hunters may check in on first-come, first-served basis after a hunter with a reservation checks out. If no reservation exists for a hunt area, hunters may check in after midnight the morning before the hunt.
6. From Dec. 1 through the last day of regular goose season, only hunting is allowed. Reservations available to hunt on Dec. 1 (first day for small-game and big-game hunting). Reservations not available from Dec. 2-end of regular goose season. Hunters may check in at one of five hunting areas on a first-come, first-served basis, after midnight the morning before the hunt. Hunters properly checked in to any of these areas may hunt anywhere on the property.
7. From the Thurs. before opening of teal season until Nov. 30, scouting permitted from 10 a.m.-2 p.m. on Thurs. that are not open to hunting in and prior to waterfowl seasons. Must have reservation or letter from CPW. All people must check in and out at check station. Firearms, dogs not allowed during scouting.

CENTENNIAL VALLEY SWA, WELD CO.

1. During waterfowl season, small-game and waterfowl hunting is only in designated zones.
2. During regular duck seasons, open only Sat., Sun., Mon. and legal holidays.
3. During regular duck seasons, reservations are required for waterfowl and small-game hunting. See "Reservation Procedures" (at left) for details. Hunters with reservations can only hunt the area specified on the reservation. Maximum 4 hunters per reservation. Mandatory check in and check out as posted at station.
4. Launching or take out of vessels prohibited from first day of teal season through dark goose season.
5. Dogs allowed only as aid to hunting.

COLORADO RIVER ISLAND SWA, MESA CO.

1. Only waterfowl hunting, and only from designated blinds.
2. Hunting by reservation only. See "Reservation Procedures" (at left) for details. Hunters may only hunt the area specified on the reservation. Mandatory check-in and check-out procedures as posted.
3. If no reservation exists for a hunt area, hunters may check in on a first-come, first-served basis after 5 a.m. the day of the hunt. Reserved areas not claimed by 7 a.m. will be available on a first-come, first-served basis. But, any area must be yielded upon request of the hunter holding a valid and active reservation for that area.
4. Dogs allowed only as aid to hunting.

ELLIOTT SWA, MORGAN CO.

1. Open to public 3 a.m.-9 p.m. daily. Open other hours only for hunters with night-hunting permit.
2. Scouting permitted from the Thurs. before opening of teal season through Nov. 30 on Hamlin Tracts, and from the Thurs. before opening of teal season until the first segment of the regular duck season on Union Tract. Scouting permitted from 10 a.m.-2 p.m. on Thurs. that are not open to hunting in and prior to duck seasons. Must have reservation or letter from CPW. All people must check in and out at check station. Firearms and dogs not allowed during scouting.
3. Launching or take out of vessels prohibited from first

day of teal season through dark goose season.

ON UNION TRACT: Open only for waterfowl hunting from designated blinds or as posted. Access from designated parking only. Reservations available but not required, see "Reservation Procedures" (at left) for details. Mandatory check station. Maximum 4 hunters per area. See CPW's 2013 *Waterfowl* brochure for hunting and reservation details.

ON HAMLIN TRACTS (N AND S): From Sept. 1-Nov. 30, waterfowl and migratory bird hunting only on Sat., Sun., Weds., Labor Day, Columbus Day, Veterans Day and Thanksgiving Day. Reservations available but not required, see "Reservation Procedures" (at left) for details. Maximum 4 hunters per area. All users must use mandatory check station. Open for small game and big game hunting Dec. 1-March 31. See CPW's 2013 *Waterfowl* brochure for details.

FRANK SWA, WELD/LARIMER COs.

1. During regular duck season, waterfowl and small-game hunting is only on Sat., Sun., Mon. and legal holidays.
2. A reservation is required. See "Reservation Procedures" (at left) for details. Maximum 4 hunters per reservation. Hunters must hunt only in areas specified on the reservation. Mandatory check out as posted at check station. Hunters may only hunt area specified on reservation.
3. Hunting prohibited west of Weld CR 13 and in the post-ed safety zone in the northeast corner of the property.

FRANKLIN ISLAND SWA, MESA CO.

1. Only waterfowl hunting, and only from designated blinds.
2. Hunting by reservation only. See "Reservation Procedures" (at left) for details. Hunters may only hunt the area specified on the reservation. Mandatory check-in and check-out procedures as posted.
3. If no reservation exists for a hunt area, hunters may check in on a first-come, first-served basis after 5 a.m. the day of the hunt. Reserved areas not claimed by 7 a.m. will be available on a first-come, first-served basis. But, any area must be yielded upon request of the hunter holding a valid and active reservation for that area.
4. Dogs allowed only as aid to hunting.

HIGHLINE LAKE STATE RECREATION AREA, MESA CO.

1. Waterfowl hunting Mon.-Fri. and only in designated blinds. Maximum 4 hunters per blind.
2. Hunting by reservation only. See "Reservation Procedures" (at left) for details. Hunters may only hunt the area specified on the reservation. Mandatory check-in and check-out procedures as posted.
3. If no reservation exists for a hunt area, hunters may check in on a first-come, first-served basis after 5 a.m. the day of the hunt. Reserved areas not claimed by 7 a.m. will be available on a first-come, first-served basis. But, any area must be yielded upon request of the hunter holding a valid and active reservation for that area.

HORSETHIEF CANYON SWA, MESA CO.

1. Open to public 5 a.m.-9 p.m. Open 24 hours for fishing only.
2. Waterfowl hunting is prohibited Weds.-Fri., except on Thanksgiving Day, Christmas Day and New Year's Day.
3. Hunting with shotguns, hand-held bows and muzzle-loaders only.
4. Quail hunting is prohibited.
5. Reservations not required for waterfowl hunting 100 yards east of Blind No. 1 to the eastern property boundary, including Skipper's Island.

LAND CLOSURES IN DEER SEASON (OPENING WEEKEND)

All recreational activities except deer hunting prohibited on the following lands during opening weekend of regular plains rifle deer season and on opening day and first weekend of late plains rifle deer season:

» **STATE TRUST LANDS (STL):** Atwood, Ford Bridge and Red Lion Ranch

» **STATE WILDLIFE AREAS (SWA):** Atwood, Bravo (and Scalva parcel), Brush, Centennial Valley, Cottonwood, Dune Ridge, Elliott, Jean K. Tool, Julesburg leases, Knudson, Messex, Overland Trail, Pony Express and Sedgwick Bar, Tamarack Ranch.

6. From 100 yards east of Blind No. 1 to the western boundary of the property, waterfowl hunting on Sat. restricted to youth/mentor hunting only.
7. Waterfowl hunters on west end of property must reserve a blind and must hunt from or within 100 yards of that blind. Maximum 4 hunters per blind. See "Reservation Procedures" (at left) for details. Hunters may only hunt the area specified on the reservation. Mandatory check-in and check-out procedures as posted.
8. If no reservation exists for a hunt area, hunters may check in on a first-come, first-served basis after 5 a.m. the day of the hunt. Reserved areas not claimed by 7 a.m. will be available on a first-come, first-served basis. But any area must be yielded upon request of the hunter holding a valid, active reservation for that area.

JACKSON LAKE SWA, MORGAN CO.

1. Access only from designated parking areas.
2. During regular duck season, all waterfowl and small-game hunters must check out at mandatory check station.
3. **NEW!** Waterfowl hunting boat reservations are no longer in place. Hunting is still allowed from boats until Nov. 1.

JAMES. M. ROBB COLORADO RIVER STATE PARK, MESA CO.

1. Park in designated parking areas only.
2. Waterfowl hunting only, and limited to designated blinds, maximum 4 hunters per blind.
3. Hunting by reservation only. See "Reservation Procedures" (at left) for details. Hunters may only hunt the area specified on the reservation. Mandatory check-in and check-out procedures as posted.
4. If no reservation exists for a hunt area, hunters may check in on a first-come, first-served basis after 5 a.m. the day of the hunt. Reserved areas not claimed by 7 a.m. will be available on a first-come, first-served basis. But, any area must be yielded upon request of the hunter holding a valid and active reservation for that area.

JEAN K. TOOL SWA, MORGAN CO.

1. Access through designated parking areas only, from 3 a.m.-9 p.m. Except with night-hunting permit.
2. During regular duck season, waterfowl and small-game hunters must check out at designated station by 2 p.m.
3. Hunting is by reservation only during regular duck season. See "Reservation Procedures" (at left) for details.

Three waterfowl and three small-game reservations per day, maximum 4 people per reservation. No reservation is required for live trapping.

- Hunting allowed only on Sat., Sun., Wed., Columbus Day (observed), Veterans Day, Thanksgiving Day, Christmas Day, New Year's Day, Martin Luther King Jr. Day.
- Launching or take out of vessels prohibited from first day of teal season through dark goose season.

JUMPING COW SWA, ELBERT CO.

- Dove hunting allowed by permit only. Permits issued free in a drawing process. Details and applications available at CPW, (303) 291-7227. Application due third Mon. in August.
- Vehicle use only on marked roads that lead to parking. All other access by foot or horseback. Leave property gates as found.
- Open to hunting two hours before sunrise to one hour after sunset.

LAKE DOROTHEY, WALKER AND WINDY GAP SWAS

- Trapping prohibited.

MT. EVANS HIGHWAY, CLEAR CREEK CO.

- Hunting prohibited a half-mile on either side of road. For map, call the CPW Northeast office in Denver, (303) 291-7227.

ORCHARD MESA SWA, MESA CO.

- Open for public access July 15-March 14.
- Only access from parking area on "C" Rd., between roads 30 and 31. Vehicles prohibited beyond parking area.

- Waterfowl hunting only. Hunters must hunt from designated blinds or in the zone identified for each blind. Maximum 4 hunters per blind.
- Must hunt with bows and/or shotguns with shotshells only.
- Dogs prohibited, except as an aid to hunting.
- Waterfowl hunting by reservation only. See "Reservation Procedures" (page 10) for details. Hunters may only hunt the area specified on the reservation. Mandatory check-in and check-out procedures as posted.
- If no reservation exists for a hunt area, hunters may check in on a first-come, first-served basis after 5 a.m. the day of the hunt. Reserved areas not claimed by 7 a.m. will be available on a first-come, first-served basis. But, any area must be yielded upon request of the hunter holding a valid and active reservation for that area.

OVERLAND TRAIL SWA, LOGAN CO.

- Foot access only, from designated parking area.
- During regular duck season, waterfowl and small-game hunters must check out at designated check station.
- Launching or take out of vessels prohibited from first day of teal season through dark goose season.

RED LION SWA, LOGAN CO.

- Access from parking areas only.
- During regular duck season, waterfowl and small-game hunting is by reservation only. See "Reservation Procedures" (page 10) for details. Hunters with reservations can only hunt area specified on reservation. Hunters must follow check-in and check-out procedures. Must check out by 2 p.m. No reservation is required for live trapping. Nine waterfowl and 3 small-game reservations are available in designated areas. There is one youth/mentor area available. Maximum 4 people per reservation. No more than 2 mentors and at least 1 youth per youth/mentor reservation. Mentors aren't required to hunt, but must be 18 and have hunter education certificate.
- Waterfowl and small-game hunting only on Sat., Sun., Wed., Columbus Day (observed), Veterans Day, Thanksgiving Day, Christmas Day, New Year's Day and Martin Luther King Jr. Day.

TAMARACK RANCH SWA, LOGAN CO.

- Reservations are available but not required. See "Reservation Procedures" (page 10) for details. Reservations available for weekends and Columbus Day (observed), Veterans Day, Thanksgiving Day, Christmas Day, New Year's Day, Martin Luther King Jr. Day and Presidents Day.
- The first hunt date available for reservations is the Sat. after Oct. 24 and the last date available is the last Sun. of regular duck season. Weekdays, weekends and holidays outside the reservation period and any unreserved or open units are available for hunting without reservations and are regulated through check station. Hunters with reservations can only hunt area specified on reservation. Mandatory check in and check out as posted at

designated station.

- Hunters must park vehicles at parking area they are checked into and are restricted to that area until 9 a.m., at which time they may walk into and hunt adjacent areas.
- Launching or take out of vessels prohibited from first day of teal season through dark goose season.

TILMAN BISHOP SWA, MESA CO.

- Open for public access July 15-March 14.
- Mandatory check-in and check-out procedures for hunters at entrance station.
- Hunting with bows and/or shotguns with shotshells only.
- Dogs allowed only as aid to hunting.
- Waterfowl hunters must hunt from designated blinds or in the zone identified for each blind. Maximum 4 hunters per blind.
- Waterfowl hunting by reservation only. See "Reservation Procedures" (page 10) for details. Hunters may only hunt the area specified on the reservation.
- If no reservation exists for a hunt area, hunters may check in on a first-come, first-served basis after 5 a.m. the day of the hunt. Reserved areas not claimed by 7 a.m. will be available on a first-come, first-served basis. But, any area must be yielded upon request of the hunter holding a valid and active reservation for that area.

TWENTY MILE/ GRASSY CREEK STLs, ROUTT CO.

- Open for small-game hunting Aug. 15-end of February. During mountain sharp-tailed grouse season, hunting on weekends and Labor Day by permit only. On those days, maximum of 8 hunters allowed daily. Maximum 4 hunters allowed per permit. No limit on hunters on weekdays.
- Permits are free and may be applied for by contacting Steamboat Springs CPW office, Box 775777, Steamboat Springs, CO 80477 or by calling (970) 871-2855. Permit deadline July 1. Permits issued by drawing. Successful applicants notified by mail.

WELLINGTON SWA, WELLINGTON UNIT, LARIMER/WELD COS.

- From first day of regular waterfowl season to first day of pheasant season open only on Sat., Sun., Mon. and legal holidays.

WHITEHORSE SWA, ADAMS CO.

- Closed except for youth/mentor waterfowl hunting when authorized by area wildlife manager as participants in CPW youth hunter program.
- Reservations required. See "Reservation Procedures" (page 10) for details. Hunters with reservations can only hunt area specified on reservation except in areas where reservations are not required or are unreserved and unoccupied. Mandatory check in and check out as posted at designated check station.

Get the lead out

www.bit.ly/leadammo

From the field to the table, ensuring your next harvest is safe for your family is important. Switching from lead bullets may be an option that's right for you. For more, go to the CPW website link above.



Science tells us ingesting lead can cause potential health problems. Risks are low for most people, however, you can also:

- Use lead-free shot or bullets.
- Liberally trim and discard meat damaged by the bullet when you process an animal. Fragments can scatter far from the wound.
- Clean your meat grinder between each animal. Lead is soft and can go through your grinder, contaminating an entire batch of ground meat.
- Avoid eating game meat from animals harvested with lead bullets if you are pregnant. Children younger than 6 should also avoid it.

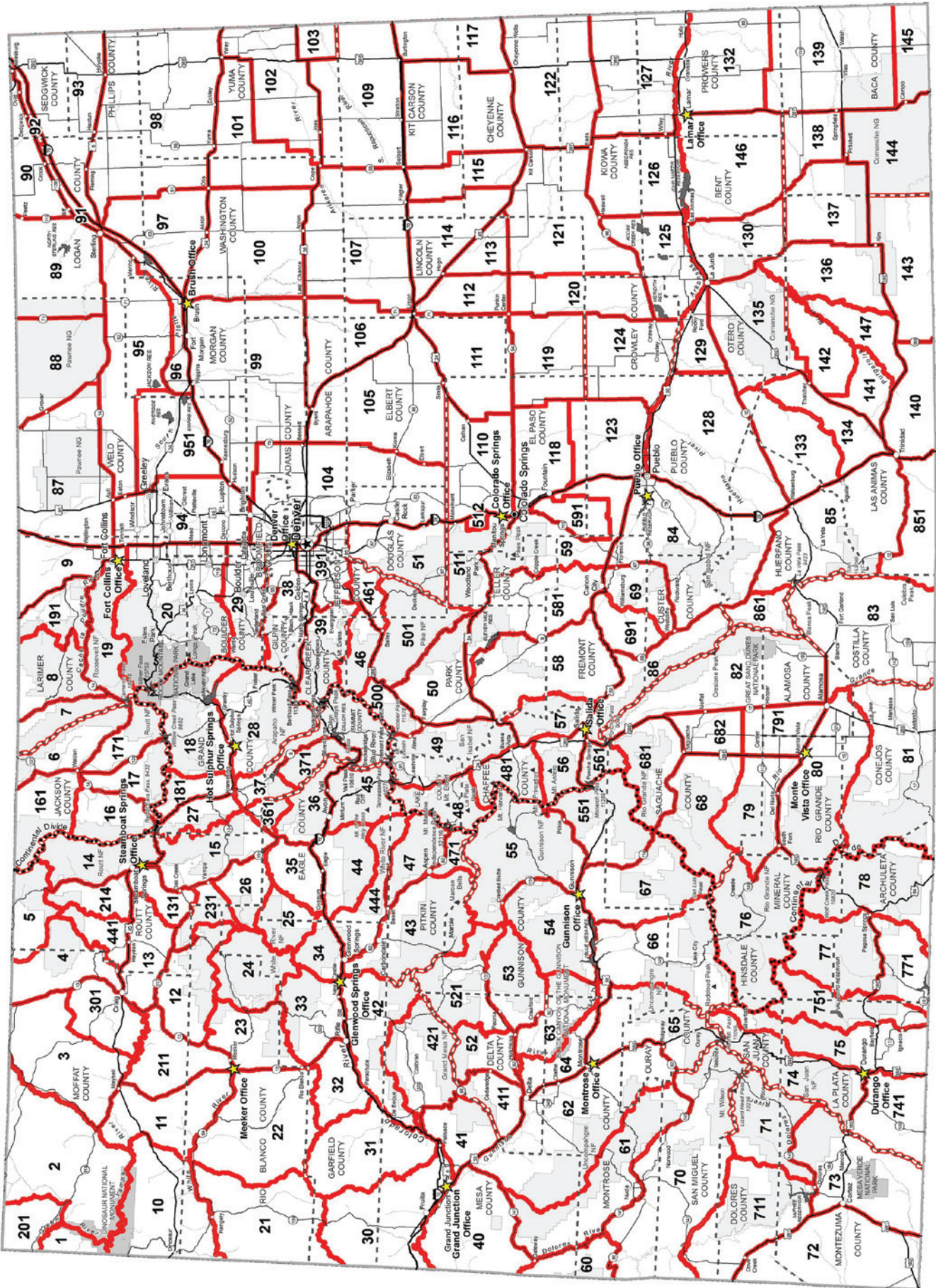


Colorado Department of Public Health and Environment and Colorado Parks and Wildlife



Get Out for Trout
Buy your combo license and park pass online today!
WWW.BIT.LY/CPWLICENSESALES

GAME MANAGEMENT UNIT MAP



2013 Small Game Hunting



online brochure

Colorado Parks and Wildlife
6060 Broadway, Denver CO 80216
(303) 297-1192
www.cpw.state.co.us

Get Outdoors



Subscribe to Colorado Outdoors

Did you know Colorado has the largest elk herd in the world? Did you know Colorado is the only state where you can buy an over-the-counter bull elk license? *Colorado Outdoors* magazine will keep you up-to-date on all the opportunities available to you and your hunting buddies. Don't flounder around looking for the best spots to fish. *Colorado Outdoors* is a must-read if you're seeking a high-country angling experience or fishing the state's plains reservoirs.

For over 70 years, *Colorado Outdoors* has been the official publication of Colorado Parks and Wildlife (CPW) and the only magazine dedicated to Colorado's wildlife. And now when you subscribe, you get your choice of either a free hunting guide or fishing guide. These special annual editions are packed with a wealth of information you need to know to be a more successful hunter or angler.

We offer insight into our wildlife resources as well as providing up-to-date coverage of hunting, fishing and wildlife management. You get valuable advice from CPW experts, information that you can't get anywhere else. You'll read about recovery efforts of some of our endangered species. Plus you'll learn about environmental news, watchable wildlife events, volunteer opportunities, state fishing records and much more.

10 Reasons to subscribe to Colorado Outdoors

- Each one-year subscription entitles you to six issues.
- Subscribers get their choice of either the Fishing Guide or the Hunting Guide. These 40-page special editions sell for \$5 on the newsstand and you get your choice of one absolutely free.
- Learn high-performance hunting tips for a more successful hunt.
- Annual Preference Point issue is a must-have tool in planning your big game hunt.
- Expert advice on cold- and warm-water fishing.
- Award-winning wildlife photography, including annual photography issue.
- A great way to introduce your children to wildlife and the outdoors.
- A valuable reference guide for classrooms and libraries.
- Makes a great gift
- Never any advertising

To order your subscription online visit the Colorado Parks and Wildlife website at <http://wildlifestore.state.co.us> and click on the link to *Colorado Outdoors* magazine

NOTICE: ABOUT THIS GUIDE & SPECIES INCLUDED

This brochure includes information on furbearers, pheasant, quail, doves, band-tailed pigeon, sora, Virginia rail, Wilson's snipe, ptarmigan, dusky (blue), mountain sharp-tailed and greater sage-grouse, chukar, crow, sandhill crane, greater prairie-chicken, rabbit, snowshoe hare, squirrel, coyote and other small game. (Ducks and geese are in the waterfowl brochure, available in September.) This brochure is not a legal notice nor a complete collection of hunting regulations and laws. Copies of statutes and regulations can be obtained from a CPW office or at www.wildlife.state.co.us/RulesRegs/Regulations/Pages/Regulations.aspx. For questions, call CPW at (303) 297-1192.