

COLORADO PARKS AND WILDLIFE

2011 Colorado Small Game



**ATTENTION HUNTERS: SOME SEASON DATES
CONTINUE INTO 2012**



DON'T MISS INSIDE:

- Greater sage-grouse hunting map
- Prairie-chicken hunt changes
- New hunting spots to reserve

See page 1 for details

TABLE OF CONTENTS

License Fees & Information 1

- What's new in 2011
- Fees and surcharges
- Hunter education requirements
- Youth license requirements
- Disabled veterans license requirements

License Requirements 2

- License and residency requirements, weapons restrictions, child-support information
- Harvest Information Program (HIP)
- Walk-In Access Program

Know Before You Go 3-4

- Legal hunting hours, sunrise/sunset table 3
- Common hunting definitions 3
- Small-game survey information 4
- Tagging requirements, bobcat seals 4
- Species identification 4
- Nontoxic shot regulations 4
- Donating wildlife 4
- Wildlife causing damage 4

Season Dates, Bag Limits 5-7

- Small game 5
- Hawking/falconry 5
- Migratory and other birds 6-7
- New greater sage-grouse hunting area maps... 6
- Common small-game bird habitat maps 7
- Dove identification chart 7

Hunting Laws

& Methods of Take 8-9

- Small-game legal, illegal hunting methods 8
- General hunting laws 8
- Furbearer legal hunting methods 8
- Hawking and falconry hunting laws 9
- Migratory bird legal hunting methods and laws 9

Land-Use Rules 10-12

- Reservation procedures 10

Game Management Unit Map 13

DIVISION OF WILDLIFE OFFICES

WWW.WILDLIFE.STATE.CO.US

HEADQUARTERS

6060 Broadway
Denver, 80216
(303) 297-1192

FORT COLLINS

317 W. Prospect Road
Fort Collins, 80526
(970) 472-4300

MEEKER

73485 Hwy. 64
Meeker, 81641
(970) 878-6090

GLENWOOD SPRINGS

50633 Hwys. 6 & 24
Glenwood Springs, 81601
(970) 947-2920

MONTE VISTA

0722 S. Road 1 E.
Monte Vista, 81144
(719) 587-6900

SERVICE CENTERS

BRUSH

122 E. Edison
Brush, 80723
(970) 842-6300

GRAND JUNCTION

711 Independent Ave.
Grand Junction, 81505
(970) 255-6100

MONTROSE

2300 S. Townsend Ave.
Montrose, 81401
(970) 252-6000

COLORADO SPRINGS

4255 Sinton Road
Colorado Springs, 80907
(719) 227-5200

GUNNISON

300 W. New York Ave.
Gunnison, 81230
(970) 641-7060

PUEBLO

600 Reservoir Road
Pueblo, 81005
(719) 561-5300

DENVER

6060 Broadway
Denver, 80216
(303) 291-7227

HOT SULPHUR SPRINGS

346 Grand County Rd. 362
Hot Sulphur Springs,
80451
(970) 725-6200

STEAMBOAT SPRINGS

925 Weiss Dr.
Steamboat Springs,
80477 (970) 870-2197

DURANGO

151 E. 16th St.
Durango, 81301
(970) 247-0855

LAMAR

2500 S. Main St.
Lamar, 81052
(719) 336-6600

SALIDA

7405 Hwy. 50
Salida, 81201
(719) 530-5520

Printed for free distribution by the

COLORADO PARKS AND WILDLIFE (DPW)

1313 Sherman St., Room 618, Denver, CO 80203
(303) 866-3437

www.wildlife.state.co.us
www.parks.state.co.us

Editor: Amy Nickelson

Cover photo of chukar partridge © Neal Mishler

Printed 2011 by American Web, Denver. 155,000 copies.

Printing paid for with hunting and fishing license fees.



42 great state parks!



The Colorado Parks and Wildlife Board set small-game regulations in July. The Parks and Wildlife Board (as of July 2011): Rick D. Cables, DPW director • Tim Glenn, chair • Gary Butterworth, vice chair • Mark Smith, secretary • Robert Streeter, member • David R. Brougham, member • Dorothea Farris, member • Allan Jones, member • Gaspar Perricone, member • John Singletary, member • Dean Wingfield, member • Chris Castilian, member • Bill Kane, member • James C. Pribyl, member • Lenna Watson, member • Mike King, ex officio member • John Salazar, ex officio member

The DPW receives federal financial assistance from the U.S. Fish and Wildlife Service. In accordance with Title VI of the Civil Rights Act of 1964, Section 504 of the Rehabilitation Act of 1973, Title II of the Americans with Disabilities Act of 1990, the Age Discrimination Act of 1975 and Title IX of the Education Amendments of 1972, the U.S. Department of the Interior and its bureaus prohibit discrimination on the basis of race, color, national origin, age, disability or sex.

NOTE: Laws and regulations in this brochure are paraphrased for easier understanding and are intended only as a guide. Colorado wildlife statutes and regulations are available for viewing at DPW offices and online at www.wildlife.state.co.us/RulesRegs.



Greater sage-grouse photo @ Kathleen Tadwick, DPW

WHAT'S NEW IN 2011

» GREATER PRAIRIE-CHICKEN PERMITS NO LONGER REQUIRED

Hunters no longer have to pay for a greater prairie-chicken permit. These birds may now be hunted with a small-game license. In addition, the hunt areas and season dates for the greater prairie-chicken have been extended in order to provide hunters with more opportunities to find and harvest birds. The season is open from Oct. 1-Jan. 2, 2012 in game management units 93, 97, 98, 100, 101 and 102. See page 6 for details.

» GREATER SAGE-GROUSE HUNTING AREA CHANGES

There are new areas around the state to hunt greater sage-grouse. A new map is included in this brochure to make planning your hunt easier. See page 6 for details.

» **NEW RESERVATION AREAS FOR HUNTS** A few DPW properties have been added this year to the list of places hunters can reserve for small-game and waterfowl hunting. These include: Tilman Bishop State Wildlife Area, Colorado River Island SWA, Franklin Island SWA, Highline Lake, Horsethief Canyon SWA, Orchard Mesa SWA and James M. Robb Colorado River State Park. These are now part of the reservation system for hunting access. See pages 10-12 for details.

» **HABITAT STAMPS ARE \$10** and only one is required per person per year. Stamps are valid April 1-March 31.

- Anyone 18-64 must purchase a stamp before buying or applying for a preference point or a hunting or fishing license.
- A lifetime stamp is \$300.25.
- Anyone buying a one-day or additional-day license for fishing and/or small game is exempt from purchasing the Habitat Stamp with the first two of these licenses. The habitat fee will be assessed when a third one-day or additional-day license is purchased for fishing or small game.
- Anyone who holds a free Lifetime Fishing License, a Veteran's Lifetime Combination Small-Game Hunting/Fishing License, or are approved for the Big Game Mobility Impaired Hunting Program is exempt from the Habitat Stamp requirement. See www.wildlife.state.co.us/Hunting/DisabledAccessibility for details.

LICENSE FEES

	RESIDENT	NONRESIDENT
» Small Game.....	\$21	\$56
» Small Game (one-day).....	\$11	\$11
» Small Game (additional day)	\$5	\$5
» Youth Small Game (Under 18)	\$1.75	\$1.75
» Small Game & Fishing Combo	\$41	n/a
» Furbearer	\$21	\$56
» Habitat Stamp (required)	\$10	\$10
» Military (60 percent or more disability, see details below)	free	n/a

Prices include 25-cent search-and-rescue fee and 75-cent surcharge for the Wildlife Management Public Education Fund.

SAVE TIME: BUY ONLINE OR BY PHONE

Buy your license through the DPW's website or by calling 1-800-244-5613. Credit cards are accepted for phone and Internet purchases. DPW offices and license agents also sell licenses.



LICENSE INFORMATION

HUNTER EDUCATION (SAFETY) REQUIREMENTS

Hunters born on or after Jan. 1, 1949, must have completed an approved hunter education course sanctioned by a state or province before purchasing a license. Colorado honors hunter education courses from other states and provinces. You must present an original hunter safety card when buying a license (unless previously verified) or enter the required information when applying by mail or online. You must carry your hunter education card while hunting unless a "V" is printed on the license, which indicates hunter education has been verified at a DPW office.

Hunter education courses can be found online at www.wildlife.state.co.us/Hunting/HunterEducation/CourseCalendar.

Details on seminars/clinics: www.wildlife.state.co.us/Hunting/HunterOutreach/ClinicsAndSeminars.

YOUTH LICENSES AND MENTOR HUNTING

People under age 18 must have a license to hunt small game. A youth small-game license is \$1, plus surcharge. All youths must meet hunter education requirements. Those under 16 must be accompanied by a mentor while hunting. A mentor must be 18 or older and must meet hunter education requirements. Mentors aren't required to hunt. While hunting, youths and mentors must be able to see and hear each other without binoculars, radios or other aids. Youths under 18 also can buy an adult license as long as they meet hunter education requirements. At age 18, hunters must buy an adult license.

DISABLED VETERANS

Colorado residents who are disabled veterans or Purple Heart recipients can get free lifetime combination small-game-hunting and fishing licenses. They must have served on active duty and have been honorably discharged. Proof is required of a service-related disability rated by the Veterans Administration of at least 60 percent through disability retirement benefits or a pension administered by the Department of Veteran Affairs or respective service department.

LICENSE REQUIREMENTS

Attention: Snow goose hunters



If you removed the plug from your shotgun during the 2011 Spring Conservation Action, remember to replace the plug in your gun before hunting during the fall small-game and waterfowl seasons.

HARVEST INFORMATION PROGRAM (HIP)

Small-game, furbearer and migratory bird hunters, including falconers, must sign up with HIP each year before their license is valid.

Write the new HIP number on your license.

To sign up with HIP, call 1-866-265-6447 (1-866-COLOHIP) or go to www.colohip.com. You will be asked for basic information, including how many birds you harvested the previous season and species you plan to hunt this year. The HIP phone line and website run 24 hours daily.

WALK-IN ACCESS PROGRAM

The Walk-In Access (WIA) Program provides opportunities to hunt small game, migratory game birds and furbearers on enrolled properties. The regular season properties are open Sept. 1 through the end of February. The late cropland season properties are open from opening day of pheasant season through the end of February. The extended walk-in properties are open from the start of pheasant season through the end of March.

WIA properties allow hunting small game, furbearers, migratory game birds and Eurasian collared-doves but only during established season dates. Properties are closed to hunting Gambel's quail, Gunnison's sage-grouse and greater sage-grouse.

Properties are open to foot access only. For small-game hunting, lands are open one hour before sunrise until one hour after sunset. A WIA permit is no longer required to hunt WIA lands, but hunters must have a small-game license. Properties enrolled are posted with Walk-In Access signs and published in a WIA atlas. Access is prohibited as posted when the landowner is actively harvesting crops.

Two atlases for 2011-12 will be published. An early version will be available in mid-August and includes properties open Sept. 1. A second atlas will be available in late October and includes all properties.

CHILD-SUPPORT DELINQUENCY

State law requires Social Security numbers for all licenses purchased. It is not displayed on the license but may be provided, if requested, to Child Support Enforcement authorities. Hunting and fishing licenses are not issued to people delinquent in child support.

WEAPONS RESTRICTIONS

Colorado and federal laws prohibit people convicted of certain crimes, such as domestic violence, from possessing weapons even for hunting. If you've been convicted of a crime, check with the appropriate law enforcement authority to find out how these laws apply to you.

LICENSE REQUIREMENTS

1. You must carry your license when hunting and show it when requested by law enforcement officers.

2. Annual fishing, small-game and furbearer licenses, as well as Colorado waterfowl stamps and habitat stamps, are valid April 1 through March 31 of the following year. Licenses expire on the date printed on them. Lifetime small-game and fishing combination licenses are valid as long as you are a Colorado resident.

3. **TO HUNT AND TAKE SMALL GAME**, you need a small-game license, a combination small-game and fishing or a lifetime small-game and fishing license. Small-game hunters must register with HIP before their first hunt. See details in the "Harvest Information Program" section at left.

4. **TO HUNT COMMON SNAPPING TURTLES**, you need a small-game license or fishing license.

5. **TO HUNT FURBEARERS**, you must have a furbearer or small-game license.

6. **YOU CAN HUNT COYOTES** without a small-game license during big-game seasons if you have an unfilled big-game license for the same season and unit. You must use the same method of take for coyotes as your big-game license allows. Once the big-game license has been filled, hunters must purchase a small-game license to continue hunting coyotes.

7. **TO HUNT WATERFOWL**, you need a small-game hunting license. If you are 16 or older, you also need a Federal Migratory Bird Hunting Stamp (Duck Stamp) and a Colorado Waterfowl Stamp.

8. **TO HUNT BAND-TAILED PIGEONS AND SANDHILL CRANES**, a separate federal permit number, available through HIP, is required.

9. If a license is restricted to a specific area, you can hunt only that area.

10. Licenses are not transferable.

11. False statements made in buying a license and altering a license are illegal and void the license.

12. Lost or destroyed licenses can be replaced by buying a new one or signing an affidavit and paying a fee. Forms are available at DPW offices and license agents.

RESIDENCY REQUIREMENTS

The requirements to qualify as a Colorado resident to buy a hunting license:

1. You must have lived continuously in Colorado at least six months immediately before applying for or buying a license, and must intend to make Colorado home (except No. 2 and No. 3 below.) The residence address given to purchase or apply for a license must be the same address used on your Colorado income tax return.

2. U.S. armed services personnel and military personnel of U.S. allies on active duty in Colorado under permanent orders and their dependents. This includes people who were Colorado residents when they entered the armed services and maintain Colorado as their home of record, and their dependents (unless they change their home of record to another state.) Also included are personnel of the U.S. Diplomatic Service or diplomatic services of nations recognized by the U.S. assigned to duty here on permanent active duty orders and their dependents. Active duty does not include reserve status or National Guard.

3. Full-time students enrolled and attending a Colorado college, university or trade school at least six months immediately before applying for or buying a license. This includes students who are temporarily absent from Colorado but still enrolled. Colorado residents who attend school full-time out of state and pay nonresident tuition still qualify for a resident license.

4. Children under 18 have the same residency status as their parent, legal guardian or person with whom they live the majority of the time per court order.

5. If you have a home in Colorado and another state, call (303) 297-1192 to make sure you comply with Colorado residency requirements before obtaining a hunting or fishing license.

6. Except as in No. 2 and No. 3 above, you lose your Colorado residency if you apply for, buy or accept a hunting, fishing or trapping license as a resident of another state or country; register to vote outside Colorado or get a driver's license with an address in another state.

MONEY WELL SPENT.
When you purchase a hunting or fishing license, 75¢ goes to the Wildlife Management Education Fund, which helps preserve your hunting and fishing privileges in Colorado.

keepingcoloradowild.org

Wildlife COUNCIL
MANAGEMENT PUBLIC EDUCATION ADVISORY

KNOW BEFORE YOU GO

More hunting laws and legal methods of take on pages 8-9

HUNTING TERMS & DEFINITIONS

AGGREGATE: total number of animals allowed in a bag limit regardless of species.

CANADA LYNX RECOVERY AREA: in San Juan and Rio Grande national forests, and associated land above 9,000 feet, west from a north-south line passing through Del Norte and east from a north-south line passing through Dolores; and from New Mexico north to the Gunnison basin, including Taylor Park east to the Collegiate Range. The recovery area includes Game Management Units 55, 65-68, 70, 71, 74-81, 551, 681, 711 and 751.

CROSSBOW: bow fired from the shoulder, attached perpendicularly to its stock. Has mechanical device to hold string cocked.

DAILY BAG LIMIT: maximum number of wildlife you can take in a day, including any consumed or donated during day taken.

FALCONRY (OR HAWKING): hunting with a trained raptor.

FURBEARERS: mink, pine marten, badger, red fox, gray fox, swift fox, striped skunk, western spotted skunk, beaver, muskrat, long-tailed weasel, short-tailed weasel, coyote, bobcat, opossum, ring-tailed cat, raccoon.

HAND-HELD BOW: long bow or compound bow with a manually held or drawn string.

HANDGUN: pistol, revolver, without shoulder stock or attachment.

LIKE LICENSE: license to take the same wildlife in same manner at same time.

LIVE TRAPS: box traps, Sneed-design colony traps, cage traps.

MIGRATORY GAME BIRDS: migratory birds included in conventions between U.S. and foreign countries to protect birds for which seasons are offered. They are: waterfowl (ducks, including mergansers, and geese, including brant), mourning and white-winged doves, band-tailed pigeons, sandhill cranes, American coots, sora, Virginia rail, Wilson's snipe, crows.

PELLET GUN: handgun or rifle powered by compressed air or gas that is .177 caliber or larger and fires pellets.

PELT: skin of a furbearer with hair intact.

POSSESSION LIMIT: maximum number of wildlife you can have at any time.

RELOCATION: moving live wildlife to a site not contiguous to the capture site.

RIFLE: firearm fired from the shoulder with a rifled bore, 16-inch or longer barrel, at least 26 inches in overall length.

SHOTGUN: firearm fired from the shoulder with a smooth bore, at least an 18-inch barrel and at least 26 inches in overall length.

SLINGSHOT: hand-held device manually drawn or held with elastic band attached to arms or attachment points for propelling stones or metal projectiles. Wrist-brace attachments and non-elastic projectile pouches are normal parts of a slingshot.

SMALL-GAME BIRDS: grouse, ptarmigan, pheasant, quail, partridge, greater prairie-chicken.

SMALL-GAME MAMMALS: cottontail rabbit, snowshoe hare, jack-rabbit, marmot, fox squirrel, pine squirrel, Abert's squirrel, prairie dog, Wyoming (Richardson's) ground squirrel.

OTHER SMALL GAME: prairie rattlesnake, European starling, English or house sparrow, common snapping turtle.

TRAPPING: taking or attempting to take wildlife with a trap.

LEGAL HUNTING HOURS

Legal times to hunt small game are one-half hour before sunrise to sunset. An exception is made for furbearers, which can be hunted from one-half hour before sunrise to one-half hour after sunset.

Raccoons, coyotes, bobcats, striped skunks, beavers and red, gray and swift foxes can be hunted at night. See "Furbearers: Legal Hunting Methods" on page 8 for details.

The sunrise/sunset chart below lists time in Denver. Subtract 1 minute from opening and closing time for each 12 1/2 miles east of Denver. Add 1 minute to opening and closing time for each 12 1/2 miles west of Denver. (These changes assume that each degree of longitude equals 50 miles and a change of 1 degree of longitude equals a 4-minute change in sunrise and sunset times.)

2011 SUNRISE/SUNSET TABLE (DENVER)

DAY	SEPT.		OCT.		NOV.		DEC.		JAN. 2012	
	RISE A.M.	SET P.M.	RISE A.M.	SET P.M.	RISE A.M.	SET P.M.	RISE A.M.	SET P.M.	RISE A.M.	SET P.M.
1	6:28	7:31	6:56	6:43	7:28	5:58	7:02	4:36	7:21	4:46
2	6:29	7:30	6:57	6:41	7:29	5:57	7:03	4:36	7:21	4:47
3	6:30	7:28	6:58	6:39	7:31	5:56	7:04	4:36	7:21	4:48
4	6:31	7:27	6:59	6:38	7:32	5:55	7:04	4:36	7:21	4:49
5	6:32	7:25	7:00	6:36	7:33	5:54	7:05	4:35	7:21	4:49
6	6:32	7:23	7:01	6:35	6:34	4:53 ^{DST ends}	7:06	4:35	7:21	4:50
7	6:33	7:22	7:02	6:33	6:35	4:52	7:07	4:35	7:21	4:51
8	6:34	7:20	7:03	6:32	6:36	4:51	7:08	4:35	7:21	4:52
9	6:35	7:19	7:04	6:30	6:37	4:50	7:09	4:35	7:21	4:53
10	6:36	7:17	7:05	6:28	6:39	4:49	7:10	4:35	7:21	4:54
11	6:37	7:15	7:06	6:27	6:40	4:48	7:11	4:36	7:20	4:55
12	6:38	7:14	7:07	6:25	6:41	4:47	7:11	4:36	7:20	4:56
13	6:39	7:12	7:08	6:24	6:42	4:46	7:12	4:36	7:20	4:57
14	6:40	7:10	7:09	6:22	6:43	4:45	7:13	4:36	7:20	4:58
15	6:41	7:09	7:10	6:21	6:44	4:44	7:14	4:36	7:19	4:59
16	6:42	7:07	7:11	6:19	6:45	4:44	7:14	4:37	7:19	5:01
17	6:43	7:06	7:12	6:18	6:46	4:43	7:15	4:37	7:18	5:02
18	6:44	7:04	7:13	6:17	6:48	4:42	7:16	4:37	7:18	5:03
19	6:45	7:02	7:14	6:15	6:49	4:42	7:16	4:38	7:18	5:04
20	6:45	7:01	7:15	6:14	6:50	4:41	7:17	4:38	7:17	5:05
21	6:46	6:59	7:16	6:12	6:51	4:40	7:17	4:39	7:16	5:06
22	6:47	6:57	7:17	6:11	6:52	4:40	7:18	4:39	7:16	5:07
23	6:48	6:56	7:18	6:10	6:53	4:39	7:18	4:40	7:15	5:09
24	6:49	6:54	7:19	6:08	6:54	4:39	7:19	4:40	7:15	5:10
25	6:50	6:52	7:21	6:07	6:55	4:38	7:19	4:41	7:14	5:11
26	6:51	6:51	7:22	6:06	6:56	4:38	7:19	4:42	7:13	5:12
27	6:52	6:49	7:23	6:04	6:57	4:37	7:20	4:42	7:12	5:13
28	6:53	6:48	7:24	6:03	6:59	4:37	7:20	4:43	7:12	5:14
29	6:54	6:46	7:25	6:02	7:00	4:37	7:20	4:44	7:11	5:16
30	6:55	6:44	7:26	6:01	7:01	4:36	7:21	4:44	7:10	5:17
31			7:27	5:59			7:21	4:45	7:09	5:18

Source: www.usno.navy.mil

TIME ADJUSTMENT FOR OTHER COLORADO CITIES

This table reflects the minutes to add to the chart above for select towns. These are approximate, use only as a general reference. Consult a state map for more details.

Alamosa	+3	Gr. Junction	+13
Buena Vista	+5	Gunnison	+7
Burlington	-10	La Junta	-6
Craig	+9	Lamar	-9
Durango	+11	Sterling	-6
Fort Morgan	-4	Walden	+5



ATTENTION HUNTERS!

The DPW has released Canada lynx in southwest Colorado, which may be found elsewhere in the state. If you see one, please report it to a DPW office. Bobcat hunters should make sure they don't shoot a lynx. Lynx differ from bobcats in several ways:

- **THE TIP OF A LYNX TAIL** is black all around. On a bobcat, the underside of the tip of its tail is white.
- **THE EAR TUFTS** of lynx are more than one inch long.
- **THE BELLY FUR** on a lynx is tawny colored. On a bobcat, it is white.
- **LYNX TRACKS** are 3 1/2 to 4 1/2 inches wide. Bobcat tracks are smaller than 2 1/2 inches wide.

SMALL-GAME SURVEYS

The DPW conducts several small-game harvest surveys annually to estimate harvest, hunter numbers and recreation days, in addition to assessing satisfaction and crowding. In many cases, surveys represent the primary means of monitoring populations of several species, especially those difficult to survey by observation. Harvest surveys also are valuable to hunters wanting to learn more about small game in Colorado. Past surveys are available on the DPW website at www.wildlife.state.co.us/Hunting/SmallGame/Statistics and updated reports are available after surveys conclude. Hunters are selected randomly to participate. Small-game surveys are by telephone or by e-mail. If contacted, your participation is not required, but responding — even if you did not hunt or harvest an animal — helps the DPW manage small game.

TAGGING REQUIREMENTS

After you kill wildlife requiring a carcass tag, you must immediately sign and date the carcass tag, then attach it to the animal. The tag must be attached while the animal is transported, in camp, at a residence, in storage or in your possession. If you accidentally detach the tag from your license, lose or destroy it, you must get a duplicate tag before hunting. You can get a duplicate after providing proof of accidental detachment, loss or damage to the DPW. To transport wildlife not requiring a carcass tag, license holders must accompany the animal. Wildlife shipped by common carrier must be accompanied by the license, photocopy of license or carcass tag.

SPECIES IDENTIFICATION

A fully feathered wing or head must be attached to all birds, except turkeys, doves and band-tailed pigeons, in transit to hunter's home or commercial processor. For pheasants, a foot with visible spur can be substituted. Note: While in the field or during transport, all dressed (not fully feathered) doves count against the daily bag and possession limit for mourning and white-winged doves during the Sept. 1-Nov. 9 dove season. Eurasian collared-doves must be fully feathered while in the field or during transport at all other times.

BOBCAT SEALS

All bobcats or their pelts must be personally presented by the hunter for inspection and sealing by the DPW within 30 days after take or within five days after the season closes, whichever is sooner. Any bobcat hide/pelt without a seal within five days after the season closes is illegal and becomes the property of the state. Seals will be placed only on bobcats taken legally in Colorado. Inspection and sealing is free, and seals must stay attached to hide until processed. Bobcat hides/pelts cannot be transported, shipped or otherwise taken from Colorado until inspected and sealed. It is illegal to buy, sell, trade or barter an untanned bobcat hide/pelt without a seal. One seal per hide/pelt. Contact a DPW office for details.

SAFE HANDLING OF GAME MEAT

Concern has grown about diseases affecting wild animals that could potentially make humans sick. Most of the time, properly handled and prepared game meat poses no greater risk than domestic meat of causing disease in humans. Hunters are encouraged to contact their local public health department or DPW office for information on wildlife diseases that may be present where they plan to hunt. Public health officials recommend the following precautions when handling and preparing game meat:

1. Do not handle animals that are obviously sick or found dead. Report sick or dead animals you find to a DPW office.
2. Keep game cool, clean and dry.
3. Do not eat, drink or smoke while dressing game.
4. Use disposable gloves when cleaning game.
5. Wash your hands with soap and water or use alcohol wipes after dressing game.
6. Clean all tools and surfaces immediately afterward. Use hot soapy water, then disinfect with a 10 percent chlorine bleach solution.
7. Cook game meat to an internal temperature of at least 165° F to kill disease organisms and parasites. Juices from adequately cooked game meat should be clear.
8. Do not eat any raw portions of wild game.
9. Do not feed raw wild game to domestic pets.

DONATING WILDLIFE

You can donate edible parts of wildlife to a like-license holder anywhere or to anyone at the recipient's home. Bag and possession limits apply to donors and recipients and birds must be properly tagged. See "Migratory Bird Transporting, Shipping" on page 9.

NONTOXIC SHOT

1. It is illegal to use or have toxic (lead) shot, either in shotshells or as loose shot for muzzleloading, while taking or attempting to take ducks, geese or coots in Colorado. This includes national wildlife refuges open to hunting. Toxic shot, either in shotshells or as loose shot for muzzleloading, cannot be in a hunter's gun, on his/her person or near a hunter taking or attempting to take waterfowl. Store lead shot in your vehicle. You can store lead shot elsewhere if it's not readily accessible while hunting waterfowl.
2. Nontoxic shot is required in commercial wildlife parks, field trials and dog-training while hunting captive-reared mallards.
3. Nontoxic shot is any type approved by the U.S. Fish and Wildlife Service. Go to: www.fws.gov/migratorybirds/CurrentBirdIssues/nontoxic.htm.
4. It is illegal to have or use nontoxic shot larger than size T to hunt ducks, geese or coots.

WILDLIFE CAUSING DAMAGE

Colorado law allows landowners to protect private property from most wildlife damage. For information, call (303) 297-1192.

OPERATION GAME THIEF

Operation Game Thief (OGT) is a nonprofit organization working with DPW law enforcement. It pays rewards to citizens who report poachers or resource violations. Callers don't have to reveal their names, testify in court or sign a deposition. Rewards are paid if the information leads to the arrest of a poacher or a citation is issued. Rewards do not depend on a conviction but must be requested when a violation is reported.



CALL TOLL-FREE: 1-877-COLOOGT | E-MAIL: GAME.THIEF@STATE.CO.US
Please do not use this phone number for information requests or emergencies.



SMALL GAME REGULATIONS, STATEWIDE HUNTING:

ABERT'S SQUIRREL

SEASON: Nov. 15-Jan. 15, 2012
DAILY BAG LIMIT: 2
POSSESSION LIMIT: 4

BEAVER

SEASON: Oct. 1-April 30, 2012
BAG AND POSSESSION LIMITS: Unlimited

BOBCAT

SEASON: Dec. 1-end of Feb. 2012
BAG AND POSSESSION LIMITS: Unlimited
NOTE: See "Bobcat Seals," page 4.

COMMON SNAPPING TURTLE

SEASONS: April 1-Oct. 31, 2011 &
 April 1-Oct. 31, 2012
BAG AND POSSESSION LIMITS: Unlimited

COTTONTAIL, SNOWSHOE HARE, WHITE-TAILED & BLACK-TAILED JACKRABBIT

SEASON: Oct. 1-end of Feb. 2012

DAILY BAG LIMIT: 10 cottontails, 10 snowshoe hares, 10 jackrabbits
POSSESSION LIMIT: 20 cottontails, 20 snowshoe hares, 20 jackrabbits

COYOTE

SEASON: Year-round
BAG AND POSSESSION LIMITS: Unlimited

FOX & PINE SQUIRREL

SEASON: Oct. 1-end of Feb. 2012
DAILY BAG LIMIT: 5 of each species
POSSESSION LIMIT: 10 of each species

MARMOT

SEASON: Aug. 10-Oct. 15
DAILY BAG LIMIT: 2
POSSESSION LIMIT: 4

PRAIRIE DOGS: WHITE-TAILED, BLACK-TAILED, GUNNISON'S

PUBLIC LAND SEASON: June 15-end of Feb. 2012

PRIVATE LAND SEASON: Year-round
BAG AND POSSESSION LIMITS: Unlimited

PRAIRIE RATTLESNAKE

SEASON: June 15-Aug. 15
DAILY BAG LIMIT: 3
POSSESSION LIMIT: 6

WYOMING (RICHARDSON'S)

GROUND SQUIRREL

SEASON: Year-round
BAG AND POSSESSION LIMITS: Unlimited

BADGER, MINK, PINE MARTEN, GRAY FOX, RED FOX, SWIFT FOX, RACCOON, RING-TAILED CAT, STRIPED SKUNK, WESTERN SPOTTED SKUNK, LONG-TAILED WEASEL, SHORT-TAILED WEASEL, OPOSSUM, MUSKRAT

SEASON: Nov. 1-end of Feb. 2012
BAG AND POSSESSION LIMITS: Unlimited



HAWKING AND FALCONRY REGULATIONS:

COTTONTAIL, SNOWSHOE HARE, WHITE-TAILED & BLACK-TAILED JACKRABBIT

SEASON: Sept. 1-March 31, 2012
AREA: Statewide
DAILY BAG LIMIT: 10 of each species
POSSESSION LIMIT: 20 of each species

CHUKAR

SEASON: Sept. 1-March 31, 2012
AREA: Statewide
DAILY BAG LIMIT: 4
POSSESSION LIMIT: 12

DUCKS, GEESE, MERGANSER, COOTS, SORA, VIRGINIA RAIL, BAND-TAILED PIGEON, DOVES, WILSON'S SNIPE, CROW

SEASON: Dates coincide with established seasons
DAILY BAG LIMIT: 3 singly or in the aggregate for species with an open hunting season or special falconry season
POSSESSION LIMIT: 6 singly or in aggregate
NOTE: Falconry bag and possession limits are not in addition to gun bag limits.

EUROPEAN STARLING, ENGLISH OR HOUSE SPARROW

SEASON: Year-round
AREA: Statewide

BAG, POSSESSION LIMITS: Unlimited

FOX & PINE SQUIRREL

SEASON: Sept. 1-March 31, 2012
AREA: Statewide
DAILY BAG LIMIT: 5 of each species
POSSESSION LIMIT: 10 of each species

FURBEARERS

SEASON: Dates coincide with established seasons.
AREA: Statewide
BAG, POSSESSION LIMITS: Unlimited

GREATER PRAIRIE-CHICKEN

SEASON: Oct. 1-Jan. 2, 2012
AREAS: Units 97, 98, 100, 101, 102
ANNUAL BAG & POSSESSION LIMITS: 2 birds

GROUSE: DUSKY

SEASON: Sept. 1-March 31, 2012
AREA: West of I-25
DAILY BAG LIMIT: 3
POSSESSION LIMIT: 9

GROUSE: GREATER SAGE-GROUSE

SEASON: Sept. 1-Jan. 31, 2012
AREA: Units 2, 3, 4, 5, 6, 10, 11, 13, 16, 17, 18 except east of Colo. 125 in Grand County; 27, 28 except north and east of Grand CR 50 (Church Park Rd.); 37, 161, 171, 181, 211, 301

and 441

DAILY BAG LIMIT: 2
POSSESSION LIMIT: 2 birds only in units 6, 16, 17, 161, 171; 4 birds in all other units

GROUSE: MOUNTAIN SHARP-TAILED

SEASON: Sept. 1-Jan. 31, 2012
AREA: Closed statewide except for units 4, 5, 12-14, 131, 211, 214, 441
DAILY BAG LIMIT: 2 birds
POSSESSION LIMIT: 4 birds

PHEASANT

SEASON: Sept. 1-March 31, 2012
AREA: Statewide
DAILY BAG LIMIT: 3 birds
POSSESSION LIMIT: 9 birds

QUAIL: NORTHERN BOBWHITE, SCALED, GAMBEL'S

SEASON 1: Sept. 1-March 31, 2012
AREA: Statewide
DAILY BAG LIMIT: 8 of each species
POSSESSION LIMIT: 24 of each species

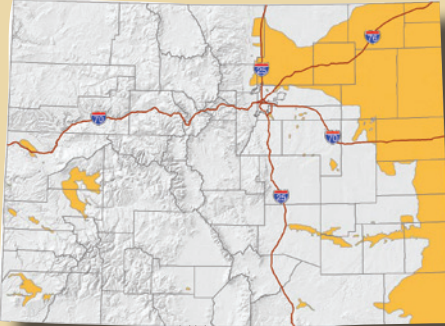
WHITE-TAILED PTARMIGAN

SEASON: Sept. 1-March 31, 2012
AREA: Statewide
DAILY BAG LIMIT: 3
POSSESSION LIMIT: 6

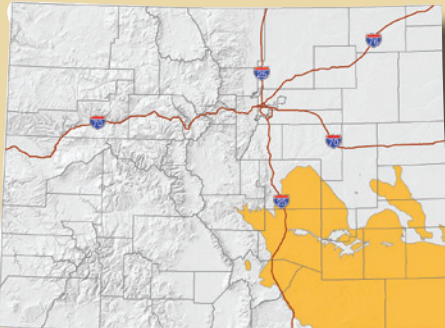
HABITAT RANGES OF COMMON SMALL-GAME BIRDS

The ranges of popular Colorado birds to hunt are shaded in orange below. The red lines through the state indicate I-70 east and west, I-25 north and south and I-76 northeast from Denver.

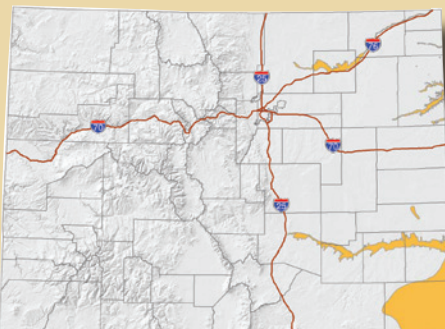
PHEASANT:



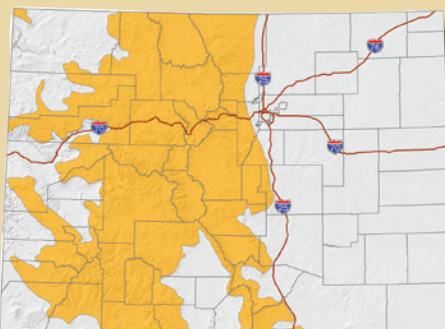
SCALED QUAIL:



BOBWHITE QUAIL:



DUSKY GROUSE:



MIGRATORY & OTHER BIRD REGULATIONS:

BAND-TAILED PIGEON

SEASON: Sept. 1-30
AREAS: Statewide
DAILY BAG LIMIT: 5
POSSESSION LIMIT: 10
NOTE: Permit required through HIP. See "License Requirements," page 2, for more.

CHUKAR

SEASON: Sept. 1-Nov. 30
AREAS: Statewide
DAILY BAG LIMIT: 4
POSSESSION LIMIT: 12

CROW

SEASON: Oct. 1-Jan. 31, 2012
AREAS: Statewide
BAG AND POSSESSION LIMITS: Unlimited
NOTE: Recorded or electronically amplified calls may be used during this season.

DOVES: MOURNING, WHITE-WINGED

SEASON: Sept. 1-Nov. 9
AREAS: Statewide
DAILY BAG LIMIT: 15 singly or in aggregate for either species
POSSESSION LIMIT: 30 of either species
NOTE: See "Species Identification" on page 4 for transit requirements. See Eurasian note below for influence on bag limits.

DOVES: EURASIAN COLLARED

SEASON: Year-round
AREAS: Statewide
DAILY BAG, POSSESSION LIMITS: Unlimited
NOTE: If taken Sept. 1-Nov. 9, fully feathered Eurasians will not be counted toward mourning and white-wing bag and possession limits. If Eurasians taken at this time are not fully feathered, they count toward all dove bag and possession limits. Eurasians must be fully feathered if taken at times other than Sept. 1-Nov. 9. See "Species Identification" on page 4 for transit requirements.

EUROPEAN STARLING, ENGLISH OR HOUSE SPARROW

SEASON: Year-round
AREAS: Statewide
BAG AND POSSESSION LIMITS: Unlimited

GREATER PRAIRIE-CHICKEN

SEASON: Oct. 1-Jan. 2, 2012
AREAS: Units 93, 97, 98, 100, 101, 102
ANNUAL BAG AND POSSESSION LIMITS: 2

GROUSE: DUSKY

SEASON: Sept. 1-Nov. 20
AREAS: West of I-25 only
DAILY BAG LIMIT: 3
POSSESSION LIMIT: 9

GROUSE: GREATER SAGE-GROUSE

SEASON 1: Sept. 10-11
AREAS: Units 6, 16, 17, 161, 171 (North Park)
DAILY BAG LIMIT: 2
POSSESSION LIMIT: 2

SEASON 2: Sept. 10-16
AREAS: Units 2, 3, 4, 5, 10, 11, 13, 18 except east of Colo. 125 in Grand County, 27, 28 except north and east of Grand CR 50 (Church Park Rd.), 37, 181, 211, 301 and 441.
DAILY BAG LIMIT: 2
POSSESSION LIMIT: 4

GROUSE: MOUNTAIN SHARP-TAILED

SEASON: Sept. 1-18
AREAS: Units 4, 5, 12, 13, 14, 131, 211, 214, 441
DAILY BAG LIMIT: 2
POSSESSION LIMIT: 4

PHEASANT

DAILY BAG LIMIT: 3 cocks
POSSESSION LIMIT: 9 cocks
SEASON 1: Nov. 12-Jan. 31, 2012
AREAS: Units east of I-25
SEASON 2: Nov. 12-Jan. 2, 2012
AREAS: Units west of I-25

QUAIL: NORTHERN BOBWHITE, SCALED, GAMBEL'S

DAILY BAG LIMIT: 8 of each species
POSSESSION LIMIT: 24 of each species
SEASON 1: Nov. 12-Jan. 2, 2012
AREAS: Units east of I-25 and north of I-70 from I-25 east to Byers and Hwy. 36 from Byers to Kansas.
SEASON 2: Nov. 12-Jan. 2, 2012
AREAS: Units west of I-25 except those areas west of I-25 in Pueblo, Fremont, Huerfano and Las Animas counties.

SEASON 3: Nov. 12-Jan. 31, 2012
AREAS: Units east of I-25 and south of I-70 from I-25 to Byers and Hwy. 36 from Byers to Kansas, and parts of the following counties that are west of I-25: Pueblo, Fremont, Huerfano, Las Animas.

SANDHILL CRANE

SEASON: Oct. 1-Nov. 27
AREAS: East of the Continental Divide except North Park (Jackson County) and San Luis Valley.
DAILY BAG LIMIT: 3
POSSESSION LIMIT: 6
NOTE: Permit required through HIP. See "License Requirements," page 2, for more.

SORA AND VIRGINIA RAIL

SEASON: Sept. 1-Nov. 9

AREAS: Statewide

DAILY BAG LIMIT: 25 singly or aggregate

POSSESSION LIMIT: 25 singly or aggregate

TEAL

SEASON: Sept. 10-18

AREAS: In Lake and Chaffee counties and east of I-25.

DAILY BAG LIMIT: 4 singly or in aggregate.

POSSESSION LIMIT: 8 singly or in aggregate.

WHITE-TAILED PTARMIGAN

DAILY BAG LIMIT: 3

POSSESSION LIMIT: 6

SEASON 1: Sept. 10-Oct. 2

AREAS: Statewide except units 44, 45, 53, 54, 66, 67, 68, 70, 71, 74-81, 444, 751

SEASON 2: Sept. 10-Nov. 20

AREAS: Units 44, 45, 53, 54, 66, 67, 68, 70, 71, 74-81, 444, 751

WILSON'S SNIPE

SEASON: Sept. 1-Dec. 16

AREAS: Statewide

DAILY BAG LIMIT: 8

POSSESSION LIMIT: 16

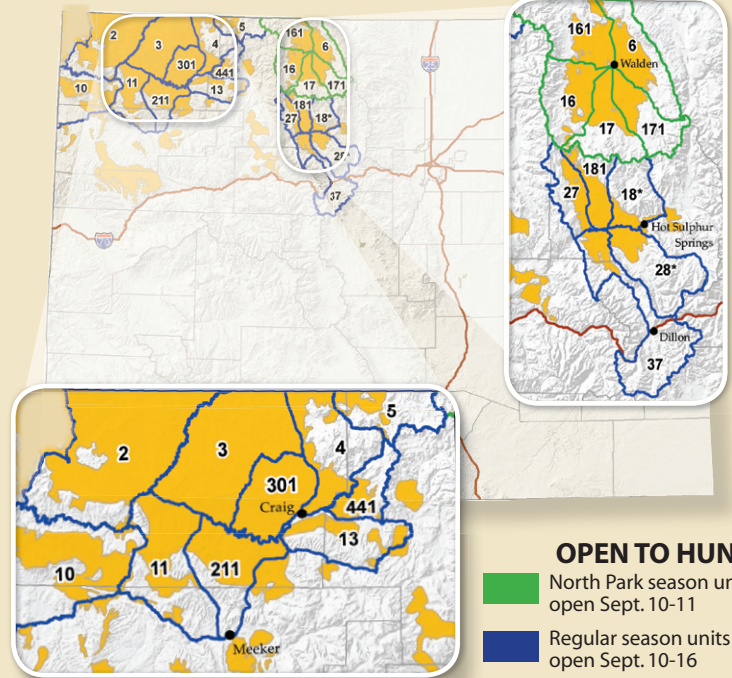
NEW GREATER SAGE-GROUSE HUNTING AREAS

The areas of the state open to greater sage-grouse hunting have been modified by the CPW based on grouse populations.

Unit 201 is now closed.

Units open to greater sage-grouse hunting include GMUs 2, 3, 4, 5, 10, 11, 13, part of 18, 27, part of 28, 37, 181, 211, 301 and 441. Also, the North Park season is open in units 6, 16, 17, 161 and 171.

See the regulation information on page 6 for details.



COLORADO DOVE ID

There are three types of doves in Colorado.

Knowing how to identify each is important to avoid violating the law while hunting.

White-winged doves are relatively uncommon in Colorado and occur primarily along the Front Range, while Eurasians occur sporadically throughout the state. The white-winged dove is pioneering new habitats north of its historic range in the southwest U.S. The Eurasian collared-dove is an exotic introduced into the United States.

DOVE BANDING

Mourning doves are banded in Colorado and other states as part of a program to monitor their status. Hunters should report banded mourning doves to the USGS Bird Banding Lab, www.reportband.gov or call 1-800-327-BAND.



MOURNING DOVE

- » 12 inches long from tip of beak to end of tail
- » Grayish-brown color
- » Long, pointed tail
- » Rapid wing beat, erratic flight path
- » Soft call, "cooAHoo," followed by several coos



© Wayne Lewis,

EURASIAN COLLARED-DOVE

- » 15 inches from tip of beak to end of tail
- » Larger, heavier than mourning dove
- » Dark grayish-brown
- » Long, squared tail
- » Thin black band on neck with white upper border
- » Gray belly and undertail coverts with black visible on tail
- » Coarse, rapidly delivered, three-part cooing, "coo-coo-coo," middle coo is longest



© George Andrejko, Ariz. Game & Fish

WHITE-WINGED DOVE

- » Slightly larger than mourning dove
- » Gray-brown color
- » Long, moderately rounded tail
- » White bar on upper wing surface
- » Soft call, "hoohoo hoohoo," with the last note descending



HUNTING LAWS

LEGAL:

SMALL-GAME HUNTING METHODS

GAME MAMMALS

- A. Rifles or handguns.
- B. Shotguns cannot be larger than 10 gauge. Shotguns cannot be capable of holding more than 3 shells in magazine and chamber combined.
- C. Hand-held bows and crossbows.
- D. Pellet guns and slingshots.
- E. Hawking.

GAME BIRDS (EXCEPT MIGRATORY BIRDS)

- A. Rifles or handguns allowed for dusky grouse and ptarmigan.
- B. Shotguns cannot be larger than 10 gauge not firing a single slug. Shotguns cannot be capable of holding more than 3 shells in magazine and chamber combined.
- C. Hand-held bows and crossbows.
- D. Pellet guns and slingshots allowed for dusky grouse and ptarmigan.
- E. Hawking.

AIDS IN HUNTING SMALL GAME

- A. Dogs are allowed to hunt small game, waterfowl and furbearers but only to pursue, bring

to bay, retrieve, flush or point. It is illegal to use dogs to hunt cottontail rabbits, snowshoe hares and tree squirrels during regular rifle big-game seasons.

- B. Artificial decoys are permitted.
- C. European ferrets are permitted for hawking. Ferrets must be neutered, tattooed on left inguinal area and dyed along one-fourth of their body for easy field identification.
- D. Mechanical devices designed to call wildlife are allowed. Electronic calls can be used to hunt furbearers.
- E. You can hunt migratory game birds over standing crops or feed used in the course of agricultural planting, harvesting or other normal agricultural practices.

ILLEGAL:

SMALL GAME AND FURBEARERS

- A. The use of toxicants, drugs, explosives, stupefying substances or leghold traps, instant kill body-gripping design traps or snares to hunt, kill, capture, injure or harass wildlife are illegal, except with permits issued by DPW or the Colorado Department of Agriculture.
- B. Use of electronic devices and electronic calls

are not allowed to hunt small game. Electronic calls are legal to hunt furbearers.

- C. Use of any artificial light as an aid in hunting wildlife, except as in "Furbearers: Legal Hunting Methods," is not allowed.
- D. Use of bait to hunt small-game mammals, game birds and migratory birds is not allowed.
- E. Use of visual lures, fresh meat baits, fish oil and anise oil lures to attract felids in lynx recovery areas or where lynx are is not allowed.

CALIBER RESTRICTION

It is illegal to hunt game birds, small-game mammals or furbearers with a centerfire rifle larger than .23 caliber in regular rifle deer and elk seasons west of I-25, unless you have an unfilled deer or elk license for the season you are hunting. A small-game license is required.

GENERAL HUNTING LAWS

1. The DPW can post firing lines at its properties.
2. It is illegal to kill, capture, injure or harass wildlife from an aircraft or motor vehicle. It is also illegal to operate aircraft with intent to injure, harass, drive or rally wildlife. It is illegal to discharge a firearm or release an arrow from an aircraft or motor vehicle.
3. It is illegal to discharge a firearm or release an arrow from, on or across a public road. Hunting with rifles, handguns, shotguns firing a single slug and archery equipment prohibited within 50 feet on each side of the center line of any public road. On a divided road, the prohibition includes the median, and the 50-foot requirement is measured from the center line of both roads.
4. It is illegal to carry or have a firearm, except a pistol or revolver, in or on a motor vehicle unless the chamber is unloaded. While using artificial light from a vehicle, it is illegal to have a firearm with cartridges in the chamber or magazine, or possess a strung bow unless the bow is cased.
5. You must take edible parts of game meat home to eat or provide it for human consumption. Do not leave wounded wildlife (or possibly wounded wildlife) without attempting to track and kill it.
6. Possession of wildlife is evidence you hunted.
7. Small-game and migratory bird hunters are not required to wear solid daylight,

fluorescent orange clothes. However, the DPW encourages you to wear fluorescent orange clothes for safety.

8. You must stop at DPW check stations when told to do so.
9. Violations of Colorado wildlife laws carry point values. You can face suspension of license privileges for up to five years or more if you accumulate 20 or more points in five years.
10. It is illegal to promote, conduct, offer to conduct or participate in a competitive event that involves killing small game or furbearers for which there is no bag and possession limit (including coyotes and prairie dogs). Contests are allowed if no more than 5 of each species are killed by each participant during the event. Contests of marked or tagged small game and game birds for money or valuable prizes also are illegal. Tokens of recognition without significant monetary value are not considered valuable prizes. This does not apply to wildlife parks and field trials licensed by the DPW.
11. During deer, elk, pronghorn and bear seasons, firearms (except handguns) must be unloaded in the chamber and magazine when carried on an off-highway vehicle. Firearms (except handguns) and bows carried on an OHV must be fully enclosed in a hard or soft case. Scabbards or cases with open ends or sides are prohibited. This regulation does not apply to landowners or their agents carrying a firearm on an OHV for the purpose of taking depredating wildlife on property owned or leased by them.

FURBEARERS: LEGAL HUNTING METHODS

1. The following methods of take are legal to hunt furbearers: Any rifle, handgun, shotgun, handheld bow or crossbow or live traps — limited to cage, box or Snead-design colony traps.
2. If wildlife (except Canada lynx, see No. 5 below) is accidentally captured alive when trapping season is closed or is illegal for that species, you must release the animal immediately. You cannot kill it. If you find a dead animal in your trap, you must bring its carcass to a DPW officer or office within five days. Failing to do so is evidence of illegal possession of wildlife. Trappers who comply will not be charged with illegal possession.
3. Any accidentally captured live animals for which trapping season is open must be killed or released immediately upon checking the trap.
4. You must check traps at least daily. In Canada lynx recovery area or where lynx are, you must check traps every 24 hours.
5. If you accidentally capture a Canada lynx but it's not injured, you must release it immediately and report it the DPW within 24 hours. If a lynx is accidentally injured, but not in your possession, you must report it to the DPW within 24 hours. If you capture a lynx accidentally and injure it, take the lynx to the DPW or licensed veterinarian and report it to the DPW within 24 hours. If you accidentally kill a lynx, you must report it to the DPW within 24 hours and take the carcass to the DPW within three days after the report. Failing to follow these rules is considered unlawful take and possession. You will not be charged if you comply with these requirements, are registered in the DPW's Lynx Conservation Plan or use the plan's best management practices to avoid accidentally taking a lynx.
6. Except when legally placed on private property by permit, it is illegal to set traps or snares within 50 feet of

either side of the travelled part of state or federal highways or county roads.

7. Hunting furbearers with bait is legal. When permitted, bait must be made solely of plants or animals. Bait cannot contain metal, glass, porcelain, plastic, cardboard or paper. Wildlife used as bait can be carcasses or parts of legally taken furbearers, carp, shad, white and longnose suckers, and inedible parts of legally obtained game mammals, birds or game fish.
8. Electronic calls are legal to hunt furbearers.
9. On private land, artificial light is allowed at night to hunt beavers, raccoons, coyotes, bobcats, striped skunks and red, gray or swift foxes with permission of landowner or agent.
10. On public land, artificial light is allowed at night with permit from local district or area wildlife manager, to hunt raccoons, coyotes, bobcats, striped skunks, beavers and red, gray or swift foxes. Permits are valid for time and place specified.
 - a. Permits are not valid 24 hours before or during deer, elk or pronghorn rifle seasons, nor opening weekend of grouse, pheasant, quail and waterfowl seasons.
 - b. It is illegal to hunt with a light permanently attached to a vehicle or to project light from inside a vehicle.
 - c. It is illegal to take furbearers within 500 yards of a dwelling, building, campground or other structure, or in areas that jeopardize human safety.
 - d. You must carry the permit while hunting to show if requested by a law enforcement officer.
 - e. DPW can deny a permit for management purposes.
 - f. Night hunting permits are not issued for bobcat on public land in Canada lynx recovery areas or where lynx are. If a bobcat hunter kills a Canada lynx during bobcat hunting season, the DPW will not issue any more night hunting permits for bobcat for the rest of the calendar year in the recovery area or where the lynx was killed. The DPW also will revoke all night hunting permits previously issued for bobcats.
11. It is illegal to destroy or damage beaver or muskrat houses, dens or dams, except to maintain water flow or prevent property damage.

HAWKING & FALCONRY GENERAL HUNTING LAWS

1. Apprentices cannot hunt with more than one raptor at a time.
2. A falconry license is required for residents.
3. Nonresident falconers must buy either:
 - a. A nonresident annual falconry license from the DPW's Special Licensing section or,
 - b. A nonresident small-game license and have proof that they possess a valid falconry license in their home state.
4. Hunter education certificate is not necessary with a resident 3-year falconry license or a nonresident annual raptor license. State and federal Migratory Bird Hunting Stamps are required for hunting migratory waterfowl.
5. Falconers must comply with HIP.
6. Firearms prohibited while hawking.
7. Hawking prohibited from a public road.
8. Hawking on private property is illegal without permission from owner or person in charge.
9. Nonresidents bringing birds into the state must obtain an import permit at least 30 days in advance from Special Licensing. The permit is free, but a current health certificate issued within 30 days of the proposed entry from state of origin is required.
10. Import permit applications and permits are available on the DPW website.

MIGRATORY BIRD LAWS

LEGAL HUNTING METHODS (ALSO FOR EURASIAN COLLARED-DOVES)

1. Shotguns cannot be larger than 10 gauge. They cannot be capable of holding more than three shells in magazine and chamber combined. They must be fired from the shoulder. To reduce capacity of shotguns that hold more than three shells in the chamber and magazine combined, the magazine must be cut off, altered or plugged with a one-piece filler that cannot be removed unless the gun is disassembled. Slugs are illegal to hunt waterfowl.
2. Hand-held bows are allowed only if the arrow or bowstring is not held or drawn mechanically. It is illegal to use bows on firing lines designated by the Wildlife Commission.
3. It is legal to hunt waterfowl in the open, from a blind or other concealed place except a sink box. When camouflaged with vegetation from agricultural crops, camouflaging cannot result in exposing, depositing, distributing or scattering grain or other feed.
 4. a. It is illegal to take migratory birds and waterfowl by the aid of baiting, or on or over any baited area, if you know or reasonably should know the area is baited. It is illegal to place or direct placement of bait on or next to an area to cause, induce or allow anyone to take or attempt to take migratory birds with the help of bait or over a baited area.
 - b. Baiting means directly or indirectly placing, exposing, distributing or scattering salt, grain or other feed as an attraction for migratory game birds to, on or over where hunters are trying to hunt.
 - c. It is legal to take migratory birds, including waterfowl, coots and cranes, on or over the following lands not otherwise baited: standing or flooded standing crops; standing flooded or manipulated natural vegetation; flooded harvested crop lands; where seeds or grains were scattered solely from normal agricultural planting, harvesting, post-harvest manipulation or normal soil stabilization practice; flooded, standing agricultural crops where grain is inadvertently scattered solely by a hunter entering or exiting an area, placing decoys or retrieving downed birds.
 - d. It is legal to take migratory birds, except waterfowl, coots and cranes, on or over the following lands not otherwise baited: where grain or other feed is distributed or scattered solely from manipulation of agricultural crops or other feed, or solely from normal agricultural operations.
 5. Hunting is allowed from vessels (except sink boxes) with motors or sails if the motor is off, and/or sails furled and forward movement has stopped. Hunting is allowed from drifting vessels and those propelled by hand. Motorized vessels are only allowed to pick up dead or injured birds, or to put out and retrieve decoys.
6. Hawking or falconry permitted.
7. Dogs, artificial decoys, duck calls or goose calls are legal, except recorded or electronically amplified calls or sounds. Recorded or electronically amplified calls are legal to hunt common crows.

GENERAL HUNTING LAWS

In Colorado, the Pacific Flyway is west of the Continental Divide, and the Central Flyway is east of the Continental Divide. Federal and state laws apply.

1. The Colorado Parks and Wildlife Board sets waterfowl seasons in August. See the DPW's waterfowl brochure, available in September.
2. You cannot hunt migratory birds on a federal reservation, federal land set aside as a wildlife reservation, breeding ground or refuge or federal land closed by

the Migratory Bird Treaty Act, except as permitted.

3. It is illegal to hunt migratory birds from, on or across a highway, road, trail, public or private right-of-way in national wildlife refuges. Stricter regulations may apply on wildlife refuges. Contact: Alamosa and Monte Vista National Wildlife Refuges, (719) 589-4021; Browns Park NWR, (970) 365-3613; Arapaho NWR, (970) 723-8202.
4. In the areas bounded on N by Wyoming; E and S by Hwy. 71, U.S. 36 and I-70; and W by the Continental Divide and Larimer-Jackson county line; and in Bent, Crowley, Kiowa, Mesa, Otero and Prowers counties:
 - a. It's illegal to hunt waterfowl within 50 yards on either side of center line of a public road.
 - b. It is illegal to hunt waterfowl within 150 yards of a dwelling, including directly above it, without first obtaining permission from owner, occupant or person in charge of the dwelling.
5. The most restrictive state or federal laws apply. See www.fws.gov/hunting/whatres.html for more.
6. You cannot kill, have, transport, import or export migratory birds, their parts, nests or eggs that were taken, bought, sold, transported, possessed or exported illegally.
7. It is illegal to have or transport live migratory birds or waterfowl, including wounded birds. You must kill migratory birds immediately after you injure them, and they become part of your bag limit.
8. You don't need a permit to have and transport plumage or skins of legally taken migratory birds for your use.
9. You don't need a permit to have, dispose and transport feathers from wild ducks and wild geese legally killed, or from birds seized and condemned by wildlife authorities. It is legal to use feathers to make fishing flies, bed pillows, mattresses and similar commercial items, except for millinery or ornamental use.
10. It is illegal to buy, sell, barter or offer to buy or sell feathers or mounted specimens of migratory birds.
11. It is illegal to receive or have someone else's migratory birds unless they are tagged as required.
12. SANDHILL CRANE HUNTERS: Whooping cranes are federally endangered and illegal to hunt. They may be in Colorado during sandhill crane season.

TRANSPORTING, SHIPPING

You must tag migratory birds or packages of birds before transporting them, including to a taxidermist or someone else for picking, cleaning, processing and storage. You must sign the tag and include your address, number and species of birds, harvest date and license number. You don't need to tag birds you have at home. You can ship migratory birds only if you mark the package outside with name and address of sender, name and address of recipient, and number of birds by species.

IMPORTING (HARVESTED BIRDS)

During a week (beginning on Sunday), you cannot import more than 25 doves and 10 pigeons from a foreign country. You also cannot import more than 10 ducks and 5 geese from a foreign country, except Canada and Mexico. Doves and waterfowl imported from Canada and Mexico cannot exceed Canadian and Mexican export limits. Export limits vary among provinces and states. One fully feathered wing must stay attached to migratory game birds transported between ports of entry and a person's home or migratory game bird facility. It is illegal to import someone else's migratory game birds.

PRESERVATION FACILITIES

It is illegal to receive or have someone else's migratory birds to pick, clean, freeze, process, store or ship without records showing number of each species, date birds were received, date birds were disposed, name and address of person receiving the birds. You must keep records for 1 year after the last entry on them. Officers authorized to enforce this regulation can enter facilities at reasonable hours to inspect records and premises.

LAND USE RULES

NOTE: This is not a complete list of regulations for these properties. See the State Wildlife Areas and State Trust Lands brochures detailing land use.

ANDRICK PONDS SWA, MORGAN CO.

- Public access is limited to Sat., Sun., Wed. and legal holidays. During these days, public access is allowed only from 3 a.m.-9 p.m. Access is by foot only, through designated parking areas. Night hunting is prohibited.
- Hunting by reservation only. See "Reservation Procedures" (*at right*) for details. Maximum 4 hunters allowed in each area at any time. From Sept. 1 through end of regular goose season, only 3 reservations allowed per hunter annually. Hunting not allowed on Clark Lake.
- From Sept. 1-Nov. 30, all public use prohibited except migratory bird hunting within designated hunting areas.
- From Dec. 1 through end of regular goose season, hunting is permitted for migratory birds and small game. During this time, hunt days will be established as small-game hunting or migratory-bird hunting only to minimize conflicts. Hunters need to refer to the waterfowl brochure to find which dates are designated small-game hunting only and which dates are designated migratory-bird hunting only.
- From the end of dark goose season through the Friday prior to Memorial Day, only spring turkey hunting permitted.
- Mandatory check in and check out as posted.
- From the Thurs. before Sept. 1 through the end of dark goose season, scouting permitted from 10 a.m.-2 p.m. on Thurs. that are not open to hunting in and prior to waterfowl seasons. Must have reservation or letter from DPW. All people must check in and out at check station. Firearms, dogs not allowed during scouting.

ATWOOD STL, LOGAN CO.

- Hunting prohibited except Sat., Sun., Wed., Labor Day, Columbus Day (observed), Veterans Day, Thanksgiving Day, Christmas Day, New Year's Day, Martin Luther King Day and Presidents Day.
- Small-game and waterfowl hunting regulated by reservation system and mandatory check station. See "Reservation Procedures" (*top of page*) for details. Hunters may hunt only area specified on reservation. Mandatory check in and check out as posted.
- Two reservations are for the general public, 1 for hunters with mobility impairments and 1 for youth/mentor. General public and mobility-impaired must hunt the up-river side of Hwy. 63. Youths and mentors must hunt down-river side of the highway.

ATWOOD SWA, LOGAN CO.

- Public access by foot, through designated parking areas. Max. 4 groups or vehicles with max. 4 people per group.
- Beginning with first day of the regular duck season through last day of regular duck season, hunting is by reservation only. See "Reservation Procedures" (*top of page*) for details. Max. 4 per reservation. Hunters may only hunt area specified on reservation and must check out at mandatory station by 2 p.m.
- Waterfowl and small-game hunting permitted only on Sat., Sun., Wed., Columbus Day

RESERVATION PROCEDURES

For land requiring reservations, call 1-800-846-9453 (1-800-UGO-WILD)

- » **RESERVATIONS NOT ACCEPTED MORE THAN 14 DAYS IN ADVANCE** of hunt date nor after noon the day before the hunt date or noon Friday for hunts on Sunday and holidays falling on Monday.
- » **TO CANCEL**, hunters must do so by noon the day before the hunt date. Failing to cancel reservations or follow check-station proce-

dures may result in losing future reservation rights for the rest of the hunting season.

- » **MAXIMUM 1 RESERVATION PER HUNT DATE** and 1 reservation per phone call. Reservations are not transferable. The person making the reservation must be a licensed hunter for the species to be hunted and must be at the property the day of the hunt.

(observed), Veterans Day, Thanksgiving Day, Christmas Day, New Year's Day, Martin Luther King Jr. Day.

BANNER LAKES SWA, WELD CO.

- Closed first day of regular waterfowl season to the day before the first day of pheasant season except for waterfowl hunting on Sat., Sun., Mon. and legal holidays.
- Reservations available for waterfowl, not required. See "Reservation Procedures" (*top of page*) for details. Hunters can only hunt the area specified on the reservation. Max. 4 hunters per reservation.
- Reservations valid during reserved day until hunter with reservation checks out. Hunters may check in on first-come, first-served basis after a hunter with a reservation checks out. If a reserved area is not claimed by legal sunrise, or if no reservation exists for a hunt area, hunters may check in after midnight the morning before the hunt.
- Waterfowl hunters must follow check-in and check-out procedures as posted.
- Access by foot only, through designated parking areas.
- From the Thurs. before Sept. 1 through the end of dark goose season, scouting permitted from 10 a.m.-2 p.m. on Thurs. that are not open to hunting in and prior to waterfowl seasons. Must have reservation or letter from DPW. All people must check in and out at check station. Firearms, dogs not allowed during scouting.

- b. Access by foot only 4 a.m.-9 p.m. through designated parking and mandatory check station.

BRUSH SWA, MORGAN CO.

- Public access only from 3 a.m.-9 p.m., except with night hunting permit. Access from designated parking areas only.
- Beginning with the first day of regular duck season through last day of regular duck season, waterfowl and small-game hunting is by reservation only. Call 1-800-846-9553 for reservations. Two waterfowl and two small-game reservations are available in designated areas. Max. 4 people per reservation. There is one youth/mentor area available. No more than two mentors and at least one youth per youth/mentor reservation. Mentors must be 18 and have hunter education certificate.
- Hunters must check out at designated check station by 2 p.m. Hunting permitted only on Sat., Sun., Wed., Columbus Day (observed), Veterans Day, and Thanksgiving Day, Christmas Day, New Year's Day and Martin Luther King Jr. Day.

BRUSH PRAIRIE PONDS SWA, MORGAN CO.

- Public access only from 3 a.m.-9 p.m., except with night hunting permit.
- All land users must check in and check out at the designated check station at Brush Memorial Park. Access is regulated through the check station, max. 4 hunters allowed in each area.
- From the last day of regular goose season until opening of first waterfowl season, only wildlife observation is permitted with access to areas as posted. Public access by foot only.
- From opening of teal season through Nov. 30, only migratory-bird hunting allowed and only on Sat., Sun., Wed., Columbus Day (observed), Veterans Day, and Thanksgiving Day during established waterfowl seasons.
- From the September teal season through Dec. 1, reservations are available, but not required. See "Reservation Procedures" (*top of page*) for details. Max. 3 reservations per hunter annually. Reservations valid until 9 a.m., hunters may only hunt the area specified on the reservation or which they check into. Hunters may check in on first-come, first-served basis after a hunter with a reservation checks out. If no reservation exists for a hunt area, hunters may check in after midnight the morning before the hunt.

BRAVO SWA, LOGAN CO.

- From the first day of the regular duck season through the last day of the regular duck season, waterfowl and small-game hunters must check out at mandatory check station.
- SCALVA PARCEL:** All public access requires a reservation. See "Reservation Procedures" (*top of page*) for details. Limited to 3 groups of 4 hunters each per day.
 - a. From Sept. 1-May 31, only hunting is allowed and is limited to archery, muzzleloading and shotgun during established seasons. Hunting is only on Sat., Sun., Wed., Labor Day, Columbus Day (observed), Veterans Day, Thanksgiving Day, Christmas Day, New Year's Day, Martin Luther King Jr. Day and Presidents Day.

- From Dec. 1 through the last day of regular goose season, only hunting is allowed. Reservations available to hunt on Dec. 1 (first day for small-game and big-game hunting). Reservations not available from Dec. 2-Jan. 31. Hunters may check in at one of five hunting areas on a first-come, first-served basis, after midnight the morning before the hunt. Hunters properly checked in to any of these areas may hunt anywhere on the property.
- From the Thurs. before opening of teal season until Nov. 30, scouting permitted from 10 a.m.-2 p.m. on Thurs. that are not open to hunting in and prior to waterfowl seasons. Must have reservation or letter from DPW. All people must check in and out at check station. Firearms, dogs not allowed during scouting.

CENTENNIAL VALLEY SWA, WELD CO.

- During waterfowl season, small-game and waterfowl hunting is only in designated zones.
- During regular duck seasons, reservations are required for waterfowl and small-game hunting. See "Reservation Procedures" (*at left*) for details. Hunters with reservations can only hunt the area specified on the reservation. No more than 4 hunters allowed per reservation. Mandatory check in and check out as posted at designated station.
- Closed during regular duck seasons except Sat., Sun., Mon. and legal holidays. Closed March 1-Aug. 31 except on designated trail for wildlife viewing and for hunters with spring turkey licenses.

COLORADO RIVER ISLAND SWA, MESA CO.

- Only waterfowl hunting, and only from designated blinds.
- Dogs prohibited, except as an aid to hunting.
- Hunting by reservation only. See "Reservation Procedures" (*at left*) for details. Hunters may only hunt the area specified on the reservation. Mandatory check-in and check-out procedures as posted.
- If no reservation exists for a hunt area, hunters may check in on a first-come, first-served basis after 5 a.m. the day of the hunt. Reserved areas not claimed by 7 a.m. will be available on a first-come, first-served basis. Any area must be yielded upon request of the hunter holding a valid and active reservation for that area.

ELLIOTT SWA, MORGAN CO.

- Open to public 3 a.m.-9 p.m. daily, except with night hunting permit.
- Scouting permitted from the Thurs. before opening of teal season until Nov. 30 on Hamlin Tracts, and from the Thurs. before opening of teal season until the first segment of the regular duck season on Union Tract. Scouting permitted from 10 a.m.-2 p.m. on Thurs. that are not open to hunting in and prior to waterfowl seasons. Must have reservation or letter from DPW. All people must check in and out at check station. Firearms and dogs not allowed during scouting.
- UNION TRACT:** Open only for waterfowl hunting. Reservations available but not required, see "Reservation Procedures" (*at left*) for details. Mandatory check station. Hunting allowed only from designated blinds or as posted. Max. 4 hunters per area. See DPW's waterfowl brochure for more details.
- HAMLIN TRACTS (N AND S):** From teal season until Nov. 30, waterfowl and migratory bird hunting only. Reservations available but not

LAND CLOSURES IN DEER SEASON (OPENING WEEKEND)

All recreational activities except deer hunting prohibited on the following lands during opening weekend of regular plains rifle deer season and on opening day and first weekend of late plains rifle deer season:

- » **STATE TRUST LANDS:** Atwood, Ford Bridge and Red Lion Ranch
- » **STATE WILDLIFE AREAS:** Atwood, Bravo (and Scalva parcel), Brush, Centennial Valley, Cottonwood, Dune Ridge, Elliott, Jean K. Tool, Julesburg leases, Knudson, Messex, Overland Trail, Pony Express and Sedgwick Bar, Tamarack Ranch.

required, see "Reservation Procedures" (*at left*) for details. Max. 4 hunters per area. Mandatory check station. See DPW's waterfowl brochure for more details.

FRANK SWA, WELD/LARIMER COs.

- During regular duck season, all waterfowl and small-game hunting is limited to Sat., Sun., Mon. and legal holidays.
- A reservation is required. See "Reservation Procedures" (*at left*) for details. Max. 4 hunters allowed per reservation. Hunters must hunt only in areas specified on the reservation. Mandatory check in and check out as posted at check station. Hunters may only hunt area specified on reservation.
- Hunting prohibited west of County Road 13 and in the posted safety zone in the northeast corner of the property.

FRANKLIN ISLAND SWA, MESA CO.

- Only waterfowl hunting, and only from designated blinds.
- Dogs prohibited, except as an aid to hunting.
- Hunting by reservation only. See "Reservation Procedures" (*at left*) for details. Hunters may only hunt the area specified on the reservation. Mandatory check-in and check-out procedures as posted.
- If no reservation exists for a hunt area, hunters may check in on a first-come, first-served basis after 5 a.m. the day of the hunt. Reserved areas not claimed by 7 a.m. will be available on a first-come, first-served basis. Any area must be yielded upon request of the hunter holding a valid and active reservation for that area.

HIGHLINE LAKE STATE RECREATION AREA, MESA CO.

- Waterfowl hunting Mon.-Fri. only and only in designated blinds. Maximum 4 hunters per blind.
- Hunting by reservation only. See "Reservation Procedures" (*at left*) for details. Hunters may only hunt the area specified on the reservation. Mandatory check-in and check-out procedures as posted.
- If no reservation exists for a hunt area, hunters may check in on a first-come, first-served basis after 5 a.m. the day of the hunt. Reserved areas not claimed by 7 a.m. will be available on a first-come, first-served basis. Any area must be yielded upon request of the hunter holding a valid and active reservation for that area.

HORSETHIEF CANYON SWA, MESA CO.

- Open to public 5 a.m.-9 p.m. Open 24 hours for fishing only.
- Hunting with shotguns, hand-held bows and muzzleloaders only.
- Quail hunting is prohibited.
- Reservations not required for waterfowl hunting 100 yards east of Blind No. 1 to the eastern property boundary, including Skipper's Island.
- Waterfowl hunting is prohibited Weds.-Fri., except on Thanksgiving Day, Christmas Day and New Year's Day.
- From 100 yards east of Blind No. 1 to the western boundary of the property, waterfowl hunting on Sat. restricted to youth/mentor hunting only.
- Waterfowl hunters on west end of property must reserve a blind and must hunt from or within 100 yards of that blind. Max. 4 hunters per blind.
- Hunting by reservation only. See "Reservation Procedures" (*at left*) for details. Hunters may only hunt the area specified on the reservation. Mandatory check-in and check-out procedures as posted.
- If no reservation exists for a hunt area, hunters may check in on a first-come, first-served basis after 5 a.m. the day of the hunt. Reserved areas not claimed by 7 a.m. will be available on a first-come, first-served basis. Any area must be yielded upon request of the hunter holding a valid and active reservation for that area.

JACKSON LAKE SWA, MORGAN CO.

- Access only from designated parking areas.
- From the first day of regular duck season through the last day of regular duck season, all waterfowl and small-game hunters must check out at mandatory check station.
- Boat hunting prohibited beginning Nov. 1 except for hunters with boat reservation. See "Reservation Procedures" (*at left*) for details. Max. 4 people per reservation. Hunters with boat reservations must call reservation line two days before hunt to confirm ice conditions. Only boat hunters with reservations are exempt from Nov. 1 boat closure. Boats prohibited on frozen surface of lake.
- Hunters and vessels must stay in designated hunt zone. Hunting prohibited within 150 yards of shore, other vessels. Vessels launched from Jackson Lake State Park must have state parks pass.
- Waterfowl hunting from vessels permitted only Sat., Sun., Wed., Columbus Day (observed), Veterans Day, Thanksgiving Day, Christmas Day, New Year's Day and Martin Luther King Jr. Day.

JAMES M. ROBB COLORADO RIVER STATE PARK, MESA CO.

- Park in designated parking areas only.
- Waterfowl hunting only, and limited to designated blinds, maximum 4 hunters per blind.
- Hunting by reservation only. See "Reservation Procedures" (*at left*) for details. Hunters may only hunt the area specified on the reservation. Mandatory check-in and check-out procedures as posted.
- If no reservation exists for a hunt area, hunters may check in on a first-come, first-served basis after 5 a.m. the day of the hunt. Reserved areas not claimed by 7 a.m. will be available on a first-come, first-served basis. Any area must be yielded upon request of the hunter holding a valid and active reservation for that area.

JEAN K. TOOL SWA, MORGAN CO.

1. Access from 3 a.m.-9 p.m., through designated parking areas only. Except with night hunting permit.
2. Beginning with the first day of regular duck season through last day of regular duck season, waterfowl and small-game hunters must check out at designated check station by 2 p.m.
3. Hunting is by reservation only. See "Reservation Procedures" (page 10) for details. Three waterfowl and three small-game reservations per day, max. 4 people per reservation.
4. Hunting allowed only on Sat., Sun., Wed., Columbus Day (observed), Veterans Day, Thanksgiving Day, Christmas Day, New Year's Day, Martin Luther King Jr. Day.
5. Deer hunting allowed in established seasons. Deer hunters do not need to check in or out. Reservations required.

JUMPING COW SWA

1. Dove hunting allowed by permit only. Permits issued free in a drawing process. Details and applications at the DPW, (303) 291-7227. Application due third Mon. in Aug.
2. Vehicle use only on marked roads that lead to parking. All other access by foot or horseback. Leave property gates as found.
3. Open to hunting two hours before sunrise to one hour after sunset.

LAKE DOROTHEY, WALKER AND WINDY GAP SWAS

1. Trapping prohibited.

MT. EVANS HIGHWAY

1. Hunting prohibited a half-mile on either side of road. For map, call Northeast Regional Office in Denver, (303) 291-7227.

ORCHARD MESA SWA, MESA CO.

1. Open for public access July 15-March 14.
2. Only access from parking area on "C" Rd., between roads 30 and 31. Vehicles prohibited beyond parking area.
3. Waterfowl hunting only. Hunters must hunt from designated blinds or in the zone identified for each blind. Maximum 4 hunters per blind.
4. Must hunt with bows and/or shotguns with shotshells only.
5. Dogs prohibited, except as an aid to hunting.
6. Waterfowl hunting by reservation only. See "Reservation Procedures" (page 10) for details. Hunters may only hunt the area specified on the reservation. Mandatory check-in and check-out procedures as posted.
7. If no reservation exists for a hunt area, hunters may check in on a first-come, first-served basis after 5 a.m. the day of the hunt. Reserved areas not claimed by 7 a.m. will be available on a first-come, first-served basis. Any area must be yielded upon request of the hunter holding a valid and active reservation for that area.

OVERLAND TRAIL SWA, LOGAN CO.

1. Foot access only, from designated parking area.
2. From first day of regular duck season through last day of regular duck season, waterfowl and small-game hunters must check out at designated check station.

RED LION SWA, LOGAN CO.

1. Access from parking areas only.
2. From the first day of regular duck season to last day of regular duck season, waterfowl and small-game hunting is by reservation only. See "Reservation Procedures" (page 10) for details. Hunters with reservations can only hunt area specified on reservation. Hunters must follow check-in and check-out procedures. Must check out by 2 p.m.
3. Nine waterfowl and three small-game reservations are available in designated areas. There is one youth/mentor area available. Max. 4 people per reservation. No more than two mentors and at least one youth per youth/mentor reservation. Mentors must be 18 and have hunter education certificate.
4. Waterfowl and small-game hunting only on Sat., Sun., Wed., Columbus Day (observed), Veterans Day, Thanksgiving Day, Christmas Day, New Year's Day and Martin Luther King Jr. Day.
5. Deer hunting allowed in established seasons. Deer hunters do not need to check in or out. Reservations required.

TAMARACK RANCH SWA, LOGAN CO.

1. Reservations are available but not required. See "Reservation Procedures" (page 10) for details. Reservations available for weekends and Columbus Day (observed), Veterans Day, Thanksgiving Day, Christmas Day, New Year's Day, Martin Luther King Jr. Day and

Presidents Day.

2. The first hunt date available for reservations is the Sat. after Oct. 24 and the last date available is the last Sun. of regular duck season. Weekdays, weekends and holidays outside the reservation period and any unreserved or open units are available for hunting without reservations and are regulated through check station. Hunters with reservations can only hunt area specified on reservation. Mandatory check in and check out as posted at designated station.
3. Hunters must park vehicles at parking area they are checked into and are restricted to that area until 9 a.m., at which time they may walk into and hunt adjacent areas.

TILMAN BISHOP SWA, MESA CO.

1. Open for public access July 15-March 14.
2. Mandatory check-in and check-out procedures for hunters at entrance station.
3. Must hunt with bows and/or shotguns with shotshells only.
4. Dogs prohibited, except as an aid to hunting.
5. Waterfowl hunters must hunt from designated blinds or in the zone identified for each blind. Maximum 4 hunters per blind.
6. Waterfowl hunting by reservation only. See "Reservation Procedures" (page 10) for details. Hunters may only hunt the area specified on the reservation.
7. If no reservation exists for a hunt area, hunters may check in on a first-come, first-served basis after 5 a.m. the day of the hunt. Reserved areas not claimed by 7 a.m. will be available on a first-come, first-served basis. Any area must be yielded upon request of the hunter holding a valid and active reservation for that area.

TWENTY MILE/ GRASSY CREEK STLs, ROUTT CO.

1. Open for small-game hunting Aug. 15-end of February. Hunting on weekends and Labor Day by permit only.
2. Max. of 8 hunters allowed daily. Max. 4 hunters allowed per permit. Permits are free and may be applied for by contacting Steamboat Springs Service Center, Box 775777, Steamboat Springs, CO 80477 or by calling (970) 871-2855. Permit deadline July 1. Permits issued by drawing. Successful applicants notified by mail.

WELLINGTON SWA, WELLINGTON UNIT, LARIMER/WELD COs.

1. Closed from first day of regular waterfowl season to first day of pheasant season except Sat., Sun., Mon. and Columbus Day (observed), Veterans Day, Thanksgiving Day, Christmas Day, New Year's Day and Martin Luther King Jr. Day.

WHITEHORSE SWA, ADAMS CO.

1. Closed except for youth/mentor waterfowl hunting when authorized by area wildlife manager as participants in DPW youth hunter program.
2. Reservations required. See "Reservation Procedures" (page 10) for details. Hunters with reservations can only hunt area specified on reservation except in areas where reservations are not required or are unreserved and unoccupied. Mandatory check in and check out as posted at designated check station.

LEAD BULLETS & GAME MEAT

Ingesting lead from a variety of sources can cause significant health problems. Not enough research has been done to evaluate potential health risks associated with lead in game meat, but data suggest these risks are low for most people. The Colorado Department of Public Health and Environment and DPW offer recommendations to minimize exposure to lead in wild game:

LEAD FRAGMENTS CANNOT BE ELIMINATED WITH COMPLETE CERTAINTY, so pregnant women and children younger than 6 should avoid eating meat from game animals harvested with lead bullets.

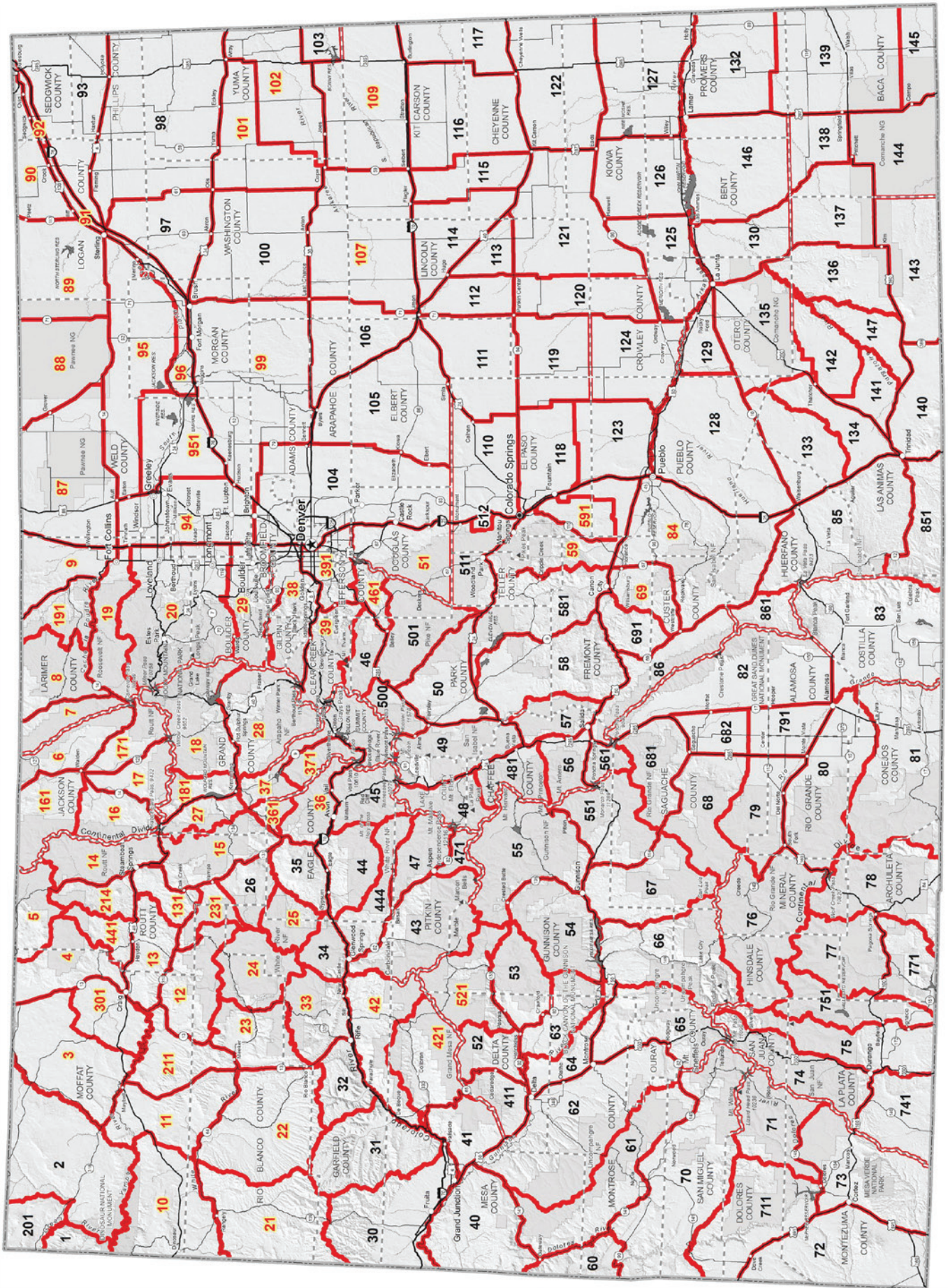
HUNTERS CAN USE LEAD-FREE SHOT OR BULLETS to eliminate lead in game meat.

WHEN PROCESSING AN ANIMAL, LIBERALLY TRIM AND DISCARD MEAT DAMAGED BY THE BULLET. Discard meat that is bruised, discolored or contains hair, dirt, grass, bone or lead fragments.

LEAD IS A SOFT METAL that can be ground with meat. Clean the grinder frequently, preferably between each animal.

EVEN IF A CARCASS IS PROCESSED USING THESE RECOMMENDATIONS, there is still a chance small amounts of lead may remain in the meat if lead bullets have been used.

GAME MANAGEMENT UNIT MAP



2011 Small Game Hunting

www.wildlife.state.co.us

Colorado Division of Parks and Wildlife

6060 Broadway, Denver CO 80216

(303) 297-1192



42 great
state parks!



Get Outdoors



Subscribe to Colorado Outdoors

Did you know Colorado has the largest elk herd in the world? Did you know Colorado is the only state where you can buy an over-the-counter bull elk license? *Colorado Outdoors* magazine will keep you up-to-date on all the opportunities available to you and your hunting buddies. Don't flounder around looking for the best spots to fish. *Colorado Outdoors* is a must-read if you're seeking a high-country angling experience or fishing the state's plains reservoirs.

For over 70 years, *Colorado Outdoors* has been the official publication of the Division of Wildlife (DOW) and the only magazine dedicated to Colorado's wildlife. And now when you subscribe, you get your choice of either a free hunting guide or fishing guide. These special annual editions are packed with a wealth of information you need to know to be a more successful hunter or angler.

We offer insight into our wildlife resources as well as providing up-to-date coverage of hunting, fishing and wildlife management. You get valuable advice from DOW experts, information that you can't get anywhere else. You'll read about recovery efforts of some of our endangered species. Plus you'll learn about environmental news, watchable wildlife events, volunteer opportunities, state fishing records and much more.

10 Reasons to subscribe to Colorado Outdoors

- Each one-year subscription entitles you to six issues.
- Subscribers get their choice of either the Fishing Guide or the Hunting Guide. These 40-page special editions sell for \$5 on the newsstand and you get your choice of one absolutely free.
- Learn high-performance hunting tips for a more successful hunt.
- Annual Preference Point issue is a must-have tool in planning your big game hunt.
- Expert advice on cold- and warm-water fishing.
- Award-winning wildlife photography, including annual photography issue.
- A great way to introduce your children to wildlife and the outdoors.
- A valuable reference guide for classrooms and libraries.
- Makes a great gift
- Never any advertising

To order your subscription online visit the Division of Wildlife website at <http://wildlife.state.co.us/wildlifestore> and click on the link to *Colorado Outdoors* magazine

NOTICE: ABOUT THIS GUIDE & SPECIES INCLUDED

This brochure includes information on furbearers, pheasant, quail, doves, band-tailed pigeon, sora, Virginia rail, Wilson's snipe, ptarmigan, dusky (blue), mountain sharp-tailed and greater sage-grouse, chukar, crow, sandhill crane, greater prairie-chicken, rabbit, snowshoe hare, squirrel, coyote and other small game. (Ducks and geese are in the waterfowl brochure, available in September.) This brochure is not a legal notice nor a complete collection of hunting regulations and laws. Copies of statutes and regulations can be obtained from a DPW office or at www.wildlife.state.co.us/RulesRegs. For questions, call the DPW at (303) 297-1192.