

COLORADO PARKS & WILDLIFE

# Your Guide to Colorado's 41 State Parks

2018 Edition



[cpw.state.co.us](http://cpw.state.co.us)



# Welcome to Your State Parks!

Wherever you go in Colorado, there's a state park waiting to welcome you. Mountains or prairies, rivers or forests, out in the country or next to the city... Colorado's 41 state parks are as diverse as the state itself, and they offer something for everyone. Take a hair-raising whitewater river trip, or kick back in a lawn chair and watch the sunset. Enjoy a family picnic, cast a line in the water, take a hike, ride a horse, try snowshoeing or discover geocaching. From Eastern Plains parks at 3,800 feet to high-mountain parks at 9,500, the network of state parks offers a wealth of activities for busy people of all ages, or the chance to do nothing at all. You can play on land or on water. On a high peak or on the prairie. In the country or the city. In spring, summer, winter or fall.



State parks are great places for families. There are plenty of activities for families to enjoy together such as boating, hiking or picnicking, as well as organized nature walks, talks and events. Junior Ranger programs, activity backpacks, kid-friendly hikes and fishing ponds for kids are among the many offerings for youth. From toddler to teen and adult to senior, every family member can enjoy their activity of choice, then come together to share a meal and stories around the campfire.



Whether you're an active outdoor recreationist or prefer to spend time watching clouds go by, you'll enjoy the special moments waiting for you in the state parks.

Cover photos:  
Large photo: State Forest State Park; lower left: Pearl Lake State Park; lower center: Elkhead State Park; lower right: Lory State Park

# Plan Your Visit

Colorado's state parks are open every day of the year, weather permitting. Day-use areas are generally open from 5 a.m. to 10 p.m., and some parks may have closed gates after hours. Campgrounds are open 24 hours a day. Contact individual parks for hours of operation. Check our website for seasonal or maintenance closures: [cpw.state.co.us](http://cpw.state.co.us)

## Entrance Passes

All Colorado state parks charge an entrance fee. Cost of a daily pass may vary by park (\$7-\$9). A pass covers all occupants of a vehicle and is valid until noon the day after purchase. Some parks may charge a per-person fee for cyclists and walk-ins. Fees are used to help pay operating costs. Cherry Creek State Park charges an additional fee for the Cherry Creek Basin Water Quality Authority.

## Annual Pass

Who doesn't love a deal? And the state parks annual pass is a great one. For just one low price, the annual pass lets you enjoy all 41 state parks for unlimited visits for 12 months from date of purchase. That's all the parks. That's unlimited times. The annual pass pays for itself in as few as 10 visits. If you're a Colorado resident who's 64 years or older, there's even a further discounted Aspen Leaf annual pass. There are also passes for disabled and income-eligible residents. For details and to purchase a pass, visit a Colorado Parks and Wildlife (CPW) office, state park or buy online: [cpw.state.co.us](http://cpw.state.co.us)



## Extend Your Stay

Make more of your state park visit by staying overnight. Bring your tent or RV, spend a cozy night in a cabin, camp in a tipi or discover a comfortable, year-round alternative to traditional camping with a yurt. All together, the state parks have more than 4,000 campsites and 58 cabins and yurts. Almost 300 campsites are ADA accessible. Many parks offer campsites or cabins for large groups. Heated cabins and yurts make a park getaway suitable any season of the year.



# Camping Reservations

Summer weekends fill up quickly so advance reservations for overnight stays are recommended. Reservations can be made six months to three days ahead of arrival.

Reserve online: [cpw.state.co.us](http://cpw.state.co.us)

Toll Free: 1-800-244-5613

A nonrefundable reservation fee applies to bookings, and visitors must purchase a daily or annual entrance pass in addition to paying camping and reservation fees. Unreserved sites are available on a first-come, first-served basis.



# What Can I Do There?

Colorado's state parks are places to have fun, get away, recreate and re-create. Here are some park activities to help you do that:

## Fishing

Top-notch fishing awaits anglers in 37 state parks across Colorado. Think Gold Medal Waters and trophy fish. A valid fishing license is required for all anglers 16 years and older. Licenses and our annual Colorado Fishing regulations brochure are available online, at most parks and at CPW authorized sales agents.

## Water Sports



Many state parks are built around a lake or waterway, which means boating and other water sports are among the headliners. Larger parks offer boat rentals and full-service marinas. Any boat with a motor or sail operated in Colorado on any public waters must be registered with CPW. All watercraft operators should be familiar with the Colorado Boating Statutes and Regulations, available at CPW offices, parks,

visitor centers and online: [cpw.state.co.us](http://cpw.state.co.us)

## Trails

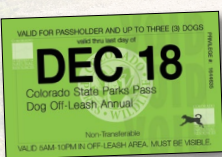
Want to take a hike or ride an off-highway vehicle (OHV)? You'll find more than 700 miles of trails in parks statewide, from easy to difficult, and paved to natural surface. Most trails are open to nonmotorized activities, including hiking, mountain biking, horseback riding and snowshoeing or cross-country skiing. Off-highway vehicles and snowmobiles are allowed on trails in some parks. Check trail-use rules before you visit.

## Nature

Getting close to nature is a major reason people visit the state parks. Park visitor centers often have interpretive displays on natural and human history. Most parks offer walks and talks on wildlife, native plants, geology, astronomy, local history and other subjects. Be a good steward and leave our natural treasures as you find them. Observe wildlife from a distance and don't feed them, even if they beg!

## Special Events

Looking for a special place to hold a wedding, family reunion or special event? A number of parks have facilities and special locations available for rent. Recite your vows against a stunning mountain view. Reserve a group cabin for all the kids and cousins for the next reunion. It's different, it's special and there's always something to do.



## Pets

While most parks allow pets in vehicles and campgrounds, they must be kept on a leash at all times. Some parks do not allow dogs on trails or within the park at all. Check with each park for specific rules for pets.

In the Denver metro area, both Chatfield and Cherry Creek state parks offer Dog Off-Leash Areas. In addition to a valid park pass, either a daily or annual Dog Off-Leash Pass is required to use these areas. They are available at the entrance stations and park offices.

# Why State Parks Are Important

Your state parks are here for everyone to enjoy and they belong to you. The parks represent a commitment made by the citizens of Colorado more than 50 years ago to set aside treasured places where people of all ages can enjoy the outdoors, learn about our state's natural heritage and be inspired to preserve and protect it for the future. As you enjoy the state parks, take care of them as if they were your own...because they are!

## Learn More

Colorado Parks and Wildlife (CPW): [cpw.state.co.us](http://cpw.state.co.us)

CPW Headquarters: 303-297-1192

CPW Regional Offices

- Northeast Region: 303-291-7227 Denver
- Northwest Region: 970-255-6100 Grand Junction
- Southeast Region: 719-227-5200 Colorado Springs
- Southwest Region: 970-247-0855 Durango

Camping reservations:

- Toll Free: 1-800-244-5613

Boat, OHV and snowmobile registration: 303- 791-1920

Hunting and fishing information and licenses: 303- 297-1192

# Volunteering

Grow, Explore, Learn and Serve! Get involved in your state parks from the inside, as a volunteer! Become a volunteer naturalist, campground host, park photographer or tour guide. Try out trail crew and special events assistant, or pitch in on a construction project. CPW strives to match you to the park and opportunity of your choice. Volunteer enough hours and you can earn a free Volunteer Parks Pass. Younger volunteers may participate with a group or supervising adult.

Apply online at [cpw.state.co.us](http://cpw.state.co.us), call 303-866-3437 or email at [dnr\\_cpw.volunteer@state.co.us](mailto:dnr_cpw.volunteer@state.co.us).



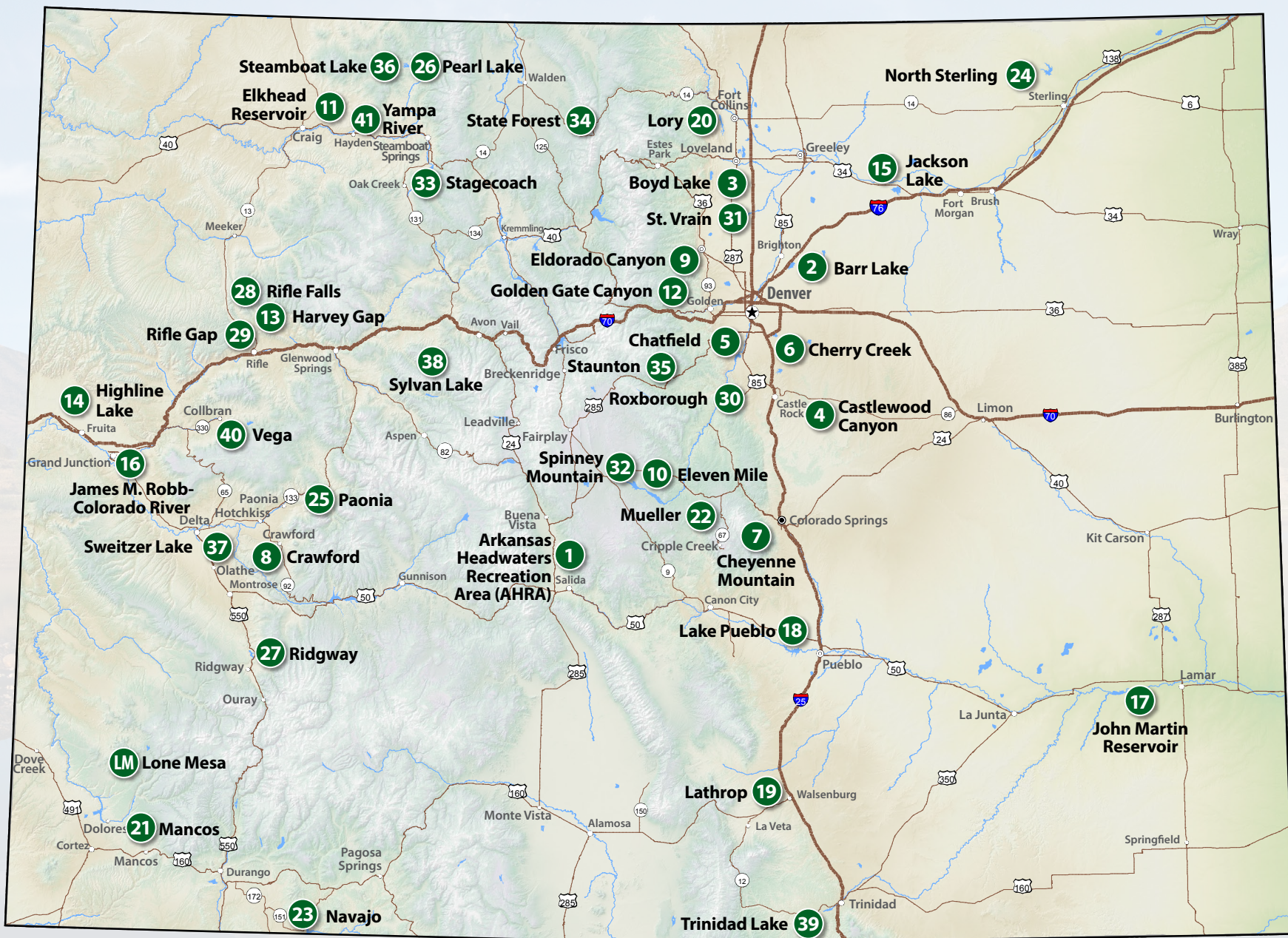
# Invasive Species

They have exotic names and are nothing but trouble. Nonnative, nuisance plants, animals, insects and diseases can invade lakes, reservoirs, rivers, streams and lands. They ruin recreational opportunities and degrade wildlife habitat. Some of these unwanted pests, such as the zebra or quagga mussels (pictured at right), live in water and hitchhike to new places on boats. Invasives such as the gypsy moth, which travels by hiding in firewood, live on land and damage trees. Noxious weeds are commonly transported in mud on hiking boots and tires.



Whether by water or land, invasive species crowd out and kill native species and are often accidentally spread by people. Prevention is the best defense against them. You can stop the spread and help protect Colorado's state parks by remembering to "Inspect, Clean, Drain and Dry" your boats, tires, gear and equipment. Never bring in firewood from another state. For more information, visit [cpw.state.co.us](http://cpw.state.co.us).





## Colorado State Parks Map

1. Arkansas Headwaters Recreation Area (AHRA) . . . pg. 8	8. Crawford . . . . . pg. 15	16. James M. Robb Colorado River . . . pg. 23–25	22. Mueller . . . . . pg. 32	30. Roxborough . . . . . pg. 40	38. Sylvan Lake . . . . . pg. 48
2. Barr Lake . . . . . pg. 9	9. Eldorado Canyon . . . . . pg. 16	17. John Martin Reservoir . . . pg. 26	23. Navajo . . . . . pg. 33	31. St. Vrain . . . . . pg. 41	39. Trinidad Lake . . . . . pg. 49
3. Boyd Lake . . . . . pg. 10	10. Eleven Mile . . . . . pg. 17	18. Lake Pueblo . . . . . pg. 27	24. North Sterling . . . . . pg. 34	32. Spinney Mountain . . . . . pg. 42	40. Vega . . . . . pg. 50
4. Castlewood Canyon . . . pg. 11	11. Elkhead Reservoir . . . . . pg. 18	19. Lathrop . . . . . pg. 28	25. Paonia . . . . . pg. 35	33. Stagecoach . . . . . pg. 43	41. Yampa River . . . . . pg. 51–52
5. Chatfield . . . . . pg. 12	12. Golden Gate Canyon . . . pg. 19	LM. Lone Mesa . . . . . pg. 29	26. Pearl Lake . . . . . pg. 36	34. State Forest . . . . . pg. 44	
6. Cherry Creek . . . . . pg. 13	13. Harvey Gap . . . . . pg. 20	20. Lory . . . . . pg. 30	27. Rifle Falls . . . . . pg. 38	35. Staunton . . . . . pg. 45	
7. Cheyenne Mountain . . . pg. 14	14. Highline Lake . . . . . pg. 21	21. Mancos . . . . . pg. 31	28. Rifle Gap . . . . . pg. 39	36. Steamboat Lake . . . . . pg. 46	
	15. Jackson Lake . . . . . pg. 22			37. Sweitzer Lake . . . . . pg. 47	



# Legend

The legend below indicates some of the activities you can find at Colorado state parks. Check the listing for each park online at [cpw.state.co.us](http://cpw.state.co.us) for more detailed information on specific activities.

FACILITY ICONS	RECREATION ICONS

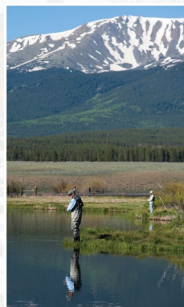
## 1. Arkansas Headwaters Recreation Area

307 W. Sackett Ave. • Salida, CO 81201  
719-539-7289 • [ahra@state.co.us](http://ahra@state.co.us)

“We are the river.” That’s the catchphrase for fun and adventure at this recreation area along one of the most popular whitewater boating rivers in the United States, which also features the longest continuous (100+ miles) Gold Medal fishing waters in Colorado! Experienced whitewater boaters can bring their own raft, kayak, whitewater canoe or stand-up paddleboard, and for those less experienced there are a number of professional outfitters with skilled guides who can help facilitate your experience down the river. From Leadville to Lake Pueblo a range of whitewater awaits, from Class II and III for beginner and family trips, to roaring Class IV and V rapids for the adventure-minded. Check the AHRA website for river conditions and a list of licensed outfitters.



For those more interested in land-based recreation, there’s plenty to do along the river’s winding course. Walk & wade anglers can try their luck in the Gold Medal waters. Others might want to pan for gold at the river’s edge, rock climb in steep walled canyons, enjoy a picnic lunch or watch for wildlife along the river and amid the gentle valleys and high mountains. In addition, there are eight campgrounds and numerous recreation sites along the river within the AHRA that also provide a variety of trails for hiking, biking, horseback riding or jumping off points that provide access to hundreds of thousands of acres of motorized OHV trails.



**36**  
BOAT RAMPS



**FACILITIES:** visitor center, boat ramps, basic campsites, group campground, group picnic area, picnic sites

**RECREATION:** biking, boating, cross-country skiing/snowshoeing, fishing, geocaching, hiking, horseback trails, hunting, ice fishing, ice skating, OHV riding, ranger/nature programs, rock climbing, swimming, wildlife/bird viewing, winter camping

**DIRECTIONS:** From the intersection of Hwys. 50/291 in Salida, go N on Hwy. 291 (1st Street). Go 1 block past stoplight to G Street, turn right 1 block to Sackett Ave., turn left. Visitor Center is on left corner of Sackett and G streets.

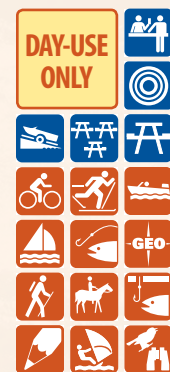
## 2. Barr Lake State Park

13401 Picadilly Road • Brighton, CO 80603  
303-659-6005 • [dnr\\_barrlake.naturecenter@state.co.us](mailto:dnr_barrlake.naturecenter@state.co.us)

Birds. They’re the headliners at Barr Lake, a mecca for birdwatchers from throughout the West. 371 species of birds have been sighted here, and records date back to the 1880s. Visitors can see bird banding in action at the migration-season banding station. Many bald eagles spend winter in the area and one pair regularly nests here in summer, raising young in a tree at the water’s edge. A visit might start with a stop at the nature center and a talk with a naturalist. Circling the lake on the level 8.8-mile, multi-use trail, much of it through a designated wildlife refuge, is a good way to see the park, particularly by bicycle or horseback. Several wildlife-viewing stations interpret the park’s wildlife and offer good places to stop and watch for birds, deer, coyotes and other wildlife, both on water and on land. This 1,900-acre prairie reservoir on the northeast side of Denver makes a great family fishing adventure or weekend picnic spot. Anglers can catch channel catfish, small and largemouth bass, rainbow trout, walleye, bluegill, wiper and tiger muskie in the lake. Kayakers and canoeists particularly enjoy the calm waters because boat motors are limited to 10 horsepower.



The archery range — free with park entrance — is another fun activity. The archery range features 12 lanes from 10–60 yards. Classes on basic archery are occasionally offered. There is a 3D walking archery range.



**FACILITIES:** nature center, archery range, boat ramps, group picnic area, picnic sites

**RECREATION:** biking, cross-country skiing/snowshoeing, boating: motorized and nonmotorized, fishing, geocaching, hiking, horseback trails, hunting, ice fishing, ranger/nature programs, sail/paddle sports, wildlife/bird viewing

**DIRECTIONS:** From Denver, take I-76 E to Exit 22, Bromley Lane. Go E about 1 mile to Picadilly Road, then go S about 2 miles to park entrance on right.



### 3. Boyd Lake

3720 North County Road 11-C • Loveland, CO 80538  
970-669-1739 • [boyd.lake@state.co.us](mailto:boyd.lake@state.co.us)

Colorful sailboats skimming blue water. Ski boats and jet skis cutting the waves. Canoes paddling the lake edge. All against a stunning mountain backdrop. That's the scene at Boyd Lake, a 1,747-acre water-sports haven lying between the plains and the mountains at the very foot of snow-capped Longs Peak. Power zones for water skiing, wakeboarding and riding personal watercraft and no-wake zones for paddle sports, fishing and "floating" offer an enjoyable boating experience for all types of users.



The campground features 148 paved, pull-through sites; it's a perfect spot for a getaway focused around the water. Anglers have the chance to hook white, large and smallmouth bass, bluegill, carp, catfish, crappie, walleye and yellow perch. There's a beach for sunbathing, sand play and a swimming pavilion. The marina is open seasonally, offering mooring slips, boat and watercraft rental,



and a store that sells fishing supplies and groceries. For a breakaway from the water, visitors can hike, picnic, watch wildlife, hunt in-season and bike along a paved, lake-edge trail that links to the City of Loveland

trail system. Pets must be kept on a 6-foot leash. Located an hour north of Denver, Boyd Lake is a great destination for residents all along the northern Front Range.



**FACILITIES:** visitor center, boat ramps, boat/jet ski rental, campsites with electric, dump station, group picnic area, laundry, marina, mooring/docking, picnic sites, shower

**RECREATION:** biking, boating, cross-country skiing/snowshoeing, fishing, geocaching, hiking, hunting, ice fishing, ice skating, jet skiing, ranger/nature programs, sail/paddle sports, swimming, water skiing, wildlife viewing, winter camping

**DIRECTIONS:** From I-25 Exit 257 West (Hwy. 34) 2.3 miles, go right on Boise Ave 1.5 miles, turn right on 37th St (T intersection). Turn right. Park is on the right (800 ft).

### 4. Castlewood Canyon

2989 South Highway 83 • Franktown, CO 80116  
303-688-5242 • [castlewood.canyon@state.co.us](mailto:castlewood.canyon@state.co.us)

A dramatic, steep-walled canyon etched into the Colorado prairie is the focus of this park along Cherry Creek. The diversity



of landscape delights visitors and creates habitat for a great variety of wildlife. Cherry Creek winds along the canyon bottom with riparian communities of willows and cottonwoods along its banks. The rock-tumbled canyon walls, with differing natural communities on the shaded versus sunny sides, rise upward to caprock and grassy uplands. A designated Colorado Natural Area, the park offers outstanding bird and wildlife watching. Species include turkey vultures, bluebirds, canyon wrens, golden eagles, prairie falcons, coyotes,

rabbits, foxes, bears and numerous reptiles and amphibians.

Geology lovers will discover a "rock layer cake" with rock as old as 56 million years.

Fourteen miles of trails, from easy to strenuous, traverse the park. Rock climbers will discover walls up to 60 feet high and canyon-face climbing for all skill levels. The canyon's scenic beauty



makes it a popular site for weddings and gatherings, particularly at the natural amphitheater and the Bridge Canyon Overlook gazebo. There are dramatic traces of human history as well, including the remnants of a homestead and the Castlewood Dam, which burst in 1933, causing major flooding through Denver. There is no biking allowed on trails in this day-use park. Pets are allowed on most trails but must be kept on a leash.



#### DAY-USE ONLY



**FACILITIES:** visitor center, group picnic area, picnic sites

**RECREATION:** cross-country skiing/snowshoeing, hiking, ranger/nature programs, rock climbing, wildlife/bird viewing

**DIRECTIONS:** From I-25 at Castle Rock, go E on Founders Parkway to Hwy. 86; go E 4 miles to Franktown; go S on Hwy. 83 (S. Parker Road), and go 5 miles S to park entrance.



## 5. Chatfield

11500 North Roxborough Park Road • Littleton, CO 80125  
303-791-7275 • [dnr\\_chatfield.park@state.co.us](mailto:dnr_chatfield.park@state.co.us)

Fun on land and water. That's the draw at this park along the South Platte River where it flows out of the mountains onto the prairie at the mouth of Waterton Canyon. The meeting of multiple habitats makes Chatfield a great spot for bird watching, with 345



documented species, including bald eagles, American white pelicans and burrowing owls. Deer, elk, coyotes, foxes, rabbits, prairie dogs and numerous reptiles and amphibians inhabit the park.

The reservoir is a popular destination for swimming, fishing, water and jet skiing, sailing and boating of all kinds, especially on warm weekends. This is one of the most popular parks in the Denver metro area, so plan ahead. Amenities include four campgrounds, boat rentals, a floating restaurant and a marina.

Chatfield offers 26 miles of trails (12 of them paved) for hiking, biking and horseback riding. Horses can be rented at Chatfield Stables and riding is restricted to the park perimeter. Pets are allowed on trails but must be on a leash. There's a model airplane field and a 69-acre dog off-leash area. Many mornings, colorful hot air balloons rise from the park and winter offers ice fishing for dedicated anglers.



**207**  
CAMPSITES

**DOG OFF  
LEASH  
AREA**

**HIGH USE SEASON  
MAY - OCTOBER**

PARK MAY REACH  
CAPACITY ON WEEKENDS  
AND HOLIDAYS



**FACILITIES:** boat ramps, boat rental, campsites with electric & full-hookup campsites, dump station, group picnic area, group campground, laundry, marina, mooring/docking, picnic sites, shower, stable/horse rental

**RECREATION:** biking, boating, cross-country skiing/snowshoeing, fishing, hiking, horseback trails, ice fishing, ice skating, jet skiing, ranger/nature programs, sail/paddle sports, swimming, water skiing, wildlife/bird viewing, winter camping

**DIRECTIONS:** From Denver, go W on C-470 to Wadsworth (Hwy. 121) exit. Go S on Wadsworth 1 mile. Deer Creek entrance is on E of road. Or, from C-470 and Santa Fe Drive (Hwy. 85), go S on Hwy. 85, go W on Titan Pkwy., turn right on Roxborough Park Road to Plum Creek entrance.

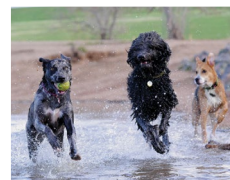
## 6. Cherry Creek

4201 South Parker Road • Aurora, CO 80014  
303-690-1166 • [cherry.creek.park@state.co.us](mailto:cherry.creek.park@state.co.us)

Surrounded by the Denver metro area, Cherry Creek offers a recreational oasis amid the hectic urban world. Almost any day, the park's 35 miles of multi-use trails, including 15 miles of paved trails, are abuzz with walkers, hikers, bikers, inline skaters and families on outings. In winter there might be snowshoers or cross-country skiers. The cool waters of Cherry Creek Reservoir attract water-skiers, anglers and boaters of all kinds. The top-notch



fishing offers walleye, trout, crappie, bass, perch, bluegill and more. Families crowd the swim beach on warm weekends. The campground boasts 133 newly renovated, modern campsites. Other amenities, some of them seasonal, include an amphitheater, boat ramps, marina, model airplane field, family shooting range, horse rental, group picnic facilities and dog off-leash area. Because of its easy accessibility, Cherry Creek can be very crowded, so plan ahead and arrive early.



The diversity of natural communities makes the park a wonderful site for nature study, attracting waterbirds, shorebirds, songbirds and raptors of all kinds, including bald and golden eagles, American white pelicans, white-faced ibis and a mix of prairie and woodland songbirds.

**MODEL AIRCRAFT FIELD**

**HIGH USE SEASON  
MAY - OCTOBER**

PARK MAY REACH  
CAPACITY ON WEEKENDS  
AND HOLIDAYS



**FACILITIES:** archery/shooting range, boat ramps, boat/jet ski rental, dump station, full-hookup campsites, group camping, group picnic area, laundry, picnic sites, shower, stable/horse rental, marina

**RECREATION:** biking, boating, cross-country skiing/snowshoeing, fishing, hiking, ice fishing, ice skating, jet skiing, horseback trails, ranger/nature programs, sail/paddle sports, swimming, water skiing, wildlife/bird viewing, winter camping

**DIRECTIONS:** From I-225, go 1 mile S on Parker Road to Lehigh Ave., turn right to reach the east entrance of the park.



## 7. Cheyenne Mountain

410 JL Ranch Heights • Colorado Springs, CO 80926  
719-576-2016 • [cheyenne.park@state.co.us](mailto:cheyenne.park@state.co.us)

Discover nature, from prairie to peak, at this 2,701-acre former ranch tucked beneath the eastern flank of Cheyenne Mountain.



Twenty-three miles of easy to moderate hiking and biking trails lead visitors from prairie grasslands through a stunning foothills transition zone of Gambel oak and ponderosa pine/Douglas fir. The natural habitats are remarkably undisturbed and unfragmented, offering outstanding wildlife viewing.

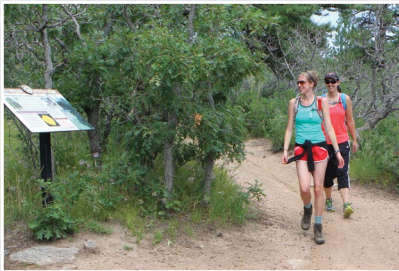
Visitors may glimpse coyotes,

foxes, deer, elk, black bears, bobcats and prairie dogs as well as golden eagles, wild turkeys and red-tailed hawks. The bird list boasts more than 100 species. To protect the park's spectacular natural landscape,

pets are allowed on approximately 2 miles of trails and smoking is strictly prohibited on all trails and in the backcountry.

After a stop at the visitor center, visitors can take a guided nature hike or family mystery hike, enjoy geocaching or attend an interpretive program. Youngsters 7 to 12 can earn their Junior Ranger badge or try their skill at the archery range.

The campground offers 51 full-service campsites and 10 basic tent sites. The camper services store is open mid-April to mid-October with camping supplies, showers, laundry and playground.



**23**  
TRAIL MILES



**FACILITIES:** visitor center, archery range, basic campsites, group picnic area, full-hookup campsites, laundry, picnic sites, shower

**RECREATION:** biking, cross-country skiing/snowshoeing, geocaching, hiking, horseback trails, ranger/nature programs, wildlife/bird viewing, winter camping

**DIRECTIONS:** From I-25, exit on South Academy (Exit 135), go W on Academy to Hwy. 115. Go S on Hwy. 115 to first traffic light at Gate 1 of Fort Carson. Turn W at the light into the park entrance.

## 8. Crawford

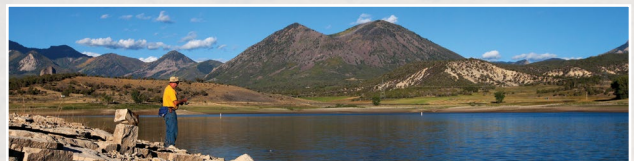
40468 Highway 92, P.O. Box 147 • Crawford, CO 81415  
970-921-5721 • [crawford.park@state.co.us](mailto:crawford.park@state.co.us)



Imagine fishing, water skiing or camping on a 400-acre reservoir against the backdrop of stunning mountain peaks and you'll have an idea of the scene at this park just 12 miles from Black Canyon of the Gunnison National Park. At 6,600-foot elevation, the mild climate offers outdoor recreation

four seasons of the year. Anglers will find rainbow trout, perch, crappie, largemouth bass, catfish and northern pike in the lake's waters. Boating opportunities include jet and water skiing, sailing, canoeing and swimming. Winter sports include cross-country skiing and ice fishing — when snow cover or ice thickness allows. Piñon-juniper woodlands with mountain mahogany, Gambel oak and other shrubs dominate the uplands, with areas of sagebrush, desert shrubs and grasses. Wetlands and riparian areas around the reservoir attract a variety of wildlife and songbirds. Wildlife watchers will often find beavers, chipmunks, rabbits and mule deer at the shoreline late in the evening. Migratory waterfowl, shorebirds and raptors are attracted to the reservoir and surrounding habitats in spring and fall.

Two campgrounds, Iron Creek and Clear Fork, accommodate tents, trailers and campers with shower facilities. Iron Creek has electric and water hookups at each campsite.



**40**  
PICNIC SITES

**66**  
CAMPSITES



**FACILITIES:** visitor center, basic campsites, boat ramps, dump station, campsites with electric, group picnic area, picnic sites, shower

**RECREATION:** biking, boating, cross-country skiing/snowshoeing, fishing, hunting, hiking, ice fishing, jet skiing, ranger/nature programs, sail/paddle sports, snow tubing, swimming, water skiing, winter camping, wildlife/bird viewing

**DIRECTIONS:** From Delta, take Hwy. 92 E to Hotchkiss. Veer right on Hwy. 92. Go 10 miles to Crawford. Park is 1 mile S on Hwy. 92.



## 9. Eldorado Canyon

9 Kneale Road, P.O. Box B • Eldorado Springs, CO 80025  
303-494-3943 • [eldorado.park@state.co.us](mailto:eldorado.park@state.co.us)

A stunning canyon with towering sandstone cliffs, outstanding rock climbing, 1.6 billion years of geology on display and the flora and fauna of a foothills canyon...all in the backyard of the city of Boulder. Visitors will find this and more when they go in search of Eldorado.

With more than 500 technical routes up scenic cliffs with names like Wind Tower, The Bastille and Whale's Tail, Eldorado is a mecca for rock climbers from around the world. The park's popularity makes weekends and holidays from May through September very busy, so it's best to visit on weekdays in the warm months.

Trails for hiking and mountain biking vary from easy to difficult and connect with Boulder's trail system. Visitors can picnic, fish in South Boulder Creek and watch for mule deer, elk, golden eagles, wild turkeys and other wildlife. Large colonies of bats breed in summer in the caves of the Inner Canyon. Winter visitors can enjoy cross-country skiing and snowshoeing.



The park's two separate parcels — Inner Canyon and Crescent Meadows — are connected by the 3 ¼-mile Eldorado Canyon Trail, with an elevation change of 1,000 feet. Eldorado is a day-use only park. It closes at sunset and camping is not permitted. Camping is available, however, at nearby Golden Gate Canyon and St. Vrain state parks.

**WORLD CLASS CLIMBING**

**DAY-USE ONLY**



**FACILITIES:** visitor center, picnic sites

**RECREATION:** hiking, ranger/nature programs, rock climbing, wildlife/bird viewing, biking, cross-country skiing/snowshoeing, fishing, geocaching, horseback trails, hunting (primitive weapons only at the Crescent Meadows property)

**DIRECTIONS:** From Hwy. 36, take the Superior/Louisville exit (McCaslin Blvd.); go S to Colo. 170, go W about 9 miles through Eldorado Springs. Park entrance is on W side of Eldorado Springs.

## 10. Eleven Mile

4229 County Road 92 • Lake George, CO 80827  
719-748-3401 • [eleven.mile.park@state.co.us](mailto:eleven.mile.park@state.co.us)



Water, water everywhere — for fishing, boating and fun! Ringed by high mountains, this 3,400 acre reservoir at 8,600 feet elevation offers trophy-sized fishing opportunities for rainbow, brown and cutthroat trout and northern pike. Some of the largest fish ever caught in the state have been pulled from these waters. Visitors may enjoy motor boating, kayaking, canoeing, sailing or windsurfing — full-body wetsuit recommended. Strong winds, high waves and fast-moving storms may challenge boaters. Swimming, water skiing, wading and

scuba diving are not allowed. The park has 348 tent, trailer and motor home campsites, scattered around the reservoir at nine separate campgrounds. For the slightly more adventurous, 25 of the sites are walk-in/boat-in backcountry sites. Wildlife watchers may spot pronghorn, elk, deer, bobcats, coyotes and various other mammals. Birders should keep an eye out for a variety of songbirds, raptors, waterfowl and shorebirds, and may spot bald eagles, American white pelicans and peregrine falcons. Hunting is permitted in certain areas of the park in-season. In the 4,000 acres of land around the reservoir, visitors can hike or bike nearly five miles of scenic trails in the Coyote Ridge/Backcountry area. Motorized vehicles are only allowed on designated roads.



**5** HIKING MILES

**348** CAMPSITES



**FACILITIES:** visitor center, boat ramps, boat rental, dump station, campsites with electric, laundry, marina, mooring/docking, picnic sites, shower

**RECREATION:** biking, boating, cross-country skiing/snowshoeing, fishing, geocaching, hiking, hunting, ice fishing, ice skating, ranger/nature programs, wildlife/bird viewing, winter camping

**DIRECTIONS:** From Colorado Springs, take Hwy. 24 W 38 miles until you get 1 mile W of town of Lake George. Then turn S on CR 90 and go 6 miles to CR 92. Go S on CR 92 for 5 miles to park.



## 11. Elkhead Reservoir

135 County Rd. 28, Craig, CO 81625  
970-276-2061 • [yampa.river@state.co.us](mailto:yampa.river@state.co.us)

Surrounded by the rolling hills, farmland and sagebrush prairie of the beautiful Yampa Valley, Elkhead Reservoir is like an oasis in the high desert. As the only water recreation site in Moffat County, it offers 900 water acres for boating, water and jet skiing, as well as swimming at the seasonal swim beach or from boats in the no-wake areas. Anglers can try their luck for warm-water species including bass, northern pike, crappie and catfish. Numerous picnic sites offer shelters, grills and tables, or visitors can hike, bike or ride horses along short trails that follow the lakeshore to more remote spots. Hunting is allowed in designated areas around the reservoir in-season. Bear's Ears campground has 15 basic sites available on a first-come basis. The campground does not have water, power or sewer.



Birdwatchers have a good chance of seeing bald and golden eagles, osprey, and red-tailed, Swainson's and rough-legged hawks. Water and shorebirds include buffleheads, goldeneyes, ruddy ducks, sandhill cranes and pelicans. Cliff swallows nest in colonies near the dam and greater sage-grouse are sometimes seen in the area.

Winter recreation includes ice fishing, cross-country skiing and snowshoeing. Winter is also when large herds of elk gather in the sagebrush and stubblefields around the lake.



**FACILITIES:** basic campsites, boat ramps, picnic sites

**RECREATION:** biking, boating, cross-country skiing/snowshoeing, fishing, hiking, horseback trails, hunting, ice fishing, jet skiing, sail/paddle sports, swimming, water skiing, wildlife viewing

**DIRECTIONS:** From Hayden, follow Hwy. 40 west 11 miles to County Road 29. Turn right and follow 5 miles to CR 28. Turn right and follow .6 miles to the park access road on the left.

## 12. Golden Gate Canyon

92 Crawford Gulch Road • Golden, CO 80403  
303-582-3707 • [dnr\\_goldengatepark@state.co.us](mailto:dnr_goldengatepark@state.co.us)

A mountain getaway close to the city. That's what the 12,000 scenic acres of mountain, meadow and forest at Golden Gate Canyon offer visitors. Just 30 miles west of Denver, this park is a wonderful choice for a close-in high-country hike or weekend getaway. The 100-mile view of the Continental Divide from Panorama Point Scenic Overlook is worth the price of admission! More



than 35 miles of trails offer experiences from casual to difficult. Mountain bikes and horses are allowed on multi-use trails. There's hunting, rock climbing (permit required to place fixed hardware), campfire and kids' programs, and six fishing ponds that are stocked regularly. Nature

lovers will find endless chances for bird watching, wildlife viewing, plant identification or just enjoying the outdoors.

With a choice of ways to spend the night in the park, there's no need to end your visit early. There are two campgrounds, 20 first-come, first-served backcountry campsites (no fires allowed), five cabins and two yurts open year-round. The 8-person Harmsen Ranch Guest House, Works Ranch Group Camping Area and Rifleman Phillips Campground offer options for family reunions or other group gatherings. Winter is a great time to see the park in a different light. Visitors can cross-country ski, snowshoe, sled, ice fish and ice skate. Families can search for that perfect tree during the annual Christmas Tree Cut.



35  
TRAIL MILES

5  
CABINS



**FACILITIES:** visitor center, basic campsites, cabins, campsites with electrical, dump station, group campgrounds, group picnic area, picnic sites, primitive campsites, laundry, shower, yurts

**RECREATION:** biking, cross-country skiing/snowshoeing, fishing, geocaching, hiking, horseback trails, hunting, ice fishing, ice skating, ranger/nature programs, rock climbing, snow tubing, wildlife viewing, winter camping

**DIRECTIONS:** Take I-70 W, exit Hwy. 58, go 5 miles to Hwy. 93. Go N 1.5 miles to Golden Gate Canyon Road; turn left and go 13 miles to the visitor center.



## 13. Harvey Gap

5775 Highway 325 • hRifle, CO 81650  
970-625-1607 • [rifle.gap.park@state.co.us](mailto:rifle.gap.park@state.co.us)

Fishing is the main draw at Harvey Gap, a day-use park six miles east of Rifle Gap State Park. Anglers will find top-notch fishing for rainbow trout and northern pike year-round, as well as catfish, large- and smallmouth bass, perch, muskie and crappie. Only nonmotorized craft and boats with motors of 20 horsepower or less are allowed.

Situated at 6,400 feet amid piñon-juniper woodlands and sagebrush, the park offers a scenic place for a day in the outdoors. The dramatic Grand Hogback runs along the south end of



the reservoir. Birdwatchers may spot a variety of migrating and resident birds, including songbirds and raptors in the vegetation around the reservoir, and waterfowl and shorebirds on and near the water.

Mule deer are often seen, as well as rabbits, coyotes, raccoons, chipmunks and ground squirrels. There are numerous shady picnic sites beneath the cottonwoods along the water's edge, and a swim beach along the south shore. To preserve Harvey Gap's natural state, no camping or pets are permitted in the park. Visitors can camp at nearby Rifle Falls and Rifle Gap state parks.



Waterfowl can be hunted on the north side of the reservoir in-season. Hunting dogs are allowed in the park only during hunting season and only in that area.

**DAY-USE ONLY**



**FACILITIES:** picnic sites, boat ramp

**RECREATION:** boating, cross-country skiing/snowshoeing, fishing, hunting, ice fishing, ice skating, sail/paddle sports, snow tubing, swimming, wildlife/bird viewing

**DIRECTIONS:** From Silt, go W on Hwy. 6/24 to First Street. Turn N on First Street and go 1.2 miles to Silt Mesa Rd. Go W 0.7 of a mile to Harvey Gap Rd. (CR 237). Go N, follow Harvey Gap Rd. for 3.4 miles to park.

## 14. Highline Lake

1800 11.8 Road • Loma, CO 81524  
970-858-7208 • [highline.park@state.co.us](mailto:highline.park@state.co.us)

Water, sunshine and fun make Highline Lake a mecca for water lovers in the Grand Valley. Jet and water skiers, paddle boarders, swimmers and boaters of all kinds can enjoy the warm waters. The lake is open to boating March 1 to September 30 and often reaches boat capacity on summer weekends, so arrive early. The swim beach is open May 1 to September 30. The lakes provide great warm-water fishing for largemouth bass, channel catfish and crappie and are stocked each spring and fall with rainbow trout. Bookcliff Campground, open year-round, offers 36 sites accommodating both tents and RVs. Reservations are highly recommended. The retail store sells books, fishing bait, ice, firewood and camping supplies. For a quieter day, the much smaller Mack Mesa Lake offers bird watching, fishing and boating for hand-propelled and electric craft. The Highline Lake Trail is a 3.5 mile loop with many out-and-back legs providing over 9 miles of trails for hiking, mountain biking and good wildlife watching opportunities. There are numerous regional trails within minutes of the park.

Thousands of birds migrate through in spring and fall, and the National Audubon Society has designated the park an Important Bird Area. Birdwatchers will find more than 200 species, including bald and golden eagles, herons, pelicans, egrets, cranes and a variety of other birds. In hunting season, seven blinds are open to waterfowl hunters Monday through Friday.



**2**  
BOAT RAMPS

**36**  
CAMPSITES



**FACILITIES:** visitor center, basic campsites, boat ramps, dump station, group campground, group picnic area, laundry, picnic sites, showers

**RECREATION:** biking, boating, cross-country skiing/snowshoeing, fishing, geocaching, hiking, horseback trails, hunting (small game and waterfowl), ice fishing, ice skating, jet skiing, ranger/nature programs, sail/paddle sports, swimming, water skiing, wildlife/bird viewing, winter camping

**DIRECTIONS:** From the Loma exit on I-70, (Hwy. 139), go N 5 miles to Q Road, then W 1.2 miles to 11.8 Road and N 1 mile to the park.



## 15. Jackson Lake

26363 County Road 3 • Orchard, CO 80649  
970-645-2551 • [dnr\\_jackson.lake@state.co.us](mailto:dnr_jackson.lake@state.co.us)

Waterfowl hunting used to be the main attraction at Jackson Lake...but then water sports took off. Now warm summer days find jet and water skiers, sailboarders and boaters of all kinds



enjoying the lake. The swim beach was ranked among the “Top 15 Park Beaches” by Reserve America. Walleye, saugeye, catfish, perch, rainbow trout, crappie and wipers will keep anglers busy, even in winter. Hunters will find waterfowl,

pheasant, upland bird and archery deer hunting. There’s an OHV track and two geocaching sites. The year-round campgrounds have 260 sites, accommodating campers, trailers or tents, as well as primitive campsites.

Birdwatchers will discover a variety of birds attracted to this cottonwood-lined reservoir on the Eastern Plains, including bald eagles, hawks, herons and grassland and riparian songbirds. Rafts of American white pelicans are common in summer. The park’s location on the Central Flyway means lots of migrating waterfowl and shore and wading birds, even long-billed curlews and an occasional whooping crane. Any time of year wildlife watchers might see white-tailed or mule deer, coyotes, red foxes, cottontails, jackrabbits and tree and ground squirrels. Visitors can discover several trails or wander along the lake edge. The quieter winter months are great for wildlife discovery, photography, ice fishing and winter camping.



<b>60</b> PICNIC SITES	<b>260</b> CAMPSITES	<p><b>FACILITIES:</b> visitor center, boat ramp, boat/jet ski rental, campsites with electrical, dump station, group campground, group picnic area, laundry, marina, mooring/docking, picnic sites, shower</p> <p><b>RECREATION:</b> biking, boating, cross-country skiing/snowshoeing, fishing, hiking, hunting, ice fishing, ice skating, jet skiing, OHV, ranger/nature programs, sail/paddle sports, swimming, water skiing, wildlife/bird viewing, winter camping</p> <p><b>DIRECTIONS:</b> From Hwy. 34 and I-76 interchange, go N 7.25 miles on Colo. 39, through Goodrich. Then go W on Y.5 (follow paved road) for 2.5 miles.</p>

## 16. James M. Robb – Colorado River: Connected Lakes Section

PO Box 700 • Clifton, CO 81520  
970-434-3388 • [colorado.river.park@state.co.us](mailto:colorado.river.park@state.co.us)

A string of pearls. That’s what the five sections of this park are like, strung along the Colorado River corridor. One of America’s greatest rivers is the attraction here, and each pearl offers separate access and has its own diversions and its own trails.

Connected Lakes is a day-use area where visitors can picnic, fish, hike, watch wildlife, boat and access the river. Five miles of trails wind around its three lakes. Only hand-propelled or sail watercraft and boats with electric motors are permitted on the lakes. Visitors can raft, tube and canoe on the river or obtain trips, lessons and equipment rental from area outfitters.

<b>DAY-USE ONLY</b>	<p><b>FACILITIES:</b> boat ramp, picnic sites</p> <p><b>RECREATION:</b> biking, boating, fishing, hiking, geocaching, ice fishing, ice skating, ranger/nature programs, sail/paddle sports, wildlife/bird viewing</p> <p><b>DIRECTIONS:</b> Travel NW 0.2 miles on Power Rd. from its intersection with Hwy. 340/Broadway in SW Grand Junction. Turn right on Dike Road and continue to travel NW until Dike Road ends at the entrance to the park.</p>





## 16. James M. Robb – Colorado River: Corn Lake Section

361 32 Rd • Clifton, CO 81520  
970-434-3388 • [colorado.river.park@state.co.us](mailto:colorado.river.park@state.co.us)

Corn Lake is a day-use only area, with riverfront trail access, fishing, picnicking and river access for boating and rafting.

**DAY-USE ONLY**



**FACILITIES:** boat ramp, picnic sites  
**RECREATION:** biking, boating, fishing, hiking, horseback trails, hunting, geocaching, ice fishing, ice skating, ranger/nature programs, wildlife viewing  
**DIRECTIONS:** Take I-70 exit 37 south. Continue south on I-70 business loop before turning left on Hwy. 141/32 Rd. towards Delta. Drive 2 miles south and the park will be on the right just prior to the Colorado River.



## Island Acres Section

Exit 47 off of I-70, East of Palisade • Fruita, CO 81521  
970-464-0548 • [colorado.river.park@state.co.us](mailto:colorado.river.park@state.co.us)

Island Acres with its four lakes is a scenic place for swimming, fishing, picnicking and hiking. Camping is available at Island Acres and Fruita, and reservations are recommended on summer weekends. Only hand-propelled or sail watercraft and boats with electric motors are permitted on the lakes at Island Acres, Corn Lake, Connected Lakes and Fruita.

**80 CAMPSITES**



**FACILITIES:** basic campsites, campsites with electric, dump station, full-hookup campsites, group picnic area, laundry, picnic sites, shower  
**RECREATION:** biking, boating, fishing, geocaching, hiking, ice fishing, ice skating, ranger/nature programs, sail/paddle sports, swimming, wildlife viewing  
**DIRECTIONS:** Take Exit 47 off I-70; follow signs.

## 16. James M. Robb – Colorado River: Fruita Section

595 Highway 340 • Fruita, CO 81521  
970-858-9188 • [colorado.river.park@state.co.us](mailto:colorado.river.park@state.co.us)

Fruita, with wonderful views of Colorado National Monument and the Book Cliffs, is a great spot for camping, fishing, boating, bird watching and hiking or biking the river trail.

Camping is available at Island Acres and Fruita and reservations are recommended on summer weekends.

Only hand-propelled or sail watercraft and boats with electric motors are permitted on the lakes at Island Acres, Corn Lake, Connected Lakes and Fruita.

**16 PICNIC SITES** **57 CAMPSITES**



**FACILITIES:** visitor center, basic campsites, boat ramp, campsites with electric, dump station, full-hookup campsites, group campground, group picnic area, laundry, picnic sites, shower

**RECREATION:** biking, boating, fishing, geocaching, hiking, ice fishing, ice skating, ranger/nature programs, sail/paddle sports, wildlife viewing

**NOTE:** Swim beach closed indefinitely  
**DIRECTIONS:** Take I-70 to Exit 19 at Fruita. Go S on Hwy. 340 for 0.5 of a mile to entrance on W.

## Colorado River State Wildlife Area and Pear Park Section

P.O. Box 700 • Clifton, CO 81520  
970-434-3388 • [colorado.river.park@state.co.us](mailto:colorado.river.park@state.co.us)

The many small lakes of the Colorado River State Wildlife Area and Pear Park are critical habitat for endangered Colorado River fishes. Boating is not allowed and fishing is restricted, making it a quiet place for hiking and nature observation.



**DAY-USE ONLY**



**FACILITIES:** n/a

**RECREATION:** biking, fishing, geocaching, hiking, horseback trails, wildlife/bird viewing

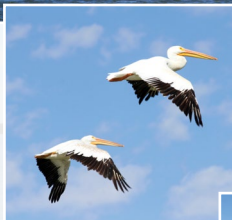
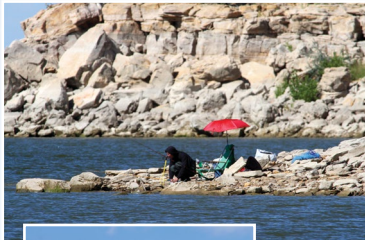
**DIRECTIONS:** Travel W. from Corn Lake on D Rd. Turn left into the park approximately 1/4 mile west of 31 Rd.



## 17. John Martin Reservoir

30703 County Road 24 • Hasty, CO 81044  
719-829-1801 • [johnmartin.statepark@state.co.us](mailto:johnmartin.statepark@state.co.us)

The treasure of water on the dry Eastern Plains...that's what attracts birds, wildlife and people to John Martin Reservoir. Built along the Arkansas River, this large reservoir is a mecca for birdwatchers and a major site along the Colorado Birding Trail. Nearly 400 species have been documented on the water, along the shore and in surrounding woodlands and grassy uplands.



Least terns and piping plovers, two federally protected species, nest here in spring and summer. Boating, swimming, water skiing and wind-water sports of all kinds are offered on this large lake, and its campground is a popular weekend destination. Whether from boat or shore, anglers can catch walleye, saugeye, bass, wiper, crappie, perch and catfish.

Away from the water, visitors can seek out six geocache locations, and hike, bike or ride horses through prairie grasses or cottonwood groves. The park is closed to hunting but the campground makes a good base camp for hunting in the adjacent John Martin State Wildlife Area.



## 18. Lake Pueblo

640 Pueblo Reservoir Road • Pueblo, CO 81005  
719-561-9320 • [lake.pueblo.park@state.co.us](mailto:lake.pueblo.park@state.co.us)

Boating, fishing, water sports, abundant nature, a mild climate and a stunning setting where the mountains meet the plains make Lake Pueblo among the top destinations in the state. Located along the Arkansas River with 4,600 water acres surrounded by 12,000 acres of land, the park offers a nearly endless list of outdoor recreation. There's sailing and sailboarding, power boating, jet and water skiing. Kayakers, rafters and tubers can enjoy the Arkansas River below the dam, as well as the tailwaters. The lake is a prime fishing spot offering large- and smallmouth bass, walleye, wiper, catfish and trout. On land there's bird watching, picnicking and small-game and waterfowl hunting. Various trails, both paved and natural, and from easy to challenging, beckon hikers and mountain bikers of all skill levels. The paved Pueblo River Trail connects the park to the city of Pueblo for easy access.



Two marinas and boat ramps and three campgrounds with 400 campsites, both basic and full-hookup, serve visitors seasonally. Swimming is allowed only at the Rock Canyon Swim Beach, open Memorial Day through Labor Day.

213  
CAMPSITES

2  
BOAT RAMPS



**FACILITIES:** visitor center, basic campsites, boat ramps, campsites with electric, dump station, group campground, group picnic area, laundry, picnic sites, showers

**RECREATION:** biking, boating, cross-country skiing/snowshoeing, fishing, geocaching, hiking, horseback trails, ice fishing, ice skating, jet skiing, ranger/nature programs, sail/paddle sports, swimming, water skiing, wildlife/bird viewing, winter camping

**DIRECTIONS:** Take Hwy. 50 W from Lamar about 20 miles to Hasty. Go S on School Street (CR 24); go 2 miles to park entrance.

400  
CAMPSITES

150  
PICNIC SITES



**FACILITIES:** visitor center, basic campsites, boat ramps, boat rental, campsites with electrical, dump station, fish-cleaning station, group picnic area, marinas, picnic sites, showers (seasonal)

**RECREATION:** biking, boating, fishing, hiking, horseback trails, hunting, jet skiing, ranger/nature programs, sail/paddle sports, swimming, wildlife/bird viewing, water skiing, winter camping

**DIRECTIONS:** From I-25 at Pueblo, Exit No. 101; go 2.5 miles W on Hwy. 50. Turn S on Pueblo Blvd., go 4 miles to Thatcher Ave. Turn W, go 4 miles to park entrance.



## 19. Lathrop

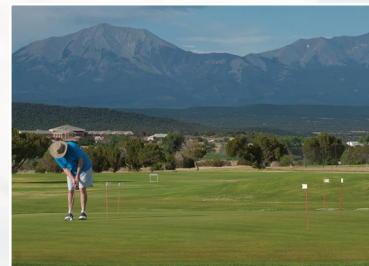
70 County Road 502 • Walsenburg, CO 81089  
719-738-2376 • [lathrop.park@state.co.us](mailto:lathrop.park@state.co.us)

With a panoramic view of the Spanish Peaks, this park lies at a crossroads of early Colorado history. Rising high above the prairie, the two peaks were prominent landmarks for Native Americans, settlers, trappers and explorers.

Lathrop was established in 1962 as Colorado's first state park. Stocked with trout, catfish, muskie, bass, walleye, bluegill and crappie, its two lakes offer great fishing. Kids will enjoy the youth fishing pond. Martin Lake is the place for jet and water skiing and power boating, as well as sailing and sailboarding. Swimmers enjoy its warm waters from the swim beach. Designated a wakeless lake, Horseshoe Lake beckons to canoeists, kayakers, sailors and other low-speed boaters and anglers looking for the elusive tiger muskie.



Not interested in the water? Bring your clubs. Lathrop's nine-hole golf course is the only course in a Colorado state park. There's also an archery practice range, 13 geocache sites and an equestrian trail. Hikers will enjoy fine views of the Spanish



Peaks, Greenhorn Mountain and Pikes Peak from park trails. The Hogback Trail is hikers only, but cyclists can peddle the Cuerno Verde Trail.

Picnicking is big here, with every table located lakeside! Lathrop has 103 campsites offering basic or improved camping. Bird and wildlife watchers can see a variety of species in the park's wetland, riparian, grassland and piñon-juniper habitats. Waterfowl and

9-HOLE  
GOLF  
COURSE

2  
BOAT RAMPS



**FACILITIES:** visitor center, archery range, basic campsites, boat ramps, dump station, campsites with electrical hookups, group camping, group picnic area, picnic sites, showers

**RECREATION:** biking, boating, fishing, hiking, horseback trails, hunting, jet skiing, ranger/nature programs, sail/paddle sports, swimming, water skiing, wildlife/bird viewing, winter camping

**DIRECTIONS:** From Walsenburg, go 3 miles W on Hwy. 160.

## LM. Lone Mesa

1321 Railroad Ave, PO Box 1047 • Dolores, CO, 81323  
970-882-2213 • [lone.mesa.park@state.co.us](mailto:lone.mesa.park@state.co.us)

This nearly 12,000-acre property in the southwest corner of the state encompasses wonderful scenery and terrain ranging from 7,200 feet to just over 9,000 feet in elevation. Management of this park currently includes inventorying and stewardship of its unique and rare natural resources along with providing a high-quality public hunting opportunity. Four of the rarest Colorado native plant species are known to exist here, including one that was discovered on—and named after—the park. The outstanding elk, deer and bear habitat of Lone Mesa along with low hunter densities help provide the high quality of the park's public hunting. The hunt requires a special-use permit, limited in number, and obtained through an annual drawing process. Volunteer projects, scheduled education and research activities, and big-game hunting are currently the only public access opportunities to this property. However, CPW continues to plan for additional public recreation and associated infrastructure here. Additional park information, area public lands information, along with OHV, snowmobile and boat registration and wildlife licensing services are provided at the Lone Mesa office in the town of Dolores.



© 2010 JOHN FIELDER AND THE GREAT OUTDOORS COLORADO TRUST FUND

HUNTING BY  
SPECIAL USE  
PERMIT ONLY



**NOTE:** While the park is currently closed pending development planning, high-quality big-game hunting is provided by a special-use permit program during big-game seasons. Call for information.

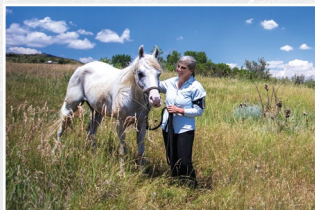
**DIRECTIONS:** From Dolores, take USFS roads 526 N then 514 W to park.



## 20. Lory

708 Lodgepole Drive • Bellvue, CO 80512  
970-493-1623 • [lory.park@state.co.us](mailto:lory.park@state.co.us)

Shaded pine forests, grassy meadows, sunny slopes grown with shrubs. Unique rock formations, sandstone hogbacks...and trails threading around and through them all. This 2,591-acre foothills gem is the place in the northern Front Range to get out and discover what outdoor recreation is all about. At Lory you can hit the trail for mountain biking, hiking and horseback riding, enjoy one of five picnic areas or discover a secluded spot all your own. Adjacent to Horsetooth Reservoir, Lory's rolling valleys and mountainous hillsides offer nearly 26 miles of trails whose grades rarely exceed 12 percent. From easy to difficult, and short, long and in between, the trails wind through granite-walled arroyos with rushing



streams, pine-scented forests and meadows blooming with wildflowers. Some trails are closed to bikes and horses. The Corral Center Mountain Bike Park provides nearly 70,000 square feet of riding terrain with dirt jumps, a pump track and a skills area. Rock climbers will find both bouldering and traditional climbing. There is only



primitive, backcountry camping in the park. Winter has opportunities for snowshoeing and cross-country skiing. If a quieter outing is more your style, the birds, wildlife and plants of the Colorado foothills found at Lory let you enjoy nature, just minutes from Fort Collins.

### MOUNTAIN BIKE TERRAIN PARK



**FACILITIES:** visitor center, group picnic area, picnic sites, primitive camping

**RECREATION:** biking, cross-country skiing/snowshoeing, fishing, geocaching, hiking, horseback trails, hunting, ranger/nature programs, rock climbing, snow tubing, wildlife viewing, winter camping

**DIRECTIONS:** From Ft. Collins, go north on Hwy 287, staying straight when the highway forks north and following County Rd. 54G into LaPorte. Continue west to Bellvue and turn left on Rist Canyon Rd. (52E). Follow one mile to County Rd. 23N. Turn left and follow 1.4 miles to Lodgepole (25G). Turn right and travel 1.6 miles to park entrance.

## 21. Mancos

42545 County Road N. • Mancos, CO 81328  
970-533-7065, 970-882-2213 off season  
[mancos.park@state.co.us](mailto:mancos.park@state.co.us)

Surrounded by the stunning scenery of the San Juan Mountains and the archaeological mysteries of southwestern Colorado, Mancos is a great destination for a vacation or getaway any time of year. The calm waters of Jackson Gulch Reservoir offer spring, summer and fall recreation for canoeists, kayakers and wakeless power boaters. Swimming and water skiing are not permitted. Anglers will find abundant yellow perch, and the lake is stocked with rainbow trout in spring and summer. Winter visitors can enjoy cross-country skiing, snowshoeing and ice fishing.



Up for exploring on foot, by bike or on horseback? The park's 5.2 miles of trails connect to a network of trails in the national forest, as well as the Colorado Trail.

Located just 12 miles from Mesa Verde National Park and close to the Anasazi Heritage Center, Durango-Silverton Narrow Gauge Railroad and the San Juan National Forest, Mancos makes a great camping headquarters for touring the area. Nestled in the shade of a ponderosa pine forest, the 23-site main campground has water and vault toilets but no electrical hookups. Nine rustic tent sites on the northwest side of the lake have restrooms but no water. Two cabin-like, heated yurts offer a unique overnight experience.



### 2 YURTS



**FACILITIES:** basic campsites, boat ramp, dump station, group picnic area, picnic sites, yurts

**RECREATION:** biking, boating, cross-country skiing/snowshoeing, fishing, hiking, horseback trails, ice fishing, ranger/nature programs, wildlife/bird viewing, winter camping

**DIRECTIONS:** From Durango, take Hwy. 160 W 27 miles to Mancos. Go N on Hwy. 184 approximately 0.25 of a mile, turn E on CR 42 (USFS Rd. 561). Go 4 miles and take CR 'N' to park entrance.



## 22. Mueller

21045 Highway 67 South • Divide, CO 80814  
719-687-2366 • [mueller.park@state.co.us](mailto:mueller.park@state.co.us)

Hushed forests, spring-fed mountain meadows, wildflowers of every hue, massive granite rock formations and the iconic form of Pikes Peak rising above. At Mueller, visitors can enjoy a wonderful outing in the mountains within easy drive of Front Range communities.



With more than 5,100 acres of terrain, Mueller is an outstanding destination for nature study, wildlife viewing and outdoor recreation. Its forests of spruce, fir, pine and aspen, and meadows of native grasses and wildflowers, are home to elk, mule deer, black bears, bobcats, mountain lions, pine squirrels, many small mammals and more than 100 species of birds.

Visitors will discover great activities any time of year. Explore the 44 miles of trails on foot, mountain bike or horseback, find a secluded picnic spot, fish a backcountry trout pond, watch birds, discover the four geocaches and hunt in the 800-acre hunting

area. In winter there's cross-country skiing, snowshoeing and sledding. Extend your visit with a stay at one of the park's three furnished log cabins. Or try the campground, located in a mountain forest with panoramic views of the Continental Divide.

Leashed pets are welcome in the campground, at picnic areas and on paved roads but are not allowed on any trails, in the backcountry or at ponds.



44  
TRAIL MILES

3  
CABINS



**FACILITIES:** visitor center, basic campsites, cabins, campsites with electric, dump station, group campground, laundry, picnic sites, showers

**RECREATION:** biking, cross-country skiing/snowshoeing, fishing, hiking, horseback trails, geocaching, hunting, ranger/nature programs, snow tubing, wildlife/bird viewing, winter camping

**DIRECTIONS:** From Colorado Springs, go 25 miles W on Hwy. 24 to Divide. Go S on Hwy. 67 for 3.5 miles to park entrance.

## 23. Navajo

1526 County Road 982 • Arboles, CO 81121  
970-883-2208 • [navajo.park@state.co.us](mailto:navajo.park@state.co.us)

Some call it "Colorado's Lake Powell." For sailors, houseboaters, motorboat enthusiasts, canoeists and anyone who enjoys water sports in a spectacular setting, Navajo Reservoir may be just that. Extending 20 miles south into New Mexico along the San Juan River, and another 15 miles north along the Pine River, Navajo is a recreation paradise. Its 15,000 surface acres of water and 150 miles of shoreline offer nearly unlimited boating recreation under the sunny, southwestern sky. The full-service Two Rivers Marina has boat slips and mooring balls, boat rental, gas and supplies. Anglers can go after northern pike, trout, bluegill, large - and smallmouth bass, catfish and crappie. Two-thirds of the reservoir is in New Mexico, so visitors must observe that state's boating rules, and anglers south of the state line require a New Mexico fishing license.



An overnight stay is almost a must here, and there is a wide variety of campsites, from primitive tent sites to full-service hookups. Or guests can reserve one of three two-bedroom, fully-furnished log cabins.

Wildlife watchers may see deer, elk, foxes, beavers, muskrats, river otters, jackrabbits, prairie dogs and numerous bird species. In winter, bald eagles hunt along the lake and shore. The Sambrito

Wetlands and the watchable wildlife viewing area near the narrow gauge railroad bridge are particularly good spots to visit. There are some opportunities for deer, elk and bird hunting.



119  
CAMPSITES

3  
CABINS



**FACILITIES:** visitor center, basic campsites, boat ramp, boat rental, cabins, campsites with electrical, dump station, full-hookup campsites, laundry, marina, mooring/docking, picnic sites, primitive campsites, showers

**RECREATION:** biking, boating, cross-country skiing/snowshoeing, fishing, hiking, horseback trails, hunting, jet skiing, ranger/nature programs, sail/paddle sports, swimming, water skiing, wildlife/bird viewing, winter camping

**DIRECTIONS:** From Pagosa Springs, take U.S. 160 W 17 miles. Go SW on Colo. 151 for 18 miles to Arboles. Go 2 miles S on CR 982.



## 24. North Sterling

24005 County Road 330 • Sterling, CO 80751  
970-522-3657 • [north.sterling.park@state.co.us](mailto:north.sterling.park@state.co.us)

Boating, fishing, prairie sunshine and pioneer history come together at this nearly 3,000-acre reservoir on the Eastern Plains. Early settlers made their way past on the historic Overland Trail, and some stayed to build this irrigation reservoir that is now part of a state park. Today's visitors make their way here to sail, jet and water ski, canoe, paddleboard, powerboat or just relax and enjoy the majestic bluffs and expansive views of the Colorado prairie stretching miles to the horizon. Anglers will find an excellent warm-water fishery featuring wiper, walleye, channel catfish, yellow perch, bluegill, crappie and trout. There is swimming at the Cottonwood Cove Swim Beach, and the 3.5 mile South Shoreline Trail lets hikers, bikers and horseback riders explore the lakeshore. Wildlife watchers will find an abundance of prairie species including pronghorn,



mule deer, coyotes, jackrabbits, prairie dogs and various reptiles. This is a great place for bird watching, particularly in migration, with more than 275 species on the bird list. Winter is a good time to see bald eagles.

The three campgrounds offer 141 campsites, many with full hookups. All campgrounds have showers, restrooms and laundry facilities, making a multi-day stay at the park comfortable. There is hunting in designated areas, restricted to archery and shotguns with bird shot only.



**FACILITIES:** visitor center, archery range, boat ramps, basic campsites, campsites with electrical, dump station, group picnic area, laundry, marina, mooring/docking, picnic sites, primitive campsites, showers

**RECREATION:** biking, boating, cross-country skiing/snowshoeing, fishing, hiking, horseback trails, hunting, ice fishing, ranger/nature programs, sail/paddle sports, swimming, water skiing, wildlife/bird viewing, winter camping

**DIRECTIONS:** From the Sterling exit on I-76, go W on Chestnut Street (Hwy. 6). Go W via Platte Street, turn right on North 3rd, go 4 blocks. Turn left on Broadway and go 4 blocks. Turn right on North 7th Avenue, go 12 miles to reservoir.

## 25. Paonia

3111 County Rd 12, Somerset, CO 81434  
970-921-5721 • [crawford.park@state.co.us](mailto:crawford.park@state.co.us)

With the majestic Ragged Mountains rising above, and surrounded by the Gunnison National Forest, Paonia is a park nestled amid spectacular mountain scenery that can be a staging area for exploring the neighborhood or just relaxing.



The 334-acre lake along the North Fork of the Gunnison River offers opportunities for jet and water skiing, powerboating, sailing, sailboarding, canoeing and other water sports. Activities may vary as the water level changes on this long, narrow reservoir. When the reservoir is full, boats and skiers can travel up to two miles in one direction before having

to turn around. Visitors can fish in the reservoir from mid-June to mid-August, but may have better luck fly fishing for trout in streams below the dam. There are no hiking trails but visitors can picnic near the water. Two campgrounds offer 13 scenic but primitive campsites with no hookups and only vault toilets. There is no drinking water available at the park.

Paonia closes for winter between early October and May, and no services are available. Visitors can still explore and cross-country ski or snowshoe along the lake's shore.



**FACILITIES:** boat ramp, picnic sites, primitive campsites

**RECREATION:** boating, fishing, hunting, jet skiing, sail/paddle sports, water skiing, wildlife/bird viewing

**DIRECTIONS:** From Glenwood Springs, take Hwy. 82 S to Carbondale. At Hwy. 133, go S 46 miles.



## 26. Pearl Lake

c/o Steamboat Lake • 61105 RCR 129 • Clark, CO 80428  
970-879-3922 • [steamboat.lake@state.co.us](mailto:steamboat.lake@state.co.us)

Like a jewel nestled in the mountain forest of northern Colorado, Pearl Lake State Park is a place of beauty and quiet at the base of Farwell Mountain. Visitors will find outdoor diversions that are uncomplicated and lowtech — hiking, picnicking, camping, fishing, wakeless boating and wildlife watching. On the watchable



wildlife viewing deck, visitors can sit back and let wildlife come into view. The shoreline trail edges the lake and links hikers and bikers with thousands of acres in the Routt National Forest. Anglers will discover excellent fly and lure fishing for native cutthroat

trout and grayling. Campers can set up on the shoreline or on a ridgeline with superb views. Those who want full-service camping should look elsewhere as the campground offers no-frills camping with no electrical hookups. Flush restrooms and water hydrants are available. For a different experience, visitors can enjoy an overnight in one of the park's two yurts. Winter activities include the quiet beauty of snowshoeing, cross-country skiing and ice fishing.



34  
CAMPSITES

2  
YURTS



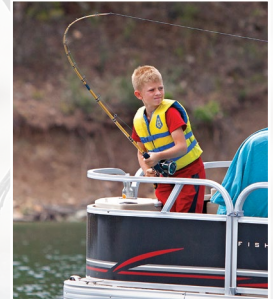
**FACILITIES:** boat ramp, basic campsites, picnic sites, yurts  
**RECREATION:** biking, boating, cross-country skiing/snowshoeing, fishing, hiking, horseback trails, hunting, ice fishing, snowmobiling, wildlife viewing

**DIRECTIONS:** From Steamboat Springs, go W 2 miles on Hwy. 40 to CR 129. Turn N and go 23 miles to Pearl Lake Rd. Go E 2 miles to park.

## 27. Ridgway

28555 Highway 550 • Ridgway, CO 81432  
970-626-5822 • [ridgway.park@state.co.us](mailto:ridgway.park@state.co.us)

With the jagged peaks of the San Juan Mountains as a backdrop and the lush Uncompahgre River Valley all around, Ridgway is among the most beautiful parks in the state. Admiring the view is just one of the many diversions here. The waters of Ridgway Reservoir offer boating of all kinds, sailing, swimming and water skiing. Anglers can try their luck for kokanee salmon, rainbow and brown trout in the reservoir, and have a choice of fishing ponds or fly fishing along the Uncompahgre River. Wildlife viewing is outstanding. Visitors might see elk and deer, golden and bald eagles, osprey, foxes, marmots, even the occasional mink. More than 140 species of birds have been recorded here. Hikers, bikers and strollers can explore 16 miles of trails winding through the park. There are three geocache sites. Overnighting here is a special treat. Choices at the three campgrounds include full-service RV sites, electric, tents-only areas, many with elevated tent pads and even three heated yurts!



**FACILITIES:** visitor center, basic campsites, boat ramp, campsites with electrical, dump station, full-hookup campsites, group picnic area, fish-cleaning station, laundry, mooring/docking, picnic sites, showers, yurts

**RECREATION:** biking, boating, cross-country skiing/snowshoeing, fishing, geocaching, hiking, hunting, ice fishing, ice skating, jet skiing, ranger/nature programs, sail/paddle sports, snow tubing, swimming, water skiing, wildlife/bird viewing, winter camping

**DIRECTIONS:** From Montrose, go 20 miles S on Hwy. 550.



## 28. Rifle Falls

5775 Highway 325 • Rifle, CO, 81650  
970-625-1607 • [rifle.gap.park@state.co.us](mailto:rifle.gap.park@state.co.us)

A 70-foot, triple waterfall, with crashing water, misty clouds of spray, dripping moss, lush vegetation and mysterious limestone caves makes Rifle Falls a spectacular destination. *Sunset* magazine named it one of the “10 Best Waterfalls” in the West. With its unique and beautiful setting, this popular park attracts movie crews and photographers from all over. The 50-seat Mountain



Mist Amphitheater is popular for weddings and special events. Three hiking trails wander along East Rifle Creek through lush riparian habitat to an overview at the top of the falls, the caves beyond and on to the very interesting Rifle Falls Fish Hatchery. Bring a flashlight if you plan on exploring the cave with the soaring, 90-foot room! There is good trout fishing in the creek. The small

campground offers drive-in and walk-in campsites and reservations are recommended. The park is very popular, especially in summer, so plan ahead and arrive early.



**12**  
PICNIC SITES



**FACILITIES:** campsites with electrical, picnic sites, primitive camping  
**RECREATION:** biking, cross-country skiing/snowshoeing, fishing, hiking, ranger/nature programs, winter camping  
**DIRECTIONS:** From I-70 exit at Rifle, take Hwy. 13 N through Rifle 3 miles. Turn right on Hwy. 325 and go 9.8 miles.

## 29. Rifle Gap

5775 Highway 325 • Rifle, CO, 81650  
970-625-1607 • [rifle.gap.park@state.co.us](mailto:rifle.gap.park@state.co.us)

Do you enjoy boating, fishing, sailing, water skiing, swimming or other water sports? Then you'll love the clean, clear waters of Rifle Gap Reservoir, set at the foot of the majestic Grand Hogback. Year-round fishing offers near-record perch and northern pike, as well as trout, bass and walleye. The park is known as a top ice-fishing destination. Five campgrounds provide tent and drive-in sites and full service facilities. Swimming is allowed only at the swim beach.



Wildlife watchers may see mule deer, elk, coyotes, weasels, rabbits, ground squirrels and great horned owls — often right from their campsite. Herons, osprey, golden and bald eagles and a variety of waterfowl are often seen on, around or flying over the reservoir. Lucky visitors may spot beavers along the creek and small lizards sunning on the rocks. There are no trails for hiking or biking in the park, but there is easy access to adjacent Bureau of Land Management (BLM) land and trails.

**14**  
PICNIC SITES

**88**  
CAMPSITES



**FACILITIES:** visitor center, boat ramp, dump station, group picnic area, picnic sites, primitive campsites  
**RECREATION:** biking, boating, cross-country skiing/snowshoeing, fishing, hunting, ice fishing, ice skating, jet skiing, ranger/nature programs, sail/paddle sports, snow tubing, swimming, water skiing, wildlife viewing, winter camping  
**DIRECTIONS:** From I-70 exit at Rifle, take Hwy. 13 N through Rifle 3 miles. Turn right on Hwy. 325 and go 6 miles.



## 30. Roxborough

4751 East Roxborough Drive • Roxborough, CO 80125  
303-973-3959 • [roxborough.park@state.co.us](mailto:roxborough.park@state.co.us)

When it comes to representing “old Colorado,” early ranches and homesteads have nothing on this park’s headliners — million-year-old sandstone monoliths jutting dramatically skyward. Hiking and nature study are foremost at this park. Hikers will find a variety of scenic trails of varying difficulty, including the 6.2-mile round-trip trail to the top of Carpenter Peak. The diversity of flora and fauna is particularly rich because of varying elevations and the park’s location where the mountains meet the prairie. Different plant communities grow on the shady versus sunny sides of the rock formations. Roxborough is a Colorado Natural Area, National Natural Landmark and Audubon Society Important Bird Area. The visitor center offers an active education, interpretation and nature-study program. To protect the park’s fragile ecosystem, pets are not permitted in the park, rock climbing is not allowed and bikes are restricted to the main roads. There are no picnic facilities, and water and restrooms are limited to the visitor center.



**DAY-USE ONLY**



**FACILITIES:** visitor center

**RECREATION:** hiking, cross-country skiing/snowshoeing, ranger/nature programs, wildlife/bird viewing

**DIRECTIONS:** Take C-470 to the Wadsworth exit. Go 4.4 miles S to Waterton Road; turn left and go 1.6 miles to North Rampart Range Road. Turn right and go 2.3 miles to Roxborough Park Road; turn left and go 1 block to the park access road. Drive 2.2 miles on the access road to reach the visitor center.

## 31. St. Vrain

3525 State Highway 119 • Firestone, CO 80504  
303-678-9402 • [st.vrain.park@state.co.us](mailto:st.vrain.park@state.co.us)

American white pelicans sailing like ships, bald eagles patrolling the air, egrets and herons poised in the shallows, all with the twin summits of Longs Peak and Mount Meeker rising to the west, make St. Vrain a wonderful park for nature study or a day of recreation in the outdoors. Not to mention some spectacular Front Range sunsets! Ten ponds are currently open to public use, with four more under development, where visitors can fish for 15 different species. With ponds from tiny to large, it’s a great place for kids to learn to fish. Boating is limited to hand- or foot-propelled, or electric motor craft on the smaller ponds. On Blue Heron Reservoir, wakeless motors up to 10 horsepower are allowed. Hikers, bikers, photographers and birdwatchers will find 4 miles of easy trails and roads. Located where St. Vrain Creek empties from the mountains onto the plains, the diverse birdlife includes waterfowl, raptors and songbirds. The eight campgrounds are open year-round, though reservations are recommended spring through fall.



**14**  
PICNIC SITES

**87**  
CAMPSITES



**FACILITIES:** boat ramp, campsites with electrical, dump station (camp permit required), picnic sites, shower

**RECREATION:** biking, boating, cross-country skiing/snowshoeing, fishing, hiking, ice fishing, ice skating, ranger/nature programs, wildlife/bird viewing

**DIRECTIONS:** From I-25, go W on Hwy. 119, turn N on CR 7. Park is 7 miles E of Longmont.



## 32. Spinney Mountain

4229 County Road 92 • Lake George, CO 80827  
719-748-3401 • [eleven.mile.park@state.co.us](mailto:eleven.mile.park@state.co.us)

The view of the Collegiate Peaks is spectacular. The mountain air is clean and fresh. The birds and wildlife are abundant. But it's the fishing that makes Spinney Mountain a special place. Built along the South Platte River in South Park, this day-use-only park offers Gold Medal fishing waters, yielding trophy-sized cutthroat, rainbow and brown trout and northern pike. Only artificial lures and flies may be used. The park is great for bird watching, with more than 220 species of water, wading and shorebirds, raptors and songbirds. Boating, sailing and windsurfing (full-body wetsuit recommended) are allowed, but not water skiing, swimming, wading or scuba diving. There is no camping inside the park, but campers can stay at Eleven Mile State Park, seven miles east. The reservoir's islands are closed to public use to protect nesting waterfowl. The park is closed when the reservoir is iced over, so the open season is approximately April 15 to November 15.



**DAY-USE ONLY**



**FACILITIES:** picnic sites, boat ramps  
**RECREATION:** boating, fishing, hunting (during normal park hours), jet skiing, sail/paddle sports, wildlife/bird viewing  
**DIRECTIONS:** From Colorado Springs, take Hwy. 24 W for 55 miles. Turn left and go 2.8 miles on CR 23. Then turn right on CR 59 and go 1.1 miles to entrance.

## 33. Stagecoach

25500 R Co Rd 14 • Oak Creek, CO 80467  
970-736-2436 • [stagecoach.park@state.co.us](mailto:stagecoach.park@state.co.us)

With a 3-mile long reservoir set amid fragrant sagebrush, and great views of the Flat Top Mountains, Stagecoach offers wonderful outdoor recreation in the lush Yampa Valley. Anglers



will find good cold-water fishing in this lake known for its fast-growing and hard-fighting rainbow trout, as well as northern pike and a few brown trout. Two hundred bird species await birdwatchers,

including white-faced ibis, American white pelicans, mountain bluebirds and both dusky and sharp-tailed grouse. Mule deer, elk, cottontails and many other mammals are common. Waterfowl and small-game hunting are allowed in some areas. Stagecoach has eight miles of trails for hiking, biking and horseback riding. Boaters, jet and water skiers, sailors and canoeists will find good recreation, with both wakeless and nonwakeless areas, as well as rentals and a full-service marina. Winter is especially quiet for ice fishing, snowshoeing and cross-country skiing. Four campgrounds provide 92 sites, with four electrical campsites maintained for winter camping.



**FACILITIES:** basic campsites, boat ramp, boat rental, campsites with electrical, dump station, group campground, group picnic area, marina, mooring/docking, picnic sites, primitive camping, shower  
**RECREATION:** biking, boating, cross-country skiing/snowshoeing, fishing, hiking, horseback trails, hunting, ice fishing, jet skiing, ranger/nature programs, sail/paddle sports, snowtubing, swimming, water skiing, wildlife/bird viewing, winter camping  
**DIRECTIONS:** From I-70 at Silverthorne, take Hwy. 9 N for 38 miles. Go W on Hwy. 40 for 6 miles to Hwy. 134. Go W on Hwy. 134 for 27 miles to Hwy. 131. Go N 17 miles to CR 14 and follow signs.



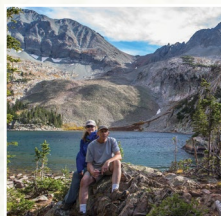
## 34. State Forest

56750 Highway 14 • Walden, CO, 80480  
970-723-8366 • [state.forest@state.co.us](mailto:state.forest@state.co.us)

Rugged mountains, alpine lakes, spectacular scenery and countless outdoor recreation opportunities make this 71,000-acre of State Forest State Park a high-country jewel. Oh, did we mention moose? With a population of around 600, moose can be viewed year-round. The Moose Visitor Center is the place to start for moose viewing. In the summer, visitors can hike, ride horses, bike and four-wheel through all kinds of terrain. Other recreation opportunities include



geocaching and hunting. There are four campgrounds, designated dispersed campsites and back-country camping, as well as cabins and yurts. Anglers will find outstanding fishing along the Canadian and Michigan rivers, on the North Michigan Reservoir and Ranger Lakes, as well as the many alpine lakes in the park. Winter offers cross-country



skiing, snowshoeing, telemarking, snowboarding, snowmobiling, tubing, sledding and quiet enjoyment of the snowy landscape. Bird and wildlife watching are outstanding here, amid forests, slopes, cliffs, creeks, alpine tundra and mountain meadows. Geology enthusiasts will discover sand dunes, glacial-carved cirques and more.



600  
MOOSE



**FACILITIES:** visitor center, basic campsites, boat ramps, cabins, campsites with electrical, dump station, horse corral, mooring/docking, picnic sites, primitive campsites, yurts

**RECREATION:** biking, boating, cross-country skiing/snowshoeing, fishing, geocaching, hiking, horseback trails, hunting, ice fishing, ice skating, OHV, rock climbing, ranger/nature programs, sail/paddle sports, snowtubing, snowmobiling, wildlife/bird viewing, winter camping

**DIRECTIONS:** From Fort Collins, go 75 miles W on Hwy. 14, over Cameron Pass.

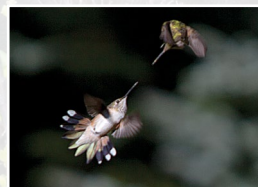
## 35. Staunton

12102 S. Elk Creek Rd., Pine, CO 80470  
303-816-0912 • [staunton.park@state.co.us](mailto:staunton.park@state.co.us)

With features like Lions Head, Chimney Rock and Elk Falls, outdoor lovers know they will enjoy a wonderful day at Staunton, Colorado's newest state park. A mosaic of meadows, granite cliffs, mountain forests and swift streams offers stunning scenery, recreation and nature appreciation within an easy drive of Denver. The nearly 30 miles of trails beckon for hikers, bikers and horseback riders. Some trails are hiking-only. Rock climbing is found in numerous designated areas in the park. There are fishing in ponds and streams. Wildlife watchers may glimpse elk, deer, bobcats, coyotes, bears, Abert's squirrels and more. Forest birds, raptors and riparian species such as dippers and kingfishers will delight birdwatchers. History buffs will discover the Staunton family cabin, an early sawmill and a sportsman's club. The



initial acreage of the park was willed to the state by Francis H. Staunton "to be preserved... as a natural wilderness-type park..." This 3,800-acre park also offers walk-in, backcountry campsites.



**FACILITIES:** picnic sites, group picnic area

**RECREATION:** biking, cross-country skiing/snowshoeing, fishing, geocaching, hiking, horseback trails, ranger/nature programs, rock climbing, walk-in, backcountry camping, wildlife viewing

**DIRECTIONS:** From Denver, take Hwy. 285 S for 19.2 miles. Take the Elk Creek Rd. exit and go N on Elk Creek Rd. for



## 36. Steamboat Lake

61105 RCR 129 • Clark, CO 80428  
970-879-3922 • [steamboat.lake@state.co.us](mailto:steamboat.lake@state.co.us)



Stunning mountain scenery and outdoor fun four seasons of the year await visitors to Steamboat Lake. At 8,100 feet elevation, with breathtaking views of Hahns Peak and the Park Range, the park beckons hikers and mountain bikers with over seven miles of trails connecting to more in the

surrounding Routt National Forest. Wildlife watchers may glimpse sandhill cranes, bald eagles, osprey, elk, deer, bears, coyotes, foxes and a variety of small mammals and birds. With more than 300 inches of snow a

year, plus a Nordic touring center with groomed trails, snowmobilers, snowshoers and cross-country skiers will find a winter-fun paradise. Overnight visitors can camp in the campgrounds (tent



and full-service sites available) or rent one of 10 cabins. The 1,100-acre lake accommodates motorboats, jet skis and sail and hand-powered craft. There's a full-service marina with boat and dock rentals. Campers can leave their boats along the shore near their campsite. The park's popularity means you should arrive early and make campground reservations, especially for summer weekends.

10  
CABINS



**FACILITIES:** visitor center, basic campsites, boat ramps, boat rental, cabins, campsites with electrical, dump station, laundry, marina, mooring/docking, picnic sites, showers

**RECREATION:** biking, boating, cross-country skiing/snowshoeing, fishing, geocaching, hiking, horseback trails, hunting, ice fishing, jet skiing, ranger/nature programs, sail/paddle sports, snowmobiling, swimming, water skiing, wildlife viewing, winter camping

**DIRECTIONS:** From Steamboat Springs, go W 2 miles on Hwy. 40 to CR 129. Turn N, go 25 miles to the visitor center.

## 37. Sweitzer Lake

1735 E Road • Delta, CO 81416  
970-874-4258 • [sweitzer.park@state.co.us](mailto:sweitzer.park@state.co.us)



A place to have fun. That's what Sweitzer Lake is all about. While many state park lakes hold irrigation water, Sweitzer Lake was built solely for recreation, fulfilling land-donor Morgan Sweitzer's vision of a place for the community to enjoy the outdoors. There's powerboating, sailing, jet and water skiing, sailboarding and canoeing. Swimming is permitted in the swim area only. This is a day-use-only park, so there is no camping, but it's a popular picnic spot. Set against the backdrop of the San Juan Mountains, Uncompahgre Plateau and Grand Mesa, this lake has been called the "oasis on the edge of the desert." One hundred seventy-nine



bird species have been seen in the area, and the lake is a good place to spot waterfowl. Fishing is strictly catch-and-release, so this is a good place for youngsters to learn to hook catfish, bluegill, green sunfish and carp. There is limited hunting in some areas and on certain days.

DAY-USE  
ONLY

1  
BOAT RAMP



**FACILITIES:** visitor center, boat ramp, group picnic area, picnic sites  
**RECREATION:** biking, boating, fishing, hiking, hunting, jet skiing, ranger/nature programs, sail/paddle sports, swimming, water skiing, wildlife/bird viewing

**DIRECTIONS:** From Delta, go 1 mile S on Hwy. 50. Or go 20 miles N of Montrose on Hwy. 50.



## 38. Sylvan Lake

10200 Brush Creek Road • Eagle, CO 81631  
970-328-2021 • [sylvan.lake@state.co.us](mailto:sylvan.lake@state.co.us)

Sylvan means a peaceful, wooded place, and that's what visitors will find at this beautiful park surrounded by the White River National Forest. Stunning mountain scenery, abundant recreation, wildlife to watch and top-notch fishing provide year-round diversion. Anglers can try for rainbow, cutthroat, brook and brown trout in the lake and streams. Hikers will find more than seven miles of state

park trails and easy access to the national forest. Canoeists, kayakers, paddle-boaters and electric-motor boaters can enjoy the water in the warm months. Swimming is not allowed. Winter offers snowshoeing,

cross-country skiing, ice fishing, ice skating, sledding and access to snowmobile trails. Nature lovers can explore the lake, meadows and aspen and pine-covered slopes, keeping an eye out for the wildlife and birds of mountain habitats. Staying overnight is a special treat, whether in the campground, a cabin or a yurt.



**DIRECTIONS:** To Sylvan Lake cabins and campground: Take I-70 to Eagle (exit 147). Turn south through the Eby Creek roundabouts, continue under the railroad and across the river, then west on US Hwy. 6 (Grand Ave) for 0.9 miles. At the roundabout take the third exit onto Sylvan Lake Road and travel 1.7 miles. Turn south on Brush Creek Road and travel 8.5 miles to the visitor center. Continue until the road forks. Take the

right fork and travel 5 miles to the lake. **To Brush Creek yurts:** Follow above directions, but turn left at the fork. After 4.5 miles, the yurts will be on the left at the top of the switchbacks.

9  
CABINS

3  
YURTS



**FACILITIES:** visitor center, basic campsite, boat ramps, boat rental, cabins, dump station, group campground, picnic sites, showers, yurts

**RECREATION:** biking, boating (nonmotorized), cross-country skiing/snowshoeing, fishing, geocaching, hiking, horseback trails, hunting, ice fishing, ice skating, jet skiing, OHV, ranger/nature programs, snowmobiling, snowtubing, wildlife viewing, winter camping,

## 39. Trinidad Lake

32610 Highway 12 • Trinidad, CO 81082  
719-846-6951 • [trinidad.lake@state.co.us](mailto:trinidad.lake@state.co.us)

Sunshine, piñon pine- and juniper-covered hills, great fishing, water sports, abundant birds and wildlife, rich history and heritage. At Trinidad Lake, visitors can roll any or all of these



attractions into an outstanding day, weekend or extended vacation. With its semi-desert climate and plenty of sunshine, many outdoor activities are year-round. Easily accessible from I-25, the lake offers jet and water skiing, sailing, power boating, canoeing and

other water sports. Anglers can try their luck for rainbow and brown trout, bass, catfish, walleye, crappie and bluegill. The scenic campground offers full hookups and services. There are miles of trails winding through ancient and interesting local history, spectacular scenery and great wildlife viewing. A functional horno (adobe oven) and Native American archaeological site are near the amphitheater. The park makes a good base camp to explore area attractions like the Santa Fe Trail, Highway of Legends Scenic Byway and the historic mining town of Trinidad.



73  
CAMPSITES

46  
PICNIC SITES



**FACILITIES:** visitor center, archery range, basic campsites, boat ramp, campsites with electrical, dump station, full-hookup campsites, group campground, group picnic area, laundry, mooring/docking, picnic sites, shower

**RECREATION:** biking, boating, cross-country skiing/snowshoeing, fishing, geocaching, hiking, horseback trails, hunting, ice fishing, ice skating, jet skiing, ranger/nature programs, sail/paddle sports, water skiing, wildlife/bird viewing, winter camping

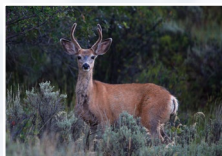
**DIRECTIONS:** From I-25, take Exit 13B for Main Street in Trinidad. Turn left at the four-way stop onto Nevada. At the next intersection, head west onto Hwy. 12/Highway of Legends. Continue 3 miles W to the park entrance.



## 40. Vega

15247 N. 6/10 Rd • Collbran, CO 81624  
970-487-3407 • [vega.park@state.co.us](mailto:vega.park@state.co.us)

Vega is Spanish for “meadow,” and in this park visitors will find lush montane meadows filled with wildflowers. Set at 8,000 feet on the northeast edge of Grand Mesa, Vega is a great year-round destination for enjoying the Colorado outdoors. The meadows and surrounding slopes of aspen and mountain shrubs beckon hikers, bikers, horseback riders and bird and wildlife watchers. There’s easy access to hundreds of miles of trails in Grand Mesa National Forest. Horse corrals are available for rent. The 900-acre reservoir offers good trout fishing and opportunities for sailing, canoeing, jet and water skiing and other water sports, though swimming is not allowed. In summer, osprey nest atop a platform at the edge of the lake and hunt dramatically above the water. Four campgrounds surround the lake, with 113 sites including basic campsites and campsites with electrical. For a different overnight experience, there are five cozy, year-round cabins. The Meadows Group Picnic Area is popular for outdoor mountain weddings.



**113**  
CAMPSITES

**5**  
CABINS



**FACILITIES:** visitor center, basic campsites, boat ramps, cabins, campsites with electrical, dump station, fish-cleaning station, group picnic area, picnic sites, showers, stables/horse rental

**RECREATION:** boating, cross-country skiing/snowshoeing, fishing, hiking, hunting, ice fishing, ice skating, jet skiing, OHV, ranger/nature programs, sail/paddle sports, snowmobiling, snow tubing, water skiing, wildlife viewing, winter camping

**DIRECTIONS:** From I-70, go S on Hwy. 65 then E on Hwy. 330 through Collbran about 16 miles. Turn S on 64.6 Road and go about 4 miles to the park.

## 41. Yampa River

P.O. Box 759, 6185 US Highway 40 • Hayden CO 81639  
970-276-2061 • [yampa.river@state.co.us](mailto:yampa.river@state.co.us)

Want to discover a river of stunning beauty, abundant wildlife and outstanding recreation? This unique state park stretches for 134 miles along northern Colorado’s iconic Yampa River, offering boating, camping, excellent fishing and the chance to glimpse bird and wildlife on



water, on land and in the air. Rafters, canoeists and kayakers will discover miles of flat water and Class I to V river boating. Visitors can begin their discovery at the visitor center near Hayden, which has a full-service campground, information, nature trail and easy river access.



**2**  
TIPIS



**FACILITIES:** visitor/nature center, basic campsites, campsites with electrical, dump station, group campground, group picnic area, laundry, picnic sites, showers, tipis

**RECREATION:** biking, boating, cross-country skiing/snowshoeing, fishing, geocaching, hiking trails, ice skating, ranger/nature programs, snow tubing, wildlife/bird viewing

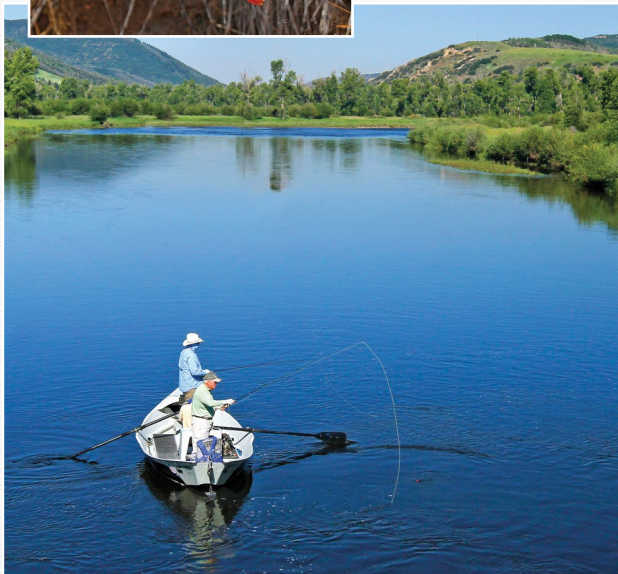
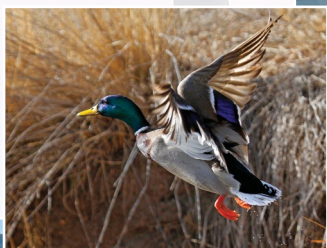
**DIRECTIONS:** Yampa River State Park (visitor center and campground) From Hayden, follow Hwy. 40 W to mile marker 104. Campground and visitor center will be on the left between the highway and Yampa River. Consult park map for other river access sites.



# Yampa River Access Sites

6185 US Highway 40 • Hayden, CO 81639  
970-276-2061 • [yampa.river@state.co.us](mailto:yampa.river@state.co.us)

Thirteen river access sites lie along the river between Hayden and Dinosaur National Monument. Facilities, access and rules for use vary by site, so boaters should visit the park's website, the information center or obtain the park brochure before traveling. Respecting private land along the river corridor, as well as the landscape and natural communities, is very important. Visitors can also swim, boat, fish, camp, hike and bike at Elkhead Reservoir.



**13**  
RIVER SITES

**8**  
BOAT RAMPS

**FACILITIES:** basic campsites, boat ramps, picnic sites  
**RECREATION:** boating, fishing, hiking, hunting, wildlife/bird viewing, winter camping  
**DIRECTIONS:** The river site accessing the Yampa River are also found along Hwy. 40, or stop by the visitor center for more information.

# Family Memories, Colorado Style

4 seasons of fun  
700 miles of trails  
4,000 camp sites



Paonia State Park

## Find adventure in every season!

Hiking • Biking • Fishing • Camping  
Boating • Paddle Sports • Rafting

Wildlife Watching • Education Programs

Great State  
Parks Across  
Colorado!



State parks are great destinations for  
weekday getaways, group picnics and  
nature programs.

[cpw.state.co.us](http://cpw.state.co.us)



# Facilities and Recreation

For more information, please visit the specific park page at [cpw.state.co.us](http://cpw.state.co.us)

● = Facility Available

	Arkansas Headwaters Recreation Area <sup>1</sup>	Barr Lake	Boyd Lake	Castlewood Canyon	Chatfield	Cherry Creek	Cheyenne Mountain	Crawford	Eldorado Canyon	Eleven Mile	Elkhead Reservoir	Golden Gate Canyon	Harvey Gap	Highline Lake	Jackson Lake	James M. Robb Colorado River (JMR CO) Connected Lakes	JMR - CO River Corn Lake	JMR - CO River Fruita	JMR - CO River Island Acres	JMR - CO River State Wildlife Area	John Martin Reservoir	Lake Pueblo	Lathrop	Lone Mesa	
Visitor Services	VISITOR/NATURE CENTER	●	●	●	●		●	●	●	●		●		●	●			●			●	●	●		
	PICNIC SITES	260		90	55	139	106	41	40	10	20	20	125	30	105	60	18	17	16	30	-	20	150	40	
	GROUP PICNIC AREA	●	1	●	●	4	5	●	●			●		●	●			●	●		3	3	●		
	STABLES/HORSE RENTAL					●	●																		
Camping Facilities	PRIMITIVE CAMPSITES	14										20*													
	BASIC CAMPSITES	126	DAY-USE ONLY		DAY-USE ONLY		30	10	21	DAY-USE ONLY	283	16*	73	DAY-USE ONLY	36	97	DAY-USE ONLY	DAY-USE ONLY	13	6	DAY-USE ONLY	104	119	21	
	ELECTRICAL CAMPSITES			148		51			45		52					163			22	34		109	281	82	
	FULL-HOOKUP SITES (ELEC., WATER, SEWER)					146	103	51											22	40					
	GROUP CAMPGROUND	●				10	3							●	●				●			●	●		
	CABIN/TIPI/YURT C/T/Y											C-6, Y-2													
	DUMP STATION			●		●	●		●		2		●	●	●				●	●		●	3	●	
	SHOWERS (Coin-operated)			●		●	●	●	●		●		●	●	●				●	●		●	●	●	
LAUNDRY			●		●	●	●		●		●		●	●				●	●		●	●	●		
Water Recreation Facilities	BOAT RAMPS	36	1	2		3	2		2		3	2		1	2	1	1	1	1			2	2	2	
	BOAT/JET SKI RENTAL			●		●	●			●					●								BOAT ONLY		
	FISH-CLEANING STATION																						●		
	MARINA			●		●	●			●					●								2		
	MOORING/DOCKING			●		●	●			●					●										
Trails	HIKING TRAILS – MILES	29	21.9	6.4	12.9	26.7	35	23	3.6	17.1	5	10.5	42.4	-	9.6	3.4	5	2	2	1	3	4.5	15.4	8	
	BICYCLING TRAILS – MILES	27.7	21	6.4	-	25.4	26	23	-	10.8	5	10.5	27.5	-	9.6	3.4	5	2	2	1	3	4.5	15.4	3	
	HORSEBACK TRAILS – MILES	19	16.5	-	-	7.9	25.6	9.5	-	11.3	-	10	27.5	-	3.5	-	-	2	-	-	3	3	1.5	1.3	
Water Recreation	BOATING	NON-MOTORIZED	●	●	●	●	●	●	●	●	●	●	●	●	●	●	●	●	●	●	●	●	●	●	
	FISHING	●	●	●	●	●	●	●	●	●	●	●	●	●	●	●	●	●	●	●	●	●	●	●	
	JET SKIING			●		●	●		●		●	●		●	●				●	●		●	●	●	
	SAIL/PADDLE SPORTS		●	●		●	●		●		●	●		●	●	●			●	●		●	●	●	
	SWIMMING	●				●	●		●		●	●		●	●				●	●		●	●	●	
	WATER SKIING			●		●	●		●		●	●		●	●							●	●	●	
Winter Recreation	CROSS-COUNTRY SKI/SNOWSHOEING — MILES	29	21.5	6		26.7	35	20.4	3.6	14.5	5	42.4	35	●	9.6							4.2		3	
	ICE FISHING	●	●	●		●	●		●		●	●		●	●	●	●	●	●	●		●			
	ICE SKATING	●		●		●	●			●		●	●	●	●	●	●	●	●	●		●			
	SNOWMOBILING																								
	SNOWTUBING								●			●													
	WINTER CAMPING	●		●		●	●	●	●		●		●	●	●				●	●		●	●	●	
Other Recreation	GEOCACHING	●	●	●		●		●		●		●		●	●	●	●	●	●	●		●		●	
	HUNTING	●	●	●					●	●	●	●	●	●	●		●						●	●	
	OHV	1.2													1.2										
	ROCK CLIMBING	●			●				●			●													
	ARCHERY/SHOOTING RANGE		ARCHERY				●	ARCHERY																ARCHERY	
	RANGER/NATURE PROGRAMS	●	●	●	●	●	●	●	●	●	●	●	●	●	●	●	●	●	●	●	●	●	●	●	●
	WILDLIFE/BIRD VIEWING	W/B	W/B	W	W/B	W/B	W/B	W/B	W/B	W/B	W/B	W	W/B	W	W/B	W/B	W	W	W	W	W	W/B	W/B	W/B	
ELEVATION (FEET)	4-9,400	5,100	5,000	6,300	5,430	5,550	6,050	6,600	6,000	8,597	6,365	9,100	6,400	4,700	4,600	4,600	4,600	4,600	4,700	4,498	3,851	4,880	6,400	8,200	
TOTAL ACRES	6,193	3,597	257	2,004	2,585	4,420	2,774	760	1,393	7,572	2,105	11,911	304	562	5,295	120	16	60	120	75	12,286	14,367	1,585	11,780	
MILES FROM DENVER	110	25	50	30	15	13	70	246	30	119	196	30	182	264	76	260	256	240	230	256	215	101	165	400	

<sup>1</sup>AHRA, in partnership with federal agencies, actively participates in the management of adjacent federal lands that are accessible via AHRA recreation sites.

\* Includes 'first-come, first-served' campsites only available at the park



# Facilities and Recreation

For more information, please visit the specific park page at [cpw.state.co.us](http://cpw.state.co.us)

● = Facility Available

	Lory	Mancos	Mueller	Navajo <sup>2</sup>	North Sterling	Paonia	Pearl Lake	Ridgway	Rifle Falls	Rifle Gap	Roxborough	St. Vrain	Spinney Mountain	Stagecoach	State Forest	Staunton	Steamboat Lake	Sweitzer Lake	Sylvan Lake	Trinidad Lake	Vega	Yampa River (Headquarters)	Yampa River (River Sites)	
Visitor Services	VISITOR/NATURE CENTER																							
	21	12	41	12	38	11	7	50	12	14	-	14	20	50	14	10	25	32	30	46	27	●	35	
	3	●	●	●	●			3	●					●	●		●	●	●	●	●	●	●	
	STABLES/HORSE RENTAL																							
Camping Facilities	PRIMITIVE CAMPSITES																							
	6*					13								9	40	25								
		32	22	38	44		34	25	7	28	DAY-USE ONLY		DAY-USE ONLY	18	126		108	DAY-USE ONLY	46	10	79	14	20	
			110	40	97			167	13	26		41		65	32		74			56	34	35		
				41				80		35		46								7				
			●	●	●									●						●	●	●	●	
		Y-2	C-3	C-3			Y-2	Y-3							C-6, Y-8 <sup>3</sup>		C-10 <sup>4</sup>		C-9, Y-3			C-5	Tipi-2 <sup>5</sup>	
		●	●	●	2			●		●		●		●	●		●		●	●	●	●	●	
			●	●	●		●		●		●		●			●		●	●	●	●	●		
		●	●	●	●		●		●		●		●			●		●	●	●	●	●		
Water Recreation Facilities	BOAT RAMPS																							
		1		1	2	1	1	1		1		1	2	2	1		2	1	1	1	3	1	8	
				BOAT ONLY										BOAT ONLY			BOAT ONLY		BOAT ONLY		BOAT ONLY			
								2														●		
				●	●									●				●						
Trails	HIKING TRAILS – MILES																							
	26	5.2	44.3	9	6.4	-	.6	16	1.5	-	15	6	-	7.9	94	29	21.3	3	7.8	12.3	4.8	1.25	-	
	21.7	5.2	38	9	6.4	-	.6	14	1.5	-	1	6	-	7	130	22	7.1	3	2.4	10.8	-	1	-	
HORSEBACK TRAILS – MILES																								
21.7	5.2	34.7	6.2	3	-	.6	-	-	-	-	1	-	-	6.9	130	22	0.9	3	5.2	4	-	-	-	
Water Recreation	BOATING																							
	●	●	●	●	●	●	●	●	●	●	●	●	●	●	●	●	●	●	●	●	●	●	●	
	●	●	●	●	●	●	●	●	●	●	●	●	●	●	●	●	●	●	●	●	●	●	●	
				●	●	●	●	●	●	●	●	●	●	●	●	●	●	●	●	●	●	●	●	
				●	●	●	●	●	●	●	●	●	●	●	●	●	●	●	●	●	●	●	●	
				●	●	●	●	●	●	●	●	●	●	●	●	●	●	●	●	●	●	●	●	
Winter Recreation	CROSS-COUNTRY SKI/SNOWSHOEING — MILES																							
	24.3	5.2	44.3	5.5	6.4		.6	4	1.5		15	6		7	114	20	20		3	0/12.3	4.8	1.25		
		●			●		●	●	●	●		●		●	●		●		●	●	●	●	●	
								●							70		8.1		access		access			
	●		●					●	●	●		●		●	●		●		●	●	●	●	●	
	●	●	●	●	●			●	●	●	●	●	●	●	●	●	●	●	●	●	●	●	●	
Other Recreation	GEOCACHING																							
	●	●	●					●	●	●	●	●	●	●	●	●	●	●	●	●	●	●		
	●		●	●	●	●	●	●	●	●	●	●	●	●	●	●	●	●	●	●	●	●		
															80				access		access			
	●														●	●								
					ARCHERY																ARCHERY			
	●	●	●	●	●			●	●	●	●	●	●	●	●	●	●	●	●	●	●	●	●	
W	W	W/B	W/B	W/B	W	W	W/B	W	W	W/B	W/B	W/B	W/B	W/B	W	W	W/B	W	W/B	W/B	W/B	W/B		
ELEVATION (FEET)																								
7,015	7,800	9,500	6,100	4,065	6,500	8,065	6,870	6,800	6,000	6,200	4,900	8,686	7,250	9-12,000	8215	8,100	5,129	8,500	6300	8000	6300	varies		
TOTAL ACRES																								
2,596	571	4,987	5,013	5,200	1,857	298	3,201	48	1,333	3,328	693	6,105	1,630	71,194	3,918	2,824	211	1,552	3,223	1,842	457	110 mi		
MILES FROM DENVER																								
82	362	100	310	137	214	180	280	210	200	15	30	115	150	143	40	180	285	150	200	256	184	varies		

\* Includes "first-come, first-served" campsites only available at the park

<sup>2</sup>Navajo State Park offers over 15,000 acres of water, approximately 3,000 of which are located in Colorado; the rest are in New Mexico. Boaters may launch in either state and use the entire reservoir, valid NM and CO fishing licenses are required.

<sup>3</sup>Yurts at State Forest are managed by Never Summer Nordic. For questions, availability or reservations call 970-723-4070 or visit [neversummernordic.com](http://neversummernordic.com)

<sup>4</sup>Cabins at Steamboat Lake State Park are booked through the marina; cabins can be reserved through: [SteamboatLakeMarina.com](http://SteamboatLakeMarina.com) For more information call 970-879-7019.

<sup>5</sup>Tipis at Yampa River State Park are available for reservation on site only or by calling 970-276-2061



# Accessibility

- Some universally accessible features available
- Some facilities accessible with assistance

	Fish	Camp	Trails
Arkansas Headwaters Recreation Area	■	■	■
Barr Lake	●		■
Boyd Lake	■	■	■
Castlewood Canyon			■
Chatfield	■	■	■
Cherry Creek	■	■	■
Cheyenne Mountain		■	■
Crawford	■	■	■
Eldorado Canyon	■		■
Eleven Mile	●	■	
Elkhead Reservoir	●	●	●
Golden Gate Canyon	■	■	■
Harvey Gap	●		
Highline Lake	●	■	●
Jackson Lake	■	■●	
James M. Robb			
JMR – Colorado River (Connected Lakes)	■		■
JMR – Colorado River (Corn Lake)	■		■
JMR – Colorado River (Fruita)	●	■	●
JMR – Colorado River (Island Acres)	●	■	●
JMR – Colorado River (Wildlife Area)	●		■
John Martin Reservoir	■	■	
Lake Pueblo	■	■	●
Lathrop	■	■	■
Lory	■		●
Mancos	●	■ 5	■
Mueller		■	●
Navajo	■	■	
North Sterling	●	■	●
Paonia		■	
Ridgway	■	■ 5	■
Rifle Falls	●	■●	
Rifle Gap	■	■	■
Roxborough			● 2
St. Vrain	■	■	■
Spinney Mountain	●		
Stagecoach	●	■	■
State Forest	●	■	●
Staunton			
Steamboat Lake/Pearl Lake	●	■● 3	
Sweitzer Lake	● 1		■
Sylvan Lake	●	■ 4	●
Trinidad Lake	●	■	■
Vega	■	■ 4	
Yampa River	●	■	●

	Picnic	Hunt	Swim	Restrooms	Showers	Visitor Center
Arkansas Headwaters Recreation Area	■	●	●	■		■
Barr Lake	●	●		●		●
Boyd Lake	■	●	●	■	●	■
Castlewood Canyon	■			■		■
Chatfield	■			■	■	
Cherry Creek	■		●	■	■	
Cheyenne Mountain	■			■	■	■
Crawford	■		■●	■	■	■
Eldorado Canyon	■			■		■
Eleven Mile	■			■	■	■
Elkhead Reservoir	■	■		■		
Golden Gate Canyon	■			■●	■	■
Harvey Gap	■●		●	■●		
Highline Lake	■		●	■	■	■
Jackson Lake	●	●	●	■●	■●	●
James M. Robb						
JMR – Colorado River (Connected Lakes)	■			■		
JMR – Colorado River (Corn Lake)	■			■		
JMR – Colorado River (Fruita)	●		●	■	■	
JMR – Colorado River (Island Acres)	■		●	■	■	■
JMR – Colorado River (Wildlife Area)				■		
John Martin Reservoir	■			■	■	■
Lake Pueblo	●	●	●	■	■	■
Lathrop	■		●	■	■	■
Lory	■			■		■●
Mancos	■			■		
Mueller	■			■	■	■
Navajo	■			■	■	■
North Sterling	●	●		■	■	●
Paonia	■			■		
Ridgway	■	●	●	■	■	■
Rifle Falls	■●			■●		
Rifle Gap		●	●	■	■	■
Roxborough				■		■
St. Vrain	●			■	■	
Spinney Mountain						
Stagecoach	●			■		
State Forest	●		●	■	■	
Staunton	●	●		■		■
Steamboat Lake/Pearl Lake	●		●	■●	■	■
Sweitzer Lake	■●		●	■●		■
Sylvan Lake	■			■●	■	■
Trinidad Lake	■	●		■	■	■
Vega	■			■	■	■
Yampa River	■			■	■	■

- 1 Fish are not edible
- 2 Golf cart vehicle available by reservation for persons with difficulty walking
- 3 Cabins available with assistance
- 4 Fully accessible cabin(s) available
- 5 Fully accessible yurt(s) available



## What a Bargain!

Your annual pass gets you into all 41 Colorado state parks for 12 months of outdoor fun! Now you can visit the parks any day or even take a quick break to relax after work.



## Reserve your campsite, cabin or yurt today

Reservations may be made three days to six months in advance of the arrival date. Campsites, cabins and yurts are charged by the number of nights reserved (similar to hotel room reservations).

Reserve online: [cpw.state.co.us](http://cpw.state.co.us)

1-800-244-5613

A nonrefundable reservation fee applies when booking campsites, cabins or yurts in advance. Any site not reserved is available on a first-come, first-served basis. Entrance fees apply at all parks in addition to camping and reservation fees.

Financial sustainability for CPW is key for maintaining your parks, your wildlife and your outdoor heritage. CPW doesn't receive general tax dollars. Rather, we rely on your park and camping fees and money from Great Outdoors Colorado and the Colorado Lottery to maintain your state parks. To learn more, visit: [cpw.state.co.us/FinancialSustainability](http://cpw.state.co.us/FinancialSustainability)

The photos used in this publication were provided in part by a grant from the Colorado Tourism Office. The photos are copyright of CPW and the respective photographers: Chris Stark, Verdon Tomajko, Ken Papaleo, Thomas Kimmel, Tye Eyden and Vic Schendel.



1313 Sherman Street, Room 618  
Denver, CO 80203 • 303-297-1192  
[cpw.state.co.us](http://cpw.state.co.us)



This publication funded in part by Great Outdoors Colorado through Colorado Lottery proceeds and the Colorado Tourism Office