

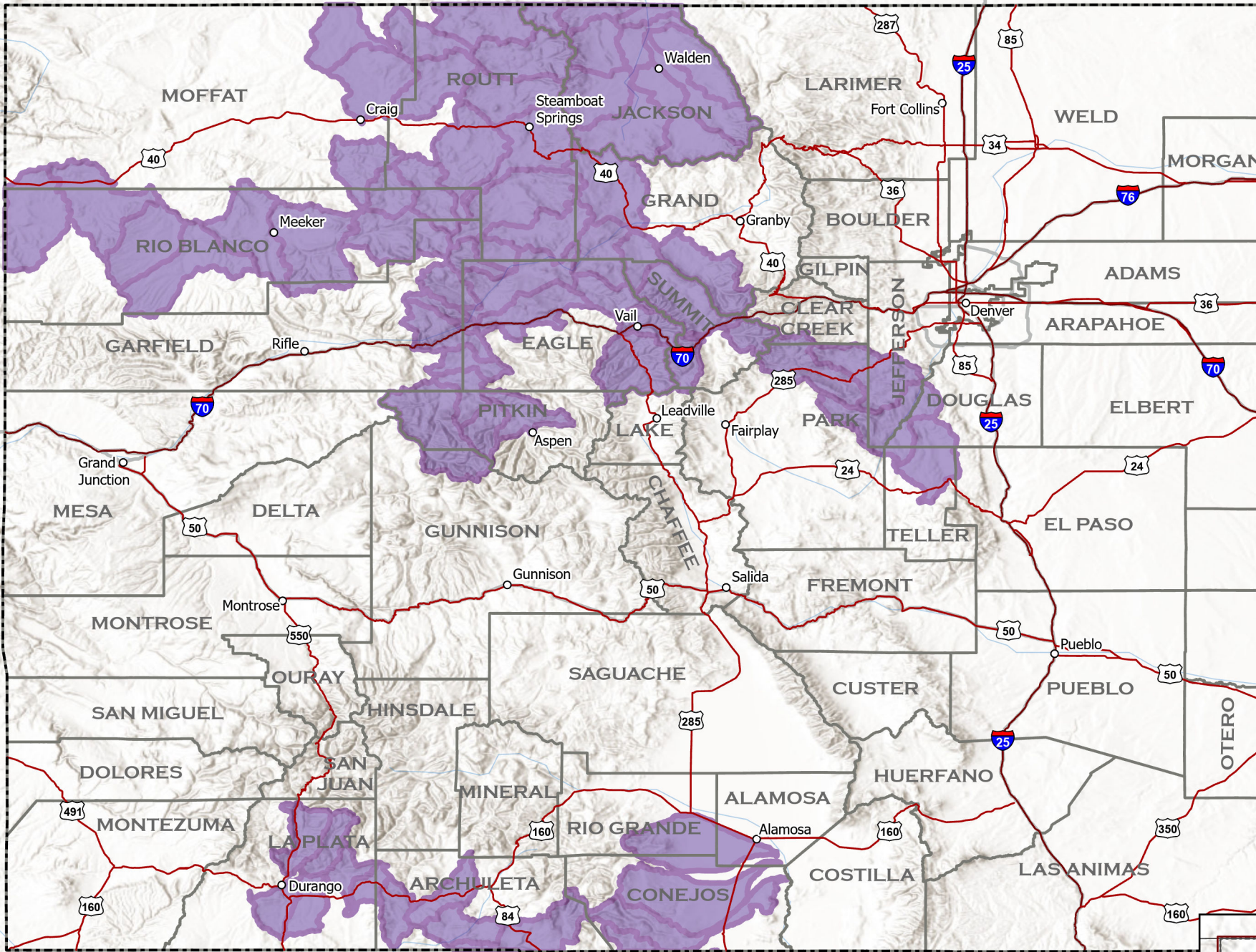



Current as of  
March 24, 2026  
Published March 25, 2026

**The minimum  
mapping unit is the  
local watershed.**

This map depicts  
watersheds where collared  
wolves in Colorado have  
been from February 24,  
2026 - March 24, 2026. In  
order for a watershed to  
indicate wolf activity, at  
least one GPS position was  
recorded within the  
boundaries of the  
watershed.

**Simply because a  
watershed indicates  
wolf activity, it does  
not mean that a wolf  
or wolves are present  
throughout the entire  
watershed.**

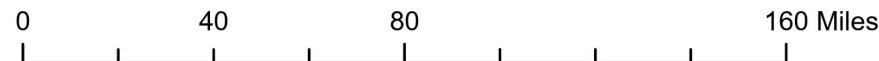





 Wolf activity in watershed

## Collared Gray Wolf Activity February 24, 2026 - March 24, 2026

1:2,550,000

A watershed is a geographic unit that drains water into a specific waterbody. These are also known as Hydrologic Unit Codes (HUC). Information is shared at the HUC 10 level. More can be learned about HUC at <https://water.usgs.gov/themes/hydrologic-units/>.



-  Colorado Towns
-  Interstate
-  Highways
-  County Boundary
-  Colorado Boundary

