

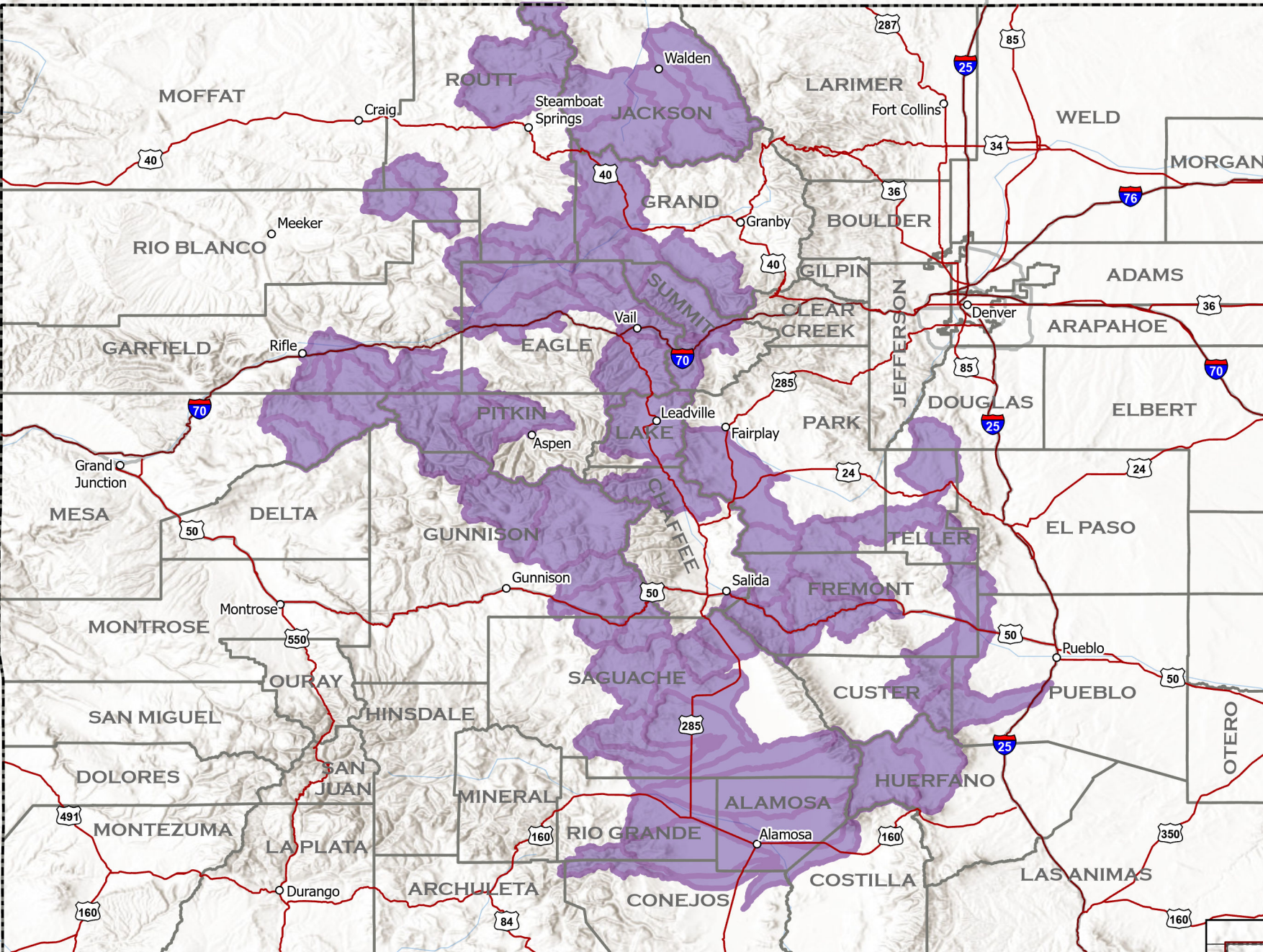
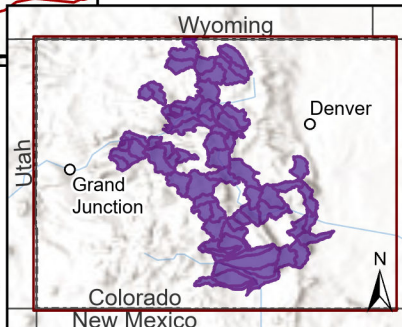



Current as of February 24, 2026  
Published February 25, 2026

**The minimum mapping unit is the local watershed.**

This map depicts watersheds where collared wolves in Colorado have been from January 27, 2026 - February 24, 2026. In order for a watershed to indicate wolf activity, at least one GPS position was recorded within the boundaries of the watershed.

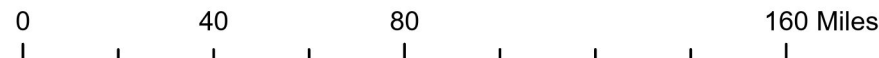
**Simply because a watershed indicates wolf activity, it does not mean that a wolf or wolves are present throughout the entire watershed.**



 Wolf activity in watershed

# Collared Gray Wolf Activity January 27, 2026 - February 24, 2026

1:2,550,000



A watershed is a geographic unit that drains water into a specific waterbody. These are also known as Hydrologic Unit Codes (HUC). Information is shared at the HUC 10 level. More can be learned about HUC at <https://water.usgs.gov/themes/hydrologic-units/>.

○ Colorado Towns

— Interstate

— Highways

□ County Boundary

□ Colorado Boundary

