

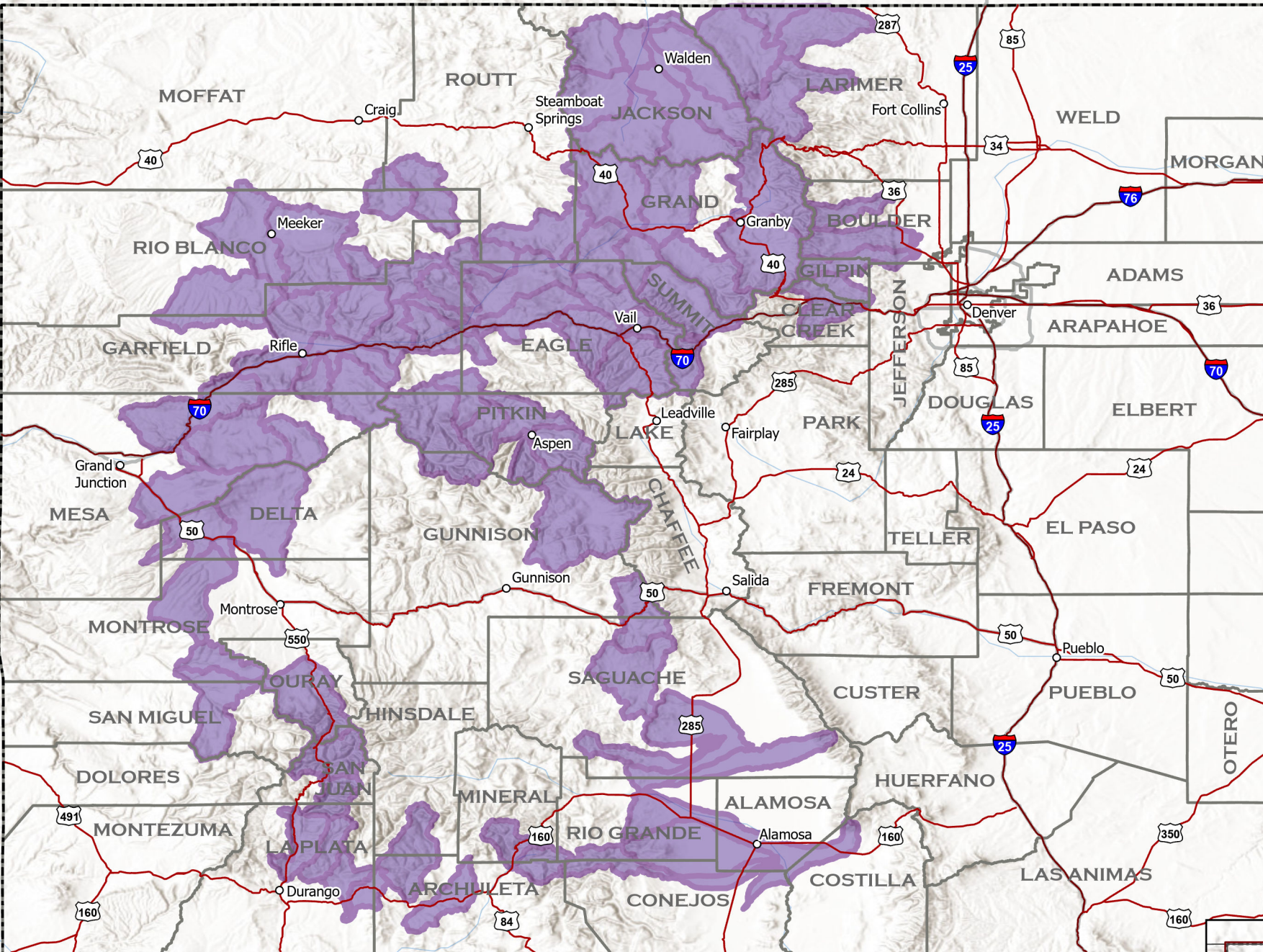
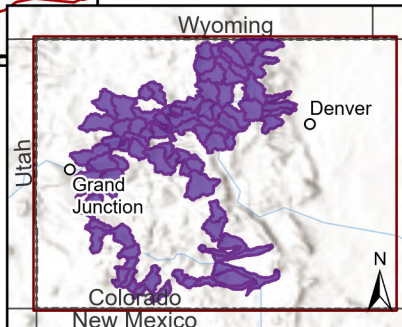



Current as of
January 27, 2026
Published January 28, 2026

**The minimum
mapping unit is the
local watershed.**

This map depicts
watersheds where collared
wolves in Colorado have
been from December 19,
2025 - January 27, 2026. In
order for a watershed to
indicate wolf activity, at
least one GPS position was
recorded within the
boundaries of the
watershed.

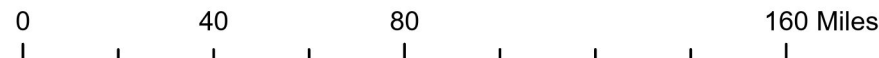
**Simply because a
watershed indicates
wolf activity, it does
not mean that a wolf
or wolves are present
throughout the entire
watershed.**



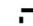
 Wolf activity in watershed

Collared Gray Wolf Activity December 19, 2025 - January 27, 2026

1:2,550,000



A watershed is a geographic unit that drains water into a specific waterbody. These are also known as Hydrologic Unit Codes (HUC). Information is shared at the HUC 10 level. More can be learned about HUC at <https://water.usgs.gov/themes/hydrologic-units/>.

-  Colorado Towns
-  Interstate
-  Highways
-  County Boundary
-  Colorado Boundary