

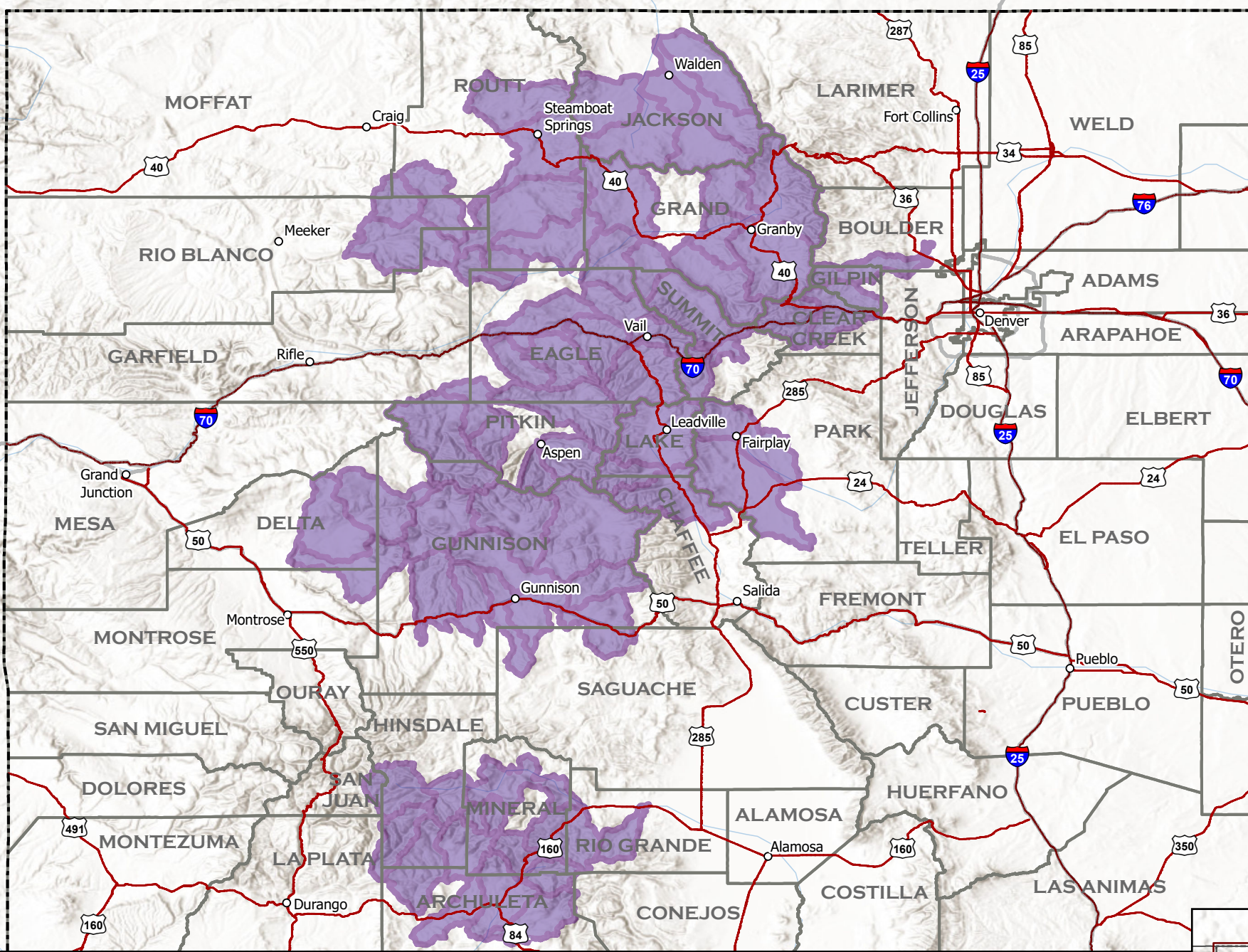


Current as of August 26, 2025  
Published August 27, 2025

**The minimum mapping unit is the local watershed.**

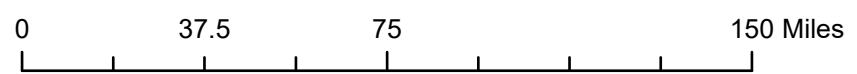
This map depicts watersheds where collared wolves in Colorado have been from July 22, 2025 - August 26, 2025. In order for a watershed to indicate wolf activity, at least one GPS position was recorded within the boundaries of the watershed.


**Simply because a watershed indicates wolf activity, it does not mean that a wolf or wolves are present throughout the entire watershed.**








# Collared Gray Wolf Activity July 22, 2025 - August 26, 2025

1:2,500,000



 Wolf activity in watershed

A watershed is a geographic unit that drains water into a specific waterbody. These are also known as Hydrologic Unit Codes (HUC). Information is shared at the HUC 10 level. More can be learned about HUC at <https://water.usgs.gov/themes/hydrologic-units/>.

-  Colorado Towns
-  Interstate
-  Highways
-  County Boundary
-  Colorado Boundary

