

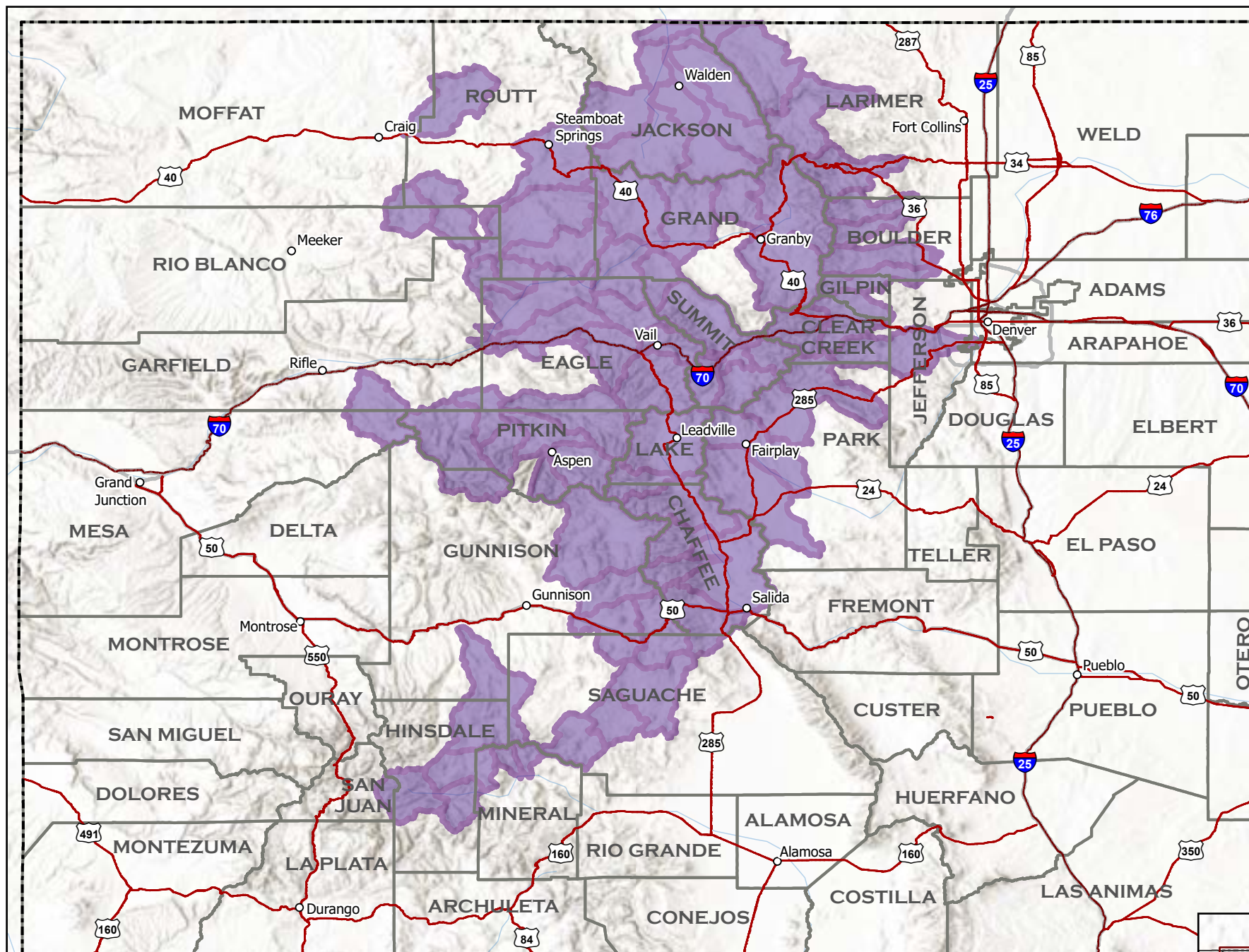



Current as of
June 24, 2025
Published June 25, 2025

**The minimum
mapping unit is the
local watershed.**

This map depicts
watersheds where collared
wolves in Colorado have
been from May 27, 2025 -
June 24, 2025. In order for
a watershed to indicate
wolf activity, at least one
GPS position was recorded
within the boundaries of the
watershed.

**Simply because a
watershed indicates
wolf activity, it does
not mean that a wolf
or wolves are present
throughout the entire
watershed.**








 Wolf activity in
watershed

A watershed is a geographic unit that drains water
into a specific waterbody. These are also known as
Hydrologic Unit Codes (HUC). Information is shared
at the HUC 10 level. More can be learned about
HUC at <https://water.usgs.gov/themes/hydrologic-units/>.

Collared Gray Wolf Activity May 27, 2025 - June 24, 2025

1:2,500,000

0 37.5 75 150 Miles

-  Colorado Towns
-  Interstate
-  Highways
-  County Boundary
-  Colorado Boundary

