

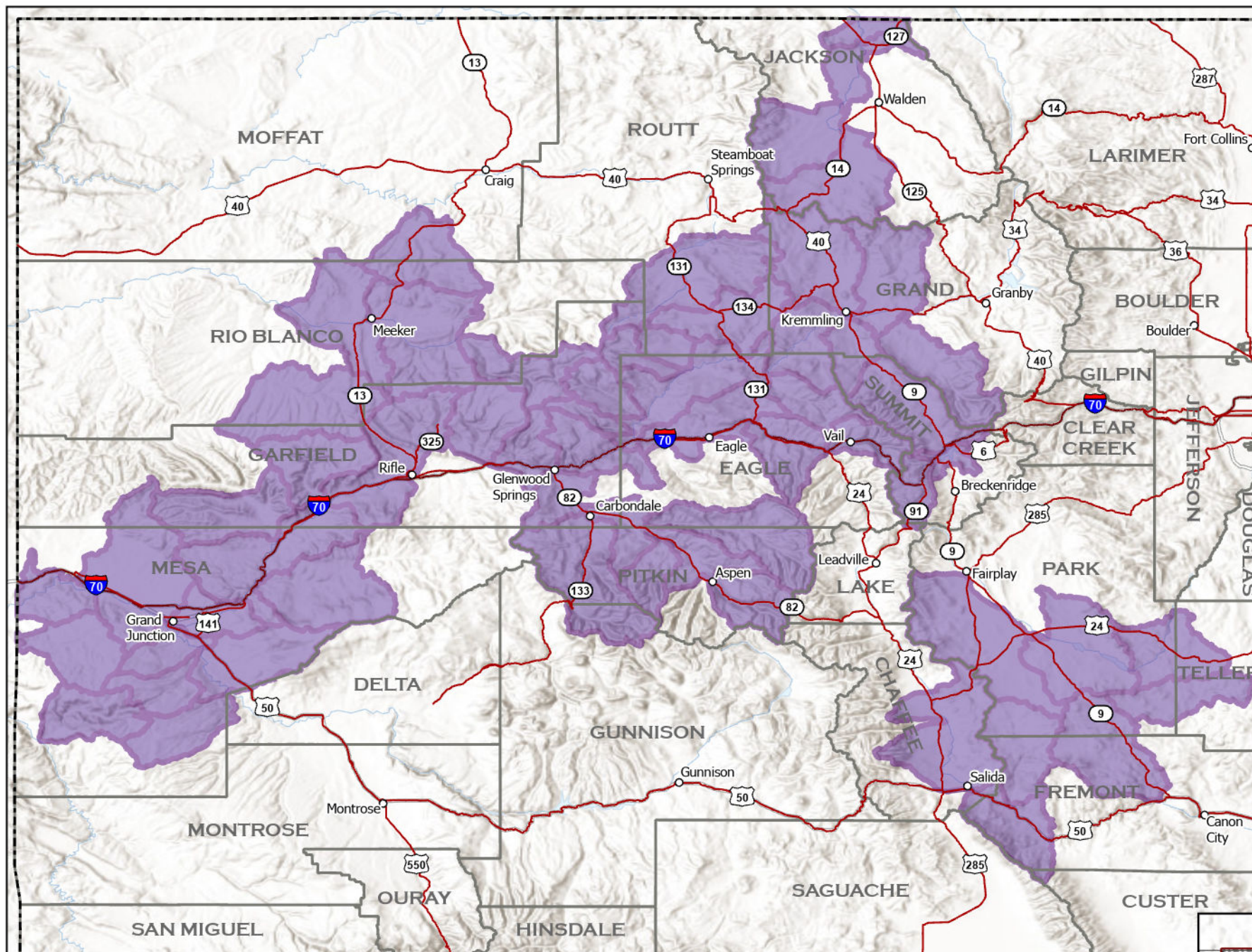


Current as of  
February 25, 2025  
Published February 26, 2025

**The minimum  
mapping unit is the  
local watershed.**


This map depicts  
watersheds where collared  
wolves in Colorado have  
been from January 21,  
2025 - February 25, 2025.  
In order for a watershed to  
indicate wolf activity, at  
least one GPS position was  
recorded within the  
boundaries of the  
watershed.

**Simply because a  
watershed indicates  
wolf activity, it does  
not mean that a wolf  
or wolves are present  
throughout the entire  
watershed.**



## Collared Gray Wolf Activity January 21, 2025 - February 25, 2025

1:1,910,000

 Wolf activity in  
watershed

A watershed is a geographic unit that drains water  
into a specific waterbody. These are also known as  
Hydrologic Unit Codes (HUC). Information is shared  
at the HUC 10 level. More can be learned about  
HUC at <https://water.usgs.gov/GIS/huc.html>.

-  Colorado Towns
-  Interstate
-  Highways
-  County Boundary
-  Colorado Boundary

0 32 64 128 Miles

