

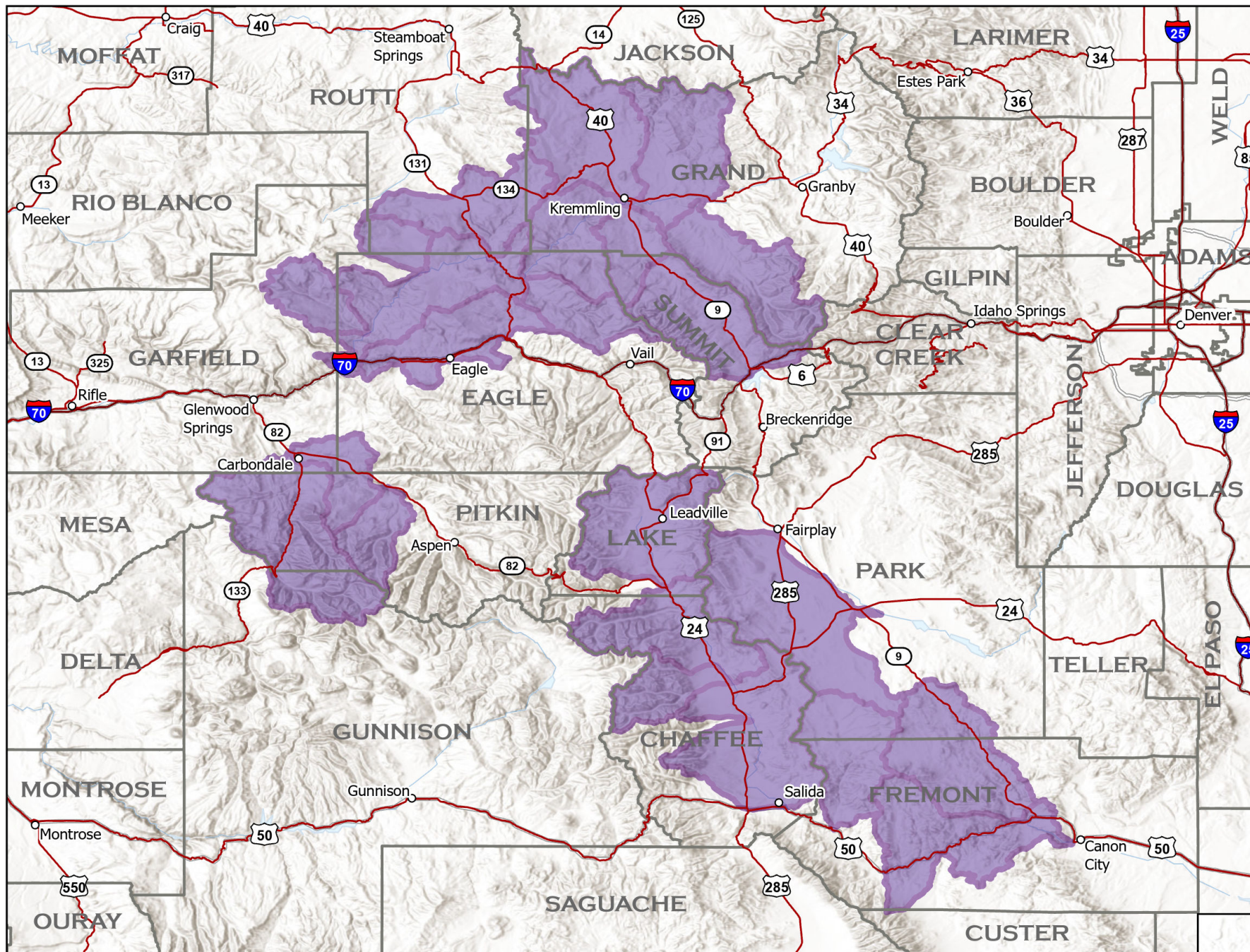



Current as of
January 21, 2025
Published January 22, 2025

**The minimum
mapping unit is the
local watershed.**

This map depicts
watersheds where collared
wolves in Colorado have
been from December 22,
2024 - January 21, 2025. In
order for a watershed to
indicate wolf activity, at
least one GPS position was
recorded within the
boundaries of the
watershed.

**Simply because a
watershed indicates
wolf activity, it does
not mean that a wolf
or wolves are present
throughout the entire
watershed.**



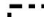
 Wolf activity in
watershed

A watershed is a geographic unit that drains water
into a specific waterbody. These are also known as
Hydrologic Unit Codes (HUC). Information is shared
at the HUC 10 level. More can be learned about
HUC at <https://water.usgs.gov/GIS/huc.html>.

Collared Gray Wolf Activity December 22, 2024 - January 21, 2025

1:1,500,000

0 25 50 100 Miles

-  Colorado Towns
-  Interstate
-  Highways
-  County Boundary
-  Colorado Boundary

Wyoming

