

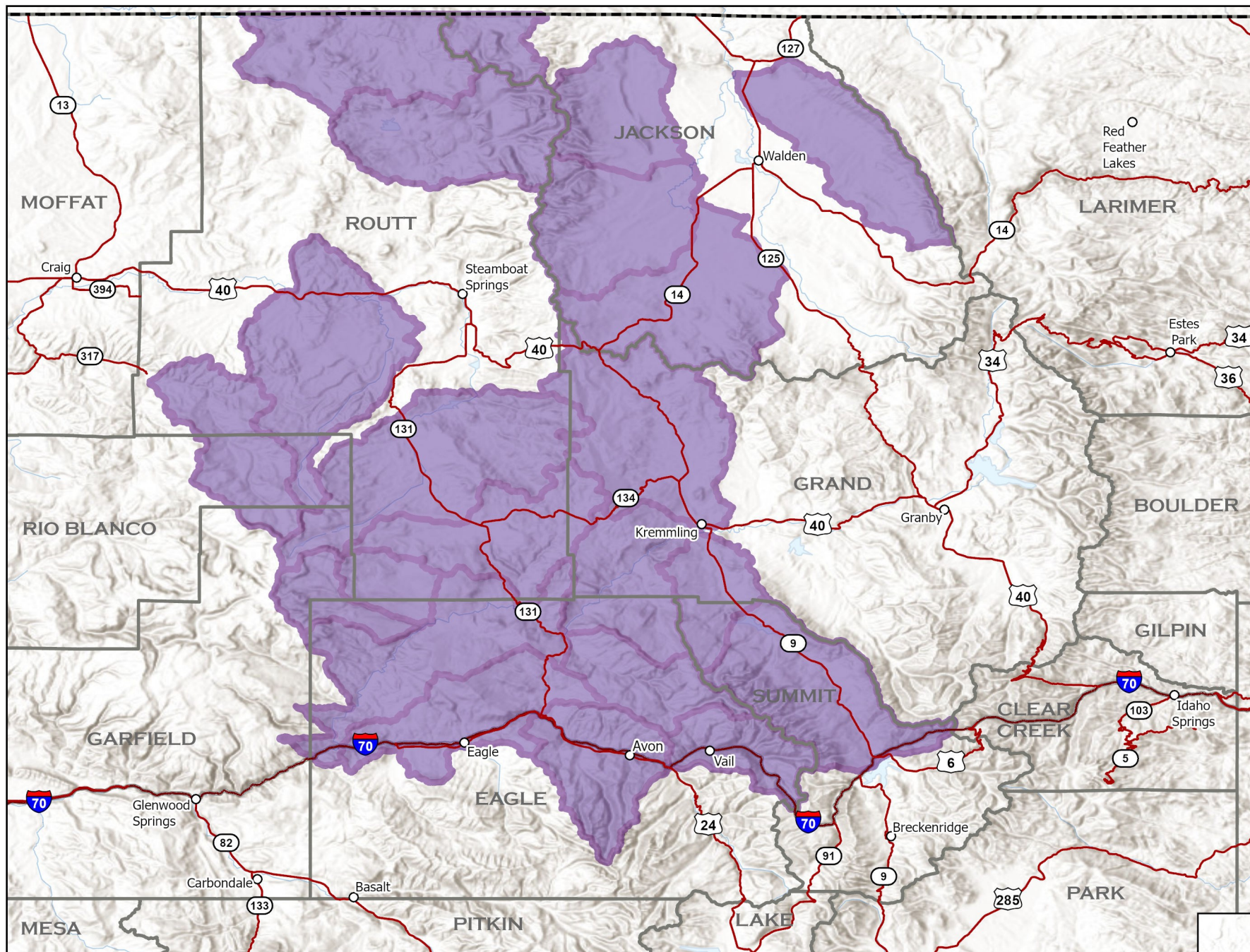



Current as of September 24, 2024
Published September 25, 2024

The minimum mapping unit is the local watershed.

This map depicts watersheds where collared wolves in Colorado have been from August 27, 2024 - September 24, 2024. In order for a watershed to indicate wolf activity, at least one GPS position was recorded within the boundaries of the watershed.

Simply because a watershed indicates wolf activity, it does not mean that a wolf or wolves are present throughout the entire watershed.



 Wolf activity in watershed

Collared Gray Wolf Activity

August 27, 2024 - September 24, 2024

1:1,100,000



A watershed is a geographic unit that drains water into a specific waterbody. These are also known as Hydrologic Unit Codes (HUC). Information is shared at the HUC 10 level. More can be learned about HUC at <https://water.usgs.gov/GIS/huc.html>.

-  Colorado Towns
-  Interstate
-  Highways
-  County Boundary
-  Colorado Boundary

