



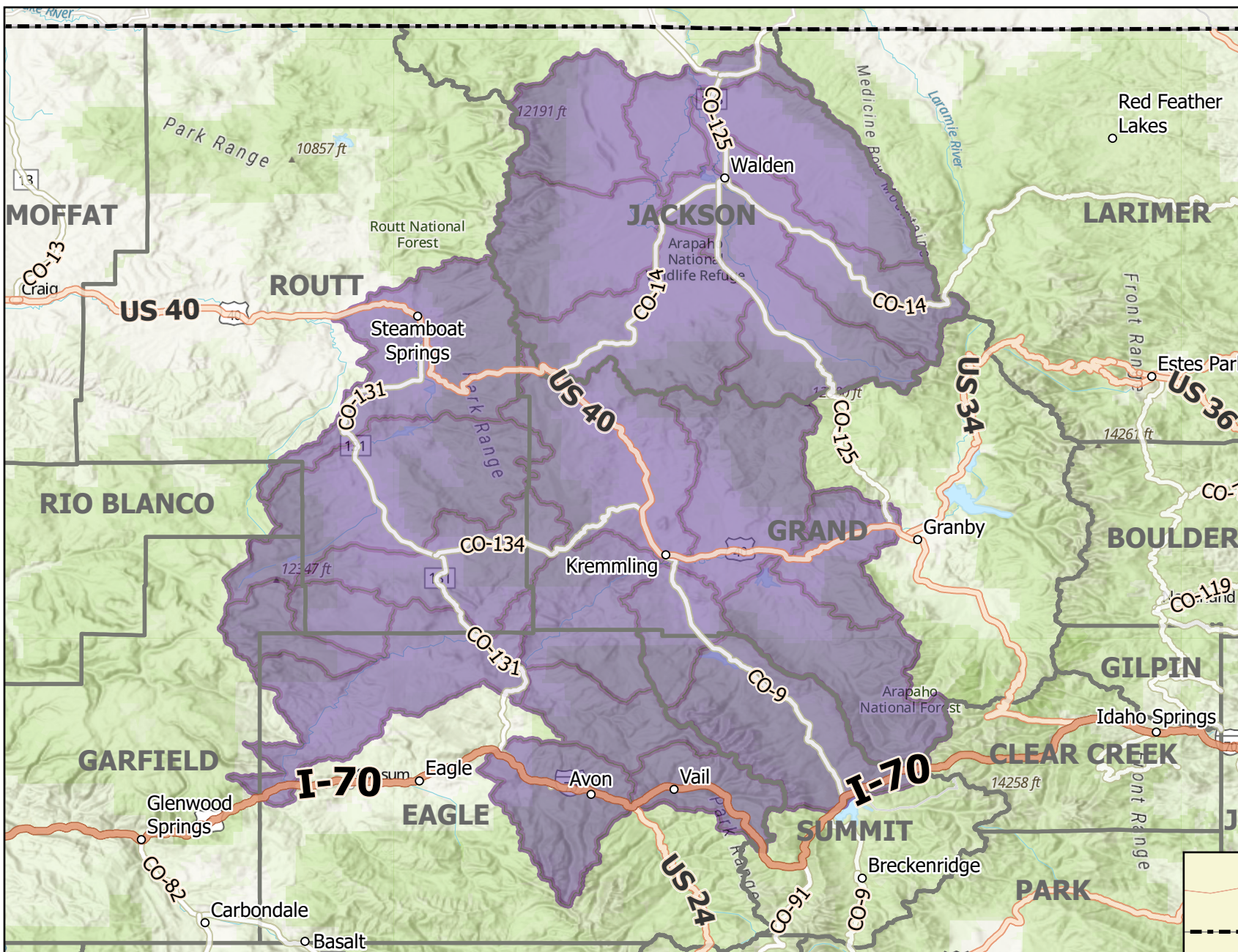
Current as of January 22, 2024
Published January 24, 2024

The minimum mapping unit is the local watershed.

At the time of this publication, all 12 collared wolves are confirmed to be alive in Colorado. This map depicts watersheds where the 12 collared wolves in Colorado have been for the last month. In order for a watershed to indicate wolf activity, at least one GPS position was recorded within the boundaries of the watershed.

Simply because a watershed indicates wolf activity, it does not mean that a wolf or wolves are present throughout the entire watershed.

For example, a wolf has not yet been located south of I-70, even though the watershed in which a wolf was detected spans both north and south of the Interstate.

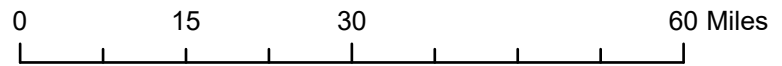


Wolf activity in watershed

A watershed is a geographic unit that drains water into a specific waterbody. These are also known as Hydrologic Unit Codes (HUC). Information is shared at the HUC 10 level. More can be learned about HUC at <https://water.usgs.gov/GIS/huc.html>.

Collared Gray Wolf Activity December 18, 2023 - January 22, 2024

1:1,100,000



- Populated Places
- State Hwy
- U.S. Hwy
- Interstate
- County Boundary
- Colorado Boundary

