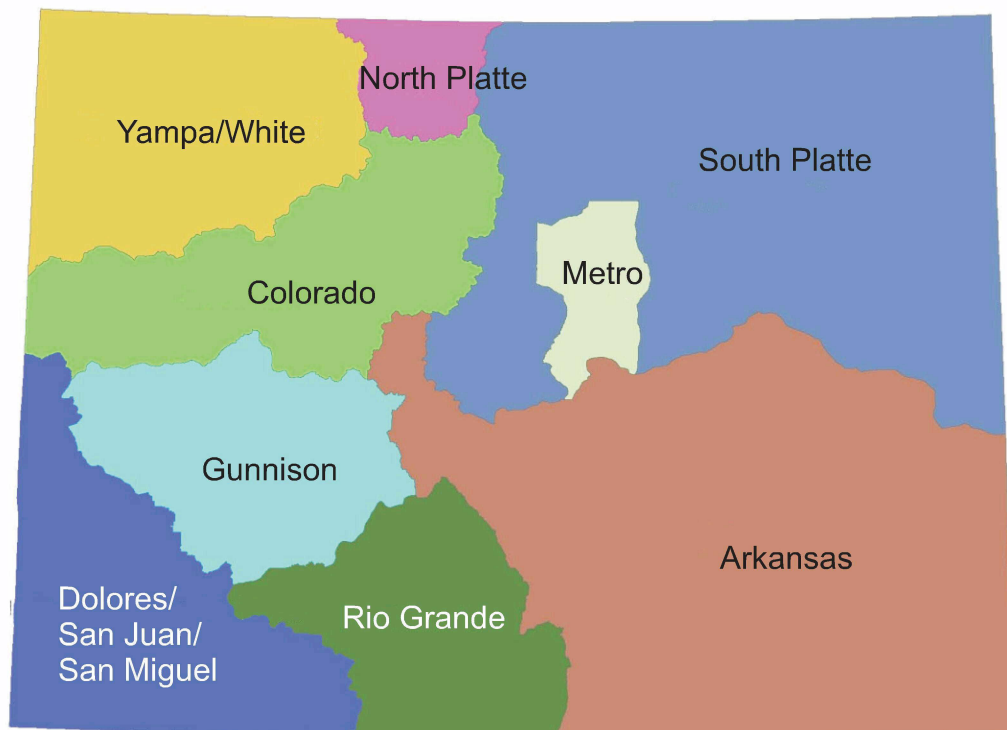


Interbasin Compact Committee Annual Report



To the House of Representatives
Committee on Agriculture, Livestock,
and Natural Resources
and the Senate Committee on
Agriculture, Natural Resources, and
Energy

October 31, 2008



Interbasin Compact Committee Annual Report

Foreword

Section 1 Newsletters

This section contains the following documents that were developed since last year's legislative report. They include:

- **Water Supply Reserve Account Fact Sheet**—This fact sheet provides an overview of the Water Supply Reserve Account Process and describes the procedures that each roundtable uses to approve grant applications.
- **Interbasin Compact Process 1st Quarter 2008 Newsletter**—The first quarterly newsletter focused on a vision for Colorado's Water Supply future. It provided an update on the Basin Roundtable consumptive and nonconsumptive needs assessments. The newsletter also provided a status update on the Water Supply Reserve Account Applications.
- **Interbasin Compact Process 2nd Quarter 2008 Newsletter**—The second quarterly newsletter focused on the IBCC vision process and provided a status update on the Water Supply Reserve Account Applications.
- **Interbasin Compact Process 3rd Quarter 2008 Newsletter**—The third quarterly newsletter provides and update on the IBCC vision process. It also presents a review of the Waste Supply Reserve Account program. The news letter also summarizes the Basin Roundtables progress on completing their consumptive needs assessments, nonconsumptive needs assessments, water supply availability analysis and projects and methods to meet water needs.

Section 2 IBCC and BRT Members

This section contains a list of the Interbasin Compact Committee members and Basin Roundtable members.

STATE OF COLORADO

Department of Natural Resources Colorado Water Conservation Board

1313 Sherman Street, Room 721
Denver, Colorado 80203



Bill Ritter, Jr.
Governor

Harris D. Sherman
Executive Director
Department of
Natural Resources

FOREWORD

October 31, 2008

Fellow Coloradans:

In 2005, the Colorado General Assembly passed HB 05-1177, *The Colorado Water for the 21st Century Act* and created a new collaborative process for addressing Colorado's water needs. This process, by setting up the Interstate Basin Compact Committee (IBCC) and nine Basin Roundtables (BRTs), continued the Department of Natural Resources water planning efforts that began with the Statewide Water Supply Initiative (SWSI). The Interbasin Compact Process is intended to use the SWSI information and, through a grassroots approach, foster inter-basin and intra-basin dialogue to create agreements that will lead to a more secure water supply future for Colorado.

This report documents the progress and milestones achieved in 2008 and fulfills the requirement of C.R.S. 37-75-105(4) to report to the House of Representatives Committee on Agriculture, Livestock, and Natural Resources and the Senate Committee on Agriculture, Natural Resources, and Energy on the status of compact negotiations by October 31st of each year.

The initial focus of the IBCC and BRTs was to identify members; create bylaws and set operational ground rules. A primary task was to use the information gained in SWSI to educate BRT and IBCC members on the challenges and needs of their basins.

In 2008, having accomplished the initial goal of creating a strong foundation, the BRTs and IBCC made progress on several important substantive issues. During the past year, the Interbasin Compact Process focused on four key goals:

1. Create a vision for Colorado's water supply future and begin discussions on strategies to help meet that vision.
2. Develop a more comprehensive understanding of the water needs in each basin through basin-wide water needs assessments.
3. Use the Water Supply Reserve Account (WSRA) to implement projects and water activities that help address the water needs in each basin.
4. Engage and educate the general public regarding our water future.

The progress made toward each goal is briefly outlined below. More detailed information about each of these activities is provided in the attached newsletters.

Vision for Colorado's Water Supply Future

The IBCC is addressing a series of questions through a visioning exercise designed to examine what Colorado's water supply future looks like and explore the difficult water supply choices facing Colorado. These questions include: If we let Colorado's water supplies continue to develop according to current trends and existing policy, what will our state look like in 50 years? Is this our vision of the future of Colorado? Is this future inevitable? If it is not, what can and should we do to effect changes?

The IBCC has come to general agreement on a vision statement and goals that further define that vision statement. The next step in the visioning process is to evaluate water supply strategies for achieving the vision.

Basin-Wide Water Needs Assessments

To develop a deeper understanding of the water needs throughout Colorado, each BRT is developing a basin-wide water needs assessment addressing four questions.

1. What are each basin's consumptive water needs (municipal, industrial, and agricultural)?
2. What are each basin's non-consumptive water needs (environmental and recreational)?
3. What are our available water supplies (surface and groundwater) and how much water is unappropriated?
4. What projects or methods are available to meet our identified water needs?

Several efforts are underway to help each BRT answer these questions. Each BRT is building on the SWSI information to develop their needs assessment.

This past year, the BRTs identified additional information needs and submitted "task orders" to the IBCC technical assistance team and/or funded studies through the WSRA. As these task orders and studies are completed, the information gathered will be incorporated into the BRTs' consumptive and nonconsumptive needs assessment. A status summary of each roundtable's basin-wide water needs assessment is included in the third quarter newsletter.

The BRTs efforts are being supplemented by the following statewide activities.

- *Colorado River Supply Availability Study*: The Colorado Water Conservation Board (CWCB), in consultation and cooperation with the BRTs, is attempting to determine how much water is available under Colorado's allocation of Colorado River water.
- *Demands to 2050*: The CWCB is working to update SWSI water supply demands from 2030 to 2050 using an extrapolation of the State Demographer's model.
- *Tracking Projects Identified in SWSI*: A number of "Identified Projects and Processes" (IPP) were predicted to be able to account for 80 percent of the water supply demand by 2030. The CWCB will be tracking the status of each of these IPPs as well as new plans and projects.

These studies will provide further information that will enable smart planning and decision-making at the local and state levels and help ensure a secure water future for all Coloradans.

Water Supply Reserve Account

Each BRT is identifying projects that can help meet their water supply needs, but for which additional financial support is needed. That is the purpose of the Water Supply Reserve Account (“WSRA”). Through state severance tax dollars, grant money enables local entities to implement water related activities and water supply projects. Requests for funds from the WSRA must be approved by the local BRTs and are then forwarded to the CWCB for evaluation and approval. Complete lists of the approved WSRA applications are included in the attached newsletters, and the third quarter newsletter summarizes the distribution of funds.

Public Education and Outreach

Colorado's water future is central to the quality of life and future of our state. It is essential, therefore, that the public be informed of and engaged in the work that is shaping our water supply future. Much has taken place in the last year to achieve this objective, under the guidance of the Public Education, Participation, and Outreach work group within the IBCC. Through volunteer leadership, the work group has redesigned the IBCC website (www.ibcc.state.co.us) for greater clarity and ease of navigation; created a wide range of materials to better communicate the activities of the IBCC and BRTs (including presentations, fact sheets, and quarterly newsletters); created an introduction to water law DVD, and conducted a series of town hall meetings were conducted throughout the state. In addition, the work group worked with Colorado State University to conduct a network analysis of the Colorado Roundtable

The Path Forward

The BRTs and IBCC will continue their work over the coming months. In 2009, our objectives are to complete the basin needs assessments, finalize a vision for Colorado's water supply future, evaluate a range of water supply strategies to help meet Colorado's consumptive and nonconsumptive water needs, and continue to implement water projects and activities through the WSRA program. Together, these activities will help further the fundamental premise upon which *The Colorado Water for the 21st Century Act* is based—that Coloradans must work together to address our state's water needs. Our future calls for nothing less, and through your continued leadership, this is a goal that we will help you achieve.

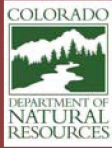


Harris D. Sherman
Executive Director of DNR and
Director of Compact Negotiations



Colorado's Water Supply Future

Bill Ritter, Jr. – Governor
 Harris D. Sherman – DNR Executive Director
 Jennifer Gimbel – CWCB Director



Water Supply Reserve Account

Introduction

In 2005 the Colorado General Assembly passed the “Colorado Water for the 21st Century Act” (House Bill 05-1177), which in part established permanent roundtables in eight river basins plus the Denver Metro area. To help implement the Act, it was clear financial assistance was needed. Senate Bill 06-179 provides financial assistance by establishing the Water Supply Reserve Account (WSRA). The WSRA provides resources to implement projects and methods for meeting our state’s water needs. The information included here outlines some of the key elements of the WSRA program, which set aside funding for the nine basin roundtables (BRTs).

Water Supply Reserve Account (SB 06-179) Process Outline

The WSRA is divided into two accounts—the Basin Accounts: \$1 million reserved for each of the nine roundtables, and The Statewide Account: \$33 million for the basin roundtables in a statewide competitive process. This totals \$42 million of state funds. However, this money is provided over a 5-year period and is therefore not available in its entirety at this time. The schedule for funding is shown below.

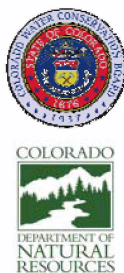
Fundin Source	Accounts	uly 0	uly 0	uly 08	uly 0	uly 10
State Treasurer Transfers		\$10 million	\$6 million ↓	\$10 million ↓	\$10 million ↓	\$6 million
	Statewide Account	\$5.5 million available (after transfer of \$4.5 million to basin accounts)	\$4.2 million added to any remaining balance (transfer additional \$1.8 million to basin accounts)	\$7.3 million added to any remaining balance	\$10 million added to any remaining balance	\$6 million
	Basin Account(s)	\$4.5 million (\$500K/basin)	\$1.8 million (\$200K/basin)	\$2.7 million (\$300K/basin)		

Notes:

- Monies from the Statewide Account will be allocated in March and September of each year based on the eligibility requirements and threshold and evaluation criteria outlined in this document.
- Monies from the Basin Accounts will be allocated at the Colorado Water Conservation Board’s (CWCB’s) bimonthly Board meetings based on the eligibility requirements and threshold criteria outlined in this document.
- The cumulative maximum funds available from the Basin Accounts is \$9 million with \$1 million available per roundtable.
- The cumulative funds available from the Statewide Account is \$33 million.
- The above cash management schedule will remain flexible to ensure that funds are available for water activities. The CWCB will strive to ensure that funding is available for each funding cycle, while at the same time addressing applications to fund water activities.
- In January 2011 any uncommitted (not under contract) monies remaining in any Basin Account will be transferred to the Statewide Account.
- On June 30, 2011 any uncommitted (not under contract) monies remaining in the Statewide Account will revert back to the Operation Account of the Severance Tax Fund.

The following is a list of current Basin Roundtable chairpersons:

Chairperson	asin	Seat Name	City	Phone	ail
Gary Barber	Arkansas	Legislative Appointment	El Paso County	719 598-0230	barbergl@aol.com
Jim Pokrandt	Colorado	Colorado River WCD	Glenwood Springs	970 945-8522	jpokrandt@crwcd.org
Michelle Pierce	Gunnison	Hinsdale Muni	Lake City	970 944-2333	lakecity@lakecity.com
Rod Kuharich	Metro	Douglas County Municipal	Greenwood Village	303 409-7747	rodkuharich@ southmetrowater.org
Kent Crowder	North Platte	Legislative Appointment	Walden	970 723-4660	kentcrowder@aol.com
Mike Gibson	Rio Grande	San Luis Valley WCD	Alamosa	719 589-2230	slvwcdco1@qwest.net
Bill Jerke	South Platte	Weld County	Greeley	970 336-7204	bjerke@co.weld.co.us
Michael Preston	Southwest	At-Large Appointment	Cortez	970 565-7562	mpreston@frontier.net
Tom Sharp	Yampa/White	Upper Yampa WCD	Steamboat Springs	970 879-1482	sharp@sharpsteinke.com



Water Supply Reserve Account Review and Approval Process

In order to apply for funding, the applicant should obtain an application and review the Criteria and Guidelines (<http://www.cwcb.state.co.us>), which identifies the procedures and criteria the CWCB will use to review and evaluate applications. The Basin Account and Statewide Account need to meet eligibility requirements and threshold criteria. Applications for the Statewide Account will undergo evaluation using the evaluation criteria described in the Criteria and Guidelines.

Each roundtable has its own process for receiving, considering, and approving WSRA applications. Once the application is approved by the roundtable, an approval letter and the completed application need to be forwarded to CWCB Staff 60 days prior to the CWCB Board Meeting. Each roundtable's process is summarized below.

Arkansas Basin

Meeting Schedule/Location

The Arkansas BRT meets monthly the 2nd Wednesday of the month for 2.5 hours from 12:30-3:00 p.m. They meet in Pueblo at the CSU Student Center.

Processes for Receiving, Considering, and Approving WSRA Applications

Contact Person: Gary Barber
Phone: 719 598-0230
e-mail: barbergl@aol.com

Interested applicants should submit on an application form used by the State Interbasin Compact Committee (IBCC) and CWCB and work through their representative on the Arkansas BRT. The Arkansas BRT member will then inform the Chair of the pending application. The Chair will make sure the Needs Assessment Committee receives the application 10 days prior to a meeting of the subcommittee. The applicant will have an opportunity to present to the Committee and answer any questions. The Committee will decide to either recommend or not recommend the application for funding. They will also make a recommendation on funding from the basin or the statewide account.

If the Committee recommends the application for funding, they will inform the Arkansas Basin Executive Committee so consideration of the application can be added to an upcoming Arkansas BRT agenda. Ten days prior to the Arkansas BRT meeting, the Chair will distribute the application to the full roundtable membership. At the Arkansas BRT meeting the applicant will have an opportunity to present and the full Arkansas BRT will discuss the application. If the full Arkansas BRT agrees with the Committee's recommendation by

consensus, the application is forwarded to the CWCB. If there is not consensus to accept the Committee's recommendation, the Arkansas BRT may vote to switch from a consensus decision process to a voting process. If the Arkansas BRT switches to a voting process, a decision on the application at hand is scheduled for the next regular roundtable meeting.

At the next Arkansas BRT meeting, the members will vote on the application and it takes a 75 percent super-majority to approve the application.

An approved application, whether by consensus or vote, must be forwarded to CWCB 60 days prior to their Board Meeting. The applicant will prepare the final submission along with a letter from the Chair describing the approval by the Arkansas BRT including dissenting opinion, if any.

The Arkansas BRT's WSRA application process is summarized in Figure 1.

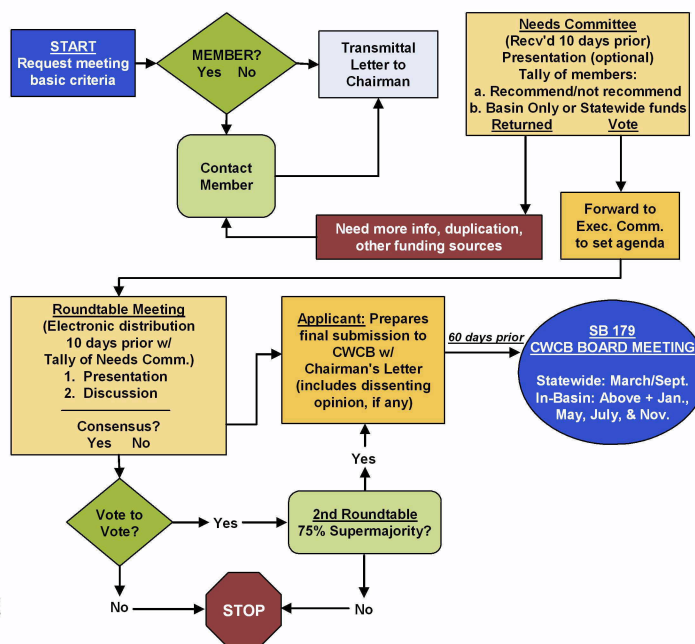


Figure 1
Arkansas Basin Roundtable's WSRA Application Process

Colorado Basin

Meeting Schedule/Location

The Colorado BRT meets monthly the 4th Monday of the month for 3 hours from 2:00-5:00 p.m. They meet in Glenwood Springs, usually at the Community Center.

Processes for Receiving, Considering, and Approving WSRA Applications

Contact Person: Jim Pokrandt
Phone: 970 945-8522
e-mail: jpokrandt@crwcd.org

Timeline/Calendar: Preliminary calendar established. The Colorado BRT may set certain meetings in which Basin Fund proposals are considered so there may be comparisons between applications.

Process: Preliminary calendar established (see above). The Colorado BRT has developed a one-page Grant Request Summary Sheet for applicants to fill out (see Figure 2). The Colorado BRT has also established a subcommittee (led by Karl Hanlon) to develop standard procedures as follows:

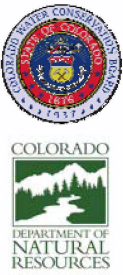
- Grant requests are discussed at a Colorado BRT meeting 2 months before they are due to be submitted to the CWCB. The application is prepared in the same format that is submitted to the CWCB, and it is circulated by e-mail to Colorado BRT members prior to the meeting. Colorado BRT members have an opportunity to ask questions and flesh out the proposal at the Colorado BRT meeting.
- Grant requests are voted upon at the next Colorado BRT meeting, one month before they are due to be submitted to the CWCB. Presenters have a chance to report back on the questions asked at the prior meeting and to answer any additional questions.
- The grant request specifies if it is to be taken from the CWCB general grant funds, or from the Colorado Basin account.
- Grant requests follow guidelines that were put together by a subcommittee.
- A grant review committee reviews the grant submitted and provides any additional questions. This group usually meets in the morning before the first grant presentation.
- It takes a 2/3 vote by the Colorado BRT members to approve a grant request out of either account. Colorado BRT members that vote against a proposal are asked to specify their objections, and these objections are forwarded to the CWCB. Written ballots are cast. The ballots, and the responses on the nays, while not public are not secret either. Colorado BRT members write their names and affiliation on the ballot, and those are kept in the Permanent Record.
- The ballots are publicly tabulated.
- At each Colorado BRT meeting at which we vote on grant requests, a report on the funds previously disbursed and the funds remaining in the Colorado Basin account is provided to the members.
- Successful grant recipients report on the grant progress at each Colorado BRT meeting.

Communication of Roundtable Approval: The results of the Colorado BRT's consideration of WSRA applications are communicated via a cover letter from the chairperson.

[Project Description] Circle one or both: BASIN / STATEWIDE		
Criteria	Yes	No
I. Threshold Requirements		
A. Eligible Project		
B. Eligible Entity		
C. Consistent with § 37-75-102		
D. Meets SWSI Recommendations		
II. CWCB/IBCC Evaluation Criteria		
A. Promoting Collaboration & Cooperation		
1. Addresses multiple needs or issues		
2. Promotes cooperation and collaboration		
B. Facilitating Water Activity Implementation		
1. Funding increases certainty activity will occur		
2. Urgency of need for the activity		
3. Time needed to implement the activity		
4. Applicant has expertise to implement activity		
5. Applicant is providing outside funding		
6. Demonstrated need for funding		
C. Meeting Water Management Goals and Objectives		
1. Helps complete unfinished needs assessment		
2. Meets one or more of the SWSI objectives		
3. Promotes water conservation and efficiency		
4. Applicant has existing water conservation plan		
5. Activity will make new water available		
6. Involves use of existing facilities		
D. Activity Addresses Issues of Statewide Concern		
1. Sustains agricultural/open space or environmental/recreational needs		
2. Compact waters/promotes maximum utilization		
3. Assists recovery of T&E species		
4. High level of benefit for funds requested		
5. Assists other CWCB programs		
6. Supports State's economic vitality		
III. Other Colorado Basin-Specific Criteria		

Figure 2
Colorado Basin Roundtable Water Supply Reserve Account Grant Criteria





Gunnison Basin

Meeting Schedule/Location

The Gunnison BRT meets monthly the 1st Monday of the month for 3 hours from 4:00-7:00 p.m. They meet in Montrose usually at the Holiday Inn Express.

Processes for Receiving, Considering, and Approving WSRA Applications

Contact Person: Michelle Pierce

Phone: 970 944-2333

e-mail: lakecity@lakecity.com

Project Screening Committee (PSC) Membership Representation:

- Two at Upper Basin Area above the Tunnel
- Two at South Basin Uncompahgre, Gunnison River south
- Two at North Basin North Delta, North Fork, Grand Mesa

Role and Responsibility

Project Steering Committee

1. Review project applications for Gunnison BRT and state accounts.
2. Prepare recommendation to accompany applications.
3. Provide Gunnison BRT with concise, succinct, and comparable applications.
4. As required by the project, provide review of progress and makes recommendations to Gunnison BRT for project modifications.
5. At least annually, and more frequently as needed, review these guidelines and the project selection process. Report to the Gunnison BRT on any changes needed to improve the project screening process.

Gunnison Basin Roundtable

1. Review, provide comments, and approve or reject all applications.
2. Support the applicant in its submittal of approved applications to the CWCB.
3. Monitor project progress and approve any necessary progress payments.
4. Conduct a final review of the project and vote to approve the project per Gunnison BRT bylaws.
5. The Chair will provide a summary of the vote per the CWCB WSRA Criteria and Guidelines.
6. Members casting a dissenting vote are responsible for providing the applicant and the Chair with a memorandum documenting their vote per CWCB's WSRA Criteria and Guidelines within the applicant's scheduled submittal. If they fail to do so, their vote will be considered having been cast in favor of the project and so reflected by the Chair in its letter.

7. Review proposed changes to the PSC structure and process as necessary.

PSC Operating Guidelines

1. At the time the project is submitted to the PSC and the Gunnison BRT, Gunnison BRT members shall disclose any participatory role of a member or affiliate of a member in the project and any financial or other benefit a member or any affiliate of a member may receive from the proposed project. For purposes of this disclosure, "member" includes the entity or entities that appointed an individual to the Gunnison BRT.
2. Applicant shall give notice at the Gunnison BRT meeting prior to its submittal of its request for PSC review of its application.
3. The PSC must consider the application at least once before the next Gunnison BRT meeting.
4. PSC will review the application against the Gunnison BRT and state application requirements.
5. The PSC will find an application acceptable when four of six members approve the application for Gunnison BRT consideration. The PSC may include comments on an application forwarded to the Gunnison BRT.
6. Should the application be found to be deficient, the PSC will request the applicant to address the identified deficiencies and reschedule a second PSC review.
7. If the PSC finds the application to be deficient, the applicant may:
 - a. Address deficiencies and resubmit to the PSC for further consideration.
 - b. Take the declined application directly to the Gunnison BRT.
8. Whenever a PSC declined applicant directly petitions the Gunnison BRT, the PSC will have the opportunity to present the PSC's position regarding the declined application.
9. The Gunnison BRT can accept the application, accept it with modifications, return it to the PSC with comments for further consideration, or reject the application.
10. Review final report and make recommendation to Gunnison BRT regarding final payment.

Application Guidelines

No application will be accepted by the Gunnison BRT that proposes use of Gunnison BRT allocated funds for any project not within the geographic boundary of the Gunnison River Basin.

Application Grading System

The intent of the PSC assessment of applications is to provide the Gunnison BRT with complete and comparable applications. Consideration for

recommendation shall include, but not be limited to, the following:

- Private individual and for-profit entity applicants shall receive preferential consideration by the PSC and Gunnison BRT if; (1) they have secured a public water entity partner prior to submitting their application, (2) the project provides public oriented benefits, (3) promotes private/public partnerships within the sub-basin, and (4) provides benefits to more than one sub-basin within the Gunnison Basin.
- Funding history, support, and commitments
 - Applicant
 - Contributions – dollar amount, real property, paid labor, material, etc.
 - Grants or loans
- Community interest commitments or support
- CWCB evaluation criteria

The applicant should refer to the Project Selection and Funding Guidelines at Appendix A to assist it in preparing its application. The PSC will use this table as guidance in its evaluation of funding requests.

Metro Basin

Meeting Schedule/Location

The Metro BRT meets monthly the 2nd Wednesday of the month for 2 hours from 4:00-6:00 p.m. The meeting location is at Denver Water.

Processes for Receiving, Considering, and Approving WSRA Applications:

Contact Person: Rod Kuharich

Phone: 303 409-7747

e-mail: rodkuharich@southmetrowater.org

Timeline/Calendar: The Metro BRT will consider WSRA applications at any of their monthly meetings.

Process: Applicants should prepare an application form used by the State IBCC and CWCB and contact the Chair to get time on an upcoming Metro BRT agenda.

Communication of Roundtable Approval: Letter from Chairperson drafted by the applicant. Applicants should work with the Chairperson to ensure the approval letter is submitted to CWCB.

North Platte Basin

Meeting Schedule/Location

The North Platte BRT meets monthly, typically the 4th Tuesday of the month for 2 hours from 3:00-5:00 p.m. in the winter and 7:00-9:00 p.m. in the summer. They meet in the USDA Forest Service Conference Room at 100 Main Street in Walden.

Processes for Receiving, Considering, and Approving WSRA Applications

Contact Person: Kent Crowder

Phone: 970 723-4660

e-mail: kentcrowder@aol.com

Timeline/Calendar:

CWCB WSRA Grant Application Deadlines

1. North Platte BRT Deadlines (approved 8-28-07 meeting)

Basinwide Account - Applications must be received 30 days prior to the North Platte BRT meeting that immediately precedes the CWCB Board 60-day Application Deadline. If that date falls on a weekend, applications are due the following Monday.

Statewide Account - Applications must be received 30 days prior to the North Platte BRT meeting that immediately precedes the CWCB Board Application Deadline for the March and September CWCB meetings. If that date falls on a weekend, applications are due the following Monday.

2. CWCB Deadline

Basinwide Account - Applications must be received 60 days prior to the bi-monthly CWCB meeting at which the application will be considered.

Statewide Account - Applications must be received 60 days prior to the CWCB's March and September meetings.





[Project Description] Circle one or both: BASIN / STATEWIDE		
Criteria	Yes	No
I. Threshold Requirements		
A. Eligible Project		
B. Eligible Entity		
C. Consistent with § 37-75-102		
D. Meets SWSI Recommendations		
II. CWCB/IBCC Evaluation Criteria		
A. Promoting Collaboration & Cooperation		
1. Addresses multiple needs or issues		
2. Promotes cooperation and collaboration		
B. Facilitating Water Activity Implementation		
1. Funding increases certainty activity will occur		
2. Urgency of need for the activity		
3. Time needed to implement the activity		
4. Applicant has expertise to implement activity		
5. Applicant is providing outside funding		
6. Demonstrated need for funding		
C. Meeting Water Management Goals and Objectives		
1. Helps complete unfinished needs assessment		
2. Meets one or more of the SWSI objectives		
3. Promotes water conservation and efficiency		
4. Applicant has existing water conservation plan		
5. Activity will make new water available		
6. Involves use of existing facilities		
D. Activity Addresses Issues of Statewide Concern		
1. Sustains agricultural/open space or environmental/recreational needs		
2. Compact waters/promotes maximum utilization		
3. Assists recovery of T&E species		
4. High level of benefit for funds requested		
5. Assists other CWCB programs		
6. Supports State's economic vitality		
III. Other North Platte Basin-Specific Criteria		

Figure 3
North Platte Basin Roundtable Water Supply Reserve Account Grant Criteria

Process:

1. Applicants should prepare an application form used by the State IBCC and CWCB.
2. Applicants are required to submit 20 hard copies of their application to the North Platte BRT contact person to the address listed above. In addition to 20 hard copies, applicants may wish to send applications to North Platte BRT members by e-mail. Contact Kent Crowder at 970 723-4660 to obtain a current list of member e-mail addresses or mailing addresses for those members who do not have an e-mail address.
3. The North Platte BRT recommends that applicants attend the North Platte BRT meeting when submitting their 20 hard copy applications in order to present and discuss their proposal with North Platte BRT members. Contact the Chair to secure time on a North Platte BRT meeting agenda.
4. The North Platte BRT recommends that applicants attend or be available by phone during the North Platte BRT meeting during which their application will be reviewed and considered for approval by the voting members of the North Platte BRT.

Communication of Roundtable Approval:

1. The North Platte BRT Chair will provide a letter to the applicant, approving or disapproving the application. This letter will include any minority reports related to the decision.
2. The North Platte BRT Chair will submit a copy of the letter to the applicant directly to the CWCB.
3. The applicant is responsible for submitting the application to the CWCB to meet their designated deadline and requirements. Applications will NOT be forwarded to the CWCB by the North Platte BRT Chair.

Rio Grande Basin

Meeting Schedule/Location

The Rio Grande BRT meets monthly the 2nd Tuesday of the month for 3 hours from 2:00-5:00 p.m. They meet in Alamosa at Adams State College.

Processes for Receiving, Considering, and Approving WSRA Applications

Contact Person: Mike Gibson

Phone: 719 589-2230

e-mail: slvwcdco1@qwest.net

Timeline/Calendar: Applications will be considered at any regular Rio Grande BRT Meeting

Process: The Rio Grande BRT has adopted the following guidelines for funding requests coming to the Rio Grande BRT:

- Applications will be considered at any regular Rio Grande BRT meeting, usually held on the second Tuesday of each month.
- Applications have to be received by the Rio Grande BRT Chairperson no less than 10 days before the Rio Grande BRT meeting. This is to allow Rio Grande BRT members to be sent a copy of the application and for them to review it prior to the meeting when it will be considered.
- The Rio Grande BRT will consider the application, but is not under any obligation to recommend the funding request at the first Rio Grande BRT meeting that it is considered. The Rio Grande BRT will make a decision on the application no later than the second Rio Grande BRT meeting after its receipt by the Rio Grande BRT Chairperson.

Communication of Roundtable Approval: The Rio Grande BRT Chairperson will be responsible for submitting the recommendation for funding to the CWCB, assisted by the Applicant, within the necessary deadline.

South Platte Basin

Meeting Schedule/Location

The South Platte BRT meets monthly the 2nd Tuesday of the month for 4 hours from 4:00-8:00 p.m. They meet in Longmont at the Weld County Building.

Processes for Receiving, Considering, and Approving WSRA Applications:

Contact Person: Bill Jerke
Phone: 970 336-7204
e-mail: bjerke@co.weld.co.us

Timeline/Calendar: The South Platte BRT will consider WSRA applications at any of their monthly meetings.

Process: Completed applications are to be submitted to the CWCB one week prior to the South Platte BRT meeting at which the application will be considered. Staff will distribute the application to South Platte BRT members for their review. At the South Platte BRT meeting, the applicant will have an opportunity to present and answer questions. Controversial applications may be subject to a super-majority vote of 60 percent for approval.

Communication of Roundtable Approval: Letter from Chairperson drafted by the applicant. Applicants should work with the Chairperson to ensure the approval letter is submitted to CWCB.

Southwest Basin

Meeting Schedule/Location

The Southwest BRT meets bi-monthly for 3 hours from 3:00-6:00 p.m. (with a social half hour prior to the meeting). Their meeting locations alternate between Durango and Cortez.

Processes for Receiving, Considering, and Approving WSRA Applications

Contact Person: Michael Preston
Phone: 970 565-7562
e-mail: mpreston@frontier.net

Timeline/Calendar: The Southwest BRT will consider WSRA applications at any of their bi-monthly meetings.

Process: Applicants should contact Michael Preston to get on the agenda and follow the process outlined below.

The following will be used to evaluate a project submitted to the Southwest BRT.

Required:

- Projects must be submitted on an application form used by the State IBCC and CWCB. All applicable sections must be completed.
- Projects must address the values encompassed by the Southwest BRT Bylaws, especially the following goals and objectives:
 - Seek the involvement of all interested parties and stakeholders.
 - Propose methods or projects, both structural and non-structural, for meeting any future needs as well as utilizing any unappropriated waters.
 - Promote the protection, conservation, and use of water in the Southwest BRT area.
 - Promote the socio-economic sustainability of the Southwest BRT Roundtable area.
 - Promote the protection and conservation of the natural environment, including the protection of open space.
- Provide the financial details of the plan, including cost sharing and other possible funding sources. Give a financial overview and rough timeline for completion of the project.

To assist the Southwest BRT in determining whether and to what extent a proposed project meets the values set forth in the Bylaws, the following questions should be addressed separately as can reasonably be answered by the applicant.

- What benefit(s) does the project provide? Are there multiple purposes?
Note: this does not mean that a single purpose project would be rejected, but for major funding requests, addressing multiple use needs would be an advantage.
- Outline the steps needed for completion of the project. What permit issues must be overcome? How will funds acquired in this process be used to accomplish the final goal?
- For prioritization of different proposals and assessment of the merits of the plan, can this



- project be physically built with this funding? Are further studies needed before actual construction is commenced (if the project anticipates construction)? Will these studies or additional steps delay the completion of the project substantially?
4. How does the proposal envision and anticipate support from its beneficiaries or from other sources in addition to the funding requested here? Would a loan reasonably address the needs of the applicant or, with a grant, should a recommendation be added to assess the future project status for ability to repay a portion of the grant?
 5. What is the ability of the sponsor to pay for the project? What actions have been taken to secure local funding? Are there supporting factors that overcome the sponsor's inability to pay? (These could be related to basin water needs and compact considerations).
 6. What alternative sources of water or alternative management ideas have you considered? Are there water rights conflicts involving the source of water for the project? If so, please explain.
 7. How has public input been solicited and is there local support for the project? Have the beneficiaries solicited funding, letters, or other documentation to demonstrate support?
 8. Is there opposition to the project? If there is opposition, how have those concerns been addressed?
 9. How does the project affect the protection and conservation of the natural environment, including the protection of open space?
 10. What is the impact of the proposed action on other non-decreed values of the stream or river? Non-decreed values may include things such as non-decreed water rights or uses, recreational uses, and soil/land conservation practices.
 11. How does the project relate to local land use plans? If conflicts exist, how will these be addressed?
 12. Identify any intrabasin conflicts and how they will be addressed.
 13. Identify any interbasin impacts and how any conflicts would be addressed.
 14. How does the project support agricultural development or protect the existing agricultural economy?

Communication of Roundtable Approval: Letter from Chairperson

Yampa/White Basin

Meeting Schedule/Location

The Yampa/White BRT meets quarterly for 3 hours from 6:00-9:00 p.m. Their meeting locations alternate between Meeker, Craig, and Steamboat Springs.

Processes for Receiving, Considering, and Approving WSRA Applications:

Contact Person: Tom Sharp

Phone: 970 879-1482

e-mail: sharp@sharpsteinke.com

Timeline/Calendar: The Yampa/White BRT will consider WSRA applications at any of their quarterly meetings. All applications are first presented for information purposes at one meeting, and then considered for vote of approval at a subsequent meeting. The Yampa/White BRT may choose to refer an application to a Committee of the Yampa/White BRT.

Process: Applicants should prepare an application form used by the State IBCC and CWCB and contact the Chair to get time on an upcoming Yampa/White BRT agenda.

Communication of Roundtable Approval: Letter from Chairperson drafted by the applicant. Applicants should work with the Chairperson to ensure the approval letter is submitted to CWCB.

For more information, please contact:

Todd Doherty

1580 Logan St., Suite 600

Denver, CO 80203

Phone: (303) 866-3441 x3210

Fax: (303) 894-2578

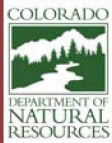
Internet: www.cwcb.state.co.us

todd.doherty@state.co.us

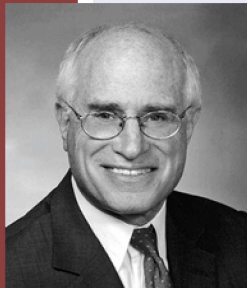


Colorado's Water Supply Future

Bill Ritter, Jr. – Governor
Harris D. Sherman – DNR Executive Director
Jennifer Gimbel – CWCB Director



Interbasin Compact Process *Quarterly Newsletter - 1st Quarter 2008*



From Harris Sherman Executive Director of DNR and Director of Compact Negotiations

If we let Colorado's water supply continue to evolve the way it is now, what will our state look like in 50 years? Is that what we want it to look like? If not, what can and should we do about it?

Those are the questions I put to the members of the Interstate Basin Compact Commission—some of the best water minds in Colorado—at our March meeting. They are fundamental and very difficult questions. Yet, it is of vital importance that we answer them.

The responses were thoughtful, insightful, and generally concerned about our future. Farmers and ranchers from the West Slope and the eastern plains, Front Range water providers, and environmentalists all expressed unease about the long-term vision of the state if we let water supply development continue on the path it is on. Dry-up of agriculture, the impact of millions of new residents in Colorado, and the need to do a better job balancing all uses among all users were common sentiments.

When the Interbasin Compact Committee (IBCC) members looked at the status quo, they saw a vision that is not the Colorado they want to see. There is strong desire across the state to take steps now to manage and control our water future.

The question is what can we do, and that issue is far less settled. That is why the IBCC will spend the next several months exploring alternatives to this status quo vision and developing strategies

for achieving a better vision for Colorado. Our meeting in May will look at a common vision for Colorado's water supply future and a proposed plan for examining various water supply strategies to achieve that common vision. Based on our progress, we will continue the discussion at the August IBCC meeting and beyond.

The March IBCC meeting was historic. I cannot recall a time when this kind of visioning discussion has taken place. The fact that water leaders from all regions representing all uses can come together and have this dialogue is a statement of just how far we have come these last few years. Prior to the 2002 drought and the Statewide Water Supply Initiative (SWSI), I do not think this dialogue would have been possible.

It is my sincere hope, however, that this dialogue does not end with the IBCC. Others around the state should ask themselves these same questions. The input of all interested stakeholders is critical. The Basin Roundtables in particular should explore these issues, but in turn they should extend it to include community leaders, civic organizations, and chambers of commerce throughout the state.

The March IBCC meeting was just the first step. We have a long way to go and no one is sure what specific solutions will come out of this important discussion. Yet, our state will be better off for having this conversation, and hopefully it will produce sound long-range planning and action that both ensures a secure water future for our state while protecting and even enhancing those qualities that make Colorado such a special place.

Stay tuned, and thanks for all that you do for Colorado.



Update on Basin Roundtable Consumptive Needs Assessment

Quantifying Municipal & Industrial (M&I) Demands to 2050

SWSI projected water demands to 2030. It was understood at the time of SWSI that demands will continue to grow beyond 2030. Since that time it has been the desire of several Basin Roundtables to project their demands out to 2050. The Technical Team will be kicking this off with the Basin Roundtables in April 2008.

Status of IPPs

SWSI compiled Identified Projects and Processes (IPPs) for each basin. IPPs are projects or processes identified by water providers to meet new water demands. The IPPs accounted for 511,800 acre-feet (AF) of new supply to address the demands of 630,000 AF out to 2030. The Technical Team will be working with the Basin Roundtables and water providers to update this information. In addition, CWCB is developing an IPPs database that will be used to track projects and processes into the future. This will be underway this year.

Identify Conservation Opportunities

The conclusions and recommendations made by the CWCB and the Conservation Technical Roundtable will serve as a starting point to further quantify the role water conservation can play in meeting the demands of Colorado's water supply future. This SWSI Phase 2 information will be rolled out to the Basin Roundtables from April through August 2008. Water provider's current conservation plans will be included in the IPP update.

Addressing Agricultural Needs

Agricultural irrigation is widely recognized as one of the most significant uses of water in Colorado, using approximately 85 percent of the state's water. This has led to a public perception that implementation of agricultural water efficiency/conservation measures can easily provide additional water supplies to meet growing demands for urban, industrial, recreational, and environmental water needs in Colorado. It is also recognized that Colorado's water resources should not be wasted and that century old irrigation systems and practices could benefit from modernization. With this in mind, CWCB worked

with the Colorado Water Agricultural Alliance to explore opportunities and challenges associated with potential agricultural water conservation measures. A draft report was issued in February and will be available to the Basin Roundtables for potential incorporation into their needs assessments.

Alternative Agricultural Water Transfer Methods for Water Supply

SWSI Phase 2 provided an extensive look at alternatives to a traditional transfer including:

- Interruptible supply agreements
- Long-term rotational fallowing
- Water banks
- Reduced consumptive use through agricultural efficiencies or cropping while maintaining historic return flows
- Purchase by end user with leaseback

This information will be presented to the Basin Roundtables. CWCB has also developed a \$1.5 million grant program to help evaluate alternatives to traditional agricultural transfers. The first of three grant applications will be considered at the May CWCB Board Meeting.

Assessing the Effects of Climate Variability

Climate change has the potential to impact our state's water supply availability as well as our consumptive demands. Climate-based changes to supply availability will be examined through the Colorado River Supply Availability Study. The change in consumptive water demands in Colorado will be evaluated using the CWCB's consumptive use model StateCU. The Technical Team will work with the Basin Roundtables on this evaluation once demands are calculated to 2050.

The CWCB is planning a conference this fall titled "Governor's Conference on Managing Drought and Climate Risk."

Recalculate the Gap

The current Gap identified in SWSI is 118,200 AF based on the ability of the IPPs to address new demands. An update to the IPPs and the new demand projections out to 2050 will be used to recalculate the Gap for each basin. Additional considerations of climate variability and groundwater sustainability will also be considered in recalculating the Gap.

Delineate a Process for Decisionmaking

Through the SWSI process, a set of nine major "water management objectives" were developed (Figure 1), refined, and then used to evaluate options for addressing Colorado's future water needs. These objectives represent the overarching interests in water management – they define major goals of water users in clear, understandable terms. These objectives can be used in decisionmaking to move stakeholders towards common ground for developing future water supply alternatives. This will be integrated with the IBCC Visioning Process.

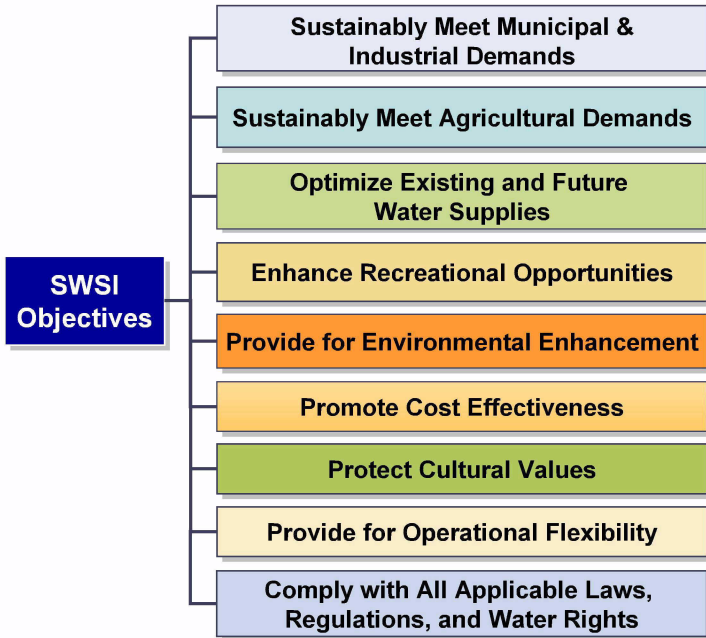


Figure 1
SWSI Objectives

Update on Basin Roundtable Nonconsumptive Needs Assessment

The goal of the nonconsumptive needs assessment (NCNA) is to provide an objective, science-based set of evaluation tools for basin roundtables and other stakeholders to utilize in making informed decisions about future water supply management. Science-based evaluation tools will facilitate analyses of ways to maintain or enhance the environmental and/or recreational values associated with rivers, reservoirs, and lakes while developing water supplies to meet current and future domestic, municipal, commercial, industrial, and agricultural water supply needs. In fulfillment of this goal, the process will seek to identify both non-flow aspects (i.e., habitat, geomorphology, public access, etc.) and the minimum flows needed to achieve the resource management objectives.

The methodology for completing the NCNA focuses on a two-step process for evaluating nonconsumptive needs – prioritization and quantification.

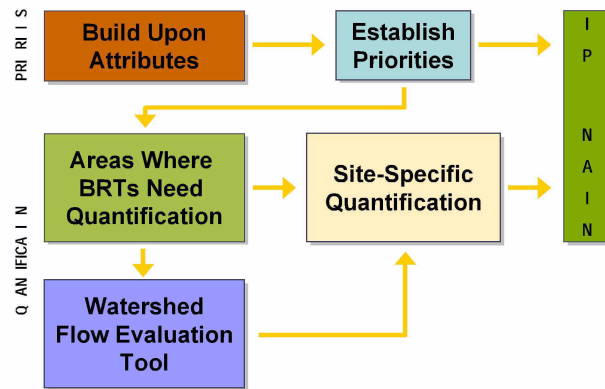


Figure 2
Nonconsumptive Needs Assessment Overview



Methodology Overview

Prioritization

Build Upon Attributes: The first step the Basin Roundtables are taking in completing their nonconsumptive needs assessments is building upon the GIS information that was gathered during the Statewide Water Supply Initiative Phase 2 (SWSI Phase 2). The Basin Roundtables are suggesting additional data that are specific to their basins be added to the SWSI Phase 2 GIS database.

Establishing Priorities: The attributes gathered by the roundtables will become the basis for establishing priorities for the basins. Establishing priorities will rely upon local input and knowledge. The technical assistance team is providing GIS tools to the Basin Roundtables as an initial starting point for their priority setting.

Quantification

After priorities are set for their basins, the roundtables will have to determine if and where they would like to utilize quantification methodologies. The technical assistance team can assist the roundtables in developing site-specific and watershed level quantification information. Both of these methods will be piloted within the next several months to provide further information to the roundtables.

Schedule

The schedule for completing the majority of the products for the nonconsumptive needs assessments is shown in Figure 3 below. It is anticipated that the Basin Roundtables will have established priorities by June 2008. During the remainder of 2008, the roundtables will be reviewing information generated from the quantification pilot studies and applying these quantification strategies in their basins. Work on site-specific quantification and the flow evaluation tool will occur through 2009.

Nonconsumptive Needs Assessment Products

Following are the anticipated products of the Basin Roundtable Nonconsumptive Needs Assessments:

- A complete set of GIS coverages that represent Colorado's important environmental and recreational attributes.
- A map of prioritized areas and reaches, as determined by the individual BRTs.
- Generalized or "coarse" flow evaluation tools and site-specific instream flow quantification methodologies that will help BRTs understand areas that might require more site-specific investigation.

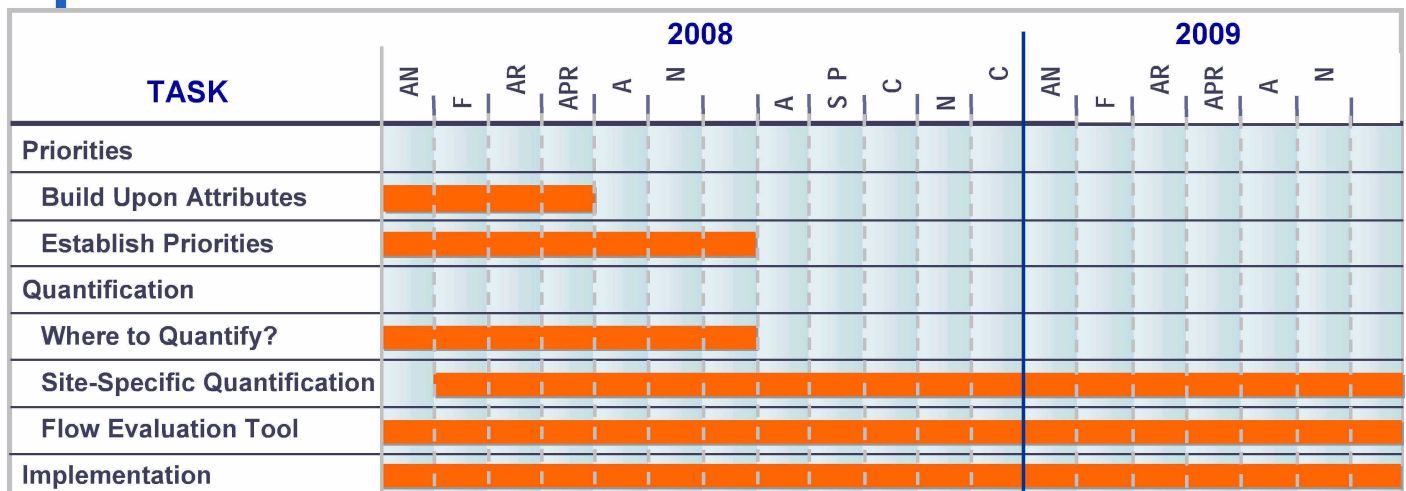


Figure 3
Schedule

- An identification of non-flow related resource management options and strategies.
- A set of BRT-directed implementation strategies for priority rivers and streams within their basins, including both flow and non-flow related resource management options and strategies.
- A resource that can be used to help identify where and how Colorado can develop future water supplies while maintaining or enhancing environmental and/or recreational values.

Examples of the GIS coverages and prioritized areas are shown in Figure 4 below.

Integration

The integration of consumptive, nonconsumptive, and supply availability needs will occur as follows:

- Completion of nonconsumptive needs assessment will influence meeting in-basin and statewide needs
- Completion of consumptive needs assessment will influence how we address nonconsumptive needs
- Addressing consumptive and nonconsumptive needs will assist us in developing probability of risk analysis under the water supply availability study

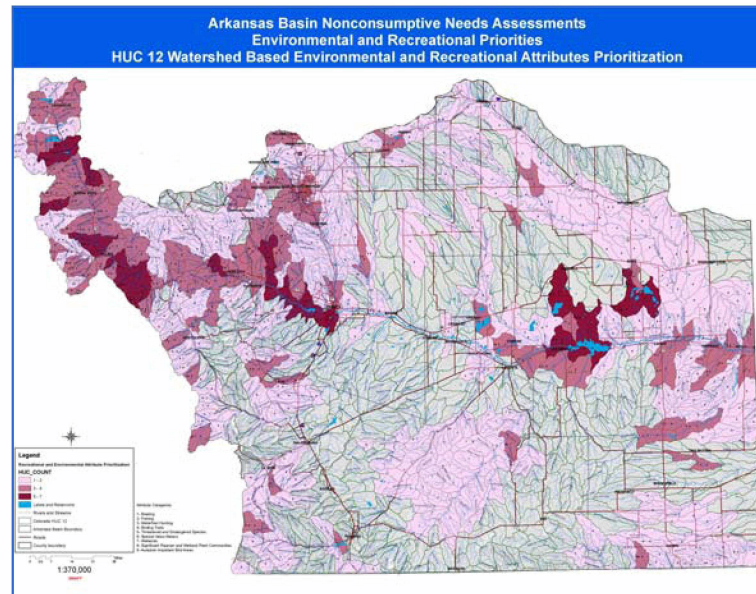


Figure 4

Example of Environmental and Recreational Coverages for the Arkansas Basin

Basin Roundtable Nonconsumptive Needs Assessment Progress

A summary of each roundtable's progress in completing their nonconsumptive needs assessment is shown in the following table:

asin	Summary of Progress on Nonconsumptive Needs Assessments
Arkansas	<ul style="list-style-type: none"> • Finalized their requests of additional GIS information • Established preliminary priorities for environmental and recreational needs that will be discussed by the roundtable during their April 2008 meeting
Colorado	<ul style="list-style-type: none"> • Finalized their requests of additional GIS information • Established preliminary priorities for environmental and recreational needs that will be discussed by the roundtable during their April 2008 meeting
Gunnison	<ul style="list-style-type: none"> • In the process of finalizing their requests of additional GIS information
Metro/South Platte	<ul style="list-style-type: none"> • In the process of finalizing their requests of additional GIS information • Started their prioritization process
North Platte	<ul style="list-style-type: none"> • In the process of finalizing their requests of additional GIS information
Rio Grande	<ul style="list-style-type: none"> • In the process of finalizing their requests of additional GIS information • Started their prioritization process
Southwest	<ul style="list-style-type: none"> • In the process of finalizing their requests of additional GIS information
Yampa/White/Green	<ul style="list-style-type: none"> • In the process of finalizing their requests of additional GIS information



Approved Water Supply Reserve Account Applications by the CWCB Board

Name of Water Activity	Reserve Account	Statewide Account	Total Request
Arkansas Basin Total Request	83,811	1,000	1,113
Arkansas Valley Conduit		\$200,000	\$200,000
Tamarisk		\$50,000	\$50,000
Upper Black Squirrel Creek Aquifer Recharge Investigation	\$45,200		\$45,200
Ground Water Conference	\$24,721		\$24,721
Fountain Creek Vision Task Force	\$75,000		\$75,000
Round Mountain Water & Sanitation District Water System Improvements Project	\$120,000		\$120,000
Rotational Land Fallowing-Water Leasing Program-Lower Arkansas Superditch Company	\$150,000		\$150,000
Upper Big Sandy Water Balance	\$45,000		\$45,000
Model Transfers-Agriculture to Urban, Arkansas Basin	\$23,860		\$23,860
Arkansas Headwaters Diversion Structure Improvement Project Arkansas River Basin		\$57,954	\$57,954
City of Las Animas Sewer System Improvements		\$200,000	\$200,000
Colorado State Parks		\$1,000,000	\$1,000,000
Colorado Basin Total Request	2,000	2,220,000	2,020,000
Energy Development Water Needs Assessment (300,000 Joint Application see Yampa)		\$150,000	\$150,000
Enlargement of Eagle Park Reservoir		\$250,000	\$250,000
Roaring Fork Watershed Assessment	\$40,000		\$40,000
Upper Colorado Endangered Fish Recovery Alternatives Analysis		\$200,000	\$200,000
Vail Ditch Project		\$1,500,000	\$1,500,000
Bull Creek Reservoir No. 5 Spillway Adequacy Analysis	\$50,000		\$50,000
Basalt Water Conservancy District	\$25,000		\$25,000
Old Dillon Reservoir	\$100,000		\$100,000
Fraser Sedimentation Basin	\$60,000	\$127,900	\$187,900
Gunnison Basin Total Request	338,000	80,000	1,100,000
Lake San Cristobal Controlled Outlet Structure	\$35,000		\$35,000
Safety and Serviceability Needs Inventory for Reservoirs in the Lerou Creek Drainage Basin	\$60,000		\$60,000
Orchard City Water Reservoir Project (Task 1-3)	\$60,000		\$60,000
Orchard City Water Reservoir Project (Remaining Tasks)		\$480,000	\$480,000
Off-System Raw Water Storage Project 7 Water Authority/Uncompahgre Valley Water Users Association	\$56,700		\$56,700
Paonia-Feldman Diversion Reconstruction; North Fork of the Gunnison River (Part 1 of 2)	\$48,000	\$62,700	\$110,700
Sedimentation Management Study for Paonia Reservoir - North Fork of the Gunnison	\$79,000	\$230,000	\$309,000
Overland Reservoir Dam Expansion/Restoration		\$68,000	\$68,000
Northern Basin Total Request	3,000	200,000	3,000
Chatfield Reallocation EIS/FR (South Platte BRT contributing \$27,000)	\$103,000		\$103,000
Zero Liquid Discharge Pilot Study	\$200,000	\$200,000	\$400,000
Parker Water and Sanitation and Colorado State University Joint Project on the Rural/Urban Farm Model	\$150,000		\$150,000
North Platte Basin Total Request	11,000	0	11,000
New Pioneer Ditch Diversion Reconstruction Project	\$116,000		\$116,000
Rio Grande Basin Total Request	38,000	1,200,000	2,000,000
Alamosa River Instream Flow Project	\$64,500		\$64,500
Preliminary Design Multi-use Rio Grande Reservoir Rehabilitation and Enlargement		\$288,000	\$288,000
Rio Grande Basin Conservation Reserve Enhancement Program	\$36,750		\$36,750
Alamosa River Watershed Restoration Project		\$104,000	\$104,000
Romero-Guadalupe Channel Rectification Project	\$83,700		\$83,700
Rio Grande Initiative	\$200,000	\$1,300,000	\$1,500,000

Approved Water Supply Reserve Account Applications by the CWCB Board



Name of Water Activity	Basin Account	Statewide Account	Total Request
South Platte Basin Total Request	303,800	28	822
Chatfield Reallocation EIS/FR (Metro BRT contributing \$103,000)	\$27,000		\$27,000
Clear Creek Water Banking/High Altitude Storage	\$52,000		\$52,000
Ovid Reservoir Comprehensive Feasibility Study	\$176,000		\$176,000
Lower South Platte Wetland Initiative Phase I South Platte River, CO		\$278,476	\$278,476
Stage Discharge Data Loggers and Telemetry	\$48,800		\$48,800
Southwest Basin Total Request	2,200	2,200,000	2,320
Dry Gulch Reservoir/San Juan Reservoir Land Acquisition		\$1,000,000	\$1,000,000
Goodman Point Water Association Pipeline Environmental Assessment	\$7,700		\$7,700
Goodman Point Phase 2	\$20,000	\$240,000	\$240,000
Jackson Gulch Reservoir Expansion Project	\$80,000		\$80,000
Bauer Lakes	\$40,000		\$40,000
La Plata West Rural Water Supply System	\$100,000	\$1,000,000	\$1,100,000
Town of Sawpit - Engineering/Planning for Domestic Water System; Southwest Basin	\$25,000		\$25,000
Yampa White River Basin Total Request	310	1,000,000	1,010
Energy Development Water Needs Assessment (300,000 Joint Application see Colorado)		\$150,000	\$150,000
Morrison Creek Reservoir Feasibility Study	\$49,500		\$49,500
Agricultural Water Needs Assessment	\$201,410		\$201,410
Common Data Repository	\$106,600		\$106,600

Status of Technical Assistance Task Orders

Name of Water Activity	Status
Aransas Basin	
<ul style="list-style-type: none"> Update the status of identified projects and processes (IP&Ps) from SWSI Articulate implementation status of conservation and reuse programs Evaluate potential opportunities for rotational fallowing and/or leasing agreements Evaluate groundwater sources that were not included in SWSI Phase I, especially designated basins. Examine the relationship between Colorado River Compact supplies, imports from the Colorado River Basin and exports of native water supplies from the basin. 	Consumptive tasks, as outlined, have been scoped and will be completed by June 2008.
Colorado Basin	
Energy Development Water Needs Assessment Scoping (Joint with Yampa Basin Roundtable)	A workplan was completed for this effort. The energy study is being implemented through a Water Supply Reserve Account Grant.
Gunnison Basin	
<ul style="list-style-type: none"> Basinwide - Review, refine, and/or confirm the estimate of current and future water demands and supply for the smaller water providers Basinwide - Review and refine the estimate of current and future rural domestic demands and supply Basinwide - Identify vulnerabilities to water supply shortages for Gunnison Basin municipalities Sub-basin Specific: Upper Gunnison - Review, refine, and/or confirm the estimate of future snowmaking demands in the Upper Gunnison 	Technical work for this first task order will be completed by June 2008.
Fronto Basin	
<ul style="list-style-type: none"> Analysis of where providers are looking at the same water as a future supply Update of unappropriated water in the South Platte Basin Impact of water administration changes on the availability of water Impact of reusable water not being available to downstream users Status of Conservation Status of IPPs 	First draft of technical work for this first task order has been completed. Consumptive tasks, as outlined, will be completed by June 2008.



Status of Technical Assistance Task Orders

North Platte asin	
Town of Walden Water Supply Evaluation	Task order has been completed.
Water Supply Availability	The requested water supply availability task will be completed through Decision Support System modeling updates.
South Platte asin	
<ul style="list-style-type: none"> • Analysis of where providers are looking at the same water as a future supply • Update of unappropriated water in the South Platte Basin • Impact of water administration changes on the availability of water • Impact of reusable water not being available to downstream users • Status of Conservation • Status of IPPs 	First draft at technical work for this first task order has been completed. Consumptive tasks, as outlined, will be completed by June 2008.
ampa asin	
Energy Development Water Needs Assessment Scoping (Joint with Colorado Basin Roundtable)	A workplan was completed for this effort. The energy study is being implemented through a Water Supply Reserve Account Grant.
Evaluation of Agricultural Needs	A workplan for this evaluation has been completed. Moffat County has been awarded a Water Supply Reserve Account Application to implement this study.

Further information regarding the Interbasin Compact Process accomplishments and support provided to the basin roundtables to further their basinwide needs assessments can be found at:

<http://ibcc.state.co.us>.

Information on the Water Supply Reserve Account and continuing SWSI activities is located on CWCB's webpage:

<http://cwcb.state.co.us/IWMD/>.

For more information, please contact:

Rick Brown
1580 Logan St., Suite 600
Denver, CO 80203
Phone: (303) 866-3514
Fax: (303) 866-4474

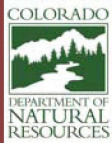
Internet: www.cwcb.state.co.us
rick.brown@state.co.us

Todd Doherty
1580 Logan St., Suite 600
Denver, CO 80203
Phone: (303) 866-3945
Fax: (303) 866-4474

Internet: www.cwcb.state.co.us
todd.doherty@state.co.us

Eric Hecox
1313 Sherman St., Room 718
Denver, CO 80203
Phone: (303) 866-3311
Fax: (303) 866-2115

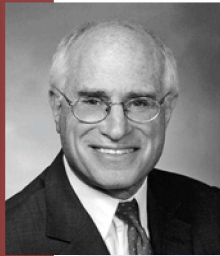
Internet: www.ibcc.state.co.us
eric.hecox@state.co.us



Colorado's Water Supply Future

Bill Ritter, Jr. – Governor
Harris D. Sherman – DNR Executive Director
Jennifer Gimbel – CWCB Director

Interbasin Compact Process *Quarterly Newsletter - 2nd Quarter 2008*



From Harris Sherman
Executive Director of DNR and
Director of Compact Negotiations

In our March newsletter I wrote about the importance of developing a vision for Colorado's water future that reflects what we want our state to

look like, not what it will look like if we let water development continue down the current path. Whether it is concern about drying up agriculture, or challenges in meeting municipal needs, or protecting our environment, the status quo vision is one that concerns the Interbasin Compact Committee (IBCC) and water stakeholders across Colorado.

Colorado is transitioning from an era of developing an undeveloped resource to one where we are managing a fully developed resource. Future water decisions will therefore increasingly involve reallocating water between uses and less on finding ways to develop new supplies. This is a fundamental shift that will forever impact our use and development of this precious resource. It is my hope that this visioning process and the strategies that come out of it will provide a roadmap for Colorado to follow as we move into these uncharted waters.

We are now several months into this visioning process and I am pleased to report that we are making progress on several fronts.

The IBCC agreed at our May meeting that we need to move forward in two areas. First, we need to develop a more detailed vision for Colorado's water supply future. Over the coming months, the IBCC will be working on a draft

document to see if we can reach agreement on a vision. Second, the IBCC believes we must also come up with specific strategies to achieve that vision. The IBCC, the Basin Roundtables (BRTs), and the Colorado Water Conservation Board (CWCB) will use information from previous studies and begin evaluating broad water supply strategies. Developing a vision and evaluating strategies simultaneously will not only keep us on a timely course, but more importantly, the information we gather from evaluating strategies will better inform the development of our vision. We are therefore pursuing both objectives on parallel paths. The IBCC is identifying demand, supply, and regional strategies and this newsletter describes those efforts.

We need to incorporate input from the broadest cross-section of Coloradans possible. In order to raise awareness and solicit input, I am having discussions with stakeholder groups such as the Colorado Concern, Colorado Cooperation Conference, and other civic, business, and community groups across Colorado. We are also going to be increasing our outreach through the press.

The BRTs are particularly well suited to solicit input from the public in their basins and I again encourage them to do so. Ask community leaders to testify at your Roundtable meetings. Send periodic e-mails to keep residents of your basins informed. Use your own networks to inform and engage the public.

I look forward to hearing any thoughts you have and on keeping you up to date on our continued progress.



Interbasin Compact Committee Vision Exercise

If we let Colorado's water supply continue to evolve the way it is now, what will our state look like in 50 years? Is that what we want it to look like? If not, what can and should we do about it? Those are questions the IBCC is addressing through their visioning exercise.

After two rounds of discussions, the IBCC generally agrees that:

1. The status quo approach to water supply will not lead to the Colorado the IBCC members want to see. Members had different ideas about the extent to which our current approach could or should be changed, but all agreed we should explore different approaches.
2. Colorado is transitioning from an era of developing an undeveloped resource to an era of managing a developed resource. Future water decisions will increasingly involve reallocating water between uses.
3. A range of strategies are needed to help meet our state's consumptive and nonconsumptive water supply needs. These include a combination of demand side strategies, supply side strategies, and regional coordination strategies (described below).
4. The IBCC should work with the Colorado Water Conservation Board (CWCB) to examine the trade-offs, risks, and uncertainties associated with different strategies and combination of strategies.
5. A statewide vision should be developed in combination with an evaluation of water supply strategies.

A statewide vision for Colorado's water supply future consists of three parts: 1) a vision statement; 2) water supply values; and 3) strategies to help meet the vision. The vision statement and water supply values provide broad guidance for addressing Colorado's Water Supply Future. They provide the goals we hope to achieve as we address our state's water challenges. The strategies are the implementable actions to help achieve the vision and protect the water supply values. These terms are specifically defined as:

- **Vision Statement** - Broad conclusions about Colorado's water supply future that provide guidance for addressing the state's water challenges.
- **Water Supply Values** - Principles or ideals that are important to protect as Colorado implements solutions to its water challenges. The agreed upon values will be used to evaluate the tradeoffs between strategies and combinations of strategies.
- **Strategies** - Broad solutions that can be implemented to help achieve the vision, meet our water challenges, and protect the values.

Strategies to be Evaluated

The following strategies may help meet our state's consumptive and nonconsumptive water supply needs. The IBCC is not endorsing these strategies, but agrees that they should be further evaluated by examining the opportunities, challenges, and trade-offs associated with each strategy or combination of strategies.

Demand Side Strategies

- Municipal and industrial conservation
- Agricultural conservation, efficiency, and alternative cropping patterns
- Density of urban development
- Energy: level of development and water use

Supply Side Strategies

- Reuse, recycling, and desalination
- Agricultural transfers: traditional permanent transfers and alternatives to permanent transfers
- Optimizing existing storage and delivery systems
- New in-basin storage that can meet multiple uses and is sensitive to our environmental and recreational needs
- Optimum use of groundwater supplies
- The benefits and risks associated with additional compact development

Regional Coordination Strategies

- Coordinated infrastructure development and opportunities for shared infrastructure
- Timing of flows to meet multiple consumptive and nonconsumptive needs
- Opportunities and challenges for managing our compact obligations in a way that benefits the river corridors
- Integrated management of groundwater and surface water
- Managing risk and uncertainty

Roles and Next Steps in Developing a Vision and Evaluating Strategies

The IBCC, BRTs, CWCB, and CWCB Staff all have important roles to play in developing a shared vision for Colorado's water supply future and examining strategies for achieving it.

IBCC – The IBCC undertakes initial visioning to help develop a draft vision statement, a set of water supply values, and a conceptual approach to evaluating water supply strategies. The IBCC then works with the CWCB staff as described below. The IBCC also provides input on various work products as they are developed and identifies opportunities for interbasin cooperation and negotiations.

Basin Roundtables – The Basin Roundtables provide input to the IBCC. They complete work on their updated needs assessment and provide input on various work products associated with the evaluation of strategies. CWCB staff and technical consultants will visit each BRT on a quarterly basis to work on their needs assessments and the evaluation of strategies.

CWCB – CWCB provides input into the visioning process and directs the implementation of staff work elements as described below. CWCB staff implements the necessary technical work to evaluate strategies. They will primarily do this by completing and integrating work through the nonconsumptive needs assessments, the consumptive needs assessments, the technical team for the water availability study, and the BRTs' updated needs assessments. As work products are developed they will be vetted to the BRTs, the IBCC, and the CWCB for input and comment.

Next Steps

The strategies outlined above will be evaluated in a way that achieves the following objectives:

- Develop a comprehensive vision for each sector – agriculture, municipal and industrial, and the environment
- Examine the interconnections between these sectors
- Execute the technical work needed to develop each strategy
- Examine each strategy's ability to meet the vision of Colorado 2050 water supply needs
- Examine the tradeoffs between different strategies
- Examine ways to integrate consumptive and nonconsumptive needs
- Examine the risks associated with different strategies and who bears those risks
- Evaluate the performance of each strategy with the vision and associated values



Approved Water Supply Reserve Account Applications by the CWCB Board

Name of Water Activity	asin Account	Statewide Account	otal Re uest
Arkansas asin otal Re uest	83 81	1 0	2 0 1 3
Arkansas Valley Conduit		\$200,000	\$200,000
Tamarisk		\$50,000	\$50,000
Upper Black Squirrel Creek Aquifer Recharge Investigation	\$45,200		\$45,200
Ground Water Conference	\$24,721		\$24,721
Fountain Creek Vision Task Force	\$75,000		\$75,000
Round Mountain Water & Sanitation District Water System Improvements Project	\$120,000		\$120,000
Rotational Land Fallowing-Water Leasing Program-Lower Arkansas Superditch Company	\$150,000		\$150,000
Upper Big Sandy Water Balance	\$45,000		\$45,000
Model Transfers-Agriculture to Urban, Arkansas Basin	\$23,860		\$23,860
Arkansas Headwaters Diversion Structure Improvement Project Arkansas River Basin		\$57,954	\$57,954
City of Las Animas Sewer System Improvements	\$100,000	\$200,000	\$300,000
Colorado State Parks - Zebra Mussels Pueblo Reservoir		\$1,000,000	\$1,000,000
Colorado asin otal Re uest	1 000	2 22 00	2 2 00
Energy Development Water Needs Assessment (300,000 Joint Application see Yampa)		\$150,000	\$150,000
Enlargement of Eagle Park Reservoir		\$250,000	\$250,000
Roaring Fork Watershed Assessment	\$40,000		\$40,000
Upper Colorado Endangered Fish Recovery Alternatives Analysis (10,825 Study)		\$200,000	\$200,000
Vail Ditch Project		\$1,500,000	\$1,500,000
Bull Creek Reservoir No. 5 Spillway Adequacy Analysis	\$50,000		\$50,000
Missouri Heights Monitoring	\$25,000		\$25,000
Grand County Streamflow Management Plan	\$100,000		\$100,000
Old Dillon Reservoir	\$100,000		\$100,000
Fraser Sedimentation Basin	\$60,000	\$127,900	\$187,900
Roaring Fork Watershed Assessment - Phase 2	\$40,000		\$40,000
Gunnison asin otal Re uest	338 00	8 0 00	1 1 00
Lake San Cristobal Controlled Outlet Structure	\$35,000		\$35,000
Safety and Serviceability Needs Inventory for Reservoirs in the Lerou Creek Drainage Basin	\$60,000		\$60,000
Orchard City Water Reservoir Project (Task 1-3)	\$60,000		\$60,000
Orchard City Water Reservoir Project (Remaining Tasks)		\$480,000	\$480,000
Off-System Raw Water Storage Project 7 Water Authority/Uncompahgre Valley Water Users Association	\$56,700		\$56,700
Paonia-Feldman Diversion Reconstruction; North Fork of the Gunnison River (Part 1 of 2)	\$48,000	\$62,700	\$110,700
Sedimentation Management Study for Paonia Reservoir - North Fork of the Gunnison	\$79,000	\$230,000	\$309,000
Overland Reservoir Dam Expansion/Restoration		\$68,000	\$68,000



Approved Water Supply Reserve Account Applications by the CWCB Board

Name of Water Activity	Basin Account	Statewide Account	Total Request
Metro Basin Total Request	80	200 000	80
Chatfield Reallocation EIS/FR (South Platte BRT contributing \$27,000)	\$103,000		\$103,000
Zero Liquid Discharge Pilot Study	\$200,000	\$200,000	\$400,000
Parker Water and Sanitation and Colorado State University Joint Project on a Rural/Urban Farm Model	\$150,000		\$150,000
Upper Mountain Counties Water Needs Assessment (South Platte contributing)	\$43,580		\$43,580
North Platte Basin Total Request	11 000	0	11 000
New Pioneer Ditch Diversion Reconstruction Project	\$116,000		\$116,000
Rio Grande Basin Total Request	38 0	1 2 000	2 0 0
Alamosa River Instream Flow Project	\$64,500		\$64,500
Preliminary Design Multi-use Rio Grande Reservoir Rehabilitation and Enlargement		\$288,000	\$288,000
Rio Grande Basin Conservation Reserve Enhancement Program	\$36,750		\$36,750
Alamosa River Watershed Restoration Project		\$104,000	\$104,000
Romero-Guadalupe Channel Rectification Project	\$83,700		\$83,700
Rio Grande Initiative	\$200,000	\$1,300,000	\$1,500,000
South Platte Basin Total Request	3 3	2 8	13 03
Chatfield Reallocation EIS/FR (Metro BRT contributing \$103,000)	\$27,000		\$27,000
Clear Creek Water Banking/High Altitude Storage	\$52,000		\$52,000
Ovid Reservoir Comprehensive Feasibility Study	\$176,000		\$176,000
Lower South Platte Wetland Initiative Phase I South Platte River, CO		\$278,476	\$278,476
Stage Discharge Data Loggers and Telemetry	\$48,800		\$48,800
Upper Mountain Counties Water Needs Assessment (Metro contributing)	\$130,763		\$130,763
Southwest Basin Total Request	2 2 00	2 2 0 000	2 32 00
Dry Gulch Reservoir/San Juan Reservoir Land Acquisition		\$1,000,000	\$1,000,000
Goodman Point Water Association Pipeline Environmental Assessment	\$7,700		\$7,700
Goodman Point Phase 2	\$20,000	\$240,000	\$240,000
Jackson Gulch Reservoir Expansion Project	\$80,000		\$80,000
Lake Mancos Dam (Jackson Gulch Reservoir Expansion Project)		\$20,000	\$20,000
Bauer Lakes	\$40,000		\$40,000
La Plata West Rural Water Supply System	\$100,000	\$1,000,000	\$1,100,000
Town of Sawpit - Engineering/Planning for Domestic Water System; Southwest Basin	\$25,000		\$25,000
ampa White Reservoir Basin Total Request	3 10	1 0 000	0 10
Energy Development Water Needs Assessment (300,000 Joint Application see Colorado)		\$150,000	\$150,000
Morrison Creek Reservoir Feasibility Study	\$49,500		\$49,500
Agricultural Water Needs Assessment	\$201,410		\$201,410
Common Data Repository	\$106,600		\$106,600

Further information regarding the Interbasin Compact Process accomplishments and support provided to the basin roundtables to further their basinwide needs assessments can be found at:

<http://ibcc.state.co.us>.

Information on the Water Supply Reserve Account and continuing SWSI activities is located on CWCB's webpage:

<http://cwcb.state.co.us/IWMD/>.

For more information, please contact:

Eric Hecox
1313 Sherman St., Room 718
Denver, CO 80203

Phone: (303) 866-3311 • Fax: (303) 866-2115
Internet: www.ibcc.state.co.us
eric.hecox@state.co.us

Todd Doherty
1580 Logan St., Suite 600
Denver, CO 80203

Phone: (303) 866-3945 • Fax: (303) 866-4474
Internet: www.cwcb.state.co.us
todd.doherty@state.co.us



Colorado's Water Supply Future

Bill Ritter, Jr. – Governor
Harris D. Sherman – DNR Executive Director
Jennifer Gimbel – CWCB Director

Interbasin Compact Process *Quarterly Newsletter - 3rd Quarter 2008*

Update on Visioning Process

The Interbasin Compact Committee (IBCC), with input from the Basin Roundtables (BRTs) and the Colorado Water Conservation Board (CWCB), has been engaged in a visioning process. A statewide vision for Colorado's water supply future has three parts: 1) a Vision Statement; 2) Vision Goals; and 3) water supply strategies. These terms are specifically defined as:

- Vision Statement** - This represents, in the broadest sense, the overall directive or mission. It describes "what" is to be achieved.
- Vision Goals** - These define the goals of the vision, and more importantly represent the benchmarks for the evaluation of strategies. The Vision Goals will play an important role in evaluating the performance of water supply strategies. This represents the "why" portion of the vision.
- Water Supply Strategies** - Strategies represent "how" we will achieve the Vision Statement. The performance of strategies is compared against the Vision Goals in order to see how well we are doing in achieving the overall Vision Statement. These strategies will lead to implementation.



The main rule is that the "what," "why," and "how" builds on each other, but are not redundant.

This visioning process is modeled after an integrated planning process and provides a path to sustainability. The elements of an integrated

resource planning process involves active stakeholder participation, examines demand-side management as vigorously as supply options, incorporates multiple criteria in decisionmaking (e.g., reliability, cost, environment, quality of life, recreation, etc.), explores risk and uncertainty, and takes a long-term perspective (30 to 50 years).

This visioning process also employs elements of sustainability including finding the right balance between economic, environmental, and social needs; taking a holistic perspective; and consideration of the long-term. This visioning process promotes sustainable solutions because:

- ◆ It focuses on the long-term
- ◆ It incorporates societal values
- ◆ It takes a holistic, interconnected perspective
- ◆ It strives for balance in meeting multiple objectives

Vision Statement

After gathering IBCC and Roundtable feedback, the following Vision Statement was drafted. This will be reviewed at the October joint IBCC/CWCB Board meeting.

Vision Statement

We envision a Colorado that balances municipal, industrial, agricultural, environmental, and recreational water needs and promotes cooperation among all water uses.

Vision Goals

Vision Goals constitute the second component of a statewide visioning process for Colorado's water supply future. Vision Goals will be used to compare the performance of water supply strategies.

(continued next page)



(continued)

These goals may individually conflict. However, by evaluating all the goals together, more sustainable water supply strategies can be achieved.

The IBCC discussed and generally agreed on the following draft Vision Goals:

1. Meet municipal and industrial (M&I) demands.
2. Meet agricultural demands.
3. Meet Colorado's environment and recreation demands.
4. Encourage cooperation between water supply planners and land use planners.
5. Encourage more cooperation among all Colorado water users.
6. Optimize existing and future water supplies by¹:
 - a. Considering conservation as a baseline water supply strategy.
 - b. Minimizing non-beneficial consumptive use (evaporation, non-native phreatophytes, etc.).
 - c. Maximizing successive uses of legally reusable water.
 - d. Maximizing use of existing and new in-basin supplies.
7. Promote cost-effectiveness by:
 - a. Allocating costs to all beneficiaries fairly.
 - b. Achieving benefits at the lowest cost.
 - c. Providing viable financing mechanisms, including local, state, and federal funding/financing.
 - d. Mitigating third-party economic impacts.
8. Minimize the net energy used to supply water, including both the energy used and/or generated with raw water delivery, and the energy used for treatment.
9. Protect cultural values by:
 - a. Maintaining and improving the quality of life unique to each basin.
 - b. Maintaining open space.
10. Provide operational flexibility and coordinated infrastructure.
11. Promote increased fairness when water is moved between basins by:
 - a. Benefiting both the area of origin and the area of use.
 - b. Minimizing the adverse economic and environmental impacts of future water projects and water transfers.

¹ Basin Roundtables have also identified conservation, use of groundwater, and development of unappropriated water as components of optimizing water supplies. These could be categorized as a goal but will be directly dealt with in the evaluation of Strategies.

12. Comply with all applicable laws and regulations, meet all applicable compact obligations, and protect water rights including the right of water right owners to market their water, while recognizing some institutional changes may be needed to implement certain strategies.
13. Educate all Coloradoans on the importance of water, and the need to conserve, manage, and plan for needs of this and future generations.

Water Supply Strategies

The third part of a statewide vision for Colorado's water supply future is water supply strategies. During their May and August meetings, the IBCC discussed which water supply strategies may help meet our state's consumptive and nonconsumptive water supply needs. They agreed on a draft list of strategies for further evaluation. These included:

Demand Side Strategies

- ◆ Growth, Land Use, and Density Development
- ◆ M&I Conservation
- ◆ Agricultural Conservation (non-beneficial losses), Efficiency, and Alternative Cropping Patterns
- ◆ Reduction in Water Demands for Energy Development (Traditional and Renewable Energy)

Supply Side Strategies

- ◆ Reuse and Desalination
- ◆ Agricultural Transfers: Traditional Permanent Transfers and Alternatives to Traditional Transfers
- ◆ Optimizing/Rehabilitating Existing Storage and Delivery Systems
- ◆ New In-basin Storage that can Meet Multiple Consumptive and Nonconsumptive Needs
- ◆ Colorado River Compact Development
- ◆ Transbasin Diversions that Benefit the Area of Origin and the Area of Use
- ◆ Coordinated Reservoir Operations, Infrastructure Development, and Opportunities for Shared Infrastructure
- ◆ Integrated Management of Groundwater and Surface Water including the optimum use of groundwater and surface water supplies and the use of aquifer storage and recovery

At the July CWCB Board meeting, the CWCB Board reviewed this draft list and asked staff to begin evaluating these strategies.

Task Order Update

House Bill 05-1177 requires each Basin Roundtable to develop a basin-wide water needs assessment consisting of:

- ◆ Consumptive needs
- ◆ Nonconsumptive needs
- ◆ Water supply availability
- ◆ Propose projects or methods to meet water needs

The following table describes the status of each roundtable with respect to completing their needs assessments. At this time, no roundtable has proposed projects or methods to meet their water needs. CWCB is in the process of developing demands to 2050 and updating identified projects and processes statewide.

Status of Basin Roundtable Needs Assessments

Basin	Consumptive Needs Assessment	Nonconsumptive Needs Assessment	Water Supply Availability Assessment
Arkansas	<ul style="list-style-type: none"> ● Used SWSI 1 as baseline needs assessment ● Updated SWSI 1 Identified Projects and Processes 	<ul style="list-style-type: none"> ● Developed priority mapping ● Participating in pilot of watershed flow evaluation tool ● Identifying areas to quantify nonconsumptive needs 	<ul style="list-style-type: none"> ● Used SWSI 1 as baseline ● Assume no additional water availability
Colorado	<ul style="list-style-type: none"> ● Used SWSI 1 and UPCO as baseline needs assessment ● Developed energy water needs work plan and implementing under WSRA 	<ul style="list-style-type: none"> ● Developed priority mapping and matrix ● Participating in pilot of watershed flow evaluation tool and site-specific quantification methods 	<ul style="list-style-type: none"> ● Participating in Colorado River Supply Availability Study
Gunnison	<ul style="list-style-type: none"> ● Used SWSI 1 as baseline needs assessment ● Revised basinwide demands, identified vulnerabilities, and updated snowmaking demands ● Developed work plan for WSRA grant to examine ag shortages 	<ul style="list-style-type: none"> ● Developed preliminary priority mapping 	<ul style="list-style-type: none"> ● Participating in Colorado River Supply Availability Study
Metro	<ul style="list-style-type: none"> ● Used SWSI 1 as baseline needs assessment ● Analysis of completing supplies, examine unappropriated water, discussion of river appropriation, examination of conservation plans 	<ul style="list-style-type: none"> ● Developed preliminary priority mapping 	<ul style="list-style-type: none"> ● Used SWSI 1 as baseline needs assessment ● Assume no additional water availability
North Platte	<ul style="list-style-type: none"> ● Used SWSI 1 as baseline needs assessment 	<ul style="list-style-type: none"> ● Developed preliminary priority mapping 	<ul style="list-style-type: none"> ● CWCB is assisting in supply availability modeling through DSS
Rio Grande	<ul style="list-style-type: none"> ● Used SWSI 1 as baseline needs assessment ● Conducted groundwater level study 	<ul style="list-style-type: none"> ● Developed preliminary priority mapping 	<ul style="list-style-type: none"> ● Groundwater study conducted
South Platte	<ul style="list-style-type: none"> ● Used SWSI 1 as baseline needs assessment ● Analysis of completing supplies, examine unappropriated water, discussion of river appropriation, examination of conservation plans 	<ul style="list-style-type: none"> ● Developed preliminary priority mapping 	<ul style="list-style-type: none"> ● Used SWSI 1 as baseline needs assessment ● Examination of unappropriated water found little to no water availability
Southwest	<ul style="list-style-type: none"> ● Used SWSI 1 as baseline needs assessment 	<ul style="list-style-type: none"> ● Developed preliminary priority mapping 	<ul style="list-style-type: none"> ● Participating in Colorado River Supply Availability Study
Yampa/White	<ul style="list-style-type: none"> ● Used SWSI 1 as baseline needs assessment ● Developed energy water needs work plan and implementing under WSRA 	<ul style="list-style-type: none"> ● Developed preliminary priority mapping 	<ul style="list-style-type: none"> ● Participating in Colorado River Supply Availability Study





Water Supply Reserve Account

Overview and Accomplishments July 2006 through September 2008

Background

The 2006 legislature passed Senate Bill 06-179, which established the Water Supply Reserve Account (Account) to help citizens identify and meet their critical water supply and management needs. Monies from the Account may be used to:

- ✓ Identify human, environmental, or recreation water needs (also commonly referred to as "Needs Assessments")
- ✓ Evaluate available water supplies in the river basin
- ✓ Build projects or identify methods to meet the water supply needs of the river basin

The authorizing legislation provides funds for a broad range of eligible activities including: construction of infrastructure (storage, pipelines, river improvements, etc.), feasibility studies, studies of human and environmental needs, and technical assistance for permitting or environmental compliance.

Overview

The Account is administered by the CWCB in collaboration with the IBCC and the 9 Basin Roundtables established under House Bill 05-1177. Requests for funding begin at the Basin Roundtables. If approved by the Roundtables, then the funding request is submitted to the CWCB. To date, all except one funding request has been for grants. However, a large number of project sponsors have provided matching funds.

Monies from the Account are distributed according to the Criteria and Guidelines, which were jointly developed by the CWCB and IBCC in collaboration with the Basin Roundtables. The Criteria and Guidelines are reviewed annually in October to determine if changes to the operation of the Account are needed.

Program Highlights

- ◆ \$13.2 Million Granted for 66 Projects Across Colorado
- ◆ Projects Recommended by Local Basin water Roundtables on a Consensus Basis with Final Approval by the CWCB

Accomplishments

Water Supply Reserve Account projects have been approved across the entire state.

Figure 1 shows the number of approved projects.

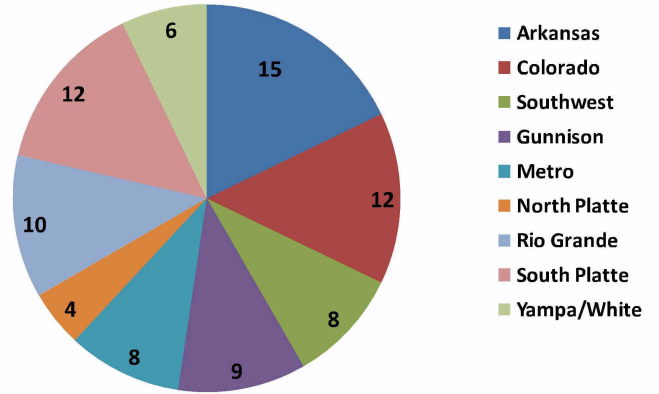


Figure 1. Number of Funding Requests Approved by Basin Roundtables

The distribution of funds based on total dollars is shown in Figure 2. The Arkansas Basin has received the largest amount of funds, followed by the Colorado Basin.

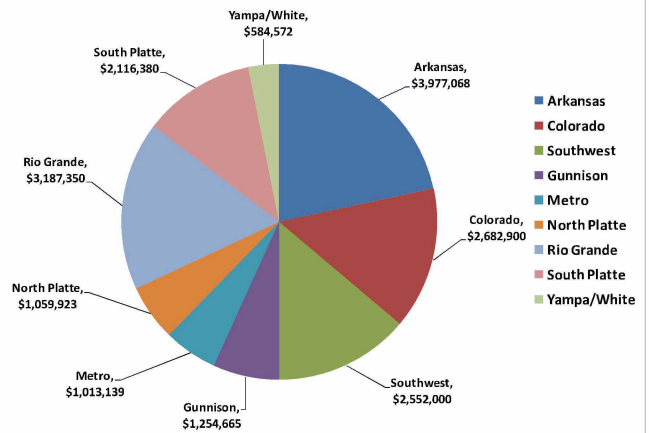


Figure 2. Funds Approved by Basin - August 2008

Projects funded from the Account have addressed both Consumptive and Nonconsumptive Needs (see Figure 3); 11 percent of the funds have addressed Nonconsumptive Needs, 47 percent are addressing Consumptive Needs and 42 percent address multiple purposes.

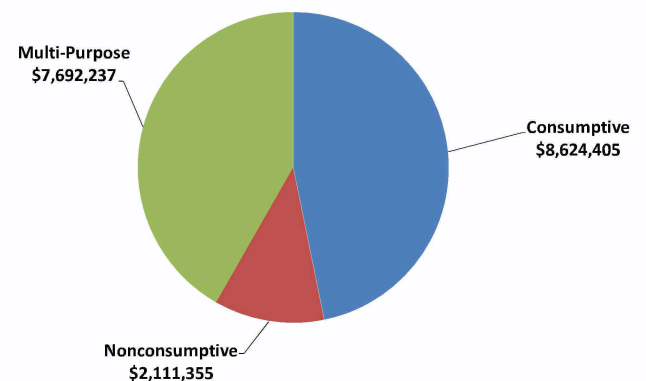


Figure 3. Consumptive and Nonconsumptive Projects (Total Requests = \$13,207,768)

Grants from the Account have also provided the means to conduct study/design work and project implementation. Figures 4, 5 and 6 show how the Account has supported both study/design and implementation aspects of water projects.

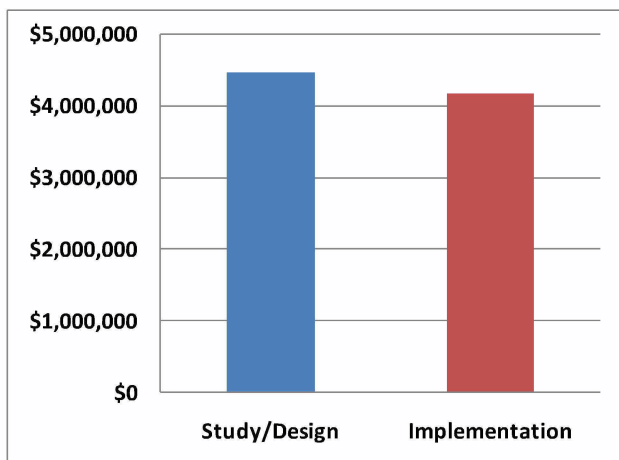


Figure 4. Total Funds for Consumptive Use Projects for Study/ Design and Implementation

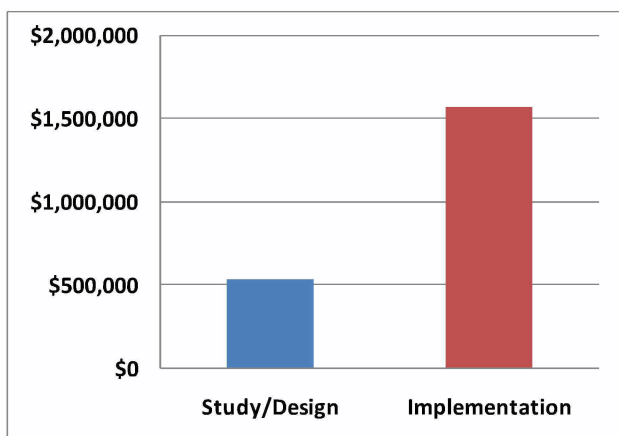


Figure 5. Total Funds for Nonconsumptive Projects for Study/ Design and Implementation

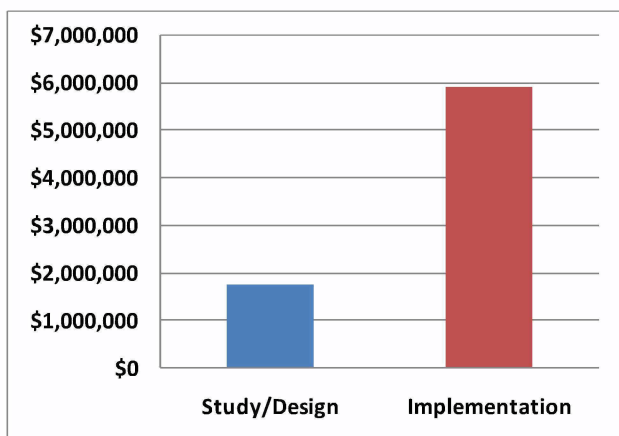


Figure 6. Total Funds for Multi-Purpose Use Projects for Study/ Design and Implementation

Observations

The Water Supply Reserve Account Program has been a tremendous success. The Account has funded a mix of consumptive and nonconsumptive water projects and promoted multi-purpose projects throughout the state. The Account is integral to meeting our water supply needs with funding that was not available until the passage of the legislation.

The annual review of the Criteria and Guidelines allow for program adjustments. While specific changes have not been needed to date, a few trends are emerging.

- ◆ A number of requests have been for treated water distribution systems. Cut backs of financial resources for treated water projects have increased the attractiveness of the Account. It will be important to ensure that significant funding is directed to raw water supply projects as these are priority for CWCB.
- ◆ Few structural water storage projects have been completed. This is likely due to the timing, complexity, and funding issues associated with multimillion dollar projects. It will be important to ensure the seed money provided from the Account helps leverage funding for project completion in addition to funding studies and project design.
- ◆ The complexities of project scoping, financial accountability, and monitoring activities remain a challenge. At the local level there is a need to work with applicants on preparing a detailed project plan, budget, and schedule. At the state level, given the tremendous growth in the number of applications, project monitoring has been limited. The CWCB is in the process of addressing these issues.

Sustaining Mineral Severance Tax Funding – Vital for Ongoing Success

Colorado has at least \$3 billion in funding needs for water supply and water management projects. The mineral severance tax fund was established to help local communities offset the impacts of extracting nonrenewable resources. The distribution formula for severance tax emphasizes water supply in order to provide a renewable resource – *water* – to help offset the impact from extractive natural resource development. The WSRA furthers this objective by helping to provide an adequate water supply for Colorado's citizens and environment.





Approved Water Supply Reserve Account Applications by the CWCB Board

Name of Water Activity	Basin Account	Statewide Account	Total Request
Arkansas Basin Total Request	\$783,781	\$3,193,286	\$3,977,067
Arkansas Valley Conduit		\$200,000	\$200,000
Tamarisk		\$50,000	\$50,000
Upper Black Squirrel Creek Aquifer Recharge Investigation	\$45,200		\$45,200
Ground Water Conference	\$24,721		\$24,721
Fountain Creek Vision Task Force	\$75,000		\$75,000
Round Mountain Water & Sanitation District Water System Improvements Project	\$120,000		\$120,000
Rotational Land Fallowing-Water Leasing Program-Lower Arkansas Superditch Company	\$150,000		\$150,000
Upper Big Sandy Water Balance	\$45,000		\$45,000
Model Transfers-Agriculture to Urban, Arkansas Basin	\$23,860		\$23,860
Arkansas Headwaters Diversion Structure Improvement Project Arkansas River Basin		\$57,954	\$57,954
City of Las Animas Sewer System Improvements	\$100,000	\$200,000	\$300,000
Colorado State Parks - Zebra Mussels Pueblo Reservoir		\$1,000,000	\$1,000,000
Geospatial Decision Support System for Integrated Water Management	\$100,000	\$775,000	\$875,000
Telemetry Data Collection Platforms at Six Reservoirs Plus Flow Control Equipment and Gauging at Six Reservoir Outlet Channels & Nine Streams within the Upper Arkansas River Basin	\$75,000	\$210,332	\$285,322
Demonstration of Membrane Zero Liquid Discharge Process for Drinking Water Systems	\$25,000	\$700,000	\$725,000
Colorado Basin Total Request	\$455,000	\$2,227,900	\$2,682,900
Energy Development Water Needs Assessment (300,000 Joint Application see Yampa)		\$150,000	\$150,000
Enlargement of Eagle Park Reservoir		\$250,000	\$250,000
Roaring Fork Watershed Assessment	\$40,000		\$40,000
Upper Colorado Endangered Fish Recovery Alternatives Analysis (10,825 Study)		\$200,000	\$200,000
Vail Ditch Project		\$1,500,000	\$1,500,000
Bull Creek Reservoir No. 5 Spillway Adequacy Analysis	\$50,000		\$50,000
Missouri Heights Monitoring	\$25,000		\$25,000
Grand County Streamflow Management Plan	\$100,000		\$100,000
Old Dillon Reservoir	\$100,000		\$100,000
Fraser Sedimentation Basin	\$60,000	\$127,900	\$187,900
Roaring Fork Watershed Assessment - Phase 2	\$40,000		\$40,000
Battlement Reservoir #3 Dam Reconstruction to Enhance Recreational & Environmental Opportunities	\$40,000		\$40,000
Gunnison Basin Total Request	\$413,965	\$840,700	\$1,254,655
Lake San Cristobal Controlled Outlet Structure	\$35,000		\$35,000
Safety and Serviceability Needs Inventory for Reservoirs in the Lerou Creek Drainage Basin	\$60,000		\$60,000
Orchard City Water Reservoir Project (Task 1-3)	\$60,000		\$60,000
Orchard City Water Reservoir Project (Remaining Tasks)		\$480,000	\$480,000
Off-System Raw Water Storage Project 7 Water Authority/Uncompahgre Valley Water Users Association	\$56,700		\$56,700
Paonia-Feldman Diversion Reconstruction; North Fork of the Gunnison River (Part 1 of 2)	\$48,000	\$62,700	\$110,700
Sedimentation Management Study for Paonia Reservoir - North Fork of the Gunnison	\$79,000	\$230,000	\$309,000
Overland Reservoir Dam Expansion/Restoration		\$68,000	\$68,000
Phase II Engineering for Lake San Cristobal Outlet Modification	\$75,265		\$75,265

Approved Water Supply Reserve Account Applications by the CWCB Board



Name of Water Activity	Basin Account	Statewide Account	Total Request
Metro Basin Total Request	\$813,139	\$200,000	\$1,013,139
Chatfield Reallocation EIS/FR (South Platte BRT contributing \$27,000)	\$103,000		\$103,000
Zero Liquid Discharge Pilot Study	\$200,000	\$200,000	\$400,000
Parker Water and Sanitation and Colorado State University Joint Project on a Rural/Urban Farm Model	\$150,000		\$150,000
Upper Mountain Counties Water Needs Assessment (South Platte contributing)	\$43,580		\$43,580
Solicitation of Stakeholder Input through a South Platte Edition of Headwaters	\$16,019		\$16,019
South Metro Water Supply Authority - Regional Aquifer Supply Assessment	\$100,540		\$100,540
South Platte River Restoration and Habitat Feasibility Study	\$150,000		\$150,000
Demonstration of Membrane Zero Liquid Discharge Process for Drinking Water Systems (\$50,000 Metro Basin Fund Contribution)	\$50,000		\$50,000
North Platte Basin Total Request	\$799,305	\$260,617	\$1,059,923
New Pioneer Ditch Diversion Reconstruction Project	\$116,000		\$116,000
Town of Walden Supply Improvement Project	\$385,000		\$385,000
Effects of Mountain Pine Beetle and Forest Management on Water Quantity, Quality, and Forest Recovery North Platte and Upper Colorado River Basins	\$212,306	\$164,618	\$376,923
Identification and Assessment of Important Wetlands in North Platte River Watershed	\$86,000	\$96,000	\$182,000
Rio Grande Basin Total Request	\$569,950	\$2,617,400	\$3,187,350
Alamosa River Instream Flow Project	\$64,500		\$64,500
Preliminary Design Multi-use Rio Grande Reservoir Rehabilitation and Enlargement		\$288,000	\$288,000
Rio Grande Basin Conservation Reserve Enhancement Program	\$36,750		\$36,750
Alamosa River Watershed Restoration Project		\$104,000	\$104,000
Romero-Guadalupe Channel Rectification Project	\$83,700		\$83,700
Rio Grande Initiative	\$200,000	\$1,300,000	\$1,500,000
Santa Maria and Continental Reservoirs: Rehabilitation and Multiple Use Studies	\$50,000	\$141,700	\$191,700
2008 Rio Grande Riparian Stabilization Project	\$35,000	\$250,000	\$285,000
Platoro Reservoir Restoration	\$50,000	\$200,000	\$250,000
Conejos River and North Branch Diversion and Stabilization	\$50,000	\$333,700	\$383,700
South Platte Basin Total Request	\$563,110	\$1,553,269	\$2,116,379
Chatfield Reallocation EIS/FR (Metro BRT contributing \$103,000)	\$27,000		\$27,000
Clear Creek Water Banking/High Altitude Storage	\$52,000		\$52,000
Ovid Reservoir Comprehensive Feasibility Study	\$176,000		\$176,000
Lower South Platte Wetland Initiative Phase I South Platte River, CO		\$278,476	\$278,476
Stage Discharge Data Loggers and Telemetry	\$48,800		\$48,800
Upper Mountain Counties Water Needs Assessment (Metro contributing)	\$130,763		\$130,763
Weld County School District RE1 Wetland Partnership	\$42,109		\$42,109
Solicitation of Stakeholder Input through a South Platte Edition of Headwaters	\$16,019		\$16,019
South Platte Water Protection and Restoration		\$1,118,552	\$1,118,552
Arickaree River Well Retirement Program, Republican River Basin, Colorado	\$19,984	\$79,936	\$99,920
Halligan Seaman Water Management Project Shared Vision Planning Model	\$25,435	\$76,305	\$101,740
Demonstration of Membrane Zero Liquid Discharge Process for Drinking Water Systems (\$25,000 South Platte Basin Fund Contributions)	\$25,000		\$25,000



Approved Water Supply Reserve Account Applications by the CWCB Board

Southwest Basin Total Request	\$312,000	\$2,240,000	\$2,552,000
Dry Gulch Reservoir/San Juan Reservoir Land Acquisition		\$1,000,000	\$1,000,000
Goodman Point Water Association Pipeline Environmental Assessment	\$7,700		\$7,700
Goodman Point Phase 2	\$20,000	\$240,000	\$240,000
Jackson Gulch Reservoir Expansion Project	\$80,000		\$80,000
Lake Mancos Dam (Jackson Gulch Reservoir Expansion Project)		\$20,000	\$20,000
Bauer Lakes	\$40,000		\$40,000
La Plata West Rural Water Supply System	\$100,000	\$1,000,000	\$1,100,000
Town of Sawpit - Engineering/Planning for Domestic Water System; Southwest Basin	\$25,000		\$25,000
MVIC Summit Irrigation Company Feasibility Study	\$39,300		\$39,300
Yampa/White/Green Basin Total Request	\$434,572	\$150,000	\$584,572
Energy Development Water Needs Assessment (300,000 Joint Application see Colorado)		\$150,000	\$150,000
Morrison Creek Reservoir Feasibility Study	\$49,500		\$49,500
Agricultural Water Needs Assessment	\$201,410		\$201,410
Common Data Repository	\$106,600		\$106,600
Sparks Reservoir	\$16,000		\$16,000
Town of Yampa Water Facilities Plan and Storage Tank Upgrades	\$61,062		\$61,062

Further information regarding the Interbasin Compact Process accomplishments and support provided to the basin roundtables to further their basinwide needs assessments can be found at:
<http://ibcc.state.co.us>.

For more information, please contact:

<p>Eric Hecox 1313 Sherman St., Room 718 Denver, CO 80203 Phone: (303) 866-4895 • Fax: (303) 866-4474 Internet: www.ibcc.state.co.us eric.hecox@state.co.us</p>	<p>Todd Doherty 1580 Logan St., Suite 600 Denver, CO 80203 Phone: (303) 866-3210 • Fax: (303) 866-4474 Internet: www.cwcb.state.co.us todd.doherty@state.co.us</p>
---	--

Section 2

IBCC and BRT Members

Arkansas Basin Representatives

Patricia Alderton, Chaffee Muni
Glen Ausmus, Baca County
Gerald Barber, El Paso County
Gary Belew, Ft. Carson (Liaison)
Cardon Berry, Kiowa Muni
James Broderick, Southeastern Colorado Water Conservancy District
Reeves Brown, At-Large Representative
Rod Brown, Kiowa County
Tom Brubaker, At-Large Representative
Lindsay Case, Huerfano County
Jeris Danielson, Purgatoire River Water Conservancy District
Misty DeSalvo, U.S. Forest Service (Liaison)
Reed Dils, Recreational Representative
Bud Elliott, Lake Muni
Deb Entwistle, U.S. Forest Service (Liaison)
James Fernandez, Las Animas Muni
Thomas Florczak, Pueblo Muni
Jonathon Fox, Agricultural Representative
Tim Glenn, Chaffee County
Chris Haga, Custer Muni
Alan Hamel, Legislative Appointment
Dan Henrichs, At-Large Representative
Keith Hood, Custer County
Kevin Karney, Otero County
Joe Kelley, Otero Muni
Loretta Kennedy, Non-Voting At Large Member
Ricky Kidd, Pueblo Conservancy
Carl McClure, Crowley Muni
Doug Montgomery, Prowers Muni
SeEtta Moss, Environmental Representative
Tom Musgrove, Bureau of Reclamation (Liaison)
Anthony Nunez, Pueblo County
Phil Overeynder, Non-Voting At-Large Member
Mark Pifher, Non-Voting At-Large Member
Tom Piltingsrud, Fremont Muni
Lisa Pinello, Local Domestic Water Provider Representative
John Proctor, At-Large Representative
Jane Rawlings, Industrial Representative
Larry Reeves, Elbert County
John Reid, Lincoln County

Kathleen Reilly, Colorado Water Quality Control Division (Liaison)
Terry Rusher, Crowley County
Terry Scanga, Upper Arkansas Water Conservancy District
John Schweizer, At-Large Representative
Lawrence Sena, Bent Muni
Jay Skinner, Division of Wildlife (Liaison)
Dennis Smith, Lake County
Max Smith, Baca Muni
Michael Stiehl, Fremont County
Dave Stone, Lincoln Muni
John Tonko, Division of Wildlife (Liaison)
Ralf Topper, Colorado Geological Survey (Liaison)
Jeff Tranel, CSU Extension Service (Liaison)
Paul Trentzsch, Bureau of Land Management (Liaison)
Van Truan, U.S. Army Corps of Engineers (Liaison)
Wayne Vanderschuere, El Paso Muni
Roy Vaughn, Bureau of Reclamation (Liaison)
Tom Verquer, Las Animas County
Frank Wallace, Bent County
Ed Warner, Bureau of Reclamation (Liaison)
Jay Winner, Lower Arkansas Valley Water Conservancy District
Steve Witte, Division of Water Resources (Liaison)
Thomas Young, Saguache County

Colorado Basin Representatives

Kim Albertson, At-Large Representative
Clay Altenbern, Bluestone Water Conservancy District
Ken Baker, Non-Voting At-Large Member
Peter Barkmann, Colorado Geological Survey (Liaison)
William Bates, Non-Voting At-Large Member
Eli Beeding, Gunnison County
Paula Belcher, Bureau of Land Management (Liaison)
Linda Bledsoe, U.S. Forest Service (Liaison)
Art Bowles, Basalt Water Conservancy District
Caroline Bradford, Eagle County
Jim Broderick, Southeastern Colorado Water
Don Carlson, Non-Voting At-Large Member
James Carter, Industrial Representative
Stanley Cazier, Middle Park Water Conservancy District
Thomas Clark, At-Large Representative

Section 2 IBCC and BRT Members

Dan Crabtree, Bureau of Reclamation (Liaison)
Lurline Curran, Grand County
Carlyle Currier, Collbran Water Conservancy District
Scot Dodero, Silt Water Conservancy District
Mark Fuller, Legislative Appointment
Jaci Gould, Bureau of Reclamation (Liaison)
David Graf, Division of Wildlife (Liaison)
Karl Hanlon, Garfield Muni
Scott Hummer, Division of Water Resources (Liaison)
Bruce Hutchins, Grand Muni
Kirk Klancke, At-Large Representative
Tom Long, Summit County
Alan Martellaro, Division of Water Resources (Liaison)
Ann Menconi, Elected Official
David Merritt, Elected Official
Louis Meyer, Garfield County
Chuck Ogilby, Eagle Muni
Ed Olszewski, West Divide Water Conservancy District
Philip Overeynder, Non-Voting At-Large Member
Bonie Pate, Colorado Water Quality Control Division
(Liaison)
Mark Pifher, Non-Voting At-Large Member
Jim Pokrandt, Colorado River Water Conservation
District
Richard Proctor, Mesa County
Ken Ransford, Non-Voting At-Large Member
John Redifer, CWCB Member
Melvin Rettig, Agricultural Representative
Steve Ryken, Ute Water Conservancy District
Rick Sackbauer, Recreational Representative
Duane Scholl, At-Large Representative
Patty Schrader Gelatt, Fish and Wildlife Service
(Liaison)
Rod Sharp, CSU Extension Service (Liaison)
Wayne Shoemaker, Routt County
Jay Skinner, Division of Wildlife (Liaison)
Scott Stoddard, U.S. Army Corps of Engineers
Rose Ann Sullivan, Pitkin County
Dale Tooker, At-Large Representative
Greg Trainor, Mesa Muni
Brent Uilenberg, Bureau of Reclamation (Liaison)
Wayne Vanderschuere, El Paso Muni
Michael Wageck, Local Domestic Water Provider
Representative
Ed Warner, Bureau of Reclamation (Liaison)
Lane Wyatt, Summit Muni

Gunnison Basin Representatives

Mike Ahlberg, At-Large Representative
Thomas Alvey, North Fork Water Conservancy District
Peter Barkmann, Colorado Geological Survey
(Liaison)
David Baumgarten, At-Large Representative
Mike Berry, Tri-County Water Conservancy District
Tom Brubaker, At-Large Member
Bud Burgess, Grand Mesa Water Conservancy District
Keith Catlin, CWCB Member
Marc Catlin, At-Large Representative
Greg Clifton, Ouray Muni
Dan Crabtree, Bureau of Reclamation (Liaison)
Steve Glazer, Environmental Representative
David Graf, Division of Wildlife (Liaison)
Ralph Grover, Hinsdale County
Steven Harris, Legislative Appointment
Jim Hokit, Montrose County
Hank Hotze, Recreational Representative
David Kanzer, Non-Voting At-Large Member
Peter Kasper, Agricultural Representative
Tom Kenyon, Mesa County
Frank Kugel, At-Large Representative
Richard Kullman, Montrose Muni
Henry LeValley, Crawford Water Conservancy District
Dixie Luke, At-Large Representative
Olen Lund, Delta County
Flynn Mangum, Saguache County
Richard Margetts, Local Domestic Water Provider
Representative
Tyler Martineau, Gunnison Muni
Steve McCall, Bureau of Reclamation (Liaison)
John MClow, Legislative Appointment
Chuck Mitisek, Ute Water Conservancy District
Dennis Murphy, Bureau of Land Management
(Liaison)
Bonie Pate, Colorado Water Quality Control Division
(Liaison)
Michelle Pierce, Hinsdale Muni
Hugh Sanburg, Industrial Representative
Wayne Schieldt, Division of Water Resources (Liaison)
Patty Schrader Gelatt, Fish and Wildlife Service
(Liaison)
Ronald Shaver, At-Large Representative
Gary Shelhorn, U.S. Forest Service (Liaison)
Jay Skinner, Division of Wildlife (Liaison)
Kenny Smith, Non-Voting At-Large Member
Ken Spann, Upper Gunnison River Water
Conservancy District

Dennis Steckel, Gunnison County
Scott Stoddard, U.S. Army Corps of Engineers
(Liaison)
Bill Trampe, Colorado River Water Conservation
District
Danny Vanover, Mesa Muni
Ed Warner, Bureau of Reclamation (Liaison)
Jay Winner, Lower Arkansas Valley Water
Conservancy District

Jay Skinner, Division of Wildlife (Liaison)
Phyllis Thomas, Non-Voting Member
Gary Thompson, Upper South Platte Water
Conservancy District
Ralf Topper, Colorado Geological Survey (Liaison)
Mark Uppendahl, Division of Wildlife (Liaison)
Ed Warner, Bureau of Reclamation (Liaison)
Carl Wilson, CSU Extension Service (Liaison)

Metro Basin Representatives

Tom Acre, At-Large Representative
Dave Allen, Weld Muni
Chips Barry, Legislative Appointment
Mike Bartleson, Broomfield
Janet Bell, At-Large Representative
Alan Berryman, Non-Voting At-Large Member
Barbara Biggs, CWCB Member
Steven Board, Douglas County
Tracy Bouvette, Non-Voting At-Large Member
Tim Carey, U.S. Army Corps of Engineers (Liaison)
Larry Cerrillo, Non-Voting At-Large Member
Robert Coney, Adams County
Pete Conovitz, Division of Wildlife (Liaison)
Dana Ehlen, Aurora Muni
Michael Glade, Industrial Representative
Mark Harding, Non-Voting At-Large Member
Polly Hays, U.S. Forest Service (Liaison)
John Hendrick, Local Domestic Water Provider
Representative
Julio Iturreria, Arapahoe County
Frank Jaeger, El Paso County
Jonathon Kahn, Recreational Representative
Dave Kaunisto, At-Large Representative
Mark Koleber, Adams Muni
Rod Kuharich, Douglas Muni
Roy Laws, Jefferson County
Scott Ludwig, Forest Service (Liaison)
Manuel Montoya, Non-Voting At-Large Member
Julia Murphy, At-Large Representative
Peter Nichols, At-Large Representative/Governor
Appt.
David Nickum, Environmental Representative
Bill Ray, Jefferson Muni
Jim Reasoner, Central Colorado River Water
Conservancy District
Randy Ristau, Colorado Water Quality Control Division
(Liaison)
Rob Sakata, Agriculture Representative

North Platte Basin

Mike Allnutt, Agricultural Representative
Deb Alpe, CSU Extension Service (Liaison)
Jim Baller, Michigan River Water Conservancy District
Peter Barkmann, Colorado Geological Survey
(Liaison)
Paula Belcher, BLM (Liaison)
Bob Burr, Jackson County Water Conservancy District
Dianne Chung, Forest Service (Liaison)
Pete Conovitz, Division of Wildlife (Liaison)
Kent Crowder, Legislative Appointment
Jaci Gould, Bureau of Reclamation (Liaison)
Tom Hackleman, At-Large Representative
Hal Hagen, Recreational Representative
Mike Hohnholz, At-Large Representative
Tom Iseman, At-Large Representative
Sandra Knox, At-Large Representative
Erin Light, Division of Water Resources (Liaison)
David Meyring, At-Large Representative
Lucy Meyring, At-Large Representative
Bonie Pate, Colorado Water Quality Control Division
(Liaison)
Ed Perkins, Division of Wildlife (Liaison)
Dirk Ramsey, Local Domestic Water Provider
Representative
John Rich, Jackson County
Jay Skinner, Division of Wildlife (Liaison)
Ann Timberman, Fish and Wildlife Services (Liaison)
Carl Trick, CWCB Member
Barbara Vasquez, Environmental Representative
Ty Wattenberg, At-Large Representative
Michael Wright, Forest Service (Liaison)
Richard Wyatt, Jackson Muni

Rio Grande Basin

J.B. Alexander, Mineral Muni
Robert Bagwell, Conejos County
Peter Barkmann, Colorado Geological Survey
(Liaison)

Section 2 IBCC and BRT Members

Rick Basagoitia, Colorado Division of Wildlife (Liaison)
Fred Bauder, Local Domestic Water Provider
Representative
Mike Blenden, Fish and Wildlife Services (Liaison)
Allen Brown, Hinsdale County
Fred Bunch, National Park Service (Liaison)
Nathan Cherpeski, Alamosa Muni
Peter Clark, Forest Service (Liaison)
Dan Dallas, Forest Service (Liaison)
Rio de la Vista, Environmental
Jerry Gallegos, Costilla County
Dennis Garcia, U.S. Army Corps of Engineers
(Liaison)
Melvin Getz, Industrial Representative
Mike Gibson, San Luis Valley Water Conservancy
District
Greg Higel, Alamosa County
Maclovio Martinez, Costilla Water Conservancy District
Edwin Nielsen, Saguache County
Dale Pizel, Mineral County
Kathleen Reilly, Colorado Water Quality Control
Division (Liaison)
Paul Robertson, At-Large Representative
John Shawcroft, Alamosa La Jara CD
Doug Shriver, At-Large Representative
Jay Skinner, Division of Wildlife (Liaison)
Travis Smith, CWCB Member
Charles Spielman, Rio Grande Muni
Pete Stagner, Saguache Muni
Charles Stillings, At-Large Representative
Mike Sullivan, Division of Water Resources (Liaison)
John Tonko, Division of Wildlife (Liaison)
Arnie Valdez, At-Large Representative
Raymond Valdez, Agricultural Representative
Steve Vandiver, Rio Grande Water Conservation
District
Zeke Ward, At-Large Representative
Ed Warner, Bureau of Reclamation (Liaison)
Glen Wiescamp, Costilla Muni
Mike Willett, Conejos Water Conservancy District
Cathee Wilson, NRCS (Liaison)
Raymond Wright, Legislative Appointment

South Platte Basin

Leon Allen, Cheyenne County
Rick Anderson, Adams County
Mike Applegate, Northern Colorado Water
Conservancy District
Bill Buckhanan, Teller County

Carl Chambers, Forest Service (Liaison)
Sasha Charney, Boulder County
David Colver, Phillips Muni
Pete Conovitz, Division of Wildlife (Liaison)
Paul Czarnecki, Industrial Representative
Lisa Darling, Non-Voting At-Large Member
Frank Eckhardt, Central Colorado River Water
Conservancy District
Harold Evans, Weld County Municipal
James Ford, Gilpin Muni
Joe Frank, Lower South Platte Water Conservancy
District
Bruce Gerck, Sedgwick Muni
Jaci Gould, Bureau of Reclamation (Liaison)
Brett Gracely, Non-Voting At-Large Member
Jim Hall, Division of Water Resources (Liaison)
Gary Herman, At-Large Representative
Stan Holmes, Yuma Muni
Larry Howard, Larimer Muni
Clay Hurst, Elbert Muni
Ken Huson, Boulder Muni
Tom Iseman, At-Large Representative
Julio Iturreria, Arapahoe County
Bill Jerke, Weld County
Webster Jones, Local Domestic Water Provider
Representative
Dennis Kaan, CSU Extension Service (Liaison)
Greg Kernohan, Recreational Representative
Kim Killin, Republican River Water Conservation
District
Joe Kiolbasa, Logan Muni
Walter Knudsen, Jefferson County
Dave Little, Non-Voting At-Large Member
Dennis Lunbery, Clear Creek Muni
Kevin Lusk, El Paso County
Richard Mann, Kit Carson Muni
Gene Manuello, Agricultural Representative
Lisa McVicker, Center of Colorado Conservancy
District
Steve Meakins, Phillips County
John Metli, Elbert County
Earl Mortemeyer, Park Muni
Brent Nation, Morgan Muni
Ed Perkins, Division of Wildlife (Liaison)
Chuck Powell, Sedgwick County
Bill Ray, Jefferson Muni
Kathay Rennels, Larimer County
Fred Rios, U.S. Army Corps of Engineers (Liaison)

Randal Ristau, Colorado Water Quality Control
Division (Liaison)
Shannon Roth, Arapahoe County
Joel Schneekloth, CSU Extension Service (Liaison)
Mike Shimmin, At-Large Representative
Jay Skinner, Division of Wildlife (Liaison)
Stephen Spann, Upper South Platte Water
Conservancy District
Phillip Steininger, El Paso County
John Stencil, Legislative Appointment
Bob Streeter, Environmental Representative
Kent Swedlund, Logan County
John Tighe, Park County
Ralf Topper, Colorado Geological Survey (Liaison)
Fred Walker, At-Large Representative
Bert Weaver, Clear Creek County
Forrest Whitman, Gilpin County
Robin Wiley, Yuma County
Eric Wilkinson, CWCB Member
Les Williams, St. Vrain, Left Hand Water Conservancy
District
Allyn Wind, Morgan County
John Wolforth, Jefferson County
Jim Yahn, At-Large Representative

Southwest Basin Representatives

Peter Barkmann, Colorado Geological Survey (Liaison)
Ken Beegles, Industrial Representative
Scott Brinton, Division of Water
Carrie Campbell, San Juan Conservancy District
Mary Helen de Koevend, Montrose Muni
Larry Deremo, Dolores County
Kelly DiNatale, Non-Voting Member
John Ey, Florida Water Conservancy District
Stephen Fearn, San Juan County
Daniel Fernandez, CSU Extension Service (Liaison)
James Fisher, Dolores Water Conservancy District
Mark Garcia, Archuleta Muni
David Graf, Division of Wildlife (Liaison)
Pat Greer, Animas-La Plata Water Conservancy
District
Vern Harrell, Bureau of Reclamation (Liaison)
Steven Harris, Legislative Appointment
Kay Hartman, San Miguel Water Conservancy District
Kara Hellige, U.S. Army Corps of Engineers (Liaison)
Tim Hunter, Recreational Representative
Raymond Keith, Local Domestic Water Provider
Representative
Gary Kennedy, Mancos Water Conservancy District

Russell Kennedy, La Plata Water Conservancy District
Gerald Koppenhafer, Montezuma County
Fred Kroeger, La Plata County
Leo Large, Montrose County
Charles Lawler, Southern Ute Indian Tribe DNR
Jerry McCaw, Agricultural Representative
Monte Naslund, At-Large Representative
Peter Ortego, Ute Mountain Ute Tribe
Pat Page, Bureau of Reclamation (Liaison)
Kelly Palmer, Bureau of Land Management (Liaison)
Bonie Pate, Colorado Water Quality Control
Hal Pierce, At-Large Representative
John Porter, Southwestern Water Conservation District
Michael Preston, At-Large Representative
Mark Ragsdale, At-Large Representative
Jennifer Russell, San Miguel County and
Municipalities
Robin Schiro, Archuleta County
Donald Schwindt, CWCB Member
Ron Shaver, At-Large Representative
Jim Siscoe, Montezuma Valley Representative
Jay Skinner, Division of Wildlife (Liaison)
Bruce Smart, Montezuma Muni
John Taylor, Hinsdale County
Chuck Wanner, Environmental
Ed Warner, Bureau of Reclamation (Liaison)
Robert Wolff, La Plata Muni

Yampa-White Basin

Peter Barkmann, Colorado Geological Survey
(Liaison)
Dan Birch, Colorado River Water Conservation District
Geoff Blakeslee, Environmental Representative
Mike Brennan, At-Large Representative
Mary Brown, Agricultural At-Large Representative
Mike Camblin, At-Large Representative
Don Carroll, Forest Service (Liaison)
Stephen Colby, Local Domestic Water Provider
Representative
Jeff Comstock, At-Large Representative
Dan Craig, Routt Muni
Jeff Devere, Rio Blanco Muni
T. Wright Dickinson, At-Large Representative Green
River Basin
Nate Dieterich, Bureau of Land Management (Liaison)
Tonia Folks, Non-Voting At-Large Member
David Graf, Division of Wildlife (Liaison)
Tom Gray, Moffat County
Bill Haffner, Non-Voting At-Large Member

Section 2 IBCC and BRT Members

Jon Hill, At-Large Representative
Don Jones, Moffat Muni
Bob Lange, Bureau of Land Management (Liaison)
Erin Light, Division of Water Resources (Liaison)
Bruce Lindahl, At-Large Representative
Forrest Luke, Industrial Representative
Ren Martyn, At-Large Representative
Kevin McBride, Non-Voting At-Large Member
Doug Monger, Routt County
CJ Mucklow, CSU Extension Service (Liaison)
Traute Parrie, Bureau of Land Management (Liaison)
Peggy Rector, Rio Blanco Water Conservancy District
Patty Schrader Gelatt, Fish and Wildlife Service
(Liaison)
Tom Sharp, Upper Yampa Water Conservancy District
Jay Skinner, Division of Wildlife (Liaison)
David Smith, Rio Blanco County
Darryl Steele, Juniper Water Conservancy District
Scott Stoddard, U.S. Army Corps of Engineers
(Liaison)
Paul Strong, Legislative Appointment
Kent Vertrees, Recreational Representative
Ed Warner, Bureau of Reclamation (Liaison)
Robert Weiss, At-Large Representative
Douglas Wellman, Yellow Jacket Water Conservation

Director of Compact Negotiations

Harris D. Sherman

Arkansas Basin Representatives

Alan Hamel
Jeris Danielson

Colorado Basin Representatives

Stan Cazier
Carlyle Currier

Gunnison Basin Representatives

Marc Catlin
Bill Trampe

Metro Basin Representatives

Chips Berry
Rod Kuharich

North Platte Basin Representatives

Kent Crowder
Carl Trick

Rio Grande Basin Representatives

Steve Vandiver
Raymond Wright

South Platte Basin Representatives

Eric Wilkinson
Mike Shimmin

Southwest Basin Representatives

John Porter
Steve Harris

Yampa/White Basin Representatives

Dan Birch
Jeff Devere

Governor

Eric Kuhn
Melinda Kassen
Wayne Vanderschuere
Rita Crumpton
T. Wright Dickinson
Peter Nichols

Senate Agriculture Committee

Jim Isgar

House Agriculture Committee

Kathleen Curry