



Staff Report

December 16, 2013

Farewell to COGCC Deputy Director - Field Operations Thom Kerr

It is with mixed emotion that I find myself ending my career at the Colorado Oil and Gas Conservation Commission ("COGCC") after 23 years. Over the last two decades, I have had the opportunity to observe extraordinary changes in the agency. Colorado has become a significant oil and gas producing state in the U.S. with the production of its unconventional resources. The state may well set an all-time record for oil production this year and gas production has increased steadily since 1989. However, this is only part of the story.

All of the increase in production has come with an increase in the number of wells resulting from continuous drilling activity. The increase in drilling and production raised concern about the impact to the public health and safety as well as the environment and wildlife resources. The changes to the COGCC rules and regulations started in the early 1990s by providing notice to local governments and outreach to land owners. Addressing issues with these parties continue as one of the highest priorities of agency, the governor, the Commission, and the legislature. Beginning in 1994, laws and rules to protect and evaluate impacts to the environment and wildlife became a regular occurrence and continued through this year with four rulemakings.

With all of these changes, Colorado has become a leader in the nation and the world with its comprehensive oil and gas development laws, rules and regulations. This regulation coupled with the cooperation of industry through the advancement of technology and operating practices have made a significant reduction in the impact from oil and gas development. As new energy resources continue to be developed, constant vigilance must be paid to advancement in technology, operation practices and regulations to protect the environment and the lives of people and wildlife. This

balance is critical to maintain our twenty-first century life styles with its economic strength, comforts, technology and enjoyment of Colorado's world class environment and recreational opportunities. With input from the people of the state, its committed leaders, creative industry, and insightful COGCC staff, I am sure that this agency will continue to maintain its prominent position as a leader in the world of balanced oil and gas development.

My time at the COGCC has been immensely rewarding and I am proud to have been a part of its important position in the history of the last two decades. I have had the honor of working for four governors, eight Directors of Department of Natural Resources, six COGCC Directors and too many devoted Commissioners to count. Most of all, I have worked with many intelligent, creative and hard-working folks that have taught, mentored, and supported me through this tremendous experience. I will miss the challenges of this fast-paced environment, but I feel confident that I have been well prepared to take on new and different challenges, spend more time with my family and enjoying this great state.

— Thom Kerr

TOP STORIES

◆ Update on Colorado Flood Response

COGCC continues its intensive flood response effort to oversee and support the recovery of the oil and gas industry in Northeast Colorado. COGCC has now evaluated or inspected every one of the 1614 wells that lie within COGCC's "flood-impact zone" - the area most affected by rushing flood waters. Overall, COGCC has completed a total of 2966 evaluations and inspections in its flood response so far.



COGCC continues to collect and update information about the effects of the floods upon the oil and gas industry. A total of 2608 wells were shut-in in anticipation of flooding. Of those shut-in wells, 2022 wells - 78 percent - have now returned to production.

The agency's oversight of the cleanup of flood-caused spills and contamination continues, too. COGCC has received 50 spill reports documenting flood-caused spills greater than COGCC's reportable quantities. The number of "notable" flood-caused spills remains at 14 - this is the category for single spills of oil or condensate in amounts greater than 20 barrels. The largest flood-caused spill of oil or condensate at a single location remains 323 barrels.

A total of 1149 barrels - 48,250 gallons - of oil or condensate spilled during the flooding. A total of 1035 barrels of produced water - 43,479 gallons - also spilled.

Due to the situation, COGCC quickly transformed itself into a response-mode organization, and, while flood-response work continues, field staff have inspected all potentially impacted oil and gas facilities. While no release of oil or produced water is always preferable, the situation could have been worse in terms of releases from oil and gas facilities. The same may not be true concerning the amount of untreated and partially treated sewage released into the environment, which far exceeded the cumulative crude oil and produced water released by several orders of magnitude

For additional details on COGCC's flood response efforts, please refer to the October Staff Report (available online at cogcc.state.co.us). Links to recommendations for the public, and requirements for operators on dealing with flood-impacted facilities are available under the HOT TOPICS banner on the website.

◆ E & P Waste Spill and Release Rulemaking

House Bill 13-1278, codified at § 34-60-130, C.R.S. requires oil and gas operators to report any spill of one barrel or more, or the equivalent of one barrel or more, of oil or exploration and production ("E&P") waste within 24 hours after

discovery of the spill. The operator is required to make a report to the COGCC; as well as to the entity with jurisdiction over emergency response within the affected local municipality or county. The operator's report of the spill must include any available information concerning the type of waste involved in the spill. The bill authorizes the Commission to promulgate rules to implement these requirements. There are proposed changes to Rule 300 Series and Rule 900 Series to implement the legislation.

The purpose of the Amended Rules is to create greater transparency of oil and gas operations by requiring operators to report oil spills of one (1) barrel or more. While the original rules required that operators report spills of five (5) barrels or more, many in the general public believed that too much E&P waste were being spilled without sufficient oversight. One barrel of oil is forty-two (42) gallons, therefore, five (5) barrels equals two hundred fifteen (210) gallons. With tighter regulations for reporting spills, COGCC can help monitor the cleanup of spills, as well as regulate operator's future activities. In addition, the public will also have a more clear understanding of the oil and gas operations as well as understand that operators are doing everything in their power to protect public health and safety as well as protect the environment from the impacts of oil and gas production.

A Stakeholder meeting was held on November 22, 2013 to address stakeholder questions. The Rule-making hearing is scheduled for December 17, 2013 at 9:00 a.m. at the Ralph L. Carr Judicial Center, 1300 Broadway, 1st Floor, Room 1E, Denver, Colorado.

◆ Sensitive Wildlife Habitat and Restricted Surface Occupancy Rulemaking

On September 17, the Commission updated the Sensitive Wildlife Habitat and Restricted Surface Occupancy maps. The Sensitive Wildlife Habitat maps identify the areas for particular species where consultation with the Colorado Parks and Wildlife (CPW) expert and surface owner is required to identify mitigation procedures that can be implemented to reduce the impact to wildlife from oil and gas development. The Restricted Surface Occupancy maps are areas that have



been identified for particular species where oil and gas development should not occur unless it is absolutely unavoidable for very specific reasons and an exception is justified and granted by the Director. These maps were originally adopted by rulemaking in 2008 and specified that the maps may be updated on a specific interval to capture updates performed by CPW. This was the first time the maps have been updated since that rulemaking.

The revised map layers have been posted on the COGCC GIS Online map. Shapefiles for these layers are available for download on the COGCC website under Wildlife Habitat Shapefiles. The updated maps became effective on November 14, 2013. The new maps can be reviewed on the COGCC website by selecting "Wildlife Map Rule-making" from the HOT TOPICS section of the homepage.

◆ Local Government Liaison (LGL) Program Update

At the request of local governments, the COGCC approved rule changes in 1992 that created the Local Government Designee (LGD) program. A program believed to be unique to Colorado, the purpose is to provide participating local governments with real-time information about planned oil and gas activity and the opportunity to comment on pending location and drilling permit applications. When comments identify valid and actionable concerns, conditions of approval (COA) can be applied by COGCC to issued drilling or location permits, which then become enforceable items of the permits.

The LGD program was enhanced in 2009 (by rule changes) to allow specific input on decisions related to public health, safety and the environment. Again, in 2013, rule changes enhanced communication and collaboration between local governments, the public, and operators, and required enhanced mitigation of nuisance impacts from oil and gas for locations in close proximity to residences. To enhance collaboration, in their roles as Local Government Liaisons (LGLs) Nancy Prince and Marc Morton work with jurisdictions, communities, operators and COGCC staff to avoid conflict, and create mutually acceptable solu-

tions to issues associated with oil and gas development. In addition, the LGLs are available to answer questions and provide information, data, and or presentations about specific aspects of oil and gas operations, or about COGCCs rules, policies, or its role as a regulatory agency within the Department of Natural Resources.

The LGLs planned and conducted eight full-day LGD training sessions at venues around the state in 2013. The LGD trainings were designed to provide an overview of the following: oil and gas operations, the relationship of COGCC and local governments in regulating oil and gas, COGCC rules and recent rule changes, a summary of opportunities for LGD and public involvement. The trainings also provided instruction in the use of the COGCC website and online tools. LGD trainings were held in Limon, Grand Junction, Broomfield, Durango, Sterling, Denver, Lamar, and Glenwood Springs. LGD training was provided to a total of 134 individuals in 2013, including "designated" LGDs, other local government staff, elected officials, and others. A total of 36 participating county LGDs, 24 participating municipal LGDs, and one participating special district LGDs received training. In addition, 44 other local government staff, 16 elected officials, and 13 others received the training.

The 2014 training schedule and content are under development. Please contact Nancy Prince or Marc Morton with if there is a specific topic of interest that you would like to see incorporated into the program, are interested in hosting a training, or if you have questions about the LGD program or LGD training.

Submittal of a completed and signed Form 29 is required for local governments to register to participate in the program, or to update existing information. Maintaining a current email address provided via a Form 29 is key to active participation in the LGD program, as email is used for automatic notifications of pending permits and other activity and for distribution of pertinent news by the LGLs. The Form 29 is available on our website at cogcc.state.co.us under the "Forms" link.

Since the last Staff Report, the LGLs have responded to numerous questions, inquiries and



concerns regarding oil and gas issues in Colorado. Inquiries have concerned a wide variety of topics that have included questions on local oil and gas activity, operator history in an area, the ongoing spill reporting rule making and stakeholder involvement process, how to track production, and questions about well permitting, mineral rights, and drilling and spacing units. Entities with inquiries included staff from Arapahoe County, Elbert County, Fremont County, Huerfano County, Jefferson County, Garfield County, La Plata, Routt County, Weld County, and the municipalities of Commerce City, Firestone, Greeley, Limon, and Windsor. Citizens from Routt County, Longmont, and Weld County also had inquiries that were responded to. In addition to responding to these entities and individuals, a list of the LGL outreach and public involvement activities conducted since the last staff report is included in the Public Outreach section of this Staff Report.

Public Outreach

➤ Outreach by Director and other Staff Members

- On October 23, 2013, Deputy Director Thom Kerr presented the new state rules on set-backs and groundwater monitoring at the South Platte Forum. The South Platte Forum is a group of water providers who use the river as a drinking water source or transportation system for their drinking water supply.
- On November 6, Director Matt Lepore attended the annual meeting of the Interstate Oil and Gas Compact Commission ("IOGCC"). Mr. Lepore presented "Working with local/county governments" at the Legal/Regulatory Committee meeting.
- On November 8, Matt Lepore spoke at the Colorado Foundation for H2O Education in Longmont, CO.
- On November 16, Matt Lepore was a Guest Lecturer on Ballot initiatives and the Floods at the University of Denver.
- On December 4, Field Inspection Manager Mar-

garet Ash provided an overview of the September 2103 Flood and its Impacts on the Oil and Gas Industry at the International Erosion Control Associations' Midwinter conference held in Denver.

- On December 5, Thom Kerr presented to the Golden Lions Club on hydraulic fracturing.

➤ Outreach by COGCC Local Government Liaisons (LGLs)

- On November 4, 2013, Marc Morton met with staff from Groundwork Denver to provide an overview of COGCC and the LGD program, and provide input on their project concerning a comprehensive watershed planning effort for impacted Lower Bear Creek, in Jefferson, Arapahoe, and Denver Counties.
- On November 5, Marc Morton attended the ongoing FrackingSENSE 2.0 informational series in Boulder, and attended a lecture by U.S. Representative Dianne DeGette (1st District, Colorado). Marc met with Rep. DeGette's Senior Policy Advisor, Jen Clanahan, to discuss his role as an LGL in Colorado, and the LGD program.
- On November 6, Nancy Prince attended the Mayor's Meeting in Florence where the major topic of discussion was operator support for an application for a DOLA grant to remedy road impacts.
- On November 6, Marc Morton attended Garfield County Environmental Advisory Board (EAB) monthly meeting in Rifle, and provided (during the public comment period) guidance to inform the public, group, and operators present of the ongoing opportunity to provide comments on pending well permits applications, of the opportunity to provide public and local government comment at any COGCC hearing, and of the existence of and purposes of LGD program.
- On November 12, Hearings Manager Robert Frick, Nancy Prince, Marc Morton and CDPHE Oil and Gas Liaison Kent Kuster travelled to Lamar, and provided LGD training to 17 individuals.
- On November 13, Marc Morton and representatives of the Colorado Office of Attorney General



travelled to Laramie, Wyoming, and attended a conference entitled "A Landscape Discussion on Energy Law in Wyoming".

- On November 14, Nancy Prince attended the Denver Petroleum Club lecture on effective operator engagement with local governments.
- On November 20, Robert Frick, Marc Morton, Nancy Prince and Kent Kuster travelled to Glenwood Springs and provided LGD training to 11 individuals.
- On December 3, Nancy Prince attended a working session of the Brighton City Council regarding proposed changes to the local oil and gas ordinance.
- On December 3, Marc Morton attended the ongoing FrackingSENSE 2.0 informational series in Boulder, and attended a lecture by Robert Martin, member of the Makah Tribe, and President and owner of Tartoosh Environmental.
- On December 5, Marc Morton travelled to Rifle and attended monthly Garfield County Environmental Advisory Board (EAB) meeting. The education program of this meeting concerned the Garfield County Phase III Hydrogeologic Study of the Mamm Creek Area, presented by David Bohmann, Operations Manager of the consulting firm Tetra Tech.
- On December 10, Marc Morton attended the ongoing FrackingSENSE 2.0 informational series in Boulder, and attended a lecture by Howard Boigon, a energy and natural attorney with Hogan Lovells.
- On December 10, various COGCC staff including Eastern Colorado Engineering Supervisor Diana Burn, Robert Koehler, Margaret Ash, Northeast Area Engineer Steve Jenkins, Engineers in Training Mike Hickey and Mark Schlagenhauf, South Area Engineer Dirk Sutphin, and Marc Morton attended a day-long course titled *Well Bore Integrity Throughout its Life Cycle*. The training took place in Golden and was offered by the Petroleum Technology Transfer Council -Rocky Mountain Chapter, at the Colorado School of Mines.

- On December 11, Marc Morton travelled to Eagle County and took part in a panel discussion hosted by the Eagle River Watershed Council titled "Hydraulic Fracturing & Water: An Informational Panel". Other panelists included Jay Foreman, Completions Supervisor at WPX Energy, and a representative from Eagle County.

REGIONAL ACTIVITIES

➤ NORTHWEST COLORADO

◆ Northwest Colorado Oil and Gas Forum

The Forum is an informal gathering of local, state, and federal government officials, oil and gas industry representatives, and citizens that have met regularly since 1989. The purpose of the Forum is to share information about oil and gas development in northwest Colorado and to make government officials and oil and gas industry representatives easily accessible to the public. Currently, the meetings are conducted once per quarter and are co-chaired by the COGCC Director Matt Lepore and Garfield County Commissioner Mike Samson.

The next meeting of the Forum was rescheduled for Thursday, December 12, 2013, at 10:00 a.m. at Colorado Mountain College in Rifle, CO.

The next meeting is tentatively scheduled for February 27, 2014 in Grand Junction, CO at a location to be determined. All parties wishing to be placed on the meeting agenda, or added to the distribution list for announcements, should contact Chris Canfield at 970-625-2497 or via email at: chris.canfield@state.co.us

• Project Rulison

Please note that the email for Project Rulison submittals has been changed to:

DNR_rulison.submittal@state.co.us

• Project Rio Blanco

Please note that the email for Project Rio Blanco submittals has been changed to:

DNR_rioblanco.submittal@state.co.us



➤ SOUTHWEST COLORADO

◆ Gas and Oil Regulatory Team (GORT) Meeting

The last GORT/Southwest Colorado Oil and Gas Stakeholders meeting occurred on Friday, October 18, from 8:30 a.m. to noon at the La Plata County Fairgrounds in Durango, Colorado.

The next GORT meeting is scheduled for Friday, January 17, 2014 from 8:30 a.m. to noon at the La Plata County Fairgrounds in Durango, Colorado. All parties wishing to be placed on the next meeting agenda should contact Alex Fischer at 303-894-2100 extension 5138 or to: alex.fischer@state.co.us.

◆ Fruitland Formation Outcrop Mitigation and Monitoring Projects (4M Projects)

Fruitland Formation Outcrop - 4M Pilot Scale Mitigation Projects La Plata County. The South Fork Texas Creek (SFTC) system operated between 10.9 and 11.1 Kilowatts (kW) power generation and was functional 97% of the time for the period September 1, 2013 and October 3, 2013. Disruption to the local power grid as a result of thunderstorms caused the main breaker on the system to trip and shutdown on September 26, 2013. LTE was onsite the following day to reset the breaker and get the system running again. An average of 5.9 kW per hour were returned to the grid during these periods. Pine River continues to operate in a passive mode. General O&M continues at both locations. The 4M Mitigation Operations & Maintenance Report (September 30, 2013) has been posted on the COGCC webpage under Library, San Juan Basin, 4M Project Reports.

4M Monitoring Wells La Plata and Archuleta Counties. There are 17 wells at 11 locations in the COGCC 4M monitoring program. Well pressures are monitored remotely via satellite telemetry with one or two maintenance visits per year, depending upon data received. Operations and maintenance (O&M) activities were conducted on September 30 and October 1, 2013 by COGCC and Norwest staff. In general, the locations held up well during the recent large storm events although several access roads were damaged. The upper transducer at Highway 151 #2 starting giving

erratic readings in late June 2013 and ceased transmitting in late July 2013. There was no surface evidence of problems, indicating the transducer itself has probably failed. Erratic readings from the upper transducer at Wagon Gulch #2 were determined to be from a loose wire in the hub which was reconnected. Data now appear to be transmitting normally. Wellhead leaks at South Fork Texas Creek #2 are still evident and require repair. Pending O&M activities includes the replacement of the upper transducer at Highway 151 #2 and a rebuild of the wellhead at South Fork Texas Creek #2. In addition it is planned to swap out the Level Troll™ datalogger system at a Basin Creek well and install an Aqua-Troll™ to run an assessment if different monitoring technologies may provide more accurate water level information. The Beaver Creek locations continue to be inaccessible due to surface access issues and the BP Highlands location was not visited due to potential road damage and wet road issues. Both locations are currently reporting normally via the telemetry system.

Ongoing Investigation, Reclamation, and Mitigation of Residual Methane in the Vicinity of the Bryce 1-X Well Area, Bondad, Colorado Four domestic water wells were sampled at the Bondad location on October 2, 2013 by COGCC and Four Corners Geoscience (FCG) staff. A visual inspection of the water at all locations indicated the water looked much cleaner than during past sampling events. Free methane results ranged from 1.41 mg/l in the South well to 6.91 mg/l in the North well. All methane results were lower than the April 2013 sampling results. Analytical and isotopic data are pending.

➤ SOUTHEAST COLORADO

◆ U.S. EPA Raton Basin Hydraulic Fracturing Study - Las Animas and Huerfano Counties

As part of the retrospective study of possible impacts from well completions, a third round of sampling and analysis of groundwater from two areas in the Raton Basin was conducted during the week of November 5, 2012. COGCC staff, as well as contractors for Pioneer Natural Resources, collected split samples at many of the sites. The EPA released an interim progress report on the study in December 2012. The EPA is



expected to release the study in a draft for public and peer review in 2014. Ultimately, results from the study are intended to inform the public and provide policymakers at all levels with high-quality scientific knowledge that can be used in decision-making. For more information on the EPA hydraulic study, go to <http://www.epa.gov/hfstudy/>.

VARIANCES

On November 11, 2013, a 502.b. variance request was granted to **Carrizo Niobrara LLC** ("Carrizo") for the Ehmke #1 well located in the NWNW of Section 6, Township 10 North, Range 59 West, 6th P.M. per Rule 303.i.(2). Due to exigent circumstances, Carrizo Niobrara LLC will face significant economic hardship as an operator if this application to drill is not approved as soon as possible. As stated in Rule 303.i.(2), this should provide the approval of this Form 2 without the Rule 305.d 20-day Comment Period. Carrizo has obtained waivers from Weld County and the surface owner to expedite the approval of this application.

A Rule 502.b Variance from Rule 305.d was granted on November 18, 2013 to **Encana Oil and Gas (USA) Inc.** ("Encana"). Rule 305.d requires a 20-day comment period for APDs. Encana requested a variance be granted to approve the Form 2 for their Dreyer 1 well, API # 123-08551, in the NWSE of Section 31, T1N, R65W in Weld County, without the comment period. This APD is a re-enter to replug. Encana would like to replug this well quickly in order to commence their horizontal drilling program. .

A Rule 502.b Variance from Rule 318A.m was granted to **Synergy Resources Corporation** ("Synergy") on November 19, 2013 for the approval of the APD for the Union 5AHZC well (API No. 05-123-38451) in the SWNW Section 5, Township 2 North, Range 68 West, 6th P.M. in Weld County. Rule 318A.m requires an operator proposing a horizontal well to obtain a waiver from the operator of a well within 150 feet of the proposed horizontal wellbore. Synergy attempted, but was unable to obtain, a Rule 318A.m waiver from Encana Oil & Gas (USA) Inc. regarding their Pietrzak #1 (API No. 05-123-10241) located 65' from Synergy's proposed horizontal Union 5AHZC

well. Prior to drilling their horizontal well, Synergy will conduct a gyro survey in the Pietrzak #1 to accurately determine the subsurface location of this older vertical well. Synergy will not complete their horizontal well until any zonal isolation deficiencies in the Pietrzak #1 have been remediated.

A Rule 502.b Variance from Rule 305.d was granted on November 20, 2013 to **PDC Energy Inc.** ("PDC"). Rule 305.d requires a 20-day comment period for APDs. PDC requested a variance be granted to approve the Form 2 for their Anderson 1 well (API No. 05-123-11545) in the SESE of Section 6, T6N, R65W in Weld County, without the comment period. This APD is a re-enter to replug. PDC would like to replug this well quickly in order to commence their horizontal drilling program.

➤ ORGANIZATION

New Permit/Completions Technician

Robert Herbert is the newest Permit/ Completions Technician, filling a vacant position in the Permitting Group. Rob has a Bachelor's Degree in Geology and a Master's Degree in Hydrogeology. His experience in the oil and gas industry includes working as a Wellsite Geologist and as a Geological Technician. After consulting as a hydrogeologist for several years, he began a 16-year career with the Utah Department of Environmental Quality, working the last 5½ years as the Environmental Program Manager of the Division of Water Quality. With his education, oil and gas industry experience, and extensive environmental regulatory experience, Rob will make a significant contribution to the Permit Group and the COGCC.

Four New Field Inspectors

The Field Inspection unit is pleased to announce the hiring of four additional engineering physical scientist technicians. All four new inspectors started on November 4, 2013. Each inspector completed a 10-day COGCC training program and a stormwater management class taught by Altitude Associates.

Jeff Rickard is a geologist with a background in



environmental consulting. He graduated from Colorado State University with a Bachelors degree in Geology. Jeff has been assigned an area near Greeley, Colorado and reports to Jim Precup.

Susan Sherman holds a Masters Degree in biology from University of Colorado-Denver and a Bachelors Degree in agronomy from Colorado State University. She has over 25 years of regulatory and environmental consulting experience. She spent years several monitoring oil and gas sites in the Raton basin for compliance with COGCC and CDPHE regulations. She is working out of Limon, Colorado and reports to Mike Leonard.

Bill Raines has an extensive oil and gas background including working as Pumper and Lead roustabout and lead service technician for natural gas compressors. Bill attended University of Southern Colorado and will be covering an area that includes much of Central and Eastern Weld County.

Craig Carlile has a wide-ranging oil field experience including being rough neck, supervising construction of production facilities and installation of instrumentation at pipeline facilities. Craig has a Bachelor's degree in mechanical engineering from Colorado State University. He lives in Fort Collins and will cover Larimer County along with parts of Boulder and Weld Counties and will report to Jim Precup.

A revised map showing field inspector areas is available on the COGCC website under Contacts and then Maps of Staff Responsibility.

An organizational chart can be found on pages 12-15. For contact information, please go to our homepage, and then "Staff Contact Information."

➤ PLANNING/ADMINISTRATION/OTHER

◆ Budget Update

Included in the Governor's Fiscal Year 2014-15 budget request, submitted to the General Assembly on November 1, 2013, are two additional Assistant Attorneys General to strengthen the COGCC's enforcement process, as well as provide

more resources for rulemakings, hearings, and other public matters before the Commission

◆ Plugging and Reclaiming Abandoned Wells (PRAW) - Project Updates

The DB Orphan Blair #1 Project came into being when on July 7, 2013 a ditch rider discovered water flowing from the ground and discharging into an irrigation ditch located on the NW edge of DeBeque, CO in Mesa County. The COGCC was contacted on July 9th and because other orphaned oil and gas wells had been previously discovered and plugged by the COGCC, the COGCC assumed responsibility and had water samples gathered for lab analysis. Lab analysis indicated salty water which is indicative of oil and gas geologic sources. The ground around the water flow was dug up and the source of the leak was determined to be from a hole in a pipeline which was traced back to an old abandoned well that appears to have been drilled around 1902 based on old USGS reports. The salt water discharge into the ditch was terminated by sealing the well head and then disconnecting the pipeline. The COGCC has placed this well in the PRAW program with plans to re-enter and plug this winter or next spring.

The PAST Project includes three leaking PA wells in need of re-entering and re-plugging and has been renamed the **2013 Piceance Re-entries Project** to avoid confusion with other work. Two are located in Garfield County and one is in Mesa County. This work has been successfully completed this past July with a final cost of \$236,776. These sites need surface reclamation which will likely take place in the next fiscal year or after July 1, 2014.

Biscuit Pad Remediation Project includes two well pads and the two respective access roads where they are currently located in an active irrigated hayfield. The goal is reclaim and return the lands back to agricultural purposes. This project is located in Garfield County near the NE border of the town of Rifle and east highway 13. The lowest bid from the list of qualified contractors came in at \$143,000 and the work had been awarded to Tally Ho Construction, Inc. Tally Ho facilities and offices are headquartered in Rifle,



CO. On October 15, Tally Ho Construction commenced mobilization of equipment, personnel and supplies to the project and has completed approximately 30 percent of the project when comparing the cumulative expenditures made to date to the contract amount of \$143,000.

The Debeque Environmental and Reclamation Project involves the remediation of soils contaminated by salt water in the vicinity of the orphaned wells known as the Homestead #2 and the Pasture #1 wells. Both sites are located in Mesa County on the NW edge of DeBeque, CO. Soil sampling and lab analysis has been completed on both well sites with remedial and reclamation designs, plans & work to be scheduled and completed during the new fiscal year (July 1, 2013 thru June 30, 2014). A purchase order up to the amount of \$12,300 has been approved to commence designing the remedial work to be done, ground water monitor well installation, surface and ground water sampling and analysis, and reporting.

The Tatonka Reclamation Project includes three well pads located in Moffat County with two well pads being on the Culverwell property that can be found approximately 20 miles west of Craig, CO and a few miles north of Hwy 40 with another well pad and pit being located on the Gerber property and found four miles west of Craig and three miles north of Hwy 40. A contractor has provided a documented quote and price to reclaim the mud reserve pit on the Gerber pad. A purchase order not to exceed \$25,000 has been approved.

The Gentry Project is located in Rio Blanco County and includes 10 sites with eight wells and two pits that can be found approximately a half mile west of Rangely, CO and one and a half miles south of Hwy 64. The landowner has plans to do some land development and brought the matter to the attention of the COGCC.

Page 16 contains a spreadsheet listing PRAW projects that are either scheduled in process or completed as of December 7, 2013.

January 2014 Hearing Docket

A docket for the January 2014 hearing will be available shortly after the December hearing. Hearing dockets are available on our website by clicking on "Hearings." Links to the notices and hearing applications are available from the Docket Number and Applicant, respectively. To sign up for e-mail notification of hearing notices and applications, please see the announcement and instructions on the homepage of the COGCC website: www.cogcc.state.co.us

➤ Colorado Oil and Gas Information System (COGIS) Projects, Updates and Changes

Environmental Database

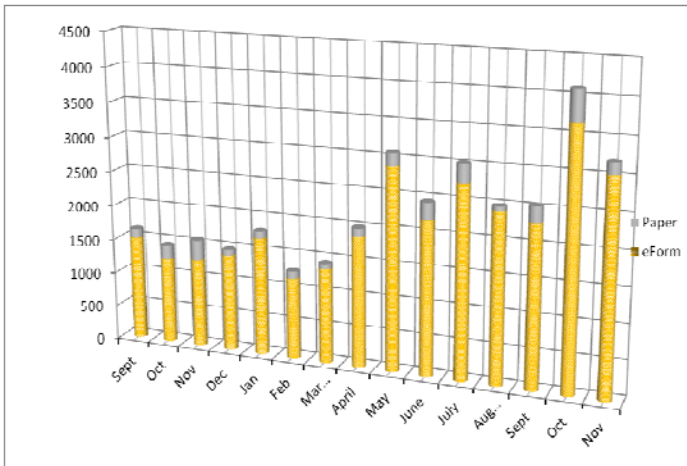
During the past 18 months, the COGCC and the Ground Water Protection Council (GWPC) have been working together to develop a new Environmental Database that will contain the results from the Colorado Oil and Gas Association Voluntary Baseline Groundwater Quality Sampling program, along with other environmental data collected by the agency. The project included the development of a new relational database model that will allow the data to be accessible to the public from the COGCC website.

Other improvements include an Electronic Data Deliverable that allows industry to submit the results of the sampling directly to the COGCC, which can then process the information directly into the database. The application has many other features to help staff analyze the information and understand the lab results from the sampling. The interface will allow the public to view and download the results.



Electronic Form Submissions (eForm)

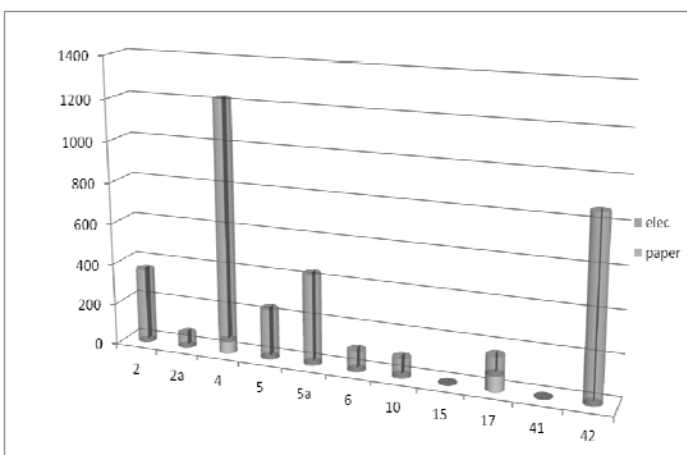
TOTAL ELECTRONIC FORM SUBMITTALS SEPTEMBER 2012 - NOVEMBER 2013



Forms currently available through eForm:

Form 2 - Application for Permit to Drill
 Form 2A - Oil and Gas Location Assessment
 Form 4 - Sundry Notice
 Form 5 - Drilling Completion Report
 Form 5A - Completed Interval Report
 Form 6 - Well Abandonment Report
 Form 10 - Certification of Clearance/Change of Operator
 Form 15 - Earthen Pit Report/Permit
 Form 17 - Bradenhead Test Report
 Form 41 - Trade Secret Claim of Entitlement
 Form 42 - Notice of Notification (Notice of Hydraulic Fracturing)

Following is a breakdown by Form for the month of November 2013:



Revisions to Forms

The revised Form 2 and 2A were released on August 5. The forms have been revised to accommodate the additional information required by the new Rules that were effective August 1st. Staff took this opportunity to make some long-needed improvements to both forms.

Industry training for the revised Forms 2 and 2A was conducted during August. Training occurred in Denver, Durango, and Grand Junction. COGCC staff continues to meet with operators to facilitate their use of the new Forms and staff is also working on guidance documents to help foster consistency throughout the permitting process.

The Form 4, Sundry Notice went live in eForm on April 30, and has become one of the fastest forms to achieve over an 80% usage within the electronic portal. With the addition to the suite of forms now available in eForms, processing of the Sundry can now be faster and more efficient. In October and November, the Commission received over 1100 Sundry Notices through eForm, saving staff the data entry time leading to faster processing.

COGCC staff is available to answer questions as needed for either the new eForm 4 or for the revised paper Form 4.

The development team has now turned its attention to the Form 19 the Report for Spills and Releases.

Form 15, Pit Permit and Report, is available in eForm and operators are encouraged to utilize the system to file this form. The form contains additional fields. The PDF version on the Forms page, <http://cogcc.state.co.us/Forms/forms.html>, is revised to reflect the changes that occurred from the release of the form in eForm.

As forms are released on eForm, updates to the PDF forms on our website will occur in tandem. These new versions of the PDF forms will reflect any changes that have taken place when forms are moved into eForm.

Along with the eForm system, a page is available where the operators can review all known bugs



within the system and report any new ones they discover. Currently, there are 305 operators using eForm.

The public can make comments on all submitted Oil and Gas Location Assessment (OGLA) forms (Forms 2A) through the eForm system. This is accomplished by going to the COGCC website (<http://www.colorado.gov/cogcc>) and clicking on the menu option, "Permits", (or <http://cogcc.state.co.us/COGIS/DrillingPermits.asp>).

On the COGIS-Permits page, two search options are available for OGLA forms, "All Pending Location Assessments for" and "All Approved Location Assessments for." When the results are displayed for forms in process, the public can click on the document number, which logs the user onto the new eForm application. Once the page is displayed with the selected document, the user can select the Comment button to make a comment on that particular form. The public can use this same method to make comments on APDs (Form 2s).

For any operator not currently enrolled in eForm, instructions for starting the process can be found at <http://cogcc.state.co.us/Announcements/COUAINformation.pdf>.

- **Financial Assurance Unit**

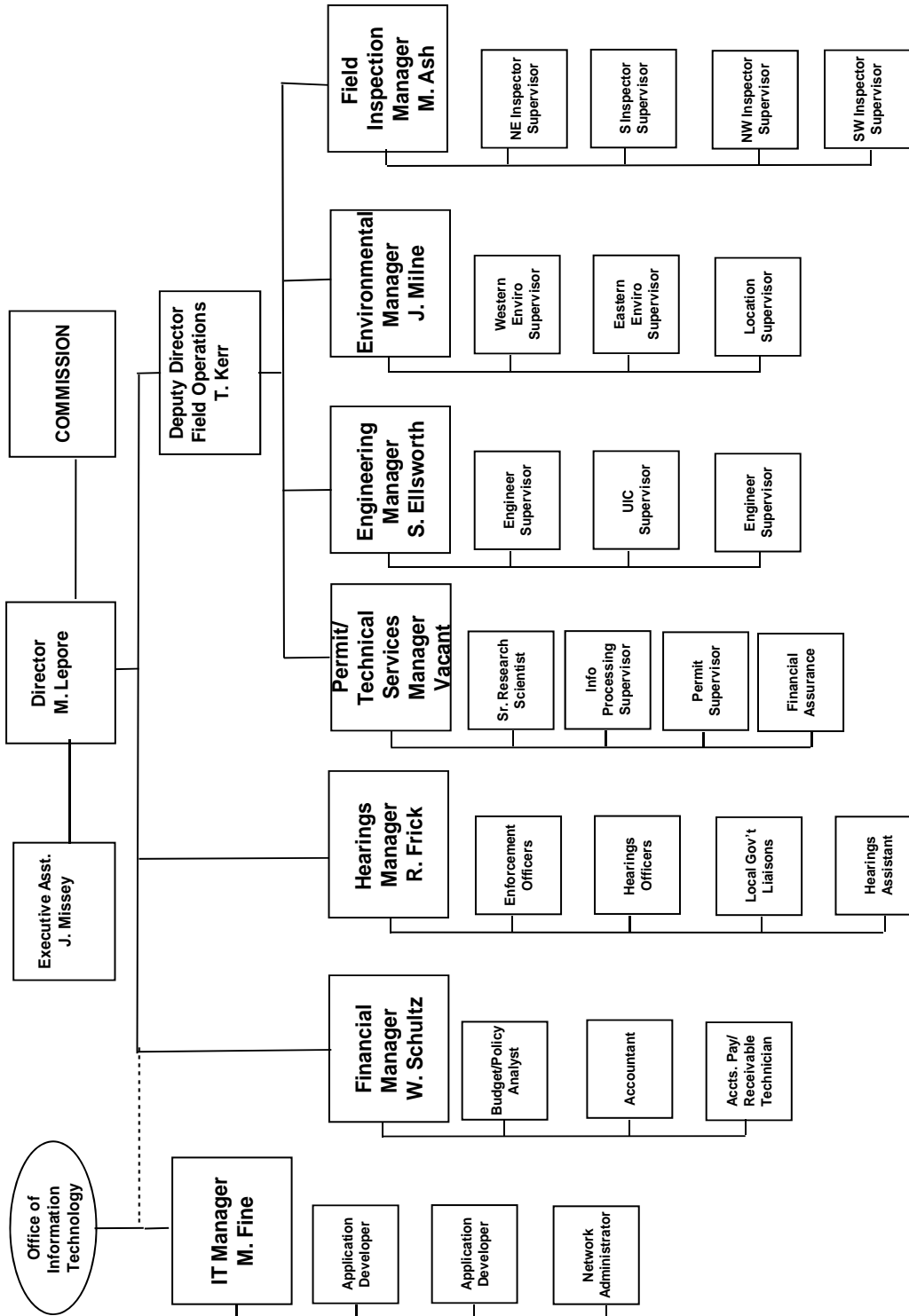
The Financial Assurance Unit together with the student intern from Arrupe Jesuit High School has been conducting phone audits with operators to determine if the database contains all pertinent information as required by Rule 302.a. Registration for Oil and Gas Operations. At the time of the phone contact, the primary phone number and address filed with the Commission is being verified. A form has been designed to capture new data at the time of phone contact. If the operator cannot be contacted by phone, then an official letter is being mailed to the operator requesting that the information on file be reviewed and a Form 1 submitted to update this information as required by Rule 302.a. This is a slow process but some compliance has been gained and new Form 1's for change of information have been received. All documents will be scanned and filed under the operator number. All inquiries are being tracked for further review.

- **COGCC GIS Online**

An upgrade of the COGCC GIS Online interactive map is now available on the COGCC's website. Two new features are now available along with some minor changes. An Address Search button will zoom the map to the area of an input street address, city and zip code. The second new feature is an enhanced Print function. This will generate a PDF document which can be saved or printed. It allows choice of paper size, orientation, input of a legend and a map scale options.



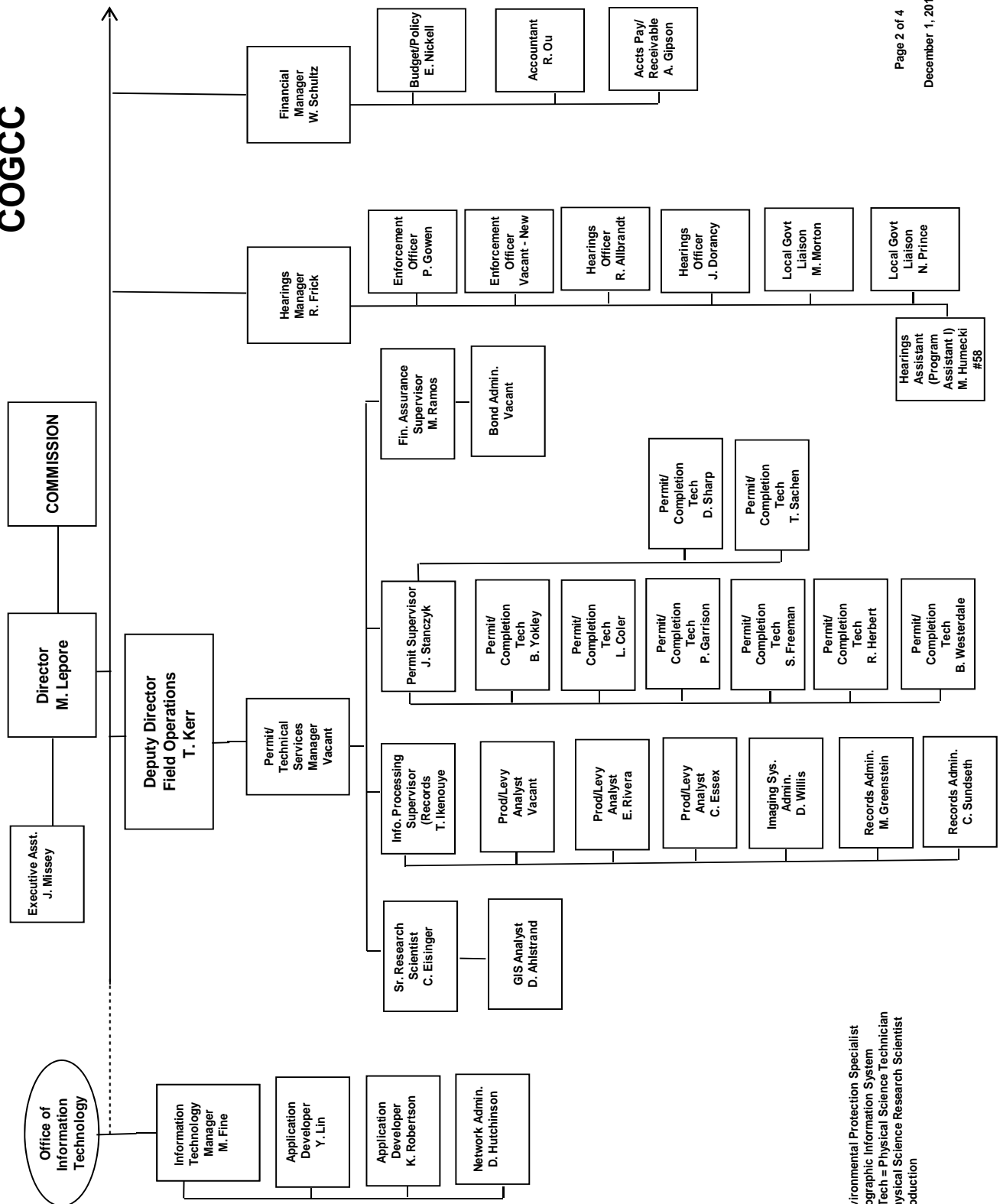
COLORADO OIL & GAS CONSERVATION COMMISSION



See the next three pages for details

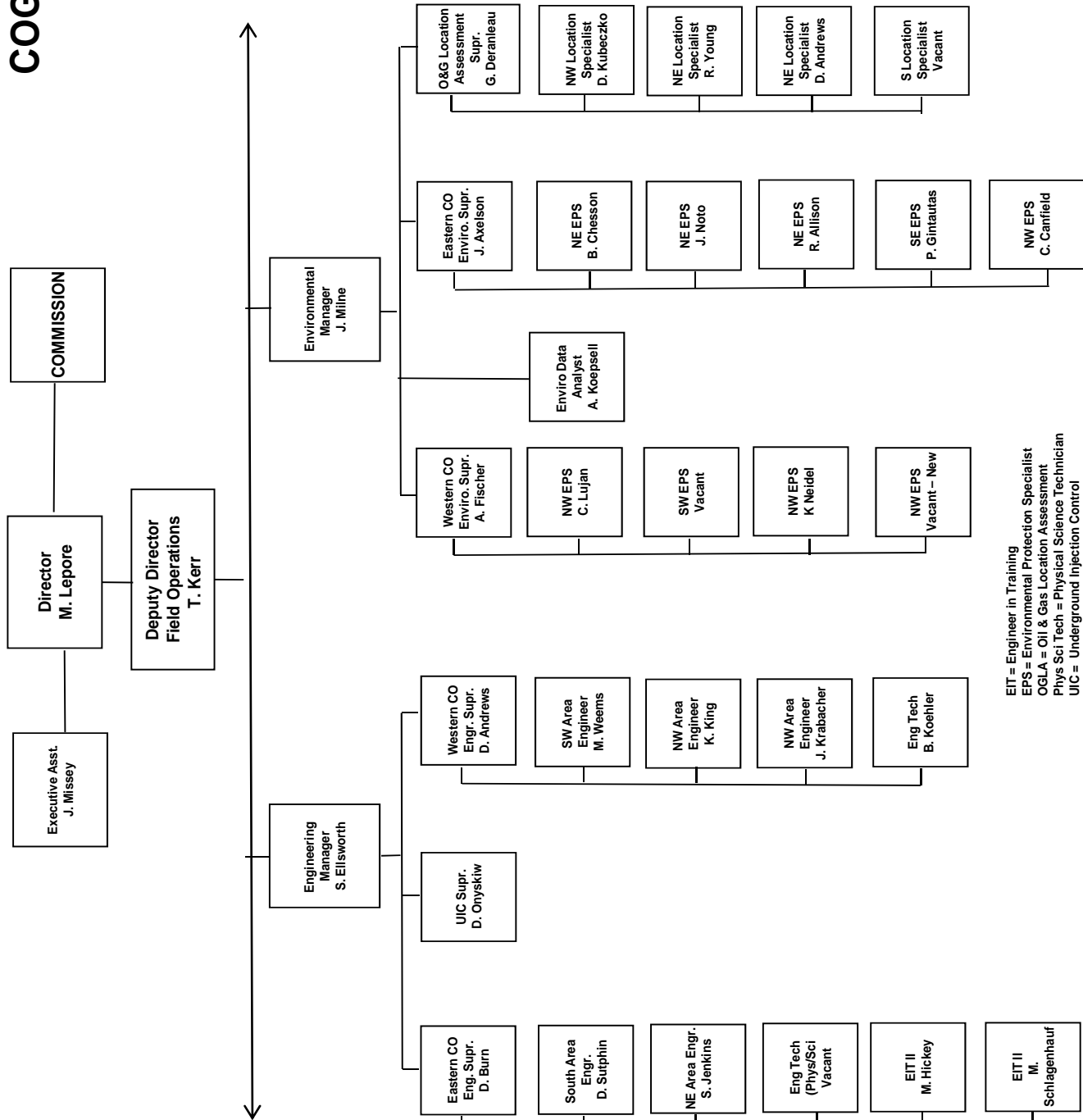


COGCC





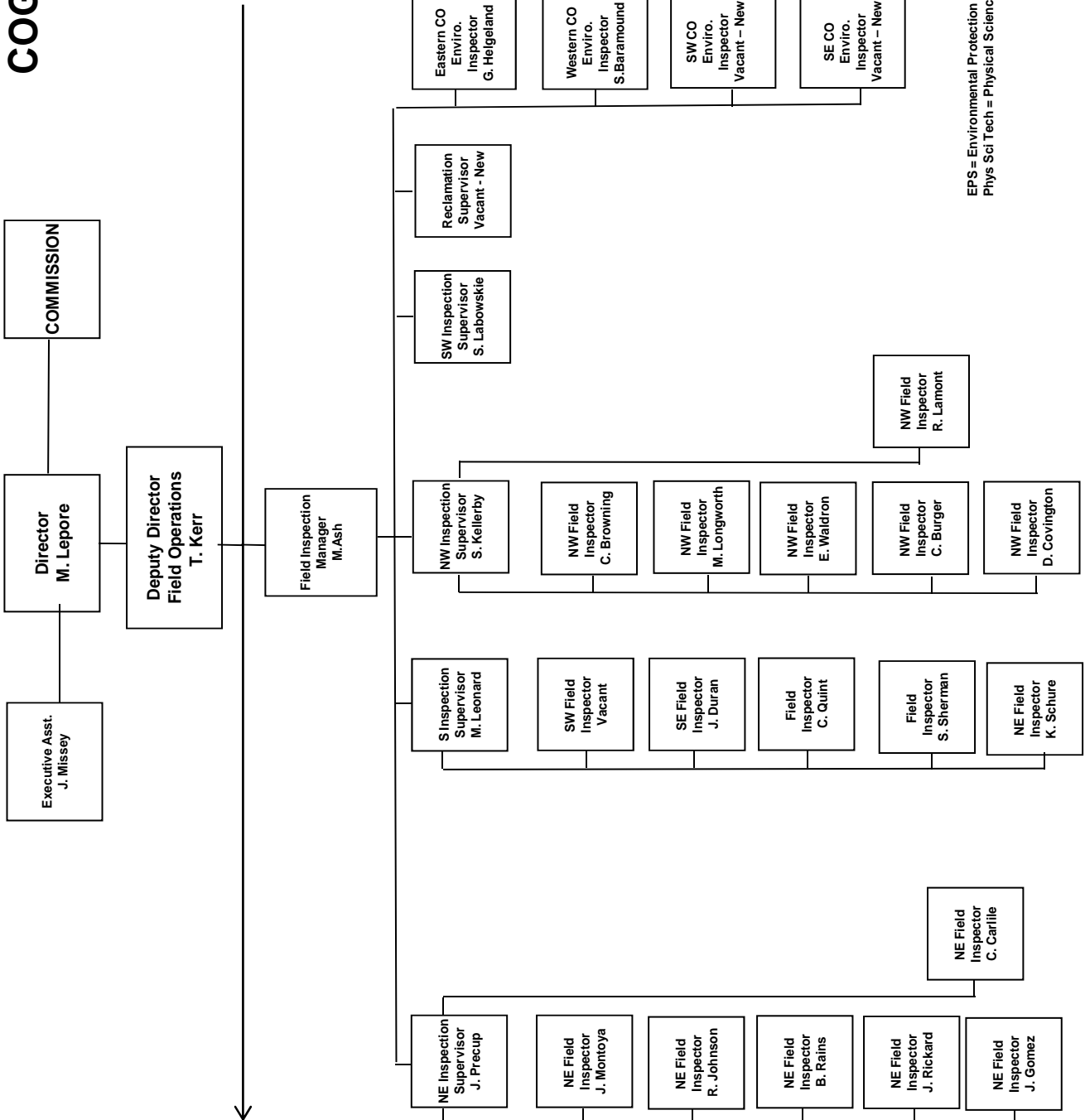
COGCC



EIT = Engineer in Training
 EPS = Environmental Protection Specialist
 O&G = Oil & Gas Location Assessment
 Phys Sci Tech = Physical Science Technician
 UIC = Underground Injection Control



COGCC



BISCUIT RANCH RECLAMATION DESIGN* The original bond amount was \$25,000. \$9074 were spent in FYE2013 for the design work supervised my Mike Hickey. The balance of \$15,296 will be carried forward to

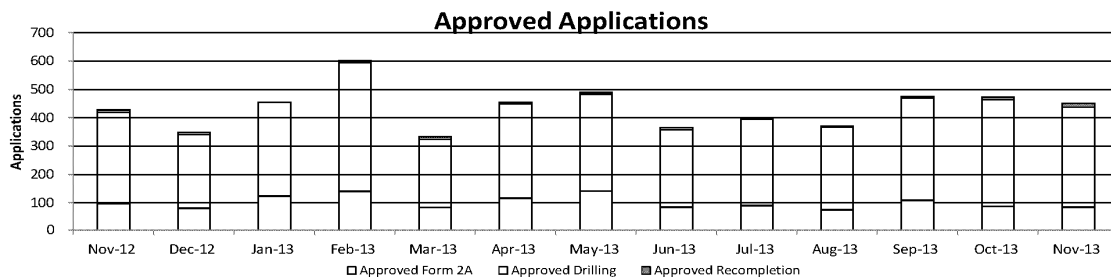
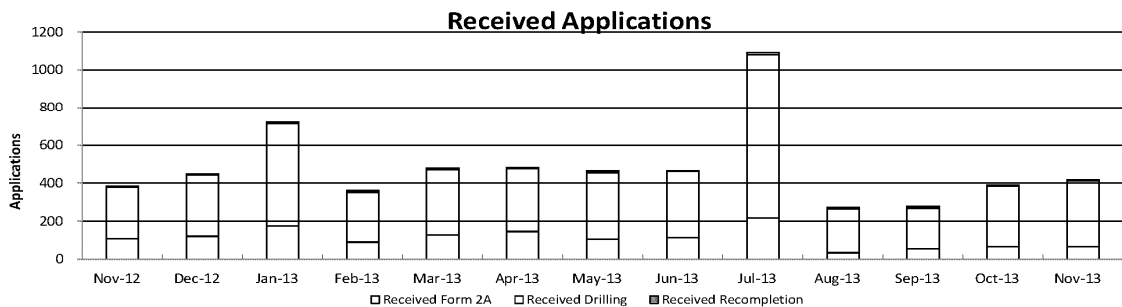


Colorado Oil & Gas Conservation Commission

Monthly Permit Activity

	Backlog	Received	Approved	Withdrawn	Rejected	Incomplete	In-Process	Remaining
Form2A								
Nov-12	141	109	97	13	0	19	112	140
Dec-12	140	122	81	4	0	35	124	177
Jan-13	177	176	124	12	0	34	183	217
Feb-13	217	91	141	8	0	34	125	159
Mar-13	159	129	84	1	0	33	170	203
Apr-13	203	146	117	7	0	40	185	225
May-13	225	106	142	4	0	37	148	185
Jun-13	185	114	85	7	0	41	166	207
Jul-13	207	218	91	15	0	34	285	319
Aug-13	319	35	76	0	0	47	231	278
Sep-13	278	56	109	0	0	68	157	225
Oct-13	225	67	88	6	0	69	129	198
Nov-13	198	67	85	6	0	57	117	174
Drilling								
Nov-12	377	271	323	21	0	65	239	304
Dec-12	304	322	260	9	0	77	280	357
Jan-13	357	538	331	19	0	101	444	545
Feb-13	545	260	455	16	0	58	276	334
Mar-13	334	344	241	4	0	46	387	433
Apr-13	433	331	333	2	0	79	350	429
May-13	429	350	342	31	0	45	361	406
Jun-13	406	349	273	18	0	57	407	464
Jul-13	464	864	304	14	0	65	945	1010
Aug-13	1010	232	291	3	0	160	788	948
Sep-13	948	212	362	2	0	160	636	796
Oct-13	796	319	376	12	0	115	612	727
Nov-13	727	346	353	10	0	88	622	710
Recompletion								
Nov-12	8	5	8	0	0	0	5	5
Dec-12	5	4	8	1	0	0	0	0
Jan-13	0	6	0	0	0	0	4	6
Feb-13	6	10	5	0	0	0	11	11
Mar-13	11	5	9	0	0	1	6	7
Apr-13	7	6	5	0	0	2	6	8
May-13	8	8	6	0	0	0	10	10
Jun-13	10	2	8	0	0	0	4	4
Jul-13	4	11	4	0	0	0	11	11
Aug-13	11	6	4	0	0	0	13	13
Sep-13	13	9	5	0	0	0	17	17
Oct-13	17	5	9	0	0	0	12	13
Nov-13	13	4	13	0	0	0	4	4

Incomplete are permits that have missing or inaccurate data and cannot be approved.



Backlog = Incomplete + In-process = Remaining permits from previous month



Colorado Oil and Gas Conservation Commission
Status of Permit Applications Filed By Month
December 3, 2013

Form 2A Location Assessment

Year	Month	Received	Approved	Withdrawn	In Process	Percent In Process	Median Days to Process	Less Than 30 Days	30 to 49 Days	Greater Than 50 Days
2010	Total	2520	2433	85	0			1559	662	212
2011	Total	2391	2298	91	2			1416	620	262
2012	1	141	138	3	0	0%	33	92	27	19
2012	2	160	152	8	0	0%	31	118	26	8
2012	3	135	133	2	0	0%	41	80	25	28
2012	4	126	119	7	0	0%	38	77	25	17
2012	5	119	115	4	0	0%	38	63	28	24
2012	6	101	96	5	0	0%	41	32	44	20
2012	7	104	98	6	0	0%	40	41	43	14
2012	8	72	68	4	0	0%	40	33	22	13
2012	9	77	72	5	0	0%	37	28	34	10
2012	10	94	89	5	0	0%	39	31	40	18
2012	11	85	79	6	0	0%	36	52	15	12
2012	12	145	129	13	3	2%	42	59	49	21
2012	Total	1359	1288	68	3	0%		706	378	204
2013	1	177	162	12	3	2%	33	99	45	18
2013	2	91	83	8	0	0%	34	42	29	12
2013	3	131	121	9	1	1%	49	41	46	34
2013	4	150	141	7	2	1%	40	47	69	25
2013	5	105	99	4	2	2%	40	47	32	20
2013	6	107	84	2	21	20%	38	28	41	15
2013	7	204	187	1	15	7%	62	11	71	105
2013	8	58	53	1	4	7%	56	7	18	28
2013	9	56	45	0	11	20%	41	13	18	14
2013	10	63	34	2	27	43%	34	12	21	1
2013	11	76	3	1	72	95%	26	3	0	0
2013	Total	1218	1012	47	158	13%		350	390	272

Form 2 Application For Permit to Drill (APDs)

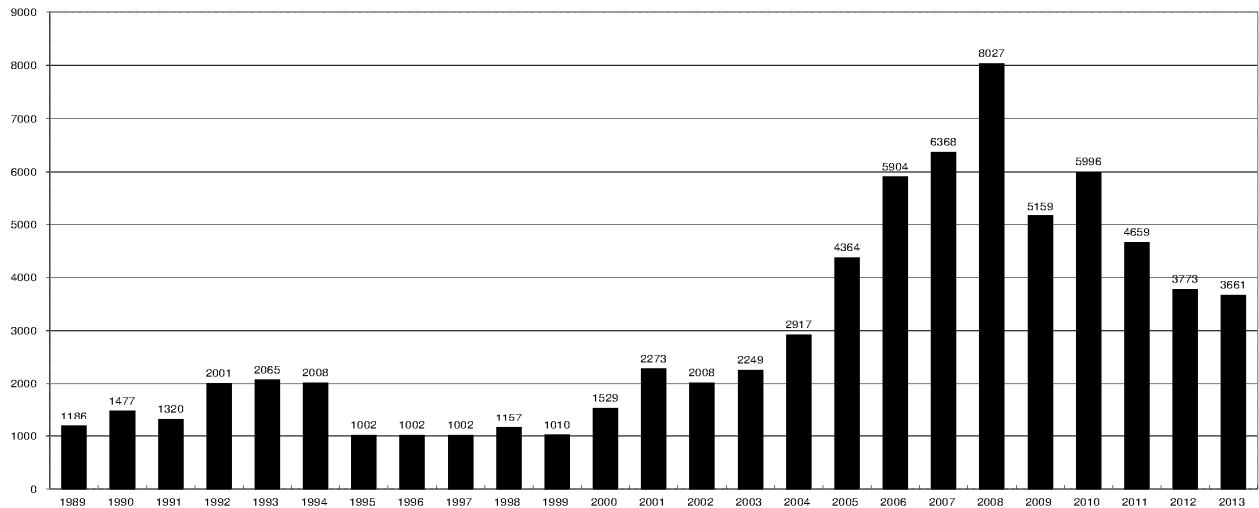
Year	Month	Received	Approved	Withdrawn	In Process	Percent In Process	Median Days to Process	Less Than 30 Days	30 to 49 Days	Greater Than 50 Days
2010	Total	5891	5746	144	0	0%		1760	2739	1744
2011	Total	4692	4557	128	5	0%		2723	1565	587
2012	1	368	361	7	0	0%	34	235	107	45
2012	2	371	360	11	0	0%	31	277	70	37
2012	3	284	279	5	0	0%	40	164	84	50
2012	4	418	405	13	0	0%	36	219	160	41
2012	5	509	491	18	0	0%	37	260	149	104
2012	6	280	277	3	0	0%	43	107	119	62
2012	7	281	274	7	0	0%	40	103	144	37
2012	8	282	262	20	0	0%	32	148	89	30
2012	9	212	192	20	0	0%	38	78	78	38
2012	10	355	350	5	0	0%	36	131	168	59
2012	11	244	228	15	1	0%	37	110	80	42
2012	12	351	334	14	3	1%	38	139	145	54
2012	Total	3955	3813	138	4	0%		1971	1393	599
2013	1	562	541	18	3	1%	35	278	179	85
2013	2	242	228	14	0	0%	36	78	126	38
2013	3	333	318	13	2	1%	41	123	119	82
2013	4	327	314	13	0	0%	40	105	153	59
2013	5	370	340	27	3	1%	40	111	181	59
2013	6	330	300	10	20	6%	43	110	131	61
2013	7	798	735	7	56	7%	61	106	218	422
2013	8	313	287	3	23	7%	56	13	138	141
2013	9	189	126	1	62	33%	44	21	66	46
2013	10	339	144	5	190	56%	41	22	79	50
2013	11	374	20	0	354	95%	22	19	1	1
2013	Total	4177	3353	111	713	17%		986	1391	1044



COLORADO OIL AND GAS CONSERVATION COMMISSION ANNUAL DRILLING PERMITS BY COUNTY

COUNTY	1988	1989	1990	1991	1992	1993	1994	1995	1996	1997	1998	1999	2000	2001	2002	2003	2004	2005	2006	2007	2008	2009	2010	2011	2012	current as of 12/3 2013
ADAMS	46	34	44	53	92	58	137	34	9	33	24	19	38	28	9	26	39	34	37	89	51	35	21	8	40	29
ARAPAHOE	5	5	15	14	11	4	20	12	2	9	1	2	0	2	1	2	5	7	11	10	10	10	8	23	35	23
ARCHULETA	8	5	18	5	2	1		3		3		1	7	9	6	10	8	13	14	26	47	11	18	12	5	4
BACA	6	4	15	10	23	9	12	24	10	7	13	15	22	6	2	3	7	8	2	11	13	3	4	5	3	1
BENT				1		2	2	4	2	5	3	5	2				5	3	8	1	1		5		2	1
BOULDER	1		1	13	38	159	38	5	8	2	5		1	5	6	7	17	13	21	37	32	35	24	30	22	
BROOMFIELD																2	7		1	1		2	33	28	11	36
CHEYENNE	203	149	102	93	71	58	48	55	43	31	41	7	3	3	3	3	3	10	21	15	33	12	13	16	31	49
COSTILLA												1														
CROWLEY	1		1	1																						
DELTA	1	1	2												7	4	5	10	9	2			4	3	6	1
DENVER										5	3	3			3				19	25	24					
DOLORES	2		4	1	2	1											1	1	1	6	10	12	21	8	8	13
EAGLE																										1
ELBERT	9	12	8	5	3		2	13	16	11	1		2						4			1		1	2	2
EL PASO																						2	3	3	18	1
FREMONT	9	5	6	7	1	2	2	1	2	1							1	3	2	4	14	13	22	14	11	2
GARFIELD	19	66	111	36	18	56	143	78	109	141	95	130	213	353	362	567	796	1509	1845	2550	2888	1981	2037	1323	1046	748
GRAND							1																			
GUNNISON			2	2		1										5	10	1	9	19	7	10	12	4	3	11
HUERFANO	3	5		4	17	3	3	2	1	3	40	26	41	27	27		8	2			7		2	1	9	1
JACKSON	3	1	4	6	2	2	3	2	2	6	3		34	18	21	9	14	6	8	5	27	19	9	18	5	12
JEFFERSON	1		4	2		1		1	1		1	2	1						1	3	2					1
KIOWA	15	39	40	46	28	28	21	26	13	17	10	2	11	18	2	4	2	1	11	9	26	7	16	17	17	11
KIT CARSON	9	5	7	8	8	15	26	11	7	6	9	5					1	3	5	4	4	13	7	3	2	6
LA PLATA	302	218	388	128	120	40	40	20	71	40	82	107	127	156	104	162	102	115	235	251	328	298	191	99	71	32
LARIMER	4	4	3	6	13	7	3		1	3	1		2		1			1		5	46	12	41	8	13	2
LAS ANIMAS	10	30	36			9	32	95	134	136	195	195	268	400	259	180	332	413	500	362	303	88	92	85	11	2
LINCOLN	8	6	4	7	7	11	8	9	3	2			2	2	1	6	3	4	1	2	58	44	48	31	36	80
LOGAN	18	21	23	13	14	30	15	13	6	12	7		4	7	3	3	6	13	17	14	5	9	17	8	27	4
MESA	1	12	29	20	22	2	22	6	11	10	2	6	13	27	30	27	54	136	265	293	501	427	306	127	150	104
MOFFAT	13	25	27	19	40	52	43	40	41	28	21	15	35	52	62	63	63	60	120	68	57	51	53	93	88	44
MONTEZUMA	6	7	10	8	7	11	15	9	13	5	4	1	4			5	8	8	11	5	12	22	39	19	27	14
MONTROSE				1						1				1	3	2	4	2		1	3	3		1	1	
MORGAN	34	27	36	13	10	11	19	12	10	11	10	12	9	9	2	7	9	7	3	6	2	1	6	13		8
OTERO				2																						
PARK				1								1										3	4	1		
PHILLIPS			3		1	1							1	2		7	13	17	12	69	82	45	64	112	56	
PITKIN		1		2													1			1						
PROWERS	19	9	5	10	14	7	3	5	5	3	9	3	2	5	4		7	5	7	5	8	1	3	1		
RIO BLANCO	34	83	77	33	81	83	126	81	33	40	51	95	89	187	105	179	154	161	360	321	477	348	441	109	117	152
RIO GRANDE	2	3	4	1			1						1	1		1					1	1				2
ROUTT	4	3	12	4	2	3	1	2	1	1	1	4	20	13	1		4	6	9	8	4	2	3	10	4	11
SAGUACHE	1							2					2		2						2	1	2			
SAN MIGUEL			2	2					1	1	4	2	11	13	27	18	42	45	35	23	20	13	10	2	1	
SEDGWICK				1				3		2							1	5	2	7	2	1	19	11	12	2
WASHINGTON	40	29	23	28	24	26	25	12	19	26	18	3	23	17	27	34	128	50	69	45	11	1	6	12	6	19
WELD	424	357	366	656	1224	1319	1030	254	305	285	392	288	509	702	760	757	832	901	1418	1527	2340	1448	2152	2262	1826	2271
YUMA	14	20	45	60	104	53	167	168	123	116	111	60	31	205	160	138	237	782	797	541	545	105	299	148	11	9
Total	1275	1186	1477	1320	2001	2065	2008	1002	1002	1002	1157	1010	1529	2273	2008	2249	2917	4364	5904	6368	8027	5159	5996	4659	3773	3661

ALL COUNTIES





Colorado Oil and Gas Conservation Commission
Form 2A Breakdown By County By Year
December 3, 2013

Yr	County	Form2As	Completed	In Process	New Location	CDP	SWH	RSO	CDPHE
2009	Total State	818	818	0	408	2	80	5	5
2010	Total State	2378	2376	0	1601	0	327	22	55
2011	Total State	2301	2294	7	1790	1	274	17	5
2012	ADAMS	19	19	0	19	0	0	0	0
2012	ARAPAHOE	21	16	5	16	0	0	0	0
2012	ARCHULETA	1	1	0	1	0	1	0	0
2012	BACA	3	3	0	2	0	1	0	0
2012	BENT	2	2	0	2	0	0	0	0
2012	BOULDER	3	3	0	0	0	0	0	0
2012	BROOMFIELD	7	7	0	1	0	0	0	0
2012	CHEYENNE	34	34	0	28	0	0	0	0
2012	DELTA	1	1	0	0	0	0	0	0
2012	DOLORES	1	1	0	1	0	0	0	0
2012	EL PASO	4	3	1	3	0	0	0	0
2012	ELBERT	1	1	0	1	0	0	0	0
2012	FREMONT	3	3	0	3	0	2	0	0
2012	GARFIELD	77	77	0	32	0	67	2	0
2012	GUNNISON	7	7	0	6	0	5	0	0
2012	HUERFANO	5	5	0	4	0	1	0	0
2012	JACKSON	3	2	1	3	0	2	0	0
2012	KIOWA	13	13	0	12	0	0	0	0
2012	KIT CARSON	6	6	0	4	0	0	0	0
2012	LA PLATA	8	8	0	3	0	7	0	0
2012	LARIMER	7	6	1	5	0	0	0	0
2012	LAS ANIMAS	8	8	0	6	0	0	0	0
2012	LINCOLN	45	45	0	41	0	0	0	0
2012	LOGAN	16	16	0	17	0	0	0	0
2012	MESA	10	10	0	5	0	3	0	0
2012	MOFFAT	47	47	0	38	0	44	4	0
2012	MONTEZUMA	8	8	0	8	0	0	0	0
2012	MORGAN	5	5	0	5	0	0	0	0
2012	PHILLIPS	38	38	0	35	0	0	0	0
2012	RIO BLANCO	35	35	0	15	0	28	0	0
2012	RIO GRANDE	1	1	0	1	0	1	0	0
2012	ROUTT	4	4	0	7	0	7	0	0
2012	SAN MIGUEL	1	1	0	1	0	0	0	0
2012	SEDGWICK	1	1	0	1	0	0	0	0
2012	WASHINGTON	14	12	2	8	0	0	0	0
2012	WELD	849	842	7	611	0	4	0	1
2012	YUMA	1	1	0	1	0	0	0	0
2012	Total State	1309	1292	17	946	0	173	6	1
2013	ADAMS	14	13	1	12	0	0	0	0
2013	ARAPAHOE	14	13	1	14	0	0	0	0
2013	ARCHULETA	1	1	0	1	0	0	0	0
2013	BACA	1	1	0	1	0	1	0	0
2013	CHEYENNE	41	38	3	37	0	0	0	0
2013	DELTA	2	2	0	1	0	1	0	0
2013	DOLORES	8	7	1	6	0	4	0	0
2013	EAGLE	1	1	0	1	0	1	0	0
2013	EL PASO	1	1	0	1	0	0	0	0
2013	ELBERT	1	1	0	1	0	0	0	0
2013	FREMONT	3	2	1	5	0	1	0	0
2013	GARFIELD	79	60	19	31	0	67	2	0
2013	GUNNISON	9	7	2	3	0	3	1	0
2013	HUERFANO	3	1	2	1	0	0	0	0
2013	JACKSON	9	9	0	3	0	9	0	0
2013	KIOWA	8	8	0	7	0	0	0	0
2013	KIT CARSON	1	1	0	1	0	0	0	0
2013	LA PLATA	13	6	7	4	0	13	0	0
2013	LARIMER	1	1	0	0	0	1	0	0
2013	LAS ANIMAS	2	2	0	1	0	0	0	0
2013	LINCOLN	72	64	8	72	0	0	0	0
2013	LOGAN	4	4	0	0	0	0	0	0
2013	MESA	7	5	2	4	0	1	0	0
2013	MOFFAT	15	13	2	12	0	13	0	1
2013	MONTEZUMA	10	10	0	8	0	2	0	0
2013	MORGAN	17	7	10	16	0	0	0	0
2013	PITKIN	1	0	1	1	0	0	0	0
2013	RIO BLANCO	21	17	4	11	0	17	0	0
2013	ROUTT	8	7	1	9	0	8	0	0
2013	WASHINGTON	20	19	1	21	0	0	0	0
2013	WELD	763	669	94	559	0	7	0	3
2013	YUMA	8	8	0	2	0	0	0	0
2013	Total	1158	998	160	846	0	149	3	4

CDP = Comprehensive Drilling Plan SWH = Sensitive Wildlife Habitat consultation

RSO = Restricted Surface Occupancy consultation CDPHE= Colorado Department of Health and Environment consultation



Colorado Oil and Gas Conservation Commission

Horizontal Well Activity

December 3, 2013

County	Prior Years			2009		2010		2011		2012		2013		Completion				
	Drilled	DA	PA	Permit	Spud	Permit	Spud	Permit	Spud	Permit	Spud	Permit	Spud	Spud	AC	PR	DA	PA
ADAMS				6	5	2	3	1		17	2	15	2	12	5	4		
ARAPAHOE	2							10	1	22	4	12	3	10	2	1		
ARCHULETA	17			7	6	15	7	10	8	5	9	2		47		40		
BENT												1	1					
BOULDER								4						0				
CHEYENNE	5		4									7	3	8		1		4
DELTA										6	2	1		2				
DOLORES	9			18	2	6				9	1	5		12		6		1
EL PASO										10				0				
ELBERT										1				0				
FREMONT	7	6		6		12	5	3	4	4	1	1	1	18		10	6	1
GARFIELD	10		2	1	1	16	2	18	6	43	6	17	3	28		24		2
GUNNISON	1					1				3	2	2		3		2		
HUERFANO										4	1			1				
JACKSON	8	1	1	8		3	3	9	2	4		8	5	18		11	1	1
KIOWA										1		3	1	1				
KIT CARSON	1									1		1	1	2				3
LA PLATA	28	2		11	2	28	3	18	7	12	1	5		41		46	1	
LARIMER	3	2						5	1	2	1		2	7		2	2	
LAS ANIMAS	16		2	4		1	1							17		15		3
LINCOLN				2	1	2	1	1			1	6	1	4		2		
LOGAN	2									1				2		2		
MESA	3	2		36	1	22	8	24	13	14		9	2	27		25	2	2
MOFFAT	7	1	1	6	3	4		9	4	44	7	18	13	34	1	17	1	1
MONTEZUMA	6		1	23	6	11	2	8	3	18	2	3		19		29		1
MORGAN								6	2	2	1	7	1	4		2		
PARK						1	1	1						1				
RIO BLANCO	7	2				1	1	11	2	15	2	3	5	17	1	7	3	
ROUTT	10	6	1							1		1		10		3	6	1
SAN MIGUEL	1			1										1		1		
WASHINGTON	1		1											1				1
WELD	11	3		12	5	208	95	763	235	964	598	1942	982	1926		832	8	13
YUMA	1		1	6										1				1
TOTAL Horizontal	156	25	14	147	32	333	132	901	288	1203	641	2069	1026	2274	9	1082	30	35
Percent of Total HZ		16%	9%												0%	48%	1%	2%
Total All Permits				5159		5996		4659		3773		3661						
Percent of Total				2.8%		5.6%		19.3%		31.9%		56.5%						



Well to Building Setback Review

Colorado Oil and Gas Conservation Commission

December 3, 2013

Count of well locations by proximity groupings from well spot to buildings for all locations reviewed under the December 17, 2008 amended rules.

Location Proximity to Buildings	2009	2010	2011	2012	2013	Number of Locations	Percent of Total Locations
less than 150 feet	2	3	3	2	0	10	0%
150 to 350 feet	37	58	61	39	33	228	3%
350 to 500 feet	50	110	97	61	61	379	5%
500 to 1000 feet	117	385	331	188	181	1202	17%
1000 + feet	356	1705	1470	838	838	5207	74%
Total Locations	562	2261	1962	1128	1113	7026	

County	Total	Less than 150 feet	150 to 350 feet	350 to 500 feet	500 to 1000 feet	1000 + feet
ADAMS	51	0	3	5	11	32
ARAPAHOE	66	0	2	4	9	51
ARCHULETA	17	0	0	1	9	7
BACA	14	0	0	0	1	13
BENT	7	0	0	0	0	7
BOULDER	23	0	1	1	17	4
BROOMFIELD	32	0	0	4	13	15
CHEYENNE	105	0	0	0	2	102
DELTA	7	0	0	2	1	4
DOLORES	17	0	0	0	6	11
EAGLE	1	0	0	0	0	1
EL PASO	12	0	0	0	2	10
ELBERT	4	0	0	0	1	3
FREMONT	35	0	2	7	6	20
GARFIELD	435	0	7	2	60	366
GUNNISON	26	0	0	2	1	22
HUERFANO	8	0	0	0	3	5
JACKSON	31	0	0	3	1	27
KIOWA	59	0	0	0	1	58
KIT CARSON	12	0	0	0	0	12
LA PLATA	95	0	3	11	27	54
LARIMER	32	0	3	3	10	16
LAS ANIMAS	200	0	6	7	37	149
LINCOLN	208	0	0	2	4	202
LOGAN	41	0	1	1	0	39
MESA	81	0	0	3	13	65
MOFFAT	155	0	0	2	13	140
MONTEZUMA	28	0	0	1	3	24
MONTROSE	2	0	0	0	0	2
MORGAN	23	0	0	2	4	17
PARK	4	0	0	0	0	4
PHILLIPS	262	0	4	6	20	231
PROWERS	4	0	0	0	0	4
RIO BLANCO	154	0	0	0	1	153
RIO GRANDE	2	0	0	0	1	1
ROUTT	23	0	0	0	2	21
SAN MIGUEL	11	0	0	0	0	11
SEDGWICK	25	0	0	1	3	21
WASHINGTON	48	0	1	0	1	46
WELD	4070	0	188	295	877	2704
YUMA	472	0	7	14	42	409



Well to Building Setback Review

Colorado Oil and Gas Conservation Commission

December 3, 2013

Listing of Locations less than 200 feet to Building

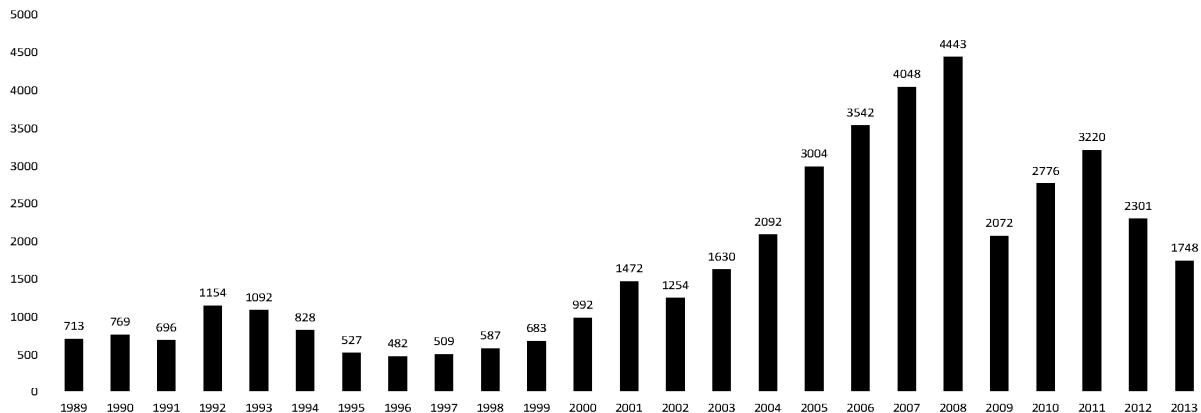
Year	Document Number	County	High Density	New Location	Distance	Proximity	Building Description
2011	2587822	CHEYENNE	No	No	58	less 150	Water well house
2009	1691798	WELD	No	No	58	less 150	Vehicle garage
2010	400072164	WELD	No	Yes	69	less 150	Abandoned hog shed
2012	400240957	GUNNISON	No	Yes	90	less 150	Equipment Shed
2009	1758843	WELD	No	Yes	103	less 150	Building to be razed
2011	1636646	WELD	No	No	122	less 150	Storage shed
2009	400011284	LAS ANIMAS	No	Yes	127	less 150	Operator is owner
2009	1786896	PHILLIPS	No	No	132	less 150	Grain Storage
2011	400117702	WELD	No	Yes	143	less 150	Irrigation pump house
2011	400227765	WELD	No	Yes	145	less 150	Storage Barn
2009	1904205	WELD	No	No	154	150 to 350	Livestock Enclosure
2012	400243295	WELD	No	Yes	155	150 to 350	Unused storage shed
2011	400179419	WELD	No	Yes	157	150 to 350	Existing well / storage building
2010	400054716	WELD	No	No	159	150 to 350	Equipment Barn
2011	400188968	WELD	No	Yes	159	150 to 350	Abandoned
2010	400021477	WELD	No	Yes	162	150 to 350	Goat Barn
2009	1758386	WELD	No	Yes	168	150 to 350	Storage Shed
2011	1635946	WELD	No	No	169	150 to 350	Storage shed
2011	400165164	WELD	No	Yes	178	150 to 350	Residence
2011	400188780	WELD	No	Yes	180	150 to 350	Residence
2010	1697620	WELD	No	No	187	150 to 350	Livestock Shed
2009	1758746	WELD	No	No	193	150 to 350	Storage Shed
2011	400154431	WELD	No	Yes	198	150 to 350	Turkey barn
2012	400250031	WELD	No	Yes	198	150 to 350	abandoned guard shack
2009	1774783	WELD	No	No	199	150 to 350	cement service building
2011	400118102	YUMA	No	Yes	199	150 to 350	Steel Barn



COLORADO OIL AND GAS CONSERVATION COMMISSION
ANNUAL WELL STARTS BY COUNTY

COUNTY	1988	1989	1990	1991	1992	1993	1994	1995	1996	1997	1998	1999	2000	2001	2002	2003	2004	2005	2006	2007	2008	2009	2010	2011	2012	Current as of 12/31 2013
ADAMS	39	27	26	36	54	20	54	28	6	16	12	17	18	13	4	19	22	24	13	41	14	15	21	2	14	5
ALAMOSA																										
ARAPAHOE	2	4	16	11	11	3	9	8	3	3	2						6	1	5	2	1	1	3	9	8	13
ARCHULETA	5	3	7	5	2	1		2		1			4	4	2	5	4	10	5	7	26	9	12	9	11	7
BACA	5	5	12	6	21	8	9	19	9	7	11	8	19	6	2	1	6	6	2	6	12		5	5	1	1
BENT				1			2	3	1	2	3	6	2				3	2	8	1	1		1	1	1	1
BOULDER	2			7	18	56	15	5									2	5	11	9	14	25	16	13	7	14
BROOMFIELD	3	2	3	7	14	27	22	2	2						2		1				10		22	11	5	
CHEYENNE	177	133	92	75	64	50	44	41	35	29	29	6	2	1	3	3		9	14	15	14	8	12	11	17	32
CONEJOS																										
COSTILLA																										
CROWLEY	1		1									1														
CUSTER																										
DELTA	1		1													5	4	6	5	2			4	1	6	
DENVER										2	3	1		2					7	5	4					
DOLORES	2		4	1													2		2	13	4	2		1	3	6
DOUGLAS																										
EAGLE																										
EL PASO																							2		5	
ELBERT	8	11	9	5	2			10	15	2	2		2						1							
FREMONT	6	3	5	7	1	1	1	2			1						1	3	2	2	5	3	9	16	7	2
GARFIELD	3	12	24	8	3	4	15	13	7	28	19	94	190	251	245	417	585	799	1005	1304	1688	768	910	880	497	381
GRAND							1																			
GUNNISON			1	2		1									1		1	1	9	5	1	4	5	2	4	1
HUERFANO	6			2	6	1	1	2		2	31	9	25	14	19	3	6	2			2		2	2	1	
JACKSON	2	1	3	7	2		3	1	1	3	3		24	2	4	10	10		3	3	10	1	6	7		5
JEFFERSON									1			2								2						
KIOWA	14	32	35	37	28	19	20	22	8	13	6	4	8	16	2	4	2	1	7	7	2	5	15	15	10	7
KIT CARSON	11	6	6	6	9	13	15	9	6	3	7	7					1	6	2	1	14	3	1	1	3	1
LA PLATA	158	129	186	44	66	26	17	19	29	48	65	80	99	135	118	110	103	104	108	179	199	131	67	54	3	7
LARIMER	8	5	1	6	13	5	3		2	1			1	1				1		4	8	1	28	2	10	4
LAS ANIMAS	17	22	20	3	2	11	17	34	62	90	120	182	202	286	205	221	296	384	413	326	221	14	7	78	1	
LINCOLN	6	5	4	4	7	7	8	8	3	2			2	2	1	5	2	2	1	2	19	10	14	22	24	40
LOGAN	17	19	19	8	13	24	9	11	4	10	4		4	6	3	3	2	11	12	12	3	7	3	9	13	4
MESA	1	2	2	4	1		7	2	1	1	4	4	2	12	12	13	25	89	156	209	222	14	11	40	4	6
MOFFAT	1	2	1	2	1	1	2	1	3	1	8	10	18	23	25	28	19	40	60	42	25	18	15	34	26	22
MONTEZUMA	6	5	7	5	2	5	7	3	12	2	2		2	3	5	5	1	7	2	4	18	11	3	9	14	7
MONTROSE				1																1	2		1			
MORGAN	26	20	32	11	9	11	16	13	8	9	7	4	9	8	1	7	5	5	3	1	1	2	3	2	3	1
OTERO				1																						
OURAY																										
PARK				1																			2			
PHILLIPS			3			1							1			6	10	11	4	35	18	2	42	129	50	
PITKIN		1			2																					
PROWERS	16	9	5	8	13	7	1	5	5	2	8	4	2	4	4		5	5	6	3	5	2	3	1		
PUEBLO																										
RIO BLANCO	1	8	10	1	3	8	6	7	5	9	9	62	51	82	47	83	92	95	107	95	203	116	107	72	52	33
RIO GRANDE	1	2																								1
ROUTT		1	1	3	1							1	5	12	1		1	6	3	2		2	1	2	4	2
SAGUACHE	1							2																		
SAN MIGUEL				1							3	1	6	9	10	19	28	13	20	17	5	1	2	2		
SEDGWICK				1			1	3		2						1	2	1	1	5			3	8	3	
WASHINGTON	39	28	22	26	24	20	20	13	17	23	18	4	15	12	24	29	65	34	23	14	11	2	2	4	1	7
WELD	176	200	168	296	660	723	389	94	136	94	117	124	237	403	406	522	632	718	931	1222	1314	877	1207	1666	1459	1147
YUMA	12	16	41	47	102	39	114	145	101	104	93	52	42	162	108	106	144	597	593	445	336	27	213	108	16	11
Grand Total	773	713	769	696	1154	1092	828	527	482	509	587	683	992	1472	1254	1630	2092	3004	3542	4048	4443	2072	2776	3220	2301	1748

ALL COUNTIES





Colorado Oil and Gas Conservation Commission

Active Wells by County and Status as of 12/03/2013

County	Drilling	Domestic	Injecting	Producing	Shut In	Temp Aband	Waiting on Completion	Active Storage	Intent to Plug	Total Active Wells
ADAMS	3		7	891	65	9	2	17		994
ARAPAHOE	13	1	3	114	17	10	2	39		199
ARCHULETA	1	5		103	8	9	8			134
BACA	2		14	129	41	4		57		247
BENT	1	1		29	6	1				38
BOULDER				317	2	1				320
BROOMFIELD				94	3					97
CHEYENNE	24		37	308	28	44	2			443
DELTA			1	2	15	1	1			20
DENVER			1	43	5		3			52
DOLORES	4		2	41	1	1	1			50
EL PASO		1			1	1	1			4
ELBERT				67	2	2		1		72
FREMONT	1	3		69	3	6				82
GARFIELD	277	5	39	9907	164	71	92	3		10558
GUNNISON	2		1	22	15	1	4			45
HUERFANO	1		1	36	1	6	1			46
JACKSON	7		33	112	40					192
JEFFERSON				1	1		1	3		6
KIOWA	7		9	104	14	6	1			141
KIT CARSON		1	1	14	2	1	1			20
LA PLATA	3	7	32	3121	119	25	3	29		3339
LARIMER	6	2	26	180	23	15	2			254
LAS ANIMAS		4	19	2882	94	49	26	5		3079
LINCOLN	17	1	6	69	14	3	3			113
LOGAN	6		16	114	45	32	4	9		226
MESA	8	1	10	879	111	25	14	11		1059
MOFFAT	15		11	503	46	38	13			626
MONTEZUMA	4	2	8	129	30	12	2			187
MONTROSE						4				4
MORGAN	3		16	80	101	42	1	83		326
OURAY		2				1				3
PARK				1						1
PHILLIPS	1		3	258	2	1	1			266
PITKIN								10		10
PROWERS				28	4					32
RIO BLANCO	24	4	274	2195	332	99	16	2		2946
ROUTT	2	2		28	12	2	1			47
SAN MIGUEL				116	12	3				131
SEDGWICK			1	14	4		2			21
WASHINGTON	7		25	414	40	7	3			496
WELD	954	1	38	19503	256	25	102	2		20881
YUMA	4	8	21	3742	74	14	21	1		3885
Totals	1397	51	655	46659	1753	571	334	272	0	51692



Colorado Oil Gas Conservation Commission
Monthly Statistics

YEAR	MO	Baker - Hughes Rig Count	Drilling		Recompletion		Injection		Pits		Locations		Well Spud	Active Drilling Permits	Active Wells	Public Visits		Well Oper Change
			Rcvd	Apvd	Rcvd	Apvd	Rcvd	Apvd	Rcvd	Apvd	Rcvd	Authz	Notice			Data	Office	Internet
2010	Total		5703	5996	519	515	34	28	120	225	2461	2548	2803			197	1115	1112479
	JAN	63	405	351	8	23	4	6	4	8	249	112	232	4755	43588	14	95	103968
	FEB	61	343	249	15	2	7	6	5	3	184	150	209	4733	43869	21	80	96171
	MAR	68	472	498	18	23	4	7	38	31	262	258	268	4847	43927	9	125	122393
	APR	72	325	314	26	15	5	0	20	27	190	218	241	4882	44203	8	105	106539
	MAY	72	372	367	20	25	3	6	12	8	214	171	248	4904	44752	14	124	73024
	JUN	70	512	436	61	22	5	4	11	4	172	239	272	5013	45401	30	131	108115
	JUL	69	457	436	13	55	2	1	13	7	215	158	261	5113	45710	20	74	103585
	AUG	73	472	482	37	17	1	0	10	17	236	229	282	5328	45975	21	141	111950
	SEP	77	336	389	22	29	7	0	35	34	159	203	322	5361	46115	9	120	116043
	OCT	78	382	443	45	29	2	1	4	12	171	172	302	5423	46719	14	126	132814
	NOV	80	342	324	29	57	0	1	12	13	166	174	305	5409	46721	18	96	130612
	DEC	79	291	370	31	23	4	0	26	28	164	183	278	5329	46835	9	77	132651
2011	Total		4709	4659	325	320	44	32	190	192	2382	2267	3220			187	1294	1337865
	JAN	73	372	258	26	21	3	0	11	5	142	129	247	5217	46958	12	106	112686
	FEB	70	370	382	23	27	7	5	21	9	160	129	231	5173	47128	16	114	105857
	MAR	66	292	347	21	14	2	2	17	24	133	172	292	5132	47263	26	138	111746
	APR	66	410	235	16	24	5	5	9	2	137	106	236	4785	47377	12	108	107627
	MAY	66	491	506	23	16	3	1	6	2	105	131	211	4885	47533	20	123	109802
	JUN	69	326	377	11	19	8	6	5	8	110	89	145	5136	47860	11	111	108849
	JUL	66	237	276	9	14	3	2	5	2	97	103	190	5152	48173	13	102	114195
	AUG	62	313	288	6	9	6	4	23	5	83	97	180	5031	49153	11	112	110908
	SEP	61	252	256	1	5	5	2	4	1	81	77	160	4960	49230	11	89	106114
	OCT	62	326	265	9	3	7	6	2	19	94	82	158	5009	49236	8	105	108833
	NOV	56	271	323	5	8	6	6	2	4	109	97	142	5000	49989	10	119	120586
	DEC	57	322	260	4	8	8	5	9	3	122	81	107	5081	50067	9	78	107240
2012	Total		3982	3773	154	168	63	44	114	84	1373	1293	2299			159	1305	1324443
	JAN	53	538	331	6	0	3	5	6	8	176	124	139	5060	50265	9	108	47406
	FEB	56	260	455	10	5	2	3	4	11	91	141	134	5250	50372	7	102	40649
	MAR	57	344	241	5	9	3	8	15	6	129	84	163	5093	50540	9	133	43019
	APR	61	331	333	6	5	5	5	6	8	146	117	156	4925	50687	3	132	46459
	MAY	61	350	342	8	6	6	6	10	7	106	142	152	5110	50810	3	123	45215
	JUN	62	349	273	2	8	8	8	5	3	114	85	132	5273	50909	8	122	41015
	JUL	68	864	304	11	4	9	2	9	5	218	91	153	5070	51091	7	154	45558
	AUG	69	232	291	6	4	3	2	4	1	35	76	176	5200	51255	20	130	44722
	SEP	69	212	362	9	5	10	9	3	19	56	109	155	5185	51407	5	105	41256
	OCT	72	319	376	5	9	7	5	1	8	67	88	214	4967	51598	5	135	45151
	NOV	69	346	353	4	13	7	4	2	27	67	85	151	5141	51711	12	119	38903
2013	Total		4145	3661	72	68	63	57	65	103	1205	1142	1725			88	1363	479353
	JAN	53	538	331	6	0	3	5	6	8	176	124	139	5060	50265	9	108	47406
	FEB	56	260	455	10	5	2	3	4	11	91	141	134	5250	50372	7	102	40649
	MAR	57	344	241	5	9	3	8	15	6	129	84	163	5093	50540	9	133	43019
	APR	61	331	333	6	5	5	5	6	8	146	117	156	4925	50687	3	132	46459
	MAY	61	350	342	8	6	6	6	10	7	106	142	152	5110	50810	3	123	45215
	JUN	62	349	273	2	8	8	8	5	3	114	85	132	5273	50909	8	122	41015
	JUL	68	864	304	11	4	9	2	9	5	218	91	153	5070	51091	7	154	45558
	AUG	69	232	291	6	4	3	2	4	1	35	76	176	5200	51255	20	130	44722
	SEP	69	212	362	9	5	10	9	3	19	56	109	155	5185	51407	5	105	41256
	OCT	72	319	376	5	9	7	5	1	8	67	88	214	4967	51598	5	135	45151
	NOV	69	346	353	4	13	7	4	2	27	67	85	151	5141	51711	12	119	38903
2013	Total		4145	3661	72	68	63	57	65	103	1205	1142	1725			88	1363	479353

Apvd = Approved, Rcvd = Received, Ind = Individual, Bkht = Blanket, Apps = Application for Hearing, NOAV = Notice of Alleged Violation, AOC = Administrative Order of Consent, OFV = Order Finding Violation, Cmpmt = Complaint, Comp = Completed



Colorado Oil Gas Conservation Commission Monthly Statistics

YEAR	MO	Operators		Bonds				Hearings		Violations		Remediation		Inspections					
		New	Inactive	Release		Claim		Apps.	Order	NOAV	AOC	OFV	Cmplt		Spills	Projects			
				Ind.	Blknt	Replace	Ind.									Blknt	Rcvd	Comp	Wells
2010	Total	46	33	38	40	74	0	1	155	136	319	10	3	218	493	511	382	17075	
	JAN	1	2	3	1	4	0	0	0	16	15	43	3	2	33	40	47	45	1316
	FEB	1	1	9	4	6	0	0	0	16	15	7	0	1	39	52	48	33	1591
	MAR	2	3	6	3	9	0	0	NA	NA	31	NA	NA	1	31	48	59	27	1675
	APR	2	0	3	2	1	0	0	24	24	8	0	0	0	10	52	38	61	959
	MAY	3	0	5	2	4	0	0	77	65	16	2	5	26	31	33	51	1577	
	JUN	2	2	2	2	0	3	0	51	58	30	1	4	14	38	53	25	1099	
	JUL	3	6	3	6	3	1	0	NA	NA	29	NA	NA	13	39	92	20	518	
	AUG	2	3	12	7	2	0	1	68	54	26	2	2	19	54	106	56	1032	
	SEP	5	1	7	5	2	0	0	44	41	4	2	4	16	46	56	66	690	
	OCT	4	2	12	6	7	0	3	57	45	9	0	0	15	38	102	28	636	
	NOV	4	9	15	4	1	0	0	NA	NA	15	NA	NA	16	31	70	58	739	
DEC	4	2	2	2	2	4	0	0	50	32	12	0	1	15	58	22	66	562	
2011	Total	33	31	79	44	43	4	4	403	349	230	10	19	247	527	726	536	12394	
	JAN	3	3	7	5	1	1	0	70	72	18	1	0	27	35	68	23	998	970
	FEB	6	9	8	5	0	0	0	NA	NA	10	NA	NA	24	40	85	36	1998	1024
	MAR	4	1	7	3	9	0	0	44	38	19	0	0	23	38	63	61	2203	1149
	APR	4	2	10	3	2	0	0	80	59	11	0	0	19	35	26	99	1701	930
	MAY	3	1	4	0	3	0	0	43	50	14	2	0	23	32	27	122	2621	1701
	JUN	3	4	3	3	4	0	0	NA	NA	5	NA	NA	35	39	46	98	1432	1091
	JUL	5	0	1	4	5	0	0	63	50	15	0	0	16	24	45	33	1319	1076
	AUG	6	5	2	8	0	1	0	67	54	24	3	2	21	28	127	33	1898	1432
	SEP	0	4	4	5	2	1	0	NA	NA	5	NA	NA	14	13	30	36	1137	864
	OCT	1	2	9	1	0	0	0	30	36	6	1	0	13	44	116	37	1407	1029
	NOV	6	4	12	8	7	0	0	85	37	16	2	0	10	44	26	44	1324	828
DEC	6	2	3	1	0	0	0	0	NA	NA	14	NA	NA	19	30	31	19	1046	625
2012	Total	47	37	70	46	33	3	0	482	396	157	9	2	244	402	690	641	19084	12719
	JAN	3	5	12	2	0	0	0	48	75	15	4	0	21	40	31	45	1673	829
	FEB	4	2	6	3	2	0	0	41	35	11	2	0	15	30	42	90	1042	614
	MAR	1	3	2	2	1	0	0	54	67	16	2	0	11	25	65	29	1967	1150
	APR	7	1	5	2	8	0	0	NA	NA	21	NA	NA	16	33	39	37	1508	910
	MAY	2	1	3	0	0	0	0	46	50	22	6	0	13	31	41	60	2648	1601
	JUN	6	2	2	4	5	0	0	91	44	13	2	0	25	40	47	37	1846	1091
	JUL	4	1	2	2	0	0	0	96	70	25	3	0	21	47	50	22	2297	1338
	AUG	6	4	5	4	2	0	0	NA	NA	23	NA	NA	25	57	36	41	2145	1028
	SEP	4	1	6	1	0	0	0	101	51	7	2	0	16	59	43	51	1535	692
	OCT	6	0	2	2	2	0	0	52	82	4	12	3	12	77	45	60	1856	1149
	NOV	2	0	2	2	0	0	0	0	NA	NA	30	NA	NA	12	42	25	34	2214
2013	Total	45	20	47	24	20	0	0	529	474	187	33	3	187	481	464	506	20731	11866