

# Staff Report

February 22, 2010

## I. STATISTICS

Our monthly statistics and permit activity report are on pages 17–23. These statistics include the permit and location assessment information that were previously included on the first page of the staff report.

## II. NORTHWEST COLORADO

### ◆ Northwest Colorado Oil and Gas Forum

The Forum is an informal gathering of local, state, and federal government officials, oil and gas industry representatives, and citizens that have met regularly since 1989. The purpose of the Forum is to share information about oil and gas development in northwest Colorado and to make government officials and oil and gas industry representatives easily accessible to the public. Currently the meetings are conducted once per quarter and are co-chaired by the COGCC's Director, Dave Neslin, and Garfield County Commissioner, Mike Samson.

The next meeting is scheduled for March 4, 2010, at 10:00 am. The venue will once again be the Colorado Mountain College—West Garfield Campus, 3695 Airport Road in Rifle, CO.

All parties wishing to be placed on the meeting agenda should contact Chris Canfield at: 970-625-2497 or via email at: [chris.canfield@state.co.us](mailto:chris.canfield@state.co.us).

### ◆ Battlement Mesa Health Impact Study

The Colorado School of Public Health (CSPH) has proposed conducting a Health Impact Assessment (HIA) related to potential future natural gas development in the vicinity of Battlement Mesa, which is a residential community near Parachute, Colorado. The HIA would be conducted in collaboration with Garfield

County Health Department, with support from the Colorado Department of Public Health and Environment (CDPHE) and COGCC. CSPH has prepared a proposal to the Pew Charitable Trust for primary funding.

An HIA is a tool used to inform decision makers about potential health impacts of pending projects and policies before final decisions are made. The intent of an HIA is to anticipate likely health impacts and provide recommendations to decision makers which can be used to mitigate potential negative impacts and support potential positive impacts.

An HIA stakeholder meeting was held on February 3, 2010, at the Garfield County Public Health office. The focus of the meeting was for stakeholders to learn about HIAs and community health studies and to gather input to support the study's conceptual design.

### ◆ New Northwest Colorado Notification Policy

See pages 28 and 29 for COGCC's new Northwest Colorado Notification Policy, effective for notices received on or after January 1, 2010.

### ◆ Project Rulison

On December 1, 2009, an audit by M. H. Chew & Associates on behalf of the COGCC, was conducted during the quarterly sampling of produced water and natural gas sampling activities at Project Rulison. Two producing natural gas wells operated by Noble Energy, Inc., located in Sectors 1 and 2 and one Williams Production RMT Inc., located in Sector 12 were sampled. All 3 locations are in the Tier II Zone. Results of the sampling activities and audit are being incorporated into the Annual Compliance Inspection Report. The comments received from those who reviewed Revision 2 of the Rulison Sampling and Analysis Plan (RSAP) are being incorporated into Revision 3 of the RSAP.



◆ Project Rio Blanco

The Rio Blanco Sampling and Analysis Plan (SAP) Revision 0 is currently being reviewed with comments to be incorporated into Revision 1 of the SAP.

III. SOUTHWEST COLORADO

◆ Gas and Oil Regulatory Team (GORT) Meeting

Approximately 50 people attended the January 2010 GORT meeting, including La Plata County Commissioners Wally White and Kellie Hotter and La Plata County staff, Archuleta County staff, COGCC Commissioner Tom Compton, representatives of the Southern Ute Indian Tribe (SUIT), CDPHE Water Quality Control Division, U.S. Bureau of Land Management (BLM), U.S. Forest Service (USFS), area operators, and the public. Presentations on regional studies were made by Denny Faust of Souder Miller & Associates and Ken Stelman of AMEC-Geomatrix.

The next GORT/Southwest Colorado Oil and Gas Stakeholders meeting is scheduled for April 15, 2010, at 8:30 am at the La Plata County Fairgrounds in Durango, Colorado.

All parties wishing to be placed on the next meeting agenda should contact Karen Spray at: 970-259-1619 or karen.spray@state.co.us. Demonstrations of new technology or unique solutions to problems are always well received.

◆ Mizar-Schick No.1 Well

The Mizar-Schick No. 1 Well was drilled and completed to Morrison sandstone formation or to a depth of 2320 feet by Sierra Exploration Company in 1981. It is located in the alluvium of the San Juan River Valley about 5 miles northeast of Pagosa Springs, Colorado, in Archuleta County. It can be found on the northwest side of U.S. Highway 160 and across the San Juan River in an irrigated hayfield.

The operator had gone out of business without properly dispensing the well. Also, under the terms of the lease, well ownership reverted to the land owner. The landowner and mineral

owner being one and the same chose not to register as an official operator. With no operator to take over the well, the COGCC assumed responsibility, claimed the \$30,000 bond, and chose to plug and abandon it under the plugging and abandonment and well reclamation program (PAWR).

A plug and abandonment procedure was prepared by COGCC staff and the work was put out to competitive bid. Walsh Engineering of Farmington, New Mexico was awarded the bid. The well was successfully plugged October 2, 2009, at a cost of \$22,960 or \$6,010 under the original bid. The bond claim being in an amount of \$30,000 included two wells, the Mizar-Schick #1 and the Binkley #2. The Binkley #2 was a well site reclamation that cost about \$3,050. The balance of the bond funds, approximately \$3,990, was returned to the bond owner.

◆ Fruitland Formation Outcrop Mitigation and Monitoring Projects (4M Projects)

Fruitland Formation Mapping - Archuleta County. As part of the 4M Projects, the Colorado Geological Survey (CGS) has finalized a detailed geologic map of the Fruitland Formation outcrop in Archuleta County. CGS is working to complete the report associated with the results of the mapping project. The final map and associated report will be posted to the website after receipt from the CGS. The mapped extent of the Fruitland Coal outcrop in Archuleta County is now available in the COGCC Information System (COGIS) as the layer "San Juan Basin - Archuleta\_Kf."

Fruitland Formation Outcrop - 4M Pilot Scale Mitigation Projects La Plata County. The South Fork Texas Creek (SFTC) system's faulty methane sensor has been repaired and the system is back on line at 12kw and putting electricity into the grid. Gas continues to be collected and vented at the Pine River Ranches (PRR) location. Long term management and system optimization options are being discussed for ongoing power generation at SFTC and possible gas combustion at PRR. Data collection and assessment will continue for a period of one year.



4M Monitoring Wells La Plata County. Installation of the 4M monitoring wells is complete and 3 new wells have been instrumented and are in the COGCC telemetry data collection system. Well site reclamation and re-contouring has been conducted at all of the locations, although re-seeding will not occur until the spring. COGCC staff continue to seek a location in the Durango/Animas River area for installation of another monitoring well. If an acceptable location is found, the well drilling and installation would occur in the spring 2010.

Pressure data from 2 of the existing 3M monitoring wells, one at Basin Creek and one at SFTC, indicate possible leaks or transducer issues. Norwest/Applied Hydrology will investigate and attempt repairs during their next site visit. Heavy snowpack precludes site access until later in the spring 2010.

4M Monitoring Wells Archuleta County. Pressure data from one of the wells at Wagon Gulch indicates a potential leak in the wellhead. Norwest/Applied Hydrology will investigate and attempt to repair this leak during their next site visit.

Souder, Miller & Associates has provided the COGCC staff a final report for the monitoring well installation and reclamation conducted in 2008 and 2009. A copy of the final report has been posted on the COGCC website under Library, San Juan Basin, 4M Project Reports, 4M Project CBM\_Monitoring Well Installation Report.

One additional Archuleta County monitoring well is scheduled for installation in spring 2010, if possible. The Deep Canyon location is located on public lands southeast of State Highway 151 just north of the SUIT line. The well will be located on an existing plugged and abandoned well pad so little earth moving work will be required. This well was permitted for installation during the 2008 field season, but not drilled due to seasonal closures and funding limits. Installation in 2010 depends upon seasonal conditions, USFS wildlife clearances, and timing within the COGCC fiscal year which ends on June 30, 2010.

## ♦ San Juan Basin Coalbed Methane Water Quality Analysis (WQA)

The objective of this study is to assess potential long-term trends in general groundwater quality in the San Juan Basin based on data available in the existing COGCC database. Data exist for over 2,000 water wells in the San Juan Basin for a period of approximately 15 years. Statistical evaluations were conducted by the COGCC's contractor, AMEC-Geomatrix, using the Mann-Kendall trend analysis as a means to filter a large amount of data to allow staff to identify and focus on potential areas of concern. Runs were limited to those wells with at least 4 available data points (sampling events) to best delineate statistically significant or relevant trends. Parameters evaluated included: total dissolved solids, alkalinity, pH, calcium, magnesium, potassium, sodium, carbonate, bicarbonate, chloride, sulfate, methane, and two isotopes of methane, deuterium and carbon-13.

Ken Stelman of AMEC-Geomatrix provided a summary of the project status at the January 14, 2010, GORT meeting in Durango, Colorado. Initial evaluation of available data using the Mann-Kendall trend analysis did not delineate any clusters of significant upward trends in methane or major cation/anion concentrations within the San Juan Basin. To the contrary, just as many significant downward trends were identified as significant upward trends. Further evaluation of indicated well-specific trends and/or changes in methane concentrations will be conducted by the COGCC on a well-by-well basis. Additional graphical representation using all data, not just those with 4 data points will also be developed to identify and assess potential areas of concern followed by detailed investigation and corrective actions, if warranted.

## IV. NORTHEAST COLORADO

### ♦ Pesticide Applicator Licensing & Complaint Investigations

In December 2009, Mr. Steven Blunt, Pesticide Applicator Program Coordinator with the Colorado Department of Agriculture (CDA), made a



presentation to COGCC staff regarding applicator licensing requirements and complaint investigations associated with pesticide use. The CDA regulates all pesticide use in Colorado including the application of both General Use and Restricted Use Pesticides. A General Use Pesticide (GUP) is any substance used to kill, control or mitigate a pest, such as weeds or insects, that does not require an applicator's license to purchase or use. A Restricted Use Pesticide (RUP) requires a license to purchase or use. Herbicide products that contain one or more of the following active ingredients are considered an RUP: Bromacil, Diuron, Monuron, Prometon, Sodium Chlorate, Sodium Metaborate and Tebuthiuron. A letter from the CDA that provides additional information and guidance can be found on pages 24–27.

Oil and Gas operators who use RUPs for weed management should be aware of the licensing requirements. If company employees are applying RUPs, a Limited Commercial Applicators' license is required and the company must employ at least one person that has obtained a Qualified Supervisors' Pesticide Applicators' license. In addition, records must be kept for every pesticide application, and the company must comply with the provisions of the Colorado Pesticide Applicators Act. For more information regarding the pesticide applicator licensing program please visit the CDA website: <http://www.colorado.gov/ag/dpi>.

The COGCC often receives complaints related to weed management issues and herbicide use. The CDA has several Pesticide Enforcement Specialists throughout the state who investigate such complaints. The CDA also utilizes an in-house laboratory to analyze various samples, including plant matter, for common chemicals found in pesticides. The COGCC will work in cooperation with the CDA Enforcement Unit for all complaints related to pesticide use in the future. Oil and Gas operators are encouraged to review their weed management programs and the products used prior to upcoming spring applications to ensure compliance with the Pesticide Applicators Act.

## V. SOUTHEAST COLORADO

### ◆ Upper Purgatoire Watershed Study

The Colorado Geological Survey (CGS) in conjunction with the Colorado Water Conservation Board (CWCB), plan to conduct studies of groundwater and surface water quality and quantity in the Upper Purgatoire Watershed portion of the Raton Basin by the end of the current fiscal year (June 2010). Ralf Topper (CGS) and Steve Miller (CWCB) are managing the study. Plans for a stakeholder meeting to be held in Trinidad early in 2010 are still being developed. Appropriate data from the COGCC water quality and production databases will be made available for the study.

### ◆ Corsentino Dairy Farms Site Investigation and Remediation Workplan

The owners of Corsentino Dairy Farms, Petroglyph Energy Inc. (PEI), and COGCC staff have reached agreement on a voluntary site investigation and remediation workplan intended to address impacts to soils at the dairy farm from CDPHE-permitted discharge of CBM produced water by PEI into the Cucharas River upstream of the dairy's irrigation water intake. All fields at the farm have been ripped and disked. Gypsum has been applied and disked into 4 of the fields. Gypsum provides a source of calcium that should displace sodium adsorbed onto soils in the impacted fields. Irrigation water and precipitation will flush the displaced sodium from the soils. The addition of calcium to the soils and the displacement and flushing of sodium from the soils will lower the sodium adsorption ratio of the soils.

### ◆ Methane Investigation Monitoring, and Mitigation Plan (MIMMP) - Huerfano County

#### Phase 1 Update

Three monitoring wells, 4 recovery, and 8 injection wells have been drilled, completed and tested by Petroglyph Energy Inc. (PEI) as part of Phase 1 of the MIMMP. Treatment under Phase 1 consists of physically separating methane from the recovered groundwater using a vertical separator. The methane is sent to a





controlled flare for combustion. Operation of the pump, treatment, and injection system started on December 8, 2008. More than 11.2 million gallons of water had been pumped to the surface and treated as of January 22, 2010. More than 99% of that water has been re-injected into the aquifer after treatment. PEI has added one pre-existing domestic water well to the methane and water recovery system to hasten removal of free gas from the impacted aquifer systems. The domestic well is functioning in a manner similar to their removal wells with the water re-injected in a nearby injection well that is already part of the system.

Gas flows are monitored at 4 domestic wells by PEI or its consultant and at 2 domestic wells by COGCC and its consultant. Overall gas flow has decreased in all monitored domestic wells.

During the period from December 10, 2009, to January 22, 2010, PEI screened 80 domestic water wells for the presence of methane with hand-held methane detectors for changes in percent volume of methane, percent lower explosive limit, and percent oxygen. Methane was not detected at 47 of the wells. Methane was detected at 33 of the screened wells and levels of methane decreased in 12 of the screened wells. Methane increased in 20 wells.

A helicopter borne methane survey was conducted in early September 2009. Ground verification of results is underway. The results of the combined aerial and ground surveys will be provided to the COGCC as a separate report in the near future.

### Mitigation

PEI is currently supplying water to 16 homes upon request of the well owner. Methane alarms have been installed in 14 homes.

### Phase II

The U.S. Environmental Protection Agency (EPA) held a public meeting in Walsenburg on August 10, 2009, regarding PEI's applications for wells that would be used to inject Vermejo Formation water produced from coalbed methane (CBM) wells into water-bearing units in the Poison Canyon Formation. The EPA is still in the

process of reviewing and addressing written and oral comments received during and after the public hearing. PEI has submitted an application to the Colorado Division of Water Resources (DWR) to ask for changes to water sources and injection as part the process of initiating Phase II. Approval by the COGCC for PEI to operate some of their CBM wells will also be needed prior to initiation of Phase II. COGCC staff will present an update on the status of Phase I at today's hearing and will discuss possible initiation of Phase II of the MIMMP.

## VI. ORGANIZATION

An organizational chart can be found on pages 12–14. For contact information, please go to our website and click on "Contacts" on our homepage, and then "Staff Contact Information."

## VII. PLANNING/ADMINISTRATION/OTHER

### ◆ Public Outreach Opportunities

Karen Spray and Mark Weems participated in and provided information for two informational public meetings held by the Division of Water Resources to discuss new and proposed rules regarding oil and gas wells and produced water. The meetings were held at the Bayfield High School and La Plata County Fairgrounds on February 2 and 3, 2010.

### ◆ Onsite Inspection Policy

Under the Policy For Onsite Inspections On Lands Where The Surface Owner Is Not A Party To A Surface Use Agreement, which was effective for Applications for Permits-to-Drill (APDs) submitted after February 15, 2005, the COGCC has received to date a total of 134 requests for onsite inspections.

Twenty-nine onsite inspections have been conducted, 88 requests for inspections have been withdrawn, one onsite inspection is being scheduled, and 16 onsite inspections are pending and will be scheduled, if necessary, after the APD is received, or after issues related to local governmental designee consultation, location change, or surface use agreements are resolved.



Of the 134 requests for onsite inspection, 72 were for locations in Weld County, 25 in Las Animas County, 9 in Adams County, 7 in La Plata County, 5 in Garfield County, 3 each in Archuleta, Boulder and Yuma Counties, 2 each in Logan and Morgan Counties, and 1 each in Baca, Kiowa, and Larimer Counties.

Where surface owners have requested Onsite Inspections beyond the 10 business-day window provided for in the Policy, and where there is a dispute between parties regarding the date of the Rule 306 consultation, COGCC staff have attended meetings between parties on location to facilitate communication between the parties and to minimize impacts to the surface owner through voluntary measures implemented by the operator.

In addition to the Onsite Inspection Policy, onsite inspections are being conducted in the San Juan Basin under Cause 112, Order Nos. 156 and 157 where an Onsite Inspection was required because an APD was submitted without a surface use agreement. Several onsite inspections under Cause 112, Order Nos. 156 and 157 are anticipated in the next few months, depending upon operator activity in the area.

◆ Plugging and Abandonment and Well Reclamation (PAWR) Fund Status

On page 15 is the spreadsheet listing PAWR projects for Fiscal Year '09-'10 that are planned (work has not yet commenced), in progress (work has been completed but invoices have not yet been submitted), and completed work.

◆ March 2010 Hearing Docket

A preliminary docket for the March 2010 hearing has been provided. Hearing dockets are available on our website by clicking on "Hearings." Links to the notices and hearing applications are available from the Docket Number and Applicant, respectively. To sign up for e-mail notification of hearing notices and applications, please see the announcement and instructions on the homepage of the COGCC website at: [www.colorado.gov/cogcc](http://www.colorado.gov/cogcc).

◆ Colorado Oil and Gas Information System ("COGIS")

COGIS is made up of many different components that are used by the COGCC, staff, industry, government agencies and many others.

➤ Internet

The COGCC determined it was most cost effective to develop applications and information in an Internet-available format. This allows for the same tools to be utilized in different environments, thus eliminating the re-creation of applications. The Internet connection was moved to a new network structure which provides a much more secure environment. The following are tabs on the Internet menu bar:

\* General

This page has links to basic information concerning the COGCC, its function, and oil and gas development in Colorado.

\* Contacts

This page has links to people and agencies that are involved with oil and gas regulation and related issues in the state. The page also contains phone lists and geographic areas of responsibility for COGCC staff.

\* Library

This page contains links to documents resulting from COGCC studies, activity reports, and statistical downloads. The annual statistics and the weekly/monthly statistics are available here.

\* Hearings

This page has links to the current and previous hearing schedules, which allow for review of the dockets, agendas, applications and their outcome. It also has information that is useful when considering filing an application for hearing or finding information about Commissioners.

\* Rules

This page contains links to the COGCC statute, Rules and Regulations, and policies.

\* Policies

This page contains links to COGCC policies.



\* Orders

This application provides searchable capability of the COGCC's orders. The search by location is still under construction as we create the map layers for all spacing orders.

\* Forms

All forms are available as Adobe Acrobat documents that can be downloaded, completed, printed and mailed; some are available as Excel and Word documents. Some example and instruction documents are viewable. The forms used by operators to submit information on location of wells and completion reports have been modified to accept latitude and longitude data. Eventually, online forms will be available here, but the exact time frame is unknown.

\* Staff Report

Current and previous staff reports are viewable here.

\* Permits

This application shows the last 12 months of approved permits and current pending permits; it may be filtered by county.

\* News/Media

This category provides general information to the media. It contains statistics, charts, graphs, and other items of interest.

\* Database

This application enables users to query well, production, and operator information. These queried databases contain the most current set of data and are updated throughout the day.

\* Local Gov

This application provides database searches for local government contact information and oil and gas activity within a selected area.

\* Images

This application is an interface to the COGCC's historical paper files. All well files, logs, and hearing files have been scanned. This application is not user friendly and the preferred method is to use the database queries and click on the "docs" icon for wells and other facilities, or to use the Orders application.

\* Maps

This interactive map application allows the user to zoom, pan, and select types of information to display. This application will also display the database information for wells by selection tools or double clicking on a single item. There are also tools to allow annotations and to save reusable map files. Three map layers were added to the COGCC Geographic Information Systems (GIS) Online main map in support of the Final Amended Rules approved in December 2008:

1. Wildlife Restricted Surface Occupancy (RSO) Areas
2. Sensitive Wildlife Habitats (SWH)
3. Rule 317B Surface Water Supply Area Buffers

These map layers will be used to determine if a proposed drilling location is subject to the provisions of the new rules. In addition, a second map was added, entitled "Wildlife Map." The Wildlife map displays the wildlife species-specific RSO and SWH areas. The Wildlife map data were provided by Colorado Division of Wildlife (CDOW). Surface Water Supply area data were provided by Colorado Department of Public Health and Environment (CDPHE). The CDOW and CDPHE GIS staffs were very helpful regarding data requests.

A statewide water wells map layer was added to the Internet on August 5, 2005. Many thanks to the Division of Water Resources for allowing us to display its data.

The National Resource Conservation Service Soil Data Mart is included on our maps. Through these links the public can get reports on the soil surveys for any area of the state.

Color images obtained from the United States Department of Agriculture-Farm Service Agency are included on the COGCC GIS Online map system. These images encompass the entire state and were taken in 2005. The black and white images were obtained from the same federal agency. These images were taken in the years between 1989 and 2001.

Statewide aerial photographs taken during the summer of 2009, under the National Agriculture Imagery Program, have been added to the COGCC GIS Online map. The



resolution is such that well pads and related features can be easily seen.

The COGCC, in cooperation with the BLM, added map layers containing the lease stipulations from the BLM to the COGCC GIS Online site. Among the layers available include Federal Oil and Gas leases, Federal Surface leases, BLM Master Plats, and Federal Oil and Gas Subsurface Rights.

New directional survey bottomhole map layers will be added to the COGCC GIS Online map sometime in March 2010.

\* Help

In December 2008, two search tools were added to the Help menu to be used in conjunction with the map layers that were added for the Final Amended Rules.

The Oil & Gas Activity Notification Tool allows a user to enter a section-township-range of interest which returns a table identifying which quarter-quarter sections are subject to Rule 317B, RSO areas, or SWH requirements. The user can then click on a link, which opens the map, and zoom to the section of interest for further inspection.

The Map Temporary Coordinated Tool allows the user to enter a latitude and longitude to view on the map. The user can then turn on the relevant map layers to see which layers intersect the entered coordinates.

A tutorial document for the COGCC Interim Policy for APDs is posted in the Help area and the homepage of the website. This document helps explain the interim process that the COGCC used for processing APDs until the Final Amended Rules took effect. Included in the document are explanations on how to use the new tools and map layers that have been developed for the Final Amended Rules.

The COGCC, with assistance from the Ground Water Quality Protection Council, has produced two Macromedia Flash movies to help users understand the many features available within the COGCC GIS Online system. The movies are located by clicking on the HELP link from the main menu or by using the following link: [http://colorado.gov/cogcc/COGIS\\_Help/Help.asp](http://colorado.gov/cogcc/COGIS_Help/Help.asp).

Two applications on the COGCC website are available to help operators with the entering of data relating to locations. The first, a Footage calculator, will take a new latitude and longitude and calculate new footage calls based on the location supplied at the time of permitting. The tool should only be used to compare locations where latitude and longitude were supplied on the permit as required by the December 1, 2005, rule change. The second application converts latitude and longitude as measured in degrees, minutes, and seconds into decimal degrees. The decimal degree format is what COGIS is expecting on all forms requiring lat/long coordinates.

The eForm Training Manual covers the material presented in the three training sessions that were held to introduce the new electronic form submission tool to the industry. The application has been receiving forms from the industry since July 2009.

The manual can be found at [http://cogcc.state.co.us/COGIS\\_Help/eForm\\_training\\_manual.pdf](http://cogcc.state.co.us/COGIS_Help/eForm_training_manual.pdf). A document explaining the Local Government Designee process in eForm is now available in the Help section.

➤ Local Area Network

COGCC staff are connected to services by a Local Area Network ("LAN") connection which provides email and data-sharing capabilities. The LAN is connected to the Centennial Building at 1313 Sherman Street by a wireless interface; this connection provides access to the Internet and other state services. COGCC staff utilize the same applications in their work as Internet users, in addition to others outlined below.

\* Database

The COGCC maintain a comprehensive database of regulated facilities (wells, pits, injection sites), incidents (inspections, complaints, spills), and affiliations (companies and contacts).

\* Imaging

This application provides the capability to convert the paper documents received by the COGCC to electronically available documents.





- \* **Form Processors**  
This set of applications allows users to input, route, edit, and update regulatory reports submitted by oil and gas operators.

- \* **eForm**  
This application utilizing the same code base that industry uses to submit Applications for Permits-to-Drill (Form 2) and Oil and Gas Location Assessment Form (Form 2A), is being used by staff to input, route, edit, and update these forms internally.

- \* **Geographic Information Systems (GIS)**  
These applications provide the capability to create custom maps, convert survey calls to geographic coordinates, and convert and utilize geographic positioning system (GPS) data.

The GIS Administrator creates daily updates for the Internet map data downloads.

- \* **COGIS Tools**  
This set of applications allows COGCC staff to correct data in the database in addition to performing specialized workflow administration.

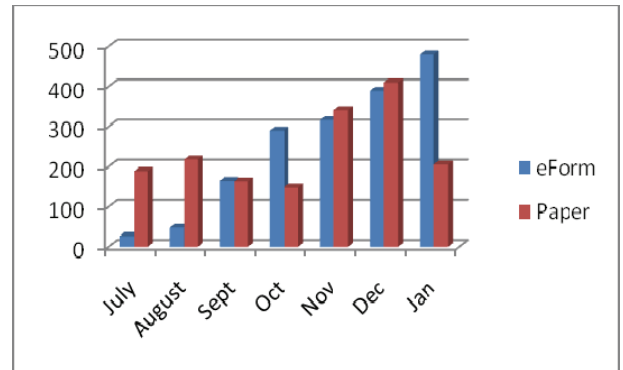
- **Remote Users**  
This is the final component of the COGIS system. This laptop system consists of Internet applications and other report tools necessary for COGCC field staff to facilitate data collection and provide information.

- \* **Electronic Business**  
There are approximately 200 operators reporting production electronically.

## ◆ COGIS Projects, Updates and Changes to Electronic Form Submissions (eForm)

During January 2010, a third regulatory form was released for electronic submission, the Bradenhead Test Form, Form 17. Development of the next two forms, the Drilling Completion Report, Form 5, and the Completed Interval Report, Form 5A, is underway. Form 5 and 5A eForms are expected to be released by the end of March.

Acceptance by operators of electronic submission of forms grows with each month, as the following chart demonstrates.



The system allows the operator to submit the data for the form and all of the required attachments. Attachments must be in a PDF file format. Benefits of the eForm application to the operator include the ability to circulate the forms internally and check data prior to submitting to the COGCC, a decrease in the time it takes for the form to begin its regulatory review at the COGCC, and for the operators who are able to log into eForm, they can track the regulatory form as it is being reviewed within the COGCC.

Along with the eForm system, a page is available where the operators can review all known bugs within the system and report any new ones they discover.

The public can now make comments on all submitted Oil and Gas Location Assessment (OGLA) forms (Forms 2A) through the eForm system. This is accomplished by going to the COGCC website (<http://www.colorado.gov/cogcc>) and clicking on the menu option, "Permits", (or <http://cogcc.state.co.us/COGIS/DrillingPermits.asp>).

On the COGIS-Permits page, two new search options have been added for OGLA forms, "All Pending Location Assessments for" and "All Approved Location Assessments for." When the results are displayed for forms in process, the public can click on the document number, which logs the user onto the new eForm application. Once the page is displayed with the selected document, the user can select the Comment button to make a comment on that particular form. The public can use this same method to make comments on APDs (Form 2s).



For any operator not currently enrolled in eForm, instructions for starting the process can be found at <http://cogcc.state.co.us/Announcements/COUAINformation.pdf>

#### Rulemaking Activity Page

The Final Amended Rules (December 2008) have been published and posted to the COGCC's website homepage at: <http://www.colorado.gov/cogcc>. The pages associated with rulemaking activity, including numerous documents filed, public comments, and audio recordings of the proceedings are still available.

#### US Standard XML Reporting Project

The COGCC, the Ground Water Quality Protection Council, and agencies from several other states have been working together to establish an XML file format for permitting wells and reporting well completions. The working group issued a beta version to members of industry for their review and comment in February 2007. After a second review and discussion among the working group, the final version was published to the industry in June 2007. The next phase of this project is underway with the development of the application within the agencies to handle the submission of the XML files for processing. With the release of eForm, another review has been undertaken to integrate the schema with eForm.

#### LAS File Upload

All digital well logs submitted to the COGCC over the Internet are to be in LAS (log ASCII) format. In addition to the LAS file, a paper log file is still required. Additionally an operator can submit the same log file in a PDS format, but the PDS format cannot replace the LAS requirement. To submit digital well logs over the Internet, an application must be completed. The application is available from the "Forms" page on the COGCC website <http://www.colorado.gov/cogcc>. To utilize the system, the operator will need to submit a Designation of Agent Form, Form 1A. COGCC staff are working with operators and logging companies to gain compliance with the digital log submission requirement. The rule still requires the operator to submit a paper copy of each well log (Rule 308A). All operators are required

to be in compliance with this Rule for all wells completed since July 2004.

#### Spacing Orders Project

The spacing orders are being evaluated and posted on the maps, with over 85% of the state having been reviewed. The Wattenberg Field in northeast Colorado is the only area remaining to be completed.

#### Mapping Directional Wellbores Project

This is an industry-sponsored project to make the directional wellbores visible on the Internet map. The COGCC, along with other states, is working with the Ground Water Quality Protection Council to establish a standard format for electronic submission of directional survey data. Many thanks to Mr. Dewey Gerdorf of Petroleum Development Corporation for his insight regarding the need for such a data set.

### **VIII. VARIANCES**

ExxonMobil Oil Corporation ("ExxonMobil") submitted a Sundry Notice requesting a variance to the production casing compressive strength requirements of Rule 317.i. for 40 wells, which are located on 12 different pads located in their Freedom Unit, Expanded Liberty Unit, Piceance Creek Unit, North Piceance Unit, and Independence Unit. All of these wells have federal jurisdiction for surface and minerals. Please see Exhibit A on page 16 for a complete list of wells and locations.

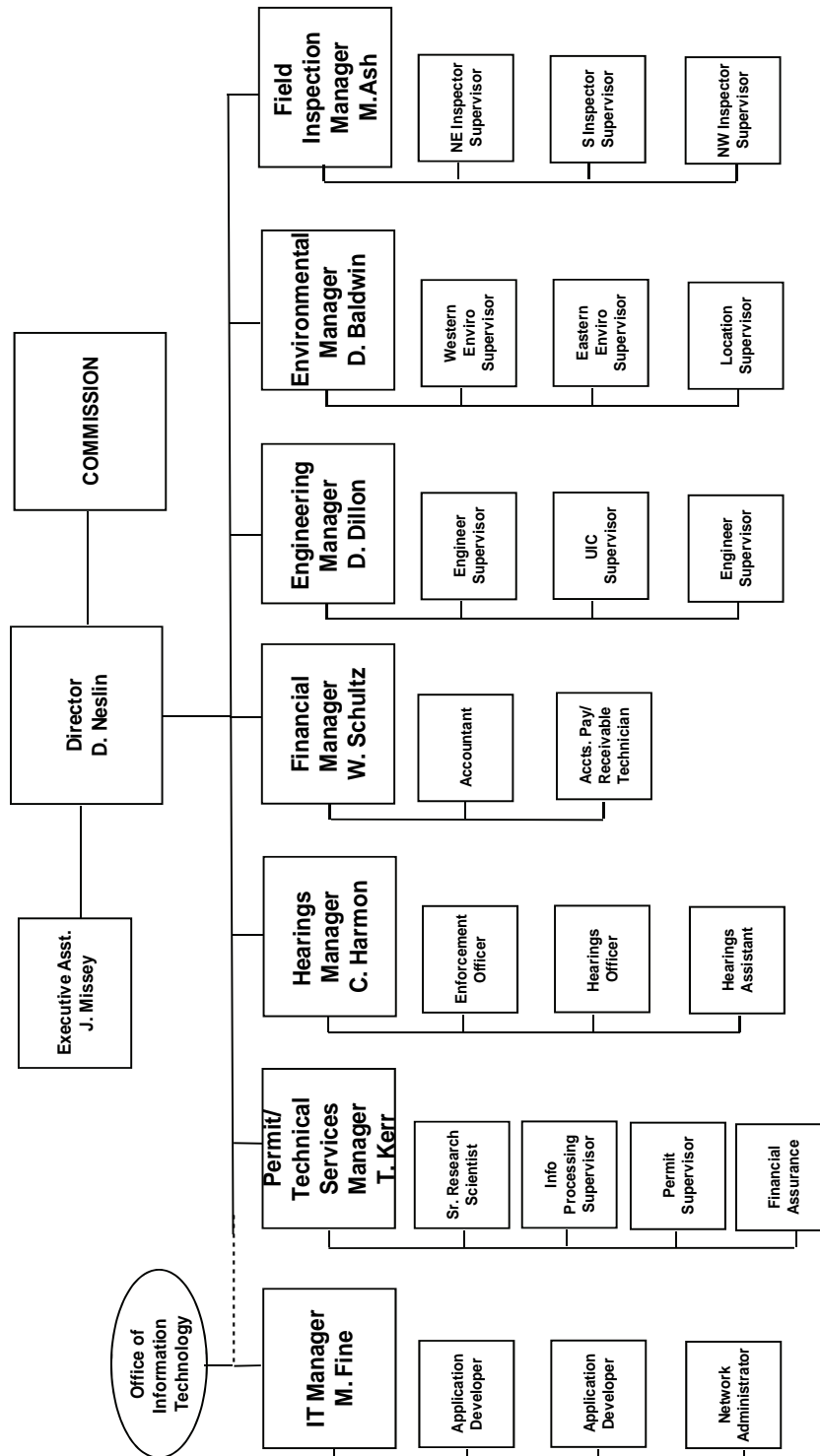
As a result of the use of high-temperature-capable cement retarders in the cement slurry, ExxonMobil's production casing cement design for these wells does not meet the temperature requirement of Rule 317.i., which specifies that production casing cement "shall be of adequate quality to achieve a minimum compressive strength of at least three hundred (300) psi after twenty-four (24) hours and eight hundred (800) psi after seventy-two (72) hours measured at ninety-five degrees fahrenheit (95°F) and at eight hundred (800) psi." ExxonMobil's production casing cement design will meet the required compressive strengths within the required timeframes at the expected downhole temperatures.



ExxonMobil contends that the requested variances do not violate the basic intent of the Oil & Gas Conservation Act. In January and February of 2010, COGCC Staff approved ExxonMobil's Rule 317.i variance requests. ExxonMobil has submitted similar requests to the BLM.



# COLORADO OIL & GAS CONSERVATION COMMISSION

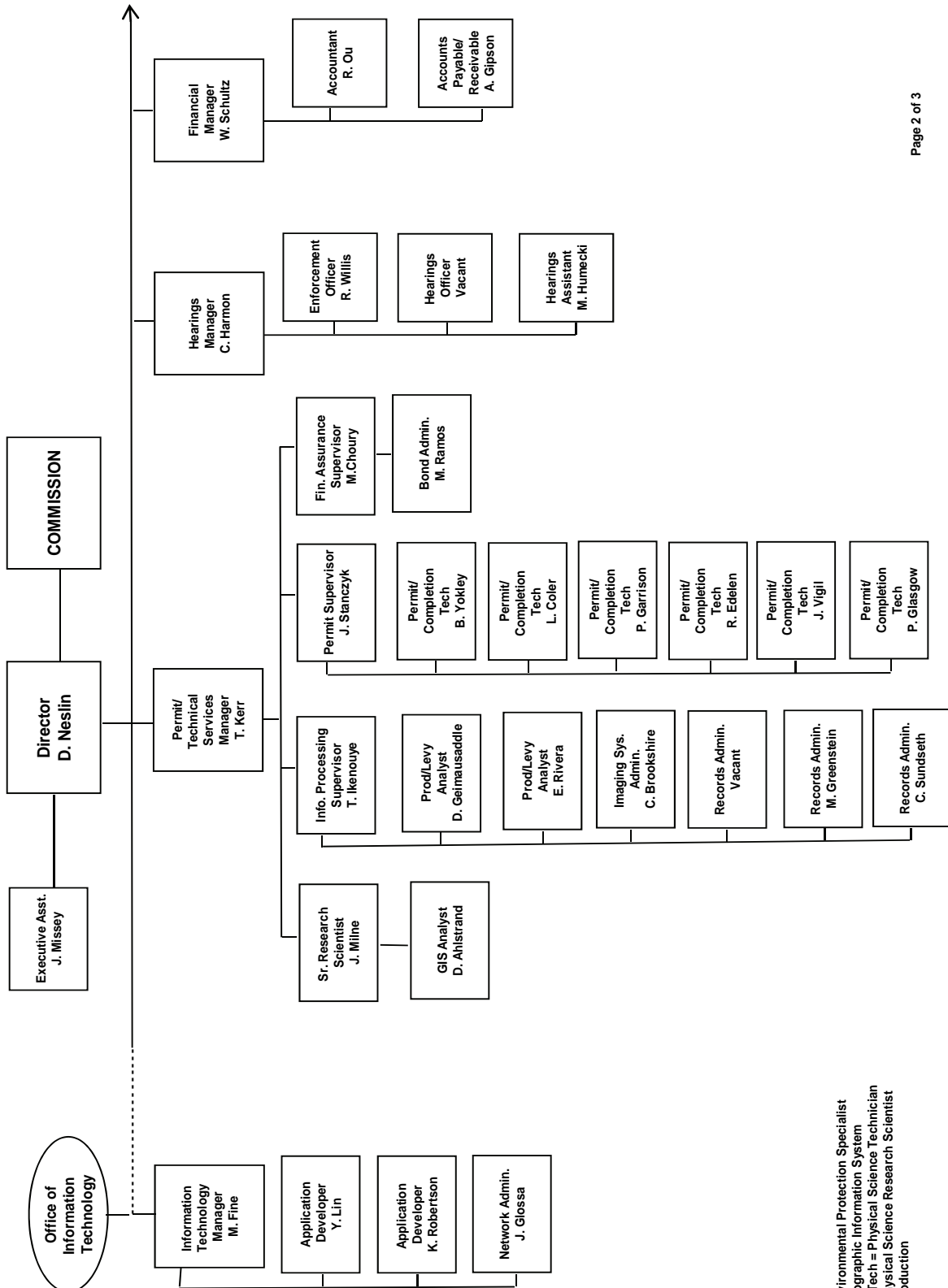


See the next two pages for details





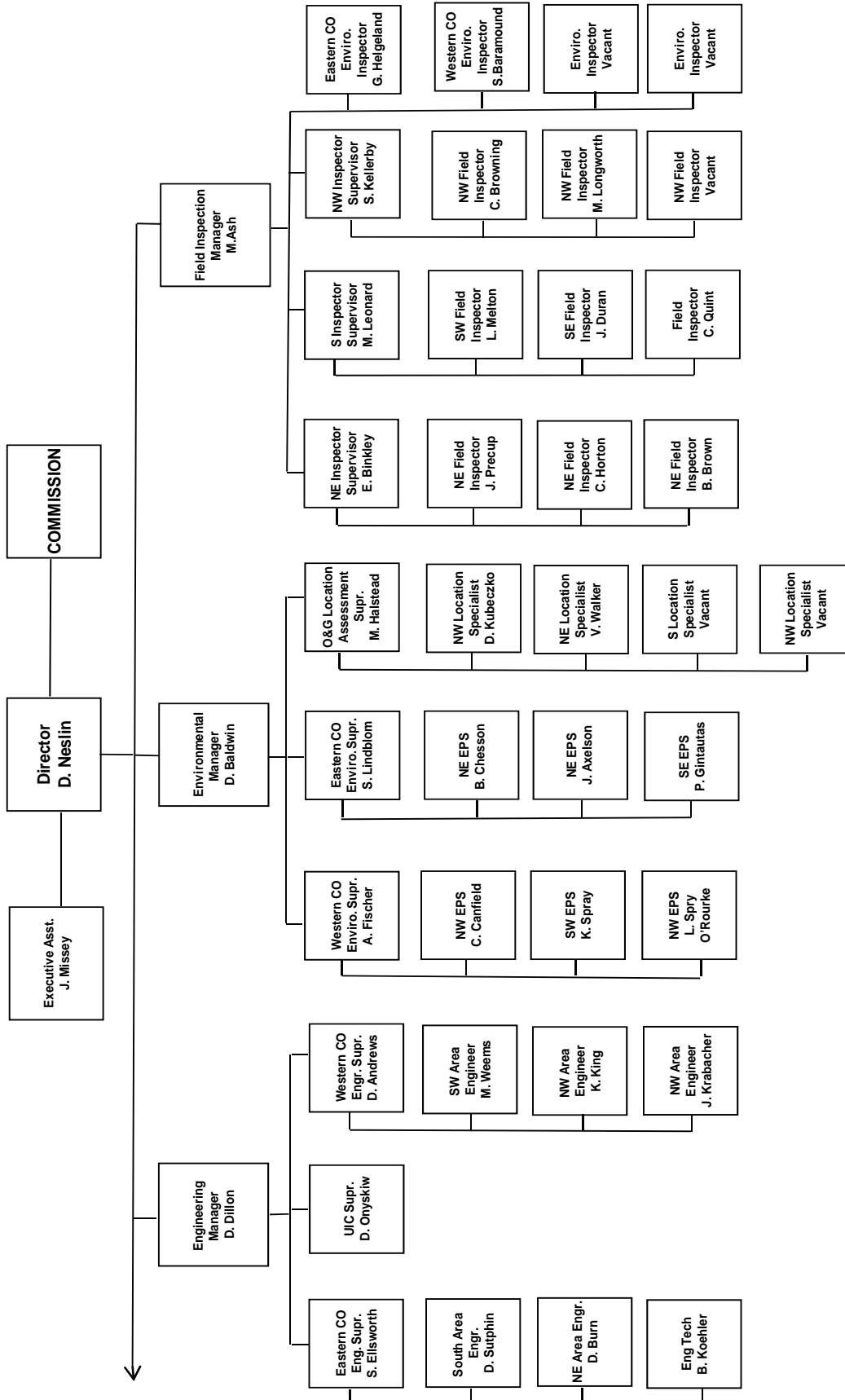
## COLORADO OIL & GAS CONSERVATION COMMISSION ORGANIZATION



EPS = Environmental Protection Specialist  
GIS = Geographic Information System  
Phys/Sci Tech = Physical Science Technician  
PSRS = Physical Science Research Scientist  
Prod = Production



# COLORADO OIL & GAS CONSERVATION COMMISSION ORGANIZATION



EIT = Engineer in Training  
 EPS = Environmental Protection Specialist  
 OGLA = Oil & Gas Location Assessment  
 Phys Sci Tech = Physical Science Technician  
 UIC = Underground Injection Control



OIL AND GAS CONSERVATION AND ENVIRONMENTAL RESPONSE FUND, BOND CLAIM, AND SPECIAL APPROPRIATIONS  
PLUGGING, ABANDONMENT AND WELL RECLAMATION (PAWR) PROJECTS FOR ORPHANED LOCATIONS  
FISCAL YEAR 2009-2010

**PLANNED**

COUNTY	TYPE	PROJECT NAME	ESTIMATED FYE2010 COSTS				ACTUAL FYE2010 EXPENDITURES				DESCRIPTION
			BOND	PAWR	SPECIAL	TOTALS	BOND	PAWR	SPECIAL	TOTALS	
LA PLATA	PLUG	DAVIE 1-22 ABANDONMENT	\$0	\$35,000	\$0	\$35,000	\$0	\$0	\$0	\$0	Plug and abandon leaking well.
MESA	PLUG	DEBEQUE ORPHANS ABANDONMENT	\$0	\$75,000	\$0	\$75,000	\$0	\$0	\$0	\$0	Complaint. Plug and abandon two leaking wells.
MESA	REC.	RED OAK OPERATING RECLAMATION	\$0	\$5,000	\$0	\$5,000	\$0	\$0	\$0	\$0	Landowner complaint. Remove junk.
RIO GRANDE	PLUG	JYNNIFER #1 ABANDONMENT (BOND CLAIM)	\$5,000	\$45,000	\$0	\$50,000	\$0	\$0	\$0	\$0	Plug and abandon well.
WELD	REC.	POWERS #1 RECLAMATION	\$0	\$5,000	\$0	\$5,000	\$0	\$0	\$0	\$0	Well was plugged and abandoned in FYE2009. Needs reseeded.
TOTALS =>			\$5,000	\$165,000	\$0	\$170,000	\$0	\$0	\$0	\$0	

**IN PROGRESS**

COUNTY	TYPE	PROJECT NAME	ESTIMATED FYE2010 COSTS				ACTUAL FYE2010 EXPENDITURES				DESCRIPTION
			BOND	PAWR	SPECIAL	TOTALS	BOND	PAWR	SPECIAL	TOTALS	
ROUTT	PLUG	BAIREL #2 ABANDONMENT (VOAST BOND CLAIM)	\$5,000	\$40,000	\$0	\$45,000	\$5,000	\$42,734	\$0	\$47,734	Landowner complaint. Plug and abandon well. Reclaim surface. Work has been completed. An additional invoice was submitted after everything was closed out. Awaiting payment of this final invoice.
TOTALS =>			\$5,000	\$40,000	\$0	\$45,000	\$5,000	\$42,734	\$0	\$47,734	

**COMPLETED**

COUNTY	TYPE	PROJECT NAME	ESTIMATED FYE2010 COSTS				ACTUAL FYE2010 EXPENDITURES				DESCRIPTION
			BOND	PAWR	SPECIAL	TOTALS	BOND	PAWR	SPECIAL	TOTALS	
ARCHULETA	PLUG	SIERRA OIL & GAS CO. BOND CLAIM	\$26,952	\$2,019	\$0	\$28,971	\$26,952	\$0	\$0	\$26,007	Plug and abandon Schrick, Mizar #1 and reclaim the surface at Binkley #2. Work has been completed and contractor invoices recieved.
WASHINGTON	REC.	EGBERT #1	\$0	\$4,360	\$0	\$4,360	\$0	\$4,360	\$0	\$4,360	Landowner complaint. Clean up junk left from Bobcat Oil.
TOTALS =>			\$26,952	\$6,379	\$0	\$33,331	\$26,952	\$4,360	\$0	\$30,367	

			ESTIMATED				ACTUAL					
BOND	PAWR	SPECIAL	TOTALS	BOND	PAWR	SPECIAL	TOTALS	BOND	PAWR	SPECIAL	TOTALS	
\$26,952	\$6,379	\$0	\$33,331	\$26,952	\$4,360	\$0	\$30,367	\$26,952	\$4,360	\$0	\$30,367	
GRAND TOTALS =>												

Project Types: "PLUG." indicates plugging and abandonment, "REC." indicates reclamation, and "ENV." indicates environmental.



## Exhibit A

Well	Location	Pad
Freedom Unit 197-28A5	NWSW, 28, 1S, 97W	Freedom Unit 197-28A Pad
Freedom Unit 197-28A6	NWSW, 28, 1S, 97W	
Freedom Unit 197-28A7	NWSW, 28, 1S, 97W	
Freedom Unit 197-28A8	NWSW, 28, 1S, 97W	
Freedom Unit 197-28A9	NWSW, 28, 1S, 97W	
Independence Unit 496-9A1	NESW, 9, 4S, 96W	Independence Unit 496-9A Pad
Independence Unit 495-6A1	NENW, 6, 4S, 95W	Independence Unit 495-6A Pad
Independence Unit 396-31A1	SESE, 31, 3S, 96W	Independence Unit 396-31A Pad
Independence Unit 495-22A1	SESW, 22, 4S, 95W	Independence Unit 495-22A Pad
Piceance Creek Unit 197-36A1	NESW, 36, 1S, 97W	Piceance Creek Unit 197-36A Pad
Piceance Creek Unit 197-36A2	NESW, 36, 1S, 97W	
Piceance Creek Unit 197-36A3	NESW, 36, 1S, 97W	
Piceance Creek Unit 197-36A4	NESW, 36, 1S, 97W	
Piceance Creek Unit 197-36A5	NESW, 36, 1S, 97W	
Piceance Creek Unit 197-36A6	NESW, 36, 1S, 97W	
Piceance Creek Unit 197-36A7	NESW, 36, 1S, 97W	
Piceance Creek Unit 197-36A8	NESW, 36, 1S, 97W	
Piceance Creek Unit 197-36A9	NESW, 36, 1S, 97W	
Piceance Creek Unit 197-36A10	NESW, 36, 1S, 97W	
Piceance Creek Unit 296-6A1	SESW, 6, 2S, 96W	Piceance Creek Unit 296-6A Pad
Piceance Creek Unit 296-6A2	SESW, 6, 2S, 96W	
Piceance Creek Unit 296-6A3	SESW, 6, 2S, 96W	
Piceance Creek Unit 296-6A4	SESW, 6, 2S, 96W	
Piceance Creek Unit 296-6A5	SESW, 6, 2S, 96W	
Piceance Creek Unit 296-6A6	SESW, 6, 2S, 96W	
Piceance Creek Unit 296-6A8	SESW, 6, 2S, 96W	
North Piceance Unit 197-17A1	SWNW, 17, 1S, 97W	North Piceance Unit 197-17A Pad
Piceance Creek Unit 296-6B1	NWSE, 6, 2S, 96W	Piceance Creek Unit 296-6B Pad
Piceance Creek Unit 296-6B2	NWSE, 6, 2S, 96W	
Piceance Creek Unit 296-6B3	NWSE, 6, 2S, 96W	
Piceance Creek Unit 296-6B4	NWSE, 6, 2S, 96W	
Piceance Creek Unit 296-6B5	NWSE, 6, 2S, 96W	
Piceance Creek Unit 296-6B6	NWSE, 6, 2S, 96W	
Piceance Creek Unit 296-6B7	NWSE, 6, 2S, 96W	
Piceance Creek Unit 296-6B8	NWSE, 6, 2S, 96W	
Piceance Creek Unit 296-6B9	NWSE, 6, 2S, 96W	
Piceance Creek Unit 296-6B10	NWSE, 6, 2S, 96W	
North Piceance Unit 197-12A1	NWSE, 12, 1S, 97W	North Piceance Unit 197-12A Pad
North Piceance Unit 197-5A1	NWSE, 5, 1S, 97W	North Piceance Unit 197-5A Pad
Expanded Liberty Unit 395-21A1	SWNW, 21, 3S, 95W	Expanded Liberty Unit 395-21A Pad

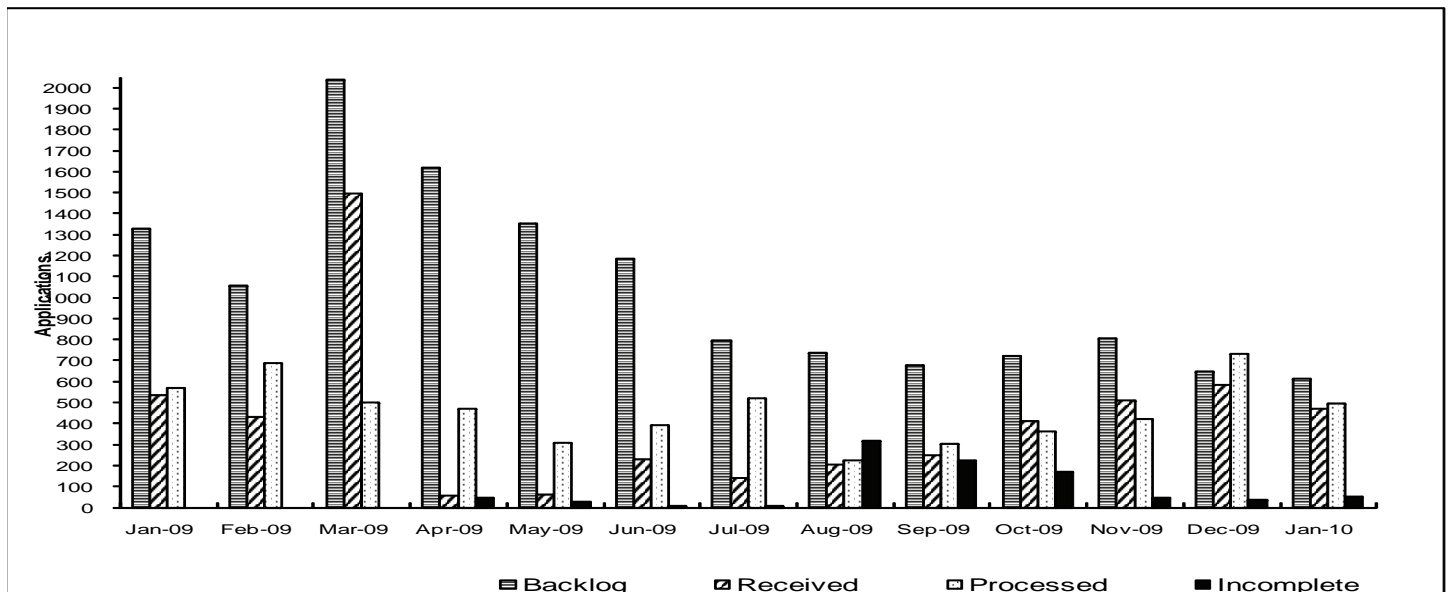




### Colorado Oil & Gas Conservation Commission Monthly Breakout of Drilling and Recompletion Permits

	Backlog	Received	Processed	Withdrawn	Rejected	Incomplete	In-Process	Remaining
<b>Drilling</b>								
Jan-09	1350	519	540	22	0	0	1307	1307
Feb-09	1307	411	678	16	0	0	1024	1024
Mar-09	1024	1476	483	13	0	0	2004	2004
Apr-09	2004	40	465	5	0	46	1528	1574
May-09	1574	54	306	18	0	26	1278	1304
Jun-09	1304	219	377	7	0	6	1134	1139
Jul-09	1139	122	487	7	0	9	759	767
Aug-09	767	157	223	33	0	315	360	668
Sep-09	668	231	277	2	0	223	404	620
Oct-09	620	369	288	3	0	163	544	698
Nov-09	698	427	382	7	0	43	702	736
Dec-09	736	540	653	9	0	37	577	614
Jan-10	614	460	462	8	0	53	551	604
<b>Recompletion</b>								
Jan-09	34	16	29	0	0	0	21	21
Feb-09	21	21	10	0	0	0	32	32
Mar-09	32	21	19	0	0	0	34	34
Apr-09	34	16	6	0	0	0	44	44
May-09	44	9	2	0	0	0	51	51
Jun-09	51	10	13	1	0	0	46	47
Jul-09	47	19	34	2	0	0	29	30
Aug-09	30	47	3	6	0	5	63	68
Sep-09	68	18	26	1	0	3	56	59
Oct-09	59	42	76	1	0	5	19	24
Nov-09	24	83	38	0	0	4	65	69
Dec-09	69	42	78	0	0	2	31	33
Jan-10	33	9	31	0	0	1	10	11
<b>Total</b>								
Jan-09	1384	535	569	22	0	0	1328	1328
Feb-09	1328	432	688	16	0	0	1056	1056
Mar-09	1056	1497	502	13	0	0	2038	2038
Apr-09	2038	56	471	5	0	46	1572	1618
May-09	1618	63	308	18	0	26	1329	1355
Jun-09	1355	229	390	8	0	6	1180	1186
Jul-09	1186	141	521	9	0	9	788	797
Aug-09	797	204	226	39	0	320	423	736
Sep-09	736	249	303	3	0	226	460	679
Oct-09	679	411	364	4	0	168	563	722
Nov-09	722	510	420	7	0	47	767	805
Dec-09	805	582	731	9	0	39	608	647
Jan-10	647	469	493	8	0	54	561	615

Incomplete are permits that have missing or inaccurate data and cannot be approved.





Colorado Oil and Gas Conservation Commission  
**2009/2010 Permit Applications Filed By Month**  
 02/09/2010

**Form 2A Location Assessment**

Year	Month	Received	Approved	Withdrawn	In Process	Percent In Process	Average Days to Process	Less Than 50 Days	Greater Than 50 days
2009	4	0							
2009	5	28	26	2	0	0%	98	0	26
2009	6	39	38	1	0	0%	87	4	34
2009	7	72	71	1	0	0%	68	20	51
2009	8	60	58	2	0	0%	72	4	54
2009	9	76	75	0	1	1%	56	23	52
2009	10	126	125	1	0	0%	38	99	26
2009	11	146	139	2	5	3%	28	132	7
2009	12	218	197	2	19	9%	26	193	4
Total		765	729	11	25	3%			
2010	1	225	67	9	147	65%	22	67	
2010	2	63	0	0	63	100%			

**Form 2 Application For Permit to Drill (APDs)**

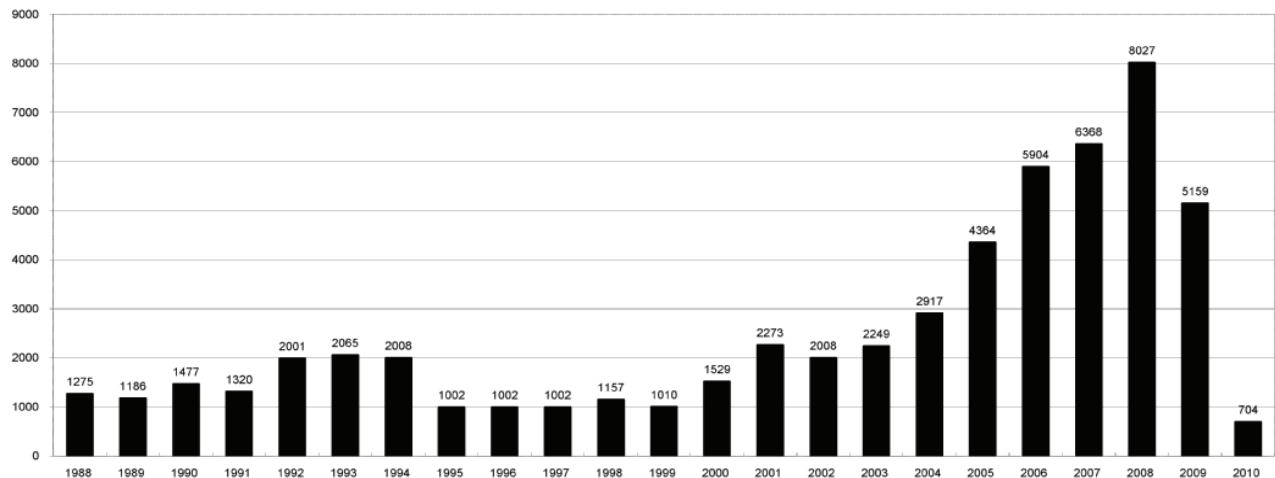
Year	Month	Received	Approved	Withdrawn	In Process	Percent In Process	Average Days to Process	Less Than 50 Days	Greater Than 50 days
2009	1	519	512	7	0	0%	83	132	380
2009	2	411	403	8	0	0%	61	229	174
2009	3	1476	1451	24	1	0%	94	369	1082
2009	4	40	38	2	0	0%	96	6	32
2009	5	54	43	11	0	0%	75	19	24
2009	6	219	218	1	0	0%	80	35	183
2009	7	122	121	1	0	0%	62	40	81
2009	8	157	148	9	0	0%	62	53	95
2009	9	231	219	1	11	5%	58	71	148
2009	10	369	364	3	2	1%	39	216	148
2009	11	427	416	1	10	2%	39	349	67
2009	12	539	461	2	76	14%	36	397	64
Year		4564	4394	70	100	2%			
2010	1	460	84	10	360	78%	34	84	0
2010	2	104	0	0	104	1			



### COLORADO OIL AND GAS CONSERVATION COMMISSION ANNUAL PERMITS BY COUNTY

COUNTY	1988	1989	1990	1991	1992	1993	1994	1995	1996	1997	1998	1999	2000	2001	2002	2003	2004	2005	2006	2007	2008	2009	Current through 2/16/10
ADAMS	46	34	44	53	92	58	137	34	9	33	24	19	38	28	9	26	39	34	37	89	51	35	11
ARAPAHOE	5	5	15	14	11	4	20	12	2	9	1	2	0	2	1	2	5	7	11	10	10	10	
ARCHULETA	8	5	18	5	2	1		3		3		1	7	9	6	10	8	13	14	26	47	11	
BACA	6	4	15	10	23	9	12	24	10	7	13	15	22	6	2	3	7	8	2	11	13	3	1
BENT				1		2	2	4	2	5	3	5	2				5	3	8	1	1		
BOULDER	1		1	13	38	159	38	5	8	2	5		1	5	6	7	17	13	21	37	32	35	9
BROOMFIELD															2	7		1	1		2	33	4
CHEYENNE	203	149	102	93	71	58	48	55	43	31	41	7	3	3	3	3	3	10	21	15	33	12	2
COSTILLA												1											
CROWLEY	1		1	1																			
DELTA	1	1	2												7	4	5	10	9	2			
DENVER										5	3	3		3				19	25	24			
DOLORES	2		4	1	2	1										1	1	1	6	10	12	21	
ELBERT	9	12	8	5	3		2	13	16	11	1		2						4			1	
EL PASO																						2	
FREMONT	9	5	6	7	1	2	2	1	2	1								1	3	2	4	14	13
GARFIELD	19	66	111	36	18	56	143	78	109	141	95	130	213	353	362	567	796	1509	1845	2550	2888	1981	272
GRAND							1																
GUNNISON			2	2		1									5	10	1	9	19	7	10	12	
HUERFANO	3	5	4	4	17	3	3	2	1	3	40	26	41	27	27		8	2			7		
JACKSON	3	1	4	6	2	2	3	2	2	6	3		34	18	21	9	14	6	8	5	27	19	
JEFFERSON	1		4	2		1		1	1	1	2	1							1	3	2		
KIOWA	15	39	40	46	28	28	21	26	13	17	10	2	11	18	2	4	2	1	11	9	26	7	4
KIT CARSON	9	5	7	8	8	15	26	11	7	6	9	5				1	3	5	4	13	7		
LA PLATA	302	218	388	128	120	40	40	20	71	40	82	107	127	156	104	162	102	115	235	251	328	298	30
LARIMER	4	4	3	6	13	7	3		1	3	1		2		1			1		5	46	12	
LAS ANIMAS	10	30	36		9	32	95	134	136	195	195	268	400	259	180	332	413	500	362	303	88	18	
LINCOLN	8	6	4	7	7	11	8	9	3	2		2	2	1	6	3	4	1	2	58	44	1	
LOGAN	18	21	23	13	14	30	15	13	6	12	7		4	7	3	3	6	13	17	14	5	9	5
MESA	1	12	29	20	22	2	22	6	11	10	2	6	13	27	30	27	54	136	265	293	501	427	3
MOFFAT	13	25	27	19	40	52	43	40	41	28	21	15	35	52	62	63	63	60	120	68	57	51	
MONTEZUMA	6	7	10	8	7	11	15	9	13	5	4	1	4		5	8	8	11	5	12	22	39	1
MONTEZUMA				1						1			1	3	2	4	2		1	3	3		
MORGAN	34	27	36	13	10	11	19	12	10	11	10	12	9	9	2	7	9	7	3	6	2	1	
OTERO				2																			
PARK				1								1										3	
PHILLIPS			3		1	1							1	2		7	13	17	12	69	82	45	19
PITKIN		1			2												1		1				
PROWERS	19	9	5	10	14	7	3	5	5	3	9	3	2	5	4		7	5	7	5	8	1	
RIO BLANCO	34	83	77	33	81	83	126	81	33	40	51	95	89	187	105	179	154	161	360	321	477	348	37
RIO GRANDE	2	3	4	1			1						1	1		1					1	1	
ROUTT	4	3	12	4	2	3	1	2	1	1	1	4	20	13	1		4	6	9	8	4	2	
SAGUACHE	1							2					2		2					2	1	2	
SAN MIGUEL			2	2					1	1	4	2	11	13	27	18	42	45	35	23	20	13	1
SEDGWICK				1				3		2						1	5	2	7	2	1	19	
WASHINGTON	40	29	23	28	24	26	25	12	19	26	18	3	23	17	27	34	128	50	69	45	11	1	
WELD	424	357	366	656	1224	1319	1030	254	305	285	392	288	509	702	760	757	832	901	1418	1527	2340	1448	242
YUMA	14	20	45	60	104	53	167	168	123	116	111	60	31	205	160	138	237	782	797	541	545	105	44
Total	1275	1186	1477	1320	2001	2065	2008	1002	1002	1002	1157	1010	1529	2273	2008	2249	2917	4364	5904	6368	8027	5159	704

ALL COUNTIES





Form 2A Breakdown by County

Yr	County	Form2As	Completed	In Process	Inform-ational	Approval	New Location	CDP	SWH	RSO	CDPHE
2009	ADAMS	7	7	0	4	0	3	0	0	0	0
2009	ARAPAHOE	9	9	0	9	0	8	0	0	0	0
2009	ARCHULETA	4	4	0	3	1	4	0	1	0	0
2009	BACA	2	2	0	0	0	2	0	0	1	0
2009	BOULDER	6	6	0	5	0	2	0	0	0	0
2009	BROOMFIELD	14	14	0	14	0	4	0	0	0	0
2009	CHEYENNE	5	5	0	4	0	6	0	0	0	0
2009	ELBERT	1	1	0	1	0	1	0	0	0	0
2009	GARFIELD	42	40	2	0	27	27	0	37	3	1
2009	GUNNISON	2	2	0	0	2	1	2	2	0	0
2009	KIOWA	6	6	0	6	0	5	0	0	0	0
2009	LA PLATA	7	7	0	4	3	5	0	4	0	0
2009	LAS ANIMAS	41	41	0	28	0	13	0	0	0	1
2009	LINCOLN	24	24	0	21	3	18	0	0	0	0
2009	LOGAN	7	7	0	4	0	2	0	0	0	0
2009	MESA	4	4	0	0	2	3	0	2	0	0
2009	MOFFAT	5	3	2	0	3	4	0	5	1	0
2009	MONTEZUMA	1	1	0	0	0	0	0	1	0	0
2009	PHILLIPS	48	48	0	43	0	13	0	0	0	0
2009	RIO BLANCO	9	8	1	0	4	6	0	7	0	0
2009	SAN MIGUEL	1	1	0	1	0	0	0	1	0	0
2009	WASHINGTON	1	1	0	1	0	1	0	0	0	0
2009	WELD	460	455	5	373	11	221	0	7	0	1
2009	YUMA	47	43	4	34	0	21	0	0	0	1
2010	ADAMS	3	3	0	3	0	1	0	0	0	0
2010	BOULDER	3	1	2	1	0	0	0	1	0	0
2010	BROOMFIELD	5	1	4	1	0	0	0	0	0	0
2010	DELTA	3	0	3	0	0	2	0	0	0	0
2010	DOLORES	1	0	1	0	0	0	0	1	0	0
2010	FREMONT	4	0	4	0	0	4	0	0	0	0
2010	GARFIELD	27	1	26	1	4	10	0	24	0	0
2010	KIOWA	3	2	1	3	0	2	0	0	0	0
2010	LA PLATA	2	0	2	0	0	0	0	2	0	0
2010	LAS ANIMAS	15	2	13	10	1	9	0	0	0	0
2010	LINCOLN	6	6	0	4	0	6	0	0	0	0
2010	LOGAN	5	0	5	4	0	2	0	0	0	0
2010	MESA	12	0	12	0	0	6	0	9	0	0
2010	MOFFAT	8	0	8	0	1	7	0	4	0	0
2010	MONTEZUMA	2	0	2	1	0	0	0	2	0	0
2010	MONTROSE	1	0	1	0	0	0	0	1	0	0
2010	PHILLIPS	7	0	7	4	0	2	0	0	0	1
2010	RIO BLANCO	5	1	4	0	0	3	0	3	0	0
2010	WELD	170	56	112	94	4	112	0	3	2	6
2010	YUMA	57	23	34	53	0	47	0	0	0	0





## Building Setback Review

Colorado Oil and Gas Conservation Commission  
February 16, 2010

Location Proximity to Buildings	Number of Locations	Percent of Total Locations Reviewed
less 150	4	0%
150 to 350	46	6%
350 to 500	58	7%
500 to 1000	160	19%
greater than 1000	567	68%
Total Locations	835	

### Listing of Locations Closest to Buildings

County	High Density	New Location	Distance	Proximity	Building Description
WELD	No	No	58	less 150	Vehicle Garage
WELD	Yes	No	103	less 150	Building to be razed
LAS ANIMAS	No	Yes	127	less 150	Operator is owner
PHILLIPS	No	No	132	less 150	Grain Storage
WELD	No	No	154	150 to 350	Livestock Enclosure
WELD	No	Yes	162	150 to 350	Permits Pending
WELD	Yes	No	168	150 to 350	Storage Shed
WELD	No	No	193	150 to 350	Storage Shed
WELD	No	No	199	150 to 350	Less than 1.5X rig Height
WELD	No	No	209	150 to 350	
WELD	No	No	214	150 to 350	
LA PLATA	No	No	221	150 to 350	
WELD	No	No	224	150 to 350	
WELD	No	Yes	226	150 to 350	
WELD	No	Yes	230	150 to 350	
WELD	No	No	235	150 to 350	
WELD	No	Yes	244	150 to 350	
LA PLATA	No	No	245	150 to 350	
PHILLIPS	No	No	250	150 to 350	
WELD	No	No	260	150 to 350	
ADAMS	No	No	261	150 to 350	
WELD	No	No	264	150 to 350	
ADAMS	No	Yes	265	150 to 350	
WELD	No	No	265	150 to 350	
WELD	No	Yes	267	150 to 350	
WELD	No	Yes	277	150 to 350	
WELD	No	Yes	277	150 to 350	
WELD	No	No	281	150 to 350	
WELD	No	No	282	150 to 350	
ADAMS	No	No	292	150 to 350	



Colorado Oil Gas Conservation Commission  
Monthly Statistics

YEAR	MO	Baker - Hughes rig count	Permits										Well		Public Visits					
			Drilling		Recompletion		Injection		Pits		Locations		Spud	Active	Data	Office	Internet			
2007	Total		Apvd	Rcvd	Apvd	Rcvd	Apvd	Rcvd	Apvd	Rcvd	Apvd	Rcvd	Authz	Rcvd	Notice	Wells		382	969	1275131
	JAN	100	6375	675	17	20	0	4	5	13						34173		16	99	87783
	FEB	115	514	591	18	14	5	8	4	22						34341		27	106	80083
	MAR	118	601	734	16	13	3	7	11	3						34695		21	91	132081
	APR	123	607	784	33	4	12	12	16	12						35058		18	84	141191
	MAY	119	587	688	20	47	6	11	2	3						35390		16	98	123537
	JUN	108	803	730	27	20	6	2	8	52						35686		12	102	79732
	JUL	109	774	759	12	28	4	6	4	13						35978		12	82	75564
	AUG	116	639	693	37	54	2	2	96	46						36271		23	122	70750
	SEP	115	709	682	55	21	4	1	147	11						36516		21	143	67034
	OCT	116	838	729	18	16	5	3	38	211						36731		22	96	69574
	NOV	123	558	608	7	23	4	5	3	37						36987		17	161	60773
	DEC	104	791	727	27	31	3	5	19	31						37359		8	107	62871
2008	Total		8029	8400	287	291	54	66	353	454							213	1291	1050973	
	JAN	87	540	519	29	16	4	5	20	18						37567		12	94	66135
	FEB	68	678	411	10	21	1	1	30	14						37785		21	81	62220
	MAR	59	483	1476	19	21	3	19	2	29						38105		21	70	68742
	APR	52	465	40	6	16	4	6	8	15	0	0				38885		0	0	66271
	MAY	45	306	54	2	9	7	4	0	3	0	28				39231		22	114	71092
	JUN	44	377	219	13	10	2	7	5	8	0	39			0	39944		6	142	67461
	JUL	44	487	122	34	19	11	10	0	12	7	72			120	40184		13	95	87216
	AUG	44	223	157	3	47	3	4	10	1	38	60			119	40338		17	99	111016
	SEP	45	277	231	26	18	3	1	1	2	82	76			152	40469		13	97	95490
	OCT	38	288	369	76	42	7	5	0	7	58	126			135	40643		10	90	0
	NOV	38	382	427	38	83	6	3	51	32	191	146			128	40854		13	121	0
	DEC	40	653	540	78	42	4	3	115	37	195	218			137	40956		13	68	0
2009	Total		5159	4565	334	344	55	68	242	178	571	765			791		161	1071	695643	
	JAN	45	462	460	31	9	1	4	48	8	571	765			166	41207		26	85	0
2010			462	460	31	9	1	4	48	8	571	765			166			26	85	0



Colorado Oil Gas Conservation Commission  
Monthly Statistics

Page 2 of 2

YEAR	MO	Well Oper Change	Operators		Release		Bonds		Claim		Hearings		Violations		Cmplt	Spills	Remediation Projects		Field Insp	
			New	Inactive	Ind.	Bknt	Replace	Ind.	Bknt	Apps.	Order	NOAV	AOC	OFV			Rcvd	Comp		
2007	Total	11700	146	35	57	41	137	3	1	89	86	542	9	0	359	331	220	85	10120	
	JAN	688	16	7	8	6	15	0	0	7	7	6	29	1	0	12	90	25	6	625
	FEB	555	10	5	6	4	11	0	0	5	5	5	42	1	0	31	40	28	14	772
	MAR	627	10	5	4	7	16	0	0	12	6	37	0	0	17	26	11	8	1002	
	APR	582	11	5	8	7	11	0	0	NA	NA	37	NA	NA	31	29	28	13	798	
	MAY	720	11	3	2	3	7	0	0	11	11	13	1	0	15	24	23	22	688	
	JUN	656	20	2	2	5	8	0	0	17	11	32	10	0	19	23	16	12	732	
	JUL	867	22	5	3	5	8	0	0	11	15	34	0	0	25	26	22	2	775	
	AUG	684	13	2	5	4	6	0	0	6	3	24	1	0	22	33	44	2	677	
	SEP	606	15	4	6	7	8	0	0	29	25	9	0	2	14	30	28	10	1001	
	OCT	585	11	2	6	4	8	0	0	5	3	25	0	0	7	34	9	2	879	
	NOV	447	5	3	0	5	6	0	0	NA	NA	10	NA	NA	8	31	12	8	722	
	DEC	2003	9	1	0	2	3	0	0	6	7	16	2	0	21	44	13	14	783	
2008	Total	9020	153	44	50	59	107	0	0	109	92	308	16	2	222	430	259	113	9454	
	JAN	221	11	4	6	3	7	1	0	7	6	15	8	0	9	35	9	1	884	
	FEB	646	6	2	6	1	10	0	0	4	7	21	0	0	15	25	7	16	1183	
	MAR	891	10	2	2	2	8	0	0	10	8	32	0	0	43	35	36	5	794	
	APR	1110	5	2	5	2	4	0	0	NA	NA	21	NA	NA	31	34	30	3	944	
	MAY	113	9	6	3	6	7	0	0	6	2	25	0	0	15	27	7	4	816	
	JUN	171	5	2	3	3	6	0	0	9	8	26	0	1	10	23	19	18	1092	
	JUL	262	8	7	3	5	9	0	0	5	4	9	1	0	12	23	26	8	783	
	AUG	184	5	0	2	3	4	0	0	10	9	25	0	0	14	10	20	6	739	
	SEP	315	7	10	7	5	12	0	0	6	5	22	0	0	20	21	8	17	766	
	OCT	497	5	9	10	12	7	0	0	13	4	16	0	0	24	34	13	14	564	
	NOV	527	6	4	2	7	18	0	0	6	9	27	0	0	3	54	21	16	623	
	DEC	332	3	2	5	4	4	0	0	NA	NA	21	NA	NA	6	50	12	25	531	
2009	Total	5269	80	50	54	53	96	1	0	76	62	260	9	1	202	371	208	133	9719	
	JAN	35	4	6	1	7	10	0	0	16	14	30	0	0	9	36	20	13	828	
2010		35	4	6	1	7	10	0	0	16	14	30	0	0	9	36	20	13	828	

Apvd = Approved, Rcvd = Received, Ind = Individual, Bknt = Blanket, Apps = Application for Hearing, NOAV = Notice of Alleged Violation, AOC = Administrative Order of Consent, OFV = Order Finding Violation, Complt = Complaint, Comp = Completed



## STATE OF COLORADO

## Colorado Department of Agriculture

[www.ag.state.co.us](http://www.ag.state.co.us)

700 Kipling Street, Suite 4000  
Lakewood, CO 80215-8000  
(303) 239-4100  
(303) 239-4125 FAX

**Plant Industry Division**  
(303) 239-4140  
(303) 239-4177 FAX



Bill Ritter, Governor  
John R. Stulp, Commissioner  
James C. Miller, Deputy Commissioner

December 11, 2009

Open Letter To Oil And Gas Companies Operating In Colorado

RE: Pesticide Applications

Recently it has come to the Colorado Department of Agriculture's attention that there may be oil and gas companies operating in Colorado that are unaware of the licensure and recordkeeping requirements when hiring a company to perform pesticide applications or making applications themselves (weed control, etc) to their oil and gas sites. CDA recently contacted Debbie Baldwin, COGCC Environmental Manager, regarding pesticide applications performed in and around oil and gas sites in Colorado. As a result of this exchange of information CDA suggested that our Department provide other COGCC employees and companies such as yours with information pertaining to these requirements.

The Colorado Pesticide Applicators' Act provides the Colorado Department of Agriculture the authority to regulate ALL pesticide use in Colorado this includes the application of both General Use Pesticides and Restricted Use Pesticides at any application site.

As a result of this authority, CDA is responsible for licensing individuals and companies to perform pesticide applications. I have included some definitions relevant to pesticides and pesticide applicators

Definitions:

- **Pesticide:** Any substance used to kill, control or mitigate a pest such as weeds, insects, etc. The word "pesticide" is a general term that includes things like herbicides (kills plants), insecticides (kills insects) and even microbiocides (kills microbes).
- **General Use Pesticide (GUP):** any pesticide (herbicide, insecticide etc.) that does not require an applicator's license to purchase / use.





- **Restricted Use Pesticide (RUP):** any pesticide that requires a license to purchase / use. RUP's can only be sold and used by someone who is licensed by the Colorado Department of Agriculture (CDA). Anyone applying a Restricted Use Pesticide without the appropriate applicator's license is doing so in violation of Federal and state pesticide laws and is subject to enforcement action.
- **Commercial Pesticide Applicator:** any business (corporation or sole proprietor) that applies pesticides for hire. A Commercial Pesticide Applicators' license issued by CDA is required to perform any pesticide application for hire.
- **Limited Commercial Applicator:** any business that applies pesticides ONLY to property that the company owns, leases or has some other type of control over.

Now that I have presented you with this information, I will also attempt to provide you with various options when making decisions pertaining to pesticide applications. These options are as follows:

- Hire a licensed Commercial Applicator to apply pesticides:
  - If a licensed Commercial Applicator is hired to apply pesticides then no additional action is required of the oil / gas company.
- Have oil / gas company employees to apply pesticides
  - If GUP's are used then a Limited Commercial Applicators' license is not required and pesticide applications are performed according to label directions
  - If RUP's are used:
    - A Limited Commercial Applicators' license is required
    - The oil / gas company must employ at least one person that has obtained a Qualified Supervisors' Pesticide Applicators' license in the appropriate category
    - Perform pesticide applications according to label directions
    - The oil / gas company must keep records of every pesticide application.
    - The oil / gas company must comply with all provisions of the Colorado Pesticide Applicators' Act and the Associated Rules and Regulations.

Please contact me to discuss particular situations pertaining to individual pesticide application / licensing issues on a one on one basis any time.

CDA would like to address issues regarding pesticide application complaint investigations at this time. I have included a brief description of CDA's Complaint Investigation process as well.

As a result of CDA's authority to license pesticide applicators and the use of pesticides, CDA also has the responsibility to investigate all pesticide use complaints including pesticide applications made by Commercial Pesticide Applicators, Limited Commercial Pesticide Applicators, Public Pesticide Applicators, licensed Private Pesticide Applicators and even pesticide applications made by homeowners.



If you believe that a pesticide has been mis-applied or mis-used, please contact CDA's Pesticide Enforcement Specialist at 303-239-4141 or 303-239-4151. CDA's Pesticide Enforcement Specialists will explain the complaint process in detail with you.

Generally, the Pesticide Enforcement Specialist will ask for as much information that may be available in order to determine the possibility that a violation of the Colorado Pesticide Applicators' Act (PAA) has occurred.

For example, some of the information needed to start a pesticide application complaint investigation would be:

- The name, phone number address, etc. of someone with firsthand knowledge of the alleged violation
- The specific allegation, such as: drift or run off of pesticides from the sprayed site, human endangerment, etc
- Who made the application
- The location where the incident occurred
- The date / time of the alleged violation
- If possible the pesticide used

After reviewing the basic information that has been provided, the Pesticide Enforcement Specialist will determine if violations of the Pesticide Applicators Act may have occurred.

An investigator will be assigned to investigate the complaint according to CDA procedures. The investigator will contact the complainant, the applicator and any other witnesses to the incident. Depending on the type of pesticide complaint the investigator may also obtain pesticide residue samples for analysis.

Once the field investigation has been completed, a Pesticide Enforcement Specialist will review or compile the complaint to determine if violation(s) of the PAA have occurred.

If the available evidence does not support the alleged violation(s) then the complaint will be dismissed for lack of supporting evidence.

If the available evidence indicates that a violation has occurred, the applicator is notified of the alleged violation(s) and is given an opportunity to respond to the charges and to also request a hearing.

If the applicator is willing to resolve the complaint investigation with CDA without a hearing, a stipulation listing the violations and other possible terms of the stipulation, such as the applicator paying a civil fine is signed by the applicator and CDA and the complaint is then resolved.

The complainant will be notified of the complaint resolution, either by dismissal for lack of supporting evidence or through stipulation.



Please feel free to contact me at 303-239-4178 or by e-mail at [steve.blunt@ag.state.co.us](mailto:steve.blunt@ag.state.co.us) if you have any questions regarding this letter.

Sincerely,

Steven D. Blunt  
CDA Pesticide Applicator Program Coordinator

**NORTHWEST COLORADO NOTIFICATION POLICY****EFFECTIVE FOR NOTICES RECEIVED ON OR AFTER JANUARY 1, 2010**

**Revised January 21, 2010 (Shaun Kellerby added as a point-of-contact to Chuck Browning and Mike Longworth notification areas for Notices of Intent and Subsequent Reports. Other minor format and editorial changes.)**

**NOTICES OF INTENT**

**Notices of Intent to: 1) construct a well pad, 2) spud a conductor, 3) spud surface casing, 4) run and cement casing (all casing strings), 5) perform a formation integrity test (East Mamm Creek Area), and 6) perform a BOP test.**

Email these notices to the appropriate field inspector, based on their geographic area of responsibility. A copy to [David.Andrews@state.co.us](mailto:David.Andrews@state.co.us) is not necessary, unless you require COGCC approval for a change of procedure. Currently, COGCC's northwest area field inspectors are responsible for the following geographic areas:

- Shaun Kellerby ([Shaun.Kellerby@state.co.us](mailto:Shaun.Kellerby@state.co.us)) – Eagle, Grand, Jackson, Moffat, Routt, and Summit Counties
- Chuck Browning ([Chuck.Browning@state.co.us](mailto:Chuck.Browning@state.co.us)) and Shaun Kellerby ([Shaun.Kellerby@state.co.us](mailto:Shaun.Kellerby@state.co.us)) – Chaffee, Delta, Gunnison, Lake, Mesa, Montrose (north of the 48N/49N township line, and Pitkin Counties)
- Mike Longworth ([Mike.Longworth@state.co.us](mailto:Mike.Longworth@state.co.us)) and Shaun Kellerby ([Shaun.Kellerby@state.co.us](mailto:Shaun.Kellerby@state.co.us)) – Garfield and Rio Blanco Counties

Shaun Kellerby is COGCC's Northwest Field Inspection Supervisor, and he should be copied on the notices of intent shown above for all northwest Colorado counties. A current map showing areas of responsibility is provided at the bottom of this policy or as a separate attachment. Periodically, field inspectors and their areas of responsibility may change. An up-to-date map is maintained on COGCC's website at <http://www.colorado.gov/cogcc>. Click CONTACTS on the left-hand side of the web page. Then click MAP OF STAFF AREAS OF RESPONSIBILITY.

**SUBSEQUENT REPORTS**

**Subsequent Reports of: 1) cement jobs, 2) annular fluid loss (Mamm Creek Field), 3) lost circulation, 4) gas kicks or loss of well control, 5) water flows, and 6) accidents.**

Email these subsequent reports to [David.Andrews@state.co.us](mailto:David.Andrews@state.co.us). In addition, copy the appropriate field inspector and [Shaun.Kellerby@state.co.us](mailto:Shaun.Kellerby@state.co.us) on subsequent reports of cement jobs and lost circulation.





## OTHER DOWNHOLE OPERATIONS

**Other Downhole Operations, including: 1) verbal approval to sidetrack, 2) dry hole plugging orders, 3) any significant downhole problem, 4) high bradenhead pressures during stimulation, 5) casing repairs, 6) gas venting, and 7) hydrogen sulfide detection.**

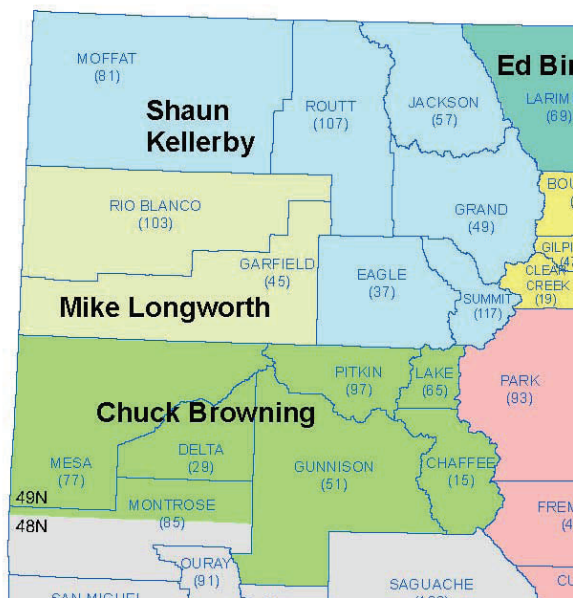
Email requests and notices to [David.Andrews@state.co.us](mailto:David.Andrews@state.co.us) and/or call David Andrews' office or cell phone numbers shown below.

## QUESTIONS

Please direct any questions regarding these new notification procedures to:

**David D. Andrews, P.E., P.G.**  
Engineering Supervisor - Western Colorado

**State of Colorado**  
**Oil and Gas Conservation Commission**  
707 Wapiti Court, Suite 204  
Rifle, Colorado 81650  
Office Phone: (970) 625-2497 Ext. 1  
Cell Phone: (970) 456-5262  
Fax: (970) 625-5682  
E-mail: [David.Andrews@state.co.us](mailto:David.Andrews@state.co.us)  
Website: <http://www.colorado.gov/cogcc>





# HEARING DOCKET: March 2010

Docket Number	Cause Number	Applicant/Attorney or Representative	Application Received	Field Formation County	Matter	Remarks
02/25/2010						
0809-GA-01	1	Colorado Board of Parks and Outdoor Recreation/ Timothy J. Monahan	12/05/2007	Adams	Request for an order to designate Barr Lake State Park as a Designated Outside Activity Area.	Protests filed by James Alexander, Alexander Energy Company, HRM Resources, Texas American Resources Company and Sovereign Energy LLC., Noble Energy, Inc., and Anadarko Petroleum Corporation  Continued from July 2009 hearing
1001-GA-01	191	Antero Resources Piceance Corporation/ William A. Keefe	11/12/2009	Mamm Creek Williams Fork/les Garfield	The Commission will hold a hearing to consider whether to vacate, modify, or affirm Order No. 191-58, issued December 9, 2008.	Protest filed by James R. and Colleen Carnahan.  Continued from January and February hearings
1002-SP-07	191	Antero Resources Piceance Corporation/ William A. Keefe	12/23/2009	Mamm Creek Williams Fork/les Garfield	Request for an order to establish three approximate 320-acre drilling and spacing units consisting of the W½ and the E½ of Section 11, and the W½ of Section 12, Township 6 South, Range 92 West, 6th P.M., and that such order allow one well per 10 acres for said unit.	Continued from February hearing
1003-AW-02	421	EOG Resources, Inc./ Michael J. Wozniak/Jamie L. Jost	02/03/2010	Hereford Niobrara Weld	Request for an order to approve of an additional horizontal well, for a total of up to two wells, for the established approximate 640-acre drilling and spacing unit for Section 36, Township 12 North, Range 63 West, 6th P.M.	





1003-GA-03	1	Gas Development Corporation Phillip D. Barber	10/30/2009	Unnamed Paradox Montezuma	Request for an order to designate Gas Development Corporation as the operator for the Mary Akin No. 2 Well located in the SE¼ SW¼ of Section 27, Township 38 North Range 14 West 6th N.M.P.M.	
1003-GA-04	1	Corsentino Dairy Farms, Inc./ John D. Faught	01/29/2010	Huerfano	Request for an order to grant funds from the Conservation and Environmental Response Fund to mitigate the losses incurred on property located in certain lands in Section 31, Township 27 South, Range 65 West, 6th P.M., Sections 35 and 36 of Township 27 South, Range 66 West 6th P.M., Sections 1 and 2 of Township 28 South, Range 66 West, 6th P.M., as a result of Petroglyph's coal bed methane operations.	
1003-GA-05	1, 369, 399, 429	Delta Petroleum Corporation/ Kenneth A. Wonstolen	02/03/2010	Vega/Buzzard Creek Williams Fork/lles Mesa	Request for an order to limit the number of wellsites according to Rule 503, to no more than three per section for lands consisting of Sections 6 and 7, Township 9 South, Range 92 West, 6th P.M. and Sections 12, 28 and 29, Township 9 South, Range 93 West 6th P.M., and limit the number of wellsites to a single location for lands consisting of Section 1, Township 8.5 South, Range 93 West, 6th P.M., and pursuant to Rule 1202.d(5), limiting ground disturbing activity during certain periods of time for each of the above mentioned sections.	
1003-SP-10	252	Bayhorse Petroleum, LLC/ Andrew A. Bremner	02/03/2010	Left Hand Marmaton Kiowa	Request for an order to establish two approximately 80-acre drilling and spacing units consisting of the N½ SW¼ and S½ SW¼ of Section 21, Township 18 South, Range 47 West 6th P.M.	
1003-SP-11	252	Bayhorse Petroleum, LLC/ Andrew A. Bremner	02/03/2010	Left Hand Marmaton Kiowa	Request for an order to modify the well location rules, particularly setbacks, pertaining to the previously established ten approximately 80-acre drilling and spacing units under Order No. 252-6 for certain lands in Sections 27, 28 and 34, Township 18 South, Range 47 West 6th P.M.	



1003-UP-15	232 and 407	Petroleum Development Corporation/ William E. Sparks/Kenneth A. Wonstolen	02/03/2010	Wattenberg Codel/Niobrara/"J" Sand Weld	Request for an order to designate various 80 and 160-acre drilling and spacing units in certain lands in Sections 28 and 33, Township 5 North, Range 67 West, 6th P.M., and to pool all nonconsenting interests in such units.	
1003-UP-16	252	Bayhorse Petroleum, LLC/ Kenneth A. Wonstolen/Andrew A. Bremner	02/03/2010	Left Hand Marmaton Kiowa	Request for an order to pool all nonconsenting interests in the proposed two approximate 80-acre drilling and spacing units for the N½ SW¼ and the S½ SW¼ of Section 21, Township 18 South, Range 47 West, 6th P.M.	
1003-UP-17	404	Red Mesa Holdings/O&G, LLC/ Thomas P. Dugan	01/28/2010	Red Mesa Gallup/Dakota La Plata	Request for an order to establish an approximate 40-acre drilling and spacing unit for the NW¼ SW¼ of Section 34, Township 33 North, Range 12 West, N.M.P.M., and to pool a nonconsenting interest in said unit.	
1003-UP-18	404	Red Mesa Holdings/O&G, LLC/ Thomas P. Dugan	01/28/2010	Red Mesa Gallup/Dakota La Plata	Request for an order to establish an approximate 40-acre drilling and spacing unit for the SW¼ NW¼ of Section 34, Township 33 North, Range 12 West, N.M.P.M., and to pool a nonconsenting interest in said unit.	
1003-UP-19	404	Red Mesa Holdings/O&G, LLC/ Thomas P. Dugan	01/28/2010	Red Mesa Gallup/Dakota La Plata	Request for an order to establish an approximate 40-acre drilling and spacing unit for the SE¼ NW¼ of Section 34, Township 33 North, Range 12 West, N.M.P.M., and to pool a nonconsenting interest in said unit.	
1003-UP-20	404	Red Mesa Holdings/O&G, LLC/ Thomas P. Dugan	01/28/2010	Red Mesa Gallup/Dakota La Plata	Request for an order to establish an approximate 40-acre drilling and spacing unit for the NW¼ SE¼ of Section 34, Township 33 North, Range 12 West, N.M.P.M., and to pool a nonconsenting interest in said unit.	