

# **2015 Biennial Report on Direct Distributions**

Local Government Energy and  
Mineral Impact Assistance Program

January 1, 2016



**COLORADO**  
Department of Local Affairs



**COLORADO**  
Department of Local Affairs  
Office of the Executive Director

January 1, 2016

Colorado General Assembly  
Colorado State Capitol  
200 East Colfax Avenue  
Denver, CO 80203

Dear Members of the General Assembly:

The Colorado Department of Local Affairs in partnership with the Energy and Mineral Impact Assistance Advisory Committee annually distributes revenue derived from energy and mineral extraction statewide. These revenues come from State Severance Tax receipts and Federal Mineral Lease non-bonus payments.

Senate Bill 2008-218 and House Bill 08-1083 authorized the current method and formula to determine the direct distribution of energy impact dollars from the severance tax, as well as federal mineral leases. The legislation also established this Biennial Report to the General Assembly on the Direct Distribution.

The following factors are considered in the formulaic distribution: permits, production, employee residence, as well as, for subcounty distribution, population and highway user miles (HUTF). The 2014 distributions came to a total of \$37,037,154 for Severance Tax and \$41,542,510 for Federal Mineral Lease Revenue. Note that SB14-106 provided a supplemental Federal Mineral Lease Revenue distribution. With fewer ad valorem tax credits taken, increased oil production and higher natural gas prices during the beginning of the fiscal year, the Severance Tax going to local communities in 2015 was \$42,047,431.62. The total for the Federal Mineral Lease Revenue Direct Distribution to counties, federal mineral lease districts, municipalities and school districts in 2015 was \$31,237,223.88. Lower oil and gas prices contributed to the decline in the Federal Mineral Lease distribution amount from 2014 to 2015.

The dollars distributed through this program are vital to helping communities provide services to Colorado citizens and we are committed to our role in managing this critically important source of funding.

Sincerely,

Irv Halter

Executive Director



## Contents

Executive Summary.....	1
Background .....	1
Severance Tax Direct Distribution.....	2
Federal Mineral Lease Receipts Direct Distribution .....	5
Evaluation of Effectiveness .....	8
Program Changes .....	8
Exhibit A: How Severance Tax in Colorado is Allocated.....	10
Exhibit B: Illustration of 2014 and 2015 Direct Distribution Formulas .....	11
Exhibit C: How Federal Mineral Lease Revenue to Colorado is Allocated .....	12
Exhibit D: 2014 and 2015 Severance Tax Direct Distributions.....	13
Exhibit E: 2014 and 2015 Federal Mineral Lease Direct Distributions.....	30
Exhibit F: 2014 & 2015 Federal Mineral Lease School District Distributions.....	55
Exhibit G: Rank of Direct Distribution Factors and Total Distributions By Planning and Management Region .....	63

## **Executive Summary**

This biennial report evaluates the effectiveness of the allocation and distribution of moneys from the Local Government Severance Tax Fund to counties and municipalities impacted by mineral and mineral fuel development. The report is submitted to the General Assembly pursuant to C.R.S. 39-29-110(1)(c)(VI). The report also evaluates the direct distribution of federal mineral lease (FML) moneys from the Local Government Impact Fund.

The statutory Severance Tax and Federal Mineral Lease direct distribution formulas help provide an equitable system for allocating money to communities socially or economically impacted by energy and mineral development, processing or energy conversion of minerals and mineral fuels. The combination of various measures of impact and their respective weightings help distribute Severance Tax and Federal Mineral Lease revenue to the communities experiencing various types of industry impacts. As illustrated by the maps of the factors and the distributions detailed in this report, communities in significantly impacted areas are receiving the greatest proportion of the distribution. The Department does not recommend legislative changes to the Direct Distributions at this time.

## **Background**

### **Severance Tax Direct Distribution**

The formulaic distribution of State Severance Tax considers several impact measure factors, including employee resident count, mining and well permits, mineral production, population, and road miles. The moneys are first allocated by factor into “county pools” and these pools are then distributed to the municipalities and the county government within each county. For an illustration of how state severance tax revenue is allocated, please see [Exhibit A](#). For an illustration of the severance tax direct distribution formula, see [Exhibit B](#).

### **Federal Mineral Lease Receipts Direct Distribution**

The Department administers two direct distributions of Federal Mineral Lease (FML) revenue: one distribution to counties (or Federal Mineral Lease districts where created by a county) and municipalities, and one distribution to school districts. Revenue generated under the Federal Mineral Leasing Act within each county, employee resident count, population, road miles and pupil count determine the distribution to counties, municipalities, school districts and Federal Mineral Lease districts. Like the Severance Tax Distribution, the moneys are first allocated into county pools and then distributed to the entities therein. For an illustration of the federal mineral lease direct distribution formula, see [Exhibit B](#). For a description of how federal mineral lease receipts are allocated through the state, see [Exhibit C](#).

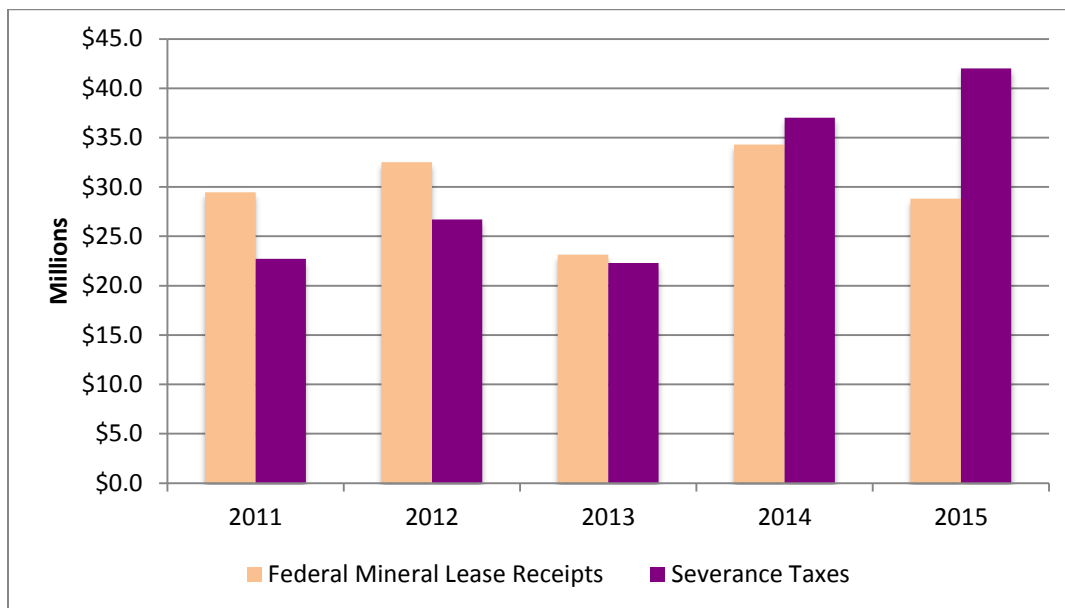
### **Distribution Trends**

Total distribution amounts in 2014 and 2015 were greater than in recent years. Higher natural gas prices at the end of FY13-14 and beginning of FY14-15, high oil prices through FY13-14 and increased oil

production, contributed to the highest Severance Tax distribution amounts since FY09. Substantially lower prices for both oil and natural gas and claimed ad valorem tax credits based on considerably higher prices are expected to result in a much lower Severance Tax direct distribution for 2016.

The distribution amounts of Federal Mineral Lease revenue are from rents and royalties paid on leased federal lands. While generally less volatile than Severance Tax revenue, the distribution amount is still influenced by commodity prices and production volumes.

**Total Direct Distribution to Counties and Municipalities**



## Severance Tax Direct Distribution

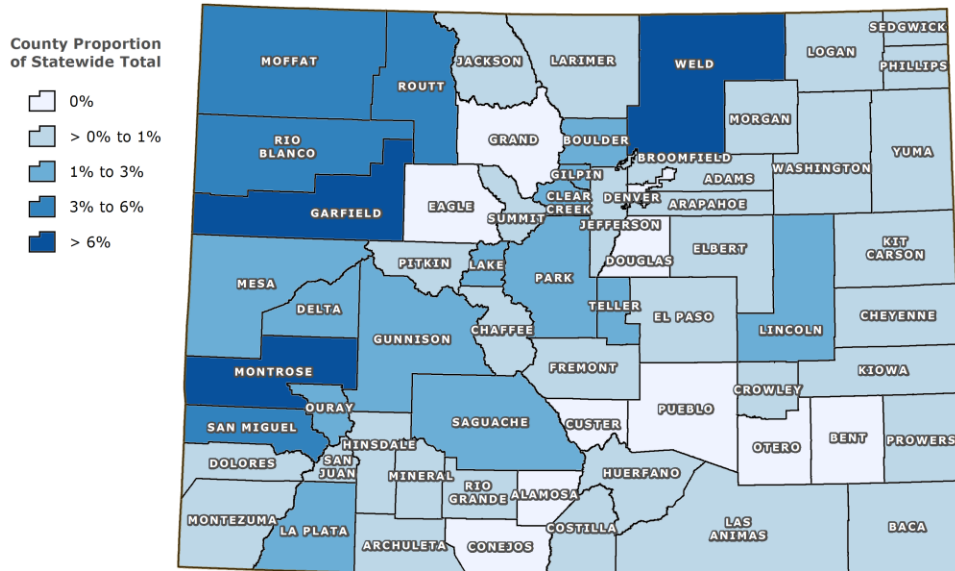
Thirty percent of the Severance Tax revenue credited to the Local Government Severance Tax Fund from July 1, 2013 to June 30, 2014 resulted in the total distribution of \$37,037,154 to 333 counties and municipalities. For the 2015 state fiscal year, the Department distributed \$42,047,432 to 333 counties and municipalities. See [Exhibit D](#) for county pools and distribution amounts to counties and municipalities for 2014 and 2015.

Moneys were first allocated into county pools based on each county’s proportion of industry employee residence, mining and well permits, and mineral production compared to the totals statewide. CRS 39-29-110(1)(c)(II)(B) directs each factor to be weighed at 30% and the Executive Director, in consultation with the Energy Impact Assistance Advisory Committee, determines the assignment of the remaining 10%. The county pool factors were weighed in 2014 and 2015 as follows:

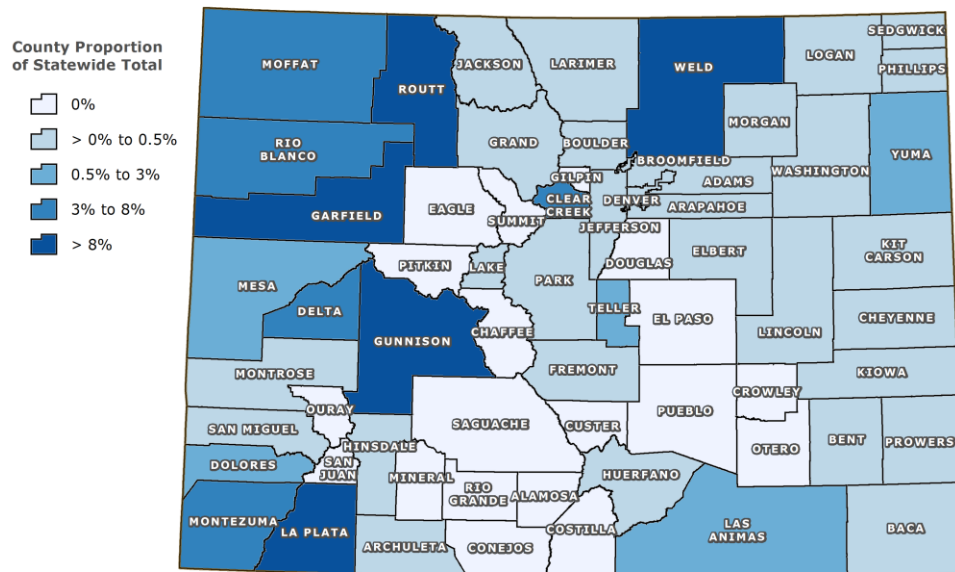
County Pool Factor	2014	2015
Colorado Employee Residence Reports	40%	40%
Mining and Well Permits	30%	30%
Mineral Production	30%	30%



## 2015 Severance Tax Direct Distribution Mining and Well Permits Index



## 2015 Severance Tax Direct Distribution Production Index



The Department distributed each county pool to the county government and each municipality therein based on the unincorporated and municipal proportions of resident industry employees, population, and road miles compared to the total in the county. Statute directs the Executive Director, in consultation with the Energy and Mineral Impact Advisory Committee, to set the weights of these factors statewide. The Executive Director set the factor weights as follows:

<b>Subcounty Pool Factor</b>	<b>2014</b>	<b>2015</b>
Colorado Employee Residence Reports	33%	33%
Population	34%	34%
Road Miles	33%	33%

Details on individual county and municipal proportions of each factor for the 2014 and 2015 distributions are available online [here](#). The [2015 Direct Distribution Guidelines](#) document has additional information about the Severance Tax distribution process and each factor.

The Executive Director may accept a memorandum of understanding (MOU) from the county and all municipalities therein requesting an alternative distribution and/or factor weights for distribution of a county pool. The Department did not receive any MOUs for the 2014 and 2015 distributions and the above weights determined all county pool allocations.

## **Federal Mineral Lease Receipts Direct Distribution**

### **County and Municipal Direct Distribution**

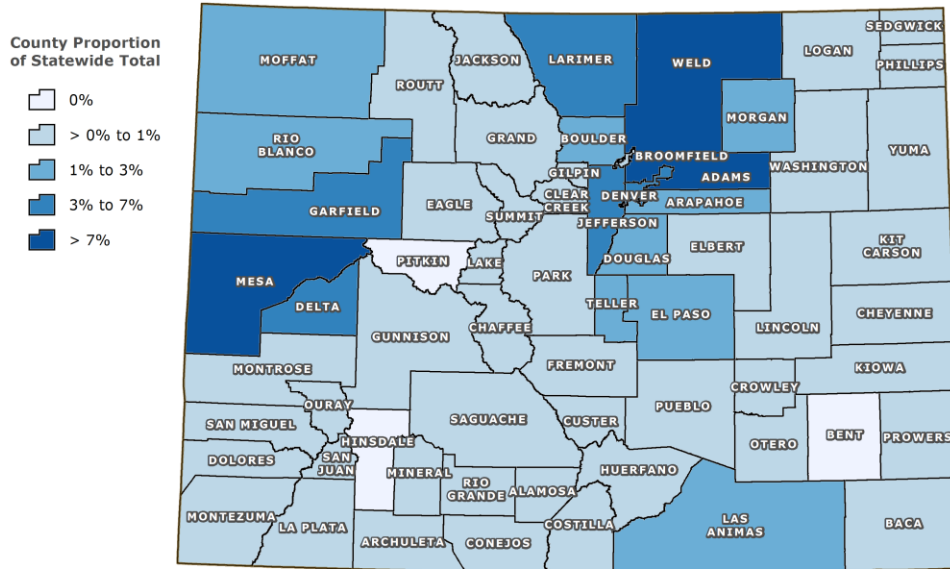
Fifty percent of the Federal Mineral Lease (FML) revenue credited to the Local Government Mineral Impact Fund during FY2014 resulted in the total distribution of \$34,321,141 to 331 counties (or federal mineral lease districts) and municipalities. For FY2015 the Department distributed \$28,790,068 to 331 entities. See [Exhibit E](#) for the 2014 and 2015 county pools and distribution amounts.

Moneys were first allocated into county pools based on each county’s proportion of employee residence and federal mineral lease revenue generated compared to the total generated statewide. CRS 34-63-102(5.4)(c)(III) specifies the Employee Residence Report factor cannot be weighted more than 35%. The county pool factors were established by the Executive Director, in consultation with the Energy and Mineral Impact Advisory Committee as follows:

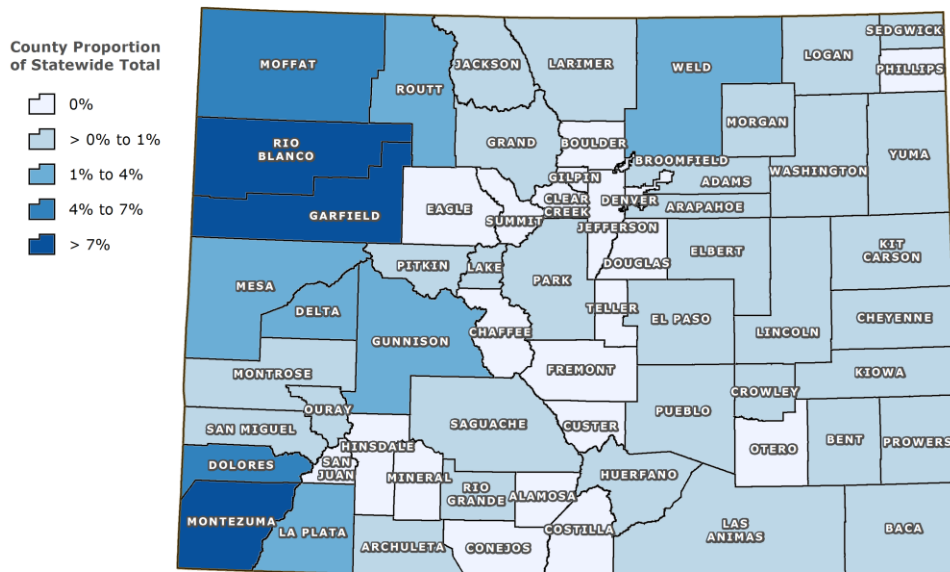
<b>County Pool Factor</b>	<b>2014</b>	<b>2015</b>
Colorado Employee Residence Reports	35%	35%
FML Revenue Generated	65%	65%



## 2015 Federal Mineral Lease Direct Distribution Colorado Employee Residence Report Index



## 2015 Federal Mineral Lease Revenue Generated by County



The Department distributes each county pool to the county government and each municipality therein based on the unincorporated and municipal proportion of resident employees, population, and road miles compared to the total in the county. Statute directs the Executive Director, in consultation with the Energy and Mineral Impact Advisory Committee, to establish weights of these factors statewide. The Executive Director set the factor weights as follows:

<b>Subcounty Pool Factor</b>	<b>2014</b>	<b>2015</b>
Colorado Employee Residence Reports	33%	33%
Population	34%	34%
Road Miles	33%	33%

Details on individual county and municipal proportions of each factor for the 2014 and 2015 distributions are available online [here](#). The [2015 Direct Distribution Guidelines](#) document contains additional information about the FML revenue distribution process and factors.

Like the Severance Tax distribution, the Executive Director may accept an MOU from the county and all municipalities therein requesting an alternative FML distribution and/or factor weights for the subcounty pool. The Department did not receive any MOUs for the 2014 or 2015 Federal Mineral Lease distributions.

### **Supplement Distribution**

During FY14, the General Assembly passed SB14-106 and appropriated \$4,304,072 from the Local Government Permanent Fund for a supplemental d FML distribution to counties, municipalities and Federal Mineral Lease districts. See [Exhibit E](#) for distribution amounts to each jurisdiction. SB14-106 also adjusted the existing statutory timeline by which the General Assembly may appropriate funds from the Local Government Permanent fund to “backfill” the county and municipal FML Direct Distribution in the event the December forecast by Legislative Council projects at least a 10% decline in annual revenue deposited into the Mineral Leasing Fund.

### **Federal Mineral Lease Districts**

Counties may choose to create a Federal Mineral Lease District for the purpose of re-directing FML payments in an effort to maximize the amount of PILT funding counties receive from the U.S. Department of Interior. HB11-1218 did not change the direct distribution formula, but enables a county government to instead have the payment otherwise calculated for the county government directed to its Federal Mineral Lease District.

In 2014 four counties had FML distributions directed to a Federal Mineral Lease District. For the 2015 Direct Distribution, five counties had FML distributions directed to a Federal Mineral Lease District. Payment details contained in [Exhibit E](#) include the payments to these districts. For additional information on federal mineral lease districts and federal PILT calculations, click [here](#).

2014 FML Districts	2015 FML Districts
Garfield	Garfield
Mesa	Huerfano
Park	Mesa
Weld	Park
	Weld

## School District Direct Distribution

The school district FML distribution occurs in similar fashion to the county/municipal distribution. Statute directs the Department to calculate county pools based on the same weights set by the Executive Director for the FML county/municipal distribution. Each county pool is then distributed based on the proportion of each school district’s pupil count to the total county pupil count. See [Exhibit B](#) for an illustration of the school district direct distribution.

The total distribution to school districts for 2014 was \$2,917,297 to 177 school districts. The Department distributed \$2,447,156 to 177 school districts in 2015. See [Exhibit F](#) for details on the 2014 and 2015 payments to school districts.

## Evaluation of Effectiveness

Since the 2013 Biennial Report oil and gas exploration and production activity has increased along the front range, especially in Weld County. [Exhibit G](#) reflects this and shows the rank of formula factors and total distributions since the last Biennial Report as grouped planning and management region. The table illustrates the combination of various measures of impacts and the shift in activity from the last Biennial Report is realized in annual Direct Distribution payments. Rankings for Regions 2 and 3 increased for Employee Residence Reports and mineral production. However, Region 11 remains prominently represented in the factors and resultant direct distributions. Most Federal Mineral Leasing activity continues to occur in Regions 9 and 11. Direct distribution factor information for individual counties is available on the DOLA website [here](#).

Both the severance tax and federal mineral lease statutory formulas allow for flexibility on a year-by-year basis for the continued pursuit of effective distribution. The Executive Director, in consultation with the Energy and Mineral Impact Advisory Committee, has authority to adjust the weights of the factors in the formula each year. The Department continually evaluates these factors and solicits feedback from the Advisory Committee, local government recipients and the Mineral Production Employee Residence Report Oversight Committee. The Executive Director did not change the factor weights for 2014 or 2015.

## Program Changes

The Department does not propose legislative changes to the Direct Distributions at this time. Since the 2013 Biennial Report the Department has made improvements to the Colorado Employee Resident

Report process and online reporting system. The General Assembly passed SB14-106 concerning the FML Direct Distribution to counties, municipalities and Federal Mineral Lease Districts.

### **Colorado Employee Residence Report Process**

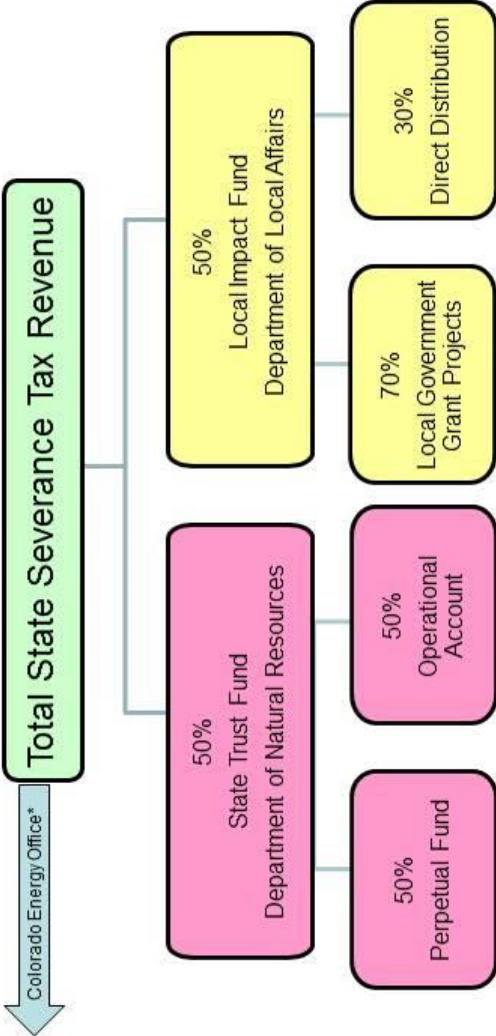
The Department created the Employee Residence Report Oversight Committee in 2006 to help make the process of employee residence reporting transparent to local governments and the mineral industry. The committee is chaired by the Executive Director and is comprised of local government, industry and Energy and Mineral Impact Advisory Committee representatives. The Oversight Committee continues to provide the Executive Director, Energy and Mineral Impact Assistance Advisory Committee and Department valuable feedback about the Employee Residence Reporting process.

During 2014 and 2015 in an effort to make the Employee Residence Reporting process easier for the industry and local governments, the Department made several changes to the [Colorado Employee Residence Report Online System](#). Evaluation of additional process improvements will continue in 2016 with stakeholder involvement.

### **SB14-106**

The FML Distribution statute provides for a backfill from the Local Government Permanent Fund to the county, municipal, FML District distribution. While this backfill provision has been in statute since 2008, the 2014 distribution year was the first occasion where a projected decline in FML revenue initiated an appropriation. During the process, the Joint Budget Committee identified the existing law was not compatible with the state budget calendar, and sponsored SB14-106 to cause Legislative Council's projection in December, instead of March, to allow the General Assembly the opportunity to appropriate funds from the Local Government Permanent fund to backfill the FML Direct Distribution.

# Exhibit A: How Severance Tax in Colorado is Allocated



\*Annual \$1.5 million from total gross receipts to Innovative Energy Fund through July 2016.

# Exhibit B: Illustration of 2014 and 2015 Direct Distribution Formulas

### DOLA portion of State Severance Tax

Direct Distribution      Grants and Loans

### DOLA portion of Federal Mineral Lease

Direct Distribution      Grants

### Separate Distribution of Federal Mineral Lease to School Districts

Direct Distribution

The State Severance Tax Direct Distribution will be allocated to County Pools based on statewide share of the following factors:

Factor	Percentages
Colorado Employee Residence Reports (CERR)	40%*
Mining and Well Permits	30%*
Mineral Production	30%*

\*No single factor of the three listed above will be less than 30%, with the remaining 10% variably allocated among the three factors at the discretion of the executive director, based on recommendation from the Energy and Mineral Impact Advisory Committee.

The Sub County Pool will be determined based on the County/Municipal split of the following factors:

Factor	Percentages
Colorado Employee Residence Reports (CERR)	33%**
Population	34%**
Road Miles	33%**

\*\*P percentages may be based on recommendation from the Energy and Mineral Impact Advisory Committee or memorandum of understanding between county and all of its municipalities, with final determination by the executive director.

Annual distribution of revenues to Counties and Municipalities by August 31.

The Federal Mineral Lease Direct Distribution for will be allocated to County Pools based on statewide share of the following factors:

Factor	Percentages
Colorado Employee Residence Reports (CERR)	35%*
Federal Mineral Lease Revenue Generated	65%*

\*Percentages, with a maximum of 35% for CERRs and the remaining percent from generated federal mineral lease revenue, to be determined by the executive director, based on recommendation from the Energy and Mineral Impact Advisory Committee.

The Sub County Pool will be determined based on the County/Municipal split of the following factors:

Factor	Percentages
Colorado Employee Residence Reports (CERR)	33%**
Population	34%**
Road Miles	33%**

\*\*P percentages may be based on recommendation from the Energy and Mineral Impact Advisory Committee or memorandum of understanding between county and all of its municipalities, with final determination by the executive director.

Annual distribution of revenues to Counties and Municipalities by August 31.

The Federal Mineral Lease Direct Distribution for will be allocated to County Pools based on statewide share of the following factors:

Factor	Percentages
Colorado Employee Residence Reports (CERR)	35%*
Federal Mineral Lease Revenue Generated	65%*

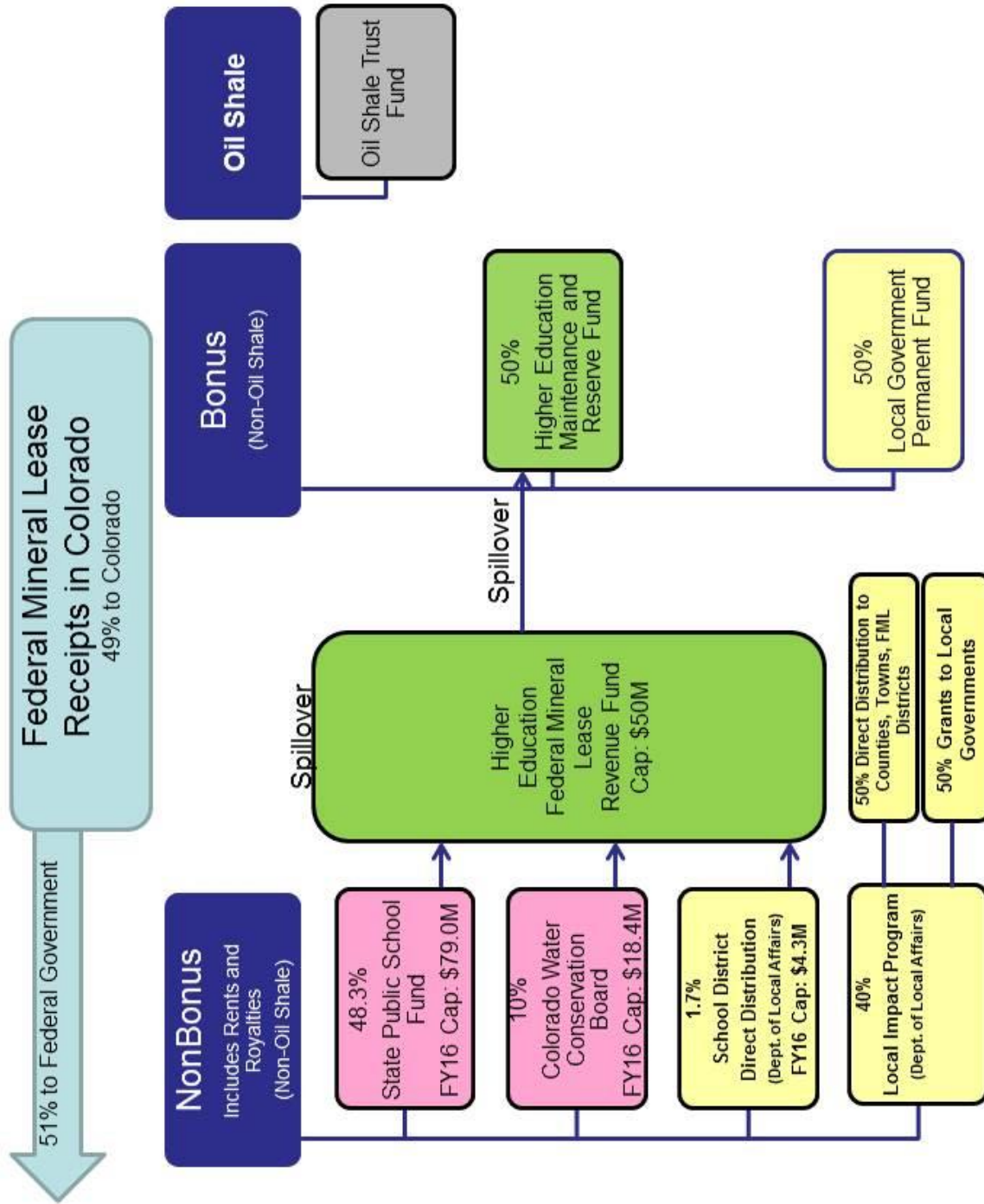
\*County Pool percentages to school districts will be identical to those used for County Pool under "DOLA Portion of Federal Mineral Lease".

The Sub County Pool will be determined based on the School District split of the following factor:

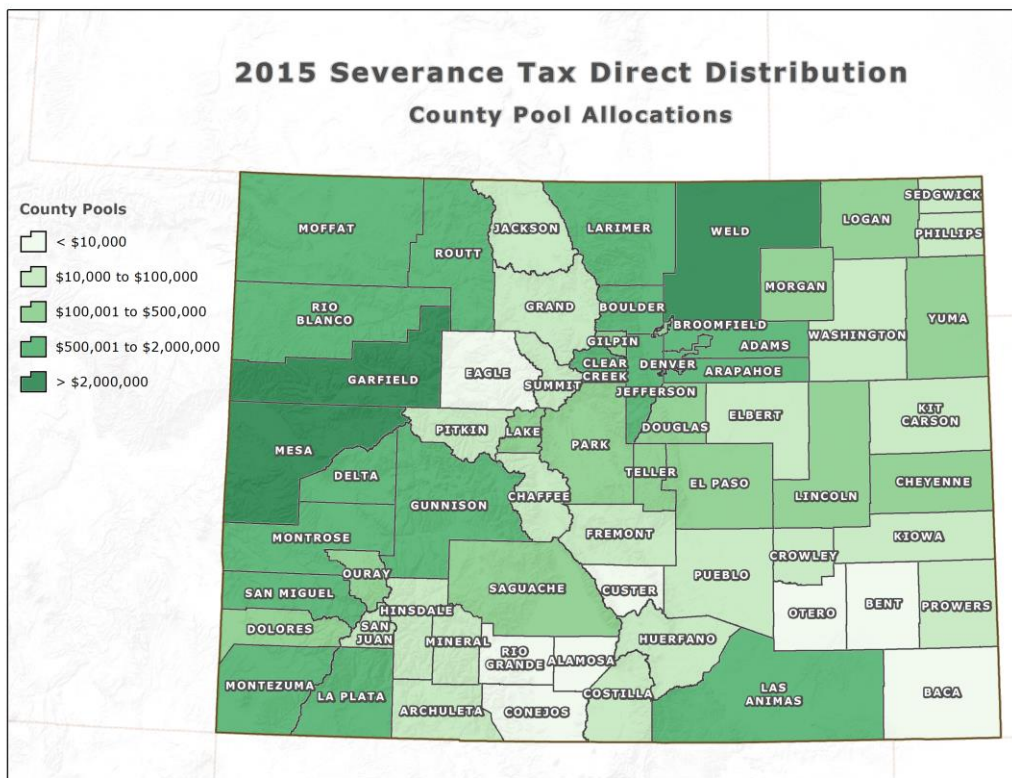
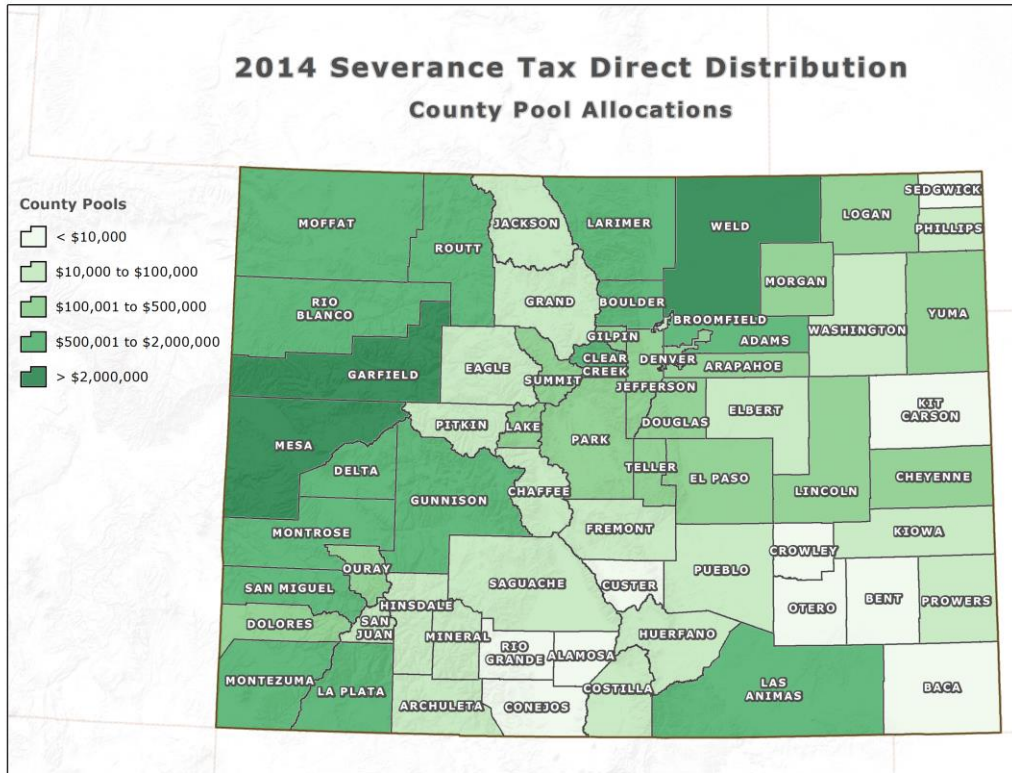
Factor	Percentages
Pupil Counts (most recent)	100%

Annual distribution of revenues to School Districts by August 31.

## Exhibit C: How Federal Mineral Lease Revenue to Colorado is Allocated



## Exhibit D: 2014 and 2015 Severance Tax Direct Distributions





**Severance Direct Distribution - by County / Municipality  
FY2014**

August 31, 2014

<b>County / Municipality</b>	<b>Total \$</b>
Adams County	482,272.44
Aguilar, Town of	12,164.57
Akron, Town of	17,689.41
Alamosa County	1,408.17
Alamosa, City of	967.19
Alma, Town of	1,257.04
Antonito, Town of	468.60
Arapahoe County	101,116.13
Archuleta County	63,189.78
Arriba, Town of	1,748.92
Arvada, City of	87,316.40
Aspen, City of	6,019.73
Ault, Town of	45,155.90
Aurora, City of	230,767.50
Avon, Town of	1,433.75
Baca County	3,148.62
Basalt, Town of	2,232.73
Bayfield, Town of	115,895.34
Bennett, Town of	10,619.95
Bent County	2,207.20
Berthoud, Town of	21,224.28
Bethune, Town of	462.94
Black Hawk, City of	3,086.79
Blanca, Town of	1,493.34
Blue River, Town of	2,341.63
Bonanza City, Town of	69.86
Boone, Town of	23.03
Boulder County	152,482.90
Boulder, City of	88,530.40
Bow Mar, Town of	563.27
Branson, Town of	1,297.80
Breckenridge, Town of	11,046.90
Brighton, City of	231,892.24
Brookside, Town of	174.65
Broomfield, City and County of	70,062.62
Brush, City of	28,148.41
Buena Vista, Town of	10,414.17
Burlington, City of	3,662.19
Calhan, Town of	1,068.28
Campo, Town of	69.92
Canon City, City of	20,690.36
Carbondale, Town of	189,903.10
Castle Pines, City of	3,285.81
Castle Rock, Town of	22,885.37
Cedaredge, Town of	46,734.89

**Severance Direct Distribution - by County / Municipality  
FY2014**

August 31, 2014

<b>County / Municipality</b>	<b>Total \$</b>
Centennial, City of	57,666.45
Center, Town of	8,919.36
Central City	9,782.30
Chaffee County	23,631.02
Cheraw, Town of	19.29
Cherry Hills Village, City of	3,404.96
Cheyenne County	84,444.28
Cheyenne Wells, Town of	41,212.63
Clear Creek County	515,659.69
Coal Creek, Town of	2,555.11
Cokedale, Town of	2,791.97
Collbran, Town of	9,667.56
Colorado Springs, City of	57,003.21
Columbine Valley, Town of	640.68
Commerce City, City of	139,214.00
Conejos County	2,943.63
Cortez, City of	148,985.66
Costilla County	22,406.06
Craig, City of	530,448.67
Crawford, Town of	12,688.04
Creede, City of	18,540.26
Crested Butte, Town of	41,196.12
Crestone, Town of	14,650.11
Cripple Creek, City of	24,269.23
Crook, Town of	254.58
Crowley County	1,025.07
Crowley, Town of	22.14
Custer County	1,062.52
Dacono, City of	103,929.28
De Beque, Town of	15,047.68
Deer Trail, Town of	2,466.21
Del Norte, Town of	500.05
Delta County	576,842.32
Delta, City of	186,013.19
Denver, City And County of	481,565.87
Dillon, Town of	4,404.06
Dinosaur, Town of	44,152.48
Dolores County	73,015.86
Dolores, Town of	10,550.27
Douglas County	105,402.98
Dove Creek, Town of	35,778.69
Durango, City of	318,809.91
Eads, Town of	6,109.01
Eagle County	8,106.39
Eagle, Town of	793.74

**Severance Direct Distribution - by County / Municipality  
FY2014**

August 31, 2014

<b>County / Municipality</b>	<b>Total \$</b>
Eaton, Town of	135,952.36
Eckley, Town of	3,179.89
Edgewater, City of	3,274.96
El Paso County	38,681.86
Elbert County	15,798.35
Elizabeth, Town of	750.11
Empire, Town of	36,588.21
Englewood, City of	19,511.87
Erie, Town of	200,251.93
Estes Park, Town of	10,821.69
Evans, City of	731,906.15
Fairplay, Town of	22,524.06
Federal Heights, City of	18,105.15
Firestone, Town of	233,642.87
Flagler, Town of	198.66
Fleming, Town of	2,232.59
Florence, City of	8,211.52
Fort Collins, City of	284,921.76
Fort Lupton, City of	313,566.46
Fort Morgan, City of	64,330.61
Fountain, City of	3,271.70
Fowler, Town of	396.27
Foxfield, Town of	1,018.84
Fraser, Town of	3,672.50
Frederick, Town of	224,588.17
Fremont County	39,978.36
Frisco, Town of	11,681.32
Fruita, City of	182,689.32
Garden City, Town of	5,290.91
Garfield County	2,587,406.23
Genoa, Town of	1,264.63
Georgetown, Town of	63,301.33
Gilcrest, Town of	52,946.55
Gilpin County	146,959.38
Glendale, City of	1,582.07
Glenwood Springs, City of	309,290.44
Golden, City of	13,797.04
Granada, Town of	1,000.84
Granby, Town of	9,052.44
Grand County	49,749.27
Grand Junction, City of	769,278.55
Grand Lake, Town of	1,962.48
Greeley, City of	2,705,145.88
Green Mountain Falls, Town of	276.82
Greenwood Village, City of	9,602.50

**Severance Direct Distribution - by County / Municipality  
FY2014**

August 31, 2014

County / Municipality	Total \$
Grover, Town of	9,888.25
Gunnison County	914,700.00
Gunnison, City of	173,157.30
Gypsum, Town of	2,214.18
Hartman, Town of	58.26
Haswell, Town of	395.94
Haxtun, Town of	1,533.42
Hayden, Town of	218,775.79
Hillrose, Town of	1,167.66
Hinsdale County	58,425.65
Holly, Town of	527.90
Holyoke, City of	5,414.60
Hooper, Town of	7.37
Hot Sulphur Springs, Town of	6,342.37
Hotchkiss, Town of	28,139.75
Hudson, Town of	62,806.61
Huerfano County	31,274.02
Hugo, Town of	25,058.01
Idaho Springs, City of	148,401.61
Ignacio, Town of	44,820.40
Iliff, Town of	1,243.73
Jackson County	18,155.33
Jamestown, Town of	405.39
Jefferson County	226,954.26
Johnstown, Town of	309,002.83
Julesburg, Town of	568.93
Keenesburg, Town of	38,114.53
Kersey, Town of	75,999.14
Kim, Town of	1,396.24
Kiowa County	14,113.68
Kiowa, Town of	184.53
Kit Carson County	3,408.86
Kit Carson, Town of	18,963.16
Kremmling, Town of	14,546.88
La Jara, Town of	163.56
La Junta, City of	1,441.24
La Plata County	1,248,806.77
La Salle, Town of	100,657.71
La Veta, Town of	1,765.64
Lafayette, City of	33,277.89
Lake City, Town of	20,017.86
Lake County	97,291.64
Lakeside, Town of	25.84
Lakewood, City of	89,497.70
Lamar, City of	9,967.30

**Severance Direct Distribution - by County / Municipality  
FY2014**

August 31, 2014

<b>County / Municipality</b>	<b>Total \$</b>
Larimer County	281,466.38
Larkspur, Town of	93.27
Las Animas County	383,828.02
Las Animas, City of	1,948.38
Leadville, City of	38,815.82
Limon, Town of	25,931.86
Lincoln County	86,774.81
Littleton, City of	29,416.20
Lochbuie, Town of	152,514.22
Log Lane Village, Town of	6,432.57
Logan County	61,363.16
Lone Tree, City of	4,311.48
Longmont, City of	227,288.04
Louisville, City of	22,524.35
Loveland, City of	236,926.85
Lyons, Town of	3,664.88
Manassa, Town of	204.69
Mancos, Town of	13,679.31
Manitou Springs, City of	1,038.72
Manzanola, Town of	32.64
Marble, Town of	4,424.91
Mead, Town of	88,453.78
Meeker, Town of	304,189.06
Merino, Town of	4,305.26
Mesa County	1,723,565.20
Milliken, Town of	165,706.24
Mineral County	20,649.47
Minturn, Town of	144.70
Moffat County	623,836.16
Moffat, Town of	8,233.31
Monte Vista, City of	1,423.26
Montezuma County	417,233.93
Montezuma, Town of	98.40
Montrose County	488,789.38
Montrose, City of	218,296.35
Monument, Town of	1,755.37
Morgan County	125,883.96
Morrison, Town of	888.68
Mountain View, Town of	213.53
Mountain Village, Town of	37,031.92
Mt. Crested Butte, Town of	23,568.62
Naturita, Town of	33,031.36
Nederland, Town of	2,642.32
New Castle, Town of	179,324.41
Northglenn, City of	78,370.90

**Severance Direct Distribution - by County / Municipality  
FY2014**

August 31, 2014

<b>County / Municipality</b>	<b>Total \$</b>
Norwood, Town of	14,324.85
Nucla, Town of	21,262.01
Nunn, Town of	18,207.15
Oak Creek, Town of	48,995.62
Olathe, Town of	20,583.22
Olney Springs, Town of	42.15
Ophir, Town of	4,354.13
Orchard City, Town of	67,255.45
Ordway, Town of	439.52
Otero County	1,515.70
Otis, Town of	5,851.99
Ouray County	135,961.81
Ouray, City of	61,051.71
Ovid, Town of	51.69
Pagosa Springs, Town of	8,126.70
Palisade, Town of	41,877.96
Palmer Lake, Town of	864.04
Paoli, Town of	34.79
Paonia, Town of	44,368.35
Parachute, Town of	139,775.90
Park County	182,429.04
Parker, Town of	20,732.40
Peetz, Town of	855.60
Phillips County	4,923.11
Pierce, Town of	26,653.32
Pitkin County	30,377.67
Pitkin, Town of	2,557.94
Platteville, Town of	107,356.96
Poncha Springs, Town of	2,489.63
Pritchett, Town of	89.00
Prowers County	10,875.77
Pueblo County	13,081.72
Pueblo, City of	8,112.01
Ramah, Town of	334.50
Rangely, Town of	569,440.59
Raymer, Town of	2,992.20
Red Cliff, Town of	37.38
Rico, Town of	5,189.78
Ridgway, Town of	39,700.43
Rifle, City of	734,269.37
Rio Blanco County	814,497.11
Rio Grande County	1,740.16
Rockvale, Town of	1,191.81
Rocky Ford, City of	290.33
Romeo, Town of	699.47

**Severance Direct Distribution - by County / Municipality  
FY2014**

August 31, 2014

<b>County / Municipality</b>	<b>Total \$</b>
Routt County	951,783.04
Rye, Town of	10.08
Saguache County	42,129.23
Saguache, Town of	6,039.39
Salida, City of	12,752.36
San Juan County	27,312.07
San Luis, Town of	15,290.33
San Miguel County	444,580.55
Sanford, Town of	196.17
Sawpit, Town of	1,089.54
Sedgwick County	474.04
Sedgwick, Town of	24.49
Seibert, Town of	64.01
Severance, Town of	85,266.86
Sheridan Lake, Town of	3,120.11
Sheridan, City of	2,831.86
Silt, Town of	175,377.90
Silver Cliff, Town of	100.42
Silver Plume, Town of	7,521.20
Silverthorne, Town of	16,802.89
Silverton, Town of	51,595.16
Simla, Town of	166.30
Snowmass Village, Town of	3,058.19
South Fork, Town of	53.29
Springfield, Town of	923.85
Starkville, Town of	987.77
Steamboat Springs, City of	388,828.68
Sterling, City of	62,087.89
Stratton, Town of	229.49
Sugar City, Town of	341.56
Summit County	77,329.41
Superior, Town of	12,300.75
Swink, Town of	45.42
Teller County	268,827.78
Telluride, Town of	62,581.74
Thornton, City of	308,348.98
Timnath, Town of	6,012.91
Trinidad, City of	280,947.53
Two Buttes, Town of	1,182.07
Vail, Town of	699.89
Victor, City of	10,618.99
Vilas, Town of	72.48
Vona, Town of	38.00
Walden, Town of	10,956.43
Walsenburg, City of	7,475.78

**Severance Direct Distribution - by County / Municipality  
FY2014**

August 31, 2014

<b>County / Municipality</b>	<b>Total \$</b>
Walsh, Town of	1,498.95
Ward, Town of	348.14
Washington County	33,113.56
Weld County	4,126,947.40
Wellington, Town of	31,019.25
Westcliffe, Town of	707.50
Westminster, City of	155,430.69
Wheat Ridge, City of	26,522.61
Wiggins, Town of	12,874.27
Wiley, Town of	593.30
Williamsburg, Town of	649.02
Windsor, Town of	367,090.84
Winter Park, Town of	2,167.91
Woodland Park, City of	93,694.07
Wray, City of	33,115.40
Yampa, Town of	45,232.81
Yuma County	128,313.88
Yuma, City of	37,158.05
<b>Totals:</b>	<b>37,037,154.44</b>



**Severance Direct Distribution - by County / Municipality  
FY2015**

August 31, 2015

<b>County / Municipality</b>	<b>Total \$</b>
Adams County	599,326.55
Aguilar, Town of	13,496.89
Akron, Town of	13,440.07
Alamosa County	1,858.67
Alamosa, City of	1,549.63
Alma, Town of	15,478.28
Antonito, Town of	1,333.83
Arapahoe County	134,890.16
Archuleta County	53,669.05
Arriba, Town of	2,889.21
Arvada, City of	100,378.77
Aspen, City of	10,075.41
Ault, Town of	56,455.98
Aurora, City of	292,788.18
Avon, Town of	404.04
Baca County	2,538.25
Basalt, Town of	2,456.40
Bayfield, Town of	129,276.17
Bennett, Town of	11,275.27
Bent County	722.74
Berthoud, Town of	26,722.47
Bethune, Town of	522.06
Black Hawk, City of	56,010.23
Blanca, Town of	1,707.64
Blue River, Town of	2,080.32
Bonanza City, Town of	120.62
Boone, Town of	325.10
Boulder County	186,880.25
Boulder, City of	117,074.00
Bow Mar, Town of	696.13
Branson, Town of	1,259.93
Breckenridge, Town of	8,712.12
Brighton, City of	271,628.92
Brookside, Town of	117.46
Broomfield, City and County of	129,455.54
Brush, City of	27,264.51
Buena Vista, Town of	12,610.16
Burlington, City of	5,817.25
Calhan, Town of	436.39
Campo, Town of	56.54
Canon City, City of	13,831.93
Carbondale, Town of	210,063.92
Castle Pines, City of	5,889.13
Castle Rock, Town of	30,069.25
Cedaredge, Town of	42,804.28

**Severance Direct Distribution - by County / Municipality  
FY2015**

August 31, 2015

<b>County / Municipality</b>	<b>Total \$</b>
Centennial, City of	75,728.31
Center, Town of	31,063.86
Central City	16,881.25
Chaffee County	27,670.83
Cheraw, Town of	35.17
Cherry Hills Village, City of	4,381.76
Cheyenne County	65,037.72
Cheyenne Wells, Town of	40,871.76
Clear Creek County	644,916.84
Coal Creek, Town of	1,400.58
Cokedale, Town of	3,754.24
Collbran, Town of	11,481.68
Colorado Springs, City of	74,725.27
Columbine Valley, Town of	822.82
Commerce City, City of	153,439.07
Conejos County	3,005.53
Cortez, City of	155,067.29
Costilla County	30,861.25
Craig, City of	520,511.60
Crawford, Town of	11,866.48
Creede, City of	21,780.10
Crested Butte, Town of	46,385.92
Crestone, Town of	1,252.50
Cripple Creek, City of	25,317.24
Crook, Town of	206.38
Crowley County	35,734.72
Crowley, Town of	566.77
Custer County	1,944.04
Dacono, City of	119,520.81
De Beque, Town of	17,671.25
Deer Trail, Town of	1,862.34
Del Norte, Town of	694.88
Delta County	493,107.61
Delta, City of	158,451.03
Denver, City And County of	659,999.38
Dillon, Town of	2,353.25
Dinosaur, Town of	38,332.26
Dolores County	71,577.69
Dolores, Town of	10,043.65
Douglas County	137,303.81
Dove Creek, Town of	27,250.83
Durango, City of	310,696.62
Eads, Town of	3,787.49
Eagle County	3,690.72
Eagle, Town of	667.94

**Severance Direct Distribution - by County / Municipality  
FY2015**

August 31, 2015

<b>County / Municipality</b>	<b>Total \$</b>
Eaton, Town of	168,202.70
Eckley, Town of	6,259.51
Edgewater, City of	3,048.31
El Paso County	55,693.10
Elbert County	22,365.56
Elizabeth, Town of	488.40
Empire, Town of	42,132.68
Englewood, City of	24,817.06
Erie, Town of	243,452.49
Estes Park, Town of	14,632.00
Evans, City of	856,763.13
Fairplay, Town of	12,228.02
Federal Heights, City of	23,447.55
Firestone, Town of	275,861.99
Flagler, Town of	759.06
Fleming, Town of	1,999.53
Florence, City of	3,796.24
Fort Collins, City of	428,116.25
Fort Lupton, City of	324,519.24
Fort Morgan, City of	66,683.76
Fountain, City of	4,503.46
Fowler, Town of	160.13
Foxfield, Town of	1,210.07
Fraser, Town of	2,553.87
Frederick, Town of	269,906.83
Fremont County	27,752.91
Frisco, Town of	7,978.29
Fruita, City of	180,996.37
Garden City, Town of	5,849.26
Garfield County	2,803,078.70
Genoa, Town of	2,086.82
Georgetown, Town of	70,463.39
Gilcrest, Town of	56,726.64
Gilpin County	200,436.68
Glendale, City of	2,080.46
Glenwood Springs, City of	330,123.71
Golden, City of	13,518.38
Granada, Town of	1,389.40
Granby, Town of	7,617.54
Grand County	39,472.37
Grand Junction, City of	829,778.01
Grand Lake, Town of	1,689.28
Greeley, City of	3,302,358.44
Green Mountain Falls, Town of	343.83
Greenwood Village, City of	10,310.81

**Severance Direct Distribution - by County / Municipality  
FY2015**

August 31, 2015

<b>County / Municipality</b>	<b>Total \$</b>
Grover, Town of	6,086.15
Gunnison County	877,513.32
Gunnison, City of	343,742.55
Gypsum, Town of	987.24
Hartman, Town of	73.31
Haswell, Town of	248.27
Haxtun, Town of	6,281.09
Hayden, Town of	266,398.64
Hillrose, Town of	1,738.67
Hinsdale County	67,425.49
Holly, Town of	987.24
Holyoke, City of	9,310.53
Hooper, Town of	10.29
Hot Sulphur Springs, Town of	4,283.19
Hotchkiss, Town of	24,959.59
Hudson, Town of	62,112.26
Huerfano County	45,485.95
Hugo, Town of	27,556.21
Idaho Springs, City of	138,066.88
Ignacio, Town of	29,239.34
Iliff, Town of	787.29
Jackson County	22,290.94
Jamestown, Town of	483.84
Jefferson County	252,762.42
Johnstown, Town of	382,501.59
Julesburg, Town of	7,992.22
Keenesburg, Town of	42,570.98
Kersey, Town of	77,157.14
Kim, Town of	1,355.87
Kiowa County	8,748.88
Kiowa, Town of	252.63
Kit Carson County	8,230.34
Kit Carson, Town of	15,259.33
Kremmling, Town of	9,307.46
La Jara, Town of	210.63
La Junta, City of	2,352.11
La Plata County	1,332,527.93
La Salle, Town of	109,762.91
La Veta, Town of	5,053.23
Lafayette, City of	42,513.33
Lake City, Town of	22,972.94
Lake County	122,016.99
Lakeside, Town of	28.54
Lakewood, City of	99,639.74
Lamar, City of	12,090.34

**Severance Direct Distribution - by County / Municipality  
FY2015**

August 31, 2015

<b>County / Municipality</b>	<b>Total \$</b>
Larimer County	429,206.45
Larkspur, Town of	121.83
Las Animas County	386,128.59
Las Animas, City of	187.39
Leadville, City of	89,682.11
Limon, Town of	61,716.99
Lincoln County	138,425.31
Littleton, City of	34,152.76
Lochbuie, Town of	152,053.39
Log Lane Village, Town of	5,678.23
Logan County	52,450.50
Lone Tree, City of	5,253.86
Longmont, City of	276,880.22
Louisville, City of	25,265.59
Loveland, City of	304,128.41
Lyons, Town of	4,281.71
Manassa, Town of	561.93
Mancos, Town of	22,325.14
Manitou Springs, City of	1,415.53
Manzanola, Town of	59.63
Marble, Town of	4,947.18
Mead, Town of	110,043.61
Meeker, Town of	357,722.46
Merino, Town of	3,685.87
Mesa County	1,786,935.80
Milliken, Town of	201,376.26
Mineral County	24,176.40
Minturn, Town of	75.27
Moffat County	642,495.92
Moffat, Town of	14,745.37
Monte Vista, City of	957.88
Montezuma County	458,869.36
Montezuma, Town of	76.65
Montrose County	569,701.65
Montrose, City of	254,318.56
Monument, Town of	1,814.38
Morgan County	133,872.49
Morrison, Town of	542.82
Mountain View, Town of	236.49
Mountain Village, Town of	39,488.29
Mt. Crested Butte, Town of	26,433.66
Naturita, Town of	11,783.62
Nederland, Town of	3,086.24
New Castle, Town of	194,781.79
Northglenn, City of	104,591.60

**Severance Direct Distribution - by County / Municipality  
FY2015**

August 31, 2015

<b>County / Municipality</b>	<b>Total \$</b>
Norwood, Town of	15,314.29
Nucla, Town of	13,341.34
Nunn, Town of	19,344.17
Oak Creek, Town of	45,047.34
Olathe, Town of	26,585.43
Olney Springs, Town of	1,077.79
Ophir, Town of	5,338.43
Orchard City, Town of	55,654.79
Ordway, Town of	11,549.11
Otero County	2,770.93
Otis, Town of	4,649.67
Ouray County	156,806.12
Ouray, City of	73,715.25
Ovid, Town of	743.96
Pagosa Springs, Town of	15,105.70
Palisade, Town of	41,282.34
Palmer Lake, Town of	318.21
Paoli, Town of	87.33
Paonia, Town of	39,056.67
Parachute, Town of	166,609.43
Park County	207,071.37
Parker, Town of	27,795.51
Peetz, Town of	741.74
Phillips County	14,413.69
Pierce, Town of	29,357.27
Pitkin County	28,462.63
Pitkin, Town of	2,846.23
Platteville, Town of	129,120.54
Poncha Springs, Town of	998.81
Pritchett, Town of	72.12
Prowers County	14,222.13
Pueblo County	23,557.52
Pueblo, City of	15,239.70
Ramah, Town of	28.81
Rangely, Town of	608,527.05
Raymer, Town of	3,518.48
Red Cliff, Town of	18.00
Rico, Town of	4,717.69
Ridgway, Town of	41,193.68
Rifle, City of	805,290.60
Rio Blanco County	885,168.30
Rio Grande County	1,495.49
Rockvale, Town of	1,063.83
Rocky Ford, City of	1,376.25
Romeo, Town of	669.81

**Severance Direct Distribution - by County / Municipality  
FY2015**

August 31, 2015

<b>County / Municipality</b>	<b>Total \$</b>
Routt County	1,052,375.76
Rye, Town of	599.73
Saguache County	86,651.34
Saguache, Town of	3,789.99
Salida, City of	12,318.14
San Juan County	56,495.51
San Luis, Town of	12,635.02
San Miguel County	476,739.92
Sanford, Town of	251.83
Sawpit, Town of	1,144.89
Sedgwick County	6,670.53
Sedgwick, Town of	343.64
Seibert, Town of	156.86
Severance, Town of	99,807.82
Sheridan Lake, Town of	1,934.61
Sheridan, City of	4,594.15
Silt, Town of	195,670.27
Silver Cliff, Town of	182.05
Silver Plume, Town of	8,558.12
Silverthorne, Town of	10,446.62
Silverton, Town of	35,723.70
Simla, Town of	252.05
Snowmass Village, Town of	5,074.84
South Fork, Town of	45.71
Springfield, Town of	745.17
Starkville, Town of	2,107.48
Steamboat Springs, City of	417,251.45
Sterling, City of	48,401.72
Stratton, Town of	468.95
Sugar City, Town of	842.28
Summit County	65,815.47
Superior, Town of	15,254.72
Swink, Town of	82.96
Teller County	338,729.10
Telluride, Town of	66,814.02
Thornton, City of	376,881.26
Timnath, Town of	8,215.30
Trinidad, City of	260,681.07
Two Buttes, Town of	23.58
Vail, Town of	332.75
Victor, City of	12,418.31
Vilas, Town of	58.63
Vona, Town of	77.01
Walden, Town of	13,924.61
Walsenburg, City of	12,411.32

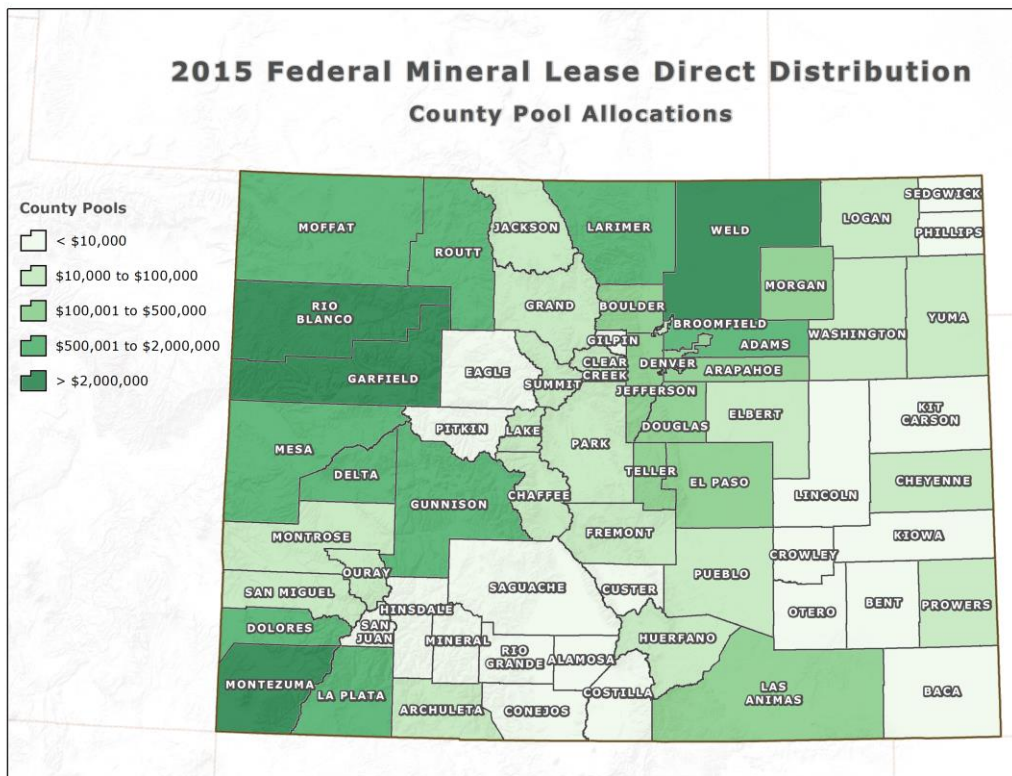
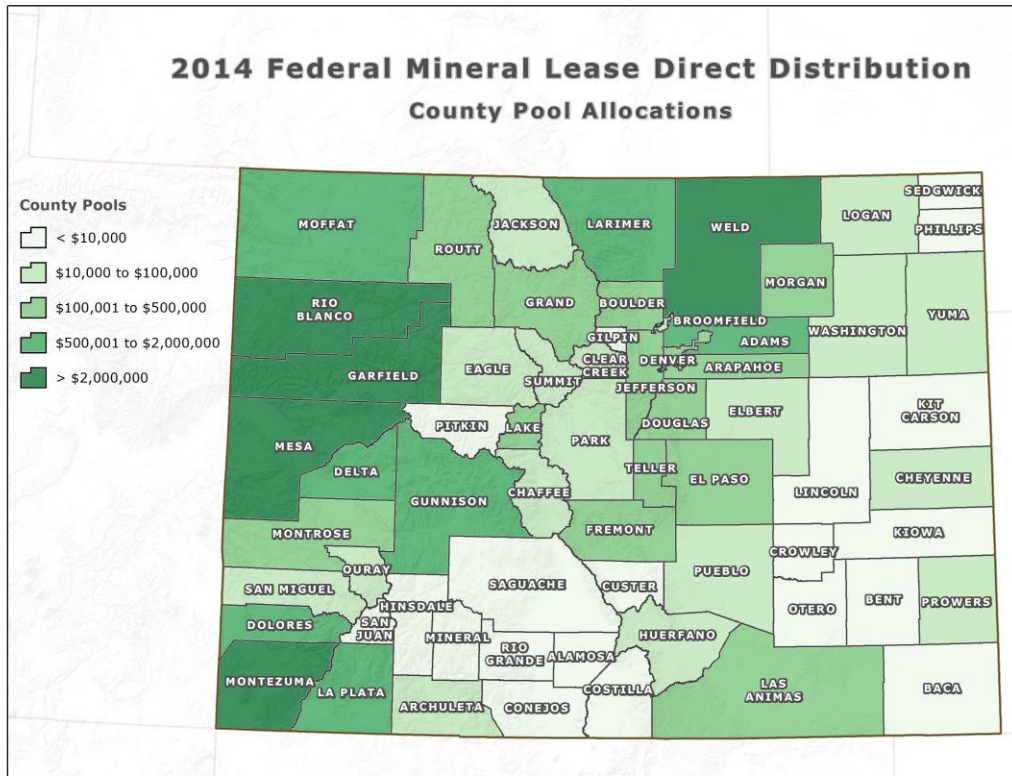
**Severance Direct Distribution - by County / Municipality  
FY2015**

August 31, 2015

<b>County / Municipality</b>	<b>Total \$</b>
Walsh, Town of	2,138.42
Ward, Town of	430.52
Washington County	31,497.34
Weld County	4,821,921.65
Wellington, Town of	31,457.52
Westcliffe, Town of	1,292.50
Westminster, City of	192,914.33
Wheat Ridge, City of	26,658.97
Wiggins, Town of	10,942.16
Wiley, Town of	331.54
Williamsburg, Town of	1,157.50
Windsor, Town of	426,063.24
Winter Park, Town of	1,651.05
Woodland Park, City of	101,562.60
Wray, City of	44,944.76
Yampa, Town of	32,724.44
Yuma County	167,864.84
Yuma, City of	60,566.94
<b>Totals:</b>	<b>42,047,431.62</b>



## Exhibit E: 2014 and 2015 Federal Mineral Lease Direct Distributions



**Federal Mineral Lease Distribution - by County / Municipality  
FY2014**

August 31, 2014

<b>County / Municipality</b>	<b>Total \$</b>
Adams County	321,068.67
Aguilar, Town of	4,754.75
Akron, Town of	4,355.61
Alamosa County	1,390.13
Alamosa, City of	1,157.52
Alma, Town of	163.73
Antonito, Town of	320.12
Arapahoe County	64,366.37
Archuleta County	13,760.05
Arriba, Town of	40.41
Arvada, City of	68,955.40
Aspen, City of	418.60
Ault, Town of	16,032.45
Aurora, City of	148,555.16
Avon, Town of	1,230.31
Baca County	1,288.14
Basalt, Town of	981.02
Bayfield, Town of	40,703.30
Bennett, Town of	6,944.76
Bent County	3,481.51
Berthoud, Town of	14,071.41
Bethune, Town of	264.38
Black Hawk, City of	300.66
Blanca, Town of	24.35
Blue River, Town of	1,160.99
Bonanza City, Town of	2.91
Boone, Town of	20.17
Boulder County	65,912.11
Boulder, City of	38,353.98
Bow Mar, Town of	391.49
Branson, Town of	512.34
Breckenridge, Town of	5,477.11
Brighton, City of	150,122.49
Brookside, Town of	240.03
Broomfield, City and County of	46,000.04
Brush, City of	17,428.19
Buena Vista, Town of	14,939.13
Burlington, City of	2,091.42
Calhan, Town of	1,152.64
Campo, Town of	28.61
Canon City, City of	40,222.83
Carbondale, Town of	398,583.96
Castle Pines, City of	2,325.12
Castle Rock, Town of	16,446.85
Cedaredge, Town of	43,478.97

**Federal Mineral Lease Distribution - by County / Municipality  
FY2014**

August 31, 2014

<b>County / Municipality</b>	<b>Total \$</b>
Centennial, City of	37,035.10
Center, Town of	391.63
Central City	430.14
Chaffee County	23,298.52
Cheraw, Town of	13.36
Cherry Hills Village, City of	2,174.22
Cheyenne County	13,851.66
Cheyenne Wells, Town of	6,760.24
Clear Creek County	62,539.99
Coal Creek, Town of	1,021.10
Cokedale, Town of	1,092.70
Collbran, Town of	8,703.20
Colorado Springs, City of	65,694.46
Columbine Valley, Town of	409.10
Commerce City, City of	93,364.99
Conejos County	2,010.92
Cortez, City of	853,973.66
Costilla County	365.27
Craig, City of	772,282.04
Crawford, Town of	13,208.17
Creede, City of	302.25
Crested Butte, Town of	27,254.84
Crestone, Town of	249.29
Cripple Creek, City of	14,409.67
Crook, Town of	162.01
Crowley County	746.88
Crowley, Town of	16.13
Custer County	742.96
Dacono, City of	36,900.71
De Beque, Town of	13,490.86
Deer Trail, Town of	1,529.90
Del Norte, Town of	426.75
Delta County	583,454.86
Delta, City of	180,153.01
Denver, City And County of	341,166.97
Dillon, Town of	2,183.56
Dinosaur, Town of	36,258.05
Dolores County	647,776.97
Dolores, Town of	60,106.03
Douglas County	75,986.50
Dove Creek, Town of	344,330.51
Durango, City of	115,972.20
Eads, Town of	1,229.34
Eagle County	6,306.05
Eagle, Town of	650.88

**Federal Mineral Lease Distribution - by County / Municipality  
FY2014**

August 31, 2014

<b>County / Municipality</b>	<b>Total \$</b>
Eaton, Town of	48,269.29
Eckley, Town of	1,424.39
Edgewater, City of	2,428.48
El Paso County	42,138.36
Elbert County	9,922.02
Elizabeth, Town of	441.04
Empire, Town of	5,873.50
Englewood, City of	12,490.13
Erie, Town of	71,807.04
Estes Park, Town of	7,356.86
Evans, City of	259,854.27
Fairplay, Town of	1,702.17
Federal Heights, City of	11,992.15
Firestone, Town of	82,957.00
Flagler, Town of	113.45
Fleming, Town of	1,420.83
Florence, City of	6,573.41
Fort Collins, City of	193,655.16
Fort Lupton, City of	111,327.56
Fort Morgan, City of	39,821.57
Fountain, City of	3,469.88
Fowler, Town of	274.40
Foxfield, Town of	643.09
Fraser, Town of	5,789.41
Frederick, Town of	79,742.03
Fremont County	50,912.63
Frisco, Town of	5,791.66
Fruita, City of	166,126.87
Garden City, Town of	1,878.59
Garfield County Federal Mineral Lease Act District	5,431,787.85
Genoa, Town of	29.22
Georgetown, Town of	9,302.45
Gilcrest, Town of	18,797.77
Gilpin County	6,296.99
Glendale, City of	1,002.74
Glenwood Springs, City of	654,056.55
Golden, City of	11,558.82
Granada, Town of	656.04
Granby, Town of	15,214.06
Grand County	69,477.17
Grand Junction, City of	699,039.39
Grand Lake, Town of	3,193.01
Greeley, City of	960,449.23
Green Mountain Falls, Town of	190.73
Greenwood Village, City of	6,071.80

**Federal Mineral Lease Distribution - by County / Municipality  
FY2014**

August 31, 2014

<b>County / Municipality</b>	<b>Total \$</b>
Grover, Town of	3,510.71
Gunnison County	583,516.39
Gunnison, City of	136,196.42
Gypsum, Town of	1,733.75
Hartman, Town of	38.19
Haswell, Town of	79.68
Haxtun, Town of	493.71
Hayden, Town of	22,528.91
Hillrose, Town of	723.32
Hinsdale County	0.00
Holly, Town of	346.03
Holyoke, City of	1,743.33
Hooper, Town of	7.90
Hot Sulphur Springs, Town of	11,197.55
Hotchkiss, Town of	30,675.28
Hudson, Town of	22,299.73
Huerfano County	30,642.33
Hugo, Town of	578.95
Idaho Springs, City of	20,292.99
Ignacio, Town of	14,927.54
Iliff, Town of	791.51
Jackson County	49,218.50
Jamestown, Town of	174.89
Jefferson County	188,931.23
Johnstown, Town of	112,436.38
Julesburg, Town of	375.88
Keenesburg, Town of	13,532.36
Kersey, Town of	26,982.14
Kim, Town of	551.20
Kiowa County	2,840.15
Kiowa, Town of	115.56
Kit Carson County	1,946.75
Kit Carson, Town of	3,110.59
Kremmling, Town of	20,160.21
La Jara, Town of	111.73
La Junta, City of	998.00
La Plata County	457,811.41
La Salle, Town of	35,736.75
La Veta, Town of	1,729.98
Lafayette, City of	14,292.48
Lake City, Town of	0.00
Lake County	91,588.64
Lakeside, Town of	21.31
Lakewood, City of	76,653.23
Lamar, City of	6,533.47

**Federal Mineral Lease Distribution - by County / Municipality  
FY2014**

August 31, 2014

<b>County / Municipality</b>	<b>Total \$</b>
Larimer County	191,351.12
Larkspur, Town of	66.90
Las Animas County	152,835.80
Las Animas, City of	3,073.26
Leadville, City of	34,272.58
Limon, Town of	599.14
Lincoln County	2,004.89
Littleton, City of	19,269.55
Lochbuie, Town of	54,150.61
Log Lane Village, Town of	3,979.94
Logan County	39,051.79
Lone Tree, City of	3,039.73
Longmont, City of	97,553.76
Louisville, City of	9,884.25
Loveland, City of	161,154.84
Lyons, Town of	1,571.47
Manassa, Town of	139.83
Mancos, Town of	109,499.41
Manitou Springs, City of	883.01
Manzanola, Town of	22.60
Marble, Town of	2,927.46
Mead, Town of	31,406.58
Meeker, Town of	1,065,095.74
Merino, Town of	2,739.89
Mesa County Federal Mineral Lease District	1,563,424.33
Milliken, Town of	58,833.66
Mineral County	336.64
Minturn, Town of	309.80
Moffat County	887,105.15
Moffat, Town of	465.16
Monte Vista, City of	1,214.61
Montezuma County	2,487,818.95
Montezuma, Town of	48.79
Montrose County	86,928.95
Montrose, City of	39,917.29
Monument, Town of	1,594.13
Morgan County	78,017.23
Morrison, Town of	596.58
Mountain View, Town of	176.13
Mountain Village, Town of	6,442.57
Mt. Crested Butte, Town of	15,592.71
Naturita, Town of	4,125.29
Nederland, Town of	1,136.73
New Castle, Town of	375,670.37
Northglenn, City of	53,011.86

**Federal Mineral Lease Distribution - by County / Municipality  
FY2014**

August 31, 2014

<b>County / Municipality</b>	<b>Total \$</b>
Norwood, Town of	2,492.14
Nucla, Town of	2,734.83
Nunn, Town of	6,464.42
Oak Creek, Town of	5,521.54
Olathe, Town of	4,050.56
Olney Springs, Town of	30.71
Ophir, Town of	757.50
Orchard City, Town of	62,946.53
Ordway, Town of	320.24
Otero County	1,049.56
Otis, Town of	1,440.92
Ouray County	9,488.84
Ouray, City of	4,809.40
Ovid, Town of	34.15
Pagosa Springs, Town of	1,769.65
Palisade, Town of	38,180.03
Palmer Lake, Town of	688.46
Paoli, Town of	11.20
Paonia, Town of	46,622.18
Parachute, Town of	291,693.12
Park County Federal Mineral Lease District	24,992.74
Parker, Town of	14,533.28
Peetz, Town of	544.51
Phillips County	1,585.09
Pierce, Town of	9,463.21
Pitkin County	2,112.40
Pitkin, Town of	1,692.30
Platteville, Town of	38,115.71
Poncha Springs, Town of	1,176.20
Pritchett, Town of	36.41
Prowers County	7,128.96
Pueblo County	11,730.62
Pueblo, City of	6,830.77
Ramah, Town of	235.61
Rangely, Town of	1,667,092.46
Raymer, Town of	1,062.45
Red Cliff, Town of	30.65
Rico, Town of	47,326.12
Ridgway, Town of	3,078.18
Rifle, City of	1,539,517.36
Rio Blanco County	2,551,773.70
Rio Grande County	1,485.06
Rockvale, Town of	807.78
Rocky Ford, City of	201.04
Romeo, Town of	477.84

**Federal Mineral Lease Distribution - by County / Municipality  
FY2014**

August 31, 2014

<b>County / Municipality</b>	<b>Total \$</b>
Routt County	102,881.71
Rye, Town of	8.83
Saguache County	1,936.58
Saguache, Town of	312.79
Salida, City of	8,502.86
San Juan County	2,211.38
San Luis, Town of	249.27
San Miguel County	77,345.22
Sanford, Town of	134.01
Sawpit, Town of	189.55
Sedgwick County	313.19
Sedgwick, Town of	16.18
Seibert, Town of	36.55
Severance, Town of	30,274.36
Sheridan Lake, Town of	627.87
Sheridan, City of	1,996.27
Silt, Town of	366,734.59
Silver Cliff, Town of	70.22
Silver Plume, Town of	1,018.94
Silverthorne, Town of	8,330.96
Silverton, Town of	4,177.51
Simla, Town of	104.14
Snowmass Village, Town of	212.66
South Fork, Town of	45.48
Springfield, Town of	377.96
Starkville, Town of	389.95
Steamboat Springs, City of	41,805.17
Sterling, City of	39,513.01
Stratton, Town of	131.06
Sugar City, Town of	248.87
Summit County	38,340.32
Superior, Town of	5,293.92
Swink, Town of	31.45
Teller County	134,594.03
Telluride, Town of	10,887.56
Thornton, City of	205,093.74
Timnath, Town of	4,086.60
Trinidad, City of	109,656.63
Two Buttes, Town of	483.60
Vail, Town of	956.21
Victor, City of	6,449.86
Vilas, Town of	29.65
Vona, Town of	21.70
Walden, Town of	27,180.29
Walsenburg, City of	7,324.78



**Federal Mineral Lease Distribution - by County / Municipality  
FY2014**

August 31, 2014

<b>County / Municipality</b>	<b>Total \$</b>
Walsh, Town of	613.24
Ward, Town of	150.19
Washington County	8,153.46
Weld County Federal Mineral Lease Act District	1,465,549.85
Wellington, Town of	21,077.34
Westcliffe, Town of	494.72
Westminster, City of	108,030.91
Wheat Ridge, City of	19,912.96
Wiggins, Town of	8,157.79
Wiley, Town of	388.90
Williamsburg, Town of	1,166.76
Windsor, Town of	132,955.97
Winter Park, Town of	3,176.73
Woodland Park, City of	42,507.02
Wray, City of	14,833.66
Yampa, Town of	4,299.50
Yuma County	57,476.70
Yuma, City of	16,644.51
<b>Totals:</b>	<b>34,321,141.16</b>

**Federal Mineral Lease Distribution - by County / Municipality  
FY2015**

August 31, 2015

<b>County / Municipality</b>	<b>Total \$</b>
Adams County	300,233.30
Aguilar, Town of	4,670.45
Akron, Town of	3,077.59
Alamosa County	965.51
Alamosa, City of	804.98
Alma, Town of	417.48
Antonito, Town of	707.11
Arapahoe County	61,301.91
Archuleta County	11,768.99
Arriba, Town of	58.31
Arvada, City of	57,180.12
Aspen, City of	558.63
Ault, Town of	16,001.72
Aurora, City of	135,861.83
Avon, Town of	766.75
Baca County	469.43
Basalt, Town of	678.78
Bayfield, Town of	40,296.56
Bennett, Town of	5,562.83
Bent County	1,114.01
Berthoud, Town of	13,589.43
Bethune, Town of	222.48
Black Hawk, City of	507.56
Blanca, Town of	50.31
Blue River, Town of	967.17
Bonanza City, Town of	2.47
Boone, Town of	173.13
Boulder County	64,484.20
Boulder, City of	40,290.61
Bow Mar, Town of	342.92
Branson, Town of	444.07
Breckenridge, Town of	3,993.40
Brighton, City of	132,709.68
Brookside, Town of	188.97
Broomfield, City and County of	42,620.01
Brush, City of	13,618.58
Buena Vista, Town of	10,324.81
Burlington, City of	2,479.12
Calhan, Town of	528.73
Campo, Town of	10.46
Canon City, City of	24,066.86
Carbondale, Town of	272,499.41
Castle Pines, City of	3,127.42
Castle Rock, Town of	16,124.82
Cedaredge, Town of	30,174.12

**Federal Mineral Lease Distribution - by County / Municipality  
FY2015**

August 31, 2015

<b>County / Municipality</b>	<b>Total \$</b>
Centennial, City of	34,851.59
Center, Town of	473.52
Central City	329.04
Chaffee County	16,139.35
Cheraw, Town of	18.27
Cherry Hills Village, City of	1,994.40
Cheyenne County	11,271.78
Cheyenne Wells, Town of	7,083.54
Clear Creek County	43,608.01
Coal Creek, Town of	1,047.64
Cokedale, Town of	1,294.33
Collbran, Town of	7,688.17
Colorado Springs, City of	58,999.39
Columbine Valley, Town of	374.52
Commerce City, City of	76,727.53
Conejos County	1,769.21
Cortez, City of	798,227.70
Costilla County	909.29
Craig, City of	574,848.83
Crawford, Town of	7,807.91
Creede, City of	420.81
Crested Butte, Town of	22,844.13
Crestone, Town of	25.62
Cripple Creek, City of	9,077.46
Crook, Town of	96.03
Crowley County	697.46
Crowley, Town of	11.06
Custer County	1,009.86
Dacono, City of	33,876.63
De Beque, Town of	11,485.67
Deer Trail, Town of	830.44
Del Norte, Town of	260.75
Delta County	367,820.24
Delta, City of	115,414.56
Denver, City And County of	353,834.85
Dillon, Town of	1,231.71
Dinosaur, Town of	23,508.79
Dolores County	814,785.09
Dolores, Town of	62,801.01
Douglas County	74,935.75
Dove Creek, Town of	306,689.99
Durango, City of	100,151.18
Eads, Town of	1,030.46
Eagle County	3,318.06
Eagle, Town of	503.71

**Federal Mineral Lease Distribution - by County / Municipality  
FY2015**

August 31, 2015

<b>County / Municipality</b>	<b>Total \$</b>
Eaton, Town of	47,674.88
Eckley, Town of	1,810.56
Edgewater, City of	1,698.08
El Paso County	41,392.78
Elbert County	10,036.08
Elizabeth, Town of	222.25
Empire, Town of	4,679.18
Englewood, City of	11,312.95
Erie, Town of	69,708.01
Estes Park, Town of	7,541.29
Evans, City of	242,838.45
Fairplay, Town of	1,039.62
Federal Heights, City of	11,944.26
Firestone, Town of	78,189.52
Flagler, Town of	323.49
Fleming, Town of	930.39
Florence, City of	4,717.98
Fort Collins, City of	220,581.32
Fort Lupton, City of	91,980.79
Fort Morgan, City of	33,308.42
Fountain, City of	3,825.30
Fowler, Town of	83.18
Foxfield, Town of	546.47
Fraser, Town of	3,652.66
Frederick, Town of	76,501.60
Fremont County	47,219.31
Frisco, Town of	4,340.92
Fruita, City of	119,915.48
Garden City, Town of	1,657.90
Garfield County Federal Mineral Lease Act District	3,639,086.68
Genoa, Town of	42.11
Georgetown, Town of	6,753.15
Gilcrest, Town of	16,078.43
Gilpin County	4,490.90
Glendale, City of	942.64
Glenwood Springs, City of	431,461.92
Golden, City of	8,416.51
Granada, Town of	656.30
Granby, Town of	10,052.24
Grand County	47,889.65
Grand Junction, City of	546,809.73
Grand Lake, Town of	2,648.40
Greeley, City of	936,010.85
Green Mountain Falls, Town of	297.87
Greenwood Village, City of	4,675.85

**Federal Mineral Lease Distribution - by County / Municipality  
FY2015**

August 31, 2015

<b>County / Municipality</b>	<b>Total \$</b>
Grover, Town of	1,725.04
Gunnison County	363,025.28
Gunnison, City of	238,418.66
Gypsum, Town of	815.63
Hartman, Town of	34.63
Haswell, Town of	67.55
Haxtun, Town of	926.65
Hayden, Town of	112,939.90
Hillrose, Town of	868.47
Hinsdale County	0.00
Holly, Town of	466.34
Holyoke, City of	1,373.59
Hooper, Town of	5.35
Hot Sulphur Springs, Town of	7,305.35
Hotchkiss, Town of	22,720.28
Hudson, Town of	17,604.92
Huerfano County Federal Mineral Lease District	30,962.75
Hugo, Town of	523.95
Idaho Springs, City of	13,946.33
Ignacio, Town of	8,708.01
Iliff, Town of	366.33
Jackson County	50,281.14
Jamestown, Town of	166.71
Jefferson County	151,008.39
Johnstown, Town of	108,736.05
Julesburg, Town of	1,353.63
Keenesburg, Town of	12,066.19
Kersey, Town of	21,869.20
Kim, Town of	477.88
Kiowa County	2,380.29
Kiowa, Town of	114.96
Kit Carson County	3,507.50
Kit Carson, Town of	2,644.62
Kremmling, Town of	13,609.98
La Jara, Town of	123.99
La Junta, City of	1,221.84
La Plata County	426,426.04
La Salle, Town of	31,110.88
La Veta, Town of	3,439.78
Lafayette, City of	14,598.05
Lake City, Town of	0.00
Lake County	56,068.20
Lakeside, Town of	16.94
Lakewood, City of	60,977.10
Lamar, City of	5,711.04

**Federal Mineral Lease Distribution - by County / Municipality  
FY2015**

August 31, 2015

<b>County / Municipality</b>	<b>Total \$</b>
Larimer County	221,159.41
Larkspur, Town of	65.99
Las Animas County	137,079.22
Las Animas, City of	288.83
Leadville, City of	41,136.86
Limon, Town of	1,181.19
Lincoln County	2,890.07
Littleton, City of	16,074.20
Lochbuie, Town of	43,098.45
Log Lane Village, Town of	2,836.26
Logan County	24,405.43
Lone Tree, City of	2,814.65
Longmont, City of	95,035.16
Louisville, City of	8,971.48
Loveland, City of	156,803.16
Lyons, Town of	1,469.01
Manassa, Town of	447.86
Mancos, Town of	153,040.12
Manitou Springs, City of	866.07
Manzanola, Town of	30.98
Marble, Town of	2,436.39
Mead, Town of	31,190.44
Meeker, Town of	955,557.15
Merino, Town of	1,715.05
Mesa County Federal Mineral Lease District	1,174,507.39
Milliken, Town of	57,077.50
Mineral County	467.11
Minturn, Town of	200.59
Moffat County	690,782.20
Moffat, Town of	639.75
Monte Vista, City of	359.44
Montezuma County	2,259,007.68
Montezuma, Town of	33.87
Montrose County	56,814.01
Montrose, City of	26,661.87
Monument, Town of	1,232.11
Morgan County	66,869.07
Morrison, Town of	285.12
Mountain View, Town of	140.36
Mountain Village, Town of	5,746.86
Mt. Crested Butte, Town of	13,018.04
Naturita, Town of	1,889.29
Nederland, Town of	1,061.83
New Castle, Town of	252,176.70
Northglenn, City of	52,939.00

**Federal Mineral Lease Distribution - by County / Municipality  
FY2015**

August 31, 2015

<b>County / Municipality</b>	<b>Total \$</b>
Norwood, Town of	2,228.74
Nucla, Town of	1,384.40
Nunn, Town of	5,482.86
Oak Creek, Town of	20,807.32
Olathe, Town of	2,551.20
Olney Springs, Town of	21.04
Ophir, Town of	776.92
Orchard City, Town of	41,485.42
Ordway, Town of	225.41
Otero County	1,439.40
Otis, Town of	1,064.71
Ouray County	6,171.11
Ouray, City of	3,273.00
Ovid, Town of	126.00
Pagosa Springs, Town of	3,312.50
Palisade, Town of	27,095.56
Palmer Lake, Town of	245.63
Paoli, Town of	12.88
Paonia, Town of	33,976.76
Parachute, Town of	214,766.62
Park County Federal Mineral Lease District	18,014.37
Parker, Town of	14,755.76
Peetz, Town of	345.14
Phillips County	2,126.46
Pierce, Town of	8,320.94
Pitkin County	1,578.11
Pitkin, Town of	1,401.71
Platteville, Town of	36,597.55
Poncha Springs, Town of	603.95
Pritchett, Town of	13.34
Prowers County	6,718.02
Pueblo County	14,287.63
Pueblo, City of	9,148.04
Ramah, Town of	22.24
Rangely, Town of	1,388,307.57
Raymer, Town of	997.27
Red Cliff, Town of	16.67
Rico, Town of	53,534.82
Ridgway, Town of	1,787.50
Rifle, City of	1,042,527.67
Rio Blanco County	2,162,724.50
Rio Grande County	561.18
Rockvale, Town of	761.87
Rocky Ford, City of	714.91
Romeo, Town of	355.26

**Federal Mineral Lease Distribution - by County / Municipality  
FY2015**

August 31, 2015

<b>County / Municipality</b>	<b>Total \$</b>
Routt County	432,760.21
Rye, Town of	452.53
Saguache County	1,603.04
Saguache, Town of	77.51
Salida, City of	5,340.85
San Juan County	1,830.20
San Luis, Town of	372.27
San Miguel County	69,381.49
Sanford, Town of	148.24
Sawpit, Town of	166.62
Sedgwick County	1,129.78
Sedgwick, Town of	58.20
Seibert, Town of	66.85
Severance, Town of	28,289.24
Sheridan Lake, Town of	526.35
Sheridan, City of	2,073.85
Silt, Town of	252,818.16
Silver Cliff, Town of	94.57
Silver Plume, Town of	714.80
Silverthorne, Town of	5,527.52
Silverton, Town of	2,609.38
Simla, Town of	256.32
Snowmass Village, Town of	281.37
South Fork, Town of	17.15
Springfield, Town of	137.81
Starkville, Town of	723.55
Steamboat Springs, City of	184,099.16
Sterling, City of	22,521.51
Stratton, Town of	199.85
Sugar City, Town of	16.44
Summit County	26,969.38
Superior, Town of	5,246.76
Swink, Town of	43.09
Teller County	96,116.58
Telluride, Town of	9,723.66
Thornton, City of	188,084.57
Timnath, Town of	4,232.45
Trinidad, City of	91,027.57
Two Buttes, Town of	4.36
Vail, Town of	438.93
Victor, City of	4,618.06
Vilas, Town of	10.84
Vona, Town of	32.82
Walden, Town of	26,804.07
Walsenburg, City of	8,448.51



**Federal Mineral Lease Distribution - by County / Municipality  
FY2015**

August 31, 2015

<b>County / Municipality</b>	<b>Total \$</b>
Walsh, Town of	395.48
Ward, Town of	148.34
Washington County	7,212.47
Weld County Federal Mineral Lease Act District	1,366,711.42
Wellington, Town of	16,190.73
Westcliffe, Town of	671.41
Westminster, City of	99,162.46
Wheat Ridge, City of	14,747.29
Wiggins, Town of	5,465.59
Wiley, Town of	156.61
Williamsburg, Town of	1,021.97
Windsor, Town of	123,461.46
Winter Park, Town of	2,165.63
Woodland Park, City of	31,747.62
Wray, City of	13,000.26
Yampa, Town of	15,601.72
Yuma County	48,554.87
Yuma, City of	17,518.98
<b>Totals:</b>	<b>28,790,068.09</b>

## Senate Bill 14-106 Supplemental Federal Mineral Lease Distribution

County / Municipality	Total \$
Adams County	32,523.58
Aguilar, Town of	1,093.79
Akron, Town of	572.62
Alamosa County	291.66
Alamosa, City of	148.63
Alma, Town of	52.83
Antonito, Town of	70.41
Arapahoe County	6,950.37
Archuleta County	1,967.67
Arriba, Town of	4.60
Arvada, City of	8,426.20
Aspen, City of	89.09
Ault, Town of	1,803.94
Aurora, City of	14,916.78
Avon, Town of	114.91
Baca County	242.27
Basalt, Town of	98.52
Bayfield, Town of	4,067.88
Bennett, Town of	503.05
Bent County	12,732.58
Berthoud, Town of	1,282.19
Bethune, Town of	77.00
Black Hawk, City of	243.31
Blanca, Town of	6.86
Blue River, Town of	143.96
Bonanza City, Town of	0.10
Boone, Town of	3.36
Boulder County	6,145.19
Boulder, City of	3,337.92
Bow Mar, Town of	44.34
Branson, Town of	102.31
Breckenridge, Town of	697.95
Brighton, City of	14,276.54
Brookside, Town of	39.91
Broomfield, City and County of	5,123.29
Brush, City of	2,416.07
Buena Vista, Town of	2,000.69
Burlington, City of	530.48
Calhan, Town of	100.38
Campo, Town of	5.39
Canon City, City of	4,402.97
Carbondale, Town of	32,141.59
Castle Pines, City of	261.88
Castle Rock, Town of	1,534.48
Cedaredge, Town of	10,268.94

## Senate Bill 14-106 Supplemental Federal Mineral Lease Distribution

County / Municipality	Total \$
Centennial, City of	3,829.57
Center, Town of	15.10
Central City	48.41
Chaffee County	2,951.38
Cheraw, Town of	2.21
Cherry Hills Village, City of	229.74
Cheyenne County	1,997.21
Cheyenne Wells, Town of	1,140.32
Clear Creek County	7,664.95
Coal Creek, Town of	150.17
Cokedale, Town of	203.72
Collbran, Town of	944.11
Colorado Springs, City of	7,785.12
Columbine Valley, Town of	43.26
Commerce City, City of	7,988.95
Conejos County	204.81
Cortez, City of	122,567.60
Costilla County	129.96
Craig, City of	140,799.42
Crawford, Town of	3,176.73
Creede, City of	41.76
Crested Butte, Town of	7,535.42
Crestone, Town of	1.06
Cripple Creek, City of	1,936.85
Crook, Town of	19.87
Crowley County	118.70
Crowley, Town of	2.58
Custer County	4.55
Dacono, City of	4,217.01
De Beque, Town of	1,859.75
Deer Trail, Town of	144.62
Del Norte, Town of	14.01
Delta County	144,830.00
Delta, City of	42,553.51
Denver, City And County of	37,188.05
Dillon, Town of	404.31
Dinosaur, Town of	6,613.59
Dolores County	78,173.93
Dolores, Town of	13,159.48
Douglas County	7,940.07
Dove Creek, Town of	30,055.06
Durango, City of	15,617.29
Eads, Town of	396.61
Eagle County	555.52
Eagle, Town of	61.54

## Senate Bill 14-106 Supplemental Federal Mineral Lease Distribution

County / Municipality	Total \$
Eaton, Town of	5,658.92
Eckley, Town of	328.66
Edgewater, City of	348.32
El Paso County	5,059.19
Elbert County	1,161.61
Elizabeth, Town of	57.90
Empire, Town of	826.24
Englewood, City of	1,421.29
Erie, Town of	7,694.23
Estes Park, Town of	768.90
Evans, City of	30,235.65
Fairplay, Town of	80.60
Federal Heights, City of	1,397.04
Firestone, Town of	8,826.47
Flagler, Town of	42.19
Fleming, Town of	157.62
Florence, City of	1,686.24
Fort Collins, City of	20,086.48
Fort Lupton, City of	13,055.57
Fort Morgan, City of	6,578.24
Fountain, City of	498.55
Fowler, Town of	40.93
Foxfield, Town of	45.09
Fraser, Town of	599.87
Frederick, Town of	8,438.51
Fremont County	9,729.24
Frisco, Town of	729.60
Fruita, City of	20,832.68
Garden City, Town of	289.70
Garfield County Federal Mineral Lease Act District	411,781.33
Genoa, Town of	3.33
Georgetown, Town of	1,113.18
Gilcrest, Town of	2,156.70
Gilpin County	503.28
Glendale, City of	112.42
Glenwood Springs, City of	50,063.02
Golden, City of	1,577.03
Granada, Town of	10.73
Granby, Town of	1,694.71
Grand County	8,626.97
Grand Junction, City of	89,285.08
Grand Lake, Town of	415.22
Greeley, City of	107,309.68
Green Mountain Falls, Town of	24.18
Greenwood Village, City of	610.41

## Senate Bill 14-106 Supplemental Federal Mineral Lease Distribution

County / Municipality	Total \$
Grover, Town of	579.93
Gunnison County	99,616.09
Gunnison, City of	20,805.24
Gypsum, Town of	180.35
Hartman, Town of	1.84
Haswell, Town of	45.11
Haxtun, Town of	61.92
Hayden, Town of	5,913.34
Hillrose, Town of	143.62
Hinsdale County	0.00
Holly, Town of	16.62
Holyoke, City of	195.91
Hooper, Town of	1.37
Hot Sulphur Springs, Town of	1,282.10
Hotchkiss, Town of	8,174.19
Hudson, Town of	2,614.74
Huerfano County	5,510.22
Hugo, Town of	108.44
Idaho Springs, City of	2,807.78
Ignacio, Town of	1,477.61
Iliff, Town of	74.17
Jackson County	6,005.66
Jamestown, Town of	16.02
Jefferson County	24,314.59
Johnstown, Town of	11,450.00
Julesburg, Town of	98.97
Keenesburg, Town of	1,523.96
Kersey, Town of	3,026.11
Kim, Town of	110.04
Kiowa County	1,891.21
Kiowa, Town of	13.67
Kit Carson County	990.20
Kit Carson, Town of	387.05
Kremmling, Town of	2,627.74
La Jara, Town of	41.53
La Junta, City of	153.71
La Plata County	63,773.81
La Salle, Town of	4,202.36
La Veta, Town of	433.73
Lafayette, City of	1,318.63
Lake City, Town of	0.00
Lake County	10,650.24
Lakeside, Town of	2.72
Lakewood, City of	9,672.60
Lamar, City of	318.08

## Senate Bill 14-106 Supplemental Federal Mineral Lease Distribution

County / Municipality	Total \$
Larimer County	19,695.86
Larkspur, Town of	6.82
Las Animas County	30,450.46
Las Animas, City of	3,373.77
Leadville, City of	3,924.65
Limon, Town of	74.17
Lincoln County	178.95
Littleton, City of	2,424.02
Lochbuie, Town of	5,624.79
Log Lane Village, Town of	703.34
Logan County	5,640.70
Lone Tree, City of	222.75
Longmont, City of	8,718.38
Louisville, City of	994.68
Loveland, City of	16,557.41
Lyons, Town of	115.28
Manassa, Town of	15.51
Mancos, Town of	21,808.18
Manitou Springs, City of	144.09
Manzanola, Town of	3.99
Marble, Town of	501.53
Mead, Town of	3,601.78
Meeker, Town of	153,084.58
Merino, Town of	253.88
Mesa County Federal Mineral Lease District	190,355.72
Milliken, Town of	6,985.93
Mineral County	46.57
Minturn, Town of	38.52
Moffat County	164,637.82
Moffat, Town of	0.88
Monte Vista, City of	127.03
Montezuma County	382,431.77
Montezuma, Town of	5.98
Montrose County	11,869.43
Montrose, City of	5,396.46
Monument, Town of	213.11
Morgan County	12,318.83
Morrison, Town of	22.35
Mountain View, Town of	22.41
Mountain Village, Town of	6,474.16
Mt. Crested Butte, Town of	2,675.70
Naturita, Town of	366.68
Nederland, Town of	113.86
New Castle, Town of	28,963.93
Northglenn, City of	5,379.37

## Senate Bill 14-106 Supplemental Federal Mineral Lease Distribution

County / Municipality	Total \$
Norwood, Town of	1,099.84
Nucla, Town of	327.07
Nunn, Town of	613.76
Oak Creek, Town of	1,688.10
Olathe, Town of	639.47
Olney Springs, Town of	4.90
Ophir, Town of	339.53
Orchard City, Town of	15,827.48
Ordway, Town of	50.95
Otero County	185.39
Otis, Town of	247.14
Ouray County	859.83
Ouray, City of	583.04
Ovid, Town of	9.02
Pagosa Springs, Town of	310.00
Palisade, Town of	4,222.88
Palmer Lake, Town of	91.13
Paoli, Town of	1.31
Paonia, Town of	11,033.15
Parachute, Town of	33,033.32
Park County Federal Mineral Lease District	2,960.23
Parker, Town of	1,312.96
Peetz, Town of	99.60
Phillips County	182.52
Pierce, Town of	1,153.82
Pitkin County	252.75
Pitkin, Town of	286.93
Platteville, Town of	4,526.11
Poncha Springs, Town of	150.91
Pritchett, Town of	6.79
Prowers County	371.08
Pueblo County	1,978.68
Pueblo, City of	1,090.04
Ramah, Town of	2.92
Rangely, Town of	248,138.12
Raymer, Town of	121.02
Red Cliff, Town of	32.07
Rico, Town of	5,108.10
Ridgway, Town of	191.73
Rifle, City of	114,466.98
Rio Blanco County	375,161.19
Rio Grande County	127.92
Rockvale, Town of	125.29
Rocky Ford, City of	65.75
Romeo, Town of	6.22

## Senate Bill 14-106 Supplemental Federal Mineral Lease Distribution

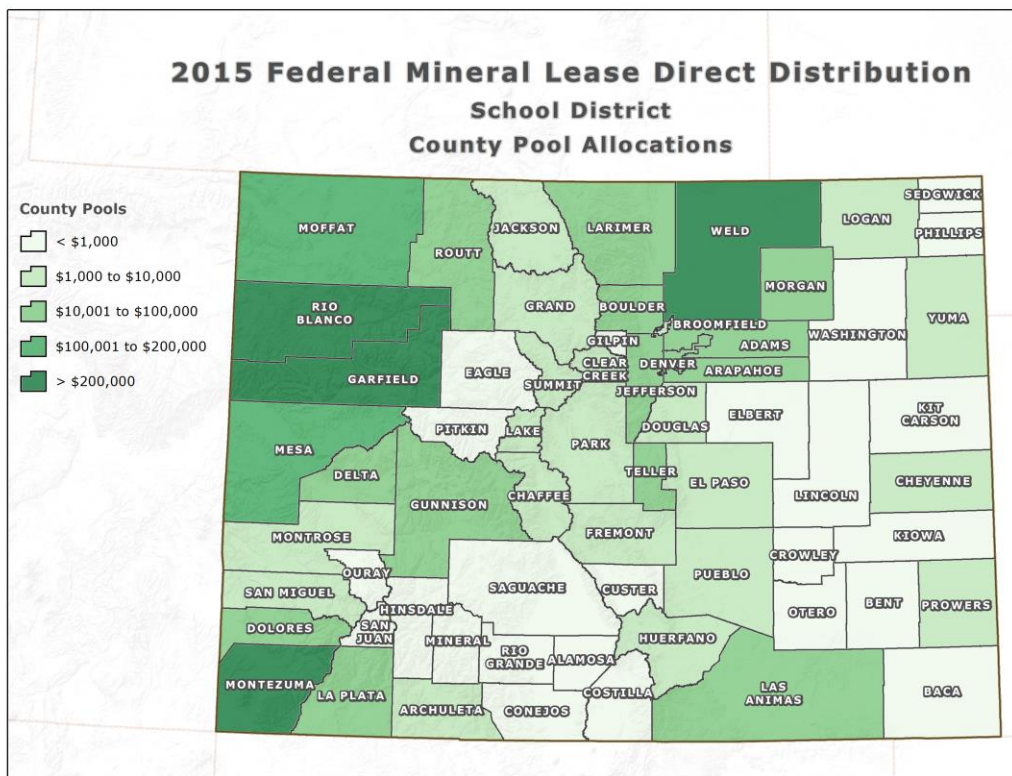
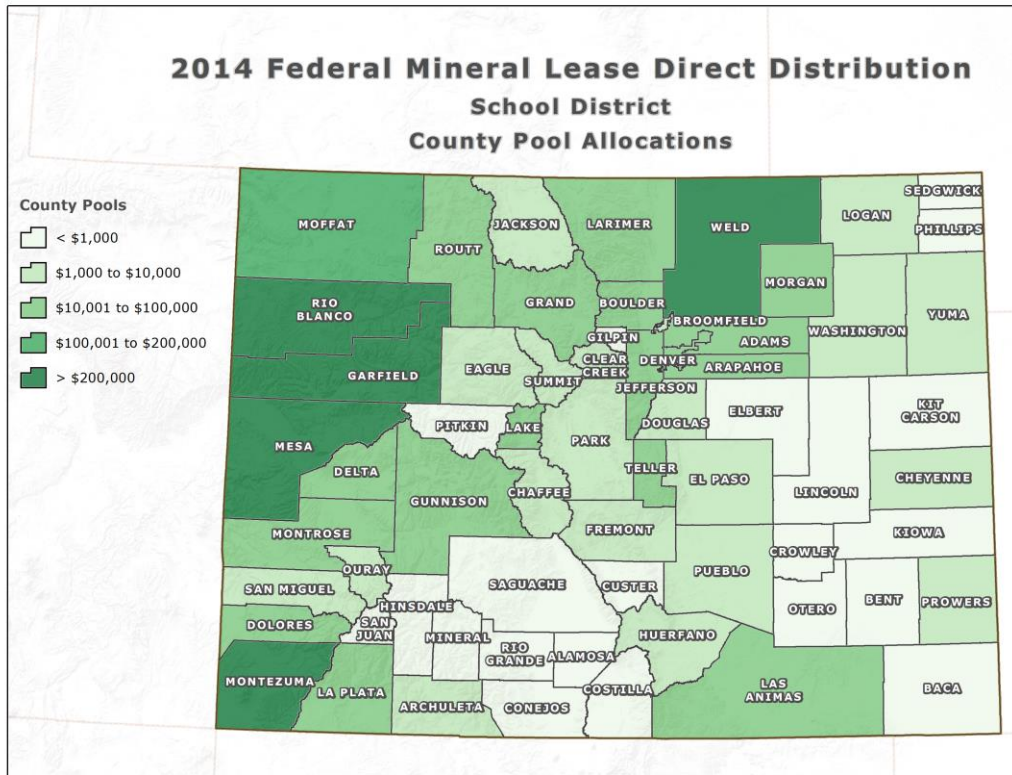
County / Municipality	Total \$
Routt County	22,293.34
Rye, Town of	30.74
Saguache County	100.48
Saguache, Town of	3.32
Salida, City of	991.97
San Juan County	213.85
San Luis, Town of	39.85
San Miguel County	30,800.27
Sanford, Town of	14.85
Sawpit, Town of	84.98
Sedgwick County	82.34
Sedgwick, Town of	4.29
Seibert, Town of	13.62
Severance, Town of	3,446.28
Sheridan Lake, Town of	353.27
Sheridan, City of	187.50
Silt, Town of	28,131.16
Silver Cliff, Town of	0.44
Silver Plume, Town of	131.08
Silverthorne, Town of	1,144.59
Silverton, Town of	404.48
Simla, Town of	12.31
Snowmass Village, Town of	45.29
South Fork, Town of	3.92
Springfield, Town of	160.18
Starkville, Town of	162.11
Steamboat Springs, City of	9,181.64
Sterling, City of	4,110.82
Stratton, Town of	48.71
Sugar City, Town of	39.59
Summit County	4,381.88
Superior, Town of	553.84
Swink, Town of	5.57
Teller County	17,969.55
Telluride, Town of	4,844.86
Thornton, City of	20,088.79
Timnath, Town of	349.51
Trinidad, City of	21,499.85
Two Buttes, Town of	2.19
Vail, Town of	79.74
Victor, City of	855.73
Vilas, Town of	5.54
Vona, Town of	8.04
Walden, Town of	2,466.50
Walsenburg, City of	1,522.15



**Senate Bill 14-106 Supplemental Federal Mineral Lease Distribution**

<b>County / Municipality</b>	<b>Total \$</b>
Walsh, Town of	115.58
Ward, Town of	13.73
Washington County	1,302.82
Weld County Federal Mineral Lease Act District	166,818.61
Wellington, Town of	2,029.58
Westcliffe, Town of	0.39
Westminster, City of	11,722.51
Wheat Ridge, City of	2,408.43
Wiggins, Town of	819.33
Wiley, Town of	8.31
Williamsburg, Town of	207.73
Windsor, Town of	14,416.87
Winter Park, Town of	453.98
Woodland Park, City of	5,724.98
Wray, City of	2,319.60
Yampa, Town of	881.35
Yuma County	8,312.03
Yuma, City of	2,219.66
<b>Totals:</b>	<b>4,304,072.00</b>

## Exhibit F: 2014 & 2015 Federal Mineral Lease School District Distributions



**Federal Mineral Lease Distribution - by School District  
FY2014**

August 31, 2014

<b>School District</b>	<b>Total \$</b>
Academy 20 School District	2,065.55
Adams 12 Five Star Schools	37,520.25
Adams County 14 School District	6,999.12
Adams-Arapahoe 28J School District	12,984.87
Agate 300 School District	10.25
Aguilar Reorganized 6 School District	895.97
Akron R-1 School District	485.65
Alamosa RE-11J School District	162.24
Archuleta County 50 JT School District	1,278.18
Arickaree R-2 School District	136.28
Arriba-Flagler C-20 School District	47.32
Aspen 1 School District	205.42
Ault-Highland RE-9 School District	5,572.52
Bayfield 10 JT.-R School District	10,381.41
Bennett 29J School District	763.67
Bethune R-5 School District	37.43
Big Sandy 100J School District	62.24
Boulder Valley RE 2 School District	12,913.00
Branson Reorganized 82 School District	3,930.23
Briggsdale RE-10 School District	1,043.87
Brighton 27J School District	16,383.06
Brush RE-2(J) School District	3,588.46
Buena Vista R-31 School District	1,868.61
Buffalo RE-4 School District	745.83
Burlington RE-6J School District	224.63
Byers 32J School District	161.58
Calhan RJ-1 School District	55.40
Campo RE-6 School District	18.88
Canon City RE-1 School District	5,780.91
Centennial R-1 School District	24.12
Center 26 JT School District	177.09
Cheraw 31 School District	14.30
Cherry Creek 5 School District	10,781.28
Cheyenne County RE-5 School District	1,221.35
Cheyenne Mountain 12 School District	398.23
Clear Creek RE-1 School District	8,417.37
Colorado Springs 11 School District	2,752.74
Consolidated C-1 School District	106.51
Cotopaxi RE-3 School District	321.31
Creede Consolidated 1 School District	54.31
Cripple Creek-Victor RE-1 School District	2,165.90
Crowley County RE-1-J School District	104.42
DeBeque 49JT School District	2,373.62
Deer Trail 26J School District	41.62
Del Norte C-7 School District	81.95

**Federal Mineral Lease Distribution - by School District  
FY2014**

August 31, 2014

<b>School District</b>	<b>Total \$</b>
Delta County School District 50(J)	82,438.13
Denver County 1 School District	28,999.19
Dolores County RE No. 2 School District	88,477.78
Dolores RE-4A School District	54,954.53
Douglas County RE 1 School District	9,592.89
Durango 9-R School District	37,597.57
Eads RE-1 School District	280.17
Eagle County RE 50 School District	873.10
East Grand 2 School District	8,134.09
East Otero R-1 School District	91.81
Eaton RE-2 School District	12,197.79
Edison 54 JT School District	17.82
Elbert 200 School District	54.39
Elizabeth C-1 School District	640.12
Ellicott 22 School District	86.52
Englewood 1 School District	578.57
Falcon 49 School District	1,324.82
Florence RE-2 School District	2,445.67
Fort Morgan RE-3 School District	7,366.34
Fountain 8 School District	665.67
Fowler R-4J School District	35.85
Frenchman RE-3 School District	463.52
Garfield 16 School District	88,542.30
Garfield RE-2 School District	358,693.46
Genoa-Hugo C113 School District	58.11
Gilcrest RE-1 School District	12,359.02
Gilpin County RE-1 School District	513.07
Granada RE-1 School District	123.21
Greeley 6 School District	131,411.66
Gunnison RE1J School District	64,955.32
Hanover 28 School District	20.45
Harrison 2 School District	945.18
Haxtun RE-2J School District	200.65
Hayden RE-1 School District	1,898.95
Hi-Plains R-23 School District	38.01
Hinsdale County RE 1 School District	0.00
Hoehne Reorganized 3 School District	3,323.20
Holly RE-3 School District	153.72
Holyoke RE-1J School District	234.19
Huerfano RE-1 School District	2,396.48
Idalia RJ-3 School District	688.90
Ignacio 11 JT School District	5,563.08
Jefferson County R-1 School District	32,469.12
Johnstown-Milliken RE-5J School District	21,598.05
Julesburg RE-1 School District	56.28

**Federal Mineral Lease Distribution - by School District  
FY2014**

August 31, 2014

<b>School District</b>	<b>Total \$</b>
Karval RE-23 School District	48.27
Keenesburg RE-3J School District	14,399.04
Kim Reorganized 88 School District	490.37
Kiowa C-2 School District	89.92
Kit Carson R-1 School District	795.06
La Veta RE-2 School District	977.77
Lake County R-1 School District	10,698.20
Lamar RE-2 School District	886.82
Las Animas RE-1 School District	361.78
Lewis Palmer 38 School District	524.19
Liberty J-4 School District	331.24
Limon RE-4J School District	157.28
Littleton 6 School District	3,128.75
Lone Star 101 School District	153.21
Mancos RE-6 School District	29,516.18
Manitou Springs 14 School District	129.97
Manzanola 3J School District	11.04
Mapleton 1 School District	7,964.69
McClave RE-2 School District	186.68
Meeker RE1 School District	260,532.44
Mesa County Valley 51 School District	205,918.18
Miami/Yoder 60 JT School District	30.91
Moffat 2 School District	65.84
Moffat County RE:No 1 School District	144,129.84
Monte Vista C-8 School District	165.25
Montezuma-Cortez RE-1 School District	213,998.12
Montrose County RE-1J School District	10,618.62
Mountain Valley RE 1 School District	37.47
North Conejos RE-1J School District	171.27
North Park R-1 School District	6,493.90
Norwood R-2J School District	1,720.10
Otis R-3 School District	251.97
Ouray R-1 School District	541.03
Park (Estes Park) R-3 School District	1,280.86
Park County RE-2 School District	737.59
Pawnee RE-12 School District	597.76
Peyton 23 JT School District	59.87
Plainview RE-2 School District	125.87
Plateau RE-5 School District	445.54
Plateau Valley 50 School District	4,587.15
Platte Canyon 1 School District	1,545.39
Platte Valley RE-3 School District	6.41
Platte Valley RE-7 School District	7,448.48
Poudre R-1 School District	32,204.59
Prairie RE-11 School District	1,166.83

**Federal Mineral Lease Distribution - by School District  
FY2014**

August 31, 2014

<b>School District</b>	<b>Total \$</b>
Primero Reorganized 2 School District	1,749.10
Pritchett RE-3 School District	21.37
Pueblo City Schools	1,044.74
Pueblo County Rural 70 School District	532.51
Rangely RE-4 School District	187,392.73
Ridgway R-2 School District	903.35
Roaring Fork RE-1 School District	321,502.63
Rocky Ford R-2 School District	56.48
Salida R-32 School District	2,241.46
Sanford 6J School District	64.29
Sangre De Cristo RE-22J School District	36.93
Sargent RE-33J School District	41.07
Sheridan 2 School District	309.32
Sierra Grande R-30 School District	30.18
Silverton 1 School District	543.06
South Conejos RE-10 School District	39.43
South Routt RE 3 School District	3,096.64
Springfield RE-4 School District	100.91
St. Vrain Valley RE 1J School District	70,131.40
Steamboat Springs RE-2 School District	11,264.13
Strasburg 31J School District	805.32
Stratton R-4 School District	52.52
Summit RE-1 School District	5,205.40
Swink 33 School District	24.77
Telluride R-1 School District	6,614.10
Thompson R-2J School District	17,595.16
Trinidad 1 School District	12,543.57
Valley RE-1 School District	5,486.65
Vilas RE-5 School District	48.26
Walsh RE-1 School District	53.47
Weld County RE-8 School District	15,331.07
Weldon Valley RE-20(J) School District	495.38
West End RE-2 School District	536.22
West Grand 1-JT. School District	2,771.96
Westminster 50 School District	9,682.17
Widefield 3 School District	787.69
Wiggins RE-50(J) School District	1,355.62
Wiley RE-13 JT School District	127.74
Windsor RE-4 School District	30,612.33
Woodland Park RE-2 School District	14,668.84
Woodlin R-104 School District	123.82
Wray RD-2 School District	3,106.86
Yuma 1 School District	3,516.90
<b>Totals:</b>	<b>2,917,296.99</b>

**Federal Mineral Lease Distribution - by School District  
FY2015**

August 31, 2015

<b>School District</b>	<b>Total \$</b>
Academy 20 School District	1,872.45
Adams 12 Five Star Schools	31,946.15
Adams County 14 School District	6,811.07
Adams-Arapahoe 28J School District	11,499.61
Agate 300 School District	13.06
Aguilar Reorganized 6 School District	985.75
Akron R-1 School District	375.57
Alamosa RE-11J School District	127.78
Archuleta County 50 JT School District	1,240.67
Arickaree R-2 School District	117.98
Arriba-Flagler C-20 School District	80.29
Aspen 1 School District	182.61
Ault-Highland RE-9 School District	4,740.29
Bayfield 10 JT.-R School District	9,972.27
Bennett 29J School District	709.89
Bethune R-5 School District	54.88
Big Sandy 100J School District	64.26
Boulder Valley RE 2 School District	13,015.00
Branson Reorganized 82 School District	3,647.71
Briggsdale RE-10 School District	992.80
Brighton 27J School District	15,856.18
Brush RE-2(J) School District	2,939.46
Buena Vista R-31 School District	1,243.27
Buffalo RE-4 School District	462.86
Burlington RE-6J School District	327.71
Byers 32J School District	404.78
Calhan RJ-1 School District	41.03
Campo RE-6 School District	7.24
Canon City RE-1 School District	4,580.71
Centennial R-1 School District	51.91
Center 26 JT School District	149.09
Cheraw 31 School District	20.08
Cherry Creek 5 School District	9,628.92
Cheyenne County RE-5 School District	1,085.91
Cheyenne Mountain 12 School District	391.84
Clear Creek RE-1 School District	5,924.62
Colorado Springs 11 School District	2,215.65
Consolidated C-1 School District	148.44
Cotopaxi RE-3 School District	255.32
Creede Consolidated 1 School District	75.47
Cripple Creek-Victor RE-1 School District	1,503.42
Crowley County RE-1-J School District	74.83
DeBeque 49JT School District	2,251.21
Deer Trail 26J School District	35.35
Del Norte C-7 School District	24.96

**Federal Mineral Lease Distribution - by School District  
FY2015**

August 31, 2015

<b>School District</b>	<b>Total \$</b>
Delta County School District 50(J)	53,166.41
Denver County 1 School District	30,075.96
Dolores County RE No. 2 School District	99,991.23
Dolores RE-4A School District	52,058.77
Douglas County RE 1 School District	9,548.87
Durango 9-R School District	33,408.96
Eads RE-1 School District	237.91
Eagle County RE 50 School District	475.92
East Grand 2 School District	5,504.09
East Otero R-1 School District	127.45
Eaton RE-2 School District	11,396.64
Edison 54 JT School District	20.40
Elbert 200 School District	54.74
Elizabeth C-1 School District	640.08
Ellicott 22 School District	80.71
Englewood 1 School District	513.92
Falcon 49 School District	1,624.69
Florence RE-2 School District	1,859.65
Fort Morgan RE-3 School District	6,058.65
Fountain 8 School District	613.74
Fowler R-4J School District	41.28
Frenchman RE-3 School District	278.77
Garfield 16 School District	55,078.21
Garfield RE-2 School District	249,858.72
Genoa-Hugo C113 School District	85.74
Gilcrest RE-1 School District	11,255.16
Gilpin County RE-1 School District	327.05
Granada RE-1 School District	106.90
Greeley 6 School District	124,574.65
Gunnison RE1J School District	54,389.91
Hanover 28 School District	19.20
Harrison 2 School District	895.65
Haxtun RE-2J School District	222.79
Hayden RE-1 School District	7,807.17
Hi-Plains R-23 School District	50.66
Hinsdale County RE 1 School District	0.00
Hoehne Reorganized 3 School District	3,057.11
Holly RE-3 School District	144.42
Holyoke RE-1J School District	292.93
Huerfano RE-1 School District	2,601.89
Idalia R-J-3 School District	656.78
Ignacio 11 JT School District	5,584.47
Jefferson County R-1 School District	25,898.23
Johnstown-Milliken RE-5J School District	21,228.58
Julesburg RE-1 School District	195.70



**Federal Mineral Lease Distribution - by School District  
FY2015**

August 31, 2015

<b>School District</b>	<b>Total \$</b>
Karval RE-23 School District	27.27
Keenesburg RE-3J School District	13,380.72
Kim Reorganized 88 School District	426.73
Kiowa C-2 School District	84.12
Kit Carson R-1 School District	699.09
La Veta RE-2 School District	1,040.45
Lake County R-1 School District	8,262.43
Lamar RE-2 School District	801.53
Las Animas RE-1 School District	76.51
Lewis Palmer 38 School District	470.27
Liberty J-4 School District	271.24
Limon RE-4J School District	252.66
Littleton 6 School District	2,770.73
Lone Star 101 School District	119.29
Mancos RE-6 School District	30,257.55
Manitou Springs 14 School District	114.95
Manzanola 3J School District	14.52
Mapleton 1 School District	7,755.14
McClave RE-2 School District	41.78
Meeker RE1 School District	215,647.15
Mesa County Valley 51 School District	156,185.52
Miami/Yoder 60 JT School District	34.07
Moffat 2 School District	47.56
Moffat County RE:No 1 School District	109,576.88
Monte Vista C-8 School District	55.05
Montezuma-Cortez RE-1 School District	195,895.18
Montrose County RE-1J School District	6,847.13
Mountain Valley RE 1 School District	32.46
North Conejos RE-1J School District	188.85
North Park R-1 School District	6,552.24
Norwood R-2J School District	1,383.23
Otis R-3 School District	229.45
Ouray R-1 School District	331.68
Park (Estes Park) R-3 School District	1,319.04
Park County RE-2 School District	608.03
Pawnee RE-12 School District	486.12
Peyton 23 JT School District	51.25
Plainview RE-2 School District	102.48
Plateau RE-5 School District	263.92
Plateau Valley 50 School District	3,339.02
Platte Canyon 1 School District	1,047.05
Platte Valley RE-3 School District	30.41
Platte Valley RE-7 School District	6,867.98
Poudre R-1 School District	34,398.87
Prairie RE-11 School District	1,033.97

**Federal Mineral Lease Distribution - by School District  
FY2015**

August 31, 2015

<b>School District</b>	<b>Total \$</b>
Primero Reorganized 2 School District	1,566.96
Pritchett RE-3 School District	7.32
Pueblo City Schools	1,341.10
Pueblo County Rural 70 School District	700.45
Rangely RE-4 School District	166,374.56
Ridgway R-2 School District	623.00
Roaring Fork RE-1 School District	212,721.81
Rocky Ford R-2 School District	77.11
Salida R-32 School District	1,535.42
Sanford 6J School District	73.13
Sangre De Cristo RE-22J School District	29.18
Sargent RE-33J School District	23.35
Sheridan 2 School District	273.37
Sierra Grande R-30 School District	61.30
Silverton 1 School District	377.36
South Conejos RE-10 School District	42.64
South Routt RE 3 School District	8,664.37
Springfield RE-4 School District	39.27
St. Vrain Valley RE 1J School District	66,712.90
Steamboat Springs RE-2 School District	49,694.54
Strasburg 31J School District	747.50
Stratton R-4 School District	79.09
Summit RE-1 School District	3,655.67
Swink 33 School District	33.14
Telluride R-1 School District	6,075.72
Thompson R-2J School District	18,958.19
Trinidad 1 School District	10,351.68
Valley RE-1 School District	3,242.05
Vilas RE-5 School District	14.79
Walsh RE-1 School District	19.92
Weld County RE-8 School District	13,512.48
Weldon Valley RE-20(J) School District	452.43
West End RE-2 School District	318.08
West Grand 1-JT. School District	1,923.44
Westminster 50 School District	9,377.75
Widefield 3 School District	698.43
Wiggins RE-50(J) School District	1,158.32
Wiley RE-13 JT School District	116.25
Windsor RE-4 School District	29,306.95
Woodland Park RE-2 School District	10,534.52
Woodlin R-104 School District	97.56
Wray RD-2 School District	2,708.10
Yuma 1 School District	3,151.91
<b>Totals:</b>	<b>2,447,155.79</b>

## Exhibit G: Rank of Direct Distribution Factors and Total Distributions By Planning and Management Region

		2012	2013	2014	2015
<b>Region 1</b> Logan, Morgan, Phillips, Sedgwick, Washington, Yuma	Factor: Employee Residence Reports	5	5	4	4
	Factor: Permits	6	10	11	11
	Factor: Production	6	7	7	7
	Factor: FML Revenue Generated	6	7	6	6
	Direct Distributions: Severance Tax	6	6	7	7
	Direct Distributions: FML	6	6	6	6
<b>Region 2</b> Larimer, Weld	Factor: Employee Residence Reports	2	1	1	1
	Factor: Permits	2	2	1	2
	Factor: Production	4	4	2	2
	Factor: FML Revenue Generated	4	4	4	4
	Direct Distributions: Severance Tax	2	2	2	1
	Direct Distributions: FML	4	3	3	3
<b>Region 3</b> Adams, Arapahoe, Boulder, Broomfield, Clear Creek, Denver, Douglas, Gilpin, Jefferson	Factor: Employee Residence Reports	3	3	3	2
	Factor: Permits	4	4	4	4
	Factor: Production	5	5	5	5
	Factor: FML Revenue Generated	11	10	11	10
	Direct Distributions: Severance Tax	4	4	3	3
	Direct Distributions: FML	5	5	4	4
<b>Region 4</b> El Paso, Park, Teller	Factor: Employee Residence Reports	7	7	7	7
	Factor: Permits	7	6	6	6
	Factor: Production	8	6	6	6
	Factor: FML Revenue Generated	7	9	9	9
	Direct Distributions: Severance Tax	7	7	6	6
	Direct Distributions: FML	7	7	7	7

		2012	2013	2014	2015
<b>Region 5</b> Cheyenne, Elbert, Kit Carson, Lincoln	Factor: Employee Residence Reports	9	10	9	8
	Factor: Permits	11	11	8	7
	Factor: Production	9	9	9	8
	Factor: FML Revenue Generated	9	8	8	8
	Direct Distributions: Severance Tax	10	10	8	8
	Direct Distributions: FML	10	11	10	10
<b>Region 6</b> Baca, Bent, Crowley, Kiowa, Otero, Prowers	Factor: Employee Residence Reports	12	12	11	11
	Factor: Permits	12	12	12	12
	Factor: Production	10	10	10	11
	Factor: FML Revenue Generated	8	5	7	7
	Direct Distributions: Severance Tax	12	12	12	12
	Direct Distributions: FML	12	10	11	11
<b>Region 7</b> Pueblo	Factor: Employee Residence Reports	11	11	12	10
	Factor: Permits	13	13	13	13
	Factor: Production	12	12	12	12
	Factor: FML Revenue Generated	12	12	12	13
	Direct Distributions: Severance Tax	13	13	13	13
	Direct Distributions: FML	11	12	12	12
<b>Region 8</b> Alamosa, Conejos, Costilla, Mineral, Rio Grande, Saguache	Factor: Employee Residence Reports	13	13	13	13
	Factor: Permits	10	9	10	9
	Factor: Production	12	12	12	12
	Factor: FML Revenue Generated	10	11	10	11
	Direct Distributions: Severance Tax	11	11	11	11
	Direct Distributions: FML	13	13	13	13
<b>Region 9</b> Archuleta, Dolores, La Plata, Montezuma, San Juan	Factor: Employee Residence Reports	6	6	5	5
	Factor: Permits	5	5	5	5
	Factor: Production	2	2	3	3
	Factor: FML Revenue Generated	2	2	2	2
	Direct Distributions: Severance Tax	5	5	5	5
	Direct Distributions: FML	2	2	2	2

		2012	2013	2014	2015
<b>Region 10</b>	Factor: Employee Residence Reports	4	4	6	6
Delta, Gunnison, Hinsdale, Montrose	Factor: Permits	3	3	3	3
Ouray, San Miguel	Factor: Production	3	3	4	4
	Factor: FML Revenue Generated	3	3	3	3
	Direct Distributions: Severance Tax	3	3	4	4
	Direct Distributions: FML	3	4	5	5
<b>Region 11</b>	Factor: Employee Residence Reports	1	2	2	3
Garfield, Mesa, Moffat, Rio Blanco,	Factor: Permits	1	1	2	1
Routt	Factor: Production	1	1	1	1
	Factor: FML Revenue Generated	1	1	1	1
	Direct Distributions: Severance Tax	1	1	1	2
	Direct Distributions: FML	1	1	1	1
<b>Region 12</b>	Factor: Employee Residence Reports	10	9	10	12
Eagle, Grand, Jackson, Pitkin, Summit	Factor: Permits	9	8	9	10
	Factor: Production	7	8	8	9
	Factor: FML Revenue Generated	5	6	5	5
	Direct Distributions: Severance Tax	8	8	9	10
	Direct Distributions: FML	8	9	8	8
<b>Region 13</b>	Factor: Employee Residence Reports	8	8	8	9
Chaffee, Custer, Fremont, Lake	Factor: Permits	8	7	7	8
	Factor: Production	11	11	11	10
	Factor: FML Revenue Generated	13	13	13	12
	Direct Distributions: Severance Tax	9	9	10	9
	Direct Distributions: FML	9	8	9	9
<b>Region 14</b>	Factor: Employee Residence Reports	14	14	14	14
Huerfano, Las Animas	Factor: Permits	13	13	13	13
	Factor: Production	12	12	12	12
	Factor: FML Revenue Generated	14	14	14	14
	Direct Distributions: Severance Tax	14	14	14	14
	Direct Distributions: FML	14	14	14	14