



# 2011 BIENNIAL REPORT

## DIRECT DISTRIBUTION

**Local Government Energy and Mineral Impact Assistance Program  
Biennial Direct Distribution Report – 2010 & 2011  
January 1, 2012**

**Reeves Brown  
Executive Director  
Colorado Department of Local Affairs  
1313 Sherman St., Room 518  
Denver, CO 80203  
(303) 866-4904  
[www.dola.state.co.us/directdistribution](http://www.dola.state.co.us/directdistribution)**

## MESSAGE FROM THE EXECUTIVE DIRECTOR

---



Reeves Brown  
DOLA Executive Director

The Colorado Department of Local Affairs in partnership with the Energy and Mineral Impact Advisory Committee annually distributes revenue derived from energy and mineral extraction statewide. These revenues come from State Severance Tax receipts and Federal Mineral Lease non-bonus payments.

Effective July 1, 2008, the General Assembly passed and Gov. Ritter signed SB08-218 and HB08-1083, which authorized this current method and formula to determine the direct distribution of energy impact dollars from the severance tax, as well as federal mineral leases. The legislation also established this Biennial Report to the General Assembly on the Direct Distribution.

The following factors are considered in the formulaic distribution: permits, production, employee residence, as well as, for sub-county distribution, population and highway user miles (HUTF). The 2010 distribution came to a total of \$11,938,671 for Severance Tax and \$25,441,721 for Federal Mineral Lease Revenue. With slightly higher production volumes and commodity prices, along with less property tax credits taken, the amount in Severance Tax Direct Distribution going to local communities in 2011 was \$22,707,792. The total for the Federal Mineral Lease Revenue Direct Distribution to counties, municipalities and school districts was \$31,947,489.

The dollars distributed through this program are vital to helping communities provide services to Colorado citizens. We are committed to working with our local government and association partners and legislators in advocating for the preservation of this critically important source of funding.

Sincerely,

A handwritten signature in black ink that reads "Reeves Brown". The signature is fluid and cursive, with a long horizontal stroke at the end.

Reeves Brown  
Executive Director



Biennial Direct Distribution Report – 2010 & 2011  
January 1, 2012

**Contents**

---

MESSAGE FROM THE EXECUTIVE DIRECTOR.....	i
INTRODUCTION.....	1
BACKGROUND .....	1
SEVERANCE TAX DIRECT DISTRIBUTION .....	2
FEDERAL MINERAL LEASE RECEIPTS DIRECT DISTRIBUTION .....	5
EFFECTIVENESS.....	7
EXHIBIT A: How Severance Tax Revenue to Colorado is Allocated.....	9
EXHIBIT B: Illustration of 2010 and 2011 Direct Distribution Formulas.....	10
EXHIBIT C: How Federal Mineral Lease Revenue to Colorado is Allocated .....	11
EXHIBIT D: 2010 and 2011 Severance Tax Direct Distributions .....	12
EXHIBIT E: 2010 and 2011 Federal Mineral Lease County and Municipal Direct Distributions.....	26
EXHIBIT F: 2010 and 2011 Federal Mineral Lease School District Direct Distributions .....	40

## INTRODUCTION

---

This biennial report evaluates the effectiveness of the allocation and distribution of moneys from the Severance Tax Local Impact Fund to counties and municipalities impacted by mineral and mineral fuel development. The report is submitted to the General Assembly pursuant to C.R.S. 39-29-110(1)(c)(VI). The report also evaluates the direct distribution of federal mineral lease (FML) moneys from the Local Government Impact Fund.

## BACKGROUND

---

### *Severance Tax Direct Distribution*

---

HB08-1083 made significant changes to the state severance tax direct distribution formula and was based on recommendations by the 2007 Interim Committee on Severance Tax and Federal Mineral Lease Revenue Allocation through collaboration with stakeholders and the Department of Local Affairs (Department). This legislation also altered the composition and role of the Energy and Mineral Impact Assistance Advisory Committee and changed the guidelines, reporting and accountability of the distribution of state grants by the Department.

Prior to the 2009 direct distribution, a count of energy industry employees was the sole factor used to determine the distribution. In order to better measure the social or economic impacts of energy and mineral development, processing, or energy conversion of minerals and mineral fuels on communities, the 2008 legislation refined the industry employee resident count and added other impact measure factors including mining and well permits, mineral production, population and road miles to the formula. The moneys are first allocated by factor to county pools and these pools are then distributed to the municipalities and county government within each county. For an illustration of how state severance tax revenue is allocated, please see [Exhibit A](#). For an illustration of the severance tax direct distribution formula, see [Exhibit B](#).

### *Federal Mineral Lease Receipts Direct Distribution*

---

SB08-218 added new factors to the formulaic distribution of non-bonus FML revenues. Revenue generated under the Federal Mineral Leasing Act within each county, population, and road miles were added to the formula. Prior to 2009, the count of industry employee residents conducted for the severance tax direct distribution was the sole metric used to determine the FML distribution. Like the severance tax direct distribution, the moneys are first allocated in county pools and then distributed to the municipalities and county government or school district within each county. For an illustration of the federal mineral lease direct distribution formula, see [Exhibit B](#). For a description of how federal mineral lease receipts are allocated through the state, see [Exhibit C](#).

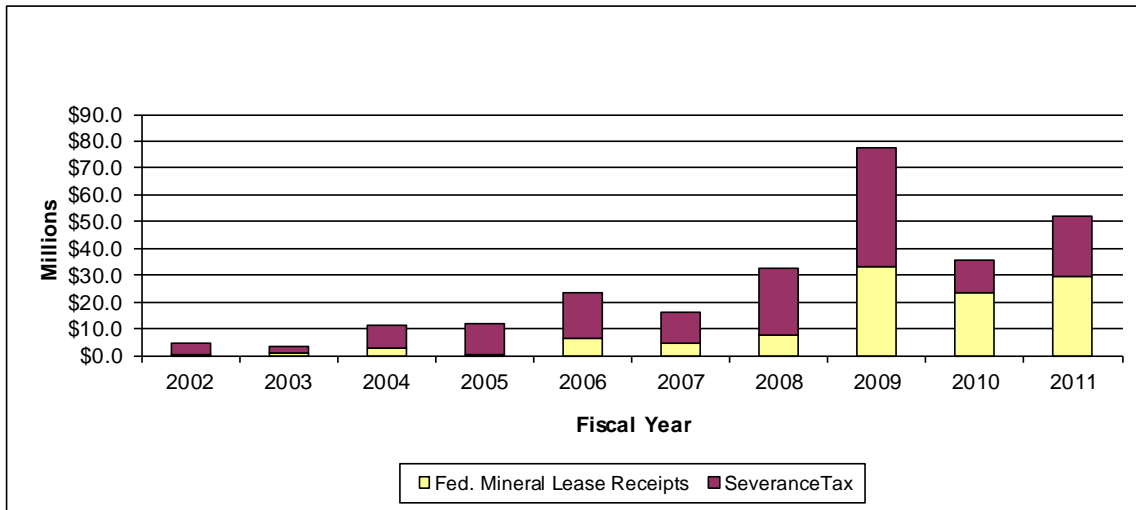
### *Distribution Trends*

---

Due to high commodity prices, primarily oil and natural gas, the 2009 direct distributions of both severance tax proceeds and federal mineral lease revenue were significantly higher than previous

years. As a result of property tax credits taken and lower commodity prices the 2010 and 2011 distributions returned to a lower level.

Total Direct Distribution to Counties 2002-2011



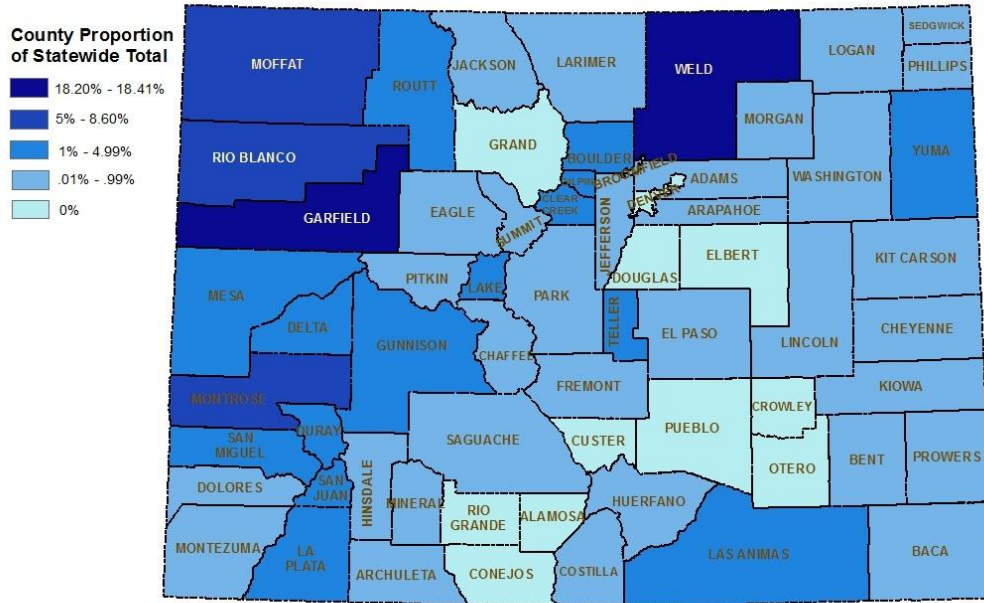
## SEVERANCE TAX DIRECT DISTRIBUTION

Thirty percent of the severance tax revenue credited to the Local Impact Fund from July 1, 2009 to June 30, 2010 resulted in the total distribution of \$11,938,671 to 330 counties and municipalities. For the 2011 state fiscal year, \$22,707,792 was distributed to 330 counties and municipalities. See [Exhibit D](#) for amounts of county pools and the individual payments to counties and municipalities.

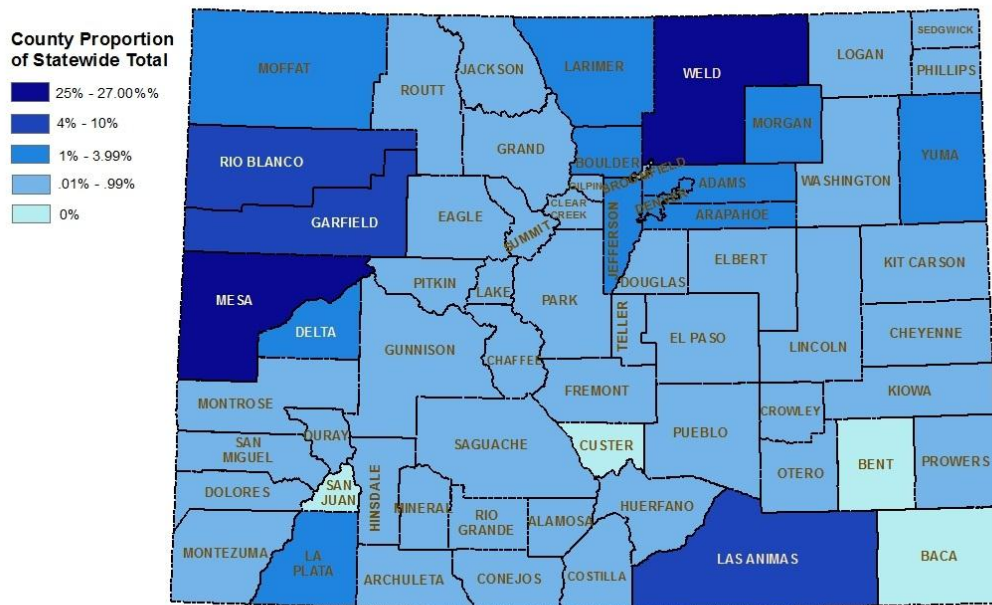
Moneys were first allocated into “county pools” based on each county’s proportion of industry employee residents, mining and well permits and mineral production compared to the totals statewide. CRS 39-29-110(1)(c)(II)(B) directs each factor to be weighed 30% and the Executive Director, in consultation with the Energy and Mineral Impact Assistance Advisory Committee, determine the assignment of the remaining 10%. The county pool factors were weighed in 2010 and 2011 as follows:

<b>County Pool Factor</b>	<b>2010</b>	<b>2011</b>
Colorado Employee Residence Reports	40%	40%
Mining and Well Permits	30%	30%
Mineral Production	30%	30%

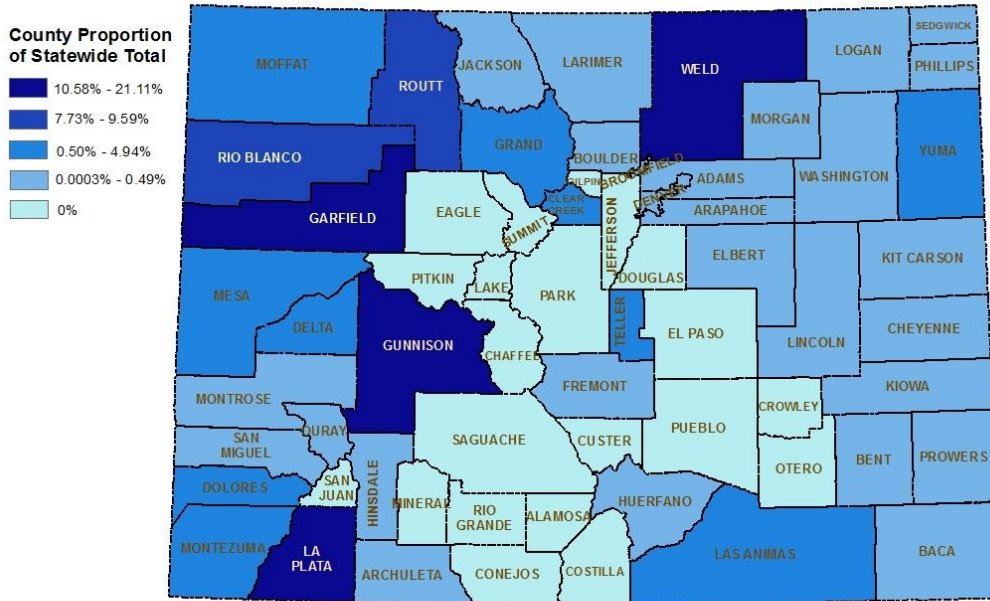
## 2011 Severance Tax Direct Distribution Mining and Well Permits Index



## 2011 Severance Tax Direct Distribution Colorado Employee Residence Report Index



## 2011 Severance Tax Direct Distribution Production Index



The Department then distributed each county pool to the county government and each municipality therein based on the unincorporated or municipal proportions of employee residents, population, and road miles compared to the total in the county. Statute directs the Executive Director, in consultation with the Energy and Mineral Impact Advisory Committee, to set the weights of these factors statewide. The Executive Director set the factor weights as follows:

<b>Subcounty Pool Factor</b>	<b>2010</b>	<b>2011</b>
Population	34%	34%
Colorado Employee Residence Reports	33%	33%
Road Miles	33%	33%

Details on individual county and municipal proportions of each factor for the 2010 and 2011 distribution can be found at <http://dola.colorado.gov/directdistribution>. The [2011 Direct Distribution Guidelines](#) document has additional information about the severance tax distribution.

The Executive Director may accept a memorandum of understanding (MOU) from the county and all municipalities therein requesting an alternative distribution and/or factor weights for a “subcounty” pool. The Department did not receive any MOUs for the 2010 or 2011 distributions.

FEDERAL MINERAL LEASE RECEIPTS DIRECT DISTRIBUTION

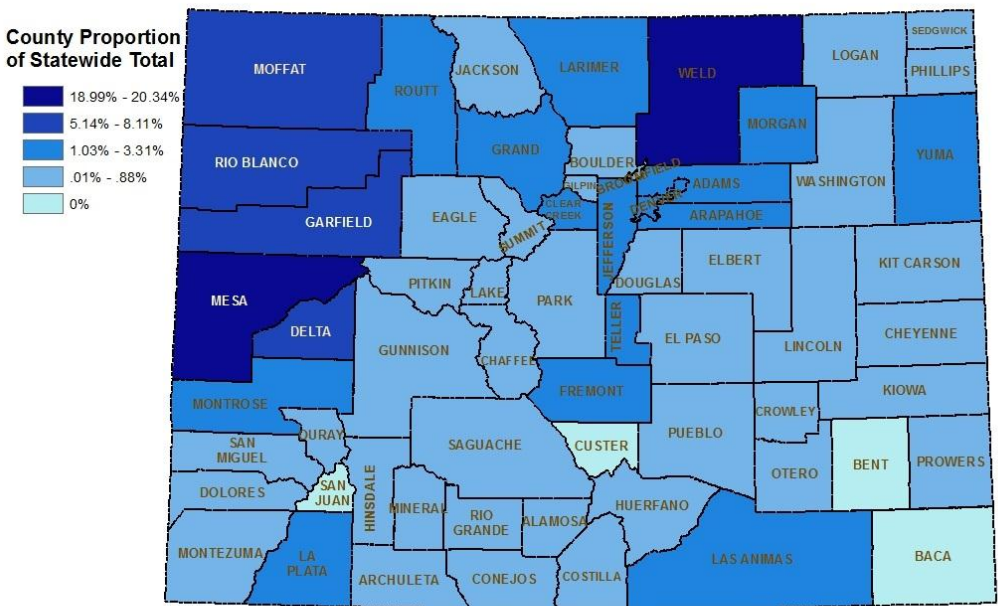
County and Municipal Direct Distribution

Fifty percent of the federal mineral lease revenue credited to the Local Government Mineral Impact Fund from July 1, 2009 to June 30, 2010 resulted in the total distribution of \$23,448,591 to 328 counties and municipalities. For the 2011 state fiscal year, \$29,444,690 was distributed to 328 counties and municipalities. See [Exhibit E](#) for the county pools and individual amounts of the sub county payments to counties and municipalities.

Moneys were first allocated into “county pools” based on each county’s proportion of resident industry employees and federal mineral lease revenues generated compared to the totals statewide. CRS 34-63-102(5.4)(c)(III) specifies the employee residence report factor cannot be weighted more than 35%. The county pool factors were weighed by the Executive Director, in consultation with the Energy and Mineral Impact Advisory Committee as follows:

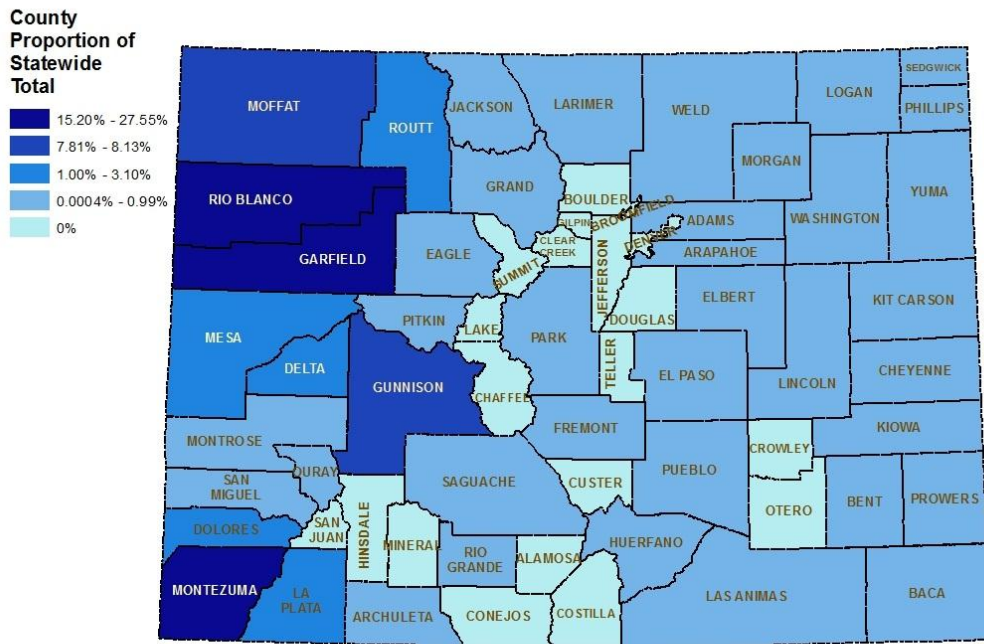
County Pool Factor	2010	2011
FML Revenue County of Origin	65%	65%
Colorado Employee Residence Reports	35%	35%

2011 Federal Mineral Lease Direct Distribution Colorado Employee Residence Report Index





## 2011 Federal Mineral Lease Revenue Generated by County



The Department is then directed to distribute each county pool to the county government and each municipality therein based on the unincorporated or municipal proportion of employee residents, population and road miles compared to the total in the county. Statute directs the Executive Director, in consultation with the Energy and Mineral Impact Advisory Committee, to set the weights of these factors statewide. The Executive Director set the factor weights as follows:

<b>Subcounty Pool Factor</b>	<b>2010</b>	<b>2011</b>
Population	34%	34%
Colorado Employee Residence Reports	33%	33%
Road Miles	33%	33%

The [2011 Direct Distribution Guidelines](http://dola.colorado.gov/directdistribution) document has additional information about the federal mineral lease receipts distribution. Details on individual county and municipal proportions of each factor used in the 2010 and 2011 distributions can be found at <http://dola.colorado.gov/directdistribution>.

Like the severance tax distribution, the Executive Director may accept a memorandum of understanding (MOU) from the county and all municipalities therein requesting an alternative

distribution and/or factor weights for a “subcounty” pool. The Department did not receive any MOUs for the 2010 or 2011 federal mineral lease distributions.

### *Federal Mineral Lease Districts*

---

As the result of HB11-1218, counties may choose to create a federal mineral lease district for the purpose of re-directing federal mineral lease distribution payments in an effort to maximize the amount of PILT funding counties receive from the U.S. Department of Interior. This legislation did not change the direct distribution formula, but enables a county to instead direct the payment otherwise calculated for the county government to its federal mineral lease district.

For the 2011 Direct Distribution, eight counties created federal mineral lease districts: Delta, Garfield, Mesa, Moffat, Park, Rio Blanco, Routt and Weld. Direct Distribution payment details contained in [Exhibit E](#) include the payments to these newly formed districts. For additional information on federal mineral lease districts and federal PILT calculations, click [here](#).

### *School District Direct Distribution*

---

The school district distribution occurs in similar fashion to the county/municipal distribution. Statute directs the Department to calculate county pools based on the same weights set by the Executive Director for the county/municipal distribution. Each county pool is then distributed based on the proportion of each school district’s pupil count to the total county pupil count. See [Exhibit B](#) for an illustration of the school district direct distribution.

For 2010, \$1,993,130 was distributed to 176 school districts; \$2,502,799 was distributed to 176 school districts in 2011. See [Exhibit F](#) for details on the 2010 and 2011 payments to school districts.

## **EFFECTIVENESS**

---

The statutory severance tax and federal mineral lease direct distribution formulas help provide an equitable system for allocating money to communities socially or economically impacted by energy and mineral development, processing, or energy conversion of minerals and mineral fuels. The combination of various measures of impact helps return severance tax and federal mineral lease revenues to the communities experiencing industry impacts. As illustrated by the maps of the factors and the distributions, communities in significantly impacted areas are receiving the greatest proportion of the distribution.

Both the severance tax and federal mineral lease statutory formulas allow for flexibility on a year by year basis for the continued pursuit of effective distribution. The Executive Director, in consultation with the Energy and Mineral Impact Advisory Committee, has discretion to adjust the weights of the factors in the formula each year. The Department continually evaluates these factors and solicits feedback from the Advisory Committee, local government recipients and the Mineral Production Employee Residence Report Oversight Committee. For the 2010 and 2011 distributions, these groups have supported the Department’s implementation of statute and administration of the

Direct Distribution Program. Furthermore, while each county and its municipalities have the ability to locally determine the most effective allocation of their county pool within their community by means of an MOU, none exercised this option instead electing to use the Department's statewide factors and weights.

EXHIBIT A: How Severance Tax Revenue to Colorado is Allocated

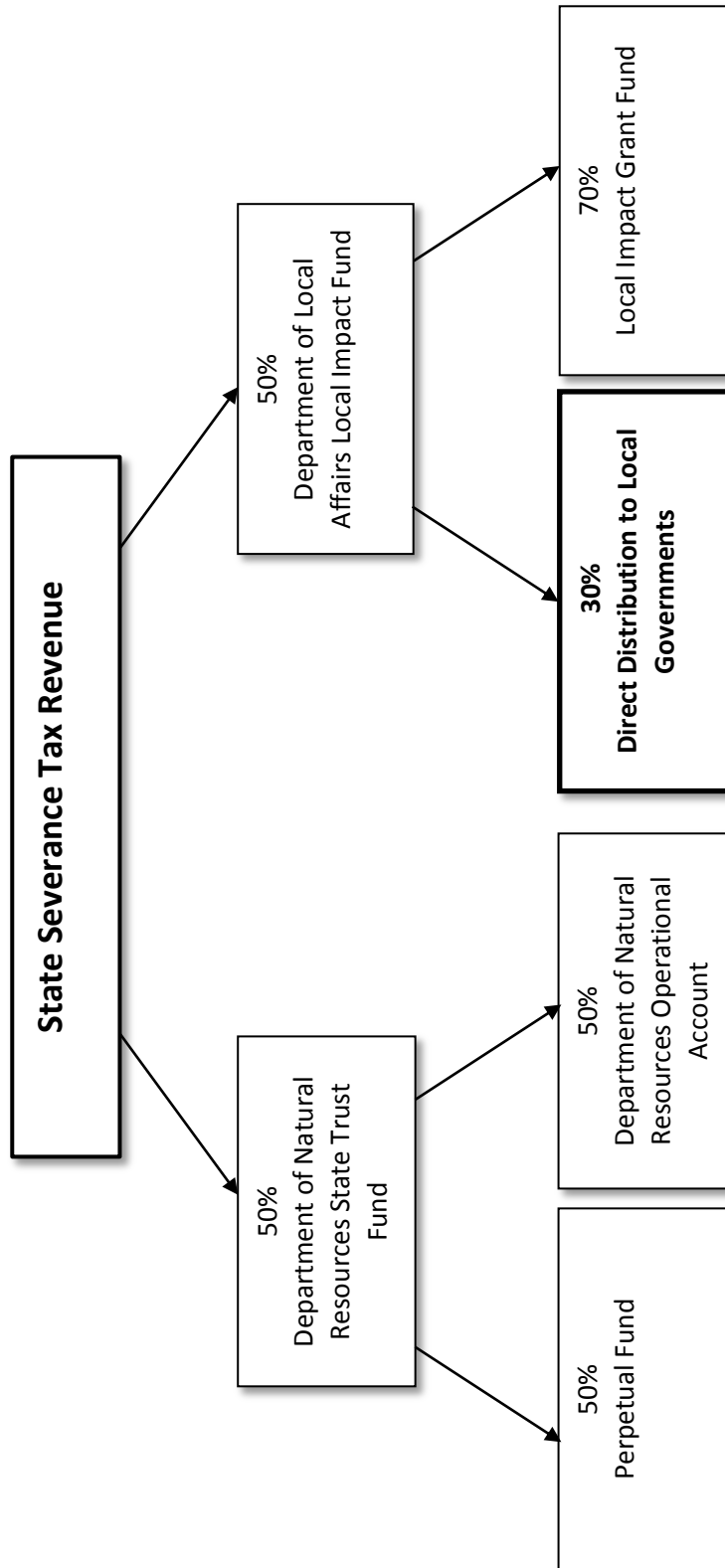


EXHIBIT B: Illustration of 2010 and 2011 Direct Distribution Formulas

DOLA portion of  
State Severance Tax

Direct Distribution      Grants and Loans

DOLA portion of  
Federal Mineral Lease

Direct Distribution      Grants

Separate Distribution of Federal  
Mineral Lease  
to School Districts

Direct Distribution

The State Severance Tax Direct Distribution will be allocated to County Pools based on statewide share of the following factors:

Factor	Percentages
Colorado Employee Residence Reports (CERR)	40%*
Mining and Well Permits	30%*
Mineral Production	30%*

\*No single factor of the three listed above will be less than 30%, with the remaining 10% variably allocated among the three factors at the discretion of the executive director, based on recommendation from the Energy and Mineral Impact Advisory Committee.

The Sub County Pool will be determined based on the County/Municipal split of the following factors:

Factor	Percentages
Colorado Employee Residence Reports (CERR)	33%**
Population	34%**
Road Miles	33%**

\*\*P percentages may be based on recommendation from the Energy and Mineral Impact Advisory Committee or memorandum of understanding between county and all of its municipalities, with final determination by the executive director.

Annual distribution of revenues to Counties and Municipalities by August 31.

The Federal Mineral Lease Direct Distribution for will be allocated to County Pools based on statewide share of the following factors:

Factor	Percentages
Colorado Employee Residence Reports (CERR)	35%*
Federal Mineral Lease Revenue Generated	65%*

\*Percentages, with a maximum of 35% for CERRs and the remaining percent from generated federal mineral lease revenue, to be determined by the executive director, based on recommendation from the Energy and Mineral Impact Advisory Committee.

The Sub County Pool will be determined based on the County/Municipal split of the following factor:

Factor	Percentages
Pupil Counts (most recent)	100%

Annual distribution of revenues to School Districts by August 31.

The Federal Mineral Lease Direct Distribution for will be allocated to County Pools based on statewide share of the following factors:

Factor	Percentages
Colorado Employee Residence Reports (CERR)	35%*
Federal Mineral Lease Revenue Generated	65%*

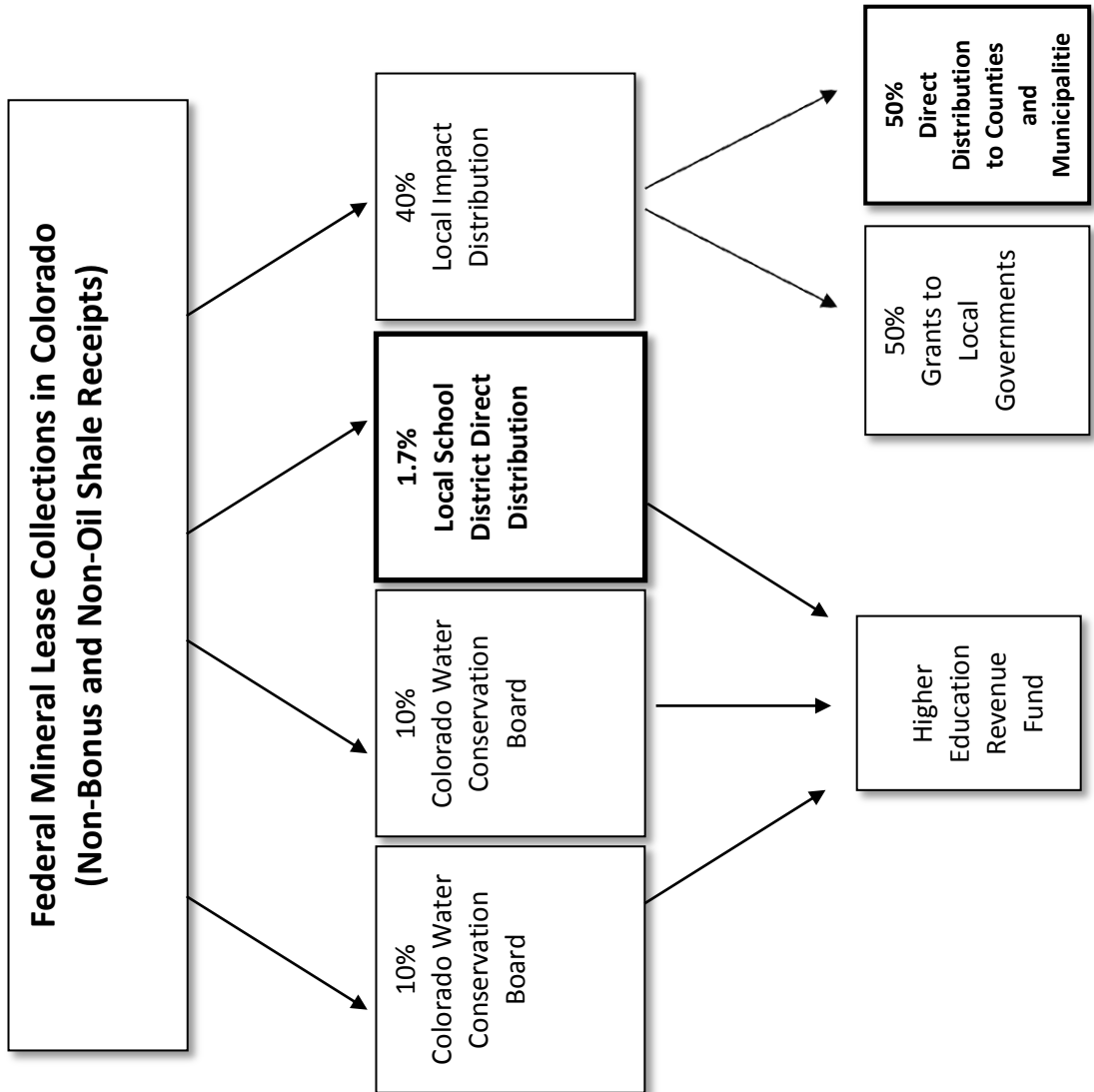
\*County Pool percentages to school districts will be identical to those used for County Pool under "DOLA Portion of Federal Mineral Lease".

The Sub County Pool will be determined based on the School District split of the following factor:

Factor	Percentages
Pupil Counts (most recent)	100%

Annual distribution of revenues to School Districts by August 31.

EXHIBIT C: How Federal Mineral Lease Revenue to Colorado is Allocated



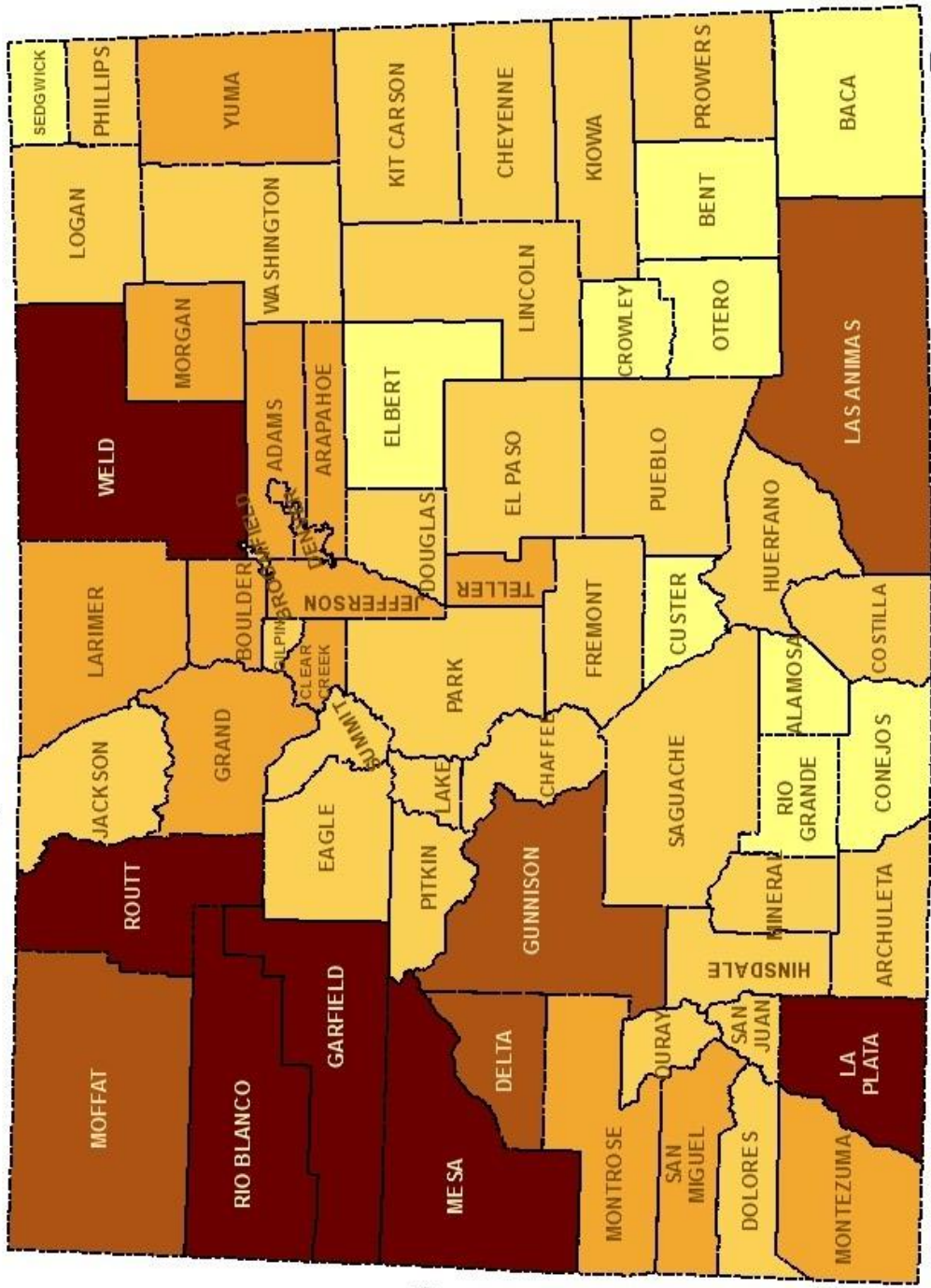
# EXHIBIT D: 2010 and 2011 Severance Tax Direct Distributions

---





# 2011 Severance Tax Direct Distribution County Pool Allocations



Source: For Allocation and Payment Amounts see [dola.colorado.gov/directdistribution](http://dola.colorado.gov/directdistribution)

Exhibit D: 2010 and 2011 Severance Tax Direct Distribution Amounts

County	Name	2010	2011
	Adams County	\$83,638.11	\$142,898.90
	Arvada, City of	\$763.67	\$1,278.92
	Aurora, City of	\$10,553.07	\$16,701.11
	Bennett, Town of	\$2,132.24	\$3,755.94
	Brighton, City of	\$45,349.17	\$77,203.73
	Commerce City, City of	\$18,936.85	\$31,647.87
	Federal Heights, City of	\$2,826.77	\$5,509.42
	Lochbuie, Town of	\$15.35	\$1.00
	Northglenn, City of	\$11,834.05	\$22,583.49
	Thornton, City of	\$44,406.20	\$76,530.55
	Westminster, City of	\$22,766.29	\$40,336.48
<b>Adams Total</b>		<b>\$243,221.77</b>	<b>\$418,447.41</b>
	Alamosa County	\$1,146.77	\$884.92
	Alamosa, City of	\$292.73	\$228.31
	Hooper, Town of	\$5.01	\$3.51
<b>Alamosa Total</b>		<b>\$1,444.51</b>	<b>\$1,116.74</b>
	Arapahoe County	\$17,890.44	\$27,673.60
	Aurora, City of	\$32,921.88	\$44,268.93
	Bennett, Town of	\$33.21	\$52.65
	Bow Mar, Town of	\$81.39	\$106.48
	Centennial, City of	\$11,136.14	\$14,584.97
	Cherry Hills Village, City of	\$705.40	\$931.01
	Columbine Valley, Town of	\$132.22	\$175.06
	Deer Trail, Town of	\$840.98	\$893.44
	Englewood, City of	\$4,387.62	\$6,098.49
	Foxfield, Town of	\$139.00	\$181.97
	Glendale, City of	\$280.13	\$338.85
	Greenwood Village, City of	\$1,464.85	\$2,658.31
	Littleton, City of	\$8,584.79	\$10,052.22
	Sheridan, City of	\$462.40	\$987.14
<b>Arapahoe Total</b>		<b>\$79,060.45</b>	<b>\$109,003.12</b>
	Archuleta County	\$15,473.21	\$32,036.70
	Pagosa Springs, Town of	\$3,566.07	\$6,296.16
<b>Archuleta Total</b>		<b>\$19,039.28</b>	<b>\$38,332.86</b>
	Baca County	\$2,153.17	\$3,970.58
	Campo, Town of	\$54.10	\$88.48
	Pritchett, Town of	\$48.72	\$112.56
	Springfield, Town of	\$1,338.01	\$1,158.94
	Two Buttes, Town of	\$24.98	\$36.86
	Vilas, Town of	\$38.96	\$91.60
	Walsh, Town of	\$1,051.81	\$436.97

Exhibit D: 2010 and 2011 Severance Tax Direct Distribution Amounts

County	Name	2010	2011
<b>Baca Total</b>		<b>\$4,709.75</b>	<b>\$5,895.99</b>
	Bent County	\$391.90	\$2,980.11
	Las Animas, City of	\$91.05	\$724.79
<b>Bent Total</b>		<b>\$482.95</b>	<b>\$3,704.90</b>
	Boulder County	\$29,150.59	\$58,486.84
	Boulder, City of	\$15,835.14	\$32,274.06
	Erie, Town of	\$1,553.86	\$3,558.19
	Jamestown, Town of	\$78.46	\$160.95
	Lafayette, City of	\$6,521.78	\$12,740.12
	Longmont, City of	\$40,485.53	\$88,308.74
	Louisville, City of	\$5,586.30	\$10,915.16
	Lyons, Town of	\$1,087.68	\$1,628.96
	Nederland, Town of	\$413.59	\$852.35
	Superior, Town of	\$2,395.27	\$4,865.54
	Ward, Town of	\$69.09	\$138.32
<b>Boulder Total</b>		<b>\$103,177.29</b>	<b>\$213,929.23</b>
	Broomfield, City and County of	\$22,789.21	\$35,208.73
<b>Broomfield Total</b>		<b>\$22,789.21</b>	<b>\$35,208.73</b>
	Buena Vista, Town of	\$4,282.60	\$6,165.90
	Chaffee County	\$5,258.65	\$10,219.57
	Poncha Springs, Town of	\$223.31	\$440.37
	Salida, City of	\$1,328.27	\$4,733.20
<b>Chaffee Total</b>		<b>\$11,092.83</b>	<b>\$21,559.04</b>
	Cheyenne County	\$23,362.20	\$38,667.77
	Cheyenne Wells, Town of	\$12,826.69	\$20,882.01
	Kit Carson, Town of	\$5,004.21	\$6,376.65
<b>Cheyenne Total</b>		<b>\$41,193.10</b>	<b>\$65,926.43</b>
	Central City	\$0.00	\$0.00
	Clear Creek County	\$151,601.33	\$265,834.55
	Empire, Town of	\$12,616.95	\$29,997.73
	Georgetown, Town of	\$20,662.35	\$37,029.39
	Idaho Springs, City of	\$38,867.22	\$97,239.29
	Silver Plume, Town of	\$2,004.75	\$3,529.64
<b>Clear Creek Total</b>		<b>\$225,752.60</b>	<b>\$433,630.60</b>
	Antonito, Town of	\$551.66	\$484.16
	Conejos County	\$1,094.19	\$1,662.92
	La Jara, Town of	\$314.33	\$854.04
	Manassa, Town of	\$90.64	\$148.00
	Romeo, Town of	\$37.40	\$59.42
	Sanford, Town of	\$78.54	\$141.68
<b>Conejos Total</b>		<b>\$2,166.76</b>	<b>\$3,350.22</b>

Exhibit D: 2010 and 2011 Severance Tax Direct Distribution Amounts

County	Name	2010	2011
	Blanca, Town of	\$394.82	\$697.18
	Costilla County	\$9,565.50	\$10,119.03
	San Luis, Town of	\$710.82	\$6,953.80
<b>Costilla Total</b>		<b>\$10,671.14</b>	<b>\$17,770.01</b>
	Crowley County	\$457.99	\$618.76
	Crowley, Town of	\$8.35	\$12.63
	Olney Springs, Town of	\$254.71	\$23.97
	Ordway, Town of	\$84.15	\$442.61
	Sugar City, Town of	\$12.38	\$18.76
<b>Crowley Total</b>		<b>\$817.58</b>	<b>\$1,116.73</b>
	Cedaredge, Town of	\$14,237.11	\$21,964.68
	Crawford, Town of	\$4,380.74	\$5,895.72
	Delta County	\$214,674.23	\$308,511.48
	Delta, City of	\$66,230.77	\$101,156.62
	Hotchkiss, Town of	\$9,785.72	\$15,293.32
	Orchard City, Town of	\$24,961.09	\$38,113.67
	Paonia, Town of	\$18,108.19	\$22,581.54
<b>Delta Total</b>		<b>\$352,377.85</b>	<b>\$513,517.03</b>
	Denver, City And County of	\$73,547.21	\$101,378.99
<b>Denver Total</b>		<b>\$73,547.21</b>	<b>\$101,378.99</b>
	Dolores County	\$55,013.98	\$66,738.03
	Dove Creek, Town of	\$23,265.28	\$21,632.42
	Rico, Town of	\$3,988.54	\$4,210.47
<b>Dolores Total</b>		<b>\$82,267.80</b>	<b>\$92,580.92</b>
	Aurora, City of	\$2.17	\$3.86
	Castle Pines, City of	\$246.63	\$351.21
	Castle Rock, Town of	\$2,654.25	\$3,600.99
	Douglas County	\$10,160.16	\$16,182.06
	Larkspur, Town of	\$10.63	\$13.85
	Littleton, City of	\$2.65	\$0.97
	Lone Tree, City of	\$1,220.86	\$366.86
	Parker, Town of	\$2,072.46	\$2,300.87
<b>Douglas Total</b>		<b>\$16,369.81</b>	<b>\$22,820.67</b>
	Avon, Town of	\$1,722.12	\$1,154.81
	Basalt, Town of	\$254.92	\$558.97
	Eagle County	\$6,730.72	\$13,136.32
	Eagle, Town of	\$2,745.84	\$1,252.30
	Gypsum, Town of	\$705.49	\$5,805.56
	Minturn, Town of	\$115.96	\$353.25
	Red Cliff, Town of	\$37.16	\$59.40
	Vail, Town of	\$525.69	\$1,033.10

Exhibit D: 2010 and 2011 Severance Tax Direct Distribution Amounts

County	Name	2010	2011
<b>Eagle Total</b>		<b>\$12,837.90</b>	<b>\$23,353.71</b>
	Calhan, Town of	\$265.40	\$501.12
	Colorado Springs, City of	\$10,434.59	\$17,609.47
	El Paso County	\$9,190.08	\$16,179.29
	Fountain, City of	\$395.80	\$745.77
	Green Mountain Falls, Town of	\$16.76	\$26.23
	Manitou Springs, City of	\$88.70	\$141.04
	Monument, Town of	\$88.89	\$160.53
	Palmer Lake, Town of	\$47.62	\$81.65
	Ramah, Town of	\$4.83	\$8.08
<b>El Paso Total</b>		<b>\$20,532.67</b>	<b>\$35,453.18</b>
	Elbert County	\$3,912.37	\$6,365.21
	Elizabeth, Town of	\$684.59	\$141.32
	Kiowa, Town of	\$616.31	\$73.48
	Simla, Town of	\$58.29	\$66.24
<b>Elbert Total</b>		<b>\$5,271.56</b>	<b>\$6,646.25</b>
	Brookside, Town of	\$131.08	\$229.60
	Canon City, City of	\$10,987.33	\$15,909.22
	Coal Creek, Town of	\$188.23	\$1,910.42
	Florence, City of	\$2,650.71	\$2,518.53
	Fremont County	\$19,071.65	\$33,567.84
	Rockvale, Town of	\$1,032.51	\$1,193.48
	Williamsburg, Town of	\$696.01	\$2,125.66
<b>Fremont Total</b>		<b>\$34,757.52</b>	<b>\$57,454.75</b>
	Carbondale, Town of	\$87,314.58	\$159,003.02
	Garfield County	\$1,105,388.34	\$2,079,303.71
	Glenwood Springs, City of	\$130,670.78	\$253,833.23
	New Castle, Town of	\$70,698.53	\$156,006.11
	Parachute, Town of	\$76,972.84	\$153,004.86
	Rifle, City of	\$295,549.96	\$603,659.75
	Silt, Town of	\$65,329.55	\$125,937.99
<b>Garfield Total</b>		<b>\$1,831,924.58</b>	<b>\$3,530,748.67</b>
	Black Hawk, City of	\$13,058.66	\$15,630.43
	Central City	\$3,436.29	\$4,542.82
	Gilpin County	\$24,594.85	\$53,261.74
<b>Gilpin Total</b>		<b>\$41,089.80</b>	<b>\$73,434.99</b>
	Fraser, Town of	\$2,523.79	\$4,558.53
	Granby, Town of	\$6,775.50	\$11,264.45
	Grand County	\$36,229.04	\$66,960.26
	Grand Lake, Town of	\$1,262.43	\$2,022.99
	Hot Sulphur Springs, Town of	\$5,673.18	\$8,312.67

Exhibit D: 2010 and 2011 Severance Tax Direct Distribution Amounts

County	Name	2010	2011
	Kremmling, Town of	\$12,544.61	\$18,660.65
	Winter Park, Town of	\$1,709.41	\$3,179.11
<b>Grand Total</b>		<b>\$66,717.96</b>	<b>\$114,958.66</b>
	Crested Butte, Town of	\$21,050.43	\$32,222.07
	Gunnison County	\$428,093.61	\$734,414.74
	Gunnison, City of	\$68,242.10	\$125,601.75
	Marble, Town of	\$1,742.45	\$3,536.68
	Mt. Crested Butte, Town of	\$11,739.28	\$18,816.78
	Pitkin, Town of	\$1,788.40	\$1,990.26
<b>Gunnison Total</b>		<b>\$532,656.27</b>	<b>\$916,582.28</b>
	Hinsdale County	\$22,636.63	\$26,993.72
	Lake City, Town of	\$7,210.05	\$27,127.20
<b>Hinsdale Total</b>		<b>\$29,846.68</b>	<b>\$54,120.92</b>
	Huerfano County	\$23,176.97	\$33,870.32
	La Veta, Town of	\$2,912.91	\$4,304.68
	Walsenburg, City of	\$13,239.98	\$19,889.51
<b>Huerfano Total</b>		<b>\$39,329.86</b>	<b>\$58,064.51</b>
	Jackson County	\$16,420.24	\$23,409.14
	Walden, Town of	\$4,790.80	\$6,956.29
<b>Jackson Total</b>		<b>\$21,211.04</b>	<b>\$30,365.43</b>
	Arvada, City of	\$15,016.04	\$24,092.87
	Bow Mar, Town of	\$28.48	\$53.07
	Edgewater, City of	\$677.84	\$596.61
	Golden, City of	\$3,222.70	\$3,699.61
	Jefferson County	\$40,936.53	\$69,083.51
	Lakeside, Town of	\$5.62	\$8.00
	Lakewood, City of	\$20,421.85	\$28,530.47
	Littleton, City of	\$120.23	\$301.97
	Morrison, Town of	\$557.15	\$853.15
	Mountain View, Town of	\$42.50	\$65.98
	Superior, Town of	\$0.00	\$0.00
	Westminster, City of	\$3,377.64	\$5,103.96
	Wheat Ridge, City of	\$4,205.55	\$9,495.42
<b>Jefferson Total</b>		<b>\$88,612.13</b>	<b>\$141,884.62</b>
	Eads, Town of	\$951.75	\$2,506.19
	Haswell, Town of	\$108.30	\$284.99
	Kiowa County	\$4,264.23	\$12,264.34
	Sheridan Lake, Town of	\$753.61	\$1,751.70
<b>Kiowa Total</b>		<b>\$6,077.89</b>	<b>\$16,807.22</b>
	Bethune, Town of	\$413.69	\$566.53
	Burlington, City of	\$3,300.78	\$3,781.19

Exhibit D: 2010 and 2011 Severance Tax Direct Distribution Amounts

County	Name	2010	2011
	Flagler, Town of	\$280.73	\$264.24
	Kit Carson County	\$6,636.11	\$6,010.99
	Seibert, Town of	\$83.35	\$85.12
	Stratton, Town of	\$605.25	\$304.87
	Vona, Town of	\$41.55	\$50.36
<b>Kit Carson Total</b>		<b>\$11,361.46</b>	<b>\$11,063.30</b>
	Bayfield, Town of	\$45,253.37	\$86,694.59
	Durango, City of	\$152,032.53	\$282,212.24
	Ignacio, Town of	\$14,675.34	\$18,634.07
	La Plata County	\$637,728.19	\$1,066,623.09
<b>La Plata Total</b>		<b>\$849,689.43</b>	<b>\$1,454,163.99</b>
	Lake County	\$31,373.86	\$55,648.53
	Leadville, City of	\$9,660.99	\$19,318.49
<b>Lake Total</b>		<b>\$41,034.85</b>	<b>\$74,967.02</b>
	Berthoud, Town of	\$3,769.83	\$9,179.56
	Estes Park, Town of	\$1,515.99	\$3,872.89
	Fort Collins, City of	\$29,235.94	\$102,319.42
	Johnstown, Town of	\$139.21	\$309.52
	Larimer County	\$31,101.98	\$103,763.21
	Loveland, City of	\$29,713.63	\$93,715.62
	Timnath, Town of	\$362.92	\$1,969.05
	Wellington, Town of	\$3,517.77	\$10,289.43
	Windsor, Town of	\$556.91	\$2,683.96
<b>Larimer Total</b>		<b>\$99,914.18</b>	<b>\$328,102.66</b>
	Aguilar, Town of	\$10,137.58	\$17,585.82
	Branson, Town of	\$846.82	\$1,471.63
	Cokedale, Town of	\$3,508.20	\$4,472.32
	Kim, Town of	\$809.21	\$2,297.93
	Las Animas County	\$263,270.64	\$431,018.95
	Starkville, Town of	\$2,107.97	\$1,839.64
	Trinidad, City of	\$182,883.23	\$311,050.84
<b>Las Animas Total</b>		<b>\$463,563.65</b>	<b>\$769,737.13</b>
	Arriba, Town of	\$261.60	\$402.26
	Genoa, Town of	\$225.40	\$290.54
	Hugo, Town of	\$3,054.17	\$12,097.85
	Limon, Town of	\$2,190.53	\$3,814.12
	Lincoln County	\$13,426.70	\$15,550.43
<b>Lincoln Total</b>		<b>\$19,158.40</b>	<b>\$32,155.20</b>
	Crook, Town of	\$86.50	\$123.67
	Fleming, Town of	\$832.38	\$1,808.77
	Iliff, Town of	\$142.80	\$278.61

Exhibit D: 2010 and 2011 Severance Tax Direct Distribution Amounts

County	Name	2010	2011
	Logan County	\$22,033.61	\$34,090.47
	Merino, Town of	\$994.58	\$753.97
	Peetz, Town of	\$163.58	\$252.48
	Sterling, City of	\$15,273.09	\$28,106.76
<b>Logan Total</b>		<b>\$39,526.54</b>	<b>\$65,414.73</b>
	Collbran, Town of	\$4,173.69	\$9,619.84
	De Beque, Town of	\$7,728.32	\$17,729.64
	Fruita, City of	\$107,185.12	\$202,526.15
	Grand Junction, City of	\$422,416.06	\$786,412.82
	Mesa County	\$941,267.03	\$1,673,124.96
	Palisade, Town of	\$19,905.56	\$37,209.66
<b>Mesa Total</b>		<b>\$1,502,675.78</b>	<b>\$2,726,623.07</b>
	Creede, City of	\$4,877.64	\$8,420.77
	Mineral County	\$5,166.59	\$9,349.24
<b>Mineral Total</b>		<b>\$10,044.23</b>	<b>\$17,770.01</b>
	Craig, City of	\$273,619.21	\$387,876.92
	Dinosaur, Town of	\$24,466.97	\$39,673.96
	Moffat County	\$323,177.73	\$478,237.98
<b>Moffat Total</b>		<b>\$621,263.91</b>	<b>\$905,788.86</b>
	Cortez, City of	\$61,135.08	\$64,483.82
	Dolores, Town of	\$6,897.83	\$4,894.13
	Mancos, Town of	\$6,871.15	\$9,575.18
	Montezuma County	\$194,240.89	\$278,418.52
<b>Montezuma Total</b>		<b>\$269,144.95</b>	<b>\$357,371.65</b>
	Montrose County	\$166,297.99	\$288,051.05
	Montrose, City of	\$59,687.45	\$126,272.54
	Naturita, Town of	\$13,461.31	\$16,201.66
	Nucla, Town of	\$11,197.40	\$5,143.63
	Olathe, Town of	\$6,020.51	\$16,316.42
<b>Montrose Total</b>		<b>\$256,664.66</b>	<b>\$451,985.30</b>
	Brush, City of	\$7,524.05	\$17,480.98
	Fort Morgan, City of	\$21,813.08	\$46,359.49
	Hillrose, Town of	\$515.87	\$1,727.96
	Log Lane Village, Town of	\$1,143.82	\$4,545.31
	Morgan County	\$39,753.96	\$95,091.14
	Wiggins, Town of	\$3,352.38	\$5,817.52
<b>Morgan Total</b>		<b>\$74,103.16</b>	<b>\$171,022.40</b>
	Cheraw, Town of	\$3.65	\$22.52
	Fowler, Town of	\$15.84	\$104.77
	La Junta, City of	\$337.37	\$1,721.10
	Manzanola, Town of	\$6.79	\$39.01



Exhibit D: 2010 and 2011 Severance Tax Direct Distribution Amounts

County	Name	2010	2011
	Otero County	\$293.14	\$1,809.65
	Rocky Ford, City of	\$56.14	\$715.60
	Swink, Town of	\$9.32	\$54.31
<b>Otero Total</b>		<b>\$722.25</b>	<b>\$4,466.96</b>
	Ouray County	\$42,015.73	\$74,010.38
	Ouray, City of	\$3,487.87	\$7,297.44
	Ridgway, Town of	\$4,530.44	\$7,163.40
<b>Ouray Total</b>		<b>\$50,034.04</b>	<b>\$88,471.22</b>
	Alma, Town of	\$208.06	\$1,177.43
	Fairplay, Town of	\$555.97	\$873.18
	Park County	\$39,113.76	\$55,961.08
<b>Park Total</b>		<b>\$39,877.79</b>	<b>\$58,011.69</b>
	Haxtun, Town of	\$3,658.11	\$5,829.22
	Holyoke, City of	\$8,801.49	\$20,557.33
	Paoli, Town of	\$73.80	\$133.14
	Phillips County	\$9,074.28	\$18,664.47
<b>Phillips Total</b>		<b>\$21,607.68</b>	<b>\$45,184.16</b>
	Aspen, City of	\$2,251.18	\$2,822.38
	Basalt, Town of	\$309.74	\$402.15
	Pitkin County	\$6,334.61	\$14,113.81
	Snowmass Village, Town of	\$1,053.36	\$1,426.95
<b>Pitkin Total</b>		<b>\$9,948.89</b>	<b>\$18,765.29</b>
	Granada, Town of	\$93.67	\$235.08
	Hartman, Town of	\$17.27	\$40.17
	Holly, Town of	\$142.74	\$361.85
	Lamar, City of	\$2,581.75	\$7,745.79
	Prowers County	\$2,677.52	\$6,839.24
	Wiley, Town of	\$393.88	\$658.16
<b>Prowers Total</b>		<b>\$5,906.83</b>	<b>\$15,880.29</b>
	Boone, Town of	\$9.50	\$14.64
	Pueblo County	\$5,948.10	\$9,018.92
	Pueblo, City of	\$2,799.55	\$4,090.29
	Rye, Town of	\$243.43	\$374.97
<b>Pueblo Total</b>		<b>\$9,000.58</b>	<b>\$13,498.82</b>
	Meeker, Town of	\$131,745.07	\$282,604.23
	Rangely, Town of	\$188,258.79	\$528,806.73
	Rio Blanco County	\$351,363.94	\$780,134.32
<b>Rio Blanco Total</b>		<b>\$671,367.80</b>	<b>\$1,591,545.28</b>
	Center, Town of	\$0.79	\$1.37
	Del Norte, Town of	\$52.10	\$80.31
	Monte Vista, City of	\$483.82	\$28.00

Exhibit D: 2010 and 2011 Severance Tax Direct Distribution Amounts

County	Name	2010	2011
	Rio Grande County	\$510.78	\$98.00
	South Fork, Town of	\$21.89	\$3.02
<b>Rio Grande Total</b>		<b>\$1,069.38</b>	<b>\$210.70</b>
	Hayden, Town of	\$78,169.94	\$154,019.80
	Oak Creek, Town of	\$23,150.71	\$42,603.49
	Routt County	\$263,796.65	\$528,106.24
	Steamboat Springs, City of	\$113,145.95	\$242,462.85
	Yampa, Town of	\$12,395.73	\$42,429.76
<b>Routt Total</b>		<b>\$490,658.98</b>	<b>\$1,009,622.14</b>
	Bonanza City, Town of	\$22.84	\$48.06
	Center, Town of	\$2,383.50	\$4,172.59
	Crestone, Town of	\$149.34	\$286.20
	Moffat, Town of	\$146.84	\$10,444.06
	Saguache County	\$17,464.07	\$20,636.52
	Saguache, Town of	\$619.70	\$1,037.10
<b>Saguache Total</b>		<b>\$20,786.29</b>	<b>\$36,624.53</b>
	San Juan County	\$19,837.96	\$36,466.31
	Silverton, Town of	\$19,957.61	\$34,127.86
<b>San Juan Total</b>		<b>\$39,795.57</b>	<b>\$70,594.17</b>
	Mountain Village, Town of	\$9,643.72	\$20,158.34
	Norwood, Town of	\$2,967.61	\$92,023.16
	Ophir, Town of	\$1,106.49	\$2,391.39
	San Miguel County	\$111,599.33	\$154,904.09
	Sawpit, Town of	\$220.89	\$595.19
	Telluride, Town of	\$15,125.04	\$33,754.70
<b>San Miguel Total</b>		<b>\$140,663.08</b>	<b>\$303,826.87</b>
	Julesburg, Town of	\$2,808.02	\$2,937.79
	Ovid, Town of	\$364.17	\$395.98
	Sedgwick County	\$3,373.59	\$3,619.80
	Sedgwick, Town of	\$1,529.38	\$1,599.11
<b>Sedgwick Total</b>		<b>\$8,075.16</b>	<b>\$8,552.68</b>
	Blue River, Town of	\$614.31	\$1,607.71
	Breckenridge, Town of	\$4,021.00	\$4,654.04
	Dillon, Town of	\$2,948.01	\$3,938.47
	Frisco, Town of	\$1,786.33	\$4,993.10
	Montezuma, Town of	\$1,497.71	\$45.35
	Silverthorne, Town of	\$3,099.28	\$7,192.53
	Summit County	\$21,628.91	\$35,008.76
<b>Summit Total</b>		<b>\$35,595.55</b>	<b>\$57,439.96</b>
	Cripple Creek, City of	\$7,337.84	\$16,971.24
	Green Mountain Falls, Town of	\$75.63	\$88.23

Exhibit D: 2010 and 2011 Severance Tax Direct Distribution Amounts

County	Name	2010	2011
	Teller County	\$55,410.45	\$114,359.15
	Victor, City of	\$3,640.83	\$6,459.14
	Woodland Park, City of	\$20,751.47	\$38,144.81
<b>Teller Total</b>		<b>\$87,216.22</b>	<b>\$176,022.57</b>
	Akron, Town of	\$3,358.72	\$7,553.02
	Otis, Town of	\$1,793.19	\$5,500.79
	Washington County	\$7,130.34	\$17,791.57
<b>Washington Total</b>		<b>\$12,282.25</b>	<b>\$30,845.38</b>
	Ault, Town of	\$6,456.88	\$20,266.16
	Berthoud, Town of	\$143.82	\$448.01
	Brighton, City of	\$858.02	\$2,207.09
	Dacono, City of	\$17,405.94	\$43,684.40
	Eaton, Town of	\$22,184.52	\$53,266.65
	Erie, Town of	\$29,039.45	\$72,525.64
	Evans, City of	\$132,363.58	\$315,895.64
	Firestone, Town of	\$30,008.80	\$80,240.91
	Fort Lupton, City of	\$68,196.75	\$132,679.42
	Frederick, Town of	\$30,169.95	\$78,319.59
	Garden City, Town of	\$1,896.56	\$5,113.83
	Gilcrest, Town of	\$10,775.61	\$22,165.40
	Greeley, City of	\$450,762.71	\$1,089,878.12
	Grover, Town of	\$1,229.36	\$2,373.92
	Hudson, Town of	\$11,365.55	\$26,802.80
	Johnstown, Town of	\$40,162.70	\$102,723.57
	Keenesburg, Town of	\$10,467.20	\$17,638.84
	Kersey, Town of	\$11,190.19	\$31,641.59
	La Salle, Town of	\$14,855.69	\$39,087.15
	Lochbuie, Town of	\$22,611.44	\$48,224.72
	Longmont, City of	\$136.23	\$188.74
	Mead, Town of	\$13,784.40	\$32,740.81
	Milliken, Town of	\$29,729.39	\$67,463.36
	Northglenn, City of	\$28.70	\$73.90
	Nunn, Town of	\$2,478.66	\$7,511.75
	Pierce, Town of	\$4,255.88	\$11,079.97
	Platteville, Town of	\$22,921.82	\$48,564.82
	Raymer, Town of	\$536.45	\$1,241.88
	Severance, Town of	\$11,518.94	\$29,949.77
	Thornton, City of	\$0.00	\$0.00
	Weld County	\$764,975.97	\$1,727,871.58
	Windsor, Town of	\$56,465.17	\$130,165.03
<b>Weld Total</b>		<b>\$1,818,976.33</b>	<b>\$4,242,035.06</b>

Exhibit D: 2010 and 2011 Severance Tax Direct Distribution Amounts

County	Name	2010	2011
	Eckley, Town of	\$3,650.31	\$6,639.06
	Wray, City of	\$35,072.63	\$82,524.94
	Yuma County	\$123,100.08	\$255,576.66
	Yuma, City of	\$34,070.67	\$66,122.95
<b>Yuma Total</b>		<b>\$195,893.69</b>	<b>\$410,863.61</b>
<b>Severance Tax Direct Distribution Total</b>		<b>\$11,938,671.31</b>	<b>\$22,707,791.51</b>

# EXHIBIT E: 2010 and 2011 Federal Mineral Lease County and Municipal Direct Distributions

---





Exhibit E: 2010 and 2011 Federal Mineral Lease County and Municipal Direct Distribution

County	Name	2010	2011
	Adams County	\$101,768.80	\$116,028.51
	Arvada, City of	\$912.05	\$1,036.23
	Aurora, City of	\$12,603.53	\$13,531.81
	Bennett, Town of	\$2,324.02	\$2,806.95
	Brighton, City of	\$49,016.96	\$58,427.96
	Commerce City, City of	\$22,145.52	\$25,686.92
	Federal Heights, City of	\$3,331.51	\$4,345.80
	Lochbuie, Town of	\$18.33	\$0.81
	Northglenn, City of	\$14,704.96	\$19,292.95
	Thornton, City of	\$54,736.76	\$63,290.83
	Westminster, City of	\$28,917.31	\$34,591.54
<b>Adams Total</b>		<b>\$290,479.75</b>	<b>\$339,040.31</b>
	Alamosa County	\$1,438.12	\$758.38
	Alamosa, City of	\$367.11	\$195.67
	Hooper, Town of	\$6.28	\$3.01
<b>Alamosa Total</b>		<b>\$1,811.51</b>	<b>\$957.06</b>
	Arapahoe County	\$26,426.02	\$29,655.63
	Aurora, City of	\$46,634.15	\$45,469.51
	Bennett, Town of	\$50.28	\$58.26
	Bow Mar, Town of	\$123.22	\$117.82
	Centennial, City of	\$16,368.29	\$15,635.29
	Cherry Hills Village, City of	\$1,067.94	\$1,030.22
	Columbine Valley, Town of	\$200.17	\$193.72
	Deer Trail, Town of	\$1,025.94	\$757.15
	Englewood, City of	\$6,563.42	\$6,476.01
	Foxfield, Town of	\$210.44	\$201.36
	Glendale, City of	\$424.10	\$374.95
	Greenwood Village, City of	\$2,217.72	\$2,710.08
	Littleton, City of	\$17,682.63	\$16,961.65
	Sheridan, City of	\$700.06	\$976.58
<b>Arapahoe Total</b>		<b>\$119,694.38</b>	<b>\$120,618.23</b>
	Archuleta County	\$9,700.97	\$10,539.44
	Pagosa Springs, Town of	\$2,235.76	\$2,071.31
<b>Archuleta Total</b>		<b>\$11,936.73</b>	<b>\$12,610.75</b>
	Baca County	\$1,426.39	\$1,339.41
	Campo, Town of	\$35.84	\$29.85
	Pritchett, Town of	\$32.27	\$37.97
	Springfield, Town of	\$886.38	\$390.95
	Two Buttes, Town of	\$16.55	\$12.43
	Vilas, Town of	\$25.81	\$30.90
	Walsh, Town of	\$696.79	\$147.40



Exhibit E: 2010 and 2011 Federal Mineral Lease County and Municipal Direct Distribution

County	Name	2010	2011
<b>Baca Total</b>		<b>\$3,120.03</b>	<b>\$1,988.91</b>
	Bent County	\$687.26	\$690.29
	Las Animas, City of	\$159.67	\$167.89
<b>Bent Total</b>		<b>\$846.93</b>	<b>\$858.18</b>
	Boulder County	\$14,289.33	\$25,088.05
	Boulder, City of	\$7,526.06	\$13,716.62
	Erie, Town of	\$738.51	\$1,512.25
	Jamestown, Town of	\$37.29	\$68.40
	Lafayette, City of	\$3,277.74	\$5,633.18
	Longmont, City of	\$18,503.23	\$36,888.21
	Louisville, City of	\$2,833.13	\$4,857.56
	Lyons, Town of	\$490.76	\$680.00
	Nederland, Town of	\$196.57	\$362.25
	Superior, Town of	\$1,112.22	\$2,055.56
	Ward, Town of	\$32.84	\$58.78
<b>Boulder Total</b>		<b>\$49,037.68</b>	<b>\$90,920.86</b>
	Broomfield, City and County of	\$14,492.01	\$16,270.05
<b>Broomfield Total</b>		<b>\$14,492.01</b>	<b>\$16,270.05</b>
	Buena Vista, Town of	\$4,340.19	\$8,337.71
	Chaffee County	\$5,329.36	\$10,888.16
	Poncha Springs, Town of	\$226.32	\$469.18
	Salida, City of	\$1,346.13	\$3,274.44
<b>Chaffee Total</b>		<b>\$11,242.00</b>	<b>\$22,969.49</b>
	Cheyenne County	\$15,213.56	\$15,670.92
	Cheyenne Wells, Town of	\$8,352.79	\$8,462.87
	Kit Carson, Town of	\$3,258.76	\$2,584.27
<b>Cheyenne Total</b>		<b>\$26,825.11</b>	<b>\$26,718.06</b>
	Central City	\$0.00	\$0.00
	Clear Creek County	\$91,525.66	\$87,921.37
	Empire, Town of	\$7,782.59	\$10,954.93
	Georgetown, Town of	\$12,604.83	\$13,006.53
	Idaho Springs, City of	\$21,845.32	\$32,406.46
	Silver Plume, Town of	\$1,198.45	\$1,184.12
<b>Clear Creek Total</b>		<b>\$134,956.85</b>	<b>\$145,473.41</b>
	Antonito, Town of	\$691.81	\$414.93
	Conejos County	\$1,372.19	\$1,425.15
	La Jara, Town of	\$394.19	\$731.93
	Manassa, Town of	\$113.67	\$126.84
	Romeo, Town of	\$46.91	\$50.92
	Sanford, Town of	\$98.49	\$121.42
<b>Conejos Total</b>		<b>\$2,717.26</b>	<b>\$2,871.19</b>

Exhibit E: 2010 and 2011 Federal Mineral Lease County and Municipal Direct Distribution

County	Name	2010	2011
	Blanca, Town of	\$33.51	\$37.55
	Costilla County	\$811.91	\$544.99
	San Luis, Town of	\$60.33	\$374.52
<b>Costilla Total</b>		<b>\$905.75</b>	<b>\$957.06</b>
	Crowley County	\$1,034.91	\$530.29
	Crowley, Town of	\$18.87	\$10.83
	Olney Springs, Town of	\$341.81	\$20.54
	Ordway, Town of	\$423.90	\$379.33
	Sugar City, Town of	\$27.97	\$16.08
<b>Crowley Total</b>		<b>\$1,847.46</b>	<b>\$957.07</b>
	Custer County	\$0.00	\$0.00
	Silver Cliff, Town of	\$0.00	\$0.00
	Westcliffe, Town of	\$0.00	\$0.00
<b>Custer Total</b>		<b>\$0.00</b>	<b>\$0.00</b>
	Cedaredge, Town of	\$59,746.28	\$58,691.29
	Crawford, Town of	\$19,248.39	\$18,203.91
	Delta County	\$907,156.68	\$0.00
	Delta County Federal Mineral L	\$0.00	\$873,033.23
	Delta, City of	\$266,748.83	\$268,036.14
	Hotchkiss, Town of	\$42,823.86	\$43,356.91
	Orchard City, Town of	\$101,078.94	\$99,839.11
	Paonia, Town of	\$78,247.06	\$68,392.62
<b>Delta Total</b>		<b>\$1,475,050.04</b>	<b>\$1,429,553.21</b>
	Denver, City And County of	\$107,784.33	\$106,233.86
<b>Denver Total</b>		<b>107784.33</b>	<b>\$106,233.86</b>
	Dolores County	\$297,721.24	\$390,282.67
	Dove Creek, Town of	\$120,998.60	\$126,505.98
	Rico, Town of	\$21,334.92	\$24,622.76
<b>Dolores Total</b>		<b>\$440,054.76</b>	<b>\$541,411.41</b>
	Aurora, City of	\$3.12	\$3.88
	Castle Pines, City of	\$354.81	\$353.50
	Castle Rock, Town of	\$3,554.50	\$3,348.99
	Douglas County	\$14,978.46	\$16,673.26
	Larkspur, Town of	\$15.29	\$13.94
	Littleton, City of	\$3.81	\$0.98
	Lone Tree, City of	\$1,580.40	\$369.25
	Parker, Town of	\$3,059.14	\$2,205.68
<b>Douglas Total</b>		<b>\$23,549.53</b>	<b>\$22,969.48</b>
	Avon, Town of	\$576.05	\$299.97
	Basalt, Town of	\$85.27	\$145.20
	Eagle County	\$2,251.42	\$3,295.82

Exhibit E: 2010 and 2011 Federal Mineral Lease County and Municipal Direct Distribution

County	Name	2010	2011
	Eagle, Town of	\$918.48	\$325.29
	Gypsum, Town of	\$235.99	\$1,333.41
	Minturn, Town of	\$38.79	\$382.78
	Red Cliff, Town of	\$12.43	\$15.43
	Vail, Town of	\$175.84	\$268.35
<b>Eagle Total</b>		<b>\$4,294.27</b>	<b>\$6,066.25</b>
	Calhan, Town of	\$358.54	\$1,010.78
	Colorado Springs, City of	\$24,878.80	\$27,011.02
	El Paso County	\$36,302.77	\$39,393.80
	Fountain, City of	\$1,427.97	\$1,944.24
	Green Mountain Falls, Town of	\$52.02	\$51.93
	Manitou Springs, City of	\$275.34	\$279.21
	Monument, Town of	\$275.91	\$317.81
	Palmer Lake, Town of	\$147.80	\$161.64
	Ramah, Town of	\$15.01	\$16.00
<b>El Paso Total</b>		<b>\$63,734.16</b>	<b>\$70,186.43</b>
	Elbert County	\$4,880.41	\$6,423.37
	Elizabeth, Town of	\$739.61	\$142.61
	Kiowa, Town of	\$657.39	\$74.15
	Simla, Town of	\$70.19	\$66.85
<b>Elbert Total</b>		<b>\$6,347.60</b>	<b>\$6,706.98</b>
	Brookside, Town of	\$500.28	\$578.69
	Canon City, City of	\$31,998.58	\$36,599.71
	Coal Creek, Town of	\$652.19	\$1,035.79
	Florence, City of	\$5,358.03	\$5,657.97
	Fremont County	\$51,744.71	\$63,782.48
	Rockvale, Town of	\$1,113.05	\$974.40
	Williamsburg, Town of	\$1,034.41	\$1,448.17
<b>Fremont Total</b>		<b>\$92,401.25</b>	<b>\$110,077.21</b>
	Carbondale, Town of	\$204,991.37	\$269,930.76
	Garfield County	\$2,591,712.70	\$0.00
	Garfield County Federal Minera	\$0.00	\$3,526,395.74
	Glenwood Springs, City of	\$308,554.81	\$432,963.56
	New Castle, Town of	\$165,732.55	\$264,547.54
	Parachute, Town of	\$179,992.71	\$258,884.77
	Rifle, City of	\$697,476.01	\$1,028,541.63
	Silt, Town of	\$153,011.37	\$213,450.73
<b>Garfield Total</b>		<b>\$4,301,471.52</b>	<b>\$5,994,714.73</b>
	Black Hawk, City of	\$1,951.73	\$1,979.21
	Central City	\$704.44	\$414.44
	Gilpin County	\$3,960.49	\$4,305.79

Exhibit E: 2010 and 2011 Federal Mineral Lease County and Municipal Direct Distribution

County	Name	2010	2011
<b>Gilpin Total</b>		<b>\$6,616.66</b>	<b>\$6,699.44</b>
	Fraser, Town of	\$4,829.36	\$5,694.60
	Granby, Town of	\$12,965.17	\$14,094.06
	Grand County	\$69,325.60	\$83,376.71
	Grand Lake, Town of	\$2,415.71	\$2,527.52
	Hot Sulphur Springs, Town of	\$10,855.84	\$10,412.32
	Kremmling, Town of	\$24,004.58	\$23,375.43
	Winter Park, Town of	\$3,271.03	\$3,968.58
<b>Grand Total</b>		<b>\$127,667.29</b>	<b>\$143,449.22</b>
	Crested Butte, Town of	\$48,597.30	\$55,238.97
	Gunnison County	\$988,302.36	\$1,259,022.85
	Gunnison, City of	\$157,544.58	\$215,321.76
	Marble, Town of	\$4,022.63	\$6,063.01
	Mt. Crested Butte, Town of	\$27,101.45	\$32,258.00
	Pitkin, Town of	\$4,128.72	\$3,411.94
<b>Gunnison Total</b>		<b>\$1,229,697.04</b>	<b>\$1,571,316.53</b>
	Hinsdale County	\$0.00	\$477.35
	Lake City, Town of	\$0.00	\$479.71
<b>Hinsdale Total</b>		<b>\$0.00</b>	<b>\$957.06</b>
	Huerfano County	\$50,416.97	\$30,022.62
	La Veta, Town of	\$6,336.46	\$3,815.67
	Walsenburg, City of	\$28,800.99	\$17,630.04
<b>Huerfano Total</b>		<b>\$85,554.42</b>	<b>\$51,468.33</b>
	Jackson County	\$48,281.78	\$49,064.31
	Walden, Town of	\$13,189.31	\$13,541.84
<b>Jackson Total</b>		<b>\$61,471.09</b>	<b>\$62,606.15</b>
	Arvada, City of	\$32,386.07	\$36,056.51
	Bow Mar, Town of	\$63.49	\$81.62
	Edgewater, City of	\$1,431.60	\$917.55
	Golden, City of	\$8,547.02	\$7,481.14
	Jefferson County	\$91,672.01	\$105,603.65
	Lakeside, Town of	\$12.53	\$12.31
	Lakewood, City of	\$43,199.57	\$43,617.55
	Littleton, City of	\$268.03	\$464.42
	Morrison, Town of	\$2,482.71	\$2,944.04
	Mountain View, Town of	\$94.76	\$101.48
	Superior, Town of	\$0.00	\$0.00
	Westminster, City of	\$7,529.87	\$7,849.59
	Wheat Ridge, City of	\$9,858.01	\$13,080.24
<b>Jefferson Total</b>		<b>\$197,545.67</b>	<b>\$218,210.10</b>
	Eads, Town of	\$1,042.66	\$863.26

Exhibit E: 2010 and 2011 Federal Mineral Lease County and Municipal Direct Distribution

County	Name	2010	2011
	Haswell, Town of	\$118.64	\$98.16
	Kiowa County	\$4,671.54	\$4,224.46
	Sheridan Lake, Town of	\$825.60	\$603.37
<b>Kiowa Total</b>		<b>\$6,658.44</b>	<b>\$5,789.25</b>
	Bethune, Town of	\$402.34	\$399.75
	Burlington, City of	\$3,210.24	\$2,668.08
	Flagler, Town of	\$273.03	\$186.45
	Kit Carson County	\$6,454.08	\$4,241.48
	Seibert, Town of	\$81.07	\$60.06
	Stratton, Town of	\$588.65	\$215.13
	Vona, Town of	\$40.41	\$35.53
<b>Kit Carson Total</b>		<b>\$11,049.82</b>	<b>\$7,806.48</b>
	Bayfield, Town of	\$32,007.56	\$41,487.84
	Durango, City of	\$104,663.49	\$130,952.66
	Ignacio, Town of	\$9,784.76	\$8,512.37
	La Plata County	\$440,665.83	\$510,022.87
<b>La Plata Total</b>		<b>\$587,121.64</b>	<b>\$690,975.74</b>
	Lake County	\$9,410.93	\$25,575.61
	Leadville, City of	\$2,897.92	\$8,878.62
<b>Lake Total</b>		<b>\$12,308.85</b>	<b>\$34,454.23</b>
	Berthoud, Town of	\$4,516.38	\$7,290.10
	Estes Park, Town of	\$1,823.02	\$3,364.54
	Fort Collins, City of	\$35,129.69	\$81,347.36
	Johnstown, Town of	\$167.59	\$246.34
	Larimer County	\$37,441.79	\$82,574.54
	Loveland, City of	\$35,879.91	\$74,431.13
	Timnath, Town of	\$436.90	\$1,565.02
	Wellington, Town of	\$4,214.92	\$8,171.33
	Windsor, Town of	\$670.43	\$2,136.08
<b>Larimer Total</b>		<b>\$120,280.63</b>	<b>\$261,126.44</b>
	Aguilar, Town of	\$9,814.89	\$9,565.09
	Branson, Town of	\$819.87	\$801.33
	Cokedale, Town of	\$3,396.53	\$2,432.34
	Kim, Town of	\$783.45	\$1,250.29
	Las Animas County	\$254,890.42	\$234,920.36
	Starkville, Town of	\$2,040.87	\$1,000.75
	Trinidad, City of	\$177,061.84	\$169,166.39
<b>Las Animas Total</b>		<b>\$448,807.87</b>	<b>\$419,136.55</b>
	Arriba, Town of	\$62.98	\$13.38
	Genoa, Town of	\$54.27	\$9.67
	Hugo, Town of	\$735.28	\$402.49

Exhibit E: 2010 and 2011 Federal Mineral Lease County and Municipal Direct Distribution

County	Name	2010	2011
	Limon, Town of	\$527.36	\$126.89
	Lincoln County	\$3,232.42	\$517.36
<b>Lincoln Total</b>		<b>\$4,612.31</b>	<b>\$1,069.79</b>
	Crook, Town of	\$97.69	\$87.19
	Fleming, Town of	\$940.01	\$1,275.21
	Iliff, Town of	\$161.26	\$196.42
	Logan County	\$24,882.54	\$24,034.20
	Merino, Town of	\$1,123.18	\$531.56
	Peetz, Town of	\$184.73	\$178.00
	Sterling, City of	\$17,247.88	\$19,815.61
<b>Logan Total</b>		<b>\$44,637.29</b>	<b>\$46,118.19</b>
	Collbran, Town of	\$5,885.83	\$9,210.88
	De Beque, Town of	\$10,821.14	\$16,833.22
	Fruita, City of	\$151,850.77	\$195,380.83
	Grand Junction, City of	\$601,303.99	\$765,199.87
	Mesa County	\$1,339,243.01	\$0.00
	Mesa County Federal Mineral L	\$0.00	\$1,623,106.57
	Palisade, Town of	\$28,019.65	\$35,932.62
<b>Mesa Total</b>		<b>\$2,137,124.39</b>	<b>\$2,645,663.99</b>
	Creede, City of	\$439.85	\$453.53
	Mineral County	\$465.90	\$503.53
<b>Mineral Total</b>		<b>\$905.75</b>	<b>\$957.06</b>
	Craig, City of	\$989,030.81	\$1,006,659.69
	Dinosaur, Town of	\$50,347.06	\$48,273.21
	Moffat County	\$1,146,199.30	\$0.00
	Moffat County Federal Mineral	\$0.00	\$1,163,830.08
<b>Moffat Total</b>		<b>\$2,185,577.17</b>	<b>\$2,218,762.98</b>
	Cortez, City of	\$470,095.20	\$566,518.22
	Dolores, Town of	\$51,716.36	\$41,012.73
	Mancos, Town of	\$68,656.89	\$101,017.97
	Montezuma County	\$1,564,680.07	\$2,286,221.32
<b>Montezuma Total</b>		<b>\$2,155,148.52</b>	<b>\$2,994,770.24</b>
	Montrose County	\$93,900.95	\$96,896.93
	Montrose, City of	\$32,846.10	\$41,855.65
	Naturita, Town of	\$5,201.59	\$4,746.11
	Nucla, Town of	\$4,949.85	\$2,810.87
	Olathe, Town of	\$4,058.94	\$5,364.66
<b>Montrose Total</b>		<b>\$140,957.43</b>	<b>\$151,674.22</b>
	Brush, City of	\$9,519.51	\$14,673.48
	Fort Morgan, City of	\$27,545.93	\$38,914.00
	Hillrose, Town of	\$651.87	\$1,450.45

Exhibit E: 2010 and 2011 Federal Mineral Lease County and Municipal Direct Distribution

County	Name	2010	2011
	Log Lane Village, Town of	\$1,448.53	\$3,815.32
	Morgan County	\$50,620.47	\$79,819.19
	Wiggins, Town of	\$4,226.99	\$4,883.20
<b>Morgan Total</b>		<b>\$94,013.30</b>	<b>\$143,555.64</b>
	Cheraw, Town of	\$4.57	\$19.30
	Fowler, Town of	\$19.87	\$89.79
	La Junta, City of	\$423.08	\$1,475.00
	Manzanola, Town of	\$8.52	\$33.44
	Otero County	\$367.62	\$1,550.90
	Rocky Ford, City of	\$70.40	\$613.28
	Swink, Town of	\$11.69	\$46.54
<b>Otero Total</b>		<b>\$905.75</b>	<b>\$3,828.25</b>
	Ouray County	\$1,750.11	\$1,014.86
	Ouray, City of	\$145.28	\$100.07
	Ridgway, Town of	\$188.71	\$98.23
<b>Ouray Total</b>		<b>\$2,084.10</b>	<b>\$1,213.16</b>
	Alma, Town of	\$414.86	\$573.41
	Fairplay, Town of	\$1,108.57	\$425.24
	Park County	\$77,990.17	\$0.00
	Park County Federal Mineral Le	\$0.00	\$27,252.98
<b>Park Total</b>		<b>\$79,513.60</b>	<b>\$28,251.63</b>
	Haxtun, Town of	\$1,139.68	\$786.29
	Holyoke, City of	\$2,742.10	\$2,772.94
	Paoli, Town of	\$22.99	\$17.96
	Phillips County	\$2,827.08	\$2,517.62
<b>Phillips Total</b>		<b>\$6,731.85</b>	<b>\$6,094.81</b>
	Aspen, City of	\$1,006.76	\$1,191.51
	Basalt, Town of	\$138.52	\$169.77
	Pitkin County	\$2,832.93	\$5,958.37
	Snowmass Village, Town of	\$471.08	\$602.41
<b>Pitkin Total</b>		<b>\$4,449.29</b>	<b>\$7,922.06</b>
	Granada, Town of	\$143.20	\$158.63
	Hartman, Town of	\$26.40	\$27.11
	Holly, Town of	\$218.20	\$244.18
	Lamar, City of	\$3,946.75	\$5,226.80
	Prowers County	\$4,093.16	\$4,615.07
	Wiley, Town of	\$602.12	\$444.12
<b>Prowers Total</b>		<b>\$9,029.83</b>	<b>\$10,715.91</b>
	Boone, Town of	\$19.26	\$21.94
	Pueblo County	\$12,249.50	\$13,985.36
	Pueblo, City of	\$5,663.52	\$5,895.68

Exhibit E: 2010 and 2011 Federal Mineral Lease County and Municipal Direct Distribution

County	Name	2010	2011
	Rye, Town of	\$311.33	\$327.57
<b>Pueblo Total</b>		<b>\$18,243.61</b>	<b>\$20,230.55</b>
	Meeker, Town of	\$862,396.34	\$1,091,450.94
	Rangely, Town of	\$1,123,505.66	\$1,789,890.67
	Rio Blanco County	\$2,099,241.38	\$0.00
	Rio Blanco County Federal Mineral Lease	\$0.00	\$2,725,651.60
<b>Rio Blanco Total</b>		<b>\$4,085,143.38</b>	<b>\$5,606,993.21</b>
	Center, Town of	\$2.03	\$10.72
	Del Norte, Town of	\$133.72	\$628.46
	Monte Vista, City of	\$1,241.92	\$219.07
	Rio Grande County	\$1,311.11	\$766.90
	South Fork, Town of	\$56.19	\$23.64
<b>Rio Grande Total</b>		<b>\$2,744.97</b>	<b>\$1,648.79</b>
	Hayden, Town of	\$80,959.01	\$53,628.06
	Oak Creek, Town of	\$27,202.76	\$16,248.21
	Routt County	\$283,577.56	\$0.00
	Routt County Federal Mineral Lease	\$0.00	\$176,630.95
	Steamboat Springs, City of	\$125,633.79	\$81,483.40
	Yampa, Town of	\$14,552.67	\$10,049.82
<b>Routt Total</b>		<b>\$531,925.79</b>	<b>\$338,040.44</b>
	Bonanza City, Town of	\$3.66	\$2.74
	Center, Town of	\$381.90	\$238.02
	Crestone, Town of	\$23.93	\$16.33
	Moffat, Town of	\$23.53	\$360.48
	Saguache County	\$2,798.25	\$1,412.47
	Saguache, Town of	\$99.29	\$59.16
<b>Saguache Total</b>		<b>\$3,330.56</b>	<b>\$2,089.20</b>
	San Juan County	\$42.25	\$0.00
	Silverton, Town of	\$42.50	\$0.00
<b>San Juan Total</b>		<b>\$84.75</b>	<b>\$0.00</b>
	Mountain Village, Town of	\$15,577.62	\$8,302.34
	Norwood, Town of	\$4,793.62	\$23,807.90
	Ophir, Town of	\$1,787.34	\$984.91
	San Miguel County	\$180,267.89	\$77,890.60
	Sawpit, Town of	\$356.81	\$245.13
	Telluride, Town of	\$24,431.68	\$13,902.08
<b>San Miguel Total</b>		<b>\$227,214.96</b>	<b>\$125,132.96</b>
	Julesburg, Town of	\$696.56	\$691.58
	Ovid, Town of	\$90.34	\$93.22
	Sedgwick County	\$836.86	\$852.13
	Sedgwick, Town of	\$379.38	\$376.44



Exhibit E: 2010 and 2011 Federal Mineral Lease County and Municipal Direct Distribution

County	Name	2010	2011
<b>Sedgwick Total</b>		<b>\$2,003.14</b>	<b>\$2,013.37</b>
	Blue River, Town of	\$531.47	\$991.14
	Breckenridge, Town of	\$2,500.91	\$2,869.18
	Dillon, Town of	\$2,224.52	\$2,428.03
	Frisco, Town of	\$1,675.83	\$3,078.21
	Montezuma, Town of	\$317.89	\$27.96
	Silverthorne, Town of	\$3,202.87	\$4,434.14
	Summit County	\$20,342.04	\$21,582.63
<b>Summit Total</b>		<b>\$30,795.53</b>	<b>\$35,411.29</b>
	Cripple Creek, City of	\$14,416.26	\$23,380.15
	Green Mountain Falls, Town of	\$136.67	\$118.49
	Teller County	\$98,331.31	\$154,575.49
	Victor, City of	\$7,187.81	\$8,907.71
	Woodland Park, City of	\$37,528.57	\$49,412.44
<b>Teller Total</b>		<b>\$157,600.62</b>	<b>\$236,394.28</b>
	Akron, Town of	\$3,036.31	\$4,692.63
	Otis, Town of	\$1,621.06	\$3,417.59
	Washington County	\$6,445.88	\$11,053.75
<b>Washington Total</b>		<b>\$11,103.25</b>	<b>\$19,163.97</b>
	Ault, Town of	\$4,465.99	\$9,913.45
	Berthoud, Town of	\$99.55	\$219.29
	Brighton, City of	\$593.86	\$1,080.32
	Dacono, City of	\$12,041.16	\$21,373.59
	Eaton, Town of	\$15,341.31	\$26,057.93
	Erie, Town of	\$20,095.50	\$35,495.40
	Evans, City of	\$91,507.83	\$154,502.06
	Firestone, Town of	\$20,764.61	\$39,268.87
	Fort Lupton, City of	\$47,140.07	\$64,891.23
	Frederick, Town of	\$21,107.87	\$38,597.64
	Garden City, Town of	\$1,311.46	\$2,500.98
	Gilcrest, Town of	\$7,448.47	\$10,840.10
	Greeley, City of	\$311,724.19	\$533,158.73
	Grover, Town of	\$850.27	\$1,161.56
	Hudson, Town of	\$7,858.60	\$13,112.98
	Johnstown, Town of	\$27,779.14	\$50,256.61
	Keenesburg, Town of	\$7,235.61	\$8,627.86
	Kersey, Town of	\$7,736.02	\$15,474.22
	La Salle, Town of	\$10,270.00	\$19,116.10
	Lochbuie, Town of	\$15,915.90	\$23,892.84
	Longmont, City of	\$94.29	\$92.38
	Mead, Town of	\$9,537.60	\$16,022.05

Exhibit E: 2010 and 2011 Federal Mineral Lease County and Municipal Direct Distribution

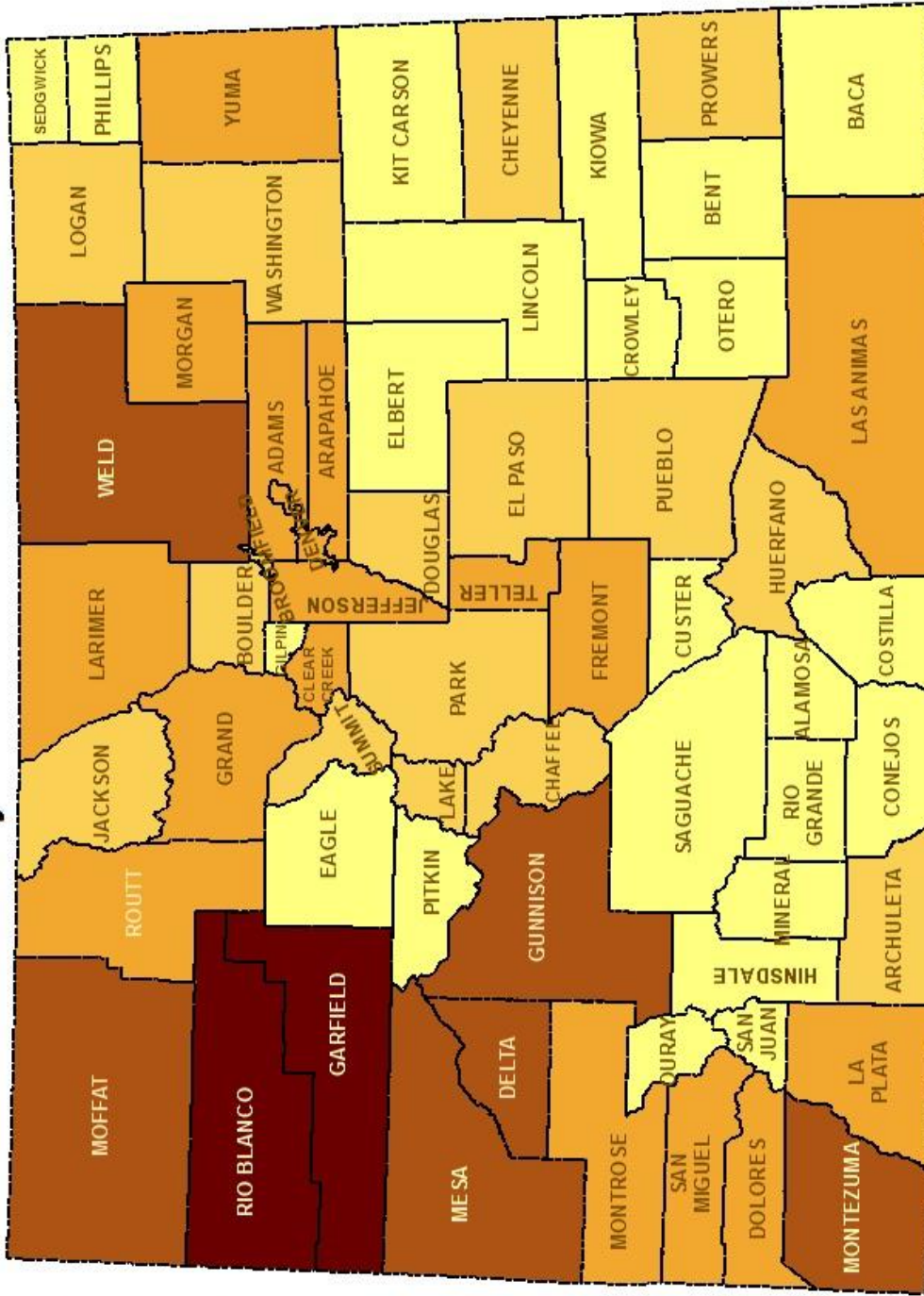
County	Name	2010	2011
	Milliken, Town of	\$20,560.33	\$33,003.49
	Northglenn, City of	\$19.86	\$36.17
	Nunn, Town of	\$1,714.96	\$3,674.70
	Pierce, Town of	\$2,943.82	\$5,420.41
	Platteville, Town of	\$15,844.96	\$23,751.81
	Raymer, Town of	\$371.30	\$607.87
	Severance, Town of	\$7,970.21	\$14,655.48
	Thornton, City of	\$0.00	\$0.00
	Weld County	\$529,560.19	\$0.00
	Weld County Federal Mineral L	\$0.00	\$845,881.92
	Windsor, Town of	\$39,066.84	\$63,691.98
<b>Weld Total</b>		<b>\$1,258,971.77</b>	<b>\$2,076,380.02</b>
	Eckley, Town of	\$3,249.00	\$2,835.36
	Wray, City of	\$31,216.82	\$35,244.15
	Yuma County	\$109,566.73	\$109,149.82
	Yuma, City of	\$30,325.02	\$28,239.31
<b>Yuma Total</b>		<b>\$174,357.57</b>	<b>\$175,468.64</b>
<b>Federal Mineral Lease Direct Distribution T</b>		<b>\$23,448,590.81</b>	<b>\$29,444,690.36</b>

# EXHIBIT F: 2010 and 2011 Federal Mineral Lease School District Direct Distributions

---



# 2011 Federal Mineral Lease Direct Distribution School District County Pool Allocations



Source: For Allocation and Payment Amounts see  
<http://www.dola.colorado.gov/directdistribution>

Exhibit F: 2010 and 2011 Federal Mineral Lease School District Direct Distribution

County	Name	2010	2011
	Adams 12 Five Star Schools	\$11,093.71	\$12,658.91
	Adams County 14 School District	\$2,043.95	\$2,371.87
	Adams-Arapahoe 28J School District	\$2,133.57	\$2,159.50
	Bennett 29J School District	\$216.74	\$243.92
	Brighton 27J School District	\$4,229.33	\$4,875.35
	Byers 32J School District	\$17.99	\$15.37
	Deer Trail 26J School District	\$3.90	\$1.76
	Keenesburg RE-3J School District	\$11.39	\$12.40
	Mapleton 1 School District	\$1,598.64	\$2,430.14
	Strasburg 31J School District	\$203.35	\$233.65
	Westminster 50 School District	\$3,135.59	\$3,813.40
	Wiggins RE-50(J) School District	\$2.62	\$2.16
<b>Adams Total</b>		<b>\$24,690.78</b>	<b>\$28,818.43</b>
	Alamosa RE-11J School District	\$131.23	\$68.81
	Center 26 JT School District	\$0.09	\$0.17
	North Conejos RE-1J School District	\$3.52	\$1.97
	Sanford 6J School District	\$0.00	\$0.00
	Sangre De Cristo RE-22J School District	\$15.08	\$8.19
	Sargent RE-33J School District	\$4.05	\$2.21
<b>Alamosa Total</b>		<b>\$153.97</b>	<b>\$81.35</b>
	Adams-Arapahoe 28J School District	\$2,835.10	\$3,010.53
	Bennett 29J School District	\$35.23	\$35.90
	Byers 32J School District	\$43.68	\$43.35
	Cherry Creek 5 School District	\$5,135.10	\$5,097.31
	Deer Trail 26J School District	\$15.93	\$15.73
	Englewood 1 School District	\$335.87	\$314.42
	Littleton 6 School District	\$1,589.05	\$1,553.53
	Sheridan 2 School District	\$155.00	\$154.36
	Strasburg 31J School District	\$29.07	\$27.43
<b>Arapahoe Total</b>		<b>\$10,174.03</b>	<b>\$10,252.56</b>
	Archuleta County 50 JT School District	\$972.39	\$1,027.32
	Bayfield 10 JT.-R School District	\$0.00	\$0.00
	Ignacio 11 JT School District	\$42.23	\$44.60
<b>Archuleta Total</b>		<b>\$1,014.62</b>	<b>\$1,071.92</b>
	Campo RE-6 School District	\$13.48	\$9.22
	Pritchett RE-3 School District	\$18.05	\$12.08
	Springfield RE-4 School District	\$76.86	\$51.41
	Vilas RE-5 School District	\$114.75	\$67.04
	Walsh RE-1 School District	\$42.07	\$29.31
<b>Baca Total</b>		<b>\$265.21</b>	<b>\$169.06</b>
	Las Animas RE-1 School District	\$48.46	\$47.45

Exhibit F: 2010 and 2011 Federal Mineral Lease School District Direct Distribution

County	Name	2010	2011
	McClave RE-2 School District	\$21.98	\$24.22
	Wiley RE-13 JT School District	\$1.55	\$1.27
<b>Bent Total</b>		<b>\$71.99</b>	<b>\$72.94</b>
	Boulder Valley RE 2 School District	\$2,412.49	\$4,533.49
	Park (Estes Park) R-3 School District	\$3.06	\$5.27
	St. Vrain Valley RE 1J School District	\$1,750.94	\$3,189.52
	Thompson R-2J School District	\$1.71	\$0.00
<b>Boulder Total</b>		<b>\$4,168.20</b>	<b>\$7,728.28</b>
	Adams 12 Five Star Schools	\$700.70	\$827.77
	Boulder Valley RE 2 School District	\$505.75	\$522.65
	Brighton 27J School District	\$0.00	\$0.00
	Jefferson County R-1 School District	\$25.05	\$32.17
	St. Vrain Valley RE 1J School District	\$0.00	\$0.00
	Weld County RE-8 School District	\$0.32	\$0.36
<b>Broomfield Total</b>		<b>\$1,231.82</b>	<b>\$1,382.95</b>
	Buena Vista R-31 School District	\$449.69	\$913.96
	Salida R-32 School District	\$505.88	\$1,038.45
<b>Chaffee Total</b>		<b>\$955.57</b>	<b>\$1,952.41</b>
	Cheyenne County RE-5 School District	\$1,519.83	\$1,444.06
	Kit Carson R-1 School District	\$760.30	\$826.97
<b>Cheyenne Total</b>		<b>\$2,280.13</b>	<b>\$2,271.03</b>
	Clear Creek RE-1 School District	\$11,471.33	\$12,365.24
<b>Clear Creek Total</b>		<b>\$11,471.33</b>	<b>\$12,365.24</b>
	Alamosa RE-11J School District	\$0.66	\$2.25
	North Conejos RE-1J School District	\$145.34	\$152.91
	Sanford 6J School District	\$46.14	\$48.83
	South Conejos RE-10 School District	\$38.82	\$40.07
<b>Conejos Total</b>		<b>\$230.96</b>	<b>\$244.06</b>
	Centennial R-1 School District	\$34.51	\$38.33
	Sierra Grande R-30 School District	\$42.48	\$43.02
<b>Costilla Total</b>		<b>\$76.99</b>	<b>\$81.35</b>
	Crowley County RE-1-J School District	\$142.99	\$73.17
	Fowler R-4J School District	\$13.74	\$7.86
	Manzanola 3J School District	\$0.30	\$0.32
<b>Crowley Total</b>		<b>\$157.03</b>	<b>\$81.35</b>
	Consolidated C-1 School District	\$0.00	\$0.00
	Florence RE-2 School District	\$0.00	\$0.00
<b>Custer Total</b>		<b>\$0.00</b>	<b>\$0.00</b>
	Delta County School District 50(J)	\$125,379.25	\$121,512.02
<b>Delta Total</b>		<b>\$125,379.25</b>	<b>\$121,512.02</b>
	Denver County 1 School District	\$9,161.67	\$9,029.88

Exhibit F: 2010 and 2011 Federal Mineral Lease School District Direct Distribution

County	Name	2010	2011
<b>Denver Total</b>		<b>\$9,161.67</b>	<b>\$9,029.88</b>
	Dolores County RE No. 2 School District	\$37,404.65	\$46,019.97
<b>Dolores Total</b>		<b>\$37,404.65</b>	<b>\$46,019.97</b>
	Douglas County RE 1 School District	\$2,001.71	\$1,952.41
<b>Douglas Total</b>		<b>\$2,001.71</b>	<b>\$1,952.41</b>
	Eagle County RE 50 School District	\$306.57	\$436.12
	Roaring Fork RE-1 School District	\$58.34	\$79.28
	West Grand 1-JT. School District	\$0.11	\$0.23
<b>Eagle Total</b>		<b>\$365.02</b>	<b>\$515.63</b>
	Academy 20 School District	\$1,098.49	\$1,230.17
	Big Sandy 100J School District	\$3.09	\$4.14
	Calhan RJ-1 School District	\$30.77	\$32.62
	Cheyenne Mountain 12 School District	\$229.97	\$249.54
	Colorado Springs 11 School District	\$1,553.47	\$1,687.07
	Edison 54 JT School District	\$12.51	\$11.75
	Ellicott 22 School District	\$45.09	\$52.55
	Falcon 49 School District	\$703.72	\$788.39
	Florence RE-2 School District	\$1.43	\$0.35
	Fountain 8 School District	\$357.25	\$397.73
	Hanover 28 School District	\$14.22	\$14.57
	Harrison 2 School District	\$532.61	\$582.14
	Lewis Palmer 38 School District	\$289.82	\$316.73
	Manitou Springs 14 School District	\$68.69	\$75.52
	Miami/Yoder 60 JT School District	\$15.68	\$16.35
	Peyton 23 JT School District	\$33.05	\$36.58
	Widefield 3 School District	\$427.54	\$469.65
<b>El Paso Total</b>		<b>\$5,417.40</b>	<b>\$5,965.85</b>
	Agate 300 School District	\$8.45	\$8.11
	Big Sandy 100J School District	\$34.92	\$36.86
	Calhan RJ-1 School District	\$3.52	\$3.87
	Douglas County RE 1 School District	\$6.84	\$0.00
	Elbert 200 School District	\$35.53	\$37.28
	Elizabeth C-1 School District	\$391.26	\$420.17
	Kiowa C-2 School District	\$51.41	\$55.10
	Limon RE-4J School District	\$5.49	\$6.20
	Miami/Yoder 60 JT School District	\$0.30	\$0.33
	Peyton 23 JT School District	\$1.83	\$2.17
<b>Elbert Total</b>		<b>\$539.55</b>	<b>\$570.09</b>
	Canon City RE-1 School District	\$5,255.16	\$6,268.68
	Cotopaxi RE-3 School District	\$310.35	\$358.04
	Florence RE-2 School District	\$2,247.53	\$2,684.20



Exhibit F: 2010 and 2011 Federal Mineral Lease School District Direct Distribution

County	Name	2010	2011
	Salida R-32 School District	\$41.07	\$45.64
<b>Fremont Total</b>		<b>\$7,854.11</b>	<b>\$9,356.56</b>
	DeBeque 49JT School District	\$1,015.64	\$939.28
	Eagle County RE 50 School District	\$0.00	\$0.00
	Garfield 16 School District	\$44,841.95	\$60,262.66
	Garfield RE-2 School District	\$175,455.60	\$246,557.98
	Roaring Fork RE-1 School District	\$144,311.89	\$201,790.85
<b>Garfield Total</b>		<b>\$365,625.08</b>	<b>\$509,550.77</b>
	Boulder Valley RE 2 School District	\$158.84	\$139.42
	Gilpin County RE-1 School District	\$403.57	\$430.04
<b>Gilpin Total</b>		<b>\$562.41</b>	<b>\$569.46</b>
	East Grand 2 School District	\$8,083.10	\$9,101.62
	West Grand 1-JT. School District	\$2,768.62	\$3,091.57
<b>Grand Total</b>		<b>\$10,851.72</b>	<b>\$12,193.19</b>
	Delta County School District 50(J)	\$687.90	\$1,028.58
	Gunnison RE1J School District	\$103,529.25	\$132,379.81
	Montrose County RE-1J School District	\$307.10	\$153.52
<b>Gunnison Total</b>		<b>\$104,524.25</b>	<b>\$133,561.91</b>
	Archuleta County 50 JT School District	\$0.00	\$2.89
	Hinsdale County RE 1 School District	\$0.00	\$78.46
<b>Hinsdale Total</b>		<b>\$0.00</b>	<b>\$81.35</b>
	Huerfano RE-1 School District	\$5,169.35	\$3,085.14
	La Veta RE-2 School District	\$2,102.77	\$1,289.66
<b>Huerfano Total</b>		<b>\$7,272.12</b>	<b>\$4,374.80</b>
	North Park R-1 School District	\$5,225.04	\$5,321.52
<b>Jackson Total</b>		<b>\$5,225.04</b>	<b>\$5,321.52</b>
	Jefferson County R-1 School District	\$16,791.38	\$18,547.86
<b>Jefferson Total</b>		<b>\$16,791.38</b>	<b>\$18,547.86</b>
	Eads RE-1 School District	\$397.42	\$340.41
	Plainview RE-2 School District	\$168.55	\$151.68
<b>Kiowa Total</b>		<b>\$565.97</b>	<b>\$492.09</b>
	Arriba-Flagler C-20 School District	\$80.91	\$59.54
	Bethune R-5 School District	\$87.38	\$62.01
	Burlington RE-6J School District	\$527.21	\$378.97
	Hi-Plains R-23 School District	\$83.31	\$56.35
	Idalia RJ-3 School District	\$1.53	\$1.59
	Liberty J-4 School District	\$5.60	\$2.78
	Stratton R-4 School District	\$153.30	\$102.31
<b>Kit Carson Total</b>		<b>\$939.24</b>	<b>\$663.55</b>
	Bayfield 10 JT.-R School District	\$10,006.37	\$11,743.60
	Durango 9-R School District	\$34,503.96	\$40,727.37

Exhibit F: 2010 and 2011 Federal Mineral Lease School District Direct Distribution

County	Name	2010	2011
	Ignacio 11 JT School District	\$5,395.01	\$6,261.96
<b>La Plata Total</b>		<b>\$49,905.34</b>	<b>\$58,732.93</b>
	Lake County R-1 School District	\$1,046.25	\$2,928.61
<b>Lake Total</b>		<b>\$1,046.25</b>	<b>\$2,928.61</b>
	Johnstown-Milliken RE-5J School District	\$0.00	\$0.00
	Park (Estes Park) R-3 School District	\$285.88	\$596.12
	Poudre R-1 School District	\$6,315.64	\$13,932.46
	St. Vrain Valley RE 1J School District	\$37.96	\$80.51
	Thompson R-2J School District	\$3,584.37	\$7,586.66
<b>Larimer Total</b>		<b>\$10,223.85</b>	<b>\$22,195.75</b>
	Aguilar Reorganized 6 School District	\$1,867.57	\$1,686.26
	Branson Reorganized 82 School District	\$6,944.96	\$5,977.95
	Hoehne Reorganized 3 School District	\$4,657.67	\$4,467.02
	Kim Reorganized 88 School District	\$819.70	\$780.80
	Primero Reorganized 2 School District	\$2,926.71	\$2,821.86
	Trinidad 1 School District	\$20,932.05	\$19,892.71
<b>Las Animas Total</b>		<b>\$38,148.66</b>	<b>\$35,626.60</b>
	Arriba-Flagler C-20 School District	\$21.21	\$4.01
	Crowley County RE-1-J School District	\$0.00	\$0.00
	Edison 54 JT School District	\$0.82	\$0.32
	Genoa-Hugo C113 School District	\$72.53	\$17.34
	Karval RE-23 School District	\$107.96	\$23.65
	Limon RE-4J School District	\$180.49	\$42.92
	Miami/Yoder 60 JT School District	\$9.03	\$2.70
<b>Lincoln Total</b>		<b>\$392.04</b>	<b>\$90.94</b>
	Buffalo RE-4 School District	\$346.36	\$357.68
	Frenchman RE-3 School District	\$232.88	\$245.73
	Haxtun RE-2J School District	\$27.90	\$32.96
	Plateau RE-5 School District	\$193.50	\$210.68
	Prairie RE-11 School District	\$11.36	\$17.00
	Valley RE-1 School District	\$2,982.17	\$3,056.00
<b>Logan Total</b>		<b>\$3,794.17</b>	<b>\$3,920.05</b>
	DeBeque 49JT School District	\$1,023.31	\$1,215.40
	Delta County School District 50(J)	\$92.58	\$94.83
	Mesa County Valley 51 School District	\$176,601.00	\$218,830.93
	Plateau Valley 50 School District	\$3,938.68	\$4,740.28
<b>Mesa Total</b>		<b>\$181,655.57</b>	<b>\$224,881.44</b>
	Creede Consolidated 1 School District	\$76.99	\$81.35
<b>Mineral Total</b>		<b>\$76.99</b>	<b>\$81.35</b>
	Moffat County RE:No 1 School District	\$185,774.06	\$188,594.85
<b>Moffat Total</b>		<b>\$185,774.06</b>	<b>\$188,594.85</b>

Exhibit F: 2010 and 2011 Federal Mineral Lease School District Direct Distribution

County	Name	2010	2011
	Dolores RE-4A School District	\$31,261.72	\$43,248.86
	Mancos RE-6 School District	\$17,549.15	\$24,376.28
	Montezuma-Cortez RE-1 School District	\$134,376.75	\$186,930.33
<b>Montezuma Total</b>		<b>\$183,187.62</b>	<b>\$254,555.47</b>
	Delta County School District 50(J)	\$367.84	\$442.92
	Montrose County RE-1J School District	\$10,933.73	\$11,741.10
	Norwood R-2J School District	\$112.65	\$99.61
	West End RE-2 School District	\$567.16	\$608.68
<b>Montrose Total</b>		<b>\$11,981.38</b>	<b>\$12,892.31</b>
	Briggsdale RE-10 School District	\$0.00	\$0.00
	Brush RE-2(J) School District	\$2,233.88	\$3,412.84
	Buffalo RE-4 School District	\$14.10	\$31.15
	Fort Morgan RE-3 School District	\$4,663.00	\$7,141.71
	Weldon Valley RE-20(J) School District	\$312.38	\$476.78
	Wiggins RE-50(J) School District	\$767.77	\$1,139.75
<b>Morgan Total</b>		<b>\$7,991.13</b>	<b>\$12,202.23</b>
	Cheraw 31 School District	\$4.60	\$20.14
	East Otero R-1 School District	\$33.04	\$137.06
	Fowler R-4J School District	\$7.15	\$31.63
	Manzanola 3J School District	\$4.42	\$18.25
	Rocky Ford R-2 School District	\$19.19	\$81.55
	Swink 33 School District	\$8.60	\$36.77
<b>Otero Total</b>		<b>\$77.00</b>	<b>\$325.40</b>
	Montrose County RE-1J School District	\$0.30	\$0.92
	Ouray R-1 School District	\$73.42	\$41.71
	Ridgway R-2 School District	\$103.43	\$60.49
<b>Ouray Total</b>		<b>\$177.15</b>	<b>\$103.12</b>
	Park County RE-2 School District	\$2,130.00	\$757.05
	Platte Canyon 1 School District	\$4,628.65	\$1,644.34
<b>Park Total</b>		<b>\$6,758.65</b>	<b>\$2,401.39</b>
	Haxtun RE-2J School District	\$174.64	\$159.94
	Holyoke RE-1J School District	\$397.57	\$358.12
	Julesburg RE-1 School District	\$0.00	\$0.00
<b>Phillips Total</b>		<b>\$572.21</b>	<b>\$518.06</b>
	Aspen 1 School District	\$318.83	\$572.44
	Roaring Fork RE-1 School District	\$59.36	\$100.93
<b>Pitkin Total</b>		<b>\$378.19</b>	<b>\$673.37</b>
	Granada RE-1 School District	\$79.03	\$91.37
	Holly RE-3 School District	\$91.03	\$109.11
	Lamar RE-2 School District	\$523.29	\$622.00
	Wiley RE-13 JT School District	\$74.19	\$88.38

Exhibit F: 2010 and 2011 Federal Mineral Lease School District Direct Distribution

County	Name	2010	2011
<b>Prowers Total</b>		<b>\$767.54</b>	<b>\$910.86</b>
	Edison 54 JT School District	\$0.24	\$0.29
	Fowler R-4J School District	\$2.64	\$3.19
	Pueblo City Schools	\$1,034.49	\$1,148.82
	Pueblo County Rural 70 School District	\$513.33	\$567.31
<b>Pueblo Total</b>		<b>\$1,550.70</b>	<b>\$1,719.61</b>
	Meeker RE1 School District	\$203,294.11	\$277,937.14
	Rangely RE-4 School District	\$143,291.93	\$197,742.93
	South Routt RE 3 School District	\$651.19	\$914.27
<b>Rio Blanco Total</b>		<b>\$347,237.23</b>	<b>\$476,594.34</b>
	Center 26 JT School District	\$9.67	\$4.82
	Del Norte C-7 School District	\$62.25	\$37.32
	Monte Vista C-8 School District	\$118.57	\$72.00
	Sargent RE-33J School District	\$42.84	\$26.01
<b>Rio Grande Total</b>		<b>\$233.33</b>	<b>\$140.15</b>
	Eagle County RE 50 School District	\$0.00	\$0.00
	Hayden RE-1 School District	\$6,403.27	\$3,931.46
	South Routt RE 3 School District	\$6,044.80	\$3,740.20
	Steamboat Springs RE-2 School District	\$32,765.62	\$21,061.79
<b>Routt Total</b>		<b>\$45,213.69</b>	<b>\$28,733.45</b>
	Center 26 JT School District	\$156.31	\$99.52
	Gunnison RE1J School District	\$2.25	\$1.23
	Moffat 2 School District	\$66.07	\$41.21
	Mountain Valley RE 1 School District	\$39.06	\$24.41
	Sangre De Cristo RE-22J School District	\$19.40	\$11.22
<b>Saguache Total</b>		<b>\$283.09</b>	<b>\$177.59</b>
	Silverton 1 School District	\$7.20	\$0.00
<b>San Juan Total</b>		<b>\$7.20</b>	<b>\$0.00</b>
	Dolores County RE No. 2 School District	\$308.77	\$225.01
	Norwood R-2J School District	\$4,464.33	\$2,462.19
	Telluride R-1 School District	\$14,540.17	\$7,949.10
<b>San Miguel Total</b>		<b>\$19,313.27</b>	<b>\$10,636.30</b>
	Haxtun RE-2J School District	\$0.63	\$0.18
	Holyoke RE-1J School District	\$0.00	\$0.00
	Julesburg RE-1 School District	\$154.54	\$159.95
	Platte Valley RE-3 School District	\$15.10	\$11.01
<b>Sedgwick Total</b>		<b>\$170.27</b>	<b>\$171.14</b>
	Summit RE-1 School District	\$2,614.74	\$3,007.80
	West Grand 1-JT. School District	\$2.88	\$2.16
<b>Summit Total</b>		<b>\$2,617.62</b>	<b>\$3,009.96</b>
	Cripple Creek-Victor RE-1 School District	\$1,930.04	\$2,795.35

Exhibit F: 2010 and 2011 Federal Mineral Lease School District Direct Distribution

County	Name	2010	2011
	Woodland Park RE-2 School District	\$11,466.02	\$17,298.16
<b>Teller Total</b>		<b>\$13,396.06</b>	<b>\$20,093.51</b>
	Akron R-1 School District	\$405.61	\$684.10
	Arickaree R-2 School District	\$104.24	\$180.11
	Brush RE-2(J) School District	\$10.05	\$17.11
	Buffalo RE-4 School District	\$21.01	\$38.99
	Lone Star 101 School District	\$114.19	\$188.05
	Otis R-3 School District	\$192.15	\$342.93
	Woodlin R-104 School District	\$96.53	\$177.64
<b>Washington Total</b>		<b>\$943.78</b>	<b>\$1,628.93</b>
	Ault-Highland RE-9 School District	\$2,119.95	\$3,387.16
	Briggsdale RE-10 School District	\$372.93	\$583.11
	Brighton 27J School District	\$578.42	\$857.82
	Eaton RE-2 School District	\$4,230.65	\$6,961.21
	Gilcrest RE-1 School District	\$4,545.26	\$7,450.48
	Greeley 6 School District	\$45,621.55	\$74,490.36
	Johnstown-Milliken RE-5J School District	\$7,355.01	\$11,860.69
	Keenesburg RE-3J School District	\$5,024.06	\$8,475.13
	Pawnee RE-12 School District	\$268.56	\$391.41
	Platte Valley RE-7 School District	\$2,814.51	\$4,453.52
	Prairie RE-11 School District	\$370.68	\$611.98
	St. Vrain Valley RE 1J School District	\$17,974.30	\$30,714.68
	Thompson R-2J School District	\$284.33	\$592.73
	Weld County RE-8 School District	\$5,688.33	\$9,010.12
	Weldon Valley RE-20(J) School District	\$0.00	\$2.01
	Wiggins RE-50(J) School District	\$54.56	\$99.86
	Windsor RE-4 School District	\$9,709.49	\$16,550.03
<b>Weld Total</b>		<b>\$107,012.59</b>	<b>\$176,492.30</b>
	Burlington RE-6J School District	\$17.87	\$0.00
	Haxtun RE-2J School District	\$35.74	\$76.72
	Holyoke RE-1J School District	\$76.85	\$36.58
	Idalia RJ-3 School District	\$1,198.25	\$1,178.45
	Liberty J-4 School District	\$690.71	\$698.51
	Wray RD-2 School District	\$5,748.20	\$5,860.13
	Yuma 1 School District	\$7,052.78	\$7,064.45
<b>Yuma Total</b>		<b>\$14,820.40</b>	<b>\$14,914.84</b>
<b>Grand Total</b>		<b>\$1,993,130.23</b>	<b>\$2,502,798.69</b>