



2009 ANNUAL REPORT

**Local Government Energy and Mineral Impact Assistance Program
Thirty-third Annual Report – 2009
January 31, 2010**



**Susan E. Kirkpatrick
Executive Director
Colorado Department of Local Affairs
1313 Sherman St., Room 500
Denver, CO 80203
www.dola.colorado.gov**



**Colorado Department of Local Affairs Mission:
Strengthening Colorado Communities**

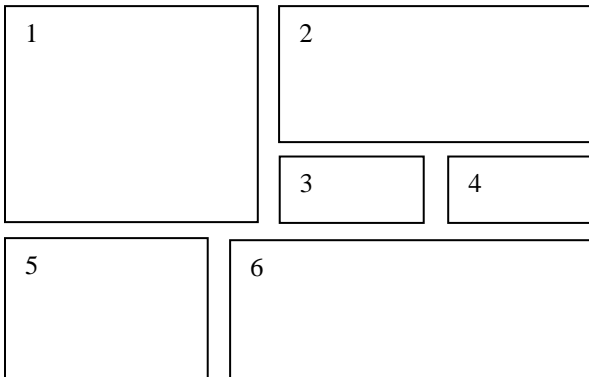
The Energy and Mineral Impact Assistance Program has been helping to improve the lives of Colorado citizens since 1977. Grants and low-interest loans are directed to those communities socially and economically impacted by the development, processing or energy conversion of mineral and fuel resources.



Pictured: Director Kirkpatrick during her travels to several Colorado communities including Bent County (top), Sedgwick County (center), and Otero County (bottom).



This report has been prepared by: Clay Brown, Ken Charles, Teri Davis, Debra Downs, Greg Etl, Tony Hernandez, Bret Hillberry, Jack Kirtland, Lee Merkel, Glory Ortega, Linda Rice, Jennifer Robinson, Don Sandoval, Charles Unseld, Diane VonDollen and Greg Winkler



Pictured on the front cover are examples of projects and communities that have benefited from the Energy and Mineral Impact Assistance Fund (EIAF):

- 1. Grand Opening of the Conejos County Library - Antonito Branch**
- 2. San Miguel County HWY 145 Upgrades Bike Tunnel**
- 3. Dolores Fire Department**
- 4. Grand River Hospital**
- 5. Frijole Road Improvements - Las Animas County**
- 6. Swink Maintenance Building Groundbreaking**



THIRTY-THIRD ANNUAL REPORT – 2009
Local Government Energy and Mineral Impact Assistance Program

TABLE OF CONTENTS

Message from the Executive Director	Page 1
<u>Overview</u>	Page 2
2009: A Snapshot	Page 2
Our Commitment to Sustainability	Page 3
2009 Revenues	Page 4
Availability of Funds	Page 4
Energy and Mineral Impact Assistance State Advisory Committee	Page 5
Continually Striving for Excellence	Page 6
Direct Distribution	Page 7
<u>Generating Jobs through Strategic Investments</u>	Page 8
DOLA Job Generation Summary: Calendar Years 2007 - 2009	Page 9
<u>Ensuring Livable Communities through Grant Awards</u>	Page 12
2009 Program Highlights	Page 12
New Energy Communities Initiative Update	Page 16
Projects by Type	Page 19
Funding by Region	Page 21
Energy and Mineral Impact Loan Program	Page 22
<u>Advancing Sustainable Communities through</u>	Page 22
<u>Technical Assistance</u>	
Process for Technical Assistance	Page 22
Types of Technical Assistance Available	Page 23
DOLA Regional Map & Regional Managers	Page 24
<u>Supporting Colorado through more Efficient</u>	Page 26
<u>Use of State Resources</u>	
EXHIBIT A: 2009 Awards	
EXHIBIT B: 2009 Severance Tax Direct Distribution by County/Municipality	
EXHIBIT C: 2009 Federal Mineral Lease Direct Distribution by County/Municipality	
EXHIBIT D: 2009 Federal Mineral Lease Direct Distribution to School Districts	
EXHIBIT E: Origins and History of the Program	



Since 1977, the Energy and Mineral Impact Assistance Program has been helping communities improve lives. This program embodies the Department of Local Affairs mission, “Strengthening Colorado Communities,” by addressing the social and economic impacts of energy and mineral production throughout the state.

Projects funded by the program have helped with a wide variety of community development efforts and improvements including planning, infrastructure, public safety facilities and services, roads and water and wastewater treatment facilities.

DOLA is committed to working with communities to create sustainable solutions that will continue to lead Colorado forward.

The nature of the energy and mineral production industry is highly variable and as a result, we can with great predictability, expect to see sharp rises and decreases in the revenues available for grants and direct distribution to Colorado communities.

Understanding that variability and the tremendous responsibility associated with the administration of this fund, the Department of Local Affairs works in partnership with community leaders, legislators, industry representatives and other organizations, to determine the most effective and relevant methods for maximizing the results of fund investment in 2009 and beyond.

In 2009, the program was identified as a source of funding to help offset the budget challenges facing Colorado. Our ability to award grants was suspended temporarily as of August 2009. However, as this report demonstrates, communities throughout the state received grant awards and direct distribution of severance and federal mineral lease dollars in 2009. In addition, we will continue to provide the unparalleled technical assistance and customer service that is the foundation of our partnerships with local communities.

We’re proud of the work we’ve done in cooperation with our stakeholders to improve the criteria for awarding grants and the metrics for determining the impact of the fund in communities. We’ll also continue to work with those communities to use these tools for giving us a clear picture of long-term needs and how they are being met.

I want to thank the members of the Energy and Mineral Impact Advisory Committee for their ongoing service and for all of their help in raising awareness about the strengths of this program.

Sincerely,

Susan E. Kirkpatrick
Executive Director

Overview

The purpose of the Energy and Mineral Impact Assistance Program is to assist political subdivisions that are socially and/or economically impacted by the development, processing, or energy conversion of minerals and mineral fuels. Funds come from the state severance tax on energy and mineral production and from a portion of the state's share of royalties paid to the federal government for mining and drilling of minerals and mineral fuels on federally-owned land. The program was created by the legislature in 1977.

In 2009, the Department was able to successfully meet those objectives by assisting local communities in achieving their goals by providing, in an efficient and timely manner, technical assistance services and distribution of revenues from state and federal sources. The Department's network of Regional Managers was key in facilitating this accomplishment.

The creation of the fund is outlined in C.R.S. 34-63-102 (Federal Mineral Lease) and C.R.S. 39-29-101 (Severance).

2009: A Snapshot

The largest distribution of funds through the Energy and Mineral Impact Assistance program occurs in the form of discretionary grants and loans to municipalities, counties and other political subdivisions socially or economically impacted by the development, processing or energy conversion of minerals and mineral fuels.

Although the state has just over five million citizens, there were an estimated six million "citizen benefits" resulting from the Energy and Mineral Impact Assistance Program due to multiple projects benefiting multiple people, multiple times. More than **\$95.8 million** in grants and loans was awarded to communities for **312** local public facility and services projects that made a positive impact on the lives of Colorado citizens. Projects helped make water and wastewater systems safer, improved roads and bridges, restored and revitalized public facilities and downtowns and met a variety of needs at the local level.

These investments leveraged more than **\$466 million** in local matching funds, encouraged regional collaboration and furthered partnerships we've so proudly formed at all levels of government.

Also in 2009, \$80.3 million was directly distributed to counties and municipalities as part of this program.

Our Commitment to Sustainability

The basic tenets of DOLA's work are rooted in the spirit of cooperation, partnership, collaboration and sustainability. In 2009, DOLA set forth to expand on the goal of sustainable community development by establishing a set of principles to further encourage collaboration across the department's divisions, identify and leverage resources across local, state and federal agencies and help guide grant criteria and grant making decisions.

These principles are designed to respect local control, incentivize sustainability and cultivate partnerships that solve problems through cooperative planning, collaborative training and the leveraging of resources.

Understanding that financial resources are limited at all levels of government, these sustainability principles have been identified to encourage funding of infrastructure and sustainable development projects designed for the long term.

Sustainable Development Defined:

"Meeting the needs of the present generation without compromising the ability of future generations to meet their needs."

-Brundtland Commission

DOLA Sustainability Criteria

1. Provide more transportation choices

Improve safe, reliable and affordable transportation choices to reduce traffic congestion and improve air quality; create transit-oriented neighborhoods with healthy biking and walking opportunities.

2. Promote equitable, affordable housing

Identify quality, energy efficient, affordable housing near jobs, shopping and recreation amenities.

3. Increase economic competitiveness

Invest in education and training, attract and position employment centers near housing and transit, expand business access and promote rural economic development that preserves and enhances community identity.

4. Support existing communities

Strategically optimize infrastructure funding to maximize investment and revitalize communities.

5. Enhance integrated planning and investment

Align policies to remove barriers, leverage funding and increase accountability and effectiveness of government programs.

6. Value healthy communities and neighborhoods

Support unique community characteristics by investing in healthy, safe, walkable neighborhoods, quality schools and prosperous, sustainable downtowns.

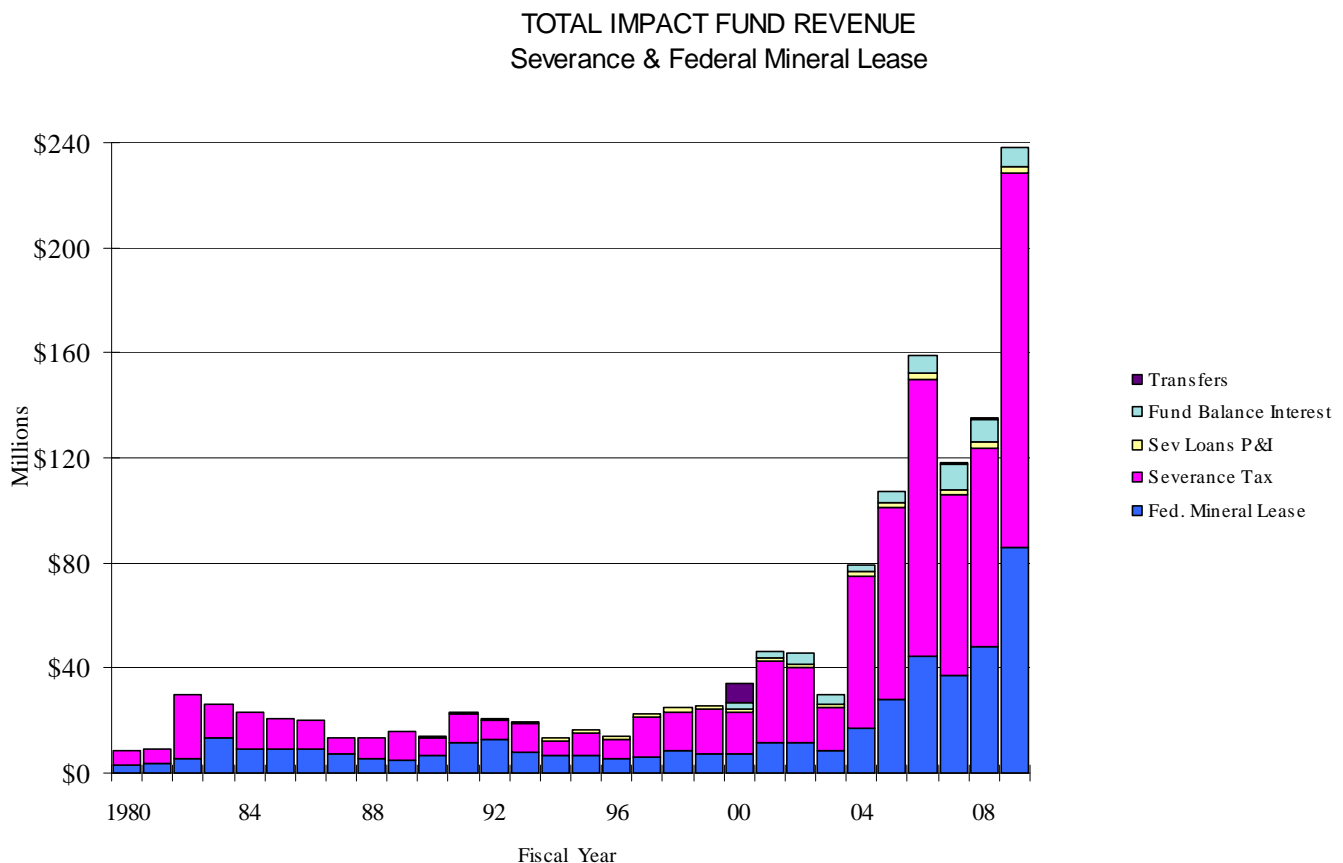
7. Conserve and protect valuable resources

Protect clean water, land and air; focus on energy efficiency.

2009 Revenues

Fiscal Year **2009** revenues to the combined Local Government Energy and Mineral Impact Assistance Program increased as a result of the 2008 spike in price and production levels of natural gas.

As shown in the chart below, the revenues to the grants program have varied considerably over the years with the mineral industry business cycles. The department maintains a careful fund balance strategy to preserve our ability to support local governments throughout these cycles.



Availability of Funds

As a result of revenue shortfalls for the 2008-2009 budget, the General Assembly transferred \$7.5 million in State Severance Tax grant funds and nearly \$5 million in Federal Mineral Lease grant funds to the General Fund in calendar year 2009. In January 2010, Gov. Bill Ritter announced a budget balancing plan to close further revenue shortfalls in the current 2009-10 budget. As part of this budget balancing plan, the program will be impacted through the additional transfer of \$50.3 million from State Severance Tax grant funds and \$18.6 million in Federal Mineral Lease grant funds to the General Fund.

All applications that had been received by the August 1, 2009, deadline will be held for consideration until the next available grant cycle after June 30, 2010. No supplemental funding is available for existing contracts at this time.

Energy and Mineral Impact Assistance State Advisory Committee
[CRS 34-63-102 (5) (b) (I)]

The Department of Local Affairs extends its appreciation to the following members of Energy and Mineral Impact Assistance State Advisory Committee for their commitment and for the perspective they bring from their respective disciplines and regions.

Susan E. Kirkpatrick **Term: Permanent**
Executive Director, Department of Local Affairs

James Martin (alt. David Neslin) **Term: Permanent**
Executive Director, Department of Natural Resources

Russell George (alt. Jennifer Finch) **Term: Permanent**
Department of Transportation

Robert K. Hammond **Term: Permanent**
Deputy Commissioner, Administration and Operations
Colorado Department of Education

Martha Rudolph (alt. Donna Davis) **Term: Permanent**
Executive Director, Department of Public Health & Environment

Carl E. Miller (Retired) **Term: 8/24/11**
Leadville, CO

Justin Clifton **Term: 8/24/11**
Bayfield Town Manager

Kay Lynn Hefley **Term: 8/24/12**
Self-Employed, Farming
Walsh, CO

The Honorable Kenneth Parsons **Term: 8/24/12**
Rio Blanco County Board of Commissioners

Vicki Spencer **Term: 8/24/13**
Energy Use Specialist, Gunnison County Electric Assn

Barry Shiohita **Term: 8/24/13**
Alamosa County Administrator

The Honorable Eric Doering **Term: 8/24/13**
Mayor, Town of Frederick

Continually Striving for Excellence

As part of its ongoing commitment to improve the Energy and Mineral Impact Assistance Fund grant program, DOLA has implemented some changes, in addition to its *Sustainability Criteria*, to help better address the needs of communities.

The grants program has been divided into three categories; small, medium and large (also referred to as Tier I, Tier II and Tier III, respectively). Matching contributions by the applicants are required.

- **Tier I** grants will be available for projects up to \$200,000 and will be administratively approved by the department's Executive Director following an evaluation of the grant criteria by DOLA staff. The Impact Advisory Committee will be notified of these awards. These grant funds will be available to local units of government three times per year.
- **Tier II** grants are for projects between \$200,000 and \$2,000,000. The Advisory Committee recommends project awards to the Executive Director for final consideration based on funding criteria developed to evaluate project significance. This funding cycle will be three times per year.
- **Tier III** grants are designed to support projects that are regional or multi-jurisdictional in nature. Grant awards will be in the range of \$2,000,000 to \$10,000,000 to be made available once per year. The new small and medium grant programs were "rolled out" during the summer of 2008. Tier III grants will be implemented in the future when funds become available.

In 2009, new legislation helped the Department carry out its goal to ensure the program continues to provide assistance appropriate to meet the needs of impacted communities.

Senate Bill 09-232

The legislation, SB09-232, designated \$17 million in grant funding available from federal mineral lease dollars for a one-time, competitive grant allocation for projects in communities significantly impacted by energy and mineral production on federal mineral lease land.

In July 2009, DOLA received pre-applications from 10 communities for the SB09-232 fund. Using several criteria such as degree of energy impact on the community, readiness of the project, regional significance and amount of local funding match committed, seven projects were selected to make a full application for the dollars.

This special grant application cycle has no minimum or maximum amount to be awarded; therefore, one project could potentially receive the full \$17 million, or multiple projects could receive varying amounts. The total amount of funding requested through the pre-application process is approximately \$61 million. Decisions will be made in February 2010.

Direct Distribution

The Colorado Department of Local Affairs (DOLA) distributes revenue derived from energy and mineral extraction statewide directly to the local units of government. These revenues come from State Severance Tax receipts and Federal Mineral Lease non-bonus payments.

Effective July 1, 2008, the legislature passed and Gov. Ritter signed SB08-218 and HB08-1083, which authorized a new method and formula to determine the direct distribution of energy impact dollars from the severance tax, as well as federal mineral leases. These new factors, coupled with the increase from the tax revenue generated by the industry, resulted in an unprecedented amount of dollars distributed in 2009.

Prior to the passage of SB08-218 and HB08-1083, direct distribution was based on the number of industry employees in the energy impacted communities in which they resided. For the county allocation, the new legislation increased the factors that would be considered to: permits, production and employee residence. At the sub-county level, the distribution is now based on population and highway user miles (HUTF)

In August 2009, over \$80 million in annual Severance Tax and Federal Mineral Lease funds was distributed to 509 Colorado counties, municipalities and school districts. The direct distributions combined total \$80,395,631.92.

With the new formula, and increased production volumes, the amount in Severance Tax Direct Distribution that went to local communities in 2009 was \$44,501,471.83 and the total for Federal Mineral Lease Direct Distribution was \$35,894,160.09.

In partnership with the department, the Mineral Production Employee Residence Report Oversight Committee, consisting of county, municipal and industry representatives, participates on an annual basis to review the proposed allocations based on industry employee counts provided by the energy industry and the new factors described above.

"We know the importance this distribution means for communities. These funds help communities address the impacts of development, processing, or energy conversion on their infrastructure and capacity to improve the livability of their communities. The department greatly values the role of the Oversight Committee and the legislature and the partnership established to ensure the integrity of the distribution process."

*-Susan Kirkpatrick
Executive Director*

Generating Jobs through Strategic Investments

DOLA Job Generation Summary: Calendar Years 2007-2009

Over the last three calendar years, the Energy and Mineral Impact Assistance Fund Program has generated and supported a total of **18,021 jobs throughout the state.**¹ This was accomplished through the investment of **\$305,096,405 in grants that leveraged \$711,281,305 from local communities for a total of more than \$1 billion.** This is an average leverage ratio of **\$1 to \$3.3 over three years.**



Summary Calendar Year 2009: Nearly \$95 million dollars in grants were leveraged with \$445 million local dollars for a total of over \$539 million in community projects during calendar year 2009. These combined funds spent on projects created or supported an estimated 4,544 direct jobs. If indirect and induced jobs created through this economic activity are included, an **estimated total of 9,076 were created or supported.**



Summary Calendar Year 2008: Over \$97 million dollars in grants were leveraged with \$238 million local dollars for a total of over \$335 million in community projects during Calendar Year 2008.

These combined dollars spent on projects created or supported an estimated 2,935 direct jobs. If indirect and induced jobs created through this economic activity are included, an **estimated total of 5,766 jobs were created or supported.**

Summary Calendar Year 2007: Over \$113 million dollars in grants leveraged with \$276 million local dollars for a total of nearly \$390 million in projects. These combined dollars spent on projects created or supported an estimated 3,179 direct jobs. **If indirect and induced jobs created through this economic activity are included, an estimated total of 3,179 jobs were created or supported.**



¹ Jobs generation figures are calculated by a methodology of the Colorado State Demography Office based on state demographic data, industry, economic factors and dollars invested to compute the number of direct, indirect and induced jobs associated with DOLA funds invested.

Estimated Employment Generated or Supported Through Discretionary Dola Grant Programs and Leverage Local Dollars CY 2009									
Program	Grant Program and Local Leverage Dollars			Direct Employment Supported or Created Through Grant Programs and Leveraged Dollars			Total Supported or Created through Grant Programs - Includes Direct, Indirect and Induced		
	Grant \$	Leverage \$	Total \$	Grant	Leverage	Total Direct	Grant	Leverage	Total Employment
Division of Emergency Management									
Emergency Management Support	2,891,270	5,575,805	8,467,075	25	48	72	52	105	157
Emergency Operations Center	137,094	45,698	182,792	1	0	1	2	1	3
Hazardous Materials Planning/Training	123,930	30,983	154,913	1	0	1	3	1	3
Mitigation Planning	318,454	204,921	523,375	3	2	4	6	4	9
Mitigation Project	248,010	82,670	330,680	2	1	3	5	2	6
Mitigation Project/Disaster Recovery	146,324	48,775	195,099	1	0	2	3	1	3
Chemical Stockpile Emergency Preparedness	1,877,950		1,877,950	17	0	17	30	0	30
Division Total	5,743,032	5,988,851	11,731,883	50	51	101	100	112	212
Division of Local Government									
Colorado Heritage Planning Grant	78,000	92,000	170,000	1	1	1	1	2	3
Community Development Block Grant	18,958,661	22,651,260	41,609,921	166	198	364	313	372	685
Energy Impact Assistance Fund	94,658,773	445,064,900	539,723,673	802	3,742	4,544	1,577	7,498	9,076
Gaming	3,926,125	2,204,697	6,130,822	35	19	54	76	40	116
Waste Tire	517,197	503,520	1,020,718	5	5	9	9	9	18
Division Total	118,138,756	470,516,377	588,655,134	1,008	3,964	4,973	1,976	7,921	9,897
Division of Housing									
Community Development Block Grant	2,298,502	8,738,576	11,037,078	23	100	124	44	172	216
Emergency Shelter Grant	299,800	299,800	599,600	5	5	11	8	8	16
Foreclosure Prevention Grant	68,000		68,000	1	0	1	2	0	2
Housing Development Grant	2,295,201	59,982,769	62,277,970	22	528	550	52	1,325	1,377
HOME CHDO Operating	139,000	1,010,423	1,149,423	2	19	21	4	30	33
HOME Investment Partnership	426,132	3,451,235	3,877,367	4	31	35	9	72	81
Revolving Loan Fund	450,000	11,003,161	11,453,161	4	97	101	10	243	253
Section 8	2,261,194		2,261,194	32	0	32	54	0	54
Division Total	8,237,829	84,485,964	92,723,793	95	779	875	184	1,849	2,032
Department of Local Affairs Total	132,119,618	560,991,192	693,110,810	1,153	4,795	5,948	2,260	9,882	12,142

Summary: Over \$132 million dollars in grants were leveraged with \$561 million local dollars for a total of over \$693 million in community projects during CY2009. These combined dollars spent on projects created or supported an estimated 5,948 direct jobs. If you include the indirect and induced jobs created through this economic activity, an estimated total of 12,142 jobs were created or supported

Estimated Employment Generated or Supported Through Discretionary Dola Grant Programs and Leverage Local Dollars CY 2008									
Grant Program and Local Leverage Dollars			Direct Employment Supported or Created Through Grant Programs and Leveraged Dollars			Total Supported or Created through Grant Programs - Includes Direct, Indirect and Induced			
Program	Grant \$	Leverage \$	Total \$	Grant	Leverage	Total Direct Employment	Grant	Leverage	Total Employment Impact
Division of Emergency Management									
Chemical Stockpile Emergency Preparedness	8,356,757	0	8,356,757	74	0	74	134	0	134
Disaster Recovery	81,856	27,285	109,141	1	0	1	2	1	2
Emergency Management Support	3,150,278	5,745,855	8,896,133	27	50	77	58	107	165
Hazardous Materials Planning/Training	78,706	18,170	96,876	1	0	1	2	0	2
Mitigation Planning	159,721	159,721	319,441	1	1	3	3	3	5
Mitigation Project	809,275	269,758	1,079,033	7	2	9	17	6	22
State Disaster Funds	156,716	0	156,716	1		1	3		3
Division Total	12,793,309	6,220,789	19,014,097	113	54	166	217	116	333
Division of Local Government									
Colorado Heritage Planning Grant	160,850	860,979	1,021,829	1	7	9	3	18	21
Community Development Block Grant	5,118,847	11,868,704	16,987,551	43	99	142	83	190	273
Energy Impact Assistance Fund	97,380,720	238,602,773	335,983,493	863	2,072	2,935	1,676	4,090	5,766
Gaming	4,503,920	2,908,804	7,412,724	40	27	67	81	55	136
Waste Tire	1,772,042	45,074,588	46,846,630	15	410	425	33	862	896
Division Total	108,936,379	299,315,848	408,252,226	963	2,614	3,578	1,877	5,215	7,092
Division of Housing									
Community Development Block Grant	6,251,977	61,729,600	67,981,577	59	583	642	108	1,173	1,281
Emergency Shelter Grant	854,284	873,684	1,727,968	16	13	28	23	20	44
Housing Development Grant	1,123,693	16,245,995	17,369,688	10	143	153	24	350	374
HOME Investment Partnership	4,169,554	75,744,897	79,914,451	41	731	773	90	1,683	1,772
Housing Opportunities for People with AIDS	367,630	0	367,630	5	0	5	10	0	10
Housing Choice Voucher Program	3,486,361	0	3,486,361	50	0	50	84	0	84
Division Total	16,253,499	154,594,176	170,847,675	182	1,470	1,652	339	3,227	3,565
Department of Local Affairs Total	137,983,187	460,130,812	598,113,999	1,258	4,138	5,396	2,432	8,558	10,990

Summary: Over \$137 million dollars in grants were leveraged with \$460 million local dollars for a total of over \$598 million in community projects during CY2008. These combined dollars spent on projects created or supported an estimated 5,396 direct jobs. If you include the indirect and induced jobs created through this economic activity, an estimated total of 10,990 jobs were created or supported

Estimated employment generated through discretionary DOLA Grant Programs and Leveraged Local Dollars CY2007						
Programs	Dollars	Leverage	Total	Employment Impact		
	Grant			Grant	Leverage	Total
Community Development Block Grants	\$5,194,130	\$17,537,407	\$22,731,537	37.34	162.99	200.34
Energy Impact Assistance Fund	\$113,056,912	\$276,136,632	\$389,193,544	888.92	2290.13	3179.05
Local Government Limited Gaming	\$11,603,847	\$3,348,451	\$14,952,298	97.92	23.44	121.36
Waste Tire	\$1,339,979	\$859,051	\$2,199,030	12.52	8.02	20.54
Community Services Block Grant	\$4,979,294	\$4,979,294	\$9,958,588	77.30	77.30	154.60
Colorado Heritage Planning Grant	\$515,000	\$659,800	\$1,174,800	4.53	5.81	10.34
Search and Rescue	\$309,703	\$0	\$309,703	0.54	0.00	0.54
Total DLG	\$ 136,998,865	\$ 303,520,635	\$ 440,519,500	1,119.06	2,567.69	3,686.75
Emergency Shelter Grant	\$1,006,766	\$1,006,766	\$2,013,532	14.60	14.60	29.20
Housing Development Grant/Revolving Loan Fund	\$1,233,202	\$5,579,907	\$6,813,109	10.86	49.30	60.16
HOME Investment Partnership	\$9,226,610	\$119,057,747	\$128,284,357	86.94	1089.01	1175.95
Community Development Block Grant	\$3,366,693	\$14,130,965	\$17,497,658	34.59	190.74	225.34
Housing Opportunities for People with AIDS	\$352,110	\$1,012,710	\$1,364,820	5.21	14.99	20.20
Housing Choice Voucher Program	\$17,699,502		\$17,699,502	267.34		267.34
Total DOH	\$32,884,883	\$140,788,095	\$173,672,978	419.55	1358.64	1778.18
Chemical Protection Preparedness	\$3,167,833	\$0	\$3,167,833	27.56	0.00	27.56
Disaster Recovery	\$8,750,393	\$2,880,877	\$11,631,269	76.13	25.06	101.19
Emergency Management Support	\$1,708,284	\$2,143,284	\$3,851,568	14.86	18.65	33.51
Hazardous Materials Planning/Training	\$47,856	\$11,964	\$59,820	0.42	0.10	0.52
Mitigation Project	\$190,843	\$63,614	\$254,457	1.66	0.55	2.21
State Disaster Funds	\$1,933,918		\$1,933,918	16.83		16.83
Total DEM	\$15,799,126	\$5,099,739	\$20,898,865	137.45	44.37	181.82
Total DOLA	\$185,682,874	\$449,408,469	\$635,091,343	1,676	3,971	5,647
RIMSII Multiplier used to generate the indirect and induced jobs created through the direct job impact.						
Direct Jobs	Empt. Multiplier	Total Job Impact including Direct, Indirect and Induced				
5,647	2.5	14,117				

Ensuring Livable Communities through Grant Awards

2009 Project Highlights

The Energy and Mineral Impact program continues to be administered with the goal of addressing local governments' priority needs. Projects ranged in size, scope and type, as characteristic of a state as diverse as Colorado. Needs met included public facilities, public safety and basic water and sewer infrastructure. In 2009, DOLA worked to assist regional efforts directed at sustainability and energy savings. Below are examples of projects highlighting the benefits of this program in meeting not only critical public facility and infrastructure needs, but also encouraging innovative, sustainable projects throughout Colorado.



Housing Alliance of La Plata County - \$500,000

This project provided funding for the shared appreciation second mortgage program operated by the Regional Housing Alliance (RHA) of La Plata County. La Plata County, the City of Durango and the Towns of Bayfield and Ignacio have formed the RHA through an intergovernmental agreement, a local government eligible to receive EIAF dollars.

The funds will be used to make affordable, shared appreciation loans averaging \$50,000 to at least ten and an estimated maximum of 20 low- and moderate-income families in La Plata County. These loans will be second mortgage loans with no monthly payments, due on sale, refinance or transfer, and made in tandem with first mortgages that local lenders have agreed to offer on special terms. Individual shared appreciation loan amounts are intended to fill the affordability gap and will vary based on family size, income, market interest rates and market process of homes in accordance with RHA guidelines that will be updated at least once a year. As the loans are repaid, the original capital plus a pro-rata share of appreciation will be revolved to make additional shared appreciation loans.

These funds were leveraged with a \$1.1 million grant from BP America for the same purpose and with funds from the local governments. Twenty-eight home buyers have benefited from this program thus far. The program has been viewed positively by realtors and lending institutions. A higher threshold of 125 percent Average Median Income (AMI), which is \$89,375 for a family of four, has helped increase the reach to residents in La Plata County.

Great West Regional Mental Health - \$900,000

Mesa County received \$900,000 for the facility to provide in-patient mental health services for the entire Western Slope.



The County has intervened in a positive way to prevent Colorado West Mental Health Center from defaulting on its mortgage of an in-patient facility. The state will help the non-profit provider eliminate a \$700,000 annual installment payment. Mesa County will assist in ensuring mental health services for the entire Western Colorado region will continue to be available.

This facility is the only in-patient mental health facility between Salt Lake City and Denver, which allows Western Slope patients to be closer to their homes and families for support.

Recently, the facility was selected to receive a National Council of Community Behavioral Health (NCCBH) Award of Excellence. This award is the “Oscar” of behavioral health. There were 125 nominations and Great West Regional Mental Health was honored with the “Advocacy (local)” category. The Center received the award due to their story of settling \$10 million in debt and keeping its doors open.

“Colorado West Mental Health has received national recognition for the partnership we put together to pay off debt on the hospital facility... this award would not have been possible without DOLA's support and participation. Thanks again!”

-John Peacock, Mesa County



DOLA Executive Director Susan Kirkpatrick (r) joins Colorado State Senator Gail Schwartz (c) and local officials from Chaffee County for a tour of the Chaffee County Community Services Complex site.

Chaffee County and City of Salida Community Services Complex - \$1,700,000

The Department of Local Affairs awarded a \$1.7 million grant for the rehabilitation of the former hospital which has a great deal of historical significance for the community. Another grant of \$50,000 went toward planning, which included mechanical and architectural services to determine how to most efficiently adapt this building for housing City and County administration services. This Complex is a model for other Colorado communities as it serves as an excellent example of successful re-use and sustainable development principles. The project is an overall win-win for its preservation of a structure that holds strong historical significance for the community while creating new

opportunities to bolster downtown revitalization.

To read a *Salida Mountain Mail* newspaper article about this successful project, go to:

<http://themountainmail.com/main.asp?SectionID=4&SubSectionID=4&ArticleID=16844&TM=47081.94>



Nederland Community Center Renovation - \$500,000

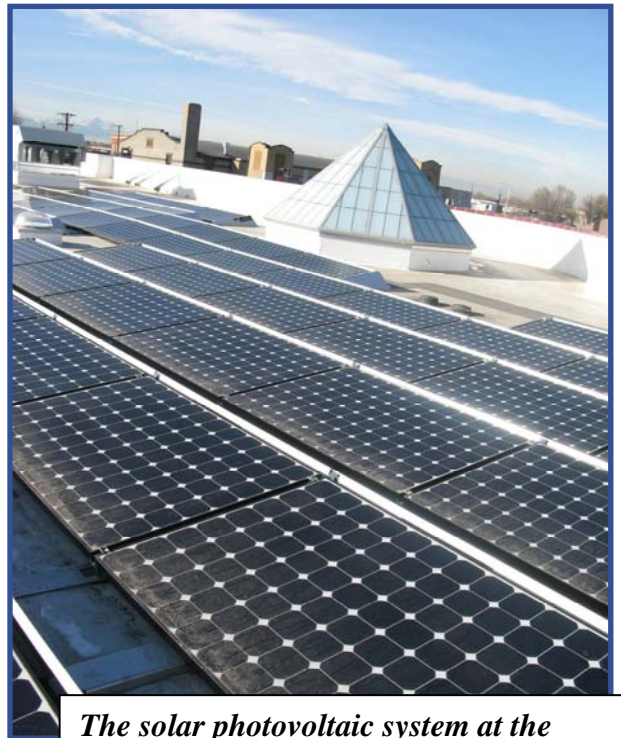
This project leveraged more than \$3M in local funding. It involved the renovation of the Nederland Community Center with improvements made to the theatre, the community library, the senior and aging services area and meeting space. This project was recently honored with a Leadership in Energy and Environmental Design (LEED) Certified Award.

Steve Steinbicke (l), an architect with Architecture West and Scott Brelsford (r) of Alliance Construction, helped make this LEED Certified project possible.

Brighton Cultural Center - \$625,000 Rangeview Library District (Brighton Library) - \$300,000

The Brighton Cultural Center and Rangeview Library District are projects that have a great sustainability aspect in that they have helped stabilize and strengthen downtown Brighton. The Brighton Cultural Center was created through the renovation of the Brighton Armory, an old structure in the Downtown area adjacent to the new library site. The City and Library District worked together on a joint parking lot that uses geo-thermal assets for heating and cooling. The City then renovated the Armory into a performing arts center. These two projects bring people into Downtown Brighton, making it a vibrant, lively sustainable place.

The Brighton Library became the first carbon-positive library in the U.S., thanks to funding DOLA was able to provide toward the Library's 108kW solar photovoltaic system. Total energy savings for the district will be upwards of \$30,000 per year.



The solar photovoltaic system at the Brighton Library

Montezuma County Courthouse Upgrades - \$650,000

This project consists of replacing the HVAC system with a ground source heat pump (GSHP) system for heating and cooling, repairing ruptured piping, replacing fluorescent lighting and failing temperature control system and installing double-paned windows.

The primary element of this project is to replace the Courthouse HVAC with the GSHP including a digital Energy Management System. Most, if not all, of the courthouse HVAC is at the end or nearing the end of life expectancy. The system is fragmented with serious health related ventilation issues.



Montezuma County Courthouse, Cortez, CO

There are several energy conservation improvements that total \$470,000. The most important and those with the highest energy/cost savings are replacement of the entire system of old fluorescent lights, replacing 50+ year-old windows and HVAC controls.



Mesa County Whitewater Lift Station & Infrastructure - \$1,000,000

This project will help to eliminate existing failing septic systems and promote new development in areas that have no agricultural value and an existing transportation infrastructure developed in accordance with the county land use plan.

An example of the type of water systems improved with Energy and Mineral Impact Assistance grants.

New Energy Communities Initiative Update

In October 2008, Gov. Bill Ritter announced the recipients of the “New Energy Communities Initiative” – 14 projects that will stimulate economic growth, enhance sustainability and lead to more livable communities all across Colorado. The program directed \$10 million in Energy Impact Assistance Funds to regional efforts (representing 66 local governments), with a maximum of \$2 million per region. Although this award was made in 2008 the implementation and technical assistance provided by DOLA began in 2009.

Since the initiative was first announced, these 14 projects, selected from 32 applications, are enhancing livability, strengthening the economy and rewarding regional collaboration throughout Colorado.

About 1.8 million people live in the areas that will benefit from these projects.

The New Energy Communities Initiative provides an energy and economic stimulus that rewards communities throughout Colorado for innovative ideas that will save energy, save money and create jobs.

The initiative, a joint effort of Colorado Department of Local Affairs and the Governor's Energy Office, is designed to maximize energy efficiency and conservation, enhance community livability, promote economic development, and address climate change by reducing carbon emissions.

The projects are:

- Avon Heat Recovery Facility: \$1.5 million
- Boulder County Biomass Heating Initiative: \$500,000
- Cortez Micro-Hydroelectric Plant: \$500,000
- Fort Collins Regional New Energy Communities Initiative: \$778,000
- Garfield County New Energy Communities Initiative: \$1.6 million
- Grand Junction New Energy Communities Initiative: \$1 million
- Greeley Intergovernmental New Energy Communities Initiative: \$700,000
- La Plata County Regional New Energy Communities Initiative: \$1.2 million
- Longmont New Energy Communities Initiative: \$500,000
- Loveland Multi-Agency New Energy Communities Initiative: \$39,250
- Pikes Peak Region New Energy Communities Initiative: \$200,000
- Pueblo Sustainable New Energy Communities Initiative: \$1 million
- Routt County New Energy Communities Initiative: \$87,000
- Yuma County New Energy Communities Initiative: \$400,000

During the past year, all projects have been initiated and the grants are helping local communities upgrade, retrofit or develop energy efficient public facilities, enhance streetscape improvements and downtown revitalization, and assist local governments' efforts to educate homeowners on energy efficient upgrades and retrofits to meet higher energy efficiency standards.

Information about the New Energy Communities Initiative is available on the Department of Local Affairs website at www.dola.colorado.gov/NewEnergyCommunities.

Energy Initiative helps green Colorado's communities

Putting it to work

By Staff

Wednesday, December 30, 2009

When Gov. Bill Ritter launched his New Energy Communities Initiative with \$10 million in grants in 2008, the idea was to foster community programs in areas such as energy efficiency and conservation and carbon-emissions reduction.

It also tapped a new energy of another sort. Its focus on regional partnerships helped communities come together to work cooperatively on green energy projects.

That new cooperative energy has been apparent to participants involved in administering the largest of the grants, about \$1.6 million given to a consortium of communities and other entities in Garfield County. The funding has been used for everything from helping pay for solar installations on public buildings, to distributing thousands of free energy-efficient light bulbs to residents.

Dave Sturges, an alternate on the Garfield New Energy Communities Initiative board, said the program has been one of the best cooperative efforts he's seen between entities in Garfield County.

"I would say the GNECI has really been something extraordinary in building the focus on energy efficiency and trying to set up a system in which really all the community partners benefit," Sturges said.

Karol Sacca, who lives outside Parachute, was thrilled when she was picked as a winner in a contest that offered energy testing of homes, and insulation and sealing.

"The guy was here the whole day to seal all these air leaks you'd never even think about," she said. "... I was so excited. I was like, yes, let it turn cold now."

The Governor's Energy Office provided separate funds for that insulation program, said Alice Laird, director of Clean Energy Economy for the Region, the nonprofit that led the effort to get the Garfield grant. It's an example of how the Garfield County coalition has pursued matching grants, utility partnerships and other ways of building on the original grant.

The 2008 grants were paid for using energy impact funds generated by traditional energy development. Now the Governor's Energy Office is making \$9.5 million available to small Colorado communities for similar programs by using federal stimulus bill dollars.

A coalition of entities in Mesa County was awarded just over \$1 million in the 2008 grant program. Kathy Portner, Grand Junction's neighborhood services manager, said the city was particularly happy to get \$200,000 to install solar panels at Two Rivers Convention Center and the visitors center at Horizon Drive and Interstate 70.

"It likely would have been something that we could not have done without the grant," she said.

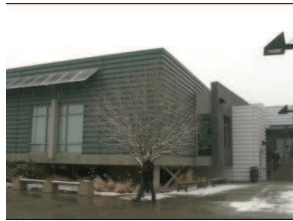
Jack Kirtland of the state Department of Local Affairs said he's seeing additional regional efforts take shape, such as one involving Delta and Montrose counties.

http://gjsentinel.com/news/articles/energy_initiative_helps_green



GJ buildings go green

Posted: Jan 27, 2010 9:34 PM MST
Updated: Jan 27, 2010 9:45 PM MST



COURTNEY
JONES
CJONES@KJCT8.COM

GRAND JUNCTION-Colo (KJCT) The City of Grand Junction is starting 2010 a little greener. Officials say that will make your tax dollars go farther.

For about two years, city leaders have been working on a project to make buildings more energy efficient. The City has been working toward a goal of reducing energy consumption at all city buildings and facilities by 20 percent by 2012.

In 2008, consultants from Johnson Controls began reviewing power and water consumption at all of the city's forty-four buildings. The consultants suggested how changes in lighting, water, heating and cooling systems could lead to much greater energy efficiency.

Since then, 18 buildings and parks have been given energy upgrades at a cost of 2 million dollars. City leaders expect to make up that cost within 12 years.

"Annually we are going to see lower utility bills on electric and gas, lower water bills as far as water consumption, and of course over time that accumulates," Utilities, Street Systems and Facilities Manager, Greg Trainor explains.

A \$200,000 dollar grand from the Department of Local Affairs, in partnership with the Governor's Energy Office, paid for solar panels at the Two Rivers Convention Center and the Visitor and Convention Bureau.

Xcel Energy rebates of \$99,000 through their Solar Rewards Program and rebates on electric motors, lighting retrofits and high efficiency lighting are also helping pay for these improvements.

The City's website tracks the amount of energy generated by the solar panels at the Convention Center and Visitor Center. You can check out at www.gjcity.org

During a presentation of the solar panels at Two Rivers Convention Center on Wednesday, Mayor Bruce Hill re-enforced the message that the City of Grand Junction is committed to energy conservation efforts.

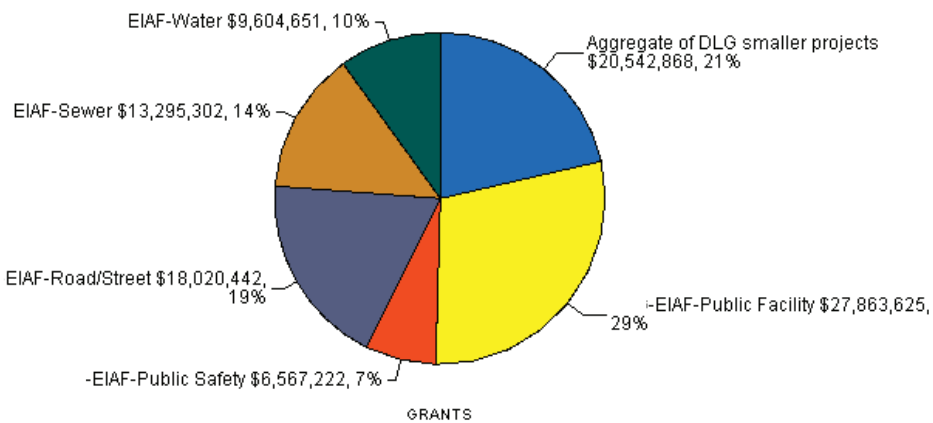
Several more energy saving projects are already in the works, including one at the cities water treatment plant.

These improvements are not only cost savers, they are also designed to help reduce the city's carbon footprint. The upgrades are expected to save 1.1 million gallons of water, 626 tons of carbon dioxide, 1,204 pounds of nitrous oxide and 1,095 pounds of sulfur dioxide every year.

Energy & Mineral Impact Grants by Project Type

2009

Total Projects Funded: 312
Total Grants Awarded: \$95,894,110*
Total Leverage: \$466,749,575
Total Invested: \$562,643,685



Project Type	# Grants	Total Grants	Total Leverage	Total Projects
Aggregate of DLG smaller projects	95	\$20,542,868	\$94,509,603	\$115,052,471
EIAF-Public Facility	66	\$27,863,625	\$205,087,321	\$232,950,946
EIAF-Public Safety	27	\$6,567,222	\$18,202,279	\$24,769,501
EIAF-Road/Street	43	\$18,020,442	\$48,011,824	\$66,032,266
EIAF-Sewer	39	\$13,295,302	\$80,271,873	\$93,567,175
EIAF-Water	42	\$9,604,651	\$20,666,675	\$30,271,326
Total:	312	\$95,894,110	\$466,749,575	\$562,643,685

*This report reflects figures generated from grants database in Jan. 2010. Jobs Generation Report is based on figures from Jan. - Dec. 2009.

Energy & Mineral Impact Grants by Project Type

2009

Total Projects Funded: 312
Total Grants Awarded: \$95,894,110
Total Leverage: \$466,749,575
Total Invested: \$562,643,685

Aggregate Projects

Project Type	# Grants	Total Grants	Total Leverage	Total Projects
EIAF-Community Development	14	\$1,268,370	\$922,509	\$2,190,879
EIAF-Drainage	2	\$300,370	\$151,170	\$451,540
EIAF-Education	10	\$3,104,804	\$12,666,445	\$15,771,249
EIAF-Health & Human Svcs	6	\$2,240,487	\$13,226,182	\$15,466,669
EIAF-Housing	2	\$525,100	\$1,195,100	\$1,720,200
EIAF-NEC	14	\$8,075,750	\$57,201,257	\$65,277,007
EIAF-Park/Recreation	5	\$1,950,000	\$6,311,894	\$8,261,894
EIAF-Planning/Administration	37	\$2,246,539	\$2,022,669	\$4,269,208
EIAF-Public Services	1	\$100,000	\$296,377	\$396,377
EIAF-Technical Assistance	1	\$100,000	\$340,000	\$440,000
EIAF-Uranium Mill Tailing Removal	2	\$329,948	\$80,000	\$409,948
EIAF-WIN	1	\$301,500	\$96,000	\$397,500
Total:	95	\$20,542,868	\$94,509,603	\$115,052,471

Regional Grant Report Summary
1/1/ 2009 - 12/31/2009

Regional Manager	Northeastern	Southeastern	South Central	Southwestern	Northwestern	N. Mountains	North Central	Central	TOTALS
	Greg Etl	Lee Merkel	Deb Downs	Ken Charles	Jack Kirkland	Greg Winkler	Don Sandoval	Clay Brown	
# of Projects	20	37	41	52	62	30	50	20	312
Total Awarded	\$3,114,535	\$9,101,408	\$9,972,168	\$14,563,647	\$27,818,968	\$9,467,915	\$17,490,838	\$4,364,631	\$95,894,110
Total Leveraged	\$7,918,348	\$15,419,798	\$31,256,979	\$91,979,014	\$127,363,780	\$64,791,137	\$87,651,605	\$40,368,914	\$466,749,575
Total Invested	\$11,032,883	\$24,521,206	\$41,229,147	\$106,542,661	\$155,182,748	\$74,259,052	\$105,142,443	\$44,733,545	\$562,643,685

Energy and Mineral Impact Loan Program

To assist communities with critical water and wastewater improvements, Colorado Revised Statutes allow loans from the Local Government Severance Tax Fund, C.R.S. 39-29-110(1)(b)(II) (A).

This program allows the executive director to make loans to political subdivisions for the planning, design, construction, erection, building, acquisition, alteration, modernization, reconstruction, improvement, or expansion of domestic wastewater treatment works or potable water treatment facilities. Loans must follow terms to insure repayment of the loan with interest assessed and collected at an interest rate of not less than five percent.

The current value of the loan portfolio is \$33,512,832 and consists of 156 active loans totaling \$21,317,787. Since the water and sewer loan program was authorized by statute in 1985, a total of 327 loans have been made, with 172 loans being fully repaid. There have been no defaults in the history of the loan program.

Advancing Sustainable Communities through Technical Assistance

While DOLA administers millions of dollars through programs that have a significant and meaningful impact on Colorado communities, the department's wealth of local government expertise, established partnerships with communities and technical assistance is invaluable in assisting local governments to achieve their goals.

Through hands on, day-to-day work with Colorado communities, Division of Local Government staff provide guidance and training on issues ranging from special district administration to budgeting.

It is this technical assistance that makes DOLA a valued, trusted resource and liaison between state and local government.

The Technical Assistance team and Regional Managers provide assistance primarily to Colorado's 128 small towns (population up to 1,000 and budgets up to \$2 million) and to medium size local government customers (53 counties and 2,000 Special Districts) in nearly all areas of municipal, county, and special district operations. This assistance enhances the capacity of these small local governments in general administration, budgeting, financial management and strategic planning to achieve a more sustainable community.

Process for Technical Assistance (TA)

Technical Assistance is provided through at least five methods:

1. Direct face to face with Regional Manager/Assistants, Denver Team and local government officials.
2. Referral of local government customers, internal and external resources.
3. Direct call by the local government to TA team.
4. Presentation at local government meetings with follow-up training developed.
5. Webinars developed and provided to targeted customers based on need.

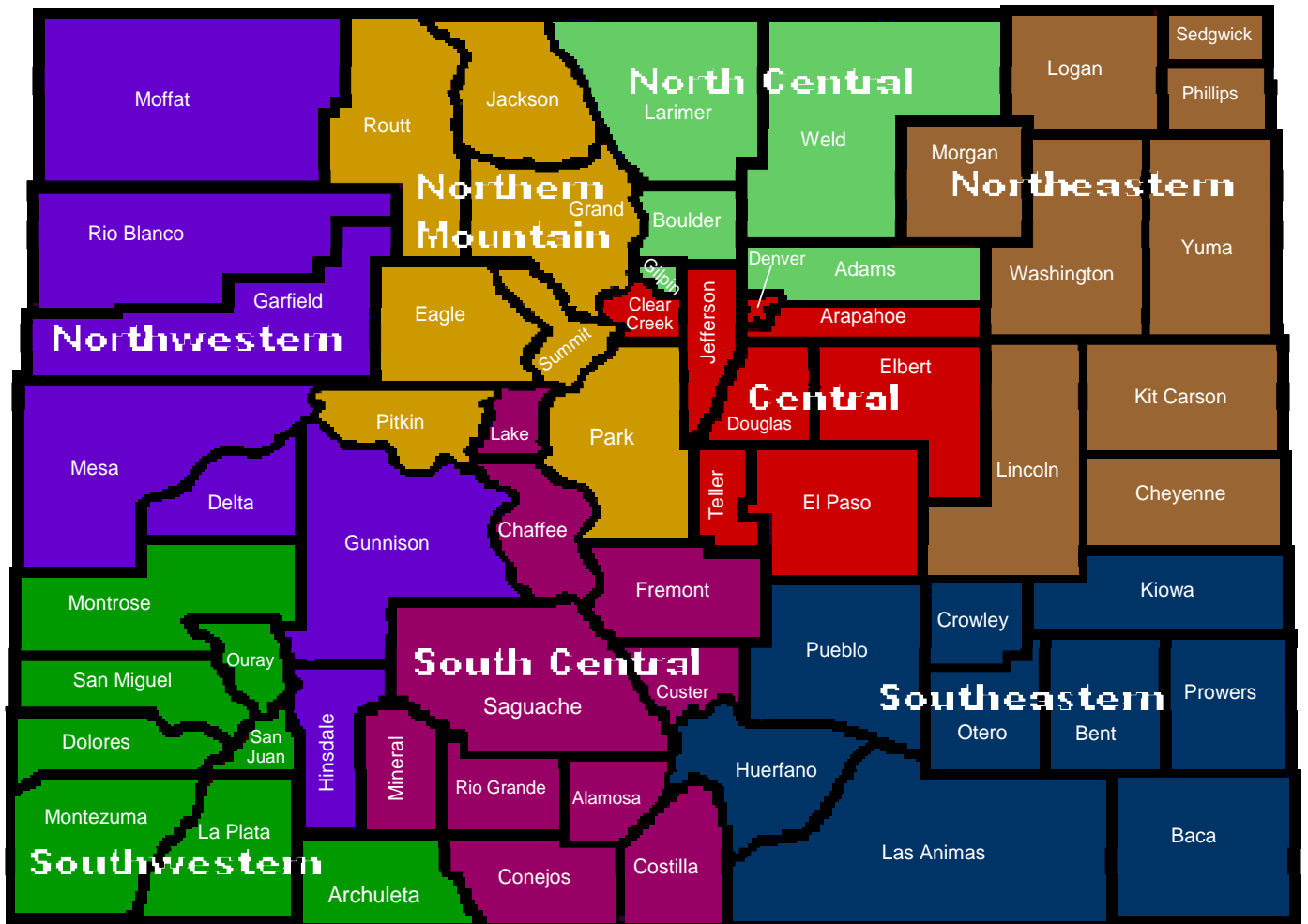
Types of Technical Assistance Available

DOLA provides its customers with Technical Assistance on a variety of local government functions including:

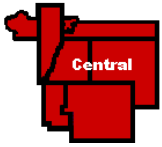
1. Analysis of fiscal capacity and effort by county and municipality.
2. Update of the poverty data by county and municipality mapped for local government use to make better decisions.
3. Financial data compiled for county or municipality to allow them to easily review the most recent eight years of Financial Trends and conduct a “Red Line-Blue Line” analysis of revenues and expenditure on their own using the sample developed by TA staff.
4. Conduct goal setting, visioning and strategic planning sessions for local government elected officials.
5. Train municipal and county governing bodies, planning commissions and staff on a variety of local government matters: budgeting, land use, planning, conduct of meetings, consensus building, effective governance, special district development and management, purchasing, financial management, water and wastewater management including rate setting, etc.
6. Train over 1000 special district employees in procedures required to conduct a legal board of directors’ election.
7. Serve as contacts for non-profits providing services within the regions, i.e., El Pomar Foundation, Boettcher foundation, Colorado Rural Health Center, Gates Foundation, etc.
8. Conflict resolution between local governments.
9. Development of Inter-Governmental Agreements.
10. Provide information on legal investments.
11. Assist in identifying regional problems and regional solutions.
12. Assist in developing:
 - a. Annual budgets and multiyear capital improvement plans.
 - b. Strategies to finance major capital investments.
 - c. Fleet management plans.
 - d. Pavement maintenance plans.
 - e. Personnel policies and procedures.
 - f. Economic development strategies for local governments.
13. Assist in hiring management and other staff.
14. Assist local governments in complying with new laws, i.e., high performance contracting, transparency notice for special districts, annual map filing requirements for special districts, SB-06-090 filing requirements certifying cooperation with federal officials on matters of immigration status.
15. Assist in the implementation of financial best management practices.
16. Development of tools that local government can utilize to be more effective.

DOLA Regional Map & Regional Managers

One of DOLA's strengths is our ability to deliver services directly within the communities we serve. Regional Managers cover eight regions throughout Colorado, allowing local governments, community leaders and organizations to address their needs with someone who lives and works right in their own communities. Our Regional Managers work tirelessly within their regions, serving as consultants to communities in their community development efforts and providing technical assistance and guidance to grant recipients throughout each step of the process – from application to contract. They play an invaluable role in helping DOLA in its administration of the Impact program.



DOLA Regional Managers



Central Region Counties:

Arapahoe, Clear Creek, Denver, Douglas, El Paso, Elbert, Jefferson, Teller

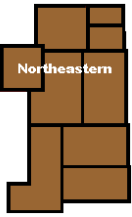


Clay Brown

15075 S. Golden Road
Golden, CO 80401
303-273-1787

FAX 303-273-1795

clay.brown@state.co.us



Northeastern Region Counties:

Cheyenne, Kit Carson, Lincoln, Logan, Morgan, Phillips, Sedgwick, Washington, Yuma

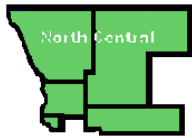


Greg Etl

218 State Street, Suite 1
Fort Morgan, CO 80701
970-867-4961

FAX 970-867-5887

greg.etl@state.co.us



North Central Region Counties:

Adams, Boulder, Broomfield, Gilpin, Larimer, Weld



Don Sandoval

150 E. 29th St., Ste. 215
Loveland, CO 80538

970-679-4501

FAX 970-669-7717

don.sandoval@state.co.us



Northern Mountain Region Counties:

Eagle, Grand, Jackson, Park, Pitkin, Routt, Summit



Greg Winkler

602 Galena Street
P.O. Box 5507

Frisco, CO 80443-5507

970-668-6160

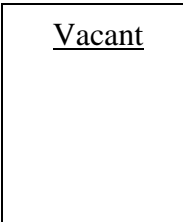
FAX 970-668-3216

greg.winkler@state.co.us



Northwestern Region Counties:

Delta, Garfield, Gunnison, Hinsdale, Mesa, Moffat, Rio Blanco



Temporary Contact: Ken Charles

Fort Lewis College
1000 Rim Dr.

Durango, CO 81302

970-247-7311

FAX 970-247-7032



Southwestern Region Counties:

Archuleta, Dolores, La Plata, Montezuma, Montrose, Ouray, San Juan, San Miguel



Ken Charles

Fort Lewis College
1000 Rim Dr.

Durango, CO 81302

970-247-7311

FAX 970-247-7032

charles_k@fortlewis.edu



South Central Region Counties:

Alamosa, Chaffee, Conejos, Costilla, Custer, Fremont, Lake, Mineral, Rio Grande, Saguache



Debra Downs

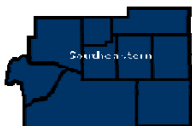
P.O. Box 127

Monte Vista, CO 81144

719-852-9429

FAX 719-852-9433

deb.downs@state.co.us



Southeastern Region Counties:

Baca, Bent, Crowley, Huerfano, Kiowa, Las Animas, Otero, Prowers, Pueblo



Lee Merkel

132 West "B" Street,
Suite 260

Pueblo, CO 81003

719-544-6577

FAX 719-545-1876

lee.merkel@state.co.us

Supporting Colorado through more Efficient Use of State Resources

DOLA utilizes webinar software, videoconferencing and teleconferencing more widely to help eliminate the need for partners throughout the state and staff to travel long distances for training. DOLA also accepts electronic filing of documents, saving postage and paper costs for local governments. We are committed to continue to find ways to identify savings, reduce our carbon footprint, and make our services more convenient and flexible for our local partners.

DOLA employees are working hard to make our services more convenient and accessible to our local partners.

Videoconferencing is now being used for hearings and presentations to help save time, resources and reduce our carbon footprint.



Basic Definitions: Title 1 C.R.S.

- **Ballot** – List of all candidates, ballot issues and ballot questions which an eligible elector is entitled to vote at an election (1.7)
- **Ballot Issue** – State or local government matter arising under... of the state constitut...
- **Ballot Issue Notice** – Me... is required under sec... article X of the state...

New webinar software has been extremely helpful for conducting training for a variety of Technical Assistance services we provide.

The trainings allow us to share the same materials, information and discussion, while reducing the amount of travel. This is a savings for both the state and our partners at the local level.

Energy & Mineral Impact Grants by County

2009

County Name	Applicant Title	Project#	Project Name	Award Date	Awarded	Leverage	Project Type
Adams	Greater Brighton Fire Protection District	06608	Greater Brighton FPD Air Compressor	05-19-09	\$34,000	\$34,000	PUBSAFE
		06427	Greater Brighton FPD Fire Engine and Software	02-04-09	\$255,000	\$262,645	PUBSAFE
	Rangeview Library District	06426	Rangeview Library District - Brighton Cultural Center	03-13-09	\$300,000	\$7,408,960	PUBFAC
	County Total:				\$589,000	\$7,705,605	
Alamosa	Alamosa County	06664	Alamosa Co. Detention Center Security Upgrades	07-28-09	\$150,000	\$89,700	PUBSAFE
		County Total:			\$150,000	\$89,700	
Archuleta	Archuleta County	06518	Archuleta Co. Impact Fee Study Calibration	04-08-09	\$20,500	\$20,500	PLAN/AD
		05710	Archuleta Co.-Arboles Satellite Facility	01-30-09	\$259,227	\$168,023	PUBFAC
	Pagosa Springs, Town of	06857	Pagosa Springs Administrative Intern	12-30-09	\$35,000	\$35,000	PLAN/AD
	County Total:				\$314,727	\$223,523	
Baca	Walsh Metropolitan Recreation District	06213	Walsh Recreation District Pool Renovation	08-24-09	\$80,000	\$54,000	PUBFAC
		County Total:			\$80,000	\$54,000	
Bent	Bent County	06411	Bent Co. Courthouse Restoration - Phase V & VI	01-12-09	\$390,000	\$909,146	PUBFAC
		06612	Bent Co. Star School Design	11-13-09	\$22,400	\$11,200	PUBFAC
		County Total:			\$412,400	\$920,346	
Boulder	Boulder County	06473	Boulder Co New Energy Communities Initiative Biomass Heating	03-31-09	\$500,000	\$2,794,200	NEC
	Lafayette, City of	06860	Lafayette Administrative Intern	12-23-09	\$35,000	\$35,000	PLAN/AD
	Longmont, City of	06466	Longmont New Energy Communities Initiative	05-15-09	\$500,000	\$3,685,000	NEC
	Nederland FPD	06357	Nederland FPD Station 2 Expansion	11-30-09	\$50,000	\$100,000	PUBSAFE
	Nederland, Town of	06698	Nederland Water Treatment Plant	10-20-09	\$600,000	\$2,200,000	WATER
	County Total:				\$1,685,000	\$8,814,200	

Energy & Mineral Impact Grants by County

2009

County Name	Applicant Title	Project#	Project Name	Award Date	Awarded	Leverage	Project Type
Chaffee	Buena Vista, Town of	06724	Buena Vista Feasibility Study	06-04-09	\$5,000	\$5,000	PLAN/AD
	Chaffee County	06391	Chaffee Co. Community Services Complex	01-28-09	\$1,700,000	\$2,575,000	PUBFAC
		06626	Chaffee Co. Renewable Energy Action Plan	07-10-09	\$30,000	\$20,000	PLAN/AD
		06726	Chaffee County Road Grader Replacements	09-10-09	\$100,000	\$483,456	ROAD/ST
	Chaffee County FPD	06673	Chaffee Co. Search & Rescue Bldg. Upgrades	08-14-09	\$40,000	\$86,712	PUBSAFE
	Poncha Springs, Town of	06517	Poncha Springs Water System Capacity Upgrades	04-29-09	\$200,000	\$100,000	WATER
		06392	Poncha Springs Water System Upgrades	01-21-09	\$360,000	\$410,000	WATER
	Salida Hospital District	06603	Salida Hospital Digital Mammography Equipment	06-01-09	\$212,000	\$211,610	H&HS
	Salida, City of	06728	Salida WW Treatment Facility Upgrades	09-10-09	\$1,350,000	\$11,224,000	SEWER
County Total:					\$3,997,000	\$15,115,778	
Cheyenne	Cheyenne Wells Sanitation District No. 1	06746	Cheyenne Wells WW Facility Safety/Efficiency Upgrades	07-20-09	\$14,750	\$10,000	SEWER
	County Total:					\$14,750	\$10,000
Clear Creek	Clear Creek County Fire Authority	06505	CCCFA Alice/Saint Mary's Fire Station	04-16-09	\$200,000	\$450,498	PUBFAC
	Georgetown, Town of	06675	Georgetown WW Treatment Engineering	06-16-09	\$155,000	\$145,000	SEWER
		06504	Georgetown Water Engineering	03-05-09	\$190,000	\$89,000	WATER
	Idaho Springs, City of	06501	Idaho Springs Sewer Line Improvements - Phase III	03-18-09	\$68,425	\$29,325	SEWER
	Silver Plume, Town of	06747	Silver Plume Sewer Collection System Study	05-27-09	\$12,500	\$10,000	SEWER
	County Total:					\$625,925	\$723,823
Conejos	Antonito, Town of	06752	Antonito Interim Town Manager	06-16-09	\$30,000	\$0	PLAN/AD
	Conejos County	06668	Conejos Co. Public Document Conversion	07-22-09	\$100,000	\$50,709	PLAN/AD
		06513	Conejos Co. R&B Shop Purchase/Construction	04-01-09	\$165,000	\$126,509	ROAD/ST
	La Jara, Town of	06751	La Jara WW Treatment Engineering Study	06-03-09	\$25,000	\$10,000	PLAN/AD
	County Total:					\$320,000	\$187,218

Energy & Mineral Impact Grants by County

2009

County Name	Applicant Title	Project#	Project Name	Award Date	Awarded	Leverage	Project Type
Costilla	Blanca, Town of	06555	Blanca Water Meter Installation	05-19-09	\$276,434	\$38,683	WATER
	Costilla County	06511	Costilla Co. Senior Nutrition Center Construction	06-29-09	\$200,000	\$584,043	PUBFAC
		06663	Costilla County Manager	07-20-09	\$125,000	\$4,845	PLAN/AD
County Total:					\$601,434	\$627,571	
Crowley	Crowley, Town of	06527	Crowley Water System Improvements Study	01-21-09	\$15,000	\$5,000	WATER
	County Total:					\$15,000	\$5,000
Custer	Round Mountain Water & Sanitation District	05738A	Round Mt. Water & Sanitation District Water System - Loan	06-16-09	\$87,500	\$737,500	WATER
	West Custer County Hospital District	06514	West Custer Co. Medical Center/EMS	03-30-09	\$80,000	\$17,164	PUBFAC
	County Total:					\$167,500	\$754,664
Delta	Cedaredge, Town of	06687	Cedaredge Administrative Intern	05-13-09	\$30,000	\$30,000	PLAN/AD
	Delta County Fire Protection District No. 3	06428	Delta Co. FPD #3 4x4 Fire Truck	03-09-09	\$90,000	\$270,000	PUBSAFE
	Delta County Joint School District No. 50J	06708	Delta County Paonia Campus HVAC & Electrical Renovations	09-23-09	\$400,000	\$291,131	PUBFAC
	Delta, City of	06639	Delta WWTP Roof Replacement	07-21-09	\$40,000	\$0	SEWER
	Paonia, Town of	06852	Paonia Administrative Intern	12-04-09	\$35,000	\$35,000	PLAN/AD
County Total:					\$595,000	\$626,131	
Denver	Colorado Community College System	06558	CCCS Colorado Center of Excellence	08-25-09	\$600,000	\$1,111,720	EDUC
	Governor's Office of Information Technology	06328	Governor's IT Office Broadband Mapping Initiative	06-09-09	\$100,000	\$340,000	TECHAST
	County Total:					\$700,000	\$1,451,720

Energy & Mineral Impact Grants by County

2009

County Name	Applicant Title	Project#	Project Name	Award Date	Awarded	Leverage	Project Type
Dolores	Dolores County	06593	Dolores Co. Squaw Point Road - Phase III	05-27-09	\$337,000	\$335,952	ROAD/ST
		06864	Dolores County Administrative Intern	12-02-09	\$35,000	\$35,000	PLAN/AD
	Rico Fire Protection District	06634	Rico FPD Expansion	09-23-09	\$20,935	\$23,434	PUBSAFE
	Rico, Town of	06635	Rico Master Plan Amendments	07-10-09	\$2,500	\$2,500	PLAN/AD
		06519	Rico Water System Improvements	03-24-09	\$60,000	\$30,000	WATER
County Total:					\$455,435	\$426,886	
Eagle	Avon, Town of	06461	Avon New Energy Communities Initiative Heat Recovery Fac	06-16-09	\$1,500,000	\$3,504,000	NEC
	Basalt Regional Library District	06489	Basalt Regional Library District Photovoltaic System	06-11-09	\$200,000	\$199,471	PUBFAC
	Red Cliff, Town of	06759	Red Cliff WWTP & Collection System Replacement	09-15-09	\$500,000	\$5,186,523	SEWER
	Western Eagle County Metropolitan Recreation District	06740	WECMRD Multi-Use Field House	09-10-09	\$185,000	\$8,653,092	PUBFAC
	County Total:					\$2,385,000	\$17,543,086
El Paso	Calhan RJ-1 School District	06700	Calhan School Heat Pump & Master Plan	11-24-09	\$400,000	\$2,690,000	EDUC
	Colorado Springs, City of	06474	Pikes Peak Region New Energy Communities Initiative	02-19-09	\$200,000	\$31,298,000	NEC
	Forest View Acres Water District	06677	Forest View Acres Water Infrastructure Repair/Upgrades	06-30-09	\$156,700	\$156,700	WATER
	Pikes Peak Library District	06560	Pikes Peak Library Falcon Branch Construction	06-01-09	\$500,000	\$2,257,703	PUBFAC
	County Total:					\$1,256,700	\$36,402,403
Fremont	Brookside, Town of	06670	Brookside Community Center	08-10-09	\$150,000	\$115,289	PUBFAC
	Coal Creek, Town of	06669	Coal Creek Town Hall Renovation	07-15-09	\$85,596	\$17,000	PUBFAC
	Fremont County	06730	Fremont County Purchase - Plow Trucks	09-10-09	\$200,000	\$475,000	ROAD/ST
		06765	Fremont County Water Line Engineering Study	09-10-09	\$21,500	\$21,500	WATER
	Williamsburg, Town of	06671	Williamsburg Motor Grader Purchase	08-10-09	\$100,000	\$95,000	ROAD/ST
County Total:					\$557,096	\$723,789	

Energy & Mineral Impact Grants by County

2009

County Name	Applicant Title	Project#	Project Name	Award Date	Awarded	Leverage	Project Type
Garfield	Carbondale, Town of	06432	Carbondale Community Non-Profit Center	09-15-09	\$750,000	\$4,065,060	PUBFAC
	Consolidated Metro District	06720	CMD WW Drying Beds Expansion	10-16-09	\$234,000	\$234,146	SEWER
	Garfield County	06539	Garfield Co. Human Services Annex Construction	06-04-09	\$600,000	\$1,958,925	H&HS
		06472	Garfield Co. New Energy Communities Initiative	02-25-09	\$1,605,000	\$2,360,445	NEC
		06538	Garfield Co. Sheriff Annex Expansion	06-04-09	\$600,000	\$2,867,710	PUBSAFE
		06744	Garfield County Assessor Software Upgrade.	07-22-09	\$100,000	\$126,000	PLAN/AD
	Garfield School District RE-2	06374	Garfield School Dist. RE-2 Water Pumps	01-07-09	\$66,375	\$81,125	WATER
	Glenwood Springs, City of	06543	Glenwood Springs Donegan Road Expansion	08-13-09	\$500,000	\$3,150,000	ROAD/ST
	New Castle, Town of	06435	New Castle WW Treatment Plant	01-22-09	\$1,000,000	\$9,247,172	SEWER
		06762	New Castle Water Facility Expansion Feasibility Study	09-15-09	\$25,000	\$25,000	WATER
	Rifle, City of	06721	Rifle Downtown Civic Plaza	09-29-09	\$1,700,000	\$9,335,500	PUBFAC
		06537	Rifle GIS Mapping Infrastructure Upgrades	03-30-09	\$120,000	\$60,000	ROAD/ST
		06544	Rifle Water Treatment Plant Design	05-19-09	\$600,000	\$1,930,000	WATER
	County Total:					\$7,900,375	\$35,441,083
Grand	Fraser Valley Metro Rec. Dist.	06408	Fraser Valley Metro Rec. Dist. Recreation Center	03-04-09	\$350,000	\$16,598,546	PUBFAC
	Grand Lake, Town of	06490	Grand Lake Stormwater Filtration	03-12-09	\$155,370	\$102,670	DRAIN
	Kremmling Memorial Hospital District	06407	Kremmling MHD Granby Medical Campus	01-21-09	\$1,000,000	\$22,160,775	PUBFAC
	Kremmling, Town of	06575	Kremmling Water Distribution Line Replacement	05-27-09	\$750,000	\$1,250,000	WATER
County Total:					\$2,255,370	\$40,111,991	
Gunnison	Gunnison County	06641	Gunnison Co. Assessor Software Purchase	07-30-09	\$142,889	\$142,889	PLAN/AD
	County Total:					\$142,889	\$142,889
Hinsdale	Lake City, Town of	06609	Lake City Capital Improvement Project - Phase II	04-27-09	\$67,400	\$67,400	PLAN/AD
	County Total:					\$67,400	\$67,400

Energy & Mineral Impact Grants by County

2009

County Name	Applicant Title	Project#	Project Name	Award Date	Awarded	Leverage	Project Type
Huerfano	Gardner Sanitation District	06607	Gardner Sanitation District Engineering Study	02-04-09	\$8,000	\$12,000	SEWER
	Huerfano County	06349	Huerfano Co. Comp Plan & Land Use Update	01-15-09	\$50,000	\$50,000	PLAN/AD
	Huerfano RE-1 School District	06581	Huerfano RE-1 Sports Complex Multi-Use Building	05-27-09	\$350,000	\$1,195,800	PRK/REC
	Upper Huerfano FPD	06486	Upper Huerfano FPD Equipment Replacement	06-23-09	\$190,000	\$294,800	PUBSAFE
County Total:					\$598,000	\$1,552,600	
Jackson	Jackson County	06492	Jackson Co. Dozer Tractor Purchase	03-10-09	\$161,000	\$161,000	PUBSAFE
	North Park R-1 School District	06576	North Park Biomass Boiler & Energy Efficiency Upgrades	06-25-09	\$350,000	\$694,000	EDUC
	Walden, Town of	06660	Walden Water Tank Rehabilitation	07-14-09	\$75,000	\$25,000	WATER
County Total:					\$586,000	\$880,000	
Jefferson	Buffalo Creek Water District	06508	Buffalo Creek Water Line Replacement	04-29-09	\$55,610	\$55,610	WATER
	Morrison, Town of	06509	Morrison Mobile WW Sludge Dewatering system	09-24-09	\$200,000	\$102,500	SEWER
	Mountain View, Town of	06618	Mountain View Town Administrator	03-06-09	\$30,000	\$19,900	PLAN/AD
County Total:					\$285,610	\$178,010	
Kiowa	Kiowa County School Dist. RE-2	06211	Kiowa Co. School Dist. School Renovation	09-10-09	\$140,042	\$691,920	PUBFAC
County Total:					\$140,042	\$691,920	
Kit Carson	Bethune, Town of	06624	Bethune WW Treatment Engineering Report	04-01-09	\$10,000	\$10,000	SEWER
County Total:					\$10,000	\$10,000	

Energy & Mineral Impact Grants by County

2009

County Name	Applicant Title	Project#	Project Name	Award Date	Awarded	Leverage	Project Type
La Plata	Bayfield, Town of	06616	Bayfield Gem Village Lift Station	05-19-09	\$462,555	\$498,638	SEWER
		06523	Bayfield Regional GIS System	04-27-09	\$90,000	\$35,000	PLAN/AD
		06005B	Bayfield Water System	08-13-09	\$68,000	\$236,497	WATER
	Durango, City of	06601	Durango Florida Road Widening Project	09-01-09	\$900,000	\$16,847,324	ROAD/ST
		06397	Durango Main Avenue Sidewalk Improvements	02-23-09	\$500,000	\$2,735,082	ROAD/ST
		06620	Durango New Energy Communities Initiative	11-02-09	\$497,000	\$0	NEC
		06633	Durango Recycling Trucks	07-22-09	\$100,000	\$296,377	PUBSRV
		06332	El Rancho Florida Metro Water System Improvements	02-19-09	\$166,800	\$166,800	WATER
	El Rancho Florida Metro Dist.	06332A	El Rancho Florida Metro Water System Improvements Loan	02-19-09	\$100,000	\$233,600	WATER
		06598	Fort Lewis College Student Union Building	08-23-09	\$300,000	\$41,200,000	PUBFAC
	Fort Lewis Mesa FPD	06701	Fort Lewis Mesa FPD Station Construction & Engine Purchase	09-15-09	\$139,255	\$334,016	PUBSAFE
	Ignacio, Town of	06597	Ignacio Gas Main Pipeline Replacements - Phase II	07-22-09	\$300,000	\$245,000	PUBSAFE
		06628	Ignacio Intersection Corridor Plan	09-23-09	\$75,000	\$225,000	ROAD/ST
		06525	Ignacio Road Infrastructure Plan	04-10-09	\$150,000	\$106,357	PLAN/AD
	La Plata County	06463	La Plata Co Regional New Energy Communities Initiative	03-30-09	\$703,000	\$147,500	NEC
		06602	La Plata Co. Beaver Creek Bridge Replacement	06-23-09	\$400,000	\$703,425	ROAD/ST
		06398	La Plata Co. Energy Efficiency Upgrades	03-30-09	\$700,000	\$1,742,149	PUBFAC
		06629	La Plata Co. Facilities Master Plan	08-05-09	\$195,000	\$65,000	PLAN/AD
		06630	La Plata Co. Land Feasibility Study	08-05-09	\$130,000	\$130,000	PLAN/AD
		06859	La Plata County Administrative Intern	12-22-09	\$35,000	\$35,000	PLAN/AD
		06133	Lake Durango Water Authority Water System Acquisition	09-23-09	\$500,000	\$2,260,000	WATER
	Regional Housing Alliance of La Plata County	06599	RHA Affordable Housing Mortgage Assistance	06-23-09	\$500,000	\$1,170,000	HOUSING
	South Durango Sanitation District	05817A	South Durango Sanitation WWTF Phase II Expansion - Loan	05-05-09	\$500,000	\$3,827,450	SEWER
05817		South Durango Sanitation WWTF Phase II Expansion - WET	05-04-09	\$250,000	\$4,077,450	SEWER	
County Total:					\$7,761,610	\$77,317,665	
Lake	Lake County	06515	Lake Co. Community Park Project	03-20-09	\$300,000	\$776,200	PRK/REC
	Leadville Sanitation District	06732	Leadville San. Dist. Interceptor Sewer Line	09-15-09	\$728,500	\$878,500	SEWER
	Leadville, City of	06516	Leadville Dump Truck & Snow Removal Equipment	03-23-09	\$95,000	\$55,000	ROAD/ST
		06735	Parkville Water Dist. Well/Pump and Pipeline	12-02-09	\$500,000	\$2,036,400	WATER
	Parkville Water District	06610	Parkville Water District Master Plan	01-15-09	\$30,000	\$10,000	WATER
		County Total:					\$1,653,500

Energy & Mineral Impact Grants by County

2009

County Name	Applicant Title	Project#	Project Name	Award Date	Awarded	Leverage	Project Type	
Larimer	Colorado State University	06850	CSU Community Development '10	12-18-09	\$240,000	\$46,945	COMMDEV	
	Fort Collins, City of	06679	Fort Collins Museum and Science Center	12-30-09	\$200,000	\$23,559,151	PUBFAC	
	Ft. Collins, City of	06468	Fort Collins Regional New Energy Communities Initiative	04-08-09	\$778,000	\$3,384,010	NEC	
	Larimer County		06627	Larimer Co. Housing Needs Assessment	04-16-09	\$25,100	\$25,100	HOUSING
			06696	Larimer County Hidden View Estates WWTP Upgrade	10-16-09	\$300,000	\$300,000	SEWER
	Loveland, City of		06464	Loveland Multi-Agency New Energy Communities Initiative	03-18-09	\$39,250	\$9,812	NEC
			06697	Loveland Public Library Renovation	11-02-09	\$400,000	\$9,000,000	PUBFAC
	Poudre Canyon FPD	06424	Poudre Canyon FPD Firehouse Complex	03-09-09	\$400,000	\$1,758,705	PUBSAFE	
	Poudre School District R-1	06681	Poudre School District Wind for Schools Project	09-29-09	\$7,500	\$32,500	EDUC	
	Red Feather Mountain Library District	06722	RFMLD Water Filtration System Upgrade	08-24-09	\$6,900	\$6,900	WATER	
	Timnath, Town of	06422	Timnath Septic System Improvements - Loan	03-13-09	\$900,000	\$2,247,879	SEWER	
	Wellington FPD	06680	Wellington FPD Dual Purpose Tanker Engine	09-29-09	\$40,000	\$80,000	PUBSAFE	
	County Total:					\$3,336,750	\$40,451,002	
Las Animas	Hoehne School District R-3	06652	Hoehne School District WWTP	07-22-09	\$200,000	\$0	EDUC	
	Kim School Dist. R-88	06653	Kim Schools Redesign	09-14-09	\$22,000	\$47,677	EDUC	
	Las Animas County		06416	Las Animas Co. Courthouse Office Space - Phase II	08-24-09	\$1,867,705	\$922,719	PUBFAC
			06739	Las Animas Countywide Road Surface Improvements	11-30-09	\$1,000,000	\$1,500,000	ROAD/ST
	Primero School Dist. RE-2	06351	Primero School Dist. Community Center	09-24-09	\$200,000	\$230,000	PUBFAC	
	Trinidad 1 School District	06353	Trinidad School Dist. Facility Master Plan	10-16-09	\$50,000	\$50,000	PLAN/AD	
	Trinidad, City of	06352	Trinidad Parking Study	04-13-09	\$25,000	\$10,000	ROAD/ST	
County Total:					\$3,364,705	\$2,760,396		
Lincoln	Limon, Town of	06861	Limon Administrative Intern	12-18-09	\$35,000	\$35,000	PLAN/AD	
	Lincoln County		06497	Lincoln Co. Loader Purchase	03-30-09	\$92,700	\$92,300	ROAD/ST
			06754	Lincoln County Diesel Fuel Tanks	08-05-09	\$84,000	\$90,364	ROAD/ST
County Total:					\$211,700	\$217,664		

Energy & Mineral Impact Grants by County

2009

County Name	Applicant Title	Project#	Project Name	Award Date	Awarded	Leverage	Project Type	
Logan	Crook, Town of	06757	Crook WWTP Engineering Study	07-10-09	\$10,000	\$12,000	SEWER	
	Logan County	06564	Logan Co. Courthouse Restoration Phase IV	09-10-09	\$250,000	\$923,630	PUBFAC	
	Northeastern Junior College District	06389	NJC Dorm Improvements	04-08-09	\$100,000	\$257,970	PUBFAC	
	Sterling, City of	06388	Sterling Emergency Communications Center	02-09-09	\$239,000	\$239,827	PUBSAFE	
		06688	Sterling Library Renovation and Expansion	11-20-09	\$600,000	\$2,474,333	PUBFAC	
County Total:					\$1,199,000	\$3,907,760		
Mesa	Clifton FPD	06764	Clifton FPD Fire Station Feasibility Study	08-20-09	\$15,000	\$35,000	PUBSAFE	
	Clifton Water District	06384	Clifton Water District Pilot Testing	01-15-09	\$200,000	\$300,000	WATER	
	De Beque, Town of	06534	De Beque WW Treatment Plant Engineering	04-10-09	\$50,000	\$50,000	SEWER	
	Fruita, City of	06712	Fruita Community Center Construction	09-23-09	\$1,500,000	\$15,088,000	PUBFAC	
		06438	Fruita WW Treatment Plant Collection Line	05-19-09	\$1,000,000	\$3,929,395	SEWER	
		06548	Fruita WW Treatment Plant Construction	05-19-09	\$1,000,000	\$25,429,090	SEWER	
	Fruita, Town of	06465C	Fruita New Energy Communities Initiative	10-30-09	\$100,000	\$0	NEC	
	Grand Junction, City of	06480	Grand Junction Mill Tailings Transport	04-08-09	\$80,000	\$80,000	UMTRA	
		06465	Grand Junction New Energy Communities Initiative	04-29-09	\$700,000	\$7,455,000	NEC	
		06546	Grand Junction Records Management & Dispatch Upgrades	09-02-09	\$1,750,000	\$829,000	PUBSAFE	
		06381	Grand Junction Tracking Software Upgrade	02-25-09	\$200,000	\$460,000	PLAN/AD	
	Lower Valley FPD	06710	Lower Valley FPD Fire Station Construction - Phase I	10-20-09	\$155,000	\$4,426,803	PUBSAFE	
	Mesa County	06622	Mesa Co. - Regional Mental Health Bldg. Purchase	05-27-09	\$900,000	\$9,700,000	H&HS	
		06440	Mesa Co. Public Works Facility	11-20-09	\$1,000,000	\$2,847,468	PUBFAC	
		06547	Mesa Co. Whitewater Lift Station & Infrastructure	11-02-09	\$1,000,000	\$3,217,300	SEWER	
		06748	Mesa County New Park N Ride Access Lot	11-02-09	\$500,000	\$1,450,989	ROAD/ST	
		06642	Mesa County Reeder Mesa Road Overlay	07-10-09	\$200,000	\$194,694	ROAD/ST	
		06711	Mesa County Road 64.6 Stabilization	07-31-09	\$200,000	\$212,850	ROAD/ST	
		Mesa State College	06436	Mesa State College Renewable Energy Project	03-13-09	\$300,000	\$1,317,139	PUBFAC
		Palisade, Town of	06853	Palisade Administrative Intern	12-18-09	\$35,000	\$35,000	PLAN/AD
06439	Palisade Civic Center Renovations - Phase I		06-03-09	\$750,000	\$1,250,000	PRK/REC		
06643	Palisade Kluge Street Rebuild		09-23-09	\$150,000	\$550,000	ROAD/ST		
06465B	Palisade New Energy Communities Initiative		09-10-09	\$200,000	\$0	NEC		
County Total:					\$11,985,000	\$78,857,728		

Energy & Mineral Impact Grants by County

2009

County Name	Applicant Title	Project#	Project Name	Award Date	Awarded	Leverage	Project Type	
Moffat	Colorado Northwestern Community College Craig, City of	06444	Colorado NCC Career & Technical Building	11-24-09	\$1,000,000	\$2,751,166	PUBFAC	
		06532	Craig Boys & Girls Club Security Upgrades	06-16-09	\$97,000	\$98,000	PUBFAC	
			06745	Craig City Hall Basement Renovation - Phase I	07-20-09	\$200,000	\$100,000	PUBFAC
			06441	Craig Equipment and Vehicle Replacement	03-23-09	\$200,000	\$808,000	PUBFAC
			06567	Craig Sand/Salt Shed	04-06-09	\$130,000	\$130,000	ROAD/ST
	Moffat County	06370	Moffat Co. Ambulance Replacement	02-05-09	\$40,000	\$121,294	PUBSAFE	
			06442	Moffat Co. Equipment Replacement	02-25-09	\$250,000	\$702,500	PUBFAC
			06551	Moffat Co. Road 7 Overlay - Phase II	06-24-09	\$500,000	\$988,000	ROAD/ST
			06716	Moffat County Memorial Hospital Radiology Equipment Upgrade	09-29-09	\$405,000	\$1,271,452	H&HS
	Moffat County RE-1 School District	06533	Moffat Co. School District Elementary Roof Replacement	06-23-09	\$132,000	\$268,000	PUBFAC	
	Moffat County RE:No 1 School District	06443	Moffat Co. RE 1 Auditorium & Gymnasium	07-10-09	\$100,000	\$661,179	PUBFAC	
	County Total:					\$3,054,000	\$7,899,591	
Montezuma	Cortez, City of	06703	Cortez Rec. Center Energy Efficiency Upgrades	09-10-09	\$425,000	\$475,391	PUBFAC	
		Dolores, Town of	06761	Dolores Administrative Intern	07-31-09	\$20,000	\$20,000	PLAN/AD
			06702	Dolores Maintenance Facility	11-13-09	\$350,000	\$357,738	PUBFAC
	Mancos RE-6 School District	06595	Mancos RE-6 Energy Efficiency Upgrade & HVAC Replacement	07-10-09	\$295,000	\$1,167,086	EDUC	
	Mancos, Town of	06858	Mancos Administrative Intern	12-04-09	\$35,000	\$35,000	PLAN/AD	
	Montezuma County	06596	Montezuma Co. Energy Efficiency Upgrades	10-07-09	\$750,000	\$1,696,000	PUBFAC	
		06522	Montezuma Co. Road Equipment	03-20-09	\$110,000	\$110,000	ROAD/ST	
	Montezuma County Hospital District	06637	Southwest Memorial Hospital Security System	10-07-09	\$42,875	\$105,960	PUBSAFE	
County Total:					\$2,027,875	\$3,967,175		
Montrose	Montrose County	06707	Montrose Co. Airport Facility/Communications Tower Purchase	11-13-09	\$750,000	\$1,050,000	PUBFAC	
		06863	Montrose County Administrative Intern	12-22-09	\$35,000	\$35,000	PLAN/AD	
	Montrose, City of	06706	Montrose Pedestrian Plaza & Road/Light Improvements	11-23-09	\$1,150,000	\$1,450,000	ROAD/ST	
		06019B	Montrose Water Storage	10-20-09	\$500,000	\$2,500,000	WATER	
	Olathe, Town of	06526	Olathe Storm Water Drainage Management Study	03-18-09	\$145,000	\$48,500	DRAIN	
	County Total:					\$2,580,000	\$5,083,500	

Energy & Mineral Impact Grants by County

2009

County Name	Applicant Title	Project#	Project Name	Award Date	Awarded	Leverage	Project Type
Morgan	East Morgan County Library District	06662	East Morgan Co. Library Expansion and Upgrade	08-18-09	\$198,700	\$596,060	PUBFAC
	Morgan County	06562	Morgan Co. CR 19 Paving Project	08-24-09	\$500,000	\$2,098,360	ROAD/ST
	County Total:					\$698,700	\$2,694,420
Multi	Dept. of Health	06760	UMTRA Monitoring	07-10-09	\$249,948	\$0	UMTRA
	Univ. of Colo.-Denver	06848	UCD Community Development '10	12-23-09	\$289,870	\$199,364	COMMDEV
	County Total:					\$539,818	\$199,364
Otero	Cheraw, Town of	06528	Cheraw WW System Improvements Study	01-27-09	\$8,000	\$12,000	SEWER
	Fowler, Town of	06483	Fowler Sewer Main Bypass	03-18-09	\$199,000	\$200,930	SEWER
		06625	Fowler Water Backfeed Line	07-28-09	\$164,221	\$164,221	WATER
	Manzanola, Town of	06361	Manzanola Main Street Plaza	03-13-09	\$34,345	\$79,500	PUBFAC
	Rocky Ford, City of	06482	Rocky Ford Community Master Plan	03-31-09	\$28,000	\$28,000	PLAN/AD
	Swink, Town of	06412	Swink Maintenance Building	03-20-09	\$195,000	\$115,906	PUBFAC
	County Total:					\$628,566	\$600,557
Ourray	Ridgway School District R-2	06141	Ridgway School District H.S. Facility	02-04-09	\$400,000	\$2,268,768	PUBFAC
	County Total:					\$400,000	\$2,268,768
Park	Fairplay Sanitation District	06487	Fairplay Sanitation Dist. WW Treatment Facility - Phase II	03-20-09	\$167,527	\$281,460	SEWER
	Park County	06631	South Park Search & Rescue Building	06-29-09	\$57,215	\$107,215	PUBSAFE
	South Park - Park and Recreation District	06488	South Park Park & Rec. Biomass Boiler System	06-16-09	\$200,000	\$202,000	PUBFAC
	County Total:					\$424,742	\$590,675
Phillips	Phillips County	06756	Phillips County Courthouse Heating System	08-10-09	\$40,000	\$27,501	PUBFAC
	County Total:					\$40,000	\$27,501

Energy & Mineral Impact Grants by County

2009

County Name	Applicant Title	Project#	Project Name	Award Date	Awarded	Leverage	Project Type
Pitkin	Pitkin County	06617	Pitkin Co. 800 DTRS Infrastructure	05-13-09	\$301,500	\$96,000	WIN
	County Total:					\$301,500	\$96,000
Prowers	Granada Sanitation District	06606	Granada Sanitation District WW Plant Improvements	03-13-09	\$8,000	\$12,000	SEWER
	Holly, Town of	06736	Holly Gateway Park Restoration	10-07-09	\$200,000	\$674,214	PRK/REC
	North Lamar Sanitation District	06623	North Lamar San. Dist. Engineering Study	05-05-09	\$8,000	\$10,000	SEWER
	Prowers County	06484	Prowers Co. Big Timbers Museum Addition	12-18-09	\$76,695	\$402,685	PUBFAC
		06753	Prowers County 10 kw Wind Turbine	09-10-09	\$25,000	\$44,898	PUBFAC
County Total:					\$317,695	\$1,143,797	
Pueblo	Pueblo County	06215	Pueblo Co. District Attorney Office Upgrades	05-19-09	\$300,000	\$320,150	PUBFAC
		06485	Pueblo Co. HHS Comp. Housing Needs Assessment	03-20-09	\$30,000	\$53,032	H&HS
	Pueblo, City of	06650	Pueblo East Side Child Care Center Addition	10-07-09	\$65,000	\$125,000	PUBFAC
		06413	Pueblo Fire Station No. 4	10-07-09	\$200,000	\$1,300,000	PUBSAFE
		05596	Pueblo Municipal Complex	04-02-09	\$500,000	\$4,873,000	PUBFAC
		06619	Pueblo Municipal Justice Center	05-19-09	\$2,000,000	\$0	PUBFAC
		06216	Pueblo Southside Fire Station Project	08-05-09	\$350,000	\$900,000	PUBSAFE
County Total:					\$3,445,000	\$7,571,182	
Region 01	NE Colo. Assn. of LGs	06458	Region 01 Community Development '09	01-28-09	\$30,000	\$30,000	COMMDEV
		06836	Region 01 Community Development '10	12-11-09	\$30,000	\$30,000	COMMDEV
County Total:					\$60,000	\$60,000	
Region 03	Denver Regional COG	06448	Region 03 Community Development '09	04-27-09	\$40,000	\$60,000	COMMDEV
County Total:					\$40,000	\$60,000	
Region 05	East Central Council of LGs	06841	Region 05 Community Development '10	12-11-09	\$70,000	\$40,000	COMMDEV
County Total:					\$70,000	\$40,000	

Energy & Mineral Impact Grants by County

2009

<u>County Name</u>	<u>Applicant Title</u>	<u>Project#</u>	<u>Project Name</u>	<u>Award Date</u>	<u>Awarded</u>	<u>Leverage</u>	<u>Project Type</u>
Region 06	SE Colorado COG	06452	Region 06 Community Development '09	05-04-09	\$30,000	\$30,000	COMMDEV
	County Total:				\$30,000	\$30,000	
Region 07	Pueblo Area COG	06838	Region 07 Community Development '10	12-10-09	\$30,000	\$30,000	COMMDEV
	County Total:				\$30,000	\$30,000	
Region 08	San Luis Valley COG	06843	Region 08 Community Development '10	12-10-09	\$100,000	\$40,000	COMMDEV
		06725	SLVCOG Regional Resource Center	09-15-09	\$350,000	\$1,010,000	PUBFAC
	County Total:				\$450,000	\$1,050,000	
Region 09	Ft. Lewis College Comm. Svcs.	06844	Fort Lewis College/Regional Community Development '10	12-18-09	\$85,000	\$133,600	COMMDEV
	County Total:				\$85,000	\$133,600	
Region 12	Northwest Colorado COG	06840	Region 12 Community Development '10	12-10-09	\$73,500	\$20,000	COMMDEV
	County Total:				\$73,500	\$20,000	
Region 13	Upper Arkansas Area COG	06457	Region 13 Community Development '09	01-12-09	\$130,000	\$50,000	COMMDEV
		06842	Region 13 Community Development '10	12-03-09	\$80,000	\$152,600	COMMDEV
	County Total:				\$210,000	\$202,600	
Region 14	South Central COG	06449	Region 14 Community Development '09	05-05-09	\$40,000	\$60,000	COMMDEV
	County Total:				\$40,000	\$60,000	

Energy & Mineral Impact Grants by County

2009

County Name	Applicant Title	Project#	Project Name	Award Date	Awarded	Leverage	Project Type
Rio Blanco	Eastern Rio Blanco County Health Services District	06531	Eastern Rio Blanco Health Monitoring System Upgrade	07-10-09	\$93,487	\$31,163	H&HS
	Meeker RE-1 School District	06717	Meeker Elementary School Ute Road Access	10-16-09	\$595,000	\$202,361	ROAD/ST
	Meeker Sanitation District	06430	Meeker Sanitation District Main Replacement - Phase IV	01-15-09	\$738,817	\$1,378,526	SEWER
	Rangely, Town of	06714	Rangely Energy Conservation Implementation	09-15-09	\$402,000	\$172,769	PUBFAC
		06550	Rangely Street & Drainage Upgrades	08-13-09	\$100,000	\$418,000	ROAD/ST
		06604	Rangely Water & WW Infrastructure Improvements	05-19-09	\$495,000	\$165,000	SEWER
	Rio Blanco County	06549	Rio Blanco Co. C.R. 4 Overlay	06-03-09	\$650,000	\$1,350,000	ROAD/ST
		06715	Rio Blanco County Road 5 Planning/Design Upgrades	09-17-09	\$1,000,000	\$611,139	ROAD/ST
County Total:					\$4,074,304	\$4,328,958	
Rio Grande	Del Norte FPD	06666	Del Norte FPD Brush Truck Purchase	08-18-09	\$40,000	\$80,000	PUBSAFE
	Del Norte, Town of	06733	Del Norte New Town Hall Facility/Business Center	09-15-09	\$400,000	\$1,461,250	PUBFAC
	Monte Vista C-8 School District	06553	Monte Vista School Gymnasium Addition	11-12-09	\$750,000	\$6,376,708	EDUC
	Monte Vista, City of	06763	Monte Vista Water System Engineering Study	08-25-09	\$22,500	\$11,250	WATER
County Total:					\$1,212,500	\$7,929,208	
Routt	East Routt Library District	06467	East Routt Library District Photovoltaic	05-27-09	\$53,500	\$35,500	NEC
	Hayden, Town of	06571	Hayden CR 53 Road & Drainage Upgrade	05-13-09	\$725,000	\$406,375	ROAD/ST
	Routt County	06569	Routt Co. Roadway Slide Area Repairs	06-04-09	\$582,287	\$1,295,360	ROAD/ST
		06657	Routt County - Phippsburg Water Filter Upgrade	08-25-09	\$25,000	\$0	WATER
		06657A	Routt County - Phippsburg Water Filter Upgrade - Loan	08-25-09	\$25,000	\$0	WATER
		06658	Routt County Bridge Replacement - CR 33	07-21-09	\$200,000	\$200,000	ROAD/ST
	Steamboat Lake Water & Sanitation District	06499	Steamboat Lake W&S Well Replacement	04-06-09	\$200,000	\$171,000	WATER
	Steamboat Springs RE-2 School District	06406	Steamboat Springs Charter School and Community Center	06-23-09	\$500,000	\$1,900,000	PUBFAC
	Timbers Water & Sanitation District	06570	Timbers Water Treatment Plant Improvements	07-31-09	\$242,433	\$757,567	WATER
		06570A	Timbers Water Treatment Plant Improvements - Loan	07-31-09	\$500,000	\$500,000	WATER
Yampa, Town of	06655	Yampa Tractor and Loader Purchase	07-28-09	\$23,583	\$23,583	ROAD/ST	
County Total:					\$3,076,803	\$5,289,385	

Energy & Mineral Impact Grants by County

2009

County Name	Applicant Title	Project#	Project Name	Award Date	Awarded	Leverage	Project Type
Saguache	Baca Grande Water & Sanitation District	06298	Baca Grande W&S Pipe Project	02-11-09	\$317,638	\$317,638	SEWER
	Center Sanitation District	06665	Center San. Dist. Building and Equipment Upgrades	07-14-09	\$60,500	\$60,894	SEWER
	Crestone, Town of	06723	Crestone Town Hall/Community Service Center	08-24-09	\$150,000	\$315,000	PUBFAC
	Saguache County	06512	Saguache Co. - San Luis Valley Software/Hardware Purchase	04-10-09	\$125,000	\$126,819	PLAN/AD
County Total:					\$653,138	\$820,351	
San Juan	San Juan County	06339	San Juan Co. Jail/Museum Rehabilitation	04-08-09	\$100,000	\$243,000	PUBFAC
	Silverton 1 School District	06704	Silverton School Asbestos Removal	06-24-09	\$150,000	\$216,450	EDUC
		06521	Silverton School Master Plan	01-07-09	\$44,000	\$30,447	PUBFAC
	Silverton, Town of	06520	Silverton & San Juan Regional Master Plan	03-31-09	\$30,000	\$20,000	PLAN/AD
County Total:					\$324,000	\$509,897	
San Miguel	Telluride, Town of	06401	Telluride Main Street Water Main Replacement	02-17-09	\$615,000	\$2,048,000	WATER
	County Total:					\$615,000	\$2,048,000
Summit	Blue Valley Metropolitan District	06572	Blue Valley Metro Water System Upgrades	05-27-09	\$305,000	\$150,000	WATER
	Breckenridge, Town of	06865	Breckenridge Administrative Intern	12-08-09	\$35,000	\$35,000	PLAN/AD
	Dillon Valley Metropolitan District	06614	Dillon Valley Sewer Collection Engineering Study	02-27-09	\$25,000	\$75,000	SEWER
County Total:					\$365,000	\$260,000	
Teller	Ridgewood Water District	06329	Ridgewood Water District System Upgrades	04-16-09	\$45,000	\$151,000	WATER
	Teller County	06561	Teller Co. CR 1 & 11 Repairs & Overlay	06-04-09	\$750,000	\$1,174,172	ROAD/ST
	Victor, City of	06510	Victor Water Meter Installation	03-18-09	\$121,578	\$28,422	WATER
County Total:					\$916,578	\$1,353,594	
Washington	Washington County	06493	Washington Co. R&B Equipment Purchase	03-30-09	\$75,872	\$73,868	ROAD/ST
	County Total:					\$75,872	\$73,868

Energy & Mineral Impact Grants by County

2009

County Name	Applicant Title	Project#	Project Name	Award Date	Awarded	Leverage	Project Type
Weld	Brighton, City of	06445	Brighton CR 6 & CR 4 Expansion	03-30-09	\$2,000,000	\$2,462,272	ROAD/ST
	Carbon Valley Park & Recreation District	06586	Carbon Valley Park & Rec. Senior Center & Gymnasium	05-04-09	\$350,000	\$2,415,680	PRK/REC
	Evans, City of	06690	Evans Carson Avenue Construction	08-18-09	\$185,000	\$185,000	ROAD/ST
	Firestone, Town of	06417	Firestone Intersection Improvements - Phase II	02-11-09	\$1,000,000	\$1,825,469	ROAD/ST
		06615	Firestone Water and Sewer Line Improvements - WET	03-18-09	\$98,290	\$157,332	SEWER
	Fort Lupton, City of	06269	Fort Lupton Water Treatment System - Phase III	06-03-09	\$500,000	\$500,000	WATER
	Gilcrest, Town of	06851	Gilcrest Emergency Sewer Line Replacement	10-26-09	\$126,800	\$0	SEWER
		06587	Gilcrest Water System Upgrades	07-20-09	\$540,000	\$240,000	WATER
		06587A	Gilcrest Water System Upgrades - Loan	07-20-09	\$90,000	\$690,000	WATER
	Greeley, City of	06470	Greeley Intergovernmental New Energy Communities Initiative	04-27-09	\$700,000	\$2,527,790	NEC
	Grover, Town of	06835	Grover W&S Preliminary Engineering Report	11-20-09	\$15,000	\$6,725	SEWER
	Hudson, Town of	06418	Hudson WW Treatment Plant	02-17-09	\$950,000	\$5,400,000	SEWER
		06270	Hudson Water Treatment Improvements - Phase III	04-29-09	\$400,000	\$223,000	WATER
	Keenesburg, Town of	06086	Keenesburg Waste Water System	03-06-09	\$229,000	\$671,000	SEWER
		06086A	Keenesburg WasteWater System Loan	03-09-09	\$55,000	\$845,000	SEWER
	Kersey, Town of	06694	Kersey Hydrant Replacement & Water Line Repair	07-28-09	\$179,100	\$107,900	WATER
	New Raymer-Stoneham FPD	06500	New Raymer-Stoneham FPD Brush Truck Purchases	04-29-09	\$75,000	\$35,000	PUBSAFE
	Nunn, Town of	06682	Nunn Water System Engineering Report	09-10-09	\$19,000	\$19,000	WATER
	Platteville, Town of	06684	Platteville Comprehensive Plan	08-05-09	\$72,250	\$29,750	PLAN/AD
	Weld County	06419	Weld Co. Community Corrections Facility	03-09-09	\$400,000	\$3,600,000	PUBFAC
		06605	Weld Co. Emergency Early Warning & Shelter System	05-05-09	\$486,300	\$61,100	PUBSAFE
		06683	Weld Co. Road 49 Overlay	07-22-09	\$200,000	\$213,320	ROAD/ST
		06589	Weld Co. Road Maintenance Equipment Replacement	06-12-09	\$500,000	\$1,743,000	ROAD/ST
		06866	Weld County Administrative Intern	12-03-09	\$35,000	\$35,000	PLAN/AD
		06693	Weld County Road 74 Paving	10-05-09	\$600,000	\$891,000	ROAD/ST
		06421	Weld Co. RE-3J Facility Improvements/Repairs	04-16-09	\$225,000	\$436,000	PUBFAC
	Weld County RE-3J School District						
	Weld County RE-4 School District	06590	Weld Co. RE-4 Elementary Gym Construction	05-19-09	\$330,304	\$330,304	EDUC
	Windsor, Town of	06588	Windsor - New Police Station	05-19-09	\$646,642	\$3,353,358	PUBSAFE
		06621	Windsor Downtown Master Plan	03-23-09	\$13,000	\$17,000	PLAN/AD
06423		Windsor Town Hall Tornado Repairs	02-04-09	\$859,402	\$1,659,798	PUBFAC	
County Total:					\$11,880,088	\$30,680,798	

Energy & Mineral Impact Grants by County

2009

County Name	Applicant Title	Project#	Project Name	Award Date	Awarded	Leverage	Project Type
Yuma	Yuma County	06496	Yuma Co. Road Graders	03-30-09	\$200,000	\$250,000	ROAD/ST
		06689	Yuma County Roads Chipseal	08-31-09	\$500,000	\$517,600	ROAD/ST
	Yuma District Hospital	06661	Yuma District Hospital HVAC/Electrical Upgrades	08-05-09	\$34,513	\$109,535	PUBFAC
County Total:					\$734,513	\$877,135	
Grand Total:					\$95,894,110	\$466,749,575	

**Severance Direct Distribution - by County / Municipality
FY2009**

County / Municipality	Total \$
Adams County	347,754.10
Aguilar, Town of	26,220.25
Akron, Town of	19,277.30
Alamosa County	2,443.74
Alamosa, City of	1,368.51
Alma, Town of	420.41
Antonito, Town of	2,233.23
Arapahoe County	100,417.97
Archuleta County	59,857.42
Arriba, Town of	603.85
Arvada, City of	68,278.47
Aspen, City of	4,365.01
Ault, Town of	25,742.79
Aurora, City of	222,994.47
Avon, Town of	2,202.52
Baca County	11,980.38
Basalt, Town of	1,457.18
Bayfield, Town of	128,182.83
Bennett, Town of	5,958.59
Bent County	1,941.25
Berthoud, Town of	16,069.94
Bethune, Town of	1,270.26
Black Hawk, City of	5,891.93
Blanca, Town of	1,562.86
Blue River, Town of	10,125.02
Bonanza City, Town of	69.15
Boone, Town of	55.15
Boulder County	118,379.38
Boulder, City of	57,516.45
Bow Mar, Town of	594.73
Branson, Town of	3,338.36
Breckenridge, Town of	8,062.74
Brighton, City of	181,053.98
Brookside, Town of	338.75
Broomfield, City and County of	51,103.39
Brush, City of	51,720.50
Buena Vista, Town of	7,247.99
Burlington, City of	18,122.06
Calhan, Town of	1,353.83
Campo, Town of	328.40
Canon City, City of	51,082.58
Carbondale, Town of	331,989.04
Castle Pines North, City of	1,016.43
Castle Rock, Town of	18,108.86
Cedaredge, Town of	48,382.40

**Severance Direct Distribution - by County / Municipality
FY2009**

County / Municipality	Total \$
Centennial, City of	69,551.61
Center, Town of	24,903.92
Central City	15,326.47
Chaffee County	22,281.19
Cheraw, Town of	22.70
Cherry Hills Village, City of	4,076.91
Cheyenne County	80,195.67
Cheyenne Wells, Town of	42,253.16
Clear Creek County	326,679.15
Coal Creek, Town of	669.46
Cokedale, Town of	10,216.07
Collbran, Town of	29,227.37
Colorado Springs, City of	52,624.51
Columbine Valley, Town of	761.65
Commerce City, City of	81,968.23
Conejos County	5,425.93
Cortez, City of	214,597.76
Costilla County	22,883.05
Craig, City of	875,861.72
Crawford, Town of	12,685.60
Creede, City of	13,256.01
Crested Butte, Town of	207,129.51
Crestone, Town of	436.65
Cripple Creek, City of	21,631.04
Crook, Town of	1,023.31
Crowley County	2,127.61
Crowley, Town of	38.34
Custer County	3,270.39
Dacono, City of	57,707.10
De Beque, Town of	54,257.40
Deer Trail, Town of	1,784.69
Del Norte, Town of	2,543.10
Delta County	682,032.90
Delta, City of	180,552.86
Denver, City And County of	469,466.93
Dillon, Town of	3,573.90
Dinosaur, Town of	70,126.95
Dolores County	93,159.52
Dolores, Town of	15,575.66
Douglas County	84,966.99
Dove Creek, Town of	40,694.30
Durango, City of	457,424.15
Eads, Town of	4,258.50
Eagle County	26,049.31
Eagle, Town of	2,003.80

**Severance Direct Distribution - by County / Municipality
FY2009**

County / Municipality	Total \$
Eaton, Town of	80,347.02
Eckley, Town of	18,241.29
Edgewater, City of	2,348.62
El Paso County	38,398.17
Elbert County	13,783.26
Elizabeth, Town of	344.89
Empire, Town of	53,110.43
Englewood, City of	30,400.06
Erie, Town of	87,069.92
Estes Park, Town of	7,077.96
Evans, City of	465,041.59
Fairplay, Town of	1,320.34
Federal Heights, City of	13,758.12
Firestone, Town of	100,310.69
Flagler, Town of	2,145.17
Fleming, Town of	3,168.09
Florence, City of	10,094.74
Fort Collins, City of	136,768.54
Fort Lupton, City of	243,203.62
Fort Morgan, City of	125,417.13
Fountain, City of	3,025.78
Fowler, Town of	126.14
Foxfield, Town of	808.09
Fraser, Town of	7,077.71
Frederick, Town of	121,694.04
Fremont County	81,972.35
Frisco, Town of	13,976.26
Fruita, City of	530,363.08
Garden City, Town of	9,005.35
Garfield County	4,565,643.68
Genoa, Town of	462.08
Georgetown, Town of	69,201.38
Gilcrest, Town of	29,337.63
Gilpin County	88,687.21
Glendale, City of	1,633.75
Glenwood Springs, City of	499,277.15
Golden, City of	12,835.95
Granada, Town of	3,277.11
Granby, Town of	21,912.42
Grand County	112,265.47
Grand Junction, City of	2,098,434.15
Grand Lake, Town of	2,512.70
Greeley, City of	1,610,708.41
Green Mountain Falls, Town of	317.81
Greenwood Village, City of	11,381.04

**Severance Direct Distribution - by County / Municipality
FY2009**

County / Municipality	Total \$
Grover, Town of	2,748.78
Gunnison County	1,085,114.50
Gunnison, City of	203,255.55
Gypsum, Town of	9,207.35
Hartman, Town of	190.28
Haswell, Town of	482.95
Haxtun, Town of	18,449.55
Hayden, Town of	214,900.98
Hillrose, Town of	4,817.11
Hinsdale County	42,018.45
Holly, Town of	2,308.59
Holyoke, City of	35,148.40
Hooper, Town of	13.24
Hot Sulphur Springs, Town of	9,283.83
Hotchkiss, Town of	28,001.82
Hudson, Town of	42,314.13
Huerfano County	91,429.24
Hugo, Town of	17,066.42
Idaho Springs, City of	161,016.40
Ignacio, Town of	49,621.79
Iliff, Town of	1,265.66
Jackson County	46,993.54
Jamestown, Town of	289.86
Jefferson County	181,138.56
Johnstown, Town of	142,604.82
Julesburg, Town of	2,692.74
Keenesburg, Town of	34,565.97
Kersey, Town of	43,219.07
Kim, Town of	3,339.47
Kiowa County	17,560.25
Kiowa, Town of	851.43
Kit Carson County	27,685.49
Kit Carson, Town of	13,260.33
Kremmling, Town of	28,796.20
La Jara, Town of	340.93
La Junta, City of	1,415.28
La Plata County	1,912,340.39
La Salle, Town of	62,136.54
La Veta, Town of	11,074.93
Lafayette, City of	24,083.04
Lake City, Town of	41,698.47
Lake County	62,480.09
Lakeside, Town of	24.07
Lakewood, City of	79,974.81
Lamar, City of	28,376.25

**Severance Direct Distribution - by County / Municipality
FY2009**

County / Municipality	Total \$
Larimer County	151,202.10
Larkspur, Town of	91.28
Las Animas County	909,747.02
Las Animas, City of	534.46
Leadville, City of	49,821.50
Limon, Town of	5,396.40
Lincoln County	21,530.69
Littleton, City of	60,080.48
Lochbuie, Town of	64,302.24
Log Lane Village, Town of	6,797.05
Logan County	87,939.39
Lone Tree, City of	3,203.42
Longmont, City of	141,924.04
Louisville, City of	14,933.83
Loveland, City of	128,996.82
Lyons, Town of	4,956.22
Manassa, Town of	416.34
Mancos, Town of	28,752.77
Manitou Springs, City of	445.61
Manzanola, Town of	54.92
Marble, Town of	5,185.47
Mead, Town of	46,499.68
Meeker, Town of	416,411.95
Merino, Town of	3,430.11
Mesa County	4,742,932.55
Milliken, Town of	105,891.63
Mineral County	14,116.22
Minturn, Town of	383.73
Moffat County	935,123.85
Moffat, Town of	401.21
Monte Vista, City of	1,962.79
Montezuma County	652,901.91
Montezuma, Town of	70.35
Montrose County	466,267.02
Montrose, City of	186,440.86
Monument, Town of	1,692.22
Morgan County	212,107.67
Morrison, Town of	208.99
Mountain View, Town of	179.44
Mountain Village, Town of	31,621.21
Mt. Crested Butte, Town of	32,539.81
Naturita, Town of	20,727.13
Nederland, Town of	2,695.26
New Castle, Town of	251,890.62
Northglenn, City of	53,998.07

**Severance Direct Distribution - by County / Municipality
FY2009**

County / Municipality	Total \$
Norwood, Town of	89,331.78
Nucla, Town of	14,046.71
Nunn, Town of	7,453.07
Oak Creek, Town of	71,958.41
Olathe, Town of	22,966.88
Olney Springs, Town of	711.88
Ophir, Town of	3,524.61
Orchard City, Town of	77,956.64
Ordway, Town of	886.75
Otero County	3,595.20
Otis, Town of	10,932.16
Ouray County	103,879.42
Ouray, City of	14,660.24
Ovid, Town of	303.31
Pagosa Springs, Town of	14,452.06
Palisade, Town of	112,627.16
Palmer Lake, Town of	237.96
Paoli, Town of	396.00
Paonia, Town of	49,091.87
Parachute, Town of	469,998.86
Park County	85,865.17
Parker, Town of	17,762.20
Peetz, Town of	694.25
Phillips County	42,258.18
Pierce, Town of	15,563.58
Pitkin County	12,633.31
Pitkin, Town of	5,120.94
Platteville, Town of	80,100.65
Poncha Springs, Town of	2,394.78
Pritchett, Town of	273.98
Prowers County	29,815.69
Pueblo County	33,469.54
Pueblo, City of	16,102.93
Ramah, Town of	22.91
Rangely, Town of	654,192.18
Raymer, Town of	1,936.28
Red Cliff, Town of	121.15
Rico, Town of	6,645.61
Ridgway, Town of	17,800.63
Rifle, City of	967,657.78
Rio Blanco County	1,406,869.88
Rio Grande County	5,528.53
Rockvale, Town of	4,200.79
Rocky Ford, City of	449.84
Romeo, Town of	162.85

**Severance Direct Distribution - by County / Municipality
FY2009**

County / Municipality	Total \$
Routt County	957,243.99
Rye, Town of	1,291.61
Saguache County	31,757.62
Saguache, Town of	1,848.08
Salida, City of	12,066.84
San Juan County	36,445.46
San Luis, Town of	2,822.15
San Miguel County	328,603.43
Sanford, Town of	984.45
Sawpit, Town of	848.10
Sedgwick County	3,533.44
Sedgwick, Town of	166.19
Seibert, Town of	410.91
Severance, Town of	41,403.69
Sheridan Lake, Town of	4,861.65
Sheridan, City of	2,517.83
Silt, Town of	217,719.05
Silver Cliff, Town of	329.24
Silver Plume, Town of	5,542.86
Silverthorne, Town of	9,771.70
Silverton, Town of	72,981.24
Simla, Town of	175.11
Snowmass Village, Town of	11,571.73
South Fork, Town of	214.73
Springfield, Town of	3,080.96
Starkville, Town of	5,158.31
Steamboat Springs, City of	433,394.49
Sterling, City of	61,427.34
Stratton, Town of	2,226.77
Sugar City, Town of	60.91
Summit County	72,814.32
Superior, Town of	8,643.54
Swink, Town of	74.16
Teller County	173,561.77
Telluride, Town of	56,786.92
Thornton, City of	187,024.39
Timnath, Town of	1,486.85
Trinidad, City of	683,271.57
Two Buttes, Town of	138.42
Vail, Town of	1,755.72
Victor, City of	7,337.38
Vilas, Town of	219.55
Vona, Town of	201.37
Walden, Town of	21,319.11
Walsenburg, City of	41,621.89

**Severance Direct Distribution - by County / Municipality
FY2009**

County / Municipality	Total \$
Walsh, Town of	1,538.33
Ward, Town of	252.55
Washington County	37,388.55
Weld County	2,682,302.78
Wellington, Town of	15,587.33
Westcliffe, Town of	2,138.61
Westminster, City of	115,599.75
Wheat Ridge, City of	16,607.14
Wiggins, Town of	20,681.74
Wiley, Town of	1,512.62
Williamsburg, Town of	2,788.05
Windsor, Town of	170,370.71
Winter Park, Town of	4,759.01
Woodland Park, City of	57,585.37
Wray, City of	184,540.88
Yampa, Town of	35,501.26
Yuma County	607,639.36
Yuma, City of	174,828.58
Totals:	44,501,471.83

**Federal Mineral Lease Distribution - by County / Municipality
FY2009**

County / Municipality	Total \$
Adams County	140,860.75
Aguilar, Town of	8,399.02
Akron, Town of	5,649.01
Alamosa County	1,026.09
Alamosa, City of	574.61
Alma, Town of	31.50
Antonito, Town of	937.70
Arapahoe County	46,182.83
Archuleta County	11,899.06
Arriba, Town of	10.76
Arvada, City of	44,832.13
Aspen, City of	682.18
Ault, Town of	7,004.60
Aurora, City of	98,442.19
Avon, Town of	391.36
Baca County	1,921.16
Basalt, Town of	245.85
Bayfield, Town of	28,694.88
Bennett, Town of	2,319.33
Bent County	610.08
Berthoud, Town of	6,193.83
Bethune, Town of	433.34
Black Hawk, City of	344.44
Blanca, Town of	0.00
Blue River, Town of	765.62
Bonanza City, Town of	4.77
Boone, Town of	30.44
Boulder County	27,097.57
Boulder, City of	13,224.82
Bow Mar, Town of	305.31
Branson, Town of	1,069.89
Breckenridge, Town of	1,914.29
Brighton, City of	68,038.99
Brookside, Town of	205.22
Broomfield, City and County of	20,881.45
Brush, City of	21,562.00
Buena Vista, Town of	6,536.54
Burlington, City of	6,182.19
Calhan, Town of	596.82
Campo, Town of	52.66
Canon City, City of	29,221.52
Carbondale, Town of	514,695.58
Castle Pines North, City of	445.48
Castle Rock, Town of	8,302.61
Cedaredge, Town of	54,137.64

**Federal Mineral Lease Distribution - by County / Municipality
FY2009**

County / Municipality	Total \$
Centennial, City of	31,556.79
Center, Town of	1,385.32
Central City	895.98
Chaffee County	18,874.23
Cheraw, Town of	9.53
Cherry Hills Village, City of	1,890.05
Cheyenne County	14,008.22
Cheyenne Wells, Town of	7,380.59
Clear Creek County	50,856.48
Coal Creek, Town of	617.19
Cokedale, Town of	3,270.77
Collbran, Town of	14,185.95
Colorado Springs, City of	38,768.36
Columbine Valley, Town of	353.10
Commerce City, City of	33,243.81
Conejos County	2,278.26
Cortez, City of	586,585.31
Costilla County	0.00
Craig, City of	1,107,757.15
Crawford, Town of	16,185.23
Creede, City of	388.95
Crested Butte, Town of	64,795.08
Crestone, Town of	30.13
Cripple Creek, City of	16,868.03
Crook, Town of	411.59
Crowley County	893.35
Crowley, Town of	16.10
Custer County	1,373.19
Dacono, City of	15,113.31
De Beque, Town of	26,213.35
Deer Trail, Town of	759.98
Del Norte, Town of	1,202.40
Delta County	814,078.88
Delta, City of	212,056.83
Denver, City And County of	204,798.79
Dillon, Town of	922.22
Dinosaur, Town of	46,010.97
Dolores County	396,545.56
Dolores, Town of	43,182.42
Douglas County	40,034.10
Dove Creek, Town of	173,220.54
Durango, City of	105,020.83
Eads, Town of	523.07
Eagle County	4,628.59
Eagle, Town of	356.05

**Federal Mineral Lease Distribution - by County / Municipality
FY2009**

County / Municipality	Total \$
Eaton, Town of	21,034.34
Eckley, Town of	4,603.41
Edgewater, City of	1,919.70
El Paso County	28,390.30
Elbert County	5,879.15
Elizabeth, Town of	146.22
Empire, Town of	9,224.70
Englewood, City of	14,031.22
Erie, Town of	22,618.26
Estes Park, Town of	2,756.45
Evans, City of	121,708.89
Fairplay, Town of	98.93
Federal Heights, City of	5,461.84
Firestone, Town of	26,275.01
Flagler, Town of	731.81
Fleming, Town of	1,274.52
Florence, City of	4,601.73
Fort Collins, City of	53,488.09
Fort Lupton, City of	63,640.46
Fort Morgan, City of	52,285.73
Fountain, City of	2,297.51
Fowler, Town of	52.96
Foxfield, Town of	374.63
Fraser, Town of	3,888.95
Frederick, Town of	32,097.01
Fremont County	54,625.75
Frisco, Town of	2,002.75
Fruita, City of	259,370.18
Garden City, Town of	2,356.92
Garfield County	7,074,402.29
Genoa, Town of	8.24
Georgetown, Town of	11,621.81
Gilcrest, Town of	7,678.54
Gilpin County	5,184.64
Glendale, City of	757.41
Glenwood Springs, City of	775,897.20
Golden, City of	11,408.11
Granada, Town of	1,178.66
Granby, Town of	9,298.02
Grand County	51,367.54
Grand Junction, City of	1,029,263.54
Grand Lake, Town of	1,261.62
Greeley, City of	421,683.53
Green Mountain Falls, Town of	245.60
Greenwood Village, City of	5,107.72

**Federal Mineral Lease Distribution - by County / Municipality
FY2009**

County / Municipality	Total \$
Grover, Town of	720.22
Gunnison County	822,154.97
Gunnison, City of	139,507.34
Gypsum, Town of	1,636.01
Hartman, Town of	68.44
Haswell, Town of	59.32
Haxtun, Town of	2,674.17
Hayden, Town of	27,222.05
Hillrose, Town of	2,008.23
Hinsdale County	403.10
Holly, Town of	830.32
Holyoke, City of	5,094.59
Hooper, Town of	5.56
Hot Sulphur Springs, Town of	6,086.18
Hotchkiss, Town of	37,556.48
Hudson, Town of	11,075.44
Huerfano County	35,920.64
Hugo, Town of	304.19
Idaho Springs, City of	23,009.17
Ignacio, Town of	10,808.10
Iliff, Town of	509.73
Jackson County	53,512.94
Jamestown, Town of	66.65
Jefferson County	127,840.36
Johnstown, Town of	37,348.96
Julesburg, Town of	2,493.48
Keenesburg, Town of	9,046.35
Kersey, Town of	11,310.46
Kim, Town of	1,070.25
Kiowa County	2,156.94
Kiowa, Town of	325.45
Kit Carson County	9,444.67
Kit Carson, Town of	2,316.26
Kremmling, Town of	19,319.56
La Jara, Town of	143.15
La Junta, City of	594.25
La Plata County	441,235.42
La Salle, Town of	16,260.33
La Veta, Town of	4,351.11
Lafayette, City of	5,737.61
Lake City, Town of	400.03
Lake County	13,851.75
Lakeside, Town of	17.02
Lakewood, City of	56,902.42
Lamar, City of	10,205.93

**Federal Mineral Lease Distribution - by County / Municipality
FY2009**

County / Municipality	Total \$
Larimer County	58,923.76
Larkspur, Town of	42.76
Las Animas County	291,437.48
Las Animas, City of	167.97
Leadville, City of	11,045.36
Limon, Town of	96.18
Lincoln County	383.76
Littleton, City of	31,581.42
Lochbuie, Town of	17,486.15
Log Lane Village, Town of	2,833.65
Logan County	35,748.53
Lone Tree, City of	1,439.28
Longmont, City of	32,438.48
Louisville, City of	3,669.67
Loveland, City of	50,144.98
Lyons, Town of	1,118.14
Manassa, Town of	174.81
Mancos, Town of	77,328.37
Manitou Springs, City of	325.38
Manzanola, Town of	23.06
Marble, Town of	3,559.12
Mead, Town of	12,179.41
Meeker, Town of	672,161.76
Merino, Town of	1,377.82
Mesa County	2,323,553.55
Milliken, Town of	27,724.27
Mineral County	414.19
Minturn, Town of	68.18
Moffat County	1,133,884.44
Moffat, Town of	27.69
Monte Vista, City of	928.03
Montezuma County	1,885,746.73
Montezuma, Town of	16.70
Montrose County	113,947.23
Montrose, City of	45,270.96
Monument, Town of	843.91
Morgan County	88,426.54
Morrison, Town of	386.47
Mountain View, Town of	126.86
Mountain Village, Town of	30,226.73
Mt. Crested Butte, Town of	22,334.16
Naturita, Town of	5,179.77
Nederland, Town of	612.58
New Castle, Town of	390,362.91
Northglenn, City of	21,980.84

**Federal Mineral Lease Distribution - by County / Municipality
FY2009**

County / Municipality	Total \$
Norwood, Town of	65,372.48
Nucla, Town of	3,837.22
Nunn, Town of	1,952.81
Oak Creek, Town of	11,016.21
Olathe, Town of	5,409.51
Olney Springs, Town of	298.91
Ophir, Town of	3,369.18
Orchard City, Town of	89,067.15
Ordway, Town of	372.33
Otero County	1,509.57
Otis, Town of	3,203.56
Ouray County	234.55
Ouray, City of	33.10
Ovid, Town of	280.86
Pagosa Springs, Town of	2,872.93
Palisade, Town of	55,270.32
Palmer Lake, Town of	173.76
Paoli, Town of	57.40
Paonia, Town of	66,217.70
Parachute, Town of	727,473.25
Park County	6,433.70
Parker, Town of	8,358.52
Peetz, Town of	281.14
Phillips County	6,125.11
Pierce, Town of	4,075.27
Pitkin County	1,974.37
Pitkin, Town of	3,514.83
Platteville, Town of	20,961.97
Poncha Springs, Town of	787.89
Pritchett, Town of	43.94
Prowers County	10,723.65
Pueblo County	18,893.75
Pueblo, City of	8,639.26
Ramah, Town of	16.73
Rangely, Town of	972,828.40
Raymer, Town of	507.33
Red Cliff, Town of	21.53
Rico, Town of	28,287.91
Ridgway, Town of	40.19
Rifle, City of	1,504,450.93
Rio Blanco County	2,023,811.45
Rio Grande County	2,613.94
Rockvale, Town of	1,324.05
Rocky Ford, City of	188.88
Romeo, Town of	68.38

**Federal Mineral Lease Distribution - by County / Municipality
FY2009**

County / Municipality	Total \$
Routt County	107,529.88
Rye, Town of	546.19
Saguache County	2,527.65
Saguache, Town of	127.53
Salida, City of	5,123.50
San Juan County	267.49
San Luis, Town of	0.00
San Miguel County	334,132.02
Sanford, Town of	413.36
Sawpit, Town of	810.70
Sedgwick County	3,271.98
Sedgwick, Town of	153.89
Seibert, Town of	140.18
Severance, Town of	10,844.71
Sheridan Lake, Town of	597.16
Sheridan, City of	1,167.26
Silt, Town of	337,309.43
Silver Cliff, Town of	138.24
Silver Plume, Town of	860.61
Silverthorne, Town of	3,126.90
Silverton, Town of	535.64
Simla, Town of	74.24
Snowmass Village, Town of	1,808.46
South Fork, Town of	101.53
Springfield, Town of	494.06
Starkville, Town of	1,653.16
Steamboat Springs, City of	48,238.06
Sterling, City of	24,763.07
Stratton, Town of	759.64
Sugar City, Town of	25.57
Summit County	19,361.15
Superior, Town of	1,973.12
Swink, Town of	31.14
Teller County	138,114.76
Telluride, Town of	54,282.64
Thornton, City of	76,272.57
Timnath, Town of	579.52
Trinidad, City of	219,107.34
Two Buttes, Town of	22.20
Vail, Town of	311.97
Victor, City of	7,203.95
Vilas, Town of	35.21
Vona, Town of	68.70
Walden, Town of	22,660.29
Walsenburg, City of	16,352.37

**Federal Mineral Lease Distribution - by County / Municipality
FY2009**

County / Municipality	Total \$
Walsh, Town of	246.69
Ward, Town of	58.07
Washington County	10,956.32
Weld County	702,845.93
Wellington, Town of	6,057.15
Westcliffe, Town of	897.97
Westminster, City of	54,423.25
Wheat Ridge, City of	12,144.04
Wiggins, Town of	8,622.11
Wiley, Town of	544.04
Williamsburg, Town of	972.81
Windsor, Town of	44,901.28
Winter Park, Town of	2,473.30
Woodland Park, City of	43,235.62
Wray, City of	46,571.13
Yampa, Town of	5,382.99
Yuma County	153,345.16
Yuma, City of	44,120.11
Totals:	33,082,175.20

**Federal Mineral Lease Distribution - by School District
FY2009**

School District	Total \$
Academy 20 School District	1,223.35
Adams 12 Five Star Schools	16,821.08
Adams County 14 School District	2,852.99
Adams-Arapahoe 28J School District	7,912.49
Agate 300 School District	9.63
Aguilar Reorganized 6 School District	2,165.21
Akron R-1 School District	732.86
Alamosa RE-11J School District	113.72
Archuleta County 50 JT School District	1,202.86
Arickaree R-2 School District	193.62
Arriba-Flagler C-20 School District	148.24
Aspen 1 School District	322.66
Ault-Highland RE-9 School District	2,894.32
Bayfield 10 JT.-R School District	9,870.74
Bennett 29J School District	382.93
Bethune R-5 School District	139.17
Big Sandy 100J School District	37.95
Boulder Valley RE 2 School District	5,244.81
Branson Reorganized 82 School District	8,227.49
Briggsdale RE-10 School District	485.19
Brighton 27J School District	6,591.56
Brush RE-2(J) School District	4,207.31
Buena Vista R-31 School District	1,254.71
Buffalo RE-4 School District	554.80
Burlington RE-6J School District	849.15
Byers 32J School District	102.67
Calhan RJ-1 School District	40.04
Campo RE-6 School District	12.46
Canon City RE-1 School District	5,168.20
Centennial R-1 School District	0.00
Center 26 JT School District	212.58
Cheraw 31 School District	11.96
Cherry Creek 5 School District	9,154.56
Cheyenne County RE-5 School District	1,368.81
Cheyenne Mountain 12 School District	264.98
Clear Creek RE-1 School District	8,123.69
Colorado Springs 11 School District	1,782.51
Consolidated C-1 School District	203.46
Cotopaxi RE-3 School District	331.43
Creede Consolidated 1 School District	68.27
Cripple Creek-Victor RE-1 School District	2,579.17
Crowley County RE-1-J School District	125.10
DeBeque 49JT School District	5,244.75
Deer Trail 26J School District	36.84
Del Norte C-7 School District	114.40

**Federal Mineral Lease Distribution - by School District
FY2009**

School District	Total \$
Delta County School District 50(J)	110,885.89
Denver County 1 School District	17,407.90
Dolores County RE No. 2 School District	51,139.68
Dolores RE-4A School District	37,022.01
Douglas County RE 1 School District	4,996.02
Durango 9-R School District	34,498.91
Eads RE-1 School District	204.78
Eagle County RE 50 School District	540.69
East Grand 2 School District	5,914.11
East Otero R-1 School District	89.61
Eaton RE-2 School District	5,698.67
Edison 54 JT School District	10.17
Elbert 200 School District	36.22
Elizabeth C-1 School District	389.94
Ellicott 22 School District	52.86
Englewood 1 School District	632.19
Falcon 49 School District	762.77
Florence RE-2 School District	2,239.57
Fort Morgan RE-3 School District	8,633.56
Fountain 8 School District	380.12
Fowler R-4J School District	34.17
Frenchman RE-3 School District	337.99
Garfield 16 School District	128,400.55
Garfield RE-2 School District	453,720.23
Genoa-Hugo C113 School District	12.58
Gilcrest RE-1 School District	6,214.19
Gilpin County RE-1 School District	377.83
Granada RE-1 School District	208.02
Greeley 6 School District	60,949.79
Gunnison RE1J School District	89,036.17
Hanover 28 School District	16.95
Harrison 2 School District	606.46
Haxtun RE-2J School District	426.13
Hayden RE-1 School District	2,468.19
Hi-Plains R-23 School District	132.74
Hinsdale County RE 1 School District	66.69
Hoehne Reorganized 3 School District	5,328.90
Holly RE-3 School District	242.58
Holyoke RE-1J School District	914.10
Huerfano RE-1 School District	3,429.26
Idalia RJ-3 School District	1,697.85
Ignacio 11 JT School District	5,474.22
Jefferson County R-1 School District	22,560.38
Johnstown-Milliken RE-5J School District	9,701.18
Julesburg RE-1 School District	458.71

**Federal Mineral Lease Distribution - by School District
FY2009**

School District	Total \$
Karval RE-23 School District	18.33
Keenesburg RE-3J School District	6,764.22
Kim Reorganized 88 School District	936.57
Kiowa C-2 School District	51.62
Kit Carson R-1 School District	646.12
La Veta RE-2 School District	1,383.79
Lake County R-1 School District	2,116.25
Lamar RE-2 School District	1,349.96
Las Animas RE-1 School District	43.95
Lewis Palmer 38 School District	331.76
Liberty J-4 School District	994.53
Limon RE-4J School District	37.80
Littleton 6 School District	2,890.65
Lone Star 101 School District	183.22
Mancos RE-6 School District	21,073.33
Manitou Springs 14 School District	77.03
Manzanola 3J School District	12.26
Mapleton 1 School District	2,350.43
McClave RE-2 School District	20.67
Meeker RE1 School District	182,329.01
Mesa County Valley 51 School District	306,204.14
Miami/Yoder 60 JT School District	20.77
Moffat 2 School District	80.08
Moffat County RE:No 1 School District	194,450.47
Monte Vista C-8 School District	218.28
Montezuma-Cortez RE-1 School District	162,296.30
Montrose County RE-1J School District	13,485.09
Mountain Valley RE 1 School District	51.40
North Conejos RE-1J School District	218.49
North Park R-1 School District	6,474.73
Norwood R-2J School District	10,200.76
Otis R-3 School District	342.03
Ouray R-1 School District	11.03
Park (Estes Park) R-3 School District	439.96
Park County RE-2 School District	174.53
Pawnee RE-12 School District	387.48
Peyton 23 JT School District	38.34
Plainview RE-2 School District	78.82
Plateau RE-5 School District	275.09
Plateau Valley 50 School District	7,009.33
Platte Canyon 1 School District	383.42
Platte Valley RE-3 School District	66.46
Platte Valley RE-7 School District	3,818.21
Poudre R-1 School District	9,337.08
Prairie RE-11 School District	497.13

**Federal Mineral Lease Distribution - by School District
FY2009**

School District	Total \$
Primero Reorganized 2 School District	3,319.25
Pritchett RE-3 School District	14.99
Pueblo City Schools	1,597.69
Pueblo County Rural 70 School District	787.48
Rangely RE-4 School District	128,940.92
Ridgway R-2 School District	15.14
Roaring Fork RE-1 School District	377,179.85
Rocky Ford R-2 School District	49.41
Salida R-32 School District	1,454.92
Sanford 6J School District	67.41
Sangre De Cristo RE-22J School District	34.43
Sargent RE-33J School District	67.58
Sheridan 2 School District	285.67
Sierra Grande R-30 School District	0.00
Silverton 1 School District	68.27
South Conejos RE-10 School District	57.39
South Routt RE 3 School District	2,881.78
Springfield RE-4 School District	65.56
St. Vrain Valley RE 1J School District	26,098.68
Steamboat Springs RE-2 School District	12,176.33
Strasburg 31J School District	328.04
Stratton R-4 School District	255.84
Summit RE-1 School District	2,386.69
Swink 33 School District	22.59
Telluride R-1 School District	31,128.04
Thompson R-2J School District	5,701.50
Trinidad 1 School District	24,733.26
Valley RE-1 School District	4,303.05
Vilas RE-5 School District	111.60
Walsh RE-1 School District	34.73
Weld County RE-8 School District	7,795.23
Weldon Valley RE-20(J) School District	590.28
West End RE-2 School District	723.27
West Grand 1-JT. School District	2,052.91
Westminster 50 School District	4,506.76
Widefield 3 School District	470.31
Wiggins RE-50(J) School District	1,532.70
Wiley RE-13 JT School District	202.78
Windsor RE-4 School District	12,639.30
Woodland Park RE-2 School District	14,896.99
Woodlin R-104 School District	175.14
Wray RD-2 School District	8,083.91
Yuma 1 School District	10,240.05
Totals:	2,811,984.89

Origins and History of the Program

Throughout its history, Colorado has experienced the booms and busts of energy and mineral production. The fluctuations of international marketplaces for precious and base metals, coal, oil, gas, carbon dioxide, uranium and other radioactive materials, oil shale, helium and other natural resources have profoundly affected Colorado, particularly small, rural communities near the geological resource deposits. Until the Local Government Energy and Mineral Impact Assistance program was created in 1977, few attempts were made to moderate these impacts and to assist the communities affected by cyclical periods of prosperity and decline.

State Severance Tax

In 1977, the General Assembly enacted legislation establishing a state severance tax on certain minerals. In that legislation, the Legislature found “when nonrenewable natural resources are removed from the earth, the value of such resources to the state of Colorado is irretrievably lost.” The Legislature declared, severance tax is a means for the state to “recapture a portion of this lost wealth...removed from the soil of this state and sold for private profit” and expressed its intent that “a portion be made available to local governments to offset the impact created by nonrenewable resource development.”

The severance tax legislation called for a portion of revenues from this new tax to be deposited in the Local Government Severance Tax Fund and to be distributed by the Executive Director of the Department of Local Affairs. According to the statute, thirty percent of the severance tax revenue credited to the fund is required to be distributed directly to counties and municipalities based on several factors. In addition to the basis of the relative number of production employees residing in the unincorporated areas of such counties and in the boundaries of unincorporated municipalities, HB08-1083 added mining and well permits, mineral production, population and HUTF road miles to the formulaic distribution. “Seventy percent of the funds from the Local Government Severance Tax Fund shall be distributed to those political subdivisions socially or economically impacted” by the development, processing, or energy conversion of mineral and mineral fuels subject to severance taxation. Such funds shall be “used for the planning, construction, and maintenance of public facilities and for the provision of public services.” For more information on the direct distribution of severance tax revenues, see

<http://dola.colorado.gov/directdistribution>.

Federal Mineral Leasing Funds

In 1977, the General Assembly also enacted legislation directing a portion of the state’s receipts of federal mineral lease revenues to be deposited in a Local Government Mineral Impact Fund for distribution by the Executive Director of the Department of Local Affairs to “public schools and political subdivisions of the state” impacted by mineral and energy development “for planning, construction and maintenance of public facilities and for public services.”

The Legislature has directed that fifty percent of the federal mineral lease funds deposited in the Fund be distributed to counties and municipalities on the basis of several factors. SB08-218 added federal mineral leasing funds by the county of origin, population and HUTF road miles to the residence of employees of mineral producers to the distribution formula. In addition, SB08-218 directed that the Department of Local Affairs distribute a portion of federal mineral leasing funds to school districts. This distribution was formerly administered by the State Treasurer. The statute requires that “priority shall be given to those public schools and political subdivisions socially or economically impacted by the development, processing or energy conversion of fuels and minerals leased under said federal mineral lands leasing act.” For more information on the direct distribution of federal mineral leasing funds, see

<http://dola.colorado.gov/directdistribution>.