

# INTRODUCTION

The Division of Workers' Compensation prepared this report to provide information on work-related injuries, occupational illnesses, and injuries resulting in fatalities that occurred in Colorado during calendar year 2009.<sup>1</sup> It will help to answer some of the most frequently asked questions about work-related injuries.

Lost-time claims<sup>2</sup>, claims with a permanent disability rating, fatal claims, and denied claims are included.<sup>3</sup> A lost-time claim is one in which the worker misses more than three days or three shifts of work because of the work-related injury or illness. The Division generally tracks only claims involving lost-time.

The information in this report is derived from documents filed by the employer, worker, or the dependents of a deceased worker for an injury, illness, or fatality that *occurred* during calendar year 2009.<sup>4</sup> This does not mean that the claim was filed in 2009. There is a lag in the reporting of some claims, and generally, 80% of claims are filed in the year in which the injury, illness, or fatality occurs. The remaining 20% of the claims are filed over the next several years. Most of these are filed in the year immediately following the year of injury. Of the 26,557 lost-time claims included in this report, 85.5% were filed in 2009. The remaining 14.5% were filed through December 28, 2010, the closing date of the database for this report.

The characteristics of the injury or illness are derived from the first report of injury filed by the employer or worker, and in most cases it is not based on a medical diagnosis.

The filing of a claim is the first step in a process that generally results in an admission or denial by the insurance carrier or self-insured employer that the worker's injury, illness, or fatality is work-related.<sup>5,6</sup> If the claim is admitted, the carrier or the self-insured employer pays medical care. The worker also receives compensation benefits to partially replace the wages that would have otherwise been lost due to the disabling injury or illness. In other cases, the claim may be denied by the insurer or self-insured employer because the injury, illness or fatality is not work-related. Claims involving a dispute over whether or not the injury, illness, or fatality is work-related may end up in a hearing.

Trends in the number of claims received and lost-time claims filed for injuries and fatalities, the number and rate of injuries by part of body, nature of injury, cause of injury, and settlements are available for 2000-2009.

Information about the development and use of the North American Industry Classification System (NAICS) can be found at the website of the U.S. Bureau of Labor Statistics: [www.bls.gov/bls/NAICS/htm](http://www.bls.gov/bls/NAICS/htm).

---

1 The only exception to this statement is the information on hearings reported in Tables 29 and 30 and the information on settlements reported in Tables 31 and 32. The hearing data are based on applications received, hearings held, or orders issued in 2009, regardless of the date of injury. Settlement information is based on claims that were settled during calendar year 2009. However, the claim itself may have initially been filed in a prior year.

2 The Division receives some reports on claims that involve only medical benefits. In such claims, the worker receives medical care but does not lose more than three days or three shifts of work. Because the "med-only" claims that are filed with the Division are neither representative, nor a complete count of all claims of this type, information on indisputably "med-only" claims is, as it has been in previous years, excluded from this report.

3 Information on the reason for a denial is no longer collected with implementation of Electronic Data Interchange (EDI). Therefore, some tables from prior years with denial data do not appear in this report.

4 In the majority of fatalities, the worker dies the same day as the date of injury. This report is strictly based on the date of injury, so death due to an injury may not occur in the reporting year. If the death occurs after the date of download, it will not be included in this report.

5 The statistics reported in sections I through VII, Tables 21-26 and Table 28 refer to claims *filed*, without regard to whether the claims were admitted or denied.

6 The source of the codes for part of body, nature of injury, and cause of injury in Tables 3-8, 11, 12, 21, and 22, is the National Council on Compensation Insurance, Inc., 901 Peninsula Corporate Circle, Boca Raton, FL 33487.

Table 1

**Lost-Time and Fatal Claims Compared to Employment, by County**

**Date of Injury - Calendar Year 2009  
State of Colorado**

County	Lost-Time Claims		Average Annual Employment <sup>2</sup>	Percent of Total CO Employment in County	Percent of Employment Filing Lost- Time Claims	Number of Fatal Claims
	Count <sup>1</sup>	Percent				
Adams	1,642	6.2	207,129	8.3	0.8	4
Alamosa	102	0.4	8,297	0.3	1.2	0
Arapahoe	2,437	9.2	287,236	11.5	0.8	6
Archuleta	44	0.2	5,809	0.2	0.8	0
Baca	17	0.1	2,475	0.1	0.7	1
Bent	35	0.1	2,483	0.1	1.4	0
Boulder	1,200	4.5	163,290	6.5	0.7	4
Broomfield	230	0.9	28,465	1.1	0.8	1
Chaffee	88	0.3	7,965	0.3	1.1	1
Cheyenne	10	*	1,325	0.1	0.8	0
Clear Creek	53	0.2	4,991	0.2	1.1	1
Conejos	21	0.1	3,430	0.1	0.6	0
Costilla	17	0.1	1,242	*	1.4	0
Crowley	19	0.1	1,800	0.1	1.1	0
Custer	24	0.1	1,894	0.1	1.3	0
Delta	138	0.5	15,618	0.6	0.9	0
Denver	4,175	15.7	295,370	11.8	1.4	6
Dolores	4	*	898	*	0.4	0
Douglas	725	2.7	150,041	6.0	0.5	0
Eagle	359	1.4	28,133	1.1	1.3	0
Elbert	36	0.1	11,921	0.5	0.3	1
El Paso	2,370	8.9	274,106	11.0	0.9	1
Fremont	373	1.4	18,115	0.7	2.1	2
Garfield	414	1.6	31,988	1.3	1.3	5
Gilpin	68	0.3	3,422	0.1	2.0	0
Grand	148	0.6	8,373	0.3	1.8	0
Gunnison	76	0.3	8,835	0.4	0.9	0
Hinsdale	8	*	638	*	1.3	0
Huerfano	36	0.1	3,156	0.1	1.1	0
Jackson	21	0.1	1,229	*	1.7	0
Jefferson	1,906	7.2	279,739	11.2	0.7	4
Kiowa	15	0.1	950	*	1.6	1
Kit Carson	48	0.2	4,627	0.2	1.0	0
Lake	37	0.1	3,539	0.1	1.0	0
La Plata	335	1.3	29,366	1.2	1.1	1
Larimer	1,352	5.1	164,333	6.6	0.8	3
Las Animas	79	0.3	7,847	0.3	1.0	0
Lincoln	35	0.1	2,953	0.1	1.2	0
Logan	129	0.5	11,331	0.5	1.1	0

**Table 1 (Continued)**

**Lost-Time and Fatal Claims Compared to Employment, by County**

**Date of Injury - Calendar Year 2009  
State of Colorado**

<b>County</b>	<b>Lost-Time Claims</b>		<b>Average Annual Employment<sup>2</sup></b>	<b>Percent of Total CO Employment in County</b>	<b>Percent of Employment Filing Lost- Time Claims</b>	<b>Number of Fatal Claims</b>
	<b>Count<sup>1</sup></b>	<b>Percent</b>				
Mesa	774	2.9	74,529	3.0	1.0	2
Mineral	5	*	443	*	1.1	0
Moffat	92	0.3	8,436	0.3	1.1	1
Montezuma	107	0.4	12,187	0.5	0.9	0
Montrose	204	0.8	19,217	0.8	1.1	1
Morgan	237	0.9	14,143	0.6	1.7	1
Otero	102	0.4	8,592	0.3	1.2	0
Ouray	19	0.1	2,714	0.1	0.7	0
Park	41	0.2	8,609	0.3	0.5	0
Phillips	23	0.1	2,491	0.1	0.9	0
Pitkin	238	0.9	10,379	0.4	2.3	0
Prowers	90	0.3	6,541	0.3	1.4	0
Pueblo	813	3.1	67,919	2.7	1.2	2
Rio Blanco	75	0.3	4,393	0.2	1.7	0
Rio Grande	65	0.2	6,317	0.3	1.0	2
Routt	214	0.8	14,121	0.6	1.5	1
Saguache	41	0.2	3,118	0.1	1.3	0
San Juan	5	*	511	*	1.0	0
San Miguel	101	0.4	4,868	0.2	2.1	0
Sedgwick	7	*	1,640	0.1	0.4	0
Summit	237	0.9	15,494	0.6	1.5	0
Teller	85	0.3	11,086	0.4	0.8	0
Washington	17	0.1	2,839	0.1	0.6	0
Weld	1,266	4.8	110,074	4.4	1.2	5
Yuma	58	0.2	6,815	0.3	0.9	2
Other <sup>3</sup>	2,815	10.6	n/a	n/a	n/a	20
<b>Total<sup>4</sup></b>	<b>26,557</b>	<b>100%</b>	<b>2,501,835</b>	<b>100%</b>	<b>1.1%</b>	<b>79</b>

**Notes:**

\* Value is less than .05%.

1 Fatal claims are included in the count of lost-time claims.

2 Source: Colorado Department of Labor and Employment, Labor Market Information, QCEW, *Colorado Employment and Wages: Average Annual Employment*, 2009. An employed person is 16 years and over in the civilian noninstitutional population who, during the reference week, (a) did any work at all; and (b) who was not working but was temporarily absent. Statewide total on QCEW differs due to rounding.

3 "Other" includes place unknown, overseas, out of state, unclassified and missing data.

4 Columns may not sum to 100% due to rounding.

**Table 2**

**Claims Received and Lost-Time Claims Filed: 1991-2009**

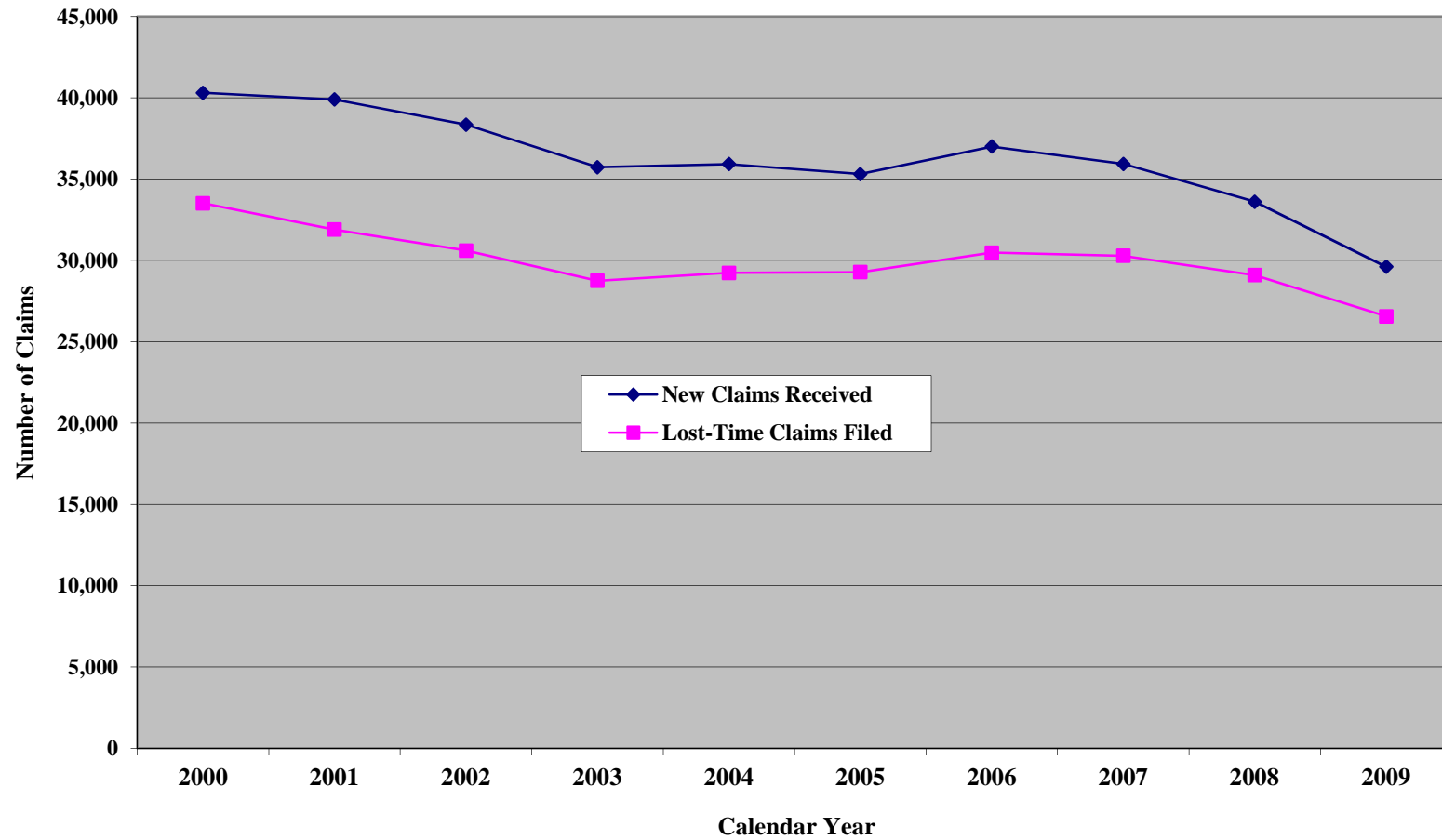
**State of Colorado**

<b>Calendar Year</b>	<b>New Claims Received<sup>1</sup></b>	<b>Lost-Time Claims Filed<sup>2</sup></b>
1991	43,026	38,427
1992	43,258	35,588
1993	43,018	34,605
1994	44,857	36,487
1995	42,842	34,581
1996	41,767	34,784
1997	37,470	34,063
1998	39,946	33,441
1999	39,979	32,706
2000	40,319	33,520
2001	39,900	31,896
2002	38,355	30,607
2003	35,739	28,752
2004	35,932	29,231
2005	35,316	29,282
2006	37,011	30,478
2007	36,663	30,293
2008	33,614	29,096
2009	29,610	26,557

**Notes:**

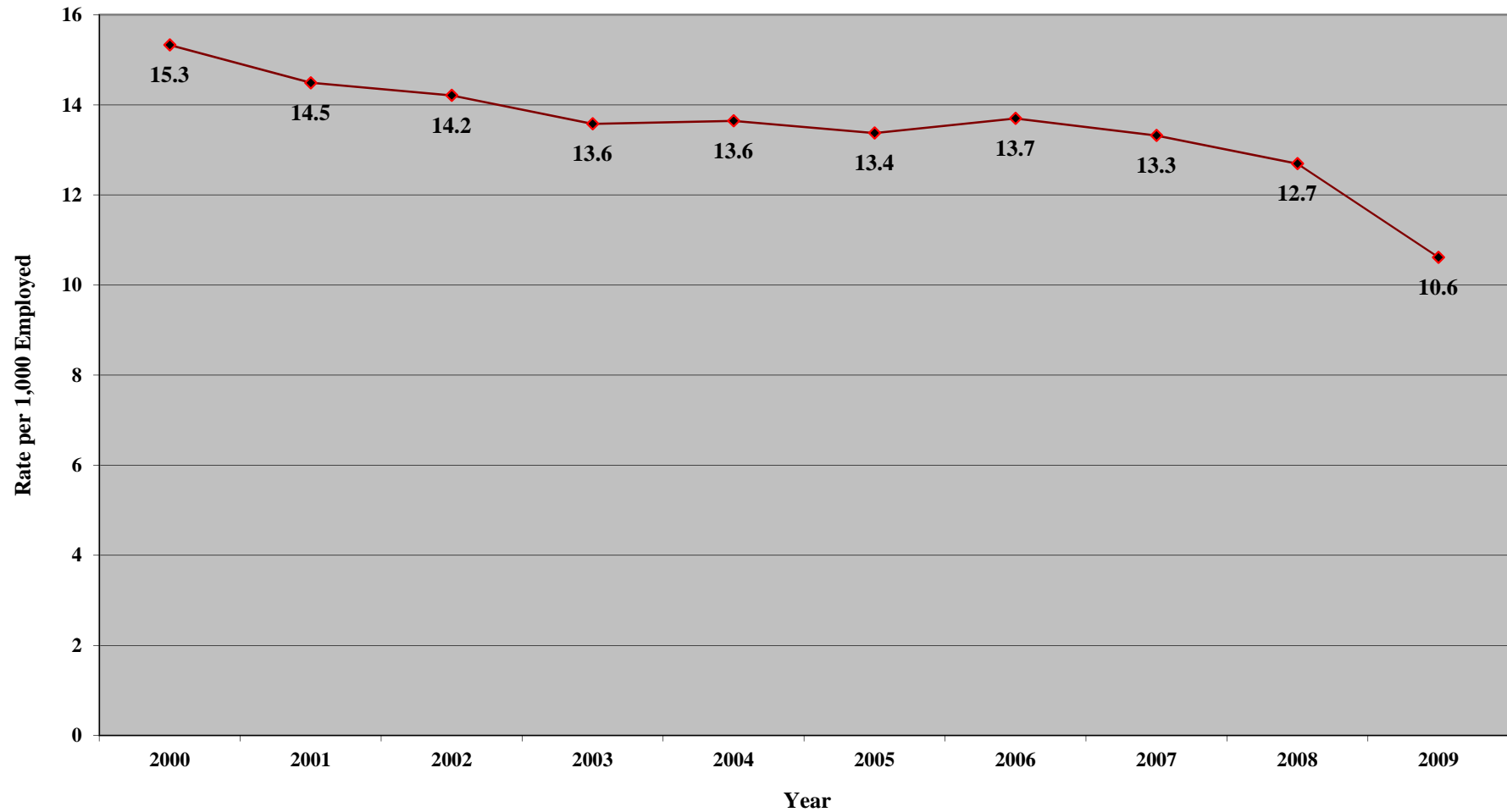
- 1 Source: Report 874, New Claims Received. These are claims received by the Division of Workers' Compensation during the **calendar year, regardless of the date/year of injury** of the claim. It includes lost-time and medical-only claims, and duplicate First Reports for the same injury.
- 2 Source: Annual download of DOWC data. These claims have a **date of injury in the calendar year, regardless of received date**. In 1991, changes in the database made it possible to distinguish between "lost-time" and "medical-only" claims. Therefore, these claims are "lost-time" claims only. A lost-time claim is one in which the worker misses more than three shifts or three days of work because of a work-related injury or illness. Duplicate injury reports have also been eliminated.

**Figure 1. Claims Received and Lost-Time Claims Filed: 2000-2009**



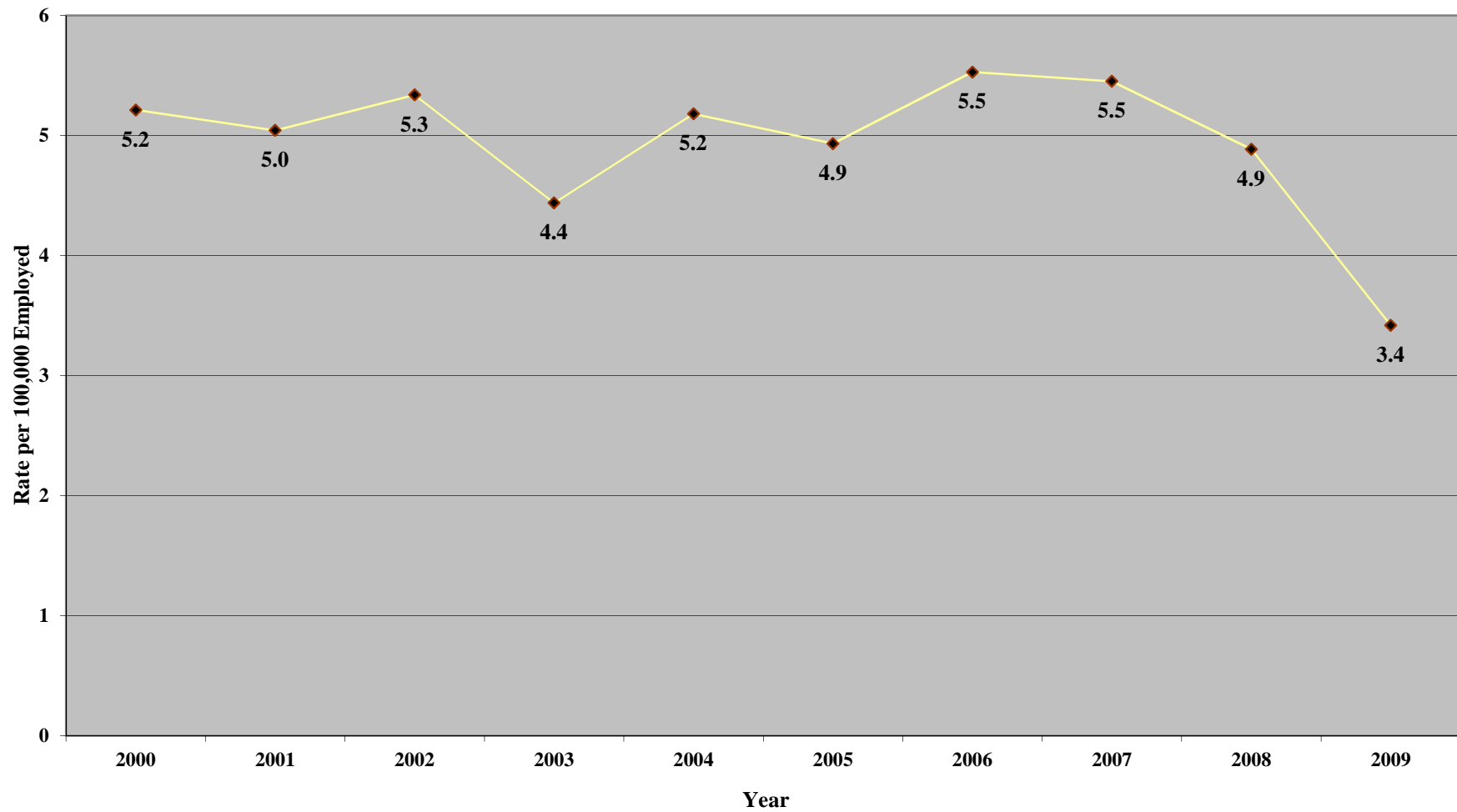
**Source:** Table 2; and Colorado Department of Labor and Employment, Division of Workers' Compensation, *Work-Related Injuries in Colorado 2000-2008*, Table 2.

**Figure 2. Rate of Lost-Time Claims Filed, per 1,000 Employed: 2000-2009**



**Source:** Table 1; and Colorado Department of Labor and Employment, Division of Workers' Compensation, *Work-Related Injuries in Colorado 2000-2008*, Table 1; and, Labor Market Information, QCEW, *Colorado Employment and Wages: Annual Averages 2000-2009*.

**Figure 3. Rate of Fatal Claims Filed, per 100,000 Employed: 2000-2009**



**Source:** Table 1; and Colorado Department of Labor and Employment, Division of Workers' Compensation, *Work-Related Injuries in Colorado 2000-2008*, Table 1; and Labor Market Information, QCEW, *Colorado Employment and Wages: Annual Averages 2000-2008*.

**Table 3**

**Rank-Order Distribution of Lost-Time Claims by Part of Body**

**Date of Injury - Calendar Year 2009  
State of Colorado**

<b>Part of Body</b>	<b>Count</b>	<b>Percent</b>
Upper Extremities	8,730	32.9
Trunk	6,611	24.9
Lower Extremities	6,142	23.1
Multiple Body Parts	1,988	7.5
Head	1,520	5.7
Neck	664	2.5
Non-Classifiable <sup>1</sup>	902	3.4
<b>Total</b>	<b>26,557</b>	<b>100%</b>

**Notes:**

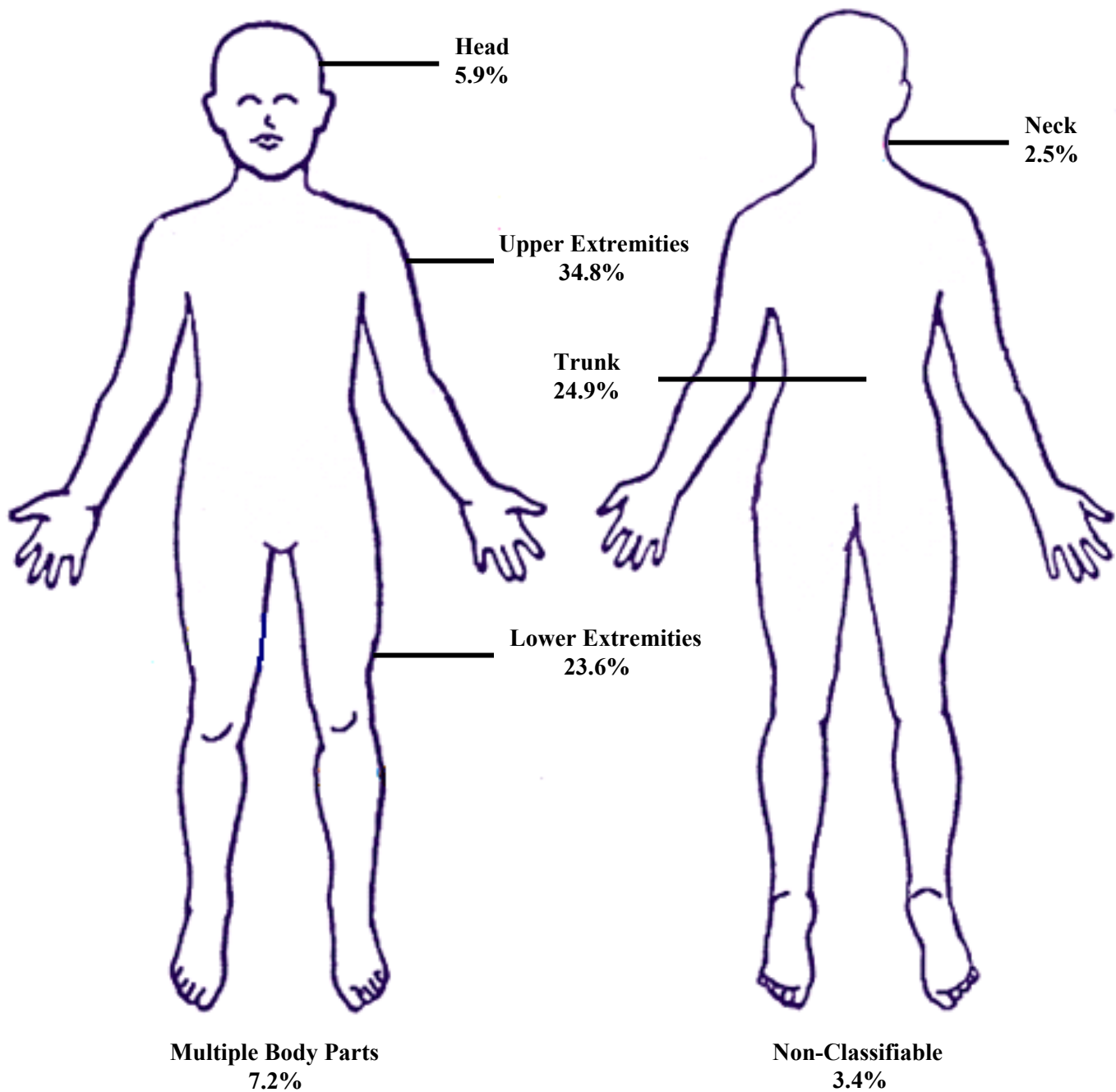
\* See Table 4 for detailed descriptions of these major categories.

<sup>1</sup> This category includes the 79 fatal cases.



**Figure 4**

**Percent Distribution of Lost-Time Claims by Part of Body**



**Table 4**

**Rank-Order Distribution of Lost-Time Claims by Part of Body (Detail)**

**Date of Injury - Calendar Year 2009  
State of Colorado**

<b>Part of Body</b>	<b>Count</b>	<b>Percent</b>
<b>UPPER EXTREMITIES</b>		
Shoulder(s) (Armpit, Rotator Cuff, Trapezius, Clavicle, Scapula)	2,775	10.4
Wrist (Carpals & Corresponding Muscles)	1,191	4.5
Finger(s) (Other than Thumb & Corresponding Muscles)	1,191	4.5
Hand (Metacarpals & Corresponding Muscles)	1,119	4.2
Lower Arm (Forearm) (Radius, Ulna & Corresponding Muscles)	607	2.3
Elbow (Radial Head)	529	2.0
Thumb	389	1.5
Upper Arm(s) (Humerus & Corresponding Muscles)	380	1.4
Multiple Upper Extremities <sup>1</sup>	336	1.3
Wrist(s) & Hand(s)	213	0.8
<i>Subtotal</i>	<i>8,730</i>	<i>32.9</i>
<b>TRUNK</b>		
Lower Back Area (Lumbar & Lumbo-Sacral)--Lower Back Muscles	3,966	14.9
Abdomen Including Groin (Excludes Injury to Internal Organs)	902	3.4
Chest (Includes Ribs, Sternum & Soft Tissue)	461	1.7
Upper Back Area (Thoracic Area)--Upper Back Muscles	442	1.7
Lungs	264	1.0
Internal Organs (Other than Heart & Lungs)	124	0.5
Multiple Trunk Injuries <sup>2</sup>	119	0.4
Lumbar and/or Sacral Vertebrae--Bone Portion of the Spinal Column	108	0.4
Buttocks (Soft Tissue)	58	0.2
Heart	54	0.2
Disc (Spinal Column Cartilage Other Than Cervical Segment)	35	0.1
Pelvis	30	0.1
Sacrum & Coccyx (Final Nine Vertebrae, Fused)	24	0.1
Spinal Cord (Nerve Tissue Other than Cervical Segment)	24	0.1
<i>Subtotal</i>	<i>6,611</i>	<i>24.9</i>
<b>LOWER EXTREMITIES</b>		
Knee (Patella)	2,970	11.2
Ankle (Tarsals)	1,167	4.4
Foot (Metatarsals, Heel, Achilles Tendon & Corresponding Muscles)	780	2.9
Lower Leg (Tibia, Fibula, & Corresponding Muscles)	510	1.9
Hip	330	1.2
Upper Leg (Femur & Corresponding Muscles)	172	0.6
Multiple Lower Extremities <sup>3</sup>	135	0.5
Toe(s)	59	0.2
Great Toe	19	0.1
<i>Subtotal</i>	<i>6,142</i>	<i>23.1</i>
<b>MULTIPLE BODY PARTS</b>		
Multiple Body Parts--More than One Major Body Part Affected	1,732	6.5
Body Systems & Multiple Body Systems--Poisoning, Inflammation	256	1.0
<i>Subtotal</i>	<i>1,988</i>	<i>7.5</i>

**Section II Part of Body**

**Table 4 (Continued)**

**Rank-Order Distribution of Lost-Time Claims by Part of Body (Detail)**

**Date of Injury - Calendar Year 2009  
State of Colorado**

<b>Part of Body</b>	<b>Count</b>	<b>Percent</b>
<b>HEAD</b>		
Multiple Head Injuries <sup>4</sup>	343	1.3
Skull	317	1.2
Eye(s) (Includes Optic Nerves, Vision, Eyelids)	235	0.9
Facial Bones (Includes Jaw)	143	0.5
Soft Tissue	125	0.5
Ear(s) (Includes Hearing, Eardrum)	115	0.4
Brain	77	0.3
Nose (Includes Nasal Passage, Sinus, Sense of Smell)	71	0.3
Mouth (Includes Lips, Tongue, Throat, Taste)	67	0.3
Teeth	27	0.1
<i>Subtotal</i>	<i>1,520</i>	<i>5.7</i>
<b>NECK</b>		
Vertebrae (Includes Spinal Column Bone, Cervical Segment)	335	1.3
Soft Tissue (Other than Larynx or Trachea)	150	0.6
Multiple Neck Injuries <sup>5</sup>	120	0.5
Disc (Includes Spinal Column Cartilage, Cervical Segment)	32	0.1
Spinal Cord (Includes Nerve Tissue, Cervical Segment)	11	*
Larynx (Includes Cartilage & Vocal Folds)	11	*
Trachea	5	*
<i>Subtotal</i>	<i>664</i>	<i>2.5</i>
<b>NON-CLASSIFIABLE</b>		
No Physical Injury (Mental Disorder)	553	2.1
Insufficient Information to Properly Identify--Unclassified	270	1.0
Death	79	0.3
<i>Subtotal</i>	<i>902</i>	<i>3.4</i>
<b>TOTAL</b>	<b>26,557</b>	<b>100%</b>

**Notes:**

\* Value is less than .05%.

1 Any combination of arm, elbow, or fingers. Also, Arm--Not Otherwise Classified.

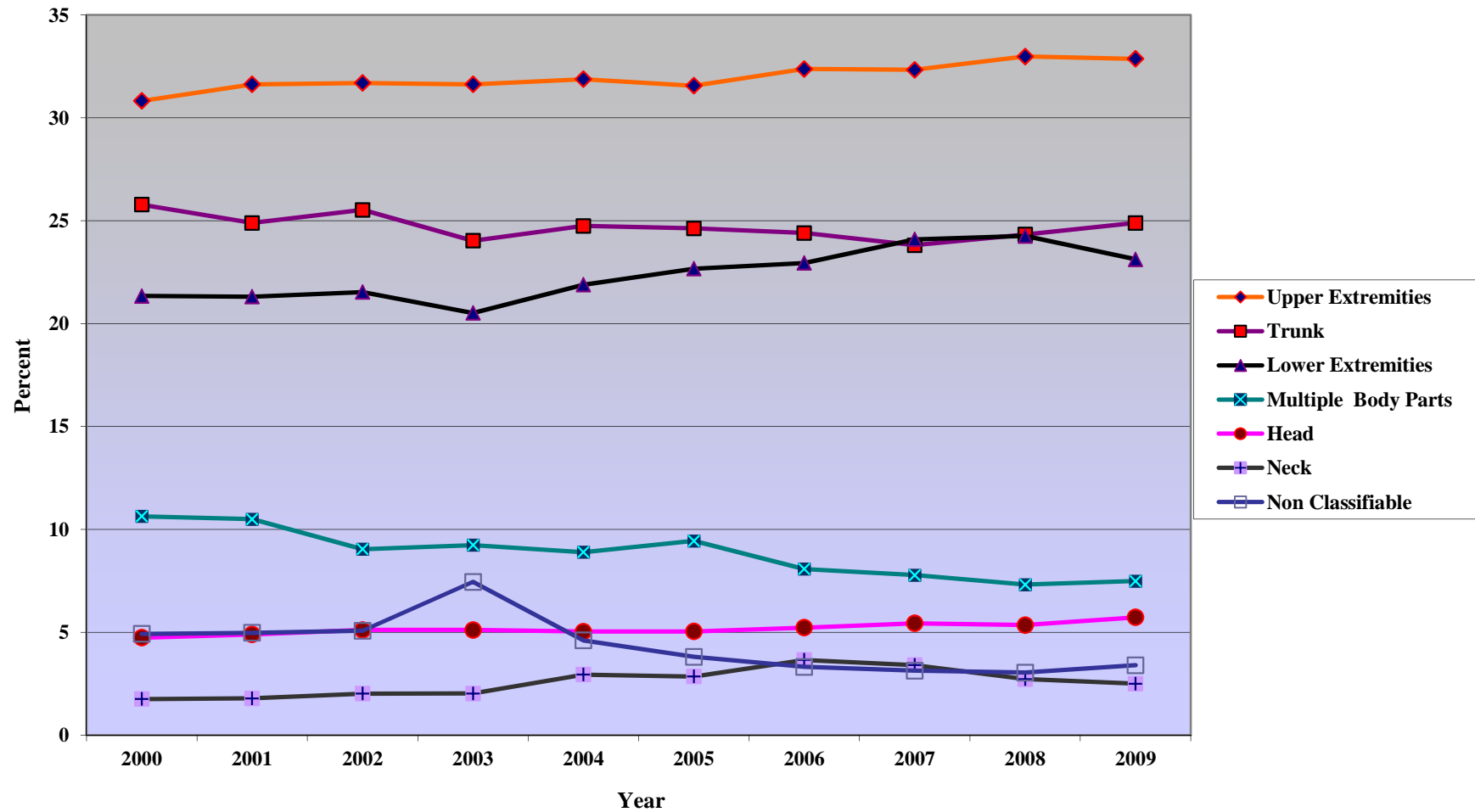
2 Any combination of hip, abdomen, chest, back, and shoulder. Also, Trunk--Not Otherwise Classified.

3 Any combination of leg, hip, thigh, knee, ankle, foot, and toe. Also, Leg--Not Otherwise Classified.

4 Any combination of brain, scalp, skull, with/out ears, eyes, nose, mouth, teeth, face, or neck. Also, Head--Not Otherwise Classified.

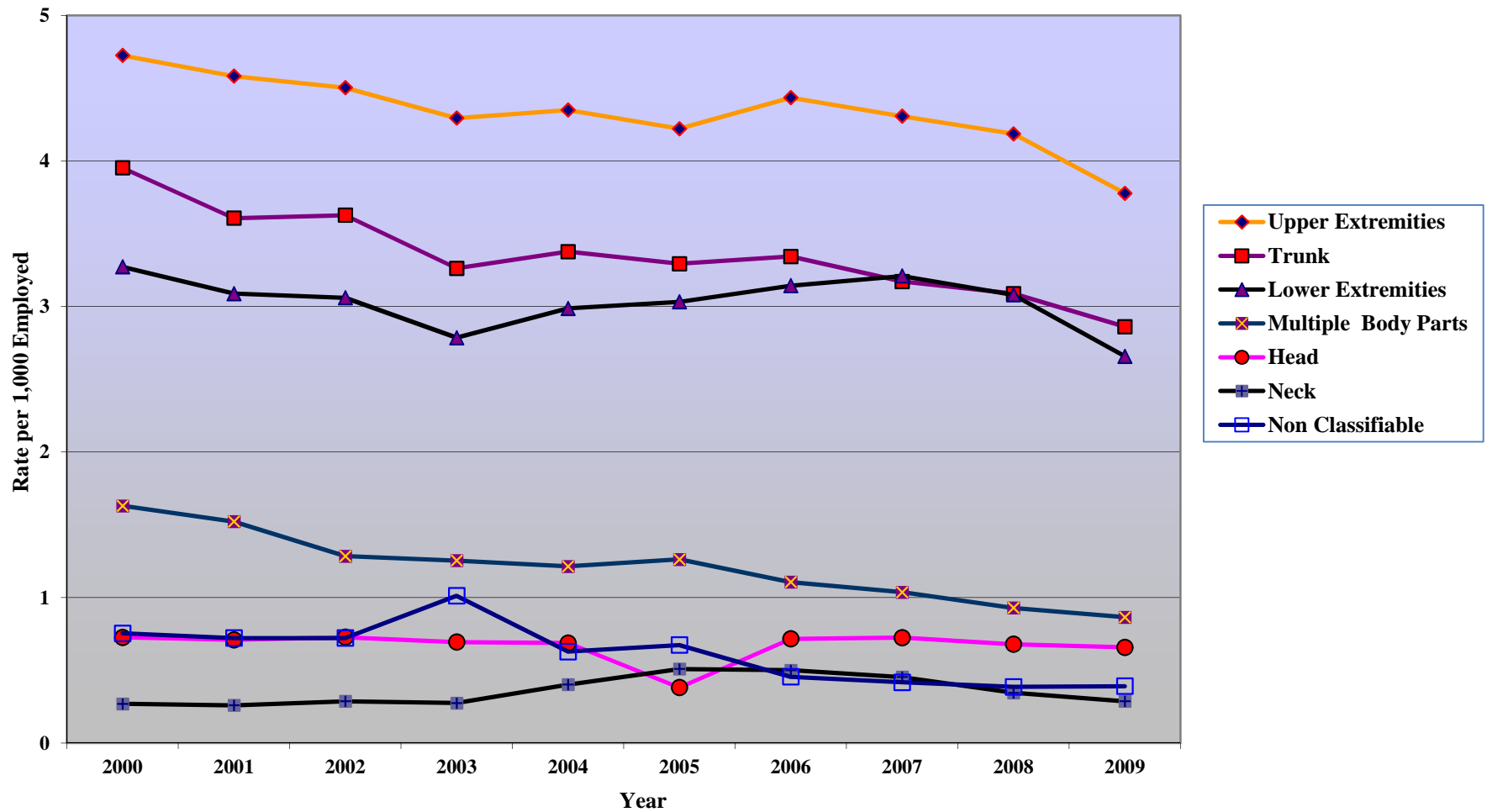
5 Any combination of vertebrae, disc, spinal cord, or soft tissue in neck. Also, Neck--Not Otherwise Classified.

Figure 5. Percent Distribution of Lost-Time Claims, Part of Body: 2000-2009



Source: Table 3; and Colorado Department of Labor and Employment, Division of Workers' Compensation, *Work-Related Injuries in Colorado 2003-2008*, Table 3; and Colorado Department of Labor and Employment, Division of Workers' Compensation, *Work-Related Injuries in Colorado 2000-2002*, Table 2.

Figure 6. Rate of Lost-Time Claims Filed, Part of Body, per 1,000 Employed: 2000-2009



Source: Table 1 & 3; and Colorado Department of Labor and Employment, Division of Workers' Compensation, *Work-Related Injuries in Colorado 2003-2008*, Table 1 & 3; and Colorado Department of Labor and Employment, Division of Workers' Compensation, *Work-Related Injuries in Colorado 2000-2002*, Table 1 & 2.

**Table 5**

**Rank-Order Distribution of Lost-Time Claims by Nature of Injury**

**Date of Injury - Calendar Year 2009  
State of Colorado**

<b>Nature of Injury</b>	<b>Count</b>	<b>Percent</b>
Strain, Sprain	12,548	47.2
Contusion, Crushing	3,374	12.7
Fracture	1,834	6.9
Occupational Disease or Cumulative Injury <sup>1</sup>	1,383	5.2
Laceration, Puncture	1,352	5.1
Inflammation	576	2.2
Hernia	480	1.8
Multiple Physical Injuries Only	454	1.7
Dislocation	327	1.2
Burn	231	.9
Carpal Tunnel Syndrome	229	.9
Mental Stress/Mental Disorder	198	.7
All Other Specific Injuries, NOC <sup>2</sup>	2,364	8.9
Other <sup>3</sup>	1,203	4.5
Missing	4	.0
<b>Total</b>	<b>26,557</b>	<b>100%</b>

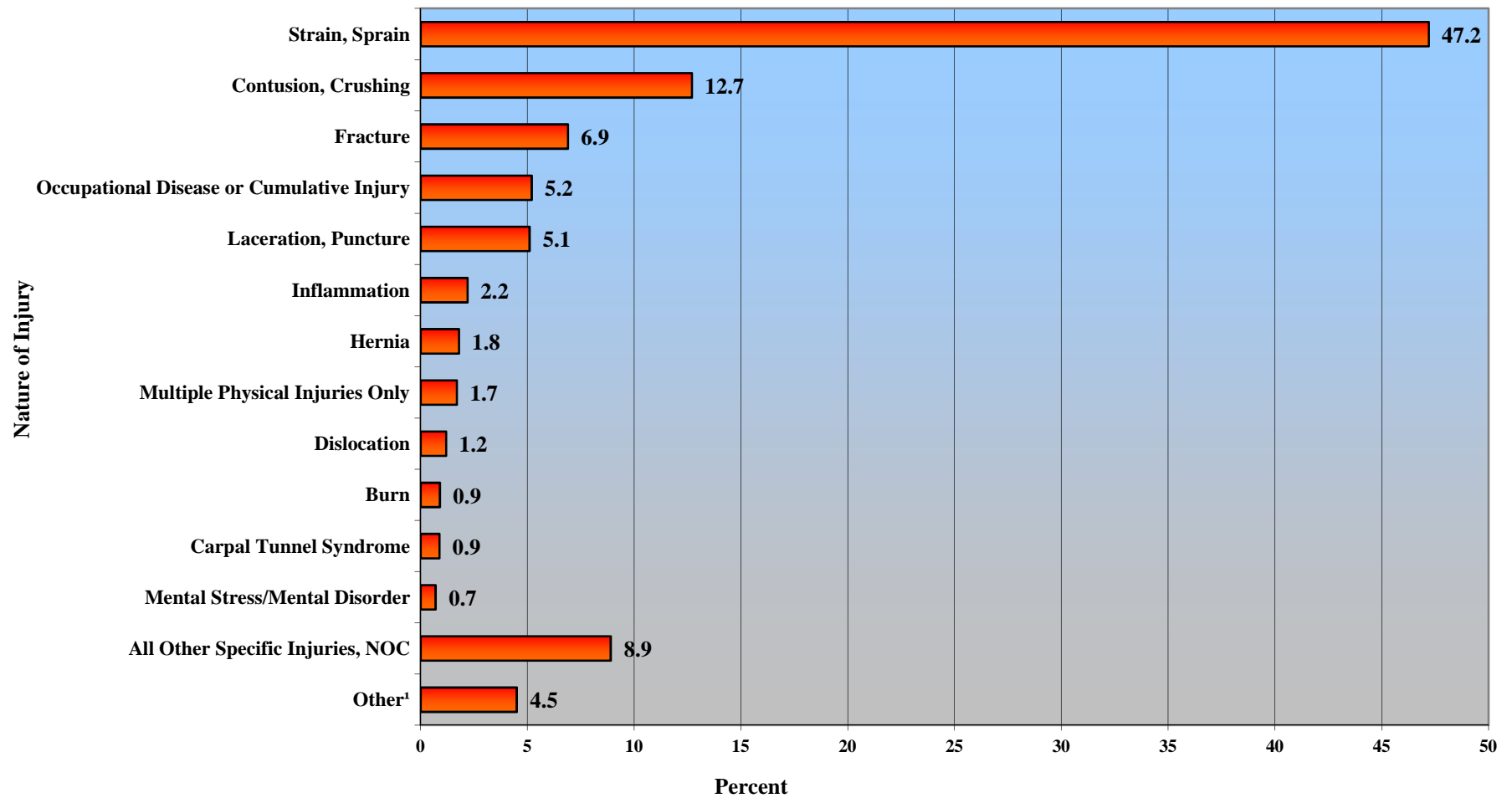
**Notes:**

1 Excludes Mental Stress, Mental Disorder and Carpal Tunnel Syndrome claims reported here in separate categories.

2 Not Otherwise Classified.

3 Includes those categories in Table 6 not already counted in other categories. Mental Stress/Mental Disorder and Carpal Tunnel Syndrome, each less than 1% of the total, are reported here separately because of the Legislature's past interest in these injuries. Burns vary above and below 1% each year and are reported here to allow annual comparison.

**Figure 7. Percent Distribution of Lost-Time Claims by Nature of Injury**



**Notes:**

Source: Table 5

<sup>1</sup> Includes missing data.

**Table 6**

**Rank-Order Distribution of Lost-Time Claims by Nature of Injury (Detail)**

**Date of Injury - Calendar Year 2009  
State of Colorado**

<b>Nature of Injury</b>	<b>Count</b>	<b>Percent</b>
<b>SPECIFIC INJURY</b>		
Strain	9,165	34.5
Sprain	3,383	12.7
Contusion	3,147	11.8
Fracture	1,834	6.9
Laceration	1,134	4.3
Inflammation	576	2.2
Hernia	480	1.8
Dislocation	327	1.2
No Physical Injury	235	.9
Burn	231	.9
Crushing	227	.9
Puncture	218	.8
Concussion--Closed Head/Traumatic Brain Injury	152	.6
Rupture	130	.5
Amputation	114	.4
Infection	107	.4
Foreign Body	105	.4
Syncope (Swooning, Fainting)	92	.3
Angina Pectoris	59	.2
Myocardial Infarction (Heart Attack)	56	.2
Hearing Loss or Impairment (Traumatic Only)	45	.2
Electric shock	21	.1
Severance	21	.1
Vascular	11	*
Freezing	10	*
Poisoning--General	9	*
Heat Prostration	7	*
Vision Loss	7	*
All Other Specific Injuries, NOC <sup>1</sup>	2,364	8.9
<i>Subtotal</i>	<i>24,267</i>	<i>91.4</i>
<b>OCCUPATIONAL DISEASE or CUMULATIVE INJURY</b>		
Contagious Disease	251	.9
Carpal Tunnel Syndrome	229	.9
Respiratory (Fumes)	213	.8
Mental Stress	178	.7
Dermatitis	72	.3
Poisoning (Chemical)	34	.1
Asbestosis	26	.1
Loss of Hearing (Cumulative Circumstances)	24	.1
Mental Disorder	20	.1
Cancer	11	*
Dust Disease, NOC <sup>1</sup>	9	*



**Table 6 (Continued)**

**Rank-Order Distribution of Lost-Time Claims by Nature of Injury (Detail)**

**Date of Injury - Calendar Year 2009  
State of Colorado**

<b>Nature of Injury</b>	<b>Count</b>	<b>Percent</b>
<b>OCCUPATIONAL DISEASE or CUMULATIVE INJURY</b>		
Black Lung	1	*
Silicosis	1	*
Radiation	1	*
AIDS	1	*
VDT <sup>2</sup> -Related Disease	1	*
All Other Cumulative Injuries, NOC <sup>1</sup>	633	2.4
All Other Occupational Disease, NOC <sup>1</sup>	105	.4
<i>Subtotal</i>	<i>1,810</i>	<i>6.4</i>
<b>MULTIPLE INJURIES</b>		
Multiple Physical Injuries Only	454	1.7
Multiple Injuries Including Both Physical & Psychological	22	.1
<i>Subtotal</i>	<i>476</i>	<i>1.8</i>
<b>MISSING</b>		
Missing	4	*
<b>TOTAL</b>	<b>26,557</b>	<b>100%</b>

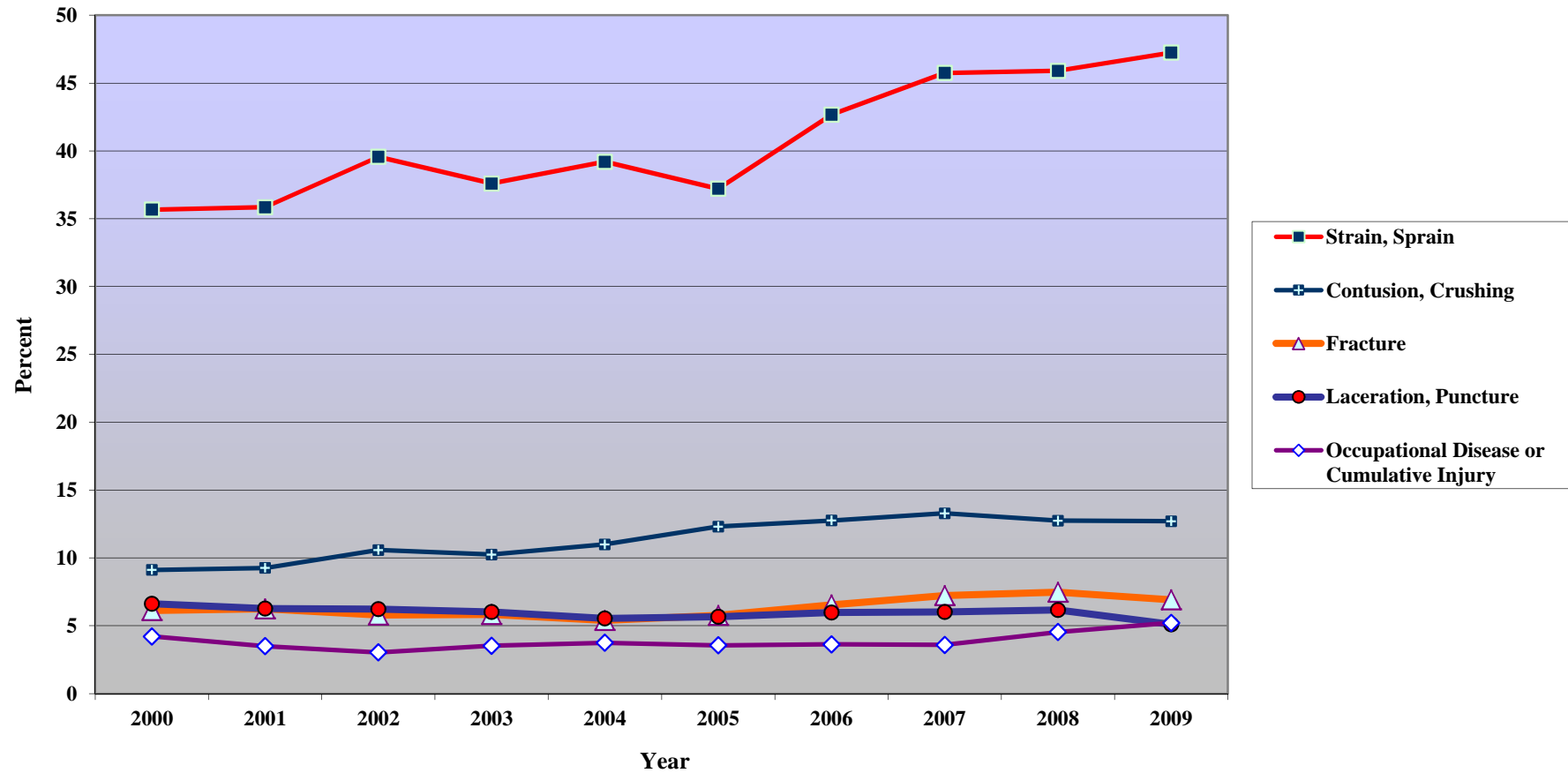
**Notes:**

\* Value is less than .05%.

1 Not Otherwise Classified.

2 Video Display Terminal.

Figure 8. Percent Distribution of Lost-Time Claims, Nature of Injury, Selected Categories: 2000-2009

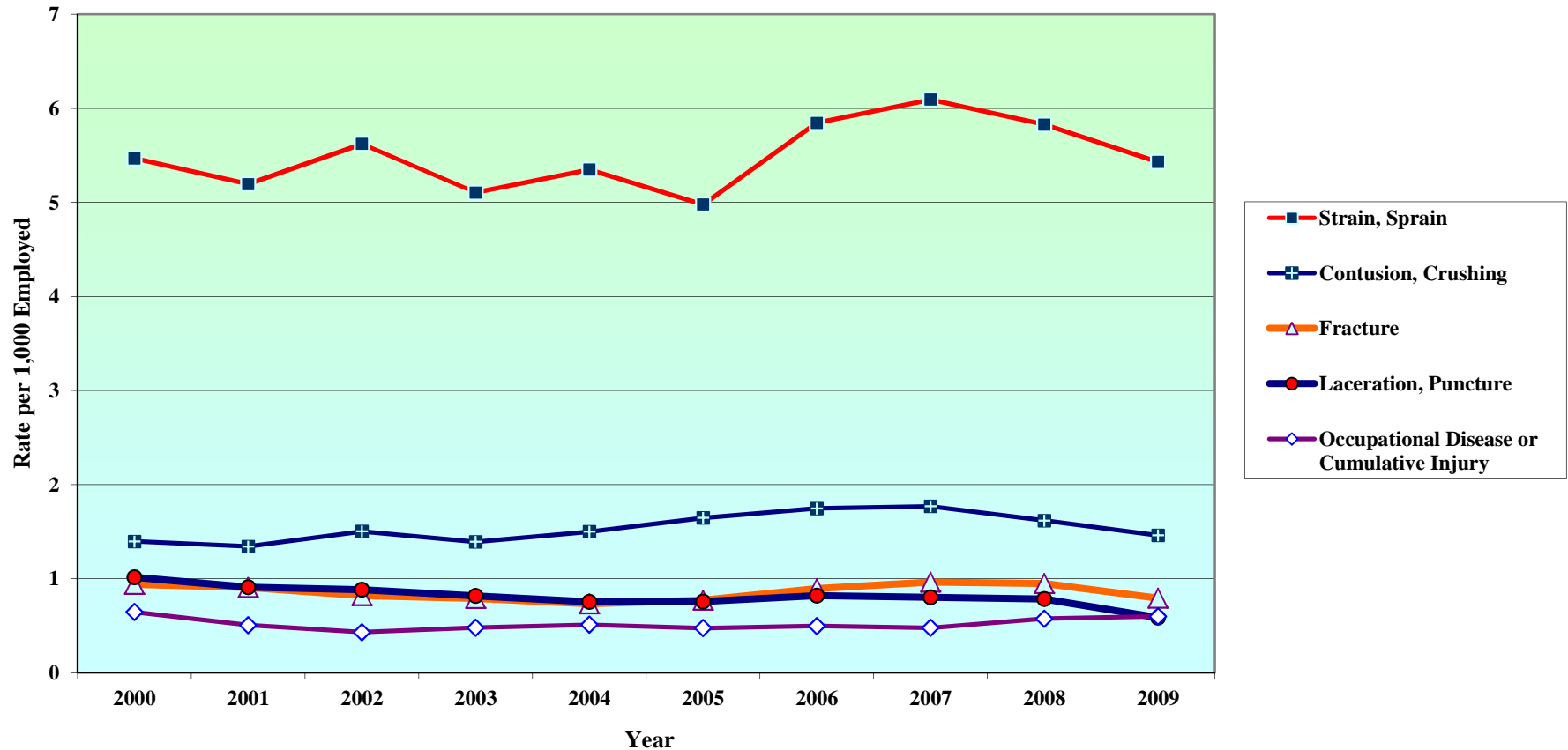


**Notes:**

Source: Tables 5; and Colorado Department of Labor and Employment, Division of Workers' Compensation, *Work-Related Injuries in Colorado 2003-2008*, Table 5; and Colorado Department of Labor and Employment, Division of Workers' Compensation, *Work-Related Injuries in Colorado 2000-2002*, Table 4.

1 This figure illustrates the five NCCI categories for Nature of Injury with the highest percentages for injuries in 2009 and their percentages over the past 10 years. For data on the other NCCI categories not included here, see Table 5.

Figure 9. Rate of Lost-Time Claims Filed, Nature of Injury, per 1,000 Employed, Selected Categories: 2000-2009



**Notes:**

Source: Tables 1 & 5; and Colorado Department of Labor and Employment, Division of Workers' Compensation, *Work-Related Injuries in Colorado 2003-2008*, Tables 1 & 5; and Colorado Department of Labor and Employment, Division of Workers' Compensation, *Work-Related Injuries in Colorado 2000-2002*, Tables 1 & 4.

1 This figure illustrates the five NCCI categories for Nature of Injury with the highest rates for injuries in 2009, and their rates over the past 10 years. For data on the other NCCI categories not included here, see Table 5.

**Section IV Cause of Injury**

**Table 7**

**Rank-Order Distribution of Lost-Time Claims by Cause of Injury**

**Date of Injury-Calendar Year 2009  
State of Colorado**

<b>Cause of Injury</b>	<b>Count</b>	<b>Percent</b>
Strain or Injury By	10,473	39.4
Fall, Slip or Trip	6,364	24.0
Struck or Injured By	2,511	9.5
Cut, Puncture, Scrape, Injured By	1,020	3.8
Motor Vehicle	890	3.4
Striking Against or Stepping On	889	3.3
Caught In, Under or Between	687	2.6
Burn or Scald - Heat or Cold Exposure	418	1.6
Rubbed or Abraded By	54	0.2
Miscellaneous Causes <sup>1</sup>	3,251	12.2
<b>Total</b>	<b>26,557</b>	<b>100%</b>

**Notes:**

1 See Table 8 for details of this category.

**Figure 10. Percent Distribution of Lost-Time Claims by Cause of Injury**

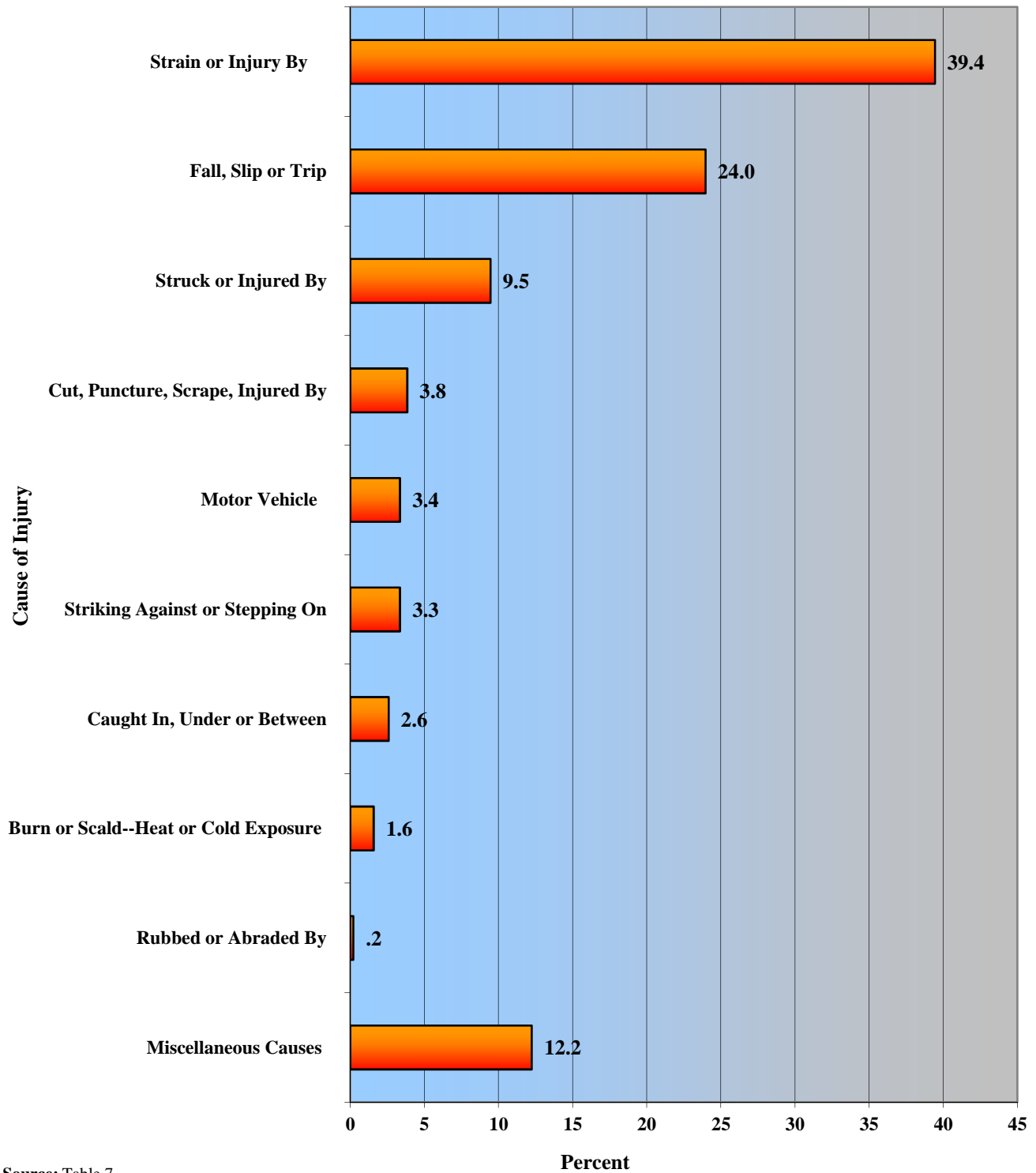


Table 8

## Distribution of Lost-Time Claims by Cause of Injury (Detail)

Date of Injury-Calendar Year 2009  
State of Colorado

Cause of Injury	Count	Percent
<b>STRAIN or INJURY BY</b>		
Lifting	3,381	12.7
Strain or Injury by, NOC <sup>1</sup>	2,295	8.6
Repetitive Motion--Carpal Tunnel Syndrome	1,359	5.1
Twisting	1,127	4.2
Pushing or Pulling	1,094	4.1
Holding or Carrying	391	1.5
Reaching	364	1.4
Using Tool or Machine	294	1.1
Jumping	95	0.4
Continual Noise	53	0.2
Welding or Throwing	20	0.1
<i>Subtotal</i>	<i>10,473</i>	<i>39.4</i>
<b>FALL, SLIP or TRIP INJURY</b>		
On Same Level	1,481	5.6
Fall, Slip, or Trip, NOC <sup>1</sup>	1,262	4.8
On Ice or Snow	1,085	4.1
From a Different Level (Elevation)--Off Wall, Catwalk, Bridge, etc.	777	2.9
From Liquid or Grease Spills	448	1.7
From Ladder or Scaffolding	447	1.7
On Stairs	446	1.7
Slip or Trip, Did Not Fall	302	1.1
Into Openings--Shafts, Excavations, Floor Openings, etc.	116	0.4
<i>Subtotal</i>	<i>6,364</i>	<i>24.0</i>
<b>STRUCK or INJURED BY</b>		
Falling or Flying Object	675	2.5
Fellow Worker, Patient or Other Person	430	1.6
Struck or Injured, NOC <sup>1</sup> --Includes Kicked, Stabbed, Bit, etc.	424	1.6
Object Being Lifted or Handled	251	0.9
Animal or Insect	176	0.7
Hand Tool or Machine in Use	171	0.6
Motor Vehicle	164	0.6
Moving Parts of Machine	110	0.4
Object Handled by Others	99	0.4
Explosion or Flare Back	11	*
<i>Subtotal</i>	<i>2,511</i>	<i>9.5</i>
<b>CUT, PUNCTURE, SCRAPE INJURED BY</b>		
Object Being Lifted or Handle	290	1.1
Cut, Puncture, Scrape, NOC <sup>1</sup>	262	1.0
Hand Tool, Utensil: Not Powered	205	0.8
Powered Hand Tool, Appliance	195	0.7
Broken Glass	68	0.3
<i>Subtotal</i>	<i>1,020</i>	<i>3.8</i>

Table 8 (Continued)

## Distribution of Lost-Time Claims by Cause of Injury (Detail)

Date of Injury-Calendar Year 2009  
State of Colorado

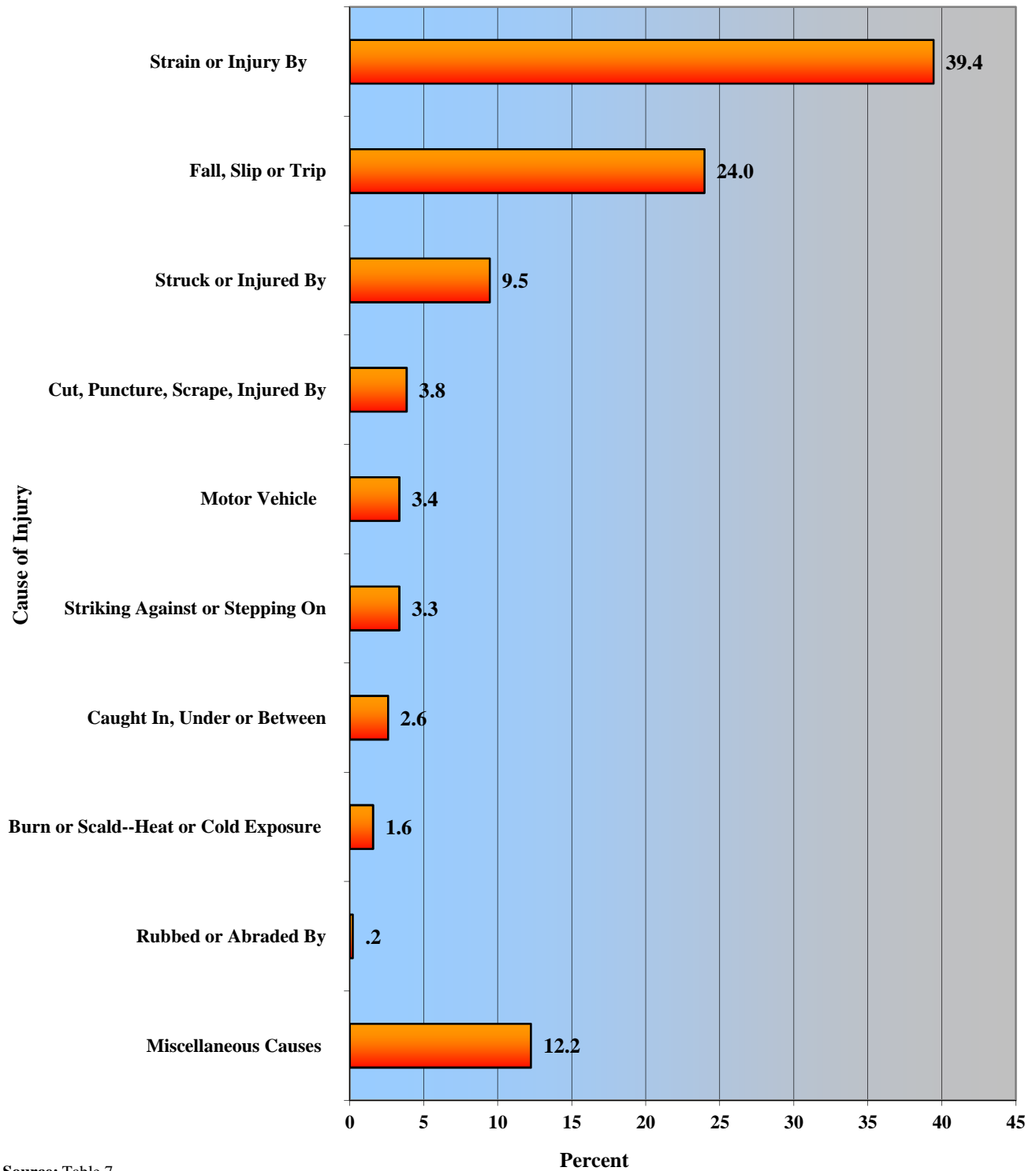
Cause of Injury	Count	Percent
<b>MOTOR VEHICLE</b>		
Collision or Sideswipe with Another Vehicle--Both Vehicles in Motion	472	1.8
Motor Vehicle, NOC <sup>1</sup>	233	0.9
Vehicle Upset--Overturned or Jackknifed	111	0.4
Collision with a Fixed Object--Vehicle or Object	57	0.2
Crash of Airplane	16	0.1
Crash of Water Vehicle	1	*
<i>Subtotal</i>	<i>890</i>	<i>3.4</i>
<b>STRIKING AGAINST or STEPPING ON</b>		
Stationary Object	401	1.5
Striking Against or Stepping On, NOC <sup>1</sup>	217	0.8
Stepping on Sharp Object	131	0.5
Object Being Lifted or Handled	86	0.3
Moving Part of Machine	45	0.2
Sanding, Scraping, Cleaning Operation	9	*
<i>Subtotal</i>	<i>889</i>	<i>3.3</i>
<b>CAUGHT IN, UNDER or BETWEEN</b>		
Caught In, Under, or Between, NOC <sup>1</sup>	301	1.1
Object Handled	200	0.8
Machine or Machinery	178	0.7
Collapsing Materials (Slides of Earth)--Man-made or Natural	8	*
<i>Subtotal</i>	<i>687</i>	<i>2.6</i>
<b>BURN or SCALD--HEAT or COLD EXPOSURE</b>		
Contact with, NOC <sup>1</sup>	100	0.4
Hot Objects or Substances	70	0.3
Steam or Hot Fluids	66	0.2
Chemicals	63	0.2
Dust, Gases, Fumes or Vapors	39	0.1
Electrical Current	26	0.1
Fire or Flame	24	0.1
Temperature Extremes	16	0.1
Cold Objects or Substances	9	*
Welding Operation	4	*
Radiation	1	*
<i>Subtotal</i>	<i>418</i>	<i>1.6</i>
<b>RUBBED or ABRADED BY</b>		
Repetitive Motion--Callus, Blister, etc.	39	0.1
Rubbed or Abraded, NOC <sup>1</sup>	15	0.1
<i>Subtotal</i>	<i>54</i>	<i>0.2</i>
<b>MISCELLANEOUS CAUSES</b>		
Other than Physical Cause of Injury	1,032	3.9
Absorption, Ingestion, or Inhalation, NOC <sup>1</sup>	166	0.6
Person in Act of a Crime--Robbery or Criminal Assault	105	0.4
Foreign Matter (Body) in Eye(s)	101	0.4
Mold	7	*
Cumulative, NOC <sup>1</sup>	368	1.4
Other--Miscellaneous, NOC <sup>1</sup>	1,472	5.5
<i>Subtotal</i>	<i>3,251</i>	<i>12.2</i>
<b>TOTAL</b>	<b>26,557</b>	<b>100%</b>

## Notes:

\* Value is less than .05%.

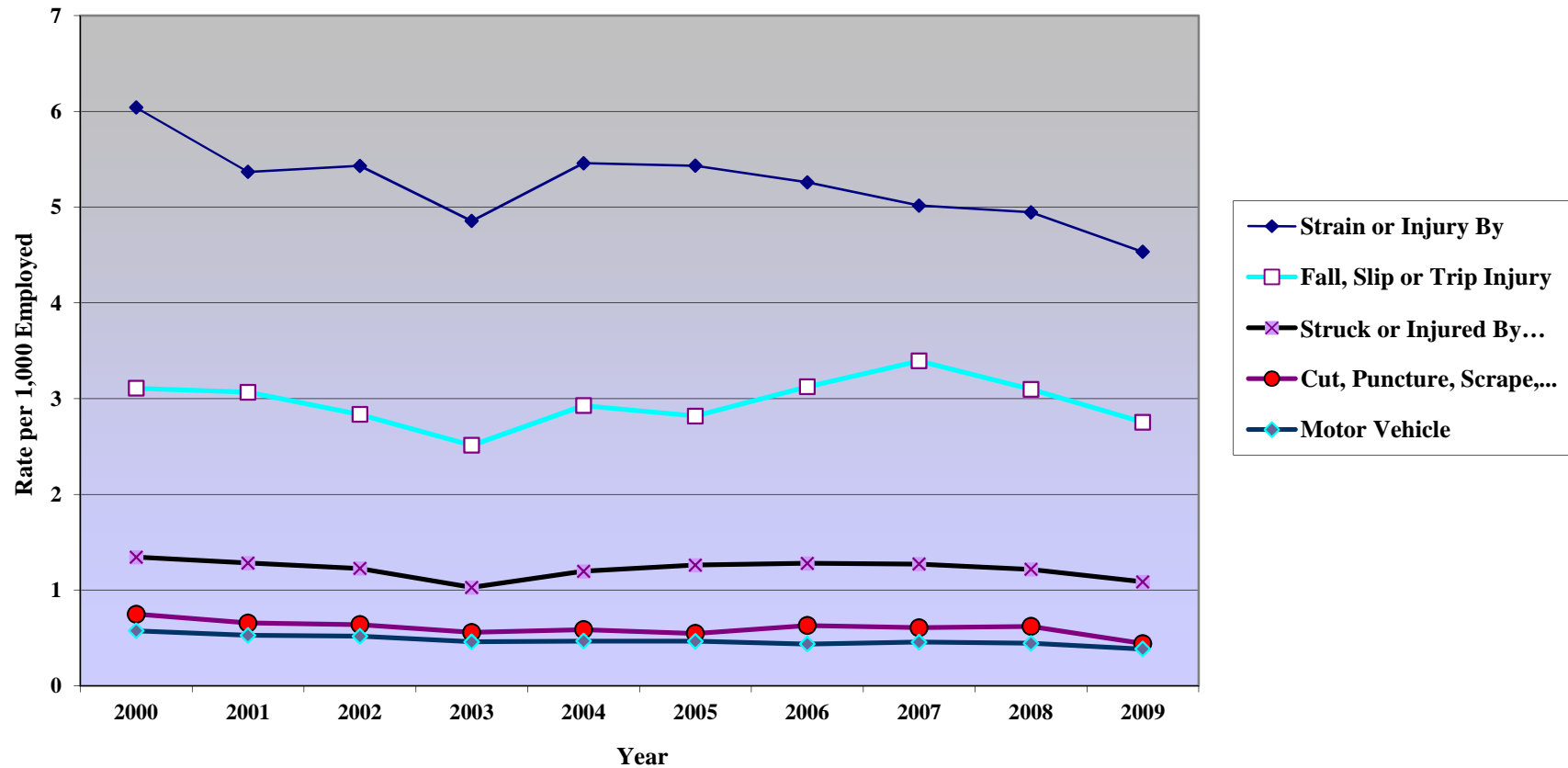
<sup>1</sup> Not Otherwise Classified.

**Figure 10. Percent Distribution of Lost-Time Claims by Cause of Injury**





**Figure 12. Rate of Lost-Time Claims Filed, Cause of Injury, per 1,000 Employed, Selected Categories: 2000-2009**



**Notes:**

Source: Tables 1 & 7; and Colorado Department of Labor and Employment, Division of Workers' Compensation, *Work-Related Injuries in Colorado 2003-2008*, Tables 1 & 7; and Colorado Department of Labor and Employment, Division of Workers' Compensation, *Work-Related Injuries in Colorado 2000-2002*, Tables 1 & 6.

1 This figure illustrates the five NCCI categories for Cause of Injury with the highest rates of injuries in 2009, and their rates over the past 10 years. For data on the other NCCI categories not included here, see Table 7.

**Table 9**

**Distribution of Lost-Time Claims, and Rate of Lost-Time Claims, Ranked, by  
North American Industry Classification System (NAICS) Sectors**

**Date of Injury-Calendar Year 2009  
State of Colorado**

NAICS Sectors <sup>1</sup>	Lost-Time Claims <sup>2</sup>		Average	Percent	Rate of
	Count	Percent	Annual Employment <sup>3</sup>	Employed in Sector	Lost-Time Claims per 1000 Employed
Public Administration	2,591	9.8	140,000	6.4	18.5
Transportation and Warehousing	1,271	4.8	73,646	3.3	17.3
Agriculture, Forestry, Fishing and Hunting	214	0.8	13,776	0.6	15.5
Construction	1,800	6.8	134,331	6.1	13.4
Arts, Entertainment, and Recreation	570	2.1	49,952	2.3	11.4
Retail Trade	2,686	10.1	239,700	10.9	11.2
Wholesale Trade	1,002	3.8	93,275	4.2	10.7
Utilities	149	0.6	14,227	0.6	10.5
Manufacturing	1,286	4.8	130,014	5.9	9.9
Administrative and Waste Services	1,135	4.3	132,108	6.0	8.6
Health Care and Social Assistance	2,168	8.2	253,265	11.5	8.6
Mining	202	0.8	24,005	1.1	8.4
Other Services, except Public Administration	531	2.0	66,451	3.0	8.0
Real Estate and Rental and Leasing	336	1.3	43,858	2.0	7.7
Educational Services	1,195	4.5	194,819	8.8	6.1
Accommodation and Food Services	946	3.6	218,686	9.9	4.3
Information	287	1.1	77,217	3.5	3.7
Finance and Insurance	258	1.0	102,057	4.6	2.5
Professional and Technical Services	297	1.1	170,708	7.8	1.7
Management of Companies and Enterprises	33	0.1	28,550	1.3	1.2
Other <sup>4</sup>	7,600	28.6	761	0.0	n/a
<b>Total<sup>5</sup></b>	<b>26,557</b>	<b>100%</b>	<b>2,201,406</b>	<b>100%</b>	<b>12.1</b>

**Notes:**

1 Source: Office of Management and Budget, *North American Industry Classification System, United States, 2007*.

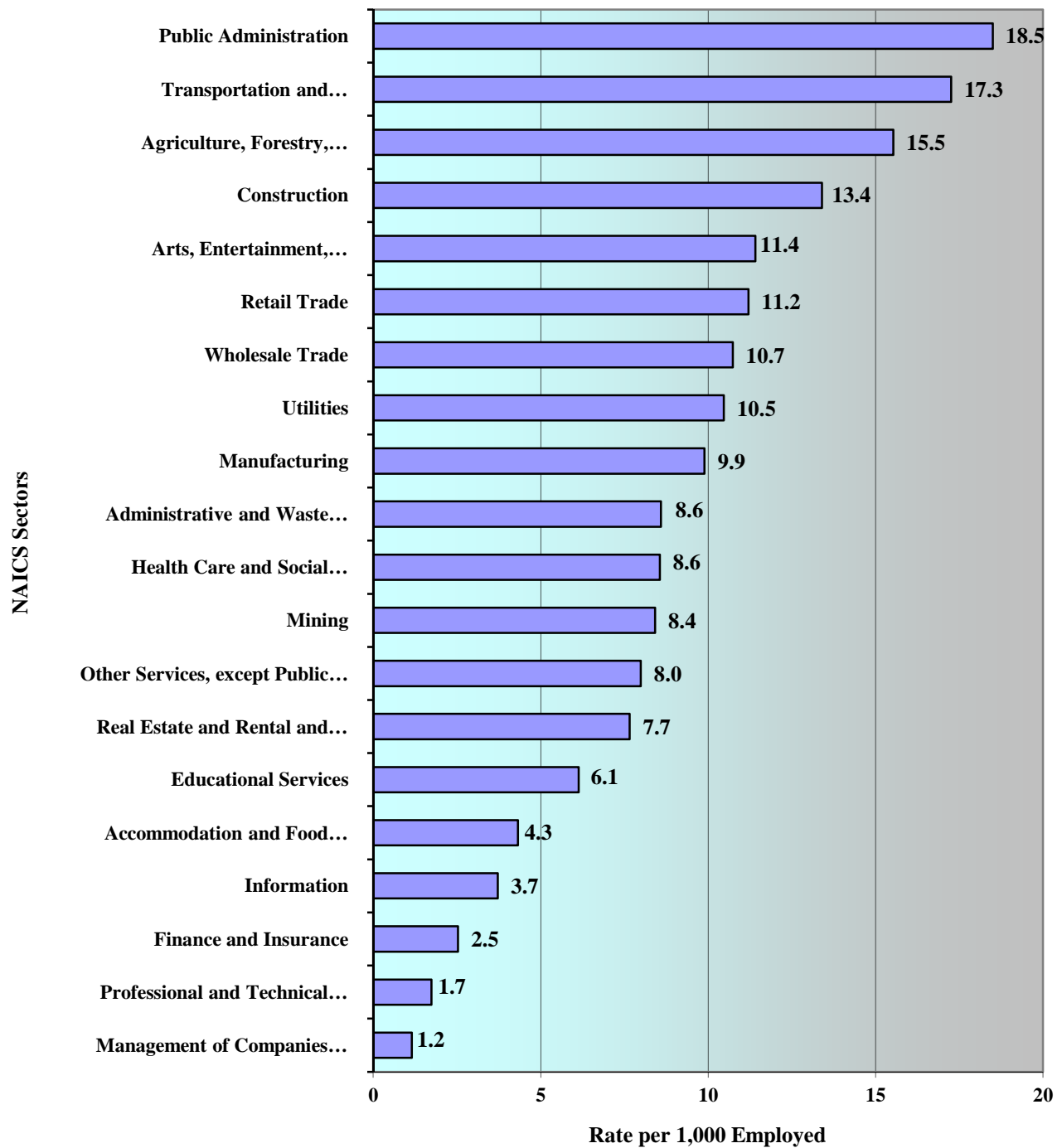
2 Fatal claims are included in count of lost-time claims.

3 Source: Colorado Department of Labor and Employment, Labor Market Information, "2009 Quarterly Census of Employment and Wages, Supersector data for Colorado, Aggregate of all types." Statewide total on QCEW differs due to distribution of government employees throughout sectors. An employed person is 16 years or over in the civilian noninstitutional population who, during the reference week, (a) did any work at all; and, (b) who was not working but was temporarily absent.

4 "Other" includes nonclassified establishments, invalid NAICS codes and missing data.

5 Totals at the industry/sector level for Colorado include nondisclosable data suppressed within the detailed table in Table 10. However, these sector totals cannot be used in Table 10 because it would allow the suppressed sub-sector data to be revealed.

**Figure 13. Rate of Lost-Time Claims, by North American Industry Classification System (NAICS) Sectors**



Source: Table 9

Table 10

**Distribution of Lost-Time Claims, and Rate of Lost-Time Claims, by  
North American Industry Classification System (NAICS) Sub-Sectors**

Date of Injury - Calendar Year 2009  
State of Colorado

NAICS Sub-Sectors <sup>1</sup>	Lost-Time Claims		Average Annual Employment <sup>2</sup>	Rate of Lost-Time Claims per 1000 Employed
	Count	Percent		
TRANSPORTATION and WAREHOUSING				
487 Scenic & Sightseeing Transportation	20	0.1	475	42.1
481 Air Transportation	366	1.4	13,383	27.3
485 Transit & Ground Passenger Transportation	186	0.7	7,123	26.1
492 Couriers & Messengers	214	0.8	8,655	24.7
484 Truck Transportation	355	1.3	17,292	20.5
488 Support Activities for Transportation	101	0.4	7,037	14.4
486 Pipeline Transportation	6	0.0	990	6.1
493 Warehousing & Storage	21	0.1	6,626	3.2
Subtotal	1,269	4.8	61,581	20.6
PUBLIC ADMINISTRATION				
923 Administration of Human Resource Programs	313	1.2	8,841	35.4
922 Justice, Public Order & Safety Activities	781	2.9	22,140	35.3
921 Executive, Legislative & Other General Government Support	1,480	5.6	82,044	18.0
925 Administration of Housing Programs, Urban Planning & Comm. Develop.	3	0.0	755	4.0
924 Administration of Environmental Quality Programs	10	0.0	10,915	0.9
926 Administration of Economic Programs	4	0.0	7,399	0.5
Subtotal	2,591	9.8	132,094	19.6
AGRICULTURE, FORESTRY, FISHING and HUNTING				
112 Animal Production	97	0.4	5,430	17.9
111 Crop Production	80	0.3	5,772	13.9
115 Support Activities for Agriculture & Forestry	30	0.1	2,439	12.3
Subtotal	207	0.8	13,641	15.2
CONSTRUCTION				
238 Specialty Trade Contractors	1,290	4.9	87,938	14.7
237 Heavy & Civil Engineering Construction	270	1.0	21,902	12.3
236 Construction of Buildings	240	0.9	24,492	9.8
Subtotal	1,800	6.8	134,332	13.4
ARTS, ENTERTAINMENT and RECREATION				
711 Performing Arts, Spectator Sports & Related Industries	93	0.4	6,636	14.0
713 Amusement, Gambling & Recreation Industries	457	1.7	40,214	11.4
712 Museums, Historical Sites & Similar Institutions	20	0.1	3,102	6.4
Subtotal	570	2.1	49,952	11.4

Table 10 (Continued)

**Distribution of Lost-Time Claims, and Rate of Lost-Time Claims, by  
North American Industry Classification System (NAICS) Sub-Sectors**

**Date of Injury - Calendar Year 2009  
State of Colorado**

NAICS Sub-Sectors <sup>1</sup>	Lost-Time Claims		Average Annual Employment <sup>2</sup>	Rate of Lost-Time Claims per 1000 Employed
	Count	Percent		
RETAIL TRADE				
444 Building Material & Garden Supply Stores	366	1.4	20,602	17.8
445 Food & Beverage Stores	701	2.6	45,074	15.6
452 General Merchandise Stores	708	2.7	51,571	13.7
442 Furniture & Home Furnishings Stores	105	0.4	8,362	12.6
447 Gasoline Stations	133	0.5	12,318	10.8
441 Motor Vehicle & Parts Dealers	288	1.1	28,055	10.3
446 Health & Personal Care Stores	109	0.4	11,204	9.7
453 Miscellaneous Store Retailers	138	0.5	14,952	9.2
454 Nonstore Retailers	21	0.1	5,463	3.8
451 Sporting Goods, Hobby, Book & Music Stores	52	0.2	15,064	3.5
448 Clothing & Clothing Accessories Stores	54	0.2	18,392	2.9
443 Electronics & Appliance Stores	11	0.0	8,644	1.3
Subtotal	2,686	10.1	239,701	11.2
MANUFACTURING				
321 Wood Product Manufacturing	53	0.2	176	301.1
314 Textile Product Mills	20	0.1	106	188.7
332 Fabricated Metal Product Manufacturing	153	0.6	1,949	78.5
325 Chemical Manufacturing	29	0.1	888	32.7
336 Transportation Equipment Manufacturing	43	0.2	1,564	27.5
323 Printing & Related Support Activities	42	0.2	1,784	23.5
311 Food Manufacturing	415	1.6	18,381	22.6
327 Nonmetallic Mineral Product Manufacturing	91	0.3	4,131	22.0
312 Beverage & Tobacco Product Manufacturing	74	0.3	5,228	14.2
339 Miscellaneous Manufacturing	72	0.3	5,312	13.6
326 Plastics & Rubber Products Manufacturing	41	0.2	6,051	6.8
337 Furniture & Related Product Manufacturing	59	0.2	9,192	6.4
334 Computer & Electronic Product Manufacturing	62	0.2	9,752	6.4
322 Paper Manufacturing	17	0.1	3,258	5.2
333 Machinery Manufacturing	68	0.3	13,105	5.2
331 Primary Metal Manufacturing	29	0.1	7,171	4.0
315 Apparel Manufacturing	5	0.0	1,807	2.8
316 Leather & Allied Product Manufacturing	1	0.0	656	1.5
324 Petroleum & Coal Products Manufacturing	3	0.0	6,067	0.5
335 Electrical Equipment, Appliance & Component Manufacturing	9	0.0	23,385	0.4
Subtotal	1,286	4.8	119,963	10.7
WHOLESALE TRADE				
424 Merchant Wholesalers, Nondurable Goods	493	1.9	31,426	15.7
423 Merchant Wholesalers, Durable Goods	451	1.7	50,039	9.0
425 Electronic Markets & Agents & Brokers	58	0.2	11,811	4.9
Subtotal	1,002	3.8	93,276	10.7

Table 10 (Continued)

**Distribution of Lost-Time Claims, and Rate of Lost-Time Claims, by  
North American Industry Classification System (NAICS) Sub-Sectors**

**Date of Injury - Calendar Year 2009  
State of Colorado**

NAICS Sub-Sectors <sup>1</sup>	Lost-Time Claims		Average Annual Employment <sup>2</sup>	Rate of Lost-Time Claims per 1000 Employed
	Count	Percent		
<b>UTILITIES</b>				
221 Utilities	149	0.6	14,227	10.5
<b>HEALTH CARE and SOCIAL ASSISTANCE</b>				
623 Nursing & Residential Care Facilities	484	1.8	41,460	11.7
622 Hospitals	892	3.4	78,525	11.4
624 Social Assistance	321	1.2	39,669	8.1
621 Ambulatory Health Care Services	471	1.8	93,611	5.0
<i>Subtotal</i>	<i>2,168</i>	<i>8.2</i>	<i>253,265</i>	<i>8.6</i>
<b>ADMINISTRATIVE and WASTE SERVICES</b>				
562 Waste Management & Remediation Services	134	0.5	6,703	20.0
561 Administrative & Support Services	1,001	3.8	125,405	8.0
<i>Subtotal</i>	<i>1,135</i>	<i>4.3</i>	<i>132,108</i>	<i>8.6</i>
<b>MINING</b>				
212 Mining (except Oil & Gas)	109	0.4	5,215	20.9
213 Support Activities for Mining	73	0.3	10,913	6.7
211 Oil & Gas Extraction	20	0.1	7,877	2.5
<i>Subtotal</i>	<i>202</i>	<i>0.8</i>	<i>24,005</i>	<i>8.4</i>
<b>OTHER SERVICES, except PUBLIC ADMINISTRATION</b>				
813 Religious, Grantmaking, Civic, Professional & Similar Organizations	164	0.6	19,045	8.6
811 Repair & Maintenance	184	0.7	21,461	8.6
812 Personal & Laundry Services	175	0.7	22,796	7.7
814 Private Households	8	0.0	3,149	2.5
<i>Subtotal</i>	<i>531</i>	<i>2.0</i>	<i>66,451</i>	<i>8.0</i>
<b>REAL ESTATE and RENTAL and LEASING</b>				
532 Rental & Leasing Services	99	0.4	11,440	8.7
531 Real Estate	232	0.9	31,547	7.4
533 Lessors of Nonfinancial Intangible Assets (except Copyrighted Works)	5	0.0	872	5.7
<i>Subtotal</i>	<i>336</i>	<i>1.3</i>	<i>43,859</i>	<i>7.7</i>
<b>EDUCATIONAL SERVICES</b>				
611 Educational Services	1,195	4.5	194,819	6.1
<b>ACCOMMODATION and FOOD SERVICES</b>				
721 Accommodation	238	0.9	40,454	5.9
722 Food Services & Drinking Places	708	2.7	178,231	4.0
<i>Subtotal</i>	<i>946</i>	<i>3.6</i>	<i>218,685</i>	<i>4.3</i>
<b>INFORMATION</b>				
519 Other Information Services	35	0.1	4,345	8.1
517 Telecommunications	152	0.6	31,810	4.8
511 Publishing Industries (Except Internet)	78	0.3	24,131	3.2
512 Motion Picture & Sound Recording Industries	9	0.0	4,130	2.2
518 ISPs, Search Portals & Data Processing	8	0.0	6,325	1.3
515 Broadcasting, Except Internet	5	0.0	6,476	0.8
<i>Subtotal</i>	<i>287</i>	<i>1.1</i>	<i>77,217</i>	<i>3.7</i>

**Table 10 (Continued)**

**Distribution of Lost-Time Claims, and Rate of Lost-Time Claims, by  
North American Industry Classification System (NAICS) Sub-Sectors**

**Date of Injury - Calendar Year 2009  
State of Colorado**

NAICS Sub-Sectors <sup>1</sup>	Lost-Time Claims		Average Annual Employment <sup>2</sup>	Rate of Lost-Time Claims per 1000 Employed
	Count	Percent		
FINANCE and INSURANCE				
524 Insurance Carriers & Related Activities	130	0.5	36,428	3.6
522 Credit Intermediation & Related Activities	103	0.4	46,687	2.2
523 Securities, Commodity Contracts, Other Financial Investments & Activities	18	0.1	15,712	1.1
Subtotal	251	0.9	98,827	2.5
PROFESSIONAL, SCIENTIFIC and TECHNICAL SERVICES				
541 Professional, Scientific & Technical Services	297	1.1	170,708	1.7
MANAGEMENT of COMPANIES and ENTERPRISES				
551 Management of Companies & Enterprises	33	0.1	28,550	1.2
OTHER				
997 Disclosure Suppression	16	0.1	n/a	n/a
998 Invalid NAICS Codes	63	0.2	n/a	n/a
999 Missing	7,537	28.4	761	n/a
Subtotal	7,616	28.7	n/a	n/a
TOTAL	26,557	100%	2,168,022	12.2

**Notes:**

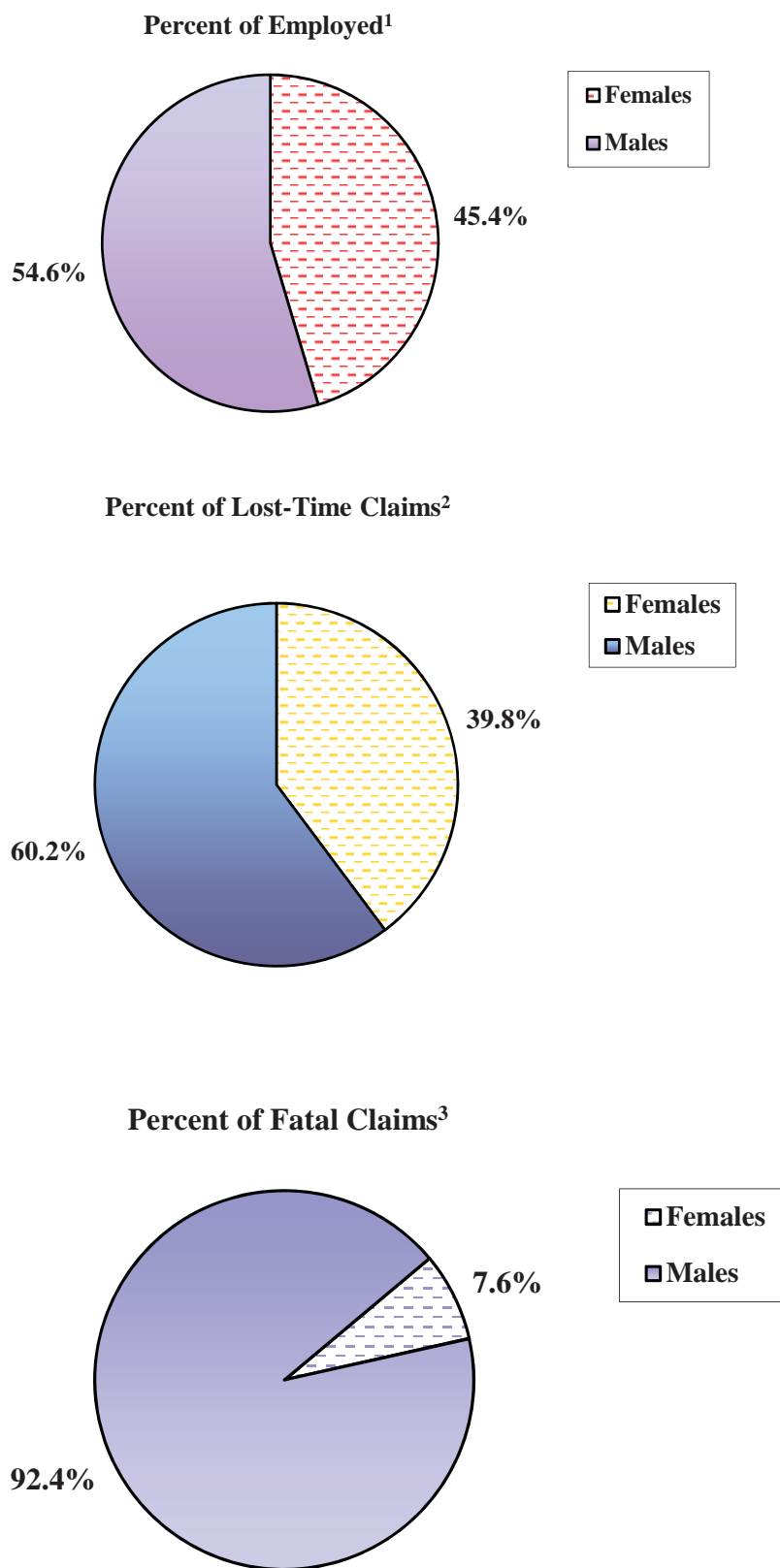
\* Value is less than .05%.

1 Source: Office of Management and Budget, *North American Industry Classification System, United States, 2007*.

2 Source: Colorado Department of Labor and Employment, Labor Market Information, "2009 Quarterly Census of Employment and Wages, Sector (2 digit) data for Colorado, Aggregate of all Types." Statewide total on QCEW differs due to distribution of government employees throughout sectors. An employed person is 16 years or over in the civilian noninstitutional population who, during the reference week, (a) did any work at all; and (b) who was not working but was temporarily absent.

3 Subtotals for individual sectors may not equal sector totals in Table 9 due to a lack of claims filed in some subsectors, and disclosure suppression. In cooperation with the CDLE Office of Labor Market Information Unit, the Division of Workers' Compensation withholds the publication of data necessary to protect the identity and data of cooperating employers and workers. There are some cases where detailed data could consist of too few employers to ensure confidentiality. These data are withheld or "suppressed" in Division publications.

**Figure 14. Percent Distribution of Employed, Lost-Time Claims and Fatal Claims, by Gender**



**Notes:**

1 Source: U.S. Dept. of Labor, Bureau of Labor Statistics, Geographic Profile of Employment and Unemployment, 2009: Table 14, *Employment by Status of the Civilian Noninstitutional Population by Sex, Race, Hispanic or Latino Ethnicity, Marital Status, and Detailed Age, 2009 Annual Averages-Colorado*.

2 Total number of lost-time claims is 26,557.

3 Total number of fatal claims is 79.



**Table 11**

**Distribution and Rate of Lost-Time Claims, and Rate Ratio, Ranked, by Gender and Part of Body**

**Date of Injury - Calendar Year 2009  
State of Colorado**

Part of Body <sup>1</sup>	Gender						Total		Rate Ratio (CI) <sup>4</sup>
	Count	Female Percent	Rate <sup>2</sup>	Count	Male Percent	Rate <sup>3</sup>	Count	Percent	
Death	7	0.0	0.01	75	0.3	0.07	82	0.3	8.91 (4.1, 19.3)
Finger(s)	498	1.9	0.49	1,082	4.1	0.95	1,580	6.0	1.81 (1.6, 2)
Internal Organs	141	0.5	0.11	301	1.1	0.18	442	1.7	1.78 (1.5, 2.2)
Upper Arm (Includes Shoulder(s))	1,121	4.2	0.95	2,034	7.7	1.50	3,155	11.9	1.51 (1.4, 1.6)
Knee	1,081	4.1	1.01	1,887	7.1	1.46	2,968	11.2	1.45 (1.3, 1.6)
Foot/Feet	317	1.2	0.28	541	2.0	0.47	858	3.2	1.42 (1.2, 1.6)
Back	1,687	6.4	1.49	2,799	10.5	2.16	4,486	16.9	1.38 (1.3, 1.5)
Head	609	2.3	0.46	911	3.4	0.71	1,520	5.7	1.24 (1.1, 1.4)
Ankle	489	1.8	0.47	678	2.6	0.62	1,167	4.4	1.15 (1, 1.3)
Hand	472	1.8	0.44	647	2.4	0.51	1,119	4.2	1.14 (1, 1.3)
Multiple Body Parts	1,020	3.8	0.92	968	3.6	0.74	1,988	7.5	0.79 (0.7, 0.9)
Wrist	699	2.6	0.66	489	1.8	0.39	1,188	4.5	0.58 (0.5, 0.7)
Multiple Upper Extremities	339	1.3	0.33	210	0.8	0.13	549	2.1	0.52 (0.4, 0.6)
All Other Classified Injuries	1,665	6.3	1.48	2,964	11.2	2.50	4,629	17.4	1.48 (1.4, 1.6)
Nonclassifiable	415	1.6	0.32	400	1.5	0.28	815	3.1	0.8 (0.7, 0.9)
<b>Total<sup>5</sup></b>	<b>10,560</b>	<b>39.8%</b>	<b>9.43</b>	<b>15,986</b>	<b>60.2%</b>	<b>12.66</b>	<b>26,546</b>	<b>100%</b>	<b>1.26 (1.2, 1.3)</b>

**Notes:**

- 1 Some of the part of body categories shown in this table incorporate related categories from Table 4 (e.g., fingers includes thumb(s); internal organs includes lungs and heart).
- 2 Rate is the number of injuries calculated per 1000 females employed in Colorado (the population-at-risk).
- 3 Rate is the number of injuries calculated per 1000 males employed in Colorado (the population-at-risk).
- 4 Rate ratio is the rate for males divided by the rate for females. A rate ratio greater than 1 means males had a higher rate than females; a ratio less than 1 means males had a lower rate than females. (CI = 95% Confidence Interval)
- 5 Total number of lost-time claims for 2009 is 26,557; eleven (11) claims were missing data for gender.

Table 12

**Distribution and Rate of Lost-Time Claims, and Rate Ratio, Ranked, by Gender and Nature of Injury**

**Date of Injury - Calendar Year 2009  
State of Colorado**

Nature of Injury	Gender						Total		Rate Ratio (CI) <sup>3</sup>
	Female			Male			Count	Percent	
	Count	Percent	Rate <sup>1</sup>	Count	Percent	Rate <sup>2</sup>			
Hernia	49	0.2	0.04	431	1.6	0.31	480	1.8	7.32 (5.44, 9.83)
Laceration, Puncture	311	1.2	0.27	1,041	3.9	0.75	1,352	5.1	2.78 (2.45, 3.16)
Dislocation	84	0.3	0.07	243	0.9	0.18	327	1.2	2.41 (1.88, 3.08)
Burn	63	0.2	0.05	168	0.6	0.12	231	0.9	2.22 (1.66, 2.96)
Fracture	655	2.5	0.57	1,179	4.4	0.85	1,834	6.9	1.5 (1.36, 1.65)
Contusion, Crushing	1,352	5.1	1.18	2,021	7.6	1.47	3,373	12.7	1.24 (1.16, 1.33)
Strain, Sprain	5,124	19.3	4.47	7,418	27.9	5.38	12,542	47.2	1.2 (1.16, 1.25)
Inflammation	278	1.0	0.24	298	1.1	0.22	576	2.2	0.89 (0.76, 1.05)
Multiple Physical Injuries Only	229	0.9	0.20	225	0.8	0.16	454	1.7	0.82 (0.68, 0.98)
Occupational Disease or Cumulative Injury <sup>4</sup>	725	2.7	0.63	658	2.5	0.48	1,383	5.2	0.75 (0.68, 0.84)
Mental Stress/Mental Disorder	116	0.4	0.10	81	0.3	0.06	197	0.7	0.58 (0.44, 0.77)
Carpal Tunnel Syndrome	172	0.6	0.15	57	0.2	0.04	229	0.9	0.28 (0.2, 0.37)
All Other Specific Injuries, NOC <sup>5</sup>	1,013	3.8	0.88	1,348	5.1	0.98	2,361	8.9	1.11 (1.02, 1.2)
Other <sup>6</sup>	389	1.5	0.34	818	3.1	0.59	1,207	4.5	1.75 (1.55, 1.97)
<b>Total<sup>7</sup></b>	<b>10,560</b>	<b>39.8%</b>	<b>9.21</b>	<b>15,986</b>	<b>60.2%</b>	<b>11.59</b>	<b>26,546</b>	<b>100%</b>	<b>1.26 (1.23, 1.29)</b>

**Notes:**

1 Rate is the number of injuries calculated per 1000 females employed in Colorado (the population-at-risk).

2 Rate is the number of injuries calculated per 1000 males employed in Colorado (the population-at-risk).

3 Rate ratio is the rate for males/rate for females. A rate ratio greater than 1 means males had a higher rate than females; a ratio less than 1 means males had a lower rate than females. (CI = 95% Confidence Interval)

4 Excludes mental stress, mental disorder and carpal tunnel claims reported here in their own categories.

5 Not Otherwise Classified.

6 "Other" includes those categories in Table 6, with counts less than 1% of the total, not already counted in other categories here, and also missing data. Even though "Mental Stress/Mental Disorder" is less than 1% of the total, it is reported separately because of the Legislature's past interest in these injuries.

7 Total number of lost-time claims for 2009 is 26,557; eleven (11) claims were missing data for gender.

**Table 13**

**Distribution of Lost-Time Claims, Ranked, by Gender and  
North American Industry Classification System (NAICS) Sectors**

**Date of Injury - Calendar Year 2009  
State of Colorado**

NAICS Sectors <sup>1,2</sup>	Gender		Gender		Totals	
	Female		Male			
	Count	Percent	Count	Percent	Count	Percent
Retail Trade	1,300	4.9	1,383	5.2	2,683	10.1
Public Administration	909	3.4	1,681	6.3	2,590	9.8
Health Care and Social Assistance	1,665	6.3	503	1.9	2,168	8.2
Construction	95	0.4	1,705	6.4	1,800	6.8
Manufacturing	310	1.2	974	3.7	1,284	4.8
Transportation and Warehousing	320	1.2	951	3.6	1,271	4.8
Educational Services	794	3.0	401	1.5	1,195	4.5
Administrative and Support and Waste Management	425	1.6	710	2.7	1,135	4.3
Wholesale Trade	207	0.8	795	3.0	1,002	3.8
Accommodation and Food Services	516	1.9	430	1.6	946	3.6
Arts, Entertainment, and Recreation	199	0.7	370	1.4	569	2.1
Other Services (except Public Administration)	218	0.8	313	1.2	531	2.0
Real Estate and Rental and Leasing	109	0.4	227	0.9	336	1.3
Professional, Scientific, and Technical Services	152	0.6	145	0.5	297	1.1
Information	146	0.5	141	0.5	287	1.1
Finance and Insurance	190	0.7	68	0.3	258	1.0
Agriculture, Forestry, Fishing and Hunting	37	0.1	177	0.7	214	0.8
Mining	10	0.0	191	0.7	201	0.8
Utilities	25	0.1	124	0.5	149	0.6
Management of Companies and Enterprises	12	0.0	21	0.1	33	0.1
Other <sup>3</sup>	24	0.1	39	0.1	63	0.2
Missing	2,897	10.9	4,637	17.5	7,534	28.4
<b>Totals<sup>4</sup></b>	<b>10,560</b>	<b>39.8%</b>	<b>15,986</b>	<b>60.2%</b>	<b>26,546</b>	<b>100%</b>

**Notes:**

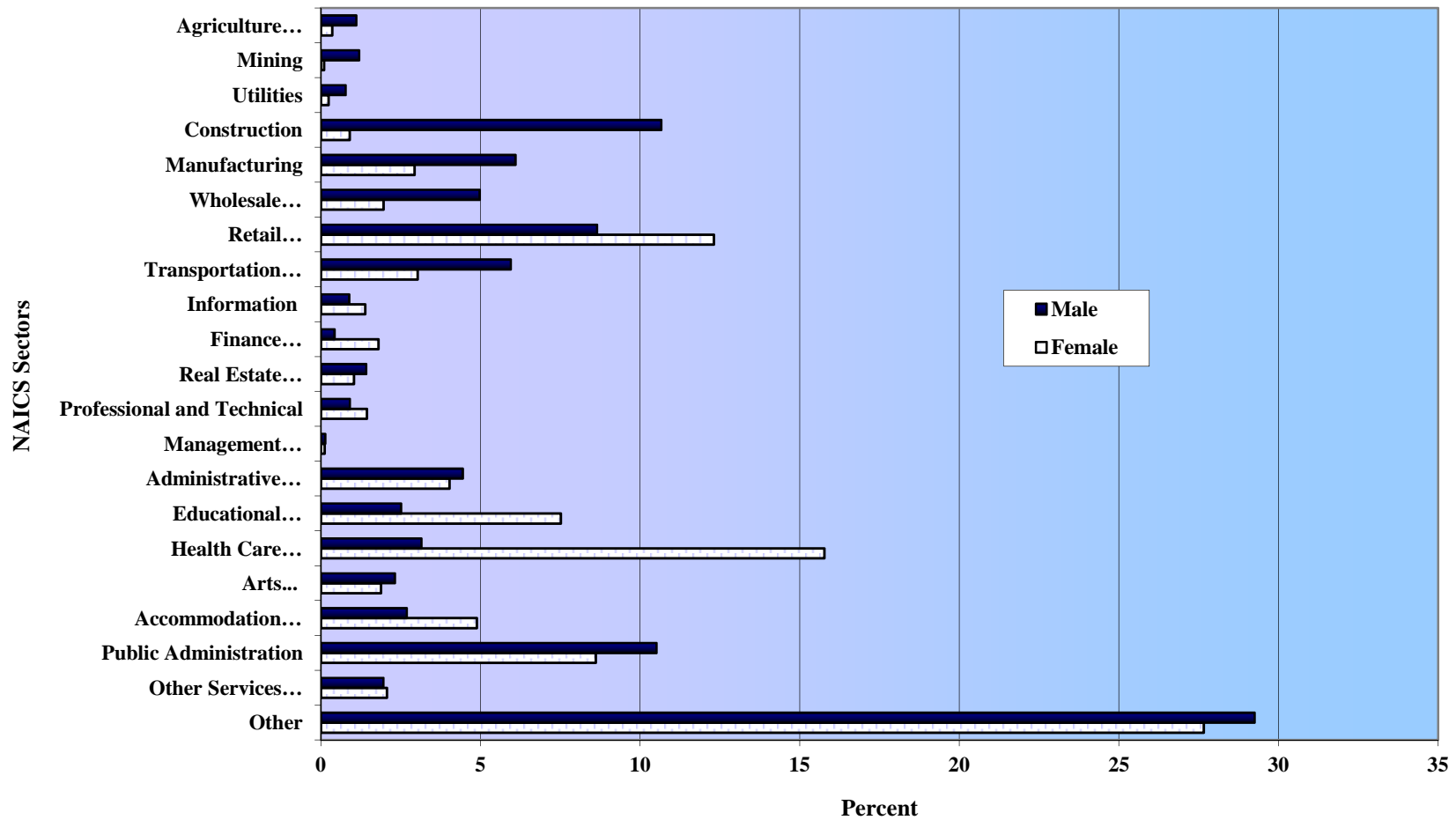
1 The findings reported are best interpreted in comparison to the NAICS by gender distribution of the total workforce; however, Colorado Labor Market Information (LMI) does not provide this data.

2 Source: Office of Management and Budget, *North American Industry Classification System, United States, 2007*.

3 "Other" includes nonclassified establishments and invalid NAICS codes.

4 Total number of lost-time claims for 2009 is 26,557; eleven (11) claims were missing data for gender.

**Figure 15. Percent Distribution of Lost-Time Claims, by Gender by North American Industry Classification System (NAICS) Sectors**



**Notes:**

Source: Table 13

1 Males = 100%, Females = 100%.

Table 14

Percent Distribution of Lost-Time Claims by Age and North American Industry Classification System (NAICS) Sectors

Date of Injury - Calendar Year 2009  
State of Colorado

NAICS Sectors <sup>1,2</sup>	Age Group <sup>3</sup>							Age	Totals	
	Under 18	18-29	30-39	40-49	50-59	60-65	Over 65	Missing	Count	Percent
Agriculture, Forestry, Fishing & Hunting	*	0.3	0.1	0.1	0.2	*	*	*	214	0.8
Mining	*	0.2	0.2	0.2	0.1	*	*	*	202	0.8
Utilities	*	0.1	0.1	0.2	0.2	0.1	*	*	149	0.6
Construction	*	1.7	1.9	1.6	1.3	0.3	0.1	*	1,800	6.8
Manufacturing	*	0.9	1.1	1.3	1.1	0.3	0.1	*	1,286	4.8
Wholesale Trade	*	0.7	0.9	1.0	0.9	0.2	0.1	*	1,002	3.8
Retail Trade	0.1	2.5	1.6	2.4	2.3	0.8	0.4	*	2,686	10.1
Transportation & Warehousing	*	0.6	0.8	1.4	1.4	0.4	0.1	*	1,271	4.8
Information	*	0.2	0.3	0.3	0.3	0.1	*	*	287	1.1
Finance & Insurance	*	0.2	0.2	0.2	0.3	0.1	*	*	258	1.0
Real Estate, Rental & Leasing	*	0.2	0.3	0.4	0.3	0.1	*	*	336	1.3
Professional & Technical Services	*	0.2	0.2	0.3	0.3	0.1	*	*	297	1.1
Management of Companies & Enterprises	*	*	*	*	*	*	*	*	33	0.1
Administrative & Waste Services	*	1.0	1.1	1.1	0.9	0.2	0.1	*	1,135	4.3
Educational Services	*	0.5	0.7	1.2	1.5	0.5	0.1	*	1,195	4.5
Health Care & Social Assistance	*	1.4	1.7	2.0	2.2	0.5	0.3	*	2,168	8.2
Arts, Entertainment & Recreation	*	0.8	0.4	0.4	0.4	0.1	0.1	*	570	2.1
Accommodation & Food Services	0.1	1.3	0.8	0.7	0.5	0.1	*	*	946	3.6
Other Services, Except Public Administration	*	0.4	0.5	0.6	0.4	0.1	0.1	*	531	2.0
Public Administration	0.1	1.1	2.1	2.7	3.0	0.7	0.2	*	2,591	9.8
Other <sup>4</sup>	0.1	6.5	6.7	7.2	6.0	1.5	0.6	0.1	7,600	28.6
<b>Totals</b>	<b>100</b>	<b>5,445</b>	<b>5,711</b>	<b>6,690</b>	<b>6,295</b>	<b>1,653</b>	<b>599</b>	<b>64</b>	<b>26,557</b>	<b>n/a</b>
<b>Percent</b>	<b>0.4%</b>	<b>20.5%</b>	<b>21.5%</b>	<b>25.2%</b>	<b>23.7%</b>	<b>6.2%</b>	<b>2.3%</b>	<b>0.2%</b>	<b>n/a</b>	<b>100%</b>

Notes:

\* Value is less than .05%.

1 The findings reported in this table are best interpreted in comparison to the NAICS by age distribution of the total workforce; however, the CDLE Office of Labor Market Information (LMI) does not provide this data.

2 Source: Office of Management and Budget, *North American Industry Classification System, United States, 2007*.

3 Note widths of age group categories vary.

4 "Other" includes nonclassified establishments, invalid NAICS codes and missing data.

Table 15

**Distribution of Lost-Time Claims, and Rate of Claims, by Age and Gender**

**Date of Injury - Calendar Year 2009  
State of Colorado**

Age Group	Gender						Totals		
	Female			Male					
	Lost-Time Claims <sup>1</sup>	Number Employed <sup>2,3</sup>	Rate of Lost-Time Claims per 1000 Females Employed	Lost-Time Claims <sup>1</sup>	Number Employed <sup>2,3</sup>	Rate of Lost-Time Claims per 1000 Males Employed	Lost-Time Claims <sup>1</sup>	Number Employed <sup>2,3</sup>	Rate of Lost-Time Claims per 1000 Employed
16-19 yrs.	228	40	5.70	320	41	7.80	548	81	6.77
20-24 yrs.	744	105	7.09	1,399	126	11.10	2,143	231	9.28
25-34 yrs.	1,969	265	7.43	3,611	307	11.76	5,580	572	9.76
35-44 yrs.	2,347	239	9.82	3,741	340	11.00	6,088	579	10.51
45-54 yrs.	3,102	281	11.04	4,046	305	13.27	7,148	586	12.20
55-64 yrs.	1,862	181	10.29	2,364	203	11.65	4,226	384	11.01
<b>Totals</b>	<b>10,252</b>	<b>1,111</b>	<b>n/a</b>	<b>15,481</b>	<b>1,322</b>	<b>n/a</b>	<b>25,733</b>	<b>2,433</b>	<b>n/a</b>
<b>Rate of Claims for Total Employed</b>			<b>9.23</b>			<b>11.71</b>			<b>10.58</b>

**Notes:**

- 1 The distribution of lost-time claims has been adjusted to make possible comparisons with the BLS Colorado employment data. The total of 2009 lost-time claims is 26,557; 824 claims are excluded from this analysis because they fall outside the age categories used in this table or had missing data for age or gender.
- 2 Source: U.S. Department of Labor, Bureau of Labor Statistics, *Geographic Profile of Employment and Unemployment, 2009, Table 14, Employment Status of the Civilian Noninstitutional Population by Sex, Race, Hispanic or Latino Ethnicity, Marital Status, and Detailed Age, 2009 Annual Averages*. An employed person is 16 years and over in the civilian noninstitutional population who, during the reference week, (a) did any work at all; and (b) who was not working but was temporarily absent.
- 3 Counts are in thousands. Sums of individual items for age and gender may not equal total for age due to rounding.

**Section VII Age**

**Table 16**

**Distribution of Lost-Time Claims by Age and Gender**

**Date of Injury -Calendar Year 2009  
State of Colorado**

<b>Age Group<sup>1,2</sup></b>	<b>Gender</b>				<b>Totals</b>	
	<b>Female</b>		<b>Male</b>			
	<b>Count</b>	<b>Percent</b>	<b>Count</b>	<b>Percent</b>	<b>Count</b>	<b>Percent</b>
Under 18 yrs.	44	0.2	56	0.2	100	0.4
18 - 29 yrs.	1,915	7.2	3,525	13.3	5,440	20.5
30 - 39 yrs.	2,066	7.8	3,645	13.7	5,711	21.5
40 - 49 yrs.	2,795	10.5	3,891	14.7	6,686	25.2
50 - 59 yrs.	2,790	10.5	3,503	13.2	6,293	23.7
60 - 65 yrs.	694	2.6	959	3.6	1,653	6.2
Over 65 yrs.	229	0.9	370	1.4	599	2.3
Age Missing	27	0.1	37	0.1	64	0.2
<b>Totals<sup>3</sup></b>	<b>10,560</b>	<b>39.8%</b>	<b>15,986</b>	<b>60.2%</b>	<b>26,546</b>	<b>100%</b>

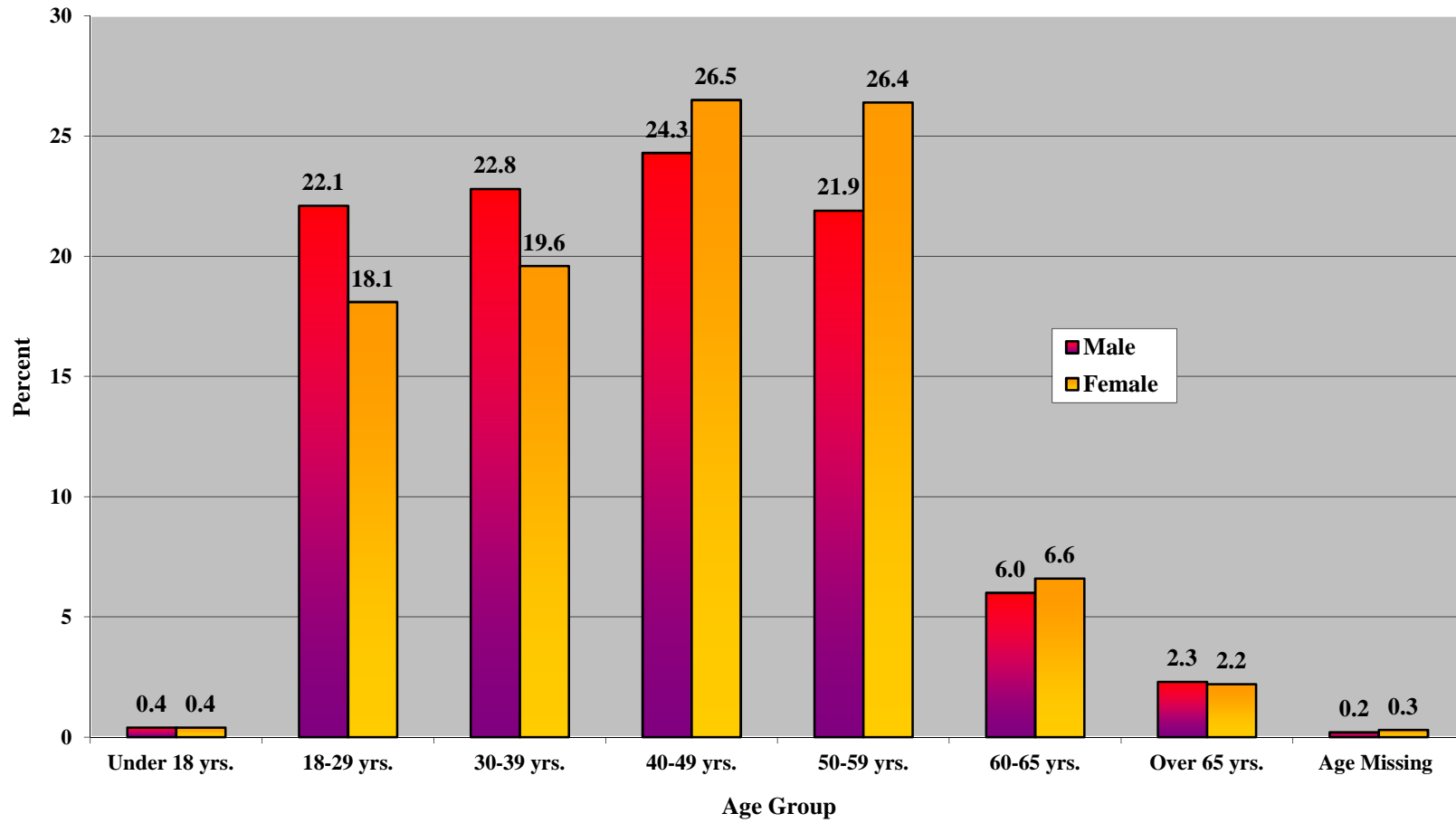
**Notes:**

- 1 The findings reported in this table are best interpreted in comparison to the age and gender distribution of the total workforce; however, Colorado Labor Market Information (LMI) does not provide this data.
- 2 Widths of age group categories vary from those in Table 15. The groupings here reflect those used by the Division of Workers' Compensation.
- 3 Total number of lost-time claims is 26,557; eleven (11) claims were missing data for gender.



**Section VII Age**

**Figure 16. Percent Distribution of Lost-Time Claims by Age and Gender**



**Notes:**

Source: Derived from Table 16.

1. Males=100%, Females =100%.

**Table 17**

**Distribution of Lost-Time Claims by Claim Status**

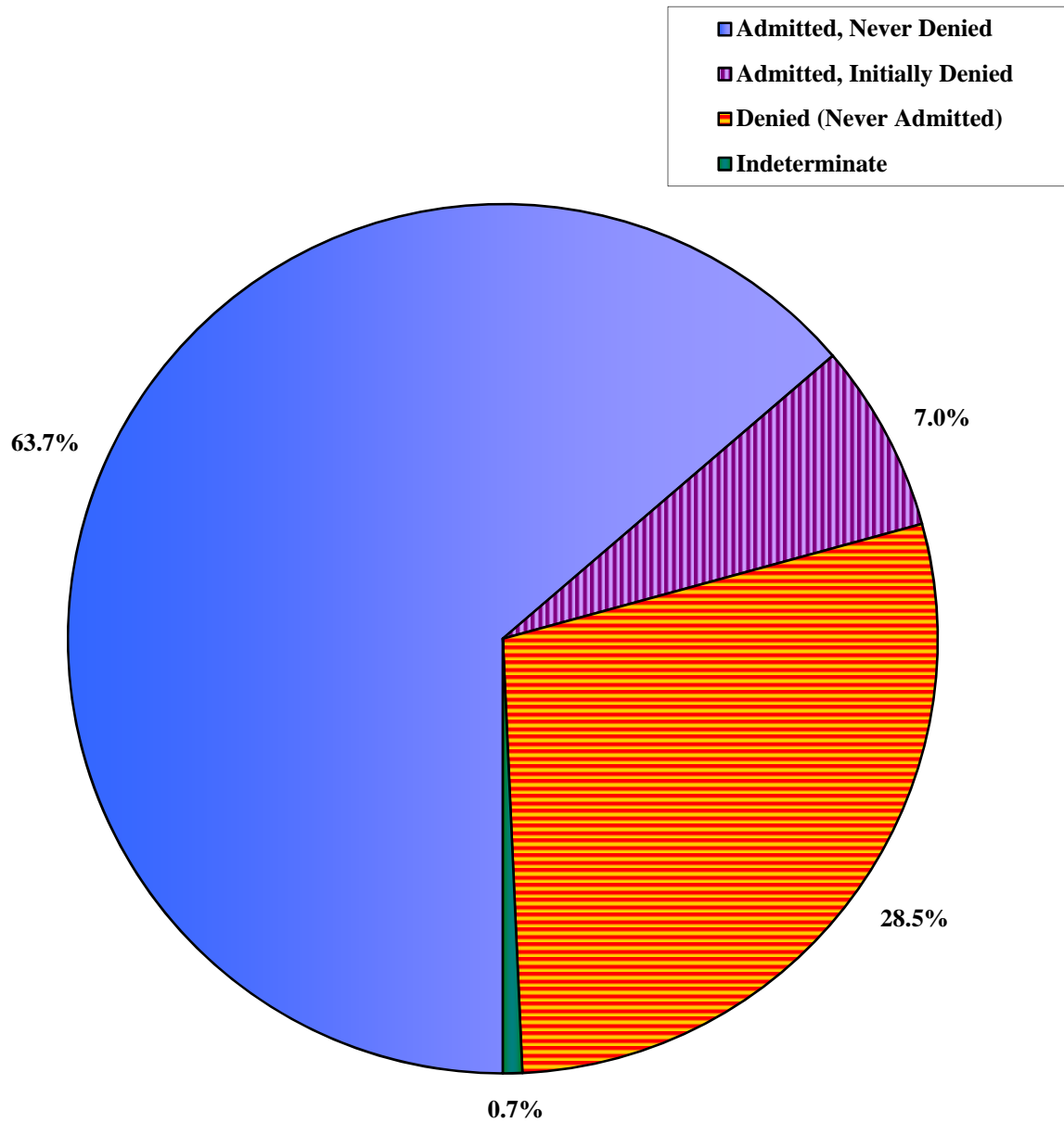
**Date of Injury - Calendar Year 2009  
State of Colorado**

<b>Claim Status<sup>1,2</sup></b>	<b>Count</b>	<b>Percent</b>
Admitted		
Never Denied	16,921	63.7
Initially Denied	1,865	7.0
Denied (Never Admitted)	7,580	28.5
Indeterminate <sup>3</sup>	191	0.7
<b>Totals</b>	<b>26,557</b>	<b>100%</b>

**Notes:**

- 1 The status of the claim is based on documents filed with the Division of Workers' Compensation, as of December 28, 2010. An "Admitted" claim is one for which a document with some indicator of liability has been filed, including a Fatal Admission or a Final Pay Notice. A "Denied" claim is one for which a "Notice of Contest" has been filed, but no evidence of liability is found.
- 2 Some of the cases have had a change of claim status during the course of the claims, but the majority were consistently one status.
- 3 An "Indeterminate" claim is one for which no evidence of an admission nor a denial has been filed. Of the "Indeterminate" claims, 9 (4.7%) have been resolved with a settlement, and none had a hearing.

**Figure 17. Percent Distribution of Lost-Time Claims by Claim Status**



Source: Table 17

**Table 18**

**Distribution of Lost-Time Claims by Claim Status (Detail) and Admission Type**

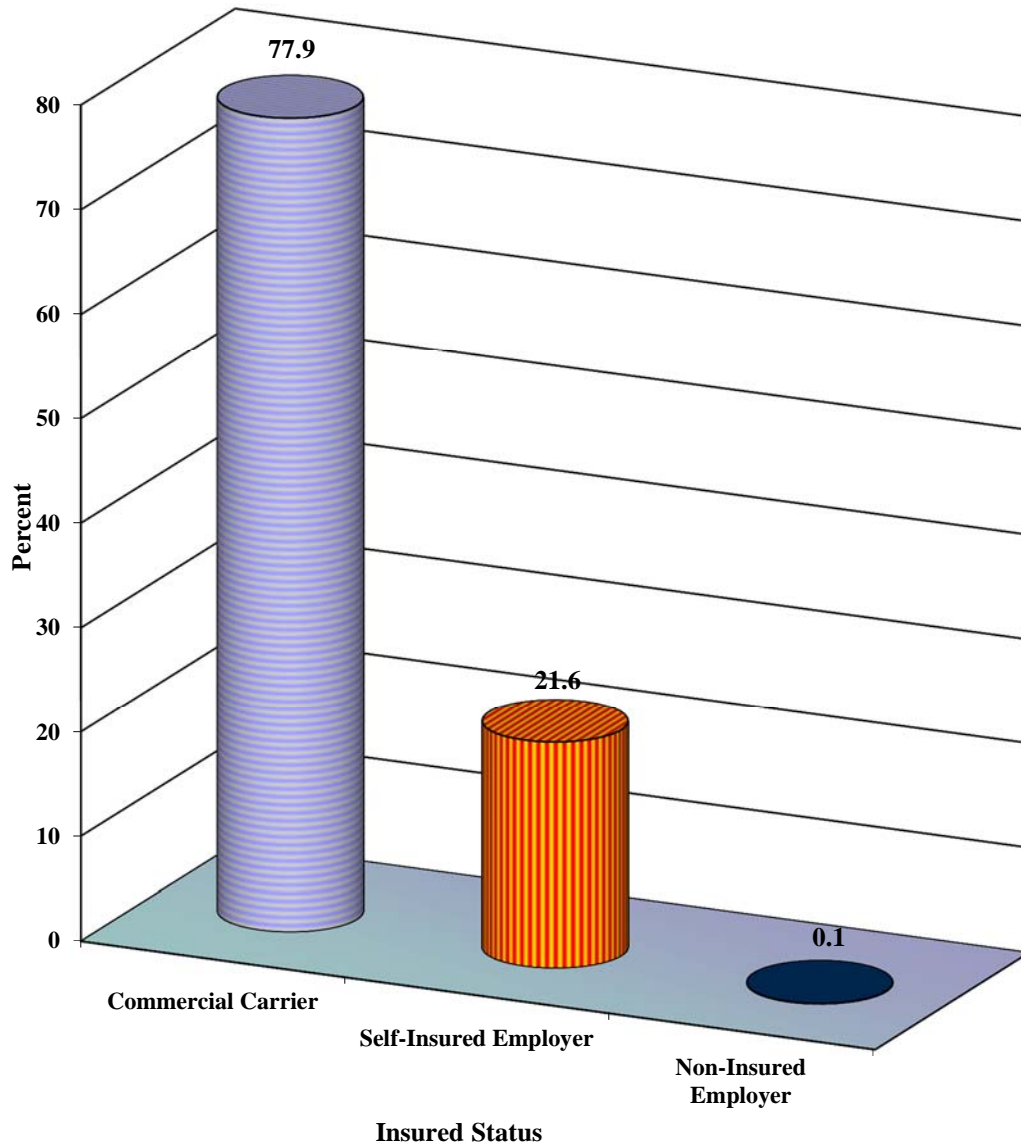
**Date of Injury - Calendar Year 2009  
State of Colorado**

Claim Status <sup>1,2</sup>	Count	Percent	Totals	
			Count	Percent
ADMITTED, NEVER DENIED				
Admission Type:				
General	2,224	13.1		
Final	1,261	7.5		
Fatal	7	0.0		
Final Pay Notice	13,429	79.4		
Subtotal	16,921	100%		
			16,921	63.7%
ADMITTED, INITIALLY DENIED				
Admission Type:				
General	256	13.7		
Final	143	7.7		
Fatal	8	0.4		
Final Pay Notice	1,458	78.2		
Subtotal	1,865	100%		
			1,865	7.0%
DENIED, NEVER ADMITTED			7,580	28.5%
INDETERMINATE <sup>3</sup>			191	0.7%
TOTALS			26,557	100%

**Notes:**

- 1 The status of the claim is based on documents filed with the Division of Workers' Compensation, as of December 28, 2010. An "Admitted" claim is one for which a document with some indicator of liability has been filed, including a Fatal Admission or a Final Pay Notice. A "Denied" claim is one for which a "Notice of Contest" has been filed, and no evidence of liability is found.
- 2 Some of the cases have had a change of claim status during the course of the claims, but the majority were consistently one status.
- 3 An "Indeterminate" claim is one for which no evidence of an admission nor a denial has been filed. Of the "Indeterminate" claims, 9 (4.7%) have been resolved with a settlement, and none had a hearing.

**Figure 18. Percent Distribution of Lost-Time Claims Filed, by Insured Status**



**Notes:**

1 Based on claims involving a single carrier, and employers without insurance.

2 The total number of lost-time claims is 26,557.

3 0.7% of claims show an indeterminate insurance status and are not shown in this graph.

4 The determination of non-insured employers in this figure was derived through an extensive claim-by-claim review process.

**Table 19**

**Distribution of Denied Claims by Insured Status<sup>1</sup>**

**Date of Injury - Calendar Year 2009  
State of Colorado**

<b>Carrier Type</b>	<b>Total Claims Filed</b>	<b>Claims Initially Denied</b>	<b>Claims Initially Denied but Later Admitted</b>	<b>Claims Ultimately Denied</b>
Commercial Carrier <sup>2</sup>	20,379	5,616	1,547	4,069
Self-Insured Employer <sup>2</sup>	5,653	1,859	240	1,619
Non-Insured Employer <sup>3</sup>	112	18	3	15
<b>Totals</b>	<b>26,144</b>	<b>7,493</b>	<b>1,790</b>	<b>5,703</b>

**Notes:**

1 A "Denied" claim is one for which a Notice of Contest, and no admission document, has been filed.

2 **The claims here had only one carrier involved throughout the process of filing, denying, and in some instances, later admitting.** There are hundreds of commercial carriers and self-insured employers, therefore the results are presented by carrier type, rather than by specific commercial carrier or self-insured employer. Of the total 26,557 lost-time claims filed, 413 (1.5%) involved multiple carriers and are excluded from this analysis.

3 Based on information in the Division's database as of December 28, 2010, neither an admission nor a denial has been filed in 85 of the 112 claims filed against apparently non-insured employers.

4 The determination of non-insured employers in this table is limited to information contained in the database on the date of the download.

**Table 20**

**Distribution of Lost-Time Claims by Gender and Claim Status**

**Date of Injury - Calendar Year 2009  
State of Colorado**

<b>Gender</b>	<b>Admission Only</b>		<b>Denial &amp; Admission</b>		<b>Denial Only</b>		<b>Indeterminate<sup>3</sup></b>		<b>Totals<sup>4</sup></b>	
	<b>Count</b>	<b>Percent</b>	<b>Count</b>	<b>Percent</b>	<b>Count</b>	<b>Percent</b>	<b>Count</b>	<b>Percent</b>	<b>Count</b>	<b>Percent</b>
Female	5,967	56.5	734	7.0	3,790	35.9	69	0.7	10,560	100
Male	10,947	68.5	1,131	7.1	3,786	23.7	122	0.8	15,986	100
<b>Totals</b>	<b>16,914</b>	<b>n/a</b>	<b>1,865</b>	<b>n/a</b>	<b>7,576</b>	<b>n/a</b>	<b>191</b>	<b>n/a</b>	<b>26,546</b>	<b>n/a</b>
<b>Percentage Overall</b>	<b>n/a</b>	<b>63.7%</b>	<b>n/a</b>	<b>7.0%</b>	<b>n/a</b>	<b>28.5%</b>	<b>n/a</b>	<b>0.7%</b>	<b>n/a</b>	<b>100%</b>

**Notes:**

- 1 The status of the claim is based on documents filed with the Division of Workers' Compensation, as of December 28, 2010. An "Admitted" claim is one for which a document with some indicator of liability has been filed, including a Fatal Admission or a Final Pay Notice. A "Denied" claim is one for which a "Notice of Contest" has been filed, but no evidence of liability is found.
- 2 Some of the cases have had a change of claim status during the course of the claims, but the majority were consistently one status.
- 3 An "Indeterminate" claim is one for which no evidence of an admission nor a denial has been filed. Of the "Indeterminate" claims, 9 (4.7%) have been resolved with a settlement and no hearing.
- 4 The total number of lost-time claims filed is 26,557; eleven (11) claims were missing data on gender.



**Section VIII Admissions and Denials**

re  
y

one

**Table 21**

**Distribution of Fatal Claims by Nature of Injury (Detail)**

**Date of Fatal Injury - Calendar Year 2009  
State of Colorado**

<b>Nature of Injury<sup>1</sup></b>	<b>Count</b>	<b>Percent</b>
<b>ORGANIC DISEASE</b>		
Organic Heart Disease	14	17.7
Organic Neurological Disease (Stroke, Seizure)	7	8.9
Organic Lung Disease	3	3.8
Organic Digestive System	*	*
Organic Disease, Misc.	*	*
<b>SPECIFIC INJURY</b>		
Concussion--Closed Head/Traumatic Brain Injury	10	12.7
Gunshot	5	6.3
Asphyxiation	4	5.1
Myocardial Infarction (Heart Attack)	3	3.8
Drowning	*	*
Fracture	*	*
All Other Specific Injuries, NOC <sup>2</sup>	*	*
<b>MULTIPLE INJURIES</b>		
Multiple Physical Injuries Only	18	22.8
<b>OCCUPATIONAL DISEASE OR CUMULATIVE INJURY</b>		
Prescription Drug Toxicity	*	*
All Other Occupational Disease, NOC <sup>2</sup>	*	*
<b>MISSING</b>		
Missing <sup>3</sup>	6	7.6
<b>TOTALS</b>	<b>79</b>	<b>100%</b>

**Notes:**

\* Counts of less than three (3) suppressed to protect confidentiality of death records.

1 The information in this table is derived from death certificates when available and is what was reported by a relative, or in their absence, the coroner or physician who completed the death certificate.

2 Not Otherwise Classified.

3 Six (6) cases had no death certificate.

Table 22

## Distribution of Fatal Claims by Cause of Injury (Detail)

Date of Fatal Injury - Calendar Year 2009  
State of Colorado

Cause of Injury <sup>1</sup>	Count	Percent
<b>DISEASE</b>		
Disease of Heart (Cardiac) System	17	21.5
Disease of the Neural System	4	5.1
Cancer	*	*
Disease of Lung/Respiratory System	*	*
Infectious Disease	*	*
<b>MOTOR VEHICLE</b>		
Collision or Sideswipe with Another Vehicle--Both Vehicles in Motion	5	6.3
Vehicle Upset--Overturned or Jackknifed	4	5.1
Loss of Control--No Other Vehicle Involved (Snow, Ice, Water, Etc.)	3	3.8
Motor Vehicle, NOC <sup>2</sup>	3	3.8
Collision with a Fixed Object--Vehicle or Object	*	*
Crash of Airplane	*	*
<b>FALL, SLIP or TRIP</b>		
From a Different Level (Elevation)--Off Wall, Catwalk, Bridge, Etc.	3	3.8
From a Ladder or Scaffolding	3	3.8
Fall, Slip, Trip, NOC <sup>2</sup>	*	*
On Same Level	*	*
<b>STRUCK or INJURED BY</b>		
Motor Vehicle	*	*
Explosion or Flare Back	*	*
Fellow Worker, Patient	*	*
Struck or Injured, NOC <sup>2</sup> --Includes Kicked, Stabbed, Bit, Etc.	*	*
<b>CAUGHT IN, UNDER or BETWEEN</b>		
Collapsing Materials (Slides of Earth)--Man-made or Natural	*	*
Immersion in Water	*	*
<b>CUT, PUNCTURED, or SCRAPPED BY</b>		
Object Being Lifted or Handled	*	*
<b>STRAINED OR INJURED BY</b>		
Repetitive Motion--Carpal Tunnel Syndrome	*	*
<b>MISCELLANEOUS CAUSES</b>		
Other--Miscellaneous, NOC <sup>2</sup>	5	6.3
Person in Act of a Crime--Robbery or Criminal Assault	4	5.1
Drug Overdose/Toxicity	*	*
Self-Inflicted Injury--Suicide	*	*
<b>MISSING</b>		
Missing <sup>3</sup>	6	7.6
<b>TOTALS</b>	<b>79</b>	<b>100%</b>

## Notes:

\* Counts less than three (3) are suppressed to protect confidentiality of death records.

1 The information in this table is derived from death certificates when available and is what was reported by a relative, or in their absence, the coroner or physician who completed the death certificate.

2 Not Otherwise Classified.

3 Six (6) cases had no death certificate.

**Section IX Fatal Claims**

**Table 23**

**Distribution of Fatal Claims, and Rate of Fatal Claims, Ranked, by  
North American Industry Classification System (NAICS) Sectors**

**Date of Fatal Injury - Calendar Year 2009  
State of Colorado**

NAICS Sectors <sup>1</sup>	Fatal Claims		Average Annual Employment <sup>2</sup>	Rate of Fatal Claims per 10,000 Employed
	Count	Percent		
Mining	3	3.8	24,005	1.25
Transportation & Warehousing	6	7.6	73,646	0.81
Agriculture, Forestry, Fishing & Hunting	1	1.3	13,776	0.73
Construction	9	11.4	134,331	0.67
Public Administration	9	11.4	140,000	0.64
Wholesale Trade	4	5.1	93,275	0.43
Manufacturing	4	5.1	130,014	0.31
Administrative & Waste Services	4	5.1	132,108	0.30
Real Estate & Rental and Leasing	1	1.3	43,858	0.23
Retail Trade	5	6.3	239,700	0.21
Other Services, Except Public Administration	1	1.3	66,451	0.15
Professional & Technical Services	2	2.5	170,708	0.12
Educational Services	2	2.5	194,819	0.10
Accommodation & Food Services	1	1.3	218,686	0.05
Health Care & Social Assistance	1	1.3	253,265	0.04
Arts, Entertainment & Recreation	0	0.0	49,952	0.00
Finance & Insurance	0	0.0	102,057	0.00
Information	0	0.0	77,217	0.00
Management of Companies & Enterprises	0	0.0	28,550	0.00
Utilities	0	0.0	14,227	0.00
Other <sup>3</sup>	26	32.9	761	n/a
<b>Totals</b>	<b>79</b>	<b>100%</b>	<b>2,201,406</b>	<b>0.36</b>

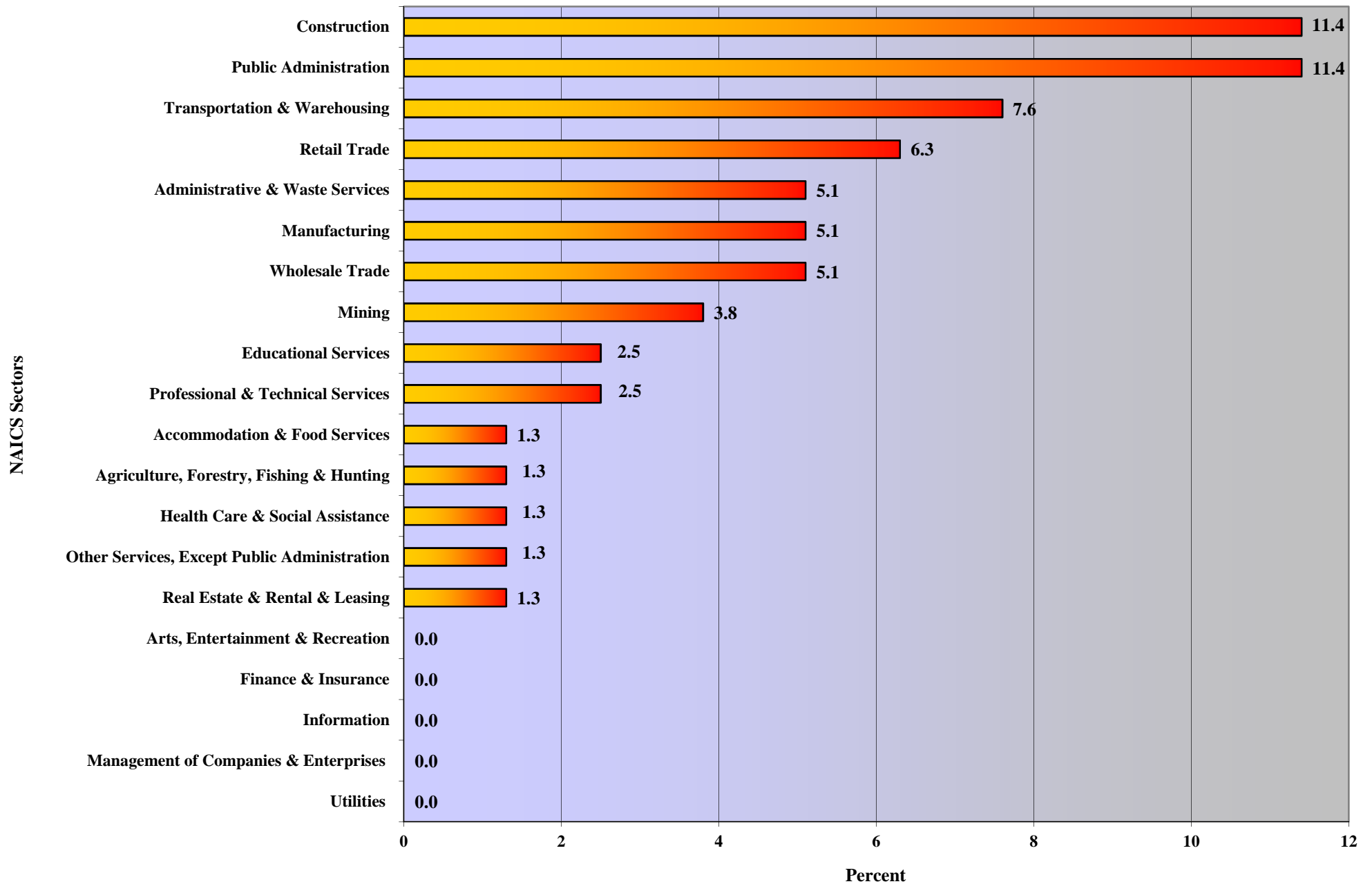
**Notes:**

1 Source: Office of Management and Budget, *North American Industry Classification System, United States, 2007*.

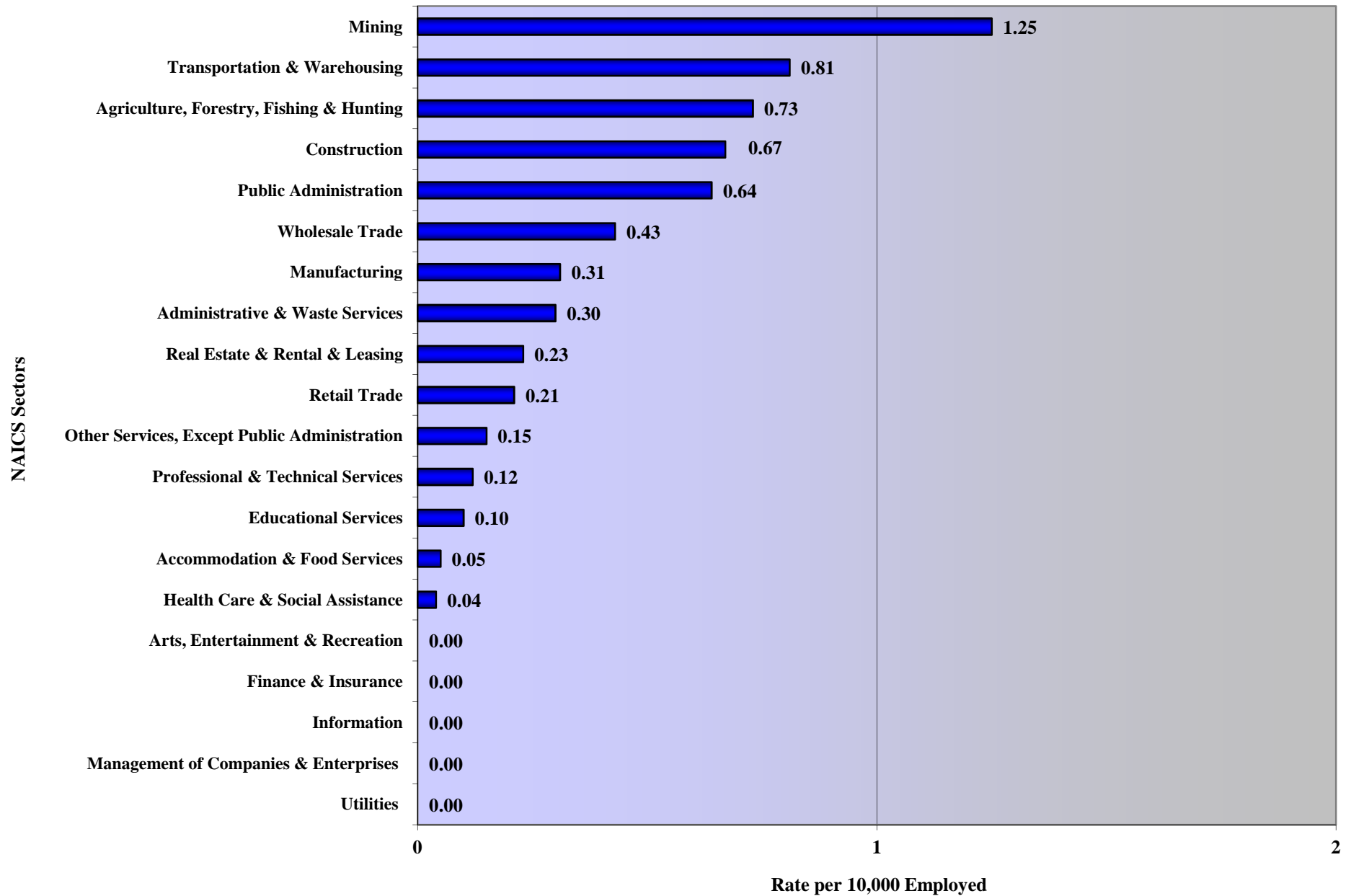
2 Source: Colorado Department of Labor and Employment, Labor Market Information, QCEW, "Quarterly Census of Employment and Wages, Sector (2 digit) for Colorado, Aggregate of all Types". Sector totals differ from the QCEW Annual Averages due to the distribution of government employees throughout all sectors, a later download date, and rounding of data. An employed person is 16 years or over in the civilian noninstitutional population who, during the reference week, (a) did any work at all; and (b) who was not working but was temporarily absent.

3 "Other" includes nonclassifiable establishments, invalid NAICS codes, and missing NAICS codes.

**Figure 19. Percent Distribution of Fatal Claims, Ranked, by North American Industry Classification (NAICS) Sectors**



**Figure 20. Rate of Fatal Claims, Ranked, by North American Industry Classification System (NAICS) Sectors**



Source: Table 23

**Table 24**

**Distribution of Fatal Claims by Worker Characteristic**

**Date of Fatal Injury - Calendar Year 2009  
State of Colorado**

<b>Worker Characteristic<sup>1</sup></b>	<b>Count</b>	<b>Percent</b>
<b>TOTAL FATALS</b>	79	100%
<b>GENDER</b>		
Male	73	92.4
Female	6	7.6
<b>AGE</b>		
Under 18 Yrs.	*	*
18-29 Yrs.	7	8.9
30-39 Yrs.	15	15.2
40-49 Yrs.	21	24.1
50-59 Yrs.	18	21.5
60-65 Yrs.	11	13.9
Over 65 Yrs.	6	6.3
<b>MARITAL STATUS</b>		
Married/Separated	50	63.3
Divorced	13	16.5
Widowed	2	2.5
Never Married	7	8.9
Missing <sup>2</sup>	7	8.9
<b>RACE &amp; HISPANIC-ORIGIN</b>		
White, Non-Hispanic	52	65.8
White, Hispanic	14	17.7
<i>Subtotal</i>	66	83.5
Black <sup>3</sup>	4	5.1
American-Indian <sup>3</sup>	*	*
Missing <sup>2</sup>	*	*

**Notes:**

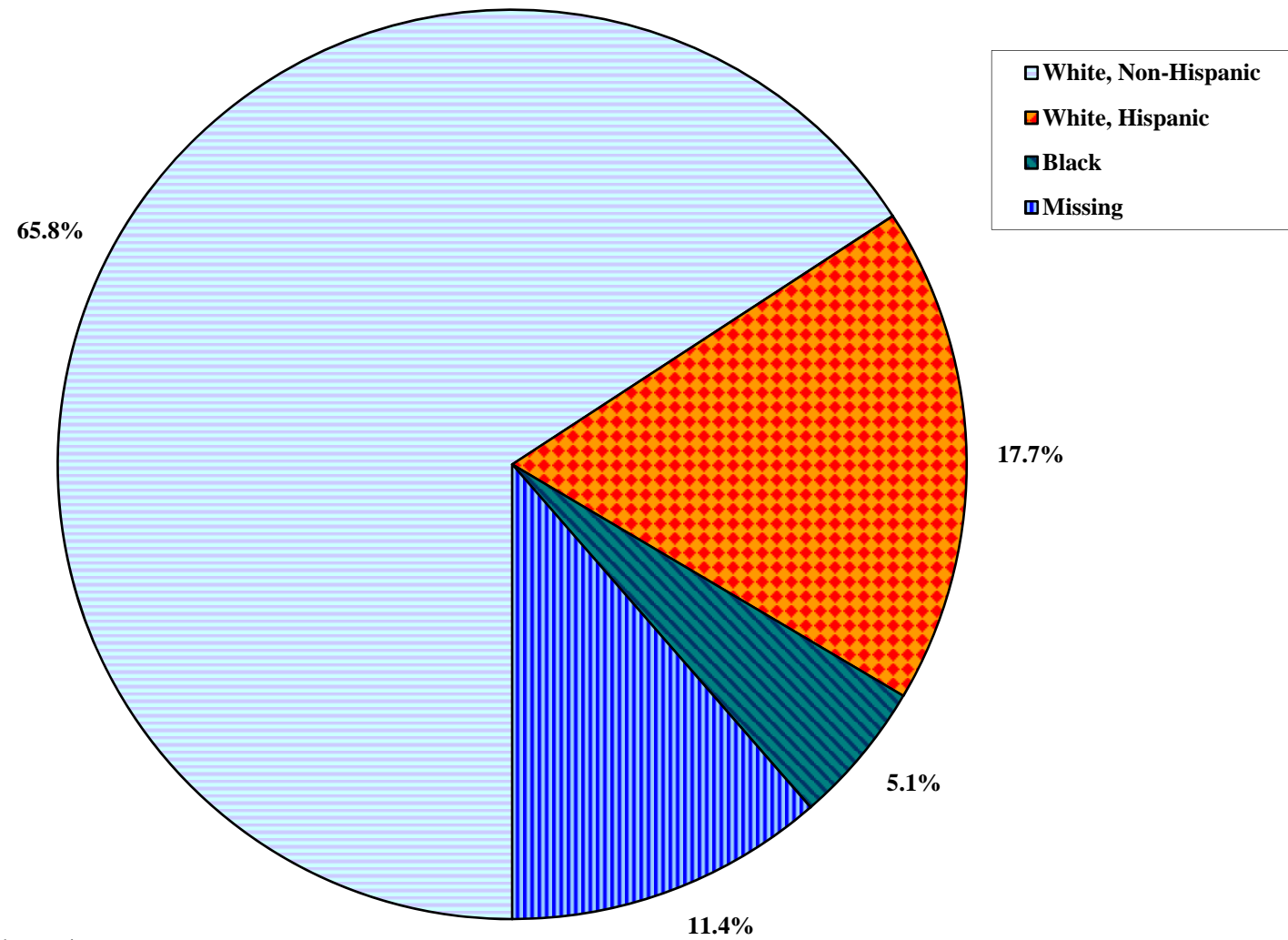
\* Counts less than three (3) are suppressed to protect confidentiality of death records.

1 Information on specific characteristics in this table was primarily derived from death certificates and was reported by a relative, or in their absence, the coroner or physician who completed the death certificate. Some missing data (age, gender) was filled from the First Report of Injury.

2 Missing categories can include six (6) cases with no death certificate. In some cases, missing data was filled by data from the First Report of Injury.

3 No Blacks or American Indian workers were also identified as Hispanic.

**Figure 21. Percent Distribution of Fatal Claims by Race and Hispanic-Origin**



**Notes:**

Source: Table 24

1 Missing includes suppressed categories.



**Table 25**

**Distribution of Fatal Claims by Age and Gender**

**Date of Fatal Injury - Calendar Year 2009  
State of Colorado**

<b>Age Group<sup>1,2</sup></b>	<b>Gender<sup>1</sup></b>			
	<b>Female</b>		<b>Male</b>	
	<b>Count</b>	<b>Percent</b>	<b>Count</b>	<b>Percent</b>
Under 18 Yrs.	*	*	*	*
18-29 Yrs.	*	*	6	7.6
30-39 Yrs.	*	*	15	19.0
40-49 Yrs.	*	*	20	25.3
50-59 Yrs.	3	3.8	15	19.0
60-65 Yrs.	*	*	10	12.7
Over 65 Yrs.	*	*	6	7.6
<b>Totals<sup>3</sup></b>	<b>6</b>	<b>7.6%</b>	<b>73</b>	<b>92.4%</b>

**Notes:**

\* Counts less than three (3) are suppressed to protect confidentiality of death records.

1 The information in this table is primarily derived from death certificates when available and is what was reported by a relative, or in their absence, the coroner or physician who completed the death certificate.

2 Widths of age group categories vary.

3 Six (6) cases had no death certificate; in some cases, missing data was provided by the First Report of Injury.

**Table 26**

**Distribution of Fatal Claims by Educational Level**

**Date of Fatal Injury - Calendar Year 2009  
State of Colorado**

<b>Educational Level<sup>1</sup></b>	<b>Count</b>	<b>Percent</b>
Some High School or Less	10	12.7
High School Graduate	28	35.4
Some College	15	19.0
College Graduate	15	19.0
Graduate Work/Degree	5	6.3
Missing <sup>2</sup>	6	7.6
<b>Total</b>	<b>79</b>	<b>100%</b>

**Notes:**

1 The information in this table is primarily derived from death certificates when available and is what was reported by a relative, or in their absence, the coroner or physician who completed the death certificate.

2 Six (6) cases had no death certificate.

**Table 27**

**Distribution of Fatal Claims by Gender and Claim Status**

**Date of Fatal Injury - Calendar Year 2009  
State of Colorado**

<b>Gender</b>	<b>Claim Status<sup>1</sup></b>		<b>Totals</b>	
	<b>Admission<sup>2</sup></b>	<b>Denial Only</b>	<b>Count</b>	<b>Percent</b>
	<b>Count</b>	<b>Percent</b>	<b>Count</b>	<b>Percent</b>
Female	3	50	3	50.0
Male	38	55	31	44.9
<b>Totals<sup>4</sup></b>	<b>41</b>	<b>54.7%</b>	<b>34</b>	<b>45.3%</b>

**Notes:**

1 The status of the claim is based on which documents have been filed with the Division of Workers' Compensation as of December 28, 2010. An "Admission" is a claim for which a document with some indicator of liability has been filed, including a Fatal Admission or Final Pay Notice. A "Denial" claim is one for which a "Notice of Contest" has been filed, but no document with evidence of liability has been filed.

2 "Admission" counts also include those claims first denied then later admitted.

3 This information is taken from death certificates and admission/denial files; six (6) cases had no death certificate.

4 There are four (4) "Indeterminate" fatal claims not included in the totals count.

**Table 28**

**Rank-Order Distribution of Fatal Claims by Occupational Classification**

**Date of Fatal Injury - Calendar Year 2009  
State of Colorado**

<b>Occupational Classification<sup>1,2</sup></b>	<b>Count</b>	<b>Percent</b>
Transportation & Material Moving	17	21.5
Construction & Extraction	12	15.2
Production	11	13.9
Professional & Related Occupations	9	11.4
Service	7	8.9
Farming, Fishing & Forestry	5	6.3
Sales & Related Occupations	4	5.1
Installation, Maintenance & Repair	3	3.8
Office & Administrative Support	*	*
Management, Business & Financial Operations	*	*
Missing <sup>3</sup>	8	10.1
<b>Totals</b>	<b>79</b>	<b>100%</b>

**Notes:**

\* Counts less than three (3) are suppressed to protect confidentiality of death records.

1 Occupational classification is based on the 2002 Occupational Classification System developed by the U.S. Census Bureau.

2 The information in this table is derived from death certificates when available and is what was reported by a relative, or in their absence, the coroner or physician who completed the death certificate. The death certificate asks for the decedent's "usual occupation" or the "kind of work done during most of working life." This may not be the decedent's occupation at the time of death.

3 Six (6) cases had no death certificate; two (2) death certificates had no occupation. Some missing data was provided by the First Report of Injury.

**Table 29**

**Distribution of Applications for Hearing, and Merit Hearings Held, by Location**

**Date of Application or Hearing - Calendar Year 2009  
State of Colorado**

<b>Location</b>	<b>Applications Received<sup>1</sup></b>	<b>Merit Hearings Held<sup>2,3</sup></b>
Alamosa	17	1
Colorado Springs	1,474	215
Durango	169	33
Denver	5,476	641
Ft. Collins	1	0
Glenwood Springs	177	15
Grand Junction	569	91
Greeley	552	37
Loveland	155	25
Pueblo	886	119
Missing City	106	3
<b>Totals</b>	<b>9,582</b>	<b>1,180</b>

**Notes:**

1 Source: Office of Administrative Courts, Hearings Held Dept. of Labor (KAA) report.

2 A merit hearing is a hearing where issues of law or fact are tried and witnesses are heard.

3 Source: Office of Administrative Courts, Hearings Held Dept. of Labor (KAA) report.

**Table 30**

**Rank-Order Distribution of Issues from Orders**

**Date of Order - Calendar Year 2009  
State of Colorado**

<b>Order Issue<sup>1</sup></b>	<b>Count</b>	<b>Percent</b>
Disfigurement	633	19.9
Compensability	482	15.1
Medical Benefits	324	10.2
Temporary Total Disability	310	9.7
Reasonable/Necessary	143	4.5
Average Weekly Wage	142	4.5
Reopen	99	3.1
Authorized Medical Benefits	85	2.7
Related to Injury	77	2.4
Penalty vs. Employer	71	2.2
Grover Meds	65	2.0
DIME Procedure	65	2.0
Permanent Total Disability	65	2.0
Interest	64	2.0
Permanent Impairment/Whole Person	60	1.9
Temporary Partial Disability	50	1.6
Occupational Disease	43	1.3
Penalty vs. Claimant	40	1.3
Permanent Impairment/Scheduled Conversion	32	1.0
MMI Only	28	0.9
Permanent Impairment/Scheduled	27	0.8
Change of Physician	26	0.8
For Offset	24	0.8
Claim Closure/Dismissal	21	0.7
Related Condition	21	0.7
Permanent Partial	19	0.6
Overpayment	18	0.6
Insurer Liability	15	0.5
All Other Issues <sup>3</sup>	136	4.3
<b>Totals</b>	<b>3,187</b>	<b>100%</b>

**Notes:**

1 Source: Division of Workers' Compensation & Division of Office of Administrative Courts, *Issues Decided Summary Report* (#667).

2 Payable benefits are reduced due to receipt of other benefits or due to a penalty.

3 "All Other Issues" contains those issue categories with less than .5% of all issues, including those with no description.

**Table 31**

**Settlements, by Type of Representation, Total by Month**

**Date of Settlement - Calendar Year 2009  
State of Colorado**

<b>Month<sup>2</sup></b>	<b>Pro Se</b>		<b>Representation<sup>1</sup></b>		<b>Totals</b>	
	<b>Count</b>	<b>Amount</b>	<b>Count</b>	<b>Amount</b>	<b>Count</b>	<b>Amount</b>
Jan	117	\$1,637,160	382	\$10,994,994	499	\$12,632,154
Feb	110	\$2,044,490	338	\$11,269,462	448	\$13,313,952
Mar	102	\$1,923,224	438	\$14,133,897	540	\$16,057,121
Apr	108	\$2,115,501	391	\$13,023,180	499	\$15,138,681
May	103	\$1,891,731	364	\$13,114,279	467	\$15,006,010
Jun	175	\$3,487,572	364	\$14,983,677	539	\$18,471,249
Jul	108	\$1,686,075	403	\$12,856,288	511	\$14,542,363
Aug	85	\$1,908,221	325	\$12,702,840	410	\$14,611,061
Sep	103	\$1,342,318	397	\$17,456,868	500	\$18,799,186
Oct	81	\$1,461,118	366	\$10,860,410	447	\$12,321,528
Nov	96	\$1,580,803	316	\$10,699,140	412	\$12,279,943
Dec	120	\$2,623,616	481	\$15,300,472	601	\$17,924,088
<b>Totals<sup>3</sup></b>	<b>1,308</b>	<b>\$23,701,829</b>	<b>4,565</b>	<b>\$157,395,507</b>	<b>5,873</b>	<b>\$181,097,336</b>

**Notes:**

1 Source: *Stipulation Activity Report* (#862).

2 Settlement information is based on claims that were settled during calendar year 2009. The claim itself may have been initially filed in 2009 or a prior calendar year.

3 Totals for settlement amounts may not equal sum of monthly settlement amounts due to rounding.

**Table 32**

**Settlements, by Type of Representation, Average Number of Cases  
per Month and Average Amount per Case: 2000-2009**

**Date of Settlement - Calendar Year 2009  
State of Colorado**

<b>Year<sup>2</sup></b>	<b>Representation<sup>1</sup></b>				<b>Totals</b>	
	<b>Pro Se</b>		<b>By Counsel</b>		<b>Average Cases Per Month</b>	<b>Average Amount Per Case</b>
	<b>Average Cases Per Month</b>	<b>Average Amount Per Case</b>	<b>Average Cases Per Month</b>	<b>Average Amount Per Case</b>		
2000	84	\$15,031	454	\$29,464	538	\$27,199
2001	96	\$13,554	450	\$28,420	546	\$25,817
2002	112	\$12,012	454	\$28,006	567	\$24,833
2003	122	\$12,180	452	\$28,305	574	\$24,872
2004	143	\$11,944	437	\$32,767	581	\$27,630
2005	138	\$11,979	426	\$34,934	564	\$29,327
2006	128	\$13,557	416	\$37,105	544	\$31,580
2007	137	\$15,185	408	\$36,944	546	\$31,467
2008	113	\$18,212	410	\$35,437	523	\$31,702
2009	109	\$18,121	380	\$34,479	489	\$30,836

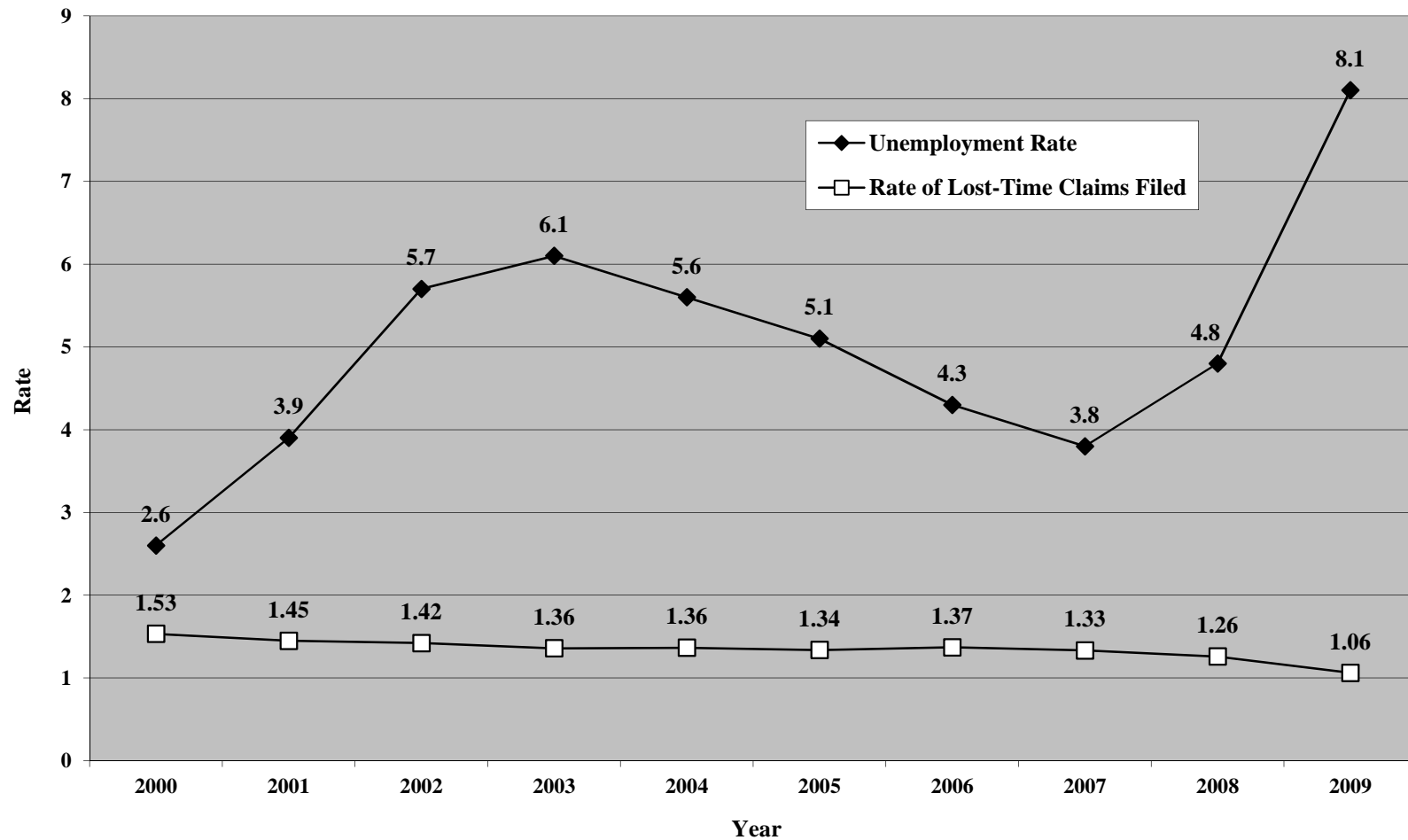
**Notes:**

1 Source: *Stipulation Activity Report* (#862) 2000-2009.

2 Based on only those settlements that occurred in the calendar year. The original filing of the claim could have taken place in the same year or prior years.



**Figure 22. Rate of Employed Workers Filing Lost-Time Claims  
Compared to Unemployment Rate: 2000-2009**



**Source:**

1 Rate of Lost-Time Claims Filed is derived from Division of Workers' Compensation counts of lost-time claims filed and from labor force data of the Colorado Department of Labor and Employment, Labor Market Information, QCEW, Colorado Employment and Wages: Annual Average 2000-2009. Rate is calculated as number of lost-time claims filed divided by the Colorado average annual employment per 100 employed.

2 Average Annual Unemployment Rate is from U.S. Dept. of Labor Statistics, Bureau of Labor Statistics, "Local Area Unemployment Statistics: Colorado." It represents the number of unemployed (persons 16 yrs. and older who had no employment during the reference week, were available for work, except for temporary illness, and had made specific efforts to find employment sometime during the 4-week period ending with the reference week) as a percentage of the labor force.