

PRESS RELEASE

Colorado Department of Labor and Employment • 633 Seventeenth Street, Suite 1200 • Denver, CO 80202 •
(303) 318-8004 • Fax: (303) 318-8070

For Immediate Release

Date: April 17, 2023/ 8:00 AM

Contact: cdle_pr@state.co.us

Office of Government, Policy and Public Relations

Websites: www.colmigateway.com

Expected Revisions to Nonfarm Payroll Jobs Based on Corrected Third Quarter 2022 QCEW Data

Important note: Due to a system modernization that coincided with the processing of third quarter 2022 Quarterly Census of Employment and Wage (QCEW) data, the Office of Labor Market Information discovered an undercount of employment that impacted nonfarm payroll job estimates for 2022 benchmark processing. This release provides information on expected revisions to nonfarm payroll job estimates from July 2022 through February 2023, with corrected underlying third quarter 2022 QCEW data. The estimates provided in this release are not official estimates. However, the data provided in this release are expected revisions to nonfarm payroll job estimates once corrected underlying QCEW data are incorporated by the Bureau of Labor Statistics during 2023 benchmarking. These official estimates will be released in March 2024. Any questions will be addressed during the Employment Situation press call on Friday, April 21st, 2023.

Corrected third quarter 2022 Quarterly Census of Employment and Wages (QCEW) results indicate Colorado total nonfarm payroll job estimates will be revised up for this period with the release of benchmarked estimates in March 2024. July 2022 estimates are expected to be revised down slightly by about 600 nonfarm payroll jobs. August and September 2022 estimates are expected to be revised up by about 8,300 and 17,400 nonfarm payroll jobs, respectively.

Applying these results through February 2023 brings estimated total nonfarm payroll jobs in February to 2,905,100. This change brings over the year payroll job growth estimates through February 2023 to 61,200 or 2.2 percent, as opposed to the currently published over the year change of 46,700 and growth rate of 1.6 percent.

The final March 2024 benchmarked series are expected to vary from these estimates due to new seasonal adjustment factors and new estimates of nonfarm payroll jobs not covered by the unemployment insurance program.

Industry sectors that were most impacted and are expected to undergo an upward revision to payroll job estimates in the 3rd quarter¹ include government (~8,200), trade, transportation, and utilities (~3,100), financial activities (~3,000), information (~1,800), and education and health services (~1,700). Payroll job estimates for mining and logging and other services may also be revised up.

With the incorporation of corrected third quarter 2022 QCEW data, the industry sector expected to undergo a downward revision to payroll job estimates in the 3rd quarter¹ is manufacturing (~1,700). Payroll job estimates for professional and business services, construction, and leisure and hospitality may also be revised down.

Corrected 3rd quarter data indicate that total nonfarm payroll job estimates for the Denver (~10,900) Metropolitan Statistical Area is expected be revised up in the 3rd quarter¹.

Payroll job estimates for the Colorado Springs, Boulder, Fort Collins, Greeley, Grand Junction, and Pueblo Metropolitan Statistical Area may be revised down in the 3rd quarter.

¹ Values shown are September estimates.

#

Expected Revisions to Colorado Nonfarm Payroll Jobs will resume as scheduled with estimates based on 4th quarter 2022 QCEW data released Wednesday, May 24, 2023. This release and future releases will incorporate the corrected underlying third quarter 2022 QCEW data.

#

Every month of the year other than February the Colorado Department of Labor and Employment, in cooperation with the U.S. Bureau of Labor Statistics, releases estimates of Colorado nonfarm payroll jobs for the previous month based on results from a survey of business establishments. Estimates for Colorado are produced by the Bureau of Labor Statistics for total nonfarm payroll jobs and specific industry sectors or groups of sectors across the entire state, and for the seven metropolitan statistical areas.

In February of each year these survey based estimates are compared to and adjusted in a process called “benchmarking” based on administrative records available since the release of the survey estimates. The results of that comparison are released in March.

For instance, at the beginning of the 2024 calendar year Colorado nonfarm payroll job estimates for the second half of 2022 and all of 2023 will be benchmarked based on information available from the QCEW program for the 3rd quarter of 2022 (corrected data), 4th quarter of 2022, and the first three quarters of 2023. These updated estimates will be released in March 2024.

The source of these administrative records for the QCEW program are unemployment insurance reports Colorado employers are required to file quarterly with the Colorado Department of Labor and Employment. Among other information, employers include the number of people employed at the firm for each month of the quarter for which the report is being filed. Although only firms with employees covered by the Colorado Unemployment Insurance program are required by state and federal law to submit these reports, this quarterly census of employment covers about 98 percent of all nonfarm payroll jobs and about 88 percent of total employment in Colorado.

Aggregated by industry, the QCEW data are more closely aligned with the definition of nonfarm payroll jobs than with total employment. This is because an individual holding more than one job is counted only once in the total employment estimate but multiple times in both QCEW and the nonfarm payroll job estimates. Total employment estimates are by place of residence while both QCEW and payroll jobs are by place of business.

Though the official nonfarm payroll job estimates are benchmarked only once a year, data from QCEW are available quarterly and, once available, can be compared to the official series to see by about how much the official statistics will be adjusted.

Colorado Nonfarm Payroll Jobs Estimates - 3rd Quarter 2022

Statewide by Industry Sector, in Thousands Seasonally Adjusted	<i>Expected revisions to estimates based on corrected Q3 2022 QCEW</i>			<i>Forecast based on September 2022 differential between modified and official series</i>					<i>Prior year official series - Benchmarked to QCEW</i>				<i>Over the Year Change</i>			
	Jul-22	Aug-22	Sep-22	Oct-22	Nov-22	Dec-22	Jan-23	Feb-23	Jul-21	Aug-21	Sep-21	Feb-22	<i>Nonfarm Payroll Jobs</i>		<i>Growth Rate</i>	
													Sep-22	Feb-23	Sep-22	Feb-23
Modified Education & Health Services ^{2 & 3}	352.4	353.9	354.3	354.2	357.1	354.5	356.3	356.1				349.9	6.4	6.1	1.8%	1.7%
Education & Health Services ¹	352.4	352.8	352.6	352.5	355.4	352.8	354.6	354.4	349.0	348.6	347.9	349.4	4.7	5.0	1.4%	1.4%
Expected Revision	0.0	1.1	1.7	1.7	1.7	1.7	1.7	1.7								
Expected Percent Revision	0.0%	0.3%	0.5%	0.5%	0.5%	0.5%	0.5%	0.5%								
Modified Leisure & Hospitality ^{2 & 3}	337.9	339.3	340.5	345.3	345.5	350.6	350.4	351.9				331.5	20.1	20.4	6.3%	6.1%
Leisure & Hospitality ¹	338.7	339.6	340.1	344.9	345.1	350.2	350.0	351.5	314.3	317.2	320.4	332.3	19.7	19.2	6.1%	5.8%
Expected Revision	-0.8	-0.3	0.4	0.4	0.4	0.4	0.4	0.4								
Expected Percent Revision	-0.2%	-0.1%	0.1%	0.1%	0.1%	0.1%	0.1%	0.1%								
Modified Other Services ^{2 & 3}	123.1	123.6	123.6	123.3	122.7	123.9	123.5	124.4				121.9	4.7	2.4	3.9%	2.0%
Other Services ¹	123.5	123.6	123.3	123.0	122.4	123.6	123.2	124.1	114.0	114.5	118.9	122.2	4.4	1.9	3.7%	1.6%
Expected Revision	-0.4	0.0	0.3	0.3	0.3	0.3	0.3	0.3								
Expected Percent Revision	-0.4%	0.0%	0.2%	0.2%	0.2%	0.2%	0.2%	0.2%								
Modified Government ^{2 & 3}	449.8	454.7	456.1	456.5	457.7	457.4	460.2	462.0				448.5	14.7	13.5	3.3%	3.0%
Government ¹	450.2	451.2	447.9	448.3	449.5	449.2	452.0	453.8	446.3	443.1	441.4	445.9	6.5	7.9	1.5%	1.8%
Expected Revision	-0.4	3.5	8.2	8.2	8.2	8.2	8.2	8.2								
Expected Percent Revision	-0.1%	0.8%	1.8%	1.8%	1.8%	1.8%	1.8%	1.8%								

¹ Source: Official payroll jobs series produced by the U.S. Bureau of Labor Statistics and the Colorado Department of Labor and Employment.

² Modified 3rd quarter estimates produced by the Colorado Department of Labor and Employment based on corrected 3rd quarter 2022 QCEW and an estimate of payroll jobs not covered by QCEW.

³ Modified 4th quarter 2022 and 1st quarter 2023 estimates produced by the Colorado Department of Labor and Employment based on corrected 3rd quarter results and over the month changes from the official payroll jobs series.

Colorado Nonfarm Payroll Jobs Estimates - 3rd Quarter 2022

By Metropolitan Statistical Area, in Thousands <i>Seasonally Adjusted</i>	<i>Expected revisions to estimates based on corrected Q3 2022 QCEW</i>			<i>Forecast based on September 2022 differential between modified and official series</i>					<i>Prior year official series - Benchmarked to QCEW</i>				<i>Over the Year Change</i>			
	Jul-22	Aug-22	Sep-22	Oct-22	Nov-22	Dec-22	Jan-23	Feb-23	Jul-21	Aug-21	Sep-21	Feb-22	<i>Nonfarm Payroll Jobs</i>		<i>Growth Rate</i>	
													Sep-22	Feb-23	Sep-22	Feb-23
Modified Statewide Total Nonfarm Payroll Jobs ^{2 & 3}	2,868.4	2,881.6	2,887.5	2,894.4	2,894.1	2,899.6	2,898.9	2,905.1				2,844.0	105.3	61.2	3.8%	2.2%
Statewide Total Nonfarm Payroll Jobs ¹	2,869.0	2,873.3	2,870.1	2,877.0	2,876.7	2,882.2	2,881.5	2,887.7	2,762.6	2,766.7	2,782.2	2,841.0	87.9	46.7	3.2%	1.6%
Expected Revision	-0.6	8.3	17.4	17.4	17.4	17.4	17.4	17.4								
Expected Percent Revision	0.0%	0.3%	0.6%	0.6%	0.6%	0.6%	0.6%	0.6%								
Modified Boulder MSA Total Nonfarm Payroll Jobs ^{2 & 3}	204.4	204.7	205.3	204.4	204.5	204.0	205.8	207.1				201.7	6.8	5.3	3.4%	2.6%
Boulder MSA Total Nonfarm Payroll Jobs ¹	205.5	205.0	206.0	205.1	205.2	204.7	206.5	207.8	197.9	197.0	198.5	202.6	7.5	5.2	3.8%	2.6%
Expected Revision	-1.1	-0.3	-0.7	-0.7	-0.7	-0.7	-0.7	-0.7								
Expected Percent Revision	-0.5%	-0.1%	-0.4%	-0.4%	-0.4%	-0.4%	-0.4%	-0.4%								
Modified Colorado Springs MSA Total Nonfarm Payroll Jobs ^{2 & 3}	314.1	314.9	315.5	316.9	316.6	317.2	319.4	320.2				314.2	9.1	6.0	3.0%	1.9%
Colorado Springs MSA Total Nonfarm Payroll Jobs ¹	316.1	316.0	316.4	317.8	317.5	318.1	320.3	321.1	302.9	304.2	306.4	314.8	10.0	6.3	3.3%	2.0%
Expected Revision	-2.0	-1.1	-0.9	-0.9	-0.9	-0.9	-0.9	-0.9								
Expected Percent Revision	-0.6%	-0.4%	-0.3%	-0.3%	-0.3%	-0.3%	-0.3%	-0.3%								
Modified Denver MSA Total Nonfarm Payroll Jobs ^{2 & 3}	1,592.7	1,599.3	1,595.5	1,602.8	1,602.3	1,604.9	1,602.5	1,604.7				1,575.7	61.2	29.0	4.0%	1.8%
Denver MSA Total Nonfarm Payroll Jobs ¹	1,591.2	1,597.2	1,584.6	1,591.9	1,591.4	1,594.0	1,591.6	1,593.8	1,517.2	1,522.7	1,534.3	1,573.7	50.3	20.1	3.3%	1.3%
Expected Revision	1.5	2.1	10.9	10.9	10.9	10.9	10.9	10.9								
Expected Percent Revision	0.1%	0.1%	0.7%	0.7%	0.7%	0.7%	0.7%	0.7%								
Modified Fort Collins MSA Total Nonfarm Payroll Jobs ^{2 & 3}	178.4	179.0	178.9	178.0	177.3	177.3	177.6	177.4				177.4	4.6	0.0	2.6%	0.0%
Fort Collins MSA Total Nonfarm Payroll Jobs ¹	179.2	179.4	179.3	178.4	177.7	177.7	178.0	177.8	172.4	172.9	174.3	177.5	5.0	0.3	2.9%	0.2%
Expected Revision	-0.8	-0.4	-0.4	-0.4	-0.4	-0.4	-0.4	-0.4								
Expected Percent Revision	-0.5%	-0.2%	-0.2%	-0.2%	-0.2%	-0.2%	-0.2%	-0.2%								
Modified Grand Junction MSA Total Nonfarm Payroll Jobs ^{2 & 3}	65.5	65.7	65.9	66.0	66.1	66.4	66.5	66.2				65.2	1.1	1.1	1.8%	1.7%
Grand Junction MSA Total Nonfarm Payroll Jobs ¹	66.1	65.8	65.9	66.0	66.1	66.4	66.5	66.2	64.9	65.1	64.8	65.6	1.1	0.6	1.7%	0.9%
Expected Revision	-0.6	-0.1	0.0	0.0	0.0	0.0	0.0	0.0								
Expected Percent Revision	-0.9%	-0.1%	0.1%	0.1%	0.1%	0.1%	0.1%	0.1%								
Modified Greeley MSA Total Nonfarm Payroll Jobs ^{2 & 3}	109.5	109.8	110.2	110.3	110.6	110.6	110.3	110.5				107.7	4.8	2.8	4.6%	2.6%
Greeley MSA Total Nonfarm Payroll Jobs ¹	110.3	110.6	110.2	110.3	110.6	110.6	110.3	110.5	105.1	104.9	105.4	108.3	4.8	2.2	4.6%	2.0%
Expected Revision	-0.8	-0.8	0.0	0.0	0.0	0.0	0.0	0.0								
Expected Percent Revision	-0.7%	-0.7%	0.0%	0.0%	0.0%	0.0%	0.0%	0.0%								
Modified Pueblo MSA Total Nonfarm Payroll Jobs ^{2 & 3}	63.9	63.9	64.1	64.1	64.1	64.3	64.0	63.9				63.5	1.1	0.4	1.7%	0.6%
Pueblo MSA Total Nonfarm Payroll Jobs ¹	64.1	64.2	64.1	64.1	64.1	64.3	64.0	63.9	62.7	63.0	63.0	63.5	1.1	0.4	1.7%	0.6%
Expected Revision	-0.2	-0.3	0.0	0.0	0.0	0.0	0.0	0.0								
Expected Percent Revision	-0.3%	-0.5%	0.0%	0.0%	0.0%	0.0%	0.0%	0.0%								

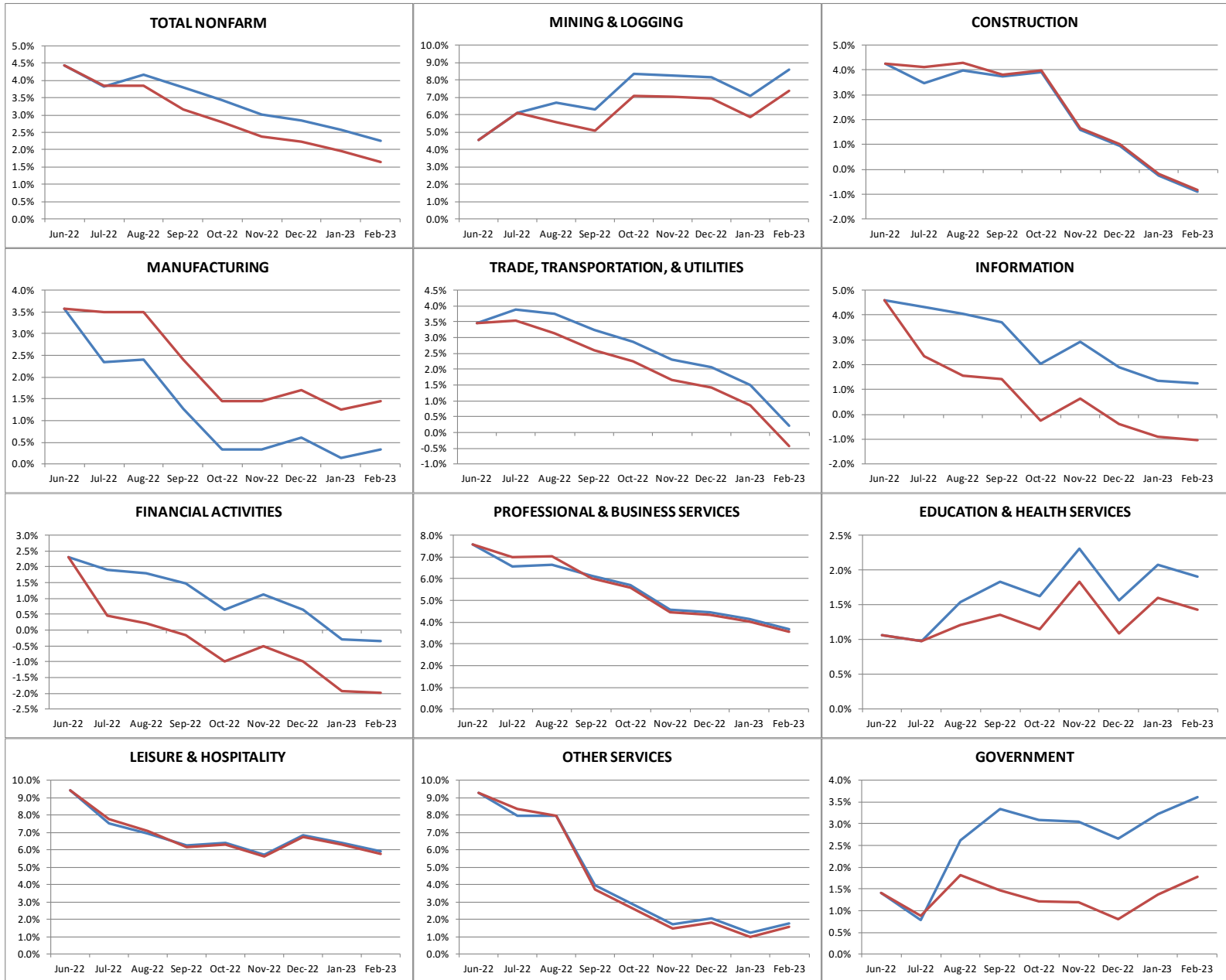
¹ Source: Official payroll jobs series produced by the U.S. Bureau of Labor Statistics and the Colorado Department of Labor and Employment.

² Modified 3rd quarter estimates produced by the Colorado Department of Labor and Employment based on corrected 3rd quarter 2022 QCEW and an estimate of payroll jobs not covered by QCEW.

³ Modified 4th quarter 2022 and 1st quarter 2023 estimates produced by the Colorado Department of Labor and Employment based on corrected 3rd quarter results and over the month changes from the official payroll jobs series.

Colorado Nonfarm Payroll Jobs Estimates – Over the Year Growth Rates by Industry Sector

Official¹ Payroll Jobs = Red Line / Modified² & ³ Payroll Jobs = Blue Line



¹ Source: Official payroll jobs series produced by the U.S. Bureau of Labor Statistics and the Colorado Department of Labor and Employment.

² Modified 3rd quarter estimates produced by the Colorado Department of Labor and Employment based on corrected 3rd quarter QCEW and an estimate of payroll jobs not covered by QCEW.

³ Modified 4th quarter 2022 and 1st quarter 2023 estimates produced by the Colorado Department of Labor and Employment based on corrected 3rd quarter results and over the month changes from the official payroll jobs series.

Colorado Nonfarm Payroll Jobs Estimates – Over the Year Growth Rates by Metropolitan Statistical Area

Official¹ Payroll Jobs = Red Line / Modified^{2 & 3} Payroll Jobs = Blue Line



¹ Source: Official payroll jobs series produced by the U.S. Bureau of Labor Statistics and the Colorado Department of Labor and Employment.

² Modified 3rd quarter estimates produced by the Colorado Department of Labor and Employment based on corrected 3rd quarter QCEW and an estimate of payroll jobs not covered by QCEW.

³ Modified 4th quarter 2022 and 1st quarter 2023 estimates produced by the Colorado Department of Labor and Employment based on corrected 3rd quarter results and over the month changes from the official payroll jobs series.