

# PRESS RELEASE

Colorado Department of Labor and Employment • 633 Seventeenth Street, Suite 1200 • Denver, CO 80202 •  
(303) 318-8004 • Fax: (303) 318-8070

## For Immediate Release

Date: May 27, 2020/ 8:00 AM

Contact: [cdle\\_pr@state.co.us](mailto:cdle_pr@state.co.us)

Office of Government, Policy and Public Relations

Websites: [www.colmigateway.com](http://www.colmigateway.com)

## Expected Revisions to Colorado Nonfarm Payroll Jobs

Fourth quarter 2019 Quarterly Census of Employment and Wages (QCEW) results indicate Colorado total nonfarm payroll jobs estimates will be revised down for this period with the release of benchmarked estimates in March 2021. December 2019 estimates are expected to be revised down by about 5,700 nonfarm payroll jobs, or two-tenths of a percentage point. November 2019 estimates are expected to be revised down by about 300. October 2019 estimates are expected to be revised up by about 1,900 nonfarm payroll jobs.

Applying these results through April 2020 brings estimated total nonfarm payroll jobs in April to 2,467,700. This change brings over the year payroll job growth estimates through April 2020 to -301,900 or -10.9 percent.

The final March 2021 benchmarked series are expected to vary from these estimates due to new seasonal adjustment factors and new estimates of nonfarm payroll jobs not covered by the unemployment insurance program.

Industry sectors expected to undergo an upward revision to payroll jobs estimates in the 4<sup>th</sup> quarter<sup>1</sup> include financial services (~1,600) and information (~1,500). Leisure and hospitality, manufacturing, and other services may also be revised up.

The industry sectors expected to undergo a downward revision to payroll jobs estimates are education and health services (~3,200), government (~2,600), professional and business services (~1,800), trade, transportation, and utilities (~1,200), and construction (~1,100). Payroll jobs estimates for mining and logging may also be revised down.

Payroll jobs estimates for the Boulder (~1,000) Metropolitan Statistical Area are expected to be revised up in the 4<sup>th</sup> quarter<sup>1</sup>. Payroll jobs estimates for the Pueblo and Colorado Springs Metropolitan Statistical Areas may also be revised upward.

Total nonfarm payroll job estimates for Fort Collins (~2,100) Metropolitan Statistical Areas are expected to be revised down in the 4<sup>th</sup> quarter<sup>1</sup>. Estimates for the Denver, Greeley, and Grand Junction Metropolitan Statistical Area may also be revised downward.

<sup>1</sup> Values shown are December estimates.

# # #

Expected Revisions to Colorado Nonfarm Payroll Jobs based on 1<sup>st</sup> quarter 2020  
QCEW data will be released Wednesday, August 26, 2020.

# # #

Every month of the year other than February the Colorado Department of Labor and Employment, in cooperation with the U.S. Bureau of Labor Statistics, releases estimates of Colorado nonfarm payroll jobs for the previous month based on results from a survey of business establishments. Estimates for Colorado are produced by the Bureau of Labor Statistics for total nonfarm payroll jobs and specific industry sectors or groups of sectors across the entire state, and for the seven metropolitan statistical areas.

In February of each year these survey based estimates are compared to and adjusted in a process called “benchmarking” based on administrative records available since the release of the survey estimates. The results of that comparison are released in March.

For instance, at the beginning of the 2021 calendar year Colorado nonfarm payroll jobs estimates for the 4<sup>th</sup> quarter of 2019 and all of 2020 will be benchmarked based on information available from the QCEW program for the 4<sup>th</sup> quarter of 2019 and the first three quarters of 2020. These updated estimates will be released in March 2021.

The source of these administrative records for the QCEW program are unemployment insurance reports Colorado employers are required to file quarterly with the Colorado Department of Labor and Employment. Among other information, employers include the number of people employed at the firm for each month of the quarter for which the report is being filed. Although only firms with employees covered by the Colorado Unemployment Insurance program are required by state and federal law to submit these reports, this quarterly census of employment covers about 98 percent of all nonfarm payroll jobs and about 88 percent of total employment in Colorado.

Aggregated by industry, the QCEW data are more closely aligned with the definition of nonfarm payroll jobs than with total employment. This is because an individual holding more than one job is counted only once in the total employment estimate but multiple times in both QCEW and the nonfarm payroll jobs estimates. Total employment estimates are by place of residence while both QCEW and payroll jobs are by place of business.

Though the official nonfarm payroll jobs estimates are benchmarked only once a year, data from QCEW are available quarterly and, once available, can be compared to the official series to see by about how much the official statistics will be adjusted.



## Colorado Nonfarm Payroll Jobs Estimates - 4th Quarter 2019

<b>Statewide by Industry Sector, in Thousands</b> <i>Seasonally Adjusted</i>	<i>Expected revisions based on Q4 2019 QCEW</i>			<i>Forecast based on Q4 2019 QCEW</i>				<i>Prior year official series - Benchmarked to QCEW</i>				<i>Over the Year Change</i>			
	Oct-19	Nov-19	Dec-19	Jan-20	Feb-20	Mar-20	Apr-20	Oct-18	Nov-18	Dec-18	Apr-19	<i>Nonfarm Payroll Jobs</i>		<i>Growth Rate</i>	
												Dec-19	Apr-20	Dec-19	Apr-20
Modified Education & Health Services <sup>2 &amp; 3</sup>	349.4	350.8	351.1	349.6	348.3	345.4	301.6				345.1	7.3	-43.5	2.1%	-12.6%
Education & Health Services <sup>1</sup>	349.0	351.2	354.3	352.8	351.5	348.6	304.8	342.1	343.0	343.8	345.1	10.5	-40.3	3.1%	-11.7%
Expected Revision	0.4	-0.4	-3.2	-3.2	-3.2	-3.2	-3.2								
Expected Percent Revision	0.1%	-0.1%	-0.9%	-0.9%	-0.9%	-0.9%	-1.1%								
Modified Leisure & Hospitality <sup>2 &amp; 3</sup>	348.8	350.0	347.1	346.5	346.0	333.7	185.6				342.8	4.9	-157.2	1.4%	-45.9%
Leisure & Hospitality <sup>1</sup>	346.9	347.0	346.4	345.8	345.3	333.0	184.9	340.8	341.7	342.2	342.8	4.2	-157.9	1.2%	-46.1%
Expected Revision	1.9	3.0	0.7	0.7	0.7	0.7	0.7								
Expected Percent Revision	0.6%	0.9%	0.2%	0.2%	0.2%	0.2%	0.4%								
Modified Other Services <sup>2 &amp; 3</sup>	113.6	113.9	114.0	113.8	115.9	113.2	93.4				112.6	2.1	-19.2	1.9%	-17.0%
Other Services <sup>1</sup>	114.5	114.3	113.2	113.0	115.1	112.4	92.6	111.9	112.0	111.9	112.6	1.3	-20.0	1.2%	-17.8%
Expected Revision	-0.9	-0.4	0.8	0.8	0.8	0.8	0.8								
Expected Percent Revision	-0.8%	-0.4%	0.7%	0.7%	0.7%	0.7%	0.9%								
Modified Government <sup>2 &amp; 3</sup>	455.9	456.3	456.7	457.9	459.7	462.1	450.0				452.6	8.4	-2.6	1.9%	-0.6%
Government <sup>1</sup>	458.1	458.9	459.3	460.5	462.3	464.7	452.6	447.5	447.6	448.3	452.6	11.0	0.0	2.5%	0.0%
Expected Revision	-2.2	-2.6	-2.6	-2.6	-2.6	-2.6	-2.6								
Expected Percent Revision	-0.5%	-0.6%	-0.6%	-0.6%	-0.6%	-0.6%	-0.6%								

<sup>1</sup> Source: Official payroll jobs series produced by the U.S. Bureau of Labor Statistics and the Colorado Department of Labor and Employment.

<sup>2</sup> Modified 4th quarter estimates produced by the Colorado Department of Labor and Employment based on 4th quarter 2019 QCEW and an estimate of payroll jobs not covered by QCEW.

<sup>3</sup> Modified 1st and 2nd quarter 2020 estimates produced by the Colorado Department of Labor and Employment based on modified 4th quarter results and over the month changes from the official payroll jobs series.

## Colorado Nonfarm Payroll Jobs Estimates - 4th Quarter 2019

<b>By Metropolitan Statistical Area, in Thousands Seasonally Adjusted</b>	<i>Expected revisions based on Q4 2019 QCEW</i>			<i>Forecast based on Q4 2019 QCEW</i>				<i>Prior year official series - Benchmarked to QCEW</i>				<i>Over the Year Change</i>			
												<i>Nonfarm Payroll Jobs</i>		<i>Growth Rate</i>	
	Oct-19	Nov-19	Dec-19	Jan-20	Feb-20	Mar-20	Apr-20	Oct-18	Nov-18	Dec-18	Apr-19	Dec-19	Apr-20	Dec-19	Apr-20
Modified Statewide Total Nonfarm Payroll Jobs <sup>2 &amp; 3</sup>	2,801.6	2,808.6	2,807.8	2,808.1	2,807.7	2,791.2	2,467.7				2,769.6	56.0	-301.9	2.0%	-10.9%
Statewide Total Nonfarm Payroll Jobs <sup>1</sup>	2,799.7	2,808.9	2,813.5	2,813.8	2,813.4	2,796.9	2,473.4	2,742.7	2,747.4	2,751.8	2,769.6	61.7	-296.2	2.2%	-10.7%
Expected Revision	1.9	-0.3	-5.7	-5.7	-5.7	-5.7	-5.7								
Expected Percent Revision	0.1%	0.0%	-0.2%	-0.2%	-0.2%	-0.2%	-0.2%								
Modified Boulder MSA Total Nonfarm Payroll Jobs <sup>2 &amp; 3</sup>	200.8	201.3	201.2	200.2	200.2	200.3	182.8				198.0	4.5	-15.2	2.3%	-7.7%
Boulder MSA Total Nonfarm Payroll Jobs <sup>1</sup>	198.1	199.6	200.2	199.2	199.2	199.3	181.8	196.3	196.4	196.7	198.0	3.5	-16.2	1.8%	-8.2%
Expected Revision	2.7	1.7	1.0	1.0	1.0	1.0	1.0								
Expected Percent Revision	1.4%	0.9%	0.5%	0.5%	0.5%	0.5%	0.6%								
Modified Colorado Springs MSA Total Nonfarm Payroll Jobs <sup>2 &amp; 3</sup>	301.7	302.5	302.1	302.6	303.5	302.8	270.1				297.6	6.7	-27.5	2.3%	-9.2%
Colorado Springs MSA Total Nonfarm Payroll Jobs <sup>1</sup>	300.3	301.9	302.1	302.6	303.5	302.8	270.1	294.1	294.7	295.4	297.6	6.7	-27.5	2.3%	-9.2%
Expected Revision	1.4	0.6	0.0	0.0	0.0	0.0	0.0								
Expected Percent Revision	0.5%	0.2%	0.0%	0.0%	0.0%	0.0%	0.0%								
Modified Denver MSA Total Nonfarm Payroll Jobs <sup>2 &amp; 3</sup>	1,548.6	1,552.1	1,554.2	1,558.0	1,557.5	1,547.1	1,375.8				1,526.5	40.0	-150.7	2.6%	-9.9%
Denver MSA Total Nonfarm Payroll Jobs <sup>1</sup>	1,547.4	1,551.5	1,556.0	1,559.8	1,559.3	1,548.9	1,377.6	1,510.6	1,512.9	1,514.2	1,526.5	41.8	-148.9	2.8%	-9.8%
Expected Revision	1.2	0.6	-1.8	-1.8	-1.8	-1.8	-1.8								
Expected Percent Revision	0.1%	0.0%	-0.1%	-0.1%	-0.1%	-0.1%	-0.1%								
Modified Fort Collins MSA Total Nonfarm Payroll Jobs <sup>2 &amp; 3</sup>	175.3	174.9	175.8	176.1	175.4	174.8	155.5				173.3	3.6	-17.8	2.1%	-10.3%
Fort Collins MSA Total Nonfarm Payroll Jobs <sup>1</sup>	176.7	178.3	177.9	178.2	177.5	176.9	157.6	170.8	171.6	172.2	173.3	5.7	-15.7	3.3%	-9.1%
Expected Revision	-1.4	-3.4	-2.1	-2.1	-2.1	-2.1	-2.1								
Expected Percent Revision	-0.8%	-1.9%	-1.2%	-1.2%	-1.2%	-1.2%	-1.3%								
Modified Grand Junction MSA Total Nonfarm Payroll Jobs <sup>2 &amp; 3</sup>	65.1	64.7	64.6	64.9	64.7	64.8	56.7				65.4	-0.3	-8.7	-0.4%	-13.2%
Grand Junction MSA Total Nonfarm Payroll Jobs <sup>1</sup>	65.0	64.7	64.8	65.1	64.9	65.0	56.9	64.7	64.5	64.9	65.4	-0.1	-8.5	-0.2%	-13.0%
Expected Revision	0.1	0.0	-0.2	-0.2	-0.2	-0.2	-0.2								
Expected Percent Revision	0.2%	0.0%	-0.2%	-0.2%	-0.2%	-0.2%	-0.3%								
Modified Greeley MSA Total Nonfarm Payroll Jobs <sup>2 &amp; 3</sup>	114.6	114.1	113.7	113.6	114.0	113.1	102.1				111.9	2.5	-9.8	2.2%	-8.8%
Greeley MSA Total Nonfarm Payroll Jobs <sup>1</sup>	114.1	114.7	114.6	114.5	114.9	114.0	103.0	110.7	111.2	111.2	111.9	3.4	-8.9	3.1%	-8.0%
Expected Revision	0.5	-0.6	-0.9	-0.9	-0.9	-0.9	-0.9								
Expected Percent Revision	0.4%	-0.5%	-0.8%	-0.8%	-0.8%	-0.8%	-0.9%								
Modified Pueblo MSA Total Nonfarm Payroll Jobs <sup>2 &amp; 3</sup>	61.9	63.9	64.8	64.7	64.7	65.1	56.7				63.3	1.9	-6.6	3.1%	-10.4%
Pueblo MSA Total Nonfarm Payroll Jobs <sup>1</sup>	63.7	63.8	63.7	63.6	63.6	64.0	55.6	62.9	63.2	62.9	63.3	0.8	-7.7	1.3%	-12.2%
Expected Revision	-1.8	0.1	1.1	1.1	1.1	1.1	1.1								
Expected Percent Revision	-2.8%	0.2%	1.8%	1.8%	1.8%	1.8%	2.0%								

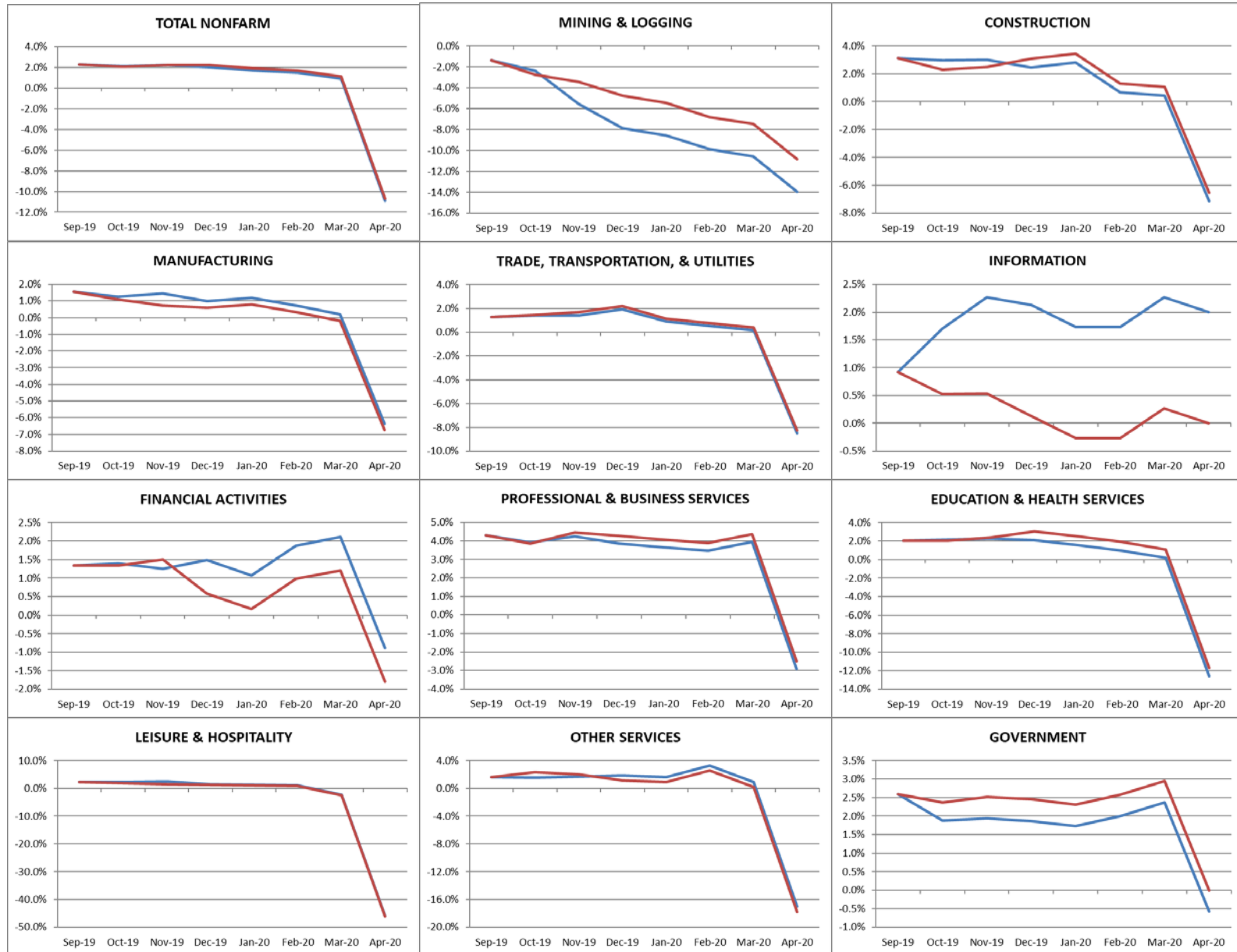
<sup>1</sup> Source: Official payroll jobs series produced by the U.S. Bureau of Labor Statistics and the Colorado Department of Labor and Employment.

<sup>2</sup> Modified 4th quarter estimates produced by the Colorado Department of Labor and Employment based on 4th quarter 2019 QCEW and an estimate of payroll jobs not covered by QCEW.

<sup>3</sup> Modified 1st and 2nd quarter 2020 estimates produced by the Colorado Department of Labor and Employment based on modified 4th quarter results and over the month changes from the official payroll jobs series.

# Colorado Nonfarm Payroll Jobs Estimates – Over the Year Growth Rates by Industry Sector

Official<sup>1</sup> Payroll Jobs = Red Line / Modified<sup>2</sup> & <sup>3</sup> Payroll Jobs = Blue Line



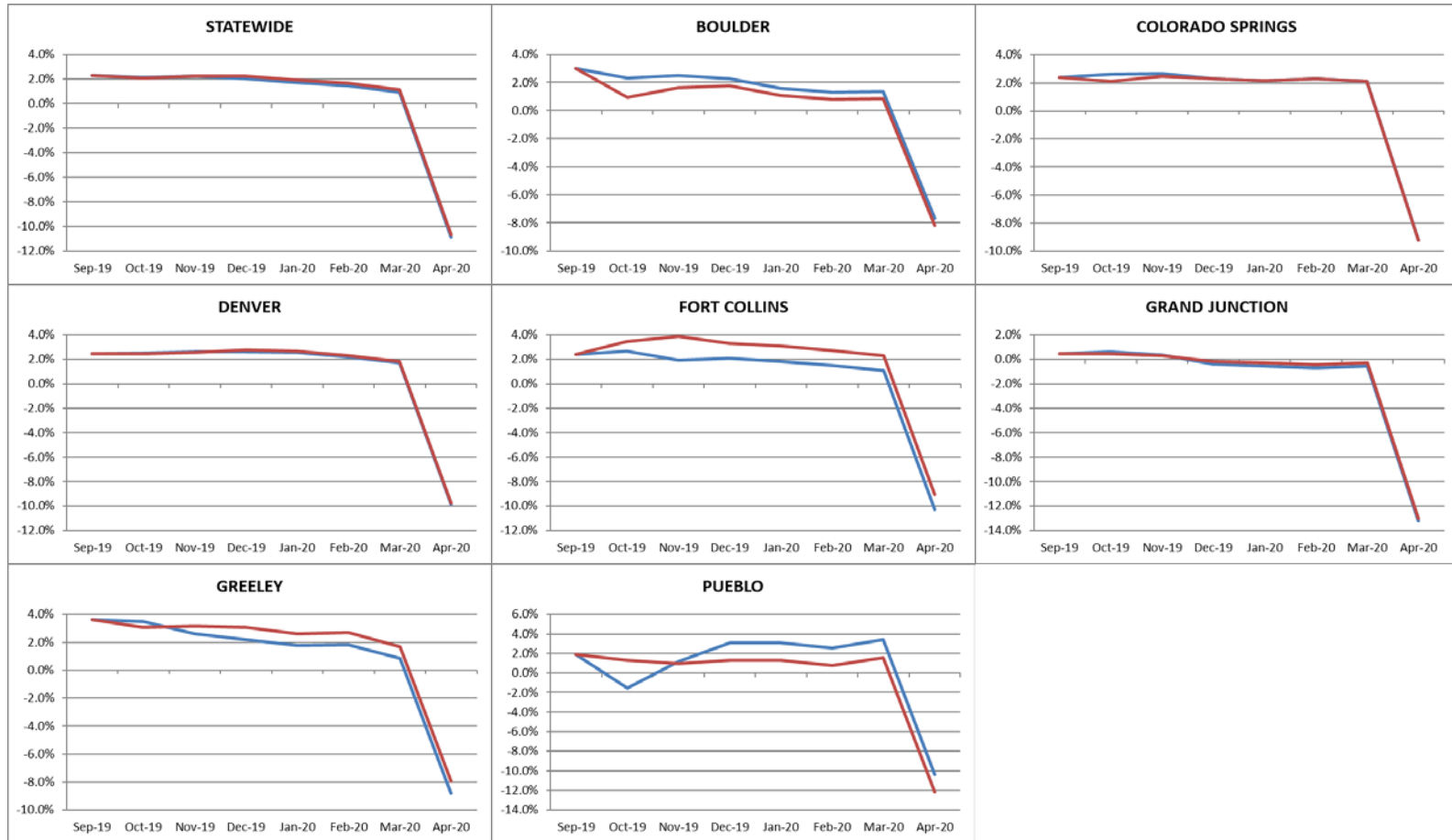
<sup>1</sup> Source: Official payroll jobs series produced by the U.S. Bureau of Labor Statistics and the Colorado Department of Labor and Employment; September 2019 is previously benchmarked data.

<sup>2</sup> Modified Oct 2019 – Dec 2019 estimates produced by the Colorado Department of Labor and Employment based on Oct 2019 – Dec 2019 QCEW and an estimate of payroll jobs not covered by QCEW.

<sup>3</sup> Modified 1<sup>st</sup> and 2<sup>nd</sup> quarter 2020 estimates produced by the Colorado Department of Labor and Employment based on modified 4<sup>th</sup> quarter results and over the month changes from the official payroll jobs series.

# Colorado Nonfarm Payroll Jobs Estimates – Over the Year Growth Rates by Metropolitan Statistical Area

Official<sup>1</sup> Payroll Jobs = Red Line / Modified<sup>2</sup> & <sup>3</sup> Payroll Jobs = Blue Line



<sup>1</sup> Source: Official payroll jobs series produced by the U.S. Bureau of Labor Statistics and the Colorado Department of Labor and Employment; September 2019 is previously benchmarked data.

<sup>2</sup> Modified Oct 2019 – Dec 2019 estimates produced by the Colorado Department of Labor and Employment based on Oct 2019 – Dec 2019 QCEW and an estimate of payroll jobs not covered by QCEW.

<sup>3</sup> Modified 1<sup>st</sup> and 2<sup>nd</sup> quarter 2020 estimates produced by the Colorado Department of Labor and Employment based on modified 4<sup>th</sup> quarter results and over the month changes from the official payroll jobs series.