

PRESS RELEASE

Colorado Department of Labor and Employment • 633 17th Street, Suite 1200 • Denver, CO 80202 • (303) 318-8004 • Fax: (303) 318-8070

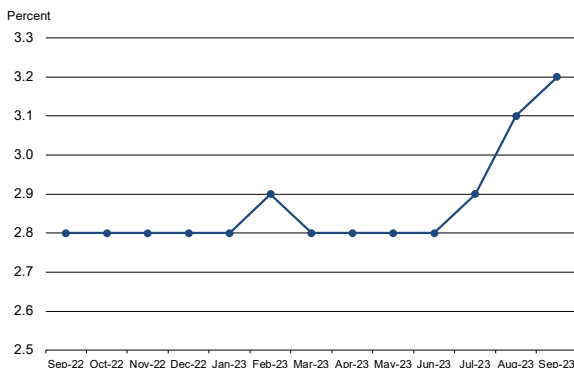
For Immediate Release

Date: October 20, 2023/ 8:00 A.M.
Contact: Office of Government, Policy and Public Relations
Email: cdle_pr@state.co.us
Web: [LMI Gateway](#)

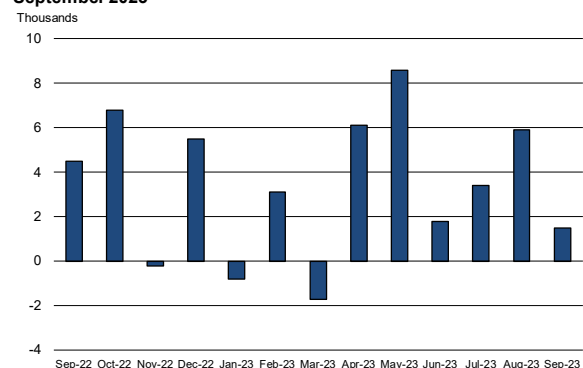
Colorado Employment Situation – September 2023

1,500 Nonfarm Payroll Jobs Added in September; Unemployment Rate Rises to 3.2 Percent

Colorado unemployment rate, seasonally adjusted
September 2022 - September 2023



Colorado nonfarm payroll employment over-the-month
change, seasonally adjusted, September 2022 -
September 2023



Household survey data

- According to the survey of households, Colorado's seasonally adjusted **unemployment rate** increased one-tenth of a percentage point in September to 3.2 percent compared to the August rate of 3.1 percent. The **number of unemployed individuals** grew by 3,600 over the same time period to 103,500. The national unemployment rate was 3.8 percent in September, unchanged from the month prior.
- Colorado's **labor force** decreased by 2,500 in September to 3,252,600. The share of Coloradans participating in the labor force fell slightly to 68.6 percent in September, compared to 68.7 percent the month prior. The U.S. labor force participation rate was 62.8 percent in September, matching the rate it was in August.
- The **number of individuals employed** in Colorado declined by 6,100 in September to 3,149,100, which represents 66.4 percent of the state's 16+ population. Colorado's employment-population ratio of 66.4 in September was two-tenths of a percentage point lower compared to the August rate of 66.6 percent. The national employment-population ratio was flat in September at 60.4 percent.

Establishment survey data

- Employers in Colorado added 1,500 **nonfarm payroll jobs** from August to September for a total of 2,917,800 jobs, according to the survey of business establishments. Private sector payroll jobs decreased by 600, while government added 2,100 jobs.
- **August estimates** were revised up to 2,916,300, and the over the month change from July to August was a gain of 5,900 rather than the originally estimated increase of 5,600 (monthly revisions are based on additional responses from businesses and government agencies since the last published estimates).
- **The Private industry sector with significant job gains** in September was: professional and business services ($\approx 2,300$). Significant over the month private sector **job loss** occurred in other services ($\approx 2,600$).
- **Since September 2022**, nonfarm payroll jobs have increased 40,000, with the private sector growing by 21,000 and government adding 19,000 jobs. The largest **private sector job gains** were in leisure and hospitality ($\approx 22,300$), professional and business services ($\approx 9,000$), and educational and health services ($\approx 5,900$). During that same period financial activities ($\approx 8,100$), trade, transportation, and utilities ($\approx 4,800$), construction ($\approx 4,200$), information ($\approx 1,800$), and other services (≈ 600) **payroll jobs declined**. Colorado's **rate of job growth** over the past year is 1.4 percent, lagging the U.S. rate of 2.1 percent.
- Over the year, the **average workweek** for all Colorado employees on private nonfarm payrolls declined from 33.5 to 33.4 hours, while **average hourly earnings** grew from \$34.44 to \$35.75. Colorado average hourly earnings are one dollar and eighty-seven cents higher than national average hourly earnings of \$33.88.

###

All Colorado estimates from the establishment and household surveys, including greater geographic detail, are available at: <http://www.colmigateway.com>. Estimates for all states and the nation are available at: <http://www.bls.gov>.

For data visualizations, visit public.tableau.com/app/profile/cdle.lmi.

The **October 2023 Colorado Employment Situation** will be released at 8:00 AM on Friday, November 17, 2023. The full schedule of release dates for calendar year 2023 estimates is available at <http://www.colmigateway.com>.

###

Technical Notes

This release provides information on industry employment and labor force statistics for September 2023, the most current estimates available from the Colorado Department of Labor and Employment. The reference period for the establishment and household surveys was the pay period or week that includes the 12th of the month.

The unemployment rate, labor force, labor force participation, total employment and the number of unemployed are based on a survey of households. The total employment estimate derived from this survey is intended to measure the number of people employed.

Nonfarm payroll jobs estimates are based on a survey of business establishments and government agencies, and are intended to measure the number of jobs, not the number of people employed. Other series based on this survey include private sector average weekly hours, average hourly earnings and average weekly earnings.

The business establishment survey covers about seven times the number of households surveyed and is therefore considered a more reliable indicator of economic conditions. Because the estimates are based on two separate surveys, one measuring jobs by worksite and the other measuring persons employed and unemployed by household, estimates based on these surveys may provide seemingly conflicting results.

###

Supplemental information available in following pages

SEPTEMBER 2023

EMPLOYMENT SITUATION SUPPLEMENTAL CHARTS

October 20, 2023

This briefing provides information on industry employment and labor force statistics, derived from surveys of business establishments and households. The reference period for these surveys is the pay period or week that includes the 12th of the month. The reference week for September was specifically September 10th – September 16th.

Colorado Department of Labor and Employment

Colorado Unemployment Rate Increases in September, Remains Below National Rate

Percent
7

6

5

4

3

2

1

0

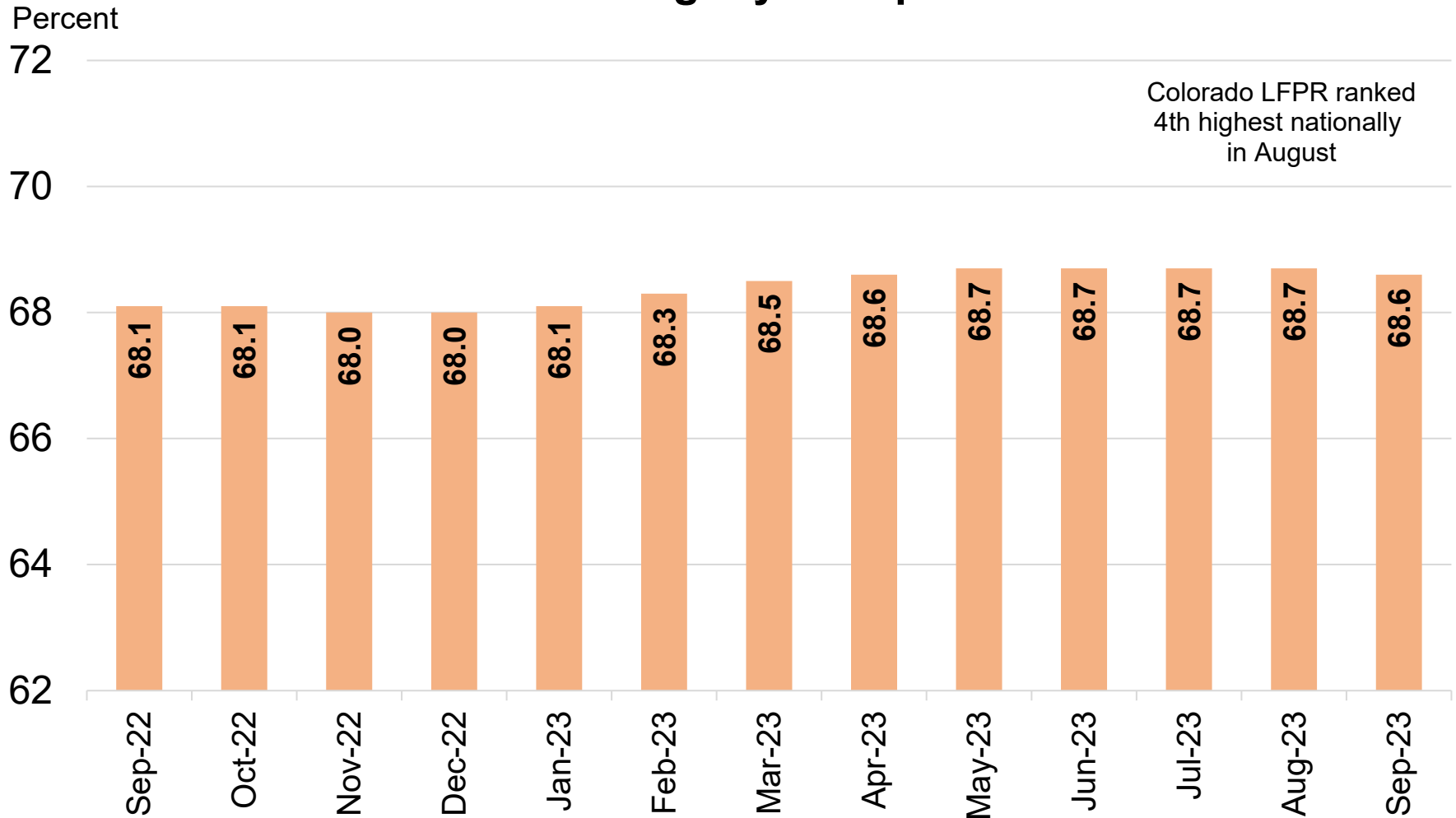


Increase in September unemployment rate due a decline in total employment (-6.1k), coupled with a decrease in labor force (-2.5k). Number of unemployed Coloradans grew by 3,600 to 103,500. Colorado's unemployment rate has ranged between percent 2.6 and 3.2 percent since April 2022.

Source: Colorado Department of Labor and Employment; Bureau of Labor Statistics
Data seasonally adjusted

■ Colorado ■ U.S.

Colorado's Labor Force Participation Rate Decreases Slightly in September



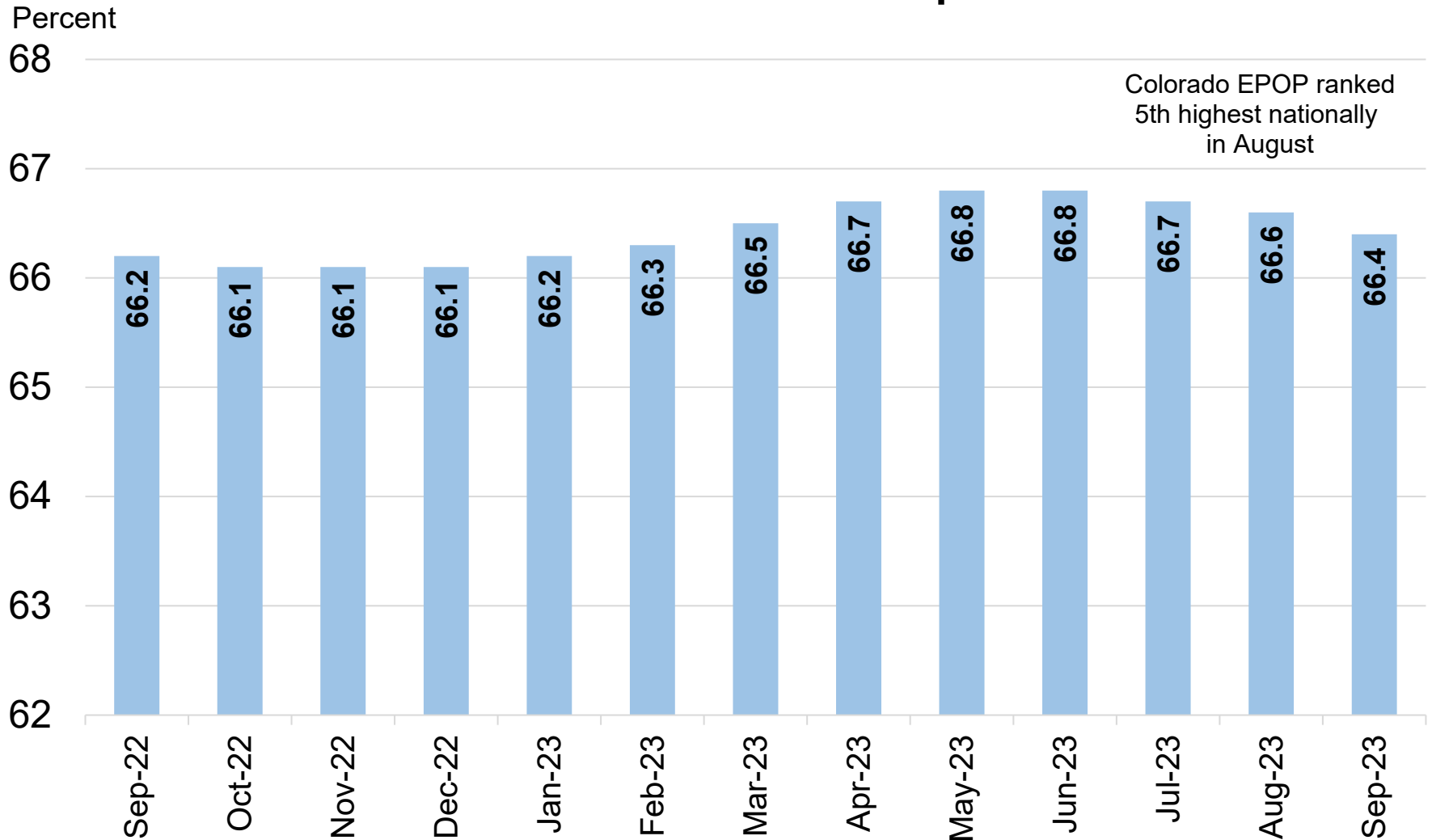
Source: Colorado Department of Labor and Employment; Bureau of Labor Statistics

Data seasonally adjusted. Estimates share of Colorado's 16+ population that is in the labor force in a given month.

February 2020 rate was 68.8 percent.

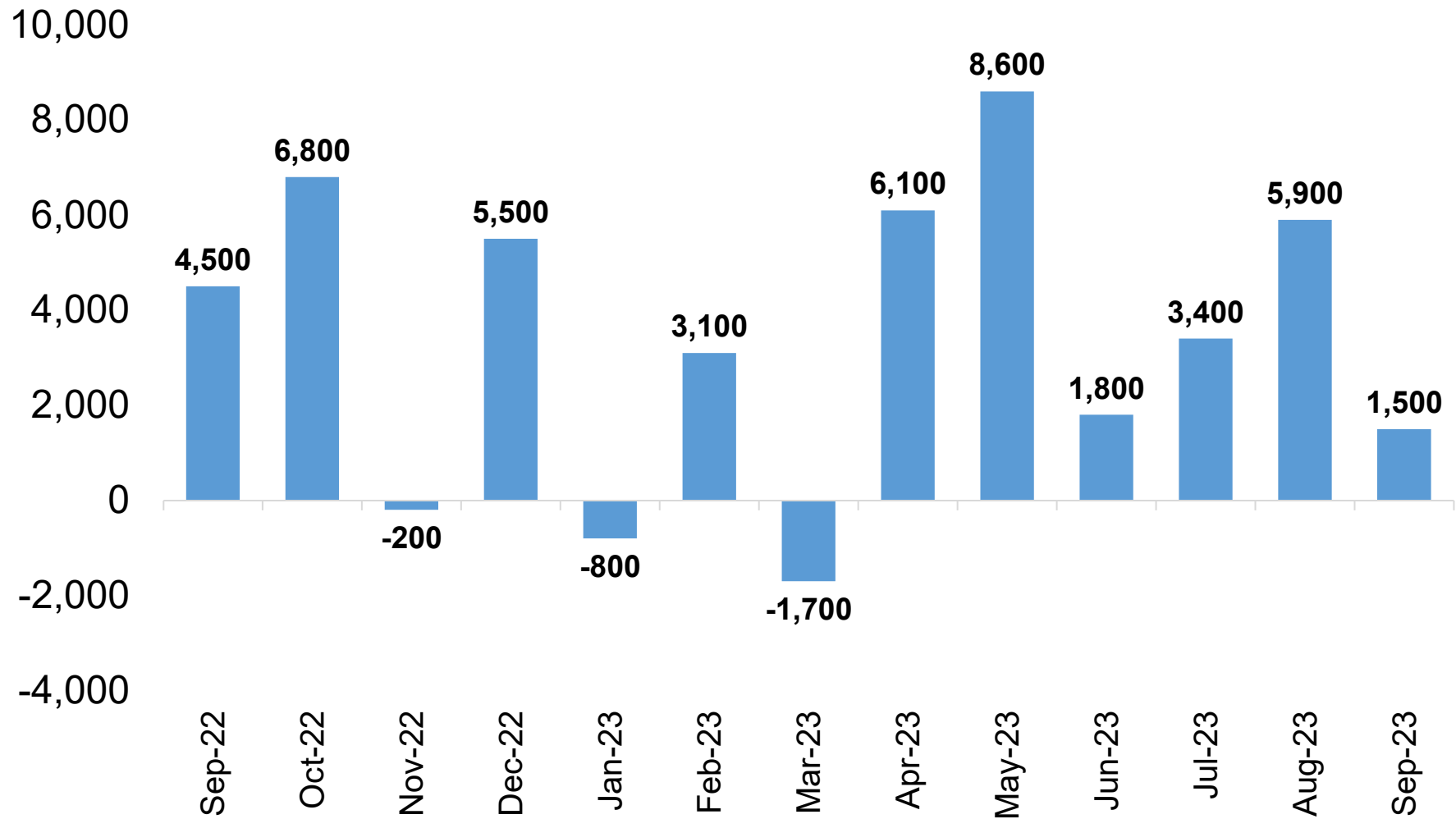
For further information on labor force definitions, go here: <https://www.bls.gov/lau/laufaq.htm>

Colorado's Employment-Population Ratio Declines to 66.4 Percent in September



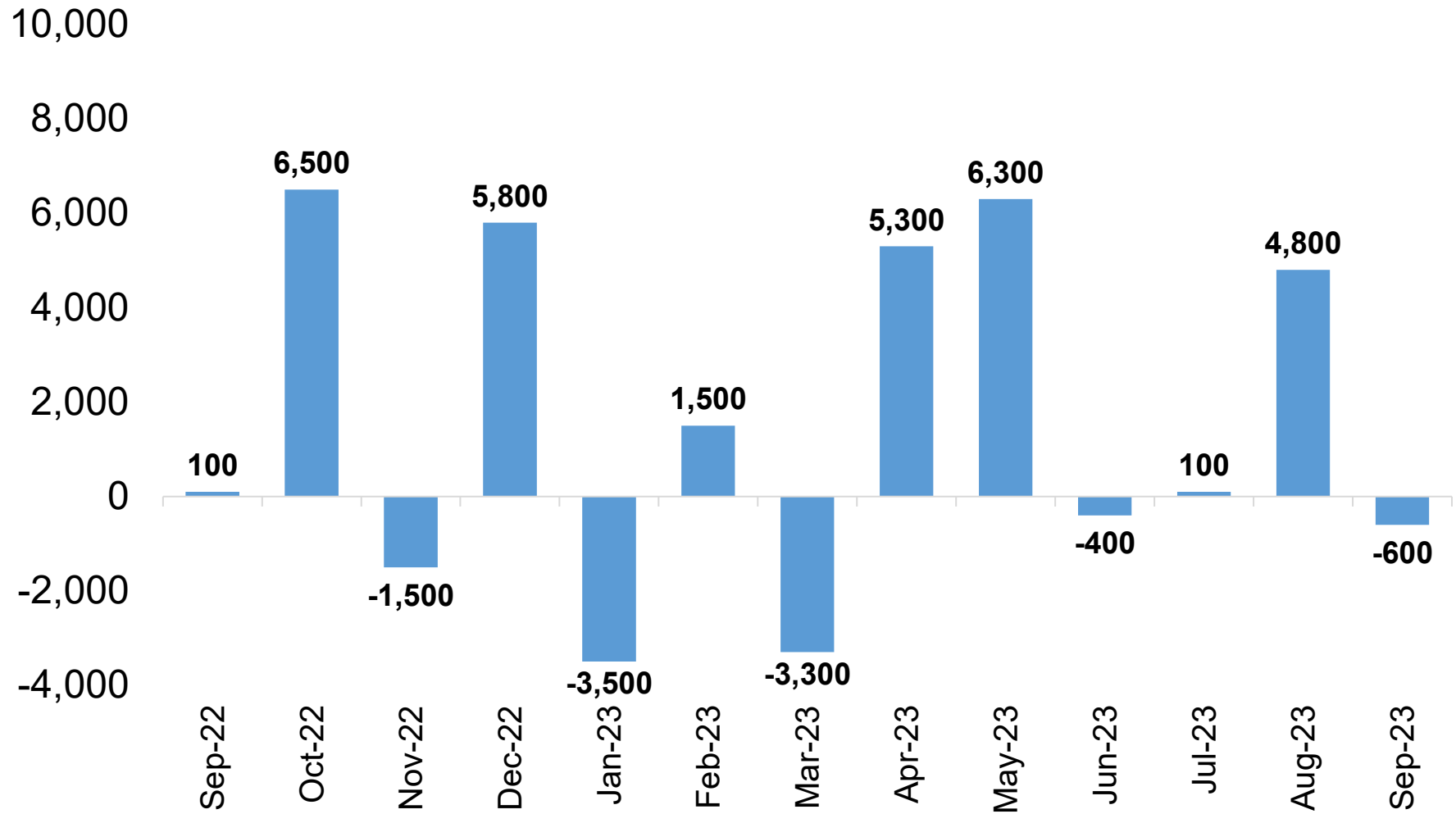
Source: Colorado Department of Labor and Employment; Bureau of Labor Statistics
Data seasonally adjusted. Estimates share of Colorado's 16+ population that is employed in a given month.
February 2020 rate was 66.6 percent.

Colorado Added 1,500 Total Nonfarm Jobs in September, August Numbers Revised Up 300



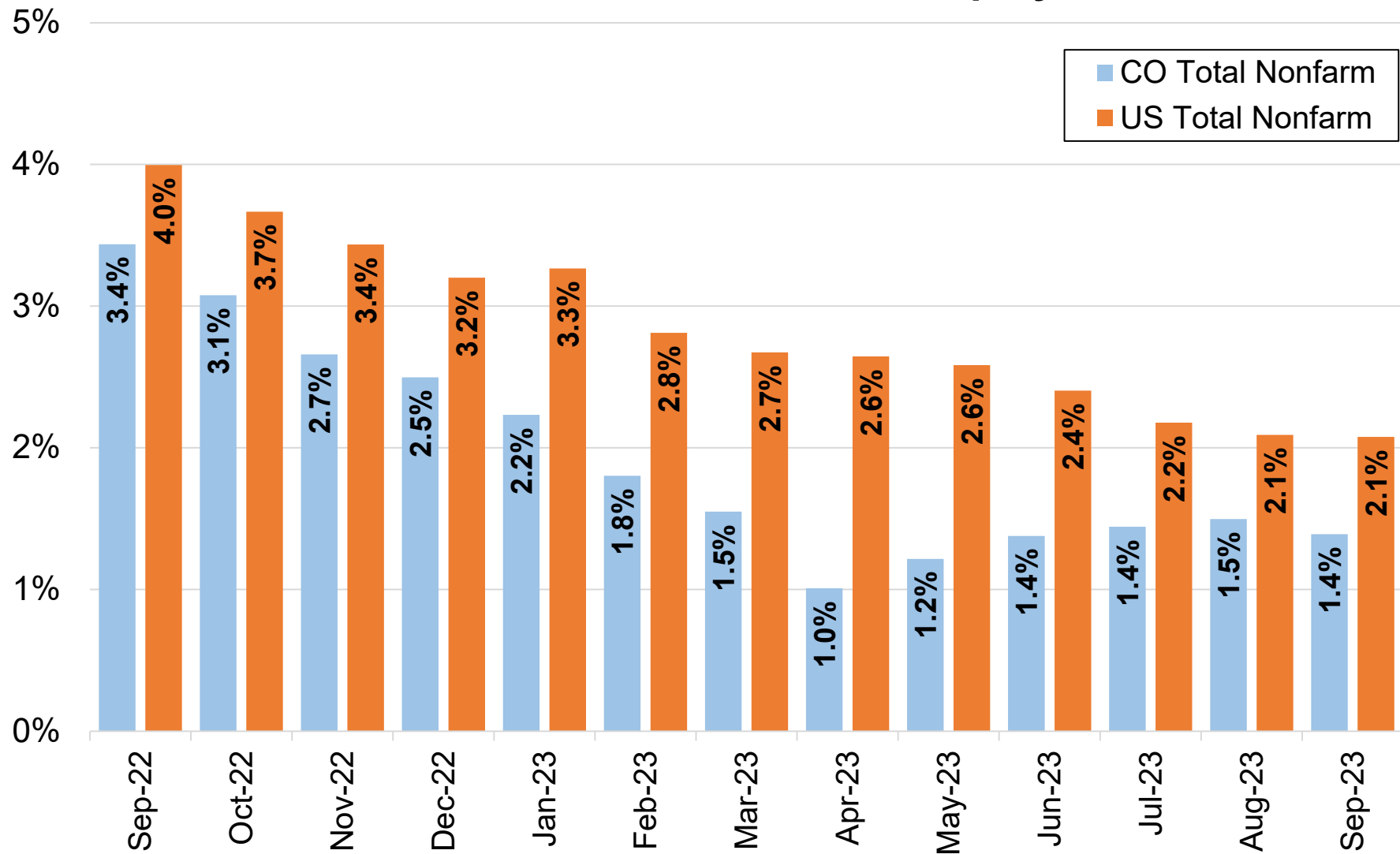
Source: Colorado Department of Labor and Employment; Bureau of Labor Statistics
Data seasonally adjusted

Private Sector Jobs Decline by 600 in September, August Figures Revised Down 4,300



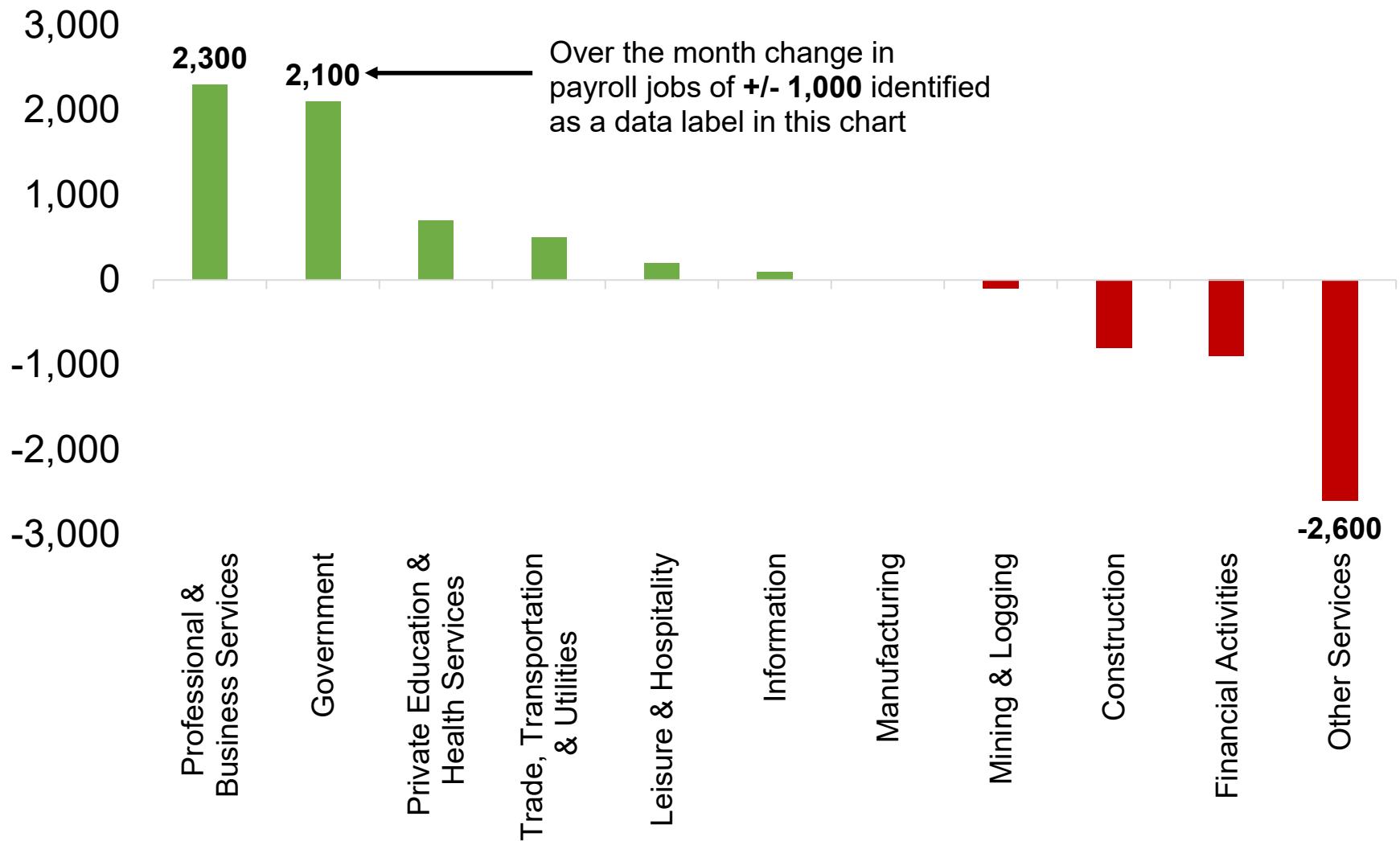
Source: Colorado Department of Labor and Employment; Bureau of Labor Statistics
Data seasonally adjusted

Colorado and U.S. Over the Year Growth Rates for Total Nonfarm Employment



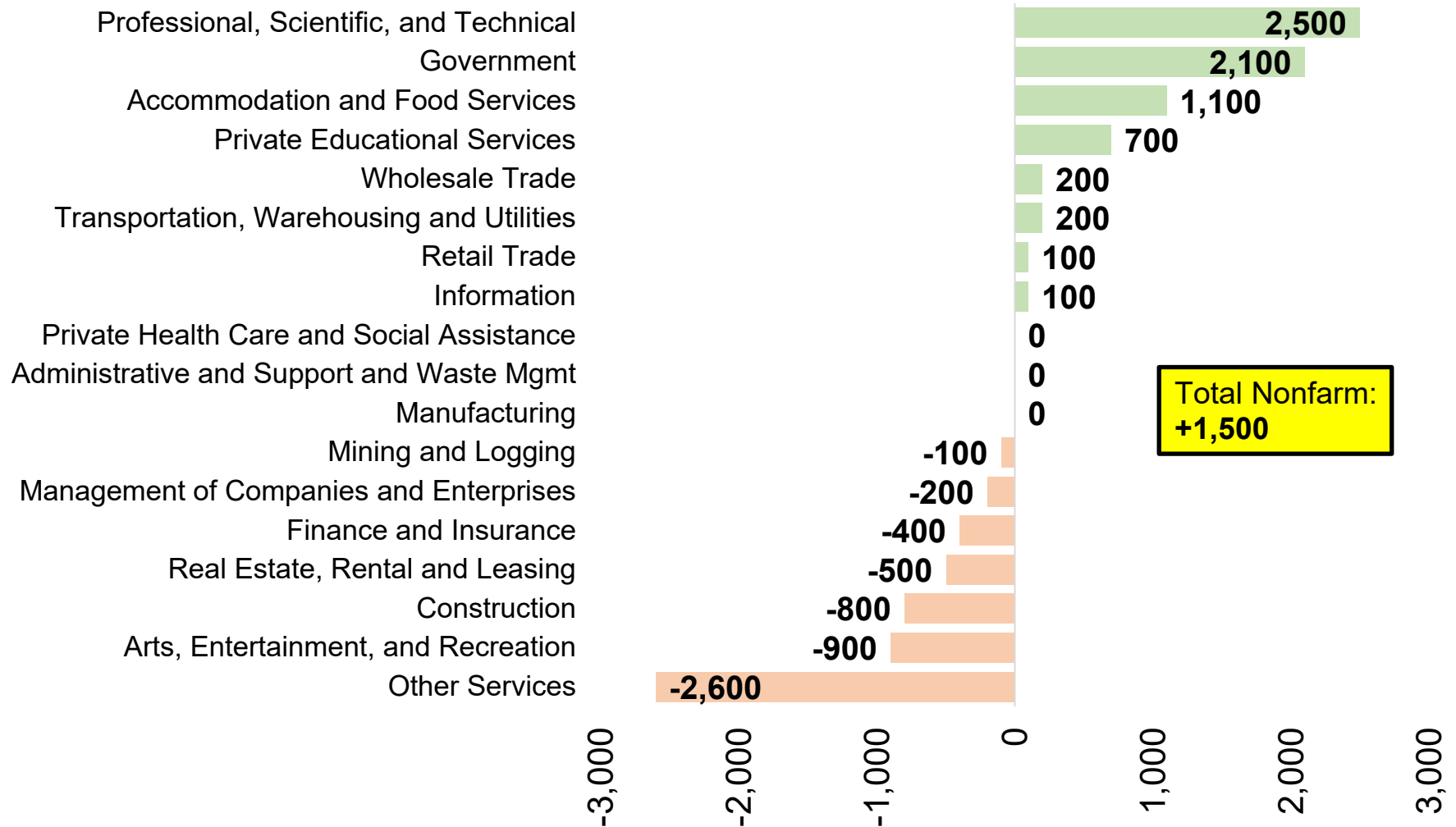
Source: Colorado Department of Labor and Employment; Bureau of Labor Statistics
Data seasonally adjusted

Mixed Industry Level Growth in September; Six Supersectors Gained Jobs vs. Four That Lost Jobs



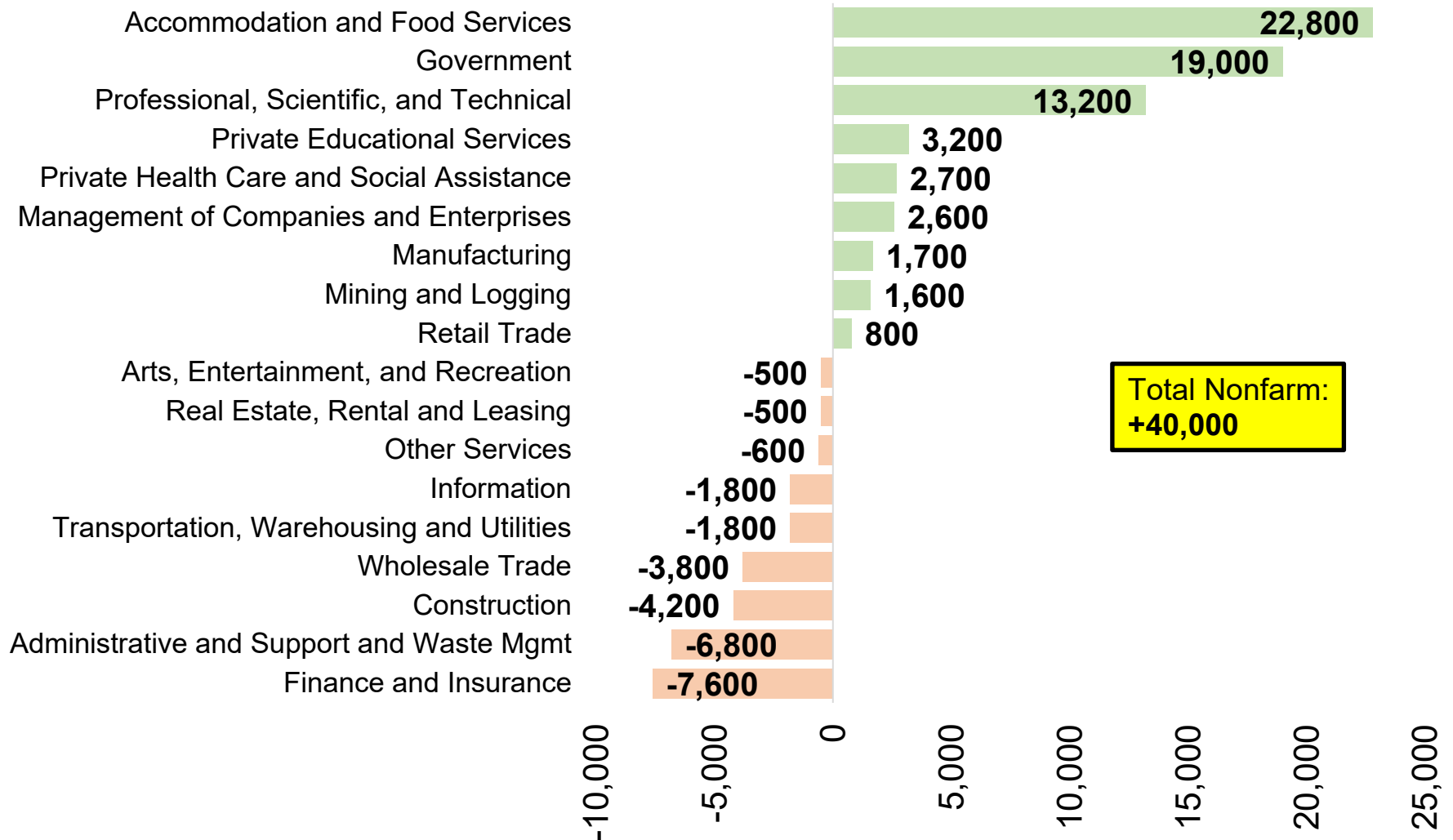
Source: Colorado Department of Labor and Employment; Bureau of Labor Statistics
Data seasonally adjusted

Change in Payroll Jobs in September 2023, by Industry Sector



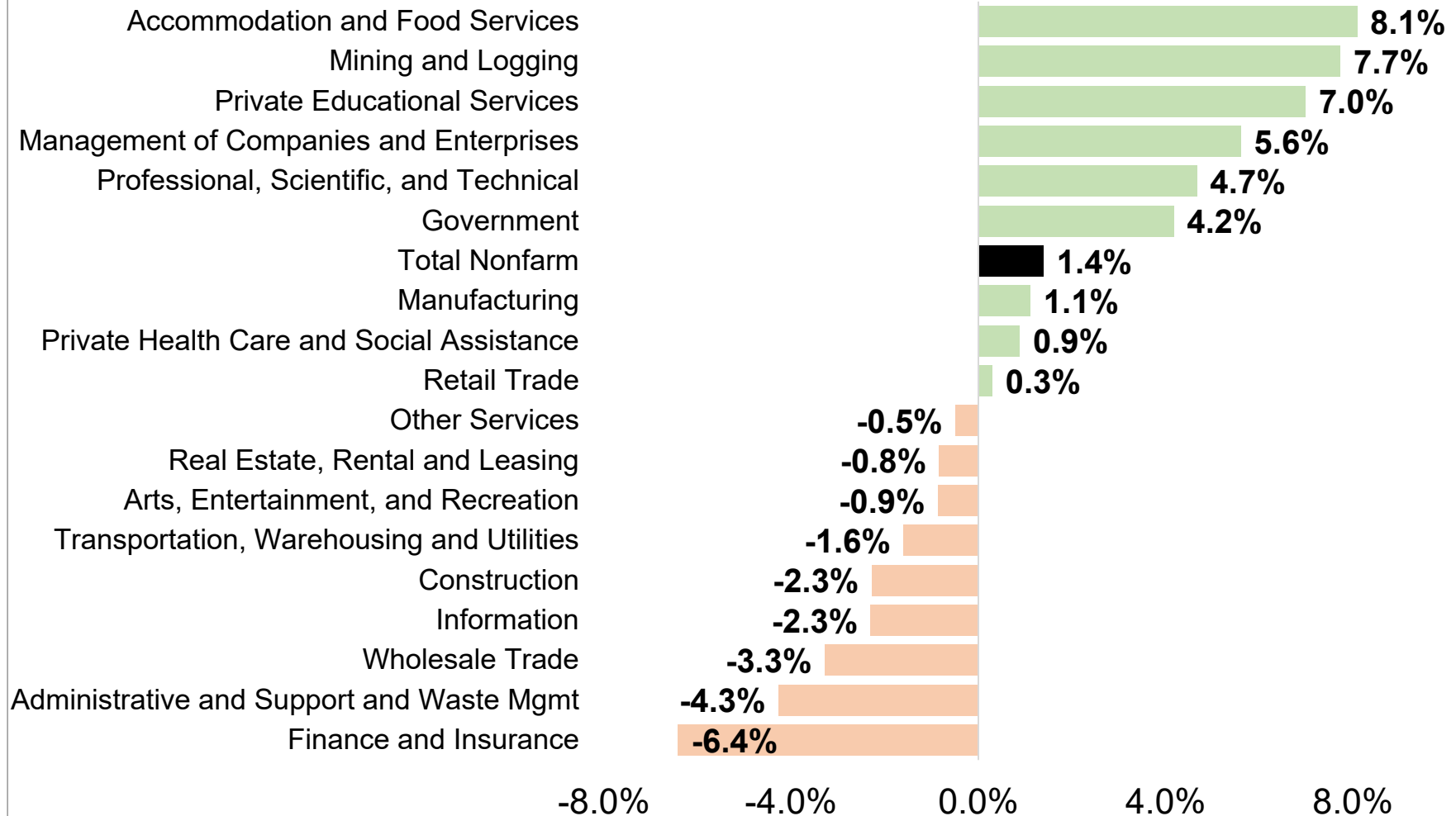
Source: Colorado Department of Labor and Employment; Bureau of Labor Statistics
Data seasonally adjusted, August 2023 to September 2023

Change in Payroll Jobs Over Past 12 Months, by Industry Sector



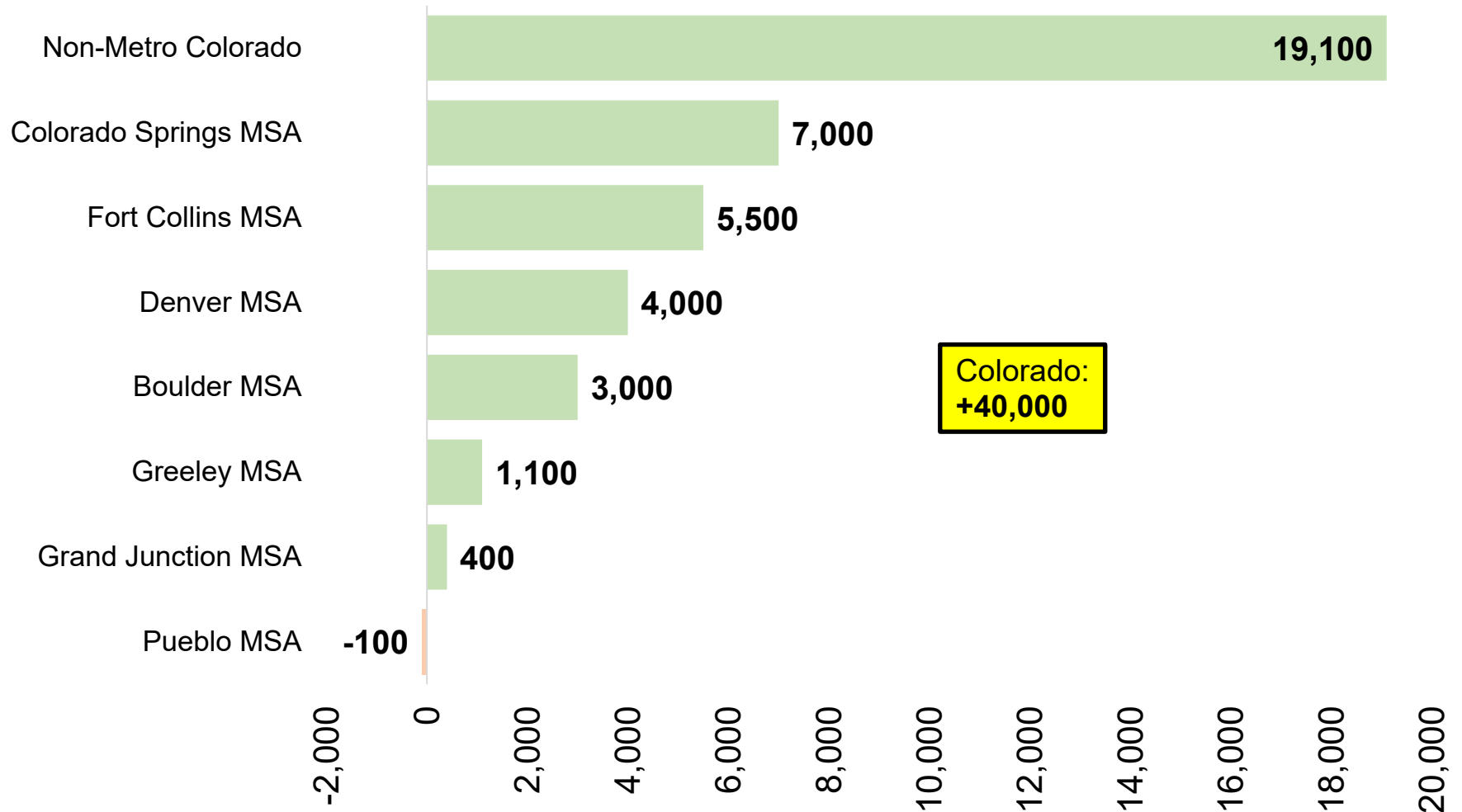
Source: Colorado Department of Labor and Employment; Bureau of Labor Statistics
Data seasonally adjusted, September 2022 to September 2023

September 2023 Over the Year Growth Rates, by Industry Sector



Source: Colorado Department of Labor and Employment; Bureau of Labor Statistics
Data seasonally adjusted, September 2022 to September 2023

Change in Payroll Jobs Over Past 12 Months, by Colorado Substate Area

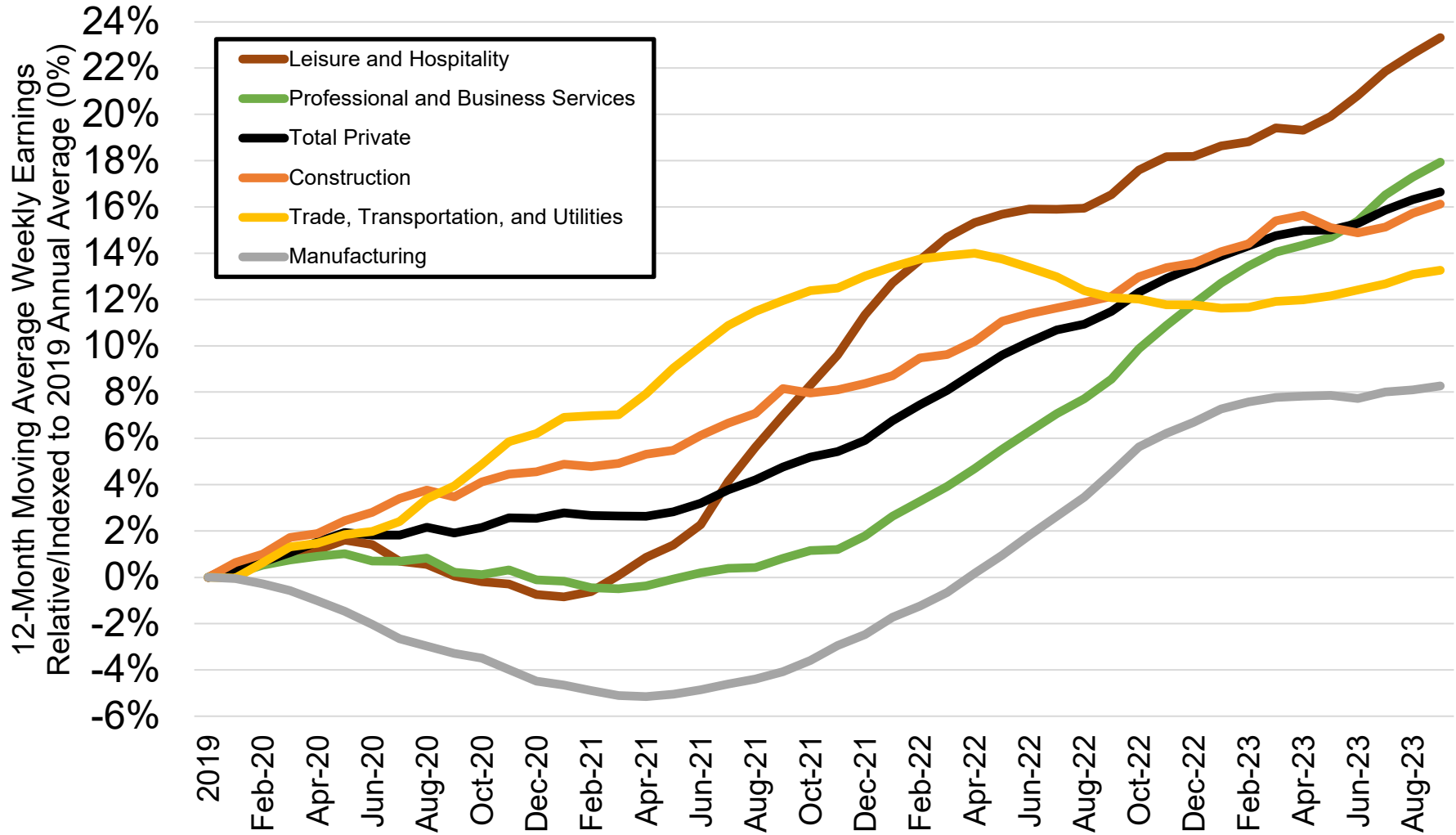


Source: Colorado Department of Labor and Employment; Bureau of Labor Statistics

Data seasonally adjusted, September 2022 to September 2023

Note: MSA = Metropolitan Statistical Area; Non-Metro Colorado = residual of state that is not an MSA (47 counties)

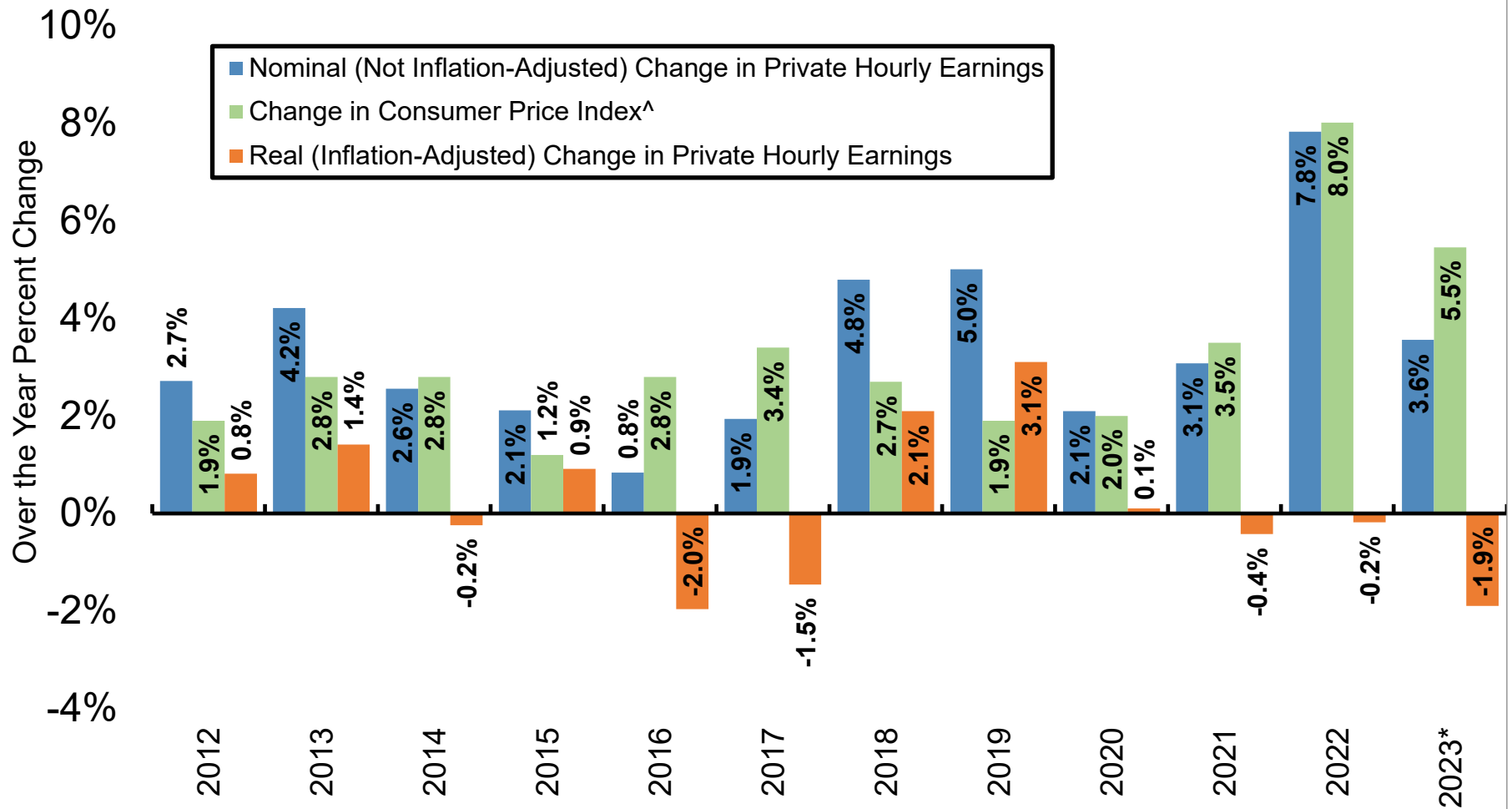
Percent Change in Average Weekly Earnings Since 2019, by Select Colorado Industry



Source: Colorado Department of Labor and Employment; Bureau of Labor Statistics

Data not seasonally adjusted. Note: each month on this chart represents a 12-month moving average and measures the percent change in average weekly earnings compared to the 2019 annual average for that industry.

Nominal and Real Percent Change in Colorado's Private Average Hourly Earnings Since 2012

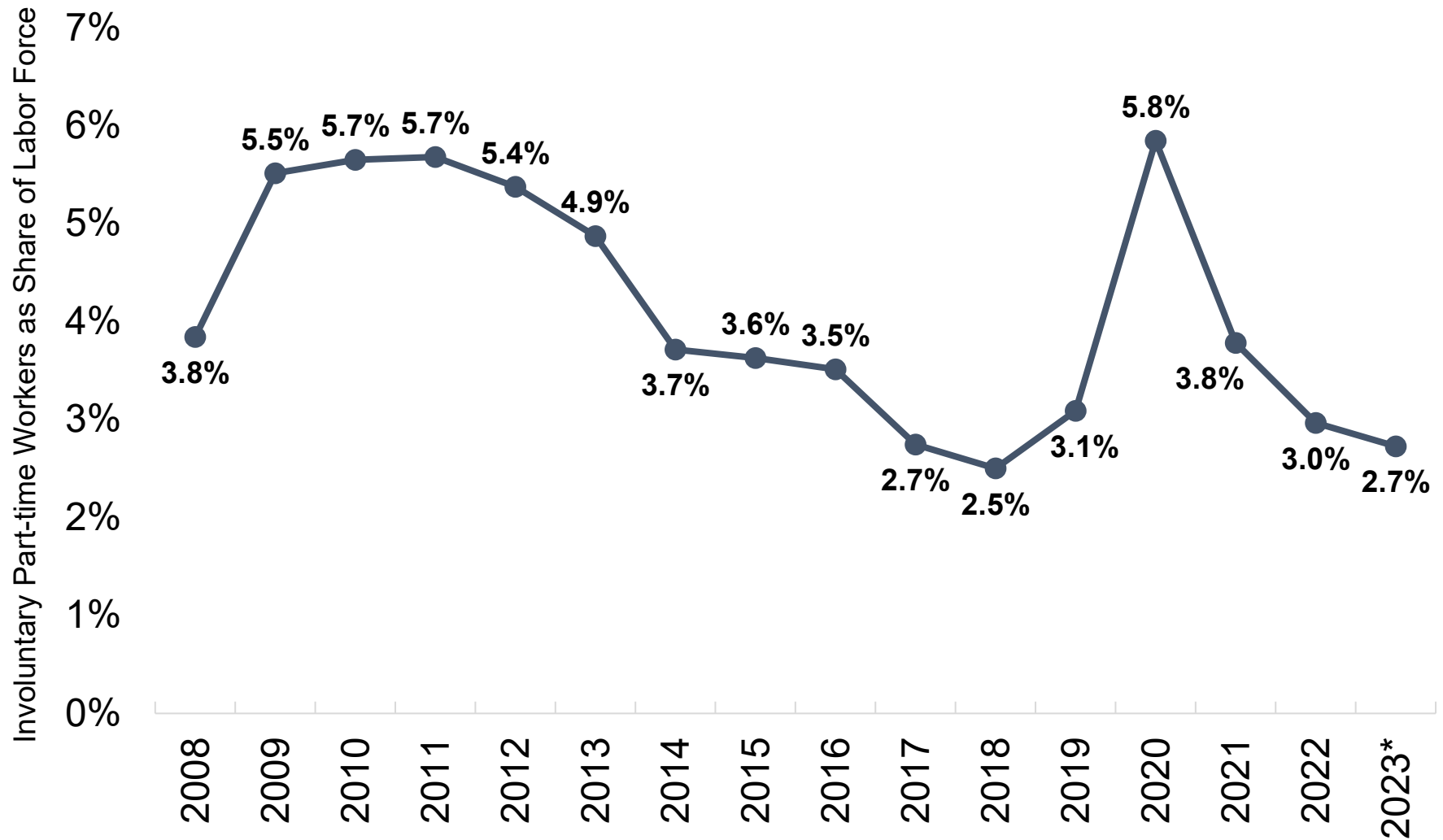


Source: Colorado Department of Labor and Employment estimates; Bureau of Labor Statistics

[^]Note: Denver-Aurora-Lakewood CPI-U estimates were utilized to adjust average hourly earnings for inflation.

That data is available here: <https://www.bls.gov/cpi/regional-resources.htm>. *2023 nominal earnings growth is measured using data for January to September compared to the same period the year prior, while real earnings were adjusted using the average over-the-year change in CPI-U for January, March, May, July, and September 2023.

Involuntary Part-Time Workers as Share of Labor Force



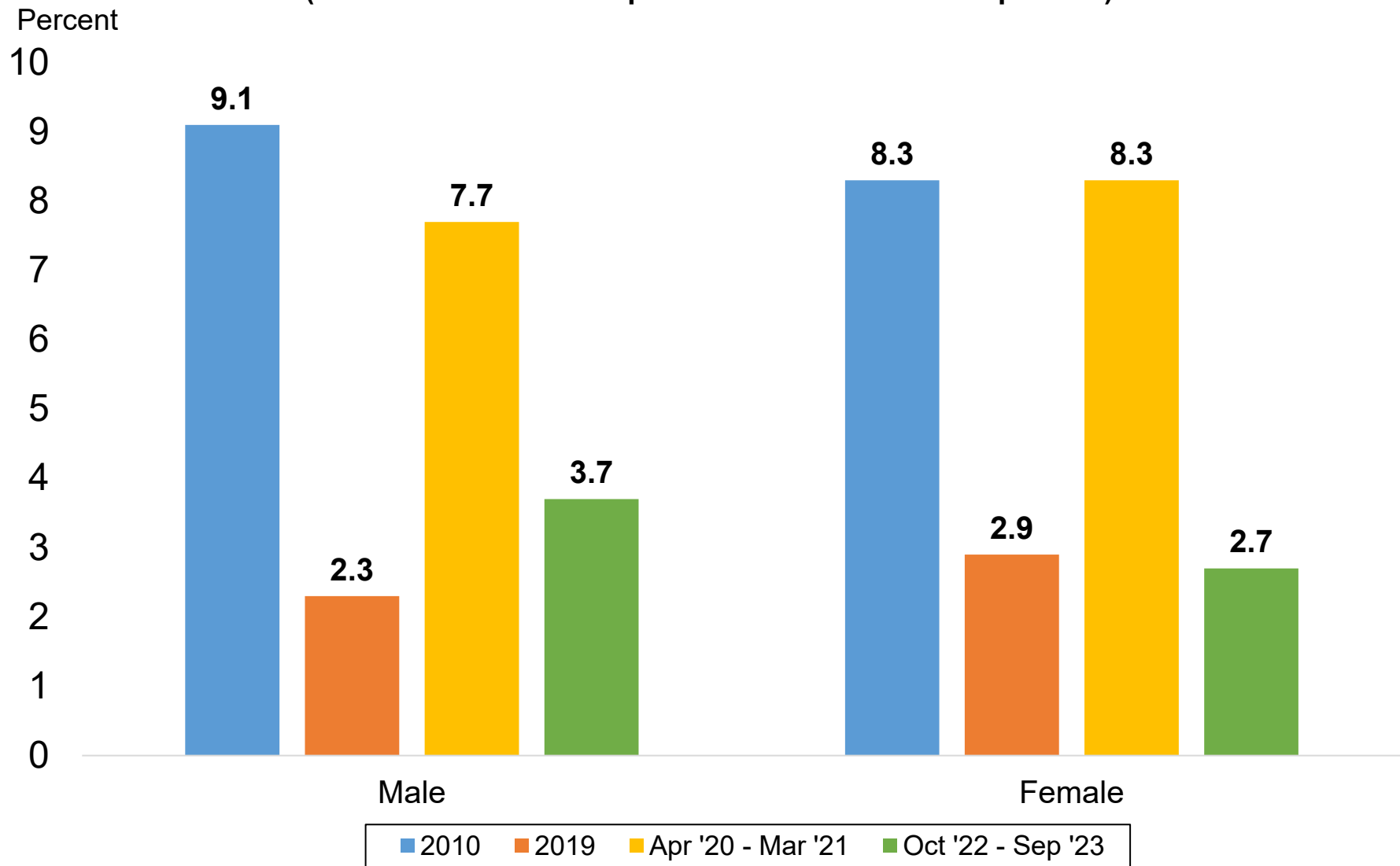
Source: Current Population Survey

Data not seasonally adjusted. Involuntary part-time workers are those individuals who are working part-time hours (34 hours or less), but prefer full-time hours (35+ hours).

*Average through the first nine months of 2023.

Unemployment Rates by Gender

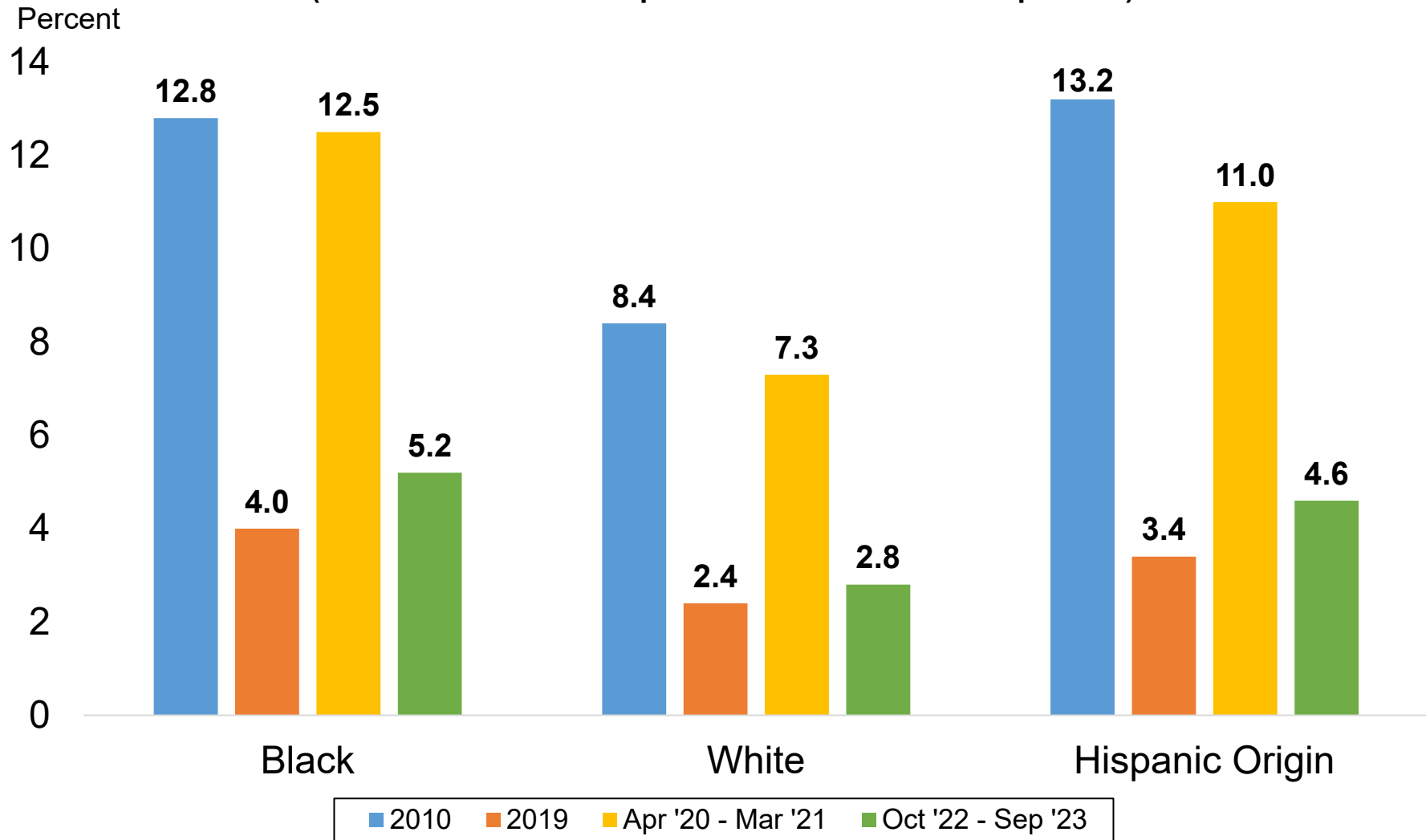
(Most recent 12-month period available vs. select periods)



Source: Current Population Survey

Data not seasonally adjusted. Unemployment rates by gender for individuals 16 years and older.

Unemployment Rates by Race & Ethnicity (Most recent 12-month period available vs. select periods)

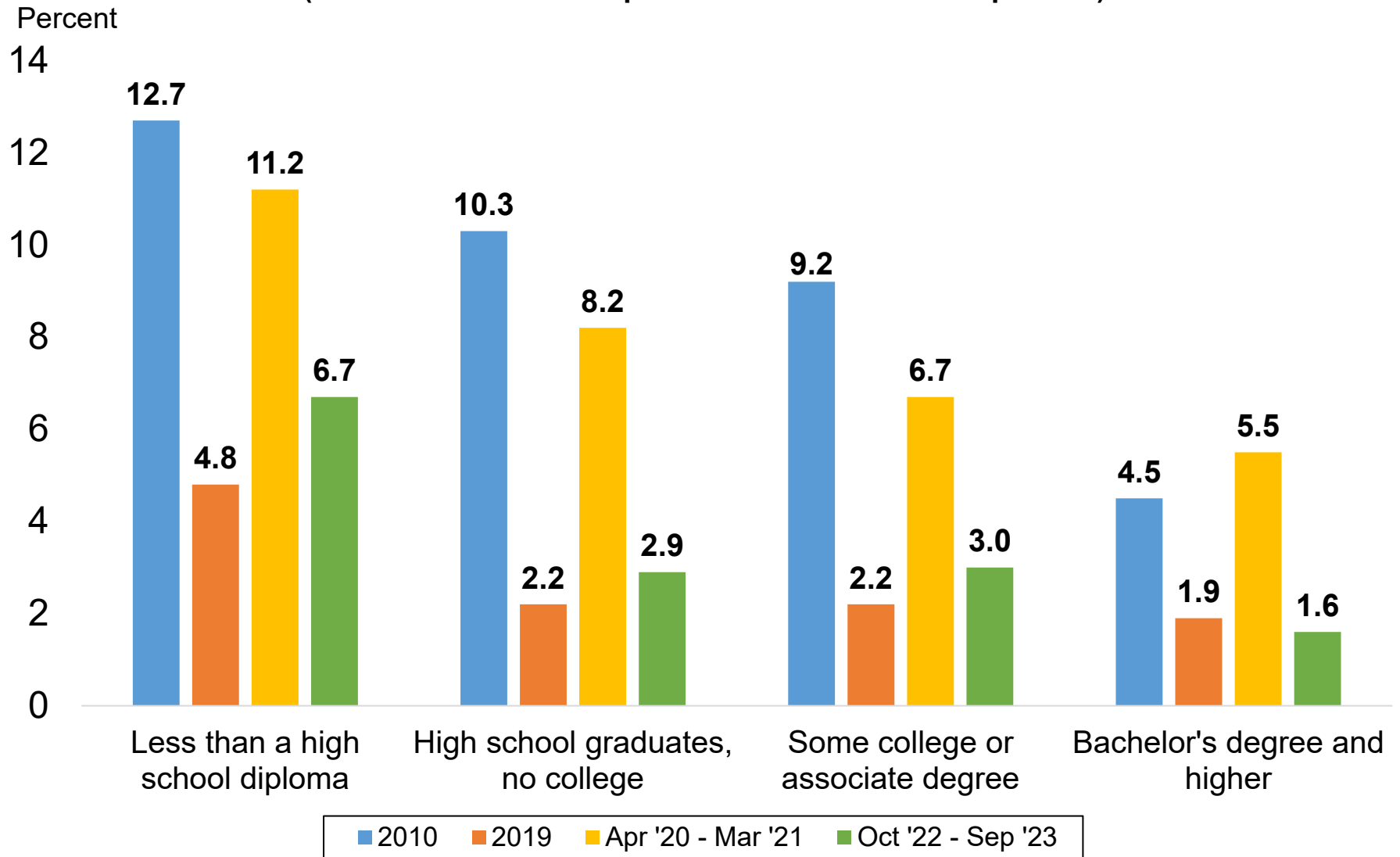


Source: Current Population Survey

Data not seasonally adjusted. Other race categories excluded due to small sample size. Hispanic origin category is not mutually exclusive (i.e. hispanic and non-hispanic ethnicities are represented in both race categories).

Unemployment Rates by Educational Attainment

(Most recent 12-month period available vs. select periods)

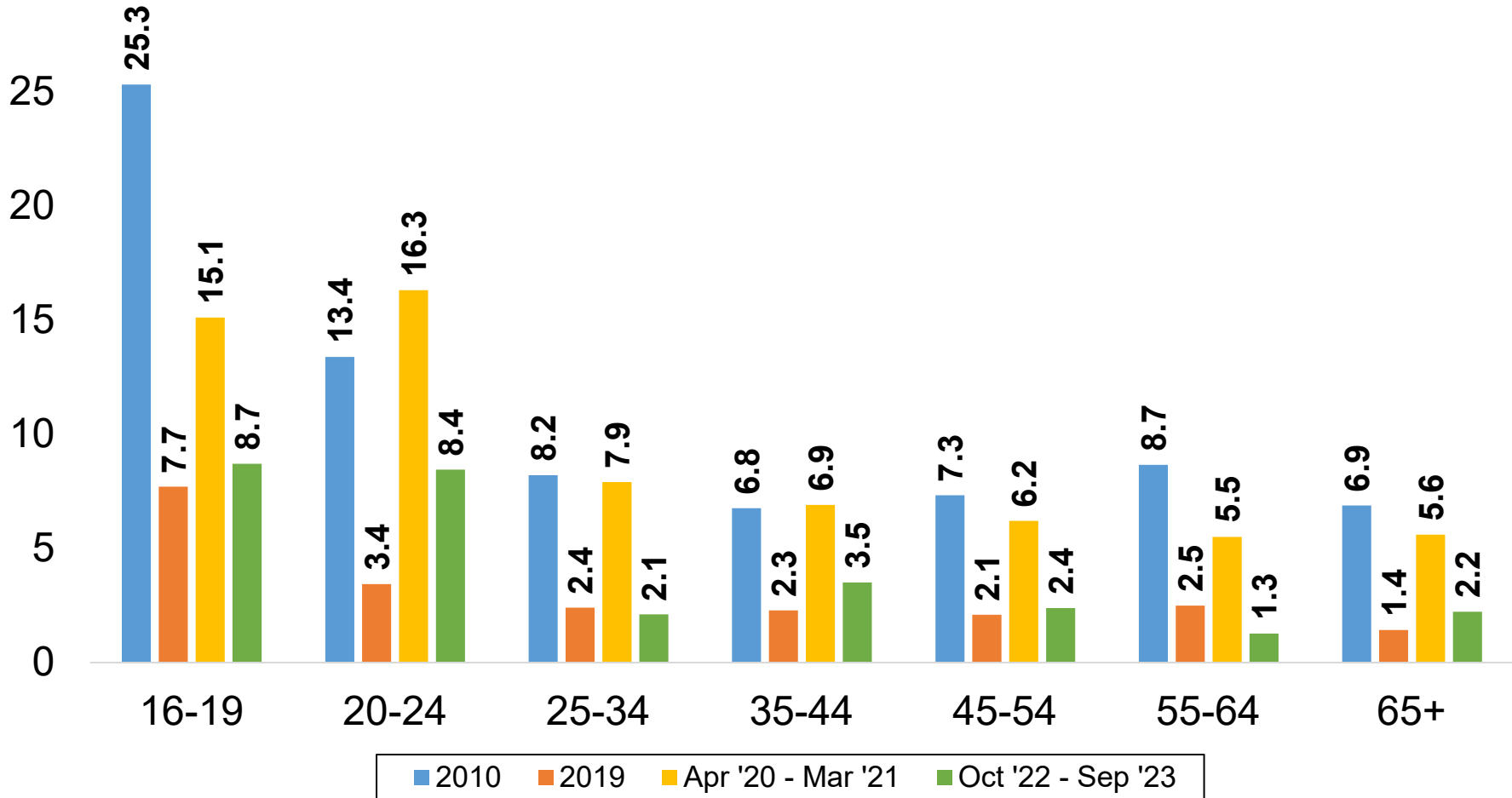


Source: Current Population Survey

Data not seasonally adjusted. Unemployment rates by educational attainment for individuals 25 years and over.

Unemployment Rates by Age Group (Most recent 12-month period available vs. select periods)

Percent
30

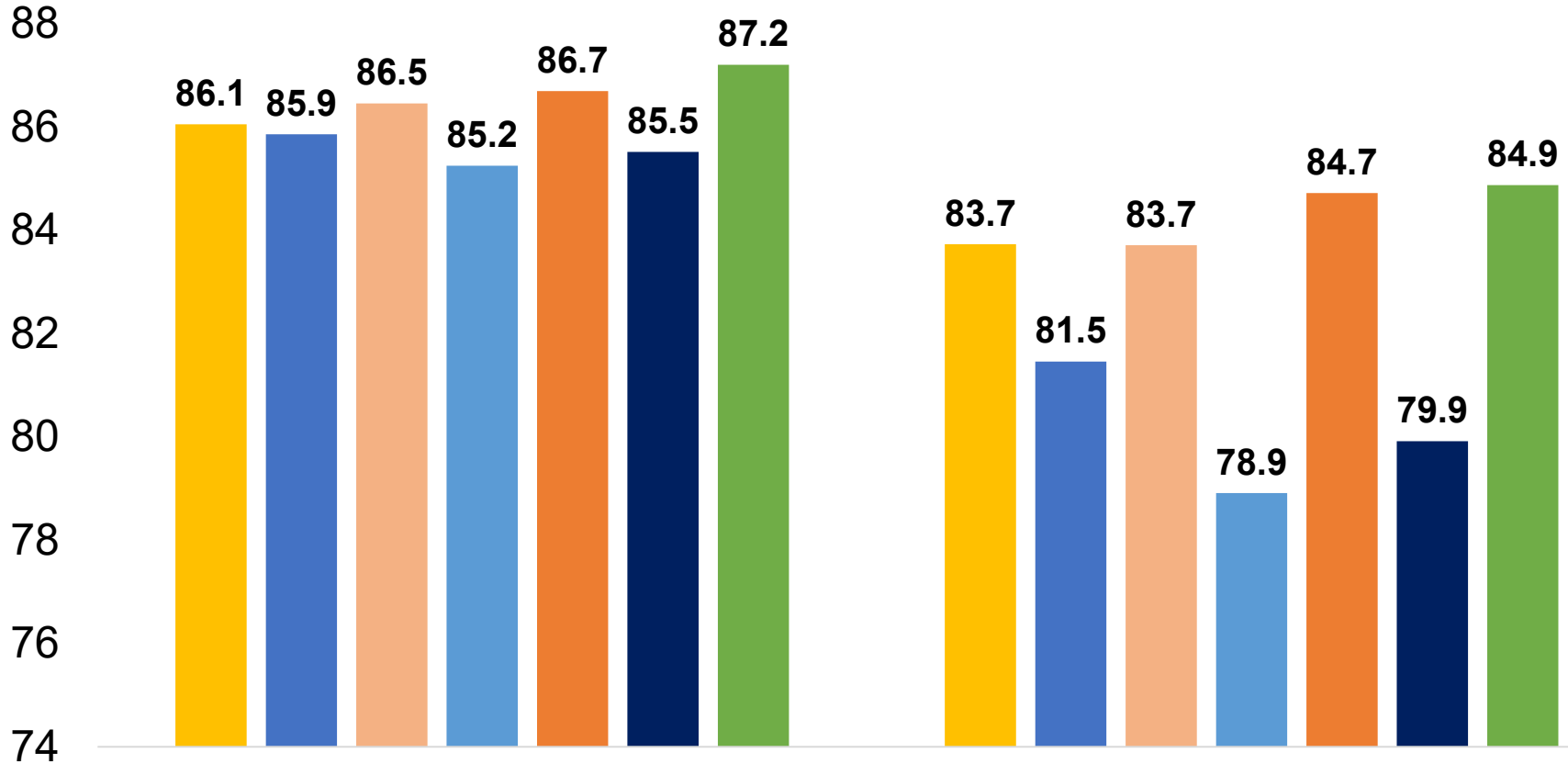


Source: Current Population Survey
Data not seasonally adjusted.

Colorado Labor Force Participation Rates and Employment-Population Ratios, Ages 25 to 54

(Most recent 12-month period available vs. select years)

Percent



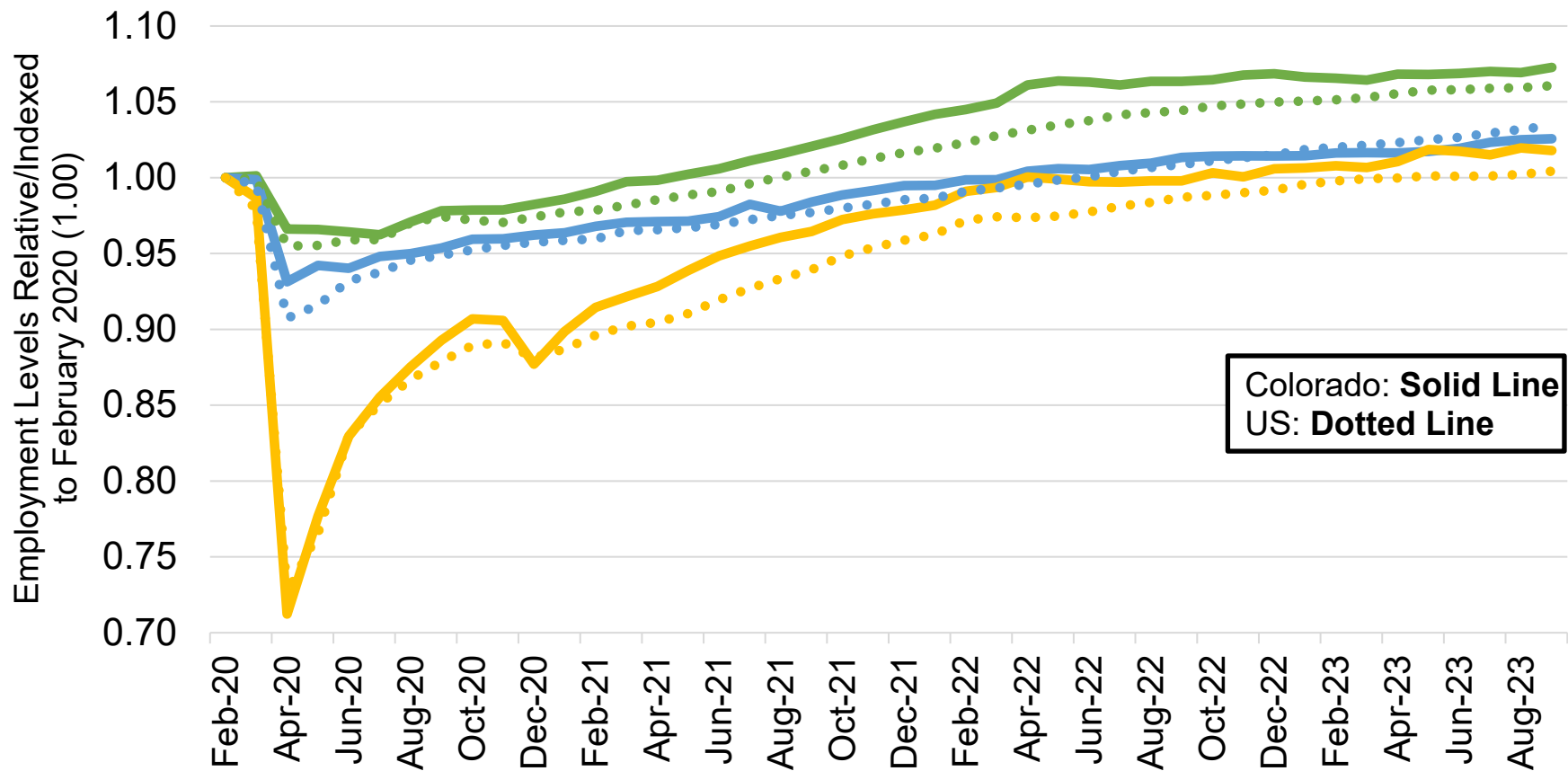
Labor Force Participation Rate

Employment-Population Ratio

■ 2001 ■ 2003 ■ 2006 ■ 2010 ■ 2019 ■ 2020 ■ Oct '22 - Sep '23

Source: Current Population Survey
Data not seasonally adjusted.

Job Loss and Recovery by Low, Medium, and High Wage Industries (Colorado & U.S.)

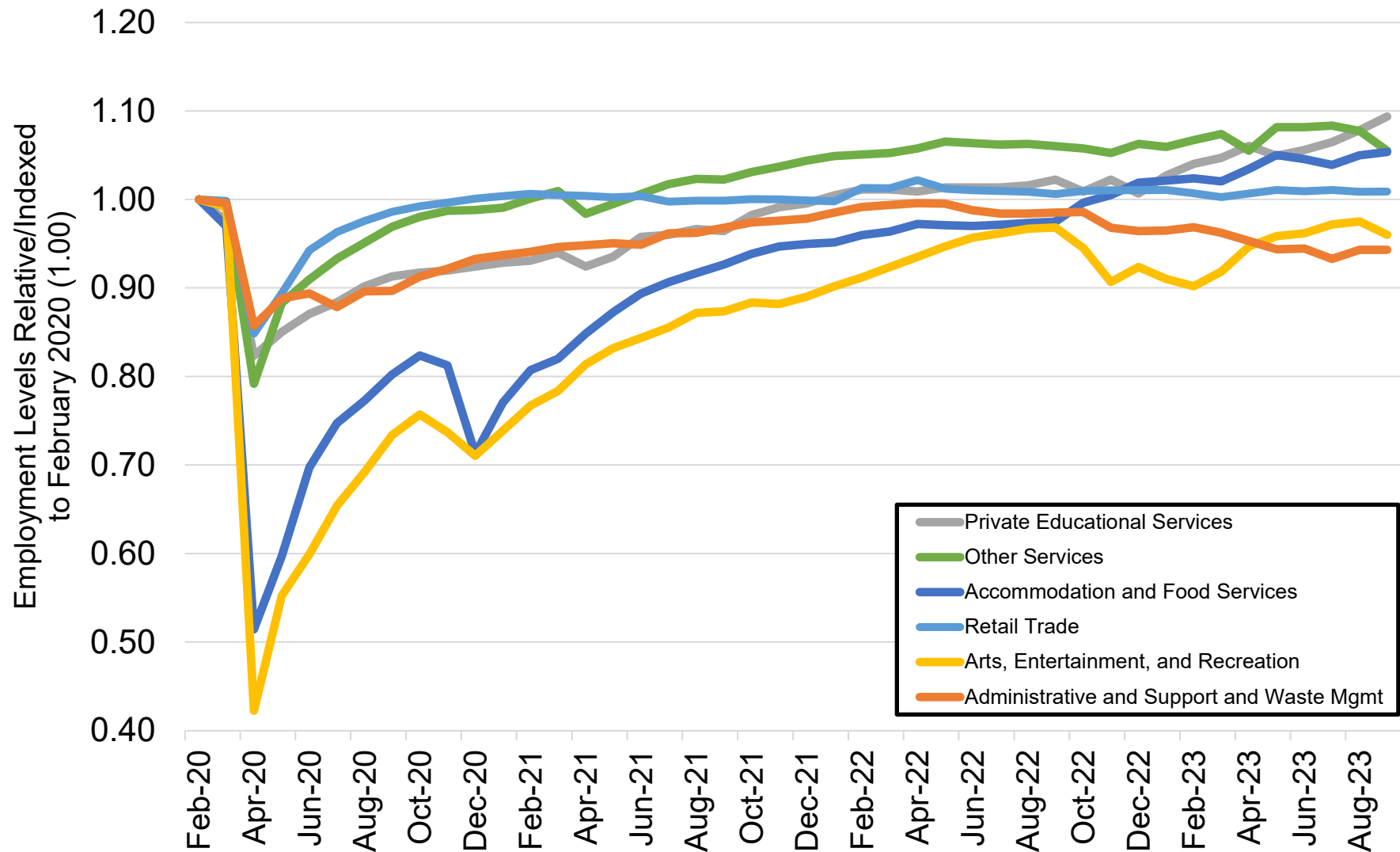


Source: Colorado Department of Labor and Employment; Bureau of Labor Statistics

Data seasonally adjusted. Note: low, medium, and high wage industries are determined by the 2019 state-level average weekly wage estimates from the Quarterly Census of Employment and Wages. **Low wage industries include:** retail trade; admin support/waste mgmt; private education services; arts, entertainment, and recreation; accommodation and food services; and other services. **Medium wage industries include:** construction; manufacturing; transportation, warehousing, and utilities; real estate, rental, and leasing; private health care and social assistance; state government; and local government.

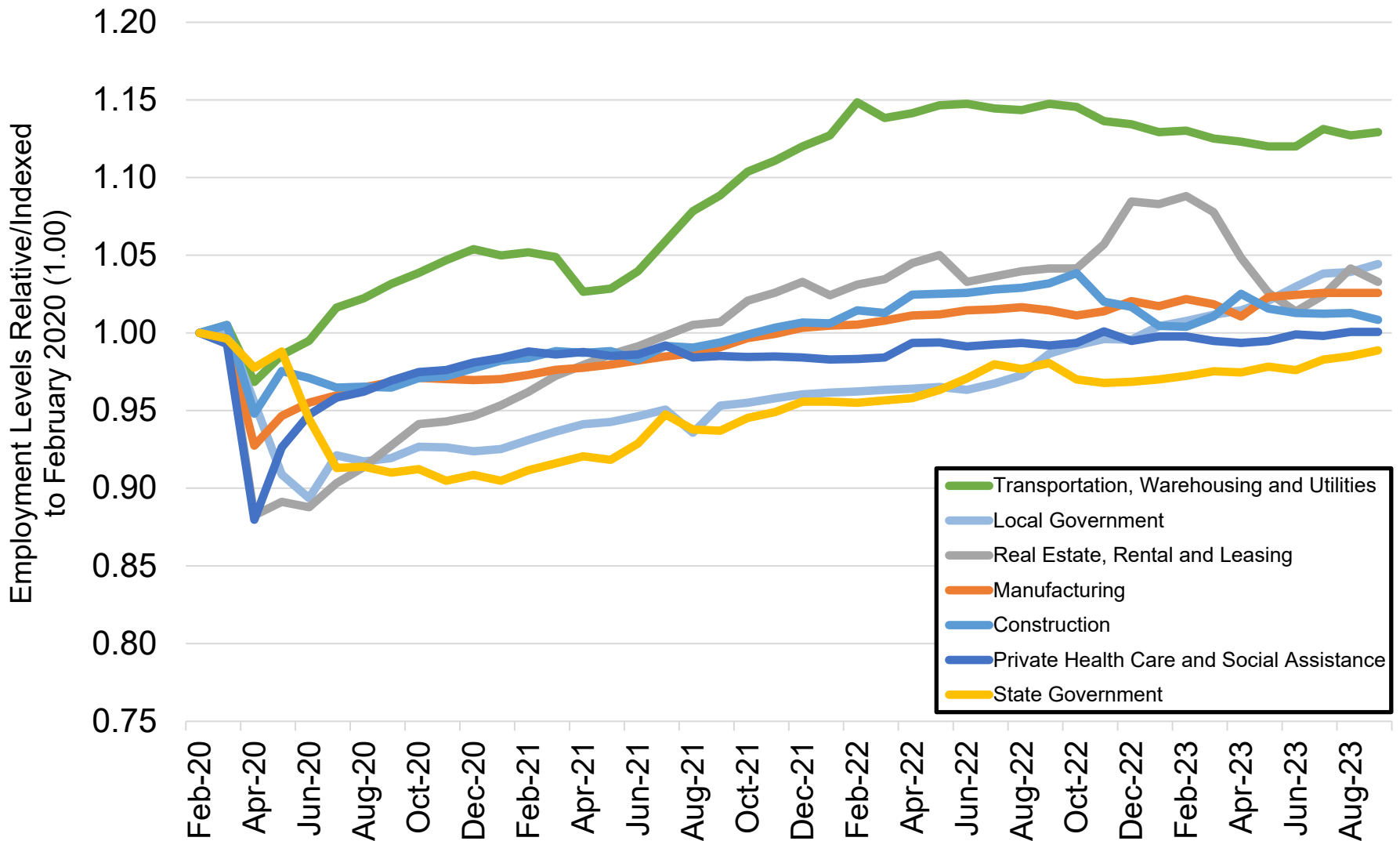
High wage industries include: mining and logging; wholesale trade; information; finance and insurance; professional and technical services; management of companies; and federal government.

Colorado Job Loss & Recovery by Low Wage Industries



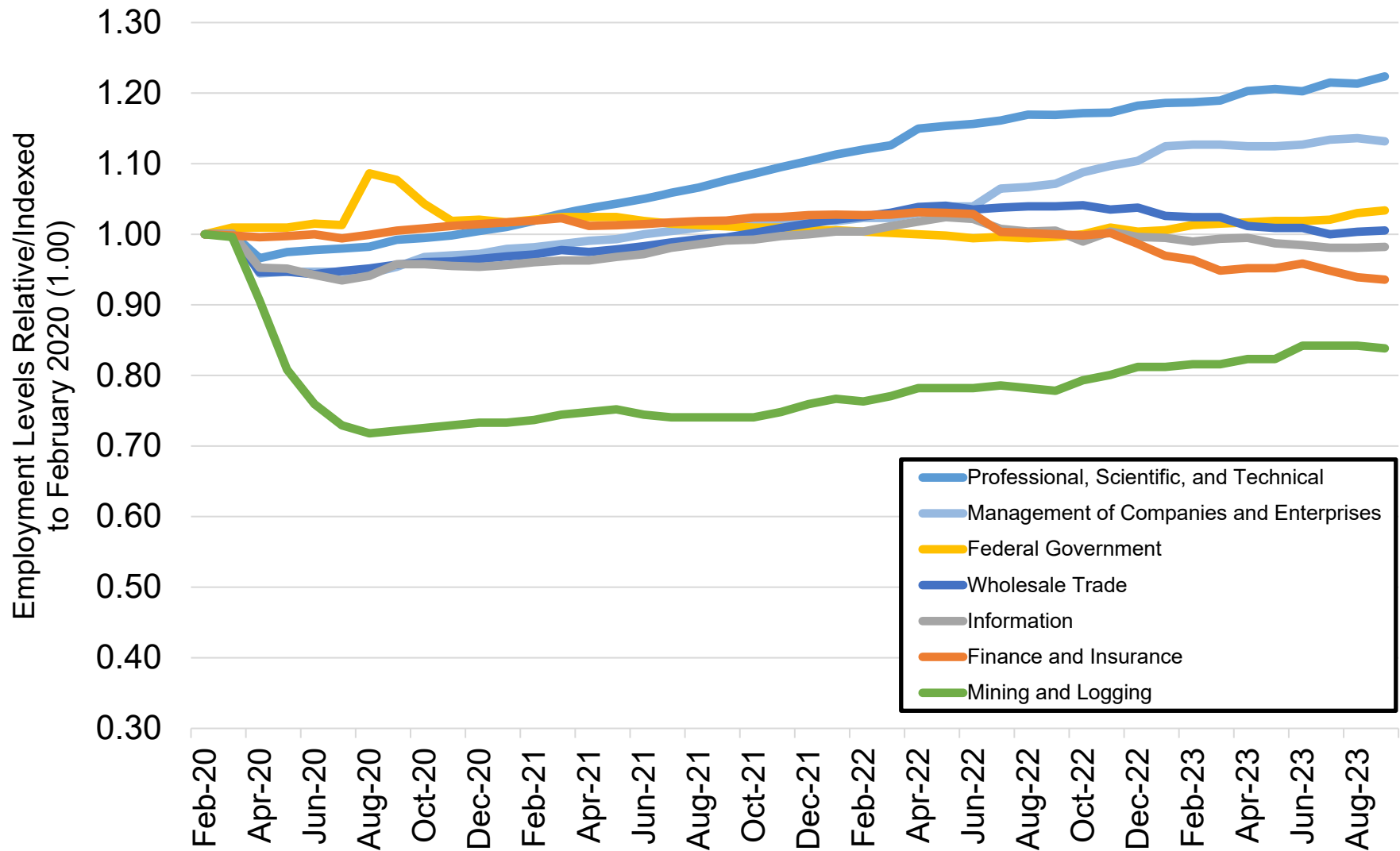
Source: Colorado Department of Labor and Employment; Bureau of Labor Statistics
 Data seasonally adjusted. Note: low wage industries are determined by the 2019 state-level average weekly wage estimates from the Quarterly Census of Employment and Wages.

Colorado Job Loss & Recovery by Medium Wage Industries



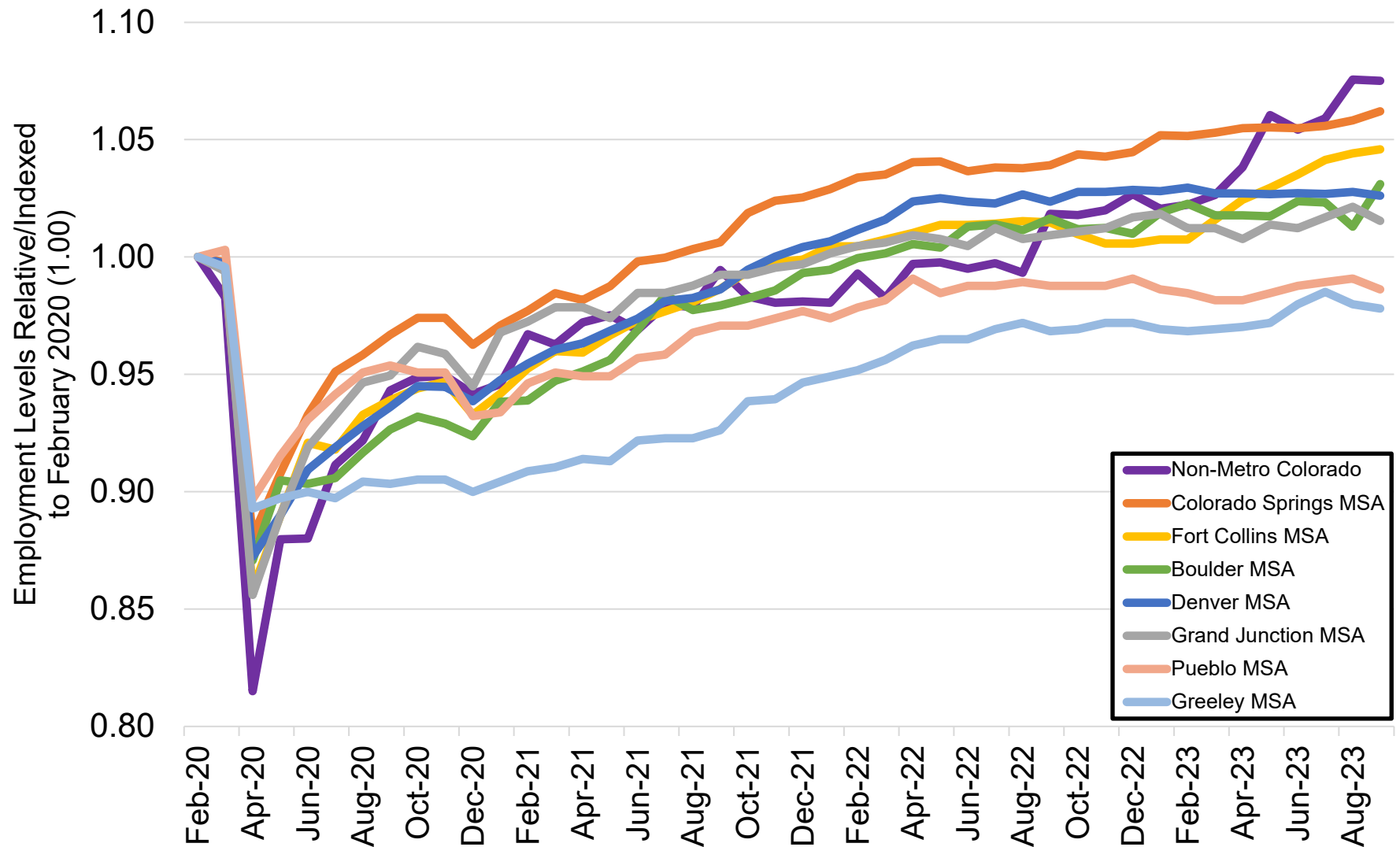
Source: Colorado Department of Labor and Employment; Bureau of Labor Statistics
 Data seasonally adjusted. Note: medium wage industries are determined by the 2019 state-level average weekly wage estimates from the Quarterly Census of Employment and Wages.

Colorado Job Loss & Recovery by High Wage Industries



Source: Colorado Department of Labor and Employment; Bureau of Labor Statistics
 Data seasonally adjusted. Note: high wage industries are determined by the 2019 state-level average weekly wage estimates from the Quarterly Census of Employment and Wages.

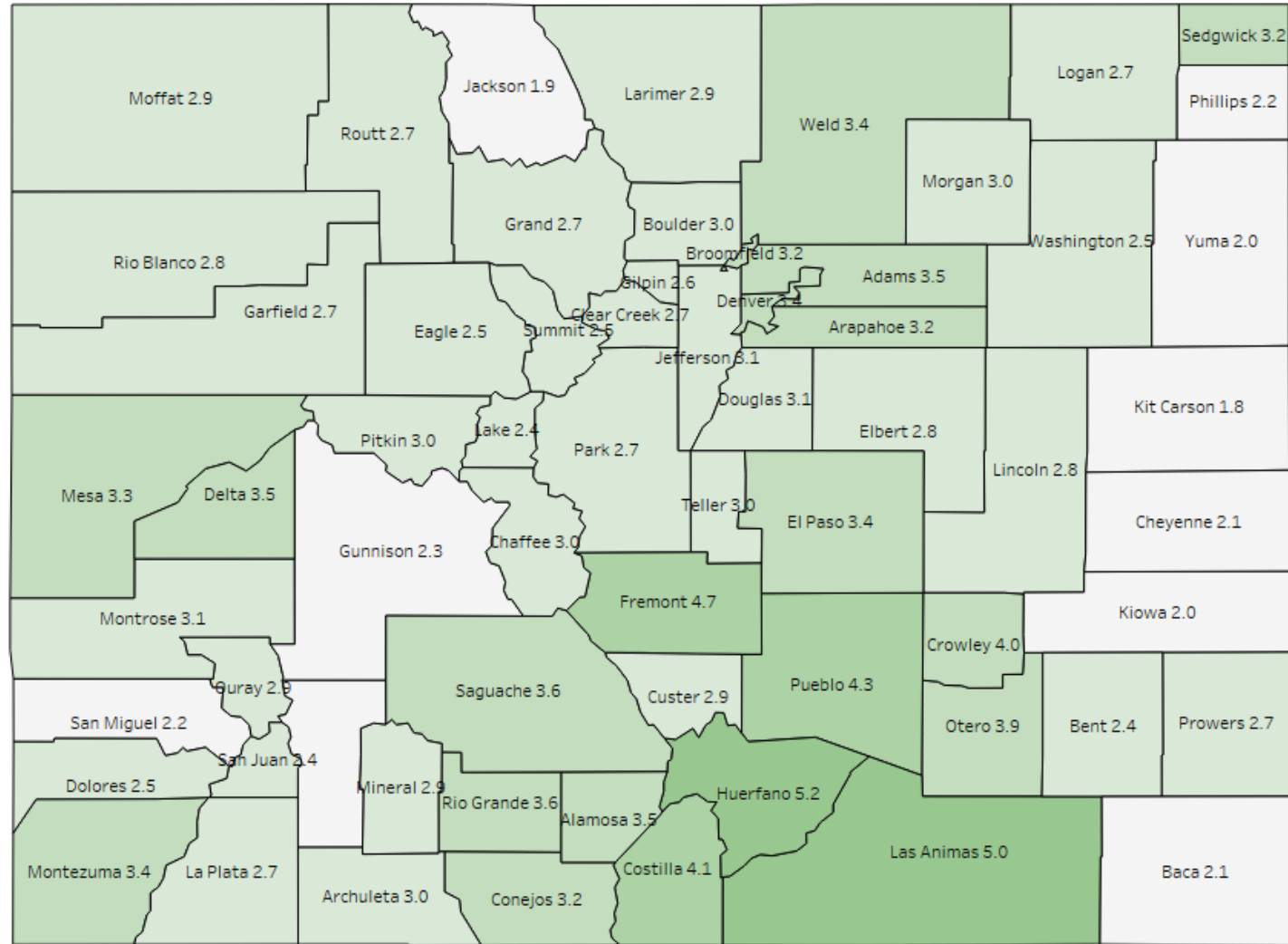
Colorado Job Loss & Recovery by Colorado Substate Area



Source: Colorado Department of Labor and Employment; Bureau of Labor Statistics

Data seasonally adjusted. Note: MSA = Metropolitan Statistical Area; Non-Metro Colorado = residual of state that is not an MSA (47 counties).

County Unemployment Rates September 2023



**LABOR FORCE SUMMARY
COLORADO**

Preliminary Estimates for September 2023

LABOR FORCE DATA (VALUES IN THOUSANDS)					
SEASONALLY ADJUSTED:				Change from last:	
	Sep-23	Aug-23	Sep-22	Month	Year
Total Civilian Labor Force	3,252.6	3,255.1	3,193.2	-2.5	59.4
Unemployment	103.5	99.9	88.3	3.6	15.2
Unemployment Rate (%)	3.2	3.1	2.8	0.1	0.4
Employment	3,149.1	3,155.2	3,104.9	-6.1	44.2
UNADJUSTED FOR SEASONALITY:				Change from last:	
	Sep-23	Aug-23	Sep-22	Month	Year
Total Civilian Labor Force	3,253.1	3,273.6	3,213.6	-20.6	39.5
Unemployment	104.8	115.7	81.3	-10.9	23.5
Unemployment Rate (%)	3.2	3.5	2.5	-0.3	0.7
Employment	3,148.2	3,157.9	3,132.3	-9.7	16.0

WAGE AND SALARY EMPLOYMENT DATA (VALUES IN THOUSANDS)					
SEASONALLY ADJUSTED:				Change from last:	
	Sep-23	Aug-23	Sep-22	Month	Year
Mining & Logging	22.3	22.4	20.7	-0.1	1.6
Construction	180.5	181.3	184.7	-0.8	-4.2
Manufacturing	155.4	155.4	153.7	0.0	1.7
Trade, Transportation, & Utilities	496.6	496.1	501.4	0.5	-4.8
Information	76.6	76.5	78.4	0.1	-1.8
Financial Activities	170.6	171.5	178.7	-0.9	-8.1
Professional & Business Services	497.6	495.3	488.6	2.3	9.0
Educational & Health Services	358.5	357.8	352.6	0.7	5.9
Leisure & Hospitality	362.4	362.2	340.1	0.2	22.3
Other Services	122.7	125.3	123.3	-2.6	-0.6
Government	474.6	472.5	455.6	2.1	19.0
TOTAL NONAG	2,917.8	2,916.3	2,877.8	1.5	40.0
Labor Disputants	0.0	0.0	0.0	0.0	0.0
UNADJUSTED FOR SEASONALITY:				Change from last:	
	Sep-23	Aug-23	Sep-22	Month	Year
Mining & Logging	22.4	22.6	20.9	-0.2	1.5
Construction	182.9	186.3	186.7	-3.4	-3.8
Manufacturing	155.3	155.2	153.2	0.1	2.1
Trade, Transportation, & Utilities	490.1	492.6	493.8	-2.5	-3.7
Information	76.4	76.6	77.7	-0.2	-1.3
Financial Activities	169.6	172.0	176.8	-2.4	-7.2
Professional & Business Services	499.6	500.9	488.7	-1.3	10.9
Educational & Health Services	358.4	357.2	350.7	1.2	7.7
Leisure & Hospitality	359.3	376.1	339.4	-16.8	19.9
Other Services	123.4	126.8	122.4	-3.4	1.0
Government	478.1	462.5	458.5	15.6	19.6
TOTAL NONAG	2,915.5	2,928.8	2,868.8	-13.3	46.7
Labor Disputants	0.0	0.0	0.0	0.0	0.0

Source: Colorado Department of Labor & Employment; Bureau of Labor Statistics

Not Seasonally Adjusted Labor Force

	September 2023				August 2023			
	Labor Force	Employment	Unemployment	Rate	Labor force	Employment	Unemployment	Rate
Colorado	3,253,069	3,148,239	104,830	3.2	3,273,628	3,157,900	115,728	3.5
Metropolitan Statistical Area								
Boulder	206,388	200,271	6,117	3.0	203,604	196,933	6,671	3.3
Colorado Springs	381,745	368,783	12,962	3.4	382,704	368,350	14,354	3.8
Denver-Aurora-Lakewood	1,741,184	1,684,509	56,675	3.3	1,755,130	1,692,677	62,453	3.6
Fort Collins	219,418	213,092	6,326	2.9	218,669	211,734	6,935	3.2
Grand Junction	78,031	75,494	2,537	3.3	78,183	75,293	2,890	3.7
Greeley	172,950	167,127	5,823	3.4	173,772	167,413	6,359	3.7
Pueblo	76,611	73,281	3,330	4.3	77,007	73,213	3,794	4.9
Counties								
Adams	284,408	274,573	9,835	3.5	287,109	276,256	10,853	3.8
Alamosa	8,487	8,188	299	3.5	8,626	8,253	373	4.3
Arapahoe	378,283	366,102	12,181	3.2	381,187	367,733	13,454	3.5
Archuleta	7,178	6,963	215	3.0	7,342	7,102	240	3.3
Baca	2,107	2,062	45	2.1	2,167	2,124	43	2.0
Bent	1,878	1,832	46	2.4	1,950	1,892	58	3.0
Boulder	206,388	200,271	6,117	3.0	203,604	196,933	6,671	3.3
Broomfield	43,038	41,679	1,359	3.2	43,439	41,922	1,517	3.5
Chaffee	10,327	10,018	309	3.0	10,563	10,233	330	3.1
Cheyenne	1,053	1,031	22	2.1	1,081	1,057	24	2.2
Clear Creek	6,183	6,016	167	2.7	6,240	6,041	199	3.2
Conejos	4,132	3,999	133	3.2	4,223	4,064	159	3.8
Costilla	1,887	1,809	78	4.1	1,883	1,796	87	4.6
Crowley	1,391	1,336	55	4.0	1,410	1,350	60	4.3
Custer	2,422	2,352	70	2.9	2,513	2,434	79	3.1
Delta	13,367	12,895	472	3.5	13,500	12,995	505	3.7
Denver	440,792	425,621	15,171	3.4	444,414	427,584	16,830	3.8
Dolores	1,217	1,187	30	2.5	1,265	1,229	36	2.8
Douglas	210,368	203,898	6,470	3.1	211,926	204,913	7,013	3.3
Eagle	35,150	34,278	872	2.5	36,068	35,136	932	2.6
El Paso	368,052	355,496	12,556	3.4	369,034	355,125	13,909	3.8
Elbert	16,219	15,768	451	2.8	16,403	15,919	484	3.0
Fremont	14,503	13,818	685	4.7	14,706	13,941	765	5.2
Garfield	31,858	30,983	875	2.7	32,670	31,720	950	2.9
Gilpin	3,947	3,846	101	2.6	3,976	3,858	118	3.0
Grand	9,295	9,045	250	2.7	9,744	9,459	285	2.9
Gunnison	12,161	11,878	283	2.3	12,293	11,996	297	2.4
Hinsdale	527	515	12	2.3	542	529	13	2.4
Huerfano	2,485	2,357	128	5.2	2,533	2,370	163	6.4
Jackson	1,132	1,110	22	1.9	1,170	1,146	24	2.1
Jefferson	346,247	335,627	10,620	3.1	348,675	337,054	11,621	3.3
Kiowa	944	925	19	2.0	976	955	21	2.2
Kit Carson	4,308	4,230	78	1.8	4,471	4,390	81	1.8
La Plata	32,392	31,520	872	2.7	32,552	31,582	970	3.0
Lake	5,087	4,965	122	2.4	5,106	4,979	127	2.5
Larimer	219,418	213,092	6,326	2.9	218,669	211,734	6,935	3.2
Las Animas	5,910	5,616	294	5.0	5,995	5,653	342	5.7
Lincoln	2,198	2,136	62	2.8	2,282	2,209	73	3.2
Logan	10,302	10,026	276	2.7	10,310	10,000	310	3.0
Mesa	78,031	75,494	2,537	3.3	78,183	75,293	2,890	3.7
Mineral	489	475	14	2.9	509	496	13	2.6
Moffat	6,885	6,687	198	2.9	6,960	6,737	223	3.2
Montezuma	12,753	12,325	428	3.4	12,652	12,171	481	3.8
Montrose	21,595	20,929	666	3.1	22,000	21,234	766	3.5
Morgan	15,785	15,305	480	3.0	16,071	15,542	529	3.3
Otero	7,941	7,632	309	3.9	8,102	7,741	361	4.5
Ouray	2,545	2,470	75	2.9	2,603	2,522	81	3.1
Park	11,699	11,379	320	2.7	11,761	11,397	364	3.1
Phillips	2,562	2,505	57	2.2	2,741	2,675	66	2.4
Pitkin	10,886	10,558	328	3.0	11,062	10,761	301	2.7
Prowers	6,419	6,243	176	2.7	6,514	6,310	204	3.1
Pueblo	76,611	73,281	3,330	4.3	77,007	73,213	3,794	4.9
Rio Blanco	2,962	2,880	82	2.8	2,976	2,880	96	3.2
Rio Grande	5,430	5,237	193	3.6	5,698	5,458	240	4.2
Routt	15,886	15,462	424	2.7	16,483	16,027	456	2.8
Saguache	3,483	3,356	127	3.6	3,643	3,495	148	4.1
San Juan	655	639	16	2.4	672	657	15	2.2
San Miguel	6,111	5,978	133	2.2	6,299	6,158	141	2.2
Sedgwick	1,041	1,008	33	3.2	1,090	1,051	39	3.6
Summit	21,054	20,537	517	2.5	21,585	21,026	559	2.6
Teller	13,693	13,287	406	3.0	13,670	13,225	445	3.3
Washington	2,848	2,778	70	2.5	2,920	2,847	73	2.5
Weld	172,950	167,127	5,823	3.4	173,772	167,413	6,359	3.7
Yuma	5,717	5,604	113	2.0	6,033	5,907	126	2.1

All estimates made in cooperation with the U.S. Department of Labor, Bureau of Labor Statistics and adjusted to Current Population Survey data. Estimates have been revised to incorporate population data from the American Community Survey.
 Colorado Department of Labor and Employment 2023

Not Seasonally Adjusted Labor Force

	September 2023				September 2022			
	Labor Force	Employment	Unemployment	Rate	Labor force	Employment	Unemployment	Rate
Colorado	3,253,069	3,148,239	104,830	3.2	3,213,586	3,132,277	81,309	2.5
Metropolitan Statistical Area								
Boulder	206,388	200,271	6,117	3.0	204,490	200,289	4,201	2.1
Colorado Springs	381,745	368,783	12,962	3.4	374,875	364,501	10,374	2.8
Denver-Aurora-Lakewood	1,741,184	1,684,509	56,675	3.3	1,729,963	1,686,403	43,560	2.5
Fort Collins	219,418	213,092	6,326	2.9	213,070	208,341	4,729	2.2
Grand Junction	78,031	75,494	2,537	3.3	77,679	75,562	2,117	2.7
Greeley	172,950	167,127	5,823	3.4	170,077	165,571	4,506	2.6
Pueblo	76,611	73,281	3,330	4.3	76,758	73,942	2,816	3.7
Counties								
Adams	284,408	274,573	9,835	3.5	282,207	274,258	7,949	2.8
Alamosa	8,487	8,188	299	3.5	8,168	7,922	246	3.0
Arapahoe	378,283	366,102	12,181	3.2	376,488	366,741	9,747	2.6
Archuleta	7,178	6,963	215	3.0	7,091	6,920	171	2.4
Baca	2,107	2,062	45	2.1	2,024	1,994	30	1.5
Bent	1,878	1,832	46	2.4	1,755	1,700	55	3.1
Boulder	206,388	200,271	6,117	3.0	204,490	200,289	4,201	2.1
Broomfield	43,038	41,679	1,359	3.2	42,598	41,635	963	2.3
Chaffee	10,327	10,018	309	3.0	10,066	9,843	223	2.2
Cheyenne	1,053	1,031	22	2.1	1,018	1,002	16	1.6
Clear Creek	6,183	6,016	167	2.7	6,187	6,031	156	2.5
Conejos	4,132	3,999	133	3.2	3,945	3,836	109	2.8
Costilla	1,887	1,809	78	4.1	1,812	1,754	58	3.2
Crowley	1,391	1,336	55	4.0	1,363	1,319	44	3.2
Custer	2,422	2,352	70	2.9	2,346	2,287	59	2.5
Delta	13,367	12,895	472	3.5	13,339	12,961	378	2.8
Denver	440,792	425,621	15,171	3.4	437,821	426,235	11,586	2.6
Dolores	1,217	1,187	30	2.5	1,145	1,120	25	2.2
Douglas	210,368	203,898	6,470	3.1	208,474	204,046	4,428	2.1
Eagle	35,150	34,278	872	2.5	34,351	33,652	699	2.0
El Paso	368,052	355,496	12,556	3.4	361,311	351,265	10,046	2.8
Elbert	16,219	15,768	451	2.8	16,040	15,703	337	2.1
Fremont	14,503	13,818	685	4.7	14,614	14,042	572	3.9
Garfield	31,858	30,983	875	2.7	30,959	30,223	736	2.4
Gilpin	3,947	3,846	101	2.6	3,952	3,864	88	2.2
Grand	9,295	9,045	250	2.7	9,066	8,862	204	2.3
Gunnison	12,161	11,878	283	2.3	11,665	11,462	203	1.7
Hinsdale	527	515	12	2.3	504	494	10	2.0
Huerfano	2,485	2,357	128	5.2	2,506	2,372	134	5.3
Jackson	1,132	1,110	22	1.9	1,010	994	16	1.6
Jefferson	346,247	335,627	10,620	3.1	344,451	336,406	8,045	2.3
Kiowa	944	925	19	2.0	896	883	13	1.5
Kit Carson	4,308	4,230	78	1.8	4,015	3,953	62	1.5
La Plata	32,392	31,520	872	2.7	31,337	30,614	723	2.3
Lake	5,087	4,965	122	2.4	4,821	4,715	106	2.2
Larimer	219,418	213,092	6,326	2.9	213,070	208,341	4,729	2.2
Las Animas	5,910	5,616	294	5.0	5,989	5,758	231	3.9
Lincoln	2,198	2,136	62	2.8	2,156	2,102	54	2.5
Logan	10,302	10,026	276	2.7	10,132	9,909	223	2.2
Mesa	78,031	75,494	2,537	3.3	77,679	75,562	2,117	2.7
Mineral	489	475	14	2.9	443	431	12	2.7
Moffat	6,885	6,687	198	2.9	6,821	6,660	161	2.4
Montezuma	12,753	12,325	428	3.4	12,623	12,266	357	2.8
Montrose	21,595	20,929	666	3.1	21,251	20,689	562	2.6
Morgan	15,785	15,305	480	3.0	15,193	14,775	418	2.8
Otero	7,941	7,632	309	3.9	7,796	7,516	280	3.6
Ouray	2,545	2,470	75	2.9	2,624	2,568	56	2.1
Park	11,699	11,379	320	2.7	11,745	11,484	261	2.2
Phillips	2,562	2,505	57	2.2	2,373	2,333	40	1.7
Pitkin	10,886	10,558	328	3.0	10,651	10,386	265	2.5
Prowers	6,419	6,243	176	2.7	6,066	5,936	130	2.1
Pueblo	76,611	73,281	3,330	4.3	76,758	73,942	2,816	3.7
Rio Blanco	2,962	2,880	82	2.8	2,854	2,774	80	2.8
Rio Grande	5,430	5,237	193	3.6	5,179	5,012	167	3.2
Routt	15,886	15,462	424	2.7	15,350	15,039	311	2.0
Saguache	3,483	3,356	127	3.6	3,289	3,203	86	2.6
San Juan	655	639	16	2.4	660	650	10	1.5
San Miguel	6,111	5,978	133	2.2	5,804	5,698	106	1.8
Sedgwick	1,041	1,008	33	3.2	1,053	1,031	22	2.1
Summit	21,054	20,537	517	2.5	20,519	20,120	399	1.9
Teller	13,693	13,287	406	3.0	13,564	13,236	328	2.4
Washington	2,848	2,778	70	2.5	2,694	2,641	53	2.0
Weld	172,950	167,127	5,823	3.4	170,077	165,571	4,506	2.6
Yuma	5,717	5,604	113	2.0	5,338	5,246	92	1.7

All estimates made in cooperation with the U.S. Department of Labor, Bureau of Labor Statistics and adjusted to Current Population Survey data. Estimates have been revised to incorporate population data from the American Community Survey.
 Colorado Department of Labor and Employment 2023

Not Seasonally Adjusted Labor Force								
	September 2023				August 2023			
Select Cities in Colorado	Labor Force	Employed	Unemployed	Rate	Labor Force	Employment	Unemployed	Rate
Arvada	71,673	69,454	2,219	3.1	72,082	69,753	2,329	3.2
Aurora	211,720	204,388	7,332	3.5	213,418	205,336	8,082	3.8
Boulder	69,237	67,140	2,097	3.0	68,355	66,021	2,334	3.4
Brighton	20,980	20,219	761	3.6	21,209	20,339	870	4.1
Castle Rock	39,810	38,544	1,266	3.2	40,118	38,736	1,382	3.4
Centennial	65,622	63,631	1,991	3.0	66,169	63,915	2,254	3.4
Colorado Springs	255,149	246,825	8,324	3.3	255,837	246,567	9,270	3.6
Commerce City	31,246	30,132	1,114	3.6	31,584	30,317	1,267	4.0
Englewood	22,062	21,344	718	3.3	22,220	21,439	781	3.5
Erie	19,030	18,469	561	2.9	18,920	18,347	573	3.0
Fort Collins	106,389	103,320	3,069	2.9	106,017	102,662	3,355	3.2
Fountain	13,954	13,461	493	3.5	14,008	13,447	561	4.0
Grand Junction	31,493	30,431	1,062	3.4	31,577	30,350	1,227	3.9
Greeley	53,123	51,172	1,951	3.7	53,376	51,260	2,116	4.0
Lafayette	18,414	17,927	487	2.6	18,184	17,628	556	3.1
Lakewood	90,344	87,387	2,957	3.3	91,048	87,759	3,289	3.6
Littleton	26,017	25,216	801	3.1	26,230	25,328	902	3.4
Longmont	58,451	56,578	1,873	3.2	57,676	55,646	2,030	3.5
Loveland	48,553	47,128	1,425	2.9	48,410	46,827	1,583	3.3
Northglenn	21,952	21,144	808	3.7	22,129	21,273	856	3.9
Parker	35,300	34,195	1,105	3.1	35,549	34,365	1,184	3.3
Pueblo	48,826	46,518	2,308	4.7	49,118	46,475	2,643	5.4
Thornton	84,723	82,052	2,671	3.2	85,493	82,555	2,938	3.4
Westminster	68,747	66,463	2,284	3.3	69,327	66,818	2,509	3.6
Wheat Ridge	17,839	17,171	668	3.7	17,949	17,244	705	3.9
Windsor	15,972	15,491	481	3.0	16,081	15,491	590	3.7

	September 2023				September 2022			
Select Cities in Colorado	Labor Force	Employed	Unemployed	Rate	Labor Force	Employment	Unemployed	Rate
Arvada	71,673	69,454	2,219	3.1	71,179	69,608	1,571	2.2
Aurora	211,720	204,388	7,332	3.5	210,734	204,680	6,054	2.9
Boulder	69,237	67,140	2,097	3.0	68,471	67,146	1,325	1.9
Brighton	20,980	20,219	761	3.6	20,799	20,189	610	2.9
Castle Rock	39,810	38,544	1,266	3.2	39,415	38,572	843	2.1
Centennial	65,622	63,631	1,991	3.0	65,222	63,742	1,480	2.3
Colorado Springs	255,149	246,825	8,324	3.3	250,725	243,887	6,838	2.7
Commerce City	31,246	30,132	1,114	3.6	30,968	30,098	870	2.8
Englewood	22,062	21,344	718	3.3	21,947	21,381	566	2.6
Erie	19,030	18,469	561	2.9	18,730	18,376	354	1.9
Fort Collins	106,389	103,320	3,069	2.9	103,223	101,017	2,206	2.1
Fountain	13,954	13,461	493	3.5	13,703	13,301	402	2.9
Grand Junction	31,493	30,431	1,062	3.4	31,309	30,458	851	2.7
Greeley	53,123	51,172	1,951	3.7	52,220	50,696	1,524	2.9
Lafayette	18,414	17,927	487	2.6	18,355	17,929	426	2.3
Lakewood	90,344	87,387	2,957	3.3	89,927	87,590	2,337	2.6
Littleton	26,017	25,216	801	3.1	25,860	25,261	599	2.3
Longmont	58,451	56,578	1,873	3.2	57,844	56,577	1,267	2.2
Loveland	48,553	47,128	1,425	2.9	47,201	46,077	1,124	2.4
Northglenn	21,952	21,144	808	3.7	21,743	21,119	624	2.9
Parker	35,300	34,195	1,105	3.1	34,982	34,220	762	2.2
Pueblo	48,826	46,518	2,308	4.7	48,988	46,938	2,050	4.2
Thornton	84,723	82,052	2,671	3.2	84,120	81,958	2,162	2.6
Westminster	68,747	66,463	2,284	3.3	68,198	66,482	1,716	2.5
Wheat Ridge	17,839	17,171	668	3.7	17,787	17,211	576	3.2
Windsor	15,972	15,491	481	3.0	15,675	15,303	372	2.4

All estimates made in cooperation with the U.S. Department of Labor, Bureau of Labor Statistics and adjusted to Current Population Survey data. Estimates have been revised to incorporate population data from the American Community Survey. Colorado Department of Labor and Employment 2023

Colorado LMI Data Overview

September 2023

Employment					
	Sep-23	Aug-23	Sep-22	Change from previous:	
				Period	Year
Nonfarm Wage and Salary Employment (SA)	2,917,800	2,916,300	2,877,800	1,500	40,000
Total Resident Employment (SA)	3,149,100	3,155,200	3,104,900	(6,100)	44,200
	Q1 2023	Q4 2022	Q1 2022		
UI Covered Total Employment	2,826,949	2,847,730	2,755,326	(20,781)	71,623
UI Covered Private Employment	2,389,453	2,409,300	2,331,346	(19,847)	58,107

Unemployment					
	Sep-23	Aug-23	Sep-22	Change from previous:	
				Period	Year
Unemployment (SA)	103,500	99,900	88,300	3,600	15,200
Percent Unemployed (SA)	3.2%	3.1%	2.8%	0.1	0.3
	Sep-23	Aug-23	Sep-22		
Initial Claims	10,823	12,287	9,572	(1,464)	1,251
Continued Weeks Claimed	101,750	105,340	80,326	(3,590)	21,424

Wages and Earnings					
	Q1 2023	Q4 2022	Q1 2022	Change from previous:	
				Period	Year
Total Average Weekly Wage	\$1,559	\$1,472	\$1,455	\$87	\$104
Private Average Weekly Wage	\$1,601	\$1,495	\$1,494	\$106	\$107
	Sep-23	Aug-23	Sep-22		
Average Weekly Earnings (Construction)	\$1,355.54	\$1,367.93	\$1,201.64	(\$12.39)	\$153.90
Average Weekly Earnings (Manufacturing)	\$1,192.88	\$1,248.40	\$1,145.05	(\$55.52)	\$47.83

CO Unemployment Insurance Trust Fund					
	Aug-23	Jul-23	Aug-22	Change from previous:	
				Period	Year
Employer Contributions	\$96,795,923	\$88,935,780	\$121,096,708	\$7,860,143	(\$24,300,785)
Benefits Paid	\$52,543,454	\$45,559,469	\$32,352,796	\$6,983,985	\$20,190,658
Average Weekly Benefit Amount	\$600.60	\$573.79	\$488.67	\$26.82	\$111.93
Duration (weeks)	14.06	16.86	11.60	(2.80)	2.46
Outstanding Title XII Loan Balance	\$0	\$0	\$33,089,861	\$0	(33,089,861)

Consumer Price Index for All Urban Consumers					
	Sep-23	Jul-23	Sep-22	% Change from previous:	
				Period	Year
Not seasonally adjusted					
Denver-Aurora-Lakewood	324.704	323.298	308.211	0.4%	5.4%
US City Average	307.789	305.691	296.808	0.7%	3.7%

(Most current data available for all categories)