

# PRESS RELEASE

Colorado Department of Labor and Employment • 633 17<sup>th</sup> Street, Suite 1200 • Denver, CO 80202 • (303) 318-8004 • Fax: (303) 318-8070

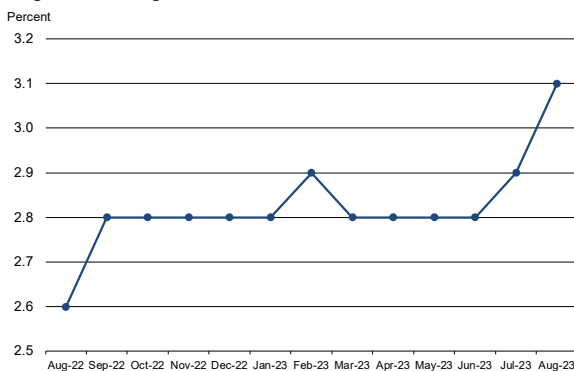
## For Immediate Release

Date: September 15, 2023/ 8:00 A.M.  
Contact: Office of Government, Policy and Public Relations  
Email: [cdle\\_pr@state.co.us](mailto:cdle_pr@state.co.us)  
Web: [LMI Gateway](#)

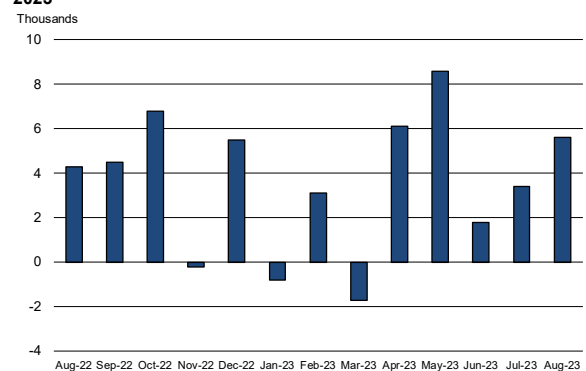
## Colorado Employment Situation – August 2023

### 5,600 Nonfarm Payroll Jobs Added in August; Unemployment Rate Rises to 3.1 Percent

Colorado unemployment rate, seasonally adjusted  
August 2022 - August 2023



Colorado nonfarm payroll employment over-the-month  
change, seasonally adjusted, August 2022 - August  
2023



## Household survey data

- According to the survey of households, Colorado's seasonally adjusted **unemployment rate** increased two-tenths of a percentage point in August to 3.1 percent compared to the July rate of 2.9 percent. The **number of unemployed individuals** grew by 4,700 over the same time period to 99,800. The national unemployment rate increased three-tenths of a percentage point to 3.8 percent from July to August.
- Colorado's **labor force** increased by 2,500 in August to 3,255,000. The share of Coloradans participating in the labor force remained at 68.7 percent in August, identical to the three months prior. The U.S. labor force participation rate was 62.8 percent in August, increasing two-tenths of a percentage point from the month prior.
- The **number of individuals employed** in Colorado declined by 2,200 in August to 3,155,200, which represents 66.6 percent of the state's 16+ population. Colorado's employment-population ratio of 66.6 in August was one-tenth of percentage point lower compared to the July rate of 66.7 percent. The national employment-population ratio was flat in August at 60.4 percent.

## Establishment survey data

- Employers in Colorado added 5,600 **nonfarm payroll jobs** from July to August for a total of 2,916,000 jobs, according to the survey of business establishments. Private sector payroll jobs grew by 9,100, while government shed 3,500 jobs.
- **July estimates** were revised up to 2,910,400, and the over the month change from June to July was a gain of 3,400 rather than the originally estimated increase of 800 (monthly revisions are based on additional responses from businesses and government agencies since the last published estimates).
- **Private industry sectors with significant job gains** in August were: leisure and hospitality ( $\approx$ 4,700), educational and health services ( $\approx$ 2,800), and professional and business services ( $\approx$ 1,600). There were no significant over the month declines.
- **Since August 2022**, nonfarm payroll jobs have increased 42,700, with the private sector growing by 26,000 and government adding 16,700 jobs. The largest **private sector job gains** were in leisure and hospitality ( $\approx$ 24,000), professional and business services ( $\approx$ 7,200), and educational and health services ( $\approx$ 6,400). During that same period financial activities ( $\approx$ 7,300), trade, transportation, and utilities ( $\approx$ 5,500), construction ( $\approx$ 2,500), and information ( $\approx$ 1,500) **payroll jobs declined**. Colorado's **rate of job growth** over the past year is 1.5 percent, lagging the U.S. rate of 2.0 percent.
- Over the year, the **average workweek** for all Colorado employees on private nonfarm payrolls was unchanged at 33.3 hours, while **average hourly earnings** grew from \$34.11 to \$35.90, two dollars and eight cents more than the national average hourly earnings of \$33.82.

###

All Colorado estimates from the establishment and household surveys, including greater geographic detail, are available at: <http://www.colmigateway.com>. Estimates for all states and the nation are available at: <http://www.bls.gov>.

For data visualizations, visit [public.tableau.com/app/profile/cdle.lmi](https://public.tableau.com/app/profile/cdle.lmi).

The **September 2023 Colorado Employment Situation** will be released at 8:00 AM on Friday, October 20, 2023. The full schedule of release dates for calendar year 2023 estimates is available at <http://www.colmigateway.com>.

###

## **Technical Notes**

This release provides information on industry employment and labor force statistics for August 2023, the most current estimates available from the Colorado Department of Labor and Employment. The reference period for the establishment and household surveys was the pay period or week that includes the 12<sup>th</sup> of the month.

The unemployment rate, labor force, labor force participation, total employment and the number of unemployed are based on a survey of households. The total employment estimate derived from this survey is intended to measure the number of people employed.

Nonfarm payroll jobs estimates are based on a survey of business establishments and government agencies, and are intended to measure the number of jobs, not the number of people employed. Other series based on this survey include private sector average weekly hours, average hourly earnings and average weekly earnings.

The business establishment survey covers about seven times the number of households surveyed and is therefore considered a more reliable indicator of economic conditions. Because the estimates are based on two separate surveys, one measuring jobs by worksite and the other measuring persons employed and unemployed by household, estimates based on these surveys may provide seemingly conflicting results.

###

**Supplemental information available in following pages**

# AUGUST 2023

## EMPLOYMENT SITUATION SUPPLEMENTAL CHARTS

September 15, 2023

This briefing provides information on industry employment and labor force statistics, derived from surveys of business establishments and households. The reference period for these surveys is the pay period or week that includes the 12<sup>th</sup> of the month. The reference week for August was specifically August 6<sup>th</sup> – August 12<sup>th</sup>.

## Colorado and U.S. Unemployment Rates Increase in August

Percent  
7

6

5

4

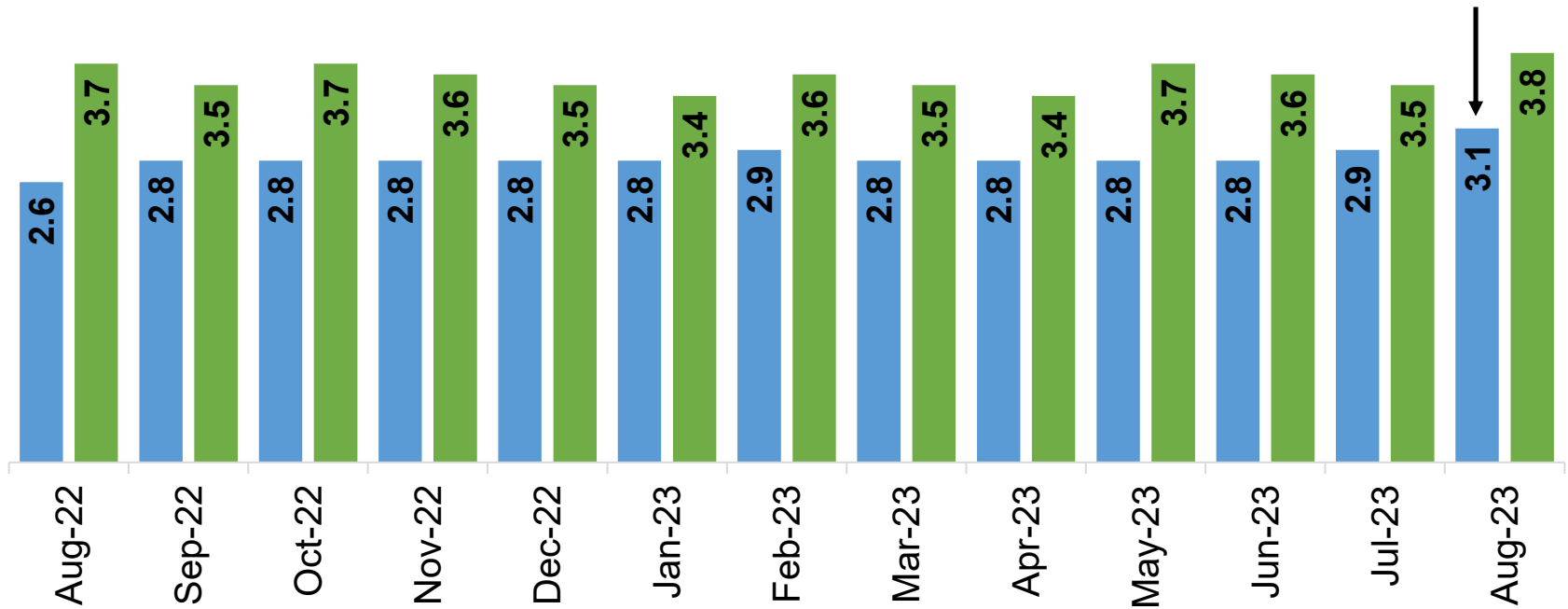
3

2

1

0

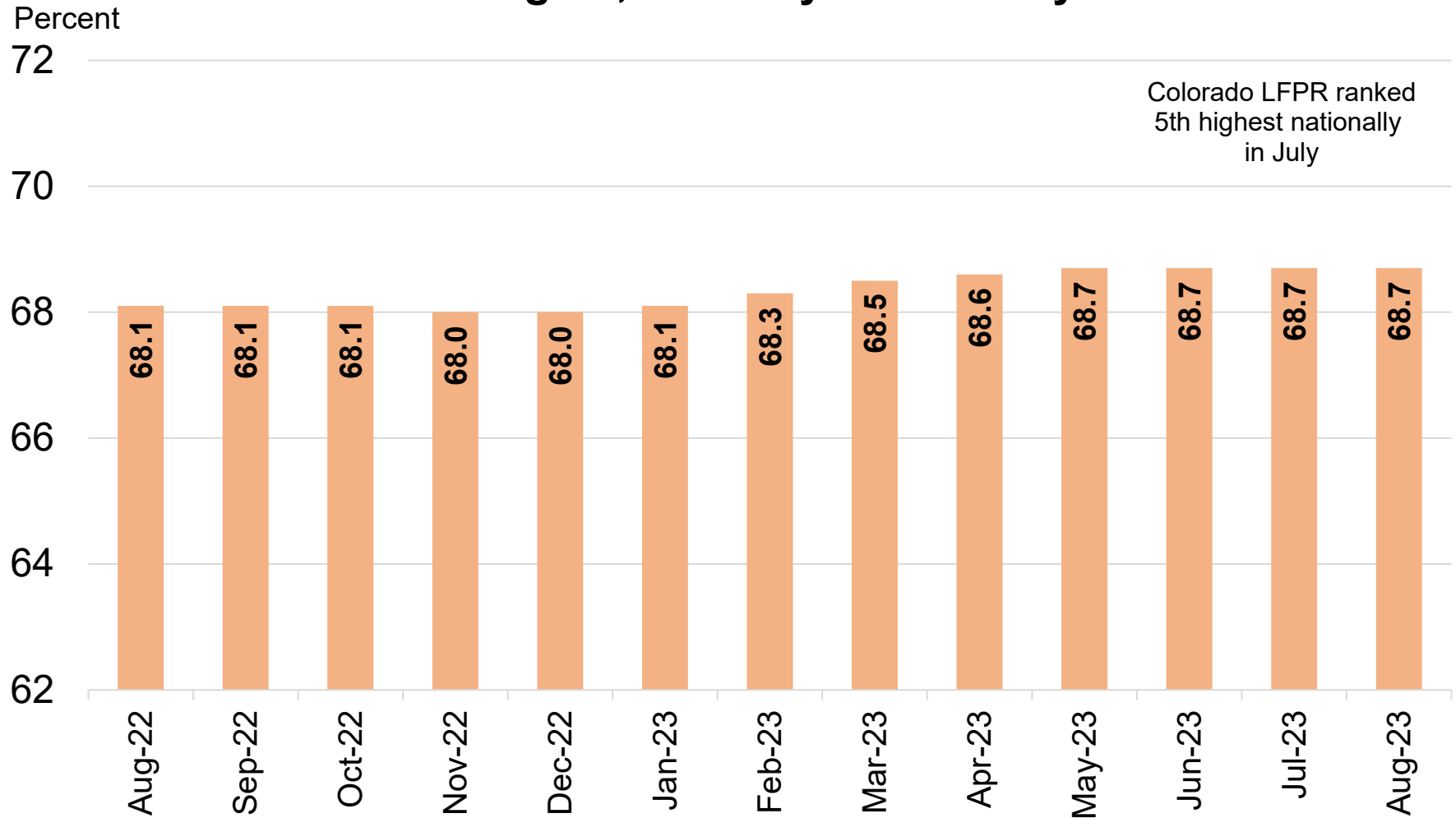
Increase in August unemployment rate due a combination of total employment decreasing (-2.2k), and labor force rising slightly (+2.5k). Number of unemployed Coloradans grew by 4,700 to 99,800. Colorado's unemployment rate has ranged between percent 2.6 and 3.1 percent since April 2022.



Source: Colorado Department of Labor and Employment; Bureau of Labor Statistics  
Data seasonally adjusted

■ Colorado ■ U.S.

## Colorado's Labor Force Participation Rate Unchanged at 68.7 Percent in August, Just Shy of February 2020 Level



Source: Colorado Department of Labor and Employment; Bureau of Labor Statistics

Data seasonally adjusted. Estimates share of Colorado's 16+ population that is in the labor force in a given month.

February 2020 rate was 68.8 percent.

For further information on labor force definitions, go here: <https://www.bls.gov/lau/laufaq.htm>

## Colorado's Employment-Population Ratio Decreases Slightly in August

Percent

68

67

66

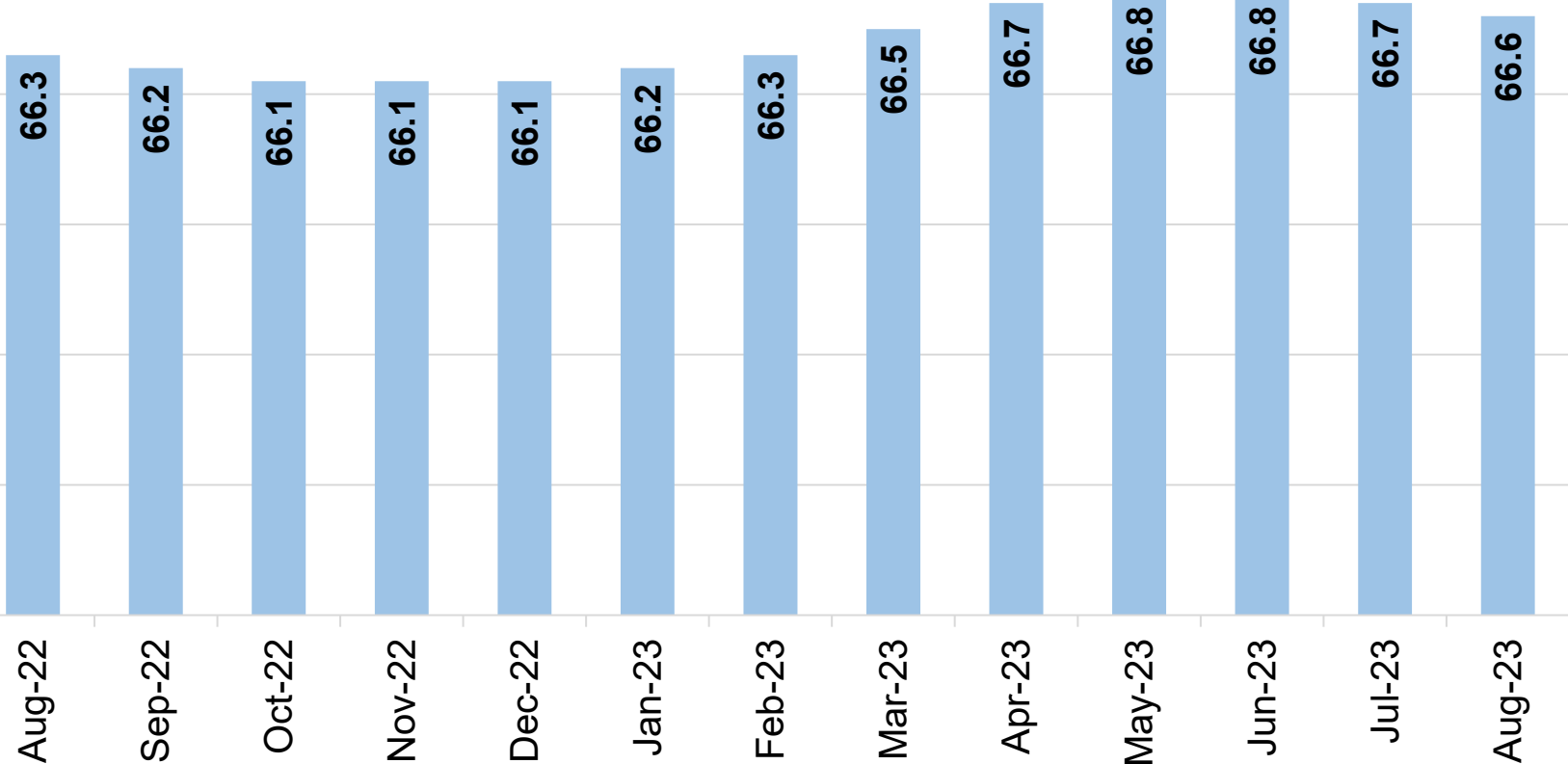
65

64

63

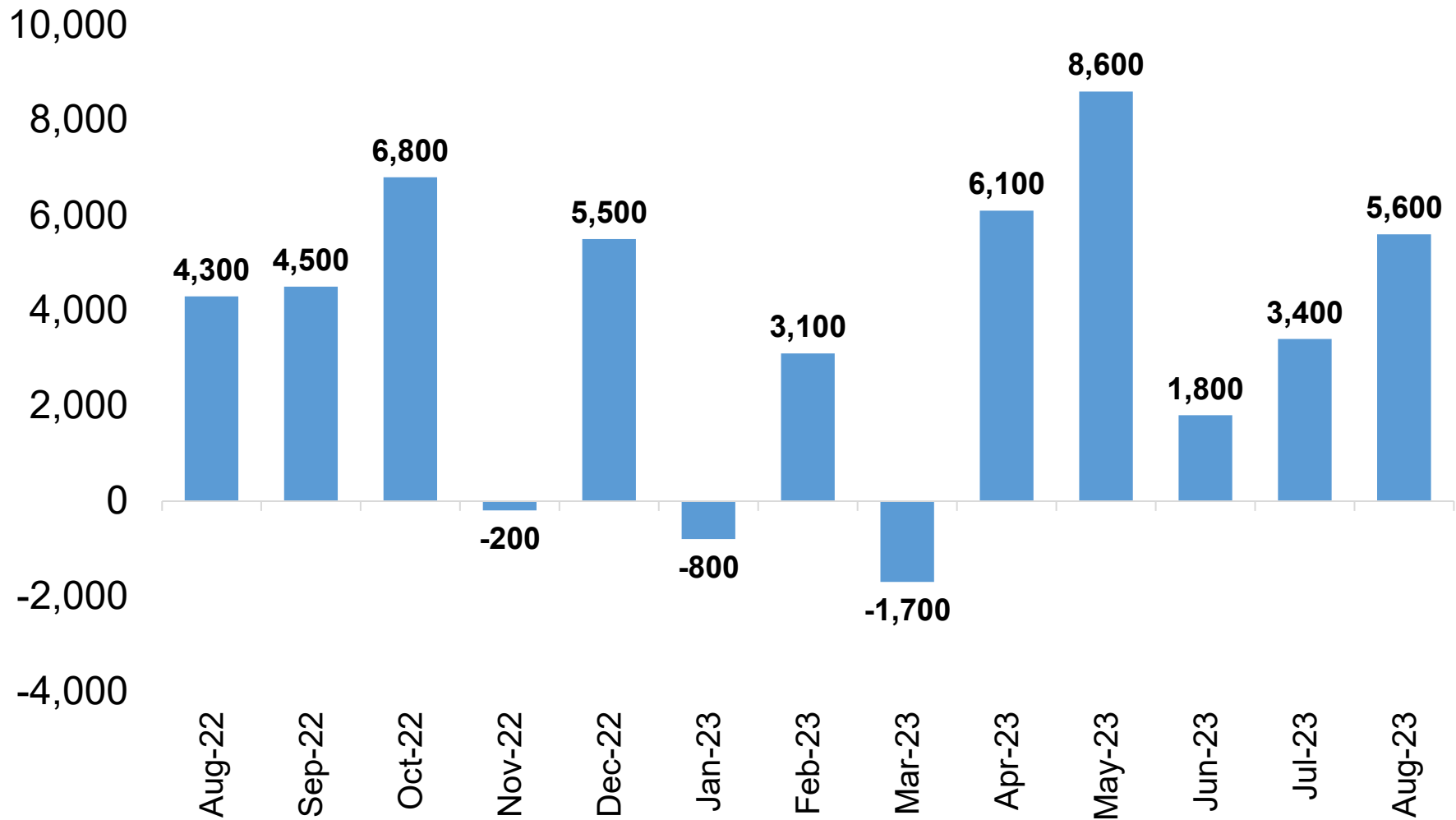
62

Colorado EPOP ranked  
5th highest nationally  
in July



Source: Colorado Department of Labor and Employment; Bureau of Labor Statistics  
Data seasonally adjusted. Estimates share of Colorado's 16+ population that is employed in a given month.  
February 2020 rate was 66.6 percent.

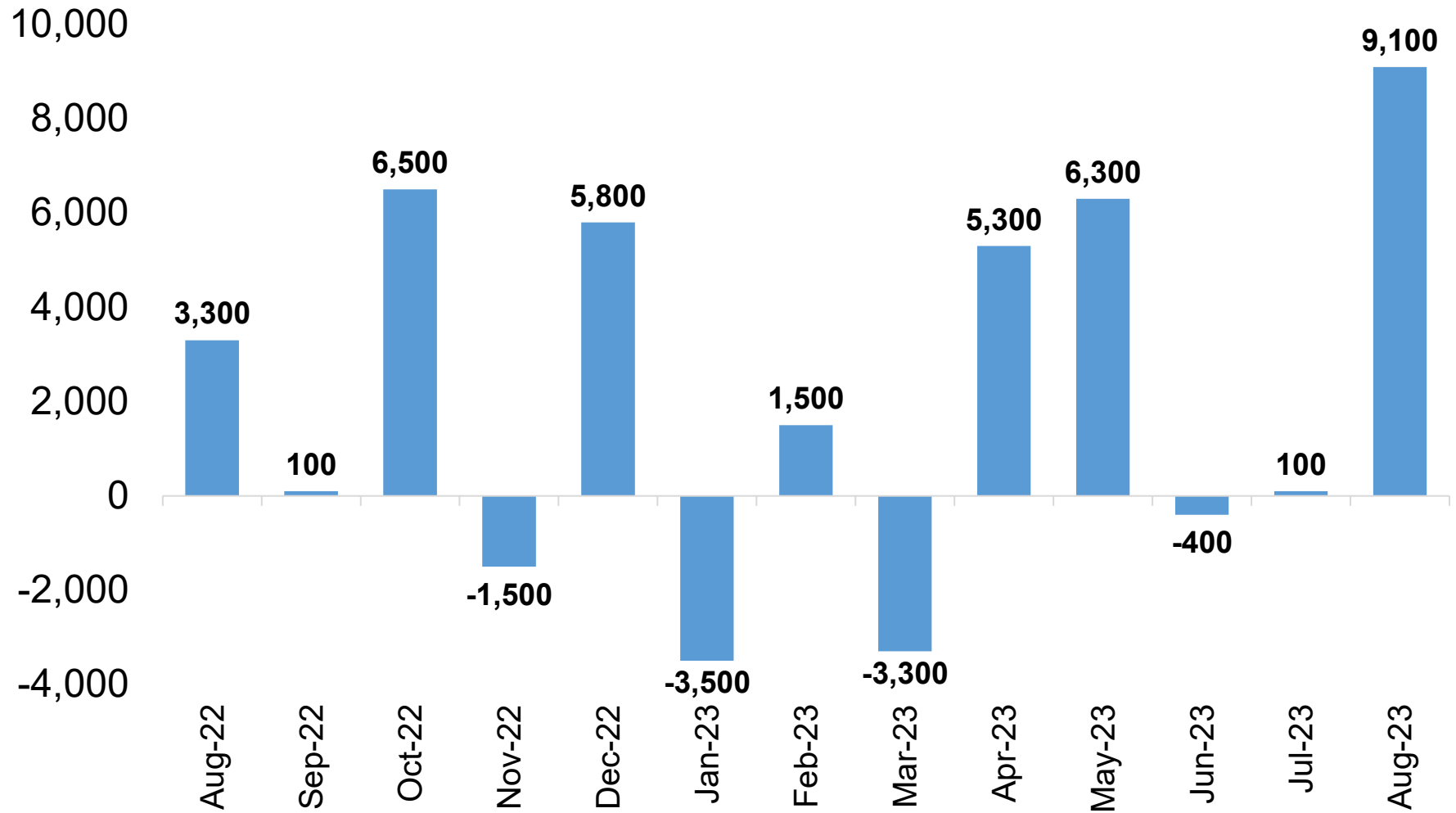
## Colorado Added 5,600 Total Nonfarm Jobs in August; July Numbers Revised Up 2,600



Source: Colorado Department of Labor and Employment; Bureau of Labor Statistics  
Data seasonally adjusted

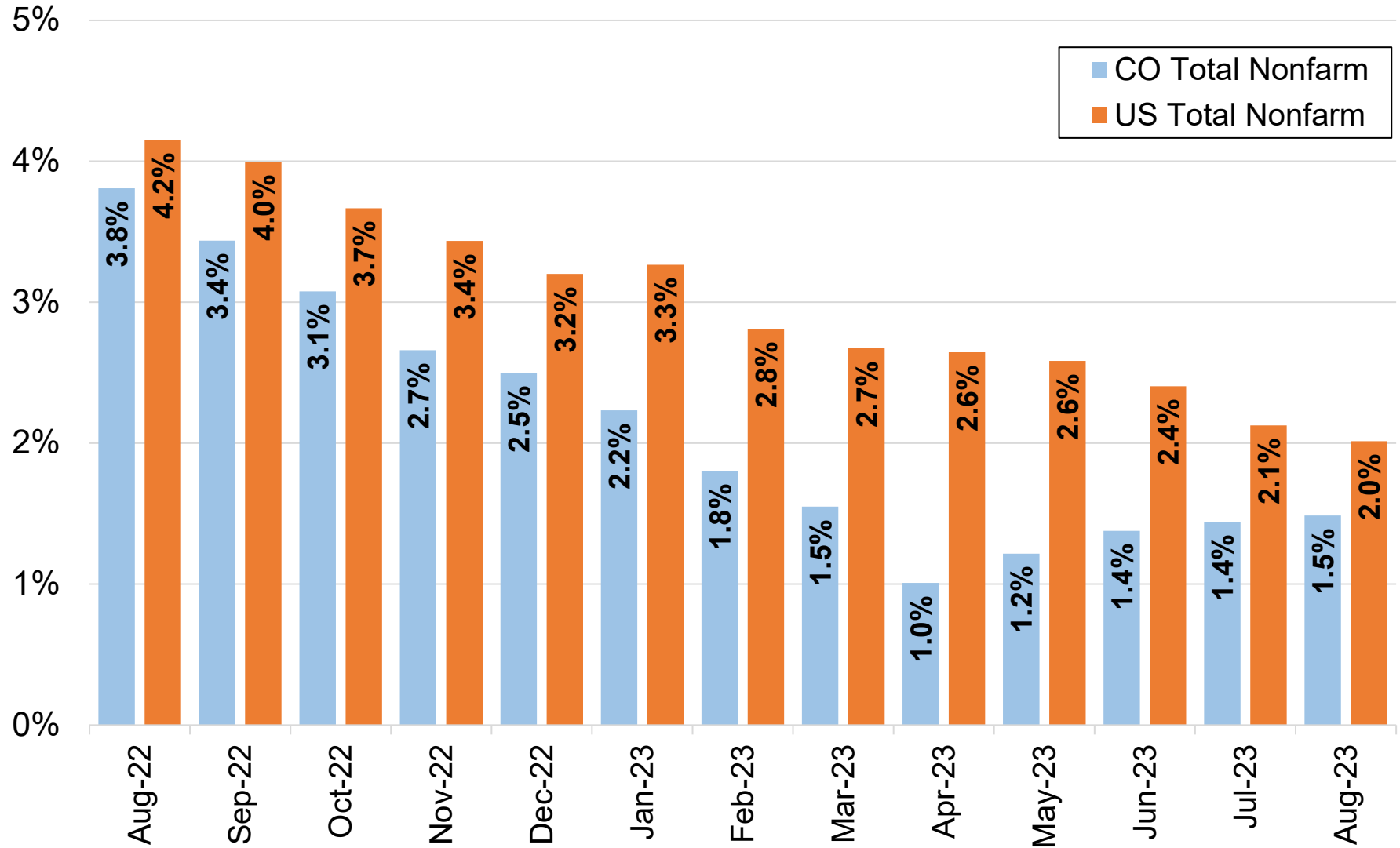


## 9,100 Private Sector Jobs Gained in August; July Figures Revised Up 2,000



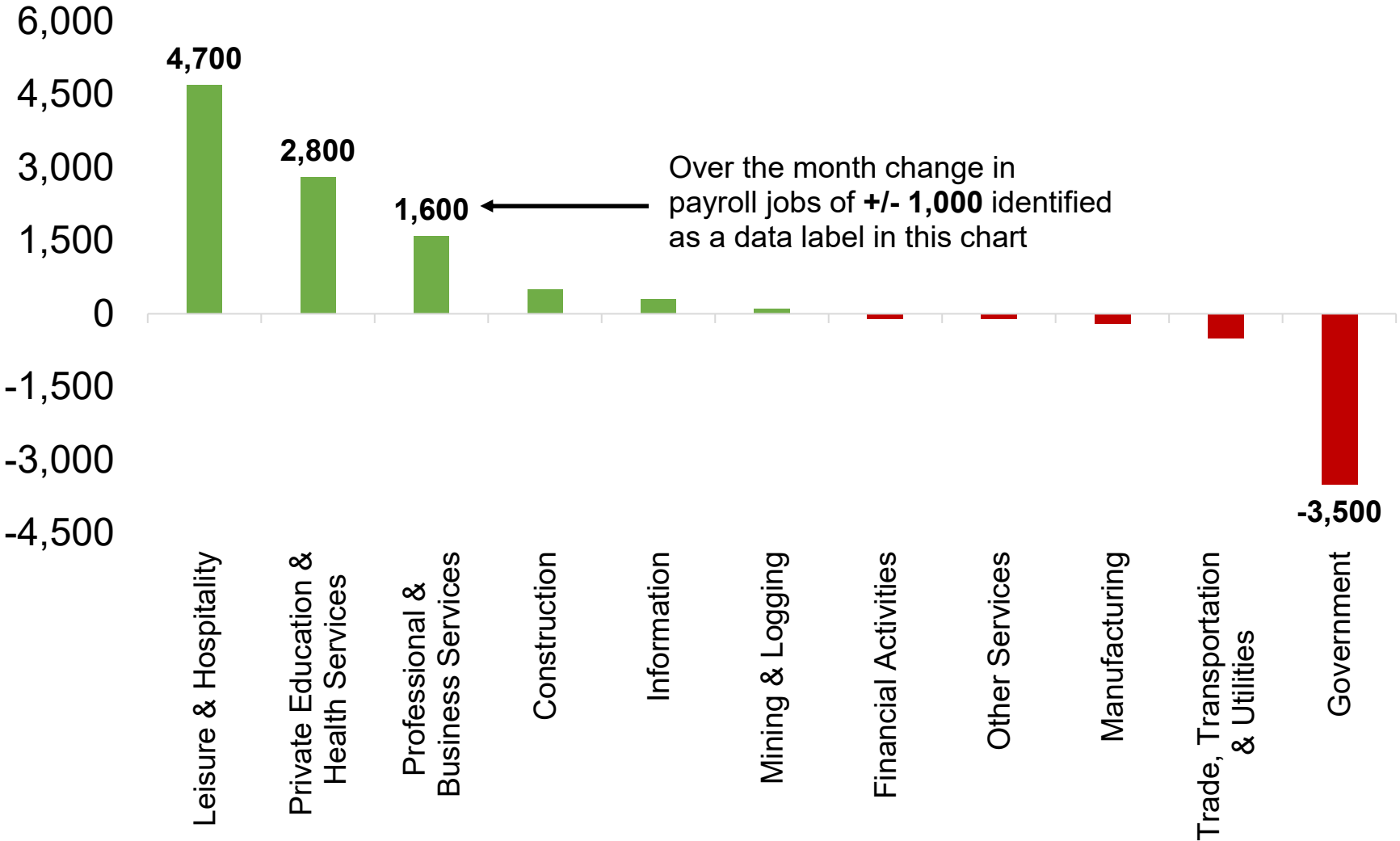
Source: Colorado Department of Labor and Employment; Bureau of Labor Statistics  
Data seasonally adjusted

## Colorado and U.S. Over the Year Growth Rates for Total Nonfarm Employment



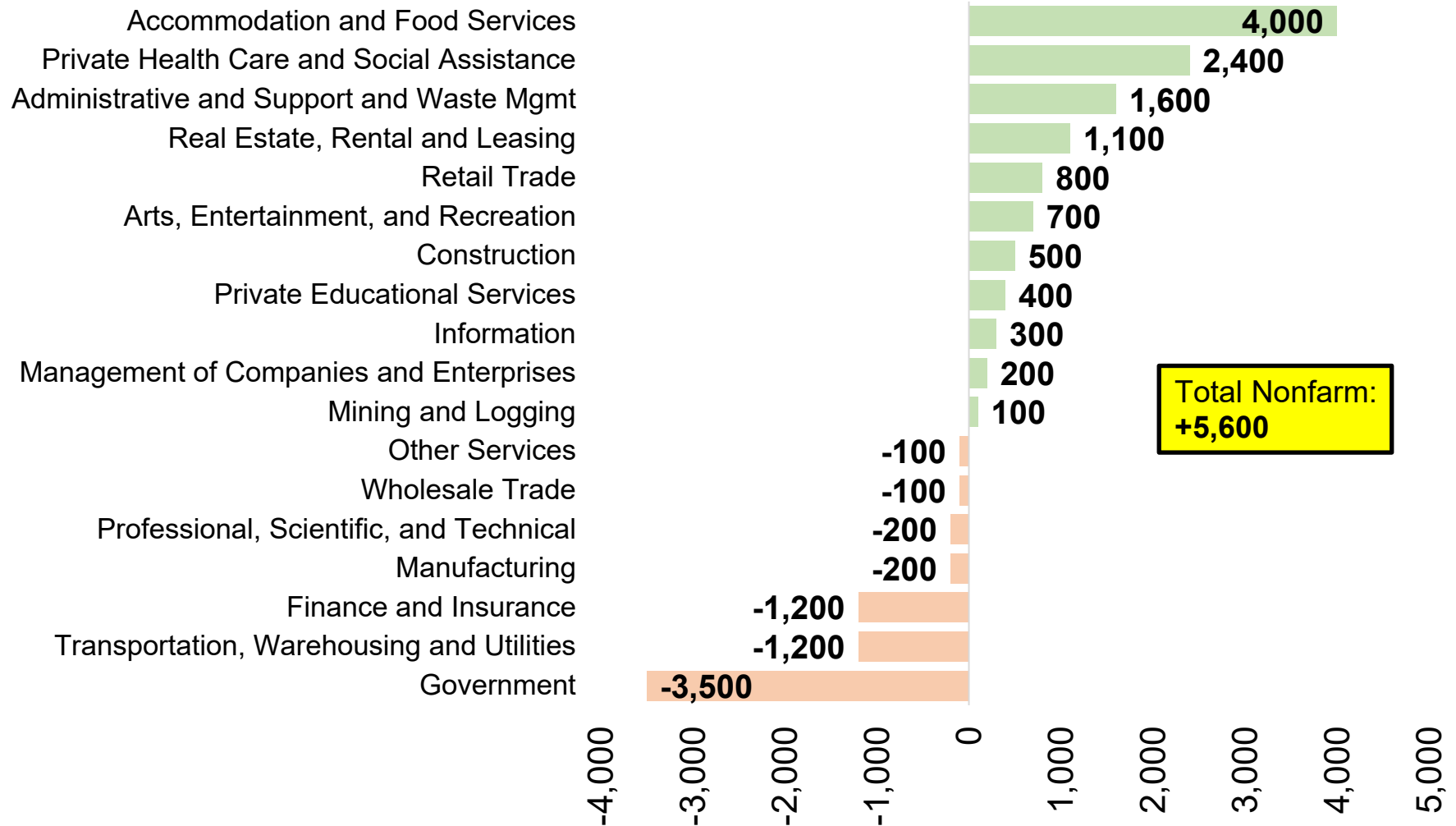
Source: Colorado Department of Labor and Employment; Bureau of Labor Statistics  
Data seasonally adjusted

## Mixed Industry Level Growth in August; Six Supersectors Gained Jobs vs. Five That Lost Jobs



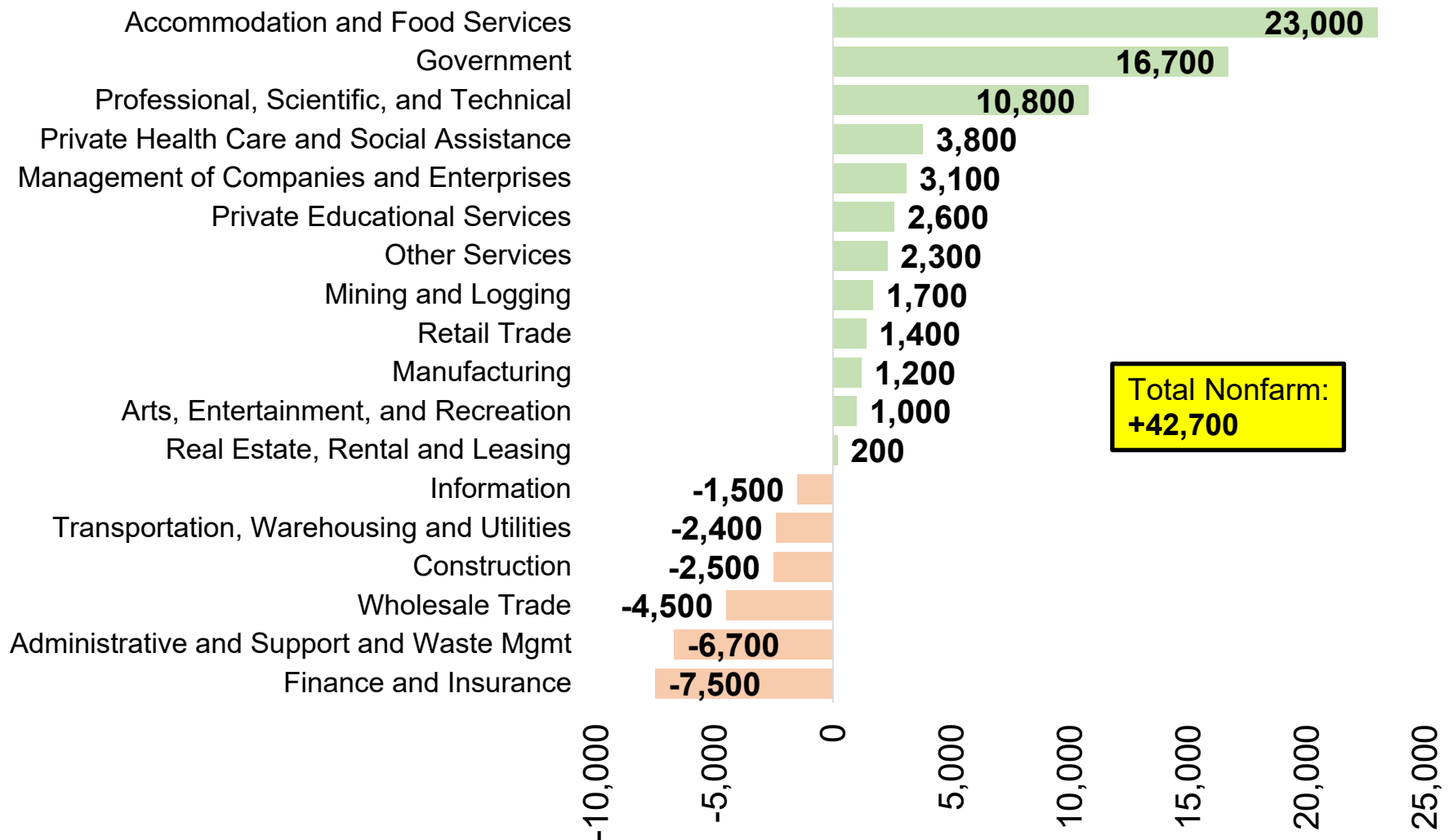
Source: Colorado Department of Labor and Employment; Bureau of Labor Statistics  
Data seasonally adjusted

## Change in Payroll Jobs in August 2023, by Industry Sector



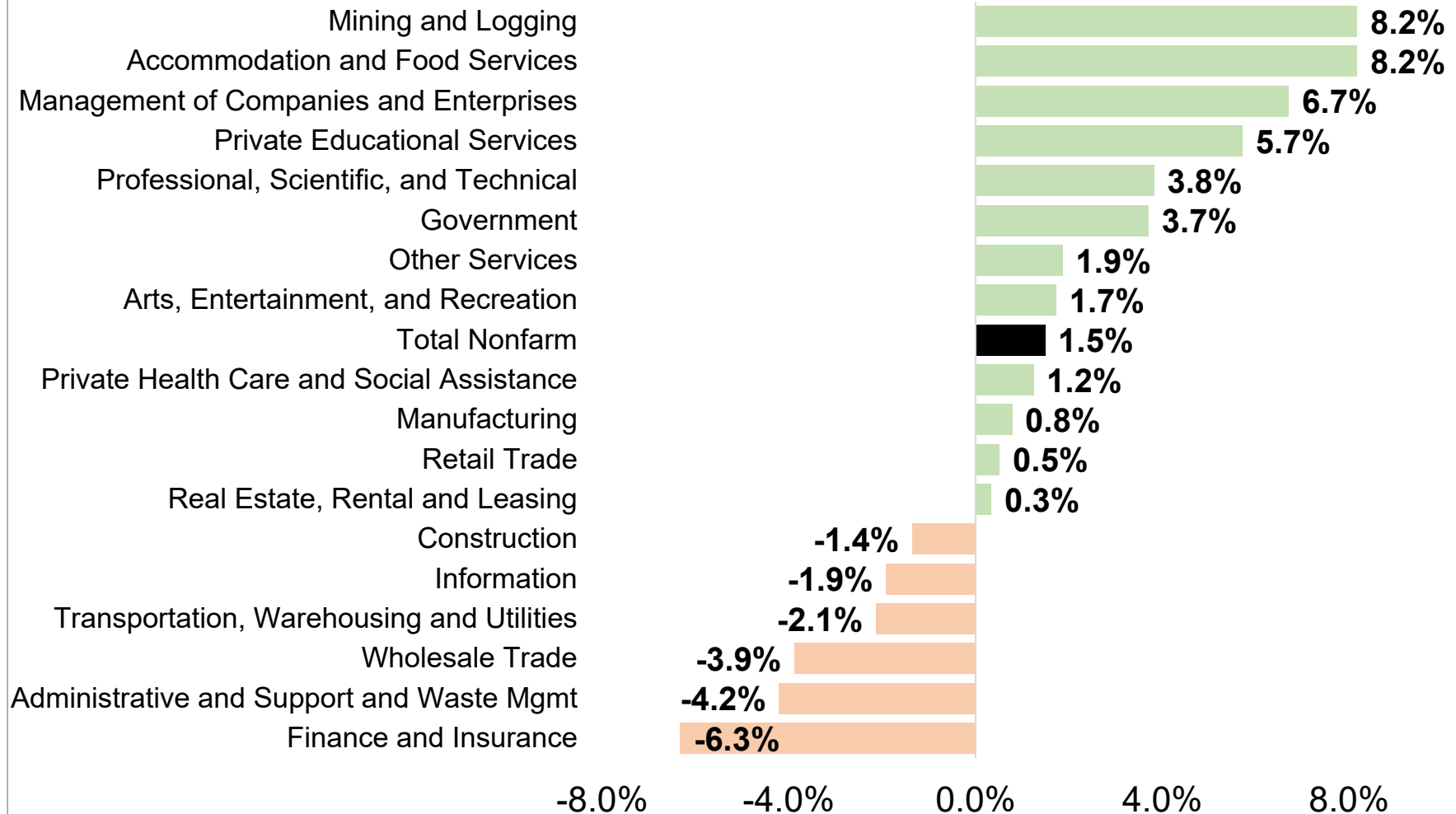
Source: Colorado Department of Labor and Employment; Bureau of Labor Statistics  
Data seasonally adjusted, July 2023 to August 2023

## Change in Payroll Jobs Over Past 12 Months, by Industry Sector



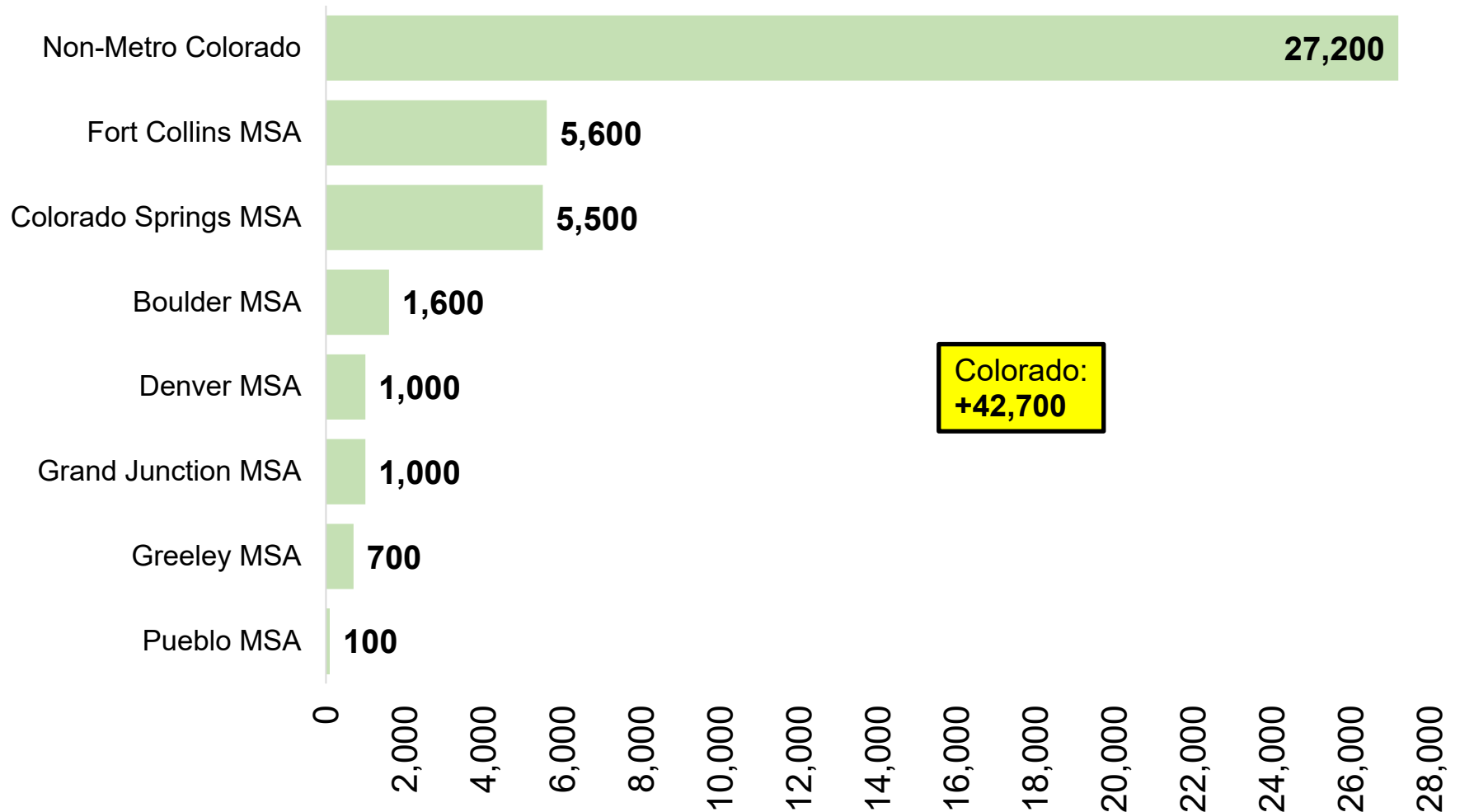
Source: Colorado Department of Labor and Employment; Bureau of Labor Statistics  
Data seasonally adjusted, August 2022 to August 2023

## August 2023 Over the Year Growth Rates, by Industry Sector



Source: Colorado Department of Labor and Employment; Bureau of Labor Statistics  
Data seasonally adjusted, August 2022 to August 2023

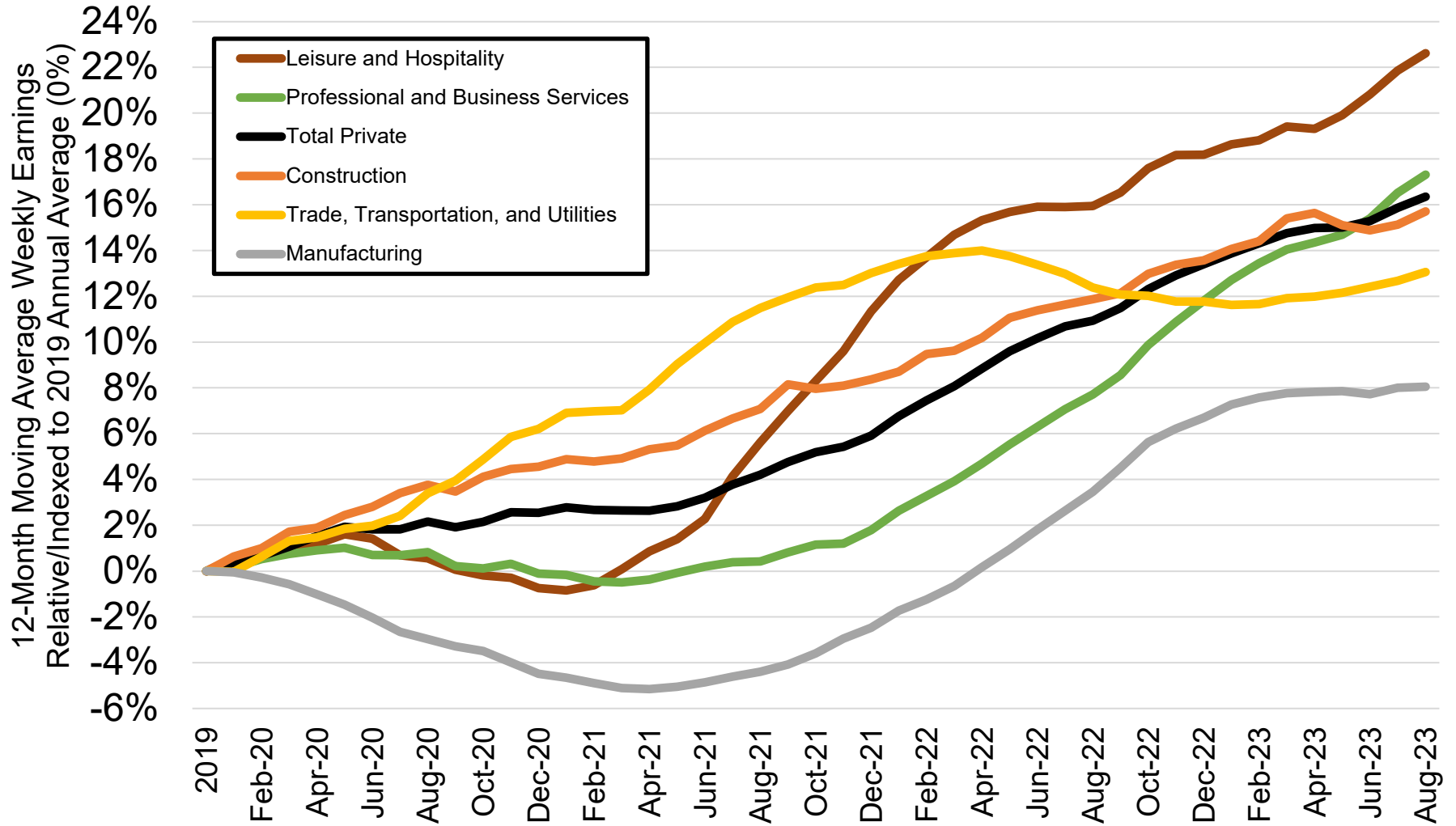
## Change in Payroll Jobs Over Past 12 Months, by Colorado Substate Area



Source: Colorado Department of Labor and Employment; Bureau of Labor Statistics  
Data seasonally adjusted, August 2022 to August 2023

Note: MSA = Metropolitan Statistical Area; Non-Metro Colorado = residual of state that is not an MSA (47 counties)

## Percent Change in Average Weekly Earnings Since 2019, by Select Colorado Industry

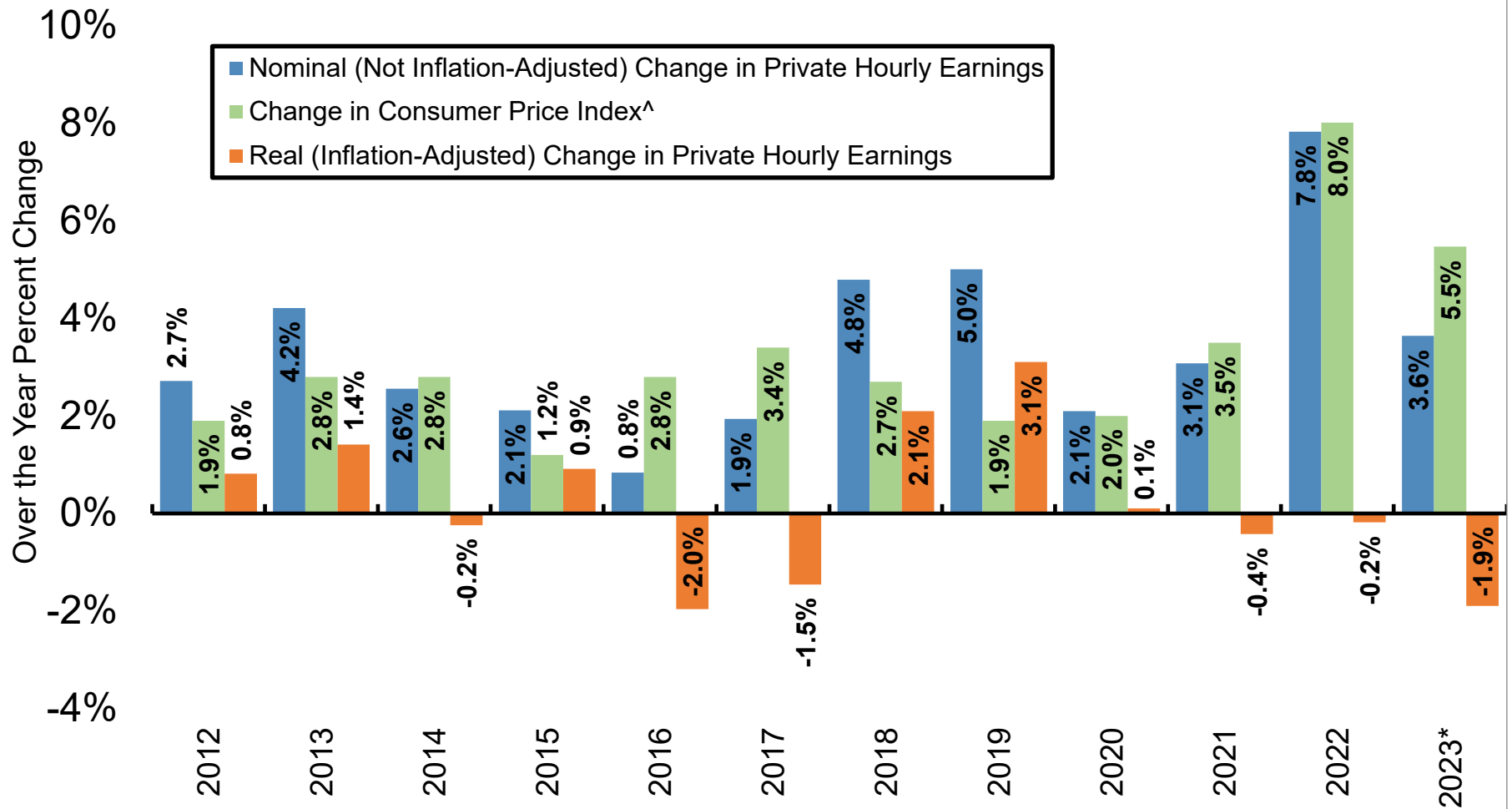


Source: Colorado Department of Labor and Employment; Bureau of Labor Statistics

Data not seasonally adjusted. Note: each month on this chart represents a 12-month moving average and measures the percent change in average weekly earnings compared to the 2019 annual average for that industry.



## Nominal and Real Percent Change in Colorado's Private Average Hourly Earnings Since 2012

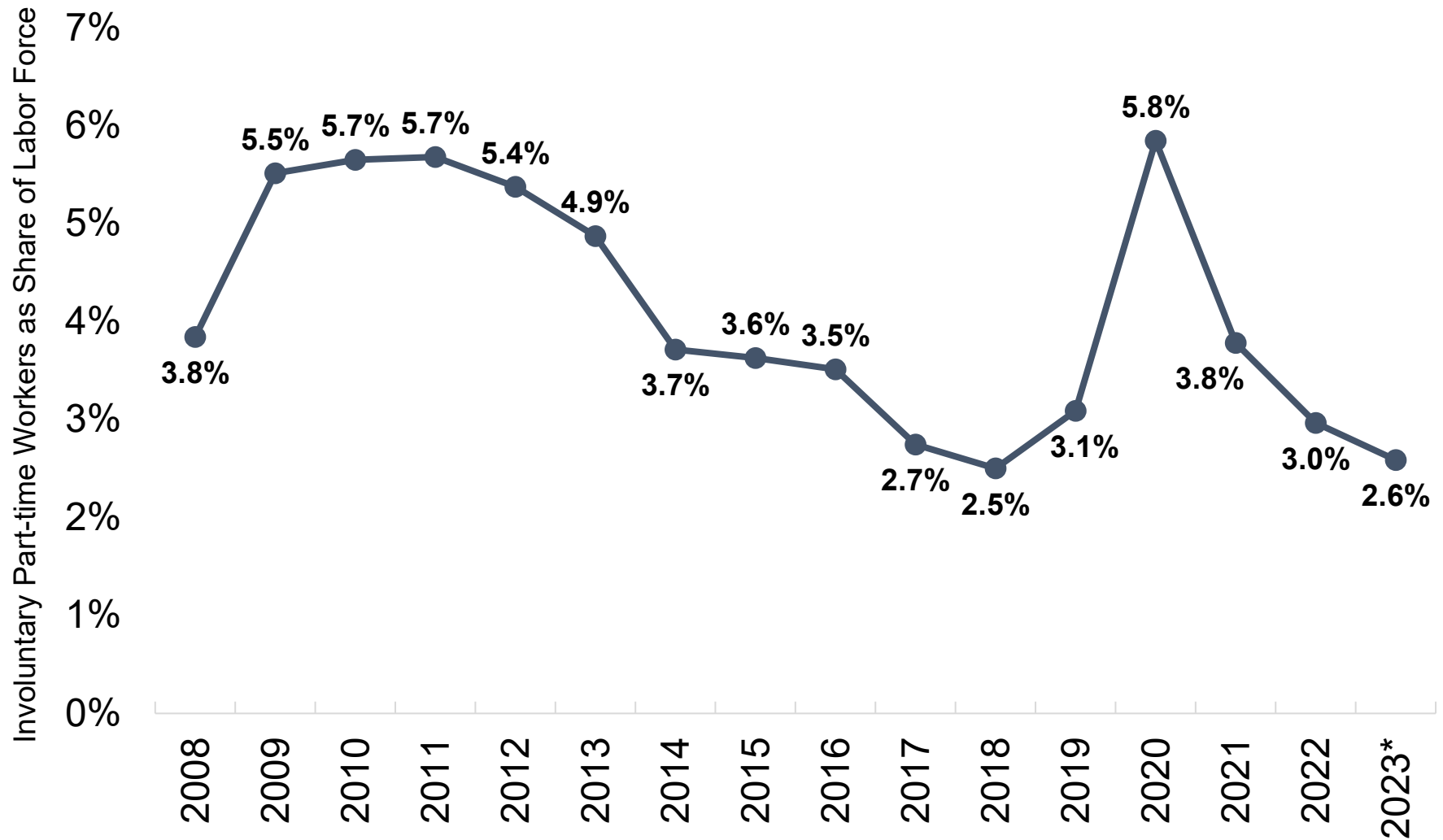


Source: Colorado Department of Labor and Employment estimates; Bureau of Labor Statistics

<sup>^</sup>Note: Denver-Aurora-Lakewood CPI-U estimates were utilized to adjust average hourly earnings for inflation.

That data is available here: <https://www.bls.gov/cpi/regional-resources.htm>. \*2023 nominal earnings growth is measured using data for January to August compared to the same period the year prior, while real earnings were adjusted using the average over-the-year change in CPI-U for January, March, May, and July 2023.

## Involuntary Part-Time Workers as Share of Labor Force

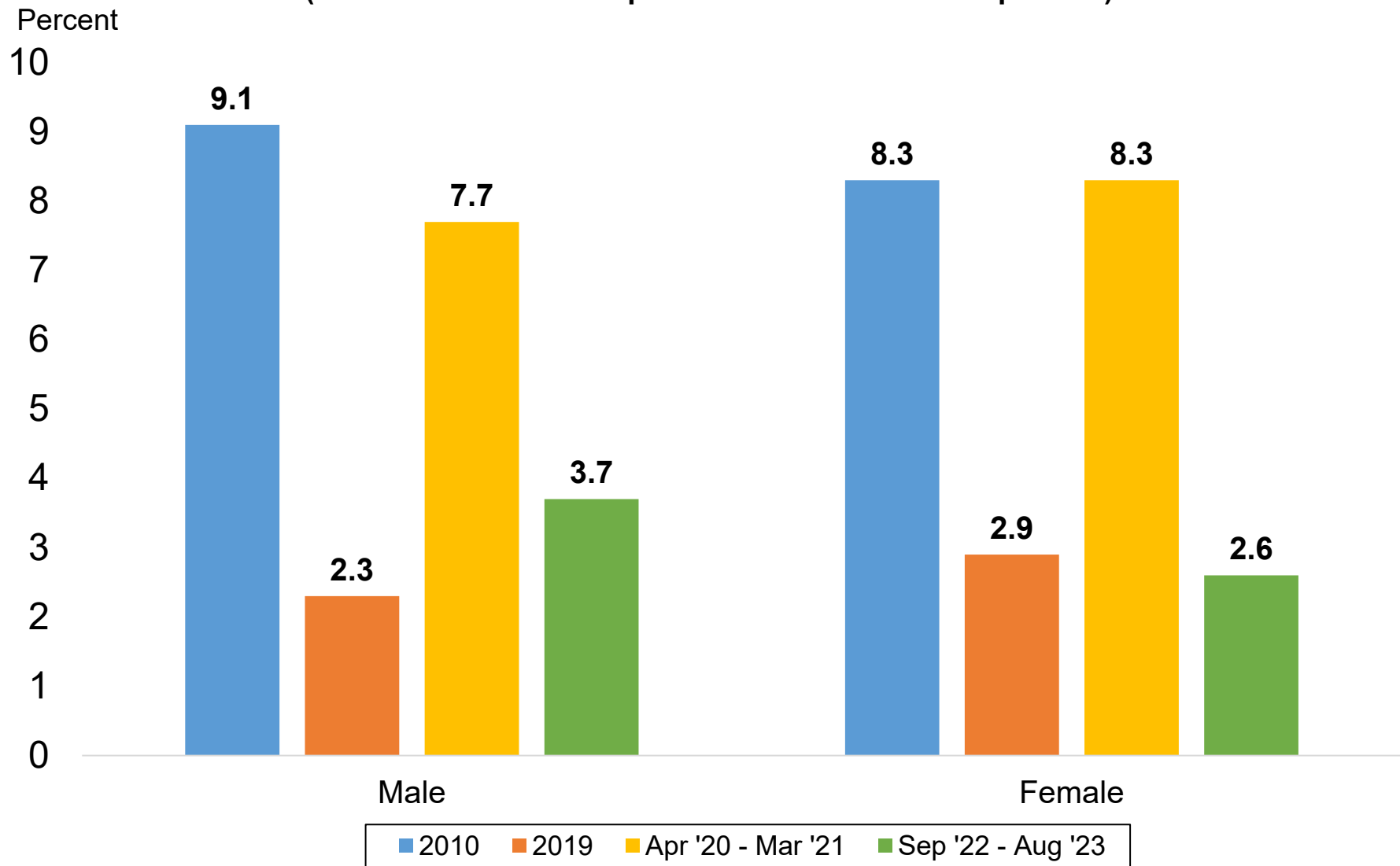


Source: Current Population Survey

Data not seasonally adjusted. Involuntary part-time workers are those individuals who are working part-time hours (34 hours or less), but prefer full-time hours (35+ hours).

\*Average through the first eight months of 2023.

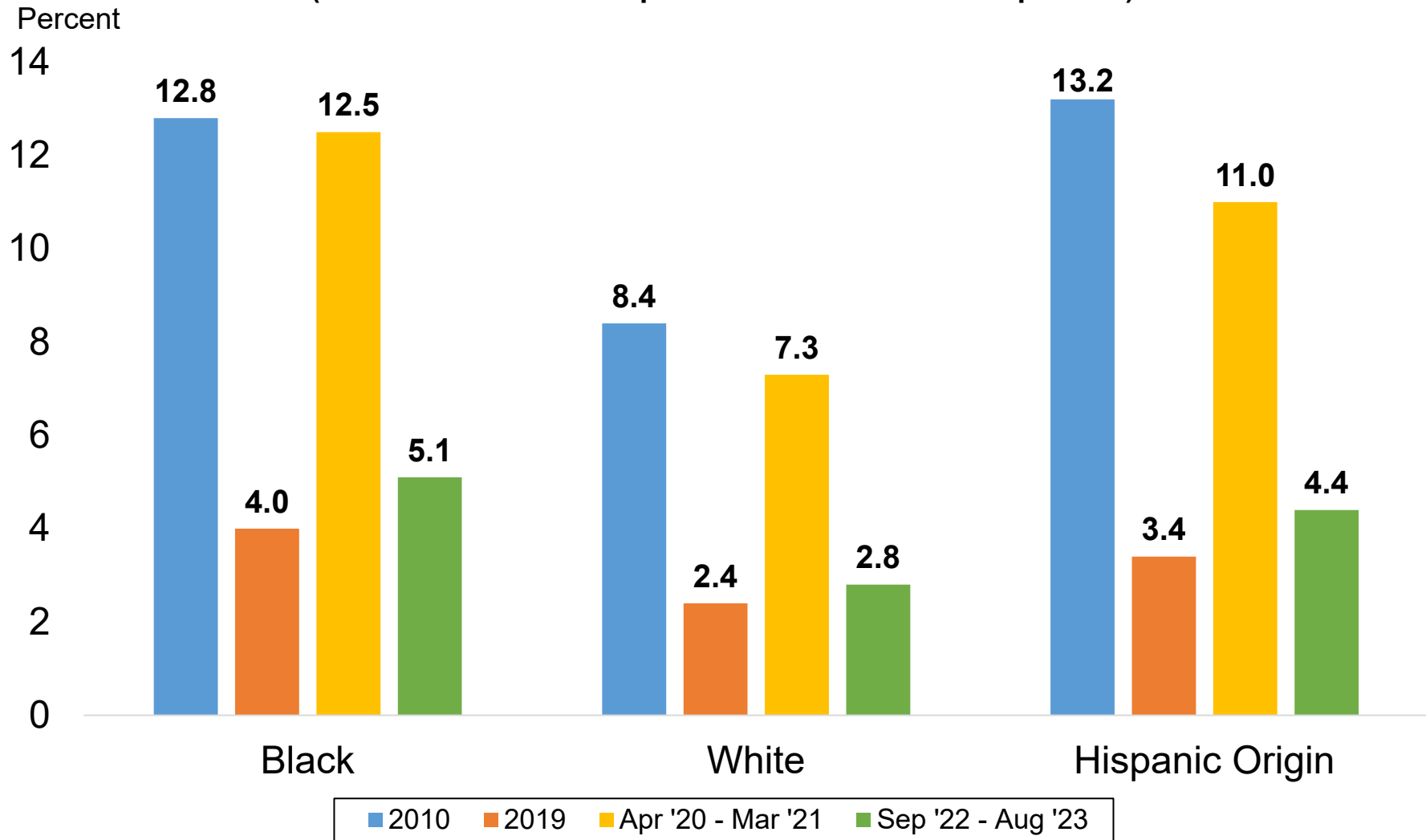
## Unemployment Rates by Gender (Most recent 12-month period available vs. select periods)



Source: Current Population Survey

Data not seasonally adjusted. Unemployment rates by gender for individuals 16 years and older.

## Unemployment Rates by Race & Ethnicity (Most recent 12-month period available vs. select periods)

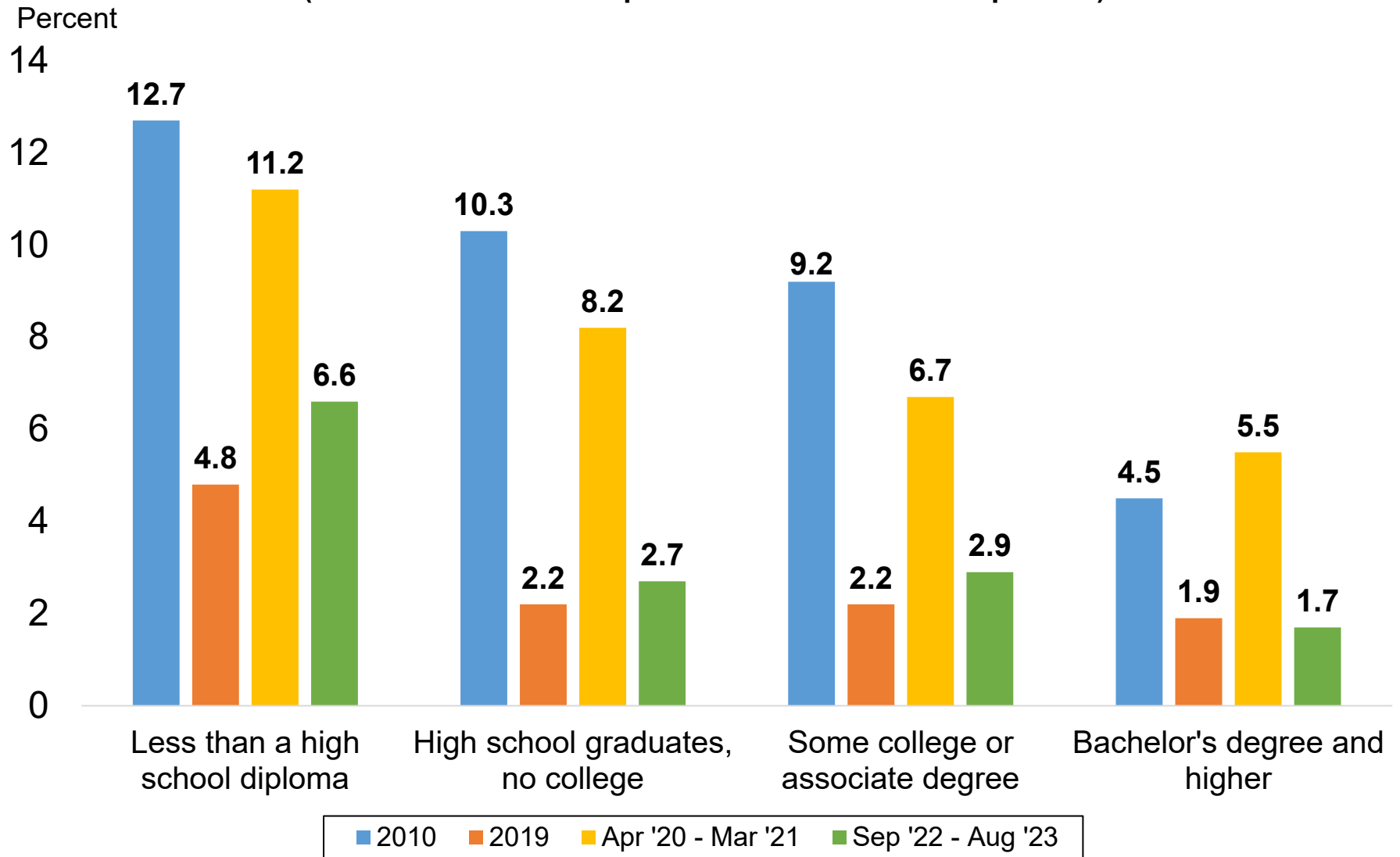


Source: Current Population Survey

Data not seasonally adjusted. Other race categories excluded due to small sample size. Hispanic origin category is not mutually exclusive (i.e. hispanic and non-hispanic ethnicities are represented in both race categories).

# Unemployment Rates by Educational Attainment

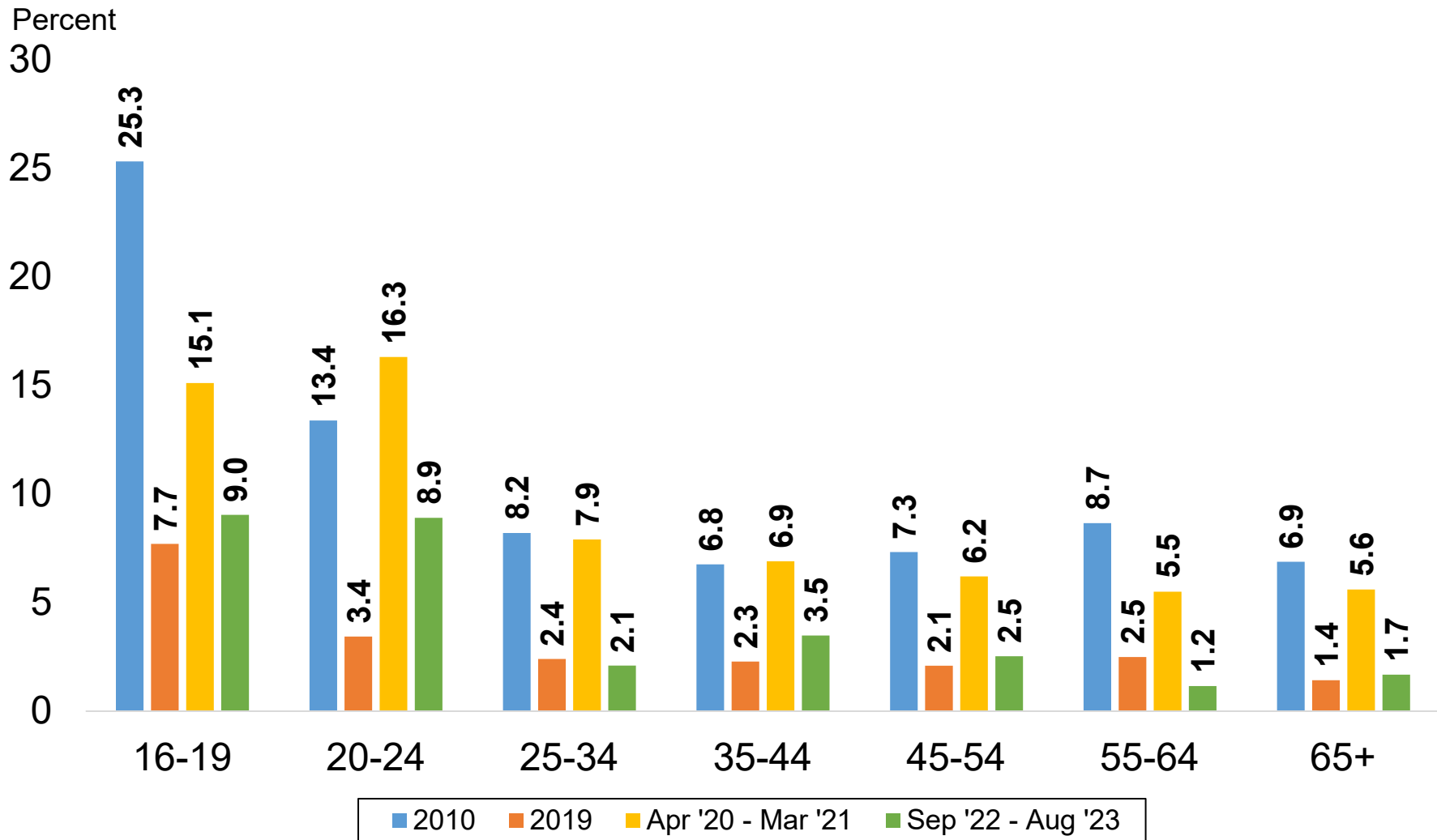
(Most recent 12-month period available vs. select periods)



Source: Current Population Survey

Data not seasonally adjusted. Unemployment rates by educational attainment for individuals 25 years and over.

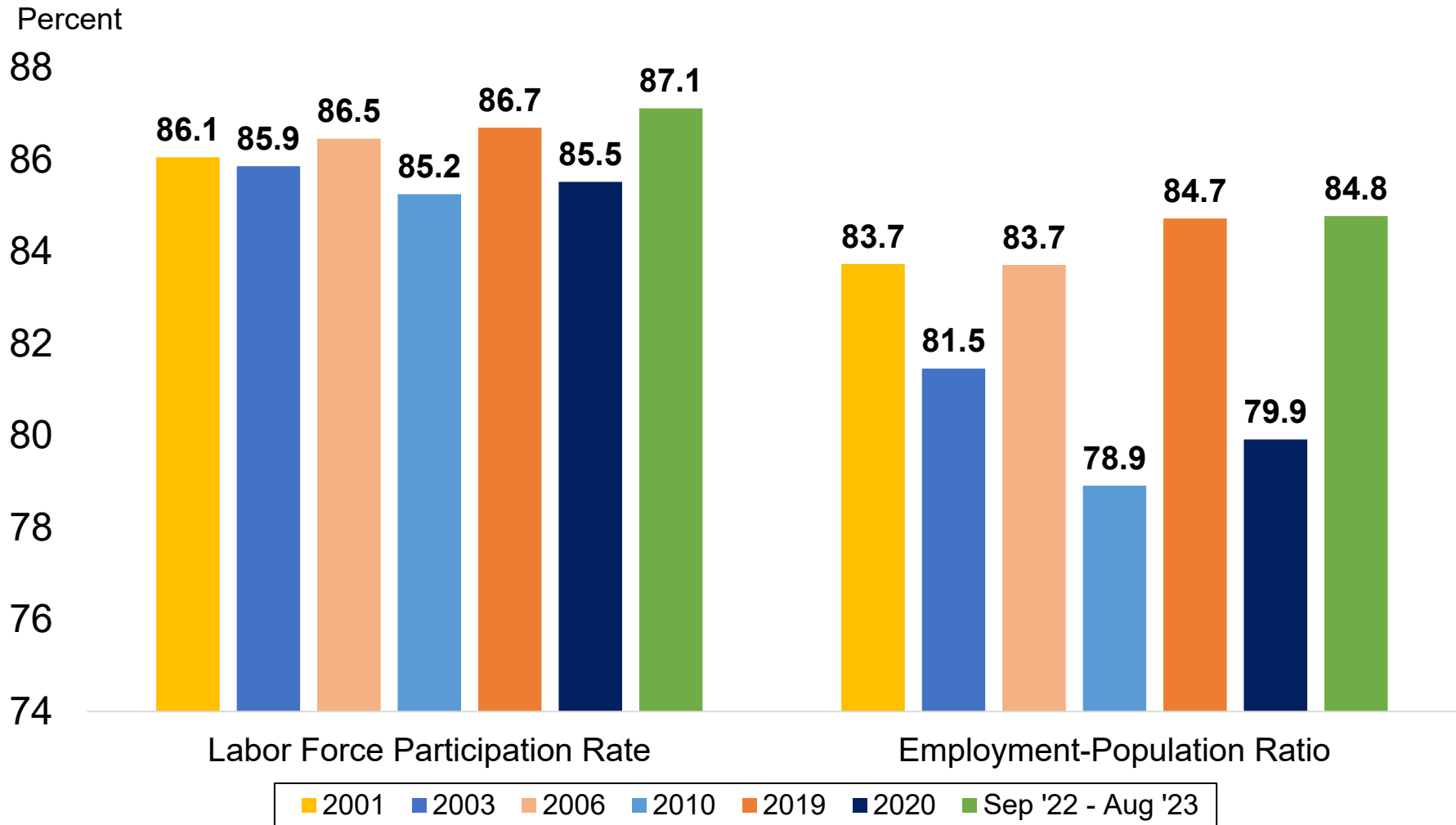
## Unemployment Rates by Age Group (Most recent 12-month period available vs. select periods)



Source: Current Population Survey  
Data not seasonally adjusted.

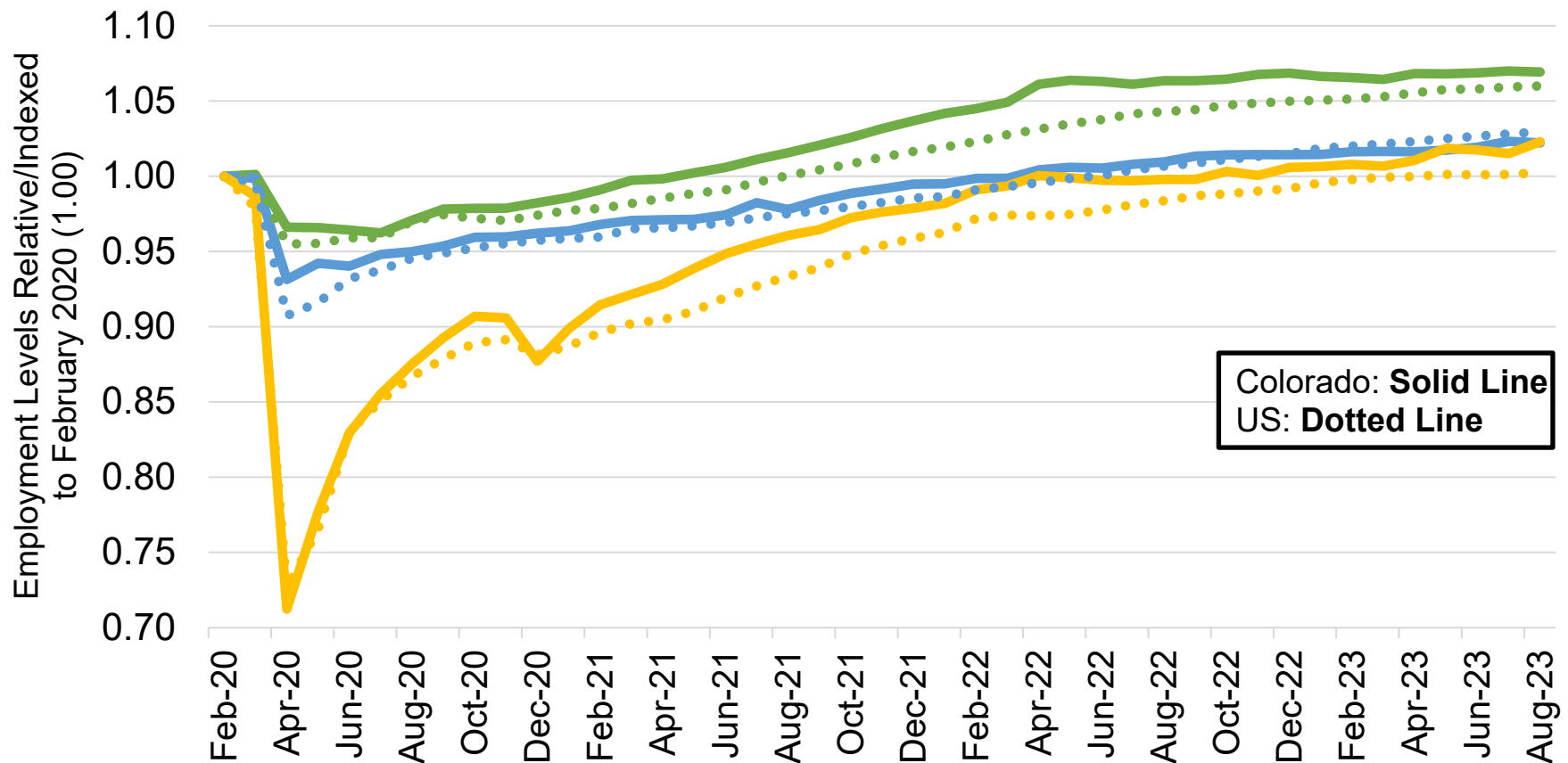
# Colorado Labor Force Participation Rates and Employment-Population Ratios, Ages 25 to 54

(Most recent 12-month period available vs. select years)



Source: Current Population Survey  
Data not seasonally adjusted.

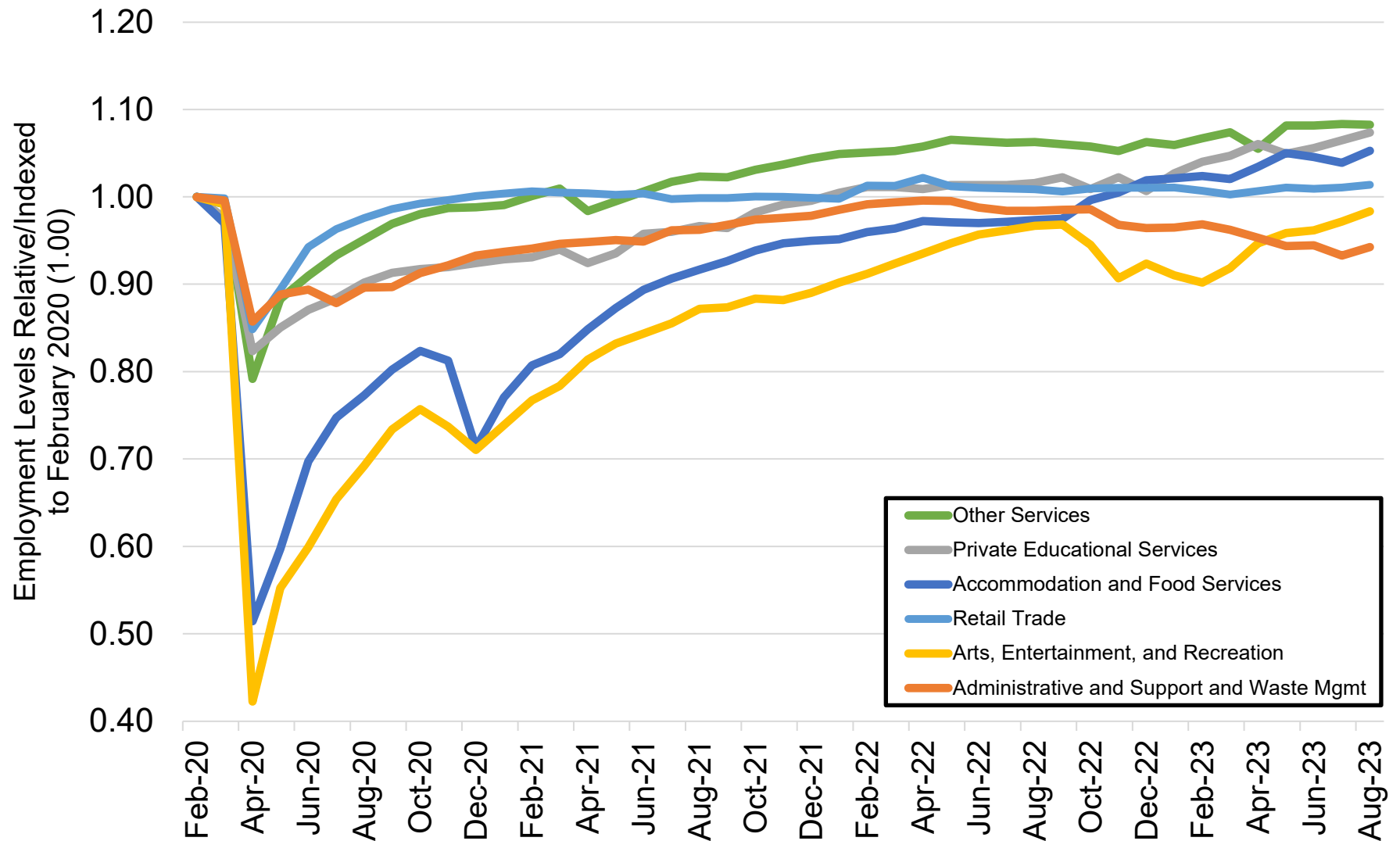
## Job Loss and Recovery by Low, Medium, and High Wage Industries (Colorado & U.S.)



Source: Colorado Department of Labor and Employment; Bureau of Labor Statistics  
 Data seasonally adjusted. Note: low, medium, and high wage industries are determined by the 2019 state-level average weekly wage estimates from the Quarterly Census of Employment and Wages. **Low wage industries include:** retail trade; admin support/waste mgmt; private education services; arts, entertainment, and recreation; accommodation and food services; and other services. **Medium wage industries include:** construction; manufacturing; transportation, warehousing, and utilities; real estate, rental, and leasing; private health care and social assistance; state government; and local government. **High wage industries include:** mining and logging; wholesale trade; information; finance and insurance; professional and technical services; management of companies; and federal government.

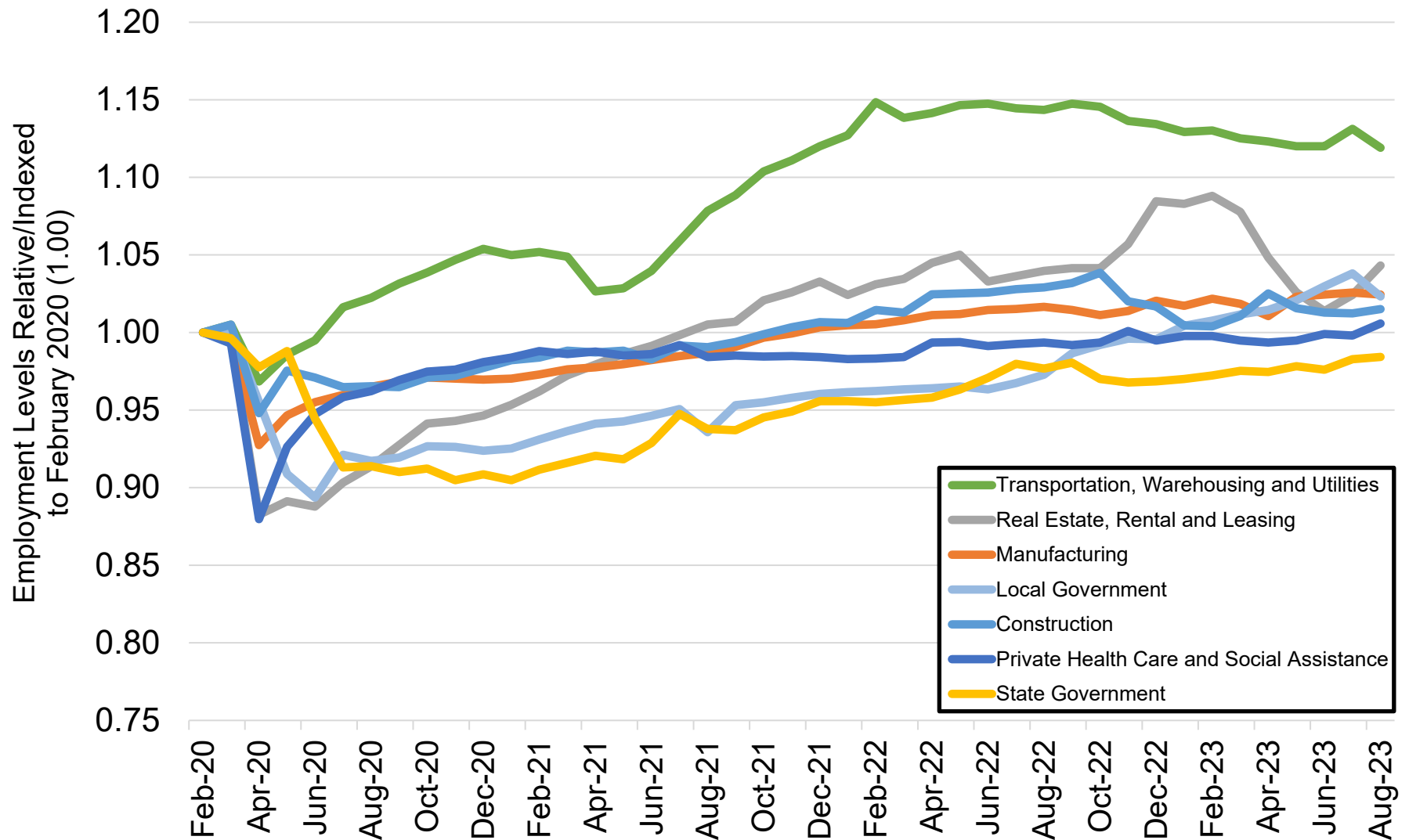


## Colorado Job Loss & Recovery by Low Wage Industries



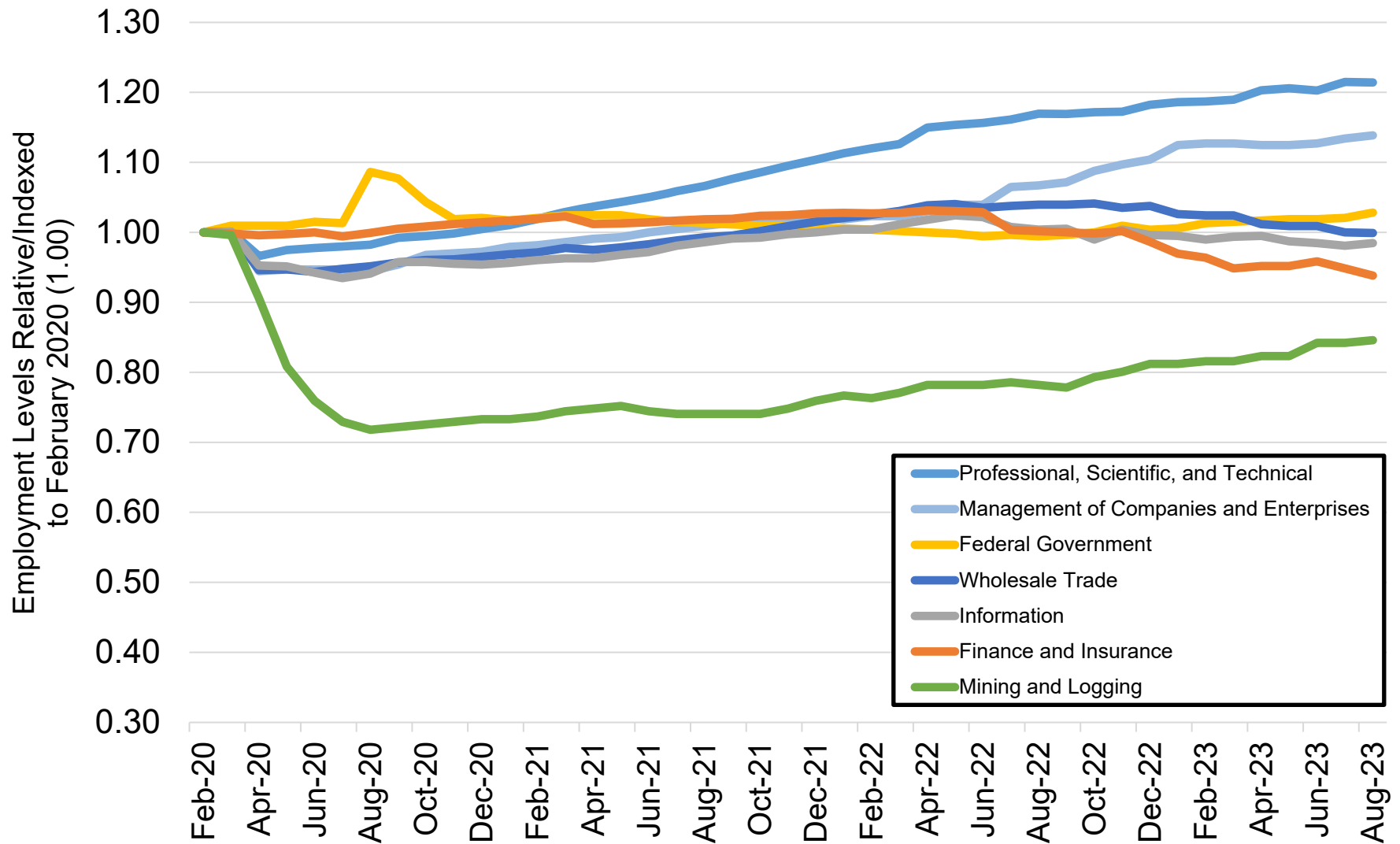
Source: Colorado Department of Labor and Employment; Bureau of Labor Statistics  
 Data seasonally adjusted. Note: low wage industries are determined by the 2019 state-level average weekly wage estimates from the Quarterly Census of Employment and Wages.

## Colorado Job Loss & Recovery by Medium Wage Industries



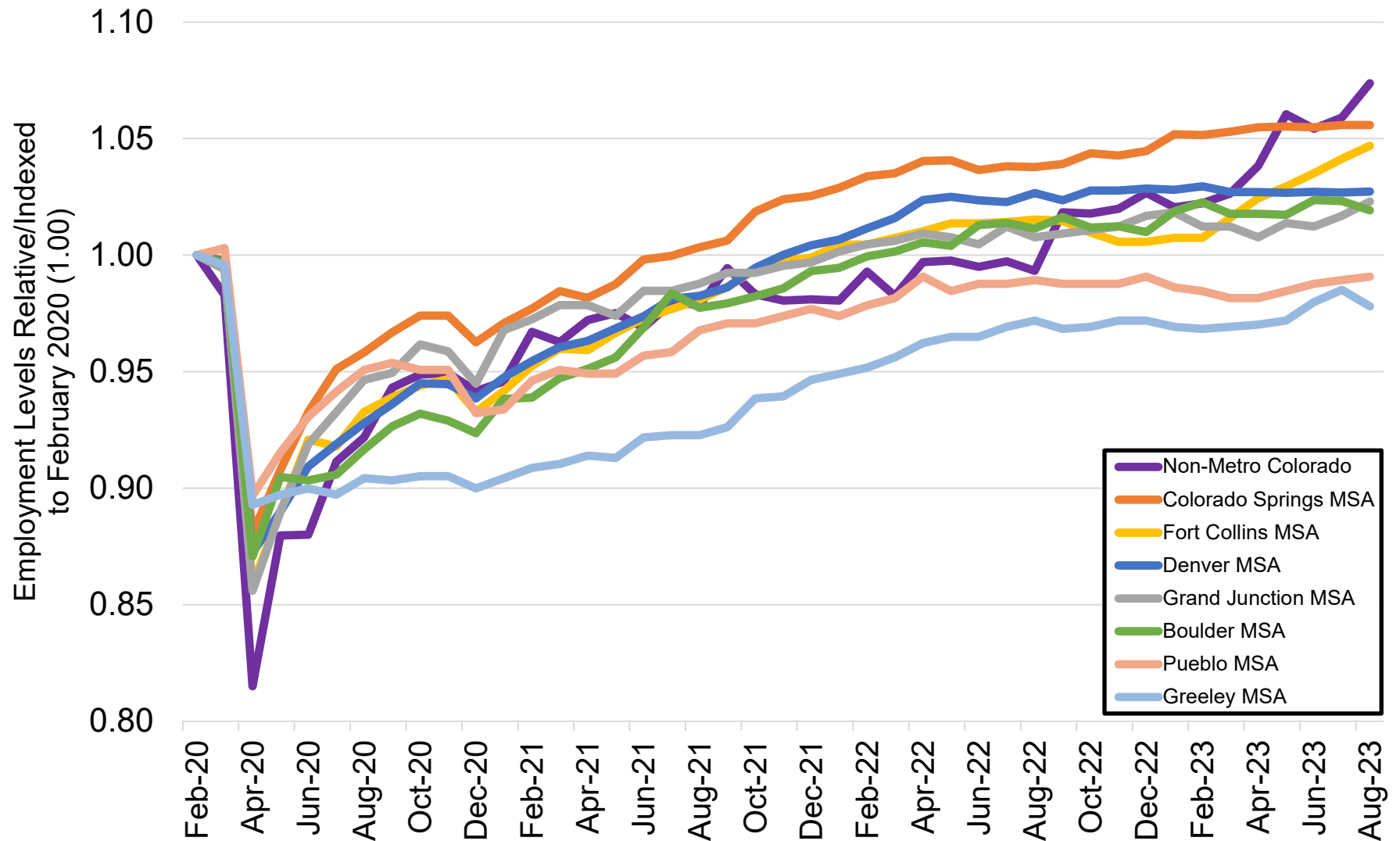
Source: Colorado Department of Labor and Employment; Bureau of Labor Statistics  
 Data seasonally adjusted. Note: medium wage industries are determined by the 2019 state-level average weekly wage estimates from the Quarterly Census of Employment and Wages.

## Colorado Job Loss & Recovery by High Wage Industries



Source: Colorado Department of Labor and Employment; Bureau of Labor Statistics  
 Data seasonally adjusted. Note: high wage industries are determined by the 2019 state-level average weekly wage estimates from the Quarterly Census of Employment and Wages.

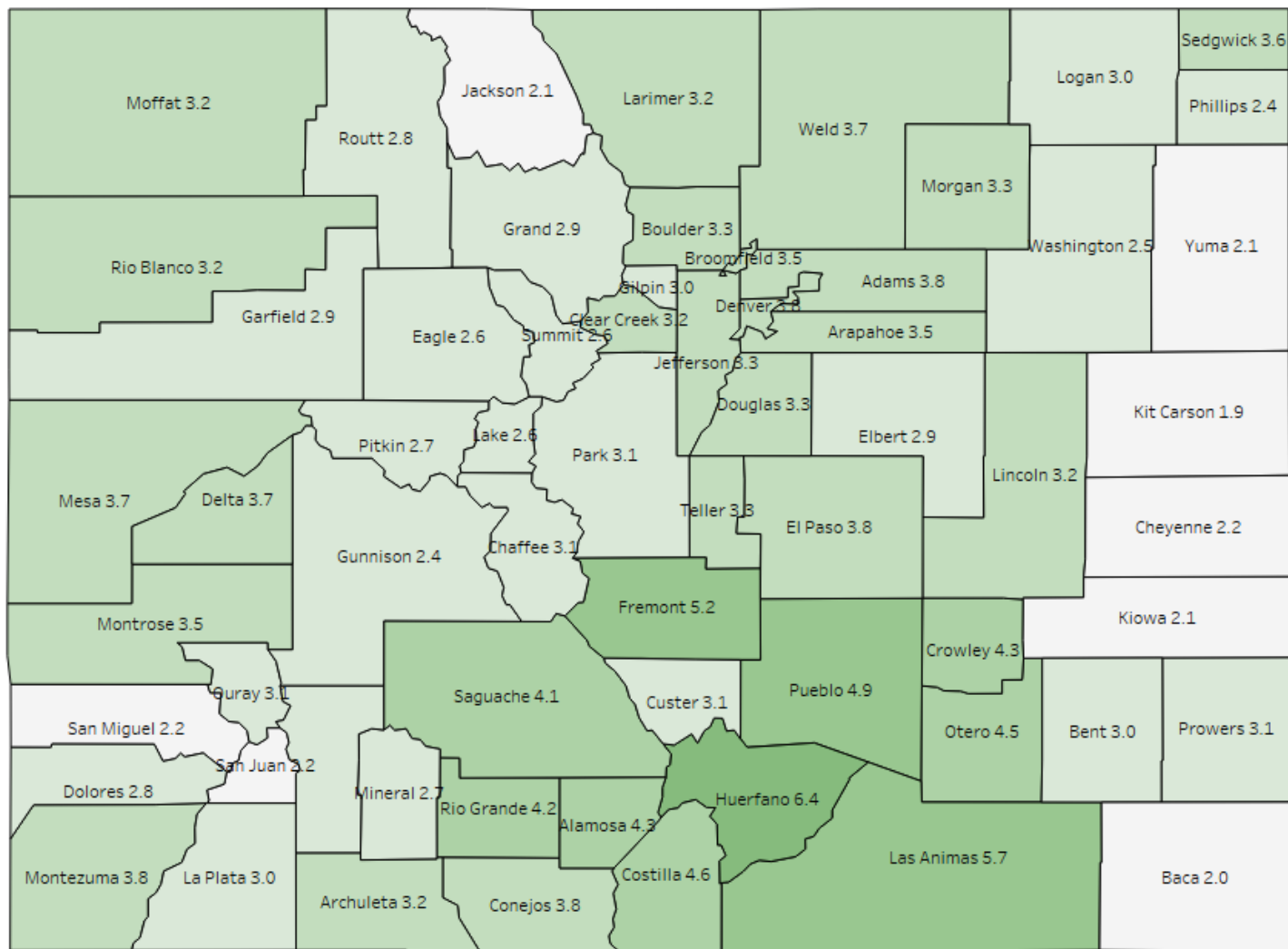
## Colorado Job Loss & Recovery by Colorado Substate Area



Source: Colorado Department of Labor and Employment; Bureau of Labor Statistics

Data seasonally adjusted. Note: MSA = Metropolitan Statistical Area; Non-Metro Colorado = residual of state that is not an MSA (47 counties).

# County Unemployment Rates August 2023



**LABOR FORCE SUMMARY**  
**COLORADO**

Preliminary Estimates for August 2023

<b>LABOR FORCE DATA (VALUES IN THOUSANDS)</b>					
<b>SEASONALLY ADJUSTED:</b>				<b>Change from last:</b>	
	<b>Aug-23</b>	<b>Jul-23</b>	<b>Aug-22</b>	<b>Month</b>	<b>Year</b>
<b>Total Civilian Labor Force</b>	3,255.0	3,252.6	3,190.6	2.5	64.4
<b>Unemployment</b>	99.8	95.1	83.5	4.7	16.3
<b>Unemployment Rate (%)</b>	3.1	2.9	2.6	0.2	0.5
<b>Employment</b>	3,155.2	3,157.5	3,107.2	-2.2	48.1
<b>UNADJUSTED FOR SEASONALITY:</b>				<b>Change from last:</b>	
	<b>Aug-23</b>	<b>Jul-23</b>	<b>Aug-22</b>	<b>Month</b>	<b>Year</b>
<b>Total Civilian Labor Force</b>	3,273.5	3,264.2	3,212.1	9.4	61.5
<b>Unemployment</b>	115.5	113.6	88.9	1.9	26.6
<b>Unemployment Rate (%)</b>	3.5	3.5	2.8	0.0	0.7
<b>Employment</b>	3,158.0	3,150.5	3,123.2	7.5	34.8

<b>WAGE AND SALARY EMPLOYMENT DATA (VALUES IN THOUSANDS)</b>					
<b>SEASONALLY ADJUSTED:</b>				<b>Change from last:</b>	
	<b>Aug-23</b>	<b>Jul-23</b>	<b>Aug-22</b>	<b>Month</b>	<b>Year</b>
<b>Mining &amp; Logging</b>	22.5	22.4	20.8	0.1	1.7
<b>Construction</b>	181.7	181.2	184.2	0.5	-2.5
<b>Manufacturing</b>	155.2	155.4	154.0	-0.2	1.2
<b>Trade, Transportation, &amp; Utilities</b>	496.2	496.7	501.7	-0.5	-5.5
<b>Information</b>	76.8	76.5	78.3	0.3	-1.5
<b>Financial Activities</b>	171.5	171.6	178.8	-0.1	-7.3
<b>Professional &amp; Business Services</b>	495.5	493.9	488.3	1.6	7.2
<b>Educational &amp; Health Services</b>	359.2	356.4	352.8	2.8	6.4
<b>Leisure &amp; Hospitality</b>	363.6	358.9	339.6	4.7	24.0
<b>Other Services</b>	125.9	126.0	123.6	-0.1	2.3
<b>Government</b>	467.9	471.4	451.2	-3.5	16.7
<b>TOTAL NONAG</b>	2,916.0	2,910.4	2,873.3	5.6	42.7
<b>Labor Disputants</b>	0.0	0.0	0.0	0.0	0.0
<b>UNADJUSTED FOR SEASONALITY:</b>				<b>Change from last:</b>	
	<b>Aug-23</b>	<b>Jul-23</b>	<b>Aug-22</b>	<b>Month</b>	<b>Year</b>
<b>Mining &amp; Logging</b>	22.6	22.7	21.0	-0.1	1.6
<b>Construction</b>	186.6	186.5	188.0	0.1	-1.4
<b>Manufacturing</b>	154.9	156.2	154.4	-1.3	0.5
<b>Trade, Transportation, &amp; Utilities</b>	492.8	494.2	498.6	-1.4	-5.8
<b>Information</b>	76.9	77.0	78.3	-0.1	-1.4
<b>Financial Activities</b>	171.9	172.7	179.2	-0.8	-7.3
<b>Professional &amp; Business Services</b>	501.4	500.8	494.2	0.6	7.2
<b>Educational &amp; Health Services</b>	358.8	355.1	352.3	3.7	6.5
<b>Leisure &amp; Hospitality</b>	376.9	377.6	354.5	-0.7	22.4
<b>Other Services</b>	126.7	127.1	125.6	-0.4	1.1
<b>Government</b>	459.9	455.4	441.3	4.5	18.6
<b>TOTAL NONAG</b>	2,929.4	2,925.3	2,887.4	4.1	42.0
<b>Labor Disputants</b>	0.0	0.0	0.0	0.0	0.0

Source: Colorado Department of Labor & Employment; Bureau of Labor Statistics

**Not Seasonally Adjusted Labor Force**

	August 2023				July 2023			
	Labor Force	Employment	Unemployment	Rate	Labor force	Employment	Unemployment	Rate
<b>Colorado</b>	3,273,533	3,158,008	115,525	3.5	3,264,182	3,150,546	113,636	3.5
<b>Metropolitan Statistical Area</b>								
Boulder	204,451	197,782	6,669	3.3	203,746	197,039	6,707	3.3
Colorado Springs	382,210	367,873	14,337	3.8	381,996	367,696	14,300	3.7
Denver-Aurora-Lakewood	1,754,043	1,691,733	62,310	3.6	1,754,357	1,693,797	60,560	3.5
Fort Collins	219,161	212,227	6,934	3.2	217,025	210,220	6,805	3.1
Grand Junction	78,400	75,518	2,882	3.7	77,561	74,590	2,971	3.8
Greeley	173,547	167,207	6,340	3.7	171,898	165,706	6,192	3.6
Pueblo	76,993	73,202	3,791	4.9	76,528	72,871	3,657	4.8
<b>Counties</b>								
Adams	286,937	276,102	10,835	3.8	286,611	276,103	10,508	3.7
Alamosa	8,627	8,257	370	4.3	8,417	8,047	370	4.4
Arapahoe	380,943	367,528	13,415	3.5	381,180	368,151	13,029	3.4
Archuleta	7,344	7,106	238	3.2	7,315	7,065	250	3.4
Baca	2,169	2,125	44	2.0	2,091	2,043	48	2.3
Bent	1,952	1,893	59	3.0	1,840	1,778	62	3.4
Boulder	204,451	197,782	6,669	3.3	203,746	197,039	6,707	3.3
Broomfield	43,410	41,897	1,513	3.5	43,424	41,939	1,485	3.4
Chaffee	10,565	10,238	327	3.1	10,686	10,351	335	3.1
Cheyenne	1,081	1,057	24	2.2	1,033	1,009	24	2.3
Clear Creek	6,237	6,038	199	3.2	6,242	6,045	197	3.2
Conejos	4,226	4,066	160	3.8	4,080	3,921	159	3.9
Costilla	1,884	1,797	87	4.6	1,854	1,763	91	4.9
Crowley	1,411	1,351	60	4.3	1,373	1,310	63	4.6
Custer	2,513	2,435	78	3.1	2,526	2,445	81	3.2
Delta	13,505	13,001	504	3.7	13,375	12,863	512	3.8
Denver	444,125	427,344	16,781	3.8	444,171	428,018	16,153	3.6
Dolores	1,265	1,230	35	2.8	1,215	1,182	33	2.7
Douglas	211,803	204,797	7,006	3.3	211,968	205,067	6,901	3.3
Eagle	36,085	35,153	932	2.6	35,964	34,999	965	2.7
El Paso	368,556	354,665	13,891	3.8	368,310	354,461	13,849	3.8
Elbert	16,394	15,912	482	2.9	16,285	15,796	489	3.0
Fremont	14,710	13,947	763	5.2	14,639	13,875	764	5.2
Garfield	32,683	31,735	948	2.9	32,750	31,787	963	2.9
Gilpin	3,975	3,856	119	3.0	3,985	3,864	121	3.0
Grand	9,747	9,464	283	2.9	9,961	9,678	283	2.8
Gunnison	12,299	12,002	297	2.4	12,358	12,048	310	2.5
Hinsdale	544	530	14	2.6	575	563	12	2.1
Huerfano	2,533	2,372	161	6.4	2,500	2,343	157	6.3
Jackson	1,170	1,146	24	2.1	1,116	1,095	21	1.9
Jefferson	348,465	336,868	11,597	3.3	348,720	337,410	11,310	3.2
Kiowa	977	956	21	2.1	911	889	22	2.4
Kit Carson	4,475	4,392	83	1.9	4,321	4,227	94	2.2
La Plata	32,568	31,597	971	3.0	32,398	31,414	984	3.0
Lake	5,113	4,982	131	2.6	5,057	4,923	134	2.6
Larimer	219,161	212,227	6,934	3.2	217,025	210,220	6,805	3.1
Las Animas	5,999	5,656	343	5.7	6,009	5,661	348	5.8
Lincoln	2,284	2,210	74	3.2	2,232	2,159	73	3.3
Logan	10,317	10,005	312	3.0	10,135	9,804	331	3.3
Mesa	78,400	75,518	2,882	3.7	77,561	74,590	2,971	3.8
Mineral	510	496	14	2.7	513	499	14	2.7
Moffat	6,963	6,740	223	3.2	6,964	6,734	230	3.3
Montezuma	12,656	12,177	479	3.8	12,431	11,953	478	3.8
Montrose	22,010	21,245	765	3.5	21,603	20,840	763	3.5
Morgan	16,080	15,550	530	3.3	15,597	15,082	515	3.3
Otero	8,105	7,744	361	4.5	7,849	7,470	379	4.8
Ouray	2,604	2,523	81	3.1	2,623	2,536	87	3.3
Park	11,754	11,391	363	3.1	11,771	11,404	367	3.1
Phillips	2,742	2,676	66	2.4	2,582	2,516	66	2.6
Pitkin	11,069	10,766	303	2.7	11,132	10,822	310	2.8
Prowers	6,516	6,313	203	3.1	6,315	6,113	202	3.2
Pueblo	76,993	73,202	3,791	4.9	76,528	72,871	3,657	4.8
Rio Blanco	2,977	2,881	96	3.2	2,958	2,853	105	3.5
Rio Grande	5,698	5,460	238	4.2	5,533	5,288	245	4.4
Routt	16,493	16,035	458	2.8	16,495	16,048	447	2.7
Saguache	3,645	3,496	149	4.1	3,447	3,306	141	4.1
San Juan	672	657	15	2.2	676	663	13	1.9
San Miguel	6,302	6,161	141	2.2	6,381	6,235	146	2.3
Sedgwick	1,090	1,051	39	3.6	1,047	1,008	39	3.7
Summit	21,597	21,036	561	2.6	21,707	21,130	577	2.7
Teller	13,654	13,208	446	3.3	13,686	13,235	451	3.3
Washington	2,922	2,848	74	2.5	2,790	2,717	73	2.6
Weld	173,547	167,207	6,340	3.7	171,898	165,706	6,192	3.6
Yuma	6,036	5,910	126	2.1	5,699	5,573	126	2.2

All estimates made in cooperation with the U.S. Department of Labor, Bureau of Labor Statistics and adjusted to Current Population Survey data. Estimates have been revised to incorporate population data from the American Community Survey.  
 Colorado Department of Labor and Employment 2023

**Not Seasonally Adjusted Labor Force**

	August 2023				August 2022			
	Labor Force	Employment	Unemployment	Rate	Labor force	Employment	Unemployment	Rate
<b>Colorado</b>	3,273,533	3,158,008	115,525	3.5	3,212,071	3,123,185	88,886	2.8
<b>Metropolitan Statistical Area</b>								
Boulder	204,451	197,782	6,669	3.3	200,886	196,251	4,635	2.3
Colorado Springs	382,210	367,873	14,337	3.8	372,024	360,751	11,273	3.0
Denver-Aurora-Lakewood	1,754,043	1,691,733	62,310	3.6	1,731,823	1,684,603	47,220	2.7
Fort Collins	219,161	212,227	6,934	3.2	212,080	206,840	5,240	2.5
Grand Junction	78,400	75,518	2,882	3.7	76,992	74,675	2,317	3.0
Greeley	173,547	167,207	6,340	3.7	170,522	165,488	5,034	3.0
Pueblo	76,993	73,202	3,791	4.9	75,895	72,767	3,128	4.1
<b>Counties</b>								
Adams	286,937	276,102	10,835	3.8	283,247	274,684	8,563	3.0
Alamosa	8,627	8,257	370	4.3	8,254	7,980	274	3.3
Arapahoe	380,943	367,528	13,415	3.5	376,658	366,068	10,590	2.8
Archuleta	7,344	7,106	238	3.2	7,156	6,964	192	2.7
Baca	2,169	2,125	44	2.0	2,122	2,087	35	1.6
Bent	1,952	1,893	59	3.0	1,852	1,793	59	3.2
Boulder	204,451	197,782	6,669	3.3	200,886	196,251	4,635	2.3
Broomfield	43,410	41,897	1,513	3.5	42,721	41,681	1,040	2.4
Chaffee	10,565	10,238	327	3.1	10,153	9,917	236	2.3
Cheyenne	1,081	1,057	24	2.2	1,074	1,054	20	1.9
Clear Creek	6,237	6,038	199	3.2	6,193	6,017	176	2.8
Conejos	4,226	4,066	160	3.8	4,051	3,925	126	3.1
Costilla	1,884	1,797	87	4.6	1,805	1,738	67	3.7
Crowley	1,411	1,351	60	4.3	1,383	1,333	50	3.6
Custer	2,513	2,435	78	3.1	2,376	2,316	60	2.5
Delta	13,505	13,001	504	3.7	13,457	13,022	435	3.2
Denver	444,125	427,344	16,781	3.8	438,014	425,594	12,420	2.8
Dolores	1,265	1,230	35	2.8	1,197	1,168	29	2.4
Douglas	211,803	204,797	7,006	3.3	208,776	203,899	4,877	2.3
Eagle	36,085	35,153	932	2.6	34,862	34,097	765	2.2
El Paso	368,556	354,665	13,891	3.8	358,651	347,753	10,898	3.0
Elbert	16,394	15,912	482	2.9	16,179	15,815	364	2.2
Fremont	14,710	13,947	763	5.2	14,623	13,996	627	4.3
Garfield	32,683	31,735	948	2.9	31,369	30,570	799	2.5
Gilpin	3,975	3,856	119	3.0	3,943	3,846	97	2.5
Grand	9,747	9,464	283	2.9	9,405	9,183	222	2.4
Gunnison	12,299	12,002	297	2.4	11,644	11,416	228	2.0
Hinsdale	544	530	14	2.6	509	498	11	2.2
Huerfano	2,533	2,372	161	6.4	2,517	2,368	149	5.9
Jackson	1,170	1,146	24	2.1	1,064	1,046	18	1.7
Jefferson	348,465	336,868	11,597	3.3	344,426	335,615	8,811	2.6
Kiowa	977	956	21	2.1	949	935	14	1.5
Kit Carson	4,475	4,392	83	1.9	4,245	4,177	68	1.6
La Plata	32,568	31,597	971	3.0	31,068	30,269	799	2.6
Lake	5,113	4,982	131	2.6	4,778	4,665	113	2.4
Larimer	219,161	212,227	6,934	3.2	212,080	206,840	5,240	2.5
Las Animas	5,999	5,656	343	5.7	6,033	5,756	277	4.6
Lincoln	2,284	2,210	74	3.2	2,258	2,198	60	2.7
Logan	10,317	10,005	312	3.0	10,164	9,892	272	2.7
Mesa	78,400	75,518	2,882	3.7	76,992	74,675	2,317	3.0
Mineral	510	496	14	2.7	456	443	13	2.9
Moffat	6,963	6,740	223	3.2	6,805	6,633	172	2.5
Montezuma	12,656	12,177	479	3.8	12,403	12,008	395	3.2
Montrose	22,010	21,245	765	3.5	21,493	20,875	618	2.9
Morgan	16,080	15,550	530	3.3	15,565	15,102	463	3.0
Otero	8,105	7,744	361	4.5	7,934	7,633	301	3.8
Ouray	2,604	2,523	81	3.1	2,646	2,578	68	2.6
Park	11,754	11,391	363	3.1	11,666	11,384	282	2.4
Phillips	2,742	2,676	66	2.4	2,612	2,566	46	1.8
Pitkin	11,069	10,766	303	2.7	10,674	10,410	264	2.5
Prowers	6,516	6,313	203	3.1	6,206	6,048	158	2.5
Pueblo	76,993	73,202	3,791	4.9	75,895	72,767	3,128	4.1
Rio Blanco	2,977	2,881	96	3.2	2,869	2,768	101	3.5
Rio Grande	5,698	5,460	238	4.2	5,515	5,293	222	4.0
Routt	16,493	16,035	458	2.8	15,743	15,406	337	2.1
Saguache	3,645	3,496	149	4.1	3,489	3,381	108	3.1
San Juan	672	657	15	2.2	666	654	12	1.8
San Miguel	6,302	6,161	141	2.2	5,904	5,778	126	2.1
Sedgwick	1,090	1,051	39	3.6	1,119	1,094	25	2.2
Summit	21,597	21,036	561	2.6	20,742	20,304	438	2.1
Teller	13,654	13,208	446	3.3	13,373	12,998	375	2.8
Washington	2,922	2,848	74	2.5	2,821	2,763	58	2.1
Weld	173,547	167,207	6,340	3.7	170,522	165,488	5,034	3.0
Yuma	6,036	5,910	126	2.1	5,816	5,709	107	1.8

All estimates made in cooperation with the U.S. Department of Labor, Bureau of Labor Statistics and adjusted to Current Population Survey data. Estimates have been revised to incorporate population data from the American Community Survey.  
 Colorado Department of Labor and Employment 2023



Not Seasonally Adjusted Labor Force								
	August 2023				July 2023			
Select Cities in Colorado	Labor Force	Employed	Unemployed	Rate	Labor Force	Employment	Unemployed	Rate
Arvada	72,041	69,715	2,326	3.2	72,163	69,824	2,339	3.2
Aurora	213,275	205,222	8,053	3.8	213,305	205,532	7,773	3.6
Boulder	68,647	66,306	2,341	3.4	68,424	66,057	2,367	3.5
Brighton	21,194	20,327	867	4.1	21,149	20,320	829	3.9
Castle Rock	40,097	38,714	1,383	3.4	40,092	38,765	1,327	3.3
Centennial	66,133	63,879	2,254	3.4	66,138	63,987	2,151	3.3
Colorado Springs	255,519	246,248	9,271	3.6	255,346	246,106	9,240	3.6
Commerce City	31,564	30,300	1,264	4.0	31,502	30,300	1,202	3.8
Englewood	22,204	21,427	777	3.5	22,248	21,463	785	3.5
Erie	18,937	18,370	567	3.0	18,801	18,248	553	2.9
Fort Collins	106,261	102,901	3,360	3.2	105,213	101,928	3,285	3.1
Fountain	13,992	13,430	562	4.0	14,002	13,422	580	4.1
Grand Junction	31,668	30,441	1,227	3.9	31,328	30,066	1,262	4.0
Greeley	53,312	51,197	2,115	4.0	52,852	50,737	2,115	4.0
Lafayette	18,265	17,704	561	3.1	18,200	17,638	562	3.1
Lakewood	90,982	87,710	3,272	3.6	91,030	87,852	3,178	3.5
Littleton	26,210	25,313	897	3.4	26,212	25,357	855	3.3
Longmont	57,903	55,882	2,021	3.5	57,681	55,670	2,011	3.5
Loveland	48,509	46,936	1,573	3.2	48,001	46,492	1,509	3.1
Northglenn	22,106	21,261	845	3.8	22,060	21,261	799	3.6
Parker	35,523	34,346	1,177	3.3	35,538	34,391	1,147	3.2
Pueblo	49,098	46,468	2,630	5.4	48,796	46,258	2,538	5.2
Thornton	85,449	82,509	2,940	3.4	85,389	82,509	2,880	3.4
Westminster	69,296	66,781	2,515	3.6	69,277	66,825	2,452	3.5
Wheat Ridge	17,932	17,235	697	3.9	17,909	17,263	646	3.6
Windsor	16,073	15,484	589	3.7	15,892	15,343	549	3.5

	August 2023				August 2022			
Select Cities in Colorado	Labor Force	Employed	Unemployed	Rate	Labor Force	Employment	Unemployed	Rate
Arvada	72,041	69,715	2,326	3.2	71,207	69,452	1,755	2.5
Aurora	213,275	205,222	8,053	3.8	210,865	204,380	6,485	3.1
Boulder	68,647	66,306	2,341	3.4	67,257	65,793	1,464	2.2
Brighton	21,194	20,327	867	4.1	20,870	20,219	651	3.1
Castle Rock	40,097	38,714	1,383	3.4	39,455	38,544	911	2.3
Centennial	66,133	63,879	2,254	3.4	65,204	63,625	1,579	2.4
Colorado Springs	255,519	246,248	9,271	3.6	248,863	241,449	7,414	3.0
Commerce City	31,564	30,300	1,264	4.0	31,090	30,145	945	3.0
Englewood	22,204	21,427	777	3.5	21,972	21,342	630	2.9
Erie	18,937	18,370	567	3.0	18,581	18,203	378	2.0
Fort Collins	106,261	102,901	3,360	3.2	102,692	100,289	2,403	2.3
Fountain	13,992	13,430	562	4.0	13,599	13,168	431	3.2
Grand Junction	31,668	30,441	1,227	3.9	31,063	30,101	962	3.1
Greeley	53,312	51,197	2,115	4.0	52,362	50,671	1,691	3.2
Lafayette	18,265	17,704	561	3.1	18,012	17,567	445	2.5
Lakewood	90,982	87,710	3,272	3.6	89,947	87,384	2,563	2.8
Littleton	26,210	25,313	897	3.4	25,874	25,214	660	2.6
Longmont	57,903	55,882	2,021	3.5	56,889	55,449	1,440	2.5
Loveland	48,509	46,936	1,573	3.2	47,012	45,745	1,267	2.7
Northglenn	22,106	21,261	845	3.8	21,832	21,152	680	3.1
Parker	35,523	34,346	1,177	3.3	35,046	34,195	851	2.4
Pueblo	49,098	46,468	2,630	5.4	48,462	46,192	2,270	4.7
Thornton	85,449	82,509	2,940	3.4	84,400	82,085	2,315	2.7
Westminster	69,296	66,781	2,515	3.6	68,345	66,477	1,868	2.7
Wheat Ridge	17,932	17,235	697	3.9	17,773	17,171	602	3.4
Windsor	16,073	15,484	589	3.7	15,709	15,273	436	2.8

All estimates made in cooperation with the U.S. Department of Labor, Bureau of Labor Statistics and adjusted to Current Population Survey data. Estimates have been revised to incorporate population data from the American Community Survey. Colorado Department of Labor and Employment 2023

# Colorado LMI Data Overview

August 2023

Employment					
	Aug-23	Jul-23	Aug-22	Change from previous:	
				Period	Year
Nonfarm Wage and Salary Employment (SA)	2,916,000	2,910,400	2,873,300	5,600	42,700
Total Resident Employment (SA)	3,155,200	3,157,500	3,107,200	(2,300)	48,000
	Q1 2023	Q4 2022	Q1 2022		
UI Covered Total Employment	2,826,949	2,847,730	2,755,326	(20,781)	71,623
UI Covered Private Employment	2,389,453	2,409,300	2,331,346	(19,847)	58,107

Unemployment					
	Aug-23	Jul-23	Aug-22	Change from previous:	
				Period	Year
Unemployment (SA)	99,800	95,100	83,500	4,700	16,300
Percent Unemployed (SA)	3.1%	2.9%	2.6%	0.2	0.5
	Jul-23	Jun-23	Jul-22		
Initial Claims	11,491	17,816	11,181	(6,325)	310
Continued Weeks Claimed	100,345	142,280	76,478	(41,935)	23,867

Wages and Earnings					
	Q1 2023	Q4 2022	Q1 2022	Change from previous:	
				Period	Year
Total Average Weekly Wage	\$1,559	\$1,472	\$1,455	\$87	\$104
Private Average Weekly Wage	\$1,601	\$1,495	\$1,494	\$106	\$107
	Aug-23	Jul-23	Aug-22		
Average Weekly Earnings (Construction)	\$1,361.33	\$1,335.73	\$1,188.16	\$25.60	\$173.17
Average Weekly Earnings (Manufacturing)	\$1,224.98	\$1,191.46	\$1,086.25	\$33.52	\$138.73

CO Unemployment Insurance Trust Fund					
	Jun-23	May-23	Jun-22	Change from previous:	
				Period	Year
Employer Contributions	\$5,785,099	\$361,933,559	\$4,593,267	(\$356,148,460)	\$1,191,832
Benefits Paid	\$43,847,672	\$47,924,104	\$24,379,411	(\$4,076,432)	\$19,468,261
Average Weekly Benefit Amount	\$580.05	\$577.58	\$427.59	\$2.47	\$152.47
Duration (weeks)	12.78	16.33	13.43	(3.55)	(0.64)
Outstanding Title XII Loan Balance	\$0	\$0	\$133,089,861	\$0	(133,089,861)

Consumer Price Index for All Urban Consumers					
Not seasonally adjusted	Jul-23	May-23	Jul-22	% Change from previous:	
				Period	Year
Denver-Aurora-Lakewood	323.298	319.132	308.728	1.3%	4.7%
US City Average	305.691	304.127	296.276	0.5%	3.2%

(Most current data available for all categories)